

Recreation Guide

MARINA

Reserve a boat, stock up at the marina store, and make your day one to remember.

PAGES 14-17

INDEPENDENCE DAY

Lakeside fun! Relax on the beach, enjoy the festive boat parade, and celebrate a day of sunshine, water, and community. **PAGES 8; 10-11**

GOLF COURSE

Trade your “someday” for a perfect tee time. Claim your spot on the green before it’s gone. **PAGE 5**



7	AIRPORT	17	FRIENDS OF THE LAKE	3	PHONE DIRECTORY
20	CAMPGROUND	9	THE GRILL	12	PML MAP
4	CLOSURES/MEETINGS	21	HIKING MAPS	19	SWIMMING POOL
21	COMPOST	11	HUNTING	6	TENNIS & PICKLEBALL
18	EQUESTRIAN CENTER	16	LAKE LODGE	10	ROOFBB CLUB

YOSEMITE REGION Real Estate

- Real Estate Sales •
- Property Management •
- Long-Term Rentals •



VIEW ALL AREA PROPERTY LISTINGS ONLINE

DRE#01964114

MOUNTAIN LEISURE CENTER
18687 Main St, Suite E / 209.962.1111
www.YosemiteRegionRealEstate.com

PINE MOUNTAIN LAKE REALTY

An Agent-Owned Company



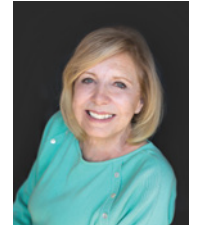
Barry Scales
Broker/Owner
209.484.7123
DRE#00451887



Lynn Bonander, GRI
Owner/Realtor®
209.484.7156
DRE#00683485



Val Bruce, GRI
Owner/Broker Assoc.
209.768.7368
DRE#00578336



Linda Willhite
Broker Assoc./Realtor®
209.985.2363
DRE#01063378



Eleda Carlson, GRI
Realtor®, SRES, e-Pro
209.814.4123
DRE#00632516



Michael & Patty Beggs
Broker Assoc./Owner/Realtor®
209.840.2294
209.840.2293
DRE#01339347



DJ Kraft
Owner/Realtor®
209.985.7633
DRE#02110007



Ann Powell
GRI, ABR, RSPS
209.200.1692
DRE#01268655

Available to serve you 7 Days a Week!
18634 Main St • Ste 1 • Groveland CA
Call 209-962-7156 • www.pmlr.com



**AWARD-WINNING
PUBLISHER • DESIGNERS
ILLUSTRATORS
PHOTOGRAPHERS**
209-962-0613
GROVELAND CA
WWW.SABREDESIGN.COM

Half the Town's Already Using It...
But no one's talking about it.

Sore knees, stiff backs, restless sleep... Our natural products are quietly helping locals feel better without the side effects.

And now it's your turn.

Exclusive Local Offer:

50% OFF your first order

Made in the USA | Fast Shipping | Trusted by Locals



ORDER NOW AT
PLANTBASED-CBD.COM



OLD WEST DAYS

**OCT
10-11
2026**
IN DOWNTOWN
GROVELAND
CALIFORNIA

Kick things off with a lively **parade** down Main Street! Then step into a **miniature Old West Town** in the park; where the spirit of the frontier comes to life.

- Old West Games
- Art vendors
- Food
- Music
- Parade
- Cornhole Tournament
- 1/2 Scale Old West Town
- The Good, The Bad & The Ugly BBQ Showdown!
- And More!

This is a 501(c)3 nonprofit event benefiting veterans.
MAKE A DONATION! <https://tinyurl.com/oldwestdays>



SPONSORS



www.OldWestDays.org

Pine Mountain Lake Phone and Email Directory

GENERAL MANAGER

Joseph Powell

ASSISTANT GENERAL MGR

Michelle Cathey
1.209.962.8640

ADMINISTRATIVE ASSISTANT TO THE GENERAL MANAGER

Janessa Owens
1.209.962.8627

HUMAN RESOURCES

Shannon Abbott
1.209.962.8628

E.C.C. ASSISTANT

Ashley Henderson
1.209.962.8605
PLAN SUBMITTAL, COMPLIANCE FEES

MEMBER RELATIONS

Shari Pingree
1.209.962.8632
GATE CARDS, ADDRESS CHANGES, WEBMASTER,
LAKE LODGE SCHEDULING, NOTARY

COMMUNITY STANDARDS DIRECTOR

Suzette Laffranchi
1.209.962.1241

COMMUNITY STANDARDS SPECIALIST

Carrie Harvey
1.209.962.1242

RECEPTIONIST

Angela Hicks
1.209.962.8600
GENERAL INFO, GATE CARDS,
LAKE LODGE SCHEDULING

MAIN GATE

1.209.962.8615
GENERAL SAFETY INQUIRIES, GATE PASSES,
CAMPGROUND RESERVATIONS

IT MANAGER

Yuris Daudish
1.209.962.1243

ACCOUNTING

CONTROLLER
Stacy Gray
1.209.962.8606
ACCOUNTING PROCEDURES

ACCOUNTING SUPERVISOR

1.209.962.8618

RECEIVABLE/COLLECTIONS/ASSESSMENTS

Sally Owens
1.209.962.8607

ACCOUNTS PAYABLE

Tina Parmalee
1.209.962.8626

THE GRILL AT PINE MOUNTAIN LAKE

FOOD & BEVERAGE DIRECTOR

Andrea Wilson
1.209.962.8639

RESTAURANT

1.209.962.8638

DEPARTMENT OF SAFETY

DIRECTOR OF SAFETY

Natalie Trujillo
1.209.962.8633

SERGEANT

Teri Cathrein
1.209.962.1244

MAINTENANCE DEPT.

ADMINISTRATIVE ASSISTANT

Patty Groothuyzen
1.209.962.8612

FIRE SAFETY COORDINATOR

Joe Milani
1.209.990.5260

FIRE SAFETY INSPECTOR

Amanda Birmingham
1.209.990.5263

FIRE SAFETY INSPECTOR

Jessica Heller
1.209.990.5261

GOLF COURSE

MAINTENANCE SUPERINTENDENT

Rob Abbott
1.209.962.8610

GOLF SHOP

Doug Schmielt
1.209.962.8620

GOLF PRO SHOP/GOLF RESERVATIONS

GOLF PRO

Mike Cook
1.209.962.8622

OTHER PHONE NUMBERS

RECREATION & SEASONAL OPERATIONS MANAGER

Melody Wisdom
1.209.962.8604

EQUESTRIAN CENTER MGR

Kendra Brown
1.209.962.8667

MARINA MANAGER

Dawn Pretzer
1.209.962.8631

POOL MANAGER

Dorothy Landrum
1.209.962.8634

PML NEWS

David Wilkinson
1.209.962.0613

ADS/ARTICLES SUBMISSIONS



LIKE OUR "OFFICIAL" PMLA FACEBOOK PAGES

[FACEBOOK.COM/PINEMOUNTAINLAKECA](https://www.facebook.com/PINEMOUNTAINLAKECA)

[FACEBOOK.COM/PMLARECREATION](https://www.facebook.com/PMLARECREATION)

[FACEBOOK.COM/PMLMAINTENANCEDEPT](https://www.facebook.com/PMLMAINTENANCEDEPT)

[FACEBOOK.COM/PMLGRILL](https://www.facebook.com/PMLGRILL)

[FACEBOOK.COM/PMLAEQUESTRIANCENTER](https://www.facebook.com/PMLAEQUESTRIANCENTER)

[FACEBOOK.COM/PMLSWIMCENTER](https://www.facebook.com/PMLSWIMCENTER)



WEBSITE



FACEBOOK

Closures and Meetings

PML Organized Groups & Clubs

Contact the individuals below if you are interested in joining!

- Aviation Association**
Bob Mackey 1-408-373-2625
- Crest Valley Firewise Community**
Terre Passeau 1-209-962-5364
- Friends of the Groveland Library**
Virginia Richmond 1-209-962-6144
- Friends of the Lake**
Mike Gustafson 1-209-962-6336
- Garden Club**
Linda Flores 1-209-770-6063
- Ladies Club**
Sharon Newell 1-415-244-7515
- Men's Golf Club**
www.pmlmgc.com
- Needle Crafts**
Barbara Klahn 1-209-916-5420
- Pickleball Club**
Tammy Talovich 1-209-605-7904
- Pine Needlers Quilt Guild**
Julie Kuhn 1-209-245-1439
- PML Ladies 18 Hole Golf Club**
Laura Kramer 1-209-840-0129
- PML Niners**
Stacie Brown 1-209-962-7397
- PML Pool Wellness Club**
Vickie Schultz pmlpoolclubpresident@gmail.com
- PML Safe Streets Campaign**
Leslie Dudley 1-209-962-4911
- PML Shooting Club**
Bill Kornele 1-415-933-7922
- PML Waterski & Wakeboard**
Dean Floyd 1-408-915-8848
pinemountainlakewaterskiclub.com
- Residents Club**
Brad Nelson 1-209-996-0106
- ROOFBB**
Audrey Prouse 1-209-962-4196 / charity@roofbb.org
- Rotary Club of Groveland**
Sharon Newell 1-415-370-4466
- Southern Tuolumne County Historical Society (STCHS)**
Harriet Codeglia 1-415-516-1852
- Southern Valley Srs. Golf Group**
Rich Robenseifner 1-707-486-9115

2026 Administration Offices Holidays

(ADMIN OFFICE WILL BE CLOSED)

MON 5/25/2026
MEMORIAL DAY

MON 7/6/2026
INDEPENDENCE DAY

MON 9/7/2026
LABOR DAY

WED 11/11/2026
VETERANS DAY

THUR 11/26/2026
THANKSGIVING

FRI 11/27/2026
DAY AFTER
THANKSGIVING

THUR 12/24/2026
CHRISTMAS EVE

FRI 12/25/2026
CHRISTMAS DAY

THUR 12/31/2026
NEW YEARS EVE

FRI 1/1/2027
NEW YEARS DAY

2026 PMLA BOARD Meetings Schedule

(THIRD SATURDAY
UNLESS OTHERWISE NOTED)

- MAY 16, 2026**
JUNE 20, 2026
(FATHER'S DAY WEEKEND)
JULY 18, 2026
AUGUST 15, 2026
(ANNUAL MEETING)
SEPTEMBER 26, 2026
(4TH SATURDAY OF THE MONTH)
OCTOBER 17, 2026
(BOARD BUDGET MEETING)
NOVEMBER 21, 2026



Pine Mountain Lake Golf Course is the Hidden Jewel of the Foothills Rated #4 in the USA by Golf Pass

Our 18-hole semi-private golf course, voted "4 1/2 Stars Best Places to Play" by Golf Digest Magazine, offers beautiful views on a classic mountain style course designed by William F. Bell, and opened in 1970. Our 2800 foot elevation allows year-round play and we are "Above the Fog and Below the Snow". The course winds through ancient oaks, towering pines and fragrant cedars, down valleys and across hills with beautiful views of the snow-capped Sierra Nevada mountains.

Each hole has its own challenges and with four sets of tees, you can change your experience just by changing which tees you play from. The greens are subtle and staying below the hole is always a good idea as downhillers can be tricky.

No matter your skill level you'll find your day spent on the course quite enjoyable with all of the flora and fauna that the foothills have to offer: herds of mule deer, red-tail hawks, blue jays and wildlife galore!

Golf Shop

It always helps to look great on the course no matter the shape of your game. The Golf Shop can help you look your best with our large variety of men's and ladies golf wear at great prices. We carry polos, tops, shorts, windshirts & sweatshirts, hats, caps & visors, and much more from Adidas, Antigua, Bermuda Sands, Monterey Club, Jamie Sadok and others. We can also

supply all of your equipment needs and wants – balls, gloves, clubs, bags and accessories from Titleist, Cobra, TaylorMade, Bridgestone and more. If it's not in stock we'll get it for you.

Junior Golf

For all aspiring golfers ages 7-18 we offer Golf Clinics where you can learn most everything you need to know about playing golf - how to swing the club, rules and etiquette, and strategy on the golf course. Please contact the Golf Shop at 1-209-962-8620 for more information about this program.

Lessons

Every player needs lessons. Even the PGA Tour pros you see on TV take lessons. If you're just starting out or looking to fine-tune your swing we can help. We provide personalized lessons for every student. Instruction can be done either individually or in groups, one lesson at a time or in series. Contact the Golf Shop at 1-209-962-8620 for more info and rates.

Rental Clubs – Didn't bring your clubs?

The Golf Shop offers rental clubs in right-hand, left-hand and Ladies sets. When you make your tee time just let us know what you need and we'll take care of the rest (golf swing not included). Clubs are also available on loan for use at the Driving Range & Practice Areas.

Golf Country Club Dress Code

Appropriate golf attire is required for all users of the golf course as follows:

Blue denim or cotton sweat pants are not permitted on the golf course.

MEN:

- Collared shirts are required.
- Mock turtleneck shirts are acceptable.
- No t-shirts, tank tops or muscle shirts are allowed.
- Shorts are allowed and must be at least mid-thigh in length.
- No cut-offs or swimsuits.

LADIES:

- Collarless tops are permitted as well as sleeveless tops with a minimum 4" shoulder strap.
- No tank tops or half shirts allowed.
- Shorts must be at least mid-thigh in length.
- No cut-offs or swim suits allowed.

FOOTWEAR:

- Metal spiked shoes are not allowed.
- Approved golf shoes only, other sport shoes such as (football, soccer, track, etc.) are not allowed at any time. Tennis shoes with smooth soles are allowed.

Driving Range & Practice Areas

Our driving Range has both grass and artificial mats for warming up before your round or fine tuning your swing. We also have a Short Game practice area with its own green and bunker for working on those scoring strokes. And don't forget to hit the Putting Green, adjacent to the 1st tee, before teeing off. Tokens for the range ball machine can be purchased at the Golf Shop or the Snack Shack; \$7 per token (26 balls) or 4 tokens for \$25 (over 100 balls).

Snack Shack at the Range

Enjoy a great Hot Dog or fresh handmade

sandwich and take in the view of the Sierra Nevada and Yosemite at our driving range.

Tee Time Reservations

PML Property Owners may make reservations up to 14 days in advance by calling the Golf Shop at 1-209-962-8620. All others may call 10 days in advance. Reservations for all days of summer's major holidays – Memorial Day, 4th of July and Labor Day – can be made two weeks prior to the first day of the holiday weekend. We accept reservations starting at 7am. *Winter Season* starts the day after daylight saving time ends and continues until daylight saving time begins and reservations are accepted starting at 8am.

Golf Fees — Monday thru Sunday

GREEN FEES CART FEES TOTAL

PML Property Owner

9 Holes	\$24	\$11	\$35
18 Holes	\$38	\$16	\$54
Twilight (1 PM)	\$26	\$16	\$42
Super Twilight (3 PM)	\$23	\$11	\$34

Guests of PML Property Owner

9 Holes	\$28	\$16	\$44
18 Holes	\$50	\$20	\$70
Twilight (1 PM)	\$43	\$20	\$63
Super Twilight (3 PM)	\$33	\$16	\$49

Public

9 Holes	\$40	\$16	\$56
18 Holes	\$60	\$20	\$80
Twilight (1 PM)	\$44	\$20	\$64
Super Twilight (3 PM)	\$36	\$16	\$52

Juniors (18 and Under) 9 or 18 Holes

PML Property Owner	\$10
Guest or Public	\$14
Youth on Course	\$5

**THE GOLF COURSE
IS FOR GOLF ONLY PLEASE!**
NO GAMES, WALKING, BIKE RIDING OR DOG WALKING ON THE GOLF COURSE.

Tennis and Pickleball

Tennis

Welcome to PML Tennis!
The tennis courts are open to PML residents, full-time renters, and guests. Whether you are an experienced player or someone who has never played before, Get your pass at the main gate at Pine Mountain Lake and come on out to join us!

Court Locations and Times

Pine Mountain Lake Association (PMLA) court located at Rock Canyon Way and Pine Mountain Drive. Courts 1 & 2 have lights until

10:00 PM, suitable for night play. The lights go out automatically at 10:00 PM and cannot be turned back on.

GENERAL RULES

A valid tennis pass is required to play. Annual tennis passes are sold at the Association Office. The Summer Pass runs Memorial Day thru Labor Day also sold at the Association office. Daily and monthly passes are sold at the Main Gate Department of Safety. Non-marking tennis shoes only. Appropriate tennis attire, no food or drink other than water on the courts. No glass containers. No pets on the courts.

Pickleball

One of the fastest growing sports in the nation: Pickleball is a fun, social game, easy to learn and provides a great physical workout that creates friendships and togetherness. This is a game that transcends age and gender boundaries. It's about having fun,

not taking life too seriously and making new connections.

Pine Mountain Lake is home to six (6) fully dedicated and fenced pickleball courts. The courts are lighted and open daily to 2026 pickleball pass holders. Passes for various durations can be purchased at the security gate (day, week, month) or Admin Office for and annual pass.

EQUIPMENT & CLOTHING

Paddles, balls and clothing are available for purchase in the Golf Shop

Call 1-209-962-8620 for more info

TENNIS & PICKLEBALL FEES

Players must display their valid tennis/pickleball pass while playing. You may purchase your annual tennis pass at the Association Office. Daily & monthly passes are on sale at the Main Gate Department of Safety office only. Passes are not available at the courts.

PROPERTY OWNER 2026

Annual single rate	\$204 per year (Includes members' children or grandchildren through age 18)
Summer Pass	\$140 (Memorial Day through Labor Day)
Off-season	\$65 (Labor Day through December 31, 2023)
Monthly rate	\$62 per month
Daily rate	\$.9 per day
Daily rate for property owners'	
Minor dependents thru age 18	\$.3 per day

Property owners may invite guests to play at property owner rates. Property owner must make the reservation for their guests either in person or over the phone with a PMLA PIN number in order to obtain this rate for their guest.

GUEST/RENTER

Long-Term Annual Individual rate	\$234 per year
Monthly rate	\$77 per month
Daily rate	\$12 per day

PICKLEBALL 2026 RECREATION GUIDE

What is Pickleball?
 One of the fastest-growing sports in the nation, *pickleball* is a fun, social, and easy-to-learn game. It provides a great workout while bringing people together—no matter your age or skill level.
It's all about fun, connection, and community!

Courts & Access

- Location: Pine Mountain Lake
- 6 dedicated, fenced courts
- Lighted for extended play
- Open daily to 2026 pass holders

Pass Options: Day Week Month Year

Available at:

- Security Gate
- Admin Office

Scheduled Play Times

Days: Monday, Wednesday, Friday, Saturday, Sunday
 * Winter: 10:00 AM
 Spring & Summer: 9:00 AM

Member Perks:

- Themed monthly events (May-Oct)
- Potlucks & hosted gatherings
- January holiday party

PICKLEBALL CLUB PML

Contact: Tammy Talovich
 tamtally1@gmail.com

\$15 PER PERSON / YEAR

Pine Mountain Lake Community Airport Day

**SATURDAY
OCTOBER 3, 2026**

from noon until 3:00 pm

The event is a terrific opportunity to gain community support and appreciation for our airport.

Visitors can enjoy viewing airplanes to include certified, vintage, and experimental during the event.

Planned demonstrations include formation flying and special aerial exhibitions.



Located in Unit 12 on Elderberry Way

FACILITIES ON SITE INCLUDE:

fueling and parking.

LOCATION:

North Latitude 37, 51' 45"

West Longitude 120, 10' 40"

ELEVATION:

2,933 feet above sea level.

RUNWAY:

27/09, 3,625 feet long. Surface is asphalt.

Right traffic runway 27.

LIGHTS:

Runway and rotating beacon,

VASI - Runway 09,

PAPI - Runway 27

TAXIWAY:

3,600 feet long, paved.

TIE DOWN AREA:

Paved, approximately 54 tie downs, transient tie downs available on west side of ramp south of fuel pumps.

Overnight fees: \$4 single; \$8 twin.

UNICOM:

122.9

FROM VORS:	FREQ.	RADIAL	DME MILES
Modesto VOR (MOD)	114.6	052°	40
Merced area	114.2	001°	40
El Nido VOR (HYP)			
Stockton area	114.8	092°	40
Linden VOR (LIN)			

LINGLEY ENTERPRISES

COMMERCIAL - HOME - INDUSTRIAL

REMODELS AND IMPROVEMENTS

PREVENTIVE MAINTENANCE

ALL PHASE OF SERVICE & REPAIR

- PLUMBING
- ELECTRICAL
- PAINTING
- WATER HEATER TANK / TANKLESS
- CARPENTRY

209 840 2654

WWW.LINGLEYENTERPRISES.COM CUSTOMERSERVICE@LINGLEYENTERPRISES.COM

Independence Day

USA'S
250TH
ANNIVERSARY
**INDEPENDENCE DAY
CELEBRATION**
AT PINE MOUNTAIN LAKE
JULY 4TH, 2026

6AM – PARKING LOT OPENS

**4PM – CEASE TRAFFIC ON
CASSARETTO COURT
TO ALLOW A CLEAR
PATH FOR SHUTTLES.**

7AM – MARINA STORE OPENS

9AM – START SHUTTLES

6PM – BOAT PARADE

10AM – LAKESIDE CAFÉ OPENS

**7PM – CLOSE LAKESIDE CAFÉ
AND MARINA STORE**

11AM – DJ STARTS

DARK – FIREWORKS SHOW

11AM – BEER BOOTH OPENS

11PM – SHUTTLE SERVICE ENDS

2–3PM – NO SHUTTLE

For more information call the
Marina Store at 1 (209) 962-8631



Schedule subject to change without notice.

Annual Fireworks Wristbands

**It's that time of year to
start picking up your wristbands
for the annual Fireworks Event.**

This year the event is held on **July 4th**. Each member can pick up their two free wristbands at the Administration Office during business hours – Monday through Friday 8:00 AM - 4:30 pm. The Administration office is open on Saturday, July 4th, from 8 am - NOON for wristband pick-up. The Marina does not give out any free wristbands. Additional wristbands can be purchased at the Administration Office prior to the event. Additional wristbands can be purchased at the Marina on the day of the event. Wristband prices are \$15 for Adults and free for children 8 years and younger. You must be a member, long-term renter, or short-term renter to purchase a wristband.

**For any questions, please call us at
1 (209) 962-8600**

2026 PMLA WRISTBAND REQUEST

I hereby request that PMLA mail my two (2) free Independence Day wristbands per property to me. Enclosed please find a #10 self-addressed, stamped envelope with required postage affixed.

I understand my free wristbands will only be mailed to the address PMLA has on record as my mailing address.

I hereby accept responsibility for delivery of the wristbands and understand that PMLA will not replace lost or missing wristbands.

Any requested change of address must be submitted in writing and signed by a current property owner.

Requests for mailing of free wristbands must be RECEIVED in the PMLA Administration office by **June 15, 2026**.



Property Owner Signature

Property Owner Name

DATE

UNIT/LOT

**MAIL TO: PMLA Free Wristbands – Member Services
19228 Pine Mountain Drive
Groveland, CA 95321**



The Grill at Pine Mountain Lake

Tucked away in the heart of Groveland, the Gateway to Yosemite, The Grill at Pine Mountain Lake is the perfect place for a bite to eat, drinks with a friend, or a meal with your family. The Grill overlooks the beautiful Pine Mountain Lake golf course with views of tall trees and mountain peaks.

Our lunch and dinner menu feature a wide variety of items, everyone is sure to enjoy. To view our menu please visit us at www.pmlgrill.com. We offer indoor and outdoor dining and service with a smile.

The Grill at Pine Mountain Lake is also home to the 19th Hole Lounge, the perfect place for a craft cocktail or a beer following a round of golf. For more information please call us at 1(209)962-8638 or email us at grill@pinemountainlake.com.

- Our banquet space at The Grill is the perfect venue for your dream wedding, celebration, or group retreat.
- Our 16,000 sq foot facility houses a full-service restaurant, banquet room, and the 19th Hole Lounge.
- Our Chefs, under the guidance of Executive Chef Raul Melchor, prepare your reception with the freshest ingredients and eye for detail.

We can accommodate your every need for any event, tailored to meet your individual needs and budget.

For more information, please give us a call at 1 (209) 962-8638 or email us at cluboffice@pinemountainlake.com.

**Open at 11AM
for lunch
7 days a week!**

**Dinner
is served
Wednesday-
Sunday
at 5PM**

**RESTAURANT
OCCUPANCY
CAPACITY
160**

WEBSITE

www.pmlgrill.com

RESTAURANT

1.209.962.8638

Hours

Monday & Tuesday

11AM - 4PM

Wednesday,

Thursday, & Sunday

11AM - 8PM

Friday & Saturday

11AM - 9PM

THE GRILL RESTAURANT & BAR

**Lounge occupancy
capacity 62.**

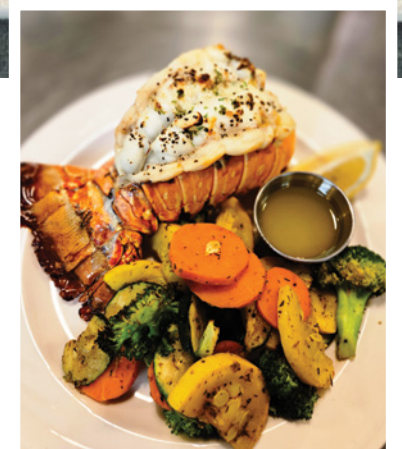
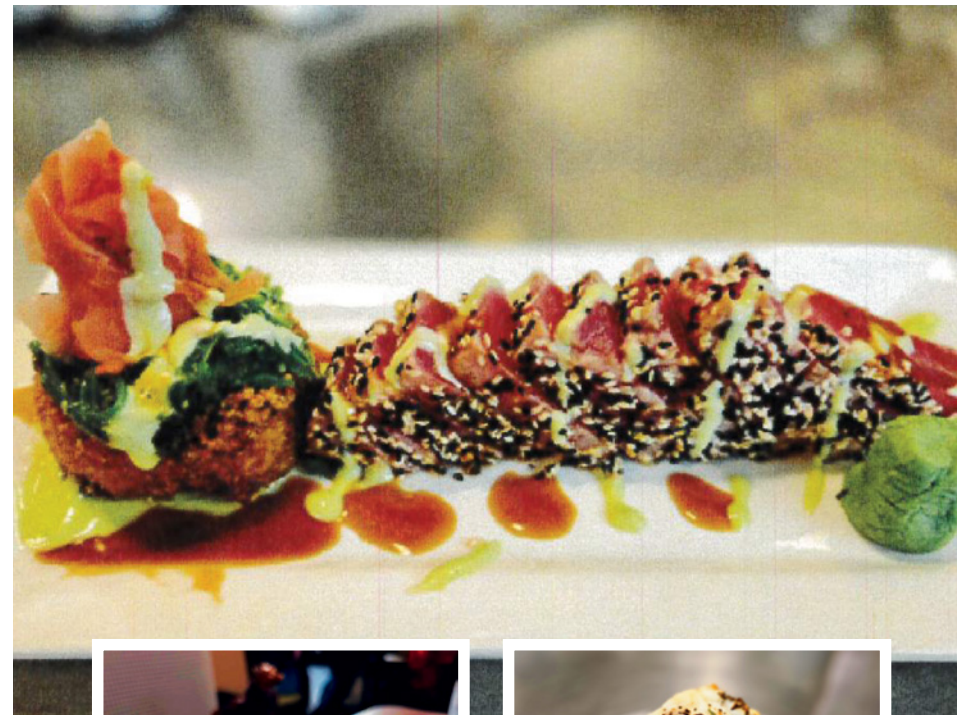
QUESTIONS OR COMMENTS?

**Any specific questions
or comments about our
restaurant or lounge?**

**We invite you to send
e-mail to: [cluboffice@
pinemountainlake.com](mailto:cluboffice@pinemountainlake.com) or
please call us.**

**Reservations
Recommended**

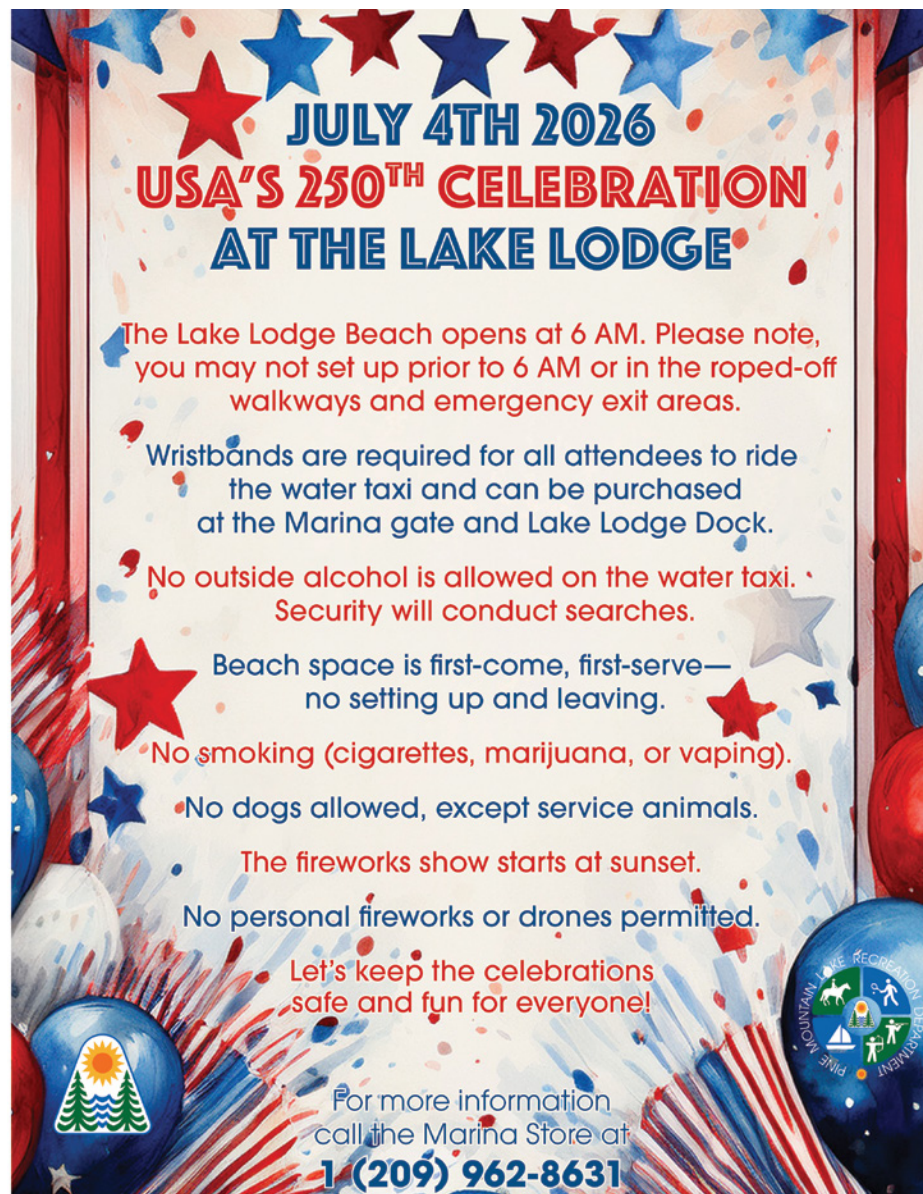
1.209.962.8638 www.pmlgrill.com





USA'S
250TH
ANNIVERSARY
**INDEPENDENCE DAY
CELEBRATION**
AT
PINE MOUNTAIN LAKE
SATURDAY,
JULY 4TH,
2026
AT THE MARINA
ALL DAY!

FOR MORE INFORMATION
CALL THE RECREATION MANAGER
AT 1-209-962-8604



JULY 4TH 2026
**USA'S 250TH CELEBRATION
AT THE LAKE LODGE**



The Lake Lodge Beach opens at 6 AM. Please note, you may not set up prior to 6 AM or in the roped-off walkways and emergency exit areas.

- Wristbands are required for all attendees to ride the water taxi and can be purchased at the Marina gate and Lake Lodge Dock.
- No outside alcohol is allowed on the water taxi. Security will conduct searches.
- Beach space is first-come, first-serve—no setting up and leaving.
- No smoking (cigarettes, marijuana, or vaping).
- No dogs allowed, except service animals.

The fireworks show starts at sunset.
No personal fireworks or drones permitted.

Let's keep the celebrations safe and fun for everyone!

For more information call the Marina Store at
1 (209) 962-8631



ROOFBB “Caring Hearts-Helping Others”

ROOFBB is a small non-profit local organization doing big things for our community! We are a group of dedicated, energetic, and fun-loving women that have one single mission; raise funds to support our local community and help those in need. All the funds we raise go towards helping neighbors in need, local schools, and community projects. Since our inception, ROOFBB has raised over \$400,000 to support the greater Groveland area. We raise funds by direct donation,

membership dues, and holding fundraisers throughout the year.

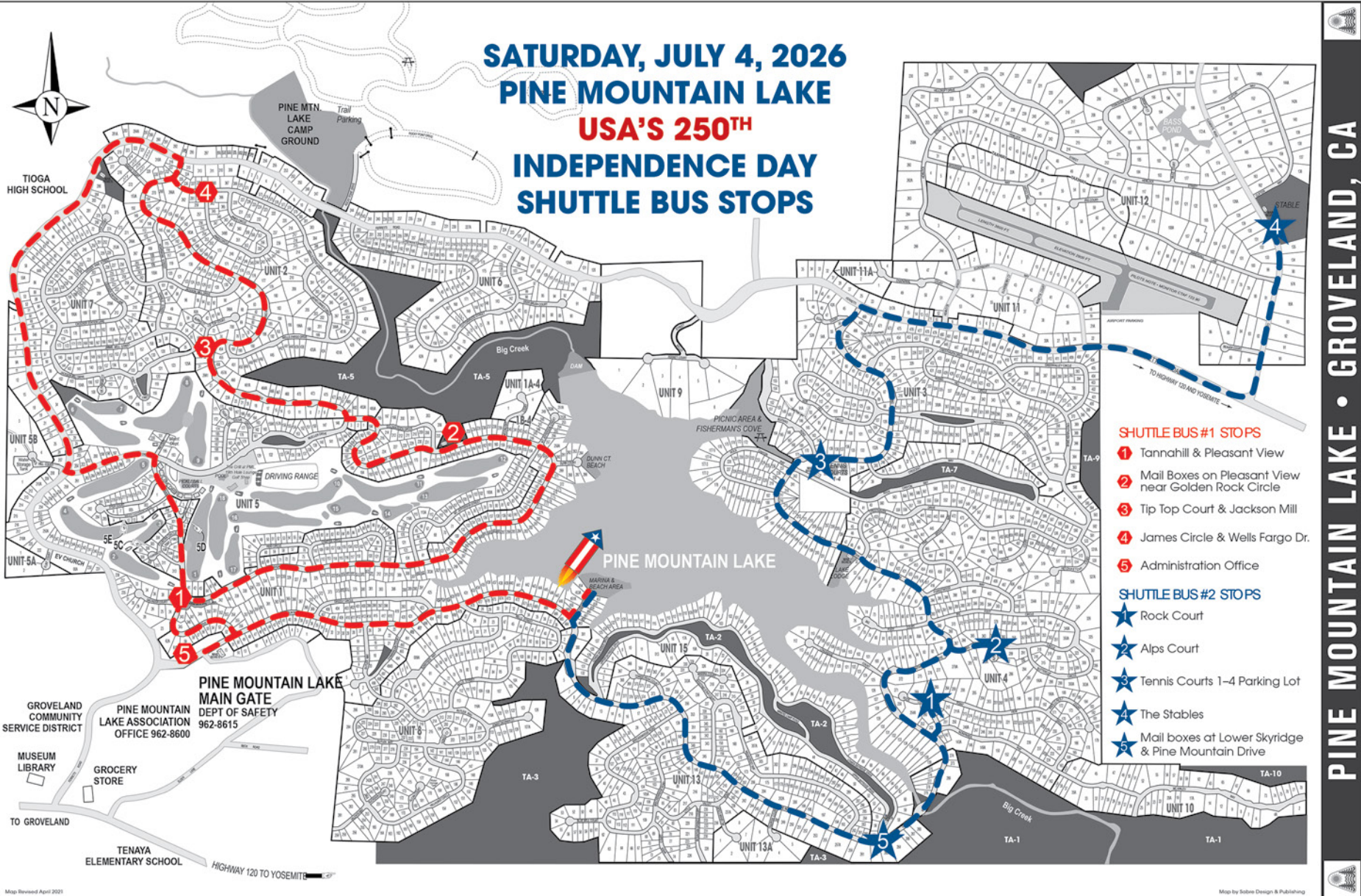
Please look for information about ROOFBB and our upcoming events on Facebook, Instagram, and NextDoor @**roofbbcharity**.

Join Us! Membership is \$50 for a year of fun and fulfilling events. Become a member of a hard-working and fun group that knows how to raise \$\$ to help support our community

and have fun doing it! To join, please call Audrey Prouse, ROOFBB President at (209) 396-5266, email us at **charity@roofbb.org**, or sign up today on our website **https://charity.roofbb.org/**



SATURDAY, JULY 4, 2026 PINE MOUNTAIN LAKE USA'S 250TH INDEPENDENCE DAY SHUTTLE BUS STOPS



HUNTING AND FISHING LICENSES

PINE MOUNTAIN LAKE OFFERS THE AUTOMATED LICENSING SYSTEM SUPPLIED BY THE DEPARTMENT OF FISH & WILDLIFE.

Purchase your Deer, Bear, Pig, or Waterfowl tags as well as fishing licenses and all supplemental stamps! Our system allows us to print your license and tags right on the spot. No more applications or mailings needed. If you're looking for the perfect gift you can pick up a gift voucher. It works just like a gift card. The recipient can redeem their gift at any licensing agency.



Stop by the Main Gate or the Marina to purchase your Hunting and Fishing Licenses. Just bring in your Drivers License and let the automated license system do the rest.

MAP LEGEND

-  Pine Mountain Lake Roads
-  Pine Mountain Lake Stable
-  Public Access Roads
-  Greenbelt
-  PML Golf Course
-  The Grill at PML Restaurant, 19th Hole Lounge, and Golf Shop
-  PML Beaches & Activities
-  Trails
-  Card Entry Gates to PML
-  Picnic Tables



- 1 ADMINISTRATION OFFICE**
- 2 MAIN GATE/DEPARTMENT OF SAFETY**
- 3 PLEASANT VIEW HORSESHOE PITS**
- 4 TENNIS COURTS 1, 2, 3 & 4**
- 5 PICKLEBALL COURTS**
- 6 SWIMMING POOL**
- 7 THE GRILL AT PML, 19th HOLE LOUNGE, GOLF SHOP**
- 8 CAMPGROUNDS**
- 9 UNIT 14 & 16 HIKING TRAILS**
- 10 DUNN COURT BEACH**
- 11 MARINA**
- 12 FISHERMAN'S COVE**
- 13 LAKE LODGE**
- 14 AIRPORT**
- 15 STABLES**
- 16 ARCHERY RANGE**
- 17 SHOOTING RANGE**

Pine Mountain Lake Association
 19228 Pine Mountain Drive
 Groveland CA 95321
 209-962-8600

Boat registration, launching, docking, boat rentals, water-ski sign-ups, fishing licenses, Marina entrance, beach security and gas dock are all controlled from the Marina Store. **NO ONE UNDER THE AGE OF 16 IS PERMITTED IN THE MARINA UNLESS ACCOMPANIED BY AN ADULT.**

MARINA STORE HOURS

Daily from 7am - 7pm

September 1 - October 30,
with modified hours.

Lakeside Café HOURS

Open Memorial Weekend to Labor Day

Sunday-Thursday - 11am to 6pm

Friday-Saturday - 11am to 7pm

Boat Launch & Watercraft Inspections

BY RESERVATION ONLY. Please call Marina Store to schedule at 1 (209) 962-8631.

Gas Dock Hours

7 am to 5:30 pm when store is open.

Parking

Parking in the Marina Parking Lot is restricted to Property Owners ONLY on weekends and holidays. Marina parking lot hours are from 6 am to 10 pm. Cars must be removed from all beach location parking lots after hours or they are subject to towing.

Water Taxi*

Park your car at Fisherman's Cove, Dunn Court or Lake Lodge and ride one of our CUSTOM 18 PASSENGER WATER TAXIS! Water Taxi Rates: The water taxi is FREE to all.

Water Taxi Schedule*

Memorial Weekend to Labor Day. Seven days a week, 10 am to 6 pm, during summer months (weather permitting). Please be at the dock prior to scheduled pick up time (Schedule subject to change without notice). Use the water taxi to avoid the crowded Marina parking.

Water Taxi Departures*

Marina Dock—on the hour

Lake Lodge—on the 1/4 hour

Fisherman's Cove—on the half hour
Dunn Court—on the 3/4 hour

PML Lake Cruises*

Sign up for Lake Cruises at the Marina Store or call 1-209-962-8631. Enjoy a relaxing lake cruise on beautiful Pine Mountain Lake. Available everyday! Charter the boat for your own group. Only \$110 for 1 hour cruise. (Max. capacity up to 16 adults.) See Marina Manager for details.

**NO LIFEGUARD
ON DUTY
SWIM AT YOUR
OWN RISK!**

NON-MOTORIZED WATERCRAFT LAUNCH ALERT PINE MOUNTAIN LAKE NO APPOINTMENT REQUIRED

**But registration and inspection still matter!
PLANNING TO LAUNCH A KAYAK, CANOE, PADDLEBOARD,
OR OTHER NON-MOTORIZED VESSEL?**

Here's what you need to know:

NO APPOINTMENT NEEDED

Non-motorized watercraft **do not** require a launch appointment. However, proper registration and inspection are **mandatory**.

LAUNCH PROCEDURE

Check-In with the Marina Attendant

Upon arrival at the Marina, Lake Lodge, or Dunn Ct. launch areas, please stop and check in.

Provide Current PML Registration

You must present your current Pine Mountain Lake vessel registration. Vessels **without valid registration and stickers will not be allowed to launch** and will be directed to the Marina Office.

Vessel Inspection

The Attendant will inspect your vessel to ensure it is:

CLEAN (no visible mud, plants, or debris)

DRAINED (no standing water)

DRIED (sun-dried and free of moisture)

Launch Approval

Once your vessel passes inspection, you'll be cleared to launch.

If it does not pass, launching will be denied until the vessel meets all requirements.

HELP PROTECT OUR LAKE:

Clean, Drain, Dry every time you move your vessel between waterbodies!

Enjoy the lake safely and responsibly.

Thank you for doing your part to protect PML!



IMPORTANT NOTICE FOR ALL MOTORIZED BOATS



PINE MOUNTAIN LAKE LAUNCH PROTOCOL

PLANNING TO LAUNCH YOUR WATERCRAFT?
Please read **before** heading to the Marina.

YOU MUST HAVE A LAUNCH APPOINTMENT!

To help protect our lake and keep launch operations running smoothly, the following is **REQUIRED**:

• CONFIRMED LAUNCH/INSPECTION APPOINTMENT

Appointments are **mandatory** for all watercraft launches and inspections.

Call the Marina Office to schedule: **1 (209) 962-8631**

• CURRENT PML REGISTRATION & STICKERS

All vessels must display current PML registration and sticker **on the boat**.

• OPEN AND EMPTY COMPARTMENTS

All compartments must be **completely emptied and open** for Aquatic Invasive Species (AIS) inspection.

If you arrive without an appointment or do not meet these requirements:

You will be required to turn around and exit the Marina.

Then, call the Marina Office to check for availability and schedule an inspection/launch appointment.

Help us keep PML safe, clean, and enjoyable for all!

Thank you for your cooperation.



2026 BOAT RENTALS

Must be 16 years or older with proof of a driver's license.

Mon - Sun

PEDAL BOAT - CAPACITY 2-4

per hour	\$35
per 1/2 day (4 hours)	\$105
per day (10 hours)	\$200

FAMILY PEDAL CRUISER - CAPACITY 5-6

per hour	\$60
per 1/2 day (4 hours)	\$180
per day (10 hours)	\$480

SAIL BOAT - CAPACITY 2

per hour	\$35
per 1/2 day (4 hours)	\$105
per day (10 hours)	\$200

SINGLE KAYAK/STAND UP PADDLE BOARD - CAPACITY 1

per hour	\$35
per 1/2 day (4 hours)	\$105
per day (10 hours)	\$280

DOUBLE KAYAK - CAPACITY 2

per hour	\$40
per 1/2 day (4 hours)	\$120
per day (10 hours)	\$320

GAS FISHING BOAT - CAPACITY 4

per hour	\$45
per 1/2 day (4 hours)	\$135
per day (10 hours)	\$360

GAS FISHING BOAT - CAPACITY 6

per hour	\$65
per 1/2 day (4 hours)	\$195
per day (10 hours)	\$520

BOAT REGISTRATION FEES (for property owners only)

Registration fees are based on the calendar year and are non-refundable.

DESCRIPTION	COST
Power/Electric Boats	\$90 per year
Paddle Boats, Rowboats, Canoes, Kayaks, Windsurfers, and Sail Boats	\$27 per year
Float Tubes, Inflatable's	\$27 per year
Daily Lunch Pass	\$12

GIFT CARDS ARE AVAILABLE AT THE ADMINISTRATION OFFICE, THE GRILL, AND AT THE PRO SHOP!

MARINA

Open daily 7 am to 7 pm

May 22-September 7, 2026

Visit our friendly full-service Marina Store for all your Fishing, Boating & Souvenir Needs!



- Floaties
- Candy
- Fishing Licenses
- Sunglasses
- Volleyball Rental
- Bait and Fishing Tackle
- Sun Screen
- PML Logo Hats & Shirts
- Beach Toys
- Ice & Much More!

Major credit cards welcome!



Please visit our website for any changes at PineMountainLake.com

DejaVu Video Services

408-899-4407 • dejavuvideo123@gmail.com

FILM & VIDEO TRANSFER SERVICES

DON'T LET DISASTER STEAL YOUR FAMILY MEMORIES!

Let us digitize your memories for your future generations. Turn those boxes of photos, reel film, and VHS tapes into a format you can share and store on a hard drive or the cloud.

- MEMORIAL SLIDESHOWS
- REEL FILM & VIDEO TRANSFERS
- PRINT & SLIDE SCANNING
- AUDIO CASSETTE TO .MP3
- FREE PICK UP & DELIVERY



- GRAPHIC DESIGN SERVICES
- PHOTO RESTORATION
- PHOTO BOOKS
- PHOTO PUZZLES & GIFTS
- WHITE GLOVE SERVICE



PML Kids' Water Ski Day 2026

PURPOSE:

To introduce youth to water skiing on Pine Mountain Lake.

WHO MAY PARTICIPATE?

Children and youth ages 6 through 17 years of age. (AKA "youth") The priority is youth of parents or grandparents of Pine Mountain Lake property owners. Proof of Pine Mountain Lake property ownership (by parent or guardian) will be required. No guests or renters please. No experience necessary,

however the youth must know how to swim and be confident in the water.

OVERVIEW:

Members of the Pine Mountain Lake Water Ski Club (AKA "Club") volunteer to teach youth to water ski. The parents will complete an application as well as two liability release forms one for PML, and one for the boat owners).

The applications must be submitted no later than 5:00 P.M. on **Thursday afternoon, July 16**. All enrollment will be on-line ONLY. Boat owners will donate their time, effort, and boats. This event is from 8: A.M. to 12:00 noon.

The dates are **Friday, July 17 and Saturday, July 18**.

See pinemountainlakewaterskiclub.com

EXCLUSIVE USE:

During this ski period, only Club members donating their boats will be using the lake for water skiing. No other water skiers, nor blow outs. The boat patrol will be on duty, all normal lake rules apply.

CHECK IN:

The youth will check in at the table by the boat launch ramp at 8:00 A.M., and be given some "dry-land" training, then be assigned

a boat. Water skiing will begin at 9:00 A.M. The youth will have approximately 5 attempts to ski.

SKIS:

The Club will provide all necessary equipment.

SAFETY:

Each boat will have a ski boat owner as driver and a legal flagger. Each boat will provide a USCG approved life jacket. If youth have their own life jacket, they are welcome to bring it.

Lake Lodge

LOCATED ON PINE MOUNTAIN DRIVE

BETWEEN CRESTHAVEN DRIVE AND ROCK CANYON WAY



- Beach
- Suitable for family groups
- Picnic tables
- Large sandy beach with large swim area
- Restrooms
- Seasonal water taxi service

NOTE: This amenity does not have sleeping accommodations.



AT PINE MOUNTAIN LAKE

12495 CASSARETTO COURT • MARINA@PINEMOUNTAINLAKE.COM



The Lakeside Café Hours

Sunday – Thursday 11am - 6pm • Friday & Saturday 11am – 7pm

For any questions please call 1-209-962-8604. See pinemountainlake.com for menu

Friends of the Lake Activities and Events

Friends of the Lake is a PML social club focused on enjoying our beautiful lake.

Our events are open to the public, sometimes for a small fee. To join Friends of the Lake, send a check for \$20/family with your names) and email address to Friends of the Lake, PO Box 591, Groveland.

You'll receive an email invitation for each program. You can also join at any of our events. Here are our planned events for 2026.

PML WILDLIFE Sunday, May 17

Join PM resident and master nature photographer Dave Douglass for a peek into his gorgeous photos of PML's birds and animals and the stories behind the photos. Potluck supper at 5:00pm at Lake Lodge, followed by the presentation. Free for everyone!

POKER RUN Sunday, June 14

Our annual Poker Run on the lake at 5:00pm. After dinner at the Marina, we board pontoon boats and travel around the lake picking up poker cards. Upon returning to the Marina,

we play the cards and win prizes. Call 962-7904 to reserve your seat. \$5 per person.

INDEPENDENCE DAY BOAT PARADE Saturday, July 4

Don't miss this highlight of the summer! Decorate your boat to celebrate

America's 250th birthday. Parade starts at 6:00pm. No fee.

Call 962-6336 for additional information.

PML LAKE SWIM Saturday, July 11

Friends of the Lake presents the annual "Lake Swim" with an open swim from Dunn Court to the Marina at 3:00pm. You can race or just swim for fun; note proficient swimmers only. No children under 10. No fee.

MUSIC AT THE MARINA Sunday, July 12

The Kaleidoscope band featuring Kerry Tweedy's smooth vocals will entertain at the Marina after a 5:00pm potluck dinner. \$10 for guests.

PUZZLES ON THE LAKE

Sunday, August 16

Another fun evening at the lake starting at 5:00pm. Following dinner at the Marina, we'll divide into teams on boats and look for clues to answer the quiz. \$10 guests.

BINGO ON THE BEACH Sunday, September 13

Bingo on the Beach is a great way to end the summer season. We meet at the Marina at 5:00pm for supper, and then play a rousing game of bingo with prizes. \$5 for non-members.

Come join us and share in the enjoyment of our beautiful lake!



ROPING
2026
IN THE PINES

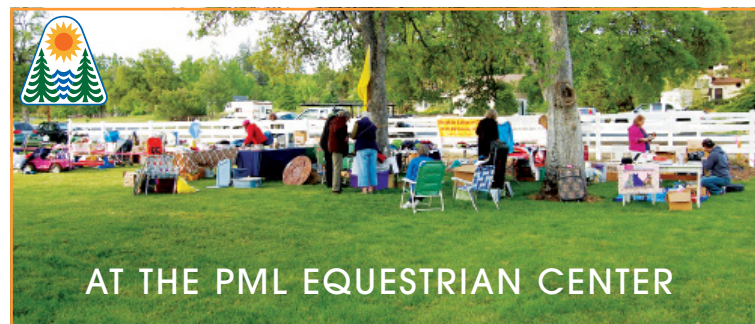
FRIDAY - MAY 22ND
4:00 PM-7:00 PM - Check-in
Open at barn office • Vendor Set Up

SATURDAY - MAY 23RD
7:00 AM-7:45 AM - Check-in Open at barn office
8:00 AM - Ground Rules in Arena with Judges
Open Division will rope immediately after ground rules
Intermediate Division will rope after the completion of the open
Youth will rope after the completion of the Intermediate.
Round 2
Youth Awards to follow
TBD - Dinner Will take place in the lawn area

SUNDAY - MAY 24TH
8:00 AM - Final Round Top 6 teams from the open and intermediate divisions
Open will rope first
Awards will follow the completion of the roping in the lawn area.
• Mixed Branding
• Team Branding
After awards on Sunday

****Schedule is tentative, we advise you watch for changes.
For more information, contact Kendra Brown at
1 (209) 962-8667

Pine Mountain Lake FLEA MARKET YARD SALE AND TACK SWAP/SALE



AT THE PML EQUESTRIAN CENTER

SAT., JUNE 13, 2026

SET-UP @ 11AM

GATES OPEN TO THE PUBLIC NOON - 4PM

\$10 FOR A 12X12 SPOT

Spaces are first come, first served on the day of the event.
No power.

Please bring your own table, chairs, shade, and money.

Weather Permitting

For questions or more info contact the Stables Manager at
1.209.962.8667

OPEN TO THE PUBLIC!

We offer a premier boarding package unlike any other! Our boarding facilities include stalls with attached paddocks, individual turnout pastures, and overnight paddock rentals. Riders have access to our 100'x250' sand arena, a 50' round pen, and a hot water wash rack for their horses' care and training needs.

Facility Rentals & Event Spaces

Looking for a scenic venue? We offer public rentals of our spacious lawn picnic and barbecue area, stage, and dance floor—perfect for gatherings, celebrations, and special events.

Horseback Riding Lessons & Trail Rides

Horse lovers of all ages and skill levels are welcome! We provide 1-hour riding lessons and 1-hour guided trail rides.

Lessons: Available year-round, seven days a week from 10 am – 3 pm.

Trail Rides: Offered May 1 – October 31.

Our facility and instructors are Certified Horsemanship Association (CHA) accredited, ensuring a fun, safe, and professional experience.



Pricing:

\$65 for property owners

\$70 for non-property owners

Call 1 (209) 962-8667 to reserve your spot!

BIRTHDAY PARTIES & SPECIAL PACKAGES

Make your next celebration unforgettable! We offer customizable birthday party packages with horseback riding and fun barn activities. Let us help create a unique and memorable experience for your special day!

BBQs & Community Events

We host BBQs and special events throughout the year. Visit our website for the latest updates on upcoming gatherings and activities!

HAUL-INS WELCOME!

OPEN 8:00 A.M. TO 5:00 P.M. / SEVEN DAYS A WEEK

Boarding Fees

PROPERTY OWNER & NON-PROPERTY OWNERS (FULL CARE)	BARN
	\$395
Hay Surcharge	Market Rate
Shavings	Market Rate
General Special Event Arena Rental	\$200 per day
P.A. System	\$50 per day

PICNIC AREA

Refundable Cleaning Deposit	\$150
Commercial Activity per event (Fund Raising, Etc.)	\$250
Property Owners & Organized Groups per event	\$150
Public Use fee	\$250
Event Set-up Fee (\$100 per hour - 1 hour minimum)	\$100

OTHER STABLE FEES

Overnight Fee (paddock only)	\$30
------------------------------	-------------

www.pMLEquestrianCenter.com

THE PINE MOUNTAIN LAKE EQUESTRIAN CENTER PRESENTS



HORSEBACK RIDING LESSONS

\$65 FOR PROPERTY OWNERS 5 YEARS OLD AND UP

\$70 FOR NON-PROPERTY OWNERS 5 YEARS OLD AND UP

MONTHLY PACKAGES AVAILABLE • LEAD LINE OPTIONS FOR 4 AND UNDER
INSTRUCTORS AND PROGRAM ARE CHA CERTIFIED

FOR MORE INFORMATION AND/OR TO MAKE AN APPOINTMENT
PLEASE CALL THE EQUESTRIAN CENTER AT 1 (209) 962-8667

THE PINE MOUNTAIN LAKE EQUESTRIAN CENTER PRESENTS



TRAIL RIDES

BY APPOINTMENT ONLY

\$65 FOR PROPERTY OWNERS • \$70 FOR NON-PROPERTY OWNERS

FOR MORE INFORMATION AND/OR TO MAKE AN APPOINTMENT
PLEASE CALL THE EQUESTRIAN CENTER AT 1 (209) 962-8667

SWIM LESSON FEES

PROPERTY OWNERS

\$15	PRIVATE/per class
\$40	per person per session
\$85	per family per session

(max. of 3 students per family)

RENTERS AND GUESTS

\$20	PRIVATE/per class
\$60	per person per session
\$105	per family per session

(max. of 3 students per family)

The Pine Mountain Lake Pool is a family recreation center with many different activities: ping pong, board games, cards, books and magazines, water toys and more are all available from the pool attendants. For your convenience, the pool also has a snack bar. The snack bar is open during all pool hours. Enjoy our quality snacks and ice cream at very competitive prices.

PRIVILEGES

There is no charge to use the pool. Guests must be accompanied by a property owner or have a valid guest pass. No admittance without property owner card or valid guest pass. Add'l identification may be required, property owner cards are nontransferable. No person(s) permitted in the pool area without first registering with pool attendant. A limit on the number of persons in the pool at one time is enforced (max of 63 people at pool at one time).

AGE REQUIREMENT

Children under 14 must be accompanied and monitored by an adult at least eighteen (18) years of age.

INFANTS & TODDLERS

Children not potty-trained must wear an approved swim diaper. Please bring your own or purchase them at the pool store.

WATER AEROBICS CLASSES

Seven (7) days a week thru October 31.

Open to all property owners. No charge to participate. Enjoy aqua exercise classes (instructed by selected audio tapes) for all fitness levels. Each class consists of a series of aquatic exercises, performed in the pool using water as resistance. Simply perform exercises for a safe and effective means of achieving overall body and cardiovascular conditioning.

Class by audio instruction from various CD's, which run continuously between 8 and 10 am, Monday thru Sunday.

SWIM LESSONS

Depending on staffing, please check with pool attendant for registration & scheduling availability 1 (209) 962-8634.



**WARNING
NO LIFEGUARD
ON DUTY**

CHILDREN MUST BE UNDER
ADULT SUPERVISION

SWIM AT YOUR OWN RISK!

Pool is open seven days a week during the season, weather/pool temps permitting.

**7 OPEN
DAYS A WEEK**

POOL HOURS

- Open 8 am – 10 am for water aerobics.

**WATER AEROBICS
8 OPEN
AM**

- Open to property owners and their escorted guests at 10 am.

**ESCORTED GUESTS
10 OPEN
AM**

- Open to renters and guests at 12 noon.

**RENTERS & GUESTS
12 OPEN
NOON**

CLOSING SCHEDULE

SUMMER (MEMORIAL WEEKEND-LABOR DAY)

**8 CLOSES
PM**

FALL (SEP 8TH-OCT 31ST)

**6 CLOSES
PM**



**FACILITY
CAPACITY**

63

CAMPGROUND FEES

PROPERTY OWNERS:

Tents \$19 per night
\$92 per week
\$370 per month

RVs \$29 per night
\$147 per week
\$565 per month

GUESTS AND PUBLIC:

Tents \$34 per night
\$191 per week

RVs \$49 per night
\$284 per week

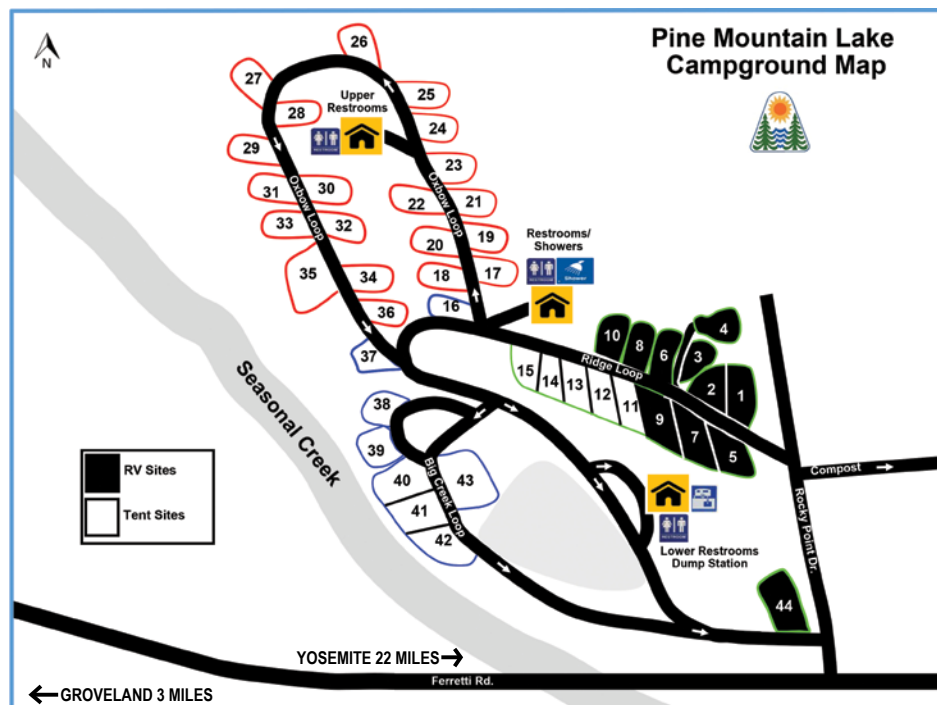
Additional camper charge \$6 per person per day (after 4 per site)

Additional Vehicle \$15

Non-camper dump station per use
Property Owner \$10

RULES & REGULATIONS

- Additional charge for more than four (4) persons per space.
- DOGS ARE TO BE KEPT ON LEASHES. No vicious or noisy animals will be tolerated.
- No dogs are allowed on any of the PML beaches.
- Except to enter and exit only, motorcycles and all other terrain type motor vehicles are prohibited in the campgrounds and on trails.
- Check-in is 11 am; check-out is 10 am.
- Quiet time BEGINS at 10 pm.
- All generators are specifically prohibited.
- GROUND FIRES ARE PROHIBITED. Fires must be confined to designated barbecue stand. Please put out your barbecue fire before leaving.
- Electric cords and water hoses may never be connected to bathrooms.
- No washing of dishes in bathroom sinks.
- Use dumpsters for your trash and recycling.
- Please do not put your cigarette butts out on the ground.
- Fireworks are prohibited.
- Hunting is illegal in Pine Mountain Lake. Loaded firearms are prohibited.
- PLEASE KEEP CAMPSITES NEAT AND CLEAN. Check prior to vacating.
- Long term campground use for property owners building a home only. (Plans must be submitted and approved by the E.C.C.)
- PMLA is not responsible for loss or damage of camper property.
- Non-property owner boats are prohibited on Pine Mountain Lake.
- For emergencies dial 911.



SELF-SERVE RV & TENT CAMPING

Operated by Pine Mountain Lake with sites reserved for PML property owners, their guests & the public. The PML Campground is not lakeside, but is located approximately 2 miles from Pine Mountain Lake. Our facilities include 33 campsites, each with stand barbecues and a picnic table and 11 RV hook-up sites, each with power and water (dump site on location). Our guests have the use of 3 nearby restrooms, both with running water, one with hot showers. Bathrooms require codes which can be requested through the main gate. Enjoy the hiking trails.

The Campground is open 7 days a week. Stays limited to 14 days within any 31 day period. Dogs must be leashed while at campground.

FACILITIES

- 33 campsites, each with stand barbecues and picnic table
- 11 RV hook-up sites, each with power and water (dump site on location, contact the Main Gate Department of Safety at 1-209-962-8615 for access)
- 3 restrooms, each with running water, one with hot shower
- Hiking Trails

RESERVATIONS

Members who would like to take advantage of property owner rates can make a reservation by calling 1-209-962-8615 or by emailing campground@pinemountainlake.com

Non-members are welcome to visit the official PML Campground website at www.pinemountainlake.com/campground-public to book a reservation online.

CANCELLATIONS

You may be entitled to a full refund if your cancellation request is received prior to the arrival date of your reservation. Cancellations received on the date of arrival forfeits one (1) night's stay for each campsite booked, including any add-on charges. A cancellation fee of \$25 applies to cancellations received less than 7 days in advance of your arrival.

PMLA is not responsible for loss or damage of camper property.

CHECK-IN TIME is 11 am
CHECK-OUT TIME is 10 am
QUIET TIME BEGINS at 10 pm

Please look for the sign listing your name and dates of stay posted at the reserved site(s). For assistance, or the codes for the restrooms at the Campground, please contact the Main Gate at 1-209-962-8615.

PUBLIC USE

- The Campground is open to the public seven days a week with first priority to property owners and guests of property owners.
- If you would like to utilize the private amenities at Pine Mountain Lake, you may do so by purchasing a \$50.00 vehicle access pass.

This pass is good for 7 days and can be purchased upon arrival or by contacting the Main Gate at 1-209-962-8615.

- No dogs allowed on beaches.
- All PMLA rules and regulations must be observed.
- Stay shall be limited to 14 days within any 31 day period.
- Loud or disruptive campers will be asked to leave.
- Campground is regularly patrolled by Department of Safety staff.

PINE MOUNTAIN LAKE HIKING TRAILS

REPORT ANY UNSAFE CONDITIONS TO SAFETY - 1-209-962-8615



PEDESTRIAN AND BICYCLE USE ONLY • DOGS MUST REMAIN ON LEASH • STAY ON TRAIL
RESPECT PRIVATE PROPERTY • CARRY DRINKING WATER
NO LITTERING • NO MOTORIZED VEHICLES • NO HUNTING • NO FIRES

PMLA SLASH AND COMPOST AREA

LOCATION

Use PML Campground turnout—
Rocky Point Drive – follow the signs

ENTRANCE REQUIREMENTS

- Verifiable PML ID
(VENDORS NEED UNIT/LOT OF JOB AND OWNER NAME)

DAYS AND HOURS OF OPERATION

(weather permitting)

- April thru October 8 am to 4 pm 7 Days a Week
- November thru March 8 am to 4 pm Tuesday thru Saturday
- Hours are subject to change without notice

Call the Main Gate 1-209-962-8615

LOAD SEPARATION

- Slash Pile - woody debris 6" in diameter or less
- Compost Pile - leaves and pine needles only
- Firewood Pile - branches/trees larger than 6" in diameter suitable for firewood and stripped of all smaller slash
- Horse manure pile for members and staff

LOAD SECURITY

- Loads must be tied down or covered to prevent spillage en route
- No stumps, concrete, dirt, metal, plastic, foods, trash or building materials or treated wood are allowed

BENEFITS TO PMLA MEMBERS

- No fee charged for delivery
- No limit of trips for delivery
- Minimal fee for wood permit to cut and haul away firewood
- Organic compost available to PMLA members

Slash/yard clippings waste only – no plastic bags, household garbage, stumps or construction waste. Do not dump materials outside of the compost area.

SEASONAL AMENITY HOURS OF OPERATION

PRE-SEASON HOURS: MAY 1 - MAY 21

Marina Store

8 am - 5 pm daily

Services provided: boat reservations, general questions, fuel sales and boat patrol.

SEASONAL HOURS: MAY 22 - SEPT 7

Marina Store

7 am - 7 pm daily

Swim Center

8 am - 8 pm daily

Lakeside Café

Friday & Saturday 11 am - 7 pm

Sunday-Thursday 11 am - 6 pm

Stables

8 am - 5 pm daily

END OF SEASON HOURS: SEPT 8 - OCT 31

Marina Store

8 am - 5 pm daily

Services provided: boat reservations, general questions, fuel sales and boat patrol.

Swim Center

8 am - 6 pm daily

Stables

8 am - 5 pm daily

Hours subject to change

For more information call the Recreation Manager at 1 (209) 962-8604



Tish Fulton

DRE # 00760019



209-985-0216 • tish.realestate@gmail.com



- Pizza • Calzones
- Pasta • Sandwiches
- Salads • & more!

OPEN LATE!

Scan to
Order Online



18583 Main St, Groveland • (209) 962-7757

Edward Jones

Member SIPC

**Complimentary
investment review.**



David Cazares
Financial Advisor
13923 Mono Way
Sonora, CA 95370
209-692-1859

EJB-19325-A-E-DA-3 AECSPAD

> edwardjones.com

SERVING LUNCH AT THE PML LAKE LODGE

Rock 'n' Tacos
Groveland, Ca (209)206-6300

MEMORIAL WEEKEND

Saturday-Monday • Noon to 4 pm

INDEPENDENCE DAY WEEKEND

Friday-Monday • Noon to 4 pm

LABOR DAY WEEKEND

Friday-Monday • Noon to 4 pm



For more information, please call the PML Recreation Manager at
1 (209) 962-8604

**Sierra Nevada
COMMUNICATIONS**

Get the

**Highest-Speed Internet
in Pine Mountain Lake & Groveland**

Call (209) 962-6373



LIKE THESE "OFFICIAL" PMLA FACEBOOK PAGES

Facebook.com/PineMountainLakeCA
Facebook.com/PMLARecreation
Facebook.com/PMLMaintenanceDept

Facebook.com/PMLGrill
Facebook.com/PMLAEquestrianCenter
Facebook.com/PMLSwimCenter



PINE MOUNTAIN LAKE REALTY

An Agent Owned Company



SEE 'VAL' FOR VALUE!

40+ Years Experience in
Pine Mountain Lake
& Groveland



Val Bruce, GRI

Owner/Broker Assoc.

209-962-7156 / Cell 209-768-7368

val@pmlr.com

DRE# 00578336



www.pmlr.com

PO Box 738
18634 Main St. Ste 1
Groveland, CA 95321

PINE MOUNTAIN LAKE REALTY

An Agent Owned Company



ELEDA CARLSON

Owner / REALTOR®

GRI, SRES, E-PRO

DRE# 00632516



PO Box 738
18634 Main St.
Suite 1
Groveland, CA 95321



eledac1@gmail.com

www.pmlr.com

Cell: 209-814-4123

Office: 209-962-7156



LIKE THESE "OFFICIAL" PMLA FACEBOOK PAGES

Facebook.com/PineMountainLakeCA
Facebook.com/PMLARecreation
Facebook.com/PMLMaintenanceDept

Facebook.com/PMLGrill
Facebook.com/PMLAEquestrianCenter
Facebook.com/PMLSwimCenter



Trail Less Traveled

BIKES & SPORTING GOODS

**Gear up, get out, and go farther.
Your next adventure starts here!**

- BIKES/E-BIKES
- RENTALS, SALES, SERVICE
- BAIT AND TACKLE
- SOUVENIRS & TOYS
- HIKING & CAMPING GEAR
- SPORTSWEAR & HATS
- TIRE CHAINS
- CUSTOM KNIVES

Located
in the
heart of
Downtown
Groveland!

www.tltbike.com • 209-732-5499 • 18743 Main Street, Groveland CA 95321