

# PINE MOUNTAIN LAKE NEWS

THE OFFICIAL MAGAZINE OF, AND FOR, PINE MOUNTAIN LAKE PROPERTY OWNERS

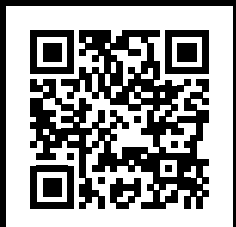
**PMLA GENERAL  
MANAGER  
JOE POWELL  
35 YEARS  
OF SERVICE  
SEE PAGE 10**

**ANNUAL  
BUDGET  
MEETING  
OCTOBER 18TH**

**COMMUNITY  
AIRPORT DAY  
OCTOBER 4TH**

**HAVE A HAPPY HALLOWEEN  
FROM PINE MOUNTAIN LAKE**

**OCTOBER 2025**







# YOSEMITE REGION REAL ESTATE

18687 Main St, Suite E, Groveland, CA 95321  
209-962-1111 ~ DRE #01964114



19824 Pine Mountain Dr **UPDATED LAKEFRONT RETREAT** steps away from the Marina beach. 3bd, 2ba, loft and bonus room. Vaulted Knotty-Pine ceilings, fresh interior paint and LVP flooring throughout. Four split systems provide H/A in each room. Double wrap-around decks with views of the lake. Fully furnished, including appliances. Currently a successful short-term rental. This can be an exceptional investment opportunity or a dream lakeside getaway. \$775,000 #41109353



20747 Rising Hill **CHARMING SINGLE-STORY**. Spacious living room featuring a vaulted Knotty-Pine ceiling and a free-standing propane fireplace. Large kitchen, stainless steel appliances and recent upgrades: Laminate flooring, interior and exterior paint, and a whole-house Generac backup generator with an automatic transfer switch. Central H/A, covered back deck, 2-car garage plus a carport for RV or boat storage. Furnishings are negotiable. \$385,000 #41109806



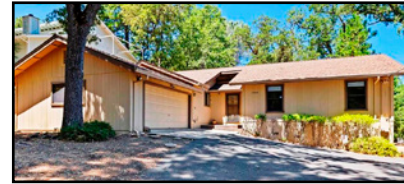
20029 Upper Skyridge **TUDOR-STYLE HOME** very near the Marina beach and a lake view from the front deck. 4bd, 4ba, 2230sf. Granite-tiled kitchen counters, a step-down living room and cluster windows, which maximize natural light. A cozy wood-burning stove provides you with toasty winter nights. Oversized master suite, with direct access to the back deck, a walk-in closet and renovated bathroom. \$600,000 #41099678

## "TAHOE CRAFTSMAN STYLE"

20162 Pine Mountain Drive • Unit 4 Lot 126



This builder's custom home offers 176 feet of deep-water lake frontage, plus a gazebo at the lake, with seating for 10, and a boat dock with a swimming platform. A solar system and whole-house battery backup system also serves the garage, hot tub & EV charger. The living room has built-in cabinetry and panoramic style windows, allowing you to enjoy the beautiful lake view. A significant amount of stone is utilized throughout the home, including flooring, counters and the fireplaces. You will also appreciate the spacious kitchen and dining nook. There are a total of 4bd, 3.5ba including a master suite with a private sitting room. A second living room, den and laundry room adds to the great appeal of this one-of-a-kind home. Below the not-so-typical 2-car garage is a 576sf game room, which can also serve as guest quarters. Built in 2009.  
**\$1,230,000 • MLS #41109861**



13048 Jackson Mill Dr **TURN-KEY RENOVATED HOME**. Open floor plan, 3bd, 2ba, private deck w/hot tub. Fully remodeled kitchen with new cabinetry, granite counters, stainless appliances, and tile flooring. New laminate flooring throughout, updated bathrooms and fresh int/ext paint. Fully furnished, including décor & artwork, this home is ideal as a primary residence, vacation getaway, or income-producing rental. \$385,000 #41105424



20808 Point View Dr **TWO-LEVEL CABIN**. 4bd, 3ba, with bonus room and laundry facilities on the lower level. Vaulted, Knotty-Pine ceilings in living room. Stainless appliances, laminate flooring, breakfast bar. Two closets in the master plus deck access. Double vanities, tub/shower combo. Central HVAC & separate air-filtration system. Oversized 2-car garage and a covered carport. 30-yr roof in 2019, 50-gal water heater. \$389,000 #41100641



19710 Butler Way **COTTAGE BEAUTY**. This is one of a handful of cottages built by this builder, who is known for his fine craftsmanship, architectural interest and stylish floor plans. Two story, 3bd, 2ba, 1444sf. Covered entry, interior archways, pillars, hardwood floors, Palladian windows and Berber carpet. Propane heat stove on a stone hearth. Central H/A plus whole-house fan. 2-car garage. \$429,500 #41087764

## 100% Local Long-Term Rentals Services

### Now Accepting Homes for Long-Term Rentals!

- Monthly Rentals & Tenant Placement
- Tenant Screening & Credit Reports
- Move-In / Move-Out Inspections
- Monthly Statements & Owner Payments
- Scheduled Maintenance & Repairs
- Local, State & Federal Tax Requirements



ROB STONE  
OWNER/REALTOR®  
DRE #01025463



BJORN WAHMAN  
BROKER  
DRE #00706559



TARA STONE  
MANAGER/DPG  
DRE# 01106544



LIZ MATTINGLY  
BROKER ASSOCIATE  
DRE #00709618



MIRIAM MARTIN  
REALTOR®, RSPS, ASP  
DRE #01400779



ANDREW RIETVELD  
REALTOR®  
DRE #01994156



RYAN NIEDENS  
BROKER ASSOCIATE  
DRE #01940007



KATHY NIEDENS  
REALTOR®  
DRE #01113243



BRENDA ZUNIGA  
BROKER ASSOCIATE  
DRE #00997621



CAPRICE KROW  
PROP. MGR/LDP  
DRE# 01179023



CORY STONE  
PHOTOGRAPHER  
VIDEOGRAPHER



Vacation Rentals



Gabe Morford-Cheibub  
General Manager



FEATURED HOME

## Now Accepting Specialty Homes!

**WELCOME TO "CASA DEL LAGO"** located about 200 yards from Pine Mountain Lake, the Lake Lodge Beach and about 1/4 mile to Fisherman's Cove. This is a spacious home, ideal for family and friends to gather for outdoor fun. Ceiling fans, WiFi, washer and dryer, a fully equipped kitchen, a microwave, dishwasher, blender, coffee maker, and a toaster. Dining table seats 6 and the kitchen bar seats 3 more. Charcoal BBQ (charcoal not provided). 3bd, 3ba, sleeps 10 in beds (max occupancy 12). Only about 25 miles to Yosemite National Park.



Trisha Richardson  
Guest Services



Keri Miller  
Guest Services

- LOCAL VACATION RENTAL SERVICES
- OWNER-APPROVED RATES
- ACCIDENTAL DAMAGE PROTECTION

CALL: (209) 962-4396

E-MAIL: [realfun@yosemiteregionresorts.com](mailto:realfun@yosemiteregionresorts.com)

- PRE-ARRIVAL INSPECTIONS FOR GUESTS
- PROFESSIONAL DEPARTURE CLEANINGS
- 24-HR EMERGENCY ANSWERING SERVICE



## Submission Guidelines

### The PML News is the Official Magazine of Pine Mountain Lake Property Owners

The PML News is dedicated to reporting PML Association business and PML Association news to Pine Mountain Lake Property Owners.

All community related articles and notices will appear in the PML News on a SPACE AVAILABLE basis and at the DISCRETION of the PML News Publishing Editor.

#### DEADLINES

Advertisements must be received IN FULL (text, MLS info, images, logos, etc.) by the 20th of the month for the following month's edition. Only advertisements received in full will be guaranteed to be published in that month's edition. **NO EXCEPTIONS.**

#### MEDIA ACCEPTED email

#### SOFTWARE (Articles)

InDesign, Microsoft Word, Apple Pages, or TXT formats only.

#### SOFTWARE (Advertisements)

PSD, JPG, PDF, EPS or TIFF only.

#### TEXT/GRAPHICS

Handwritten text is not accepted. Material composed completely of capital letters is not accepted. Please use uppercase and lowercase letters in composition. Ink jet printed images are not accepted. Images are accepted ONLY as camera ready art, original photos (to be scanned) or as JPEG, TIFF or PDF files created with above listed software. All scans and bitmap images must be in TIFF or JPG format at least 120 dpi at 100% (150 dpi preferred). Ad files are stored for 90 days from first run date. Older ads that have not been running must be resubmitted. (See Display & Insert Advertising Contract "Design and Preparation Charges.")

#### E-MAIL TEXT/GRAPHICS

Text/graphics may be delivered as e-mail attachments via the Internet. Send to:

***pmlnews@sabredesign.net.***

#### AD DESIGN and PROOFS

Ads that are requested to be sent to other periodicals require a usage fee from the advertiser (see Display & Insert Advertising Contract "Design and Preparation Charges"). Proofs are available upon request and final proof approval for all ads is expected within 24 hours. Changes made are LIMITED to typographical or graphic placement errors. NO OTHER ADDITIONS OR CHANGES WILL BE MADE.

#### SUBMISSION DEADLINES

Articles and Ads — 20th each month  
Classifieds Ads — 20th each month

## VISIT US ONLINE

[www.pinemountainlake.com](http://www.pinemountainlake.com)

## PINE MOUNTAIN LAKE ASSOCIATION

# 1.209.962.8600

[www.pinemountainlake.com](http://www.pinemountainlake.com)

### ADMINISTRATION OFFICE HOURS 8:00 AM TO 4:30 PM – MON THRU FRI

**OPEN AT 8:45 AM SECOND TUESDAY OF EACH MONTH  
THE OFFICE IS CLOSED BETWEEN 12:00 & 1:00 EACH DAY**

### 2025 ADMINISTRATION OFFICES HOLIDAYS

(ADMIN OFFICE WILL BE CLOSED)

**TUE 11/11/2025 VETERANS DAY**

**THUR 12/25/2025 CHRISTMAS DAY**

**THUR 11/27/2025 THANKSGIVING**

**WED 12/31/2025 NEW YEARS EVE**

**FRI 11/28/2025 DAY AFTER THANKSGIVING**

**THUR 1/1/2026 NEW YEARS DAY**

**WED 12/24/2025 CHRISTMAS EVE**

### 2025 PMLA BOARD MEETINGS SCHEDULE

(THIRD SATURDAY - UNLESS OTHERWISE NOTED)

**OCTOBER 18, 2025  
(BOARD BUDGET MEETING)**

**NOVEMBER 15, 2025**

## PHONE/EMAIL DIRECTORY

### GENERAL MANAGER

**Joseph Powell**  
*gm@pinemountainlake.com*

### ASSISTANT GENERAL MANAGER

**Michelle Cathey - 1.209.962.8640**  
*agm@pinemountainlake.com*

### ADMINISTRATIVE ASSISTANT TO THE GENERAL MANAGER

**Janessa Owens - 1.209.962.8627**  
*gmassist@pinemountainlake.com*

### HUMAN RESOURCES

**Shannon Abbott - 1.209.962.8628**  
*pmlhr@pinemountainlake.com*

### E.C.C. ASSISTANT

**Ashley Henderson - 1.209.962.8605**  
Plan Submittal, Compliance Fees  
*ecc@pinemountainlake.com*

### MEMBER RELATIONS

**Shari Pingree - 1.209.962.8632**  
Gate Cards, Address Changes, Webmaster,  
Lake Lodge Scheduling, Notary  
*pmlmr@pinemountainlake.com*

### COMMUNITY STANDARDS DIRECTOR

**Suzette Laffranchi - 1.209.962.1241**  
*communitystandards@pinemountainlake.com*

### COMMUNITY STANDARDS SPECIALIST

**Carrie Harvey - 1.209.962.1242**  
*compliance@pinemountainlake.com*

### RENTAL COMPLIANCE COORDINATOR

**John Ferles - 1.209.962.1245**  
*RCC@pinemountainlake.com*

### RECEPTIONIST

**Angela Hicks - 1.209.962.8600**  
General Info, Gate Cards, Lake Lodge Scheduling  
*admin@pinemountainlake.com*

### MAIN GATE

**1.209.962.8615**  
General Safety Inquiries, gate passes,  
campground reservations  
*campground@pinemountainlake.com*  
*maingate@pinemountainlake.com*

### ACCOUNTING CONTROLLER

**Dan Szathmary - 1.209.962.8606**  
Accounting Procedures  
*controller@pinemountainlake.com*

### ACCOUNTING SUPERVISOR

**Stacy Gray - 1.209.962.8618**  
*sracct@pinemountainlake.com*

### RECEIVABLE/COLLECTIONS/ASSESSMENTS

**Sally Owens - 1.209.962.8607**  
*pmlar@pinemountainlake.com*

### ACCOUNTS PAYABLE

**Tina Parmalee - 1.209.962.8626**  
*pmlap@pinemountainlake.com*

### IT MANAGER

**Yuris Daudish - 1.209.962.1243**  
*ITManager@pinemountainlake.com*

### RECREATION AND SEASONAL OPERATIONS MANAGER

**Melody Wisdom - 1.209.962.8604**  
*pmifun@pinemountainlake.com*

### DEPARTMENT OF SAFETY

#### DIRECTOR OF SAFETY

**Natalie Trujillo - 1.209.962.8633**  
*dosdirector@pinemountainlake.com*

#### SERGEANT

**Teri Cathrein - 1.209.962.1244**  
*dossgrt@pinemountainlake.com*

### MAINTENANCE DEPT

#### MAINTENANCE MANAGER

**Rick Laffranchi - 1.209.962.8611**  
*facmgr@pinemountainlake.com*

### ADMINISTRATIVE ASSISTANT

**Patty Groothuyzen - 1.209.962.8612**  
*maintenance@pinemountainlake.com*

### FIRE SAFETY COORDINATOR

**Joe Milani - 1.209.990.5260**  
*fsc@pinemountainlake.com*

### FIRE SAFETY INSPECTOR

**Amanda Birmingham - 1.209.990.5263**  
*inspector@pinemountainlake.com*

### FIRE SAFETY INSPECTOR

**Jessica Heller - 1.209.990.5261**  
*firesafety@pinemountainlake.com*

### GOLF COURSE

#### GOLF COURSE SUPERINTENDENT

**Rob Abbott - 1.209.962.8610**  
*super@pinemountainlake.com*

### GOLF SHOP

**Doug Schmielt - 1.209.962.8620**  
Golf Pro Shop/Golf Reservations  
*golfshop@pinemountainlake.com*

### GOLF PRO

**Mike Cook - 1.209.962.8622**  
*golfpro@pinemountainlake.com*

### THE GRILL AT PINE MOUNTAIN LAKE

#### FOOD & BEVERAGE DIRECTOR

**Andrea Wilson - 1.209.962.8639**  
*clubmgr@pinemountainlake.com*

**Restaurant - 1.209.962.8638**

### OTHER PHONE NUMBERS

#### EQUESTRIAN CENTER MANAGER

**Kendra Brown - 1.209.962.8667**  
*stables@pinemountainlake.com*

### MARINA MANAGER

**Dawn Pretzer - 1.209.962.8631**  
*marina@pinemountainlake.com*

### PML NEWS

**David Wilkinson - 1.209.962.0613**  
Ad/Article Submissions  
*PMLNews@SabreDesign.net*





# TOWN HALL MEETING

(The meeting will begin at 10 AM and end at noon)

**Saturday,  
December 6, 2025**

**AT THE PMLA LAKE LODGE**

For more information call the PMLA Office at 1-209-962-8600

## TABLE OF CONTENTS

Administration	3-46
PMLA Financials	12-13
The Grill & Lounge	32-33
PML Clubs & Recreation	48-54
Community News	54-65
Classified Ads	70

## GET IMPORTANT NEWS VIA EMAIL

**eSNAP**

ELECTRONIC SAFETY, NEWS & ALERT PROGRAM

Signing up for the new eSNAP program is quick and easy and gives you the ability to sign up for the information that you want to receive. Just head over to [www.PineMountainLake.com](http://www.PineMountainLake.com) and sign up today.

### ABOUT EACH OF THE PROGRAMS

**PML News & Alerts** – Receive emails with information regarding anything affecting Pine Mountain Lake such as road closures, utility problems, fire alerts and more.

**PML Amenities News** – Receive emails with information about upcoming events, specials, or news regarding all PML amenities such as the lake, marina, golf course, etc.

**The Grill at Pine Mountain Lake** – Receive emails with information regarding happenings at The Grill. Get information on Wine Tastings, Entertainment, Special Events and more.

This program is separate from the current email opt-in program that allows you to receive PMLA governing documents and requires your signed approval. This program can be signed up for via the online system. *Get your news and alerts via email, it's eSNAP!*

## 24/7 RENTAL COMPLIANCE HOTLINE

IT JUST GOT EASIER TO REPORT, PROVE, AND RESOLVE NON-EMERGENCY SHORT-TERM RENTAL RELATED PROBLEMS IN REAL TIME, 24 HOURS A DAY, 7 DAYS A WEEK

**1-209-231-4543**

## ALL PMLA HOMEOWNERS EMAIL OPT-IN PROGRAM

The Association is pleased to offer a money saving program available to all PMLA property owners. This program allows you to receive many of the documents we are required to provide to you via email. This option is important because:

**COST SAVINGS** – The Association is spared the expense of printing and mailing many documents to those property owners who sign up.

**ENVIRONMENTAL SAVINGS** – Less paper means less trash and reduced damage to the environment both in the disposal and production of paper and envelopes.

**REDUCED CLUTTER** – By receiving documents via email there is less paper for you to deal with.

All documents can be saved on your computer and viewed at your discretion.

**TIMELY RECEIPT** – Documents sent electronically are received in minutes as opposed to the days it takes for regular mail to arrive.

If these sound like good reasons to you, please sign up for the Document Email Program today using the attached form. Simply return the completed form to the Administration office at your convenience.

If you have any questions on this program please feel free to give us a call 1 (209) 962-8600 and we will be happy to explain the details and the advantages.

Please read the Terms & Conditions for the email opt-in program on the website, [www.pinemountainlake.com](http://www.pinemountainlake.com) under the Resources/Forms > Opt-In Email Program.

### Mail form below to:

Pine Mountain Lake Association

19228 Pine Mountain Drive • Groveland, CA 95321



YES, I WANT TO ENROLL IN PMLA'S EMAIL STATEMENT AND DOCUMENT SERVICE. I ACKNOWLEDGE AND AGREE TO THE TERMS AND CONDITIONS SET FORTH ABOVE AS A CONDITION FOR PARTICIPATION IN THIS SERVICE.

PMLA Account Number: \_\_\_\_\_ Unit/Lot #: \_\_\_\_\_

Name: \_\_\_\_\_ Phone #: \_\_\_\_\_

Address: \_\_\_\_\_

Email Address: \_\_\_\_\_

Signature: \_\_\_\_\_



# **PINE MOUNTAIN LAKE ASSOCIATION**

## **1.209.962.8600**

### **BOARD OF DIRECTORS**

Mike Gustafson: President  
Chuck Obeso-Bradley: Vice President  
Dania Schaffer: Secretary  
Craig Prouse: Treasurer  
Dianne McDermott: Director-at-large

### **GENERAL MANAGER**

Joseph M. Powell, PCAM, CCAM-LS, CMCA, AMS

### **CORRESPONDENCE TO DIRECTORS**

Pine Mountain Lake Association  
19228 Pine Mountain Drive  
Groveland, CA 95321  
PMLABoard@pinemountainlake.com

### **ADMINISTRATION OFFICE HOURS OF OPERATION\***

Monday – Friday 8:00 AM – 4:30 PM  
Closed 12:00 – 1:00 PM  
Tel: 1-209-962-8600

The Pine Mountain Lake News,  
established July 25, 1973,  
is posted monthly for residents of  
Pine Mountain Lake and vicinity by  
Pine Mountain Lake Association,  
Groveland, California 95321.

### **SUBMISSION DEADLINE**

20th of the month by 4:30 PM  
LATE SUBMISSIONS MAY NOT BE ACCEPTED  
Visit [www.pinemountainlake.com](http://www.pinemountainlake.com) for ad rates  
and submission guidelines or email:  
[PMLNews@SabreDesign.net](mailto:PMLNews@SabreDesign.net)

For the mutual benefit of all property owners, the Pine Mountain Lake News reserves the right to edit all copy submitted for publication. The Pine Mountain Lake News is a private enterprise, not a public entity, and as such is entitled to reject advertisements or articles in the best judgment of its editor or publisher, despite a probable monopoly in the area of its publication. Pine Mountain Lake Association is not responsible for, nor does it guarantee the accuracy of, information contained in any ad placed in the Pine Mountain Lake News. The Pine Mountain Lake News attempts to ensure that this publication is free of legal infringements and the Pine Mountain Lake Association and its contractors are not liable for copyright/trademark infringements from external advertisements and articles.

### **PMLA–Publisher**

**DAVID WILKINSON**–Publishing Editor  
**SABRE DESIGN & PUBLISHING**  
Design/layout  
**PINE MOUNTAIN LAKE NEWS**  
P.O. Box 605, Groveland, CA 95321  
Tel: 1.209.962.0613  
**E-mail: PMLNews@SabreDesign.net**

## **MAKE PML YOUR ONE-STOP-SHOP FOR ALL YOUR GIFT GIVING!**

**PICK UP A GIFT CARD FOR:  
GOLF • GOLF SHOP APPAREL  
& ACCESSORIES • THE GRILL  
HUNTING & FISHING LICENSE VOUCHERS**

**GIFT CARDS ARE AVAILABLE AT THE  
ADMINISTRATION OFFICE, THE GRILL,  
AND AT THE PRO SHOP**

## **KEEP YOUR INFORMATION UP TO DATE**

If you have moved or changed your contact information, please contact the Administration Office at 1 (209) 962-8600 to update your records. You can also update your information online by scanning the QR code. Staying connected helps us keep you informed about important updates, news, and events in our community.

<https://www.pinemountainlake.com/address-change-2/>



## **NOTICE**

The Pine Mountain Lake News, established July 25, 1973, is created monthly for residents and property owners of Pine Mountain Lake. Members can access the PML News monthly edition online at [www.PineMountainLake.com](http://www.PineMountainLake.com). Every month the newest edition of the PML News is posted online before the first of each month.

The PML News is emailed to and posted online for approximately 3,500 PML property owner households each month. Our circulation reaches approximately 1,200 full-time, resident, PML property owners and approximately 2,300 "weekender," non-resident, property owners who maintain primary residence in Northern California, in Southern California, or in other states. For more information regarding the PML News, please call the PML Administration Office at 1 (209) 962-8600. We greatly appreciate your contributions but please note that the PML News fills up very quickly – often before the 20th deadline. To ensure that your submission is reviewed for publication please submit in full and as early as possible. Please remember that the PML News is limited in capacity and your submissions are reviewed on a first-come-first-served, space-available basis.

We publish all PMLA related submissions such as Board & Management Business, Clubs, Activities & Events. Where space remains, we publish non-PMLA related submissions in our "Community" section.

We do our best to provide timely news. Please visit us at the PMLA website [www.pinemountainlake.com](http://www.pinemountainlake.com) for a downloadable PDF of the News posted by the 1st of the month and a downloadable PDF list of ad rates.

# GENERAL MANAGER'S MESSAGE

JOE POWELL – PCAM, CCAM-LS, CMCA, AMS GENERAL MANAGER

## PML DIRECTOR RESIGNS AND THE BOARD APPOINTS NEW DIRECTOR

**P**ML Director Brian Watson resigned from the Board of Directors as he relocates to his home in Scotland. Brian served our Association well and always encouraged members to attend board meetings and get involved. He fostered transparency, dialogue and positivity at every meeting and event. We wish Brian well in this new chapter of his life and will miss him.

I am pleased to announce that at the September 27th PML Board meeting, the Board of Directors appointed one of our upstanding committee members, Dianne McDermott to fill the open director position. Dianne is a native Californian who has been a resident of PML for the past 5 years. She is married to a retired firefighter and Deputy Fire Marshall with two grown children.

Dianne recently retired from Fremont Bank, where she held the position of Senior Director of Mortgage Operations. In addition to her banking career, Dianne has served as Secretary to the PML Budget and Finance Committee. She is also a member of Brainy Groveland, where she tutors fourth graders. She also taught Budget and Finance at two local community colleges.

Dianne's commitment to community service includes previous roles such as Board Member of a Homeowners Association (HOA) in Hayward, California, and eight years' service as a Planning Commissioner for the City of Hayward, one year as the president. She also served as a board member for the PMLA Resident's Club. One year in the City of Hayward, she was elected Volunteer of the Year. She also served as

a Reserve Police Officer for the City of Hayward for three years.

Dianne has served in several leadership roles and President of several organizations such as the Fremont Chamber of Commerce, the Hayward Education Foundation, and the Mission San Jose Rotary Club.

On behalf of the Board of Directors and management team, we congratulate Dianne on her appointment and look forward to working with her.

## PML MEMBER SURVEY UPDATE

The PML triannual member satisfaction survey came to an end on September 30th. Our team and the Long-Range Planning Committee will be reviewing the results, and these results will be reported at the November 15th Board meeting and a final report will be posted to the official PML website for member review.

At the November Board meeting, we will also choose the winners of the three PML gift cards from a drawing of all of the members who chose to participate.

## THE PML 2026 BUDGET DEVELOPMENT PROCESS

The PML 2026 Budget development process continues, with the setting of the 2026 Fee Schedule at the September 27th Board meeting. Our Controller Dan will finalize the first draft and roll-up. When that occurs, he will distribute it to the Board, management team and Budget and Finance Committee for review. The individual board members will meet with department managers to review their budgets one more time to ensure that they have a clear understanding as to what is included.

The annual budget meeting is scheduled for Saturday, October 18th at the Lake Lodge and all members are welcome to attend. This is an important meeting as the board will be approving the budget and annual assessment for next year.

## PML ROADS REFURBISHMENT PROJECT

Our roads refurbishment project is nearly complete. The asphalt and slurry sealing is finished as well as most of the painting of the parking lot and roadway line and parking space striping and road legends. We experienced several challenges during the project this year. While we had planned our work to avoid conflicting with PG&Es undergrounding and power pole replacement schedule, they moved up their 2026 work and it impacted us this year. Additionally, GCSD decided to install their new water line down Mueller Drive and Ferretti Road so that they can relocate their emergency water treatment plant from the PMLA Maintenance yard back to their property.

We have been working with both PG&E and GCSD to lessen the impact of their projects on our project and the membership, but it has been chaotic at best. Regardless, our project will soon be completed and we will work to address and mitigate impacts caused by PG&E and GCSD through constant and thorough communication and we will continue to post information to our members as it becomes available. Hopefully they will both complete their projects before the end of November.

*Until next month, wishing everyone a Happy Halloween! 🎃*



# PRESIDENT'S MESSAGE

MIKE GUSTAFSON – PMLA BOARD PRESIDENT

Every season here in the Sierra foothills has its own special feeling and the end of summer and the onset of the fall colors is no different. I admit that summer is my favorite season with warm weather, good boating, lake fun, and excellent flying weather. The fall brings fewer visitors, downtown is quiet, the lake gets quiet and a certain calm falls over our little slice of heaven. Did you know that 70% of our homeowners call Pine Mountain Lake their second home or vacation house? So out of 3400 homes total, only about 1020 are here full time. Those of us lucky enough to live here all year should acknowledge the financial support of the off-the-hill folks. Thank you all!

In early September a major fire swept through Chinese Camp and pretty much destroyed the town. A few structures were saved but the devastation was significant. We are all mourning the loss of the homes and historical buildings, but luckily there was not any loss of life. At almost the same time, a hangar and all its contents burned at the PML airport.

These fires reinforce the importance of everyone doing their best to keep our homes and neighborhoods as fire safe as possible. If you have any questions about how to protect your property, contact our fire safety coordinator Joe Milani at **209.990.5260**.

On a happier note, I am pleased to report that Labor Day weekend brought a huge influx of folks to enjoy the last hurrah of summer. By all accounts the number of folks at the Marina, Lake Lodge, golf course, and the Grill rivaled the July 4th weekend! Kind of amazing really, but we are happy to see people enjoying themselves and for the business at the Lake Side Café and the Grill.

At the last Board of Directors meeting some folks complained about the goose problem around PML. I sensed that they might be new to our neighborhood so to be educational here are all the steps we have taken over the years to reduce the goose population:

1. **We used dogs, off leash, to drive them away. This works temporarily.**
2. **We used a remote-control model car/boat to scare them off the grass and**

**beach.**

3. **We tried loud “bangers” that worked until the noise annoyed the homeowners.**
4. **We continue to oil their eggs as we find them around the association.**
5. **We purchased two swans that attacked the geese but they were outnumbered!**
6. **We coated the grass with a chemical that was supposed to deter the geese from eating same.**
7. **We tried predator effigies at the Marina and Golf Course to try and scare them off.**
8. **We tried sterilization pellets and feeding stations.**
9. **We tried signage to deter people from feeding the geese.**
10. **We tried laser lights to frighten them off. Didn't work.**
11. **We have literally tried every non-lethal method to scare off the geese and none of them have worked effectively.**
12. **Our latest trial is to hire a professional**

**Guide and hunters who shoot them during the goose hunting season. This is effective and chases the survivors away for a few months.**

All of the above efforts worked to some degree but we have not ever been able to permanently “solve” the goose problem. We will keep trying.

For many years, we have worked with a professional lake management consultant and our management team have prepared a PML Canada Geese Management Plan and this is available for member review on the official PML website. The plan details all of the activities that our Association has engaged in to try and resolve the overpopulation of Canada geese in our community.

The October 18th Board of Directors meeting will be dedicated to hashing out the 2026 Budget. It is a long day, but I encourage everyone to attend and see the process!

Enjoy the Fall colors! 🍁

## COMPOST & ARCHERY RANGE HOURS OF OPERATION

**NOVEMBER THRU MARCH TUES. – SUN. 8AM TO 4PM**  
*WEATHER PERMITTING*

**APRIL THRU OCTOBER – 7 DAYS A WEEK 8AM TO 4PM**  
*WEATHER PERMITTING*

**SHOOTING RANGE – TUES, THUR, SAT 9AM TO 3PM**  
**PLEASE NOTE** Hours may vary depending on weather conditions, safety concerns, or other situations beyond control. Archery & Gun Range users must check-in with compost attendant.

**HOURS SUBJECT TO CHANGE WITHOUT NOTICE**  
**Call Main Gate at 1-209-962-8615**

# HONORING PMLA GENERAL MANAGER JOE POWELL AND HIS 35 YEARS OF SERVICE TO PML



*PMLA Board President Mike Gustafson, above at left, presents General Manager Joe Powell with a token of our appreciation for his 35 years of service to Pine Mountain Lake.*

**W**e would like to congratulate our General Manager, Joe Powell, who has reached an incredible milestone of 35 years with our Association. His hard work and dedication over the years have had a lasting impact on our community and the membership.

Joe started out as a part time bartender at the Country Club (now the Grill), and over the years has served as Bar Manager, interim Club Manager, IT Manager, webmaster, PML News Editor, Assistant General Manager and 20 years as our General Manager.

He's guided the Association safely through multiple wildfires, floods, community evacuations, lawsuits and largescale projects.

His leadership, work ethic and commitment serve as an example for all of our employees. Thank you Joe for all you've done and continue to do. 🙏

## PINNELL'S CARPET ONE FLOOR & HOME

**FREE**  
Furniture Moving  
Call to set up your free estimate!\*

**Pinnell's Carpet One**  
Sonora 209.532.1696  
Angels Camp 209.736.8077

\*See store for details

**THANK YOU FOR VOTING US BEST OF  
THE MOTHERLODE SINCE 2005!**



**Waterproof Flooring, LVT, Laminate, Vinyl, Hardwood  
Tile, and Hunter Douglas Window Coverings.**

**209.736.8077 263 S. Main St. Angels Camp, CA**

**209.532.1696 12900 Mono Way Sonora, CA**

**Don't forget to ask us about our special financing options!**

**[www.pinnellscarpetone.com](http://www.pinnellscarpetone.com)**



# PMLA MONEY MATTERS\$

DAN SZATHMARY, ASSOCIATION CONTROLLER

It's September, most of summer has come and gone, and we are reviewing how money flowed through PML through August of 2025.

Year to date, PMLA is still performing extremely well to budget. Net Operating Expense, the golden metric of our Operating Fund, is running more than \$480k under budget. Vehicle Access fees, the most significant indicator of how much guests are contributing to our financial well-being; broke record for the second year in a row.

All in, operational revenue, the money used to supplement our dues needed to fund PMLA operations, is running over \$450K higher than this point last year. That's the equivalent to a 5% increase in our assessment (aka "HOA dues") for the year. A large percentage of that sales volume are contributions visitors and guests make while enjoying this wonderful community.

The Grill is hitting record sales numbers and the test of being open, at least for lunch, 7 days a week has proven to be a resounding success. The Marina is also showing record numbers, and some heavy hitters in Administration, such as legal fees, are trending down significantly.

The improvements in managing collections and accounts receivable are starting to really bear fruit. It can take 12-18 months to resolve seriously delinquent accounts, even under "normal" conditions. It's a long road and we are getting there one day at a time. This represents the extra weight members that pay their fair share have to bear from those that don't. It's an issue we take very seriously, and have been working very diligently on it for a considerable amount of time now. The tides are starting to turn and the published numbers speak for themselves.

The solar project that wrapped up a couple

of years ago continues to pay huge dividends. PMLA has realized six figure savings so far thanks to some careful planning, hard work, and many days of sunshine. That PG&E bill still stings, but a lot less than it would have if solar power wasn't helping us out.

We are continuing to roll out our new Point of Sale system and upgrades to PMLA IT infrastructure overall. Yuris, the "new" IT Director is doing an outstanding job across all departments bringing us up to date with the latest tools and technology. This has

had a notable impact on the efficiency of operations, and the rate at which these efforts pay dividends for the members will only grow though this year and next.

With a great wrap up to peak season, your money management team charges in to planning and setting the framework for 2026. Budget time. The best is yet to come.

Would love to hear from you. Please feel free to contact me anytime. [Controller@PineMountainLake.com](mailto:Controller@PineMountainLake.com) or 1-209-962-8606. 🌲



## NEED A NOTARY?

Shari L. Pingree

1.209.962.8632

pmlmr@pinemountainlake.com

1.209.352.6514

**Affidavits • Acknowledgements**

**Deeds • Employment Documents**

**Oaths • Power of Attorney**

**Promissory Notes**

**School Documents**

**Titles • Wills**

**and more!**

**\$10 per signature for PMLA members**

**\$15 per signature for non-members**



We are not attorneys licensed to practice law in the state of California and may not provide legal advice or accept fees for legal advice



**Pine Mountain Lake Association  
Balance Sheet  
As of 8/31/25**

	<b>Consolidated</b>	<b>Operating Fund</b>	<b>Reserve Fund</b>	<b>New Cap. Fund</b>
<b><u>ASSETS:</u></b>				
Cash & Equivalents	\$4,908,737.68	\$1,035,797.89	\$3,709,475.88	\$163,463.91
Due To/Due From	\$0.00	\$13,546.19	-\$13,321.19	-\$225.00
Accounts Receivable	\$1,884,955.67	\$1,884,955.67		
Less: Bad Debt Reserve	-\$548,917.60	-\$548,917.60		
Inventory	\$181,107.90	\$181,107.90		
Deposits & Prepaids	\$715,546.01	\$715,546.01		
<b>Total Current Assets</b>	<b>\$7,141,429.66</b>	<b>\$3,282,036.06</b>	<b>\$3,696,154.69</b>	<b>\$163,238.91</b>
Fixed Assets				
Land & Buildings	\$17,384,545.57	\$17,384,545.57		
Operating Equipment	\$6,769,299.70	\$6,769,299.70		
Vehicles	\$1,488,826.93	\$1,488,826.93		
<b>Total Fixed Asset Costs</b>	<b>\$25,642,672.20</b>	<b>\$25,642,672.20</b>	<b>\$0.00</b>	<b>\$0.00</b>
Accumulated Depreciation	-\$18,920,533.35	-\$18,920,533.35		
<b>Net Fixed Assets</b>	<b>\$6,722,138.85</b>	<b>\$6,722,138.85</b>	<b>\$0.00</b>	<b>\$0.00</b>
<b>TOTAL ASSETS</b>	<b>\$13,863,568.51</b>	<b>\$10,004,174.91</b>	<b>\$3,696,154.69</b>	<b>\$163,238.91</b>
<b>LIABILITIES &amp; EQUITY</b>				
<b><u>LIABILITIES:</u></b>				
Accounts Payable	\$14,294.46	\$14,294.46		
Personnel Related Items	\$559,603.86	\$559,603.86		
Accrued Taxes & Liabilities	\$33,692.78	\$33,692.78		
Unearned Dues	\$1,384,176.59	\$1,384,176.59		
Other Liabilities	\$163,781.70	\$163,781.70		
<b>Total Liabilities</b>	<b>\$2,155,549.39</b>	<b>\$2,155,549.39</b>	<b>\$0.00</b>	<b>\$0.00</b>
<b><u>EQUITY:</u></b>				
Prior Year End Balance	\$9,988,505.26	\$6,335,996.24	\$3,646,782.83	\$5,726.19
Current Year Equity				
Income/(Exp)	\$2,109,931.96	-\$945,002.02	\$2,879,505.98	\$175,428.00
Asset Transfers from Funds	\$0.00	\$2,457,631.30	-\$2,439,716.02	-\$17,915.28
Reserve Expenses	-\$390,418.10		-\$390,418.10	
<b>TOTAL EQUITY</b>	<b>\$11,708,019.12</b>	<b>\$7,848,625.52</b>	<b>\$3,696,154.69</b>	<b>\$163,238.91</b>
<b>TOTAL LIABILITIES &amp; EQUITY</b>	<b>\$13,863,568.51</b>	<b>\$10,004,174.91</b>	<b>\$3,696,154.69</b>	<b>\$163,238.91</b>



**PINE MOUNTAIN LAKE ASSOCIATION**  
**SUMMARY STATEMENT OF OPERATING FUND REVENUES AND EXPENSES**  
For Eight Months Ended August 31, 2025

OPERATION OF AMENITIES	Revenues					Expenses		Cost/(Income) Before Depreciation	Depreciation Expense	NET COST (INCOME)	Budget NET COST (INCOME)	Variance Bud - Act	Variance %
	Members' Assessments Net of Discount	User Fees	Sales, Net of Cost of Sales	Miscellaneous Income	Total Revenues	Total Expenses							
Golf Course		\$740,710	\$31,022		\$771,732	\$1,386,370		\$614,639		\$614,539	\$776,789	(162,250)	-20.89%
Restaurant & Bar		\$4,017	\$705,900		\$709,917	\$1,246,439		\$536,523		\$536,523	\$521,592	14,930	2.86%
Marina		\$464,956	\$251,421		\$716,377	\$822,971		\$106,594		\$106,594	\$81,239	25,354	31.21%
Snack Shack			\$53,943		\$53,943	\$94,858		\$40,914		\$40,914	\$28,952	11,962	41.32%
Stables		\$94,393		\$5,616	\$100,009	\$408,188		\$308,179		\$308,179	\$302,360	5,819	1.92%
Recreation		\$184,688			\$184,688	\$143,299		\$41,388		\$41,388	\$31,696	(9,693)	30.58%
Roads & Facilities Maintenance		\$176,336		\$600	\$176,936	\$2,002,239		\$1,825,303		\$1,825,303	\$1,986,153	(160,850)	-8.10%
PROPERTY OWNER SERVICES													
Safety		\$198,912		\$4,379	\$203,292	\$866,004		\$662,712		\$662,712	\$675,350	(12,638)	-1.87%
Administration		\$229,957		\$1,303	\$231,259	\$1,854,518		\$1,623,259		\$1,623,259	\$1,819,324	(196,065)	-10.78%
ASSESSMENTS													
+	\$5,412,098				\$5,412,098	\$190,132		-\$5,221,966	\$490,333	-\$4,731,633	-\$4,661,843	(69,790)	1.50%
Totals	\$5,412,098	\$2,093,968	\$1,042,286	\$11,898	\$8,560,250	\$9,015,018		\$454,768	\$490,333	\$945,002	\$1,498,222	(553,220)	-36.93%

## DO YOU HAVE YOUR PIN?

Since PML is a private gated community, we want to offer our property owners a secure way to call in guests. When you become a member of PML you are assigned a Personal Identification Number (PIN) to utilize either when calling in a guest pass or using the Gate Access Internet program. This PIN identifies you to staff without you having to be present. This is a confidential number and should **not be shared**. When you call the Main Gate to authorize a guest or vendor access into PML, you will be asked for your PIN. The staff will look up the number in the computer and use it to confirm your identity before entering the guest information. You must have this number to utilize the Gate Access Internet program as well. If you do not know your PIN or have any questions, please contact the Administration Office at:

**1-209-962-8600**

Monday - Friday from 8 am - 4:30 pm  
and we will gladly supply this information to you.

## PML AUTOMATIC PAYMENT PROGRAM

Taking the time to write a check for your monthly assessment payment can be time consuming and costly. You can avoid this burden and eliminate the potential for late payment charges by enrolling in PMLA's Auto Payment Program. By completing the form, which can be found at **[www.PineMountainLake.com](http://www.PineMountainLake.com)** under the Resources/Forms, and returning it to the Administration Office, you can have your monthly assessment automatically deducted from your checking account or charged to your credit card. This means you never have to remember to write a check and mail it each month. The peace of mind that comes with knowing your payment will always be made on time is easy to attain. We can also arrange to have any other regular payment you make to the Association (such as golf membership, horse boarding fees, etc.) paid in the same way.

For more information on this simple, effective and time saving plan please contact us at **1 (209) 962-8600**

## PAY YOUR PML PAYMENTS ONLINE

Did you know you can make your payments online?

Online Bill Pay is available on **[www.PineMountainLake.com](http://www.PineMountainLake.com)**.

*Pay via your credit card,  
it is quick and easy!*

# COMPLIANCE CORNER

SUZETTE LAFFRANCHI – COMMUNITY STANDARDS DIRECTOR

**T**hey say fall is the best time to branch out and explore!

While you are out there exploring with your furry friend, remember the wildlife is out and about too. Squirrels, deer, turkeys, skunks and much more are out looking for their next meal or preparing their bodies for the winter months ahead. It is important that when you are out with your dog to keep them on a leash for the safety of your dog and for the safety of our local wildlife.

Household pets out exploring on their own is a concern in our community. Our Rules and Regulations are clear when it comes to a pet owner's responsibility. Article VIII, Section 6 of our Association's CC&Rs tackles the Household Pet issue and an owner's responsibility to manage their animal's care, maintenance and control.

Tuolumne County Ordinance code, chapter 6 Animal Control, 6.04.280 Control of dogs. Every owner of a dog shall keep it exclusively upon their own premises:

provided, however, that such dog may be off such premises if it is under the control of a person capable and actually restraining the animal by a leash.

Having dogs running loose in our community creates a lot of frustration. It is the owner's first responsibility to be in control of their animal at all times, and allowing them to roam the neighborhood is unacceptable. Letting your dog out and hoping they stay on the property is less than responsible or in control.

Always walk your dog on a leash. Prey animals like rabbits and squirrels will usually run away from your dog, but others will try to defend themselves by various means, like a skunk with his spray. Larger predatory animals like coyotes, mountain lions or bears can attack if chased or confronted by a dog. Either way, your dog is at risk. Be considerate of your neighbors, our wildlife and keep your dog safe, in control and on a leash.

A convenient way to get information, find links, review frequently asked questions, or

continue to develop a better understanding of the rules and regulations, twenty-four hours a day, seven days a week is to visit the Pine Mountain Lake Community Standards web page. You will find our page at [www.pinemountainlake.com](http://www.pinemountainlake.com) under the resource tab, click on the Community Standards Icon or Scan the QR code for quick on the go access.

Here you will find other resources such as FAQs, a list of common rules, rental registration or the link to submit an exterior project such as a dog run.



As always, if you have any questions, please feel free to reach out to me, Suzette Laffranchi at 1 (209) 962-1241 or [communitystandards@pinemountainlake.com](mailto:communitystandards@pinemountainlake.com). I will be happy to guide and provide you with the information you need to navigate our governing documents to maintain our beautiful community. 🌲

## ADMINISTRATION

## DON'T BLAME THE BEARS

CARRIE HARVEY – COMMUNITY STANDARDS SPECIALIST

**F**all is here, and the bears are foraging and getting ready for the cold weather! Have you had the chance to spot one of our furry friends yet? Although we may not see them, they are here, and they are hungry. Bears instinctively avoid people, but we make it easy for them to access unsecured garbage, bird feeders, pet food, livestock and feed, and other human-provided food sources. Maybe it is not a bear problem that we have, but a human problem. We all need to do our part to protect not only the bears, but all wildlife, and ourselves. There are a few ways we can enjoy the bears, while keeping them at a safe distance:

- Make sure your garbage is put out on the

morning of your scheduled pick-up day, not the night before.

- Keep garbage cans cleaned, closed and secure.
- Keep grill/smoker cleaned and covered when not in use.
- Do not leave food left unattended when cooking/grilling outdoors.
- Do not feed birds/hummingbirds when bears are active in our area, once they realize bird-feeders are full, they will come back.

- Please do not put food out for the wildlife.

- Keep garage doors closed, to keep bears away from stored pet food.

- Make sure your pet doors are locked at night.

Please be mindful of the bears, and remember we share this beautiful place we call home with them. Let us all do our part to keep them safe and healthy. Bears are very intelligent, and quick learners. They can be active at any time of the day. Be bear aware! If you have any questions regarding compliance, garbage cans, etc., please feel free to reach out, and I will gladly assist you. You can reach me at 1-209-962-1242 or [compliance@pinemountainlake.com](mailto:compliance@pinemountainlake.com). 🌲



# CARING FOR OUR DAM # BIG DAM

STEPHEN McCORD – LAKE MANAGER

**P**ine Mountain Lake Association owns and operates Big Creek Dam, which holds back the water creating Pine Mountain Lake. The dam was completed in October 1969, and the reservoir first filled and began flowing over the spillway in March 1970. Happy belated 55th birthday!

The dam foundation was dug deep and filled with a grout “curtain”. That center is relatively impermeable clay while most of the structure is just compacted dirt—envision it from the side as a tall, narrow triangle of clay with dirt on either side to hold it in place and large boulders on the surface to protect against erosion. It is elegant in that it efficiently uses the space available (minimizing excavation) and critical material (minimizing expensive grout and imported clay) and stabilizes it all with local material. The concrete spillway, dug into rock, allows large volumes of storm flows to pass quickly and safely around the earthen structure.

Due to the potential catastrophe that a dam failure could cause, Association staff and many others take their responsibilities for dam safety seriously.

## THE GRUMBLING GROUND

Catastrophic earthquakes elsewhere are useful reminders that the Earth’s tectonic plates are always shifting. The U.S. Geological Survey’s National Earthquake Information Center operates a global Earthquake Hazards Program. Email alerts are sent to me and others for any activity greater than magnitude 4.0 anywhere in the Sierra Nevada region. We periodically monitor movement of the dam itself by precisely surveying a line of 11 “monuments” on the dam crest and tracking if they’re sinking or moving downstream.

The pressure of over 100 feet of water on the dam is significant. So, even with the grout and impermeable clay core for the dam, there is a risk that shifting from an earthquake or pressure from a flood event will change how water seeps through or around the dam. To monitor that, the dam has two wells on the downstream side in which we can observe if water is saturating that side of the dam. Good news: they’re always dry.

Also, there is a series of five perforated

pipes under the back side of the dam with outlets draining into a small pool. Water does trickle out of those, so we monitor for discoloration (wouldn’t want dirt from the dam to be coming out) and change in flow (as indicated by the pool depth). More good news: that water is always clear and its flow is always slow and steady.

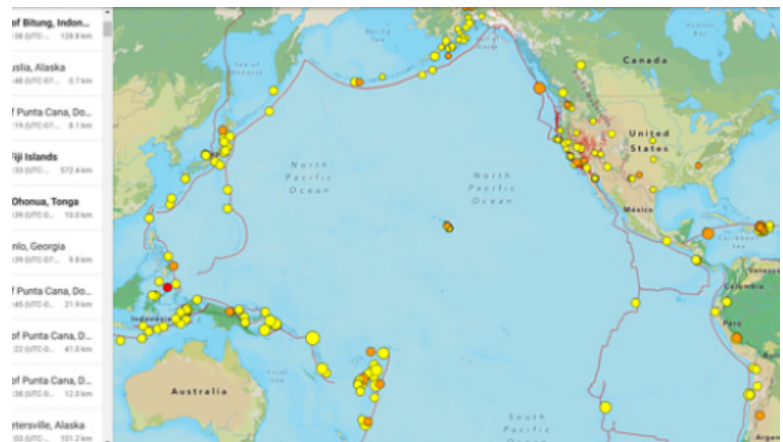
## TRACKING STORMS

Dam spillways are designed to handle extreme events. Most of the time, the spillway looks ridiculously over-sized. Yet on the other hand, even a spillway designed to pass a 1-in-500 year storm still means (loosely speaking) that the dam could fail once every 500 years. And even that is based on only a few decades of historical data (could that period have been a long-term drought?), which does not account for expected worse storms associated with climate change.

Storm forecasts trigger lots of activity by the Association so that you can sleep better at night. First, several managers get alerts from weather services about incoming storms. Those lead to increased monitoring of the dam—both inspections by safety and maintenance staff, as well as more frequent checks on the online video camera. Staff are also alerted of high flows from upper Big Creek into the dam and high lake water levels at the dam.

## DIG BABY, DIG

One inevitable issue with dams and the lakes they create is that there’s always going to be more sediment coming in than going out—some material settles onto the lakebed. Most mountain meadows used to be lakes, which filled in over time. And likewise, Pine Mountain Lake will eventually have to be renamed Pine Mountain Meadow if the accumulated material is not removed. Sedimentation is a major hassle for lakeshore



*Map of the Pacific Rim of Fire indicating locations of fault lines and major earthquakes recorded over the past year.*



*Big Creek Dam spillway toe during a major flood event (March 22, 2018).*

property owners in the coves (which fill in first), plus it removes space that could dampen the flood flows to relieve the spillway. But removing sediment from the lake is a major hassle and a major upcoming expense that the Association is wrestling with.

Community members can help by minimizing erosion and keeping other materials out of the lake, staying away from the dam and spillway, and alerting staff of trespassing or vandalizing around the dam. 🌱

*[Stephen McCord is the Association’s Lake Manager. He is a Certified Lake Manager with the North American Lake Management Society and a registered Professional Engineer in California. He received his M.S. and Ph.D. in Civil & Environmental Engineering from the University of California Davis. He is President of McCord Environmental, Inc., based in Davis, CA. Comments and questions can be sent via email to [sam@mccenv.com](mailto:sam@mccenv.com).]*

# RECREATION UPDATE

MELODY WISDOM – RECREATION AND SEASONAL OPERATIONS MANAGER

## SHARING THE LAKE WITH OUR FEATHERED NEIGHBORS

Pine Mountain Lake is having some beautiful fall weather, crisp mornings, golden afternoons, and stunning lake views framed by autumn colors. Members and guests are out soaking up every last bit of the beauty. But we're not the only ones enjoying the lake... the geese have returned in full feathery glory, strutting the beaches like they're on vacation too.

Whether they're sunbathing on the docks, sneaking snacks in the grass, or organizing a honking choir at sunrise, the geese are here to stay. And while we love them as part of the lake life experience, we need to set some ground rules, both for their sake and ours.

### GOOSE ETIQUETTE 101

Don't feed the geese. Bread, chips, and snacks may feel like a friendly gesture, but it actually makes them sick, encourages overpopulation, and guarantees more goose "gifts" on our lawns, beaches, and docks.

Don't throw things at the geese. Aside from being downright rude, it's against the law to harass wildlife. Tossing objects at geese can result in more than just angry honks—it can result in legal trouble.

Do admire them from a distance. Watch their antics, snap a photo, and enjoy the free entertainment.

### THE BOTTOM LINE

The weather is beautiful, the lake is full of life, and we're all lucky to



share it. Let's enjoy these autumn days together, people and geese alike without breaking the law or turning our beaches into a goose buffet.

So next time you see a goose waddling proudly across the beach, give it a respectful nod, resist the urge to share your snacks, and remember: Pine Mountain Lake is big enough for all of us.

For more information, contact Melody Wisdom at 1 (209) 962-8604. 🌲

## ATTENTION NEW PML MEMBERS!

### WELCOME to PML...We're glad you're here!

Once you have received your welcome letter from the Association you will have the information you need to log into the PML website ([www.pinemountainlake.com](http://www.pinemountainlake.com))

Once there click on the **RESOURCES** tab & then on the **NEW MEMBER ORIENTATION** icon.

The New Member Orientation page is **JUST FOR YOU!**

Here you will find:

- Member Orientation Packet
  - o Information on the Official PML Facebook page
  - o Gate Access Guest Pass internet program information
  - o Fire Safety contact and information
  - o Board Meeting Dates and information
  - o Rules, Regulations and Procedural information
  - o Information on PML Committees and Clubs

- Assessment Information
- PML Fact Sheet
- Getting Connected in Groveland

And **MUCH MORE!**





# DON'T HESITATE, DON'T WAIT

NATALIE TRUJILLO – DIRECTOR OF SAFETY

The Main Gate will often receive a sudden deluge of reports from members that seem to store up information like squirrels store nuts for winter. Sometimes it's things that might have happened three years ago, sometimes it's a problem that's been going on for months unresolved.

Please don't wait until an issue, problem, etc. has reached a fever pitch or is completely unbearable, or even scary, before reporting it to the Main Gate. It may be that we advise you to pass your concern, issue, or violation information on to another department or higher agency so that it can be properly addressed and rectified. At your request

we can even create a record of your reports under a 'for information only' label when no action need yet be taken.

The ability to track the progression or rates of occurrence for a specific issue or concern is invaluable. On top of this, it becomes exponentially more challenging to investigate crimes, violations or what have you when the person reporting it only has a vague idea of when it might have happened. Details can become hazy and things that may not have seemed relevant at the time could potentially form a pattern or indicate a bigger issue as time goes on. As I have seen personally so many times with gate violations alone, memory is not infallible. What a person

may have recollected happened at a certain time can turn into an uncertain time when hours or even days pass before it is reported to us. Specific time and details matter so much. Don't wait to call.

If there is something you would like to share with us via video, please make sure you include information on the date and time when the video was taken. Videos can be emailed directly to the Main Gate at [maingate@pinemountainlake.com](mailto:maingate@pinemountainlake.com).

Any objectionable or suspicious activity can be reported to the Main Gate at 1 (209) 962-8615 as Safety Officers are on-duty 24 hours a day, 7 days a week, 365 days a year. 🧑‍🚒

## Edward Jones®

Member SIPC

**Invest in a way that aligns with your values.**  
Call to schedule a one-on-one.



**David Cazares**  
Financial Advisor  
13923 Mono Way  
Sonora, CA 95370  
209-532-3830



EJB-19325-A-E-DA-2

> [edwardjones.com](https://www.edwardjones.com)

# FRIENDLY REMINDERS FOR LIFE AT PINE MOUNTAIN LAKE

JOHN FERLES – RENTAL COMPLIANCE COORDINATOR

**L**ife at Pine Mountain Lake is all about enjoying the peace and beauty of our community while respecting one another and the environment we share. To help keep things running smoothly, here are a few end of summer reminders from your Rental Compliance Coordinator!

## QUIET HOURS

Our quiet hours run from 10:00 PM to 7:00 AM. This is the time when everyone—residents, vacationers, and even the wildlife—get their well-deserved rest. Please be mindful of noise during these hours so that everyone can enjoy the calm of Pine Mountain Lake nights.

## DOGS IN THE COMMUNITY

We love our four-legged friends, but remember: dogs must be leashed at all times, and they are not permitted at any of the beaches. While out on walks, please clean up after them. A little courtesy goes a long way toward keeping our trails and streets

welcoming for everyone.

## GARBAGE AND TRASH

Please reinforce to your guests not to leave garbage outside your home. Instead, have them connect with your property manager if they have questions on proper disposal. This simple step helps us avoid unwanted visits from wildlife and keeps our community clean.

## WATER TAXI SERVICE

The marina store is your source for the latest information on water taxi hours. You can reach them directly at **209-962-8631**.

## PARKING RULES

To keep roads clear and safe, no parking is allowed on the streets. Please make sure to let your guests know where they should be parked when arriving at your property!

## DRIVING AND TRAFFIC SAFETY

Please obey all posted traffic signs and speed limits. The maximum speed within

Pine Mountain Lake is 25 miles per hour. Set an example for everyone coming from near or far! Driving slowly protects not just our neighbors but also the deer, turkeys, and other wildlife that share our community.

## PRIVATE PROPERTY

Please do not trespass or park on private property. Respect for one another's space is one of the cornerstones of life here.

## BOATING ON THE LAKE

Only property owners may launch personal watercraft on Pine Mountain Lake. If you'd like to enjoy the water without owning a boat, rentals are available through the Marina store May-September.

By following these guidelines, we ensure that Pine Mountain Lake remains a safe, peaceful, and welcoming place for all. Thank you for doing your part as a neighbor to uphold the values that make our community such a special place to live. 🌲

## PMLA OWNED LOTS FOR SALE

10/008	MCKINLEY WAY	\$1,000
2/047	GAMBLE STREET	\$1,000
2/283	19364 FERRETTI ROAD	\$1,000
2/287	FERRETTI ROAD	\$1,000
2/305	FERRETTI RD	\$1,000
2/306	FERRETTI RD	\$1,000
3/463	20465 PINE MOUNTAIN DRIVE	\$1,000
6/113	19795 FERRETTI ROAD	\$1,000
6/235	FERRETTI ROAD	\$1,000
6/252	19426 FERRETTI ROAD	\$1,000
7/239	DIGGER PINE STREET	\$1,000
8/143	HILLHURST CIRCLE	\$1,000

FOR FURTHER INFORMATION REGARDING THESE PROPERTIES PLEASE CONTACT DAN SZATHMARY AT 1 (209) 962-8606

[HTTPS://WWW.PINEMOUNTAINLAKE.COM/PMLA-LOTS-FOR-SALE/](https://www.pinemountainlake.com/pmla-lots-for-sale/)



# IS IT HAUNTED, OR JUST FALLING APART?

ASHLEY HENDERSON – ARCHITECTURAL CONTROL SPECIALIST

**P**icture this: You've just bought your home for a killer deal—the papers are signed, you've got your gate cards in hand, and you start moving in. But slowly you start to realize that deck is creaking like the Tell-Tale Heart, and the lights flicker with alarming regularity. And, is that...moaning coming from the walls? Surely you can't be those people, right? You know, the cliché ones in the horror movies who have inadvertently dropped their entire life savings into a haunted house?!

While fun to catastrophize that Casper the not so friendly ghost has unwittingly

become your roommate, its unfortunately far more likely that you have come face to face with the chilling reality of an older home in need of some TLC. That creaking deck? Needs to be replaced. The flickering lights? The electrical panel is on the fritz. The moaning walls? That's the HVAC system's death rattle. So, while not the preferred circumstances, at least they're not paranormal.

Prior to beginning any work, all exterior projects must be submitted to the Environmental Control Committee for approval. For your convenience, all projects can easily be submitted online at:

<https://www.pinemountainlake.com/ecc-project-submittal-process/> For specific project requirements, you can review our newly updated ECC Guidelines which can be found on our website. Just sign into the My PML tab, and then navigate to the governance tab.

And, while I may not be able to help decipher if the flickering lights are actually Casper's morse code way of communicating with you, I am more than happy to assist you with submitting your more corporeal projects. I can be reached at **1-209-962-8605** or [ecc@pinemountainlake.com](mailto:ecc@pinemountainlake.com) 🌲

ADMINISTRATION

# OCTOBER AT THE BARN

KENDRA BROWN – EQUESTRIAN CENTER

**F**all is upon us, bringing cooler evenings and warm afternoons. These changing conditions can be hard on horses, and veterinarians remind us that this is a prime time for colic. Please make sure your horses continue to drink plenty of water as the weather shifts. Before long, blankets will be coming out to keep horses comfortable through dropping temperatures, so now is a great time to have them washed and ready before the cold truly sets in.

October is also bringing some exciting events to the PMLA Equestrian Center. On Saturday, October 18th, we are proud to host Dave Stamey and Jennifer Grant in concert.

Tickets are on sale now and may be purchased on our website or at the barn office. Pricing is \$40 for the concert only or \$65 for dinner and concert. Dinner will feature tri-tip, a baked potato bar, salad, and dessert. Gates open at 4:00 p.m., dinner will be served at 4:30 p.m., and the music begins at 5:00 p.m. A no-host bar will be available, but please note that outside food and alcohol are not permitted. Guests are welcome to bring their own seating to enjoy the show.

The fun continues the following weekend with our first-ever Fall Festival on Saturday, October 25th, from noon to 4:00 p.m. Admission is free, and families can look forward to a variety of activities, including

a pumpkin patch, pony rides, a petting zoo, and games for all ages. At 2:00 p.m., we will host an inflatable costume race that is free to enter, with categories for both kids and adults. We encourage everyone to bring a family-friendly inflatable and join in the fun.

For tickets or more information about either event, please call the barn office at **1 (209) 962-8667** or visit us online at [www.pmlaequestriancenter.com](http://www.pmlaequestriancenter.com).

## Equestrian Center

Open Monday-Sunday 7:00am-5:00pm  
13309 Clifton Way  
Office: 1-209-962-8667  
[stables@pinemountainlake.com](mailto:stables@pinemountainlake.com) 🌲





# FALL FESTIVAL

**AT THE  
EQUESTRIAN CENTER  
OCTOBER 25TH  
NOON - 4:00 PM  
FREE ADMISSION**

**Seasonal Food and Drinks**

**ACTIVITIES**  
**Pumpkin Patch**  
**Pony Rides**  
**Petting Zoo**  
**Games**

**Inflatable Costume Race**  
**FREE TO ENTER**

**Races start at 2:00 PM**

**\*Bring your own family friendly inflatable costume**

**For more information, please call  
Equestrian Center 1-209-962-8667**





# FALL FESTIVAL

**AT THE  
EQUESTRIAN CENTER  
OCTOBER 25TH  
NOON - 4:00 PM**

## VENDORS WANTED

## \$10 PER SPOT

**For more information or to reserve  
your spot call the Equestrian Center  
at 1-209-962-8667**





PINE MOUNTAIN LAKE  
EQUESTRIAN CENTER

**PINE MOUNTAIN LAKE PRESENTS**

# LIVE IN CONCERT

**SATURDAY, OCTOBER 18, 2025**

**AT THE PML EQUESTRIAN CENTER**

# DAVE STAMEY



GATES OPEN AT 4:00 PM  
DINNER SERVED AT 4:30 PM  
MUSIC STARTS AT 5:00 PM  
CONCERT ONLY \$40  
CONCERT AND DINNER \$65  
NO HOST BAR ON SITE  
NO OUTSIDE FOOD  
OR ALCOHOL  
GUESTS MAY BRING  
THEIR OWN SEATING

WITH SPECIAL GUEST  
**JENNIFER GRANT**

DINNER - TRI-TIP, BAKED POTATO BAR, SALAD, DESSERT  
TICKETS ON SALE AUGUST 4, 2025 AT 9AM  
FOR MORE INFO CALL EQUESTRIAN CENTER 1 (209) 962-8667



## LETTERS TO THE EDITOR

LETTERS TO THE EDITOR RECEIVED	0	DEFERRED TO NEXT EDITION BY	
DENIED BY EDITORIAL COMMITTEE	0	EDITORIAL COMMITTEE	0
Exceeds 250 word maximum	0	DENIED BY BOARD OF DIRECTORS	0
Content	0	DEFERRED TO NEXT EDITION BY	
Not a property owner	0	BOARD OF DIRECTORS	0
"THANK YOU" LETTERS RECEIVED*	0	* Thank you's do not require editorial committee approval	

Submit Letters to the Editor by sending to "Editor, PML News"  
Mail: 19228 Pine Mountain Drive, Groveland, CA 95321  
Email: PMLNews@sabredesign.net

### PLEASE NOTE THAT ALL LETTERS APPEAR IN THE ORDER THEY WERE RECEIVED BY THE PML NEWS

The Pine Mountain Lake News welcomes letters and articles for publication provided they meet the criteria established in the current PMLA Editorial Policy (See excerpt below – entire policy on file at the Administration Office). Letters must be limited to 250 words, typewritten using upper and lowercase letters or neatly printed (no all-capital material) and signed with name, mailing address, PML unit/lot number, and day/evening telephone numbers by a property owner in good standing. **LETTERS MUST BE RECEIVED BY THE EDITOR BY THE 10th OF THE MONTH.** Letters deemed by the Editorial Committee to be improper will not be accepted. Readers are advised that **THE OPINIONS EXPRESSED IN THESE LETTERS ARE THOSE OF THE INDIVIDUAL AUTHORS, NOT OF THE PMLA, THE PINE MOUNTAIN LAKE NEWS, NOR THEIR EMPLOYEES.**

**SPEED  
LIMIT  
25**

**SLOW DOWN**  
WATCH FOR WILDLIFE,  
CYCLISTS, AND PEDESTRIANS  
PLEASE DRIVE SAFELY

## GUEST & RENTERS HANDBOOK IS AVAILABLE ONLINE!

You can now view or print the Guest and Renters Handbook from the PML Website.  
Go to our website at:

[WWW.PINEMOUNTAINLAKE.COM](http://WWW.PINEMOUNTAINLAKE.COM)

and click on Resources, then scroll down to the bottom of the page and click on Guest and Renters Handbook. This handbook has valuable information for Guests and Renters in Pine Mountain Lake.



PML Website



PML Facebook Page

### BE SURE TO LIKE OUR PMLA FACEBOOK PAGES:

[Facebook.com/PineMountainLakeCA](https://www.facebook.com/PineMountainLakeCA)

[Facebook.com/PMLARecreation](https://www.facebook.com/PMLARecreation)

[Facebook.com/PMLMaintenanceDept](https://www.facebook.com/PMLMaintenanceDept)

[Facebook.com/PMLGrill](https://www.facebook.com/PMLGrill)

[Facebook.com/PMLAEquestrianCenter](https://www.facebook.com/PMLAEquestrianCenter)

## GOVERNING DOCUMENT ENFORCEMENT ACTIONS AUGUST 2025

Courtesy Notices	71
Notice of Non-Compliance	12
Final Notice of violation	6
Fines Assessed	1
Member Service	866

# PML SAFETY REPORT

	1st Qtr	2nd Qtr	AUGUST	3rd Qtr	YTD
Guest Passes Issued	2,308	4,031	2,026	4,504	<b>10,843</b>
Vendor Passes Issued	1,437	1,740	546	1,199	<b>4,376</b>
Access Passes Issued	2,211	5,557	2,573	5,770	<b>13,538</b>
Vehicles Admitted	31,794	47,916	21,023	43,072	<b>122,782</b>
Vehicles Refused Entry	562	991	602	1,286	<b>2,839</b>
Phone Calls Received	5,333	8,182	2,661	5,879	<b>19,394</b>
Residential Alarm	8	12	2	4	<b>24</b>
Animal - Loose	32	28	4	12	<b>72</b>
Animal - Impounded	6	6	-	1	<b>13</b>
Animal - Dead/Injured	18	24	23	28	<b>70</b>
Animal - Disturbance	4	27	2	10	<b>41</b>
Patrol Assist	377	528	197	385	<b>1,290</b>
Public Assist	8	29	6	12	<b>49</b>
Welfare Check	2	4	2	2	<b>8</b>
Transport	-	2	2	2	<b>4</b>
Traffic Hazard	1	2	1	7	<b>10</b>
Traffic Control	-	1	-	-	<b>1</b>
Excessive Speed/Reckless Driving	2	6	2	6	<b>14</b>
Gate - Tamper	2	1	1	3	<b>6</b>
Gate - Follow Through	40	55	45	81	<b>176</b>
Gate - Malfunction	216	758	6	9	<b>983</b>
Gate - Struck by Vehicle	10	33	10	16	<b>59</b>
Control Burn Reported	114	104	-	-	<b>218</b>
Fire Safety - Smoke Complaint	6	1	-	1	<b>8</b>
Hazard - Tree Down	6	2	-	1	<b>9</b>
Residential Disturbance	1	2	-	-	<b>3</b>
Amenity Burglary	-	-	-	-	<b>-</b>
Residential Burglary	1	-	1	1	<b>2</b>
Grand Theft	1	2	1	1	<b>4</b>
Petty Theft	1	-	-	-	<b>1</b>
Trespassing	2	3	4	6	<b>11</b>
Vandalism	-	-	-	1	<b>1</b>
Property Damage - PML	2	6	1	1	<b>9</b>
Property Damage - Resident	1	1	1	1	<b>3</b>
PML Regs Violations Resident	1	4	-	2	<b>7</b>
PML Regs Violations Guest	1	-	-	-	<b>1</b>
Vehicle - Citation Issued	1	4	9	34	<b>39</b>
Vehicle - Accident PML	2	4	4	7	<b>13</b>
Patrolling Unit	5,189	3,896	765	1,716	<b>10,801</b>
Amenity Security Check	7,826	7,260	2,398	4,841	<b>19,927</b>
Residence Security Check	554	536	99	295	<b>1,385</b>
Weapon Violation	1	-	-	1	<b>2</b>
Fixed Post	3	4	2	5	<b>12</b>
Courtesy Notice Issued	32	48	34	51	<b>131</b>
All Other Fees Collected	\$97,757	\$308,138	\$138,087	\$313,559	<b>\$719,455</b>

# PML ANNUAL COMMUNITY VOLUNTEER SERVICE AWARD

*Get your nominations in now!*

In 2017, the PMLA Board of Directors created the PML Annual Community Volunteer Service Award. The purpose of the award is to annually recognize a PML member for their service to our community.

Each year, the Board President is tasked with carrying forward this honor. Each recipient of the award will receive an individual plaque and their name on the perpetual plaque that hangs in the entrance to the PML Administration Office, as well as a PML gift card.

Our Board President is calling for nominations and the rules are as follows:

## **ELIGIBILITY**

- Nominees must be PML members in good standing.
- Nominees must have had a positive impact on the community of PML through the act of volunteerism.
- All nominees must carry out the majority of their volunteer service in PML, Nonprofit leaders' organizations must be based in California.
- Nominees must have exhibited consistent commitment to one or more cause.
- Nominees should support opportunities for other PMLA members to serve.
- Nominations may be submitted by the nominees themselves or other members.

## **RULES AND GUIDELINES**

1. All nominations must be completed, on time, in their entirety. Partial and/or late nominations and late letters of support and additional materials will not be accepted.
2. Online nominations are strongly encouraged and should be submitted via email to PMLA's Board of Directors, or by mail to the PML Administration Office.
3. Open only to PMLA members in good standing.
4. Nominees must have had a significant, measurable impact on their community of PMLA.
5. Nominees must have exhibited creativity, compassion, leadership, and consistent commitment to one or more cause.
6. Nominations may be submitted by the nominees themselves or by other members.
7. Separate nomination packets may be submitted for as many nominees as desired. Nominating multiple volunteers in the same role, in the same organization will not increase the likelihood of an award. Nominating the same nominee multiple times and/or in multiple categories will not increase the likelihood of an award.
8. All nominations must include a letter of support. This letter should be attached as a Word or PDF document, if submitting the nomination online. If submitting a mail-in nomination, this letter should be mailed with the nomination information and not sent separately.
9. Additional materials are optional. They can include additional relevant information about the nominee, additional letters of support, photos, testimonials, news clippings, pamphlets, etc. PDF documents are preferred; Word documents are acceptable.
10. Electronic additional materials (video, CD, etc.) are acceptable and should be included as part of a mail-in nomination. Electronic materials should be no longer than 5 minutes in length.
11. The deadline for nomination submissions is **November 1st**.
12. Nominations will be reviewed and winners selected by the PMLA Board of Directors.
13. The winner will receive an award to be presented at the January Board of Directors meeting.

Nominations may be made by email at

**[PMLABoard@pinemountainlake.com](mailto:PMLABoard@pinemountainlake.com)**

Nominations may be made in writing and mailed to:

PMLA Board of Directors – Annual Service Award  
19228 Pine Mountain Dr. Groveland, CA 95321



# Would you like to be more involved in your community?

## *Here's your chance!*



Pine Mountain Lake Association has openings on the following committees:



*Covenants Committee*

*Environmental Control Committee*

*Lake & Marina Committee*

*Recycling Committee*

If you are a property owner and wish to be considered for committee membership, please complete an application available on the PMLA website at:

**[www.pinemountainlake.com/application-for-pmla-committee-assignment/](http://www.pinemountainlake.com/application-for-pmla-committee-assignment/)**  
or from the Administration Office

Mail the completed form to:  
**Pine Mountain Lake Association**  
**Attention: Janessa Owens**  
**19228 Pine Mountain Drive**  
**Groveland CA 95321**

*Or*

Email to  
**[gmassist@pinemountainlake.com](mailto:gmassist@pinemountainlake.com)**  
or drop it by the  
Administration Office  
front desk

*[www.PineMountainLake.com](http://www.PineMountainLake.com)*

Would you like to be more involved in your community?

*Here's your chance!*



Pine Mountain Lake Association has openings on the newly established committee:



## Recycling Program Committee

PMLA Community Recycling Program Committee is brand new and needs 5 new members!

This committee has been put together to foster a sustainable community by promoting and facilitating effective recycling practices among PMLA residents. The committee meets once a month.

If you are a property owner and wish to be considered for committee membership, please complete an "Application for PMLA Committee Assignment"

<https://www.pinemountainlake.com/application-for-pmla-committee-assignment/> or from the Administration Office

Mail the completed form to:  
**Pine Mountain Lake Association**  
**Attention: Janessa Owens**  
**19228 Pine Mountain Drive**  
**Groveland CA 95321**

Or

Email to  
**gmassist@pinemountainlake.com**  
or drop it by the  
Administration Office  
front desk

[www.PineMountainLake.com](http://www.PineMountainLake.com)

# FROM THE FRINGE

MIKE COOK – PGA HEAD GOLF PROFESSIONAL

**T**he Golf Shop is open 7 days a week from 7:30am until 6:00pm and our staff and I are here to assist you in any way we can. Please call us if you have any questions or need to make a reservation for golf at **1-209-962-8620**.

## UPCOMING EVENTS

### Ladies 9-Hole Golf Club

Weekly Play Day

Tuesdays (New Day for 2025)

### Ladies 18-Hole Golf Club

Weekly Play Day – Thursdays

### PML Men's Golf Club

October Odyssey 4-Man Scramble

Wednesday October 8

### PML Men's Golf Club

Spook-Tacular 2-Man Scramble

Saturday October 25

### PML Lady Niners

Wine In The Pines – Tuesday October 7

## PINE MOUNTAIN LAKE GOLF COURSE

### RATED #4 IN THE USA BY GOLF PASS

Golf Pass is one of the Nation's leading promoters of the game of golf. Golf Pass brings together the best golf courses, instruction, entertainment, travel information and much more to help golfers enjoy more golf, more often. Each year Golf Pass customer's rate the Golf Courses that they play and in the latest list of the top 25 Golf Courses in America, **Pine Mountain Lake Golf Course is rated #4 in the Country**. We are truly blessed with a great Golf Course and thank you Rob Abbott our Golf Course Superintendent and his crew for the wonderful condition of our Hidden Gem.

### PML LADY NINERS

The PML Lady Niners will hole their annual Wine In The Pines on Tuesday October 7. For more information call the Golf Shop at **209-962-8620**.

### PINE MOUNTAIN LAKE HOLIDAY EXPRESS

If you are not aware of what the Holiday Express is; the Holiday Express is an event

where PML Property Owners whose property is on the Golf Course on holes 1-5 and 10-18, light up their Golf Course portion of their property with lights and Christmas decorations and PML conducts tours where spectators tour the Golf Course at night to view the lights and decorations. This is PML's version of "Candy Cane Lane". It is our hope that EVERY PML home owner whose property is on the Golf Course will take part in this event and light up the Golf Course side of their property, even if it is just putting up a few strings of lights. This year's event is scheduled for Friday December 8 and Saturday December 9. See fliers in the newsletter for more information. Sign-ups for the tours will be available starting in the first week of November. For more information call the Golf Shop at **209-962-8620**.

## A SPECIAL THANK YOU

Pine Mountain Lake would like to extend a special thank you to the PML Members, Guests and Public for helping keep the course in such great shape by fixing their ball marks, raking the bunkers and replacing divots. We feel that along with the PML Maintenance Staff you deserve credit for the course conditions also. Keep up the great work!

## MEN'S PURPLE/GREEN COMBO TEE CHANGES

Beginning on July 1, 2025 the following changes will go into effect for the Men's Purple/Green Combo Tees:

- Hole #6 will change from a **Purple Tee to a Green Tee**.
- Hole #10 will change from a **Purple Tee to a Green Tee**.
- Hole #11 will change from a **Green Tee to a Purple Tee**.

### Reasons for the changes:

- 1) The men's and women's Purple/Green Combo tees have been the same but the women's par on #6 & #10 is 5 and the men's par is 4. Moving the men's tees to the Green Tee on these two holes is warranted due to the difference in par and the length of the holes.
- 2) Playing hole #11 from the Green Tee made it necessary to adjust the handicap holes on the back nine due to the 168-yard shorter distance

difference from the Gold Tee. By moving back to the Purple Tee it makes it so we can keep the handicap holes the same for all the tees.

- 3) Our new scorecards reflect these changes and the new scorecards have rounded corners so we can easily recognize the new scorecards.

If you have any questions, please call the Golf Shop.

## DRIVING RANGE

As of October 1, the Driving Range will be open from 8:00am until 4:00pm (Last Ball Hit at 4:00pm).

## GOLF SERVICES (LOCKERS, BAG & PUSH CART STORAGE)

If you would like to rent a locker or store your bag or push cart, there is space available. Call or come to the Golf Shop for more information or an application.

## PINE MOUNTAIN LAKE GOLF WEBCAM

On the [pinemountainlake.com](http://pinemountainlake.com) website we now have a live webcam that looks down the 10th hole. Click on the Amenities tab, then go to and click on the 18 Hole Championship Golf Course tab, then scroll down to and click on the Golf Course Webcam. You will be able to see the live conditions at the Golf Course.

## CALLAWAY GOLF CLUB TRIAL SETS

We NOW have the NEW Callaway ELYTE line of clubs available for testing in the Golf Shop. We have trial sets that you can take to the range or out on the Golf Course. For more information, call or come in to the Golf Shop.

We now have the NEW CALLAWAY REVA LADIES trial sets.

## SOUTHERN VALLEY SENIORS

If you are a PML Property Owner, a Member of the PML Men's Golf Club and are 50 years of age and above, you qualify to join the PML Southern Valley Seniors (SVS). The SVS play home & away events with other Golf Courses in the Southern Valley, such as Turlock CC, Oakdale CC & Spring Creek CC, to name a few. If you are interested call the Golf Shop and we will put you in touch

*(Continued on next page)*



(Continued from previous page)

with the SVS PML Captain.

## PUNCH CARDS

Pine Mountain Lake Association Property Owners can save up to \$6.00 per round by purchasing a Punch Card in the Golf Shop. There are; 9-Hole & 18-Hole Punch Cards available. For more information call or come into the Golf Shop.

## NEW PINE MOUNTAIN LAKE PROPERTY OWNERS

If you are a new Pine Mountain Lake Property Owner and you are interested in getting acquainted with other Property Owners who play golf, call the Golf Shop **1-209-962-8620** and we will let you know what golfing groups you may be able to join or what golf activities are planned for the year.

## MEN'S & LADIES GOLF CLUBS

If you are interested in joining the Men's or Ladies Golf Clubs, you can call the Golf Shop **1-209-962-8620** and we will give you the information you need. Applications are available in the Golf Shop. The Men's Club has a website ([www.pmlmgc.com](http://www.pmlmgc.com)) that you can visit to sign-up online for your membership (see Men's Club eligibility rules) or to print an application. Once you are a Men's Club Member, you can sign-up

for tournaments online.

## PROPERTY OWNER ANNUAL GOLF CART RENTAL AGREEMENT

Every person who drives a golf cart on the course, is required to sign a golf cart rental agreement at the time of registration, before they can drive a golf cart. PML Property Owners sign the agreement one-time and that covers the entire year. If you have not signed your agreement you can go to the PML website ([www.pinemountainlake.com](http://www.pinemountainlake.com)) and fill it out and sign online or you will be asked to sign the form when you register in the Golf Shop. Click on amenities, then click on golf and you will see the agreement with other forms available. If you have any questions, please call the Golf Shop **1-209-962-8620**.

## CARE OF THE GOLF COURSE

### TAKING CARE OF THE GOLF COURSE IS EVERYONE'S RESPONSIBILITY; PLEASE DO YOUR PART!

**Replacing Divots** – PML is a DIVOT FIRST facility; that means that if the divot is intact or even a portion of the divot is intact, we want you to replace the divot first and press the divot down firmly with your foot. When an intact divot is replaced, it will begin

to root right away but a mulch filled divot will take weeks to fill in. If the divot hole is not totally filled in by the divot that you replaced then fill the rest of the hole with mulch and press down the divot firmly with your foot. If the divot is not intact, then fill the divot hole with mulch and smooth the mulch with your foot so it is level with the ground.

**Repairing Ball Marks** – This is one of the major negatives in our great game; players either do not know how to repair ball marks correctly or don't even attempt to repair them. Here is the correct way to repair a ball mark:

Insert the divot tool just outside the edge of the ball mark, use the divot tool to mend in the outside portion if the ball mark towards the middle. Then use your putter to tap down the repaired turf. If a ball mark is repaired properly, you will not even be able to tell that there was a ball mark. **NEVER PULL UP THE MIDDLE OF THE BALL MARK.**

**Raking Bunkers** – We are back to normal procedures concerning bunkers; **PLEASE** make sure that you rake the bunker after you have hit your shot.

**Golf Carts** – Driving golf carts on the fairways has a negative effect on turf conditions over time. **PLEASE** use the 90-degree rule posted in each golf cart in order to minimize the cart traffic on the fairways. 🌱

## ADMINISTRATION

# FIRE SAFETY

JOE MILANI – FIRE SAFETY COORDINATOR

**O**ctober brings cooler temperatures and shorter days, but when it comes to fire safety, we are not out of the woods yet. Due to climate change and unmanaged forests, wildfire season is starting earlier and ending later. Fire behavior patterns have changed and pose new threats to our communities and surrounding forest land. Pine Mountain Lake Association practices year-round fire safety standards, so your home is better prepared for wildfire season. If you would like a fire safety inspection or home hardening assessment, please contact our office to schedule an appointment.

October 5th-11th is **Fire Prevention Week**. The theme of this year is "Charge into Fire Safety: Lithium-Ion Batteries in Your Home!", works to educate everyone about using these batteries safely. The campaign stresses how important it is to Buy, Charge and Recycle safely when it comes to lithium-ion batteries. Learn more at: <https://www.nfpa.org/fpw> and <https://nfpa.org/>. Both sites are full of valuable information for the whole family including educational games for kids to play and learn about fire safety and prevention.

Please remember to test your smoke alarms once a month and replace any faulty alarms

or low batteries immediately. This could be the difference between life and death in a fire-related emergency.

Lastly, fire safety inspections will continue in Pine Mountain Lake. Remember, a fire safe community begins with you! If you would like an inspection of your property, or you are looking to educate yourself more, our fire safety team would love to help.

If you have questions or concerns regarding fire safety, you can contact Amanda Birmingham at **1 (209) 990-5263** or email her at [inspector@pinemountainlake.com](mailto:inspector@pinemountainlake.com). I can be reached at **1 (209) 990-5260** or by email [fsc@pinemountainlake.com](mailto:fsc@pinemountainlake.com). 🌱



**ALL ABOARD**

**PML'S ANNUAL**



**FRI, DEC. 5 • SAT, DEC. 6, 2025**

Board a lighted golf cart as your tour leader takes you on a tour of outdoor home decorations on the golf course. Enjoy **Hot Cocoa & Cookies**.

If you would like to make reservations for dinner, please call **The Grill at 1-209-962-8638**. Reservations are limited to first come first serve and can be made up 30 days in advance.

Seats are limited so call early to reserve your designated tour time.

Call Mike Cook **1-209-962-8620** with questions regarding this event

**FOR HOLIDAY TOUR  
RESERVATIONS CALL  
THE GOLF SHOP AT  
1-209-962-8620**

*Adults \$10* | *Kids\* \$5*  
per person | per person

\* 17 years old and younger  
(must be registered in advance and for every child registered there must be an adult to drive the cart)

Price includes:  
Tour, Hand Warmer, Hot Cocoa & Cookies

**TOURS BEGIN AT 5:30PM**

**LAST TOUR AT 7:30PM**

Tours go Rain or Shine

Be sure to stop by the Stables for a **photo with Santa** and view **Christmas Tree Lane** decorated Christmas Trees from 5-8pm on Friday, December 12!

For more information on the Christmas Tree Lane call the Recreation Manager at 1.209.962.8604

**ONE-OF-A-KIND**

**TICKET TO RIDE**



*Light up*

*the Links*



FRIDAY & SATURDAY DECEMBER 5 & 6, 2025

*Help us Light up the Links this year!*

On Friday December 5 & Saturday December 6, the golf course staff will conduct tours of homes decorated on the golf course side of the property via golf carts traveling on golf course cart paths. The headlight equipped carts are set to drive by holes 1-5 and 10-18.

There is no stopping or entering of any property, just a slow drive to enjoy the holiday decorations. The tours begin about 5:30 pm and the last tour at 7:30 pm.

**OPTIONAL HOUSE DECORATING CONTEST WITH PRIZES!**

1st Prize \$100 Country Club Gift Card • 2nd Prize \$80 Country Club Gift Card  
3rd Prize \$60 Country Club Gift Card • 4th Prize \$40 Country Club Gift Card

If you'd like to participate in the contest, fill out the form below and drop it off at the golf shop or email the form to [golfpro@pinemountainlake.com](mailto:golfpro@pinemountainlake.com)

Lights need to be turned on by 5:00pm on December 5 & 6, 2025

**Even if you prefer not to participate in the contest, PLEASE share your holiday spirit and decorate in anyway that you can on side facing the golf course**



*Yes*, we would like to sign up for the House Decoration Contest.

name \_\_\_\_\_

address \_\_\_\_\_ unit/lot # \_\_\_\_\_

phone # \_\_\_\_\_ email \_\_\_\_\_

Return this form to Mike Cook at the Golf Pro Shop or via email at [golfpro@pinemountainlake.com](mailto:golfpro@pinemountainlake.com)

REGISTRATION DEADLINE: 5PM ON DEC. 1ST



# **FOOTBALL MONDAY NIGHTS**

**AT**



**SEPTEMBER 8<sup>TH</sup> – DECEMBER 29<sup>TH</sup>**

**5PM – End of Game**

**\$5 Pints**

**\$5 Hot Dogs**

**\$5.25 Polish or Brats**

**\$7.50 Chili Dog**

**\$2 Bag of Chips**

**FOR MORE INFORMATION CALL THE GRILL AT 1-209-962-8638**



# HALLOWEEN PARTY AT THE GRILL

Please join us  
**NOVEMBER 1, 2025**  
for a night of Halloween fun



**Dinner from 5PM – 9PM**  
(Reservations recommended)

**Entertainment by DJ Jordan from 7PM – 10PM**  
**Costume contest at 9PM**

**Themed Dinner Specials  
and Spooky Specialty Cocktails**

**For more information, please call 1 (209) 962-8638.**



# TEE TO GREEN

ROB ABBOTT – GOLF COURSE SUPERINTENDENT

**W**e have just completed our golf course aeration at the end of September. This included, greens tees, fairways, collars, and approaches. I know all of you golfers out there dislike this process and to be honest I don't care for it much either. We baby the greens through the heat of summer and have them looking nearly perfect just to punch 1.5 million holes into our 3 acres of greens. I have touched on the importance of the aeration process several times in the past but still get the same questions. I am going to explain the process again. Aerification achieves three important objectives. It relieves soil compaction; it provides a method to improve the soil mixture around the highest part of a green's roots and it reduces or prevents the accumulation of excess thatch. Aerification is a mechanical process that creates more air space in the soil and promotes deeper rooting, thus helping the plants stay healthy. We achieve this by removing half-inch cores, or plugs from the soil, allowing for air and water

to penetrate the greens surface. The spaces are then filled with sand "topdressing" that helps the soil retain air space and makes it easier for roots to grow downward.

With the cool fall temperatures on their way, we will be doing some late-season fertilizing. Greens, tees, and fairways are on their monthly program and will continue through October. The best results from late-season fertilization will be achieved by applying fertilizer early enough in the season that the plants are still photosynthesizing and absorbing nutrients. Doing this will give the plant a boost of nutrients going into winter and give the necessary nitrogen boost to get it started in the spring.

For those who play, I hope you noticed the repair that was done to the staging area at the golf shop. We poured new concrete and leveled pavers on the entire length of the staging area, reducing the trip hazards that existed, and created superior drainage going into winter. At the cart path crossing of Tannahill, we improved the cart path

by widening it by two feet and replacing the handrail. This was also a concern for cart traveling to the stop sign on a narrow path. Some other projects include a new greenhouse being installed at the maintenance department. This will allow us to propagate a lot of our own plants, start seedlings, and provide our own plants back into landscapes. Staff also just finished a beautiful new landscape at 16 green 17 tee, with plants that we were able to grow from cuttings or splits from other plants during pruning.

Remember that it is extremely hard this time of year to irrigate seventy-plus acres of turf when you have huge swings in temperatures as we are seeing now. The days get shorter and the sun angle begins to shift casting large shade patterns throughout the course. The course may seem wet in the morning, but when the dew wears off and the sun is high in the sky, conditions become perfect. Come on out and enjoy the cooler weather and our beautiful course. 🌈

## MAINTENANCE MATTERS

RICK LAFFRANCHI – MAINTENANCE AND OPERATIONS MANAGER

*"October is a performance of symphony and change"* – Bonaro W. Overstreet

**O**ctober is here and with it, a small sigh of relief in the Maintenance department. With the end of September comes the completion of the 2025 Pavement Management Plan work. The extensive work takes place normally on a 2-year schedule and requires 100s of hours of preplanning between all entities involved to bring this project to completion. This year nearly 2 dozen streets, courts, and roads were treated, with the addition of Pine Mountain Drive and Mueller Drive receiving line striping in excess of 7 miles total. I would like to extend my thanks to all involved.

The Facilities crew continue to be engaged in multiple projects, as with last month extensive reed removal from many parts of the lake will take place as well as choosing multiple locations along the lake shore to apply a muck consuming product that has been utilized in many small lake communities to significantly reduce the (that icky sticky muddy stuff all the organics grow in), which will remove one of the sources for reed propagation on the lake. Road work continues with crack sealing in units 2, 6, 7 and 12 this process assists in extending the life of our roads. Finally, the team will be preparing the Green Waste Site for its yearly chipping project, this year we anticipate between 14k yd<sup>3</sup> and 15k yd<sup>3</sup> will be processed and removed.

The Buildings and Grounds crew will

be engaged across the association. With the end of the summer season comes the closure of the seasonal amenities. The Swim center, The Lake Side Café and all contributing areas will be put to rest. This process includes shutting down refrigeration, Irrigation, cook lines, Docks etc... And finally, the month of October brings our annual visit from DSOD and our inspection of the Big Creek Dam. The Maintenance team spends over 500 hours a year clearing on around or ensuring that the area stays in qualified condition. The dam is over 50 years old and requires extensive upkeep to keep the area safe and accessible. Well, that's all for this month, remember slow for the cone zone and enjoy the beautiful community we live work and play in. 🌈



**NEW LOCATION**

**HOLIDAY**  
**CHRISTMAS**  
**CRAFT FAIR**

at Tenaya Elementary School Gym  
in Groveland, California

November 28 & 29

2025

**FROM 9 AM TO 4 PM**  
**ON BOTH DAYS**

**At Tenaya School Gym**  
**19177 CA-120**  
**Groveland CA 95321**

**Enjoy Food from**  
**ROCK-IT TACOS**

**OVER 44 VENDORS!**

- Jewelry
- Custom Ornaments
- Woodworking
- Cottage Foods
- Artwork
- Photography
- Apparel
- Toys and More!



# FROM PMLA SAFETY COMMITTEE

BOB ASQUITH

**T**he Pine Mountain Lake Safety and Security Committee is a standing committee authorized by the PMLA Board of Directors to inform its decision making and promote its mission. The Committee meets every month.

## *Join Our Committee Meeting:*

Members may attend our committee meetings.

Our next meeting is October 8th at 9am via Zoom. Please email [SafetyComm@pinemountainlake.com](mailto:SafetyComm@pinemountainlake.com) to obtain your invitation.

- **Wildfire Season IS STILL HERE. Load WatchDuty app on your smartphone. It shows fire activity nearby. Sign up for alerts (See below). Include family/friend OFF THE HILL.**
- **We will hold a morning First Aid/AED/ CPR class at Lake Lodge on October 11. We are planning another class in mid-summer. Watch Social Media.**
- **CERT will hold its FEMA provided Basic Training Nov 14-16 in Groveland.. ALL are welcome. It is Free.**
- **We are developing a path for Firewise Communities to also be Neighborhood Watch Neighborhoods. Details coming.**
- **We met with researchers from UC Davis**

**who are working on a project with CALFIRE to graphically show members what their property would look like when the vegetation is thinned to a safe state. See separate story.**

## WE WANT YOUR OPINIONS.

PLEASE EMAIL THEM TO US:

- ✓ **House numbering** – Fire Dept recommendations
- ✓ **Speeding** – Looking for solutions to calm PML traffic
- ✓ **Roadway and Intersection markings** – Speed limits and Evacuation routes
- ✓ **Text messaging** – Admin is working on texting. Stay tuned (Push technology)
- ✓ **Updates to PML Safety and Emergency documentation**

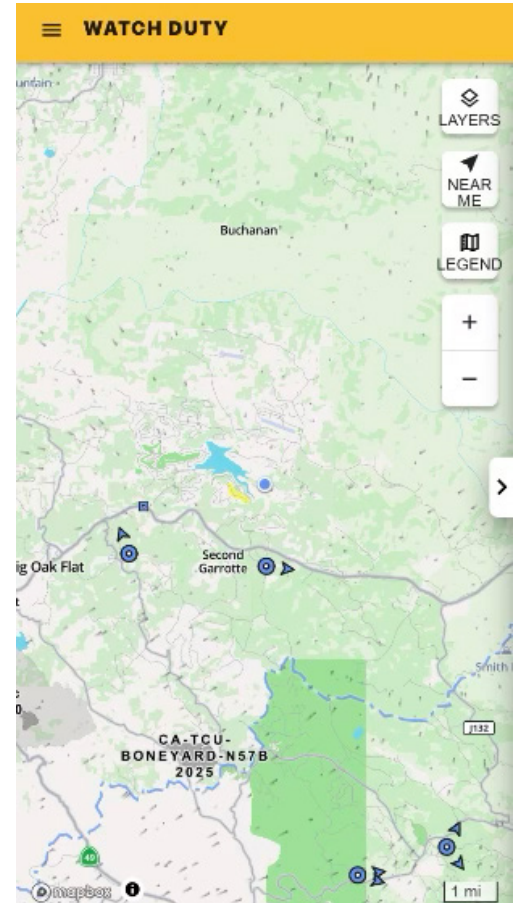
**Emergency Communications** – Sign up for these emergency alerts at:

<https://www.tuolumnecounty.ca.gov/1170/Emergency-Alerts>

Who should receive these alerts? Your Land Line, ALL family members cell phones, including Someone Off-The-Hill.

**Emergency Evacuation**—These maps are approved and ready to use. Maps show the routes out of PML and the major evacuation routes away from Groveland. Additional emergency information can be found at:

<https://www.pinemountainlake.com/emergency-information-and-resources/>



Evac Maps are on the PMLA website. Download & print your copy.

<https://www.pinemountainlake.com/.../PML-Evacuation-Maps.pdf>

Please email comments to: [SafetyComm@pinemountainlake.com](mailto:SafetyComm@pinemountainlake.com) 🇺🇸

# IF YOU FAIL TO PLAN, YOU ARE PLANNING TO FAIL



# FROM PMLA SAFETY COMMITTEE

BOB ASQUITH

The Pine Mountain Lake Safety and Security Committee is a standing committee authorized by the PMLA Board of Directors to inform its decision making and promote its mission. The Committee meets every month.

For several months, your Safety Committee has been meeting with researchers from UC Davis to learn more about an innovative tool they are developing along with CALFIRE. This tool provides homeowners with a view of their property before and after applying the best practices for thinning vegetation to make it more fire safe.

More than 40 members attended the

evening meeting Sept 17th at Lake Lodge to discuss this tool and provide feedback to its development team. This will help further the refinements of their tool.

More than a dozen PML properties were used to provide samples of the tool's operation. They were review and comments were abundant to aid the developers. Below is a sample. The PMLA Fire Safety Coordinator also has been involved with this process.

We expect this tool to be widely available in the months ahead. Look for announcements in Social Media and via eSNAP. This will be great for members to visualize what fire safe improvements to their property will look like.



Here are two samples.

Please email comments to: [SafetyComm@pinemountainlake.com](mailto:SafetyComm@pinemountainlake.com) 🌱





WELCOME TO THE  
*Hidden Jewel of the Foothills*  
**PINE MOUNTAIN LAKE  
GOLF & COUNTRY CLUB**

12765 MUELLER DRIVE • GROVELAND, CA. 95321

*Championship Golf Course*



*Beautifully Manicured Greens*



*Stunning Vistas & Surroundings*



*Mountain Golf*



*at its Finest!*



[www.PineMountainLake.com](http://www.PineMountainLake.com)  
**1-209-962-8620**





**LINGLEY ENTERPRISES**

**SERVICE AND REPAIR CONTRACTOR**  
**PLUMBING - ELECTRICAL - CARPENTRY**

**AFFORDABLE PRICING**

**WWW.LINGLEYENTERPRISES.COM**

**209 840 2654** LIC # 920143

**Edward Jones®**

> [edwardjones.com](http://edwardjones.com) | Member SIPC



**Pine Mountain Lake: The power of personal attention working for you**  
**Let's explore.**



**Jordan R Sergent**  
 Financial Advisor

728 Mono Way  
 Sonora, CA 95370  
 209-213-7203

EJB-19325-A-E-DA-4 AECSPAD 26255318

## FIREWOOD CUTTING

PML SLASH & COMPOST SITE

**OAK AND CEDAR**  
 REQUIRES A \$20 PML WOOD CUTTING PERMIT

WOOD CUTTING PERMITS AVAILABLE  
 AT THE MAINTENANCE FACILITY

**PINE AND FIR**  
 AVAILABLE FOR FREE CUT & HAUL

FOR MORE INFORMATION  
 PLEASE CONTACT  
 MAINTENANCE AT

**1 (209) 962-8612**  
 BETWEEN THE HOURS OF 7 AM TO 2:30 PM, M-F.

# **RESOLUTION #25.04 PINE MOUNTAIN LAKE ASSOCIATION RESOLUTION ADOPTING SWIM CENTER POOL OPERATIONAL RULES**

In accordance with Pine Mountain Lake Association's CC&Rs, Article III, Section 7(c), Adoption and Amendment of Rules, the Board of Directors has approved the adoption of Resolution 25.04 - Pine Mountain Lake Association Resolution Adopting Swim Center Pool Operational Rules.

The purpose of this resolution is to establish a policy governing the management, operation, and use of the Pine Mountain Lake Association Swim Center Pool.

This new resolution was published in the August and September editions of the PML News and posted on the PML website for member review and comment.

This adoption of Resolution 25.04 was approved and adopted by the Board of Directors at a duly noticed meeting on September 27, 2025.



**PINE MOUNTAIN LAKE ASSOCIATION  
RESOLUTION ADOPTING SWIM CENTER POOL OPERATIONAL RULES**

SUBJECT: Adoption of Pine Mountain Lake Association Swim Center Pool Operational Rules

PURPOSE: To establish a policy governing the management, operation and use of the Pine Mountain Lake Association Swim Center Pool

AUTHORITY: The Declaration, Bylaws, and Articles of Incorporation of the Association, and California Law.

EFFECTIVE

DATE: September 27, 2025

WHEREAS, the Association owns a swimming pool facility in the common area for the use and enjoyment of PMLA members, tenants, lessees, and guests;

WHEREAS, California civil code and the PMLA governing documents authorizes the Board of Directors to adopt reasonable rules and policies for the management and operation of common area amenities;

WHEREAS, the Board of Directors recognizes the importance of adopting rules for health, safety and operational purposes at common area amenities;

WHEREAS, the Association can generally be more restrictive than the State or County in adopting certain policies and rules unless otherwise specifically prohibited by law;

WHEREAS, the Board of Directors has determined that Swim Center Pool operational rules are necessary for the health and safety of members, tenants, lessees, staff and guests as well as to protect the assets of the Association and its ability to operate the facilities and common area and enforce the governing documents for the benefit of the membership;

NOW, THEREFORE BE IT RESOLVED, The Board of Directors adopts the following Association Swim Center Pool Operational Rules as referenced in Exhibit "A":

**EXHIBIT A**

**PMLA Swim Center Pool Rules**

No lifeguard on duty, all individuals using the Swim Center Pool Facility do so at their own risk.

In the event of an emergency call 911.

The Pine Mountain Lake Association (PMLA) Swim Center is a member recreation center with many different activities: ping pong, board games, cards, books, magazines, and swimming pool. There is no charge to use the PMLA Swim Center Pool.

The pool is open to PMLA property owners and their guests seasonally. For the safety of everyone, please note that persons under 14 years of age must be accompanied and monitored by a person at least 18 years of age.

The following rules are established for the health, welfare, and safety of all members. It has been established to assure safe and sanitary operation and use of the PMLA Swim Center.

All personal injuries, regardless of how minor, should be reported immediately to an PMLA Swim Center attendant.

A First Aid kit is located on site. An ADA chair lift is next to the pool. An emergency phone is located in the office. Please ask the PMLA staff for assistance with supplies or equipment when needed.

PMLA Swim Center staff are in charge at all times and have full authority and responsibility to enforce these rules, including limiting activities of anyone disturbing the enjoyment or safety of others.

Anyone violating a rule will be asked to voluntarily comply. If an individual violating a rule does not voluntarily comply with the instructions of PMLA staff, they will be asked to leave the Swim Center. All infractions will be reported to the General Manager for governing document enforcement.

Swim Center Facility capacity: 63 individuals.

### **Swim Center Pool Operational Schedule**

The Swim Center is open from the Friday of Memorial Weekend until October 31st. The daily operational hours for a majority of the season are from 8 am to 8 pm. The closing hour may vary depending on variance to sunset time or weather as determined by PMLA management.

Exceptional events or circumstances that are beyond the control of management can occur that may put the Association in the position where it may have to open the pool season later than normal or close the Swim Center early for the season. For example, but not limited to: mechanical, safety, weather, and/or maintenance issues.

### **Swim Center Pool Standard Hours of operation**

The Swim Center may only be used during operational hours, as follows:

- 8 am to 10 am: water aerobics
- 10 am to 12 pm: property owners and accompanied guests only
- 12 pm to close: general session

Once the Swim Center reaches capacity (currently 63 individuals), it will be closed to additional people entering and using the pool area.

All individuals using the Swim Center are required to exit the facility at or before the established closing time. It may be necessary to close the pool for up to a twenty-four-hour period, at the discretion of the Certified Pool Operator for maintenance purposes.

In the event of lightning, swimmers are required to exit the pool immediately and take shelter from the storm. Take appropriate action for your safety. Staff will announce when swimming and sunbathing may resume.

### **Swim Center Access Procedure**

A Pool Attendant will meet you at the Swim Center entrance gate to register your name and property or guest/tenant information. Please have the following with you:



- Property owner must have their PMLA gate access/ID card
- Guests must be accompanied by a property owner between 10 am and noon
- Renters/tenants/guests must have a valid guest pass (e.g., green, yellow, or orange pass issued from the PMLA main gate)

No admittance without property owner card or valid guest pass. Additional information may be required. The Swim Center back gate may be used to exit, but not to enter.

Please note: a property owner card is non-transferable. It must be used by the person identified in the picture on the card.

### **Use of the Swim Center Facility**

PMLA property owners, guests, and tenants may use the Swim Center. It is not open to the general public. Pool gates are to remain closed for controlled access and may not be propped open.

The Swim Center is a place of non-discrimination. The Federal Fair Housing Act includes, but is not limited to, protecting a person's age, race, color, national origin, sex, familial status, religion, sexual orientation, gender identity, or disability. Harassment or exclusion of any person or a family based on these or any other factors will not be tolerated.

The pool and deck are shared areas. As a common area it is available for common use by all property owners and guests. It is owned, maintained, repaired, and managed by PMLA, but reserved exclusively for the use and enjoyment of PMLA members, and their invited guests, tenants, or lessees. The Swim Center may not be dominated by an individual, group, or club. Exclusive use of the Swim Center for private member parties during normal operational hours is not permitted.

The use of pool side furniture is on a first-come, first-serve basis. All pool furniture must be kept at least 4 feet away from the pool water. No person may reserve or save furniture for themselves or others, when not present in the Swim Center for an extended period of time.

All individuals are required to shower before getting into the pool. Be sure to change clothes in the restroom or other private area.

Showers are intended for rinsing off before entering the pool and rinsing off after exiting the pool. They are not intended for general bathing. Using pool showers for general bathing is not allowed.

Special event or specific use of the pool by individual members or member groups must be approved by the Association General Manager or their designated representative.

A reservation may be made, with pool staff, to reserve the covered deck area for a small party (e.g., 8-12 people maximum). Be sure to clean the reserved area before and after use. The area must be maintained in an orderly manner and cleaned before exit.

The Swim Center may use string buoys to allocate a portion of the pool for PMLA swim lessons Monday thru Friday as needed. Swim lessons are taught by a Certified Water Safety Instructor.

The string buoys cannot be used for any other reason or to segregate individuals or private groups. The pool is common area and must be available to all.

The Swim Center employees are responsible for playing the music designated by PMLA. Each guest is responsible for their own property. PMLA is not responsible for damage, theft, or loss to personal property.

The facility cannot be used for personal profit or commercial purposes. The pool itself cannot be rented or advertised to be rented by anyone other than the General Manager as authorized by the Board of Directors for the benefit of PMLA.

All members are required to inform their renters and guests, long-term and short-term, of the rules and regulations. The property owner is responsible for the behavior and actions of their renters/guests.

PMLA reserves the right to the use of its logo. It may not be used by anyone else other than PMLA. PMLA may create flyers to advertise the Swim Center upcoming activities. No other group or organization may advertise on behalf of PMLA. Unauthorized PMLA signs or flyers are not allowed to be posted at the Swim Center. Outside advertisements are prohibited.

If damage occurs to any area of the facility, please report it to PMLA staff immediately. If human waste is found in the pool, notify PMLA staff immediately.

### **Water Aerobics**

Water aerobics is offered in the morning, seven days a week. There are two classes: (1) from 8 am until 9 am, and (2) from 9 am until 10 am. The classes are open to all ages. Participation is required by all persons in the pool during water aerobics. Water aerobics may be enjoyed by authorized individuals and families. PMLA may provide water weights and dumbbells (foam) to be used by participants during the water aerobics class. Individuals participating in water aerobics may bring additional water cuff weights to use.

Each class is led by an audio system. The pool staff determines which audio track to play for each class.

#### **Service and Assistance Animals**

Pets are not allowed in the Swim Center.

Service and assistance animals may be present when leashed, or in a carrier, or otherwise controlled as required by law, and otherwise under the supervision and restraint of the owner, as required by law. Service animals are not permitted to be on the pool furniture, unless required by law. Do not leave the service animal alone or unattended.

The service animal should rarely, if ever, bark. It may not defecate on the pool deck or furniture, or cause any damage to property. Animals causing a nuisance or damaging property will be required to leave the Swim Center immediately and owners may be held responsible for damage caused. Animals are not allowed in the water, unless required by law.

Please do not feed your service animal at the Swim Center.

If a mess is accidentally made, it is the responsibility of the property owner/guest to clean it up. Please note, if at any time you lose control of your service animal, or your animal causes a significant disturbance, a member of the PMLA staff may ask you to leave the Swim Center.

### **Additional Standard PMLA Swim Center Rules**

Once you've entered the Swim Center, be sure to follow the pool rules. The Pool Manager and Pool Attendants have full authority to enforce these rules. Violations shall result in ejection from the facility and potential suspension of use of the amenity or a monetary penalty in accordance with the PMLA Governing Document Enforcement Procedures.

- People under the age of 14 who cannot swim must remain within arm's length of a person who can assist at all times
- No person or thing may be thrown in the pool or pool area.



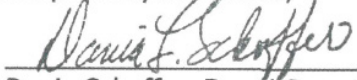
- No masks, fins, snorkels, water wings, ring buoys, rafts, balls, squirt guns, water toys or other "water- aides" are allowed. Pool noodles are allowed.
- No life jackets/vests unless they are Coast Guard approved Type 1 or Type 2.
- No yelling or shouting.
- No chicken fighting or any type of on the shoulders type of activity.
- Running, hitting or conduct harmful to self or others is prohibited in the pool water or on the deck.
- No speed-walking into the pool. Enter from the pool edge.
- No diving, twists, or flips.
- No jumping into the pool from the stairs.
- No rough housing (e.g., no dunking, pushing, or wrestling).
- Ping-pong balls may only be used on the ping-pong table.
- Do not use a ping-pong paddle for anything other than its intended use.
- No water balloons, or balloons in the water.
- No sliding, climbing, swinging etc. on pool railings.
- No spitting or spouting of water or blowing noses in the pool or onto the deck.
- No glass containers (e.g., bottles, stemware, or cookware) or similar material with a tendency to shatter on impact is allowed in the pool or pool area.
- No one may use the pool if they are intoxicated or inebriated (drunk or high).
- No drug-related activity is allowed at the Swim Center.
- No annoying or noxious behavior, physical or verbal.
- No swimming during inclement weather.
- No urinating or defecating in the pool.
- No electrical devices are allowed on the pool deck or in the pool.
- No drones or remote-control devices are allowed at the Swim Center
- No furniture in the pool.
- No littering.
- No food or drink near or in the water. Keep food and drinks at your table.
- Persons under 14 years old must be accompanied and monitored by an adult.
- No smoking of cigarettes or cannabis. No vaping. This is a non-smoking facility. A smoker must go to the designated area (right corner of the Swim Center parking lot) if they wish to smoke or vape.
- No pets are allowed at the Swim Center.
- Service animals are allowed under the supervision and restraint of the owner.
- Service animals are not allowed in the pool water, except as provided above.
- Clean your area before leaving the facility. Place trash in provided receptacles.
- Change clothes in the restroom.

- Pool rules are for the safety and enjoyment to all in the Association. Members, tenants, guests and lessees who violate the rules will be asked to leave the Pool. Repeat violations will result in pool privileges being revoked.
- No lifeguard will be on duty. All persons using the pool do so at their own risk and agree to abide by the rules for the use of these areas. The Association assumes no responsibility for an accident or injury in connection with such use or for any loss or damage to personal property.
- Non-swimmers must always be accompanied by an adult swimmer of capable abilities.
- Persons having an infectious or communicable disease or possible infectious condition, such as a cold, skin eruption or open blister are not permitted in the pool.
- Swimmers must wear clean and proper bathing attire. No street clothes/shoes, cutoffs or jeans in the pool.
- Any person who is incontinent or not fully potty-trained must wear appropriate waterproof swim diapers, when entering or being carried into the pool.
- No wheeled vehicles (skateboards, bicycles, scooters, etc.) are permitted in the pool or pool area at any time, with the exception of vehicles for the physically challenged and infant strollers. Bike racks are available in the Swim Center and Grill Restaurant vehicle parking areas.
- No climbing or sitting on common area fencing, pathway retaining walls or gates.
- No chewing gum or profane language.
- Turn in all lost items to the pool staff.
- These rules shall be construed in conjunction with, and not in contravention of, the various provisions of the Pine Mountain Lake Association governing documents.
- No one may use the pool whose pool privileges have been suspended or revoked by PMLA.

With the adoption of this resolution, the Board of Directors hereby rescinds or nullifies any portion or provision in any previous resolution, policy or rule that conflicts with this resolution until such time that the resolution, policy or rule can be updated to reflect the adoption of this resolution.

The Association Board of Directors reserves the right to update, amend or rescind this resolution as appropriate in the future.

Respectfully submitted,

  
Dania Schaffer, Board Secretary

DS/JP ADOPTED 9/27/25





**WE ARE STILL BUSY SELLING IN THIS MARKET !!!**  
**Call us to tell you what your home could sell for right now.**

**We Beautifully  
 Stage  
 Our Listings  
 Presentation  
 Matters !**

**Make  
 Chris & Gina  
 your  
 1st call!**

**YOSEMITE AREA  
 REAL ESTATE**

**CHRIS H. LAKE**  
 DRE 00946632  
**209-768-6156**  
 chrishlake@gmail.com

**GINA GIAMPIETRO HERNANDEZ**  
 DRE 01226555  
**408-506-6944**  
 GinaGHRRealEstate@gmail.com

Specializing in Pine Mtn Lake, Groveland, Tuolumne & Mariposa Counties  
 View listings at [www.YosemiteAreaProperties.com](http://www.YosemiteAreaProperties.com)  
**PAUL S. BUNT REAL ESTATE BROKER DRE 01221266**

### BEAUTIFUL HOME IN THE MOUNTAINS



**20686 Crest Pine Easement U3L473, \$389,999** 3bd 2 ba 2car 1500sf. 33 Acre. Move-in ready mountain home in beautiful Pine Mountain Lake, near Yosemite National Park, full-time or part-time, a lovely, spacious home that you will find has just the right space for family & friends. Built in 2006, in excellent condition, 3 bdrms, 2 full ba, granite counters, dual sinks, tub/shower- both baths, primary bdrm w/walk-in closet, kitch w/granite counters, stainless appliances, breakfast bar, freshly painted interior, gorgeous refinished hardwood flooring in main liv areas, open grt room concept, crown molding, new carpeting, Central Heat and A/C, outdoor deck area made of Trex decking material, fenced garden area w/ watering system, incredibly lg laund rm w/ sink/ counters/cabinets, oversized 2 car garage-may possibly fit tandem, definitely a long boat. Large yard area w/ 40ft RV/Trailer Boat park. Ferretti Rd easy access.

### COZY CABIN W/LARGE LOT



**19555 Ferretti Rd, Groveland (Cottonwood Access) PML U6 L207 \$364k** Cozy Cabin With Large Lot and Tree Views. Great Condition Move-In Ready Cabin Home in Beautiful Pine Mountain Lake, 3 bdrms, 2 Baths, 2 Car Gar plus 2 Carports for car/truck & RV/boat on .582 Acre private backyard w/tree views. Rustic covered wood entry porch, charming lg liv rm w/ vaulted knotty wood ceiling & cozy propane gas frpl & sliding door to lg back deck. Central HVAC, 10 year new roof, newer water htr, roomy kitch w/garden window, stainless refrigerator, electric stove/oven, breakfast bar, lots of counter space & storage plus pantry closet. Dining area w/sliding door to back deck. Lrg primary bdrm w/access to back deck, 2 closets & just remodeled ba w/ private shower & toilet area. Pine Mountain Lake Amenities include lake beaches & swim areas, playgrounds, boating, fishing, concession, hiking trails, tennis & pickleball, 18 hole golf course, restaurant/ bar w/ outdoor dining. Airport & equestrian center.

### LARGE MOUNTAIN HOME



**19763 Jonny Degnan Ct \$384,000** 3 bedrooms 3 baths 2172 sq ft. 42 acres Large Mountain Home in Beautiful Pine Mountain Lake near Yosemite. 2172 sq feet of living space, 3 Bdrm 3 Ba, Tri-Level with 2 dining areas, living room, family room and bonus room. Backyard sauna, BBQ deck by kitchen and back large expansive whole house private back deck with beautiful tree views. Solar power, 2 car detached garage, on a large .42 Acre lot on a quiet court, a short 10-15 minute hike on back trail or short drive to Pine Mountain Lake main marina and 18 hole golf course, restaurant/ bar, swimming pool, pickleball courts. Other amenities are 4 tennis courts, 3 beach areas, hiking trails, 2 playgrounds, horseshoe pits, airport, equestrian center in historic Groveland, just 35 miles from Yosemite National Park.

### SPACIOUS MODERN CABIN



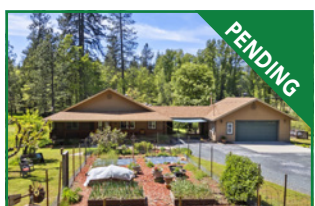
**11995 McGraw Ct. U13A L8 1.67 Acre, 2243 sf \$525,000** Welcome In! Enjoy the views & tranquility! Your opportunity to own a beautiful cabin home in the heart of Pine Mountain Lake, just 35 miles from Yosemite. Built in 2003, on a quiet court, move-in condition, 2243 sf on 1.67 acre, featuring a stunning living rm w/approx 20ft tall vaulted knotty cedar ceiling, wall of windows w/ gorgeous tree views, floor to ceiling stone fireplace, two levels of wrap around decks, open bright kitchen w/skylights, pecan wood cabinetry, wet bar w/ beverage frig, large laundry rm w/ counters & storage near kitchen, main bdrm w/ vaulted ceiling, bright w/ many windows & high picture window, walk-in closet, deck access, ba w/ dual sinks, sep shower, soaking tub. Guest bdrm & bath on main level, loft overlooking lvrn used as sleeping area, has drop down ladder for access, lower level family rm, overflow sleeping area, bright windows & wrap around covered porch/deck and a full bath w/tub/shower. Wonderful like new condition, tile flooring in living areas, RV parking space & parking for several cars, also room for sf expansion if desired in lower level.

### CUSTOM ESTATE CABIN



**19596 Butler Way U1 L1, \$1,520,000** 1.25 Acre 3 merged lots, 3630sf 4-5 Bedrooms 3.5 ba 2 car gar, Solar, EV Charger, Generator. Stunning State of the Art Turnkey Custom Estate Cabin in Beautiful Pine Mountain Lake near Yosemite. An architectural masterpiece, for the owner who requires style, sophistication, highest quality & comfort, in Pine Mtn Lake gated community w/18 hole golf, lake, airport & more. Built in 2020, New-like condition, a SuperHost Airbnb, features galore! 3630 sf living space, 850-1420 wrap around covered gated deck w/ glass & metal railing sys, oversized 2 car gar w/EV Charger, whole house solar power w/3 TESLA backup batteries, 3 levels, 4 bdr/3.5 ba plus downstr open fam rm now a 5th bdrm w/wetbar, sitting area. Main lvl ensuite to covered porch, Nordic Hot Tub & outdoor open deck w/gas firepit, bdrm w/ Italian stack stone biofuel frpl, ba w/quartz vanities, Italian marble stone heated flrs, fire standing bathtub, sep glass shower. Lvrn/ great rm & open Loft w/28ft tall open beam ceilings, knotty pine walls, a 36ft tall mural of Yosemite Bridal Fall Falls. Exquisite!

### 10 GORGEOUS ACRE RANCHETTE



**6653 Dogtown Rd. \$639,000** 2 Ponds & 3 Stall Barn/Corral 1980sf 38rm 2.5 Ba 2 CGar, 10 Acres w/2 ponds, you will absolutely fall in love! Outstanding ranch home bit in 109 w/1980sf of single level living, move-in ready/pride of ownership maintained, solar powered, 2 car oversize gar/shop, beautiful spacious flr plan w/covered wrap around decks, screened porch area, cement patio breezeway, fenced garden, 3 stall barn w/tack rm, 2 corrals, flat & landscaped yards, open metal shed/tractor/wood, tool shed, green house, priv well, pump house w/iron filtration system, backup dual fuel generator, outdoor shower. Maple engineered wood flrs, vaulted knotty sugar pine wd clings, wd bum stove, huge kitch w/pantry, island w/prep sink, lg mud rm/laundry area w/side patio access, 3 sliding doors to wrap around deck porches made of TimberTech. CenHVAC, cen vac, solar hot wtr flash wtr htr, 7 sky tunnel lights, w/hl house fan, view of pond fr house & porch areas, outdoor fire pit. Primary bd w/deck patio access, sep tub/shower, dual lav, walk-in closet. 2nd Bd + bonus rm for 3rd bd or office & hallway ba. Completely fenced property, + adorable curb appeal, your dream home in the country/mountains, must see! <https://listings.mattermanncreative.com/sites/6653-dogtown-rd-coulterville-ca-95301-16247469/branded>

### BEAUTIFUL GOLF COURSE HOME



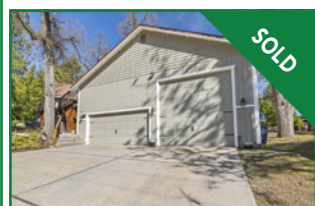
**12791 Mueller Dr., Groveland U5/L129 \$587k** Lg Move-In Ready Golf Course Home w/Solar & Electric Car Charger. A Remarkable Family Home in Beautiful Pine Mountain Lake built in 2004, Near Yosemite on the Golf Course & Near Lake Beach Areas & Amenities. Enjoy 5 covered spacious deck areas w/ views of natural outdoors!! 3430sf of living space w/5 bdrms & 3 1/2 baths, 2 garages, private lg .54 acre lot move-in condition, solar & car charger. Primary bdrm on main w/level entry, 4 bdrms on lower level. Beautiful open grt Rm floorplan: living rm to kitch to dining & family rm, to outdoor covered deck patio porch. Hrdwd, tile & carpet flooring, granite tile kitch counters, stainless appli, breakfast bar, pantry closet, bright windows in every rm w/ beautiful views. Privacy & spacious living. Lg Primary bdrm w/private patio, ba w/sep soaking tub sep shower, dual sinks, tile floors, light & bright. Downstairs has 4 bdrms & one rm is lg enough for game rm set up. Also w/covered deck/balcony & access from 3 bdrms. A 30 second drive to the golf course & restaurant parking lot, swimming pool & pickleball courts. A 2 minute drive to Dunn Ct. Beach.

### MOUNTAIN RETREAT



**19591 Chaffee Circle \$375,000.00** 3bed/2baths 1968sf. 23ac. Make yourself at home & bring family & friends in your mountain retreat, full-time or part-time. Single level spacious home has great rustic flair, centrally located to the beach, pool or golf course in minutes. Step up to inviting covered front entryway. Great room concept w/vaulted open beam knotty wood ceilings & brick hearth f.p. area w/wd burning stove say welcome to all! Front & back decks allow for a variety of entertaining. Newer Roof & HVAC. Primary bdrm is spacious w/walk-in closet & has back patio deck access, & spacious bathroom w/stylish barn door. 2 guest bdrms & hall bath also in 1968sf of living space, on .23ac + a 2 car garage. Just a few hours drive from the Bay Area and just 35 miles from amazing Yosemite. Pine Mtn Lake HOA has a variety of amenities for all. 18 hole golf course, golf shop, restaurant & bar, swimming pool, 6 pickleball & 4 tennis courts, 3 beach areas, marina w/concession & boat rentals, airport, equestrian center, 2 playground areas, horseshoe pits, hiking trails & located in historic Groveland just off Hwy 120.

### BEAUTIFUL MOUNTAIN HOME



**19425 Chaffee Cir. Unit 1 Lot 111 \$474,000** 3B 2Ba 5-6 car garage/RV Garage. Beautiful Mountain Home in a great location nestled between the golf course & the beach! Don't miss the chance to own a wonderful move-in ready cabin home in Beautiful Pine Mountain Lake HOA just a few hours from the Bay Area & Central Valley. This lovely 3bd/2ba home features a wonderful grt rm concept w/gorgeous high knotty wd Lv Rm ceiling w/skylights, cozy 1 button flame gas fp w/stone background. BRAND NEW BEAUTIFUL Trex decks w/metal railing systems on both front/back decks w/privacy screens & natural tree views, huge kitch space w/tons of storage, garden window, lg breakfast bar, side access door. Main private bdrm w/balcony, jetted tub w/TVP, sep shower & walk-in closets. On demand hot water heater, Central HVAC. Super huge garages!! RV size 35x16ft w/clean out & 220v outlet, 2 car garage currently a game rm w/pool table, add'l loft storage over enclosed 15x13ft shop. Bonus lg cement driveway for tons of add'l parking just a few blocks from Dunn Court Beach & Golf Course, Pool, Pickleball

### AMAZING MOUNTAIN HOME



**19716 Butler Way U8L230 \$419,000** 3bd 3ba 2car, 1973 sf .28 acre. A lovely amazing mountain home in beautiful Pine Mountain Lake! From the absolutely glorious serene front lawn surrounded by mature landscaped shrubs & trees w/ cool breezes even on warm days, to the back deck peaceful patio w/ amazing tree views, this pride of ownership home is the place for your full-time stay or parttime get-a-way. Close to the main marina beach area & the golf course, restaurant, pool & pickleball, this move-in ready home w/just one step to entry features 2 spacious primary bdrms plus 1 guest bdrm, hall guest ba, on demand tankless hot water htr, central HVAC, stone tile flooring, granite kitch countertops, skylight, breakfast nook plus formal din area, stylish plantation shutters, upgraded windows, indoor laundry w/ pantry storage cabinets, private upstairs lrg primary bdrm & private balcony deck. Expansive lrg full length back deck perfect for outdoor dining, entertaining & relaxing w/extra outdoor storage closet - Flat driveway & parking in front yard.

## PML Organized Groups & Clubs

Contact the individuals below if you are interested in joining!

**Aviation Association**  
Bob Mackey 1-408-373-2625

**Crest Valley Firewise Community**  
Terre Passeau 1-209-962-5364

**Friends of the Groveland Library**  
Virginia Richmond 1-209-962-6336

**Friends of the Lake**  
Mike Gustafson 1-209-962-6336

**Garden Club**  
Susan Dwyer 1-209-962-6265

**Ladies Club**  
Sharon Newell 1-415-244-7515

**Men's Golf Club** www.pmlmgc.com

**Needle Crafts**  
Barbara Klahn 1-209-916-5420

**Pickleball Club**  
Lee Carstens 1-415-215-5564

**Pine Needlers Quilt Guild**  
Leslie Timmons 1-209-482-1406

**PML Ladies 18 Hole Golf Club**  
Laura Kramer 1-209-840-0129

**PML Niners**  
Stacie Brown 1-209-962-7397

**PML Pool Wellness Club**  
Vickie Schultz  
pmlpoolclubpresident@gmail.com

**PML Safe Streets Campaign**  
Leslie Dudley 1-209-962-4911

**PML Shooting Club**  
Scott Knupter 1-925-809-2850

**PML Waterski & Wakeboard**  
Dean Floyd 1-408-915-8848  
www.pinemountainlakewaterskiclub.com/

**Racquet/Tennis Club**  
Ron Bass pmlatennis@gmail.com

**Residents Club**  
Brad Nelson 1-209-996-0106

**ROOFBB**  
Audrey Prouse 1-209-962-4196  
charity@roofbb.org

**Rotary Club of Groveland**  
Pete Stevenson 1-209-814-1382

**Southern Tuolumne County Historical Society (STCHS)**  
Harriet Codeglia 1-415-516-1852

**Southern Valley Srs. Golf Group**  
Rich Robenseifner 1-707-486-9115

PML ORGANIZED CLUBS

# PML MEN'S GOLF CLUB

DAVE FERNANDEZ

## SUMMER SHAMBLE

As the summer schedule comes to a close we finished it off with the Summer Shamble. Great way to finish the summer. 2025 has been a great year for the PMLMGC. Let's finish it off strong. Now for our winners.

## SUMMER SHAMBLE

**1st place-** Larry Torres, Ben Rebiskie, Joel Pluim, Marc Allyn

**2nd place-** Edvard Eshagh, Steve Burke, Tony Pavlakis, Dana Soloman

**3rd place-** Dave Berthold, Bud Roberts, Jeff Sera, Dave Gibson

**4th place-** Ted Toffey, Blake Bridges, Mark Lofstrand, Rod Raine

**5th place-** Doug Schmielt, Rich Martinez, Dave Hart, Allen Craig

## Closest to the pin

#3- Dana Soloman 11'11"

#7- Alan Miller 13'2"

#14- Marc Allyn 2'5"

#17- Frank Jablonski 6'7"

## TOURNAMENT TEE SELECTION

Many of our tournaments allow players to select what tees they will play from. It is important that players sign up for the correct tees. Any player can play from the Gold tees, regardless of their age or index, if they so choose. But only players that qualify may

play from the Purple/Green tees. To qualify a player must be 70, or older, or have an index of 18.7, or higher. It is very difficult for the Golf Shop to make tee changes at the last minute. Any player that plays from incorrect tees risks disqualification. Typically, one team member will sign up a 4-man or 2-man team, so it is imperative that team member sign up their team from the correct tees.

## WEBSITE TOURNAMENT SIGN UP

Please continue to use the website, [pmlmgc.com](http://pmlmgc.com), to sign up and pay for tournaments. Using the website for tournament sign up and payment makes it easier for the club and the Golf Shop to manage tournaments. Go to [pmlmgc.com](http://pmlmgc.com) to see the tournament schedule.

## JOIN THE MEN'S GOLF CLUB

Any male persons who are current property owners, their siblings, sons, nephews, sons-in-law, and PMLA employees are eligible to join the men's golf club. Go to [pmlmgc.com](http://pmlmgc.com) and click on the button, Join the Club, to see the many benefits of club membership, as well as the ability to sign up on line. Applications are also available in the Golf Shop, or you can contact our Handicap/Membership Chair, Ted Toffey. Email Ted at [handicap@pmlmgc.com](mailto:handicap@pmlmgc.com), if you have any questions about club membership, or, if you're a current member, your NCGA handicap index. 🏌️

LIC # 781255



**ROBERT T. RUDOLPH**  
CONSTRUCTION & LANDSCAPING

[www.builtbyrudolph.com](http://www.builtbyrudolph.com)

**209-703-6158**

Home  
**Remodel**
**Restoration**
Home  
**Repairs**



**TTFN**

JANET GREGORY

**F**arewell. Until we meet again. See you again soon. TTFN or ta-ta for now.

“Do not go gentle into that good night.” At PML, the airport community finds it difficult to say goodbye. I don’t know if it’s a PML Airport “thing” or something that happens to everyone in time.

In the PML airport community, there is seldom a farewell party when people move. When people die, celebrations of life are small, private gatherings, if at all. Occasionally, a missing man formation lifts our eyes to the sky to commemorate lost lives. We are thankful our flight path has crossed with so many interesting people.

The airport community has dwellers and wanderers. Some see PML Airport as a forever home base; for others, it’s a stop en route to other destinations.

The dweller makes it a permanent tie-down. A few dwellers qualify as aviation antiques.

This may be a second home for the wanderers, or they may live here full-time

for some years before moving on, like us. Ed and I have owned property at the Groveland Airport for 19 years, making it our full-time home for 15. We are aviation nomads.

**Aviation Nomads** have a mobile mindset. Our sense of freedom allows us to live in places that suit us. The commitment and dedication of wanderers are equally as strong as those of dwellers. Wanderers make a significant contribution while they are here.

From a sociological perspective, humans are nomadic. Humans move, migrate, and emigrate. Where are your ancestors from? My mother traced our family line back to the Mayflower. Ed is second-generation Polish. Ed and I migrated west from the Washington, DC area. Groveland Airport is young; very few residents were born here. Most of us have moved or migrated here from somewhere else.

Aviation nomads are wanderers, free to pull out the chocks and move on. The aviation

nomad can’t say goodbye; it is by our very nature, “until we meet again.”

**Are you a dweller or a wanderer?** Maybe your mind doesn’t want to know the answer or doesn’t care. You are here. Please make the most of it.

What do you bring to the party with the years you have tread upon this earth or flown above it? What is behind you that makes you who you are? What’s ahead? Not the TO-DO list of the day. Not the goal for the year. Think about the grand arc of your life.

Some people are architects and want the blueprint. Others are gardeners who enjoy planting the seed to see how it grows. We are a bit of both. Ed and I talk about these questions, usually over a glass of wine. If you are enjoying the party, it’s not time to leave. Maybe you are the life of the party, with everyone admiring your enthusiasm. Perhaps you are quietly soaking it all in. Either way, enjoy it. Dweller or wanderer. Architect or gardener. Who cares? You are here. Enjoy it. 🌈

**LABOR DAY BBQ – STCHS FUNDRAISER**

PATRICIA GIBSON

**T**he Southern Tuolumne County Historical Society’s (STCHS) thanks everyone who attended our Annual Fundraising event – the Labor Day BBQ. We also thank our Sponsors, the many volunteers, PMLA for their support and use of the Stable Event Center and our STCHS board members who spent their time and energy to make this event such a tremendous success.

Highlights this year included our Celebrity Chef and County Supervisor– Steve Grier, antique photo display, silent auction, bake sale, 4-H games for the kids, tug of war, watermelon eating contest, line dancing instruction, and the band – Sequoia Tree-O.

The tri-tip was cooked and flavored perfectly, thanks to MarVal and our expert volunteers. We sold out of hot dogs- twice! plasticware,

water, white wine... Whew! It was hard keeping up, though a great time was had by all, and we won some new members to our local museum.

The winners of the raffle were: Grand Prize went to local ray of sunshine Patty Douglas; Second prize went to an out-of-town visitor – Steve Macejewski; third prize went to long time STCHS supporters – Ed and Marianne Quinn. Congratulations to all! Thank you to everyone who purchased tickets!!!

We appreciate the community support! The purpose of this fundraiser is to fund the repainting of the museum parking lot. So, look for that work this fall and come in and pay us a visit. We have some new “rusty bits” on display in the yard and are working on another special one for, hopefully, next summer! The museum is open Thursday – Sunday from 10am -2pm.

STCHS will celebrate 25 years of the Museum Opening next spring and we will be having a party this spring! Be on the lookout for this fun event or become a member and get notice and reminders for our many events and happenings.

If you missed this year’s BBQ, please put it on your calendar for next year! Sunday, September 5th, 2026.

STCHS is a 501c3 Charity that provides great service to our community. It is dedicated to preserving the history of Southern Tuolumne County and several buildings in the Big Oak Flat/Groveland Area. It houses and operates the local museum which is open and to free visitors. STCHS has an all-volunteer staff and subsists uniquely on donations and two annual fund-raising events. 🌈

# PINE NEEDLERS QUILT GUILD

SANDY SMITH

Okay it is October already, and time for the QUILT SHOW!!! Yahoo!!! CELEBRATING FRIENDSHIPS is the theme. Lots of work, patience, and love went into getting us ready for the 3rd and 4th. More info below...

The October Pine Needlers Quilt Guild October meeting will be on Tuesday the 21st, at 10 a.m. under the Library. Also, we will have a Meet & Greet at 9:30 before the meeting. Lots of fun to catch up, and help set up the room for the meeting. Then to add to your sew day, bring your lunch and a project to work on and sew with us til 3!

Remember to check with Sharon Kenyon if you would like to hang a smallish quilt at the Library. Always fun to see the changes.

Last month a visitor to the museum asked me to tell her about the quilts in the Library. So I explained it to her. She was from the bay area and was going to go home and share the idea with her guild, she was impressed.

Now on to the most exciting news: The **CELEBRATING FRIENDSHIPS QUILT SHOW** is finally here: We have worked hard, and it shows 100 quilts on display, boutique items for sale, Soup lunch on Saturday, baked goods for sale and a great way to spend the day with a special friend. Drop off for your quilts will be Monday September 29, 3pm to 6pm or Tuesday, September 30, 11 a.m. to 2 p.m. **DO NOT LEAVE QUILTS AT CHURCH.** Save your claim check it will be required for pick up on Saturday between

4:30 and 5:00 p.m.

Next on the horizon will be our Advent Exchange in November. Its exciting to make things in secret, share at the exchange and then wait to open a surprise each day of December til Christmas Eve. I have been saving ideas if you need one. It has been a delightful experience for sure.

Remember the Pine Needlers Quilt Guild meets the 3rd Tuesday of each month {except December no meeting}. Tuesday October 21st at 10 a.m. Meet and Greet at 9:30 will be our next meeting.

The winner of the Heritage Quilt will be announced in November's column.

If you have any questions please call President Judi {with an I} 650 254-1439 or V.P. Michele {with one I} 209 962-4327. 🌱



[www.djsellsdirt.com](http://www.djsellsdirt.com)

## Buying or Selling?

**Personalized Not Franchised**

### 209-985-7633

*D.J. Kraft*  
REALTOR

Born and raised in Groveland and an experienced, local expert. My childhood was spent on the lake and riding my horses at the Pine Mountain Lake stables while my young adult years were spent buying, developing and adventuring in real estate. I LOVE my hometown and it's surrounding areas. It would be my pleasure assisting you with buying or selling. Let's work together!





# PML LADY NINERS

TAMMY TALOVICH

Quote of the month: *"Believe you can and you're half way there"*  
– Theodore Roosevelt

If you would like to learn more about becoming a member of the Lady Niners contact Stacie Brown at [happygem529@gmail.com](mailto:happygem529@gmail.com). We play 9 holes on Tuesday mornings; it only takes a few hours and is a great opportunity to meet some awesome ladies!

## AUGUST 5TH: WE HAD 11 PLAYERS AND PLAYED EVEN HOLES

**1st place:** Barb Lenorak

**2nd place tie:** Deanie Martini, Pat Van Gerpen

**3rd place:** Lindsey Lorant

**4th place:** Nancy Brewster

**Pars:** #12,13,17 Lindsey Lorant, #14 Deanie Martini, Barb Lenorak, #16 Barb Lenorak

**Low Putts:** Lindsey Lorant, Barb Lenorak w/16

**Low Net:** Barb Lenorak w/30

**Low Gross:** Lindsey Lorant w/43

## AUGUST 12TH: WE HAD 13 PLAYERS AND PLAYED OUR LADYBUGS AND BUTTERFLIES TOURNAMENT

Ladybugs were the winners: Maureen Campbell, Stacie Brown,

Linelle Marshall, Deanie Martini, Debbie Torres, Linda Wall  
**Pars:** #14 Linda Craig, Deanie Martini, Linda Wall, #17 Trudy Alt

**Low Net:** Nancy Brewster and Deanie Martini w/35

**Low Gross:** Deanie Martini w/50

## AUGUST 19TH: WE HAD 10 PLAYERS AND PLAYED BLIND PARTNERS

**1st place team:** Mary Steinkamp and Tammy Talovich

**2nd place team:** Deanie Martini and Nancy Brewster

**3rd place team:** Trudy Alt and Linda Wall

**Pars:** #10,12,13,16,17 Lindsey Lorant, #14 Mary Steinkamp, #17 Deanie Martini, Tammy Talovich

**Low Putts:** Lindsey Lorant w/15

**Low Net:** Mary Steinkamp w/35

**Low Gross:** Lindsey Lorant w/41

## AUGUST 26TH: RAINED OUT

**Ace of Aces for August:** Nancy Brewster w/35 net

**Queen of Clubs for August:** Susan Dwyer w/54 gross

**Putter of the Month:** Lindsey Lorant w/15 🏆

# PML LADIES 18 HOLE GOLF CLUB

THELMA FAUX

Here are the results of the recent tournament play. Congratulations to all the winners!

## AUGUST 14, 2025 – 4 LADIES SCRAMBLE

**First Place:** Laura Kramer, Marcee Cress, Jayne Reynolds, Marlene Drew - 61

**Second Place:** Tari Skelley, June Von Rotz, Nancy Johnson, Cindy Hollaway - 63

**Third Place:** Lisa Brown-Jimenez, Stacie Brown, Debbie Torres, Deanie Martini - 63

**Fourth Place:** Thelma Faux, Helena McMillian, Sara Hancock, Jodie Awai - 70

## AUGUST 21, 2025 – LEFT/RIGHT PARTNERS

**First Place:** Nancy Johnson, Sara Hancock, Jodie Awai, Marlene Drew - 137

**Second Place:** Pula Parisi, Helena McMillian,

Pricilla Park, Thelma Faux - 139

**Third Place:** Laura Kramer, Elisa Hoppner, Marcee Cress, Lisa Brown-Jimenez - 141

## AUGUST 28, 2025 – REVERSE 6, 6, 6

**First Place:** Jayne Reynolds, Sara Hancock, Jodie Awai, Marlene Drew - 138

**Second Place:** Elisa Hoppner, Pricilla Park, Linda Sarrett, Susan Dwyer - 140

**Third Place:** Paula Parisi, Thelma Faux, Lisa Broen- Jimenez, Kit Edgerton - 141

**Fourth Place:** Laura Kramer, Tari Skelley, June Von Rotz, Cindy Hollaway - 144

## COMING IN OCTOBER .....

The 2025 Ladies Club Championship is

underway. Will have all the exciting results next month.

The Pine Mountain Lake Ladies Golf Club plays every Thursday and is open to all women residents and owners of property in the Pine Mountain Lake community. Our club would love to add some new members and have modified our bylaws to allow female family members of property owners to apply for membership. If you are interested in becoming a member, we can arrange for you to join us as a guest, so that you can meet and play with some members and see what our club is all about. If you're interested, please contact our PML Head Golf Professional, Mike Cook at **209-962-8620**. 🏌️

# PML PICKLEBALL CLUB

PAM RODGERS

## 13 COMMON BEGINNER PICKLEBALL MISTAKES AND HOW TO FIX THEM

In the first article of this series, we looked at two common beginner pickleball mistakes—staying in no man's land and hitting too often to the forehand. Now, let's keep building on that foundation with two more errors that can quietly creep into your game—and, more importantly, how to fix them. These small adjustments not only help you avoid giving away free points but also set you up to play with more confidence and control.

This time, we'll look at why aiming for your opponent's backhand is a smarter strategy—and why it's better to master consistency before adding fancy spin to your shots.

### MISTAKE #3: HITTING TO THE OPPONENT'S FOREHAND

One of the foundational concepts to learn in pickleball is to let your opponent make the mistakes. Many games are won just by your opponent doing all the work for you. But by hitting to the opponent's forehand, you're making it easy for them. Instead, let's make it hard. Let's hit to their backhand instead.

Most pickleball players, regardless of skill level, are weaker with their backhand than their forehand. This doesn't mean that everyone is, but most people are, especially at the recreational level. Knowing this, which side would you rather hit to, the forehand or the backhand?

#### The backhand of course!

There are a few important shots that you'll want to prioritize this strategy on. They are the serve, the third shot drop, and the cross-court dink. **Focus on hitting to the opponent's backhand on these shots** especially and it will make your pickleball life significantly easier. For the cross-court dink, you'll want to especially make sure that you do this right.

Let's pretend for a minute that you're on the left side of the court and you're dinking cross-court to your right. Let's

also assume that your opponent is right-handed. The last thing you want to do is dink to their forehand. The reason is that the net is much closer to you with that angle. The more extreme the angle is, the lower the ball needs to go over the net (like if you were cross-court dinking to the sideline). If you hit the dink too high to their forehand, it's going to be smashed.

### MISTAKE# 4: GETTING TOO FANCY WITH SPIN SHOTS

I used to be a total spin junky. I love pickleball, but what I love even more is playing fancy pickleball. Let me tell you up front, it did not end well. Unfortunately, I had to take my own medicine and stop getting fancy with spin.

There's nothing wrong with using spin shots every now and then, but using them all the time is probably going to lead to more mistakes. Also, spin shots don't work very well on advanced players because they understand them and have played against them so much. So if you're using spin shots against great players, you're risking a lot for very little reward.

The problem with most spin shots is that they take a lot of skill and accuracy to pull off. If you don't have this kind of expertise, then you should stay away from spin shots. Just for context, I'm an advanced player and even I stay away from spin shots. Remember, winning in pickleball is about consistency,

persistence, and strategy, not as much about trickery and cunning.

Look, I'm not saying that you should never put spin on any of your shots. But it needs to be used intelligently. Spin shots can be devastating, but they should be used as a tool and not a regular shot.

### REMEMBER...

Pickleball is about progress, not perfection.

Keep focusing on smart shot placement and building consistency, and you'll notice a big difference in your rallies.

COME OUT AND PLAY!

FOR MORE INFORMATION:

Current Play Times (Changes Seasonally).

Check out: [PlayTime Scheduler for Pickleball](#)

To Join the PML Pickleball Club email Tammy Talovich at [TamTally1@gmail.com](mailto:TamTally1@gmail.com) or call 209.605.7904 🇺🇸

## ENERGY SOLUTIONS

Generators, Solar & Batteries

REPRESENTING

Generac • Briggs-Stratton

Enphase • Sol-Ark • Omnimetrix

- Service with installation agreement
- Fast response times - Located in PML
- All installations come with warranty service
- Trained & certified by OEM
- All subs are local and licensed contractors with highest recommendations

LOCALLY OWNED & OPERATED



[www.sol-training.com](http://www.sol-training.com)

(650) 681-9445

24 hr answering service

[info@sol-training.com](mailto:info@sol-training.com)

CA license #858377



# ROOFBB



AUDREY PROUSE

*“ROOFBB has had a direct and profoundly positive impact on my family and community. Not only has ROOFBB supported my children with high school scholarships, but assisted friends in need, and provided support to students at school, making membership a personal and meaningful way to show gratitude.”*

— Wynette Hilton, ROOFBB member

## WHY JOIN ROOFBB?

Since January, ROOFBB has stepped in to help ten local families through times of crisis—covering car repairs, utility bills, funeral costs, and more. But the impact goes far beyond emergency assistance. ROOFBB also invests in our town spirit, proudly contributing to the Christmas Committee to bring festive cheer to Groveland.

Education and youth are always strongly supported. ROOFBB organized a back-to-school shopping spree on September 13th for Tenaya Elementary students, ensuring these kids started the year with confidence and basic essentials. 25 students were paired with community volunteers, Tioga High School students, and ROOFBB members along with friends and family to shop. All of these wonderful people generously gave up their Saturday morning to lend a hand. We are also deeply grateful to the Ladies Club, Helping Hands, Rotary, and Walmart Sonora for donating funds to make this event possible.

As member Wynette reminds us, being part of ROOFBB is more than volunteering—it’s about making a real difference while building friendships along the way. Whether you want to give back, to find deeper purpose, or to spend time with an uplifting, energetic group of women, ROOFBB welcomes you.



## TRUNK OR TREAT

Mark your calendars for Halloween night! ROOFBB will be hosting a Bake Sale during Trunk or Treat at Mary Laveroni Park. Find us near the Snack Shack and stock up on sweet treats baked with love by our members. Every purchase supports our mission to help our Groveland community.

Now is the perfect time to get involved. Together, we can continue to make our community stronger. To learn more, follow us on Instagram, Facebook, or Nextdoor. Membership applications are available at [charity.roofbb.org/join](http://charity.roofbb.org/join).

If you know anyone in need, please let us know! 🙏



## DONATE!



venmo

## CONTACT US!

[charity@roofbb.org](mailto:charity@roofbb.org)

## FOLLOW US!

@roofbbcharity

# PML GARDEN CLUB

LINDA NEUSCHWANDER

**G**olden autumn is here at last! Hot days are fewer and milder. Fair breezes waft over us, time to put up the fans for awhile. Maple trees and Chinese pistache trees are starting their gorgeous autumn display. By the way, have you ever noticed some Chinese pistache trees turn bright fiery shades? That's because pistache trees are either male or female. The male (cultivar Keith davies) having showy foliage, and the female tree much less so. The male tree also never produces the sometimes messy berries that the birds love. Who knew???

But there is nothing like those mild autumnal breeze on a fine fall afternoon while visiting wonderful local gardens with friends. The PM Garden Club enjoyed those autumn

breezes on such a day. Two different local families off Ferretti Rd. welcomed us into their fine gardens. The first featured beautiful vineyards of wine grapes, fruit trees, veggie gardens overflowing with produce such as peppers, cucumbers, tomatoes, squash, green beans, strawberries and the like (we were even given produce to take home with us!!). We had a wonderful time.

The second tour was a property that featured a chicken ranch (no gambling!) but with plenty of happy hens running around. This large property held lots of beautiful plants and flowers, garden art, herb beds, and beautiful specimens of plants I did not expect to find in Groveland such as passionflower, rose of sharon, and golden bamboo. We all

sat in their colorful summer house while listening to Marilyn share a bit of history about the place and enjoying snacks. It was a wonderful day!!!

The PM Garden Club meets regularly to talk about horticulture while (of course) sharing snacks. We have a good time. You would too, I'm sure! Want to learn more about native plants and gardens? Join us for one of our regular second Monday meetings. We also host tours of local gardens as they reach their best showy beauty. Just give us a call for best dates, location, and time. Questions?? Contact Linda F. **209-770-6062**. Or Vicki S. **650-773-2207**. We meet most months at the PM Lake Lodge. We would love to see you there. 🌱

## OUR COMMUNITY

# 49ER FESTIVAL RESULTS

SHIRLEY HORN

## HELPING HANDS PARADE WINNERS

**Best of Parade:** Pine Mountain Lake Airport Flyover

**Best Equestrian:** Miss Rodeo LaGrange Savannah Fulton

**Best Float:** California Houndsmen for Conservation

**Best Motor Vehicle:** Miller Bros. Automotive Miller Mud Boggs Kracker 1968 Ford

**Best Walking Group:** ROOFBB

# COMMUNITY AIRPORT DAY

## OCTOBER 4, 2025

## FREE ADMISSION!

**PML AIRPORT  
NOON – 3:00 PM**

**FORMATION FLIGHTS • RC PLANES • HELICOPTERS  
FLYING SKILLS CONTESTS • SPECIAL AERO SURPRISES!  
AIRPLANE/CAR DEMONSTRATIONS  
AIRPLANES & CARS DISPLAY • REFRESHMENTS AVAILABLE**

**Bring a chair and enjoy the entertainment!**

**PML Airport – Our Community Resource!**

*Organized by Pine Mountain Lake Aviation Association*

For more information, call (209) 406-9236



# BRAINY GROVELAND GOES BACK TO SCHOOL

VIRGINIA RICHMOND

The Brainy Groveland reading and math programs have resumed for the new school year at Tenaya Elementary school.

Brainy Groveland is a volunteer program that helps Tenaya elementary students develop sound reading and math skills. We meet once a week to help fourth graders gain a strong foundation in basic math and to encourage third graders to enjoy reading by choosing “just right” books and discussing them with a caring volunteer.

The math program meets for an hour on Monday afternoons and the reading program is on Thursday afternoons.

The program is staffed by a wonderful team of 40 volunteers who meet with students and provide the caring support that kids so need. We appreciate their service to our young students. Volunteers typically sign-up for one session a month. The Tenaya teachers are big supporters of the program, as they see its positive results. The students also develop strong relationships with their kind volunteers.



Above Left: *Volunteer Ron Cone and friend*  
Above Right: *Volunteers Craig Prouse and Dianne McDermott with young math students*

At Right: *Volunteer Nancy Mora discusses a book with a student*



If you are interested in learning more about the Brainy Groveland program, please contact Virginia Richmond at **962-6336**. We provide training and all program materials. 🐶



## OUTSTANDING PEST CONTROL SERVICES

## RESIDENTIAL & COMMERCIAL

# 209-591-0184

## [www.NickChasePestControl.com](http://www.NickChasePestControl.com)



# GROVELAND COMMUNITY THANKSGIVING DINNER 2025

**W**e are pleased to announce and celebrate our 37th annual Thanksgiving Day Dinner for Groveland, and ALL surrounding communities. It will be held on Thursday, November 27th, 2025. Seating hours are 11:30 am – 4:00 pm.

Turkey & ham, stuffing, mashed potatoes & gravy, yams, peas & carrots, corn, dinner rolls and three types of pie are all on the menu.

First come, first served. We are now accepting reservations of six (6) or more for your party. There is no charge for your dining experience. However, DONATIONS are 'Gladly Accepted and Appreciated'. Checks can be sent to:

Groveland Community Thanksgiving - P.O. Box 308 - Big Oak Flat, CA 95305

Please join us at the Groveland Community Resilience Center located at 18986 Ferretti Road in Groveland. This will be our third year holding our event at this location, so be sure to come and reunite and visit with your friends, neighbors and community.

If you are willing and able to volunteer, please let us know. You may select one or more of three available shifts for food preparation, kitchen duties, buffet line or table serving.

To sign up as a volunteer, make a reservation for six (6) or more in your group or if you have any questions, please call us anytime on **209-770-9302**.

Thank You!

HAPPY THANKSGIVING!!! 🍁



**Come join us at the  
Annual Groveland Community  
Thanksgiving Dinner**

**Free to all!! Bring the Family**

**GROVELAND COMMUNITY RESILIENCE  
CENTER - 18986 FERRETTI ROAD**

**THURSDAY, NOVEMBER 27, 2025**

**11:30 A.M. – 4:00 P.M.**

*Turkey, Ham and all the Trimmings*

*Reservations accepted for parties of 6 or more*

*Donations Gladly Accepted and Appreciated*

*Checks can be sent to:*

**Groveland Community Thanksgiving  
PO BOX 308, Big Oak Flat, CA 95305**

***For Questions or to Volunteer  
Please call 209-770-9302***

# CELEBRATING FRIENDSHIP QUILT SHOW

SANDY SMITH

**T**he **CELEBRATING FRIENDSHIP QUILT SHOW** will be held on Friday, October 3rd from 3p.m. to 6 p.m. and on Saturday, October 4th from 9 a.m. to 4 p.m. at the Gateway Community Church at 19172 Ferretti Road in Groveland, Ca.

There will be over 100 quilts for viewing and yes, we will have a Boutique

with many handcrafted and sewn items on sale both days. On Saturday bring a friend or two and have a soup lunch with us beginning at 11 a.m. and maybe take home some baked goods with your Boutique items.

The Quilt show is possible due to the Gateway Community Church Women's Ministry, the Pine Needlers Quilt Guild, and the many many volunteers, both men

and women, who help set it all up, and then take it all down. Then there are the crafters, we thank you one and all.

Also a huge thank you to those who come and support us. There is no admission fee but if you would like to donate that would be wonderful.

So come, bring a friend and enjoy lunch after your visit to the show. See you on the 3rd or 4th. 🍁



# STCHS

HARRIET CODEGLIA

**S**TCHS (Southern Tuolumne County Historical Society) has for many years sponsored talks open to the public on a variety of topics. The talks used to take place in the downtown Community Hall, but COVID and a destructive fire closed that venue.

So STCHS started up again in 2024 offering free monthly speaker programs. The talks take place the first Friday of each month at the Groveland Community Resilience Center. The response has been wonderfully positive, and the events very well attended. Speakers have given presentations on Strong Women of Tuolumne County, Hetch Hetchy,

the Hetch Hetchy Railroad, local wildlife, the geology of the region, and colorful local characters. Our most recent program featured two Yosemite National Park biologists who shared the story of the restoration of Ackerson Meadow. STCHS does not charge for these programs and everyone is welcome.

The programs are video recorded, and (eventually) will be on the Museum's YouTube channel (Groveland Museum). In addition, DVD copies can be checked out of the museum for free. If you miss anything, all is not lost.

Speakers are lined up for each first Friday evening through the balance of 2025.



The museum is now open four days a week, Thursday, Friday, Saturday and Sunday, from 10 until 2. 🇺🇸

## PINE CONE SINGERS WINTER CONCERT

BOB SWAN

**A**s you read this, the season should be changing around to Fall, but right now it's still Summer-ish. We're working on our Winter Concert, and – somewhat unusually – only four of the sixteen pieces are mainly about snow. This really helps with the cognitive dissonance at rehearsal.

We've got a pretty varied collection to perform this year, from traditional

carols like The Holly and the Ivy, to well-known favorites like The Christmas Song ("Chestnuts roasting...") and The Prayer, and less serious numbers (Boogie Woogie Santa Claus, anyone?). Of course, there will also be special performances from some of our talented singers.

Three pieces are brand new to us, and we do have to brush up on our pronunciation of Latin, Spanish, and Italian, but we're excited

to be back to rehearsal with our friends. Thanks to Gateway Community Church for allowing us to use their Fellowship Hall.

Please save the date(s): Friday, 12/12 at 7PM; Saturday 12/13 at 2PM; and Sunday 12/14 at 2PM; at Gateway Community Church on Ferretti Road. We look forward to celebrating the holidays in music with you.

For more information, please call Bob Swan at 408-398-4731. 🇺🇸

### JOANNE SCOTT

Independent Beauty Consultant

13166 Wells Fargo Drive-PO Box 1257  
Groveland CA 95321  
209-573-1415

Bernijo3@aol.com  
www.marykay.com/jbernasoni

God First, Family Second, Career Third

### MARY KAY



- Launching
- Winterizing
- House Calls
- Dock Calls
- Service
- Repairs
- Storage
- Trailer Repair

**209-962-4594**

## The Boat Doctor

Paul Belluomini • P.O. Box 113 • Big Oak Flat, CA 95305

# HELPING HANDS HAPPENINGS

PATTI BEAULIEU

I can't believe this is the October article I'm now writing. The summer seemed to fly by and soon we'll have Halloween and fall items out with Christmas is fast approaching. It'll be here before we know it. As volunteers, we all appreciated our first month of a shortened day in September. We are now on our winter hours of closing at 3 and donations ending at 2 at both stores.

Our Fall décor and Halloween costumes were out in late September and they seem to increase in volume each year, so again this year, we have costumes for all ages – infants to adult. Come see what we have to complete your costume or to bring a little fall into your home or cabin with some lovely home décor items. As soon as Halloween is over, like the next week-end, Christmas will take over the Store and the Furniture Barn. Large items,

like trees, garland, light strands, yard décor and large items will be at the Furniture Barn. Everything else will be at the Store.

This month we'll begin to stock our racks with winter and fall clothing and shoes and boy oh boy, do we have a lot of them. There'll be new items coming out daily, even hourly, so be sure you walk through the Store a few times to see it all.

We've also implemented our GROVELAND CARES project that collects money for personal or community tragedies or disasters. We're now collecting for the TCU fire victims, primarily Chinese Camp. Donations can be made in the store or mailed to GROVELAND CARES c/o HELPING HANDS, PO BOX 713, GROVELAND, CA 95321. Your donations are tax deductible, since we're a 501c3.

Since it's the fall season, once again we're proud to sponsor the Groveland Community Thanksgiving Dinner. This is the event that was held in the Groveland Community Hall for over 30 years, and has moved to the Groveland Community Resilience Center on Ferretti Road after COVID and the Community Hall fire. This is a FREE turkey dinner, with all the trimmings to anyone who walks through the door. Last year, about 350 dinners were served to local or visiting friends, neighbors, or travelers. Watch for the flyers all around town and on all the local social media sites. There will also be notifications in the local papers. It's totally run by volunteers so be sure to call if you're interested in helping out. The contact info will be on the flyer. 🌱

OUR COMMUNITY

# FOGL DONATES TO TENAYA

JENNY FERRAIOLO

Friends of the Groveland Library (FOGL) is proud to support literacy efforts in the Groveland area. That includes helping with volunteers and funding at our local library and supporting reading programs at Tenaya Elementary School.

At the beginning of every school year, FOGL donates funds to Tenaya Elementary to assist teachers in purchasing new books for their classroom libraries. On August 26th, FOGL President Michele Roberts presented Tenaya's new principal Ashley Schmid with a check in the amount of \$4,000. The teachers and students get excited about new books, which leads them to become better readers. Research proves that enjoying reading is the single biggest predictor of academic success.

## QUOTES TO ENCOURAGE CHILDREN TO READ

*"Reading should not be presented to children as a chore, a duty. It should be offered as a gift."* - Kate DiCamillo

*"Literacy is a bridge from misery to hope."* - Kofi Annan

*"The whole world opened to me when I learned to read."* - Mary McLeod Bethune

## FOGL NEWS

On September 23, FOGL hosted the Friends of the Tuolumne County Library (FOTCL) board at the Book Nook. The group included representatives from the Friends of the Tuolumne County Library, High Country Friends (supporting the



FOGL President Michele Roberts presents \$4,000 check to Tenaya principal Ashley Schmid for the purchase of new books.

Twain Harte Branch Library), FOGL, and Tuolumne City Friends of the Library. Discussions included FOTCL financials, Tuolumne County Library update, communications to members and the public, and branch updates. Following this meeting, FOGL held its regular board meeting. 🌱



# CAMP TUOLUMNE TRAILS NEWS

DORI JONES

## CAMP NEWS

**T**uolumne Trails remains active well into the fall season. In September, camp welcomed 145 participants from multiple groups, including Los Medanos Honors, Breath in Yosemite and Leadership Stockton. This month, campers from RISE Family Camp and Studio 49 Fiber Arts will also enjoy the beauty of autumn at Tuolumne Trails.

## MAL AND DAR BROWN FAMILY COMMEMORATION



To follow up on last month's announcement about the very generous donation from the Malcolm & Darlene Brown Family Trust, CTT has dedicated its outdoor Amphitheater to the Brown's and has mounted a commemorative plaque on the amphitheater. Please check it out the next time you visit camp. A big thank you to Bob Mackey for designing the stainless steel sign and arranging for its fabrication through SendCutSend, which donated the materials and laser cutting.

## CTT SPOTLIGHT - BARBARA BUSSLER

Many of you know Barbara from her Black Bear Mosaics studio in Groveland—but did you know she's also been sharing her talent with CTT for the past four summers. Barbara has worked with our campers with disabilities to create beautiful mosaic pieces—some to brighten camp spaces (like the dragonflies on the back wall of the Great Hall), while others for the campers to take home as treasured keepsakes.



This summer alone, Barbara led seven sessions where campers created 144 mosaic rocks, 126 small- and medium-sized mosaics (dragonflies and flowers), and 15 large mosaics during CTT's family camps. In total, more than 200 mosaics (including pieces from last year) are waiting to be prepared and installed around camp. She is inviting community members to help with the installation of those 200+ pieces at CTT at a date to be determined next spring—before campers return next June. Please direct message Barbara on NextDoor if you're interested in helping.

Another project that Barbara was working on for the Groveland community is a very large mosaic mural mounted on the public restrooms on Ponderosa Lane—next to Echo Adventures and the Tesla charging area. This project involved 20+ community members and also artists from the WATCH Resources clay team in Sonora. Stop by and have a close look to find all the details that are hidden in the amazing mural.

## IN MEMORIUM



training a group of young adults living with MD at CTT and discussing future endeavors

CTT mourns the loss of longtime friend and supporter John Kerr. Born with Muscular Dystrophy (MD), John passed away unexpectedly at age 52 in August—just one day after

with Jerry Baker.

John founded The John Kerr Foundation and brought his first group of young adults with MD (typically age 17) when CTT opened in 2008. Having faced the challenge of learning to live independently after being figuratively “dumped” at college by his parents to figure out independent living on his own, John—whose intellect and determination were extraordinary—dedicated his foundation to preparing others with MD for independent living. His guidance covered everything from applying for educational grants and finding jobs, to hiring and managing caregivers, navigating government services, and even dating.

CTT also played a special role in John's personal life—it was here that he met his future wife, Krystle Englehart, who was working as a caregiver for other campers at the time. Their friendship soon blossomed into love, and they were later married.

John's impact reaches far beyond CTT. Countless young adults with MD in the Sacramento area gained independence, confidence and life skills through his tireless dedication. His motto, “Go Find Life, Life Won't Find You!” continues to inspire all who knew him. John will be deeply missed by the CTT community and by the many lives he touched.

Camp Tuolumne Trails' mission is devoted to helping those with disabilities and those who support them by providing an accommodating environment for healing, respite, education and recreation. If you'd like to find out more about CTT, take a tour, volunteer or learn more about donating and legacy giving, please call CTT at (209) 962-7534, email [info@tuolumnetrails.org](mailto:info@tuolumnetrails.org) or visit: <http://www.tuolumnetrails.org>. Follow us on Facebook and Instagram to stay updated on camp happenings.



PLEASE DONATE 🙏

# THE WHEELS PROGRAM: NEIGHBORS HELPING NEIGHBORS

BETH MARTIN – TRANSPORTATION COORDINATOR

**S**outhside Community Connections' (SCC) Wheels program is a vital connection to the outside world for many Groveland and Big Oak Flat residents. Wheels pairs volunteer drivers with seniors who have no one nearby to assist them, taking them to medical appointments in Sonora, and to appointments, the bank, post office, market, pharmacy and even the hair salon in Groveland.

For many, Wheels also relieves isolation and fosters independence. Riders appreciate not only the rides, but the kindness and

companionship of their volunteer drivers—who live right here in the community. Drivers often say they get as much out of the experience as the riders do. It's a powerful reminder that a simple act of service can have a lasting impact.

Wheels is a membership-based program, available for \$120 per year or \$30 per quarter. The modest fee helps cover administrative costs, and all rides are scheduled through SCC. Volunteers use their own vehicles, set their own hours, and are reimbursed for mileage if they choose. All Wheels volunteers undergo background/DMV checks, and a

thorough orientation.

By stepping in to provide safe, reliable service, Wheels volunteers provide riders, and often their families, peace of mind. Wheels is an essential part of keeping our community connected, supported, and thriving.

To learn more about becoming a Wheels member or volunteer driver, call (209) 962-6952, email [Wheels@southsidecommunityconnections.org](mailto:Wheels@southsidecommunityconnections.org), or visit us at The Little House Monday-Friday between 10 am and 2 pm, 11699 Merrell Road, Groveland. 📍

OUR COMMUNITY

## THE LITTLE HOUSE IS IN GOOD HANDS

A NOTE FROM SAMANTHA WEST –  
LITTLE HOUSE SUPERVISOR

**B**ig news, friends and neighbors, I'm trading in my event calendar for a baby blanket (just for a little while)!

Starting this October, I'll be stepping away on maternity leave to welcome a new addition to my family. It's an exciting time, and while I'll miss the daily buzz of The Little House, I know I'm leaving things in capable hands.

During my absence, we've brought on a Temporary Little House Coordinator who will be holding down the fort Monday through Friday from 9:30 AM to 2:00 PM. They'll be available to assist with all your favorite programs, facility rentals, volunteer needs, and community questions.

Need to get in touch? Easy, all emails can still be sent to [tlh@southsidecommunityconnections.org](mailto:tlh@southsidecommunityconnections.org), and our new coordinator will be happy to help.

I'll miss seeing your smiling faces at The Little House, but I'll be back before you know it! Hopefully with some baby photos to share and plenty of coffee in hand!

Thank you all for your continued support, patience, and love. Our community truly is the heart of The Little House, and I'm so grateful to be part of it, both as a team member and a neighbor. 📍

*Dust off your poodle skirts!*  
**Let's go to  
the Flop!**

**October 25 ~ 4 to 9 PM**

**DANCING   ENTERTAINMENT   CONTESTS**  
**RAFFLES   DOOR PRIZES**  
**1950s COMFORTFOOD CATERED by**  
**PERFECT DAY CATERING**  
**LIVE ENTERTAINMENT INCLUDING ELVIS**

HULA HOOP CONTEST  
BEST 1950'S LOOK  
ELVIS LOOK-A-LIKE  
DANCE CONTEST  
AND MORE



**GROVELAND RESILIENCE CENTER**  
**18986 Ferretti Rd, Groveland, CA 95321**

CALL SCC FOR TICKETS  
209-962-7303 OR  
BUY ONLINE



Scan for tickets

**\$95/Person**  
**Includes \$50 Donation** All proceeds benefit

**Sponsored by**  
 **Mechanics Bank**

**Questions? Call Linda**  
**(831) 915-9879**

**Southside**  
COMMUNITY CONNECTIONS  
Tax ID: 68-0463862



# VALADEZ TREE SERVICE LLC

- BRUSH CHIPPING
- HAZARD TREE  
REMOVAL
- LAND CLEARING



- STORM CLEAN UP
- MASTICATION
- TREE TRIMMING/  
PRUNING

CA LIC. # 1097030  
**24 HOUR EMERGENCY SERVICE**

(209)206-8591  
valadeztree@gmail.com

16843 Crestview Dr.  
Sonora Ca 95370

**\*VETERAN AND SENIOR DISCOUNT\***



# PROPANE DISCOUNT PROGRAM

Suburban Propane – As the preferred provider of PML we are happy to provide an exclusive members only program to all residents.

Benefits include: Propane at a discounted rate, Tank rental at a discounted rate, Free basic tank installation, Easy payment options, 24/7 Tech support, Flexible delivery options, 24/7 live phone support. Contact our local staff for further details and current rates.

Suburban Propane Jamestown California

**(209) 984-5283**  
**1 (800) PROPANE**



**TWO GUYS PIZZA PIES**  
18955 Ferretti Rd., Groveland  
(Just 1/2 Block Off Hwy 120)

Check out our weekday  
**LUNCH SPECIAL!**

We ♥ Phone Orders  
**(209) 962-4897**

**\$1.00 OFF**  
ANY SIZE TWO GUYS  
PIZZA OR CALZONE

One coupon per order, per visit. May not be combined with any other offer and/or coupon. Not valid on delivery.

PMLN 1025 Offer Expires 11/15/25

**\$2.00 OFF**  
ANY LARGE OR EXTRA LARGE  
TWO GUYS PIZZA

One coupon per order, per visit. May not be combined with any other offer and/or coupon. Not valid on delivery.

PMLN 1025 Offer Expires 11/15/25

## GROVELAND GAL FRIDAY

**Don't "FALL" behind  
on your To-Do list!**

**Let me help  
with organizing,  
pet-care,  
house-sitting,  
senior help,  
shopping, rides,  
vacation home  
checks, and most  
anything you need!**

**SHARON VOLPONI**  
**209-962-6848**  
**209-770-6277**

**MURRA'S**  
**TOTAL YARD MAINTENANCE**



**BRINGING VALUE FOR YOUR DOLLAR IN PML**

- WEED EATING
- LOT CLEARING
- SENIOR DISCOUNTS
- LEAF REMOVAL
- PLANTING
- TREE SKIRTING
- HAULING
- AND MORE

**CALL JASON MURRA**  
**209-352-3750**  
LIABILITY INSURED

Save on the Bundle  
**INTERNET, PHONE & TV**  
from

**\$99.95**  
*Install*



*Wired  
to your  
Home!*

**BROADBAND SERVICE for**  
**PINE MOUNTAIN LAKE**  
**Call (209) 962-6373**

18859 Microtronics Way Suite B13 Sonora, CA 95370 [www.gosnc.com](http://www.gosnc.com)

Standard installation, equipment not included. Offer expires 12/31/25. Limited to one promotional offer at a time.



# COMMUNITY ORGANIZATIONS

*Contact the individuals/organizations below  
if you are interested in joining!*

If you would like your community organization listed please send  
your group's name, contact person, and phone number to

[gmassist@pinemountainlake.com](mailto:gmassist@pinemountainlake.com)

## CAMP TUOLUMNE TRAILS

Jerry Baker – 1.209.962.7916

## FRIENDS OF THE GROVELAND LIBRARY

Michele Roberts – 1.209.962.4327

## HELPING HANDS THRIFT STORE & FURNITURE BARN

Patti Beaulieu – 1.209.962.7402

## SOUTHERN TUOLUMNE COUNTY HISTORICAL SOCIETY (STCHS)

Harriet Codeglia – 1.415.516.1852

## SOUTHSIDE COMMUNITY CONNECTIONS

Nancy Reggio - 209-962-7303

## VILLAGE ON THE HILL

1.209.962.6906 or [info@villageonthehill.org](mailto:info@villageonthehill.org)

## MOORE BROS RECYCLING NOTICE

### WE HAVE DROP-OFF RECYCLING!!

All residents and visitors are asked to source separate their recyclable materials. There are designated bins located at our office located at 11300 Wards Ferry Rd. in Big Oak Flat where you may drop off your recyclable materials anytime **Monday through Saturday 8am to 5pm** (weather permitting). CLOSED SUNDAYS and major holidays.

### Acceptable materials include:

- Aluminum beverage containers, tin cans, glass bottles and jars (all colors)
- #1 Plastic (bottle form only) \*\*\*\*#1 clear fruit/veggie, sandwich or salad clam shell type containers are NOT allowed\*\*\*\*
- #2 Plastic (bottle form only) \*\*\*\*#2 colored plastic coffee containers are NOT allowed\*\*\*\*
- ALL CONTAINERS MUST BE RINSED AND FREE OF LIDS AND CAPS

We also accept Mixed Paper, newspaper, magazines, catalogs, junk mail, paperback books & shredded paper which can all be put in the same bin. NO WRAPPING PAPER ALLOWED

### CARDBOARD BIN ACCEPTABLE MATERIALS INCLUDE:

Cardboard, Carton Board such as cereal and cracker and soda/beer boxes, etc. are also accepted and can be placed in the cardboard bin with the cardboard. THESE ITEMS NEED TO BE FLATTENED OR BROKEN DOWN AND ANY PACKAGING MATERIALS OR TAPE REMOVED.

IF THE CARDBOARD BIN IS FULL OR YOU HAVE A LARGE LOAD OF CARDBOARD TO RECYCLE, we ask you to take it to our shop location at 17641 Yates St. in Big Oak Flat where we still maintain a 50 yard cardboard recycle box.

**PLEASE DO NOT THROW PLASTIC BAGS  
OF RECYCLABLES INTO THE BINS.**

# THE OPPORTUNITIES OF FALL!

PASTOR BOB KANDELS

As October settles into our mountain homes—from Yosemite Valley to Pine Mountain Lake, from Groveland to Big Oak Flat and beyond—we enter a season filled with new opportunities to gather, celebrate, and grow together as a community.

Here are a few highlights of events this fall:

**Quilt Show & Craft Faire** – Friday, October 3rd (2–6 pm) & Saturday, October 4th (9 am–4 pm) at Gateway Community Church. Come enjoy the artistry of quilts and explore handmade crafts just in time for Thanksgiving and Christmas.

**Trunk or Treat** – Friday, October 31st

at Mary Laveroni Community Park in Groveland. A safe and joyful way for families to celebrate together.

**Men's Retreat** – Thursday evening, November 6th – Saturday morning, November 8th at Old Oak Ranch near Sonora. Cost: \$250 (lodging and meals included). Our guest speaker, Bob Osborne, a follower of Christ and former Los Angeles County Sheriff, will share his testimony and encouragement. <https://www.oldoakranch.org>

Each of these events reflects the heart of community life—neighbors coming together, sharing talents, encouraging one another, and building bonds that make our mountain

towns strong.

It's easy to get caught up in our own worries and needs, but God continually shows us that His grace works through others—the banker, teacher, mechanic, health care worker, those in hospitality and tourism, and more. Together, we experience God's provision and His love.

I am grateful to be part of this community and even more thankful for the grace of Christ that binds us together. I warmly invite you to join us for worship at Gateway Community Church each Sunday at 10:00 am, where all are welcome to come as they are and experience the goodness of God in fellowship with one another.

In Christ's Service,  
Pastor Bob Kandels 🙏

## TENAYA ELEMENTARY STUDENT OF THE MONTH



First grade student Wade Malloy is Tenaya Elementary School's Student of the Month for September. According to his teacher, Kim Scheu, Wade is a kind and happy go lucky student. He is always ready to learn and follows directions. His smile is contagious and he is a great friend to his classmates. Wade is the son of Connor and Kendall Malloy of Big Oak Flat. Congratulations Wade! 🙏



# LOIS R NIX

**L**ong time Sonora, Groveland resident Lois Nix died August 18, 2025 after a short illness. Lois was born in San Bernardino county, and spent her childhood there. She married Norman Schlenker in 1962 and they had 2 children. Norman passed away in 1977. Lois met and married Alan Nix in 1983 and were married 42 years. Lois was active in the local Seventh-Day Adventist Church in Groveland. She was a beloved wife, mother, grandmother and

friend who was a shining light to anyone she knew. People described her personality as being so bright that strangers instantly became friends. She loved to play and watch tennis. She is survived by her husband Alan, daughter Kelly, son Brandon, stepson Craig. Also 1 granddaughter Chelsea, 6 great grandchildren, and 3 step grandchildren. Celebration of Life open house will be held October 26, 2025 at Pine Mountain Lake Country Club from 1-4 pm in Groveland, Ca. 🌿





**Land & Structure**  
SURVEYING | ENGINEERING | DESIGN

Deck Plans / Additions / New Houses  
Site Plans / Surveying / Mergers  
209-532-5173 [www.landstruc.com](http://www.landstruc.com)



**HEADLEY'S TREE SERVICE**  
Tree Service Without the Headache.

---

**WALTER HEADLEY**  
Owner / Operator  
(209)316-5167

[headleystreeservice.com](http://headleystreeservice.com)  
[headleystreeservice209@gmail.com](mailto:headleystreeservice209@gmail.com)

## Pine Mountain Lake Electric

**Residential and Commercial  
Electrical Contracting**  
State Contractor's Lic. 404081

*The local electrician*

**TOM KATOSIC**  
209/962-6949



**P.O. Box 25**  
**BIG OAK FLAT, CA 95305**



# Waters Plumbing Heating & Air

**FAST  
SAME DAY  
SERVICE\***

\*IN MOST CASES

**All work 100% Guaranteed!**



Contractors License #463958

www.watersplumbing.com

"I want you to know that our technicians will give you a price before we start the job." —Wayne Waters



**Groveland (209) 533-1010**

**JACK IS BACK!!!**



## Jack Proctor

**Heating &  
Air Conditioning**

**Call your local Pro!**

**CELL**

**209-678-8915**

**License #313926  
Since 1975**

- Complete commercial & residential services
- Service & repair - all makes and models
- Heating & ventilation
- Heat pump specialist
- Air conditioning troubleshooting expert
- Installation and remodeling
- Upgrading & energy efficiency
- Bonded & Insured

**Before replacing your unit, ask us for a 2nd opinion.  
Chances are, we CAN repair it!**

## Pest Control

- Ants, spiders, mice, wasps, earwigs, etc.
- Fast service, great prices
- Squirrel and bat Exclusion
- Termite Inspections

- Weed Control
- Poison Oak
- Star Thistle



**962-5710  
800-464-3772**  
Free estimates





# Ken's Asphalt

Lic. 708310

**Grading • Paving • Chip Seal • Road Oil**

**Seal & Slurry Coatings • Crafco Hot Rubberized Crack Sealer**

**Driveways • Private Roads • Subdivisions**

DOING  
BUSINESS  
SINCE  
1985

## DRAINAGE PROBLEMS?

*We have the Solution!*

**Erosion Control • Riprap (6-12" Rock) • Asphalt Curbing • Base Rock**

"Just Pave It"

## Complete Concrete Services

"Just Pave It"

- Stamped Concrete and Colored Concrete
- Stained Concrete
- Cleaning & Sealing
- Retaining Walls
- Driveways
- Walkways
- RV Pads
- Patios

**532-0800 • 962-5644 • 768-7395 Cell**

# TMC CONSTRUCTION

License # 717300

Insured

**(209) 962-6938**

**Brushing • Log Removal**

**Mastication**

**Hazardous Tree Removal & Pruning**

**Excavation**

Site Prep, Engineered Septic, Culverts,  
French drains, Retaining walls,  
Hauling, Post hole digging,  
Under ground work,  
Concrete work

**We can help with your grant.  
Skid Steer and Dump truck service  
Reasonal Rates • Free Estimates**



## **BEFORE YOU BEGIN CONSTRUCTION ON YOUR LOT**

The Declaration of Restrictions (CC&Rs) states that no construction of any type (new construction, driveways, grading, lot development, etc.) can be performed without prior approval from the Environmental Control Committee (ECC).

Failure to obtain approval could result in the stoppage of work or even fines, and nobody wants that to happen. Inspections are made every Tuesday and reviewed by the Committee every other Thursday, so we can accommodate our members.

Please contact ECC before you begin any type of construction at 1-209-962-8605.

## **HOMEOWNER CHECKLIST**

### **CHECK OUT YOUR CONTRACTOR**

- ☐ Did you contact the Contractors State License Board (CSLB) to check the status of the contractor's license? Connect with CSLB at 800.321.CSLB (2752), [www.cslb.ca.gov](http://www.cslb.ca.gov) or [www.CheckTheLicenseFirst.com](http://www.CheckTheLicenseFirst.com).
- ☐ Did you get at least three local references from the contractors you are considering?
- ☐ Did you call the references and personally view the contractor's completed work?
- ☐ Does the contractor carry general liability insurance?

### **BUILDING PERMITS**

- ☐ Does your contract state whether you or your contractor will pull necessary building permits before the work starts?
- ☐ Are the permit fees included in the contract price?

[www.cslb.ca.gov](http://www.cslb.ca.gov)

### **DOUBLE-CHECK THE CONTRACT**

- ☐ Did you read and understand your contract?
- ☐ Does the three-day right to cancel a contract apply to you?
- ☐ Does the contract identify when work will begin and end?
- ☐ Does the contract include a detailed description of the work to be done, the materials to be used, and/or equipment to be installed?
- ☐ Are you required to make a down payment? (The down payment should never be more than 10 percent of the contract price of \$1,000, whichever is less, unless there is a valid blanket performance and payment bond on file with CSLB.)
- ☐ Is there a schedule of payments? (Only pay as work is completed, not before).
- ☐ Did your contractor give you a "Notice to Owner" warning notice that describes mechanics liens and how to prevent them?
- ☐ Do you have changes or additions to your contract? (Remember that all changes must be in writing and signed by both parties to avoid disagreements.)

		<b>BUSINESS HOURS</b> Monday - Friday: 8:00am - 5:30pm Saturday: 8:00am - 2:00pm Sunday: CLOSED
<b>Well Stocked Parts House:</b> <i>For All of Your Heavy Duty Needs!</i> <ul style="list-style-type: none"> <li>• Heavy Duty Brake Linings</li> <li>• Baldwin &amp; Fleetguard Filters</li> <li>• Delo Oil</li> <li>• LED Lights</li> <li>• Air Brake Valves &amp; Hoses</li> <li>• CB Radios, Antennas &amp; Accessories</li> <li>• Logging &amp; Dump Truck Parts</li> <li>• Hydraulic Hose Shop</li> </ul>	<b>Full Service RV Repair Shop:</b> <ul style="list-style-type: none"> <li>• Commercial House &amp; Starting Batteries</li> <li>• Full Service Chassis &amp; Lube Center</li> <li>• Electrical &amp; Plumbing Repairs</li> <li>• Interior &amp; Exterior LED Lighting</li> <li>• Complete Body Damage Repair Shop</li> <li>• Solar Power Systems &amp; Inverters</li> <li>• Complete Detailing Services</li> <li>• Warranty &amp; Insurance Work Accepted</li> </ul>	
<b>Mobile Service Available</b>		
18968 Waylon Way Sonora CA 95370 Call or Email us to schedule an appointment today! <b>(209)-532-7994</b> EMERGENCY CONTACT: (209)-559-3840 Email: shop@sierraheavyduty.com Visit Us Online: www.sierraheavyduty.com		<i>Over 50 Years of Experience!</i>  All Major Credit Cards Accepted.

## CONTRACTORS PERFORMING WORK IN PML ARE REQUIRED TO FOLLOW PMLA RULES & REGULATIONS

The following are some ***"common violations."*** Please do your part to maintain a harmonious environment for all to enjoy. Remember: The PML property Owner is held responsible for those they hire.

### VEHICLE USE:

1. Exceeding the posted speed limit
2. Driving in a reckless manner
3. Following another through an access gate or allowing others to follow you through
4. Parking on street (road shoulders OK)

### PERSONAL CONDUCT:

1. Allowing loud music
2. Uttering abusive language or conduct that would be offensive to a reasonable person
3. Using the property Owner's gate card or clicker

### WORK RELATED CONDUCT

1. Starting work before 7am or continuing after 7pm
2. Allowing dogs at construction sites
3. Performing work on Sunday
4. Cutting down a tree in excess of 5" without PMLA approval
5. Trespassing on neighboring property
6. Using neighbors water or electricity without written permission
7. Leaving construction signs longer than 5 days after work has been completed
8. Nailing signs to trees
9. Storing building materials on street or easement
10. Beginning exterior construction without PMLA approval

If you have questions call: The ECC Assistant  
@ (209) 962-8605 with questions.

## MOORE BROTHERS PREPAID BAG BIN

The bin (dumpster) at the PMLA Maintenance Yard entrance is for the dumping of prepaid, Moore Bros., trash bags ONLY. No dumping of any other trash items are allowed. Violators will face enforcement action. Please help us keep this area clear and ensure that the dumpster can remain in place for our residents use. Thank you!

***THE PREPAID BAGS CAN BE PURCHASED AT THE MAIN GATE AND THE PMLA OFFICE***



# CLASSIFIED ADS

## COMMERCIAL SPACE FOR LEASE

### COMMERCIAL SPACE FOR LEASE!

18717 Hwy 120, Groveland. Approximately 1600 square feet of building space, located downtown with propane heat, one ADA bathroom perfect for retail, food service, professional office, medical etc. Rent \$1,650.00 Deposit \$1,700.00. Contact agent **650-520-1022**

## HELP WANTED

### PMLA IS HIRING

PMLA is looking for qualified candidates for several job openings. Apply online at [www.PineMountainLake.com](http://www.PineMountainLake.com)

## RENTALS WANTED

### EXCELLENT TENANTS

w/excellent credit and rental history looking for homes to rent. Owner approves tenant before placement. Call *Yosemite Region Resorts* **209-962-1111**

## SERVICES

### RONNING ROOFING

Call Joe for all your Roofing and Gutter needs. Licensed, Bonded, and Insured. License #976739 **209-962-6842**

### HOUSE CLEANING

We are mature/experienced PML residents. Steve **925-595-3362**  
Carla **925-639-4929**.

## GET YOUR AD SEEN!



Place a photo of your item for sale for just \$10. Call 1-209-962-0613

## LOT FOR SALE

### >>> 1/2 PRICE SALE !!! <<<

Extremely RARE approx. 4.5 Acre cul-de-sac hillside PML lot with great views- \$59,975. Private, yet close to Golf, The Grill, Tennis Courts, and Pool. Unit 5B-03. [PinePlay@pm.me](mailto:PinePlay@pm.me) or **(559) 692-0117**

## HOMES FOR RENT

### COTTAGE

**209-770-1755**

### ENJOY COMFORT AND CONVENIENCE

in this beautifully updated single-story home, located on a quiet circle drive in the Pine Mountain Lake community. This fully furnished 3-bedroom, 2-bath home features an open and inviting layout, complete with all appliances and remote-controlled window shades. The attached garage adds extra convenience, while the spacious deck is perfect for outdoor entertaining and relaxing under the trees. **\$2,000.00 (209) 962-6268**

## FOR SALE

### 8HP MERCURY FOUR STROKE



with gas tank only used a few times. Minn Kota battery motor for fishing with charger and battery, almost new.

**\$1750.**

Call: Jan at

**650-208-2562**



## CHECK OUT YOUR GROVELAND LIBRARY

**THE GROVELAND LIBRARY IS OPEN**  
**TUESDAY – THURSDAY — 12PM–6PM**  
**FRIDAY & SATURDAY — 10AM–2PM**



**BOOK NOOK**  
**USED BOOK SALE**  
**SATURDAYS**  
**10AM–1PM**

**PRE-SCHOOL STORY TIME FRIDAYS AT 10:30AM**

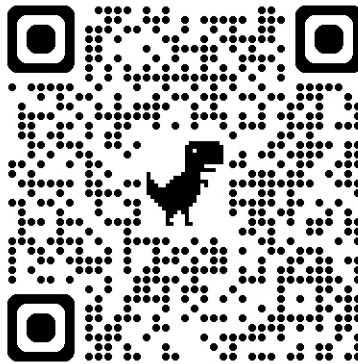
Visit the Library for a great selection of books, magazines, newspapers, CDs, & DVDs.  
Also computers and free Wi-Fi!

# THE PML NEWS IS DIGITAL!

**Don't miss your chance to stay informed and connected with the all-new monthly PML News Magazine – now delivered electronically!**

## **HOW TO SUBSCRIBE:**

- **Scan the QR Code below to sign up instantly.**
- **Visit our official website and Sign up for the PML News Magazine.**  
<https://www.pinemountainlake.com/pmlnewsrequest/>



**Be part of the future of PML communication!  
Subscribe today and never miss an issue.**