

# PINE MOUNTAIN LAKE NEWS

AUGUST

2024



THE OFFICIAL NEWSPAPER OF, AND FOR, PINE MOUNTAIN LAKE PROPERTY OWNERS

## TABLE OF CONTENTS

Administration	2-20
PMLA Finanacials	6
Letters to the Editor	8
The Grill & Lounge	12-13
PML Clubs & Recreation	21, 28-32
Community News	32-42
Home Improvement	43-45
Classified Ads	46

PRSRT STD U.S. POSTAGE PAID ABS DIRECT	Change Service Requested
---	--------------------------



Photo by Tamara K. Vargas

**BE FIRE SAFE!**  
**CALLING ALL CANDIDATES**  
**SEE PAGE 9**





GET  
IMPORTANT  
NEWS VIA  
EMAIL



Signing up for the new eSNAP program is quick and easy and gives you the ability to sign up for the information that you want to receive. Just head over to *www.PineMountainLake.com* and sign up today.

ABOUT EACH OF THE PROGRAMS

**PML News & Alerts** – Receive emails with information regarding anything affecting Pine Mountain Lake such as road closures, utility problems, fire alerts and more.

**PML Amenities News** – Receive emails with information about upcoming events, specials, or news regarding all PML amenities such as the lake, marina, golf course, etc.

**The Grill at Pine Mountain Lake** – Receive emails with information regarding happenings at The Grill. Get information on Wine Tastings, Entertainment, Special Events and more.

This program is separate from the current email opt-in program that allows you to receive PMLA governing documents and requires your signed approval. This program can be signed up for via the online system. *Get your news and alerts via email, it's eSNAP!*

— NOTICE —

Listed below are ALTERNATE phone numbers for  
EMERGENCY use during power/phone/internet outages:

DEPARTMENT OF SAFETY – MAIN GATE  
1-209-768-8600

PMLA ADMINISTRATION OFFICE  
1-209-768-3998

THE GRILL AT PINE MOUNTAIN LAKE  
1-209-962-8658

NOTICE

The Pine Mountain Lake News, established July 25, 1973, is printed monthly for residents of Pine Mountain Lake and sold in the Groveland, CA 95321 area. Members can access the PML News monthly edition online at *www.PineMountainLake.com*. Every month the newest edition of the PML News is posted online before the first of each month. Interested parties can subscribe to the traditional "hard copy" and receive a copy by mail each month.

The PML News is mailed to approximately 3500 PML property owner households each month. Up to 500 copies are rack-sold in the local Groveland area. Our circulation reaches approximately 1200 full-time, resident, PML property owners and approximately 2300 "weekender," non-resident, property owners who maintain primary residence in Northern California, in Southern California, or in other states. For more information regarding the PML News, please call the PML Administration Office at 1 (209) 962-8600. We greatly appreciate your contributions but please note that the PML News fills up very quickly – often by the 7th or 8th of the month (long before the 10th deadline). To ensure that your submission is reviewed for publication please submit in full and as early as possible. Please remember that the PML News is limited in capacity and your submissions are reviewed on a first-come-first-served, space-available basis.

We publish all PMLA related submissions such as Board & Management Business, Clubs, Activities & Events. Where space remains, we publish non-PMLA related submissions in our "Community" section.

We do our best to provide timely news. If you experience delayed delivery or have misplaced a particular edition, please visit us at the PMLA website *www.pinemountainlake.com* for a downloadable PDF of the News posted by the 1st of the month and a downloadable PDF list of ad rates.

SUBSCRIBE TO THE  
PML NEWS  
TODAY!

NAME \_\_\_\_\_

UNIT \_\_\_\_\_ LOT \_\_\_\_\_

MAILING ADDRESS \_\_\_\_\_

\_\_\_\_\_

\_\_\_\_\_

\_\_\_\_\_

NO CHARGE FOR PROPERTY OWNERS (BULK)  
\$6/YR FOR CO-OWNERS (BULK);  
\$10/YR FOR NON-PROPERTY OWNERS (BULK)  
\$20/YR FOR PROPERTY OWNERS (1<sup>ST</sup> CLASS)  
\$30/YR FOR NON-PROPERTY OWNERS  
(1<sup>ST</sup> CLASS)

ENCLOSED IS MY CHECK IN THE AMOUNT OF  
\$\_\_\_\_\_ (PAYMENT DUE IN FULL)

SEND THIS SUBSCRIPTION TO:  
PINE MOUNTAIN LAKE ASSOCIATION  
19228 PINE MTN. DR. GROVELAND, CA 95321  
ATTN: MELODY

Submission Guidelines

The PML News is the Official Newspaper of Pine Mountain Lake Property Owners

The PML News is dedicated to reporting PML Association business and PML Association news to Pine Mountain Lake Property Owners.

All community related articles and notices will appear in the PML News on a SPACE AVAILABLE basis and at the DISCRETION of the PML News Publishing Editor.

DEADLINES

Advertisements must be received IN FULL (text, MLS info, images, logos, etc.) by the 10th of the month for the following month's edition. Only advertisements received in full will be guaranteed to be published in that month's edition. **NO EXCEPTIONS.**

MEDIA ACCEPTED email

SOFTWARE (Articles)  
InDesign, Microsoft Word, Adobe Pages, or TXT formats only.

SOFTWARE (Advertisements)  
PSD, JPG, PDF, EPS or TIFF only.

TEXT/GRAPHICS

Handwritten text is not accepted. Material composed completely of capital letters is not accepted. Please use uppercase and lowercase letters in composition. Ink jet printed images are not accepted. Images are accepted ONLY as camera ready art, original photos (to be scanned) or as JPEG, TIFF or PDF files created with above listed software. All scans and bitmap images must be in TIFF or JPG format at least 200 dpi at 100% (300 dpi preferred). Ad files are stored for 90 days from first run date. Older ads that have not been running must be resubmitted. (See Display & Insert Advertising Contract "Design and Preparation Charges.")

E-MAIL TEXT/GRAPHICS

Text/graphics may be delivered as e-mail attachments via the Internet. Send to: *pmlnews@sabredesign.net*.

AD DESIGN and PROOFS

Ads that are requested to be sent to other periodicals require a usage fee from the advertiser (see Display & Insert Advertising Contract "Design and Preparation Charges"). Proofs are available upon request and final proof approval for all ads is expected within 24 hours. Changes made are LIMITED to typographical or graphic placement errors. NO OTHER ADDITIONS OR CHANGES WILL BE MADE.

SUBMISSION DEADLINES

Articles — 10th each month  
Ads — 10th each month  
Classifieds — 15th each month

VISIT US ONLINE  
*www.pinemountainlake.com*

**PHONE/EMAIL DIRECTORY****ADMINISTRATION**

**General Manager**  
**Joseph Powell**  
*gm@pinemountainlake.com*

**Assistant General Manager**  
**Michelle Cathey - 1.209.962.8640**  
*agm@pinemountainlake.com*

**Admin Asst. to G.M.**  
**Janessa Owens - 1.209.962.8627**  
*gmassist@pinemountainlake.com*

**Human Resources**  
**Shannon Abbott - 1.209.962.8628**  
*pmlhr@pinemountainlake.com*

**E.C.C. Assistant - Ashley Henderson**  
**1.209.962.8605**  
Plan Submittal, Compliance Fees  
*ecc@pinemountainlake.com*

**Member Relations**  
**Shari Pingree - 1.209.962.8632**  
Gate Cards, Address Changes,  
Webmaster, Mergers  
Lake Lodge Scheduling  
*pmlmr@pinemountainlake.com*

**Community Standards Director**  
**Suzette Laffranchi - 1.209.962.1241**  
*communitystandards@pinemountainlake.com*

**Community Standards Specialist**  
**Carrie Harvey - 1.209.962.1242**  
*compliance@pinemountainlake.com*

**Rental Compliance Coordinator**  
**Sally Owens - 1.209.962.1245**  
*RCC@pinemountainlake.com*

**General Info &**  
**Lake Lodge Scheduling**  
**1.209.962.8600**  
Receptionist  
*admin@pinemountainlake.com*

**Main Gate - 1.209.962.8615**  
General Safety Inquiries, gate  
passes, campground  
reservations, tennis reservations  
*campground@pinemountainlake.com*  
*maingate@pinemountainlake.com*

**ACCOUNTING**  
**Controller - Dan Szathmary**  
**1.209.962.8606**  
Accounting Procedures  
*controller@pinemountainlake.com*

**Accounting Supervisor**  
**Stacy Gray - 1.209.962.8618**  
*sracct@pinemountainlake.com*

**Receivable/Collections/  
Assessments - Debbie Green**  
**1.209.962.8607**  
*pmlar@pinemountainlake.com*

**Accounts Payable - Tina Parmalee**  
**1.209.962.8626**  
*pmlap@pinemountainlake.com*

**IT Manager**

**Yuris Daudish - 1.209.962.1243**  
*ITManager@pinemountainlake.com*

**Recreation and Seasonal  
Operations Manager**  
**Melody Wisdom - 1.209.962.8604**  
*pmlfun@pinemountainlake.com*

**DEPARTMENT OF SAFETY**  
**Director of Safety - Natalie Trujillo**  
**1.209.962.8633**  
*safety@pinemountainlake.com*

**Sergeant - Teri Cathrein**  
**1.209.962.1244**  
*dossgrt@pinemountainlake.com*

**MAINTENANCE DEPT**  
**Maintenance Manager**  
**Rick Laffranchi - 1.209.962.8611**  
*facmgr@pinemountainlake.com*

**Administrative Assistant**  
**Patty Groothuyzen - 1.209.962.8612**  
*maintenance@pinemountainlake.com*

**Fire Safety Coordinator**  
**Joe Milani - 1.209.990.5260**  
*fsc@pinemountainlake.com*

**Fire Safety Inspector**  
**Amanda Darrow - 1.209.990.5263**  
*inspector@pinemountainlake.com*

**Fire Safety Inspector**  
**Jessica Heller - 1.209.990.5261**  
*firesafety@pinemountainlake.com*

**GOLF COURSE**  
**Golf Course Superintendent**  
**Rob Abbott - 1.209.962.8610**  
*super@pinemountainlake.com*

**Golf Pro Shop**  
**Doug Schmielt - 1.209.962.8620**  
Golf Pro Shop/Golf Reservations  
*golfshop@pinemountainlake.com*

**Golf Pro**  
**Mike Cook - 1.209.962.8622**  
*golfpro@pinemountainlake.com*  
**THE GRILL AT PINE MOUNTAIN LAKE**  
**Food & Beverage Director**  
**Andrea Wilson - 1.209.962.8639**  
*clubmgr@pinemountainlake.com*

**Restaurant - 1.209.962.8638**

**OTHER PHONE NUMBERS**  
**Equestrian Center Manager**  
**Kendra Brown - 1.209.962.8667**  
*stables@pinemountainlake.com*

**Marina Manager**  
**Dawn Pretzer - 1.209.962.8631**  
*marina@pinemountainlake.com*

**Pool Manager**  
**Dorothy Landrum - 1.209.962.8634**  
*pool@pinemountainlake.com*

**PML NEWS**  
**David Wilkinson - 1.209.962.0613**  
Ad/Article Submissions  
*PMLNews@SabreDesign.net*

**PINE MOUNTAIN LAKE ASSOCIATION**

# 1.209.962.8600

[www.pinemountainlake.com](http://www.pinemountainlake.com)

**ADMINISTRATION OFFICE HOURS**

**8:00 AM TO 4:30 PM – MON THRU FRI**

**OPEN AT 8:45 AM SECOND TUESDAY OF EACH MONTH**  
**THE OFFICE IS CLOSED BETWEEN 12:00 & 1:00 EACH DAY**

**2024 ADMINISTRATION OFFICES HOLIDAYS**

**(ADMIN OFFICE WILL BE CLOSED)**

MON 9/2/24 LABOR DAY

TUE 12/24/24 CHRISTMAS EVE

MON 11/11/24 VETERANS DAY

WED 12/25/24 CHRISTMAS DAY

THUR 11/28/24 THANKSGIVING

TUE 12/31/24 NEW YEARS EVE

FRI 11/29/24  
DAY AFTER THANKSGIVING

WED 1/1/25 NEW YEARS DAY

**PMLA BOARD MEETINGS SCHEDULE**

**(THIRD SATURDAY – UNLESS OTHERWISE NOTED)**

**AUGUST 17, 2024**

SEPTEMBER 28, 2024

OCTOBER 19, 2024  
(BOARD BUDGET MEETING)

NOVEMBER 16, 2024  
(ANNUAL MEMBER MEETING/ELECTION)

**PINE MOUNTAIN LAKE NEWS DELIVERY**

Although we guarantee that the PML News is mailed from Modesto, CA on the same day (between the 26th-30th of month), most post offices (except Groveland) sort Bulk Mail after First Class mail. So, consider a First Class delivery subscription for just \$20/yr. (\$20 per year for property owners and \$30 per year for non-property owners) Interested? Call the PMLA Office at 1 (209) 962-8632 or see form on page 2.

The Pine Mountain Lake News is also available  
(in PDF format) at: [www.pinemountainlake.com](http://www.pinemountainlake.com).  
New editions are posted by the 1st of the month.

# GENERAL MANAGER’S MESSAGE

JOE POWELL – PCAM, CCAM-LS, CMCA, AMS GENERAL MANAGER

## BOARD RECALL EFFORT FAILS – WE NOW PIVOT TO THE POSTPONED ANNUAL ELECTION

On Saturday, July 20, 2024, the Association held a Special Meeting to determine if all of the Board members should be recalled. A total of 1,497 members or 45.54% were represented by ballot or present in person. The Recall effort failed with 601 members voting “YES” and 879 members voting “NO”. We would like to thank all PML property owners who voted and encourage members to always participate and vote in all PML elections. Now that the recall vote has been determined, we are immediately moving on the process to hold the postponed regular Annual Meeting of the Membership, scheduled to be held on November 16, 2024. There will be two director positions to fill in this election. A call for candidates has gone out and the deadline for the submittal of candidate nomination/applications

to The Inspectors of Election is Thursday, August 22, 2024 by 5 pm. If a candidate wishes to receive a discounted rate for ads in the PML News for the three-month election timeline, they must submit their \$200 fee when they submit their candidate nomination/application. ENVIRONMENTAL CONTROL COMMITTEE WORKING ON UPDATE TO THEIR RULES, GUIDELINES AND STANDARDS POLICY The ECC architectural and property improvement policy book has not been updated since 2021 and some laws have changed, so the Committee is working on an update. The Committee has also taken in member feedback for consideration as well as operational challenges and constraints that have been seen in the enforcement of these policies in recent years. The Committee has been working on this update diligently for many weeks and plans to have a draft completed for Board review by the September Board meeting. Once the Board reviews the draft document

and accepts the changes, it will be published in the PML News for member review and comment prior to any adoption by the Board of Directors. Members will also be given a chance to voice their opinion on this draft policy in an open board meeting so that the Board can take this feedback into consideration prior to any adoption of any changes to the rules and policy. GRILL 19TH HOLE LOUNGE NOW OPEN 7-DAYS A WEEK I am pleased to report that based on member feedback; we are opening the Grill 19th Hole Lounge 7-days a week. Our Grill team now has enough staffing to handle business in the Bar, so we are now opening up on Mondays and Tuesdays. The Grill kitchen will still remain closed on these two days, but the Grill Bar team plans on having some food items and snacks on hand for our members. I would like to thank our new Interim Food and Beverage Director, Andrea Wilson and her team for making this happen.

ASSOCIATION FINANCIAL PERFORMANCE I am also happy to report that the Association team outperformed expectations financially. As of the end of June and PML is better-than-budget by over \$291K. I would like to thank our team for their diligent efforts in managing operations. Some of this great financial performance is based on the timing of using funds that will go towards fire safety and maintenance of our amenities, but we anticipate that we will continue to thrive financially through the remainder of 2024. We appreciate all of our members who patronize and use our facilities and amenities. All of this revenue goes back into providing for our membership and the Association. PMLA ALWAYS LOOKING FOR HARDWORKING FRIENDLY FOLKS If you are looking for a job, we have an employment opportunity page and that link can be found on our Official PML Website homepage at [www.pinemountainlake.com](http://www.pinemountainlake.com). Until Next Month, wishing everyone a fun and safe Summer!

**MAKE PML YOUR ONE-STOP-SHOP FOR ALL YOUR GIFT GIVING!**

**PICK UP A GIFT CARD FOR: GOLF • GOLF SHOP APPAREL & ACCESSORIES • THE GRILL HUNTING & FISHING LICENSE VOUCHERS**

**GIFT CARDS ARE AVAILABLE AT THE ADMINISTRATION OFFICE, THE GRILL, AND AT THE PRO SHOP**

**KEEP YOUR INFORMATION UP TO DATE**

If you have moved or changed your contact information, please contact the Administration Office at 1 (209) 962-8600 to update your records. You can also update your information online by scanning the QR code. Staying connected helps us keep you informed about important updates, news, and events in our community. <https://www.pinemountainlake.com/address-change-2/>





# PINE MOUNTAIN LAKE ASSOCIATION

## 1.209.962.8600

### BOARD OF DIRECTORS

Chuck Obeso-Bradley: **President**  
Mike Gustafson: **Vice President**  
Karen Hopkins: **Secretary**  
Craig Prouse: **Treasurer**  
Brian Watson: **Director-at-large**

### GENERAL MANAGER

Joseph M. Powell, PCAM, CCAM-LS, CMCA, AMS

### CORRESPONDENCE TO DIRECTORS

Pine Mountain Lake Association  
19228 Pine Mountain Drive  
Groveland, CA 95321  
PMLABoard@pinemountainlake.com

### ADMINISTRATION OFFICE HOURS OF OPERATION\*

Monday – Friday 8:00 AM – 4:30 PM  
Closed 12:00 – 1:00 PM  
Tel: 1-209-962-8600

The Pine Mountain Lake News,  
established July 25, 1973,  
is printed monthly for residents of  
Pine Mountain Lake and vicinity by  
Pine Mountain Lake Association,  
Groveland, California 95321.

### SUBSCRIPTION RATES:

Co-owner subscription: \$6 per year  
Single copies: 50 cents each  
Single mailed copies: \$1.35 each  
For non-members: \$10 per year

### SUBMISSION DEADLINE

10th of the month by 4:30 PM  
LATE SUBMISSIONS MAY NOT BE ACCEPTED  
Visit [www.pinemountainlake.com](http://www.pinemountainlake.com) for ad rates  
and submission guidelines or email:  
[PMLNews@SabreDesign.net](mailto:PMLNews@SabreDesign.net)

For the mutual benefit of all property owners,  
the Pine Mountain Lake News reserves  
the right to edit all copy submitted for  
publication. The Pine Mountain Lake News is  
a private enterprise, not a public entity, and  
as such is entitled to reject advertisements or  
articles in the best judgment of its editor or  
publisher, despite a probable monopoly in  
the area of its publication. Pine Mountain Lake  
Association is not responsible for, nor does  
it guarantee the accuracy of, information  
contained in any ad placed in the Pine Mountain  
Lake News. The Pine Mountain Lake News  
attempts to ensure that this publication is free  
of legal infringements and the Pine Mountain  
Lake Association and its contractors are not  
liable for copyright/trademark infringements  
from external advertisements and articles.

**PMLA**–Publisher

**DAVID WILKINSON**–Publishing Editor

**SABRE DESIGN & PUBLISHING**

Design/layout

**PINE MOUNTAIN LAKE NEWS**

P.O. Box 605, Groveland, CA 95321

Tel: 1.209.962.0613

**E-mail: [PMLNews@SabreDesign.net](mailto:PMLNews@SabreDesign.net)**

# PRESIDENT'S MESSAGE

CHUCK OBESO-BRADLEY – PMLA BOARD PRESIDENT

## TAKE-AWAYS FROM THE SPECIAL ELECTION

The Special Election to Recall the PML Board failed on a vote of 879 NO (60 %) to 601 YES (40%), and a Big Thank You to everyone who voted – we had one of the biggest vote turnouts in the last few years. The paperwork will soon be mailed to all members for the call for candidates for the regular Annual Meeting of the Membership and Directors Election that was postponed until November due to the Special Recall Election. We hope that we can get as big a turnout for the election in November as we did for the Recall.

There were a number of helpful comments during the Member Open Forum while the votes were being counted, and I wanted to highlight some of those sentiments here.

## NOT BUSINESS AS USUAL

With 601 votes to Recall the Board, clearly we need to improve a number of issues in the way that we govern our Association. We need to find new ways to improve the lines of communication with all our members, and not assume that everyone will read the PML News and attend our monthly meetings to get accurate information. 601 votes sent us a clear message.

## BRIDGING THE DIVIDE

It was mentioned a few times that divisions have developed over the Recall issues, and we need to do a better job finding the common ground among our diverse group of Property Owners. One of the ways that we want to do just that is to show that we have learned from the mistakes made in the PPP Loan Program. We have taken immediate action by retaining a new General Counsel and reviewing

all of our procedures so that this type of situation does not happen in the future. We have made a demand on the Weintraub firm regarding this situation in an effort to recover funds related to the PPP and DOJ settlement matter.

## MOVING FORWARD

Some of the PML Property Owners have lost faith in our PML Leadership, and we need to do everything we can to regain that trust. The Board will strive to keep that in mind as we make the important decisions that affect our little slice of heaven here in PML. We are far from perfect and mistakes will surely be made, but we'll continue to keep the issue of member trust at the forefront of our actions.

Now please join us in going out and enjoying the rest of the Summer weather here in Pine Mtn. Lake!

## COMPOST & ARCHERY RANGE HOURS OF OPERATION

**NOVEMBER THRU MARCH TUES. – SUN. 8AM TO 4PM**  
*WEATHER PERMITTING*

**APRIL THRU OCTOBER – 7 DAYS A WEEK 8AM TO 4PM**  
*WEATHER PERMITTING*

**SHOOTING RANGE – TUES, THUR, SAT 9AM TO 3PM**  
**PLEASE NOTE** Hours may vary depending on weather conditions, safety concerns, or other situations beyond control. Archery & Gun Range users must check-in with compost attendant.

**HOURS SUBJECT TO CHANGE WITHOUT NOTICE**  
**Call Main Gate at 1-209-962-8615**

**SPEED  
LIMIT  
25**

**SLOW DOWN**  
WATCH FOR WILDLIFE,  
BIKES, AND PEDESTRIANS  
PLEASE DRIVE SAFELY

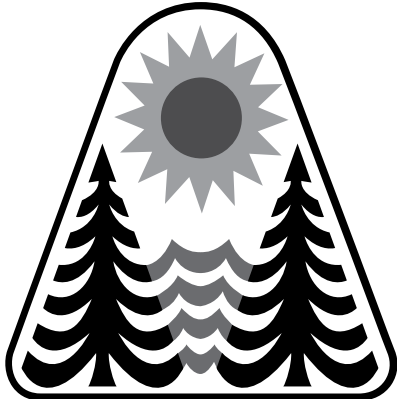
PINE MOUNTAIN LAKE ASSOCIATION												
SUMMARY STATEMENT OF OPERATING FUND REVENUES AND EXPENSES												
For Six Months Ended June 30, 2024												
OPERATION OF AMENITIES	Revenues					Expenses		(Cost)/Income			Budget	
	Members' Assessments Net of Discount	User Fees	Sales, Net of Cost of Sales	Miscellaneous Income	Total Revenues	Total Expenses	Before Depreciation	Depreciation Expense	(NET COST) INCOME	(NET COST) INCOME	Variance Bud - Act	Variance %
Golf Course	\$ -0-	408,612	17,499		\$ 426,111	\$ 953,638	\$ (527,527)		\$ (527,527)	\$ (596,113)	68,587	-11.51%
Restaurant & Bar	-0-	1,946	387,628		389,574	810,824	(421,250)		\$ (421,250)	(389,915)	(31,335)	8.04%
Marina	-0-	286,907	57,913		344,821	433,870	(89,049)		\$ (89,049)	(117,289)	28,240	-24.08%
Snack Shack	-0-		25,625		25,625	36,421	(10,796)		\$ (10,796)	(22,341)	11,545	-51.67%
Stables	-0-	49,334		17,730	67,064	233,185	(166,121)		\$ (166,121)	(206,582)	40,461	-19.59%
Recreation	-0-	101,371			101,371	66,104	35,267		\$ 35,267	38,644	(3,377)	-8.74%
Roads & Facilities Maintenance	-0-	89,504		320	89,824	1,275,463	(1,185,639)		\$ (1,185,639)	(1,396,129)	210,490	-15.08%
PROPERTY OWNER SERVICES												
Safety	-0-	118,757		4,605	123,362	555,263	(431,901)		(431,901)	(586,838)	154,937	-26.40%
Administration	-0-	189,640		471	190,111	1,540,827	(1,350,716)		(1,350,716)	(1,162,919)	(187,797)	16.15%
ASSESSMENTS												
+	4,209,079				4,209,079	102,886	4,106,193	\$ 380,725	3,725,468	3,734,962	(9,494)	-0.25%
Totals	\$ 4,209,079	\$ 1,246,071	\$ 488,666	\$ 23,127	\$ 5,966,943	\$ 6,008,481	\$ (41,538)	\$ 380,725	\$ (422,263)	\$ (704,520)	282,257	-40.06%

CAPITAL EXPENDITURES Six Months Ended June 30, 2024			
	TOTAL RESERVE FUNDS	NEW CAPITAL ADDITIONS FUND	TOTAL CONTRIBUTION TO CAPITAL
2024 Beginning Fund Balances	2,270,763	42,703	4,506,017
Interest Income			-
Bank Fees/Discounts Taken			-
Assessments Earned	1,400,000	51,406	1,451,406
Other Income/Expense			-
PURCHASES BY AMENITY			
Golf Course	(47,011)	(8,075)	(55,085)
Country Club			-
Bar			-
Marina	(31,114)		(31,114)
Snack Shack	(8,255)		(8,255)
Swim Center			-
Stables	(91,016)		(91,016)
Recreation			-
Roads & Facilities Maintenance	(11,093)		(11,093)
PROPERTY OWNER SERVICES	-		
Safety			-
Administration	(1,800)	(1,683)	(3,483)
Non-Capital Reserve Expenses	(634,911)	(1,050)	(635,961)
Total expense for property and equipment additions and reserve expenses	(825,200)	(10,807.33)	(836,007)
Adjusted Fund Balances	\$ 2,845,564	\$ 84,352	\$ 5,121,416

**PAY YOUR PML PAYMENTS ONLINE**

Did you know you can make your payments online?

Online Bill Pay is available on [www.PineMountainLake.com](http://www.PineMountainLake.com).  
Pay via your credit card,  
it is quick and easy!





# MONEY MATTERS

DAN SZATHMARY, CAFM – ASSOCIATION CONTROLLER

We are well into and almost through the summer season, our busiest time of year. The process of forming our budget for next year is right around the corner.

One of the initial pieces of the process is updating our reserve study and refreshing our 30 year projection of how much it will cost to repair or replace the assets of the association. Everything owned by PMLA worth at least \$1000, with a useful life of at least a year is included.

The reserve component list, which currently has 829 items ranging in replacement value from \$1000 to \$1.4 Million is reviewed and updated. We then use that information to estimate how much it will cost to repair or replace each one of those items next year and the 29 years following.

The Board then ultimately decides, how much of the money generated from assessments and sales throughout the year will go to fund operations this year? And how much of that money do we put away to fund repair and replacement of everything of value PMLA owns for the next 30?

There is a direct trade off between efficiently using cash to fund operations, and how much of money collected through the year should get tucked away into reserves. There is no “one size fits all” guideline or metric to use to determine what that number should be. Each community has different needs, tolerance for risk, and general financial conditions that impact the choice of how well funded reserves should be.

If you are a “Google Expert” on the topic and rely on information supplied by websites created by reserve study specialists selling their services; you could believe there is a hard set rule to have a healthy position you need to be “at least 70% funded.” This unicorn number is largely accepted in the HOA management community as way too high in most cases, and an incredibly inefficient use of cash. In fact, most associations in California are funded well under 70%.

There are others that believe funding reserves at all is a waste of resources that could go to fund operations today. Those that subscribe to this school of thought believe putting a

single dollar more into the fund than a bare minimum of 10% of operating expenses, is a dollar wasted. The more you put away after paying the bills for the year, the higher your assessment has to be, so why do that to the members?

It is all about finding that happy medium that is the best fit for our association under the current circumstances.

In perspective, PMLA has very healthy and well-funded reserves. We reached a record funding level last year of \$4.6M that covers about three years’ worth of projected expenses. We are also on track to have about \$3.5M in the fund by the end of this year and can easily beat our previous record level of funding before the end of next year, assuming that is the will of the Members and their Board of Directors.

That means right now, and into the foreseeable future, we have enough in the fund to cover multiple years of reserve spending, even if we stopped

contributing to the fund entirely. In fact, even after some large expenses this year, PMLA will still be more aggressively funded than most like-HOAs in California.

What matters most when deciding what comes next, is input from all of you. On the spectrum of efficient use of money and lower assessments vs. how well funded we are to avoid special assessments in the future; what is your opinion?

In our never ending quest to make most of the people happy most of the time, where are you as an individual member on the issue?

The more we know, the more we can manage that money for you collectively, the way you want it managed. Your voice matters, and would love to hear from you so we can put your money to work for you as effectively as possible.

As always, would love to hear from you anytime at *Controller@PineMountainLake.com* or 1-209-962-8606.

## PML AUTOMATIC PAYMENT PROGRAM

Taking the time to write a check for your monthly assessment payment can be time consuming and costly. You can avoid this burden and eliminate the potential for late payment charges by enrolling in PMLA’s Auto Payment Program. By completing the form, which can be found at [www.PineMountainLake.com](http://www.PineMountainLake.com) under the Resources/Forms, and returning it to the Administration Office, you can have your monthly assessment automatically deducted from your checking account or charged to your credit card. This means you never have to remember to write a check and mail it each month. The peace of mind that comes with knowing your payment will always be made on time is easy to attain. We can also arrange to have any other regular payment you make to the Association (such as golf membership, horse boarding fees, etc.) paid in the same way.

For more information on this simple, effective and time saving plan please contact us at **1 (209) 962-8600**

## DO YOU HAVE YOUR PIN?

Since PML is a private gated community, we want to offer our property owners a secure way to call in guests. When you become a member of PML you are assigned a Personal Identification Number (PIN) to utilize either when calling in a guest pass or using the Gate Access Internet program. This PIN identifies you to staff without you having to be present. This is a confidential number and should **not be shared**. When you call the Main Gate to authorize a guest or vendor access into PML, you will be asked for your PIN. The staff will look up the number in the computer and use it to confirm your identity before entering the guest information. You must have this number to utilize the Gate Access Internet program as well. If you do not know your PIN or have any questions, please contact the Administration Office at:



**1-209-962-8600**



Monday through Friday from 8 am to 4:30 pm  
and we will gladly supply this information to you.

LETTERS TO THE EDITOR

LETTERS TO THE EDITOR RECEIVED	1	DEFERRED TO NEXT EDITION BY	
DENIED BY EDITORIAL COMMITTEE	0	EDITORIAL COMMITTEE	0
Exceeds 250 word maximum	0	DENIED BY BOARD OF DIRECTORS	0
Content	0	DEFERRED TO NEXT EDITION BY	
Not a property owner	0	BOARD OF DIRECTORS	0
"THANK YOU" LETTERS RECEIVED*	0	* Thank you's do not require editorial committee approval	

Submit Letters to the Editor by sending to "Editor, PML News"  
Mail: 19228 Pine Mountain Drive, Groveland, CA 95321  
Email: PMLNews@sabredesign.net

PLEASE NOTE THAT ALL LETTERS  
APPEAR IN THE ORDER THEY WERE RECEIVED BY THE PML NEWS

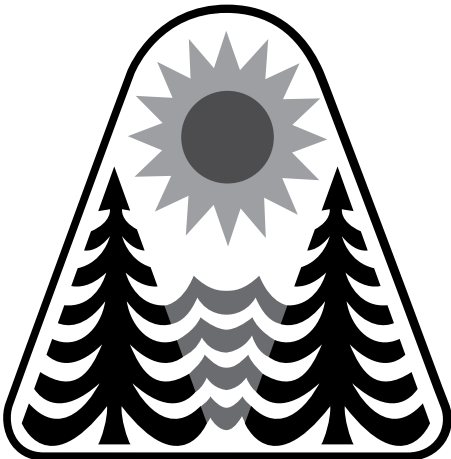
The Pine Mountain Lake News welcomes letters and articles for publication provided they meet the criteria established in the current PMLA Editorial Policy (See excerpt below – entire policy on file at the Administration Office). Letters must be limited to 250 words, typewritten using upper and lowercase letters or neatly printed (no all-capital material) and signed with name, mailing address, PML unit/lot number, and day/evening telephone numbers by a property owner in good standing. **LETTERS MUST BE RECEIVED BY THE EDITOR BY THE 10th OF THE MONTH.** Letters deemed by the Editorial Committee to be improper will not be accepted. Readers are advised that **THE OPINIONS EXPRESSED IN THESE LETTERS ARE THOSE OF THE INDIVIDUAL AUTHORS, NOT OF THE PMLA, THE PINE MOUNTAIN LAKE NEWS, NOR THEIR EMPLOYEES.**

CONCERNED ABOUT THE FUTURE

As of this letter printed we will have a new board or we will have the same status quo board.  
We will have a new group of 5 individuals taking all of our interests in mind or, the same board with more mistakes, blunders, and fines possibly forthcoming. The board same or new will need to address the contingencies and litigation as stated in note 8 of the published financial statement.  
In 2022 and 2023 the Association recieved tax penalty notices regarding the affordable care act fillings for employees. The matter is currently under

review with an attorney for resolution.  
This is a scary statement that there could be another fine forthcoming to the association.  
Either way we are paying an attorney to work thru this. The question to all of us here, is the past mistakes, and decision's from the recycling people that feel compelled to spend millions of our reserves money without a home owner vote and no transparency, good enough?  
No it is not acceptable and hopefully a new board will prove this.

D & S Maloney  
Groveland, Ca



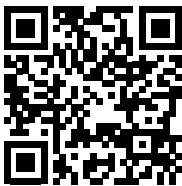
MAINTENANCE MATTERS

RICK LAFFRANCHI – MAINTENANCE AND OPERATIONS MANAGER

*"If it could be like this always-always summer, always alone, the fruit always ripe."*  
Evelyn Waugh

August is upon us; the days are hot the lake is cool and we have one more month to celebrate summer. As with every month the Buildings and Grounds crew have their work cut out for them. The painters on the crew have multiple buildings that require treatment. The Aquatic Center has two faces that received siding that require paint the new storage shed at the Marina also requires paint and finally after some delay the 3 restrooms at the Campground will be painted. The construction crew will move from the Marina to the Country club and will start work on the sidewalk that connects the lower deck to the stairway that extends to the cart building. This work is targeted for completion by the end of August. The technicians will

continue with gate updates, preventative and predictive work orders and requested work orders along with the emergency repairs that inevitably pop up.  
The Facilities crew as always is incredibly busy performing asphalt Curb work throughout the association, this work helps to divert water correctly from the road, while protecting the road edge from the inevitable erosion. Also on tap for the roads crew is crack sealing many of our roads develop cracks due to the constant expansion and contraction, crack sealing allows us additional time before a repave becomes necessary. Lake clearing to include lily's, grass and the occasional escaped float toy continues, remember as the water level in our lake drops obstacles and obstruction may be exposed, so if you see something make sure to report it so it can be dealt with accordingly. This year is flying by and there is still so much to do, so back to work for us, and to all of you we hope for a wonderful August.



PML Website



PML Facebook Page

BE SURE TO LIKE OUR PMLA FACEBOOK PAGES:

- Facebook.com/PineMountainLakeCA
- Facebook.com/PMLARecreation
- Facebook.com/PMLMaintenanceDept
- Facebook.com/PMLGrill
- Facebook.com/PMLAEquestrianCenter



# CALLING ALL CANDIDATES! BOARD OF DIRECTORS ELECTION NOVEMBER 16, 2024

Pine Mountain Lake Association is seeking candidates for two (2) positions, three-year terms, on its Board of directors. These are volunteer positions.

THE DEADLINE TO FILE NOMINATION PAPERS IS  
THURSDAY, AUGUST 22, 2024, 5PM

To be eligible to be a candidate for election to the Board of Directors, the candidate must a) be a Member of the Association b) who is current in the payment of regular and special assessments, unless the nominee has paid the regular assessment under protest pursuant to Civil Code section 5658, entered into a payment plan pursuant to Civil Code section 5665, or has not been provided the opportunity to engage in internal dispute resolution pursuant to Civil Code section 5900 et seq.; and c) is insurable under the Association's existing fidelity bond.

Board application information is available at the **The Inspectors of Election (TIE)** via email at *info@theinspectorsofelection.com* (PREFERRED METHOD), via mail at 2794 Loker Ave W, Suite 104, Carlsbad, CA 92010, or via fax at 1 (888) 211-5332. Applications and nominations must be received no later than 5:00 pm on Thursday, August 22, 2024.

Serving on the Board requires a commitment to attend monthly Board Meetings, Executive Sessions and other interim meetings, as required, and to review materials diligently prior to taking Board action.

According to CAI (Community Associations Institute), characteristics of good Board members include being fair and impartial, detail-oriented, dependable, flexible, people-oriented, a team player, punctual and able to weigh the overall good for the majority of owners against the rights, freedom and the good of the individual.

If you are interested in becoming an active participant who makes decisions for the Pine Mountain Lake Association membership and you are willing to devote your time for this purpose, we encourage you to submit an application and nomination materials for candidacy to The Inspectors of Election (TIE) by 5:00 PM, Thursday, August 22, 2024.

Would you like to be more  
involved in your community?  
*Here's your chance!*



Pine Mountain Lake Association has openings  
on the following committees:



*Budget and Finance Committee*

*Covenants Committee*

*Editorial Committee*

*Environmental Control Committee*

*Equine Advisory Committee*

If you are a property owner and wish to be considered for committee membership, please complete an "Application for PMLA Committee Assignment" form available on the PMLA website at **www.PineMountainLake.com** or from the Administration Office

Mail the completed form to:  
**Pine Mountain Lake Association**  
**Attention: Janessa Owens**  
**19228 Pine Mountain Drive**  
**Groveland CA 95321**

*or*

Email to  
**j.owens@pinemountainlake.com**  
or drop it by the  
Administration Office  
front desk

*www.PineMountainLake.com*

**www.PineMountainLake.com**

PML SAFETY REPORT

Guest Passes Issued	2,246	1,806	4,192	6,438
Vendor Passes Issued	989	424	1,520	2,509
Temporary Resident Passes Issued	2,123	2,707	5,593	7,716
Vehicles Admitted	27,669	21,082	48,415	76,084
Vehicles Refused Entry	689	412	1,307	1,996
Phone Calls Received	6,079	2,936	8,185	14,264
Residential Alarm	13	2	10	23
Animal - Loose	24	9	28	52
Animal - Impounded	8	2	12	20
Animal - Dead/Injured	6	9	27	33
Animal - Disturbance	1	2	4	5
Patrol Assist	308	169	465	773
Public Assist	22	12	31	53
Welfare Check	6	1	6	12
Transport	8	0	6	14
Traffic Hazard	3	0	1	4
Traffic Control	3	2	2	5
Excessive Speed/Reckless Driving	1	2	9	10
Gate - Tamper	0	0	0	0
Gate- Follow Through	23	20	41	64
Gate - Malfunction	18	4	23	41
Gate - Struck by Vehicle	12	7	21	33
Control Burn Reported	164	7	77	241
Fire Safety - Smoke Complaint	4	2	4	8
Hazard - Tree Down	6	0	1	7
Residential Disturbance	6	2	5	11
Amenity Burglary*	1	0	0	1
Residential Burglary	1	0	1	2
Grand Theft	1	0	0	1
Petty Theft	0	2	2	2
Trespassing	2	3	7	9
Vandalism	2	1	1	3
Property Damage - PML	1	0	4	5
Property Damage - Resident	3	0	0	3
PML Regs Violations Resident	1	0	3	4
PML Regs Violations Guest	0	0	0	0
Vehicle - Citation Issued	4	1	4	8
Vehicle - Accident PML	1	1	1	2
Patrolling Unit	3,749	1,006	2,922	6,671
Amenity Security Check	6,211	1,832	6,170	12,381
Residence Security Check	543	151	398	941
Monitoring Tennis Courts	0	0	0	0
Weapon Violation	0	0	0	0
Fixed Post	7	0	3	10
Courtesy Notice Issued	37	18	39	76
All Other Fees Collected	\$119,104	\$140,495	\$300,257	\$419,360.76

CONGRATULATIONS  
ROB ABBOTT

Congratulations to Rob Abbott, our Golf Course Superintendent, on reaching an incredible 35-year milestone with Pine Mountain Lake Association. His contributions to the Golf Course are greatly appreciated, and we look forward to many more years of excellence. Thank you, Rob, for your remarkable dedication.

Board President, Chuck Obeso-Bradley (left) and Rob Abbott (right) are pictured.



GOVERNING DOCUMENT ENFORCEMENT  
ACTIONS JUNE 2024

Courtesy Notices	45
Notice of Non-Compliance	8
Final Notice of violation	2
Fines Assessed	2
Member Service	853

24/7 RENTAL  
COMPLIANCE HOTLINE

IT JUST GOT EASIER TO REPORT, PROVE,  
AND RESOLVE NON-EMERGENCY  
SHORT-TERM RENTAL RELATED PROBLEMS  
IN REAL TIME, 24 HOURS A DAY, 7 DAYS A WEEK

1-209-231-4543



# SHHH! KEEP YOUR SHORT-TERM RENTAL FROM BEING THE LOUD HOUSE

SALLY OWENS - RENTAL COMPLIANCE COORDINATOR

Pine Mountain Lake is a residential community whose residents value calmness and tranquility, particularly during night hours. Short-Term rentals, must maintain a quiet atmosphere to ensure they do not disrupt the peace of their surrounding community. Excessive noise from renters can lead to disturbances and strained relationships with neighbors. By prioritizing quiet and respectful behavior, short-term rental owners can encourage positive relationships with the community, enhance renter experience and uphold the overall harmony of the community.

To learn more about our rules regarding Article VIII Section 4. Prohibition of Noxious Activity, scan the QR code to access [pinemountainlake.com](http://pinemountainlake.com), select the "Members" tab and select "Governance"



to sign in and access our Governing Documents. While you are checking out our website, be sure to check out the Community Standards page. There you will find other resources such as the Guest & Renters Handbook, a resource for renters to learn about the PML community standards and provide them with information about our fun amenities. You will also find the link to the Rental Compliance Hotline to report non-emergency short-rental problems and our FAQs for answers to those commonly asked questions.

Tuolumne County Fire Department

now requires all short-term rentals to have a Fire and Life Safety inspection. In order to schedule an inspection, please start with verifying that your rental property is registered with Tuolumne County's Tax Collectors Office. If you need to register, please call 1-209-533-5544. After you have completed your registration, you may proceed with scheduling your fire inspection.

As always, please do not hesitate to reach out to me with any questions or concerns by calling 1-209-962-1245 or sending an e-mail to [rcc@pinemountainlake.com](mailto:rcc@pinemountainlake.com). Happy Renting!



## Pine Mountain Lake Golf & CC Family Golf Fun Day

**Saturday, August 17**  
**5:00pm until 7:00pm**  
At the Short Game Practice Area

**Short Game Contests, Food & Fun for Adults and Children of Any Age**

Open to Pine Mountain Lake Property Owners and their Guests

**\$10.00 Per Person**  
Includes: Hot Dog, Beverages & Prizes



**Call the Golf Shop to Sign-up 1-209-962-8620**

## GATE ACCESS

CARRIE HARVEY – COMMUNITY STANDARDS SPECIALIST

August is here, Summer is flying by! Hot weather, BBQ's, lake days with family and friends, all these things bring more visitors to Pine Mountain Lake. When you are planning to have visitors come up to your home, please remember to also put their names on [gateaccess.net](http://gateaccess.net). When they arrive at the Main Gate to check in, it will be quick and easy, for them, and for our Main Gate Staff. Please make sure your visitors are aware of the check in process, they cannot go to another gate and wait for you to "click" them in, and you cannot use your card to let them in the gates.

Please do not allow your visitors to follow you through any of our entry gates, doing so could damage our gates and/or your vehicle. It could also lead to a letter, and possibly a fine. So please refrain from sharing your gate devices with anyone. Please refer to the Pine Mountain Lake Resolutions I have provided for you

below, you can also find them on our website under the Governance tab. If you have any questions, please do not hesitate to reach out to me. You can reach me at 1-209-962-1242 or [compliance@pinemountainlake.com](mailto:compliance@pinemountainlake.com) Stay safe, and enjoy your Summer!

**Resolution 04.04 – Gate Card, Clicker Policies and Procedures.** The Association reserves the right to control the use of devices to access Pine Mountain Lake. Unauthorized use of gate cards or clickers will be subject to deactivation and/or confiscation. Access clickers are not available to anyone other than the property owner without the General Manager's approval.

**Resolution 95.09 - PML access gate single-entry policy.** All damage done to a gate or equipment caused by individuals following a vehicle through the gate attempting improper entry or exit will be the responsibility of the individual, including parts and labor.

**Beginning July 29th  
The 19th Hole Lounge  
will be**

**OPEN 7 DAYS  
PER WEEK**

**Monday & Tuesday 10AM – 5PM (Kitchen closed)**

**Wednesday, Thursday, & Sunday 11AM – 10PM**

**Friday & Saturday 11AM – 12AM**



**For more information  
please call  
1 (209) 962-8638**



## HEATHER PARKHURST – FOOD & BEVERAGE DIRECTOR

*PMLGrill.*

We look forward to seeing you all at The Grill at Pine Mountain Lake. Come for the exquisite food and drinks, stay for the great company and live entertainment. Summer is almost over, so let's make this August unforgettable!

This August, we're excited to introduce a special promotion on Fridays from 3-5 pm. You might have already seen the eSNAP detailing our Wine Down Fridays! This delightful event will feature a curated menu of small plates to choose from, with a special selection of wines by the glass available. It's the perfect way to unwind after a long week and enjoy the beautiful summer evenings with friends and family. For more information or to make inquiries, please call us at 1-209-962-8638 or visit us on Facebook at *Facebook.com/*

**August 2nd ..... Karaoke**  
**August 3rd ..... DJ Jordan with**  
**Sounds and Entertainment**  
**August 10th ..... *Doug Earley***  
**August 17th ..... *Happy Times Posse***  
**August 24th .... DJ Mike with AM Entertainment**  
**August 31st ..... *Kickstart Band***

12765 MUELLER DRIVE • GROVELAND, CA. 95321

*Stunning Vistas & Surroundings*

E MOUNTAIN L

Mountain Golf  at its Finest!

[www.PineMountainLake.com](http://www.PineMountainLake.com)

1-209-962-8620



# ENERGY SOLUTIONS

GENERATORS, SOLAR & BATTERIES

Local service with installation.



[www.sol-training.com](http://www.sol-training.com)  
24 hour answering service  
(650) 681-9445  
[thuggett@sol-training.com](mailto:thuggett@sol-training.com)  
CA license #858377



# Groveland Rotary

Presents our Annual

# Shrimp Fest



## SATURDAY, AUGUST 17, 2024

*Louisiana Style Shrimp and Sausage*  
with all the Trimmings

**Bar opens 4:30pm ... Dinner 5:30pm**

**Pine Mountain Lake Stables**  
**\$40 For Adults \$45 at the Gate**

**Call or Email for Tickets**  
**Greg Cramblit (209) 962-0607**  
or [gregcramblit@gmail.com](mailto:gregcramblit@gmail.com)

**All Proceeds Benefit the Groveland Community**  
**and Rotary International Projects**





## FRESH SEAFOOD FLOWN IN FROM HALF MOON BAY

HERE'S HOW TO ORDER:

1. Go to [sierraflyingfish.com](http://sierraflyingfish.com)
2. Select items & add to your cart
3. Place your order
4. Pick up your order at our shop located in Groveland next to the Iron Door Saloon
5. Enjoy!

We also carry limited in-shop weekly specials that don't require pre-ordering

Don't see something you want?  
Custom orders also available!  
Check our website for shop hours



**Mention this ad and receive 20% off service call**



**Voted best for 6 years**



**Reliable, Dedicated Service**  
Offering free estimates on upgrade or new systems



**Quality You Can Trust**  
**(209) 588-0207**  
**fousthvac.com**  
Bonded & Insured  
• License #841677

21026 080720udtv



PML residence, NO more waiting a week for service, usually same day, when you call before 1 pm.



**CHRIS  
LEVERING  
HVAC**

**Since 1987**

California Contractor  
License #  
797190 Insured &  
Bonded

# HVAC

## SERVICE AND REPAIR

Are you tired of feeling too hot in the summer and too cold in the winter? Look no further than Chris Levering Heating & Air Conditioning, your trusted source for expert HVAC service and repair! I have no employees.

If no credit card present there is a 3.5% surge charge

- ✓ HVAC System Repair & Maintenance.
- ✓ complete diagnostics of your system.
- ✓ 2023 winter power outages/brown outs/surges could of effected your electrical components. Get your system checked out before the summer.
- ✓ If you have an older system that uses R22 freon, I can help.
- ✓ One year parts & labor warranty.



**209.732.4622**

20231 Pine Mountain Dr  
Groveland

**Free service call for PML residence, with repair. Not good with any other offer**

# TEE TO GREEN

ROB ABBOTT – GOLF COURSE SUPERINTENDENT

**B**ALL MARKS, and lots of them. I am beginning to think golf etiquette has been forgotten among some players as we are seeing more ball marks than I care to see. My Greens mowing staff is spending an inordinate amount of time repairing damage that is easy for most players to handle on their own. When we pull up to a green and have twenty plus marks to repair and eighteen holes of this, they add up and take time. As our greens are in top notch condition these ball marks are slight and not tearing the turf, they are just leaving slight depressions. There is the possibility some just aren't seeing them, so I would ask for everyone to pay attention and assume you have left a mark to repair, fix yours and a few more.

Repairing these slight depressions is very important for greens playability. A ball mark can cause the grass in the depression to die, leaving not just a scar but also a dent in the putting surface. This is not only unsightly but also can knock putts offline. Repairing a ball mark restores a smooth surface and helps keep the grass healthy. The ball mark repair tool is an essential piece of equipment that every golfer should have in his or her golf bag and knowledge in how to properly use it.

The first step in repairing ball marks is to take your ball mark repair tool and insert the prongs into the turf at the edge of the depression. Do not insert the prongs into the depression itself, but at the rim of the depression. The next step is to push the edge of the ball mark toward the center, using your ball mark repair tool in a twisting motion. This is the step where some golfers can damage turf. Many golfers believe the way to fix a ball mark is to insert the tool at an angle, so the prongs are beneath the center of the crater, and then to use the tool as a lever to push the bottom of the ball mark back up even with the surface. Do not do this, pushing the bottom of the depression upward only tears the roots, and kills the grass. Remember use the prongs to push grass at the edge of the depression toward the center. Once you've correctly repaired the ball mark, simply pat the repair with your putter or foot to smooth the surface.

Play well, play often, and remember to do the little things such as ball mark repair and raking a bunker following that sand shot so the players behind you can enjoy the same course you are.

**PLACE AN AD TODAY**

Go to our website for more information and prices.

**www.PineMountainLake.com**

# FROM THE FRINGE

MIKE COOK – PGA HEAD GOLF PROFESSIONAL

The Golf Shop is open 7 days a week and my staff and I are here to assist you so please call us if you have any questions at 1-209-962-8620.

### UPCOMING EVENTS

**Ladies 9-Hole Golf Club**  
Weekly Play Day – Thursdays

**Ladies 18-Hole Golf Club**  
Weekly Play Day – Thursdays

**Men’s Golf Club**  
Hamburger Tournament;  
2-Man Team – Saturday August 3

**Men’s Golf Club**  
August Shamble; 4-Man Team,  
Wednesday August 14

**Family Golf Fun Day**  
Golf, Food & Fun for the Family  
Saturday August 17 (Date Change)

**Men’s Golf Club**  
Men’s/Ladies Mixer; 4-Person Scramble  
Saturday August 24

**GOLF COURSE FIRST TEE TIME**  
In August, the first tee time of the day will be 7:00am. If you would like to make a reservation or have any questions, please call the Golf Shop. PML Property Owners can make a reservation up to 14 days in advance.

**DRIVING RANGE**  
Through August 31, the Driving Range will be open from 7:00am until 5:00pm.

**NEW PINE MOUNTAIN LAKE GOLF WEBCAM**  
On the pinemountainlake.com website we now have a live webcam that looks down the 10th hole. Click on the Amenities tab, then go to and click on the 18 Hole Championship Golf Course tab, then scroll down to and click on the Golf Course Webcam. You will be able to see the live conditions at the Golf Course.

**FAMILY GOLF FUN DAY**  
On Saturday August 17 (Date Change), there will be a Family Golf Fun Day on the Practice Short Game Area. Golf Games, Food, Beverages & Fun. This event is be open to adults and children of all ages. Call the golf shop at 1-209-962-8620 to sign-up. \$10 per person; Includes: Hot Dog, Beverages & Prizes.

**MOTHER LODGE INVITATIONAL**  
The 2024 Mother Lode Invitational was held on Friday/Saturday July 21/22. The weather was great and the 64 players had a great time on the course.  
**Gold Flight Winners** – Alec Vaughn & Garrett Gregg  
**Silver Flight Winners** – Vince McEvoy & Paddy Daly

A special Thank You to the Major Sponsors - Pat Hennigan, Andrew & Tim Hugan, Joel Pluim Construction  
**Save the date for the 2025 Event – June 18, 19 & 20, 2025**

**HOLE-IN-ONE’S**  
Congratulations!!! To the following Pine Mountain Lake Golf Club Members who made a Hole-In-One at Pine Mountain Lake in 2024:  
**Paul Purifoy May 1 Hole #17 158 Yards**  
**Matt Alvarez July 5 Hole #14 143 Yards**

**CALLAWAY GOLF CLUB TRIAL SETS**  
The NEW Callaway PARADYMI Smoke golf clubs are available in the Golf Shop for you to try out. We have trial sets that you can take to the range or out on the Golf Course. For more information, call or come in to the Golf Shop.

**SOUTHERN VALLEY SENIORS**  
If you are a PML Property Owner, a Member of the PML Men’s Golf Club and are 50 years of age and above, you qualify to join the PML Southern Valley Seniors (SVS). The SVS play home & away events with other Golf Courses in the Southern Valley, such as Turlock CC, Oakdale CC & Spring Creek CC, to name a few. If you are interested call

the Golf Shop and we will put you in touch with the SVS PML Captain.

**PUNCH CARDS**  
Pine Mountain Lake Association Property Owners can save up to \$6.00 per round by purchasing a Punch Card in the Golf Shop. There are; 9-Hole & 18-Hole Punch Cards available. For more information call or come into the Golf Shop.

**NEW PINE MOUNTAIN LAKE PROPERTY OWNERS**  
If you are a new Pine Mountain Lake Property Owner and you are interested in getting acquainted with other Property Owners who play golf, call the Golf Shop 1-209-962-8620 and we will let you know what golfing groups you may be able to join or what golf activities are planned for the year.

**MEN’S & LADIES GOLF CLUBS**  
If you are interested in joining the Men’s or Ladies Golf Clubs, you can call the Golf Shop 1-209-962-8620 and we will give you the information you need. Applications are available in the Golf Shop. The Men’s Club has a website ([www.pmlmgc.com](http://www.pmlmgc.com)) that you can visit to sign-up online for your membership (see Men’s Club eligibility rules) or to print an application. Once you are a Men’s Club Member, you can sign-up for tournaments online.

**PROPERTY OWNER ANNUAL GOLF CART RENTAL AGREEMENT**  
Every person who drives a golf cart on the course, is required to sign a golf cart rental agreement at the time of registration, before they can drive a golf cart. PML Property Owners sign the agreement one-time and that covers the entire year. If you have not signed your agreement you can go to the PML website ([www.pinemountainlake.com](http://www.pinemountainlake.com)) and fill it out and sign online or you will be asked to sign the form when you register in the Golf Shop. Click on amenities, then click on golf and you will see the agreement with other forms available. If you have any questions, please call the Golf Shop 1-209-962-8620.

**CARE OF THE GOLF COURSE**  
**TAKING CARE OF THE GOLF COURSE IS EVERYONE’S**

**RESPONSIBILITY; PLEASE DO YOUR PART!**  
**Replacing Divots** – PML is a DIVOT FIRST facility; that means that if the divot is intact or even a portion of the divot is intact, we want you to replace the divot first and press the divot down firmly with your foot. When an intact divot is replaced, it will begin to root right away but a mulch filled divot will take weeks to fill in. If the divot hole is not totally filled in by the divot that you replaced then fill the rest of the hole with mulch and press down the divot firmly with your foot. If the divot is not intact, then fill the divot hole with mulch and smooth the mulch with your foot so it is level with the ground.  
**Repairing Ball Marks** – This is one of the major negatives in our great game; players either do not know how to repair ball marks correctly or don’t even attempt to repair them. Here is the correct way to repair a ball mark:  
Insert the divot tool just outside the edge of the ball mark, use the divot tool to mend in the outside portion if the ball mark towards the middle. Then use your putter to tap down the repaired turf. If a ball mark is repaired properly, you will not even be able to tell that there was a ball mark. **NEVER PULL UP THE MIDDLE OF THE BALL MARK.**  
**Raking Bunkers** – We are back to normal procedures concerning bunkers; **PLEASE** make sure that you rake the bunker after you have hit your shot.  
**Golf Carts** – Driving golf carts on the fairways has a negative effect on turf conditions over time. **PLEASE** use the 90-degree rule posted in each golf cart in order to minimize the cart traffic on the fairways.

**PINE MOUNTAIN LAKE GOLF APP**  
Pine Mountain Lake Golf & CC has an app that you can download FREE from the app store. There are many fun and useful features on the app such as:

- Golf course GPS
- Players can measure their shots
- Golf course hole by hole flyover
- Interactive scorecard
- Score posting
- Player profile and automatic stats tracker
- Food & beverage menus and ordering
- Receive notifications about special events
- Weather information



# BUILDING OUR COMMUNITY

SUZETTE LAFFRANCHI – COMMUNITY STANDARDS DIRECTOR

Before any changes or improvements are made to your property or the exterior of your home, you must first receive approval from the Environmental Control Committee. All request for ECC approval must be submitted by the Lot Owner or have a signed agent form from the owner. It is the property owner’s responsibility to make sure they are in compliance with the CC&R.

Having your project approved, prior to starting, will save you time and money in the long-run. Violations of these rules will result in fines and removal or correction cost.

For example, if you paint your house and you choose a color that has not been reviewed by the ECC, you may

end up having to repaint your house. This scenario would be avoided if the colors had been reviewed by the Committee. They would have told you before-hand and you could have chosen a color that met the requirements for paint color.

Another situation the Committee deals with is the installation of fences without prior approval. When a fence project is submitted to the Committee, several things are reviewed; placement on the property and materials to be used are two important considerations with a fence. Without prior approval, a property owner can run into costly changes and significant delays that would have been avoided if the project had been properly reviewed and approved.

The same goes for any improvement, whether it’s a driveway, deck, dock, exterior lights... anything exterior. Did your contractor get the proper building permit? Is there any other agency that needs to be notified such as the Department of Fish and Wildlife or the Tuolumne County Airports Division? Getting prior approval not only is required by the Governing Documents, it assures the property owner will not be required to remove or re-do their project. The Community Standards Department is here to assist you with all aspects of the approval process for your improvement.

For more information or to submit your improvement please visit our web. You will find our page at [www.pinemountainlake.com](http://www.pinemountainlake.com) under the



resource tab, click on the Community Standards Icon or Scan the QR code for quick on the go access. Let us take the steps to protect and preserve the natural beauty and character of Pine Mountain Lake and all it has to offer.

As always, if you have any questions, please feel free to reach out to me, Suzette Laffranchi at 1 (209) 962-1241 or [communitystandards@pinemountainlake.com](mailto:communitystandards@pinemountainlake.com). I am happy to guide and provide you with the information you need to navigate our governing documents to maintain our beautiful community.

[www.PineMountainLake.com](http://www.PineMountainLake.com)

## ALL PMLA HOMEOWNERS EMAIL OPT-IN PROGRAM

The Association is pleased to offer a money saving program available to all PMLA property owners. This program allows you to receive many of the documents we are required to provide to you via email. This option is important because:

**COST SAVINGS** – The Association is spared the expense of printing and mailing many documents to those property owners who sign up.

**ENVIRONMENTAL SAVINGS** – Less paper means less trash and reduced damage to the environment both in the disposal and production of paper and envelopes.

**REDUCED CLUTTER** – By receiving documents via email there is less paper for you

to deal with. All documents can be saved on your computer and viewed at your discretion.

**TIMELY RECEIPT** – Documents sent electronically are received in minutes as opposed to the days it takes for regular mail to arrive.

If these sound like good reasons to you, please sign up for the Document Email Program today using the attached form. Simply return the completed form to the Administration office at your convenience.

If you have any questions on this program please feel free to give us a call (1-209-962-8600) and we will be happy to explain the details and the advantages.

## PLACE AN AD TODAY

With a classified or display ad in the Pine Mountain Lake News your ad will go directly to every PMLA member every month.

Go to our website for more information and prices.

[www.pinemountainlake.com/pmla-newspaper/](http://www.pinemountainlake.com/pmla-newspaper/)

Mail form below to:

Pine Mountain Lake Association

19228 Pine Mountain Drive • Groveland, CA 95321



YES, I WANT TO ENROLL IN PMLA’S EMAIL STATEMENT AND DOCUMENT SERVICE. I ACKNOWLEDGE AND AGREE TO THE TERMS AND CONDITIONS SET FORTH ABOVE AS A CONDITION FOR PARTICIPATION IN THIS SERVICE.

PMLA Account Number: \_\_\_\_\_ Unit/Lot #: \_\_\_\_\_

Name: \_\_\_\_\_ Phone #: \_\_\_\_\_

Address: \_\_\_\_\_

Email Address: \_\_\_\_\_

Signature: \_\_\_\_\_

Please read the Terms & Conditions for the email opt-in program on the website, [www.pinemountainlake.com](http://www.pinemountainlake.com) under the Resources/Forms > Opt-In Email Program.



# FROM PMLA SAFETY COMMITTEE

BOB ASQUITH – PMLA SAFETY COMMITTEE

The Pine Mountain Lake Safety and Security Committee is a standing committee authorized by the PMLA Board of Directors to inform its decision making and promote its mission. The Committee meets every month.

Join Our Committee Meeting: Members may attend our committee meetings.

Our next meeting is August 14th at 9am via Zoom. Please email [safetyandsecuritycommittee@pinemountainlake.com](mailto:safetyandsecuritycommittee@pinemountainlake.com) to obtain your invitation.

- Your Safety Committee will be researching and making recommendations to the BOD during 2024 on the following topics:
- ✓ Partnering with CERT to conduct Fire & Communications Preparedness Workshops. July 21st at PML Lake Lodge from 1PM to 4PM featured special presentations by CALFIRE, Tuolumne County Office of Emergency Services, Sheriff's Community Services Unit, and Tuolumne County Animal Control. Watch Social Media for more in the months ahead.
  - ✓ Providing members, guests, and Short-Term Renters with vital emergency information through information posted inside the front door, mirror hangers and electronic messaging. We are presenting information to mark "T" intersections as to which way out.
  - ✓ Began discussions about PML street address signs. PMLA has specific requirements, and the Fire Department has suggestions. The committee will be bringing those together in a plan.
  - ✓ Discussed improvements to railings at PML facilities throughout the community.
  - ✓ Continued to develop and plan for power outages. Continued discussions for using PML facilities for Warming, Cooling, Charging

- functions during outages.
- ✓ Continued discussions to improve PMLA emergency communications and provide members with relevant emergency communications information. Reviewed GMRS radio report and noted more repeaters coming online with some communications reached Oakdale. GMRS basic training will be announced soon. Watch Social Media for announcements.
  - ✓ Continue to work with PMLA to improve the flow of traffic at the main gate during peak times. Use Elder Lane to avoid the backups at those times. CERT and TC-CSU will be assisting with traffic management at the main gate during the Fourth of July weekend.
  - ✓ Continued to locate and articulate measures to reduce speeding within PML. We are open to other suggestions that will make our Pine Mountain Lake community safer for all members, guests, and renters. Please direct comments to our email above.
- Firewise Communities**—Contact the Safety Committee (email address below) for details.
- You can start a Firewise community and make your area SAFER. It is easy.
  - SAVE on your Homeowners Fire Insurance.

**Emergency Evacuation**—These maps all are approved and are ready use. Maps show the routes out of PML and the major evacuation routes away from Groveland. Additional emergency information can be found at <https://www.pinemountainlake.com/emergency-information-and-resources/>

Evac Maps are on the PMLA website. Download & print your copy. <https://www.pinemountainlake.com/.../PML-Evacuation-Maps.pdf>

Please email comments to: [safetyandsecuritycommittee@pinemountainlake.com](mailto:safetyandsecuritycommittee@pinemountainlake.com)

# WILDFIRE EVACUATION CHECKLIST

MAKE LEAVING SAFELY SECOND NATURE

Plan, prepare and practice these simple tips that can help make leaving your home quicker, easier and safer in the event of a wildfire and reduce your risk of injury.

## PRE-FIRE: PLAN, PREPARE AND PRACTICE BEFORE A WILDFIRE OCCURS.

A wildfire may make it necessary for you and your neighbors to evacuate. Plan, prepare and practice wildfire evacuation together and with your local emergency services. This can help save lives!

### PRE-FIRE: PLAN

- o Sign up to receive local emergency alerts and warnings on all home phones, cellphones and other devices.
- o Know what your community's emergency notification and evacuation plans are.
- o Plan an evacuation route away from your home and other alternate routes in case the first route is closed or threatened by wildfire.
- o Make sure your designated contact knows your plan and to communicate with you to know you are safe.
- o Know the evacuation plans for locations where household members regularly are such as workplaces, schools and commuter routes.
- o Plan to evacuate family, friends or neighbors who have disabilities.
- o Maintain roads and bridges on your property and in your community if you are responsible for them. Improve roads to have 2 ways out and make them wide enough for emergency vehicles. Make sure everyone can open gated roads. Post load limits on bridges. Build culverts with materials that won't melt.

### PRE-FIRE: PREPARE

- o Prepack emergency supply kits.
- o Back vehicles into your garage or park them in an open space facing the direction of escape.
- o Keep the gas tank in vehicles at least

- half full.
- Pre-fire: practice
- o Practice often with everyone in your home, using at least 2 ways out of your neighborhood.
- o Participate in community wildfire drills. If something could keep you from leaving successfully, such as a locked gate, address it immediately.
- o Practice evacuating animals and pets, including how to operate trailers and other vehicles needed to transport them. Know what resources are needed for their care in case of evacuation.

### DURING A WILDFIRE EVENT

- o Charge all cellphones in case of power loss.
- o Know the local fire conditions and be prepared to leave at a moment's notice.
- o Leave early if you are concerned. It may take more time than you think to evacuate due to heavier traffic and decreased visibility, or if you have small children, pets or livestock, or have physical challenges.
- o Go promptly when told to evacuate.
- o Don't drive out with trailers or large vehicles like RV's, especially if you are unfamiliar with operating them. A stalled or abandoned vehicle makes it hard for others to leave and first responders to get into the area.
- o Keep your car windows up and the air conditioning on to prevent embers and smoke from entering the vehicle.
- o Continue to listen for additional evacuation instructions.

### AFTER EVACUATING

- o Make sure that everyone is okay once you are out. If someone is injured or not feeling well, get immediate assistance.
- o Inform your designated contact as soon as you are safe.
- o Don't return to your home until you are told you can safely do so.

[usfa.fema.gov](https://usfa.fema.gov)

# RECREATION UPDATE

MELODY WISDOM – RECREATION AND SEASONAL RECREATION MANAGER

## PINE MOUNTAIN LAKE INDEPENDENCE DAY CELEBRATION: A HOT DAY FILLED WITH COOL FUN

Despite the sweltering 105-degree heat, Pine Mountain Lake’s Independence Day celebration was a resounding success, filled with fun, creativity, and community spirit.

Throughout the day, enjoyable music by DJ Jordan played at the marina, providing a delightful soundtrack to the festivities and keeping the energy high despite the heat.

One of the main attractions was the Disney-themed boat parade, showcasing the community’s creativity and dedication. The parade featured a variety of beautifully decorated boats, each bringing a beloved Disney story to life on the water. The winners in each category were:

**Electric Boats:** “Jungle Book” by Burke Nicholson and friends, capturing the adventurous spirit of Mowgli and his jungle companions.

**Gas Pontoons:** A tie between “Beauty and the Beast” by Alyssa Ramirez and friends, and “Pirates of the Caribbean” by Lisa Artacho with friends and their dogs. Both entries enchanted spectators with their intricate designs and lively presentations.

**Ski Boats:** “101 Dalmatians” by the Lackovic and Slezak families, delighting everyone with their spot-on (pun intended) portrayal of the classic tale.

One of the highlights was the appearance of Uncle Sam (Stilts), towering above the crowd and spreading cheer. His presence added an extra layer of excitement and patriotism to the event, delighting both children and adults alike.

The day concluded with a breathtaking fireworks display, lighting up the night sky and leaving attendees in awe. The vibrant colors and spectacular explosions were the perfect end to a day of celebration and community bonding.

Despite the high temperatures, everyone had a wonderful time, coming together to celebrate the nation’s independence in true Pine Mountain Lake fashion. The success of this year’s event is a testament to the community’s creativity, and festive spirit.

Here’s to many more memorable celebrations in the years to come!

## SUMMER FUN CONTINUES

As July fades into cherished memories of barbecues, fireworks, and lazy days by the lake, many might think the season’s excitement has reached its peak. However, you have the opportunity to extend your summer adventures at the Pine Mountain Lake Equestrian Center.

So, don your riding boots, pack your sense of adventure, and head to the Pine Mountain Lake Equestrian Center to discover why summer fun doesn’t end with July. Experience the joy of horseback riding with a trail ride or lesson and create lasting memories that will carry you through the seasons to come.

For more information, contact Melody Wisdom at 1 (209) 962-8604

# FROM YOUR DISTRICT 4 SUPERVISOR

SUPERVISOR KATHLEEN HAFF – TC DISTRICT FOUR

## WHAT’S TAKING SO LONG??

It was a Sunday, on June 26, 2023, when a fire broke out in the Groveland Community Hall. We all remember that sinking feeling when we heard about it. Although the fire was managed and put out quickly, the damage was done. Unfortunately for us, the remedy has been a long and winding road that has not been met with prompt resolution.

Originally, under our County Facilities direction, the work for this project was divided into two phases.

Phase 1: Initiate demolition, winterization and securing the building

Phase 2: Repair and restoration of the building

Belfor Disaster Restoration Services was hired to come in and do some of the immediate restoration work such as securing the roof, removing the water from inside the building, and securing the building. After that, Belfor Insurance Restoration retained an outside engineering firm to complete the plans for the rest of the Phase 1 work. Those plans were sent to the County’s Community Development Department for plan check review. The permit was issued for Phase 1 work in April of this year. After this happened, the facilities department manager retired.

Within the last couple of months, the County Administrator reassigned duties and projects, and the Capital Projects Director, Maureen “Mo” Frank, was assigned to take over the Groveland Community Hall project. Mo has had several internal meetings with the County’s Human Resources-Risk Management Group, the County’s attorneys, and other County staff. From these meetings, a path forward was created, but needed the insurance company’s approval. After the second



meeting the decision was made that it was a waste of time and resources to proceed with Phase 1 work without having an actual plan for Phase 2. It would have meant tearing off the roof with no plan in place for the full restoration! It also would have meant going through the County’s procurement process of bidding, meaning that work would not start until early October 2024, just in time for the rainy season, with an open roof. Ugh, no!!

In July, the County took back ownership of this project from the insurance company. A Request for Qualifications (RFQ) was issued for architectural services for both phases of the project. At this point, there was very little work needed under Phase 1.

When this article is published in August, most of the RFQ responsibilities will already have taken place: release of RFQ on July 5th, the pre-proposal bid walk on July 15th and a deadline of July 26th when the architectural services proposals are due back. The contract for these services will be approved by the Board of Supervisors at our August 20th Board meeting. Plans and specifications will be developed thereafter. Although I remain optimistic that we will do our best to fast-track this project, I also need to tell you that it “could” take many months before the architectural plans are finished and actual construction can commence.



# ALGAE, AS OLD AS TIME ITSELF

STEPHEN MCCORD – CERTIFIED LAKE MANAGER

Oxygen was absent from Earth’s atmosphere for close to half of its lifespan. Then, 2.7 billion years ago, along came cyanobacteria. They seem to be the first organism to photosynthesize, turning sunlight and water into useful energy and producing oxygen as a by-product. Today, there are about 70,000 known species of algae, but the actual number could be several times more.

The basic food web process in lakes is: algae (and plants) grow through photosynthesis, aquatic insects eat them, little fish eat the insects, and big fish eat the little fish. But here’s another element of time: algae grow and die faster than the insects that eat them, which grow faster and die faster than the fish that eat them. Algae blooms portray this pattern as the algae prosper before Father Time and the insect population catch up with them.

Algae can be thought of like floating grass. We deal with them as a group rather than individuals (like how you enjoy a field, not individual blades of grass). Multiple species of algae can grow in an area based on their optimal conditions of light, water, nutrients, and loss (consumption, filtering).

The tens of thousands of algae species fall into a few general groups with colorful names such as green, red, brown, golden, and blue-green, plus the well-named flagellates (moving parts!) and diatoms. They can also be divided into two general types: planktonic (free-floating individuals) or filamentous (they clump together and can clog filters).

### WHAT’S IN OUR LAKE?

Over the past several years, I’ve sent small samples of lake water to a lab for analyses of algae. To the human eye, the water looks as clear as tap water. But each time the lab identifies and quantifies about 50 species of algae representing about six major groups.

The lake is typically dominated by diatoms in spring (they live hard and die young), green algae in early summer, and

cyanobacteria in late summer. Cyanobacteria are harbingers of climate change impact—they thrive in warmer waters.



*A species of green algae affectionately called elephant snout, as seen in Pine Mountain Lake in May 2024.*

This spring you may have noticed clumps of a filamentous algae in several calm, shoreline areas. It turns out they are a green algae called Mougeotia, but its common name is so much more descriptive: elephant snout.

### ARE ALGAE GOOD OR BAD? YES!

Algae perform two critical ecological functions. Their process of photosynthesis produces oxygen to breath and organic material to eat.

But algae can also pose several problems. An algae bloom sounds lovely, but too much is a bad thing because when the algae cells die off the bacteria decomposing the algae use up the available oxygen in the water. The lack of oxygen generates toxins and can lead to fish kills (the fish either succumb to the toxins or asphyxiate). Some algae produce compounds that give water a bad taste and odor, and give it color. Also, the organic compounds react with chlorine (used to treat many water supplies) to form potentially cancer-causing compounds.

Some species of algae (called blue-green algae or more accurately cyanobacteria) resort to chemical warfare—producing various toxins that can harm your liver,

skin, lungs, intestines or nerves. There’s no way to tell visually if there are such toxins in the water, but floating clumps or mats of algae certainly indicate greater risk. Pine Mountain Lake Association occasionally test both Pine Mountain Lake and Bass Pond for the major toxins, and so far all samples have had no detectable levels.

Because it is very shallow and stagnant all summer, Bass Pond tends to be covered in various aquatic weeds. Free-floating plants such as duckweed outcompete algae, completely covering the lake surface to shade out any plants or algae in the water below.



*Duckweed on Bass Pond in summer 2019, shading out algae and rooted plants below.*

### AS GOOD AS IT GETS

Lakes provide everything algae need to thrive—sunlight, water, and nutrients. Fortunately, Pine Mountain Lake maintains high-quality water which generally supports a low concentration of most forms of algae.

The community can control certain factors to maintain this high-quality water and minimize the growth of certain algae in the lake. For example, knowing

that cyanobacteria tend to proliferate in warmer, stagnant, phosphorus-rich water, minimizing the use of fertilizers and practicing diligent sediment control greatly reduces the risk of cyanobacteria from becoming a problem. Also, because plants take up nutrients that could otherwise be available for algae, staff periodically harvest and compost plants growing in the shallow lake margins. Maintaining high-quality water in the lake is a truly a community wide effort.



*View of Pine Mountain Lake’s forested watershed from Long Gulch Ridge.*

For more information about harmful algae, visit [mywaterquality.ca.gov/habs/](http://mywaterquality.ca.gov/habs/). Check out a state map showing algae and cyanobacteria levels in large surface waters at [fhab.sfei.org/](http://fhab.sfei.org/). July is Lakes Appreciation Month ([www.nalms.org/lakes-appreciation-month/](http://www.nalms.org/lakes-appreciation-month/)), so get to it!

*[Stephen McCord is a Certified Lake Manager with the North American Lake Management Society. He holds a Ph.D. in Civil & Environmental Engineering from the University of California Davis and is a registered Professional Engineer in California. He is President of McCord Environmental, Inc., based in Davis, CA. Comments and questions can be sent via email to [sam@mccenv.com](mailto:sam@mccenv.com).]*

PLACE AN AD TODAY

Go to our website for more information and prices.

[www.PineMountainLake.com](http://www.PineMountainLake.com)



# PML Organized Groups & Clubs

Contact the individuals below if you are interested in joining!

Aviation Association

Bob Mackey 1-408-373-2625

Crest Valley Firewise Community

Terre Passeau 1-209-962-5364

Friends of the Groveland Library

Virginia Richmond 1-209-962-6144

Friends of the Lake

Mike Gustafson 1-209-962-6336

Garden Club

Susan Dwyer 1-209-962-6265

Groveland Rotary Club

Rudy Manzo 1-209-962-5219

Greg Cramblit 1-209-962-0607

Ladies Club

Pam King 1-831-601-8471

pam\_king@sbcglobal.net

Men's Golf Club

www.pmlmgc.com

Needle Crafts

Barbara Klahn 1-209-916-5420

Pickleball Club

Lee Carstens 1-415-215-5564

Pine Needlers Quilt Guild

Leslie Timmons 1-209-482-1406

PML Ladies 18 Hole Golf Club

Laura Kramer 1-209-840-0129

PML Niners

Stacie Brown 1-209-962-7397

PML Pool Wellness Club

Vickie Schultz

pmlpoolclubpresident@gmail.com

PML Safe Streets Campaign

Leslie Dudley 1-209-962-4911

PML Shooting Club

Scott Knupter 1-925-809-2850

PML Waterski & Wakeboard

Dean Floyd 1-408-915-8848

Racquet/Tennis Club

Ron Bass pmlatennis@gmail.com

Residents Club

Dick Faux 1-209-962-4617

ROOFBB

Audrey Prouse 1-209-962-4196

charity@roofbb.org

Southern Tuolumne County Historical Society (STCHS)

Harriet Codegla 1-209-962-0300

Southern Valley Srs. Golf Group

Rich Robenseifner 1-707-486-9115

# PML LADY NINERS

TAMMY TALOVICH

Quote of the month – *Always be a first-rate version of yourself, instead of a second-rate version of someone else.* Judy Garland

If you would like to learn more about becoming a member of the Lady Niners contact Stacie Brown at happygem529@gmail.com. We play 9 holes on Thursday mornings; it only takes a few hours and is a great opportunity to meet some awesome ladies!

JUNE 6TH: WE HAD 5 PLAYERS

Linelle Marshall had the lowest score

Chip-in: #1 Maureen Campbell

JUNE 13TH: WE HAD 17 PLAYERS AND THE GAME WAS BLIND PARTNERS

1st place team: Deanie Martini and Linda Craig

2nd place team: Barbara Connelly and Monica Herendeen

3rd place team: Nancy Johnson and Wendy Mena

4th place team tie: Linelle Marshall and

Linda Wall, Anne Toner and blind draw

Low Putts: Pat VanGerpen w/15 and Linda Craig and Nancy Johnson w/16

Pars: #14 Anne Toner, Nancy Johnson, Maureen Campbell, #17 Deanie Martini

Chip-in: #18 Pat VanGerpen

Low Net: Linda Craig w/32

Low Gross: Deanie Martini w/47

JUNE 19TH: WE HAD 6 PLAYERS AND THERE WAS NO ORGANIZED GAME

Pat VanGerpen w/ 17 putts

Barb Connelly w/17 putts

Nancy Johnson w/18 putts

KC Lennen w/18 putts


Debbie Tores w/20 putts

Wendy Mena w/23 putts

Pars: #3 Nancy Johnson

JUNE 27TH: WE HAD 14 PLAYERS AND IT WAS PROM GOLF WITH GAME OF CHANCE (everyone dressed for the prom, the Grill was decorated and dinner was great)

1st place team: Baines, Johnson,



Steinkamp, VanGerpen

2nd place team tie: Lennen, Martini, Talovich and Brown, Connelly, Day, Torres

Low putts: Barb Connelly w/14

Pars: #3 Susan Dwyer, #6, #7 Stacie Brown, #7 Monica Herendeen, Nancy Johnson

Low Net: Stacie Brown w/33

Low Gross: Stacie Brown w/47

Ace of Aces for June: Linda Craig

Queen of Clubs for June: Nancy Johnson

Putter of the Month for June: Barb Connelly

# PINE NEEDLERS

SANDY SMITH

Holie smolies it has been a hot summer...hope you are drinking lots of water, and keeping cool. A good time to browse the quilt sites and quilt books and to plan your next project. Also something to think about, the Advent project for Dec Meeting. Mine is half finished, supplies at hand, now I just need life to slow down a little from summer activities so I can complete it.

Tuesday August 20th @10:00a.m. under the Library, will be our next meeting.

The Meet & Greet will be at 9:30 if you want to come a little early and enjoy each other, and catch up with what's happening. Also if you bring your lunch, you can stay after and sew til 3 with us.

Always fun!

One quick note: The Row By Reveal will be delayed until the October Meeting... just too much going on.

The retreat was a huge success...and all were excited to plan for next years. We have seen some of the results already... wahoo!

Again congratulations go out to Lynn Sigafoose for her embroidered United States Quilt...A second Place Ribbon at the Motherlode County Fair. Very nice Lyn, it is beautiful.

A Snowflake Mystery Quilt has been started at the Guild...its not too late for you to join us. It is built block by block, one per month. Further explanation and instructions will be given at this months

meeting. You can give Kris a call later for any questions 650 722-0307.

DID U KNOW:

- Pipe Cleaners clean lint from your feeddogs
- Q-Tips clean fuzz out of your bobbin case
- Dryer Sheets clean your iron, just press and wipe
- Credit Cards slide through tension disks, clean up lint

Know you know!

Remember Pine Needlers Quilt Guild meets the 3rd Tuesday of each month. Tuesday August 20th, under the Library, 9:30 for Meet and Greet, and 10 a.m. for the meeting. See you then

If you have any questions please call President Kris 650 722-0307 or VP Leslie 209 482-1406





**CHRIS H. LAKE**  
DRE 00946632  
**209-768-6156**  
*chrishlake@gmail.com*

**GINA GIAMPIETRO HERNANDEZ**  
DRE 01226555  
**408-506-6944**  
*GinaGHRRealEstate@gmail.com*

**We Beautifully  
Stage  
Our Listings  
Presentation  
Matters !**

**WE ARE STILL BUSY SELLING IN THIS MARKET !!!**  
Call us to tell you what your home could sell for right now.

**YOSEMITE AREA  
REAL ESTATE**

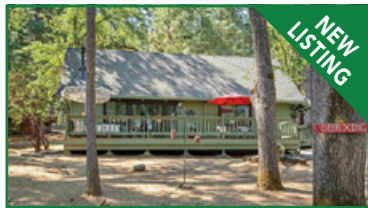
**Make  
Chris & Gina  
your  
1st call!**

**18687 MAIN ST. STE B2 GROVELAND**

*View listings at [www.YosemiteAreaProperties.com](http://www.YosemiteAreaProperties.com)*

**PAUL S. BUNT REAL ESTATE BROKER DRE 01221266**

**CABIN COTTAGE**



**19483 Grizzly Circle \$289,000** 1 bdrm w/loft 1 bath 888sf .22ac Adorable A Frame Cabin Cottage in beautiful PML! Open beam ceilings w/knotty pine. Lg spacious natural landscaped yard only .6 of a mile to the main marina beach! Bright & light int. color schemes, new energy efficient windows & blinds, 2 newer ductless mini-split heating and cooling units, 1bd/1ba, laundry rm & grt rm living rm w/cozy gas fp on main level & beautiful lg knotty pine loft used as 2nd sleeping area & office on upper level. Wonderful lg deck area, tons of paved parking, RV parking space & an outdoor matching painted storage shed.

**LAKEVIEW A-FRAME**



**12775 Mt Jefferson \$450,000** 3bd/3ba 2035sf .35ac Location Location! Lake View & around the corner from beach! Darling Rustic A-Frame cabin, ready for fun in the sun near Dunn Court Beach. OWNER FINANCING OFFERED! Tall open beam living rm w/peak windows & peakaboo lake views from all levels. Beautiful open loft family rm area can be 4th sleeping area & has full bath. 1 bdrm & bath on main level, guest & primary bdrm w/full bath on lower level & laundry. Great rm w/brick wd burning fp & lake facing deck! Kitchen w/granite cntrs & brkfst bar, LED lighting, 2 car main level garage w/workbench & storage shelving & a lower area 2 car garage vehicle accessible and awesome for tons of storage.

**CLOSE TO THE LAKE**



**19955 Pleasant View Dr. \$449,000** 3bed/3 bath 2043sf Super location close to Dunn Ct Beach! A grt lg & spacious family tri-level home in beautiful PML. Lg living rm w/wd burning fp heat stove w/stone hearth, spacious dining area, lg kitchen w/2 pantry closets, back deck patio access from dining & kitchen, breakfast bar, new LED lights, Lg Primary bedroom w/bath & guest bedroom & bath on one level & 2nd guest bedroom & bath on lower level. Large finished garage w/ newly painted floor, large paved parking area. Just perfect for full or part-time vacation living. Owner financing available.

**SUPER CUTE CABIN!**



**12929 Jackson Mill Drive U7 L132 2Bdr 2.5 Ba 1504 sf .34 acre \$399,000** There is a convenient ramp walkway to the covered porch front entrance & wrap around deck, overlooking natural landscape & beautiful tree views. Great room concept with cozy wood burning fireplace, open kitchen, central heating and a/c, 2 bedrooms 2 baths on main living area of 1048 sf and spacious 456 sf lower bonus room via exterior access, with 1/2 bath and covered deck porch patio. Lots of paved parking with RV parking space.

**CABIN DELUX!**



**19723 Butler Way U8 L281 Approx 2500 plus sf on .95ac 4 bed 2 1/2 bath \$574,000** Fully furnished turnkey family cabin w/multiple living & entertaining spaces. Private setting nestled among beautiful pine trees, featuring a beautiful lg entertaining deck & an amazing lwr level family/rec room, cozy pellet stove, lounge area, w/TV, pool table, card table, standing bar, dart board, guest bedroom, half bath, outdoor concrete covered patio. The main level has a bedroom plus bonus room and hall bath. Upper level has bathroom, 2 bedrooms w/the bunkroom that sleeps 5.

**CUTE & COZY SINGLE LEVEL**



**12699 Cresthaven Dr., Unit 4 Lot 485 \$279,000** 3 Bed 2 bath 2 car Cute & cozy single level home in beautiful Pine Mountain Lake. Affordable & adorable, full or part-time, this mountain home is located near Lake Lodge Beach and Playground in beautiful Pine Mountain Lake & also short drive to Fisherman Cove, Playground & Tennis Courts. This home has solar for energy efficiency plus a cozy wood burning fireplace with rustic stone hearth, central heating & air conditioning & an easy one step front entry access. The kitchen has a large pantry, there is a spacious dining area and living room area.

**CHALET GOLF COURSE HOME W/BEAUTIFUL VIEWS!**



**12703 Mueller Dr. \$399,000 Pending** Chalet Golf Course Home w/Beautiful Views! Sweet cabin on Pine Mountain Lake golf course hole number 5. This charming cabin has an expansive deck overlooking the golf course with wonderful views. 3 bedrooms, 3 bathrooms, great room concept with 20 plus feet tall open beam ceiling and picture windows, lower level large family room, screened porch room, 2 car garage, large laundry room, under house storage, lots of parking, all a block from the golf club house, restaurant/bar, swimming pool and pickleball courts.

**COMMERCIAL PROPERTY**



**13051 Boitano Rd Commercial property \$949,000 2.27ac Buildings total 9442sf** Business Opportunity Potential!! Known as Down to Earth, locally owned & operated as a garden nursery supply source, landscape & paving construction business located at Ferretti & Boitano Roads, just outside of PML, is for sale. This commercial property location w/existing buildings, vast spacious grounds, structures, shop areas & garages, can accommodate a variety of uses for the next business entrepreneur. The property itself is for sale, not the business. Please contact Chris Lake at 209-768-6156 or Gina Hernandez at 408-506-6944 for additional information & a tour.

**COMMERCIAL PROPERTY**



**17870 Hwy 120 \$449,000** 3.74ac on Hwy 120 just 25 miles west of Yosemite National Park. The Property has 2 metal warehouse style buildings w/a total 3000sf. Presently being utilized as auto repair shop & auto salvage. Tenants would like to stay if possible but not required. Rent is month to month at this time. Property is on both sides of Hwy 120. The section on the south side of the Hwy is 1.88ac & is a dedicated drainage easement. South side of highway currently receives income for PML signage. Property has public water & sewer & has been recently surveyed. Above the fog and below the snow line.

**LOTS & LAND**

**63.74 acres Ponderosa Way GH \$180,000** Views, views, views 360 degrees to Yosemite & the Central Valley. Property has a capped off well. Output at drilling 70 gallons/minute. \$225/month income produced from internet tower rental space. Several amazing building sites. Close to Cherry Lake, Lake McClure and Lake Don Pedro.

**68.28 acres Greeley Hill Rd GH \$90,000** Vista views from several locations on this parcel. Pines & oak trees. Build your dream home here. Magnificent sunsets. Close to the villages of Greeley Hill and Coulterville. Close to lakes McClure and Don Pedro.

**44.26 acres Ponderosa Way GH \$150,000** Ridgetop acreage w/360 degree views to Yosemite & Central Valley. This parcel is a view junkie's dream. Year round access via Ponderosa Way. Within a 20 mile radius of Cherry Lake, Lake McClure and Lake Don Pedro. It's a piece of heaven.

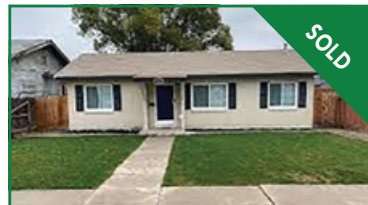
**Unit 12 Lot 238 Hillcroft \$20,000** Almost one acre sized lot. District water is accessible to this lot. Septic system required. Amazing vista views of mountains & trees. Close to PML airport & equestrian center. Lot is part of the gated community of Pine Mountain Lake. Dues are \$264.00/ month. Amenities include association lake, swimming, fishing and boating. 18 hole golf course with restaurant and bar, tennis and pickle ball courts, trails and play grounds, swimming pool. Yosemite National Park is just 25 miles away.

**GOLF COURSE PICTURESQUE VIEW!**



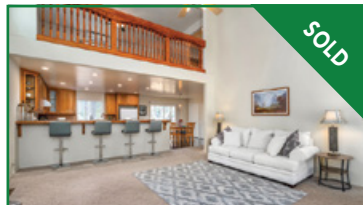
**19350 Reid Cir U5 L45 1936sf 3Bed 2 Ba 2 Car .24 on 17th Green \$569,000** Walk-in and be amazed at the view from this wonderful single level home situated at the 17th green at beautiful Pine Mountain Lake Golf Course. Full-length covered outdoor patio deck w/ hot tub overlooking acres of lush green grass & trees, gorgeous views from inside or outside. Corian kitch cntrs, ss appliances, Lv rm w/fireplace, family rm, concrete circular hedge lined driveway, 2 car garage w/newly installed EV charging station, new 50 year roof & gutters w/gutter guards, solar.

**TURLOCK DELIGHT**



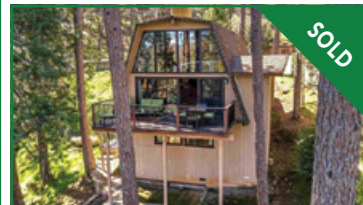
**336 Locust St Turlock \$360,000** 2bd/1ba 1065sf on .16ac A delightful home in the heart of Turlock's well-established neighborhood! Experience the charm & character of this property, which has undergone considerable upgrades including a new roof, freshly painted interiors, new vinyl flooring, & a beautifully landscaped front yard. For added convenience, a water softener & filtration system are included. The spacious backyard presents boundless opportunities & showcases an inviting open deck. Large fenced backyard w/ detached 1 car garage. Alleyway access to rear yard.

**BEAUTIFUL & SPACIOUS MOUNTAIN HOME**



**13201 Wells Fargo Dr. \$499,000** 3bds/3ba 2536sf .28ac Amazing home in the mountains w/tons & tons of space! Walk-in & be amazed at the 25ft high ceiling featuring an open loft w/pool table, spacious great rm w/huge kitchen & 2 full closet pantry storage areas, enormous backyard deck w/level backyard, huge 3 car tandem garage, lg master on main level w/lg cedar walk-in closet, 3 bedrooms + 1 add'l sleeping room available, back up generator, tankless water heater, breakfast bar to seat 4-6, double sinks in kitchen, a great large family or entertaining home! Must See!

**MOUNTAIN VISTA VIEWS!!**



**12855 Mueller Drive \$399,000** 3 beds/3 baths 1968sf .31 ac Quaint Cabin a getaway dream! Walk-in to WOW! Mountain & tree views. Tall floor to ceiling picture windows, 3 private bedrooms w/3 private baths, each on their own floor, open beam ceilings + an open loft that has amazing views! All baths remodeled, decks remodeled, hot tub, lg mstr bedroom, 2 propane heat stoves, grt rm concept, 2 water heaters, 1/2 mile from golf course, restaurant/bar, swimming pool & pickleball courts. Approximately 2 miles from Dunn Ct Beach, 3 miles from the main marina in beautiful Pine Mountain Lake.

**STUNNING LAKE HOUSE REMODEL!**



**20450 Rock Canyon Way U3 L177 2801 Sf Lake Front home 3/3/2 car .74 acre \$1,699,000** Absolutely gorgeous remodeled lake house in beautiful Pine Mountain Lake. Huge Great rm, lrg kitchen w/white granite counters/ breakfast bar, stainless appliances, wall of pantry cabinets, soft close feature, white & grey color schemes throughout, new engineered hardwood floors & carpet, brand new Timber tech decks, Generac generator, new 30 year roof, new HVAC, garage modification for taller vehicles, remodeled bathrooms, new paint, Private boat dock.



# END OF SUMMER - SCHOOL DAYS AHEAD



## WE CELEBRATE AVIATION & SENIOR CITIZENS

Who you choose to list your home is important!  
Just slapping a few photos and putting on the Multiple Listing Service (MLS) is not enough. Give us a call to discuss our market plan.

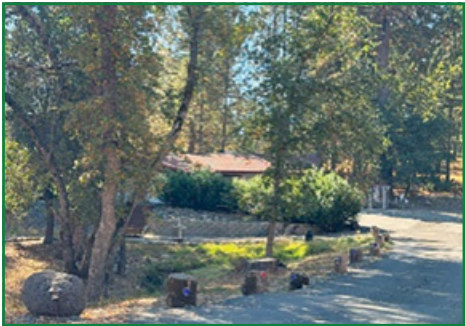
TWO honest, hardworking agents working together for YOU.  
You won't be disappointed.

### LARRY JOBE

REALTOR - TAXIWAY EXPERT  
**209.768.5508** Cell  
larryjobe1@gmail.com  
DRE #01444727

### PENNY CHRISTENSEN

BROKER ASSOCIATE - CRS  
**925.200.7149** Cell  
penny@askpenny.com  
DRE #00785760



19273 Salvador Ct.  
.70 Treed Acres  
3 bdrm, 2 ba, 1656sf  
Won't last at  
**\$329,900**



13360 Clements Rd.  
3 Bdrm - 3 Ba-2688sf  
1.61 ac - 5 car garage  
Equestrain Unit  
**\$649,900**



20992 Iris Ct. - U12 L56-A - 3  
3 bdrm - 3.5 ba - 3543sf  
Stunning Home - Updated  
Classic Charm - High End Finish  
**\$899,900**

### PILOTS OR AUTO COLLECTORS DREAM

Hangar  
49.5'x32'  
Bi - Fold Door  
Luxury Home  
Runway View  
Large lot  
Airport Access

[www.YosemiteAreaRealtors.com](http://www.YosemiteAreaRealtors.com)

PAUL S. BUNT REAL ESTATE - DRE #01221266



KATHY NIEDENS  
REALTOR® / SALESPERSON

209.962.1111 OFFICE  
209.985.4031 CELL  
knniedens@gmail.com

LIST & SELL WITH  
KATHY & GET YOUR  
HOUSE CLEANED  
FOR **FREE**  
ASK FOR DETAILS

HOME • CARPET  
WINDOWS

As both a realtor, and the owner of heavenly cleaning service, I can offer you more. We all know how important it is to get your home looking it's best when selling or when buying a new home, cleaning it before you move in. Well, let me take care of it. Home cleaning. Carpet cleaning. Windows cleaning. *Could save you time, trouble, and money.*

**HEAVENLY  
CLEANING SERVICE**  
**209.962.6418**



PROFESSIONAL CARPET CLEANING & HOUSEKEEPING SERVICE

## MURRA'S TOTAL YARD MAINTENANCE



### BRINGING VALUE FOR YOUR DOLLAR IN PML

- WEEDEATING
- LOT CLEARING
- SENIOR DISCOUNTS
- LEAF REMOVAL
- PLANTING
- TREE SKIRTING
- HAULING
- AND MORE

**CALL JASON MURRA**  
**209-352-3750**

LIABILITY INSURED





# PINE MOUNTAIN LAKE REALTY

An Agent Owned Company

18919 Ferretti Road • PO Box 738 • Groveland CA 95321 • 209-962-7156 • www.pmlr.com



**Barry Scales**  
Broker/Owner  
209.484.7123  
DRE#00451887



**Lynn Bonander, GRI**  
Realtor®  
209.484.7156  
DRE#00683485



**Val Bruce, GRI**  
Owner/Broker Assoc.  
209.768.7368  
DRE#00578336



**Marc Fossum**  
Owner/Realtor®  
209.770.4750  
DRE#01956242



**Patty Beggs**  
Owner/Realtor®  
209.840.2293  
DRE#01339347



**Michael Beggs**  
Broker Assoc./Realtor®  
209.840.2294  
DRE#0133568



**Linda Willhite**  
Broker Assoc./Realtor®  
209.985.2363  
DRE#01063378



**Ann Powell**  
GRI, ABR, RSPS  
209-200-1692  
DRE#01268655



**Eleda Carlson**  
Owner/Realtor®  
209-814-4123  
DRE#00632516



### Room to Room

5 Bd/3 1/2 Bth, 2 Car Garage, Approx 4285sf, Approx 0.55 Acre, Bonus Rm, Large Living Rm, Brfst Bar, Pantry, Open Dining, Master Suite, Large Walk-in Closet, Game Rm, Laundry Rm, Screened-in Porch, Deck, 2 Separate Heat/Air Systems & 2 Water Heaters. Green Belt Lot 19424 Ferretti Rd. 6-253 \$675,000 MLS# 20240686



### Tempting Tri Level!

3 Bd/2 Bth, 2 Car Oversized Garage, Great Rm w/FP Stone Surround. Vaulted Ceilings, Skylights, Central Air, Propane Heat, Modern Kitchen, Brfst Bar, Open Dining, Master Bdrm, Whole House Generator, Boat/RV Parking. Front & Rear Decking. 20766 Rising Hill 3-345 \$419,900 MLS# 20240342



### Extrodinary Views!

2 Bd/2 Bth, 2 Car Garage, Approx 2045sf. Bonus Rm, Wet Bar, Fireplace, Breakfast Bar, Pantry, Open Dining, Master Bd/Bth, Inside Laundry, W/D Included. Generous Decking, Community Pool & Recreation Room. Backs up to Private Ranch Land. 22665 Prospect Hts, \$349,000 MLS# 20240551



### Golf Course Lot - End Unit!

2 Bd/2 Bth, Great Rm w/FP Stone. Open Beam Ceiling, Ceiling Fan, Brfst Bar, Open Dining, Master Bd/Bth. Inside Laundry, W/D Included. Private Deck Over Looking the 5th Green. "Turn-Key" Furniture Included. Great Location! 19154 Dyer Ct, #4 \$220,000 MLS# 20240381



### Opportunity Knocks!

2 Bd/1 Bth, Single Level, 1.33 Acre, Living Rm w/Fireplace, Kitchen, Dining Area, Laundry Hook Ups, Shed and Storage, 2 Addresses on 1 Parcel, with 2 water/Sewer, Electric & Propane Connections. Zoned R-2, 18843-18845 Foote St., Groveland, \$298,000 MLS# 20240429



### Great Location - Super Views!

3 Bd/3 Bth, 2 Car Garage, Approx 3207sf, on 0.55 Acre, Great Rm w/Fireplace, Brfst Bar, Island, Pantry, Brfst Area, Dining Rm, Master Bdrm w/FP, Walk-in Closet & Private Deck, Lower Level Family Rm w/FP, Office, Storage, Laundry Rm, W/D Included, Covered Porch, Deck, Awnings, Slate Porch. Green Belt Lot. 20773 Nonpareil Way, 4-162 \$759,000 MLS#20240791



### Idyllic Farmhouse Retreat

3 Bd/2 1/2 Bth, 2-3Car Garages, 6.28 ACRES! Large Living Rm w/Built-in Hutch, Propane Fireplace, Cathedral Ceiling, Spacious Kitchen, Granite Countertops, Island, Pantry, Master Suite, Den/Office, Laundry Rm w/Cabinetry & Utility Sink. 844sf Guest House w/Garage, Barn/Horse Set-up, Workshop & Much Much More! \$1,125,000 MLS# 20231470



### Delightful Home!

3 Bd/2 Bth, 2 Car, Great Rm w/FP, Cathedral Ceiling, Open Modern Kitchen, Solid Surface Countertops, Breakfast Island, Open Dining w/Slider to Deck, Laminate Flooring, Inside Laundry Rm, Deck & Patio, Parking for RVs, Boats, Trailers, and More. Generac Generator. 22782 Rolling Woods Yosemite Vista \$260,000 MLS# 20240448



### Privacy & a View 16 Acres

3 Bd/3 1/2 Bth, 2 Car Finished & Separate 1 Car Garage w/Heat & A/C. Approx 2164sf. Living Rm w/FP Stone, Brfst Bar, Pantry, Master Bdrm/Bth, Walk-in Closet, Vanity, Family Rm/Den. Lower Level 4th Bdrm/Bonus Rm w/Bath & Private Entrance. Mud Rm w/1/2 Bath. Deck about 1 year old. Whole House Generator. 19807 Old Hwy 120, \$649,000 MLS# 20240895



### Pretty as a Picture!

3 Bd/ Bth, 2 Car Finished Garage w/ Cabinets, Workbench, Plumbed, & Utility Sink, Approx 1910sf, 0.31 Acre, 1 Level, Greenbelt Lot. Great Room w/Fireplace, Brfst Bar, Pantry, Stainless Appliances, Open Dining, Cathedral Ceilings, Skylights, Primary Suite, Laundry in Garage, W/Dryer Included. Generous Deck. 19099 Raboul Ct, 2-274 \$489,500 MLS#20240987



### Enjoy the Views!

2 Bd/2 Bth/2 Car Garage Mfg Home w/ Step-saver Floor Plan. Living Rm w/FP, Central Air, Skylights, Brkfst Bar, Pantry, Built-in China Cabinet. Mst. Bedrm, Den/Office, Inside Laundry, Conveniently located just around the bend from the Clubhouse and Pool. 22690 Prospect Hts Yosemite Estates \$199,999 MLS# 20240450



### A Relaxing Retreat!

3 Bd/2&1/2 Bth, 3 Levels, Approx 1824sf on 0.80 Acre, Filtered Lake View, Great Room w/Fireplace Opens to Large Deck, Brfst Bar, Pantry, Open Dining, Vaulted Wood Beam Ceiling, Laminate Flooring, Lower Level Large Family/Bonus Room, Inside Laundry Rm, Upper & Lower Decks. Serene Setting. 20067 Upper Skyridge Dr. \$465,000 MLS# 20240948



### Cozy & Peaceful!

3 Bd/2 Bth, 2 Car Oversized Finished Garage, 2 Levels, Approx 1584sf on 0.49 Acre, Living Rm w/Fireplace Stone Surround, Cathedral Open Beam Ceiling, Ceiling Fans, Kitchen w/Light Wood Style Floors, Open Dining, Primary Bdrm w/Private Deck, Inside Laundry w/d Included, Spacious Wrap Around Deck. 20883 Big Foot Ct., \$399,900 MLS# 20240950



### Good Location - Lots of Space!

3 Bd/2 1/2 Bth, 2 Car Garage, 1 Level, Approx 1614sf, 0.79 Acre, Living Rm w/FP, Step Saver Kitchen, Formal Dining Rm, Primary Suite, Inside Laundry w/ Wash Tub, Enclosed Porch, Deck, Plus over 1000sf Detached Studio/Shop w/1/2 Bth, Heating/Air Unit, Many More Unique Features! 13320 Clifton Way, 12-160 \$529,000 MLS# 20240748



### Premier Setting!

3 Bd/2 Bth, 1 Car Garage, 1 Level, Approx 1659sf, 0.26 Acre, Great Rm w/FP, Vaulted Ceiling, Solid Surface Countertops, Under Counter Windows, Brfst Area, Primary Bdrm/Bth, Inside Laundry W/D Included, Wash Tub, Deck. Steps from Dunn Ct Beach. 19820 Pleasant View, 1-151, \$599,000 MLS# 20240692



### A Clean Slate!

3 Bd/2 Bth, Loft and Bonus Room, 2 Car Finished Garage w/Cabinets, Approx 2337sf on 0.32 Acre, 3 Levels, Central Air, Cathedral Open Beam Ceiling, Great Rm w/FP, Open Dining, Kitchen Area, Primary Suite, Walk-in Closet, Private Deck, Laundry in Garage, w/d included. Deck. All Ready to make it your own! 12786 Mt. Jefferson, \$399,990 MLS#20240952



### Simply Stunning!

3 Bd/2 Bth, 2 Car Garage, 1 Level, Approx 1644sf, 0.24 Acre, Great Rm, Vaulted Ceilings, Recessed Lighting, Brfst Bar, Granite Countertops, Garden Window, Open Dining w/Slider to New Deck, Master Suite. New Paint Inside/Out, HVAC Unit, Water Heater, Lighting. Much More! 19442 Pleasantview, 1-114, \$575,000 MLS# 20240771



### Beautiful Elegant Home!

3 Bd/2 Bth, Two Garages, 1 Level, Approx 2428sf, 3.52 Acres, Vaulted Ceilings, Great Rm w/FP, Expansive Windows and Doors, Brfst Bar, Island, Wet Bar, Brfst Area, Formal Dining, Primary Suite, Laundry Rm, Synthetic Deck w/Retractable Awnings, plus Stand Alone Deck. Many More Fine Amenities! 11335 Bridal Veil, \$799,000 MLS# 20240860



### Charming-Convenient-Comfort!

3 Bd/3 Bth, 2 Car Finished Garage w/ Cabinets, Workbench, Utility Sink. One-Level, Approx 1412sf, 0.35 Acre, Living Rm w/Fireplace, Cathedral Ceiling, Lighted Ceiling Fans, Solid Surface Countertops, Brfst Bar, Open Dining, Primary Bdrm w/Walk-in Closet. Sliders to Deck. 12926 Green Valley Cir., 3-418, \$359,000 MLS# 20241036



### Scenic Sierra Nevada Property!

77.44 ACRES, 2 Bd/2Bth, 1 Level, Approx 1368sf, Mfg Hm on this Stunning Property. Great Room, Brfst Bar, Open Brfst Area, Granite Countertops, Primary Bd/Bth, Den, Central Propane Air, Inside Laundry, Shed, Seasonal Creek, Well Water, Basic Cabin on So. End. 10715 Merrell Rd., \$465,000 MLS# 20240737



## LOTS OF PARKING!

MLS# 20240347



12900 Hondo Court

**Reduced \$375,000**

3 Bedrooms, 2 FB, 3 Levels,  
2120 Sq Ft, 2 Car Garage,  
Transform this into your  
dream home with a little TLC  
and imagination.

Ron Connick, 209.206.0007

## Rustic Charm

MLS# 20240851

19976 Pine Mountain Dr



3 Bd, 2 F/B, 1,056 sq ft. This  
Cabin would make a per-  
fect 2nd home you can use  
for your enjoyment and a  
vacation rental. Level lot  
and room for your RV.

**Only \$295,000**

Call: Ron, 209.206.0007



**FOR AN  
INSTANT  
HOME VALUE  
ESTIMATE**



Ron Connick  
REALTOR  
DRE #00575067  
209.206.0007



Tish Fulton  
REALTOR  
DRE #0076019  
209.985.0216

18727 Main St, Groveland Ca 95321 | 209.962.7765

## Home is "Turn Key"

MLS# 20240704

20256 longview Street



4Bd, 3F/B, 1,944 sq ft. This  
"Turn Key" includes all fur-  
nishings. Perfect for a large  
family with plenty of separa-  
tion.

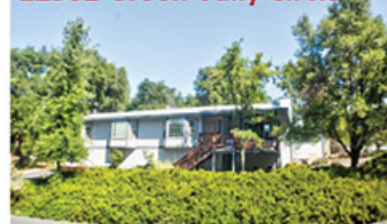
Only \$395,555

Call: Tish, 209.985.0216

## CUSTOM DESIGNED

MLS# 20231494

12932 Green Vally Circle



**NOW \$529,000**

5 Bedrooms, 2 FB, 1H/B  
Jetted Tub, Hardwood Floors  
Free Standing Fireplace,  
2166 SqFt, 2 Car Garage  
Ron Connick, 209.206.0007

## Golf Course Home

MLS# 20240870

19430 Reid Circle



4 BD, 2 Bath, 1,536 sq ft. Home  
Recently updated with stain-  
less appliances. Open floor  
plan with pine ceilings. And  
views of the golf course

Only \$469,555

Call: Tish, 209.985.0216

© BHH Affiliates, LLC. An independently owned and operated franchisee of BHH Affiliates, LLC. Berkshire Hathaway HomeServices and the Berkshire Hathaway HomeServices symbol are registered service marks of Columbia Insurance Company, a Berkshire Hathaway affiliate. Equal Housing Opportunity. Information not verified or guaranteed. If your home is currently listed with a Broker, this is not intended as a solicitation.

## ATTENTION NEW PML MEMBERS!

### WELCOME to PML...We're glad you're here!

Once you have received your welcome letter from the Association you will have the information you need to log into the PML website ([www.pinemountainlake.com](http://www.pinemountainlake.com))

Once there click on the **RESOURCES** tab & then on the **NEW MEMBER ORIENTATION** icon.

The New Member Orientation page is **JUST FOR YOU!**

Here you will find:

- Member Orientation Packet
  - o Information on the Official PML Facebook page
  - o Gate Access Guest Pass internet program information
  - o Fire Safety contact and information
  - o Board Meeting Dates and information
  - o Rules, Regulations and Procedural information
  - o Information on PML Committees and Clubs

- Assessment Information
- PML Fact Sheet
- Getting Connected in Groveland

And **MUCH MORE!**





>>>>

Radius Energy

- Immediate monthly savings.
- PG&E true up \$500 or more  
Let us fix it!
- Federal tax incentive.
- Family owned and operated.
- Located in the Central Valley
- 0 down financing O.A.C.
- In house installers.
- Guaranteed best prices in all Central Valley!

Call today to set up your free consultation!

Ben Brenning  
209-968-1588  
info@radiusenergyinc.com

Best of 2024

Scan Me

PLACE AN AD TODAY

With a classified or display ad in the Pine Mountain Lake News your ad will go directly to every PMLA member every month.  
Go to our website for more information and prices.

www.pinemountainlake.com/pmla-newspaper/



Pine Mountain Vacation Rentals

Looking to rent your home for short term rentals?  
Not sure where to start or who to trust?  
**LET US DO THE WORK FOR YOU!**  
Locally owned and managed properties.  
Rated Airbnb Superhost and VRBO Premier Host.  
We use **DYNAMIC PRICING** with  
Prompt Statements and Monthly payments  
and very **COMPETITIVE RATES.**  
Quick response time with  
**NO** surprise fees.

Call Michael — Phone: (209) 840-2294  
email: pinemountain48@gmail.com  
www.pinemountainvacationrentals.net

PMLA OWNED LOTS FOR SALE

2/047	GAMBLE STREET	PENDING \$1,000
2/287	FERRETTI ROAD	PENDING \$2,500
2/448	WELLS FARGO DRIVE	\$1,000
6/113	FERRETTI ROAD	\$1,000
6/179	COTTONWOOD STREET	\$1,000
6/252	FERRETTI ROAD	\$1,000
7/062A	FERRETTI ROAD	\$1,000
7/239	DIGGER PINE STREET	\$1,000

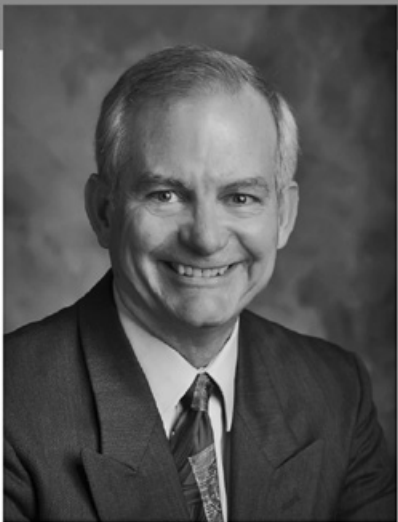
FOR FURTHER INFORMATION REGARDING THESE PROPERTIES PLEASE  
CONTACT PMLA AT 1 (209) 962-8600



**GUEST & RENTERS HANDBOOK  
IS AVAILABLE ONLINE!**

You can now view or print the Guest and Renters Handbook from the PML Website. Go to our website at:  
**WWW.PINEMOUNTAINLAKE.COM**

and click on Resources, select Community Standards, then scroll down to the bottom of the page and click on Guest and Renters Handbook. This handbook has valuable information for Guests and Renters in Pine Mountain Lake.



**PAUL S. BUNT, ESQ.**  
ATTORNEY AT LAW

ESTATE PLANNING  
PROBATE  
REAL ESTATE  
BANKRUPTCY  
ELDER CARE  
**209.962.6778**

Mountain Leisure Center, Groveland  
appointments available in Sonora and Lake Don Pedro



*Buying or Selling?*  
**Personalized Not Franchised**  
**209-985-7633**



Born and raised in Groveland and an experienced, local expert. My childhood was spent on the lake and riding my horses at the Pine Mountain Lake stables while my young adult years were spent buying, developing and adventuring in real estate. I LOVE my hometown and it's surrounding areas. It would be my pleasure assisting you with buying or selling. Let's work together!



# GROVELAND ROTARY

MIRIAM MARTIN – ROTARIAN



Rotarian Rudy Manzo, past president kicks out current club president Greg Cramblit.

Greg Cramblit, the 2023-2024 Groveland Rotary Club President, couldn't go out quietly from his term as president. The club members actually had to kick him out!! He was subdued with a ball and chain! It is so much fun in Rotary that people just don't want to give up their presidency! Actually it was a great night of roasting and good fun. It's not all work for Rotarians.

Just 3 more Saturdays to enjoy the Flea Market at Premier Valley Bank parking lot, sponsored by the Groveland Rotary Club. On the first Saturday of the month the fun begins for treasure hunters at 8:00am sharp. Sellers and vendors arrive at 7am with your table, your chair, your wares and \$15 for registration. A vendor is anyone with items they want to sell (your chance to clean out your garage, closets and storage locker).

Save The Date for our premiere annual fundraiser, the Rotary Shrimpfest at the PML Stables on 8/17/2024, starting at 4:30 for the open bar and dinner starts at 5:30. Get your tickets now by calling the event coordinator Rotarian John Gray at 209-840-1351. Advanced sale tickets

are for sale at \$40 each and \$45 at the gate. Kids 10 and under are just \$15. The ticket price includes the Louisiana Shrimp Boil; with large shrimp, sausage, potatoes, corn on the cob, a roll, and desert. This is a fundraiser, so please no outside beverages. This is a night of entertainment with music and dancing, a silent auction, a live auction, and a 50/50 raffle. Our generous business community provides the most amazing auction prizes.

Your participation in Rotary fundraiser events enables our club to make a difference both in our own community and around the world. We are presently looking at joining in on a multi-club grant that will provide mammogram and ultrasound equipment for a small hospital in Guatemala that serves a community of 100,000.

We thank all of you in our community for your support and we welcome you to join us a Friend of Rotary, helping with projects and events, or to join our club as a Rotarian, taking part in the direction and implementation of our endeavors. For more information, please contact Rotarian Greg Cramblit at 209-962-0607.

# PML LADIES 18 HOLE GOLF CLUB

PAULA PARISI

It's been HOT, HOT, HOT!!! And some golf has been cancelled as a result. We are hoping for a break from the heat soon. Our first Team Mixer at our club had to be cancelled due to the extreme heat. We were expecting 50 players from Greenhorn Creek, Copper Valley and Sequoia Woods to join us for a two person, best ball, tournament organized by our Handicap Chair, Marcee Cress. It's unfortunate it had to be cancelled but we thank Marcee for all her efforts in organizing the event.

We did have our second Saturday tournament on June 29th. This tournament is an effort to provide tournament play for those members (and guests) who cannot play during the week. This event was planned by Paula Parisi and was a fun team format of One Best Ball, Two Best Ball and One Best Putt, for each 6 holes.

Thursday, August 1st will be the first Golf at the OK Corral. Organized by Thelma Faux, this fun event (formerly called the Women Invite the Men) has been expanded to teams of two or four, with a member inviting a guest (or guests) to play in a fun format of 6 Holes Best Ball, 6 Holes Scramble and 6 Holes Alternate Shot. The event will include lunch and prizes. You can sign up through Thelma Faux at fauxbanker@aol.com.

Following are results from our club tournament play this past month:

## JUNE 13TH – ONE BEST BALL – ONE BEST PUTT

**First Place:** Marlene Drew, Sara Hancock and Jeanne Pacco - 94

## JUNE 27TH – GROSS/NET/PUTTS

**Ace of Aces** – Marilyn Scott – Net 71

## First Flight (Handicaps 14 – 25)

**Low Gross** – Elisa Hoppner – 90

**Low Net** - Kitty Edgerton – 73

## Second Flight (Handicaps 26 – 32)

**Low Gross:** Linda Sarratt – 102

**Low Net:** Helena McMillan – 76

## Third Flight (Handicaps 36 – 48)

**Low Gross:** Marilyn Scott – 107

**Low Net:** Jane Reynolds – 74

**Low Putts:** Kitty Edgerton

**Birdie:** Kitty Edgerton – Hole #7

**First Place:** Lisa Brown-Jimenez – 37 Points

**Second Place:** Sara Hancock – 34 Points

**Third Place:** Marlene Drew – 31 Points

**Fourth Place:** Sue Perry – 30 Points

**Birdie:** Thelma Faux – Hole #17

## JUNE 29TH – ONE BEST BALL, TWO BEST BALLS, ONE BEST PUTT (SATURDAY TOURNAMENT)

**First Place:** Paula Parisi, Jane Reynolds and Kathy McEvoy - 73

**Second Place:** Laura Kramer, Tari Skelley and Helena McMillan - 74

**Third Place:** Kitty Edgerton, Jodie Awai and Lisa Brown-Jimenez

**Birdies:** Laura Kramer – Hole #10

## Congratulations to all the winners!

The Pine Mountain Lake Ladies Golf Club plays every Thursday and is open to all women residents and owners of property in the Pine Mountain Lake community. Our club would love to add some new members and have modified our bylaws to allow female family members of property owners to apply for membership. If you are interested in becoming a member, we can arrange for you to join us as a guest, so that you can meet and play with some members and see what our club is all about. If you're interested, please contact our PML Head Golf Professional, Mike Cook at 209-962-8620.



# COMMUNITY AIRPORT DAY

JULIE ANEMA

Community Airport Day will be on Saturday, October 5th, from noon until 3:00 pm. The Pine Mountain Lake Aviation Association welcomes everyone to come out to the airport and enjoy the afternoon. Refreshments are available for purchase. Visitors can view airplanes that include home built, vintage, and experimental during the event. Planned demonstrations include formation flying and special aerial exhibitions. Pine Mountain Lake County Airport

gives pilots a beautiful destination to fly into. Local resident pilots can commute to work by air. The local chapter of the Experimental Aircraft Association (EAA) offers a Young Eagles program which gives area youth an opportunity to experience flight. Our community is fortunate to have a local airport that can add added safety during emergencies including medical and fire, where planes can be of aid. Come on out and enjoy the show! Bring a chair! Admission is free!

# LABOR DAY BBQ – STCHS FUNDRAISER

PATRICIA GIBSON

You are invited to the Southern Tuolumne County Historical Society’s (STCHS) Annual Fundraising Event, which is happening on Sunday, September 1st, 2023, at PML Stables. The event is from 4-7pm and has fun events planned for kids and parents alike. Come enjoy a delicious country BBQ of Tri-Tip or Hot Dog meal, with sides of green salad, potato salad and dessert. We will have live music from Sequoia Tree-O. Please bring your family and friends along to our kid friendly event. We will have a bake sale, silent auction, bar, and lots of new friends to meet and mingle with. Our local 4-H presents a whole host of games for the kids. Our Groveland Librarian, Barbara Connelly, will lead kid activities that include tug-o-war and a watermelon eating contest. Joanne Prieto will give line dancing instruction. STCHS members have been mailed a flyer to purchase their event/meal tickets in advance, which are discounted by \$5 each! Others may stop buy the museum to purchase reduced rate entrance tickets. So please either mail in your payment or drop it by the museum office. Elsewise,

you may buy your event tickets on the day of at the gate. Everyone is invited! STCHS is a 501c3 non-profit that provides great service to our community. It is dedicated to preserving the history of Southern Tuolumne County and several buildings in the Big Oak Flat/Groveland Area. It houses the local museum which is open to free to visitors. It is run by an all-volunteer staff and subsists uniquely on donations, membership fees and two annual fund-raising events. Our STCHS members, please watch for the raffle tickets in the mail, along with the pre-order discount ticket form. You may return them to the Museum office or via mail in the envelope provided. We are also looking for donations for our Silent Auction! If you have something to donate, we will give you a 501(c)3 in-kind receipt for its value. Please drop it by the museum or call and we can pick it up. Our Board members will be soliciting the community vendors. Please be as generous as you can. If you’d like to volunteer for this event or have any questions, please contact Patricia Gibson at the museum phone 209-962-0300 or via email at: [patty.gibson@comcast.net](mailto:patty.gibson@comcast.net).

# PML MEN’S GOLF CLUB

DAVE FERNANDEZ

## CLUB CHAMPIONSHIP, GRAND SLAM

- #14- Greg Sarratt 4’1”
- #17- Dave Villaroman 9’7”

Summer is here and as the weather heated up, so did the competition for our PMLMGC tournaments. Two great tournaments. Congratulations to our winners.

## CLUB CHAMPIONSHIP

- Championship Flight Gross**
- 1st place- Steve Grant
  - 2nd place- Jim Grant
  - 3rd place- Marc Allyn

## Masters Flight Gross

- 1st place- Gus Climent

## Senior Flight Gross

- 1st place- Joe Robinson

## Super Senior Flight Gross

- 1st place- Dave Hart

## Net Championship

- 1st place- Ben Rebiskie
- 2nd place- Jim Grant
- 3rd place- Steve Grant
- 4th place- Dave Hart
- 5th place- Gus Climent
- 6th place- Joe Vautier

## GRAND SLAM

### Flight 1

- 1st place- Dave Hart, Doug Schmiett
- 2nd place- Marc Allyn, Joe Parisi
- 3rd place- Rick Liszewski, Edvard Eshagh
- 4th place- Dave Villaroman, Gus Climent

### Flight 2

- 1st place- Gus Allegri, Paul Purifoy
- 2nd place- Dan O’Connor, Rich Martinez
- 3rd place- Dennis Johnson, Bob Stock
- 4th place- Al Costa, John Lloyd

## Closest to the pin

- #3- Doug Schmiett 3’9”
- #7- Joe Parisi 10’8”

## TOURNAMENT TEE SELECTION

Many of our tournaments allow players to select what tees they will play from. It is important that players sign up for the correct tees. Any player can play from the Gold tees, regardless of their age or index, if they so choose. But only players that qualify may play from the Purple/Green tees. To qualify a player must be 70, or older, or have an index of 18.7, or higher. It is very difficult for the Golf Shop to make tee changes at the last minute. Any player that plays from incorrect tees risks disqualification. Typically, one team member will sign up a 4-man or 2-man team, so it is imperative that that team member sign up their team from the correct

## WEBSITE TOURNAMENT SIGN UP

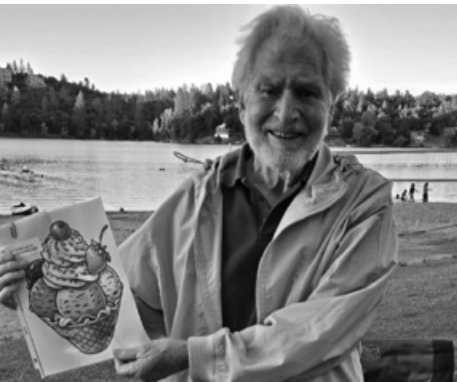
Please continue to use the website, [pmlmgc.com](http://pmlmgc.com), to sign up and pay for tournaments. Using the website for tournament sign up and payment makes it easier for the club and the Golf Shop to manage tournaments. Go to [pmlmgc.com](http://pmlmgc.com) to see the tournament schedule.

## JOIN THE MEN’S GOLF CLUB

Any male persons who are current property owners, their siblings, sons, nephews, sons-in-law, and PMLA employees are eligible to join the men’s golf club. Go to [pmlmgc.com](http://pmlmgc.com) and click on the button, Join the Club, to see the many benefits of club membership, as well as the ability to sign up on line. Applications are also available in the Golf Shop, or you can contact our Handicap/Membership Chair, Ted Toffey. Email Ted at [handicap@pmlmgc.com](mailto:handicap@pmlmgc.com), if you have any questions about club membership, or, if you’re a current member, your NCGA handicap index.

# FRIENDS OF THE LAKE POKER RUN

VIRGINIA RICHMOND



*John Weisenburger, First prize for best poker hand*



*Poker master Larry Santa Maria*

Friends of the Lake held our first event of the year in June with dinner at the marina followed by a poker run on boats around the lake. We traveled around the lake and picked up our cards at docks. Back at the marina, we “played” our hands. It was wonderful to get back together and enjoy a beautiful evening and a fun lake activity.

Our thanks to Larry and Catherine Santa Maria for organizing the event. Special thanks to our boat drivers Karen Hopkins, Don Wallace, Ed Sullivan, Mike Gustafson, Dotty Davis and Catherine Santa Maria.

Our lucky winners got their pick of prizes.

First place went to John Weisenburger, second place Ray Wong, third place Mike Gustafson and fourth place Dave Robertson. Gloria Marler won the “worst hand” prize.

Join us July 14th for “Music at the Marina,” August 18th for the “Pictionary on the Lake” puzzle game and September 8th for “Bingo on the Beach.”

Friends of the Lake is a PML social club focused on the safe and equitable use of the lake. We have fun lake-centered events all summer. You can join at any of our events, or send your name and email address with \$20 annual dues to Friends of the Lake, PO Box 591, Groveland.

# PML PICKLEBALL CLUB

TAMMY TALOVICH

COME DINK WITH US!

Whether you are new to the game or have been playing for a long time come on out, all are welcome. There are six courts and plenty of room for all, so bring your family, or neighbors.

You can get a daily pass at the gate if you want to see if you like it! I’m sure you

will! The Admin Office is where you can get passes for half year or full year.

Regular play is Monday, Wednesday, Friday, Saturday and Sunday beginning at 8:30am. Location is the same for all times, Pickleball Courts on Mueller.

Make sure you wear comfortable clothes, court shoes and bring plenty of liquids to rehydrate! There is a drinking fountain if you run out!

See ya on the courts!

# PML BOAT PARADE WOWS

VIRGINIA RICHMOND



*101 Dalmatians*

The PML boat parade on July 6, organized by Friends of the Lake, entertained participants and spectators alike. The theme this year was “Disney” and everyone enjoyed an amazing array of creatively decorated boats depicting Disney icons such as Pirates of the Caribbean, 101 Dalmatians, Beauty and the Beast and more. We also had some terrific patriotic decorations.



*Pirates of the Caribbean*

First place in the electric boat category was won by Burke Nicholson and friends, all dressed up for the Jungle Book.

Gas pontoons winners include Beauty and the Beast by Alyssa Ramirez and friends, tied with a two-story Pirates of the Caribbean by Lisa Artacho with friends and dogs.



*Jungle Book*

The winning ski boat was a two-boat production of 101 Dalmatians by the Lackovic and Slezak families.

As always, we’re impressed by the creativity and enthusiasm of our PML neighbors in the parade. Congratulations to all. Special thanks to Trudy Alt in the escort boat, keeping everyone going in the right direction! The annual Independence Day

boat parade is organized for the community by the Friends of the Lake Club.

**BE SURE TO LIKE OUR PMLA FACEBOOK PAGES:**

***Facebook.com/PineMountainLakeCA***

***Facebook.com/PMLARecreation***

***Facebook.com/PMLMaintenanceDept***

***Facebook.com/PMLGrill***

***Facebook.com/PMLAEquestrianCenter***



# ROOFBB

AUDREY PROUSE

“I joined because I love doing good things and also a way to meet new people since I’m new to the area.” Rainey Miller

Summer is in full swing and so are the ROOFBB ladies! **SAVE THE DATE:** We are excited to announce that planning is underway for our fabulous 30th Anniversary Party! Join us on Tuesday, August 20th at Around the Horn Brewery for a celebration. The public is invited to come celebrate with us; **MUSIC BINGO** is on the agenda! Look for a flyer on social media to get all the details!

Giving Back to Our Community! We are thrilled to share that ROOFBB sponsored the 3rd Annual Groveland Bot Wars, hosted by Damien Renault of Groveland Outdoor Zone. This year’s event, held in Sonora, was a smashing success! Families came together to build and compete with their robots, and we are proud to have provided kits to two Groveland families.

Monday Night Football is Back! We are happy to announce ROOFBB ladies will be hosting 6 MNF game night dinners this football season. Monday Night Football is back starting Sept. 9th when the 49ers play the NY Jets! At the Lake Lodge-dinner, dessert and a cash bar. Doors open at 4:45. Other dates are 9/23, 10/7, 10/21, 10/28 and 11/4. Mark

your calendars now!

Join the Fun-get Involved with ROOFBB! We hold fundraising events throughout the year to support our initiatives. Keep an eye on our social media and local flyers for details on our upcoming events. Your support is crucial to our success!

Want to learn more about ROOFBB? Follow us on Instagram, Facebook, and Nextdoor. Looking for a volunteer opportunity that’s both fun and fulfilling? ROOFBB is the place for you! We also welcome donations to support our cause.

Thank you for being part of our community and helping us make a difference!

**DONATE**

**venmo**

**CONTACT US!**  
*charity@roofbb.org*

**FOLLOW US!**  
Facebook, Instagram, NextDoor  
*@roofbbcharity*

# PML LADIES CLUB

MAE FRANCO

Ladies Club took the month of July off to celebrate the birth of our nation with family and friends. Hope everyone enjoyed the holiday and found some creative and fun ways to stay cool during the excessive heat wave.

EXCITING NEWS! We have had several requests for membership from some of our current members for friends who live outside of PML, so the Board has voted to accept membership of ladies who live outside of PML if they are sponsored

by a current member. So, spread the word and invite your friends to join us and join the fun!

More good news! Our Facebook page has been restored and updated. We invite you to follow us and stay up to date with all of our events at [www.facebook.com/pml\\_ladies\\_club](http://www.facebook.com/pml_ladies_club)

Ladies Club meets the first Wednesday of the month except January and July.

If you are interested in joining or learning more about our club please contact Mae Franco at 831-297-0554 or Pam King at 831-601-8471.

# PML RACQUET CLUB

EILEEN LEE

**EAT, SLEEP, TENNIS, REPEAT!**

PML Racquet Club serves up Breakfast on the Courts

The PML Racquet Club courts are heating up this summer as members host Breakfast on the Courts the first Sunday of each month.

“We hope everyone will come out and enjoy a light breakfast and get to know our club members during our Breakfast on the Courts events,” club president Ronn Bass said. “This is a free drop-in event, and we would really like to have some new folks join us for a fun morning of tennis and a casual

continental breakfast.”

Summer is a wonderful time to improve upon all aspects of the game. The club has a ball machine for players who are looking to hone their returns and plenty of loaner rackets are available. Whether you are a beginner or an experienced player, all skills levels are welcome to play. Tennis is a great sport to get your heart pumping and enjoy spending time with family and friends.

Club members gather at the tennis courts on Pine Mountain Lake Drive on Tuesday and Friday mornings each week. For weekly play start times or further information email the club at [PMLAtennis@gmail.com](mailto:PMLAtennis@gmail.com).

# GARDEN CLIPPINGS

LINDA NEUSCHWANDER – PINE MOUNTAIN GARDEN CLUB

It is STILL too darn hot! But what ‘cha going to do? Keep up the watering, that’s what! Remember to rise early and water your garden deeply, allowing one to enjoy the cool and peaceful beauty of our early Sierra foothills mornings. But watch out for extreme heat conditions! Drink plenty of water, wear a hat

and use sunscreen. Not to worry, watering shouldn’t be an everyday ritual, twice a week should suffice. Container gardens do require more. It helps to know your garden. Limit the time spent out-doors in the heat. And make plenty of time for visiting with friends and neighbor in cool places. Remember to enjoy the summer! Plans we had for the next two months have been cancelled due to the unpredictable hot weather. We look forward to a temperant fall for new events. Without fail in November at the Lake Lodge we will feature an Arts Workshop including mosaic, watercolor, or birdhouse decorating, your choice!

Sounds fun? Want to learn more about

local foothill gardening? Join us! Let’s be friends (and have fun in the garden...)! Questions? Contact club president Susan Dwyer at [smdwyer@sbcglobal.net](mailto:smdwyer@sbcglobal.net). We meet the second Monday at 1:00 pm at the PM Lake Lodge (January and July are dark, no meetings). We can be reached at P.O. Box 167, Groveland, CA 95321.

# PML LAKE SWIM RESULTS

VIRGINIA RICHMOND

Congratulations to the 16 intrepid swimmers who completed the 2024 Lake Swim from Dunn Court to the Marina Beach, organized by Friends of the Lake. Some swam for speed and many people did it just for the personal challenge. It's one-third of a mile and it's not easy! Many thanks to the PML boat patrol and our kayak safety line of Anita Millard and Luci Tyndall for keeping everyone safe. First place at a very fast 6 minutes and 18 seconds was Alex Otomo. Alex

swam with her high school team and is a former Nevada State high school swim champion. Second place at 6:33 was visitor Yuri Obolenskiy from Pleasant Hill. Yuri is on his school water polo team and just finished 8th grade. Third place went to part-timer Sierra Geringer at 6:55. Sierra goes to Leigh High School in San Jose and belongs to three swim teams. The last swimmer arrived at exactly 16:36 minutes. Congratulations to all! Special thanks to Friends of the Lake

event organizers Bill Bent and Mike Gustafson, and Weldon and Janis Killion who timed the race, and to Karen Hopkins and Kate Greene for their help, along with the excellent Marina staff. To join Friends of the Lake and receive information on each upcoming event, please send your contact information and a check for \$20 per family to Friends of the Lake, PO Box 591, Groveland, CA 95321. Be sure to include your email address, as all club communication is by email.



Fastest lake swimmers: Alex Otomo (1st), Sierra Geringer (3rd) and Yuri Obolenskiy (2nd)

# ASIAN FRESH SPRING ROLLS

RECIPE BY TOM KNOTH AND PAULA MARTELL

This is a fun appetizer recipe that goes over well at parties and is easy to make ahead. I highly recommend serving it with the peanut butter dipping sauce. The ingredients mentioned are possibilities and you don't want to use all of them together; just pick your favorites that you have on hand. The most popular combo is shrimp or chicken, lettuce and/or cabbage, carrots, green onion, and fresh herbs.

## INGREDIENT OPTIONS

- Rice Paper Spring Roll Wrappers** (a must ingredient, "Banh Trang" brand available in Marval Market's Asian section)
- Shrimp** – small to medium sized is best but you can use larger ones and cut into smaller pieces (after they are cooked)
- Cooked Chicken**, seasoned and cooked as you prefer
- Rice Sticks or Noodles**, cooked to manufacturer's directions
- Cabbage**, chopped – green, red, and/or purple
- Butter Lettuce**, chopped
- Carrots**, use a vegetable peeler to make strips
- Cucumbers**, thinly sliced

- Green Onion**, thinly sliced
- Jalapeno Peppers**, finely diced – if you like spicy
- Fresh Herbs** – use whole mint, basil, and/or cilantro leaves
- Other possible ingredients:** avocado, mango, bell pepper, edamame, peanuts, almonds

## COOKING SHRIMP

Place a couple quarts of COLD water in a high sided pan with 2 Tbsps. Salt and the shrimp. Heat on high and use a probe thermometer for monitoring water temp and checking shrimp internal temp. When the water temp reaches 170F the shrimp should be done to around 140F, which is just where you want them. But check shrimp temp before the water reaches 170F as smaller shrimp will be done earlier. When shrimp is cooked to 140F, remove immediately with a slotted spoon and transfer to an ice water bath.

## PEANUT BUTTER SAUCE

With ingredients listed this is spicy, but you can reduce or eliminate the Sriracha and/or red pepper flakes to make it less spicy. Simply mix all ingredients in a blender until blended.

- 1/2 cup creamy peanut butter
- 1/4 cup hot water
- 2 tablespoons Thai red curry paste (available at MARVAL Market)
- 2 tablespoons light brown sugar
- 2 tablespoons Sriracha sauce
- 1 tablespoon soy sauce
- 1 tablespoon rice vinegar
- 1 tablespoon freshly squeezed lime juice
- 1 teaspoon finely minced garlic
- 1/2 teaspoon red pepper flakes
- 2 scallions, thinly sliced

## DIRECTIONS

Fill a large shallow dish or pie plate with an inch or so of water. Remove one rice paper wrapper from the package, and place it in the water to soak. Allow it to soak for about 10 seconds and then remove and place on another plate with a couple tablespoons of water spread around it (so the wrappers don't stick). The rice wrapper should still feel pretty firm at this point. It will soften as it sits and as you add the filling ingredients. If you let it soak for too long it might tear when rolled, but you can just wrap it in a second rice paper if that happens. Layer desired fillings on the 1/3 of the spring roll that is closest to you, starting



with whatever ingredients that you want visible (such as shrimp) at the bottom. Keep fillings under 5 inches in width so that you have at least an inch on the sides to "burrito wrap" the skins. Gently pull the bottom of the wrapper up and over the lower portion of the filling. Try to keep the fillings compact as you roll upwards, just until the fillings are enveloped. Pull each side over to enclose the filling. Continue wrapping upward until your spring roll is fully wrapped. If you're not enjoying the spring rolls right away, wrap each roll individually in plastic wrap (to keep them from sticking together) and refrigerate. Serve spring rolls, sliced in half on a diagonal, with peanut butter dipping sauce. Enjoy!!



# CAMP TUOLUMNE TRAILS

DORI JONES



## CAMP IS ALIVE WITH THE SOUND OF CAMPERS!

Summer campers are enjoying all the fun summer camp is supposed to be! Swimming, archery, ceramics, campfires, skits, dances, and so much more. CTT’s first of seven groups this summer was from United Cerebral Palsy clients in Modesto and Turlock, followed by a session serving adults with developmental disabilities. We need to remember that just because someone has a disability, doesn’t mean they are less smart, less talented, less fun or less engaging with others. For example, a group of youngsters (average age 12) came from as far north as Rocklin and as far south as Los Angeles, and they turned out to be quite the talented group, each in their own unique way. Some were good at dancing, some were good singers and some were good at arts & crafts. Our final group of the summer session will be a family camp serving 13 families with children with a disability. We thank our dedicated and tireless team of counselors, nurse, lifeguard and CTT staff, led by program director

Jacqui Montero, who made another successful summer session possible for our very special campers.

## NEWLY EXPANDED 2024 CONCERTS FOR A CAUSE

CTT will be hosting the remaining four (yes four!) concerts this summer. Purchase tickets now for the amazing lineup of extraordinary artists in August, September and October. You will not be able to experience this caliber of talent in a venue as intimate and special anywhere else.

## DON'T MISS THESE AMAZING CONCERTS:

**Aug 24: Adam Hawley** - a chart-topping, uber-talented guitarist accompanied by his five-piece band and vocalist Cat Hawley. His latest single, “Unstoppable,” has been on the top 20 chart for 6 weeks.

**Sept 21: Vincent Ingala** - a world renowned, 30-something phenom who plays sax, piano, keys, drum and sings. Vincent just released his 8th album. Look for it to spawn even more chart-topping hits.

**Oct 12: The Boneshakers** - featuring sultry vocalist Jenny Langer and extraordinary guitarist Randy Jacobs, along with their band.

**Oct 26: Rebecca Jade & Jeff Ryan** - Returning for her fourth season, Rebecca will be joined by acclaimed saxophonist Jeff Ryan, who returns for his second season. Jeff’s latest collaboration with Kim Scott is currently #8 on the charts.

Thank you to all our generous sponsors, who help keep Concerts for a Cause moving forward and gaining momentum: Mechanics Bank and MarVal (Groveland), Christopher Lawrence, and Dave Koz. All proceeds from the Concerts for a Cause music series benefit Tuolumne Trails’ summer camp programs, which allows the organization to pursue its mission of creating inclusion and safe outdoor recreation for all and providing an accommodating environment for healing, respite, education and recreation for people with disabilities, their families and caretakers. Tickets for Concerts for a Cause and dinners sell out very quickly. For more information and to purchase tickets, visit CTT’s website: [www.tuolumnetrails.org/concerts](http://www.tuolumnetrails.org/concerts).

## CONSIDER HELPING OUR MISSION

CTT’s goal of becoming the most accommodating camp in the country for people with disabilities does not come cheap, and isn’t just our focus during our summer camp sessions. It’s a year-round effort—the work doesn’t stop when summer campers are gone. We host off-season groups, continue work on improving camp accessibility, maintain the facility and grounds and plan programs and staff for the next sessions—an ever-evolving effort. Please help us further our mission by donating today.



## CTT'S MAINTENANCE TEAM IS GROWING



*John Kiraly and Joshua Relles*

CTT welcomed John Kiraly and Joshua Relles to CTT’s maintenance team. John, who comes from rural Nevada, previously held positions in the military, law enforcement and other camp-related jobs. John enjoys his CTT co-workers, and his hobbies include herbalism and studying history, philosophy and anthropology. He loves all types of music, and considers himself a true “music man.”

A California native, Joshua comes to CTT from previous roles as a surf instructor and maintenance for various RV resorts. He’s interested in learning more about enabling campers. His hobbies include gold prospecting, playing music and spending time with his wife and two young daughters. According to Josh, “I’m an open book—ask me anything.”

We invite you all to join the Camp Tuolumne Trails team! We are always happy to answer any questions or give you a tour of the 80-acre facility. If you’d like to participate in upcoming events, volunteer at camp or learn more about donating and legacy giving, please call CTT at (209) 962-7534, email [info@tuolumnetrails.org](mailto:info@tuolumnetrails.org) or visit: <http://www.tuolumnetrails.org>. Follow us on Facebook and Instagram to stay updated on camp happenings.

# CONCERTS

## for a Cause

Adam Hawley



[www.tuolumnetrails.org/concerts](http://www.tuolumnetrails.org/concerts)



PRESENTED BY  
CAMP TUOLUMNE TRAILS

**Camp Tuolumne Trails**  
August 24th 6:00 PM

"Accessible Arts for All"  
in GROVELAND, CALIFORNIA

# VALADEZ TREE SERVICE LLC

- BRUSH CHIPPING
- HAZARD TREE REMOVAL
- LAND CLEARING



- STORM CLEAN UP
- MASTICATION
- TREE TRIMMING/PRUNING

CA LIC. # 1097030  
**24 HOUR EMERGENCY SERVICE**  
(209)206-8591  
valadeztree@gmail.com  
16843 Crestview Dr.  
Sonora Ca 95370  
**\*VETERAN AND SENIOR DISCOUNT\***





## A CELTIC CRAFTSMAN BUILDERS

Craftsmanship that can be counted on!  
Punctual, Reliable,  
Honest, and Dependable!

GENERAL CONTRACTOR #962605 • PHONE #209-459-2936

**COMPLETE HOME CONSTRUCTION REPAIRS, REMODELS**

- Kitchen/bathroom repair/remodel
- Doors hung, re-hung, installed & removed
- Finish carpentry
- Windows installed, removed, replaced, upgraded

- Wood decks installed, repaired
- Wood fences constructed, installed & repaired
- Wood gates, built, repaired, replaced
- No job is too big or small
- 35+ years' experience
- Competitive rates

**209-459-2936**





## WINDOW TINTING

Residential • Commercial • Auto

CALL FOR A FREE ESTIMATE  
**(209)-352-7926**



**Do you have unwanted sun or glare in your home?**

Our specialty here at Sierra Nevada Tint is doing our best to keep you and your family comfortable in your own home. Our window film can reject up to 70% of the heat entering your home as well as 99% of the damaging UV rays.





## HERE IS YOUR CHANCE TO BE MORE INVOLVED IN YOUR COMMUNITY!

Pine Mountain Lake  
Association has  
openings on the  
Following Committees:

**BUDGET & FINANCE COMMITTEE**

**COVENANTS COMMITTEE**

**EDITORIAL COMMITTEE**

**ENVIRONMENTAL CONTROL  
COMMITTEE**

**EQUINE COMMITTEE**

If you wish to be  
considered for committee  
membership, please  
complete an "Application  
for Committee  
Assignment". This form is  
available on the website  
at [www.pinemountainlake.com](http://www.pinemountainlake.com)  
or from the  
Administration Office.

MAIL COMPLETED FORM TO:  
Pine Mountain Lake Association  
Attention: Janessa Owens 19228  
Pine Mountain Drive  
Groveland, CA 95321  
Email to  
[gmassist@pinemountainlake.com](mailto:gmassist@pinemountainlake.com)  
or drop it by  
the Administration Office

## High Speed Broadband internet

STARTING AT **\$44.95**  
PER MONTH

- SPEEDS UP TO 300 MBPS\*  
\*Speeds vary with packages
- DISCOUNTS AVAILABLE FOR MULTIPLE SERVICES
- CABLE TV & TELEPHONE SERVICES  
ALSO AVAILABLE

**GOSNC.COM | 209.962.6373**

*Sierra Nevada*  
**COMMUNICATIONS**

**hci**  
**DOCKS**

**Custom Boat Docks – Gangways**  
**Kayak/Canoe Launches - Floats & Hardware**

**209-845-2876**

1398 East F St Oakdale, CA 95361

Independently owned Since 1982

[www.hcidocks.com](http://www.hcidocks.com)

## PAINTING & CONSTRUCTION



**PAINTING – EXTERIOR/INTERIOR • DECK REPAIRS • WOOD REPAIRS • REMODELS**

**Bay Cal Construction**  
**209.962.4777**

[www.baycal.com](http://www.baycal.com)  
email: [davec@baycal.com](mailto:davec@baycal.com)



**FREE ESTIMATES**

## GROVELAND GAL FRIDAY

**AS YOU MAKE YOUR  
SUMMER PLANS,  
REMEMBER TO CALL  
ME FOR: PET CARE,  
HOUSESITTING,  
VACATION HOME  
CHECKS,  
PLANT/GARDEN  
WATERING,  
SHOPPING, RIDES,  
ORGANIZING,  
SENIOR CARE OR...  
YOU NAME IT!**

**SHARON VOLPONI**  
209-962-6848  
209-770-6277



2024

HOUSEHOLD HAZARDOUS  
WASTE COLLECTION DAYS

Sonora Area

Saturday, May 18

9:00 am - 1:00 pm

Event Location:  
Cal Sierra Recycling Center  
14959 Camage Ave.

For Appointment Call  
After April 15, 2024 -24/7  
1-800-811-2435


Big Oak Flat/Groveland Area

Saturday, August 24

9:00 am - 1:00 pm

Event Location:  
Take Hwy 120 to Big Oak Flat.  
Take Catholic Cemetery Rd. &  
Follow the Signs

No Appointment Required  
for Groveland Event



Weed killers,  
Insect sprays,  
Pesticides,  
Fungicides,  
Pool chemicals,  
Camp & BBQ  
Propane cylinders

Glues,  
Polishes,  
Solvents,  
Paint, Gasoline,  
Thinners, Wood  
preservatives,  
Photo chemicals,  
Art supplies

Brake fluid,  
Waxes,  
Rust  
preventatives,  
Contaminated  
motor oil, Engine/  
brake part  
cleaners

Oven/  
drain  
cleaners,  
Mothballs,  
Non-empty  
aerosol cans,  
Deodorizers,  
Household cleaners,  
Nail polish remover,  
Shoe polish

TUOLUMNE COUNTY RESIDENTS

Now is the time to dispose of the hazardous materials hanging around your house and garage.

Follow these simple steps:

1. Keep waste in original container

2. Do not mix material

3. Prevent leakage or spills  
*(Place container in tub or box and surround with paper or kitty litter)*

4. Transport wastes in trunk or secured in bed of truck

Restrictions:

• No containers larger than 5 gallons

• Limit toxic items to 15 gals. or 125 lbs. per trip (California State Law)

We do not accept:

• Ammunition or explosives

• Asbestos, tires, or medical waste

• Radioactive waste

• Marine flares

• Non-hazardous wastes or regular trash

For **Small Business Hazardous Waste** or any other questions please contact  
Tuolumne County Solid Waste Division (209) 533-5588 or visit  
[www.tuolumnecounty.ca.gov/swd](http://www.tuolumnecounty.ca.gov/swd)





**FREE Tire Disposal**  
**August 1<sup>st</sup> - 31<sup>st</sup>, 2024**



# Big Oak Flat/Groveland Tire Amnesty Event

For additional information,  
please contact:

**Tuolumne County  
Public Works  
Solid Waste Division  
(209) 533-5588**  
  
or  
**Moore Bros.  
Scavenger Co.  
(209) 962-7224**

## Groveland Transfer Station

Every Wednesday and Saturday in August  
No Appointment Necessary  
10700 Merrell Rd., Groveland

- ✓ 9\* Waste Tires per vehicle, per trip maximum
- ✓ NO commercial or business tires
- ✓ Tires diameter must be less than 40"
- ✓ Tires on rims are **NOT** accepted

*Funding for this program is limited. Tuolumne County reserves the right to stop accepting tires for free disposal at any time, with or without notice.*

\*California law prohibits transport of more than nine (9) tires at any time.



**Rural Counties  
Environmental Services  
Joint Powers Authority  
ESJPA**

Sponsored by Tuolumne County Public Works Department,  
Solid Waste Division & the Rural Counties' Environmental  
Services Joint Powers Authority.



TWO GUYS PIZZA PIES  
18955 Ferretti Rd., Groveland  
(Just 1/2 Block Off Hwy 120)

Check out our weekday  
LUNCH SPECIAL!

We ♥ Phone Orders  
(209) 962-4897

**\$1.00 OFF**  
ANY SIZE TWO GUYS  
PIZZA OR CALZONE  
One coupon per order, per visit. May not be combined with any other offer and/or coupon. Not valid on delivery.  
PMLN 0824 Offer Expires 09/15/24

**\$2.00 OFF**  
ANY LARGE OR EXTRA LARGE  
TWO GUYS PIZZA  
One coupon per order, per visit. May not be combined with any other offer and/or coupon. Not valid on delivery.  
PMLN 0824 Offer Expires 09/15/24



**LINGLEY ENTERPRISES**  
**SERVICE AND REPAIR CONTRACTOR**  
**PLUMBING - ELECTRICAL - CARPENTRY**  
**AFFORDABLE PRICING**  
**WWW.LINGLEYENTERPRISES.COM**  
**209 840 2654** LIC # 920143

**\$25  
DISCOUNT**  
Mention this ad for a discount on cleaning services.  
*Minimum charge applies.*



**DISASTER RESTORATION SERVICES • RESIDENTIAL AND COMMERCIAL CLEANING SERVICES**

Carpet & Furniture Cleaning • Steam & Dry Cleaning • Deep Soil Extraction • Spot & Odor Removal • Hoarding Cleanup • Post Construction Cleanup  
24 Hour Emergency Service • Water Removal • Wet Carpet Care • Fire & Smoke Restoration • Vandalism Cleanup • Structure Drying • Sanitizing

**ServiceMASTER**  
**Restore**

*The clean you expect.*  
*The service you deserve.*



Serving Tuolumne, Calaveras & Amador Counties  
ServiceMasterSierras@mlode.com • www.ServiceMasterSierras.com

**209-532-1700**  
17330 High School Road  
Jamestown CA 95327





# DOG PARK NEWS

DORI JONES

Sadly, we had to say goodbye to another of our furry friends from the dog park. Maya, a sweet 12-year-old Samoyed, meant the world to owner Barbara Haiges, who rescued Maya 3½ years ago. About a year ago, she was diagnosed with liver disease and took daily medication for quite some time, however, she started having seizures about a month ago. On June 13, when Maya could no longer stand, Barb knew it was time. RIP sweet, gentle Maya.

A BIG THANK YOU goes to the volunteer “crew” who did weed whacking, power washing and general clean up around the dog park on June 22. Thanks to Bob, Tim, Rick, John, Rik, Curk, Jack and Greg!

Please register or renew your dog park registration and get the gate code for 2024. Please stop by the GCSD administration office on Ferretti Road to



register (or go use the Merchant Transact system on the GCSD website: [www.gcscd.org](http://www.gcscd.org)). Bring current Rabies and Bordetella vaccination certificates, pay a \$25 annual fee for up to two dogs (\$10 for each additional dog), and get the gate code. It is a great place for dogs (and people) to socialize. To keep all our dogs safe at the dog park, we ask that you keep your dog’s vaccinations current.

# HELPING HANDS HAPPENINGS

PATTI BEAULIEU

I can’t believe we’re writing the last articles of summer. Where on Earth has the year gone? We had a super summer with a record number of visitors and shoppers, not to mention, record donations from our generous community. This is our last month of a 4 p.m. close since we’ll change to a 3 p.m. close after Labor Day on Wednesday, September 4th.

We had a very busy July with many visitors, week-enders and travelers stopping to see what our Thrift Store has to offer. Thanks to our locals for sharing us with your summer visitors and houseguests. Everyone is so surprised at the quality and amount of merchandise our little store has. It’s all thanks to our generous donors and our wonderful staff, that only put out the best items. Unfortunately, we get many items that are not up

to our standards and have to be either thrown out or re-donated to another entity. Please be sure your donations are items that match our high standards, are clean and in good or better condition.

We still have a very extensive collection of summer clothes and shoes for all ages and sizes. In about 8 weeks we’ll start purging the summer inventory and start bringing out our winter goods. Look for many sales on summer clothes to reduce the inventory prior to the season switch. We always stock light jackets, blankets and all weights of sleepwear year-round, for those that don’t realize how cold camping can be in the middle of summer in the high country.

The Furniture Barn is still filled with some wonderful, quality items –

# GROVELAND TRAIL HEADS HONORED WITH PRESIDENTIAL AWARD FOR OUTSTANDING VOLUNTEER SERVICE

BOB BONOMO – GROVELAND TRAIL HEADS

We are thrilled to share that our very own Groveland Trail Heads, a dedicated nonprofit mountain bike club, has been honored with the prestigious Presidential Award for Outstanding Volunteer Service. The award ceremony took place during the Stanislaus National Forest Service’s Community Meeting on Wednesday, June 12th, at the Groveland Resiliency Center.

The President’s Volunteer Services Gold Level Award was presented to the Groveland Trail Heads by Jose Hernandez from the Stanislaus National Forest. This award recognizes their remarkable volunteer efforts in 2023, where they logged an impressive 1,045 volunteer hours.

Established in 2003 by the President’s Council on Service and Civic Participation, the President’s Volunteer Services Award honors individuals and groups demonstrating sustained commitment to volunteer service. The Gold Level Award, the highest recognition, celebrates those who have significantly impacted their

communities and inspired others to take action.

Dwight Follien, President of the Groveland Trail Heads, expressed deep gratitude for this recognition. “We are deeply honored to receive this award from the White House,” Follien said. “Having it presented by the Groveland Ranger District personnel is especially meaningful, as they, along with the Stanislaus National Forest, have been incredible partners since our inception in 2013.”

Since its founding 11 years ago, the Groveland Trail Heads have become a cornerstone of the Groveland community. Their efforts support local businesses and address the unique challenges faced by our rural area. Their dedication and hard work not only enhance our trails but also foster economic prosperity throughout the entire Groveland area.

Please join us in congratulating the Groveland Trail Heads on this well-deserved recognition. Their volunteerism and community spirit are truly inspiring, and we are proud to have such dedicated individuals among us.

everything from artwork in all shapes and sizes to luggage and backpacks. This, of course, includes furniture, lamps, sports equipment, baby furniture and decorating accessories. A couple of months ago, we started selling record albums. We have some 78’s and many 33’s from the Big Band era to the 80’s and 90’s.

Wander downtown during these dog days of summer and visit our

wonderful shops and eateries. You’ll also notice the new ‘beautification’ of downtown project all done by our local Chamber, artists and volunteers. There are beautifully decorated trash and recycle receptacles, planters and hanging flower baskets and reclaimed, handmade wooden benches, all scattered about downtown. Come see their hard work and visit your local merchants.

# STUFF THE BUS

WYNETTE HILTON

## TENAYA PARENT CLUB ANNOUNCES FOURTEENTH ANNUAL “STUFF THE BUS” CAMPAIGN

The Tenaya Parent Club initiated the “Stuff the Bus” campaign thirteen years ago to help alleviate state budget cuts in the classroom. In past years, we have been overwhelmed by the generosity of our community. Last year, we collected over \$8,000 in school supplies and cash donations. With these contributions, the Tenaya Parent Club purchased necessary school supplies for every student at our school, alleviating the financial burden on our families.

In partnership with the Big Oak Flat-

Groveland Unified School District, we will be collecting school supplies and cash donations on Friday, August 2, from 8:00 AM to 12:00 PM at Mary Laveroni Park. Please note that this event will be held on a Friday this year.

Suggestions for school supplies include: pencils, binder paper, Sharpies, crayons, glue sticks, colored pencils, markers, binders, dry erase markers, pocket folders, white glue and highlighters. Many big box stores run significant sales on school supplies at this time of year, making it a great opportunity to shop. You can make a difference in the life of a student! For further information, please contact Wynette Hilton at (209) 962-7846 or (209) 449-8547, or email [whilton@bofg.org](mailto:whilton@bofg.org).

# BRAINY GROVELAND GOES BACK TO SCHOOL

VIRGINIA RICHMOND



The Brainy Groveland reading and math programs will be starting up again soon at Tenaya Elementary school.

And you can join us!

Brainy Groveland is a volunteer program that helps Tenaya elementary students work on their reading and math skills. We meet once a week to help fourth graders develop a strong foundation in basic math facts and to encourage the third graders to enjoy reading by choosing “just right” books and discussing them with a volunteer.

The math program meets for an hour on Monday afternoons and the reading program is on Thursday afternoons.

The program is staffed by a wonderful team of nearly 40 volunteers who meet with students on a one-to-one basis. We so appreciate their service to our young students. The Tenaya teachers are big supporters of the program, as they see its positive results.

We have volunteers who have enjoyed being with the program for over ten years and others who are brand new. The time commitment for volunteers is just one meeting per month. It’s a very rewarding experience for the volunteers and very helpful for the students.



*Volunteer Brian Watson helps a student with a math problem*



*A student describes his book to volunteer Bonnie Phillips*

As people move away, we have a few openings in the program for September. If you are interested in learning more about the Brainy Groveland program, please contact Virginia Richmond at 962-6336. We provide training and all program materials.

In August, the Brainy Groveland organization makes a special donation to Tenaya’s Stuff the Bus project to purchase school supplies for all elementary students.

# FRIENDS OF THE GROVELAND LIBRARY PAYS COUNTY

VIRGINIA RICHMOND

Did you know that FOGL must raise \$10,000 each year to pay the County for our fifth day of library services? The county pays for only four days. In the photo, FOGL treasurer Harriet Codeglia, delivers our check to County library operations supervisor, Anita Simpson.

We thank our members, donors, and Book Nook patrons for helping raise the necessary funds to keep our library open five days a week.



[www.PineMountainLake.com](http://www.PineMountainLake.com)

[Facebook.com/PineMountainLakeCA](https://Facebook.com/PineMountainLakeCA)



# EXCITING NEWS FROM GROVELAND EVANGELICAL FREE CHURCH!

PASTOR BOB KANDELS

GREETINGS,

We are thrilled to announce that Groveland Evangelical Free Church will soon be known as Gateway Community Church. In November 2023, our congregation decided to embrace this new name to better reflect our vision and mission. We have completed all necessary steps with the state of California to obtain a Doing Business As (DBA) name, and we will officially launch Gateway Community Church in September with a public Ice Cream Social. The exact date of the event will be announced soon.

Despite our new name, we remain a proud member of the Evangelical Free Church Family. As Gateway Community Church, our aim is to clarify our vision: to welcome and serve the people of our mountain community by helping them connect with Jesus Christ through joyful worship, prayer, and discipleship.

In John’s Gospel, Jesus tells us He is the Shepherd, and we are His sheep. He explains how the evil one lures us into a sinful way of life, but Jesus provides us with a gate to find direction and purpose. Those who

heard Jesus use this illustration didn’t understand what He meant, so He explained it to them: “Therefore Jesus said again, ‘Very truly I tell you, I am the gate for the sheep.’” (John 10:7, NIV). We believe in the salvation offered by the Son of the Living God as the gateway to God’s Kingdom. Therefore, we strive to be a movement for God through the wisdom of the Holy Spirit, connecting to our Lord through various ministries such as worship, small group Bible studies, children and youth ministry, and community service.

The Old Testament reminds us through Isaiah that God calls us by name: “But now, this is what the Lord says—he who created you, Jacob, he who formed you, Israel: ‘Do not fear, for I have redeemed you; I have summoned you by name; you are mine.’” (Isaiah 43:1, NIV). We believe God has chosen us for unending and continual love through the salvation of our Lord and Savior. As Gateway Community Church, we seek to express that love and fulfill our mission.

We look forward to celebrating this new chapter with you at our upcoming Ice Cream Social. Stay tuned for more details!

In Christ Service.

# WELCOME JEFF McFARLAND TO TIOGA HIGH

BOB SWAN

The Big Oak Flat-Groveland Unified School District Governing Board and Superintendent, Wynette Hilton are delighted to announce the appointment of Jeff McFarland as the assistant superintendent, and site Principal of Tioga High School for the 2024/25 school year.

Mr. McFarland brings deep rural school district experience to his new assignment including having served as a Superintendent/Principal and Teacher of Horicon Elementary School for the past 11 years. Prior to that assignment, he served as the Lead Teacher at Kashia Elementary School, a unique K-8 inclusive one room schoolhouse. Mr. McFarland holds a Multiple Subject teaching credential, a Single Subject

Social Science Credential, and an Administrative Credential.

He brings great enthusiasm towards fostering a positive environment for all students and staff and intends to maintain a setting devoted to each student’s learning and well-being. Mr. McFarland related, “I have an abiding belief that all students can excel and achieve and a personal motto to cherish those who hold you up and pay forward the lessons you have learned.” He has expressed his earnest commitment to continue to build the team and collaborate going forward.

It is his intention to establish deep roots and form an everlasting bond with our community where he plans to raise his children.

# ANY SINGERS OUT THERE?

BOB SWAN

This is the time of year when Pine Cone Singers are looking for folks who might want to join us in making some (high-quality) noise. We plan to get back together on Tuesday, August 27 at 2PM to begin rehearsing for our Winter Concerts. As I’m writing this in July, it is 101F, and yes, we’ll be singing about snow when it’s at least in the 90s outside. Thanks to the generosity of the Groveland Evangelical Free Church, we will be rehearsing in their Fellowship Hall.

We’re looking forward to getting back together, but as I said at the start, we are always eager to welcome new singers.

If you’ve never done choral singing – or it’s been a while since you did – it’s an amazing feeling when it all comes together. You should try it!

If you are interested but uncertain: It is not necessary to read music – we provide rehearsal CDs (or mp3s) that will allow you to learn the material at your own pace.

We rehearse on Tuesdays from 2 to 4:30. If you might be interested, but that time just doesn’t work, we’d really like to hear from you about what times would work better. With questions or comments, please contact Bob Swan at 408-398-4731, or email [swanpml@gmail.com](mailto:swanpml@gmail.com).

**PLACE AN AD TODAY**

Go to our website for more information and prices.

[www.pinemountainlake.com/pmla-newspaper/](http://www.pinemountainlake.com/pmla-newspaper/)

# SOUTHSIDE COMMUNITY CONNECTIONS FALL 2024 FUNDRAISING FUN: SAVE THE DATE

NANCY A REGGIO – EXECUTIVE DIRECTOR

Exciting news! Southside Community Connections’ 2024 fall fundraising event planning is underway. For those who remember last year’s Murder Mystery Dinner, this will be another event not to be missed.

This year’s event is “CASABLANCA: Here’s looking at you Groveland.” Scheduled for Friday and Saturday Nov. 8 and 9 at the Groveland Resilience Center, this evening promises an unforgettable experience filled with music, dancing, and exquisite cuisine. All to support the programs and services SCC provides to the community. Save the date! Tickets will become available in early September.

Attendees will be treated to the smooth

sounds of local saxophonist Doug Earley, who will set the perfect mood for an evening of entertainment. Later, guests can dance the night away to the lively tunes of the Lack Family Band. Dinner will be provided by Perfect Day Catering. More excitement will include just-for-fun gaming tables, bingo, a dance contest, and prizes for best dressed in the Casablanca theme!

Additionally, generous donors have offered three amazing items for SCC’s fall fundraising raffle, which is happening NOW: a 2010 Mini Cooper S convertible, a luxurious timeshare week on the Mexican Riviera, and an amazing timeshare week on the beautiful Big Island of Hawaii. Raffle winners will be announced on the last night of our

Casablanca event (you don’t need to be present to win). Picture yourself cruising through Groveland with the convertible top down. Or sunning on the beach in Hawaii or Mexico. Raffle tickets are being sold at various locations around town. Contact us at (209) 962-7303 for more information and to purchase raffle tickets.

We extend our sincerest thanks to the Groveland/Big Oak Flat communities for their continuous and unwavering support of our nonprofit organization. Through donations, support of our fundraising efforts and the ongoing generosity of residents, businesses, and volunteers, SCC has been able to continue our mission of fostering connections and enhancing lives.

SCC provides essential services and programs, from transportation and educational initiatives to cultural events and social activities. Our commitment is to help make Groveland/Big Oak Flat a vibrant and inclusive place to live. We strive to make aging in place a possibility for many residents in Southern Tuolumne County.

Now’s your chance to get involved! Purchase a raffle ticket, save the date for the Casablanca event, or consider volunteering with us. Call us at 209-962-7303, check out our website at southsidecommunityconnections.org, or visit us Monday-Friday between 10 am and 2 pm at The Little House, 11600 Merrell Road in Groveland.

## EXCITING PROGRAMS AT THE LITTLE HOUSE

SAMANTHA WEST – THE LITTLE HOUSE SUPERVISOR

Southside Community Connections is excited to introduce new and ongoing programs at The Little House!

**New Scrapbooking Group:** Join us on the last Tuesday of each month from 5:30 pm to 7 pm to capture memories and craft connections. Perfect for all skill levels! Advance sign-up is required. We provide all the materials for a \$5 fee, that goes back to our facilitator. Bring 4-6 photos each class and we will assist with creating a two-page spread for your scrapbook.

classes every Monday at 9 am. For a gentler option, Chair Yoga begins at 10:45 am, ideal for seniors and those with limited mobility.

**Balance and Core:** Stay active with our Balance and Core classes every Tuesday and Thursday at 10 am, focusing on stability and core strength.

**Thursdays:** After your workout, enjoy Needlecrafts or a Congregate Lunch provided by Sierra Senior Providers.

Explore more activities at [southsidecommunityconnections.org](https://southsidecommunityconnections.org). Join us and be part of the fun!

Give the Gift of Family Memories

Are you tired of binge watching Netflix or streaming content? Why not dust off your old 8mm family movie films or VHS tapes and bring those golden memories back to life. Have a reel family movie night!



- VHS & 8MM FILM TRANSFER TO DVD OR USB
- PRINT & SLIDE SCANNING
- AUDIO CASSETTE TRANSFER
- CD & DVD DUPLICATION
- PHOTO RESTORATION
- PHOTO BOOKS • MEMORIAL SLIDESHOWS
- PHOTO PUZZLES



DejaVu Video Services

408-899-4407 • [dejavuvideo123@gmail.com](mailto:dejavuvideo123@gmail.com)





**TMC CONSTRUCTION**  
License # 717300  
Insured  
(209) 962-6938

**Brushing • Log Removal  
Mastication  
Hazardous Tree Removal & Pruning  
Excavation**

Site Prep, Engineered Septic, Culverts,  
French drains, Retaining walls,  
Hauling, Post hole digging,  
Under ground work,  
Concrete work

**We can help with your grant.  
Skid Steer and Dump truck service  
Reasonal Rates • Free Estimates**



**PROPANE DISCOUNT PROGRAM**

Suburban Propane – As the preferred provider of PML we are happy to provide an exclusive members only program to all residents.

Benefits include: Propane at a discounted rate, Tank rental at a discounted rate, Free basic tank installation, Easy payment options, 24/7 Tech support, Flexible delivery options, 24/7 live phone support. Contact our local staff for further details and current rates.

Suburban Propane Jamestown California

**(209) 984-5283 • 1 (800) PROPANE**

**FIREWOOD CUTTING**

PML SLASH AND COMPOST SITE


**OAK AND CEDAR** REQUIRES A \$20 PML WOOD CUTTING PERMIT

WOOD CUTTING PERMITS AVAILABLE AT THE MAINTENANCE FACILITY

**PINE AND FIR** AVAILABLE FOR FREE CUT & HAUL

FOR MORE INFORMATION PLEASE CONTACT ANITA AT


**1 (209) 962-8612** BETWEEN THE HOURS OF 7 AM TO 2:30 PM, M-F.



**Land & Structure**  
SURVEYING | ENGINEERING | DESIGN

Deck Plans / Additions / New Houses  
Site Plans / Surveying / Mergers  
209-532-5173 [www.landstruc.com](http://www.landstruc.com)

**MOORE BROS. SCAVENGER CO., INC.**  
P. O. Box 278 • Big Oak Flat, CA 95305 • (209) 962-7224 • FAX (209) 962-7257



**VACATION RENTAL OPTIONS FOR TRASH SERVICE**

In order to assist property owner/managers of short-term rentals with trash removal, Moore Bros. Scavenger Co. offers the following services.

Short-term rental customers may participate in year-round or three-month summer curbside service. To manage anticipated levels of guest trash, property owners/managers of short-term rentals should maintain the suggested service levels as determined by the *Maximum Occupancy for Rental Property* (please see the chart below). In the event that renters generate more than the expected amount of trash or the home is rented multiple times during a given week the following options are provided:

- **As Needed Extra Pickup.** Property owners/managers may request a notation on their rental service accounts to *pick up extra as needed*. This will ensure that all trash left alongside the cans will be picked up by Moore Bros. and a special pickup will not be required. There is an additional per-can/bag charge for each extra can/bag picked up.
- **Special Pickup.** Moore Bros. has a truck and driver available for special pickups Monday through Friday.
- Property owner/managers must place a request for service call or email to Moore Bros. before 3 pm on the business day prior to the requested pickup day. A request for a Monday pickup must be made by 3 pm on the previous Friday. **Prepaid Bags.** Prepaid Moore Bros. bags may be purchased by property owner/manager to be used by any handyman or housekeeper servicing the residence between rental customers. The prepaid bags can be disposed of at the Pine Mountain Lake Maintenance Yard on Par Court off of Mueller Dr.

Property owners/managers **utilizing full summer service** may go to *on-call service* for the off season.

- **Off Season on Call Service.** Property owner/manager may call or email an *on-call request* to Moore Bros. for a service pickup on the regular pickup day for the address. A request for service call or email must be received before 3 pm the business day prior to regular scheduled pickup day. Charges will be based on the standard a per-can rate for each can/bag picked up.
- **Special Pickup.** Please follow the same procedure as listed above for Special Pickup.

**Maximum Occupancy for Rental Property**

Maximum Occupancy	Suggested Service Level
6 - 8 people	2 can
8 - 10 people	3 can
10 - 12 people	4 can
Lake front Property 12 people	4 or more cans as typically needed

If you have questions please feel free to contact our office at (209) 962-7224 or email us at: [info@moorebrosscavenger.com](mailto:info@moorebrosscavenger.com) and [Shirley@moorebrosscavenger.com](mailto:Shirley@moorebrosscavenger.com) (Please cc both to insure prompt replies).

**\*\*\*A drop-off Recycling center is available for use Mon – Sat. 8 am – 5 pm @ 11300 Wards Ferry Rd. Big Oak Flat, Ca\*\*\***

If you happen to accumulate excess garbage and need to dispose of it, you may purchase a prepaid Moore Bros garbage bag at the Pine Mountain Lake Administration Office between 8am – 4:30 pm (closed for lunch from 12pm – 1pm), the Pine Mountain Lake Main Gate , or at the Moore Bros Office which is located at 11300 Wards Ferry Rd in Big Oak Flat. Pine Mountain Lake Association is limiting the amount of Moore Bros trash bags you can purchase at one time to 5 bags, and will only sell the bags to PMLA Property Owners. Prepaid Moore Bros Bags can be purchased by anyone and in any quantity at the Moore Bros Office. For service related questions, please contact Moore Bros Scavenger Co at 1 (209) 962-7224.

# Rod Diehl Pest Control

**RESIDENTIAL & COMMERCIAL • HIGH QUALITY  
100% SATISFACTION GUARANTEED**

Locally Owned & Operated • *5th Generation Tuolumne County*  
**PERSONAL SERVICE • FREE ESTIMATES**

We will customize your service around your pets  
*info@RodDiehlPestControl.com*

**(209) 532-3260**

**PROUDLY SERVING THE PINE MOUNTAIN LAKE / GROVELAND AREA**

## Ken's Asphalt

Lic. 708310

**Grading • Paving • Chip Seal • Road Oil**

Seal & Slurry Coatings • Crafcro Hot Rubberized Crack Sealer  
Driveways • Private Roads • Subdivisions

DOING  
BUSINESS  
SINCE  
1985

### DRAINAGE PROBLEMS?

*We have the Solution!*

Erosion Control • Riprap (6-12" Rock) • Asphalt Curbing • Base Rock

"Just Pave It"

### Complete Concrete Services

"Just Pave It"

- Stamped Concrete and Colored Concrete
- Stained Concrete
- Cleaning & Sealing
- Retaining Walls
- Driveways
- Walkways
- RV Pads
- Patios

**532-0800 • 962-5644 • 768-7395 Cell**



## Waters Plumbing Heating & Air

**FAST  
SAME DAY  
SERVICE\***

\*IN MOST CASES

**All work 100% Guaranteed!**



Contractors License #463958  
[www.watersplumbing.com](http://www.watersplumbing.com)

"I want you to know that our technicians will give you a price before we start the job." —Wayne Waters

**Groveland (209) 533-1010**



# Pest Control

- Ants, spiders, mice, wasps, earwigs, etc.
- Fast service, great prices
- Squirrel and bat Exclusion
- Termite Inspections
- Weed Control
- Poison Oak
- Star Thistle



962-5710  
800-464-3772  
Free estimates



**BUSINESS HOURS**  
Monday - Friday:  
8:00am - 5:30pm  
Saturday: 8:00am - 2:00pm  
Sunday: CLOSED

## Well Stocked Parts House:

*For All of Your Heavy Duty Needs!*

- Heavy Duty Brake Linings
- Baldwin & Fleetguard Filters
- Delo Oil
- LED Lights
- Air Brake Valves & Hoses
- CB Radios, Antennas & Accessories
- Logging & Dump Truck Parts
- Hydraulic Hose Shop

## Full Service RV Repair Shop:

- Commercial House & Starting Batteries
- Full Service Chassis & Lube Center
- Electrical & Plumbing Repairs
- Interior & Exterior LED Lighting
- Complete Body Damage Repair Shop
- Solar Power Systems & Inverters
- Complete Detailing Services
- Warranty & Insurance Work Accepted

**Mobile Service Available**

18968 Waylon Way  
Sonora CA 95370  
Call or Email us to schedule an appointment today!  
(209)-532-7994  
EMERGENCY CONTACT: (209)-559-3840  
Email: [shop@sierraheavyduty.com](mailto:shop@sierraheavyduty.com)  
Visit Us Online: [www.sierraheavyduty.com](http://www.sierraheavyduty.com)

*Over 50 Years of Experience!*



All Major Credit Cards Accepted.

# PLACE AN AD TODAY

With a classified or display ad in the Pine Mountain Lake News your ad will go directly to every PMLA member every month.  
Go to our website for more information and prices.

[www.pinemountainlake.com/pmla-newspaper/](http://www.pinemountainlake.com/pmla-newspaper/)

We are known for our integrity and legendary customer service!

Produce Your Own Clean Power!

- Save \$\$\$ Every Month
- Federal Tax Credit available
- 5-Year Typical Payback



Your Local Solar Electric Company

License #892261 / Since 2002  
16046A Via Este Rd., Sonora

Call Us For A Free Estimate  
**209-532-5925**

Check our reviews at [www.apssolarpower.com](http://www.apssolarpower.com)  
and [www.SolarReviews.com](http://www.SolarReviews.com)



# JACK IS BACK!!!



**Jack Proctor**  
Heating & Air Conditioning

- Complete commercial & residential services
- Service & repair - all makes and models
- Heating & ventilation
- Heat pump specialist
- Air conditioning troubleshooting expert
- Installation and remodeling
- Upgrading & energy efficiency
- Bonded & Insured

Call your local Pro!  
CELL  
**209-678-8915**  
License #313926  
Since 1975

Before replacing your unit, ask us for a 2nd opinion.  
Chances are, we CAN repair it!



**HEADLEY'S TREE SERVICE**

Tree Service Without the Headache.

**WALTER HEADLEY**

Owner / Operator  
(209)316-5167

[headleystreeservice.com](http://headleystreeservice.com)  
[headleystreeservice209@gmail.com](mailto:headleystreeservice209@gmail.com)

COMMERCIAL SPACE FOR LEASE

COMMERCIAL SPACE FOR LEASE!  
18717 Hwy 120, Groveland. Approximately  
1600 square feet of building space, located  
downtown with propane heat, one ADA  
bathroom perfect for retail, food service,  
professional office, medical etc. Rent  
\$1,650.00 Deposit \$1,700.00. Contact agent  
**650-520-1022**

HELP WANTED

PMLA IS HIRING  
PMLA is looking for qualified candidates  
for several job openings. Apply online at  
**www.PineMountainLake.com**

RENTALS WANTED

EXCELLENT TENANTS  
w/excellent credit and rental history looking  
for homes to rent. Owner approves tenant  
before placement. Call *Yosemite Region  
Resorts* **209-962-1111**

SERVICES

RONNING ROOFING  
Call Joe for all your Roofing and Gutter  
needs. Licensed, Bonded, and Insured.  
License # 976739 **209-962-6842**

HOUSE CLEANING

We are mature/experienced PML residents.  
Steve **925-595-3362**  
Carla **925-639-4929**.

B BEAUTIFUL SALON @ SPA

Massage \$65.00 per hour  
W - F every other Saturday  
Massages are tailored to your needs with  
a combination of Swedish, deep tissue and  
trigger point body work. My goal is to ease  
your body pain. There is a discounted rate  
available for those that choose to have a  
massage monthly for maintenance. That rate  
is \$50.00 per hour. However you must book  
your discounted massage prior to leaving from  
your current massage as the discount applies  
to the next massage. To book an appointment  
call or text Karen Mazzola at **209-768-6290**  
State of California License #13763

SERVICES

BIG JOHN HANDYMAN SERVICES  
Yard Maintenance, House Maintenance and  
moving households Call John **962-6163**

LAND FOR SALE

EXTREMELY RARE APPROX. 4.5 ACRE  
hillside PML lot with great views. Private, yet  
close to Golf, The Grill, Tennis Courts, and  
Pool. Unit 5B-03. Call **(559) 692-0117** or email  
**PinePlay@pm.me**

FOR SALE

NEW MERCURY OUTBOARD MOTOR  
8hp Mercury, 4 stroke, heavy duty with gas  
tank, used less than 10 hours. \$1,400.00  
O.B.O.  
Contact Steve Benstead, **209-770-4881**

WANTED

LOOKING FOR SAILBOAT  
Hobie Cat. Carl 805-234-2563.

NOTICE

THE CALIFORNIA PUBLIC  
UTILITIES COMMISSION WILL  
HOLD PUBLIC PARTICIPATION  
HEARINGS ON AUGUST 14,  
SEPTEMBER 5, AND SEPTEMBER  
19, 2024 REGARDING CHANGES  
TO THE COMMISSION'S  
LICENSING AND OVERSIGHT OF  
VIDEO FRANCHISEES UNDER  
THE DIGITAL INFRASTRUCTURE  
AND VIDEO COMPETITION ACT  
OF 2006 (DIVCA). YOU ARE  
INVITED TO PARTICIPATE AND  
EXPRESS YOUR VIEWS. VISIT  
**CPUC.CA.GOV/PPH** FOR MORE  
INFORMATION.

MOORE BROS RECYCLING NOTICE

WE HAVE DROP-OFF RECYCLING!!

All residents and visitors are asked to source separate their recyclable materials. There are designated bins located at our office located at 11300 Wards Ferry Rd. in Big Oak Flat where you may drop off your recyclable materials anytime **Monday through Saturday 8am to 5pm** (weather permitting). CLOSED SUNDAYS and major holidays.

Acceptable materials include:

- Aluminum beverage containers, tin cans, glass bottles and jars (all colors)
- #1 Plastic (bottle form only) \*\*\*\*#1 clear fruit/veggie, sandwich or salad clam shell type containers are NOT allowed\*\*\*\*
- #2 Plastic (bottle form only) \*\*\*\*#2 colored plastic coffee containers are NOT allowed\*\*\*\*
- ALL CONTAINERS MUST BE RINSED AND FREE OF LIDS AND CAPS

We also accept Mixed Paper, newspaper, magazines, catalogs, junk mail, paperback books & shredded paper which can all be put in the same bin. NO WRAPPING PAPER ALLOWED

CARDBOARD BIN ACCEPTABLE MATERIALS INCLUDE:

Cardboard, Carton Board such as cereal and cracker and soda/beer boxes, etc. are also accepted and can be placed in the cardboard bin with the cardboard. THESE ITEMS NEED TO BE FLATTENED OR BROKEN DOWN AND ANY PACKAGING MATERIALS OR TAPE REMOVED.

IF THE CARDBOARD BIN IS FULL OR YOU HAVE A LARGE LOAD OF CARDBOARD TO RECYCLE, we ask you to take it to our shop location at 17641 Yates St. in Big Oak Flat where we still maintain a 50 yard cardboard recycle box.

PLEASE DO NOT THROW PLASTIC BAGS  
OF RECYCLABLES INTO THE BINS.

CHECK OUT YOUR  
GROVELAND LIBRARY

THE GROVELAND LIBRARY IS OPEN  
TUESDAY – THURSDAY — NOON–6PM  
FRIDAY & SATURDAY — 10AM–2PM



BOOKNOOK  
USED BOOK SALE  
SATURDAYS  
10AM–1PM

VISIT THE LIBRARY FOR A GREAT  
SELECTION OF BOOKS, MAGAZINES,  
NEWSPAPERS, VIDEOS, CDS, DVDS.  
ALSO COMPUTERS AND FREE WI-FI!



# COMMUNITY ORGANIZATIONS

Contact the individuals/organizations below  
if you are interested in joining!

If you would like your community organization listed please send  
your group's name, contact person, and phone number to  
[j.owens@pinemountainlake.com](mailto:j.owens@pinemountainlake.com)

CAMP TUOLUMNE TRAILS  
Jerry Baker – 1.209.962.7916

FRIENDS OF THE GROVELAND LIBRARY  
Virginia Richmond – 1.209.962.6336

HELPING HANDS THRIFT STORE & FURNITURE BARN  
Patti Beaulieu – 1.209.962.7402

SOUTHERN TUOLUMNE COUNTY HISTORICAL SOCIETY (STCHS)  
Harriet Codeglia – 1.209.962.6270

SOUTHSIDE COMMUNITY CONNECTIONS  
Nancy Reggio - 209-962-7303

VILLAGE ON THE HILL  
1.209.962.6906 or [info@villageonthehill.org](mailto:info@villageonthehill.org)



- Launching
- Winterizing
- House Calls
- Dock Calls
- Service
- Repairs
- Storage
- Trailer Repair

209-962-4594

The Boat Doctor

Paul Belluomini • P.O. Box 113 • Big Oak Flat, CA 95305

JOANNE SCOTT  
Independent Beauty Consultant

13166 Wells Fargo Drive-PO Box 1257  
Groveland CA 95321  
209-573-1415

Bernijo3@aol.com  
[www.marykay.com/jbernasoni](http://www.marykay.com/jbernasoni)

God First, Family Second, Career Third

MARY KAY



## PINNELL'S CARPET ONE FLOOR & HOME

FREE

Furniture Moving

Call to set up your free estimate!\*



Pinnell's Carpet One

Sonora 209.532.1696

Angels Camp 209.736.8077

\*See store for details.

THANK YOU FOR VOTING US BEST OF  
THE MOTHERLODE SINCE 2005!



Waterproof Flooring, LVT, Laminate, Vinyl, Hardwood  
Tile, and Hunter Douglas Window Coverings.

209.736.8077 263 S. Main St. Angels Camp, CA

209.532.1696 12900 Mono Way Sonora, CA

Don't forget to ask us about our special financing options!

[www.pinnellscarpetone.com](http://www.pinnellscarpetone.com)

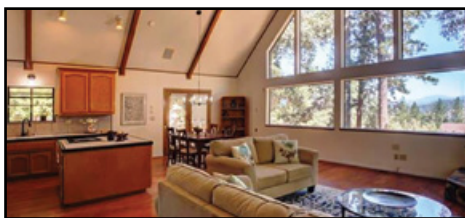




# YOSEMITE REGION REAL ESTATE

18687 Main St, Suite E, Groveland, CA 95321

209-962-1111 ~ DRE #01964114



12856 Mueller Dr **LOVELY VIEWS!** Double lot, almost 1/2 acre! Oaks, Pines and mountain views. 3bd, 2ba, quality hardwood flooring, wood-framed windows and doors. Master bedroom and 2nd bdrm on the main level. Spacious loft 3rd bdrm above with the same beautiful views. Enjoy all the amenities that Pine Mountain Lake has to offer, as well as close proximity to Yosemite Park. Plenty of potential for expansion via the merged adjacent lot. \$399,000 #20240913



19995 Pine Mountain Dr **CREATE MEMORIES** and get away from it all. 3bd, 2ba, cozy wood-burning stove, vaulted ceiling, laminate pine flooring. Granite kitchen counters and large dining area. Retractable awnings and a jetted spa on the back deck, off the master suite. Two detached storage buildings plus a carport. Turn-key home. Ready for full-time living, vacationing or short-term income property. \$439,000 #20240130



20810 Big Foot Circle **UNIQUE & CHARMING.** Stonework columns and wainscoting add interest to the exterior of this 3bd, 3ba home. Wood flooring and vaulted wood ceiling. Arched curio shelving and a free-standing wood stove, with stone hearth. Well-appointed kitchen with skylight, garden window and granite counters. Lower-level bonus room currently serves as a 4th sleeping area, with full bathroom and hobby room. Water circulation system and 2-car garage. \$425,000 #20240616

## LONG-TERM RENTAL AVAILABLE!

Ask for Rob Stone • 209-962-1101



12725 Junipero Serra Way  
Country Club Village, Unit #16

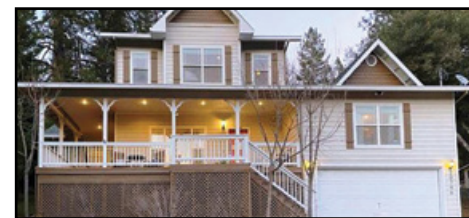
- 4 Bedrooms • 3-1/2 Bathrooms
- 2244 Square Feet • \$2200 Per Month

## COMING SOON!

- 2 Bedroom + Loft, 2 Bathroom Cabin in Pine Mountain Lake — \$2,000/month
- 2 Bedroom, 2 Bathroom Mobile Home in Groveland — \$1,500/month

### 100% Local Long-Term Rental Services • Now Accepting Long-Term Rentals!

- ◆ Monthly Rentals & Tenant Placement
- ◆ Monthly Statements & Owner Payments
- ◆ Tenant-Screening & Credit Reports
- ◆ Scheduled Maintenance & Repairs
- ◆ Move-in / Move-out Inspections
- ◆ Local, State & Federal Tax Requirements



20796 Non Pareil Way **GREAT OPPORTUNITY!** Well-established vacation rental on about .64 acre, being sold completely furnished, with décor, kitchenware, linens, hot tub and outdoor furniture. Backs to ranchland; a short distance to Big Creek's hiking trail. Claw-footed tub, dual sinks and a separate shower in main bathroom. Rental history and inventory of items included are available to qualified buyers. \$625,000 #20240905



19329 Ferretti Rd **SPLIT-LEVEL HOME** with soaring ceilings and a modern design greets you as you enter. Spacious kitchen with granite counters and newer appliances. Step-down living area with a cozy fireplace. Newly installed laminate flooring, plus freshly painted interior & exterior. Finished 2-car garage and detached shed for extra storage. Plenty of parking for your RV or boats. Almost 1/2 acre. \$397,000 #20240917



13141 Mueller Dr **SHADY PARKLIKE SETTING.** Vaulted ceiling, rake-style windows and natural wood paneling. A native stone hearth with pedestal wood stove. 2bd, 1ba on the main level. The loft 3rd bedroom has a balcony overlooking the living room and views across the property. Separate entrance to lower level bonus room w/full bath and additional area currently being used as a 4th bdrm. \$385,000 #20240825



ROB STONE  
OWNER/REALTOR®  
DRE #01025463



BJORN WAHMAN  
BROKER  
DRE #00706559



TARA STONE  
MANAGER/DPG  
DRE #01106544



LIZ MATTINGLY  
BROKER ASSOCIATE  
DRE #00709618



MIRIAM MARTIN  
REALTOR® RSPS, ASP  
DRE #01400779



ANDREW RIETVELD  
REALTOR®  
DRE #01994156



RYAN NIEDENS  
BROKER ASSOCIATE  
DRE #01940007



KATHY NIEDENS  
REALTOR®  
DRE #01113243



BRENDA ZUNIGA  
BROKER ASSOCIATE  
DRE #00997621



CAPRICE KROW  
PROP. MGR/LDP  
DRE #01179023



CORY STONE  
PHOTOGRAPHER  
VIDEOGRAPHER

## We Will Begin Accepting Specialty Homes In September, 2024



Vacation Rentals



Ryan Niedens  
General Manager

## FEATURED HOME



Welcome to "Water's Edge". This 3-level, tranquil retreat is nestled on the shores of picturesque Pine Mountain Lake. With 4 bedrooms and 3 bathrooms, there is plenty of room for everyone in your group. Enjoy indoor entertainment with complimentary Wi-Fi and Dish Network TV in the comfort of central air conditioning or heating. A gas BBQ, spacious deck and gorgeous views of the lake invite you to unwind in style. Kayaks & Paddleboards provide hours of fun on the Lake. Come and stay at this lovely lakefront home!



Trisha Richardson  
Guest Services



Sharron Wahman  
Guest Services

- LOCAL VACATION RENTAL SERVICES
- OWNER-APPROVED RATES
- ACCIDENTAL DAMAGE PROTECTION

18687 Main Street, Suite E, Groveland, CA 95321  
(209) 962-4396 • [realfun@yosemiteregionresorts.com](mailto:realfun@yosemiteregionresorts.com)

- PRE-ARRIVAL INSPECTIONS FOR GUESTS
- PROFESSIONAL DEPARTURE CLEANINGS
- 24-HR ANSWERING SERVICE FOR EMERGENCIES

