

# PINE MOUNTAIN LAKE NEWS

MARCH

2024

THE OFFICIAL NEWSPAPER OF, AND FOR, PINE MOUNTAIN LAKE PROPERTY OWNERS

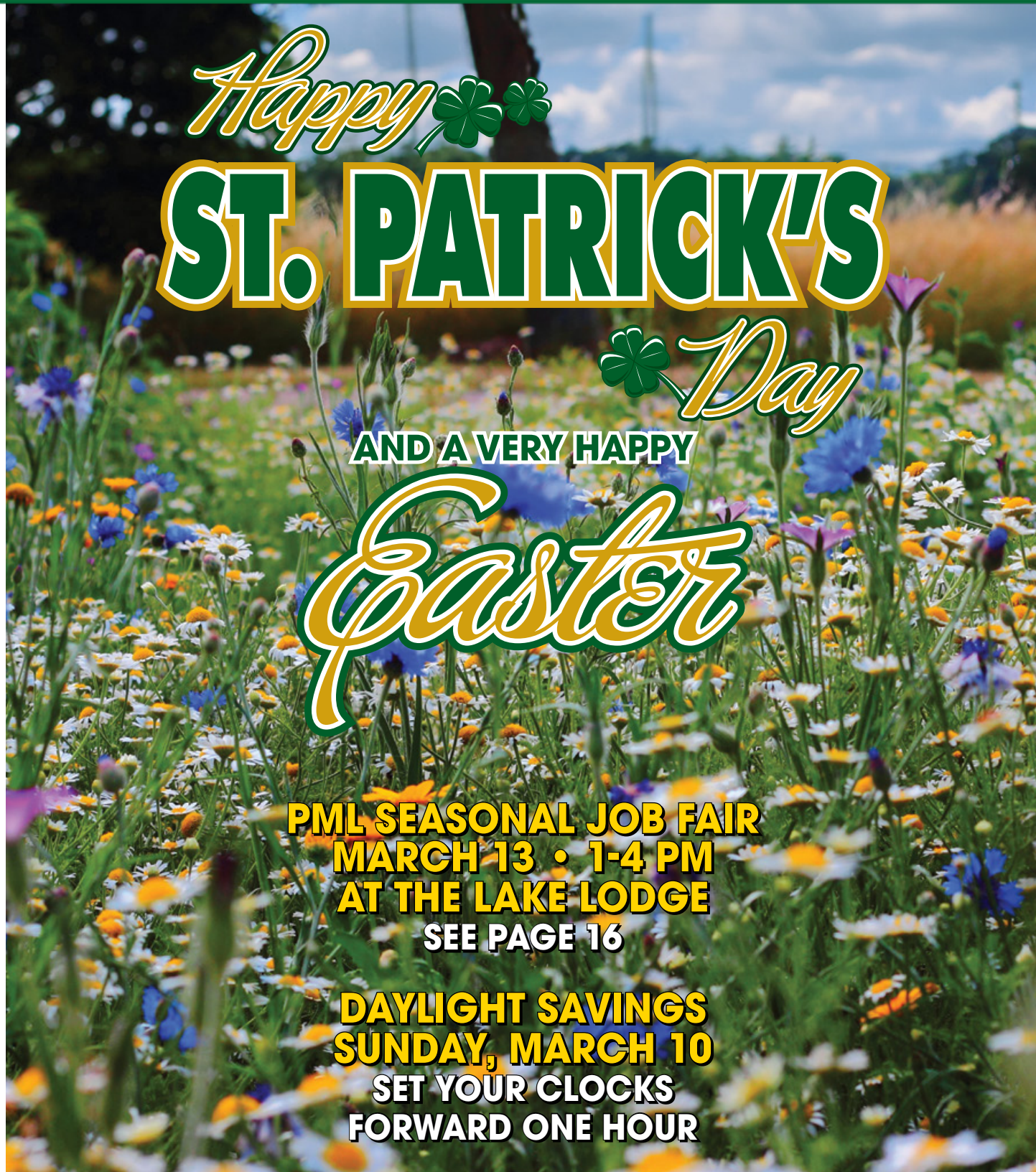


## TABLE OF CONTENTS

Administration	2-19
The Grill	12-14
PML Clubs & Recreation	24-25, 30-31
Community News	23, 31-35
From Your Supervisor	31
Home Improvement	36-38
Classified Ads	39

PRSRT STD  
U.S. POSTAGE  
PAID  
ABS DIRECT

Change Service Requested



*Happy*   
**ST. PATRICK'S**  
*Day*

AND A VERY HAPPY

*Easter*

**PML SEASONAL JOB FAIR**  
**MARCH 13 • 1-4 PM**  
**AT THE LAKE LODGE**  
**SEE PAGE 16**

**DAYLIGHT SAVINGS**  
**SUNDAY, MARCH 10**  
**SET YOUR CLOCKS**  
**FORWARD ONE HOUR**

# GET IMPORTANT NEWS VIA EMAIL

**eSNAP**  
ELECTRONIC SAFETY, NEWS & ALERT PROGRAM

Signing up for the new eSNAP program is quick and easy and gives you the ability to sign up for the information that you want to receive. Just head over to *www.PineMountainLake.com* and sign up today.

## ABOUT EACH OF THE PROGRAMS

**PML News & Alerts** – Receive emails with information regarding anything affecting Pine Mountain Lake such as road closures, utility problems, fire alerts and more.

**PML Amenities News** – Receive emails with information about upcoming events, specials, or news regarding all PML amenities such as the lake, marina, golf course, etc.

**The Grill at Pine Mountain Lake** – Receive emails with information regarding happenings at The Grill. Get information on Wine Tastings, Entertainment, Special Events and more.

This program is separate from the current email opt-in program that allows you to receive PMLA governing documents and requires your signed approval. This program can be signed up for via the online system. *Get your news and alerts via email, it's eSNAP!*

## DO YOU HAVE YOUR PIN?

Since PML is a private gated community, we want to offer our property owners a secure way to call in guests. When you become a member of PML you are assigned a Personal Identification Number (PIN) to utilize either when calling in a guest pass or using the Gate Access Internet program. This PIN identifies you to staff without you having to be present. This is a confidential number and should **not be shared**. When you call the Main Gate to authorize a guest or vendor access into PML, you will be asked for your PIN. The staff will look up the number in the computer and use it to confirm your identity before entering the guest information. You must have this number to utilize the Gate Access Internet program as well. If you do not know your PIN or have any questions, please contact the Administration Office at:



**1-209-962-8600**



Monday through Friday from 8 am to 4:30 pm  
and we will gladly supply this information to you.

## NOTICE

The Pine Mountain Lake News, established July 25, 1973, is printed monthly for residents of Pine Mountain Lake and sold in the Groveland, CA 95321 area. Members can access the PML News monthly edition online at *www.PineMountainLake.com*. Every month the newest edition of the PML News is posted online before the first of each month. Interested parties can subscribe to the traditional "hard copy" and receive a copy by mail each month.

The PML News is mailed to approximately 3500 PML property owner households each month. Up to 500 copies are rack-sold in the local Groveland area. Our circulation reaches approximately 1200 full-time, resident, PML property owners and approximately 2300 "weekender," non-resident, property owners who maintain primary residence in Northern California, in Southern California, or in other states. For more information regarding the PML News, please call the PML Administration Office at (209) 962-8600. We greatly appreciate your contributions but please note that the PML News fills up very quickly – often by the 7th or 8th of the month (long before the 10th deadline). To ensure that your submission is reviewed for publication please submit in full and as early as possible. Please remember that the PML News is limited in capacity and your submissions are reviewed on a first-come-first-served, space-available basis.

We publish all PMLA related submissions such as Board & Management Business, Clubs, Activities & Events. Where space remains, we publish non-PMLA related submissions in our "Community" section.

We do our best to provide timely news. If you experience delayed delivery or have misplaced a particular edition, please visit us at the PMLA website *www.pinemountainlake.com* for a downloadable PDF of the News posted by the 1st of the month and a downloadable PDF list of ad rates.

## SUBSCRIBE TO THE PML NEWS TODAY!

NAME \_\_\_\_\_

UNIT \_\_\_\_\_ LOT \_\_\_\_\_

MAILING ADDRESS \_\_\_\_\_  
\_\_\_\_\_  
\_\_\_\_\_

NO CHARGE FOR PROPERTY OWNERS (BULK)  
\$6/YR FOR CO-OWNERS (BULK);  
\$10/YR FOR NON-PROPERTY OWNERS (BULK)  
\$20/YR FOR PROPERTY OWNERS (1<sup>ST</sup> CLASS)  
\$30/YR FOR NON-PROPERTY OWNERS (1<sup>ST</sup>  
CLASS)

ENCLOSED IS MY CHECK IN THE AMOUNT OF

\$\_\_\_\_\_ (PAYMENT DUE IN FULL)

SEND THIS SUBSCRIPTION TO:  
PINE MOUNTAIN LAKE ASSOCIATION  
19228 PINE MTN. DR. GROVELAND, CA 95321  
ATTN: MELODY

## Submission Guidelines

### The PML News is the Official Newspaper of Pine Mountain Lake Property Owners

The PML News is dedicated to reporting PML Association business and PML Association news to Pine Mountain Lake Property Owners.

All community related articles and notices will appear in the PML News on a SPACE AVAILABLE basis and at the DISCRETION of the PML News Publishing Editor.

### DEADLINES

Advertisements must be received IN FULL (text, MLS info, images, logos, etc.) by the 10th of the month for the following month's edition. Only advertisements received in full will be guaranteed to be published in that month's edition. **NO EXCEPTIONS.**

### MEDIA ACCEPTED email

### SOFTWARE (Articles)

InDesign, Microsoft Word, Adobe Pages, or TXT formats only.

### SOFTWARE (Advertisements)

PSD, JPG, PDF, EPS or TIFF only.

### TEXT/GRAPHICS

Handwritten text is not accepted. Material composed completely of capital letters is not accepted. Please use uppercase and lowercase letters in composition. Ink jet printed images are not accepted. Images are accepted ONLY as camera ready art, original photos (to be scanned) or as JPEG, TIFF or PDF files created with above listed software. All scans and bitmap images must be in TIFF or JPG format at least 200 dpi at 100% (300 dpi preferred). Ad files are stored for 90 days from first run date. Older ads that have not been running must be resubmitted. (See Display & Insert Advertising Contract "Design and Preparation Charges.")

### E-MAIL TEXT/GRAPHICS

Text/graphics may be delivered as e-mail attachments via the Internet. Send to: [pmlnews@sabredesign.net](mailto:pmlnews@sabredesign.net).

### AD DESIGN and PROOFS

Ads that are requested to be sent to other periodicals require a usage fee from the advertiser (see Display & Insert Advertising Contract "Design and Preparation Charges"). Proofs are available upon request and final proof approval for all ads is expected within 24 hours. Changes made are LIMITED to typographical or graphic placement errors. NO OTHER ADDITIONS OR CHANGES WILL BE MADE.

### SUBMISSION DEADLINES

Articles — 10th each month  
Ads — 10th each month  
Classifieds — 15th each month

**VISIT US ONLINE**  
[www.pinemountainlake.com](http://www.pinemountainlake.com)

**ADMINISTRATION**

**General Manager**

**Joseph Powell**

*joepowell@pinemountainlake.com*

**Admin Asst. to G.M.**

**Janessa Owens - 1.209.962.8627**

*j.owens@pinemountainlake.com*

**Human Resources**

**Shannon Abbott - 1.209.962.8628**

*pmlhr@pinemountainlake.com*

**E.C.C. Assistant - Ashley Henderson**

**1.209.962.8605**

**Plan Submittal, Compliance Fees**

*ecc@pinemountainlake.com*

**Member Relations**

**Melody Wisdom - 1.209.962.8632**

**Gate Cards, Address Changes,**

**Webmaster, Mergers**

**Lake Lodge Scheduling**

*pmlmr@pinemountainlake.com*

**Community Standards Director**

**Suzette Laffranchi - 1.209.962.1241**

*communitystandards@pinemountainlake.com*

**Community Standards Specialist**

**Carrie Harvey - 1.209.962.1242**

*compliance@pinemountainlake.com*

**Rental Compliance Coordinator**

**Sally Owens - 1.209.962.1245**

*RCC@pinemountainlake.com*

**General Info &**

**Lake Lodge Scheduling**

**Shari Pingree - 1.209.962.8600**

**Receptionist**

*admin@pinemountainlake.com*

**Main Gate - 1.209.962.8615**

**General Safety Inquiries, gate**

**passes, campground**

**reservations, tennis reservations**

*campground@pinemountainlake.com*

**ACCOUNTING**

**Controller - Dan Szathmary**

**1.209.962.8606**

**Accounting Procedures**

*controller@pinemountainlake.com*

**Accounting Supervisor**

**Stacy Gray - 1.209.962.8618**

*stacy@pinemountainlake.com*

**Receivable/Collections/**

**Assessments - Debbie Green**

**1.209.962.8607**

*pmlar@pinemountainlake.com*

**Accounts Payable - Tina Parmalee**

**1.209.962.8626**

*pmlap@pinemountainlake.com*

**Recreation and Seasonal**

**Operations Manager**

**Michelle Cathey**

**1.209.962.8604**

*m.cathey@pinemountainlake.com*

**IT Manager**

**Yuris Daudish - 1.209.962.1243**

*ITManager@pinemountainlake.com*

**DEPARTMENT OF SAFETY**

**Director of Safety - Natalie Trujillo**

**1.209.962.8633**

*n.trujillo@pinemountainlake.com*

**Sergeant - Sgt. Teri Cathrein**

**1.209.962.1244**

*t.cathrein@pinemountainlake.com*

**Main Gate**

**1-209-962-8615**

**MAINTENANCE DEPT**

**Maintenance Manager**

**Rick Laffranchi - 1.209.962.8611**

*rickl@pinemountainlake.com*

**Administrative Assistant**

**Anita Spencer - 1.209.962.8612**

*maintenance@pinemountainlake.com*

**Fire Safety Coordinator**

**Joe Milani - 1.209.990.5260**

*j.milani@pinemountainlake.com*

**Fire Safety Inspector**

**Amanda Darrow - 1.209.990.5263**

*inspector1@pinemountainlake.com*

**Fire Safety Inspector**

**Jessica Heller - 1.209.990.5261**

*firesafety@pinemountainlake.com*

**GOLF COURSE**

**Golf Course Superintendent**

**Rob Abbott - 1.209.962.8610**

*rabbott@pinemountainlake.com*

**Golf Pro Shop**

**Doug Schmielt - 1.209.962.8620**

**Golf Pro Shop/Golf Reservations**

*dschmielt@pinemountainlake.com*

**Golf Pro**

**Mike Cook - 1.209.962.8622**

*golfpro@pinemountainlake.com*

**THE GRILL AT PINE MOUNTAIN LAKE**

**The Grill Manager**

**Heather Parkhurst - 1.209.962.8639**

*clubmgr@pinemountainlake.com*

**Restaurant - 1.209.962.8638**

**OTHER PHONE NUMBERS**

**Equestrian Center Manager**

**Kendra Brown - 1.209.962.8667**

*stables@pinemountainlake.com*

**Marina Manager**

**Dawn Pretzer - 1.209.962.8631**

*marina@pinemountainlake.com*

**PML NEWS**

**David Wilkinson - 1.209.962.0613**

**Ad/Article Submissions**

*PMLNews@SabreDesign.net*

**PINE MOUNTAIN LAKE ASSOCIATION**



**1.209.962.8600**

[www.pinemountainlake.com](http://www.pinemountainlake.com)



**ADMINISTRATION OFFICE HOURS**

**8:00 AM TO 4:30 PM - MON THRU FRI**

**OPEN AT 8:45 AM SECOND TUESDAY OF EACH MONTH**

**THE OFFICE IS CLOSED BETWEEN 12:00 & 1:00 EACH DAY**

**2024 ADMINISTRATION OFFICES HOLIDAYS**

**(ADMIN OFFICE WILL BE CLOSED)**

MON 5/27/24 MEMORIAL DAY

FRI 11/29/24

DAY AFTER THANKSGIVING

THUR 7/4/24 INDEPENDENCE DAY

TUE 12/24/24 CHRISTMAS EVE

MON 9/2/24 LABOR DAY

WED 12/25/24 CHRISTMAS DAY

MON 11/11/24 VETERANS DAY

TUE 12/31/24 NEW YEARS EVE

THUR 11/28/24 THANKSGIVING

WED 1/1/25 NEW YEARS DAY

**PMLA BOARD MEETINGS SCHEDULE**

**(THIRD SATURDAY - UNLESS OTHERWISE NOTED)**

**MARCH 16, 2024**

AUGUST 17, 2024

(ANNUAL MEMBER MEETING/ELECTION)

APRIL 20, 2024

MAY 18, 2024

SEPTEMBER 28, 2024

JUNE 15, 2024

(FATHER'S DAY WEEKEND)

OCTOBER 19, 2024

(BOARD BUDGET MEETING)

JULY 20, 2024

NOVEMBER 16, 2024

**PINE MOUNTAIN LAKE NEWS DELIVERY**

Although we guarantee that the PML News is mailed from Modesto, CA on the same day (between the 26th-30th of month), most post offices (except Groveland) sort Bulk Mail after First Class mail. So, consider a First Class delivery subscription for just \$20/yr. (\$20 per year for property owners and \$30 per year for non-property owners) Interested? Call the PMLA Office at 209/962-8632 or see form above.

The Pine Mountain Lake News is also available (in PDF format) at: [www.pinemountainlake.com](http://www.pinemountainlake.com). New editions are posted by the 1st of the month.

# GENERAL MANAGER'S MESSAGE

JOE POWELL – PCAM, CCAM-LS, CMCA, AMS GENERAL MANAGER

## OUR ANNUAL ELECTION NOTIFICATION PROCESS HAS BEGUN

The first mailing to the membership for our annual election is the Candidate Solicitation notice was mailed out to the membership on Tuesday, February 20th in accordance with the civil code.

Members will receive a letter providing information on the process for this year's election of directors along with a candidate petition form and application. Members who wish to run for the board this year will need to submit their application and nomination paperwork to the Inspectors of Election no later than Thursday, May 23rd.

## PML MAINTENANCE BUSY THIS WINTER

The multiple atmospheric river storms over the winter have been keeping our Maintenance staff very busy. The above average rainfall, wind and snow have caused multiple issues with downed trees, powerlines, flooding, clogged culverts and other

drainage issues as well as ice mitigation and the never-ending piles of leaves that our streetsweeper unit is handling. They have done a great job and stayed on top of all of these impacts to keep our community and roadways safe and clear, and we all appreciate the effort.

## PINE MOUNTAIN LAKE HAS TWO SANDBAG STATIONS TO PREPARE FOR FLOODING

With all of the recent storms comes the risk of flooding. Our Maintenance staff have provided and maintain two sandbag stations for member use. We have one located at Fisherman's Cove and the other at Par Court near the Maintenance shop. Both of these stations have sandbags and sand. You'll just need to bring a shovel. For more information, please call the Maintenance Department at 1.209.962.8612 and they will assist you.

## ADMINISTRATION OFFICE STANDBY EMERGENCY GENERATOR REPLACEMENT

I am happy to report that the new replacement emergency standby generator

for the Administration Office has been delivered and is ready for installation. Our Maintenance team is working with the County to ensure that we are in compliance with all permitting and regulatory standards. They have scheduled the placement of an engineered concrete pad and electrician to complete and test the installation hookup and we hope to have everything completed soon.

## CAMERA PLACEMENT FOR MEMBERS ATTENDING BOARD MEETINGS USING ZOOM

We are still working on camera and table placement so that the board and staff sitting at the table and perhaps the members who speak at the podium can be seen online by members attending our board meetings remotely. Our IT Manager and staff have not yet resolved this situation, but we plan to have it addressed soon.

## CHICKENS IN PML

And lastly, some members have inquired as to why chickens are not allowed in PML. The CC&R's allow

poultry and other livestock to be kept in Unit 12. Originally this was because Unit 12 was the only area of PML that was zoned for this type of use. There have been some recent changes in the law and subsequent County ordinance code to allow a limited number of chickens in other residential zoning, but it is very restrictive so as not to cause problems for neighboring properties.

Regardless, keeping and raising chickens in any area of PML other than Unit 12 is still prohibited under our current CC&R's. Given member interest in this idea, the Governing Documents update committee will be discussing the potential amendment of this provision of the CC&R's to evaluate the possibility of allowing chickens in other areas of PML. Regardless, any change would require a vote of approval by the entire membership and everyone will be allowed to weigh-in on all aspects of the governing documents update.

*Until next month, wishing everyone a safe and fun St. Patrick's Day and Easter!*

# COMMUNITY STANDARDS

SUZETTE LAFFRANCHI - COMMUNITY STANDARDS DIRECTOR

The Community Standards Department is here to assist you with Pine Mountain Lake association's governing documents such as the PMLA CC&R's, Resolutions, ECC rules, guidelines and construction standards as well as the enforcement procedures. If you have questions on Rental Compliance, property use and restrictions or making improvements on your property, we are here to assist our membership in their quest to develop a comprehensive understanding of PMLA Governing Documents.

A convenient way to get information,

find links, review frequently asked questions, or continue to develop a better understanding of the rules and regulations, twenty-four hours a day, seven days a week is to visit the Pine Mountain Lake Community Standards web page. You will find our page at [www.pinemountainlake.com](http://www.pinemountainlake.com) under the resource tab, click on the Community Standards Icon or Scan the QR code for quick on the go access.

There you will find instructions on how to submit your construction project, view approved paint colors charts, get links to register your rental and much more. We



have streamlined and gathered all this information in one location for quick easy access.

As always, if you have any questions, please feel free to reach out to our staff, we are happy to guide and provide you with the information you need to navigate our governing documents to maintain our beautiful community.

**Architectural Control Specialist,**  
**Ashley Henderson**

[ECC@pinemountainlake.com](mailto:ECC@pinemountainlake.com) or 1 (209) 962-8605

**Community Standards specialist,**  
**Carrie Harvey**

[Compliance@pinemoluntainlake.com](mailto:Compliance@pinemoluntainlake.com) or call at 1 (209) 962-1242.

**Rental Compliance Coordinator,**  
**Sally Owens**

[RCC@pinemountainlake.com](mailto:RCC@pinemountainlake.com) or 1 (209) 962- 1242

**Community Standards Director,**  
**Suzette Laffranchi**

[communitystandards@pinemountainlake.com](mailto:communitystandards@pinemountainlake.com) or 1 (209) 962-1241

# PINE MOUNTAIN LAKE ASSOCIATION

## 1.209.962.8600

### BOARD OF DIRECTORS

Chuck Obeso-Bradley: **President**  
Mike Gustafson: **Vice President**  
Karen Hopkins: **Secretary**  
Craig Prouse: **Treasurer**  
Brian Watson: **Director-at-large**

### GENERAL MANAGER

Joseph M. Powell, PCAM, CCAM-LS, CMCA, AMS

### CORRESPONDENCE TO DIRECTORS

Pine Mountain Lake Association  
19228 Pine Mountain Drive  
Groveland, CA 95321

PMLABoard@pinemountainlake.com

### ADMINISTRATION OFFICE HOURS OF OPERATION\*

Monday - Friday 8:00 AM - 4:30 PM  
Closed 12:00 - 1:00 PM  
Tel: 1/209/962-8600

The Pine Mountain Lake News, established July 25, 1973, is printed monthly for residents of Pine Mountain Lake and vicinity by Pine Mountain Lake Association, Groveland, California 95321.

### SUBSCRIPTION RATES:

Co-owner subscription: \$6 per year  
Single copies: 50 cents each  
Single mailed copies: \$1.35 each  
For non-members: \$10 per year

### SUBMISSION DEADLINE

10th of the month by 4:30 PM  
LATE SUBMISSIONS MAY NOT BE ACCEPTED  
Visit [www.pinemountainlake.com](http://www.pinemountainlake.com) for ad rates and submission guidelines or email:

[PMLNews@SabreDesign.net](mailto:PMLNews@SabreDesign.net).

For the mutual benefit of all property owners, the Pine Mountain Lake News reserves the right to edit all copy submitted for publication. The Pine Mountain Lake News is a private enterprise, not a public entity, and as such is entitled to reject advertisements or articles in the best judgment of its editor or publisher, despite a probable monopoly in the area of its publication. Pine Mountain Lake Association is not responsible for, nor does it guarantee the accuracy of, information contained in any ad placed in the Pine Mountain Lake News. The Pine Mountain Lake News attempts to ensure that this publication is free of legal infringements and the Pine Mountain Lake Association and its contractors are not liable for copyright/trademark infringements from external advertisements and articles.

**DAVID WILKINSON**—Publishing Editor  
**SABRE DESIGN & PUBLISHING**

Design/layout

**PINE MOUNTAIN LAKE NEWS**

P.O. Box 605

Groveland, CA 95321

Tel: 1.209.962.0613

E-mail: [PMLNews@SabreDesign.net](mailto:PMLNews@SabreDesign.net)

# PRESIDENT'S MESSAGE

CHUCK OBESO-BRADLEY – PMLA BOARD PRESIDENT

### WELCOME TO MARCH!

I can't believe how quickly this year is going by, and soon it will be time again to take advantage of the warmer weather at our awesome Lake and Marina, and at all of our other wonderful amenities!

### NEW FIRST AID/CPR/AED CLASS

Mark your calendars now to join the First Aid/CPR/AED Class on March 23rd, at the Lake Lodge, from 9 am – 12 noon. The cost is \$75.00 per person, and attendees can earn a First Aid/CPR/AED certificate upon completion of the class. There is only room for 20-30 attendees, so get your registration in early. To sign up, please email the Safety and Security Committee at [safetyandsecuritycommittee@pinemountainlake.com](mailto:safetyandsecuritycommittee@pinemountainlake.com).

Kudos to the volunteers on the Safety Committee for organizing these important classes – the life you save may be your own!

### WOW – MORE GREAT EVENTS AT THE GRILL!

The Valentine's Day Dinner at the Grill was very well attended, and a great time was had by all! The attendees enjoyed the live music and the fabulous Valentine's Day special menu – congratulations to Grill Manager Heather Parkhurst and Chef Raul for serving up such a great Valentine's Day!

Don't miss the Brunch Buffet & Bingo, Saturday, March 10th, 11:30 am – 1:30 pm, at the Grill! \$25.00 per person, which includes 3 rounds of Bingo, all supplies provided by the Grill. The winner of each round receives a prize, and reservations are required.

Call to reserve your place for the Buffet Brunch and Bingo at 209-962-8638.

### ONGOING CLARIFICATION OF THE PPP SETTLEMENT

The PML Association reached a settlement with the Federal Government in December of 2023 for

the repayment of the PPP loans, and the total amount of \$2,372,440.98 was paid out of our Reserves. As part of the settlement, The U.S. has released the Association from all civil or administrative monetary claims under the False Claim Act. PMLA has not admitted any liability as a result of the settlement agreement, the federal court action has been dismissed, and the matter is now concluded as it pertains to the Association.

The settlement amount was borrowed from the PML Reserve Fund, and will be repaid from the operating fund by the end of 2024. The Board is not considering a special assessment at this time, and we do not believe that a special assessment will be required for this situation in the future.

Finally, the PPP funds were used for the purposes set forth in the CARES Act – to protect PML employees. The funds provided for personnel wages in order to avoid laying-off employees.

**MAKE PML YOUR  
ONE-STOP-SHOP  
FOR ALL YOUR GIFT GIVING!**

**PICK UP A GIFT CARD FOR:  
GOLF • GOLF SHOP APPAREL  
& ACCESSORIES • THE GRILL  
HUNTING & FISHING LICENSE VOUCHERS**

**GIFT CARDS ARE AVAILABLE AT THE  
ADMINISTRATION OFFICE, THE GRILL,  
AND AT THE PRO SHOP**

**SPEED  
LIMIT  
25**

**SLOW DOWN  
BEWARE OF ICY AND  
SLICK ROADS THIS WINTER  
PLEASE DRIVE SAFELY**

# FIRE SAFETY

JOE MILANI – FIRE SAFETY COORDINATOR

Spring is on the way! The first day of spring will be on March 19th, 2024 and with it we will begin to see some changes around our beautiful community. During early spring, the axis of the Earth is increasing its tilt relative to the Sun, and the length of daylight rapidly increases for the relevant hemisphere. The hemisphere begins to warm significantly, causing new plant growth to “spring forth,” giving the season its name. Although this is a stunning time of year, it is imperative to stay vigilant and remember that we live in the Wildland Urban Interface and with it comes the responsibility to maintain your defensible space and prepare for the fire season ahead of us.

This month’s article will highlight three of the most important zones to consider while performing your annual spring cleanup this year. It’s important to understand how wildfire can threaten homes and what one can do to effectively reduce the wildfire risk. Wildfire causes homes to burn in three ways:

1. Wind-blown embers (leading cause of home ignition).
2. Contact by flames (burning vegetation near or touching home).
3. Radiant heat (flames heat up siding or attachments causing them to combust).

Next, it’s important to remember that PMLA Fire Safety holds all property owners’ property pin to property pin (entire lot). Understanding zone specifications:

## IMMEDIATE ZONE (ZONE 0): 0’ – 5’

The Immediate Zone extends 0-5’ from your house. ZONE 0 is the area closest to one’s house, including the structure itself, decks, outdoor furniture, and the outside walls and coverings. This area is most vulnerable, and should be most aggressively maintained for fire resistance.

- Remove any combustible outdoor furniture. Replace jute or fiber doormats with fire resistant materials.
- Remove or relocate all combustible materials, including garbage and recycling containers, lumber, trash, and patio accessories.
- Clean all fallen leaves and needles regularly. Repeat often during fire season.
- No vegetation is recommended within 5’ of structures.
- Remove tree limbs that extend into this zone. Fire-prone tree varieties should be removed if they extend within 5’ of structures.
- Do not store firewood, lumber, or combustibles here, **especially** under decks or overhangs.
- Move stored combustibles inside, or at least

30’ away from structures.

- Use only inorganic, non-combustible mulches such as stone or gravel.

## INTERMEDIATE ZONE (ZONE 1): 5’- 30’

The Intermediate Zone from 5’ to 30’ out from buildings, structures, decks, etc. Keep ZONE 1 “Lean, Clean, and Green” and employ careful landscaping to create breaks that can help influence and decrease fire behavior.

- Remove all dead plants, grass and weeds (vegetation).
- Rake and haul debris 30 ft around structures (needles, leaves, and dead vegetation).
- Clear your roof and gutters of all debris regularly. Roof and gutters often need to be inspected and cleaned multiple times a year, once a year is typically insufficient.
- Trim trees regularly to keep branches a minimum of 10 feet from structures.
- Remove branches within 10 ft of your chimney.
- Limb dead branches 15ft up and live branches 6ft up.
- Remove vegetation and items that could catch fire from around and under decks.
- Create additional separation between trees, shrubs and items that could catch fire, such as patio furniture, wood piles, swing sets, etc. Provide adequate spacing between all plants.
- Firewood piles in this zone it must be stacked neatly and covered with a fire-resistant tarp or covering.
- Remove fire-prone plants i.e. rosemary and juniper, and choose only fire-resistant varieties. Irrigate regularly.
- Remove dead vegetation from shrubs, bushes, trees, and ornamentals regularly.
- Use only fire resistant inorganic mulches.

“Gorilla Hair” or similar shredded bark mulch should be removed in this zone.

- Clear 10ft in all directions around propane tank down to bare mineral soil. (Including live vegetation).

## EXTENDED ZONE (ZONE 2): 30’ – 100’

The extended zone is 30’ to 100’ from your home. In some cases more than 100’ is required due to steep slopes, nearby vegetation conditions. The goal here is not to eliminate fire but to interrupt fire’s path and keep flames smaller and on the ground. This zone should include at a minimum:

- Cut or mow annual grass down to a maximum height of 4 inches. (pin to pin)
- Create horizontal spacing between shrubs, trees and vertical spacing between grass, shrubs and trees.
- Limb dead branches 15ft up and live branches 6ft up.
- Remove fallen leaves, needles, twigs, bark, cones, and small branches. However, they may be permitted to a depth of 3 inches if erosion control is an issue.

Understanding the three zones will aid in employing these techniques and strategies to maintain a fire resistive property that stands a better chance in the event of wildland fire. It is strongly encouraged that all PMLA members develop an individual fire abatement plan. If help is needed in developing individual fire abatement plan please contact our office.

Please remember to test all smoke and carbon monoxide detectors once a month and replace any faulty alarms or low batteries immediately.

Lastly, fire safety inspections will continue in Pine Mountain Lake. Remember a fire safe community begins with you! The fire safety team is here to help with inspections of your property, and questions or concerns regarding fire safety or defensible space zones. Please contact Amanda Birmingham at 1-209-990-5263 or email [inspector@pinemountainlake.com](mailto:inspector@pinemountainlake.com) or Joe Milani at 1-209-990-5260 or Email [fsc@pinemountainlake.com](mailto:fsc@pinemountainlake.com).

## 24/7 RENTAL COMPLIANCE HOTLINE

IT JUST GOT EASIER TO REPORT, PROVE,  
AND RESOLVE NON-EMERGENCY  
SHORT-TERM RENTAL RELATED PROBLEMS  
IN REAL TIME, 24 HOURS A DAY, 7 DAYS A WEEK

# 1-209-231-4543

# MONEY MATTERS

DAN SZATHMARY, CAFM – ASSOCIATION CONTROLLER

One question I hear often is “where did the money go?” This is usually in the context of a call for greater transparency about how PMLA money is being made and spent. We do publish very detailed financial statements on a monthly basis that answers that question and ones like it. These statements outline in great detail how much revenue is booked and how much money is spent broken out by every department in PMLA. This financial information also goes through a full audit by an independent third party once a year to ensure the statements are accurate and to maximize transparency.

Every dollar out of the reserve, new cap, and operating funds is itemized and accounted for. This includes a list of each item and project budgeted to be spent out of the

reserve fund along with its variance to budget. There is a summary of sales, assessments collected, and variance against what was expected; along with additional detail of activity through the operating fund broken out by each major department. These statements are posted after each month is closed, and the annual report for the year is published after the auditors complete their review; including a letter from the CPA verifying the results of the audit and certifying the integrity of the financials.

Every member can access and review this financial information going back two years through the member-only governance section of the PMLA website at <https://www.pinemountainlake.com/governance/> and we are always happy to provide any additional information members are entitled to upon request. I also

regularly answer specific questions in detail via e-mail just about every week. I get lots of really great questions and am happy to take the time to ensure members have as much good information as possible about how their money is managed and “where it all goes.”

We regularly get questions or comments that suggest a lot of members either aren’t aware this information is published, or perhaps are not familiar with how to read the financial statements. It can be a daunting task. The last round of statements was 54 pages long and covers in great detail how every one of the approximately \$12 Million that flows through the PMLA coffers every year is made and spent. We endeavor to present a lot of information in the most accessible and easy to read format as possible, and we are always

available to walk members through how to get the information they are looking for. Don’t have the desire or wherewithal to sift through 50+ pages of official statements that get posted just about every month of the year? No problem. We are here to help.

So, “where does the money go?” It’s all right there, at your fingertips. Any questions or can’t find what you are looking for? Your answers are just an e-mail or phone call away. Our staff is more than happy to help guide you to or through anything you need to know about how your money is collected and spent. It’s all about transparency.

Looking forward to more great questions and feedback from all of you. Feel free to contact me anytime at [Controller@PineMountainLake.com](mailto:Controller@PineMountainLake.com) or 1-209-962-8606.

## PAY YOUR PML PAYMENTS ONLINE

Did you know you can make your payments online?

Online Bill Pay is available on [www.PineMountainLake.com](http://www.PineMountainLake.com).

*Pay via your credit card, it is quick and easy!*

## NOTARY SERVICE

ANITA SPENCER, – PMLA NOTARY PUBLIC

PML Property Owners – \$10

Non-Property Owners – \$15

Witness Fee – \$5 (Prices listed are per Signature Rate)

You may call Anita @ **1-209-962-8612** to schedule an appointment between the hours of 8am – 4pm

## PML AUTOMATIC PAYMENT PROGRAM

Taking the time to write a check for your monthly assessment payment can be time consuming and costly. You can avoid this burden and eliminate the potential for late payment charges by enrolling in PMLA’s Auto Payment Program. By completing the form, which can be found at [www.PineMountainLake.com](http://www.PineMountainLake.com) under the Resources/Forms, and returning it to the Administration Office, you can have your monthly assessment automatically deducted from your checking account or charged to your credit card. This means you never have to remember to write a check and mail it each month. The peace of mind that comes with knowing your payment will always be made on time is easy to attain. We can also arrange to have any other regular payment you make to the Association (such as golf membership, horse boarding fees, etc.) paid in the same way.

For more information on this simple, effective and time saving plan please contact us at **1 (209) 962-8600**

## LETTERS TO THE EDITOR

LETTERS TO THE EDITOR RECEIVED	12	DEFERRED TO NEXT EDITION BY	
DENIED BY EDITORIAL COMMITTEE	2	EDITORIAL COMMITTEE	0
Exceeds 250 word maximum	0	DENIED BY BOARD OF DIRECTORS	0
Content	2	DEFERRED TO NEXT EDITION BY	
Not a property owner	0	BOARD OF DIRECTORS	0
"THANK YOU" LETTERS RECEIVED*	0	* Thank you's do not require editorial committee approval	

Submit Letters to the Editor by sending to "Editor, PML News"  
 Mail: 19228 Pine Mountain Drive, Groveland, CA 95321  
 Email: PMLNews@sabredesign.net • Fax: 800-680-6217

### PLEASE NOTE THAT ALL LETTERS APPEAR IN THE ORDER THEY WERE RECEIVED BY THE PML NEWS

The Pine Mountain Lake News welcomes letters and articles for publication provided they meet the criteria established in the current PMLA Editorial Policy (See excerpt below – entire policy on file at the Administration Office). Letters must be limited to 250 words, typewritten using upper and lowercase letters or neatly printed (no all-capital material) and signed with name, mailing address, PML unit/lot number, and day/evening telephone numbers by a property owner in good standing. **LETTERS MUST BE RECEIVED BY THE EDITOR BY THE 10th OF THE MONTH.** Letters deemed by the Editorial Committee to be improper will not be accepted. Readers are advised that **THE OPINIONS EXPRESSED IN THESE LETTERS ARE THOSE OF THE INDIVIDUAL AUTHORS, NOT OF THE PMLA, THE PINE MOUNTAIN LAKE NEWS, NOR THEIR EMPLOYEES.**

### SUPPORT FOR PML MANAGEMENT

Larry and I support our current General Manager and Board of Directors and would like to remind everyone that the Board of Directors does not receive compensation of any kind for serving on the Board. Larry knows because he spent 3 years on the Board as treasurer and was a member of the budget and finance committee. The Board members are all volunteers and work long hours supporting our Homeowner's Association.

With regard to the PPP funds please be advised that from what we have read the funds were used and properly spent to support and retain our employees during confusing Covid times. In addition to our HOA, the Bank, SBA, and the regulatory agencies approved the application for these funds in good faith.

The Board members faithfully serve our entire Homeowner's Association and were elected by the majority of our members they need our continued support, not criticism and costly recall efforts. There is an election coming up soon if you would like to serve on the Board consider running.

Regards,  
 Catherine and Larry Santa Maria  
 Groveland, CA

### CONCERN FOR TRANSPARENCY

There seems to be a written code  
 If they don't ask we don't need to tell.  
 The PPP fiasco is yet another blunder and problem for our association that leaves the members on the hook for it.

The complaint and settlement documents should be made available to membership. Why not publish it here in this monthly newsletter?

My concern is the lack of transparency and entering into a settlement agreement of this size. In the past 10 years we are having to deal with mistakes, irresponsible decisions, and no responsibility taken. When is enough, enough? If you enjoy going down this road please open up your wallets and keep digging deeper. If you are wanting transparency, new thinking, Membership input then please vote for it!!!

D Maloney  
 Groveland, Ca

### RECALL SUPPORT

I've submitted my recall form by email requesting a recall of our board. I feel our community in PML has not been informed of important issues involving our dues! I also feel by reading the information posted that the information

is not up to date and that we've been misinformed. All meetings the board has should be recorded and homeowners should be able to access and listen to those meetings. All homeowners need to be informed of extra monies requested and spent with the majority for approval. This board needs a critical reorganization as soon as possible! This new organization also needs a new salary adjustment lowering the salary and to no longer include bonuses for this part time position!

Any amount from the loans that need to be paid back should come from the board! The homeowners pay their dues to cover the yearly budgeted cost along with gate fees, golf fees, ECT. The Grill hasn't been run responsibly since we've been there for the past 25 years and is a huge loss in the HOA. Time for a change to improve!

Lilly Ann Loughran  
 San Jose, CA

**Editors Note:** *The PMLA Board members do not receive any compensation nor bonuses for serving on the board. The board of directors serve on a volunteer basis.*

### THOUGHTS ON PPP

The PMLA Board has admitted their mistake in applying for PPP loans during the pandemic. They were not alone – many HOAs did the same. They were guided by attorneys, banks and the Small Business Administration and used the funds to retain employees and continue to provide services to us, the homeowners. They operated in good faith but made a mistake, they admitted it, they repaid the loan, corrected the mistake and it is time to move on. I believe the board and Joe Powell have been professional and accountable to the membership. There is a process for replacing board members – it is called an election. A recall is a waste of time, money and energy. Badmouthing folks who serve as volunteers brings us all down. I appreciate Joe Powell and the members of the Board.

Respectfully,  
 Harriet Codeglia

### THANK YOU ADMIN & BOARD

This morning, Thursday February 8, I woke up to a Winter Wonderland courtesy of Wednesday night's snowfall. I had a doctor's appointment in Sonora and was concerned about the roads. However, they were all clear. In fact, the PML roads appeared to be in better condition than Hwy. 120. Kudos to the PML maintenance people that had the foresight to start plowing the roads Wednesday night, so they were clear Thursday morning.

I thought back to dinner we had with friends in San Mateo recently. They live in an HOA and pay \$725 monthly dues. That HOA has 2 miles of roads, no lake, no golf course, no restaurant, and not most of the amenities PML has. So, I figure we have a rather good deal for an HOA at PML. Our dues are one-third of what theirs are and we have many times the amenities.

My conclusion is our HOA is run well. Do I agree with everything management does? Nope. As I see it that is normal. There is a small group of members that seem to want to second guess everything management does and that is their right.

We have a good deal going in PML financially and all the amenities we pay for are in good repair and working well for us. The roads ahead are clear. Thanks to PML administration and Board of Directors.

Bob Asquith  
 Groveland, CA

### THOUGHTS ON PPP

I know most people are unhappy about the PPP loan program and the fact the Association is being asked to pay back those funds because they were not eligible for the program.

There is plenty of blame to spread around besides the Board and the General Manager, but the focus seems to be on them. You need to ask yourself the question if the Board of Directors did their due diligence in applying for this program? And the answer is yes. Having sat on an HOA Board before, they do have a fiduciary responsibility to the homeowners, but they are not



experts in all issues or problems that come before them. This means they need to seek outside advice to guide them, which they did. Rules and requirements did change, and the original application was amended.

The bank who underwrote the loan approved the loan. Documentation was given on the type of organization we were. When the loan was submitted to the agency (SBA) they approved the loan. All the people who reviewed the application agreed PMLA met the qualifications.

Perhaps the focus needs to be if PMLA Homeowner's Association has any recourse in this matter? The Board and its General Manager acted in good faith on our behalf. A recall would further damage PMLA and cost us more money. Has any thought been given on what would happen if the recall was successful, who would want to volunteer or seek election for what seems to be a thankless job?

Dianne McDermott  
Groveland, CA

### SUPPORT FOR THE BOARD

We've been homeowners at Pine Mountain Lake since 1995. PML has been our sanctuary from the hectic Bay Area. It's our "homebase" where we gather, adding new generations as they arrive.

As longtime members of the PML community, we are concerned about the effort to recall our Board of Directors. Running an organization like PML is difficult and management requires making tough decisions in a timely manner with the best information available. We know that is true from our experience running organizations in our professional lives and we have been at PML long enough to have seen several managers and many BODs.

We believe that PML is well-run and that our community is strong and resilient. Our dues are reasonable, providing excellent value. The wide array of amenities we enjoy are maintained in good condition and are a key draw for those who live & play here.

We don't support the current recall of the PMLA Board of Directors and believe it's a waste of time and money. Moreover, it's detrimental to the health of our community and quality of life. We appreciate the work of PML Administration and Board of Directors in helping to maintain and grow the value of our community along with the value of our family investment. We believe it is important to express our support for the PMLA Board at this time and encourage others to do the same.

Jeff & Mary Eid  
Santa Rosa, CA

### SUPPORT FOR THE BOARD

Life during Covid was extremely chaotic and very messy. The rules and regulations changed every day and that meant we had to guess how to conduct our lives according to the standards of the moment. Small and large businesses were doing their best to keep their doors open and their staff paid during this unprecedented horror show.

This included our Board of Directors. They were tasked with finding a way to continue providing services to our community as well as to continue to pay the staff. So our Board did what any business with a conscience would do. They chose to apply for a PPP loan which was approved. Twice.

Long after the Covid chaos died down the Board was notified that businesses of their status, in this case, a 501C-4, was NOT eligible for a loan after all. Subsequently they were ordered to repay the loan as well as fines for making the "error."

Before we start finger pointing and blaming, we must remember what a mess lives were, how experts couldn't even be sure, how our government didn't really know where to turn.

Your Board thought they were making the best decision based on advice from attorneys as well as bankers. It's terribly sad that we got caught up in the "gotcha." However, this board has still consistently been thoughtful, brave, professional, caring, hardworking VOLUNTEERS—No, they are not paid for their service.

Their personal and group integrity are without question. I support our Board of Directors 100%.

Charleen Beam  
Groveland, CA

### THOUGHTS ON PPP

We are writing to support the volunteer board members of our Association, both the previous board members and today's board members.

First, the board members in 2020 and 2021 made the decision to seek relief funding during the tragic and uncertain times resulting from the pandemic and the restrictions imposed by government agencies at all levels. They sought guidance and professional advice, based on the information available at the time, and made the best judgement possible at the time. Government regulations are rarely as clear as they should be or are later claimed to have been.

Second, the board members today made the decision to resolve the dispute in the most prudent way possible. They likewise sought professional advice, based on the information available today

and made the best judgement possible.

With the benefit of hindsight, it is easy to question someone else's decision. It is much more difficult to have to make the decision.

Michele and David Roberts  
Groveland, CA

### NO TO A RECALL

ANOTHER RECALL??? Really???

Our board did a fine job handling the COVID crisis. They used extreme diligence in handling the PPP issue. Blaming them for the government inefficiency is ridiculous. Suppose they didn't get the money, what would have happened to all our good employees? All property owners received an excellent letter from the Board explaining the entire situation. Why all the negativity? If you think our board members did wrong simply vote them out this year. Or are you part of the almost SEVENTY PERCENT who do not vote!! What we don't need is wasting our money on another useless recall. Stop the nonsense now!

T.R. Sanfilippo  
Groveland, CA

## COMPOST & ARCHERY RANGE HOURS OF OPERATION

**NOVEMBER THRU MARCH TUES. - SUN. 8AM TO 4PM**  
*WEATHER PERMITTING*

**APRIL THRU OCTOBER - 7 DAYS A WEEK 8AM TO 4PM**  
*WEATHER PERMITTING*

**SHOOTING RANGE - TUES, THUR, SAT 9AM TO 3PM**  
**PLEASE NOTE** Hours may vary depending on weather conditions, safety concerns, or other situations beyond control. Archery & Gun Range users must check-in with compost attendant.

**HOURS SUBJECT TO CHANGE WITHOUT NOTICE**  
**Call Main Gate at 1-209-962-8615**

# FROM THE FRINGE

MIKE COOK – PGA HEAD GOLF PROFESSIONAL

The Golf Shop staff and I are here to assist you so please call us if you have any questions or need our assistance at 1-209-962-8620.

## UPCOMING EVENTS

### Ladies 18-Hole Golf Club

Weekly Play Day – Thursdays

### Ladies 9-Hole Golf Club

Weekly Play Day – Thursdays

### Men's Golf Club

St. Patrick's Day (4-Man Team; 2 BB)

Saturday March 9

### Men's Golf Club

March Madness (4-Man Team; Cha Cha Cha) – Wednesday March 27

## WINTER 11:00AM SHOTGUN STARTS

The 11:00am Shotgun Starts will continue until Daylight Savings Time begins on Sunday March 10, 2024. On Monday March 11, we will return to starting play by tee times. The first tee time on Monday March 11 will be 9:00am. If you have any questions, please call the Golf Shop. The same reservation policy of 14 days in advance for PML Property Owners will be in effect.

## CALLAWAY GOLF CLUB TRIAL SETS

The NEW Callaway PARADYM AI Smoke golf clubs are available in the Golf Shop for you to try out. We have trial sets that you can take to the range or out on the Golf Course. For more information, call or come in to the Golf Shop.

## 2024 ANNUAL GOLF MEMBERSHIPS & GOLF SERVICES

If you have not signed up for your Annual Golf Membership yet, it is not too late. If you would like your application(s) emailed to you, please call the Golf Shop. The applications are also on the ([www.pinemountainlake.com](http://www.pinemountainlake.com)) website.

## SOUTHERN VALLEY SENIORS

If you are a PML Property Owner, a Member of the PML Men's Golf Club and are 50 years of age and above, you qualify to join the PML Southern Valley Seniors (SVS). The SVS play home & away events with other Golf Courses in the Southern Valley, such as Turlock CC, Oakdale CC & Spring Creek CC, to name a few. If you are interested call the Golf Shop and we will put you in touch with the SVS PML Captain.

## PUNCH CARDS

Pine Mountain Lake Association Property Owners can save up to \$6.00 per round by purchasing a Punch Card in the Golf Shop. There are; 9-Hole & 18-Hole Punch Cards available. For more information call or come into the Golf Shop.

## NEW PINE MOUNTAIN LAKE PROPERTY OWNERS

If you are a new Pine Mountain Lake Property Owner and you are interested in getting acquainted with other Property Owners who play golf, call the Golf Shop 1-209-962-8620 and we will let you know what golfing groups you may be able to join or what golf activities are planned for the year.

## MEN'S & LADIES GOLF CLUBS

If you are interested in joining the Men's or Ladies Golf Clubs, you can call the Golf Shop 1-209-962-8620 and we will give you the information you need. Applications are available in the Golf Shop. The Men's Club has a website ([www.pmlmgc.com](http://www.pmlmgc.com)) that you can visit to sign-up online for your membership (see Men's Club eligibility rules) or to print an application. Once you are a Men's Club Member, you can sign-up for tournaments online.

## PROPERTY OWNER ANNUAL GOLF CART RENTAL AGREEMENT

Every person who drives a golf cart

on the course, is required to sign a golf cart rental agreement at the time of registration, before they can drive a golf cart. **PML Property Owners sign the agreement one-time and that covers the entire year.** If you have not signed your agreement you can go to the PML website ([www.pinemountainlake.com](http://www.pinemountainlake.com)) and fill it out and sign online or you will be asked to sign the form when you register in the Golf Shop. Click on amenities, then click on golf and you will see the agreement with other forms available. If you have any questions, please call the Golf Shop 1-209-962-8620.

## CARE OF THE GOLF COURSE

**TAKING CARE OF THE GOLF COURSE IS EVERYONE'S RESPONSIBILITY; PLEASE DO YOUR PART!**

**Replacing Divots** – PML is a **DIVOT FIRST** facility; that means that if the divot is intact or even a portion of the divot is intact, we want you to replace the divot first and press the divot down firmly with your foot. When an intact divot is replaced, it will begin to root right away but a mulch filled divot will take weeks to fill in. If the divot hole is not totally filled in by the divot that you replaced then fill the rest of the hole with mulch and press down the divot firmly with your foot. If the divot is not intact, then fill the divot hole with mulch and smooth the mulch with your foot so it is level with the ground.

**Repairing Ball Marks** – This is one of the major negatives in our great game; players either do not know how to repair ball marks correctly or don't even attempt to repair them. Here is the correct way to repair a ball mark:

Insert the divot tool just outside the edge of the ball mark, use the divot tool to mend in the outside portion if the ball mark towards the middle.

Then use your putter to tap down the repaired turf. If a ball mark is repaired properly, you will not even be able to tell that there was a ball mark. **NEVER PULL UP THE MIDDLE OF THE BALL MARK.**

**Raking Bunkers** – We are back to normal procedures concerning bunkers; **PLEASE** make sure that you rake the bunker after you have hit your shot.

**Golf Carts** – Driving golf carts on the fairways has a negative effect on turf conditions over time. **PLEASE** use the 90-degree rule posted in each golf cart in order to minimize the cart traffic on the fairways.

## PINE MOUNTAIN LAKE GOLF APP

Pine Mountain Lake Golf & CC has an app that you can download **FREE** from the app store. There are many fun and useful features on the app such as:

- Golf course GPS
- Players can measure their shots
- Golf course hole by hole flyover
- Interactive scorecard
- Score posting
- Player profile and automatic stats tracker
- Special offers
- Food & beverage menus and ordering
- Receive notifications concerning special events
- Weather information
- PMLA Member information & online payments

# MARCH ON OVER TO HOST COMPLIANCE

SALLY OWENS – RENTAL COMPLIANCE COORDINATOR

Are you marching to the beat of the rental drum? If you are planning to register your property as a rental with Pine Mountain Lake or would like to renew your existing rental permit, then this is for you! We have a fast and easy online process that allows you to complete your registration or renewal and pay the annual rental fee all in one place. You may find the secure link to Host Compliance through [pinemountainlake.com](http://pinemountainlake.com), select the Resources tab, Community Standards, Rental Registration Link or scan our QR code



our fun amenities. You will also find the link to the Rental Compliance Hotline to report non-emergency short-rental problems and our FAQ's for commonly asked questions.

Tuolumne County Fire Department now requires all short-term rentals to have a Fire and Life Safety inspection. In order to schedule an inspection, please start with verifying that your rental property is registered with Tuolumne County's Tax Collectors Office. If you need to register, please call 1-209-533-5544. After you have completed your registration, you may proceed with scheduling your fire inspection.

As always, please do not hesitate to reach out to me with any questions or concerns by calling 1-209-962-1245 or sending an e-mail to [rcc@pinemountainlake.com](mailto:rcc@pinemountainlake.com).

Happy Renting!

# TEE TO GREEN

ROB ABBOTT – GOLF COURSE SUPERINTENDENT

The golf course maintenance team has been hard at work over the last month cleaning up storm debris and trimming trees. Additionally, they have been working on various projects readying the course for our 2024 season. We have been keeping our fingers crossed all season for rain and we have sure seen our share lately. I wouldn't mind us drying out a bit now that our lake is full and spilling and we have a decent snow pack. We still have a couple more months of potential with March and April but should see things gradually warm up and turn dry.

The spring months bring a lot of projects and challenges. We will be aerating greens April 1st and 2nd and be doing tees, fairways and rough around the same time period. All of these activities need to be finished in preparation of our pre-emergent herbicide being applied aiding us in the prevention of weeds on our tees,

fairways and green surrounds. During the aeration closure we will also be potentially sealcoating the asphalt from the parking lot above one tee to the cart shed. Access to the Golf Shop would be limited during this time. We will also work throughout the warm spring months to rehabilitate some bunker edges, complete a dress up of all the bunkers with a little fresh sand, raising and leveling some greens heads, and leveling some collars. We will also have some larger projects planned in early summer that I will touch on in future articles. While all of this is happening, the longer days and warmer weather will cause our spring bloom and a surge in turf growth. The Spring push can last until early to mid-June and will require a large amount of my staff to be dedicated to mowing operations. Preparations are well under way for the 2024 season and we are hopeful for a healthy start to the year.

# HOW TO SUBMIT YOUR DREAM GARDEN

ASHLEY HENDERSON – ARCHITECTURAL CONTROL SPECIALIST

Have you found yourself dreaming about having your very own secret garden? A tranquil oasis you can step into and forget the day-to-day woes of adulthood? If you are ready to turn those dreams into reality, we're here to help guide you through the process. Prior to beginning any work, please submit your plans to the Environmental Control Committee for their review and approval. We would hate for you to plant a rose garden that rivals the White House, only to find out its placed in a non-compliant location. It is important to keep in mind, that all landscaping, and hardscaping—plants, decorative rocks, boarder walls, water features, etc. cannot be placed in your setbacks. It's also worth noting, that given the area in which we live, and the seemingly ever-present fire danger

we face, that we recommend choosing fire safe plants.

For all dream garden submittals, the Committee will want a plot plan showing the locations of all your larger plants, walls, cherubic statuary, etc. Additionally, they will want a list of all proposed materials and plants, and any applicable permits. You can submit your plans online at: <https://www.pinemountainlake.com/ecc-project-submittal-process/>

If you have any questions about the landscaping submittal process, setback requirements, or want to see if we have a plot plan of your property on file, please do not hesitate to reach out. We will be more than glad to help answer any questions you may have. You may contact me at: 209-962-8605 or [ecc@pinemountainlake.com](mailto:ecc@pinemountainlake.com)

## — NOTICE —

Listed below are ALTERNATE phone numbers for EMERGENCY use during power/phone/internet outages:

DEPARTMENT OF SAFETY – MAIN GATE  
1-209-768-8600

PMLA ADMINISTRATION OFFICE  
1-209-768-3998

THE GRILL AT PINE MOUNTAIN LAKE  
1-209-962-8658



# EASTER BRUNCH AT THE GRILL

SUNDAY, MARCH 31 · 10AM – 4PM



## EASTER BRUNCH MENU

### SALADS

#### Classic Wedge \$14

Iceberg lettuce wedge,  
bacon, tomato,  
with blue cheese dressing.

#### Black & Bleu \$24

Mixed greens, candied walnuts, Roma tomatoes,  
fried onion strings, topped with sirloin steak,  
with a raspberry vinaigrette.

### ENTREES

All entrees served with choice of potatoes or salad

#### Biscuit & Gravy Bake \$14

Sausage gravy topped with flaky biscuits  
and baked to perfection.

#### Classic Quiche Lorraine \$16

Egg, bacon, gruyere cheese,  
and caramelized shallots  
in a flaky pie crust.

#### Ham & Cheese Spinach Puffs \$16

Ham, and spinach with a gruyere cheese sauce in a  
flaky puff pastry.

#### Country Benedict \$16

Pork sausage patty on an English muffin topped with  
country gravy.

#### Grill Monte Cristo \$16

Black forest ham, turkey, swiss cheese,  
with passion fruit jam on sourdough bread,  
dipped in egg and grilled.

#### Chicken & Waffles \$16

Homestyle chicken tenders  
served with a Belgium waffle  
drizzled with hot honey  
and topped with whipped butter.

#### Egg & Hashbrown Casserole \$18

Country sausage, red bell pepper,  
spinach, and scrambled eggs baked.

#### BLT Eggs Benedict \$18

Maple & brown sugar bacon,  
arugula, heirloom tomato,  
on a English muffin, topped  
with a classic hollandaise sauce.

#### Bagels & Lox \$18

Smoked salmon, cream cheese,  
capers, sliced red onion, tomato,  
and arugula on a toasted bagel.

### KIDS MENU

#### Belgium Waffle \$10

Served with 2 sausage links. Topped with choice of  
fresh berries or maple syrup.

#### Brioche French Toast \$10

Served with 2 sausage links. Topped with choice of  
fresh berries or maple syrup.

#### French Style Pancakes \$10

Served with 2 sausage links. Topped with choice of  
fresh berries or maple syrup.

### SWEETS & SIDES - \$6 EACH

#### Cinnamon Rolls

#### Morning Buns

#### Scones

#### Assorted Danishes

#### Fresh Fruit

#### Yogurt with Granola

For more information or to make  
reservations call 1.209.962.8638

# HOT OFF THE GRILL

HEATHER PARKHURST – FOOD & BEVERAGE DIRECTOR

Hello friends, greetings from The Grill! As the last remnants of winter (hopefully!) slowly give way to the promise of warmer days, the anticipation for the arrival of spring grows stronger with each passing day. After enduring a season marked by relentless atmospheric rivers, brutal winds, and occasional snow days, it's no wonder we find ourselves eagerly awaiting the coming of the first day of spring. March, true to its reputation, often begins with the ferocity of a lion, lashing us with its unpredictable weather patterns. However, as the month progresses, it usually transforms, becoming more like the gentle lamb as we inch closer to spring. With the equinox serving as a hopeful turning point, we are all ready to bid farewell to the frosty grip of winter and welcome the warmth and beauty of a new season, filled with all the wonderful things that spring in Pine Mountain Lake brings.

In honor of that transition to spring I want to invite everyone to Join us on Sunday, March 10th from 11:30 am to 1:30 pm for a delightful Brunch & Bingo experience at The Grill! For just \$25 per person, indulge in our sumptuous brunch buffet, which includes tax and tip. We'll keep the excitement going with three rounds of bingo, and don't worry, all supplies will be

provided by us. Winners of each round will be rewarded with prizes. Be sure to reserve your spot as reservations are required due to limited seating. Each Brunch & Bingo event will offer a unique buffet selection, and this time, savor mouthwatering entrees such as cheese blintze with strawberry topping, eggs, bacon, breakfast potatoes, French toast casserole, assorted pastries, yogurt, and more. Don't miss out on the fun and deliciousness!

We all know that March boasts the St. Patrick's Day holiday, and we will definitely have some lucky specials for that, but this is one of those years where we welcome Easter at the end of the month as well. Come celebrate this year with our exclusive Easter brunch menu on Sunday, March 31st. Our talented Chef Raul has curated another special plated menu featuring his finest brunch creations. So treat yourself and your loved ones to an unforgettable Easter celebration with the stunning backdrop of Pine Mountain Lake Golf Course and views all the way to Yosemite!

Secure your reservations for both events now by calling 1-209-962-8638. Sign up for The Grills own eSNAP on the main PMLA website to get our event flyers and menus delivered directly to your email inbox.

## PMLA WEBSITE:

[www.PineMountainLake.com](http://www.PineMountainLake.com)

## BE SURE TO LIKE OUR PMLA FACEBOOK PAGES:

[Facebook.com/PineMountainLakeCA](https://www.facebook.com/PineMountainLakeCA)

[Facebook.com/PMLARecreation](https://www.facebook.com/PMLARecreation)

[Facebook.com/PMLMaintenanceDept](https://www.facebook.com/PMLMaintenanceDept)

[Facebook.com/PMLGrill](https://www.facebook.com/PMLGrill)

[Facebook.com/PMLAEquestrianCenter](https://www.facebook.com/PMLAEquestrianCenter)

## WELCOME TO THE *Hidden Jewel of the Foothills* PINE MOUNTAIN LAKE GOLF & COUNTRY CLUB

12765 MUELLER DRIVE • GROVELAND, CA. 95321

### *Championship Golf Course*



### *Beautifully Manicured Greens*



### *Stunning Vistas & Surroundings*



*Mountain Golf*  *at its Finest!*

[www.PineMountainLake.com](http://www.PineMountainLake.com)

1-209-962-8620

JOIN US AT THE GRILL FOR

# BRUNCH



March 10th • 11:30 AM – 1:30 PM • \$25 Per Person

Join us for Brunch Buffet & Bingo!

3 rounds of Bingo, all supplies provided by The Grill  
Winner of each round receives a prize!

Reservations Required

For more information please call  
1.209.962.8638

# RECREATION UPDATE

MICHELLE CATHEY – RECREATION & SEASONAL OPERATIONS MANAGER, CCAM & CPO

**F**isherman’s Cove is a great place to visit and have fun. There is a big playground and a half court to play basketball. There is also a nice little walk to a fishing area. You can fish or have a picnic. Dogs are allowed as long as they are controlled and on a leash. Please do not let your dog off of the leash and allow them to play in the water. It is dangerous. Often times fish hooks can be found on the shoreline or in the water. It is also disruptive to the fishermen.

When you’re not playing, you can look forward to working. Seasonal jobs are planned to be posted by the beginning of March. Also, a PML Job Fair is scheduled for March 13th at the Lake Lodge from 1 pm – 4 pm. Come out and visit and apply

for a position of interest. The following jobs will be open for application:

- Café Lead
- Café Attendant
- Marina Lead
- Marina Attendant
- Boat Patrol
- Water Taxi
- Pool Manager
- Pool Attendant
- Wrangler
- Stable Hand

We look forward to meeting you and are available to help with the application process. We will also have time to do an interview while you’re visiting. See you soon.

For more information, feel free to email [pmlfun@pinemountainlake.com](mailto:pmlfun@pinemountainlake.com).

# STAR LIGHT, STAR BRIGHT!

CARRIE HARVEY – COMMUNITY STANDARDS SPECIALIST

**H**appy March! A lot of times when coming up to your home in the hills, after a relaxing weekend, you forget to do some things before you leave, like turning the lights off! Not only will it save on your electric bill, but it will keep your neighbors happy too!



One of the biggest issues we deal with are bright exterior lights. Lights are not always a bad thing, we understand some of you have the outside motion lights, they come on when a deer walks by, and then they go off. We appreciate that! There are some that are not motion, some that have porch lights that shine right into the neighbor’s windows, or shine bright from across the street. If this sounds like your home, please remember that we do have some full-time residents here at PML, some that even love star gazing, and those lights can be bothersome. Please turn off your lights before you head back home. If you need a light outside your home for when you arrive in the dark, maybe consider

those motion lights that go off after a few minutes. If you have any questions about lighting, or maybe you are not sure if your light fixture is compliant, please feel free to reach out to our office, we

will gladly assist you. You can also log on to the Pine Mountain Lake website. Under the Resources tab, you will click on the Community Standards icon, or scan the QR Code, there you will find the Environmental Control Committee information, scroll down to the lighting fixture guidelines. You will be able to see what type of light fixtures are compliant and non-compliant. As always, you must submit your project for approval prior to installation. We should all be enjoying the beautiful stars that light up our wonderful community at dark!

Per our ECC Guidelines. Exterior Lighting. All exterior lights must be shielded or hooded and constructed so as not to create a nuisance or hazard. The lighting footprint must project downward and should not project beyond the property boundaries.

## ENERGY SOLUTIONS

GENERATORS, SOLAR & BATTERIES

Local service with installation.



[www.sol-training.com](http://www.sol-training.com)  
 24 hour answering service  
 (650) 681-9445  
[thuggett@sol-training.com](mailto:thuggett@sol-training.com)  
 CA license #858377



**F**oust  
 Heating & Air Conditioning

Mention this ad and receive 20% off service call

**Voted best for 6 years**



**Reliable, Dedicated Service**  
 Offering free estimates on upgrade or new systems

**F**oust  
 Heating & Air Conditioning

**Quality You Can Trust**  
 (209) 588-0207  
[foustvac.com](http://foustvac.com)  
 Bonded & Insured  
 • License #841677

**PINE MOUNTAIN LAKE ASSOCIATION**

# SEASONAL JOB FAIR

**WEDNESDAY, MARCH 13**

**1:00<sup>PM</sup> - 4:00<sup>PM</sup>**

**PMLA LAKE LODGE  
20270 PINE MOUNTAIN DRIVE**

**Complete application online  
for quicker interview process  
[www.pinemountainlake.com/Employment](http://www.pinemountainlake.com/Employment)**

**For more information, please call  
Human Resources at 1 (209) 962-8628**

**BE SURE TO LIKE OUR PMLA FACEBOOK PAGES:**

***Facebook.com/PineMountainLakeCA***

***Facebook.com/PMLARecreation***

***Facebook.com/PMLMaintenanceDept***

***Facebook.com/PMLGrill***

***Facebook.com/PMLAEquestrianCenter***

## PML SAFETY REPORT

	<b>JANUARY</b>	<b>YTD</b>
Guest Passes Issued	679	679
Vendor Passes Issued	287	287
Temporary Resident Passes Issued	562	562
Vehicles Admitted	8,152	8,152
Vehicles Refused Entry	161	161
Phone Calls Received	2,018	2,018
Residential Alarm	4	4
Animal - Loose	8	8
Animal - Impounded	5	5
Animal - Dead/Injured	5	5
Animal - Disturbance	0	0
Patrol Assist	106	106
Public Assist	4	4
Welfare Check	3	3
Transport	2	2
Traffic Hazard	0	0
Traffic Control	0	0
Excessive Speed/Reckless Driving	0	0
Gate - Tamper	0	0
Gate - Follow Through	12	12
Gate - Malfunction	1	1
Gate - Struck by Vehicle	3	3
Control Burn Reported	55	55
Fire Safety - Smoke Complaint	2	2
Hazard - Tree Down	1	1
Residential Disturbance	3	3
Amenity Burglary	0	0
Residential Burglary	0	0
Grand Theft	1	1
Petty Theft	0	0
Trespassing	2	2
Vandalism	1	1
Property Damage - PML	0	0
Property Damage - Resident	0	0
PML Regs Violations Resident	0	0
PML Regs Violations Guest	0	0
Vehicle - Citation Issued	0	0
Vehicle - Accident PML	0	0
Patrolling Unit	1,236	1,236
Amenity Security Check	1,940	1,940
Residence Security Check	118	118
Monitoring Tennis Courts	0	0
Weapon Violation	0	0
Fixed Post	5	5
Courtesy Notice Issued	26	26
All Other Fees Collected	\$33,394.70	\$33,394.70



# FROM PMLA SAFETY COMMITTEE

BOB ASQUITH – PMLA SAFETY COMMITTEE

The Pine Mountain Lake Safety and Security Committee is a standing committee authorized by the PMLA Board of Directors to inform its decision making and promote its mission. The Committee meets every month.

Join Our Committee Meeting: Members may attend our committee meetings.

Our next meeting is March 13th at 9am via Zoom. Please email [safetyandsecuritycommittee@pinemountainlake.com](mailto:safetyandsecuritycommittee@pinemountainlake.com) to obtain your invitation.

Your Safety Committee will be researching and making recommendations to the BOD during 2024 on the following topics:

- ✓ Partnering with CERT to conduct Fire & Communications Preparedness Workshops, and Emergency Concepts. Develop checklists for evacuations.

First Aid/AED/CPR training will be March 23rd from 9am to noon at the Lake Lodge. Professional certification will be provided. Cost is \$75.

Please RSVP to the Safety Committee at the email [GrovelandCERT@gmail.com](mailto:GrovelandCERT@gmail.com)

- ✓ Providing members, guests, and Short-Term Renters with vital emergency information through information posted inside the front door, mirror hangers and electronic messaging. We are presenting information to mark “T” intersections as

to which way

- ✓ Develop and plan for power outages as well as implementing safe places to go when it is cold or hot in PML.

- ✓ Improve PMLA emergency communications and provide members with relevant emergency communications information.

- ✓ Continue to work with PMLA to improve the flow of traffic at the main gate during peak times. Use Elder Lane to avoid the backups at those times.

- ✓ Locate and articulate measures to reduce speeding within PML.

We are open to other suggestions that will make our Pine Mountain Lake community safer for all members, guests, and renters. Please direct comments to our email above.

Firewise Communities—Contact the Safety Committee (email address below) for details.

- You can start a Firewise community and make your area SAFER. It is easy.

- SAVE on your Homeowners Fire Insurance.

Emergency Evacuation—S&SC, Tuolumne County Maps, TC Sheriff, and TC OES have approved the maps. Maps show the routes out of PML and the major evacuation routes away from Groveland.

Evac Maps are on the PMLA website. Download & print your copy. <https://www.pinemountainlake.com/.../PML-Evacuation-Maps.pdf>

Please email comments to: [safetyandsecuritycommittee@pinemountainlake.com](mailto:safetyandsecuritycommittee@pinemountainlake.com)

## DON'T BELIEVE THE LIES!

The “recall committee” is telling you lies – about your assessments, your board, and your PML management team.

*Here's the truth:*

- PML was advised we were eligible for Payroll Protection Loans. We were awarded two loans totaling \$1.6M, which were then forgiven. The money was used as prescribed for employee wages and for approved Covid-related expenses; the left-over funds went into your Reserve Fund.
- Years later we learned that an error was made on the application and our type of HOA was ineligible, so we had to pay back the loans with penalties. This was done, using money from reserves, and postponing our road repair project for one year. Paid in full.
- There is no special assessment, and no money is “missing.” PML has no debt.
- Board members are volunteers. They receive zero compensation.
- Facebook pages controlled by the “recall committee” have blocked anyone who disagrees with them, so you may only see their conspiracy theories and false accusations.
- They claim PML committed fraud. That's not true. It was a clerical mistake, since corrected, and fines paid. Case closed.

PML management and board have been completely open and told you the truth, even acknowledging the original mistake. What is the recall committee accomplishing – other than lying, disrupting, dividing, and costing us all a lot of money?

# PMLA GMRS NEWS

BOB ASQUITH – PMLA SAFETY COMMITTEE

## EMERGENCY COMMUNICATIONS UPDATE

**N**ormal communications in Groveland/Big Oak Flat all are supported by a fiber optic cable that runs from Groveland to Sonora. That carries all land lines, cell lines, and Internet services.

- When that single cable goes out – YOU have NO communications.
- It has gone out during the Moc Fire, Washington Fire (Sonora). It has also

gone our randomly without apparent cause.

- The **ONLY** other communication channel is via **RADIO**.
- Groveland GMRS is designed to be the Emergency Radio.
- All you need is the Radio and the FCC radio license.
- Join the GROVELAND GMRS Radio network.

Please email comments to:  
[safetyandsecuritycommittee@pinemountainlake.com](mailto:safetyandsecuritycommittee@pinemountainlake.com)

## GOVERNING DOCUMENT ENFORCEMENT ACTIONS JANUARY 2024

Courtesy Notices	34
Notice of Non-Compliance	10
Final Notice of violation	3
Fines Assessed	8
Member Service	895

## PMLA OWNED LOTS FOR SALE

2/047	GAMBLE STREET	PENDING \$1,000
2/287	FERRETTI ROAD	PENDING \$2,500
2/448	WELLS FARGO DRIVE	\$1,000
3/011	FERRETTI ROAD	PENDING \$1,000
6/113	FERRETTI ROAD	\$1,000
6/179	COTTONWOOD STREET	\$1,000
6/252	FERRETTI ROAD	\$1,000
7/062A	FERRETTI ROAD	\$1,000
7/239	DIGGER PINE STREET	\$1,000
13/264	PINE MOUNTAIN DRIVE	PENDING \$1,000

FOR FURTHER INFORMATION REGARDING THESE PROPERTIES PLEASE CONTACT PMLA AT (209) 962-8600



DRE# 01113243

**MLS**  
18687 MAIN ST., STE E  
GROVELAND, CA 95321



**KATHY NIEDENS**  
REALTOR® / SALESPERSON

209.962.1111 OFFICE  
209.985.4031 CELL  
[kniedens@gmail.com](mailto:kniedens@gmail.com)

LIST & SELL WITH  
KATHY & GET YOUR  
HOUSE CLEANED  
FOR **FREE**  
ASK FOR DETAILS

**HOME • CARPET  
WINDOWS**

As both a realtor, and the owner of heavenly cleaning service, I can offer you more. We all know how important it is to get your home looking it's best when selling or when buying a new home, cleaning it before you move in. Well, let me take care of it. **Home cleaning. Carpet cleaning. Windows cleaning. Could save you time, trouble, and money.**

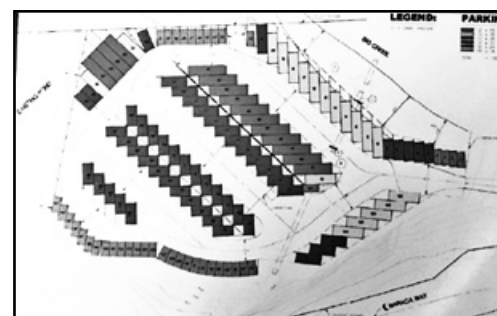
**HEAVENLY  
CLEANING SERVICE**  
**209.962.6418**



PROFESSIONAL CARPET CLEANING & HOUSEKEEPING SERVICE

## Deardorff Realty

### A MUST SEE OPPORTUNITY!



**28 acres close to campground zoned for dry (boats, motor homes, campers, etc.) storage. Get all of those items off the properties in Pine Mt. Lake. A must**

**see to appreciate! Priced to sell @ only \$259,000!**

Contact Marilyn Deardorff-Scott - BRE 00396888

**209-962-0718**

### BE SURE TO LIKE OUR PMLA FACEBOOK PAGES:

[Facebook.com/PineMountainLakeCA](https://www.facebook.com/PineMountainLakeCA)

[Facebook.com/PMLARecreation](https://www.facebook.com/PMLARecreation)

[Facebook.com/PMLMaintenanceDept](https://www.facebook.com/PMLMaintenanceDept)

[Facebook.com/PMLGrill](https://www.facebook.com/PMLGrill)

[Facebook.com/PMLAEquestrianCenter](https://www.facebook.com/PMLAEquestrianCenter)

**RANCH STYLE HOME**

MLS# 20231474

13035 Tip Top Court



**Reduced!**

**\$449K** was \$488K

2 Bd, 2 F/B, + Bonus Rm,  
2170 SqFt, 3 Detached  
Oversized Car Garage,  
Circular Driveway,  
RV Parking, Active Solar,  
0.98 Acre, 3 Merged Lot  
**Tish Fulton, 209.985.0216**

**CUSTOM DESIGNED**

MLS# 20231494

12932 Green Valley Circle



**\$579K**

5 Bedrooms, 2 FB, 1H/B  
Jetted Tub, Hardwood Floors  
Free Standing Fireplace,  
2166 SqFt, 2 Car Garage  
**Ron Connick, 209.206.0007**

**MUST SEE!**

MLS# 20231478

19269 Ferretti Road



**REDUCED!**

**\$345,000** was \$379K

3 Bedrooms, 2 F/B,  
Cathedral Ceiling,  
Large Kitchen with Great  
Pantry, Covered Porch,  
2 Car Garage, 1,552 SqFt  
**Tish Fulton, 209.985.0216**

**Unit 11 Lot 41 NEAR AIRPORT**

11 - 41 Elderberry

**\$75,000**

1.5 acre Parcel .  
Save at least \$25,000  
on County and GCSD fees.

Use existing concrete slab-see  
Engineer's report on usability.  
Corner lot with two driveways in.

**Tish Fulton, 209.985.0216**



**“We Help People Get  
What They Want.”**

Gretchen Pearson, President/Owner



FOR AN  
INSTANT  
HOME VALUE  
ESTIMATE



Ron Connick  
REALTOR | BRE #00025867  
209.206.0007



Tish Fulton  
REALTOR | BRE #00870078  
209.985.0216



Carmen Taira  
Office Administration  
209.962.7765

18727 Main Street, PO Box 792, Groveland, CA 95321 | 209.962.7765

**GUEST & RENTERS  
HANDBOOK  
IS AVAILABLE ONLINE!**

You can now view or print the  
Guest and Renters Handbook  
from the PML Website. Go to our  
website at:

**WWW.PINEMOUNTAINLAKE.COM**

and click on Resources, select  
Community Standards, then scroll  
down to the bottom of the page  
and click on Guest and Renters  
Handbook. This handbook has  
valuable information for Guests  
and Renters in Pine Mountain Lake.

**ATTENTION NEW PML MEMBERS!**

**WELCOME to PML...We're glad you're here!**

Once you have received your welcome letter from the Association you will have the  
information you need to log into the PML website ([www.pinemountainlake.com](http://www.pinemountainlake.com))

Once there click on the **RESOURCES** tab & then on the **NEW MEMBER ORIENTATION** icon.

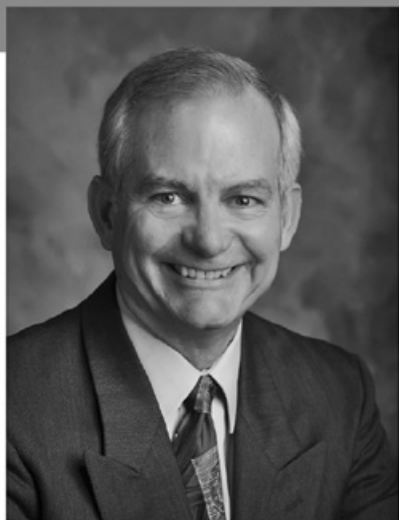
The New Member Orientation page is **JUST FOR YOU!**

Here you will find:

- Member Orientation Packet
  - o Information on the Official PML Facebook page
  - o Gate Access Guest Pass internet program information
  - o Fire Safety contact and information
  - o Board Meeting Dates and information
  - o Rules, Regulations and Procedural information
  - o Information on PML Committees and Clubs
- Assessment Information
- PML Fact Sheet
- Getting Connected  
in Groveland

And **MUCH MORE!**





**PAUL S. BUNT, ESQ.**  
ATTORNEY AT LAW

ESTATE PLANNING  
PROBATE  
REAL ESTATE  
BANKRUPTCY  
ELDER CARE  
209.962.6778

Mountain Leisure Center, Groveland  
appointments available in Sonora and Lake Don Pedro



**FRESH SEAFOOD FLOWN IN  
FROM HALF MOON BAY**

*HERE'S HOW TO ORDER:*

1. Go to [sierraflyingfish.com](http://sierraflyingfish.com)
2. Select items & add to your cart
3. Place your order
4. Pick up your order at our shop located in Groveland next to the Iron Door Saloon
5. Enjoy!

We also carry limited in-shop weekly specials that don't require pre-ordering

Don't see something you want?

Custom orders also available!

Check our website for shop hours



[www.djsellsdirt.com](http://www.djsellsdirt.com)

# Buying or Selling?

**Personalized Not Franchised**

**209-985-7633**

*D.J. Kraft*  
REALTOR

Born and raised in Groveland and an experienced, local expert. My childhood was spent on the lake and riding my horses at the Pine Mountain Lake stables while my young adult years were spent buying, developing and adventuring in real estate. I LOVE my hometown and it's surrounding areas. It would be my pleasure assisting you with buying or selling. Let's work together!





# PINE MOUNTAIN LAKE REALTY

An Agent Owned Company 18919 Ferretti Road • PO Box 738 • Groveland CA 95321 • 209-962-7156 • www.pmlr.com



**Barry Scales**  
Broker/Owner  
209.484.7123  
DRE#00451887



**Lynn Bonander, GRI**  
Owner/Realtor®  
209.484.7156  
DRE#00683485



**Val Bruce, GRI**  
Owner/Broker Assoc.  
209.768.7368  
DRE#00578336



**Marc Fossum**  
Owner/Realtor®  
209.770.4750  
DRE#01956242



**Patty Beggs**  
Owner/Realtor®  
209.840.2293  
DRE#01339347



**Michael Beggs**  
Broker Assoc./Realtor®  
209.840.2294  
DRE#0133568



**Linda Willhite**  
Broker Assoc./Realtor®  
209.985.2363  
DRE#01063378



**Ann Powell**  
GRI, ABR, RSPS  
209-200-1692  
DRE#01268655



**Eleda Carlson**  
Owner/Realtor®  
209-814-4123  
DRE#00632516



### Beautiful Merged Lots on 0.66 Acre!

3 Bd/2 Bth, 2 Car Attached Oversized Garage w/Shelves & Workbench, Approx 1800sf, Built 2019. Great Rm, Stainless Appliances, Pantry, Master Bd/Bth, Walk-in Closet, Separate Shower, Space & Plumbed for a Soak/Jetted Tub, Large Laundry Rm, Wrap Around Deck, Huge Sub-Area, Lots of Extra Parking, RV Pad with Full Hookups, Fenced Garden, Gazebo and Many More Unique Amenities!

11962 Mtn View 13-220  
\$474,900 MLS# 20240118



### Rustic Charm ~ Modern Convenience

3 Bd/2 Bth, Attached Finished Garage w/ Cabinets, Approx 1300sf on 0.55 Acre. Great Rm, Family Rm w/Heat Stove, Solid Surface Countertops, Pantry, Open Dining, Handcrafted Wood Finishes, Rustic Accents. Master Bd/Bth, Laundry in Garage, Washer/Dryer Included. Newer Roof, Septic System, Gutters, Ductless Heating & Cooling Systems. Turnkey.

13325 Wells Fargo 2-337  
\$410,000 MLS# 20240112



### Ranch Style Home ~ Great Location!

3 Bd/2 Bth, 2 Car Garage, Approx 1562sf on 0.38 Acre, Living Rm w/Propane FP, Vaulted Ceiling, Kitchen w/plenty of Counter & Cabinet Space, Large Skylight & Sun Tunnels, Pantry, Open Dining w/Octagon Window facing the Garden. Master Bdrm w/2 Separate Closets, Jetted Garden Tub/Walk-in Shower, Inside Laundry, Covered Porch, Patio. Circular Driveway, RV Parking, New Roof 2003.

19410 Pleasant View 1-74 \$435,000  
MLS#20240122



### Idyllic Farmhouse Retreat

3 Bd/2 1/2 Bth, on 6.28 ACRES! 2- 3 Car Finished Garages, Large Living Rm w/Built-in Hutch- Propane Fireplace, Marble Tiled Foyer, Cathedral Ceiling, Whole House Fan, Spacious Kitchen, Brfst Bar, Island, Granite Countertops, Pantry, Master Suite w/Walk-in Closet, Spa Like Bath, Den/Office, Laundry Rm w/Cabinetry & Utility Sink. Separate 844sf Guest House w/Garage. Barn/Horse Setup, Workshop & Much Much More!

\$1,125,000 MLS# 20231470



### Comfort~Beauty~Charm

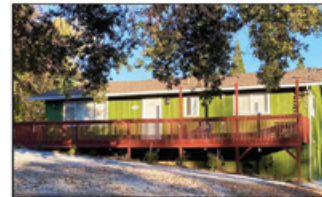
2 Bd/1 1/2 Bth, 1 Car Finished Garage, Large Corner Lot. Great Rm w/Propane Fire Place, Open Beam Knotty Pine Ceiling, Ceiling Fan, Hardwood Flooring, Kitchen Island, Granite Countertops, Master Bdrm with a Private Deck, Inside Laundry, New wrap-around Trex Deck and Ramp. New Propane Heating & AC Unit. New Roof & Gutters. Level Driveway.

20249 Little Valley 13-235  
\$329,000 MLS# 20231610



### Beautiful Corner Lot ~ Fairly Level-Easy Build

Approx .50 ACRE Lot backs up to a Green Belt w/Big Creek & Great Walking/Hiking Trails in back. Enjoy the Scenery and Pine Mountain Lake's Amenities: Lake, Swimming, Fishing, Boating, Championship Golf Course, Tennis & Pickle Ball Courts, Horse Back Riding/Equestrian Center, Airport, Etc. Enjoy Fine Food at "The Grill," overlooking the Scenic Sierra's & Golf Course. Located in the Historic Town of Groveland & Only 25 miles from Yosemite National Park. 20801 Nonpariel Way, 10-26, \$38,000 MLS# 20231769



### "No Stairs" Ranch Home!

2 Bd/2 Bth, 1 Level, Great Rm w/Circulating Fireplace with Stone, Solid Surface Countertops, Brfst Bar, Open Dining w/Access to Rear Deck. New Flooring thru-out, New Heating/Air System. Master Suite w/Walk-in Closet, Separate Shower. Inside Laundry. Security System, Deck, New Rain Gutters & Guards, Automatic Drip System.

12547 Mount Jefferson 5-62  
\$275,000 MLS# 20231607



### Lovely Renovated Golf Course Condo

2 Bed/2 Bath, 2 Levels Located on the #5 Golf Course Fairway. Living Room with-Floor to Ceiling Shelving, Carpeted, Slider to Patio Area. Kitchen with Plenty of Cupboards with "See Thru" Panels, Unique Lighting & Breakfast Bar, Open Dining Area, Master Bedroom with Slider to Balcony, Inside Laundry.

19032 Dyer Ct #13  
\$215,000 MLS# 20231645

Welcome to Spring in  
Pine Mountain Lake



**WE ARE STILL BUSY SELLING IN THIS MARKET !!!**  
 Call us to tell you what your home could sell for right now.

**Listing  
 Staging  
 Makeover  
 Specialists !!**

**YOSEMITE AREA  
 REAL ESTATE**

**Make  
 Chris & Gina  
 your  
 1st call!**

**CHRIS H. LAKE**  
 DRE 00946632  
**209-768-6156**  
*chrishlake@gmail.com*

**GINA GIAMPIETRO HERNANDEZ**  
 DRE 01226555  
**408-506-6944**  
*GinaGHRealEstate@gmail.com*

**18687 MAIN ST. STE B2 GROVELAND**

*View listings at [www.YosemiteAreaProperties.com](http://www.YosemiteAreaProperties.com)*

**PAUL S. BUNT REAL ESTATE BROKER DRE 01221266**

**CLOSE TO THE LAKE**



**19955 Pleasantview Unit 1 Lot 233 \$449,000**  
 3bd/3ba 2043sf Your opportunity to have a lovely & spacious home in the mountains near the beach & golf course in beautiful Pine Mountain Lake just 35 miles from Yosemite! Large home w/plenty of space for many w/great room living area w/stone hearth & wood burning fireplace stove for a cozy fire on cool mountain days & nights. Lg dining area w/sliding door to private back deck for wonderful outdoor living & dining overlooking nature. Huge kitchen w/breakfast bar, beautiful new bright LED ceiling lighting, 2 pantry closets, stainless appliances & access to the back patio deck. A must see house! Split level w/very private bedrooms - each room has 2 big closets and each can easily fit more than one queen bed for additional family or guests, 3 full bathrooms, indoor laundry, central vacuum system, central heat & A/C, large oversized finished garage, private deck area, and just a minute drive to Dunn Ct. Beach.

**BEAUTIFUL & SPACIOUS MOUNTAIN HOME**



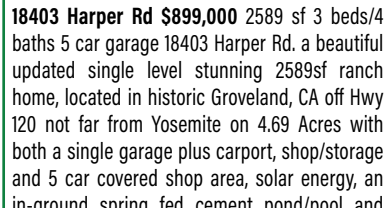
**13201 Wells Fargo Dr. Unit 2 Lot 377 \$559,000** 2536sf 3bd/3ba .28ac. Your chance to own a lovely mountain getaway or full-time home in beautiful Pine Mountain Lake. Built in '94, this home has both interior & exterior lg living areas. 2 bedrooms including oversized master w/large walk-in cedar wardrobe closet, hall bath & guest bedroom w/built-in desk & cabinetry on the main living area, over 15 feet high ceiling in living room area w/grt rm concept, gas freestanding f.p., vast open spacious kitchen w/tons of storage, tall breakfast bar, 2 sink areas, gas range/oven, a sliding door from dining area to the expansive entertaining size deck patio made of trex decking material. Upstairs is an open loft family room w/pool table, 3rd bedroom w/built in beds and/or seating & shelving, full bath & a lg office w/built-ins that can be a 4th bedroom or den. Garage is 3 car size w/one side tandem & built-in storage. The house is equipped w/whole house backup generator, central heat and a/c, lovely stone entrance w/level parking & room for boat or additional vehicle parking.

**CUTE & COZY SINGLE LEVEL**



**12699 Cresthaven Dr., Unit 4 Lot 485 \$359,000**  
 3Bd/2ba/2car Cute and cozy single level home in beautiful Pine Mountain Lake. Your golden opportunity to live or vacation in the mountains just 35 miles from Yosemite. This home has energy efficient solar powered electricity, central heat and air conditioning, stone hearth with wood burning fireplace stove, beautiful hardwood floors, tile flooring and awesome spacious enclosed sun room with mountain views, main bedroom with sliding door to backyard area. The kitchen has a large pantry closet and a big plus is a convenient 2 car garage. This home is located up the street from Lake Lodge Beach and playground. Pine Mountain Lake has 3 beach areas plus Fisherman's Cove, 18 hole public golf course with restaurant and bar, in ground swimming pool, tennis and pickleball courts, airport, equestrian center, playground areas, walking trails and more!

**STUNNING RANCH HOME 4.69 ACRES**



**18403 Harper Rd \$899,000** 2589 sf 3 beds/4 baths 5 car garage 18403 Harper Rd. a beautiful updated single level stunning 2589sf ranch home, located in historic Groveland, CA off Hwy 120 not far from Yosemite on 4.69 Acres with both a single garage plus carport, shop/storage and 5 car covered shop area, solar energy, an in-ground spring fed cement pond/pool and also income producing rental studio house, all in a serene peaceful natural setting you must see if the simple life surrounded by beautiful tree views and blue skies is what you desire! This wonderful incredibly spacious home with a freshly painted exterior & interior has 3 bedrooms with brand new carpeting plus a room without closet with laminate flooring, making 4 private sleeping quarters or perhaps an office or craft room, 4 full bathrooms including one ADU accessible. Spacious living room with tall vaulted rustic knotty cedar and rough hewn cedar beams, built in book shelves, and featuring a stunning brick wall/wood burning fireplace and hearth with a wood mantel and sconce lighting plus rustic style cork flooring. The bright spacious updated kitchen has LVP flooring, a large dining area new stylish lighting recessed and pendant light fixtures, a breakfast nook, granite counters with breakfast bar, stainless refrigerator and dishwasher, oiled farmhouse sink, a wall of pantry cabinets in adjacent laundry/mud room and one bathroom. Another large walk-in storage closet is between kitchen and living room area - tons of great storage. 1 year new roof, tankless water heater, newer double pane windows throughout and every room has beautiful views! The entire front porch is covered with one step to entry and beautiful lawn areas with a circular driveway, mature trees and shrubs and a front yard producing apple tree. There is a spring available for irrigation and District water for house use. A wonderful property very close to downtown Groveland great for a large or small family and a venue for large gatherings. Also 7.71 acre adjacent lot is for sale with historic landmarks bordering BLM on one side. Parcel B Harper Rd. See the ranch virtual tour at <https://www.tourfactory.com>



**CUTE AND COZY CABIN**



**19762 Cottonwood \$299,000** A super cute affordable single level, 2 bedroom 2 bathroom 1038 sf cabin home with a large awesome covered deck patio that you can enjoy the outdoors and natural views all year round. Spacious great room with vaulted open beam ceiling, a cozy wood burning fireplace stove on a stone hearth, glass door access and large windows to view the covered balcony deck patio area which is fantastic for all year round outdoor enjoyment, one of the best things about having a cabin in the mountains. Indoor laundry area, central heat and a/c plus energy efficient solar system. A bit of TLC needed with paint and desired upgrades, but a perfect and unique opportunity to make this great little cabin home all your own. A propane tank is on site. Pine Mountain Lake has 3 beach areas, boating, fishing, swimming; an 18 hole public golf course with a driving range, restaurant and bar, swimming pool area, hiking trails, tennis and pickleball courts, an airport, an equestrian center just a few hour drive from the Bay Area and Central Valley, and 35 miles from Yosemite National Park.

**ABSOLUTELY STUNNING**



**18570 Harper Rd \$399,000** Cabin style exterior, beautifully upgraded and refurbished new, 3 bedrooms 2 baths 1430 sf home on .29 Acres. Absolutely stunning and in move-in condition!!! Renovated from top to bottom, inside and out, like new condition, cabin home to enjoy full or part-time, or perhaps a vacation rental, and not lived in since the upgrades. Lots of parking too! Quartz slab countertops in kitchen & upstairs bathroom (quartz is found to be more durable than granite against chipping & cracking). New cabinets in kitchen. New stainless LG kitchen appliances. Waterproof Pergo durable laminate flooring throughout living room & kitchen. New double pane vinyl windows, sliding door and raised profile baseboards throughout. New Ductless HVAC system on main floor and brand new electric fireplace/heater on lower level. Entry door with beautiful beveled glass and both entry and lower exterior doors are low maintenance fiberglass doors that resist dings and dents like metal doors. New cement step at lower door entry. Open and spacious bright living room with surround windows with gorgeous views, recessed lighting. Plenty of room for RV Parking and a 4 minute drive to downtown Groveland.

**GOLF COURSE CABIN**



**12670 Mt Jefferson \$495,000** a Wonderful Golf Course Cabin Home. You Will Fall In Love at First Sight! Enjoy the best of all worlds in beautiful Pine Mountain Lake! Sweet, spacious Cabin home on the 13th fairway, 2 blocks distance to Dunn Ct. Beach, perfect for full or part-time living. Beautiful hardwood floors, open beam knotty pine ceilings, brick hearth with wood burning fireplace, plantation shutters, 3bd/3ba - Main bedroom suite & guest bedroom w/bath on upper level w/tall vaulted open beam knotty pine ceilings. Main bedroom has a huge walk around closet, bath w/stylish double bowl sinks, jetted tub, separate shower, private toilet closet, built-in storage cabinets and drawers. Main level floor has great room kitchen/dining breakfast bar, large walk-in pantry, open living room, hall full bath, guest bedroom & large family room/den with wet bar, both have doors to back golf course view & spacious wrap around deck. Central HVAC, large cement driveway with guest parking. One step up garage to house entry access plus electric chair lift to upper level.

**WELL MAINTAINED HOME**



**20828 Knollcrest u4/1183 279,000** Very nice affordable single level mountain home in beautiful Pine Mountain Lake just 35 miles from Yosemite. This lovely 2 bedroom 2 bath manufactured home has a 2 car garage, and is located on a small court, on .53 acre and has natural landscape, tree and mountain views. You will fall in love with this home inside and out. It has super curb appeal and a modest paved front driveway, on septic saving the owner a monthly sewer fee. Spacious floorplan/great room with valuted ceilings, light neutral color scheme, a beautiful wrap around back deck balcony with metal railing overlooking the backyard natural view landscape. It also has the electrical installed for a generator. Pine Mountain Lake has HOA dues of \$264 per month with amenities including lake and marina with 3 beaches, boat ramp, seasonal concession with boat rentals for summer fun and fishing, 18 hole public golf course, tennis and pickleball courts, inground HOA pool, playgrounds, airport, equestrian center, golf course restaurant and bar in the historic town of Groveland

**LAKE VIEW LEISURE VACATION HAVEN!**



**20307 Pine Mountain Dr \$699,000** 2bd/2ba .52ac A-frame cabin perched high above Pine Mountain Lake, has views to die for, currently an established vacation rental! Huge deck is the star of the show. Fully equipped for chillin' & grillin'. 1 block to the beach for access to fun lake activities including swimming, kayaking, paddleboarding. Open concept living room, dining room & kitchen allow for great interaction with your fellow vacationers. Stay cool in the summer w/central A/C. Experience the outdoors from a bird's eye view of the beautiful glistening waters of Pine Mountain Lake. Located one block between both Lake Lodge Beach and Fisherman's Cove an ideal location for the entire family, in turnkey condition. A Frame cabin style and charm you will love at first sight! Cozy yet spacious enough to sleep 10, open beam knotty wood ceilings, bright great room concept with cozy wood burn fireplace stove on brick hearth, gorgeous views through the tall picturesque windows, 2bdrms 1ba on main level, Main bedroom w/bonus, loft, metal roof.

## SPRING HAS COME – THE GRASS IS GREEN HAPPY SAINT PATTY'S DAY



**LARRY JOBE**  
REALTOR – TAXIWAY EXPERT  
**209.768.5508** Cell  
larryjobe1@gmail.com  
DRE #01444727

**PENNY CHRISTENSEN**  
BROKER ASSOCIATE – CRS  
**925.200.7149** Cell  
penny@askpenny.com  
DRE #00785760

Daylight Savings – Longer, warmer Day's – Buyer's are looking - Time to List your property is now.

Call us for a professional evaluation of your property. Let our combined 50 years of experience benefit you in preparing your property for market. We have our fingers on the pulse of our unique local market and love sharing that knowledge with you.



### PILOTS OR AUTO COLLECTORS DREAM

Hangar  
49.5'x32'  
Bi - Fold Door  
Luxury Home  
Runway View  
Large lot  
Airport Access

19273 Salvador Ct.  
Unit 5 Lot 30  
3 bdrm, 2 ba, 1656sf  
Single story on .70 Acres  
**\$349,900**



20992 Iris Ct. – U12 L56-A – 3 bdrm – 3.5 ba – 3543sf  
Stunning Home – Updated Modern Conveniences  
Classic Charm – High End Finish – Master Bedroom Suite  
Flying a passion? Live on the Best airport in the west.  
**\$949,900**



[www.YosemiteAreaRealtors.com](http://www.YosemiteAreaRealtors.com)

PAUL S. BUNT REAL ESTATE – DRE #01221266

## WHAT IS THE SIGNIFICANCE OF EASTER?

PASTOR BOB KANDELS

### GREETINGS,

**A**s we look forward to the celebration of Easter at the end of March, we might want to ask what does it mean to live in remembrance of Easter? In other words, what is the real meaning of Easter? After all, Jesus' death and resurrection on the cross 2000 years ago was an actual event, not a myth or a fairy-tale. Jesus was an innocent man, the Son of God who lived a perfect life, but was given the harshest punishment given to criminals. Then, after His death, Jesus' resurrection a few days later changed everything for all

time. What sprang forth from Jesus' death and resurrection was mankind's salvation.

There were a few days between the death of Jesus and His resurrection. What was that like for people in the day? For the disciples, it was a short season of doubt and disappointment. For the religious leaders, it was a season of outward confidence combined with inward fear. For the women closest to Jesus, it was a season of hopefulness and confusion. In this day and age, with all that we have going on around us, we can certainly identify with these emotions.

So, what *is* the true impact of Easter? Because of Jesus' life, death and

resurrection, if we believe in Him, our life is forever changed. We live with God's love and presence as we face the inevitable challenges of life. And, we live with hope anchored in the truth of a life that is eternal. Jesus reminded His dear friend, Martha, about this truth, *"Jesus said to her, 'I am the resurrection and the life. Those who believe in me, even though they die, will live, and everyone who lives and believes in me will never die. Do you believe this?'"* (John 11:25-26) NRSV

Any of us can seek to know more about Jesus. And, if we choose to prayerfully listen, we can find hope that will not disappoint. A relationship with Jesus will

guide us through the storms of life into the light of eternity. During this Easter season, I hope you will be curious to find out more about Jesus and the life He lived. One way is to attend worship at one of the area churches. And, I would like to personally invite you to join us at Groveland Evangelical Free Church. We worship Sundays at 10:00 am. Or, talk with a friend who you know is a believer. Take advantage of this Easter by discovering or reconnecting with Jesus, our risen Lord and Savior. You will be blessed!

In Christ's Service,  
Pastor Bob Kandels

## PML Organized Groups & Clubs

Contact the individuals below if you are interested in joining!

**Aviation Association**  
Bob Mackey 1-408-373-2625

**Friends of the Groveland Library**  
Virginia Richmond 1-209-962-6144

**Friends of the Lake**  
Mike Gustafson 1-209-962-6336

**Garden Club**  
Susan Dwyer 1-209-962-6265

**Groveland Rotary Club**  
Rudy Manzo 1-209-962-5219  
Greg Cramblit 1-209-962-0607

**Ladies Club**  
Dart Woodruff 1-209-962-1980

**Men's Golf Club** www.pmlmgc.com

**Needle Crafts**  
Barbara Klahn 1-209-916-5420

**Pickleball Club**  
Lee Carstens 1-415-215-5564

**Pine Needlers Quilt Guild**  
Leslie Timmons 1-209-482-1406

**PML Ladies 18 Hole Golf Club**  
Marcee Cress 1-209-962-0771

**PML Niners**  
Stacie Brown 1-209-962-7397

**PML Pool Wellness Club**  
Karen Reyes  
pmlpoolclubpresident@gmail.com

**PML Safe Streets Campaign**  
Leslie Dudley 1-209-962-4911

**PML Shooting Club**  
Scott Knupter 1-925-809-2850

**PML Waterski & Wakeboard**  
Dean Floyd 1-408-915-8848

**Racquet/Tennis Club**  
Ron Bass pmlatennis@gmail.com

**Residents Club**  
Dick Faux 1-209-962-4617

**ROOFBB**  
Audrey Prouse 1-209-962-4196  
charity@roofbb.org

**Southern Valley Srs. Golf Group**  
Rich Robenseifner 1-707-486-9115

# JOIN FRIENDS OF THE LAKE FOR SUMMER FUN

VIRGINIA RICHMOND

## IT'S NOT TOO EARLY TO BE THINKING OF SUMMER AT PML!

**T**he Friends of the Lake club is planning a busy summer of lake-oriented events. Join us now and enjoy all our fun activities. Most programs are on Sunday evenings. Friends of the Lake members will receive email invitations prior to each event.

Friends of the Lake is a PML social club open to everyone who is committed to enjoying our beautiful lake and ensuring safe and equitable usage. In addition, we work with the PML Association to promote improvements such as lake dredging, lighted buoys, shade umbrellas, swans, and Wednesday night slow-boating. June 16th will be the annual poker run

on boats around the lake with prizes for the winners. July is a big month with the boat parade on July 6th. Friends of the Lake organizes the annual Independence Day Boat Parade – the highlight of the PML summer season. This year's parade is on July 6 and the theme is "Disney."

The annual Lake Swim is on July 13th and Music at the Marina, featuring the Sequoia Trio is on July 14th. August 18 brings a Pictionary game on the lake by boat, followed by "Bingo on the Beach" on September 8th. Come join us!

To join Friends of the Lake and receive information on each upcoming event, please send your contact information and a check for \$20/family to Friends of the Lake, PO Box 591, Groveland, CA 95321. Be sure to include your email address, as all club communication is by email.



"Ted Lasso" decorated boat



2023 Lake Swim winners

## PINE NEEDLERS QUILT GUILD

SANDY SMITH

**G**uess what is happening Tuesday, March 19th? Why Pine Needlers Quilt Guild monthly meeting of course.

We meet under the Library ... meeting officially starts at 10 a.m. but we have a meet and greet at 9:30 so we can catch up since last month. If you bring a lunch, and a project you can also stay after and sew with us til 3. Always fun to eat, sew, laugh, and learn.

The March meeting will be the 1st return of the "Row By" pizza boxes. It will be fun to see what is happening in that area.

As in all crafts quilting has its own language that can be a little confusing for someone new ... So I thought I would offer a little help in understanding.

**BSK** ... basic sewing kit

**Cornerstones** ... squares of fabric pieced within the sashing that align at the block corners.

**Fat quarter** ... a 1 / 4 yard fabric cut cut crosswise from a 1 / 2 yard piece. Measures approximately 18X22 inches.

**Fat Eighth** ... a 1 / 8 yard fabric cut crosswise from 1 / 4 piece. Measures approximately 9x22.

**Foundation piecing** ... a method of sewing together fabric pieces on the reverse side of a paper pattern. Very effective for joining very small pieces.

**Half Square Triangle** ... the 90 degree triangle formed when a square is cut in half diagonally once.

**Mitered borders** ... border strips that meet in the corner at a 45 degree angle.

**Quarter-square triangle** ... the 90 degree triangle formed when a square is cut diagonally twice in an X.

**Setting triangles** ... triangles used to fill out a design when blocks are set on point.

**FOB** ... ??? I will share next month!

I hope this was helpful. Pine Needlers Quilt Guild meets the 3rd Tuesday of each month at 10 a.m. (9:30 for the meet and greet) If you have any questions you can call our President Kris @ 650 722-0307 or our V.P. Leslie 209 482-1406.

Have a Happy Saint Patrick's Day!



# BREAKFAST ON THE COURTS

EILEEN LEE

## PML RACQUET CLUB HOLDS MONTHLY DROP-IN TENNIS DAYS

If Old Man Winter has you suffering from cabin fever, the PML Racquet Club Board of Directors has the perfect dose of sunshine to help you kick the winter blues.

Join us at the courts on Pine Mountain Lake Drive the first Sunday of each month for a morning of drop-in tennis accompanied by a scrumptious continental breakfast. We will socialize, have some tasty breakfast treats, and play tennis.

The first drop-in Breakfast on the Courts will take place on Sunday, April 7, at 10AM. If you are up for the weekend and didn't bring your racquet – no worries at all. The PML Racquet Club has plenty of loaner racquets for you to use. All ages and skill levels are welcome to attend.

Club President Ron Bass said he would

like to see the courts filled with current and prospective players. "We have an amazing facility here in Pine Mountain Lake," Bass said. "Our courts are in good shape and I'd like to see them filled with folks enjoying the game and the facilities. We are really looking forward to welcoming new players to the courts during our Breakfast on the Courts drop-in days."

Bass said you don't have to wait for a Sunday to join the fun. Club members gather at the tennis courts on Pine Mountain Lake Drive Tuesday and Friday mornings each week. During the winter months, start times will change according to court conditions and the weather. Email the club at PMLAtennis@gmail.com for further information.

So put away your rain and snow boots, lace up your sneakers and come enjoy a morning of tennis at the PML Racquet Club.

# PML GARDEN CLUB

LINDA NEUSCHWANDER

## BATS NATIONAL WILDLIFE FEDERATION BAT CONSERVATION INTERNATIONAL

**P**romote natural habitat around your home. Leave a dead or dying tree where they don't create a hazard – they may be used as roosting sites for bats (or birds, including owls!).

**Feed bats by minimizing the use of pesticides in your yard.** A single bat can eat up to 3,000 insects in a single night! Bats are primary predators of night-flying insects, including many pest species.

**Provide shelter by installing a bat box.** Bat boxes should be placed 10 to 20 feet high in open areas that receive at least 6 to 8 hours of direct sunlight with morning sun preferred. Try to avoid areas near artificial lights. Bat houses can be built from plans available on line, purchased at stores carrying pet and bird supplies (Wilco has them) or found for purchase on line.

Bats play an essential role in pest control, pollinating plants and dispersing seeds. Recent studies estimate that bats eat enough pests to save more than \$1 billion per year in crop damage and pesticide costs in the United States corn industry alone. Across all agricultural production, consumption of insect pests by bats results in a savings of more than \$3 billion per year. While many bats eat insects, other feed on nectar and provide critical pollination for a variety of plants. A third bat food source is fruit, leading to yet another important role in the ecosystem – seed dispersal.

Bats prefer roosts mounted on buildings or other large wooden

structures to those mounted on poles or trees. Pole mounts work well in climates that are moderate to hot, without extreme variance between day and night temperatures. Best siting is 20'-30' from the nearest trees and at least 10' (from the bottom of the roost) – 12'-20' is better – above ground (or above the tallest vegetation beneath the bat house). When using a tree for your bat house, choose one that is solitary, in an open location.

Years of research have shown that bat houses are far more successful at attracting bats if they are painted or stained. Painting helps maintain the proper internal temperature for bats and also increases the life span of the bat house. Appropriate color depends upon location and amount of sun. Adjust to darker colors for less sun. Use exterior, water-based stain or latex flat paint.

Providing water to bats is important, and not as simple as a bird bath. Since bats drink on the wing (they swoop down and drink while flying) they need at least 7-10 feet in length of water to drink successfully. Ponds work well. Locations nearest an area's largest water sources are the most successful – preferably 1/4 mile or less.

Why build a bat house? America's bats are an invaluable natural resource. Yet, due to habitat loss, bats are in decline. The loss of bats contributes to growing demands for pesticides. The most important goal is to preserve America's bats in sufficient numbers to maintain nature's balance. If you live in areas of bats, putting up a bat house near your home or school can help provide a critical safe haven.

# PML LADY NINERS

TAMMY TALOVICH

## Quote of the month – *You Make the World a Better Place just by Being in it*

If you would like to learn more about becoming a member of the Lady Niners contact Stacie Brown at [happygem529@gmail.com](mailto:happygem529@gmail.com). We play 9 holes on Thursday mornings; it only takes a few hours and is a great opportunity to meet some awesome ladies!

**Pars:** #10 Stacie Brown and Trudy Alt, #17 Susan Dwyer  
**Low Net:** Claudia Day and Monica Herendeen w/36  
**Low Gross:** Stacie Brown w/52

We had our kick-off breakfast on January 18, we had a wonderful lunch at the Iron Door. We received our new booklets for 2024 and are ready to get out there and play some golf!

## JANUARY 18TH:

We had 12 golfers, and it was a putts day  
**1st place:** Susan Dwyer  
**2nd place:** Pat VanGerpen  
**3rd place:** Claudia Day

## JANURAY 25TH:

We had 16 players and we played a new game, Color Ball Game  
**1st place team:** Brown, Marshall, Brewster, Day  
**2nd place team:** Baines, Herendeen,

Lee, VanGerpen

**Pars:** #14 Chris Balek, Claudia Day, Pat VanGerpen, #17 KC Lennen

**Low Putts:** Satcie Brown

**Low Net:** Claudia Day and Mary Steinkamp w/36

**Low Gross:** Stacie Brown w/52

**Ace of Aces for January:** Claudia Day and Mary Steinkamp w/36 net

**Queen of Clubs for January:** Stacie Brown w/52 gross



# HERE IS YOUR CHANCE TO BE MORE INVOLVED IN YOUR COMMUNITY!

Pine Mountain Lake  
Association has  
openings on the  
Following Committees:

**BUDGET & FINANCE  
COMMITTEE**

**COVENANTS COMMITTEE**

**EDITORIAL COMMITTEE**

**LAKE AND MARINA COMMITTEE**

If you wish to be  
considered for committee  
membership, please  
complete an "Application  
for Committee  
Assignment". This form is  
available on the website  
at [www.pinemountainlake.com](http://www.pinemountainlake.com)  
or from the  
Administration Office.

MAIL COMPLETED FORM TO:  
Pine Mountain Lake Association  
Attention: Janessa Owens 19228  
Pine Mountain Drive  
Groveland, CA 95321  
Email to  
[j.owens@pinemountainlake.com](mailto:j.owens@pinemountainlake.com)  
or drop it by  
the Administration Office

# hci DOCKS

**Custom Boat Docks – Gangways  
Kayak/Canoe Launches - Floats & Hardware**

**209-845-2876**

1398 East F St Oakdale, CA 95361

Independently owned Since 1982

[www.hcidocks.com](http://www.hcidocks.com)

# PAINTING & CONSTRUCTION



**PAINTING – EXTERIOR/INTERIOR • DECK REPAIRS • WOOD REPAIRS • REMODELS**

# Bay Cal Construction

**209.962.4777**

[www.baycal.com](http://www.baycal.com)  
email: [davec@baycal.com](mailto:davec@baycal.com)



**FREE ESTIMATES**

# High Speed Broadband internet

STARTING AT **\$44.95** PER MONTH

- SPEEDS UP TO 300 MBPS\*  
*\* Speeds vary with packages*
  - DISCOUNTS AVAILABLE FOR MULTIPLE SERVICES
  - CABLE TV & TELEPHONE SERVICES
- ALSO AVAILABLE

**GOSNC.COM | 209.962.6373**

*Sierra Nevada*  
**COMMUNICATIONS**



Pine Mountain Vacation Rentals

Looking to rent your home for short term rentals?  
Not sure where to start or who to trust?

**LET US DO THE WORK FOR YOU!**

Locally owned and managed properties.

Rated Airbnb Superhost and VRBO Premier Host.

We use **DYNAMIC PRICING** with

Prompt Statements and Monthly payments

and very **COMPETITIVE RATES.**

Quick response time with

**NO** surprise fees.

Call Michael – Phone: (209) 840-2294

email: pinemountain48@gmail.com

www.pinemountainvacationrentals.net

# VALADEZ TREE SERVICE LLC

- BRUSH CHIPPING
- HAZARD TREE  
REMOVAL
- LAND CLEARING



- STORM CLEAN UP
- MASTICATION
- TREE TRIMMING/  
PRUNING

CA LIC. # 1097030

**24 HOUR EMERGENCY SERVICE**

(209)206-8591

valadeztree@gmail.com

16843 Crestview Dr.

Sonora Ca 95370

\*VETERAN AND SENIOR DISCOUNT\*



## PLACE AN AD TODAY

With a classified or display ad in  
the Pine Mountain Lake News your ad  
will go directly to every PMLA member  
every month.

Go to our website for more  
information and prices.

**www.PineMountainLake.com**

## GROVELAND GAL FRIDAY

**LET ME HELP YOU  
WITH YOUR  
SPRING  
CLEANING!**

I will organize, shop, give  
rides, provide pet care,  
senior care, home checks,  
watering, errands,  
and more!

You name it!

**SHARON VOLPONI**  
209-962-6848  
209-770-6277



**STEPHEN A. McBAIN**  
General Contractor #962605

FROM FORM TO FINISH AND  
EVERYTHING IN BETWEEN

PHONE #209-459-2936  
ACELTICCRAFTSMAN@GMAIL.COM  
CELTICCRAFTSMANBUILDERS.COM

Kitchen / Bathroom  
Specialist

# MURRA'S TOTAL YARD MAINTENANCE



**BRINGING VALUE FOR YOUR DOLLAR IN PML**

- WEEDING
- LOT CLEARING
- SENIOR DISCOUNTS
- LEAF REMOVAL
- PLANTING
- TREE SKIRTING
- HAULING
- AND MORE

**CALL JASON MURRA**  
**209-352-3750**  
LIABILITY INSURED



**TWO GUYS PIZZA PIES**  
18955 Ferretti Rd., Groveland  
(Just 1/2 Block Off Hwy 120)

Check out our weekday  
**LUNCH SPECIAL!**

We ♥ Phone Orders  
**(209) 962-4897**

**\$1.00 OFF**  
ANY SIZE TWO GUYS  
PIZZA OR CALZONE

One coupon per order, per visit. May not be combined with any other offer and/or coupon. Not valid on delivery.

PMLN 0324 Offer Expires 04/15/24

**\$2.00 OFF**  
ANY LARGE OR EXTRA LARGE  
TWO GUYS PIZZA


One coupon per order, per visit. May not be combined with any other offer and/or coupon. Not valid on delivery.

PMLN 0324 Offer Expires 04/15/24

**\$25 DISCOUNT**

Mention this ad for a discount on cleaning services.

*Minimum charge applies.*


## DISASTER RESTORATION SERVICES • RESIDENTIAL AND COMMERCIAL CLEANING SERVICES

Carpet & Furniture Cleaning • Steam & Dry Cleaning • Deep Soil Extraction • Spot & Odor Removal • Oriental & Fine Rug Cleaning • Ultrasonic Blind Cleaning  
24 Hour Emergency Service • Water Removal • Wet Carpet Care • Fire & Smoke Restoration • Vandalism Cleanup • Structure Drying • Sanitizing

*ServiceMASTER Restore*

*The clean you expect.®*  
*The service you deserve.®*



Serving Tuolumne, Calaveras & Amador Counties  
ServiceMasterSierras@mlode.com • www.ServiceMasterSierras.com

**209-532-1700**

17330 High School Road  
Jamestown CA 95327



# PINNELL'S CARPET ONE <sup>FLOOR & HOME</sup>

# FREE

## Furniture Moving

Call to set up your free estimate!\*

**Pinnell's Carpet One**

Sonora 209.532.1696

Angels Camp 209.736.8077

\*See store for details.

## THANK YOU FOR VOTING US BEST OF THE MOTHERLODE SINCE 2005!



**Waterproof Flooring, LVT, Laminate, Vinyl, Hardwood Tile, and Hunter Douglas Window Coverings.**

209.736.8077 263 S. Main St. Angels Camp, CA

209.532.1696 12900 Mono Way Sonora, CA

**Don't forget to ask us about our special financing options!**

[www.pinnellscarpetone.com](http://www.pinnellscarpetone.com)



- Launching
- Winterizing
- House Calls
- Dock Calls
- Service
- Repairs
- Storage
- Trailer Repair

**209-962-4594**

## The Boat Doctor

Paul Belluomini • P.O. Box 113 • Big Oak Flat, CA 95305

**JOANNE SCOTT**  
Independent Beauty Consultant

13166 Wells Fargo Drive-PO Box 1257  
Groveland CA 95321  
209-573-1415

Bernijo3@aol.com  
[www.marykay.com/jbernasconi](http://www.marykay.com/jbernasconi)

God First, Family Second, Career Third

**MARY KAY**



## COMMUNITY ORGANIZATIONS

*Contact the individuals/organizations below if you are interested in joining!*

If you would like your community organization listed please send your group's name, contact person, and phone number to [j.owens@pinemountainlake.com](mailto:j.owens@pinemountainlake.com)

**CAMP TUOLUMNE TRAILS**

Jerry Baker - 1.209.962.7916

**FRIENDS OF THE GROVELAND LIBRARY**

Virginia Richmond - 1.209.962.6336

**HELPING HANDS THRIFT STORE & FURNITURE BARN**

Patti Beaulieu - 1.209.962.7402

**VILLAGE ON THE HILL**

1.209.962.6906 or [info@villageonthehill.org](mailto:info@villageonthehill.org)

**SOUTHERN TUOLUMNE COUNTY HISTORICAL SOCIETY (STCHS)**

Harriet Codeglia - 1.209.962.6270

# GROVELAND ROTARY CLUB

ROTARIAN MIRIAM MARTIN

By the time you are reading this article, the SF 49ers have won the Super Bowl (positive forward thinking) and Groveland Rotarians have participated in the Sonora 49er Rotary Club's Super Bowl Sunday Fundraiser Breakfast. This annual countywide Rotary event includes a first class omelet breakfast with the fixings. Attendees have a chance to bid on fantastic live auction items, silent auction items and enjoy the pregame festivities. The Super Bowl Breakfast is held each year at the Tuolumne County Fairgrounds and proceeds help each participating club to fund scholarships, local and worldwide projects. If you missed the fun in 2024, mark your 2025 calendar for the next Super Bowl Sunday.

Here are a few local upcoming Rotary events and projects happening in our little community with a big heart-

Easter Bunny In The Park will be held on Saturday March 30 at 10:00am in Mary Laveroni Park, weather permitting. Bring your kids, grandkids and friend's kids, your camera for pictures with the Easter Bunny, and baskets for the egg hunt. All kids under 11 years old are welcome to participate, but be sure to arrive early as the fun begins promptly at 10:00am and is over at the blink of an eye!

Food Closet Donations are needed year round, but particularly during the off season when tourism is at a lull and businesses slow down. The Rotary Club of Groveland is always there to support our community Food Closet, hosted by Groveland EV Free Church on 4th Friday of every month. To learn how



Rotarian Greg Cramblit Hands Check To Wayne Phillips with the Food Closet



19 Rotarian Fire Wood Project

you can volunteer, or get help, contact parish member Wayne Phillips at 209-962-4762.

Firewood Assistance is one of many ways that Rotarians reach out to help struggling local families to make ends meet. If you would like to volunteer with wood splitting, wood delivery to those in need, or if you are struggling and need firewood to keep your home heated in these difficult times, please contact Rotarian Greg Cramblit at 209-962-0607.

# PML LADIES 18 HOLE GOLF CLUB

PAULA PARISI

Continued challenging weather has prevented a lot of tournament play for our club; however, following are results from the tournament play we were able to complete this month:

Points

**Fourth Place:** Elisa Hoppner – 28 Points

**Fifth Place:** Thelma Faux – 26 Points

*Congratulations to all the winners!*

The Pine Mountain Lake Ladies Golf Club plays every Thursday and is open to all women residents and owners of property in the Pine Mountain Lake community. Our club would love to add some new members and have modified our bylaws to allow female family members of property owners to apply for membership. If you are interested in becoming a member, we can arrange for you to join us as a guest, so that you can meet and play with some members and see what our club is all about. If you're interested, please contact our PML Head Golf Professional, Mike Cook at 209-962-8620.

## JANUARY 18TH – TWO PERSON SCRAMBLE

**First Place:** Marcee Cress & Sue Perry – 74

**Second Place:** Lisa Brown-Jimenez & Laura Kramer – 75

**Third Place:** Elisa Hoppner & Tari Skelley – 77

**Birdies:** Marcee Cress and Sue Perry #10

## JANUARY 25TH – INDIVIDUAL POINT BOGEY:

**First Place:** Marcee Cress – 36 Points

**Second Place:** Jodie Awai – 31 Points

**Third Place:** Helena McMillan – 29

# PML PICKLEBALL CLUB

TAMMY TALOVICH

## POT O' GOLD

Follow the rainbow to the Pickleball Courts maybe there's a pot o' gold, if not maybe just some Irish Luck to help our games get better.

The weather has been off and on for Pickleball, but will hopefully be better for March, so come on out! If you are a newbie, experienced or somewhere in between; all are welcome to play. Just bring your water, wear comfy clothes and court shoes we've got the equipment, if you don't.

The Pickleball Center is on Mueller (by the golf course) there is usually someone out playing every Monday,

Wednesday, Friday, Saturday & Sunday at 10:00 AM. During this time of year – it is weather permitting – if it's cold that's fine but wet courts are dangerous.

Don't forget to purchase your Pickleball Pass at the Administration Office or the Main Gate.

If you want to join a fun bunch of people, the club membership is \$15.00 per person. There will be some fun events planned for this year. You don't have to play pickleball to join us for our members-only social events!

Come on out and have some fun with us!

See ya on the courts!

## PLACE AN AD TODAY

Go to our website for more  
information and prices.

[www.PineMountainLake.com](http://www.PineMountainLake.com)

## PML LADIES CLUB

MAE FRANCO

The Ladies Club celebrated "Friendship and Love" at our February "Galentines Day" lunch. We enjoyed a lovely lunch at the Grill, fun games and prizes and sweet fellowship. The club voted to grant lifetime membership to Barbara Coldren and Agnes Ludwig for the many years of dedicated service. We also welcomed new members Linda Welch and Adrienne Balk.



For more info or questions please contact Mae Franco 831-297-0554

This month we will be celebrating St. Patrick's Day with traditional Irish food and no doubt a few shenanigans. Get your green on and join us for an afternoon of fun!

Ladies Club meets the first Wednesday of the month and invites all PML ladies to join the fun and bring a friend.

## MADE TO MOVE

KATHY MALLOY

Birds do it, Bees do it... Cats and dogs really do it... Let's do it – Let's Stretch!

Our bodies were made to move. Stretching improves our overall health.

Chair Yoga is an easy way to start or improve movement. Whether you're recovering from a medical injury or operation, want to gain some strength before hiking season or keep up with the grandkids, this might be perfect for you. Come Stretch With me at Chair Yoga.

Chair Yoga reduces stress, increases flexibility, and decreases injuries. It can lower your blood pressure and helps regulate blood sugar. It helps with range

of motion and blood flow. It enables our muscles to work most effectively.

Chair Yoga can be modified to fit needs and abilities. In one hour you will feel relaxed and revitalized. One attendee compared it to the 'afterglow' feeling of a massage.

Classes are held on Mondays 10:45-11:45

The Little House – Groveland  
Suggested donation \$5.00... LESS than a designer coffee!!!

Interested? Call The Little House at 209-962-7303... they have lots of fun programs,) or call Kathy at 209-840-4777.

Let's Do It – Let's Stretch!

## FROM YOUR DISTRICT 4 SUPERVISOR

KATHLEEN K HAFF – TUOLUMNE COUNTY DISTRICT 4 SUPERVISOR

### SHERIFF BILL POOLEY

You may have heard that our Sheriff, Bill Pooley, has officially retired. After almost 35 years in law enforcement, his last day was February 29, 2024. Besides holding the position of Tuolumne County Sheriff for the last 5 ½ years, Bill Pooley was our Undersheriff for 5 ½ years before that. His career in law enforcement also included many years as the Chief of Police for Riverbank and before that, a Lieutenant for Stanislaus County Sheriff's Department.

I interviewed Sheriff Pooley in February to capture some of his thoughts before leaving office. One of the first things he mentioned was that he enjoyed his time here very much. Sheriff Pooley stated, "I can't imagine having been Sheriff in any other county. This community has been so supportive!"

Some of his fondest memories about the South County have been recollections of past 49'er Festivals and the Chili Cook-Offs. He calls that "Americana at its finest." He also loves the air shows that the Pine Mountain Lake Airport has put on over the years.

The challenges of the Sheriff Pooley's position have been many, but none more difficult than the staffing shortages that the department has experienced over the past several years up until more recently. Sheriff Pooley relates, "staffing went from having a resident deputy in the Groveland area, to having an assigned beat deputy for a number of years, to having no regular beat deputy at all." Now, out of 120 shifts that have to be covered for the entire County in a month, 33 of them are covered by patrol in the South County area. This is a positive change and up from only a few shifts (4-5) covered in the months previous to January 2024. "It will only get better from here on out" the Sheriff proudly stated. This is due to the higher pay approved by the Board of Supervisors including hiring incentives

that helped the department recruit in a big way. Since that time in January 2023, we have hired 15 Patrol Deputies. As we continue to fill our ranks, we will continue adding patrols to the South County area," touted the Sheriff with a smile.

We discussed the Sheriff's values and standards related to hiring and keeping personnel. These are standards that must be maintained to gain and keep the trust of the public. "Even when we were short-handed, we would not lower our standards. If you allow marginal recruits to sneak through the process, they can cause problems down the road in the way of negative encounters, inappropriate interactions and bad decisions that have a ripple effect in our community, which can be felt for years. We are committed to keeping our high standards."

Sheriff Pooley exudes pride when he talks about the succession planning he has done during his time in office. His aim has been to train identified leadership personnel in "knowing every aspect of the office. The idea is, when I leave, the public shouldn't even know that I am gone!"

"We are on a great trajectory", the Sheriff added. "Now that we are increasing staffing, we are in a position to be more proactive and interactive with the community and better protect Tuolumne County."

In his final comments, Bill Pooley noted, "I look back on 34 years and know I have had a blessed career! I look forward to this next phase of my life." After retirement, the civilian Bill Pooley will have more time to spend with his two grandchildren and with his family. He looks forward to traveling with his wife and has one trip planned per month through September 2024!

I think that's a great start and have appreciated working alongside and serving this County with our Sheriff. Here's to wishing him a retirement full of joy, laughter, and fulfillment in the coming years!

## 10 REASONS TO LOVE YOUR GROVELAND LIBRARY

VIRGINIA RICHMOND

The Groveland Library is a great resource for people of all ages in our area. If you're not familiar, here are some of the great things you can take advantage of when you visit. The library is open Tuesday-Thursday from noon-5pm and Friday-Saturday from 10am-2pm. The Book Nook used book store is open every Saturday from 10am-1pm.

1. Read the latest books for free
2. Browse your favorite magazines
3. Borrow audio books for long car trips
4. Bring the kids for StoryTime on Fridays mornings
5. Take home a free puzzle for family fun
6. Use the computers, copier and free internet
7. Sign young students up for Summer Reading Program
8. Check out movies on DVD for free
9. Download free eBooks to your device
10. Bring the kids to STEM Club the first Saturday of every month

Our library is part of the Tuolumne County Library system with additional resources and programs provided by Friends of the Groveland Library. Join us and help support our library and our school enrichment programs. You



*Browse a great collection of books for all ages*



*Pre-school StoryTime gives children an introduction to the joys of reading.*

can pick up a membership form at the library or send \$25 and your contact information to PO Box 43, Groveland. You'll be glad you did!

## GENERAL TSO'S MEATBALLS

RECIPE PROVIDED BY TOM KNOTH AND PAULA MARTELL

These are low carb, sugar free, and gluten free; and they are the best meatballs that I have ever tasted.

They are great for bringing to a party (served in a crockpot).

### INGREDIENTS FOR THE MEATBALLS

- 1 lb ground turkey or chicken (can sub ground pork)
- 2 tablespoons minced ginger
- 1/4 cup scallions, chopped
- 1 teaspoon garlic powder
- 1/4 cup almond flour
- 1 egg
- light flavored oil for frying

### FOR THE GENERAL TSO'S SAUCE

- 1/2 teaspoon sesame oil
- 3 tablespoons rice wine vinegar (unseasoned and sugar free, but can also use seasoned)
- 3 tablespoons soy sauce (tamari based for GF, or coconut aminos for Paleo)
- 1/4 cup water
- 3 tablespoons sugar substitute (Monkfruit, Swerve, etc)
- 1/4 teaspoon xanthan gum (or arrowroot powder)
- 1/4 cup scallions, chopped
- 1 tablespoon of crushed red pepper flakes



### DIRECTIONS

To make the meatballs, combine all of the meatball ingredients (except oil) and mix thoroughly.

Form into 16 balls about 1 inch in diameter.

Fry in hot oil over medium heat until cooked through and crispy.

To make the sauce, combine the sesame oil, vinegar, GF soy sauce, water, sugar substitute, and xanthan gum in a small saucepan and whisk until combined. Add the scallions and chili pepper and bring to a boil. Simmer for five minutes or until thickened, and remove from heat.

To serve, add the cooked meatballs to the thickened sauce and stir to coat.

Garnish with more chopped scallions and chilis if desired.

## PINE CONE SINGERS, MOM, AND APPLE PIE

BOB SWAN

**PLEASE NOTE SCHEDULE CHANGE:** We are going to try something different this year. Our Spring Concerts will be held on Mothers' Day weekend, May 10-12. As usual the Friday concert will be at 7PM, and the Saturday and Sunday shows at 2PM. We suggest treating Mom to brunch and a show

(or a show and dinner).

The show itself will be a lot of fun. We will be doing arrangements based on familiar tunes (folk songs, spirituals, children's songs, a little Gershwin). A cross section of "Americana". I'd say that most of them are "hummable", except that there are a few twists to make them a bit more interesting.

We are having a great time rehearsing them, and look forward to performing them for you. You'll have to supply your own apple pie.

The concerts will be held at the Groveland Evangelical Free Church at 7PM on Friday, May 10, and 2PM on Saturday and Sunday, May 11-12. Tickets are usable for any one of the

shows, and will be available at Yosemite Bank or Body Beautiful Salon and Spa, as well as from any Pine Cone Singer. Suggested donation is \$15, with children 12 and under free.

If you have questions, please contact Bob Swan at 408-398-4731.



# CAMP TUOLUMNE TRAILS

DORI JONES

## NEW CABARETS FOR A CAUSE CONTINUES ITS ROLL IN MARCH

CTT kicked off its Cabarets for a Cause winter dinner/shows with a resounding success with the Spirit of Lennon show. If you missed this amazing performance, Drew Harrison and Scott Southard and the entire Sun Kings band are returning on May 31 to kick off CTT's Concerts for a Cause Summer Music Series (more details to follow). Don't wait too long to purchase tickets for the two remaining Cabarets for a Cause dinner shows. The first event sold out within two weeks.



On Friday, March 15, CTT is excited to welcome back country/folk singer/songwriter Rebecca Correia, who performed with Javier

Colon last summer. Rebecca has written more than 250 songs, beginning at age nine. She plays the guitar, piano and mandolin, and tours around the world.

Saturday, April 6 will feature "Wartime Radio Revue," a nostalgic and memorable tribute to The Andrew Sisters and music from the 1940s. (Many of you will remember Billye Johnstone from Renaissance as one of the three singers). As we know this show will be very popular and the genre really needs a dance floor, this show will be presented as a cocktail party complete with heavy hors d'oeuvres and special period-appropriate drink options. If you want to immerse yourself in the 1940s, we invite you to wear attire from that era.

These dinner/shows are presented in an intimate setting in the Great Hall at Tuolumne Trails and include a four-course gourmet meal. Profits for these events go toward providing camperships to CTT's

disabled campers who otherwise might not be able to afford attending camp—bridging the gap between the actual cost to run our summer programs and the fee that CTT's campers with disabilities pay. It also furthers CTT's mission to be one of the most accommodating camps in the country—an ongoing and expensive undertaking. Check CTT's website <https://www.tuolumnetrails.org/concerts-for-a-cause-2/> or the QR code below to learn more about the four-course menu and ticket info.



## CTT'S NEW AMBASSADOR COMMITTEE

Each month, CTT invites you to get involved in CTT, come out to tour the beautiful 80-acre grounds, including the Great Hall and 150-seat amphitheater, etc. Now, we are sincerely asking community members who would like to volunteer their time. You will learn more in-depth information about what CTT does and how it impacts a very special community of its own—disabled campers. We are seeking individuals who want to learn more, get more involved with actual camp activities and to spread the word to others about the outstanding work that CTT is doing for some very deserving disabled campers and their tireless and dedicated caregivers. CTT is undeniably one of the most, if not the most, accommodating camp for disabled campers in the entire nation. Call (209) 962-7534 if you'd like to become an "Ambassador."

## CTT WELCOMES HEATHER ARNOLD

Heather Arnold has joined CTT as its new office manager, filling some big shoes left by long-time office manager Linda Hunter. Heather has lived in Tuolumne County for more

# HELPING HANDS HAPPENINGS

PATTI BEAULIEU

As of this writing, in early February, we've had a mixed bag of winter weather - a huge snowstorm, powerful windstorms and plenty of rain. Any moisture coming down is appreciated to avoid any more disastrous droughts. Of course, many of us remember the historic flood of March 2018. That amount of rain is never appreciated. Measured doses only please, Mother Nature.

We continue to have our winter clothing, shoes, hats, ski and snow wear and coats in great supply. We'll change to our 'spring and winter' inventory in April. In the middle of the month, we have St. Patrick's Day on March 17. We have a few items for that occasion that might interest you. Then, since Easter is early this year (March 31st), our very extensive Easter inventory is also on display. There are bunnies galore, serve-ware, baskets, decorative items and more. The only thing missing are the real Easter Eggs! Don't forget to check our window displays. There are always seasonal items in there.

Speaking of Spring, for the past 19 years, we've had our Spring and Fall Clothing (and Stuff) Giveaways. They're always appreciated and are a win-win for the community and our organization. We clear the store of excess inventory

and the community can have it all for free. Unfortunately, unless there's a miracle, the Community Hall will still be inoperable so we'll be unable to have the Giveaway again this season. We couldn't have it in the Fall, for the same reason, but we were hopeful the post-fire construction would be completed by Spring. At this writing, it seems impossible, since the construction has yet to begin, but we can always hope.

As always, we're so appreciative of the community for their support of our organization with their purchases and donations. With those in tandem, in 2023 we were able to give away in excess of \$26,000 to a combination of our schools, students, teachers, Community Organizations, Food Bank, crisis events and more. In addition, our GROVELAND CARES project collected over \$5200 for a well-known community member who suffered life altering injuries in an automobile accident.

We'll continue to support our Community in this way, thanks to those of you who donate and shop and, of course, our wonderful volunteers. If you'd like to join our staff and make a difference in your Community, please call 209-962-6830 for information. We love new members to join our volunteer family.

than 20 years, and has held financial and office manager positions for even longer.

We invite you to become part of the Camp Tuolumne Trails team! We are always happy to answer any questions

or give you a tour of the 80-acre facility. If you'd like to participate



in upcoming events, volunteer at camp or learn more about donating and legacy giving, please call CTT at (209) 962-7534, email: [info@tuolumnetrails.org](mailto:info@tuolumnetrails.org) or visit: <http://www.tuolumnetrails.org>.

Follow us on Facebook and on Instagram to stay updated on camp happenings.

# SOUTHSIDE COMMUNITY CONNECTIONS – 2023 IN REVIEW

DAVID BEALBY PRESIDENT

Southside Community Connections (SCC) has had a stellar 2023 and is growing.

Ridership through the Wave and Wheels program is up 33%. We have expanded our WAVE bus and van program to additional out-of-county locations including Davis, Fresno, and more for medical appointments only. We are also offering weekend rides when staffing and scheduling permits. We continue to provide rides to Modesto, Sonora, and other in-county locations for any need including shopping, recreational activities, and of course medical. Our WHEELS program provides local rides on the hill and down to Sonora only for individuals unable to drive themselves.

Our Little House program now provides additional yoga classes, a grief support group, free WiFi and IT tech support. In April of 2024 we are offering digital literacy



Nancy Reggio

courses. We continue to offer our many classes including wellness (like yoga), fun to learn and play (like BUNCO), support groups and congregate lunches.

Village on the Hill, another program of SCC, provides at-home help for individuals with mobility and other difficulties. Services include changing light bulbs and batteries,

taking trash to the street, watering plants, light housework, daily calls to check-in with members, and other services.

We have maintained a large CalTrans Grant, while being awarded additional grants from Sonora Area Foundation and the Broadband Adoption Account of the California Advanced Services Fund, a program administered by the California Public Utilities Commission for our Digital Literacy and Broadband Access grants. Fundraising and gross revenue have more than doubled.

Many thanks to Britne Gose, our

Executive Director, and her team, for making 2023 a banner year.

2024 will bring some new faces to SCC. We are fortunate to have Dave Millitello join us as a driver, please see the article about him in this edition. Britne has decided to leave her current position, but we are extremely fortunate to have found a new Executive Director, Nancy Reggio. Nancy brings a wealth of experience in

- Nonprofit outreach, communications, budget management, and strategic

planning

- Lifelong learning classes and programs
- Leadership and community building

Nancy lives in PML with her husband Don. Please welcome Nancy to the team and reach out to her at [ed@southsidecommunityconnections.org](mailto:ed@southsidecommunityconnections.org).

If you would like to participate in any of these programs, would like to teach a class, or volunteer, please reach out to us at (209) 962-7303 and check out the website <https://southsidecommunityconnections.org>.

## ALL PMLA HOMEOWNERS EMAIL OPT-IN PROGRAM

The Association is pleased to offer a money saving program available to all PMLA property owners. This program allows you to receive many of the documents we are required to provide to you via email. This option is important because:

**COST SAVINGS** – The Association is spared the expense of printing and mailing many documents to those property owners who sign up.

**ENVIRONMENTAL SAVINGS** – Less paper means less trash and reduced damage to the environment both in the disposal and production of paper and envelopes.

**REDUCED CLUTTER** – By receiving documents via email there is less paper for you

to deal with. All documents can be saved on your computer and viewed at your discretion.

**TIMELY RECEIPT** – Documents sent electronically are received in minutes as opposed to the days it takes for regular mail to arrive.

If these sound like good reasons to you, please sign up for the Document Email Program today using the attached form. Simply return the completed form to the Administration office at your convenience.

If you have any questions on this program please feel free to give us a call (1-209-962-8600) and we will be happy to explain the details and the advantages.

Please read the Terms & Conditions for the email opt-in program on the website, [www.pinemountainlake.com](http://www.pinemountainlake.com) under the Resources/Forms > Opt-In Email Program.

Mail form below to:

Pine Mountain Lake Association

19228 Pine Mountain Drive • Groveland, CA 95321

YES, I WANT TO ENROLL IN PMLA'S EMAIL STATEMENT AND DOCUMENT SERVICE. I ACKNOWLEDGE AND AGREE TO THE TERMS AND CONDITIONS SET FORTH ABOVE AS A CONDITION FOR PARTICIPATION IN THIS SERVICE.

PMLA Account Number: \_\_\_\_\_ Unit/Lot #: \_\_\_\_\_

Name: \_\_\_\_\_ Phone #: \_\_\_\_\_

Address: \_\_\_\_\_

Email Address: \_\_\_\_\_

Signature: \_\_\_\_\_

## Give the Gift of Family Memories

Are you tired of binge watching Netflix or streaming content? Why not dust off your old 8mm family movie films or VHS tapes and bring those golden memories back to life. Have a reel family movie night!



- VHS & 8MM FILM TRANSFER TO DVD OR USB
- PRINT & SLIDE SCANNING
- AUDIO CASSETTE TRANSFER
- CD & DVD DUPLICATION
- PHOTO RESTORATION
- PHOTO BOOKS • MEMORIAL SLIDESHOWS
- PHOTO PUZZLES



DejaVu Video Services

408-899-4407 • [dejavuvideo123@gmail.com](mailto:dejavuvideo123@gmail.com)

## MEET OUR NEW WAVE DRIVER!

BETH MARTIN – TRANSPORTATION COORDINATOR

**W**e're pleased to introduce Dave Millitello as our new WAVE transportation driver! Dave joins Fleet Manager/Driver Rick Whybra in providing free bus and van transportation from Groveland to Sonora, Modesto and other locations.

Dave lives in PML with his wife Diana, a teacher's aide at Tenaya Elementary School, and their adult son. Their adult daughter, her husband and Dave and Diana's three grandchildren live in the Bay Area, where Dave and Diana lived before the pandemic.

"I owned a carpet cleaning business in the Bay Area for 35 years," Dave said. "Unfortunately, my business slowed way down during the pandemic. And we'd fallen in love with Pine Mountain Lake and had a vacation home here, so I sold my business and we moved to PML full time in 2021."

"Dave has worked as a member of the PML Boat Patrol, and as PML Marina Manager. Now, his part-time WAVE position enables him to look

after his grandchildren in the Bay Area two days a week.

"I like helping people," Dave says about his new job. "I enjoy helping them get to their destinations, whether it's the doctor or for shopping, and lending and extra helping hand when they need it."

WAVE features a three-passenger van and a comfortable, wheelchair-accessible bus that take riders from Groveland to Sonora and Modesto for medical appointments, errands, and shopping. WAVE also goes to Stockton, Merced, Fresno and the Sacramento area for medical appointments (but not, unfortunately, to Palo Alto as reported earlier).

WAVE rides leave Mary Laveroni Park in the morning and return to Groveland in the afternoon. Anyone can ride WAVE. While rides are free, we gratefully accept donations to help defray expenses.

To schedule a ride, or for more details, email us at [wheels@southsidecommunityconnections.org](mailto:wheels@southsidecommunityconnections.org) or call us at (209) 962-6952.

## "SING YOUR HEART OUT AT SOUTHSIDE SING-ALONG"

SAMANTHA WEST – TLH SUPERVISOR

**C**alling all music enthusiasts and melody lovers! Southside Community Connections is thrilled to announce the launch of our newest program, Southside Sing-Along, Thursdays at 12:30-2 pm, after Senior Lunch and Social Hour. Get ready to join us every week for a fun-filled session of harmonious joy, where voices unite and spirits soar!

### WHAT IS SOUTHSIDE SING-ALONG?

Southside Sing-Along is not just your ordinary singing group—it's a vibrant community where participants come together to share the joy of music. Led by talented and passionate volunteers, this program offers a supportive and inclusive space for individuals of all singing abilities to come together and raise their voices in song.

### WHEN AND WHERE?

Our weekly sessions will take place every Thursday from 12:30 pm to 2:00 pm at The Little House's Playhouse, our beloved Community Gathering Place located in the heart of Groveland just off Highway 120 and Merrell Road.

### WHY SING?

Aside from the sheer enjoyment of making music, singing has been linked to numerous health benefits, including improving memory and cognitive function. Research has shown that engaging in singing activities can stimulate the brain, potentially helping to enhance memory recall and cognitive skills. In fact, studies have even suggested a connection between singing and Alzheimer's prevention, highlighting the powerful impact that music can have on our mental well-being.

### JOIN US AND EXPERIENCE THE MAGIC OF MUSIC!

Whether you're a seasoned crooner or someone who simply loves to sing in the shower, Southside Sing-Along welcomes you with open arms. Come rediscover the joy of music, connect with fellow community members, and experience the transformative power of song.

For more information, please contact us at (209) 962-7303. Let's make music and memories together at Southside Sing-Along!"

## STCHS

HARRIET CODEGLIA

### WHAT A TRANSFORMATION!

**B**uilt in 1901 by Edward Cobden, this distinctive Big Oak Flat home suffered from neglect and disuse in recent decades. In 2007 it was donated to STCHS with the Wells Fargo stone building and the quest began to restore it to its earlier elegance. After historical studies and county approval, work began in 2014 to restore the original house footprint, remove exterior

lead paint, level the foundation, replace missing doors and windows, reroof, and general cleanup of the exterior thanks to the support of the STCHS membership. The generous donations of time and money and sweat equity have helped preserve this gem from our hard rock mining era.

Now in 2024 STCHS plans to have an open house so everyone can appreciate the uniqueness of the "yellow house" and Wells Fargo Building. The house will be getting

a fresh coat of paint this spring and more improvements are planned.

Want to help? Send an email to [GYGMSTCHS@gmail.com](mailto:GYGMSTCHS@gmail.com) to volunteer.



Cobden House, left photo, January 2006; right photo, April 2015.

# Rod Diehl Pest Control

**RESIDENTIAL & COMMERCIAL • HIGH QUALITY  
100% SATISFACTION GUARANTEED**

Locally Owned & Operated • 5th Generation Tuolumne County

**PERSONAL SERVICE • FREE ESTIMATES**

We will customize your service around your pets

*info@RodDiehlPestControl.com*

**(209) 532-3260**

**PROUDLY SERVING THE PINE MOUNTAIN LAKE / GROVELAND AREA**

## Ken's Asphalt

Lic. 708310

**Grading • Paving • Chip Seal • Road Oil**

Seal & Slurry Coatings • Crafcro Hot Rubberized Crack Sealer

Driveways • Private Roads • Subdivisions

DOING  
BUSINESS  
SINCE  
1985

**DRAINAGE PROBLEMS?**

*We have the Solution!*

Erosion Control • Riprap (6-12" Rock) • Asphalt Curbing • Base Rock

"Just Pave It"

**Complete Concrete Services**

"Just Pave It"

- Stamped Concrete and Colored Concrete
- Stained Concrete
- Cleaning & Sealing
- Retaining Walls
- Driveways
- Walkways
- RV Pads
- Patios

**532-0800 • 962-5644 • 768-7395 Cell**

## Waters Plumbing Heating & Air

**FAST  
SAME DAY  
SERVICE\***

\*IN MOST CASES

**All work 100% Guaranteed!**



Contractors License #463958  
www.watersplumbing.com

"I want you to know that our technicians will give you a price before we start the job." —Wayne Waters

**Groveland (209) 962-0990**

# Pest Control

- Ants, spiders, mice, wasps, earwigs, etc.
- Fast service, great prices
- Squirrel and bat Exclusion
- Termite Inspections
- Weed Control
- Poison Oak
- Star Thistle



962-5710  
800-464-3772  
Free estimates

We are known for our integrity and legendary customer service!

Produce Your Own Clean Power!

- Save \$\$\$ Every Month
- Federal Tax Credit available
- 5-Year Typical Payback



Your Local Solar Electric Company

License #892261 / Since 2002  
16046A Via Este Rd., Sonora

Call Us For A Free Estimate  
**209-532-5925**

Check our reviews at [www.apssolarpower.com](http://www.apssolarpower.com) and [www.SolarReviews.com](http://www.SolarReviews.com)



# Sean McCoy Painting

License No. 822616

Home of the Cabinet Doctor

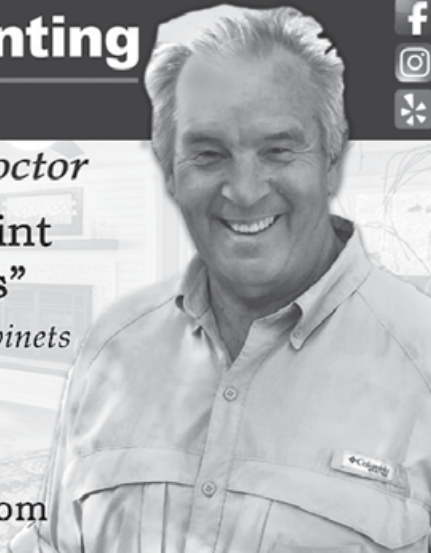
“Let’s Refinish or Paint Those Old Cabinets”

- Fine Finish • Mill Work • Cabinets
- Doors • Interiors



**209.588.1741**

[www.smccoypainting.com](http://www.smccoypainting.com)



HEADLEY'S TREE SERVICE

Tree Service Without the Headache.

WALTER HEADLEY

Owner / Operator

(209)316-5167

[headleystreeservice.com](http://headleystreeservice.com)

[headleystreeservice209@gmail.com](mailto:headleystreeservice209@gmail.com)



### BUSINESS HOURS

Monday - Friday:  
8:00am - 5:30pm  
Saturday: 8:00am - 2:00pm  
Sunday: CLOSED

### Well Stocked Parts House:

*For All of Your Heavy Duty Needs!*

- Heavy Duty Brake Linings
- Baldwin & Fleetguard Filters
- Delo Oil
- LED Lights
- Air Brake Valves & Hoses
- CB Radios, Antennas & Accessories
- Logging & Dump Truck Parts
- Hydraulic Hose Shop

### Full Service RV Repair Shop:

- Commercial House & Starting Batteries
- Full Service Chassis & Lube Center
- Electrical & Plumbing Repairs
- Interior & Exterior LED Lighting
- Complete Body Damage Repair Shop
- Solar Power Systems & Inverters
- Complete Detailing Services
- Warranty & Insurance Work Accepted

### Mobile Service Available

18968 Waylon Way  
Sonora CA 95370  
Call or Email us to schedule an appointment today!

(209)-532-7994

EMERGENCY CONTACT: (209)-559-3840

Email: [shop@sierraheavyduty.com](mailto:shop@sierraheavyduty.com)

Visit Us Online: [www.sierraheavyduty.com](http://www.sierraheavyduty.com)

*Over 50 Years of Experience!*



All Major Credit Cards Accepted.

# JACK IS BACK!!!



# Jack Proctor

Heating & Air Conditioning

- Complete commercial & residential services
- Service & repair - all makes and models
- Heating & ventilation
- Heat pump specialist
- Air conditioning troubleshooting expert
- Installation and remodeling
- Upgrading & energy efficiency
- Bonded & Insured

Call your local Pro!  
CELL

**209-678-8915**

License #313926  
Since 1975

Before replacing your unit, ask us for a 2nd opinion.  
Chances are, we CAN repair it!

# FIREWOOD CUTTING

PML SLASH AND COMPOST SITE

**OAK AND CEDAR** REQUIRES A \$20 PML WOOD CUTTING PERMIT

WOOD CUTTING PERMITS AVAILABLE AT THE MAINTENANCE FACILITY

**PINE AND FIR** AVAILABLE FOR FREE CUT & HAUL

FOR MORE INFORMATION PLEASE CONTACT ANITA AT

**1 (209) 962-8612** BETWEEN THE HOURS OF 7 AM TO 2:30 PM, M-F.

20231 Pine Mountain Dr  
Groveland Ca 95321



**Chris Levering**  
Owner  
chrislev888@gmail.com

**Chris Levering Heating & Air**

lic# 797190 34 years  
Maintenance and Repair 10% off with this ad (repairs)

209-732-4622

**WE HAVE R22 STILL AVAILABLE FOR A LIMITED TIME - CALL NOW**

**TMC CONSTRUCTION**  
License # 717300  
Insured  
**(209) 962-6938**

**Brushing • Log Removal  
Mastication  
Hazardous Tree Removal & Pruning  
Excavation**

Site Prep, Engineered Septic, Culverts,  
French drains, Retaining walls,  
Hauling, Post hole digging,  
Under ground work,  
Concrete work

**We can help with your grant.  
Skid Steer and Dump truck service  
Reasonal Rates • Free Estimates**

**MOORE BROS. SCAVENGER CO., INC.**  
P. O. Box 278 • Big Oak Flat, CA 95305 • (209) 962-7224 • FAX (209) 962-7257



## VACATION RENTAL OPTIONS FOR TRASH SERVICE

In order to assist property owner/managers of short-term rentals with trash removal, Moore Bros. Scavenger Co. offers the following services.

Short-term rental customers may participate in year-round or three-month summer curbside service. To manage anticipated levels of guest trash, property owners/managers of short-term rentals should maintain the suggested service levels as determined by the *Maximum Occupancy for Rental Property* (please see the chart below). In the event that renters generate more than the expected amount of trash or the home is rented multiple times during a given week the following options are provided:

- **As Needed Extra Pickup.** Property owners/managers may request a notation on their rental service accounts to *pick up extra as needed*. This will ensure that all trash left alongside the cans will be picked up by Moore Bros. and a special pickup will not be required. There is an additional per-can/bag charge for each extra can/bag picked up.
- **Special Pickup.** Moore Bros. has a truck and driver available for special pickups Monday through Friday.
- Property owner/managers must place a request for service call or email to Moore Bros. before 3 pm on the business day prior to the requested pickup day. A request for a Monday pickup must be made by 3 pm on the previous Friday. **Prepaid Bags.** Prepaid Moore Bros. bags may be purchased by property owner/manager to be used by any handyman or housekeeper servicing the residence between rental customers. The prepaid bags can be disposed of at the Pine Mountain Lake Maintenance Yard on Par Court off of Mueller Dr.

Property owners/managers **utilizing full summer service** may go to *on-call service* for the off season.

- **Off Season on Call Service.** Property owner/manager may call or email an *on-call request* to Moore Bros. for a service pickup on the regular pickup day for the address. A request for service call or email must be received before 3 pm the business day prior to regular scheduled pickup day. Charges will be based on the standard a per-can rate for each can/bag picked up.
- **Special Pickup.** Please follow the same procedure as listed above for Special Pickup.

### Maximum Occupancy for Rental Property

Maximum Occupancy	Suggested Service Level
6 - 8 people	2 can
8 - 10 people	3 can
10 - 12 people	4 can
Lake front Property 12 people	4 or more cans as typically needed

If you have questions please feel free to contact our office at (209) 962-7224 or email us at: [info@moorebrosscavenger.com](mailto:info@moorebrosscavenger.com) and [Shirley@moorebrosscavenger.com](mailto:Shirley@moorebrosscavenger.com) (Please cc both to insure prompt replies).

**\*\*\*A drop-off Recycling center is available for use Mon - Sat. 8 am - 5 pm @ 11300 Wards Ferry Rd. Big Oak Flat, Ca\*\*\***

If you happen accumulate excess garbage and need to dispose of it, you may purchase a prepaid Moore Bros garbage bag at the Pine Mountain Lake Administration Office between 8am - 4:30 pm (closed for lunch from 12pm - 1pm), the Pine Mountain Lake Main Gate, or at the Moore Bros Office which is located at 11300 Wards Ferry Rd in Big Oak Flat. Pine Mountain Lake Association is limiting the amount of Moore Bros trash bags you can purchase at one time to 5 bags, and will only sell the bags to PMLA Property Owners. Prepaid Moore Bros Bags can be purchased by anyone and in any quantity at the Moore Bros Office. For service related questions, please contact Moore Bros Scavenger Co at 1(209)962-7224.

## PROPANE DISCOUNT PROGRAM

Suburban Propane - As the preferred provider of PML we are happy to provide an exclusive members only program to all residents.

Benefits include: Propane at a discounted rate, Tank rental at a discounted rate, Free basic tank installation, Easy payment options, 24/7 Tech support, Flexible delivery options, 24/7 live phone support. Contact our local staff for further details and current rates.

Suburban Propane Jamestown California

**(209) 984-5283 • 1 (800) PROPANE**

**COMMERCIAL SPACE FOR LEASE**

**COMMERCIAL SPACE FOR LEASE!**  
18717 Hwy 120, Groveland. Approximately 1600 square feet of building space, located downtown with propane heat, one ADA bathroom perfect for retail, food service, professional office, medical etc. Rent \$1,650.00 Deposit \$1700.00. Contact agent **650-520-1022**

**MOORE BROS  
RECYCLING  
NOTICE**

WE HAVE DROP-OFF RECYCLING!!

All residents and visitors are asked to source separate their recyclable materials. There are designated bins located at our office located at 11300 Wards Ferry Rd. in Big Oak Flat where you may drop off your recyclable materials anytime **Monday through Saturday 8am to 5pm** (weather permitting). CLOSED SUNDAYS and major holidays.

**Acceptable materials include:**

- Aluminum beverage containers, tin cans, glass bottles and jars (all colors)
- #1 Plastic (bottle form only) \*\*\*\*#1 clear fruit/veggie, sandwich or salad clam shell type containers are NOT allowed\*\*\*\*
- #2 Plastic (bottle form only) \*\*\*\*#2 colored plastic coffee containers are NOT allowed\*\*\*\*
- ALL CONTAINERS MUST BE RINSED AND FREE OF LIDS AND CAPS

We also accept Mixed Paper, newspaper, magazines, catalogs, junk mail, paperback books & shredded paper which can all be put in the same bin. NO WRAPPING PAPER ALLOWED

**CARDBOARD BIN ACCEPTABLE MATERIALS INCLUDE:**

Cardboard, Carton Board such as cereal and cracker and soda/beer boxes, etc. are also accepted and can be placed in the cardboard bin with the cardboard. THESE ITEMS NEED TO BE FLATTENED OR BROKEN DOWN AND ANY PACKAGING MATERIALS OR TAPE REMOVED.

IF THE CARDBOARD BIN IS FULL OR YOU HAVE A LARGE LOAD OF CARDBOARD TO RECYCLE, we ask you to take it to our shop location at 17641 Yates St. in Big Oak Flat where we still maintain a 50 yard cardboard recycle box.

**PLEASE DO NOT THROW PLASTIC BAGS OF RECYCLABLES INTO THE BINS.**

**HELP WANTED**

**PMLA IS HIRING**

PMLA is looking for qualified candidates for several job openings. Apply online at [www.PineMountainLake.com](http://www.PineMountainLake.com)

**RENTALS WANTED**

**EXCELLENT TENANTS**

w/excellent credit and rental history looking for homes to rent. Owner approves tenant before placement. Call *Yosemite Region Resorts* **209-962-1111**

**SERVICES**

**RONNING ROOFING**

Call Joe for all your Roofing and Gutter needs. Licensed, Bonded, and Insured. License # 976739 **209-962-6842**

**HOUSE CLEANING**

We are mature/experienced PML residents. Steve **925-595-3362**  
Carla **925-639-4929**.

**LOREN SNIDER'S TREE SERVICE**

General pruning, weight reduction, satellite/internet clearing, mistletoe removal, tree removal, dump truck, stump grinder, local references, Non Licensed, 30 + years experience. General liability insurance **209-878-3828 or 209-402-9797**

**HAVE YOU BEEN INJURED?**

Work injuries, auto accidents, wrongful death, and dog bites. No fee unless you win. Contact me now for a free consultation. Michael Lamb (Attorney at Law)  
phone: **(209) 436-9318**  
e-mail: [MRLAMBLAW@GMAIL.COM](mailto:MRLAMBLAW@GMAIL.COM)

**PERSONAL SHOPPING  
/ CLOSET EDITS / STYLING**

Need help shopping for clothes, thrifting for vintage items, putting outfits together, or organizing your closet? For further information and assistance with all of your fashion needs, contact Amy J. at **(209) 436-9318**.

**SERVICES**

**B BEAUTIFUL SALON @ SPA**

Massage \$65.00 per hour  
W - F every other Saturday  
Massages are tailored to your needs with a combination of Swedish, deep tissue and trigger point body work. My goal is to ease your body pain. There is a discounted rate available for those that choose to have a massage monthly for maintenance. That rate is \$50.00 per hour. However you must book your discounted massage prior to leaving from your current massage as the discount applies to the next massage. To book an appointment call or text Karen Mazzola at **209-768-6290**  
State of California License #13763

**BIG JOHN HANDYMAN SERVICES**

Yard Maintenance, House Maintenance and moving households Call John **962-6163**

**HOMES FOR RENT**

**ONE PERSON COTTAGE FOR RENT**  
in Groveland. \$800  
**209-770-1755**

**FOR SALE**



**2 1995 SEADOOS**

Really good condition runs well, always inside garage when not in use. Bought them brand new.  
1st) Seadoo GTX model 3 seat model and  
2nd) Seadoo XP 2 seater a fast Seadoo along with a trailer for both Seadoo's.  
\$4,000.00 for both including the tandem trailer.  
Seller: Randy Barber - **408-529-0409**  
email [rbarber17@yahoo.com](mailto:rbarber17@yahoo.com)

 **CHECK OUT YOUR  
GROVELAND LIBRARY**

**THE GROVELAND LIBRARY IS OPEN  
TUESDAY - THURSDAY — 11AM-5PM  
FRIDAY & SATURDAY — 10AM-2PM**



**BOOKNOOK  
USED BOOK SALE  
SATURDAYS  
10AM-1PM**

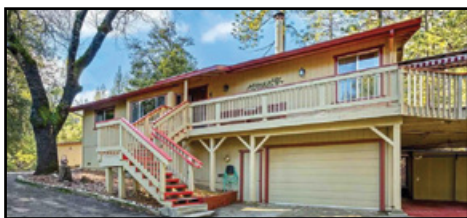
**VISIT THE LIBRARY FOR A GREAT  
SELECTION OF BOOKS, MAGAZINES,  
NEWSPAPERS, VIDEOS, CDS, DVDS.  
ALSO COMPUTERS AND FREE WI-FI!**

# YOSEMITE REGION REAL ESTATE

18687 Main St, Suite E, Groveland, CA 95321

209-962-1111 ~ DRE #01964114

**YOSEMITE REGION**  
Real Estate



19995 Pine Mountain Dr **CREATE MEMORIES** and get away from it all. 3bd, 2ba, home nestled in the trees. Cozy wood-burning stove, vaulted ceiling, laminate pine flooring. Granite kitchen counters and large dining area. Retractable awnings and a jetted spa on the back deck, off of the master suite. Two detached storage buildings plus a carport. Turn-key home, ready for full-time living, vacationing or short-term income property. \$469,000 #20240130



20111 Cherokee Trail **OPPORTUNITY KNOCKS** AE-10 zoning. This 40 acres can be subdivided into four 10-acre lots. Enjoy 180 degree views from the deck. Open floor plan, vaulted ceilings, kitchen island, new gas cooktop & oven, re-tractable skylights and built-in bar. Wood-burning stove, 2bd and 1ba on main floor. Loft master suite. Detached garage, with shop area. 2500 gallon water storage tank. Being sold "as is." \$550,000 #20231298



19723 Butler Way **THE BEST OF BOTH WORLDS!** Nearly 1 acre with a unique home, set up for all your entertaining needs. 4bd, 2-1/2ba, 2576sf. Spacious living room, wood-burning stove and dining room, with access to a secluded deck, overlooking a park-like setting. Den/office. Parking for multiple vehicles. A great investment or vacation property near the main Marina beach. \$649,000 20231298

## LONG-TERM RENTALS AVAILABLE!

Ask for Rob Stone • 209-962-1101



• **19219 Ferretti Rd •**  
3bd, 2.5ba, 2382sf  
\$2800/mo.



• **11966 Mountain Springs Ct •**  
4bd, 2ba, 1906sf  
\$2400/mo.



• **19096 Dyer Ct, #5 •**  
2bd, 2ba, 984sf  
\$1395/mo.



• **19223 Salvador Ct, #D •**  
2b, 1.5ba, 1114sf  
\$1600/mo.

### 100% Local Long-Term Rental Services • Now Accepting Long-Term Rentals!

- ◆ Monthly Rentals & Tenant Placement
- ◆ Monthly Statements & Owner Payments
- ◆ Tenant-Screening & Credit Reports
- ◆ Scheduled Maintenance & Repairs
- ◆ Move-in / Move-out Inspections
- ◆ Local, State & Federal Tax Requirements



ROB STONE  
OWNER/REALTOR®  
DRE #01025463



BJORN WAHMAN  
BROKER  
DRE #00706559



TARA STONE  
MANAGER/DPG  
DRE# 01106544



LIZ MATTINGLY  
BROKER ASSOC.  
DRE #00709618



MIRIAM MARTIN  
REALTOR® RSPS, ASP  
DRE #01400779



ANDREW RIETVELD  
REALTOR®  
DRE #01940156



RYAN NIEDENS  
BROKER ASSOCIATE.  
DRE #01940007



KATHY NIEDENS  
REALTOR®  
DRE #01113243



BRENDA ZUNIGA  
REALTOR  
DRE #00997621



CAPRICE KROW  
PROP. MGR/LDP  
DRE# 01179023



CORY STONE  
PHOTOGRAPHER  
VIDEOGRAPHER



23370 Rusty Spur Rd **BEHIND A PRIVATE GATE** is this modern home, nestled in the Sierra foothills, on over 6.5 acres. Great-room concept, wood-burning stove and a sunroom, currently used as a dining room, with amazing views. Two bedrooms with skylights and a main suite with spacious closets. Lower level bonus living space, with bed/bath, 2nd sunroom. Passive solar heating and plenty of room for vehicles, "toys" and an RV hookup. \$725,000 #20231704



12000 Trapper Ct **NESTLE YOUR HOME** in the Pines and Cedars on this quiet cul-de-sac lot. Approx. 1.27 acres, with plans available for your dream cabin. Many trees offer cool seclusion on a sloped North-East facing property. Borders green-belt inside the gated community. Enjoy all the amenities of Pine Mountain Lake! \$29,900 #20231285



12050 Breckenridge Rd **MOUNTAIN HAVEN.** Well-maintained custom home on 1/3 acre. 3bd, 2ba, 2-car garage. Great room, with vaulted ceiling and wood stove. Wet bar and kitchen island, doubling as a cooktop & breakfast bar. Covered deck with pull-down sun shades. Bonus room added in 2005. Updated HVAC. Additional parking area with stair-free access to front door. \$459,000 #20231760



Vacation Rentals



Ryan Niedens  
General Manager



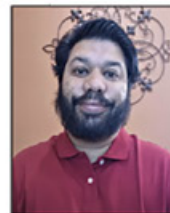
~ NOW ACCEPTING HOMES FOR VACATION RENTALS ~  
HOUSEKEEPERS AND MAINTENANCE PERSONS WANTED

**YOSEMITE "FIREFALL" & PRESIDENTS WEEKEND IS COMING SOON!**

Want your family close but not too close?

Yosemite Region Resorts is offering Pine Mountain Lake Locals a  
**25% Discount between January 15th, 2024 and April 30th, 2024**

Now is the time to have your family & friends visit for a lot less \$\$  
Call or come into our office during business hours and we will be happy to  
find you and your visitors a place to stay and relax.



Josh Regalado  
Property Manager



Mary Fackrell  
Guest Services

- LOCAL VACATION RENTAL SERVICES
- OWNER-APPROVED RATES
- AGGRESSIVE ADVERTISING CAMPAIGN

18687 Main Street, Suite E, Groveland, CA 95321  
(209) 962-4396 • realfun@yosemiteregionresorts.com

- PRE-ARRIVAL INSPECTIONS FOR GUESTS
- PROFESSIONAL DEPARTURE CLEANINGS
- ACCIDENTAL DAMAGE PROTECTION