

# PINE MOUNTAIN LAKE NEWS

APRIL

2024



THE OFFICIAL NEWSPAPER OF, AND FOR, PINE MOUNTAIN LAKE PROPERTY OWNERS

## TABLE OF CONTENTS

Administration 2-12, 14-19, 21-22

PMLA Financials 6

Letters to the Editor 8-9

The Grill 10-11

From Your Supervisor 18

PML Clubs &  
Recreation 26-30

Community News 30-31, 36-39

Home Improvement 40-42

Classified Ads 43

*Welcome  
to  
Spring*



PRSR STD  
U.S. POSTAGE  
PAID  
ABS DIRECT

Change Service Requested

19228 Pine Mountain Dr. Groveland, CA 95321



# GET IMPORTANT NEWS VIA EMAIL

**eSNAP**  
ELECTRONIC SAFETY, NEWS & ALERT PROGRAM

Signing up for the new eSNAP program is quick and easy and gives you the ability to sign up for the information that you want to receive. Just head over to *www.PineMountainLake.com* and sign up today.

## ABOUT EACH OF THE PROGRAMS

**PML News & Alerts** – Receive emails with information regarding anything affecting Pine Mountain Lake such as road closures, utility problems, fire alerts and more.

**PML Amenities News** – Receive emails with information about upcoming events, specials, or news regarding all PML amenities such as the lake, marina, golf course, etc.

**The Grill at Pine Mountain Lake** – Receive emails with information regarding happenings at The Grill. Get information on Wine Tastings, Entertainment, Special Events and more.

This program is separate from the current email opt-in program that allows you to receive PMLA governing documents and requires your signed approval. This program can be signed up for via the online system. *Get your news and alerts via email, it's eSNAP!*

## — NOTICE —

Listed below are ALTERNATE phone numbers for EMERGENCY use during power/phone/internet outages:

DEPARTMENT OF SAFETY – MAIN GATE  
1-209-768-8600

PMLA ADMINISTRATION OFFICE  
1-209-768-3998

THE GRILL AT PINE MOUNTAIN LAKE  
1-209-962-8658

## NOTICE

The Pine Mountain Lake News, established July 25, 1973, is printed monthly for residents of Pine Mountain Lake and sold in the Groveland, CA 95321 area. Members can access the PML News monthly edition online at *www.PineMountainLake.com*. Every month the newest edition of the PML News is posted online before the first of each month. Interested parties can subscribe to the traditional "hard copy" and receive a copy by mail each month.

The PML News is mailed to approximately 3500 PML property owner households each month. Up to 500 copies are rack-sold in the local Groveland area. Our circulation reaches approximately 1200 full-time, resident, PML property owners and approximately 2300 "weekender," non-resident, property owners who maintain primary residence in Northern California, in Southern California, or in other states. For more information regarding the PML News, please call the PML Administration Office at (209) 962-8600. We greatly appreciate your contributions but please note that the PML News fills up very quickly – often by the 7th or 8th of the month (long before the 10th deadline). To ensure that your submission is reviewed for publication please submit in full and as early as possible. Please remember that the PML News is limited in capacity and your submissions are reviewed on a first-come-first-served, space-available basis.

We publish all PMLA related submissions such as Board & Management Business, Clubs, Activities & Events. Where space remains, we publish non-PMLA related submissions in our "Community" section.

We do our best to provide timely news. If you experience delayed delivery or have misplaced a particular edition, please visit us at the PMLA website *www.pinemountainlake.com* for a downloadable PDF of the News posted by the 1st of the month and a downloadable PDF list of ad rates.

## SUBSCRIBE TO THE PML NEWS TODAY!

NAME \_\_\_\_\_

UNIT \_\_\_\_\_ LOT \_\_\_\_\_

MAILING ADDRESS \_\_\_\_\_

\_\_\_\_\_

\_\_\_\_\_

NO CHARGE FOR PROPERTY OWNERS (BULK)  
\$6/YR FOR CO-OWNERS (BULK);  
\$10/YR FOR NON-PROPERTY OWNERS (BULK)  
\$20/YR FOR PROPERTY OWNERS (1<sup>ST</sup> CLASS)  
\$30/YR FOR NON-PROPERTY OWNERS  
(1<sup>ST</sup> CLASS)

ENCLOSED IS MY CHECK IN THE AMOUNT OF

\$\_\_\_\_\_ (PAYMENT DUE IN FULL)

SEND THIS SUBSCRIPTION TO:  
PINE MOUNTAIN LAKE ASSOCIATION  
19228 PINE MTN. DR. GROVELAND, CA 95321  
ATTN: MELODY

## Submission Guidelines

### The PML News is the Official Newspaper of Pine Mountain Lake Property Owners

The PML News is dedicated to reporting PML Association business and PML Association news to Pine Mountain Lake Property Owners.

All community related articles and notices will appear in the PML News on a SPACE AVAILABLE basis and at the DISCRETION of the PML News Publishing Editor.

### DEADLINES

Advertisements must be received IN FULL (text, MLS info, images, logos, etc.) by the 10th of the month for the following month's edition. Only advertisements received in full will be guaranteed to be published in that month's edition. **NO EXCEPTIONS.**

### MEDIA ACCEPTED email

### SOFTWARE (Articles)

InDesign, Microsoft Word, Adobe Pages, or TXT formats only.

### SOFTWARE (Advertisements)

PSD, JPG, PDF, EPS or TIFF only.

### TEXT/GRAPHICS

Handwritten text is not accepted. Material composed completely of capital letters is not accepted. Please use uppercase and lowercase letters in composition. Ink jet printed images are not accepted. Images are accepted ONLY as camera ready art, original photos (to be scanned) or as JPEG, TIFF or PDF files created with above listed software. All scans and bitmap images must be in TIFF or JPG format at least 200 dpi at 100% (300 dpi preferred). Ad files are stored for 90 days from first run date. Older ads that have not been running must be resubmitted. (See Display & Insert Advertising Contract "Design and Preparation Charges.")

### E-MAIL TEXT/GRAPHICS

Text/graphics may be delivered as e-mail attachments via the Internet. Send to: [pmlnews@sabredesign.net](mailto:pmlnews@sabredesign.net).

### AD DESIGN and PROOFS

Ads that are requested to be sent to other periodicals require a usage fee from the advertiser (see Display & Insert Advertising Contract "Design and Preparation Charges"). Proofs are available upon request and final proof approval for all ads is expected within 24 hours. Changes made are LIMITED to typographical or graphic placement errors. NO OTHER ADDITIONS OR CHANGES WILL BE MADE.

### SUBMISSION DEADLINES

Articles — 10th each month  
Ads — 10th each month  
Classifieds — 15th each month

**VISIT US ONLINE**  
[www.pinemountainlake.com](http://www.pinemountainlake.com)

**PHONE/EMAIL DIRECTORY****ADMINISTRATION****General Manager****Joseph Powell***gm@pinemountainlake.com***Assistant General Manager****Michelle Cathey***agm@pinemountainlake.com***Admin Asst. to G.M.****Janessa Owens - 1.209.962.8627***gmassist@pinemountainlake.com***Human Resources****Shannon Abbott - 1.209.962.8628***pmlhr@pinemountainlake.com***E.C.C. Assistant - Ashley Henderson****1.209.962.8605**

Plan Submittal, Compliance Fees

*ecc@pinemountainlake.com***Member Relations****1.209.962.8632**

Gate Cards, Address Changes,

Webmaster, Mergers

Lake Lodge Scheduling

*pmlmr@pinemountainlake.com***Community Standards Director****Suzette Laffranchi - 1.209.962.1241***communitystandards@pinemountainlake.com***Community Standards Specialist****Carrie Harvey - 1.209.962.1242***compliance@pinemountainlake.com***Rental Compliance Coordinator****Sally Owens - 1.209.962.1245***RCC@pinemountainlake.com***General Info &****Lake Lodge Scheduling****Shari Pingree - 1.209.962.8600**

Receptionist

*admin@pinemountainlake.com***Main Gate - 1.209.962.8615**

General Safety Inquiries, gate

passes, campground

reservations, tennis reservations

*campground@pinemountainlake.com**maingate@pinemountainlake.com***ACCOUNTING****Controller - Dan Szathmary****1.209.962.8606**

Accounting Procedures

*controller@pinemountainlake.com***Accounting Supervisor****Stacy Gray - 1.209.962.8618***sracct@pinemountainlake.com***Receivable/Collections/****Assessments - Debbie Green****1.209.962.8607***pmlar@pinemountainlake.com***Accounts Payable - Tina Parmalee****1.209.962.8626***pmlap@pinemountainlake.com***IT Manager****Yuris Daudish - 1.209.962.1243***ITManager@pinemountainlake.com***Recreation and Seasonal****Operations Manager****Melody Wisdom****1.209.962.8604***pmlfun@pinemountainlake.com***DEPARTMENT OF SAFETY****Director of Safety - Natalie Trujillo****1.209.962.8633***safety@pinemountainlake.com***Sergeant - Sgt. Teri Cathrein****1.209.962.1244***dossgt@pinemountainlake.com***MAINTENANCE DEPT****Maintenance Manager****Rick Laffranchi - 1.209.962.8611***facmgr@pinemountainlake.com***Administrative Assistant****Anita Spencer - 1.209.962.8612***maintenance@pinemountainlake.com***Fire Safety Coordinator****Joe Milani - 1.209.990.5260***fsc@pinemountainlake.com***Fire Safety Inspector****Amanda Darrow - 1.209.990.5263***inspector@pinemountainlake.com***Fire Safety Inspector****Jessica Heller - 1.209.990.5261***firesafety@pinemountainlake.com***GOLF COURSE****Golf Course Superintendent****Rob Abbott - 1.209.962.8610***super@pinemountainlake.com***Golf Pro Shop****Doug Schmielt - 1.209.962.8620**

Golf Pro Shop/Golf Reservations

*golfshop@pinemountainlake.com***Golf Pro****Mike Cook - 1.209.962.8622***golfpro@pinemountainlake.com***THE GRILL AT PINE MOUNTAIN LAKE****The Grill Manager****Heather Parkhurst - 1.209.962.8639***clubmgr@pinemountainlake.com***Restaurant - 1.209.962.8638****OTHER PHONE NUMBERS****Equestrian Center Manager****Kendra Brown - 1.209.962.8667***stables@pinemountainlake.com***Marina Manager****Dawn Pretzer - 1.209.962.8631***marina@pinemountainlake.com***PML NEWS****David Wilkinson - 1.209.962.0613**

Ad/Article Submissions

*PMLNews@SabreDesign.net***PINE MOUNTAIN LAKE ASSOCIATION****1.209.962.8600**[www.pinemountainlake.com](http://www.pinemountainlake.com)**ADMINISTRATION OFFICE HOURS****8:00 AM TO 4:30 PM - MON THRU FRI****OPEN AT 8:45 AM SECOND TUESDAY OF EACH MONTH****THE OFFICE IS CLOSED BETWEEN 12:00 & 1:00 EACH DAY****2024 ADMINISTRATION OFFICES HOLIDAYS****(ADMIN OFFICE WILL BE CLOSED)**

MON 5/27/24 MEMORIAL DAY

THUR 7/4/24 INDEPENDENCE DAY

MON 9/2/24 LABOR DAY

MON 11/11/24 VETERANS DAY

THUR 11/28/24 THANKSGIVING

FRI 11/29/24

DAY AFTER THANKSGIVING

TUE 12/24/24 CHRISTMAS EVE

WED 12/25/24 CHRISTMAS DAY

TUE 12/31/24 NEW YEARS EVE

WED 1/1/25 NEW YEARS DAY

**PMLA BOARD MEETINGS SCHEDULE****(THIRD SATURDAY - UNLESS OTHERWISE NOTED)****APRIL 20, 2024**

MAY 18, 2024

JUNE 15, 2024  
(FATHER'S DAY WEEKEND)JULY 20, 2024  
(SPECIAL MEETING)

AUGUST 17, 2024

SEPTEMBER 28, 2024

OCTOBER 19, 2024  
(BOARD BUDGET MEETING)NOVEMBER 16, 2024  
(ANNUAL MEMBER MEETING/ELECTION)**PINE MOUNTAIN LAKE NEWS DELIVERY**

Although we guarantee that the PML News is mailed from Modesto, CA on the same day (between the 26th-30th of month), most post offices (except Groveland) sort Bulk Mail after First Class mail. So, consider a First Class delivery subscription for just \$20/yr. (\$20 per year for property owners and \$30 per year for non-property owners) Interested? Call the PMLA Office at 209/962-8632 or see form above.

The Pine Mountain Lake News is also available (in PDF format) at: [www.pinemountainlake.com](http://www.pinemountainlake.com). New editions are posted by the 1st of the month.

# GENERAL MANAGER'S MESSAGE

JOE POWELL – PCAM, CCAM-LS, CMCA, AMS GENERAL MANAGER

## THE PML LITIGATION AND ENFORCEMENT PROCESS AND CURRENT LAWSUITS

Recently, some individuals have been spreading misinformation regarding litigation involving the Association. They have stated basically that the Association is currently embroiled in hundreds of lawsuits. This is completely false.

As an Association we do everything that we can to stay out of court, as it can be very costly and time-consuming. If a member violates the CC&R's, we provide them with multiple opportunities to resolve the matter. Members under enforcement for CC&R violations, receive several letters before a hearing is held, and fines are levied by the Covenants Committee upon a finding by the Committee. The Covenants Committee is made up of volunteer, unpaid, property owners who are appointed by the Board of Directors in accordance with our governing documents.

The Covenants Committee members take their role seriously, and make sure that they have all the facts before they levy a fine. In most cases, the Covenants Committee gives the member even more additional time to resolve the violation.

To ensure that all members are aware of the process, the Association provides a copy of the schedule of fines to all members as part of our annual disclosure packet. Additionally, it should be noted that individual property owners who are under enforcement for CC&R violations, who receive a fine, always have an opportunity to appeal these decisions to the board of directors in accordance with our governing document enforcement procedures.

If a member chooses to ignore the Association and multiple fines have been levied, and the member under enforcement still has not resolved

the violations, we are forced to take the next step. At this point in the enforcement process, we turn it over to legal counsel. Prior to filing a lawsuit to enforce the governing documents, our attorneys make an effort to schedule mediation to try and resolve the situation with the individual property owner.

Any lawsuit filed by the Association, is filed as a matter of last resort. As the General Manager, I do not have the authority to file a lawsuit without specific direction of the Board. Moving forward to file a lawsuit, is a decision of the Board of Directors and it is always made on advice of counsel. Again, it is not something that we take lightly, as lawsuits can be costly and time-consuming. That said, the Board of Directors has a fiduciary duty to ensure the CC&Rs and other governing documents are being followed. The goal of the Association is to make sure that all members follow the governing documents to the benefit of all of our property owners.

We are currently involved in two lawsuits. Both are related to the enforcement of the CC&Rs. We provide a litigation disclosure letter to all new buyers of property in PML. This litigation disclosure letter is prepared by our attorneys and is available to any member upon request.

As for all legal matters that we are engaged in at this time, it is not 600 or whatever non-factual number that is bouncing around social media at the moment. We currently have around 25 legal matters that we are navigating at the moment. Only the two aforementioned actions have resulted in lawsuits. All the rest are in various stages of the Association governing document enforcement process.

We ask the individuals who are spreading false information regarding Association lawsuits to please get the facts and stop portraying the Association as some sort of litigious

organization. This type of negative narrative is not beneficial to the membership as a whole.

## RUMORS REGARDING THE CONDITION OF THE PML BIG CREEK DAM AND SPILLWAY

Recently we have seen a number of posts on social media claiming that the PML Big Creek dam and spillway have somehow been compromised and failure is imminent. As a result of these erroneous posts, we would like to share the information, most of which has been provided to us by the DSOD (California Division of Safety of Dams).

The California DSOD is the agency responsible for the inspection of dams and spillways throughout the state. On a yearly basis they provide us with guidance of work required, as well as a report of the overall health of our dam and spillway. The following inspection statements are the conclusions of the inspectors, on the dam and spillway condition, this information is being shared verbatim from the inspection reports.

- 1) Inspection date **03/13/2019**  
Conclusion; From the known information and visual inspection, the dam, reservoir, and the appurtenances are judged safe for continued use. **Inspector M. Sutliff**
- 2) Inspection date **08/14/2019**  
Conclusion; From the known information and visual inspection, the dam, reservoir, and the appurtenances are judged safe for continued use. **Inspector C.M. Lancaster**
- 3) Inspection date **11/04/2020**  
Conclusion; From the known information and visual inspection, the dam, reservoir, and the appurtenances are judged safe for continued use. **Inspector Param Dhillon**
- 4) Inspection date **11/09/2021**

Conclusion; From the known information and visual inspection, the dam, reservoir, and the appurtenances are judged safe for continued use.

**Inspector Param Dhillon**

- 5) Inspection date **11/09/2022**  
Conclusion; From the known information and visual inspection, the dam, reservoir, and the appurtenances are judged safe for continued use. **Inspector Param Dhillon**

- 6) Inspection date **08/10/2023**  
Conclusion; From the known information and visual inspection, the dam, reservoir, and the appurtenances are judged safe for continued use. **Inspector O. Madera Gutierrez**

As is reflected in the above information, 4 different inspectors, over 5 years and 6 individual inspections found the PML Dam, spillway and surrounding areas in satisfactory condition to continue to operate. This coupled with the 200+ hours of maintenance on and around the Dam that take place **yearly** help to ensure the continued safety of our members.

In addition to the inspections by the California DSOD, Pine Mountain Lake contracted with an outside engineer to perform a spillway evaluation and assist us with the repairs to the spillway and Big Creek channel after the 2018 storm that resulted in flooding in PML. The bottom line is that the Association continues to properly maintain our dam and spillway, and we work directly with both contracted and state DSOD experts to ensure that our spillway and dam remain safe for the membership.

*Until next month, wishing everyone a fun and safe Spring!*



# PINE MOUNTAIN LAKE ASSOCIATION

## 1.209.962.8600

### BOARD OF DIRECTORS

Chuck Obeso-Bradley: **President**  
Mike Gustafson: **Vice President**  
Karen Hopkins: **Secretary**  
Craig Prouse: **Treasurer**  
Brian Watson: **Director-at-large**

### GENERAL MANAGER

Joseph M. Powell, PCAM, CCAM-LS, CMCA, AMS

### CORRESPONDENCE TO DIRECTORS

Pine Mountain Lake Association  
19228 Pine Mountain Drive  
Groveland, CA 95321  
PMLABoard@pinemountainlake.com

### ADMINISTRATION OFFICE HOURS OF OPERATION\*

Monday – Friday 8:00 AM – 4:30 PM  
Closed 12:00 – 1:00 PM  
Tel: 1-209-962-8600

The Pine Mountain Lake News, established July 25, 1973, is printed monthly for residents of Pine Mountain Lake and vicinity by Pine Mountain Lake Association, Groveland, California 95321.

### SUBSCRIPTION RATES:

Co-owner subscription: \$6 per year  
Single copies: 50 cents each  
Single mailed copies: \$1.35 each  
For non-members: \$10 per year

### SUBMISSION DEADLINE

10th of the month by 4:30 PM  
LATE SUBMISSIONS MAY NOT BE ACCEPTED  
Visit [www.pinemountainlake.com](http://www.pinemountainlake.com) for ad rates and submission guidelines or email: [PMLNews@SabreDesign.net](mailto:PMLNews@SabreDesign.net)

For the mutual benefit of all property owners, the Pine Mountain Lake News reserves the right to edit all copy submitted for publication. The Pine Mountain Lake News is a private enterprise, not a public entity, and as such is entitled to reject advertisements or articles in the best judgment of its editor or publisher, despite a probable monopoly in the area of its publication. Pine Mountain Lake Association is not responsible for, nor does it guarantee the accuracy of, information contained in any ad placed in the Pine Mountain Lake News. The Pine Mountain Lake News attempts to ensure that this publication is free of legal infringements and the Pine Mountain Lake Association and its contractors are not liable for copyright/trademark infringements from external advertisements and articles.

**DAVID WILKINSON**—Publishing Editor  
**SABRE DESIGN & PUBLISHING**  
Design/layout  
**PINE MOUNTAIN LAKE NEWS**  
P.O. Box 605  
Groveland, CA 95321  
Tel: 1.209.962.0613  
E-mail: [PMLNews@SabreDesign.net](mailto:PMLNews@SabreDesign.net)

# PRESIDENT'S MESSAGE

CHUCK OBESO-BRADLEY – PMLA BOARD PRESIDENT

**H**appy April, everyone – we're one month closer to a bunch of exciting happenings in PML!

### GMRS RADIO TRAINING – SATURDAY, APRIL 13TH

PML's Safety and Security Committee did a great job organizing the recent First Aid/AED/CPR Class at the Lake Lodge, and they have now announced the next training on the GMRS Radios. That will take place on Saturday, 4/13, location and time TBA – mark your calendars now!

### BOATS IN THE SLIPS AT THE MARINA – WEDNESDAY, MAY 1ST

One of the happiest times of the year is the day when PML owners can park their boats in the slips at the Marina. That day is Wednesday, May 1st, and that date cannot come too soon! The plan is to open the Marina Store and Grill on Memorial Day weekend, but we will be

able to enjoy our wonderful Lake and Marina all through May.

### SCC CHARITY GOLF TOURNAMENT, AUCTION, AND LUNCHEON – SATURDAY, MAY 4TH

The Southside Community Connections will hold its annual Charity Golf Tournament, Auction, and Luncheon at the PML Golf Course and Grill on May 4th. This event supports the four SCC programs in the Groveland community – The Little House, Wheels rides, Village on the Hill in-home services, and the WAVE bus. Mark your calendars now for this great event, and you can contact SCC at 209-962-7303.

### DON'T MISS THE STCHS ANNUAL WINE TASTING CRUISE – MAY 18TH

Get your tickets early, as this popular event may sell out! The Southern Tuolumne County Historical Society (STCHS) will hold their 18th Annual

Wine Tasting Cruise on Saturday, May 18th, from 2:30 – 6:30 pm, on beautiful Pine Mountain Lake. Only advance tickets are sold, so don't delay – get your tickets today, at [winetastingcruise@gmail.com](mailto:winetastingcruise@gmail.com). All proceeds from the event go towards the Groveland Yosemite Gateway Museum and other STCHS projects.

### PPP APPLICATION NOW POSTED ON THE OFFICIAL PML WEB PAGE

With the approval of the PMLA counsel, the Board of Directors has posted the two PPP applications on the official web page for the purpose of transparency. You can login to the Governance Tab on the web site to view the applications, which will hopefully provide more clarity and understanding about the issue.

Have a Great April, everyone, and I hope to see you out on the Marina on sunny days this month!

## COMPOST & ARCHERY RANGE HOURS OF OPERATION

**NOVEMBER THRU MARCH TUES. – SUN. 8AM TO 4PM**  
*WEATHER PERMITTING*

**APRIL THRU OCTOBER – 7 DAYS A WEEK 8AM TO 4PM**  
*WEATHER PERMITTING*

**SHOOTING RANGE – TUES, THUR, SAT 9AM TO 3PM**  
**PLEASE NOTE** Hours may vary depending on weather conditions, safety concerns, or other situations beyond control. Archery & Gun Range users must check-in with compost attendant.

**HOURS SUBJECT TO CHANGE WITHOUT NOTICE**  
**Call Main Gate at 1-209-962-8615**

**SPEED  
LIMIT  
25**

**SLOW DOWN**  
WATCH FOR WILDLIFE,  
BIKES, AND PEDESTRIANS  
PLEASE DRIVE SAFELY

**PINE MOUNTAIN LAKE ASSOCIATION**  
**SUMMARY STATEMENT OF OPERATING FUND REVENUES AND EXPENSES**  
 For One Month Ended January 28, 2024

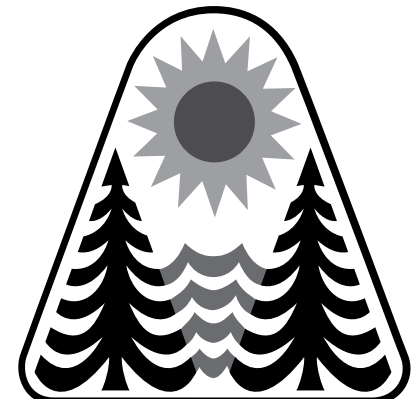
OPERATION OF AMENITIES	Revenues					Expenses				Budget (NET COST) INCOME	Variance Bud - Act	Variance %
	Members' Assessments Net of Discount	User Fees	Sales, Net of Cost of Sales	Miscellaneous Income	Total Revenues	Total Expenses	(Cost)/Income Before Depreciation	Depreciation Expense	(NET COST) INCOME			
Golf Course	\$ -0-	48,343	\$ 830		\$ 49,173	\$ 129,700	\$ (80,527)		\$ (80,527)	\$ (95,160)	14,633	-15.38%
Restaurant & Bar	-0-	299	37,248		37,547	113,830	(76,283)		(76,283)	(75,869)	(414)	0.55%
Marina	-0-	29,539			29,539	30,940	(1,401)		(1,401)	(19,067)	17,666	-92.65%
Snack Shack	-0-	-0-	1,257		1,257	4,887	(3,630)		(3,630)	(3,659)	29	-0.79%
Stables	-0-	6,207		2,908	9,115	26,564	(17,449)		(17,449)	(32,785)	15,336	-46.78%
Recreation	-0-	7,606			7,606	4,140	3,466		3,466	7,564	(4,098)	-54.18%
Roads & Facilities Maintenance	-0-	6,429		100	6,529	183,468	(176,939)		(176,939)	(223,519)	46,580	-20.84%
<b>PROPERTY OWNER SERVICES</b>												
Safety	-0-	8,587		5,221	13,808	88,407	(74,599)		(74,599)	(112,851)	38,252	-33.90%
Administration	-0-	24,847		30	24,877	230,271	(205,394)		(205,394)	(178,014)	(27,380)	15.38%
<b>ASSESSMENTS</b>												
+	649,100				649,100	7,699	641,401	-0-	641,401	815,784	(174,383)	-21.38%
<b>Totals</b>	\$ 649,100	\$ 131,857	\$ 39,335	\$ 8,259	\$ 828,551	\$ 819,906	\$ 8,645	\$ -0-	\$ 8,645	\$ 82,424	(73,779)	-89.51%

CAPITAL EXPENDITURES One Month Ended January 28, 2024			
	TOTAL RESERVE FUNDS	NEW CAPITAL ADDITIONS FUND	TOTAL CONTRIBUTION TO CAPITAL
<b>2024 Beginning Fund Balances</b>	2,270,763	42,703	4,506,017
Interest Income			-
Bank Fees/Discounts Taken			-
Assessments Earned	300,000	-	300,000
Other Income/Expense			-
<b>PURCHASES BY AMENITY</b>			
Golf Course	(605,169)	(7,442)	(612,611)
Country Club			-
Bar			-
Marina			-
Snack Shack	(8,255)		(8,255)
Swim Center			-
Stables			-
Recreation			-
Roads & Facilities Maintenance	(10,354)		(10,354)
<b>PROPERTY OWNER SERVICES</b>			
Safety			-
Administration		(1,683)	(1,683)
Non-Capital Reserve Expenses			-
<b>Total expense for property and equipment additions and reserve expenses</b>	(623,778)	(9,124.58)	(632,902)
<b>Adjusted Fund Balances</b>	\$ 1,946,985	\$ 34,629	\$ 4,173,115

**PAY YOUR PML PAYMENTS ONLINE**

Did you know you can make your payments online?

Online Bill Pay is available on [www.PineMountainLake.com](http://www.PineMountainLake.com).  
 Pay via your credit card,  
 it is quick and easy!





# MONEY MATTERS

DAN SZATHMARY, CAFM – ASSOCIATION CONTROLLER

We are very pleased to announce we recently received a return of \$128,028.00 from our Worker's Comp. Captive based on favorable loss experience from the years 2015-2020.

For context, insurance captives are groups that are formed for the purpose of pooling risk and come in all shapes and sizes. PMLA worked with our insurance partners beginning 12 years ago to participate in a captive offering our Worker's Compensation coverage. Our goal was to reduce premiums as we were paying over \$300k a year for coverage with no possible return of those premiums.

Our cost of Worker's Comp coverage for last year for the approximately 100 employees of the association was about \$189k, less than two thirds of what we were paying for coverage over

a decade ago.

Thanks to the PMLA employees and management for staying safer than most in the workplace. Those efforts over many years are not only keeping us all safer and happier as we work here, it is generating a significant financial return to members.

The Accounting and Finance department at PMLA has also been quite busy in the first quarter of the year. We had a large influx of volume at the end of February through the beginning of March of members that were on the auto pay program that did not renew or take note of the change in the new year. A surge of accounts turned delinquent as of the end of February. For approximately two weeks the accounting department worked almost exclusively on handling phone calls and responding to inquiries.

The central theme was they did not take notice of the information distributed with the annual packet that indicated the change, driven by the pending credit card surcharge, that required re-enrollment in the new year. The notice and documents required to re-enroll in auto pay via credit card acknowledging and authorizing the surcharge were distributed with the annual packets, and we received a much higher than expected volume of members that did not take notice of that information.

We only had 58 of the 538 members that were on auto credit remain, and 285 new members enrolled in auto pay via ACH in the new year, which almost doubled our volume processing ACH assessment transactions. Only 9 members out of everyone enrolled in member charge reenrolled in the program with the rest of the active

accounts changing over to ACH.

This generated an immense amount of volume for the department managing hundreds of phone calls and transactions a day with only a staff of four, including yours truly. The staff did an incredible job handling the volume, and now that the phones and e-mails have calmed down, it is back to business as usual.

On a related note, the move to the new merchant accounts that will enable the surcharge to be implemented is currently under contractual review so is not yet implemented, but will be after the change over to the new accounts is complete.

Looking forward to more great questions and feedback from all of you. Feel free to contact me anytime at [Controller@PineMountainLake.com](mailto:Controller@PineMountainLake.com) or 1-209-962-8606.

## DO YOU HAVE YOUR PIN?

Since PML is a private gated community, we want to offer our property owners a secure way to call in guests. When you become a member of PML you are assigned a Personal Identification Number (PIN) to utilize either when calling in a guest pass or using the Gate Access Internet program. This PIN identifies you to staff without you having to be present. This is a confidential number and should **not be shared**. When you call the Main Gate to authorize a guest or vendor access into PML, you will be asked for your PIN. The staff will look up the number in the computer and use it to confirm your identity before entering the guest information. You must have this number to utilize the Gate Access Internet program as well. If you do not know your PIN or have any questions, please contact the Administration Office at:



# 1-209-962-8600



Monday through Friday from 8 am to 4:30 pm  
and we will gladly supply this information to you.

## PML AUTOMATIC PAYMENT PROGRAM

Taking the time to write a check for your monthly assessment payment can be time consuming and costly. You can avoid this burden and eliminate the potential for late payment charges by enrolling in PMLA's Auto Payment Program. By completing the form, which can be found at [www.PineMountainLake.com](http://www.PineMountainLake.com) under the Resources/Forms, and returning it to the Administration Office, you can have your monthly assessment automatically deducted from your checking account or charged to your credit card. This means you never have to remember to write a check and mail it each month. The peace of mind that comes with knowing your payment will always be made on time is easy to attain. We can also arrange to have any other regular payment you make to the Association (such as golf membership, horse boarding fees, etc.) paid in the same way.

For more information on this simple, effective and time saving plan please contact us at **1 (209) 962-8600**

## LETTERS TO THE EDITOR

LETTERS TO THE EDITOR RECEIVED	12	DEFERRED TO NEXT EDITION BY EDITORIAL COMMITTEE	0
DENIED BY EDITORIAL COMMITTEE	0	DENIED BY BOARD OF DIRECTORS	0
Exceeds 250 word maximum	0	DEFERRED TO NEXT EDITION BY BOARD OF DIRECTORS	0
Content	0		
Not a property owner	0		
"THANK YOU" LETTERS RECEIVED*	0	* Thank you's do not require editorial committee approval	

Submit Letters to the Editor by sending to "Editor, PML News"  
 Mail: 19228 Pine Mountain Drive, Groveland, CA 95321  
 Email: PMLNews@sabredesign.net • Fax: 800-680-6217

### PLEASE NOTE THAT ALL LETTERS APPEAR IN THE ORDER THEY WERE RECEIVED BY THE PML NEWS

The Pine Mountain Lake News welcomes letters and articles for publication provided they meet the criteria established in the current PMLA Editorial Policy (See excerpt below – entire policy on file at the Administration Office). Letters must be limited to 250 words, typewritten using upper and lowercase letters or neatly printed (no all-capital material) and signed with name, mailing address, PML unit/lot number, and day/evening telephone numbers by a property owner in good standing. **LETTERS MUST BE RECEIVED BY THE EDITOR BY THE 10th OF THE MONTH.** Letters deemed by the Editorial Committee to be improper will not be accepted. Readers are advised that **THE OPINIONS EXPRESSED IN THESE LETTERS ARE THOSE OF THE INDIVIDUAL AUTHORS, NOT OF THE PMLA, THE PINE MOUNTAIN LAKE NEWS, NOR THEIR EMPLOYEES.**

### NO ON THE RECALL

Not Another Recall Attempt Again!

For the second time in five years, the group that masterminded the 2019 failed recall attempt are at it again. In my opinion it's all because of personal vendettas with association management.

I have seen the false information posted on unofficial PML Facebook pages where the narrative is tightly controlled, and opposing viewpoints are not allowed.

Every year, the regular election is held in August and this year two seats will be up for election. Instead of forcing a special recall election this group could have run candidates in the regular August annual election. This would have avoided the need for two elections this year. Now all of us will be paying for two elections. One is budgeted, one is not.

You, me and every single member are paying from our dues to fund the retaliation efforts. PMLA members should not be funding personal vendettas!

Terre Passeur  
 Groveland CA

### SUPPORT FOR THE BOARD

Susie and I Support the PML Board for trying to do what was best for the employees of our Association.

Walter Bales  
 Groveland CA

### SUPPORT OF THE GENERAL MANAGER AND CURRENT BOD

In my opinion I believe that the Board and Joe Powell did the best they could do in obtaining professional outside help. They were told by number of agencies that they were able to apply for the PPP loan. After the loan was awarded they then found out that it was done in error. Everything now has been litigated and been resolved. With the election coming up in August I believe it is a waste of money to do an additional recall election. If you have qualified applicants to run for the board then let the homeowners vote on who they want at the annual election.

Larry Woodruff  
 Groveland CA

### SOME THOUGHTS ON PPP.

I have been volunteering on the ECC Committee for over two years. As a member of this committee, I have gained

a more in-depth understanding of PML standards, rules, County regulations, etc., as well as experience in their practical application. I also attend board meetings and keep up with PML news which helps to round out my volunteer experience and keeps me informed on PML matters. As a result of my committee involvement, I have gained a personal understanding of how dedicated PMLA staff and volunteers are, at all levels, to the members of our HOA and its continued success. Through their everyday work in support of our HOA, they have made PML a great place to live and visit.

This is why I take issue with the recall effort of board members now underway. In the chaos of the pandemic era, I believe the board members and PMLA staff kept the best interests of PML in mind when they applied for the PPP. Unfortunately, the application for and receipt of the monies turned out to be a mistake by many well-intentioned people including trusted advisors. For this reason, I don't believe the board members or general manager deserve the flogging they are receiving from a minority of members. The board and our general manager have my full support in the decisions they have made thus far concerning this matter.

Regards,  
 Dania Schaffer  
 Groveland CA

### NO ON THE RECALL

Dear Editor,

I write from Pine Mountain Lake (PML) regarding the latest Recall effort from a group of malcontents. This second attempted recall in 5 years, has cost the Homeowners(HOA) \$100,000. The recall will trigger an election this summer AND a regular election will follow in August. The malcontent's candidate for HOA office garnered only 6% vote last regular election cycle; they hope for better in special elections. These Rabblers keep their properties in disrepair and the HOA fines them. They seek remedy to avoid these fines by gaining access to the HOA Board. No one will elect them! They need to stop bloviating and MOVE outside of the HOA boundaries with their unhappiness and quit making everyone else miserable. The currently elected board is a group of smart, trustworthy and honest individuals. The nationwide PPP debacle is due principally to extremely poor government rollout and monitoring of the program, which the HOA board fell victim to. The HOA board paid back the funds granted legally, no harm – no foul. Let's move on. Next!

Thank you for your time.  
 Patricia Gibson  
 Groveland CA

owners are duped by these posts believing where there is smoke there is fire. These rabblers keep their properties in disrepair and the HOA fines them. They seek remedy to avoid these fines by gaining access to the HOA Board. No one will elect them! They need to stop bloviating and MOVE outside of the HOA boundaries with their unhappiness and quit making everyone else miserable.

The currently elected board is a group of smart, trustworthy and honest individuals. The nationwide PPP debacle is due principally to extremely poor government rollout and monitoring of the program, which the HOA board fell victim to. The HOA board paid back the funds granted legally, no harm – no foul. Let's move on. Next!

Thank you for your time.  
 Patricia Gibson  
 Groveland CA

### NO ON THE RECALL

My wife and I are strongly opposed to this latest recall attempt by many of the same group of people that have attempted recalls in the past. It is abundantly clear that the Board and General Manager took all the correct steps in applying for and using the PPP loan money. The Board even apologized for the refund PMLA had to make, even though the applications were reviewed by our legal team, Mechanics Bank and the SBA. This situation could not have been foreseen, period. Our family have been home owners in PML since 1972; I have served on several committees over the years and have watched many Boards and all the General Managers back to and including Michael De Barnetti. Our current General Manager is the best one we have ever had and I know personally that all the Board members put in untold hours gratis and have the best interests of all property owners at heart. For those who support the recall, I suggest you first serve on any number of PML committees so you can really understand how the organization works and how hard the Board and association work for you.

Steven C. Engstrom  
 Groveland CA



**NO ON THE RECALL**

Having lived here almost forty years, I have seen several recall attempts - All failed!

The low threshold required to trigger a recall election insures a recall committee will get the required signatures. That costs all the property owners money, stirs up dissent and makes PML appear to be a hotbed of malcontents, which hurts your property values. I have been asked by clients exposed to the recall campaign, "What's wrong with PML?"

Demonizing our management and elected board with distorted and misleading "facts" to further the recall case effort was called yellow journalism in years gone by. Today it seems we are too comfortable with manufactured "facts." An example is the misleading assertion that PML has 200 lawsuits against homeowners in the courts in Tuolumne County - left at just that with no further explanation as to why. While the assertion may be true, the insinuation is completely misleading. The only way the association can redress violations of the CC&R's, plus collect fines or dues which are in arrears, is to go to court.

The federal government's PPP process was hastily created and confusing. I stand behind our management, this board, and the previous board who oversaw the PPP process to the best of their abilities, with appropriate reliance on advice and counsel. The mistake was only identified much later by a whistle-blowing lawyer who has so far found 50+ HOAs with the same error and is now reaping hundreds of thousands of dollars per case for his efforts.

Larry Jobe  
Groveland CA

**VOTE NO ON THE RECALL**

What another tumultuous and costly time for us in our paradise of Pine Mountain Lake. The illusive 'recall team' has found yet another reason to call for a recall vote of the current Board of Directors, just like they did in 2019, and failed. Each attempt costs the Association thousands of unnecessary dollars. Hopefully, all voting members have read the truth from the Association, and the recall team's 'version' of the truth, which is undeniably and provably false.

Many of their statements are exaggerated, incorrect and challengeable. They are members that have no involvement in our community except to disparage and destroy it - they aren't involved, don't volunteer, are not members of any of the organizations, don't attend Board meetings, but wait in the shadows ready to pounce and destroy.

Please stand strong with your Association Board of Directors, and **VOTE NO ON THE RECALL** when you receive your ballot. They work tirelessly for you, the members, and the health of the Association - at no salary or bonus, contrary to what the recall group states. **THEY VOLUNTEER** for this strenuous, thankless position to maintain our wonderful community.

Patti Beaulieu  
Groveland CA

**NO ON THE RECALL**

As I've read (and laughed) at the 'facts' claimed by the Serial Recallers, I am struck by how callous their approach is. It's all checkboxes and legal forms and a ruthless search for fault and money. The only time anything human is introduced into their accusations is when it comes to firing staff members or attaching blame to those other than themselves or their friends.

Who among us moved to Groveland/PML for this sort of behavior? I'd venture a guess that almost all of us moved here for the opposite reason, to find a community and neighbors to appreciate and support. Our community is special thanks to the local focus that benefits us all or the amenities that we all enjoy or the unique individuals that live here.

The Serial Recallers have now gone so far as to suggest that the management of our association be taken over elsewhere, presumably by some faceless corporation that knows nothing of our community and will make decisions driven by cost cutting and bottom line logic. So if you think that decisions made miles away by some high-rise management firm will be better for PML than decisions made by PMLers for PMLers, then by all means support the recall. But if you think that

our community is special and nobody knows what is best for us better than we here do, be sure to vote NO on the recall.

Eric Voogd  
Groveland CA

**SUPPORT FOR CHANGE**

We have been a homeowner here in PML for the past 15 years. Our dues have skyrocketed from \$99.00 a month now to a staggering \$264.00!

Why? The answer is pretty simple. Amenities that fail, and are in red losing gross amounts of money and continuing to turn in budget's that are to explain why we need to increase our spending on them so they can, yes, continue to loose money. Doing the same thing over and over and expecting a different result is ignorant.

If we also have the same recycled people on our board we will get exactly the same result. Increased dues, more spending, no transparency, irresponsible decisions without membership votes, or input. No check and balances from the homeowners.

In the last 7 years from the Grill remodel over expenditures 2.8 million, added Gun Range, Pickle Ball courts, remodel Golf cart storage, and now the irresponsible PPP loan fiasco that is costing us yet millions more from our reserves to pay back or worse go to court.

When will we demand better?

We need new thinking, New responsible people Transparency to us the owners and yes a Wind of change!!

D Maloney  
Groveland CA

*NOTE: The views presented in this letter to the editor do not represent factual information. Claims regarding amenity updates and artificially high dues attributed to failing amenities is not based on accurate information or context. Readers are encouraged to use discretion when considering information that is not directly provided by the association. For accurate and verified information, we recommend reaching out to the association directly or visiting the official website at [www.pinemountainlake.com](http://www.pinemountainlake.com).*

**NO ON THE RECALL**

Don't be misled by postings to Facebook and Nextdoor. To get actual facts regarding PPP or other information regarding Pine Mountain Lake Homeowners Association go to their official website.

**Vote No on the Recall.**  
Catherine Santa Maria  
Groveland CA

**SUPPORT FOR PML**

As new Lot Owners as of 2023, we truly love everything about Pine Mountain Lake from the first time we came up in 2022. The amenities we've enjoyed, Golf and the Grill were fabulous, and more amenities looking forward to enjoying this summer.

We were not Lot Owners when the events of the PPP loan program were initiated by the Board at that time and are only involved now with the Recall the Board campaign. It's unsettling to see the divisions of so many in a community that so many love. From our viewpoint, PML seems to be running well with all the communication received from the current President Chuck Obeso-Bradley. Unfortunately, all of us are in this current mess together and we need to find a way out. The PML Board has found a way and informed all property owners in writing of what happened and are focused to keep our dues reasonable, no special assessments, no further penalties and the mistake no longer exists as all monies have now been repaid. Obviously, there was a mistake made. Although unfortunate, they happen. Continuing to drag this mistake out through the Recall will cost additional monies which we will all most likely end up paying, and for what, to just prove the Board at that time made a mistake?

We chose to purchase a Lot at PML and bring our family here because we loved everything about it. We do not want to regret this decision based on a Recall.

Richard and Rikki Pleis  
Hollister, CA

# DINNER MENU

WED, THURS & SUN 5PM – 8PM  
FRIDAY & SATURDAY 5PM – 9PM



CLOSED MON & TUES  
RESERVATIONS ARE  
REQUIRED FOR DINNER  
CALL 209.962.8638

Please note: prices and items subject to change

## APPETIZERS

### Sesame Chicken Bites

tender chunks of tempura chicken tossed with a orange sesame sauce,  
roasted peanuts, and green onions **16**

### Asian Lettuce Wraps

Ground pork, shredded carrots, water chestnuts, and hoisin sauce  
Served with crisp butter lettuce **15**

### Crispy Calamari

lightly battered served with cocktail sauce **23**

### Caprese Garlic Bread

Ciabatta bread topped with garlic, fresh mozzarella cheese, sliced tomatoes  
and fresh basil with a drizzle of balsamic syrup **14**

### Marsala Mushrooms

Sautéed in garlic, onions and Marsala wine then finished with parmesan cheese & fresh basil **15**

### Avocado Toast

lightly grilled sourdough, creamy avocado, tomatoes and arugula with green goddess dressing **15**  
add grilled shrimp **7** • add grilled chicken **6**

## SALADS

### Shrimp Louie

bay shrimp and prawns over a bed of crisp greens with avocado, egg,  
tomato, cucumber and thousand island dressing **20**

### Poke Bowl

Ahi tuna on a bed of fresh greens with scallions, avocado, cucumber, jalapeno, cilantro,  
wasabi aioli, ginger soy sauce and siracha topped with wonton strips **28**

### Traditional Spinach Salad

spinach, bacon, mushroom, feta cheese, egg & marinated red onion with vinaigrette dressing **14**  
• add salmon **10**

### Sierra Salad

crisp romaine lettuce, tomato, artichoke hearts, marinated red onion  
and feta cheese with caesar dressing **14**  
• add grilled shrimp **7** • add grilled chicken **6**

### Goat Cheese and Beet Salad

Fresh tossed greens with goat cheese, beets, fuji apples, red onion, prosciutto,  
cashews, and a blood orange vinegarete **24**

## ENTREES

### 8oz Prime Sirloin

Topped with garlic mushrooms served with baked potato **35**

### T-Bone Steak

20oz choice certified angus beef topped with a house made chimichurri sauce,  
served with baked potato **55**

### Seared Ahi Tuna

seared medium rare with crispy sushi rice cake, seaweed salad,  
wasabi aioli & soy ginger vinaigrette **32**

### Smokey Mountain Macaroni & Cheese

A mountain of smoked pork burnt ends on our  
white cheddar and fontina Mac-n-cheese served with cole slaw **25**

### Grilled Wasabi Salmon

8 oz grilled salmon filet topped with a orange wasabi cream sauce, served rice pilaf **30**

### Grilled Chicken Terriyaki

Thinly pounded 8oz chicken breast marinated in teriyaki sauce,  
served with rice pilaf, fresh vegetables, and teriyaki dipping sauce **25**

### Chicken Curry

Tender chunks of chicken with braised onions and pineapple, tossed in  
coconut milk and curry spices. Served with white rice and tzatziki sauce **26**

### Corriander Pork Chop

White Marble Farms bone-in pork chop with a coriander and cumin rub,  
topped with caramelized onions and roasted Fuji apples **32**

### Build Your Own Pasta 16

Pasta Options: Penne, Linguini, or Fettuccini  
Sauce Options: Marinara, Alfredo, or Pesto  
Add Vegetables - **6** | Add Chicken - **6**  
Add Italian Sausage - **6** | Add Shrimp - **8**

## BURGERS AND BRICK OVEN PIZZA

Also available on our Dinner Menu

We accept visa, MasterCard, American express & discover, no personal checks please.

WARNING: This facility processes nuts, dairy, flour, seafood, etc. which may be  
considered allergens. Eating raw or undercooked meat, seafood, poultry and eggs  
may cause serious food-borne illness



# HOT OFF THE GRILL

HEATHER PARKHURST – FOOD & BEVERAGE DIRECTOR

Hello friends, greetings from The Grill! As we bid farewell to the last remnants of winter, April emerges as a beacon of hope and renewal. Although this year was nothing like the “Snowmageddon” that we experienced last year, I imagine we are all ready for the change. This is the magical time of year when nature has come fully awake from its slumber, painting our lake, golf course and the surrounding hills with vibrant new growth and color. At The Grill, we welcome this transition with open arms, eager to embrace the joys of the season and share them with our cherished guests.

With the arrival of warmer weather, there’s no better time to dine al fresco and soak in the sunshine and extra daylight hours. Our patio deck, overlooking the gorgeous golf course with views all the way to Yosemite, provides the perfect setting to enjoy a leisurely meal amidst the beauty of nature. Whether you’re sipping on a refreshing cocktail from the 19th Hole Lounge or savoring a sumptuous item from our refreshed menu, every moment spent at The Grill is an opportunity to bask in the splendor of spring.

As we gear up from spring for the bustling summer season to come, I’m excited to extend an invitation to our members and guests who may be seeking part-time

employment opportunities. With The Grill experiencing a surge in visitors during the summer months, we find ourselves in need of additional staff to take care of them and ensure that every guest receives the exceptional service they deserve.

Whether you’re a seasoned professional or looking to gain valuable experience in the hospitality industry, we have positions available for adults and teenagers alike. From bus persons and dishwashers to Snack Shack clerks, servers and bartenders, there’s a role for everyone at The Grill. While some positions may require prior experience, we’re also open to training individuals who are eager to learn and grow with us.

If you’re interested in joining our team, we’d love to hear from you! Simply visit [pinemountainlake.com](http://pinemountainlake.com) and click on “Employment Opportunities” to explore all available positions and get started submitting your application. Alternatively, if The Grill isn’t quite the right fit for you, Pine Mountain Lake Association offers a variety of summer positions across our other amenities. If you have questions please reach out to Shannon Abbott, PMLA’s HR Manager, at [pmlhr@pinemountainlake.com](mailto:pmlhr@pinemountainlake.com). Don’t miss out on the chance to be part of something special this summer – apply today and embark on a rewarding adventure with us!

**BE SURE TO LIKE OUR PMLA FACEBOOK PAGES:**

***Facebook.com/PineMountainLakeCA***

***Facebook.com/PMLARecreation***

***Facebook.com/PMLMaintenanceDept***

***Facebook.com/PMLGrill***

***Facebook.com/PMLAEquestrianCenter***

WELCOME TO THE  
*Hidden Jewel of the Foothills*  
**PINE MOUNTAIN LAKE  
GOLF & COUNTRY CLUB**

12765 MUELLER DRIVE • GROVELAND, CA. 95321

*Championship Golf Course*



*Beautifully Manicured  
Greens*



*Stunning Vistas & Surroundings*



*Mountain Golf*  *at its Finest!*

[www.PineMountainLake.com](http://www.PineMountainLake.com)

**1-209-962-8620**



# CAN-CAN WHERE CAN YOU STORE YOUR GARBAGE CANS

SALLY OWENS - RENTAL COMPLIANCE COORDINATOR

Being a part of Pine Mountain Lake not only gives us the benefit of living in a community with a great view, we also have the privilege of observing wildlife that would not be in a more populated area. I am so grateful that so many of our homeowners put in a great amount of effort to maintain a high standard of cleanliness and respect for Mother Nature. Part of maintaining that standard is being sure to store our garbage cans out of sight while they are not in use and preserving a balance with nature by eliminating occurrences of scattered garbage.

Garbage cans can only be stored at roadside on your scheduled pick-up day and must be removed from your driveway, roadside or garbage can holder on the same day. According to our Governing Documents, PMLA, CC&R, Article VIII, Section 9, your garbage cans must be kept out of sight from the road and neighboring lots. Scan the QR code below to access Pine Mountain Lakes website and access the Governing Documents under the

Governance tab.

Setting your full garbage cans out before your scheduled pick-up date may seem like the most convenient option but it creates a temptation for our furry friends. These cute hooligans are very good at finding treasure in your trash but they are also very bad at housekeeping and will leave their messes behind. Our garbage also poses a threat to their health and wellbeing. Let us work together as a community to maintain our neighborhoods and keep our critters safe.

Contact Moore Bros Scavenger Co. at 1-209-962-7224 to schedule pick up service and to ask for your scheduled pick-up day.



Scan the QR code to access [pinemountainlake.com](http://pinemountainlake.com). While you are checking out our website, be sure to check out the Community Standards page. There you will find other resources such as the Guest & Renters Handbook, a resource for renters to

learn about the PML community standards and provide them with information about our fun amenities. You will also find the link to the Rental Compliance Hotline to report non-emergency short-rental problems and our FAQ's for answers to those commonly asked questions.

Tuolumne County Fire Department now requires all short-term rentals to have a Fire and Life Safety inspection. In order to schedule an inspection, please start with verifying that your

rental property is registered with Tuolumne County's Tax Collectors Office. If you need to register, please call 1-209-533-5544. After you have completed your registration, you may proceed with scheduling your fire inspection.

As always, please do not hesitate to reach out to me with any questions or concerns by calling 1-209-962-1245 or sending an e-mail to [rcc@pinemountainlake.com](mailto:rcc@pinemountainlake.com).

Happy Renting!

## ENERGY SOLUTIONS

GENERATORS, SOLAR & BATTERIES

Local service with installation.



[www.sol-training.com](http://www.sol-training.com)  
24 hour answering service  
(650) 681-9445  
[thuggett@sol-training.com](mailto:thuggett@sol-training.com)  
CA license #858377



**F**  
oust  
Heating & Air Conditioning

Mention this ad  
and receive  
20% off service call

**Voted best  
for 6 years**



**bryant** Factory  
Authorized  
Dealer  
Heating & Cooling Systems

**WHATEVER  
IT TAKES!**

**Reliable,  
Dedicated Service**

Offering free  
estimates on  
upgrade or  
new systems

**F**  
oust  
Heating & Air Conditioning

**Quality You Can Trust**  
(209) 588-0207  
[foustvac.com](http://foustvac.com)

Bonded & Insured  
• License #841677





# 24 CARAT Fun

**\$600,000**  
*Party On The*  
**PONTOON**  
BOAT & JET SKI GIVEAWAY

**LET THE SPLASH GAMES BEGIN!**

EARN ENTRIES FEB 26 - APR 26  
Swipe Kiosks Daily  
for Prizes  
Drawings Thursdays & Fridays  
@ 8, 9 & 10pm

**TABLE BONUS**  
**THURSDAYS**

EVERY THURSDAY  
FROM 12AM-11:59PM

**3X**  
BONUS POINTS\*

**ACT FAST TO EARN  
TRIPLE THE POINTS  
ON TABLE GAMES!**

**PRESENT YOUR  
REWARDS CARD WHEN  
PLAYING TO EARN**

\*Bonus points do not contribute to tier status, promotions, and gifts. See [chukchansigold.com](http://chukchansigold.com) for more info.

**DID SOMEONE SAY...**

**BOUFE!**

**IS COMING BACK?**  
Stay tuned for details!



# FROM THE FRINGE

MIKE COOK – PGA HEAD GOLF PROFESSIONAL

**T**he Golf Shop is open 7 days a week and my staff and I are here to assist you so please call us if you have any questions at 1-209-962-8620.

## UPCOMING EVENTS

**Ladies 18-Hole Golf Club**  
Weekly Play Day – Thursdays

**Ladies 9-Hole Golf Club**  
Weekly Play Day – Thursdays

**Greens Aeration –Golf Course Closed**  
Monday/Tuesday April 1/2

**Men's Golf Club**  
April Awakening (4-Man Scramble, P/G, 5 Clubs) – Wednesday April 10

**Men's Golf Club**  
Spring Shootout (2-Man Chapman Scotch) – Saturday April 20

## GOLF COURSE FIRST TEE TIME

Beginning on Wednesday April 3, the first tee time of the day will be 8:30am. If you would like to make a reservation or have any questions, please call the Golf Shop. PML Property Owners can make a reservation up to 14 days in advance.

## 2024 MOTHER LODGE INVITATIONAL

The 2024 Motherlode Invitational is scheduled for June 20-22. If you have any questions, please call the Golf Shop. The tournament entry form will be available by April 1.

## CALLAWAY GOLF CLUB TRIAL SETS

The NEW Callaway PARADYM AI Smoke golf clubs are available in the Golf Shop for you to try out. We have trial sets that you can take to the range or out on the Golf Course. For more information, call or come in to the Golf Shop.

## 2024 ANNUAL GOLF MEMBERSHIPS & GOLF SERVICES

If you have not signed up for your Annual Golf Membership yet, it is

not too late. If you would like your application(s) emailed to you, please call the Golf Shop. The applications are also on the ([www.pinemountainlake.com](http://www.pinemountainlake.com)) website.

## SOUTHERN VALLEY SENIORS

If you are a PML Property Owner, a Member of the PML Men's Golf Club and are 50 years of age and above, you qualify to join the PML Southern Valley Seniors (SVS). The SVS play home & away events with other Golf Courses in the Southern Valley, such as Turlock CC, Oakdale CC & Spring Creek CC, to name a few. If you are interested call the Golf Shop and we will put you in touch with the SVS PML Captain.

## PUNCH CARDS

Pine Mountain Lake Association Property Owners can save up to \$6.00 per round by purchasing a Punch Card in the Golf Shop. There are; 9-Hole & 18-Hole Punch Cards available. For more information call or come into the Golf Shop.

## NEW PINE MOUNTAIN LAKE PROPERTY OWNERS

If you are a new Pine Mountain Lake Property Owner and you are interested in getting acquainted with other Property Owners who play golf, call the Golf Shop 1-209-962-8620 and we will let you know what golfing groups you may be able to join or what golf activities are planned for the year.

## MEN'S & LADIES GOLF CLUBS

If you are interested in joining the Men's or Ladies Golf Clubs, you can call the Golf Shop 1-209-962-8620 and we will give you the information you need. Applications are available in the Golf Shop. The Men's Club has a website ([www.pmlmgc.com](http://www.pmlmgc.com)) that you can visit to sign-up online for your membership (see Men's Club eligibility rules) or to print an application. Once

you are a Men's Club Member, you can sign-up for tournaments online.

## PROPERTY OWNER ANNUAL GOLF CART RENTAL AGREEMENT

Every person who drives a golf cart on the course, is required to sign a golf cart rental agreement at the time of registration, before they can drive a golf cart. PML Property Owners sign the agreement one-time and that covers the entire year. If you have not signed your agreement you can go to the PML website ([www.pinemountainlake.com](http://www.pinemountainlake.com)) and fill it out and sign online or you will be asked to sign the form when you register in the Golf Shop. Click on amenities, then click on golf and you will see the agreement with other forms available. If you have any questions, please call the Golf Shop 1-209-962-8620.

## CARE OF THE GOLF COURSE

**TAKING CARE OF THE GOLF COURSE IS EVERYONE'S RESPONSIBILITY; PLEASE DO YOUR PART!**

**Replacing Divots** – PML is a **DIVOT FIRST** facility; that means that if the divot is intact or even a portion of the divot is intact, we want you to replace the divot first and press the divot down firmly with your foot. When an intact divot is replaced, it will begin to root right away but a mulch filled divot will take weeks to fill in. If the divot hole is not totally filled in by the divot that you replaced then fill the rest of the hole with mulch and press down the divot firmly with your foot. If the divot is not intact, then fill the divot hole with mulch and smooth the mulch with your foot so it is level with the ground.

**Repairing Ball Marks** – This is one of the major negatives in our great game; players either do not know how to repair ball marks correctly or don't even attempt to repair them. Here is the correct way to repair a ball mark:

**Insert the divot tool just outside the edge of the ball mark, use the divot tool to mend in the outside portion if the ball mark towards the middle. Then use your putter to tap down the repaired turf. If a ball mark is repaired properly, you will not even be able to tell that there was a ball mark. NEVER PULL UP THE MIDDLE OF THE BALL MARK.**

**Raking Bunkers** – We are back to normal procedures concerning bunkers; PLEASE make sure that you rake the bunker after you have hit your shot.

**Golf Carts** – Driving golf carts on the fairways has a negative effect on turf conditions over time. PLEASE use the 90-degree rule posted in each golf cart in order to minimize the cart traffic on the fairways.

## PINE MOUNTAIN LAKE GOLF APP

Pine Mountain Lake Golf & CC has an app that you can download FREE from the app store. There are many fun and useful features on the app such as:

- Golf course GPS
- Players can measure their shots
- Golf course hole by hole flyover
- Interactive scorecard
- Score posting
- Player profile and automatic stats tracker
- Special offers
- Food & beverage menus and ordering
- Receive notifications concerning special events
- Weather information
- PMLA Member information & online payments

# PINE MOUNTAIN LAKE G&CC 2024 MOTHERLODE INVITATIONAL JUNE 20-22, 2024



PINE MOUNTAIN LAKE  
**MOTHERLODE  
INVITATIONAL**  
SINCE 1978

THE 47<sup>TH</sup> EDITION OF THE  
**MOTHER LODE INVITATIONAL**  
IS COMING THIS SUMMER!

DON'T MISS OUT ON THE  
GREATEST GOLF TOURNAMENT  
IN THE FOOTHILLS

**SIGN UP ONLINE AT PMLMGC.COM**  
**OR PRINTABLE ENTRY FORMS ARE AVAILABLE AT**  
**WWW.PINEMOUNTAINLAKE.COM**

FOR MORE INFORMATION CONTACT MIKE COOK  
**1-209-962-8620 OR GOLFPRO@PINEMOUNTAINLAKE.COM**

## DOCKS

CARRIE HARVEY – COMMUNITY  
STANDARDS SPECIALIST

Spring has sprung! Winter has come and gone, and it is so nice to see sunny days ahead of us. Perfect time to get out and enjoy our beautiful lake. Did you know you can check the lake level and temperature by visiting <https://www.pinemountainlake.com/Imarina/>? Log on and check it out, if you not done so yet!

For those of you that are lucky enough to own a lakeside property, please take some time to review the Lake Shoreline Improvement in our ECC rules, guidelines, and construction standards. Property Owners are responsible to meet the requirements and know the regulations. The following is some of the things we look at while doing our dock inspections, that will happen this Spring:

- Dock shall not extend into lake more than twenty (20) feet from the high-water line. (High water line is defined as 2,550 feet Mean Sea Level)
- Material shall be of a non-corrosive material or treated wood.
- Make sure your dock is in good repair.
- Flotation must be designed with safety factors in mind and should allow for changes in lake level.
- No permanent pilings are permitted in the lake.
- One dock per lot is allowed.
- Each dock must have a Unit and Lot Number placed where it can be seen from lake.
- A private dock shall not exceed ninety-six (96) square feet, excluding ramp.

If you are planning on making any improvements, please be sure to submit your plans to the Environmental Control Committee for approval at <http://www.pinemountainlake.com/ecc-project-submittal-process/>.

As always, if you have any questions or concerns you can contact me at 1-209-962-1242 or email me at [compliance@pinemountainlake.com](mailto:compliance@pinemountainlake.com). I will be happy to assist you Happy Spring!



# THE END OF AN ERA

ASHLEY HENDERSON – ARCHITECTURAL CONTROL SPECIALIST

Paint holds a certain nostalgia for me having grown up in a house painting business—paint was a constant presence—as much a part of my family as a relative. It was there when I followed my dad around job sites as a child, to my first big girl job working in the family painting business, to my college art classes... and now even my job here at Pine Mountain Lake. Suffice to say, paint has helped make me who I am.

So, for me, the closing of Kelly Moore, (and my dad retiring a few years back) signals the end of an era. But, like a lot of you out there, there are still layers of paint on our walls documenting the different versions of our life over the years—the pale pink princess palace of girlhood, to the moodier hunter green of adulthood—and everything in between. And while Kelly Moore may no longer play a part in thickening our walls with new identities, other companies will.

That being said, we are working with various paint companies to update our approved paint color lists. We currently have two Dunn Edwards boards available online (one has matched the previously approved Kelly Moore colors), and we are in the process of getting other companies to provide approvable color schemes for members

to choose from. You can access our current Dunn Edwards color schemes online, in the office, or by scanning the following QR Code:



Of course, if you have your heart set on a color that we do not have, you can always submit your choices for the Committee to review. All paint colors are reviewed on a case-by-case basis, and take into account factors such as terrain, neighboring homes, the foliage, etc. When submitting colors that are not on our approved list, please note that the Committee prefers that your home have visual contrast and texture, and feel that monochromatic homes are not in line with the visual harmony of the community. You can submit both colors from our approved lists, or any other color that represents the current version of yourself, online at:



[pinemountainlake.com](http://pinemountainlake.com)

As always, please do not hesitate to reach out with any questions. 1-209-962-4286, or [ecc@pinemountainlake.com](mailto:ecc@pinemountainlake.com)

As always, please do not hesitate to reach out with any questions. 1-209-962-4286, or [ecc@pinemountainlake.com](mailto:ecc@pinemountainlake.com)

## PML SAFETY REPORT

	FEBRUARY	1st Qtr	YTD
Guest Passes Issued	746	1,425	1,425
Vendor Passes Issued	311	598	598
Temporary Resident Passes Issued	727	1,289	1,289
Vehicles Admitted	8,559	16,711	16,711
Vehicles Refused Entry	262	423	423
Phone Calls Received	1,856	3,874	3,874
Residential Alarm	2	6	6
Animal - Loose	13	21	21
Animal - Impounded	2	7	7
Animal - Dead/Injured	1	6	6
Animal - Disturbance	0	0	0
Patrol Assist	86	192	192
Public Assist	6	10	10
Welfare Check	0	3	3
Transport	4	6	6
Traffic Hazard	3	3	3
Traffic Control	3	3	3
Excessive Speed/Reckless Driving	1	1	1
Gate - Tamper	0	0	0
Gate - Follow Through	7	19	19
Gate - Malfunction	5	6	6
Gate - Struck by Vehicle	5	8	8
Control Burn Reported	47	102	102
Fire Safety - Smoke Complaint	0	2	2
Hazard - Tree Down	4	5	5
Residential Disturbance	1	4	4
Amenity Burglary	0	0	0
Residential Burglary	1	1	1
Grand Theft	0	1	1
Petty Theft	0	0	0
Trespassing	0	2	2
Vandalism	0	1	1
Property Damage - PML	1	1	1
Property Damage - Resident	2	2	2
PML Regs Violations Resident	0	0	0
PML Regs Violations Guest	0	0	0
Vehicle - Citation Issued	1	1	1
Vehicle- Accident PML	0	0	0
Patrolling Unit	1221	2,457	2,457
Amenity Security Check	2,070	4,010	4,010
Residence Security Check	202	320	320
Monitoring Tennis Courts	0	0	0
Weapon Violation	0	0	0
Fixed Post	2	7	7
Courtesy Notice Issued	5	31	31
All Other Fees Collected	\$39,792	\$73,186	\$73,186

## 24/7 RENTAL COMPLIANCE HOTLINE

IT JUST GOT EASIER TO REPORT, PROVE,  
AND RESOLVE NON-EMERGENCY  
SHORT-TERM RENTAL RELATED PROBLEMS  
IN REAL TIME, 24 HOURS A DAY, 7 DAYS A WEEK

# 1-209-231-4543

# BUILDING OUR COMMUNITY

SUZETTE LAFFRANCHI – COMMUNITY STANDARDS DIRECTOR

## OPEN LAND DOES NOT MEAN OPEN ACCESS

Warmer weather brings beautiful greenery, seasonal blooms, babbling creeks and an increase in visitors who come to enjoy nature’s show off season. Sounds like a peaceful time to take a stroll through the woods but strolling onto private property could cause unwanted conflict. A common rule to remember is that there is NO trespassing or parking on private property, or green belt areas to access the Lake or Golf Course.

Please inform your guests and tenants that Pine Mountain Lake is a group of private property owners and at no time shall you wander through other private property without permission from the owner of record. Adjoining property shall not be trespassed upon. If you use your neighbor’s property for any purpose, please obtain permission, in writing, from your neighbor.

If trying to access the lake for a picnic or some peaceful time to reflect, there are four common areas to visit the lake; Fisherman’s Cove, Lake Lodge, Marina Beach, and Dunn Court Beach. Pine Mountain Lake also offers walking trails with plenty of mountain views, tall pine trees, and seasonal creeks. Check out the Big Creek Trail, Rock Canyon Trail, or the Campground recreation and trail area, or visit the Equestrian Center to do a fun guided trail ride.

A map of Pine Mountain Lake Association is available at the

Administration Office for a fee. Please highlight these common areas for your guests to prevent an unintended trespass. Visit our website at [www.pinemountainlake.com](http://www.pinemountainlake.com) or scan the QR code for easy on-the-go access. There you will find some great resources such as the Guest & Renters Handbook, which is a resource for renters and guest to learn about the PML community standards and provide them with information about our amenities, trailhead parking areas, and hiking trails maps.



In order to avoid conflicts with your neighbors and maintain your own peace of mind, it is best to have your property corners clearly marked to know your property boundaries. Once you have taken the steps to confirm your property pins, please make the effort to keep your property well maintained pin to pin with your property boundaries clearly identified.

Please make sure your Unit and Lot numbers, as well as your house numbers are posted where they can be seen from the street. This is for Emergency Service units and compliance with Resolution 89.20.

As always, if you have any questions, please feel free to reach out to me at 1 (209) 962-1241 or [communitystandards@pinemountainlake.com](mailto:communitystandards@pinemountainlake.com). I will be happy to guide and provide you with the information you need to navigate our governing documents and maintain our beautiful community.

# FIRE SAFETY

JOE MILANI – FIRE SAFETY COORDINATOR

The Fire Safety team will be planning and coordinating several wildfire mitigation projects around the Association this month. New construction of shaded fuel breaks will be built in strategic areas around the development; we are also planning and scheduling maintenance of the existing fuel breaks currently in place. Next month the team will begin ramping up our routine residential fire safety inspections. If you would like a fire safety inspection of your home or property, please contact us to set up an appointment. Although beautiful this time of year it is imperative to stay vigilant and remember that we live in the Wildland Urban Interface and with it the responsibility to maintain your defensible space and prepare for the fire season ahead of us.

Owning a home in Pine Mountain Lake provides the satisfaction of living in a great community. The local rules and restrictions, which you became acquainted with when you purchased a home, are important in maintaining ownership here. I would like to highlight one rule that is occasionally overlooked or forgotten.

- **ARTICLE VIII, SECTION 1, Use of Lots (k).** – No existing trees with a diameter greater than five inches shall be destroyed, uprooted, cut down or removed from any lot without first obtaining a tree-cutting permit from the Association.

This rule can be found in Pine Mountain Lakes Articles of Incorporation, By-Laws, and Declaration of Restrictions handbook “flash drive” you received with your new owner information packet. For any tree over five inches in diameter please fill out a Tree Removal Request form found on our website at <https://www.pinemountainlake.com/tree-removal-request-2-2/>. If this rule is not followed and trees are removed prior to PMLA approval monetary fines and penalties may result. Pine Mountain Lake has experienced major tree mortality due to drought and bark beetle; because of that, preserving live trees is of the utmost importance.

Please remember to test your smoke and carbon monoxide detectors once a month and replace any faulty alarms or low batteries immediately.

Lastly, fire safety inspections will continue in Pine Mountain Lake. Remember a fire safe community begins with you! If you would like an inspection of your property, or you are looking to educate yourself more, our fire safety team would love to help. If you have questions or concerns regarding fire safety, you can contact Amanda Birmingham at 1-209-990-5263 or email her at [Inspector@pinemountainlake.com](mailto:Inspector@pinemountainlake.com). I can be reached at 1-209-990-5260 or Email [fsc@pinemountainlake.com](mailto:fsc@pinemountainlake.com).

## GOVERNING DOCUMENT ENFORCEMENT ACTIONS FEBRUARY 2024

Courtesy Notices	23
Notice of Non-Compliance	3
Final Notice of violation	4
Fines Assessed	2
Member Service	636



# FROM YOUR TC DISTRICT 4 SUPERVISOR

SUPERVISOR KATHLEEN HAFF

## THE PINE MOUNTAIN LAKE FUEL REDUCTION PROJECT

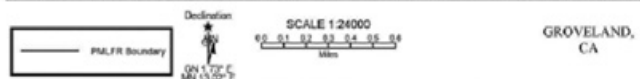
Good News!! The Tuolumne County Resource Conservation District received a Forest Health Grant through CalFire to treat about 640 acres of land in the Groveland-Pine Mountain Lake area to develop a defensible space fuel break from the north side of Ferretti Road (near the stables) south to Alice Lane and Highway 120. This fuel break will extend a little over one mile and will create a wide area (quarter mile) swath. The project is within the Old Long Gulch Ranch and beyond. Please see map. This work will tie right into the work that the Pine Mountain Lake Association (PMLA) has done.

This project will dramatically decrease the wildfire threat to the 2,834 parcels within PMLA, and approximately 1,250 other parcels within the Groveland Community Service District. As we all know, this region of the South County has been significantly impacted by large wildfires in the past.

The fuel reduction project has three interrelated goals:

- Goal 1 is to build a defensible shaded fuel break on the eastern flank of Pine Mountain Lake.

- Goal 2 is to reduce the potential of rapid release of greenhouse gas (CO2) emissions that would occur if a wildfire was to enter this site.



- Goal 3 is to increase the forest health and resiliency of the forested ground east of Pine Mountain Lake.

The objectives of this project revolve around implementation of activities that will dramatically increase the safety of human life, structures, utility and resource infrastructure which play an important role for the rural economy of Pine Mountain Lake, Groveland, and Big Oak Flat.

Treatment of the project area will begin later this Spring and should be completed by the end of the year.

# TEE TO GREEN

ROB ABBOTT – GOLF COURSE SUPERINTENDENT

Over the winter months grasses on the golf course have been growing very slowly, or not at all. As temperatures begin to rise so will the turf growth throughout the course having significant impact on course playability. Quality of turf on greens and tees is basically turf density, smooth surface, ball mark and divot recovery and speed none of these can happen without warming soil temperatures prompting growth. Once the soil temperatures catch up with the warmer days course conditions will steadily improve.

Many areas of the course can and will be a little soggy leading into spring and early summer. Winter and spring rains have saturated the ground and activated springs in many areas. These areas will steadily dry out as days get warmer and longer. Don't be fooled by a few warm days and expect to have summer conditions, we will see less bounce and ball roll and even some cart restrictions well into spring.

Once the spring turf bloom really gets

under way, we will be challenged with keeping up on seventy acres of explosive growth. The change in growth can seemingly happen in a matter of days and bounce around a bit with temperatures, but once we see consecutive weeks of 70 plus temps its going to be all hands-on deck keeping up. Players periodically may see or be in some excessive turf or even some clippings, it may be tough at time but everything will settle down after the initial burst of energy.

As I mentioned last month, we will have many cultural practices happening over the next couple of months. Please do not be surprised if there is some disruption or activity in some play areas as these practices are a must for the busy season ahead. Recovery from these practices is typically quick, but if we have any bouts of cold weather, it may slow the process.

Being on the course in the spring is my favorite time of the year, grass is vibrant, flowers are out, days are long and warm, perfect for a round of golf. Remember there may be some challenging conditions from time to time so be patient and enjoy.



DRE# 01113243  
 **MLS**  
 18687 MAIN ST., STE E  
 GROVELAND, CA 95321



**KATHY NIEDENS**  
 REALTOR® / SALESPERSON  
 209.962.1111 OFFICE  
 209.985.4031 CELL  
[knieldens@gmail.com](mailto:knieldens@gmail.com)

**LIST & SELL WITH  
 KATHY & GET YOUR  
 HOUSE CLEANED  
 FOR FREE  
 ASK FOR DETAILS**

**HOME • CARPET  
 WINDOWS**

As both a realtor, and the owner of heavenly cleaning service, I can offer you more. We all know how important it is to get your home looking it's best when selling or when buying a new home, cleaning it before you move in. Well, let me take care of it. **Home cleaning. Carpet cleaning. Windows cleaning. Could save you time, trouble, and money.**

**HEAVENLY  
 CLEANING SERVICE**

**209.962.6418**



**PROFESSIONAL CARPET CLEANING & HOUSEKEEPING SERVICE**



# FROM PMLA SAFETY COMMITTEE

BOB ASQUITH – PMLA SAFETY COMMITTEE

**T**he Pine Mountain Lake Safety and Security Committee is a standing committee authorized by the PMLA Board of Directors to inform its decision making and promote its mission. The Committee meets every month.

Join Our Committee Meeting: Members may attend our committee meetings.

Our next meeting is April 10th at 9am via Zoom. Please email [safetyandsecuritycommittee@pinemountainlake.com](mailto:safetyandsecuritycommittee@pinemountainlake.com) to obtain your invitation.

Your Safety Committee will be researching and making recommendations to the BOD during 2024 on the following topics:

✓ Partnering with CERT to conduct Fire & Communications Preparedness Workshops, and Emergency Concepts. Develop checklists for evacuations.

**First Aid/AED/CPR training** will be March 23rd from 9am to noon at the Lake Lodge. Professional certification will be provided. Cost is \$75.

Please RSVP to the Safety Committee at the email [GrovelandCERT@gmail.com](mailto:GrovelandCERT@gmail.com)

✓ Providing members, guests, and Short-Term Renters with vital emergency information through information posted inside the front door, mirror hangers and electronic messaging. We are presenting information to mark "T" intersections as to which way out.

✓ Continued to develop and plan for power outages. Opened discussions for using PML facilities for Warming, Cooling, Charging during outages.

✓ Improve PMLA emergency communications and provide members with relevant emergency communications information. See GMRS article in March PML News

for more information.

✓ Continue to work with PMLA to improve the flow of traffic at the main gate during peak times. Use Elder Lane to avoid the backups at those times.

✓ Continued to locate and articulate measures to reduce speeding within PML.

We are open to other suggestions that will make our Pine Mountain Lake community safer for all members, guests, and renters. Please direct comments to our email above.

**Firewise Communities**—Contact the Safety Committee (email address below) for details.

- You can start a Firewise community and make your area SAFER. It is easy.
- SAVE on your Homeowners Fire Insurance.

**Emergency Evacuation**—These maps all have been approved and are ready to post & use. Maps show the routes out of PML and the major evacuation routes away from Groveland.

Evac Maps are on the PMLA website. Download & print your copy.  
<https://www.pinemountainlake.com/.../PML-Evacuation-Maps.pdf>

Please email comments to: [safetyandsecuritycommittee@pinemountainlake.com](mailto:safetyandsecuritycommittee@pinemountainlake.com)

**T**here have been significant emergencies in Pine Mountain Lake's recent past. The Flood of 2018 and the Moc Fire evacuation to name two. During these emergency times, effective and timely communication is paramount to preserving life and property. The PMLA Safety Committee is partnering with local Ham Radio operators, Groveland CERT and the Tuolumne County Office of Emergency Communications (OES) to provide a reliable and comprehensive radio backup system. In the weeks ahead, we will be holding Town Hall type meetings

to explain how to participate. Here are some preliminary concepts.

**WHAT COULD POSSIBLY GO WRONG:** These are just some of the things.

- Power is out.
- The Internet is not working.
- Your landline is down.
- The connection carrying Land Lines, Cellular voice, text & data, Internet service fails.

**HOW WILL YOU GET INFORMATION:** These are the kinds of information you will need.

- **First** – General Awareness of Possible Emergency
  - **Next** – Specific Alert Comes (Emergency Notifications)
  - **Share** – Who Else Needs to Know (someone off the Hill)
- EMERGENCY NOTIFICATIONS:** Be ready to use all of these, Sign up for all.
- Tuolumne County Alert System
    - o Landline call
    - o Text message to Cell Phone: All in local family, some family off the hill.
  - PG&E Alert System
  - Posts to Social Media – These Trusted Sources ONLY
    - o Office of Emergency Communications (OES)
    - o Sheriff
  - Radio Stations – Do you have a radio? Batteries? Which Station?
  - Email – How will you get critical info during power outage?
    - o Does your internet work during a power outage?

## How to Sign up for Alerts

1. Google "Tuolumne County Alerts"
2. Click on "Emergency Alerts"
3. Click on the words shown
4. On the right, click on *Sign up*
5. Fill in the form
6. WRITE DOWN what you entered
7. Click on **VERIFY THIS ADDRESS**
8. Be certain the address is yours
  - a. Then Select Your Location
  - b. Then click on This is My Location
9. Fill in Email, CELL phones
10. Click on *Accept Terms*
11. Click on *Create Account*
12. Fill in more on *Complete Profile* screen
  - a. More phones – Land line, Cell phone, Off-hill Cell phone
  - b. Scroll to bottom – Click on *Save & Continue*
13. On next *Complete Profile* screen, Click *Save & Continue*
14. On next *Complete Profile* screen
  - a. Click any information about you appropriate
  - b. Click on *Save & Continue*
15. On next *Complete Profile* screen
  - a. Review information (Edit if necessary)
  - b. Click on *Finish*
16. Click on *Logout* (top left)

- o What is your backup plan for email?
  - Call from Relative
- SIGN UP FOR ALERTS:** This most important to be complete.
- Which Numbers
    - o Your landline
    - o Your cell phone
    - o Your family's cell phones (Someone off the hill)
  - Trusted Sources Alerts
    - o Tuolumne County Emergency Alerts
    - o PG&E Alerts

The Pine Mountain Lake Safety and Security Committee is a standing committee authorized by the PMLA Board of Directors to inform its decision making and promote its mission. The Committee meets every month.

Please email comments to: [safetyandsecuritycommittee@pinemountainlake.com](mailto:safetyandsecuritycommittee@pinemountainlake.com)





**WE ARE STILL BUSY SELLING IN THIS MARKET !!!**  
Call us to tell you what your home could sell for right now.

**Listing  
Staging  
Makeover  
Specialists !!**

**YOSEMITE AREA  
REAL ESTATE**

**Make  
Chris & Gina  
your  
1st call!**

**CHRIS H. LAKE**  
DRE 00946632  
**209-768-6156**  
*chrishlake@gmail.com*

**GINA GIAMPIETRO HERNANDEZ**  
DRE 01226555  
**408-506-6944**  
*GinaGHRRealEstate@gmail.com*

**18687 MAIN ST. STE B2 GROVELAND**

*View listings at [www.YosemiteAreaProperties.com](http://www.YosemiteAreaProperties.com)*

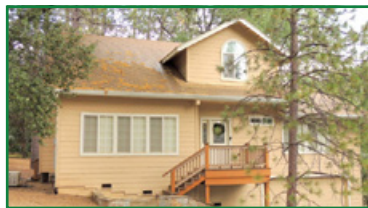
**PAUL S. BUNT REAL ESTATE BROKER DRE 01221266**

**CLOSE TO THE LAKE**



**19955 Pleasantview Unit 1 Lot 233 \$449,000**  
3bd/3ba 2043sf Your opportunity to have a lovely & spacious home in the mountains near the beach & golf course in beautiful Pine Mountain Lake just 35 miles from Yosemite! Large home w/plenty of space for many w/great room living area w/stone hearth & wood burning fireplace stove for a cozy fire on cool mountain days & nights. Lg dining area w/sliding door to private back deck for wonderful outdoor living & dining overlooking nature. Huge kitchen w/breakfast bar, beautiful new bright LED ceiling lighting, 2 pantry closets, stainless appliances & access to the back patio deck. A must see house! Split level w/very private bedrooms - each room has 2 big closets and each can easily fit more than one queen bed for additional family or guests, 3 full bathrooms, indoor laundry, central vacuum system, central heat & A/C, large oversized finished garage, private deck area, and just a minute drive to Dunn Ct. Beach.

**BEAUTIFUL & SPACIOUS MOUNTAIN HOME**



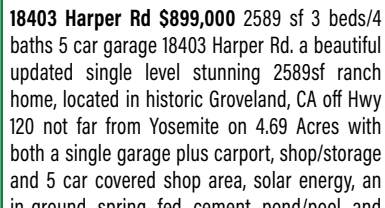
**13201 Wells Fargo Dr. Unit 2 Lot 377 \$499,900 2536sf**  
3bd/3ba .28ac. Your chance to own a lovely mountain getaway or full-time home in beautiful Pine Mountain Lake. Built in '94, this home has both interior & exterior lg living areas. 2 bedrooms including oversized master w/large walk-in cedar wardrobe closet, hall bath & guest bedroom w/built-in desk & cabinetry on the main living area, over 15 feet high ceiling in living room area w/grt rm concept, gas freestanding f.p., vast open spacious kitchen w/tons of storage, tall breakfast bar, 2 sink areas, gas range/oven, a sliding door from dining area to the expansive entertaining size deck patio made of trex decking material. Upstairs is an open loft family room w/pool table, 3rd bedroom w/built in beds and/or seating & shelving, full bath & a lg office w/built-ins that can be a 4th bedroom or den. Garage is 3 car size w/one side tandem & built-in storage. The house is equipped w/whole house backup generator, central heat and a/c, lovely stone entrance w/level parking & room for boat or additional vehicle parking.

**CUTE & COZY SINGLE LEVEL**



**12699 Cresthaven Dr., Unit 4 Lot 485 \$359,000**  
3Bd/2ba/2car Cute and cozy single level home in beautiful Pine Mountain Lake. Your golden opportunity to live or vacation in the mountains just 35 miles from Yosemite. This home has energy efficient solar powered electricity, central heat and air conditioning, stone hearth with wood burning fireplace stove, beautiful hardwood floors, tile flooring and awesome spacious enclosed sun room with mountain views, main bedroom with sliding door to backyard area. The kitchen has a large pantry closet and a big plus is a convenient 2 car garage. This home is located up the street from Lake Lodge Beach and playground. Pine Mountain Lake has 3 beach areas plus Fisherman's Cove, 18 hole public golf course with restaurant and bar, in ground swimming pool, tennis and pickleball courts, airport, equestrian center, playground areas, walking trails and more!

**STUNNING RANCH HOME 4.69 ACRES**



**18403 Harper Rd \$899,000 2589 sf 3 beds/4**  
baths 5 car garage 18403 Harper Rd. a beautiful updated single level stunning 2589sf ranch home, located in historic Groveland, CA off Hwy 120 not far from Yosemite on 4.69 Acres with both a single garage plus carport, shop/storage and 5 car covered shop area, solar energy, an in-ground spring fed cement pond/pool and also income producing rental studio house, all in a serene peaceful natural setting you must see if the simple life surrounded by beautiful tree views and blue skies is what you desire! This wonderful incredibly spacious home with a freshly painted exterior & interior has 3 bedrooms with brand new carpeting plus a room without closet with laminate flooring, making 4 private sleeping quarters or perhaps an office or craft room, 4 full bathrooms including one ADU accessible. Spacious living room with tall vaulted rustic knotty cedar and rough hewn cedar beams, built in book shelves, and featuring a stunning brick wall/wood burning fireplace and hearth with a wood mantel and sconce lighting plus rustic style cork flooring. The bright spacious updated kitchen has LVP flooring, a large dining area new stylish lighting recessed and pendant light fixtures, a breakfast nook, granite counters with breakfast bar, stainless refrigerator and dishwasher, oiled farmhouse sink, a wall of pantry cabinets in adjacent laundry/mud room and one bathroom. Another large walk-in storage closet is between kitchen and living room area - tons of great storage. 1 year new roof, tankless water heater, newer double pane windows throughout and every room has beautiful views! The entire front porch is covered with one step to entry and beautiful lawn areas with a circular driveway, mature trees and shrubs and a front yard producing apple tree. There is a spring available for irrigation and District water for house use. A wonderful property very close to downtown Groveland great for a large or small family and a venue for large gatherings. Also 7.71 acre adjacent lot is for sale with historic landmarks bordering BLM on one side. Parcel B Harper Rd. See the ranch virtual tour at <https://www.tourfactory.com>



**CHALET GOLF COURSE HOME W/BEAUTIFUL VIEWS!**



**12703 Mueller Dr. U5 L263 \$399,000 3 Bdrm 3 Ba 2 Car**  
Rare opportunity to own a chalet in the mountains & be on the golf course with fabulous views! This sweet cabin home has such charm & is so spacious! 1976sf of living space, 3 levels, 3bd/3bath, plus a wonderful screened open view porch room, an open view loft & a lg downstairs family room w/wet bar & bathroom, perfect for a game room for family fun or entertaining. The kitchen is open & spacious w/breakfast bar, dining area w/sitting nook. The tall open beam living room features a beautiful brick fireplace & hearth w/gas fireplace surrounded by tall peak windows & 2 sliding doors to expansive wraparound deck balcony overlooking the 5th fairway. One main bdrm on mail level w/bath & 2 bedrooms & bath both w/bath access on upper level. Large indoor laundry room w/storage cabinets, central heat & A/C, auto attic fan, lower patio area, storage shed, lg 2 car garage & mature natural landscape just one block from PML Golf Course & Country Club.

**COMMERCIAL PROPERTY**



**17870 Hwy 120 \$485,000 3.74 acres on**  
Hwy 120 just 25 miles west of Yosemite National Park. The Property has 2 metal warehouse style buildings w/a total 3000sf. Presently being utilized as auto repair shop & auto salvage. Tenants would like to stay if possible but not required. Rent is month to month at this time. Property is on both sides of Hwy 120. The section on the south side of the Hwy is 1.88 acres and is a dedicated drainage easement. The south side of the highway currently receives income for PML signage. The property has public water and sewer and has been recently surveyed. Located on the Hwy 120 corridor to Yosemite National Park. Just 30 scenic miles to the park entrance. Local elevation is below 3000' above the fog and below the snow line.

**MOVE-IN READY MOUNTAIN HOME!**



**12022 Breckenridge \$449,000 3 bds/2baths 2 car garage.** This adorable single level, updated, beautifully maintained home in the mountains is just .7 mile from the marina, close to golf course & PML amenities, & a dream come true! New windows throughout make this a very energy efficient home. Wonderful Great Room concept, beautiful w/rustic stone hearth wood burning fp stove - literally heats the whole house! (though there is also central heating) Gorgeous quartz grey w/white, bull nose counters tops in the spacious open kitchen w/stainless Frigidaire appliances including a brand new gas range/oven to be installed prior to close. Lvrw w/ bright windows, vaulted ceiling with ceiling fan light. The breakfast bar can seat 5 & has chrome pendulum lighting, double stainless sinks. Overhead ambience cabinet lighting, skylight, recessed lights & lg dining area w/bay window & serving bar. Front & back deck areas invite outdoor living w/wonderful views a fabulous, like new hot tub - must see! The lg main bedroom has walk-in closet & sliding door to hot tub patio, both bathrooms remodeled like new + 2 bright & cheery guest bdrms. Decking in front & back are made of stylish & low maintenance grey Trex decking. Oversized garage w/new garage door + ample under house storage. Upgraded propane tank Rock Cover & a huge backyard area, partially fenced for small pets.

**CUTE AND COZY CABIN**



**19762 Cottonwood \$299,000** A super cute affordable single level, 2 bedroom 2 bathroom 1038 sf cabin home with a large awesome covered deck patio that you can enjoy the outdoors and natural views all year round. Spacious great room with vaulted open beam ceiling, a cozy wood burning fireplace stove on a stone hearth, glass door access and large windows to view the covered balcony deck patio area which is fantastic for all year round outdoor enjoyment, one of the best things about having a cabin in the mountains. Indoor laundry area, central heat and a/c plus energy efficient solar system. A bit of TLC needed with paint and desired upgrades, but a perfect and unique opportunity to make this great little cabin home all your own. A propane tank is on site. Pine Mountain Lake has 3 beach areas, boating, fishing, swimming; an 18 hole public golf course with a driving range, restaurant and bar, swimming pool area, hiking trails, tennis and pickleball courts, an airport, an equestrian center just a few hour drive from the Bay Area and Central Valley, and 35 miles from Yosemite National Park.

**ABSOLUTELY STUNNING**



**18570 Harper Rd \$399,000** Cabin style exterior, beautifully upgraded and refurbished new, 3 bedrooms 2 baths 1430 sf home on .29 Acres. Absolutely stunning and in move-in condition!!! Renovated from top to bottom, inside and out, like new condition, cabin home to enjoy full or part-time, or perhaps a vacation rental, and not lived in since the upgrades. Lots of parking too! Quartz slab countertops in kitchen & upstairs bathroom (quartz is found to be more durable than granite against chipping & cracking) New cabinets in kitchen. New stainless LG kitchen appliances. Waterproof Pergo durable laminate flooring throughout living room & kitchen. New double pane vinyl windows, sliding door and raised profile baseboards throughout. New Ductless HVAC system on main floor and brand new electric fireplace/heater on lower level. Entry door with beautiful beveled glass and both entry and lower exterior doors are low maintenance fiberglass doors that resist dings and dents like metal doors. New cement step at lower door entry. Open and spacious bright living room with surround windows with gorgeous views, recessed lighting. Plenty of room for RV Parking and a 4 minute drive to downtown Groveland.



# Spring has Sprung - Buyer's Searching. Inventory is LOW: It's Time to List With Us.



**LARRY JOBE**  
REALTOR - TAXIWAY EXPERT  
**209.768.5508** Cell  
larryjobe1@gmail.com  
DRE #01444727

**PENNY CHRISTENSEN**  
BROKER ASSOCIATE - CRS  
**925.200.7149** Cell  
penny@askpenny.com  
DRE #00785760

SPRING A time of family, friends, making new friends and optimism. Warm weather brings out dreams of summer days, family outings and mountain getaways. It's when Buyers begin looking for that perfect property to fulfill their dreams. Now is the time to list your property for sale.

Two local, experienced agents to meet your needs.



## PILOTS OR AUTO COLLECTORS DREAM

Hangar  
49.5'x32'  
Bi - Fold Door  
Luxury Home  
Runway View  
Large lot  
Airport Access

19273 Salvador Ct.  
Unit 5 Lot 30  
3 bdrm, 2 ba, 1656sf  
Single story on .70 Acres  
**\$349,900**



20992 Iris Ct. - U12 L56-A - 3 bdrm - 3.5 ba - 3543sf  
Stunning Home - Updated Modern Conveniences  
Classic Charm - High End Finish - Master Bedroom Suite  
Flying a passion? Live on the Best airport in the west.  
**\$899,900**



[www.YosemiteAreaRealtors.com](http://www.YosemiteAreaRealtors.com)

PAUL S. BUNT REAL ESTATE - DRE #01221266

## THE HOOF PRINT

KENDRA BROWN - EQUESTRIAN CENTER MANAGER

Winter is the time for comfort, for good food and warmth, for the touch of a friendly hand and for a talk beside the fire: it is the time for home." As much as we love the winter months, we are ready for SPRING!

Much like everyone else March brought us lots of work around the barns. It doesn't matter what the weather looks like: snow, flooding, or fire the horses must receive care. I would like to say thank you to our AMAZING staff team that showed up

each day and made sure the horses and property were taken care of daily. As we start transitioning into the warmer months, we are watching the horses closely as sometimes the warmer days and cool nights can cause sickness and uncomfortably.

April starts the beginning of our busy season here at the barn. We are hosting a Certified Horsemanship Instructor Certification April 8th through the 12th. During this time members of our staff team and community members will go through the process of becoming a certified lesson instructor.

Although the process is strenuous it is very rewarding to become a horseback riding instructor and to pass on the love of our equine partners with members of our community through riding lessons.

Another busy weekend on our upcoming calendar is Memorial Day Weekend May 25-27th. We will be putting on an event first of its kind not only to PML but to Tuolumne County, ROPING IN THE PINES. Roping in the Pines is designed to highlight and promote the tradition of the Vaquero Style of working cowboys. These cowboys develop their skills working on ranches and in the branding pens across the country. Many of the largest ranches in the country are in our home

state of California. Spectators are welcome to watch the competition, free of charge. Shopping and food vendors will be on site for concessions.

We would like to thank our event sponsors for helping make this event possible and awesome

Bank's Glass  
F.E.C.  
Wilco Farm Store  
Miller Brothers Auto Shop  
Crook Logging  
Lucky Buck Restaurant  
Tractor Supply  
Reichard Designs  
The Branded Vaquero  
Brennan Ranch  
Rocky Armitage



# MAINTENANCE MATTERS

RICK LAFFRANCHI – MAINTENANCE AND OPERATIONS MANAGER

*“Our spring has come at last with the soft laughter of April suns and shadows of April showers”*

April is here and better weather has arrived. At the time of writing this article in early March we have accumulated 28 inches of rain and 12 inches of snow, while the accumulations are small, the fact that we have received these amounts in just a handful of storms have created some damage, mainly to Dock A at the Marina. During the storm of March 2-3, a branch transition point was buckled by the quick increase in lake level causing extensive damage to the dock, along with that, we had damage to the gang plank which provides access from the parking lot to the dock. The gang plank issue will require the rental of a crane to remove and reset, while the branch transition will be repaired completely in house.

Along with the change in seasons we will see a change in responsibilities for

the two teams in Maintenance. The Facilities or “roads crew” will change their focus from snow and rain management to preparing our roads and Beaches for the upcoming recreation season. This means the painting of stops and bars, the painting of road edge markings, like no parking red or unloading blue. Along with those tasks, the crew is responsible for preparing the swim areas, repairing floats on the docks, and general summer activity maintenance.

The Building and Grounds crew will also be making preparations for the season ahead, landscaping will be updated, building paint will be touched up and at the Swim Center we will be preparing by repairing the deck, firing up the boiler and tuning the chemical dosing system for a safe fun summer. It is shaping up to be a wonderful season of fun in the sun. And please remember if you see folks working on the road edge, slowdown, look around and be courteous. Have a great April!

# ALL PMLA HOMEOWNERS EMAIL OPT-IN PROGRAM

The Association is pleased to offer a money saving program available to all PMLA property owners. This program allows you to receive many of the documents we are required to provide to you via email. This option is important because:

**COST SAVINGS** – The Association is spared the expense of printing and mailing many documents to those property owners who sign up.

**ENVIRONMENTAL SAVINGS** – Less paper means less trash and reduced damage to the environment both in the disposal and production of paper and envelopes.

**REDUCED CLUTTER** – By receiving documents via email there is less paper for you

to deal with. All documents can be saved on your computer and viewed at your discretion.

**TIMELY RECEIPT** – Documents sent electronically are received in minutes as opposed to the days it takes for regular mail to arrive.

If these sound like good reasons to you, please sign up for the Document Email Program today using the attached form. Simply return the completed form to the Administration office at your convenience.

If you have any questions on this program please feel free to give us a call (1-209-962-8600) and we will be happy to explain the details and the advantages.

Please read the Terms & Conditions for the email opt-in program on the website, [www.pinemountainlake.com](http://www.pinemountainlake.com) under the Resources/Forms > Opt-In Email Program.

Mail form below to:

Pine Mountain Lake Association

19228 Pine Mountain Drive • Groveland, CA 95321



YES, I WANT TO ENROLL IN PMLA'S EMAIL STATEMENT AND DOCUMENT SERVICE. I ACKNOWLEDGE AND AGREE TO THE TERMS AND CONDITIONS SET FORTH ABOVE AS A CONDITION FOR PARTICIPATION IN THIS SERVICE.

PMLA Account Number: \_\_\_\_\_ Unit/Lot #: \_\_\_\_\_

Name: \_\_\_\_\_ Phone #: \_\_\_\_\_

Address: \_\_\_\_\_

Email Address: \_\_\_\_\_

Signature: \_\_\_\_\_

## PMLA OWNED LOTS FOR SALE

2/047	GAMBLE STREET	PENDING \$1,000
2/287	FERRETTI ROAD	PENDING \$2,500
2/448	WELLS FARGO DRIVE	\$1,000
6/113	FERRETTI ROAD	\$1,000
6/179	COTTONWOOD STREET	\$1,000
6/252	FERRETTI ROAD	\$1,000
7/062A	FERRETTI ROAD	\$1,000
7/239	DIGGER PINE STREET	\$1,000
13/264	PINE MOUNTAIN DRIVE	PENDING \$1,000

FOR FURTHER INFORMATION REGARDING THESE PROPERTIES PLEASE CONTACT PMLA AT (209) 962-8600

**BE SURE TO LIKE OUR PMLA FACEBOOK PAGES:**

[Facebook.com/PineMountainLakeCA](https://www.facebook.com/PineMountainLakeCA)

[Facebook.com/PMLARecreation](https://www.facebook.com/PMLARecreation)

[Facebook.com/PMLMaintenanceDept](https://www.facebook.com/PMLMaintenanceDept)

[Facebook.com/PMLGrill](https://www.facebook.com/PMLGrill)

[Facebook.com/PMLAEquestrianCenter](https://www.facebook.com/PMLAEquestrianCenter)

**NEW LISTING!**



**\$250,000**

39 Acres 1 Mile from Groveland  
Two houses allowed and level sites.  
Gorgeous views of high Sierra Peaks  
and Duckwall Mountain. GCSD water  
available. Vernal Drive access. Dirt  
road already in

**Tish Fulton, 209.985.0216**

**CUSTOM DESIGNED**

MLS# 20231494



12932 Green Valley Circle  
**REDUCED! \$549K**  
was \$579,000

5 Bedrooms, 2 FB, 1H/B  
Jetted Tub, Hardwood Floors  
Free Standing Fireplace,  
2166 SqFt, 2 Car Garage  
**Ron Connick, 209.206.0007**

**RANCH STYLE HOME**

MLS# 20231474

13035 Tip Top Court



**Reduced!**

**\$449K** was \$488K

2 Bd, 2 F/B, + Bonus Rm,  
2170 SqFt, 3 Detached  
Oversized Car Garage,  
Circular Driveway,  
RV Parking, Active Solar,  
0.98 Acre, 3 Merged Lot

**Tish Fulton, 209.985.0216**

**MUST SEE!**

MLS# 20231478

19269 Ferretti Road



**REDUCED!**

**\$345,000** was \$379K

3 Bedrooms, 2 F/B,  
Cathedral Ceiling,  
Large Kitchen with Great  
Pantry, Covered Porch,  
2 Car Garage, 1,552 SqFt

**Tish Fulton, 209.985.0216**

**Unit 11 Lot 41 NEAR AIRPORT**



11 - 41 Elderberry

**\$75,000**

1.5 acre Parcel .  
Save at least \$25,000  
on County and GCSD fees.

Use existing concrete slab-see  
Engineer's report on usability.  
Corner lot with two driveways in.  
**Tish Fulton, 209.985.0216**



**FOR AN  
INSTANT  
HOME VALUE  
ESTIMATE**



Ron Connick  
REALTOR®  
DRE #00575067  
209.206.0007



Carment Taira  
Office Administrator  
209.962.7765



Trish Fulton  
REALTOR®  
DRE #00760019  
209.985.0216

18727 Main Street, PO Box 792, Groveland, CA 95321 | 209.962.7765

© BHH Affiliates, LLC. An independently owned and operated franchisee of BHH Affiliates, LLC. Berkshire Hathaway HomeServices and the Berkshire Hathaway HomeServices symbol are registered service marks of Columbia Insurance Company, a Berkshire Hathaway affiliate. Equal Housing Opportunity. Information not verified or guaranteed. If your home is currently listed with a Broker, this is not intended as a solicitation.

**GUEST & RENTERS  
HANDBOOK  
IS AVAILABLE ONLINE!**

You can now view or print the  
Guest and Renters Handbook  
from the PML Website. Go to our  
website at:

**WWW.PINEMOUNTAINLAKE.COM**

and click on Resources, select  
Community Standards, then scroll  
down to the bottom of the page  
and click on Guest and Renters  
Handbook. This handbook has  
valuable information for Guests  
and Renters in Pine Mountain Lake.

**ATTENTION NEW PML MEMBERS!**

**WELCOME to PML...We're glad you're here!**

Once you have received your welcome letter from the Association you will have the  
information you need to log into the PML website ([www.pinemountainlake.com](http://www.pinemountainlake.com))

Once there click on the **RESOURCES** tab & then on the **NEW MEMBER ORIENTATION** icon.

The New Member Orientation page is **JUST FOR YOU!**

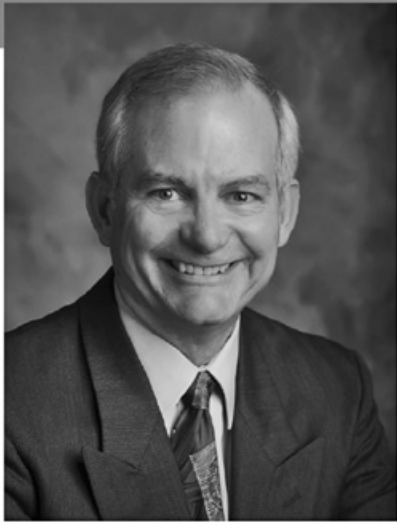
Here you will find:

- Member Orientation Packet
  - o Information on the Official PML Facebook page
  - o Gate Access Guest Pass internet program information
  - o Fire Safety contact and information
  - o Board Meeting Dates and information
  - o Rules, Regulations and Procedural information
  - o Information on PML Committees and Clubs
- Assessment Information
- PML Fact Sheet
- Getting Connected  
in Groveland

And **MUCH MORE!**







**PAUL S. BUNT, ESQ.**  
ATTORNEY AT LAW

ESTATE PLANNING  
PROBATE  
REAL ESTATE  
BANKRUPTCY  
ELDER CARE  
**209.962.6778**

Mountain Leisure Center, Groveland  
appointments available in Sonora and Lake Don Pedro

**PLACE AN AD TODAY**

Go to our website for more  
information and prices.

**[www.PineMountainLake.com](http://www.PineMountainLake.com)**



*Buying or Selling?*

**Personalized Not Franchised**

**209-985-7633**

*D.J. Kraft*  
REALTOR

Born and raised in Groveland and an experienced, local expert. My childhood was spent on the lake and riding my horses at the Pine Mountain Lake stables while my young adult years were spent buying, developing and adventuring in real estate. I LOVE my hometown and it's surrounding areas. It would be my pleasure assisting you with buying or selling. Let's work together!







# PINE MOUNTAIN LAKE REALTY

An Agent Owned Company

18919 Ferretti Road • PO Box 738 • Groveland CA 95321 • 209-962-7156 • www.pmlr.com



**Barry Scales**  
Broker/Owner  
209.484.7123  
DRE#00451887



**Lynn Bonander, GRI**  
Owner/Realtor®  
209.484.7156  
DRE#00683485



**Val Bruce, GRI**  
Owner/Broker Assoc.  
209.768.7368  
DRE#00578336



**Marc Fossum**  
Owner/Realtor®  
209.770.4750  
DRE#01956242



**Patty Beggs**  
Owner/Realtor®  
209.840.2293  
DRE#01339347



**Michael Beggs**  
Broker Assoc./Realtor®  
209.840.2294  
DRE#0133568



**Linda Willhite**  
Broker Assoc./Realtor®  
209.985.2363  
DRE#01063378



**Ann Powell**  
GRI, ABR, RSPS  
209-200-1692  
DRE#01268655



**Eleda Carlson**  
Owner/Realtor®  
209-814-4123  
DRE#00632516



**Beautiful Merged Lots on 0.66 Acre!**

3 Bd/2 Bth, 2 Car Attached Oversized Garage w/Shelves & Workbench, Approx 1800sf, Built 2019. Great Rm, Stainless Appliances, Pantry, Master Bd/Bth, Walk-in Closet, Separate Shower, Space & Plumbed for a Soak/Jetted Tub, Large Laundry Rm, Wrap Around Deck, Huge Sub-Area, Lots of Extra Parking, RV Pad with Full Hookups, Fenced Garden, Gazebo and Many More Unique Amenities!

11962 Mtn View 13-220  
\$474,900 MLS# 20240118



**Rustic Charm ~ Modern Convenience**

3 Bd/2 Bth, Attached Finished Garage w/ Cabinets, Approx 1300sf on 0.55 Acre. Great Rm, Family Rm w/Heat Stove, Solid Surface Countertops, Pantry, Open Dining, Handcrafted Wood Finishes, Rustic Accents. Master Bd/Bth, Laundry in Garage, Washer/Dryer Included. Newer Roof, Septic System, Gutters, Ductless Heating & Cooling Systems. Turnkey.

13325 Wells Fargo 2-337  
\$410,000 MLS# 20240112



**Ranch Style Home ~ Great Location!**

3 Bd/2 Bth, 2 Car Garage, Approx 1562sf on 0.38 Acre, Living Rm w/Propane FP, Vaulted Ceiling, Kitchen w/plenty of Counter & Cabinet Space, Large Skylight & Sun Tunnels, Pantry, Open Dining w/Octagon Window facing the Garden. Master Bdrm w/2 Separate Closets, Jetted Garden Tub/Walk-in Shower, Inside Laundry, Covered Porch, Patio. Circular Driveway, RV Parking, New Roof 2003.

19410 Pleasant View 1-74 \$435,000  
MLS#20240122



**Idyllic Farmhouse Retreat**

3 Bd/2 1/2 Bth, on 6.28 ACRES! 2- 3 Car Finished Garages, Large Living Rm w/Built-in Hutch- Propane Fireplace, Marble Tiled Foyer, Cathedral Ceiling, Whole House Fan, Spacious Kitchen, Brist Bar, Island, Granite Countertops, Pantry, Master Suite w/Walk-in Closet, Spa Like Bath, Den/Office, Laundry Rm w/Cabinetry & Utility Sink. Separate 844sf Guest House w/Garage. Barn/Horse Setup, Workshop & Much Much More!

\$1,125,000 MLS# 20231470



**Lovely Renovated Golf Course Condo**

2 Bed/2 Bath, 2 Levels Located on the #5 Golf Course Fairway. Living Room with-Floor to Ceiling Shelving, Carpeted, Slider to Patio Area. Kitchen with Plenty of Cupboards with "See Thru" Panels, Unique Lighting & Breakfast Bar, Open Dining Area, Master Bedroom with Slider to Balcony, Inside Laundry.

19032 Dyer Ct #13  
\$215,000 MLS# 20231645



**Greenbelt Merged Lots!**

Approximately 0.61 Acre with a Seasonal Big Creek in Back. This Lot has plenty of Room to Build a Home of your Dreams. The Property has a Nice View and is Clear with Some Trees, Includes Level Areas and also with a Downslope. Enjoy all the Pine Mountain Lake Amenities that is Located in the Historical Town of Groveland and is only Approx 24 Miles from Yosemite National Park.

19571 Cottonwood 6-20/21  
\$13,900 MLS# 20240075

### Lots & Acreage for Sale

- \$ 10,000 - 6-52 0.33 Acre Seasonal Creek
- \$ 12,000 - 2-94 0.30 Acre Very Nice Lot
- \$ 13,900 - 6-20/21 0.61 Acre Green Belt w/Seasonal Creek
- \$ 19,500 - 13-161 0.62 Acre Fantastic Opportunity
- \$ 60,000 - 4-425 0.18 Acre Great Location
- \$ 69,000 - 5-8 0.21 Acre Nice Views Walk to Golf Course
- \$ 89,900 - 4-128 0.78 Acre ke Front Lot
- \$ 95,000 - 4-137/138 0.95 Acre Lake Front Lot

- \$299,000 - Hwy 120 Zoned C-1 Town-site Location
- \$300,000 - Hwy 120 29.0 Acres Multi Uses
- \$349,000 - Big Oak Flat 9.32 Acres Beautiful
- \$425,000 - Jamestown 42.7 Acres - Great Building Sites
- \$599,000 - Jamestown 37.7 Acre Great Housing Opportunities
- \$756,000 - Jamestown 63.4 Acres Absolutely Beautiful
- \$9,000,000- Main St. Groveland 6.5 Acre Prime Business Opportunity

*There is nothing better than Spring in the mountains  
The air is crisp and the hills are bursting with life*

Anonymous



## PML Organized Groups & Clubs

Contact the individuals below if you are interested in joining!

### Aviation Association

Bob Mackey 1-408-373-2625

### Crest Valley Firewise Community

Terre Passeau 1-209-962-5364

### Friends of the Groveland Library

Virginia Richmond 1-209-962-6144

### Friends of the Lake

Mike Gustafson 1-209-962-6336

### Garden Club

Susan Dwyer 1-209-962-6265

### Groveland Rotary Club

Rudy Manzo 1-209-962-5219

Greg Cramblit 1-209-962-0607

### Ladies Club

Pam King 1-831-601-8471

pam\_king@sbcglobal.net

Men's Golf Club www.pmlmgc.com

### Needle Crafts

Barbara Klahn 1-209-916-5420

### Pickleball Club

Lee Carstens 1-415-215-5564

### Pine Needlers Quilt Guild

Leslie Timmons 1-209-482-1406

### PML Ladies 18 Hole Golf Club

Marcee Cress 1-209-962-0771

### PML Niners

Stacie Brown 1-209-962-7397

### PML Pool Wellness Club

Karen Reyes

pmlpoolclubpresident@gmail.com

### PML Safe Streets Campaign

Leslie Dudley 1-209-962-4911

### PML Shooting Club

Scott Knupter 1-925-809-2850

### PML Waterski & Wakeboard

Dean Floyd 1-408-915-8848

### Racquet/Tennis Club

Ron Bass pmlatennis@gmail.com

### Residents Club

Dick Faux 1-209-962-4617

### ROOFBB

Audrey Prouse 1-209-962-4196

charity@roofbb.org

### Southern Tuolumne County

### Historical Society (STCHS)

Harriet Codeglia 1-209-962-0300

### Southern Valley Srs. Golf Group

Rich Robenseifner 1-707-486-9115

# STCHS EIGHTEENTH ANNUAL WINE TASTING CRUISE

HARRIET CODEGLIA

On Saturday, May 18, 2024, STCHS (Southern Tuolumne County Historical Society) will host its 18th Annual Wine Tasting Cruise on Pine Mountain Lake! That is a lot of wine tasted over the years! All proceeds benefit the Groveland Yosemite Gateway Museum, the restoration of the Cobden House and Wells Fargo Building, and other STCHS projects.

Water taxis will leave from the Lake Lodge starting at 2:30 pm and transport guests between six lakefront homes where wines from local wineries will be available for sampling, accompanied by delicious

appetizers from local restaurants and caterers. Everyone will be returned to the Lake Lodge by 6:30 pm for a coffee and cookie reception.

Don't delay! This event is a sell-out each year, as tickets are limited (attendees must be at least 21 years of age). Tickets must be purchased in advance and paid by check and are \$75 per person. Order forms are available in the Museum or you may send your request to STCHS, P.O. Box 180, Big Oak Flat, CA 95305. Forms can also be requested by sending an email to [winetastingcruise@gmail.com](mailto:winetastingcruise@gmail.com) or by going to the STCHS website: [www.grovelandmuseum.org](http://www.grovelandmuseum.org). The museum continues to be open Friday, Saturday and Sundays from 10 until 2.



We don't send out actual tickets, but you will receive confirmation of your purchase. Come join us for another fabulous day on the Lake!

For questions or further information, email ([winetastingcruise@gmail.com](mailto:winetastingcruise@gmail.com)), call Harriet Codeglia (415-516-1852).

## PINE NEEDLERS QUILT GUILD

SANDY SMITH

Sunshine...yay! Isn't it wonderful to have sunny days after such a gloomy month of March? And we all survived the Blizzard of 2024!

Tuesday April 16th at 10 a.m. is the next Pine Needlers Quilt Guild meeting. If you come a little early you can share in the meet and greet at 9:30 where we catch up with whats been happening in the quilting world since last month. Also if you bring a lunch, and a project to do..you can participate in what quilters do best...sew, laugh, help one another, and eat! Always a time of encouragement. We usually sew until 3.

Good news...A wonderful celebration is coming in May! A 20 year celebration of Pine Needlers Quilt Guild is being planned for May 4th. We are going to celebrate with a luncheon at Rush Creek Lodge. The lunch will be \$15.00 not including drinks. Monies needs to be turned in by noon April 16th at

the meeting, or check can be mailed to PNQG P.O. Box 1197 Groveland, Ca. 95321 no later than April 8th to secure your reservation with Rush Creek. Lots of fun things planned, and we encourage you to check with past members who have moved away. We have unfortunately lost contact with some of our past members. For those of us that were there in the very beginning this is going to be a wonderful day. Looking forward to this luncheon very much.

Last month I covered some quilt acronyms in the column, it was enlightening and fun. So I wanted to add some more this month, here goes:

**FOB**...Fear of binding

**BDNQ**...Bad Day Not Quilting

**DQ**...Dragon Quilt (A quilt that is dragged many places to hurry the finishing process)

**FW**...Featherweight sewing machine

**PHD**...Projects half done

**RST**...Right sides together

**STASH**...Special Treasures all secretly hidden

**Fart**???

Hope you are enjoying...I have more to come.

The Pine Needlers have exciting and fun things always planned. Last month 4 demonstrations of different quilting techniques...Wina Helm demonstrated the Eleanor Burns method of applique... Lynn Sigafose demonstrated using crayons to enhance an embroidered block...Donna Wolf demonstrated yo-yo's...Michelle Roberts demonstrated needle punch art. A retreat coming up, and much more.

Pine Needlers Quilt Guild meets the 3rd Tuesday of each month at 10 a.m. (9:30 for meet and greet) If you have any questions you can call our President Kris @ 650-722-0307 or the V.P. Leslie 209-482-1406.

Enjoy the sunshine!

# ROOFBB

AUDREY PROUSE



**August 20-** 30th Anniversary party at Around the Horn. Open to the public so come celebrate 30 years with us!

**Fall-** Monday Night Football dinners at The Lake Lodge

**October 31-** Trunk or Treat Bake Sale at Mary Laveroni Park

In our third year, this has become an annual tradition for ROOFBB and we love being a part of this community event!

As you can see, being a ROOFBB is a lot of fun, some hard work, and 100% worth the effort! If you want to learn more about ROOFBB organization, you can find us on Instagram, Facebook, and Nextdoor. If you want to find a volunteer opportunity that is fun and fulfilling, look no further than ROOFBB! If you want to donate to a worthy cause, we gladly accept all donations!

DONATE



**venmo**

CONTACT US! [charity@roofbb.org](mailto:charity@roofbb.org)

FOLLOW US! [roofbbcharity](https://www.instagram.com/roofbbcharity)

# PML PICKLEBALL CLUB

TAMMY TALOVICH

## NO FOOLING AROUND

If being stuck in the house because of the weather has led you to want to get some more exercise, we have the answer. Don't be a fool this month and come out and play some pickleball!

The weather for March cooperated for the most part, we are hoping that the weather is more accommodating for us this month. If the courts are dry put on your court shoes and some comfy clothes and meet us at the Pickleball Center on

Mueller, next to the Country Club. We play on Monday, Wednesday, Friday, Saturday and Sunday, because of the time change we will be starting play at 9:00am!

If you want to learn, all you have to do is come out, no April's Fool joke, we will be there! We have a lot of fun, exercising or laughing either way you will get your endorphins going!

It's still not too late to join the Pickleball Club, just contact Tammy at 209-605-7904 or [tamtally1@gmail.com](mailto:tamtally1@gmail.com).

See ya on the courts!

# PML LADY NINERS

TAMMY TALOVICH

Quote of the month – *If you believe in yourself anything is possible.*

If you would like to learn more about becoming a member of the Lady Niners contact Stacie Brown at [happygem529@gmail.com](mailto:happygem529@gmail.com). We play 9 holes on Thursday mornings; it only takes a few hours and is a great opportunity to meet some awesome ladies!

**February 1st:** we were rained out

**February 8th:**

**February 15th:** we had 11 players and the game was blind partners

**1st place:** Marilyn Alexander and Chris Balek

**2nd place:** Anne Toner and Linda Wall  
**3rd place:** Patty Nelson and Pat VanGerpen

**4th place:** KC Lennen and Tammy Talovich

**5th place:** Nancy Brewster and Nancy Whitefield

**Pars:** #14 Marilyn Alexander, Eileen Lee, Patty Nelson #17 Linda Wall

**Chip-ins:** #14 Marilyn Alexander

**Low Net:** Marilyn Alexander w/35 net

**Low Gross Tie:** Linda Wall and KC Lennen w/59 gross

**February 22nd:** we had 13 players and the game was Low net plus putts

**1st place:** Susan Dwyer

**2nd place tie:** Nancy Brewster and Pat VanGerpen

**3rd place:** Anne Toner

**Pars:** #14 Deanie Martini, #17 Monica Herendeen

**Chip-ins:** #15 Susan Dwyer

**Low Putts:** Susan Dwyer w/15 putts

**Low net tie:** Nancy Brewster, Susan Dwyer, Monica Herendeen, Pat VanGerpen w/39 net

**Low gross:** Susan Dwyer w/54 gross

**February 29th:** we were rained out

[www.PineMountainLake.com](http://www.PineMountainLake.com)



## PML LADIES CLUB

MAE FRANCO



Fun was had by all at our March "Shamrocks and Shenanigans" luncheon at the Grill. Graciously hosted this month by Els Blom and Laura Van Oestende, there was plenty of green and games before we enjoyed a traditional Irish feast of corned beef and cabbage and all the fixings. We tested our knowledge of all things green and Terre Melinn earned our "Leprechaun for a Day" title.

Our April 3rd luncheon will be held at the Lake Lodge when we will host a Jewelry Exchange and enjoy a specially prepared lunch provided by Perfect Day Catering.

Ladies Club meets the first Wednesday

of each month (except January and July). All PML ladies are invited so come make new friends and join the fun. For more info or questions, contact Mae Franco at 831-297-0554.

## PML LADIES 18 HOLE GOLF CLUB

PAULA PARISI

B lizzard warnings, rain, lightning and thunder, lots of winter weather and very wet course conditions the last month has made it challenging to play our weekly tournaments. Now with the end of daylight savings time and the longer daylight hours (and hopefully better weather), we are very excited for more regular tournament play to commence. Following are results from the tournament play we were able to complete this month:

& Jane Reynolds - 127  
**Second Place:** Jodie Awai, Sara Hancock, Tari Skelley - 130

**MARCH 7TH – INDIVIDUAL POINT BOGEY**

**First Place:** Sally Wrye – 34 Points  
**Second Place:** Linda Sarratt – 33 Points  
**Third Place:** Paula Parisi – 29 Points  
**Fourth Place:** Sue Perry - 28 Points

*Congratulations to all the winners!*

The Pine Mountain Lake Ladies Golf Club plays every Thursday and is open to all women residents and owners of

## PML MEN'S GOLF CLUB

DAVE FERNANDEZ

### 2024 ICE-BREAKER TOURNAMENT

The PMLMGC kicked off its 2024 Tournament Schedule with our annual ICE-BREAKER TOURNAMENT. Great showing for our first event of the year. Congratulations to all the winners and to a great 2024 season.

### ICE-BREAKER Flight A

**1st place** - John Wilkins, Anthony Barrera  
**2nd place** - Bud Roberts, Dennis Scott  
**3rd place** - Bryan Eshagh, Manny Youkhaneh  
**4th place** - Rick Liszewski, Edvard Eshagh  
**5th place** - Dave Villaroman, Tony Pavlakis

### Flight B

**1st place** - Andrew Hughan, Dave Bealby  
**2nd place** - Tim Hughan, Jeff Krisa  
**3rd place** - Steve Bittick, Tom Borup  
**4th place** - Mark Vahey, Dennis Perry  
**5th place** - Levi Fontaine, Tim Jordan  
**Closest to the pin**

#3 - Anthony Barrera 5'9"  
 #7 - Anthony Barrera 18'  
 #14 - Joel Pluim 11'4"  
 #17 - Dave Villaroman 10'6"

### Skins

Fontaine/Jordan #16-3  
 Torres/Rebiskie #2-2  
 A, Hughan/Bealby #15-2  
 T. Hughan/Krisa #5-2 and #9-2  
 Wilkens/Barrera #8-2  
 Bittick/Borup #18-2

### TOURNAMENT TEE SELECTION

Many of our tournaments allow players to select what tees they will play

from. It is important that players sign up for the correct tees. Any player can play from the Gold tees, regardless of their age or index, if they so choose. But only players that qualify may play from the Purple/Green tees. To qualify a player must be 70, or older, or have an index of 18.7, or higher. It is very difficult for the Golf Shop to make tee changes at the last minute. Any player that plays from incorrect tees risks disqualification. Typically, one team member will sign up a 4-man or 2-man team, so it is imperative that that team member sign up their team from the correct tees.

### WEBSITE TOURNAMENT SIGN UP

Please continue to use the website, [pmlmgc.com](http://pmlmgc.com), to sign up and pay for tournaments. Using the website for tournament sign up and payment makes it easier for the club and the Golf Shop to manage tournaments. Go to [pmlmgc.com](http://pmlmgc.com) to see the tournament schedule.

### JOIN THE MEN'S GOLF CLUB

Any male persons who are current property owners, their siblings, sons, nephews, sons-in-law, and PMLA employees are eligible to join the men's golf club. Go to [pmlmgc.com](http://pmlmgc.com) and click on the button, Join the Club, to see the many benefits of club membership, as well as the ability to sign up on line. Applications are also available in the Golf Shop, or you can contact our Handicap/Membership Chair, Ted Toffey. Email Ted at [handicap@pmlmgc.com](mailto:handicap@pmlmgc.com), if you have any questions about club membership, or, if you're a current member, your NCGA handicap index.

property in the Pine Mountain Lake community. Our club would love to add some new members and have modified our bylaws to allow female family members of property owners to apply for membership. If you are interested in becoming a

member, we can arrange for you to join us as a guest, so that you can meet and play with some members and see what our club is all about. If you're interested, please contact our PML Head Golf Professional, Mike Cook at 209-962-8620.

### FEBRUARY 15TH – ST. VALENTINES DAY MASSACRE

**First Place:** Marcee Cress, Priscilla Park

# YOU'VE BEEN SERVED!

EILEEN LEE

## PML RACQUET CLUB HOSTS BREAKFAST ON THE COURTS

It's time to put up the rain and snow gear, pull out the rackets and lace up the sneakers because the PML Racquet Club Board of Directors is ready to kick off the 2024 tennis season by hosting Breakfast on the Courts Sunday, April 7, at 10AM.

The event is currently planned for the first Sunday of each month. Club President Ron Bass said he is looking forward to the Sunday drop-in events.

"This is going to be a really fun event for our club," Bass said. "We have a great group of folks who really enjoy the game and we want others to join in the fun. We will have a light continental breakfast and play some tennis and hopefully get to meet some

new players."

Bass said he encourages tennis enthusiasts to drop by for the Sunday events and see what's going on at the courts.

"This is great opportunity for anyone who enjoys the sport to come out and meet our club members," Bass said. "If you are up for the weekend and don't have your racket, the club has plenty of loaner racquets available."

If Sunday tennis doesn't fit into your schedule, club members gather at the tennis courts on Pine Mountain Lake Drive Tuesday and Friday mornings each week. Start times change according to court conditions and the weather. Email the club at [PMLAtennis@gmail.com](mailto:PMLAtennis@gmail.com) for further information.

# GARDEN CLUB

DAWN SILVA

The Pine Mountain Garden Club meets on the second Monday of each month (except January and July) from 1:00 – 3:00 pm at the Lake Lodge. Our meetings will have special speakers on various topics, tours of gardens in the area, tool sharpening and many other events. On April 20th the club will go to the Modesto Garden Club tour. This is always an exciting event that allows our club to see what other clubs are doing.

The Pine Mountain Garden Club has many events being planned for 2024. We will be having a Plant Sale/Bake Sale on May 11th at the Jail Garden. This event is our one and only fundraiser which helps us maintain the jail garden. This year we are having it a day before Mother's Day, so come

on down and pick up a nice plant for Mom. The club also does several workdays in the jail to keep the flowers and landscape looking fresh. Tourists love having a nice place to sit and eat while their cars are being charged.

In June we will be reaching out to Martha Cover (Cover's Apple Ranch) to come and talk about her plants. Martha is always a great speaker and shares her knowledge of how to care for the different plants. She also brings plenty of plants for everyone to purchase.

We would love to have you join our club and meet new people, get information on seasonal garden preparation, help keep our town jail beautiful all year round, enjoy refreshments and just have fun. If you have any questions, contact Susan Dwyer at [smdwyer@sbcglobal.net](mailto:smdwyer@sbcglobal.net).

# ROTARY CLUB OF GROVELAND

MIRIAM MARTIN – ROTARIAN



*Dictionary Distribution; Tara Durland, David Valponi, Sharon Hunt-Stevenson, Pete Stevenson, Greg Cramblit and Pam Rafton.*

Rotarians are busy year round looking for projects that change lives and often bring a smile to the recipients. As Rotarians, we are privileged to work with other clubs around the world that are taking on huge projects that affect whole towns. We finance these local and worldwide projects with our fundraisers that are designed to entertain and bring value to the participants.

Some of our most recent local projects were the Easter Bunny Egg hunt in Mary Laveroni Park, distributing personalized Dictionaries to the third grade class at Tenaya Elementary, supporting our local Food Closet in both funding and helpers, providing school supplies and clothing for students in our

local schools, providing firewood for persons in need, and much more.

We are currently pursuing an international water project with multiple clubs across the globe. It will benefit a small town in India. This is a particularly important project for our club as it is a way to honor our past member Jim Goodrich, who was the previous General Manager for GCSD. Water projects around the world were his passion.

We thank our community for all of your support and we welcome you to join us a Friend of Rotary, helping with projects and events, or to join our club as a Rotarian, taking part in the direction and implementation of our endeavors. For more information, please contact Rotarian Greg Cramblit at 209-484-2079.

*"Spring won't let me stay in this house any longer!  
I must get out and breathe the air deeply again."*

Gustav Mahler



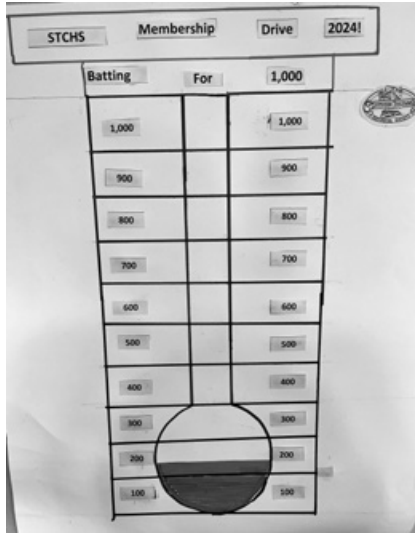
# STCHS MEMBERSHIP DRIVE!

PATRICIA GIBSON

WE'RE BATTING FOR 1,000!

**S**outhern Tuolumne County Historical Society (STCHS) 2024 membership drive is underway, and we invite you to become members of the Groveland Museum/ STCHS community. This year we are batting for 1,000 members! We thank everyone for your past patronage and ask you to join us and/or renew your membership. Renewal forms were mailed in January with the newsletter. So far, we are at 140 members. We would need to have one out of every three property owners in PML to make our goal. Please come into the museum today and fill out a 2024 membership form and help us reach our milestone goal of 1,000 active members. I have posted the attached thermometer to the lobby wall of the museum and you invite you to follow our progress. Let's get the temperature rising!

The Groveland Museum is free to all visitors and also acts as the Visitor's Bureau as Tuolumne County's Yosemite Gateway. If you or your guests have not yet had a chance to enjoy the beauty of our local museum, we invite you to please come along and



do so.

STCHS maintains the Museum/Library building plus several other historical properties. Funds raised go toward the preservation, maintenance, and upgrades of those historical buildings. In 2023 we brought electricity to the Wells Fargo Gamble Building. In 2024 we hope to repaint

the Cobden House and the surrounding fences. There are also plans to build a gazebo structure that will be conducive to holding events for members, visitors, and patrons.

2024 membership starts at \$25 per family, which would give us a membership goal of \$25,000. We thank our generous community for supporting our two major fundraisers: The Wine Cruise around Pine Mountain Lake and the Labor Bay BBQ. We need you now to support us in reaching our membership goal. Please consider joining the heart of our community and become a STCHS member today. Send Payments to P.O. Box 181, Big Oak Flat, CA 95305 or drop in and say hello. We're batting for 1,000!

*STCHS is a 501C3 Non-Profit charity – Tax ID #: 77-0132781; Donations are tax-deductible.*

# PINE CONE SINGERS SPRING CONCERT

BOB SWAN

**P**LEASE NOTE SCHEDULE CHANGE: We are trying something different this year.

Our Spring Concerts will be held on Mothers' Day weekend, May 10-12. As usual the Friday concert will be at 7PM, and the Saturday and Sunday shows at 2PM. If you are lucky enough to have a Mom around (or if you are one), we suggest brunch and a show.

Our Spring concerts normally have a "fun" menu, and this one is no exception, with a big side order of Americana. From "Home on the Range" to "Polly Wolly Doodle" to "Over the Rainbow", we'll be singing choral arrangements of folk songs, spirituals, childrens' songs, and the like. And a couple of numbers from the

Gershwin brothers. Of course, there will also be solo performances by our some of our talented singers.

We are working hard on this show – some of the arrangements move along pretty fast. We think it will be a lot of fun, and we hope you will join us.

The concerts will be held at the Groveland Evangelical Free Church at 7PM on Friday, May 10, and 2PM on Saturday and Sunday, May 11-12. Tickets are usable for any one of the shows, and will be available at Yosemite Bank, Body Beautiful Salon and Spa, and from any Pine Cone Singer. Suggested donation is \$15, with children 12 and under free.

If you have questions, please contact Bob Swan at 408-398-4731.

# TOP DOG OF THE MONTH

BOB SWAN

**T**his month, we are paying tribute to one of the dog park's mighty little dogs, Max. Little Max, who was 17 years old, passed over the Rainbow Bridge in March. He was a Chihuahua-Terrier mix who was full of spunk, loved squeaky toys and tennis balls. Max's mom Heather brought him to the dog park whenever she was in Groveland visiting her mom. Max always hid when Heather had to leave her mom's house and head back home to Pacifica. RIP Max.



Don't forget to renew your dog park registration and get the gate code for 2024. Please stop by the GCSD administration office on Ferretti Road to register (or go use the Merchant Transact system on the GCSD website: [www.gcsd.org](http://www.gcsd.org)). Bring current Rabies and Bordetella

vaccination certificates, pay a \$25 annual fee for up to two dogs (\$10 for each additional dog), and get the gate code. It is a great place for dogs (and people) to socialize. To keep all our dogs safe at the dog park, we ask that you keep your dog's vaccinations current.

*"Spring is nature's way of saying, 'Let's party.'"*

Robin Williams

# THAI CASHEW CHICKEN

RECIPE PROVIDED BY TOM KNOTH AND PAULA MARTELL

**P**retty easy recipe, very tasty results. This one is spicy but you can calm it down by reducing or eliminating the chilies and/or red pepper flakes. I've offered some ingredient substitutions which are available at Marval market. Enjoy!



## INGREDIENTS

3 tablespoons tamari or soy sauce, divided  
 2 tablespoons all-purpose flour  
 kosher salt and ground black pepper  
 1½ pounds boneless, skinless chicken thighs, trimmed and cut into ¾- to 1-inch pieces  
 1½ tablespoons Thai chili paste (nam prik pao) (I subbed Garlic Chili Paste)  
 1½ tablespoons white sugar (can sub Swerve artificial sweetener)  
 1 tablespoon oyster sauce (I subbed Hoisin Sauce)  
 5 tablespoons avocado or other neutral oil, divided  
 1 cup roasted cashews  
 6 dried árbol chilies (optional)  
 6 medium garlic cloves, minced  
 ¾-1¼ teaspoons red pepper flakes  
 1 medium red onion, cut into 1-inch pieces  
 1 bunch scallions, cut into 1-inch lengths

## DIRECTIONS

In a medium bowl, combine 1 tablespoon of the soy sauce, the flour, 2 tablespoons water, ¼ teaspoon salt and 1 teaspoon black pepper; whisk until smooth. Add the chicken and toss to coat; set aside.

In a small bowl, combine the remaining 2 tablespoons soy sauce, chili paste, sugar, oyster sauce and 3 tablespoons water, then whisk until the sugar dissolves; set the sauce aside.

In a 12- to 14-inch wok or 12-inch skillet over medium-high, heat 1

tablespoon of the oil until shimmering. Add the cashews and árbol chilies (if using); cook, stirring, until the nuts are fragrant and browned, 1 to 2 minutes. Transfer to a small bowl and set aside. Wipe out the pan.

Set the pan over high and heat 1 tablespoon of the remaining oil until barely smoking, swirling to coat. Add half of the chicken mixture; cook, stirring intermittently and scraping up any browned bits, until well browned, 2 to 3 minutes, then transfer to another medium bowl. Using 1 tablespoon of the remaining oil, cook the remaining chicken mixture in the same way and transfer to the bowl with the first batch.

Return the pan to medium-high and add the remaining 2 tablespoons oil, garlic and pepper flakes; cook, stirring, until the garlic is golden brown, about 30 seconds. Add the onion and cook, stirring and scraping, until just beginning to brown, 1 to 2 minutes. Stir in the chicken and accumulated juices, then pour the sauce mixture down the sides of the pan. Cook, stirring and scraping, until the sauce thickens slightly and lightly coats the chicken and onion, 1 to 2 minutes. Stir in the scallions and cashews with árbol chilies (if used); cook, stirring, until the scallions are just wilted, about 30 seconds. Remove from the heat. Taste and season with salt and black pepper.

# WHO WALKS WITH US THROUGH THE STORMS OF LIFE?

PASTOR BOB KANDELS

## GREETINGS,

**A**s we move into the month of April and start enjoying the warmer temperatures and added daylight of Spring, it is a great time for reflection. I recently gave a sermon on the passage in Matthew's Gospel when Jesus walked on water. This event was relayed by Matthew (one of Jesus's disciples) in the Gospel of Matthew and followed Jesus performing the miracle of feeding over five thousand people with "only five loaves of bread and two fish" (Matthew 14:17). But Jesus was only getting started! After that, Jesus invited his disciples to take a boat across a lake (called the Sea of Galilee) while Jesus went to be alone and spend some much-needed time in prayer with his Father, God. Eventually the disciples in the boat could no longer see Jesus. The wind also came up and created dangerous waves. Somewhere between 3:00 and 6:00 am, Jesus walked on the water towards his disciples who had remained in the boat (Matthew 14:22-33).

An interesting and unexpected twist happened when the disciples first saw Jesus walking on the water towards them. They were scared and jumped to the conclusion they were seeing a ghost. "When the disciples saw him walking on the lake, they were terrified. 'It's a ghost,' they said, and cried out in fear." (Matthew 14:26). Sensing his disciples fear, Jesus

immediately reassured them. "But Jesus immediately said to them: 'Take courage! It is I. Don't be afraid.'" (Matthew 14:27).

Then, Peter went from fearing a ghost to realizing he was seeing his loving Savior. "Lord, if it's you,' Peter replied, 'tell me to come to you on the water.' (Verse 28) 'Come,' he said. Then Peter got down out of the boat, walked on the water and came toward Jesus." (Matthew 14:29). Hearing the reaction of the disciples begs the question, how often does fear cause us to forget that God walks through the storms of life with us? In times of trouble, do I lose sight of Jesus and think Jesus is not with me, or do I remember Jesus is always with me?

How often do we fearfully assume the worst instead of leaning into the love, power and support of a loving Savior? Are you hitting the inevitable storms of life and in need of encouragement? Would you like to know more about how a relationship with Jesus can sustain you through the many challenges of life? Or, do you already have a relationship with Jesus and God, and it might be time to reconnect and strengthen it? If so, I encourage you to join a service at one of the area's Christian churches. At Groveland Evangelical Free Church, we worship every Sunday at 10:00 am and would love to have you join us. Please come!

In Christ Service

## PLACE AN AD TODAY

Go to our website for more information and prices.

[www.PineMountainLake.com](http://www.PineMountainLake.com)





## HERE IS YOUR CHANCE TO BE MORE INVOLVED IN YOUR COMMUNITY!

Pine Mountain Lake  
Association has  
openings on the  
Following Committees:

**BUDGET & FINANCE  
COMMITTEE**

**COVENANTS COMMITTEE**

**EDITORIAL COMMITTEE**

If you wish to be  
considered for committee  
membership, please  
complete an "Application  
for Committee  
Assignment". This form is  
available on the website  
at [www.pinemountainlake.com](http://www.pinemountainlake.com)  
or from the  
Administration Office.

MAIL COMPLETED FORM TO:  
Pine Mountain Lake Association  
Attention: Janessa Owens 19228  
Pine Mountain Drive  
Groveland, CA 95321  
Email to  
[j.owens@pinemountainlake.com](mailto:j.owens@pinemountainlake.com)  
or drop it by  
the Administration Office

## PAINTING & CONSTRUCTION



PAINTING - EXTERIOR/INTERIOR • DECK REPAIRS • WOOD REPAIRS • REMODELS

Bay Cal Construction  
**209.962.4777**

[www.baycal.com](http://www.baycal.com)  
email: [davec@baycal.com](mailto:davec@baycal.com)



FREE ESTIMATES

## GROVELAND GAL FRIDAY

LET ME HELP YOU  
WITH YOUR  
SPRING  
CLEANING!

I will organize, shop, give  
rides, provide pet care,  
senior care, home checks,  
watering, errands,  
and more!

You name it!

**SHARON VOLPONI**  
209-962-6848  
209-770-6277

## High Speed Broadband internet

STARTING AT **\$44.95**  
PER MONTH

- SPEEDS UP TO 300 MBPS\*  
*\* Speeds vary with packages*
- DISCOUNTS AVAILABLE FOR MULTIPLE SERVICES
- CABLE TV & TELEPHONE SERVICES  
ALSO AVAILABLE

**GOSNC.COM | 209.962.6373**

*Sierra Nevada*  
**COMMUNICATIONS**

**hci**  
**DOCKS**

**Custom Boat Docks – Gangways**  
**Kayak/Canoe Launches - Floats & Hardware**

**209-845-2876**

1398 East F St Oakdale, CA 95361

Independently owned Since 1982

[www.hcidocks.com](http://www.hcidocks.com)





**A CELTIC CRAFTSMAN BUILDERS**

Craftsmanship that can be counted on!  
**Punctual, Reliable, Honest, and Dependable!**

GENERAL CONTRACTOR #962605 • PHONE #209-459-2936

**COMPLETE HOME CONSTRUCTION REPAIRS, REMODELS**

- Kitchen/bathroom repair/remodel
- Doors hung, re-hung, installed & removed
- Finish carpentry
- Windows installed, removed, replaced, upgraded
- Wood decks installed, repaired
- Wood fences constructed, installed & repaired
- Wood gates, built, repaired, replaced
- No job is too big or small
- 35+ years' experience
- Competitive rates

**209-459-2936**

Veteran & Senior Discounts



**Pine Mountain Vacation Rentals**

**Looking to rent your home for short term rentals?  
 Not sure where to start or who to trust?**

**LET US DO THE WORK FOR YOU!**

Locally owned and managed properties.  
 Rated Airbnb Superhost and VRBO Premier Host.

We use **DYNAMIC PRICING** with  
**Prompt Statements and Monthly payments**  
 and very **COMPETITIVE RATES.**

Quick response time with  
**NO** surprise fees.

**Call Michael – Phone: (209) 840-2294**  
 email: [pinemountain48@gmail.com](mailto:pinemountain48@gmail.com)  
[www.pinemountainvacationrentals.net](http://www.pinemountainvacationrentals.net)

**Give the Gift of Family Memories**

Are you tired of binge watching Netflix or streaming content?  
 Why not dust off your old 8mm family movie films or VHS tapes and bring those golden memories back to life. Have a reel family movie night!



- VHS & 8MM FILM TRANSFER TO DVD OR USB
- PRINT & SLIDE SCANNING
- AUDIO CASSETTE TRANSFER
- CD & DVD DUPLICATION
- PHOTO RESTORATION
- PHOTO BOOKS • MEMORIAL SLIDESHOWS
- PHOTO PUZZLES




**DejaVu Video Services**  
 408-899-4407 • [dejavuvideo123@gmail.com](mailto:dejavuvideo123@gmail.com)



**TWO GUYS PIZZA PIES**  
 18955 Ferretti Rd, Groveland  
 (Just 1/2 Block Off Hwy 120)

Check out our weekday  
**LUNCH SPECIAL!**

We ♥ Phone Orders  
**(209) 962-4897**

**\$1.00 OFF**  
 ANY SIZE TWO GUYS  
 PIZZA OR CALZONE

One coupon per order, per visit. May not be combined with any other offer and/or coupon. Not valid on delivery.

PMLN 0424 Offer Expires 05/15/24

**\$2.00 OFF**  
 ANY LARGE OR EXTRA LARGE  
 TWO GUYS PIZZA

One coupon per order, per visit. May not be combined with any other offer and/or coupon. Not valid on delivery.

PMLN 0424 Offer Expires 05/15/24



# HOMEOWNER CHECKLIST

## CHECK OUT YOUR CONTRACTOR

- Did you contact the Contractors State License Board (CSLB) to check the status of the contractor's license? Connect with CSLB at 800.321.CSLB (2752), [www.cslb.ca.gov](http://www.cslb.ca.gov) or [www.CheckTheLicenseFirst.com](http://www.CheckTheLicenseFirst.com).
- Did you get at least three local references from the contractors you are considering?
- Did you call the references and personally view the contractor's completed work?
- Does the contractor carry general liability insurance?

## BUILDING PERMITS

- Does your contract state whether you or your contractor will pull necessary building permits before the work starts?
- Are the permit fees included in the contract price?

[www.cslb.ca.gov](http://www.cslb.ca.gov)

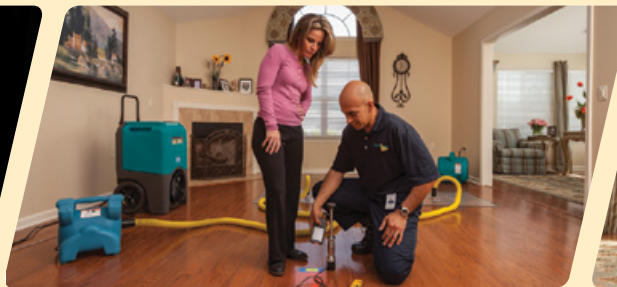
## DOUBLE-CHECK THE CONTRACT

- Did you read and understand your contract?
- Does the three-day right to cancel a contract apply to you?
- Does the contract identify when work will begin and end?
- Does the contract include a detailed description of the work to be done, the materials to be used, and/or equipment to be installed?
- Are you required to make a down payment? (The down payment should never be more than 10 percent of the contract price of \$1,000, whichever is less, unless there is a valid blanket performance and payment bond on file with CSLB.)
- Is there a schedule of payments? (Only pay as work is completed, not before.)
- Did your contractor give you a "Notice to Owner" warning notice that describes mechanics liens and how to prevent them?
- Do you have changes or additions to your contract? (Remember that all changes must be in writing and signed by both parties to avoid disagreements.)

**\$25  
DISCOUNT**

Mention this ad for a discount on cleaning services.

*Minimum charge applies.*



## DISASTER RESTORATION SERVICES • RESIDENTIAL AND COMMERCIAL CLEANING SERVICES

Carpet & Furniture Cleaning • Steam & Dry Cleaning • Deep Soil Extraction • Spot & Odor Removal • Oriental & Fine Rug Cleaning • Ultrasonic Blind Cleaning  
24 Hour Emergency Service • Water Removal • Wet Carpet Care • Fire & Smoke Restoration • Vandalism Cleanup • Structure Drying • Sanitizing

**ServiceMASTER  
Restore**

*The clean you expect.*

*The service you deserve.*



Serving Tuolumne, Calaveras & Amador Counties  
[ServiceMasterSierras@mlode.com](mailto:ServiceMasterSierras@mlode.com) • [www.ServiceMasterSierras.com](http://www.ServiceMasterSierras.com)

**209-532-1700**

17330 High School Road  
Jamestown CA 95327



# COMMUNITY ORGANIZATIONS

Contact the individuals/organizations below  
if you are interested in joining!

If you would like your community organization listed please send  
your group's name, contact person, and phone number to  
[j.owens@pinemountainlake.com](mailto:j.owens@pinemountainlake.com)

**CAMP TUOLUMNE TRAILS**  
Jerry Baker – 1.209.962.7916

**FRIENDS OF THE GROVELAND LIBRARY**  
Virginia Richmond – 1.209.962.6336

**HELPING HANDS THRIFT STORE & FURNITURE BARN**  
Patti Beaulieu – 1.209.962.7402

**SOUTHERN TUOLUMNE COUNTY HISTORICAL SOCIETY (STCHS)**  
Harriet Codeglia – 1.209.962.6270

**SOUTHSIDE COMMUNITY CONNECTIONS**  
Nancy Reggio - 209-962-7303

**VILLAGE ON THE HILL**  
1.209.962.6906 or [info@villageonthehill.org](mailto:info@villageonthehill.org)



- Launching
- Winterizing
- House Calls
- Dock Calls
- Service
- Repairs
- Storage
- Trailer Repair

**209-962-4594**

## The Boat Doctor

Paul Belluomini • P.O. Box 113 • Big Oak Flat, CA 95305

**JOANNE SCOTT**

Independent Beauty Consultant

13166 Wells Fargo Drive-PO Box 1257  
Groveland CA 95321  
209-573-1415

Bernijo3@aol.com  
[www.marykay.com/jbernasconi](http://www.marykay.com/jbernasconi)

God First, Family Second, Career Third

**MARY KAY**



## PINNELL'S CARPET ONE FLOOR & HOME

### THANK YOU FOR VOTING US BEST OF THE MOTHERLODE SINCE 2005!



**Waterproof Flooring, LVT, Laminate, Vinyl, Hardwood  
Tile, and Hunter Douglas Window Coverings.**

**209.736.8077** 263 S. Main St. Angels Camp, CA

**209.532.1696** 12900 Mono Way Sonora, CA

**Don't forget to ask us about our special financing options!**

[www.pinnellscarpetone.com](http://www.pinnellscarpetone.com)

# FREE

## Furniture Moving

Call to set up your free estimate!\*

**Pinnell's Carpet One**

Sonora 209.532.1696

Angels Camp 209.736.8077

\*See store for details.



# FRIENDS OF THE GROVELAND LIBRARY

AUDREY PROUSE

## GUEST READERS INSPIRE TENAYA ELEMENTARY STUDENTS THROUGH "READ ACROSS AMERICA"

Tenaya Elementary School welcomed a group of enthusiastic guest readers in celebration of "Read Across America", turning the classrooms into a hub of literary excitement. Friends of the Groveland Library (FOGL) volunteers gathered to share the joy of reading with students, fostering a love for literature that will undoubtedly leave a lasting impact.

The event, held on March 4th, marked the birthday of the beloved children's author Dr. Seuss, making it a fitting occasion to emphasize the importance of reading in the lives of young learners. The school's commitment to promoting literacy was evident as an enthusiastic group of guest readers engaged students in captivating Dr. Seuss stories, sparking their imaginations and fueling their curiosity.

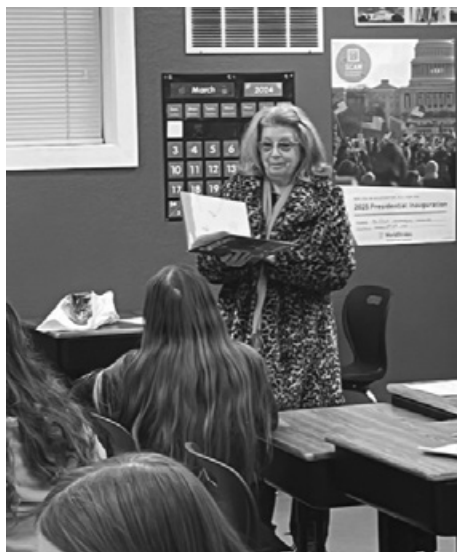
Principal Hilton expressed gratitude for the community's involvement, emphasizing the positive impact these role models have on the students. "Our students were excited to celebrate Read Across America in honor of Dr. Seuss's birthday. One of our first graders shared that their reader dressed up and made the story come to life. A third grader stated that the reader talked about the moral of the story," Hilton remarked.

The event went beyond promoting literacy; it served as a reminder of the important connections that can be forged when community members come together to support the growth and development of the younger generation. Each student was gifted a Dr. Seuss pencil as a reminder of this special day and FOGL presented a Dr. Seuss book to each classroom.

Tenaya Elementary's "Read Across America" celebration was a resounding success, leaving students inspired and excited about the world of books. This



Linda Craig reads to first graders.



Laura Silvestro reads *The Sneetches* to the fifth grade

annual event had achieved its goal – fostering a lifelong appreciation for reading among the students at Tenaya Elementary School thanks to the support of the Friends of the Grovelan Library volunteers. FOGL's mission is to support the Groveland Library and literacy in our community. You can join us! Just send your contact information and a check for \$25 to FOGL, Box 43, Groveland.

# CYBERSKILLS CLASSES: SIGN UP NOW!

SAMANTHA WEST – TLH SUPERVISOR

We have opened sign-ups for our first 8-week-long Digital Literacy class! Call SCC to reserve your spot. Classes will be held at SCC, The Little House, on April 2, 9, 16, 23, and 30 and May 7, 14, and 21 from 11:30 am to 12:30 pm. If you complete all classes in the course, you may be entered to win a new laptop!

If you prefer a shorter class, we will have two-hour classes with only four days to commit from June to July. Please call The Little House if you are interested.

## SCHEDULE FOR 8-WEEK DIGITAL LITERACY CLASS:

Week 1: Introduction to Digital Literacy  
Week 2: Online Safety and Security

Week 3: Digital Communication  
Week 4: Digital Content Creation  
Week 5: Information Literacy  
Week 6: Digital Citizenship  
Week 7: Productivity Tools  
Week 8: Future of Digital Literacy

For more information about Southside Community Connections and its programs, visit us online at [southsidecommunityconnections.org](http://southsidecommunityconnections.org) or call (209) 962-7303.

Funding for this project has been provided in part through a grant by the Broadband Adoption Account of the California Advanced Services Fund, a program administered by the California Public Utilities Commission.

# HELPING HANDS HAPPENINGS

PATTI BEAULIEU

Where did the first quarter of 2024 go? The months seem to fly by and before you know it, it'll be Summer. As we enter April, it's very disappointing that we're unable to have our twice-yearly GIVEAWAY again this Spring. Because of the Community Hall fire in June of 2023, we couldn't have it in October, as we have for 20 years (except for the COVID years). We still haven't seen any progress on the rebuilding of the Community Hall come to fruition, as was announced months ago. Let's hope we'll have our beloved hall back by October.

In the absence of the GIVEAWAY,

we look forward to many Clothing and Bag Sales as we clear the Store of our Winter inventory and make room for our Spring and Summer items. We plan to bring our summer clothing out in Mid-April so look for some super sales and many great winter things are still available, at rock bottom prices.

Since Easter was in March this year, we don't have any holidays on the horizon until July 4th, when our RED, WHITE and BLUE items make their appearance. This means all of our shelves can be dedicated to our large supply of Home Décor, Housewares, and 'regular' items. We

*Continued on next page*

# GET WHERE YOU'RE GOING WITH WHEELS!

BETH MARTIN – TRANSPORTATION COORDINATOR

Last year, Dotty Davis learned some exciting news. A newly approved treatment for the dry macular degeneration she has in both eyes was now available in Modesto. But the Pine Mountain Lake resident, who continues to live independently in the home she shared with her late husband Dick, faced a dilemma. While Dotty had no trouble driving to her appointments in Modesto, the treatment would render her temporarily unable to see well enough to drive home.

Her family was willing to help, but they live full time in the Bay Area. And most of Dotty's friends weren't comfortable with the long drive.

Dotty had heard of Southside Community Connections' Wheels program – and it turned out to be the answer to her transportation need. Volunteer driver Todd began taking her to and from her appointments, so she could receive the care she needed.

"At my first appointment, I told Todd he could go shopping at Costco because I was going to be in here for

a while," Dotty said. "And he said no, I'm going to walk you in and keep you company and I will be right here waiting for you."

Wheels offers door-to-door rides to seniors in Groveland and Big Oak Flat who can't drive, and who don't have help getting to shopping, medical appointments and errands in Groveland/Big Oak Flat or to medical appointments in Sonora. Rides to Modesto are considered on a case-by-case basis. All Wheels rides are provided by volunteer drivers.

"It was so important to be able to get to my appointments," Dotty said. "Because of the treatments I've received, my left eye is improving. My family is thrilled, and so is Todd, because he's a part of this."

Our volunteer Wheels drivers make a huge difference in our community. Please consider joining us! To learn more about Wheels, call (209) 962-6952, email [wheels@southsidecommunityconnections.org](mailto:wheels@southsidecommunityconnections.org), or stop by The Little House between 10 am and 2 pm (11699 Merrill Road).



COMMUNITY CONNECTIONS

## Charity Golf Tournament




**This event includes the following:**

- 4-Person Scramble (Men, Women, or Mixed Teams)
- Live auction plus raffle (25 raffle tickets for \$20)
- \$60 Fee which includes a \$28 lunch and \$32 donation\*

**SATURDAY**  
**May 4th**  
**PINE MOUNTAIN LAKE GOLF COURSE**

**Check-in: 7:30 am**  
**Shotgun starts 9:00 am**

Make \$60 checks payable to **SCC**

Return the form and checks to Linda Sarratt or The Little House by April 30th.

Drop off: 11699 Merrell Rd. Groveland, CA or Mail: PO Box 63 Groveland, CA 95321

Questions (831) 915-9879




*Continued from previous page*

haven't been able to 'spread out' since last September, when we started with Halloween. As soon as that was over, we filled the Store with Christmas, then we moved right into Valentines and then Easter. Consequently, we've been in some 'holiday' mode for months, so we're glad to get back to 'normal'.

As anticipated, with the better weather, and spring nearing, we're getting some beautiful donations of furniture at the Furniture Barn. If it's

been a while since you've been in, come stroll through and see what we have in stock, not just furniture but also luggage, backpacks, tons of artwork, mirrors and frames, artificial plants, lamps, sporting goods and so much more. Just like the Store, it's a treasure hunt to see what you can find.

Please remember our donation days/times and restrictions as you begin your 'spring cleaning'. Feel free to call if you have questions about what items we take/do not take.

**THRIFT STORE – STORE HOURS ARE WEDNESDAY-**

**SATURDAY 11 -3; DONATIONS WEDNESDAY -SATURDAY 11-2; THRIFT STORE PHONE – 209-962-6830**

Due to limited space, we can only accept (3) 13-gallon bags of clothing or 3 'bankers' size boxes of housewares or home décor at a time. We can only accommodate large, black garbage bags when used to donate linens, which are usually too large for the 13-gallon bags. All donations are to be taken to the receiving door in the back of the Store during donation hours only.

**FURNITURE BARN – STORE**

**HOURS ARE FRIDAY AND SATURDAY 11-3; DONATIONS FRIDAY AND SATURDAY 11 -2; FURNITURE BARN PHONE -209-962-7014.**

Please call the Furniture Barn prior to bringing your items, as we are often limited on space and may not be able to accept your donation. A photo of the item you plan to donate might also save you a trip, as it may not be something we can accept.

Enjoy the spring, with temperate weather, blooming flowers, longer days and cheery friends and neighbors.



# STUDENTS OF THE MONTH

## TIOGA'S STUDENT OF THE MONTH FOR MARCH IS TRINITY ROMINE

As a 10th grader at Tioga High School, Trinity exemplifies the qualities of academic excellence, leadership, and dedication that this prestigious award represents. Trinity's hard work, positive attitude, and commitment to both her studies and her school community have made her stand out among her peers. Her contributions to the school are invaluable, and her achievements serve as an inspiration to others. Keep up the fantastic work, Trinity, and continue to shine brightly as a role model for your fellow students.



*Trinity Romine*

## TENAYA ELEMENTARY STUDENT OF THE MONTH IS MAX FISCHER

Sixth grader Max Fischer is Tenaya Elementary School's Student of the Month. According to his teacher, Jessica Pretzer, "Max has brought so much laughter to our classroom. He is highly intelligent, kind and full of wit. He is a walking history book and I am constantly amazed by his ability to make me smile by the things he says. The best way I can describe him is to say, he is an old soul. In addition, his ability to initiate engaging conversations make him an invaluable asset to our classroom.

Max is the son of Danielle Holt & Rick Holt of Groveland and Juan De La Vara of Modesto.



*Max Fischer*



## FRESH SEAFOOD FLOWN IN FROM HALF MOON BAY

### HERE'S HOW TO ORDER:

1. Go to [sierraflyingfish.com](http://sierraflyingfish.com)
2. Select items & add to your cart
3. Place your order
4. Pick up your order at our shop located in Groveland next to the Iron Door Saloon
5. Enjoy!

We also carry limited in-shop weekly specials that don't require pre-ordering

Don't see something you want?

Custom orders also available!

Check our website for shop hours

## MAKE PML YOUR ONE-STOP-SHOP FOR ALL YOUR GIFT GIVING!

**PICK UP A GIFT CARD FOR:  
GOLF • GOLF SHOP APPAREL  
& ACCESSORIES • THE GRILL  
HUNTING & FISHING LICENSE VOUCHERS**

**GIFT CARDS ARE AVAILABLE AT THE  
ADMINISTRATION OFFICE, THE GRILL,  
AND AT THE PRO SHOP**

*The clock of life is wound but once,  
And no man has the power  
To tell just when the hands will stop  
On what day . . . of what hour  
Now is the only time you have;  
So live it with a will  
Don't wait until tomorrow;  
The hand may then be still.*

# CAMP TUOLUMNE TRAILS

DORI JONES

## CABARET FOR A CAUSE — STEP BACK IN TIME

Join us on Saturday, April 6, at CTT for the final performance of Cabarets for a Cause winter music series. This special evening will feature “Wartime Radio Revue”—an L.A.-based group that plays tribute to the Andrew Sisters and music from the 1940s and WWII era that will take you back in time. This evening will be a



cocktail party with heavy hors d'oeuvres, and dance lessons will be offered prior to the performance. Step back in time, immerse yourself in the 1940s and wear attire from that era.

Profits from these events provide camperships to CTT's disabled campers who otherwise might not be able to afford to attend camp—bridging the gap between the actual cost to run our summer programs and the fee that CTT's campers with disabilities pay. It also furthers CTT's mission to be one of the most accommodating camps in the country—an ongoing and expensive undertaking. Check CTT's website <https://www.tuolumnetrails.org/concerts-for-a-cause-2/> or the QR code below to learn more about the four-course menu and ticket info.



## VOLUNTEER DAY AT CAMP

Join us on Saturday, April 13, for CTT's Spring Volunteer Day. Please

join us for a morning to help CTT prepare for its summer season. Some of the chores that we need help with are trail clearing, cabin staining, vegetable garden and wall mural preparation.

## CTT'S NEW RESOURCE FAIR

The day after the first Concerts for a Cause on May 31, CTT will be hosting its first Resource Fair on Saturday, June 1, from 12:00-6:00 p.m. Families with young children and adults with disabilities as well as seniors are invited to connect with local organizations that provide services and support. Some fun activities to look forward to include: arts and crafts, face painting, karaoke, a petting zoo, food trucks and music. In conjunction with the Fair, CTT will host an Open House where families who are considering sending their child to CTT's summer camp will get a tour of camp's facility and learn more about how CTT can accommodate their child's needs. Families of all abilities are welcome. This is an opportunity for everyone to get an up-close and complete picture about what CTT offers and to experience first hand the magic that is Camp Tuolumne Trails. This fun-filled day will end with some really great music in CTT's famous amphitheater.

## 4TH ANNUAL CONCERTS FOR A CAUSE LINE-UP

CTT is beyond excited about the lineup for this summer's Concerts for a Cause. Having snagged some performers that we've been working on for a couple years, really ups the level of performers this year. Cumulatively, our headliners and their bands (not all jazz performers) have garnered 24 #1 hits on Billboard and released 18 albums—four of which went to the top of the charts, including the Jazz Artist and Breakout Artist of 2024.

May 31 - The Sun Kings - (Beatles tribute band)

Aug 24 - Adam Hawley and band (Guitar, Vocals)

Sept 21 - Vincent Ingala and band (Saxophone, Drums, Piano, Guitar, Vocals)

Oct 12 - The Boneshakers (Blues/Rock/Funk)

For more information is available on CTT's website: <https://www.tuolumnetrails.org/concerts-for-the-cause-2024/>

## CTT'S NEW AMBASSADOR COMMITTEE

Each month, CTT invites all of you to get involved and tour the beautiful 80-acre grounds, including the Great Hall and 150-seat amphitheater. However, to truly understand what makes Tuolumne Trails so special, one needs to experience camp on a much more personal level, listen to the stories, see the smiles, and hear the laughter.

While it is impractical to provide first-hand experiences for all of you, we are looking for a handful of 'ambassadors' who can spend more time directly with our campers, caregivers, staff, and leadership. As a CTT ambassador, you will become intimately aware of what being the most

accommodating camp in the state really means. Seeing camp through the eyes of our campers, caregivers, and counselors can be truly inspirational. Sharing that insight will broaden our support and ensure that we are able to continue to change the lives of all those that we touch. CTT strives to be the most accommodating camp for individuals with disabilities in the nation. If you have the time and passion to help us reach that goal, email [Jerry@tuolumnetrails.org](mailto:Jerry@tuolumnetrails.org) to learn more about this vital role.

We invite all of you to become part of the Camp Tuolumne Trails team! We are always happy to answer any questions or give you a tour of the 80-acre facility. If you'd like to participate in upcoming events, volunteer at camp or learn more about donating and legacy giving, please call CTT at (209) 962-7534, email: [info@tuolumnetrails.org](mailto:info@tuolumnetrails.org) or visit: <http://www.tuolumnetrails.org>. Follow us on Facebook and Instagram to stay updated on camp happenings.

## MOORE BROS RECYCLING NOTICE

### WE HAVE DROP-OFF RECYCLING!!

All residents and visitors are asked to source separate their recyclable materials. There are designated bins located at our office located at 11300 Wards Ferry Rd. in Big Oak Flat where you may drop off your recyclable materials anytime **Monday through Saturday 8am to 5pm** (weather permitting). CLOSED SUNDAYS and major holidays.

### Acceptable materials include:

- Aluminum beverage containers, tin cans, glass bottles and jars (all colors)
- #1 Plastic (bottle form only) \*\*\*\*#1 clear fruit/veggie, sandwich or salad clam shell type containers are NOT allowed\*\*\*\*
- #2 Plastic (bottle form only) \*\*\*\*#2 colored plastic coffee containers are NOT allowed\*\*\*\*
- **ALL CONTAINERS MUST BE RINSED AND FREE OF LIDS AND CAPS**

We also accept Mixed Paper, newspaper, magazines, catalogs, junk mail, paperback books & shredded paper which can all be put in the same bin. NO WRAPPING PAPER ALLOWED

### CARDBOARD BIN ACCEPTABLE MATERIALS INCLUDE:

Cardboard, Carton Board such as cereal and cracker and soda/beer boxes, etc. are also accepted and can be placed in the cardboard bin with the cardboard. THESE ITEMS NEED TO BE FLATTENED OR BROKEN DOWN AND ANY PACKAGING MATERIALS OR TAPE REMOVED.

IF THE CARDBOARD BIN IS FULL OR YOU HAVE A LARGE LOAD OF CARDBOARD TO RECYCLE, we ask you to take it to our shop location at 17641 Yates St. in Big Oak Flat where we still maintain a 50 yard cardboard recycle box.

**PLEASE DO NOT THROW PLASTIC BAGS  
OF RECYCLABLES INTO THE BINS.**



# Rod Diehl Pest Control

**RESIDENTIAL & COMMERCIAL • HIGH QUALITY  
100% SATISFACTION GUARANTEED**

Locally Owned & Operated • 5th Generation Tuolumne County

**PERSONAL SERVICE • FREE ESTIMATES**

We will customize your service around your pets

*info@RodDiehlPestControl.com*

**(209) 532-3260**

**PROUDLY SERVING THE PINE MOUNTAIN LAKE / GROVELAND AREA**

## Ken's Asphalt

Lic. 708310

**Grading • Paving • Chip Seal • Road Oil**

Seal & Slurry Coatings • Crafcro Hot Rubberized Crack Sealer

Driveways • Private Roads • Subdivisions

DOING  
BUSINESS  
SINCE  
1985

**DRAINAGE PROBLEMS?**

*We have the Solution!*

Erosion Control • Riprap (6-12" Rock) • Asphalt Curbing • Base Rock

"Just Pave It"

**Complete Concrete Services**

"Just Pave It"

- Stamped Concrete and Colored Concrete
- Stained Concrete
- Cleaning & Sealing
- Retaining Walls
- Driveways
- Walkways
- RV Pads
- Patios

**532-0800 • 962-5644 • 768-7395 Cell**

## Waters Plumbing Heating & Air

**FAST  
SAME DAY  
SERVICE\***

\*IN MOST CASES

**All work 100% Guaranteed!**



Contractors License #463958  
www.watersplumbing.com

"I want you to know that our technicians will give you a price before we start the job." —Wayne Waters

**Groveland (209) 533-1010**

# Pest Control

- Ants, spiders, mice, wasps, earwigs, etc.
- Fast service, great prices
- Squirrel and bat Exclusion
- Termite Inspections
- Weed Control
- Poison Oak
- Star Thistle



962-5710  
800-464-3772  
Free estimates

We are known for our integrity and legendary customer service!

Produce Your Own Clean Power!

- Save \$\$\$ Every Month
- Federal Tax Credit available
- 5-Year Typical Payback



Your Local Solar Electric Company

License #892261 / Since 2002  
16046A Via Este Rd., Sonora

Call Us For A Free Estimate  
**209-532-5925**

Check our reviews at [www.apssolarpower.com](http://www.apssolarpower.com)  
and [www.SolarReviews.com](http://www.SolarReviews.com)



# Sean McCoy Painting

License No. 822616

Home of the Cabinet Doctor

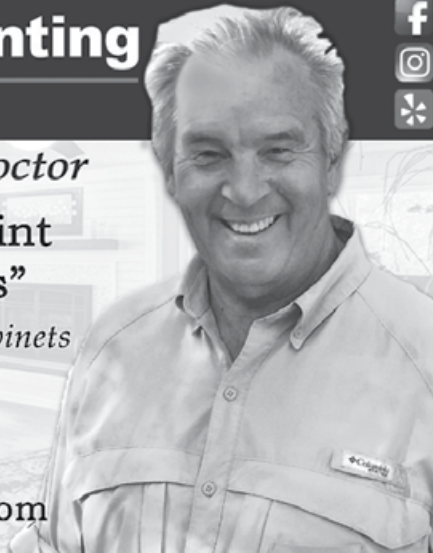
“Let’s Refinish or Paint  
Those Old Cabinets”

- Fine Finish • Mill Work • Cabinets
- Doors • Interiors



**209.588.1741**

[www.smccoypainting.com](http://www.smccoypainting.com)



HEADLEY'S TREE SERVICE

Tree Service Without the Headache.

WALTER HEADLEY

Owner / Operator

(209)316-5167

[headleystreeservice.com](http://headleystreeservice.com)

[headleystreeservice209@gmail.com](mailto:headleystreeservice209@gmail.com)



### BUSINESS HOURS

Monday - Friday:  
8:00am - 5:30pm  
Saturday: 8:00am - 2:00pm  
Sunday: CLOSED

### Well Stocked Parts House:

*For All of Your Heavy Duty Needs!*

- Heavy Duty Brake Linings
- Baldwin & Fleetguard Filters
- Delo Oil
- LED Lights
- Air Brake Valves & Hoses
- CB Radios, Antennas & Accessories
- Logging & Dump Truck Parts
- Hydraulic Hose Shop

### Full Service RV Repair Shop:

- Commercial House & Starting Batteries
- Full Service Chassis & Lube Center
- Electrical & Plumbing Repairs
- Interior & Exterior LED Lighting
- Complete Body Damage Repair Shop
- Solar Power Systems & Inverters
- Complete Detailing Services
- Warranty & Insurance Work Accepted

### Mobile Service Available

18968 Waylon Way  
Sonora CA 95370  
Call or Email us to schedule an appointment today!

(209)-532-7994

EMERGENCY CONTACT: (209)-559-3840

Email: [shop@sierraheavyduty.com](mailto:shop@sierraheavyduty.com)

Visit Us Online: [www.sierraheavyduty.com](http://www.sierraheavyduty.com)

*Over 50 Years of Experience!*



All Major Credit Cards Accepted.

# JACK IS BACK!!!



# Jack Proctor

Heating &  
Air Conditioning

- Complete commercial & residential services
- Service & repair - all makes and models
- Heating & ventilation
- Heat pump specialist
- Air conditioning troubleshooting expert
- Installation and remodeling
- Upgrading & energy efficiency
- Bonded & Insured

Call your local Pro!  
CELL

**209-678-8915**

License #313926  
Since 1975

Before replacing your unit, ask us for a 2nd opinion.  
Chances are, we CAN repair it!



## FIREWOOD CUTTING

PML SLASH AND COMPOST SITE

**OAK AND CEDAR** REQUIRES A \$20 PML WOOD CUTTING PERMIT

WOOD CUTTING PERMITS AVAILABLE AT THE MAINTENANCE FACILITY

**PINE AND FIR** AVAILABLE FOR FREE CUT & HAUL

FOR MORE INFORMATION PLEASE CONTACT ANITA AT

**1 (209) 962-8612** BETWEEN THE HOURS OF 7 AM TO 2:30 PM, M-F.

## TMC CONSTRUCTION

License # 717300

Insured

**(209) 962-6938**

**Brushing • Log Removal**

**Mastication**

**Hazardous Tree Removal & Pruning**

**Excavation**

Site Prep, Engineered Septic, Culverts,

French drains, Retaining walls,

Hauling, Post hole digging,

Under ground work,

Concrete work

**We can help with your grant.  
Skid Steer and Dump truck service  
Reasonal Rates • Free Estimates**

**MOORE BROS. SCAVENGER CO., INC.**

P. O. Box 278 • Big Oak Flat, CA 95305 • (209) 962-7224 • FAX (209) 962-7257



## VACATION RENTAL OPTIONS FOR TRASH SERVICE

In order to assist property owner/managers of short-term rentals with trash removal, Moore Bros. Scavenger Co. offers the following services.

Short-term rental customers may participate in year-round or three-month summer curbside service. To manage anticipated levels of guest trash, property owners/managers of short-term rentals should maintain the suggested service levels as determined by the *Maximum Occupancy for Rental Property* (please see the chart below). In the event that renters generate more than the expected amount of trash or the home is rented multiple times during a given week the following options are provided:

- **As Needed Extra Pickup.** Property owners/managers may request a notation on their rental service accounts to *pick up extra as needed*. This will ensure that all trash left alongside the cans will be picked up by Moore Bros. and a special pickup will not be required. There is an additional per-can/bag charge for each extra can/bag picked up.
- **Special Pickup.** Moore Bros. has a truck and driver available for special pickups Monday through Friday.
- Property owner/managers must place a request for service call or email to Moore Bros. before 3 pm on the business day prior to the requested pickup day. A request for a Monday pickup must be made by 3 pm on the previous Friday. **Prepaid Bags.** Prepaid Moore Bros. bags may be purchased by property owner/manager to be used by any handyman or housekeeper servicing the residence between rental customers. The prepaid bags can be disposed of at the Pine Mountain Lake Maintenance Yard on Par Court off of Mueller Dr.

Property owners/managers **utilizing full summer service** may go to *on-call service* for the off season.

- **Off Season on Call Service.** Property owner/manager may call or email an *on-call request* to Moore Bros. for a service pickup on the regular pickup day for the address. A request for service call or email must be received before 3 pm the business day prior to regular scheduled pickup day. Charges will be based on the standard a per-can rate for each can/bag picked up.
- **Special Pickup.** Please follow the same procedure as listed above for Special Pickup.

### Maximum Occupancy for Rental Property

Maximum Occupancy	Suggested Service Level
6 - 8 people	2 can
8 - 10 people	3 can
10 - 12 people	4 can
Lake front Property 12 people	4 or more cans as typically needed

If you have questions please feel free to contact our office at (209) 962-7224 or email us at:

[info@moorebrosscavenger.com](mailto:info@moorebrosscavenger.com) and [Shirley@moorebrosscavenger.com](mailto:Shirley@moorebrosscavenger.com) (Please cc both to insure prompt replies).

\*\*\*A drop-off Recycling center is available for use Mon - Sat. 8 am - 5 pm @ 11300 Wards Ferry Rd. Big Oak Flat, Ca\*\*\*

If you happen accumulate excess garbage and need to dispose of it, you may purchase a prepaid Moore Bros garbage bag at the Pine Mountain Lake Administration Office between 8am - 4:30 pm (closed for lunch from 12pm - 1pm), the Pine Mountain Lake Main Gate, or at the Moore Bros Office which is located at 11300 Wards Ferry Rd in Big Oak Flat. Pine Mountain Lake Association is limiting the amount of Moore Bros trash bags you can purchase at one time to 5 bags, and will only sell the bags to PMLA Property Owners. Prepaid Moore Bros Bags can be purchased by anyone and in any quantity at the Moore Bros Office. For service related questions, please contact Moore Bros Scavenger Co at 1(209)962-7224.

## PROPANE DISCOUNT PROGRAM

Suburban Propane - As the preferred provider of PML we are happy to provide an exclusive members only program to all residents.

Benefits include: Propane at a discounted rate, Tank rental at a discounted rate, Free basic tank installation, Easy payment options, 24/7 Tech support, Flexible delivery options, 24/7 live phone support. Contact our local staff for further details and current rates.

Suburban Propane Jamestown California

**(209) 984-5283 • 1 (800) PROPANE**

**COMMERCIAL SPACE FOR LEASE****COMMERCIAL SPACE FOR LEASE!**

18717 Hwy 120, Groveland. Approximately 1600 square feet of building space, located downtown with propane heat, one ADA bathroom perfect for retail, food service, professional office, medical etc. Rent \$1,650.00 Deposit \$1700.00. Contact agent **650-520-1022**

**FOR SALE****2 1995 SEADOOS**

Really good condition runs well, always inside garage when not in use.

Bought them brand new.

1st) Seadoo GTX model 3 seat model and 2nd) Seadoo XP 2 seater a fast Seadoo along with a trailer for both Seadoo's.

\$4,000.00 for both including the tandem trailer.

Seller: Randy Barber - **408-529-0409**

email [rbarber17@yahoo.com](mailto:rbarber17@yahoo.com)

**HARLEY DAVIDSON FOR SALE**

2004 Road King Police Special Blue Clear title accident free includes owners manual with a number of extras 13270 miles \$8000.00 obo call for more details **209-422-4439**

**HELP WANTED****PMLA IS HIRING**

PMLA is looking for qualified candidates for several job openings. Apply online at [www.PineMountainLake.com](http://www.PineMountainLake.com)

**RENTALS WANTED****EXCELLENT TENANTS**

w/excellent credit and rental history looking for homes to rent. Owner approves tenant before placement. Call *Yosemite Region Resorts* **209-962-1111**

**SERVICES****RONNING ROOFING**

Call Joe for all your Roofing and Gutter needs. Licensed, Bonded, and Insured. License # 976739 **209-962-6842**

**HOUSE CLEANING**

We are mature/experienced PML residents.

Steve **925-595-3362**

Carla **925-639-4929**.

**HAVE YOU BEEN INJURED?**

Work injuries, auto accidents, wrongful death, and dog bites. No fee unless you win. Contact me now for a free consultation.

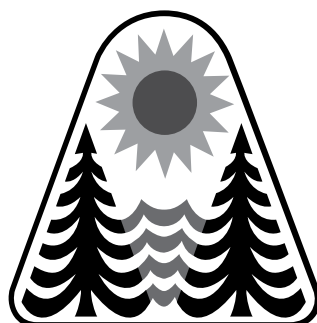
Michael Lamb (Attorney at Law)

phone: **(209) 436-9318**

e-mail: [MRLAMBLAW@GMAIL.COM](mailto:MRLAMBLAW@GMAIL.COM)

**PERSONAL SHOPPING / CLOSET EDITS / STYLING**

Need help shopping for clothes, thrifting for vintage items, putting outfits together, or organizing your closet? For further information and assistance with all of your fashion needs, contact Amy J. at **(209) 436-9318**.

**SERVICES****B BEAUTIFUL SALON @ SPA**

Massage \$65.00 per hour

W - F every other Saturday

Massages are tailored to your needs with a combination of Swedish, deep tissue and trigger point body work. My goal is to ease your body pain. There is a discounted rate available for those that choose to have a massage monthly for maintenance. That rate is \$50.00 per hour. However you must book your discounted massage prior to leaving from your current massage as the discount applies to the next massage. To book an appointment call or text Karen Mazzola at **209-768-6290** State of California License #13763

**BIG JOHN HANDYMAN SERVICES**

Yard Maintenance, House Maintenance and moving households Call John **962-6163**

**LAND FOR SALE****EXTREMELY RARE APPROX. 4.5 ACRE**

hillside PML lot with great views. Private, yet close to Golf, The Grill, Tennis Courts, and Pool. Unit 5B-03. Call **(559) 692-0117** or email

[PinePlay@pm.me](mailto:PinePlay@pm.me)

**GET YOUR AD NOTICED**

Place a photo of your item for sale for just \$10. Call 1-209-962-0613

**CHECK OUT YOUR GROVELAND LIBRARY**

**THE GROVELAND LIBRARY IS OPEN**  
TUESDAY - THURSDAY — 11AM-5PM  
FRIDAY & SATURDAY — 10AM-2PM



**BOOKNOOK**  
USED BOOK SALE  
SATURDAYS  
10AM-1PM

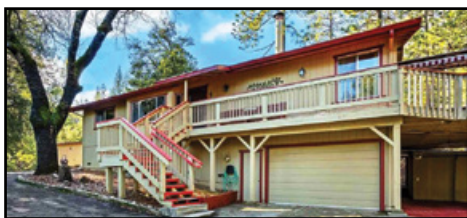
VISIT THE LIBRARY FOR A GREAT SELECTION OF BOOKS, MAGAZINES, NEWSPAPERS, VIDEOS, CDS, DVDS. ALSO COMPUTERS AND FREE WI-FI!



# YOSEMITE REGION REAL ESTATE

18687 Main St, Suite E, Groveland, CA 95321  
209-962-1111 ~ DRE #01964114

**YOSEMITE REGION**  
Real Estate



19995 Pine Mountain Dr **CREATE MEMORIES** and get away from it all. 3bd, 2ba, home nestled in the trees. Cozy wood-burning stove, vaulted ceiling, laminate pine flooring. Granite kitchen counters and large dining area. Retractable awnings and a jetted spa on the back deck, off of the master suite. Two detached storage buildings plus a carport. Turn-key home, ready for full-time living, vacationing or short-term income property. \$469,000 #20240130



12050 Breckenridge Rd **MOUNTAIN HAVEN**. Well-maintained custom home on 1/3 acre. 3bd, 2ba, 2-car garage. Great room, with vaulted ceiling and wood stove. Wet bar and kitchen island, doubling as a cooktop & breakfast bar. Covered deck with pull-down sun shades. Bonus room added in 2005. Updated HVAC. Additional parking area with stair-free access to front door. \$489,000 #20231760



12000 Trapper Ct **NESTLE YOUR HOME** in the Pines and Cedars on this quiet cul-de-sac lot. Approx. 1.27 acres, with plans available for your dream cabin. Many trees offer cool seclusion on a sloped North-East facing property. Borders green-belt inside the gated community. Enjoy all the amenities of Pine Mountain Lake! \$299,900 #20231285

## LONG-TERM RENTALS AVAILABLE!

Ask for Rob Stone • 209-962-1101



• **19834 Pine Mountain Dr** •  
3bd, 2ba, 1797sf  
\$2800/mo.



• **19219 Ferretti Rd** •  
3bd, 2.5ba, 2382sf  
\$2800/mo.



• **11966 Mountain Springs Ct** •  
4bd, 2ba, 1906sf  
\$2400/mo.

### 100% Local Long-Term Rental Services • Now Accepting Long-Term Rentals!

- ◆ Monthly Rentals & Tenant Placement
- ◆ Monthly Statements & Owner Payments
- ◆ Tenant-Screening & Credit Reports
- ◆ Scheduled Maintenance & Repairs
- ◆ Move-in / Move-out Inspections
- ◆ Local, State & Federal Tax Requirements



19018 Jimmie Bell **MOUNTAIN LIFE AT ITS BEST!** Attractive, single-level home, built in 2004, with a low-maintenance design. 3bd, 2ba, 1426sf. Recent updates: Gutters & leaf-guards, carpeting, appliances. Central H/A, insulated garage, textured patios, exterior stone wainscoting, bay window and a great room, with wood cathedral ceiling. Driveway resurfaced. \$449,000 #20231429



20111 Cherokee Trail **OPPORTUNITY KNOCKS** AE-10 zoning. This 40 acres can be subdivided into four 10-acre lots. Enjoy 180 degree views from the deck. Open floor plan, vaulted ceilings, kitchen island, new gas cooktop & oven, re-tractable skylights and built-in bar. Wood-burning stove, 2bd and 1ba on main floor. Loft master suite. Detached garage, with shop area. 2500 gallon water storage tank. Being sold "as is" \$550,000 #20231298



23370 Rusty Spur Rd **BEHIND A PRIVATE GATE** is this modern home, nestled in the Sierra foothills, on over 6.5 acres. Great-room concept, wood-burning stove and a sunroom, currently used as a dining room, with amazing views. Two bedrooms with skylights and a main suite with spacious closets. Lower level bonus living space, with bed/bath, 2nd sunroom. Passive solar heating and plenty of room for vehicles, "toys" and an RV hookup. \$680,000 #20231704



ROB STONE  
OWNER/REALTOR®  
DRE #01025463



BJORN WAHMAN  
BROKER  
DRE #00706559



TARA STONE  
MANAGER/DPG  
DRE# 01106544



LIZ MATTINGLY  
BROKER ASSOCIATE  
DRE #00709618



MIRIAM MARTIN  
REALTOR®, RSPS, ASP  
DRE #01400779



ANDREW RIETVELD  
REALTOR®  
DRE #01994156



RYAN NIEDENS  
BROKER ASSOCIATE  
DRE #01940007



KATHY NIEDENS  
REALTOR®  
DRE #01113243



BRENDA ZUNIGA  
BROKER ASSOCIATE  
DRE #00997621



CAPRICE KROW  
PROP. MGR/LDP  
DRE# 01179023



CORY STONE  
PHOTOGRAPHER  
VIDEOGRAPHER



Vacation Rentals



Ryan Niedens  
General Manager



~ **NOW ACCEPTING HOMES FOR VACATION RENTALS** ~  
**HOUSEKEEPERS AND MAINTENANCE PERSONS WANTED**

Want your family close but not too close?

Yosemite Region Resorts is offering Pine Mountain Lake Locals  
**25% Discount between January 15th, 2024 and April 30th, 2024**

Now is the time to have your family & friends visit for a lot less \$\$

Call or come into our office during business hours and meet our staff.

We will be happy to find you and your visitors a place to stay and relax.



Josh Regalado  
Property Manager



Mary Fackrell  
Guest Services

- LOCAL VACATION RENTAL SERVICES
- OWNER-APPROVED RATES
- AGGRESSIVE ADVERTISING CAMPAIGN

18687 Main Street, Suite E, Groveland, CA 95321  
(209) 962-4396 • [realfun@yosemiteregionresorts.com](mailto:realfun@yosemiteregionresorts.com)

- PRE-ARRIVAL INSPECTIONS FOR GUESTS
- PROFESSIONAL DEPARTURE CLEANINGS
- ACCIDENTAL DAMAGE PROTECTION