



Covered Arena Presentation

By the PML Equine Advisory Committee

As presented by

Lynne Orloff



Equine Advisory Committee

- ***Discussion***
- **Why consider a covered arena?**
 - Rider, horse
 - Extends opportunities to ride
 - Weather, too hot, too cold, too damp
 - Lessons get cancelled
 - Some horses are not trail ride-savvy or riders don't feel safe on the trail
 - Safety and Liability
 - Wet, snowy surfaces can lead to direct or indirect accidents
 - New riders and young horses are more confident in covered arenas. Less likelihood of distractions.



Equine Advisory Committee

- Non-Equine Activities:
 - Greater range of activities, with less cancellations or poor turnouts due to weather*
 - Concerts
 - Clinics
 - Weddings or celebrations
 - Cowboy events such as roping, reining, gymkhanas
 - Flea markets
 - Holiday events
 - Hayrides

* Most of the above are a revenue stream for the association as the arena would be rented.



Equine Advisory Committee

Additional Activities continued.

- First Responder Training for equine rescue
- Loading Training for emergencies
- Dressage events,.. arena size meets the requirements for an official dressage pattern of 66'X197'.

*Most of the above are a revenue stream for the association as the arena would be rented.



Equine Advisory Committee

- Investigations:
 - Committee members visited four arenas to solidify what would work best for our needs at Pine Mountain Lake
 - Ed Hughes Memorial Arena in Lone, CA.
 - 200'X250' within moveable panels, 165'X250' under roof.
 - 800 amps in addition to solar, no dark areas
 - Bridlewood, Copperopolis, CA
 - 185'X240' enclosed, metal halide lights, speaker system can be directed to a targeted area or overall
 - Sargent's Equestrian Center, Lodi, CA
 - 130'X240', plus a 250'X400' outside area, sound system, sun/wind panels on sides
 - Pioneer Equine Hospital, Oakdale, CA
 - Built in two sections, @275'x165', metal halide lights, capped ends



Equine Advisory Committee

Low pitch
roof

No
amenities





Equine Advisory Committee

Enclosed
sides





Equine Advisory Committee

End cap





Equine Advisory Committee

Big Ass Fans

Metal Halide
Lights





Equine Advisory Committee

Skylights

Open
Structure





Equine Advisory Committee

Bleachers





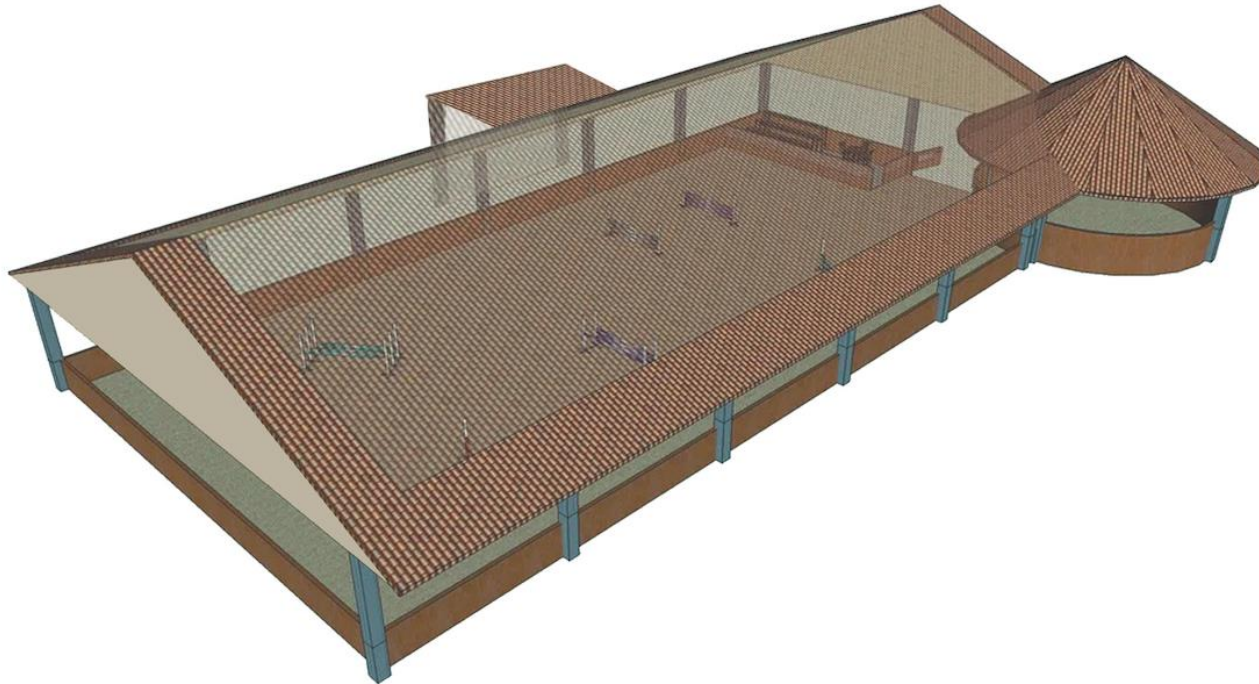
Equine Advisory Committee



PROPOSED PINE MOUNTAIN LAKE COVERED ARENA



Equine Advisory Committee



OVERVIEW OF COVERED ARENA/ROUND-PEN IDEA



Equine Advisory Committee

- Specifications:
 - 120'X200' which is the footprint of the outdoor arena
 - Completely open structure with steel supports, sloped roof (snow loads)
 - Amenities eventually:
 - Big Ass Fans
 - Adequate Lighting
 - Mounted Speakers
 - Solar panels
 - Additional portable railings as needed for an event.



Equine Advisory Committee

- Getting Estimates:
 - Only one received to date from:
Metal Mike Steel Building Contractor
which included labor, materials, concrete engineering, bolt inspections, fuel and travel from Valley Springs, CA.
Estimate was at \$20/sq. ft.
- Cost Reductions?
 - Partial labor by our own labor department
 - Solar from our current contractor at a reduced rate?
 - Build structure in two stages...half the length each cycle.
 - Amenities (fans, sprinklers, lights, speakers) get added over the next three years