

PINE MOUNTAIN LAKE NEWS

JUNE

2023

THE OFFICIAL NEWSPAPER OF, AND FOR, PINE MOUNTAIN LAKE PROPERTY OWNERS

TABLE OF CONTENTS

| | |
|------------------------------------|--------------------|
| Administration | 2-16, 19-23, 32-37 |
| PMLA Financials | 6 |
| The Grill | 18-19, 24 |
| “Homes on the Hill” Real Estate | 25-29 |
| PML Clubs & Recreation | 38, 42-45 |
| Community News | 45-52 |
| Home Improvement | 52-54 |
| Classified Ads | 55 |

HAPPY *Father's Day* FROM PINE MOUNTAIN LAKE

**WRISTBANDS
FOR JULY 1
FIREWORKS
SEE PAGE 2**

**MEET THE
CANDIDATES
SEE PAGES 20-21**

**LIVING WITH
WILDLIFE
SEE PAGES 22-23**

**RESOLUTIONS
FOR REVIEW
SEE PAGES 32-37**

PRSR STD
U.S. POSTAGE
PAID
ABS DIRECT

Change Service Requested

19228 Pine Mountain Dr. Groveland, CA 95321

Photo by Terre Passeau

Submission Guidelines

The PML News is the Official Newspaper of Pine Mountain Lake Property Owners

The PML News is dedicated to reporting PML Association business and PML Association news to Pine Mountain Lake Property Owners. The PML News receives more than 100 Tuolumne County/Groveland community related submissions each month. All such community related articles and notices will appear in the PML News on a SPACE AVAILABLE basis and at the DISCRETION of the PML News Publishing Editor.

DEADLINES

Advertisements must be received IN FULL (text, MLS info, images, logos, etc.) by the 10th of the month for the following month's edition. Only advertisements received in full will be guaranteed to be published in that month's edition. **NO EXCEPTIONS.**

MEDIA ACCEPTED email

SOFTWARE (Articles)

InDesign, Microsoft Word, Adobe Pages, or TXT formats only.

SOFTWARE (Advertisements)

PSD, JPG, PDF, EPS or TIFF only.

TEXT/GRAPHICS

Handwritten text is not accepted. Material composed completely of capital letters is not accepted. Please use uppercase and lowercase letters in composition. Ink jet printed images are not accepted. Images are accepted ONLY as camera ready art, original photos (to be scanned) or as JPEG, TIFF or PDF files created with above listed software. All scans and bitmap images must be in TIFF or JPG format at least 200 dpi at 100% (300 dpi preferred). Ad files are stored for 90 days from first run date. Older ads that have not been running must be resubmitted. (See Display & Insert Advertising Contract "Design and Preparation Charges.")

E-MAIL TEXT/GRAPHICS

Text/graphics may be delivered as e-mail attachments via the Internet. Send to: pmlnews@sabredesign.net.

AD DESIGN and PROOFS

Ads that are requested to be sent to other periodicals require a usage fee from the advertiser (see Display & Insert Advertising Contract "Design and Preparation Charges"). Proofs are available upon request and final proof approval for all ads is expected within 24 hours. Changes made are LIMITED to typographical or graphic placement errors. NO OTHER ADDITIONS OR CHANGES WILL BE MADE.

SUBMISSION DEADLINES

Articles — 10th each month
Ads — 10th each month
Classifieds — 15th each month

NOTICE

The Pine Mountain Lake News, established July 25, 1973, is printed monthly for residents of Pine Mountain Lake and sold in the Groveland, CA 95321 area. Members can access the PML News monthly edition online at www.PineMountainLake.com. Every month the newest edition of the PML News is posted online before the first of each month. Interested parties can subscribe to the traditional "hard copy" and receive a copy by mail each month.

The PML News is mailed to approximately 3500 PML property owner households each month. Up to 500 copies are rack-sold in the local Groveland area. Our circulation reaches approximately 1200 full-time, resident, PML property owners and approximately 2300 "weekender," non-resident, property owners who maintain primary residence in Northern California, in Southern California, or in other states. For more information regarding the PML News, please call the PML Administration Office at (209) 962-8600. We greatly appreciate your contributions but please note that the PML News fills up very quickly — often by the 7th or 8th of the month (long before the 10th deadline). To ensure that your submission is reviewed for publication please submit in full and as early as possible. Please remember that the PML News is limited in capacity and your submissions are reviewed on a first-come-first-served, space-available basis.

We publish all PMLA related submissions such as Board & Management Business, Clubs, Activities & Events. Where space remains, we publish non-PMLA related submissions in our "Community" section.

We do our best to provide timely news. If you experience delayed delivery or have misplaced a particular edition, please visit us at the PMLA website www.pinemountainlake.com for a downloadable PDF of the News posted by the 1st of the month and a downloadable PDF list of ad rates.

SUBSCRIBE TO THE PML NEWS TODAY!

NAME _____

UNIT _____ LOT _____

MAILING ADDRESS _____

NO CHARGE FOR PROPERTY OWNERS (BULK)
\$6/YR FOR CO-OWNERS (BULK);
\$10/YR FOR NON-PROPERTY OWNERS (BULK)
\$20/YR FOR PROPERTY OWNERS (1ST CLASS)
\$30/YR FOR NON-PROPERTY OWNERS (1ST CLASS)

ENCLOSED IS MY CHECK IN THE AMOUNT OF
\$ _____ (PAYMENT DUE IN FULL)

SEND THIS SUBSCRIPTION TO:
PINE MOUNTAIN LAKE ASSOCIATION
19228 PINE MTN. DR. GROVELAND, CA 95321
ATTN: MELODY

ANNUAL FIREWORKS WRISTBANDS

MICHELLE CATHEY, CCAM – RECREATION & SEASONAL OPERATIONS MGR

It's that time of year to start picking up your wristbands for the annual Fireworks Event. This year the event will be held on July 1st. Each member can pick up their two free wristbands at the Administration Office during business hours — Monday through Friday 8:00 AM – 4:30 pm. The Administration office will be open on Saturday July 1st, from 8 AM – NOON for wristband pick up. The Marina will not give out any free wristbands. Additional wristbands can be purchased at the Administration Office prior to the event. Additional wristbands can be purchased at the Marina on the day of the event. Wristband prices will be \$10 for Adults and free for children 8 years and younger. You must be a member, long-term renter, or short-term renter to purchase a wristband. For any questions, please call us at 1 (209) 962-8600.

PMLA WRISTBAND REQUEST



I hereby request that PMLA mail my two (2) free Independence Day wristbands per property to me. Enclosed please find a #10 self-addressed, stamped envelope with required postage affixed. I understand my free wristbands will only be mailed to the address PMLA has on record as my mailing address.

I hereby accept responsibility for delivery of the wristbands and understand that PMLA will not replace lost or missing wristbands.

Any requested change of address must be submitted in writing and signed by a current property owner.

Requests for mailing of free wristbands must be RECEIVED in the PMLA Administration office by June 15, 2023.

Property Owner Signature _____

Property Owner Name _____

DATE _____

UNIT/LOT _____

MAIL TO: PMLA Free Wristbands – Melody
19228 Pine Mountain Drive
Groveland, CA 95321

24/7 RENTAL COMPLIANCE HOTLINE

IT JUST GOT EASIER TO REPORT, PROVE, AND RESOLVE
NON-EMERGENCY SHORT-TERM RENTAL RELATED
PROBLEMS IN REAL TIME, 24 HOURS A DAY,
7 DAYS A WEEK

1 (209) 231-4543

VISIT US ONLINE
www.pinemountainlake.com

PINE MOUNTAIN LAKE ASSOCIATION



ADMINISTRATION OFFICE HOURS
8:00 AM TO 4:30 PM – MON THRU FRI
OPEN AT 8:45 AM SECOND TUESDAY OF EACH MONTH
THE OFFICE IS CLOSED BETWEEN 12:00 & 1:00 EACH DAY

2023 ADMINISTRATION OFFICES HOLIDAYS (ADMIN OFFICE WILL BE CLOSED)

| | |
|-------------------------------------|----------------------------------|
| TUE. 7/4/23 INDEPENDENCE DAY | |
| MON. 9/4/23 LABOR DAY | MON 12/25/23 CHRISTMAS EVE (OBS) |
| FRI. 11/10/23 VETERANS DAY (OBS) | TUE 12/26/23 CHRISTMAS DAY (OBS) |
| THUR 11/23/2023 THANKSGIVING | MON 1/1/24 NEW YEARS EVE (OBS) |
| FRI 11/24/23 DAY AFTER THANKSGIVING | TUE 1/2/24 NEW YEARS DAY (OBS) |

PMLA BOARD MEETINGS SCHEDULE (THIRD SATURDAY - UNLESS OTHERWISE NOTED)

| | |
|---|---|
| JUNE 17, 2023 (Father's Day Weekend) | SEPTEMBER 23, 2023 |
| JULY 15, 2023 | OCTOBER 21, 2023 (Board Budget Meeting) |
| AUGUST 19, 2023 (Annual Member Meeting/Election) | NOVEMBER 18, 2023 (Saturday before Thanksgiving) |

PINE MOUNTAIN LAKE NEWS DELIVERY

Although we guarantee that the PML News is mailed from Modesto, CA on the same day (between the 26th-30th of month), most post offices (except Groveland) sort Bulk Mail after First Class mail. So, consider a First Class delivery subscription for just \$20/yr. (\$20 per year for property owners and \$30 per year for non-property owners) Interested? Call the PMLA Office at 209/962-8632 or see form above.

The Pine Mountain Lake News is also available (in PDF format) at: www.pinemountainlake.com. New editions are posted by the 1st of the month.

PHONE & EMAIL DIRECTORY

ADMINISTRATION
General Manager - Joseph Powell
joepowell@pinemountainlake.com

Admin Asst. to G.M. - 1.209.962.8627
Janessa Owens
j.owens@pinemountainlake.com

Human Resources - 1.209.962.8628
Shannon Abbott
pmlhr@pinemountainlake.com

E.C.C. Assistant - 1.209.962.8605
 Plan Submittal, Compliance Fees
Ashley Henderson
ecc@pinemountainlake.com

Member Relations - 1.209.962.8632
 Gate Cards, Address Changes,
 Webmaster, Mergers
 Lake Lodge Scheduling
Melody Wisdom
pmlmr@pinemountainlake.com

Community Standards Director
1.209.962.1241
Suzette Lafranchi
communitystandards@pinemountainlake.com

Community Standards Specialist
1.209.962.1242
Kara Powers
compliance@pinemountainlake.com

Rental Compliance Coordinator
1.209.962.1245
Carrie Harvey
RCC@pinemountainlake.com

General Info & Lake Lodge Scheduling 1.209.962.8600
Shari Pingree
 Receptionist
admin@pinemountainlake.com

Main Gate - 1.209.962.8615
 General Safety Inquiries, gate passes, campground reservations, tennis reservations
campground@pinemountainlake.com

ACCOUNTING
Tina Parmalee - 1.209.962.8607
 Receivable/Collections/
 Assessments
pmlar@pinemountainlake.com

Accounts Payable - 1.209.962.8626
Vikki Smedley
pmlap@pinemountainlake.com

Accounting Supervisor
1.209.962.8618
Stacy Gray
stacy@pinemountainlake.com

Controller - 1.209.962.8606
Dan Szathmary
 Accounting Procedures
controller@pinemountainlake.com

Recreation and Seasonal Operations Manager
1.209.962.8604
Michelle Cathey
m.cathey@pinemountainlake.com

DEPARTMENT OF SAFETY
Director of Safety - 1.209.962.8633
Natalie Trujillo
n.trujillo@pinemountainlake.com

Sergeant - 1.209.962.1244
Sgt. Teri Cathrein
t.cathrein@pinemountainlake.com

MAINTENANCE DEPT
Maintenance Manager
1.209.962.8611
Rick Lafranchi
rickl@pinemountainlake.com

Administrative Assistant
1.209.962.8612
Anita Spencer
maintenance@pinemountainlake.com

Fire Safety Coordinator
1.209.990.5260
Joe Milani
j.milani@pinemountainlake.com

Fire Safety Inspector
1.209.990.5263
Amanda Darrow
inspectorl@pinemountainlake.com

Fire Safety Inspector
1.209.990.5261
Jessica Heller
firesafety@pinemountainlake.com

GOLF COURSE
Golf Course Superintendent
1.209.962.8610
Rob Abbott
rabbott@pinemountainlake.com

Golf Pro Shop - 1.209.962.8620
 Golf Pro Shop/Golf Reservations
Doug Schmielt
dschmielt@pinemountainlake.com

Golf Pro - 1.209.962.8622
Mike Cook
golfpro@pinemountainlake.com

THE GRILL AT PINE MOUNTAIN LAKE
The Grill Manager - 1.209.962.8639
Heather Parkhurst
clubmgr@pinemountainlake.com

Restaurant - 1.209.962.8638

OTHER PHONE NUMBERS
Equestrian Center Manager
Kendra Brown - 1.209.962.8667
stables@pinemountainlake.com

Marina Manager
1.209.962.8631
Dawn Pretzer
marina@pinemountainlake.com

PML NEWS - 209.962.0613
 Ad/Article Submissions
 Sabre Design & Publishing
PMLNews@SabreDesign.net

GENERAL MANAGER'S MESSAGE

JOE POWELL – PCAM, CCAM-LS, CMCA, AMS GENERAL MANAGER

SOLAR POWER SYSTEM PROJECT UPDATE

Our solar power system project contractor has informed us that the final tie-in work has been completed including parking lights, and they have submitted for approval by PG&E to turn on the system. We anticipate that this will happen soon and we will start seeing some cost savings in our electricity billing.

FISHERMAN'S COVE BEAR TRASH ENCLOSURE

We were forced to remove our trash cans at Fisherman's Cove due to bears and other wild animals. We ordered a new two-can bear resistant trash enclosure for this area. It is high quality and similar to the ones that we are using successfully at our Campgrounds. Maintenance poured a concrete pad to accommodate the new trash enclosure, and it was installed the middle of last month.

There is some misinformation spreading around on social media, that the Association rules do not allow for members to purchase and install bear-resistant trash enclosures, but this is not accurate. All improvement projects including the installation of bear boxes are required to be submitted to ECC for review and approval BEFORE they get installed. Unfortunately, some members are not submitting their improvement projects for approval before they perform the work and they are ending up under enforcement.

If you are going to hire someone to do any kind of construction or work on your property, please due your due diligence and make sure that they are licensed contractors. Do not just post a request for references on Facebook or Nextdoor, and hope you get a qualified contractor. We are seeing more and more members getting ripped off and in trouble with our compliance department because they did not get the right information directly from the Association.

PML PRE-ENTRY AND MAIN GATE MONUMENT IMPROVEMENTS

Our Maintenance team has been working on the landscape and hardscape at the Main Gate monuments and the pre-entry area near Ferretti Road. They have completed the Main Gate monument and will continue working on the pre-entry area until it is completed. The work that they have accomplished already makes both areas look a 100% better.

ROAD INTERSECTION STOPS AND BARS PAINT PROJECT

Our Maintenance team has also been working on painting all stops and bars at each intersection in time for peak season. Please keep an eye out for road crews as they work on this project.

SWIMMING POOL REFURBISHMENT PROJECT UPDATE

The Swimming Pool Refurbishment project is going well. The contractor finalized the plastering of the inside of the Pool last month and the deck resurfacing contractor is scheduled to complete their portion of the project the middle of June. We hope to have the Swim Center back open for member use by the middle of the month if not sooner.

GRILL SCHEDULED TO OPEN THE MONDAY OF THE THREE BIG HOLIDAY WEEKENDS

Many members have requested that the Grill be open on Mondays,

most importantly the three big holiday weekends, Memorial Day, Independence Day and Labor Day. In the past, the idea did not make sense financially as we did not see enough member participation to warrant opening on these Mondays.

As you know, times change so we are going to try again and will be open the Monday of all three holiday weekends. We encourage the membership to patronize the Grill restaurant and bar on these Mondays as we will be analyzing the numbers at the end of the season to determine if it will be worthwhile to remain open on these Mondays in the future.

GATE ACCESS VENDOR

In March, the Board of Directors awarded a contract to a gate access vendor that included upgrades to hardware and software. This was in response to the issues with long lines at the Main Gate during the summer season. We were going to begin installation and testing at the Main Gate guest and member lanes. Unfortunately, the integrator backed out with no explanation. As a result, we have gone back to the manufacturer and they are contacting other integrators in our area. We

will continue to work on this until we see some success.

In the meantime, we coordinated with members of our Safety and Security Committee, CSU and CERT teams in coming up with some possible solutions to the traffic issues at the Main Gate.

CANADA GEESE DEPREDATION PERMIT

We submitted our application for a depredation permit so that we could perform a take of the geese year-round. Even though the submittal was quite comprehensive, the permit was denied. We are attempting to get letters from the County environmental health and other agencies to support our effort for health and safety reasons. If they decide to assist, we will resubmit with the additional statements to the U.S. Fish and Wildlife Department in support of our efforts.

Until next month, wishing all the dad's a Happy Father's Day!

**MAKE PML YOUR
ONE-STOP-SHOP
FOR ALL YOUR GIFT GIVING!**

**PICK UP A GIFT CARD FOR:
GOLF • GOLF SHOP APPAREL
& ACCESSORIES • THE GRILL
HUNTING & FISHING LICENSE VOUCHERS**

**GIFT CARDS ARE AVAILABLE AT THE
ADMINISTRATION OFFICE, THE GRILL,
AND AT THE PRO SHOP**

**SPEED
LIMIT
25**

**SLOW DOWN
WATCH FOR ANIMALS,
CYCLISTS & PEDESTRIANS
PLEASE DRIVE SAFELY**

PRESIDENT'S MESSAGE

NICK STAUFFACHER – PMLA BOARD PRESIDENT

It is now officially Summer Season here in PML. Hope everyone had a wonderful Memorial Day Weekend. Taking a moment to remember those who gave so much for us by serving in our Military.

Personally, it seemed like we would never get to the summertime weather. But here we are, finally. With this warmer weather there is so much to do and enjoy here in PML. Let me list a few of these things...

The Marina is now open and it is time to spend some quality time there. What better way to enjoy our beautiful lake than relaxing by the water meeting up with friends and/or having a bite to eat or (my wife's favorite) having a tasty ice cream treat.

Our Stables have a fun season planned with concerts, car show and BBQ, horseback riding lessons and trail rides. Mark your calendars for June 30th, this will kick off our 4th of July weekend with our Posting of Colors at the Stables. It is always an awe-inspiring, heartwarming show. I highly recommend this event.

The swimming pool repairs should be almost complete if not done by this time. When open they will be offering swimming lessons. What an opportunity to learn to swim if you don't know how.

Which reminds me that the Golf course provides golf lessons, if you have always wanted to take a swing at learning to golf here is your chance. In case you didn't know, they rent golf clubs, this way you can give it a try without having to buy any equipment. Let's not dismiss from mind the driving range. What a fun way to get out and enjoy the beauty of the PML Golf course while practicing your swing hitting a bucket of balls. One of the best kept secrets of PML is the Golf Snack Shack. It is a favorite spot for us to have one of the best hot dog lunches and watch people on the course or at the driving range.

Another popular amenity is Pickleball. People really seem to enjoy their time on the courts playing this easy to learn fun sport. You should really give this a whirl.

Heads up, the shooting range is planning on several summer events. One to lookout for is an all-ladies shooting event. Sounds like it should be an amazing event.

As you are probably aware that The Grill has brought back Karaoke, DJ's and live Band music on Friday nights for the Summer. They also have some special events coming up for us, like this June they are having a Wine Tasting Dinner. Sign me up. They will continue to do weekly dinner and drinks special. This year The Grill was open on Monday after Memorial Day Weekend for lunch. Hopefully this proves to be a welcomed addition on these long Holiday weekends.

In closing I wanted to mention our 4th of July Fireworks, it will be on Saturday July 1st. Make sure to stop by the Admin. office and get your wrist bands for this big event.

Please enjoy all PML has to offer and stay safe. Be fire wise, make sure your lot is clean of debris, weeds and pine needles.

PINE MOUNTAIN LAKE ASSOCIATION

1.209.962.8600

BOARD OF DIRECTORS

Nick Stauffacher: **President**
 Karen Hopkins: **Vice President**
 Chuck Obeso-Bradley: **Secretary**
 Craig Prouse: **Treasurer**
 Mike Gustafson: **Director-at-large**

GENERAL MANAGER

Joseph M. Powell, PCAM, CCAM-LS, CMCA, AMS

CORRESPONDENCE TO DIRECTORS

Pine Mountain Lake Association
 19228 Pine Mountain Drive
 Groveland, CA 95321
 PMLABoard@pinemountainlake.com

ADMINISTRATION OFFICE

HOURS OF OPERATION*

Monday - Friday 8:00 AM - 4:30 PM
 Closed 12:00 - 1:00 PM
 Tel: 1/209/962-8600

The Pine Mountain Lake News, established July 25, 1973, is printed monthly for residents of Pine Mountain Lake and vicinity by Pine Mountain Lake Association, Groveland, California 95321.

SUBSCRIPTION RATES:

Co-owner subscription: \$6 per year
 Single copies: 50 cents each
 Single mailed copies: \$1.35 each
 For non-members: \$10 per year

SUBMISSION DEADLINE

10th of the month by 4:30 PM
 LATE SUBMISSIONS MAY NOT BE ACCEPTED

Visit www.pinemountainlake.com for ad rates and submission guidelines or email:

PMLNews@SabreDesign.net.

For the mutual benefit of all property owners, the Pine Mountain Lake News reserves the right to edit all copy submitted for publication. The Pine Mountain Lake News is a private enterprise, not a public entity, and as such is entitled to reject advertisements or articles in the best judgment of its editor or publisher, despite a probable monopoly in the area of its publication. Pine Mountain Lake Association is not responsible for, nor does it guarantee the accuracy of, information contained in any ad placed in the Pine Mountain Lake News. The Pine Mountain Lake News attempts to ensure that this publication is free of legal infringements and the Pine Mountain Lake Association and its contractors are not liable for copyright/trademark infringements from external advertisements and articles.

DAVID WILKINSON - Publishing Editor
SABRE DESIGN & PUBLISHING
 Design/layout

PINE MOUNTAIN LAKE NEWS

P.O. Box 605
 Groveland, CA 95321
 Tel: 1.209.962.0613

E-mail: PMLNews@SabreDesign.net

ATTENTION NEW PML MEMBERS!

WELCOME to PML...We're glad you're here!

Once you have received your welcome letter from the Association you will have the information you need to log into the PML website (www.pinemountainlake.com)

Once there click on the **RESOURCES** tab & then on the **NEW MEMBER ORIENTATION** icon.

The New Member Orientation page is **JUST FOR YOU!**

Here you will find:

- Member Orientation Packet
 - o Information on the Official PML Facebook page
 - o Gate Access Guest Pass internet program information
 - o Fire Safety contact and information
 - o Board Meeting Dates and information
 - o Rules, Regulations and Procedural information
 - o Information on PML Committees and Clubs
 - Assessment Information
 - PML Fact Sheet
 - Getting Connected in Groveland
- And **MUCH MORE!**



PINE MOUNTAIN LAKE ASSOCIATION
SUMMARY STATEMENT OF OPERATING FUND REVENUES AND EXPENSES
For Four Months Ended April 30, 2023

| OPERATION OF AMENITIES | Revenues | | | | | Expenses | | | | Budget (NET COST) INCOME | Variance Bud - Act |
|--------------------------------|--------------------------------------|------------|-----------------------------|----------------------|----------------|----------------|-----------------------------------|----------------------|-------------------|--------------------------|--------------------|
| | Members' Assessments Net of Discount | User Fees | Sales, Net of Cost of Sales | Miscellaneous Income | Total Revenues | Total Expenses | (Cost)/Income Before Depreciation | Depreciation Expense | (NET COST) INCOME | | |
| Golf Course | \$ -0- | \$ 167,241 | \$ 5,564 | | \$ 172,805 | \$ 548,584 | \$ (375,779) | | \$ (375,779) | \$ (400,599) | 24,820 |
| Restaurant & Bar | -0- | 999 | 251,678 | | 252,677 | 504,725 | (252,048) | | (252,048) | (316,082) | 64,034 |
| Marina | -0- | 148,657 | | | 148,657 | 152,883 | (4,226) | | (4,226) | (450) | (3,776) |
| Snack Shack | -0- | -0- | 6,909 | | 6,909 | 16,808 | (9,899) | | (9,899) | (14,836) | 4,937 |
| Stables | -0- | 36,220 | | 1,717 | 37,937 | 149,950 | (112,013) | | (112,013) | (111,712) | (301) |
| Recreation | -0- | 38,028 | | | 38,028 | 12,451 | 25,577 | | 25,577 | 15,992 | 9,585 |
| Roads & Facilities Maintenance | -0- | 30,104 | | 340 | 30,444 | 814,621 | (784,177) | | (784,177) | (935,951) | 151,774 |
| PROPERTY OWNER SERVICES | | | | | | | | | | | |
| Safety | -0- | 38,074 | | (5,283) | 32,791 | 349,096 | (316,305) | | (316,305) | (363,537) | 47,232 |
| Administration | -0- | 120,534 | | 146 | 120,680 | 870,704 | (750,024) | | (750,024) | (547,091) | (202,933) |
| ASSESSMENTS | | | | | | | | | | | |
| + | 2,385,192 | | | 41,413 | 2,426,605 | 43,542 | 2,383,063 | 225,805 | 2,157,258 | 2,113,632 | 43,626 |
| Totals | \$ 2,385,192 | \$ 579,857 | \$ 264,151 | \$ 38,333 | \$ 3,267,533 | \$ 3,463,364 | \$ (195,831) | \$ 225,805 | \$ (421,636) | \$ (560,634) | 138,998 |

CAPITAL EXPENDITURES Four Months Ended April 30, 2023

| | TOTAL RESERVE FUNDS | NEW CAPITAL ADDITIONS FUND | TOTAL CONTRIBUTION TO CAPITAL |
|---|------------------------|----------------------------|-------------------------------|
| 2023 Beginning Fund Balances | 4,403,620 | 102,395 | 4,506,017 |
| Interest Income | | | - |
| Bank Fees/Discounts Taken | | | - |
| Assessments Earned | 825,587 ⁽¹⁾ | 1,100 ⁽²⁾ | 826,687 |
| Other Income/Expense | | | - |
| PURCHASES BY AMENITY | | | |
| Golf Course | (105,698) | (24,451) | (130,149) |
| Country Club | (5,363) | | (5,363) |
| Bar | | | - |
| Marina | (28,994) | | (28,994) |
| Snack Shack | | | - |
| Swim Center | (7,850) | | (7,850) |
| Stables | (5,856) | | (5,856) |
| Recreation | (10,239) | | (10,239) |
| Roads & Facilities Maintenance | (77,299) | (19,235) | (96,534) |
| PROPERTY OWNER SERVICES | | | |
| Safety | | | - |
| Administration | (10,855) | | (10,855) |
| Non-Capital Reserve Expenses | (12,626) | | (12,626) |
| Total transfer to Operating Fund for property and equipment additions and reserve expenses | (264,779) | (43,686) | (308,465) |
| Adjusted Fund Balances | \$ 4,964,428 | \$ 59,809 | \$ 5,024,239 |

Notes to the Financial Statements

(1) The Budgeted Reserve Fund assessment for 2023 is \$2,355,000

(2) The Budgeted New Capital Additions Fund assessment for 2023 is \$1,100

PML AUTOMATIC PAYMENT PROGRAM

Taking the time to write a check for your monthly assessment payment can be time consuming and costly. You can avoid this burden and eliminate the potential for late payment charges by enrolling in PMLA's Auto Payment Program. By completing the form, which can be found at www.PineMountainLake.com under the Resources/Forms, and returning it to the Administration Office, you can have your monthly assessment automatically deducted from your checking account or charged to your credit card. This means you never have to remember to write a check and mail it each month. The peace of mind that comes with knowing your payment will always be made on time is easy to attain. We can also arrange to have any other regular payment you make to the Association (such as golf membership, horse boarding fees, etc.) paid in the same way.

For more information on this simple, effective and time saving plan please contact us at **1 (209) 962-8600**

DO YOU HAVE YOUR PIN?

Since PML is a private gated community, we want to offer our property owners a secure way to call in guests. When you become a member of PML you are assigned a Personal Identification Number (PIN) to utilize either when calling in a guest pass or using the Gate Access Internet program. This PIN identifies you to staff without you having to be present. This is a confidential number and should **not be shared**. When you call the Main Gate to authorize a guest or vendor access into PML, you will be asked for your PIN. The staff will look up the number in the computer and use it to confirm your identity before entering the guest information. You must have this number to utilize the Gate Access Internet program as well. If you do not know your PIN or have any questions, please contact the Administration Office at:


1-209-962-8600


Monday through Friday from 8 am to 4:30 pm
and we will gladly supply this information to you.

PAY YOUR PML PAYMENTS ONLINE

Did you know you can make your payments online?

Online Bill Pay is available on www.PineMountainLake.com.

Pay via your credit card, it is quick and easy!

MONEY MATTERS

DAN SZATHMARY – ASSOCIATION CONTROLLER

Every couple of years we incur the single largest expenditure from our reserve fund, road improvements and maintenance.

Given the significant amount of money involved, and the impact having well maintained roads has on our members and their experience at PMLA; we review and manage the investment in our 52 miles of roads very diligently and carefully.

Why do we spend so much money on road maintenance?

The quality of roads has a major impact on the wear and tear of the vehicles that use them, so well-maintained roads generate a reasonably high return on investment to members the use our roads regularly. More money generally means better roads and a good return on investment makes spending the money a good investment. Ask anyone like me that lives down a stretch of road that is not county maintained and what that does to your vehicle over time.

Well maintained roads also have a direct impact on the aesthetic value of PML properties. One of our primary missions as your HOA is to protect and maximize the value of your property. We strive to provide more than \$242 a month of value to our members, every month of the year. Impressively well-maintained roads along with common areas is the best way we have of delivering that value back to the members that invest in it. That means as we responsibly manage your money, sometimes it is clearly worth more to spend more, within reason of course.

Well maintained roads also require a good amount of engineering and expertise. That is why we hire professionals and do it right. And with most things you can pick between good and cheap but can't have both. If we had a bunch of maintenance guys with shovels and asphalt filling potholes nine months out of the year, we could keep our roads somewhat passable on the cheap, but then what? Over time they would look a lot like the road I have to drive on to get to and from

of my house every day. After years of work like that, don't try to do it without 4-wheel drive with a really good suspension. Not to mention, it doesn't look pretty. See above for why all that is important.

Why do we generally perform this maintenance every other year, instead of every year, or perhaps every four or five?

After 50 years of experience, and lots of professional consultation from different firms, we found the sweet spot in terms of saving as much money as possible while keeping our roads in pristine condition one year to the next. PMLA used to perform road maintenance every year, and found we would save \$40-70k a year on mobilization costs if we did twice the amount of work every other year.

So why not do it every four, or even five years and save even more? We found after two to three years, roads start to visibly degrade having a notable impact on aesthetics, and end up costing more as the level of degradation impacts things that need more work and engineering. An ounce of prevention every couple of years is worth a pound of cure in the long term.

How do we ensure quality work on such a significant investment at the best possible price?

As with all high dollar reserve expenditures, the manager in charge of it has to obtain no less than three quotes from credible and reputable sources. They must be packaged and presented to the Controller (me) and is also reviewed by the General Manager. Not all bids are created equal, and if you have ever worked in any aspect of construction, you well know the "cheapest" bid is usually the most expensive. So, we thoroughly vet the contractors themselves as well as the scopes of work presented; and of course, a lot of weight is placed on the price of the contract.

Thanks for your time and, as always, I love to hear suggestions and am always listening.

What would you like to learn more about next month? Contact me anytime. Controller@PineMountainLake.com or 209-962-8606.

TEE TO GREEN

ROB ABBOTT – GOLF COURSE SUPERINTENDENT

Summer officially starts June 21st, and we are feeling the effects of a very wet winter and spring with about 63.5" of rain for the season and numerous snow events. So far, we have had a cool spring but we are anticipating a long hot summer. The hot weather brings a lot of issues for our cool season grasses. The heat brings the need to cool the grass in the afternoons with our irrigation system and hoses, this practice is called syringing turf. We are not trying to water the turf heavily, just simply cool the top of the plant to give it a break from the afternoon heat. Our nightly watering will be ramping up with the heat, and my goal is to keep the course alive and playable through the summer and not have any extensive turf loss. Golfers may encounter wet conditions in the early morning hours but as the day wears on conditions become ideal. If we didn't have those wet conditions in the morning, we would see more wide spread turf stress in the afternoons and have the potential for turf loss.

Originally when the course was constructed, the greens were planted with a variety of Bentgrass. As the years have gone by, Poa Annuua (annual Bluegrass) has invaded the greens here as well as most courses in the region and across the western states. Poa is different than bent in its fertility needs, water needs, and can be more prone to disease. It also produces a

seed head that makes the greens a little bumpy and white in color. We control the Poa seedheads through our frequent applications of fertilizer. Healthy Poa will not seed as it only does so when it thinks it is going to die. As long as we feed and water turf properly, we will maintain a quality putting surface. Higher fertility levels have benefits that are not apparent for Bent grass. Higher levels of nitrogen are beneficial in maintaining dark green color, enhanced density and an increased resistance to stress, pest, and disease issues.

Staff will again begin frequent light sanding of the greens combined with a light vertical cut mowing. It seems every time we do this, we will get questions as to why it is done. Vertical cut mowing promotes upward growth of the grass rather than horizontal growth, this gives the ball a better lye and smoother roll out. Sanding after vertical mowing aids in the upward growth the smoother faster greens. It is recommended that every two to three weeks we apply a light sand application. The goal is to reduce thatch density and maintain sand as the dominant component of the soil, to maintain a balance between air filled and water filled pore space. An added benefit is the putting surface will also improve a little each time we complete this project. Our goal this season is at least ten of these operations.

HAPPY
Father's Day
FROM PINE MOUNTAIN LAKE

COMMUNITY ORGANIZATIONS

Contact the individuals/organizations below if you are interested in joining!

If you would like your community organization listed please send your group's name, contact person, and phone number to j.owens@pinemountainlake.com

CAMP TUOLUMNE TRAILS
Jerry Baker - 1.209.962.7916

FRIENDS OF THE GROVELAND LIBRARY
Virginia Richmond - 1.209.962.6336

HELPING HANDS THRIFT STORE & FURNITURE BARN
Patti Beaulieu - 1.209.962.7402

VILLAGE ON THE HILL
1.209.962.6906 or info@villageonthehill.org

SOUTHERN TUOLUMNE COUNTY HISTORICAL SOCIETY (STCHS)
Harriet Codeglia - 1.209.962.6270

PML SAFETY REPORT

| | 1st Quarter | April | YTD |
|----------------------------------|-------------|----------|-----------|
| Guest Passes Issued | 2,063 | 1,175 | 3,238 |
| Vendor Passes Issued | 842 | 522 | 1,364 |
| Temporary Resident Passes Issued | 1,787 | 1,048 | 2,835 |
| Vehicles Admitted | 22,385 | 11,318 | 33,703 |
| Vehicles Refused Entry | 526 | 263 | 789 |
| Phone Calls Received | 7,419 | 3,068 | 10,487 |
| Residential Alarm | 16 | 7 | 23 |
| Animal - Loose | 27 | 14 | 41 |
| Animal - Impounded | 4 | 7 | 11 |
| Animal - Dead/Injured | 29 | 5 | 34 |
| Animal - Disturbance | 8 | 1 | 9 |
| Patrol Assist | 510 | 200 | 710 |
| Member Assistance Request | 69 | 17 | 86 |
| Welfare Check | 5 | 4 | 9 |
| Transport | 14 | 3 | 17 |
| Traffic Hazard | 2 | 1 | 3 |
| Traffic Control | 0 | 0 | 0 |
| Excessive Speed/Reckless Driving | 9 | 6 | 15 |
| Gate - Tamper | 6 | 0 | 6 |
| Gate - Follow Through | 56 | 19 | 75 |
| Gate - Malfunction | 12 | 3 | 15 |
| Gate - Struck by Vehicle | 14 | 5 | 19 |
| Control Burn Reported | 139 | 122 | 261 |
| Fire Safety - Smoke Complaint | 8 | 2 | 10 |
| Hazard - Tree Down | 54 | 3 | 57 |
| Residential Disturbance | 2 | 0 | 2 |
| Amenity Burglary | 0 | 0 | 0 |
| Residential Burglary | 0 | 0 | 0 |
| Grand Theft | 0 | 1 | 1 |
| Petty Theft | 0 | 0 | 0 |
| Trespassing | 3 | 0 | 3 |
| Vandalism | 3 | 0 | 3 |
| Property Damage - PML | 3 | 0 | 3 |
| Property Damage - Resident | 5 | 0 | 5 |
| PML Regs Violations Resident | 2 | 1 | 3 |
| PML Regs Violations Guest | 1 | 0 | 1 |
| Vehicle - Citation Issued | 3 | 0 | 3 |
| Vehicle - Accident PML | 3 | 0 | 3 |
| Patrolling Unit | 2,438 | 916 | 3,354 |
| Amenity Security Check | 6,001 | 2,236 | 8,237 |
| Residence Security Check | 724 | 247 | 971 |
| Monitoring Tennis Courts | 0 | 0 | 0 |
| Weapon Violation | 0 | 0 | 0 |
| Fixed Post | 7 | 4 | 11 |
| Courtesy Notice Issued | 85 | 42 | 127 |
| All Other Fees Collected | \$96,108 | \$52,806 | \$148,914 |

GOVERNING DOCUMENT ENFORCEMENT ACTIONS APRIL 2023

| | |
|---------------------------|-----|
| Courtesy Notices | 46 |
| Notice of Non-Compliance | 10 |
| Final Notice of violation | 4 |
| Fines Assessed | 5 |
| Member Service | 409 |

COMPOST & ARCHERY RANGE HOURS OF OPERATION

APRIL THRU OCTOBER - 7 DAYS A WEEK 8AM TO 4PM
WEATHER PERMITTING

NOVEMBER THRU MARCH TUES. - SUN. 8AM TO 4PM
WEATHER PERMITTING

SHOOTING RANGE - TUES, THUR, SAT 9AM TO 3PM

PLEASE NOTE Hours may vary depending on weather conditions, safety concerns, or other situations beyond control. Archery & Gun Range users must check-in with compost attendant.

HOURS SUBJECT TO CHANGE WITHOUT NOTICE
Call Main Gate at 1-209-962-8615

FROM THE FRINGE

MIKE COOK – PGA HEAD GOLF PROFESSIONAL

The Golf Shop Staff is here to assist you in every way possible so please call us if you have any questions or need our assistance at 1-209-962-8620. Our June Golf Shop hours are from 7:00am until 6:00pm, 7 days a week.

UPCOMING EVENTS

Ladies 18-Hole Golf Club

Weekly Play Day – Thursdays

Ladies 18-Hole Golf Club

Bunnies -vs- Rabbits – Thurs. June 1 & 8

Ladies 9-Hole Golf Club

Weekly Play Day – Thursdays

Ladies 9-Hole Golf Club

Wine in the Pines Invitational
Thursday June 15

Man's Golf Club

Club Championship – Gross & Net
Sat/Sun June 10 & 11

Men's Golf Club

June Grand Slam – 2 Man Team
Wednesday June 14

Men's Mother Lode Inv PML Event

Invitational Event
Thurs/Fri/Sat June 22/23/24

GOLF COURSE FIRST TEE TIME

In June, the first tee time of the day will be 7:30am. Property Owners can make a reservation up to 14 days in advance by calling the Golf Shop 1-209-962-8620 or in person at the Golf Shop. It is always a good idea to book your tee time 14 days in advance, if at all possible. The Golf Course starts getting very busy, when schools close for summer vacation.

CALLAWAY GOLF CLUB TRIAL SETS

The NEW Callaway PARADYM golf clubs are available in the Golf Shop for you to try out. We have trial sets that you can take to the range or out on the Golf Course. For more information, call or come in to the Golf Shop.

2023 ANNUAL GOLF SERVICES

If you have not paid for your Bag

Storage, Push Cart Storage or Locker, please call or come in to the Golf Shop and we will be happy to assist you. If you are interested in signing up for one of these services, please call the Golf Shop.

SOUTHERN VALLEY SENIORS

If you are a PML Property Owner, a Member of the PML Men's Golf Club and are 50 years young and above, you qualify to join the PML Southern Valley Seniors (SVS). The SVS play home & away events with other Golf Courses in the Southern Valley, such as Turlock CC, Oakdale CC & Spring Creek CC, to name a few. If you are interested call the Golf Shop and we will put you in touch with the SVS PML Captain.

PUNCH CARDS

Pine Mountain Lake Association Property Owners can save up to \$6.00 per round by purchasing a Punch Card in the Golf Shop. There are; 9-Hole & 18-Hole Punch Cards available. For more information call or come into the Golf Shop.

2023 MOTHER LODGE INVITATIONAL

The 2023 Mother Lode invitational is scheduled for June 22, 23 & 24. Entry forms are available at the Golf Shop and online at www.pmlmgc.com. For further information call the Golf Shop at 1-209-962-8620.

JUNIOR CLINICS

The 2023 PML Junior Clinics are scheduled for; July 6-8, July 20-22 & August 10-12. For more information call the Golf Shop or you can find the registration forms on the PML website: www.pinemountainlake.com.

NEW PINE MOUNTAIN LAKE PROPERTY OWNERS

If you are a new Pine Mountain Lake Property Owner and you are interested in getting acquainted with other Property Owners who play golf, call the Golf Shop 1-209-962-8620 and we will let you know what golfing groups you may be able to join or what golf activities are planned for the year.

PROPERTY OWNER ANNUAL GOLF CART RENTAL AGREEMENT

Every person who drives a golf cart on the course, is required to sign a golf cart rental agreement at the time of registration, before they can drive a golf cart. PML Property Owners sign the agreement one-time and that covers the entire year. If you have not signed your agreement you can go to the PML website (www.pinemountainlake.com) and fill it out and sign online or you will be asked to sign the form when you register in the Golf Shop. Click on amenities, then click on golf and you will see the agreement with other forms available. If you have any questions, please call the Golf Shop 1-209-962-8620.

MEN'S & LADIES GOLF CLUBS

If you are interested in joining the Men's or Ladies Golf Clubs, you can call the Golf Shop 1-209-962-8620 and we will give you the information you need. Applications are available in the Golf Shop. The Men's Club has a website (www.pmlmgc.com) that you can visit to sign-up online for your membership (see Men's Club eligibility rules) or to print an application. Once you are a Men's Club Member, you can sign-up for tournaments online.

CARE OF THE GOLF COURSE

TAKING CARE OF THE GOLF COURSE IS EVERYONE'S RESPONSIBILITY; PLEASE DO YOUR PART!

Replacing Divots – PML is a **DIVOT FIRST** facility; that means that if the divot is intact or even a portion of the divot is intact, we want you to replace the divot first and press the divot down firmly with your foot. When an intact divot is replaced, it will begin to root right away but a mulch filled divot will take weeks to fill in. If the divot hole is not totally filled in by the divot that you replaced then fill the rest of the hole with mulch and press down the divot firmly with your foot. If the divot is not intact, then fill the divot hole with mulch and smooth the mulch with your foot so it is level with the ground.

Repairing Ball Marks – This is one of the major negatives in our great

game; players either do not know how to repair ball marks correctly or don't even attempt to repair them. Here is the correct way to repair a ball mark:

Insert the divot tool just outside the edge of the ball mark, use the divot tool to mend in the outside portion if the ball mark towards the middle. Then use your putter to tap down the repaired turf. If a ball mark is repaired properly, you will not even be able to tell that there was a ball mark. **NEVER PULL UP THE MIDDLE OF THE BALL MARK.**

Raking Bunkers – We are back to normal procedures concerning bunkers; **PLEASE** make sure that you rake the bunker after you have hit your shot.

Golf Carts – Driving golf carts on the fairways has a negative effect on turf conditions over time. **PLEASE** use the 90-degree rule posted in each golf cart in order to minimize the cart traffic on the fairways. Reminder – Driving golf carts behind any of our greens is **NOT ALLOWED.**

PINE MOUNTAIN LAKE GOLF APP

Pine Mountain Lake Golf & CC has an app that you can download FREE from the app store. There are many fun and useful features on the app such as:

- Golf course GPS
- Players can measure their shots
- Golf course hole by hole flyover
- Interactive scorecard
- Score posting
- Player profile and automatic stats tracker
- Special offers
- Food & beverage menus and ordering
- Receive notifications concerning special events
- Weather information
- PMLA Member information & online payments

**GO TO THE OFFICIAL ONLINE PRESENCE
OF THE PMLA FOR THE LATEST
NEWS & INFORMATION**

PineMountainLake.com

Facebook.com/PineMountainLakeCA

Facebook.com/PMLARecreation

Facebook.com/PMLMaintenanceDept

**ALL PMLA HOMEOWNERS
EMAIL OPT-IN PROGRAM**

The Association is pleased to offer a money saving program available to all PMLA property owners. This program allows you to receive many of the documents we are required to provide to you via email. This option is important because:

COST SAVINGS – The Association is spared the expense of printing and mailing many documents to those property owners who sign up.

ENVIRONMENTAL SAVINGS – Less paper means less trash and reduced damage to the environment both in the disposal and production of paper and envelopes.

REDUCED CLUTTER – By receiving documents via email there is less paper for you

to deal with. All documents can be saved on your computer and viewed at your discretion.

TIMELY RECEIPT – Documents sent electronically are received in minutes as opposed to the days it takes for regular mail to arrive.

If these sound like good reasons to you, please sign up for the Document Email Program today using the attached form. Simply return the completed form to the Administration office at your convenience.

If you have any questions on this program please feel free to give us a call (962-8600) and we will be happy to explain the details and the advantages.

Please read the Terms & Conditions for the email opt-in program on the website, *www.pinemountainlake.com* under the Resources/Forms > Opt-In Email Program.

Mail form below to:
Pine Mountain Lake Association
19228 Pine Mountain Drive • Groveland, CA 95321



YES, I WANT TO ENROLL IN PMLA'S EMAIL STATEMENT AND DOCUMENT SERVICE. I ACKNOWLEDGE AND AGREE TO THE TERMS AND CONDITIONS SET FORTH ABOVE AS A CONDITION FOR PARTICIPATION IN THIS SERVICE.

PMLA Account Number: _____ Unit/Lot #: _____

Name: _____ Phone #: _____

Address: _____

Email Address: _____

Signature: _____

PINE MOUNTAIN LAKE G&CC
2023 MOTHERLODE INVITATIONAL
JUNE 22-24, 2023



THE 46TH EDITION OF THE
MOTHER LODE INVITATIONAL
IS COMING THIS SUMMER!

DON'T MISS OUT ON THE
GREATEST GOLF TOURNAMENT
IN THE FOOTHILLS

SIGN UP ONLINE AT PMLMGC.COM
OR PRINTABLE ENTRY FORMS ARE AVAILABLE AT
WWW.PINEMOUNTAINLAKE.COM

FOR MORE INFORMATION CONTACT MIKE COOK
209-962-8620 OR GOLFPRO@PINEMOUNTAINLAKE.COM

**GUEST & RENTERS
HANDBOOK
IS AVAILABLE ONLINE!**

You can now view or print the Guest and Renters Handbook from the PML Website.
Go to our website at:

WWW.PINEMOUNTAINLAKE.COM

and click on Resources, then scroll down to the bottom of the page and click on Guest and Renters Handbook. This handbook has valuable information for Guests and Renters in Pine Mountain Lake.

LETTERS TO THE EDITOR

| | | | |
|--------------------------------|---|--|---|
| LETTERS TO THE EDITOR RECEIVED | 1 | DEFERRED TO NEXT EDITION BY EDITORIAL COMMITTEE | 0 |
| DENIED BY EDITORIAL COMMITTEE | 1 | DENIED BY BOARD OF DIRECTORS | 0 |
| Exceeds 250 word maximum | 0 | DEFERRED TO NEXT EDITION BY BOARD OF DIRECTORS | 0 |
| Content | 1 | | |
| Not a property owner | 0 | | |
| "THANK YOU" LETTERS RECEIVED* | 1 | <i>* Thank you's do not require editorial committee approval</i> | |

Submit Letters to the Editor by sending to "Editor, PML News"
 Mail: 19228 Pine Mountain Drive, Groveland, CA 95321
 Email: PMLNews@sabredesign.net • Fax: 800-680-6217

**PLEASE NOTE THAT ALL LETTERS
 APPEAR IN THE ORDER THEY WERE RECEIVED BY THE PML NEWS**

The Pine Mountain Lake News welcomes letters and articles for publication provided they meet the criteria established in the current PMLA Editorial Policy (See excerpt below – entire policy on file at the Administration Office). Letters must be limited to 250 words, typewritten using upper and lowercase letters or neatly printed (no all-capital material) and signed with name, mailing address, PML unit/lot number, and day/evening telephone numbers by a property owner in good standing. **LETTERS MUST BE RECEIVED BY THE EDITOR BY THE 10th OF THE MONTH.** Letters deemed by the Editorial Committee to be improper will not be accepted. Readers are advised that **THE OPINIONS EXPRESSED IN THESE LETTERS ARE THOSE OF THE INDIVIDUAL AUTHORS, NOT OF THE PMLA, THE PINE MOUNTAIN LAKE NEWS, NOR THEIR EMPLOYEES.**

THANK YOU LETTER

I would like to thank my neighbors on Ridgcrest for going up and above the call of duty. During the Month of April we pooled our resources together and made 20 trips to the Compost Site .

Peter Natale
 Groveland CA

— NOTICE —

Listed below are ALTERNATE phone numbers for EMERGENCY use during power/phone/internet outages:

DEPARTMENT OF SAFETY – MAIN GATE
 1-209-768-8600

PMLA ADMINISTRATION OFFICE
 1-209-768-3998

THE GRILL AT PINE MOUNTAIN LAKE
 1-209-962-8658

BEFORE YOU BEGIN CONSTRUCTION ON YOUR LOT

The Declaration of Restrictions (CC&Rs) states that no construction of any type (new construction, driveways, grading, lot development, etc.) can be performed without prior approval from the Environmental Control Committee (ECC).

Failure to obtain approval could result in the stoppage of work or even fines, and nobody wants that to happen. Inspections are made every Tuesday and reviewed by the Committee every other Thursday, so we can accommodate our members.

Please contact ECC before you begin any type of construction at 209-962-8605

PAINT DISCOUNT PROGRAM

Kelly-Moore Paint Company has been serving Pine Mountain Lake for 40 years. They want to remind PML property owners of the discount program that has been established for them. This program offers a generous discount on Kelly-Moore paint and accessories such as rollers, brushes, tape, caulk, etc. Delivery is available on orders of 10 gallons or more. This special discount opportunity is available with proof of Pine Mountain Lake membership (Member ID Card) on a cash or credit/debit card basis only (no checks please).

Although this program was initiated through the Sonora store, it will be honored at any Kelly-Moore Paint Company store. If you are interested in this discount program, call your local Kelly-Moore Paint store for details.



ZUMBA®

CLASSES

**CLASSES WILL BE HELD AT THE LAKE LODGE
 ON TUESDAYS AND THURSDAY
 FROM 9 AM UNTIL 10 AM**

Participants use this link to register for a class
www.pinemountainlake.com/zumba-gold-registration-form/



**WITH YOUR ZUMBA
 INSTRUCTOR
 BETSY MOLINA**



**FOR MORE INFORMATION CALL THE
 RECREATION MANAGER AT
 1 (209) 962-8604**

MAINTENANCE MATTERS

RICK LAFFRANCHI – MAINTENANCE MANAGER

“In June the world of leaf and blade and flowers explodes, and every sunset is different.”- John Steinbeck

June is here and at the time of writing this article, early, May, it has been raining for the last 3 days. The lake is still spilling at a trickle, The weather ahead looks amazing, perfect for outside work.

Preparations are nearly complete for the busy summer season, The Building and Grounds crew is still busy with painting, much of it delayed due to inclement weather. Gate 8 at the corner of Ferretti and Pine Mountain drive, is getting an updated drive and gate arm as a result of a transformer failure that scorched the wiring of the existing unit. Gate 1 will finally get its rock façade and paint which will make it a match to gate 4. New sewer lift station pumps will be installed at the Marina in preparation of our 4th of July celebration, they really take

a beating due to the amount of use on the holiday, also at the Marina a new Frequency drive Irrigation pump will be installed allowing us to throw nearly 100 gallons per minute and shorten the run time necessary to water the Marina.

The Facilities crew is prepping for road work. This season a number of our areas will be crack sealed to extend their life, Administration parking lot and Pine Mountain Drive just to name a few, additionally this crew will be seen throughout the community painting what we call “Stops and Bars” stop sign markings this also was delayed due to the extraordinary winter we experienced. Towards the end of the month, you will start to see the team utilizing our curbing equipment to repair or replace substandard curbs through the association. So, remember slow for the cone zone and keep our folks safe.

And here is to an amazing summer.

THE HOOF PRINT

KENDRA BROWN – EQUESTRIAN CENTER MANAGER

Wow May came and went just as fast as the rest of the year is moving along!!! In the last month we have been busy with Spring Vet clinics and gearing up for the summer season here at the Equestrian Center.

I am excited to say that we have officially started Trail Rides here at the Equestrian Center!! Each ride will be a guided ride on PML property, taking in the sweet smells and views that nature has to offer. Riding Lessons and trail rides here at the Equestrian Center will run 7 days a week from 9:00 A.M. - 3:00 P.M. A few ground rules are long pants, closed toed shoes, and helmets will be required (we will supply helmets). Prices for a 1-hour lesson or trail ride for property owners is \$60, non-property

owners is \$65. Call to schedule a riding time today 1 (209) 962-8667.

Our Memorial Day Car Show was a fun chance for us to check out the “other horse power” from our community. We had some great cars, awesome music, yummy food and great company! We are looking forward to doing this event again next year.

The Flea Market has arrived back at the Equestrian Center, I don’t know about you but it was sure nice to be able to do some spring cleaning and share some treasures.

Mark your calendars for Friday June 30th for our Posting of the Colors event opening up Independence Day weekend here in the PML community. We have been planning and working on adding to our patriotic event and look forward to seeing you all!

BEAR BOXES

ASHLEY HENDERSON – ARCHITECTURAL CONTROL SPECIALIST

Us humans aren’t the only ones glad that winter is finally over—our large furry friends coming out of hibernation are also pretty excited about the warmer weather. Of course, that means that we have seen quite a few bears in our community lately, more often than not, availing themselves to a hearty buffet of garbage can delicacies.

That being said, it is more important than ever, to make sure that you are properly storing your garbage cans. It is important to bear in mind (pun intended) that garbage cans need to be securely stored out of view of the street and neighboring lots (PMLA CC&R’s Article 8, Section 9). But, even in compliant locations, cans left unsecured, or stored within open holders, or plastic receptacles, offer little to no protection from a hungry bear looking for a midnight snack. And not everyone has a garage that they can keep their cans stored in...so how can

you keep Yogi Bear from making a “pic-a-nic basket” out of your garbage can? Bear boxes.

Bear boxes such as the BearSaver enclosures we have at the Pine Mountain Lake Campgrounds, protect your cans from scavenging on the days between your scheduled garbage collection day. As with all other fully enclosed garbage receptacles, bear boxes must be placed next to, or behind your primary dwelling, and be submitted for approval with the Environmental Control Committee.

Collectively keeping your garbage as secure as possible, and only bringing your cans curbside on the day of your scheduled pick up, will help discourage Smokey the Bear from snacking, when he should really be focusing on preventing forest fires.

If you have any questions about bear boxes, compliant locations, or the submittal process, please do not hesitate to reach out at: 1-209-962-8605 or ecc@pinemountainlake.com.

PMLA Official Online Presence

www.PineMountainLake.com

Facebook.com/PineMountainLakeCA

Facebook.com/PMLARecreation

Facebook.com/PMLMaintenanceDept

Facebook.com/PMLAEquestrianCenter

FROM PMLA SAFETY COMMITTEE

BOB ASQUITH – PMLA SAFETY COMMITTEE

The Pine Mountain Lake Safety and Security Committee is a standing committee authorized by the PMLA Board of Directors to inform its decision making and promote its mission. The Committee meets every month.

Join Our Committee Meeting: Members may attend our committee meetings.

Our next meeting is June 7th at 9am via Zoom. Please email safetyandsecuritycommittee@pinemountainlake.com to obtain your invitation.

First Aid/AED/CPR class is offered June 3rd. These are in Groveland, they last all day, and there is a \$110 charge. We will schedule additional classes as needed. Email us for details and to sign up at the address below.

Safety Training—S&SC is partnering with CERT for several Fire Preparedness Workshops. Presenters will include GCSO Fire Department and Tuolumne County Office of Emergency Services during the second quarter 2023. More than 100 people have attended these workshops in 2022. Look for announcements in Social Media or via eSnap.

Emergency Communications—In times of emergencies, traditional channels (land lines, cell service, internet) may be unavailable – it has happened recently. S&SC is working with CERT and Tuolumne County Office of Emergency Services (OES) to implement GrovelandNET. GrovelandNET is a community radio communications network utilizing small GMRS radios. These are about \$30-40 each, require a simple FCC license, and would be in use throughout Groveland/BOF. GMRS radios can communicate outside the area on to Sonora OES using repeaters. During emergencies, these radios are used to contact the Emergency Operations Center in Sonora.

We will publish purchase instructions and how to get an FCC license good for 10 years for your family and schedule a workshop to teach how to use these small radios and program

them as well. Look for announcements in Social Media or via eSnap.

Speeding—There are numerous solutions discussed to reduce speeding. Speed humps are a popular choice for HOAs such as PML. There is a difference between a Speed Hump and a Speed Bump. Bumps are like those at the main gate that require a very slow speed to drive over. Humps have a different profile and are a common traffic calming device. One can drive over humps at 20-30 mph.

South Lake Tahoe HOA uses removeable humps to slow Spring/Summer/Fall traffic. They are removed for Winter to facilitate snow removal and replaced in Spring.

Firewise Communities—Contact the Safety Committee (email address below) for details how you can start a FW community and potentially save on your Homeowners Fire Insurance.

Emergency Evacuation—S&SC, working with Tuolumne County Maps has finalized evacuation maps. TC Sheriff and TC OES have approved the maps. Maps show the routes out of PML and the major evacuation routes away from Groveland.

Evac Maps are on the PMLA website. Download & print your copy.

<https://www.pinemountainlake.com/.../PML-Evacuation-Maps.pdf>

Traffic Backup at PML Main Gate—We have a clear picture of traffic control responsibility now. CHP is responsible for traffic control both on Highway 120 and Ferretti Road. Our meetings with CHP have highlighted the enforcement actions they will use going forward. CHP's job is to clear traffic and make the roads safe.

We encourage members to NOT use the Main Gate on Friday afternoons at the beginning of 3-day weekends such as Memorial Day. As an alternative, use Elder Lane to avoid the backups.

Safety Department Phone Lines Down—The continuing problem of the phone line to the Safety Department needs attention. The S&SC is available to design and present solutions.

Please email comments to: safetyandsecuritycommittee@pinemountainlake.com

YOU CAN HELP – VOLUNTEER
BY BRUCE DUDLEY

One of the responsibilities of the PML Safety Committee is to organize and promote volunteer organizations. The Tuolumne County Sheriff NEEDS YOU. Pine Mountain Lake NEEDS YOU. So, whether you are a permanent resident or just occasionally stay in PML, you can participate – in fact, one of these organizations can use your help right now:

TUOLUMNE COUNTY SHERIFF'S COMMUNITY SERVICE UNIT

Tuolumne County Sheriff's Community Service Unit—The Community Assistance Patrol (CAP) performs a multitude of duties which may include serving subpoenas, vacation checks, handicap parking enforcement, motorist assists, victim witness transport, crime scene security, property bookings. The Sheriff's office provides training. Here is an overview:

Mission Statement

It is the mission of the CSU to work with the Sheriff's Office to help make Tuolumne County a safer and more enjoyable place to live, work, and visit.

Background

Tuolumne County encompasses 2,293 square miles of territory. The ability of the Sheriff's Office to provide law enforcement services over such a wide area is severely limited. The county continues to grow in population and law enforcement

needs. The ability of the Sheriff's Office to meet the rising need for service has become more difficult with the current budget limitations.

The increased need for services by the Sheriff's Office requires increased personnel and added expenditure of public funds, which are not always available. A partial answer to this problem is the utilization of the volunteer pool of talent and experience in the community.

CSU Volunteer Requirements

- *Minimum 18 Years of age
- *Must be able to volunteer a minimum of 4 hours per month
- *Must maintain professional and private life in a way that exemplifies integrity, trust, and morality as a representative of the Tuolumne County Sheriff's Office
- *Willingness to be called upon to assist in times of emergency and disaster

For More Information

<https://www.tuolumnecounty.ca.gov/347/Community-Service-Unit>

To Apply

<https://www.tuolumnecounty.ca.gov/DocumentCenter/View/6550/Volunteer-Application-2018>

Please email us to connect for more information: safetyandsecuritycommittee@pinemountainlake.com

www.PineMountainLake.com

FIRE SAFETY

JOE MILANI – FIRE SAFETY COORDINATOR

The Fire Safety team will be ramping up inspections this month beginning in areas that have been identified as high fire danger. If you would like a courtesy fire safety inspection of your home or property, please contact us to set up an appointment. Here are a few tips on getting your defensible space project going.

- Cut all dry grasses and weeds pin to pin.
- Make sure your roof, gutters, and eaves are clean and clear of all debris.
- Remove branches, shrubs, or any vegetation that makes contact with roof or chimney.
- Remove fuel in direct contact with home or out buildings.
- Remove any flammable mulch, wood

chips or other flammable debris from the first 5 ft around your home.

- Remove all dead and dying debris, branches, brush, and trees from property.
- Remove all ladder fuels that provide an avenue to transfer fire from ground to trees.
- Remember fire safety practices apply year-round; it is no longer a 3- or 4-month responsibility.

Owning a home in Pine Mountain Lake provides the satisfaction of living in a great community. The local rules and restrictions, which you became acquainted with when you purchased a home, are important in maintaining ownership here. I would like to highlight one rule that is occasionally overlooked or forgotten.

• **ARTICLE VIII, SECTION 1, Use of Lots (k).** – **No existing trees with a diameter greater than five inches shall be destroyed, uprooted, cut down or removed from any lot without first obtaining a tree-cutting permit from the Association.**

This rule can be found in Pine Mountain Lakes Articles of Incorporation, By-Laws, and Declaration of Restrictions hand book “flash drive” you received with your new owner information packet. For any tree over five inches in diameter please fill out a Tree Removal Request form found on our website at <https://www.pinemountainlake.com/tree-removal-request-2-2/>. Pine Mountain Lake has experienced major

tree mortality due to drought and bark beetle; because of that, preserving live trees is of the utmost importance.

Please remember to test your smoke and carbon monoxide detectors once a month and replace any faulty alarms or low batteries immediately.

Lastly, fire safety inspections will continue in Pine Mountain Lake. Remember a fire safe community begins with you! If you would like an inspection of your property, or you are looking to educate yourself more, our fire safety team would love to help. If you have questions or concerns regarding fire safety, you can contact Amanda Darrow at 1 (209) 990-5263 or email her at Inspector1@pinemountainlake.com. I can be reached at 1 (209) 990-5260 or Email J.milani@pinemountainlake.com.

SHOUT OUT TO THOSE LONG-TERM RENTALS!

CARRIE HARVEY-RENTAL COMPLIANCE COORDINATOR

Hello Summer! Did you know that not all rentals are short-term? We have long-term rentals too here at Pine Mountain Lake. Often times, we get calls about homes that neighbors assume are “short-term rentals”. That’s not always the case. Whether it be long-term, or short-term, the same rules apply. Please make sure your tenants are aware of some of the common ones. All dogs must be on a leash, do not feed the wildlife, and a big one is garbage, just to name a few.

Make sure your tenants know how to properly store their garbage. Garbage cannot be placed roadside on days that are NOT their scheduled pick-up day. By placing it out the night before it only attracts the bears, other critters, and creates a nuisance for the whole neighborhood. Not only is it not safe for your tenants and neighbors, it is not safe for the wildlife. Garbage cans cannot be stored in the garbage can holder down by the road, unless it is your scheduled pick-up day. Garbage cans must be secured from wildlife, and placed out of view. Nobody wants to look at scattered garbage, it takes away from the beautiful

scenery we have here at PML.

As an owner of a rental property, make sure your home is registered with the Association, and provide us with a copy of the rental agreement/lease of your tenants. We need to have that on file so they may get their proper gate cards. There is a \$150 annual fee to register your rental home. With summer here, your tenants will want their gate cards to get in, and avoid sitting in the lines at the main gate. You can register your home at: <https://secure.hostcompliance.com/pine-mountain-lake-association-ca/permit-registration>. Many of you may not know that if you rent your home to a Pine Mountain Lake employee, the \$150 annual fee is waived. If you have any questions, or need assistance with the fee waiver please reach out to me at 1-209-962-1245.

Also, be sure to share the rental hotline with your tenants, they may utilize it if they have any concerns about a rental in their neighborhood. The rental hotline is available 24 hours a day, 7 days a week. 1-209-231-4543. Long-term rentals are few and far between nowadays, so we did not want to leave you out! Wishing you all a safe, fun summer!

RECREATION UPDATE

MICHELLE CATHEY – RECREATION & SEASONAL OPERATIONS MANAGER, CCAM & CPO

PML'S INDEPENDENCE DAY CELEBRATION IS SATURDAY, JULY 1ST.

As we approach this event, please keep the following in mind:

- Please be courteous and kind to others throughout the day.
- Members are not allowed to use their own fireworks. Personal fireworks are illegal in Tuolumne County.
- No dogs or pets allowed at the Marina or the Lake Lodge beach. Service animals are permitted.
- Members cannot set up at the Lake Lodge or Marina the night before the event.
- Property owners, guests and tenants must have a wristband to enter the Marina.
- Wristbands can be purchased at the Administration office until noon on Saturday, July 1st. They can also be purchased at the Marina entry gate.
- No outside alcohol is allowed. You will be subject to search upon entry of the Marina and water taxi to the Marina.
- Property owners may park in the Marina parking lot starting at 6 am – you cannot line up and wait for the parking lot to open. Security will be patrolling overnight.

- Members cannot set up on the beach and leave (e.g., reserve a spot). They must stay and occupy the space. It is first come, first serve. Any unattended popup tents will be taken down by Marina staff to allow room for others to set up.
- The sand area of the Marina beach must remain clear of chairs, umbrellas and tents.
- There is no smoking of cigarettes or cannabis. No vaping.
- Shuttle starts at 9 am. Must have wristband to ride.
- Boat launching is not allowed after noon.
- Traffic down Cassaretto Court will be stopped at 4 pm to allow quicker route times for the shuttle.
- Shuttle stops at 11 pm.
- Dunn Court is closed all day.
- PML has a permit to do the fireworks show.
- The fireworks show starts at sunset.

PML enjoys putting together this event and looks forward to everyone having a safe and happy holiday.

For any questions, please feel free to contact the Recreation Manager at 1 (209) 962-8604 or by email at m.cathey@pinemountainlake.com.

BUILDING OUR COMMUNITY

SUZETTE LAFFRANCHI – COMMUNITY STANDARDS DIRECTOR

According to the CC&R's, the Environmental Control Committee was established by Pine Mountain Lake Association to make sure that all improvements made, enhance the natural beauty and character of the properties and the quiet enjoyment thereof.

Following that goal in the CC&R's are 20 pages of how that should be done. Then there is another entire document, the ECC Rules, Guidelines and Construction Standards.

All property owners, regardless of how long you've owned property in Pine Mountain Lake, are encouraged to review these documents. Too many times property owners rely on information given to them by someone other than the Association. Often this information is incomplete or just plain wrong. Then,

the property owner finds themselves in the position of being in violation of ECC standards, even though they thought they were doing everything right.

Knowing what is required by the governing documents is the first step to having a successful improvement project here in Pine Mountain Lake.

What "improvements" are we talking about? Well, the simple answer is – anything that you are doing to your home or on your lot. This could include anything from a dog run or garbage receptacle to a brand new home. Common improvements are storage buildings, garages, new and replacement decks, docks, retaining walls, fences, paint, landscaping and the hottest items on the list generators and solar panels.

The Environmental Control Committee's

job is to review all improvements within the properties of Pine Mountain Lake to make sure they meet the minimum standards. This review process begins prior to starting the project and continues through to completion.

The Community Standards Department, is here to assist you, the property owner, through the process. We have compiled a lot of information that will explain what you need to do to help you move smoothly through the completion of any improvement. Additionally, Pine Mountain Lake has an easy-to-understand booklet available to property owners called the "ECC Rules, Guidelines and Construction Standards". It is available on our official web site by going to www.pinemountainlake.com under "Governance", and then

"Environmental Control Committee".

The Environmental Control Committee looks forward to working with our property owners in this New Year, as they take on improvement projects that add to the enjoyment of their home in Pine Mountain Lake.

Please visit our web page at <https://www.pinemountainlake.com/ecc-project-submittal-process/>, where you will submit your project, upload the plot plans, project description and county documents as needed.

Our Assistant to the ECC can be reached at 1-(209) 962-8605 or email us at ecc@pinemountainlake.com to assist you with all aspects of the approval process for your improvement. If you have questions, you can call our office Monday through Friday, 8:00a – 4:30p.

SATURDAY, JULY 1, 2023 PINE MOUNTAIN LAKE INDEPENDENCE DAY SHUTTLE BUS STOPS

Hours of operation 9 am - 11 pm
Frequency - 30 min intervals
Must have wristband to ride

SHUTTLE BUS #1 STOPS

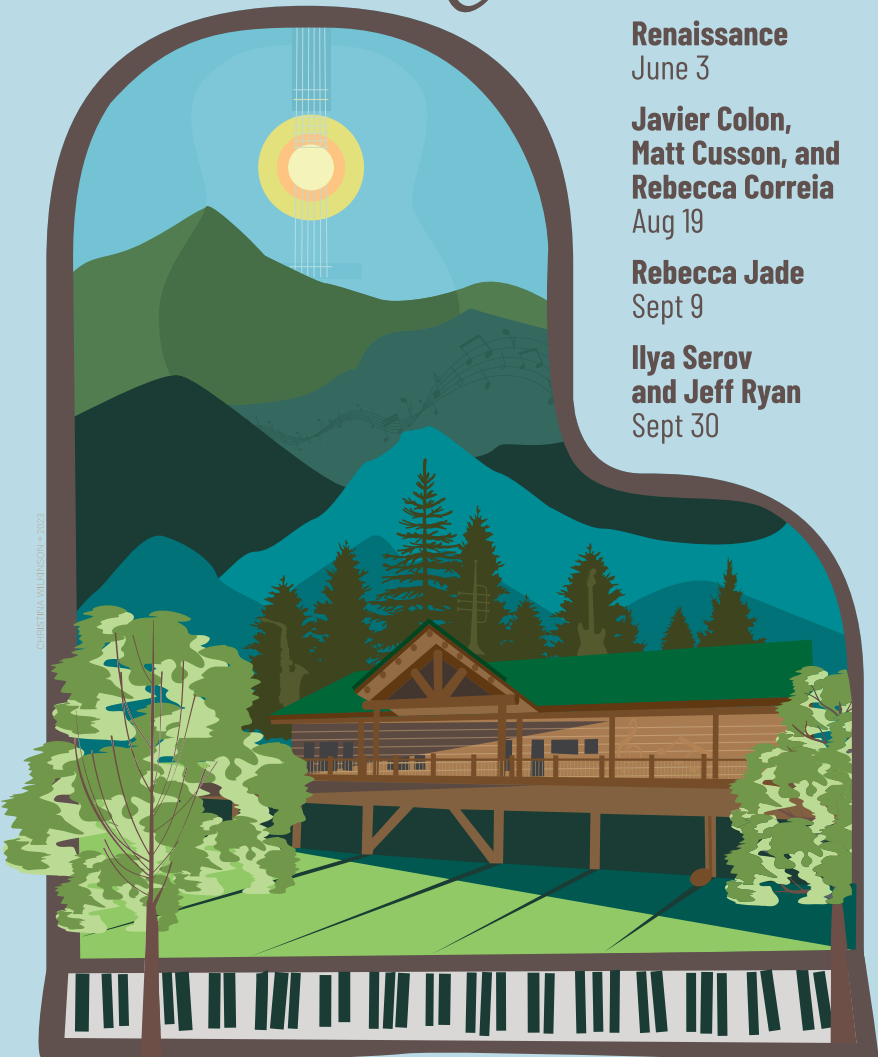
- 1 Admin Parking Lot
- 2 James Circle & Wells Fargo Drive
- 3 Mailboxes on Pleasant View near Golden Rock Circle
- 4 Tannahill & Pleasant View

SHUTTLE BUS #2 STOPS

- ★ The Stables
- ★ Tennis Courts 3-4 Parking Lot
- ★ Alps Court
- ★ Mail boxes at Lower Skyridge & Pine Mountain Drive

PINE MOUNTAIN LAKE • GROVELAND, CA

CONCERTS for a Cause



Renaissance
June 3

**Javier Colon,
Matt Cusson, and
Rebecca Correia**
Aug 19

Rebecca Jade
Sept 9

**Ilya Serov
and Jeff Ryan**
Sept 30

*presented by
Camp Tuolumne Trails* **2023** *Groveland, California*

Locally Owned since 1950

YOUR ONE-STOP SHOP FOR
all your pest control services

- PEST CONTROL: HOME, BUSINESS AND INDUSTRY
- LAWN FERTILIZATION AND COMPREHENSIVE LAWN CARE
- TERMITE INSPECTIONS, REPAIRS AND FUMIGATIONS
- TREE AND SHRUB CARE, AND BARK BEETLE CONTROL
- TERMITE TREATMENTS AND MONITORING
- WEED CONTROL AND FIRE BREAKS
- BED BUG TREATMENT
- DECK REPAIR/REPLACEMENT (LICENSE #922758)



OUR REPUTATION IS IMPORTANT TO US AND YOUR COMMUNITY.
Call now for a free estimate!









(209) 770-7733
clarkpest.com

MOORE BROTHERS PREPAID BAG BIN

The bin (dumpster) at the PMLA Maintenance Yard entrance is for the dumping of prepaid, Moore Bros., trash bags ONLY. No dumping of any other trash items are allowed. Violators will face enforcement action. Please help us keep this area clear and ensure that the dumpster can remain in place for our residents use. Thank you!

THE PREPAID BAGS CAN BE PURCHASED AT THE MAIN GATE AND THE PMLA OFFICE

GROVELAND GAL FRIDAY

TOO BUSY THIS SUMMER?

LET ME HELP YOU WITH...

- * VACATION HOME CHECKS
- * PLANT WATERING
- * PET SITTING/HOUSE SITTING
- * GARDENING * ORGANIZING
- * RIDES * SHOPPING
- * SENIOR CARE
- * YOU NAME IT!

SHARON VOLPONI
962-6848 • 770-6277

www.PineMountainLake.com

PLAY WITH THE BEST



\$1,500,000
CELEBRATION
GIVEAWAY

*20 Lucky Years
of Winning!*

MAY 1 - JUNE 30

Earn entries and swipe daily for prizes.

CELEBRATION DRAWINGS

Win your share of \$45,000 or a chance at

\$1,000,000

Thursdays & Friday 8, 9 & 10pm

GRAND FINALE

\$75,000

Friday, June 30

A CHANCE TO WIN

\$1,000 LUCKY KIOSK CASH*

Every Saturday 10am-10pm

*Earn 500 & 1,000 base points to swipe. See Rewards Club for complete details.

Welcome
to the
Best

*Sign up now
and
Earn up to*

\$2,000*

For Becoming a New Member!

*Awarded as free play



**ENTERTAINMENT
IS BACK!**

**EVERY SAT NIGHT
8-11PM**

FIREHOUSE
LOUNGE



**CHUKCHANSI GOLD
RESORT & CASINO**

Hwy 41 North To Coarsegold | chukchansigold.com | 866.794.6946

Must be 21 years of age or older and have a valid government-issued photo ID acceptable management and be a Chukchansi Rewards Club Member for any and all transactions. Management reserves all rights to cancel or modify all offers, promotions and/or events without prior notice. Restrictions and exclusions may apply. Please visit our website for further details and what to expect during your visit.

FOR RESERVATIONS
OR MORE
INFORMATION
CALL 1.209.962.8638



FOR RESERVATIONS
OR MORE
INFORMATION
CALL 1.209.962.8638

UPCOMING ENTERTAINMENT AT THE GRILL

| | |
|-------------------------------|--|
| Friday, June 2 | Karaoke |
| Saturday, June 3 | TBD |
| Saturday, June 10 | <i>DJ Larry</i> |
| Saturday, June 17 | <i>Leilani & The Distractions</i> |
| Saturday, June 24 | <i>Rattle Tone</i> |
| Saturday, July 1 | <i>Scott Patrick Band</i> |
| Friday, July 7 | Karaoke |
| Saturday, July 8 | <i>Leilani & The Distractions</i> |
| Saturday, July 15 | <i>Happy Times Posse</i> |
| Saturday, July 22 | <i>DJ Larry</i> |
| Saturday, July 29 | <i>The Koolshifters</i> |
| Friday, August 4 | Karaoke |
| Saturday, August 5 | <i>DJ Larry</i> |
| Saturday, August 12 | <i>Rattle Tone</i> |
| Saturday, August 19 | <i>Leilani & The Distractions</i> |
| Saturday, August 26 | <i>Happy Times Posse</i> |
| Friday, September 1 | Karaoke |
| Saturday, September 2 | <i>Happy Times Posse</i> |
| Saturday, September 9 | <i>Jokers & Jesters Comedy Show</i> |
| Saturday, September 16 | <i>The Koolshifters</i> |
| Saturday, September 23 | <i>Leilani & The Distractions</i> |
| Saturday, September 30 | <i>DJ Larry</i> |



HOT OFF THE GRILL

HEATHER PARKHURST – FOOD & BEVERAGE DIRECTOR

Hello friends, greetings from the Grill! It's hard to believe that May is already over. It went by in a whirlwind of success! There was Mother's Day Brunch, where Chef Raul and the kitchen crew out did themselves with the food. Karaoke made a comeback and we opened on Memorial Day for the first time in many, many years. Speaking of being open for Monday holidays....we will be open for lunch on Monday, July 3rd and Monday, September 4th from 11 to 4 pm. The bar will stay open until 6 pm.

We have so much planned for the season. Be sure to check out our entertainment schedule for the summer line-up, and sign up for The Grill's eSNAP alerts so we can keep you informed of all the fun things we have planned. We will be sending out updates, reminders, and additions.

This month brings Karaoke again on June 2nd, and DJ Larry on June

10th. For live music we will have Eric Russell out of Tacoma, Washington on June 3rd and we'll welcome back Leilani & the Distractions on June 17th, and Rattle Tone for June 24th.

We are planning a wonderful winemaker dinner for members Thursday, June 29th. We will have sent out a flyer through eSNAP with all of the details. We are partnering with Aloria Vineyards out of Calaveras County for an Italian themed, plated, 3 course dinner where a representative will tell you all about the paired vintages being served. This event will be \$65.00 per person and includes tax and tip. There will be some other wine events in the future, like fun tastings, but Aloria Vineyards deserved the full treatment to showcase their amazing selection of wines. Give us a call for details, or to book you're your event reservation.

It's shaping up to be an incredible summer. I look forward to seeing you here at The Grill very soon!



YOU SPOKE, AND WE LISTENED. THE GRILL AT PINE MOUNTAIN LAKE WILL NOW BE OFFERING ADDITIONAL DAYS OF DINING ON THREE HOLIDAY WEEKENDS THIS SUMMER. HISTORICALLY, THE GRILL HAS BEEN CLOSED ON MONDAYS. HOWEVER, THIS NEW SCHEDULE WILL ALLOW YOU THE OPPORTUNITY TO ENJOY A MEAL ON MEMORIAL DAY, THE MONDAY FOLLOWING INDEPENDENCE DAY WEEKEND, AND LABOR DAY. FOR FURTHER DETAILS AND TO MAKE RESERVATIONS, PLEASE CONTACT THE GRILL AT 1-209-962-8638.

WELCOME TO THE *Hidden Jewel of the Foothills* PINE MOUNTAIN LAKE GOLF & COUNTRY CLUB

12765 MUELLER DRIVE • GROVELAND, CA. 95321



Mountain Golf  *at its Finest!*

www.PineMountainLake.com

1-209-962-8620

PETER NATALE – PML BOARD CANDIDATE

As a candidate for the HOA board, I strongly believe in the values of transparency and accountability. I recognize the importance of fostering open communication, ensuring residents have access to information about operations, finances, and decision-making. By promoting transparency, I aim to empower residents to shape our community's future.

Accountability is also paramount in my approach. I prioritize responsible conduct, ethical behavior, and fair enforcement of rules. Upholding accountability fosters a culture of integrity and trust among residents.

I am committed to promoting open dialogue, seeking feedback, and addressing concerns promptly. I also manage financial resources responsibly, providing transparent reporting and decision-making. Enforcing bylaws,

codes of conduct, and procedures establishes a level playing field, ensuring accountability for all residents.

My inclusive leadership style promotes collaboration, with a focus on bringing diverse perspectives together for solutions. I will listen to residents' concerns and ideas, facilitating productive discussions that foster a sense of pride and belonging within our community.

My unwavering commitment to transparency and accountability makes me an excellent candidate for the HOA board. By championing open communication, responsible decision-making, and resident engagement, I will contribute to building a stronger and more harmonious community within our HOA

CHOOSE PETER NATALE: BUILDING A BETTER PINE MOUNTAIN LAKE TOGETHER



*"As a candidate for the HOA board, I strongly believe in the values of **TRANSPARENCY** and **ACCOUNTABILITY**."*

BRIAN WATSON FOR PML

I'm Brian Watson and I'm running for the PML Board because I want to continue to support and serve our special home.

I originally hail from Scotland, and have even been seen in a kilt for (very) special occasions. I've been a lucky PML homeowner for nine years and a full-time resident for the last five. My son attends Sacramento State University and will soon be completing his degree. While in college, he has enjoyed working summers at the PML Marina.

I have been a software engineer in



the video games industry for over 30 years. I currently work for a major Bay Area online game creator, but fortunately, I still get to live here and work remotely.

Since I moved here permanently five years ago, I have been involved with our local community by volunteering with

Brainy Groveland, helping kids with math at Tenaya Elementary. I currently serve on the PML Covenants Committee and the Editorial Committee - both of which have given me knowledge of our community and experience in applying our bylaws in a

fair and impartial fashion. I also volunteer at the Helping Hands Furniture Barn; and at the career faire at Tioga High School.

It's important to me to spend time giving back to our community. I view the Board as another way to contribute and support our community.

As a career engineer, I have a very logical mind that approaches problems from many perspectives in order to develop a practical, cost-effective and workable solution. To make decisions, I look for facts, not emotions.

- I believe in fiscal responsibility - if you need to spend money, spend wisely and within your means.
- I believe your home is your castle, but I also believe in reasonable limits where it affects our neighbors.

• I believe in honesty and transparency in all things.

• As PML is home to many different groups of people (full-time, part-time, landlords, retirees and young families), I believe it's important for the Board to consider everyone's needs, and make decisions that benefit the majority.

I believe I can make a positive contribution to our community. I have no "hidden agenda." I'm just ready to serve you. I promise to work collaboratively with the other board members and administration to keep our Pine Mountain Lake a great value and a wonderful place to live.

I ask for your support and your vote. Please contact me at www.facebook.com/brian.for.pml with any questions, suggestions or comments.



Vote for BRIAN WATSON

PML Board of Directors

Contributing to Our Community

I have gained ample knowledge of PML issues and priorities by serving on the Covenants and Editorial committees.

My commitment to you:

- No hidden agenda—I will work for all homeowners
- Fiscal Responsibility—Spend cautiously, maintain our investments
- Plan for the future—Maintain and improve our amenities
- Objectivity and Integrity—Apply rules fairly and objectively
- Teamwork—Work collaboratively with Board and HOA staff
- Listen to the Community—Always listen to homeowners

Please visit www.facebook.com/brian.for.pml for the latest information.

MOUNTAIN LIONS, AND SNAKES, AND BEARS, OH MY!

LIVING SAFELY WITH GROVELAND'S WILDLIFE

DAVID WILKINSON – REPRINTED FROM A PREVIOUS EDITION OF THE PML NEWS. SOME INFORMATION HAS BEEN UPDATED

Anyone living in rural parts of the American West knows that wildlife is a constant presence and neighbor. As such, it is our responsibility to understand and learn to live with wildlife. After all, this is their home and we moved into it.

ABOUT THE BLACK BEAR

The American Black Bear, *Ursus americanus*, is an omnivore, is the smallest of the three species of bear found in North America, and ranges in size from 50 to 80 inches in length and 2.5 to 3.5 feet tall at the shoulder. Male black bears of breeding age usually weigh between 125 and 500 pounds, depending upon age, season, and food supply, very well fed bears can be heavier. Females usually weigh between 90 and 300 pounds and are smaller than the males in stature. The bear's coat is shaggy and can be black, chocolate-brown, cinnamon-brown, or blonde. The Black Bear lives up to 30 years in the wild, though most live only 10 years due to interaction with humans. **(90% of all bear deaths past the age of 18 months are attributed to humans.)** The bear has an excellent sense of smell, potentially 100 times that of humans, and can locate garbage and carrion from great distances. They are excellent tree climbers due to their short, sharp claws and powerful, muscular legs.

MORE BEARS, MORE PEOPLE, MORE ENCOUNTERS – SIMPLE MATH

According to Harry Morse, Public Information Officer for the California Department of Fish and Wildlife, what we are experiencing when it comes to bear activity, “people all over California are experiencing.” The Department of Fish and Wildlife estimates that the Black Bear population in California has risen from around 10,000 bears in the 1980's to around 40,000 bears at the present time.

The thing that makes encounters with the Black Bear a little more interesting is the fact that they are much different than other bear species. Black Bears seldom attack humans unless they are cornered, feel threatened, or are wounded and they are also much less likely to attack a human than Grizzly Bears and usually run away at the sight of humans. However, with the Black Bear, unlike the Grizzly, “playing dead” when attacked is ineffective. As Harry Morse put it, “play dead with a Black Bear and you will be dead.” The reason for this is that most black bear attacks are “predatory” in nature unlike Grizzly attacks that are most often defensive. If you see a Black Bear stand tall, back away, and speak naturally. This will identify you



The American Black Bear. Photo courtesy of Ca. Dept. of Fish & Wildlife

as a human right away and give the bear the chance to retreat. If a Black Bear approaches you, make yourself appear as large as possible, raise your arms, and yell loudly and back away. If attacked fight back with everything you've got. The best way to be safe from the bear is to make the bear want to get away from you. A good thing to note is that attacks on humans are very rare and, while 15 people have been killed by Black Bears in North America since 2000, no fatalities in California have been attributed to the bears in that time.

More common are attacks on pets and small livestock, these numbers are still very low and losses of livestock due to Black Bear attacks are considered negligible. Black Bears, as well as mountain lions and coyotes, like pet food, they see it as a treat, or dessert. If you have pet feeders, or large amounts of pet food, in the areas that your pets are in this naturally leads to confrontations between the pets and the wildlife. The sad part is that the pets never come out on top. While some bears may run from a barking dog, it is generally because the bear has associated the barking with a human presence, not from fear of the dog. Black Bears do not fear or run from dogs and, while they do not prey on them, they will attack and kill dogs that attempt to defend their territory against the intruder.

WHAT BRINGS THE BEARS INTO POPULATED AREAS?

Other than the obvious, that we are moving into the bear's habitat at increasingly high rates, the problem is man-made. “Problems begin when bears learn to associate an easy food supply with humans and developed areas,” said Doug Updike, CDFW statewide bear program coordinator. “Once this happens, bears become habituated or conditioned to go after human food because it's easy. If people don't change their ways, the bear won't either.” “One of the biggest challenges we face is teaching people to keep their garbage away from bears,” said Carl Lackey,



A bear tearing apart a, supposedly, bear “resistant” trash can looking for goodies in PML.

Nevada Department Of Wildlife's bear program coordinator. “The more people who understand that it is our responsibility to keep the bears wild, the better off bears and humans will be.”

Food is often a problem in the majority of public safety incidents involving bears. Access to human food from garbage, overflowing a campground or residential dumpster, to candy bars and sandwiches hidden in a tent or left on a residential deck, are highly attractive to bears. Many people do not realize feeding wildlife provides false food sources, habituates animals to humans and can change animal behavior from foraging for food to trying to take it away from humans.

WHAT YOU CAN DO TO LIMIT THE DANGER?

First and foremost, remove the temptation. The bears seek out high protein, high fat foods to supplement their diets, and people's garbage tends to fit that bill nicely. Once they find a source of it they will continue to come back again and again for it. It is illegal to feed bears, mountain lions, coyotes, and deer in California. This includes leaving food or garbage out expecting that the animals will eat it. Follow the California plans for wildlife outlined in the Keep Me Wild program. Information on this program can be found at the fish and wildlife website, www.dfg.ca.gov, or from www.keeptomewild.org. The information provided by the Dept. of fish and wildlife, at right, can help you to live in harmony with the wildlife in our area. Most of the precautions are universal and help us live better with all of the wildlife species found in this area.

If all of the measures to keep the bear away fail and the bear seems to have lost fear of people, or shows aggression towards people, immediately call the Department of Fish and Wildlife at 559-243-4005. Or contact the DFW 24-hour dispatch center at (916) 445-0045. If an actual bear attack occurs call 911 immediately.

CAN FISH & WILDLIFE JUST MOVE THE BEARS?

While some bears that are considered “non-habituated” or bears who wanders into a populated area and do not leave, may be candidates for relocation, but many bears do not meet this standard. Bears that have become habituated to humans and may be a nuisance problem (no property damage involved) by tipping over garbage cans, invading compost piles, walking across porches, etc., or that have been previously captured and removed, but return to areas of human habitation are subject to reasonable corrective measures. These include, but are not limited to, area clean-up, removal of trash or other food attractants, bear-proofing food storage areas, electric fencing, temporary closure of campsites, etc. Habituated bears are not candidates for moving and shall either be humanely euthanized or placed with a permitted animal care facility upon failure of the corrective measures.

Bears that cause severe damage or chase, harass, or attack humans, *Depredation Bears*, are euthanized if corrective measures to make the bear flee and remain away from the area are unsuccessful.

Removing the attraction for bears that come into populated areas is the first corrective measure all residents should take to ensure that local bears do not become habituated or worse. Cleaning up human trash can save a bear's life.

RATTLESNAKES

California has a variety of snakes, most of which are benign. The exception is California's only native venomous snake – the rattlesnake. Though rattlesnakes are dangerous if provoked, they also provide humans with a tremendous service by eating rodents, other reptiles, and insects, and are in turn eaten by other predators. In California where rattlesnakes are found from sea level to the inland prairies and desert areas and to the mountains at elevations of more than 10,000 feet, enjoying the outdoors means learning how to avoid contact with rattlesnakes.

Generally not aggressive, rattlesnakes strike when threatened or deliberately provoked, but given room they will retreat. Most snake bites occur when a rattlesnake is handled or accidentally touched by someone walking or climbing. The majority of snakebites occur on the hands, feet and ankles.

The potential of running into a rattlesnake should not deter anyone from venturing outdoors, but there are several precautions that can be taken to lessen the chance of being bitten when out in snake country – which is just about anywhere in California.

DOS AND DON'TS IN SNAKE COUNTRY

- Never go barefoot or wear sandals when walking through wild areas. Wear hiking boots.
- When hiking, stick to well-used trails and wear over-the-ankle boots and loose-fitting long pants. Avoid tall grass, weeds and heavy underbrush where snakes may hide during the day.
- Do not step or put your hands where you cannot see, and avoid wandering around in the dark. Step ON logs and rocks, never over them, and be especially careful when climbing rocks or gathering firewood.
- Check out stumps or logs before sitting down, and shake out sleeping bags before use.
- Never grab “sticks” or “branches” while swimming in lakes and rivers. Rattlesnakes can swim.
- Be careful when stepping over the doorstep as well. Snakes like to crawl along the edge of buildings where they are protected on one side.
- Never hike alone. Always have someone with you who can assist in an emergency.
- Do not handle a freshly killed snake, it can still inject venom.

WHAT TO DO IN THE EVENT OF A SNAKE BITE

(The California Poison Control Center advises)

- Stay calm
- Wash the bite area gently with soap and water
- Remove watches, rings, etc., which may constrict swelling
- Immobilize the affected area
- Transport safely to the nearest medical facility or call an ambulance

MOUNTAIN LIONS / COUGARS**LIVING IN MOUNTAIN LION COUNTRY**

- Don't feed deer; it is illegal in California and it will attract mountain lions.
- Deer-proof your landscaping by avoiding plants that deer like to eat. For tips, request A Gardener's Guide to Preventing Deer Damage from DFG offices.
- Trim brush to reduce hiding places for mountain lions.
- Don't leave small children or pets outside unattended.
- Install motion-sensitive lighting around the house.
- Provide sturdy, covered shelters for sheep, goats, and other vulnerable animals.
- Don't allow pets outside when mountain lions are most active—dawn, dusk, and at night.
- Bring pet food inside to avoid attracting raccoons, opossums and other potential mountain lion prey.

If in doubt about what to do, ask your local Fish and Game warden or wildlife biologist.

TURKEYS

Feeding wild turkeys will bring problems home to roost.

California's wild turkeys now occupy about 18 percent of our state, and are a highly valued upland game bird. Many Californians also enjoy watching them.

Some homeowners can't resist feeding them. That's when trouble begins. A few stray visitors soon become a flock of permanent residents that have lost their natural fear of humans.

Adult wild turkeys, which can weigh upwards of 20 pounds, can destroy flowers and vegetable gardens, leave their droppings on patios and decks, and roost on cars, scratching the paint.

Turkeys can become aggressive during the breeding season, occasionally even charging, threatening, and acting aggressively toward people.

PREVENT PROBLEMS BY:

- Discouraging wild turkeys from becoming too comfortable on your property.
- If turkeys begin feeding under hanging bird feeders, remove the feeders until the turkeys leave the area.
- If turkeys are causing problems in your yard, install motion-detecting sprinklers.
- Wild turkeys typically will not enter yards with dogs.
- If confronted by a wild turkey that has lost its fear of human, an open umbrella may help steer it out of your path.

For more information please go to:
www.dfg.ca.gov/keepmewild

STAYING SAFE IN MOUNTAIN LION COUNTRY

Mountain lions are quiet, solitary and elusive, and typically avoid people. Mountain lion attacks on humans are extremely rare. However, conflicts are increasing as California's human population expands into mountain lion habitat.

- Do not hike, bike, or jog alone.
- Avoid hiking or jogging when mountain lions are most active—dawn, dusk, and at night.
- Keep a close watch on small children.
- Do not approach a mountain lion.
- If you encounter a mountain lion, **DO NOT RUN**; instead, back away slowly. If confronted, face the animal, make noise and try to look bigger by waving your arms; throw rocks or other objects. Pick up small children.
- If attacked, fight back.
- If a mountain lion attacks a person, immediately call 911.

Information courtesy CDFW Keep Me Wild program.

AMERICAN BLACK BEARS**BEAR COUNTRY PRECAUTIONS**

- Keep a close watch on children, and teach them what to do if they encounter a bear.
- While hiking, make noise to avoid a surprise encounter with a bear.
- Never keep food in your tent.
- Store food and toiletries in bear-proof containers or in an airtight container in the trunk of your vehicle.
- Keep a clean camp by cleaning up & storing food & garbage immediately after meals.
- Use bear-proof garbage cans whenever possible or store your garbage in a secure location with your food.
- Never approach a bear or pick up a bear cub.
- If you encounter a bear, **DO NOT RUN AND DO NOT PLAY DEAD**; instead, back away slowly. If confronted, face the animal, make noise and try to appear as large as possible.
- If attacked, fight back.
- If a bear attacks a person, call 911.

Information courtesy CDFW Keep Me Wild program.

STASH YOUR FOOD AND TRASH

Allowing wild animals access to human food and garbage is reckless and deadly.

Bears and other animals are attracted to anything edible or smelly.

- Store garbage in bear-proof containers, or store garbage in your garage until pick-up
 - Keep food indoors or in airtight and odor-free containers
 - Put away picnic leftovers; clean BBQ grills
 - Keep pet food inside, and bird feeders away
 - Pick up fallen tree fruit as soon as possible, or protect fruit trees with electric fencing
 - Remove cosmetic fragrances and other attractants, including bird feeders and compost piles
 - Install or request bear-proof trash containers
- When wild animals are allowed to feed on human food and garbage, they lose their natural ways—often resulting in death for the animal. Please respect and protect wild animals. Keep them wild.

COYOTES

Coyotes play an important role in the ecosystem, helping to keep rodent populations under control. They are by nature fearful of humans.

If coyotes are given access to human food and garbage, their behavior changes. They lose caution and fear. They may cause property damage. They might threaten human safety. They might be killed.

Relocating a problem coyote is not an option because it only moves the problem to someone else's neighborhood.

Help prevent deadly conflicts for these beautiful wild animals.

COYOTE COUNTRY PRECAUTIONS

- Never feed or attempt to tame coyotes. The result may be serious conflicts with pets, livestock, or to small children.
- Do not leave small children or pets outside unattended.
- Install motion-sensitive lighting around houses.
- Trim ground-level shrubbery to reduce hiding places.
- Be aware that coyotes are more active in the spring, when feeding and protecting their young.
- If followed by a coyote, make loud noises. If this fails, throw rocks in the animal's direction.
- If a coyote attacks a person, immediately contact the nearest Department of Fish and Game or law enforcement office.

Information courtesy CDFW Keep Me Wild program.

STASH YOUR FOOD AND TRASH

Allowing coyotes access to human food and garbage is reckless and deadly.

Coyotes primarily hunt rodents and rabbits for food, but will take advantage of whatever is available, including garbage, pet food, and domestic animals.

- Put garbage in tightly closed containers that cannot be tipped over.
- Remove sources of water, especially in dry climates.
- Bring pets in at night, and do not leave pet food outside.
- Put away bird feeders at night to avoid attracting rodents and other coyote prey.
- Provide secure enclosures for rabbits, poultry, etc.
- Pick up fallen fruit & cover compost piles.
- Ask your neighbors to follow these tips.

Special thanks to:

Harry Morse - Public Information Officer, California Department of Fish and Wildlife. • California Department of Fish and Wildlife's Keep Me Wild program. Defenders of Wildlife - www.defenders.org • Dewey, T. and C. Kronk. 2007. "Ursus americanus" (On-line), Animal Diversity Web. http://animaldiversity.ummz.umich.edu/site/accounts/information/Ursus_americanus.html.

Wine Maker's Dinner

FEATURING ALORIA WINERY

THURSDAY,
JUNE 29TH

ENJOY A 3 COURSE
ITALIAN THEMED
DINNER PAIRED
WITH SELECT
VINTAGES



\$65

PER PERSON
(TAX AND TIP INCLUDED)

RESERVATIONS REQUIRED

CALL 1.209.962.8638 FOR MORE INFORMATION



MOORE BROS. SCAVENGER CO., INC.

P. O. Box 278 • Big Oak Flat, CA 95305 • (209) 962-7224 • FAX (209) 962-7257



VACATION RENTAL OPTIONS FOR TRASH SERVICE

In order to assist property owner/managers of short-term rentals with trash removal, Moore Bros. Scavenger Co. offers the following services.

Short-term rental customers may participate in year-round or three-month summer curbside service. To manage anticipated levels of guest trash, property owners/managers of short-term rentals should maintain the suggested service levels as determined by the *Maximum Occupancy for Rental Property* (please see the chart below). In the event that renters generate more than the expected amount of trash or the home is rented multiple times during a given week the following options are provided:

- **As Needed Extra Pickup.** Property owners/managers may request a notation on their rental service accounts to *pick up extra as needed*. This will ensure that all trash left alongside the cans will be picked up by Moore Bros. and a special pickup will not be required. There is an additional per-can/bag charge for each extra can/bag picked up.
- **Special Pickup.** Moore Bros. has a truck and driver available for special pickups Monday through Friday.
- Property owner/managers must place a request for service call or email to Moore Bros. before 3 pm on the business day prior to the requested pickup day. A request for a Monday pickup must be made by 3 pm on the previous Friday. **Prepaid Bags.** Prepaid Moore Bros. bags may be purchased by property owner/manager to be used by any handyman or housekeeper servicing the residence between rental customers. The prepaid bags can be disposed of at the Pine Mountain Lake Maintenance Yard on Par Court off of Mueller Dr.

Property owners/managers utilizing full summer service may go to on-call service for the off season.

- **Off Season on Call Service.** Property owner/manager may call or email an on-call request to Moore Bros. for a service pickup on the regular pickup day for the address. A request for service call or email must be received before 3 pm the business day prior to regular scheduled pickup day. Charges will be based on the standard a per-can rate for each can/bag picked up.
- **Special Pickup.** Please follow the same procedure as listed above for Special Pickup.

Maximum Occupancy for Rental Property

| Maximum Occupancy | Suggested Service Level |
|-------------------------------|------------------------------------|
| 6 - 8 people | 2 can |
| 8 - 10 people | 3 can |
| 10 - 12 people | 4 can |
| Lake front Property 12 people | 4 or more cans as typically needed |

If you have questions please feel free to contact our office at (209) 962-7224 or email us at: info@moorebrosscavenger.com and Shirley@moorebrosscavenger.com (Please cc both to insure prompt replies).

A drop-off Recycling center is available for use Mon – Sat. 8 am – 5 pm @ 11300 Wards Ferry Rd. Big Oak Flat, Ca

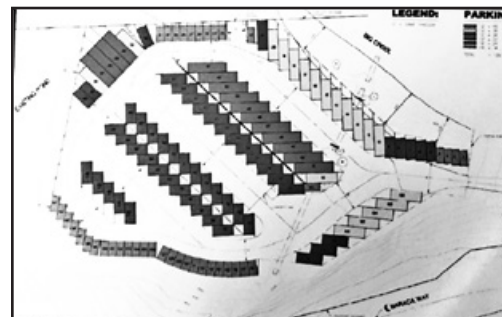
PMLA OWNED LOTS FOR SALE

| | | |
|-------|---------------------|-----------------|
| 2/047 | GAMBLE STREET | PENDING \$1,000 |
| 2/287 | FERRETTI ROAD | PENDING \$2,500 |
| 2/448 | WELLS FARGO DRIVE | \$1,000 |
| 3/011 | FERRETTI ROAD | \$1,000 |
| 3/057 | PINE MOUNTAIN DRIVE | \$1,500 |
| 6/113 | FERRETTI ROAD | \$1,000 |
| 6/179 | COTTONWOOD STREET | \$1,000 |
| 6/211 | FERRETTI ROAD | \$2,000 |
| 6/252 | FERRETTI ROAD | \$1,000 |

FOR FURTHER INFORMATION REGARDING THESE PROPERTIES PLEASE CONTACT PMLA AT (209) 962-8600

Deardorff Realty

A MUST SEE OPPORTUNITY!



28 acres close to campground zoned for dry (boats, motor homes, campers, etc.) storage. Get all of those items off the properties in Pine Mt. Lake. A must

see to appreciate! Priced to sell @ only \$259,000!

Contact Marilyn Deardorff-Scott - BRE 00396888

209-962-0718



PAUL S. BUNT, ESQ.
ATTORNEY AT LAW

ESTATE PLANNING
PROBATE
REAL ESTATE
BANKRUPTCY
ELDER CARE
209.962.6778

Mountain Leisure Center, Groveland
appointments available in Sonora and Lake Don Pedro

NEW LISTING! MLS# 20230464
SPECTACULAR PANORAMIC CRIMSON SUNSETS

Jacksonville Road
\$410K



44.35 Acres

Beautiful Acreage with Fantastic Sunsets, Bordered by Sullivan Creek on the North End and Seasonal Creek Runs through the Property. Already has Power for Possible Building Site. With 360 degree Views at the Crest. Neighboring Gold Rush Towns, Jamestown, Sonora and Don Pedro.

Kristin Simon: 817.366.9942

Tish Fulton: 209.985.0216

SOLD!



RON CONNICK
Realtor
CP. 209.206.0007

ALEK feels very Lucky to own his 3 Acres located at Merrell Road in Groveland, CA. Give me a call and I can assist you too!

Turn Key Vacation Rental
MLS#20221820

20046 Pine Mountain Dr. REDUCED!
\$380K
was \$399,000



4 Bd/3 Ba, Bonus Room
New Mini-Split heating and air system.
Located 25 miles to the entrance of Yosemite National Park.

IT'S ALL ABOUT THE VIEW
LAKEFRONT

\$1,775,000



Three Levels with 4Bd/4.5Ba, aprx 3,790 SqFt. Guests Quarter on Lower Level. Located at the Best Location on Pleasantview Dr. for Residents and your Guests to enjoy the Frontrow seats of Boat Parades and Fireworks. Boat included with accepted offer.



Ron Connick
209.206.0007

HAPPY FATHER'S DAY

A Private World

MLS# 20230100

\$649K
REDUCED was \$727K



20839 McKinley Way

Newer Built Home
2 Bd/ 3 Ba
2 Car Garage
2010 Sqft in nearly 1 acre Lot
Bonus Room with Wet Bar and Murphy Bed
Seasonal Creek & Greenbelt
Ron Connick, 209.206.0007



PENDING!
ENCHANTED CABIN

\$539K

13194 Wells Fargo Drive



Ron Connick
Realtor
209.206.0007



FOR AN
INSTANT
HOME VALUE
ESTIMATE



Ron Connick
REALTOR® | DRE #00575067
209.206.0007



Tish Fulton
REALTOR® | DRE #00760019
209.985.0216



Kristin Simon
REALTOR® | DRE #02202543
817.366.9942



Carmen Taira
Office Administration
209.962.7765

18727 Main Street, PO Box 792, Groveland, CA 95321 | 209.962.7765

NOTARY SERVICE

ANITA SPENCER, – PMLA NOTARY PUBLIC

PML Property Owners – \$10 | Non-Property Owners – \$15 | Witness Fee – \$5 (Prices listed are per Signature Rate)

You may call Anita @ **1-209-962-8612** to schedule an appointment between the hours of 8am – 4pm



PINE MOUNTAIN LAKE REALTY

An Agent Owned Company 18919 Ferretti Road • PO Box 738 • Groveland CA 95321 • 209-962-7156 • www.pmlr.com



Barry Scales
Broker/Owner
209.484.7123
DRE#00451887



Lynn Bonander, GRI
Owner/Realtor®
209.484.7156
DRE#00683485



Val Bruce, GRI
Owner/Broker Assoc.
209.768.7368
DRE#00578336



Marc Fossum
Owner/Realtor®
209.770.4750
DRE#01956242



Patty Beggs
Owner/Realtor®
209.840.2293
DRE#01339347



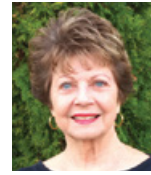
Michael Beggs
Broker Assoc./Realtor®
209.840.2294
DRE#01335568



Linda Willhite
Broker Assoc./Realtor®
209.985.2363
DRE#01063378



Ann Powell
GRI, ABR, RSPS
209-200-1692
DRE#01268655



Eleda Carlson
Owner/Realtor®
209-814-4123
DRE#00632516



19372 James Cir
2-366
\$425,000
MLS# 20230187

Spacious Lovely Mountain Home !!

3 Bd/3 Bth, 2 Car Attached, Oversized Garage w/Bath, Shelves & Cabinets. Approx 1872sf on 0.52 Acre! Large Great Rm with Huge Freestanding Fire Place, 1 Step down to Large Pool/Family Rm, w/Wet Bar, Pool Table Included. Beautiful Open Beam Ceilings, Ceiling Fans, Granite Countertops, Kitchen w/Island, Stainless Steel Appliances, Master Bdrm/Bath with Vanity and Tub/Shower. Inside Laundry, Washer & Dryer Included. Front & Rear Decks, Circular Driveway, Large Back Yard.



New Listing
Pilots Dream!
20894 Woodside
12-31
\$1,200,000
MLS# 20230432

3 Bd/3 Bth/3 Car Attached, Finished, Oversized Garage, 2,880sf Hanger, Approx 2835sf Custom Home on 0.71 Acres, Great Room w/ Stone Fireplace, Cathedral Open Beam Ceiling, Ceiling Fans, Wood Framed Windows, Central Vacuum, Crown Molding, Breakfast Bar, Pantry, Stainless Appliances, Formal Dining Rm w/Unique Beam Ceiling, Master Bdrm w/Walk-in Closet, Bth, w/Separate Shower, Vanity, Den/Office or a 4th Bdrm. Lower Level Family/Hobby Room. Inside Laundry, Washtub, Washer/Dryer Included. Lovely Deck, New Roof and Leaf Gutter Guards, Workshop.



Retreat to the Mountains!

3 Bd/2 1/2 Bth, 2 Level, Approx 1640sf, 0.48 Acre. Great Room, Free Standing Wood Burning Fireplace, Ceiling Fans, Double Pane Windows, Central Air, Propane Heat. Brfst Bar, Open Dining, Master Bd/Bth on Entry Level, Lower Level Bonus/Game Rm, Plus 3rd Bdrm & Full Bath & Laundry Area. Deck/ Balcony, Level Driveway, Plenty of Indoor Storage. Most Furnishings will stay for New Owner!

15-39 20225 Upper Skyridge Dr
\$435,000 MLS# 20221950



New Listing
Magnificent Lake Front !!
20002 Dunn Ct
1-263
\$1,700,000
MLS# 20230478

3 Bd/4 1/2 Bth, 2 Car Attached Garage, 2 Levels, Approx 2307sf on Approx 0.41 Acre, Totally Updated Inside & Out. Spacious Great Rm w/ Fireplace, Cathedral Ceiling, Skylights, Family Room w/Fireplace, Home Theater, Kitchen w/ Granite Countertops, Brfst Bar, Island, Pantry, 3 Master Suites ea. w/Full Baths. Main Level w/ Powder Rm, Lower Level 4th Bath. Inside Laundry, Terraced Back Yard, New Zealand Pine Decking, Outdoor Kitchen, Several Sitting Areas, Bocci Ball Ct., Artificial Turf Lawn & Sandy Beach Areas, Outside Shower + a Shower for the Pets, Dock. So Many Many More Amenities!!



New Listing
21171 Hemlock
12-105A
\$499,000
MLS# 20230482

2.44 Acres of Country Living!

4 Bd/2 1/2 Bth Spanish Style Home, 2 Car Garage w/Shelves & Workbench, Approx 2462sf. Living Rm w/Fireplace, Cathedral Ceiling, Solid Surface Countertops, Ceiling Fans, Spacious Kitchen, Garden Window, Dining L, Mstr Bdrm w/Fireplace, Family Room w/Heat Stove, Inside Laundry. Fenced Property, Covered Patio, Deck, Barn, Horse Set-up, Well, Detached Shed, Chicken Coup, Fenced Pens, Dog Run, RV and Large Equipment Parking. Plus all of the Pine Mountain Lake Amenities.



11993 Valenta
Way
8-256
\$499,000
MLS# 20221959

Quality, Convenience & Comfort!

3 Bd/2 1/2 Bth, Approx 1.05 Acre, 1716sf, 2 Car Detached, Finished Oversized Garage, Bonus Rm w/outside access to the 8 Person Cal Spas Hot Tub. Open Floor Plan, Living Rm w/Freestanding Fireplace, Cathedral Open Beam Ceiling, Solid Surface Countertops, Open Dining, Dual-Zone Trans HVAC System, Dual-Fuel Furnace, Wired for Internal & External Speakers. Patio, Deck with Awnings, Solar, and Outside Shed. Inside Laundry.



20771 Big Foot
4-322
\$375,000
MLS# 20230323

Close to the Lake Lodge

3 Bed, 2 Bath, 2 Car Attached, Finished, Plumbed Garage, with Cabinets, Washer/ Dryer Hookups, Tandem Parking. Open Floor Plan with Access to a Generous Sized Deck, Propane Heat Stove with Brick, Modern Kitchen w/Large Center Island, Lots of Counter Space, Solid Surface Countertops, Open Dining, Master Bdrm with Slider to Deck, Bth w/Dbl Sink Vanity & Separate Shower. Family Room on Lower Level w/ Heat Stove w/Brick and Book Case/Shelves. Plenty of extra Parking



Bright & Cheerful!
19369 Ferretti Rd
2-321
\$379,900
MLS# 20230280

3 Bd/2 Bth, Single Level, Approx 1232 SqFt., Great Room, Air Tight Fireplace w/ Tile and Mantel, Sliding Glass Door with Access to Deck, Hardwood Floors, Lighted Ceiling Fans, Granite Countertops, Central HVAC, Open Dining, Master Bdrm w/ Private Deck, Inside Laundry, Washer & Dryer Included. Security System. Back Patio Area has a "Artistic" Rock BBQ & Unique Tree. Gravel Driveway and RV Parking.



19080 Dyer Court
#8
\$195,000
MLS# 20230121

Lovely Renovated Condo on Golf Course

2 Bed/2 Full Bath, 2 Levels, Living Room with access to Patio and View of the Golf Course/ 5th Hole, Electric Fireplace/Heater, Ceiling Fans. Kitchen with Breakfast Bar, Granite Countertops, Open Dining Area, Wall AC Unit and Baseboard Heaters. Master Bed/ Bath, Balcony. Inside Laundry. Walking distance to the Pro Shop, Restaurant, Pool and Pickle Ball Courts.
The HOA is planning on re-siding the Wooden Shingles on the front of the Units.



New Listing
Custom Built - Highly Maintained
20022 Ridgecrest
13-305
\$599,900
MLS# 20230405

3 Bd/3 Bah, 2 Car Attached Finished Garage w/Shelves, 2 Levels, Approx 2283sf on Approx 0.43 Acre. Living Rm w/Beautiful Wood Burning Fireplace, Cathedral Ceiling, Coffered Ceilings, Skylights, Ceiling Fans, Central Air-Central Propane Heat, Spacious Kitchen, Granite Countertops, Stainless Appliances, Wine Refrigerator, Open Dining, Master Bd/Bth on Entry Level, Walk-in Closet, Slider to Deck, Jetted Tub, Separate Shower, Loft/Office, Inside Laundry Rm w/Cabinets, Spacious Trex-Like Rear Deck, Drip System, Fiber Cement Siding. Practice Putting Green, Most Furnishings and All Appliances Included!



New Listing
22690 Prospect
Heights
Lot 20
\$239,900
MLS# 20230495

Enjoy the Views!

2 Bd/2 Bth/2 Car Finished Garage, Located in Yosemite Vista Estates, "Over 55" Community. Manufactured Home w/Step-saver Floor Plan providing a comfortable design. Living Rm w/Fireplace Stove, Central Air, Skylights, Brkfst Bar, Pantry, Built-in China Cabinet. Primary Bdrm & Guest Bdrm are situated on opposite ends. Den/Office, Inside Laundry, Lightly Landscaped, Approved Permanent Foundation. This home is conveniently located just around the bend from the Clubhouse and Pool.

Lots & Acreage for Sale
\$ 12,000 - 6-183 0.53 Acre Nice Buildable Lot
\$ 14,500 - 6-217 0.24 Acre Good Location
\$ 15,000 - 2-94 0.30 Acre Very Nice Lot
\$ 15,000 - 13-358 0.37 Acre Easy Build
\$ 18,000 - 6-219 Great Buildable Lot
\$ 18,900 - 2-35 0.25 Acre Corner Lot
\$ 19,000 - 4-21 1.03 Acres Double Merged
\$ 19,900 - 3-373 0.39 Acre Beautiful & Level
\$ 19,900 - 4-31 0.62 Acre Great Location
\$ 22,500 - 6-70 0.66 Acre Creekside Lot
\$ 24,900 - 15-50 0.87 Acre Green Belt Lot
\$ 29,000 - 6-24 Great Buildable -Green Belt/Creek
\$ 34,900 - 3-154 0.29 Acre Beautiful Lot
\$ 49,000 - 7-275 1.60 Acre Quiet Cul-D-Sac
\$ 49,900 - 5E-17 0.33 Acre Prime Golf Course
\$ 65,000 - 5-23A 0.98 Acre Good Location
\$ 69,000 - 5-8 0.21 Acre Good Location
\$ 88,888 - 5-28 1.29 Acre R3 Multi-Family
\$ 89,500 - 5-63 0.30 Acre Great Location
\$ 89,900 - 4-128 0.78 Acre Lake Front Lot
\$299,000 - Hwy 120 Townsite Location
\$300,000 - Hwy 120 29.0 Acres Multi Uses
\$359,000 - Big Oak Flat 9.32 Acres Beautiful
\$450,000 - Jamestown 42.39 Acres -



CHRIS H. LAKE
DRE 00946632
209-768-6156
chrishlake@gmail.com



GINA GIAMPIETRO HERNANDEZ
DRE 01226555
408-506-6944
GinaGHRealEstate@gmail.com



WE ARE STILL BUSY SELLING IN THIS MARKET !!!
Call us to tell you what your home could sell for right now.

**YOSEMITE AREA
REAL ESTATE**

**Make
Chris & Gina
your
1st call!**

18687 MAIN ST. STE B2 GROVELAND
View listings at www.YosemiteAreaProperties.com
PAUL S. BUNT REAL ESTATE BROKER DRE 01221266

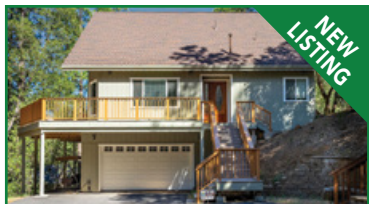
INCREDIBLE SCENIC VIEWS



NEW LISTING

20775 Nonpareil \$599,000 A lovely home w/wonderful scenic views by Big Creek in Pine Mtn Lake. Beautiful 3bd, 2ba, 2 car garage w/extra storage areas. Light & bright windows throughout, great rm concept, hardwood floors, rustic stone hearth, wd burn fp stove, white quartz countertops in kitchen & laundry, newer stainless appliances, pendant lighting, garden window, coffee bar area, pantry storage, pull out drawer cabinets, induction cooktop, new stainless accent light fixtures, lg matching island, laundry w/add'l storage & sink. Lg Lvrn sliding door to spacious back entertaining, 2bd & bath on main flr. Lower level has enormous Mstr Bdrm ste w/balcony deck access. Lg walkthrough closet + 2 add'l closets, Upgraded bath w/marble tiled flooring, 2 sep. stylish glass vanity sink areas, private w.c., tiled doorless shower w/decorative tile, stand alone clawfoot bathtub. RV parking & elect, 2021 whole house generator.

BEAUTIFUL MOUNTAIN HOME



NEW LISTING

2019 Pine Mt Dr \$629,000 Beautiful Mtn Home in serene Pine Mtn Lake, 3Bd/2 1/2Ba/2 Car gar, 35mi from Yosemite. Over 2083sf of living space w/wonderful outdoor wrap around entertaining deck area. The home features 30ft tall ceilings in the main living area, beautiful hardwood flooring, a grt rm w/tall bright windows, lg open tall kitchen cabinetry, granite counters & backsplash, 2 stainless sinks & ss appliances, garden window, lg center island w/high circular breakfast bar seats 6, pantry cabinet, French doors w/slate stone access to deck /BBQ area. Main flr half ba & 2 spacious bdrms w/walk-in closets, each w/full bath access, glass & tile shower, granite counters, dble sinks. Upstairs open loft & master bdrm w/ dbl doors, jetted soaking tub, dbl sinks and vanity with granite counters & sep shower area, large walk-in closet. Lg bonus rm downstairs entry level near laundry area.

RELAX, RETIRE OR VACATION



NEW LISTING

12389 Deer Path Ct., Yosemite Vista Estates 1600 sf 3 Bed 2 bath 2 car. \$349,000 Relax, Retire or Vacation in comfort! 2015 year new - beautiful single level manufactured home near Yosemite in Yosemite Vista Estates. Take in the breathtaking views as you relax on the lg deck porch overlooking the mountains & countryside. Beautifully designed floor plan home has high ceilings throughout, bright windows, great rm concept, lovely lg spacious kitchen, granite counters, lg breakfast bar, breakfast nook & dining rm eating areas also. Enormous cabinet storage, pendant & recessed lighting, ceiling fan lights throughout, mstr ste w/ shower, 3 closet sections, private water closet, dbl sinks, situated opposite end of 2 guest bedrooms. This delightful clean & move-in ready home has crown molding accents, 9 ft ceilings, neutral color scheme, window treatments, lg laundry w/ sink & storage. Finished oversized 2 car garage w/ workbench. Whole house back-up generator. 7mi from Pine Mtn Lake & 25mi from Yosemite.

YOSEMITE VISTA ESTATES HOME



NEW LISTING

22622 Whispering Springs Dr., Yosemite Vista Estates 1600 sf 3 bed 2 bath 1 car \$329,000 Relax, Retire or Vacation in comfort in this 2015 yr new - beautiful single level manufactured home near Yosemite in Yosemite Vista Estates. You will love this beautiful designed floor plan home w/high 9ft ceilings throughout, bright windows, great rm concept, lovely large spacious kitchen w/ granite counters, lg breakfast bar, breakfast nook & dining room eating areas also. Enormous cabinet storage, pendant & recessed lighting, ceiling fan lights throughout, master bedroom suite w/lrg walk-through closet, separate soaking tub & shower, private water closet, dble sinks & the master situated opposite end of 2 guest bdrms. This move-in ready home has warm tone paint color schemes, window treatments, lg laundry w/ sink & storage, level parking, add'l storage shed & whole house back-up generator. Located off Ferretti Rd just 7mi from Pine Mtn Lake & 25 mi from Yosemite.

BREATHTAKING VIEWS



NEW LISTING

22684 Prospect Heights \$319,000 Stunning Views from this updated/ remodeled single level manufactured home near Yosemite in Yosemite Vista Estates. Situated in a lovely senior living development, across from the clubhouse & swimming pool, this lovely home is the place to be for comfort and ease. Wide open spacious floor plan, move in ready! Super views from lg beautiful deck, great rm living rm, & kitchen. Updated windows & flooring, countertops, cabinets, appliances, newer roof & gutters, beautiful concrete paths w/retaining walls, flower landscape, handicap sloped concrete ramp, lg laundry rm with tons of storage also w/deck access, updated bathrooms, lg mstr ste w/vaulted ceiling, walk-in closet, beautiful window treatments throughout. Whole house back-up generator, 2 car garage & long driveway w/level parking. Located off Ferretti Rd just 7mi from Pine Mountain Lake & 25 miles from Yosemite.

COMMERCIAL ZONING



NEW LISTING

17870 Hwy 120 \$495,000 3.74 acres on Hwy 120 just 25 miles west of Yosemite National Park. The Property has 2 metal warehouse style buildings w/a total 3000sf. Presently being utilized as auto repair shop & auto salvage. Tenants would like to stay if possible but not required. Rent is month to month at this time. Property is on both sides of Hwy 120. The section on the south side of the Hwy is 1.88 acres and is a dedicated drainage easement. The south side of the highway currently receives income for PML signage. The property has public water and sewer and has been recently surveyed.

ADORABLE RUSTIC CABIN



10600 Converse Rd, Greeley Hill \$425,000 private setting near Yosemite on 3 + acres. 3Bd/2Ba/2 Car gar, Your very own quaint cabin to enjoy nature & privacy is waiting! This is truly a rustic cabin featuring stone hearth w/wd burning stove/f.p., knotty wood walls & kitchen cabinets w/open beams, old fashioned hrwd flooring, upgraded stainless appls, gas stove/oven, garden window, custom bar & bar stools, newly remodeled full upstairs bath along w/3-4 sleeping rooms w/enormous upper level lg sun room w/potential for a variety of uses. Plus small office or storage room on the upper level. Living Rm w/bright windows overlooking beautiful lawn area & surrounding tree views. Attached is an oversized 1 garage with work benches. Fall in love alone w/ exterior lg covered deck porch/patio area to enjoy year round sunshine or snow days.

ONE OF THE NICEST HOMES IN PINE MOUNTAIN LAKE



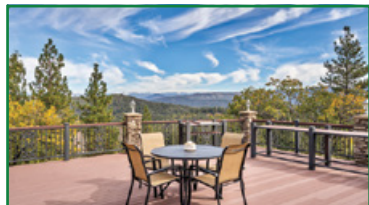
20966 Hemlock St U12/L250 \$649,000 2781 sq ft on .86 AC. 3Bd/2 1/2Ba, Patio with HOT TUB. Lovely, immaculate home w/beautiful views in tranquil & private setting w/great entertaining inside & outside. Level entry & lovely landscaped grounds, built in 2002, remodeled in 2018. Move in ready (turnkey negotiable). Enjoy or entertain in lg living rm w/ high vaulted ceilings, spacious and bright, Hunter Douglas top and bottom open window treatments & sun shade, beautiful gas f.p. w/mantel, wonderful light & bright updated open kitchen & dining areas w/ gorgeous wd style laminate floors, granite counters & backsplash, breakfast bar, breakfast nook, gas down draft cook top, built-in oven & microwave, pull out storage, walk-in pantry, spacious & long buffet/coffee bar w/glass face cabinets & so much storage! Formal foyer, half guest bath, two sliding doors to wonderful covered patio/deck area. Large wrap around deck has beautiful vista views for miles, w/a built in bar, extension awning, gas fire pit, concrete patio area by hot tub & an outdoor shower. The main level mstr bdrm has 2 sky windows, private patio balcony, lg bay window, walk-in closet + add'l linen/towel storage, oversized tile shower, bidet, tile floor. Bright & cheery downstairs are two high ceiling guest bdrms, family rm area w/slider to outside, full bath w/tub/shower, laundry rm w/sink, bonus rm for office, hobbies or storage. Delightful front covered porch & breezeway to oversized 2+ garage, RV parking on beautiful paved driveway, storage shed, irrigation system, security system, nest system for HVAC remote control, tankless water heater, gutter guards. HOA monthly dues are \$242 per month. Gate pass required for access. Unit 12 allows fencing and certain livestock. Must see this exceptional home.

A MUST SEE-SUPER SPACIOUS & GREAT LOCATION



19940 Pine Mountain Dr. Unit 13 Lot 347 \$439,000 2295sf on .27ac, built in '89, 2bdrm 2 bonus rooms, 2ba, 2 car garage. True rustic style cabin w/room for entire family and more! Exterior has rustic look that says cabin in sweet cabin. Great location not far from main marina w/easy approach mostly level driveway that leads to 2 car garage w/convenient access to kitchen. Enormous GREAT rm w/vaulted ceilings, wd burning stove on a lg brick hearth f.p. & back covered deck access. Open dining area as well as a breakfast area in kitchen & breakfast bar can seat 5. Indoor laundry area. Lg master, 2nd bdrm, hall bath & 2 bonus rooms for additional sleeping areas. Downstairs is unfinished but spacious.

SELLER FINANCING AVAILABLE 40 ACRE ESTATE WITH STUNNING VIEWS



10403 FISKE HILL RD. \$999,999 3120sf, 3 Bdrms 2 1/2 Ba, 5 car garage sitting on 40+/- acres, w/360 degree views including AWESOME views of Yosemite, snow capped mountains, the Clark Range & Greeley Hill areas. If you like nature, treasure privacy, estate style living at its stunning best, + beautiful landscaped grounds that can accommodate large gatherings, then this amazing place is for you! Large (34'10"X29') finished, 2 car attached garage w/ storage cabinets. There is also a large work shop/garage (25'X50') w/3 garage doors, storage, & 220 outlets, a car collector's dream. Living rm, dining area & kitchen are great rm style, beautiful hardwood floors, open w/tall cedar ceilings & lg cross beams w/directional lighting, floor to ceiling windows & a rustic, magnificent floor to ceiling stone wood burning f.p. w/log mantel. Stainless appliances, walk-in pantry, bar that seats 7, French doors lead to expansive decks w/custom metal railing throughout the grounds, astonishing tree & panoramic views. Mstr bdrm upstairs is very lg w/views, lg bthrm, spa tub, walk-in shower & lg walk-in closet. Bonus/game rm upstairs w/pool table & built in storage. The ext. huge deck leads to another terraced deck below, waterfall/pond, then to a wine tasting patio w/an oak burl bar, huge fire pit, bocce court & horseshoe pit. Lovely gazebo overlooks the valley; storage area/carpport for firewood, a fenced vegetable garden, garden shed, chicken house w/fenced area & a dog kennel. Parking for around 40 vehicles. Concrete driveway entrance leads to beautiful stately custom iron solar powered gate & entry alarm system. 20,000 gallon water tank w/2 fire hydrants plumbed to it. 2 heat/air units, fireplace can heat entire home, propane gas and Generac generator that starts automatically. Located 27 miles from Yosemite.

64 ACRES - OWNER FINANCING



Fiske Rd Greeley Hill Secluded acreage tucked away off County paved road and paved driveway. Seasonal creek. Several unique building sites. Close to US Forestry Land. Power on adjacent properties. Varied sloped terrain. Ground coverage is a mixture of grasses and pines and oaks. Amazing mountain and vista views. Close to some retail amenities Possible owner financing. Located just 25 miles from Yosemite National Park

TURNKEY TOWNHOME



SOLD

12721 Junipero Serra Way #14 - \$375,000 2161sf townhome next to golf course & pool. Updated/turnkey - Beautifully renovated. Formal entry, beautiful wd flrm in living areas, dining area & bdrms, open kitch. w/ granite cntrs, ss applcs, white cabinetry w/brushed nickel hardware throughout, 4 patio areas! Lg living rm w/beautiful wet bar, high windows w/tree views, floor to ceiling rock wd burning f.p., lg mstr bdrm w/balcony deck, walk-in closet, private shwr & commode, 2nd guest mstr w/cheerful colors & walk-in closet & full bath; bonus area for den or guest & indoor laundry. Enormous media rm, bdrm overflow area. Half bath, kitchenette & perfect entertainment area! Near amenities.



\$750,000

19191 OLD HIGHWAY 120 GROVELAND, CA 95321
2 bedroom, 2 bath. LOCATION, LANDSCAPE, and BEAUTY! Sit under the covered wrap-around porch all year long and enjoy the beauty nature in the Sierra has to offer. Sitting on 62.75 acres with Groveland Community Service District Water and zoned A-20, there are many possibilities to build on this rare, gently sloped and level parcel. Only 30 minutes to the gates of Yosemite and 1 minute down the road from the historic town of Groveland it's difficult to beat this location.



\$495,000

19970 DEERBRUSH COURT GROVELAND, CA 95321
This quiet, single level, 3 bedroom, 2 bath home sits on 1.43 acres with views of the Pine Mountain Lake 4th of July fireworks from the front porch. Large open concept kitchen with ample granite countertop space and cabinets. New Generac whole house generator automatically turns on when the power goes out. Oversized, finished and plumbed 3 car garage has workbenches and cabinets.



\$799,999

9935 JACKASS CREEK GROVELAND, CA 95321 1900 SQ FT 20.89 ACRES
Built in 2020, this custom straw bale home is the ideal off-grid mountain homestead only 35 minutes to the gates of Yosemite National Park. In addition to this 1900 SqFt, 1 bedroom, 2 bath main house there are 4 additional sleeping quarters, each equipped with their own full bathroom. Owned Solar Power, a private well, and 20,000 gallons of water storage tanks provide the property with utilities.



\$110,000

9759 JACKASS CREEK GROVELAND, CA 95321
10 Acre parcel with mountain views and jackass creek running through it. Land has been developed with a gravel driveway and level areas that were used as Hipcamp Campsites. 1500 Gal Septic dump tank has been installed, no leach field. The land has been cleared of overgrowth. Only minutes from the town of Groveland. Ask the listing agent about the adjacent 20 acres for sale.



\$17,000

PINE MOUNTAIN LAKE UNIT 12 LOT 222 GROVELAND, CA 95321
Rare opportunity to own just over 2 acres in Pine Mountain Lake's Unit 12 near the airport and equestrian center. Gently sloped lot, mature trees, and views of the Tuolumne Canyon mountain tops. The lot borders Greenbelt and ranch lands. Enjoy all of Pine Mountain Lake's amenities with the quiet country lifestyle. Just 30 minutes to the gates of Yosemite, this lot is perfect to build your getaway or retirement home.



\$150,000

20990 FERRETTI ROAD GROVELAND, CA 95321
This nearly level, commercial parcel just outside the Pine Mountain Lake airport is the perfect plot of land to build a retail, shop or storage facility. The parcel has access to district water and sewer and is close to two pg&e poles to tie into power. Sitting on the corner of Ferretti and Elderberry with a fire hydrant along the Eastern property line, this a great location for those just passing by. Contact the agent for more information or questions.



\$295,000

18985 FERRETTI ROAD GROVELAND, CA 95321
Forested 17 acres in prime location near Pine Mountain Lake and downtown Groveland. Zoned RE-1 one-acre minimum for possible subdivision. Groveland Community Services District water and sewer, plus power lines on north and west sides. Bordered by Ferretti Rd, Pine Mtn Drive, and Elder Lane. Across the street from the new Resiliency Center; 5 minute walk to market, library, Youth center, Park. Close to PML golf course and dog park. **co-broker Lauren Borup DRE # 00975527**

VANESSA RENKEL



Realtor, RE/MAX Gold
DRE # 02138062

(650) 704-9973

WWW.RENKELREALTY.COM

VCRENKEL@GMAIL.COM

- 📍 renkelrealty_remaxgoldyoosemite
- 📌 RenkelRealtyREMAXGoldYosemite
- 📧 RenkelRealty_REMAXGoldYosemite



Looking to rent your home for short term rentals?
Not sure where to start or who to trust?

LET US DO THE WORK FOR YOU!

Locally owned and managed properties.
Rated Airbnb Superhost and VRBO Premier Host.

We use **DYNAMIC PRICING** with
Prompt Statements and Monthly payments
and very **COMPETITIVE RATES.**

Quick response time with
NO surprise fees.

Call Michael – Phone: (209) 840-2294
email: pinemountain48@gmail.com
www.pinemountainvacationrentals.net



TWO GUYS PIZZA PIES
18955 Ferretti Rd, Groveland
(Just 1/2 Block Off Hwy 120)

Check out our weekday
LUNCH SPECIAL!

We ♥ Phone Orders
(209) 962-4897

\$1.00 OFF
ANY SIZE TWO GUYS
PIZZA OR CALZONE

One coupon per order, per visit. May not be combined with any other offer and/or coupon. Not valid on delivery.

PMLN 0623 Offer Expires 07/15/23

\$2.00 OFF
ANY LARGE OR EXTRA LARGE
TWO GUYS PIZZA

One coupon per order, per visit. May not be combined with any other offer and/or coupon. Not valid on delivery.

PMLN 0623 Offer Expires 07/15/23

GET IMPORTANT NEWS VIA EMAIL

Signing up for the new eSNAP program is quick and easy and gives you the ability to sign up for the information that you want to receive. Just head over to www.PineMountainLake.com and sign up today.

eSNAP

ELECTRONIC SAFETY, NEWS & ALERT PROGRAM

ABOUT EACH OF THE PROGRAMS

PML News & Alerts – Receive emails with information regarding anything affecting Pine Mountain Lake such as road closures, utility problems, fire alerts and more.

PML Amenities News – Receive emails with information about upcoming events, specials, or news regarding all PML amenities such as the lake, marina, golf course, etc.

The Grill at Pine Mountain Lake – Receive emails with information regarding happenings at The Grill. Get information on Wine Tastings, Entertainment, Special Events and more.

This program is separate from the current email opt-in program that allows you to receive PMLA governing documents and requires your signed approval. This program can be signed up for via the online system. *Get your news and alerts via email, it's eSNAP!*

Carron Tax associates

Carole Smith
Enrolled Agent

20093 Ridgecrest Way
Groveland, CA 95321
Tel: 209/962-6119
E-mail: carolesmith@carrontax.com

INCOME TAX PREPARATION
AUDIT REPRESENTATION

VALADEZ TREE SERVICE LLC

- BRUSH CHIPPING
- HAZARD TREE REMOVAL
- LAND CLEARING
- STORM CLEAN UP
- MASTICATION
- TREE TRIMMING/ PRUNING



CA LIC. # 1097030
24 HOUR EMERGENCY SERVICE
(209)206-8591
valadeztree@gmail.com
16843 Crestview Dr.
Sonora Ca 95370
VETERAN AND SENIOR DISCOUNT



KATHY NIEDENS
REALTOR® / SALESPERSON

209.962.1111 OFFICE
209.985.4031 CELL
knniedens@gmail.com

LIST & SELL WITH KATHY & GET YOUR HOUSE CLEANED FOR FREE ASK FOR DETAILS

HOME • CARPET WINDOWS

DRE# 01113243
18687 MAIN ST., STE E
GROVELAND, CA 95321

HEAVENLY CLEANING SERVICE
209.962.6418



PROFESSIONAL CARPET CLEANING & HOUSEKEEPING SERVICE

FIREWOOD CUTTING

PML SLASH AND COMPOST SITE

OAK AND CEDAR REQUIRES A \$20 PML WOOD CUTTING PERMIT

WOOD CUTTING PERMITS AVAILABLE AT THE MAINTENANCE FACILITY

PINE AND FIR AVAILABLE FOR FREE CUT & HAUL

FOR MORE INFORMATION PLEASE CONTACT ANITA AT

1 (209) 962-8612 BETWEEN THE HOURS OF 7 AM TO 2:30 PM, M-F.

MURRA'S
TOTAL YARD MAINTENANCE



BRINGING VALUE FOR YOUR DOLLAR IN PML

- WEEDING
- LOT CLEARING
- SENIOR DISCOUNTS
- LEAF REMOVAL
- PLANTING
- TREE SKIRTING
- HAULING
- AND MORE

CALL JASON MURRA
209-352-3750
LIABILITY INSURED

ORGANIZED BY FRIENDS OF THE LAKE

Pine Mountain Lake
Boat Parade
July 1 at 6:00pm



DECORATION THEME:
"CLASSIC TV SHOWS" OR PATRIOTIC

Boaters:

- Sign-up at the Marina; no fee
- Line up at 5:30pm at the dam
- Prizes for best decorations
- Any questions, call 1-209-962-6336



Mark DeGregorio, CFP®, has earned the CERTIFIED FINANCIAL PLANNER™ certification.

A financial professional with a CFP® certification is well-versed in developing integrated wealth management plans, has a robust theoretical and practical knowledge of investment products and services, has an unwavering dedication to the highest ethics and a steadfast commitment to putting your interests first.

Contact me for wealth planning and financial advice.



Mark DeGregorio, CFP®
Senior Financial Associate
Associate Planning Professional
345 California Street, Floor 29
San Francisco, CA 94104
(415) 445-8583 | mark.degregorio@rbc.com



Investment and insurance products offered through RBC Wealth Management are not insured by the FDIC or any other federal government agency, are not deposits or other obligations of, or guaranteed by, a bank or any bank affiliate, and are subject to investment risks, including possible loss of the principal amount invested.

© 2023 RBC Wealth Management, a division of RBC Capital Markets, LLC, registered investment adviser and Member NYSE/FINRA/SIPC. All rights reserved. 22-SI-03250 (02/23)



- Launching
- Winterizing
- House Calls
- Dock Calls
- Service
- Repairs
- Storage
- Trailer Repair

209-962-4594

The Boat Doctor
Paul Belluomini • P.O. Box 113 • Big Oak Flat, CA 95305



MY CAR GUY
Automotive Consulting Services

Dave Sutch
Auto Broker/Dealer/Consignor

20950 Ferretti Road
Mail: PO Box 22
Groveland, CA 95321

Cell/Text 415-860-1505
dave@mycarguy-sf.com
www.mycarguy-sf.com

...dream cars at dream prices with no hassle



BROKER / DEALER / CONSIGNOR
Cars, Trucks, SUVs, RVs, Motorcycles

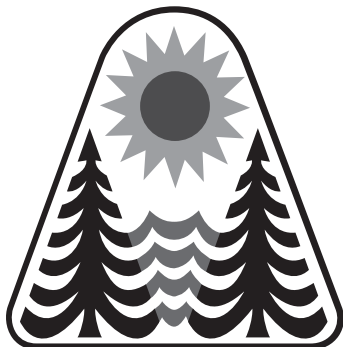
**RESOLUTION #23.03
PINE MOUNTAIN LAKE
ASSOCIATION RESOLUTION
ADOPTING ACCESSORY
DWELLING UNIT POLICY**

In accordance with Pine Mountain Lake Association's CC&R's, Article III, Section 7(c), Adoption and Amendment of Rules, the Board of Directors has approved an amendment to Resolution 23.03 – Pine Mountain Lake Association Resolution Adopting Boat Berth Wait List and Transfer Policy.

The purpose of this resolution is to establish a policy governing the planning, permitting, approval, construction, use and occupancy of accessory dwelling and junior accessory dwelling units in Pine Mountain Lake Association.

This amendment was published in the May edition of the PML News and posted on the PML website for member review and comment.

This amendment to Resolution 23.03 was approved and adopted by the Board of Directors at a duly noticed meeting on May 20, 2023.



Resolution 23.03
Adopted: 05/20/2023

**PINE MOUNTAIN LAKE ASSOCIATION
RESOLUTION ADOPTING ACCESSORY
DWELLING UNIT POLICY**

SUBJECT: Adoption of an Accessory Dwelling Unit Policy.

PURPOSE: To establish a policy governing the planning, permitting, approval, construction, use and occupancy of accessory dwelling and junior accessory dwelling units in Pine Mountain Lake Association.

AUTHORITY: The Declaration, Bylaws, and Articles of Incorporation of the Association, California Law and Tuolumne County Ordinance Code.

**EFFECTIVE
DATE:** May 20, 2023

WHEREAS, an Accessory Dwelling Unit ("ADU") means an attached or a detached residential dwelling unit that provides complete independent living facilities for one or more persons and is located on a lot with a proposed or existing primary residence. AN ADU must include permanent provisions for living, sleeping, eating, cooking, and sanitation on the same parcel as a single-family dwelling ("SFD") or multi-family dwelling ("MFD").

WHEREAS, a Junior Accessory Dwelling Unit ("JADU") means a unit that is no more than 500 square feet in size and contained entirely within a single-family residence. A JADU may include separate sanitation facilities, or may share sanitation facilities with the existing structure.

WHEREAS, a Guesthouse means a detached building occupied by guests without compensation of any kind as a condition of occupancy and used as sleeping quarters only, without cooking or housekeeping facilities.

WHEREAS, the Board of Directors has determined that the construction and occupancy of ADUs and JADUs in PMLA will impact the financial, operational, enforcement and maintenance needs of the Association;

WHEREAS, the State of California has enacted laws to allow the construction of an ADU or JADU on properties with an existing SFD or MFD;

WHEREAS, the stated purpose and intent of allowing ADUs and JADUs to be constructed on properties with existing SFDs and MFDs is to increase the amount of available, affordable long-term housing in California;

WHEREAS, the new ADU and JADU laws do not address the conflicts and negative impacts of adding additional housing to parcels in existing planned unit developments;

WHEREAS, the Board of Directors anticipates the influx of ADUs and JADUs in PMLA will increase the financial requirement from the membership due to an increase in operational needs and governing document enforcement activity to maintain current standards and the quality of life for residents in the community;

WHEREAS, the Association can generally be more restrictive than the State or County in adopting certain policies and rules unless otherwise specifically prohibited by law;

WHEREAS, the Board of Directors has determined that an ADU policy is necessary to protect the assets of the Association and its ability to repair, maintain and operate the facilities and common area and enforce the governing documents for the benefit of the membership;

NOW, THEREFORE BE IT RESOLVED, The Board of Directors adopts the following ADU policy and operational rules:

1. No ADU or JADU may be rented or leased for a period of less than 30 days.
2. No single-family dwelling may be rented or leased for a period of less than 30 days if the property also has an ADU, JADU or both.
3. Owner-occupancy is required in a SFD in which a JADU is constructed.
4. An ADU or JADU may not be rented or leased if an existing SFD or MFD on the property is being rented or leased.
5. No ADU or JADU may be rented or leased unless the property owner maintains and occupies the adjoining single-family dwelling or multi family dwelling as their fulltime, primary residence.
6. A Guesthouse is not an ADU or JADU. A Guesthouse may not be rented or leased.
7. No Guesthouse may be fully converted into an ADU.
8. No single-family dwelling may be fully converted into an ADU.
9. No multi family dwelling may be fully converted into an ADU.
10. Property owners who rent or lease their ADU or JADU must comply with all Association rental rules and policies.
11. The total floor area of an attached ADU shall not exceed 50% of the existing primary dwelling.
12. The total floor area for a detached ADU shall not exceed 1,200 square feet.
13. The required setback for an ADU shall be at least four (4) feet from side and rear lot lines.
14. All ADUs and JADUs shall also be constructed in compliance with applicable California law and Tuolumne County Ordinance Codes including, without limitation, Tuolumne County Ordinance Section 17.52.200.

With the adoption of this resolution, the Board of Directors hereby rescinds or nullifies any portion or provision in any previous resolution, policy or rule until such time that the resolution, policy or rule can be updated to reflect the adoption of this resolution.

Nothing in this Resolution is intended to unreasonably increase the cost to construct, effectively prohibit the construction of, or extinguish the ability to otherwise construct, an ADU or JADU consistent with the provisions of the California Government Code.

The Association Board of Directors reserves the right to update, amend or rescind this resolution as appropriate in the future.

Respectfully submitted,

Chuck Obeso-Bradley, Secretary

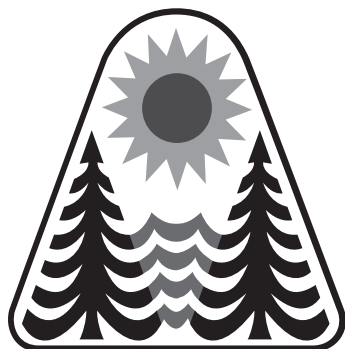
**PROPOSED CHANGES TO
RESOLUTION #99.12**

**Pine Mountain Lake Association
Advisory Committee Guidelines**

In accordance with Pine Mountain Lakes' CC&Rs, Article III, Section 7 (a) (ii)-Association Policies & Association Rules, the Board of Directors has approved a member review of the proposed amendment as shown below. This revision is being published in this issue of the PML News to give members the opportunity to review the proposed changes and provide feedback to the Board prior to adoption.

Legend: **Bold/Italic = new text**
~~Strikethrough = removed text~~

The purpose of this revision is to permit more than five individuals to serve on a committee as the Board deems appropriate, and to appoint one non-Association member to a committee if a committee is unable to find members to serve. The non-Association members would have expertise or hold positions of influence that are relevant to the committee they are appointed to, and no more than one non-Association member would be able to serve on any Committee at a time.



Resolution #99.12
Adopted: 12/13/1999
Amended: 06/16/2001
Amended: 10/15/2001
Amended: 11/12/2011
Amended: 04/20/2019
Amended: **/**/****

**PINE MOUNTAIN LAKE ASSOCIATION
ADVISORY COMMITTEE GUIDELINES**

PURPOSE OF COMMITTEES

The role of the Board of Directors is to protect, maintain, and enhance the commonly held property of the membership. In fulfilling that responsibility, the Board is often faced with optional avenues or solutions. Advisory committees were created to assist the Board with fact-finding, analysis and, finally, recommendations for or against a course of action regarding those options.

The role of the committees therefore, is to advise the Board on those matters assigned to them. However, the Board recognizes that committees are made up of Association members, who are the "eyes and ears" of the community. Valuable projects, options, or solutions, therefore, may originate with the committee itself and the Board wants to hear them in an organized manner, as stated in the following guidelines.

COMMITTEE SIZE & APPOINTMENT

- 1) In the interest of efficiency, it is recommended that committees be limited to no more than five members in good standing. **The Board of Directors may appoint more than five Association members as it deems appropriate. The Board may also choose to appoint non-Association members to a committee if a committee is unable to find members to serve. No more than one non-Association member may serve on any Committee at a time.**
- 2) Committee chairmen and members will be appointed by the Board, annually, upon written application.
- 3) It is recommended that members be limited to three years' service, consecutively, on a given committee.
- 4) Members are limited to serving on one Advisory Committee at a time.
- 5) Member's length of appointment is from January to January.

ROLE OF COMMITTEES AND THE BOARD OF DIRECTORS

- 1) Committees will meet as required to complete assignments, or at a minimum of once per quarter.
- 2) Meeting schedules will be provided to the Administrative Assistant prior to the first of each month for posting.
- 3) Minutes of meetings are required, one copy to be given to the Administrative Assistant at the Association Office.
- 4) Committee project assignments will be made at a regular meeting of the Board of Directors and will be issued in writing.

- 5) Suggestions for project assignment, originating within the committee, will be made in writing and given to the Liaison for delivery to the Board. Such requests shall outline the aim and scope of the project as well as the resources and time necessary to complete a recommendation to the Board.
- 6) Committees will have the opportunity to present a report to the Board at the monthly, regularly scheduled Open Board Meeting. Final reports and recommendations regarding assigned projects will be brief and to the point; report requiring detailed statistics, calculations and financial material, will be summarized for presentation at a regular Board Meeting. One page summaries are preferred.
- 7) Discussion by Board members and meeting attendees will follow presentation of committee recommendations. Board action may or may not take place. In any case, the Board will respond to the committee within 30 days.
- 8) These guidelines and specific charter of each Advisory Committee will be used in conjunction.
- 9) Committee members shall attend all meetings possible. Three (3) consecutive unexcused absences will result in replacement.

ADDENDUM TO POLICY GUIDELINES FOR ADVISORY COMMITTEES

Committee members are appointed as advisors to the PMLA Board of Directors. Committee assignments (charges) will be initiated by the Board or, they may be initiated by written request of the committee (see: Policy Guidelines for Advisory Committees).

The committee's preliminary reports, working papers, requests for information and recommendations shall be delivered, exclusively, to the Board through the Liaison, and shall only be circulated elsewhere by permission of the Board.

Public statements, either verbally or in writing, on committee matters, shall not be made when acting in the capacity of a committee member, unless specifically authorized by the Board to do so.

This directive is not intended to infer that committee members are prohibited from speaking on committee issues as private citizens, rather, it is intended to prevent misunderstanding among the PMLA membership as to the Board of Directors' position on association matters and the private opinions of its committee members.

ADDENDUM TO ADVISORY COMMITTEE GUIDELINES DEFINITION OF LIAISON

As used in this Resolution, the term Liaison shall refer to a person acting as a contact or go-between for communication between the Committee and the Board of Directors.

Respectfully submitted,

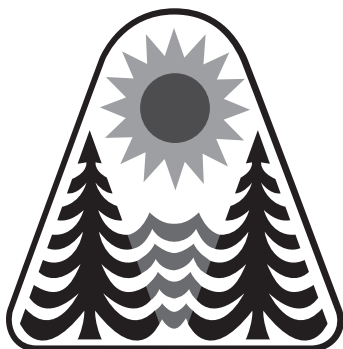
Wayne Augsburger **Chuck Obeso-Bradley**, Board Secretary

PROPOSED ADOPTION OF NEW
RESOLUTION – PINE MOUNTAIN
LAKE ASSOCIATION
LOT MERGER MORATORIUM

In accordance with Pine Mountain Lakes' CC&Rs, Article III, Section 7 (a) (ii)-Association Policies & Association Rules, the Board of Directors has approved a first reading for the proposed new resolution as shown below:

The resolution will be published for 30 days in the PML News for to give members the opportunity to provide feedback to the Board prior to adoption.

The purpose of this resolution is to establish a moratorium suspending the merger of Lots within the Association until such time that a draft restatement of the governing documents is put to a vote of the membership, and a determination is made as to the approval of the Governing Documents restatement.



Resolution #
Adopted:

**PINE MOUNTAIN LAKE ASSOCIATION
LOT MERGER MORATORIUM**

SUBJECT: Adoption of a Lot merger moratorium.

PURPOSE: To establish a moratorium suspending the merger of Lots within the Association until such time that a draft restatement of the governing documents is put to a vote of the membership, and a determination is made as to the approval of the Governing Documents restatement.

AUTHORITY: The CC&Rs, Bylaws, and Articles of Incorporation of the Association and California Law.

EFFECTIVE

DATE: _____

WHEREAS, neither the current PML Bylaws nor CC&Rs include express provisions addressing Lot mergers within the Association;

WHEREAS, Article VIII, Section 18 of the current PML CC&Rs does contain an express provision prohibiting the further subdivision or severability of Lots within the Association;

WHEREAS, the Board of Directors has determined that the merging of Lots under the current Lot merger policy presents an imminent risk of substantial economic loss to the Association and its Members;

WHEREAS, the Governing Documents Update Ad Hoc Committee is working with Association Counsel to prepare a draft restatement of the PML Bylaws and CC&Rs, including provisions governing Lot mergers and restoration of previously-merged Lots, that will be presented for a membership vote;

WHEREAS, on March 18, 2023, the Board of Directors adopted Resolution 23.01 establishing an emergency temporary Lot merger moratorium and suspending PML Board Resolution 90.05 concerning Merging of PML Lots;

WHEREAS, the Board of Directors has now determined that a formal Lot merger moratorium is necessary to protect the assets of the Association and its ability to repair, maintain and operate the Facilities and Common Area for the benefit of the membership;

NOW, THEREFORE BE IT RESOLVED, The Board of Directors adopts the following resolution:

Lot Merger Moratorium

The Board of Directors hereby establishes a moratorium suspending all Lot mergers in the Association, until such time that a draft restatement of the Governing Documents is put to a vote of the membership, and a determination is made as to the approval of the Governing Documents restatement including a new provision regarding Lot mergers and restoration of previously-merged Lots.

All members who have submitted a Lot merger application, including a letter of intent and fee payment, as of March 18, 2023, and received an acknowledgement

of acceptance of the proposed lot merger application, will not be subject to the moratorium and will be allowed to proceed with the Lot merger process to completion.

Any Member who has not completed the Lot merger application process including the submittal of a letter of intent or merger fee payment, or has not received acknowledgement and acceptance of the proposed Lot merger application from the Association, as of the date of adoption of this Resolution by the Board of Directors, will be subject to the Lot merger moratorium and will not be allowed to merge their lots at this time.

The adoption of this Resolution suspends PML Board Resolution #90.05, Merging of PML Lots, and the current Pine Mountain Lake Association Merging of Lots policies, until such time as the new restatement of the PMLA Governing Documents have been put to a vote of the membership.

Respectfully submitted,

Chuck Obeso-Bradley, Secretary

DRAFT

PINE MOUNTAIN LAKE IS NOW HIRING!

- MANY POSITIONS AVAILABLE
- COMPETITIVE SALARIES
- FULL & PART-TIME EMPLOYMENT
- BENEFIT PACKAGES*
- HIRING BONUSES**
- WORK CLOSE TO HOME



Employment Questions Contact
Shannon Abbott, HR Manager
19228 Pine Mountain Dr.
Groveland Ca. 95321

Phone: (209) 962-8628 Fax: (209) 962-0624
Email: pmlhr@pinemountainlake.com

Apply at: www.pinemountainlake.com/job-opportunities/

* Benefits vary by position and job status. ** Hiring Bonuses are subject to change and vary by position
Pine Mountain Lake Association is an Equal Employment Opportunity Employer

GARDEN CLIPPINGS

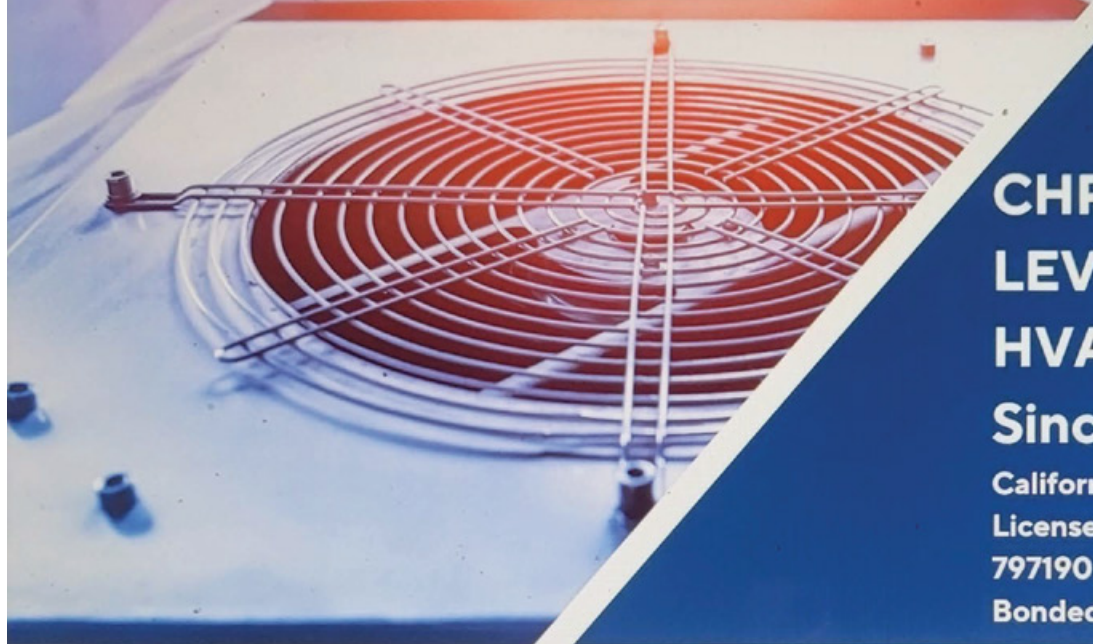
LINDA NEUSCHWANDER – PINE MOUNTAIN GARDEN CLUB

Well, we all agree that our Pine Mountain Garden Plant Sale was the biggest and best fund raiser sale we have had so far! The day started gray, cold and drippy, but we and Groveland was ready for it. Light rain, warm jackets, loads of lovely flowers, plants and tasty baked treats assured us of a good time being had by all. But what really sealed the deal was the happy and supportive crowds of friends and neighbors who showed up to buy Mom a little something for Mothers day or perk up their own garden with fresh new flowers, veggie starts, garden art or Barbara's brownies! And not just Barbara, our club is blessed to have so many wonderful bakers—YUM! It was a fun and helpful event. We will be hosting another sale NEXT May, and we promise you that we will work hard to bring in spring color for you to purchase for your gardens as well as your friends and neighbors, count on us! Our next club event will be Wednesday, June 14 tour at Peter Cover's Fresh Produce Tomato Farm (Hydroponic Greenhouse) at Cover's Apple Ranch Bakery/Deli with Lunch at the deli following the tour. (Did you know they have train rides?????) Call for more info.

I believe its safe to assume that winter is over, so let's get down to dirt, not to mention planting, pruning and general spring cleaning. The sooner the better! I hope you find the prospect as welcome as we do. Here are a few hints to make gardening a pleasant task. 1) start as early as you comfortably can. Mornings are so beautiful, cool and calm. 2) Know what you plan to accomplish before you start each time. Not everything that needs to be done at once, but one or two limited tasks you can complete in an hour or two at the most. 3) Plan breaks. Why not set a comfy chair in the shady, pretty spot where you can look out at your garden and dream or plan? Grab a drink and a snack such as nuts or cheese. Relax. A sketch book, note pad or magazine can be so helpful in helping us to learn to appreciate our gardens. 4) Please don't work yourself to the point of exhaustion. Take your time. If the task is doable and enjoyable you will want to return sooner. 5) Dress for success. Sensible shoes, sun hat, & garden gloves to protect your hands from cuts, injury & fatigue. 6) Always have tissue and drinking water with you.

Learn more about Sierra foothill gardening. There are many awe-inspiring and easy care plants that thrive in our area. Join us. Let's be friends! (and have fun in the garden...) Questions? contact club president Susan Dwyer at smdwyer@sbcglobal.net. We can be reached at P.O. Box 167, Groveland, CA 95321

PML residence, NO more waiting a week for service, usually same day, when you call before 1 pm.



CHRIS LEVERING HVAC
Since 1987

California Contractor
License #
797190 Insured &
Bonded


HVAC

SERVICE AND REPAIR

Are you tired of feeling too hot in the summer and too cold in the winter? Look no further than Chris Levering Heating & Air Conditioning, your trusted source for expert HVAC service and repair! I have no employees.

If no credit card present there is a 3.5% surge charge

- ✓ HVAC System Repair & Maintenance.
- ✓ complete diagnostics of your system.
- ✓ 2023 winter power outages/brown outs/surges could of effected your electrical components. Get your system checked out before the summer.
- ✓ If you have an older system that uses R22 freon, I can help.
- ✓ One year parts & labor warranty.

 **209.732.4622**

20231 Pine Mountain Dr
Groveland

Free service call for PML residence, with repair. Not good with any other offer

PLACE AN AD TODAY

With a classified or display ad in the Pine Mountain Lake News your ad will go directly to every PMLA member every month. Go to our website for more information and prices.

www.PineMountainLake.com



HERE IS YOUR CHANCE TO BE MORE INVOLVED IN YOUR COMMUNITY!

Pine Mountain Lake Association has openings on the following Committees:

- COVENANTS COMMITTEE**
- EDITORIAL COMMITTEE**
- EQUINE ADVISORY COMMITTEE**
- LONG-RANGE PLANNING COMMITTEE.**

If you wish to be considered for committee membership, please complete an "Application for Committee Assignment". This form is available on the website at www.pinemountainlake.com or from the Administration Office.

MAIL COMPLETED FORM TO:
 Pine Mountain Lake Association,
 Attention: Janessa Owens 19228
 Pine Mountain Drive
 Groveland, CA 95321
 Email to j.owens@pinemountainlake.com
 or drop it by
 the Administration Office

Sierra Nevada COMMUNICATIONS

HIGH SPEED BROADBAND INTERNET

SPEEDS UP TO 125 MBPS

Starting at **\$44.95 PER MONTH**

CABLE TV & TELEPHONE SERVICES
Also available

www.gosnc.com
209-962-6373

*Speeds up to 125 Mbps, speeds vary with packages

PAINTING & CONSTRUCTION

Bay Cal
LIC #795283

PAINTING – EXTERIOR/INTERIOR • DECK REPAIRS • WOOD REPAIRS • REMODELS

Bay Cal Construction
209.962.4777

www.baycal.com
email: davec@baycal.com

VISA MasterCard
FREE ESTIMATES

Custom Boat Docks – Gangways
Kayak/Canoe Launches - Floats & Hardware

209-845-2876

1398 East F St Oakdale, CA 95361
 Independently owned Since 1982
www.hcidocks.com

PINNELL'S CARPET ONE FLOOR & HOME



FREE Healthier Living Installation Upgrade, because your health matters.

Waterproof Flooring, LVT, Laminate, Vinyl, Hardwood, Tile, and Hunter Douglas Window Coverings.

Thank you for voting us Best of the Mother Lode since 2005!

209.736.8077 263 S. Main St. Angels Camp, CA
209.532.1696 12900 Mono Wy. Sonora, CA

\$25 DISCOUNT

Mention this ad for a discount on cleaning services.

Minimum charge applies.



DISASTER RESTORATION SERVICES • RESIDENTIAL AND COMMERCIAL CLEANING SERVICES

Carpet & Furniture Cleaning • Steam & Dry Cleaning • Deep Soil Extraction • Spot & Odor Removal • Oriental & Fine Rug Cleaning • Ultrasonic Blind Cleaning
 24 Hour Emergency Service • Water Removal • Wet Carpet Care • Fire & Smoke Restoration • Vandalism Cleanup • Structure Drying • Sanitizing

ServiceMASTER Restore

The clean you expect.

The service you deserve.®



Serving Tuolumne, Calaveras & Amador Counties
 ServiceMasterSierras@mlode.com • www.ServiceMasterSierras.com

209-532-1700

17330 High School Road
 Jamestown CA 95327





PERFORMANCE-BASED HEATING & AIR



We Accept Credit Cards
Lic #998841

We Service All Makes and Models • Veteran Owned, Family Operated • Financing Available



CONTROL YOUR ZONE

- Room by room temperature control
- Whisper-quiet
- Odor filtration
- Improves air quality, reducing dust, mold and allergens
- Allergen filtration
- No more hot or cold rooms in your home
- Turn OFF unoccupied rooms
- Up to 40% more efficient than central air

CALL US TODAY 209-588-7421
www.performancebasedheatingandair.com

These products have NO DUCTWORK so they are perfect for LOFTS, multi-story, additions, garages, man caves, single rooms, stick-built, modular, or in most cases the entire home. Can heat down to -15* and provide a winter wonderland on the hottest of days without costing a fortune on your energy bill. control over the temperatures in your home, and do it better than central air.

PML Organized Groups & Clubs

Contact the individuals below if you are interested in joining!

Aviation Association

Mike Gustafson 1-209-962-6336

Friends of the Groveland Library

Virginia Richmond 1-209-962-6144

Friends of the Lake

Mike Gustafson 1-209-962-6336

Garden Club

Susan Dwyer 1-209-962-6265

Groveland Rotary Club

Rudy Manzo 1-209-962-5219

Greg Cramblit 1-209-962-0607

Ladies Club

Dart Woodruff 1-209-962-1980

Men's Golf Club www.pmlmgc.com

Needle Crafts

Barbara Klahn 1-209-916-5420

Pickleball Club

Lee Carstens 1-415-215-5564

Pine Needlers Quilt Guild

Leslie Timmons 1-209-482-1406

PML Ladies 18 Hole Golf Club

Marcee Cress 1-209-962-0771

PML Niners

Stacie Brown 1-209-962-7397

PML Pool Wellness Club

Karen Reyes
pmlpoolclubpresident@gmail.com

PML Safe Streets Campaign

Leslie Dudley 1-209-962-4911

PML Shooting Club

Scott Knupter 1-925-809-2850

PML Waterski & Wakeboard

Dean Floyd 1-408-915-8848

Racquet/Tennis Club

Ron Bass pmlatennis@gmail.com

Residents Club

Dick Faux 1-209-962-4617

ROOFBB

Audrey Prouse 1-209-962-4196
roofbborg@yahoo.com

Southern Valley Srs. Golf Group

Rich Robenseifner 1-707-486-9115

Wednesday Bridge Club

Linelle Marshall 1-209-962-7931

ANNUAL PML BOAT PARADE – JULY 1

VIRGINIA RICHMOND

The Marina is open and the lake is getting busy! Time to start planning your boat parade decorations. The PML Boat Parade is on July 1 at 6:00pm. All PML boat owners are invited to participate. The theme this year is "Classic TV Shows." Pick your favorite show and go crazy. Of course, patriotic decorations are also welcome. We're always impressed with the creativity of PML boaters!

Prizes will be awarded in four categories: 1.) electric boats, 2.) gas pontoon boats, 3.) fishing or ski boats, and 4.) non-motorized boats such as canoes, sailboats, and kayaks. Sign up at the Marina store to



Last year's winning Boston Tea Party boat



Jim McCloud entertains in his seaplane

participate in the parade. There's no fee.

Adding to the fun, be sure to watch for the airplane landing on the lake at 3:00pm on July 1. Pilot Jim McCloud will entertain with a great show in his seaplane.

The annual PML Boat Parade and

airplane visit are organized by Friends of the Lake. If you have any questions, please call Virginia at 962-6336.

PML MEN'S GOLF CLUB

DAVE FERNANDEZ

APRIL AWAKENING, SPRING SHOOTOUT

The PMLMGC kicked off its Spring Swing with two great events. Congratulations to our winner's and a great kick-off for our 2023 Tournaments,

APRIL AWAKENING

1st place - Greg Sarratt, Ben Rebiskie, Larry Torres, Cary Brown

2nd place - Dan Bradlee, Steve Grant, Jim Grant, Lance Hunter

3rd place - Larry Drew, Gus Climent, Dave Villaroman, Tony Pavlakis

4th place - Rick Liszewski, Edvard Eshagh, Craig Herendeen, Steve Burke

5th place - Marc Allyn, Jon Rivera, Dave Fernandez, Joe Parisi

Closest to the pin

#3- Ted Toffee 3'8"

#7- Dan O'Connor 14'11"

#14- Craig Herendeen

#17- Tom Knoth 6'1"

SPRING SHOOTOUT

Flight 1

1st place- Doug Wall, Tim King

2nd place - Jeff Funston, Blake Funston

3rd place - Dave Berthold, Jeff Sera

4th place - Chuck Obeso-Bradley, Joe Robinson

5th place - Marc Allyn, Ted Toffee

Flight 2

1st place- John Lloyd, Dan O'Connor

2nd place- Uriel Vargas, Mike Ingster

3rd place- Rich Martinez, Joe Vautier

4th place- Brian Vahey, Mark Vahey

5th place- Joe Parisi, Rod Raine

Closest to the pins

#3- Colm Conefrey 12'5"

#7- Pat Hennigan 5'10"

#14- Edvard Eshagh 12'1"

#17- Joe Robinson 4'4"

TOURNAMENT TEE SELECTION

Many of our tournaments allow players to select what tees they will play from. It is important that players sign up for the correct tees. Any player can play from the Gold tees, regardless of their age or index, if they so choose. But only players that qualify may play from the Purple/Green tees. To qualify a player must be 70, or older, or have an index of 18.7, or higher. It is very difficult for the Golf Shop to make tee changes at the last minute. Any player that plays from incorrect tees risks disqualification. Typically, one team member will sign up a 4-man or 2-man team, so it is imperative that that team member sign up their team from the correct tees.

REPAIRING DIVOTS

A very important responsibility for

golfers is to repair all divots, and to repair them correctly in order to maintain our fairways in top shape. Please make sure to use the bottles in your cart to fill all divots and to fill any divots you may see while on the course approaching your ball. Let's do our part to maintain this great course.

WEBSITE TOURNAMENT SIGN UP

Please continue to use the website, pmlmgc.com, to sign up and pay for tournaments. Using the website for tournament sign up and payment makes it easier for the club and the Golf Shop to manage tournaments. Go to pmlmgc.com to see the tournament schedule.

JOIN THE MEN'S GOLF CLUB

Any male persons who are current property owners, their siblings, sons, nephews, sons-in-law, and PMLA employees are eligible to join the men's golf club. Go to pmlmgc.com and click on the button, Join the Club, to see the many benefits of club membership, as well as the ability to sign up on line. Applications are also available in the Golf Shop, or you can contact our Handicap/Membership Chair, Ted Toffey. Email Ted at handicap@pmlmgc.com, if you have any questions about club membership, or, if you're a current member, your NCGA handicap index.

PINE NEEDLERS QUILT GUILD

LYNN SIGAFOOSE

Pine Needlers Quilt Guild meets the third Tuesday of the month, under the Groveland Library. Doors open at 9:30 and meeting begins at 10 am. Guests are Welcome. This June the meeting will be held one week earlier on June 13 due to a conflict with the Quilt Retreat.

New Board Officers were installed in May, President, Kris Fichou, Vice President, Dee Small, 2nd Vice President, Leslie Timmons, Treasurer, Catherine SantaMaria, Recording Secretaries, Sharon Kenyon and Lynn Sigafoose,

Corresponding Secretary, Carol Willmon, Directors Sandy Smith and Anita Millard, Parliamentarian, Leslie Timmons. Congratulations to our new Board 2023-2024, looking forward to another adventures year, beginning with our four day quilt retreat. Lots of fun sewing with some fabulous ladies.

Have you been to the Groveland Library lately? Stop by and check out the fabulous quilts created by the members of our guild, which are hanging inside the library. Questions please contact PNQG President, Kris Fichou at 650-722-0307.

PML LADIES CLUB

JOAN STAUFFACHER



the lake on two boats tied together for cocktails and appetizers. If you like, you can get together with your friends and combine your money to outbid everyone on this what is to be for sure a heck of a

The Wii Bowling was such a blast. Robin Runyon was our winner with the most strikes and Wanda Patterson, a first-time player, came in second place. Well done ladies. Maybe we can do it again sometime.

On June 7th we are doing our auction luncheon at The Grill. Once again, Catherine Santa Marie has graciously agreed to be our Auctioneer. As you are probably aware, she has a real flare for doing this. There will be wonderful things for you to bid on. One of our more beloved items we have had in the past and are able to have again for your pleasure, is Barbara Coldren's famous fudge. Also, on the auction block we are having an evening on the lake for 12 people. Here is a great opportunity for a fun evening with your friends enjoying

merrymaking night. There will be a few other new themes also available to bid on such as a game night basket and puzzle fun basket. Also, if you have anything you would like to donate to our auction, please email me at joanstauf@gmail.com prior to the auction. So come have a tasty luncheon of French Dip Sandwiches, Potato Wedges and Lemon Leechee dessert. Bring your money for some fun and exciting bidding. All monies made from the auction are going toward our 50th Anniversary celebration in October.

If you would like to join us for this event or any of our other ones, the cost is only \$25.00 for members and \$30.00 for guests. Please contact Joan Stauffacher at 209-559-7028 for more information.

PML LADY NINERS

TAMMY TALOVICH

Quote of the month – *A Negative Mind Will Never Give You A Positive Life*

Low Gross tie: Dania Schaffer, Stacie Brown and Tari Skelley w/54

If you would like to learn more about becoming a member of the Lady Niners contact Stacie Brown at happygem529@gmail.com. We play 9 holes on Thursday mornings; it only takes a few hours and is a great opportunity to meet some awesome ladies!

APRIL 6TH: WE HAD 16 PLAYERS AND PLAYED BLIND PARTNERS

1st place: Nancy Brewster and Linelle Marshall

2nd place: Pat VanGerpen and Tammy Talovich

3rd place: Mary Steincamp, Linda Craig

4th place: Stacie Brown and Barbara Connelly

Pars: #14 Stacie B., Linda V., Barbara C.

Chip-in: #16 Christina Baines

Low Net: Mary Steincamp w/36

APRIL 13TH: NO GOLF

APRIL 20TH: WE HAD 19 PLAYERS AND PLAYED LOW NET PLUS PUTTS

1st place: Deanie Martini

2nd place tie: Linelle Marshall, Tammy Talovich

3rd place: Julie Robinson

4th place: Anne Toner

Pars: #10, 15, 17 Deanie Martini, #14 KC Lennon, Tammy Talovich

Chip-in: #10 Deanie Martini

Low Net: Deanie Martini w/32

Low Gross: Deanie Martini w/45

Ace of Aces and Queen of Clubs for April – Deanie Martini

APRIL 27TH: NO GOLF

We have lots of fun events planned, the weather seems to be cooperating!

PICKLEBALL FOR THE SUMMER

TAMMY TALOVICH

First day of summer is just around the corner, and everyone will be coming back to the mountain for some much needed vacation and fun.

If you have met some new people, have new neighbors bring them down and show them how much fun exercise can be!

As always there is regular play on Monday, Wednesday, Friday, Saturday and Sunday at 9:00am. So no excuses, there is a day for everyone, with play of all levels: novice, intermediate and advanced.

Make sure you stop by the Main Gate to get a pass for 1 day, 1 month or if you just love playing and want to come out anytime stop at the Administrative Office and get an annual pass.

LEARNING THE LINGO:

Dillball: incoming ball that has bounced once

Dink: soft arching shot hit on a bounce inside the kitchen

Falafel: shot it without power

Flapjack: shot that must bounce before being hit

Kitchen: the 7ft no-volley zone near the net

Pickled: scoring zero points in a game.

We will be planning some fun events for members this year so keep an eye on your email we will let you know – when, where and what! If you are not a member but would like to join in the fun contact Tammy Talovich at tamtally1@gmail.com.

Look forward to seeing everyone back for the summer!

FLYING HIGH

JANET GREGORY



It's a magical sight to see the world from above. On Saturday April 22nd, 55 kids from the Sonora area joined pilots and ground crew from our Tuolumne County Airports for a Young Eagle Rally at Columbia Airport. For more than 80% of the kids this was their first Young Eagles flight.

Local EAA Chapter 1337 organized the event. Eight pilots volunteered their time and airplanes to share their excitement about aviation. Not sure who had more fun ... the kids or the pilots. Our pilots were: Armin Abusaidi, Mike Gustafson, Bob Hornauer, Bill Thomas, and Greg Triplett from Pine Mountain Lake, along with Andy Aldrich, Jim Stenger, and Diana Sunday from Columbia.

The ground crew kept everything fun, safe, and well organized before take-off. There was great teamwork with volunteers from both Pine Mountain Lake and Columbia Airports.

The adventure of flight began with a warm greeting from Allen Craig and Dennis Smith. Check-in with Peggy Abusaidi and Pat Thomas. Waiting time included some free aviation goodies from Roxie Compton and introduction to aviation by Hal Cunningham, who was also the photographer. Tonya Scheftner coordinated dispatch, connecting Young Eagles with their pilots. Guiding aircraft safely on the ground were Rob Compton, Ed

Gregory, Leon Leibster, and Carson Scheftner. Nothing happens without the paperwork, behind the scenes registration went without a hitch under Ed Sunday's leadership with support from John Williams and Janet Gregory.

After the flight there were big smiles and lots of excitement as the Young Eagles picked up a log book and flight certificate from Robyn Scheftner. Lots of other volunteers pitched in for set up, ground support, and clean up, including Hans Bayer, Chris Henningsen, and three Aviation Explorers. The great morning ended with a volunteer lunch.

Young Eagles is a national program supported by EAA, the Experimental Aircraft Association. The program began over 30 years ago. Our local chapter, founded in 2001, has flown over 1,100 Tuolumne County Young Eagles. We love this opportunity to introduce the next generation to aviation and many exciting career opportunities in their future, such as air crew, flight operations, air traffic services, aircraft maintenance and ground support services.

Thank you to everyone who shared their time and love for aviation with the children and families that joined us for our Young Eagles Rally. Mark your calendars for the next Young Eagle Rally at Pine Mountain Lake Airport, Saturday October 14th, 9:00 to Noon. Register at www.YEday.org in September.

PML LADIES 18 HOLE GOLF CLUB

PAULA PARISI



The WGANC Legacy organization (through the NCGA) hosted a women's two person, two-day scramble tournament at Pine Mountain Lake Golf Course, April 24th and 27th. Seventy-four women, representing over 13 clubs in Northern California, participated in the event with three flights being awarded (1st through 3rd places) for both gross and net play. Our Captain for PMLLGC, Laura Kramer, and our Head Golf Professional, Mike Cook, did a great job organizing this event with the NCGA. Kitty Edgerton and Sally Wrye of our club took first place in the "B" flight Net and Lisa Brown-Jimenez and Helena McMillan of our club took second place in the "C"

FLIGHT, NET.

On April 17th, PMLLGC hosted a beer and wine tasting event at Around the Horn, to promote social fun and membership synergy off the golf course. The event was a huge success, with 21 of our members participating. A big thank you to Sally Wrye, our Social Sunshine Chair, for organizing this fun event.

Here are the results of our regular Thursday tournament play:

APRIL 20TH – INDIVIDUAL POINT BOGEY:
First Place: Kitty Edgerton – 37 Points
Second Place: Sue Perry – 33 Points
Third Place: Elisa Hoppner – 31 Points
Birdies: Kitty Edgerton – Hole #1 and Linda Sarratt - Hole #3



Sally Wrye & Kitty Edgerton, First Place Flight "B"

The Pine Mountain Lake Ladies Golf Club plays every Thursday and is open to all women residents and owners of property in the Pine Mountain Lake community. Our club would love to add some new members and we have recently modified our bylaws to allow female family members of property owners to apply for membership. If you're interested in joining our club, please contact our PML Head Golf Professional, Mike Cook at 1-209-962-8620.

GROVELAND ROTARY NEWS, PROJECTS AND UPCOMING EVENTS

ROTARIAN MIRIAM MARTIN

This month the Rotary Club of Groveland happily honors lifetime member Jim Thayer and wife Donna Thayer with a plaque in their memory as key players in the creation of our local food closet. The Food Closet is a local project that Rotary regularly contributes to.



Rotarian Jim Goodrich receiving an award

We also sadly report the passing of Jim Goodrich, former General Manager of GCSD and a lifetime Rotarian. Jim's many accomplishments outside of his work in municipal water projects include volunteer work he did developing and supervising remote water projects around the world. Look for more info on a future water project Rotary will be contributing to in his memory.



Check to Food closet with Rotarians Pete Stevenson and Wayne Phillips

The popular Red, White and Blue Ball, a tribute to our veterans, may have been postponed, but plans are in the works to make it happen on November 11th, Veterans Day. More info to follow.

Mark your calendar for our annual Shrimpfest, scheduled at PML Stables on August 19th. This is our cornerstone fundraiser of the year that finances our many local, state and international projects. This outdoor gala includes music,

dancing, raffles, silent auctions and a wonderful all you can eat meal of sausage, shrimp, boiled potatoes, corn on the cob, dinner rolls and if you are still hungry, dessert. This is an event that you won't want to miss!

PML TENNIS CLUB

CAROL NAGY

SUMMERTIME AT THE TENNIS COURTS!

Our Cinco de Mayo tennis tournament was postponed until May 19th and the potluck hosted by Tom Hernandez barbequing Carne asada followed that evening. Our results will be posted in the July newspaper edition as articles are due by the 10th of the month before printing.

We are all looking forward to great weather and more tennis. Drop-in Tennis

Sundays will be from 9:00 to 11:00am. Stop on by and check us out. We have racquets available and a ball machine we can set up. Just send us an email if you are interested in dropping in.

The Wimbledon tournament will be held on July 7th and our social potluck will be that evening at 5:00 pm. Please notify Laura Stengel at PMLatennis@gmail.com by June 30th to sign up. It will be a round robin format with warm-ups at 8:30 and tournament play from 9:00 to 12:00.

TOP DOGS OF THE MONTH

DORI JONES

We're known as "Double Trouble." We're Amie and Gemma—six-month-old sisters who are black Labrador-mix puppies. A few months ago, our foster mom Lisa, notified everyone at the dog park that we were available for adoption. Lucky for us, Gordon Glasson, who had just lost his dog Sebastian (see April article), decided he wanted to adopt us both to be his buddies. We don't really have favorite toys because we have each other to chase, tumble and play with. We always have the best fun together and dad thinks we're hilarious. I'm the larger of the two of us (dad calls me a little piggie), and Gemma is smaller but is the wild one and very independent. We love the dog park because there's always so many fun friends to romp around with and we use up a lot of our puppy energy there.



We are still seeking additional dogs to feature each month. If you're new to the

dog park or haven't previously filled out a Top Dog form, PLEASE pick one up at the dog park (inside the bulletin board) and return it to the email listed on the form.

If you're new to PML and want to learn more about our amazing dog park, please stop by the GCSD administration office on Ferretti Road to register. Bring current Rabies and Bordetella vaccination certificates, pay a \$25 annual fee for up to two dogs (\$10 for each additional dog), and get the gate code. It's a great place for dogs (and people) to socialize.

Give the Gift of Family Memories

Preserve your past before it's too late
We'll digitize your old home movies and videos



- VHS TAPES & 8MM REEL FILM
- PRINT & SLIDE SCANNING
- AUDIO CASSETTES
- CD & DVD DUPLICATION
- PHOTO RESTORATION
- MEMORIAL SLIDESHOWS
- PHOTO PUZZLES



DejaVu Video Services
408-899-4407 • dejavuvideo123@gmail.com



Dr. Etty Garber Ph.D.

in Clinical Psychology and a licensed Marriage Family & Child Therapist, with 36 years experience in mental health, lives in Groveland and

OFFERS PRIVATE PRACTICE SERVICE

Dr. Garber can provide psychotherapy in a variety of settings to individuals, couples, families and groups.

RELATIONSHIPS • FAMILY CONFLICT • CHEMICAL DEPENDENCY
DEPRESSION • ANXIETY • ABUSE, etc.

Low Fees • No Insurance

FOR AN APPOINTMENT CALL 209.768.5200

CAMP TUOLUMNE TRAILS NEWS

DORI JONES

READY FOR SUMMER CAMPERS!

Thanks to our staff, volunteers and community members who helped make our camp ready to receive its first group of campers mid-June. This will be CTT's most fully packed schedule of campers yet. However, there's always much to do around camp, so don't forget to sign up to volunteer when your schedule allows on Tuesdays, Thursdays and Saturdays. Call the office (209) 962-7534 or email Ed at ed@tuolumnetrails.org to schedule the days/times you can commit to helping.



there is no socializing a m o n g veterans—training is strictly focused

on the veteran and their dog. These veterans carry some of their horrendous experiences inside, long after they return home, yet their weekend at CTT provided them an opportunity to bond with other veterans with similar experiences. "For these veterans, the enemy resides on the inside, not on the outside," as OFP Founder Mary Cortani stated. This group included many former Army soldiers who fought in Afghanistan and Iraq, a former ranger who was a first responder for the Santa Clara Sheriff's Department, and a non-verbal and deaf 19 year-old woman with Cerebral Palsy, whose dog alerts her parents when she has seizures during the night. At CTT, there were dogs as small as a Boston Terrier and as big as a Great Pyrenees.

Mary founded OFP in 2010 after spending many years in the Army as one of its first female dog trainers. She now matches rescue dogs to her clients and then spends the next two years training the duo and performs life coaching as well. She has trained more than 500 dogs over the years. Mary should be commended for her steadfast and tireless commitment to helping her clients come out of their darkness. For more info about OFP, visit: <https://operationfreedompaws.org/>

If you have any questions or would like to find out more information about upcoming events, Summer Camp programs, Concerts for a Cause, Family Camp, volunteering and options for giving, please call CTT at (209) 962-7534, email us at: info@tuolumnetrails.org or visit: <http://www.tuolumnetrails.org>

SUMMER CONCERTS KICK OFF JUNE 3

Kicking off our 3rd annual Concerts for a Cause will be Renaissance on June 3. All proceeds from this year's concerts will benefit camp's creative arts programs, offering more opportunities for expression, creativity and meaningful experiences for our campers—ensuring Arts Accessible for All.

If you attended last year's concerts, you'll be happy to know that these amazing musicians are returning and bringing more musicians along with them. This will prove to be our best concert series yet! Don't miss:

Renaissance ~ June 3: Some new musicians join Renaissance to offer a new and fresh take on popular music through the decades.

Javier Colon ~ August 19: Javier returns and brings in two artists—Grammy-nominated Matt Cusson on keyboard and singer/songwriter Rebecca Correia—for a unique round-robin style performance.

Rebecca Jade ~ September 9: Rebecca joins us again and will be accompanied by super talented keyboardist Carnell Harrell.

Ilya Serov ~ September 30: Walnut Creek-based sax player Jeff Ryan joins Ilya on stage for an unforgettable and electrifying performance.

Visit: <https://www.tuolumnetrails.org/concerts-for-a-cause-2/> for tickets, season tickets and dinner reservations.

In late April, Operation Freedom Paws (OFP) returned after a three-year Covid hiatus. CTT welcomed 15 veterans with PTSD and others with medical issues, along with their families, to train their service dogs. During regular training in San Martin,

MEET MICHAEL CONEFREY

CHUCK OBESO-BRADLEY

BRONZE MEDAL WINNER AT THIS YEAR'S NATIONAL COLLEGIATE BOXING ASSOCIATION (NCBA) CHAMPIONSHIPS!

Colm and Trish Conefrey purchased their PML home in 2016, when their son Michael was still in middle school and was interested in wrestling in high school. After Michael's graduation from Sonora High School, Colm and Trish were thrilled when he was accepted as a University of Iowa Hawkeye two years ago, since that institution is known as a wrestling powerhouse in collegiate athletics. In his freshman year, Michael changed gears and joined the Hawkeye Boxing Club, and he has not looked back since.

With only two years of boxing experience, Michael placed 2nd this Spring in the Midwest Regionals in Cincinnati, Ohio, which earned him a trip to the National College Championships in Charlotte, North Carolina. Michael did well in his weight class, winning all three rounds of his Quarter-Final bout against a fellow California boxer from UC Davis.

Founded in 1976, the NCBA is a non-profit college sports organization which organizes boxing matches for student athletes, and the association falls under the auspices of USA Boxing. In order to be eligible to participate in an NCBA member school, a collegiate boxer must be a full-time student at an accredited institution at which he/she is attending for graduation.

Michael fought hard in his Semi-Final bout, but lost to a West Point Cadet who ultimately won this year's National Championship in his weight class - Michael was the only boxer in the top 4 NOT from a military academy.

Here are the final results of the National Championships in his weight class: Gold Medal Ryan Chi, West Point; Silver Medal Aidan



McNally, Naval Academy; Bronze Medal Michael Conefrey, University of Iowa (2nd from left in the picture below); and 4th Place Tyler Dalzell, Air Force Academy.

Apart from his advanced boxing skills, Michael has excelled in his first 2 years of academic achievement at the University of Iowa – last year, Michael was named to the Dean's List (GPA 3.50 or higher), and this year is hoping to be named to the President's List (GPA 4.0 or higher). He is also one of the nicest young men you will ever meet, always ready to lend his muscles to assist his PML neighbors (including yours truly) when they need his help.

Michael's family and friends are very proud of his accomplishments, and PML is lucky to have such a wonderful young man in our community!

RIDE THE WAVE!

BETH MARTIN

FREE TRANSPORTATION TO SONORA AND MODESTO

Want someone else to drive when you have medical appointments, errands or shopping in Sonora or Modesto? Ride the WAVE!

Southside Community Connection's wheelchair-accessible WAVE bus and three-person van take riders from Groveland to Sonora and Modesto. WAVE departs Mary Laveroni Park Monday-Friday morning and returns in the afternoon, stopping at multiple locations for medical appointments, shopping, and errands. Departure times vary, depending on rider needs. Trips to Sonora are usually Monday, Wednesday, and Friday, and Modesto is typically Tuesday or Thursday. Rides must be scheduled two to seven days in advance. And while rides are free, donations are gratefully accepted (suggested donation: \$10 to Sonora, \$20 to Modesto).

Longtime Groveland residents Fred Faiella and Norm Volponi ride the WAVE two to three times a week for

ongoing medical appointments. They previously relied on friends or family.

"It was a big inconvenience because they also had to wait during my appointment," Norm said. "It took a big chunk out of the day. Taking the bus instead has been fabulous."

Norm and Fred enjoy the camaraderie during the ride with each other and drivers Rick Whybra and Dot Brown. "It's like having a friend take you," Fred said. "We'll play word games, we'll joke, we'll have a discussion. And both Rick and Dot are very concerned with making sure all riders feel comfortable and safe."

The drivers also work to get everyone where they need to go. Medical appointments are prioritized, but riders also go to grocery and clothing stores, the DMV, and many other locations, time permitting.

"I relax in the comfort of having someone drive that I know is dependable and conscientious," Fred said. "I enjoy the ride so much."

To schedule a ride or learn more about the WAVE program, contact us at (209) 962-6952 or wheels@southsidecommunityconnections.org.

NEW RESOURCE DIRECTORY KIOSK FOR GROVELAND RESIDENTS

SAMANTHA WEST - THE LITTLE HOUSE COORDINATOR

Southside Community Connections (SCC) is pleased to announce the arrival of a new touchscreen computer kiosk and printer on loan from the Area 12 Agency on Aging and the ADRC (Aging Disability Resource Connection) of the Mother Lode. The kiosk will be available to residents in The Little House's Serenity Room during regular business hours.

The kiosk will provide seniors and other residents easy access to health and wellness information, legal services, transportation, and other resources. With a user-friendly touchscreen interface, visitors can browse various local resources and services via the ADRC Resource Directory. The Little House will also utilize the kiosk to show movies and access online instruction classes such as Tai Chi and Geri-Fit.

"We are thrilled to be able to offer

this new resource to our community," said SCC Director Britne Gose. "With this kiosk, we hope to empower seniors by providing them access to important information that can help them live healthier and more fulfilling lives."

The computer kiosk and printer are part of a larger effort by the Area 12 Agency on Aging and the ADRC of the Mother Lode to support aging adults and their families in the community. The organizations have worked to provide similar resources to other community and senior centers throughout the region. They used ADRC Infrastructure Grant Funds to purchase these kiosks for the community.

The kiosk is available at Southside Community Connections, located at 11699 Merrell Road in Groveland. SCC staff will be available to assist visitors with any questions about using the kiosk and printer.

MONDAY MATINÉES

SAMANTHA WEST- THE LITTLE HOUSE COORDINATOR

Monday Matinéés at The Little House are the perfect way to spend your afternoons! Here are some additional details about what you can expect from this exciting new series:

- Each show will take place on Mondays at 1 PM.
- We will be showcasing classic movies that are sure to bring back fond memories and create new ones.
- Whether you want to attend a single showing or purchase a season pass, we have options to fit your needs.

- Our self-serve concession stand will be stocked with your favorite snacks from the past and present, so you can enjoy some treats while you watch your movie.

- If you have any movie or snack requests, our friendly team is happy to help. You can reach Samantha at The Little House by phone at (209) 962-7303 or by email at tlh@southsidecommunityconnections.org.

Get ready to sit back, relax, and enjoy the magic of the silver screen at Monday Matinéés!

SUMMER READING CLUB

ANGELINA GALASSI-STEINER – CHILDREN'S LIBRARIAN
TUOLUMNE COUNTY LIBRARY

In June, schools will be out for the summer which means time to do many fun things! So why not come to the library and join the Tuolumne County Library Reading is a Blast Summer Reading Club! During the summer, we will have many fun filled activities at our four branches (Sonora Main, Tuolumne City, Twain Harte, and Groveland). To join the reading club, register at your local library and read books to earn prizes,

that is it! The 2023 Summer Reading Club begins on June 20, 2023 and ends on July 29, 2023. During that period, all the branches will have many festive activities, crafts, and story times. So, stop by your local library branch to sign up and receive information about any of the events you wish to attend. All library programs are offered FREE of charge. For more details, please call the Sonora Main Library at (209) 533-5507.

Wishing You an Awesome Summer!

GROVELAND EV FREE CHURCH

PASTOR BOB KANDELS

WE INVITE YOU TO COME SEEK THE LOVE OF GOD...

I went to see the movie “Jesus Revolution” a few months ago based on the true story of the greatest revival that has occurred in American history. This revival occurred in the 1970’s. Although the movement hit in entire West Coast and spread throughout the US from there, in part, it was started by Greg Laurie, a young man on a quest for belonging and liberation, Lonnie Frisbee, a charismatic free-spirited preacher, and Pastor Chuck Smith of Calvary Chapel in California, a struggling church which was in a slow and steady decline.

Reluctant at first to welcome young, barefoot and underdressed hippies into God’s house, Pastor Chuck began to question himself and what was best for the church and his dwindling congregation. He asked himself many questions; “What will the pillars of the church think of these newcomers?”, “Who is my neighbor” (Luke10:29), “Will existing church members decide with their feet and wallets to leave?”, “How will the church grow and survive?” Finally, he opened the doors of his church and welcomed a steady stream of vibrant youth looking for answers and filling God’s house with exuberant love. A “Jesus Movement” grew and grew into the most powerful spiritual awakening in American history.

Lonnie and his friends brought new music to the church and familiar hymns changed into what we know today as contemporary Christian worship music. Church pews began to fill and the Holy Spirit became real as worshipers invited Him into their lives. Eventually, the worship services spilled out onto the beaches as more and more people came, seeking the love of God and wanting to live more meaningful and purpose-filled lives.

Perhaps you’ve heard about the more recent revival--that occurred this year? 20 students spontaneously began to

worship and pray for one another on February 8, 2023 on the campus of Asbury University in Wilmore, Kentucky. They were asked by the campus Pastor to “Become the love of God by experiencing the love of God”. The 20 grew into hundreds and then thousands as they were joined by faculty, staff, community members and others from all over the country and world. The auditorium filled to capacity and overflowed with people who were focused, reverent and humble as the stirring of their hearts awakened to God’s spirit. This service went on 24 hours a day, 7 days a week until the college administrators requested to conclude the service on February 23, 2023, which was also the National Collegiate Day of Prayer.

I was recently asked by someone what I thought started that revival with the young Asbury University college students? My answer was simple. I told them that like these students, people of all ages want to seek the heart of God. Jesus said “Follow me”. That was simple too. “You will seek me and find me when you seek me with all your heart.” Jeremiah 29:13

We can find the Holy Spirit if we seek Him in all of our beautiful mountain communities. If we are willing to ask God a simple, faith-based question, “What do you want from me?”, and if we are willing to listen for His answer and act accordingly, our lives will change for the better. If we want a fresh start, we need to make space in our hearts by taking a step of faith and seeking Jesus.

Are you ready for a change in your life? Do you feel a gentle stirring that is yet unfulfilled? Are you experiencing hardships or difficulties and could use some support? Come join us at Groveland Evangelical Free Church at 10:00 a.m. every Sunday morning and come to our many special gatherings, studies and events. We welcome you!

In Christ’s Service
Pastor Bob Kandels

THE LITTLE TOWN THAT COULD

BROWNIE BROHARD, GABY HUEBNER, AND TERRE PASSEAU

Sometimes living in a scenic and serene community such as Groveland you can be lulled into a sense of complacency about issues that affect us all, such as wildfires. The PML Firewise Communities of Clifftonites and Crest Valley met for a joint annual meeting on May 6, which was very well attended.

PML’s Fire Safety Coordinator Joe Milani was the first speaker. He displayed a map showing the firebreaks that PML has created along the outside borders and the fuel reduction work that has been done, and is currently being done, within the PML boundaries. He also brought several poster boards with very helpful information on them.

Pat Laeng with the U.S. Forest Service talked about the firebreaks the Forest Service has been working on around Groveland and Big Oak Flat. He also gave us the history of Forest Service activity throughout the area

Gary Whitson with CalFire showed us on the map the firebreaks his department has been working on between Unit 12 and the Tuolumne River, as well as firebreaks that have already been established in the Groveland and Big Oak Flat area together with future planned firebreaks. After the meeting Gary told us “PML is doing a very good job of trying to reduce the fire danger in your community, and I commend you on the amount of participation I saw at the meeting”.

These three presentations put all the pieces of the puzzle together and explained how these different organizations work hand-in-hand to protect our beautiful community.

Chris Passeur spoke about a reliable radio communications system within PML that can be used during wildfire evacuations, power outages, and other emergency situations when landlines and cell towers are overwhelmed or are out completely. This radio system is called G.M.R.S. (which stands for General Mobile Radio Service). The radio that many members in the G.M.R.S. group use is a Radioddity, Model #GM30. It can be purchased from Amazon for about \$40. You do



Joe Milani talking about PML firebreaks and fuel reduction projects

need an FCC G.M.R.S. license, but there is no test to get the license – you just need to submit an application. The cost of the license is \$35 for 10 years and it covers everyone in your family. Check out the Groveland G.M.R.S. Facebook page at <https://www.facebook.com/groups/885555812498346> for more information or if you would like to contact Chris.

A big thank you to Joe, Pat, Gary, and Chris for taking time out of their Saturdays to share their information with us and answer our questions! We all learned so much.

As leaders of our respective Firewise Communities, we encourage you to join the Firewise Community in your neighborhood or start your own. There is no cost to join or to start a Firewise Community. In addition to learning ways to make your property fire resilient, you will also be entitled to a discount on your fire insurance premium from your insurance company. If you want to know if your property is in one of PML’s Firewise Communities, you can contact Joe Milani at j.milani@pinemountainlake.com. If you would like to start a Firewise Community in your neighborhood, you can visit the Tuolumne County’s Firewise website for more information at <https://tuolumnefiresafe.org/firewise/>. You can also contact Tuolumne County’s Firewise Coordinator Karen Caldwell at tcfirewise@gmail.com. She is more than willing to help you through each step of the application process, which is not difficult.

LOCAL CANCER SUPPORT GROUP

You need not be alone in your fight against cancer. The women of the Groveland Cancer Support Group gather the last Tuesday of each month, 10:30 a.m. – 12 p.m., at the Mountain Lutheran Church, 13000 Down to

Earth Court, off Ferretti Road, next to the nursery. You will be most welcome and embraced by a circle of compassionate, empathetic listeners in a non-judgmental atmosphere along the way. Please call (209) 962-0584 if you would like more information.

YOU DESERVE A BREAK!

KATHLEEN MALLOY

Take a day for yourself. You deserve it! Join like minded folks who want to expand their Mind, Bodies and Spirit, in a day of creativity and camaraderie at the 2nd Mind ~ Body ~ Spirit Retreat. The retreat will take place on Saturday, June 24th, at the Unitarian Universalist Fellowship, 19632 Mono Way, Sonora, CA, from 9:30 -3:00.

You can choose 1 class from the morning offerings and 1 from the afternoon classes. Each class is 2 hours long.

The morning classes include:

Herbalist & Nurse Practitioner Lauren Campana, who invites you to come for tea tasting and stay for topical herbal remedies. You'll go home with your customized tea blend and an herbal oil blend to take home.

Award winning local storyteller BZ Smith, offers a class on Finding Your Story and Telling It. You will explore how storytelling helps people understand each other. BZ will guide you through gathering your own tales and how to prepare to tell your stories for friends, family and the Community.

Join local caterer and meal preparer extraordinaire CHEF DAVE and learn how to make Healthy and delicious Vegan desserts. Healthy Diets are essential to help us live our best lives. Healthy eating can improve your Mind, Body and Spirit. He will also offer culinary tips to help you become a professional in your own kitchens. The desserts will be served to everyone

during the noon – Bag Lunch Hour

In the afternoon choose from a class where you will learn and create your own eight sided 'Ojo De Dios Mandala with Teacher Artist Leslie Latour. These beautiful and complex yarn weavings are impressive to look at and fun to weave. All materials for the project will be provided.

A Yoga and Writing Class will be offered by Kathleen Malloy MDiv & Yoga Instructor. Both energy and creativity are unleashed when practicing Yoga. The class will flow from stretching poses to discovering and writing down what we hear when we listen deeply to Mind, Bodies and Spirit.

There will also be an afternoon Art class 'Dare To Paint Like A Child.' This hands on class is for everyone. Whether you've done art in the past, consider yourself a professional, or believe you have zero creativity you should make art. Art, Creativity and Spirit have been entwined for ages. "Art Enables us to find ourselves and lose ourselves at the same time." Theologian Thomas Merton

Join Us! You Deserve It!

Bring a bag lunch, coffee and tea will be provided. Bring a Friend. The Mind ~ Body ~ Spirit Retreat costs \$50.00 Proceeds will benefit the Unitarian Universalist Fellowship of Tuolumne County.

For more information and to reserve your spot (space is limited) please call or email:

Dodie @ 209-535-3909 – Cathy @ 435- 896-3926 or Kathleen @ 209-840-4777. Uuftp3@gmail.com

HELPING HANDS HAPPENINGS

PATTI BEAULIEU

Now that it's June, we're on our 'Summer Hours' and are now open from 11 - 4 each Tuesday thru Saturday at the Store and Friday and Saturdays at the Furniture Barn. We've also extended our donation hours and accept them until 3 on our days of operation at each store. We love the summer time when the visitors from out of town and week-enders wander in and find just what they're looking for, or find something they didn't even know they needed or wanted. There is something for everyone and it's very rare that anyone leaves without buying something, or lots of somethings.

We're often asked 'What do we do with our proceeds?' Just this past month alone, we were happy to monetarily sponsor the STCHS Annual Fund Raising Wine Cruise, monetarily sponsor the Pine Cone Performers Spring Concert, award thousands of dollars in scholarships to

graduating high school seniors at Tioga and Don Pedro High Schools, award cash to 'most improved' elementary students in 6 academic categories, pay several thousand dollars for 'end of the year' field trips to Tenaya Elementary and Tioga High School students, and monetarily sponsor the 'child trafficking seminar'. All this, in addition to our monthly subsidizing the Evangelical Free Church Food closet, and many other community contributions throughout the year.

Our volunteers all work as hard as they do to facilitate giving back to our community and the reward comes from knowing what we do, matters to so many. Besides the generous donations from our community members, our volunteers are the life blood of the Helping Hands Organization and we wouldn't exist without them. Next time you see your friend or neighbor that volunteers with us, give them a well-earned 'thank you'. They deserve it.

ACTIVITIES FOR KIDS AT THE GROVELAND LIBRARY

VIRGINIA RICHMOND, FOGL

The Groveland Library offers a STEM Club for kids ages 6-12. At each event, children learn some science in a fun way and build something using scientific principles that they can take home.

The next STEM program is Saturday June 3 at 2:00pm. We will be building paper structures to test which paper structure can hold the most weight. We will be learning about how bridges, roads and buildings are made to carry their heavy weight and not collapse. STEM Club is free; no registration necessary, just come on in!

The annual Summer Reading Program (SRP) for children ages 5-12 begins Tuesday, June 20th for sign ups and games. Following the sign-up day

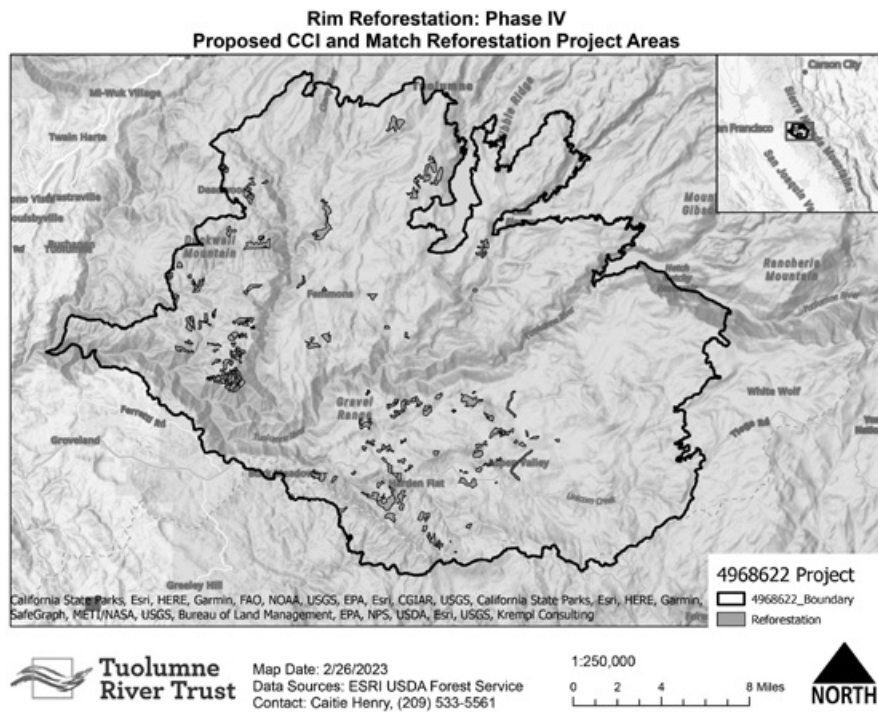
the Summer Reading Program will meet on six Thursdays (until the end of July) from 2:30 to 3:30pm downstairs in the Groveland library meeting room. Kids can come to one or all SRP days and may register after June 20th. This year's theme is "Reading is a Blast."

Educators tell us that students can lose reading skills over the summer, so don't let that happen to your child. Summer reading programs help kids maintain and improve their reading abilities. It's also a fun way to spend an afternoon. There's no fee. Prizes, free books and snacks are provided. Come join us!

Call your Groveland Library at 962.6144 or stop in for more information on any of these programs.

FROM YOUR DISTRICT 4 SUPERVISOR

KATHLEEN HAFF – TUOLUMNE COUNTY SUPERVISOR, DISTRICT 4



You have, no doubt, heard about all the fuel break projects going on “on the other side of the river” right? In January 2018, the County entered into a Master Stewardship Agreement with the US Forest Service/Stanislaus National Forest to provide landscape restoration projects in many areas in partnership with the Yosemite - Stanislaus Solutions Collaborative. Many millions of dollars have come into the county in support of at least 4 project areas since 2018.

So, what is happening on “this side of the river,” you may ask?

A Cal Fire California Climate Investments Grant of just under \$7M has just been awarded to fund a landscape restoration effort in the South County, within the 2013 Rim Fire footprint. Did you hear about it? This project is named The Rim Fire Reforestation: Phase IV Project because it is the fourth phase in a large-landscape reforestation project in the 2013 Rim Fire burn scar. See the map of the project area.

The Rim Fire burned over 257,300 acres, with over 90,000 acres of this landscape suffering high-intensity catastrophic wildfire, killing all trees and eradicating seed banks. This project will build on previous work to restore

this landscape -over 3,000 acres- by way of site preparation, reforestation, and release treatments.

Fuel reduction work is required on all project areas and sites. With the exception of infrequent hazard tree removals, these areas have not been treated in the decade since the Rim Fire devastated this ecosystem. Dead trees (both standing and down) clutter the project area, creating hazards and contributing to fire risk. Chapparal, ceanothus, whitethorn, and manzanita have vigorously established here, creating a dense shrub layer that keeps sunlight from reaching the ground. It also creates an environment where there is fierce competition for nutrients, and more importantly, water. To address this issue, mechanical and hand treatments will be employed. Priority treatment shall be mastication, which will decrease competition and obliterate hazard trees. Four to six snags shall be left in each acre where feasible for wildlife habitat, as well as two to four downed logs. Where mastication cannot occur or fully address fuel loading from dead trees, additional treatments will occur, including grapple piling of large materials and hand treatments of steep slopes.

At least 3,200 acres of fuels reduction

FROM DR. SPACCIA PHD

DR SIMONETTA SPACCIA PHD

RECOVERING THE RELATIONSHIP WITH HIGHLY PROBLEMATIC CHILDREN.

In my previous article, I wrote about parents losing control of their children. I mentioned how a cooperative approach can be more successful than an authoritative one: parents who failed when exerting authority and control over their children are now instructed on how to use cooperation techniques instead of authoritarian styles and to foster independence and self-control versus obedience and control. In this article, I will write about two crucial techniques to practice these concepts. These techniques don't solve all problems but can help in many circumstances.

Sit in technique. When a problem with the child occurs (for ex., the child came back home late or skipped school), the parents don't react immediately, still instead, they will wait for “the iron to be cold” to avoid acting impulsively and engaging in an escalating behavior. The parent can enter the child's room the following day, sit calmly and start talking (talking while sitting versus standing up is essential to withhold a message of an authoritative attitude). The parent will say that they can no longer accept the child's behavior and, since their requests have been failing, now they are asking the child for a new way to work together, to bring him (or her) back on the right path again. The parent must stay there, sitting and waiting for the child's answer. The answer may or may not occur, the child may complain or try to escalate, but the point is that the parent has to stay calm in a waiting, hopeful mode. This new perspective, even with no

immediate outcome, changes the parent and the child, offering both of them a fresh standpoint to start working on. It also gives a new perception of themselves in the relationship, where they can both still find space for possibility and negotiation.

The telephone round. When parents feel a failure in their relationship with their child and already tried everything they could, it's time to get help. Most of the time, more than a specialist in parenting is needed to solve the problem. Parents need help from any possible source. Extended family, reliable friends, and school staff can significantly contribute to assistance. Social support doesn't arise spontaneously (at least not so often). Parents have to construct it. It takes courage and humility to ask for help, but most people are happy to contribute to a good cause. The telephone round is an example of cooperation that a web of supporters can offer. For example, when the children are late or the parents don't know where they are, they will call these people and ask if they know anything about it. They will also ask a little favor: have them tell the child, as soon as possible, that they were looking for him (or her).

When children acknowledge that parents made phone calls to look for them, they usually get furious. After the children's stormy reaction, the parents communicate to them that 1) they are no longer available to engage in a conflict and 2) they will always be present and act when they sense risk for their children.

I welcome suggestions on specific topics for my column from readers

You can email me at: simonettaspaccia@gmail.com

and site preparation is estimated to occur between July 2024 and is to be finished before December 2026. Reforestation shall occur as detailed in the 2016 Rim Fire Reforestation Strategy Environmental Impact Statement. In total, at least 900,000 trees will be planted across the 3,200 acres following the site prep, starting January 2027 and be complete by September 2028. The Rim Fire Reforestation: Phase IV project

focuses on reforestation and post-fire habitat and ecosystem recovery.

August marks the 10-year anniversary of the Rim Fire. Can you believe that? I thought you might appreciate this update as to what is still being done to recover and restore the forest from that devastating fire.

As we venture into the hotter months of the year, starting with this month of June – Be safe out there!

OBITUARIES

TERRY KENT BRUCE

AUGUST 13, 1943 – APRIL 27, 2023



Terry Kent Bruce, beloved husband, father, grandfather, and great-grandfather, passed away in Modesto, CA on April 27, 2023, due to injuries sustained from an automobile accident on April 13, 2023. Born on August 13, 1943, in Clinton, IL, Terry lived his 79 years without limits. Touching countless lives, his friendly demeanor, intelligence, and passionate spirit will be dearly missed by all who had the privilege of knowing him. Terry was preceded in death by his parents, son Michael Bruce, and step-son Todd Hallman. He is survived by his loving wife, Val Bruce; daughters Amanda Krodell of Cincinnati, OH, Brandee Moore of Steele, AL, and Nichole Lacy of O'Fallon, MO; son Matthew Bruce of St. Peters, MO; step-sons Doug Williams of Santa Barbara, CA and Troy Williams of Mint Hill, NC; sisters Darlene Loy and Barb Teuscher, both of Normal, IL; 15 grandchildren and one great-grandchild.

Terry earned a BS and MS at SIU-Carbondale. He was a successful real estate broker for over 30 years, owning one of Groveland's first real estate offices, Pine Mountain Lake Realty. Formerly the first president of the Hetch Hetchy Assoc. of Realtors, he also earned their 2010 "Lifetime Achievement Hall of Fame" award. He was a past president of the Pine Mountain Lake Men's Golf Club and a 28-year advisor to the Pine

Mountain Lake Environmental Control Committee. A talented musician, Terry enjoyed singing and playing guitar. He brought joy and entertainment to all who had the pleasure of hearing him perform. Terry's athleticism and enthusiasm for sports was also evident, especially for St. Louis Cardinals baseball.

In the words of Ralph Waldo Emerson, "Do not go where the path may lead, go instead where there is no path and leave a trail." Terry Bruce's inspiring legacy will continue to live on in the hearts and minds of his family, friends, and the countless lives he touched throughout his time on earth. May we all honor his memory by embracing his passion for life, learning, and love, and strive to leave our own trail for future generations. Memorial Services to be determined.

JAY MARTIN WARSHAUER



With great sorrow the Warshauer family announces the passing of our sweet, kind and beloved husband, and father Jay Martin Warshauer. Jay passed away on April 20 from complications during surgery to remove cancerous tumors in his kidney and bladder.

Jay and Patti married in 1979 and immediately made Half Moon Bay their home where they proudly raised four wonderful sons and immersed

themselves in the community. In 1987 they opened Main Street Goldworks upholding their motto "We Enjoy Making You Happy" and sharing special occasions and sentimental moments with their customers and friends for 26 years before passing the legacy to their son.

Jay enjoyed being a member of the HMB Lions Club and you'd find him flipping pancakes on the 4th of July, manning a booth at Dream Machines and everything in between. He served our country as an Army Aircraft Turbo Engine Mechanic in Vietnam and then spent a year competing on the US Army Table Tennis Team in Germany. His stamina is also evident in his black belt in karate and hang gliding.

Jay and Patti bought a home in Pine Mountain Lake in 2005 and then retired and became full time residents in 2014 where Jay fell in love with golf. A pontoon boat added to wonderful times floating and fishing on the lake with friends. Pickleball was also one of his favorite pastimes. Jay enjoyed being a member of the Garotte Lions and contributing to the Groveland community. In 2020 they bought a house in a Del Webb complex in Manteca to be closer to the family while still maintaining an active lifestyle.

Jay leaves behind four adoring sons, Josh, Jesse, Kevin and Jeff - a beautiful daughter-in-law Hillary, and his grateful and devoted wife Patti as well as his sisters

Anne and Helene and many cherished friends and cuddly dog Deja. The family will gather to spread his ashes in places he loved and asks others to celebrate in his honor by spreading love and kindness.

MARIE FRIAR

1923-2023

Marie was born and raised in Los Angeles, California. She met the love of her life Frank and they were married for over forty years until his death. They had a happy life together raising their son and daughter. They traveled in Europe and golfed in Hawaii. She had a very successful career in real estate in Los Angeles. In 1990 they moved to PML where they made many wonderful friends. Following the death of her husband she joined a group called the widows who had many adventures together. She played women's 9 and 18 hole golf with the widows, volunteered on the ecc committee, and helped teaching children to read.

She is survived by her daughter, Linda and son-in-law Wally in Oregon and her son and Daughter-in-law Liz and grandchildren Riley and Travis of Los Gatos Ca. No services are planned.

PMLA Official Online Presence

www.PineMountainLake.com

Facebook.com/PineMountainLakeCA

Facebook.com/PMLARecreation

Facebook.com/PMLMaintenanceDept

Facebook.com/PMLAEquestrianCenter

TACOS AL PASTOR

RECIPE PROVIDED BY TOM KNOTH AND PAULA MARTELL OF TWO LITTLE PIGS CATERING

This has always been my favorite Mexican dishes and I have experimented with numerous recipes, but have settled on this one by J. Kenji López-Alt (seriouseats.com) as my favorite.

Traditionally, Mexican taquerias marinate thin slices of pork shoulder in a mixture of chilies and aromatics colored bright red with achiote. The slices are then stacked onto a vertical skewer, forming a large, bell-shaped trompo (spinning top), which gets topped with an onion and pineapple, and slowly rotates in front of a vertical grill. The meat is sliced off as it browns and used in tacos. If there's a reason it resembles shawarma or doner kebab, it's because the concept was first introduced to Mexico by Lebanese immigrants.

I do have a stationary Trompo which can be used on a BBQ or grill and it works well, but it is not worth using unless you are entertaining a large party. This recipe utilizes a loaf pan to layer and then slow roast the meat. The one issue is that the recipe does have to be started 2 days before serving, but it is pretty easy and the results are fabulous.

- 2 whole ancho chilies, seeds and stems removed
- 2 whole pasilla or guajillo chilies, seeds and stems removed
- 1/2 cup homemade or store-bought low-sodium chicken stock
- 2 teaspoons vegetable oil
- 1 teaspoon dried Mexican oregano
- 1 teaspoon dried ground cumin seed
- 1 tablespoon achiote powder or paste
- 1 chipotle chili packed in adobo sauce, plus 2 teaspoons sauce from can
- 1/4 cup distilled white vinegar
- 3 whole cloves garlic
- 2 1/2 teaspoons kosher salt
- 2 teaspoons sugar
- 2 pounds boneless blade-end loin or sirloin pork roast
- 8 ounces (1/2 pound) sliced bacon
- 1 small pineapple, peeled, cored, and cut into quarters lengthwise
- 32 to 48 corn tortillas
- 1 medium white onion, finely diced (about 1 cup)
- 1/2 cup finely minced fresh cilantro leaves and tender stems
- 1 cup salsa verde
- 3 to 4 limes, cut into 8 wedges each for serving

Day 1: Place chilies in a large saucepan over medium high heat and cook, turning chilies occasionally, until puffed, pliable, lightly browned in spots, and very aromatic, about 5 minutes. Add chicken stock (it should boil immediately), then pour contents of pan into a small bowl. Cover loosely and set aside.

Wipe out saucepan, add oil, and return to medium-high heat until oil is shimmering. Add cumin, oregano, and achiote and cook, stirring frequently, until aromatic but not browned, about 30 seconds. Add chipotle chilies and sauce and cook until aromatic, about 30 seconds longer. Add vinegar, salt, and sugar and remove from heat.

Scrape contents of saucepan into a blender along with garlic and chilies with their soaking liquid. Blend on high speed until completely smooth, about 1 minute, scraping down sides as necessary. Set sauce aside to cool.

Using a very sharp chef's knife or slicing knife, slice the meat as thin as possible. If necessary, place meat in freezer for 15 minutes to firm it up before slicing.

Add marinade to bowl and toss with hands until every piece of meat is evenly coated in marinade. Line the bottom of a loaf pan (metal or disposable) with bacon. Add a layer of thin-sliced marinated meat. Continue layering in bacon and meat until all the meat is used up. Cover with plastic wrap and refrigerate overnight.

Day 2: Preheat the oven (I use my smoker) to 275°F. Uncover loaf pan and place on a foil-lined rimmed baking sheet. Transfer to oven and cook until meat is completely tender (180-190°F - it will drip lots of fat), about 4 hours. Remove from oven, allow to cool slightly, cover with aluminum foil, and refrigerate for at least 2 hours and up to overnight.

To Serve: Preheat oven (or smoker) to 350°F. Remove cooked meat from aluminum tray, scraping off any fat or jellied juices from its sides. Collect fat and juices from tray, reserving each separately (I use a gravy separator). Using a sharp chef's knife or slicing knife, slice meat as thinly as possible to create fine shavings of meat and fat. Transfer to a bowl.

Transfer pineapple pieces to a rimmed baking sheet lined with aluminum foil. Brush with fat. Transfer to oven and roast until completely tender, about 25

minutes. Remove from oven and allow to cool slightly.

About 10 minutes before pineapple is done roasting, transfer meat and 1 tablespoon of fat to a large cast iron or non-stick skillet. Heat over medium high heat, stirring occasionally, until meat crisps and deeply browns in spots. Add any reserved juices and toss to combine, allowing it to

cook until reduced to a moist glaze. Transfer meat to a warmed serving bowl.

Chop roasted pineapple into large chunks. Serve meat and pineapple immediately with warmed tortillas, onions, cilantro, salsa, and lime wedges. Meat will be very moist and should be packed into double-stacked tortillas for serving.

TENAYA STUDENT OF THE MONTH

Owen Smith, 8th Grade, is Tenaya Elementary's Student of the Month. The son of David & Candice Smith of Groveland, Mrs. Hawkins says, "Owen is an asset to our classroom in many ways. He is kind, inclusive and generous with his peers. Owen has a positive attitude with a big smile that he shares with students and staff. Owen is gifted both academically and athletically. Tenaya has been blessed to have Owen as a student for many years."





TMC CONSTRUCTION

License # 717300
Insured
(209) 962-6938

**Brushing • Log Removal
Mastication
Hazardous Tree Removal & Pruning
Excavation**

Site Prep, Engineered Septic, Culverts,
French drains, Retaining walls,
Hauling, Post hole digging,
Under ground work,
Concrete work

**We can help with your grant.
Skid Steer and Dump truck service
Reasonal Rates • Free Estimates**



Rod Diehl Pest Control

**RESIDENTIAL & COMMERCIAL • HIGH QUALITY
100% SATISFACTION GUARANTEED**

Locally Owned & Operated • 5th Generation Tuolumne County

PERSONAL SERVICE • FREE ESTIMATES

We will customize your service around your pets

info@RodDiehlPestControl.com

(209) 532-3260

PROUDLY SERVING THE PINE MOUNTAIN LAKE / GROVELAND AREA

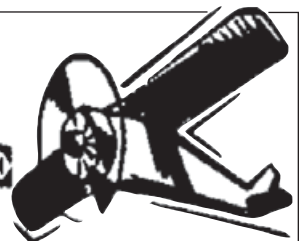
PROPANE DISCOUNT PROGRAM

Suburban Propane – As the preferred provider of PML we are happy to provide an exclusive members only program to all residents. Benefits include: Propane at a discounted rate, Tank rental at a discounted rate, Free basic tank installation, Easy payment options, 24/7 Tech support, Flexible delivery options, 24/7 live phone support. Contact our local staff for further details and current rates.

Suburban Propane
Jamestown California

(209) 984-5283
1 (800) PROPANE

AIRPORT MINI-STORAGE



60 Units - 6'x8' to 10'x30'

Open 7 a.m. to 9 p.m. Daily

Located on Elderberry Way off Ferretti Rd. near PML Airport

209/962-5360

Pest Control

- Ants, spiders, mice, wasps, earwigs, etc.
- Fast service, great prices
- Squirrel and bat Exclusion
- Termite Inspections
- Weed Control
- Poison Oak
- Star Thistle



962-5710

800-464-3772

Free estimates



HEADLEY'S TREE SERVICE

Tree Service Without the Headache.

WALTER HEADLEY

Owner / Operator

(209)316-5167

headleystreeservice.com

headleystreeservice209@gmail.com

Ken's Asphalt

Lic. 708310

Grading • Paving • Chip Seal • Road Oil

Seal & Slurry Coatings • Crafcro Hot Rubberized Crack Sealer

Driveways • Private Roads • Subdivisions

DOING BUSINESS SINCE 1985

DRAINAGE PROBLEMS?

We have the Solution!

Erosion Control • Riprap (6-12" Rock) • Asphalt Curbing • Base Rock

"Just Pave It" **Complete Concrete Services** *"Just Pave It"*

- Stamped Concrete and Colored Concrete
- Stained Concrete
- Cleaning & Sealing
- Retaining Walls

- Driveways
- Walkways
- RV Pads
- Patios

532-0800 • 962-5644 • 768-7395 Cell



BUSINESS HOURS

Monday - Friday:
8:00am - 5:30pm

Saturday: 8:00am - 2:00pm

Sunday: CLOSED

Well Stocked Parts House:

For All of Your Heavy Duty Needs!

- Heavy Duty Brake Linings
- Baldwin & Fleetguard Filters
- Delo Oil
- LED Lights
- Air Brake Valves & Hoses
- CB Radios, Antennas & Accessories
- Logging & Dump Truck Parts
- Hydraulic Hose Shop

Full Service RV Repair Shop:

- Commercial House & Starting Batteries
- Full Service Chassis & Lube Center
- Electrical & Plumbing Repairs
- Interior & Exterior LED Lighting
- Complete Body Damage Repair Shop
- Solar Power Systems & Inverters
- Complete Detailing Services
- Warranty & Insurance Work Accepted

Mobile Service Available

18968 Waylon Way
Sonora CA 95370

Call or Email us to schedule an appointment today!
(209)-532-7994

EMERGENCY CONTACT: (209)-559-3840
Email: shop@sierraheavyduty.com
Visit Us Online: www.sierraheavyduty.com

Over 50 Years of Experience!



All Major Credit Cards Accepted.



Waters Plumbing Heating & Air

FAST SAME DAY SERVICE*

*IN MOST CASES

All work 100% Guaranteed!




Contractors License #463958
www.watersplumbing.com

Voted Best Plumber in Tuolumne County 4 Years in a Row

"I want you to know that our technicians will give you a price before we start the job." —Wayne Waters

Groveland (209) 962-0990

We are known for our integrity and legendary customer service!

Produce Your Own Clean Power!

- Save \$\$\$ Every Month
- Federal Tax Credit available
- 5-Year Typical Payback



APS SOLAR
ALTERNATIVE POWER SOLUTIONS, INC.

Your Local Solar Electric Company

License #892261 / Since 2002
16046A Via Este Rd., Sonora

Call Us For A Free Estimate
209-532-5925

Check our reviews at www.apssolarpower.com and www.SolarReviews.com



Sean McCoy Painting



License No. 822616

Home of the Cabinet Doctor

"Let's Refinish or Paint Those Old Cabinets"

- Fine Finish • Mill Work • Cabinets
- Doors • Interiors





209.588.1741

www.smccoypainting.com

ADVERTISE IN
THE PML NEWS
GO TO
PINEMOUNTAINLAKE.COM
FOR RATES
AND DETAILS

RECYCLING NOTICE FROM MOORE BROS

WE HAVE DROP-OFF RECYCLING!!

All residents and visitors are asked to source separate their recyclable materials. There are designated bins located at our office located at 11300 Wards Ferry Rd. in Big Oak Flat where you may drop off your recyclable materials anytime **Monday through Saturday 8am to 5pm** (weather permitting). CLOSED SUNDAYS and major holidays.

Acceptable materials include:

- Aluminum beverage containers, tin cans, glass bottles and jars (all colors)

- #1 Plastic (bottle form only) *****#1 clear fruit/veggie, sandwich or salad clam shell type containers are NOT allowed*****

- #2 Plastic (bottle form only) *****#2 colored plastic coffee containers are NOT allowed*****

- ALL CONTAINERS MUST BE RINSED AND FREE OF LIDS AND CAPS

We also accept Mixed Paper, newspaper, magazines, catalogs, junk mail, paperback books & shredded paper which can all be put in the same bin. NO WRAPPING PAPER ALLOWED

CARDBOARD BIN ACCEPTABLE MATERIALS INCLUDE:

Cardboard, Carton Board such as cereal and cracker and soda/beer boxes, etc. are also accepted and can be placed in the cardboard bin with the cardboard. THESE ITEMS NEED TO BE FLATTENED OR BROKEN DOWN AND ANY PACKAGING MATERIALS OR TAPE REMOVED.

IF THE CARDBOARD BIN IS FULL OR YOU HAVE A LARGE LOAD OF CARDBOARD TO RECYCLE, we ask you to take it to our shop location at 17641 Yates St. in Big Oak Flat where we still maintain a 50 yard cardboard recycle box.

PLEASE DO NOT THROW PLASTIC BAGS OF RECYCLABLES INTO THE BINS.

FOR SALE

1978 HONDA 550 FOUR.



Low,Low miles: 6,867. New seat, Kerker pipes, Runs good, \$2,350.00
408-529-0409

COMMERCIAL SPACE FOR LEASE

COMMERCIAL SPACE FOR LEASE!
18717 Hwy 120, Groveland. Approximately 1600 square feet of building space, located downtown with propane heat, one ADA bathroom perfect for retail, food service, professional office, medical etc. Rent \$1,650.00 Deposit \$1700.00. Contact agent
650-520-1022

RENTALS WANTED

EXCELLENT TENANTS
w/excellent credit and rental history looking for homes to rent. Owner approves tenant before placement. Call *Yosemite Region Resorts* 209-962-1111

HELP WANTED

PMLA IS HIRING
PMLA is looking for qualified candidates for several job openings. Apply online at www.PineMountainLake.com

HOMES FOR SALE

RETIRE IN PEACE. REMODELED HOME IN GORGEOUS GROVELAND NEAR YOSEMITE!



Welcome Home! This beautiful remodeled home is a terrific opportunity. It has a serene neighborhood with a nice community pool and a lovely greenspace backyard. It has been completely remodeled — with new roof; new interiors, new floors, 2 gorgeous bathrooms; skylight; recessed lights; granite countertops; new stainless steel appliances, and a lovely deck area, It is close to downtown Groveland and a chance to live in a lovely and relaxing countryside environment.... but close to town. Only 25 minutes from Yosemite. 22493 Prospect Heights Groveland, CA 95321 Come and view this wonderful home. \$249,950. Call Chuck at **650-346-4150** for more details and to see the house!

SERVICES

RON'S HANDYMAN SERVICE
Located in Pine Mountain Lake Quality work at affordable prices 35 years experience
209-962-4845

BIG JOHN HANDYMAN SERVICES
Yard Maintenance, House Maintenance and moving households Call John **962-6163**

RONNING ROOFING
Call Joe for all your Roofing and Gutter needs. Licensed, Bonded, and Insured. License # 976739 **209-962-6842**

HOUSE CLEANING
We are mature/experienced PML residents. Steve **925-595-3362**
Carla **925-639-4929**.

LOREN SNIDER'S TREE SERVICE
General pruning, weight reduction, satellite/internet clearing, mistletoe removal, tree removal, dump truck, stump grinder, local references, Non Licensed, 30 + years experience. General liability insurance
209-878-3828 or 209-402-9797

SERVICES

HAVE YOU BEEN INJURED?
Work injuries, auto accidents, wrongful death, and dog bites.No fee unless you win. Contact me now for a free consultation.

Michael Lamb (Attorney at Law)
phone: **(209) 436-9318**
e-mail: MRLAMBLAW@GMAIL.COM

PERSONAL SHOPPING / CLOSET EDITS / STYLING
Need help shopping for clothes, thrifting for vintage items, putting outfits together, or organizing your closet? For further information and assistance with all of your fashion needs, contact Amy J. at **(209) 436-9318**.

LOCAL PML COUPLE HOUSECLEANING SERVICES
Full home & property services specializing in rental property cleaning schedules. White glove inspection-quality guaranteed. Call Patrick @ **(209) 404-1996**

✓ CHECK OUT YOUR GROVELAND LIBRARY

THE GROVELAND LIBRARY IS OPEN TUESDAY - THURSDAY — NOON-6PM SATURDAY — 10AM-1PM



BOOKNOOK
USED BOOK SALE
SATURDAYS
9AM-NOON.

VISIT THE LIBRARY FOR A GREAT SELECTION OF BOOKS, MAGAZINES, NEWSPAPERS, VIDEOS, CDS, DVDS. ALSO COMPUTERS AND FREE WI-FI!



YOSEMITE REGION REAL ESTATE

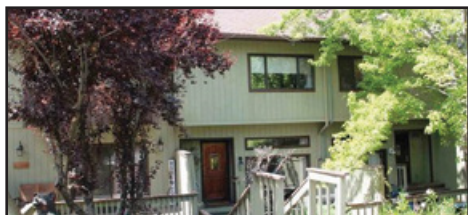
18687 Main St, Suite E, Groveland, CA 95321
209-962-1111 ~ DRE #01964114



13245 Clements Rd **CUSTOM HOME** on 1.3 acres. Interior arches, columns and voluminous ceilings. Hardwood flooring, Maple cabinetry, granite counters, gas cook stove. Formal dining, breakfast nook, with a Bay window. 4bd, 2-1/2 baths and bonus room, which can double as a 5th sleeping area. Oversized 2-car garage, with cabinetry and workbench. Newer 30-yr composition roof and more! Zoned for agriculture and livestock. \$629,000 #20230253



19445 Ferretti Rd **ONE-LEVEL RANCH-STYLE** home, across from the camp grounds. 3bd, 2ba, 2-car garage. New heater, a/c and water heater. water heater and heat and air. There are storage areas under the deck and a shed for gardening tools. Granite counters, breakfast bar, granite in the main bathroom. Enjoy all the amenities of Pine Mountain Lake! \$369,900 #20230403



12707 Junipero Serra, #7 **GOLF COURSE TOWNHOUSE** near the tennis courts, swimming pool and Country Club. Entry is from the front deck into the dining/kitchen area, with a couple of steps down to a nice-sized living room. Cozy wood-burning fireplace, surrounded with stone. Large windows look out onto the back deck, which has an awning for hot summer days. \$359,000 #20221389



ROB STONE
OWNER/REALTOR®
DRE #01025463



BJORN WAHMAN
BROKER
DRE #00706559



TARA STONE
MANAGER/DPG
DRE #01106544



LIZ MATTINGLY
BROKER ASSOC.
DRE #00709618



ROY NAVARRO
BROKER ASSOC.
DRE #01235457



MIRIAM MARTIN
REALTOR®, RSPS, ASP
DRE #01400779



ANDREW RIETVELD
REALTOR®
DRE #01994156



RYAN NIEDENS
BROKER ASSOCIATE
DRE #01940007



KATHY NIEDENS
REALTOR®
DRE #01113243



CAPRICE KROW
PROP. MGR/LDP
DRE #01179023



CORY STONE
PHOTOGRAPHER
VIDEOGRAPHER

12866 Green Valley Circle • Unit 3 Lot 370



A RESORT WITHIN A RESORT!

Rare, mountain home on a nice corner lot. Your own private swimming pool, spa and sauna. Large picture windows and skylights provide natural lighting and ambiance. Single-level, 2bd, 2ba, 2-car garage. Vaulted ceilings and wood-burning stove atop a stone hearth. Granite counters, garden window, breakfast bar and walk-in pantry. Spacious master suite, with large closets and a bay window seating, transitioning to a dressing area and master bathroom. Garage is currently set up with a gaming table and has a receptacle for EV charging. Behind this property, Lots 368 and 369 are also available for sale. Enjoy golf, tennis, pickle ball, fishing, boating and all the rest of Pine Mountain Lake's amenities!

\$425,000 • MLS #20230305

100% Local Long-Term Rental Services

Now Accepting Long-Term Rentals!

- ◆ Monthly Rentals & Tenant Placement
- ◆ Monthly Statements & Owner Payments
- ◆ Tenant-Screening & Credit Reports
- ◆ Scheduled Maintenance & Repairs
- ◆ Move-in / Move-out Inspections
- ◆ Local, State & Federal Tax Requirements



19223-C Salvador Ct **RENOVATED CONDO** with all furniture included. Skylights, double-pane windows, new kitchen, bathrooms and flooring. Spacious deck, overlooking a seasonal creek. Near Pine Mountain Lake's Golf Course, Country Club, Tennis Courts and Community Swimming Pool. Minutes from the historic town of Groveland. \$279,000 #20230037



20445 Pine Mtn Drive **AN ORIGINAL CHALET** in a unique setting. Oversized .62 acre, with large boulders, grinding stones, a seasonal creek and mature Oaks. Renovated kitchen, with granite counters and tile backsplash, renovated bathroom, vinyl windows, free-standing gas fireplace. Mini split ductless H/A, hardwood floors. 2bd on lower level, plus loft on the upper level. \$300,000 #20221961



19432 Grizzly Circle **SINGLE-LEVEL HOME** with 2bd, 2ba, 2-car garage and 1600sf wrap-around TimberTech® deck. Acacia wood flooring, wood-beam ceiling, wood-burning stove, granite counters, stainless appl., apron sink and a 6-burner gas stove. The 3rd sleeping area can double as a bonus room. Pella(c) windows, Generac(c) whole-house generator and new HVAC system. \$525,000 #20221995



Vacation Rentals

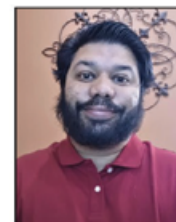
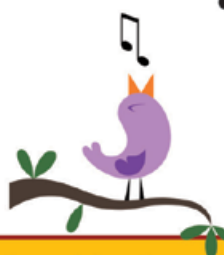


Ryan Niedens
General Manager

HOUSEKEEPERS & MAINTENANCE PERSONS WANTED

CALL 209-962-1111 & PRESS 2 FOR RENTALS

- Competitive Management Rates
- Online & Telephone Reservations
- See Us on AirBnB, VRBO, Trivago, Expedia,
- Booking.com, Priceline, Trip Advisor,
- Orbitz, Homes & Villas and More!



Josh Regalado
Property Manager



Sharron Wahman
Guest Services

Local Vacation Rental Services
Owner-Approved Rates
Accidental Damage Protection

18687 Main Street, Suite E, Groveland, CA 95321
(209)962-1111 • realfun@yosemiteregionresorts.com

Aggressive Advertising Campaign
Professional Departure Cleanings
Pre-Arrival Inspections for Guests