

PINE MOUNTAIN LAKE NEWS

APRIL

2023

THE OFFICIAL NEWSPAPER OF, AND FOR, PINE MOUNTAIN LAKE PROPERTY OWNERS

TABLE OF CONTENTS

Administration	2-12, 15-20 28-29
PMLA Financials	6
“Homes on the Hill” Real Estate	21-25
PML Clubs & Recreation	30-33
Community News	33-43
School News	43
Home Improvement	44-46
Classified Ads	47

HAPPY Easter



**RESOLUTIONS
SEE PAGES 16-19**

**PMLA ANNUAL REPORT
INSIDE THIS EDITION**

PRSR STD
U.S. POSTAGE
PAID
ABS DIRECT

Change Service Requested

19228 Pine Mountain Dr. Groveland, CA 95321

Submission Guidelines

The PML News is the Official Newspaper of Pine Mountain Lake Property Owners

The PML News is dedicated to reporting PML Association business and PML Association news to Pine Mountain Lake Property Owners.

The PML News receives more than 100 Tuolumne County/Groveland community related submissions each month. All such community related articles and notices will appear in the PML News on a SPACE AVAILABLE basis and at the DISCRETION of the PML News Publishing Editor.

DEADLINES

Advertisements must be received IN FULL (text, MLS info, images, logos, etc.) by the 10th of the month for the following month's edition. Only advertisements received in full will be guaranteed to be published in that month's edition. **NO EXCEPTIONS.**

MEDIA ACCEPTED

email

SOFTWARE (Articles)

InDesign, Microsoft Word, Adobe Pages, or TXT formats only.

SOFTWARE

(Advertisements)

PSD, JPG, PDF, EPS or TIFF only.

TEXT/GRAPHICS

Handwritten text is not accepted.

Material composed completely of capital letters is not accepted. Please use uppercase and lowercase letters in composition. Ink jet printed images are not accepted. Images are accepted

ONLY as camera ready art, original photos (to be scanned) or as JPEG, TIFF or PDF files created with above listed software. All scans and bitmap images must be in TIFF or JPG format at least 200 dpi at 100% (300 dpi preferred). Ad files are stored for 90 days from first run date. Older ads that have not been running must be resubmitted. (See Display & Insert Advertising Contract "Design and Preparation Charges.")

E-MAIL TEXT/GRAPHICS

Text/graphics may be delivered as e-mail attachments via the Internet. Send to: pmlnews@sabredesign.net.

AD DESIGN and PROOFS

Ads that are requested to be sent to other periodicals require a usage fee from the advertiser (see Display & Insert Advertising Contract "Design and Preparation Charges"). Proofs are available upon request and final proof approval for all ads is expected within 24 hours. Changes made are LIMITED to typographical or graphic placement errors. NO OTHER ADDITIONS OR CHANGES WILL BE MADE.

SUBMISSION DEADLINES

Articles — 10th each month

Ads — 10th each month

Classifieds — 15th each month

NOTICE

The Pine Mountain Lake News, established July 25, 1973, is printed monthly for residents of Pine Mountain Lake and sold in the Groveland, CA 95321 area. Members can access the PML News monthly edition online at www.PineMountainLake.com. Every month the newest edition of the PML News is posted online before the first of each month. Interested parties can subscribe to the traditional "hard copy" and receive a copy by mail each month.

The PML News is mailed to approximately 3500 PML property owner households each month. Up to 500 copies are rack-sold in the local Groveland area. Our circulation reaches approximately 1200 full-time, resident, PML property owners and approximately 2300 "weekender," non-resident, property owners who maintain primary residence in Northern California, in Southern California, or in other states. For more information regarding the PML News, please call the PML Administration Office at (209) 962-8600. We greatly appreciate your contributions but please note that the PML News fills up very quickly — often by the 7th or 8th of the month (long before the 10th deadline). To ensure that your submission is reviewed for publication please submit in full and as early as possible. Please remember that the PML News is limited in capacity and your submissions are reviewed on a first-come-first-served, space-available basis.

We publish all PMLA related submissions such as Board & Management Business, Clubs, Activities & Events. Where space remains, we publish non-PMLA related submissions in our "Community" section.

We do our best to provide timely news. If you experience delayed delivery or have misplaced a particular edition, please visit us at the PMLA website www.pinemountainlake.com for a downloadable PDF of the News posted by the 1st of the month and a downloadable PDF list of ad rates.

SUBSCRIBE TO THE PML NEWS TODAY!

NAME _____

UNIT _____ LOT _____

MAILING ADDRESS _____

NO CHARGE FOR PROPERTY OWNERS (BULK)

\$6/YR FOR CO-OWNERS (BULK);

\$10/YR FOR NON-PROPERTY OWNERS (BULK)

\$20/YR FOR PROPERTY OWNERS (1ST CLASS)

\$30/YR FOR NON-PROPERTY OWNERS (1ST CLASS)

ENCLOSED IS MY CHECK IN THE AMOUNT OF

\$ _____ (PAYMENT DUE IN FULL)

SEND THIS SUBSCRIPTION TO:
PINE MOUNTAIN LAKE ASSOCIATION
19228 PINE MTN. DR. GROVELAND, CA 95321
ATTN: MELODY

PMLA Official Online Presence

www.PineMountainLake.com

[Facebook.com/PineMountainLakeCA](https://www.facebook.com/PineMountainLakeCA)

[Facebook.com/PMLARecreation](https://www.facebook.com/PMLARecreation)

[Facebook.com/PMLMaintenanceDept](https://www.facebook.com/PMLMaintenanceDept)

[Facebook.com/PMLAEquestrianCenter](https://www.facebook.com/PMLAEquestrianCenter)

24/7 RENTAL COMPLIANCE HOTLINE

IT JUST GOT EASIER TO REPORT, PROVE, AND RESOLVE
NON-EMERGENCY SHORT-TERM RENTAL RELATED
PROBLEMS IN REAL TIME, 24 HOURS A DAY,
7 DAYS A WEEK

1 (209) 231-4543

FIREWOOD CUTTING

PML SLASH AND COMPOST SITE

OAK AND CEDAR REQUIRES A \$20 PML WOOD CUTTING PERMIT

WOOD CUTTING PERMITS AVAILABLE AT THE MAINTENANCE FACILITY

PINE AND FIR AVAILABLE FOR FREE CUT & HAUL

FOR MORE INFORMATION PLEASE CONTACT ANITA AT

1 (209) 962-8612 BETWEEN THE HOURS OF 7 AM TO 2:30 PM, M-F.

VISIT US ONLINE

www.pinemountainlake.com

PINE MOUNTAIN LAKE ASSOCIATION



1.209.962.8600

www.pinemountainlake.com



ADMINISTRATION OFFICE HOURS
8:00 AM TO 4:30 PM – MON THRU FRI
OPEN AT 8:45 AM SECOND TUESDAY OF EACH MONTH
THE OFFICE IS CLOSED BETWEEN 12:00 & 1:00 EACH DAY

2023 ADMINISTRATION OFFICES HOLIDAYS
(ADMIN OFFICE WILL BE CLOSED)

MON. 5/29/23 MEMORIAL DAY	FRI 11/24/23 DAY AFTER THANKSGIVING
TUE. 7/4/23 INDEPENDENCE DAY	MON 12/25/23 CHRISTMAS EVE (OBS)
MON. 9/4/23 LABOR DAY	TUE 12/26/23 CHRISTMAS DAY (OBS)
FRI. 11/10/23 VETERANS DAY (OBS)	MON 1/1/24 NEW YEARS EVE (OBS)
THUR 11/23/2023 THANKSGIVING	TUE 1/2/24 NEW YEARS DAY (OBS)

PMLA BOARD MEETINGS SCHEDULE
(THIRD SATURDAY - UNLESS OTHERWISE NOTED)

APRIL 15, 2023	
MAY 20, 2023	SEPTEMBER 23, 2023
JUNE 17, 2023 (Father's Day Weekend)	OCTOBER 21, 2023 (Board Budget Meeting)
JULY 15, 2023	NOVEMBER 18, 2023 (Saturday before Thanksgiving)
AUGUST 19, 2023 (Annual Member Meeting/Election)	

PINE MOUNTAIN LAKE NEWS DELIVERY

Although we guarantee that the PML News is mailed from Modesto, CA on the same day (between the 26th-30th of month), most post offices (except Groveland) sort Bulk Mail after First Class mail. So, consider a First Class delivery subscription for just \$20/yr. (\$20 per year for property owners and \$30 per year for non-property owners) Interested? Call the PMLA Office at 209/962-8632 or see form above.

The Pine Mountain Lake News is also available (in PDF format) at: www.pinemountainlake.com.
 New editions are posted by the 1st of the month.

PHONE & EMAIL DIRECTORY

ADMINISTRATION
General Manager – Joseph Powell
joepowell@pinemountainlake.com
Admin Asst. to G.M. – 1.209.962.8627
Janessa Owens
j.owens@pinemountainlake.com
Human Resources – 1.209.962.8628
Shannon Abbott
pmlhr@pinemountainlake.com
E.C.C. Assistant – 1.209.962.8605
 Plan Submittal, Compliance Fees
Ashley Henderson
ecc@pinemountainlake.com
Member Relations – 1.209.962.8632
 Gate Cards, Address Changes,
 Webmaster, Mergers
 Lake Lodge Scheduling
Melody Wisdom
pmlmr@pinemountainlake.com
Community Standards Director
1.209.962.1241
Suzette Laffranchi
communitystandards@pinemountainlake.com
Community Standards Specialist
1.209.962.1242
Kara Powers
compliance@pinemountainlake.com
Rental Compliance Coordinator
1.209.962.1245
Carrie Harvey
RCC@pinemountainlake.com
General Info & Lake Lodge
Scheduling 1.209.962.8600
Shari Pingree
 Receptionist
admin@pinemountainlake.com
Main Gate – 1.209.962.8615
 General Safety Inquiries, gate
 passes, campground reservations,
 tennis reservations
campground@pinemountainlake.com
ACCOUNTING
Tina Parmalee – 1.209.962.8607
 Receivable/Collections/
 Assessments
pmlar@pinemountainlake.com
Accounts Payable – 1.209.962.8626
Vikki Smedley
pmlap@pinemountainlake.com
Accounting Supervisor
1.209.962.8618
Stacy Gray
stacy@pinemountainlake.com
Controller – 1.209.962.8606
Dan Szathmary
 Accounting Procedures
controller@pinemountainlake.com
Recreation and Seasonal
Operations Manager
1.209.962.8604
Michelle Cathey
m.cathey@pinemountainlake.com

DEPARTMENT OF SAFETY
Director of Safety – 1.209.962.8633
Natalie Trujillo
n.trujillo@pinemountainlake.com
Sergeant – 1.209.962.1244
Sgt. Teri Cathrein
t.cathrein@pinemountainlake.com
MAINTENANCE DEPT
Maintenance Manager
1.209.962.8611
Rick Laffranchi
rickl@pinemountainlake.com
Administrative Assistant
1.209.962.8612
Anita Spencer
maintenance@pinemountainlake.com
Fire Safety Coordinator
1.209.990.5260
Joe Milani
j.milani@pinemountainlake.com
Fire Safety Inspector
1.209.990.5263
Amanda Darrow
inspectorl@pinemountainlake.com
Fire Safety Inspector
1.209.990.5261
Jessica Heller
firesafety@pinemountainlake.com
GOLF COURSE
Golf Course Superintendent
1.209.962.8610
Rob Abbott
rabbott@pinemountainlake.com
Golf Pro Shop – 1.209.962.8620
 Golf Pro Shop/Golf Reservations
Doug Schmielt
dschmielt@pinemountainlake.com
Golf Pro – 1.209.962.8622
Mike Cook
golfpro@pinemountainlake.com
THE GRILL AT PINE MOUNTAIN LAKE
The Grill Manager – 1.209.962.8639
Heather Parkhurst
clubmgr@pinemountainlake.com
Restaurant – 1.209.962.8638
OTHER PHONE NUMBERS
Equestrian Center Manager
Kendra Brown – 1.209.962.8667
stables@pinemountainlake.com
Marina Manager
1.209.962.8631
marina@pinemountainlake.com
PML NEWS – 209.962.0613
 Ad/Article Submissions
 Sabre Design & Publishing
PMLNews@SabreDesign.net

GENERAL MANAGER'S MESSAGE

JOE POWELL – PCAM, CCAM-LS, CMCA, AMS GENERAL MANAGER

RECENT STORM IMPACTS AND RESPONSE BY PML STAFF

PML experienced a wide variety of atmospheric events starting at the end of February and halfway into March. We got hit with on-going snow storms that lasted over a week and a half. This resulted in power outages and damage caused by dozens of downed trees and power lines. Following the snowstorms, were atmospheric river rainstorms that dumped a lot of water on Pine Mountain Lake.

Our Maintenance staff was well-prepared for the snow storms and continued operating and clearing roadways to allow PG&E and emergency services to access all areas of our community. I haven't seen this much snow over a period of weeks since 1989 and 1990. After "Snowmageddon" came the atmospheric river storms. Tuolumne County even had a tornado touch down and cause damage. This is a rarity for our community. I haven't seen this in the last 30 years.

Again, our Maintenance team was well-prepared. They had already checked and cleared all drainage systems and lowered the lake level to accommodate the in-coming flow. We actively monitored the dam and spillway and a small unregistered dam off of Elder Lane and observed no flow impacts that would cause concern.

We notified members through constant outgoing information on social media and through direct email messaging. We also sent out special notifications to lake front owners who have supplied us with their email addresses so that they could prepare.

Maintenance adjusted the boat slips at the Marina to allow for the rising water and monitored the lake for private docks and watercraft that inevitably break away and float towards the spillway.

We provided our sandbag stations for the membership to prepare sandbags to mitigate flooding.

The lower Campground area flooded in 2/3rds of the way, but this area was designed for this. It is set up to accommodate this type of weather

and creek overflow. Maintenance and other staff members are now working on storm cleanup and repairs.

Overall, our emergency planning and preparation worked well and we saw no major damage or catastrophes on Association property or common areas.

BOARD ADOPTS EMERGENCY TEMPORARY LOT MERGER MORATORIUM RESOLUTION

At the March 18th Board meeting, the Board of Directors adopted an emergency resolution that places a temporary moratorium on all lot mergers until such time that the draft of the newly restated governing documents are put to a vote of the membership.

The Board of Directors has determined that the merging of lots under the current lot merger policy presents an imminent risk of substantial economic loss to the Association. The Association has lost over \$31 million dollars in assessment income since the first lot was merged in 1974. This has had a dramatic financial impact on the ability of the Association to repair, maintain and replace facilities, and common area components.

The Governing Documents Update Ad Hoc Committee is working with Association Counsel to prepare a draft restatement of the PML Bylaws and CC&R's that will be presented for a membership vote.

The Board of Directors established this emergency temporary moratorium suspending all lot mergers in the Association, until such time that a draft restatement of the governing documents is put to a vote of the membership, and a determination is made as to the approval of the governing documents restatement including a new provision regarding lot mergers.

All members who submitted a lot merger application, including a letter of intent and fee payment, prior to the March 18th adoption of this emergency temporary lot merger moratorium, and received an acknowledgement of acceptance of the proposed lot merger application, will

not be subject to the moratorium and will be allowed to proceed with the lot merger process to completion.

Any member who has not completed a lot merger application process including the submittal of a letter of intent and merger fee payment, and has not received acknowledgement and acceptance of the proposed lot merger application from the Association, as of the date of adoption of this resolution by the Board of Directors, will be subject to the lot merger moratorium and temporarily prohibited from merging their lots.

The adoption of this emergency resolution temporarily suspends PML Board Resolution #90.05, Merging of PML Lots, until such time as the new restatement of the PMLA governing documents have been put to a vote of the membership. A copy of the emergency resolution can be found on page 18 of this issue of the PML News and on the Official PML Website at www.pinemountainlake.com.

UNLICENSED CONTRACTORS

We continue to receive reports from members regarding the negative impacts of unlicensed contractors performing work in our community. Some members are getting ripped off by individuals and companies that are performing work that requires a contract and a state contractors license. Everything from roofing, tree removal, excavation to solar and electrical work.

Many advertise as handymen who do shoddy work or they take upfront deposits and do not complete the work. Some con the member into letting them stay and work on the property and then

they end up squatting and refuse to leave, causing a lot of headaches and cost to the member to evict them.

We encourage all members to perform their due diligence and make sure that they get a written contract and that they only hire those contractors who are licensed with the state and have the proper insurance. To that end, we are looking at developing a policy for the use of our PML News for advertisements for home improvement and handyman work.

Until Next Month, wishing everyone a Happy Easter!

**SPEED
LIMIT
25**

**SLOW DOWN
WATCH FOR ANIMALS,
CYCLISTS & PEDESTRIANS
PLEASE DRIVE SAFELY**

PRESIDENT'S MESSAGE

NICK STAUFFACHER – PMLA BOARD PRESIDENT

This sure has been a winter for the books. I don't think I have ever seen this much snow in all my 36 years here, and let's not forget the rain we have had. It's a year that we have gotten it all. Now hoping for a warm and beautiful Spring that is calmer than its predecessor.

Maintenance and their staff have done a formidable job in PML with all that they have faced with these constant storms. From downed trees, to setting up and manning sand bag stations, to keeping our roads cleared with plowing day and night during the

colossal snow storms, to working hard to get our Golf Course ready to use again. The Golf Course has sustained a lot of tree and water damage this year. Maintenance has had some challenges to get the Course up and read to be played. Kudos to their hard work. The Golf Course has sustained a lot of tree and water damage. Golf maintenance has had some challenges to get the course up and ready to be played.

Also, I would like to give recognition and thanks to Suzette Laffranchi, our Community Standards Director and Ashley Henderson, our Architectural

Control specialist for doing a splendid job, plus going those extra miles whenever needed. The success of our Community Standards Department is largely due to you two and all that you give to it. Thank you.

For the first time in a long time The Grill is having an "Easter Sunday Brunch", that will be from 10AM – 3:30PM. Not only that, but they are having an Easter Dinner Special from 5PM – 8PM. Make sure to get your reservations in for this Spring treat.

Happy Easter to all.
Nick Stauffacher

PINE MOUNTAIN LAKE ASSOCIATION

1.209.962.8600

BOARD OF DIRECTORS

Nick Stauffacher: **President**
Karen Hopkins: **Vice President**
Chuck Obeso-Bradley: **Secretary**
Craig Prouse: **Treasurer**
Mike Gustafson: **Director-at-large**

GENERAL MANAGER

Joseph M. Powell, PCAM, CCAM-LS, CMCA, AMS

CORRESPONDENCE TO DIRECTORS

Pine Mountain Lake Association
19228 Pine Mountain Drive
Groveland, CA 95321
PMLABoard@pinemountainlake.com

ADMINISTRATION OFFICE

HOURS OF OPERATION*

Monday - Friday 8:00 AM - 4:30 PM
Closed 12:00 - 1:00 PM
Tel: 1/209/962-8600

The Pine Mountain Lake News, established July 25, 1973, is printed monthly for residents of Pine Mountain Lake and vicinity by Pine Mountain Lake Association, Groveland, California 95321.

SUBSCRIPTION RATES:

Co-owner subscription: \$6 per year
Single copies: 50 cents each
Single mailed copies: \$1.35 each
For non-members: \$10 per year

SUBMISSION DEADLINE

10th of the month by 4:30 PM
LATE SUBMISSIONS MAY NOT BE ACCEPTED

Visit www.pinemountainlake.com for ad rates and submission guidelines or email:

PMLNews@SabreDesign.net.

For the mutual benefit of all property owners, the Pine Mountain Lake News reserves the right to edit all copy submitted for publication. The Pine Mountain Lake News is a private enterprise, not a public entity, and as such is entitled to reject advertisements or articles in the best judgment of its editor or publisher, despite a probable monopoly in the area of its publication. Pine Mountain Lake Association is not responsible for, nor does it guarantee the accuracy of, information contained in any ad placed in the Pine Mountain Lake News. The Pine Mountain Lake News attempts to ensure that this publication is free of legal infringements and the Pine Mountain Lake Association and its contractors are not liable for copyright/trademark infringements from external advertisements and articles.

DAVID WILKINSON – Publishing Editor
SABRE DESIGN & PUBLISHING
Design/layout

PINE MOUNTAIN LAKE NEWS

P.O. Box 605
Groveland, CA 95321
Tel: 1.209.962.0613

E-mail: PMLNews@SabreDesign.net

NOTARY SERVICE

ANITA SPENCER, – PMLA NOTARY PUBLIC

(Prices listed are per Signature Rate)

PML Property Owners – \$10

Non-Property Owners – \$15

Witness Fee – \$5

You may call Anita @ **1-209-962-8612** to schedule an appointment between the hours of 8am – 4pm

ATTENTION NEW PML MEMBERS!

WELCOME to PML...We're glad you're here!

Once you have received your welcome letter from the Association you will have the information you need to log into the PML website (www.pinemountainlake.com)

Once there click on the **RESOURCES** tab & then on the **NEW MEMBER ORIENTATION** icon.

The New Member Orientation page is **JUST FOR YOU!**

Here you will find:

- Member Orientation Packet
 - o Information on the Official PML Facebook page
 - o Gate Access Guest Pass internet program information
 - o Fire Safety contact and information
 - o Board Meeting Dates and information
 - o Rules, Regulations and Procedural information
 - o Information on PML Committees and Clubs
 - Assessment Information
 - PML Fact Sheet
 - Getting Connected in Groveland
- And **MUCH MORE!**



PINE MOUNTAIN LAKE ASSOCIATION
SUMMARY STATEMENT OF OPERATING FUND REVENUES AND EXPENSES
 For Two Months Ended February 26, 2023

OPERATION OF AMENITIES	Revenues					Expenses				Budget	
	Members' Assessments Net of Discount	User Fees	Sales, Net of Cost of Sales	Miscellaneous Income	Total Revenues	Total Expenses	(Cost)/Income Before Depreciation	Depreciation Expense	(NET COST) INCOME	(NET COST) INCOME	Variance Bud - Act
Golf Course	\$ -0-	\$ 76,272	\$ 1,350		\$ 77,622	\$ 236,658	\$ (159,036)		\$ (159,036)	\$ (191,068)	32,032
Restaurant & Bar	-0-	322	103,422		103,744	240,137	(136,393)		(136,393)	(155,826)	19,433
Marina	-0-	79,438			79,438	65,645	13,793		13,793	18,660	(4,867)
Snack Shack	-0-	-0-	1,319		1,319	6,350	(5,031)		(5,031)	(7,803)	2,772
Stables	-0-	17,020		1,003	18,023	60,610	(42,587)		(42,587)	(62,434)	19,847
Recreation	-0-	20,105			20,105	6,019	14,086		14,086	21,243	(7,157)
Roads & Facilities Maintenance	-0-	14,788		160	14,948	381,582	(366,634)		(366,634)	(458,375)	91,741
PROPERTY OWNER SERVICES											
Safety	-0-	16,738		1,789	18,527	167,714	(149,187)		(149,187)	(186,746)	37,559
Administration	-0-	71,844		57	71,901	315,989	(244,088)		(244,088)	(315,668)	71,580
ASSESSMENTS											
+	1,168,696			24,087	1,192,783	19,509	1,173,274	105,371	1,067,903	1,031,314	36,589
Totals	\$ 1,168,696	\$ 296,527	\$ 106,091	\$ 27,096	\$ 1,598,410	\$ 1,500,213	\$ 98,197	\$ 105,371	\$ (7,174)	\$ (306,703)	299,529

CAPITAL EXPENDITURES Two Months Ended February 26, 2023

	TOTAL RESERVE FUNDS	NEW CAPITAL ADDITIONS FUND	TOTAL CONTRIBUTION TO CAPITAL
2023 Beginning Fund Balances	4,409,135	102,395	4,511,530
Interest Income	168		168
Bank Fees/Discounts Taken			-
Assessments Earned	392,500 ⁽¹⁾	1,100 ⁽²⁾	393,600
Other Income/Expense			
PURCHASES BY AMENITY			
Golf Course	(51,716)		(51,716)
Country Club	(850)		(850)
Bar			-
Marina	(2,214)		(2,214)
Snack Shack			-
Swim Center			-
Stables	(5,856)		(5,856)
Recreation	(850)		(850)
Roads & Facilities Maintenance	(5,218)	(19,235)	(24,453)
PROPERTY OWNER SERVICES			
Safety			-
Administration			-
Non-Capital Reserve Expenses	(12,626)		(12,626)
Total transfer to Operating Fund for property and equipment additions and reserve expenses	(83,844)	(11,329)	(98,565)
Adjusted Fund Balances	\$ 4,717,959	\$ 92,166	\$ 4,806,733

Notes to the Financial Statements

- (1) The Budgeted Reserve Fund assessment for 2023 is \$2,355,000
- (2) The Budgeted New Capital Additions Fund assessment for 2023 is \$1,100

PML AUTOMATIC PAYMENT PROGRAM

Taking the time to write a check for your monthly assessment payment can be time consuming and costly. You can avoid this burden and eliminate the potential for late payment charges by enrolling in PMLA's Auto Payment Program. By completing the form, which can be found at www.PineMountainLake.com under the Resources/Forms, and returning it to the Administration Office, you can have your monthly assessment automatically deducted from your checking account or charged to your credit card. This means you never have to remember to write a check and mail it each month. The peace of mind that comes with knowing your payment will always be made on time is easy to attain. We can also arrange to have any other regular payment you make to the Association (such as golf membership, horse boarding fees, etc.) paid in the same way.

For more information on this simple, effective and time saving plan please contact us at **1 (209) 962-8600**

DO YOU HAVE YOUR PIN?

Since PML is a private gated community, we want to offer our property owners a secure way to call in guests. When you become a member of PML you are assigned a Personal Identification Number (PIN) to utilize either when calling in a guest pass or using the Gate Access Internet program. This PIN identifies you to staff without you having to be present. This is a confidential number and should **not be shared**. When you call the Main Gate to authorize a guest or vendor access into PML, you will be asked for your PIN. The staff will look up the number in the computer and use it to confirm your identity before entering the guest information. You must have this number to utilize the Gate Access Internet program as well. If you do not know your PIN or have any questions, please contact the Administration Office at:



1-209-962-8600



Monday through Friday from 8 am to 4:30 pm
and we will gladly supply this information to you.

PAY YOUR PML PAYMENTS ONLINE

Did you know you can make your payments online?
Online Bill Pay is available on www.PineMountainLake.com.

Pay via your credit card, it is quick and easy!

MONEY MATTERS

DAN SZATHMARY – ASSOCIATION CONTROLLER

Our 2022 audit is complete. As expected, PMLA received a good bill of health and financial performance last year exceeded budget and expectations in just about every notable area. PMLA came through 2022 in a stronger cash position, underbudget for expenses, and exceeded amenity sales expectations.

Given the news in the banking industry the last few weeks, have received and answered a lot of questions about the security of our funds, and exposure PMLA may have to the issues currently facing the banking industry. Safeguarding and efficiently using the association's resources is a job we take very seriously and arguably the most important responsibility of the PMLA accounting team.

The first consideration in choosing a banking partner, is ensuring the health and financial integrity of the bank in which we trust our funds is sound. Mechanics Bank was vetted and selected for a few reasons, most importantly of which is a long and consistent history or strong financial performance. Mechanics has a very sound and conservative investment strategy they have applied consistently for many years. They were one of the few banks that did not need or wish to obtain TARP (or "bailout") funds during the 2008 financial crisis. They also keep away from risky investments such as swaps or derivatives, that often plague other banks during market downturns. Since Markets change, and safeguarding our funds is our top priority, we continually monitor the safety and security of our money.

The second consideration is how we store and invest the funds we have in one or more solid financial institutions. There is a balancing

act we play between rate of return, risk exposure, and liquidity. Most of our funds are allocated towards maintaining and replacing assets over a many years period; and ensure there are funds available for large expenditures, planned or otherwise, without putting undue financial strain on the members or the association. We also want to maximize the return of dollars sitting in the bank, without putting unmanageable limits on access to those funds when needed.

To this end, we maintain most of the association's funds in sweep accounts that distribute deposits among many institutions to mitigate risk. As managing dozens of accounts between different situations would be prohibitively cumbersome, sweep accounts allow us to manage all of our money in one place, while still having the safety and security of having our funds deposited across different banking intuitions.

As far as maximizing the return on those funds earmarked for on going maintenance and capital improvements; we look for options that provide the highest rate of return possible, without presenting a risk of losing value or locking up an undue amount of cash that may be needed in any given year or quarter. This allows us to get some level of return on our deposits, without risking our funding levels or access to cash that may be needed to improve or maintain our amenities and infrastructure.

Thanks again for your input and suggestions, and looking forward to another great month at PMLA.

Additional questions, comments, or suggestions? Feel free to contact me anytime. *Controller@PineMountainLake.com* or give me a call at 1-209-962-8606.

BUILDING OUR COMMUNITY

SUZETTE LAFFRANCHI – COMMUNITY STANDARDS DIRECTOR

Garbage that is being improperly stored is leading to scattered litter in our scenic community. Never leave bags of garbage or overflowing cans that are accessible to wildlife. Please keep your garbage in a secured trash enclosure. Garbage that is not properly bagged will not be picked up by the contracted garbage service. Garbage shall not be stored by the roadside.

The Rule or Regulation that applies is as follows:

PMLA CC&R, ARTICLE VIII, Section 9. Garbage. No rubbish, trash, or garbage shall be allowed to accumulate on Lots. Any trash that is accumulated by an Owner outside the interior walls of a Residence shall be stored entirely within appropriate covered disposal containers and facilities which shall be screened from view from any street, neighboring Lot or the Common Area.

Many times, when the property is in violation of the PML CC&R, article VIII, Section 9, it is due to improper disposal receptacles and placement. These receptacles are required to have a solid bottom, made of sturdy material with a latch for closure. If you need guidance on properly storing your garbage between garbage service pick-ups contact our Community Standards Department who

can assist you to bring your receptacle into compliance. All receptacles must be approved by ECC prior to construction or placement. Don't let your dilapidated open garbage receptacle add to the garbage concerns.

If you are planning a storage container to store your garbage between pick-ups, please note that ALL exterior improvements including storage containers must be approved by the Environmental Control Committee and meet our minimum construction standards.

PML CC&Rs, article VI, Section 5, Setback Requirements, applies to all permanent structures. Storage containers may not be placed in your setbacks. Tuolumne County Title 17.52.130 (A) 1. Storage Containers are prohibited in all zoning districts unless they conform to the following requirements: Any storage container, regardless of size, shall conform to all building setbacks. (C)1. Only one storage container, not exceeding two hundred square feet in size, is allowed on any parcel. (C)2. Any storage container shall be placed behind or to the side of the principle building. Said container shall be screened from view.

For more information or to submit your new project please visit our web page at <https://www.pinemountainlake.com/ecc-committee/>. For the love our community let us take the steps to protect and preserve the natural beauty and character of Pine Mountain Lake and all it has to offer.

Welcome Spring!

SAVE AS MUCH AS 30%

OVER THE CHAIN OPTICS STORES AND EVEN MORE OVER DOCTORS OFFICES

Large Selection of Unique & Traditional Designs
Can Bill Most Insurance Plans • Over 20 Years Experience
Designer Sunglasses • FREE Adjustments & Repairs



Stacy Hancock
Certified / Licensed Optician

18729 HWY 120, Unit A, Groveland • 209.962.1972

COMMUNITY ORGANIZATIONS

Contact the individuals/organizations below if you are interested in joining!

If you would like your community organization listed please send your group's name, contact person, and phone number to j.owens@pinemountainlake.com

CAMP TUOLUMNE TRAILS
Jerry Baker - 1.209.962.7916

FRIENDS OF THE GROVELAND LIBRARY
Virginia Richmond - 1.209.962.6336

HELPING HANDS THRIFT STORE & FURNITURE BARN
Patti Beaulieu - 1.209.962.7402

VILLAGE ON THE HILL
1.209.962.6906 or info@villageonthehill.org

SOUTHERN TUOLUMNE COUNTY HISTORICAL SOCIETY (STCHS)
Harriet Codeglia - 1.209.962.6270

PML SAFETY REPORT

	FEBRUARY	1st Quarter	YTD
Guest Passes Issued	716	1,378	1,378
Vendor Passes Issued	260	519	519
Temporary Resident Passes Issued	812	1,369	1,369
Vehicles Admitted	7,854	14,327	14,327
Vehicles Refused Entry	206	401	401
Phone Calls Received	2,366	4,839	4,839
Residential Alarm	8	13	13
Animal - Loose	8	19	19
Animal - Impounded	1	3	3
Animal - Dead/Injured	10	22	22
Animal - Disturbance	3	7	7
Patrol Assist	146	345	345
Member Assistance Request	13	33	33
Welfare Check	1	3	3
Transport	2	9	9
Traffic Hazard	0	0	0
Traffic Control	0	0	0
Excessive Speed/Reckless Driving	1	4	4
Gate - Tamper	1	4	4
Gate - Follow Through	18	34	34
Gate - Malfunction	0	5	5
Gate - Struck by Vehicle	4	10	10
Control Burn Reported	68	101	101
Fire Safety - Smoke Complaint	0	8	8
Hazard - Tree Down	1	12	12
Residential Disturbance	0	2	2
Amenity Burglary	0	0	0
Residential Burglary	0	0	0
Grand Theft	0	0	0
Petty Theft	0	0	0
Trespassing	2	2	2
Vandalism	1	3	3
Property Damage - PML	0	1	1
Property Damage - Resident	0	1	1
PML Regs Violations Resident	0	0	0
PML Regs Violations Guest	1	1	1
Vehicle - Citation Issued	0	2	2
Vehicle - Accident PML	0	2	2
Patrolling Unit	803	1,600	1,600
Amenity Security Check	1,917	3,875	3,875
Residence Security Check	233	435	435
Monitoring Tennis Courts	0	0	0
Weapon Violation	0	0	0
Fixed Post	1	2	2
Courtesy Notice Issued	25	64	64
All Other Fees Collected	\$41,784	\$71,811	\$71,811

GOVERNING DOCUMENT ENFORCEMENT ACTIONS FEBRUARY 2023

Courtesy Notices	38
Notice of Non-Compliance	11
Final Notice of violation	6
Fines Assessed	4
Member Service	329

COMPOST & ARCHERY RANGE HOURS OF OPERATION

APRIL THRU OCTOBER - 7 DAYS A WEEK 8AM TO 4PM
WEATHER PERMITTING

NOVEMBER THRU MARCH TUES. - SUN. 8AM TO 4PM
WEATHER PERMITTING

SHOOTING RANGE - TUES, THUR, SAT 9AM TO 3PM

PLEASE NOTE Hours may vary depending on weather conditions, safety concerns, or other situations beyond control. Archery & Gun Range users must check-in with compost attendant.

HOURS SUBJECT TO CHANGE WITHOUT NOTICE
Call Main Gate at 1-209-962-8615

FROM THE FRINGE

MIKE COOK – PGA HEAD GOLF PROFESSIONAL

The Golf Shop Staff is here to assist you in every way possible so please call us if you have any questions or need our assistance at 1-209-962-8620. Our April Golf Shop hours are from 7:30am until 6:00pm, 7 days a week.

UPCOMING EVENTS

Ladies 9-Hole Golf Club
Weekly Play Day – Thursdays

Ladies 18-Hole Golf Club
Weekly Play Day – Thursdays

Ladies 18-Hole Golf Club
18-Hole Ladies Invite the 9-Hole Ladies
Thursday April 13

Men's Golf Club
St. Patrick's Day Invitational
Saturday April 1 (Rescheduled)

Greens Aeration
Golf Course Closed – Mon/Tues April 3/4

Man's Golf Club
April Awakening; 4-Man Scramble
Wednesday April 12

Men's Golf Club
Spring Shootout;
2-Man Chapman Scotch
Saturday April 22

WGANC
Legacy 2-Person Scramble
Wed/Thurs April 26/27

GOLF COURSE FIRST TEE TIME

Beginning on April 5 the first tee time of the day will be 8:30am. Property Owners can make a reservation up to 14 days in advance by calling the Golf Shop 1-209-962-8620 or in person at the Golf Shop.

CALLAWAY GOLF CLUB TRIAL SETS

The NEW Callaway PARADYD golf clubs are available in the Golf Shop for you to try out. We have trial sets that you can take to the range or out on the Golf Course. For more information, call or come in to the Golf Shop.

2023 ANNUAL GOLF SERVICES

If you have not paid for your Bag Storage, Push Cart Storage or Locker, please call or come in to the Golf Shop and we will be happy to assist you. If you are interested in signing up for one of these services, please call the Golf Shop.

NEW PINE MOUNTAIN LAKE PROPERTY OWNERS

If you are a new Pine Mountain Lake Property Owner and you are interested in getting acquainted with other Property Owners who play golf, call the Golf Shop 1-209-962-8620 and we will let you know what golfing groups you may be able to join or what golf activities are planned for the year.

PROPERTY OWNER ANNUAL GOLF CART RENTAL AGREEMENT

Every person who drives a golf cart on the course, is required to sign a golf cart rental agreement at the time of registration, before they can drive a golf cart. **PML Property Owners sign the agreement one-time and that covers the entire year.** If you have not signed your agreement you can go to the PML website (www.pinemountainlake.com) and fill it out and sign online or you will be asked to sign the form when you register in the Golf Shop. Click on amenities, then click on golf and you will see the agreement with other forms available. If you have any questions, please call the Golf Shop 1-209-962-8620.

MEN'S & LADIES GOLF CLUBS

If you are interested in joining the Men's or Ladies Golf Clubs, you can call the Golf Shop 1-209-962-8620 and we will give you the information you need. Applications are available in the Golf Shop. The Men's Club has a website (www.pmlmgc.com) that you can visit to sign-up online for your membership (see Men's Club eligibility rules) or to print an application. Once you are a Men's Club Member, you can sign-up for tournaments online.

CARE OF THE GOLF COURSE

TAKING CARE OF THE GOLF COURSE IS EVERYONE'S

RESPONSIBILITY; PLEASE DO YOUR PART!

Replacing Divots – PML is a **DIVOT FIRST** facility; that means that if the divot is intact or even a portion of the divot is intact, we want you to replace the divot first and press the divot down firmly with your foot. When an intact divot is replaced, it will begin to root right away but a mulch filled divot will take weeks to fill in. If the divot hole is not totally filled in by the divot that you replaced then fill the rest of the hole with mulch and press down the divot firmly with your foot. If the divot is not intact, then fill the divot hole with mulch and smooth the mulch with your foot so it is level with the ground.

Repairing Ball Marks – This is one of the major negatives in our great game; players either do not know how to repair ball marks correctly or don't even attempt to repair them. Here is the correct way to repair a ball mark:

Insert the divot tool just outside the edge of the ball mark, use the divot tool to mend in the outside portion if the ball mark towards the middle. Then use your putter to tap down the repaired turf. If a ball mark is repaired properly, you will not even be able to tell that there was a ball mark.

NEVER PULL UP THE MIDDLE OF THE BALL MARK.

Raking Bunkers – We are back to normal procedures concerning bunkers; **PLEASE** make sure that you rake the bunker after you have hit your shot.

Golf Carts – Driving golf carts on the fairways has a negative effect on turf conditions over time. **PLEASE** use the 90-degree rule posted in each golf cart in order to minimize the cart traffic on the fairways. Reminder – Driving golf carts behind any of our greens is **NOT ALLOWED**.

PINE MOUNTAIN LAKE GOLF APP

Pine Mountain Lake Golf & CC has an app that you can download FREE from the app store. There are many fun and useful features on the app such as:

- Golf course GPS
- Players can measure their shots
- Golf course hole by hole flyover
- Interactive scorecard
- Score posting
- Player profile and automatic stats tracker
- Special offers
- Food & beverage menus and ordering
- Receive notifications concerning special events
- Weather information
- PMLA Member information & online payments

**MAKE PML YOUR
ONE-STOP-SHOP
FOR ALL YOUR GIFT GIVING!**

**PICK UP A GIFT CARD FOR:
GOLF • GOLF SHOP APPAREL
& ACCESSORIES • THE GRILL
HUNTING & FISHING LICENSE VOUCHERS**

**GIFT CARDS ARE AVAILABLE AT THE
ADMINISTRATION OFFICE, THE GRILL,
AND AT THE PRO SHOP**

FIRE SAFETY

JOE MILANI – FIRE SAFETY COORDINATOR

The Fire Safety team will be planning and coordinating several wildfire mitigation projects around the Association this month. New construction of shaded fuel breaks will be built in strategic areas around the development; we are also planning and scheduling maintenance of the existing fuel breaks currently in place. Next month the team will begin ramping up our routine residential fire safety inspections. If you would like a fire safety inspection of your home or property, please contact us to set up an appointment. Although beautiful this time of year it is imperative to stay vigilant and remember that we live in the Wildland Urban Interface and with it the responsibility to maintain your defensible space and prepare for the fire season ahead of us.

Owning a home in Pine Mountain Lake provides the satisfaction of living in a great community. The local rules and restrictions, which you became acquainted with when you purchased a home, are important in maintaining ownership here. I would like to highlight one rule that is occasionally overlooked or forgotten.

- **ARTICLE VIII, SECTION 1, Use of Lots (k).** – No existing trees with a diameter greater than five inches shall be destroyed, uprooted, cut down or removed from any lot without first obtaining a tree-cutting

permit from the Association.

This rule can be found in Pine Mountain Lakes Articles of Incorporation, By-Laws, and Declaration of Restrictions handbook “flash drive” you received with your new owner information packet. For any tree over five inches in diameter please fill out a Tree Removal Request form found on our website at <https://www.pinemountainlake.com/tree-removal-request-2-2/>. If this rule is not followed and trees are removed prior to PMLA approval monetary fines and penalties may result. Pine Mountain Lake has experienced major tree mortality due to drought and bark beetle; because of that, preserving live trees is of the utmost importance.

Please remember to test your smoke and carbon monoxide detectors once a month and replace any faulty alarms or low batteries immediately.

Lastly, fire safety inspections will continue in Pine Mountain Lake. Remember a fire safe community begins with you! If you would like an inspection of your property, or you are looking to educate yourself more, our fire safety team would love to help. If you have questions or concerns regarding fire safety, you can contact Amanda Darrow at 1 (209) 990-5263 or email her at Inspector1@pinemountainlake.com. I can be reached at 1 (209) 990-5260 or Email J.milani@pinemountainlake.com.

LET'S TALK TRASH

CARRIE HARVEY-RENTAL COMPLIANCE COORDINATOR

Happy Spring! Who would've thought we would finally make it to Spring, what a Winter that was! With the busy season coming up, and all the extra visitors we will have, let's talk trash! Garbage is a big deal up here in PML, it is part of the day to day, and there may be some things your guests do not know. If you have a short-term rental, please advise your guests of the rules about garbage. Let them know where to put their garbage during their stay, and let them know where to store the garbage when they are cleaning up and heading out. Garbage cans cannot be stored roadside on days other than your scheduled pick-up day. Advising your guests to leave the cans out

when they leave is a no-no, and it also welcomes the wildlife to your property, which can make a bigger mess for you, and for your neighbors.

If you have a property manager, this is something they can help you with. If you do not have a property manager, maybe you have a friend or neighbor who can bring your cans down for you? If you do not have either of those, you can contact Moore Bros. at 1-209-962-7224, and see what your options are. As always, if you notice garbage scattered in your area, and you suspect it's from a rental, please do not hesitate to call our Rental Hotline at 1-209-231-4543. Let's all be mindful and keep Pine Mountain Lake beautiful and clean!

THE HOOF PRINT

KENDRA BROWN – EQUESTRIAN CENTER MANAGER

Winter is the time for comfort, for good food and warmth, for the touch of a friendly hand and for a talk beside the fire: it is the time for home.” As much as we love the winter months, as it is our slow season here at the Equestrian Center, we are ready for SPRING!

Much like everyone else March brought us lots of work around the barns. It doesn't matter what the weather looks like: snow, flooding, or fire the horses must receive care. I would like to say thank you to our AMAZING staff team that showed up each day and made sure the horses and property were taken care of daily. As we start transitioning into the warmer months, we are watching the horses closely, as sometimes the warmer days and cool nights can cause sickness discomfort.

UPCOMING EVENTS

April 5th Pioneer Equine Vet-Spring Vet Clinic. Please call Pioneer Equine Vet to reserve a spot on the schedule.

April 11th Mono Way Vet- Spring Vet Clinic. Horses and Dogs. Please call the barn office 1 (209) 962-8667 for more information.

April 28th Dave Stamey Concert- Bring your lawn chair and enjoy the evening with us. Dave Stamey is a nationally acclaimed cowboy singer/songwriter and entertainer and in 2016 was inducted into the Western Music Hall of Fame. Gates open at 5:00 PM Show starts at 6:00 PM. Call the barn office to purchase tickets at 1 (209) 962-8667.

May 1st Trail Rides open for the season. Call the barn office for more information and to book a ride at 1 (209) 962-8667.

May 28th The 3rd Annual Memorial Day Car Show/ Flea Market/ Tioga High School Memorial Day BBQ. To enter a car into the car show or reserve a spot for the flea market call the barn office at 1 (209) 962-8667.

June 30th Posting of the Colors-more information coming soon.

Kendra Brown
Equestrian Center
13309 Clifton Way
Office: 1-209-962-8667
stables@pinemountainlake.com

— NOTICE —

Listed below are ALTERNATE phone numbers for EMERGENCY use during power/phone/internet outages:

DEPARTMENT OF SAFETY – MAIN GATE
1-209-768-8600

PMLA ADMINISTRATION OFFICE
1-209-768-3998

THE GRILL AT PINE MOUNTAIN LAKE
1-209-962-8658

GOING WITH THE FLOW

ASHLEY HENDERSON – ARCHITECTURAL CONTROL SPECIALIST

April showers may very well bring May flowers, but unfortunately, they can also bring clogged culverts, heavy erosion, and flooding. While we may not be able to completely control Mother Nature and her mercurial California whims, there are steps we can take to help mitigate any potential damage. All drainage courses, ditches and swales on your property are your responsibility to keep clear. (PML CC&R's Article VII, Section 3 B & C) Routinely clearing out debris from

drainage areas will keep the water flowing in its natural course, and will greatly help our Maintenance department when it comes to keeping our streets and culverts clear.

It is also incredibly important that all projects that will disturb the earth, and potentially affect the natural drainage have approved drainage plans. This includes retaining walls, landscaping, new builds, driveways, etc.

If you have any questions, please do not hesitate to reach out at: 1-209-962-8605 or ecc@pinemountainlake.com

TEE TO GREEN

ROB ABBOTT – GOLF COURSE SUPERINTENDENT

CALIFORNIA, CALIFORNIA, CALIFORNIA. Shock and awe are all I can say about the weather we have seen this winter. With 55" total rainfall and upwards of 12-16 inches of snow in March I can safely say I am done with winter and ready for some spring time influences.

We saw hundreds of down branches and numerous tree failures on the course over the last couple months but it was the snow load that put us over the top. Tree failures have been the main focus of the Golf Maintenance Department as of late with at least 10 complete failures and numerous large limbs lost. Most of the work is all being done by hand as large equipment isn't able to access the wet conditions. Other than the tree

failures the course has survived well through all that it has been exposed to.

At this point in the year we are usually planning and implementing the start of our horticultural needs. This includes the aeration of the course which at this point is at a standstill. We will get caught up and everything will be beautiful as the grass begins to wake up over the next couple months, but for now we are awaiting better weather. Another item to note as I made my rounds today are the springs. Springs are everywhere on the course and have completely overwhelmed all drainage. We will likely see these springs into late Spring and early Summer. We will mark them well but please use caution when trying to navigate the area looking for the little white ball.

GUEST & RENTERS HANDBOOK IS AVAILABLE ONLINE!

You can now view or print the Guest and Renters Handbook from the PML Website.

Go to our website at:

WWW.PINEMOUNTAINLAKE.COM

and click on Resources, then scroll down to the bottom of the page and click on Guest and Renters Handbook. This handbook has valuable information for Guests and Renters in Pine Mountain Lake.

LETTERS TO THE EDITOR

LETTERS TO THE EDITOR RECEIVED	2	DEFERRED TO NEXT EDITION BY	
DENIED BY EDITORIAL COMMITTEE	0	EDITORIAL COMMITTEE	0
Exceeds 250 word maximum	0	DENIED BY BOARD OF DIRECTORS	0
Content	0	DEFERRED TO NEXT EDITION BY	
Not a property owner	0	BOARD OF DIRECTORS	0
"THANK YOU" LETTERS RECEIVED*	0	* Thank you's do not require editorial committee approval	

Submit Letters to the Editor by sending to "Editor, PML News"
Mail: 19228 Pine Mountain Drive, Groveland, CA 95321
Email: PMLNews@sabredesign.net • Fax: 800-680-6217

PLEASE NOTE THAT ALL LETTERS APPEAR IN THE ORDER THEY WERE RECEIVED BY THE PML NEWS

The Pine Mountain Lake News welcomes letters and articles for publication provided they meet the criteria established in the current PMLA Editorial Policy (See excerpt below – entire policy on file at the Administration Office). Letters must be limited to 250 words, typewritten using upper and lowercase letters or neatly printed (no all-capital material) and signed with name, mailing address, PML unit/lot number, and day/evening telephone numbers by a property owner in good standing. **LETTERS MUST BE RECEIVED BY THE EDITOR BY THE 10th OF THE MONTH.** Letters deemed by the Editorial Committee to be improper will not be accepted. Readers are advised that **THE OPINIONS EXPRESSED IN THESE LETTERS ARE THOSE OF THE INDIVIDUAL AUTHORS, NOT OF THE PMLA, THE PINE MOUNTAIN LAKE NEWS, NOR THEIR EMPLOYEES.**

SWIMMING POOL OPENING

PML Newspaper, Editor

During our presentation to develop the PML Pool Wellness Club, we discussed with the board how for many of our HOA members, swimming and water aerobics are the only type of exercise they can tolerate. It is disappointing when we read that the pool will not open until Memorial Day weekend.

Years ago the pool opened in April, then it was then pushed to Mother's Day Weekend, and now, it is once again pushed to Memorial Day Weekend. This certainly benefits the tourists, but for those HOA residents who count on the pool for their physical and mental wellness, the loss of the entire month of May only adds to their physical decline.

The members of the Pool Wellness Club ask you, our HOA members, to contact the board requesting they reconsider their decision and open the pool the first of May. Employees are waiting to return to work, and we are anxious to get back to our physical fitness routines.

PML Pool Wellness Club
Represented by Karen Reyes, President
PML Pool Wellness Club
Groveland, CA

NEIGHBORS HELPING NEIGHBORS

It takes a village!

That comment was never more true than over the last few weeks, seems like months, of one of the largest snowfalls

ever to hit our area. Long term, the extra rain and snow is most welcome to help our drought conditions, but short term it was pretty rough.

When we cannot get out of our driveways, our power is off, and the propane tank or wood pile is nearing bottom it is a "Village" that comes to our rescue. This is those few community members who show up with their 4 wheel drive cars/trucks and make sure we get to our doctor appointments. They show up with snow shovels and clear our driveways, garages and decks so we can drive ourselves to the market or a warming center. They show up with that magical "blade" attached to their heavy equipment, and for no fee, just a hearty thanks, they clear that driveway that was long and cute before it was stacked with 2 feet of snow, and in minutes make all go away.

These tireless individuals often come and go like the clouds in the sky, but they are our home town heroes (I am sure I am not capturing all of them) who saved the day for so many of us: Tom Hernandez, Leon Liebster, John Rohleder, Russ Crook, Ron Selvey, Moses Mai, Gene Peak, and many others.

The community of Groveland owes you all our deep gratitude. Thanks for coming to our rescue when it counted!

Mike Gustafson
Groveland, CA

DIRECTOR'S CORNER

THE HISTORY OF THE PML SWANS

MIKE GUSTAFSON

There have been a few questions recently regarding the swans on our lake; this note provides some history on how they came to be here.

The issue with too many geese has been around for many years. Swans are one of the known deterrents, so back in 2005 or so, PML decided to purchase a mated pair of Whooper swans. Swans do not like geese and may harass them enough to drive them away. There are commercial operations that rent swans for this purpose, but Pine Mountain Lake is too far away from the nearest rental operator so we decided to buy.

It is no easy task bringing swans onto the lake, they “fly” into Sacramento in the hold of a jet and must be picked up and then held in a pen for 14 days to get then acclimated to our lake and their new home. So after all that we had two very pretty swans cruising around our lake making life miserable for the geese as expected. We named them Romeo and Juliet.

After a few years the female swan died as a result of eating food given by humans so we had to arrange for another female to be shipped here and penned for 14 days. Unfortunately, and you are not going to believe this, this new female swan hated water! No kidding, she kept climbing up on shore and making her way onto the road and tried to wander off. I kept getting calls from our Safety Department asking me to go collect her again! At some point I called the breeder and it was determined that she was a weird swan so we shipped her back in exchange for a more “normal” female swan. The new swan liked water and settled in with the older resident swan. This new swan was purchased by the Friends of the Lake club.

A year or so goes by and then that female swan just disappeared. The rumor was that someone had bird-napped her to be placed on some private pond. We don't know. An interesting detail about these swans -- they cannot fly. At birth a tiny piece



Our first swans in their acclimation pen, such beauties

of their wing tip is cut off; they sense flight is impossible and don't try.

So here we are, the male swan is all alone so Friends of the Lake bought yet another female swan which may have actually been a male swan (it's hard to tell). An issue with the breeder but none the less we were happy with both swans and they seemed happy and bonded together, so we left well enough alone. They were happy chasing the geese as hoped so all good.

This arrangement lasted many years until a very kindly couple, feeling sorry for our two male swans, purchased a pair of female swans with big hopes for baby swans called cygnets. Another trip to Sacramento and then construction of a pen for 14 days, etc.

I had high hopes for all four swans because the male swans would hang out just outside the pen clucking and honking at the girls. When we opened the pen and the girls made their debut, much swimming about and honking and carrying on and all four swans sailed away. As NASA says, confidence was high!!

About two weeks later I noticed that two swans were up in Big Creek

(which was where the male swans hung out) and two swans were hanging out at the Marina. We concluded that the males were in Big Creek and the females were at the Marina.

The breeder suggested that the males were too set in their ways to become a mated pair with the females; silly males! So that was the way it went for many years, the males owned the east end of the lake and the females owned the west end of the lake, never the twain met.

The downside of the females hanging at the Marina was that people thought it was a good idea to feed the swans. The females got lazy and stopped cruising around the lake shore finding good eating grounds. Then when all the crowds left for the winter the females had a tough go of it. This is why you should never feed any wildlife, especially swans. Please do not feed the swans anything at all. Human food can kill them.



Mike and his swan buddy

There have been some other adventures, like the time one of the swans went over the spillway and we had to rappel down to get her. Or the times we've watched a swan get angry and kill a goose that tried to get his food. Swans have also gotten tangled in fishing lines, which can be dangerous to them.

Fast forward to the last six months and one of the male swans was found dead. One of the males was about 17 years old so it is very likely that he died of old age. Now I notice that the female swans roam all over the lake and once in a while the girls invite the male swan over for dinner at their favorite feeding grounds.

This is where we are now with the three beautiful swans on Pine Mountain Lake. I hope they are smart enough to avoid humans and animals alike. Please don't feed the swans; you are not doing them any favors by doing so. Let's just enjoy their grace and beauty.

PLAY WITH THE BEST



\$600,000
Cruisin'
CAMARO GIVEAWAY

ROCK THE COOLEST RIDE & WIN BIG-TIME BUCKS

February 27 - April 28

Win your share of over \$46,000 weekly at drawings every Thursday & Friday

GRAND FINALE
Cruise away in a new Camaro April 28

Kiosk swipe every day to win prizes

FIREHOUSE LOUNGE

LIVE ENTERTAINMENT
SATURDAYS in APRIL
8pm - 11pm

APRIL 1 South 65	
APRIL 8 Rudy Parris and the Rounders	
APRIL 15 Max Headroom	
APRIL 22 3rd Rock	
APRIL 29 Nova	

No cover charge Must be 21.



Raise The Steaks.

Vintage STEAKHOUSE
HANDCRAFTED STEAKS & SEAFOOD

FOR RESERVATIONS GO TO
CHUKCHANSIGOLD.COM



**CHUKCHANSI GOLD
RESORT & CASINO**



Hwy 41 North To Coarsegold | chukchansigold.com | 866.794.6946

Must be 21 years of age or older and have a valid government-issued photo ID acceptable management and be a Chukchansi Rewards Club Member for any and all transactions. Management reserves all rights to cancel or modify all offers, promotions and/or events without prior notice. Restrictions and exclusions may apply. Please visit our website for further details and what to expect during your visit.

FOR RESERVATIONS
OR MORE
INFORMATION
CALL 1.209.962.8638



FOR RESERVATIONS
OR MORE
INFORMATION
CALL 1.209.962.8638

UPCOMING ENTERTAINMENT AT THE GRILL

Friday, May 5	Karaoke
Saturday, May 27	<i>The Koolshifters</i>
Friday, June 2	Karaoke
Saturday, June 3	TBD
Saturday, June 10	<i>DJ Larry</i>
Saturday, June 17	<i>Leilani & The Distractions</i>
Saturday, June 24	<i>Rattle Tone</i>
Saturday, July 1	<i>Scott Patrick Band</i>
Friday, July 7	Karaoke
Saturday, July 8	<i>Leilani & The Distractions</i>
Saturday, July 15	<i>Happy Times Posse</i>
Saturday, July 22	<i>DJ Larry</i>
Saturday, July 29	<i>The Koolshifters</i>
Friday, August 4	Karaoke
Saturday, August 5	<i>DJ Larry</i>
Saturday, August 12	<i>Rattle Tone</i>
Saturday, August 19	<i>Leilani & The Distractions</i>
Saturday, August 26	<i>Happy Times Posse</i>
Friday, September 1	Karaoke
Saturday, September 2	<i>Happy Times Posse</i>
Saturday, September 9	<i>Jokers & Jesters Comedy Show</i>
Saturday, September 16	<i>The Koolshifters</i>
Saturday, September 23	<i>Leilani & The Distractions</i>
Saturday, September 30	<i>DJ Larry</i>



WELCOME TO THE
Hidden Jewel of the Foothills
**PINE MOUNTAIN LAKE
GOLF & COUNTRY CLUB**

12765 MUELLER DRIVE • GROVELAND, CA. 95321

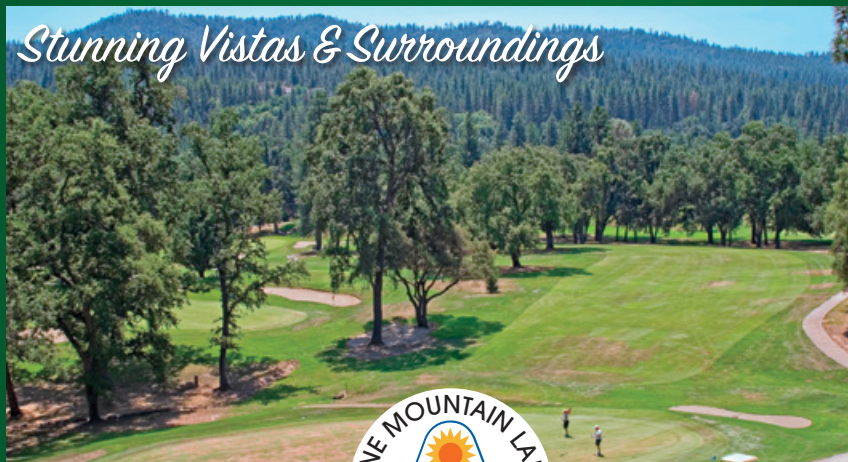
Championship Golf Course



*Beautifully Manicured
Greens*



Stunning Vistas & Surroundings



Mountain Golf  *at its Finest!*

www.PineMountainLake.com

1-209-962-8620

The Grill at Pine Mountain Lake Presents

**Easter Sunday
Brunch**

Sunday, April 9th

SPECIAL EASTER BRUNCH MENU AVAILABLE
10 am - 3:30 pm

EASTER DINNER SPECIAL AVAILABLE
5 pm - 8 pm

FOR RESERVATIONS OR MORE INFO
1.209.962.8638



MAINTENANCE MATTERS

RICK LAFFRANCHI – MAINTENANCE AND OPERATIONS MANAGER

“April hath put a spirit of youth in everything” – William Shakespeare

April is here and hopefully the better weather has arrived. At the time of writing this article (March 10th) we have accumulated 51+ inches of rain for the season (October-March) and countless inches of snow, which in turn creates 100s of hours of overtime by our plow team and Facilities crew. Thank goodness for the dedicated team that keep the roads clear and the homeowners safe in their travels.

April will bring big changes for the two teams in Maintenance. The Facilities or “roads crew” will change their focus from snow and rain management to preparing our roads and Beaches for the upcoming

recreation season. This means the painting of stops and bars, the painting of road edge markings, like no parking red or unloading blue. Along with those tasks, the crew is responsible for preparing the swim areas, repairing floats on the docks, and general summer activity maintenance.

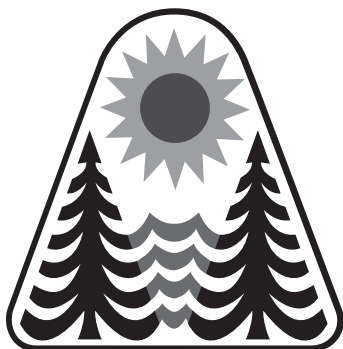
The Building and Grounds crew will also be making preparations for the season ahead, landscaping will be updated, building paint will be touched up and at the Swim Center we will be preparing by repairing the deck, firing up the boiler and tuning the chemical dosing system for a safe fun summer. It is shaping up to be a wonderful season of fun in the sun. And please remember if you see folks working on the road edge, slowdown, look around and be courteous. Have a great April!

**PROPOSED ADOPTION OF NEW
RESOLUTION – BOAT BERTH WAIT
LIST AND TRANSFER POLICY**

In accordance with Pine Mountain Lakes' CC&Rs, Article III, Section 7 (a) (ii)-Association Policies & Association Rules, the Board of Directors has approved a first reading for the proposed new resolution as shown below:

The resolution will be published for 30 days in the PML News for to give members the opportunity to provide feedback to the Board prior to adoption.

The purpose of this resolution is to establish a policy to be followed setting forth rules and procedures with respect to the creation and maintenance of a boat berth wait list and the transfer of Association owned boat berths to subsequent PML members in accordance with the most current boat berth rental agreement.



Resolution _____
Adopted: _____, 2023

PINE MOUNTAIN LAKE ASSOCIATION RESOLUTION ADOPTING BOAT BERTH WAIT LIST AND TRANSFER POLICY

SUBJECT: Adoption of a boat berth wait list and transfer policy.

PURPOSE: To establish a policy to be followed setting forth rules and procedures with respect to the creation and maintenance of a boat berth wait list and the transfer of Association owned boat berths to subsequent PML members in accordance with the most current boat berth rental agreement.

AUTHORITY: The Declaration, Bylaws, and Articles of Incorporation of the Association and California Law.

EFFECTIVE DATE: 2023

WHEREAS, the Board of Directors for the Association has determined that there is a need for rules and procedures to govern the use of a wait list and transfer of Association-owned boat berths;

WHEREAS, the PML Lake and Marina Committee has reviewed the usage of Association-owned boat berths and developed and recommended reasonable rules and procedures to govern the use of a wait list and transfer of said boat berths;

WHEREAS, the Board of Directors has determined it is in the best interests of the Association and its members to adopt a policy, rules and procedures for the management of a boat berth wait list and transfer of boat berths;

NOW, THEREFORE BE IT RESOLVED, The Board of Directors adopts the following boat berth wait list and transfer policies and procedures, which govern the use Association-owned boat berths:

PML Boat Wait List Rules and Procedures

These rules and procedures cover the following areas: Rules and procedures for Wait Lists:

Pontoon boat berth in Marina Pontoon space on the beach Ski boat berth in the marina Boat space on the mud bank

A. To Join the Wait List

1. To join the end of the wait list, the human individual (aka "individual") must be a property owner in good standing with PML. The name on the wait list shall be that of an individual, NOT a partnership, corporation, trust, etc.
2. Further, the individual needs to be individually listed on the deed to the PML property, OR a named partner in a partnership that owns PML property, OR an officer or shareholder in a corporation that owns PML property, OR a trustee of a trust that owns PML property.
3. Should the individual name change on the wait list (i.e., a name changes relative to a partnership, name change relative to a corporation, name change relative to a trust, OR name change relative to a family member), the "new" individual will be entered on the wait list at the end, and thus be treated as a NEW addition to the wait list. The former position will be forfeited.
4. The individual shall pay PML an application fee of \$350 to join any ONE wait list. This application fee is non-refundable: \$50 is an administrative fee and \$300 is applicable to the first season (or seasons) docking fee. A season is May 1 through October 31. Any change in the individual name on the wait list shall result in a forfeiture of the entire \$350 fee. If there is a name change, as described in #2 above, then a new fee of \$350 is due to PML.
5. Pontoon Boat Exception: An enrollment on the pontoon boat beach space wait list shall also enable the individual to enroll (should they so choose) on the marina pontoon boat berth wait list, and, vice versa, enrollment on the marina pontoon boat berth wait list shall also enable the individual to enroll (should they so choose) on the pontoon boat beach space wait list, for no additional fee.

B. A Space/Berth Becomes Available While on Wait List

1. Is the individual property owner in good standing?
 - a. If no, then the position on the wait list is forfeited.
 - b. If yes, then does the individual have a boat to occupy the available slip?
 - i. If no, then the individual may pass on this available space/berth and remain on the wait list in the same position.
OR
 - ii. The individual may search for a boat to purchase but must pay the docking fee at the time they are offered an available space / berth, regardless of whether they have a boat. The alternative is to pass on this available slip and remain on the wait list in the same position.
 - c. If the individual has a boat, then the space/berth is transferred to the new individual, upon payment of the season's docking fee (net of the \$300 applied).

C. The Individual Dies While on Wait List

1. Was the individual property owner in good standing?
 - a. If no, then the position on the wait list is forfeited.
2. If yes, then the next individual listed on the deed shall assume the position of the deceased individual on the wait list. This deed shall be the deed as it existed when the deceased individual first enrolled in the wait list. However, is this next individual in good standing?
 - a. If no, then the position on the wait list is forfeited.
 - b. If yes, then this "next individual" assumes the position on the wait list.

D. Lessee Dies

1. The boat space/berth is offered to the "next individual" listed on the deed. This shall be the deed as it existed when the deceased individual first gained the space/berth. Is this "next individual" in good standing?
 - a. No, then the space/berth is freed up.
 - b. If yes, then this "next individual" takes over the space/berth.

E. Lessee Sells Property and is no Longer a PML Property Owner

1. The space/berth is freed up and available to the next individual on the wait list.

Amendment

1. This Policy may be repealed, supplemented, or amended from time to time by the Board of Directors.

Respectfully submitted,

Chuck Obeso-Bradley, Secretary

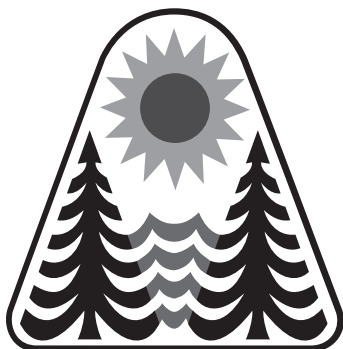
CB/jp/3.13.23

**RESOLUTION 23.01 – PINE
MOUNTAIN LAKE ASSOCIATION
RESOLUTION ADOPTING
EMERGENCY TEMPORARY LOT
MERGER MORATORIUM**

In accordance with Pine Mountain Lake Association's CC&R's, Article III, Section 7(c), Adoption and Amendment of Rules, the Board of Directors has approved a new resolution, 23.01 – Pine Mountain Lake Association Resolution Adopting Emergency Temporary Lot Merger Moratorium

The purpose of this resolution is to establish an emergency temporary moratorium suspending all lot mergers in the Association until such time that a draft restatement of the governing documents is put to a vote of the membership, and a determination is made as to the approval of the governing documents restatement.

This Resolution 23.01 was approved and adopted by the Board of Directors at a duly noticed meeting on March 18, 2023.



Resolution 23.01
Adopted: March 18, 2023

**PINE MOUNTAIN LAKE ASSOCIATION
RESOLUTION ADOPTING EMERGENCY TEMPORARY LOT MERGER MORATORIUM**

SUBJECT: Adoption of an emergency temporary lot merger moratorium.

PURPOSE: To establish an emergency temporary moratorium suspending all lot mergers in the Association until such time that a draft restatement of the governing documents is put to a vote of the membership, and a determination is made as to the approval of the governing documents restatement.

AUTHORITY: The Declaration, Bylaws, and Articles of Incorporation of the Association and California Law.

EFFECTIVE DATE: March 18, 2023

WHEREAS, the Board of Directors has determined that the merging of lots under the current lot merger policy presents an imminent risk of substantial economic loss to the Association;

WHEREAS, the Governing Documents Update Ad Hoc Committee is working with Association Counsel to prepare a draft restatement of the PML Bylaws and CC&R's that will be presented for a membership vote;

WHEREAS, the Board of Directors has determined that an emergency temporary lot merger moratorium is necessary to protect the assets of the Association and its ability to repair, maintain and operate the facilities and common area for the benefit of the membership;

NOW, THEREFORE BE IT RESOLVED, The Board of Directors adopts the following resolution:

Emergency Temporary Lot Merger Moratorium:

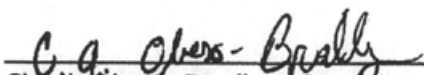
The Board of Directors hereby establishes an emergency temporary moratorium suspending all lot mergers in the Association, until such time that a draft restatement of the governing documents is put to a vote of the membership, and a determination is made as to the approval of the governing documents restatement including a new provision regarding lot mergers.

All members who have submitted a lot merger application, including a letter of intent and fee payment, at the date of adoption of this emergency temporary lot merger moratorium, and received an acknowledgement of acceptance of the proposed lot merger application, will not be subject to the moratorium and will be allowed to proceed with the lot merger process to completion.

Any member who has not completed a lot merger application process including the submittal of a letter of intent and merger fee payment, and has not received acknowledgement and acceptance of the proposed lot merger application from the Association, as of the date of adoption of this resolution by the Board of Directors, will be subject to the lot merger moratorium and they will not be allowed to merge their lots.

The adoption of this emergency resolution temporarily suspends PML Board Resolution #90.05, Merging of PML Lots, until such time as the new restatement of the PMLA governing documents have been put to a vote of the membership

Respectfully submitted,


Chuck Obeso-Bradley, Secretary

CB/jp/3.13.23

**CHANGES TO RESOLUTION #02.02
DUNN COURT BEACH NON-
MOTORIZED WATERCRAFT BERTHS**

In accordance with Pine Mountain Lakes' CC&Rs, Article III, Section 7 (a) (ii)-Association Policies & Association Rules, the Board of Directors has approved a member review of the proposed amendment as shown below. This revision is being published in this issue of the PML News to give members the opportunity to review the proposed changes and provide feedback to the Board prior to adoption.

Legend: *Bold/Italic* = new text
~~Strikethrough~~ = removed text

The purpose of this revision is to expand the usage of berths at Dunn Court Beach from sailboats only, to non-motorized watercraft, including, but not limited to sailboats, canoes, and kayaks.

Resolution 02.02
Adopted: March 18, 2002
Amended: March 18, 2023

DUNN COURT BEACH SAILBOAT NON-MOTORIZED WATERCRAFT BERTHS

WHEREAS, the Board of Directors has deemed it to be in the best interest of Pine Mountain Lake Association to allow ~~sailboat~~ **non-motorized watercraft** docking on the beach at Dunn Court;

NOW, THEREFORE, BE IT RESOLVED, that ~~thirty~~ **twenty-five (25)** berths will be made available to Pine Mountain Lake Association property owners of **non-motorized watercraft** sailboats who wish to rent a berth from the Association on an annual basis. Space allotments ~~may~~ will be made giving preference to ~~boat~~ **non-motorized watercraft** owners with previous year assignments. Any unused berths will be offered to property owners on the **Dunn Court Beach** waiting list. Berths cannot be sublet.

BE IT FURTHER RESOLVED that the **non-motorized watercraft** boat berth fee is based upon the Amenity Fee Schedule for the current year. If full payment is not received in the Pine Mountain Lake Association Administration Office by April 1st the berth will be offered to the next person on the waiting list.

Respectfully submitted,

Bill Floren **Chuck Obeso-Bradley**, Board Secretary

/jodg



ECHO45
ADVISORS

If you're working with a financial advisor and you can't answer YES to all 10 of these questions, it might be time for a change.

IN PERSON MEETINGS
AVAILABLE IN PML!

- 1) Is your financial advisor **independent** and working as a **fiduciary**, aka, someone that is required to place your needs above their own?
- 2) Has your financial advisor **created a bespoke financial plan** for you, based on your specific resources and goals, that covers your Investments, Taxation, Insurance, Employee Benefits, Education and Estate Planning?
- 3) Is your financial advisor a **CERTIFIED FINANCIAL PLANNER™** ?
- 4) Has your financial advisor provided you with **customized tax planning** based on your most recent tax return?
- 5) Has your financial advisor **created a personal stock index** for you defined by your specific tax situation and Environmental, Social and Governance (ESG) preferences?
- 6) Are you able to securely **text** your financial advisor when you have a question?
- 7) Does your financial advisor **actively tax-loss harvest** in your taxable investment accounts during market downturns?
- 8) Is your financial advisor **fee-based**, avoiding commission-based trading?
- 9) Are you supported by a **team of financial professionals** that you are comfortable working with directly?
- 10) Is your financial professional certified in **Blockchain** and **Digital Assets** and have they offered advice on whether **cryptocurrencies** are appropriate for you?

Call us at **877-4-Echo45** (877-432-4645) or **info@echo45advisors.com**

1801 N. California Blvd., Suite 101, Walnut Creek, CA 94596 | **Echo45Advisors.com**

Echo45 Advisors, LLC is a registered investment adviser. Past performance is no guarantee of future returns. Investing involves risk and possible loss of principal capital. No advice may be rendered by our firm unless a client service agreement is in place. The certificate in Blockchain and Digital AssetsSM is issued by the Digital Assets Council of Financial Professionals.



GO TO THE OFFICIAL ONLINE PRESENCE OF THE PMLA FOR THE LATEST NEWS & INFORMATION

PineMountainLake.com

Facebook.com/PineMountainLakeCA

Facebook.com/PMLARecreation

Facebook.com/PMLMaintenanceDept

ALL PMLA HOMEOWNERS EMAIL OPT-IN PROGRAM

The Association is pleased to offer a money saving program available to all PMLA property owners. This program allows you to receive many of the documents we are required to provide to you via email. This option is important because:

COST SAVINGS – The Association is spared the expense of printing and mailing many documents to those property owners who sign up.

ENVIRONMENTAL SAVINGS – Less paper means less trash and reduced damage to the environment both in the disposal and production of paper and envelopes.

REDUCED CLUTTER – By receiving documents via email there is less paper for you

to deal with. All documents can be saved on your computer and viewed at your discretion.

TIMELY RECEIPT – Documents sent electronically are received in minutes as opposed to the days it takes for regular mail to arrive.

If these sound like good reasons to you, please sign up for the Document Email Program today using the attached form. Simply return the completed form to the Administration office at your convenience.

If you have any questions on this program please feel free to give us a call (962-8600) and we will be happy to explain the details and the advantages.

Please read the Terms & Conditions for the email opt-in program on the website, www.pinemountainlake.com under the Resources/Forms > Opt-In Email Program.

Mail form below to:
Pine Mountain Lake Association
 19228 Pine Mountain Drive • Groveland, CA 95321

YES, I WANT TO ENROLL IN PMLA'S EMAIL STATEMENT AND DOCUMENT SERVICE. I ACKNOWLEDGE AND AGREE TO THE TERMS AND CONDITIONS SET FORTH ABOVE AS A CONDITION FOR PARTICIPATION IN THIS SERVICE.

PMLA Account Number: _____ Unit/Lot #: _____

Name: _____ Phone #: _____

Address: _____

Email Address: _____


Signature: _____

PINE MOUNTAIN LAKE EQUESTRIAN CENTER PRESENTS

SPRING VET CLINICS



PIONEER EQUINE VET
APRIL 5
 Equine Only

MONO WAY VET
APRIL 11
 Dogs & Horses



Both clinics are open to public not just boarders or PML Residents

Please call the Stables office to be placed on the list or for more information at
1-209-962-8667

RECREATION UPDATE

MICHELLE CATHEY-RECREATION AND SEASONAL OPERATIONS MANAGER, CCAM & CPO

WE'RE HIRING!

Seasonal jobs are posted and PML is still accepting applications. We need more applicants for the Café Lead and Marina Attendant positions. Check out the job description on our website to see if it's a position you're interested in and apply @ www.pinemountainlake.com

People have been asking about the fish plant this year. We'll be having a single fish plant in mid-May. The date is still TBD and we'll get the information out as soon as we know more. We are expecting to plant approximately 2,000 pounds of triploid rainbow trout. These fish will be delivered to us from Mt. Lassen Trout Farm in Payne's Creek, CA.

Don't forget to pick up your season passes for racquet sports. Passes can be purchased and picked up from the

Administration Office. Passes need to be purchased at the administration office because you will receive a card that has your picture and property information such as your unit and lot. Cards will be uniquely identified by the color so that you can show them at the tennis and pickleball courts.

If you're a property owner and you don't have a gate card, now is a good time to get one of those too. Per Resolution #03.01-Weekend & Holiday Parking at the PML Marina: property owners may be required to provide a valid PML Property Owner Card for identification purposes. This will be the case for any owner who uses their hang tag - please be prepared.

For any questions, please feel free to reach out to me at 1 (209) 962-8604 or send me an email at m.cathey@pinemountainlake.com



MOORE BROS. SCAVENGER CO., INC.
 P. O. Box 278 • Big Oak Flat, CA 95305 • (209) 962-7224 • FAX (209) 962-7257



VACATION RENTAL OPTIONS FOR TRASH SERVICE

In order to assist property owner/managers of short-term rentals with trash removal, Moore Bros. Scavenger Co. offers the following services.

Short-term rental customers may participate in year-round or three-month summer curbside service. To manage anticipated levels of guest trash, property owners/managers of short-term rentals should maintain the suggested service levels as determined by the *Maximum Occupancy for Rental Property* (please see the chart below). In the event that renters generate more than the expected amount of trash or the home is rented multiple times during a given week the following options are provided:

- **As Needed Extra Pickup.** Property owners/managers may request a notation on their rental service accounts to *pick up extra as needed*. This will ensure that all trash left alongside the cans will be picked up by Moore Bros. and a special pickup will not be required. There is an additional per-can/bag charge for each extra can/bag picked up.
- **Special Pickup.** Moore Bros. has a truck and driver available for special pickups Monday through Friday.
- Property owner/managers must place a request for service call or email to Moore Bros. before 3 pm on the business day prior to the requested pickup day. A request for a Monday pickup must be made by 3 pm on the previous Friday. **Prepaid Bags.** Prepaid Moore Bros. bags may be purchased by property owner/manager to be used by any handyman or housekeeper servicing the residence between rental customers. The prepaid bags can be disposed of at the Pine Mountain Lake Maintenance Yard on Par Court off of Mueller Dr.

Property owners/managers **utilizing full summer service** may go to *on-call service* for the off season.

- **Off Season on Call Service.** Property owner/manager may call or email an *on-call request* to Moore Bros. for a service pickup on the regular pickup day for the address. A request for service call or email must be received before 3 pm the business day prior to regular scheduled pickup day. Charges will be based on the standard a per-can rate for each can/bag picked up.
- **Special Pickup.** Please follow the same procedure as listed above for Special Pickup.

Maximum Occupancy for Rental Property

Maximum Occupancy	Suggested Service Level
6 - 8 people	2 can
8 - 10 people	3 can
10 - 12 people	4 can
Lake front Property 12 people	4 or more cans as typically needed

If you have questions please feel free to contact our office at (209) 962-7224 or email us at: info@moorebrosscavenger.com and Shirley@moorebrosscavenger.com (Please cc both to insure prompt replies).

A drop-off Recycling center is available for use Mon – Sat. 8 am – 5 pm @ 11300 Wards Ferry Rd. Big Oak Flat, Ca

PMLA OWNED LOTS FOR SALE

2/047	GAMBLE STREET	PENDING \$1,000
2/287	FERRETTI ROAD	\$2,500
2/448	WELLS FARGO DRIVE	\$1,000
3/011	FERRETTI ROAD	\$1,000
3/057	PINE MOUNTAIN DRIVE	\$1,500
6/113	FERRETTI ROAD	\$1,000
6/179	COTTONWOOD STREET	\$1,000
6/211	FERRETTI ROAD	\$2,000
6/252	FERRETTI ROAD	\$1,000

FOR FURTHER INFORMATION REGARDING THESE PROPERTIES PLEASE CONTACT PMLA AT (209) 962-8600

Deardorff Realty

COZY CABIN

Waiting for you to enjoy this summer. Walk to fisherman's cove & tennis. 20571 Rock Canyon Way, Groveland.



3bed, 1bath 0.25 acres solid surface countertops, dining room breakfast area, free standing wood burning fireplace private sewer septic — **\$339,000**

Contact Marilyn Deardorff, agent.

Contact Marilyn Deardorff-Scott - BRE 00396888

209-962-0718



PAUL S. BUNT, ESQ.
 ATTORNEY AT LAW

ESTATE PLANNING
 PROBATE
 REAL ESTATE
 BANKRUPTCY
 ELDER CARE
209.962.6778

Mountain Leisure Center, Groveland
 appointments available in Sonora and Lake Don Pedro

BERKSHIRE HATHAWAY
HOMESERVICES

DRYSDALE
PROPERTIES

A Private World

MLS# 20230100

20839 McKinley Way

\$727K



Newer Built Home
2 Bd/ 3 Ba
2 Car Garage
2010 Sqft in nearly 1 acre Lot
Bonus Room with Wet Bar
and Murphy Bed
Seasonal Creek & Greenbelt

Ron Connick, Realtor
Call: 209.206.0007



FROM YOUR GROVELAND OFFICE
KRISTIN SIMON: 817.366.9942
TISH FULTON: 209.985.0216
RON CONNICK: 209.206.0007
CARMEN TAIRA: 209.962.7765
18727 MAIN STREET P.O. BOX 792 GROVELAND, CA 95321

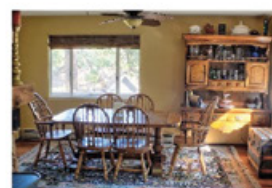


SOLD! to a Happy Buyer
Unit 7 Lot 217
*"I introduce People
to Homes until they
find the one they
Love."*
Kristin Simon
Realtor
CP: 817.366.9942

Turn Key Vacation Rental

MLS#20221820

20046 Pine Mountain Dr. **REDUCED!**
\$380K
was \$399,000



4 Bd/3 Ba, Bonus Room
New Mini-Split heating and air system.
Located 25 miles to the entrance of
Yosemite National Park.

Congratulations!
Ron Connick
Honor Society Award
Top 16% Nationwide



FOR AN
INSTANT
HOME VALUE
ESTIMATE



Ron Connick
REALTOR® DRE #00575057
209.206.0007



Carmen Taira
Office Administration
209.962.7765



Kristin Simon
REALTOR® DRE #02202543
817.366.9942



Tish Fulton
REALTOR® DRE #00750019
209.985.0216

18727 Main Street, PO Box 792, Groveland, CA 95321 | 209.962.7765

© 2022 BHH Affiliates, LLC. An independently owned and operated franchisee of BHH Affiliates, LLC. Berkshire Hathaway HomeServices and the Berkshire Hathaway HomeServices symbol are registered service marks of HomeServices of America, Inc.
Equal Housing Opportunity, DRE #01499008, Nevada Lic. #B.1001647.



DRE# 01113243
MLS
18687 MAIN ST. STE E
GROVELAND, CA 95321



KATHY NIEDENS
REALTOR® / SALESPERSON
209.962.1111 OFFICE
209.985.4031 CELL
knniedens@gmail.com

LIST & SELL WITH
KATHY & GET YOUR
HOUSE CLEANED
FOR FREE
ASK FOR DETAILS

HOME • CARPET
WINDOWS

As both a realtor, and the owner of heavenly cleaning service, I can offer you more. We all know how important it is to get your home looking it's best when selling or when buying a new home, cleaning it before you move in. Well, let me take care of it. Home cleaning. Carpet cleaning. Windows cleaning. *Could save you time, trouble, and money.*

HEAVENLY
CLEANING SERVICE
209.962.6418



PROFESSIONAL CARPET CLEANING & HOUSEKEEPING SERVICE



- Launching
- Winterizing
- House Calls
- Dock Calls
- Service
- Repairs
- Storage
- Trailer Repair

209-962-4594

The Boat Doctor

Paul Belluomini • P.O. Box 113 • Big Oak Flat, CA 95305



PINE MOUNTAIN LAKE REALTY

An Agent Owned Company 18919 Ferretti Road • PO Box 738 • Groveland CA 95321 • 209-962-7156 • www.pmlr.com



Barry Scales
Broker/Owner
209.484.7123
DRE#00451887



Lynn Bonander, GRI
Owner/Realtor®
209.484.7156
DRE#00683485



Val Bruce, GRI
Owner/Broker Assoc.
209.768.7368
DRE#00578336



Parker 'PJ' Johnson
Owner/Realtor®
209.768.6232
DRE#01732298



Marc Fossum
Owner/Realtor®
209.770.4750
DRE#01956242



Patty Beggs
Owner/Realtor®
209.840.2293
DRE#01339347



Michael Beggs
Broker Assoc./Realtor®
209.840.2294
DRE#0133568



Ann Powell
GRI, ABR, RSPS
209-200-1692
DRE#01268655



Eleda Carlson
Owner/Realtor®
209-814-4123
DRE#00632516



20267 Little Valley
13-236
\$289,900
MLS# 20222032

Escape to the Mountains!!

2 Bd/2 Bth, Approx 1708sf on 0.53 Acre, Great Rm, Central Heat/Air, Open Kitchen & Dining Rm, Plenty of Counter & Cupboard Space. Off Kitchen Laundry Rm, Washer & Dryer Included, Large Patry & Extra Refrigerator. Extra Large Master Bd/Bth, Mirrored Closets & an Alcove w/Add'l Large Closet Soace w/Rm for an Office/Hobby Rm, Bth w/ Corner Garden Tub, Double Sinks & Separate Shower. Outside Patio, Circular Driveway and Level Lot.



19372 James Circle
2-366
\$425,000
MLS# 20230187

Spacious Lovely Mountain Home !!

3 Bd/3 Bth, 2 Car Attached, Oversized Garage w/Bath, Shelves & Cabinets. Approx 1872sf on 0.52 Acre! Large Great Rm with Huge Free-standing Fire Place, 1 Step down to Large Pool/ Family Rm, w/Wet Bar, Pool Table Included. Beautiful Open Beam Ceilings, Ceiling Fans, Granite Countertops, Kitchen w/Island, Stainless Steel Appliances, Master Bedrm/Bath with Vanity and Tub/Shower. Inside Laundry, Washer & Dryer Included. Front & Rear Decks, Circular Driveway, Large Back Yard.



20470 Ferretti Rd
3-34
\$289,000
MLS# 20221324

Pretty Ranch Style

3 Bed/2 Bath, Bonus Room, Single Level, 2 Car Attached Finished Garage, Approx 1344sf, 0.65 Acre! Living Room with Wood Burning Fireplace with Stone Accent, Cathedral Ceiling, Crown Molding, Central Heat/ Air. Skylights, Ceiling Fans, Breakfast Bar, Open Dining. Master Bed & Bath w/Separate Shower. Inside Laundry, French Doors Leading to the Covered Deck. Home Sits back from Road & Traffic.



11993 Valenta Way
8-256
\$499,000
MLS# 20221959

Quality, Convenience & Comfort!

3 Bed/2 1/2 Bath, Approx 1.05 Acre, 1716sf, 2 Car Detached, Finished Oversized Garage, Bonus Rm w/outside access to the 8 Person Cal Spas Hot Tub. Open Floor Plan, Living Rm w/Freestanding Fireplace, Cathedral Open Beam Ceiling, Solid Surface Countertops, Open Dining, Dual-Zone Trans HVAC System, Dual-Fuel Furnace, Solar. Wired for Internal & External Speakers. Patio, Deck with Awnings, Solar, and Outside Shed. Inside Laundry.



20225 Upper Skyridge Dr
15-39
\$435,000
MLS# 20221950

Retreat to the Mountains!

3 Bd/2 1/2 Bth, 2 Level, Approx 1640sf, 0.48 Acre. Great Room, Free Standing Wood Burning Fireplace, Ceiling Fans, Double Pane Windows, Central Air, Propane Heat. Brfst Bar, Open Dining, Master Bd/Bth on Entry Level, Lower Level Bonus/Game Rm, Plus 3rd Bdrm & Full Bath & Laundry Area. Deck/ Balcony, Level Driveway, Plenty of Indoor Storage. Most Furnishings will stay for New Owner!



19080 Dyer Court #8
\$195,000
MLS# 20230121

Lovely Renovated Condo on the Golf Course

2 Bed/2 Full Bath, 2 Levels, Living Room with access to Patio and View of the Golf Course/5th Hole, Electric Fireplace/Heater, Ceiling Fans. Kitchen w/Breakfast Bar, Granite Countertops, Open Dining Area, Wall AC Unit and Base-board Heaters. Master Bed/Bath, Balcony. Inside Laundry. Walking distance to the Pro Shop, Restaurant, Pool and Pickle Ball Courts. The HOA is planning on re-siding the wooden shingles on the front of the units.

Lots & Acreage for Sale

- \$ 9,900 - 7-217 0.41 ace Nice Buildable Lot Seasonal Creek
- \$ 15,000 - 1-39 0.25 acre - **PENDING!**
- \$ 18,000 - 6-219 0.29 acre Great Buildable Lot
- \$ 19,000 - 7-055A 0.52 acre - **PENDING!**
- \$ 19,000 - 4-21 1.03 acres Double Merged Lot near Fisherman's Cove and Tennis Courts
- \$ 24,900 - 15-50 0.87 acre Green Belt Merged Lot w/Filtered Views of the Lake **Reduced!**
- \$ 34,900 - 3-154 0.29 acre Beautiful Lot with Panoramic Mountain & Filtered Lake Views **Reduced!**
- \$ 49,900 - 5E-17 0.33 ace Prime Golf Course Lot

- \$ 65,000 - 5-23A 0.98 ace Close to Most Amenities, Zoned R-5
- \$ 69,000 - 5-8 0.21 acre Wonderful Views and Great Location, Bldg Plans for a Home Included
- \$ 89,900 - 4-128 0.78 acre Lake Front Lot
- \$129,500 - Merrell Rd 3.0 acres Open Spaces & Beautiful Views
- \$299,000 - Hwy 120 Townsite Location w/ General Commercial District (C-1) Zoning
- \$300,000 - Hwy 120 29.0 acres Multitude of Uses
- \$359,000 - Big Oak Flat 9.32 acres Beautiful Location w/Multitue Uses
- \$450,000 - Jamestown 42.39 acres Opportunity of a Lifetime! Near the Historic Gold Rush Town of Jamestown

MOORE BROTHERS PREPAID BAG BIN

The bin (dumpster) at the PMLA Maintenance Yard entrance is for the dumping of prepaid, Moore Bros., trash bags ONLY. No dumping of any other trash items are allowed. Violators will face enforcement action. Please help us keep this area clear and ensure that the dumpster can remain in place for our residents use. Thank you!

THE PREPAID BAGS CAN BE PURCHASED AT THE MAIN GATE AND THE PMLA OFFICE

Carron Tax

associates

Carole Smith
Enrolled Agent

20093 Ridgecrest Way
Groveland, CA 95321
Tel: 209/962-6119
E-mail: carolesmith@carrontax.com

INCOME TAX PREPARATION
AUDIT REPRESENTATION



WE ARE STILL BUSY SELLING IN THIS MARKET !!!
Call us to tell you what your home could sell for right now.



**YOSEMITE AREA
REAL ESTATE**

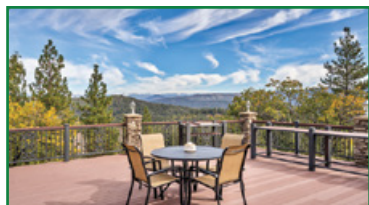


CHRIS H. LAKE
DRE 00946632
209-768-6156
chrishlake@gmail.com

GINA GIAMPIETRO HERNANDEZ
DRE 01226555
408-506-6944
GinaGHRealEstate@gmail.com

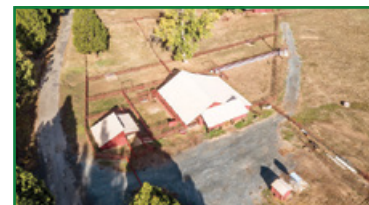
18687 MAIN ST. STE B2 GROVELAND
View listings at www.YosemiteAreaProperties.com
PAUL S. BUNT REAL ESTATE BROKER DRE 01221266

ABSOLUTELY STUNNING HOME & VIEWS-HILLTOP ESTATE RANCH NEAR YOSEMITE



10403 FISKE HILL RD. \$1,200,000 3120sf, 3 Bdrms 2 1/2 Ba, 5 car garage sitting on 40+/- acres, w/360 degree views including AWESOME views of Yosemite, snow capped mountains, the Clark Range & Greeley Hill areas. If you like nature, treasure privacy, estate style living at its stunning best, + beautiful landscaped grounds that can accommodate large gatherings, then this amazing place is for you! Large (34'10"X29') finished, 2 car attached garage w/storage cabinets. There is also a large work shop/garage (25'X50') w/3 garage doors, storage, & 220 outlets, a car collector's dream. Living rm, dining area & kitchen are great rm style, beautiful hardwood floors, open w/tall cedar ceilings & lg cross beams w/directional lighting, floor to ceiling windows & a rustic, magnificent floor to ceiling stone wood burning f.p. w/log mantel. Stainless appliances, walk-in pantry, bar that seats 7, French doors lead to expansive decks w/custom metal railing throughout the grounds, astonishing tree & panoramic views. Mstr bdrm upstairs is very lg w/views, lg bthrm, spa tub, walk-in shower & lg walk-in closet. Bonus/game rm upstairs w/pool table & built in storage. The ext. huge deck leads to another terraced deck below, waterfall/pond, then to a wine tasting patio w/an oak burl bar, huge fire pit, bocce court & horseshoe pit. Lovely gazebo overlooks the valley; storage area/carpport for firewood, a fenced vegetable garden, garden shed, chicken house w/fenced area & a dog kennel. Parking for around 40 vehicles. Concrete driveway entrance leads to beautiful stately custom iron solar powered gate & entry alarm system. 20,000 gallon water tank w/2 fire hydrants plumbed to it. 2 heat/air units, fireplace can heat entire home, propane gas and Generac generator that starts automatically. Located 27 miles from Yosemite. For added privacy, another 10+ acres may be purchased & for more room yet another 64.6 +/- acres are available for purchase. These parcels are connected to the 40ac that the house is on, making a total of 117+/- acres.

HOME ON THE RANGE - RANCHES FOR SALE



ABSOLUTELY BEAUTIFUL 343+/- acres!!! \$2,200,000 Prime meadow ranch land for sale, fully equipped for livestock. Highest quality new fencing & cross fencing, pipe & cable & barbed wire. There are 2 ranches (Converse Ranch & Caldwell Ranch) that are run & sold together for they are contracted together in the Williamson Act. There are 2 historic houses on the ranches w/their own well & septic. One built in 1906 has been newly renovated. Also there are 2 solar wells & 1 electrical well for livestock that supply plenty of water. 1 house well can also water livestock. Cattle equipment includes, pipe corrals & pens, squeeze chute, loading chute, new Rice Lake Scale, all in great shape & ready to use. 3 historic barns have been renovated. They all have cement floors, great for storing hay. The ranches are located in a beautiful valley along Converse Road in Greeley Hill, CA. Smith Creek runs through the valley providing water for the abundance of deer, wildlife & cattle. The hillsides of the valley are nicely forested w/pines that have all been brushed & masticated. The ranches have been recently surveyed by Freeman & Seaman Land Surveyors. It is 27 miles from Yosemite National Park.

RESORT STYLE LIVING



12721 Junipero Serra Way #14 - \$375,000 2161sf townhome next to golf course & pool. Updated/turnkey - Beautifully renovated. Formal entry, beautiful wd flrm in living areas, dining area & bdrms, open kitch. w/ granite cntrs, ss applcs, white cabinetry w/brushed nickel hardware throughout, 4 patio areas! Lg living rm w/beautiful wet bar, high windows w/tree views, floor to ceiling rock wd burning f.p., lg mstr bdrm w/balcony deck, walk-in closet, private shwr & commode, 2nd guest mstr w/cheerful colors & walk-in closet & full bath; bonus area for den or guest & indoor laundry. Enormous media rm, bdrm overflow area. Half bath, kitchenette & perfect entertainment area! Near amenities.

ADORABLE CHALET STYLE CABIN



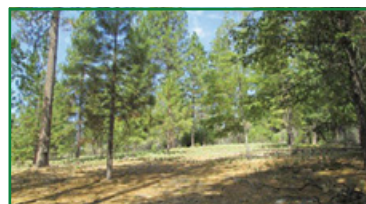
20723 Forestwood Way Unit 4 Lot 400 \$499,000 Absolutely cute, clean, turnkey, and near Lake Lodge Beach too! 2 car garage, flat parking, double merged private lot, Great rm w/knotty wd open beam vaulted ceilings, cozy newer & efficient propane f.p., newer ductless heat & cooling unit, luxury vinyl plank water proof flooring, stainless appliances, newer washer & dryer also, w/2bd 2ba on main level, breakfast bar & wet bar, 2 storage closets. Upper level has open loft w/partition wall making 2 areas for bedroom/sleeping areas. Interior staircase, master bath & main baths have been upgraded. Exterior has wonderful wd deck area & add'l concrete patio areas. Fully furnished & ready.

TRUE RUSTIC CABIN



19940 Pine Mountain Dr. Unit 13 Lot 347 \$449,000 2295sf on .27ac, built in '89, 2bdrm 2 bonus rooms, 2ba, 2 car garage. True rustic style cabin w/room for entire family and more! Exterior has rustic look that says cabin sweet cabin. Great location not far from main marina w/easy approach mostly level driveway that leads to 2 car garage w/convenient access to kitchen. Enormous GREAT rm w/vaulted ceilings, wd burning stove on a lg brick hearth f.p. & back covered deck access. Open dining area as well as a breakfast area in kitchen & breakfast bar can seat 5. Indoor laundry area. Lg master, 2nd bdrm, hall bath & 2 bonus rooms for additional sleeping areas. Downstairs is unfinished but spacious.

GREELEY HILL PROPERTY



Fiske Hill Rd, Greeley Hill \$134,900 2 separate parcels make up this 19.53ac. Located within the community of Greeley Hill yet enjoys the seclusion afforded by this acreage. Mature pines and oaks cover this woody retreat. Gentle rolling terrain with an open meadow. Power close to property. Septic and well will be required. Access has been developed. Close to elementary school.

64 ACRES



Fiske Rd Greeley Hill Secluded acreage tucked away off County paved road and paved driveway. Seasonal creek. Several unique building sites. Close to US Forestry Land. Power on adjacent properties. Varied sloped terrain. Ground coverage is a mixture of grasses and pines and oaks. Amazing mountain and vista views. Close to some retail amenities Possible owner financing. Located just 25 miles from Yosemite National Park

SPACIOUS AND UNIQUE FIXER UPPER



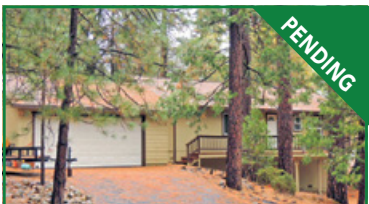
19208 Ferretti Rd., U5L217 .58 acre \$249,999 One of a kind dome architectural design home in beautiful PML. Originally built in 1975, on a beautiful deep lot, features 1184sf, 1bdrm/1 full bath & an upstairs open loft, great rm open living rm floor plan, and is in need of some general repairs & updating. Plus an oversized detached 2 car garage w/half bath, bonus storage rm & additional loft storage. If simple & unique and putting your own touches are what you are after, this is the one for you. Centrally located w/short drive to downtown & to golf course and country club restaurant, swimming pool & main marina.

REMODELED AND MARVELOUS!!!



12306 Tower Peak Unit 13 Lot 371 \$579,000 3bd/2 1/2ba 2054sf 3 car gar .31ac. 2020 Tesla Solar System, 2 power walls provide instant backup power, includes charger plug, fully monitored & supported by Tesla, no PGE power bills & no backup generator maintenance or fuel costs. New roof & Lennox HVAC system 2020 also w/new duct distribution system. Tankless Hot water heater 2021, NEW in-ground propane tank, Trex Decks, granite counters, Upgraded appliances and fixtures. Main level master w/ double sinks, private jetted tub/shower & commode, lg walk-in closet + 2nd storage closet, open grt rm. Tandem 3 car garage w/access to back deck for easy storage convenience. Short drive to main marina & golf course.

ADORABLE FRESHLY RENOVATED INSIDE AND OUT



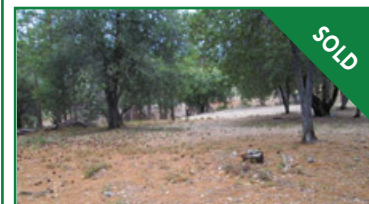
20058 Pine Mountain Dr. U15 L57 \$359,000 1192sf 2Bdrm/2Ba/2 Car Garage .32 acre. New & fresh - top to bottom, adorable & spacious home w/2 car garage - you will absolutely love it, located in beautiful Pine Mountain Lake. Featuring 2 master bedrooms, an open great rm w/new wd burning fp stove, new beautiful grey tone laminate flooring, new windows, new doors, new bathrooms, new HVAC, new kitchen w/stainless appliances, new cabinets, lg laundry rm w/pantry storage, new gutters, new exterior & interior paint, & new decking. What's not to love! Move right in & enjoy.

CLOSE TO LAKE AIRBNB



12415 Mills Unit 8 Lot 33 \$385,000 3bd/1 1/2 ba 1072sf .23ac. Adorable updated A-Frame cabin near lake in PML has been an extremely successful Airbnb for several years & turnkey. Beautiful 20ft tall knotty pine ceiling grt rm w/A-frame high, tree top view windows front & back, highly insulated & sustainable Metal Roof is PG&E 5 Star energy program certified since 2014 w/updated windows. New Trex Decking 2016, updated kitchen Hickory Cabinets, granite countertops, glass top range 2014, LG refrigerator & Microwave 2022, new laminate flooring in kitchen & family room 2019, lg storage & workshop in sub area, upgraded gutter screen & large level paved driveway w/space for RV parking 2014.

AMAZING VIEWS



10 acres off Fiske Hill Rd \$50,000 Amazing vista views. Several great building sites. Room for horses. Well maintained property. Gentle rolling terrain. Mix of mature pine and oak trees. Property has been surveyed. Paved road. Location is a low traffic area. Property is close to some local retail facilities including a cafe, hair salon, feed store and hardware/grocery and gas station. Possible owner financing. Just 25 miles to Yosemite National Park.

MAY YOUR EASTER BASKET BE FILLED WITH JOY AND HAPPINESS



LARRY JOBE
REALTOR – TAXIWAY EXPERT
209.768.5508 Cell
larryjobe1@gmail.com
DRE #01444727

PENNY CHRISTENSEN
BROKER ASSOCIATE – CRS
925.200.7149 Cell
penny@askpenny.com
DRE #00785760

Penny and I want to wish everyone the best that the Easter season has to offer. Many buyers will be looking for their perfect - **"EASTER EGG"**. Make sure they see the one in your yard by listing **NOW!**

LOTS & ACREAGE



U5 182 MUELLER DR.
Zoned R3-MX
\$75,000



1918 DYER CT.
Zoned R3-MX
\$69,500



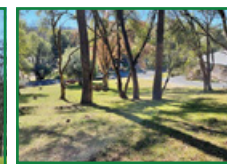
NO GATES – GOOD LOCATION
19526 Ferretti Rd.
3 bdrm, 3 ba, 2745sf
\$499,900



MTN. CABIN – AIRBnB
13141 Mueller Dr.
4 bdrm, 2 ba, 2098sf
\$449,900



LOOP TAXIWAY LOT
21065 Hemlock St.
1.03 Acres - Easy Build
\$249,900



20680 Ferretti Rd
.22 Acre
Easy build
\$9,900



Elder Lane
in PML U1
Each
\$9,900

Lot 4 .27ac – Lot 5 .26ac
.53 acres merged

www.YosemiteAreaRealtors.com

PAUL S. BUNT REAL ESTATE – DRE #01221266



TWO GUYS PIZZA PIES
18955 Ferretti Rd., Groveland
(Just 1/2 Block Off Hwy 120)

Check out our weekday
LUNCH SPECIAL!

We ♥ Phone Orders
(209) 962-4897

\$1.00 OFF
ANY SIZE TWO GUYS
PIZZA OR CALZONE

One coupon per order, per visit. May not be combined with any other offer and/or coupon. Not valid on delivery.

PMLN 0423 Offer Expires 05/15/23

\$2.00 OFF
ANY LARGE OR EXTRA LARGE
TWO GUYS PIZZA

One coupon per order, per visit. May not be combined with any other offer and/or coupon. Not valid on delivery.

PMLN 0423 Offer Expires 05/15/23



Pine Mountain Vacation Rentals

Looking to rent your home for short term rentals?
Not sure where to start or who to trust?

LET US DO THE WORK FOR YOU!

Locally owned and managed properties.

Rated Airbnb Superhost and VRBO Premier Host.

We use **DYNAMIC PRICING** with

Prompt Statements and Monthly payments

and very **COMPETITIVE RATES.**

Quick response time with

NO surprise fees.

Call Michael – Phone: (209) 840-2294

email: pinemountain48@gmail.com

www.pinemountainvacationrentals.net

GET IMPORTANT NEWS VIA EMAIL

Signing up for the new eSNAP program is quick and easy and gives you the ability to sign up for the information that you want to receive. Just head over to www.PineMountainLake.com and sign up today.

eSNAP

ELECTRONIC SAFETY, NEWS & ALERT PROGRAM

The Grill at Pine Mountain Lake – Receive emails with information regarding happenings at The Grill. Get information on Wine Tastings, Entertainment, Special Events and more.

This program is separate from the current email opt-in program that allows you to receive PMLA governing documents and requires your signed approval. This program can be signed up for via the online system. *Get your news and alerts via email, it's eSNAP!*

ABOUT EACH OF THE PROGRAMS

PML News & Alerts – Receive emails with information regarding anything affecting Pine Mountain Lake such as road closures, utility problems, fire alerts and more.

PML Amenities News – Receive emails with information about upcoming events, specials, or news regarding all PML amenities such as the lake, marina, golf course, etc.

VALADEZ TREE SERVICE LLC

- BRUSH CHIPPING
- HAZARD TREE REMOVAL
- LAND CLEARING



- STORM CLEAN UP
- MASTICATION
- TREE TRIMMING/ PRUNING

CA LIC. # 1097030

24 HOUR EMERGENCY SERVICE

(209)206-8591

valadeztree@gmail.com

16843 Crestview Dr.

Sonora Ca 95370

VETERAN AND SENIOR DISCOUNT



CONTRACTORS PERFORMING WORK IN PML ARE REQUIRED TO FOLLOW PMLA RULES & REGULATIONS

The following are some ***“common violations.”*** Please do your part to maintain a harmonious environment for all to enjoy. Remember: The PML property Owner is held responsible for those they hire.

VEHICLE USE:

1. Exceeding the posted speed limit
2. Driving in a reckless manner
3. Following another through an access gate or allowing others to follow you through
4. Parking on street (road shoulders OK)

PERSONAL CONDUCT:

1. Allowing loud music
2. Uttering abusive language or conduct that would be offensive to a reasonable person
3. Using the property Owner's gate card or clicker

WORK RELATED CONDUCT

1. Starting work before 7am or continuing after 7pm
2. Allowing dogs at construction sites
3. Performing work on Sunday
4. Cutting down a tree in excess of 5" without PMLA approval
5. Trespassing on neighboring property
6. Using neighbors water or electricity without written permission
7. Leaving construction signs longer than 5 days after work has been completed
8. Nailing signs to trees
9. Storing building materials on street or easement
10. Beginning exterior construction without PMLA approval

If you have questions call: The ECC Assistant
@ 1 (209) 962-8605 with questions.



Mark DeGregorio, CFP®, has earned the CERTIFIED FINANCIAL PLANNER™ certification.

A financial professional with a CFP® certification is well-versed in developing integrated wealth management plans, has a robust theoretical and practical knowledge of investment products and services, has an unwavering dedication to the highest ethics and a steadfast commitment to putting your interests first.

Contact me for wealth planning and financial advice.



Mark DeGregorio, CFP®
Senior Financial Associate
Associate Planning Professional

345 California Street, Floor 29
San Francisco, CA 94104

(415) 445-8583 | mark.degregorio@rbc.com



Investment and insurance products offered through RBC Wealth Management are not insured by the FDIC or any other federal government agency, are not deposits or other obligations of, or guaranteed by, a bank or any bank affiliate, and are subject to investment risks, including possible loss of the principal amount invested.

© 2023 RBC Wealth Management, a division of RBC Capital Markets, LLC, registered investment adviser and Member NYSE/FINRA/SIPC. All rights reserved. 22-SI-03250 (02/23)

Food & Drink sales begin at 5:00 PM

Tacos by Rock It Taco

Concert Begins at 6:00 PM

7 Times Entertainer of the Year

Western Music Hall of Fame Inductee in 2016

Will Rogers Award Winner from Academy of Western Artists

THE PINE MOUNTAIN LAKE ASSOCIATION PRESENTS

AN EVENING CONCERT WITH

Dave Stamey

FRIDAY APRIL 28

PML EQUESTRIAN CENTER

13309 CLIFTON WAY • GROVELAND CA

\$20 PER PERSON

CALL THE STABLES MANAGER, KENDRA BROWN, TO PURCHASE TICKETS

1.209.661.6321

MURRA'S TOTAL YARD MAINTENANCE

BRINGING VALUE FOR YOUR DOLLAR IN PML

- WEEDING
- LOT CLEARING
- SENIOR DISCOUNTS
- LEAF REMOVAL
- PLANTING
- TREE SKIRTING
- HAULING
- AND MORE

CALL JASON MURRA
209-352-3750

LIABILITY INSURED

Give the Gift of Family Memories

Preserve your past before it's too late
We'll digitize your old home movies and videos

- VHS TAPES & 8MM REEL FILM
- PRINT & SLIDE SCANNING
- AUDIO CASSETTES
- CD & DVD DUPLICATION
- PHOTO RESTORATION
- MEMORIAL SLIDESHOWS
- PHOTO PUZZLES

DejaVu Video Services
408-899-4407 • dejavuvideo123@gmail.com

FROM PMLA SAFETY COMMITTEE

BOB ASQUITH

One of the responsibilities of the PML Safety Committee is to organize and promote CERT. CERT will partner with the Safety Committee to bring your workshops in Fire Preparedness, First Aid, and Emergency Communications.

Join with your neighbors to make Pine Mountain Lake and Groveland a safer place. We are building out our CERT team to do just that. We invite you to come and join us. We will train you and give you practical experience how you can be safer, your family can be safer, and your community safer. In Tuolumne County, we work closely with the Office of Emergency Services. Our local sponsor is the Groveland Fire Department of GCSD.

There are more than 600,000 CERT volunteers in more than 2,700 chapters throughout the US. FEMA has developed CERT training. There are 9 units to the training which takes about 20 hours. It is the combination of classroom and practical experience. The topics covered include:

- Disaster preparedness
- Disaster fire suppression
- Disaster medical operations
- Light search and rescue operations
- Disaster psychology and team organization
- Disaster Simulation

The CERT course will benefit any citizen who takes it. They will be better prepared to respond to and cope with the aftermath of a disaster. These groups can provide immediate assistance to victims in their area, organize spontaneous volunteers who have not had the training and collect disaster intelligence that will assist professional responders with prioritization and allocation of resources following a disaster.

Inasmuch as the Groveland area is basically rural and some distance from Sonora and Tuolumne County government, following a major disaster, first responders who provide fire and medical services will not be able to meet the demand for these services. Factors such as number of victims, communication failures and road blockages will prevent people from accessing emergency services they have come to expect at a moment's notice through 911. People will have to

rely on each other for help in order to meet their immediate lifesaving and life sustaining needs.

One also expects that under these kinds of conditions, family members, fellow employees and neighbors will spontaneously to help each other. This was the case following the Mexico City earthquake where untrained, spontaneous volunteers saved 800 people. However, 100 people lost their lives while attempting to save others. This is a high price to pay and is preventable through training.

The Community Emergency Response Team (CERT) concept was developed and implemented by the Los Angeles City Fire Department (LAFD) in 1985. The Whittier Narrows earthquake in 1987 underscored the area-wide threat of a major disaster in California. Further, it confirmed the need for training civilians to meet their immediate needs. As a result, the LAFD created the Disaster Preparedness Division with the purpose of training citizens and private and government employees.

Email us at GrovelandCERT@gmail.com to join with our program

The Pine Mountain Lake Safety and Security Committee is a standing committee authorized by the PMLA Board of Directors to inform its decision making and promote its mission. The Committee meets every month.

Please email comments to: safetyandsecuritycommittee@pinemountainlake.com

The Pine Mountain Lake Safety and Security Committee is a standing committee authorized by the PMLA Board of Directors to inform its decision making and promote its mission. The Committee meets every month.

Join Our Committee Meeting: Members may attend our committee meetings.

Our next meeting is April 1st at 9am via Zoom. Please email safetyandsecuritycommittee@pinemountainlake.com to obtain your invitation.

Committee Meeting—was cancelled due to spotty internet service during the storms. The following are continuing issues for the committee.

Safety Training—S&SC will be partnering with CERT for another Fire Preparedness Workshop. Presenters will include GCSD Fire Department and Tuolumne County Office of Emergency Services. We will repeat this at least once during the second quarter, 2023. More than 100 people have attended these workshops in 2022.

Firewise Communities—Congratulations to the PointViewers as they are our newest FW community. Presently there is 2 Firewise (FW) community in PML. Contact the Safety Committee (email address below) for details how you can start a FW community and potential save on your Homeowners Fire Insurance.

Emergency Evacuation—S&SC, working with Tuolumne County Maps has finalized evacuation maps. TC Sheriff and TC OES have approved the maps. Maps show the routes out of PML and the major evacuation routes away from Groveland. Email the Safety Committee and we will send you a printable copy.

Evac Maps will be on PMLA website soon. Download & print your copy.

Traffic Backup at PML Main Gate—Much more discussion about the long lines that back up onto Ferretti Road and cause traffic problems.

We have a clear picture of traffic control responsibility now. CHP is responsible for traffic control both on Highway 120 and Ferretti Road. Our meetings with CHP have highlighted the enforcement actions they will use going forward. One is to divert ALL traffic backed up at Pine Mountain Dr & Ferretti Rd on down Ferretti Road (no turns into PML). Or, two is to write citations to cars stopped on Ferretti Rd for blocking traffic. Either way, CHP's job is to clear traffic and make the roads safe.

We discussed PMLA providing a strong Social Media marketing push ahead of holiday weekends to encourage members to NOT use the Main Gate unless via Elder Lane.

Safety Department Phone Lines Down—The continuing problem of the phone line to the Safety Department

needs attention. The S&SC is available to design and present solutions.

Speeding—As the committee continues its study of speeding on PML roads, it was pointed out that association can be sued for an accident caused by speeding if the association has done, or nothing to prevent it.

Please email comments to: safetyandsecuritycommittee@pinemountainlake.com

YOU CAN HELP – VOLUNTEER

One of the responsibilities of the PML Safety Committee is to organize and promote CERT – a volunteer organization that prepares you for emergent situations. And, there are other needs for volunteers. So, whether you are a permanent resident or just occasionally stay in PML, you can participate – in fact, one of these organizations can use your help right now.

There is a need for many types of volunteers in Pine Mountain Lake and Groveland. Here is a summary of opportunities:

- **Pine Mountain Lake Committees**
- **CERT organization**
- **Tuolumne County Sheriff's Community Service Unit**
- **California Highway Patrol – Senior Volunteer Program**
- **Firewise – Making your community more fire safe**

Pine Mountain Lake Committees—There are opportunities to participate in member committees right now. There are eight standing committees and there are openings in several. Check out the committees on the PMLA website.

CERT organization—CERT members are trained to help in a wide variety of circumstances that might affect PML and Groveland. Most recently, you may have met a CERT volunteer at the Tuolumne County shelter at the Groveland Resilience Center. They were partnering with the Red Cross to assist those in need from the storms. FEMA supports CERT with training.

Tuolumne County Sheriff's

Community Service Unit—The Community Assistance Patrol (CAP) performs a multitude of duties which may include serving subpoenas, vacation checks, handicap parking enforcement, motorist assists, victim witness transport, crime scene security, property bookings. The Sheriff's office provides training.

California Highway Patrol Senior Volunteer Program—Volunteers assist the CHP in providing enhanced public service to the community. This is an opportunity for senior citizens to make a definitive contribution towards improving public Safety Service and Security.

Firewise—PML members organize their local area—a street, a cul-de-sac, or a group of streets (at least 8 homes and usually about 30) into a Firewise community. Once organized, your FWC is inspected by CAL FIRE and recommendations are made to improve fire safety.

All of these organizations have needs and most have training programs that equip you to handle circumstances you might encounter volunteering. The Pine Mountain Lake community and the greater Groveland community can use your participation.

Please email us to connect with any of these programs: safetyandsecuritycommittee@pinemountainlake.com

GO BAGS

The Pine Mountain Lake Safety and Security Committee is a standing committee authorized by the PMLA Board of Directors to inform its decision making and promote its mission.

As you might have experienced in the past several months, you may have to leave your home on short notice, even without an evacuation order. Some members had to relocate while waiting for power to be restored. When this happens it is too late to figure out what to take and where to go. This is a plan for a GoBag which should be prepared NOW and in a convenient place to quickly grab, finish and go.

As you plan it, consider – you may not be the family member grabbing the bag. Plan accordingly to any person can finish the bag and go to meet you somewhere, should you not be home at the time of an evacuation.

GOBAG PLANNING

- Items are in two categories: In the Bag and Put in the Bag. Some items may not be convenient to always have IN the bag.
- In The Bag: Load these supplies into the bag. Store the bag in a convenient place where EVERYONE knows. List of "Put in the Bag" on top.
- Put in the Bag: Some items like Rx added to bag at GO TIME. List must be for someone NOT familiar as you with these items. Scoop these up when you are ready to go and add to the GoBag.

Below are Recommendations for GoBag Contents.

PERSONAL & FAMILY

- **Personal for each person**
 - Rx for 7 days
 - Prescription meds
 - Over-the-counter meds
 - Hearing aid batteries
 - Medical devices – CPAP, etc.
 - Clothes – Layers, Warm, Hat
 - Sturdy shoes & several sox
 - Glasses & contacts
 - Hygiene kit for 7 days
 - Feminine products
 - Gloves – sturdy
 - Poncho
- **Community**
 - Toilet paper in Zip-Lock bag
 - N95 masks – for smoke & infections
 - Hand sanitizer
 - Notebook & pens
 - Whistle
 - Water bottles
 - Soap – Little sizes (CVS, Rite Aid)
 - Extra keys – Car, House, other

SUPPLIES & TECHNOLOGY

- **Supplies**
 - Duct tape – small roll
 - Small first aid kit
 - Towels
 - Garbage bags, Zip Lock bags
 - Flashlight & batteries (**not** in flashlight) & light sticks
 - Some rope
 - Pliers & multi-tool
 - Scissors
- **Technology**
 - Car charger for Smartphone
 - Home charger for Smartphone
 - Charger for your watch
 - USB cables, charger cables
 - Emergency thumb drive
 - Electronics for kids

DOCUMENTS

- **Papers**
 - Cash – power may be out
 - Credit Cards
 - Contact phone numbers
 - Maps of 2 evacuation routes
 - Family records
 - Birth certificates
 - Marriage certificate
 - Power of attorney
 - Advanced Health Care Directives
 - Passports
 - Medical records & doc contacts
 - Vaccination Records (cards)
- **Cloud**
 - Consider storing copies of records in the cloud
 - Copies of records on thumb drive
 - Bank account numbers
 - Credit card numbers
 - Passport numbers
 - Contact info family & close friends
 - Medical records & doc contacts

CHILDREN & PETS

- **Children**
 - Baby supplies
 - Diapers
 - Formula
 - Meds
 - Rx – Mark on "Add" list
 - OTC
 - Clothes
- Entertainment – games

- **Pets**
 - Food
 - Rx
 - Supplies
 - Leash
 - Collar
 - ID
 - Carrier
 - Bowl

ALL THE OTHER STUFF

- **Contact Info – for friends, relatives**
 - Who do you contact when you leave home to evacuate? Have that person contact other family members and close friends to advise where you are going and when.
- **Navigation Info – Routes to safety maps, at least two**
 - Know how to get out of PML and where to go. Also, know where to go and how to get there if your first choice is blocked. Have maps in the GoBag.

Remember YOU may not be the one evacuating, another family member may do that if you are away.

Plan and practice in advance. Each family member needs to know what to do when the it is time to go. Sometimes you have several hours. However, other times you may only have a few minutes. **Be prepared and PRACTICE.** Your life may depend on it.

BEFORE YOU BEGIN CONSTRUCTION ON YOUR LOT

The Declaration of Restrictions (CC&Rs) states that no construction of any type (new construction, driveways, grading, lot development, etc.) can be performed without prior approval from the Environmental Control Committee (ECC).

Failure to obtain approval could result in the stoppage of work or even fines, and nobody wants that to happen. Inspections are made every Tuesday and reviewed by the Committee every other Thursday, so we can accommodate our members.

Please contact ECC before you begin any type of construction at 209-962-8605

PAINT DISCOUNT PROGRAM

Kelly-Moore Paint Company has been serving Pine Mountain Lake for 40 years. They want to remind PML property owners of the discount program that has been established for them. This program offers a generous discount on Kelly-Moore paint and accessories such as rollers, brushes, tape, caulk, etc. Delivery is available on orders of 10 gallons or more. This special discount opportunity is available with proof of Pine Mountain Lake membership (Member ID Card) on a cash or credit/debit card basis only (no checks please).

Although this program was initiated through the Sonora store, it will be honored at any Kelly-Moore Paint Company store. If you are interested in this discount program, call your local Kelly-Moore Paint store for details.

PML Organized Groups & Clubs

Contact the individuals below if you are interested in joining!

Aviation Association

Mike Gustafson 1-209-962-6336

Friends of the Groveland Library

Virginia Richmond 1-209-962-6144

Friends of the Lake

Mike Gustafson 1-209-962-6336

Garden Club

Susan Dwyer 1-209-962-6265

Groveland Rotary Club

Rudy Manzo 1-209-962-5219

Greg Cramblit 1-209-962-0607

Ladies Club

Dart Woodruff 1-209-962-1980

Men's Golf Club www.pmlmgc.com

Needle Crafts

Barbara Klahn 1-209-916-5420

Pickleball Club

Lee Carstens 1-415-215-5564

Pine Needlers Quilt Guild

Leslie Timmons 1-209-482-1406

PML Ladies 18 Hole Golf Club

Marcee Cress 1-209-962-0771

PML Niners

Stacie Brown 1-209-962-7397

PML Pool Wellness Club

Karen Reyes
pmlpoolclubpresident@gmail.com

PML Safe Streets Campaign

Leslie Dudley 1-209-962-4911

PML Shooting Club

Scott Knupter 1-925-809-2850

PML Waterski & Wakeboard

Dean Floyd 1-408-915-8848

Racquet/Tennis Club

Ron Bass pmlatennis@gmail.com

Residents Club

Dick Faux 1-209-962-4617

ROOFBB

Audrey Prouse 1-209-962-4196
roofbborg@yahoo.com

Southern Valley Srs. Golf Group

Rich Robenseifner 1-707-486-9115

Wednesday Bridge Club

Linelle Marshall 1-209-962-7931

JOIN FRIENDS OF THE LAKE FOR SUMMER FUN

VIRGINIA RICHMOND

The Friends of the Lake club is planning a busy summer of lake-oriented events. Join us now and enjoy all our fun activities. Most programs are on Sunday evenings. Watch for event flyers at the mail houses and newspaper articles for the latest information. Friends of the Lake members will receive email invitations prior to each event.

Friends of the Lake is a PML social club open to everyone who is committed to enjoying our beautiful lake and ensuring safe and equitable usage. In addition, we work with the PML Association to promote improvements such as lake dredging, lighted buoys, shade umbrellas, swans, and Wednesday night slow-boating.

Our first event will be a presentation on May 21 by Dr. Stephen McCord, PML's lake scientist. Join us at 5:00pm at Lake Lodge for a potluck supper and to hear the latest on the condition, care and

maintenance of our lake.

June 11th will be the annual poker run on boats around the lake with prizes for the winners. July is a big month with the boat parade on July 1st. Friends of the Lake organizes the annual Independence Day Boat Parade – the highlight of the PML summer season. This year's parade is on July 1 and the theme is "Classic TV Shows."

The annual Lake Swim is on July 8th and Music at the Marina, featuring the smooth jazz of Rod Harris and friends on July 16th. August 13 brings a Pictionary game on the lake by boat, followed by "bingo on the beach" on September 10th. Come join us!

To join Friends of the Lake and receive information on each upcoming event, please send your contact information and a check for \$20/family to Friends of the Lake, PO Box 591, Groveland, CA 95321. Be sure to include your email address, as all club communication is by email.



Lake Swim winners



"Boston Tea Party" decorated boat

APRIL GARDEN CLIPPINGS

LINDA NEUSCHWANDER – PINE MOUNTAIN GARDEN CLUB

The Pine Mountain Garden Club is really looking forward to spring! It WILL stop snowing-honest! And we mean to be ready for it. Our March meeting featured discussion on among other things; Watering your garden wisely -- Do's & Don'ts -here's what we came up with: Start by choosing water thrifty plants for your garden-KNOW the water needs of the plants you are choosing. Many attractive plants are available which are drought tolerant AND deer resistant! FYI, an English cottage garden is not really an option here. Think dry Mediterranean/Italian Tuscan instead! Try to mulch, amend new and established plants every spring and fall using compost or composted manure. Make watering part of your early morning, or better yet, after dinner routine when it can soak in deeply in the cool of the night.

It is never good to water in the heat of the day. Irrigate/water slowly around the base of your plants. Try soaking a plant, moving on to the next, return and repeat. Watering 1 or 2X a week is ideal! Not daily. Plant in spots that take advantage of partial to full shade. Group your plantings rather than spreading them out. Concentrate on nice smaller garden nooks rather than stringing out plants over a large area requiring more labor and water. And remember, vegetable gardens tend to need extra water.

DON'T FORGET OUR MAY 6TH PLANT & BAKED TREATS SALE!

Also, coming up in May, don't forget the Pine Mountain Garden Club May 6th plant and baked treats sale at our community Jail Garden located on Ponderosa Drive. All proceeds support



the Jail Garden. Come join us and learn more about Sierra foothill gardening. There are many awesome and easy-care plants that survive and thrive in our area. We would be glad to show them to you. Let's be friends! We usually meet the second Monday of the month at 1:00 pm at the Pine Mountain Lake Lodge. Questions, contact club president Susan Dwyer at smdwyer@sbcglobal.net. We can also be reached at P.O. Box 167, Groveland, California 95321.

PML MEN'S GOLF CLUB

DAVE FERNANDEZ

ICE-BREAKER TOURNAMENT

The PMLMGC kicked off its 2023 with its traditional ICE-BREAKER TOURNAMENT. While Mother Nature has created some challenges for the PMLMGC and all golfers, we started out the year with a great opening tournament with a host of winners. Congratulations to all and here's to a great 2023 season.

ICE-BREAKER

Flight A

1st place- Dave Bealby, Dave Villaroman

2nd place- Ben Rebiskie, Jon Rivera

3rd place- Cary Brown, Paul Funston

4th place- Dave Berthold, Jeff Sers

Flight B

1st place- Rod Raine, Vince McEvoy

2nd place- Paul Purifoy, Gus Allegri

3rd place- Tim King, Steve Espinoza

4th place- Craig Herenden, Edvard

Eshagh

Flight C

1st place- Joe Vautier, Rich Martinez

2nd place- Rich Higgs, Dan O'Connor

3rd place- Andrew Hughan, Tim

Hughan

4th place- Todd Brebner, Jeff Krisa

Closest to the pins

#3- Dave Bealby 2'4"

#7- Al Craig 4"

#14- Larry Drew 3'10"

#17- Wayne Handley 8'10"

TOURNAMENT TEE SELECTION

Many of our tournaments allow players to select what tees they will play from. It is important that players sign up for the correct tees. Any player can play from the Gold tees, regardless of their age or index, if they so choose. But only players that qualify may play from the Purple/Green tees. To qualify a player must be 70, or older, or have an

index of 18.7, or higher. It is very difficult for the Golf Shop to make tee changes at the last minute. Any player that plays from incorrect tees risks disqualification. Typically, one team member will sign up a 4-man or 2-man team, so it is imperative that that team member sign up their team from the correct tees.

REPAIRING DIVOTS

A very important responsibility for golfers is to repair all divots, and to repair them correctly in order to maintain our fairways in top shape. Please make sure to use the bottles in your cart to fill all divots and to fill any divots you may see while on the course approaching your ball. Let's do our part to maintain this great course.

WEBSITE TOURNAMENT SIGN UP

Please continue to use the website, pmlmgc.com, to sign up and pay for tournaments. Using the website for tournament sign up and payment makes it easier for the club and the Golf Shop to manage tournaments. Go to pmlmgc.com to see the tournament schedule.

JOIN THE MEN'S GOLF CLUB

Any male persons who are current property owners, their siblings, sons, nephews, sons-in-law, and PMLA employees are eligible to join the men's golf club. Go to pmlmgc.com and click on the button, Join the Club, to see the many benefits of club membership, as well as the ability to sign up on line. Applications are also available in the Golf Shop, or you can contact our Handicap/Membership Chair, Ted Toffey. Email Ted at handicap@pmlmgc.com, if you have any questions about club membership, or, if you're a current member, your NCGA handicap index.

PICKLEBALL NO FOOLING AROUND

TAMMY TALOVICH

If being stuck in the house because of the weather has led you to want to get some more exercise, we have the answer. Don't be a fool this month and come out and play some pickleball!

The weather was not our friend for of February and March, we have been able to play a few days, lets hope that the weather is more accommodating for us this month. If the courts are dry put on your court shoes and some comfy clothes and meet us at the Pickleball Center on Mueller, next to the Country Club. We play on Monday, Wednesday, Friday, Saturday and Sunday, check playtimescheduler.com to confirm what time we will be playing! It all depends on the temperature!



If you want to learn, all you have to do is come out, no April's Fool joke, we will be there! We have a lot of fun, exercising or laughing either way you will get your endorphins going!

It's still not too late to join the Pickleball Club, just contact Tammy at 209-605-7904 or tamtally1@gmail.com.

See ya on the courts!

PML LADY NINERS

TAMMY TALOVICH

Quote of the month – *Stay positive! The only difference between a good day and a bad day is your attitude.*

If you would like to learn more about becoming a member of the Lady Niners contact Stacie Brown at happygem529@gmail.com. We play 9 holes on Thursday mornings; it only takes a few hours and is a great opportunity to meet some awesome ladies!

FEBRUARY 2ND: we had 21 players and played par fours

1st place tie: Kathy Egan, Tammy Talovich

2nd place: Pat VanGerpen

3rd place: Mary Steincamp

4th place tie: Nancy Brewster, Susan Dwyer, Patty Nelson, Anne Toner

Pars: #10 Kathy Egan, Mary Steincamp, #13 KC Lennon, Kathy Egan, #14 Christina Baines, Susan Dwyer, Patty Nelson

Low Net: Tammy Talovich w/32

Low Gross tie: Susan Dwyer, Kathy Egan w/52

FEBRUARY 9TH: we had 15 players and played Blind Holes

1st place: Chris Balek

2nd place: Anne Toner

3rd place: Trudy Alt

4th place tie: Nancy Brewster, Susan Dwyer, Linelle Marshall, Tammy Talovich, Pat VanGerpen

Pars: #14 Nancy Brewster, Pat VanGerpen, #17 Nancy Brewster

Low Net: Chris Balek w/35

Low Gross: Trudy Alt w/52

FEBRUARY 16TH: we had 14 players and played Odd Holes (front 9)

1st place: Linda Vahey

2nd place: Tari Skelley

3rd place: Tammy Talovich

4th place tie: Chris Balek, Linda Craig

Pars: #2 Christina Baines, #3 Susan Dwyer, Linda Vahey, Tammy Talovich, #7 Tari Skelley

Low Net: Linda Vahey w/30

Low Gross: Tari Skelley w/50

We were able to play most of weeks before the weather came in, hoping next month will be better!

HAPPY
Easter

PML LADIES CLUB

JOAN STAUFFACHER

Happy Easter everyone. May your Easter be filled with warmth and all the beauty that spring has to offer.

Unfortunately, our March "Jewelry and Purse Swap" didn't happen due to the unbelievable amount of snow we had. What a way to blast March off. Since we didn't do the March luncheon, we have decided to move it to April's event. So, on April 5th we will have the "Jewelry and Purse Swap", along with the menu of Lasagna, Caesar Salad, Garlic Bread and of course finishing it off with Tiramisu.

Remember if you don't want to be a part of the Swap, you can still join us for the luncheon and watch all the fun. The cost is \$25.00 for our members and \$30.00 for our guests. For those

of us that had signed up for the March lunch, your money will be applied to April's lunch, unless you can't make it, then let us know. So, if you want to take a break from your daily routine, then come on over to The Grill to have a few laughs, a great lunch and meet some wonderful ladies.

If you are interested in any participate in future events, please contact Joan Stauffacher, Vice President of the Ladies Club at 209-559-7028.

Don't forget about signing up for helping on a committee if you can. We are always looking for ladies to help each month with the events. We are looking for volunteers and models for our upcoming fashion show. Please let me know if you are interested in participating.

GROVELAND ROTARY UPDATES FOR APRIL

MIRIAM MARTIN – ROTARIAN

Groveland Rotary events have been a challenge in the months of January, February and March due to the inclement weather. Though several events had to be cancelled, we've still found ways to service our community and fundraise for projects that impact both our local community and beyond.

On the local front, Groveland Rotarian, Greg Cramblit presented a \$1000 check to Jerry Baker, a cofounder of Camp Tuolumne Trails. Camp Tuolumne Trails was founded in 2008 and is one of the most accommodating camps in the state. Their mission is to help those with disabilities and they provide an environment for healing, respite, education and recreation.

On Super Bowl Sunday the Groveland Rotary joined 4 other local Rotary Clubs at the Sonora fairgrounds for the annual 49er Rotary Super Bowl Breakfast fundraiser. Columbia College Culinary students volunteered in cooking the omelets, local high school students helped with serving, and 5 local Rotary clubs



Rotarian Greg Cramblit giving a \$1000 check to Jerry Baker of Camp Tuolumne Trails

handled the logistics. The proceeds were shared between the clubs and will fund future community service projects around Tuolumne County.

April 8th is the next upcoming Rotary event, our 31st Annual Easter Egg Hunt for children 0-8 years old. The Easter Egg Hunt starts promptly at 10:00am, so don't be late! Children should bring their own easter basket and dress up for spring. Meet the Easter Bunny and join about 150 other kids in finding the 3000 hidden eggs. The grassy upper park will be divided into sections by age level.

PINE NEEDLERS QUILT GUILD

LYNN SIGAFOOSE

Pine Needlers Quilt Guild will meet on April 18th, which is the third Tuesday of the month, at 10 am. We meet under the Groveland Library with Social Time beginning at 9:30 am, unless it snows, we don't show. Guests are Welcome.

We will have a guest who will talk about a project we will be doing as a guild on Wednesday. Susan Flores from Quails Nest Quilt Shop in Sonora has a new quilt pattern "Athena Pattern" that has our interest.

In April we hold our election of new officers and in May we will be installing the newly elected officers. We will also have a Trunk Show by Wina Helm. Next month we will provide more information on what a trunk show is all about.

We always have sewing after the general meeting; you may join us, bring your lunch, ask your questions and just chat with us.

Questions please contact Leslie Timmons our President at 209-482-1406.

PML LADIES 18 HOLE GOLF CLUB

PAULA PARISI

By the time you read this, I hope spring is finally here and that the Pine Mountain Lake Ladies 18 Hole Golf Club will be back in full swing (pun intended) playing golf on our regular Thursdays, in Team Play and other upcoming tournaments.

On April 13th, we will have our annual 18 Hole Players invite the Niners tournament. This tournament is a fun social event where two 18 hole club ladies play with two ladies from the Niners club. The theme this year is upcoming spring and should be a lot of fun. We will announce the winners of that tournament in next month's newsletter.

On April 26th and 27th, NCGA is hosting a WGANL Legacy 2-Person Ladies Scramble here at Pine Mountain Lake Golf Club. This event consists of 40 teams of women from all over Northern California and is already sold out. We are looking forward to an enjoyable and successful tournament.

Here are the results of recent tournament play:

FEBRUARY 16, 2023 – ST. VALENTINES DAY MASSACRE:

1st Place: Marcee Cress, Laura Kramer and Linda Wall (+Blind Draw) - 132

2nd Place: Helena McMillan, Paula Parisi, Priscilla Park & Sue Perry - 140

Birdies: Laura Kramer - #9

The Pine Mountain Lake Ladies Golf Club plays every Thursday and is open to all women residents and owners of property in the Pine Mountain Lake community. Our club would love to add some new members and we have recently modified our bylaws to allow female family members of property owners to apply for membership. If you're interested in joining our club, please contact our PML Head Golf Professional, Mike Cook at 209-962-8620.

ROOFBB

AUDREY PROUSE

ROOFBB 2023 is in full swing and we couldn't do it without the support from our community at large, or our dedicated members! A GREAT BIG THANK YOU to everyone who helps to make the ROOFBB vision of helping our local community, our schools, and our neighbors in need a reality.

Our new Board of Directors has stepped up to the plate and each new officer has fully embraced her position. And a special thanks is owed to our new President, Audrey Prouse, for her leadership and seeing us through this transition.

ROOFBB has been fast at work in the area of GIVING! Since January 2023, the new board has had the pleasure of helping several individuals and the local schools. This is what it is all about folks! Knowing that, with your help and support, ROOFBB is making a difference in people's lives!!

Currently our focus is on one of the largest FUNdraising events ROOFBB sponsors, Our **2nd Annual Downtown Groveland SummerFest** is on **SUNDAY, JUNE 25 from 12 noon - 4 pm** at the Mary Laveroni Park on Hwy 120. Come prepared for A LOT OF FUN including:

- **Live Music**
- **Kids Activities**
- **Food Vendors**
- **Local Makers & Artists**

- **Wine & Beer Tasting**
- **Silent Auction & Raffle**
- **& more!**

Come out and support Groveland's RED HEART Charity, **ROOFBB!** And help us in Helping our Neighbors in Need! For more information please email downtowngrovelandevent@gmail.com or visit summerfest.roofbb.org.

You may have noticed that ROOFBB has gotten a bit of a facelift! We are sitting pretty with a new, dedicated phone number, email address, updated graphics, a new website and domain and an Instagram account! You can now find all of the information you are looking for at our new website roofbb.org, [facebook.com/roofbbcharity](https://www.facebook.com/roofbbcharity) and [instagram.com/roofbbcharity](https://www.instagram.com/roofbbcharity). Our new phone number is (209) 396-5266. Our new email is charity@roofbb.org.

Please make note of these as our old information will be phased out, but don't worry, if you send something to our old email, we will still get it!

For more information or to learn more about how you can become a ROOFBB member, please visit us online, email or call us and one of our lovely ladies will be happy to help! And of course if you would like to donate, we'd love that too! We also would like to hear from anyone who may need a helping hand- we are here to help.

PML TENNIS CLUB

CAROL NAGY

HAPPY EASTER! HAPPY SPRING!

Goodbye March! We are all looking forward to some Sun and great Spring weather so we can be out on the courts again!! Join us for Drop-In Sundays from 10:00 to 12:00 until the weather warms up then 9:00 to 11:00. Please email us at PMLAtennis@gmail.com if you are interested in Sunday tennis or joining the Tennis Club. Tennis club members have Tuesday and Thursday scheduled play in the morning. Come and check us out.

Our Cinco de Mayo Tournament

Friday May 5th will be from 9:00am to 12:00am with warm ups starting at 8:30am. That evening we will have our first social of the year at 5:00pm at the Tennis picnic area. If you would like to sign up to play, please RSVP by April 28th to Laura Stengel, pmlatennis@gmail.com or call Laura at 209-610-1030 (text is ok). The social is a potluck affair with Tom Hernandez as the main dish Chef for the evening.

Cinco de Mayo is the kickoff to our summer potluck socials. Our Socials will be at 5:00 on the first Friday of each month thru October. Come join us for some fun and great conversation.

NEW RESOURCE FOR KIDS AT THE GROVELAND LIBRARY

VIRGINIA RICHMOND

There's a new fun learning tool at the Groveland Library for little children. As you know, Friends of the Groveland Library already offers pre-school Storytime on Friday mornings at 10:30am. The story is followed by a little craft project that the children can have creative fun with and then take home.

Now, the library has two new computers specifically designed (and sized) for kids 3-8 years old. They are not connected to the internet, so they are completely secure. The computers include both fun games with age-appropriate graphics and educational programs in reading, math, art, science and technology. Again, great graphics will keep the children engaged and enjoying learning. These are touch-screen computers, so no mousing or typing required.

Bring your kids to the library and have fun exploring this wonderful new resource.



Just the right size computers with great graphics.

WRITERS WORKSHOP

JANET GREGORY

Do you have a story to tell, ideas bubbling, or want to publish?

A free workshop for writers is being offered through the combined effort of Groveland Library, FOGL (Friends of Groveland Library), and local authors. The workshop is for writers in every genre and of any age.

The five-week Writers Workshop will be hands-on and interactive, along with instructional guidance and writing tasks. Workshop topics will help writers start a writing project or advance work already underway. Together we will explore how to find your voice, the power of a short story, engaging readers, and getting published.

Each Wednesday of May from 10:00am to Noon will inspire you. Join us in the Book Nook, downstairs from the Groveland

Library and Museum. The workshop will launch on Wednesday, May 3rd. Please pre-register with Janet 510-693-7546 or janetg.96a@gmail.com.

Mark your calendar for May 3, 10, 17, 24, and 31 to exercise your writing muscle. Two Groveland writers are organizing the workshop and will draw from expertise of other local writers. Nadine Pedron is author of "Lily's Own" (2013 childhood stories) and numerous short stories. Janet Gregory has authored several books, most recently "Age of Freedom" (2021 exploring retirement) and previously a business book, ghostwriter for a Groveland woman's autobiography, and a book of family recipes.

Please join the Writers Workshop by pre-registering with Janet, as space is limited.

FROM SUPERVISOR KATHLEEN HAFF

DISTRICT 4, TUOLUMNE COUNTY

STORMS, GARDENS, WILDFIRE PREPAREDNESS AND COMMUNITY PLANNING

What a wild ride we have all been on since 2023 began, eh? It is mid-March as I write this article for April. Earlier this month our County officially left behind its drought designation. I am hoping that those who have needed help due to storm damage have already reached out to our Office of Emergency Services (OES) folks to see what they have to offer for property or business damage. And I am keeping my fingers crossed that by the time you read this in April, we are all well on our way to digging out, drying out and planting our gardens!

I don't know about you, but I am really looking forward to getting into my garden soon! Those of you who grow your own food, have a summer garden, or want to exercise your green thumb capabilities may enjoy watching this panel discussion I moderated last month at the Foothill Collaborative for Sustainability: Annual Seed Share Event and Speaker Series. The speaker series was videotaped by Access Tuolumne - our local public TV station. You can watch it by placing this link in your browser: <https://media.accesstuolumne.org/CablecastPublicSite/show/5574?channel=1>

The panel I moderated was entitled "Ask Your Local Farmer" which starts around the 30-minute mark. The farmers who participated were: Galen Weston, Blue Oak Farm; Jonathan Anderson, Hawk n Fox Farm; and Jordan Lowrey, Dambacher Family Farm.

Besides gardening, this is the time of year we begin to prepare for wildfire season. You know it, I know it...but what do we actually DO about it? Yes, as always, this is the big question. One of the things you can do to prepare is come to my next South County Town Hall Meeting on Wildfire Preparedness later in April. I will be holding it with our OES Coordinator, Dore Bietz, IN PERSON at the Groveland Community Resilience Center. When in April, you ask? Well, that is up to you!! Please take

this brief survey to let me know which dates and times work best for you. You may have already received an email about it, or you have seen a social media posting on this. But, if not, please use this link to take the survey on or before April 7th: <https://forms.office.com/g/EVCGVUahJ1> Sometime in the second week of April, I will send out another email and make posts all over social media announcing the date and time for this important meeting. I hope to see you all there!

Lastly, I will be asking for a serious commitment from folks who want to finish the Groveland-BOF Community Plan! Those interested will dedicate a sizable amount of time and energy in working on this project. It will require homework! This means actually reading various elements of our County's General Plan, knowing what is in it, so that decisions can be made and written into a more specific Community Plan. I will be sending out an email to those of you who have expressed interest in participating at the end of March or beginning of April. If you haven't received a Community Plan email from me by the time you read this article, shoot me an email that you wish to be included: khaff@co.tuolumne.ca.us Thank you and Happy Spring, Everyone!!

GROVELAND GAL FRIDAY

WHEN SPRING
FEVER HITS...

Let me lighten
your workload
with help
for petcare,
senior care,
shopping, rides,
organization,
office work,
or...you name it!

SHARON VOLPONI
962-6848 • 770-6277

Locally Owned since 1950

YOUR ONE-STOP SHOP FOR
all your pest control services

PEST CONTROL: HOME,
BUSINESS AND INDUSTRY



LAWN FERTILIZATION AND
COMPREHENSIVE LAWN CARE



TERMITE INSPECTIONS,
REPAIRS AND FUMIGATIONS



TREE AND SHRUB CARE,
AND BARK BEETLE CONTROL



TERMITE TREATMENTS
AND MONITORING



WEED CONTROL
AND FIRE BREAKS



BED BUG
TREATMENT



DECK REPAIR/REPLACEMENT
(LICENSE #922758)



OUR REPUTATION IS IMPORTANT
TO US AND YOUR COMMUNITY.
Call now for a free estimate!



(209) 770-7733
clarkpest.com

PLACE AN AD TODAY

With a classified or display ad in the Pine Mountain Lake News your ad will go directly to every PMLA member every month. Go to our website for more information and prices.

www.PineMountainLake.com



HERE IS YOUR CHANCE TO BE MORE INVOLVED IN YOUR COMMUNITY!

Pine Mountain Lake Association has openings on the following committees:

BUDGET AND FINANCE COMMITTEE

COVENANTS COMMITTEE

EDITORIAL COMMITTEE

EQUINE ADVISORY COMMITTEE

LONG-RANGE PLANNING COMMITTEE.

If you wish to be considered for committee membership, please complete an "Application for Committee Assignment". This form is available on the website at www.pinemountainlake.com or from the Administration Office.

MAIL COMPLETED FORM TO:
 Pine Mountain Lake Association,
 Attention: Janessa Owens 19228
 Pine Mountain Drive
 Groveland, CA 95321
 Email to j.owens@pinemountainlake.com
 or drop it by
 the Administration Office

PAINTING & CONSTRUCTION



PAINTING – EXTERIOR/INTERIOR • DECK REPAIRS • WOOD REPAIRS • REMODELS

Bay Cal Construction
209.962.4777

www.baycal.com
 email: davec@baycal.com



FREE ESTIMATES



Custom Boat Docks – Gangways
Kayak/Canoe Launches - Floats & Hardware

209-845-2876

1398 East F St Oakdale, CA 95361
 Independently owned Since 1982
www.hcidocks.com



HIGH SPEED BROADBAND INTERNET



Starting at
\$44.95
 PER MONTH

CABLE TV & TELEPHONE SERVICES
 Also available

*Speeds up to 125 Mbps, speeds vary with packages



www.gosnc.com
209-962-6373

PINNELL'S CARPET ONE FLOOR & HOME



FREE Neutralize Installation Upgrade, because your health matters.
Waterproof Flooring, LVT, Laminate, Vinyl, Hardwood, Tile, and Hunter Douglas Window Coverings.

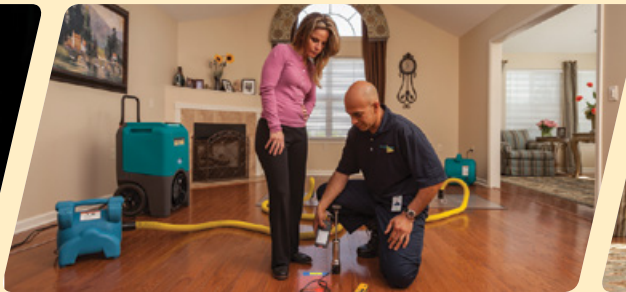
Thank you for voting us Best of the Mother Lode since 2005!

209.736.8077 263 S. Main St. Angels Camp, CA
209.532.1696 12900 Mono Wy. Sonora, CA

\$25 DISCOUNT

Mention this ad for a discount on cleaning services.

Minimum charge applies.



DISASTER RESTORATION SERVICES • RESIDENTIAL AND COMMERCIAL CLEANING SERVICES

Carpet & Furniture Cleaning • Steam & Dry Cleaning • Deep Soil Extraction • Spot & Odor Removal • Oriental & Fine Rug Cleaning • Ultrasonic Blind Cleaning
 24 Hour Emergency Service • Water Removal • Wet Carpet Care • Fire & Smoke Restoration • Vandalism Cleanup • Structure Drying • Sanitizing

ServiceMASTER Restore

The clean you expect.

The service you deserve.®



Serving Tuolumne, Calaveras & Amador Counties
 ServiceMasterSierras@mlode.com • www.ServiceMasterSierras.com

209-532-1700

17330 High School Road
 Jamestown CA 95327





PERFORMANCE-BASED HEATING & AIR



We Accept Credit Cards
Lic #998841

We Service All Makes and Models • Veteran Owned, Family Operated • Financing Available



CONTROL YOUR ZONE

- Room by room temperature control
- Whisper-quiet
- Odor filtration
- Improves air quality, reducing dust, mold and allergens
- Allergen filtration
- No more hot or cold rooms in your home
- Turn OFF unoccupied rooms
- Up to 40% more efficient than central air

CALL US TODAY **209-588-7421**
www.performancebasedheatingandair.com

These products have NO DUCTWORK so they are perfect for LOFTS, multi-story, additions, garages, man caves, single rooms, stick-built, modular, or in most cases the entire home. Can heat down to -15* and provide a winter wonderland on the hottest of days without costing a fortune on your energy bill. control over the temperatures in your home, and do it better than central air.

HELPING HANDS HAPPENINGS

PATTI BEAULIEU

As of this writing, we are between major snow storms. Everyone was impacted by the huge storms we had during the end of February and beginning of March. Many businesses, including ours, were closed for many days due to weather related safety concerns. We won't be open if it's snowing or the roads and driveways are covered. We're sorry for the inconvenience, but our volunteer's and customer's safety are our first priority. We certainly had an exciting winter up here so I suppose we're all ready for a nice, green spring season. According to the experts, we're finally out of the drought.

This month is a busy one for us. April 16-22 is National Volunteer Appreciation Week and no one appreciates their volunteers more than we do!! They always receive a special gift to show our appreciation of their dedication. We're also observing the Easter season with our extensive inventory of Easter items. There are bunnies, serve-ware, decorations, baskets and anything else you can imagine out for sale.

In addition, we have our Spring Giveaway this month. On Friday and Saturday,

April 14 -15, we'll have the Groveland Community Hall filled wall to wall with items from our Stores to be given away for FREE. Clothes, shoes, purses, linens, housewares, home décor, and anything else we have cleared out or have too much of will be yours for the taking. Everyone that comes in, leaves with at least a bag, or multiple big, black bags of things. It helps the community and allows us to make room in the Store for the next season. We will begin to put out our summer clothing as we are preparing for the Giveaway. This will be our 18th year of providing this service to the community. Look for the Giveaway flyers around town.

Come in soon and see what we have for the spring and summer season. It's never the same and new things are coming out daily. Best to grab something when you see it, or else it might be gone the next time you're in. Be sure to visit our web page www.helpinghandsofgroveland.com or our Facebook page (Helping Hands Thrift Store) weekly to see what's on sale or any other announcements.

Enjoy the changing of the seasons and have a Happy Easter.

EXCITING VOLUNTEER NEWS!

BETH MARTIN – TRANSPORTATION COORDINATOR

National Volunteer Week is April 16-22! This year's theme is "Shining a Light on the People and Causes That Inspire us to Serve." That immediately makes me think of our fantastic volunteer Wheels drivers. These dedicated individuals drive our members to shopping, medical appointments, and errands throughout Groveland/Big Oak Flat and to medical appointments in Sonora. These rides go a long way towards helping them stay in their homes "on the hill" with all that's familiar and comfortable to them.

We're excited to announce that, thanks to a county program called Tuolumne Trip, we can now provide mileage reimbursement to our drivers! This is the first time we've been able to offer anything other than our heartfelt gratitude, and we hope it

might inspire YOU to consider becoming a Wheels driver!

What's involved? It can be as simple as picking up groceries, mail, or prescriptions for neighbors who can't drive to town or dedicating more time to take someone to and from a medical appointment in Sonora. Once your Wheels driver application/orientation is complete and you're on our team, you decide how much time you can commit and which trips you can do. It's as easy as that. Our Wheels drivers make a huge difference in our community, helping those who can't drive themselves and don't have friends or family nearby to assist. Please consider joining us!

To learn more, call us at (209) 962-6952, email wheels@southsidecommunityconnections.org, or stop by The Little House between 10 am and 2 pm (11699 Merrill Road).

SOUTHSIDE COMMUNITY CONNECTIONS:

FINANCIAL CORNER

BRITNE GOSE – EXECUTIVE DIRECTOR

WHY?

Should address the elephant in the room: why is SCC giving you financial information?

We are a nonprofit, and we have two goals: 1) provide needed services for residents in our community that allow them to live safely and happily "on the hill" with a great quality of life, and 2) raise funds that allow us to continue to function and provide these services. We care deeply about you and our community and want you to live long, healthy, and happy lives. In turn, we can only help you succeed if our organization can raise funds to keep us going. Many of our funds come from individual donations, so your success is ours.

The advice we provide here targets two different groups with very different goals. The pre-retirement group focuses on amassing wealth. SCC wants to provide information for this group, so they are better prepared for retirement and, therefore, more resilient. The post-retirement group focuses on maintenance – as in maintaining a comfortable lifestyle. "Maintaining" does not mean

you shouldn't invest or start a side gig. My parents are in their 70's and have opened an Airbnb. You could easily live to be 90+; if you retire at 65, that's another 25 years of investment.

An article may focus more on one group or another, but one thing is true for both: knowledge is power. I may discuss tax diversification and how a traditional IRA differs from a Roth IRA and a 401k. I may discuss money management advice for retirees. No matter the subject, we all have one goal in common, financial literacy. This foray into finances has been life-changing for me. I recently hired a financial advisor and have not been disappointed. If you worry about money, the best thing you can do is learn about your options.

I can't say this enough: I am not a financial advisor. If you don't know what you're doing and have money that needs managing, you should invest in an advisor. They can feel expensive, but they make you more money than you spend.

If you have questions, contact Paul Bunt, a local attorney and previous SCC board member. He may be able to send you in the right direction.

LIGHTEN YOUR LOAD

BRITNE GOSE – EXECUTIVE DIRECTOR

Southside Community Connections is a nonprofit in Groveland with a tight budget. We are always in search of supplies, so if you think you have something we need, please give us a call at our community resource center, The Little House, at (209) 962-7303 or stop by 11699 Merrell Rd Monday - Friday, 10 am to 2 pm.

We need the following supplies:

- Printer paper
- Coffee and coffee filters #4: we offer free coffee and tea at The Little House - stop by!
- Disposable coffee cups with lids
- Small cups (-3 oz) for water: we have purified water for guests and exercise classes
- Hot cocoa: free cocoa, anyone?

- Envelopes, legal and otherwise
- Cards of all kinds: we send thank you cards, birthday cards, get-well cards, and so many more!

- Road salt
- Pens
- Scotch tape
- Sticky notes

Make sure to indicate whether it is an anonymous donation or if we can give you kudos on social media. We want to make you famous! (If you'll allow it.)

Do you know what else can lighten your load? Volunteering. Get your mind off your problems by solving the problems of others. Give us a call if you are interested.

Thank you for your continued support, and we hope to see you at The Little House!

SEVENTEENTH ANNUAL WINE TASTING CRUISE

HARRIET CODEGLIA

On Saturday, May 20, 2023, STCHS (Southern Tuolumne County Historical Society) will host its 17th Annual Wine Tasting Cruise on Pine Mountain Lake! That is a lot of wine tasted over the years! All proceeds benefit the Groveland Yosemite Gateway Museum, the restoration of the Cobden House and Wells Fargo Building, and other STCHS projects.

Water taxis will leave from the Lake Lodge starting at 3:00 pm and transport guests between seven lakefront homes where wines from local wineries will be available for sampling, accompanied by delicious appetizers from local restaurants and caterers. Everyone will be returned to the Lake Lodge by 7:00 pm for a coffee and cookie reception.

Don't delay! This event is a sell-out each year, as tickets are limited (attendees must be at least 21 years of age). Tickets must be purchased in advance and paid by check and are \$75 per person. Order forms are available in the Museum or



you may send your request to STCHS, P.O. Box 180, Big Oak Flat, CA 95305. Forms can also be requested by sending an email to winetastingcruise@gmail.com or by going to the STCHS website: www.grovelandmuseum.org. The museum continues to be open Friday, Saturday and Sundays from 10 until 2.

We don't send out actual tickets, but you will receive confirmation of your purchase. The cost is \$75 per person. Come join us for another fabulous day on the Lake!

For questions or further information, email (winetastingcruise@gmail.com), call Harriet Codeglia (415-516-1852).

PINE CONE SINGERS ARE "BROADWAY BOUND"

BOB SWAN

Pine Cone Singers are looking forward to presenting our Spring Concerts on the weekend of May 19-21. For this show, Music Director Dennis Brown has selected repertoire that is entirely from musical theatre. Eight pieces are full-length arrangements, ranging from "Goodnight, My Someone" (Music Man) to "Popular" (Wicked) to "Seasons of Love" (Rent). We will also perform some segments from the medley "100 Years of Broadway", which has shortened versions of a couple of dozen musical favorites, organized by time period. We

hope you have as much fun listening to it as we do while rehearsing it.

Current plans are for the concerts to be held at the Groveland Evangelical Free Church at 7PM on Friday, May 19, and 2PM on Saturday and Sunday, May 20-21. Tickets are usable for any one of the shows, and will be available at Yosemite Bank and The Little House, as well as from any Pine Cone Singer. Suggested donation is \$15, with children 12 and under free.

If you have questions, please contact Bob Swan at 408-398-4731. We hope to see you "On Broadway" (in Groveland).

DOG PARK NEWS

DORI JONES

This month, we are featuring Sebastian, who was scheduled to be in this April article. Unfortunately, Sebastian, a Tibetan Spaniel mix, passed over to the Rainbow Bridge in February at age 14 and a half. To honor his mighty soul, here's a little background on sweet Sebastian. It all started in 2010 when Sebastian's soon-to-be owner, Gordon Glasson, went to have lunch with his daughter who worked at the Silicon Valley Humane Society. She introduced Gordon to Sebastian, who was a rescued stray from San Jose. It was mutual love at first sight. Over the years, Sebastian's favorite toy was a squeaky, fuzzy tennis ball, but toward the end, he preferred chicken-wrapped rawhide sticks. Sebastian liked to bark at the vacuum, always did a big stretch before going for a walk and loved the dog park because he loved smelling all the different and interesting scents.

We are still seeking additional dogs to feature in this monthly article. If



you're new to the dog park or haven't previously filled out a Top Dog form, PLEASE pick one up at the dog park (inside the bulletin board) and return it to the email listed on the form.

If you're new to PML and want to learn more about our amazing dog park, please stop by the GCSD administration office on Ferretti Road to register. Bring current Rabies and Bordetella vaccination certificates, pay a \$25 annual fee for up to two dogs (\$10 for each additional dog), and get the gate code. It's a great place for dogs (and people) to socialize.

FRIENDS OF GROVELAND LIBRARY

Virginia Richmond

FOGL SUPPORTS "READ ACROSS AMERICA"

Read Across America" is a national program organized by the National Education Association to celebrate children's literature and to encourage reading. It's held annually on March 2, Dr. Seuss' birthday – who authored so many beautiful children's books and is a part of everyone's cherished childhood memories.

Friends of the Groveland Library volunteers Cathy Shakespeare, Debbie Triplett, Cathy O'Connell, Michele Roberts, and Janet Gregory read Dr. Seuss classics to children in Tenaya Elementary grades. Dr. Seuss books, besides being entertaining, carry important messages such as kindness and caring for others, the importance of being trustworthy



and keeping promises, and using your imagination and inspiration for success.

Friends of the Groveland Library also made a gift of each book to the classroom libraries, as well as Dr. Seuss bookmarks for each student. Huge thank you to our volunteer readers!

UPCOMING BOOK SIGNING WITH LOCAL AUTHORS AT THE GROVE MERCANTILE

LORI REYNOLDS

If you're like me, you've probably dreamt of writing and publishing your own book. You may have even sat down to outline an idea and written a few lines or pages. But few of us have the determination to actually finish putting our ideas on the page and completing the process. Even fewer still have had their work published.

What sets published writers and artists apart is not only their creativity and skill, but also their determination to finish bringing their work to life. After all, art is meant to be shared and enjoyed, right?

The Grove Mercantile is bringing several local authors together to tell their story to you in person to celebrate the Third Annual Tuolumne County Art Week (more information at <https://www.visittuolumne.com/art-week>).

This will be your chance to meet local authors, learn how they were inspired to tell their story, and get a copy of their book signed.

The event is taking place April 8, 2023, from 12:00 – 3:00 p.m. at The Grove Mercantile, located at 18687 Main Street, Suite D3, in Groveland, CA. Books will be available for sale, or bring your own copy if you've already purchased one of these great works.

The event will feature two talented authors from different genres:

Dori Jones was a fixture in the Groveland community for years. As the former owner/operator of Dori's Tea Cottage, Dori and her husband Greg ran a very successful and popular Tea Cottage in town before deciding to retire several years ago. There is rarely a day that goes by in Groveland where a local

can't be heard reminiscing about missing Dori's delicious baked goods. Dori may have retired, but she's still been busy publishing her amazing recipes from the Tea Cottage! Dori will be signing copies of her book, "Dori's Tea Cottage Recipes & More." Additionally, the very talented Linelle Marshall will be making some of Dori's favorite recipes from the book for you to sample for free at the event.

Claudia Day knows first hand how important books are in the lives of children. From an early age, Claudia was inspired by the books she read and wanted to tell stories of her own, often using her big brother's typewriter to write her own tales. As she had children of her own, and eventually grandchildren, Claudia became determined to write her own children's story and help inspire future generations. "The Little Egg's

Journey" is a touching story, weaving a classic Easter tradition – an Easter egg hunt – with a touching story of hope and perseverance. You will love the positive message of the story, as well as the adorable illustrations, and it would make a great gift just in time for Easter!

Please come out on April 8th and support these amazing and talented authors and show them some local love. The Grove Mercantile will also be open for business as usual during the book signing. We look forward to hosting future book signings with other local authors, such as Dave Gookin, Janet Gregory, Hannah Bodle, , Lauren Miller, and others. If you are a local author and would like to participate in future events, please email us at thegrovemercantile@yahoo.com. Stay tuned with updates on our Facebook or Instagram pages [@thegrovemercantile](https://www.instagram.com/thegrovemercantile).

CAMP TUOLUMNE TRAILS NEWS

DORI JONES

CHALLENGING TIMES AT CAMP

Like everyone, we are looking forward to Spring and are ramping up for a good summer season ahead. Jacqui has been working hard to attain dedicated counselors, and we already have a significant number of registered campers. Despite this positive news, camp experienced unexpected and significant damage to the property. We lost dozens of trees, which need to be removed; the gravel on roads and paths were washed away and need fresh gravel; and some decking will need to be shored up or replaced. The heavy rains also delayed further construction of the new greenhouse and the ceramics studio, which are planned to be operational by June. On top of all this, the elevator in the Great Hall needs major maintenance and will cost more than \$8K to repair. Although we will need to contract out some of these costly repairs, we are seeking local volunteers to help get our grounds cleaned up and fully and safely accessible again for when our campers return in June.

We also have several construction and repair projects to complete that we sure could use some help with. Weather permitting, we will be setting aside every

Tuesday, Thursday and Saturday as potential volunteer opportunities. Please consider donating some of your time and skills to camp. We really need some help getting ready for what is sure to be a record-breaking summer for CTT. Call the office (209) 962-7534 or email Ed at ed@tuolumnetrails.org to arrange the days/times you can commit to helping at camp. It could be once or twice a week, once a month or whatever time you can offer. It all will be very much appreciated. While our hands-on volunteerism is crucial to camp, the impact of the storms will really strain our budget. Professional services and materials add up in a hurry. Your donations are crucial in supporting camp readiness for this summer.

Update on the Impact Quality of Life \$38K grant from the Christopher and Dana Reeve Foundation—the three chair-lift systems have been purchased and installed in camp's infirmary and the two cabin bath houses. We're excited for our staff to start using these when our summer campers arrive. Not only is this an immense safety improvement for existing campers and staff, it allows us to accommodate individuals who could not have experienced camp before. To the best of our knowledge, we are the only

camp in the state that has systems like these installed. One more example of how we are becoming the most accommodating place in the state!

VOLUNTEER DAY

If it's Spring, that means Volunteer Day at Camp must be in the works. For the first time, we have scheduled Saturday, April 15, as a full-day event. You can choose to work in the morning session and/or the afternoon session, with lunch served in between. This year, more than ever before, we need extra hands-on volunteers to help clean up after a harsh winter at camp, and to make CTT a fully accessible camp before our summer campers arrive in June. Please call (209) 963-5734 to sign up for either the morning session from 8:00-12:00 or the afternoon session from 12:30-4:30. Lunch will be served at 12:00 noon for both groups.

CONCERTS FOR A CAUSE

We're excited to announce that when CTT kicks off its third annual "Concerts for a Cause" summer music series on June 3, Renaissance returns for another unforgettable and lively evening with a new and fresh take on popular music through the decades.



Save August 19, when acoustic soul singer/songwriter Javier Colon returns along with Grammy-nominated Matt Cusson, a self-taught piano/guitar player and singer who transitions smoothly from pop, R&B to jazz genres. Additionally, we expect a third special guest to join them on stage. Rebecca Jade also returns to the stage on Sept 9, accompanied by amazing keyboardist Carnell Harrell. Rebecca's career has skyrocketed this past year and was recently described as "Billie Holiday meets Beyonce with some Chaka Khan thrown in for good measure." Stay tuned for the announcement of our fourth concert, slated for late September, and be

(Continued at right)

COMMUNICATION: NOT ONLY WORDS MATTER

DR SIMONETTA SPACCIA PHD

Nowadays we are involved in a complex web of communication: through the news, commercials, and even in our personal relationships we engage in virtual exchanges through the online channels. Sometimes it can be overwhelming and confusing. Communication is meant to inform, but most importantly, to elicit a response from the recipient. However, even when a message appears to be clear, we don't respond to the information in the same way; each of us has our own specific interpretation.

When we deliver information to someone, we can do that through different channels: verbal, visual, and written, being the most common. Each of these channels can be more or less appropriate according to the purpose of the sender and also according to the characteristics of the receiver. For example, suppose someone has to deliver sensitive information that has the potential to ignite an emotionally charged reaction; this person may choose to deliver the message in writing instead of facing a painful situation in person. On the contrary, the sender, aware of the possible emotional reaction of the receiver, may choose to deliver the message in person. Sometimes it can be less complicated and even more effective to put some distance between the two parts of the communication or vice versa, it can be more helpful to provide intimacy and support.

Communication can occur in different contexts, such as work, with friends, or

with family. We all have specific styles of communication, but these styles usually modify and adapt to different contexts. We do not talk to our boss as we talk to our friends, and we don't talk to a strong, confident person as we talk to a weak or sensitive one. Flexibility and awareness lead to a more productive communication in the workplace and in our personal lives.

Besides flexibility, other communication characteristics are essential to achieve effectiveness. For example, clarity, conciseness and respect are among the essential aspects of an efficient communication. Another aspect of communication that I take in great account is timing. Even the most truthful, accurate, and wise idea, belief or advice, won't likely provide a good response (or will be accepted as expected) if we don't deliver it at the right time.

Communication is a complex process that implies many different variables. The same words can produce very different responses depending on the characteristics of both the sender and the receiver: the tone of voice, the location, the timing of the words delivered, and the state of the receiver in that specific moment; also, the kind of relationship between the sender and receiver (such as potential preexisting problems between the two), all these elements are crucial, and we should always keep them in mind in order to avoid misunderstandings and perform a successful communication.

I welcome suggestions on specific topics for my column from readers. You can email me at: simonettaspaccia@gmail.com

ready to purchase tickets when they go on sale. We're sure you won't be disappointed with this summer's line-up as we continue to enhance our concert series year after year!

NCCC UPDATE

The NCCC team made some good headway on clearing brush around several local properties and creating defensible space in preparation for fire season. However, when the snow storms hit in February, and the torrential rains bombarded us in March, their work

abruptly came to a halt. In Mid-March the Tuolumne County OES asked if NCCC would help distribute sandbags and help with other flood mitigation work when the big rain storms hit our area.

If you have any questions or would like to find out more information about upcoming events, Summer Camp programs, Concerts for a Cause, Family Camp, volunteering and options for giving, please call CTT at (209) 962-7534, email us at: info@tuolumnetrails.org or visit: <http://www.tuolumnetrails.org>

AREA CHURCHES HONOR HOLY WEEK & CELEBRATE EASTER

SEMI-RETIRED PASTOR GINGER DUMARS OF MOUNTAIN LUTHERAN CHURCH

Easter Sunday is the most important & highest holy day of the whole year for Christians! We'll celebrate the Resurrection of Jesus Christ on April 9, 2023, with a variety of Worship & festive opportunities for everyone in our community! But, in order to appreciate the significance of Easter we need to honor the events of Holy Week leading up to Jesus' trial, torture & excruciating death on a cross. Christian churches honor Palm Sunday on April 2 as the beginning of Holy Week and of Jesus' final days in Jerusalem leading to his crucifixion & death on Good Friday.

At Mountain Lutheran Church of Groveland (13000 Down to Earth Ct.) we begin Palm Sunday Worship at 4:00 p.m. by singing "All Glory, Laud and Honor to You, Redeemer King" – as we process into the sanctuary waving our palm branches. This procession reminds us of Jesus entering Jerusalem one week before His crucifixion, riding on a little donkey – as the crowds cheered for Him, hoping He was the long awaited for Messiah who would bring peace and freedom from the oppressive Roman Rulers. The crowds waved palm branches & greenery as they shouted, "Blessed is the king who comes in the Name of the Lord! Peace from Heaven and Glory to God in the Highest Heaven!" Others shouted "Hosanna" as Jesus passed by them. Holy

Week begins by celebrating Jesus' triumphal entry into Jerusalem but quickly turns into a tirade of false accusations and determination to kill Jesus and end His influence on thousands of people.

In order to help us understand these events and their importance First Baptist Church (11347 Wards Ferry Rd. in Big Oak/ BOF) will show the movie, "The Passion of Christ" on Wed., April 5 at 5:00 p.m. Then on Good Friday, April 7, Groveland Evangelical Free Church (19172 Ferretti Rd.) will offer a live dramatic presentation at 7:00 p.m. of "Jesus' Journey to the Cross at Calvary". ALL are WELCOME to these community preparations for Easter! At 7:00 – Early on Easter Morning, First Baptist Church in BOF will offer a Glorious Early Easter Worship Celebration & Breakfast!

Mountain Lutheran members are eager to participate in these Community Preparations for Easter as we also prepare for our 10:00 Easter Morning Worship Celebration & Pot Luck Brunch after Worship. YOU are always most WELCOME at Mountain Lutheran Church (209-962-4064) & at ALL our area churches. Ask God to make this Holy Week & Easter Season a time of Spiritual Significance in your Faith Journey with Jesus as you participate in these special events. God Bless Your Holy Week & Easter Season and May God Revive Your Spirit with Faith, Hope & Love!

GUESS WHO I AM

TOMAS HERNANDEZ, JR.

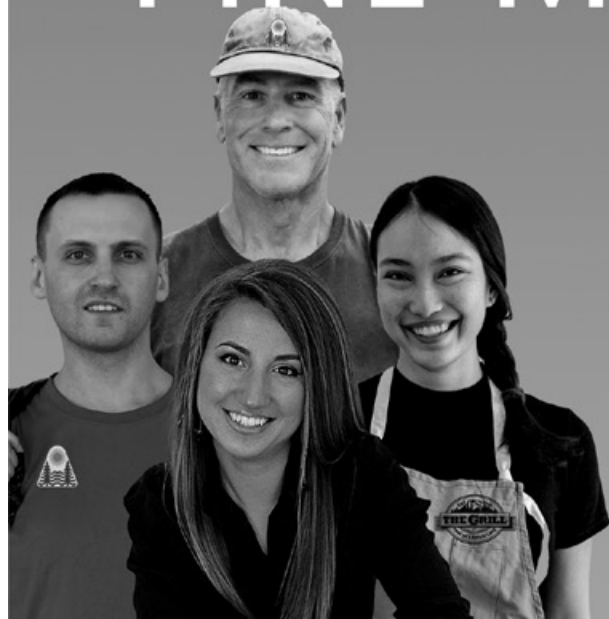
Igrew up in the home my father grew up in-Mill Valley. My grandmother was a WW2 nurse and my grandfather was a POW on Wake Island. Got into equestrian vaulting as a young girl, our team was good enough to compete in Germany. I was an adrenaline junkie-skydiving, bungee jumping, long solo motorcycle road trips and extreme solo traveling. While in Turkey, I was exploring Istanbul and realized I was in too deep, needed help, I was escorted out by machete point.

After graduating UC Berkeley, started a recruiting company, I was a construction project manager, spent months at a time traveling Europe to find and import furniture and design elements to build into custom homes. We bought our friends home in PML, my husband loves Yosemite-he proposed to me on a waterfall ledge New Year's Eve.

Guess Who I am

Last month's Mystery Member:
Tamara Muhler

PINE MOUNTAIN LAKE IS NOW HIRING!



- MANY POSITIONS AVAILABLE
- COMPETITIVE SALARIES
- FULL & PART-TIME EMPLOYMENT
- BENEFIT PACKAGES*
- HIRING BONUSES**
- WORK CLOSE TO HOME



Employment Questions Contact
Shannon Abbott, HR Manager
19228 Pine Mountain Dr.
Groveland Ca. 95321

Phone: (209) 962-8628 Fax: (209) 962-0624
Email: pmlhr@pinemountainlake.com

Apply at: www.pinemountainlake.com/job-opportunities/

* Benefits vary by position and job status. ** Hiring Bonuses are subject to change and vary by position
Pine Mountain Lake Association is an Equal Employment Opportunity Employer

INSTANT POTATO GNOCCHI

RECIPE PROVIDED BY TOM KNOTH AND PAULA MARTELL

Using instant potato flakes to make gnocchi might make purists cringe, but it's a surefire way to make the softest, most pillowy dumplings. It's an easy and mess-free method, too, because it eliminates the need to boil a russet potato, then rice it or put it through a food mill. The gnocchi are delicious tossed with pesto or a simple tomato sauce or dressed with browned butter and finished with fresh herbs.

MILK STREET VERSION

71 Grams (1 Cup) Instant Potato Flakes
1 Cup Boiling Water
1 Large Egg, lightly beaten
130 Grams (1 Cup) All Purpose Flour
½ Teaspoon Kosher Salt
¼ Teaspoon Garlic Powder
¼ Teaspoon Black or White Pepper,
freshly ground

DIRECTIONS

In a large bowl, stir together the potato flakes and water. Let stand until cooled to room temperature. Add the egg, flour and salt, then mix with your hands until the ingredients are just incorporated. Lightly dust the counter with flour and turn the

dough out onto it. Gently knead until the dough is smooth.

Using a rolling pin, roll the dough into a ½-inch-thick rectangle. Cut the dough into ½-inch strips, then, using your hands, roll each strip against the counter into a ½-inch diameter log. Cut each log into 1-inch pieces. If desired, dip the back of the tines of a fork into flour, then gently press into each piece to create a ridged surface.

In a large pot, bring 4 quarts salted water to a boil. Add half of the gnocchi, return to a boil and cook, stirring gently and occasionally, until the gnocchi float to the surface. Cook for 1 minute, then use a slotted spoon to transfer the gnocchi to a wire rack. Return the water to a boil and repeat with the remaining gnocchi. Let the gnocchi cool for at least 15 minutes before using.

AMERICAS TEST KITCHEN VERSION

2 cups (4 ounces) plain instant mashed potato flakes
1 cup (5 ounces) all-purpose flour
2 teaspoons table salt, plus salt for cooking gnocchi
1½ cups water
1 large egg

DIRECTIONS

Whisk potato flakes, flour, and salt together in large bowl. Whisk water and egg together in separate bowl. Add water mixture to potato flake mixture and stir with wooden spoon until fully combined and mixture forms dough ball. Let sit for 3 minutes for potato flakes and flour to hydrate.

Turn out dough onto lightly floured counter and knead until dough has texture of Play-Doh and springs back halfway when poked with your finger, about 3 minutes. Lightly dust dough with flour and let rest on counter for 5 minutes.

Divide dough into 6 equal pieces. On very lightly floured counter, roll 1 piece into ¾-inch-thick rope. Lightly dust rope with flour. Using floured bench scraper, cut rope crosswise into ¾-inch pieces; transfer gnocchi to lightly floured rimmed baking sheet. Repeat with remaining dough pieces.

Press gnocchi, cut side down, on tines of fork, then roll downward to create grooves. If dough sticks, dust your thumb and fork with flour. Return gnocchi to sheet.



TO COOK:

Bring 4 quarts water to boil in large pot over high heat. Add 1 tablespoon salt to boiling water. Add half of gnocchi, then stir gently to keep from sticking. Simmer until just cooked through and gnocchi float to top, about 1½ minutes. Using spider skimmer or slotted spoon, transfer gnocchi to skillet with sauce. Return water to boil and repeat with remaining gnocchi.

NOTE:

Uncooked gnocchi can be frozen on sheet. Once frozen, transfer to airtight container or zipper-lock bag and keep frozen for up to 1 month. Cook from frozen and increase cooking time to 3 minutes.

GROVELAND EV FREE CHURCH

PASTOR BOB KANDELS

ARE YOU EMBRACING YOUR BEST LIFE THROUGH GOD EVERY DAY?

So, here's what I want you to do, God helping you: Take your everyday, ordinary life - your sleeping, eating, going-to-work, and walking - around life - and place it before God as an offering. Embracing what God does for you is the best thing you can do for him. Don't become so well-adjusted to your culture that you fit into it without even thinking. Instead, fix your attention on God. You'll be changed from the inside out. Readily recognize what he wants from you, and quickly respond to it. Unlike the culture around you, always dragging you down to its level of immaturity, God brings the best out of you, develops well-formed maturity in you." Romans 12: 1-2 - The Message Bible

The scripture above is from The Message Bible; Romans, Chapter 12, verses 1-2. I believe it is one of the best modern-day interpretations of this scripture passage. It helps believers think through their purpose, and it reminds us that we can live each day in God's grace and with many opportunities for renewal. It helps us appreciate God's love and blessings, which He displays in the beauty of the world and the people in our lives. God is always giving us gifts because He loves us. Our challenge is not to fall into a life of seasons that can drag us down in the middle of our everyday life, but to embrace the uniqueness of each day and be lifted up as we appreciate every moment.

April is a month of change in the Sierra

Nevada Mountains. We move from snow and showers to spring flowers and sunshine. We put the long winter behind us and anticipate putting boats and skis on the lakes. We begin hiking during the day and watching God paint colorful sunsets across the horizon before twinkling stars emerge and cover the night sky. We marvel at the morning light and breathtaking sunrises and look forward to the warm days of an approaching summer. Basking in the bright and hot days of summer we pack in all the activities we can before the days begin to shorten, signaling the end of that season. When the things of summer have been safely stored away, we once again ready ourselves for fall and winter.

In Romans, Paul the Apostle asked believers to hold fast to their faith and make every day of each season count as people who live with grace and the promise of eternal life. As Easter approaches, let us celebrate the birth and life of Jesus Christ, the assurance of His love and grace, and the knowledge that the Holy Spirit is living within us. We all have a purpose and many reasons to live an abundant and purposeful life and we can choose to make each and every day count!

You are invited to learn more about God's purpose for your life at one of our area churches and you are always welcome to attend Groveland Evangelical Free Church on Sunday morning for worship at 10:00 am.

In Christ's Service,
Pastor Bob Kandels

TENAYA 4TH GRADE FUNDRAISER

DAWN SILVA



The Tenaya 4th grade class sponsored a Sip and Paint fundraiser on March 11th. This fundraiser was to help support their field trip to the Oakland Zoo. Fifteen people came to enjoy the afternoon having fun painting and sipping. The rainy day didn't seem to bother any of them as they focused on creating a beautiful canvas painting. The laughter and camaraderie was infectious as they compared their painting to their

neighbors. A good time was had by all.

The next fundraising sip and paint class is April 16th from 1:00 to 3:00 pm at Around the Horn Brewery. This fundraiser will support the 2nd grade class field trip. Children can attend this event with their parent. If you would like to donate to support these special field trips for our Tenaya 2nd and 4th grade classes, please send a check to Tenaya Elementary School. Or you can Venmo Kim Scheu.

YOUTH CENTER'S EASTER BUNNY BAKE SALE

DONICA GRAF – GROVELAND YOUTH CENTER COORDINATOR

With just a short time ahead of us till Easter, our Bunny Bake Sale is coming up quick! Our kids are starting to pick and choose who is doing the baking, the packaging, and the decorating. The

amount of excitement that is coming from our youth is just thrilling as they are so eager to get this event put together for their friends and family in our small town. Saturday, April 8th, our event will be held at the Groveland Community Hall from 10:30am-

1:00pm. We will have a variety of cookies available, as well as cupcakes, fudge, rice crispies, and more!

And not only will our families be able to support us with the Bake Sale, but they will have the opportunity to take special photos with the Easter

Bunny for a small donation as well!

We are open Tuesdays-Fridays from 1:00pm-7:00pm and Saturdays 9:30am-5:00pm. Please call 209-962-7263 with any questions regarding Groveland Youth Center or our Bunny Bake Sale.

PMLA Official Online Presence

www.PineMountainLake.com

PML Association Official Facebook Page
Facebook.com/PineMountainLakeCA

**Official page of the PML
 Recreation Department**
Facebook.com/PMLARecreation

**Official page of the PML
 Maintenance Department**
Facebook.com/PMLMaintenanceDept

Official page of the PML Stables
Facebook.com/PMLAEquestrianCenter

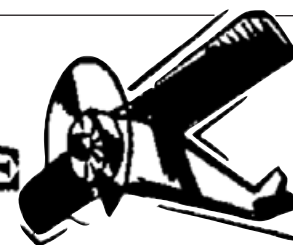
AIRPORT MINI-STORAGE

60 Units - 6'x8' to 10'x30'

Open 7 a.m. to 9 p.m. Daily

Located on Elderberry Way off Ferretti Rd. near PML Airport

209/962-5360





TMC CONSTRUCTION

License # 717300
 Insured
(209) 962-6938

**Brushing • Log Removal
 Mastication
 Hazardous Tree Removal & Pruning
 Excavation**

Site Prep, Engineered Septic, Culverts,
 French drains, Retaining walls,
 Hauling, Post hole digging,
 Under ground work,
 Concrete work

**We can help with your grant.
 Skid Steer and Dump truck service
 Reasonal Rates • Free Estimates**



HOMEOWNER CHECKLIST

CHECK OUT YOUR CONTRACTOR

- Did you contact the Contractors State License Board (CSLB) to check the status of the contractor's license? Connect with CSLB at 800.321.CSLB (2752), www.cslb.ca.gov or www.CheckTheLicenseFirst.com.
- Did you get at least three local references from the contractors you are considering?
- Did you call the references and personally view the contractor's completed work?
- Does the contractor carry general liability insurance?

BUILDING PERMITS

- Does your contract state whether you or your contractor will pull necessary building permits before the work starts?
- Are the permit fees included in the contract price?

www.cslb.ca.gov

DOUBLE-CHECK THE CONTRACT

- Did you read and understand your contract?
- Does the three-day right to cancel a contract apply to you?
- Does the contract identify when work will begin and end?
- Does the contract include a detailed description of the work to be done, the materials to be used, and/or equipment to be installed?
- Are you required to make a down payment? (The down payment should never be more than 10 percent of the contract price of \$1,000, whichever is less, unless there is a valid blanket performance and payment bond on file with CSLB.)
- Is there a schedule of payments? (Only pay as work is completed, not before).
- Did your contractor give you a "Notice to Owner" warning notice that describes mechanics liens and how to prevent them?
- Do you have changes or additions to your contract? (Remember that all changes must be in writing and signed by both parties to avoid disagreements.)

Sean McCoy Painting

License No. 822616

Home of the Cabinet Doctor

"Let's Refinish or Paint Those Old Cabinets"

- Fine Finish • Mill Work • Cabinets
- Doors • Interiors

209.588.1741

www.smccoypainting.com

KEEP CALM AND REFINISH

We are known for our integrity and legendary customer service!

Produce Your Own Clean Power!

- Save \$\$\$ Every Month
- Federal Tax Credit available
- 5-Year Typical Payback

APS SOLAR
ALTERNATIVE POWER SOLUTIONS, INC.

Your Local Solar Electric Company

License #892261 / Since 2002
16046A Via Este Rd., Sonora

Call Us For A Free Estimate
209-532-5925

Check our reviews at www.apssolarpower.com and www.SolarReviews.com

Ken's Asphalt

Lic. 708310

Grading • Paving • Chip Seal • Road Oil

Seal & Slurry Coatings • Crafcoc Hot Rubberized Crack Sealer

Driveways • Private Roads • Subdivisions

DOING BUSINESS SINCE 1985

DRAINAGE PROBLEMS?

We have the Solution!

Erosion Control • Riprap (6-12" Rock) • Asphalt Curbing • Base Rock

"Just Pave It" **Complete Concrete Services** *"Just Pave It"*

- Stamped Concrete and Colored Concrete
- Stained Concrete
- Cleaning & Sealing
- Retaining Walls
- Driveways
- Walkways
- RV Pads
- Patios

532-0800 • 962-5644 • 768-7395 Cell

LaMar EQUIPMENT & HAULING

LIC #431743 • BONDED AND INSURED

Job Site Storage Containers	End Dump	Post Hole Digging
15 Ton Hydro Crane	Manlifts	Concrete Demolition
Heavy Equipment Hauling	Rock Hauling	Towable Trailers
Irrigation & Electrical Trenching	Lot Clearing	Retaining Walls
Landscaping Materials	Demolition	Earth Moving
New Construction & Remodels & Decks	Log Hauling	
	Septic Install	
	Fire Breaks	

(209) 962-0500

Mobile: 770-5667 LanceMarchetti@yahoo.com

VISA MasterCard

Waters Plumbing Heating & Air

FAST SAME DAY SERVICE* **IN MOST CASES*

All work 100% Guaranteed!

Contractors License #463958
www.watersplumbing.com

Groveland (209) 962-0990

"I want you to know that our technicians will give you a price before we start the job." —Wayne Waters

Voted Best Plumber in Tuolumne County 4 Years in a Row

Sierra HEAVY DUTY

RV & TRUCK CENTER INC.

BUSINESS HOURS

Monday - Friday: 8:00am - 5:30pm
Saturday: 8:00am - 2:00pm
Sunday: CLOSED

Well Stocked Parts House:

For All of Your Heavy Duty Needs!

- Heavy Duty Brake Linings
- Baldwin & Fleetguard Filters
- Delo Oil
- LED Lights
- Air Brake Valves & Hoses
- CB Radios, Antennas & Accessories
- Logging & Dump Truck Parts
- Hydraulic Hose Shop

Full Service RV Repair Shop:

- Commercial House & Starting Batteries
- Full Service Chassis & Lube Center
- Electrical & Plumbing Repairs
- Interior & Exterior LED Lighting
- Complete Body Damage Repair Shop
- Solar Power Systems & Inverters
- Complete Detailing Services
- Warranty & Insurance Work Accepted

Mobile Service Available

18968 Waylon Way
Sonora CA 95370
Call or Email us to schedule an appointment today!
(209)-532-7994

EMERGENCY CONTACT: (209)-559-3840
Email: shop@sierraheavyduty.com
Visit Us Online: www.sierraheavyduty.com

Over 50 Years of Experience!

All Major Credit Cards Accepted.

PROPANE DISCOUNT PROGRAM

Suburban Propane – As the preferred provider of PML we are happy to provide an exclusive members only program to all residents. Benefits include: Propane at a discounted rate, Tank rental at a discounted rate, Free basic tank installation, Easy payment options, 24/7 Tech support, Flexible delivery options, 24/7 live phone support. Contact our local staff for further details and current rates.

Suburban Propane
Jamestown California

(209) 984-5283
1 (800) PROPANE

20231 Pine Mountain Dr
Groveland Ca 95321



Chris Levering
Owner
chrislev888@gmail.com

Chris Levering Heating & Air
lic# 797190 34 years
Maintenance and Repair 10% off with this ad (repairs)

209-732-4622

WE HAVE R22 STILL AVAILABLE FOR A LIMITED TIME - CALL NOW



HEADLEY'S TREE SERVICE

Tree Service Without the Headache.

WALTER HEADLEY

Owner / Operator
(209)316-5167

headleystreeservice.com
headleystreeservice209@gmail.com

Pest Control

- Ants, spiders, mice, wasps, earwigs, etc.
- Fast service, great prices
- Squirrel and bat Exclusion
- Termite Inspections
- Weed Control
- Poison Oak
- Star Thistle



962-5710
800-464-3772
Free estimates



Rod Diehl Pest Control

— BAT REMOVAL —

**RESIDENTIAL & COMMERCIAL • HIGH QUALITY
100% SATISFACTION GUARANTEED**

Locally Owned & Operated • 5th Generation Tuolumne County

PERSONAL SERVICE • FREE ESTIMATES

We will customize your service around your pets

info@RodDiehlPestControl.com

(209) **532-3260**



Ask about installation of **BAT HOUSES** on your property

PROUDLY SERVING THE PINE MOUNTAIN LAKE / GROVELAND AREA

RECYCLING NOTICE FROM MOORE BROS

WE HAVE DROP-OFF RECYCLING!!

All residents and visitors are asked to source separate their recyclable materials. There are designated bins located at our office located at 11300 Wards Ferry Rd. in Big Oak Flat where you may drop off your recyclable materials anytime **Monday through Saturday 8am to 5pm** (weather permitting). CLOSED SUNDAYS and major holidays.

Acceptable materials include:

- Aluminum beverage containers, tin cans, glass bottles and jars (all colors)

- #1 Plastic (bottle form only) *****#1 clear fruit/veggie, sandwich or salad clam shell type containers are NOT allowed*****

- #2 Plastic (bottle form only) *****#2 colored plastic coffee containers are NOT allowed*****

- **ALL CONTAINERS MUST BE RINSED AND FREE OF LIDS AND CAPS**

We also accept Mixed Paper, newspaper, magazines, catalogs, junk mail, paperback books & shredded paper which can all be put in the same bin. NO WRAPPING PAPER ALLOWED

CARDBOARD BIN ACCEPTABLE MATERIALS INCLUDE:

Cardboard, Carton Board such as cereal and cracker and soda/beer boxes, etc. are also accepted and can be placed in the cardboard bin with the cardboard. THESE ITEMS NEED TO BE FLATTENED OR BROKEN DOWN AND ANY PACKAGING MATERIALS OR TAPE REMOVED.

IF THE CARDBOARD BIN IS FULL OR YOU HAVE A LARGE LOAD OF CARDBOARD TO RECYCLE, we ask you to take it to our shop location at 17641 Yates St. in Big Oak Flat where we still maintain a 50 yard cardboard recycle box.

PLEASE DO NOT THROW PLASTIC BAGS OF RECYCLABLES INTO THE BINS.

ADVERTISE IN THE PML NEWS GO TO PINEMOUNTAINLAKE.COM FOR RATES AND DETAILS

COMMERCIAL SPACE FOR LEASE

COMMERCIAL SPACE FOR LEASE!
18717 Hwy 120, Groveland. Approximately 1600 square feet of building space, located downtown with propane heat, one ADA bathroom perfect for retail, food service, professional office, medical etc. Rent \$1,650.00 Deposit \$1700.00. Contact agent **650-520-1022**

RENTALS WANTED

EXCELLENT TENANTS
w/excellent credit and rental history looking for homes to rent. Owner approves tenant before placement. Call *Yosemite Region Resorts* **209-962-1111**

HELP WANTED

PMLA IS HIRING
PMLA is looking for qualified candidates for several job openings. Apply online at www.PineMountainLake.com

SERVICES

HOUSESIT YOUR HOME.

Professional couple, building a new home in PML, will take care of your home while you are away. Call or text Rich **(512) 632-0162**

SERVICES

RON'S HANDYMAN SERVICE
Located in Pine Mountain Lake Quality work at affordable prices 35 years experience **209-962-4845**

ARE YOU LOOKING FOR A IN HOME HEALTH CARE GIVER?

I'm background checkked, fingerprinted, and certified nurses aide. Please call Jeanette Tew at **209-962-0589**.

BIG JOHN HANDYMAN SERVICES

Yard Maintenance, House Maintenance and moving households Call John **962-6163**

RONNING ROOFING

Call Joe for all your Roofing and Gutter needs. Licensed, Bonded, and Insured. License # 976739 **209-962-6842**

HANDYMAN/CARPENTER / COMPUTER NETWORKS

Dry rot and termite repair, doors, windows, flooring, finish work Decks, fences, gates, steps, stairs, plumbing, appliance installs Networks, cabling, electrical, etc. Reasonable prices. **(209) 436-9767**

SERVICES

HOUSE CLEANING
We are mature/experienced PML residents. Steve **925-595-3362**
Carla **925-639-4929**.

LOREN SNIDER'S TREE SERVICE

General pruning, weight reduction, satellite/internet clearing, mistletoe removal, tree removal, dump truck, stump grinder, local references, Non Licensed, 30 + years experience. General liability insurance **209-878-3828 or 209-402-9797**

HAVE YOU BEEN INJURED?

Work injuries, auto accidents, wrongful death, and dog bites. No fee unless you win. Contact me now for a free consultation. Michael Lamb (Attorney at Law) phone: **(209) 436-9318**
e-mail: MRLAMBLAW@GMAIL.COM

PERSONAL SHOPPING / CLOSET EDITS / STYLING

Need help shopping for clothes, thrifting for vintage items, putting outfits together, or organizing your closet? For further information and assistance with all of your fashion needs, contact Amy J. at **(209) 436-9318**.

GET YOUR AD NOTICED



Place a photo of your item for sale for just \$10. Call 962-0613 today.



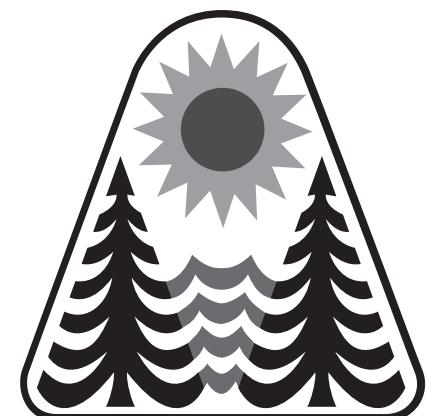
CHECK OUT YOUR GROVELAND LIBRARY

THE GROVELAND LIBRARY RE-OPENS
TUESDAY - THURSDAY — NOON-6PM
FRIDAY & SATURDAY — 10AM-2PM



BOOKNOOK
USED BOOK SALE
SATURDAYS
9AM-NOON.

VISIT THE LIBRARY FOR A GREAT SELECTION OF BOOKS, MAGAZINES, NEWSPAPERS, VIDEOS, CDS, DVDS. ALSO COMPUTERS AND FREE WI-FI!





YOSEMITE REGION REAL ESTATE

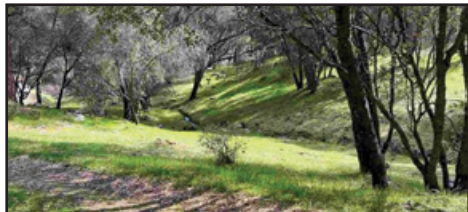
18687 Main St, Suite E, Groveland, CA 95321
209-962-1111 ~ DRE #01964114



20254 Pine Mtn Drive **FULLY-FURNISHED LAKEFRONT.** About 159 feet of lake-frontage and only a few lots from the Lake Lodge and beach. 3bd, 2ba, updated kitchen, quartz counters. Two bdms and bath on the main level. Master bdrm & bath upstairs. A great view of the lake from the spacious deck, accessible from the living room. Private boat dock. Sail boats, paddleboards and pontoon boat, with trailer, included in the sale. Almost 3/4 acre. \$999,500 #20220093



19432 Grizzly Circle **SINGLE-LEVEL HOME** with 2bd, 2ba, 2-car garage and 1600sf wrap-around TimberTech® deck. Acacia wood flooring, wood-beam ceiling, granite counters, stainless appl., apron sink and a 6-burner gas stove. Wood-burning stove in living area. The 3rd sleeping area can double as a bonus room or office. Pella(c) windows, Generac(c) whole-house generator and a new HVAC system. \$569,000 #20221995



19337 Ferretti Rd **GREAT MEMBERSHIP LOT!** Wooded setting with easy access. Enjoy using all PML amenities: Lake, beaches, boat rentals and great fishing spots. The Lake Lodge is a perfect place for weddings or private parties. Enjoy dining at the Country Club Grill, overlooking the 18-hole championship golf course and view the beautiful mountains beyond. \$5,000 #20230011

20445 Pine Mountain Drive • Unit 3 Lot 321



AN ORIGINAL COZY CHALET IN A VERY UNQUE SETTING!

Large boulders with grinding stones and a seasonal creek adorn this oversized .62 acre lot. Mature oak trees provide a private setting. Recent updates include: Renovated kitchen, granite counters, a tile backsplash, a renovated bathroom, vinyl windows and a free-standing gas fireplace. Mini-split ductless H/A, hardwood floors. 2bd on lower level, plus open loft on the upper level. \$325,000 • MLS #20221961

100% Local Long-Term Rental Services

Now Accepting Long-Term Rentals!

- ◆ Monthly Rentals & Tenant Placement
- ◆ Monthly Statements & Owner Payments
- ◆ Tenant-Screening & Credit Reports
- ◆ Scheduled Maintenance & Repairs
- ◆ Move-in / Move-out Inspections
- ◆ Local, State & Federal Tax Requirements



12707 Junipero Serra, #7 **GOLF COURSE TOWNHOUSE** near the tennis courts, swimming pool and Country Club. Entry is from the front deck into the dining/kitchen area, with a couple of steps down to a nice-sized living room. The cozy wood-burning fireplace is surrounded with stone. Large windows look out onto the back deck, which has an awning for hot summer days. \$359,000 #20221389



19223-C Salvador Ct **LOVELY RENOVATED CONDO** with all furniture included. Skylights, double-pane windows, new kitchen, bathrooms and flooring. A spacious deck, overlooking a seasonal creek. Near Pine Mountain Lake's Golf Course, Country Club, Tennis Courts and Community Swimming Pool. Minutes from the historic town of Groveland. \$279,000 #20230037



19011 Carter St **RANCH-STYLE HOME** located near Black Oak Casino. 2bd, 1.5ba. Situated facing away from the road for privacy. Large, covered porch and detached garage, with a pass-through door for additional parking/storage of vehicles or boat. Solar installation allows for more affordable electricity year-round. Build some sweat equity! \$249,900 #20221808



ROB STONE
OWNER/REALTOR®
DRE #01025463



BJORN WAHMAN
BROKER
DRE #00706559



TARA STONE
MANAGER/DPG
DRE# 01106544



LIZ MATTINGLY
BROKER ASSOC.
DRE #00709618



ROY NAVARRO
BROKER ASSOC.
DRE #01235457



MIRIAM MARTIN
REALTOR®, RSPS, ASP
DRE# #01400779



ANDREW RIETVELD
REALTOR®
DRE #01994156



RYAN NIEDENS
BROKER ASSOCIATE
DRE #01940007



KATHY NIEDENS
REALTOR®
DRE #01113243



CAPRICE KROW
PROP. MGR/LDP
DRE# 01179023



CORY STONE
PHOTOGRAPHER
VIDEOGRAPHER



Vacation Rentals



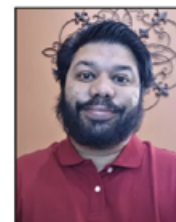
Ryan Niedens
General Manager



HOUSEKEEPERS & MAINTENANCE PERSONS WANTED

CALL 209-962-1111 & PRESS 2 FOR RENTALS

- Competitive Management Rates
- Online & Telephone Reservations
- See Us on AirBnB, VRBO, Trivago, Expedia
- Booking.com, Priceline, Tripadvisor
- Orbitz, Homes & Villas and More!



Josh Regalado
Property Manager



Sharron Wahman
Guest Services

Local Vacation Rental Services
Owner-Approved Rates
Accidental Damage Protection

18687 Main Street, Suite E, Groveland, CA 95321
(209)962-1111 • realfun@yosemiteregionresorts.com

Aggressive Advertising Campaign
Professional Departure Cleanings
Pre-Arrival Inspections for Guests