

PINE MOUNTAIN LAKE NEWS

MAY

2022

THE OFFICIAL NEWSPAPER OF, AND FOR, PINE MOUNTAIN LAKE PROPERTY OWNERS



TABLE OF CONTENTS

Administration	3-10, 14-20
PMLA Financials	6
The Grill & Lounge	12-13
"Homes on the Hill"	
Real Estate	21-27
PML Clubs	28-31
Our Community	32-42
Home Improvement	43-46
Classified Ads	46

PRSRT STD
U.S. POSTAGE
PAID
ABS DIRECT

Change Service Requested

YOUR OPINION COUNTS



Complete the 2022 PMLA Survey Today

The PMLA Board and the Long-Range Planning Committee need your opinion! Answer a short survey on the future of PML and its amenities at www.PineMountainLake.com or come to the Administration Office to fill out a paper version of the survey.

Survey runs from April 1 to June 30

YOUR OPINIONS WILL HELP ESTABLISH PRIORITIES FOR:

- Amenities that need repair or upgrade
- Communication & Safety
- Improvements in member services



PINE MOUNTAIN LAKE ASSOCIATION – 1.209.962.8600

CALLING ALL CANDIDATES

Nomination Submission Deadline is June 6, 2022
See Page 15

**ANNUAL PMLA
RECREATION GUIDE**
Inside this Edition

MEMORIAL DAY
Monday, May 30th
Remember the Fallen

**SEASONAL JOB
OPPORTUNITIES**
See Page 20




Tree Pruning

Tree Removal

Defensible Space

Mastication / Land Clearing


209.768.5946



PINE MOUNTAIN LAKE ASSOCIATION

1.209.962.8600

www.pinemountainlake.com



ADMINISTRATION OFFICE HOURS*

8:00 AM TO 4:30 PM – MON THRU FRI

OPEN AT 8:45 AM SECOND TUESDAY OF EACH MONTH

THE OFFICE IS CLOSED BETWEEN 12:00 & 1:00 EACH DAY

*** SUBJECT TO COVID-19 RESTRICTIONS**

2022 ADMINISTRATION OFFICES HOLIDAYS

(ADMIN OFFICE WILL BE CLOSED)

MON. 5/30/22 MEMORIAL DAY	FRI. 11/25/22 DAY AFTER THANKSGIVING
MON. 7/04/22 INDEPENDENCE DAY	FRI. 12/23/22 CHRISTMAS EVE (OBS)
MON. 9/05/22 LABOR DAY	MON. 12/26/22 CHRISTMAS DAY (OBS)
FRI. 11/11/22 VETERANS DAY	FRI. 12/30/22 NEW YEARS EVE (OBS)
THUR. 11/24/22 THANKSGIVING	MON. 1/02/23 NEW YEARS DAY (OBS)

2022 PMLA BOARD MEETINGS SCHEDULE

Meetings held at the PML Lake Lodge & start at 9 AM
See website, www.pinemountainlake.com, for details

(THIRD SATURDAY – UNLESS OTHERWISE NOTED)

MAY 21, 2022	September 17, 2022
June 18, 2022 (Father's Day Weekend)	October 15, 2022 (Budget Meeting)
July 16, 2022	November 19, 2022 (Saturday before Thanksgiving)
August 20, 2022 (Annual Member Meeting/Election)	December 17, 2022 (Tentative)

PINE MOUNTAIN LAKE NEWS DELIVERY

Although we guarantee that the PML News is mailed from Modesto, CA on the same day (between the 26th-30th of month), most post offices (except Groveland) sort Bulk Mail after First Class mail. So, consider a First Class delivery subscription for just \$20/yr. (\$20 per year for property owners and \$30 per year for non-property owners) Interested? Call the PMLA Office at 209/962-8632 or see form above.

The Pine Mountain Lake News is also available (in PDF format) at: www.pinemountainlake.com.
New editions are posted by the 1st of the month.

PHONE & EMAIL DIRECTORY

ADMINISTRATION
General Manager – Joseph Powell
joepowell@pinemountainlake.com
Admin Asst. to G.M. – 1.209.962.8627
Janessa Owens
j.owens@pinemountainlake.com
Human Resources – 1. 209.962.8628
Shannon Abbott
pmlhr@pinemountainlake.com
E.C.C. Assistant – 1. 209.962.8605
Plan Submittal, Compliance Fees
ecc@pinemountainlake.com
Member Relations – 1. 209.962.8632
Gate Cards, Address Changes,
Webmaster, Mergers,
Lake Lodge Scheduling
Melody Wisdom
pmlmr@pinemountainlake.com
Community Standards Director
1. 209.962.1241
Suzette Laffranchi
communitystandards@pinemountainlake.com
Community Standards Specialist
1. 209.962.1242
Carlie Newton
compliance@pinemountainlake.com
Rental Compliance Coordinator
1. 209.962.1245
Ashley Henderson
RCC@pinemountainlake.com
General Info & Lake Lodge
Scheduling 1. 209.962.8600
Shari Pingree
Receptionist
admin@pinemountainlake.com
Main Gate – 1. 209.962.8615
General Safety Inquiries, gate
passes, campground reservations,
tennis reservations
campground@pinemountainlake.com
ACCOUNTING
Tina Parmalee – 1. 209.962.8607
Receivable/Collections/
Assessments
pmlar@pinemountainlake.com
Accounts Payable – 1. 209.962.8626
Vikki Smedley
pmlap@pinemountainlake.com
Accounting Supervisor
1. 209.962.8618
Stacy Gray
stacy@pinemountainlake.com
Controller – 1. 209.962.8606
Accounting Procedures
controller@pinemountainlake.com
Recreation and Seasonal
Operations Manager
1. 209.962.8604
Michelle Cathey
m.cathey@pinemountainlake.com

DEPARTMENT OF SAFETY
Director of Safety – 1. 209.962.8633
Natalie Trujillo
n.trujillo@pinemountainlake.com
Sergeant – 1. 209.962.1244
Sgt. Teri Cathrein
t.cathrein@pinemountainlake.com
Sergeant – 1. 209.962.8616
Sgt. Carrie Harvey
c.harvey@pinemountainlake.com
MAINTENANCE DEPT
Maintenance Manager
1. 209.962.8611
Rick Laffranchi
rickl@pinemountainlake.com
Administrative Assistant
1. 209.962.8612
Anita Spencer
maintenance@pinemountainlake.com
Fire Safety Coordinator
1. 209.990.5260
Joe Milani
j.milani@pinemountainlake.com
Fire Safety Inspector
1. 209.990.5263
Amanda Darrow
inspector1@pinemountainlake.com
GOLF COURSE
Golf Course Superintendent
1. 209.962.8610
Rob Abbott
rabbott@pinemountainlake.com
Golf Pro Shop – 1. 209.962.8620
Golf Pro Shop/Golf Reservations
Doug Schmielt
dschmielt@pinemountainlake.com
Golf Pro – 1. 209.962.8622
Mike Cook
golfpro@pinemountainlake.com
THE GRILL AT PINE MOUNTAIN LAKE
The Grill Manager – 1. 209.962.8639
Jay Reis
clubmgr@pinemountainlake.com
Restaurant – 1. 209.962.8638
OTHER PHONE NUMBERS
Equestrian Center Manager
Kendra Brown
1. 209.962.8667
stables@pinemountainlake.com
Marina Manager
Dave Millitello
1. 209.962.8631
marina@pinemountainlake.com
PML NEWS – 1. 209.962.0613
Ad/Article Submissions
Sabre Design & Publishing
PMLNews@SabreDesign.net

GENERAL MANAGER'S MESSAGE

JOE POWELL – CCAM-LS, CMCA, AMS GENERAL MANAGER

2022 PML MEMBER SURVEY

Every three years, the PML Long-Range Planning Committee (LRPC) prepares and distributes a member survey to gauge member satisfaction with the facilities and services that they receive from PMLA. They also look for feedback on pertinent current issues for the Association.

This survey will be used by the PMLA Board of Directors and management to determine where to focus our efforts and to assess how well we are doing in meeting your expectations.

The survey timeframe is April 1 to June 30, 2022. We hope many property owners will respond so that the results represent the feelings of the majority. Spouses or multiple adult property owners may submit separate survey responses.

If you have difficulty using the web-based tool or prefer to submit a paper version, printed copies are available at the PMLA Administration Office. If you choose to use this printed version of the survey, indicate your answers with a check mark and write legibly so they can be read and entered into the database of online survey responses.

ALL RESPONSES WILL BE KEPT CONFIDENTIAL. The summary of results will be posted on the PML website in August/September 2022. Results will also be presented at the July 2022 PMLA Board of Directors meeting and will be summarized in the PML News.

If you would like to be entered into a drawing for three PML gift cards (\$100, \$50, and \$25), please provide your name and contact information at the end of

the survey. As of the date of this article, 425 members have completed the survey. Our goal is to exceed the 2019 Member Survey number of responses which was 1029. Help us reach our goal and make sure your voice is heard!

PINE MOUNTAIN LAKE FIRE SAFETY WORKSHOP

The Pine Mountain Lake Fire Safety Team is hosting a workshop to present information regarding the FIREWISE USA Program and creating a defensible space around your home. The workshop will be held at the PML Lake Lodge on Friday, May 27, 2022 from 5 pm to 7 pm. For more information, call the PML Fire Safety Team at 1-(209) 990-5260.

TUOLUMNE COUNTY VEGETATION ORDINANCE

Tuolumne County formed a Fire Safety and Community Resilience Citizens Advisory Committee and Task Force in February 2021 in response to the on-going wildfires in our area with a goal to promote fire safety and preparedness.

The Tuolumne County Fire Safety Committee is working on a proposed vegetation ordinance to help resolve some of the issues with fire fuel threats on unimproved private property within the County that are not covered by State regulations. So far the Committee has held four public meetings on the Zoom platform and have put out a survey to receive feedback from citizens. The meetings were recorded and posted to their webpage on the County website.

The Committee has developed some language for the ordinance, but they are

not quite ready to put it out to the public for comment. I recommend that PML members review the information and recordings on the Tuolumne County website at <https://www.tuolumnecounty.ca.gov/1341/Fire-Safety-Advisory-Committee>. It is important to stay informed and provide your input to our County staff and Board of Supervisors.

DEPARTMENT OF SAFETY STAFFING SHORTAGE CONTINUES

We are still experiencing a severe staffing shortage in our Department of Safety. We have made every attempt to recruit and retain staff for this operation, but the situation has gotten worse. We will continue to work to resolve this

challenge, but ask that members please be patient with our staff as some services provided by Safety may not be available at all times.

If you know of anyone who is looking for a job, please direct them to our website at www.pinemountainlake.com. We offer a competitive salary and benefits and signing bonus. Look for the employment opportunities button at the bottom of the homepage. We offer an easy-to-use online application. For more information, please call our HR Manager, Shannon Abbott at 1-(209) 962-8628.

Until next month, wishing all moms a **Happy Mother's Day**, and everyone a fun and safe Memorial Day!

PINE MOUNTAIN LAKE ASSOCIATION JOB OPENING



SAFETY OFFICER POSITION

Are you looking for a way to give back to your community?
**COME JOIN OUR SAFETY DEPARTMENT
AT PINE MOUNTAIN LAKE ASSOCIATION!**

Our Safety Officer position is full-time with a Union benefit package of medical/dental/vision/prescription.
Starting salary is \$18.31/hour
Offering Sign-on Bonus after 30 days of hire

Full job description and our online application can be found at:
www.pinemountainlake.com, click on "Employment Application"
and create a profile to apply for this position.

Shannon Abbott, HR Manager 209-962-8628 • pmlhr@pinemountainlake.com
Equal Employment Opportunity Employer

MAKE PML YOUR ONE-STOP-SHOP FOR ALL YOUR GIFT GIVING!

PICK UP A GIFT CARD FOR:
GOLF • GOLF SHOP APPAREL & ACCESSORIES • THE GRILL
HUNTING & FISHING LICENSE VOUCHERS
GIFT CARDS ARE AVAILABLE AT THE ADMINISTRATION OFFICE,
THE GRILL, AND AT THE PRO SHOP

PRESIDENT'S MESSAGE

KAREN HOPKINS – PRESIDENT

Great rain in April, so the May flowers should be popping up soon.

If you've been out and about you have probably noticed all the work getting PML ready for the summer season. New grass and picnic tables at the marina, swim platforms back in the water, fire abatement and brush clearing. I'm looking forward to it all.

That said, we do have some ongoing challenges. I'm highlighting a few here to help you know that we are busy working on.

Supply chain issues—you probably have experienced your own problems getting the goods you want. This is happening in every PML department, but in my opinion, is most obvious at The Grill. Grill Manager, Jay Reis, Chef Raul and the staff are doing a great job of working through the challenges. Bar Manager, Jamie Wortmann has introduced some new weekly drink specials. I'm very impressed by their creativity and commitment.

Hiring excellent employees—as evidenced by the help wanted signs we see everywhere, you can understand the problem. This will be an ongoing issue as new businesses, like the new resorts

that have been approved, vie for the same talent pool. One of the limiting factors in our area is employee housing. With the success of short term vacation rentals there are no longer as many long term rentals in our community that serve to house employees. Our staff is looking into some creative solutions that we hope to bring before the membership soon.

Infrastructure issues beyond PML—things like water/sewage, ambulance and emergency services availability, declining county budgets. These all affect PML in some way. Staying up to date on what's going on, especially when there is a call for resident input or an issue on the ballot, can be daunting. Often, members want the PML board or staff to take a position, tell members what to do, or tell the agencies what to do. This is not our role. However, we do work hard to stay informed and when appropriate we update members on issues and where they can get more information. Especially when the issues affect our membership and our community.

Long lines at the main gate during the summer—staff is working hard to make access at the Main Gate smoother and quicker. Unfortunately, the Department

of Safety has been impacted the most by staffing shortages. Regardless, our management team is currently reviewing equipment and software that will help improve guest registration and access to the community, and hopefully reduce the long lines at the Main Gate. PML has become a popular place and it shows with all of the visitors that we get each summer.

Ever-changing law updates—we are nearly complete with the CC&R and Bylaw restatement draft development. Once we have a final draft it will be presented to the Board of Directors and membership for review and consideration. Besides the discussion in open board meetings, we plan to hold a town hall meeting to address member questions and concerns regarding the draft documents. Members will have a say in what goes into the governing documents and ultimately will have the final say when you vote on the final draft.

Remember to drive 25—the wildlife and walkers appreciate it.



*Karen Hopkins,
Board of Directors
President*

**PINE MOUNTAIN
LAKE ASSOCIATION**
1.209.962.8600

BOARD OF DIRECTORS

Karen Hopkins: **President**
Nick Stauffacher: **Vice President**
Tom Moffitt: **Secretary**
Craig Prouse: **Treasurer**
Chuck Obeso-Bradley: **Director-at-large**

GENERAL MANAGER

Joseph M. Powell, CCAM-LS, CMCA, AMS

CORRESPONDENCE TO DIRECTORS

Pine Mountain Lake Association
19228 Pine Mountain Drive
Groveland, CA 95321
PMLABoard@pinemountainlake.com

ADMINISTRATION OFFICE

HOURS OF OPERATION*

Monday - Friday 8:00 AM - 4:30 PM
Closed 12:00 - 1:00 PM
Tel: 209/962-8600

* Subject to COVID-19 Restrictions

The Pine Mountain Lake News,
established July 25, 1973,
is printed monthly for residents of
Pine Mountain Lake and vicinity by
Pine Mountain Lake Association,
Groveland, California 95321.

SUBSCRIPTION RATES:

Co-owner subscription: \$6 per year
Single copies: 50 cents each
Single mailed copies: \$1.35 each
For non-members: \$10 per year

SUBMISSION DEADLINE

10th of the month by 4:30 PM
LATE SUBMISSIONS MAY NOT BE
ACCEPTED

Visit www.pinemountainlake.com for ad rates
and submission guidelines or email:

PMLNews@SabreDesign.net

For the mutual benefit of all property owners, the Pine Mountain Lake News reserves the right to edit all copy submitted for publication. The Pine Mountain Lake News is a private enterprise, not a public entity, and as such is entitled to reject advertisements or articles in the best judgment of its editor or publisher, despite a probable monopoly in the area of its publication. Pine Mountain Lake Association is not responsible for, nor does it guarantee the accuracy of, information contained in any ad placed in the Pine Mountain Lake News. The Pine Mountain Lake News attempts to ensure that this publication is free of legal infringements and the Pine Mountain Lake Association and its contractors are not liable for copyright/trademark infringements from external advertisements and articles.

DAVID WILKINSON—Publishing Editor

SABRE DESIGN & PUBLISHING

Design/layout

PINE MOUNTAIN LAKE NEWS

P.O. Box 605

Groveland, CA 95321

Tel: 1.209.962.0613

E-mail: PMLNews@SabreDesign.net

ATTENTION NEW PML MEMBERS!

WELCOME to PML...We're glad you're here!

Once you have received your welcome letter from the Association you will have the information you need to log into the PML website (www.pinemountainlake.com)

Once there click on the **RESOURCES** tab & then on the **NEW MEMBER ORIENTATION** icon.

The New Member Orientation page is **JUST FOR YOU!**

Here you will find:

- Member Orientation Packet
 - o Information on the Official PML Facebook page
 - o Gate Access Guest Pass internet program information
 - o Fire Safety contact and information
 - o Board Meeting Dates and information
 - o Rules, Regulations and Procedural information
 - o Information on PML Committees and Clubs

- Assessment Information
- PML Fact Sheet
- Getting Connected in Groveland

And **MUCH MORE!**



PINE MOUNTAIN LAKE ASSOCIATION
SUMMARY STATEMENT OF OPERATING FUND REVENUES AND EXPENSES
For The Three Months Ended April 3, 2022

OPERATION OF AMENITIES	Revenues					Expenses				Budget	
	Members' Assessments Net of Discount	User Fees	Sales, Net of Cost of Sales	Miscellaneous Income	Total Revenues	Total Expenses	(Cost)/Income Before Depreciation	Depreciation Expense	(NET COST) INCOME	(NET COST) INCOME	Variance Bud - Act
Golf Course	\$ -0-	\$ 159,832	\$ 12,126		\$ 171,958	\$ 407,573	\$ (235,615)		\$ (235,615)	\$ (284,957)	49,342
Restaurant & Bar	-0-	583	177,794		178,377	371,585	(193,208)		\$ (193,208)	(313,687)	120,479
Marina	-0-	132,519			132,519	97,861	34,658		\$ 34,658	21,801	12,857
Snack Shack	-0-		9,625		9,625	15,711	(6,086)		\$ (6,086)	(14,553)	8,467
Stables	-0-	23,137		1,025	24,162	101,896	(77,734)		\$ (77,734)	(76,024)	(1,710)
Recreation	-0-	37,724			37,724	8,249	29,475		\$ 29,475	42,387	(12,912)
Roads & Facilities Maintenance	-0-	26,842		200	27,042	552,465	(525,423)		\$ (525,423)	(673,504)	148,081
PROPERTY OWNER SERVICES											
Safety	-0-	35,990		(1,992)	33,998	262,889	(228,891)		(228,891)	(265,069)	36,178
Administration	-0-	127,773		149	127,922	528,258	(400,336)		(400,336)	(397,353)	(2,983)
ASSESSMENTS											
Assessments	1,560,389			30,499	1,590,888	22,221	1,568,667	178,326	1,390,341	1,359,886	30,455
Totals	\$ 1,560,389	\$ 544,400	\$ 199,545	\$ 29,881	\$ 2,334,215	\$ 2,368,708	\$ (34,493)	\$ 178,326	\$ (212,819)	\$ (601,073)	388,254

CAPITAL EXPENDITURES 3 Month Ended April 4, 2022

	TOTAL RESERVE FUNDS	NEW CAPITAL ADDITIONS FUND	TOTAL CONTRIBUTION TO CAPITAL
2022 Beginning Fund Balances	3,206,538	\$ 74,944	3,281,482
Interest Income			-
Bank Fees/Discounts Taken	539		539
Assessments Earned	563,751 ⁽¹⁾	25,563 ⁽²⁾	589,314
Other Income/Expense			
PURCHASES BY AMENITY			
Golf Course	(69,521)		(69,521)
Country Club	(3,185)		(3,185)
Bar			-
Marina	(14,153)		(14,153)
Snack Shack	(3,303)		(3,303)
Swim Center			-
Stables	(141)	(239)	(380)
Recreation			-
Roads & Facilities Maintenance	(86,210)	(11,034)	(97,244)
PROPERTY OWNER SERVICES			
Safety			-
Administration		(7,317)	(7,317)
Non-Capital Reserve Expenses	(207,166)		(207,166)
Total transfer to Operating Fund for property and equipment additions and reserve expenses	(383,679)	(18,590)	(402,269)
Adjusted Fund Balances	\$ 3,387,149	\$ 81,917	\$ 3,469,066

Notes to the Financial Statements

(1) The Budgeted Reserve Fund assessment for 2022 is \$2,255,000

(2) The Budgeted New Capital Additions Fund assessment for 2022 is \$102,249

DO YOU HAVE YOUR PIN?

Since PML is a private gated community, we want to offer our property owners a secure way to call in guests. When you become a member of PML you are assigned a Personal Identification Number (PIN) to utilize either when calling in a guest pass or using the Gate Access Internet program. This PIN identifies you to staff without you having to be present. This is a confidential number and should **not be shared**. When you call the Main Gate to authorize a guest or vendor access into PML, you will be asked for your PIN. The staff will look up the number in the computer and use it to confirm your identity before entering the guest information. You must have this number to utilize the Gate Access Internet program as well. If you do not know your PIN or have any questions, please contact the Administration Office at:



1-209-962-8600



Monday through Friday from 8 am to 4:30 pm
and we will gladly supply this information to you.

PML AUTOMATIC PAYMENT PROGRAM

Taking the time to write a check for your monthly assessment payment can be time consuming and costly. You can avoid this burden and eliminate the potential for late payment charges by enrolling in PMLA's Auto Payment Program. By completing the form, which can be found at www.PineMountainLake.com under the Resources/Forms, and returning it to the Administration Office, you can have your monthly assessment automatically deducted from your checking account or charged to your credit card. This means you never have to remember to write a check and mail it each month. The peace of mind that comes with knowing your payment will always be made on time is easy to attain. We can also arrange to have any other regular payment you make to the Association (such as golf membership, horse boarding fees, etc.) paid in the same way.

For more information on this simple, effective and time saving plan please contact us at **(209) 962-8600**.

PAY YOUR PML PAYMENTS ONLINE

Did you know you can make your payments online?
Online Bill Pay is available on www.PineMountainLake.com.
Pay via your credit card, it is quick and easy!

PMLA MONEY MATTERS

KEN SPENCER, CAFM – ASSOCIATION CONTROLLER

Summer is right around the corner! Warm (or hot) weather, clear skies (unless there's a fire somewhere) and lots of sunshine. Time to get out and enjoy all that PML has to offer in the way of recreation and fun activities. A round of golf on our magnificent championship course. Tennis or Pickleball on our well maintained courts. A trail ride at our Stables. A delicious lunch or dinner at the Grill. Swimming and sunning in the pool. Not to mention all there is to do at the Marina/Lake including boating and swimming as well as snacking at the Lakeside Café.

Besides being a blatant promotional pitch what does this have to do with Money Matters? Thank you for asking dear readers. Money is one of the driving forces behind all of the Association's amenities. Money comes in when you patronize an amenity and purchase a product or service from them. Indirectly money also comes in when you subscribe to a long-term service such as a golf annual. These incomes are used to help offset the costs of providing the service or product.

Money goes out when we need to pay for the products (i.e. food, merchandise, etc.) that you purchase at one of the amenities. In addition we have other expenses such as employee costs (wages, taxes, benefits, etc.), supplies and utilities. These costs all add up and the difference between the revenue we bring it in and the total expenses represents the subsidy required as part of your annual assessment.

Simple math tells us that the more revenue we generate the less money we need from property owners through their assessment. Looking at the financial results for the first three months of 2022 highlights this simple fact. The Grill/Bar operation has generated \$103k more revenue than budgeted and \$126K more than last year. The result is a subsidy requirement that is substantially

less (\$120k) than anticipated. In addition the golf snack shack has also benefited from increased sales. With \$5k more in revenue than budgeted the subsidy for this amenity is already \$8k less than expected.

The golf operation is another example of this. With merchandise sales and golf play revenue already \$35k higher than budget this means that the positive contribution to the subsidy requirement (meaning less is required from property owners) is \$27k. These are both great starts to the new year for these operations. With the Marina getting ready to open in a few weeks the opportunities to continue this trend are exciting.

In the coming months even more of our amenities will be available for your enjoyment. The stables will be offering lessons and trail rides. The pool will open as well and you can always jump down to the Grill to get lunch. The tennis and pickleball courts are always open but should be even more accessible once the weather starts to heat up.

While no one can predict the final result of this year it is encouraging to see such strong performance in the first quarter of 2022. You can help keep this trend going during the spring and summer months ahead. Get out there and enjoy the weather. Play a round of golf, buy a shirt at the Pro Shop. Have lunch and dinner at the Grill. All of these activities are a great way to experience the wonderful place we call home as well as to support the financial health of the Association.

Well that's it for this month. If you have any PMLA Money Matters you would like to see discussed in this column in the future please drop me a line at CONTROLLER@PINEMOUNTAINLAKE.COM or give me a call at 962-8606. Thanks for reading and I hope you find this monthly discussion helpful, somewhat interesting and at least a bit informative.

Simonetta Spaccia, PhD

All of us face challenges in our personal relationships from time to time. As a Psychologist, I specialize in short-term consultations where I teach others coping strategies for improving family, friend or work relationships. Difficulties with a spouse, child, parent, colleague or friend, can be improved or completely overcome by embracing a new perspective, and having the right set of tools to help you move forward.

Based in Pine Mountain Lake

*At this time working only online via Zoom or other apps

(408) 391-3447

simonettaspaccia@gmail.com



RECYCLING NOTICE FROM MOORE BROS

WE HAVE DROP-OFF RECYCLING!!

All residents and visitors are asked to source separate their recyclable materials. There are designated bins located at our office located at 11300 Wards Ferry Rd. in Big Oak Flat where you may drop off your recyclable materials anytime **Monday through Saturday 8am to 5pm** (weather permitting). CLOSED SUNDAYS and major holidays.

Acceptable materials include:

- Aluminum beverage containers, tin cans, glass bottles and jars (all colors)
- #1 Plastic (bottle form only) ****#1 clear fruit/veggie, sandwich or salad clam shell type containers are NOT allowed****
- #2 Plastic (bottle form only) ****#2 colored plastic coffee containers are NOT allowed****
- **ALL CONTAINERS MUST BE RINSED AND FREE OF LIDS AND CAPS**

We also accept Mixed Paper, newspaper, magazines, catalogs, junk mail, paperback books & shredded paper which can all be put in the same bin. NO WRAPPING PAPER ALLOWED

CARDBOARD BIN ACCEPTABLE MATERIALS INCLUDE:

Cardboard, Carton Board such as cereal and cracker and soda/beer boxes, etc. are also accepted and can be placed in the cardboard bin with the cardboard. THESE ITEMS NEED TO BE FLATTENED OR BROKEN DOWN AND ANY PACKAGING MATERIALS OR TAPE REMOVED.

IF THE CARDBOARD BIN IS FULL OR YOU HAVE A LARGE LOAD OF CARDBOARD TO RECYCLE, we ask you to take it to our shop location at 17641 Yates St. in Big Oak Flat where we still maintain a 50 yard cardboard recycle box.

PLEASE DO NOT THROW PLASTIC BAGS OF RECYCLABLES INTO THE BINS.

NOTARY SERVICE

ANITA SPENCER, – PMLA NOTARY PUBLIC

(Prices listed are per Signature Rate)

PML Property Owners – \$10

Non-Property Owners – \$15

Witness Fee – \$5

You may call Anita @ **209-962-8612** to schedule an appointment between the hours of 8am – 4pm

FROM THE FRINGE

MIKE COOK – PGA HEAD GOLF PROFESSIONAL

The Golf Shop Staff is here to assist you in every way possible so please call us if you have any questions or need our assistance at 962-8620. Our Spring Golf Shop hours are from 7:00am until 6:00pm, 7 days a week.

UPCOMING EVENTS

Ladies 9-Hole Golf Club

Weekly Play Day – Thursdays

Ladies 18-Hole Golf Club

Weekly Play Day – Thursdays

Men's Golf Club

2 Man Scramble – Wednesday May 4

Ladies 18 Hole Golf Club

Handicap Tournament (54 Holes)
May 5, 10 & 12

PML Southern Valley Seniors

Home Event – Friday May 6

Men's Golf Club

Razzle Dazzle – 2 Man Team
Saturday May 14

GOLF COURSE FIRST TEE TIME

Beginning Monday May 4th, the first tee time of the day will change from 8:30am to 7:30am.

2022 GOLF SERVICES

Golf Services: If you have not paid for your Bag Storage, Push Cart Storage or Locker, please call or come in to the Golf Shop and we will be happy to assist you. If you are interested in signing up for one of these services, please call the Golf Shop.

NEW EVENT FOR 2022 – PML PUTTING CHAMPIONSHIP

In the month of May, we will hold a PML Putting Championship held over 3 Saturdays in May. For more information and to sign-up call or come into the Golf Shop.

ONLINE TEE TIME RESERVATIONS

Online tee time reservations are in the works, more information to follow.

PUNCH CARDS

Pine Mountain Lake Association Property Owners can save up to \$6.00 per round by purchasing a Punch Card in the Golf Shop. For more information call or come into the Golf Shop.

2022 MOTHER LODE INVITATIONAL

The Mother Lode invitational is back! The 2022 dates are June 23, 24 & 25. Entry forms are available at the Golf Shop and online at www.pmlmgc.com. For further information call the Golf Shop at 209-962-8620.

CALLAWAY GOLF COMPANY

Callaway Golf Company has come out with a very diversified line of golf clubs for 2022. If you are in the market for a new set of clubs, we will have trial sets available in the Golf Shop for you to take to the range or on the golf course to try out. These sets should be arriving in the month of March. Stop by the Golf Shop and check them out.

MEN'S & LADIES GOLF CLUBS

If you are interested in joining the Men's or Ladies Golf Clubs, you can call the Golf Shop 962-8620 and we will give you the information you need. Applications are available in the Golf Shop. The Men's Club has a website (www.pmlmgc.com) that you can visit to sign-up online for your membership (see Men's Club eligibility rules) or to print an application. Once you are a Men's Club Member, you can sign-up for tournaments online.

PINE MOUNTAIN LAKE GOLF APP

Pine Mountain Lake Golf & CC has an app that you can download FREE from the app store. There are many fun and useful features on the app such as:

- Golf course GPS
- Players can measure their shots
- Golf course hole by hole flyover
- Interactive scorecard
- Score posting
- Player profile and automatic stats tracker
- Special offers
- Food & beverage menus and ordering
- Receive notifications concerning special events
- Weather information
- PMLA Member information & online payments

CARE OF THE GOLF COURSE

TAKING CARE OF THE GOLF COURSE IS EVERYONE'S RESPONSIBILITY; PLEASE DO YOUR PART!

Replacing Divots – PML is a **DIVOT FIRST** facility; that means that if the divot is intact or even a portion of the divot is intact, we want you to replace the divot first and press the divot down firmly with your foot. When an intact divot is replaced, it will begin to root right away but a mulch filled divot will take weeks to fill in. If the divot hole is not totally filled in by the divot that you replaced then fill the rest of the hole with mulch and press down the divot firmly with your foot. If the divot is not intact, then fill the divot hole with mulch and smooth the mulch with your foot so it is level with the ground.

Repairing Ball Marks – This is one of the major negatives in our great game; players either do not know how to repair ball marks correctly or don't even attempt to repair them. Here is the correct way to repair a ball mark:

Insert the divot tool just outside the edge of the ball mark, use the divot tool to mend in the outside portion if the ball mark towards the middle. Then use your putter to tap down the repaired turf. If a ball mark is repaired properly, you will not even be able to tell that there was a ball mark. **NEVER PULL UP THE MIDDLE OF THE BALL MARK.**

Raking Bunkers – We are back to normal procedures concerning bunkers; **PLEASE** make sure that you rake the

bunker after you have hit your shot.

Golf Carts – Driving golf carts on the fairways has a negative effect on turf conditions over time. **PLEASE** use the 90-degree rule posted in each golf cart in order to minimize the cart traffic on the fairways. Reminder – Driving golf carts behind any of our greens is **NOT ALLOWED**.

NEW PINE MOUNTAIN LAKE PROPERTY OWNERS

If you are a new Pine Mountain Lake Property Owner and you are interested in getting acquainted with other Property Owners who play golf, call the Golf Shop and we will let you know what golfing groups you may be able to join or what golf activities are planned for the year.

PROPERTY OWNER ANNUAL GOLF CART RENTAL AGREEMENT

Every person who drives a golf cart on the course, is required to sign a golf cart rental agreement at the time of registration, before they can drive a golf cart. PML Property Owners sign the agreement one-time and that covers the entire year. If you have not signed your agreement you can go to the PML website (www.pinemountainlake.com) and fill it out and sign online or you will be asked to sign the form when you register in the Golf Shop. Click on amenities, then click on golf and you will see the agreement with other forms available. If you have any questions, please call the Golf Shop 209-962-8620.

MAINTENANCE MATTERS

RICK LAFFRANCHI

May is here and at the time of writing this article, early April, it has been 7 days since our last rain. The lake is still spilling at a trickle, The weather is amazing, perfect for outside work.

Preparations are taking place for our upcoming season, New HVAC units have been installed at the Marina Café, the new irrigation system is functioning very well, the swim platforms are back in place, the orange fence is down and the

newly improved lawn area at the marina is ready to go, let the picnics begin.

The Facilities crew is busy in the green belts with fire mitigation taking place in TA 3 one, as of the writing of this column we have cleared and burned nearly 50 acres and by the print of this article will have completed this area making a total of 71 acres cleared.

And please remember if you see folks working on the road edge slowdown, look around and be courteous. Have a great April!


SAVE THE DATES!

JUNE 23, 24 & 25, 2022



THE 45TH EDITION OF THE
MOTHER LODE INVITATIONAL
IS COMING THIS SUMMER!
DON'T MISS OUT ON THE
GREATEST GOLF TOURNAMENT
IN THE FOOTHILLS
DETAILS COMING SOON!

FOR MORE INFORMATION CONTACT MIKE COOK
209-962-8620 OR GOLFPRO@PINEMOUNTAINLAKE.COM



Town Hall with Supervisor Kathleen Haff

On the Groveland Ambulance Tax Measure W

When:	Wednesday, May 18th, 2022
What time:	5:00 pm to 6:00 pm
Where:	Tenaya School—in person only

Have your questions answered before casting your vote on or before June 7th!

COMMUNITY ORGANIZATIONS

Contact the individuals/organizations below if you are interested in joining!

If you would like your community organization listed please send your group's name, contact person, and phone number to debra@pinemountainlake.com

Camp Tuolumne Trails – Jerry Baker – 1.209.962.7916

Friends of the Groveland Library – Virginia Richmond – 1.209. 962.6336

Helping Hands Thrift Store & Furniture Barn – Patti Beaulieu – 1.209. 962.7402

Village on the Hill – 1.209.962.6906 or info@villageonthehill.org

Southern Tuolumne County Historical Society (STCHS) – Harriet Codeglia – 1.209. 962.6270

COMPOST & ARCHERY RANGE HOURS OF OPERATION

APRIL THRU OCTOBER – 7 DAYS A WEEK 8AM TO 4PM
WEATHER PERMITTING

NOVEMBER THRU MARCH – TUES. – SUN. 8AM TO 4PM
WEATHER PERMITTING

SHOOTING RANGE – TUES, THUR, SAT 9AM TO 3PM
PLEASE NOTE Hours may vary depending on weather conditions, safety concerns, or other situations beyond control. Archery & Gun Range users must check-in with compost attendant.

HOURS SUBJECT TO CHANGE WITHOUT NOTICE
Call Main Gate at 1-209-962-8615

LETTERS TO THE EDITOR

LETTERS TO THE EDITOR RECEIVED	0	DEFERRED TO NEXT EDITION BY	
DENIED BY EDITORIAL COMMITTEE	0	EDITORIAL COMMITTEE	0
Exceeds 250 word maximum	0	DENIED BY BOARD OF DIRECTORS	0
Content	0	DEFERRED TO NEXT EDITION BY	
Not a property owner	0	BOARD OF DIRECTORS	0
"THANK YOU" LETTERS RECEIVED*	0	* Thank you's do not require editorial committee approval	

Submit Letters to the Editor by sending to "Editor, PML News"
Mail: 19228 Pine Mountain Drive, Groveland, CA 95321
Email: PMLNews@sabredesign.net • Fax: 800-680-6217

PLEASE NOTE THAT ALL LETTERS
APPEAR IN THE ORDER THEY WERE RECEIVED BY THE PML NEWS

The Pine Mountain Lake News welcomes letters and articles for publication provided they meet the criteria established in the current PMLA Editorial Policy (See excerpt below – entire policy on file at the Administration Office). Letters must be limited to 250 words, typewritten using upper and lowercase letters or neatly printed (no all-capital material) and signed with name, mailing address, PML unit/lot number, and day/evening telephone numbers by a property owner in good standing. **LETTERS MUST BE RECEIVED BY THE EDITOR BY THE 10th OF THE MONTH.** Letters deemed by the Editorial Committee to be improper will not be accepted. Readers are advised that **THE OPINIONS EXPRESSED IN THESE LETTERS ARE THOSE OF THE INDIVIDUAL AUTHORS, NOT OF THE PMLA, THE PINE MOUNTAIN LAKE NEWS, NOR THEIR EMPLOYEES.**

GUEST & RENTERS HANDBOOK
IS AVAILABLE ONLINE!

You can now view or print the Guest and Renters Handbook from the PML Website.
Go to our website at:

WWW.PINEMOUNTAINLAKE.COM

and click on Resources, then scroll down to the bottom of the page and click on Guest and Renters Handbook. This handbook has valuable information for Guests and Renters in Pine Mountain Lake.

ALL PMLA HOMEOWNERS
EMAIL OPT-IN PROGRAM

The Association is pleased to offer a money saving program available to all PMLA property owners. This program allows you to receive many of the documents we are required to provide to you via email. This option is important because:

COST SAVINGS – The Association is spared the expense of printing and mailing many documents to those property owners who sign up.

ENVIRONMENTAL SAVINGS – Less paper means less trash and reduced damage to the environment both in the disposal and production of paper and envelopes.

REDUCED CLUTTER – By receiving documents via email there is less paper for you

to deal with. All documents can be saved on your computer and viewed at your discretion.

TIMELY RECEIPT – Documents sent electronically are received in minutes as opposed to the days it takes for regular mail to arrive.


If these sound like good reasons to you, please sign up for the Document Email Program today using the attached form. Simply return the completed form to the Administration office at your convenience.

If you have any questions on this program please feel free to give us a call (962-8600) and we will be happy to explain the details and the advantages.

Please read the Terms & Conditions for the email opt-in program on the website, *www.pinemountainlake.com* under the Resources/Forms > Opt-In Email Program.

Mail form below to:
Pine Mountain Lake Association

19228 Pine Mountain Drive • Groveland, CA 95321



YES, I WANT TO ENROLL IN PMLA'S EMAIL STATEMENT AND DOCUMENT SERVICE. I ACKNOWLEDGE AND AGREE TO THE TERMS AND CONDITIONS SET FORTH ABOVE AS A CONDITION FOR PARTICIPATION IN THIS SERVICE.

PMLA Account Number: _____ Unit/Lot #: _____

Name: _____ Phone #: _____

Address: _____

Email Address: _____

Signature: _____

PINE MOUNTAIN LAKE
FIRE SAFETY WORKSHOP

Friday, May 27, 2022 • 5pm to 7 pm
PML LAKE LODGE


The Pine Mountain Lake Fire Safety Team is hosting a workshop to present information regarding the FIREWISE USA Program and creating a defensible space around your home.

Fire season is now year-round. Learn how to prepare and protect your property from wildland fire. Meet with representatives from the Tuolumne County Fire Safe Council, PML Fire Safety Team, and FIREWISE USA.

All PML members and vendors are encouraged to attend.

For more information please call the PML Fire Safety Team at 1-(209) 990-5260.



**\$600,000
SWING
BIG
GIVEAWAY**

MAY 2 - JULY 1

EARN ENTRIES DAILY

**\$24,000 CASH
DRAWINGS EVERY
THUR & FRI
AT 8, 9, & 10PM**

**EARNED KIOSK
SWIPE DAILY**

Win cash prizes, Fresno
Grizzlies tickets,
eCASH, bonus points and
drawing entries

**\$39,000 GRAND FINALE
FRIDAY, JULY 1**


Gift of the Month!

**ELEVATE
YOUR NEXT TRIP**

In May,
earn 1,000 base points
Tuesday-Thursday or 1,200
base points Friday-Sunday
from 12am-11:59pm and receive
a Sandstone Travel Bag
while supplies last.



GOTTA HAVE
**STREET
TACOS**
FOR CINCO DE MAYO!



CASA de FUEGO
Restaurant & Cantina

APPETIZERS • SOUPS & SALADS • TACOS
TOSTADAS • QUESADILLAS • BURRITOS & FAJITAS
MARGARITAS • DESSERTS



**CHUKCHANSI GOLD
RESORT & CASINO**

Hwy 41 North To Coarsegold | chukchansigold.com | 866.794.6946

Must be 21 years of age or older to be on property, including restaurants and hotel. All guests must have a valid government-issued photo ID acceptable to management and be a Chukchansi Rewards Club Member for any and all transactions. Management reserves all rights to cancel or modify all offers, promotions and/or events without prior notice. Restrictions and exclusions may apply, please visit website for further details. Masks are optional (not required if vaccinated). Visit our website for *What to Expect During Your Visit*.

DINNER HOURS
WED, THURS & SUN
5PM – 8PM
FRIDAY & SATURDAY
5PM – 9PM



RESERVATIONS
REQUIRED
CALL THE GRILL
AT
209.962.8638

MOTHER'S DAY

SUNDAY MAY 8

We will be open for regular Lunch and Dinner menu
Lunch 11am until 3pm • Dinner 5pm until 8pm

Mother's Day Lunch Specials served from 11am until 3pm

CRAB ROLL SANDWICH \$19

Crab meat tossed with cucumber, fresh dill and mayonnaise
Served with garden salad

MONTE CRISTO SANDWICH \$16

Sliced ham and turkey and fontina cheese with a jalapeno
passion fruit jelly on grilled sourdough bread with an egg wash
Served with French fries

PORK BELLY AND WATERMELON SALAD \$19

Sous Vide Pork Belly and watermelon on a bed of spinach
with cucumber, feta cheese and red onion
Served with raspberry vinaigrette

"THE WHOLE WORLD IS SHORT STAFFED. SO BE KIND TO THOSE THAT SHOWED UP"

JAY REIS – GRILL MANAGER

The restaurant business is still facing a long recovery. Labor challenges are not just localized to restaurants but a shortage of workers in agriculture and meatpacking production has affected the Grill with supply chain issues forcing many restaurants to shorten hours of service to simplifying and downsizing menus. Rising menu prices as the cost to get food delivered and rising wages has made dining out one of the first things families scale back. These factors are magnified in our rural community.

"The whole world is short staffed. So be kind to those that showed up". Just a reminder as we have switched our focus to the new reality. There are not many people that want to work nights and weekends. Since the pandemic, many people have been saying that folks don't have to work because they are living of the stimulus checks. That might have been a reason a year ago but now that the stimulus has expired many have changed their careers and lifestyle. Some people decided that it was the perfect time to start their side hustle. Some decided that they could

live on one income. Some decided that they can be a stay-at-home mom or dad. Some went back to school online. And some decided to move because there are no rental homes for them close to the Grill, and with the rising price of gas commuting is not an option.

As we start our busy summer season, reservations are not required but are highly recommended. Plan in advance, as we typically fill up on Friday, Saturday and Sundays 2 weeks in advance during the busy season. We use our reservation list as a guideline for our staffing needs. Please be patient if you walk-in without a reservation as we are probably too short staffed to serve the entire restaurant. Yes, there may be empty tables but our 3 to 4 servers and one bartender cannot serve the entire restaurant efficiently. We hope to hire and recruit more employees as we move forward but our main focus is keeping the employees that we have now. They are very dedicated in serving our community, so be kind.

For reservations or questions call 1-209-962-8638



MICHAEL HAHN
Owner/Qualified Manager

P.O. Box 588
Groveland, CA 95321

209-770-7798
graniteinvestigations@gmail.com

CALIFORNIA PRIVATE
INVESTIGATOR Nº 18754

MOORE BROTHERS PREPAID BAG BIN

The bin (dumpster) at the PMLA Maintenance Yard entrance is for the dumping of prepaid, Moore Bros., trash bags ONLY. No dumping of any other trash items are allowed. Violators will face enforcement action. Please help us keep this area clear and ensure that the dumpster can remain in place for our residents use. Thank you!

**THE PREPAID BAGS CAN BE PURCHASED AT
THE MAIN GATE AND THE PMLA OFFICE**

WELCOME TO THE *Hidden Jewel of the Foothills* PINE MOUNTAIN LAKE GOLF & COUNTRY CLUB

12765 MUELLER DRIVE • GROVELAND, CA. 95321

Championship Golf Course



Beautifully Manicured Greens



www.PineMountainLake.com
209-962-8620



Custom Boat Docks – Gangways
Kayak/Canoe Launches - Floats & Hardware

209-845-2876

1398 East F St Oakdale, CA 95361

Independently owned Since 1982

www.hcidocks.com



**HERE IS YOUR
CHANCE
TO BE MORE
INVOLVED
IN YOUR
COMMUNITY!**

Pine Mountain Lake
Association has
openings on the
Following **Committees:**

**ENVIRONMENTAL CONTROL
COMMITTEE**

EDITORIAL COMMITTEE

COVENANTS COMMITTEE

If you wish to be considered
for committee membership,
please complete an
"Application for Committee
Assignment". This form is
available on the website at
www.pinemountainlake.com
or from the Administration
Office.

MAIL COMPLETED FORM TO:
Pine Mountain Lake Association,
Attention: Administrative Assistant
19228 Pine Mountain Drive
Groveland, CA 95321
Email to
Admin@pinemountainlake.com
or drop it by
the Administration Office



**HIGH SPEED
BROADBAND
INTERNET**



Starting at
\$44.95
PER MONTH

**CABLE TV &
TELEPHONE
SERVICES**
Also available

*Speeds up to 125 Mbps, speeds vary with packages



www.gosnc.com
209-962-6373

PAINTING & CONSTRUCTION



PAINTING – EXTERIOR/INTERIOR • DECK REPAIRS • WOOD REPAIRS • REMODELS

Bay Cal Construction
209.962.4777

www.baycal.com
email: davec@baycal.com



FREE ESTIMATES

TEE TO GREEN

ROB ABBOTT – GOLF COURSE SUPERINTENDENT

Well after an incredibly mild winter with very little rain, Spring has arrived with a vengeance. Everything has come out of its dormancy, flowers are blooming, trees are leafing out and the grass is green and growing rapidly.

Staff has been busy with all our Horticultural needs over the past month including aerification of greens, tees, fairways, collars, approaches, and rough. This project basically touched all the turf areas on the course. We have also been busy with our seed drill rehabilitating areas that have thinned over the last 24 months. We have also completed a large course wide tree trimming project that has left very few trees on the course untouched. This has made a huge improvement to the spray patterns of our irrigation, the sunlight availability on the turf, and an immense aesthetic improvement.

We took advantage of our two-day greens aeration closure, to rehabilitate the asphalt path at the golf shop. The path in this area is nearly six hundred feet in length with an entry point to the Club, Golf Shop, and cart staging area. We crack sealed and heavy slurry coated the entirety. Additionally, we expanded the width of a narrow section of path adjacent to the parking lot by 4 feet in with by 95 feet in length. This will allow carts to easily pass one another when entering and

exiting the path. We also added a nice apron approach to our putting green area providing better access for mowers and carts.

The staff has been busy applying fertilizer throughout the course. Fertilizers will be applied through the month of April on tees, fairways, surrounds and primary rough. This too will be weather dependent as we want to wait until after the initial spring growth has ended. Our green and tee fertilizer program is also under way. We will be applying liquid applications from mid-April through the beginning of October with a total of 12 applications being applied to both surfaces. This has proven over the last couple of seasons to give us the most consistent turf quality through the entire growing season.

For those of you that play golf or travel Tanahill Dr., I hope you have noticed the improvement to the pond on the first hole. The shoreline was badly deteriorating and had been steadily growing beyond its original lined banks. We chose to do a stack block wall, with boulders incorporated and level the terrain behind the new structure. We finished off the area with new sod and have ordered a new fountain that will be larger than the current one and will be uplit at night. The current fountain will be re located to the pond on hole 9.

Come on out and enjoy the spring condition and all of the improvements, see you out there.

CALLING ALL CANDIDATES!

BOARD OF DIRECTORS ELECTION

Pine Mountain Lake Association is seeking candidates for two (2) positions, both three-year terms, on its Board of directors. These are volunteer positions.

THE DEADLINE TO FILE NOMINATION PAPERS IS FRIDAY, JUNE 6, 2022, 5PM

To be eligible to be a candidate for election to the Board of Directors, the candidate must a) be a Member of the Association b) who is current in the payment of regular and special

assessments, unless the nominee has paid the regular assessment under protest pursuant to Civil Code section 5658, entered into a payment plan pursuant to Civil Code section 5665, or has not been provided the opportunity to engage in internal dispute resolution pursuant to Civil Code section 5900 et seq.; and c) is insurable under the Association's existing fidelity bond.

Board candidate application and petition forms are available from The Inspectors of Election (TIE) via email at info@theinspectorsofelection.com.

STREAMLINING THE RENTAL WORLD

ASHLEY HENDERSON – RENTAL COMPLIANCE COORDINATOR

Believe it or not, the summer months are almost upon us. And, as we all know, those summer sunbeams attract people from all over the world, looking for a place to unwind. So, if you have been thinking about renting your home, now is the perfect time to get all your ducks in a row.

All property owners who wish to use their home as a rental must register for a rental permit, and our online rental registration portal allows property owners to register their properties in a matter of minutes. Our system has streamlined the registration process by offering a centralized place to collect and review registrations, and process payments. The implementation of this online registration and renewal portal has significantly enhanced our ability to monitor rental properties and maintain effective communications with property owners and managers. Rental permits are approved for one year from the date that you applied, and will need to be renewed each year. The requirement for a yearly renewal of your rental permit, helps us efficiently maintain the most accurate rental property data.

If you have not yet registered your property as a rental, or when you are ready to renew your registration and pay the annual fee, head on over to the following link: <https://secure.hostcompliance.com/pine-mountain-lake-association-ca/permit-registration>

Additionally, I would like to remind everyone about our 24/7 Rental Compliance

Hotline. The hotline is a sophisticated call center platform that offers neighboring owners, guests, and even other short-term renters the opportunity to report unreasonable noise, parking, trash, and other concerns specifically relating to short-term rental properties. It is a quick outlet that will provide information to the property owner or property manager in real-time, so they can resolve the issue. You can reach the rental compliance hotline by calling (209) 231-4543. For those that wish to electronically report a violation, you may do so by going to www.hostcompliance.com/tips. When using the hotline, make sure you have the following information ready: the full address of where the alleged violation is taking place, and your phone number. This system also makes it easier to differentiate between real and frivolous complaints by allowing individuals to supply photos and videos of the potential violations via text or email. You can opt for a callback to confirm resolution, or in the event that the issue has not been corrected, you may escalate the complaint to the Department of Safety or local law enforcement. Our goal is to open a line of communication between owners, guests, and property managers by providing them with a fast and efficient way to report and resolve issues.

As always, I am here to answer any questions you may have. I can be reached at (209) 962-1245 or by email at RCC@pinemountainlake.com.

com. Upon completion candidate forms and petitions can be sent to The Inspectors of Election and info@theinspectorsofelection.com (PREFERRED METHOD), via mail at 2794 Loker Ave W, Suite 104, Carlsbad, CA 92010, or via fax at (888) 211-5332. Applications and nominations must be received no later than 5:00 pm on Friday, June 6, 2022.

Serving on the Board requires a commitment to attend monthly Board Meetings, Executive Sessions and other interim meetings, as required, and to review materials diligently prior to taking Board action.

According to CAI (Community

Associations Institute), characteristics of good Board members include being fair and impartial, detail-oriented, dependable, flexible, people-oriented, a team player, punctual and able to weigh the overall good for the majority of owners against the rights, freedom and the good of the individual.

If you are interested in becoming an active participant who makes decisions for the Pine Mountain Lake Association membership and you are willing to devote your time for this purpose, we encourage you to submit an application and nomination materials for candidacy to The Inspectors of Election (TIE) by 5:00 PM, Friday, June 6, 2022.

PML SAFETY REPORT 2022

	MARCH	1st Qrr	YTD
Guest Passes Issued	998	3,260	3,260
Vendor Passes Issued	449	1,176	1,176
Temporary Resident Passes Issued	731	2,423	2,423
Vehicles Admitted	11,103	34,176	34,176
Vehicles Refused Entry	189	588	588
Phone Calls Received	3,266	9,702	9,702
Residential Alarm	1	7	7
Animal - Loose	23	56	56
Animal - Impounded	9	11	11
Animal - Dead/Injured	37	79	79
Animal - Disturbance	1	8	8
Patrol Assist	141	473	473
Public Assist	20	53	53
Welfare Check	4	5	5
Transport	0	6	6
Traffic Hazard	1	1	1
Traffic Control	1	2	2
Excessive Speed/Reckless Driving	5	9	9
Gate - Tamper	0	2	2
Gate - Follow Through	6	18	18
Gate - Malfunction	4	14	14
Gate - Struck by Vehicle	8	19	19
Control Burn Reported	109	344	344
Fire Safety - Smoke Complaint	3	9	9
Hazard - Tree Down	0	1	1
Residential Disturbance	2	7	7
Amenity Burglary	1	1	1
Residential Burglary	2	2	2
Grand Theft	1	1	1
Petty Theft	2	7	7
Trespassing	3	4	4
Vandalism	0	1	1
Property Damage - PML	2	3	3
Property Damage - Resident	0	1	1
PML Regs Violations Resident	3	6	6
PML Regs Violations Guest	0	1	1
Vehicle - Citation Issued	5	16	16
Vehicle - Accident PML	2	3	3
Patrolling Unit	660	2,087	2,087
Amenity Security Check	2,200	6,561	6,561
Residence Security Check	149	406	406
Monitoring Tennis Courts	0	3	3
Weapon Violation	0	1	1
Fixed Post	1	2	2
Courtesy Notice Issued	2	7	7
All Other Fees Collected	\$40,487	\$128,273	\$128,273

BUILDING OUR COMMUNITY

SUZETTE LAFFRANCHI – COMMUNITY STANDARDS DIRECTOR

Spring has arrived with warm and sunny days ahead. Great time to get out and enjoy our beautiful lake. Did you know you can check the lake level and temperature by visiting www.pinemountainlake.com? Check it out!

With Pine Mountain Lake being one of our Association's most visible, valuable and regulated amenities please take some time to review the Lake Shoreline Improvement in our ECC rules, guidelines and construction standards. Property Owners are responsible to meet the requirements and know the regulations.

Spring means it's once again time to discuss private docks on Pine Mountain Lake. Soon the Community Standards' inspector will be going out to re-inspect each dock from the lake. You may have already received your courtesy notice of items of concerns, please contact us with your plans to resolve these issues. The following information is from the ECC Rules, Guidelines and Construction Standards:

DOCKS

- A private dock shall not exceed ninety-six (96) square feet, excluding ramp.
- Dock shall not extend into lake more than twenty (20) feet from the high water line. (High water line is defined as 2,550 feet Mean Sea Level)
- Material shall be of a non-corrosive material or treated wood.
- Flotation must be designed with safety factors in mind and should allow for changes in lake level.
- No permanent pilings are permitted in the lake.
- One dock per lot is allowed.
- Each dock must have a Unit and Lot Number placed where it can be seen from lake.

If you are a dock owner, please make sure your dock is in good repair and in compliance with all the standards above. If you need to do repairs or replacements, be sure to submit your exterior projects to our Environmental Control Committee for review and approval. All exterior improvements, changes, additions,



modifications, and landscaping on your property must be submitted to the ECC prior to commencement of the project. Visit our new streamlined submittal process at <http://www.pinemountainlake.com/ecc-project-submittal-process/>.

If you have question regarding your submittal, documents or construction fees, please contact our Community Standards Department at ECC@pinemountainlake.com or call (209) 962-8605. To report any dangerous, unsightly conditions or other compliance concerns contact our Community Standards Specialist at Compliance@pinemountainlake.com or call (209) 962-1245.

The Lake is calling, let's get out there and enjoy all this beautiful water!!

**SPEED
LIMIT
25**

SLOW DOWN
WATCH FOR ANIMALS
AND PEOPLE. PML SHOULD
BE SAFE FOR ALL

Submission Guidelines

The PML News is the Official Newspaper of Pine Mountain Lake Property Owners

The PML News is dedicated to reporting PML Association business and PML Association news to Pine Mountain Lake Property Owners.

The PML News receives more than 100 Tuolumne County/Groveland community related submissions each month. All such community related articles and notices will appear in the PML News on a SPACE AVAILABLE basis and at the DISCRETION of the PML News Publishing Editor.

DEADLINES

Advertisements must be received IN FULL (text, MLS info, images, logos, etc.) by the 10th of the month for the following month's edition. Only advertisements received in full will be guaranteed to be published in that month's edition. **NO EXCEPTIONS.**

MEDIA ACCEPTED email

SOFTWARE (Articles)

InDesign, Microsoft Word, Adobe Pages, or TXT formats only.

SOFTWARE (Advertisements)

PSD, JPG, PDF, EPS or TIFF only.

TEXT/GRAPHICS

Handwritten text is not accepted. Material composed completely of capital letters is not accepted. Please use uppercase and lowercase letters in composition. Ink jet printed images are not accepted. Images are accepted ONLY as camera ready art, original photos (to be scanned) or as JPEG, TIFF or PDF files created with above listed software. All scans and bitmap images must be in TIFF or JPG format at least 200 dpi at 100% (300 dpi preferred). Ad files are stored for 90 days from first run date. Older ads that have not been running must be resubmitted. (See Display & Insert Advertising Contract "Design and Preparation Charges.")

E-MAIL TEXT/GRAPHICS

Text/graphics may be delivered as e-mail attachments via the Internet. Send to: pmlnews@sabredesign.net.

AD DESIGN and PROOFS

Ads that are requested to be sent to other periodicals require a usage fee from the advertiser (see Display & Insert Advertising Contract "Design and Preparation Charges"). Proofs are available upon request and final proof approval for all ads is expected within 24 hours. Changes made are LIMITED to typographical or graphic placement errors. NO OTHER ADDITIONS OR CHANGES WILL BE MADE.

SUBMISSION DEADLINES

Articles — 10th each month
Ads — 10th each month
Classifieds — 15th each month

— NOTICE —

Listed below are ALTERNATE phone numbers
for EMERGENCY use during power/phone/internet outages:

DEPARTMENT OF SAFETY-MAIN GATE
1-209-768-8616

PMLA ADMINISTRATION OFFICE
1-209-768-3998

THE GRILL AT PINE MOUNTAIN LAKE
1-209-962-8658

24/7 RENTAL COMPLIANCE HOTLINE

IT JUST GOT EASIER TO REPORT, PROVE, AND RESOLVE
NON-EMERGENCY SHORT-TERM RENTAL RELATED PROBLEMS
IN REAL TIME, 24 HOURS A DAY, 7 DAYS A WEEK.
(209) 231-4543

GOVERNING DOCUMENT ENFORCEMENT ACTIONS MARCH 2022

Courtesy Notices	35
Notice of Non-Compliance	7
Final Notice of violation	2
Fines Assessed	4
Member Service	238

GO TO THE OFFICIAL ONLINE PRESENCE OF THE PMLA FOR THE LATEST NEWS & INFORMATION

PINEMOUNTAINLAKE.COM · FACEBOOK.COM/
PINEMOUNTAINLAKECA
FACEBOOK.COM/PMLARECREATION

NOTICE

The Pine Mountain Lake News, established July 25, 1973, is printed monthly for residents of Pine Mountain Lake and sold in the Groveland, CA 95321 area. Members can access the PML News monthly edition online at www.PineMountainLake.com. Every month the newest edition of the PML News is posted online before the first of each month. Interested parties can subscribe to the traditional "hard copy" and receive a copy by mail each month.

The PML News is mailed to approximately 3500 PML property owner households each month. Up to 500 copies are rack-sold in the local Groveland area. Our circulation reaches approximately 1200 full-time, resident, PML property owners and approximately 2300 "weekender," non-resident, property owners who maintain primary residence in Northern California, in Southern California, or in other states. For more information regarding the PML News, please call the PML Administration Office at (209) 962-8600. We greatly appreciate your contributions but please note that the PML News fills up very quickly – often by the 7th or 8th of the month (long before the 10th deadline). To ensure that your submission is reviewed for publication please submit in full and as early as possible. Please remember that the PML News is limited in capacity and your submissions are reviewed on a first-come-first-served, space-available basis.

We publish all PMLA related submissions such as Board & Management Business, Clubs, Activities & Events. Where space remains, we publish non-PMLA related submissions in our "Community" section.

We do our best to provide timely news. If you experience delayed delivery or have misplaced a particular edition, please visit us at the PMLA website www.pinemountainlake.com for a downloadable PDF of the News posted by the 1st of the month and a downloadable PDF list of ad rates.

SUBSCRIBE TO THE PML NEWS TODAY!

NAME _____

UNIT _____ LOT _____

MAILING ADDRESS _____

NO CHARGE FOR PROPERTY OWNERS (BULK)

\$6/YR FOR CO-OWNERS (BULK);

\$10/YR FOR NON-PROPERTY OWNERS (BULK)

\$20/YR FOR PROPERTY OWNERS (1ST CLASS)

\$30/YR FOR NON-PROPERTY OWNERS (1ST CLASS)

ENCLOSED IS MY CHECK IN THE AMOUNT OF

\$_____ (PAYMENT DUE IN FULL)

SEND THIS SUBSCRIPTION TO:
PINE MOUNTAIN LAKE ASSOCIATION
19228 PINE MTN. DR. GROVELAND, CA 95321
ATTN: MELODY

VISIT US ONLINE
www.pinemountainlake.com

FROM PMLA SAFETY COMMITTEE

BOB ASQUITH – PMLA SAFETY COMMITTEE

The Pine Mountain Lake Safety and Security Committee is a standing committee authorized by the PMLA Board of Directors to inform its decision making and promote its mission. The Committee meets every month.

Join Our Committee Meeting: Members may attend our committee meetings.

Our next meeting is May 4 at 9am via Zoom. Please email safetyandsecuritycommittee@pinemountainlake.com to obtain your invitation.

Safety training is one of the important tasks for this committee. Here is our current schedule:

- Fire Extinguisher hands-on training with CERT/GCSD FD/Calfire April 30 2022. 9am in Mary Laveroni Park
- GO-Bag & First Aid Kit training will be at Lake Lodge May 5 & 7 from 9am to noon.
- First Aid and CPR training June 3 & 4 at Lake Lodge

Firewise Communities – Presently there is 1 Firewise (FW) community in PML. There are 3 other FW communities in various stages of participation. Contact the Safety Committee (email address below) for details how you can start a FW community and potential save on your Homeowners Fire Insurance.

Emergency Evacuation: Our mission to make recommendations to the PML BOD continues.

- Our committee has identified about 125 “T” intersections in PML. Tuolumne County Public Works has provided the standard sign options to mark them so during an evacuation, drivers will know which direction is out. We have made this

recommendation to the PML Board of Directors.

- We are developing prototypes of evacuation instructions that we are recommending be posted on all Rental properties in PML. This would provide critical information to visitors not familiar with TC nor PML roads.
- We will be recommending the printing of emergency contact info on the back of visitor mirror hangers.
- We continued our discussion of types of emergency communications that can be used in PML. See the related article in PML News in March.
- TC has received a grant for study and recommendations for emergency evacuations. There will be public meetings within the next several months. You will be notified.

Recently there were long traffic backups onto Ferretti Road of cars waiting to enter the Main Gate at PML. Admin and the S&SC are working on solutions. Your input is solicited.

The Safety Committee continues its study of Speeding in PML. We discussed using mobile radar signs to track speeders. We have identified 36 locations within PML on its main roads (outlined in the Anderson Traffic Study 2018) that need specific attention. We are considering painting “25” on the pavement at those critical locations. We have reached out to similar communities to document what they have found to be successful.

We received a presentation on a retardant (Phos-Chek) for home use. This is a “civilian” version of the retardant used by the USFS. It is NOT the color red. It is meant to be applied annually around one’s home. A presentation will be scheduled for the PML BOD.

Please email comments to: safetyandsecuritycommittee@pinemountainlake.com

SUMMER ALMOST HERE – GET READY, BE PREPARED

BOB ASQUITH – PMLA SAFETY COMMITTEE

Pine Mountain Lake, Groveland, Tuolumne County, Yosemite National Park are all almost ready for the summer rush. Get your fishing gear ready, boat/kayak in the water, beach wear out of the closet, and summer reads from Amazon. Now you are ready, right? Not quite.

Last summer (2021) the Moc Fire caused the Pine Mountain Lake community to be evacuated. Were you ready? We can help. Your safety committee is holding a “how to” session for creating both a Go-Bag and Emergency Kit for your home.

Go-Bag & Emergency Kit Training May 5 & 7 9am-noon at Lake Lodge

We are also working with CERT, GCSD FD and Calfire to provide Fire Safety and Fire Extinguisher training.

Fire Safety/Fire Extinguisher training Mary Laveroni Park April 30 9am-noon

We strongly recommend that you cut out this article and post it somewhere you can find it should an emergency arise. It has valuable communications information all in one place.

IMPORTANT TELEPHONE NUMBERS

- Tuolumne County Sheriff (209) 533-5815
- CHP (California Highway Patrol) (209) 984-3944
- PML Safety (209) 962-8615 or during outages (209) 768-8616

We also recommend signing up for alerts (via CalAlerts below) in Calaveras and Mariposa Counties as well as Tuolumne County for a wider alert picture of emergencies.

- <https://www.tuolumnecounty.ca.gov/1170/Emergency-Alerts>
Office of Emergency Services – 209-533-6354

- pge.com/mywildfirealerts

For PG&E alerts for power failures & power shutoffs

- <http://calalerts.org/>

For earthquake and emergency alerts – any county in CA

SOCIAL MEDIA

It is important to know the source of any information you read on Social Media. Information on other sources should not be relied upon. There are official Tuolumne County information sources during emergencies:

- Facebook – Tuolumne County Sheriff <https://www.facebook.com/tuolumnecountysheriff>
- Facebook – Tuolumne County Office of Emergency Services (OES) <https://www.facebook.com/TuolumneCountyOES/>
- Facebook – Tuolumne County Fire Department <https://www.facebook.com/Tuolumne-County-Fire-Department-2180612105600021>
- Facebook – Cal fire Tuolumne Calaveras Unit <https://www.facebook.com/CALFIRETCU>
- Facebook – Caltrans highway info for Tuolumne County <https://www.facebook.com/CaltransDistrict10>
- Twitter – Tuolumne County Sheriff – @TuolumneSheriff
- Twitter – Cal fire for Tuolumne County – @CALFIRETCU
- Twitter – Caltrans for Tuolumne County – @CaltransDist10

The Pine Mountain Lake Safety and Security Committee is a standing committee authorized by the PMLA Board of Directors to inform its decision making and promote its mission.

Please email comments to: safetyandsecuritycommittee@pinemountainlake.com

GO TO THE OFFICIAL ONLINE PRESENCE OF THE PMLA FOR THE LATEST NEWS & INFORMATION

**PINEMOUNTAINLAKE.COM · FACEBOOK.COM/PINEMOUNTAINLAKECA
FACEBOOK.COM/PMLARECREATION**

WWW.PINEMOUNTAINLAKE.COM

FIRE SAFETY

JOE MILANI – FIRE SAFETY COORDINATOR

May 7th is Wildfire Community Preparedness Day! This is a national campaign that encourages people and organizations everywhere to come together on a single day to take action and raise awareness to reduce wildfire risks. Typically held on the first Saturday in May, this year's theme is focused on what residents can do on and around their home to help protect against the threat of wildfires. So pick up a rake, bring out the pole saw and get to work.

The Fire Safety department has a workshop planned this month at the Lake Lodge. On Friday May 27th beginning at 5:00pm you will have a chance to meet your fire safety team, and discuss how to make your property fire safe for the upcoming fire season. We are also pleased to announce our special guest, Karen Caldwell, a member of the Tuolumne County Fire Safe Council and the FIREWISE USA coordinator for the council. The Firewise USA program is a grassroots effort of neighbors working together to reduce the risk of wildfire damage in their neighborhood. Firewise communities are organized by residents to work together with their neighbors in reducing fire risk to their properties. It only works if the property owners are engaged and supportive. Some Benefits of the program Include:

- Reduced risk to life and property from wildfire.

- Get a framework for action.
- Community building and citizen pride.
- Sharing resources, and helping neighbors.
- Possible discounts on fire insurance (USAA, Cal Fire Plan, State Farm, and Mercury).

To learn more about Firewise communities and how it works please join us on May 27th at the Lake Lodge or visit the website at <https://www.nfpa.org/Public-Education/Fire-causes-and-risks/Wildfire/Firewise-USA>. If you can't attend this meeting, we're still here to help. Give us a call and schedule a courtesy fire safety inspection today. Our team will help you understand fire safety in PMLA and assist you in developing a custom fire abatement plan for your property.

Please remember to test your smoke and carbon monoxide detectors once a month and replace any faulty alarms or low batteries immediately.

Lastly, fire safety inspections will continue in Pine Mountain Lake. Remember a fire safe community begins with you! If you would like an inspection of your property, or you are looking to educate yourself more, our fire safety team would love to help. If you have questions or concerns regarding fire safety, you can contact Amanda Darrow at (209) 990-5263 or email her at Inspector1@pinemountainlake.com. I can be reached at (209) 990-5260 or Email J.milani@pinemountainlake.com.

RECREATION UPDATE

MICHELLE CATHEY – RECREATION & SEASONAL OPERATIONS MANAGER

MAY IS GO TIME!

The Marina Store opens May 1st for training and to assist boaters on the lake. You can call 1-(209) 962-8631 to schedule a time to launch your boat. Feel free to visit the Marina Store and check out our new merchandise. We have new floaties, hats, tank tops, shirts and sweat shirts.

If you haven't already registered your boat, kayak, SUP etc. now is a great time to fill out the online form and get it done. Here is the location of the form: www.pinemountainlake.com → click on Amenities → click on Marina Store, Lakeside Café & Lake → click on the Pine Mountain Lake 2022 Boat Registration Form link. You can pay for registration online too! After submitting the form, click on Online Payments header and make the payment online. Feel free to call the Marina Store with any questions and/or if you need assistance at 1-(209) 962-8631. We're happy to help.

Memorial Weekend is the formal

kick off for the Lakeside Café and the Swim Center. We are going to have some new menu items for you to try. They are delicious. Please check www.pinemountainlake.com for the current menu items and pricing. I personally excited about our new Harris Ranch burger. I love a good burger...and of course, I can't wait to get soft serve!

Friendly reminder as we begin to use the beaches:

- Please pick up your trash.
- Don't feed the geese or ducks.
- Be kind.
- Have fun.

The Stables has an event in May as well. It is having a car show and Memorial Day BBQ. So, be sure to stop by the Stables on Sunday May 28th for fun and festivities. The cars are awesome, the food will be great and we're selling car show t-shirts.

Let's go out there and have some fun!

Feel free to call or write me with any questions or comments → Michelle Cathey 1-(209) 962-8604 → m.cathey@pinemountainlake.com

GET IMPORTANT NEWS VIA EMAIL

Signing up for the new eSNAP program is quick and easy and gives you the ability to sign up for the information that you want to receive. Just head over to www.PineMountainLake.com and sign up today.

ABOUT EACH OF THE PROGRAMS

PML News & Alerts – Receive emails with information regarding anything affecting Pine Mountain Lake such as road closures, utility problems, fire alerts and more.

PML Amenities News – Receive emails with information about upcoming events, specials, or news regarding all PML amenities such as the lake, marina, golf course, etc.

eSNAP
ELECTRONIC SAFETY, NEWS & ALERT PROGRAM

The Grill at Pine Mountain Lake –

Receive emails with information regarding happenings at The Grill. Get information on Wine Tastings, Entertainment, Special Events and more.

This program is separate from the current email opt-in program that allows you to receive PMLA governing documents and requires your signed approval. This program can be signed up for via the online system. *Get your news and alerts via email, it's eSNAP!*

SAVE AS MUCH AS 30%

OVER THE CHAIN OPTICS STORES AND EVEN MORE OVER DOCTORS OFFICES

Large Selection of Unique & Traditional Designs
Can Bill Most Insurance Plans • Over 20 Years Experience
Designer Sunglasses • FREE Adjustments & Repairs



Stacy Hancock
Certified / Licensed Optician

18729 HWY 120, Unit A, Groveland • 209.962.1972

PINE MOUNTAIN LAKE ASSOCIATION

SEASONAL EMPLOYMENT OPPORTUNITIES

Join the Team!

APPLY NOW TO SEASONAL JOBS AT WWW.PINEMOUNTAINLAKE.COM

Job areas: Pool, Marina, Lakeside Café and Stables.



IF YOU NEED ASSISTANCE, CONTACT
MICHELLE CATHEY AT 209.962.8604

HOMES ON THE HILL

MOORE BROS. SCAVENGER CO., INC.
P. O. Box 278 • Big Oak Flat, CA 95305 • (209) 962-7224 • FAX (209) 962-7257



YOUR GUIDE TO
REAL ESTATE IN THE
GROVELAND AREA

VACATION RENTAL OPTIONS FOR TRASH SERVICE

In order to assist property owner/managers of short-term rentals with trash removal, Moore Bros. Scavenger Co. offers the following services.

Short-term rental customers may participate in year-round or three-month summer curbside service. To manage anticipated levels of guest trash, property owners/managers of short-term rentals should maintain the suggested service levels as determined by the *Maximum Occupancy for Rental Property* (please see the chart below). In the event that renters generate more than the expected amount of trash or the home is rented multiple times during a given week the following options are provided:

- **As Needed Extra Pickup.** Property owners/managers may request a notation on their rental service accounts to *pick up extra as needed*. This will ensure that all trash left alongside the cans will be picked up by Moore Bros. and a special pickup will not be required. There is an additional per-can/bag charge for each extra can/bag picked up.
- **Special Pickup.** Moore Bros. has a truck and driver available for special pickups Monday through Friday.
- Property owner/managers must place a request for service call or email to Moore Bros. before 3 pm on the business day prior to the requested pickup day. A request for a Monday pickup must be made by 3 pm on the previous Friday. **Prepaid Bags.** Prepaid Moore Bros. bags may be purchased by property owner/manager to be used by any handyman or housekeeper servicing the residence between rental customers. The prepaid bags can be disposed of at the Pine Mountain Lake Maintenance Yard on Par Court off of Mueller Dr.

Property owners/managers **utilizing full summer service** may go to *on-call service* for the off season.

- **Off Season on Call Service.** Property owner/manager may call or email an *on-call request* to Moore Bros. for a service pickup on the regular pickup day for the address. A request for service call or email must be received before 3 pm the business day prior to regular scheduled pickup day. Charges will be based on the standard a per-can rate for each can/bag picked up.
- **Special Pickup.** Please follow the same procedure as listed above for Special Pickup.

Maximum Occupancy for Rental Property

Maximum Occupancy	Suggested Service Level
6 - 8 people	2 can
8 - 10 people	3 can
10 - 12 people	4 can
Lake front Property 12 people	4 or more cans as typically needed

If you have questions please feel free to contact our office at (209) 962-7224 or email us at: info@moorebrosscavenger.com and Shirley@moorebrosscavenger.com (Please cc both to insure prompt replies).

A drop-off Recycling center is available for use Mon – Sat. 8 am – 5 pm @ 11300 Wards Ferry Rd. Big Oak Flat, Ca



PAUL S. BUNT, ESQ.
ATTORNEY AT LAW

ESTATE PLANNING
PROBATE
REAL ESTATE
BANKRUPTCY
ELDER CARE

209.962.6778

Mountain Leisare Center, Groveland
appointments available in Sonora and Lake Don Pedro

Deardorff Realty

COZY CABIN

Waiting for you to enjoy this summer. Walk to fisherman’s cove & tennis. 20571 Rock Canyon Way, Groveland.



3bed, 1bath 0.25 acres
solid surface countertops,
dining room breakfast
area, free standing wood
burning fireplace private
sewer septic — **\$339,000**

Contact Marilyn Deardorff,
agent.

Contact Marilyn Deardorff-Scott - BRE 00396888
209-962-0718

PMLA OWNED LOTS FOR SALE

2/047	GAMBLE STREET	\$1,000
2/287	FERRETTI ROAD	\$2,500
2/448	WELLS FARGO DRIVE — PENDING	\$1,000
3/057	PINE MOUNTAIN DRIVE	\$1,500
5/212	FERRETTI ROAD — PENDING	\$1,000
6/113	FERRETTI ROAD	\$1,000
6/179	COTTONWOOD STREET — PENDING	\$1,000
6/211	FERRETTI ROAD	\$2,000
6/252	FERRETTI ROAD	\$1,000
7/049	FERRETTI ROAD	\$1,000
7/062A	FERRETTI ROAD	\$1,500

FOR FURTHER INFORMATION REGARDING THESE PROPERTIES PLEASE
CONTACT PMLA AT (209) 962-8600



CHRIS H. LAKE
DRE 00946632

209-768-6156
chrishlake@gmail.com



GINA GIAMPIETRO HERNANDEZ
DRE 01226555

408-506-6944
GinaGHRRealEstate@gmail.com



THE MARKET IS HOT AND HOMES ARE SELLING FAST!
Call us to tell you what your home could sell for right now.

**YOSEMITE AREA
REAL ESTATE**

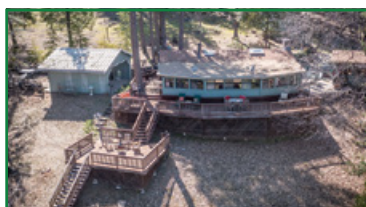
**Make
Chris & Gina
your
1st call!**

18634 MAIN ST. STE 1 GROVELAND

View listings at www.YosemiteAreaProperties.com

PAUL S. BUNT REAL ESTATE BROKER DRE 01221266

MOUNTAIN RETREAT AND COMPOUND



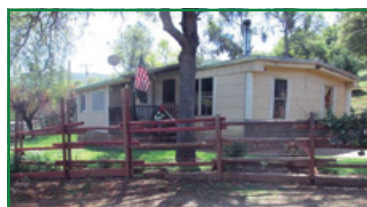
22111 HELLS HOLLOW RD., GROVELAND \$675,000 14.75 AC

Rare opportunity to own your own campground style wilderness retreat just 23 miles from Yosemite National Park, and 8 miles from Groveland. A beautiful



secluded private retreat/compound in the forest with panoramic mountain valley views on 14.75 acres with 2 residential structures — a main house 1498 sf rustic ranch style cabin with custom mountain flair décor throughout, vista views, and large expansive decks. 2nd adorable A frame cabin with loft and enclosed screened porch. The property has three additional ancillary structures plus a one car garage, one two car carport, 1 free standing carport, 3 cargo storage containers, entrance roads with 2 automatic privacy gates, 2 septic systems, newer well system, convenient roads to all structures.

UNIQUE OPPORTUNITY



5314 DOGTOWN \$269,000 Affordable Acreage w/a Home 13.5ac w/several great building sites w/ views. Property is fenced. Season creek. Oaks & pines. Meadow area grt for horses. Existing manufactured home allows for a place to live while building your dream home. Well, septic & power already on the property. Close to Coulterville & enroute to Yosemite just 35 miles away, Historical gold mining area. Close to Lake McClure & Lake Don Pedro for all summer sports & fishing. Zoning is Mountain Home 5 acre minimum lot split may be possible should check w/Mariposa County Planning Dept Manufactured home is livable but being sold "AS IS".

UNIQUE OPPORTUNITY



19383 PINE MT DR TRUE "A FRAME" STYLE \$419,000 Cabin w/nearly 20ft tall knotty pine open bm clngs w/stunning dual pane windows, updated throughout w/granite cntrs, stainless applcs, upgraded pine kitchen cabinets, breakfast bar + dining area, 1 year new lam. flrng & carpeting, remodeled baths, 4 yrs new cntrl HVAC + new mini split in open loft, upgraded windows & lighting, tankless propane water heater, simple & stylish décor, gas fp stove in grt rm. Main lvl has 2bdrms & fully remodeled bath w/shwr & tub, grt rm, wrap around decks w/3 doors from main lvl. Open loft sleeps 2 twins & a queen comfortably & has newer 1/2ba, newer carpeting & cabin charm.

MOUNTAIN GETAWAY



19923 PINE MT \$349,900 Simply adorable, cabin on large corner lot in Beautiful Pine Mountain Lake near Yosemite. Single level 3 bedrooms and 1 and 1/2 bath, tall vaulted knotty pine open beam ceiling, cute kitchen open to living room and dining area with 2 doors to wrap around gated deck and outdoor entertaining area. Under house storage and laundry. Circular Paved driveway with tons of parking. Great location to all amenities.

BEAUTIFUL RUSTIC HOME WITH GUEST CABIN ON 7 1/2 ACRES JUST 23 MILES FROM YOSEMITE

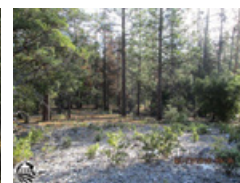
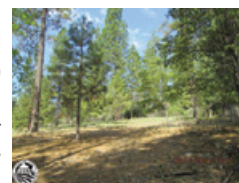


10509 CONVERSE RD GREELEY HILL \$1,225,000 What dreams are made of you will find here in this absolutely charming estate setting. Upon approach, this property is adorned w/beautiful gated entrance to long paved driveway, all surrounded by nature, trees, meadows & snow-capped mountain views. You will find a piece of paradise in a mini ranch property setting w/wedding venue flair! Rustic solid construction is what you'll notice first as you drive up to the main house of stone pillars on the covered front porch patio & walkway to an extended outdoor living area w/lg stone wood burning fp. The grounds consist of a Main house, guest house, bunk house, 2 shop areas, fenced garden & a potting shed, over-sized 2 car garage w/storage rooms/wine shed. 2 outdoor fire pit areas, mini putting green, archery course, bocce ball area, covered RV/Boat carport area, tractor shed/shop & another work shop near the garage. The Main house is 3000sf +, has radiant heated floors in kitchen & mstr bdrm/bath. Milgard windows throughout, Grt rm size kitchen/dining w/doorway to living rm + a "man cave" bar/pub room that overlooks backyard area of artificial turf, hot tub & gathering areas. Kitchen has bright windows, built-in pantry knotty alder cabinets w/glass, soap stone leather finish countertops, stainless appliances, Kahr's engineered hardwood oak espresso flooring, breakfast area & lg dining area, mud room & desk area, French doors to slate stone balcony patio w/metal gated railing. Guest full bath on the main level w/glass shower. The mstr bdrm & guest bdrm & laundry are on the upper level. Mstr has private covered balcony w/slate stone & ceiling fan. Mstr bdrm has a cozy gas fp heat stove, & a grand mstr bath w/glass tile shwr, oversized walk-in closet, granite top lg jetted soaking tub w/picture window & high windows, tunnel skylights & tile flooring, built-in lg linen cabinets & drawers. Each living area & bdms have private setting Daikin mini-split heat & a/c units. The Guest Cabin has had a successful Air BnB rental history & the property definitely shows pride of ownership.

LOTS AND LAND FOR SALE

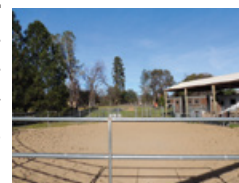
Fiske Hill Rd, Greeley Hill

— 2 separate parcels make up this 19.53ac. Located within community of Greeley Hill yet enjoys the seclusion afforded by this acreage. Mature pines and oaks cover this woody retreat. Gentle rolling terrain with an open meadow. Power close to property. Septic and well will be required. Access has been developed. Close to elementary school **\$134,900**

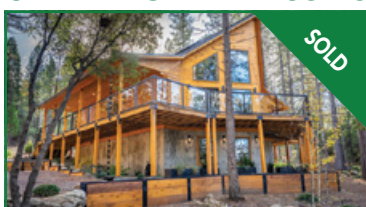


13323 MULE CT U12/LOT 183

— Endless possibilities for this 1ac level parcel w/water & sewer available. Corner lot on cul du sac. Close to bass pond & stable. Close to the airport for flying enthusiasts. Completely fenced, pole barn on site. Enjoy all PML amenities including lake, golf course & tennis courts. Horses are welcome here. Gated community. **\$79,000.00**

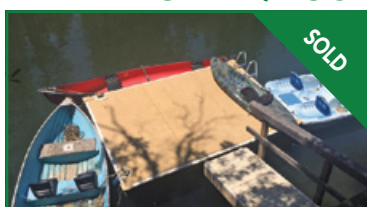


ULTRA-MODERN RUSTIC



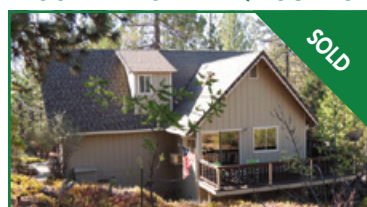
19596 BUTLER \$1,499,000 3bd/3ba/2car detached gar. Ultra-Modern Rustic Home w/Posh Industrial Design, one-of-a-kind custom cabin situated on 1.25ac lot. 3630sf architectural design w/28' high clngs w/prow wall, lg picturesque windows, high open wd beams on contemporary bright light clngs, + knotty pine interior walls. 1420sf of wraparound covered, gated decking, detached 2 car gar w/ChargePoint 40amp electric car charger, Baldwin Kevo keyless entry with app, SMART home command operational system with apps to control HVAC, tankless hot water, lighting and heated flooring, and has an electric power solar system.

WATERFRONT W/DOCK



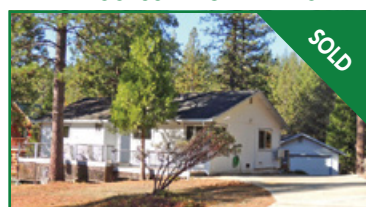
20132 PINE MT. DR U4/L POR 136 & 137 \$599,000 Sweet cabin w/landing & dock in PML. Super cute & bright 3bd/2ba home has a living rm & fam rm + 2 car gar & is ready for new owner. 2 deck areas. Main area has 2bd/1ba, grt rm w/ bright windows, upgraded kitch & gas fp. Lower lvl mstr bdrm & fam rm w/wd burning fp, lower deck access. Dock access via the service easement rd a short distance from Big Creek to private landing and doc. Level entry access makes this a great home for full time, part-time or vacation rental. This home has a successful Air BnB history.

MOUNTAIN CABIN W/HUGE LOT



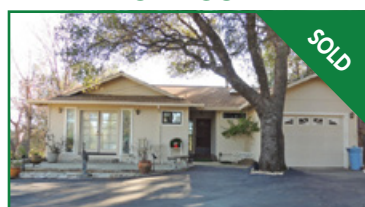
20704 POINT VIEW UNIT 4 LOT 260 \$399,000 Charming Cabin home in PML on .56ac corner lot. Perfect for vacation or full-time, 3bd/2ba, 1755sf, detached 2 car gar, flat access driveway. New roofs 1 1/2 years ago, beautiful lg wrap around decks, covered patio area perfect for outdoor dining year round. Features open bm clng on main level, lg kitch area w/upgraded appliances, 2 bdms 1 ba & laundry area; upper lvl lg bdrm w/bath & fam rm/overflow area. Living rm has stone hearth wd burning stove fp & updated windows. Kitchen has hrwd floor & pantry cabinet, breakfast bar & slider to the BBQ deck area.

LAKE ACCESS ADORABLE CABIN



20104 PINE MOUNTAIN DR. U13 L278 \$575,000 3bd/3ba/2car waterfront access 1716sf Single level cabin w/small dock at Big Creek. Spacious lake access cabin has slate tile entry, lg living area w/vaulted clng, skylights, rustic slate stone wd burning fp, 5 excellent low maint. deck areas, 2 mstr bdms, guest bdrm & guest bath w/dble vanity, main mstr w/3 skylights, private balcony deck, 2 closets, double vanity sinks, priv. shower/commode. Upgraded windows throughout, indoor laundry & lwr lvl finished storage + ext. detached finished outbuilding for office, storage or hobbies. 2 car detached gar w/workbench/storage.

IT'S A CUTIE



12693 Cresthaven \$365,000 Close to Lake Lodge beach. 2 bedroom 2 bath single level home. 1 car attached garage. Newly painted interior and carpeting. Ceiling fans and recessed lighting. Vaulted ceiling with open beams. Expansive, impressive mountain view from the huge rear deck. Plenty of room for outdoor entertaining or just relaxing. French doors off Master bedroom leads to a special patio area. Inside the laundry room washer/dryer included.

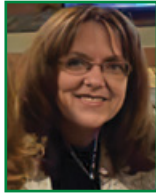
MOMS CREATE A HOME – HAPPY MOTHERS DAY – LET’S GET COOKING ON YOURS



.76 AC WITH LAKE VIEW
20634 Nob Hill Cr. 4 bdrm, 3 ba, 3057sf
U3/L101 – **\$629,900**



LARRY JOBE
REALTOR – TAXIWAY EXPERT
209.768.5508 Cell
larryjobe1@gmail.com
DRE #01444727



PENNY CHRISTENSEN
BROKER ASSOCIATE – CRS
925.200.7149 Cell
penny@askpenny.com
DRE #00785760



TAXIWAY LOT
U12 L45 Hemlock St.
\$249,900



GROVELAND CAR WASH
18762 Main St. Opposite Iron Door, 3 bays
plus office – **\$299,900**

- LOTS FOR SALE**
- U4 L198 Pointview Dr. **\$39,900**
 - U10 L23 McKinley Wy **\$29,900**
 - U3 L13 Ferretti Rd **\$10,900**



HWY 120 COMMERCIAL
73.14ac, RE-5, 14.99ac C-K zone,
1022' frontage **\$450,000**



COMMERCIAL LOT
U5/L182 Mueller Dr., Zoned
R-3 MX **\$99,000**



EASY ACCESS & GOOD LOCATION
19504 Pine Mountain Dr., U1 L415, 3bd, 2ba,
2024sf – **\$499,000**

www.YosemiteAreaRealtors.com

PAUL S. BUNT REAL ESTATE – DRE #01221266

WANT RESULTS — LIST WITH LEDA

YOU WILL LOVE THIS CABIN!

NEW LISTING It has the character and charm that you would hope to find in a mountain retreat. Tongue-in-groove pine interior walls, with wood & beam ceilings in an open “great room” design. Situated on a merged 2/3rd acre lot with a seasonal creek in the back yard. Beautiful setting! 2 bedrooms, 2 baths, tile roof, ctrl heat/ air (furnished, too) 13133 Wells Fargo Dr, **\$379,950**



SEE YOUR HOME OR PROPERTY HERE



CALL FOR NEW CONSTRUCTION INFO



ELEDA CARLSON
Realtor® GRI,
SRES, e-Pro DRE
00632516
209-814-4123
Cell – Call or text
eledac1@gmail.com

BUILD YOUR DREAM HOME



Merrill Rd 3 ac w/ well,
power near & views
\$132,900



U4 L137 Water Front,
Big Creek .95 ac.
\$84,900

- U13 L112 Quiet area, gentle slope .23 ac **\$9,700**
- U4 L565 Near Tennis, Fishermans Cove .31 ac **\$9,900**
- U2 L215 **New Listing!** Gnt'l upslope .38 ac **\$11,500**
- Big Oak Flat Commercial/residential 3 lots **\$29,500**
- U3 L232 **New Listing!** Nr.Fisherman's Cove .35 ac **\$37,500**
- 9.32 ac commercial zone, Hwy 120 frontage **\$359,000**
- 42.39 acres Jamestown Rd, near town **\$450,000**

GROVELAND GAL FRIDAY
WHEN SPRING FEVER HITS...

Let me lighten your load with help with pet care, senior care, shopping, rides, organization, gardening, watering, office work or ... you name it!

SHARON VOLPONI
962-6848 • 770-6277



18919 Ferretti Road • PO Box 738 • Groveland CA 95321
209-962-7156 • www.pmlr.com



DRE# 00683485



Pine Mountain Lake Realty

An Agent Owned Company

Lynn Bonander, GRI Owner / REALTOR®

18919 Ferretti Rd., Ste. A, Groveland, CA 95321
Office 209-962-7156 / Cell 209-484-7156
lynn@pmlr.com www.pmlr.com



*Fabulous
One-of-Kind Property*

13194 Wells Fargo
2-220
\$699,000
\$688,000

Immaculate 3 Bed/2 1/2 Bath, 2 Car Oversized Finished Garage w/Work-bench, Approx 2220sf on 0.62 Acre! Central Air, Open Beam Ceiling, Crown Molding, Skylights, Lighted Ceiling Fans. Living Rm w/Fireplace, Brkfst Bar, Stainless Appliances, Secretary's Deck, Hardwood Flooring, Master Bdrm w/Walk-in Closet, Separate Shower, Craft Room. Inside Laundry, Washer/Dryer Included. Spectacular Low Maintenance Yard, Complete with Covered Multi-Leveled Decks, Fencing & Sitting Areas, 100' Slide, Climbing Rope, Play House, Frisbee Golf, Tree House, Water Falls, Horse Shoe Pit, Dog Run, Fenced Garden Area. Fire Pit Hot Tub. Expansive Parking for RV, Boat and Guests. MLS# 20220178



*Simply
Charming!*

18976 Digger Pine
7-240
\$450,000
MLS# 20220418

3 Bed/3 Bath, 3 Car Garage + Large Workshop, 1870 sq ft, Built 1986, Office & Laundry Rm, 3rd Bedroom/Bonus Rm Combo & 3rd Bath on Lower Level w/separate Entrance. Lighted Ceiling Fans thru-out, Laminate Flooring in Living Rm, Kitchen & Dining Rm. Central Heat & A/C + Evap Cooler, Freestanding Air Tight Wood Stove, Wine Cabinet, Granite Counter Tops, Display Cabinet at end of Hall. New Redwood Deck w/Rod Iron Railings, Back Deck being Replaced. Lots of Parking, Plus RV & Boat Parking. Circular Drive-Way.



~ IDEAL LOCATION ~

Great Single Level Home Right across the Street Fisherman's Cove. . . Like having your own Dock for Evenings at the Lake. Steps away from Tennis Courts and a Short walk to Lake Lodge Beach. TONS of Storage. Huge Kitchen & Cabinets Galore. Decks and Covered Porches for Ample Outdoor Living. 3 Bedroom, 2 Bath, Approx. 2400sq.ft. Central Heat and Air, plus two Cozy Propane FS Fireplaces. Large Rec Room w/Backyard Access, Great Entertainment Space. 2 Car Garage with Workbench, Propane hookup for BBQ and Much More!

3-237 20354 Pine Mountain Drive **\$489,000**



Lake Front

0.78 Acre w/161 Feet of Lake Frontage. Beautiful View down the Channel. Architectural Design for a Custom Home can be Available from Seller. Up to an 8'x12' Dock can be added for your Pleasure.

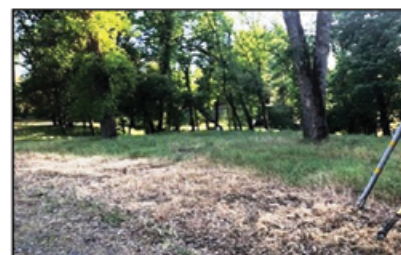
20158 Pine Mountain Dr. 4-128
\$89,900 MLS# 20210766



Want Close to the Lake?

Here is a ****Four Star Lot with Southern Exposure and Just around the Corner to the Lake. It's Sewered....Ready.... & Easy to Build On! 0.32 Acre. A Location You will Love!

1-242 Pleasantview
\$65,000 MLS# 20211338



Close to Most Amenities!

0.98 Acre - Zoned R-3! Build a Single Family Home or Several Units. Close to Country Club, Lounge, Pro Shop, Golf Course, Swimming Pool & Pickle Ball. Water, Sewer & Electrical Available. Plenty of Room to Build!

5-23-A Tannahill Drive
\$65,000 MLS# 20210858



Front & Rear Access

~Merged Lot 0.64 Acre~

All Set-up and Ready to Build! Level Driveway, Room for 8 Cars and More. Septic System for a 3 Bedroom Home and Water Meter are already in. Excellent buy at **\$50,000!!**

02-185 12933 Mueller Dr.
\$50,000 MLS# 20220112



Convenient Location!

Close to Country Club, Pine Golf Course, Pool, Pickle Ball Courts, Mountain Lake Main Gate, and More! Easy Lot to Build On. Graveled Parking Area to the Right Side of the Lot.

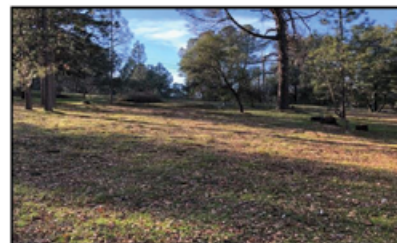
19511 Chaffee
1-106 **\$28,000**
MLS# 20151979



One Block to Lake!

Nice Lot to Build on Your Dream Home or Mountain Cabin. Approximately One Block to the Lake and Beach Area. Also close to Fisherman's Cove, Tennis Courts and More! Sewer Hook-up Available.

Cresthaven Dr.
4-435 **\$20,000**
MLS# 20201898



Beautiful Easy to Build Lot

This is a 0.52 Acre Lot on a Park Like Setting is Surrounded by Large Parcels on Both Sides and Back! Very Gentle Down Slope.

19297 Ferretti Rd
7-055 **\$19,000**
MLS# 20181471



Great Buildable Lot

Gentle Down Slope. Double Access, One off Ferretti Road and One from the Easement Road off Cottonwood Street in back of the Property.

Ferretti Road
6-219 **\$18,000**
MLS# 20201552



PINE MOUNTAIN LAKE REALTY

An Agent Owned Company

18919 Ferretti Road • PO Box 738 • Groveland CA 95321 • 209-962-7156 • www.pmlr.com



Barry Scales
Broker/Owner
209.484.7123
DRE#00451887



Lynn Bonander, GRI
Owner/Realtor®
209.484.7156
DRE#00683485



Val Bruce, GRI
Owner/Broker Assoc.
209.768.7368
DRE#00578336



Parker 'PJ' Johnson
Owner/Realtor®
209.768.6232
DRE#01732298



Marc Fossum
Owner/Realtor®
209.770.4750
DRE#01956242



Patty Beggs
Owner/Realtor®
209.840.2293
DRE#01339347



Michael Beggs
Broker Assoc./Realtor®
209.840.2294
DRE#0133568



Ann Powell
GRI, ABR, RSPS
209-200-1692
DRE#01268655



Eleda Carlson
Owner/Realtor®
209-814-4123
DRE#00632516



Spectacular Million Dollar Views!!

3 Bd/3 Bth, 2 Car Attached, Oversized, Finished Garage w/ Cabinets, Shelves/Workbench, Approx 3142sf on **13.0 Acres!** Great Rm w/an Indoor Pool! Living Rm w/Fire Place, Open Beamed Ceilings. Kitchen w/Breakfast Bar, Island, Pantry, Open Dining. Master Bd/Bth w/Walk-in Closet & Slider to Huge Deck. Lower Level Bedroom, Bath & Bonus Room-Could be a 4th Bedrm/Den/Office. Inside Laundry w/Wash Tub. Huge Deck that Wraps Around to a Covered Deck. A Court Yard & Plenty of Parking. 2 Car Carport w/RV Connection. Sold "As Is"

19701 Old Highway 120
\$795,000 MLS#20212276



Beautiful Mountain Home!

5Bd, 3 1/2 Bth, 2 Car Oversized, Finished Garages, Approx 3649sf on 0.80 Acre, Central Air, Crown Molding, Granite Counter tops, Open Beam Ceiling, Skylights, 2 HVAC Units, Active Solar, Formal Living Rm w/Fireplace. Brfst Bar, Island, Pantry, Open Dining, Inside Laundry, Enclosed Patio, Deck, Awnings, Hard Wired Generator & Fire Suppression Sprinkler System. Plenty of Rm for RV & Boat Parking.

12-100 21246 Jimmersal Lane
\$689,000 MLS 20212155



Great Opportunity!

19 Acres - Excellent Location! Close to the Historical Gold Rush Town of Groveland and only 20 miles from the Northern Gate of Yosemite National Park. Open Space Zoning around a Nice Pond and a Creek. Gently Sloped with Several Building Sites or Just for that fun "Glamping" if not ready to Build.

Old Highway 120 - 19.0 Acre
\$160,000 MLS# 20212056



Romantic Rustic Mountain Cabin!

3 Bd/2 1/2 Bth, 2 Level, Approx 1640sf, 0.48 Acre. Great Room, Free Standing Fireplace Brick Surround, Ceiling Fans, Double Pane Windows, Central Air, Propane Heat. Brfst Bar, Open Dining, Master Bd/Bth on Entry Level, Inside Laundry. Family Room, Bedroom & Full Bath on Lower Level. Deck, Balcony, Level Driveway, Storage.

15-39 20225 Upper Skyridge Dr
\$429,000 MLS#20220592



Peaceful, Tranquil Mountain Retreat!

3 Bd/3 Bth, Detached 1 Car Garage, 2170sf Living Space, In-Law/Guest Quarters. Backs up to Greenbelt. Living Rm w/Fireplace, Open Kitchen w/ Brfst Bar & Dining. Master Suite w/Fireplace. Central Air, Open Beam Ceiling, Skylights, Solid Surface Countertops, Hardwood Floors. Inside Laundry, Washer & Dryer Included. Lower Level Extra Large Bdrm and/or Bonus Room w/Full Bath & Fireplace. Guest House includes Bdrm, Full Bath & Sitting Rm with a sink. Nice Setting!

20717 Nonpareil Way 4/146
\$383,000 MLS#20220375



Beautiful Custom Home & Mountain Views!

3 Bd/3Bth, Bonus Rm, 2 Car Attached Oversized Garage, Approx 2745sf, on 0.68 Acre! Master Bd/Bth on Entry Level. Great Rm w/Air Tight Wood Burning Fireplace, Bkfst Bar, Garden Window, Bkfst/Dining Area, Coffered Ceilings, Crown Molding, Open Beam Ceilings, Skylights, Inside Laundry Rm, Lower Level 864sf Living Area w/Full Bath & 10x30 Bdrm/Office. Split HVAC System w/Heat Pump, New Septic Pump & Risers. 100 Yr Metal Roof. Car Port, Enclosed Hot-Tub Rm/Atrium, 12'x20' Covered Porch. Enjoy the Outdoors with a Deck, Patio, Screened Porch, Awnings & Balcony!

6-237 19526 Ferretti Road
\$729,000 MLS#20220642



Prime Business Location!

18911 Ferretti Road
Groveland, Ca 95321

\$399,000

MLS# 20220086

A Rare Business Opportunity at a Prime Location, Corner of State Highway 120 and Ferretti Road. The Location shares the Parking Lot with the Last Grocery Store before entering the North Gate Way to Yosemite National Park allowing a lot of Tourist Traffic to and from Yosemite and the Pine Mountain Lake Resort. Small, but Mighty Retail Business with Substantial Successive Multiple Revenue Growth over the Last 3 Years at an Affordable Price! All Itemized Cost Inventory is Included in the Purchase Price. The Listing Price is actually 20% Below the 2021 Full Year End Gross Sales. Knowledgeable Retail Manager will remain, if asked and assist with the Day-to-Day Operation.



Nice Location - Not Far from Main Marina

3 Bd/2 Bth, 2 Car Attached Finished Garage, Single Level, Approx 1571sf, 0.33 Acre, Blt in 1991. Living Rm w/Fireplace, Brfst Bar, Pantry, Open Dining, Laminated Flooring, Cathedral Ceiling, Ceiling Fan, Large Master Bdrm, Bath w/Tub Shower & Vanity on one side of House and the other 2 Bedrooms on other side. Inside Laundry, Washer/Dryer Included. Large Deck and more Parking in Rear of Home which offers near Level Entry to the House.

1-499 19585 Chamberlain Ct
\$450,000 MLS# 20220549



1.29 Acres; 4 Merged R-3 Lots. Multi Family per Tuolumne County Zoning. Ok for up to 15 Units/ Acre. Good location for Condos, Townhouses, Duplex or Triplex Units. Just Past the Pine Mountain Lake Main Entrance

1/2 Mile off Highway 120.
5-28 19127 Ferretti Rd.
\$98,000 MLS# 20210991



Potential Plus

2 Bed/2 Bath, 1 Car Attached Garage, Approx 1127sf pm 1.89 Acres. Conventional Living Room w/Stone Fireplace, Solid Surface Countertops, Kitchen and Open Dining, Master Bed/Bath w/ Vanity, Inside Laundry, Outside Shed and Storage. A Work in Progress, A Contractor's Dream to come in and Finish Remodeling!

12011 Homestead Road
\$315,000 MLS# 20220555

Lots for Sale

\$ 9,900 - 4-565 Near Tennis Cts & Fisherman's Cove
\$ 10,500 - 13-112 Treed Views
\$ 11,500 - 2-215 0.38 Acre Gentle Upslope
\$ 12,000 - 4-344 Easy Build-Seasonal Creek
\$ 20,000 - 6-70 .66Acre Lot, Creek, Greenbelt
\$ 20,000 - 13-358 Wooded, Buildable
\$ 22,500 - 4-530 Very Gentle Slope
\$ 29,000 - 4-31 0.62 Acre Nicely Treed
\$ 29,000 - 3-373 Cresthaven Beautiful Almost Level
\$ 37,500 - 3-232 0.35 Ac Near Fisherman's Cove
\$ 49,000 - 12-186 Beautiful 1.05 Acre with Utilities
\$ 69,000 - 5E-8 Dyer Ct Great Location
\$ 84,900 - 4-137 .95 AC Big Creek Frontage
\$132,500- 3 Acre w/Good Well, View
\$359,000 - 359,000 9.25 Commercial/Big Oak Flat
\$450,000- 42.4 Acres Near James Town

BERKSHIRE HATHAWAY | Drysdale Properties
HomeServices

DON'T PASS THIS ONE UP!



**11191 BIG OAK ROAD,
BIG OAK FLAT**
3BD | 1BA | 1,140 sq ft | \$299,900
A comfortable creek side home.
Linda Willhite (209) 985-2363

SOLD



19144 #8 DYER COURT
2BD | 2BA | 1,056 sq ft | \$299,999
Immaculate, warm and comfortable
ground floor condo. Great location.
Linda Willhite (209) 985-2363

PENDING



6851 DOGTOWN ROAD
3BD | 2BA | 1,386 sq ft | \$129,900
Quiet, gated community in a
unique mobile home park.
Kathleen Love (209) 743-5432

PENDING



20160 LOWER SKYRIDGE
Lot & Land | 0.42 acres | \$145,000
Best value including house plans!
Ron Connick (209) 206-0007

PENDING



19691 BUTLER WAY
3BD | 2BA | 1,376 sq ft | \$289,000
Linda Willhite (209) 985-2363

PINE MOUNTAIN LAKE LOTS

20080 Ridgecrest Way—Unit 13, Lot 192
\$11,900 was \$12,500
Panoramic views of the mountains
Call Ron 209.206.0007

20273 Upper Skyridge—Unit 15, Lot 50
\$29,000 | .87 Acre
3 Merged Lots 49-50-51

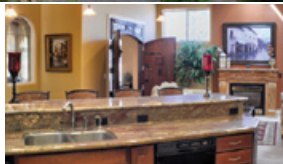
20762 Nonpareil Way—Unit 4, Lot 235
\$28,000 Build your Home Here!

12891 Boitano Road—Unit 3, Lot 154
\$49,900 Panoramic views of the mountains and filtered lake view
Call Linda 209.985.2363

NEW LISTING!



14200 Boitano Road
4BD | 3BA | 3,198 sq ft | 7.1 acres
\$1,097,000
European chateau on tranquil lot
with seasonal creek!
Linda Willhite (209) 985-2363



PENDING



12885 GREEN VALLEY CIR.
4BD | 2BA | 1,782 sq ft | \$310,000
Spacious home with 2 car garage.
Linda Willhite (209) 985-2363



Gretchen Pearson
President/CEO
DRE #00964735
925.640.0590



Jenny Arnold
Sales Manager
DRE #01344158
209.770.2201



Linda Willhite
Broker Associate
DRE #01063378
209.985.2363



Ron Connick
REALTOR®
DRE #00575067
209.206.0007



Kathleen Love
REALTOR®
DRE #01223318
209.743.5432



Carmen Taira
Office Administration
209.962.7765

18727 Main Street, PO Box 792, Groveland, CA 95321 (209) 962-7765



© 2022 BHH Affiliates, LLC. An independently owned and operated franchisee of BHH Affiliates, LLC. Berkshire Hathaway HomeServices and the Berkshire Hathaway HomeServices symbol are registered service marks of HomeServices of America, Inc.®
Equal Housing Opportunity. DRE #01499008. Nevada Lic. #B.1001647.



- Launching
- Winterizing
- House Calls
- Dock Calls
- Service
- Repairs
- Storage
- Trailer Repair

209-962-4594

The Boat Doctor

Paul Belluomini • P.O. Box 113 • Big Oak Flat, CA 95305



Groveland's only Multi-Line Insurance Agency

KIEFER
INSURANCE AGENCY

Lic 0D77765

PROUDLY HELPING YOU INSURE YOUR FUTURE

209-962-6593

Home/Rentals • Life • Autos RVs
Motorcycles • Business • Builders Risk

18688 Main Street • Groveland Ca 95321

Give the Gift of Family Memories


Are you tired of binge watching Netflix or streaming content?
Why not dust off your old 8mm family movie films or VHS tapes and
bring those golden memories back to life. Have a reel family movie night!




- VHS & 8MM FILM TRANSFER TO DVD OR USB
- PRINT & SLIDE SCANNING
- AUDIO CASSETTE TRANSFER
- CD & DVD DUPLICATION
- PHOTO RESTORATION
- PHOTO BOOKS • MEMORIAL SLIDESHOWS
- GRAPHIC DESIGN • VIDEO EDITING




DejaVu Video Services
408-899-4407 • dejavuvideo123@gmail.com




RE/MAX Gold
Your Mountain Guides to Groveland Real Estate
DRE # 01225931




FREE HOME INSPECTION
when you list with our team
(a \$350 to \$450 value)
FREE detailed CURRENT
HOME PRICE ANALYSIS
-no obligation



Lauree Borup (209) 628-4600 (650) 704-9973 Vanessa Meyers



VIEW OF SIERRA & FIRST FAIRWAY
From end unit townhouse
4 bedroom, 4 baths, 4 decks
\$399,000



2227 sq ft, furnished.
Next to pool, pickleball, Grill
& Pro shop. 12749 Junipero
Serra, Pine Mountain Lake



MOVING OUT of the Area or the STATE?
We can help make it happen! Whether selling or buying we have all the connections you need to get you on your way! Contact us Today!

Michael O. Bowers
Broker Associate Full-time PML resident
DRE #00901538
209.770.3683
Michael@MichaelBowers.com

Emily Hunter
Broker/Owner
DRE #01386542
925.785.3795
EmHunterRE@gmail.com

Two Brokers serving you with an unparalleled level of service and a combined 56 years experience.

COMING SOON
in GROVELAND
Single story on
1.3 acres.
\$429K

AVAILABLE
in GROVELAND
4bd/3ba, remodeled
kitchen & baths plus
beautiful flooring!
3,150 sq.ft.
\$749K

JUST SOLD

- 18529 Well House Dr., Jamestown
- 20711 Chaparral Ct., Groveland



BLUEBIRD
REALTY
www.BlueBRealty.com

Residential • Lake Homes • Cabins • Ranches

Our gift to you!
When you buy or sell, we will provide a 1 year home warranty!

MURRA'S
TOTAL YARD MAINTENANCE



BRINGING VALUE FOR YOUR DOLLAR IN PML

- WEEDING
- LOT CLEARING
- SENIOR DISCOUNTS
- LEAF REMOVAL

- PLANTING
- TREE SKIRTING
- HAULING
- AND MORE

CALL JASON MURRA
209-352-3750
LIABILITY INSURED



TWO GUYS PIZZA PIES
18955 Ferretti Rd., Groveland
(Just 1/2 Block Off Hwy 120)

Check out our weekday LUNCH SPECIAL!

We ♥ Phone Orders
(209) 962-4897

\$1.00 OFF
ANY SIZE TWO GUYS
PIZZA OR CALZONE

One coupon per order, per visit. May not be combined with any other offer and/or coupon. Not valid on delivery.

PMLN 0522 Offer Expires 06/15/22

\$2.00 OFF
ANY LARGE OR EXTRA LARGE
TWO GUYS PIZZA

One coupon per order, per visit. May not be combined with any other offer and/or coupon. Not valid on delivery.

PMLN 0522 Offer Expires 06/15/22

PML Organized Groups & Clubs

Contact the individuals below if you are interested in joining!
(All numbers are 209 area code unless noted otherwise)

Aviation Association
Mike Gustafson 209 962 6336

Friends of the Lake
Mike Gustafson 962-6336

Garden Club
Susan Dwyer 962-6265

Groveland Rotary Club
Rudy Manzo 962-5219
Greg Cramblit 962-0607

Ladies Club
Dart Woodruff 962-1980

Men's Golf Club
www.pmlmgc.com

Needle Crafts
Barbara Klahn 209-916-5420

Pickleball Club
Lee Carstens 415-215-5564

Pine Needlers Quilt Guild
Leslie Timmons 482-1406

PML Ladies 18 Hole Golf Club
Marcee Cress 962-0771

PML Niners
Stacie Brown 962-7397

PML Safe Streets Campaign
Leslie Dudley 962-4911

PML Shooting Club
Scott Knupter 925-809-2850

PML Waterski & Wakeboard
Dean Floyd 408-915-8848

Racquet/Tennis Club
Alex Nagy 831-588-8469

Residents Club
Dick Faux 962-4617

ROOFBB
Susan Dwyer 962-6265

Southern Valley Srs. Golf Group
Rich Robenseifner 707-486-9115

Wednesday Bridge Club
Linelle Marshall 962-7931

Windjammers Sailing Club
Ken Regalia 415-819-4252

PML LADY NINERS

TAMMY TALOVICH

Quote of the month – *Champions keep playing until they get it right.* – Billie Jean King

If you would like to learn more about becoming a member of the Lady Niners contact Stacie Brown at happygem529@gmail.com We play 9 holes on Thursday mornings, it only takes a few hours and is a great opportunity to meet some awesome ladies!

MARCH 3RD: MEETING NO GOLF

MARCH 10TH: WE HAD 13 PLAYERS AND PLAYED CRY BABY

1st place: Chris Balek
2nd place: tie, Nancy Whitefield and Deanie Martini

3rd place: tie, Christina Baines and Pat VanGerpen

Pars: Chris B. #10, Deanie M. #11, Syd R. and Tammy T. #14, Marilyn A. and Chris B. #17

Chip-in: Pat VanGerpen #12
Low putts: Linelle M. and Pat V. w/16 putts

Low Net: Chris Balek w/32

Low Gross: Deanie Martini w/50

MARCH 17TH: WE HAD 17 PLAYERS WITH 1 GUEST TARI SKELLEY AND PLAYED IRISH GREENS

1st place team: Brown, Connelly, Nelson, VanGerpen

2nd place team: tie, Martini, Whitefield, Talovich and Brewster, Price, Toner, Robenseifner

Pars: Campbell, Martini #11, Nelson #13, Martini #14 and #15

Low putts: Brewster, Talovich, Toner, VanGerpen w/18

Low Net: Nancy Whitefield w/33

Low Gross: Deanie Martini w/49

MARCH 24TH: WE HAD 20 PLAYERS AND PLAYED RIGHT/LEFT PARTNERS, SO GLAD TO HAVE ALICE STOLL RIDE ALONG WITH US!

1st place team: Brown, Lennen, Alexander, Talovich

2nd place team: Balek, Brewster, Dwyer, Robinson

Chip-in: Martini #17 for par

Pars: VanGerpen #10, Lennen,

Robinseifner #17, Martini, Brown, Dwyer #17

Low Net tie: Lennen and Talovich w/33

Low Gross: Martini w/47
Outstanding!!!!

March 31st: we had 12 players and played Low Net plus Putts

1st place: Nancy Brewster, Linda Craig and Linda Vahe

2nd place: Marilyn Alexander

Pars: Linda Craig #17

Chip-In: Jackie Sample #12

Low Net: Linda Vahey 37

Low Gross: Nancy Brewster and Syd Robenseifner both 57

To finish off the month our **Ace of Aces** was Chris Balek net 32, **Queen of Clubs** was Deanie Martini gross 47

Captain's Corner: Stacie Say's.....

A big congratulations to Syd Robenseifner for getting a "Hole in One" on February 7, 2022 at a Greg Norman Golf Course in Puerto Vallarta!!!! It was done on Hole #12, she used her 8 iron and it was 86 yards!!!! CONGRATULATIONS Syd. That is amazing!!!

Our 9 hole golf group consists of



amazing women! We get out there and have lots of fun and our Tournament Chair, Pat Van Gerpen, does a fantastic job in picking our weekly games, which are very fun!! We have a few new gals who joined us this year. Barbara Connelly moved from the 18 hole group to our 9 hole group, as she is working and can't play 18, as it takes a lot more time! We are happy to have her in our group. Jackie Sample, who was a past player and past captain just joined us this month! So happy she is back with us. Welcome Ladies!!! We have several gals working on getting their 10 games played, they will be joining us soon! We look forward to a fun and exciting year of Women's 9 Hole Golf!!!

NO FOOLING AROUND

TAMMY TALOVICH

If you to want to get some more exercise, we have the answer. Don't be a fool this month and come out and play some pickleball!

The weather has been mostly perfect, starts out a little chilly but we warm up fast. A few days the weather made the courts wet and we couldn't play. If the courts are dry put on your court shoes and some comfy clothes and meet us at the Pickleball Center on Mueller, next to the Country Club. We play on Monday, Wednesday, Friday, Saturday and Sunday, because of the time change we will start play at 9:00am, depending on the temperatures it may start at 10:00am.

If you want to learn, all you have to



do is come out, no April's Fool joke, we will be there! We have a lot of fun, exercising or laughing either way you will get your endorphins going!

It's still not too late to join the Pickleball Club, just contact Tammy at 209-605-7904 or tamtally@sbcglobal.net.

See ya on the courts!

SPRING'S A POPPIN'!!

CLAUDIA D. DAY

Spring is a lovely time of year in our area! I get so excited I wet my plants! Ha ha ha~

ROOFBB has many exciting things to report on. Our Spring Luncheon April 22 at the Lake Lodge was a blooming good time! President Susan Dwyer let members know what the club's plan are for the year. We will have our fall luncheon in October.

Fundraising efforts are in full bloom as well:

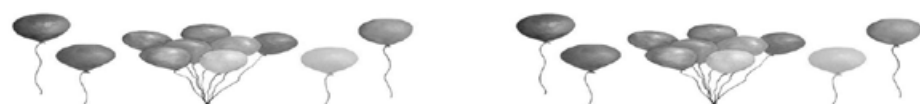
- **July 9:** Our 27th Annual Golf Tournament. Come out & play or just watch! Many new & exciting things this year!
- **August 27:** Street Fair downtown. A celebrate Groveland event! Vendors, food, wine tasting, kids' activities, bake sale & so much more – ooh-la-la!

• **Battlebots for youth** – date for competition TBD – help raise funds for local youth to participate in building and competing with robots. Kids learn about science, math and technology in a fun way! Let us know if you can help! Local businesses will be offering a special in May, i.e. you patronize their business and they will donate a % to this fundraiser! Watch for details on NextDoor & Facebook.

WAYS TO DONATE:

Amazon Smile • eScript at MarVal
• corporate matching funds • our Facebook page
ROOFBBorg@gmail • 962-6265

~ Caring Hearts Helping Others ~



Community Mix and Mingle

The PML Ladies Club presents our first annual Mix & Mingle Event

At Pine Mountain Lake Stables on Wednesday, June 15th from 1-3pm.

Meet, mix, mingle and match with representatives from a wide variety of clubs and organizations, who are looking for members and volunteers.

Enjoy displays; make new friends, get to know your community.

This is a terrific event for newcomers and current residents alike to get to know what is happening "up on the hill".

Clubs Represented include:

- | | |
|--------------------------------|--------------------------------|
| • AeroClub | • Sierra Club |
| • Friends of the Lake | • Groveland Area Writers Group |
| • STCHS/ Museum | • Residents Club |
| • Pinecone Singers | • PHI Cares |
| • Aviation Association | • Shooting Club |
| • Mah Jong | • Little House -SCC |
| • Pinochle Club | • Waves |
| • Ladies Club | • Meals on Wheels |
| • Friends of Groveland Library | • Tennis Club |
| • Wii Bowling Club | • Brainy Groveland |

For more information, please contact: Dart Woodruff at 209-559-7028.



GROVELAND ROTARY

MIRIAM MARTIN

The Groveland Rotary Club has been busy the last couple of months planning and executing new events, projects and activities for the Groveland community and beyond.

March brought forth our first annual St Patty's Day Drive Thru, a special Corned Beef Dinner. It was such a success that we ran out of dinners in the first 45 minutes of the event. Our newest Rotarian member, Justin Atwood of Marval Market saved the day when supplies ran low. Many thanks to Marval and the Groveland community for your support of Rotary.

April 16th was the annual Rotary Children's Easter Egg Hunt. This event has been a family favorite for many years.. Many Groveland residents will remember back to the days when Lions Club sponsored this event and Kay Graves donned the bunny costume. We miss you Kay!

The Highway 120 Chamber of Commerce will not be hosting the monthly downtown flea market as their efforts are currently concentrated on supporting their membership in their post COVID business recovery. The good



Rotarian Barrett Giorgis and Greg Cramblit pin new member Justin Atwood

news for the treasure hunters among you is that the Groveland Rotary is taking over this monthly event which takes place at the Premier Valley Bank parking lot on the first Saturday of the month from May through September. Flea market hours are from 8:00am - 1:00 for shoppers. Vendor spaces are limited and preregistration is recommended. Vendor set up time begins at 7:00am and the cost for a 10'x10' space rental is \$15 per vendor. Contact the vendor coordinator T Vincent at 510-703-5382 or the Rotary contact, Jeff Thompson at 209-770-2779 for your vendor questions, early registration and liability waiver forms.

PINE NEEDLERS QUILT GUILD

LYNN SIGAFOOSE

How do we benefit from quilting? All quilters know that the art of quilting is an excellent creative outlet but did you know that quilting can improve your mental and emotional health? Keeping ourselves mentally and emotionally healthy is related to our overall physical well-being, which is why creative arts like quilting, sewing and other crafting is so important in our daily lives. Not only does quilting carry on a time honored tradition of artistry and skill, but it also brings people together and allows us to express ourselves using fabric and textile art.

If you're interested in joining us we will be

meeting on the Third Tuesday, of the month, under the Groveland Library with social time beginning at 9:30 and the meeting to begin at 10 am. Guests are welcome.

In April many of our guild members made Bunny Blocks and one person became the owner of the Blocks to create a quilt or wall hang. We also had our fun and exciting Basket Auction with the fabulous auctioneer Catherine Santa Maria. Thank you, Catherine for always making this event so successful.

Installation of new officers will be in May which will be a luncheon and the location unknown at the time of these print, all new Officers to be published in the June edition.

PML TENNIS CLUB

CAROL NAGY

The Tennis Club Cinco de Mayo tournament will be held on May 3, 2022. It will be a Round Robin format beginning at 9:00 am and over around noon. We are having our first Social that same evening Tuesday May 3 at 5:00 pm. It will be a Cinco de Mayo menu, Carne Asada as the main dish hosted by Tom Hernandez. There will be a sign up sheet sent out in email to members for side dishes. Premixed Tequila Margaritas will be served and Beer. The winners of the tournament will be announced at the Social and prizes given out that evening.

We have a correction to the Tennis PML April Newspaper article. The membership for the Tennis Club is

\$12.00 not the \$12.50 as published. We encourage new residents to come out and join the fun at the courts. We have had interest in Weekend tennis times. By joining the club, you will receive member's emails and phone numbers. You can set up play with our members that are interested in Saturday or Sunday Tennis. We are hoping to have more weekend club tennis again. The Spinshot ball machine is available for member use. Email us pml.clubtennis@gmail.com

Our Socials are on the 2nd Tuesday of the month throughout the Summer thru October. They are held at the picnic area of the Tennis Courts at 5:00 with a main dish and potluck style affair. Members cost is \$5.00 each and guests are \$10.00.

GARDEN CLUB CLIPPINGS

LINDA NEUSCHWANDER – PINE MOUNTAIN GARDEN CLUB

Our April meeting at the Jail Garden said it all about the possibilities of April showers! We gathered out of doors, braving cold wet weather, in spite of having just basked in several of the most lovely, mild spring days any of us can remember. This newsletter was posted just before our April meeting, so you tell me, did we shiver in the damp, or did we enjoy the fresh air and carry on with a demonstration of how to divide various bulbs and plants that we grow locally? Both I imagine. I am sure we had a great time and welcomed the opportunity to harvest colorful additions to our home gardens. After all, we are gardeners!

Our Jail garden work day was a blast with about a dozen laughing jail birds doing not exactly 'hard' time moving rocks and weeding, as well as cleaning out the actual jail building. The morning was beautiful with plenty of snacks to share with each other.

Several of us joined in the volunteer work day at Camp Toulumne Trails. If you are not familiar with this amazing place, ask around. We in Groveland are very proud of this beautiful, serene 80 acre retreat just down the road from Yosemite. Camp Toulumne Trails is dedicated to providing an enriching and fun camp experience in a facility especially designed and built for chil-

dren, teens, and adults with disabilities. The camp promotes a traditional camp experience in an all-accessible setting. Our project for the morning was to clean out the raised beds used for veggie planting and then lay out a wheelchair friendly base rock path around the planting boxes. We met such energetic, fun neighbors, and ended the event with BBQ burgers and all the trimmings! Count me in for next year too!

On the home front, there's plenty to do in our gardens. This is a work month, before things really heat up. Get started on the grass mowing along with trimming any shrubs and trees that could be a fire hazard. I like to weed by hand, a bucket or two a day. It gives me a feel for what is going on in my garden. Mulch your garden spots to keep plant roots cooler and to conserve moisture. If you want to add a shrub or perennial, place it where you are already watering, preferably in areas of partial sun.

That being said, have fun in the garden, and please know that you are most welcome to join us (we'd love to get to know you)...

Questions? Please contact club president Susan Dwyer at smdwyer@sbcglobal.net.

We can also be contacted at P.O. Box 167, Groveland, Ca 95321

FRIENDS OF THE LAKE MAKE SUMMER PLANS

VIRGINIA RICHMOND

The Friends of the Lake Club announces its 2022 summer schedule and you're invited!

Friends of the Lake is a PML social club open to everyone who is committed to enjoying our beautiful lake and ensuring safe and equitable usage. In addition, we work with the PML Association to promote improvements such as lake dredging, lighted buoys, shade umbrellas, and Wednesday night slow-boating.

Among our activities this year will be a poker run by boat on June 12, "music at the marina" and the lake swim and kayak races in July, a Pictionary puzzle by boat in August and bingo at the marina in September. Most of our events are preceded by a potluck supper and are on a Sunday evening, from June through September.

Friends of the Lake also organizes the annual Independence Day Boat Parade and airplane landing – the highlight of the PML summer season. This year's parade is on July 2 and the theme is "American history."

To join Friends of the Lake and receive information on each upcoming event, please send your contact information and



Friends of the Lake members enjoy Bingo on the Beach.



Nancy Jones shows her winning poker hand.

a check for \$20 per family to Friends of the Lake, PO Box 591, Groveland, CA 95321. Be sure to include your email address, as all club communication is by email.

PML LADIES CLUB

PATRICIA GIBSON

The PML Ladies Club enjoyed a delicious luncheon on April 6th, at the Pine Mountain Lake Grill presented by the hostess Paula See. The theme was Easter and many attendees won gift certificates for a free ice cream at the new Mercantile in Groveland, which had its Grand Opening on Monday, April 4th. One day, two desserts!

Dart Woodruff will hostess our May luncheon at PML Grill and the theme is Kentucky Derby. Dig out your big hats! And come join the fun! The date is Wednesday, May 4th, as we always meet the first Wednesday of the Month (except January and July, when we don't meet at all.)

We are also working to put together a community mixer for Wednesday, June 15th at the PML Stables from 1-3pm. Almost 50 clubs will have representatives

there to sign you up for their clubs or to recruit volunteer for their services. This will be a wonderful event community building event, where everyone should be able to find a few new places to be. New friends and old, newcomers and old-timers – we encourage all to come and find your places to belong. If you are interested in having your group represented and you have not yet heard from us, please contact Dart at the phone number listed below.

The PML Ladies Club is a social club, presently with 99 members, whose focus is on making friends and meeting neighbors. We welcome you to come join the fun. Membership for the year is \$15 and can be sent to: PML Ladies Club, P.O. Box 100, Groveland, CA 95321. For any inquiries, please reach out to our President of the Board – Dart Woodruff at 209-559-7028.

PML MEN'S GOLF CLUB

DAVE FERNANDEZ

ST. PATRICKS DAY AND MARCH SWEEPS TOURNAMENT

As the spring weather started to heat up, the PMLMGC Tournaments got hotter as we celebrated March with our annual St. Patrick's Day Tournament and the March Sweeps event. Congratulations to all our winners and to all our participants. Hope everybody is enjoying our after tournament get together and continuing to build PMLMGC into a top notch club.

ST. PATS DAY TOURNAMENT

Flight 1

- 1st place** - Colm Conefrey, Vince McEvoy, Brenden Frost, Mark Christensen
2nd place - Steve Grant, Jim Grant, Dan Bradlee, Jeff Graham
3rd place - Jeff Sera, Al Saisi, Dennis Scott, Bud Roberts
4th place - Paul Funston, Jeff Funston, Gary Funston, Blake Funston
5th place - Chuck Obeso Bradley, Greg Surratt, Larry Drew, Dave Fernandez

Flight 2

- 1st place** - John Lloyd, Bill Hippe, Rick Higgs, Gus Alegri
2nd place - Rich Martinez, Joe Vautier, Paul Kuhn, Levi Fountaine
3rd place - Barry Scales, Tom Geren, Steve Bittick, Tom Borup
4th place - Bob Stock, John Petkewich, Doug Wall, Dennis Perry
5th place - Steve Burke, Michael Skonovd, Rick Liszewski, Edvard Esha

Closest to the Pins

- #3- Paul Funston 4'10"
 #7- Vince McEvoy 2'8"
 #14- Bob Stock 7'3"
 #17- Bill Hippe 11"

MARCH SWEEPS

Flight 1

- 1st place** - Steve Burke, Craig Herendeen, Rick Liszewski, Edvard Eshagh
2nd place - Dick Faux, Don Lacy, Dan O'Connor, Allen Craig
3rd place - Jeff Serra, Dennis Scott, Dave Gibson, Dave Berthold

Flight 2

- 1st place** - Rich Martinez, Joe Vautier, Paul Kuhn, Levi Fountaine
2nd place - Ted Toffee, Joel Pluim, Joe Parisi, Rod Raines
3rd place - Tim King, Steve Vahey, Doug Wall, Bob Stock
Closest to the Pins
 #3- Joe Vautier 18'0"
 #7- Michael Thoben 4'0"
 #14- Dan O'Connor 8'0"
 #17- Rick Higgs 8'5"

TOURNAMENT TEE SELECTION

Many of our tournaments allow players to select what tees they will play from. It is important that players sign up for the correct tees. Any player can play from the Gold tees, regardless of their age or index, if they so choose. But only players that qualify may play from the Purple/Green tees. To qualify a player must be 70, or older, or have an index of 18.7, or higher. It is very difficult for the Golf Shop to make tee changes at the last minute. Any player that plays from incorrect tees risks disqualification. Typically, one team member will sign up a 4-man or 2-man team, so it is imperative that that team member sign up their team from the correct tees.

REPAIRING DIVOTS

A very important responsibility for golfers is to repair all divots, and to repair them correctly in order to maintain our fairways in top shape. Please make sure to use the bottles in your cart to fill all divots and to fill any divots you may see while on the course approaching your ball. Let's do our part to maintain this great course.

WEBSITE TOURNAMENT SIGN UP

Please continue to use the website, pmlmgc.com, to sign up and pay for tournaments. Using the website for tournament sign up and payment makes it easier for the club and the Golf Shop to manage tournaments. Go to pmlmgc.com to see the tournament schedule.

JOIN THE MEN'S GOLF CLUB

Any male persons who are current

PML LADIES 18 HOLE GOLF CLUB

PAULA PARISI

The course is in beautiful spring condition thanks to the hard work of Rob Abbott and his grounds crew. The club golf professional, Mike Cook, and his team in the pro shop (Doug, Dave, and Stan) also do a great job of organizing tee times, giving lessons and providing our club with the best customer service possible. Also serving us daily with carts and equipment organization are Michael, Dan, Jim, Greg and Taylor. A huge thank you to all the golf club staff for all they do.

The PMLLGC is gearing up for team play against Del Rio Golf Club hosted at our club on April 29th. Our club's team will be competing against numerous other clubs throughout Northern California in the upcoming months, so wish us luck!

The annual Charity Golf Tournament hosted by our club will be held July 28th. It is an 18 hole, par 3 tournament including lunch, as well as a silent and live auction. All proceeds raised will benefit the Southside Community Center (The Little House). The committee, chaired by our Co-Captain, Linda Sarratt, can use donations of all kinds (volunteers, money, gift certificates, baskets, etc.) for the event. If you're interested in volunteering for the day of the event, or wish to contribute, please contact Linda at (831) 915-9879.

Here are the results of our recent tournament play:

MARCH 10TH - SIX-SIX-SIX

1st Place: Marcee Cress, Kitty Edgerton

& June Song - 130

2nd Place: Helena McMillan, Linda Sarratt & Marilyn Scott - 134

Birdie: Helena McMillan - Hole #17

MARCH 17TH - IRISH GREENS

1st Place: Lisa Brown-Jimenez, Helena McMillan, Priscilla Park & Linda Wall - 55 Putts

2nd Place: Kit Edgerton, Jane Reynolds & Marilyn Scott (+blind draw) - 58 Putts

3rd Place: Marcee Cress, Paula Parisi, Sue Perry & Linda Sarratt - 59 Putts

MARCH 24TH - CHA/CHA/CHA

1st Place: Lisa Brown-Jimenez, Paula Parisi, Jane Reynolds & June Song - 129 Points

2nd Place: Sara Hancock, Sue Perry, Marilyn Scott & Linda Wall - 131 Points

3rd Place: Thelma Faux, Elisa Hoppner, Helena McMillan & Kathie Wood - 134 Points

MARCH 31ST - LEFT/RIGHT PARTNERS

1st Place: Thelma Faux, Laura Kramer, Priscilla Park & Linda Wall - Net 128

2nd Place: Jodie Awai, Kitty Edgerton, Sara Hancock & June Song - Net 131

The PMLLGC plays Thursdays and one Saturday a month (weather permitting) and is open to all women residents and owners of property in the Pine Mountain Lake community. We are always looking for new members, so if you're interested in joining our club, please contact Head Golf Pro, Mike Cook at 209-962-8620.

property owners, their siblings, sons, nephews, sons-in-law, and PMLA employees are eligible to join the men's golf club. Go to pmlmgc.com and click on the button, Join the Club, to see the many benefits of club membership, as well as the ability to sign up on line. Applications are also

available in the Golf Shop, or you can contact our Handicap/Membership Chair, Ted Toffey. Email Ted at handicap@pmlmgc.com, if you have any questions about club membership, or, if you're a current member, your NCGA handicap index.

WHAT IS MEASURE W?

KATHLEEN K. HAFF – DISTRICT 4 SUPERVISOR, TUOLUMNE COUNTY

If you are a registered voter and live in or around Groveland, Big Oak Flat, Moccasin, or the Marshes Flat areas, you will see a measure on your June 7, 2022 ballot for the Groveland Ambulance Tax:

MEASURE W

Since 1988, voters in the Groveland area have voted to support Advanced Life Support (ALS) services with a station and fully trained staff in Groveland. Groveland Ambulance Station was built to support the provision of ALS services and staffing for around the clock operations to this region. The average response time last year for an ambulance to arrive in the Groveland area was between 15-16 minutes.

Citizens in other remote areas have not asked for this kind of ambulance support. Let's look at the distant reaches of the Hwy 108 corridor as an example. Those who live in Pinecrest, Strawberry or the Dardanelle areas wait for ambulance services from East Sonora (the closest ambulance station). The average response time last year to have an ambulance arrive was almost 35 minutes for Pinecrest, over 36 minutes for Strawberry and over 58 minutes for the Dardanelle area.

There is a point of confusion I would like to clear up. Did you know that your property taxes *do not* cover ambulance services? Not one property owner pays any taxes that go to the ambulance fund. Not in Sonora, Jamestown, Columbia, Twain Harte or any other location in the County, including the Groveland area. The ambulance system we have here is a public-private (non-profit) partnership between the County and Manteca Ambulance District. It has its own enterprise fund. And as such, it is self-sustaining. That means that the services provided are paid for by the users (those who need the ambulance services) via insurance payments or private self-pay. The Ambulance Enterprise Fund pays for the equipment, stations, staff, all training and supplies.

Today, in 2022, there is not



enough call volume to pay for an ALS ambulance with 24/7 coverage in Groveland, without an additional tax measure to help fill the financial gap. So, on June 7th or before, if you vote early, you will essentially be asked if you want to continue having this ALS ambulance service locally, or if you don't. The fee for having this service locally is \$90 a year. That is what the cost has been to the taxpayer since 2018. Also, the County Ambulance Enterprise Fund financially supplements the Groveland Ambulance Fund, because, even at \$90 per year, and with patient reimbursement, it is not sufficient to cover all costs.

It is my hope that most of you reading this article attended my virtual Town Hall meeting on the Groveland Ambulance Tax measure via Zoom on March 16th. Education is key in understanding this measure.

On Wednesday, May 18th, at Tenaya School, from 5-6 pm I will hold one more Town Hall meeting, in-person only, before you vote in June. Details will also be posted on social media like Nextdoor, and on my Supervisor Facebook page: www.facebook.com/2020VisionForAVibrantCommunity at the beginning of May. Between now and May 15th, please send your questions about this tax measure to me via email at khaff@co.tuolumne.ca.us or write to me: Supervisor Kathleen Haff, 2 South Green Street, Sonora, CA 95370. I will plan to answer your questions at this in-person Town Hall meeting.

Hope to see you there!

★ Sunday May 29 ★

PINE MOUNTAIN LAKE ASSOCIATION & TIOGA HIGH SCHOOL
ARE PROUD TO PRESENT

TIOGA HIGH SCHOOL Memorial Day ★ Barbecue ★

at the PML Stables 

13309 Clifton Way, Groveland

FROM 4-8PM SERVING BEGINS AT 5PM

Tri-Tip, Beans, Cole Slaw, Roll and a Drink (soda)

Live Band
Silent Auction

\$20.00 for Adults • \$12.00 kids 10 and under

For any questions, please call Rebecca (209) 962-4763

**TICKETS MAY BE PURCHASED AT TIOGA HIGH SCHOOL OFFICE
OR AT THE EVENT**

Carron Tax

associates


Carole Smith
Enrolled Agent

20093 Ridgcrest Way
Groveland, CA 95321
Tel: 209/962-6119
E-mail: carolesmith@carrontax.com

INCOME TAX PREPARATION
AUDIT REPRESENTATION

Cynthia Brown
Sewing & Alterations

19623 Cottonwood St. Groveland Ca
95321



818-824-2955

VILLAGE ON THE HILL

BRITNE GOSE

AGE MY WAY: MAY IS OLDER AMERICANS MONTH

The 2020 census for the Big Oak Flat-Groveland area found 40% of our community is above 65 years old, over twice the rate in California [1]. An AARP study found 80% of Americans over 65 wish to remain in their homes indefinitely [2]. The unfortunate reality is approximately 70% of seniors will eventually require long-term care [3]. Without proper infrastructure, many friends and neighbors will need to move away or accept a quality of life that could be dangerous, both physically and mentally. Here is where Southside Community Connection (SCC) steps in. SCC works to provide its aging community a choice in how and where they spend their days as they age. May is Older Americans Month (OAM) and the theme is Age My Way. This month, celebrate and acknowledge SCC for its part in helping our neighbors age their own way, by volunteering, finding members and donating.

SCC provides many services, including local and Sonora rides, social and life-long

learning programs, household tasks, and friendly visits and calls. To continue this work, we need everyone in the community to participate. Do you know someone 65 or older struggling with day-to-day activities? Refer them to SCC. Do you have an hour after work to run an errand or perform a chore? Call SCC to volunteer. Do you have a skill to share? Call The Little House to host a class. Do you have an extra \$5 dollars? Visit our website at www.southsidecommunityconnections.org and donate.

Welcome to Older Americans Month, a celebration and acknowledgement of the desire to Age My Way, the theme for May 2022.

Remember, Donate for Donuts begins May 5th. If the sign is out, the donuts are in!

[1] <https://censusreporter.org/profiles/97000US0691137-big-oak-flat-groveland-unified-school-district-cal>

[2] <https://assets.aarp.org/rgcenter/ppil/liv-com/lib190.pdf>

[3] <https://www.singlecare.com/blog/news/long-term-care-statistics/>

SOUTHSIDE COMMUNITY CONNECTIONS

SYD ROBENSEIFNER

Southside Community Connections would like to thank the family of Miguel Maldonado for their generosity and kindness in remembering their loved one by requesting that donations in Miguels' name be made to Southside Community Connections Village on the Hill service program.

Miguel was a friend and supporter of our organization from the very beginning. His belief in our mission and his insight into the services our community needed, helped mold SCC into the organization it is today. He was a giant of a man with a wicked sense of humor, and many life lessons which he shared freely. Miguel's spirit of community will continue to be a part of SCC always.

SCC would also like to introduce our new office manager, Britne Gose. Britne comes to us with diverse experience and an enthusiastic demeanor, full of energy to help SCC

and the community fulfill its needs.

Mark your calendars! SCC has a few events happening over the next few months. Now through May 1st, you can donate to our non-event, event. We organized this event in lieu of an in-person fundraiser. Visit our website www.southsidecommunityconnections.org, mail or drop your donation off at The Little House located at 11699 Merrill Rd. Starting in May, every Thursday, visit The Little House, donate \$2 and go home with a freshly baked donut in return. A half or dozen donuts can be pre-ordered if you call (209) 962-6906. Finally, on July 29, SCC and the Sierra Repertory Theatre will show Sh-Boom. Doors open at 5:30 pm, curtain at 6:30 pm. Tickets are \$36 per person (plus \$4.00 service fee) and can be purchased directly through the SRT website: sforce.co/3C0sO3a.

Stay tuned for more activities!

CELEBRATING EASTER FOR 7 WEEKS (& LONGER)

RETIRED PASTOR GINGER DUMARS

MOUNTAIN LUTHERAN CHURCH OF GROVELAND

According to the Gospel of Matthew (chapter 28), on that 1st Easter morning an angel came to the tomb where Jesus had been buried and rolled back the stone (boulder) and sat on it. When Mary Magdalene and the other Mary came to the tomb they saw that it was empty! The angel told them, "Do not be afraid; I know that you are looking for Jesus, who was crucified. He is not here; for He has been raised... from the dead." On their way back to tell the disciples, they are surprised to meet Jesus who talks to them. These women are the first ones to witness—to see and talk to the Resurrected &

Alive Jesus! They have the greatest news to tell and they go & tell others about Jesus being raised from the dead! ALLELUIA! Jesus is alive! We, as Christians, are also called to go & tell about Jesus!

Most Christians worship on Sundays (the 1st day of the week) to honor & in remembrance of the Resurrection of Jesus & His promise of Resurrection for ALL believers in Him! Easter Sunday is extra special as we celebrate Jesus' Resurrection and a sense of new or renewed life in Christ! And, we all celebrated in a variety of churches in our Groveland Area Community in Mid-April! We also gathered together at Mountain Lutheran Church as Groveland's Community of Christians on Good Friday to sing & pray & to hear the Gospels of Luke

& John telling of the final events leading to Jesus' torture, crucifixion and excruciating death. Thank You to Pastors Luis Alecio & Richard Cripe, Lay Ministers Tom Radanovick & Cyndi Schlenker for leading the Good Friday Service with me.

On Palm Sunday morning, April 10th, four foothill Lutheran Churches met in Sugar Pine to celebrate Palm Sunday with our N. CA. & NV. Bishop. We were all inspired by Bp. Megan Rohrer's sermon & the meeting times we had with the bishop after the worship service. The service began with a trumpet procession as we all entered Mt. Calvary Lutheran Church waving palm branches & singing "All Glory, Laud & Honor". Bishop Megan visited Mountain Lutheran Church later that afternoon and gave us encouraging possibilities for our future!

Liturgical (Catholic & Lutheran, Episcopal & Anglican) Churches celebrate Easter for 7 weeks up to the Biblical time sited when the disciples receive God's Holy Spirit at

Pentecost—another major event for Christians to celebrate—on June 5 this year. **We invite you to keep celebrating EASTER for these 7 weeks with us at Mountain Lutheran Church with Sunday Worship at 4:00 p.m. at 13000 Down to Earth Ct.**—just off Ferretti Road in Groveland.

You're also welcome to participate in Bible Studies on the 1st & 3rd Thursdays at 1:00 as we discuss Rick Warren's *Purpose Driven Life* book & related Biblical passages.

Near the end of May we will celebrate the blessing that Pastor Debbie McAllister has been for us as our Sunday Pastor for the past 4½ years. She is retiring & moving back to Santa Rosa after serving Mt. Calvary Lutheran Church in Sugar Pine for 6 years & blessing us in Groveland as our Sunday Preacher & Presider. A date for our Farewell & Thank You event for her has not been set yet.

God Bless You & Your Faith Journey during this long Easter Season & always!
With Faith, Hope & Love.

TOP DOG OF THE MONTH

DORI JONES

My name is Dutchess (aka Dutch) and I came to live with Tish and Harold Fulton last year all the way from Salinas. I do like the weather here in Groveland and my mom and dad are sure happy to have me as their companion. I'm a one-year old shiny black Labrador Retriever. I love my squeaky toys, fetching balls and any paper products (they smell and taste sooo good!), but I guess my one and only bad habit is chasing the cat. I love going to the dog park because I can run all over and visit with my dog friends and their owners. It's the place where I became socialized and learned how to play with other dogs and be a good 'dog citizen.'

Mark your calendars for Monday, July 11, when the Frank Hicks' Dog Park community will hold its 4th Annual Dog Park picnic. This year, we will hold the picnic at Lake Lodge starting at 1:00. If you're a dog park member and aren't on our email list, please leave your name and email address inside the bulletin board at the park.

If you are a member of the Groveland Dog Park and would like your dog featured as "Top Dog of the Month," please fill out one of the forms (posted on the bulletin board at the dog park). We are always looking for new dogs to feature!

Just a reminder to avoid unnecessary (although rare) fights among dogs for

dog treats and food, we have a new policy that no dog treats or food are allowed in the dog park. Thank you for your cooperation.

To join or renew membership for the Groveland Dog Park, contact GCSD. The annual fee is \$25 for up to two dogs (plus \$10 for each additional dog), and new dogs are required to provide current Rabies and Bordetella vaccination certificates when registering. It's a



Dutchess

wonderful place to socialize with other dog lovers and their dogs! Join the fun!

Granite & Quartz Countertops



10 YEAR GUARANTEE
ON ALL WORK AND INSTALLATIONS

Located right here in Groveland!

Upgrade Your Kitchen & Bathroom Countertops
High Quality, Guaranteed Work
Affordable Prices • Stone & Tile Projects

Visit our website: www.RockSolidCreations.us

Call Brandon Hoffman: 209-962-1813

NEW!

FASTER INTERNET SPEEDS



STANDARD	PLUS	BRONZE	SILVER	GOLD
\$69.95	\$89.95	\$124.95	\$174.95	\$224.95
NOW 15X5 MBPS	NOW 20X5 MBPS	NOW 30X5 MBPS	NOW 40X5 MBPS	NOW 50X5 MBPS



CONIFER

communications

866-378-8393
CONIFERCOM.NET

PROPANE DISCOUNT PROGRAM

Suburban Propane – As the preferred provider of PML we are happy to provide an exclusive members only program to all residents.

Benefits include: Propane at a discounted rate, Tank rental at a discounted rate, Free basic tank installation, Easy payment options, 24/7 Tech support, Flexible delivery options,

24/7 live phone support. Contact our local staff for further details and current rates.

Suburban Propane, Jamestown California

(209) 984-5283 • 1 (800) PROPANE



PAT LEAHY
CONSTRUCTION

CUSTOM HOMES
—
REMODELS

209-768-5759
Lic# 1018268

Doing Great Work for you Since 2005



Bonded & Insured
CA Contractor
#945393

GREAT WEST PAVING



WE ARE THE PAVING EXPERTS!

Specializing in Asphalt, Paving Seal Coating, Grading, Oil & Screen for Driveways, Roadways and Parking Lots



**Call Now for a
FREE Estimate**

**Mention this ad
for Monthly Specials!!**



24 Hour Service Call Today!

209-345-7161

Check out our website @ greatwestpaving.com

GO TO THE OFFICIAL ONLINE PRESENCE OF THE PMLA FOR THE LATEST NEWS & INFORMATION

PINEMOUNTAINLAKE.COM

FACEBOOK.COM/PINEMOUNTAINLAKECA

FACEBOOK.COM/PMLARECREATION

*Locally Owned
since 1950*

YOUR ONE-STOP SHOP FOR
all your pest control services

PEST CONTROL: HOME, BUSINESS AND INDUSTRY

LAWN FERTILIZATION AND COMPREHENSIVE LAWN CARE

TERMITE INSPECTIONS, REPAIRS AND FUMIGATIONS

TREE AND SHRUB CARE, AND BARK BEETLE CONTROL

TERMITE TREATMENTS AND MONITORING

WEED CONTROL AND FIRE BREAKS

BED BUG TREATMENT

DECK REPAIR/REPLACEMENT (LICENSE #922758)

OUR REPUTATION IS IMPORTANT TO US AND YOUR COMMUNITY.
Call now for a free estimate!



(209) 770-7733
clarkpest.com

PINNELL'S CARPET ONE FLOOR & HOME



FREE Neutralize Installation, because your health matters.

Waterproof Flooring, LVT, Laminate, Vinyl, Hardwood, Tile, and Hunter Douglas Window Coverings.

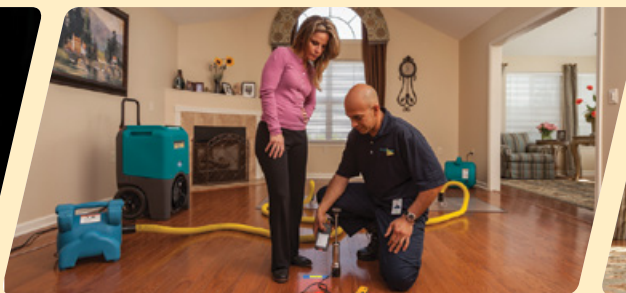
Thank you for voting us Best of the Mother Lode since 2005!

209.736.8077 263 S. Main St. Angels Camp, CA
209.532.1696 12900 Mono Wy. Sonora, CA

**\$25
DISCOUNT**

Mention this ad for a discount on cleaning services.

Minimum charge applies.



DISASTER RESTORATION SERVICES • RESIDENTIAL AND COMMERCIAL CLEANING SERVICES

Carpet & Furniture Cleaning • Steam & Dry Cleaning • Deep Soil Extraction • Spot & Odor Removal • Oriental & Fine Rug Cleaning • Ultrasonic Blind Cleaning
 24 Hour Emergency Service • Water Removal • Wet Carpet Care • Fire & Smoke Restoration • Vandalism Cleanup • Structure Drying • Sanitizing

**ServiceMASTER
Restore**

*The clean you expect.
The service you deserve.®*



Serving Tuolumne, Calaveras & Amador Counties
 ServiceMasterSierras@mlode.com • www.ServiceMasterSierras.com

209-532-1700

17330 High School Road
 Jamestown CA 95327



CAMP TUOLUMNE TRAILS NEWS

DORI JONES

Summer is Fast Approaching —

CTT now has more than 130 campers already registered for camp this summer and have nearly hit our target of 150—our biggest year ever. Our programs will run from June 10 through August 8.

We had another tremendous turnout for Volunteer Day on April 2, when more than 30 community volunteers helped us make improvements around camp and ready it for our summer programs and music concerts. We thank all those generous “locals” who gave up their Saturday morning to help make camp ready for summer!



Fundraising — We want to thank those who have already contributed to our new Campership Fund, but we’re hoping more of you will donate to help make it possible for more of our campers with disabilities and special needs to make it to camp this summer. A monthly donation of just \$57 will sponsor a deserving camper. To make a donation visit: <http://www.tuolumnetrails.org/donate/>

Concerts for a Cause — Our concerts are confirmed and we’re selling tickets! Tickets are selling quickly so don’t hesitate to check out ticket and dinner options at: www.tuolumnetrails.org/concerts-for-a-cause-2/. You can hear a sample of the artists’ music by clicking on their names on the “Concerts for a Cause” page of CTT’s website. Here’s the lineup of this summer’s concerts:

• June 4 – Renaissance

An extraordinary six-piece band from L.A. that plays all genres of music and features singers Billye Johnstone—our biggest production to date.

• August 13 – Javier Colon

Winner of the first season of The Voice—multi-talented singer, songwriter and acoustic guitarist.

• September 3 – Aubrey Logan

Singer, songwriter and trombonist—returns this year for another unbelievable performance.

• September 24 – Ilya Serov

Award-winning and Billboard-charted trumpet player, composer, producer and singer (think Sinatra-style crooner).

Summer Job Openings — We have already confirmed a full-time lifeguard, a full-time nurse and three counselors returning from Brazil. CTT is still seeking program leads, camp counselors, camp workers and a program assistant. Check CTT’s website for more information.

AmeriCorps’ NCCC Team — We have another outstanding AmeriCorps team of 10 NCCC workers at camp that arrived April 2 and will finish on June 24. They are working on general readiness for summer camp, including specific projects to improve wheelchair accessibility in the more remote parts of camp, like the mining camp area. Teams of NCCC workers are such an important resource that we appreciate wholeheartedly.

If you have any questions or would like to find out more information about CTT’s Summer Camp Program, Concerts for a Cause summer music series and Family Camp, please call CTT at 962-7534, email us at: info@tuolumnetrails.org or visit us at: <http://www.tuolumnetrails.org>.

CONCERTS

for a Cause

June 4
RENAISSANCE

August 13
JAVIER COLON

September 3
AUBREY LOGAN

September 24
ILYA SEROV

presented by
Camp Tuolumne Trails
TUOLUMNETRAILS.ORG

2022

Groveland, California
209-962-7534

GUESS WHO I AM

TOMAS HERNANDEZ, JR

MAY MYSTERY PMLA MEMBER

At the age of 11, I wrestled a Bear (no teeth or claws, but a real Bear) I worked as a surveyor, surveyed the center line for the then proposed Interstate Highway 5. Worked for an Oil Company—we ended our Mission when the earth dropped away-down below, Way down below—we could see the confluence of the Green River and Colorado River—we could go no further, packed up and headed back to civilization. Who Am I?

ANSWER TO APRIL'S

PMLA MYSTERY MEMBER

Catherine Santa Maria — Catherine has a distinguished background and is currently serving as a Commissioner on the Tuolumne County Planning Commission, treasurer, and board member of the Southern Tuolumne County Historical Society and The PML Aero Club. In addition, secretary, and treasurer of the San Joaquin Valley Chapter of the 99s and Parliamentarian of the PML Ladies club and co-chair annual poker run for Friends of the Lake.

HELPING HANDS HAPPENINGS

PATTI BEAULIEU

Last month, we purged the Store of winter clothing, shoes, hats, scarves and many other items that we were overstocked with. Those items, and much more, were offered for FREE at our Annual Spring Giveaway on Friday and Saturday April 15 & 16. We had many neighbors come in and take whatever they wanted or needed. We're so thrilled to be able to do this twice a year for our Community. It's a win, win for us all because we only have room for the current season and the Community members are able to get lots of free stuff – and who doesn't like FREE??? We'll do this again in the fall, so watch for the ads and flyers in early October.

Once the Store was cleared, we were able to begin filling the racks with summer clothing. There are many items that we stock year-round for those chilly nights or unexpected cold spells for those heading to Yosemite. We always have long pants and sweats,

jackets, socks, umbrellas, warm PJ's and robes, regardless of the season. The weather can change rapidly up here, so we try to accommodate those surprises.

April 17-23 was also "National Volunteer Appreciation Week". We truly appreciate our volunteers and gave each of them a thank you gift for their dedication to the Helping Hands organization.

We hope everyone had a wonderful Easter and welcomed the changing weather with open arms. We still need rain, hopefully, we'll get some surprise showers this month. We begin our 'summer hours' on May 24 and will stay open until 4 until Labor Day. Come shop for Mom, Grandma, or your favorite Auntie for Mother's Day, which is Sunday, May 8. We have something for everyone.

Enjoy the spring, the great weather, this wonderful community and each other. We have much to be thankful for.



GRANITE
INVESTIGATIONS LLC.

CALIFORNIA PRIVATE INVESTIGATOR № 18754
209-770-7798

A REALTOR WRITES

LAUREE BORUP

THE KIDS ARE ALRIGHT: PROP 19

Mrs. Million passes away at the age of 100, after outliving her two children. She wills her family home, worth \$1,000,000, to her two grandsons. If this happened before February 16, 2021, they could rent the house out, split the income, AND keep the property taxes the same as when Grandma died. But after Proposition 19 passed in California, this heir-friendly tax benefit changed. Now, in order to keep the Prop 13-era tax assessment of \$200,000 valuation, one of them has to live in the house, call it their primary residence, and claim the homeowner's exemption.

Grandson Scott is disappointed

because for years he had planned to turn the house on the golf course into a vacation rental. He already owns his own home, and doesn't want to move. Grandson Rory is happy, because he wants to live in the house, and he can inherit the low tax valuation. The two of them work it out. Rory buys Scott out, and files Board of Equalization form 19-G with the County Assessor within the one-year-of-transfer deadline.

Before prop 19, children or grandchildren could inherit a primary home of ANY value and retain the date-of-death tax valuation (TV) whether they lived in the house or not. And they could inherit other real property and keep those low TVs up to a \$1,000,000 in value. An average of 70,000 real estate

to child/grandchild transfers a year resulted in an estimated loss of annual tax revenue of around \$1.5 billion. The California Association of Realtors sponsored Prop 19 on the 2020 ballot partly because this sweet tax benefit was under attack, and might have been lost entirely. The new law will generate more local property tax revenue. It will cause more heirs to sell these properties (if they don't move into them) and free up more housing for buyers.

If the property market value is more than \$1M higher than the original tax basis, then the tax break is "capped". For example, "Sheila" exceeded this cap when she inherited her Dad's primary home this year that was worth \$1,800,000. The original tax basis was \$400,000. The new taxable value will be \$1.8M minus \$1M, or \$800,000. This formula applies because the value of the property at time of transfer was more than \$1M over the taxable basis.

Sheila moves into the house with a friend, and because it is her primary home now, she files BOE form 19-P. Form 19-P's official title is: **CLAIM FOR REASSESSMENT EXCLUSION FOR TRANSFER BETWEEN PARENT AND CHILD OCCURRING ON OR AFTER FEBRUARY 16, 2021.**

What if Sheila's Dad had sold her the house before he died? Would she still qualify for the \$1M break in tax reassessment? Yes, she would. The transfer can be a sale, or a gift, or an inheritance.

What if she preferred to buy Dad's vacation house, and not the home he lived in full-time? The vacation house would be reassessed based on what she paid for it (or market value determined by the County Assessor if she paid a low amount). Prop 19 eliminated the transfer of base tax values to children or grandchildren for vacation or investment properties.

Lauree is a Broker-Associate with RE/MAX Gold in Groveland

WYNETTE HILTON

SUPERINTENDENT, PRINCIPAL, OF THE YEAR AWARDS

CATHERINE SANTA MARIA

Congratulations to Wynette Hilton, Superintendent/Principal Big Oak Flat Groveland Unified School District, who was selected Superintendent/Principal of the year from the Association of California School Administrators (ACSA), Region 7. Region 7 Administrator of the Year awards will be presented during the President's Reception at the annual spring conference, scheduled for Friday, May 6, 2022, at the Lake Tahoe Resort in South Lake Tahoe.

This year's conference theme "Reimagining, Reinventing and Redesigning" will celebrate the daily excellence of educational leaders and other strategies and best practices for the many challenges the educators encounter every day. Wynette will be honored for her admirable leadership in public education for the Big Oak Flat Groveland Unified School District.

In addition, Region 7 submitted the winners to the state awards committee (ACSA) and Wynette was selected as the winner of the Superintendent/Principal of



Wynette Hilton, Superintendent/Principal Big Oak Flat Groveland Unified School District

the year. The 2022 Administrators of the year recipients will be featured in EdCal this summer and fall and honored at the Leadership Summit Statewide Awards Ceremony November 4 in San Diego.

Nickie Lamm, Principal, Don Pedro High School, nominated Wynette for this award.

Principal Lamm said "Wynette is by far one of the most inspirational leaders I've ever worked with. She sees the potential in staff and students and supports them. Her commitment to kids and the community is unmatched."

FOGL BUSY AT THE LIBRARY!

VIRGINIA RICHMOND

Friends of the Groveland Library is busy with activities supporting our library and literacy programs in our community. Please join us. Send your name and email address to FOGL, PO Box 43, Groveland and support our library and its valuable projects.

We're pleased to announce that Pre-school Storytime has restarted! Storytime is a great way for families to start their children learning to love reading. It is held on Friday mornings at 10:30am, for about 30 minutes. Parents and little ones are invited. FOGL members are the volunteer story readers.

We resumed "field trips" in April for Tenaya students to visit the library

and museum. Kids will get their own library card and a free book in addition to seeing all the library and museum have to offer. We'll have photos next month.

The Book Nook used book store is open downstairs at the library every Saturday from 10am-1pm. We have special sales on holiday weekends. Stop by for bargain prices on gently used books for kids and adults. All proceeds benefit your Groveland Library. Donations of books are gratefully received in the donation box behind the library. Please, no cookbooks encyclopedias or VHS tapes.

Remember, we are supporting YOUR library! Please join us.

WOT D'YA FANCY?

HOT CHILI CHARLIE

We ain't only BACK but we're rarin' to GO. Them 49er Festival folk are meetin' ever' second Tuesday now and tar-nation! Ol' Charlie never figgered there wuz so many movin' parts that make the Festival the best dang day out since the last one.

But afore we git too fer down this trail, we'd kinda like to hear which bits of the Festival tickle yer fancies the most. Is it the Big Parade down Main Street, with them vee-hickles all decked out like it's Sunday and the local law enforcement flashin' their lights and blastin' their woo-woos? And them trigger-happy n'er-do-well gunslingers lurkin' around with their floozies, lookin' fer trouble and botherin' all the God-fearin' townfolk?

Do I hear you say it's the knee-slappin, foot-stompin live music with big beats n' lots o' fancy pickin', strummin' and singin' them oldies but goodies from Back in the Day and summa that new stuff too? Welp, them all-day tunes are top-notch, but I gotta cross my heart and tell ya that a passle of folks'll be ready to leap outta their bedrolls on September 17 fer the Chili Cook-off. There's sum serious competition brewin' up already. Jist be watchin' and wary of fancy posturin' and whatnot from summa the best chili conjurers in the County. Ol' Charlie sez, "Bring it on!" But on the day? Y'all will be the judge of the Best Dang Chili in the Motherlode.

Or is yer favorite bit havin' all them artists 'n crafters n' makers n' peddlers circlin' their wagons ever' year, makin' fer summa the best shoppin' this side o' the Wild and Scenic Tuolumne River? Why, I heard tell

that there's so many of 'em already stakin' their claims for September 17, it's makin' Jeff Bezos sweat like a stuck pig in a tight corner.

Now, y'all gotta unnerstan' that Ol' Charlie's all-timey favorite is the Beard and Mustache showdown. Menfolk, you best start workin' on yer beards and shapin' yer 'staches fer the annual facial hair contest. But here's a real back-slapper...this year, the womenfolk and kiddies are gonna be gittin' in the act, creatin' their own beards and 'staches. If that jist don't beat all! Last time Ol' Charlie seen a lady with a mustache (besides my gramma), she wuz settin' up all purdy in a circus tent next to a half-man/half-bear.

Or d'ya jist like ever' thin' about the 49er Festival? C'mon, you kin tell Ol' Charlie what you like the best, and iff'n there's anythin' you bin hankerin to see or do when y'all come to the Festival. And how 'bout pitchin' in to hep out a bit this year? The crew could shorely use s'more hands 'n heads afore the Festival and lots more on the day. (That's the seventeenth of September...jist go ahead 'n carve it on yer kneecap so's ya don't fergit.)

Jist betwixt y'all 'n me, bein' part of the 49er Festival is more fun than a goat in the goose coop (and ain't nearly as messy). If y'all kin give an hour a week or sign up to hep on the day, you kin join the posse. Send one of 'em newfangled emails to 49erFestival@yosemitechamber.org, give 'em a jingle on 209-962-0429. Or jist show up on Tuesday, May 6 at 8:00 am at the Iron Door Saloon fer yer mornin' vittals, to larn more, and to pitch in and make the 2022 49er Festival Better Than Ever!



Storytime is fun for children and their parents.



We give free books to teachers.

OBITUARIES

JOHNNIE GRACE DICKSON

FEB 2, 1927 – DEC 2, 2021

A memorial service was held for Johnnie Grace Dickson on Saturday, April 23, 2022 at 10:00 am at the Groveland Evangelical Free Church on Ferretti Road. Grace, as she was known by her friends and family, and her husband, Jerry, were long-time residents of Pine Mountain Lake.

Grace was born in Roaring Springs, TX, on February 2, 1927. Her family moved west when she was a child living in Boulder City, NV for a short time while her father and brothers worked on the Hoover (Boulder) Dam. They also resided in Reno, NV before settling in the San Francisco Bay Area.

Grace met her sister's nephew while living there. She and Keith (AKA Jerry) were married in 1944. They moved to Los Altos, where they raised their three children. They were married over 67 years.

Grace is preceded in death by her husband, Jerald Keith Dickson, and oldest daughter, Judith Dickson Parker. She is survived by son, Jerald L. Dickson (Karen), and daughter, Janet L. Cox (James). She leaves grandchildren Christy Buhler (Michael), James Exum, Daniel Cox, Matthew Cox (partner, Typanga Jones), Erin Vujasinovic (Robert), Brian Parker and Emily Parker (partner Conrad Schmidt) and great-grandchildren, Morgan Buhler, Adam James Exum, Alison Grace Exum, Annabelle Harlee Grace Cox, and Matthew Wade Cox.

Grace and Jerry retired to PML in 1977 and she lived there until moving to Bonney Lake, Washington in 2018. She passed away at Memory Haven in Sumner, WA on December 2, 2021.

DICK DAVIS

APRIL 3, 2022

At 91, Dick Davis passed on April 3, 2022. He was known in Pine Mountain Lake for his superb photography, including close ups of the bald eagles. He



Dick Davis

and his wife, Dotty, traveled to over 80 countries so Dick could photograph the wildlife. Polar bears in the arctic, animals in Africa, mammals in Australia, and even orangutans in Borneo. His camera was his enjoyment. His photos graced the cover of the PML News many times.

Born in Martinez, he graduated from UC Berkeley with a degree in chemistry. For 35 years he worked as an analytical chemist.

When Dotty sold her CPA practice in Orinda, Dick and Dotty moved to PML. There they built their dream home overlooking the lake, just above the spillway. Tennis at PML was Dick's primary activity, playing tennis with the Racquet Club until he was in his mid 80s. He first picked up a tennis racquet at about 60.

He started skiing at 57 so that he could ski Europe with the group that Dotty led each year. Learning to ski was easy for Dick so he enjoyed 6 two week ski trips to Europe.

He was a backpacker and a runner when Dotty met him. So the two of them did the Milford Trek in New Zealand, the Cradle Mountain Walk in Tasmania, twice, several weeks hiking independently in the Austrian Alps and in the Dolomites of Italy. Half Dome, Clouds Rest, Saddlebag Lake and many of the trails in Yosemite were his favorites.

Dotty's sons and their wives truly loved Dick. (Steve Nash and Jodi Blom have a place at the airport and are active in the Aviation Association.)

During the time that Dick was enjoying PML, he and Dotty were responsible for starting the 4th of July Boat Parade, the Wine Tasting Cruise, the permission to swim off boats on the lake, and totally refurbishing the two women's bathrooms on the golf course.

Dick was a very caring individual, soft spoken, and a true "gentleman". We all lost a very fine man on April 3rd.

SOUTHSIDE COMMUNITY CONNECTIONS

BRITNE GOSE

DONATE FOR DONUTS

Enjoy freshly baked doughnuts every Thursday in May. Donuts will be available for purchase at The Little House. If the Donate for Donuts sign is placed at the corner of Highway 120 and Merrell Road on Thursday mornings, we have donuts!

We will accept your orders in advance for a half dozen or dozen by Monday afternoon at 3:00 p.m. When placing an order, please keep your order to two flavors of donuts. Contact SCC by calling 209.962.6906 or send an email to info@southsidecommunityconnections.org.

Please leave your name, flavor of donut, and your contact information. We will confirm your order by Wednesday. Orders can be picked up between 9:00 am and noon on Donut Day Thursday.

A half dozen of delicious, freshly baked donuts is \$12.00 and a full dozen is \$20.00. If ordering in advance, we will require payment at the time of the order.

SH-BOOM! LIFE COULD BE A DREAM AT SRT

On Friday, July 29, 2022, SCC and

Sierra Repertory Theatre will team-up to offer guests an evening of entertainment at the East Sonora Theater during our preview night of Sh-Boom!

Denny and the Dreamers, a fledgling doo-wop singing group preparing to enter the Big Whopper Radio contest to realize their dreams of making it to the big time! The '60s hits say it all: "Runaround Sue," "Earth Angel," "Unchained Melody," and many more. Sh-Boom! Life Could Be a Dream will leave you laughing, singing, and cheering.

Tickets are \$36.00 (plus a \$4.00 item fee) per person and can be purchased through the SRT website: <https://sforce.co/3C0sO3a>

Doors Open at 5:30, Curtain at 6:30.

All proceeds are used to help maintain services in Groveland and Big Oak Flat through Southside Community Connections programs: The Little House, Village on the Hill, Wheels and WAVE.

Southside Community Connections
PO Box 63 11699 Merrell Road
Groveland, CA 95321

209.962.7303

www.southsidecommunityconnections.org

PINE CONE SINGERS

BOB SWAN

SPRING CONCERT

We look forward to seeing you at our Spring Concert, which will be three shows at the Groveland Evangelical Free Church: Friday, May 13, at 7PM; Saturday, May 14, at 2PM; and Sunday, May 15, at 2PM.

The theme is "Anything Goes", and that means that we will be presenting a wide variety of musical styles, all written in the modern era. We'll have selections from musicals, some jazzy pieces, a couple of gospel tunes, and some quieter, evocative numbers. For the first time in a while, there will also be solo performances.

At the time I write this (early April), it looks fairly likely that we will be able to conduct this concert in the "old-fashioned" way, with no requirements for vaccination or masking. As we all know, Covid requirements can change fairly quickly, so it would be a good idea to check with our Facebook page (Pine Cone Performers), or any Pine Cone Singer, as the concert dates get closer.

Tickets are available at Premier Valley Bank, Body Beautiful Salon and Spa, or from any Pine Cone Singer. As usual, we ask for a donation of \$10 in advance, \$15 at the door, and kids 12 and under are free.

Please do plan to join us on May 13, 14 or 15. We hope to see you there!

POST TRAUMATIC STRESS DISORDER

ETTY GARBER, PH.D. – LICENSED MARRIAGE AND FAMILY THERAPIST

As I was driving down a very steep hill a truck was coming from the opposite direction and went over the double yellow line. It was heading straight toward me. I reacted very quickly, turned the steering wheel and ran into the grassy area next to the road, just missing a tree. We did not collide, but I was terrified and began to tremble. For many nights I could not sleep and when I did I relived the fear in nightmares."

This is one example of a person experiencing something so frightening that it caused Post Traumatic Stress Disorder (PTSD).

A person may develop PTSD if he/she witnessed or was confronted with an event that involved fear, helplessness or horror. It may include sexual assault, serious injury, physical abuse or any other event that may cause recurring nightmares, flashbacks, hallucinations or paralyzing fear that may persist over an extended period of time.

Many military veterans suffer PTSD when they have witnessed the horrors of war.

Anger, rage, confusion and the inability to develop or maintain relationships often destroy marriages and break up families. Many resort to the use of alcohol or drugs to medicate their pain.

Children who have been victims of physical or sexual abuse within or outside of the family, suffer many

symptoms physically and psychologically which can interfere with their natural progression of growth and maturation. Memories of these events may trigger an individual to re-experience the trauma in flashbacks or nightmares.

Other symptoms may include: impulsivity, aggression, depression, anxiety, emotional numbness, major changes in personality, attitude or behavior. They may develop phobias, loss of trust, feel detached, and have suicidal thoughts.

If you suspect that you or a loved one has post-traumatic stress disorder, it is important to seek help. The sooner it is confronted, the easier it is to overcome. It is not a sign of weakness. Early treatment is better as symptoms may get worse in time. The process is much easier with the guidance and support of a professional mental health therapist.

The are "Veterans Administration" offices that provide counseling for veterans who have experienced shocking or dangerous events while in the military.

There are many licensed Mental Health Therapists who work with adults and children who have had frightening traumatic experiences in their lives. These dark and painful memories do not have to remain in your thoughts. Recover your love of life, go for it!

HEALTHY HABITS

FROM PINE MOUNTAIN THERAPY

JULIE TANAKA, PT

SMALL MOVEMENTS, BIG PROBLEMS

Repetitive stress injuries result from doing the same

thing over and over, as the name implies. The basics of tissue health are that they need to be constantly re-nourished with fresh blood, rest and a balance of forces. Our focus used to be on the repetitive movements in sports and work causing chronic problems. Now with the use of small electronic devices those respective movements are smaller and more constant. Examples are the way that you hold your phone, the way with text or play games, and the way you hold your head to look down at a screen.

Take the example of holding your phone and texting or gaming with your thumbs. This creates a constant tension in the tendons and muscles of the forearm. At the same time there are small repetitive contractions of the tendons going from your thumb to your elbow. This constant tension and "on-off" of the muscle leads to inflammation in the tendons, decreased healing time as there is little rest time between movements. This sets the forearm up for chronic pain.

We look for these habits when we evaluate a new patient, you can be your own investigator. Look at what you do during your day-to-day life. Anything you are doing repetitively needs to be balanced by stretching, resting, and using the opposite muscle groups.

Our bodies are designed to change postures and movements throughout the day. Modern technology has made it less necessary to move and easier to be sedentary. We can break these habits. Put

your phone down, go for a walk, do some yoga, stretch your arms above your head, rotate your wrists.

Our bodies are amazing at healing themselves we just have to create a good environment through healthy habits.



PINE MOUNTAIN THERAPY

Outpatient Physical Therapy


Serving the Mountain Communities of Tuolumne and Mariposa Counties

18800 Main Street,
Groveland, CA 95321

209-962-4035

Please visit our new web site at
www.pinemountaintherapy.com

*A Preferred Therapy Provider,
participating provider with
most insurance carriers
including Medicare.*



Dr. Etty Garber Ph.D.
in Clinical Psychology and a licensed Marriage Family & Child Therapist, with 36 years experience in mental health, lives in Groveland and
OFFERS PRIVATE PRACTICE SERVICE
Dr. Garber can provide psychotherapy in a variety of settings to individuals, couples, families and groups.
**RELATIONSHIPS • FAMILY CONFLICT • CHEMICAL DEPENDENCY
DEPRESSION • ANXIETY • ABUSE, etc.**
Low Fees • No Insurance FOR AN APPOINTMENT CALL 209.768.5200

**ADVERTISE YOUR BUSINESS WITH A DISPLAY
AD IN THE PML NEWS FOR AS LOW AS
\$25 PER ISSUE
OR A CLASSIFIED AT \$0.35 PER WORD**

Happy Mother's Day

COCONUT SHRIMP WITH RED CURRY SAUCE

RECIPE BY TOM KNOTH AND PAULA MARTELL

We recently took our first trip up the Northern California Coast, visiting Bodega Bay, Jenner, Gualala, Timber Cove, Mendocino, and Fort Bragg. That was followed by a trip through the wine country of Healdsburg and Sonoma. We were entertained by great coastal views, wonderful wineries, and tasty eateries.

Our favorite dish was served at “Mayan Fusion” in Fort Bragg and it was an unforgettable plate of Coconut Shrimp with Red Curry Sauce, so enjoyed that I tipped the chef. Upon returning, I set out to replicate his recipe, and here it is for you to enjoy.

COCONUT SHRIMP

Ingredients

Twenty-Four 12/15 count jumbo shrimp (about 2 pounds), peeled and deveined
Kosher salt
1 cup shredded unsweetened coconut
1/2 cup panko-style bread crumbs
2 large whole eggs
3/4 cup flour

Directions

Season shrimp lightly with salt and set aside. Mix coconut and panko in a large mixing bowl and whisk to combine. Mix eggs and 2 tablespoons flour in a large mixing bowl and whisk well. Place remaining flour in a large mixing bowl.

Add shrimp to bowl with flour and toss to coat evenly. Transfer shrimp to egg mixture, shaking off excess flour. Toss to coat thoroughly. Hold the bowl with the coconut mixture in your left hand, and tossing constantly, pick up shrimp one at a time with your right hand, allow excess batter to drip off, and toss in the coconut mixture. The shrimp should end up evenly coated without sticking to each other.

Transfer the shrimp to a plate, wiping batter and crumbs off of their tails as you go. Set aside for 10 minutes.



Heat oil in a large wok or Dutch oven to 375°F as measured on an instant read thermometer. Lower shrimp into oil one at a time and fry, agitating constantly with a metal spider until deep golden brown and crisp on all sides, about 3 minutes total. Transfer shrimp to a bowl lined with paper towels, season lightly with kosher salt, and toss to coat. Serve immediately, with red curry sauce on the side.

RED CURRY SAUCE

Ingredients

2 tablespoons vegetable oil
2 tablespoons Thai red curry paste
1 cup unsweetened coconut milk
1/4 to 1/2 tsp red pepper flakes (optional for spiciness)
Juice of 1/2 of a lime

Directions

Place a small pot over medium heat and coat with the oil. Stir the red curry paste into the pan and fry that up until aromatic. Slowly pour in the coconut milk and red pepper flakes (optional) and continue to stir to incorporate. Add the lime juice and cook for 5 to 10 minutes to thicken. Pour the sauce into a bowl and serve with the coconut shrimp.

Note: If you don't have two cooks in the kitchen to coordinate the timing of the sauce with shrimp, make the sauce ahead of time and then briefly reheat.

CHAMBER OF COMMERCE

PATRICIA EPP

AN ARTIST REMEMBERS – WITH PRIDE.

Imagine. You're coming home. You've traveled up Old Priest Grade, curving to the left, then to the right, passing familiar businesses and buildings. It was a great trip but you're glad to be home. A charming community, rich in history, where people care about each other, celebrate life and enjoy the beauty of nature everywhere. You remember how lucky you felt when you first came upon Groveland/Big Oak Flat and how you couldn't wait to put your roots down and call this area home.

And then you see the first set, containers sitting side-by-side, just as you have so many times before. They're painted with a scene of Yosemite's Half Dome, a scene you think truly represents the beauty and the wonder of this magical Gateway to Yosemite. The scene you chose ... sketched and painted.

You heard the Yosemite Chamber was looking for Tuolumne County artists. They had been awarded a Beautification grant to provide downtown Groveland with recycling and garbage receptacles. Tourists had no place to throw their trash and this grant would eliminate that problem. The receptacles, made of smooth concrete arrived a boring gray, but the Yosemite Chamber asked artists to see them as a canvas on which they could paint scenes indicative of the area and its history. Scenes representing the Mi-Wuk Indians, the first settlers, the Gold Rush, Yosemite, Hetch-Hetchy, John Muir, and more.

And so, you submitted an entry, choosing the iconic image of Half Dome. It was a great project and a solid opportunity to demonstrate your commitment to the community and its future. The grant paid for your supplies, you received compensation for your work, and you were honored for your creativity and talent as the town came out to celebrate and support the efforts of all the artists involved.

You once dreamed of becoming an active, contributing member of this wonderful community – and, well, because of this project you believe you have. You're proud, honored, and, most of all, pleased how you and your fellow area artists joined together and helped to bring some beauty to those who travel Hwy 120 downtown Groveland.

The Yosemite | Hwy 120 Chamber of Commerce would like this to become the story of many area artists. It's true, we have been awarded a grant to bring beauty to Hwy 120 Main Street Groveland with recycling and garbage receptacles, ground and hanging planters and benches. The receptacles will be round and placed on the ground in sets of two. They will be made of smooth concrete and artists are invited to request an application and submit a sketch based on the parameters provided. If awarded, materials will be paid for, and each artist will be compensated for their work. It's truly an opportunity to be a part of something we will all be very proud to see each time we come home up Old Priest Grade.

Inquire today: info@yosemitchamber.org

209-630-0447

45+ YEARS
EXPERIENCE

Steven's

Hc
HOMES & CABINS
REPAIR & SERVICES

HOME REPAIRS • PAINTING • PRESSURE WASHING • MORE!

Rod Diehl Pest Control

— BAT REMOVAL —

RESIDENTIAL & COMMERCIAL • HIGH QUALITY
100% SATISFACTION GUARANTEED

Locally Owned & Operated • 5th Generation Tuolumne County

PERSONAL SERVICE • FREE ESTIMATES

We will customize your service around your pets

info@RodDiehlPestControl.com

(209) **532-3260**



Ask
about
installation of
BAT HOUSES
on your
property

PROUDLY SERVING THE PINE MOUNTAIN LAKE / GROVELAND AREA

HOPE'S TREE SERVICE

Lic# 987171

EXPERT TREE SERVICE, PRUNING,
REMOVAL, CUT & STACK OR HAUL AWAY
FIRE SAFETY TRIMMING • REASONABLE RATES
FULLY LICENSED/INSURED

Proud member of the Yosemite Hwy 120 Chamber of Commerce

We accept credit cards

**HOPE'S
TREE SERVICE**
Fully Licensed and Insured
PO Box 1072
Groveland CA 95321



209.878.3096
or **209.225.3191**

Pine Mountain Lake Electric

Residential and Commercial
Electrical Contracting

State Contractor's Lic. 404081

TOM KATOSIC
209/962-6949

P.O. Box 25
BIG OAK FLAT, CA 95305



HEAVENLY CLEANING SERVICE

209.962.6418

Celebrating our 26th Year!

PROFESSIONAL CARPET CLEANING & HOUSEKEEPING SERVICE



DRE# 01113243

MLS

18687 MAIN ST., STE E
GROVELAND, CA 95321



KATHY NIEDENS
REALTOR® / SALESPERSON

209.962.1111 OFFICE
209.985.4031 CELL
knniedens@gmail.com

LIST & SELL WITH
KATHY & GET YOUR
HOUSE CLEANED
FOR **FREE**
ASK FOR DETAILS

**HOME • CARPET
WINDOWS**

KATHY NIEDENS IS THE PROUD OWNER OF HEAVENLY CLEANING

20231 Pine Mountain Dr
Groveland Ca 95321



Chris Levering

Owner
chrislev888@gmail.com

Chris Levering Heating & Air

lic# 797190 34 years
Maintenance and Repair 10% off with this ad (repairs)

209-732-4622

P A I N T I N G

Exterior/Interior

Deck Repairs

Wood Repairs

Remodels



SEE COLOR AD PAGE 14

209.962.4777

www.baycal.com • email: davec@baycal.com

TMC CONSTRUCTION
License # 717300
Insured
(209) 962-6938

**Brushing • Log Removal
Mastication**

**Hazardous Tree Removal & Pruning
Excavation**

Site Prep, Engineered Septic, Culverts,
French drains, Retaining walls,
Hauling, Post hole digging,
Under ground work,
Concrete work

**We can help with your grant.
Skid Steer and Dump truck service
Reasonal Rates • Free Estimates**

PAINT DISCOUNT PROGRAM

Kelly-Moore Paint Company has been serving Pine Mountain Lake for 40 years. They want to remind PML property owners of the discount program that has been established for them. This program offers a generous discount on Kelly-Moore paint and accessories such as rollers, brushes, tape, caulk, etc. Delivery is available on orders of 10 gallons or more. This special discount opportunity is available with proof of Pine Mountain Lake membership (Member ID Card) on a cash or credit/debit card basis only (no checks please).

Although this program was initiated through the Sonora store, it will be honored at any Kelly-Moore Paint Company store. If you are interested in this discount program, call your local Kelly-Moore Paint store for details.

BEFORE YOU BEGIN CONSTRUCTION ON YOUR LOT

The Declaration of Restrictions (CC&Rs) states that no construction of any type (new construction, driveways, grading, lot development, etc.) can be performed without prior approval from the Environmental Control Committee (ECC).

Failure to obtain approval could result in the stoppage of work or even fines, and nobody wants that to happen. Inspections are made every Tuesday and reviewed by the Committee every other Thursday, so we can accommodate our members.

Please contact ECC before you begin any type of construction at 209-962-8605

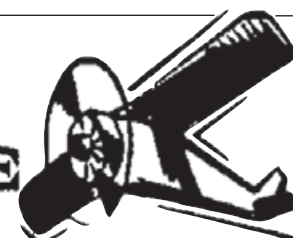
**AIRPORT
MINI-STORAGE**

60 Units - 6'x8' to 10'x30'

Open 7 a.m. to 9 p.m. Daily

Located on Elderberry Way off Ferretti Rd. near PML Airport

209/962-5360



Sean McCoy Painting

License No. 822616

Home of the Cabinet Doctor

**"Let's Refinish or Paint
Those Old Cabinets"**

• Fine Finish • Mill Work • Cabinets
• Doors • Interiors



209.588.1741

www.smccoypainting.com

*Exterior-Estimates
Available*



Pest Control

- Ants, spiders, mice, wasps, earwigs, etc.
- Fast service, great prices
- Squirrel and bat Exclusion
- Termite Inspections

- Weed Control
- Poison Oak
- Star Thistle



962-5710
800-464-3772
Free estimates

**Foothill-Sierra
PEST CONTROL**
Since 1977

Ken's Asphalt

Lic. 708310

Grading • Paving • Chip Seal • Road Oil

Seal & Slurry Coatings • Crafcro Hot Rubberized Crack Sealer

Driveways • Private Roads • Subdivisions

DOING
BUSINESS
SINCE
1985

DRAINAGE PROBLEMS?

We have the Solution!

Erosion Control • Riprap (6-12" Rock) • Asphalt Curbing • Base Rock

"Just Pave It"

Complete Concrete Services

"Just Pave It"

- Stamped Concrete and Colored Concrete
- Stained Concrete
- Cleaning & Sealing
- Retaining Walls
- Driveways
- Walkways
- RV Pads
- Patios

532-0800 • 962-5644 • 768-7395 Cell



BUSINESS HOURS

Monday - Friday:
8:00am - 5:30pm
Saturday: 8:00am - 2:00pm
Sunday: CLOSED

Well Stocked Parts House:

For All of Your Heavy Duty Needs!

- Heavy Duty Brake Linings
- Baldwin & Fleetguard Filters
- Delo Oil
- LED Lights
- Air Brake Valves & Hoses
- CB Radios, Antennas & Accessories
- Logging & Dump Truck Parts
- Hydraulic Hose Shop

Full Service RV Repair Shop:

- Commercial House & Starting Batteries
- Full Service Chassis & Lube Center
- Electrical & Plumbing Repairs
- Interior & Exterior LED Lighting
- Complete Body Damage Repair Shop
- Solar Power Systems & Inverters
- Complete Detailing Services
- Warranty & Insurance Work Accepted

Mobile Service Available

18968 Waylon Way
Sonora CA 95370

Call or Email us to schedule an appointment today!

(209)-532-7994

EMERGENCY CONTACT: (209)-559-3840

Email: shop@sierraheavyduty.com

Visit Us Online: www.sierraheavyduty.com

Over 50 Years of Experience!



All Major Credit Cards Accepted.

We are known for our integrity and legendary customer service!

Produce Your Own Clean Power!

- Save \$\$\$ Every Month
- Federal Tax Credit available
- 5-Year Typical Payback



Your Local Solar Electric Company

License #892261 / Since 2002
16046A Via Este Rd., Sonora

Call Us For A Free Estimate

209-532-5925

Check our reviews at www.apssolarpower.com
and www.SolarReviews.com



Waters Plumbing Heating & Air

**FAST
SAME DAY
SERVICE***

*IN MOST CASES

All work 100% Guaranteed!



Voted Best Plumber
in Tuolumne County
4 Years in a Row



Contractors License #463958
www.watersplumbing.com

"I want you to know that our technicians will give you
a price before we start the job." —Wayne Waters

Groveland (209) 962-0990

LaMar EQUIPMENT & HAULING

LIC #431743 • BONDED AND INSURED

Job Site Storage Containers

15 Ton Hydro Crane
Heavy Equipment Hauling
Irrigation & Electrical Trenching
Landscaping Materials
New Construction &
Remodels & Decks

End Dump

Manlifts
Rock Hauling
Lot Clearing
Demolition
Log Hauling
Septic Install
Fire Breaks

Post Hole Digging

Concrete Demolition
Towable Trailers
Retaining Walls
Earth Moving



**(209) 962-0500
Mobile: 770-5667**

LanceMarchetti@yahoo.com



CONTRACTORS PERFORMING WORK IN PML ARE REQUIRED TO FOLLOW PMLA RULES & REGULATIONS

The following are some **"common violations."** Please do your part to maintain a harmonious environment for all to enjoy. Remember: The PML property Owner is held responsible for those they hire.

VEHICLE USE:

1. Exceeding the posted speed limit
2. Driving in a reckless manner
3. Following another through an access gate or allowing others to follow you through
4. Parking on street (road shoulders OK)

PERSONAL CONDUCT:

1. Allowing loud music
2. Uttering abusive language or conduct that would be offensive to a reasonable person
3. Using the property Owner's gate card or clicker

WORK RELATED CONDUCT

1. Starting work before 7am or continuing after 7pm
2. Allowing dogs at construction sites
3. Performing work on Sunday
4. Cutting down a tree in excess of 5" without PMLA approval
5. Trespassing on neighboring property
6. Using neighbors water or electricity without written permission
7. Leaving construction signs longer than 5 days after work has been completed
8. Nailing signs to trees
9. Storing building materials on street or easement
10. Beginning exterior construction without PMLA approval

If you have questions call: The ECC Assistant @ (209) 962-8605 with questions.

HELP WANTED

PART-TIME SUMMER SEASON PASSENGER VAN AND/OR BUS DRIVER NEEDED

Commercial driver's license required.

Must be able to pass drug test.

Contact Marty at Sierra Mac River Trips at marty@sierramac.com or 970-218-0625. Pay commensurate with experience and availability.

PMLA IS HIRING

PMLA is looking for qualified candidates for several job openings. Apply online at www.PineMountainLake.com

COMMERCIAL SPACE FOR LEASE

OFFICE/RETAIL SPACE AVAILABLE ON MAIN STREET

Office/Retail space available at 18634 Main Street Suite 2 next to Groveland Pharmacy. Previously a Salon but can remodel as needed for new renter. Current space has lobby, reception, storage, restroom, two offices (hair stations) and break room - approximately 672 square feet. Location has excellent signage available and parking. Call Robert for details 559-305-3172.

COMMERCIAL SPACE FOR LEASE!

18717 Hwy 120, Groveland. Approximately 1600 square feet of building space, located downtown with propane heat, one ADA bathroom perfect for retail, food service, professional office, medical etc. Rent \$1,650.00 Deposit \$1700.00. Contact agent 650-520-1022

RENTALS WANTED

EXCELLENT TENANTS

w/excellent credit and rental history looking for homes to rent. Owner approves tenant before placement. Call Yosemite Region Resorts 209-962-1111

SERVICES

RON'S HANDYMAN SERVICE

Located in Pine Mountain Lake
Quality work at affordable prices
35 years experience
209-962-4845

SERVICES

BIG JOHN HANDYMAN SERVICES

Yard Maintenance, House Maintenance and moving households Call John 962-6163

RONNING ROOFING

Call Joe for all your Roofing and Gutter needs. Licensed, Bonded, and Insured. License # 976739 209-962-6842

YOUR HOME HELPERS

Punctual, reliable, seasoned. Cleaning, windows, handyman, painting, pet care, yard work, weed eating, organizing, errands, more. Steve. 925-595-3362
Carla 925-639-4929.

SENIOR FOR SENIORS

PML resident helping other seniors with daily light chores/pet care/routine. Call to find out if I can be of help. Reasonable rates. Steve 925-595-3362

AJ'S CLEANING SERVICE

Residential and Business Cleaning
541-227-1043

LOREN SNIDER'S TREE SERVICE

General pruning, weight reduction, satellite/internet clearing, mistletoe removal, tree removal, dump truck, stump grinder, local references, Non Licensed, 30 + years experience. General liability insurance
209-878-3828 or 209-402-9797

AT YOUR SERVICE

handyman, small carpentry jobs, tree trimming, hauling your unwanted items, prompt service reasonable rates.
Call Mike 209-770-3683



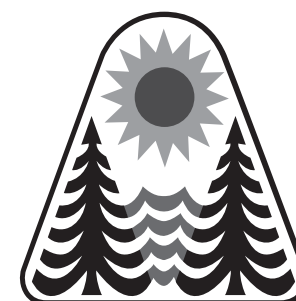
CHECK OUT YOUR GROVELAND LIBRARY

THE GROVELAND LIBRARY RE-OPENS
TUESDAY - THURSDAY — NOON-5PM
FRIDAY & SATURDAY — 10AM-2PM



BOOKNOOK
USED BOOK SALE
SATURDAYS
10AM-1PM

VISIT THE LIBRARY FOR A GREAT
SELECTION OF BOOKS, MAGAZINES,
NEWSPAPERS, VIDEOS, CDS, DVDS.
ALSO COMPUTERS AND FREE WI-FI!



CLASSIFIED AD SUBMISSION DEADLINE IS THE 15TH OF THE MONTH. SUBMIT AT WWW.PINEMOUNTAINLAKE.COM

COST IS \$0.35 PER WORD, \$10 TO ADD A PHOTO TO YOUR LISTING. ADS RUN UNTIL CANCELED BY ADVERTISER

The PMLA is not responsible for, nor does it endorse, any contractor, company, or individual advertising in the PML News.

MEMORIAL WEEKEND

SUNDAY, MAY 29

CAR SHOW

& TIOGA HIGH BBQ

AT THE PML STABLES

13309 CLIFTON WAY, GROVELAND, CA

TIOGA HIGH SCHOOL WILL BE HOSTING A

MEMORIAL DAY BBQ 4:00 PM - 8:00 PM

PEOPLE CHOICE AWARDS 1ST-3RD PLACE

WILL BE ANNOUNCED AT 6:00 PM

LIVE MUSIC AND SILENT AUCTION

THROUGHOUT THE DAY

Gates open @ 1:00 pm for set up.

Vehicles need to be in place and ready by 3:00 pm

Cost: **Pre-Registration is \$25** per vehicle.

On the **Day of Registration \$30**

PEOPLE'S CHOICE AWARDS

FOR MORE INFORMATION,

CALL THE STABLES

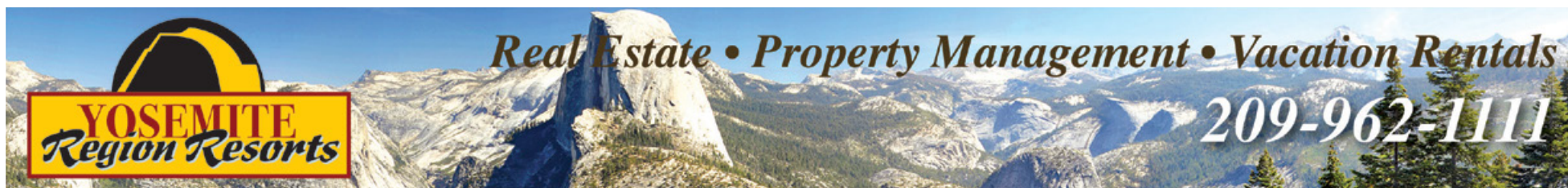
AT **(209) 962-8667**

Name _____ Phone Number _____

Email _____ Number of Vehicles _____

Address _____





19272 Ferretti Rd **SINGLE-LEVEL HOME** in a ranch land setting. 3bd, 2ba, 1306sf manufactured home, with vaulted ceilings, wood-burning fireplace and Palladian windows in the kitchen & dining areas. Cedar wood mantel gives a rustic appeal. Full guest bathroom, accessible from the living room and guest bedrooms. Double doors lead to the master suite. Double sink dressing area and an oversized closet. Circular driveway makes for easy access from either end of the easement road. \$329,500 #20220476



13078 Fox Ct **SINGLE-LEVEL HOME** with updated features throughout since 2018: Engineered Bamboo flooring, with a 50-yr warranty, septic system, garage roof, deck, paint, lighting, plumbing & electrical, laundry, bathrooms, toilets & fixtures and stainless appliances. 3bd, 2ba, central H/A and wet bar. Detached 2-car garage. \$489,000 #20220041



Parcel 3 Ferretti Rd **PASTORAL LAND** and open meadows. Ferretti Road-frontage, with access from Clements Road. Borders conservation land, with access to Forest Service trails. Build your dream home, ranch or just camp out on this beautiful acreage. \$525,000 #20220325



Ferretti Rd & Clements Rd **CORNER ACREAGE**. 3-acre lot, located at the eastern edge of Pine Mountain Lake but not in the HOA. With the extension of GCSD water & sewer line to adjacent lots, District water and sewer may become available. Current zoning is RE-2. It may be possible to convert to commercial zoning. Distant, mountain views. \$150,000 #20200998



19171 Ferretti Rd **AT THE 4TH FAIRWAY!** Recently renovated home, with great attention to detail. New improvements include: Kitchen cabinets, granite counters, stainless appliances. Tile flooring, carpet in bdms, water heater, blinds, attic insulation, int/ext paint, epoxy on garage floor, expanded driveway & parking areas, plus extensive deck repairs. Large storage room, with potential for a bonus room. Park-like setting, with rock pathways, numerous trees and a seasonal creek. \$475,000 #20220309

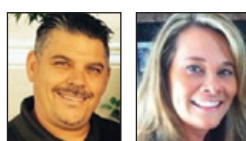


ROB STONE
OWNER/REALTOR®
DRE #01025463

BJORN WAHMAN
BROKER
DRE #00706559

TARA STONE
MANAGER/DRE
DRE# 01106544

LIZ MATTINGLY
BROKER ASSOC.
DRE #00709618

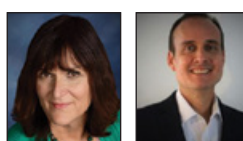


TED BIANCHI
REALTOR®
DRE #01318805

PAULA BIANCHI
REALTOR®
DRE #01316556

RYAN NIELDS
BROKER ASSOCIATE
DRE #01940007

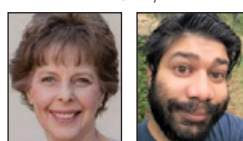
ROY NAVARRO
BROKER ASSOC.
DRE #01235457



MIRIAM MARTIN
REALTOR®, RPS, ASP
DRE #01400779

ANDREW RIETVELD
REALTOR®
DRE #01994156

KATHY NIELDS
REALTOR®
DRE #01113243



SHARRON WAHMAN
EXEC. ASSISTANT
RESERVATIONIST

JOSH REGALADO
PROPERTY
MANAGER

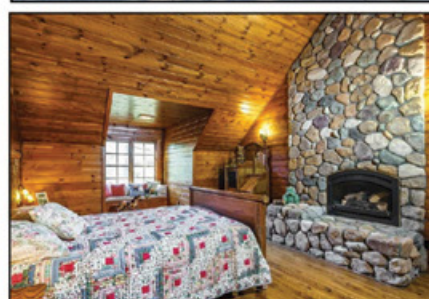
CAPRICE KROW
PROP. MGR/LDP
DRE# 01179023

CORY STONE
PHOTOGRAPHER
VIDEOGRAPHER



Thinking About Selling?
Now is the Time!

CUSTOM • LUXURY • LAKEFRONT
20156 Pine Mountain Drive ~ Unit 4 Lot 129



Gorgeous, luxury, custom-built, log home in Pine Mountain Lake's cove area. Constructed in 1996 by the seller, this beautiful home features 3 master suites, including 2 soaking tubs and one bedroom with a propane fireplace. Entry doors were hand-carved by a local artist. The beautiful Burl Maple staircase was completely cut & hand-lathed on site. Rustic, wide-plank Ash hardwood flooring. Spacious, gourmet kitchen. Oversized 2-car garage, with unfinished room above. 190 feet of deep-water, lake-frontage, with the potential to build a deck and a boat dock at the lakeside. You could also build a path from the home to the lake or access the lakefront from the easement access road below. Being sold with all the furnishings included. About 26 miles to the north gate entrance of Yosemite Park via CA State Hwy 120.

Get ready to move in and enjoy!

\$1,500,000 • MLS #20220093

100% Local Vacation & Long-Term Rental Services

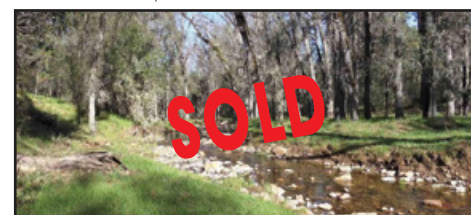
- ◆ Owner-Approved Rates
- ◆ Online & Telephone Reservations
- ◆ Aggressive Advertising Campaign
- ◆ AirBnB, VRBO, HomeAway, Booking.com, Lake House Vacations and More!
- ◆ Pre-Arrival Inspections for Guests
- ◆ Professional Departure Cleanings
- ◆ Accidental Damage Protection
- ◆ Monthly Rentals & Tenant Placement
- ◆ Tenant-Screening & Credit Reports
- ◆ Move-in / Move-out Inspections
- ◆ Scheduled Maintenance & Repairs
- ◆ 24/7 Emergency Services Available
- ◆ Monthly Statements & Owner Payments
- ◆ Local, State & Federal Tax Requirements



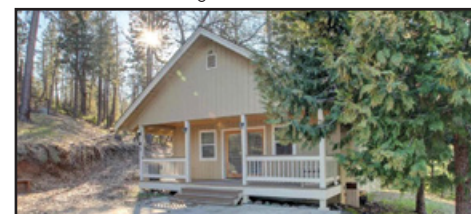
18687 Main Street, Suite E, Groveland, CA 95321
(209) 962-1111 • yosemiteregionresorts.com



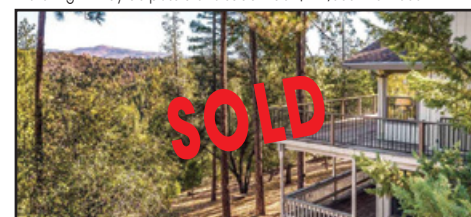
Parcel 2-A Clinton Rd **CALIFORNIA GOLD COUNTRY**. Located on the eastern edge of Pine Mountain Lake's gated community. Only minutes from the historic town of Groveland and a short drive to the entrance of Yosemite National Park, about 25 miles away. Over 178 acres, with level-to-gently rolling terrain, including meadows, Heritage Oaks, Cedars, a large water pond and wonderful mountain views. This quiet and serene setting is one of a kind and the possibilities are endless! \$1,300,000 #20220327



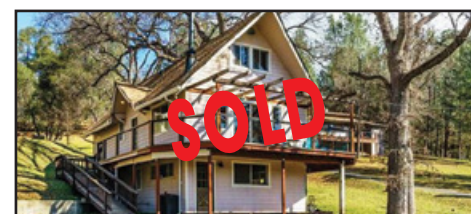
Parcel 11-5, Clements Road **A RARE OPPORTUNITY** to own a piece of California's Gold Country, on the eastern edge of Pine Mtn Lake's gated community, near Groveland, and a short drive to Yosemite Park. Level-to-gently rolling terrain, with Oaks, Cedars, meadows and mountain views. Seasonal creeks on some properties add to the allure. 16.04 acres. Contact Agent for details. \$129,000 #20212047



20865 State Hwy 120 **REMOTE PROPERTY**. 8.24 acres, off Hwy 120, with two dwellings plus an 800sf detached garage, with a metal roof, storage shelving, shop area, wood stove and kennel. Fenced dog run, chicken coop and fenced garden area. 1bd, 1ba cabin, built in 2009 and a second 1978 mfg home, with 3bd, 2ba, 1900sf. on a permanent foundation. Dwellings share a well and a propane tank, with separate metering. It may be possible to subdivide. \$429,000 #20220057



12831 Mueller Dr **SO MUCH TO LOVE!** Well-maintained Scandinavian-style cabin, on a double-merged lot, with tree views from the deck. Lots of privacy and natural lighting. Brazilian hardwood wrap-around deck. 3bd, 3ba, Pine wood cathedral ceiling in great room. Two stone fireplaces, new flooring in kitchen and bathrooms, new refrigerator, range, microwave, washer and dryer. Pantry, storage and bonus room downstairs. \$537,000 #20212143



20780 Crescent Wy **WELCOME HOME!** Charming cabin, on 1/2 acre lot, has plenty of space for family and friends. 4bd (3bd, per County records), 2.5ba, 1760sf. Renovated bathrooms, flooring, appliances and deck. Most furniture included. Near the lake, tennis courts, Fisherman's Cove and only minutes to the golf course, Equestrian Center and Country Club. The perfect base for Yosemite adventures, only about 25 miles away! \$399,900 #20220251