

THE OFFICIAL NEWSPAPER OF, AND FOR, PINE MOUNTAIN LAKE PROPERTY OWNERS

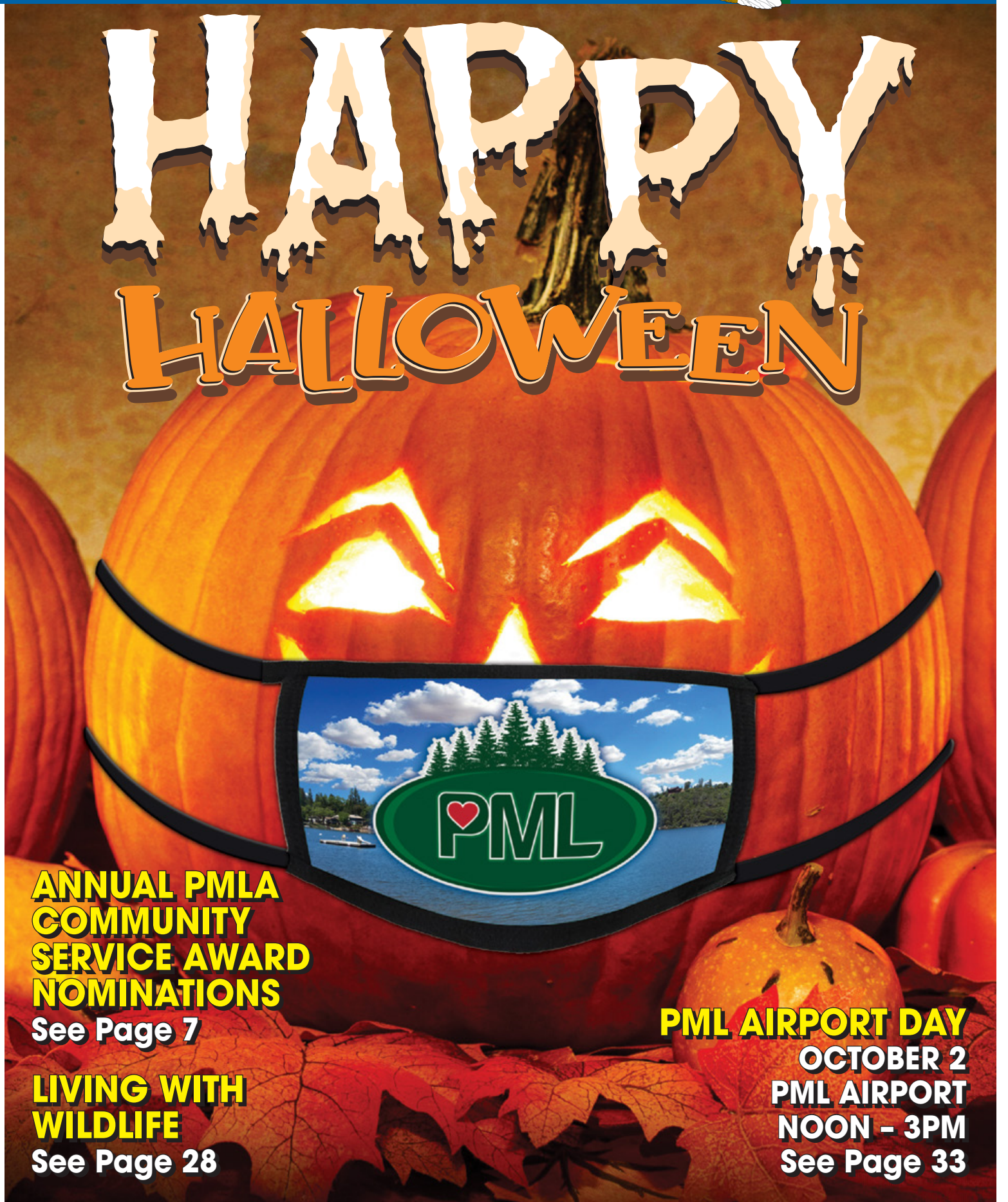
The Pine Mountain Lake News



2021
OCTOBER

TABLE OF CONTENTS

Administration	2-20, 28-30
PMLA Financials	6
Letters to the Editor	8
The Grill & Lounge	12-13
“Homes on the Hill” Real Estate	21-27
PML Clubs & Recreation	31-33
Community News	33-42
Home Improvement	43-46
Classified Ads	47



HAPPY HALLOWEEN

PRSR STD
U.S. POSTAGE
PAID
ABS DIRECT

Change Service Requested

19228 Pine Mountain Dr. Groveland, CA 95321

**ANNUAL PMLA
COMMUNITY
SERVICE AWARD
NOMINATIONS**

See Page 7

**LIVING WITH
WILDLIFE**

See Page 28

PML AIRPORT DAY

**OCTOBER 2
PML AIRPORT
NOON - 3PM
See Page 33**

PINE MOUNTAIN LAKE ASSOCIATION**209.962.8600**www.pinemountainlake.com**ADMINISTRATION OFFICE HOURS*****8:00 AM TO 4:30 PM – MON THRU FRI****OPEN AT 8:45 AM SECOND TUESDAY OF EACH MONTH
THE OFFICE IS CLOSED BETWEEN 12:00 & 1:00 EACH DAY***** SUBJECT TO COVID-19 RESTRICTIONS****2021 ADMINISTRATION OFFICES HOLIDAYS****(ADMIN OFFICE WILL BE CLOSED)**

Thur. 11/11 Veterans Day

Fri. 12/24 Christmas Day (Observed)

Thur. 11/25 Thanksgiving

Thur. 12/30 New Years Eve (Observed)

Fri. 11/26 Day After Thanksgiving

Fri. 12/31 New Years Day (Observed)

Thur. 12/23 Christmas Eve (Observed)

PMLA BOARD MEETINGS SCHEDULEMeetings held at the PML Lake Lodge & start at 9 AM
See website, www.pinemountainlake.com, for details**(THIRD SATURDAY – UNLESS OTHERWISE NOTED)****OCTOBER 16**

(Board Budget Meeting, Begins at 8AM)

November 20

(Saturday before Thanksgiving)

December

(To be determined)

PINE MOUNTAIN LAKE NEWS DELIVERY

Although we guarantee that the PML News is mailed from Modesto, CA on the same day (between the 26th-30th of month), most post offices (except Groveland) sort Bulk Mail after First Class mail. So, consider a First Class delivery subscription for just \$20/yr. (\$20 per year for property owners and \$30 per year for non-property owners) Interested? Call the PMLA Office at 209/962-8632 or see form above.

The Pine Mountain Lake News is also available
(in PDF format) at: www.pinemountainlake.com.
New editions are posted by the 1st of the month.**PHONE & EMAIL DIRECTORY****ADMINISTRATION****General Manager – Joseph Powell**
*joepowell@pinemountainlake.com***Admin Asst. to G.M. – 209.962.8627**
Debra Durai*debra@pinemountainlake.com***Human Resources – 209.962.8628**
Shannon Abbott*pmlhr@pinemountainlake.com***E.C.C. Assistant – 209.962.8605**
Plan Submittal, Compliance Fees**Nikki Grimes***ecc@pinemountainlake.com***Member Relations – 209.962.8632**
Gate Cards, Address Changes,

Webmaster, Mergers

Melody Wisdom*pmlmr@pinemountainlake.com***Community Standards Director**
209.962.1241**Suzette Laffranchi***communitystandards@pinemountainlake.com***Community Standards Specialist**
209.962.1242**Ashley Henderson***compliance@pinemountainlake.com***Rental Compliance Coordinator**
209.962.1245**Janessa Owens***RCC@pinemountainlake.com***General Info & Lake Lodge**
Scheduling 209.962.8600**Shari Pingree**

Receptionist

*admin@pinemountainlake.com***Main Gate – 209.962.8615**General Safety Inquiries, gate
passes, campground reservations,
tennis reservations*campground@pinemountainlake.com***Accounting – 209.962.8607****Tina Parmalee**Receivable/Collections/
Assessments*pmlar@pinemountainlake.com***Accounts Payable – 209.962.8626**
Vikki Smedley*pmlap@pinemountainlake.com***Accounting Supervisor****209.962.8618****Stacy Gray***stacy@pinemountainlake.com***Controller – 209.962.8606**

Accounting Procedures

*controller@pinemountainlake.com***Recreation and Seasonal**
Operations Manager**209.962.8604****Michelle Cathey***m.cathey@pinemountainlake.com***DEPARTMENT OF SAFETY****Director of Safety – 209.962.8633****Natalie Trujillo***n.trujillo@pinemountainlake.com***Sergeant – 209.962.1244****Sgt. Teri Cathrein***t.cathrein@pinemountainlake.com***Sergeant – 209.962.8616****Sgt. Carrie Harvey***c.harvey@pinemountainlake.com***MAINTENANCE DEPT****Maintenance Manager****209.962.8611****Rick Laffranchi***rickl@pinemountainlake.com***Administrative Assistant****209.962.8612****Anita Spencer***maintenance@pinemountainlake.com***Fire Safety Coordinator****209.990.5260 or 990.5263****Joe Milani****GOLF COURSE****Golf Course Superintendent****209.962.8610****Rob Abbott***rabbott@pinemountainlake.com***Golf Pro Shop – 209.962.8620**

Golf Pro Shop/Golf Reservations

Doug Schmielt*dschmielt@pinemountainlake.com***Golf Pro – 209.962.8622****Mike Cook***golfpro@pinemountainlake.com***THE GRILL AT PINE MOUNTAIN LAKE****The Grill Manager – 209.962.8639****Jay Reis***clubmgr@pinemountainlake.com***Restaurant – 209.962.8638****OTHER PHONE NUMBERS****Equestrian Center Manager****Kendra Brown****209.962.8667***stables@pinemountainlake.com***Marina Manager****209.962.8631***marina@pinemountainlake.com***PML NEWS – 209.962.0613**

Ad/Article Submissions

Sabre Design & Publishing

PMLNews@SabreDesign.net

Submission Guidelines

The PML News is the Official Newspaper of Pine Mountain Lake Property Owners

The PML News is dedicated to reporting PML Association business and PML Association news to Pine Mountain Lake Property Owners.

The PML News receives more than 100 Tuolumne County/Groveland community related submissions each month. All such community related articles and notices will appear in the PML News on a SPACE AVAILABLE basis and at the DISCRETION of the PML News Publishing Editor.

DEADLINES

Advertisements must be received IN FULL (text, MLS info, images, logos, etc.) by the 10th of the month for the following month's edition. Only advertisements received in full will be guaranteed to be published in that month's edition. **NO EXCEPTIONS.**

MEDIA ACCEPTED email

SOFTWARE (Articles)

InDesign, Microsoft Word, Adobe Pages, or TXT formats only.

SOFTWARE (Advertisements)

PSD, JPG, PDF, EPS or TIFF only.

TEXT/GRAPHICS

Handwritten text is not accepted. Material composed completely of capital letters is not accepted. Please use uppercase and lowercase letters in composition. Ink jet printed images are not accepted. Images are accepted ONLY as camera ready art, original photos (to be scanned) or as JPEG, TIFF or PDF files created with above listed software. All scans and bitmap images must be in TIFF or JPG format at least 200 dpi at 100% (300 dpi preferred). Ad files are stored for 90 days from first run date. Older ads that have not been running must be resubmitted. (See Display & Insert Advertising Contract "Design and Preparation Charges.")

E-MAIL TEXT/GRAPHICS

Text/graphics may be delivered as e-mail attachments via the Internet. Send to: pmlnews@sabredesign.net.

AD DESIGN and PROOFS

Ads that are requested to be sent to other periodicals require a usage fee from the advertiser (see Display & Insert Advertising Contract "Design and Preparation Charges"). Proofs are available upon request and final proof approval for all ads is expected within 24 hours. Changes made are LIMITED to typographical or graphic placement errors. NO OTHER ADDITIONS OR CHANGES WILL BE MADE.

SUBMISSION DEADLINES

Articles — 10th each month
Ads — 10th each month
Classifieds — 15th each month

— NOTICE —

Listed below are ALTERNATE phone numbers for EMERGENCY use during power/phone/internet outages:

DEPARTMENT OF SAFETY-MAIN GATE

209-768-8616

PMLA ADMINISTRATION OFFICE

209-768-3998

THE GRILL AT PINE MOUNTAIN LAKE

209-962-8658

GOVERNING DOCUMENT ENFORCEMENT ACTIONS AUGUST 2021

Courtesy Notices	59
Notice of Non-Compliance	9
Final Notice of violation	4
Fines Assessed	1
Member Service	200

GET IMPORTANT NEWS VIA EMAIL

Signing up for the new eSNAP program is quick and easy and gives you the ability to sign up for the information that you want to receive. Just head over to www.PineMountainLake.com and sign up today.



ELECTRONIC SAFETY, NEWS & ALERT PROGRAM

ABOUT EACH OF THE PROGRAMS

PML News & Alerts – Receive emails with information regarding anything affecting Pine Mountain Lake such as road closures, utility problems, fire alerts and more.

PML Amenities News – Receive emails with information about upcoming events, specials, or news regarding all PML amenities such as the lake, marina, golf course, etc.

The Grill at Pine Mountain Lake –

Receive emails with information regarding happenings at The Grill. Get information on Wine Tastings, Entertainment, Special Events and more.

This program is separate from the current email opt-in program that allows you to receive PMLA governing documents and requires your signed approval. This program can be signed up for via the online system. *Get your news and alerts via email, it's eSNAP!*

NOTICE

The Pine Mountain Lake News, established July 25, 1973, is printed monthly for residents of Pine Mountain Lake and sold in the Groveland, CA 95321 area. Members can access the PML News monthly edition online at www.PineMountainLake.com. Every month the newest edition of the PML News is posted online before the first of each month. Interested parties can subscribe to the traditional "hard copy" and receive a copy by mail each month.

The PML News is mailed to approximately 3500 PML property owner households each month. Up to 500 copies are rack-sold in the local Groveland area. Our circulation reaches approximately 1200 full-time, resident, PML property owners and approximately 2300 "weekender," non-resident, property owners who maintain primary residence in Northern California, in Southern California, or in other states. For more information regarding the PML News, please call the PML Administration Office at (209) 962-8600. We greatly appreciate your contributions but please note that the PML News fills up very quickly – often by the 7th or 8th of the month (long before the 10th deadline). To ensure that your submission is reviewed for publication please submit in full and as early as possible. Please remember that the PML News is limited in capacity and your submissions are reviewed on a first-come-first-served, space-available basis.

We publish all PMLA related submissions such as Board & Management Business, Clubs, Activities & Events. Where space remains, we publish non-PMLA related submissions in our "Community" section.

We do our best to provide timely news. If you experience delayed delivery or have misplaced a particular edition, please visit us at the PMLA website www.pinemountainlake.com for a downloadable PDF of the News posted by the 1st of the month and a downloadable PDF list of ad rates.

Subscribe to the PML NEWS TODAY!

Name _____

Unit _____ Lot _____

Mailing Address _____

NO CHARGE for Property Owners (bulk)
\$6/yr for Co-Owners (bulk);
\$10/yr for Non-Property Owners (bulk)
\$20/yr for PROPERTY OWNERS (1st class)
\$30/yr for Non-property owners (1st class)

Enclosed is my check in the amount of
\$ _____ (Payment due in full)

Send this subscription to:
Pine Mountain Lake Association
19228 Pine Mtn. Dr. Groveland, CA 95321
Attn: Melody

VISIT US ONLINE

www.pinemountainlake.com

General Manager's Message

JOE POWELL – CCAM-LS, CMCA, AMS GENERAL MANAGER

FERRETTI ROAD AND STABLES MAILHOUSES

Twice over the last two years the Ferretti Road Mailhouse has been burglarized. The first time, the burglars were chased off by our Department of Safety patrol, but the second time they made off with some members mail. The Mailhouse is outside the gates and in a remote location so this poses some security issues for us.

After the first burglary, the Association moved the door to the front where it could more easily be seen and installed a heavy duty, security door. The criminals figured out how to break into it as well. We then beefed it up and enclosed the locking mechanism to mitigate this situation.

In an effort to improve security at the Mailhouse we have installed an alarm system that is audible and noisy and it will automatically signal our Main Gate and the Sheriff's Dept. for immediate response. Additionally, given that the Stables Mailhouse is outside the gates, we have installed an alarm there as well. Hopefully this will deter burglaries in the future. As always, we recommend that members pick up their mail at all mailhouses on a daily basis. It is an easy way to ensure that you do not become a victim of mail theft.

THE MAIN ENTRANCE POTHOLE

The pothole at the exit lane of the Ferretti Road/Pine Mountain Drive entrance near the fountain has been a frustrating situation. It deteriorates to a point that drivers steer to avoid it causing a potential road hazard. The pothole gets filled with asphalt and patched and then quickly becomes a problem again in just a few days.

Maintaining the roadway where the pothole is located is the responsibility of Tuolumne County as it is their property. To complicate matters, their drainage culvert is located under the median where our entry sign and fountain area is located and runs diagonally and then at a 45 degree angle under the three traffic lanes.

Our Maintenance Manager met with the Tuolumne County Roads Superintendent onsite at the location on September 14th and they have developed a plan to repair and improve the road and drainage area. We are also looking at hardscaping the small portion of entry lawn and signage area to reduce the need for irrigation to save water during this drought, and to reduce future maintenance costs.

The plan is to reroute the drainage culvert, place a new one and then remove and repair

the existing area. This takes engineering, planning and funding and the County has been working on all three.

Unfortunately, nothing happens quickly in our new COVID reality. Funding and staffing shortages are an issue these days, and Tuolumne County is experiencing this like many other agencies.

Once the County gets all of the engineering, planning and funding squared away, they will need to close off lanes of traffic to our entrance when they perform this work. We will be working with them to provide notice to the membership as this will significantly impact our community.

So the short answer is that the pothole is not being ignored, it is just a much bigger problem than most people realize. PML will continue working with the County to navigate and ultimately resolve this very challenging situation.

ISSUES WITH AT&T AND PG&E DURING THE WASHINGTON FIRE

The Washington Fire began in areas of Sonora and Jamestown on August 26th and was finally contained on September 1st. The fire destroyed PG&E power lines and poles and AT&T internet fiber cables and phone line infrastructure.

During the power outage the PML Administration Office generator began to malfunction and cavitate. This caused intermittent power surges within the building. The surges damaged power supply surge protectors and one of our virtual network servers as it was updating. Fortunately the power systems in place protected all hardware and network servers and the virtual server was something that could be rebuilt quickly with programming. Maintenance has identified the issue with the generator and has made repairs.

Additionally, the damage to the AT&T lines cause intermittent cellphone service loss at our cell tower which impacted all cell service for Verizon and AT&T providers in our area. As a result of this disaster, the Association lost telephone VOIP, cellular and internet service for 6 days. During the first couple of days we were able to rebuild the virtual server to allow the Main Gate to check passes and determine membership authorization for access. We implemented our backup telephone lines and posted the numbers online as the system failed to roll the numbers automatically to the alternate lines.

We use both copperwire lines and cellular lines as a backup. Unfortunately, the intermittent cell service caused issues with some of these lines. This is the first time that

we had an issue with using the cellular lines for backups to our regular system. As a result, we are re-evaluating our backup systems to determine what changes will need to be made to have a backup to our backup.

Normally, AT&T is able to restore service in a couple of days. We found out later that they were unable to enter and make repairs in one area of the fire where the County found a dead body. Once the Sheriff conducted their investigative work, they let AT&T and PG&E back in to finish making repairs and restoring service. We have yet to hear if the death was caused by the fire as the Sheriff has not concluded their investigation.

PML STABLES FENCING PROJECT

Phase 2 of the Stables Project is completed. As is have reported in the past, this is a 4 phase project. We spread the project out over several years to reduce the impact on the annual budget. Other than a delay this year due to supply chain issues, everything went according to plan.

EMERGENCY SIREN AND NOTIFICATION SYSTEM

After the Camp Fire in Butte County in 2018 that resulted in multiple deaths, we began researching emergency notification systems for our community. After the Moc Fire our Director of Safety began contacting vendors so that we could understand what kind of technology was available, establish pricing and what it would take to purchase and install such a system. Our Director of Safety completed the task and prepared an executive summary and procured a quote from a qualified vendor. The vendor put together a proposal for an emergency notification system for PML that includes hardware, software and a platform for public safety mass notification.

The system proposed includes geo-targeted mobile alerts, voice messaging broadcast over large areas of our community, acoustic technology (sirens) and remote activation. We had planned on having our Director of Safety give a presentation at the Board meeting in September, but it turns out that two of our County supervisors have been working with other local businesses and GCSD to fund and install emergency sirens in Big Oak Flat, Groveland and Pine Mountain Lake.

We have reached out to see if we can coordinate our efforts with the County and maybe save everyone some money on a combined project, rather than duplicating efforts. We hope to provide more information on this at the October board meeting.

PINE MOUNTAIN LAKE FUEL REDUCTION PROJECT GRANT

Cal Fire recently announce some grant funded project for fire fuel reduction in Tuolumne and Calaveras Counties. I'm

sure that many of our members have seen the articles online from MyMotherlode.com and other local news agencies. One of these projects is the Pine Mountain Lake Fuel Reduction grant.

Our Fire Safety Coordinator, Joe Milani put in a lot of time working with Cal Fire and the Tuolumne Resource Conservation District to procure this grant money for PML. He and PML Maintenance Manager Rick Laffranchi played a huge roll in securing outside funds to reduce fire fuel loads in and around the perimeter of our community to help keep us safe. This \$2 million dollar plus grant will fund the reduction of fire fuel in 640 acres along the perimeter of our community and within our greenbelts near Units 10 and 4.

PML 5-YEAR FUEL REDUCTION PLAN

Along those lines, we have been working with our registered forester Glenn Gottschall of Forestland Consulting in preparing a 5-year fuel reduction plan for all of the greenbelts in our community. Glenn has been working with our Maintenance and Fire Safety staff and has prepared a draft plan that includes projected cost estimates so that we can continue to include these expenditures in our annual budget. We will finalize the plan and have it ready for Board consideration at October budget meeting.

HOMES THAT ARE BURN-DAMAGED OR DESTROYED IN PML

Two homes in PML caught fire this year. One was fully engulfed and completely destroyed and the other was significantly damaged. Some members have expressed concerns that the ash from these burned homes could present a safety or health hazard to neighbors if it rains. Under the CC&R's Article XII, Section 2, members are required to rebuild, repair and reconstruct any residence that is damaged or destroyed. They have 3 months to commence cleanup and reconstruction and should complete the reconstruction within 6 months. The Association will give the member more time if needed if there is appropriate justification. As long as they are taking action and making progress, we work with them.

Members need to know that it takes time for insurance companies and the County to conduct their fire investigations and to go through the process. We are sensitive to the emotional turmoil that a member goes through during these situations and work closely with them to help guide them through the Association's ECC process.

While I will not get into specifics, I can report that the property owners of the two homes mentioned are working with their insurance companies, contractors and the Association to clean up their damaged and destroyed properties, and begin

GM Message continues on next page

President's Message

KAREN HOPKINS – PRESIDENT

Hello everyone! Whew! It seems like Fall is finally here and the heat has gone away. Coming into this “quiet”, but beautiful time of year, is my favorite.

I'd like to welcome new board members Chuck Obeso-Bradley and Craig Prouse. They survived their first board meeting and executive session with flying colors. Both gentlemen have experience that enabled them to slip right into their new roles. They are already adding value.

Part of the new board member orientation includes a discussion about duty of care and fiduciary duty. All of your board members take this very seriously. These duties include monitoring finances, association assets and amenities and making decisions based on what is best for the entire membership. We often hear from small but vocal groups with special interests. And, we want to hear from them, but we also work hard to balance the

needs of all members.

I'd also like to thank my board colleagues for entrusting me with the president's position. I appreciate their confidence in me and I look forward to working with all of them and serving all of you for the next year.

Lots of grounds clean up and association planning for 2022 is happening. Including creation of the annual budget. The managers and the Board are already hard at work preparing for the annual budget meeting in October (mark the calendar for October 16—starts at 8am). I hope you'll join us. Actually, if there are budget elements that are important to you, now is the time for us to hear your suggestions. Especially for new considerations it's better to hear about them in advance so we can do the leg work prior to the meeting. The objective is to come away from the meeting with an approved budget.

I hope you are all enjoying the Just The Facts columns. From time to time issues come up that affect many members. So far there is a lot

of positive feedback. If you want these delivered directly to you, sign up online for eSnap emails.

Lastly, speeding continues to be a real problem in PML. Many say that it is visitors and contractors, but I can tell you it comes from every group, including people who live here. I certainly understand that it's easy to build up speed on those downhill streets, but that's what your brake pedal and lower gears are for. In my car it's possible to set the cruise control for 25 MPH. Boy, does that make people behind me mad. Sorry, but it enables me to stay in my lane, watch for wildlife and people in the road and generally get from point A to point B safely. I encourage you to join me in my “Drive 25” campaign. And, by the way, I'm thrilled when I get behind someone else driving 25.

Be kind to others—you might make their day.



*Karen Hopkins,
Board of Directors
President*

Pine Mountain Lake Association 209.962.8600

BOARD OF DIRECTORS

Karen Hopkins: **President**
Nick Stauffacher: **Vice President**
Tom Moffitt: **Secretary**
Craig Prouse: **Treasurer**
Chuck Obeso-Bradley: **Director-at-large**

GENERAL MANAGER

Joseph M. Powell, CCAM-LS, CMCA, AMS

CORRESPONDENCE TO DIRECTORS

Pine Mountain Lake Association
19228 Pine Mountain Drive
Groveland, CA 95321
PMLABoard@pinemountainlake.com

ADMINISTRATION OFFICE

HOURS OF OPERATION*

Monday - Friday 8:00 AM - 4:30 PM
Closed 12:00 - 1:00 PM
Tel: 209/962-8600

* Subject to COVID-19 Restrictions

The Pine Mountain Lake News, established July 25, 1973, is printed monthly for residents of Pine Mountain Lake and vicinity by Pine Mountain Lake Association, Groveland, California 95321.

SUBSCRIPTION RATES:

Co-owner subscription: \$6 per year
Single copies: 50 cents each
Single mailed copies: \$1.35 each
For non-members: \$10 per year

SUBMISSION DEADLINE

10th of the month by 4:30 PM
LATE SUBMISSIONS MAY NOT BE ACCEPTED

Visit www.pinemountainlake.com for ad rates and submission guidelines or email: PMLNews@SabreDesign.net.

For the mutual benefit of all property owners, the Pine Mountain Lake News reserves the right to edit all copy submitted for publication. The Pine Mountain Lake News is a private enterprise, not a public entity, and as such is entitled to reject advertisements or articles in the best judgment of its editor or publisher, despite a probable monopoly in the area of its publication. Pine Mountain Lake Association is not responsible for, nor does it guarantee the accuracy of, information contained in any ad placed in the Pine Mountain Lake News. The Pine Mountain Lake News attempts to ensure that this publication is free of legal infringements and the Pine Mountain Lake Association and its contractors are not liable for copyright/trademark infringements from external advertisements and articles.

DAVID WILKINSON—Publishing Editor

SABRE DESIGN & PUBLISHING

Design/layout

PINE MOUNTAIN LAKE NEWS

P.O. Box 605

Groveland, CA 95321

Tel: 209.962.0613

Fax: 800.680.6217

E-mail: PMLNews@SabreDesign.net

GM Message continued from previous page

reconstruction of their homes.

There is one other home in PML that was damaged by fire many years ago that has been under enforcement and legal action by the Association. Again, I cannot get into the specifics of this other than to say that we are working with Association Counsel and our Association lien service to resolve this situation. In the meantime, we will most likely have to go in and clean up the property for fire safety and board up the home and

take other measures to mitigate safety issues until we resolve the matter through the court system. We are frustrated that the situation is taking a long time to conclude, but we are resolved to make it happen.

STORM RECOVERY AND COVE AND INLET MAINTENANCE PLAN

After the storms of 2017 and 2018, we hired Condor Engineering to prepare a storm damage recovery plan and Cove and Inlet Maintenance plan. The damage to all of these areas was significant and it

took this long to complete the plan as the scope of work was huge.

Condor has completed the damage recovery plan and it is in draft and under review at this time. They should be completed the cove and inlet maintenance plan soon. We expect the plan to be formatted in a 5-year cycle similar to our roads maintenance and fire fuel reduction plans.

Until next month, wishing everyone a Happy Halloween!

ATTENTION NEW PML MEMBERS!

WELCOME to PML...We're glad you're here!

Once you have received your welcome letter from the Association you will have the information you need to log into the PML website (www.pinemountainlake.com)

Once there click on the **RESOURCES** tab & then on the **NEW MEMBER ORIENTATION** icon.

The New Member Orientation page is **JUST FOR YOU!**

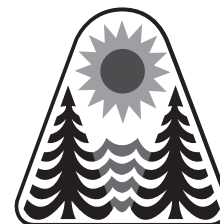
Here you will find:

- Member Orientation Packet
 - o Information on the Official PML Facebook page
 - o Gate Access Guest Pass internet program information
 - o Fire Safety contact and information
 - o Board Meeting Dates and information
 - o Rules, Regulations and Procedural information

o Information on PML Committees and Clubs

- Assessment Information
- PML Fact Sheet
- Getting Connected in Groveland

And **MUCH MORE!**



PINE MOUNTAIN LAKE ASSOCIATION
SUMMARY STATEMENT OF OPERATING FUND REVENUES AND EXPENSES
 For The Eight Months Ended August 29, 2021

OPERATION OF AMENITIES	Revenues					Expenses				Budget	
	Members' Assessments Net of Discount	User Fees	Sales, Net of Cost of Sales	Miscellaneous Income	Total Revenues	Total Expenses	(Cost)/Income Before Depreciation	Depreciation Expense	(NET COST) INCOME	(NET COST) INCOME	Variance Bud - Act
Golf Course	\$ -0-	\$ 799,447	\$ 27,027		\$ 826,474	\$ 1,057,330	\$ (230,856)		\$ (230,856)	\$ (511,297)	280,441
Restaurant & Bar	-0-	176,276	522,302		698,578	916,192	(217,614)		(217,614)	(510,368)	292,754
Marina	-0-	466,275	123,625		589,900	650,398	(60,498)		(60,498)	(207,805)	147,307
Snack Shack	-0-	5,929	31,817		37,746	41,012	(3,266)		(3,266)	(19,949)	16,683
Stables	-0-	128,078		3,829	131,907	270,331	(138,424)		(138,424)	(158,298)	19,874
Recreation	-0-	152,394			152,394	107,868	44,526		44,526	29,015	15,511
Roads & Facilities Maintenance	-0-	333,529		440	333,969	1,507,098	(1,173,129)		(1,173,129)	(1,516,290)	343,161
PROPERTY OWNER SERVICES											
Safety	-0-	275,102		590	275,692	728,190	(452,498)		(452,498)	(629,095)	176,597
Administration	-0-	444,893		7,351	452,244	1,226,107	(773,863)		(773,863)	(1,004,368)	230,505
ASSESSMENTS											
Assessments	4,193,480			72,868	4,266,348	43,949	4,222,399	459,718	3,762,681	3,640,800	121,881
Totals	\$ 4,193,480	\$ 2,781,923	\$ 704,771	\$ 85,078	\$ 7,765,252	\$ 6,548,475	\$ 1,216,777	\$ 459,718	\$ 757,059	\$ (887,655)	1,644,714

CAPITAL EXPENDITURES 8 Months Ended August 29, 2021

	TOTAL RESERVE FUNDS	NEW CAPITAL ADDITIONS FUND	TOTAL CONTRIBUTION TO CAPITAL
2021 Beginning Fund Balances	2,269,966	\$ 90,361	2,360,327
Interest Income	1,035	1	1,036
Bank Fees/Discounts Taken	96	174	270
Assessments Earned	1,443,336 ⁽¹⁾	128,464 ⁽²⁾	1,571,800
Other Income/Expense			
PURCHASES BY AMENITY			
Golf Course	(98,563)	(70,608)	(169,171)
Country Club			-
Bar			-
Marina	(186,801)	(10,332)	(197,133)
Snack Shack			-
Swim Center	(2,037)		(2,037)
Stables	(60,434)	(10,086)	(70,520)
Recreation		(1,496)	(1,496)
Roads & Facilities Maintenance	(62,501)	(54,565)	(117,066)
PROPERTY OWNER SERVICES			
Safety	(18,576)		(18,576)
Administration	(21,731)	(18,493)	(40,224)
Non-Capital Reserve Expenses	(1,291,922)		(1,291,922)
Total transfer to Operating Fund for property and equipment additions and reserve expenses	(1,742,565)	(165,580)	(1,908,145)
Adjusted Fund Balances	\$ 1,971,868	\$ 53,420	\$ 2,025,288

Notes to the Financial Statements

- (1) The Budgeted Reserve Fund assessment for 2021 is \$2,165,000
- (2) The Budgeted New Capital Additions Fund assessment for 2021 is \$192,698

PML AUTOMATIC PAYMENT PROGRAM

Taking the time to write a check for your monthly assessment payment can be time consuming and costly. You can avoid this burden and eliminate the potential for late payment charges by enrolling in PMLA's Auto Payment Program. By completing the form, which can be found at www.PineMountainLake.com under the Resources/Forms, and returning it to the Administration Office, you can have your monthly assessment automatically deducted from your checking account or charged to your credit card. This means you never have to remember to write a check and mail it each month. The peace of mind that comes with knowing your payment will always be made on time is easy to attain. We can also arrange to have any other regular payment you make to the Association (such as golf membership, horse boarding fees, etc.) paid in the same way.

For more information on this simple, effective and time saving plan please contact us at (209) 962-8600.

DO YOU HAVE YOUR PIN?

Since PML is a private gated community, we want to offer our property owners a secure way to call in guests. When you become a member of PML you are assigned a Personal Identification Number (PIN) to utilize either when calling in a guest pass or using the Gate Access Internet program. This PIN identifies you to staff without you having to be present. This is a confidential number and should *not be shared*. When you call the Main Gate to authorize a guest or vendor access into PML, you will be asked for your PIN. The staff will look up the number in the computer and use it to confirm your identity before entering the guest information. You must have this number to utilize the Gate Access Internet program as well. If you do not know your PIN or have any questions, please contact the Administration Office at:



(209) 962-8600



Monday through Friday from 8 am to 4:30 pm
and we will gladly supply this information to you.

PAY YOUR PML PAYMENTS ONLINE

Did you know you can make your payments online?

Online Bill Pay is available on www.PineMountainLake.com.

Pay via your credit card, it is quick and easy!

PML ANNUAL COMMUNITY VOLUNTEER SERVICE AWARD

Get your nominations in now!

In 2017, the PMLA Board of Directors created the PML Annual Community Volunteer Service Award. The purpose of the award is to annually recognize a PML member for their service to our community.

Each year, the Board President is tasked with carrying forward this honor. Each recipient of the award will receive an individual plaque and their name on the perpetual plaque that hangs in the entrance to the PML Administration Office, as well as a PML gift card.

Our Board President, Karen Hopkins, is calling for nominations and the rules are as follows:

ELIGIBILITY

- Nominees must be PML members in good standing.
- Nominees must have had a positive impact on the community of PML through the act of volunteerism.
- All nominees must carry out the majority of their volunteer service in PML, Nonprofit leaders' organizations must be based in California.
- Nominees must have exhibited consistent commitment to one or more cause.
- Nominees should support opportunities for other PMLA members to serve.
- Nominations may be submitted by the nominees themselves or other members.

RULES AND GUIDELINES

1. All nominations must be completed, on time, in their entirety. Partial and/or late nominations and late letters of support and additional materials will not be accepted.
2. Online nominations are strongly encouraged and should be submitted via email to PMLA's Board of Directors, or by mail to the PML Administration Office.
3. Open only to PMLA members in good standing.
4. Nominees must have had a significant, measurable impact on their community of PMLA.
5. Nominees must have exhibited creativity, compassion, leadership, and consistent commitment to one or more cause.
6. Nominations may be submitted by the nominees themselves or by other members.
7. Separate nomination packets may be submitted for as many nominees as desired. Nominating multiple volunteers in the same role, in the same organization will not increase the likelihood of an award. Nominating the same nominee multiple times and/or in multiple categories will not increase the likelihood of an award.
8. All nominations must include a letter of support. This letter should be attached as a Word or PDF document, if submitting the nomination online. If submitting a mail-in nomination, this letter should be mailed with the nomination information and not sent separately.
9. Additional materials are optional. They can include additional relevant information about the nominee, additional letters of support, photos, testimonials, news clippings, pamphlets, etc. PDF documents are preferred; Word documents are acceptable.
10. Electronic additional materials (video, CD, etc.) are acceptable and should be included as part of a mail-in nomination. Electronic materials should be no longer than 5 minutes in length.
11. The deadline for nomination submissions is **November 1st**.
12. Nominations will be reviewed and winners selected by the PMLA Board of Directors.
13. The winner will receive an award to be presented at the January Board of Directors meeting.

Nominations may be made by email at
PMLABoard@pinemountainlake.com

Nominations may be made in writing and mailed to:
PMLA Board of Directors – Annual Service Award – 19228 Pine Mountain Dr. Groveland, CA 95321

Recreation Update

MICHELLE CATHEY – RECREATION & SEASONAL OPERATIONS MANAGER, CCAM

Thank you for a great season. We appreciated the opportunity to serve you during the busy times. We are approaching the end of the season and will be available according to this modified operational schedule until October 31st (weather permitting):

SWIM CENTER

Open 7 days a week from 8am to 6pm
Water aerobics daily: 8 am until 10 am

EQUESTRIAN CENTER

Open daily from 8 am until 5 pm
Trail rides are done for this season
Individual lessons are available by appointment. Please call (209) 962-8667

to make a reservation.

MARINA STORE

Open Monday – Sunday 8 am until 5 pm
Water Taxi is available Thursday thru Sunday from 10 am until 6 pm
Rentals are available Friday, Saturday & Sunday.

Reminder: if you have a boat on the lake, please remember to remove it on or before October 31st. You can call the Marina Store at (209) 962-8631 to reserve a time to remove your boat.

Most of the seasonal staff has returned to school, please be kind to those who are working to make it possible for us to stay open until the end of October.

Recycling Notice from Moore Bros

WE HAVE DROP-OFF RECYCLING!!

All residents and visitors are asked to source separate their recyclable materials. There are designated bins located at our office located at 11300 Wards Ferry Rd. in Big Oak Flat where you may drop off your recyclable materials anytime **Monday through Saturday 8am to 5pm** (weather permitting). CLOSED SUNDAYS and major holidays.

Acceptable materials include:

- Aluminum beverage containers, tin cans, glass bottles and jars (all colors)
- #1 Plastic (bottle form only) ****#1 clear fruit/veggie, sandwich or salad clam shell type containers are NOT allowed****
- #2 Plastic (bottle form only) ****#2 colored plastic coffee containers are NOT allowed****
- **ALL CONTAINERS MUST BE RINSED AND FREE OF LIDS AND CAPS**

We also accept Mixed Paper, newspaper, magazines, catalogs, junk mail, paperback books & shredded paper which can all be put in the same bin. NO WRAPPING PAPER ALLOWED

CARDBOARD BIN ACCEPTABLE MATERIALS INCLUDE:

Cardboard, Carton Board such as cereal and cracker and soda/beer boxes, etc. are also accepted and can be placed in the cardboard bin with the cardboard. THESE ITEMS NEED TO BE FLATTENED OR BROKEN DOWN AND ANY PACKAGING MATERIALS OR TAPE REMOVED.

IF THE CARDBOARD BIN IS FULL OR YOU HAVE A LARGE LOAD OF CARDBOARD TO RECYCLE, we ask you to take it to our shop location at 17641 Yates St. in Big Oak Flat where we still maintain a 50 yard cardboard recycle box.

PLEASE DO NOT THROW PLASTIC BAGS OF RECYCLABLES INTO THE BINS.

Tee to Green

ROB ABBOTT – GOLF COURSE SUPERINTENDENT

As of the 7th of September, the golf course has used 8 inches of water from the lake, and we have been supplementing our water needs with reclaimed water from the Groveland Utilities District. The lake has dropped 3.9 feet this season with 37 inches of evaporation. The rate of evaporation changes constantly with the temperature and the amount of sunlight per day. When temperatures are up and the lake has a lot of activity, we can see a loss of .25 inches

or more per day. I am projecting we will use an additional two inches out of the lake for a total of 10. This is 2 inches more than in previous years but with no spring rain and prolonged heat through the summer, consumption was up. My hope for the cold months is plenty of rain and lots of snowpack, fingers crossed.

As the mowing season slows down, we will turn our attention to the fall cleanup of leaves and needles. This cleanup process is undoubtedly one of our biggest

challenges, finally being completed around the first of the year. Daily blowing of the tees, greens, and fairways along with sweeping and relocating the leaves to our mulch areas and grinding them up requires a considerable amount of time.

Another big project for fall and winter will be tree trimming. The USGA has stated on many occasions that our trees are one of our greatest assets and they need some care. Trees provide many valuable contributions to the course besides being aesthetically pleasing.

They direct play on the fairway and define the shape of the hole, and in many cases offer huge objects that provide a more interesting and challenging experience. We again will be utilizing an outside Arborist to take care of a handful of our oldest Mother Oaks cleaning out deadwood and thinning their canopies. Our staff will work on trimming the lower canopies, and trimming the suckers off the smaller trees. Weather permitting this project will take most of the winter. Happy Halloween and Autumn to you all.

From the Fringe

MIKE COOK – PGA HEAD GOLF PROFESSIONAL

The Golf Shop Staff is here to assist you in every way possible so please call us if you have any questions or need our assistance at 962-8620. Our Golf Shop hours are from 7:00am until 6:00pm, 7 days a week.

UPCOMING EVENTS

Ladies 9-Hole Golf Club

Weekly Play Day — Thursdays

Ladies 18-Hole Golf Club

Weekly Play Day — Thursdays

Men's Golf Club

4 Man Scramble — Wednesday October 6

Men's Golf Club

2 Man Chapman Scotch — Saturday October 30

FIRST STARTING TIME

In the month of October our first tee time of the day is 8:30am. Reservation can be made by PML Property Owners up to 14 days in advance by calling the Golf Shop 962-8620.

WINTER SHOTGUNS

It looks like we will return to our 11:00am Shotguns for this coming winter season. The shotguns will begin on the first day after Daylight Savings Time ends. Look for further information in the next article.

CARE OF THE GOLF COURSE

TAKING CARE OF THE GOLF COURSE IS EVERYONE'S RESPONSIBILITY; PLEASE DO YOUR PART!

REPLACING DIVOTS – PML is a DIVOT FIRST facility; that means that if the divot is intact or even a portion of the divot is intact, we want you to replace the divot first and press the divot down firmly with your foot. When an intact divot is

replaced, it will begin to root right away but a mulch filled divot will take weeks to fill in. If the divot hole is not totally filled in by the divot that you replaced then fill the rest of the hole with mulch and press down the divot firmly with your foot. If the divot is not intact, then fill the divot hole with mulch and smooth the mulch with your foot so it is level with the ground.

REPAIRING BALL MARKS – This is one of the major negatives in our great game; players either do not know how to repair ball marks correctly or don't even attempt to repair them. Here is the correct way to repair a ball mark:

Insert the divot tool just outside the edge of the ball mark, use the divot tool to mend in the outside portion if the ball mark towards the middle. Then use your putter to tap down the repaired turf. If a ball mark is repaired properly, you will not even be able to tell that there was a ball mark. NEVER PULL UP THE MIDDLE OF THE BALL MARK.

RAKING BUNKERS – We are back to normal procedures concerning bunkers; PLEASE make sure that you rake the bunker after you have hit your shot.

GOLF CARTS – Driving golf carts on the fairways has a negative effect on turf conditions over time. PLEASE use the 90-degree rule posted in each golf cart in order to minimize the cart traffic on the fairways.

NEW PML PROPERTY OWNERS

If you are a new Pine Mountain Lake Property Owner and you are interested in getting acquainted with other Property Owners who play golf, call the Golf Shop and we will let you know what golfing groups you may be able to join or what golf activities are planned for the year.

BUNKERS

We are in the process of completing the replacement of our old bunker sand with new and better-quality sand. We only have a few bunkers left so hopefully the project will be completed this fall. Thank you for your patience during this project.

PROPERTY OWNER ANNUAL GOLF CART RENTAL AGREEMENT

Every person who drives a golf cart on the course, is required to sign a golf cart rental agreement at the time of registration, before they can drive a golf cart. PML Property Owners sign the agreement one-time and that covers the entire year. If you have not signed your agreement you can go to the PML website (www.pinemountainlake.com) and fill it out and sign online or you will be asked to sign the form when you register in the Golf Shop. Click on amenities, then click on golf and you will see the agreement with other forms available. If you have any questions, please call the Golf Shop 209-962-8620.

MEN'S & LADIES GOLF CLUBS

If you are interested in joining the Men's or

Ladies Golf Clubs, you can call the Golf Shop 962-8620 and we will give you the information you need. Applications are available in the Golf Shop. The Men's Club has a website (www.pmlmgc.com) that you can visit to sign-up online for your membership (see Men's Club eligibility rules) or to print an application. Once you are a Men's Club Member, you can sign-up for tournaments online.

PINE MOUNTAIN LAKE GOLF APP

Pine Mountain Lake Golf & CC has an app that you can download FREE from the app store. There are many fun and useful features on the app such as:

- Golf course GPS
- Players can measure their shots
- Golf course hole by hole flyover
- Interactive scorecard
- Score posting
- Player profile and automatic stats tracker
- Special offers
- Food & beverage menus and ordering
- Receive notifications concerning special events
- Weather information
- PMLA Member information & online payments

Go to the official online presence of the PMLA for the latest news & information

PineMountainLake.com

Facebook.com/PineMountainLakeCA

Facebook.com/PMLARecreation

LETTERS TO THE EDITOR

LETTERS TO THE EDITOR RECEIVED	1	DEFERRED TO NEXT EDITION BY	
DENIED BY EDITORIAL COMMITTEE	0	EDITORIAL COMMITTEE	0
Exceeds 250 word maximum	0	DENIED BY BOARD OF DIRECTORS	0
Content	0	DEFERRED TO NEXT EDITION BY	
Not a property owner	0	BOARD OF DIRECTORS	0
"THANK YOU" LETTERS RECEIVED*	0	* Thank you's do not require editorial committee approval	

Submit Letters to the Editor by sending to "Editor, PML News"
 Mail: 19228 Pine Mountain Drive, Groveland, CA 95321
 Email: PMLNews@sabredesign.net • Fax: 800-680-6217

**PLEASE NOTE THAT ALL LETTERS
 APPEAR IN THE ORDER THEY WERE RECEIVED BY THE PML NEWS**

The Pine Mountain Lake News welcomes letters and articles for publication provided they meet the criteria established in the current PMLA Editorial Policy (See excerpt below – entire policy on file at the Administration Office). Letters must be limited to 250 words, typewritten using upper and lowercase letters or neatly printed (no all-capital material) and signed with name, mailing address, PML unit/lot number, and day/evening telephone numbers by a property owner in good standing. **LETTERS MUST BE RECEIVED BY THE EDITOR BY THE 10th OF THE MONTH.** Letters deemed by the Editorial Committee to be improper will not be accepted. Readers are advised that **THE OPINIONS EXPRESSED IN THESE LETTERS ARE THOSE OF THE INDIVIDUAL AUTHORS, NOT OF THE PMLA, THE PINE MOUNTAIN LAKE NEWS, NOR THEIR EMPLOYEES.**

SHORT TERM RENTALS

I received my monthly PML newspaper and want to address the letter regarding short term rentals. The author points out the additional revenue for PML however, does not address the compromise to our peace and quiet. I've been a home owner in PML for 15 years. While I'm still a "weekender" one of the reasons I purchased my home on the hill was for the lovely setting. My street now has three vacation rentals that have destroyed our neighborhood ambiance. Most of my neighbors have complained and have needed to make calls to security every weekend, me included, more than once. These rentals are being occupied with 8-10 people at a time. They party all night. They light illegal bon fires during fire season! We are constantly

being woken up after midnight as the "partying" echoes through our neighborhood. Many of my neighbors are elderly and this effects their health with stress, anxiety and loss of sleep. My feelings are PML has changed and not for the better.

My plan was to retire in PML and now this dream may not come to fruition as I explore other options for my retirement. I am not in favor by any means of more vacation rentals that are not being monitored by the companies renting them as they clearly break the PML rules.

The Association seems to have turned a blind eye as well. I agree with the author of "short term rental thoughts" that we are ALL EQUAL MEMBERS OF PML!

Sandi Kenneally
 San Mateo, CA

COMPOST & ARCHERY RANGE HOURS OF OPERATION

APRIL THRU OCTOBER - 7 DAYS A WEEK 8AM TO 4PM
WEATHER PERMITTING

NOVEMBER THRU MARCH - TUES. - SUN. 8AM TO 4PM
WEATHER PERMITTING

SHOOTING RANGE - TUES, THUR, SAT 9AM TO 3PM
PLEASE NOTE Hours may vary depending on weather conditions, safety concerns, or other situations beyond control. Archery & Gun Range users must check-in with compost attendant.

HOURS SUBJECT TO CHANGE WITHOUT NOTICE
Call Main Gate at 209-962-8615

PML SAFETY REPORT 2021

	1ST QTR	2ND QTR	AUGUST	YTD
Guest Passes Issued	3,703	7,345	3,062	17,172
Vendor Passes Issued	905	1,359	366	2,996
Temporary Resident Passes Issued	2,650	5,030	2,749	13,178
Vehicles Admitted	37,709	53,803	29,109	149,730
Vehicles Refused Entry	761	1,154	1,035	3,985
Phone Calls Received	10,878	12,982	5,221	34,302
Residential Alarm	15	18	3	40
Animal - Loose	68	40	5	122
Animal - Impounded	8	10	1	19
Animal - Dead/Injured	31	29	43	126
Animal - Disturbance	18	25	4	52
Patrol Assist	664	692	174	1,798
Public Assist	58	90	9	176
Welfare Check	8	9	0	17
Transport	4	14	4	23
Traffic Hazard	5	19	0	29
Traffic Control	3	5	0	10
Excessive Speed/Reckless Driving	14	33	11	67
Gate - Tamper	0	1	1	4
Gate - Follow Through	28	35	10	89
Gate - Malfunction	72	22	6	101
Gate - Struck by Vehicle	9	19	7	40
Control Burn Reported	337	126	0	463
Fire Safety - Smoke Complaint	8	4	0	12
Hazard - Tree Down	11	0	1	12
Residential Disturbance	4	2	1	12
Amenity Burglary	0	1	0	1
Residential Burglary	0	2	0	3
Grand Theft	0	0	0	0
Petty Theft	3	0	0	5
Trespassing	2	1	1	4
Vandalism	3	5	1	9
Property Damage - PML	3	3	4	11
Property Damage - Resident	3	1	0	4
PML Regs Violations Resident	2	14	2	20
PML Regs Violations Guest	5	2	2	11
Vehicle - Citation Issued	7	5	5	36
Vehicle - Accident PML	3	6	0	10
Patrolling Unit	2,564	2,524	509	6,310
Amenity Security Check	6,702	7,516	2,100	18,672
Residence Security Check	38	94	16	187
Monitoring Tennis Courts	5	11	1	21
Weapon Violation	0	0	0	0
Fixed Post	4	12	1	31
Courtesy Notice Issued	4	26	3	34
All Other Fees Collected	\$132,203	\$245,992	\$75,259	\$583,439

Building Our Community

SUZETTE LAFFRANCHI – COMMUNITY STANDARDS DIRECTOR

It's hard to believe but, this year nearly 250 homes and properties have changed hands in Pine Mountain Lake.

California, like many states, requires its residential property sellers to disclose, in writing, details about the property they have on the market. These disclosure obligations apply to all California home owners selling their property, whether it's a standalone home, a high-rise condo unit, or a manufactured or mobile home. (*See, California Civil Code § 1102.*)

This includes knowing about any potential repairs or upgrades needed to areas of the home or improvements done without proper permitting. The disclosure obligations also remind California home sellers that they have a legal responsibility to be open about a property's condition and can be sued for hiding problems or defects.

Often times when a property is in the process of being transferred from one owner to another, certain aspects of the home and property are scrutinized and it is necessary to repair or replace them, prior to sale. Roofing, decks and paint are three of the most common repairs.

Because there is often a push to get a house ready for closing, people are tempted to circumvent the process of having these repairs, replacements or improvements approved by the ECC and sometimes even the County. In the long-run, this can end up costing you more time and money than having your project approved in the first place.

If it comes to the attention of the ECC that an unapproved project is being completed on a property, the ECC is obligated to issue a Stop Work Order and no work can be done until all necessary paperwork is submitted and approved by the Committee. PMLA, CC&R,

Article V, Section 1: Environmental Control Committee Approval of Improvements: In the event that it comes to the knowledge and attention of the Association, the Committee, or the agents or employees of either that a work of Improvement, or any modification thereof, is proceeding without proper approval, the Association shall be entitled to exercise the enforcement remedies specified in Section 12 of this article V, including, without limitation, ordering an immediate cessation and abatement of all aspects of the work of Improvement until such time as proper Committee review and approval is obtained.

PMLA, CC&R, article V Section 12: Enforcement of Environmental Control Matters. No work of Improvement for which approval is required shall be deemed to be approved simply because it has been completed without a complaint, notice of violation, or commencement of a suit to enjoin such work.

Take the time to submit your exterior project prior to starting those repairs or improvements. In the long-run, this can save you money and time. The Committee will work with property owners to expedite the process in any way possible, to the extent allowed in the Governing Documents.

If you have questions, you may call our office any time, Monday through Friday, 8:00 – 4:30 at 209-962-8605 or email us at ecc@pinemountainlake.com. There are several resources available on-line, visit the PMLA web page at <https://www.pinemountainlake.com/ecc-committee/> where you will find the PMLA ECC, Rules, Guidelines and Construction Standards, project submittal process and other helpful links.

Fire Safety

JOE MILANI - FIRE SAFETY COORDINATOR

Autumn is here, bringing with it, cooler temps, falling leaves, and extreme fire danger. The vegetation is dry and the winds tend to pick up this time of year making fire conditions worse. Red flag warnings and optimal fire conditions could prompt PG&E to perform public safety power shutoff's (PSPS). Pine Mountain Lake residents need to be mindful of this growing situation. For more information on this issue please call: PG&E at 1-800-743-5000 or visit <https://pgealerts.alerts.pge.com/splash/>

Pine Mountain Lake Association practices year-round fire safety standards, so your home is better prepared before wildfire season. Residents, please remember 100ft of defensible space and 30ft around structures being the most aggressive clearance. Another often overlooked wildfire mitigation practice is cleaning off your roof and gutters. This issue cannot be stressed enough, depending on your homes location and surrounding tree types it may be necessary to clean off your roof and gutters of debris multiple times a year. Research shows that two out of three homes destroyed during wildfires are ignited by wind-blown embers, and not from the actual flames of the fire. By taking one hour today to clean your roof and gutters, you'll have taken the first, and possibly the most significant step, towards protecting your home from wildfire.

Did you know, roughly three out of five fire related deaths happen in homes with no smoke alarms or no working smoke alarms? Luckily, today's smoke alarms are more technologically advanced to

respond to a multitude of fire conditions. Remember, smoke alarms should be installed inside every bedroom, outside each separate sleeping area, and on every level, including basements. Please remember to test your smoke and carbon monoxide detectors once a month and replace any faulty alarms or low batteries immediately.

October 3rd – 9th is Fire Prevention Week. The theme for this year is, "Learn the Sounds of Fire Safety." The theme focuses on educating children and adults about smoke and carbon monoxide detectors. Is there a chirp or beep coming from your smoke or carbon monoxide alarm? What does it all mean? Knowing the difference can save you, your family, and your home. Visit <https://www.nfpa.org/fpw> and <https://nfpa.org/> for more lifesaving information and interactive lessons for all ages. This site also offers a fire prevention tool kit and an opportunity for the kids to join Sparky's fire safety club <http://www.sparky.org/> and become a fire safety hero today.

Lastly, fire safety inspections will continue in Pine Mountain Lake. Remember a fire safe community begins with you! If you would like an inspection of your property, or you are looking to educate yourself more, our fire safety team would love to help. If you have questions or concerns regarding fire safety, you can contact Amanda Darrow at (209) 990-5263 or email her at Inspector1@pinemountainlake.com. I can be reached at (209) 990-5260 or Email J.milani@pinemountainlake.com.

PML Safety & Security Committee

BOB ASQUITH

The Pine Mountain Lake Safety and Security Committee is a standing committee authorized by the PMLA Board of Directors to inform its decision making and promote its mission. Your committee has a variety of responsibility areas including organizing for emergency preparedness (Neighborhood Watch, CERT), training (CPR, AED, First Aid), and child car seat installation demonstrations. The Committee meets every first Wednesday of each month.

Join Our Committee Meeting: Property Owners may attend our committee meetings.

Our next meeting is Oct 6th at 9am via Zoom.

Please email safetyandsecuritycommittee@pinemountainlake.com to obtain your invitation.

We are pleased to announce our first Firewise community (The Clintonites) within Pine Mountain Lake. It is a group of thirteen properties that are certified by National Firewise USA and have received their certificates of participation which may entitle them to Home Insurance discounts. There are two more Firewise communities in progress. Firewise is a national program supported by Cal fire, Tuolumne County, and Pine Mountain Lake Association.

A Firewise Community provides a framework

for reducing the risk of life and property to wildfire. It also could result in a reduction in your home insurance cost. Participation is entirely voluntary with at least eight neighbors joining. Not everyone needs to participate. However, if you participate, you will receive a certificate which you can forward to your insurance company. And the more people in our neighborhood participating; the safer the entire neighborhood.

There are six steps to become a Firewise Community:

1. **Organize** – Gather neighborhood participants, elect officers.
2. **Plan** – Together with Calfire, create a Wildfire Risk Assessment.
3. **Do** – The participants develop an action plan, short term & long term.
4. **Submit** – Submit the plan to Firewise USA (portal.firewise.org) for processing.
5. **Implement** – Each participant is required to

volunteer one hour towards the plan.

6. **Renew** – Submit plan for annual renewal.

The Safety Committee also began discussions on **Speeding in PML**. It is a hot topic with a number of ideas expressed. We will continue this at our October 6th meeting. Our goal is to make recommendations to inform our Board of Directors decision making process.

The Committee also continued Emergency Evacuation discussions. Please refer to a companion article in this PLMA News about emergency communications.

For 2021, your committee consists of Bruce Dudley-Chairperson elect, Keith Martin-Secretary, Tim Shanahan-Treasurer, Len Otley At Large, and Bob Asquith-Member Relations Specialist.

Please email comments to: safetyandsecuritycommittee@pinemountainlake.com

The Hoof Print

KENDRA BROWN – EQUESTRIAN CENTER MANAGER

Our busy season here at the barn has come and gone! I would like to take this time to thank each and every one of you that came out and joined us for a horseback riding lesson or trail ride. Our horses have left for the season, but don't worry they will be back!! Keep an eye out for when they join us again and we open lessons back up.

Our car show on Labor day weekend was a fun chance for us to check out the "other horse power" from our community. We had some great cars, awesome music, and great company! We are looking forward to doing this event again next year.

Fall is upon us which brings cooler weather

in the evenings and warmer weather in the afternoons. Make sure your horses are still drinking plenty of water our vets tells us that these conditions are prime for bringing on colic. Soon the blankets will be coming out to help keep our horses warm through those dropping temperatures. If you haven't thought about it already, now is a good time to wash those blankets before the cold really sets in.

Equestrian Center

Open Monday-Sunday 7:00am-5:00pm
13309 Clifton Way
Office: 209-962-8667
stables@pinemountainlake.com



Safety & Security Committee

BOB ASQUITH

The Pine Mountain Lake Safety and Security Committee is a standing committee authorized by the PMLA Board of Directors to inform its decision making and promote its mission. Your committee has a variety of responsibility areas including organizing for emergency preparedness (Neighborhood Watch, CERT), training (CPR, AED, First Aid), and child car seat installation demonstrations. The Committee meets every first Wednesday of each month.

EMERGENCY COMMUNICATIONS FOR PINE MOUNTAIN LAKE

The PML Safety Committee provides this emergency communications information:

Important Telephone Numbers

- Tuolumne County Sheriff 209-533-5815
- CHP (California Highway Patrol) (209) 984-3944
- PML Safety (209) 984-8615 or during outages (209) 768-8616

TEXT MESSAGE OR EMAIL ALERTS

We recommend signing up for all the alerts you can. Knowing what is happening during an emergency will provide critical information so you know what to do. Alerts are sent by the Sheriff or OES during an emergency such as Fire, Evacuation, Flood, or any other disruption to your area. You can have alerts sent to your email account and/or your cellular phone. We recommend both.

We also recommend signing up for alerts (via CalAlerts below) in Calaveras and Mariposa Counties as well as Tuolumne County for a wider alert picture of emergencies.

- <https://www.tuolumnecounty.ca.gov/1170/Emergency-Alerts>

Office of Emergency Services -- 209-533-6354

- pge.com/mywildfirealerts

For PG&E alerts for power failures & power shutoffs

- <http://calalerts.org/>

For earthquake and emergency alerts – any county in CA

A WORD ABOUT LAND LINES

Many PML residents use an AT&T land line for communications. When the power is shut off, some of these telephones do not work for several reasons. One – their telephone needs power to function (wireless). Two – their land line is connected to a field installed AT&T system (PairGain) that uses a battery. When the battery is done (2-3 hours), the line is dead. The Safety Committee is working on materials to help you cope with loss of communications during an emergency.

SOCIAL MEDIA

It is important to know the source of any information you read on Social Media. Information on other sources should not be relied upon. There are official Tuolumne County information sources during emergencies:

- Facebook – Tuolumne County Sheriff <https://www.facebook.com/tuolumnecountysheriff>

- Facebook – Tuolumne County Office of Emergency Services (OES) <https://www.facebook.com/TuolumneCountyOES/>

- Facebook – Tuolumne County Fire Department <https://www.facebook.com/Tuolumne-County-Fire-Department-2180612105600021>

- Facebook – Cal fire Tuolumne Calaveras Unit <https://www.facebook.com/CALFIRETCU>

- Facebook – Caltrans highway info for Tuolumne County <https://www.facebook.com/CaltransDistrict10>

- Twitter – Tuolumne County Sheriff-- @TuolumneSheriff

- Twitter – Cal fire for Tuolumne County -- @CALFIRETCU

- Twitter – Caltrans for Tuolumne County -- @CaltransDist10

Please email comments to: safetyandsecuritycommittee@pinemountainlake.com

PAINTING & CONSTRUCTION

PAINTING – EXTERIOR/INTERIOR • DECK REPAIRS • WOOD REPAIRS • REMODELS

Bay Cal Construction

209.962.4777

www.baycal.com
email: davec@baycal.com

FREE ESTIMATES

DINNER MENU

WED, THURS & SUNDAY 5PM – 9PM

FRIDAY & SATURDAY 5PM – 9:30PM



CLOSED MONDAY & TUESDAY
RESERVATIONS ARE
REQUIRED FOR DINNER
CALL 209.962.8638

Please note: prices and items subject to change

APPETIZERS

Shrimp and Crab Cocktail

bay shrimp, crab meat and a prawn tossed in our house cocktail sauce **12**

Crispy Calamari

lightly battered served with cocktail sauce **21**

Crispy Brussels Sprouts

Fried and topped with lemon aioli and chives **10**

Artichoke Fritters

Curry seasoned artichoke hearts fried in a goat cheese batter and topped with spicy aioli **12**

Avocado Toast

lightly grilled sourdough, creamy avocado, tomatoes and arugula with green goddess dressing **12**
add grilled shrimp **6** • add grilled chicken **5**

SALADS

Shrimp Louie

bay shrimp and prawns over a bed of crisp greens with avocado, egg, tomato, cucumber and thousand island dressing **18**

Seared Ahi Tuna Salad

seared tuna on a bed of fresh greens with bell pepper, avocado, cucumber, carrot, topped with wonton strips with sesame dressing **23**

Traditional Spinach Salad

spinach, bacon, mushroom, feta cheese, egg & marinated red onion with vinaigrette dressing **13**

Sierra Salad

crisp romaine lettuce, tomato, artichoke hearts, marinated red onion and feta cheese with caesar dressing **13** • add grilled shrimp **6** • add grilled chicken **5**

14" BRICK OVEN ARTISAN PIZZA

substitute cauliflower pizza crust add, **2**

Classic Margherita

sliced Roma tomatoes, fresh basil and mozzarella cheese with a light pesto drizzle **15**

Bacon and Pickle

seasoned olive oil, w/ mozzarella & Parmesan cheese, Dill pickle, bacon, red pepper flakes & chopped dill **19**

Smoked Gouda

prosciutto, arugula, tomato, olive & sweet onion **19**

The Italian

Sausage, bell pepper, onion, olives, mushrooms **21**

Garlic Chicken

chicken, bacon, artichoke hearts, black olives, green onion and mozzarella with a garlic ranch sauce **21**

Meat Lovers

Sausage, prosciutto, pepperoni, salami, and bacon **25**

ENTREES

Half Rack of Lamb

Marinated & finished w/ house made demi-glace served w/ a garlic mashed potato **33** Full rack **52**

Seared Ahi Tuna

seared medium rare with crispy sushi rice cake, seaweed salad, wasabi aioli & soy ginger vinaigrette **29**

Roasted Cauliflower Pasta

served over zucchini noodles with walnuts, cherry tomatoes, garlic and grated parmesan cheese **15**

Grilled Apple Honey Chipotle Pork Chop

White Marble Farms bone-in pork chop topped w/ honey chipotle glaze served w/ garlic mashed potatoes **25**

Cedar Plank Salmon

Topped with garlic lemon and rosemary served with rice pilaf **26**

Shrimp Pasta

large prawns sauteed then tossed with linguini in a creamy ginger cilantro sauce **22**

Pesto Bruschetta Chicken

Grilled boneless skinless chicken breast topped with pesto sauce mozzarella cheese and tomato relish served on a bed of couscous **21**

BURGERS

All Burgers served with lettuce, tomato, pickle & onion and french fries or sweet potato fries or garden salad. Add: pepper jack cheese, cheddar, blue cheese, swiss or smoked gouda, caramelized onions, mushrooms, bacon or avocado **1** ea
for an additional **2** ea choose: onion rings, garlic fries or a caesar salad

Grilled Angus Chuck

Half pound **14**

Sliders

three Certified Angus Beef mini burgers with your choice of cheese **15**

Turkey Burger

seasoned ground turkey **14**

Vegetarian Black Bean Burger

For the veggie lover **12**

Beyond Burger

plant based patty **12**

We accept visa, MasterCard, American express & discover, no personal checks please.
WARNING: This facility processes nuts, dairy, flour, seafood, etc. which may be considered allergens.

Eating raw or undercooked meat, seafood, poultry and eggs may cause serious foodborne illness

October News at The Grill

JAY REIS – GRILL MANAGER

As the days get shorter and the weather turns milder, it's that time of the year where our dinner menu usually evolves towards comfort food. Chef Raul will be making some small changes to the dinner the menu. However, we are still running into supply chain issues. Transportation and production issues are still affecting the supply line from our vendors. We are having issues with everything from beer and Gatorade to inconsistent food products. This inconsistency on ingredients and products are why we haven't been able to expand our menu. We will still have a simple menu with nightly dinner specials.

I have received many inquiries as we all try and plan the holidays. When will we have live music? When is Karaoke starting? Will we have Holiday parties? When will be hosting Wine dinners? Are we having Thanksgiving dinner at the Grill? Are we planning a New Years Eve dinner dance? At this time, we are not planning any entertainment or events through December 2021. We will not be having our holiday Thanksgiving Buffet and we unfortunately will not be having

our Turkey dinners to go. We will revisit entertainment for 2022 in January based on staffing levels and keeping members and their family's health and safety in mind.

HOLIDAY GRILL CLOSURES

We will be **CLOSED** Thanksgiving Day
Thursday November 25

We will be **OPEN** Friday November 26,
Saturday 27 and Sunday 28

WINTER HOURS – RESERVATIONS FOR DINNER ARE HIGHLY RECOMMENDED

Monday and Tuesday
Closed

Wednesday, Thursday and Sunday
Lunch 11am until 3pm
Dinner 5pm until 8pm

Friday and Saturday
Lunch 11am until 3pm
Dinner 5pm until 9pm

For reservations call 209-962-8638 or any questions feel free to email clubmgr@pinemountainlake.com



WELCOME TO THE
Hidden Jewel of the Foothills
**PINE MOUNTAIN LAKE
GOLF & COUNTRY CLUB**
12765 MUELLER DRIVE • GROVELAND, CA. 95321

Championship Golf Course



**SEARCH FOR OUR APP
PINE MOUNTAIN LAKE
IN YOUR APP STORE!**



*Beautifully Manicured
Greens*



Stunning Vistas & Surroundings



Mountain Golf  *at its Finest!*

www.PineMountainLake.com

209-962-8620

PINNELL'S CARPET ONE FLOOR & HOME



FREE Neutralize Installation, because your health matters.

Waterproof Flooring, LVT, Laminate, Vinyl, Hardwood, Tile, and Hunter Douglas Window Coverings.

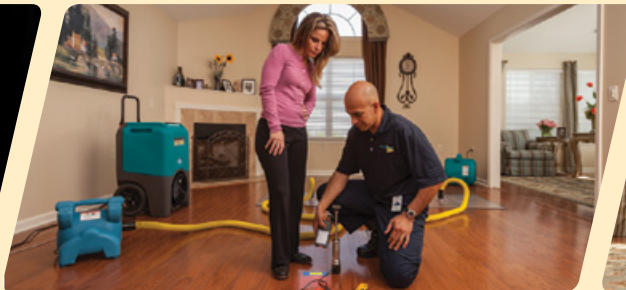
Thank you for voting us Best of the Mother Lode since 2005!

209.736.8077 263 S. Main St. Angels Camp, CA
209.532.1696 12900 Mono Wy. Sonora, CA

**\$25
DISCOUNT**

Mention this ad for a discount on cleaning services.

Minimum charge applies.



DISASTER RESTORATION SERVICES • RESIDENTIAL AND COMMERCIAL CLEANING SERVICES

Carpet & Furniture Cleaning • Steam & Dry Cleaning • Deep Soil Extraction • Spot & Odor Removal • Oriental & Fine Rug Cleaning • Ultrasonic Blind Cleaning
 24 Hour Emergency Service • Water Removal • Wet Carpet Care • Fire & Smoke Restoration • Vandalism Cleanup • Structure Drying • Sanitizing

**ServiceMASTER
Restore**

The clean you expect.

The service you deserve.



Serving Tuolumne, Calaveras & Amador Counties
 ServiceMasterSierras@mlode.com • www.ServiceMasterSierras.com

209-532-1700

17330 High School Road
 Jamestown CA 95327





\$1.45 million
WHEEL OF GOLDEN CASH

EARN ENTRIES DAILY NOW - OCT 29

DRAWINGS THURSDAYS & FRIDAYS 8PM, 9PM & 10PM

SPIN A TOTAL OF \$3,000 WIN \$1,000,000!

Gift of the Month!

Oct 1-31
 (Excludes Mondays)

Earn 1,000 base points Tuesday-Thursday or 1,200 base points Friday-Sunday from 12am-11:59pm and receive a *Chukchansi Cares* Family First Aid Kit while supplies last.

FEEL The FUN OF DOUBLE REWARDS!

Sign up now and Get up to

\$2,000*

For Becoming a New Member!

*Awarded as free play



Hwy 41 North To Coarsegold | chukchansigold.com | 866.794.6946

Must be 21 years of age or older to be on property, including restaurants and hotel. All guests must have a valid government-issued photo ID acceptable to management and be a Chukchansi Rewards Club Member for any and all transactions. Management reserves all rights to cancel or modify all offers, promotions and/or events without prior notice. Restrictions and exclusions may apply, please visit website for further details. Masks are optional (not required if vaccinated). Visit our website for *What to Expect During Your Visit*.

Resolution 05.01 – PMLA Boating & Lake Rules

In accordance with Pine Mountain Lake Association's CC&R's, Article III, Section 7(c), Adoption and Amendment of Rules, the Board of Directors has approved an amendment to Resolution 05.01 PMLA Boating & Lake Rules.

The purpose of the amendment is to update verbiage and clarify procedures for PMLA boating and Lake usage.

This amendment was published in the August 2021 edition of the PML News and posted on the PML website for member review and comment.

This amendment to Resolution 05.01 was approved and adopted by the Board of Directors at a duly noticed meeting on September 18, 2021.



Resolution 05.01
Adopted: April 16, 2005
Amended: July 21, 2007
Amended: May 17, 2008
Amended: June 15, 2013
Amended: May 17, 2014
Amended: January 23, 2021
Amended: April 17, 2021
Amended: September 18, 2021

PMLA BOATING AND LAKE RULES

For your safety, California Boating Laws prevail. For your convenience, copies of the pamphlet "ABC's of California Boating" published by the California Division of Boating and Waterways, are available at the Marina Store.

Listed below are further regulations that apply to Pine Mountain Lake boating usage. Failure to comply with them shall be grounds for termination of your privileges. Violations are subject to citation. All boats are subject to inspection to determine compliance with State Law and Association requirements. If you have any questions on the safety requirements of your boat, contact a Boat Patrol Officer or the Marina Store staff.

Additional rules and regulations may apply.

KNOW OUR RULES AND ABIDE BY THEM FOR YOUR ENJOYMENT AND SAFETY.

FAILURE TO COMPLY MAY RESULT IN FINES OR LOSS OF LAKE PRIVILEGES.

GENERAL BOATING RULES

PML Members in good standing may register their boats. EVERY watercraft (including power boats, canoes, stand-up paddle boards and kayaks) must be registered and have a current year decal before it will be allowed on the lake. If a boat does not have a current decal, it must be removed from the water.

Long-term tenants who have been assigned property owner rights may register canoes, stand-up paddleboards, and kayaks for use on the lake. If a watercraft does not have a current decal, it must be removed from the water.

REGISTRATION: Requirements for registration include current personal liability insurance with a minimum of \$300,000, proof of PML Membership, and proof that the boat meets California Boating Law safety requirements, current DMV registration (if required) and agreement to abide by lake rules. Personal liability insurance coverage is not required to register a canoe, stand-up paddleboard or kayak. All other requirements apply.

Eligible Boats & Devices

Kayaks and Stand-Up Paddle Boards (SUPs) are approved watercraft for use on Pine Mountain Lake. Registration fees will be the same as for other, non-motorized watercraft.

Water skis are the only devices permitted to be used in the high-speed boating lane. The Boat Patrol and Marina Staff have the final authority to decide what is a water ski and what is a non-approved device.

Ineligible Boats & Devices

Prohibited completely from the Lake are jet-skis, wave runners, surfboards, motor surfers, and water/wake board skiers.

Wake Enhancement: The use of devices, equipment, or placement of passengers in boats for the purpose of creating an enlarged wake is prohibited. Further, no such devices or equipment may be used on any boat in PML. Such devices and equipment include, but are not limited to: exterior panels or wings deployed underwater; rubberized, plastic, or metal tanks or bags filled with any material; crowding of passengers to the rear; inside-the-hull water tanks or boat hulls designed specifically to enhance the wake.

Use of wakeboards, kneeboards, discs, inner tubes, surfboards, water toys, and non-approved devices are prohibited.

No float tubes, surfboards, "noodles", lounge rafts, etc., are allowed on the lake other than within 30 feet from your own private dock. (Tubes, noodles and "soft" float toys are allowed in the swim areas as well as if used within 20 feet of your boat when tied to a mooring buoy.)

Power boats larger than 26' will not be allowed on Pine Mountain Lake, and patio boats shall not exceed the length of 29'. (Resolution 98.07)

Open stack boats and others with a decibel level exceeding 82 db are prohibited. Likewise, radios or stereos may not be played at a high volume.

BOAT LAUNCHING & REMOVAL NO WATERCRAFT MAY BE LAUNCHED without current Pine Mountain Lake registration.

Motorized boat launching and removal is allowed only at the Marina boat ramp. Sailboats may launch at the Marina.

Sailboats may also launch and remove at Dunn Court by reservation.

ALL BOATS NOT REMOVED from Dunn Court and the Marina area by October 31 of each year will be removed and stored AT THE OWNER'S EXPENSE.

NO TRAILER PARKING permitted on or Between Memorial Day and Labor Day at the Marina, Dunn Court or Lake Lodge.

Operators, Operating, Safety

Only skippers (with a valid driver's license) designated by a boat owner may operate a powerboat, provided that they know the PMLA Boating & Lake rules.

Boat owners are responsible for the operation of their boats and the wakes they create regardless of who may be operating the boat.

Boaters must stay inside the passenger/operator areas of the boat. Riding on or outside of the railing or gate is prohibited.

Sitting on the front of a pontoon boat, dangling your feet above or in the water is dangerous and is expressly prohibited.

Powerboat operators may not tow or pull rafts, tubes, wakeboards, kneeboards, paddleboats, kayaks, canoes, or similar craft. Under State law, it is an infraction, punishable by a fine of up to \$250, to operate a vessel of any length, unless every child under 13 years of age on board is wearing a Coast Guard approved life jacket. It is recommended that all children and non-swimmers while underway, on docks or boats moored to docks, wear a Coast Guard-approved life jacket. Powerboats may not be operated within 50 feet of a swimming area. All lake activity is suspended when CDF helicopters perform firefighting procedures or during other emergencies that require use of lake water.

Safety, Violations

Reckless operation and disregard for others may result in citation and forfeiture of lake boating privileges.

Any boat that produces excessive wakes may be cited. Two citations result in eviction from the lake for the remainder of the calendar year. In case of an accident, give any necessary assistance, then immediately contact the Boat Patrol (based at the Marina). The Boat Patrol will be in effect daily. Citations may be given for PML rule infractions. Two citations will constitute action for removing all boats registered to the member from Pine Mountain Lake for the remainder of the season. Any boating or swimming rule may be changed in an emergency based on input from PML management, Safety Dept., Sheriff's Dept. or other appropriate agency.

Wakes, Speed, Buoys

All boats are limited to 5 mph except during water skiing hours, where the speed limit is 40 mph in the ski area. All boats, except those signed up for skiing, must stay out of the ski area while skiing is in progress. The ski area is marked with ORANGE-STRIPED buoys. Skiing or blow-out boating activity is permitted during designated water ski hours from May 1 thru October 31 only. No wake areas are marked with white buoys that say "NO Wake". Boats may have to go slower than 5 mph in order not to create any wake.

All boats being used on PML waters must be operated in a manner to minimize the size of the wake produced by the boat. With the exception of pontoon boats and those boats traveling less than 5 mph, all powerboat operators shall operate at planning speeds as soon as practical when in the ski pattern. Every effort shall be made to minimize wakes, especially those affecting shoreline properties. When the slalom course is in use, all boaters (including those with pontoon boats) should operate their boats so as not to create ANY wakes. Wakes ruin the slalom skiing experience and can be dangerous for skiers in the course.

FISHING RULES

A California State Fishing License is required and is to be displayed at all times while fishing. Fishing rules are governed by California Fish & Wildlife laws. NO LIVE BAIT is permitted other than worms.

Fishing off water taxi docks during water taxi operating hour is prohibited. Trespassing on private property is not allowed. No fishing within 25 feet of designated swim areas. **SAILING RULES**
Sailing Hours: ANYTIME

DUNN COURT SAILBOAT OWNERS: **must** relocate their sailboat prior to 9:00 A.M. the day of the annual fireworks display. This date may vary from year to year.

The high-speed boating lane is outlined with ORANGE-STRIPED buoys. Stay out of this area while high-speed boating is in progress. Be aware of high-speed boating hours for your own protection. Sailing of rental boats in Big Creek is not allowed.

PARKING, BEACH, SWIMMING, DOGS Etc.

Swimming is at your own risk. There is NO LIFEGUARD ON DUTY.

Follow all posted beach and marina rules and regulations. **Note:** the beaches and lawns are designated non-smoking areas.

The swimming areas are designated for swimming only. No paddles are allowed in the swimming areas, for example, no stand-up paddle boards, kayaks, motorized floats etc.

Do not swim more than 30 feet from your own private dock. **DO NOT** swim across or in the open lake area.

FOR THE ENTIRE PML MARINA, DUNN COURT AND LAKE LODGE AMENITIES:

- Children under the age of 14 years must be accompanied by an adult.
- No pets, dogs, cats, etc. are allowed at the beach. Dogs are prohibited from the entire PML Marina, Dunn Court, and Lake Lodge amenities except authorized PML utility dogs in the performance of their duties and ADA service animals assisting their owners. These dogs must be leashed and under control at all times and may not wander.
- Dogs should not be left in cars parked in these areas.
- No littering, glass containers, illegal drug use, loud music, profane language, obscene behavior, or nudity on the beaches at any time.

- Use of bats and balls, Frisbees and other uncontrollable or hard to control objects, and other dangerous or potentially dangerous activities shall be prohibited in the Pine Mountain Lake Association beach areas. (The use of beach balls, volley balls, and the playing of catch in a controlled and responsible manner shall be excepted from this restriction.)
- Bicycles and skateboards must be walked through all amenity-parking areas. No riding is permitted.
- No recreational activities such as fishing or watercraft is permitted in the swimming area.
- Residential use of beach trash receptacles is strictly prohibited.
- Clean up after yourself and your guests; pick up all of your belongings, towels, chairs, toys, etc.

ONLY property owners with a current PML Property Owner Parking Sticker, and PMLA employees that are on duty will be allowed to park at the Marina parking area on weekends and holidays from May 1 to September 10. This restriction will also be extended to the Friday before holiday weekends (Memorial Day, the Independence Day Observed weekend, and Labor Day weekend) Property owners may be required to provide a valid PML Property Owner Card for identification purposes.

WATER AND SLALOM SKIING & Blow Outs

Skiing will be on a one-hour session, reservation basis. Reservations can be made no more than 24 hours in advance are on a first come first served basis. You may walk-in or call the store to make a reservation at 209-962-8631.

Water Ski boating hours are generally as follows:

<u>DAY</u>	<u>MORNING HOURS</u>	<u>EVENING HOURS</u>
Monday	9:00-12:00 noon	5:00-8:00 PM
Tuesday	9:00-12:00 noon	5:00-8:00 PM
Wednesday	9:00-12:00 noon	5:00-8:00 PM SLOW Boating
Thursday	9:00-12:00 noon	5:00-8:00 PM
Friday	9:00-12:00 noon	5:00-8:00 PM
Saturday	9:00-12:00 noon	5:00-8:00 PM
Sunday	9:00-12:00 noon	5:00-8:00 PM

State law prohibits the towing of water skiers from sunset to sunrise.

Water skiing is prohibited November 1 through April 30. The speed limit for all boats during this time is 5 mph.

All users of the water ski lane must check-in with the Boat Patrol prior to commencing their activity. The Boat Patrol will wait 10 minutes for a user with a reservation. After that, the time slot will be opened to the next water ski boater requesting time. If there are no reservations or ad hoc boaters in line, the water ski lane will be closed to fast boat activities but can be reopened upon request during normal water ski boating hours.

An orange flag raised on the jetty flag pole indicates that water skiing is occurring. Boaters may call the Marina Store for flag status. No skiing or blowouts are permitted until the Boat Patrol advises the boater that the orange flag has been raised.

A maximum of four (4) boats will be allowed to ski at any one time. A distance of 400 feet shall be maintained between boats.

Individuals wishing to **blow out** their motors may do so during water skiing hours and must first check-in with the Boat Patrol. Blowouts will be limited to two (2) times around the ski pattern and must adhere to all water ski boating rules. A maximum of four boats are allowed in the water ski lane with skiers given priority over boats wishing to blow out their motor. No engine blowouts will be allowed between 6:00 PM and 8:00 PM.

A counter-clockwise ski pattern shall be maintained.Ski course is marked with ORANGE-STRIPED buoys. Stay inside of the ORANGE-STRIPED buoys. These buoys are NOT a SLALOM COURSE.Ski boats returning to a fallen skier must make a starboard (right) turn to return to the skier while raising the red or orange warning flag. The boat operator shall make the 'turn-around' at a slow speed to minimize the wake. The driver of any boat approaching a boat displaying a red or orange flag MUST acknowledge the downed skier's presence by raising their hand for the skier's towboat to see and then take appropriate evasive action to ensure the safety of the downed skier.

Skier must raise one (1) ski when in water with slack towline to warn other boats in the area. Boaters are limited to pulling ONE skier at a time. Water skiing may be limited on certain days such as, but not limited to holidays, fishing derbies and sailing regatta days.

Use of Slalom Ski Course The 9:00 A.M. to 10:00 A.M. slot daily is the only time when slalom skiers may have priority over water skiers. When requesting a 9:00 A.M. ski time, the first boater requesting time for that hour shall state ski or slalom. Subsequent boaters are then restricted to that which the first boater has selected.

Slalom boaters shall check in with the boat patrol, then begin their runs at the Lake Lodge end of the ski course. A skier may run the slalom course round trip twice, then the next boat may pull a skier in this fashion. ALTERNATIVELY, the skier may ski adjacent to the course. If this is the case, the return trip SHALL be in the same path; in this fashion, the skier has flat water on the return trip, as well as subsequent passes. IMPORTANTLY, subsequent skiers likewise have flat water.

All competition ski boats will be eligible to run the slalom course. Other skiers wishing to run the course may only do so if their boats have a maximum width of 92" at the waterline. Wider boats WILL damage the course, so they SHALL run immediately adjacent to the course.

After a skier falls twice, the boat should exit the pattern at a no-wake speed and return to the Lake Lodge area. The next boat in the rotation now gets a turn.

KNOW OUR RULES AND ABIDE BY THEM FOR YOUR ENJOYMENT AND SAFETY.

Additional Lake Related Resolutions can be found as follows:

Dunn Court Beach Sailboat Berths	Resolution 02.02
PML Open Water Swim Area	Resolution 00.06
Fourth of July Fireworks	Resolution 95.03
Private Docks on PML	Resolution 92.06
Small Watercraft Rack Usage	Resolution 19.01
Access Fees/Restricted Parking	Resolution 00.07

Respectfully submitted,

Tom Moffitt, Secretary

DD 9/20/21

SAVE AS MUCH AS 30%
OVER THE CHAIN OPTICS STORES AND EVEN MORE OVER DOCTORS OFFICES

Large Selection of Unique & Traditional Designs
Can Bill Most Insurance Plans • Over 20 Years Experience
Designer Sunglasses • FREE Adjustments & Repairs



Stacy Hancock
Certified / Licensed Optician
18729 HWY 120, Unit A, Groveland • 209.962.1972

All PMLA Homeowners Email Opt-in Program

The Association is pleased to offer a money saving program available to all PMLA property owners. This program allows you to receive many of the documents we are required to provide to you via email. This option is important because:

COST SAVINGS – The Association is spared the expense of printing and mailing many documents to those property owners who sign up.

ENVIRONMENTAL SAVINGS – Less paper means less trash and reduced damage to the environment both in the disposal and production of paper and envelopes.

REDUCED CLUTTER – By receiving documents

via email there is less paper for you to deal with. All documents can be saved on your computer and viewed at your discretion.

TIMELY RECEIPT – Documents sent electronically are received in minutes as opposed to the days it takes for regular mail to arrive.

If these sound like good reasons to you, please sign up for the Document Email Program today using the attached form. Simply return the completed form to the Administration office at your convenience.

If you have any questions on this program please feel free to give us a call (962-8600) and we will be happy to explain the details and the advantages.

Please read the Terms & Conditions for the email opt-in program on the website, www.pinemountainlake.com under the Resources/Forms > Opt-In Email Program.

Mail form below to:
Pine Mountain Lake Association
19228 Pine Mountain Drive • Groveland, CA 95321



YES, I WANT TO ENROLL IN PMLA'S EMAIL STATEMENT AND DOCUMENT SERVICE. I ACKNOWLEDGE AND AGREE TO THE TERMS AND CONDITIONS SET FORTH ABOVE AS A CONDITION FOR PARTICIPATION IN THIS SERVICE.

PMLA Account Number: _____ Unit/Lot #: _____

Name: _____ Phone #: _____

Address: _____

Email Address: _____

Signature: _____



MOORE BROS. SCAVENGER CO., INC.
 P. O. Box 278 • Big Oak Flat, CA 95305 • (209) 962-7224 • FAX (209) 962-7257



VACATION RENTAL OPTIONS FOR TRASH SERVICE

In order to assist property owner/managers of short-term rentals with trash removal, Moore Bros. Scavenger Co. offers the following services.

Short-term rental customers may participate in year-round or three-month summer curbside service. To manage anticipated levels of guest trash, property owners/managers of short-term rentals should maintain the suggested service levels as determined by the *Maximum Occupancy for Rental Property* (please see the chart below). In the event that renters generate more than the expected amount of trash or the home is rented multiple times during a given week the following options are provided:

- **As Needed Extra Pickup.** Property owners/managers may request a notation on their rental service accounts to *pick up extra as needed*. This will ensure that all trash left alongside the cans will be picked up by Moore Bros. and a special pickup will not be required. There is an additional per-can/bag charge for each extra can/bag picked up.
- **Special Pickup.** Moore Bros. has a truck and driver available for special pickups Monday through Friday.
- Property owner/managers must place a request for service call or email to Moore Bros. before 3 pm on the business day prior to the requested pickup day. A request for a Monday pickup must be made by 3 pm on the previous Friday. **Prepaid Bags.** Prepaid Moore Bros. bags may be purchased by property owner/manager to be used by any handyman or housekeeper servicing the residence between rental customers. The prepaid bags can be disposed of at the Pine Mountain Lake Maintenance Yard on Par Court off of Mueller Dr.

Property owners/managers utilizing full summer service may go to on-call service for the off season.

- **Off Season on Call Service.** Property owner/manager may call or email an on-call request to Moore Bros. for a service pickup on the regular pickup day for the address. A request for service call or email must be received before 3 pm the business day prior to regular scheduled pickup day. Charges will be based on the standard a per-can rate for each can/bag picked up.
- **Special Pickup.** Please follow the same procedure as listed above for Special Pickup.

Maximum Occupancy for Rental Property

Maximum Occupancy	Suggested Service Level
6 - 8 people	2 can
8 - 10 people	3 can
10 - 12 people	4 can
Lake front Property 12 people	4 or more cans as typically needed

If you have questions please feel free to contact our office at (209) 962-7224 or email us at: info@moorebrosscavenger.com and Shirley@moorebrosscavenger.com (Please cc both to insure prompt replies).

A drop-off Recycling center is available for use Mon – Sat. 8 am – 5 pm @ 11300 Wards Ferry Rd. Big Oak Flat, Ca

PAINT DISCOUNT PROGRAM

Kelly-Moore Paint Company has been serving Pine Mountain Lake for 40 years. They want to remind PML property owners of the discount program that has been established for them. This program offers a generous discount on Kelly-Moore paint and accessories such as rollers, brushes, tape, caulk, etc. Delivery is available on orders of 10 gallons or more. This special discount opportunity is available with proof of Pine Mountain Lake membership (Member ID Card) on a cash or credit/debit card basis only (no checks please).

Although this program was initiated through the Sonora store, it will be honored at any Kelly-Moore Paint Company store. If you are interested in this discount program, call your local Kelly-Moore Paint store for details.



PAUL S. BUNT, ESQ.
 ATTORNEY AT LAW

ESTATE PLANNING
 PROBATE
 REAL ESTATE
 BANKRUPTCY
 ELDER CARE
 209.962.6778

Mountain Leisare Center, Groveland
 appointments available in Sonora and Lake Don Pedro

Deardorff Realty

**IT'S HERE!! COMPLETELY REFURBISHED!
 TURN KEY! PRICE REDUCED!!**

2 bedroom, 2 bath, fireplace, 2 large decks for entertaining, 2 car garage! New floors, new stove, new paint.



This real charmer sits on 1/4 acre parcel with lots of room for storage of your "toys", boats, motorhomes, etc.

Buy now! Move in now! – And enjoy your new home in Pine Mt. Lake for this great summer and always!

UNIT2 LOT 315

Priced reduced \$289,000!!!!

Contact Marilyn Deardorff-Scott - BRE 00396888
209-962-0718

PMLA OWNED LOTS FOR SALE

2/047	GAMBLE STREET	\$1,000
2/287	FERRETTI ROAD	\$2,500
2/448	WELLS FARGO DRIVE	\$1,000
3/057	PINE MOUNTAIN DRIVE	\$1,500
5/212	FERRETTI ROAD — PENDING	\$1,000
6/113	FERRETTI ROAD	\$1,000
6/179	COTTONWOOD STREET	\$1,000
6/211	FERRETTI ROAD	\$2,000
6/252	FERRETTI ROAD	\$1,000
7/049	FERRETTI ROAD	\$1,000

FOR FURTHER INFORMATION REGARDING THESE PROPERTIES PLEASE CONTACT PMLA AT (209) 962-8600



LARRY JOBE
REALTOR – TAXIWAY EXPERT
209.768.5508 Cell
larryjobe1@gmail.com
DRE #01444727

PENNY CHRISTENSEN
BROKER ASSOCIATE – CRS
925.200.7149 Cell
penny@askpenny.com
DRE #00785760

PAUL S. BUNT REAL ESTATE – DRE #01221266

.86 ACRE OAK TREED LOT

20996 Hemlock St. 2781sf, 3Bd, 2.5Ba
Unit 12 Lot 250 **\$699,900**

BETTER THAN NEW

12414 Mills St. 2528sf, 3 bdrm., 3 bath
Unit 8 Lot 44 **\$631,900**



4.5 AC UNIT 5B LOT 3

19071 Jones Hill Ct
\$124,900



BRAND NEW – ALMOST DONE

Luxury Home – 4425sf, 3 bdrm,
3 bath, 20145 Pleasantview Dr.
Unit 1 Lot 221 **\$994,999**



COMMERCIAL PROPERTY

Hwy 120 – 1022' Rd. Frontage
73.14 ac RE-5, 14.99 ac C-K
\$450,000

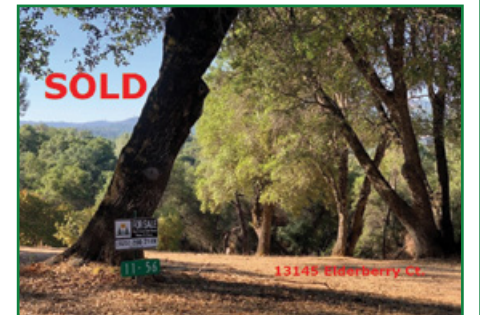


TAXIWAY LOT 12/45

1.03ac 135' Taxiway frontage
Easy build – Oaks **\$249,900**



PENNY AND LARRY'S RECENTLY SOLD AND PENDING





THE MARKET IS HOT AND HOMES ARE SELLING FAST!
Call us to tell you what your home could sell for right now.



**YOSEMITE AREA
REAL ESTATE**

**Make
Chris & Gina
your
1st call!**

CHRIS H. LAKE
DRE 00946632
209-768-6156
chrishlake@gmail.com

GINA GIAMPIETRO HERNANDEZ
DRE 01226555
408-506-6944
GinaGHRRealEstate@gmail.com

18634 MAIN ST. STE 1 GROVELAND
View listings at www.YosemiteAreaProperties.com
PAUL S. BUNT REAL ESTATE BROKER DRE 01221266

BEAUTIFUL LARGE MOUNTAIN RETREAT



NEW LISTING

20769 BIG FOOT CIRCLE UNIT 4 LOT 324 \$559,000 2283 sf + 2 bonus rooms & add'l bath. Lg circular paved driveway w/add'l RV & Boat parking, + lg oversized finished 2 car garage w/work bench & storage cabinets on a double merged lot .63ac. Efficient Tankless Hot Water Heater. Great as a full-time or vacation getaway or rental, single level living, granite cntrs, newer applcs, patio access from nearly all rooms, lg sunken living rm w/30ft vaulted cng, stone hearth fp, & wet bar. Lg dining area + breakfast area & bar, 6 potential sleeping rms & 3 baths, + backyard Trex deck Lg indoor laundry rm.

RUSTIC COZY CABIN



PENDING

20422 PINE MT DR \$329,000 Warm & inviting cabin style features 4 sleeping areas, including mstr bdrm w/full ba & 2 bdrms sharing a full ba, + a 4th bonus sleeping area, great to share w/family & friends. Great potential for vacation rental. One of the best features is a flat spacious paved circular parking area that can fit a boat + lg RV & 10 cars easily if not more! 2 car gar + lg carport & you can drive to kitchen access door for level entry access a huge plus! Lg spacious grt rm has a brick wd burning fp, open area kitchen w/brkfst bar, French doors to front & backyard areas w/rustic wd paneling & ceilings throughout.

DARLING A-FRAME



PENDING

19601 PINE MT U1/L 482 IDEAL CABIN \$400,000 Near Marina in PML. Built 1990 on .54 acre double merged lot, wonderful cabin for getaway or full-time home! Great room w/tall knotty pine open beam ceiling, high picturesque bright window allowing natural landscape tree & sky views, lg brick hearth w/wood burning freestanding fp, lg open dining area, spacious kitchen w/lg pantry, & access to lg front wrap around deck. 3 spacious bedrooms including large master with vaulted ceiling, Plantation shutters throughout, central vac, oversized 2 car garage and RV parking space, and near the main marina and close to all amenities.

CALL ME COZY



PENDING

21349 BEAVER CT U12/L88 \$300,000 A little bit of country a little bit of the mountains! A little cozy gem on 1.09ac in unit 12 of PML HOA which allows livestock & fencing. A slice of paradise in open floorplan octagon shape 2bd/2ba home w/bonus loft near the airport & equestrian stables on cul-de-sac semi private gated st. Circular driveway, plenty of RV parking & outbuilding building or garage building potential. New flooring throughout, freshly painted int., new bath vanity, floor to ceiling massive river rock wd burning fireplace, Open beam vaulted Grt Rm ceiling, mstr bdrm w/4 closets, open kitchen with breakfast bar, separate laundry area with exterior door to covered wrap around cement patio

ADORABLE AFFORDABLE LAKEFRONT HOME



PENDING

20292 LOWER SKYRIDGE \$525,000 Move-in condition lakefront on 1.67ac of natural landscape. 3bdrm/2 1/2ba 1609sf great condition home w/2 car garage built in 2000 is ready for family fun and adventure in beautiful PML. Main level has guest half bath, lg living rm w/propane fp, lg windows w/beautiful views, and back patio deck. Open kitchen w/lg pantry & open dining area. Spacious mstr bdrm w/2 closets, private shower & commode area. Laundry & garage access on the main level. Downstairs 2 guest bedrooms and full bath with tub/shower and additional large lower deck area.

DARLING A-FRAME



PENDING

19972 Dunn Ct. U11L260 - \$430,000 1544 sf 4/2/2 car .24ac A-Frame cabin at Dunn Ct Beach. 4bd cabin style + location, location, location-at the lake beach entrance cul-de-sac, Some TLC is needed on ext., but move in ready on the int. 2bdrms, full bath, grt rm, laundry & access to bonus family rm on main level. Upstairs 2 sizeable bdrms & w/vaulted A-frame open beam ceilings & remodeled full bath. Kitchen is open & updated w/granite cntrs, ss applcs, lg 2 sided porcelain sink, laminate flng, & breakfast bar. Also, open beam ceiling, cozy cabin style stone hearth wd burning stove fp. Convenient hall laundry. Lvl driveway w/RV parking, 2 car large garage and corner lot. All within a 2 minutes walk from toes wet /kayak in -Pine Mountain Lake!

ONE OF A KIND LAKE FRONT LOG CABIN



PENDING

20284 Lower SkyrIDGE \$1,400,000 Custom Rustic Log Cabin in beautiful PML on the lake. Towering 21' tall open bm Eastern White Knotty Pine interior clngs & shiplap paneling, self insulating log construction, lg windows flr to cng, Open balcony loft + 2bd & full ba on upper lvl. Wide open spacious kitch w/conc counters, tile flng, stainless applcs, cherry wd cabinets, slate stone backsplash. Open living rm w/stone hearth flr to cng f.p. Mstr Bdrm on main lvl opens to lg back deck balcony overlooking lake & dock. MBa has walk in stone shwr, jetted soaker tub w/waterfall, custom conc sink. Lower lvl bonus rm & lg storage, hobby or work shop. Each bdrm w/ mini-split heating/AC units plus LVrm & lower level. Too many special features to list here.

PERFECT COZY CABIN BY THE LAKE!!!



PENDING

19729 PINE MT DR U1/L473 - \$425,000 3Bd/3 1/2Ba 2 Car gar. 1 block from Marina. Across street from lake, peekaboo lake views, 3 lvl cabin open wd beam, A-Frame. 2 mstr bdrms. Great rm concept on main mid level, w/1ba w/tub/shower & 1 bdrm, a lg kitchen w/center island & pantry. Open living rm w/cozy wd burning fp & wall to wall windows facing lake & lg deck w/metal railing + a side deck w/sliding door to lower lvl fire pit area. Downstairs is a 1/2ba, laundry & lg family rm w/patio. Upstairs 3rd level - 2 private mstr bdrms Lg cement parking area can accommodate several vehicles and/or boat storage.

LOTS AND LAND FOR SALE

Unit 6 lot 41
Unit 3 Lot 468 - SOLD
Unit 3 Lot 469 - SOLD

A steal of a deal only **\$50 each**

Fiske Hill Rd, Greeley Hill - 2 separate parcels make up this 19.53ac. Located within community of Greeley Hill yet enjoys the seclusion afforded by this acreage. Mature pines and oaks cover this woody retreat. Gentle rolling terrain with an open meadow. Power close to property. Septic and well will be required. Access has been developed. Close to elementary school **\$134,900**



Unit 5c Lot 299 - Golf Course Lot Affordable golf course lot District water and sewer available. Approx 1/3 acre in the gated community of Pine Mountain Lake. Centrally located to all PML amenities **\$30,000**



19728 Old Hwy 120 Groveland 5ac Feels like you are sitting on the top of the world. 360 degree views. District water installed. Power is hooked up at property. Includes a trailwe. Just 25 miles to Yosemite. Year round access above the fog and below the snow. Just waiting for you to make this your dream location. **\$250,000**



Unit 4/Lot 348A Big Foot Circle - 1/2 acre within walking distance of the lake. Gentle terrain and mature oaks create a desirable spot for building your dream house. Property has been evaluated and approved for septic. District water is available. Power is at the lot. The seasonal creek adds another source of beauty and enjoyment. **\$20,000**



13323 MULE CT U12/LOT 183 - Endless possibilities for this 1ac level parcel w/water & sewer available. Corner lot on cul du sac. Close to bass pond & stable. Close to airport for flying enthusiasts. Completely fenced, pole barn on site. Enjoy all PML amenities including lake, golf course & tennis courts. Horses welcome here. Gated community. **\$89,000**



Unit 13/Lot 102 Breckenridge - 1/3ac Level access from paved rd leads to slightly gentle upslope/level lot. Prime location close to main marina. Mostly open, some mature pines. District water avail. & power conveniently close. PML amenities swimming, fishing, boating, golf, hiking & horseback riding, tennis & pickleball are benefits enjoyed by all in this gated community. **\$12,500**



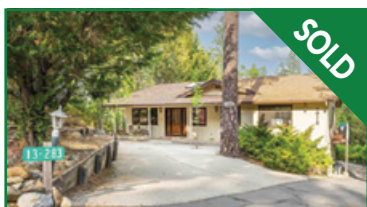
PANORAMIC VIEWS



PENDING

20769 Nonpareil Unit 4/160 \$575,000 Tree lined street. Lg .55ac. 2136sf move in condition mountain home w/cabin flair! Vaulted knotty pine open bm clngs, great rm + open bonus rm, wrap around deck balcony w/tree & mountain valley views. Free standing wd burning fp on rock hearth, 3 skylights, lg dining area and breakfast bar, large pantry storage & extra storage in laundry area off kitchen, one bedroom & full bath on main level, upper level has two bedrooms & full bath, and lower 3rd level can be 4th sleeping area with full bath, a large walk-in closet and plenty of room for beds or game room. Plus lower level sliding door to lower covered deck patio. Durable tile floor. Large oversized 2 car detached garage and plenty of level parking.

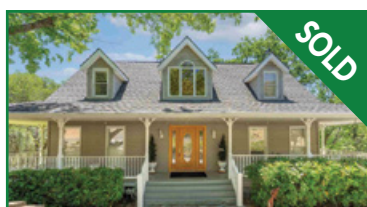
MOUNTAIN VIEWS



SOLD

20116 RIDGECREST U13/L283 \$410,000

LUXURY ESTATE



SOLD

20731 FORESTWOOD UNIT 4 LOT 402 \$635,000

LUXURY LAKEFRONT LIVING



SOLD

20166 PINE MOUNTAIN DR U4/L125

SINGLE LEVEL LIVING HOME



SOLD

20724 CREST PINE EASEMENT U3/L475 \$349,000



PINE MOUNTAIN LAKE REALTY

An Agent Owned Company

18919 Ferretti Road • PO Box 738 • Groveland CA 95321 • 209-962-7156 • www.pmlr.com



Barry Scales
Broker/Owner
209.484.7123
BRE#00451887



Lynn Bonander, GRI
Owner/Realtor®
209.484.7156
BRE#00683485



Val Bruce, GRI
Owner/Broker Assoc.
209.768.7368
BRE#00578336



Parker 'PJ' Johnson
Owner/Realtor®
209.768.6232
BRE#01732298



Marc Fossum
Owner/Realtor®
209.770.4750
BRE#01956242



Elaine North
Realtor®
209.768.4221
BRE#01047723



Patty Beggs
Owner/Realtor®
209.840.2293
BRE#01339347



Michael Beggs
Broker Assoc./Realtor®
209.840.2294
BRE#0133568



Ann Powell
GRI, ABR, RSPS
209-200-1692
BRE#01268655



Eleda Carlson
GRI, SRES, e-Pro
209-814-4123
BRE#00632516



Beautiful Mountain Condominium

2 Bd/2 1/2 Bth, 2 Car Attached Finished Plumbed Garage w/Utility Sink, Approx 1380sf, Central Air, Great Room, Fireplace w/Stone Mantel, Stainless Appliances, Breakfast Bar, 2 Master Suites, Upper Level Private Deck, Separate Shower, Vanity, Washer/Dryer Included, Wash Tub in Garage. Refurbished Decks. All Furnishings Remain, Ready to Move In. Ideal Location!
19235-B Salvador Ct
\$359,000 MLS#20211657



Cute Mountain Cabin!

2 Bd/1 Bth, 1 Level, 0.39 Acre. Great Room w/Fireplace w/Brick Surround, Kitchen w/Breakfast Bar, Solid Surface Countertops, Ceiling Fan, Double Pane Windows, Bath-Tub/Shower. Inside Laundry with Dryer & Washer Hookups, Seller has County Approved Plans to Add-on to the Cabin and partial Deck has been removed for the Addition.
2-74 12906 Mueller Dr
\$230,000 MLS#20211579



Beautiful Custom Built

8-231
19714 Butler Way
\$605,000

3 Bed/3 Bath, 3 Car Oversized Finished Garage w/ Shop. Approx 2882sf, Formal Living Rm w/Heat Stove, Kitchen w/Gourmet Style Range, Island, Brfst Bar, Pantry, Granite Countertops, Formal Dining Room. Cathedral Ceiling, Central Vacuum, Skylights, Ceiling Fans, Window Coverings, Crown Molding, Master Bedrm w/Walk-in Closet, Bath w/ Vanity, Separate Shower & Closeted Toilet. Den/Office, Bonus Room, Storage. Inside Laundry, Washer/Dryer Included. Covered Porch, Deck & Balcony.



Stunning!!

8-118A
19663 Butler Way
\$879,750
MLS#20211708

3Bd/3 1/2 Bth, 3 Car Detached Garage w/Cabinets, 1/2 Bath, Utility Sink, RV Parking & More. Approx. 3519sf, on 0.90 Acre. Great Rm, Security System, Skylights, Cathedral Ceiling, Ceiling Fans, Kitchen w/Stainless Appliances, Gourmet Style Range, Brfst Bar, Pantry, Living Rm w/Fireplace, Family/Bonus Rm-Lower Level w/Fireplace, Master w/Walk-in Closet, Bath w/Jetted Tub, Separate Shower, Vanity, Den/Office, Library, Lots of Storage, 2 HVAC Systems & 2 Tankless Water Heaters, Inside Laundry Rm w/Shelves & Cubby-Holes, Wrap Around Front Porch, Large Deck. And So Much More!



Lovely Home ~ Beautiful Views

3 Bed/3 Bath, Lower Level Family Rm or 4th Bdrm w/2nd Fireplace, Stone Surround. Approx 1971sf. Open Beam Cathedral Ceiling, Ceiling Fan, Skylights, Marble Countertops, Great Rm w/Fireplace Stone Surround, Open Dining, Brfst bar, Stainless Appliances, Master Bedrm, Bath, Tub/Shower & Vanity, Inside Laundry, Washer/Dryer Included. Upper & Lower Decks, Carport, Level Blacktop Driveway, RV Parking.
13016 Mokelumnes Cir 2-202
\$430,000 MLS#20211539



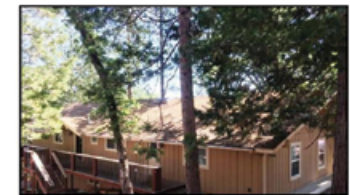
Ideal Location!

3 Bed/3 Bath, 2 Levels, Bonus Room, Approx 2162sf. Open Beam Cathedral Ceiling, Central Air, Central Propane Heat, Central Vacuum, Great Room w/Fireplace w/ Lovely Brick Alcove, Open Dining, Breakfast Bar, Master Bed/Bath on Entry Level, Lower Level Family/Bonus Room w/ 2nd Fireplace w/Brick Surround, Inside Laundry, Deck, Gazebo and Unique Rock Pathway.
19443 Pine Mountain Dr 1-30
\$459,000 MLS#20211733



Beautifully Maintained

3 Bed/3 Bath, Approx 2070sf., 2 Car Finished Attached Garage w/Shelves, Bonus/Family Rm, Wet Bar, Great Rm w/Propane Heat Stove w/ Stone Surround, Cathedral Ceiling, Granite Countertops, Central Propane Air/Heat, Instant Tankless Water Heater. Very Nice Kitchen, Brfst Bar, Open Dining, 2 Master Suites on Entry Level, Soaking Tub, Separate Shower, Vanity. Inside Laundry w/Washtub, Washer/Dryer Included. Upper Deck, Blacktop Driveway.
19562 Butler Way, 1-11
\$435,000 MLS# 20211794



Lake Front - Many Amenities

Completely Remodeled 4 Bed/4 Bath, 2 Levels, Approx 3290sf on 0.34 Acre. Central Air, Propane Heat, Skylights, Crown Moldings, Great Rm w/Fireplace with Rock Surround, Kitchen, Granite Counter Tops, Open Dining, 2 Master Suites, Spacious Bonus Rm Lower Level w/ Large Wet Bar, the 4th Full Bath and 5th Bedroom or Large Storage Area, Inside Laundry Room Washer & Dryer Included, Deck, Blacktop Driveway, RV Parking and More!
19596 Pine Mountain Dr 1-427
\$849,990 MLS# 20211393



Custom Airport Taxiway

21101 Jimmersall
12-51
\$871,000
MLS# 20211800

3 Bed/3 1/2 Bath, 4 Car Garage, Hanger w/40' Door Opening, Mother-in Law Qtrs. Copula @ top of House w/360 Degree Views of Mountains, Yosemite and Air Traffic, Wet Bar; Central Air, Cathedral Ceiling, Crown Molding, Skylights, Ceiling Fans, Intercom, Security System, Solar System. Great Rm, Fireplace w/Rock Surround, Kitchen, Brfst Bar, Island, Pantry, Garden Window, Wine Storage, Formal Dining, Master w/Walk-in Closet, Jetted Tub, Separate Shower, Vanity, Closeted Toilet, Inside Laundry w/Washtub, Deck, Sprinklers/Drip System, Workshop, RV Parking and MORE!



Close to Many of the Amenities!

19955 Pleasant View
1-233
\$498,900
MLS# 20210695

Beautiful 3Bed/3 Bath, 2043sf Home, 2 Car Attached Finished Garage with Cabinets & Shelves, Great Rm, Living Rm w/Efficient Wood Burning Stove, Crown Molding, Ceiling Fans, Central Air, Open Dining, Large Kitchen w/Brfst Bar, Pantry & Plenty of Counter Space. Master Bed Upper Level, Master Bath w/Soaking Tub, Vanity, Inside Laundry, Washer & Dryer Included. Deck, Dog Run, Blacktop Driveway. Greenbelt Lot.



Lots for Sale

- \$ 2,995 - 2-394 Great Opportunity
- \$ 3,495 - 2-192 Centrally Located
- \$ 15,000 - 4-344 Easy Build-Seasonal Creek
- \$ 20,000 - 13-358 Wooded, Buildable
- \$ 29,000 - 4-31 Nicely treed 0.62 Lot
- \$ 29,000 - 3-373 Beautiful almost Level Lot
- \$ 35,000 - 4-211A Beautiful Double Lot
- \$ 49,900 - 5E-17 Sean Patrick Prime Golf Course Lot Zoned R-3
- \$ 69,000 - 5E-8 Dyer Ct Great Location
- \$237,000 - 30 Acre Parcel Spectacular Views
- \$600,000 - 150+ Ferretti Beautiful 154 Acre Ranch Spectacular Views

1/2 Mile off Highway 120.
5-28 19127 Ferretti Rd. **\$98,000**
MLS# 20210991

Pending!



Pine Mountain Lake Realty

An Agent Owned Company

Lynn Bonander, GRI Owner / REALTOR®

18919 Ferretti Rd., Ste. A, Groveland, CA 95321

Office 209-962-7156 / Cell 209-484-7156

lynn@pmlr.com www.pmlr.com



DRE# 00683485



Half Way to Heaven!

20450 Pine Mountain Dr
3-62

\$450,000

MLS #20211000

3 Bd/2 1/2 Bths, 2 Car Garage w/Half Bath, 2 Levels, Great Room, Living Rm w/Propane Fireplace, Central Electric Air/Propane Heat, Cathedral Ceiling, Ceiling Fans, Skylights, Recessed Lighting thru-out, Security System, Dining Area, Granite Countertops, Brfst Bar, Pantry, Stainless Appliances. Hardwood Flooring in Kitchen, Living Room, Hall, Pantry & Storage Room. Master Bedroom with Private Deck, Master Bath w/Separate Shower, Vanity. Garage Level includes, Laundry Room, Washer, Dryer Included, Wash Tub, and a 4'x10' Storage Room. Large Covered Deck w/Lighted Fan overlooking the Serene Tree Top Views. Immaculate and Beautiful! Most Furniture is Included, List is Available.



"Hummingbird Hill"

19327 Ferretti Road
7-70

\$298,800

MLS# 20211585

3 Bed/2 Bath, Manufactured Home, Large 2 Car Attached Garage, Approx 1320sf on Approx 0.47 Acre. Living Room w/Free Standing Wood Burning Fire Place, Cathedral Ceiling, Ceiling Fan, Roomy Kitchen w/New Appliances and plenty of Cabinets, Open Dining, Master Bedroom, Master Bath with Separate Shower and Large Separate Tub, Inside Laundry, Washer & Dryer Included. Deck, Room for RV Parking, Patio Boat, and Extra Parking. As of 2019: New Roof, Decks & Stairs, Road, Painting Inside and Out, Flooring, Lights, Wi-Fi, Garage Door Opener, Door Handles. Fully Furnished.



Lake Front

0.78 Acre w/161 Feet of Lake Frontage. Beautiful View down the Channel. Architectural Design for a Custom Home can be Available from Seller. Up to an 8'x12' Dock can be added for your Pleasure.

20158 Pine Mountain Dr.
4-128 \$89,900
MLS# 20210766



Great Lot and Location!

This 0.32 Acre Lot is on Sewer and Ready & Easy to Build on JUST AROUND THE CORNER FROM THE LAKE! Plus it's located in Beautiful Pine Mountain Lake, a Gated Mountain Community in the Sierras.

1-242 Pleasantview
1-242 \$65,000
MLS# 20211338



Close to Most Amenities!

0.98 Acre - Zoned R-3! Build a Single Family Home or Several Units. Close to Country Club, Lounge, Pro Shop, Golf Course, Swimming Pool & Pickle Ball. Water, Sewer & Electrical Available. Plenty of Room to Build!

5-23-A Tannahill Drive
\$65,000
MLS# 20210858



Double Lot ~ Pretty Layout!

This 0.78 Acre lot has a "Park-Like" Setting would be a Great Lot to Build Your Dream Home! Inside the Pine Mountain Lake Gated Community.

19081 Jimmie Bell St
7-157 \$28,500
MLS# 20211408



Convenient Location!

Close to Country Club, PML Main Gate, Golf Course and More! Easy Lot to Build On. Graveled Parking Area to the Right Side of the Lot.

19511 Chaffee
1-106 \$28,000
MLS# 20151979



One Block to Lake!

And a Nice Lot to Build on Your Dream Home or Mountain Cabin. Approximately One Block to the Lake and Beach Area. Also close to Fisherman's Cove, Tennis Courts and More! Sewer Hook-up Available.

Cresthaven Dr.
4-435 \$20,000
MLS# 20201898



Beautiful Easy to Build Lot

This is a 0.52 Acre Lot and is Surrounded by Large Parcels on Both Sides and Back!

19297 Ferretti Rd
7-055 \$19,000
MLS# 20181471



Great Buildable Lot

Gentle Down Slope. Double Access, One off Ferretti Road and One from the Easement Road off Cottonwood Street in back of the Property.

Ferretti Road
6-219 \$18,000
MLS# 20201552



Beautiful Lot ~ Pine Tree Setting

Gentle Upslope Lot size 0.38 Property on the right is merged. Close to the Lake/PML Marina, Swimming, Fishing, Septic system required.

Pine Mountain Dr.
13-244 \$15,000
MLS# 20160427



Great lot ~ Great Price!!

Easy Lot to Build your Mountain Home, Sewer Hookup Water, and Electricity Available. Close to Airport, Fisherman Cove, Tennis Courts and Lake Lodge.

Cresthaven Drive
3-446 \$12,500
MLS# 20211305

Sold!

**VETERANS OR SENIORS SAVE 25%
ON SALE OF YOUR HOME**



Michael O. Bowers
Broker Assoc.
Full-time resident in PML
209.770.3683



Emily Hunter
Broker Assoc.
Tech savvy with all
Real Estate platforms
925.785.3795

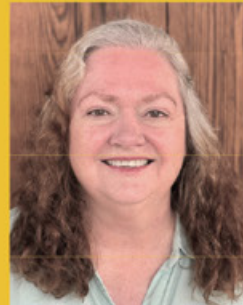
DRE #00901538 Michael@MichaelBowers.com EmHunterRE@gmail.com DRE #01386542

EXPERIENCE COUNTS – Happy Clients, Regular Updates
Father / Daughter Team, 2 Brokers serving with an
Unparalleled Level of Service! Combined 55 years experience.

ACTION 1 PROPERTIES
Residential • Ranches • Lake Homes • Cabins



**Your Mountain Guides to
Groveland Real Estate**



Lauree Borup
Broker
CRS, CRB, GRI
E-Pro, SRES,
GREEN
33 years
experience



Vanessa Meyers
Realtor
DRE #02138062
**TOGETHER
AS A TEAM**

(209) 628-4600
REMAXyosemite@gmail.com

(650) 704-9973
VCrenkel@gmail.com

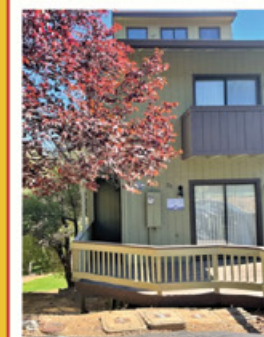
**MURRA'S
TOTAL YARD MAINTENANCE**



BRINGING VALUE FOR YOUR DOLLAR IN PML
• WEEDING • PLANTING
• LOT CLEARING • TREE SKIRTING
• SENIOR DISCOUNTS • HAULING
• LEAF REMOVAL • AND MORE
CALL JASON MURRA
209-352-3750
LIABILITY INSURED



CHALET WE DANCE?
3 bedroom, 2 bath,
1626 sq ft with
soaring pine ceiling
in great room on
.68 acre and green-
belt in back! Large
newer garage; fully
furnished;
never rented.
Call For Price



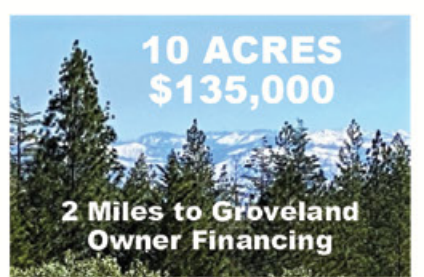
**VIEW OF
SIERRA AND
GOLF COURSE**
From end unit town-
house overlooking
the 1st fairway. 4
bdrm, 3.5 bath, 2227
sq ft, four decks, fully
furnished.



Next to pool, pickleball, Grill & Pro shop.
Call For Price



**Well, Power, & Septic
already in!**
**Plenty of LEVEL area to
build on!**



**10 ACRES
\$135,000**
**2 Miles to Groveland
Owner Financing**



**\$310,000
19610 Butler
Way**



**\$290,000
19150 Dyer
Ct Condo**

Sold

HOURS
MON-TUE: 11AM - 10PM
WED 11AM - 9PM
THU-SUN: 11:00 - 10PM

"WE TAKE LOCAL
COMPETITOR'S COUPONS!"

**FREE
Wi-Fi**

PIZZA PIES

**TRY OUR ALL-YOU-CAN-EAT LUNCH SPECIAL
OR OUR OVEN BAKED SUBS**

Call ahead: 962-4897 (962-GUYS)
18955 Ferretti Road. Left turn off of Main St (Hwy 120) 1/2 Block

\$1.00

**Off Any Size Two Guys
Pizza or Calzone**

One coupon per order, per visit. May not be combined
with any other offer and/or coupon. Not valid on delivery.

PML1021 EXPIRES 11/15/21

\$2.00

**Off Any Large or Extra
Large Two Guys Pizza**

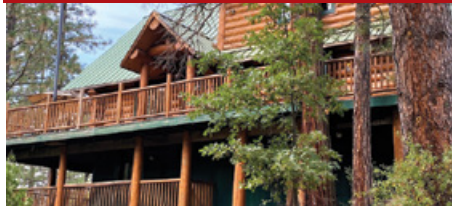
One coupon per order, per visit. May not be combined
with any other offer and/or coupon. Not valid on delivery.

PML1021 EXPIRES 11/15/21

WANT RESULTS — "FOLLOW ELEDA TO HER NEW OFFICE"

Eleda has recently joined the sales force at Pine Mountain Lake Realty as an Owner/ Realtor®. She brings with her over 40 yrs of professional real estate experience (35 yrs in Groveland-PML). Eleda looks forward to hearing from you.

A REAL LOG HOME NEW LISTING



A unique property ideal for use as a vacation getaway or full-time residence. Massive logs were used in the construction and you will feel as though you are relaxing in your own personal mountain lodge. Situated just past the Big Creek Bridge the wintertime sounds of water splashing against the rocks creates a soothing sound. (2400 sq feet built in 2007) 3 bdrms & 3 baths on 3 levels - plus a bonus room. **Unit 13 Lot 279 \$699,900**

VICTORIAN COMMERCIAL BUILDING



High visibility corner lot on Highway 120 in downtown Groveland. Expansive paved parking area (plus additional "town" parking lot behind). Over 1900 sqft with main floor lobby area, parlor, office space & 2 bath main level. 2 bdrm/ 1 ba upstairs + "break room". Update interior to live upstairs and have a shop on the lower level. **18680 Highway 120 \$499,900**

IT'S A "DOUBLE DECKER" MOTIVATED TO SELL



This fine custom-built home is perched on the hillside above the road and is situated midway between PML's Main Gate, PML Golf Course and the Main Marina Beach. Constructed in 1991, it features a total of 3 bdrms and 3 full baths, beautiful vaulted wood & beam ceiling and an efficient wood stove in the living room. The 3rd bdrm and 3rd bath + a bonus room with a brick fireplace are on the lower level. Cntl Vacuum, ctrl ht/ ac, backyard gazebo-Over 2100 sqft living space **Unit 1 Lot 30 \$459,000**

SINGLE LEVEL DREAM HOME



A custom curved top entry door features a "speakeasy" window reminiscent of the 1920's. But there's nothing 1920's about this home! Built in 2005, looks like brand new with new bamboo flooring, new appliances, newer 3 yr old roof, new paint in & out and refinished kitchen cabinets (granite countertops and breakfast bar). Even AstroTurf in the backyard to give it a "cooler" feel. 1968 sqft, 3 bedrooms, 2 full baths-double lot next door offers extra space between neighbors. Cntl ht/ ac + 2 car garage **Unit 3 Lot 481 \$379,900**

LOTS FOR SALE IN YVE



"Over 55" Community. Underground utilities, water, sewer, propane, and electricity-- Modest Hook-up fees **Lots 33, 44, 45, 49, 57, 58, 59, 73** available from **\$2,500 to \$9,000**



18919 Ferretti Road • PO Box 738 • Groveland CA 95321
209-962-7156 • www.pmlr.com

Realtor® GRI, SRES, e-Pro DRE 00632516
209-814-4123 Cell - Call or text
eledac1@gmail.com

Eleda Carlson



NEW LAND LISTING



**18984 Crocker Station Lane
Unit 7 Lot 190A**
Lot & Land | .98 acres | \$39,000
Triple merged lot on approx. 1 Acre.
Ron Connick (209) 206-0007

PENDING



19427 FERRETTI RD
3BD | 2BA | 1,412 sq ft | \$239,000
The price was right for this single story home on a large double flat lot.
Ron Connick (209) 206-0007

SOLD!



19795 PLEASANTVIEW DR.
4BD | 3BA | 1,824 sq ft | \$1,199,000
Designed strategically on a very rare, flat lot in Pine Mountain Lake.
Ron Connick (209) 206-0007

SOLD!



12949 JACKSON MILL DR.
3BD | 2BA | 1,413 sq ft | \$325,000
Designed to Pamper... Fully renovated by owner/contractor.
Ron Connick (209) 206-0007

SOLD!



19662 COTTONWOOD ST.
2BD | 1BA | 936 sq ft | \$249,900
An opportunity to own your own home at an amazing price.
Kim VanPetten (209) 499-8525

SOLD!



13044 JACKSON MILL DR.
3BA | 2BA | 1,971 sq ft | \$429,000
3-story home with lots of privacy but also designed for easy socializing.
Ron Connick (209) 206-0007

SOLD!



12000 MCGRAW COURT
3BD | 2.5BA | 1,939 sq ft | \$499,000
Very Secluded Area of Pine Mountain Lake on a quiet cul-de-sac.
Ron Connick (209) 206-0007

LOTS & LAND

UNIT 3 LOT 154 BOITANO
Lot & Land | 0.29 acres | \$49,000
Linda Willhite (209) 985-2363

UNIT 15 LOT 50 UPPER SKYRIDGE
Lot & Land | 0.87 acres | \$29,000
Linda Willhite (209) 985-2363

9810 SMITH STATION ROAD
Lot & Land | 1.9 acres | \$95,000
Lisa Vandermeer (209) 840-0379



NEW NEIGHBOR SPOTLIGHT

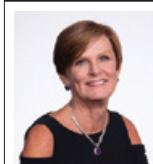


Welcome Tig & Carmen!
Ron helped them find their **FOREVER** home. He can do the same for you!
Call Ron at 209.206.0007

18727 Main Street,
PO Box 792,
Groveland, CA 95321
(209) 962-7765

For an Instant Home Value Estimate Visit:

BHSDP.COM/PML



Gretchen Pearson
President/CEO
DRE #00964735
925.640.0590



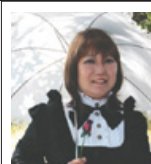
Linda Willhite
Broker Associate
DRE #00964735
209.985.2363



Ron Connick
REALTOR®
DRE #00575067
209.206.0007



Kathleen Love
REALTOR®
DRE #00964735
209.743.5432



Carmen Taira
Office Administration
209.962.7765



**BERKSHIRE
HATHAWAY**
HomeServices
Drysdale Properties

Mountain Lions, and Snakes, and Bears, Oh My!

LIVING SAFELY WITH GROVELAND'S WILDLIFE

DAVID WILKINSON – REPRINTED FROM A PREVIOUS EDITION OF THE PML NEWS. SOME INFORMATION HAS BEEN UPDATED

Anyone living in rural parts of the American West knows that wildlife is a constant presence and neighbor. As such, it is our responsibility to understand and learn to live with wildlife. After all, this is their home and we moved into it.

ABOUT THE BLACK BEAR

The American Black Bear, *Ursus americanus*, is an omnivore, is the smallest of the three species of bear found in North America, and ranges in size from 50 to 80 inches in length and 2.5 to 3.5 feet tall at the shoulder. Male black bears of breeding age usually weigh between 125 and 500 pounds, depending upon age, season, and food supply, very well fed bears can be heavier. Females usually weigh between 90 and 300 pounds and are smaller than the males in stature. The bear's coat is shaggy and can be black, chocolate-brown, cinnamon-brown, or blonde. The Black Bear lives up to 30 years in the wild, though most live only 10 years due to interaction with humans. **(90% of all bear deaths past the age of 18 months are attributed to humans.)** The bear has an excellent sense of smell, potentially 100 times that of humans, and can locate garbage and carrion from great distances. They are excellent tree climbers due to their short, sharp claws and powerful, muscular legs.

MORE BEARS, MORE PEOPLE, MORE ENCOUNTERS – SIMPLE MATH

According to Harry Morse, Public Information Officer for the California Department of Fish and Wildlife, what we are experiencing when it comes to bear activity, “people all over California are experiencing.” The Department of Fish and Wildlife estimates that the Black Bear population in California has risen from around 10,000 bears in the 1980's to around 40,000 bears at the present time.

The thing that makes encounters with the Black Bear a little more interesting is the fact that they are much different than other bear species. Black Bears seldom attack humans unless they are cornered, feel threatened, or are wounded and they are also much less likely to attack a human than Grizzly Bears and usually run away at the sight of humans. However, with the Black Bear, unlike the Grizzly, “playing dead” when attacked is ineffective. As Harry Morse put it, “play dead with a Black Bear and you will be dead.” The reason for this is that most black bear attacks are “predatory” in nature unlike Grizzly attacks that are most often defensive. If you see a Black Bear stand tall, back away, and speak naturally. This will identify you



The American Black Bear. Photo courtesy of Ca. Dept. of Fish & Wildlife

as a human right away and give the bear the chance to retreat. If a Black Bear approaches you, make yourself appear as large as possible, raise your arms, and yell loudly and back away. If attacked fight back with everything you've got. The best way to be safe from the bear is to make the bear want to get away from you. A good thing to note is that attacks on humans are very rare and, while 15 people have been killed by Black Bears in North America since 2000, no fatalities in California have been attributed to the bears in that time.

More common are attacks on pets and small livestock, these numbers are still very low and losses of livestock due to Black Bear attacks are considered negligible. Black Bears, as well as mountain lions and coyotes, like pet food, they see it as a treat, or dessert. If you have pet feeders, or large amounts of pet food, in the areas that your pets are in this naturally leads to confrontations between the pets and the wildlife. The sad part is that the pets never come out on top. While some bears may run from a barking dog, it is generally because the bear has associated the barking with a human presence, not from fear of the dog. Black Bears do not fear or run from dogs and, while they do not prey on them, they will attack and kill dogs that attempt to defend their territory against the intruder.

WHAT BRINGS THE BEARS INTO POPULATED AREAS?

Other than the obvious, that we are moving into the bear's habitat at increasingly high rates, the problem is man-made. “Problems begin when bears learn to associate an easy food supply with humans and developed areas,” said Doug Updike, CDFW statewide bear program coordinator. “Once this happens, bears become habituated or conditioned to go after human food because it's easy. If people don't change their ways, the bear won't either.” “One of the biggest challenges we face is teaching people to keep their garbage away from bears,” said Carl Lackey,



A bear tearing apart a, supposedly, bear "resistant" trash can looking for goodies in PML.

Nevada Department Of Wildlife's bear program coordinator. “The more people who understand that it is our responsibility to keep the bears wild, the better off bears and humans will be.”

Food is often a problem in the majority of public safety incidents involving bears. Access to human food from garbage, overflowing a campground or residential dumpster, to candy bars and sandwiches hidden in a tent or left on a residential deck, are highly attractive to bears. Many people do not realize feeding wildlife provides false food sources, habituates animals to humans and can change animal behavior from foraging for food to trying to take it away from humans.

WHAT YOU CAN DO TO LIMIT THE DANGER?

First and foremost, remove the temptation. The bears seek out high protein, high fat foods to supplement their diets, and people's garbage tends to fit that bill nicely. Once they find a source of it they will continue to come back again and again for it. It is illegal to feed bears, mountain lions, coyotes, and deer in California. This includes leaving food or garbage out expecting that the animals will eat it. Follow the California plans for wildlife outlined in the Keep Me Wild program. Information on this program can be found at the fish and wildlife website, www.dfg.ca.gov, or from www.keeptomewild.org. The information provided by the Dept. of fish and wildlife, at right, can help you to live in harmony with the wildlife in our area. Most of the precautions are universal and help us live better with all of the wildlife species found in this area.

If all of the measures to keep the bear away fail and the bear seems to have lost fear of people, or shows aggression towards people, immediately call the Department of Fish and Wildlife at 559-243-4005. Or contact the DFW 24-hour dispatch center at (916) 445-0045. If an actual bear attack occurs call 911 immediately.

CAN FISH & WILDLIFE JUST MOVE THE BEARS?

While some bears that are considered “non-habituated” or bears who wanders into a populated area and do not leave, may be candidates for relocation, but many bears do not meet this standard. Bears that have become habituated to humans and may be a nuisance problem (no property damage involved) by tipping over garbage cans, invading compost piles, walking across porches, etc., or that have been previously captured and removed, but return to areas of human habitation are subject to reasonable corrective measures. These include, but are not limited to, area clean-up, removal of trash or other food attractants, bear-proofing food storage areas, electric fencing, temporary closure of campsites, etc. Habituated bears are not candidates for moving and shall either be humanely euthanized or placed with a permitted animal care facility upon failure of the corrective measures.

Bears that cause severe damage or chase, harass, or attack humans, *Depradation Bears*, are euthanized if corrective measures to make the bear flee and remain away from the area are unsuccessful.

Removing the attraction for bears that come into populated areas is the first corrective measure all residents should take to ensure that local bears do not become habituated or worse. Cleaning up human trash can save a bear's life.

RATTLESNAKES

California has a variety of snakes, most of which are benign. The exception is California's only native venomous snake – the rattlesnake. Though rattlesnakes are dangerous if provoked, they also provide humans with a tremendous service by eating rodents, other reptiles, and insects, and are in turn eaten by other predators. In California where rattlesnakes are found from sea level to the inland prairies and desert areas and to the mountains at elevations of more than 10,000 feet, enjoying the outdoors means learning how to avoid contact with rattlesnakes.

Generally not aggressive, rattlesnakes strike when threatened or deliberately provoked, but given room they will retreat. Most snake bites occur when a rattlesnake is handled or accidentally touched by someone walking or climbing. The majority of snakebites occur on the hands, feet and ankles.

The potential of running into a rattlesnake should not deter anyone from venturing outdoors, but there are several precautions that can be taken to lessen the chance of being bitten when out in snake country – which is just about anywhere in California.

DOS AND DON'TS IN SNAKE COUNTRY

- Never go barefoot or wear sandals when walking through wild areas. Wear hiking boots.
- When hiking, stick to well-used trails and wear over-the-ankle boots and loose-fitting long pants. Avoid tall grass, weeds and heavy underbrush where snakes may hide during the day.
- Do not step or put your hands where you cannot see, and avoid wandering around in the dark. Step ON logs and rocks, never over them, and be especially careful when climbing rocks or gathering firewood.
- Check out stumps or logs before sitting down, and shake out sleeping bags before use.
- Never grab “sticks” or “branches” while swimming in lakes and rivers. Rattlesnakes can swim.
- Be careful when stepping over the doorstep as well. Snakes like to crawl along the edge of buildings where they are protected on one side.
- Never hike alone. Always have someone with you who can assist in an emergency.
- Do not handle a freshly killed snake, it can still inject venom.

WHAT TO DO IN THE EVENT OF A SNAKE BITE

(The California Poison Control Center advises)

- Stay calm
- Wash the bite area gently with soap and water
- Remove watches, rings, etc., which may constrict swelling
- Immobilize the affected area
- Transport safely to the nearest medical facility or call an ambulance

MOUNTAIN LIONS / COUGARS

LIVING IN MOUNTAIN LION COUNTRY

- Don't feed deer; it is illegal in California and it will attract mountain lions.
- Deer-proof your landscaping by avoiding plants that deer like to eat. For tips, request A Gardener's Guide to Preventing Deer Damage from DFG offices.
- Trim brush to reduce hiding places for mountain lions.
- Don't leave small children or pets outside unattended.
- Install motion-sensitive lighting around the house.
- Provide sturdy, covered shelters for sheep, goats, and other vulnerable animals.
- Don't allow pets outside when mountain lions are most active—dawn, dusk, and at night.
- Bring pet food inside to avoid attracting raccoons, opossums and other potential mountain lion prey.

If in doubt about what to do, ask your local Fish and Game warden or wildlife biologist.

TURKEYS

Feeding wild turkeys will bring problems home to roost.

California's wild turkeys now occupy about 18 percent of our state, and are a highly valued upland game bird. Many Californians also enjoy watching them.

Some homeowners can't resist feeding them. That's when trouble begins. A few stray visitors soon become a flock of permanent residents that have lost their natural fear of humans.

Adult wild turkeys, which can weigh upwards of 20 pounds, can destroy flowers and vegetable gardens, leave their droppings on patios and decks, and roost on cars, scratching the paint.

Turkeys can become aggressive during the breeding season, occasionally even charging, threatening, and acting aggressively toward people.

PREVENT PROBLEMS BY:

- Discouraging wild turkeys from becoming too comfortable on your property.
- If turkeys begin feeding under hanging bird feeders, remove the feeders until the turkeys leave the area.
- If turkeys are causing problems in your yard, install motion-detecting sprinklers.
- Wild turkeys typically will not enter yards with dogs.
- If confronted by a wild turkey that has lost its fear of human, an open umbrella may help steer it out of your path.

For more information please go to: www.dfg.ca.gov/keepmewild

STAYING SAFE IN MOUNTAIN LION COUNTRY

Mountain lions are quiet, solitary and elusive, and typically avoid people. Mountain lion attacks on humans are extremely rare. However, conflicts are increasing as California's human population expands into mountain lion habitat.

- Do not hike, bike, or jog alone.
- Avoid hiking or jogging when mountain lions are most active—dawn, dusk, and at night.
- Keep a close watch on small children.
- Do not approach a mountain lion.
- If you encounter a mountain lion, **DO NOT RUN**; instead, back away slowly. If confronted, face the animal, make noise and try to look bigger by waving your arms; throw rocks or other objects. Pick up small children.
- If attacked, fight back.
- If a mountain lion attacks a person, immediately call 911.

Information courtesy CDFW Keep Me Wild program.

AMERICAN BLACK BEARS

BEAR COUNTRY PRECAUTIONS

- Keep a close watch on children, and teach them what to do if they encounter a bear.
- While hiking, make noise to avoid a surprise encounter with a bear.
- Never keep food in your tent.
- Store food and toiletries in bear-proof containers or in an airtight container in the trunk of your vehicle.
- Keep a clean camp by cleaning up & storing food & garbage immediately after meals.
- Use bear-proof garbage cans whenever possible or store your garbage in a secure location with your food.
- Never approach a bear or pick up a bear cub.
- If you encounter a bear, **DO NOT RUN AND DO NOT PLAY DEAD**; instead, back away slowly. If confronted, face the animal, make noise and try to appear as large as possible.
- If attacked, fight back.
- If a bear attacks a person, call 911.

Information courtesy CDFW Keep Me Wild program.

STASH YOUR FOOD AND TRASH

Allowing wild animals access to human food and garbage is reckless and deadly.

Bears and other animals are attracted to anything edible or smelly.

- Store garbage in bear-proof containers, or store garbage in your garage until pick-up
 - Keep food indoors or in airtight and odor-free containers
 - Put away picnic leftovers; clean BBQ grills
 - Keep pet food inside, and bird feeders away
 - Pick up fallen tree fruit as soon as possible, or protect fruit trees with electric fencing
 - Remove cosmetic fragrances and other attractants, including bird feeders and compost piles
 - Install or request bear-proof trash containers
- When wild animals are allowed to feed on human food and garbage, they lose their natural ways – often resulting in death for the animal. Please respect and protect wild animals. Keep them wild.

COYOTES

Coyotes play an important role in the ecosystem, helping to keep rodent populations under control. They are by nature fearful of humans.

If coyotes are given access to human food and garbage, their behavior changes. They lose caution and fear. They may cause property damage. They might threaten human safety. They might be killed.

Relocating a problem coyote is not an option because it only moves the problem to someone else's neighborhood.

Help prevent deadly conflicts for these beautiful wild animals.

COYOTE COUNTRY PRECAUTIONS

- Never feed or attempt to tame coyotes. The result may be serious conflicts with pets, livestock, or to small children.
- Do not leave small children or pets outside unattended.
- Install motion-sensitive lighting around houses.
- Trim ground-level shrubbery to reduce hiding places.
- Be aware that coyotes are more active in the spring, when feeding and protecting their young.
- If followed by a coyote, make loud noises. If this fails, throw rocks in the animal's direction.
- If a coyote attacks a person, immediately contact the nearest Department of Fish and Game or law enforcement office.

Information courtesy CDFW Keep Me Wild program.

STASH YOUR FOOD AND TRASH

Allowing coyotes access to human food and garbage is reckless and deadly.

Coyotes primarily hunt rodents and rabbits for food, but will take advantage of whatever is available, including garbage, pet food, and domestic animals.

- Put garbage in tightly closed containers that cannot be tipped over.
- Remove sources of water, especially in dry climates.
- Bring pets in at night, and do not leave pet food outside.
- Put away bird feeders at night to avoid attracting rodents and other coyote prey.
- Provide secure enclosures for rabbits, poultry, etc.
- Pick up fallen fruit & cover compost piles.
- Ask your neighbors to follow these tips.

Special thanks to:

Harry Morse - Public Information Officer, California Department of Fish and Wildlife. • California Department of Fish and Wildlife's Keep Me Wild program. Defenders of Wildlife - www.defenders.org • Dewey, T. and C. Kronk. 2007. "Ursus americanus" (On-line), Animal Diversity Web. http://animaldiversity.ummz.umich.edu/site/accounts/information/Ursus_americanus.html.

Board Honors Past Members



President Karen Hopkins presents a plaque to former PML Director, Mike Gustafson. Mike served as Vice President in 2018 and 2019 and Board President in 2020.



President Karen Hopkins also presented a plaque to former PML Director Steve Griefer. Steve could not attend as he was working to protect our highways as a California Highway Patrolman. Vice President Nick Stauffacher accepted the plaque on Steve's behalf. Steve served PMLA as Board President in 2018, Board Secretary in 2019 and Vice President in 2020.

Maintenance Matters

RICK LAFFRANCHI – MAINTENANCE AND OPERATIONS MANAGER

"I wish that every day was Saturday and every month was October" — Charmaine J. Forde

October is here, and your PMLA Maintenance Team has already begun its transition from summer work and upkeep, to our fall and winter projects. Your Facilities maintenance crew has been busy performing roadside clearing in units 1,5,7,8 and 2. This work is performed yearly to remove dead or dying vegetation and to provide maximum overhead clearance.

Taking place in TA -9 is final clearing and piling in preparation of burning and final clearing. This work will provide our association with an additional 19 acres of Fire protection on our Eastern border.

Compost is in final preparations for our Contract Grinding that will be performed this month. Sorting and separation are being done to remove dirt and other unwanted contaminants from the slash before grinding takes place. The grinding is required as a result of tightened fire regulations prohibiting us from utilizing our air burner from May/June

- November. Our Current load at compost is estimated at 4k yards.

Our Buildings and grounds crew have been busy with multiple projects and tasks, Our Technicians are busy updating wiring and pulling Cat-5 cable at all gates providing for improved communication as well as improved camera clarity.

The construction side of the staff have been carrying out building upgrades and fire hardening structures throughout the association. Currently, they are at Dunn ct. reworking the large pump station building as well as an exterior upgrade of the restrooms, further expanding the fire survivability of association buildings.

Our grounds team is busy punching and fertilizing lawns and putting sprinkler systems to bed for the winter, making sure things come back better next year.

Just a final note, Please make sure to blow off your roofs and gutters, it is one of the easiest ways to help prevent the transfer of flames to your home.

Thank you all for the wonderful summer, now bring on the rain.

**Make PML your
ONE-STOP-SHOP
for all your gift giving!**

Pick up a gift card for:

**Golf • Golf Shop Apparel & Accessories • The Grill
Hunting & Fishing License Vouchers**

**Gift cards are available at the Administration Office,
The Grill, and at the Pro Shop**

**Sign up for PML's eSNAP program to receive news,
updates, safety bulletins and more
directly in your email inbox**

Sign up at www.PineMountainLake.com

**GUEST & RENTERS HANDBOOK
IS AVAILABLE ONLINE!**

You can now view or print the Guest and Renters Handbook from the PML Website.

Go to our website at:

WWW.PINEMOUNTAINLAKE.COM

and click on Resources, then scroll down to the bottom of the page and click on Guest and Renters Handbook. This handbook has valuable information for Guests and Renters in Pine Mountain Lake.

Give the Gift of Family Memories

Are you tired of binge watching Netflix or streaming content? Why not dust off your old 8mm family movie films or VHS tapes and bring those golden memories back to life. Have a reel family movie night!



- VHS & 8MM FILM TRANSFER TO DVD OR USB
- PRINT & SLIDE SCANNING
- AUDIO CASSETTE TRANSFER
- CD & DVD DUPLICATION
- PHOTO RESTORATION
- PHOTO BOOKS • MEMORIAL SLIDESHOWS
- GRAPHIC DESIGN • VIDEO EDITING



DejaVu Video Services

408-899-4407 • dejavuvideo123@gmail.com

PML Organized Groups & Clubs

Contact the individuals below if you are interested in joining! (All numbers are 209 area code unless noted otherwise)

Aviation Association	
Danielle Coelho	831-601-7328
Computer Users Group	
Frank Perry	962-0728
Exercise	
Barbara Elliott	962-6457
Cindy Simpson	962-7018
Friends of the Lake	
Mike Gustafson	962-6336
Garden Club	
Linda Flores	962-0824
Groveland Rotary Club	
Rudy Manzo	962-5219
Greg Cramblit	962-0607
Ladies Club	
Evelyn Bealby	650-743-4105
Men's Golf Club	
	www.pmlmgc.com
Needle Crafts	
Barbara Klahn	209-916-5420
Pickleball Club	
Lee Carstens	415-215-5564
Pine Needlers Quilt Guild	
Lynn Sigafoose	962-1868
PML Ladies 18 Hole Golf Club	
Marcee Cress	962-0771
PML Niners	
Stacie Brown	962-7397
PML Safe Streets Campaign	
Leslie Dudley	962-4911
PML Shooting Club	
George Voyvodich	962-5163 770-5163
PML Waterski & Wakeboard	
Dean Floyd	408-915-8848
Racquet/Tennis Club	
Alex Nagy	831-588-8469
Residents Club	
Dick Faux	962-4617
ROOFBB	
Susan Dwyer	962-6265
Sierra Professional Artists	
Heinie Hartwig	586-1637
Southern Valley Srs. Golf Group	
Rich Robenseifner	962-0932
Wednesday Bridge Club	
Linelle Marshall	962-7931
Windjammers Sailing Club	
Ken Regalia	415-819-4252

Groveland Quilters – Pine Needlers Quilt Guild

LYNN SIGAFOOSE

Our small Quilt Guild meets once a month on the third Tuesday at 9:30 am, meeting to start at 10 am. We meet under the Groveland Library unless things change with the CDC; we will meet in Mary Laveroni (Wayside) Park in downtown Groveland off the Library parking lot. Guests are always welcome. Remember to bring a chair and since it is October maybe a sweater. Our next meeting will be Tuesday, October 19, 2021.

In September Kris Fichou demonstrated on how to make a Button Boat, a really cute idea for a Christmas gift. The instructions to make a Button Boat can be found on YouTube, just type in buttonboat and YouTube will bring it right up. It is so simple to make.

JUST A REMINDER:

- October 9th from 9 am to 4 pm at the Groveland Evangelical Free Church Quilt Show. Many of our guild members will be showing off their finest quilts and other quilt

projects. Free Admission. Come by and see all the talent these ladies have.

- October 20th from 10 am to 4 pm we will have a Featherweight Sewing Machine maintenance class in the Groveland Library Meeting room. Everyone will leave with a clean machine and any problems will be fixed by the teacher. Bring your machine and a lunch. Cost \$50.00. If interested please contact Anita Millard 962-7514.

PML Men's Golf Club

STEVE BURKE

SUMMER SHAMBLE

On August 18 the smoke cleared and the heat relented; it was a beautiful day for 55 players to tee it up for the Summer Shamble. Each 4-man team selected the team's best drive, then each man played their ball into the hole from that spot. Fun format.

Flight #1:

1st Place – 116 – Stan Bednarski, Dave Frock, Jon Rivera, Dave Villaroman

2nd Place – 119 – Andrew Hughan, Stuart Loux, Ian Macrae, Chuck Obeso-Bradley

3rd Place – 124 – Marc Allyn, Bryan Eshagh, George Ismail, Jim Atkinson

Flight #2:

1st Place – 118 - Gus Allegri, John Lloyd, Rich Martinez, Joe Vautier

2nd Place – 118 – Levi Fontaine, Paul Kuhn, Michael Skonovd, Roy Stotts

3rd Place – 120 – Steve Bittick, Tom Borup, Barry Scales, Bill Wrighton

Closest-to-the-Pin:

#7: Larry Drew – 14'4"

#14: Bob Stock – 6'5"

THE ITALIAN OPEN

The Italian Open was played September 11. We will report the results from this tournament next month.

BUSINESS MEETING TOURNAMENT

This tournament was played September 18. We will report the results from this tournament next month.

OCTOBER SWEEPS

This 4-man scramble, from the Purple-Green tees, my favorite format, will be played October 6. Deadline to sign up is October 1.

PLAYER-OF-THE-YEAR UPDATE

With five tournaments remaining, the race for POY has tightened up. Ten players are in the hunt: Will Hoppner – 159 points; Larry Drew – 150; Ted Toffey – 135; Marc Allyn

– 134; Joe Vautier – 126; Dick Faux – 118; Glen Fiance – 116; Wayne Handley – 116; Don Lacy – 115; Frank Jablonski – 114; Dan O'Connor – 111; Steve Burke – 102.

TOURNAMENT TEE SELECTION

Many of our tournaments allow players to select what tees they will play from. It is important that players sign up for the correct tees. Any player can play from the Gold tees, regardless of their age or index, if they so choose. But only players that qualify may play from the Purple/Green tees. To qualify a player must be 70, or older, or have an index of 18.7, or higher. It is very difficult for the Golf Shop to make tee changes at the last minute. Any player that plays from incorrect tees risks disqualification. Typically, one team member will sign up a 4-man or 2-man team, so it is imperative that that team member sign up their team from the correct tees.

REPAIRING BALL MARKS

A very important responsibility for golfers is to repair ball marks, and to repair them correctly. Insert the divot tool just outside the edge of the ball mark and mend in the outside of the ball mark towards the middle. Do this several times around the ball mark, then tap down with your putter. Do not twist the divot tool, this will break turf roots, and do not lift up the middle of the ball mark, this will create an air pocket, which will not heal properly.

WEBSITE TOURNAMENT SIGN UP

Please continue to use the website, pmlmgc.com, to sign up and pay for tournaments. Using the website for tournament sign up and payment makes it easier for the club and the Golf Shop to manage tournaments. Go to pmlmgc.com to see the tournament schedule.

JOIN THE MEN'S GOLF CLUB

Any male persons who are current property owners, their siblings, sons, nephews, sons-in-law, and PMLA employees are eligible to join

the men's golf club. Go to pmlmgc.com and click on the button, Join the Club, to see the many benefits of club membership, as well as the ability to sign up on line. Applications are also available in the Golf Shop, or you can contact our Handicap/Membership Chair, Ted Toffey. Email Ted at handicap@pmlmgc.com, if you have any questions about club membership, or, if you're a current member, your NCGA handicap index.

ROOFBB Reports!

CLAUDIA D DAY

In October the ROOFBB ladies will hold their annual fall luncheon. Barring cancellation because of the pandemic, it will be held at Tuolumne Trails on October 15 beginning at 11:30 a.m. We will meet outside to remain apart. Masks will be required when not seated at your table. Come join us and bring a guest to make a difference in our own community.

The 49'er Parade & Festival was cancelled but we are still moving along strong with our Wagon fundraiser! Get your tickets from any ROOFBB member or call 962-6265. If you want to purchase tickets virtually with Venmo or PayPal contact Claudia directly at (209) 770-2881.

We will be gearing up for our Toys for Kids for the holiday season. Watch for further announcements and plans here and also on our Facebook page or on NextDoor.

ROOFBB thanks you for your continued contributions and support. To join ROOFBB or to request assistance if in need, contact Susan Dwyer at (209) 962-6265 or email ROOFBB.org@gmail.com.

PML Ladies 18 Hole Golf Club

Congratulations to Elisa Hoppner for shooting a 3 day gross total score of 269 in the Championship Flight to repeat her title as Club Champion. This is a grueling 3 day tournament where your gross score for each day is combined for your total score. There was a tie score of 302 between Jodie Awai and Linda Johnson for First Place in the First Flight and Sara Hancock had a total score of 307 to take First Place in the Second Flight. Congratulations to all the winners and a special thank you to Priscilla Park and Mike Cook for all their hard work organizing this event.

HOME & HOME WITH COPPER VALLEY:

On August 25th our club reciprocated last months' invitation from the Copper Valley Ladies Golf Club to play a tournament here at PML. The tournament was an 18 hole, 2 best ball format with four person teams (two from CVLGC and two from our club). This type of tournament creates a fun environment to build relationships with other golf club's. Thank you to Elisa Hoppner for



Elisa Hoppner

organizing the event for PML. Here are the results:

1st Place: Stacie Brown, Marcee Cress, Darlene DeBaldo & Laurel Grillos
2nd Place: Dolores Baker, Lisa Brown-

Jimenez, Debbie Cardozo & Shelly Hanak

3rd Place: Elisa Hoppner, Mary Ellen Lazarus, Celia Miller & Linda Wall

Here are results of the all other weekly tournament play:

AUGUST 12TH & 19TH - BIRDS & BUTTERFLIES TEAM PLAY

A two-day team play tournament was held on August 12th and August 19th. The first round of the team play resulted in the Butterflies with 9.5 points versus the Birds points of 5.5. The second round resulted in the Butterflies with 10.5 points and 1.5 points for the Birds, with the Butterflies winning 20 points to 7.

The team of Paula Vautier and Lisa Brown-Jimenez had the best two-day score of 5-1/2 points

Closest to the Pin (8/12): Birds: Barbara Connelly; Butterflies: Kitty Edgerton

Closest to the Line (8/12): Birds: Jane Reynolds; Butterflies: Helena McMillan

Closest to the Pin (8/19): Birds: Kathie Wood; Butterflies: Linda Johnson

Closest to the Line (8/19): Birds: Jodie Awai; Butterflies: Lisa Brown-Jimenez
 Thank you Linda Johnson for organizing a fun two-day event.

AUGUST 14TH - JOKERS WILD BEST BALL

1st Place: Elisa Hoppner, Kathy McEvoy, Helena McMillan, Denise Phillips - 136

2nd Place: Jeanne Pacco, Paula Parisi, Priscilla Park, Linda Sue Sarratt - 140

3rd Place: Jodie Awai, Christina Baines, Marcee Cress, Linda Johnson - 141

Closest to the Pin (#14): Denise Phillips
Birdies: Denise Phillips - #14 and Ann Clark - #17

Thank you Elisa Hoppner for organizing these fun Saturday events.

The PMLLGC plays Thursdays and one Saturday a month (weather permitting) and is open to all women residents and owners of property in the Pine Mountain Lake community. We are always looking for new members, so if you're interested in joining our club, please contact Head Golf Pro, Mike Cook at 209-962-8620.

The Groveland Rotary Club

GREG CRAMBLIT

Wow!! The annual (almost annual) Shrimp Fest was a huge success. We raised enough funds to keep all our programs going for another year. We want to thank you for buying tickets, liquid refreshments, and auction items. We want to give a special thanks to our county supervisor, Kathleen Haff, and her husband Bob, for helping us man one of the gates. A big thank you also goes out to Catherine and Larry Santa Maria who helped make the live auction happen. It must also be noted that we could not pull off this fund raiser without the help of friends and relatives of Rotary members. Finally, we would like to thank all those who contributed to our auctions, a list of which follows this article. You are very generous and very much appreciated.

We will be spending the funds raised by everyone who attended and all who contributed, wisely and for good causes. Thank you all!

Two Guys Pizza
 Lucky Buck Restaurant
 Earl & Mary Brohard
 Mechanics Bank

Baumann Family
 Barrett & Ellie Giorgis
 Mountain Sage Nursery
 Hamms Carpet Cleaning
 Miriam Martin
 Suburban Propane
 David Newell
 Kevin & Randy's Meat Market
 Jackie's Jewels
 Karen & Craig Seals
 Sharon's Hair Design
 Trione Vineyards
 Sharon & David Volponi
 Miller Bros.
 Down to Earth
 All Outdoors Calif. Rafting
 Chicken Ranch Rancheria
 John Gray & Eleda Carlson
 Felts Family
 Cocina Michoacana Rest.
 Rush Creek Lodge
 Firefall Coffee Roasting Co.
 Pine Mountain Hardware
 Moore Brothers Scavenger Co.
 Greg Cramblit & Pam Rafton
 Judy Sheridan & Richard Parise
 Joanne Scott-Mary Kay

Vic's Towing
 Sharon & Pete Stevenson
 Yosemite Adventures Supply
 Get Hammered
 Sonora Subaru
 Sierra Motors
 MarVal
 Groveland Pharmacy
 Yankee Hill Winery
 Yosemite Cellars
 Paul's Tire Shop
 Iron Door Saloon
 Rudy Manzo
 JS West Propane
 George Navarro
 Dickey's Barbecue Pit
 Around the Horn
 Barry Scales
 Carole & Ron Smith
 Tom Stivers
 Tractor Supply
 Sonora Lowes
 PMLA
 Front Sight Firearms Training Institute

If we inadvertently left you off this list, please call 962-0607.

Garden Clippings

SHARON HUNT-STEVENSON

POTTED PLANT SALE

Saturday, October 9, 2021

Jail Garden

10:00 am to 3:00 pm

This Autumn Plant Sale will be riot of color! This is chrysanthemums time to shine. The Garden Club Board is working very hard to bring our community the best of Fall. We promised a silent auction, garden décor, A SURPRISE and yummy goodies for sale. Mark your calendar.

It is time to buy Daffodil bulbs before they are gone. There are many other colorful bulbs to be had now also... Tulips, Iris, Allium, Crocus, Grape Hyacinth ...

A word to the wise ... Juniper is HIGHLY inflammable! You might consider removing it if it is too close to your house.

The Garden Club celebrates Halloween Sunday, October 31st, at the Jail Garden by passing out candy to the community kids from 4:30 to 7:00. Bring your bag of candy to Tony and Linda Flores house to be passed out.

October 2 is PML Community Airport Day!

VIRGINIA RICHMOND



Red Star formation

The Pine Mountain Lake Aviation Association invites everyone to Community Airport Day on October 2nd from 12:00 noon – 3:00pm at the Pine Mountain Lake County Airport. This is a great fun and free way to visit your airport and see interesting aircraft and exciting flying exhibitions. Please use the Elderberry Way entrance to the airport. Bring folding chairs and settle in for a fun and exciting afternoon.

Special events include skydiving, radio-controlled model airplanes, cool flyovers and high-speed events, flying demonstrations, and stunning formation flying. Formation teams include the Beech Boys (Bonanzas) and the Red Star precision team flying “warbirds.” The airplane vs. car races are always audience favorites. There’s even a rumor crazy pilot Clyde Cadiddlehopper may stop by.

There will be tests of flying skills among PML pilots including “flour bombing” and precision landing contests. In between



Skydivers over PML

special events, visitors can view current and vintage planes up close, plus a really interesting “Huey” helicopter from the Merced County Sheriff’s Department.

Admission is free. Refreshments will be available for purchase.

Note: Community Airport Day is operating within Covid protocols. We encourage masks, social distancing and vaccinations. If we need to cancel due to last minute health concerns, we’ll place notices on PMLAA.org and social media.

We’re fortunate to have a local airport which provides not only a home for PML pilots, including those who commute by air to their jobs, but also provides a safe and secure location for medical evacuations and a base for fire fighters and firefighting aircraft during emergencies.

Pine Cone Singers (Still) Working Toward a Winter Concert

BOB SWAN

By the time you read this, we hope to have held three rehearsals. We can’t see the future, but we have more than twenty singers committed to give it a try, so we’re aiming for a holiday show. We’re all vaccinated, and we’ll rehearse outside as long as we can, and we really want to do this performance.

Because this choir is a bit smaller than we’ve had in the past, Music Director Dennis Brown is re-evaluating the repertoire for suitable pieces, so I don’t, just yet, have details about what we will sing. I’ll have more next month.

The Groveland Evangelical Free Church has indicated that we may be able to use their sanctuary for performance, as long as we can follow whatever the safety guidelines are at the

time. We remain optimistic that things will improve, and look forward to singing for you.

We will keep you posted on developments in these articles, and also on our Facebook page: www.facebook.com/pineconeperformers.

*** You may recall that we had to cancel our planned June show at Camp Tuolumne Trails because of excessive heat. We did have a sort-of-dress-rehearsal in their Great Hall, and we have video of a few of the pieces. This is available on YouTube on the Pine Cone Performers channel (just go to youtube.com and search Pine Cone Performers). It will give you an idea of what we wanted to do.

Stay safe, and we hope to see you in December.

PML Residents Heading to Antarctica

DAVID WILKINSON – PUBLISHING EDITOR

As we go to press with this edition of the PML News two residents of PML are heading to Antarctica for the Antarctic summer season. Bethany Wilkinson and Abraham Phyle will both be working with the United States Antarctic Program for the season.

Everyone has found it funny that two people from the same small town were among the only 600 Americans heading to McMurdo Station in the Antarctic this year. The really funny part of this is that, until just days before they were to fly to New Zealand, the two did not know the other was going.

That’s right, two residents are both heading down to the ice and they were unaware that the other was going. But wait, it gets even better...The two PML residents live next door to one another and did not know the other was going to be a part of the USAP until they were both in quarantine in San Francisco before flying to the Southern Hemisphere!

Abraham is on his 7th deployment and Bethany is on her 1st deployment. Bethany will be sharing some stories for future PML News of her time on the ice.

Members of the USAP were required to spend 5 days in quarantine in San Francisco

and pass a COVID test before flying to Christchurch, New Zealand where they have to quarantine for two weeks and pass two more COVID tests before flying to McMurdo Station in Antarctica.

McMurdo Station is a United States Antarctic research station on the south tip of Ross Island, which is in the New Zealand-claimed Ross Dependency on the shore of McMurdo Sound in Antarctica. It is operated by the United States through the **United States Antarctic Program**, a branch of the **National Science Foundation**. The station is the largest community in Antarctica, capable of supporting up to 1,258 residents, and serves as one of three year-round United States Antarctic science facilities.

Due to the COVID pandemic the number of residents this year will be about half of the average of normal years.

Bethany made the decision to apply for the program earlier this year. On average, workers wishing to get on with the USAP try for three years before getting accepted as alternates for positions. Bethany was an exception as she was hired right away on her first try.

We all wish Bethany and Abraham safe and happy work down on the ice.

Young Eagles – Canceled

PLEASE NOTE THAT THE YOUNG EAGLES AIRPLANE RIDES FOR KIDS AT PML AIRPORT, ORIGINALLY SCHEDULED FOR OCTOBER 9, HAS BEEN CANCELED DUE TO HEALTH CONCERNS.

WE HOPE TO SEE YOU NEXT YEAR.

MARINE CORPS RESERVE

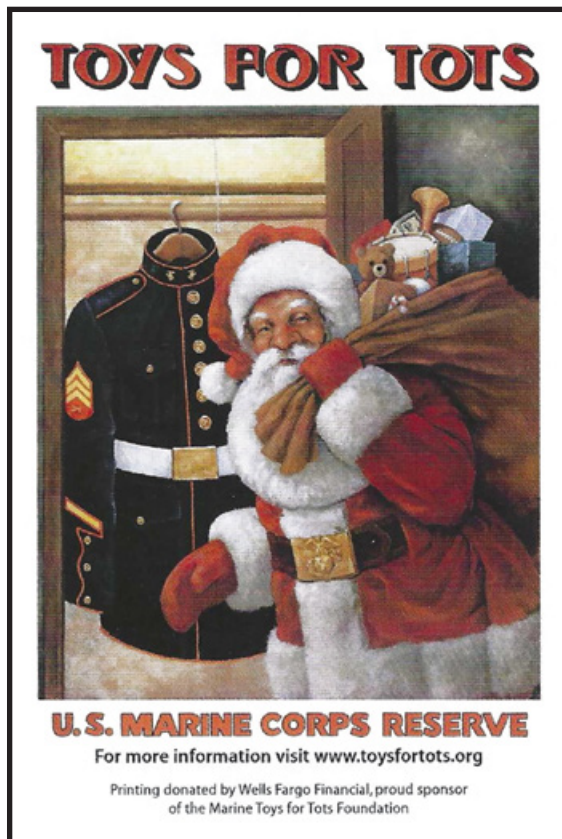


Is coming to the greater Groveland area this Christmas! The Marine Corps Reserve Toys for Tots Program will be in Groveland to deliver toys to every child 0 to 17, Thurs-day, December 16th.

We currently have the support of our schools, Banks, Assoc. of Realtors, Aviation Club, Rotary, various Men's and Women's Clubs including golf, the Chamber of Commerce, CAL/Fire and the CHP. You can bring your new donated toys to the following locations starting Friday, October 1st thru Tuesday, November 30th. Drop off locations are:

- Breeze Way • Mar-Val Market
- Mechanics Bank • Premier Bank
- Pine Mountain Lake Association
- The Grill at Pine Mountain Lake
- Kevin and Randy Meat Market
- Pizza Factory • Hungry Bear

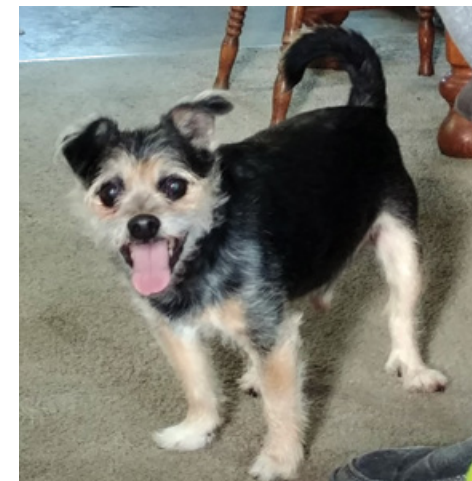
Families will receive a request form for toys from the schools and the Food Closet at Groveland Evangelical Free Church. **SANTA IS COMING!**



Top Dog of the Month

DORI JONES

My name is Max (aka Mama's Baby)! I'm a 14-year-old Chihuahua/Terrier mix and I'm pretty adorable! My mom, Heather Bruemmer, luckily found me found me on a website, brought me home and I've gotten so much love ever since that very lucky day for me. I love all my squeaky toys and tennis balls. I'm a funny dude, good at fetching the ball and I like making lots of doggie friends. I lead a pretty good life with dual residency, too. Besides my home in Pacifica, I'm often come up to Groveland to visit my grandma. When it's time to leave Groveland, I run and hide in the house because I don't want to go back home. I've made so many friends at the dog park – especially my two girlfriends Daisy and Lily. I have so much fun at the dog park!



To join the Groveland Dog Park, contact GCSD. The annual fee is \$25 for up to two dogs (plus \$10 for each

additional dog), and new dogs are required to provide current Rabies and Bordetella vaccination certificates when registering. It's a wonderful place to socialize with other dog lovers and their dogs! Join the fun!

PML COMMUNITY AIRPORT DAY
OCTOBER 2, 2021

FREE ADMISSION!

PML AIRPORT
NOON – 3:00 PM

SKY DIVERS • FORMATION FLIGHTS • PLANES VS. CARS
FLYING SKILLS CONTESTS • SPECIAL AERO SURPRISES!
AIRPLANES & CARS DISPLAY • MODEL AIRPLANES DEMO
REFRESHMENTS AVAILABLE

Bring a chair and enjoy the entertainment!

At the PML Airport – Our Community Resource!

Organized by Pine Mountain Lake Aviation Association

GROVELAND GAL FRIDAY



BUSY SUMMER?

I can help you with

- Vacation home checks
- Watering plants
- Pet Care/House sitting
- Ride • Shopping
- Organizing

You name it!

SHARON VOLPONI
962-6848 • 770-6277

PROPANE DISCOUNT PROGRAM

Suburban Propane – As the preferred provider of PML we are happy to provide an exclusive members only program to all residents.

Benefits include: Propane at a discounted rate, Tank rental at a discounted rate, Free basic tank installation, Easy payment options, 24/7 Tech support, Flexible delivery options,

24/7 live phone support. Contact our local staff for further details and current rates.

Suburban Propane
Jamestown California
(209) 984-5283 • 1 (800) PROPANE



HERE IS YOUR CHANCE TO BE MORE INVOLVED IN YOUR COMMUNITY!

Pine Mountain Lake Association has openings on the following **Committees:**

ENVIRONMENTAL CONTROL COMMITTEE

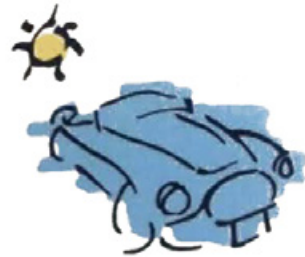
FIRE INSURANCE

EDITORIAL COMMITTEE

COVENANTS COMMITTEE

If you wish to be considered for committee membership, please complete an "Application for Committee Assignment". This form is available on the website at www.pinemountainlake.com or from the Administration Office.

MAIL COMPLETED FORM TO:
Pine Mountain Lake Association,
Attention: Debra Durai
19228 Pine Mountain Drive
Groveland, CA 95321
Email to
Debra@pinemountainlake.com
or drop it by
the Administration Office



MY CAR GUY
Automotive Consulting Services

Dave Sutch
Auto Broker/Dealer/Consignor

20950 Ferretti Road
Mail: PO Box 22
Groveland, CA 95321

Cell/Text 415-860-1505

dave@mycarguy-sf.com
www.mycarguy-sf.com

*...dream cars at
dream prices
with no hassle*



BROKER / DEALER / CONSIGNOR

Cars, Trucks, SUVs, RVs,
Motorcycles

4H Club News

CAROL WILLMON

As the 2020-2021 4-H year comes to a close, and we prepare for another year, we would like to thank the volunteer leaders and parents who have helped so many 4-H members "learn by doing" (4-H motto). A big THANK YOU goes to Shannon and Rob Abbott, leaders – Rabbits and Swine, and Tammy Kohn, leader – Games; unable to meet because of CoVid was our Sewing/Quilting Project – leaders – Susan Fisher, Maria Tortorelli, Gayle Jonas, and Carol Willmon.

For Community Service projects, our club participated in Food Baskets and Winter clothes donations for Tenaya School.

Our monthly meetings were by Zoom all last year; this year we are able to meet (with safety protocol – masks, wipes, distance) in the Library Book Room (downstairs) the second Tuesday, October 12th at 6:00 pm. All girls and boys, ages 9-18 are welcome; we are always looking for more adults who are interested in sharing a hobby or special talent with our youth in this educational program. 4-H is organized by the Tuolumne County Cooperative Extension Office through the guidelines of the University of California, with the assistance of local volunteers and community organizations. For more information, please call Carol Willmon – 962-7528.



CUSTOM HOMES
REMODELS

209-768-5759
Lic# 1018268



HIGH SPEED BROADBAND INTERNET



**SPEEDS UP TO
125 MBPS**

Starting at
\$44.95
PER MONTH

CABLE TV & TELEPHONE SERVICES
Also available



www.gosnc.com
209-962-6373

*Speeds up to 125 Mbps, speeds vary with packages

Locally Owned since 1950

YOUR ONE-STOP SHOP FOR
all your pest control services

PEST CONTROL: HOME,
BUSINESS AND INDUSTRY



LAWN FERTILIZATION AND
COMPREHENSIVE LAWN CARE



TERMITE INSPECTIONS,
REPAIRS AND FUMIGATIONS



TREE AND SHRUB CARE,
AND BARK BEETLE CONTROL



TERMITE TREATMENTS
AND MONITORING



WEED CONTROL
AND FIRE BREAKS



BED BUG
TREATMENT



DECK REPAIR/REPLACEMENT
(LICENSE #922758)



OUR REPUTATION IS IMPORTANT
TO US AND YOUR COMMUNITY.
Call now for a free estimate!



(209) 770-7733
clarkpest.com

Go to the official online presence of the
PMLA for the latest news & information

PineMountainLake.com

Facebook.com/PineMountainLakeCA

Facebook.com/pmlarecreation

Doing Great
Work for you
Since 2005



Bonded & Insured
CA Contractor
#945393

GREAT WEST PAVING



WE ARE THE PAVING EXPERTS!

Specializing in Asphalt, Paving Seal Coating, Grading, Oil & Screen
for Driveways, Roadways and Parking Lots



Call Now for a
FREE Estimate

Mention this ad
for Monthly Specials!!

24 Hour Service Call Today!

209-345-7161

Check out our website @ greatwestpaving.com



- Launching
- Winterizing
- House Calls
- Dock Calls
- Service
- Repairs
- Storage
- Trailer Repair

209-962-4594

The Boat Doctor

Paul Belluomini • P.O. Box 113 • Big Oak Flat, CA 95305



Groveland's only Multi-Line Insurance Agency

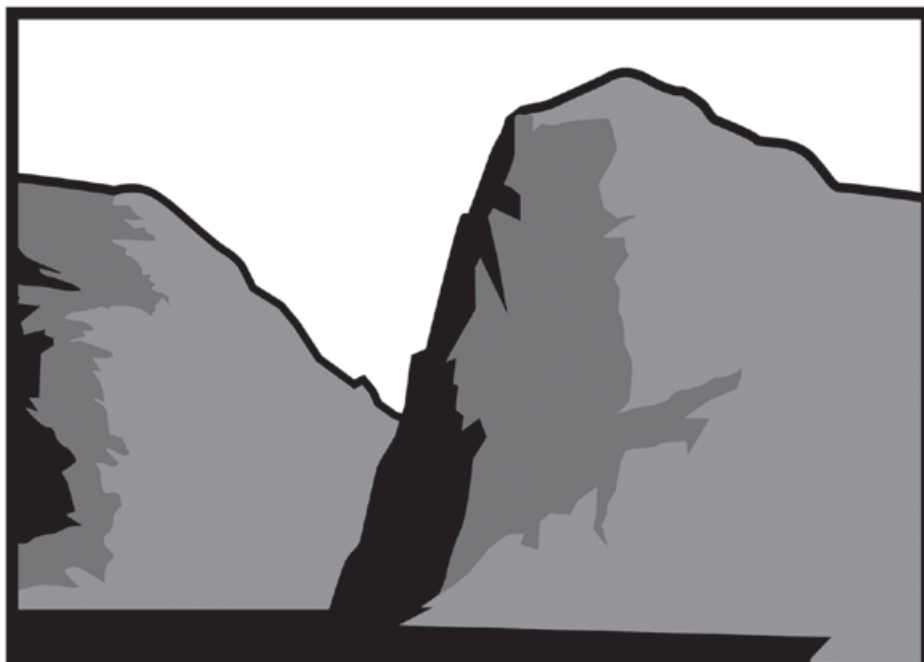
KIEFER INSURANCE AGENCY

Lic 0D77765 PROUDLY HELPING YOU INSURE YOUR FUTURE

209-962-6593

- Home/Rentals • Life • Autos RVs
- Motorcycles • Business • Builders Risk

18688 Main Street • Groveland Ca 95321



GRANITE INVESTIGATIONS LLC.

CALIFORNIA PRIVATE INVESTIGATOR Nº 18754

209-770-7798

STREAM MUSIC, MOVIES, SPORTS, TV & MORE!



**GET UP TO
25MBPS**

UNLIMITED DATA!

**THE LOCALS' CHOICE FOR
BROADBAND
INTERNET** SINCE 2008

 **CONIFER**
communications

866-378-8393
CONIFERCOM.NET

OBITUARY

Joe L Smith

JANUARY 6, 1930 – JUNE 28, 2021

Joe was born in Shawnee, OK to Oscar and Opal Smith, on 01/06/1930. Joe was married to Joyce Smith for 68 years. Their passion for golf, the outdoors and mountain life took them from residing in Brentwood to residing at Pine Mountain Lake in Groveland after Joe's retirement from Dupont. After 35 years of employment, Joe and Joyce enjoyed their life in the mountains, playing golf and entertaining.

He was a graduate of East Central University in Ada, OK where he excelled in all sports including baseball, pole vaulting, track and basketball. He went on to be inducted into the Basketball Hall of Fame at East Central University. Joe had a great personality and a wonderful

sense of humor. He was very active in the community of Brentwood and Pine Mountain Lake. To name a few, he was on the Oakley Volunteer Fire Dept. and Liberty H.S. School Board for 10 years.

Joe and Joyce moved back to Brentwood in October 2020, to be close to family; both residing at Westmont of Brentwood.

Joe is survived by his loving wife, Joyce of 68 years, daughters Janet Hueber (Brad), Stayce Burns (Gary), 3 grandchildren, 2 great grandchildren, and many nieces and nephews. He was preceded in death by son Stanley Smith (Karen).

He was very loved and will be greatly missed.

Burial and services are pending at this time.

NEED HOMEOWNER'S INSURANCE?



**Having trouble finding
insurance for your home?**

**We may have the solution for you even
if you live in a forested area!**

EASON INSURANCE AGENCY, INC.
209.383.7322

9AM - 5PM - MON - FRI ● 9AM - 1PM SAT
Email: homeins@easoninsuranceagency.com
CA Lic #0C97581

Camp Tuolumne Trails News

DORI JONES

Although abbreviated compared to a normal CTT summer program, we appreciated all the 95 campers with special needs and disabilities who got to enjoy a part of their summer at Tuolumne Trails. We had 70% returning campers and 30% brand new ones – all so very happy to be at camp, a place where they've grown to love and look forward to coming back all year long. Next year, we fully expect to have a full summer program for our friends.

Now we're in planning mode for 2022. In September, we restarted Dinner on the Deck – now on alternating Wednesday nights. We quickly sold out the first dinner with 50 diners who enjoyed a delicious meal prepared by Chef Rob. Check our website or Facebook page for new menus posted every other week.

As we head into Fall, camp will not have its usual outdoor education campers, although we are planning for these campers to return in 2022. We are, however, excited to welcome

AmeriCorps NCCC's Mini-Spike Leadership training programs, which are utilizing camp in September and October. CTT is one of three camps in California selected for these training programs. The seven-day sessions are for training NCCC team leaders and introducing them to their 2021 NCCC teams – a total of about 80 volunteers. During this time, these NCCC volunteers will be participating in service projects around camp – learning everything from team dynamics to dealing with poison oak.

CALLING ALL VOLUNTEERS

We have scheduled our next community Volunteer Day for Sat, Oct. 30, from 8:00-12:00. Come join the fun helping with various tasks around camp, and enjoy a boxed lunch afterward. It's always a fun time to reconnect with fellow community members. Call 209-962-7534 to sign up.

CTT is also searching for some specialized volunteers. Specifically, someone who is proficient at grant writing, and someone

(or a team of volunteers) who is adept in maintaining social media campaigns for camp. These are two areas in which we could really use some expertise in extending CTT's followers and donor base, as well as garnering more interest and enthusiasm about what camp offers to the special-needs community. Please call Jerry Baker at CTT for more information.

Be assured, we are steadfast in our commitment to continue supporting the special-needs community. During these challenging times that CTT is continuing to encounter, we are doing our utmost to ensure that we can continue to bridge the financial gap we face. Your generous donations – either direct monetary donations, volunteering at camp events or including CTT in your estate planning – are greatly appreciated. <http://www.tuolumnetrails.org/donate/>

If you have any questions or would like to find out more information about CTT's Dinner on the Deck, Family Camp, Work in the Woods, Volunteer Day, next year's



Summer Camp Program and Summer Music Series, please call CTT at 209-962-7534, email us at: info@tuolumnetrails.org or visit us at: <http://www.tuolumnetrails.org>.

PROVISIONS TAPROOM & BOURBON BAR
AT THE HISTORIC GROVELAND HOTEL

Stock Up or Sit Down at your favorite destination for drinks, small bites and *Texas-style BBQ!* Offering the best bottle & can selection in town plus snack & essentials for any adventure.

HOURS
Wednesday to Sunday
4 – 9PM

14 HANDLE TAPROOM – HUGE SELECTION

GROVELAND HOTEL
18767 Main St, Groveland, CA 95321
1-209-962-4000 | Groveland.com | [@GrovelandHotel](https://www.instagram.com/GrovelandHotel)

Granite & Quartz Countertops

10 YEAR GUARANTEE ON ALL WORK AND INSTALLATIONS

ROCK SOLID CREATIONS
TILE & STONE DESIGN & INSTALLATION

Located right here in Groveland!

Upgrade Your Kitchen & Bathroom Countertops
High Quality, Guaranteed Work
Affordable Prices • Stone & Tile Projects

Visit our website: www.RockSolidCreations.us

Call Brandon Hoffman: 209-962-1813

Moore Brothers Prepaid Bag Bin

The bin (dumpster) at the PMLA Maintenance Yard entrance is for the dumping of prepaid, Moore Bros., trash bags ONLY. No dumping of any other trash items are allowed. Violators will face enforcement action. Please help us keep this area clear and ensure that the dumpster can remain in place for our residents use. Thank you!

**THE PREPAID BAGS CAN BE PURCHASED AT
THE MAIN GATE AND THE PMLA OFFICE**

FIREWOOD CUTTING

PML SLASH AND COMPOST SITE

OAK AND CEDAR REQUIRES A \$20 PML WOOD CUTTING PERMIT

WOOD CUTTING PERMITS AVAILABLE AT THE MAINTENANCE FACILITY

PINE AND FIR AVAILABLE FOR FREE CUT & HAUL

FOR MORE INFORMATION PLEASE CONTACT ANITA AT

(209) 962-8612 BETWEEN THE HOURS OF 7 AM TO 2:30 PM, M-F.

COMMUNITY ORGANIZATIONS

Contact the individuals/organizations below if you are interested in joining! (All numbers are 209 area code unless noted otherwise)

If you would like your community organization listed please send your group's name, contact person, and phone number to debra@pinemountainlake.com

Camp Tuolumne Trails - Jerry Baker - 962.7916

Friends of the Groveland Library - Virginia Richmond - 962.6336

Helping Hands Thrift Store & Furniture Barn - Patti Beaulieu - 962.7402

Village on the Hill - 209.962.6906 or info@villageonthehill.org

Southern Tuolumne County Historical Society (STCHS) - Harriet Codeglia - 962.6270

NOTARY SERVICE

ANITA SPENCER, - PMLA NOTARY PUBLIC

(Prices listed are per Signature Rate)

PML Property Owners - \$10

Non-Property Owners - \$15

Witness Fee - \$5

You may call Anita @ **209-962-8612** to schedule an appointment between the hours of 8am - 4pm

Quilt Show "Joyful Threads Through Time"

GROVELAND EVANGELICAL FREE CHURCH

We will be hosting our 13th Biennial Quilt Show, "Joyful Threads Through Time", on October 9th, 9 am to 4 pm. We will have a variety of homemade crafts, a Silent Auction, homemade Baked Goods and a Soup Luncheon for take home. There is no entry fee. Donations are always accepted at the door. We will be following Tuolumne

County guidelines for COVID, masks and distancing. There will be over 100 beautiful quilts and quilted items entered in the show for viewing. Any questions contact the church office at 962-7131, Monday-Thursday between 10 and 2. This Quilt Show will be held October 9, at the Groveland Evangelical Free Church 19172 Ferretti Rd, Groveland, CA 95321.

Helping Hands Happenings

PATTI BEAULIEU

FALL CLOTHING AND KIWANIS COAT GIVEAWAY COMING OCTOBER 15-16

As I write this, we have just endured another unannounced power outage. In the recent past we have dealt with the Jamestown (Washington) Fire, COVID, the Delta variant, unexplained countless power outages, planned power outages, the closing of the Groveland Community Hall that has led to many local functions being cancelled again this year and yet, our wonderful little Community still manages to come together, be supportive and thrive.

As we move into fall and winter, we're now closing at 3 p.m. at each Store and have filled them with fall décor, clothing and Halloween costumes. And you know what comes next... Christmas! Hopefully this holiday season will be better for all than it was last year. For up-to-date info and weekly sale announcements, visit our Helping Hands Facebook page or our web page at HelpinghandsofGroveland.com.

At Helping Hands, we are so grateful for our loyal customers and those that donate who make it possible for us to financially support our community, the local schools, the Food Closet, sponsor local club's events and award scholarships and honor other financial requests. Thank you for understanding our

recent changes in donation days/hours, donation limitations, mask requirements and social distancing protocols. They're all necessary because of the pandemic. We hope to get back to 'normal' soon, but not until it's safe for everyone.

Due to circumstances beyond our control (mentioned in the first paragraph), we've been unable to have our popular CLOTHING GIVEAWAY for the past couple of years. On Friday, October 15 and Saturday, October 16 from 10-2 we'll, once again, be having our FALL CLOTHING GIVEAWAY and be joined by the KIWANIS COAT GIVEAWAY on Saturday. **MASKS WILL BE REQUIRED.** Due to the continued closure of the Groveland Community Hall, the Evangelical Free Church on Ferretti Road has generously offered their Fellowship Hall for this event. Please mark your calendars and watch for flyers around town and on our Social Media pages. Due to space restrictions, we'll need to scale it back from what it has been, but there will still be TONS of clothing, shoes, coats, linens and whatever else we can fit into the room - **ALL FOR FREE!!** Save the date, tell your friends, car pool and be ready to shop FOR FREE.

Stay safe and healthy.

Simonetta Spaccia, PhD

All of us face challenges in our personal relationships from time to time. As a Psychologist, I specialize in short-term consultations where I teach others coping strategies for improving family, friend or work relationships. Difficulties with a spouse, child, parent, colleague or friend, can be improved or completely overcome by embracing a new perspective, and having the right set of tools to help you move forward.

Based in Pine Mountain Lake

*At this time working only online via Zoom or other apps

(408) 391-3447

simonettaspaccia@gmail.com



Southside Community Connections

CARA SMITH – SOUTHSIDE COMMUNITY CONNECTIONS

WHAT'S OPEN AND CLOSED AT SOUTHSIDE COMMUNITY CONNECTIONS (THE LITTLE HOUSE, VILLAGE ON THE HILL, WHEELS, AND WAVE)

SCC has reluctantly decided to put all activities on hold at The Little House. With the current rise in COVID-19 cases in Tuolumne County, it is our highest priority to protect the members of our community. We are still here to support you in others way, such as our Handy Helpers, Wheels and WAVE Bus services. If you are a member and need a service from us, please call us at 209-962-0616. If you are not a member and would like information, please call 209-962-6906 to learn about our different membership options.

Our WAVE Bus schedule can be flexible depending on the days and times, so please do not hesitate to call and inquire! There is no fee for this service, although we do appreciate donations.

Southside would like to give a big

THANK YOU to the wonderful volunteers that make day-to-day operations possible! Without volunteers, we would not be able to offer any services to our community. If you are interested in giving a little bit of your time in any capacity, please contact our Volunteer Coordinator at 209-962-7303 or volunteers@southsidecommunityconnections.org.

Another important role in our organization is our Board Members. We are currently looking for additional board members. For additional information, please contact us at 209-962-7303 or info@southsidecommunityconnections.org.

SCC will be hosting the Commission on Aging meeting on October 11th at The Little House. Dore Bietz, Director of Emergency Services will be our guest speaker and speaking about emergency evacuations. Community members are encouraged to attend and ask questions about services in South County. If you are interested, please RSVP to 209-962-7303 and we will send you information.

STCHS News

HARRIET CODEGLIA

STCHS held its annual (except for 2020) Labor Day Country Barbecue fundraiser at the Pine Mountain Lake Equestrian Center on September 5. Much discussion took place as the planned event date neared, but we are all pleased we could proceed.

Groovy Judy rocked and rolled, and folks listened to the music (too hot for much dancing) and enjoyed a day in the fresh air. The burgers were delicious and the ice cream was divine. Even the smoke stayed away for the day. Although the event did not have as many attendees as in pre-COVID days, the crowd was lively and the day was a fund-raising success.

STCHS thanks its wonderful sponsors and donors including Priest Station Café, Mechanics Bank, Yosemite Bank, PML Association, Crook Logging, Black Oak Casino, Helping Hands, and Gary and Cynthia Benegier. Folks who donated goods or services to be sold at our silent auction include Robb Hirsch, Body Beautiful, Catherine and Larry Santa



Maria, Rush Creek Lodge, Pizza Factory, the Hopkins/Hendricks family, Sabre Design, Andra Ericson Photography, Eddie Pavlu, Ambria Witt, Ron and Cynthia Sartori, Sierra Rep and Jackie's Jewels.

STCHS board members and their recruits worked sunup to sundown to set up, tear down, cook, serve, bartend, sell tickets (and now have to put everything away) are an amazing troupe. Thank you all. Joe Hopkins chaired the event with great energy and skill. Take some time off, Joe!

Ride the Wave

JACKIE SAMPLE – SOUTHSIDE COMMUNITY CONNECTIONS

WE NEED YOU TO RIDE THE WAVE!! AND NO – YOU DON'T NEED TO BE A SENIOR OR HAVE A MEDICAL APPOINTMENT TO RIDE!

We really need your help. The WAVE bus is running smoothly, but we would like more participants so we can keep this going long into the future. We are in compliance with county Covid guidelines. We have a wonderful driver, Rick Whybra, who takes pride in accommodating his riders. If you and some friends want to have some fun in Modesto or Sonora, your driver will drop you off and pick you up. We currently go to Modesto on Thursdays. Sonora trips are Monday, Wednesday, and Fridays as we have Dialysis patients who rely on us on those days. We do have Tuesdays available for special trips, additional trips to Modesto, or – use your

imagination!

We still need volunteer Wheels drivers. We have too few drivers right now, doing so much. This is a neighbors helping neighbors situation. If you are interested in being a driver, please call 962-0616 and leave a message; someone will get back to you. Currently, due to Covid, most of our drivers are doing deliveries, i.e., Mar Val and Pharmacy, although we are still driving to local medical appointments. If the WAVE bus schedule doesn't work, we are also still driving people to medical appointments in Sonora. We confirm vaccination status for drivers and riders. All drivers and riders must wear a mask. There is no fee for riding the bus, although we gratefully accept donations to help us defray our operating costs.

These are difficult times, but together we'll get through this and be healthy and strong!

It takes our Village!

Spicy Garlic Lemon Butter Shrimp

RECIPE BY TOM KNOTH AND PAULA MARTELL

We eat shrimp weekly, and this is our new favorite recipe. Serve this wonderful shrimp on a salad, over pasta or rice, with some sourdough bread, or just on its own. If you don't like spicy reduce the Cajun seasoning by half.

INGREDIENTS

2 tablespoons extra virgin olive oil
4 tablespoons salted butter
1 1/2 pounds raw shrimp, peeled and deveined
1 tablespoon Cajun seasoning
3 cloves garlic chopped
2 tablespoons fresh thyme leaves
juice from 1 lemon
1/2 cup fresh basil, roughly chopped

DIRECTIONS

Heat the olive oil in a large skillet over medium heat. Add the butter, shrimp, Cajun seasonings, and a big pinch of pepper. Cook on both sides until seared, about 2-3 minutes per side. Stir in the garlic and thyme and continue to cook until the garlic is fragrant and the shrimp is 145 degrees F internal temperature.



Remove from the heat, stir in the lemon juice and basil.

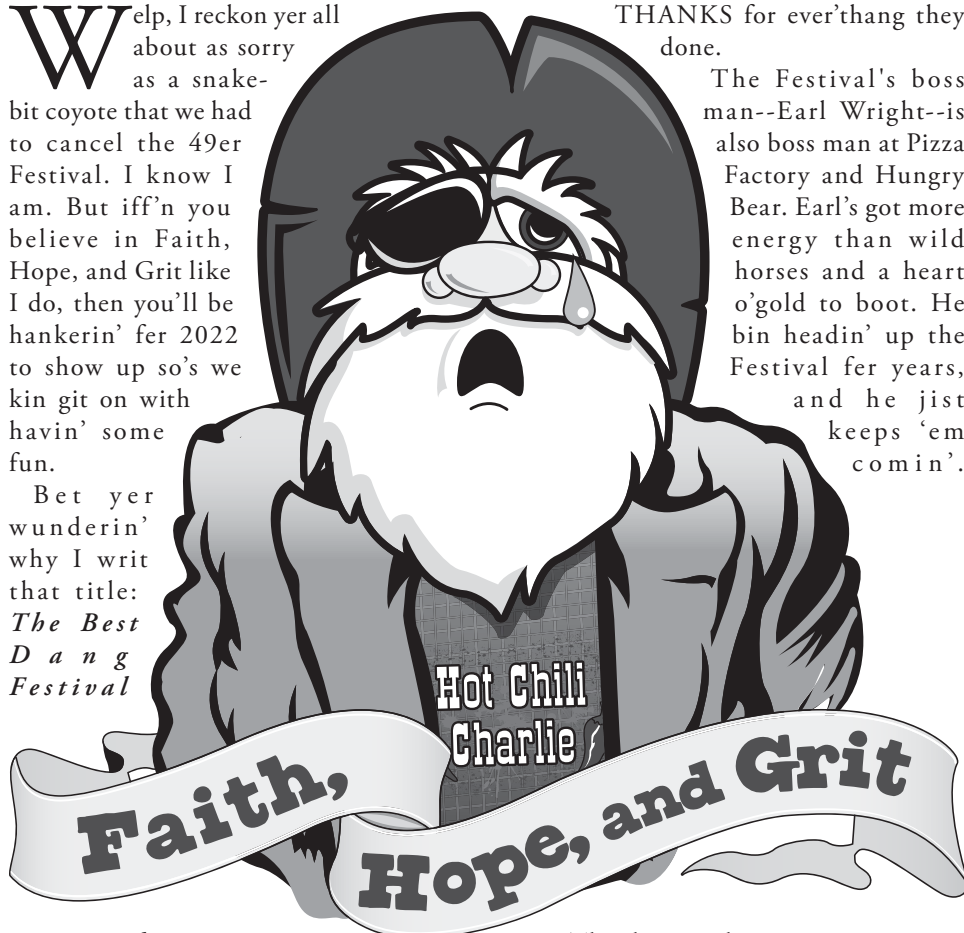
This recipe makes enough sauce to serve the shrimp over pasta or rice, or to use as a dipping sauce for some accompanying bread. But if you don't need the extra sauce; you can reduce the oil and butter by half.

2021: The Best Dang Festival that Never Was

HOT CHILI CHARLIE

Welp, I reckon yer all about as sorry as a snake-bit coyote that we had to cancel the 49er Festival. I know I am. But iff'n you believe in Faith, Hope, and Grit like I do, then you'll be hankerin' fer 2022 to show up so's we kin git on with havin' some fun.

Bet yer wunderin' why I writ that title: *The Best Dang Festival*



THANKS for ever'thang they done.

The Festival's boss man--Earl Wright--is also boss man at Pizza Factory and Hungry Bear. Earl's got more energy than wild horses and a heart o'gold to boot. He bin headin' up the Festival fer years, and he jist keeps 'em comin'.

that Never Was. Cuz there's a posse of hard-workin' townsfolks who was ready set to pull the trigger on the best dang Festival ever. Ol' Charlie knows these folks pour their hearts and souls into this community. We jist wanna tell 'em

Thankee, Earl! Iff'n it warn't fer Janis Killion and Tom Hernandez, all them vendors under all them tents would look like a stampede in a chicken coop. And talkin' about organizin' a herd o'wild animals, Dawn Miller's 'bout as good as I've seen at corralin' them Parade participants and puttin' on a real good show. Cathy Leetham done got all that red tape tied up with them County folks, and Miguel Maldonado was all set to make a fancy moving pitcher show. A talkie too! And then there's Tom Clawson, that tall silent type who rides around the whole derved shootin' match, helpin' out and ropin' in the strays. Bob Turney's bin roundin' up the gunfighters, bearded wonders, and hot chili cookers ever' year and he 'bout cried when he told 'em all to stay home. Thankee all, from the bottom of our peapikin' hearts.

But jist you wait. We've already got on our thinkin' caps fer 2022. I'll see you then or I ain't Hot Chili Charlie!

GRANITE
INVESTIGATIONS, LLC.

MICHAEL HAHN
Owner/Qualified Manager

P.O. Box 588
Groveland, CA 95321

209-770-7798
graniteinvestigations@gmail.com

CALIFORNIA PRIVATE
INVESTIGATOR Nº 18754

Making the Call

BOB TURNEY – PRESIDENT, YOSEMITE HWY 120 CHAMBER OF COMMERCE

Making the call is tough. Sometimes, the best call isn't the most popular one. Or the easiest to communicate.

Cancelling the 2021 49er Festival was one of the toughest calls I've ever faced in business as well as personally. I feel fortunate to have a group of intelligent and experienced individuals serving on your board with me. We discussed and debated for weeks before taking a final vote. We watched daily reports on COVID cases in Tuolumne County, sought advice and guidance from County and State public health, spoke with our major sponsors, and to our partners and families. We tried to come to an agreement earlier in August, but the board was split. Some members felt we should weigh the increase in COVID cases and pressure on our local healthcare system; others felt strongly about the impact on our business community and our rights to personal choice. When we finally voted

on August 31, four voted to cancel; two voted against.

Personal choice is a key factor in making the call. I can choose to attend an event or to stay home and watch a game--either choice impacts only me. But when I put on my Chamber of Commerce director's hat, it becomes a call that impacts my entire community. And the thought of something happening to any one of YOU...it's simply unthinkable.

Cancelling the Festival was a tough call but personally, I believe it was the right one. We are still engaged in the Strategic Planning process and this challenge was a real test of the strength of this team. We're looking forward to sharing our Strategic Plan at the Chamber's annual meeting in October and seeing you at next year's 49er Festival.

Bob Turney is owner of Yosemite Adventure Supplies and the Turnkey Institute (turnkeyinstitute.com).

Classic Christmas Decoration

DAWN SILVA

BIG OAK FLAT AND GROVELAND CHRISTMAS

It's that time again to begin preparing for decorating the 120 corridor and downtown Groveland. This year we were given garland and ornament bulb wreaths from JC Penny's in Modesto. They were giving away their in-store decorations and I just happened to be in the right place at the right time. Susan Horn, a floor manager saw that I was purchasing replacement bulbs for our rooftop garland. She asked me if we needed more garland and to my surprise, we were given 11 boxes of garland and 11 boxes with wreaths. You will be seeing these new items around town. When you go shopping for Christmas, please shop at Penny's if possible as a thank you.

The goal for our committee is to bring more of a Christmas spirit to Big Oak Flat and Groveland. The Chambers Christmas Committee would like to see more residents and tourists enjoying our little town during Christmas. For the children, we will have a Santa Letter

mailbox in front of the new bicycle shop between Serendipity and the coffee shop. Drop off your child's letter to Santa with a stamped self-addressed return envelope and Santa will write them a letter.

Donations to help purchase replacement bulbs and lights are always needed. Also, we need to purchase new wrapping paper and red ribbons for the poles. Each year we would like to add something new and can only do that with your generous donations. Donations can be made out to the Highway 120 Chamber with a note: for Christmas Fund. Send to the Highway 120 Chamber of Commerce, P.O. Box 1263, Groveland, CA, 95321. We are non-profit and only rely on donations to purchase supplies.

It takes the community to prepare our town for Christmas. Volunteers are needed to help decorate beginning November 13th, please send us your name and contact information to:

GrovelandBOFChristmasCommittee@gmail.com

Sincerely,
Chambers Christmas Committee

EMOTIONS

ETTY GARBER, PH.D. – LICENSED MARRIAGE AND FAMILY THERAPIST

Emotions matter. Feelings are the most important resources we have. Emotions are life-lines to self-awareness, self-preservation, self control, motivation and persistence. They deeply connect us to ourselves and others. They express personal values including health care, relationships, our work and the love and caring of our families and friends.

Intelligence has always been revered as the most important and successful part of a human being. This has not always proven to be true. Brain-imaging technologies that scientists are using to map the brain suggest that the rational and emotional parts of the brain depend on each other. This means emotional intelligence contributes to rational thought so emotion and intellect are two halves of a whole.

Early on we are told that it is self-indulgent to show our feelings and we need to learn the rules on how, when, where and how much we can allow ourselves to feel. If we cry, we don't do it in front of others, we are discouraged from showing our anger, if we are hurt, we force a smile.

It is healthy for mind, body, heart and spirit to feel our feelings when they occur. When feelings are suppressed that puts pressure on the body and mind. Illnesses, such as heart attack, ulcers, skin rashes, eating disorders and others have been attributed to stuffing painful emotions.

Accepting your negative feelings is only one part of emotional awareness, expressing your emotions is another. How you express them is key; crying, taking a time out until you can assess the cause of your emotions, and rationally decide what you can do to alleviate them.

As stated: suppressing emotions can be harmful. It may produce negative behavior to yourself or others which could become dangerous. It is most helpful to express your feelings with someone you trust and who can understand why you are hurting and help you figure out how to alleviate the negative emotions and possibly prevent a destructive response that you may regret.

Don't forget the good feelings you get and share them with others. That will not only increase the happiness for yourself and the sharing with others.



PHOTO BY BECKY SHIFFEN

Dr. Ety Garber Ph.D.

in Clinical Psychology and a licensed Marriage Family & Child Therapist, with 36 years experience in mental health, lives in Groveland and

OFFERS PRIVATE PRACTICE SERVICE

Dr. Garber can provide psychotherapy in a variety of settings to individuals, couples, families and groups.

**RELATIONSHIPS • FAMILY CONFLICT • CHEMICAL DEPENDENCY
DEPRESSION • ANXIETY • ABUSE, etc.**

Low Fees • No Insurance FOR AN APPOINTMENT CALL 209.768.5200

Cynthia Brown

Sewing & Alterations

19623 Cottonwood St. Groveland Ca
95321



818-824-2955

Healthy Habits

From Pine Mountain Therapy

JULIE TANAKA, PT

CROSS TRAINING IS NOT JUST FOR TRIATHLETES

Triathlons consists of a swim, bike and run. At first glance this may look like an intense endeavor, but we can all

learn something from triathletes. A triathlon is a great example of cross training. Cross training by definition is doing different activities to gain strength, endurance and flexibility without exposing your body to the repetitive stresses of doing the same exercises every day. It has an added benefit for making exercise more interesting.

To adopt the cross training concept to your own fitness regime make a list of activities you enjoy doing. Such as, going for a walk, hiking, golf, pickle ball, yoga... Take a look at your list and label each accordingly: endurance, leg strength, arm strength, core strength, flexibility and balance. If you're missing one of those components you may need to add it in, like stretching or arm weights. If you aren't familiar with stretching watch a few YouTube videos or look at a fitness book or magazine for some ideas.

Cross training can mean doing something different each day. Like walking one day, stretching and doing some arm weights the next, and then golfing the third day. You can also combine everything into a 30 min workout to be done daily. Such as 10 min each of stationary bike, arm weights, and core work.

Cross training reduces the chance of repetitive use injuries, keeps exercise interesting, and keeps you receiving the benefits of exercise. A wide variety of exercise keeps your body "guessing" and will improve your fitness level. Remember that getting in shape, and building muscle not only help prevent many medical conditions but are also a key part of treatment for diabetes, high blood pressure,

high cholesterol and heart disease.

So, keep it simple, keep it fun, and design your own triathlon. If you need more ideas for exercises that would be right for you we're here to help you out.



PINE MOUNTAIN THERAPY

Outpatient Physical Therapy

Serving the Mountain Communities of Tuolumne and Mariposa Counties

18800 Main Street,
Groveland, CA 95321

209-962-4035

Please visit our new web site at
www.pinemountaintherapy.com

*A Preferred Therapy Provider,
participating provider with
most insurance carriers
including Medicare.*

Carron Tax

Carole Smith
Enrolled Agent

associates

20093 Ridgecrest Way
Groveland, CA 95321

Tel: 209/962-6119

E-mail: carolesmith@carrontax.com

**INCOME TAX PREPARATION
AUDIT REPRESENTATION**

PAINTING

Bay Cal
LIC #923832

Exterior/Interior
Deck Repairs
Wood Repairs
Remodels



SEE COLOR AD PAGE 11

VISA MasterCard

209.962.4777

www.baycal.com • email: davec@baycal.com

AIRPORT MINI-STORAGE



60 Units - 6'x8' to 10'x30'
Open 7 a.m. to 9 p.m. Daily
Located on Elderberry Way off Ferretti Rd. near PML Airport

209/962-5360

Pine Mountain Lake Electric

Residential and Commercial
Electrical Contracting
State Contractor's Lic. 404081



TOM KATOSIC
209/962-6949

P.O. Box 25
BIG OAK FLAT, CA 95305

Ken's Asphalt

Lic. 708310

Grading • Paving • Chip Seal • Road Oil
Seal & Slurry Coatings • Crafcro Hot Rubberized Crack Sealer
Driveways • Private Roads • Subdivisions

DOING BUSINESS SINCE 1985

DRAINAGE PROBLEMS?

We have the Solution!

Erosion Control • Riprap (6-12" Rock) • Asphalt Curbing • Base Rock

"Just Pave It" Complete Concrete Services *"Just Pave It"*

- Stamped Concrete and Colored Concrete
- Driveways
- Stained Concrete
- Walkways
- Cleaning & Sealing
- RV Pads
- Retaining Walls
- Patios

532-0800 • 962-5644 • 768-7395 Cell



Waters Plumbing Heating & Air

All work 100% Guaranteed!

FAST SAME DAY SERVICE*
*IN MOST CASES



Contractors License #463958
www.watersplumbing.com

"I want you to know that our technicians will give you a price before we start the job." —Wayne Waters

Voted Best Plumber in Tuolumne County 4 Years in a Row

Groveland (209) 962-0990

HANDYMAN FOR HIRE

"The Small Job Specialist"



Doing Building and Repairs in PML Since 1976
WHERE ONE CALL CAN DO IT ALL!!
Working by the Hour to Save you Money...

- Deck Repairs
- Interior Repairs
- Painting
- Exterior Repairs

omni1handyman@aol.com

No **(209) 962-5463** License



**Sierra
HEAVY DUTY**
RV & TRUCK CENTER INC.

BUSINESS HOURS
 Monday - Friday:
 8:00am - 5:30pm
 Saturday: 8:00am - 2:00pm
 Sunday: CLOSED

Well Stocked Parts House:
For All of Your Heavy Duty Needs!

- Heavy Duty Brake Linings
- Baldwin & Fleetguard Filters
- Delo Oil
- LED Lights
- Air Brake Valves & Hoses
- CB Radios, Antennas & Accessories
- Logging & Dump Truck Parts
- Hydraulic Hose Shop

Full Service RV Repair Shop:

- Commercial House & Starting Batteries
- Full Service Chassis & Lube Center
- Electrical & Plumbing Repairs
- Interior & Exterior LED Lighting
- Complete Body Damage Repair Shop
- Solar Power Systems & Inverters
- Complete Detailing Services
- Warranty & Insurance Work Accepted

Mobile Service Available

18968 Waylon Way
 Sonora CA 95370
 Call or Email us to schedule an appointment today!
 (209)-532-7994
 EMERGENCY CONTACT: (209)-559-3840
 Email: shop@sierraheavyduty.com
 Visit Us Online: www.sierraheavyduty.com

Over 50 Years of Experience!



All Major Credit Cards Accepted.

HOPE'S TREE SERVICE

Lic# 987171

**EXPERT TREE SERVICE, PRUNING,
 REMOVAL, CUT & STACK OR HAUL AWAY
 FIRE SAFETY TRIMMING • REASONABLE RATES
 FULLY LICENSED/INSURED**

Proud member of the Yosemite Hwy 120 Chamber of Commerce


We accept credit cards





Fully Licensed and Insured
 PO Box 1072
 Groveland CA 95321

209.878.3096
 or 209.225.3191

PML MINI STORAGE

65 Units Ranging From 5'x5' to 12'x30'

- REASONABLE RATES •
- WELL LIGHTED •

Located one-half block off Ferretti Rd. on Elderberry Way towards Airport

209/962-6220

BEFORE YOU BEGIN CONSTRUCTION ON YOUR LOT

The Declaration of Restrictions (CC&Rs) states that no construction of any type (new construction, driveways, grading, lot development, etc.) can be performed without prior approval from the Environmental Control Committee (ECC). Failure to obtain approval could result in the stoppage of work or even fines, and nobody wants that to happen. Inspections are made every Tuesday and reviewed by the Committee every other Thursday, so we can accommodate our members. Please contact ECC before you begin any type of construction at **209-962-8605**

HEAVENLY CLEANING SERVICE

209.962.6418

Celebrating our 26th Year!

PROFESSIONAL CARPET CLEANING & HOUSEKEEPING SERVICE





DRE# 01113243
 18687 MAIN ST., STE E
 GROVELAND, CA 95321



KATHY NIEDENS
 SALESPERSON
 209.962.1111 OFFICE
 209.985.4031 CELL
 knniedens@gmail.com

ASK ME HOW YOU CAN GET YOUR HOUSE CLEANED FOR FREE

HOME • CARPET
 WINDOWS



ADVERTISE IN
 THE PML NEWS
 GO TO
PINEMOUNTAINLAKE.COM
 FOR RATES AND DETAILS

Carpenter's Handyman Services

Need help with a small project?
 We can help and will show up!

- Electrical
- Plumbing
- Drain Cleaning
- Decks
- Roof Repair

- Painting
- Tile Repair
- Debris Removal
- Chimney Sweep
- Much more...

Tim Carpenter
 707-530-4154

With over 35 Years Experience

Senior Discounts available



TAGE'S PLUMBING
COMMERCIAL & RESIDENTIAL

Tage Wert
Owner

(707)615-2547 Lic. #1029595
tagesplumbing@gmail.com



**FIND WHAT YOU
NEED IN THE
HOME IMPROVEMENT
DIRECTORY**



Mark's Groundskeeping Service
Let me help you with your seasonal chores...
Serving The Greater Groveland Area

Mark Roy
Local permitted owner / operator
Call or Text: 1 (831) 406 7715
markroyx@yahoo.com

We are known for our integrity and legendary customer service!

Produce Your Own Clean Power!

- Save \$\$\$ Every Month
- Federal Tax Credit available
- 5-Year Typical Payback




APS SOLAR
ALTERNATIVE POWER SOLUTIONS, INC.™

Your Local Solar Electric Company

License #892261 / Since 2002
16046A Via Este Rd., Sonora

Call Us For A Free Estimate
209-532-5925

Check our reviews at www.apssolarpower.com
and www.SolarReviews.com

Sean McCoy Painting
License No. 822616

Home of the Cabinet Doctor

**"Let's Refinish or Paint
Those Old Cabinets"**

- Fine Finish • Mill Work • Cabinets
- Doors • Interiors



209.588.1741

www.smccoypainting.com

KEEP CALM AND REFINISH

Exterior-Estimates Available

Rod Diehl Pest Control

— BAT REMOVAL —

**RESIDENTIAL & COMMERCIAL • HIGH QUALITY
100% SATISFACTION GUARANTEED**

Locally Owned & Operated • 5th Generation Tuolumne County
PERSONAL SERVICE • FREE ESTIMATES

We will customize your service around your pets
info@RodDiehlPestControl.com



(209) 532-3260

**Ask about installation of
BAT HOUSES
on your
property**

PROUDLY SERVING THE PINE MOUNTAIN LAKE / GROVELAND AREA

REIMERS CONSTRUCTION

PROUDLY SERVING GROVELAND/PML SINCE 1987

DESIGN/BUILD • EXPERT REMODELING • SPECIALIZE IN KITCHEN AND BATH
CEMENT SIDING • COMPOSITE & REDWOOD DECKS • WINDOW AND DOOR REPLACEMENT

(209) 962 5682





This project designed
and constructed by
Reimers Construction



Email: wwrpar@gmail.com
CA.LIC. 590514

TMC CONSTRUCTION

License # 717300
Insured
(209) 962-6938

**Brushing • Log Removal
Mastication
Hazardous Tree Removal & Pruning
Excavation**

Site Prep, Engineered Septic, Culverts,
French drains, Retaining walls,
Hauling, Post hole digging,
Under ground work,
Concrete work

**We can help with your grant.
Skid Steer and Dump truck service
Reasonal Rates • Free Estimates**



Pest Control

- Ants, spiders, mice, wasps, earwigs, etc.
- Fast service, great prices
- Squirrel and bat Exclusion
- Termite Inspections

- Weed Control
- Poison Oak
- Star Thistle



Foothill-Sierra
PEST CONTROL
Since 1977

962-5710
800-464-3772
Free estimates

LaMar EQUIPMENT & HAULING

LIC # 43743 • BONDED AND INSURED

- Job Site Storage Containers
- 15 Ton Hydro Crane
- Heavy Equipment Hauling
- Irrigation & Electrical Trenching
- Landscaping Materials
- New Construction & Remodels & Decks

- End Dump Manlifts
- Rock Hauling
- Lot Clearing
- Demolition
- Log Hauling
- Septic Install
- Fire Breaks

- Post Hole Digging
- Concrete Demolition
- Towable Trailers
- Retaining Walls
- Earth Moving





(209) 962-0500

Mobile: 770-5667

LanceMarchetti@yahoo.com

VISA MasterCard

Contractors Performing Work in PML are Required to Follow PMLA Rules & Regulations

The following are some "common violations." Please do your part to maintain a harmonious environment for all to enjoy. Remember: The PML property Owner is held responsible for those they hire.

VEHICLE USE:

1. Exceeding the posted speed limit
2. Driving in a reckless manner
3. Following another through an access gate or allowing others to follow you through
4. Parking on street (road shoulders OK)

PERSONAL CONDUCT:

1. Allowing loud music
2. Uttering abusive language or conduct that would be offensive to a reasonable person
3. Using the property Owner's gate card or clicker

WORK RELATED CONDUCT

1. Starting work before 7am or continuing after 7pm
2. Allowing dogs at construction sites
3. Performing work on Sunday
4. Cutting down a tree in excess of 5" without PMLA approval
5. Trespassing on neighboring property
6. Using neighbors water or electricity without written permission
7. Leaving construction signs longer than 5 days after work has been completed
8. Nailing signs to trees
9. Storing building materials on street or easement
10. Beginning exterior construction without PMLA approval

If you have questions call: The ECC Assistant @ (209) 962-8605 with questions.

FOR SALE

LIMITED FIREWOOD

Perfect Seasoned Oak
1/2 Cord \$250 Full cord \$400.
No Delivery Service.
Pick Up At Our Wood Yard
Near Tioga High School.
Please Call For Details
Mark **588-6227**
Steve **732-7721**
Please Leave A Message

RENTALS WANTED

EXCELLENT TENANTS

w/excellent credit and rental history looking for homes to rent. Owner approves tenant before placement. Call *Yosemite Region Resorts* **209-962-1111**

LAND FOR SALE

BULK LOT SALE

5 PML lots, \$10,000 or best offer.
209-768-3690

COMMERCIAL SPACE FOR LEASE

FOR LEASE

Office/Retail space now available at Mountain Leisure Center, downtown Groveland. Executive Suites from 250.00 per month, includes utilities and furnishings. Additional office/retail units 500 to 1400 sq ft. Award winning design along with the best parking in town. Call John at **209-962-6014** office, or **209-768-3690** cell.

OFFICE/RETAIL SPACE AVAILABLE ON MAIN STREET

Office/Retail space available at 18634 Main Street Suite 2 next to Groveland Pharmacy. Previously a Salon but can remodel as needed for new renter. Current space has lobby, reception, storage, restroom, two offices (hair stations) and break room - approximately 672 square feet. Location has excellent signage available and parking. Call Robert for details **559-305-3172**.

GET IT SOLD
with a classified ad
in the Pine Mountain
Lake News

HELP WANTED

PINE MOUNTAIN THERAPY

Position available for an exercise / clinical assistant. Please come by the clinic to pick up an application. Phone **209-962-4035** or email us at jdtanaka@comcast.net for more information.

MOORE BROS SCAVENGER

in Groveland is now hiring fulltime CDL Class A truck driver. Full benefits after 90 days, paid sick and vacation. Competitive salary. Please contact us by phone **(209) 962-7224** or email at info@moorebrosscavenger.com

PMLA IS HIRING

PMLA is looking for qualified candidates for several job openings. Apply online at www.PineMountainLake.com

SERVICES

BIG JOHN HANDYMAN SERVICES

Yard Maintenance, House Maintenance and moving households Call John **962-6163**

RONNING ROOFING

Call Joe for all your Roofing and Gutter needs. Licensed, Bonded, and Insured. License # 976739 **209-962-6842**

YOUR HOME HELPERS

Punctual, reliable, seasoned. Cleaning, windows, handyman, painting, pet care, yard work, weed eating, organizing, errands, more. Steve. **925-595-3362**
Carla **925-639-4929**.

YOUR HONEYDEW HANDYMAN,
weedeating tree trimming, log removal, painting and hauling, also small home repairs, call Michael today **209-770-3683**

TREE WORK

- Brush hauling or chipping
 - Excavator work
 - Tree removals
 - Storm tree damage
 - Free estimates
- 209-591-0486**

SERVICES

LOREN SNIDER'S TREE SERVICE

General pruning, weight reduction, satellite/ internet clearing, mistletoe removal, tree removal, dump truck, stump grinder, local references, Non Licensed, 30 + years experience. General liability insurance
209-878-3828 or 209-402-9797

AT YOUR SERVICE

handyman, small carpentry jobs, painting, tree trimming, hauling your unwanted items, prompt service reasonable rates. Call Mike **209-962-0777**

GET YOUR AD NOTICED



Place a photo of your item for sale for just \$10. Call 962-0613 today.

RENTAL NEEDED

FAMILY IN NEED

We are a local family of five in desperate need of a rental home the short term vacation rental market has destroyed our long term rental market

THERE ARE NO RENTALS AVAILABLE! Due to circumstances beyond our control, we must vacate our current home by Oct 31st. We are open to just about anything at this point, long term lease being our preferred option. Care take on a ranch, an airplane hanger, property to put a trailer on, open to anything? We have references. We pay our rent. We could use some help from this community we love so much!

Please Call Sarah @ **209-566-5254**
Thank You.

Classifieds are \$0.35 per word and one photo can be included for an additional \$10 per month.
www.PineMountainLake.com

CHECK OUT YOUR GROVELAND LIBRARY

THE GROVELAND LIBRARY RE-OPENS

TUESDAY - THURSDAY — NOON-6PM
FRIDAY & SATURDAY — 10AM-2PM

BOOKNOOK

USED BOOK SALE
SATURDAYS
9AM-NOON.

VISIT THE LIBRARY FOR A GREAT SELECTION OF BOOKS, MAGAZINES, NEWSPAPERS, VIDEOS, CDS, DVDS. ALSO COMPUTERS AND FREE WI-FI!



Real Estate • Property Management • Vacation Rentals

209-962-1111



20252 Lower Skyridge **LUXURY LAKEFRONT HOME** in a cove area of PML and remodeled from top-to-bottom! Great room, with wood beam ceilings and tall windows framing the view. Stone hearth & propane heat stove. Wood-grained plank porcelain tiles in the entry, kitchen, dining room and hall. Granite counters flank the cabinets and vanities thru-out. First-class kitchen, well-appointed master suite, lower level bonus room, wet bar, full bath and 2bds, plus 4th sleeping area, exercise/hobby room and laundry. Private boat dock. \$1,300,000 #20211771



19259 Ferretti Rd **MOUNTAIN GETAWAY** with beautiful Sierra views from the living room and the back deck. 2bd, 2ba, on main level, 3rd bdrm downstairs & bonus room. Updated kitchen, stone counters, electric skylight. Knotty pine ceilings. Recent updates include: Flooring in living room & bdrms, remodeled bedroom on lower level. Easy access but tucked away from the road for privacy. Includes all furniture and appliances plus TV's and Football table. Just move right in! \$325,000 #20211480



12604 Cresthaven Dr **ACROSS FROM THE LAKE!** Charming 3bd, 2ba, 1758sf home with 2-car garage. Only ¼-mile to tennis and Fisherman's Cove. Bonus room can be used as a 4th bdrm. Decks provide 1369sf of outdoor living. Most furniture is included. Many improvements completed over the past few years: Decking, windows, skylights, roof, gutters, garage door, composite fiber cement siding, 50-gal water heater and H/A system. Enjoy all the amenities of Pine Mountain Lake. \$440,000 #20211402



20785 Buttercup Cir **COUNTRY COTTAGE**. Eclectic home, backing to ranch land. Spacious dining and game room, doubling as an extra sleeping area and home theatre. Newer roof, tank-less water heater and four mini HVAC units. Enjoy all the amenities of Pine Mountain Lake: Recreational lake, pool, PGA-rated golf course, tennis & pickle ball, Equestrian Center, Country Club & bar, overlooking beautiful golf course and mountain views. \$342,000



20802 McKinley Wy **UNIQUE MOUNTAIN CABIN** set back on a 1.15 acres, backing to ranchland. Over 2800sf of living are and two patios and a deck. Great room with soaring wood beam ceiling, a grand hearth with a pellet stove, and enclosed bar with seating area. Separate dining room open to the great room. Generous kitchen storage, 3 master suites and a large bunk room sleeping area, presently set up to sleep 14 guests. A lower level suite includes a full bath and private living room. \$499,900 #20211620



Thinking About Selling? Now is the Time!

FABULOUS LAKEFRONT CHALET!

Stunning views over Pine Mountain Lake! The perfect location for 4th of July fireworks, across from the Marina. Double decks, cable deck railings, allowing for an uninhibited view, and a private boat dock.



Beautiful lake views, from inside and out. Interior Pine and French colors, Oak hardwood floors. Spacious bonus room or private 4th bedroom on the lower level. Laundry room, storage and a whole-house generator.

Dramatic open-beam ceiling. Authentic River Rock wood fireplace. Custom Milgard windows & patio doors. Granite kitchen counters, stainless steel appliances. Loft-style main bedroom on the upper level.



20060 Lower Skyridge Drive • \$1,400,000

100% Local Vacation & Long-Term Rental Services

- ◆ Owner-Approved Rates
- ◆ Online & Telephone Reservations
- ◆ Aggressive Advertising Campaign
- ◆ AirBnB, VRBO, HomeAway, Lake House Vacations, Booking.com & More!
- ◆ Pre-Arrival Inspections for Guests
- ◆ Professional Departure Cleanings
- ◆ Accidental Damage Protection
- ◆ Monthly Rentals & Tenant Placement
- ◆ Tenant-Screening & Credit Reports
- ◆ Move-in / Move-out Inspections
- ◆ Scheduled Maintenance & Repairs
- ◆ 24/7 Emergency Services Available
- ◆ Monthly Statements & Owner Payments
- ◆ Local, State & Federal Tax Requirements



18687 Main Street, Suite E, Groveland, CA 95321
(209) 962-1111 • yosemiteregionresorts.com



12728 Mueller Dr **GOLF COURSE HOME**, with lovely views of the course and distant mountains. Country Club dining & bar just up the road. Near Pro Shop, pool and pickle ball courts. Two levels, 4bd, 3ba, garage and level entry. Large upper deck and lower patio overlook the golf course. Updates in 2019: Hardwood flooring, new carpet, new kitchen & dining light fixtures, window coverings and interior paint. Most furniture available on separate bill of sale. \$550,000 #20211528



20230 Little Valley Rd **NEAR THE MAIN MARINA**. Furnished and newly painted. Split-level on merged lots equaling .66 acre. 2bd, full bath on entry level. Step-down living room, galley kitchen, granite counters, newer appliances and large pantry. Laundry room off kitchen. Master bdrm w/ large closet and access to large deck. Updated bathrooms. Room for expansion, adding a garage or extra space between you and neighbors! Circular driveway and extra parking on the merged lot. \$320,000 #20211049



12024 Hillhurst Cir **ESTABLISHED & HIGHLY-RATED** vacation home, in the Yosemite area resort community of Pine Mountain Lake. Home is being sold furnished. Many recent updates: Int/Ext paint, windows, flooring, roof, deck work, appliances, water heater, septic leach lines/pump and more. 3bd, 2ba. Enjoy all the amenities: Lake, pool, tennis, golf, equestrian center, Country Club restaurant & bar. Don't miss out on this great investment opportunity! \$349,900 #20211379



19645 Golden Rock Cir **5-STAR REVIEWS!** Currently one of the top performing homes on Airbnb. Single-level living area. Great room, large kitchen, office, master bdrm & bath, with jetted tub & separate shower. Lower level has kitchenette, family room, 3bd, 1½ baths, large garden patio with 6-person hot tub. Low-energy electric & water solar system. Deck with potting area and 2-car garage. ADT Alarm system. Portable whole generator for sale at \$1,500, with 5 star reviews! \$475,000 #20211755



19560 Pleasant View **PRIME LOCATION** near Dunn Court Beach, and a short drive to PML golf course, pool, tennis and Country Club. Well-maintained two story cabin on a 1/3 acre, with detached 2 car garage. Great room floor plan, brick fireplace, vaulted wood and beam ceiling, and a galley-style kitchen with breakfast bar. Master suite, guest bdrm & bathroom on this level. Game room on lower level, with bar, can be sleeping area. Spacious patio and wrap-around deck. \$359,000 #20211272



ROB STONE OWNER/REALTOR® DRE #01025463 | BJORN WAHMAN BROKER DRE #00706559 | TARA STONE MANAGER/DPG DRE# 01106544 | LIZ MATTINGLY BROKER ASSOC. DRE #00709618 | TED BIANCHI REALTOR® DRE #01318805 | PAULA BIANCHI REALTOR® DRE #01316556 | RYAN NIEDENS BROKER ASSOCIATE DRE #01940007 | ROY NAVARRO BROKER ASSOC. DRE #01235457 | MIRIAM MARTIN REALTOR®, RSPS, ASP DRE #01400779 | ANDREW RIETVELD REALTOR® DRE #01994156 | KATHY NIEDENS REALTOR® DRE #01113243 | SHARRON WAHMAN EXEC. ASSISTANT RESERVATIONIST | PATTI MOORE EXEC. ASSISTANT RESERVATIONIST | JOSH REGALADO PROPERTY MANAGER | CAPRICE KROW PROF. MGR/RLD DRE# 01179023 | CORY STONE PHOTOGRAPHER VIDEOGRAPHER