

THE OFFICIAL NEWSPAPER OF, AND FOR, PINE MOUNTAIN LAKE PROPERTY OWNERS

The Pine Mountain Lake News



2021
APRIL

TABLE OF CONTENTS

Administration	2-16, 23-24
PMLA Financials	6
Letters to the Editor	8
The Grill & Lounge	12-13
“Homes on the Hill” Real Estate	17-22
PML Clubs & Recreation	24-25
Community News	27-33
Home Improvement	35-38
Classified Ads	39

Happy Easter

FROM PINE MOUNTAIN LAKE



PML 2020 ANNUAL REPORT
INSIDE THIS EDITION

CALLING ALL CANDIDATES
THE PMLA BOARD OF DIRECTORS ELECTION COMING SOON
See Page 24

SEASONAL EMPLOYEMENT OPPORTUNITIES
APPLY ONLINE TO JOIN OUR TEAM
See Page 34 for Details

PRSR STD
U.S. POSTAGE
PAID
ABS DIRECT

Change Service Requested

19228 Pine Mountain Dr. Groveland, CA 95321

Moore Brothers Prepaid Bag Bin

The bin (dumpster) at the PMLA Maintenance Yard entrance is for the dumping of prepaid, Moore Bros., trash bags ONLY. No dumping of any other trash items are allowed. Violators will face enforcement action. Please help us keep this area clear and ensure that the dumpster can remain in place for our residents use. Thank you!

**THE PREPAID BAGS CAN BE PURCHASED AT
MOORE BROS. SCAVENGER SERVICE — CALL 209.962.7224 FOR INFORMATION**

COMPOST & ARCHERY RANGE HOURS OF OPERATION

**APRIL THRU OCTOBER - 7 DAYS A WEEK 8AM TO 4PM
WEATHER PERMITTING**

**NOVEMBER THRU MARCH - TUES. - SUN. 8AM TO 4PM
WEATHER PERMITTING**

SHOOTING RANGE - TUES, THUR, SAT 9AM TO 3PM

PLEASE NOTE Hours may vary depending on weather conditions, safety concerns, or other situations beyond control. Archery & Gun Range users must check-in with compost attendant.

**HOURS SUBJECT TO CHANGE WITHOUT NOTICE
Call Main Gate at 209-962-8615**

GET IMPORTANT NEWS VIA EMAIL

Signing up for the new eSNAP program is quick and easy and gives you the ability to sign up for the information that you want to receive. Just head over to www.PineMountainLake.com and sign up today.



ELECTRONIC SAFETY, NEWS & ALERT PROGRAM

ABOUT EACH OF THE PROGRAMS

PML News & Alerts – Receive emails with information regarding anything affecting Pine Mountain Lake such as road closures, utility problems, fire alerts and more.

PML Amenities News – Receive emails with information about upcoming events, specials, or news regarding all PML amenities such as the lake, marina, golf course, etc.

The Grill at Pine Mountain Lake –

Receive emails with information regarding happenings at The Grill. Get information on Wine Tastings, Entertainment, Special Events and more.

This program is separate from the current email opt-in program that allows you to receive PMLA governing documents and requires your signed approval. This program can be signed up for via the online system. *Get your news and alerts via email, it's eSNAP!*

NOTICE

The Pine Mountain Lake News, established July 25, 1973, is printed monthly for residents of Pine Mountain Lake and sold in the Groveland, CA 95321 area. Members can access the PML News monthly edition online at www.PineMountainLake.com. Every month the newest edition of the PML News is posted online before the first of each month. Interested parties can subscribe to the traditional "hard copy" and receive a copy by mail each month.

The PML News is mailed to approximately 3500 PML property owner households each month. Up to 500 copies are rack-sold in the local Groveland area. Our circulation reaches approximately 1200 full-time, resident, PML property owners and approximately 2300 "weekender," non-resident, property owners who maintain primary residence in Northern California, in Southern California, or in other states. For more information regarding the PML News, please call the PML Administration Office at (209) 962-8600. We greatly appreciate your contributions but please note that the PML News fills up very quickly – often by the 7th or 8th of the month (long before the 10th deadline). To ensure that your submission is reviewed for publication please submit in full and as early as possible. Please remember that the PML News is limited in capacity and your submissions are reviewed on a first-come-first-served, space-available basis.

We publish all PMLA related submissions such as Board & Management Business, Clubs, Activities & Events. Where space remains, we publish non-PMLA related submissions in our "Community" section.

We do our best to provide timely news. If you experience delayed delivery or have misplaced a particular edition, please visit us at the PMLA website www.pinemountainlake.com for a downloadable PDF of the News posted by the 1st of the month and a downloadable PDF list of ad rates.

Subscribe to the PML NEWS TODAY!

Name _____

Unit _____ Lot _____

Mailing Address _____

- NO CHARGE for Property Owners (bulk)
- \$6/yr for Co-Owners (bulk);
- \$10/yr for Non-Property Owners (bulk)
- \$20/yr for PROPERTY OWNERS (1st class)
- \$30/yr for Non-property owners (1st class)

Enclosed is my check in the amount of
\$ _____ (Payment due in full)

Send this subscription to:
Pine Mountain Lake Association
19228 Pine Mtn. Dr. Groveland, CA 95321
Attn: Anita

Submission Guidelines

The PML News is the Official Newspaper of Pine Mountain Lake Property Owners

The PML News is dedicated to reporting PML Association business and PML Association news to Pine Mountain Lake Property Owners.

The PML News receives more than 100 Tuolumne County/Groveland community related submissions each month. All such community related articles and notices will appear in the PML News on a SPACE AVAILABLE basis and at the DISCRETION of the PML News Publishing Editor.

DEADLINES

Advertisements must be received IN FULL (text, MLS info, images, logos, etc.) by the 10th of the month for the following month's edition. Only advertisements received in full will be guaranteed to be published in that month's edition. **NO EXCEPTIONS.**

MEDIA ACCEPTED email

SOFTWARE (Articles)

InDesign, Microsoft Word, Adobe Pages, or TXT formats only.

SOFTWARE (Advertisements)

PSD, JPG, PDF, EPS or TIFF only.

TEXT/GRAPHICS

Handwritten text is not accepted. Material composed completely of capital letters is not accepted. Please use uppercase and lowercase letters in composition. Ink jet printed images are not accepted. Images are accepted ONLY as camera ready art, original photos (to be scanned) or as JPEG, TIFF or PDF files created with above listed software. All scans and bitmap images must be in TIFF or JPG format at least 200 dpi at 100% (300 dpi preferred). Ad files are stored for 90 days from first run date. Older ads that have not been running must be resubmitted. (See Display & Insert Advertising Contract "Design and Preparation Charges.")

E-MAIL TEXT/GRAPHICS

Text/graphics may be delivered as e-mail attachments via the Internet. Send to: pmlnews@sabredesign.net.

AD DESIGN and PROOFS

Ads that are requested to be sent to other periodicals require a usage fee from the advertiser (see Display & Insert Advertising Contract "Design and Preparation Charges"). Proofs are available upon request and final proof approval for all ads is expected within 24 hours. Changes made are LIMITED to typographical or graphic placement errors. NO OTHER ADDITIONS OR CHANGES WILL BE MADE.

SUBMISSION DEADLINES

Articles — 10th each month
Ads — 10th each month
Classifieds — 15th each month

VISIT US ONLINE
www.pinemountainlake.com

PINE MOUNTAIN LAKE ASSOCIATION



209.962.8600



www.pinemountainlake.com

ADMINISTRATION OFFICE HOURS*

8:00 AM TO 4:30 PM – MON THRU FRI
OPEN AT 8:45 AM SECOND TUESDAY OF EACH MONTH
 * SUBJECT TO COVID-19 RESTRICTIONS

The Administration Office Lobby is CLOSED to the public until further notice. Staff is available by phone or email.

2021 ADMINISTRATION OFFICES HOLIDAYS

(ADMIN OFFICE WILL BE CLOSED)

Mon. 5/31 Memorial Day	Fri. 11/26 Day After Thanksgiving
Mon. 7/5 Independence Day (Observed)	Thur. 12/23 Christmas Eve (Observed)
Mon. 9/6 Labor Day	Fri. 12/24 Christmas Day (Observed)
Thur. 11/11 Veterans Day	Thur. 12/30 New Years Eve (Observed)
Thur. 11/25 Thanksgiving	Fri. 12/31 New Years Day (Observed)

PMLA BOARD MEETINGS SCHEDULE

Meetings held remotely during COVID-19 protocols & start at 9 AM
 See website, www.pinemountainlake.com, for details

(THIRD SATURDAY - UNLESS OTHERWISE NOTED)

April 17	August 21 (Annual Member Meeting/Election)
May 15	September 18
June 19 (Father's Day Weekend)	October 16 (Board Budget Meeting, Begins at 8AM)
July 17	November 20 (Saturday before Thanksgiving)
	December 18 (To be determined)

PINE MOUNTAIN LAKE NEWS DELIVERY

Although we guarantee that the PML News is mailed from Modesto, CA on the same day (between the 26th-30th of month), most post offices (except Groveland) sort Bulk Mail after First Class mail. So, consider a First Class delivery subscription for just \$20/yr. (\$20 per year for property owners and \$30 per year for non-property owners) Interested? Call the PMLA Office at 209/962-8632 or see form above.

The Pine Mountain Lake News is also available (in PDF format) at: www.pinemountainlake.com.
 New editions are posted by the 1st of the month.

PHONE & EMAIL DIRECTORY

ADMINISTRATION

General Manager - Joseph Powell
joepowell@pinemountainlake.com

Admin Asst. to G.M. - 209.962.8627
Debra Durai
debra@pinemountainlake.com

Human Resources - 209.962.8628
Shannon Abbott
pmlhr@pinemountainlake.com

E.C.C. Assistant - 209.962.8605
 Plan Submittal, Compliance Fees
Nikki Grimes
ecc@pinemountainlake.com

Member Relations - 209.962.8632
 Gate Cards, Address Changes,
 Webmaster, Notary Public, Mergers
Anita Spencer
anita.s@pinemountainlake.com

Community Standards Director
209.962.1241
Suzette Lafranchi
communitystandards@pinemountainlake.com

Compliance Officer
209.962.1245
Janessa Owens
compliance@pinemountainlake.com

General Info & Lake Lodge
Scheduling 209.962.8600
Melody Wisdom
admin@pinemountainlake.com

Main Gate - 209.962.8615
 General Safety Inquiries, gate
 passes, campground reservations,
 tennis reservations
campground@pinemountainlake.com

Accounting - 209.962.8607
Tina Cutright
 Receivable/Collections/
 Assessments
pmlar@pinemountainlake.com

Accounts Payable - 209.962.8626
Karen Peracca
pmlap@pinemountainlake.com

Sr Accountant/Payroll
209.962.8618
Stacy Gray
stacy@pinemountainlake.com

Controller - 209.962.8606
 Accounting Procedures
Ken Spencer
controller@pinemountainlake.com

Recreation and Seasonal
Operations Manager
209.962.8604
Michelle Cathey
m.cathey@pinemountainlake.com

DEPARTMENT OF SAFETY

Director of Safety - 209.962.8633
Natalie Trujillo
n.trujillo@pinemountainlake.com

Sergeant - 209.962.1244
Sgt. Teri Cathrein
t.cathrein@pinemountainlake.com

Sergeant - 209.962.8616
Sgt. Carrie Harvey
c.harvey@pinemountainlake.com

MAINTENANCE DEPT
209.962.8612
Susan Capitanich

maintenance@pinemountainlake.com

Maintenance Manager
209.962.8611
Rick Lafranchi
rickl@pinemountainlake.com

Fire Safety Coordinator
209.990.5260 or 990.5263
Joe Milani

GOLF COURSE
Golf Course Superintendent
209.962.8610
Rob Abbott
rabbott@pinemountainlake.com

Golf Pro Shop - 209.962.8620
 Golf Pro Shop/Golf Reservations
Doug Schmielt
dschmielt@pinemountainlake.com

Golf Pro - 209.962.8622
Mike Cook
golfpro@pinemountainlake.com

THE GRILL AT PINE MOUNTAIN LAKE
The Grill Manager - 209.962.8639
Jay Reis
clubmgr@pinemountainlake.com

Restaurant - 209.962.8638

OTHER PHONE NUMBERS
Equestrian Center Manager
Kendra Brown
209.962.8667
stables@pinemountainlake.com

Marina Manager
Valarie Owens
209.962.8631
marina@pinemountainlake.com

PML NEWS - 209.962.0613
 Ad/Article Submissions
 Sabre Design & Publishing
PMLNews@SabreDesign.net

General Manager's Message

JOE POWELL - CCAM-LS, CMCA, AMS GENERAL MANAGER

COVID-19 UPDATE - TUOLUMNE COUNTY MOVES TO THE RED TIER

As of the date of writing this article, Tuolumne County moved to the Red Tier designation, under the State COVID-19 "Blueprint". This allows us to reopen the Grill Restaurant to limited indoor dining. All other amenities continue to operate under current COVID restrictions and changes will be made to our operational parameters as allowed. Please note that the restrictions and guidelines change frequently and we adjust our operational procedures and hours as appropriate.

GOVERNING DOCUMENTS UPDATE PROJECT

We are moving forward on the work to update our CC&R's and Bylaws to bring them into compliance with current law this year. To that end, the Board retained the Adams Stirling Law Firm to assist us with the drafting of the new documents for membership consideration and approval by vote.

The Board formed an ad hoc committee and our team has started working on the project. The first steps included responding to a detailed questionnaire from Adams Stirling and providing all documents and information needed so that our law firm can get to work on the first draft. We plan to hold a Zoom town hall meeting so that members can ask questions and we can clarify the changes and improvements to the documents. More to follow.

AGGRESSIVE DOGS ROAMING IN PML

From time to time our Main Gate, Department of Safety receives reports regarding dogs that roam in our community, attacking pets and wildlife and acting aggressively towards members and guests. Our staff immediately acts on these reports.

While our Department of Safety staff is not resourced to perform animal control activities, we work with the County Animal Control Department and members in capturing and securing dogs. In most cases, it is a lost pet and our goal is to get the dog back to its owner.

We have a kennel near our Main Gate operation to secure the animals while we locate the owner. If we are unable to locate the owner, Animal Control will pick up the dog or we will transport it to the Animal Control center in Jamestown.

In extreme cases where the dogs are aggressive, we ask that members who see the dogs to use caution and take

pictures or video of them, and report them immediately to the Tuolumne County Animal Control Department and then the PML Department of Safety at our Main Gate number. This allows us to identify travel patterns and improve our odds that the animals will be captured.

PML takes these situations seriously and we act immediately within our authority, resources and sphere of control to resolve safety issues such as roaming dog packs

To report loose and aggressive dogs, please use the contact information below. The County Animal Control webpage states that they will not take reports or complaints by email, so it is important to call and talk directly to a staff member.

Michael Mazouch,

Animal Control Manager

Physical Address: 10040 Victoria Way,
Jamestown, CA 95327

Mailing Address: 2 S. Green Street,
Sonora, CA 95370

Telephone: (209) 694-2730

Fax: (209) 984-1339

For after-hour emergencies, Animal Control asks that you contact the Sheriff's Office dispatch at (209) 533-5815.

Pine Mountain Lake Main Gate -
Department of Safety
(209) 962-8615

FISHERMAN'S COVE PLAYGROUND PROJECT

The new Fisherman's Cove playground equipment was delivered and the vendor began installation work last month. There have been some weather delays due to rain and snow storms, but progress is being made. Our goal is to complete the project for use this spring.

PML STAFF WORKS ON FIREWISE COMMUNITY EFFORTS

Our Fire Safety staff has been investigating the requirements involved with PML becoming a Firewise Community. What is a Firewise Community and why is it so important?

According to their website "Firewise Communities / USA is a national program sponsored by the National Fire Prevention Association (NFPA). Initiated at the grass roots level, the program empowers homeowners to help protect their neighborhood.

The Firewise USA Program encourages local solutions for safety by involving homeowners in taking individual responsibility for preparing their homes from the risk of wildfire. The

program provides resources to help homeowners learn how to adapt to living with wildfire while encouraging and empowering neighbors to work together to take action now to reduce their wildfire risk and prevent losses."

PML has had a comprehensive fire safety and mitigation program for decades and we have recently overhauled and improved our operational standards. These efforts can be leveraged to take fire safety to the next level with the Firewise Communities Program.

It takes buy-in from the entire community and volunteers to carry out the work needed to earn this designation. Firewise Communities requires a board or committee of volunteers to run the program in each community. Additionally, another challenge is that they limit each community program to 2,500 units. Given the size of our community, we may have to split up into two programs. Regardless, we could see a decrease in our insurance premiums, so the effort is well worth it.

Our staff is preparing information on the requirements to become a Firewise Community to present to the Board of Directors at the April Board meeting.

Until next month, wishing everyone a Happy Easter holiday!

ATTENTION NEW PML MEMBERS!

WELCOME to PML...We're glad you're here!

Once you have received your welcome letter from the Association you will have the information you need to log into the PML website (www.pinemountainlake.com)

Once there click on the **RESOURCES** tab & then on the **NEW MEMBER ORIENTATION** icon.

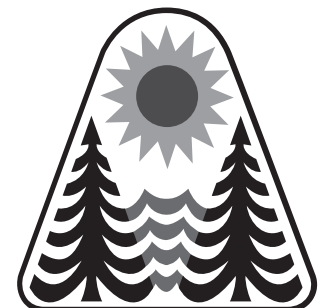
The New Member Orientation page is **JUST FOR YOU!**

Here you will find:

- Member Orientation Packet
 - o Information on the Official PML Facebook page
 - o Gate Access Guest Pass internet program information
 - o Fire Safety contact and information
 - o Board Meeting Dates and information
 - o Rules, Regulations and Procedural information
 - o Information on PML Committees and Clubs

- Assessment Information
- PML Fact Sheet
- Getting Connected in Groveland

And **MUCH MORE!**



Pine Mountain Lake Association 209.962.8600

BOARD OF DIRECTORS

Steve Griefer – President
Mike Gustafson – Vice President
Nick Stauffacher – Secretary
Karen Hopkins – Treasurer
Tom Moffitt – Director-at-large

GENERAL MANAGER

Joseph M. Powell, CCAM-LS, CMCA, AMS

CORRESPONDENCE TO DIRECTORS

Pine Mountain Lake Association
19228 Pine Mountain Drive
Groveland, CA 95321
PMLABoard@pinemountainlake.com

ADMINISTRATION OFFICE

HOURS OF OPERATION*

Monday - Friday 8:00 AM - 4:30 PM
Tel: 209/962-8600

* Subject to COVID-19 Restrictions

The Pine Mountain Lake News, established July 25, 1973, is printed monthly for residents of Pine Mountain Lake and vicinity by Pine Mountain Lake Association, Groveland, California 95321.

SUBSCRIPTION RATES:

Co-owner subscription: \$6 per year
Single copies: 50 cents each
Single mailed copies: \$1.35 each
For non-members: \$10 per year

SUBMISSION DEADLINE

10th of the month by 4:30 PM
LATE SUBMISSIONS MAY NOT BE ACCEPTED

Visit www.pinemountainlake.com for ad rates and submission guidelines or email: PMLNews@SabreDesign.net.

For the mutual benefit of all property owners, the Pine Mountain Lake News reserves the right to edit all copy submitted for publication. The Pine Mountain Lake News is a private enterprise, not a public entity, and as such is entitled to reject advertisements or articles in the best judgment of its editor or publisher, despite a probable monopoly in the area of its publication. Pine Mountain Lake Association is not responsible for, nor does it guarantee the accuracy of, information contained in any ad placed in the Pine Mountain Lake News. The Pine Mountain Lake News attempts to ensure that this publication is free of legal infringements and the Pine Mountain Lake Association and its contractors are not liable for copyright/trademark infringements from external advertisements and articles.

DAVID WILKINSON – Publishing Editor
SABRE DESIGN & PUBLISHING
Design/layout

PINE MOUNTAIN LAKE NEWS

P.O. Box 605
Groveland, CA 95321
Tel: 209.962.0613
Fax: 800.680.6217

E-mail: PMLNews@SabreDesign.net

President's Message

STEVE GRIEFER – PRESIDENT

GREETINGS MY FELLOW HOMEOWNERS!!

Over the last few years, I've written to you about the ongoings of the Association. The finances, the Grill, the Golf Course, Stables for example... However, we sometimes forget why we all chose to call this place our home. When I moved to PML back in 2012, I was amazed by the beauty and awesomeness of the night. I remember working in the dead of night, thinking about how bright the night sky was to see. It was so dark at night I had no trouble finding the Milky Way, the North Star, the Big Dipper and even Orion's belt. Over time, as all things do, our little slice of heaven has changed. Our membership changes, grows, adapts to the location they call home. We bring with us, the tools and experiences, we've had in our other homes. As we get new property owners, and some of our long time residents have embraced, owners have changed outside lights to be operational all night long. We have seen light

pollution steadily increased in PML. Some say it is to prevent crime. It may make us feel safer but has not been shown to make us safer. Banks, donut shops, real estate offices, court buildings keep the lights on in the inside, not the outside. Light pollution, in our community, does have a some costs. For example: your energy bill is higher, lack of sleep to yourself and neighbors is disrupted, and possible glare can be blinding to drivers. When we moved here, bought here, rent here, we all agree to follow the ECC regulations which spell out how to build and use outside lights. All homes in PML are subject to these. They are:

EXTERIOR LIGHTING

All exterior lights must be shielded or hooded, and must be located and constructed so as not to create a nuisance or hazard. The lighting footprint must project downward and should not project beyond the property boundaries. Any fixture that fails to meet the above specifications must be replaced prior to a final ECC inspection.

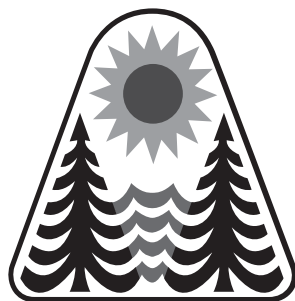
No vapor lights will be allowed. At any time, the ECC may evaluate unduly bright lights that create a nuisance to adjacent property owners or on which a complaint has been received.



Steve Griefer
PMLA President

So, please, go outside and see the stars. Go outside and look up at the night sky and wish upon a star. Please turn off your outside lights. Maybe we're blinding our neighbors and not even knowing it. Perhaps we're blinding a passing motorists and aren't even aware. Take a moment, breath in, look up, and enjoy the splendor of the cosmos. If you need any guidance, please call Administration and ask for Community Standards – Suzette Laffranchi (962-1241).

It's a big universe.... look up at it.



On the Cover



*It is Spring...Right?
The PML News wishes everyone
a very Happy Easter!
Photo by Valeria Boltneva*

Recycling Notice from Moore Bros

WE HAVE DROP-OFF RECYCLING!!

All residents and visitors are asked to source separate their recyclable materials. There are designated bins located at our office located at 11300 Wards Ferry Rd. in Big Oak Flat where you may drop off your recyclable materials anytime **Monday through Saturday 8am to 5pm** (weather permitting). CLOSED SUNDAYS and major holidays.

Acceptable materials include:

- Aluminum beverage containers, tin cans, glass bottles and jars (all colors)
- #1 Plastic (bottle form only) ****#1 clear fruit/veggie, sandwich or salad clam shell type containers are NOT allowed****
- #2 Plastic (bottle form only) ****#2 colored plastic coffee containers are NOT allowed****
- **ALL CONTAINERS MUST BE RINSED AND FREE OF LIDS AND CAPS**

We also accept Mixed Paper, newspaper, magazines, catalogs, junk mail, paperback books & shredded paper which can all be put in the same bin. NO WRAPPING PAPER ALLOWED

CARDBOARD BIN ACCEPTABLE MATERIALS INCLUDE:

Cardboard, Carton Board such as cereal and cracker and soda/beer boxes, etc. are also accepted and can be placed in the cardboard bin with the cardboard. THESE ITEMS NEED TO BE FLATTENED OR BROKEN DOWN AND ANY PACKAGING MATERIALS OR TAPE REMOVED.

IF THE CARDBOARD BIN IS FULL OR YOU HAVE A LARGE LOAD OF CARDBOARD TO RECYCLE, we ask you to take it to our shop location at 17641 Yates St. in Big Oak Flat where we still maintain a 50 yard cardboard recycle box.

PLEASE DO NOT THROW PLASTIC BAGS OF RECYCLABLES INTO THE BINS.

PINE MOUNTAIN LAKE ASSOCIATION
SUMMARY STATEMENT OF OPERATING FUND REVENUES AND EXPENSES
For The Two Months Ended February 28, 2021

OPERATION OF AMENITIES	Revenues					Expenses				Budget	
	Members' Assessments Net of Discount	User Fees	Sales, Net of Cost of Sales	Miscellaneous Income	Total Revenues	Total Expenses	(Cost)/Income Before Depreciation	Depreciation Expense	(NET COST) INCOME	(NET COST) INCOME	Variance Bud - Act
Golf Course	\$ -0-	\$ 126,049	\$ 2,655		\$ 128,704	\$ 212,499	\$ (83,795)		\$ (83,795)	\$ (153,360)	69,565
Restaurant & Bar	-0-	160	39,631		39,791	182,131	(142,340)		(142,340)	(174,523)	32,183
Marina	-0-	83,255			83,255	40,205	43,050		43,050	7,386	35,664
Snack Shack	-0-		3,303		3,303	6,444	(3,141)		(3,141)	(8,133)	4,992
Stables	-0-	12,981		900	13,881	44,741	(30,860)		(30,860)	(46,391)	15,531
Recreation	-0-	25,828			25,828	5,234	20,594		20,594	12,831	7,763
Roads & Facilities Maintenance	-0-	17,230		100	17,330	339,491	(322,161)		(322,161)	(366,149)	43,988
PROPERTY OWNER SERVICES											
Safety	-0-	17,300		280	17,580	177,732	(160,152)		(160,152)	(193,244)	33,092
Administration	-0-	110,913		5,729	116,642	298,133	(181,491)		(181,491)	(270,549)	89,058
ASSESSMENTS											
Assessments	1,010,670			18,873	1,029,543	11,435	1,018,108	112,379	905,729	871,950	33,779
Totals	\$ 1,010,670	\$ 393,716	\$ 45,589	\$ 25,882	\$ 1,475,857	\$ 1,318,045	\$ 157,812	\$ 112,379	\$ 45,433	\$ (320,182)	365,615

CAPITAL EXPENDITURES 2 Months Ended Feb. 28, 2021

	TOTAL RESERVE FUNDS	NEW CAPITAL ADDITIONS FUND	TOTAL CONTRIBUTION TO CAPITAL
2021 Beginning Fund Balances	2,269,966	\$ 90,361	2,360,327
Interest Income	432		432
Bank Fees/Discounts Taken			-
Assessments Earned	360,834 ⁽¹⁾	32,116 ⁽²⁾	392,950
Other Income/Expense			
PURCHASES BY AMENITY			
Golf Course	(20,449)	(47,470)	(67,919)
Country Club			-
Bar			-
Marina	(186,722)	(4,274)	(190,996)
Snack Shack			-
Swim Center			-
Stables	(49,684)		(49,684)
Recreation		(1,497)	(1,497)
Roads & Facilities Maintenance	(13,555)	(43,180)	(56,735)
PROPERTY OWNER SERVICES			
Safety	(3,411)		(3,411)
Administration	(18,851)		(18,851)
Non-Capital Reserve Expenses	(37,985)		(37,985)
Total transfer to Operating Fund for property and equipment additions and reserve expenses	(330,657)	(96,421)	(427,078)
Adjusted Fund Balances	\$ 2,300,575	\$ 26,056	\$ 2,326,631

Notes to the Financial Statements

- (1) The Budgeted Reserve Fund assessment for 2021 is \$2,165,000
(2) The Budgeted New Capital Additions Fund assessment for 2021 is \$192,698

PAY YOUR PML PAYMENTS ONLINE

Did you know you can make your payments online?

Online Bill Pay is available on www.PineMountainLake.com.

Pay via your credit card, it is quick and easy!

DO YOU HAVE YOUR PIN?

Since PML is a private gated community, we want to offer our property owners a secure way to call in guests. When you become a member of PML you are assigned a Personal Identification Number (PIN) to utilize either when calling in a guest pass or using the Gate Access Internet program. This PIN identifies you to staff without you having to be present. This is a confidential number and should **not be shared**. When you call the Main Gate to authorize a guest or vendor access into PML, you will be asked for your PIN. The staff will look up the number in the computer and use it to confirm your identity before entering the guest information. You must have this number to utilize the Gate Access Internet program as well. If you do not know your PIN or have any questions, please contact the Administration Office at:



(209) 962-8600



Monday through Friday from 8 am to 4:30 pm
and we will gladly supply this information to you.

PML AUTOMATIC PAYMENT PROGRAM

Taking the time to write a check for your monthly assessment payment can be time consuming and costly. You can avoid this burden and eliminate the potential for late payment charges by enrolling in PMLA's Auto Payment Program. By completing the form, which can be found at www.PineMountainLake.com under the Resources/Forms, and returning it to the Administration Office, you can have your monthly assessment automatically deducted from your checking account or charged to your credit card. This means you never have to remember to write a check and mail it each month. The peace of mind that comes with knowing your payment will always be made on time is easy to attain. We can also arrange to have any other regular payment you make to the Association (such as golf membership, horse boarding fees, etc.) paid in the same way.

For more information on this simple, effective and time saving plan please contact us at (209) 962-8600.

PMLA Money Matters

KEN SPENCER, CAFM – ASSOCIATION CONTROLLER

Included in this month's edition of the PML News you will find the 2020 Annual Report. While it is not the most stimulating reading it does contain a lot of valuable information regarding the Association's financial condition and results for last year.

As always this includes the report from our outside auditors (Porter & Lasiewicz, CPAs) detailing the work they performed in the annual review of our records and accounting practices. As you know from previous year's articles they always issue an opinion statement regarding the fairness of our financial statements for the year end. This year, as has been the case for many years, this opinion was an unqualified one (meaning no material issues to report). I am proud of this record and know that it is due to the hard work and dedication of the Association's accounting staff. Thank you Stacy, Karen and Tina.

Beyond this important auditing review the annual report contains detailed information on our financial position at year end (Balance Sheet), the results of our operations during the 12 months ending December 31 (Statement of Revenue & Expenses) and the report on how we received and distributed cash (Statement of Cash Flows).

In addition there are several pages of Notes to the Financial Statements. These important notes provide more detail and clarification of the numbers shown on the previous pages. This includes such things as information on our organizational structure, the type and nature of our various bank accounts, a description of some of our accounting practices (how we treat deposits and the use of estimates in evaluating our results, etc.). There is also a fairly lengthy discussion on how we account for our fixed assets, as well as an explanation of a few of some of our

employee benefit programs.

Towards the end of the report is a legally required report detailing the status of our Replacement (Reserve) fund broken out by the type of asset involved. This report is interesting as it serves to point out the wide variety and type of assets that the Association has and is responsible for maintaining and replacing.

I know that generally speaking this report gathers as much attention from property owners as does the budget package distributed annually with your payment coupons and parking stickers. Not much. That's OK since all of us have a lot of things going on in our life and reviewing mundane accounting figures does not rank very high on a daily to-do list. The point is that this information is available and provided to all property owners in the spirit of open communication and transparency. Even if you don't take the time to read this from cover to cover it is nice to know it is there and hopefully serves to provide you with a greater sense of comfort that your money is being handled appropriately and that there are other, outside individuals that review and oversee our accounting operation.

I encourage you all to take at least a cursory look at this report and perhaps gain a bit more insight into the "mysterious" world of accounting. Please feel free to contact me if you have any questions on any aspect of the report or would like to discuss it more detail.

Well that's it for this month. If you have any PMLA Money Matters you would like to see discussed in this column in the future please drop me a line at CONTROLLER@PINEMOUNTAINLAKE.COM or give me a call at 962-8606. Thanks for reading and I hope you find this monthly discussion helpful, somewhat interesting and at least a bit informative.

PMLA Safety Committee

BOB ASQUITH

The Pine Mountain Lake Safety and Security Committee is one of the standing committees authorized by the PMLA Board of Directors to inform its decision making and promote its mission. Your committee has a variety of responsibility areas including organizing for emergency preparedness (Neighborhood Watch, CERT), training (CPR, AED, First Aid), and child car seat installation demonstrations. The Committee meets every first Monday of the month.

Your Input is Requested: Property Owners may attend our committee meetings.

Our next meeting is April 5th at 9am via Zoom. Please email safetyandsecuritycommittee@pinemountainlake.com to obtain your invitation and join us.

We are currently soliciting comments about your Moc Fire evacuation experiences as well as developing strategies for Firewise, Neighborhood Watch, CERT, Viper and general emergency preparedness. So, bring your ideas and suggestions to make PML a safer place.

With fire season rapidly approaching,

we will be working with the Tuolumne County Office of Emergency Services Coordinator and the CAL Fire Tuolumne-Calaveras Unit Forester on Firewise. This includes local fire services – CAL Fire and GCSD Fire. Tuolumne County already has seven designated Firewise communities which have proactively taken steps to reduce fire risks in their neighborhoods. The goal is to bring this critical program to Pine Mountain Lake as rapidly as practical.

To learn more about fire evacuation responsibilities, please attend one of our meetings. We also encourage you to directly discuss fire evacuation concerns with the PML administration and your Board Members.

More than two dozen CERT volunteers from PML have provided services for Tuolumne County Public Health at their vaccination clinics. To join our team, email GrovelandCERT@gmail.com and visit our Facebook Page – CERT Groveland Area.

For 2021, your committee consists of Bruce Dudley-Chairperson elect, Keith Martin-Secretary, Tim Shanahan-Treasurer, and Bob Asquith-Member Relations Specialist. Steve Griefer is our Board Liaison.

Please jot down your comments and email to: safetyandsecuritycommittee@pinemountainlake.com or admin@pinemountainlake.com

NOTARY SERVICE

ANITA SPENCER, – PMLA NOTARY PUBLIC

DUE TO COVID-19 RESTRICTIONS,
NOTARY SERVICES HAVE BEEN
SUSPENDED UNTIL FURTHER NOTICE.

FIREWOOD CUTTING

PML SLASH AND COMPOST SITE

OAK AND CEDAR REQUIRES A \$20 PML WOOD CUTTING PERMIT

WOOD CUTTING PERMITS AVAILABLE AT THE MAINTENANCE FACILITY

PINE AND FIR AVAILABLE FOR FREE CUT & HAUL

FOR MORE INFORMATION PLEASE CONTACT SUSAN AT

(209) 962-8612 BETWEEN THE HOURS OF 7 AM TO 2:30 PM, M-F.

Make PML your

ONE-STOP-SHOP

for all your gift giving!

Pick up a gift card for:

**Golf • Golf Shop Apparel & Accessories • The Grill
Hunting & Fishing License Vouchers**

**Gift cards are available at the Administration Office,
The Grill, and at the Pro Shop**

LETTERS TO THE EDITOR

LETTERS TO THE EDITOR RECEIVED	1	DEFERRED TO NEXT EDITION BY EDITORIAL COMMITTEE	0
DENIED BY EDITORIAL COMMITTEE	0	DEFERRED TO NEXT EDITION BY BOARD OF DIRECTORS	0
Exceeds 250 word maximum	0	DEFERRED TO NEXT EDITION BY BOARD OF DIRECTORS	0
Content	0	DEFERRED TO NEXT EDITION BY BOARD OF DIRECTORS	0
Not a property owner	0	DEFERRED TO NEXT EDITION BY BOARD OF DIRECTORS	0
"THANK YOU" LETTERS RECEIVED*	0	* Thank you's do not require editorial committee approval	

Submit Letters to the Editor by sending to "Editor, PML News"
 Mail: 19228 Pine Mountain Drive, Groveland, CA 95321
 Email: PMLNews@sabredesign.net • Fax: 800-680-6217

PLEASE NOTE THAT ALL LETTERS APPEAR IN THE ORDER THEY WERE RECEIVED BY THE PML NEWS

The Pine Mountain Lake News welcomes letters and articles for publication provided they meet the criteria established in the current PMLA Editorial Policy (See excerpt below – entire policy on file at the Administration Office). Letters must be limited to 250 words, typewritten using upper and lowercase letters or neatly printed (no all-capital material) and signed with name, mailing address, PML unit/lot number, and day/evening telephone numbers by a property owner in good standing. **LETTERS MUST BE RECEIVED BY THE EDITOR BY THE 10th OF THE MONTH.** Letters deemed by the Editorial Committee to be improper will not be accepted. Readers are advised that **THE OPINIONS EXPRESSED IN THESE LETTERS ARE THOSE OF THE INDIVIDUAL AUTHORS, NOT OF THE PMLA, THE PINE MOUNTAIN LAKE NEWS, NOR THEIR EMPLOYEES.**

CONCERNED ABOUT RULE CHANGES

As homeowners in PML, we have become enchanted and deeply appreciative of the beauty our surroundings offer. Learning the PML board of directors may change Resolution 89.15, Private refuge with NO HUNTING is unacceptable. The shooting and killing of geese is both outrageous and disheartening. What's the next, the turkeys and deer?

We feel the board of directors did not do their due diligence in informing our community nor allowing us to have our voices heard regarding your consideration to use lethal methods. You may well point us in the direction of where you made these announcements, but at this point in time, the news that the PML board of directors is considering to change 89.15 and allow hunters is therefore unacceptable.

While contemplating such drastic and lethal measures, please do the following:

- Immediately intact a Waterfowl committee, as it was disbanded in Dec of 2017.
- Send out a mass email to every resident regarding community hearings on the matter.
- Use an entire page in the PML Newspaper to announce the hearings.
- Post notices on social media, the official Pine Mountain Lake FB page.
- Post on the marquee at the gate regarding community hearings.
- Place a banner across from the exit of the front gate announcing the hearings.
- Create and air a Public Service Announcement announcing the hearings

Thank you for considering these suggestions. Sincerely,
 Peter Natale
 Homeowner
 Groveland, CA

RESPONSE FROM THE BOARD

The author misrepresents the facts. The Board of Directors is not opening PML to all types of hunting. The Board is considering all options to mitigate the problems caused by the dramatic increase in the Canada Goose population in PML.

Any proposed amendment or change in any Association Board policy will be published in the PML News so that members may comment and provide input to the Board prior to adoption. Additionally, the Association has solicited applications for the Waterfowl Impact Mitigation Committee for several months and has not received enough interest in order to form a committee.

ADVERTISE IN THE PML NEWS
 GO TO **PINEMOUNTAINLAKE.COM**
 FOR RATES AND DETAILS

Recreation Update

MICHELLE CATHEY – RECREATION AND SEASONAL OPERATIONS MANAGER, CCAM

May is approaching and we are getting ready to have a great season. If you haven't already applied for a seasonal job, then now is a great time. We are still taking applications. We're planning on opening the Marina Store, Lakeside Café and Pool May 1st and operating under state and county COVID restrictions and guidelines at that time. The Stables continues to be open and is providing horse riding lessons. In order to have a successful season we need lots of applicants to ensure these amenities can provide optimal service. You may go to www.pinemountainlake.com to apply.

We are happy to see people are already enjoying the beach. You may notice signs around the beach stating "DO NOT FEED DUCKS – GEESE OR ANY OTHER WILDLIFE". Please take heed and follow this request.

Feeding geese and other waterfowl bread and crackers is a common pastime for many adults and children, but many people do not know that this can be harmful to the birds, as well as the environment.

If an abundant supply of food is readily available from humans, the geese population will grow because the birds will be attracted to the handouts. This can cause the area to become overcrowded. A supply of easy-to-acquire food will also lead the birds to lay more eggs, which can further contribute to overpopulation.

Feeding geese bread can also contribute to the spread of disease. A diet rich in carbohydrates will cause the birds to defecate more, which can

spread bacteria that can contribute to disease. Moldy bread that is not eaten and left on the ground can cause aspergillosis, a lung infection that can be fatal to waterfowl. In addition, rotting bread can attract pests, such as rats, mice, and insects, which can spread disease.

Feeding geese can also pollute the environment. Uneaten bread is unsightly. It can rot and release noxious odors, and it can also lead to the growth of algae, which can clog natural waterways and endanger the health of fish and other wildlife.


Geese and other birds that rely on humans for food lose their natural fear and may place themselves in dangerous situations, such as crossing roads in search of food. They may also become aggressive toward humans who do not provide them with the food they want.


While you may think that you are helping geese by providing them with food, you can be jeopardizing the health of the birds, other animals, and humans, as well as polluting the environment. Wild geese have plenty of healthy food in their habitat to sustain them. Let the geese find food on their own so that they and other animals in the environment can stay healthy.

In addition to the beach, there are other things you can start to do. It's an excellent time to sign up for a tennis or pickleball pass. You can also use the playground at Lake Lodge and/or Fisherman's Cove. It's fun to get outside and play.

Feel free to contact me with any questions at (209) 962-8604 or email me at m.cathey@pinemountainlake.com

HOURS
 MON-TUE: 11AM - 10PM
 WED 11AM - 9PM
 THU-SUN: 11:00 - 10PM





"WE TAKE LOCAL COMPETITOR'S COUPONS!" **PIZZA PIES**

TRY OUR ALL-YOU-CAN-EAT LUNCH SPECIAL OR OUR OVEN BAKED SUBS

Call ahead: 962-4897 (962-GUYS)
 18955 Ferretti Road. Left turn off of Main St (Hwy 120) 1/2 Block

\$1.00
 Off Any Size Two Guys
 Pizza or Calzone

One coupon per order, per visit. May not be combined with any other offer and/or coupon. Not valid on delivery.

PML0421 EXPIRES 05/15/21

\$2.00
 Off Any Large or Extra
 Large Two Guys Pizza

One coupon per order, per visit. May not be combined with any other offer and/or coupon. Not valid on delivery.

PML0421 EXPIRES 05/15/21

PML SAFETY REPORT 2020

	FEBRUARY	YTD
Guest Passes Issued	1,258	2,390
Vendor Passes Issued	283	510
Temporary Resident Passes Issued	994	1,629
Vehicles Admitted	12,954	23,292
Vehicles Refused Entry	216	503
Phone Calls Received	3,475	6,975
Residential Alarm	2	9
Animal - Loose	28	36
Animal - Impounded	6	6
Animal - Dead/Injured	15	24
Animal - Disturbance	4	6
Patrol Assist	226	432
Public Assist	17	46
Welfare Check	2	4
Transport	1	4
Traffic Hazard	1	5
Traffic Control	1	2
Excessive Speed/Reckless Driving	8	14
Gate - Tamper	0	0
Gate - Follow Through	11	16
Gate - Malfunction	28	46
Gate - Struck by Vehicle	5	7
Control Burn Reported	114	239
Fire Safety - Smoke Complaint	3	7
Hazard - Tree Down	1	10
Residential Disturbance	1	3
Amenity Burglary	0	0
Residential Burglary	0	0
Grand Theft	0	0
Petty Theft	2	3
Trespassing	1	1
Vandalism	2	3
Property Damage - PML	1	2
Property Damage - Resident	1	2
PML Regs Violations Resident	0	0
PML Regs Violations Guest	0	3
Vehicle - Citation Issued	2	5
Vehicle - Accident PML	1	2
Patrolling Unit	836	1,694
Amenity Security Check	2,133	4,373
Residence Security Check	12	20
Monitoring Tennis Courts	1	4
Weapon Violation	0	0
Fixed Post	0	1
Courtesy Notice Issued	2	2
All Other Fees Collected	\$51,192	\$84,707

GOVERNING DOCUMENT ENFORCEMENT ACTIONS FEBRUARY 2021

Courtesy Notices	24
Notice of Non-Compliance	10
Final Notice of violation	0
Fines Assessed	2
Member Service	160

Happy Easter

MOORE BROS. SCAVENGER CO., INC.
 P. O. Box 278 • Big Oak Flat, CA 95305 • (209) 962-7224 • FAX (209) 962-7257



VACATION RENTAL OPTIONS FOR TRASH SERVICE

In order to assist property owner/managers of short-term rentals with trash removal, Moore Bros. Scavenger Co. offers the following services.

Short-term rental customers may participate in year-round or three-month summer curbside service. To manage anticipated levels of guest trash, property owners/managers of short-term rentals should maintain the suggested service levels as determined by the *Maximum Occupancy for Rental Property* (please see the chart below). In the event that renters generate more than the expected amount of trash or the home is rented multiple times during a given week the following options are provided:

- **As Needed Extra Pickup.** Property owners/managers may request a notation on their rental service accounts to *pick up extra as needed*. This will ensure that all trash left alongside the cans will be picked up by Moore Bros. and a special pickup will not be required. There is an additional per-can/bag charge for each extra can/bag picked up.
 - **Special Pickup.** Moore Bros. has a truck and driver available for special pickups Monday through Friday.
 - Property owner/managers must place a request for service call or email to Moore Bros. before 3 pm on the business day prior to the requested pickup day. A request for a Monday pickup must be made by 3 pm on the previous Friday. **Prepaid Bags.** Prepaid Moore Bros. bags may be purchased by property owner/manager to be used by any handyman or housekeeper servicing the residence between rental customers. The prepaid bags can be disposed of at the Pine Mountain Lake Maintenance Yard on Par Court off of Mueller Dr.
- Property owners/managers **utilizing full summer service** may go to *on-call service* for the off season.
- **Off Season on Call Service.** Property owner/manager may call or email an *on-call request* to Moore Bros. for a service pickup on the regular pickup day for the address. A request for service call or email must be received before 3 pm the business day prior to regular scheduled pickup day. Charges will be based on the standard a per-can rate for each can/bag picked up.
 - **Special Pickup.** Please follow the same procedure as listed above for Special Pickup.

Maximum Occupancy for Rental Property

Maximum Occupancy	Suggested Service Level
6 - 8 people	2 can
8 - 10 people	3 can
10 - 12 people	4 can
Lake front Property 12 people	4 or more cans as typically needed

If you have questions please feel free to contact our office at (209) 962-7224 or email us at: info@moorebrosscavenger.com and Shirley@moorebrosscavenger.com (Please cc both to insure prompt replies).

A drop-off Recycling center is available for use Mon – Sat. 8 am – 5 pm @ 11300 Wards Ferry Rd. Big Oak Flat, Ca

Equestrian Spotlight

KENDRA BROWN -EQUESTRIAN CENTER MANAGER



Renee Thompson



Noah Hertzberg

I would like to continue to introduce our AWESOME team at the Equestrian Center!

Renee Thompson – Renee is currently in her 4th year as a student at UC Santa Cruz where she is studying biology. She has goals of becoming a veterinarian after graduating from UC Santa Cruz. When she was young her love and interest for horses began when she participated in summer equestrian camps. She is excited to give back to the community while working here at the Equestrian Center.

Noah Hertzberg – Although Noah comes to us with minimal horse experience, don't let that fool you, he is extremely eager to learn and brings great qualities to our team. Noah is currently a student at Santa Monica Community College, where he is working towards the goal of becoming a real estate agent.



Jasmy Roberts

Jasmy Roberts – Jasmy has grown up here in Groveland and is a student at Tioga High School. She was fortunate to have opportunities as a kid that fueled her fire for horses at the age of 5. Over the years she has had the opportunity to work with horse owners and boarding facilities where she has continued to expand her equine knowledge. Jasmy hopes to become an equine veterinary assistant at Pioneer Vet Hospital.

Look for next months article to meet the rest of our team!

Our first month of riding lessons was a huge success and everyone had fun! With this gorgeous spring weather, we will be begin to offer trail rides starting May 1st. Each ride will be a guided ride on PML property, taking in the sweet smells and views that nature has to offer. Riding Lessons and trail rides here at the Equestrian Center will run 7 days a week from 10:00 A.M. - 3:00 P.M. A few ground rules are long pants, closed toed shoes, and helmets will be required (we will supply helmets). Prices for a 1-hour lesson or trail ride for property owners is \$50, non-property owners is \$55. Young or old it does not matter, call us to schedule a riding lesson today (209) 962-8667.

Fire Safety

JOE MILANI – FIRE SAFETY COORDINATOR

The Fire Safety team will be ramping up inspections this month beginning in areas that have been identified as high fire danger. If you would like a fire safety inspection of your home or property, please contact us to set up an appointment. Although this is a stunning time of year it is imperative to stay vigilant and remember that we live in the Wildland Urban Interface, and with it comes the responsibility to maintain your defensible space and prepare for the fire season ahead of us.

Owning a home in Pine Mountain Lake provides the satisfaction of living in a great community. The local rules and restrictions, which you became acquainted with when you purchased a home, are important in maintaining ownership here. I would like to highlight one rule that is occasionally overlooked or forgotten.

• ARTICLE VIII, SECTION 1, Use of Lots (k). – No existing trees with a diameter greater than five inches shall be destroyed, uprooted, cut down or removed from any lot without first obtaining a tree-cutting permit from the Association.

This rule can be found in Pine Mountain Lakes Articles of Incorporation, By-Laws, and Declaration of Restrictions handbook

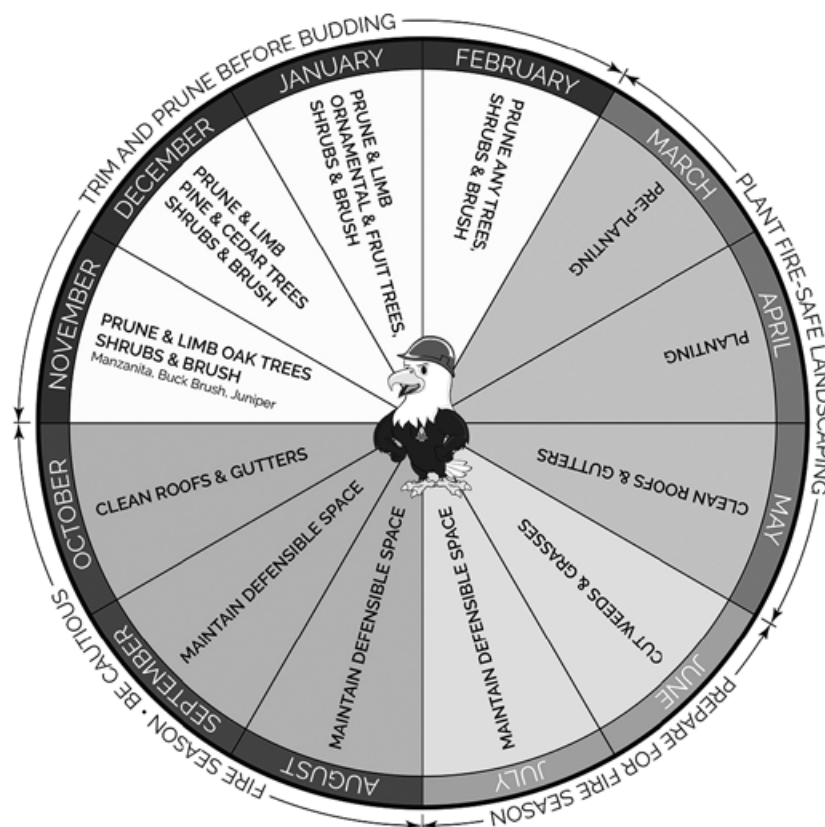
“flash drive” you received with your new owner information packet. For any tree over five inches in diameter please fill out a Tree Removal Request form found on our website at <https://www.pinemountainlake.com/tree-removal-request-2-2/>. Pine Mountain Lake has experienced major tree mortality due to drought and bark beetle; because of that, preserving live trees is of the utmost importance.

In personnel matters, I would like to welcome Ashley Henderson to the Fire Safety team. She is a Columbia Jr. College graduate having earned three Associate Arts degrees ranging from English to Humanities. She is a Groveland native and enjoys giving back to the community. Please join me in welcoming Ashley to her new position.

Please remember to test your smoke and carbon monoxide detectors once a month and replace any faulty alarms or low batteries immediately.

Lastly, fire safety inspections will continue in Pine Mountain Lake. Remember a fire safe community begins with you! If you would like an inspection of your property, or you are looking to educate yourself more, our fire safety team would love to help. If you have question or concerns regarding fire safety, you can contact Amanda Darrow at (209) 990-5263 or email her at Inspector1@pinemountainlake.com. I can be reached at (209) 990-5260 or Email J.milani@pinemountainlake.com.

Pine Mountain Lake Association FIRE SAFETY WHEEL



From the Fringe

MIKE COOK – PGA HEAD GOLF PROFESSIONAL

The Golf Shop staff and I are here to assist you so please call us if you have any questions or need our assistance at 962-8620. Our Golf Shop hours are from 8:00am until 6:00pm.

UPCOMING EVENTS

LADIES 9-HOLE GOLF CLUB
Weekly Play Day – Thursdays

LADIES 18-HOLE GOLF CLUB
Weekly Play Day – Thursdays

MEN'S GOLF CLUB
4-Man Scramble; Purple/Green Tees
Wednesday April 14

MEN'S GOLF CLUB
Individual Match Play – Round 1
Saturday April 24

STARTING TIME CHANGES

As of March 14, our first tee time of the day changed to 9:00am. Beginning April 5, our first tee time of the day will be 8:30am. Reservation can be made by PML Property Owners up to 14 days in advance by calling the Golf Shop 962-8620.

COVID-19 GOLF RULES

During this unprecedented time, we need to be aware of and follow the precautionary measures outlined by our State and County. Here are a few very important things for all our golfers to be aware of:

- All golfers must have a prearranged tee time, no walk-up play is allowed.
- If you are feeling ill, please do not come to the course.
- Please do not arrive at the Golf Course more than 15 minutes before your tee time. If you are going to hit range balls before your round, you can arrive 30 minutes before your tee time.
- Face coverings are required when entering the clubhouse.
- Please keep at least 6 feet away from others on and off the course.
- **Please do not gather in groups before or after your round.**
- After finishing your round, please leave the facility unless you have reservations at the Grill.
- The Golf Shop is open, with a maximum of 4 people in the shop at a time. Please check-in at the side window before

entering the Golf Shop. Merchandise is available for purchase (ask staff for conditions of purchase).

- **Note:** These policies can change at any time due to State and County regulation changes.

NEW PINE MOUNTAIN LAKE PROPERTY OWNERS

If you are a new Pine Mountain Lake Property Owner and you are interested in getting acquainted with other Property Owners who play golf, call the Golf Shop and we will let you know what golfing groups you may be able to join or what golf activities are planned for the year

BUNKERS

We are in the middle of completing the replacement of our old bunker sand with new and a better-quality of sand. Hopefully the project will be completed in early spring.

MEN'S & LADIES GOLF CLUBS

If you are interested in joining the Men's or Ladies Golf Clubs you can call the Golf Shop 962-8620 and we will give you the information you need. Applications are available in the Golf Shop. The Men's Club has a website (www.pmlmgc.com) that you can visit to sign-up online for your membership (see Men's Club eligibility rules) or to print an application. Once you are a Men's Club Member, you can sign-up for tournaments online.

PINE MOUNTAIN LAKE GOLF APP

Pine Mountain Lake Golf & CC has an app that you can download FREE from the app store. There are many fun and useful features on the app such as:

- Golf course GPS
- Players can measure their shots
- Golf course hole by hole flyover
- Interactive scorecard
- Score posting
- Player profile and automatic stats tracker
- Special offers
- Food & beverage menus and ordering
- Receive notifications concerning special events
- Weather information
- PMLA Member information & online payments
- More on the way...

Tee to Green

ROB ABBOTT – GOLF COURSE SUPERINTENDENT

Spring has come around once again! We have seen the golf course come alive over the past month. Everything has come out of its dormancy, flowers, trees and most notably the grass, which is exploding out of the ground and gobbling up the nitrogen we gave it in the fall.

Staff has been busy working on our Horticultural needs such as aerification of greens, tees, collars, and approaches along with a deep tine aerification of fairways. Many people ask why we choose to beat the greens up with Aerification when they seem to be in excellent shape. Aerification achieves three important objectives. It relieves soil compaction; it provides a method to improve the soil mixture around the highest part of a green's roots and it reduces or prevents the accumulation of excess thatch. Aerification is a mechanical process that creates more air space in the soil and promotes deeper rooting, thus helping the plants stay healthy. We achieve this by removing half-inch cores, or plugs from the soil, (you have probably seen a lot of these around the course lately) allowing for air and water to penetrate the greens surface. The spaces are then filled

with sand "topdressing" that helps the soil retain air space and makes it easier for roots to grow downward.

I would like to take a moment to acknowledge a milestone the maintenance staff had last month. Ed "Groot" Groothuyzen achieved 25 years of continuous employment with Golf Maintenance. Ed has been an operator, irrigator, Lead Man, Foreman, my assistant, and friend. Ed strives to make the Golf Course better every day and takes pride in his duties, my job would genuinely be much harder without him. So, give him thanks when you see him out on the course.

My top 4 tenured employees, including myself have a combined term of 78 years of experience at PML and a vast knowledge of our course. Again, without their knowledge and dedication my job would be infinitely harder. With the tenure shown not only with my department but also the entire Association staff, I feel we have a clear message that PML is a great place to work and our community is a great place to live. Get out this Spring and enjoy everything PML and our surroundings have to offer.

Building Our Community

SUZETTE LAFFRANCHI – COMMUNITY STANDARDS DIRECTOR

If you are planning on storing your garbage in between pick-ups, please note that **ALL** exterior improvements including storage containers must be approved by the ECC (Environmental Control Committee) and meet our minimum construction standards.

Please keep your garbage in a secured trash enclosure. Garbage that is not properly bagged will not be picked up by the contracted garbage service. Garbage shall not be stored by the roadside. No storage sheds will be permitted in your setbacks.

PML CC&Rs, ARTICLE VIII, Section 9, Garbage. No rubbish, trash, or garbage shall be allowed to accumulate on Lots. Any trash that is accumulated by an Owner outside the interior walls of a Residence shall be stored entirely within appropriate covered disposal containers and facilities which shall be screened from view from any street, neighboring Lot or the Common Area.

PML CC&Rs, article VI, Section 5, Setback Requirements, applies to all permanent structures. Storage containers may not be placed in your setbacks. Tuolumne County Ordinance 17.52.130 (A) 1. Storage Containers are prohibited in all zoning districts unless they conform to the following

requirements: Any storage container, regardless of size, shall conform to all building setbacks. (C)1. Only one storage container, not exceeding two hundred square feet in size, is allowed on any parcel. (C)2. Any storage container shall be placed behind or to the side of the principle building. Said container shall be screened from view.

If you need guidance on properly storing your garbage in between garbage service pick-ups contact our Community Standards Department who can assist you in understanding the requirements to bring or create a receptacle that will be compliant with our CC&Rs and guidelines. All receptacles must be approved by ECC prior to construction or placement.

For more information or to submit your new project please visit our web page at <https://www.pinemountainlake.com/ecc-committee/>. Let us take the steps to protect and preserve the natural beauty and character of Pine Mountain Lake and all it has to offer.

Thanks for reading and I hope you find this article helpful and informative. Please feel free to contact me directly at communitystandards@pinemountainlake.com or call (209) 962-1241.

DINNER MENU

WEDNESDAY – SUNDAY
CLOSED MONDAY & TUESDAY



SERVED AFTER 5PM
RESERVATIONS REQUIRED
CALL 209.962.8638

APPETIZERS

Brick Oven Brussel Sprouts

crusted with three cheeses and finished with bacon 9

Crispy Calamari

lightly battered served with cocktail sauce 19

Steamers

full pound of clams sautéed in a white wine butter sauce with onions, tomatoes, garlic and a touch of heat 18

Avocado Toast

lightly grilled sourdough, creamy avocado, tomatoes and arugula with green goddess dressing 12
add grilled shrimp 5 • add grilled chicken 4

SALADS

Shrimp Louie

bay shrimp & prawns over a bed of crisp greens w/avocado, egg, tomato, cucumber & thousand island dressing 16

Cajun Chicken Tostada

Blackened Chicken Breast – housemade hummus, black beans, cheddar cheese, sweet corn, olives, chipotle ranch, & salsa 19

Spinach Salmon Salad

seared salmon on a bed of fresh spinach with mango, avocado, cucumber, carrot, red onion, chopped macadamia nuts and a ginger sesame dressing 23

14" BRICK OVEN ARTISAN PIZZA

substitute cauliflower pizza crust add, 2

Classic Margherita

sliced Roma tomatoes, fresh basil and mozzarella cheese with a light pesto drizzle 15

Bacon and Pickle

seasoned olive oil, with mozzarella and Parmesan cheese, Dill pickle, bacon, red pepper flakes and chopped dill 19

Smoked Gouda

prosciutto, arugula, tomato, olive & sweet onion 19

The Italian

Sausage, bell pepper, onion, olives, mushrooms 21

Garlic Chicken

chicken, bacon, artichoke hearts, black olives, green onion & mozzarella with a garlic ranch sauce 21

Meat Lovers

Sausage, prosciutto, pepperoni, salami, and bacon 25

ENTREES

New York Steak

12 oz. steak grilled to temperature finished with a Jack Daniels peppercorn sauce topped with fried onion strings served with a baked potato 31

Seared Ahi Tuna

seared medium rare with crispy sushi rice cake, seaweed salad, wasabi aioli & soy ginger vinaigrette 29

Chili Lime Power Bowl

red quinoa & brown rice blend with roasted peppers, tomatoes, fresh cilantro & lime 12
add grilled chicken 5 add grilled shrimp 6

Grill Marinated Pork Chop

Grilled center-cut bone in chop topped with pineapple habanero salsa served with garlic mashed potatoes 25

Cedar Plank Salmon

Topped with garlic lemon and rosemary served with rice pilaf 25

Shrimp Scampi

Sauteed in butter, lemon, fresh tomato, capers and scallions served with rice pilaf 23

Stuffed Chicken Breast

Mary's Organic chicken breast stuffed with ham, fontina cheese and basil covered with a Dijon mustard sauce served with garlic mashed potatoes 19

BURGERS

All Burgers served with lettuce, tomato, pickle & onion and french fries or sweet potato fries or garden salad. Add: pepper jack cheese, cheddar, blue cheese, swiss or smoked gouda, caramelized onions, mushrooms, bacon or avocado 1 ea
for an additional 2 ea choose: onion rings, garlic fries or a caesar salad

Grilled Angus Chuck

Half pound 12

Sliders

three mini CAB burgers with your choice of cheese 14

Turkey Burger

seasoned ground turkey 12

Vegetarian Black Bean Burger

For the veggie lover 10

Beyond Burger

plant based patty 12

We accept visa, MasterCard, American express & discover, no personal checks please.
WARNING: This facility processes nuts, dairy, flour, seafood, etc. which may be considered allergens.
Eating raw or undercooked meat, seafood, poultry and eggs may cause serious foodborne illness

Please note: prices and items subject to change

No Shoes, No Shirt, No Mask...No Service

JAY REIS – GRILL MANAGER

As COVID 19 restrictions start to loosen and we move towards indoor dining, the Grill will continue follow public health guidelines and restaurant best practices in order to mitigate the spread of the virus. We will continue to provide a safe and welcoming dining experience at the Grill. Our protocols that remain in place are regular cleaning and disinfecting, hand sanitizer stations throughout the Grill, and employee screening prior to their scheduled shift. Face coverings are required for our staff and for guests when not seated at the table. The Goal is to reduce the possibility of having to close the Grill again because of an outbreak due to the variants that have arose. Protecting employees and guests and acknowledging that restaurant employees should not be placed in a difficult or potentially dangerous situation if a customer refuses to comply with our mask protocol. Unfortunately, we have seen far too many instances of these difficult interactions over the past year, which is why we continue to call upon every guest to show respect and patience to any staff member who is simply trying to do their job in spite of very challenging circumstances.

Restrictions on restaurants and bars are starting to loosen. However, still some restrictions remain in order to control another outbreak; No large gatherings,

No buffet service, No live music, and No Karaoke or dancing. As the situation around COVID-19 continues to change, we will continue to adapt how we can best serve you. We have followed guidance from the CDC and local authorities around the situation and continue to monitor the changes. Masks are required when not seated at the table. The Bar remains closed but alcohol can be served on the same ticket as food.

- **Purple Tier** – Take-out and outside dining. Reservations required for Dinner
- **Red Tier** – Take-out and outside dining. And Inside dining at 25% of maximum capacity. Reservations required for Dinner
- **Orange Tier** – Take-out and outside dining. And Inside dining at 50% of maximum capacity. Reservations required for Dinner

The Grill remains open and continue to accept phone orders and pick-up orders. You can visit our Website to find our menus (please call the Grill directly for up-to-date information 209-962-8638).

We appreciate the support shared with us by our members and remain committed to doing what's best to serve you; while keeping all of us safe.

Renovations on the Rise

JANESSA OWENS – COMMUNITY STANDARDS SPECIALIST

With another winter behind us, its that time of year when many of us look forward to tackling our exterior home improvement ideas. Whether your home is in need of repairs or you simply want to invest in increasing your market value, please be sure to submit your exterior projects to our Environmental Control Committee for review and approval. One of the main functions of Environmental Control in Pine Mountain Lake is to help maintain property values with respect to the community's minimum construction standards, which are outlined in Article VI of your CC&R's.

Once you submit your project, you may

be excited and tempted to start before the "go-ahead", but don't let your impatience get the best of you. It's possible that you may have to alter plans according to the guidelines, which could result in a costly, or longer delay to the project.

All exterior improvements, changes, additions, modifications, and landscaping on your property must be submitted to the ECC prior to commencement of the project. In order to streamline the submittal process, you can now do much of it online at <https://www.pinemountainlake.com/ecc-project-submittal-process/>. If you have any questions regarding your submittal, documents, or 2021 construction fees, please contact our ECC Assistant at (209) 962-8605.

WELCOME TO THE *Hidden Jewel of the Foothills* PINE MOUNTAIN LAKE GOLF & COUNTRY CLUB

12765 MUELLER DRIVE • GROVELAND, CA. 95321

Championship Golf Course



Beautifully Manicured Greens

Stunning Vistas & Surroundings



Mountain Golf  *at its Finest!*

www.PineMountainLake.com

209-962-8620

HEALTHIER. IT'S HOW WE INSTALL!



Mention this ad to receive Free Healthier Living Installation Upgrade!

Thank you for voting us Best of the Mother Lode since 2005!

PINNELL'S CARPET ONE FLOOR & HOME

209.736.8077 · 263 S Main St · Angels Camp, CA

209.532.1696 · 12900 Mono Wy · Sonora, CA

GUEST & RENTERS HANDBOOK IS AVAILABLE ONLINE!

You can now view or print the Guest and Renters Handbook from the PML Website.
Go to our website at:

WWW.PINEMOUNTAINLAKE.COM

and click on Resources, then scroll down to the bottom of the page and click on Guest and Renters Handbook. This handbook has valuable information for Guests and Renters in Pine Mountain Lake.

HERE IS YOUR CHANCE TO BE MORE INVOLVED IN YOUR COMMUNITY!

Pine Mountain Lake Association has openings on the Following **Committees:**

FIRE INSURANCE

SAFETY & SECURITY

WATERFOWL MANAGEMENT

If you wish to be considered for committee membership, please complete an "Application for Committee Assignment". This form is available on the website at www.pinemountainlake.com or from the Administration Office.

MAIL COMPLETED FORM TO:
Pine Mountain Lake Association,
Attention: Debra Durai
19228 Pine Mountain Drive
Groveland, CA 95321
Email to Debra@pinemountainlake.com
or drop it by
the Administration Office

Starting at
\$44.95
per month

High speed Broadband Internet 100Mbps*

Cable and Telephone services also available

Ask about our flex plans!

gosnc.com
(209) 962-6373

Sierra Nevada COMMUNICATIONS

*Reaching speeds up to 100Mbps, speeds vary with packages

MORE FUN!



**CHUKCHANSI GOLD
RESORT & CASINO**

At Chukchansi Gold Resort & Casino, we offer you MORE...
Like bigger payouts, better prizes, double rewards, and more fun!

**\$350,000
SPRING
CHUK-CHING
GIVEAWAY**



NOW-APRIL 30 • EARN ENTRIES DAILY
Win your share of \$15,000 inCASH and eCASH every
Thursday & Friday with drawings at 8 pm, 9 pm & 10 pm

GRAND FINALE APRIL 30
**WIN A NEW DODGE RAM TRUCK
or FREE GAS FOR A YEAR**

Gift of the Month!

April 1-30
(Excludes Mondays)
For your overnight getaways!
Earn 1,000 base points from 12am-11:59pm
and receive an Overnight Carry All Bag
while supplies last.



CASA de FUEGO
Restaurant & Cantina

COOL & REFRESHING MARGARITAS
APPETIZERS • SOUPS & SALADS • TACOS • TOSTADAS
QUESADILLAS • BURRITOS & FAJITAS • MARGARITAS • DESSERTS

Hwy 41 North To Coarsegold | chukchansigold.com | 866.794.6946

Must be 21 years of age or older and a Chukchansi Rewards Club Member. All guests must have a valid government-issued photo ID acceptable to management for all Chukchansi Rewards Club transactions. Management reserves all rights to cancel or modify all offers, promotions and/or events without prior notice. Restrictions and exclusions may apply, please visit website for further details. Chukchansi is enforcing safe gaming, social distancing and taking extra precautions to ensure your safety. Masks are mandatory. Visit our website for *What to Expect During Your Visit*.

Maintenance Matters

RICK LAFFRANCHI – MAINTENANCE AND OPERATIONS MANAGER

“APRIL IS A PROMISE THAT MAY IS BOUND TO KEEP”- HAL BORLAND

April, in maintenance might best be described as the most important part(s) of a roller coaster ride.

PART 1

Picture this, you leave the station you are all strapped in nice and safe then that first transition, down you go! (that first little drop in your stomach) a small taste of things to come. This would best describe our transition from March to April.

While I may have taken a little license (a

lot of license) in my analogy it does show many similarities.

The building and grounds team comes out of March finishing up indoor projects such as the LED lighting project in the pro shop, Lake Lodge exterior bathroom remodel and winter outdoor projects such as Gate 4 the exterior siding and concrete work at the lake lodge playground, while our grounds staff has remained busy with prescribed burning at our campground and weed abatement throughout the association.

During this time our roads crew has stayed incredibly busy with fire abatement work (76 acres cleared) throughout the

association while simultaneously caring for our compost/slash site (open 7 days a week starting April 5th) in addition to hours spent snow plowing and completion of new fencing at the lake lodge playground.

PART 2

April itself would best be described by the next portion of that ride, you are moving along smoothly enjoying the end of winter and “bam” there is a quick transition and you are being pulled *click, click, click* up the hill towards May and all the excitement that the summer season brings.

April brings the consistency of being pulled up that hill knowing well and good, what happens when we reach the top, that said, preparations begin for what we hope will be a fantastic summer season.

Building and grounds will start to bring restrooms, outbuildings and summer amenities

out of winterization, the pool will be prepped, and finally the horseshoe pits will be installed in preparation for the season. Aeration and fertilization begin at most amenities while the Lake lodge playground and bar-b-que area will be completed, one major paint project is scheduled for April which is the Lake lodge, it will get new paint after the completion of our winter siding project.

Our Roads Crew will continue green belt abatement and burning will continue at our compost site for as long as conditions allow, a portion of their team will transition to painting stops, bars and road edges helping to bring a clean fresh look to the association.

While these activities are repeated year in and year out and may sound mundane or even mechanical in nature, they are the *click, click, click* pulling us toward May and the exciting season ahead.

Have a great April!



All PMLA Homeowners Email Opt-in Program

The Association is pleased to offer a money saving program available to all PMLA property owners. This program allows you to receive many of the documents we are required to provide to you via email. This option is important because:

COST SAVINGS – The Association is spared the expense of printing and mailing many documents to those property owners who sign up.

ENVIRONMENTAL SAVINGS – Less paper means less trash and reduced damage to the environment both in the disposal and production of paper and envelopes.

REDUCED CLUTTER – By receiving documents

via email there is less paper for you to deal with. All documents can be saved on your computer and viewed at your discretion.

TIMELY RECEIPT – Documents sent electronically are received in minutes as opposed to the days it takes for regular mail to arrive.

If these sound like good reasons to you, please sign up for the Document Email Program today using the attached form. Simply return the completed form to the Administration office at your convenience.


If you have any questions on this program please feel free to give us a call (962-8600) and we will be happy to explain the details and the advantages.

Please read the Terms & Conditions for the email opt-in program on the website, www.pinemountainlake.com under the Resources/Forms > Opt-In Email Program.

Mail form below to:

Pine Mountain Lake Association

19228 Pine Mountain Drive • Groveland, CA 95321

 _____

YES, I WANT TO ENROLL IN PMLA'S EMAIL STATEMENT AND DOCUMENT SERVICE. I ACKNOWLEDGE AND AGREE TO THE TERMS AND CONDITIONS SET FORTH ABOVE AS A CONDITION FOR PARTICIPATION IN THIS SERVICE.

PMLA Account Number: _____ Unit/Lot #: _____

Name: _____ Phone #: _____

Address: _____

Email Address: _____

Signature: _____

HOMES ON THE HILL



**YOUR GUIDE TO
REAL ESTATE IN THE
GROVELAND AREA**

Action 1 Properties

Residential • Ranches • Investment Sales • 1031 Exchanges

The Market is great! Thinking of selling?

**VETERANS OR SENIORS
SAVE 25% ON SALE OF
YOUR HOME****

*** Home must be listed by May 15th 2021. CONTACT US TODAY.*

TIME TO SELL – THE MARKET IS HOT!



Cedar log home
2200sf.
Cedar Ridge
Sonora
Offered at \$489,000

COMING SOON

Near the lake lodge
4 bedroom/3 bath
2,700 sq. ft.
Offered at \$399,000

Coming Soon Fixer Upper in PML on 1.7 acres – \$344,000

Near Lake Lodge U4/L423 – \$83,950 Pointview U4/L198 – \$44,900

Buying or Selling we **ALWAYS** have you Covered



Michael O. Bowers
Broker Assoc.
Over 30 years experience
Full-time resident in PML
209.770.3683

DRE #00901538 Michael@MichaelBowers.com

Emily Hunter
Broker Assoc.

Over 16 years experience
Tech savvy with all
Real Estate platforms
925.785.3795



EmHunterRE@gmail.com DRE #01386542

EXPERIENCE COUNTS – Happy Clients, Regular Updates
Father / Daughter Team, 2 Brokers serving with an
Unparalleled Level of Service!

PMLA OWNED LOTS FOR SALE

2/287	FERRETTI ROAD	\$2,500
3/057	PINE MOUNTAIN DRIVE	\$1,500
5/212	FERRETTI ROAD	\$1,000
6/113	FERRETTI ROAD	\$1,000
6/211	FERRETTI ROAD	\$2,000
6/252	FERRETTI ROAD	\$1,000

FOR FURTHER INFORMATION REGARDING THESE PROPERTIES PLEASE
CONTACT PMLA AT (209) 962-8600

Carron Tax
associates

Carole Smith
Enrolled Agent

20093 Ridgecrest Way
Groveland, CA 95321
Tel: 209/962-6119
E-mail: carolesmith@carrontax.com

**INCOME TAX PREPARATION
AUDIT REPRESENTATION**

Cynthia Brown
Sewing & Alterations

19623 Cottonwood St. Groveland Ca
95321



818-824-2955



Pine Mountain Lake Realty

An Agent Owned Company

Lynn Bonander, GRI Owner / REALTOR®

18919 Ferretti Rd., Ste. A, Groveland, CA 95321

Office 209-962-7156 / Cell 209-484-7156

lynn@pmlr.com www.pmlr.com



Delightful 3 Level Chalet

4 Bed/2 1/2 Bath, Large Bonus Rm Downstairs. Approx 2024 SF, Plenty of Deck Space Front & Back, New Gazebo, Lots of Privacy, Parking and Rm for RV. 2 Large Tuff Sheds, New Interior & Exterior Paint. Inside Laundry, Washer/Dryer Included. All Furniture & Deck Furniture included.

13027 Wells Fargo Dr
2-422 \$455,000
MLS# 20210287



Beautiful Golf Course Lot

0.17 Acre - Located just off the #1 Fairway. Great Views, Walk to the Pine Mountain Lake Golf Pro Shop, Restaurant, Pool, and Pickle Ball Courts!

5D-7 Tannahill Court
5D-9 \$59,000
MLS# 20201412



Roomy Golf Course Lot!

0.35 Acre Over Looking the 6th Fairway. One Block to Country Club, Lounge, Pro Shop, Pickle Ball & Swimming Pool. Gentle down slope. Lots of room to pick your Building spot.

Mueller Drive
5-199 \$45,000
MLS# 20192020



Location, Location, Location...

Close to Lake, Main Gate, Country Club, Golf Shop and More! Across from the Golf Course, has a nice Golf Course View. Already has a Graveled Parking area to the right side.

19511 Chaffee
1-106 \$28,000
MLS#20151979



Beautiful Views of the Sierras

Gentle Upslope 0.29 Acre, with lots of Space to build your Dream Home. Property is close to Fisherman's Cove, Tennis Courts, Lake/Beach and Hiking Trails.

Longview Street
3-313 \$20,000
MLS# 20210328



Close to Lake!

Nice Lot to Build Your Dream Home or Mountain Cabin. Approximately One Block to the Lake and Beach Area. Also close by are Fisherman's Cove, Tennis Courts and Hiking Trail.

Cresthaven Dr.
4-435 \$20,000
MLS# 20201898



Beautiful Easy to Build Lot

This is a 0.52 Acre Lot and is Surrounded by Large Parcels on Both Sides and Back! Lot is lower than the Road and would have less Road Noise

19297 Ferretti Rd
7-055 \$19,000
MLS# 20181471



Great Buildable Lot

Gentle Down Slope. Double Access, One off Ferretti Road and One from the Easement Road off Cottonwood Street in back of the Property.

Ferretti Road
6-219 \$18,000
MLS# 20201552



Great Location

0.43 Acre Lot close to PML Country Club/Grill and Lounge, Golfing, Pro Shop, Swimming Pool, Pickle Ball & Downtown Groveland. Gentle Upslope

Ferretti Road
5-213 \$15,000
MLS#20171354



Beautiful Lot ~ Pine Tree Setting...

Nice Gentle Upslope Lot size 0.38 Property on the right is merged. Close to the Lake/PML Marina, Swimming, Fishing, Boating or just relax in the sun. Septic system required.

Pine Mountain Dr.
13-244 \$15,000
MLS# 20160427

Go to the official online presence of the PMLA for the latest news & information

PineMountainLake.com

Facebook.com/PineMountainLakeCA



Groveland's only Multi-Line Insurance Agency

KIEFER INSURANCE AGENCY

Lic 0D77765

PROUDLY HELPING YOU INSURE YOUR FUTURE

209-962-6593

Home/Rentals • Life • Autos RVs
Motorcycles • Business • Builders Risk

18688 Main Street • Groveland Ca 95321



PINE MOUNTAIN LAKE REALTY

An Agent Owned Company 18919 Ferretti Road • PO Box 738 • Groveland CA 95321 • 209-962-7156 • www.pmlr.com



Barry Scales
Broker/Owner
209.484.7123
DRE#00451887



Lynn Bonander, GRI
Owner/Realtor®
209.484.7156
DRE#00683485



Val Bruce, GRI
Owner/Broker Assoc.
209.768.7368
DRE#00578336



Parker 'PJ' Johnson
Owner/Realtor®
209.768.6232
DRE#01732298



Marc Fossum
Owner/Realtor®
209.770.4750
DRE#01956242



Elaine North
Realtor®
209.768.4221
DRE#01047223



Patty Beggs
Owner/Realtor®
209.840.2293
DRE#01339347



Michael Beggs
Broker Assoc./Realtor®
209.840.2294
DRE#0133568



Beautiful Home!

20758 Nonpareil Way
4-237

\$480,000

MLS# 20210293

4 Bedroom/2 1/2 Bath, 2 Car Oversized Garage with Workbench. New Hardwood Flooring. Approx 2801 sqft on 0.72 Acre. Central Propane Air/Heat, Skylights, Central Vacuum, Security System, Wine Storage, Wet Bar, Living Rm w/Heat Stove, Spacious Kitchen, Stainless Appliances, Pantry, Master Bedroom with Walk-in Closet and Private Deck, Bath with a Jacuzzi Tub, Vanity, Double Sinks, Closeted Toilet. Laundry Room with Washtub, Covered Porch and Decks.



Fully Remodeled Cozy & Private!

13510 Clements Rd
12-149

\$399,000

MLS#20210060

3 Bd/2 Bth, 1 Car Detached Garage, Approx 1036sf on 0.89 Acre, Great Room, Open Beam Ceilings, Skylights w/remot control, Stone Surround Fireplace, Modern Kitchen, Brfst Bar, Granite Countertops, Laminate Hardwood Flooring, Inside Laundry, Washer & Dryer Included, Ductless Mini-Split Air/Heat, Many Many Upgrades—Newness throughout. Includes Covered Coral & Stalls. Beautiful Views and Spectacular Sunsets over Mountain Meadows!



Charming & Comfortable!

20781 Big Foot
4-329

\$299,000

MLS# 20210263

3 Bedrooms, 2 Baths, Approx 1144 sqft. On Approximately 1.79 Acres, Open Floor Plan. Living Room with Heat Stove, Cathedral Ceiling, Laminate Flooring, Open Dining, Solid Countertops, Stainless Steel Appliances, Ceiling Fan, Master & Master Bath w/Tub/Shower & Vanity, Inside Laundry. Back Deck is your Oasis for Outdoor Entertaining. Lots of Room under the House which could be finished giving you more Living Space!



521 Feet of River Front!

31451 Hardin Flat Rd
(East of Groveland -
So Fork of Tuolumne River!)

\$499,000

MLS#20201569

ZONED FOR RECREATIONAL DEVELOPMENT!
1.83 Level Acres, located in Historic Harden Flat, 5 miles from Yosemite National Park, & only 20 min from a County Airport & a 18-hole Championship Golf Course. Entirely Livable Manufactured Home on property w/Detached 2 Car Garage, 3 Car Covered Carport & Storage Sheds. 3 Bed/2 Bath, Fireplace, Inside Laundry. New Roof, Flooring, Appliances & Remodeled Bath. 2 Separate Septic Systems and 2 Electric Hookups Ideal for an RV and So Much More!



Pretty Open Space & Surroundings

19386 Ferretti Road
2-292

\$430,000

MLS# 20210243

3 Bedroom/3 Full Baths, 2 Car Attached Finished Garage, Approx 2000sqft, on Approx 0.56 Acre, a Double Lot. Large Great Room, Living Rm with Heat Stove, Open Beam Ceiling, Ceiling Fan, Island Bar, Breakfast Area, Solid Surface Countertops, Kitchen Island, Inside Laundry Room, Washer & Dryer Included, Wash Tub, Master with Walk-in Closet, Bath w/Separate Shower. Abundant Room for Boat, RV and other "Toys" & Equipment. Covered Porch and Deck to enjoy the Out Doors.

Lots for Sale

\$49,900 - 5E-17 Sean Patrick Prime
Golf Course Lot Zoned R-3

\$69,000 - 5-8 Dyer Court—Overlooks
the Golf Course & Mountain
Range vista. Property Comes w/
Building Plans for 1500-1600 sq
Home. One can Walk to the
Golf Course, Community Pool,
& Pickle Ball Courts.

COMMUNITY ORGANIZATIONS

Contact the individuals/organizations below if you are interested in joining!
(All numbers are 209 area code unless noted otherwise)

If you would like your community organization listed please send your group's name, contact person, and phone number to debra@pinemountainlake.com

Camp Tuolumne Trails – Jerry Baker – 209. 962.7916

Friends of the Groveland Library – Virginia Richmond – 209. 962.6336

Helping Hands Thrift Store & Furniture Barn – Patti Beaulieu – 209.962.7402

Village on the Hill – 209.962.6906 or info@villageonthehill.org

PROPANE DISCOUNT PROGRAM

Suburban Propane – As the preferred provider of PML we are happy to provide an exclusive members only program to all residents. Benefits include: Propane at a discounted rate, Tank rental at a discounted rate, Free basic tank installation, Easy payment options, 24/7 Tech support, Flexible delivery options, 24/7 live phone support

Contact our local staff for further details and current rates.

Suburban Propane Jamestown California
(209) 984-5283 • 1 (800) PROPANE

YOSEMITE AREA REAL ESTATE

PAUL S. BUNT REAL ESTATE – DRE #01221266

ASK FOR FREE EVALUATION OF YOUR PROPERTY'S VALUE



BEST HOME IN TOWN

Walk to everything. R2 zoning.
Lots of possibilities
18909 Main Street (Highway 120)
\$299,000



NEW HOME – ALMOST DONE

Choose your colors, flooring and finishing touches in
this 5 plus bdrm, 3 bath home with over 4400sf views
of the golf course 20145 Pleasantview U1/L221
\$749,900



SINGLE LEVEL RANCHER

Covered Sittin' Porch for Visitin'
1436 sf, 3 bdrm, 2 ba
20757 Rising Hill Cr. U3/L422
\$359,950

#1 TEAM IN OUR AREA



LARRY JOBE

REALTOR – TAXIWAY EXPERT

209.768.5508 Cell

larryjobe1@gmail.com
DRE #01444727



Our Passion Is Here, Where's Yours?
Local Agents, Modern Technology,
Best Service



PENNY CHRISTENSEN

BROKER ASSOCIATE – CRS

925.200.7149 Cell

penny@askpenny.com
DRE #00785760

DON'T MISS OUT ON THIS SELLERS MARKET • BUYERS GALORE – NEED MORE HOMES



88.13 ACRES

1022' Hwy 120 frontage
Commercial property
\$450,000



NO GATE HASSLE

.22 ac., gentle slope
20680 Ferretti Rd. 3/13
\$9,900



EASY BUILD

.31 ac., nearly lvl
U4/L571 Rock Cyn.
\$8,000



ZONED R3

.25 ac., easy build
CC, Golf course
12790 Mueller Dr
Unit 5B Lot 3
\$124,900



4.5 ACRES

No gates, views
19071 Jones Hill Ct.
Unit 5 Lot 182
\$99,000

www.YosemiteAreaRealtors.com



THE MARKET IS HOT AND HOMES ARE SELLING FAST!
Call us to tell you what your home could sell for right now.



**YOSEMITE AREA
REAL ESTATE**

**Make
Chris & Gina
your
1st call!**

CHRIS H. LAKE
DRE 00946632
209-768-6156
chrishlake@gmail.com

GINA GIAMPIETRO HERNANDEZ
DRE 01226555
408-506-6944
GinaGHRRealEstate@gmail.com

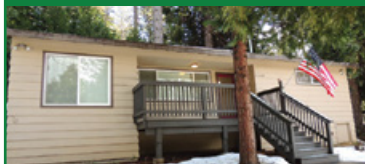
18634 MAIN ST. STE 1 GROVELAND
View listings at www.YosemiteAreaProperties.com
PAUL S. BUNT REAL ESTATE BROKER DRE 01221266

**GREAT FAMILY CABIN
NEW LISTING**



19434 PINE MT DR UNIT 1 LOT 408 – \$425,000
2240sf 2/3bd/2.5ba 2 levels w/main living on entry level. Great rm concept w/vaulted wd ceilings & open beams. Wd burning fp in LR. Corian countertops in kitchen & brkfst bar. Updated Mstr bdrm & bath. Lower level ideal for guests with full ba, bdrm, 2nd sleeping area/office, lg bonus rm & laundry rm. Near main marina & close to PML amenities. 500sf of redwood decking for outdoor entertaining & an additional 500sf of covered patio.

**MOUNTAIN RETREAT
NEW LISTING**

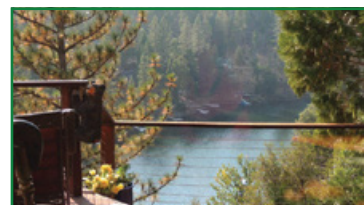


1847 MEADOWVIEW RD ARNOLD – \$269,000
Move in ready, adorable cabin located in Arnold. Updated throughout w/fresh paint, LED energy efficient lighting, double pane windows, nice front & back deck porches, great rm atmosphere; propane appliances. GE Stainless appliances, 5 burner gas stove/oven, dining area and large living room area with propane brick fireplace, bright windows and lighting throughout, recessed and ceiling/fan lighting. The HOA is Meadowmont and a very simple management HOA with dues at \$2 per month.

LUXURY LAKEFRONT LIVING



20166 PINE MOUNTAIN DR Lakefront home w/stunning lake & mountain views!!! Elegant high-end gourmet kitchen w/top-of-the-line stainless applcs, granite & stone, gas range, built-in convection ovens & warmer, island w/prep sink, skylight, breakfast bar, custom lg tile wd inlay flooring & hrdwd flooring, lg walk-in pantry/laundry rm, 2 sided gas fp in grt rm, windows overlooking lake, drop ceiling TV, main level mste & guest bath. finished downstairs level 3 large bedroom, workshop, bonus room with full bath, solar. Private boat dock. Easy access to the championship 18 hole golf course, pro shop and Grill. Enjoy swimming in the lake or built-in swimming pool. The lake offers fishing, boating and skiing, Other other enthusiasts can take advantage of the pickleball courts, archery range or gun range. There is something here for everyone. Also small airport for convenient fly-ins.



ESTATE SIZED PROPERTY



13323 MULE CT U12/LOT 183 – \$89,000
Endless possibilities for this 1 acre level parcel with water and sewer available. Corner lot on cul du sac. Close to bass pond and equestrian center. Close to airport for those flying enthusiasts. Completely fenced, pole barn on site. Enjoy all PML amenities including lake, golf course and tennis courts. Horses welcome here. Gated community.

**COUNTRY LIVING
PENDING**



10242 HWY 49 N SONORA \$425,000 Great location for people, animals & horses too. Mormon Creek runs through property. Fenced garden area, lg dog runs & chicken coop, flat parking areas. Oversized workshop/storage. 3bd/2ba + alcove area, laundry rm, vaulted ceiling in Living Rm & decorative archways. Lg concrete patio w/an outdoor cooking area, even serves as basketball ct. Parking for several RV's. 16.82ac private yet not far from Columbia and 3mi from downtown Sonora. ATVs okay here. Open floor plan.

**UNIQUE OPPORTUNITY
PENDING**



20631 ROCK CANYON U4/L564 – \$79,000 .28 acre lot ready to be completed. Septic system and water meter are installed. Plans have been approved by the County and PMLA for a 3 bedroom 2 bath 1600 sq ft single level panel kit home. The kit price is approximately \$44,000. Foundation trenches are dug. There is an existing 1 car garage on site with a loft for residential purposes. Located within walking distance to the tennis courts and Fisherman's Cove. Put your skills to work here. Walking distance to Fisherman's Cove and tennis courts and hiking trails. Expansive views to greenbelt. Easy access to the championship 18 hole golf course, pro shop and Grill. Enjoy swimming in the lake or built-in swimming pool. The lake offers fishing, boating and skiing, other enthusiasts can take advantage of the pickleball courts, archery range or gun range. There is something here for everyone.

LOTS AND LAND FOR SALE

Fiske Hill Rd, Greeley Hill – 2 separate parcels make up this 19.53ac. Located within community of Greeley Hill yet enjoys the seclusion afforded by this acreage. Mature pines and oaks cover this woody retreat. Gentle rolling terrain with an open meadow. Power close to property. Septic and well will be required. Access has been developed. Close to elementary school **\$134,900**



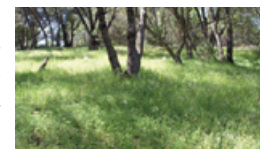
20384 Pine Mt Dr. Unit 3/Lot 138 – 1/3ac ready for building. Public sewer & district water available. Upslope lot w/expansive views of mountain & trees. Conveniently located across from tennis courts & just around corner from Fisherman's Cove. Paved access rd. Just minutes from all PML amenities including the lake and golf course. **\$10,000**



Unit 4/Lot 348A Big Foot Circle – 1/2 acre within walking distance of the lake. Gentle terrain and mature oaks create a desirable spot for building your dream house. Property has been evaluated and approved for septic. District water is available. Power is at the lot. The seasonal creek adds another source of beauty and enjoyment. **\$20,000**



Unit 7 Lot 62A – .66 acres gentle rolling slope. Seller says sell I have moved out of state. Septic is required and a water meter is available for installation. Power is nearby. County road access. Close to the high school and close to town. Very affordable at **\$5,500**



Unit 13/Lot 102 Breckenridge – 1/3ac Level access from paved rd leads to slightly gentle upslope/level lot. Prime location close to main marina. Mostly open, some mature pines. District water avail. & power conveniently close. PML amenities swimming, fishing, boating, golf, hiking & horseback riding, tennis & pickleball are benefits enjoyed by all in this gated community. **\$15,000**



Unit 5A Lot 2 2.09ac Rare find close to town at end of a cul du sac. Amazing affordable opportunity to build a custom home. Short distance to main marina & golf course + other amenities **\$59,900**



Unit 5/Lot 198 – Golf Course Lot w/view of Fairway 6 & 1/2 block from Clubhouse/Country Club, pool, pickleball & close to lake access. Gentle slope, slightly over 1/4 acre. Ready to build. Some trees **\$65,000**



**LARGE FAMILY CABIN
PENDING**



19712 BUTLER UNIT 8 LOT 232 Near marina and golf this is the perfect family cabin. Great room with vaulted/ knotty wood open beam ceiling and rock fireplace, open large kitchen w/ breakfast bar that seats 5, plus mini bar, 2 master bedrooms on the main level, large downstairs family room w/ wet bar, 3rd master bedroom and additional sleeping area. Large outdoor deck with view of trees. Awesome for the entire group, Tons of paved parking and plenty of room for RV parking as well.

**PRIMO LOCATION
SOLD**



3480 HWY 132 E. COULTERVILLE 5 acres Home, home on the range. Room for everything including all the animals. Gentle rolling/level terrain. Backs to Piney Creek. Mature oaks and pasture. Centrally located between Lake McClure and Lake Don Pedro. Just 5 minutes to boating, swimming and fishing. On a paved Highway 132 East. Easy access to Merced, Modesto and Sonora. Several great building sites. Septic and well is required. Partially fenced. Premium location with endless possibilities. It's a steal at just **\$89,000**.

**MOUNTAIN HOME
SOLD**



20722 RISING HILL CIR U3/L334 – \$332,500 3/2 2 car .47ac in beautiful PML HOA near Yosemite Nt'l Park. On a nearly half acre lot, move-in ready single level home w/fenced metal railing upper front deck. Lg living rm, vaulted ceiling, propane heat stove & laminate flooring. Spacious kitchen, tile flooring & counters overlooking Lg trex & metal fenced back deck patio w/tiered landscape & RV parking. Free internet service, central vac system, Lg mstr w/double sinks, Lg walk-in closet & window seat bench. Spacious hall bath w/dual sinks, shower/tub & finished garage.

Deardorff Realty

SUCH A DEAL...IT'S A STEAL!!!!!!!!!!!!

**UNIT 12/LOT 120 1.1 acre almost flat!
Seller will finance. Call for showing, or
drive by on Hemlock near Mule Ct.
for only – \$99,999!!**

Contact Marilyn Deardorff-Scott - BRE 00396888
209-962-0718

WANT RESULTS? LIST WITH LEDA FILTERED LAKE VIEW



Enjoy the peaceful setting as you relax on the deck of this spacious 3 bedroom, 3 bath home with a view of the foothills and the lake. Bonus room with wet bar on the lower level with full bath. Ideal vacation or full-time residence. Situated on nearly 1 acre of land near Lake Lodge Beach. **Unit 4 Lot 451—\$449,000**

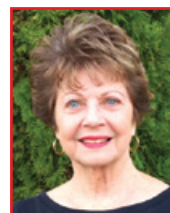
Eleda Carlson



Realtor® GRI,
SRES, e-Pro
DRE 00632516

209-814-4123

Cell - Call or text
eledac1@gmail.com



RE/MAX Gold Groveland

DRE 01215931



Emmett Brennan
Broker/Owner
DRE 00659397



Linda Willhite
Broker/Assoc
209.985.2363



Ron Connick
Realtor
209.206.0007



Kathleen Love
Realtor
209.743.5432



Carmen
Office Admin.
e-Marketing

www.sugarpinerealty.com
18727 Main Street
PO Box 792
Groveland CA 95321

209.962.7765



WELCOME NEW NEIGHBORS Baker Family



Ron Connick
Realtor
209.206.0007

Long Gulch Groveland



PENDING



Call: Ron
209.206.0007



40 ACRES squared land. A Development Dream Zoned AE-37 to build Two Single Family Residences.

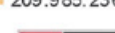
"Bringing the American Dream Home"
Panoramic View & Privacy \$269,900



10887 Merrell Road



Linda Willhite
Broker/Assoc
209.985.2363



HE IS RISEN
Forgiven
For God so Loved the World
LAMB of God
love
He is Risen Indeed
CHRIST THE LORD IS RISEN TODAY
HALLELUJAH
Eternal Life
Redeemer
my savior

"Bringing the American Dream Home" CHARMING HOME



17868 State Hwy 120



Linda Willhite
Broker/Assoc
209.985.2363



PRICE REDUCED! \$829K was \$849,000



Working Horse
Boarding Facility

Beautiful Working Horse Ranch 22025 Ferretti Rd

11.95 Acres
Home 1,640 Sq Ft
Shop 1,280 Sq Ft
3 Car Garage
3 Wells & Pond
Bunk House
and much more

Call Michelle
209.770.6878

PML LOTS for SALE

*29K

.87 Acre Unit 15 Lot 50
Upper Sky Ridge

*\$49,900

Mountain & Lake View
Unit 3 Lot 154 Boitano

Build Your Dream Home



13336 Mule Court
Located on the Bass Pond
close to the PML Airport
and Equestrian Center.

\$24,380

Call Ron
209.206.0007



\$469K

20995 Hemlock

- *4Bd/3Ba
- *1,836 Sq Ft
- *Living & Kitchen on Entry Level
- *Bonus Room
- *2 Master Bedrooms w/ Private Deck

Fly in Pine Mountain Lake

This airport property with a big private hangar is an Aviation enthusiasts dream. Gentle down slope to view the mountains while relaxing from your deck



PENDING



Call: Ron
209.206.0007

CHECK OUT YOUR GROVELAND LIBRARY

THE GROVELAND LIBRARY RE-OPENS TUESDAY & WEDNESDAY — NOON-4PM FRI. — 10AM-2PM • SAT. — 10AM-3PM



BOOKNOOK IS CURRENTLY OPEN BY APPOINTMENT ONLY ON SATURDAY MORNINGS. CALL LINDA AT **962.5114** TO MAKE AN APPOINTMENT

VISIT THE LIBRARY FOR A GREAT SELECTION OF BOOKS, MAGAZINES, NEWSPAPERS, VIDEOS, CDS, DVDS. ALSO COMPUTERS AND FREE WI-FI!

SAVE AS MUCH AS 30%
OVER THE CHAIN OPTICS STORES AND EVEN MORE OVER DOCTORS OFFICES

Large Selection of Unique & Traditional Designs
Can Bill Most Insurance Plans • Over 20 Years Experience
Designer Sunglasses • FREE Adjustments & Repairs



Stacy Hancock
Certified / Licensed Optician
18729 HWY 120, Unit A, Groveland • 209.962.1972

MURRA'S TOTAL YARD MAINTENANCE



BRINGING VALUE FOR YOUR DOLLAR IN PML
 • WEEDING • PLANTING
 • LOT CLEARING • TREE SKIRTING
 • SENIOR DISCOUNTS • HAULING
 • LEAF REMOVAL • AND MORE
CALL JASON MURRA 209-352-3750
 LIABILITY INSURED

Granite & Quartz Countertops



10 YEAR GUARANTEE
ON ALL WORK AND INSTALLATIONS

Located right here in Groveland!

Upgrade Your Kitchen & Bathroom Countertops
High Quality, Guaranteed Work
Affordable Prices • Stone & Tile Projects

Visit our website: www.RockSolidCreations.us

Call Brandon Hoffman: 209-962-1813

Give the Gift of Family Memories

Are you tired of binge watching Netflix or streaming content? Why not dust off your old 8mm family movie films or VHS tapes and bring those golden memories back to life. Have a reel family movie night!



- VHS & 8MM FILM TRANSFER TO DVD OR USB
- PRINT & SLIDE SCANNING
- AUDIO CASSETTE TRANSFER
- CD & DVD DUPLICATION
- PHOTO RESTORATION
- PHOTO BOOKS • MEMORIAL SLIDESHOWS
- GRAPHIC DESIGN • VIDEO EDITING



DejaVu Video Services
 408-899-4407 • dejavuvideo123@gmail.com

Calling All Candidates!

BOARD OF DIRECTORS ELECTION – AUGUST 21, 2021

Pine Mountain Lake Association is seeking candidates for two (2) positions, both three-year terms, on its Board of directors. These are volunteer positions.

THE DEADLINE TO FILE NOMINATION PAPERS IS FRIDAY, MAY 28, 2021, 5PM

To be eligible to be a candidate for election to the Board of Directors, the candidate must a) be a Member of the Association b) who is current in the payment of regular and special assessments, unless the nominee has paid the regular assessment under protest pursuant to Civil Code section 5658, entered into a payment plan pursuant to Civil Code section 5665, or has not been provided the opportunity to engage in

internal dispute resolution pursuant to Civil Code section 5900 et seq.; and c) is insurable under the Association's existing fidelity bond.

Board candidate application and petition forms are available from The Inspectors of Election (TIE) via email at info@theinspectorsofelection.com. Upon completion candidate forms and petitions can be sent to The Inspectors of Election and info@theinspectorsofelection.com (PREFERRED METHOD), via mail at 2794 Loker Ave W, Suite 104, Carlsbad, CA 92010, or via fax at (888)211-5332. Applications and nominations must be received no later than 5:00 pm on Friday, May 28, 2021.

Serving on the Board requires a commitment to attend monthly Board Meetings, Executive Sessions and other interim meetings, as

required, and to review materials diligently prior to taking Board action.

According to CAI (Community Associations Institute), characteristics of good Board members include being fair and impartial, detail-oriented, dependable, flexible, people-oriented, a team player, punctual and able to weigh the overall good for the majority of owners against the rights, freedom and the good of the individual.

If you are interested in becoming an active participant who makes decisions for the Pine Mountain Lake Association membership and you are willing to devote your time for this purpose, we encourage you to submit an application and nomination materials for candidacy to The Inspectors of Election (TIE) by 5:00 PM, Friday, May 28, 2021.

PML Ladies Golf Club

PAULA PARISI

There has been a lot of exciting play in the Ladies 18 Hole Golf Club this past month. Of special note is Linda Sarratt's "fly in" eagle from the fairway on Hole #10, which was personally witnessed by this player. This month also started a new round of Saturday tournaments planned for one Saturday a month, coordinated by Elisa Hoppner. Her plan is to make each tournament fun and different each month, so hopefully we can a lot of participation. Thankfully the PML Grill is back open on the outside deck, so the Club can responsibly socialize after each round, as well.

Here are the results from the most recent Club play:

FEBRUARY 11TH

ST. VALENTINES DAY MASSACRE

1st Place: Priscilla Park, Linda Johnson, Helena McMillan & June Song – 120 Points

2nd Place: Kitty Egerton, Linda Sarratt, Sara Hancock & Sally Wrye – 127 Points

Birdies: Anne Clark – Hole #17; Elisa Hoppner – Hole #14, Laura Kramer – Holes 6 & 10, Jeanne Pacco – Hole #17

FEBRUARY 18TH

INDIVIDUAL POINT BOGEY

First Flight (15 – 22 handicap):

1st Place: Linda Johnson – 36 Points

2nd Place: Elisa Hoppner – 33 Points

3rd Place: Kitty Edgerton – 30 Points

Second Flight (23 – 27 handicap):

1st Place: Marcee Cress – 35 Points

2nd Place: Patty Peebles – 33 Points

3rd Place: Ann Clark – 32 Points

Third Flight (28 – 36 handicap):

1st Place: Jane Reynolds – 35 Points

2nd Place: Sue Perry – 32 Points

3rd Place: Jodie Awai – 29 Points

FEBRUARY 25TH

ONE BEST BALL EVEN/ TWO BEST BALL ODD

First Flight:

1st Place: Kitty Edgerton, Elisa Hoppner, Paula Parisi & Jodie Rodriguez – Net 94

Second Flight:

1st Place: Lois Lee, Helena McMillan, Sue Perry & Jane Reynolds – Net 86

2nd Place: Lisa Brown-Jimenez, Sara Hancock, Jeanne Pacco & Priscilla Park – Net 91

Birdies: Kitty Edgerton - Hole #2, Paula Parisi – Hole #14

MARCH 4TH – GROSS-NET-PUTTS

Ace of Aces: Jane Reynolds – Net 64

First Flight (15 – 22 handicap):

Low Gross: Elisa Hoppner - 84

Low Net: (Tie) Laura Kramer & Priscilla Park - 72

Second Flight (23 – 27 handicap):

Low Gross: (Tie) Anne Clark & Marcee Cress - 97

Low Net: Patty Peebles - 69

Third Flight (28 – 36 handicap):

Low Gross: Jane Reynolds - 100

Low Net: Helena McMillan – 75

Putters of the Month: (Tie) Elisa Hoppner & Priscilla Park - 30 putts

Birdies: Elisa Hoppner – Holes #10 & 16

EAGLE: Linda Sarratt – Hole #10

MARCH 6TH

TWISTED TWO BALL FORMAT (First Saturday Tournament)

1st Place: Elisa Hoppner, Deb Benson, Anne Clark & Marcee Cress – 133 Points

2nd Place: June Song, Jodie Awai, Paula Parisi, Sara Hancock – 139 Points

Birdies: Marcee Cress – Hole #1 & Linda Sarratt – Hole #10

The PML Ladies 18 Hole Golf Club is open to homeowners and residents of the Pine Mountain Lake area. If you are interested in becoming a member, please contact Head Pro, Mike Cook at 962-8620.

PML Organized Groups & Clubs

Contact the individuals below if you are interested in joining!
(All numbers are 209 area code unless noted otherwise)

Aviation Association

Danielle Coelho 831-601-7328

Computer Users Group

Frank Perry 962-0728

Exercise

Barbara Elliott 962-6457

Cindy Simpson 962-7018

Friends of the Lake

Mike Gustafson 962-6336

Garden Club

Linda Flores 962-0824

Groveland Rotary Club

Rudy Manzo 962-5219

Greg Cramblit 962-0607

Ladies Club

Evelyn Bealby 650-743-4105

Men's Golf Club

www.pmlmgc.com

Needle Crafts

Barbara Klahn 209-916-5420

Pickleball Club

Lee Carstens 415-215-5564

Pine Needlers Quilt Guild

Lynn Sigafoose 962-1868

PML Ladies 18 Hole Golf Club

Marcee Cress 962-0771

PML Niners

Stacie Brown 962-7397

PML Safe Streets Campaign

Leslie Dudley 962-4911

PML Shooting Club

George Voyvodich 962-5163

770-5163

PML Waterski & Wakeboard

Dean Floyd 408-915-8848

Racquet/Tennis Club

Alex Nagy 831-588-8469

Residents Club

Dick Faux 962-4617

ROOFBB

Susan Dwyer 962-6265

Sierra Professional Artists

Heinie Hartwig 586-1637

Southern Valley Srs. Golf Group

Rich Robenseifner 962-0932

Wednesday Bridge Club

Linelle Marshall 962-7931

Windjammers Sailing Club

Ken Regalia 415-819-4252

Ladies Club

EVELYN BEALBY – PRESIDENT

We've had rain, we've had sun and we've had snow during the month of March.....and it now looks like there is a strong possibility of us resuming our much-missed social luncheons in June, albeit in a slightly different format. It's very likely we will be hosting our Wednesday, June 2nd, event outdoors in the Stables area so put this date in your calendar and watch out for our club newsletters and perhaps some calls from Mae Franco, our Vice-President for Events, if you'd previously signed up to volunteer. Numbers may be restricted as per Federal, State and PML guidelines so paid-up members will get priority in attending the event. Most of us will be fully vaccinated, we'll be in the fresh air, can be socially distant in the outdoor setting and we can still have delicious food served in individual boxes at beautifully decorated tables. Yes, there may be games, party themes and music while we enjoy our lunch!

On another note, we are still keeping our members engaged with ecards, games, birthday cards and sharing of information about local offerings and events. Our Vice Presidents, Patricia Summers Epp and Dart Woodruff have been working with Tioga High School Senior Girls to support them in their academic and work endeavors and the \$800 we raised with the sale of donated Xmas basket items will be disbursed by mid-April. Congratulations to the Senior Girls and thanks to Patricia Epp and Nancy Mora for putting in the hours to run a very successful fundraiser. Remember, membership of the Ladies Club is only \$15 per year so email me at president@pmladiesclub.org for more information about joining us.

Garden Clippings

SHARON HUNT-STEVENSON

**POTTED PLANT SALE
MAY 1, 2021
JAIL GARDEN
10:00 AM TO 3:00 PM**

Just in time for Mother's Day ... The Pine Mountain Garden Club is having our Spring Plant Sale. Flowers and garden art will tickle your fancy. The sales support the seasonal plantings and maintenance of the Jail, a Groveland showplace.

April is the month to start vegetables. Remember not to plant annuals until after Mother Day.

Pine Mountain Lake Men's Golf Club

STEVE BURKE

THE ICE BREAKER

The first tournament of 2021 was played on February 20th, and held true to its name, as it was cold and wet. We had 68 players turnout for our first tournament playing from split tees. We had three flights, based on handicaps, and paid out to nearly half the field. A great start to 2021.

A Flight

1st Place – net 66 – Tony Pavlakis, Bryan Eshagh

2nd Place – net 66 – Jeff Sera, Bud Roberts

3rd Place – net 67 – Larry Drew, Dave Fernandez

4th Place – net 67 – Colm Conefrey, Brian Clausen

5th Place – net 67 – Rick Liszewski, Gus Climent

B Flight

1st Place – net 65 – Dave Inouye, Spencer Marquiss

2nd Place – net 65 – Doug Wall, Frank Jablonski

3rd Place – net 66 – Chad Meister, Eric Meister

4th Place – net 66 – Andrew Hughan, Tim Hughan

5th Place – net 67 – Will Hoppner, Glen Fiance

C Flight

1st Place – net 64 – Jim Lee, Brian Vahey

2nd Place – net 64 – Larry Torres, Dave Villaroman

3rd Place – net 66 – Rich Robenseifner, Lou Marinacci

4th Place – net 67 – Gus Allegri, Frank Hicks

5th Place – net 67 – Rich Martinez, Joe Vautier

MARCH TOURNAMENTS

We held two tournaments in March: St. Patrick's Day and March Sweeps. We will report the results from these events next month.

APRIL SWEEPS

We will tee it up April 14th, for our first 4-man scramble, playing from the purple-green tees. There is plenty of time to sign up. Go to www.pmlmgc.com and click on Tournament Schedule, and then click on April Sweeps to sign up and pay on line.

NCGA 12-MAN MATCH PLAY COMPETITION

This year the Men's Club will participate in a multiple event competition, where Men's Club members will compete against players from 3 other Golf Clubs, likely Greenhorn Creek, Copper Valley, and Oakdale Country Club. There will be 6 matches, 3 at our course and one each at the clubs mentioned. These matches will take place June through August. This is a great opportunity to represent and play 3 beautiful golf courses. Anyone can join in, though there is a maximum index of 18.4. Away matches, lunches, and drinks are free, and there will be a small fee when playing at home. Contact the Golf Shop to sign up.

WEBSITE TOURNAMENT SIGN UP

Please continue to use our website, pmlmgc.com, to sign up and pay for

tournaments. Using the website for tournament sign up and payment makes it much easier for the club and the Golf Shop to manage tournaments. When signing up please fill out the form completely, including the first and last names of all players you are signing up. If you have a guest, which we encourage, please include their GHIN on the form, as this saves the Golf Shop time. Enter the tees to be played by each player, if applicable, and use the Additional Requests box to indicate if you want to play with specific people that have signed up separately, or you wish to have an early or later tee time.

Go to pmlmgc.com to see the tournament schedule. We will continue utilizing tee times, rather than shotgun starts, with no gatherings before or after play, as the Tuolumne County COVID Guidelines remain in place at this time.

JOIN THE MEN'S GOLF CLUB

Any male persons who are current property owners, their siblings, sons, nephews, sons-in-law, and PMLA employees are eligible to join the men's club. Go to pmlmgc.com and click on the button, Join the Club, to see the many benefits of club membership, as well as the ability to sign up on line. Applications are also available in the Golf Shop, or you can contact our Handicap/Membership Chair, Ted Toffey. Email Ted at handicap@pmlmgc.com, if you have any questions about club membership, or, if you're a current member, your NCGA handicap index.

APPLY FOR SUPPORT!

If you are having challenges or know someone who is:

CALL (209) 962-1850

MESSAGE US ON FACEBOOK.COM (just search for ROOFBB)

EMAIL: ROOFBB.org@gmail.com

A confidential application will be sent to you with instructions.

Times are different for fundraising but the ROOFBB organization is still working hard raising funds to help those in the community who need it most.









~All inquiries kept strictly confidential~



STAY INFORMED, SIGN UP FOR OUR eSNAP PROGRAM AT
WWW.PINEMOUNTAINLAKE.COM AND GET INFO
 RIGHT IN YOU EMAIL IN BOX

Locally Owned since 1950

YOUR ONE-STOP SHOP FOR
all your pest control services

- PEST CONTROL: HOME, BUSINESS AND INDUSTRY 
- LAWN FERTILIZATION AND COMPREHENSIVE LAWN CARE 
- TERMITE INSPECTIONS, REPAIRS AND FUMIGATIONS 
- TREE AND SHRUB CARE, AND BARK BEETLE CONTROL 
- TERMITE TREATMENTS AND MONITORING 
- WEED CONTROL AND FIRE BREAKS 
- BED BUG TREATMENT 
- DECK REPAIR/REPLACEMENT (LICENSE #922758) 



OUR REPUTATION IS IMPORTANT TO US AND YOUR COMMUNITY.
Call now for a free estimate!




 (209) 770-7733
 clarkpest.com

STREAM MUSIC, MOVIES, SPORTS, TV & MORE!



GET UP TO
25MBPS

UNLIMITED DATA!

THE LOCALS' CHOICE FOR
BROADBAND INTERNET SINCE 2008



866-378-8393
 CONIFERCOM.NET

Your LOCAL Source for Rock Solid Security Solutions

Securing Pine Mountain Lake and Surrounding Areas



Call for **FREE Security Review**

(209) 651-0051

www.GranitePeakAlarm.com



ACO #7823 • Contractors Lic. #1046953

- Burglar Alarms
- Security Cameras
- Fire Systems
- Video Doorbells
- Home Automation

...and more

PINE MOUNTAIN LAKE ASSOCIATION
JOB OPENINGS

FULL-TIME

CONTROLLER

**RENTAL
COMPLIANCE
COORDINATOR**

FULL-TIME UNION

SAFETY OFFICER

PART-TIME

STABLE HAND

OUTSIDE SERVICES

SEASONAL

POOL

MARINA

LAKESIDE CAFÉ

STABLES

Online application link on website, [www.
pinemountainlake.com](http://www.pinemountainlake.com), click on
"Employment Application" and create a profile to
apply for this position.

Shannon Abbott, HR Manager 209-962-8628 •

pmlhr@pinemountainlake.com

Equal Employment Opportunity Employer

"Love Groveland" Needs You!

SHARON HUNT- STEVENSON

**EXCITING NEW BEGINNINGS
IN GROVELAND**

Groveland's project to brighten the campus at Tioga High School has been approved by "Love Tuolumne County"! "Love Groveland" is calling on YOU to volunteer! Come on Saturday and Sunday, April 24 and 25, 2021 with shovels, rakes, clippers, wheel barrels, gloves, and a hat and be prepared to meet a lot of good folks. This is your opportunity to participate in making a difference in our community. Please call Marty Bolar at 209-962-4469 or Sharon Hunt-Stevenson

at 209-962-7707 to say when you can help.

Behind the scenes Marty Bolar has been refining the details and monetary needs for the project. The community has come forward to help make this day possible. Many folks have said yes to coming along side "Love Groveland" ... including the Groveland Rotary, the Chamber of Commerce, GCSD, Moore Bros. and other organizations who have the skills needed to clean up the campus. "Love Tuolumne County" has pledged to help in organizing the resources and funding in order to pull the "Tioga High School Campus Project" together.

Mark your calendar and come and join the fun!

MLC News

PASTOR GINGER DUMARS, RETIRED

**HONORING GOOD FRIDAY ON APRIL
2 & CELEBRATING EASTER MORNING
TOGETHER ON APRIL 4TH AT MOUNTAIN
LUTHERAN CHURCH**

Easter Sunday is the most important day of the whole year for most Christians! We celebrate God's Powerful Resurrection of Jesus Christ from the dead & the promise of our own resurrections & eternal life with Jesus on Easter Sunday Morning! Singing & hearing joyful music & hymns, praising God & praying, hearing the Good News & receiving Holy Communion inspire us as we give God thanks for the Gifts of Easter! Worshipping God In Person together seems extra special this year also! Mountain Lutheran Church's Easter Morning Worship begins at 10:00 a.m. Easter refreshments will be served after the worship service. There is NO Early 7 a.m. & NO 4 p.m. Worship Service at Mountain Lutheran on April 4th; but, we will resume 4:00 afternoon only worship time on April 11. As Liturgical

Christians we celebrate the Easter Season for 7 weeks until May 23; but, the most important, festive day is Easter Sunday Morning, April 4 this year. EVERYONE is WELCOME to celebrate Easter & all Sundays at Mountain Lutheran Church at 13000 Down to Earth Ct. - just off Ferretti Rd. in Groveland! We are still wearing masks during worship & keeping physical distances - as of my writing this article. Hand sanitizers are also available. For more information, visit our website, www.mountainlutheranchurch.com OR call the church office & leave a message: 209-962-4064.

We cannot celebrate Easter, as Christians, without honoring Good Friday; so, Mountain Lutheran will host our Community's Good Friday Service at NOON on April 2. I've organized a simple service with area pastors reading the Passion (Jesus' suffering & death) Narrative from the 14th & 15th chapters of the Gospel according to Mark. Hymns reflecting the readings will be sung between passages with Pastor Richard Cripe of Groveland Christian Fellowship offering the Opening Prayer. Pastor Luis Alecio of First Baptist Church in Big Oak Flat has agreed to give the Closing Prayer. Pastor Mark Rathe of Groveland Evangelical Free Church & I will alternate reading the Scripture passages with the other pastors. Please come & join other area Christians at Mountain Lutheran Church (13000 Down to Earth Ct.) for this solemn, April 2nd NOON Good Friday Service of Remembrance of Jesus' suffering & sacrificial death for ALL people. God Bless You & the amazing gifts God gives you through the life, death & resurrection of Jesus Christ, our Lord & Savior.



**Custom Boat Docks – Gangways
Kayak/Canoe Launches - Floats & Hardware**

209-845-2876

1398 East F St Oakdale, CA 95361

Independently owned Since 1982

www.hcidocks.com

GROVELAND GAL FRIDAY
SPRING FEVER?
 Let me help you!
 I can do your shopping, pet-sitting, organizing, senior care, rides, house checks, house sitting, errands and more - while you go out and play! Just give me a call!



SHARON VOLPONI
 962-6848 • 770-6277

PAINTING & CONSTRUCTION






PAINTING – EXTERIOR/INTERIOR • DECK REPAIRS • WOOD REPAIRS • REMODELS

Bay Cal Construction
209.962.4777

www.baycal.com
 email: davec@baycal.com

VISA MasterCard
FREE ESTIMATES

\$25 DISCOUNT
 Mention this ad for a discount on cleaning services.
 Minimum charge applies.

DISASTER RESTORATION SERVICES • RESIDENTIAL AND COMMERCIAL CLEANING SERVICES

Carpet & Furniture Cleaning • Steam & Dry Cleaning • Deep Soil Extraction • Spot & Odor Removal • Oriental & Fine Rug Cleaning • Ultrasonic Blind Cleaning
 24 Hour Emergency Service • Water Removal • Wet Carpet Care • Fire & Smoke Restoration • Vandalism Cleanup • Structure Drying • Sanitizing

ServiceMASTER Restore

The clean you expect.®
The service you deserve.®



Serving Tuolumne, Calaveras & Amador Counties
 ServiceMasterSierras@mlode.com • www.ServiceMasterSierras.com

209-532-1700

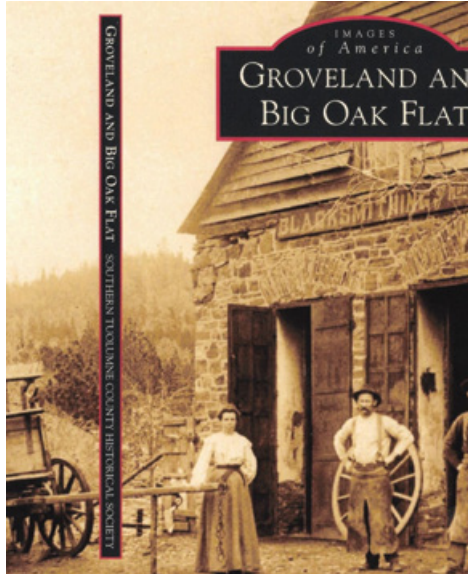
17330 High School Road
 Jamestown CA 95327



STCHS News

HARRIET CODEGLIA

Although STCHS has not been able to host our two popular fund-raising events (Wine Tasting Cruise and Labor Day BBQ), we have not been entirely idle. We were able to publish the "Images of America" book titled "Groveland and Big Oak Flat". Folks who have purchased it are singing its praises. You can purchase the book online on



limited numbers of visitors at a time.

Part of the reason we have limited hours is that many of our volunteers are in that wonderful higher risk age group and are not available. We need volunteers as docents in the museum, and for other projects.

STCHS works to restore and maintain the historic Gamble Block in Big Oak Flat. The restoration of the Cobden house was an award winning effort

our newly redesigned website: www.grovelandmuseum.org, or via email through gygmstchs@gmail.com, and now there is an even better way. By the time you read this we will have reopened our wonderful little museum in town. We will operate the museum with shorter hours and fewer days: Friday, Saturday, and Sunday from 10 until 2. Masks are required, along with social distancing and

by our volunteers. STCHS also manages the upkeep of the Museum/Library building. A great way to find out all that STCHS does is to become a member. Membership forms are available at the museum.

WE REALLY NEED YOU! This is a great way to get involved in your community! Come by the museum and ask the docent on duty how you can help. And buy a book. It will make a great gift too.

NEED HOMEOWNER'S INSURANCE?



Having trouble finding insurance for your home?

We may have the solution for you even if you live in a forested area!

EASON INSURANCE AGENCY, INC.
209.383.7322
9AM - 5PM - MON - FRI • 9AM - 1PM SAT
Email: homeins@easoninsuranceagency.com
CA Lic #0C97581



- Launching
- Winterizing
- House Calls
- Dock Calls
- Service
- Repairs
- Storage
- Trailer Repair

209-962-4594

The Boat Doctor

Paul Belluomini • P.O. Box 113 • Big Oak Flat, CA 95305



MY CAR GUY
 Automotive Consulting Services

Dave Sutch
 Auto Broker/Dealer/Consignor

20950 Ferretti Road
 Mail: PO Box 22
 Groveland, CA 95321

Cell/Text 415-860-1505

dave@mycarguy-sf.com
www.mycarguy-sf.com

*...dream cars at
 dream prices
 with no hassle*



BROKER / DEALER / CONSIGNOR

Cars, Trucks, SUVs, RVs,
 Motorcycles



CUSTOM HOMES



REMODELS

209-768-5759
 Lic# 1018268

Healthy Habits

From Pine Mountain Therapy

JULIE TANAKA, PT

GIVE YOUR BODY AND BRAIN A BREAK!

The computer era is amazing.

We can shop, pay bills, and now hold all our meetings and family gatherings virtually, without ever getting out of our chairs.

Unfortunately this is not so great for our bodies. Our bodies are made to move! Movement keeps our muscles balanced and joints lubricated.

The office set up a few decades ago had built in breaks. You had to get up to walk across the room to use the mimeograph machine, go to the post office to mail a letter, even our typewriters had built in breaks. At the end of each line you had to return the cartridge giving the wrist a mini break and improved circulation. Carpal tunnel syndrome (chronic wrist pain) came along with the computer. As technology improved we are now at the point that we never have to get up or even move our hands from the keyboard. Not great for the human body, but job security for physical therapists!

In the 90's I became a specialist in workplace ergonomics. My job was to go out into the business world and set up workstations that would promote proper posture and alignment while working. We charged a lot of money and bought a lot of cool office furniture. In the end it improved, but did not solve the problems of neck, back and wrist pain. The biggest decline in office related injury was in Japan. Japanese companies instituted a stretch break every hour for their workers and the injury rate decreased markedly.

Workstation set up and posture is still very important, but need to be combined with movement. Get up every hour. I set up a routine for my daughter who works from home now and all meetings are virtual. We made up several cards with activities to do in between meetings that take just a few minutes. These activities not only help your body they also relieve the stress that comes along with long work days of sitting and staring at a screen.

Take time to write out cards of your



own. Things like:

- Stand up and take three big breaths reaching your arms over your head.

- March into the kitchen and drink an 8 ounce glass of water and march an additional

3 minutes looking out the window

- Standing side stretches for 3 minutes
- Biceps curls alternating with wall push ups

You get the idea.

Stay healthy and keep moving!

PINE MOUNTAIN THERAPY

Outpatient Physical Therapy

Serving the Mountain Communities of Tuolumne and Mariposa Counties

18800 Main Street,
Groveland, CA 95321

209-962-4035

Please visit our new web site at
www.pinemountaintherapy.com

A Preferred Therapy Provider,
participating provider with
most insurance carriers
including Medicare.

A Poem by Chief Tecumseh

ETTY GARBER, PH.D. – LICENSED MARRIAGE AND FAMILY THERAPIST

So live your life that the fear of death can never enter your heart. Trouble no one about their religion; respect yours. Love your life, perfect your life, beautify all things in your life. Seek to make life and its purpose in the service of your people. Prepare a noble death song for the day when you go over the great divide.

Always give a word or a sign of salute when meeting or passing a friend, even a stranger, when in a lonely place. Show respect to all people and grovel to none. When you rise in the morning give thanks for the food and the joy of living. If you see no reason for giving thanks, the fault lies in yourself.


Abuse no one and no thing, for abuse turns the wise ones to fools and robs the spirit of its visit.

When it comes your time to die, be not

like those whose hearts are filled with the fear of death, so that when their time comes they weep and pray for a little more time to live their lives over again in a different way. Sing your death song and die like a hero going home.

Note: This is not intended to be depressing but a reminder that you are in charge of your life and it is never too late to make the most of what you have left so you can feel proud of your accomplishments and the positive legacy you will leave. No one is perfect. We have all made miss-steps, but that is in the past. Allow yourself to experience a more positive and happier future and share it with others.

Thank you to Tom Huggett for sharing this with me.



Dr. Etty Garber Ph.D.
in Clinical Psychology and a licensed Marriage Family & Child Therapist, with 36 years experience in mental health, lives in Groveland and

OFFERS PRIVATE PRACTICE SERVICE

Dr. Garber can provide psychotherapy in a variety of settings to individuals, couples, families and groups.

**RELATIONSHIPS • FAMILY CONFLICT • CHEMICAL DEPENDENCY
DEPRESSION • ANXIETY • ABUSE, etc.**

Low Fees • No Insurance FOR AN APPOINTMENT CALL 209.768.5200

The Bus is Here!

SYD ROBENSEIFNER

Everyone at Southside Community Connections and the Transportation Grant committee has been working hard to make public transportation a reality on the hill. We now have our bus! We have hired two transportation coordinators and are interviewing drivers (by the time this article is published, we also will, hopefully, have hired both drivers).

We have received "Name the Bus" entries and the winner will be announced in May's papers and on all of SCC's social media. We hope to have a ribbon-cutting event (with social distancing) in early May, and we will launch the program as soon as the County lifts Covid restrictions and we can safely put multiple people in one vehicle. We have preliminary routes and schedules created for our initial pilot program. Those will be modified as needed during the first few



months of the program, as we learn more about where our riders really need to go.

If you are interested in riding the bus (which should be going to Sonora three times each week and to Modesto once each week during the pilot program), please call us at 962-6952 or send us an email at: wheels@southsidecommunityconnections.org. Everyone will need to receive a copy of the Rules of the Bus and sign a waiver.

We look forward to seeing you on the bus! Stay tuned for the winner of the "Name the Bus" contest.

Mental Fitness: Facing your Saboteurs

MERILEE COLLE FERDINAND, PT, DPT, MAOM, PCC – PROFESSIONAL CERTIFIED COACH

In last month's article, I mentioned that people can be sabotaged in ten main ways. Author and researcher, Shirzad Chamine has named and described these "Saboteurs." This month, I will go into more detail about five of these Saboteurs, along with how they negatively impact us.



Saboteurs are a universal phenomenon. Everyone has some version of these Saboteurs. But each of us has different ones, at different intensities. Saboteurs develop in childhood as a survival mechanism to a real or perceived threat. The Saboteurs are actually strengths taken too far. As you read about each of the saboteurs, your first thought may be, "Isn't that a good thing?" The answer is yes, the strength is a good thing, but that strength taken too far has a significant negative impact.

First, we all have the **Judge Saboteur**. We also typically have several of the other nine **Saboteurs**, which are referred to as **Accomplice Saboteurs**. These saboteurs work to influence our thoughts and behaviors and cause us to feel all the negative emotions we feel.

Recognizing our top Saboteurs is the beginning of taking charge of their negative effects on us.

The **Judge Saboteur** is the Master

Saboteur. As the name implies, it causes us to judge ourselves, others, and circumstances. It is the one that beats us up, often without us even realizing it. The Judge causes stress, anxiety, shame, and guilt.

Next is the **Avoider Saboteur**. People who have a strong Avoider Saboteur focus on positive and pleasant things.

While this sounds like a good thing, being constantly positive often means avoiding difficult and unpleasant tasks and conflicts. People with strong **Avoider Saboteurs** hope these negative things will go away on their own. But instead, problems fester, causing more difficulties, leading to anxiety, anger, and resentment.

Those with **Controller Saboteurs** try to control other people and situations around them. They justify their controlling natures by saying things wouldn't get done right if they didn't take charge. They may get the short-term results they want, but there is a price. Those around them develop resentment at being controlled. The people with **Controller Saboteurs** feel anxiety and frustration when they can't control everything around them.

The **Hyper-Achiever Saboteur's** influence causes one to use constant performance and achievement to gain self-respect and self-validation. This leads to unsustainable workaholic tendencies and often loss of deeper emotional and

relationship connections. People with this saboteur feel they worthy only as long as they are successful and accomplishing things, so they often feel like they can never rest.

The **Hyper-Rational Saboteur's** focus is intense rational processing as well as analyzing of everything, including relationships. People with this saboteur often are perceived as cold, distant, or intellectually arrogant. They get frustrated with others for being "too emotional" and devalue their own emotions. This can negatively impact their relationships and cause loneliness, misunderstandings, and reduced effectiveness at work.

Next month, I will describe the five other Saboteurs. In the meantime, you can go to my website (www.ColleCoaching.com) for the link to the free Saboteur Assessment, which will report your top saboteurs. The first step to weaken your saboteurs is to recognize which ones you have and "shine a light on them." Next month, I will talk about more tools to weaken their negative impact, resulting in increased happiness and an improved quality of life.

For a free session to discuss your top saboteurs and what to do about them, go to: <https://www.collecoaching.com/schedule> and use coupon code: **FREE-INTRO APR**

Professional, Business, and Personal Life Coaching

How often do you say, "Someday I will...?"

Would you like to live a more balanced and fulfilled life? Improve your finances, or manage your time better? Would you like to take your business to the next level? How about improving your personal and professional relationships?

No matter where you are in life's journey, it's never too late or too soon to start fulfilling your desires.

Colle Coaching Services can help you **make SOMEDAY into TODAY**. Our coaching is confidential, and over the phone for privacy and convenience.

We are offering a free introductory session through April. Go to www.collecoaching.com/schedule to choose your session time. Use **FREE-INTRO APR**

For more information about what we offer, go to www.collecoaching.com



Merilee Colle Ferdinand PT, DPT, MAOM

- Certified Professional Coach
- Doctorate in Physical Therapy
- Masters Degree in Organizational Management



Tioga High Leadership Dinner to Go

SATURDAY APRIL 17TH, 2021

Pick Up Time: 4-6 pm

Pick Up Location Tioga High School Cafeteria

\$25 to feed family of 4

Choice of Lasagna with Red Sauce, or Vegetarian

Lasagna with White Sauce

1 loaf Garlic Bread

Green Salad Kit

Must pre-order, contact Mrs. Seals at

kseals@bofg.org or a Tioga High leadership student



PAUL S. BUNT, ESQ.
ATTORNEY AT LAW

ESTATE PLANNING

PROBATE

REAL ESTATE

BANKRUPTCY

ELDER CARE

209.962.6778

Mountain Leisure Center, Groveland
appointments available in Sonora and Lake Don Pedro

Thank You, Ike!

VIRGINIA RICHMOND

Friends of the Groveland Library thanks PML resident and photographer, Ike Shin, for donating prints of his wonderful “Groveland in the Snow” photo to the library. They sold out quickly and produced \$600 for the library. We’ll use the funds to buy new books that everyone can enjoy. You can see why the cards were so popular!

The library is now open Tuesday and Wednesday from 1:00-4:00pm, Friday from 10:00-2:00pm, and Saturday from 10:00-3:00pm. Covid precautions are in place, of course.

By the time you see this, we hope that the Book Nook will have reopened on Saturdays from 9:00am-noon. Naturally, schedules are dependent on the county’s current Covid status, and could change. Call the library at 962.6144 to check.



Photographer Ike Shin holds the Groveland in the Snow postcards he donated to benefit the library.

Top Dog of the Month

DORI JONES

My name is Buddy Herbert Schaffer (aka Bubba Bear) and I’ve been named Top Dog for April. I’m a little more than two years old, and I’m a small but mighty mix of miniature Manchester Terrier and Dachshund. I’m so lucky the day my owners, Dania Schaffer and Joanne Beatty, found me at a shelter in Milpitas. They treat me so special and I’ve never had it so good living with them! I’m a real cuddle bug, and I love sitting on my mom’s lap to watch TV and sleep right next to her at night—anything to stay close. And they love me even though I have some funny and quirky habits: I only eat my treats on the living room rug, I tug at my mom’s clothes when I want to play, and I love to steal socks and use them like a pillow to sleep on. My favorite spot in the house is sitting by the front door in the sun. It’s the best! But the highlight of my day is going to the dog park to run and play with my doggie friends. I love wrestling and chasing all the dogs, especially the big ones! They don’t scare me at all!

A big thank you to Steve Holt, who graded the new dog park walking path. And thanks to Frank Hicks, Bob Steinkamp, Tim West, Bob Hervey, John Lloyd, Rick Koerlin and Greg Jones for installing the bender board around the perimeter of the path. It will take a couple months to complete the walking path, but it will be a great addition for



Buddy, Bubba Bear, Herbert

dog owners, who will be able to walk the inside perimeter of the park while their dogs play.

To join the Groveland Dog Park, contact GCSD. The annual fee is \$25 for up to two dogs (plus \$10 for each additional dog), and new dogs are required to provide current Rabies and Bordetella vaccination certificates when registering. Join the fun!

The Little House

DENISE JERVIS

USE OF OUTDOOR AREA AT THE LITTLE HOUSE

Southside Community Connections, like most of us, had no idea that when we closed the doors to The Little House that it would be over a year until we would open the doors to our community again. The subject of reopening was recently presented to the SCC Board of Directors and after much discussion and consideration, have voted and approved the use of outdoor areas for educational and social activities.

Beginning May 1, 2021, unless otherwise advised by Federal, State and County officials, groups may begin using the outdoor facilities at The Little House. With safety being at the forefront, SCC will require that persons participating in all scheduled activities observe the current (March 7, 2021) CDC recommendations which states: “When vaccinated people are interacting with unvaccinated people from multiple households everyone should wear masks and physically distance, and meet outdoors in a well ventilated space”. We have determined the maximum number of outdoor activity participants will be twenty. Preference will be given to the groups and

activities who had been part of the monthly schedule during the 2019-2020 program schedule. New groups and activities will be added to the calendar as the schedule allows.

VOLUNTEER HELP NEEDED AT THE LITTLE HOUSE

In order to prepare the facilities for re-opening, help is needed to get the outdoor area tidied up and ready to welcome our community. Some of the tasks include: preparing outdoor furniture for use, garden bed maintenance, installing sunshades, painting, moving and re-installing A/V equipment and other small tasks. The schedule for the items listed is flexible though we hope to have all work completed by May 1, 2021.

If you are interested in reserving an outdoor space at The Little House for your group or if you are interested in volunteering to help with our outdoor areas, please contact us.

Thank you and we look forward to seeing everyone soon.

SOUTHSIDE COMMUNITY CONNECTIONS

11699 Merrell Road
Groveland CA 95321
209.962.7303

www.southsidecommunityconnections.org

Chamber Chatter

GLORIA SCHROETER – YOSEMITE HWY 120 CHAMBER OF COMMERCE

The Hwy 120 Chamber of Commerce flea market is slated for the first Saturday of the month from April through September. Hours will be 8:00 a.m. to 1:00 p.m. 10 X 10 spots are available at \$10 for Chamber members and \$15 for non-members. This is a community event, so come visit the biggest event to hit Groveland since COVID.

Your Chamber is planning all the usual events: flea market, 49er Festival, car show, Groveland open house, etc. Also, many new activities and events are in the hopper once the state lifts COVID restrictions. As I’m writing this that seems to be happening, but for now we are continuing to ask that you make

reservations for the flea market by calling Jeff at (510) 759-1570 so that we can manage the restrictions currently in place.

We are improving our social media and web presence with an interactive website Groveland.org, Google, Trip Advisor, Next Door, Hwy 120, Facebook, and Instagram. We are expanding locally with shopping coupons, shopping days, downtown events, and much more. Additionally, we are looking at options to remedy the current parking situation in Groveland.

If you are interested in joining the Hwy 120 Chamber of Commerce or would like more information, please visit Groveland.org or email Jeff Thompson at JimnicJeff@gmail.com.

Go to the official online presence of the PMLA for the latest news & information

PineMountainLake.com

Facebook.com/PineMountainLakeCA

Facebook.com/pmlarecreation

Pandemic Panic?, or Optimism?

PASTOR MARK – GROVELAND EV FREE CHURCH

Did you notice that March 9 was ‘national panic day?’ I chuckled... there seems to be a ‘national day’ for everything these days. But I found panic an interesting topic to honor with a special day. Oddly enough, ‘panic’ sounds a lot like ‘pandemic,’ which is what we’ve all been going through. The pessimists have had the upper hand during the pandemic. Optimists have been subdued. Which are you- optimist?, or pessimist?... is the glass half full or half empty for you? Optimism is the tendency to expect the best- that good things are coming. But optimism is not the same as faith in God. Optimism can be a personality trait that has nothing to do with One’s belief in God. There are optimistic Christians and pessimistic Christians also.

I would say most of my friends are optimists. They lean toward a pleasant view of life. “Don’t worry; be happy” is a common motto among them. Like most people, I think I’m drawn to those types, because they are usually just more pleasant to be around. They tend to worry less about things they can’t control. However, just because a person is optimistic does not mean that he has great faith in God or that her faith is properly placed. I have known optimists who are just plain in denial about the hard facts.

Then there’s the ‘power in positive thinking.’ This also has nothing to do with God, but instead, it is a belief that if a person focuses and believes hard enough, they will get what they want or need. But there can be a letdown or confusion if it doesn’t happen.

Biblical optimism (and, if you will, biblical positive thinking) is called ‘hope.’ It is based on faith in the character of God, not our mental willpower. *Romans 15:13* says, “May the God of hope fill you with all joy and peace as you trust in him, so that you may overflow with hope by the power of the Holy Spirit.” Hope in God means trusting His plan above whatever is going on around us. Paul adds to that in *Romans 8*: “But hope that is seen is no hope

at all. Who hopes for what they already have? But if we hope for what we do not yet have, we wait for it patiently.” *Romans 8:23-35*

In this life, bad things happen to good people who seemingly don’t deserve such pain. The pandemic is a good example. Millions of hardworking, good people (around the world) have suffered terribly through this odd, mysterious time. Only God stands above history and sees how this virus, His will and our choices fit together. It’s beyond us. But regardless of what may happen in this life, we know that God sees, cares, and will “wipe every tear from our eyes” when we are forever with Him. *Revelation 21:4*. That kind of confidence makes me optimistic, even in the panic of the pandemic. And I believe that hope has helped me comfort others who have suffered in these difficult times. Biblical optimism looks beyond earthly events. That’s not denial- instead it’s a tool to help us hold onto ‘the hope that lies within us.’ *1 Peter 3:15*

God designed us to live with hope. *Psalms 43:5* says, “Why, my soul, are you downcast?... Put your hope in God...” Holding onto hope is an optimistic choice- a conscious choice to trust God when we don’t understand circumstances.

It looks like we’re coming out of the worst of the panic from the pandemic. Maybe you’re coming out of it okay- barely scathed. Or maybe it’s been a crushing experience to you or people you love. But in our pain- and joy- when we try to look at life from God’s point of view, the fear eases a bit. My job, at Groveland Evangelical Free Church, is to speak to issues we all struggle with, and point toward the One who wants to help us through this life, on Earth, on the way to Heaven. That One is Jesus Christ. Why not come and see how a loving God can fit into your everyday life. If you don’t have a church home, you are welcome to join us, 10 am every Sunday, 19172 Ferretti Road, just up from the PML main entrance. Come as you are! (But at least for now, wear a mask :))

Camp Tuolumne Trails News

DORI JONES



Volunteers diligently working on projects at Camp Tuolumne Trails

The feel of Spring is in the air. CTT had a very successful Volunteer Day on Sat, March 6, with a total of 45 volunteers (including nine NCCC team leaders and four staff) working on various tasks around camp. We very much appreciate the continued support from our community volunteers who helped us ready camp for our summer campers.

CTT’s Program Manager Jacqui Montero stated, “We are so excited to welcome our campers back to Tuolumne Trails this summer. Our summer sessions are starting to fill up with new and returning campers, and it has been such a pleasure to hear how excited they are about staying with us. In these months leading up to summer, our focus is on planning activities and readying camp for their arrival. It can’t come soon enough!”

Don’t forget to check CTT’s website and Facebook page to order baked goodies from CTT’s Easter Bake Sale. Deadline to order is Wed, March 31, with pick-up on April 2 and 3.

CTT’s website has new information about “The Sirens of Summer” music series in the new amphitheater. Check it out to see the line-up of these three amazing singers/musicians and get a glimpse of their unique styles of music. Ticket prices and reservation information will be updated soon. <http://www.tuolumnetrails.org/sirens-of-summer/>

www.tuolumnetrails.org/sirens-of-summer/

- **Aubrey Logan – Sat, June 6**
- **Sarah Niemietz – Sat, July 17**
- **Rebecca Jade – Sat, Aug 14**

By the time you read this article, we hope that Tuolumne County has loosened restrictions and we can restart our *Dinner on the Deck* sometime in April. Please check CTT’s Facebook page <https://www.facebook.com/TuolumneTrails> for the menu and to make reservations.

Don’t forget - a very easy way to give back to CTT is by registering on smile.amazon.com and sign up to donate to the Jerry & Paula Foundation. With us all using Amazon for so many purchases nowadays, it’s an easy and seamless way to donate with a small portion of each purchase going back to camp. You can also donate directly to CTT by going to the “Donate” page on its website: <http://www.tuolumnetrails.org/donate/>

If you have any questions or would like to find out more details about Family Camp, Work in the Woods, *Dinner on the Deck*, CTT’s Music Series, making a donation, or other camp information, please contact General Manager Jessica Morrison at 962-7534 or visit <http://www.tuolumnetrails.org/>.

Helping Hands Happenings

PATTI BEAULIEU

We are so excited! After more than a year of closures, we are finally able to safely open the Thrift Store and the Furniture Barn. The Store will open on Tuesday, April 13 and the Barn will open on Thursday, April 15. Unfortunately, we will not be able to accept donations until a later day (to be announced) as we need to play ‘catch up’. The hours will be Thrift Store : Tuesday – Saturday 11-3/ Furniture Barn: Thursday – Saturday 11 – 3.

Please be assured that we will be practicing the COVID safety protocols of masks required, social distancing and a limited admittance of 50% capacity. Look for our sale flags and open signs out front and come and see us. We have missed our community and are so anxious to be back open. Follow us on Facebook Page or visit our website www.helpinghandsofgroveland.com for our GRAND RE-OPENING SALES and other announcements.

Simonetta Spaccia, PhD

All of us face challenges in our personal relationships from time to time. As a Psychologist, I specialize in short-term consultations where I teach others coping strategies for improving family, friend or work relationships. Difficulties with a spouse, child, parent, colleague or friend, can be improved or completely overcome by embracing a new perspective, and having the right set of tools to help you move forward.

Based in Pine Mountain Lake

*At this time working only online via Zoom or other apps

(408) 391-3447

simonettaspaccia@gmail.com



PINE MOUNTAIN LAKE ASSOCIATION

SEASONAL EMPLOYMENT OPPORTUNITIES

Join the Team!

APPLY NOW TO SEASONAL JOBS AT WWW.PINEMOUNTAINLAKE.COM

Job areas: Pool, Marina, Lakeside Café and Stables.



IF YOU NEED ASSISTANCE, CONTACT
MICHELLE CATHEY AT 209.962.8604



Waters Plumbing Heating & Air

FAST SAME DAY SERVICE*
*IN MOST CASES

All work 100% Guaranteed!

Contractors License #463958
www.watersplumbing.com

"I want you to know that our technicians will give you a price before we start the job." —Wayne Waters

Groveland (209) 962-0990

CARPET CLEANING

HEAVENLY CLEANING SERVICE

Celebrating our 26th Year!



PROFESSIONAL CARPET CLEANING & HOUSEKEEPING SERVICE

STEAM OR DRY CLEANING

Have your carpet deep cleaned with steam. Or, if your in a rush, a guest coming in a few hours? Have your carpet looking clean and fresh with *dry cleaning*.

209.962.6418 • heavenlycleaning@mail.com

Rod Diehl Pest Control

— BAT REMOVAL —

**RESIDENTIAL & COMMERCIAL • HIGH QUALITY
100% SATISFACTION GUARANTEED**

Locally Owned & Operated • *5th Generation Tuolumne County*
PERSONAL SERVICE • FREE ESTIMATES

We will customize your service around your pets
info@RodDiehlPestControl.com



(209) 532-3260

Ask about installation of BAT HOUSES on your property

PROUDLY SERVING THE PINE MOUNTAIN LAKE / GROVELAND AREA



Mark's Groundskeeping Service
Let me help you with your seasonal chores...
Serving The Greater Groveland Area

Mark Roy
Local permitted owner / operator
Call or Text: 1 (831) 406 7715
markroyx@yahoo.com

**FIND WHAT YOU
NEED IN THE
HOME IMPROVEMENT
DIRECTORY**



TAGE'S PLUMBING
COMMERCIAL & RESIDENTIAL

Tage Wert
Owner



(707)615-2547
tagesplumbing@gmail.com

Lic. #1029595



TMC CONSTRUCTION
 License # 717300
 Insured
(209) 962-6938

**Brushing • Log Removal
 Mastication
 Hazardous Tree Removal & Pruning
 Excavation**

Site Prep, Engineered Septic, Culverts,
 French drains, Retaining walls,
 Hauling, Post hole digging,
 Under ground work,
 Concrete work

**We can help with your grant.
 Skid Steer and Dump truck service
 Reasonal Rates • Free Estimates**



LaMar EQUIPMENT & HAULING
 LIC # 43743 • BONDED AND INSURED

Job Site Storage Containers	End Dump	Post Hole Digging
15 Ton Hydro Crane	Manlifts	Concrete Demolition
Heavy Equipment Hauling	Rock Hauling	Towable Trailers
Irrigation & Electrical Trenching	Lot Clearing	
Landscaping Materials	Demolition	Retaining Walls
New Constructions & Remodels & Decks	Log Hauling	Earth Moving
	Septic Install	
	Fire Breaks	



(209) 962-0500
Mobile: 770-5667 LanceMarchetti@yahoo.com

VISA MasterCard

Contractors Performing Work in PML are Required to Follow PMLA Rules & Regulations

The following are some *"common violations."* Please do your part to maintain a harmonious environment for all to enjoy. Remember: The PML property Owner is held responsible for those they hire.

VEHICLE USE:

1. Exceeding the posted speed limit
2. Driving in a reckless manner
3. Following another through an access gate or allowing others to follow you through
4. Parking on street (road shoulders OK)

PERSONAL CONDUCT:

1. Allowing loud music
2. Uttering abusive language or conduct that would be offensive to a reasonable person
3. Using the property Owner's gate card or clicker

WORK RELATED CONDUCT

1. Starting work before 7am or continuing after 7pm
2. Allowing dogs at construction sites
3. Performing work on Sunday
4. Cutting down a tree in excess of 5" without PMLA approval
5. Trespassing on neighboring property
6. Using neighbors water or electricity without written permission
7. Leaving construction signs longer than 5 days after work has been completed
8. Nailing signs to trees
9. Storing building materials on street or easement
10. Beginning exterior construction without PMLA approval

If you have questions call: The ECC Assistant @ (209) 962-8605 with questions.

Pest Control

- Ants, spiders, mice, wasps, earwigs, etc.
- Fast service, great prices
- Squirrel and bat Exclusion
- Termite Inspections
- Weed Control
- Poison Oak
- Star Thistle



962-5710
800-464-3772
 Free estimates



Foothill-Sierra
PEST CONTROL
 Since 1977

REIMERS CONSTRUCTION

PROUDLY SERVING GROVELAND/PML SINCE 1987

DESIGN/BUILD • EXPERT REMODELING • SPECIALIZE IN KITCHEN AND BATH
 CEMENT SIDING • COMPOSITE & REDWOOD DECKS • WINDOW AND DOOR REPLACEMENT

(209) 962 5682





This project designed and constructed by Reimers Construction

Email: wrrpar@gmail.com
 CA.LIC. 590514



BEFORE **AFTER**

Ken's Asphalt

Lic. 708310

Grading • Paving • Chip Seal • Road Oil

Seal & Slurry Coatings • Crafcro Hot Rubberized Crack Sealer
Driveways • Private Roads • Subdivisions

DOING BUSINESS SINCE 1985

DRAINAGE PROBLEMS?

We have the Solution!

Erosion Control • Riprap (6-12" Rock) • Asphalt Curbing • Base Rock

"Just Pave It" **Complete Concrete Services** *"Just Pave It"*

<ul style="list-style-type: none"> • Stamped Concrete and Colored Concrete • Stained Concrete • Cleaning & Sealing • Retaining Walls 	<ul style="list-style-type: none"> • Driveways • Walkways • RV Pads • Patios
--	--

532-0800 • 962-5644 • 768-7395 Cell

Sean McCoy Painting

License No. 822616

Home of the Cabinet Doctor

"Let's Refinish or Paint Those Old Cabinets"

• Fine Finish • Mill Work • Cabinets
• Doors • Interiors

209.588.1741

www.smccoypainting.com

Exterior-Estimates Available

We are known for our integrity and legendary customer service!

Produce Your Own Clean Power!

- Save \$\$\$ Every Month
- Federal Tax Credit available
- 5-Year Typical Payback

APS

SOLAR

ALTERNATIVE POWER SOLUTIONS, INC.

Your Local Solar Electric Company

License #892261 / Since 2002
16046A Via Este Rd., Sonora

Call Us For A Free Estimate
209-532-5925

Follow us on Facebook at APsolarpower
Check our reviews at www.SolarReviews.com

PAINTING

Bay Cal

LIC #923832

SEE COLOR AD PAGE 28

209.962.4777

www.baycal.com • email: davec@baycal.com

HOPE'S TREE SERVICE

Lic# 987171

EXPERT TREE SERVICE, PRUNING, REMOVAL, CUT & STACK OR HAUL AWAY

FIRE SAFETY TRIMMING • REASONABLE RATES

FULLY LICENSED/INSURED

Proud member of the Yosemite Hwy 120 Chamber of Commerce

We accept credit cards

HOPE'S TREE SERVICE

Fully Licensed and Insured
PO Box 1072
Groveland CA 95321

209.878.3096

or 209.225.3191

HANDYMAN FOR HIRE

"The Small Job Specialist"

Doing Building and Repairs in PML Since 1976
WHERE ONE CALL CAN DO IT ALL!!!

Working by the Hour to Save you Money...

<ul style="list-style-type: none"> • Deck Repairs • Painting 	<ul style="list-style-type: none"> • Interior Repairs • Exterior Repairs
--	--

omni1handyman@aol.com

(209) 962-5463

License

HOMEOWNER CHECKLIST

CHECK OUT YOUR CONTRACTOR

- Did you contact the Contractors State License Board (CSLB) to check the status of the contractor's license? Connect with CSLB at 800.321.CSLB (2752), www.cslb.ca.gov or www.CheckTheLicenseFirst.com.
- Did you get at least three local references from the contractors you are considering?
- Did you call the references and personally view the contractor's completed work?
- Does the contractor carry general liability insurance?

BUILDING PERMITS

- Does your contract state whether you or your contractor will pull necessary building permits before the work starts?
- Are the permit fees included in the contract price?

www.cslb.ca.gov

DOUBLE-CHECK THE CONTRACT

- Did you read and understand your contract?
- Does the three-day right to cancel a contract apply to you?
- Does the contract identify when work will begin and end?
- Does the contract include a detailed description of the work to be done, the materials to be used, and/or equipment to be installed?
- Are you required to make a down payment? (The down payment should never be more than 10 percent of the contract price of \$1,000, whichever is less, unless there is a valid blanket performance and payment bond on file with CSLB.)
- Is there a schedule of payments? (Only pay as work is completed, not before.)
- Did your contractor give you a "Notice to Owner" warning notice that describes mechanics liens and how to prevent them?
- Do you have changes or additions to your contract? (Remember that all changes must be in writing and signed by both parties to avoid disagreements.)

Go to the official online presence of the PMLA for the latest news & information

Website:
PineMountainLake.com

Official PMLA Facebook Page:
[Facebook.com/PineMountainLakeCA](https://www.facebook.com/PineMountainLakeCA)

PMLA Recreation Department
Facebook Page:
[Facebook.com/PMLARecreation](https://www.facebook.com/PMLARecreation)

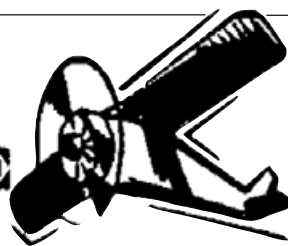
AIRPORT MINI-STORAGE

60 Units - 6'x8' to 10'x30'

Open 7 a.m. to 9 p.m. Daily

Located on Elderberry Way off Ferretti Rd. near PML Airport

209/962-5360



PML MINI STORAGE

65 Units Ranging From 5'x5' to 12'x30'

- REASONABLE RATES •
- WELL LIGHTED •

Located one-half block off Ferretti Rd. on Elderberry Way towards Airport

209/962-6220

A AMERICAN ELECTRIC & SERVICE CO.

COMMERCIAL • INDUSTRIAL • RESIDENTIAL

209.962.7374

ELECTRICAL CONTRACTORS LIC. # 465220

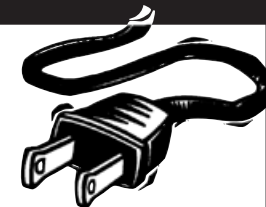
Pine Mountain Lake Electric

Residential and Commercial Electrical Contracting

State Contractor's Lic. 404081

TOM KATOSIC
209/962-6949

P.O. Box 25
BIG OAK FLAT, CA 95305



BEFORE YOU BEGIN CONSTRUCTION ON YOUR LOT

The Declaration of Restrictions (CC&Rs) states that no construction of any type (new construction, driveways, grading, lot development, etc.) can be performed without prior approval from the Environmental Control Committee (ECC).

Failure to obtain approval could result in the stoppage of work or even fines, and nobody wants that to happen. Inspections are made every Tuesday and reviewed by the Committee every other Thursday, so we can accommodate our members.

Please contact ECC before you begin any type of construction at **209-962-8605**

PAINT DISCOUNT PROGRAM

Kelly-Moore Paint Company has been serving Pine Mountain Lake for 40 years. They want to remind PML property owners of the discount program that has been established for them. This program offers a generous discount on Kelly-Moore paint and accessories such as rollers, brushes, tape, caulk, etc. Delivery is available on orders of 10 gallons or more. This special discount opportunity is available with proof of Pine Mountain Lake membership (Member ID Card) on a cash or credit/debit card basis only (no checks please).

Although this program was initiated through the Sonora store, it will be honored at any Kelly-Moore Paint Company store. If you are interested in this discount program, call your local Kelly-Moore Paint store for details.

RENTALS WANTED

EXCELLENT TENANTS

w/excellent credit and rental history looking for homes to rent. Owner approves tenant before placement. Call *Yosemite Region Resorts* 209-962-1111

LAND FOR SALE

BULK LOT SALE

5 PML lots, \$10,000 or best offer. 209-768-3690

COMMERCIAL SPACE FOR LEASE

COMMERCIAL STORE FRONT!

Downtown space, 1530 approx. square feet, great for retail or office +++ ... great traffic location ... wooden sidewalks ... iconic building. Call agent 650-520-1022

FOR LEASE

Office/Retail space now available at Mountain Leisure Center, downtown Groveland. Executive Suites from 250.00 per month, includes utilities and furnishings. Additional office/retail units 500 to 1400 sq ft. Award winning design along with the best parking in town. Call John at 209-962-6014 office, or 209-768-3690 cell.

OFFICE/RETAIL SPACE AVAILABLE ON MAIN STREET

Office/Retail space available at 18634 Main Street Suite 2 next to Groveland Pharmacy. Previously a Salon but can remodel as needed for new renter. Current space has lobby, reception, storage, restroom, two offices (hair stations) and break room - approximately 672 square feet. Location has excellent signage available and parking. Call Robert for details 559-305-3172.

GET YOUR AD NOTICED



Place a photo of your item for sale for just \$10. Call 962-0613 today.

SERVICES



BIG JOHN HANDYMAN SERVICES

Yard Maintenance, House Maintenance and moving households Call John 962-6163

RONNING ROOFING

Call Joe for all your Roofing and Gutter needs. Licensed, Bonded, and Insured. License # 976739 209-962-6842

YOUR HOME HELPERS

Punctual, reliable, seasoned. Cleaning, windows, handyman, painting, pet care, yard work, weed eating, organizing, errands, more. Steve. 925-595-3362
Carla 925-639-4929.

ELECTRICAL

A AMERICAN ELECTRIC & SERVICE CO.
Lic. #465220 209/962-7374

GOLD COUNTRY PLUMBING & DRAIN

Local plumber here for all your plumbing needs! 209-916-5818

HANDYMAN

For removal of unwanted items,also Tree Trimming and removal. Call Mike very reasonable rates and prompt service. 209-962-0777

SERVICES

TREE WORK

- Brush hauling or chipping
 - Excavator work
 - Tree removals
 - Storm tree damage
 - Free estimates
- 209-591-0486

FURNITURE & CHAIR REPAIR/ WOODWORKING

Retired Cabinet-maker
will repair all types / kinds of furniture, cabinets, crown moulding
Local PML Craftsman 209-479-8098

SERVICES

GROVELAND PLUMBING SERVICES

Local licensed plumber severing the Pine Mountain Lake and the greater Groveland area. I'm here to take care of all your plumbing needs!!!!
209-916-5818

HELP WANTED

PMLA HIRING FOR SEASONAL EMPLOYMENT

Jobs available at the Pool, Marina, Lakeside Café and the Stables. Apply online at www.PineMountainLake.com
Call Michelle Cathey if you need assistance
209-962-8604

PLACE AN AD...GET IT SOLD

with a classified ad in the Pine Mountain Lake News Classifieds are \$0.35 per word and one photo can be included for an additional \$10 per month.
www.PineMountainLake.com

Looking For A New Dentist?

We're Accepting New Patients!

- Advanced Level Dental Expertise
- Care with a Gentle Touch
- Coffee & Tea for Your Enjoyment
- Advanced Digital Technology
- Relaxing Movies During Treatment
- Insurance Friendly
- Senior Discount



209.536.1954


Michael D Scherer, DMD, MS, APC 14570 MONO WAY, STE. I
SONORA, CA 95370

WWW.SONORAMODERNDENTAL.COM

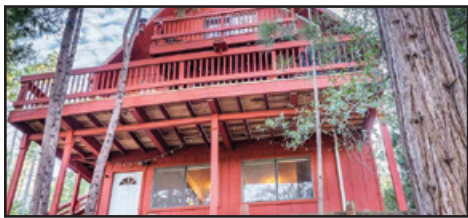
GET IT SOLD
with a classified ad
in the Pine Mountain
Lake News

CLASSIFIED AD SUBMISSION DEADLINE IS THE 15TH OF THE MONTH. SUBMIT AT WWW.PINEMOUNTAINLAKE.COM
COST IS \$0.35 PER WORD, \$10 TO ADD A PHOTO TO YOUR LISTING. ADS RUN UNTIL CANCELED BY ADVERTISER
The PMLA is not responsible for, nor does it endorse, any contractor, company, or individual advertising in the PML News.

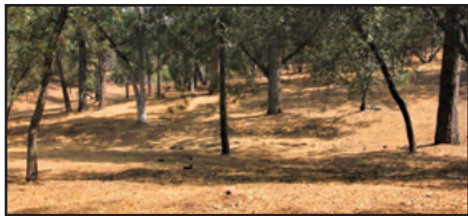


Real Estate • Property Management • Vacation Rentals

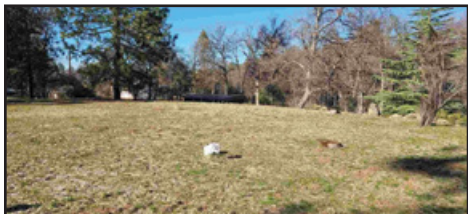
209-962-1111



20257 Upper Skyridge **CLASSIC CHALET**, with mountain views and a peek-a-boo view of the Lake. 4bd, 2.5ba, 2024sf, bonus room w/pool table. Recent upgrades: New higher-efficiency mini-split H/A (with warranty), granite counters, refrigerator, stove & microwave, laminate flooring, carpeting in bedrooms, updated bathrooms, wood stove insert and decking. "Turn-key", with most furniture available. Great for a getaway or full-time living. This cabin has been a successful Airbnb rental. Near the PML Marina & Beach. \$449,000 #20210331



Unit 12 Lot 186, Yorkshire Rd **NEAR THE BASS POND!** Just over 1 acre, ready for you to create the masterpiece home you have always wanted. Enjoy all the amenities of Pine Mountain Lake including: Golf, fishing, pool, Country Club, stables, archery, the shooting range and much more! This great lot is near the PML Stables, Airport and only a short drive to Yosemite Nation Park's Hwy 120 north entrance. \$43,000 #20201442



22726 Whispering Pines, YVE **LEVEL, EASY-TO-BUILD LOT** next to the front gate of Yosemite Vista Estates. A peaceful community for those who are 55+. The Club House is available for private parties or get-togethers or you can enjoy swimming at the private pool. Beautiful views of rolling hills and the surrounding ranches. Yosemite Park entrance only about 25 miles away, using Hwy 120. \$12,000 #20210089



12007 Breckenridge Rd **A PRIVATE SETTING** for this single-level home on over 1/3 acre. Hardwood floors, open-beam cathedral ceilings, wood-burning stove, with floor to ceiling stonework. Spacious bedrooms, wet bar, oversized 2-car garage, level driveway and large parking area. Recent upgrades include: New Central Heat & Air, new water heater, double pane windows, exterior paint & refinished decks. Access to Pine Mtn Lake amenities. \$325,000 #20210067



Ferretti Rd & Clements Rd, Groveland **CORNER ACREAGE**. This 3-acre lot is located at the eastern edge of Pine Mtn Lake but not in the HOA. With the extension of GCSD water & sewer line to adjacent lots, district water & sewer may become available. Current zoning is RE-2. The possibility exists to convert to commercial zoning. Imagine an RV/Boat storage facility combined with a market, serving residents on the far end of Groveland. Distant mountain views and plenty of level ground. \$99,900 #20200998



**Thinking About Selling?
Now is the Time!
Inventory is Low
Interest Rates are Down**



21224 Jimmersal Lane
Custom ranch, built for easy and efficient living. Situated on 1.22 acres, with views of Duck Wall and the Sierra. Single-level, 3bd, 2-1/4ba, 1728sf, with hardwood, tile and vinyl flooring. Stainless steel appliances, large laundry room and pantry. Jetted tub, separate shower and vanity in main bathroom. Attic fan, over-sized garage and 1420sf of decking. Low-maintenance fiber cement siding. Property includes 1728sf barn, with tack room and 1/4 bath. Fenced & cross-fenced for large animals. \$529,900,000 #20182035



19865 Pleasant View Drive
Near Dunn Court beach. Two-level home, with beautiful wooden staircase leading up to the main level. Wood-burning stove in living room, open kitchen and dining, plus a spacious pantry/laundry room, with plenty of shelving and folding counter. A large bedroom, off the living room, can also be accessed from the hall. Bonus room, with full bath, can be used as an office, exercise room, hobby space or extra bedroom. Terraced back yard and a 2-car garage, with built-in cabinets and a work bench area. \$375,000 #20201220



20136 Lower Skyridge Drive
Spacious lake-side home, built on a grand scale. This two-level floor plan maximizes lake views and the surrounding scenery. Vaulted ceilings and custom woodwork give this home a "mountain cabin" ambiance. Floor-to-ceiling stone hearth in the great room. Bonus room & wet bar. Master suite plus 4bds (the 5th is a den/sleeping area). 120 feet of lake-frontage is terraced above, with a flat area, just perfect for making your own beach. \$899,900 #20201680



38119 Glendale Drive
Beautifully-maintained corner home in the Glenmoore area of Fremont, CA. 3bd, 1-1/2ba, mud room (can be a possible laundry area). Eat-in kitchen within family room area or enjoy the formal dining & living room. Welcoming front yard, with mature trees, manicured bushes & lawn. Back yard, with patio, has space for a swing-set, trampoline, a small basketball court, bbq and fire-pit/seating. 2-car garage. Great location, with Glenmoore Elementary School and a park only about a block away! \$1,249,888 #20210097



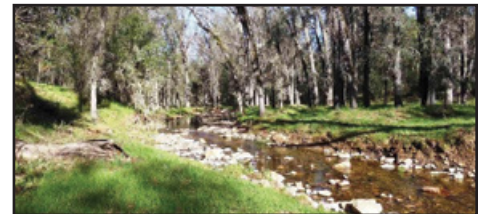
20721 Point View Dr **SINGLE-LEVEL HOME** on a gently-sloping lot. Enjoy sunset views from a spacious, open interior plan that includes vaulted-pine ceiling in the living room, Corian kitchen counters, dining room and large deck, brightened by an extended wall of sliding glass doors. Features 3bd, 2.5 baths, 2083sf and a 2-car attached garage, all on a .39-acre lot. About a mile from the Lake Lodge beach & playground and Big Creek hiking trail. \$450,000 #20210168



19888 Pine Mtn Dr **LIVING AT ITS BEST!** Get a feeling of seclusion, with this 2-level home, tucked away on a .46-acre wooded lot. 3bd, 3ba, 2464sf. Spacious, open living room, bonus room and wet bar, wood-burning stove plus fireplace. Large covered deck. About 1/3 mile to the PML Marina Beach and approx. 25 miles to the entrance of Yosemite Park. Enjoy all Pine Mtn Lake amenities: Boating, fishing, golf, tennis, swimming, Country Club dining, Equestrian Center and more! \$499,000 #20210126



Unit 2 Lot 442 Wells Fargo Dr **BACKS UP TO GREEN BELT**. This beautiful lot has plenty of trees and a seasonal creek. Build your dream home here and enjoy all the amenities that Pine Mountain Lake offers: The newly remodeled Country Club Grill & Bar, a championship golf course, community pool, campgrounds, Equestrian Center, airport, Fisherman's Cove, archery & shooting ranges, pickle ball, bocce ball and horseshoes. Yosemite's entrance if only about 25 miles away. This is the way to live! \$9,999 #20210344



Clements Road, Groveland **A RARE OPPORTUNITY** to own a piece of California's Gold Country. Located on the eastern edge of Pine Mtn Lake's gated community, near Groveland, and just a short drive to Yosemite Park. Level to gently-rolling terrain, with Oaks, Cedars, meadows and mountain views. Seasonal creeks may also add to the allure of these properties. Choose your location. 15+ acre parcels, starting at \$89,000. Contact R.E. Agent for more information.



19080 Dyer Ct #8 **5TH FAIRWAY VIEWS**. Move-in ready! 2bd, 2ba, condo near the Country Club, golf course driving range, pro-shop, swimming pool and tennis courts. Located in the resort community of Pine Mountain Lake, just 26 miles to the main gate of Yosemite Park. PML is a private, gated, subdivision, located in the historic gold rush town of Groveland. Enjoy outdoor recreation year round from boating, swimming, fishing, skiing, hiking, bird watching, gold panning and much more! \$149,000 #20201776

**100% Local Vacation & Long-Term Rental Services
Now Accepting Homes!**

- ◆ Owner-Approved Rates
- ◆ Monthly Rentals & Tenant Placement
- ◆ Online & Telephone Reservations
- ◆ Tenant-Screening & Credit Reports
- ◆ Aggressive Advertising Campaign
- ◆ Move-in / Move-out Inspections
- ◆ AirBnB, VRBO, HomeAway, Flip-Key, Trip Advisor, Booking.com & more!
- ◆ Scheduled Maintenance & Repairs
- ◆ Pre-Arrival Inspections for Guests
- ◆ 24/7 Emergency Services Available
- ◆ Professional Departure Cleanings
- ◆ Monthly Statements & Owner Payments
- ◆ Accidental Damage Protection
- ◆ Local, State & Federal Tax Requirements



18687 Main Street, Suite E, Groveland, CA 95321
(209) 962-1111 • yosemiteregionresorts.com



ROB STONE OWNER/REALTOR® DRE #01025463 | BJORN WAHMAN BROKER DRE #00706559 | TARA STONE MANAGER/CFO DRE #01106544 | LIZ MATTINGLY BROKER ASSOC. DRE #00709618 | TED BIANCHI REFERRAL AGENT DRE #01318805 | PAULA BIANCHI REALTOR® DRE #01316556 | RYAN NIEDENS BROKER ASSOCIATE DRE #01940007 | ROY NAVARRO BROKER ASSOC. DRE #01235457 | MIRIAM MARTIN REALTOR®, RPS, ASP DRE #01400779 | ANDREW RIETVELD REALTOR® DRE #01994156 | KATHY NIEDENS REALTOR® DRE #01113243 | SHARRON WAHMAN EXEC. ASSISTANT RESERVATIONIST | JOSH REGALADO EXEC. ASSISTANT RESERVATIONIST | HAMISH WATSON EXEC. ASSISTANT RESERVATIONIST | CAPRICE KROW PROP. MGR/ILDP DRE # 01179023 | CORY STONE PHOTOGRAPHER VIDEOGRAPHER