

THE OFFICIAL NEWSPAPER OF, AND FOR, PINE MOUNTAIN LAKE PROPERTY OWNERS

The Pine Mountain Lake News



2020
MARCH

TABLE OF CONTENTS

Administration	2-17
PMLA Financials	6
The Grill & Lounge	10-11
PML Clubs & Recreation	18-19, 26-27
"Homes on the Hill" Real Estate	19-25
Our Community	28-36
School News	36
Home Improvement	37-41
Classified Ads	42

PINE MOUNTAIN LAKE ASSOCIATION

JOB FAIR



20 20

SATURDAY, MARCH 14
11:00^{AM} - 2:00^{PM}

PMLA Lake Lodge • 20270 Pine Mountain Drive
Seasonal employment opportunities for the
Marina • Lakeside Café • Pool
For questions call 209-962-8604

PLEASE COMPLETE ONLINE APPLICATION AT
WWW.PINEMOUNTAINLAKE.COM

DAYLIGHT SAVINGS BEGINS
SUNDAY, MARCH 8, 2020
"SPRING FORWARD"
SET YOUR CLOCKS AHEAD 1 HOUR



PRSR STD
U.S. POSTAGE
PAID
ABS DIRECT
Change Service Requested

Make PML your
ONE-STOP-SHOP
for all your gift giving!

Pick up a gift card for:
Golf • Golf Shop Apparel & Accessories
The Grill • Hunting & Fishing License Vouchers
Gift cards are available at the Administration
Office, The Grill, and at the Pro Shop

**GUEST & RENTERS HANDBOOK IS
AVAILABLE ONLINE!**

You can now view or print the Guest and Renters
Handbook from the PML Website. Go to our website at:

www.PineMountainLake.com

and click on Resources, then scroll down to the bottom of the page
and click on Guest and Renters Handbook. This handbook has
valuable information for Guests and Renters in Pine Mountain Lake.

Go to the official online presence of the PMLA
for the latest news & information

PineMountainLake.com
Facebook.com/PineMountainLakeCA
Facebook.com/pmlarecreation

GET IMPORTANT NEWS VIA EMAIL

Signing up for the new
eSNAP program is
quick and easy and
gives you the ability to sign up
for the information that you
want to receive. Just head over
to www.PineMountainLake.com
and sign up today.

eSNAP

ELECTRONIC SAFETY, NEWS & ALERT PROGRAM

The Grill at Pine Mountain Lake

– Receive emails with information
regarding happenings at The Grill.
Get information on Wine Tastings,
Entertainment, Special Events and
more.

This program is separate from the
current email opt-in program that
allows you to receive PMLA governing
documents and requires your signed
approval. This program can be signed
up for via the online system. *Get your
news and alerts via email, it's eSNAP!*

ABOUT EACH OF THE PROGRAMS

PML News & Alerts – Receive emails
with information regarding anything
affecting Pine Mountain Lake such
as road closures, utility problems, fire
alerts and more.

PML Amenities News – Receive
emails with information about
upcoming events, specials, or
news regarding all PML amenities
such as the lake, marina, golf
course, etc.

PAY YOUR PML PAYMENTS ONLINE

Did you know you can make your payments online?
Online Bill Pay is available on www.PineMountainLake.com.
Pay via your credit card, it is quick and easy!

NOTARY SERVICE

Anita Spencer, PMLA Notary Public
Prices Listed are Per Signature Rate
PML Property Owners \$10.00
Non-Property Owners \$15.00
Witness Fee \$5.00

You may call Anita @ 209-962-8632 to schedule an
appointment between the hours of 8am – 4pm

PML Automatic Payment Program

Taking the time to write a check for your monthly assessment payment
can be time consuming and costly. You can avoid this burden and
eliminate the potential for late payment charges by enrolling in PMLA's
Auto Payment Program. By completing the form, which can be found
at www.PineMountainLake.com under the Resources/Forms, and returning
it to the Administration Office, you can have your monthly assessment
automatically deducted from your checking account or charged to your
credit card. This means you never have to remember to write a check
and mail it each month. The peace of mind that comes with knowing
your payment will always be made on time is easy to attain. We can also
arrange to have any other regular payment you make to the Association
(such as golf membership, horse boarding fees, etc.) paid in the same way.

For more information on this simple, effective and time saving plan please
contact us at (209) 962-8600.

**HERE IS YOUR CHANCE TO BE MORE
INVOLVED IN YOUR COMMUNITY!**

Pine Mountain Lake Association has openings on the Following Committees:

Editorial Committee

Fire Insurance Ad Hoc Committee

Lake & Marina Committee

Safety & Security Committee

Waterfowl Management Committee

If you wish to be considered for committee membership, please
complete an "Application for Committee Assignment". This form
is available on the website at www.pinemountainlake.com or
from the Administration Office.

MAIL COMPLETED FORM TO:

Pine Mountain Lake Association, Attention: Debra Durai
19228 Pine Mountain Drive • Groveland, CA 95321
Email to Debra@pinemountainlake.com or drop it by
the Administration Office

PINE MOUNTAIN LAKE ASSOCIATION



209.962.8600

www.pinemountainlake.com



PHONE & EMAIL DIRECTORY

ADMINISTRATION

General Manager - Joseph Powell
joepowell@pinemountainlake.com

Admin Asst. to G.M. - 209.962.8627
Debra Durai
debra@pinemountainlake.com

Human Resources - 209.962.8628
Shannon McNair
pmlhr@pinemountainlake.com

E.C.C. Coordinator - 209.962.8605
Plan Submittal, Compliance Fees,
Mergers
Terri Thomas
ecc@pinemountainlake.com

Member Relations - 209.962.8632
Gate Cards, Address Changes,
Webmaster, Notary Public
Anita Spencer
anita.spencer@pinemountainlake.com

Community Standards Specialist
209.962.1241
Suzette Laffranchi
compliance@pinemountainlake.com

General Info & Lake Lodge
Scheduling 209.962.8600
Rental Coordinator
admin@pinemountainlake.com

Main Gate - 209.962.8615
General Safety Inquiries, gate
passes, campground reservations,
tennis reservations
campground@pinemountainlake.com

Accounting - 209.962.8607
Tina Cutright
Receivable/Collections/
Assessments
pmlar@pinemountainlake.com

Accounts Payable - 209.962.8626
Karen Peracca
pmlap@pinemountainlake.com

Sr Accountant/Payroll
209.962.8618
Stacy Gray
stacy@pinemountainlake.com

Controller - 209.962.8606
Accounting Procedures
Ken Spencer
controller@pinemountainlake.com

Recreation and Seasonal
Operations Manager
209.962.8604
Michelle Cathey
m.cathey@pinemountainlake.com

DEPARTMENT OF SAFETY

Director of Safety - 209.962.8633
Natalie Trujillo
n.trujillo@pinemountainlake.com

Sergeant - 209.962.1244
Sgt. Teri Cathrein
t.cathrein@pinemountainlake.com

Sergeant - 209.962.8616
Sgt. Amanda Darrow
a.darrow@pinemountainlake.com

MAINTENANCE DEPT

209.962.8612
Susan Capitanich
maintenance@pinemountainlake.com

Maintenance Manager
209.962.8611
Rick Laffranchi
rick@pinemountainlake.com

Fire Safety/Fire Mitigation
209.990.5260 or 990.5263
Sarah Ruhl
communitystandards@pinemountainlake.com

GOLF COURSE
Golf Course Superintendent
209.962.8610
Rob Abbott
rabbott@pinemountainlake.com

Golf Pro Shop - 209.962.8620
Golf Pro Shop/Golf Reservations
Doug Schmielt
dschmielt@pinemountainlake.com

Golf Pro - 209.962.8622
Mike Cook
golfpro@pinemountainlake.com

THE GRILL AT PINE MOUNTAIN LAKE
The Grill Manager - 209.962.8639
Jay Reis
clubmgr@pinemountainlake.com

Restaurant - 209.962.8638
Hospitality Coordinator
Jimmy Gutierrez
cluboffice@pinemountainlake.com

OTHER PHONE NUMBERS
Equestrian Center
Equestrian Center Manager
Melissa Moore
209.962.8667
stables@pinemountainlake.com

PML NEWS - 209.962.0613
Ad/Article Submissions
Sabre Design & Publishing
PMLNews@SabreDesign.net

ADMINISTRATION OFFICE HOURS

8:00 AM TO 4:30 PM - MON THRU FRI
OPEN AT 8:45 AM SECOND TUESDAY OF EACH MONTH

2020 ADMINISTRATION OFFICES HOLIDAYS

(ADMIN OFFICE WILL BE CLOSED)

Mon. 5/25/2020 Memorial Day	Thur. 12/24/2020 Christmas Eve
Mon. 9/7/2020 Labor Day	Fri. 12/25/2020 Christmas Day
Wed. 11/11/2020 Veterans Day	Thur. 12/31/2020 New Years Eve
Thur. 11/26/2020 Thanksgiving	Fri. 1/1/2021 New Years Day
Fri. 11/27/2020 Day After Thanksgiving	

PMLA BOARD MEETINGS SCHEDULE

Meetings are held at the PML Lake Lodge and start at 9 AM
(THIRD SATURDAY - UNLESS OTHERWISE NOTED)

March 21	September 12
April 18	(2nd Saturday, due to 49er Festival)
May 16	October 24 - Budget Meeting
June 13 (2nd Saturday, due to Father's Day)	(Begins at 8 am) (4th Saturday)
July 18	November 21
August 15 - Annual Meeting / Election	(Saturday before Thanksgiving)
	No December Meeting Scheduled

PINE MOUNTAIN LAKE NEWS DELIVERY

Although we guarantee that the PML News is mailed from Modesto, CA on the same day (between the 26th-30th of month), most post offices (except Groveland) sort Bulk Mail after First Class mail. So, consider a First Class delivery subscription for just \$20/yr. (\$20 per year for property owners and \$30 per year for non-property owners) Interested? Call the PMLA Office at 209/962-8632 or see form above.

The Pine Mountain Lake News is also available
(in PDF format) at: www.pinemountainlake.com.
New editions are posted by the 1st of the month.

General Manager's Message

Joe Powell – CCAM-LS, CMCA, AMS General Manager

WHERE ARE YOU GETTING YOUR PINE MOUNTAIN LAKE INFORMATION?

SOCIAL MEDIA

The PMLA Board of Directors and management realize that social media is a quick and easy way to communicate with the members, but a balance must be maintained and we have to be cognizant of the risks involved. One poorly worded posting by a board member, me or one of my managers could easily land the Association in legal hot water. We live in a litigious society and the risks are always there.

To ensure that clear expectations are set with regard to the use of social media by the Board, management, members and staff, we have implemented an employee social media use policy and the Board has adopted an Association social media policy. These documents spell out how PML employees are expected to use social media, and how we are going to manage and operate official PML social media sites like the official PML Facebook Page and website. A copy of the PML Social Media policy can be found on the Official PML Website at www.pinemountainlake.com.

OFFICIAL PML SOCIAL MEDIA SOURCES AND COMMUNICATION

It should be noted that Nextdoor and the public Facebook pages that are maintained and administered by individual members, are NOT official PML social media resources. A lot of members are confused by the number of unofficial PML Facebook pages that are out there. Just because the page or group is labeled "Pine Mountain Lake", does not mean it is an official source of information from our Association. Every day, I see members posting questions on non-official PML social media pages or groups,

rather than going to the source. More often than not, the answers they get are incorrect and this causes further confusion and frustration.

If you are unsure who is running the page or group, just look for the PML Logo. If the Pine Mountain Lake Association logo is at the top of the page, then it is the official PML page. If we find other pages using our logo, we immediately take action to have it removed. The reason for this is to ensure that our membership knows that they can trust the information coming from an official source and not confuse it with a non-official page.

As for responding online, we do not like to get into a protracted dialogue or debate with members online for legal reasons. Members who have questions regarding PMLA operations, governance and enforcement, should contact me or my staff or the PMLA Board directly at our official email addresses, by letter, or telephone and we will be happy to respond. Contact information for PML department managers and the Board can be found in every issue of the PML News and online at the Official PML Website.

WHAT IS PML DOING TO COMMUNICATE WITH THE MEMBERSHIP?

So what ARE we doing to communicate with our members on social media? Well, we put out information on social media, in the PML News, through our direct email opt-in program (eSNAP), on flyers that go out on our bulletin boards around the community, and direct mail. Additionally, the Board and management provide information at board meetings and we also hold town hall meetings from time to time to allow members to discuss issues and concerns with the Board members directly in a more conversational way.

When time permits, we monitor the main social media pages used by the membership and post out-going information from time to

time that we think is useful, based on what our members are discussing. We also respond through private messaging and email to members when appropriate to address their individual concerns.

Again, to get the facts about PML-related topics, I encourage all members to use official PML resources to address their questions and concerns.

www.pinemountainlake.com

Official website of the association

www.facebook.com/PineMountainLakeCA/

Official Facebook page of the association

eSNAP

Sign up for official emails at:

www.pinemountainlake.com

Our staff and the Board is here for you. Contact us directly and we will be happy to assist with your questions and concerns.

Wishing everyone a Happy St. Patrick's Day!

Subscribe to the PML News TODAY!

Name _____

Unit _____ Lot _____

Mailing Address _____

NO CHARGE for Property Owners (bulk)

\$6/yr for Co-Owners (bulk);

\$10/yr for Non-Property Owners (bulk)

\$20/yr for PROPERTY OWNERS (1st class)

\$30/yr for Non-property owners (1st class)

Enclosed is my check in the amount of

\$ _____ (Payment due in full)

Send this subscription to:

Pine Mountain Lake Association

19228 Pine Mtn. Dr. Groveland, CA 95321

Attn: Anita

NOTICE

The Pine Mountain Lake News, established July 25, 1973, is printed monthly for residents of Pine Mountain Lake and sold in the Groveland, CA 95321 area. Members can access the PML News monthly edition online at www.PineMountainLake.com. Every month the newest edition of the PML News is posted online before the first of each month. Interested parties can subscribe to the traditional "hard copy" and receive a copy by mail each month.

The PML News is mailed to approximately 3500 PML property owner households each month. Up to 500 copies are rack-sold in the local Groveland area. Our circulation reaches approximately 1200 full-time, resident, PML property owners and approximately 2300 "weekender," non-resident, property owners who maintain primary residence in Northern California, in Southern California, or in other states. For more information regarding the PML News, please call the PML Administration Office at (209) 962-8600. We greatly appreciate

your contributions but please note that the PML News fills up very quickly – often by the 7th or 8th of the month (long before the 10th deadline). To ensure that your submission is reviewed for publication please submit in full and as early as possible. Please remember that the PML News is limited in capacity and your submissions are reviewed on a first-come-first-served, space-available basis.

We publish all PMLA related submissions such as Board & Management Business, Clubs, Activities & Events. Where space remains, we publish non-PMLA related submissions in our "Community" section.

We do our best to provide timely news. If you experience delayed delivery or have misplaced a particular edition, please visit us at the PMLA website www.pinemountainlake.com for a downloadable PDF of the News posted by the 1st of the month and a downloadable PDF list of ad rates.

Submission Guidelines

The PML News is the Official Newspaper of Pine Mountain Lake Property Owners

The PML News is dedicated to reporting PML Association business and PML Association news to Pine Mountain Lake Property Owners.

The PML News receives more than 100 Tuolumne County/Groveland community related submissions each month. All such community related articles and notices will appear in the PML News on a SPACE AVAILABLE basis and at the DISCRETION of the PML News Publishing Editor.

DEADLINES

Advertisements must be received IN FULL (text, MLS info, images, logos, etc.) by the 10th of the month for the following month's edition. Only advertisements received in full will be guaranteed to be published in that month's edition. **NO EXCEPTIONS.**

MEDIA ACCEPTED

email

SOFTWARE (Articles)

InDesign, Microsoft Word, Adobe Pages, or TXT formats only.

SOFTWARE (Advertisements)

PSD, JPG, PDF, EPS or TIFF only.

TEXT/GRAPHICS

Handwritten text is not accepted.

Material composed completely of capital letters is not accepted. Please use uppercase and lowercase letters in composition. Ink jet printed images are not accepted. Images are accepted

ONLY as camera ready art, original photos (to be scanned) or as JPEG, TIFF or PDF files created with above listed software. All scans and bitmap images must be in TIFF or JPG format at least 200 dpi at 100% (300 dpi preferred). Ad files are stored for 90 days from first run date. Older ads that have not been running must be resubmitted. (See Display & Insert Advertising Contract "Design and Preparation Charges.")

E-MAIL TEXT/GRAPHICS

Text/graphics may be delivered as e-mail attachments via the Internet.

Send to:

pmlnews@sabredesign.net.

AD DESIGN and PROOFS

Ads that are requested to be sent to other periodicals require a usage fee from the advertiser (see Display & Insert Advertising Contract "Design and Preparation Charges"). Proofs are available upon request and final proof approval for all ads is expected within 24 hours. Changes made are LIMITED to typographical or graphic placement errors. NO OTHER ADDITIONS OR CHANGES WILL BE MADE.

SUBMISSION DEADLINES

Articles — 10th each month

Ads — 10th each month

Classifieds — 15th each month

VISIT US ONLINE

www.pinemountainlake.com

**PINE MOUNTAIN LAKE
ASSOCIATION**
209.962.8600

BOARD OF DIRECTORS

Karen Hopkins – President
Steve Griefer – Vice President
Mike Gustafson – Secretary
Wayne Augsburg – Treasurer
Tom Moffitt – Director-at-large

GENERAL MANAGER

Joseph M. Powell, CCAM-LS, CMCA, AMS

CORRESPONDENCE TO DIRECTORS

Pine Mountain Lake Association
19228 Pine Mountain Drive
Groveland, CA 95321
PMLABoard@pinemountainlake.com

**ADMINISTRATION OFFICE
HOURS OF OPERATION**

Monday - Friday 8:00 AM - 4:30 PM
Tel: 209/962-8600

The Pine Mountain Lake News, established July 25, 1973, is printed monthly for residents of Pine Mountain Lake and vicinity by Pine Mountain Lake Association, Groveland, California 95321.

SUBSCRIPTION RATES:

Co-owner subscription: \$6 per year
Single copies: 50 cents each
Single mailed copies: \$1.35 each
For non-members: \$10 per year

SUBMISSION DEADLINE

10th of the month by 4:30 PM
LATE SUBMISSIONS MAY NOT BE
ACCEPTED

Visit www.pinemountainlake.com for ad rates and submission guidelines or email: PMLNews@SabreDesign.net. For the mutual benefit of all property owners, the Pine Mountain Lake News reserves the right to edit all copy submitted for publication. The Pine Mountain Lake News is a private enterprise, not a public entity, and as such is entitled to reject advertisements or articles in the best judgment of its editor or publisher, despite a probable monopoly in the area of its publication. Pine Mountain Lake Association is not responsible for, nor does it guarantee the accuracy of, information contained in any ad placed in the Pine Mountain Lake News. The Pine Mountain Lake News attempts to ensure that this publication is free of legal infringements and the Pine Mountain Lake Association and its contractors are not liable for copyright/trademark infringements from external advertisements and articles.

DAVID WILKINSON—Publishing Editor

SABRE DESIGN & PUBLISHING
Design/Layout

PINE MOUNTAIN LAKE NEWS

P.O. Box 605
Groveland, CA 95321
Tel: 209.962.0613
Fax: 800.680.6217

E-mail: PMLNews@SabreDesign.net

Director's Corner

Steve Griefer – PMLA Board Vice President

PMLA BOARD OF DIRECTORS HOLDS TOWN HALL MEETING WITH THE MEMBERSHIP

My fellow Board members and I held a town hall meeting on February 1, 2020 at the Lake Lodge. The meeting was held at 11 a.m. and followed the February monthly Board meeting.

The entire Board, General Manager, and Controller attended along with more than 30 members. The meeting was less formal than the regular board meetings and we all had a great discussion. Members were invited up to the podium to speak directly to the Board and management, and several topics were brought up for consideration and discussion.

A member inquired as to when the PML Grill will return to serving breakfast and brunch and holding wine dinners. We followed up with our Grill Manager, Jay Reis and he and his staff will be serving breakfast on Saturday and Sunday from 8 am to 11 am, starting March 7th. As for wine tasting dinners, Jay is bringing these back starting Wednesday, March 11th. There is a new event format, so please contact the Grill for more information and reservations.

A member briefed the Board and members in attendance on ballot measures related to a sales tax and TOT (Transient Occupancy Tax) due to the Tuolumne County budget shortfall. An informational workshop was organized by some members and held at the PML Lake Lodge on February 15th at 10 a.m. and Tuolumne County Sheriff, Bill Pooley presented some information on the impacts to our County budget.

A member complimented Grill Manager, Jay Reis and his staff for the high quality of food and service they provided for the Helping Hands volunteer appreciation luncheon at the Grill. We have also seen a lot of positive

comments on social media lately about our Grill. Compliments to Jay and his team.

A member suggested adding a small sign under the HWY 120 Grill Restaurant sign in Big Oak Flat to let travelers know what days the restaurant is closed and moving the radar speed sign located on Pine Mountain Drive to another location. Management is discussing this idea with our restaurant marketing consultant and evaluating the speed sign locations.

Some members stated that they felt that acoustics at the Grill are a problem when there are large groups and asked that the Board look into improving this situation. Our management team is following up on this.

At least three members asked that the Kiwanis event notice be removed from the Main Gate LED board as the date has already passed. Since the Town Hall meeting, it was determined that the LED board was malfunctioning and the Department of Safety staff worked with the manufacturer to correct the problem.

A member asked the Board to consider allowing the use of private golf carts by the membership on our golf course. He stated that it had been considered by the Board in the past, but was voted down for a variety of reasons, but times and situations have

changed. The management team pulled the file on the past review of this topic and provided it to the Board for consideration.

A member asked the Board to increase the amount of ADA parking at the Grill operation and suggested more lighting on the pathway from the Swim Center down to the Grill parking lot. Our Maintenance staff has since installed additional lighting along the Swim Center pathway to improve safety in this area for our members and management is looking into the cost to evaluate additional ADA parking.

A member stated that she would like the Board and management to consider holding movies at the PML Stables lawn area next year. Our Recreation Manager is working with our Stables Manager on an evaluation of this idea.

The Board plans to hold town hall meetings with our members on a quarterly basis and that at least one will be regarding an update to our governing documents. On behalf of the Board of Directors, I would like to thank all of the members who took the time to attend our town hall meeting.

Just a reminder that the next Board meeting is scheduled for March 21st we encourage all members to attend this meeting as well.

Moore Brothers Prepaid Bag Bin

The bin (dumpster) at the PMLA Maintenance Yard entrance is for the dumping of prepaid, Moore Bros., trash bags ONLY. No dumping of any other trash items are allowed. Violators will face enforcement action. Please help us keep this area clear and ensure that the dumpster can remain in place for our residents use. Thank you!

*THE PREPAID BAGS CAN BE PURCHASED AT
THE MAIN GATE AND THE PMLA OFFICE.*

COMPOST & ARCHERY RANGE HOURS OF OPERATION

APRIL THRU OCTOBER - 7 DAYS A WEEK 8AM TO 4PM WEATHER PERMITTING

**NOVEMBER THRU MARCH - TUES. - SUN. 8AM TO 4PM
WEATHER PERMITTING**

SHOOTING RANGE - TUES, THUR, SAT 9AM TO 3PM

PLEASE NOTE Hours may vary depending on weather conditions, safety concerns, or other situations beyond control. Archery & Gun Range users must check-in with compost attendant.

HOURS SUBJECT TO CHANGE WITHOUT NOTICE
Call Main Gate at 209-962-8615

CAPITAL EXPENDITURES 1 Month Ended Jan. 26, 2020			
	TOTAL RESERVE FUNDS	NEW CAPITAL ADDITIONS FUND	TOTAL CONTRIBUTION TO CAPITAL
2020 Beginning Fund Balances	1,223,440	\$ 139,719	1,363,159
Interest Income	42		42
Bank Fees/Discounts Taken			-
Assessments Earned	174,583 ⁽¹⁾	4,750 ⁽²⁾	179,333
Other Income/Expense			
PURCHASES BY AMENITY			
Golf Course	(40,833)		(40,833)
Country Club			-
Bar			-
Marina			-
Snack Shack			-
Swim Center			-
Stables			-
Recreation			-
Roads & Facilities Maintenance	(4,528)		(4,528)
PROPERTY OWNER SERVICES			
Safety			-
Administration			-
Non-Capital Reserve Expenses	(6,495)		(6,495)
Total transfer to Operating Fund for property and equipment additions and reserve expenses	(51,856)	-	(51,856)
Adjusted Fund Balances	\$ 1,346,209	\$ 144,469	\$ 1,490,678

Notes to the Financial Statements

- (1) The Budgeted Reserve Fund assessment for 2020 is \$2,095,000
- (2) The Budgeted New Capital Additions Fund assessment for 2020 is \$57,000

DO YOU HAVE YOUR PIN?

Since PML is a private gated community, we want to offer our property owners a secure way to call in guests. When you become a member of PML you are assigned a Personal Identification Number (PIN) to utilize either when calling in a guest pass or using the Gate Access Internet program. This PIN identifies you to staff without you having to be present. This is a confidential number and should **not be shared**. When you call the Main Gate to authorize a guest or vendor access into PML, you will be asked for your PIN. The staff will look up the number in the computer and use it to confirm your identity before entering the guest information. You must have this number to utilize the Gate Access Internet program as well. If you do not know your PIN or have any questions, please contact the Administration Office at:



(209) 962-8600



Monday through Friday from 8 am to 4:30 pm and we will gladly supply this information to you.

PINE MOUNTAIN LAKE ASSOCIATION											
SUMMARY STATEMENT OF OPERATING FUND REVENUES AND EXPENSES											
For The One Months Ended January 26, 2020											
OPERATION OF AMENITIES	Revenues					Expenses			Budget (NET COST) INCOME	Variance Bud - Act	
	Members' Assessments Net of Discount	User Fees	Sales, Net of Cost of Sales	Miscellaneous Income	Total Revenues	Total Expenses	(Cost)/Income Before Depreciation	Depreciation Expense			(NET COST) INCOME
Golf Course	\$ -0-	\$ 56,696	\$ 626		\$ 57,322	\$ 100,427	\$ (43,105)		\$ (43,105)	\$ (58,058)	14,953
Restaurant & Bar	-0-	434	39,253		39,687	120,818	(81,131)		(81,131)	(68,490)	(12,641)
Marina	-0-	14,282			14,282	19,876	(5,594)		(5,594)	(8,526)	2,932
Snack Shack	-0-		767		767	2,999	(2,232)		(2,232)	(2,864)	632
Stables	-0-	4,430		20	4,450	19,362	(14,912)		(14,912)	(18,209)	3,297
Recreation	-0-	7,586			7,586	2,075	5,511		5,511	13,970	(8,459)
Roads & Facilities Maintenance	-0-	3,473		40	3,513	138,352	(134,839)		(134,839)	(140,865)	6,026
PROPERTY OWNER SERVICES											
Safety	-0-	6,787		(415)	6,372	89,406	(83,034)		(83,034)	(80,752)	(2,282)
Administration	-0-	16,286		290	16,576	160,025	(143,449)		(143,449)	(152,338)	8,889
ASSESSMENTS											
Assessments	493,707			(4)	493,703	10,667	483,036	47,308	435,728	411,987	23,741
Totals	\$ 493,707	\$ 109,974	\$ 40,646	\$ (69)	\$ 644,258	\$ 664,007	\$ (19,749)	\$ 47,308	\$ (67,057)	\$ (104,145)	37,088

Main Gate personnel are available to issue gate cards on SATURDAY & SUNDAY — 8:30AM-4:30PM.

Please call in advance to schedule an appointment at 209-962-8615

PMLA Money Matters

Ken Spencer, CAFM – Association Controller

Please bear with me this month as I digress a bit from my normal discussion centering on numbers. I feel the need to focus a bit on one word that has a lot of meaning and multiple implications – TRUST.

The dictionary definition of trust is a – “firm belief in the reliability, truth, ability, or strength of someone or something.” A pretty powerful set of traits for such a simple word. The second word of this definition, belief, is the underlying concept that influences all the words that come after it. To hold a belief in something indicates that the individual accepts things at their face or stated value.

We trust that our spouse or significant other cares for us. We trust that our employer values our contribution to the organization. We trust that the sun will rise again tomorrow. We trust that the bridge we are crossing is strong enough to hold us up. We trust that our best friend will always be there for us. We trust that our doctor has the ability to correctly diagnose our medical issues.

Without trust our world becomes one filled with doubt, suspicion, hesitation and extreme, almost paralyzing caution. Trust is very much a double edged sword. Trust should not be given lightly or unconditionally. But neither should it be given blindly. Sometimes this can be a very difficult, fine line to walk. It has been said that while it can take months or even years to develop trust it can be destroyed in an instant. I am sure we have all had our trust tested at some point in our lives. The key is keeping an open mind to trust.

Trust within a community like PML takes on a whole myriad to challenges since we are, in essence, a big family of over 8,000 members. Trust that your neighbors care as much about living here as you do. Trust that people want to do the right thing and not just do things right. Trust that the Board of Directors, management team and all employees have the best interest of the Association at heart when performing their duties.

As important as having trust is, the lack of trust is, in many ways more powerful

in a negative way. A lack of trust breeds more lack of trust. Granting trust is never easy, while unfortunately, denying trust is far too easy. Often our lack of trust comes about when someone or some organization makes a decision that is not in line with our views or beliefs. Does this mean that person cannot be trusted? While that is always a personal decision in most cases this is not true.

A disagreement over a belief or action should not indicate a lack of trust in the individual but rather an honest difference of opinion. For example assume that I, as your Controller, believe that our budget is a fair representation of what it takes to run PML. If you disagree with this conclusion is it because we see things differently or is it because you do not have sufficient trust in my ability to analyze this process and act in the best interests of all members of the Association. Hopefully it is because we have a true difference of opinion on this topic. I would hope that my 14 years of service to PML would earn me a certain level of trust.

A lot of the discussion (much of it very heated) in the last year or so on social media touches on this important topic in one form or another. I encourage and enjoy passionate discourse on a wide range of topics. For me the key is adopting a certain level of trust that people with opposing viewpoints truly have the best interests of PML at heart. Only by starting with this even playing field can we avoid and rise above the animosity that comes with distrust.

Life without trust can be very stressful and unpleasant. Hopefully we all have room in our existence to extend trust to those that have earned it and respect it moving forward.

Well that’s it for this month. If you have any PMLA Money Matters you would like to see discussed in this column in the future please drop me a line at controller@pinemountainlake.com or give me a call at 962-8606. Thanks for reading and I hope you find this monthly discussion helpful, somewhat interesting and at least a bit informative.

PML SAFETY REPORT 2020

	JAN	1st Qtr	YTD*
Guest Passes Issued	929	929	929
Vendor Passes Issued	266	266	266
Temporary Resident Passes Issued	399	399	399
Vehicles Admitted	7,825	7,825	7,825
Vehicles Refused Entry	145	145	145
Phone Calls Received	2,745	2,745	2,745
Residential Alarm	4	4	4
Animal - Loose	20	20	20
Animal - Impounded	4	4	4
Animal - Dead/Injured	7	7	7
Animal - Disturbance	7	7	7
Patrol Assist	187	187	187
Public Assist	12	12	12
Welfare Check	0	0	0
Transport	1	1	1
Traffic Hazard	0	0	0
Traffic Control	0	0	0
Excessive Speed/Reckless Driving	10	10	10
Gate - Tamper	1	1	1
Gate - Follow Through	15	15	15
Gate - Malfunction	8	8	8
Gate - Struck by Vehicle	4	4	4
Burn Reported	109	109	109
Fire Safety - Smoke Complaint	1	1	1
Hazard - Tree Down	1	1	1
Residential Disturbance	4	4	4
Amenity Burglary	0	0	0
Residential Burglary	0	0	0
Grand Theft	0	0	0
Petty Theft	0	0	0
Trespassing	1	1	1
Vandalism	2	2	2
Property Damage - PML	2	2	2
Property Damage - Resident	0	0	0
PML Regs Violations Resident	1	1	1
PML Regs Violations Guest	0	0	0
Vehicle - Citation Issued	8	8	8
Vehicle - Accident PML	2	2	2
Patrolling Unit	836	836	836
Amenity Security Check	2,523	2,523	2,523
Residence Security Check	124	124	124
Monitoring Tennis Courts	3	3	3
Weapon Violation	1	1	1
Fixed Post	0	0	0
Courtesy Notice Issued	4	4	4
All Other Fees Collected	\$24,625	\$24,625	\$24,625

*YTD total is total from January 1st through January 31st.

GOVERNING DOCUMENT ENFORCEMENT ACTIONS JANUARY 2020

Courtesy Notices	17
Notice of Non Compliance.....	9
Final Notices of Violation.....	3
Fines Assessed	1
Member Service.....	70

The Hoof Print

Melissa Moore – Equestrian Center Manager

I had the opportunity to attend a veterinary seminar hosted by Taylor Equine Hospital in January. The presentation title was ‘When Good Drugs Go Bad’, wherein we covered several different topics regarding equine medications and safety for storing, handling, and administering medications. Often-times owners can come into possession of drugs, or have left over drugs from previous ailments. This clinic was designed to educate owners about commonly used drugs and to hopefully avoid medical emergencies resulting from incorrect medications being used. Here’s a condensed version of the seminar for you to read.

Dr. Stanford began his discussion stating that there are four very important factors when dealing with medications and those are: drug, dosage, route, and frequency. When handling medications we must always know what drugs we are handling, the proper dosage prescribed for that animal and the ailment, what route the medication must be administered (oral, intramuscular, intravenous, or subcutaneous), and the frequency for the drug to be given. If we do not know these four important pieces of information, it is extremely important to call your vet and become familiar with what you are handling.

The next topic was expiration dates, as the FDA requires that all medications be labeled with an expiration date. Expiration dates set by the FDA are to denote when a medication has gone below 90% potency and is therefore no longer suggested to use for treatment. Dr. Stanford goes on to explain that if the medication is an orally administered substance to call your vet and they can advise you if it could still potentially be used, as some can become toxic over time. He emphasizes great caution on injectable drugs as the concern with an injectable is sterility and severe complications can result if sterility has been compromised. Dr. Stanford also notes how important it is to correctly store drugs within proper temperature ranges. All medications are meant to be stored in environments under 86 degrees Fahrenheit, so horse trailers in summer are never ideal. Always bring your medications inside your home to avoid degrading and wasting product.

Dr. Stanford made an interesting note that in 1994 there were two acts put into place called ELDU (Extra Label Drug Use) and AMDUCA (Animal Medical Drug Use Care Act). These laws gave veterinarians more freedom in allowing them the opportunity to prescribe otherwise unavailable drugs for their patients. Previously, the FDA did not allow for medications to be used for different species or treatment other than that originally labeled on the medication. With these acts as long as the veterinarian is reasonably certain the treatment could work, and the animal would otherwise suffer without treatment, they could use the drug for off label use. For instance, SMZs are

not originally intended for animals but there is a large body of evidence that they work on animals as well. However, along with AMDUCA this is only acceptable if there is not a drug of the same strength and form as an already existing drug. This is why we can no longer use Previcox for horses, because Equioxx exists. I found this extremely interesting because there’s always the discussion of how expensive Equioxx is and why we can’t just go back to Previcox.

Dr. Stanford then went into a discussion about compounded medications versus approved medications. Approved medications have been set forth by companies before the FDA and have been tested for potency, safety, and effectiveness. Compounded medications are typically used when medications are needed in a different form than normally made by the manufacturer. For instance they may need a more potent version, or different flavoring agent than normally available. However, while compounding pharmacies are approved and licensed to make drugs and medications, they are not tested by the FDA before going out. There have been studies showing that the medications going out are not always the proper concentration as those we would get from FDA-approved drugs. He stresses that they are not ‘generic drugs’ and while compounding pharmacies have their role and place, they shouldn’t be used simply for cheaper medications.

Moving on Dr. Stanford goes on to explain side effects and adverse effects to drugs in horses. A side effect is a reasonably common reaction attributed to the medications given, while an adverse reaction is the uncommon reaction to proper administration of a medication. He states it’s important when prescribing drugs to take into consideration the risks of medications versus the benefit we will see by administering medications. This is why veterinarians take into consideration your horse’s risk of contracting diseases and which vaccinations they encourage you to give your horse. He states that some horses react to the adjuvant that is used to make the vaccine. Ways to get around that reaction are spreading out vaccines administrations, giving them in a different site other than the neck, or changing brands. He also states that exercising horses after vaccinations gets the blood flowing and muscles moving to help carry the product out of the muscle and through the rest of their system. He also suggests when giving injections to a horse not to swab the site with an alcohol pad, as this turns dirt into mud which is easier to transport bacteria through the needle.

Nonsteroidal Anti-inflammatory Drugs (NSAIDs) are the most common drugs given by owners to their horses. These are pain medications prescribed by veterinarians for pain control, which work by blocking prostaglandins. Blocking prostaglandins can potentially decrease blood flow to the kidneys and interfere with the protective

lining of the stomach. That’s why long term use of these drugs is strongly discouraged, as we once again go back to considering risk versus benefit. We were shown pictures of Clostridial Myonecrosis, which is most commonly caused by a reaction from giving banamine intramuscularly. This is a gas gangrene caused by clostridial bacteria entering the body via needle and eating away at the muscle tissues in the horse. While this is a rare occurrence, and the banamine bottles state that it can be given intramuscularly, Dr. Stanford states to never give banamine intramuscularly and to never attempt to give intravenous injections yourself either. Other commonly used prescription drugs are antibiotics; these work by killing bacteria in the body. The upside is it kills bacteria causing infections. The downside is it kills the good bacteria such as in the stomach and gut, as well. Common side effects to antibiotics are diarrhea or hives due to allergic reaction. Some antibiotics are targeted more towards certain types of bacteria, and this is why it’s important to make sure your veterinarian has seen the horse so that animal is getting the most suitable antibiotic to treat his condition.

Dewormers were thoroughly discussed as well. Dr. Stanford states that when we give Ivermectin to a horse, it gets absorbed and goes through the body for a day and then leaves the system. When we give Moxidectin it goes through the blood stream, is absorbed into body, and stays in the system for 59 days being slowly released into the blood stream again. When given to a very young, old, or skinny horse, they do not have an adequate amount of fat for the drug to be stored in and it stays in the blood stream and becomes toxic to the horse. Signs of toxicity in horses are dilated pupils, blindness, and other neurological signs such as lack of coordination. So why would we use Moxidectin in horses? Small strongyles is a common worm found in horses that we treat for, and in one of its larval stages it burrows into the lining of the intestines. When it is in this stage Ivermectin does not stay in the system long enough to be effective, so we give Quest or a Panacur Powerpac instead. The proper way to deworm is to strategically deworm each horse. This involves having your veterinarian perform a fecal egg count test; this is a fecal test that individually counts parasite eggs and determines if your horses is a low, medium, or high shedder. This helps prevent over medicating and parasites developing a resistance to deworming medications. Most horses will only need to be wormed twice a year, and they tend to stay the same if their environment stays the same. Removing manure from pastures greatly decreases exposure to worm larvae, and is a great practice to use in worm load management.

Steroids work in regards to the horse’s immune system, and therefore are typically used for inflammatory conditions such as skin conditions. However, some horses are very sensitive and steroids can put them into a laminitic process, so often veterinarians avoid using steroids on horses with previous founder cases or overweight horses and ponies with metabolic problems. Another very important point Dr. Stanford touched on is if an eye has an ulceration and you put an

eye ointment with steroids into it, it will cause a melting ulcer in the eye. Steroid medications tend to end in ‘-one’ and if your horse has any type of painful eye he greatly emphasizes to never ever put a steroid ointment into that eye. He once again recommends to call your veterinarian as eyes are typically emergencies, and if you need to flush an eye to use a saline solution. Joint injections also use steroids and hyaluronic acid injected into the joints for therapeutic purposes. This is a relatively safe procedure, but it is not without risk for an infected joint and that’s why it is important for your veterinarian to determine the risk versus benefit for you horse. Injecting joints is not like changing the oil in the car, injecting joints is for when there’s pathology and/or disease in the joint.

Sedation is always a tricky process. Dormosedan gel is a gel that can be picked up in a veterinarian’s office and can be given sublingual (under the tongue) to help sedate the horse. It must be given sublingual or it does not absorb properly and does not work well; however overdosing is very unlikely and it’s an easy drug for owners to use in the right circumstances. Acepromazine is a drug Dr. Stanford does not like to prescribe because the way it works is by making all the blood vessels open up and rush to the extremities. If you’ve had a horse in an accident and it is currently experiencing low blood pressure, this is extremely dangerous to your horse and can cause a stroke. It’s also recommended not to give ace to a stallion because sometimes there can be an adverse reaction that could compromise your stallion’s breeding capabilities. There is also an anesthesia gradient to be aware of with horses; anesthesia works from nose to tail and top to bottom. So a horse’s nose could be sound asleep, but his hind foot can still be wide awake and it’s very important to be aware of that when working around sedated equines. When veterinarians are giving intravenous injections, they give them in the jugular vein and the medication goes down into the heart and dilutes through the body. However, next to the jugular vein is the carotid artery and that blood carries undiluted medicine and goes straight to the brain. This causes seizures and can harm or kill a horse. Occasionally horses will have this reaction and owner’s think their horse is allergic to sedation, when there’s a chance some medication got into the carotid. This is why you should never attempt to give intravenous injections yourself.

This clinic proved to be an extremely informative 90 minutes for me, and I always appreciate and enjoy the quality information they make easily available to us horse owners. If you’d like to view the seminar in its entirety you can go to the Taylor Equine Hospital’s Facebook page and watch the Facebook live version there! Next month I’m extremely excited to let you all know about what I learn at Pioneer Equine Hospital’s Client Appreciation day. Until then, stay warm and have fun!

Equestrian Center
13309 Clifton Way
Office: 209-962-8667
stables@pinemountainlake.com

WIN *for* FUN

What do you do for fun? Visit our award-winning casino!

\$600,000 JEEP ^a WEEK

**8 JEEPS! 8 WEEKS!
OVER \$200K IN CASH!**

March 1 - April 25 swipe daily
for GAS & eCASH prizes!

Drawings Fridays & Saturdays
at 8pm & 10pm!



Gift of the Month!

March 1-31

(Excludes Mondays)

Perfect for those chilly, winter nights.

Earn 1,000 base points from
12am-11:59pm to
receive a Soft Shell Vest.



FUN ⁵⁰⁺ & FREE

Tuesday Slot Tournament
11am - 3pm

WIN Cash & eCASH Prizes!

2X Bonus Points!

DOUBLE Dining Discounts!



**CHUKCHANSI GOLD
RESORT & CASINO**

Hwy 41 North To Coarsegold | chukchansigold.com | 866.794.6946

Must be 21 years of age or older and a Chukchansi Rewards Club Member. All guests must have a valid government-issued photo ID acceptable to management for all Chukchansi Rewards Club transactions. Management reserves all rights to cancel or modify all offers, promotions and/or events without prior notice. Restrictions and exclusions may apply, please visit website for further details.

WELCOME TO THE
Hidden Jewel of the Foothills
**PINE MOUNTAIN LAKE
GOLF & COUNTRY CLUB**

12765 MUELLER DRIVE • GROVELAND, CA. 95321

Championship Golf Course



Beautifully Manicured Greens



Stunning Vistas & Surroundings



Mountain Golf  *at its Finest!*

www.PineMountainLake.com

209-962-8620

Wine Tasting Dinners are Back in March

Written by Jay Reis, Manager

I've had many requests to bring back wine tasting events. In the past they were both social and fun with great food and wine. The event format will change but the great food, wine and social gathering will remain the same. This month the dinner will be held on Wednesday March 11. We will have an Italian themed dinner with an Italian wine pairing. The dinner will be served family style. The wine tasting flights will feature 3 wine samples to taste with each course. If you enjoy the wine you can purchase a glass with dinner or a bottle to take home. Seating is very limited so make your reservations early. The evening will start with a salad with an Italian flair, the main course will include 2 entrees, Chicken Cacciatore and Mushroom Agnolotti and dessert will be

Tiramisu each course will be paired with an appropriate wine sample. All for only \$35 per person tax and gratuity not included.

Other events that sell out every year are Easter and Mother's Day brunches. Easter is Sunday April 12. Mother's Day is May 10, this is a champagne brunch and always sells out. Don't forget about Mom. We have seating's at 9am, 11am, and 3pm for both brunches. To make reservations call 209-962-8638.

Will be serving breakfast on Saturday and Sunday from 8am until 11am starting Saturday March 7. Lunch and dinner service remain the same. Lunch Tuesday through Sunday 11am until 3pm. Dinner is served Wednesday, Thursday and Sunday 5pm until 8pm and Friday and Saturday 5pm until 9pm.

The Grill Winter Hours

**GRILL OPEN WEDNESDAY THROUGH SUNDAYS
FOR LUNCH AND DINNER**
Closed Monday and Tuesday

LUNCH — 11AM UNTIL 3PM
**DINNER — WEDNESDAY, THURSDAY AND SUNDAY
5PM UNTIL 8PM**
FRIDAY & SATURDAY 5PM UNTIL 9PM

BAR IS OPEN 7 DAYS A WEEK

Contractors Performing Work in PML are Required to Follow PMLA Rules & Regulations

The following are some **"common violations."** Please do your part to maintain a harmonious environment for all to enjoy. Remember: The PML property Owner is held responsible for those they hire.

VEHICLE USE:

1. Exceeding the posted speed limit
2. Driving in a reckless manner
3. Following another through an access gate or allowing others to follow you through
4. Parking on street (road shoulders OK)

PERSONAL CONDUCT:

1. Allowing loud music
2. Uttering abusive language or conduct that would be offensive to a reasonable person
3. Using the property Owner's gate card or clicker

WORK RELATED CONDUCT

1. Starting work before 7am or continuing after 7pm
2. Allowing dogs at construction sites
3. Performing work on Sunday
4. Cutting down a tree in excess of 5" without PMLA approval
5. Trespassing on neighboring property
6. Using neighbors water or electricity without written permission
7. Leaving construction signs longer than 5 days after work has been completed
8. Nailing signs to trees
9. Storing building materials on street or easement
10. Beginning exterior construction without PMLA approval

If you have questions call Terri Thomas, ECC Coordinator @ (209) 962-8605 with questions.



Italian Night

MARCH 11, 2020 5:30^{PM}

3 course family style dinner with wine pairings

MENU

1ST COURSE

Antipasto Salad

2ND COURSE

Chicken Cacciatore and Mushroom Agnolotti

3RD COURSE

Tiramisu

\$35

PER PERSON
(GRATUITY NOT INCLUDED)

Reservations only. Seating is limited – Call 209-962-8638



HAMM'S Carpet Cleaning

Carpet • Tile • Upholstery
(209) 962-5852

STREAM MUSIC, MOVIES, SPORTS, TV & MORE!



**GET UP TO
25MBPS**

UNLIMITED DATA!

**THE LOCALS' CHOICE FOR
BROADBAND
INTERNET** SINCE 2008

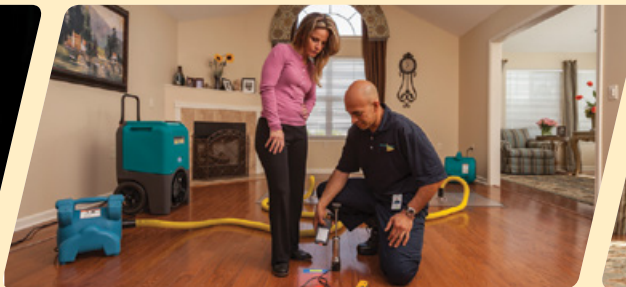
 **CONIFER**
communications

866-378-8393
CONIFERCOM.NET

**\$25
DISCOUNT**

Mention this ad for a discount on cleaning services.

Minimum charge applies.



DISASTER RESTORATION SERVICES • RESIDENTIAL AND COMMERCIAL CLEANING SERVICES

Carpet & Furniture Cleaning • Steam & Dry Cleaning • Deep Soil Extraction • Spot & Odor Removal • Oriental & Fine Rug Cleaning • Ultrasonic Blind Cleaning
24 Hour Emergency Service • Water Removal • Wet Carpet Care • Fire & Smoke Restoration • Vandalism Cleanup • Structure Drying • Sanitizing

ServiceMASTER
Restore

The clean you expect.[®]
The service you deserve.[®]



Serving Tuolumne, Calaveras & Amador Counties
ServiceMasterSierras@mlode.com • www.ServiceMasterSierras.com

209-532-1700

17330 High School Road
Jamestown CA 95327



HEALTHIER. IT'S HOW WE INSTALL!



Mention this ad to receive Free Healthier Living Installation Upgrade!

Thank you for voting us **Best of the Mother Lode since 2005!**

PINNELL'S CARPET ONE FLOOR & HOME

209.736.8077 • 263 S Main St • Angels Camp, CA

209.532.1696 • 12900 Mono Wy • Sonora, CA

Granite & Quartz Countertops



10 YEAR GUARANTEE
ON ALL WORK AND INSTALLATIONS

Located right here in Groveland!

Upgrade Your Kitchen & Bathroom Countertops
High Quality, Guaranteed Work
Affordable Prices • Stone & Tile Projects

Visit our website: www.RockSolidCreations.us

Call Brandon Hoffman: 209-962-1813



Starting At

\$44.95

Per mo.

Faster Speeds

Better Prices

Vist GoSNC.com

(209) 962- 6373

FIREWOOD CUTTING

PML SLASH AND COMPOST SITE

OAK AND CEDAR

REQUIRES A \$20 PML WOOD CUTTING PERMIT

WOOD CUTTING PERMITS AVAILABLE AT THE MAINTENANCE FACILITY

PINE AND FIR

AVAILABLE FOR FREE CUT & HAUL

FOR MORE INFORMATION PLEASE CONTACT SUSAN AT

(209) 962-8612

BETWEEN THE HOURS OF 7 AM TO 2:30 PM, M-F.

All PMLA Homeowners Email Opt-in Program

The Association is pleased to offer a money saving program available to all PMLA property owners. This program allows you to receive many of the documents we are required to provide to you via email. This option is important because:

COST SAVINGS – The Association is spared the expense of printing and mailing many documents to those property owners who sign up.

ENVIRONMENTAL SAVINGS – Less paper means less trash and reduced damage to the environment both in the disposal and production of paper and envelopes.

REDUCED CLUTTER – By receiving documents via email there is less paper for you to deal with.

All documents can be saved on your computer and viewed at your discretion.

TIMELY RECEIPT – Documents sent electronically are received in minutes as opposed to the days it takes for regular mail to arrive.

If these sound like good reasons to you, please sign up for the Document Email Program today using the attached form. Simply return the completed form to the Administration office at your convenience.

If you have any questions on this program please feel free to give us a call (962-8600) and we will be happy to explain the details and the advantages.

Please read the Terms & Conditions for the email opt-in program on the website, www.pinemountainlake.com under the Resources/Forms > Opt-In Email Program.

Mail form below to:
Pine Mountain Lake Association
19228 Pine Mountain Drive • Groveland, CA 95321

YES, I WANT TO ENROLL IN PMLA'S EMAIL STATEMENT AND DOCUMENT SERVICE. I ACKNOWLEDGE AND AGREE TO THE TERMS AND CONDITIONS SET FORTH ABOVE AS A CONDITION FOR PARTICIPATION IN THIS SERVICE.

PMLA Account Number: _____ Unit/Lot #: _____

Name: _____ Phone #: _____

Address: _____

Email Address: _____

Signature: _____

Letters to the Editor

LETTERS TO THE EDITOR RECEIVED – 0
DENIED BY EDITORIAL COMMITTEE – 0
Exceeds 250 word maximum – 0
Content – 0
Not a property owner – 0
"THANK YOU" LETTERS RECEIVED* – 0

DEFERRED TO NEXT EDITION BY EDITORIAL COMMITTEE – 0
DENIED BY BOARD OF DIRECTORS – 0
DEFERRED TO NEXT EDITION BY BOARD OF DIRECTORS – 0
* Thank you's do not require editorial committee approval

Submit Letters to the Editor by sending to "Editor, PML News"
Mail: 19228 Pine Mountain Drive, Groveland, CA 95321
Email: PMLNews@sabredesign.net • Fax: 800-680-6217

**PLEASE NOTE THAT ALL LETTERS
APPEAR IN THE ORDER THEY WERE RECEIVED BY THE PML NEWS**

The Pine Mountain Lake News welcomes letters and articles for publication provided they meet the criteria established in the current PMLA Editorial Policy (See excerpt below – entire policy on file at the Administration Office). Letters must be limited to 250 words, typewritten using upper and lowercase letters or neatly printed (no all-capital material) and signed with name, mailing address, PML unit/lot number, and day/evening telephone numbers by a property owner in good standing. **LETTERS MUST BE RECEIVED BY THE EDITOR BY THE 10th OF THE MONTH.** Letters deemed by the Editorial Committee to be improper will not be accepted. Readers are advised that **THE OPINIONS EXPRESSED IN THESE LETTERS ARE THOSE OF THE INDIVIDUAL AUTHORS, NOT OF THE PMLA, THE PINE MOUNTAIN LAKE NEWS, NOR THEIR EMPLOYEES.**

MOORE BROS. SCAVENGER CO., INC.

P. O. Box 278 • Big Oak Flat, CA 95305 • (209) 962-7224 • FAX (209) 962-7257



VACATION RENTAL OPTIONS FOR TRASH SERVICE

In order to assist property owner/managers of short-term rentals with trash removal, Moore Bros. Scavenger Co. offers the following services.

Short-term rental customers may participate in year-round or three-month summer curbside service. To manage anticipated levels of guest trash, property owners/managers of short-term rentals should maintain the suggested service levels as determined by the *Maximum Occupancy for Rental Property* (please see the chart below). In the event that renters generate more than the expected amount of trash or the home is rented multiple times during a given week the following options are provided:

- **As Needed Extra Pickup.** Property owners/managers may request a notation on their rental service accounts to pick up extra as needed. This will ensure that all trash left alongside the cans will be picked up by Moore Bros. and a special pickup will not be required. There is an additional per-can/bag charge for each extra can/bag picked up.
- **Special Pickup.** Moore Bros. has a truck and driver available for special pickups Monday through Friday.
- Property owner/managers must place a request for service call or email to Moore Bros. before 3 pm on the business day prior to the requested pickup day. A request for a Monday pickup must be made by 3 pm on the previous Friday. **Prepaid Bags.** Prepaid Moore Bros. bags may be purchased by property owner/manager to be used by any handyman or housekeeper servicing the residence between rental customers. The prepaid bags can be disposed of at the Pine Mountain Lake Maintenance Yard on Par Court off of Mueller Rd.

Property owners/managers utilizing full summer service may go to on-call service for the off season.

- **Off Season on Call Service.** Property owner/manager may call or email an on-call request to Moore Bros. for a service pickup on the regular pickup day for the address. A request for service call or email must be received before 3 pm the business day prior to regular scheduled pickup day. Charges will be based on the standard a per-can rate for each can/bag picked up.
- **Special Pickup.** Please follow the same procedure as listed above for Special Pickup.

Maximum Occupancy for Rental Property

Maximum Occupancy	Suggested Service Level
6 - 8 people	2 can
8 - 10 people	3 can
10 - 12 people	4 can
Lake front Property 12 people	4 or more cans as typically needed

If you have questions please feel free to contact our office at (209) 962-7224 or email us at: info@moorebrosscavenger.com and Shirley@moorebrosscavenger.com (Please cc both to insure prompt replies).

A drop-off Recycling center is available for use Mon – Sat. 8 am – 5 pm @ 11300 Wards Ferry Rd. Big Oak Flat, Ca

Maintenance Matters

Rick Laffranchi – Maintenance and Operations Manager

PROPANE DISCOUNT PROGRAM

Suburban Propane – As the preferred provider of PML we are happy to provide an exclusive members only program to all residents. Benefits include: Propane at a discounted rate, Tank rental at a discounted rate, Free basic tank installation, Easy payment options, 24/7 Tech support, Flexible delivery options • 24/7 live phone support Contact our local staff for further details and current rates. Suburban Propane Jamestown California (209) 984-5283 • 1 (800) PROPANE

What!!!!!! March already? I feel like Rip Van Winkle, the days are flying by, the grass and weeds are starting to pop, trees are starting to blossom the work load is increasing and your maintenance team is ramping up preparation for what should be a productive and busy spring repair season.

For you folks who enjoy the pool during its months of operation, have we got a treat for you, a brand new 1 million BTU boiler. This unit is 25 % more powerful than our existing boiler while being significantly more efficient. And the best part is we have the talent and licensed skill set within our

department to install the unit ourselves, which equates to a huge savings for our association.

As mentioned early with this type of weather comes the accelerated growth of weeds and grass in our lovely community so as you move around PML please keep an eye out for our state licensed application crew applying herbicide to roadside and greenbelt areas. This type of work helps protect us from fire danger, by utilizing safe, economical and time saving practices.

The roads crew continues to work hard clearing trees, brush, poison oak (getting itchy just thinking about it) and

reducing fire fuel in our green belts while simultaneously maintaining our compost area, by utilizing our airburner. This work keeps the fire fuel load to a minimum (remember no logs or limbs over 6 inches in diameter).

As for me I will remain busy project planning, through implementation of our new computerized maintenance management program. Additionally, as a licensed plumber, I will be taking the lead on the team installing the new Swim Center boiler. It's going to be another busy, yet productive month!

SAVE AS MUCH AS 30% OVER THE CHAIN OPTICS STORES AND EVEN MORE OVER DOCTORS OFFICES

Large Selection of Unique & Traditional Designs
Can Bill Most Insurance Plans • Over 20 Years Experience
Designer Sunglasses • FREE Adjustments & Repairs



Stacy Hancock
Certified / Licensed Optician

18729 HWY 120, Unit A, Groveland • 209.962.1972

Recycling Notice from Moore Bros

WE HAVE DROP-OFF RECYCLING!!

All residents and visitors are asked to source separate their recyclable materials. There are designated bins located at our office located at 11300 Wards Ferry Rd. in Big Oak Flat where you may drop off your recyclable materials anytime **Monday through Saturday 8am to 5pm** (weather permitting). CLOSED SUNDAYS and major holidays.

Acceptable materials include:

- Aluminum beverage containers, tin cans, glass bottles and jars (all colors)

- #1 Plastic (bottle form only)

****#1 clear fruit/veggie, sandwich or salad clam shell type containers are NOT allowed****

- #2 Plastic (bottle form only)

****#2 colored plastic coffee containers are NOT allowed****

- ALL CONTAINERS MUST BE RINSED AND FREE OF LIDS AND CAPS

We also accept Mixed Paper, newspaper, magazines, catalogs, junk mail, paperback books & shredded paper which can all be put in the same bin. NO WRAPPING PAPER ALLOWED

CARDBOARD BIN ACCEPTABLE MATERIALS INCLUDE:

Cardboard, Carton Board such as cereal and cracker and soda/beer boxes, etc. are also accepted and can be placed in the cardboard bin with the cardboard. THESE ITEMS NEED TO BE FLATTENED OR BROKEN DOWN AND ANY PACKAGING MATERIALS OR TAPE REMOVED.

IF THE CARDBOARD BIN IS FULL OR YOU HAVE A LARGE LOAD OF CARDBOARD TO RECYCLE, we ask you to take it to our shop location at 17641 Yates St. in Big Oak Flat where we still maintain a 50 yard cardboard recycle box.

PLEASE DO NOT THROW PLASTIC BAGS OF RECYCLABLES INTO THE BINS.

HOURS
MON-TUE: 11AM - 10PM
WED 11AM - 9PM
THU-SUN: 11:00 - 10PM

“WE TAKE LOCAL COMPETITOR’S COUPONS!”

FREE Wi-Fi

PIZZA PIES

TRY OUR ALL-YOU-CAN-EAT LUNCH SPECIAL OR OUR OVEN BAKED SUBS

Call ahead: 962-4897 (962-GUYS)

18955 Ferretti Road. Left turn off of Main St (Hwy 120) 1/2 Block

\$1.00

Off Any Size Two Guys Pizza or Calzone

One coupon per order, per visit. May not be combined with any other offer and/or coupon. Not valid on delivery.

PML0320 Expires 04/15/20

\$2.00

Off Any Large or Extra Large Two Guys Pizza

One coupon per order, per visit. May not be combined with any other offer and/or coupon. Not valid on delivery.

PML0320 Expires 04/15/20

From the Fringe

Mike Cook – PGA Head Golf Professional

UPCOMING EVENTS

Ladies 9 & 18 Hole Golf Clubs
Weekly Play Day – Thursdays

Men's Golf Club
St. Patrick's Day Tournament
Saturday March 21

Men's Golf Club
Orange Ball – Wednesday April 1

Greens Aeration – Golf Course Closed
Monday & Tuesday April 6 & 7

HOLE-IN-ONE

Congratulations! To Tim King who had his first Hole-In-One on hole #17 on Friday February 7.

GOLF CART USAGE

Just a reminder of how important it is to drive golf carts according to the 90 degree rule:
1) Keep the cart on the path as much as possible.

- 2) Drive laterally to your ball.
- 3) After hitting your shot drive back to the path or in the rough, if the ball is on the opposite side of the path.
- 4) When you reach the BLUE STAKES, drive to the path, park the cart on the path and walk to the green.

Please follow the above policy that is posted in every golf cart so we can keep our golf course in great condition.

GOLF CART BLUE FLAG POLICY

If you have a physical condition that makes walking to your ball difficult, we have a Blue flag policy that you may qualify for. Please check with the Golf Shop staff for more information. But even with a Blue Flag there are the following rules to follow:

- 1) Using the 90 degree rule is still required before you reach the Blue Stakes.
- 2) You may drive past the Blue Stakes but you must stay in the rough and drive no closer than 30 feet from the green and or bunkers.
- 3) After completion of the hole drive the golf

cart back to the Blue Stake to get back to the cart path. There are curbs bordering many of the cart paths near the greens that we do not want you to go over.

- 4) Please, never drive the golf cart around in back of any green.

PICKLE BALL PRODUCTS

The Golf Shop has expanded its stock of Pickle Ball products to include: Men's & Ladies Tee Shirts, premium and economically priced paddles. The Golf Shop is open daily from 8:00 am to 5:00 pm during the winter months.

JUNIOR GOLF PROGRAM

We will continue our Junior Golf Program in 2020. If you have a son, daughter, grandchild or know a young person that is between 8 and 17 years of age and would like to be a part of our 2020 program. Call the Golf Shop 209-962-8620 and we will add them to our mailing list. The dates we are looking at for the clinics are:

Session 1 – July 9-11

Session 2 – July 23-25

Session 3 – August 6-8

We will have the registration forms available by mid-March.

STARTING TIMES

We will be returning to starting times instead of our winter shotguns on Monday March 9. Our first tee time will be 9:00 am (depending on frost). Call the golf shop 962-8620 to reserve a starting time. Property owners can make a reservation up to 14 days in advance.

MEN'S & LADIES GOLF CLUBS

If you are interested in joining the Men's or Ladies Golf Clubs you can call the Golf Shop and we will give you the information you need. The Men's Club has a website (www.pmlmgc.com) that you can visit for an application, tournament schedule and other information concerning the Men's Club Organization.

Recreation Update

Michelle Cathey – Recreation and Seasonal Operations Manager

We are getting ready for the Pine Mountain Lake Association Job Fair. March 14th is just around the corner. Our focus is on getting as many people to visit the job fair and our website as possible. Review the employment opportunities and apply to your area of interest. It is going to be a fun season filled with learning and growth.

Did you know that even if you don't live in PMLA, you can still get to the Job Fair at the Lake Lodge? You can! Just contact our HR Manager at (209) 962-8628 or call my number at (209) 962-8604 and we will let the Department of Safety, Main Gate know you are here for the job fair and they'll let you

in between 11 am and 2 pm on March 14th.

Did you know that if you are between 14 – 18 yrs. old you will need a work permit? Shannon McNair, from Human Resources, can talk to you about that process and give you direction, as needed.

Another focus in 2020 is planning new events for all ages. The events will be during the week and on weekends, so everyone can participate. We're working on a lot of events for you to enjoy. It's a great way to have fun and build community.

OPENING DATES:

Marina – May 23rd

Pool – May 23rd

Tee to Green

Rob Abbott – Golf Course Superintendent

The golf course maintenance crew has been hard at work through the winter months. We have been focused on cleaning up fall debris and winter debris along with many other projects readying the course for our summer season. We saw a lot of snow damage to our Live Oaks particularly to holes six and seven that have consumed many of our labor hours I had slotted for other projects. The trees were heavily split from heavy snow loads and were absolutely in need of removal for safety reasons. For the golfers out there, that have noticed the areas where the removal has occurred, you will be happy to know there will be grass planted and irrigation reworked in those areas.

Staff will be continuing the bunker sand replacement project through the year along with all of our upcoming spring projects. We will be aerating the greens and pulling cores on April 6th and 7th and the course will be closed those days. Yes, the greens will be a little sandy, slow and bumpy but this is the process and the conditions we must deal with to have healthy greens the rest of the year. We should have the tees, fairways, and rough, aerating by this point as long as the weather holds. There will be some impact to the golfers during these horticultural activities but staff will try to keep it to a minimum.

Aerating achieves three important objectives. One, it relieves soil compaction. Two, improves the soil mixture to promote root zone and drainage. Three, aerating and topdressing reduces thatch accumulation at the surface of the green.

Golfers are always ready to get out and cannot help but be disappointed when they hear the words frost delay, frozen greens, or cart path only. Golfers who enjoy playing all year will encounter times when limiting access to the golf course is necessary. A question that I must ask myself is will traffic from golfers cause any long- or short-term damage to the turf that could affect course conditions now or in the future? All courses make decisions about winter play, because the growth pattern of the turfgrass change as days lengthen and shorten. Temperature decrease, also changes the response of turfgrass to stress from the golfers and course maintenance activities. Therefore, we must adapt to a variety of conditions that affect short- and long-term course health as weather patterns become colder and wetter. We have seen an extremely dry winter thus far and I am hoping for some significant rainfall in March to help flush the soil and give us a healthy snowpack. That said get out and enjoy the course on the sunny warm days ahead.

Carron Tax
associates

Carole Smith
Enrolled Agent

20093 Ridgecrest Way
Groveland, CA 95321
Tel: 209/962-6119
E-mail: carolesmith@carrontax.com

INCOME TAX PREPARATION
AUDIT REPRESENTATION

Resolution 20.02

Continuation of Declaration of Emergency Big Creek Bank Stabilization

In accordance with Pine Mountain Lake Associations' CC&R's, Article III, Section 7 (c), Adoption and Amendment of Rules, the Board of Directors has approved a new Resolution #20.02, Continuation of Declaration of Emergency-Big Creek Bank Stabilization. The purpose of the resolution is to continue the Declaration of Emergency-Big Creek Bank Stabilization (Resolution 19.03) that was adopted by the Board of Directors at a duly noticed meeting on March 15, 2019, at the PML Lake Lodge.



Resolution 20.02
Adopted: February 1, 2020

PINE MOUNTAIN LAKE ASSOCIATION CONTINUATION OF DECLARATION OF EMERGENCY BIG CREEK BANK STABILIZATION

BACKGROUND

The winter storms of 2017 and 2018 resulted in significant storm runoff and subsequent flood damage throughout the PML Association. These and subsequent storms resulted in significant water flow over the Pine Mountain Lake emergency spillway. These flows, accelerated by the steepness of the spillway chute, caused the creek channel to jump its historic flow pattern and adversely impact the creek bank near Deerbrush Court in Unit 6 of the subdivision.

Damage to the bank consists of scour to bedrock, erosion and destabilization of the bank along Unit 6 lots 88, 89 and 90 and threatens to the residential improvements constructed on lot 89.

PMLA staff has taken emergency measures to slow the bank loss at Lot 88, but emergency construction measures are necessary to enter the channel with heavy equipment and rock materials to redirect the channel and reconstruct and stabilize the bank.

An emergency declaration by the PMLA Board of Directors will allow channel and bank stabilization work to occur prior to eventual environmental permitting. The imminent danger to the bank and improvements, including risk to the residents of Lot 89 justify the declaration of an emergency.

RECOMMENDATION

It is recommended that the PMLA Board of Directors make the following findings:

WHEREAS:

1. In 2017, 2018 and 2019, storm-caused runoff into Pine Mountain Lake engaged the emergency spillway resulting in changes to the flows within the Big Creek channel.
2. Because of the above storm events, the primary flow channel has moved to the north causing scour damage to the right bank of Big Creek, downstream of Pine Mountain Lake dam; affecting Lots 88, 89 and 90 of Unit 6 along Deerbrush Court.
3. Damage to the right bank has resulted in loss of soil, trees and brush with over steepening of the bank.
4. The over steepened bank is destabilized threatening further loss of materials along Lots 88, 89 and 90.
5. Residential improvements constructed on Lot 89 consist of a covered patio and single-story wood framed residence.
6. The loss of creek bank soils and vegetation has caused settlement beneath the patio and further bank loss may result in loss of patio improvements and risk to stability of the residence.

THEREFORE, BE IT RESOLVED

That the Board of Directors of the Pine Mountain Lake Association, under whose jurisdiction and responsibility dam operations and creek channel maintenance is executed, hereby makes a finding of emergency for the immediate repair and stabilization of the Big Creek channel and bank and reconstruction and stabilization of the Creek right bank along Unit 6, Lots 88, 89 and 90 in order to protect the interests of the Pine Mountain Lake Association.

Respectfully submitted,

Mike Gustafson

Mike Gustafson
Secretary, Board of Directors

MG/JP 2/6/2020 dd

PML Organized Groups & Clubs

Contact the individuals below if you are interested in joining!
(All numbers are 209 area code unless noted otherwise)

Aviation Association	
Bonnie Ritchey	650-996-6274
Computer Users Group	
Frank Perry	962-0728
Exercise	
Barbara Elliott	962-6457
Cindy Simpson	962-7018
Friends of the Lake	
Mike Gustafson	962-6336
Garden Club	
Linda Flores	962-0824
Groveland Rotary Club	
Rudy Manzo	962-5219
Greg Cramblit	962-0607
Ladies Club	
Evelyn Bealby	650-743-4105
Men's Golf Club	
Pat Hennigan	962-4470 768-3720
Needle Crafts	
Barbara Klahn	209-916-5420
Pickleball Club	
Elisa Hoppner	962-2002
Pine Needlers Quilt Guild	
Lynn Sigafosse	962-1868
PML Ladies 18 Hole Golf Club	
Marcee Cress	962-0771
PML Niners	
Stacie Brown	962-5129
PML Safe Streets Campaign	
Leslie Dudley	962-4911
PML Shooting Club	
George Voyvodich	962-5163 770-5163
PML Waterski & Wakeboard	
Dean Floyd	408-915-8848
Racquet Club	962-6787
Mike Canizzaro	510-414-9657
Residents Club	
Dick Faux	962-4617
ROOFBB	
Susan Dwyer	962-6265
Sierra Professional Artists	
Heinie Hartwig	586-1637
Southern Valley Srs. Golf Group	
Rich Robenseifner	962-0932
Wednesday Bridge Club	
Linelle Marshall	962-7931
Windjammers Sailing Club	
Ken Regalia	415-819-4252

PML Men's Golf Club

Steve Burke

THE 2020 TOURNAMENT SEASON HAS STARTED!

Your Men's Golf Club has 20 Tournaments on the schedule for 2020. The first tournament, the Icebreaker, was played February 22, and we will report on those results next month. The next tournament, the St. Patrick's Day Tournament, one of the most popular tournaments of the year, is a 4-man, 2 best ball, scheduled for Saturday, March 21, 11:00am shotgun.

Throughout the year the Men's Golf Club has scheduled Tournaments with a variety of formats, and most with multiple flights, to accommodate all ages and skill levels. Some of the favorites are the Orange Ball in April, the Razzle Dazzle in May,

the Hamburger in August, and, of course, the Italian Open in September.

The 2020 Men's Golf Club Tournament Schedule is on the Men's Golf Club website. Go to www.pmlmgc.com to review the new tournament schedule and plan the events you would like to participate in during 2020. You can join the Men's Golf Club anytime during the year and participate in any of these events. It's a great way to meet new people and be active in our beautiful mountain setting.

ABOUT THE MEN'S GOLF CLUB

The Pine Mountain Lake Men's Golf Club (PMLMGC) is an organization of properly handicapped golfers, that helps improve the quality of play and increase

interest and pleasure in playing golf at the Pine Mountain Lake Golf & Country Club. The club is a non-profit organization and is registered with the Northern California Golf Association (NCGA).

The PMLMGC welcomes all property owners to join our club. Membership is available even if you have not yet established a USGA Handicap Index. Membership applications are available in the Golf Shop, or you can contact our Membership Director, Will Hoppner.

Entry forms for all Men's Club Tournaments are available in the Golf Shop, or you can download the forms at www.pmlmgc.com. Internet tournament sign-up and payment capability is now available on the website.

PML Racquet/Tennis Club

Pauline Turski

ABOUT THE PML RACQUET/TENNIS CLUB

Tennis is one of the year round activities at PML so come on out and join us! Whether you are an experienced player or someone who has never played before, Racquet Club members will make it easy and fun to get started playing tennis at Pine Mountain Lake. From tournament players to beginners, everyone is welcome - full time, part time, guest, and renters. We have a program for you and want to see you on the courts.

For questions or to learn more about the PML Tennis Club send an email to pmlracquetclub@gmail.com.

TENNIS PLAY AND SOCIALS

Tuesday night tennis socials will start on June 2nd and run through the end of September, typically on the 1st and 3rd Tuesday of summer months. We will have three tournaments this summer. The first is Cinco de Tennis and will be held on May 5th. Come on out for play and enjoy a Mexican Feast. You can get your siesta after! The Wimbledon tournament is on July 7th with a brunch and the Davis Cup is on September 15th with a potluck lunch

immediately following the tournament. Send an email to pmlracquetclub@gmail.com regarding your interest in any of the summer socials and/or tournaments.

Weather permitting, we offer drop-in tennis every Saturday starting at 10:00 a.m. during the winter months. Simply drop in at courts 3 and 4 at Rock Canyon Way and Pine Mountain Drive to play; no advance scheduling required. This is a great way to meet members.

Join us for organized group tennis on Monday through Friday. We start at 9 AM in the cooler months and wrap up by mid-morning. If interested in joining us for weekday tennis, send an email to tomknoth@yahoo.com.

GENERAL RULES

A valid tennis pass is required to play. Annual tennis passes are sold at the Administration Office. Daily and monthly passes are sold at the Main Gate Department of Safety. Non-marking tennis shoes only. Appropriate tennis attire - no swimsuits or jeans. No food or drink other than water on the courts and no glass containers. Learn more by visiting the Tennis page at PMLA website, www.pinemountainlake.com/tennis-and-pickleball-courts/

Pickleball

Tammy Talovich

POT O' GOLD

Follow the rainbow to the Pickleball Courts maybe there's a pot o' gold, if not maybe just some Irish Luck to help our games get better.

The weather has been great for Pickleball, lets hope it continues for March, so come on out! If you are a newbie, experienced or somewhere in between; we invite all levels to play. Just bring your water, wear comfy clothes and court shoes we've got the equipment, if you don't.

The Pickleball Center is on Mueller (by the golf course) there is usually someone out playing every Monday, Wednesday, Friday, Saturday & Sunday at 10:00 AM. During this time of year - it is weather permitting - if it's cold that's fine but wet courts are dangerous.

Please don't forget to purchase your Pickleball Annual Pass at the Administration Office; or you may purchase a daily pass from the Main Gate.

If you want to join a fun bunch of people, the club membership is \$15.00 per person. There will be some fun events planned for this year. You don't have to play pickleball to join us for our members-only social events!

Come on out and have some fun with us!
See ya on the courts!

HOMES ON THE HILL

**YOUR GUIDE TO
REAL ESTATE IN THE
GROVELAND AREA**



RE/MAX
Yosemite Gold
Each Office Independently Owned and Operated

Patricia (TISH) Fulton
REALTOR® / PROPERTY MANAGER
BRE #00760019

18688 Main St. P.O. 808
Groveland, CA 95321

Phone: 209-962-0837
Office: 209-962-4080
Cell: 209-985-0216
Email: Tish.realestate@gmail.com




YOSEMITE GATEWAY PROPERTIES
GROVELAND, CALIFORNIA

	<p>GEORGE VOYVODICH Broker/Owner 209-962-5163 Office 209-770-5163 Cell gvoyvodich@gmail.com BRE license 01080130</p>		<p>JUNE DEE Realtor/GRI 209-962-5190 Office 209-962-7060 Home Office 209-770-5190 Cell junedee@ymail.com groveland-real-estate.com BRE license 01700083</p>
--	---	--	--

CALL TODAY TO LIST YOUR HOME

YosemiteGatewayProperties.com • (209) **962-5190**

Cynthia Brown
Sewing & Alterations

19623 Cottonwood St. Groveland Ca
95321



818-824-2955

PMLA OWNED LOTS FOR SALE

2/287	FERRETTI ROAD	\$2,500
2/291	FERRETTI ROAD	\$2,500
3/056	ECHO CT	\$1,000
3/057	PINE MOUNTAIN DRIVE	\$1,500
5/212	FERRETTI ROAD	\$1,000
6/113	FERRETTI ROAD	\$1,000
7/049	FERRETTI ROAD	\$1,000
7/133	JACKSON MILL DRIVE	\$1,000

**FOR FURTHER INFORMATION REGARDING THESE
PROPERTIES PLEASE CONTACT PMLA AT (209) 962-8600**

Groveland's only Multi-Line Insurance Agency

Kiefer Insurance Agency—Since 2002

Working with top rated insurers in the primary and secondary markets, we have coverage for ALL your insurance needs:

**Homes • Autos • RVs • Boat • Trailer • Mobile
Motorcycles • Business • Rental • Renovation**

18800 Main St
Groveland, Ca 95321
Lic 0D77765

P 209-962-6593
F 209-962-6656

LET US HELP YOU, INSURE YOUR FUTURE

Community Organizations

Contact the individuals/organizations below if you are interested in joining!
(All numbers are 209 area code unless noted otherwise)

If you would like your community organization listed please send your group's name, contact person, and phone number to
debra@pinemountainlake.com

Camp Tuolumne Trails - Jerry Baker - 962-7916
Friends of the Groveland Library - Virginia Richmond - 962-6336
Village on the Hill - 209.962.6906 or info@villageonthehill.org

Love Movies? So Do the ROOFBB's!

Dar Brown

The ROOFBB's are proud to be a sponsor for "Movies in the Park" which brings the community together to enjoy recent movies. If you haven't gone, give it a try – such fun. The ROOFBB Spring Luncheon will be April 17. The luncheon is always great fun and an opportunity to hear about events and plans for the year. While we are all still reeling from our beloved 49ers losing to the Chiefs in Super Bowl, we will continue to have Monday Night Football dinners and game-watching

starting in September. ROOFBB's are a proud philanthropic organization giving back to those in need in our community including paying propane bills, rent, buying firewood, and the like plus sponsoring Groveland Operation Care – Packages for our Troops. If you would like to give back to our community and have a terrific time with a bunch of truly fun and loveable women, please join us. Mail your \$40 membership check to P O Box 1163, Groveland, CA 95321. We would love to have you with us.

YOSEMITE AREA REAL ESTATE

PAUL S. BUNT REAL ESTATE – DRE #01221266



RARE 4.5 AC LOT IN PML!

One of the largest lots in PML! Lot B2 also for sale, buy both! Awesome multitiered views. Very private yet located near amenities at end of cul-de-sac & borders lg ranch. 19701 Jones Hill Ct **\$124,900**



SUPERB LOCATION

.73 acres, 3 bdrm., 2.5 ba., 2810sf
Double treed lot backs up to seasonal creek. Lots of parking.
12417 Tannahill Dr.
1/349
\$449,900



LAKE VIEW & DUAL HOMES

Main home 3 bdrm, 2 ba, 2302sf.
Mother-in-law 1 bdrm, 1 ba 728sf
Low Price – 3/217
20399 Pine Mt. Dr
\$299,900



1.48AC NO GATE, CUL-DE-SAC

3 bdrm, 2 ba, 1560sf, single lvl, Tile roof,
2 garages, Circular drive, Nearly new AC/
Heat/Deck, Close to stables/airport/lake
Lodge, 20700 Chaparral Ct. – U11/L47
\$249,900



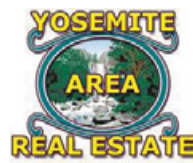
SINGLE LEVEL-EASY ACCESS

20535 Ferretti Rd. Double Lot .71ac.
Beautiful trees, private, move in ready
Unit 3 Lot 42A **\$249,900**



LARRY JOBE

REALTOR – TAXIWAY EXPERT
209.962.5501 • 209.768.5508 Cell
larryjobe1@gmail.com
DRE #01444727



PENNY CHRISTENSEN

BROKER ASSOCIATE – CRS
925.200.7149 Cell
penny@askpenny.com
DRE #00785760

PENNY & LARRY – Our Passion Is Here, Where's Yours?
Local Agents, Modern Technology, **Best Service**



GOLF COURSE HOME

Walk to Country Club,
located on first fairway
4 bdrm, 2.5 ba, 2892 sq. ft.
12599 Tannahill Dr.
Unit 5 Lot 9
\$449,900



COMMERCIAL LOT

Only R3-MX lot for sale in PML.
Contractors dream. Build multiple units
or one incredible home. Lg lot w/perfect
location, next to golf course & across from
pool and Country Club. View galore!
Mueller Dr. – U5/L189 **\$224,900**



COMMERCIAL ON AIRPORT

20970 Elderberry Way
Unit 11 Lot 18 (Old Corsair site)
County approved building plans
Two hangars, multiple storage units
\$20,000 value included.
\$99,900



HWY 120 COMMERCIAL FRONTAGE

88.13 acres with 1022 feet of frontage
on Hwy 120, 1/2 mile west of Groveland.
Rare buy at **\$449,900**



LUXURIOUS & PRIVATE

5 bdrm., 3.5 ba. 3511 sq. ft.
1.34 acres Two 2 car garages
and work shop, hobby room
20523 Echo Ct. – Unit 3 Lot 15
\$549,900



5.39 PRIVATE ACRES

This home is truly unique & is a "one of a kind", built to last.
Perfect for Airbnb or B&B 4bd/4ba/2,705sf. Antique tub.
Mstr bdrm is lg w/sit-in bay window. Much, much more to see.
Manicured, usable acreage. No HOA dues 20955 Whites
Gulch Rd. **\$549,900**

LAND AND LOTS

- 6/45 **\$4,999** Cottonwood St.
- 4/571 **\$5,900** Rock Canyon Way
- 8/267 **\$9,950** Hillhurst Cr.
- 4/378 **\$19,900** Big Foot Cr.
- 12/227 **\$19,900** 1.48ac Hillcroft Dr.
- 11/56 **\$24,900** Elderberry Ct.
- 12/80 **\$29,900** 21257 Jimmersall Ln.
- 5B/3 **\$124,900** 19071 Jones Hill Ct.



NEW CONSTRUCTION

Choose your colors, flooring and finishing touches in this
5 plus bdrm, 3 bath home with over 4400sf and that
boasts views of the golf course. 20145 Pleasantview Dr.
– U1/L221 **\$649,900**

www.YosemiteAreaRealtors.com



CHRIS H. LAKE
DRE 00946632
209-768-6156

chrishlake@gmail.com



GINA GIAMPIETRO HERNANDEZ
DRE 0122655
408-506-6944

GinaGHRealEstate@gmail.com

Our FREE HOME STAGING helps you sell!! No one does what we do!
Lake Homes, Golf Course Homes, Country Homes, Cabin Homes, Newer and Fixers



**YOSEMITE AREA
REAL ESTATE**

18634 MAIN ST. STE 1 GROVELAND

View listings at www.YosemiteAreaProperties.com

PAUL S. BUNT REAL ESTATE BROKER DRE 01221266

Make
Chris & Gina
your
1st call!

RARE FIND



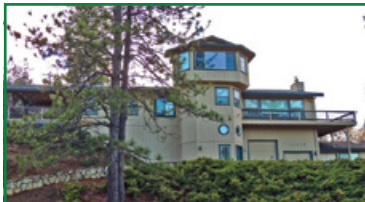
12752 CRESTHAVEN U4/L2 – \$359,000
3bed/2.5 baths 1855sf. Single lvl on 3/4ac lvl dbl lot. Attchd oversized 2 car gar. w/flr to clng adjstble shelving for storage. Addtl work shop area extended from garage. Paved parking for RV & boat. Great rm concept w/vltd clng & fp. Light/airy kitch. w/tons of storage. Low maint. landscape, lg ext. deck w/propane for BBQ. Clear pest report available. Move-in ready.

BEAUTIFUL PEEKABOO LAKE VIEW



20449 ROCK CANYON WAY U3/228 – \$369,000 A block fr Fisherman's Cove, rare find, single lvl w/enormous kitch w/Corian island cooktop, cabinets throughout, breakfast nook w/patio door, gated back covered patio, sep dining rm, formal entry w/hardwood flrng, new carpet, lg lvng rm w/f.p. & bright windows, 4th bdrm or den, 1/2 ba, indoor lndry, 2 guest bdrm & Mbr w/patio access, walkin cedar lined closet. Oversize 2 car gar w/storage.

MOUNTAIN ESTATE



11950 MOUNTAIN SPRINGS U13/L226 – \$569,000 One of a kind. Beautiful View of entire valley! 4B/4ba, 3 floors elevator access, wd flrs w/tile inlay, gourmet kitchen, huge mstr bdrm w/gas fp, hot tub off mstr w/covered porch. 4 car oversize gar, indoor endless pool, gym rm, 3rd flr cupola, lg wrap around deck w/synth low maint material & metal rail. 2 other deck areas, indoor laundry, lg pantry, alarm, Central HVAC, beautifully landscaped on double lot on cul-de-sac.

GREAT LOCATION/COZY CABIN



19390 PLEASANT VIEW. U1 L73 – \$239,000 3 bd/2ba 1576 sq ft. Vaulted/open bm ceiling. Air tight f.p. keeps you toasty on chilly nights. Grt rm concept Lg bdms w/lg closets. New efficient heat/air unit. Trex type decking on 2 expansive decks. Great for BBQ and/or just relaxing. Convenient ext. open elevator/lift. Inside laundry. Lower level access to attached 2 car gar. Add'l private entry. Newer roof. 1/3ac usable lot w/seasonal creek. Close to golf course & beach. Perfect location & vacation cabin w/great potential for vacation rental! Affordable & Adorable Move-in ready.

NEAR LAKE LODGE BEACH



20235 PINE MT DR. U4/L420 – \$399,000 3292sf 4bd/3ba. Walking distance to beach. Great rm concept, remodeled kitch. sep. office, oversized walk-in pntry/stor. 2 mstr stes, 1 on entry level. Bonus rm w/fp & wet bar, open beams. Deck & custom lg patio. Sep. workshop. Parking & oversized 2+carport. Addtn'l exterior storage cabinets. Home warranty included.

LARGE FAMILY CABIN



19712 BUTLER WAY U8/L232 – \$282,000
Near Marina & Golf, this is the perfect family cabin in Pine Mountain Lake. Great room w/vaulted knotty wood/open beam ceiling & rock fireplace, open large kitchen w/breakfast bar that seats 5, plus mini bar, 2 master bedrooms on main floor, large downstairs family room w/3rd master & additional sleeping area, w/wet bar. Large outdoor deck w/tree views. Awesome for entire family! Tons of paved parking including RV parking space.

TONS OF BANG FOR THE BUCK



19418 FERRETTI U6/L256 – \$249,000. 1896 sq ft 3 beds/ 3 baths plus 4th sleeping room/office/study. Additional bonus/family room. Level entry. Hardwood flooring, vaulted wood ceilings. Granite counter tops in kitchen. Separate inside laundry room. Upper and lower level decks. Detached 1 car garage, expansive paved parking area. Backs to camping area. 1/2 acre lot. Close to all PML amenities.

DEEP WATER LAKEFRONT LOT



UNIT 4 LOT 123 LONGRIDGE CT. – \$79,000 .35 acres on cul du sac. Water access and beautiful lakeviews. Build your fabulous get away or full-time home here. Property will support a personal boat dock. Water, sewer and powerat the site. 87' of lakefrontage. Great location with east access to all the PML amenities-golf course, tennis courts, airport, stables swimming pool. Enjoy the good life. Gated community.

MOUNTAIN GETAWAY

SOLD



10247 RED CLOUD MINE RD GREELEY HILL – \$210,000 2bd/2ba 1360sf. Cozy cabin w/plenty of sleeping areas. Wd burning stove adds to cuddle factor on chilly nights. Some work is required so bring your tools. Oaks & pines are flourishing. Make this your permanent home or vacation get away.

AFFORDABLE/ADORABLE

SOLD



18548 NORTH DOME COURT – \$199,000 3/2 1 car .42ac Central Heat, laminate plank flooring, granite kitchen countertops, 3 yr new appliances, back balcony deck and front area cement patio, cement driveway on culdesac court, on septic, and a short drive to downtown.

LOTS FOR SALE IN PML

Unit 8/Lot 53A – .35ac, Beautiful buildable lot w/ Mountain & Tree views close to Marina & Golf Course. District water available. **\$15,000**



Unit 3/Lot 138 – Across from tennis courts. Expansive views. Close to Fisherman's Cove & beach area. Access road, water & sewer available **\$15,000**



Unit 4/Lot 348A – Big Foot Circle 1/2 acre, gentle slopes, seasonal creek, Septic approval, walk to lake **\$20,000**



Unit13/Lot102 – 1/3ac lot w/gentle up-slope. Level access from paved rd. Some mature pines. Great bldg site. Centrally located to amenities. Power & water at the property. **\$18,000**



Unit 5 Lot 109 – Rare opportunity - Beautiful cleared buildable golf course lot. .22 acres on fairway hole 13 on Mt. Jefferson Street. **\$70,000**



Unit 5 Lot 198 – Golf Course Lot w/view of Fairway 6 & 1/2 block from Clubhouse/Country Club, pool, pickleball & close to lake access. Gentle slope, slightly over 1/4 acre. **\$40,000**



DESIRABLE ACREAGE



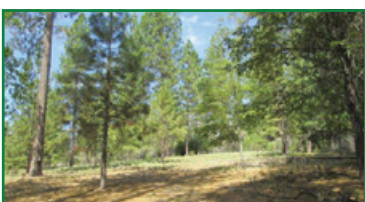
PAR 1A VERNAL DR – \$55,000 5.3 acres close to town yet allows for privacy. Expansive vista views and stunning sunsets. City water is available. Septic required, Several ideal building sites. Paved access. Oaks and pines blanket this parcel. NO HO dues here. Plenty of room to spread out. Bring all your toys A bargain at \$55,000

A PIECE OF PARADISE



20141 WHITES GULCH – \$175,000 23.96 acres. Endless possibilities build your dream home, AIRBNB or bed & breakfast. Easy access to Yosemite National Park. Expansive views. Property affords several great building sites. Power at the property, septic installed in '08, district water available. Private setting yet close to town. Enjoy all the amenities of the Sierra Foothills. Above the fog line & below the snowline. Fresh air & room to roam. A friendly community which gives you a sense of belonging.

ROOM TO ROAM



FISKE HILL RD GREELEY HILL – \$134,900 19.53 acres Opportunity awaits on this 19+ acre parcel. Two separate lot make up this toal acreage. Subdivision potenial .Gentle rolling and woody terrain or wide open meadow. Several choices available on this piece. Power is close by. Well and septic is required. Close to town yet secluded. Easy access has been created. Don't pass up this deal!!!!



BRE# 00683485



Pine Mountain Lake Realty

An Agent Owned Company

Lynn Bonander, GRI Owner / REALTOR®

18919 Ferretti Rd., Sthame. A, Groveland, CA
Office 209-962-7156 / Cell 209-484-7156

lynnb@goldrush.com www.pmlr.com



Enchanting Retreat only 1 Block from Lake!!

5 Bedroom/2 & 1/2 Bath, 2 Separate 2 Car Finished Garages, Cabinets, Shelves and Work Bench, 1 w/1/2 Bath, . Approx 2494sf, Approx 0.85 Acre. Great Rm, Cathedral Ceiling, Living Room w/ Free Standing Wood Burn Fire Place, Ceiling Fans, Family Room, Wet Bar, Large Kitchen, Island w/Electric Stovetop. Den, Master Bedroom w/Walk-in closet and Private Deck. Master Bath w/ Separate Shower. Inside Laundry, Security System, Window Coverings, Wood Framed Windows. Circular Blacktop Driveway, RV Parking, 3 New Deck Areas. Many Recent Upgrades - List Available. Beautifully Maintained Home!

Great Full Time Residence, 2nd Home or Vacation Rental!

12609 Mount Jefferson 5-68 **\$389,500** MLS#20191957



~ Wonderful Mountain Retreat ~

Beautiful Log Home on Big Creek, Hiking Trails right across the Street. Beautifully Designed offering Heart-stirring Warmth that will win you over. 3 Bd/3 Bth, 2440 sf, with Downstairs Guest Quarters, 3 Levels w/Bath on each level. Central Heat and Air. Tons of Amenities. All Furnishings Included. Built in 2007. On Vacation Rental Program.

20098 Pine Mountain Dr. 13-279
\$575,000 MLS#20150638



Beautifully Updated - Privacy with a View!

3 Bd/3 Bth, 2 Levels, Approx 1800 SqFt, Approx 0.38 Acre, Well Laid out Floor Plan. Central Heat & A/C, Living Room w/Rock Surround Fireplace, Brfst Bar, Stainless Steel Appliances, Master Bdrm w/Walk-in closet, Master Bath w/Separate Shower. Lower Level Family Room w/Freestanding Fire Place, Bedroom, Bath and Private Entrance. Inside Laundry, Large Deck w/Beautiful Views.

20018 Pine Mountain Dr. 13-198
\$245,000 MLS#20192163



Location ~ Location ~ Location

A Very Cute, Very Cozy Golf Course Cabin! Located Below the #1 Green. Location and Price makes this a great Get-Away 2nd Home or Investment Property! 3 Bedrooms, 1 Bath, Approx 1152 SqFt. and Approx 0.37 Acre. Close to Pine Mountain Lake Golf Course and Country Club, Pool, Pickle Ball Courts & many other Amenities.

Reduced \$10K 5-42 19220 Pleasantview Dr.,
\$189,000 MLS#20191365



Lovely Single Level Home!!

3 Bd/2 Full Bath, Single Level, Approx 1144 Sq. Ft., on Approx 0.23 Acre, Central Propane Heat and Air Conditioning. Spacious Open Floor Plan with Free Standing Heat Stove, Ceiling Fan, Lots of Natural Lighting. Inside Laundry, Washer & Dryer and Furniture Included. 2 Separate Decks, Great for Outside Entertaining. Home is on Septic. Large Sub Area for Storage.

19283 James Cir 2-245 **\$187,500** MLS# 20191638

LOTS FOR SALE!

- \$15,000 -13-244 - Beautiful Lot w/Pine Tree Setting
- \$15,000 - 5-213 Close to Country Club
- \$19,000 - 7-55 - 0.52 Acre Lot near Country Club
- \$28,000 - 1-106 Near country Club, Lake & Most Amenities
- \$39,000 - 4-21 Overlooks Green Belt - Close to Lake
- \$45,000 - 5-199 Level Golf Course Lot - Close to Country Club, Golf, Pro Shop, Pool
- \$89,900 - 4-128 Lake Front- Gorgeous View

MAY YOU FIND A POT OF GOLD AT THE END OF THE RAINBOW

HAPPY ST. PATRICK'S DAY FROM THE PML NEWS!



PINE MOUNTAIN LAKE REALTY

An Agent Owned Company

18919 Ferretti Road • PO Box 738 • Groveland CA 95321 • 209-962-7156 • www.pmlr.com



Barry Scales
Broker/Owner
209.484.7123
BRE#00451887



Lynn Bonander, GRI
Owner/Realtor®
209.484.7156
BRE#00683485



Val Bruce, GRI
Owner/Broker Assoc.
209.768.7368
BRE#00578336



Parker 'PJ' Johnson
Owner/Realtor®
209.768.6232
BRE#01732298



Marc Fossum
Owner/Realtor®
209.770.4750
BRE#01956242



Elaine North
Realtor®
209.768.4221
BRE#01047723



Patty Beggs
Owner/Realtor®
209.840.2293
BRE#01339347



Michael Beggs
Broker Assoc./Realtor®
209.840.2294
BRE#0133568



Taxiway Property with Hanger!

2 Bd/1 1/2 Bths, 2 Car Garage, Approx 0.65 Acre, 42'x32' Hanger on the Taxiway w/ attached Shop. House is set back for privacy. Great Rm, New Kitchen Appliances, HVAC, New Paint, New Roof on Hanger. Solid Surface Countertops, Inside Laundry, Washer & Dryer Included.

11-12 20900 Elderberry,
\$499,000 MLS#20192160



Mountain Retreat!
23633
Rock Hammer Rd
2.43 Acres!
\$675,000

2 Homes! Plus 2 Cottages Plus More!

Main House: Approx 2000sf, 4 Bd/3 Bth, 4 Car Garage w/Shop, Great Rm w/Fire-place, Brfst Bar, Island, Inside Laundry, Deck, Gazebo, Storage, Covered Porch and Deck. 2nd House: 2 Bd/2 Bth, Separate Well & Address, Large Deck, Forest Settings. 2 Guest Cottages plus Additional Sleeping Area, Seasonal Pond, Paved Driveways, Well Water. MLS#20191814



Cozy Cabin in the Woods
19743 Butler Way
8-286
\$219,000

3Bd/2Bth, 2 Levels, Approx 1360sf, Approx 0.9 Acre, Large Trex Deck, Window A/C, Baseboard Heat, Great Rm w/Stone Surround Fireplace, Open Beam Ceiling, Lighted Ceiling Fans, Sky Lights, Wood Framed Windows, Brfst Bar, Solid Surface Countertops, Large Lower Level Family/Bonus Rm, Inside Laundry Rm, Security System. MLS#20190652



Location-Location-Location!

3 Bd/2 Bth, 2 Car Garage, Split Level, Approx 1904sf, Central HVAC, 2 Decks, Large Great Rm, Fireplace w/ Rock Surround, Master w/Walk-in, Both Baths have Double Sink Vanities, Inside Laundry. 19659 Pine Mountain Dr, 1-477 **\$329,000** MLS#20191717



20040 Pleasant View
1-173
\$369,000
MLS#20192205

Immaculate Golf Course Home. 3/Bd,2 1/2/Bth, Approx 1817sf, 2 Car Garage, Extra Paved & Level Parking on .68 Acres. House sets back for privacy with 120 ft of Golf Course Frontage. Great Rm with Views, Bedroom Suite w/Sun-room Annex. Beautiful well designed Kitchen with Stainless Steel Appliances. Many Furnishings offered with property. Large Front Yard has an ancient Willow Tree that has grown around an old Wagon Wheel.



Beautiful Mountain Home!!

3 Bd/3 & 1/2 Bths, 2 Car Finished Garage w/ Shelves, Cabinets & Workbench, Approx 2240sf, Approx 0.54 Acre. Office, Bonus Rm, Great Room w/Fireplace, Brfst Bar, Brfst Area, Dining Room, Master Bed/Bath with Separate Shower & Vanity. Inside Laundry. Home Overlooks Big Creek & Lush Green Belt.

20791 Nonpareil Way10-31,
\$449,000 MLS#20200039



Modern Mountain Chalet
19368 James Circle
2-365
\$399,000

3 Bed/2 Bath, Bonus Room, 2 Car Garage, Built in 2006, Approx 2242sf, Great Room with Propane Circulating Fireplace w/Slate Surround, Ceiling Fans, Office, Cathedral Ceiling, Large Modern Kitchen, Breakfast Bar, Master Bed w/ Walk-in Closet & Private Deck, Master Bath, Dual Lav, Jetted Tub, Separate Shower, Inside Laundry, Washer & Dryer Included. MLS#20192178



Cute as a Bug's Ear!

2 Bd/1 Bth, 2 Car Attached Garage w/ Shelves, Great Rm, Wood Burning Fireplace with Stone Surround, Ceiling Fans, Solid Surface Countertops, Window Coverings, Hall Bath w/Tub/Shower and Vanity, Washer & Dryer Included.

19414 Pine Mountain Dr 1-369
\$169,900 MLS#20191715



Super Location & Views!!

2 Bd/2 Bth + Bonus Area, Attached Garage, Approx 1759sf on .54 Acres. Great Room, Fireplace w/Rock Surround, Central Air, Inside Laundry. 11'x11' Screened Porch w/ pass thru to Kitchen. 8'x12' Shop/Storage New Trex Decks on both sides, New Septic System. Close to Many Amenities!

19600 Golden Rock 1-195
\$245,000 MLS#20190028



Adorable Chalet

3 Bed/2 Bath, 2 Car Garage, Plus extra Parking. Open floor plan 1944sf, Large Game Rm Lower Level, Bonus Rm Upper Level, Large Deck, w/Wonderful Mountain Views! Fire Place, New Pergo Wood Floors, New Carpet!

13026 Moeklumnes 2-203
\$275,000 MLS #20191388



Updated Cool Mountain Cabin
19640 Pleasantview
1-133
\$250,000

3 Bed/3 Bath, 1 Car Garage + Car Port, Approx 1608sf, Open Beam Ceiling, Granite Countertops, Ceiling Fans, Great Rm, Brfst Area & Formal Dining, Stainless Appliances. Kitchen and Bathrooms fully Remodeled, Hardwood Floors & New Carpeting & Paint in the Bedrms. Deck, Fenced Yard, and Drip System. MLS#20192138



Spectacular Views!!
11396 Alice Lane
\$460,000
MLS#20200109

4 Bd/3 Bth, Attached 2 Car & a 2 Car Detached Garage w/Wood Burning Stove. Approx 2655sf on 5.03 Acres! 180° of Views from Yosemite to the Coastal Range. Great Room w/Rock Surround Fireplace, A Beautiful designed Kitchen w/new Stainless Steel Appliances, new Hardwood Floors thru-out, Master Bed/Bath Features a 6'x5' Steam Shower, Home Theater, Family Rm on Lower Level, Skylights, Well, Septic System and so Much More - A Must See!



Cutest Cabin Going!

Pristine Bd/1 Bth, 2 Levels, Approx 1000sf, Approx 0.32 Acre, Electric Air/Heat, Large Open Loft Upstairs w/2 Sleeping Areas, Living Room w/Free Standing Fireplace, Open Dining Rm, Brfst Bar, New Floors & Granite Countertops, Washer & Dryer Included. 6-99 19187 Cottonwood St., **\$165,000** MLS#20200190



The Perfect Cabin!

4 Bed/1&1/2 Bath, Large Living Room, Continuous to Kitchen & Dining. Everything Stays. Wood Burning Stove. The front Porch is under repair & Pest Report pending. Green Belt & Hiking trails go for miles located adjacent to the back of the lot. Wildlife is abundant to view! 19720 Ferretti Rd 6-131
\$199,000 MLS#20190485



Prime Location - Walk to the Lake!

3 Bd/2 Bth, 2 Car Garage, Single Level, Knotty Pine Ceilings, Propane Fireplace, Oak Hardwood Flooring, Brfst Bar, Stainless Appliances, Master Bed/Bth w/Vanity, Separate Shower, Closeted Toilet, Built-in Display Cabinets, Upgraded Carpet, Covered Deck, & More! 1-118 19480 Pleasantview Dr. \$239,900 MLS#20192166

Lots for Sale

\$ 7,000 - 7-269 Very Buildable 0.66 Acre Lot

\$49,900 - 5E-17 Sean Patrick Prime Zoned R-3 Golf Course Lot

\$69,000 - 5-8 Dyer Ct VIEWS - Golf Course & Mountain Range!



Emmet Brennan
Broker/Owner
DRE 00659397



Dave Lint
Realtor
209.768.5010



Linda Willhite
Broker/Assoc
209.985.2363



Ron Connick
Realtor
209.206.0007



Kathleen Love
Realtor
209.743.5432



Carmen
Office Asst.
e-Marketing

www.sugarpinerealty.com
18727 Main Street
PO Box 792
Groveland CA 95321

209.962.7765

Cozy Ranch Style

\$348K

20575 Whites Gulch Rd

Call: Linda Willhite
209.985.2363

- * 3Bd/2Ba
- * 5 Acres
- * 2,100 sqft
- * Family Room
- * Large Bonus Rm
- * Oversized 2 Car Garage, *Large Circular Driveway, *Filtration System to Well Water



SALE PENDING

Cabin for All Seasons

20571 Rock Canyon

- * 3 Bd / 1Ba
- * Two Levels
- * Central Heat & Air
- * Upgraded Shutters & Windows
- * A Frame Cabin
- * Backs up to the Green Belt
- * Plus Extra Sleeping on side of Spacious Knotty Pine Loft



\$179,900 was \$199K
MLS# 20190277 Call: Linda

Secluded a Perfect for Getaway

\$339K

20185 McKinley Way

- * 4Bd/4Ba
- * Open Floor Plan
- * Two Car Garage
- * Open Great Room on Entry Level
- * Cathedral Ceiling
- * Breakfast Bar
- * Big Storage Area



*Enjoy the Back Panoramic View of Greeneries and Natural Light from the Kitchen or the Back Deck.
Call Ron Connick 209.206.0007

LOTS & LOTS of UPDATES!

\$379K

12909 Mueller Drive

- was \$389,000
- * 4 Bd/2 Ba
- * Large Bonus Rm w / Private Entry
- * Oversized Double Car Garage
- * Circular Driveway for Guests
- * Relaxing Patio
- * Beautifully Strategized Location for Full Solar Access



MLS# 20191276
Call: Ron 209.206.0007

BACK on the MARKET for LOWER PRICE!

\$269,900

was \$289K

- * 2 Bd/ 2 Ba
- * 2 Carport
- * Large Loft
- * .77 Acre
- * A Frame Cabin
- * Central Air & Heat
- * Ideal for Rental
- * Well Maintained



YOUR TRANQUIL HIDEAWAY
20580 Ferretti Road
MLS# 20190188 Call: Linda

LAKEFRONT \$109,000



Unit 15 Lot 93 .42 Acres
Dock included MLS #20192181



Call Ron 209.206.0007



PML Lots for Sale

- * **\$5K** was \$10,500 Mountain Views
- Unit 13 Lot 292 Ridgecrest
- * **\$10K** Beautiful Hill-Side
- Unit 10 Lot 7 McKinley
- * **15K** Level Lot Septic in
- Unit 6 Lot 135 Cottonwood
- * **\$59,900** Mountain and Lake View
- Unit 3 Lot 154 Boitano
- * **\$74,900** Lake Front
- Unit 13 Lot 276 Pine Mountain Drive

40 ACRES for \$189K!



Long Gulch
Groveland



Call Ron 209.206.0007

Build Your Dream in this 40 Acres perfect squared land. A Development Dream Zoned AE-37 to build Two Single Family Residences.

PML Taxiway Lot

Unit 12 Lot 79
Jimmersall



Call Linda 209.985.2362



\$75K

Last taxiway lot. Seller did not have the lot extended taxiway stops before this lot which price reflex that.

EVER STEAL A HOUSE?

\$209K

Call: Ron 209.206.0007
or Dave 209.768.5010

- * 3Bd/2Ba
- * 1,302 Sq Ft
- * Breakfast Bar
- * Cathedral Ceiling
- * Plenty of Parking
- * Furniture Included
- * Ideal for Retirement, Second Home or Vacation Rental.



13335 Wells Fargo

Visualize the Nature in Bird's Eye View

\$399,900

was \$449,900

- * 3 Bd/ 3Ba
- * .75 Acre
- * 2465 SqFt
- * 3 Xtrodinair Fireplaces
- * A Frame Cabin
- * Class AA Siding
- * Travertine & Granite Countertop
- * 2000 SqFt Decking



SALE PENDING

19889 Pine Mountain Drive
Call Linda: 209.985.2363

GROVELAND GAL FRIDAY

WHEN SPRING FEVER HITS...

Let me lighten your load with help with pet care, senior care, shopping, rides, organization, office work or...you name it!

SHARON VOLPONI
962-6848 • 770-6277



PAINTING & CONSTRUCTION



PAINTING - EXTERIOR/INTERIOR • DECK REPAIRS • WOOD REPAIRS • REMODELS

Bay Cal Construction
209.962.4777

www.baycal.com
email: davec@baycal.com



FREE ESTIMATES



Property Sales: (888) 962-4080 BRE Lic #975527
 PineMtnLake.com Rentals: (209) 985-0216



Lauree Borup
 Broker
 (209) 628-4600
 Lauree@Lauree.com



Ann Powell
 (209) 200-1692
 AnnPowell
 Realtor
 @gmail.com

Tish Fulton
 (209) 985-0216
 Tish.RealEstate
 @gmail.com



Eleda Carlson
 (209) 814-4123
 EledaC1
 @gmail.com



New Listing

YOU'LL BE CHARMED
 by this fine single-level home. Picture "purr-fect" inside and out. Meticulously maintained and tastefully decorate with nothing to do but move in. French doors, crown moulding, granite counter tops, light and airy interior with 3 spacious bedrooms, 2 baths, 2 car garage. Quiet Green Valley Circle location.
 3-411 \$329,950

FEEL LIKE YOU'RE OUTSIDE IN THE PINES looking through the wall of french doors. Large and light travertine tile floors in great room, stainless appliances, quartzite counters, breakfast bar, vaulted beam ceilings, 1700+ sq ft, 3 bdrm, 2 bath, plus bonus room with wet bar. Cent heat & A/C + propane fireplace in slate rock hearth, spacious deck in front, patio in back. Near Marina \$218,000



New Listing

MODERNBROKER

Weldon Killion - 209.459.0163 Janis Killion - 209.459.0098

view properties at KillionTeam.com CA DRE #00959395 / 01737445

Agent Opportunities at Attractive Commission Plans



Jimmersall Ln - 4,400 sf
 Open Floor Plan
 4 Bed/3.5 Baths & Wine Cellar
 Large Lot by Airport

Crescent Way - 3,312 sf
 2 Master Suites
 3rd Large Bedroom
 3.5 Baths, Shop & Grand Views



New Listing 7 Acres



Greeley Hill area \$325,000

POT O' GOLD at the end of the road! Like-new 2003 mountain cabin with National Forest on two sides. Open great room with soaring wood and beam ceiling. Main floor master bedroom & bath, 2 guest bedrooms and full bath in the upstairs with loft. Underground utilities. Not far from town but in a world of it's own.



GOLF FRONT for \$139,000! Cute condo near Country Club and swimming pool. Nicely maintained 2 bdrm, 2 bath. Stone fireplace in living room with sliding glass doors to the deck -level with the fairway. Newer tile floors. Dyer Ct. Oaks #10



2600 sq ft - 3 Stories



DELIGHTFUL WOODLAND SETTING Explore paths & benches alongside a babbling brook under magnificent oak and pine trees on shady .74 acre. Cedar chalet, giant-size deck, 3 bdrm, 3 baths, 2 bonus rooms. Upstairs large bedrooms have vaulted pine ceilings with skylights. Quiet street, close to Marina Beach. Grizzly Circle \$348,000

PAT LEAHY
 CONSTRUCTION

CUSTOM HOMES
 REMODELS

209-768-5759
 Lic# 1018268

NEW YEAR - NEW BENEFITS
 SCHEDULE YOUR APPOINTMENT TODAY

"A great smile is only one visit away."

SONORA
 (209) 532-3171

SMILES
 Dr. Dave C. Berger

Dr. Dave offers exceptional dentistry for patients of ALL ages

www.SonoraSmiles.com

\$100 OFF NEW PATIENT EXAM & X-RAYS

* For new patients only, this offer cannot be combined with any other offer. Please present this ad for discount.

PML Ladies Golf Club

Lisa Jimenez

This has been a fantastic New Year for the Pine Mountain Lake Ladies 18 Golf Club. Besides weather and course conditions that have allowed us to play, we have gained 6 new members! We welcomed Debra Benson, Anne Clark, Laura Kramer, Jane Morales, Jodie Rodriguez and Linda Sarratt. We look forward to playing and socializing with our expanding club!



JANUARY 2ND INDIVIDUAL POINT BOGEY

First Flight (Handicap 16-23)

1st - Jodie Rodriguez - 41 points
2nd - Kitty Edgerton - 36 points
3rd - Priscilla Park - 33 points

SECOND FLIGHT (27-30)

1st - Paula Vautier - 36 points
2nd - Helena McMillan - 34 points
3rd - Lisa Brown-Jimenez - 33 points
Birdies: Marcee Cress #10, Elisa Hoppner #14, Kit Edgerton #10, Jodie Rodriguez #1

JANUARY 23 ~ 666

1st Place - 135 points – Jodie Awai, Thelma Faux, Kitty Edgerton and Sue Perry
2nd Place - 137 points – Marcee Cress, Elisa

Hoppner, Helena McMillan and Paula Vautier

JANUARY 30TH LEFT/RIGHT PARTNERS

1st Place - 134 points – Elisa Hoppner, Kitty Edgerton, Priscilla Park and Paula Vautier
2nd Place - 136 points – Jodie Awai, Barbara Connelly, Marcee Cress and Laura Kramer

Remember, Golf is a four letter word for Fun!

PML Lady Niners

Deanie Martini

The PML Lady Niners met for our Annual Kick-Off Breakfast at the Grille on January 9. We currently have 41 ladies in our group! As members of WNHGA (Women's Nine-Hole Golf Association), our annual calendar not only includes fun tournaments and invitationals at our PML course, but, opportunities to golf at courses throughout our Northern California Area!

The month of January gave us a few chilly days, but we enjoyed playing, nonetheless! Thank you to the PML Golf Maintenance Crew who kept our course in great condition through the winter months!

JANUARY 2 - GAME: "PAR FOURS"

1st Place: Patty Nelson
2nd Place Tie: Stacie Brown & Pat VanGerpen
3rd Place: Sandy DeRodeff
Par's: #14 Susan Dwyer, Sandy DeRodeff, Deanie Martini & Patty Nelson, #17 Patty Nelson
Chip-In's: #15 Deanie Martini, #14 Patty Nelson
Low Net: Patty Nelson with 31

Low Gross: Stacie Brown with 51 & Patty Nelson with 51

JANUARY 23 - GAME "PUTTS DAY"

1st Place: Sarah Zimmerman with 17 putts
2nd Place Tie: Nancy Brewster and Val Kelly with 18 putts
Par's: #14 Linelle Marshall; #17 Trudy Alt
Chip-In: #16 Judy Michaelis & Pat VanGerpen
Low Net: Nancy Brewster with 35
Low Gross: Nancy Brewster with 55

JANUARY 30 - GAME "CRY BABY"

1st Place: Marilyn Bolar & Pat VanGerpen
2nd Place: Kay Bettencourt & Nancy Whitefield
3rd Place: Stacie Brown, Patty Nelson & Tammy Talovich
4th Place: Susan Dwyer
Par's: #14 Stacie Brown, Marilyn Bolar & Pat VanGerpen, #17 Pat VanGerpen
Low Net: Nancy Whitefield with 32
Low Gross: Stacie Brown with 51
January Ace of Aces: Patty Nelson with 31
January Queen of Clubs: Patty Nelson with 51

PML Ladies Club

Pat Summers

ST. PATRICK'S DAY AND ROARING TWENTIES

The first Luncheon for the Pine Mountain Lake Ladies Club 2020 season was a huge success ... a fabulous Mardi Gras event with surprises and prizes for all.



The masks worn by the ladies were amazing ... the luncheon served by 'Lunch Lady Catering' was authentic ... there were games and prizes for everyone.

During the February program, president Evelyn Bealby introduced the 2020 Board of Directors to the membership who then surprised her by honoring her for all the hard work and dedication displayed throughout 2019 ... new program themes ... special prizes and gifts throughout the year ... great menus by a variety of caterers ... and more.

The 2020 Ladies Club Board is: Evelyn Bealby, president; Patricia Epp, vice president communications; Cathie Clark, vice president events; Dart Woodruff, vice president membership; Barbara Coldren, treasurer; Pam King, secretary; Joan Stauffacher, parliamentarian..

The March luncheon and theme is St. Patrick's Day and will be celebrated on Wednesday, March 4. Included at this

luncheon is the Ladies Club's very first book swap. Members are encouraged to bring as many books as they want. For each book they bring they will get a ticket. Each ticket will be able to be redeemed for another book. Let the reading begin!! And it's all happening at the PML Lake Lodge.

The April luncheon and theme is 'The Roaring 20's ... and it is sure to be plenty of fun. Wednesday, April 1 ... no foolin'. So, it's time for pearls, bangles, cigarette holders, elbow-length gloves and feathers. It'll be a fun event with plenty of surprises and a fabulous lunch ... all at the PML Lake Lodge ... once again!

If you're new to Pine Mountain Lake or if you're looking for an opportunity to make some new friends come join us for a luncheon and learn what we're all about. Call Evelyn Bealby 650-743-4105. Annual dues are just \$15 and are due now if you'd like to be included in the 2020 Roster.

Family Wellness Faire

Sharon Hunt

MARK YOUR CALENDAR ... The Family Wellness Faire March 24, 2020 Tenaya Elementary Gymnasium from 8:00 a.m. to 12:00 pm.

The Groveland Rotary Club is pleased to announce our Annual Wellness Faire. The exhibitors will be bringing the most up-to-date health and safety information. You will have the opportunity to visit the wellness related exhibits located in the gymnasium. Come early so that you will have time to visit all of the booths and talk with the exhibitors. Allow yourself ample time to partake in the free screenings, such as vision, blood pressure, hearing and diabetes. Prevention is the key to wellness.

Adventist Health Medical Center will offer a low cost (\$25.00) blood chemistry panel

that includes a lipid panel (Cholesterol, LDL, HDL and triglycerides), kidney function thyroid and liver function. For those of you planning on having a lipid panel, please fast, starting at midnight prior to the Faire and drink several cups of water prior to the draw. This helps the flow of blood. They are also offering a PSA test for \$10.

Knowing the importance of good health, the Rotary Club of Groveland felt that it was important to offer our annual Family Wellness Faire. With the cost of health care today the Family Wellness is practically free. Don't miss it!

Tenaya Elementary School
Tuesday, March 24, 2020

8:00 am to Noon

Sponsored by the Groveland Rotary Club

Zeroing Your Rifle Scope

George Voyvodich

BORE SIGHT

Bore sighting is a term for Rough-Zeroing the scope to your rifle. It's a quick way to get the scope and rifle approximately calibrate together so that your bullet hole will be somewhere on that target, therefore you've know exactly what direction you'll need to adjust the crosshair for your final fine-tuned zero.

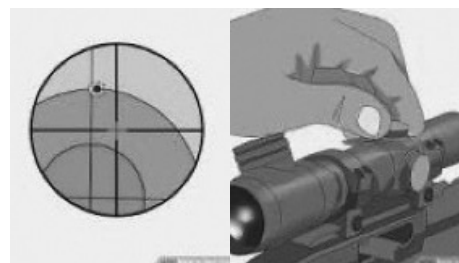
MOUNT THE GUN IN A REST

When you're zeroing a rifle, you need to eliminate user-error from the equation as

much as possible to give yourself the most zero, you need to mount your rifle into rest.



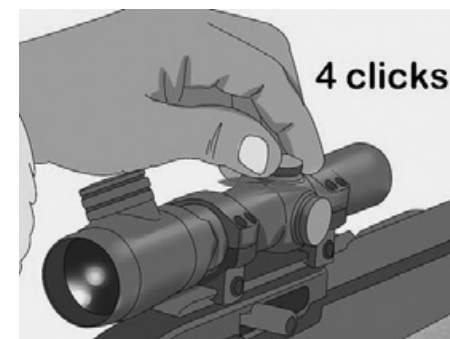
USING THE PROPER STOCK



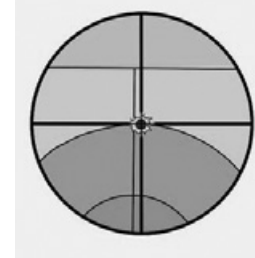
Using the proper stock for your cheek will maintain the same sight picture. At the end of your exhale, hold for a split second then squeeze the trigger firmly without jerking. Shoot 3 to 5 shots. Check your groups and make the adjustments.

EXAMINE YOUR GROUPS

You shoot at 100 yards, let say 3 inches low and 4 inches to the right of the bullseye.



You need to move 3 inches up and 4 inches to the left. The elevation adjustment you need to rotate the scope elevation turret 3 inches up or 12 clicks. For the windage dial, you want to rotate 4 inches left or 16 clicks. Once your adjustment have been complete and you hit a tight group at the bullseye center put your turret back to zero without losing your dope.



Rotary Red, White & Blue Ball

Rudy Manzo

On January 25th the Groveland Rotary Club held their 19th Red, White and Blue Ball at Tuolumne Trails Camp. This event was started to honor those who perished or were wounded in the 9/11 attack as well as members of our Armed Forces. Each year some of the proceeds go to and organization that supports wounded veterans. This years recipient was the Admiral Nimitz Wounded Veterans Foundation.

Prior to the event Rotary Club donated a Heatable food service cart to Tuolumne Trails Camp to be used at this event and others which they will be hosting in the

future. We can say now that is worked very well for this event and all the meals arrived at the tables nice and hot.

Opening remarks were presented by Club President, Rudy Manzo followed by a Tuolumne Trails Camp update by Jerry Baker in which he indicated possible plans for a music stage area is being considered.

After dinner the guests danced to the music of the Home Grown band and a good time was had by all.

We encourage everyone to consider attending next years event. The Rotary Club of Groveland thanks you for your support.

Pine Needlers Quilt Guild

Beverly Oakley

Above is a picture of those who made an item from the same fabric choosing to make a different item or two by putting other fabric to make their items. It is fun to see how diverse people are.

A group of members started on a Round Robin in January. This means each member of the group will start (in this case) a row of blocks. Then there will be rows added on by the other members of the group. You don't know how the quilt will turn out until you get all the rows back. The member supplies the fabric; each group member designs what she think will look good with the quilt thus far. Hopefully, I can show you a picture of how the quilts came out when they are finished.

June 1-4, 2020 some of our members will be going on a three day retreat to San Juan Bautista. I'm sure they will have a lot of fun.

We are having additional sewing days to the ones we have after the meeting. They are January 7th, February 4th, March 4th and April 7th. So if you can't stay after the meeting, you can still get together with the group and share ideas, conversations and lunch (it's bring you own.)



Back row: Michele Roberts, Anita Millard, Linda Drummond, Catherine Santa Maria, Judy McKinnon, Carol Willmon, Cathy Lincoln and Donna Wolf. Front row: Sandy Smith, Lynn Sigafosse, Jean Cox and Beverly Oakley.

Program for February 18th: "Sewing Item Bingo" and a small sewing project.

Don't forget, we meet below the Groveland Library at 10:00 a.m. on the third Tuesday of the month except we are dark in December. The meeting is 10:00 a.m. to 12:00. Bring a lunch if you would like to stay and sew on the project of your choosing or just stay and chat.

Guests are always welcome. Don't worry that you are a beginner. We have all been there. We have lots of people that would love to help you. If you have a quilt or the beginnings of a quilt bring it along for 'show and tell' or for help. Don't be shy, we are all friendly and love to have new people in the club. We hope to see you at 10:00 a.m. February 18th, 2020!

Garden Clippings

Sharon Hunt-Stevenson

Were you happy that the strong wind we had on Sunday, February 9th, blew all the leaves out of your garden? Wow, no mechanical blowing.

Michalene Martin for years was a member of the Garden Club and on the Board. She faithfully executed her position as recording secretary. She gave so much to the community. The Garden Club has voted to purchase a bench to be placed in the Jail garden. We know Michalene will love the bench since her spirit will enjoy the visitors to the garden.

Linda Neuschwander, our resident Master Gardner, treated the Club to a very fun and informative talk on pruning fruit trees. We all came away feeling a lot more confident. Everyone took home a red carnation bouquet in honor of Valentine's Day.

The March 9th Garden Club meeting at the Lake Lodge at 1:00 pm will prove to be another



Michalene Martin (middle of picture)

fun meeting. "Attracting Birds to Your Garden" is the theme. Barbara Connelly, one of our members is excited about sharing what she knows about the names of birds and how to make your garden inviting.

Pine Cone Singers

Bob Swan

PINE CONE SINGERS SPRING CONCERTS: MAY 15-17

Pine Cone Singers are GOING TO THE MOVIES for our 2020 Spring Concerts, scheduled for May 15-17. Music Director Dennis Brown has chosen fifteen arrangements of (mostly) famous tunes from the world of cinema, and we're working hard to get ready to perform them for you.

From "The Wizard of Oz" to "Skyfall", we'll be presenting familiar movie music in a wide variety of styles and arrangements. I expect that this movie theme will also bring out the best in several of our soloists. Additionally, the Sierra Sounds will perform an excerpt from

their "Cinematic" show. All in all, we think it's going to be a fun show.

We welcome new member Sam Park, and welcome back Gloria Marler, who has managed to get along without us for a few years.

Pine Cone Singers have been Groveland's community chorus for forty years. The group has come quite a way since its start as a book club. We are delighted to have another opportunity to serve up some entertainment, and are very grateful for the support we get from our donors and from the community.

Please note the dates of the Spring Concerts, May 15-17. Hope to see you there!

God's Creativity, Man's Response

Pastor Ron Cratty – Groveland Evangelical Free Church

The Bible tells us not only about God but also about the ways we can know He exists. Our church's current study of the Apostle Paul's letter to the Romans tells us that viewing creation gives us an awareness of God. (Romans 1:18-20) This general revelation doesn't tell us everything, but it does allude to His power, orderliness, love of beauty and variety, etc. King David, in the Old Testament, declares God's majestic creativity in Psalm 8, and then reflects on humankind's place in God's plan. His insights cause us to be humbled and yet marvel at the dignity He has given us.

Perhaps the part of creation I marvel at the most is us. Humans possess personality – we think, feel and decide. We can reason and therefore communicate with each other. We

produce art, literature, music. We design, engineer and construct buildings. It is incredible to me that a "force" or "process" would bring us to this point of development without being a thinking, feeling, deciding Being Himself.

At GEFC we worship a God to whom we can relate. No surprise there. Genesis 1:26-27 tell us we're created in His image. Our people seek to grow in the way we relate to Him and to each other. If this sounds a bit intriguing to you, no matter where you are on your life journey, we invite you to come check us out. We meet weekly at 10:00 a.m. Sundays at 19172 Ferretti Road in Groveland. Every Sunday we provide nursery and Sunday School as well as fellowship and love. We hope to see you soon.

Mountain Lutheran Church

Jackie Ostrum

As I write this in Mid-February, I notice the days getting longer! That means more light to get things done! Jesus, in his "Sermon on the Mountain" (Matthew 5) says: "You are the light of the world!" Who, me? Yes, we all are asked to do God's work on earth and give God the Glory!

We serve in and through our congregations and communities, and sometimes world wide. We speak words of encouragement and hope, and we actively help our neighbor in need, as we are guided by God's Holy Spirit. We have Worship Services, Prayer and Bible Study and mission projects.

Come and see!

- On Ash Wednesday, February 26 we started the 40 day journey through the 5 Sundays in Lent to Easter on April 12.
- Our Lent Soup Supper and Holden Evening Prayer Service (set to beautiful music), is on Wednesday, March 18 at 6 pm.
- On Sunday, March 29 at 6 pm we participate in the 5th Sunday Hymn

Hosted by Groveland Christian Fellowship, 18829 Foote Street.

- On Easter Sunday, April 12, at 7 am will be the Community Early Easter Service at our church, led by area pastors. Light breakfast to follow.
- Our Lutheran Festive Easter Worship will be on April 12 at 10 am (not 4 pm), with Easter Brunch to follow. Our regular Sunday Worship Services are at 4 pm. Everyone is warmly welcomed to all services, as well as Prayer Bible Study and missionary service projects!

To God Be the Glory!

Mountain Lutheran Church
13000 Down to Earth Ct. off Ferretti Road
P. O. Box 995
Groveland, CA 95321
(209) 962-4064

Chamber Chatter

Bob Turney

As the newest board member of the Yosemite Highway 120 Chamber of Commerce, I am first honored and excited about being able to help our membership. My parents have been bringing me to Yosemite since I was a baby. Along with many fun memories, I have also had several bear encounter experiences, from my Dad throwing a lawn chair at a Yogi Bear as he was dragging off our Cooler of goodies in the middle of the night, to waking up with Boo Boo Bear standing on the end of my sleeping bag on the first night of a 5 day backpacking trip as a 14 year old Boy Scout. I saw the original Fire Falls before it was stopped in 1968 and I started bringing my own children here too when they were very young. I have so many wonderful memories of Yosemite and now I live here and own two businesses here in Groveland, the North Gateway to Yosemite, Yosemite Adventure Supplies & www.turnkeyinstitute.com, which is a 501c-3 Non-Profit dedicated to providing vocational education to Veterans.

Our other newest Board Member is Elisabeth Barton, who is an owner of Echo Adventure Cooperative, which now means this chamber has two new Directors, that are in the "tourist" industry. Elisabeth and I are also on a newly formed "Strategy Committee". This committee was formed with the sole intent to come up with ideas to present to the entire BOD, on things that will better service our members. We are so driven by this endeavor, that we meet every week to discuss new ideas and build on the existing ones.

One of our biggest Chamber events of the year is the 49er Festival, which is on Sept 19 and we are inviting the community to help us come up with a new theme for the event. The very first year I moved here to Groveland, the chamber was in turmoil and nearly cancelled the entire festival, until the community came together to help the chamber with this event. I volunteered to be the Chairmen of the Chili & Salsa competition. This

was not new to me, because I had been on the chili cookoff committee for the Castro Valley Rowell Ranch Rodeo Chili Cookoff for many years. Many other members volunteered for everything else and the event was a huge success. Since that time, I have also volunteered to handle Gunfight Reenactments and we started a Beard contest, which have both become staples. We have many more fun activities too and all you need to do is check out www.49erfestival.org for a list of them all.

Last year, in consideration of our local western history, we decided to keep a western style festival and we would like to ask the community to help us come up with the actual Western Theme. We also want to invite any nominations for the next Grand Marshall of the parade.

Please send your suggestions to me at bob@yosemiteadventuresupplies.com.

Since our last mixer of 2019, we are very happy to welcome and introduce 11 new members to the Yosemite Highway 120 Chamber of Commerce.

David & Christina Wilkinson, Sabre Design
Christian De Ryss, Equinox Technology Partners

Tage Wert, Tage's Plumbing.

Rob Narin, Tri-Tipperly

Dan & Britta, Hamm's Carpet Cleaning

Tom Hugget, SOL Training

John Loyd (Friend of the Chamber)

Lee & Less Miller, Miller Brothers Auto

John & Tonie Keifer, Farmers Insurance

Etty Garber, Marriage and Family Counseling

Mike Dryden, Groveland Music

Thank you for helping us to make the Yosemite Highway 120 Chamber of Commerce, the best chamber of all the National Parks.



Friends of the Groveland Library president, Virginia Richmond, presents a \$2000 donation to principal Wynette Hilton and the teachers of Tenaya Elementary School. They will use the funds to purchase books for classroom libraries.

Helping Hands Happenings

Patti Beaulieu

As we know, the holidays don't stop coming and that goes for our inventory at Helping Hands. As this is being written, we have our Valentine items out and on sale. However, as you read this our extensive Easter items will be on display soon. We always have a very large supply of bunnies, chicks and everything Easter. We always try to put our holiday inventory out at least a month in advance of the holiday, to be sure the weekenders and travelers have an opportunity to see what we have.

Mark your calendars. In April we'll have our semi-annual Giveaway at the Groveland Community Hall. Tons of stuff from the Stores are given away for FREE! Yes, FREE! The Spring Giveaway will be April 10 and 11 from 10 a.m. to 4 p.m.

We have received an abundance of Jewelry in

the past couple of months and much of it's on display. We really have a beautiful selection and they are on tastefully displayed for your perusal. Think of that special gift for Mother's Day, another holiday around the corner.

Do you want to know what's on sale and when? Our weekly sales run from Tuesday through Saturday at the Thrift Store and they are announced on several of the local Buy and Sell Facebook pages. In addition, you can visit our website at Helpinghandsofgroveland.com. This site will tell you our hours, what we accept and don't accept at both Stores, allow you to send an email and find out other general information about the organization. The tab for the weekly sales is called 'Current Bargains'. Take a look at our webpage when you get a chance. You'll have the inside scoop on what's happening.

PML Airport Celebrates 50 Years: Who Dat?

Janet Gregory

All airports have three names that are used interchangeably. Maybe it's just to confuse people or similar to most people that have a first, middle, and last name. Our airport like any other U.S. airport can be identified by name, city, airport code, or some combination. We are Pine Mountain Lake, Groveland, or E45 Airport.

Pine Mountain Lake Airport. In 1970 when Burt Pike filed the original application to the State of California and the FAA, he named the airport to coincide with the Boise Cascade property development. Some airports are named after famous people, like John Wayne Orange County Airport, or not-so-famous, like Norm Mineta San Jose Airport.

Groveland Airport. That's pretty obvious. Some airports, like San Francisco, only go by their city name.

E45. Three-letter codes are assigned by the FAA. Each three-letter code is unique and not

used by any other entity. Codes can seem to make sense, like SFO or SJC. Codes can make no sense, like E45 for our PML Airport. Codes can also be kind of funny, like BAD for Barksdale Air Force Base in Louisiana.

Q68 was the original three-letter code for our airport. Q68 changed to E45 in the mid-2000's (between 2003 and 2006). Q68 has been reassigned as a high altitude RNAV route (aRNAV NAVigation routes are used in instrument flight navigation).

In the last month, two Air Ambulance rescue flights came into Pine Mountain Lake Airport providing critical lifesaving services. Thank you E45, for fifty great years serving the greater Groveland community in fire suppression with CalFire, Search & Rescue, Air Ambulance Services, Police, Wildlife monitoring, and recreational aviation.

Sources: Jim Thomas, FAA, Conde Nast Traveler

First Wednesday Bird Walk

Jeanne Ridgley

The first Wednesday of the month Bird Walk at the Groveland Community Services property at 18966 Ferretti Road, Groveland, will be led by Jeanne Ridgley on March 4. The property encompasses an area of more than 200 acres of oak, pine and willow habitat with three water storage ponds.

On the Feb. Bird Walk, we saw 31 species.

Highlights were Cooper's Hawk, Nuttall's Woodpecker, Cedar Waxwings, & Purple Finches.

Access for birders here is limited. Birders must be accompanied by an authorized birder.

Meet the group in the GCSD parking lot at 8:00 AM. Bring binoculars and a birding field guide if you have one. Rain will cancel the trip. The walk will last about two-three hours.

Groveland Kiwanis

Sandy Smith

Spring is here.....that means KIWANIS SAINT PATRICK'S DINNER. Saturday March 14th will be the day! The TIME is from 5 - 7. Serving Corned Beef and Cabbage, with the works.....drinks..... and dessert! Special drawings with great Prizes, and this year we are adding a 4H Cake Auction. WHERE, at the Community Hall. The COST will be \$15.00 adults \$10.00 kids. Reserve your dinner by calling Earl Wright 534-9548 - Tammy Kohn 206-6759 -Sandy Smith 962-4950 for tickets.

KIWANIS BINGO night is Thursday March 5th. Come on down to the Community Hall and join us for an evening of fun! We open the doors at 5:30 to select just the right seat. EARLY BIRD is at 6:30 and BINGO is at 7.

Our \$19.00 packet includes Early Bird, Bingo, Texas Blackout, game sheets and the Hotball. Also we have the "color of the month" which entitles you to a special sweet treat! This month it is green for Saint Patty.

Kiwanis is involved not only in local communities but in other countries as well. Such as Africa, Clean water project and the ELIMINATE project. We are working with UNICEF to help eliminate maternal/neonatal tetanus. We are a global organization of volunteers dedicated to improving the world one child and one community at a time.

Groveland Kiwanis meet each Tuesday morning at 8 a.m. in the Pizza Factory. Drop in and get to know us, see how you can be a help in our great community

Free Writers Workshop

Janet Gregory

Writers Roundtable is offering free workshop for writers interested in capturing personal history, memoir, biography, or family history. It is being offered through the combined effort of Groveland Library, FOGL (Friends of the Groveland Library), and three local writers. The workshop is for adults at any level of writing, from not-started-yet to accomplished-published-author.

The six-week Writers Roundtable will be hands-on and interactive, with instructional guidance. Workshop focus will be on historical non-fiction of personal, family, and individual stories. Topics will help writers start a writing project or advance a writing project already underway. Topics will include storytelling, research, making the subject come alive, and how to engage your readers.

Groveland Library will host the Writers

Roundtable, upstairs in the main library, on Thursday's from 10:00am to Noon. The first meeting will be on Thursday, March 12th, 2020. Advance registration is required. Please contact Janet Gregory at 209-962-5061 or janetg@kickstartall.com to register. Space is limited to 10-12; if more people register, we may consider offering an afternoon session from 2:00-4:00.

The six-week workshop will be every Thursday from March 12th to April 16th. Organizers for the workshop are three local writers: Judy Hewett, Marle Hewett, and Janet Gregory. Workshops will be led by guest authors, the organizers, or author panels.

If you are an experienced or an aspiring writer of a biography, memoir, or history, please join us for this free Writers Roundtable. Remember to pre-register with Janet Gregory at 209-962-5061, as space is limited.

STCHS Save the Date

Jeanne Ridgley

STCHS (Southern Tuolumne County Historical Society) will once again host its annual fundraising WINE TASTING CRUISE on Pine Mountain Lake! This year's event will be held Saturday, May 16, and it is our 16th YEAR! More details will follow.

As in previous years, water taxis will transport guests between beautiful lakefront homes where wines from local wineries will be available for sampling. Also appetizers will be furnished by leading area restaurants and caterers for your enjoyment. Cruisers

will arrive back at the Lake Lodge around 6:30 where a Coffee & Cookie Reception will be waiting.

Each year this event sells out and we're looking forward to another fabulous day on the lake.

Tickets are \$55 per person, payable in advance. Over 21 years of age only!

Please contact us at winetastingcruise@gmail.com or call Harriet Codeglia (209-962-6270).

Volunteers will be needed as always, so don't be shy!

SOS – Seniors Operating Single – Support Group

Etty Garber, PhD. – Licensed Marriage and Family Therapist


Each stage of life presents us with changes and challenges. All of life stages can be difficult as well as invigorating. It depends on the support of those who are important in our lives and our own attitude and self-esteem. Other influences may include personal health issues, death of a spouse, family member or friend, budget and financial adjustments. Our major challenges may be accepting the changes that we face in our health, family connections and social interactions.

This is the time to recognize that despite the challenges of life, you have survived and perhaps flourished. You have enhanced the lives of your family and gifted the people you have encountered along the way. You have what is known as “having

added value” to all of us. Acknowledge your personal sense of worth and celebrate the worthwhile acts you have contributed no matter large or small they may be. All are important in the scheme of things. Your life has mattered.

We meet at the Little House on the 1st and 3rd Thursdays of the month for one hour from 12:30 to 1:30. You can attend the communal luncheon (donation \$4.50) at 11:45am.

If you would like to participate with others who are interested in sharing their experiences and wisdom, explore strategies to overcome challenges and discovering the happiness you deserve, contact Dr. Etty Garber, professional counselor at 209-768-5200 or ettygarber@yahoo.com to sign up for this FREE SUPPORT GROUP.



Dr. Etty Garber Ph.D.
in Clinical Psychology and a licensed Marriage Family & Child Therapist, with 36 years experience in mental health, lives in Groveland and

OFFERS PRIVATE PRACTICE SERVICE

Dr. Garber can provide psychotherapy in a variety of settings to individuals, couples, families and groups.

**RELATIONSHIPS • FAMILY CONFLICT • CHEMICAL DEPENDENCY
 DEPRESSION • ANXIETY • ABUSE, etc.**

Low Fees • No Insurance FOR AN APPOINTMENT CALL 209.768.5200

Camp Tuolumne Trails News

Dori Jones

Last month, 35 young adults from the Crossroads Church in Manteca spent one weekend at camp doing various activities and team-building exercises. In addition, the church donated 50 cushioned chairs to camp. And the 40+ people who attended camp's Super Bowl party got to try them out and enjoy a delicious variety of potluck dishes. About

Camp's outdoor education sessions continue to thrive. With about 65 students who braved the winter elements here in February, we have approximately 138 students coming to various sessions in March.

The Shabsters, a close-knit group of neighbors from Mountain View, are also returning in March for their ninth year. As part of their bi-annual work weekend, they work on various projects for camp, and there's always lots of lively music performed by these musically inclined folks.

Stay tuned for the Spring Volunteer Day to be announced in next month's article.

And if you didn't see this in last month's article: Every donation to camp – large or small – makes a difference. AmazonSmile donates 0.5% of the price of your eligible AmazonSmile purchases to the Jerry & Paula Baker Foundation, Inc.

Camp Tuolumne Trails, founded in 2008, is a year-round camp located in Groveland. It was specially designed and built for special-needs children and adults of all abilities to experience a typical summer camp environment. Camp also hosts veterans' groups, environmental education, myriad organizations and corporate retreats. Please contact General Manager Jessica Morrison at (209) 962-7534 to learn more about camp, volunteer, or get a tour of camp for an upcoming event. www.tuolumnetrails.org

Healthy Habits

From Pine Mountain Therapy

Julie Tanaka, PT

HEARING LOSS AND HEARING AIDES

“It's not as simple as turning up the volume”

Recently I have had the opportunity to accompany my mother when she went for hearing tests, analysis and recommendations for hearing aides. She has been wearing hearing aides for a few years now and has repeatedly complained that they don't help. They make things louder, but she can't “hear” better. We have learned a lot from the audiologists in the last few weeks. Mainly that she was right and the hearing aides she's been wearing are wrong.

Sooner rather than later. Hearing loss has a stigma of “aging” and we will often put off getting hearing aides until our family is yelling at us that we need to do something. Now I'm learning that if we don't use our hearing, we lose the ability to understand speech. As our brain is getting weaker and weaker signals of speech it will stop paying attention to what someone is saying and look for “speech cues” like, how the lips move, body postures, and filling in gaps of unheard conversation. Gradually we shift to this “speech cuing” system and our brain unlearns speech. If we get aides when we have mild hearing loss we can be saved more severe problems later.

It's not all about volume. Once we have lost the speech reception ability turning up the volume just makes the garbled message louder. Also you can be hard of hearing but be sensitive to sounds. So turning up the volume just makes everything worse. The sound needs to be adjusted to the frequency of our hearing loss. (I apologize that I've been yelling at you Mom.)

Adjusting and re-learning. Once the correct aides are found the wearer needs to wear them 12 hours a day, and do things like reading to themselves out loud to re-learn language.

Technology magic. Of course the Smart phone has gotten involved with this and in this case it is a “smart” development. The aides can be adjusted through an app on the phone very easily. Adjusted to environment, what your trying to listen to, conversation or music etc. Phone calls come from the phone through the aides into the ear directly cutting down static and adjusting to the frequency your ears like.

Like everything else, hearing loss is on a spectrum. We lose certain frequencies. Having a hearing test done by an expert helps to understand where the hearing loss is. Next is understanding that it's a long process. Like rehab from a total joint



replacement you have to do the work. Work on your own and with your audiologist for the best results. Loss of hearing leads to isolation and the loss of so many pleasures in life. It's really pretty silly we wait so long to address hearing loss. My pledge is to take care of any change in hearing like I would vision or any other health issue.

PINE MOUNTAIN THERAPY

Outpatient Physical Therapy

Serving the Mountain Communities of Tuolumne and Mariposa Counties

18800 Main Street,
Groveland, CA 95321

209-962-4035

Please visit our new web site at www.pinemountaintherapy.com

A Preferred Therapy Provider, participating provider with most insurance carriers including Medicare.

Top Dog of the Month

Dori Jones

My name is Cooper (or Coop) and as you can see, I'm pretty cute. I'm a 5-year-old cockapoo, and I know my owners Tim and Kim West love me a lot. They call me the sweetest fur baby they know. And I'm lucky, too, because Tim brings me to the dog park TWICE a day! Since I'm not a 'morning dog' I'm pretty chill in the morning when all the other dogs are running around like goofballs. I just walk around and keep an eye on all of them. However, you should see me in the afternoon when I kick into high gear and I become linebacker "Hacksaw Cooper." When all the dogs are playing with a football I like to go in and steal the ball. When I'm not at the dog park, I like to play with stuffed squeaker toys and love pulling all the stuffing out of them. Some of my special tricks are spinning around when I'm happy, and I can vertically jump four feet high, even though I'm kinda short.

Remember it's time to renew your dog park fees at GCSD and get the 2020 code for the gate.



To learn more about the dog park, stop by the GCSD administration office on Ferretti Road to register. Bring current Rabies and Bordetella vaccination certificates, pay a \$25 annual fee for up to two dogs (\$10 for each additional dog), and get the gate code. It's a great place for dogs (and people) to socialize.

Feel-Good News from The Little House

Denise Jervis

Southside Community Connections' (SCC) Shoe Drive is off to a running start. Boxes and bags of shoes are filling collection boxes in Groveland! As of mid-February, 575 pair of shoes have been collected! There is no money that anyone must give, just shoes. Collection Boxes are in the Groveland Pharmacy, Pine Mountain Therapy, Premier Valley Bank and The Little House. Shoes donated are shipped to micro-entrepreneurs, helping them create, maintain and grow small businesses in areas where economic opportunity and jobs are limited. Proceeds from sales of the shoes are used to feed, clothe and house their families. Your donations to SCC allow our team to develop quality programs and activities for Groveland area residents. One of those programs is Tuesday Lunch Bunch at The Little House. Students enrolled in the Culinary Arts Program at Tioga High School, along with their instructor Karen Seals, have created a lunch menu, which they prepare for our group. The meals have been nutritious, delicious and plentiful. SCC reimburses

Tioga for the food and helps defray the cost of lunch for those who are unable to pay. Lunch is served at approximately 11:45 for a donation of \$5.00 per person. To reserve your lunch, please call us at 209.962.7303 no later than the Thursday before the lunch you plan to attend.

Mar 19 Meatloaf, Mashed Potatoes

Mar 24 Turkey Taco Lunch Bowls

April 7 Cobb Salad

April 21 Honey-baked Ham, Yams, Spring Veggies

May 5 Thai Chicken Sandwich, Thai Cucumber Salad

May 19 Pulled Pork, Coleslaw, Rolls

Stay tuned, the Lunch Bunch is planning a field trip to Tioga's cafeteria to tour the facilities and enjoy lunch with the student chefs.

SOUTHSIDE COMMUNITY CONNECTIONS

The Little House
11699 Merrell Road
Groveland, CA 95321
209.962.7303

Low-Carb Italian Sausage Soup

recipe by Tom Knoth and Paula Martell

Take the chill out of winter with this delicious Low-Carb Italian Sausage Soup recipe. This soup is pure comfort food and it is so tasty, but can still be part of a low-carb, keto, Atkins, Whole-30, Paleo, or diabetic diet.

INGREDIENTS

1 pound ground turkey Italian sausage
4 ounces onion chopped
2 stalks celery chopped
2 ounces carrot diced
15 ounces tomato sauce
2 cloves garlic crushed
32 ounces beef or chicken broth, low-sodium
1 tablespoon fresh basil (or 1 teaspoon dried)
1/4 teaspoon dried oregano
1/4 teaspoon red pepper flakes (optional)
1/4 teaspoon black pepper (freshly ground)
1/2 - 1 teaspoon sea salt
2 cups raw cauliflower (bite sized pieces)

DIRECTIONS

In a large pot over high heat, break up and brown sausage. Reduce heat to medium and add onion, celery, and carrot. Cook, stirring occasionally, until they begin to soften.

Stir in the tomato sauce, garlic, broth, basil, oregano, red pepper flakes, black pepper, and 1/2



teaspoon of the sea salt. (omit salt if using regular broth instead of low-sodium). When the pot starts to boil, reduce heat to simmer, cover pot, and allow to simmer for 60 minutes.

Add cauliflower and continue simmering (covered) for 20 minutes or until cauliflower is tender.

Taste and adjust seasoning. I add the second half teaspoon of salt at this stage, but you should add according to your tastes and needs. Sprinkle a bit of chopped basil on top of each bowl if desired.

Notes: you may substitute other vegetables for the cauliflower such as green beans, mushrooms, or broccoli.

This can be easily made in an instant pot with directions here: <https://simplysohealthy.com/low-carb-italian-sausage-soup-instant-pot-recipe/>

Nutrition: Serving size: 1/6th of the recipe, 176 Cal, Fat 6g, Carbs 10g, Fiber 3g, Protein 20 g

Whodunnit?!

Denise Jervis

SOUTHSIDE COMMUNITY CONNECTIONS

Prohibition— 1920's. There's a mob war a-brewing between two ruthless crime bosses and this town isn't big enough to have two mobs bootlegging! After months of threats, the two mobster bigshots have finally reached an agreement to settle who would control the town's supply of hooch. A date was set to meet at the Grand Gatsby Speakeasy in Groveland to resolve the issues once and for all. Will these two crime bosses and their henchmen resolve their disputes, or will a massive melee erupt?

On Saturday, April 18, 2020 you will come in close contact with notorious criminals from the Roaring Twenties. As you are enjoying cocktails and appetizers you'll listen to gangsters and their molls talking about old grudges and murderous thoughts. It's as you're preparing to enjoy a plated dinner that the lights go out and someone screams. Soon, the lights are back on and a body is found. Fingers are being pointed

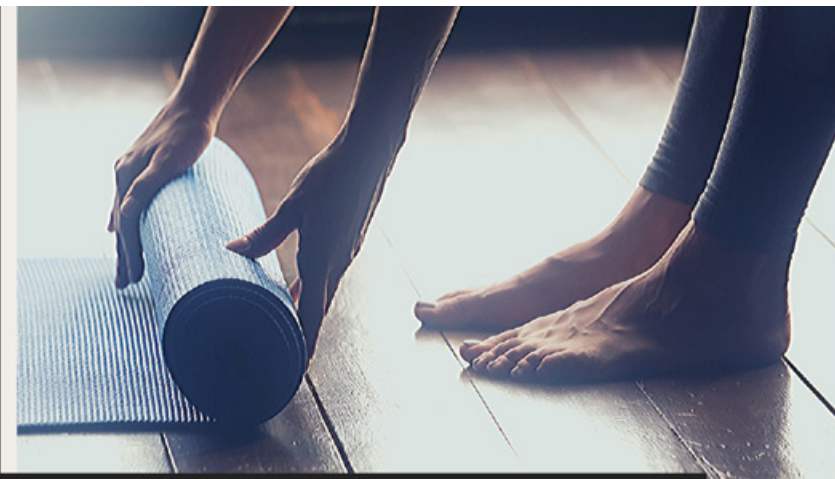
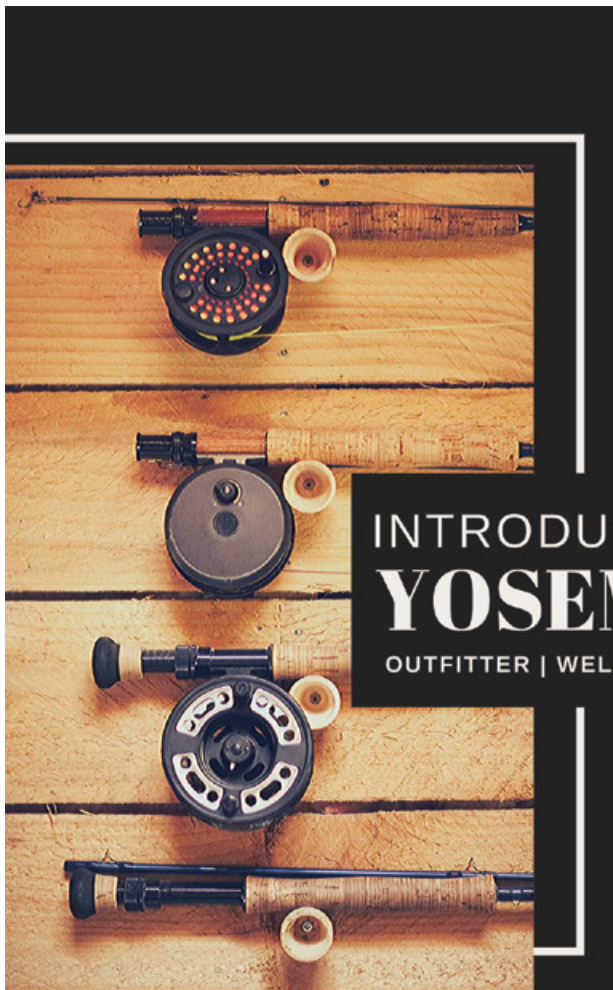
and accusations are flying but it your job to interrogate these criminals and figure out the truth. By the time dessert is being cleared, someone is singing like a canary thanks to some fine detective work! Was it you and your teammates who have figure out the mystery?

The intrigue begins at the Grand Gatsby Speakeasy Murder Mystery Dinner on April 20, 2020 at 5:00. Tickets are \$45.00 per person and are available on the SCC website and at The Little House. Hold on to your ticket: it reveals the secret location and password for entry into the speakeasy.

This fundraiser is hosted by Southside Community Connections for your enjoyment. All proceeds benefit SCC programs: Village on the Hill, Wheels and The Little House.

SCC
11699 Merrell Road
Groveland, CA 95321
209.962.7303

[Southsidecommunityconnections.org](https://southsidecommunityconnections.org)



INTRODUCING ECHO ADVENTURES YOSEMITE BASECAMP

OUTFITTER | WELLNESS | GUIDED ADVENTURES | ACCOMMODATIONS

Certified Corporation **B** CALL | 209.732.5161
BROWSE | ECHOCOOP.COM
MESSAGE | ADVENTURES@ECHOCOOP.COM
FOLLOW | #ECHOCOOP



2020 **YOGA** SCHEDULE

MINDFULNESS YOGA

SUN | 9:00AM | 90 MIN | \$20.00

INTRO TO MEDITATION

TUES | 10:15AM | 60 MIN | \$15.00

SLOW FLOW YOGA

TUES | 11:15AM | 60 MIN | \$15.00

POWER THE HOUR YOGA

WED | 5:15 PM | 60 MIN | \$15.00

UNWIND THE WORK MIND

YOGA & MEDITATION

THURS | 6PM | 90 MIN | \$20.00

- Additional Classes Added Monthly -

- Local's Discounts Available -

LOCATED IN DOWNTOWN
GROVELAND, CA
11892 PONDEROSA LANE

WINTER | 9AM - 6PM
SUMMER | 8AM - 8PM



Your LOCAL source for
Rock Solid Security Solutions

(209) 651-0051
www.granitepeakalarm.com

ACO #7823 Contractors Lic. #1046953

Securing Pine
Mountain Lake and
surrounding areas.

AVAILABLE SERVICES

- BURGLAR ALARMS
- SECURITY CAMERAS
- FIRE SYSTEMS
- VIDEO DOOR BELLS
- HOME AUTOMATION

Call now for a FREE
Security Review.

HENDRICKS CONSTRUCTION, INC.



**CUSTOM HOMES • REMODELS
ADDITIONS**

Specializing in interior & exterior home renovations, including bathrooms and kitchen remodeling, garages and more!

**OUTDOOR LIVING PROJECTS
SHE SHEDS & MANCAVES**

CONSTRUCTION MANAGEMENT

DECKS • STAIRCASES

FOUNDATIONS

WATER DAMAGE REPAIRS

Pest Control Report Repairs

PML Approved Plot Maps

PML Approved Garbage Enclosures

209-329-3782

www.jhendricksconstruction.com

jimmy@jhendricksconstruction.com

BONDED & INSURED LOCALLY OWNED & OPERATED LIC. #931275

Deardorff Realty

WHAT A STEAL!!!



Unit 4/Lot 474 – 4 bedroom, 2.5 baths / 2 car garage. Large deck with fabulous view! Walk to Lake Lodge Beach. This is a must see to appreciate. Call before it is too late Don't miss this one! Priced to sell quickly @ \$249,900

**SUCH A DEAL...IT'S A STEAL!!!!!!!
UNIT 12/LOT 120 1.1 flat acre for only – \$89,900!!**

*Contact Marilyn Deardorff-Scott - BRE 00396888
209-962-0718*

**MURRA'S
TOTAL YARD MAINTENANCE**



BRINGING VALUE FOR YOUR DOLLAR IN PML

- WEEDING
- LOT CLEARING
- SENIOR DISCOUNTS
- LEAF REMOVAL
- PLANTING
- TREE SKIRTING
- HAULING
- AND MORE

CALL JASON MURRA

209-352-3750

LIABILITY INSURED

Operation Groveland Care

Dar Brown – Program Co-Chair

PACKAGES FOR OUR TROOPS 2019 SUMMARY

Thanks to the incredible generosity of the wonderful people in our community and visitors who donated at our event on Labor Day weekend, we mailed 158 boxes to our deployed military, bringing the total since Mal and I started the program in 2002 to over 900! We have mailed everything from soap and shampoo and other toiletries, protein bars and other snacks, paperbacks, magazines, crossword puzzle/sudoku books, bibles and devotionals, single bed sheet sets, and even toilet paper, all items to fulfill requests from our soldiers. On behalf of the entire committee of dedicated folks, we can't thank you enough for your support. We continue to fulfill requests and mail boxes all year, as we have the funds to do so. Thanks again.

Large Print Books at Groveland Library



The Groveland Library has acquired many brand new Large Print books, thanks to a donation from Friends of the Groveland Library. Here is Librarian Cathy O'Connell with some of the new Large Print westerns.

GCSD SPOTLIGHT HAPPY NEW YEAR!

BY RONI BORREGO, Customer Relations Consultant



During a Board Workshop held on January 28, 2020, the Board confirmed its goals for the next year. The Board once again stated its strong support for GCSD facilities and operations in the following goal: Plan, fund and implement improvements to the treatment plants and systems that integrate technology and provide for industry standard, efficient maintenance and operations.

This Board goal gives GCSD management clear vision regarding what they are expected to accomplish in the coming year. District management and staff have been working diligently on technology implementation efforts to complete the integration of existing and newly acquired data, into updated and new software as well as online platforms so that every piece of District information is at the fingertips (and cell phones) of every GCSD employee; real time.

The purpose of this labor intensive and time consuming endeavor is to get all staff on the same platform when gathering and inputting system information, and to provide current, real time information

about every piece of equipment, pump, control valve, water quality monitoring device, location of water and sewer pipes, maintenance completed, etc.... Ultimately, this technology integration and implementation will bring instant information to the fingertips of staff that will allow for much more efficient operations, reduce administrative efforts and expense while eliminating the loss of institutional knowledge with staffing changes in the future.

In 2018 GCSD purchased software and entered into an agreement with SEMS Technologies <https://semstechnologies.com/> for an asset management program to document and provide information to field crews on anything (and everything!) requiring inspection, maintenance or replacement over time. The program generates service and maintenance schedules and orders, documents progress, develops replacement budgets and much more.

In 2019 the District entered into agreement with California Cad Solutions <https://www.calcad.com> for the development and hosting of a GCSD Geographic Information System (GIS) site, where the

digital information on our district infrastructure is a click away. This powerful tool will allow GCSD field crews to more quickly locate underground pipes, valves and manholes; fire hydrants, service lines, meter boxes and much more, quickly and accurately, even in the snow. The GCSD GIS site is updated regularly as additional information is discovered, and the data will be refined over time to be as accurate as possible using (Global Positioning) GPS equipment and conducting field surveys.

District staff have been busy with the field work and document gathering required to integrate these technologies, while administrative staff has worked closely with those providing our Customer Data Base and Work Management Systems to input all necessary information. The technology brings an exciting upgrade to your district's maintenance, operations and management capabilities. With field staff able to edit information on the pipes they themselves work on, this eliminates the delays, cost, and "telephone game" of having a technician do the data entry. Being browser-based removes the need for expensive GIS software and training increasing the cost-effectiveness of having a GIS. This is a smart move for the community, as it will eliminate losing ground when staff changes occur as everything will be documented and easily accessible to anyone coming on board.

Stay tuned to our website and social media accounts for exciting updates to what's happening in YOUR district.



OBITUARIES

Mike Chaddon

January 28, 1952 – January 16, 2020

Mike Chaddon died on January 16, 2020 due to a heart attack.

Mike was born in Batesville, Indiana on January 28, 1952. He graduated from Dixie Heights High School in Fort Mitchell, KY in 1970.

Mike was married to Carol on July 4, 1970, the love of his life. They were married for almost 50 years.

Mike moved to Fremont, California in October 1970. He went to college for Hydraulics at UC Hayward. Mike worked as a sales manager for Sweetland Company for several years and then bought a video store in San Leandro where his passion was movies and video games. At his store, he always made sure to reward kids for good grades giving discounts on games and movies and he was also involved in many charities for kids. Mike

also loved to bowl and play golf.

In 2003, He sold the video store in San Leandro and moved to Groveland, California where he opened Pine Mountain Video which started as a video store and in a few years grew to include a deli and ice cream. Mike was always there to help with any charity for kids. He would give gift certificates to the library for ice cream if a child read a book. He sold the video store to Pam Harris, a good friend, and went to work as a subcontractor for the post office. In 2017, Mike retired due to health issues.

Mike loved to read and travel.

Mike is survived by his wife, Carol, and his cat Winston. We will miss you, but you will always be with us.

There will be no memorial service but there will be a celebration of his life held for him.

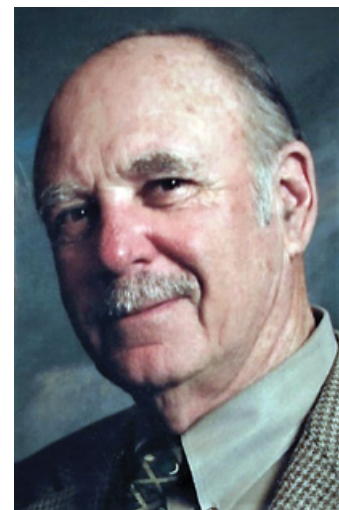
Clyde Austin Parlette

July 19, 1938 – January 21, 2020

Austin Parlette (Clyde Austin Parlette) passed away in his sleep peacefully on January 21, 2020 in Placerville, CA. He was 81 years old. He was fondly known to his family and friends as the "Big A", and then as he matured majestically into great-grandfather-hood, the beloved "Papa A".

He will be forever held in our memories and hearts for his amazing sense of humor, his compassion and dedication to family and close ties. An avid skier and golfer into his 80's, he enjoyed his retirement years at Pine Mountain Lake, in his home built by himself and his son, Chris.

Austin was born July 19, 1938 in San Antonio, Texas and grew up in San Carlos, CA. He was the adored son of Jane Austin Parlette and Clyde Parlette, with a younger brother, Rick Parlette, who unfortunately passed away in 1986. A graduate of Carmont High School, he was quarterback for the football team, and then went on to graduate in business from Utah State University, where he also played football. Soon after graduating, he married Bette Ann Beddow in Woodside,



Clyde Austin Parlette

CA on September 5, 1959.

Austin's professional career included stock brokering and financial planning for Burr Wilson, Paine Webber, and then UBS. An accomplished contractor, he built over three homes over his lifetime and countless projects that his children asked for. He was an incredibly giving person, known for his classic one-liners and frank way of communicating what was needed to be said with a style that was only the "Big A's." Always an optimist, he

encouraged others to look for the miraculous in the world. He was loved dearly and will be forever with us. He is survived by his 3 children: Susie, Chris and Carey; 5 grandchildren: Matt Brucell, Drew and Molly Mazzie, Olivia and Andy Parlette; and three great-grandchildren: Matty, Ian, and Andy Brucell, as well as his ex-wife Bette and his wonderful friend, Priscilla Baxter. We welcome anyone we may have missed as we will be hosting a celebration of Austin's life on March 21, 2020 in Monterey, CA at the Monterey Beach House from 4-7 pm.

'Her'story Month

Elisabeth Barton

March Marks 1st Annual Groveland 'Her'story Month to Celebrate the High Percentage of Women-Owned and Operated Businesses in Yosemite's Northern Gateway Community

In honor of Women's History Month and International Women's Day, the Yosemite Hwy 120 Chamber of Commerce and the Groveland Area Business Alliance (GABA) have teamed up with local businesses to celebrate female leadership within the Groveland community. The first annual Groveland 'Her'story Month will take place in March 2020 and will be marked by window clings at businesses that are either 51% woman owned or managed. GABA will also have "supporter" window clings for sale to local businesses that are not owned or operated by women. Echo Adventure Cooperative will replace their popular Historic Groveland Happy Hour Walking Tour with a 'Her'story Walk dedicated to the pioneer women of Groveland's past. The local Chamber of Commerce has dedicated their monthly Open House Groveland event to women's history allowing local businesses like Ranch Revived Decor and the Groveland Hotel to feature female musicians and artisans as well as female inspired food and drink specials on March 21st from 4-6pm.

Groveland 'Her'story Month was created by



Echo Adventure Cooperative's CEO, Elisabeth Barton, who noticed that the number of female business owners in downtown Groveland was much higher than the national average. According to nawbo.org, female entrepreneurs own only 36% of US businesses and Pew Research Center research shows that female leadership is much lower with only 5 percent of CEOs in Fortune 500 companies and 20 percent as Fortune 500 board members; however, Barton claims that "Upwards of 60% of the businesses in downtown Groveland are owned or operated by women." In a speech she gave for the Sonora Women's March in February, Elisabeth went farther saying that "Here in Tuolumne County, our red, republican county, we were already at 40% female ownership way back in 2012. Equality does not have to be a partisan issue."

Hilltop Musical Kids

Louise Turney

It's spring and by the time you read this the Hill Top Musical Kids will be starting to practice our spring musical "ultimate superstar". It is a fun filled lively musical about a bunch of kids getting ready to put on a talent show. Can you tell a joke, do a dance, impersonate someone famous, or just walk around? We have some kids but there is always room for more.

If you are 5 years old or older we would love to have you come join our group. There is no charge to join. We practice twice a week but you do not have to attend all the practices. Even if you play sports, take lessons or have lots of homework, adjustments can be made. This musical play has a number of small walk on parts, lots of songs with fun

motions. Our practices are in Mrs. Turney's garage usually after school. The bus drops the kids right at her door.

The Hill Top Musical Kids are financially sponsored by our whole community so there are no expenses for the kids. We have been performing musical plays, singing at community events and for local organizations for the last 7+ years. This year we will be learning more sign with our songs, hopefully singing for more people in our community.

We are always looking for help, adults, older kids who need to do some community service, financial sponsors. Contact Louise Turney or Shana Berthelson Mason for more information: Louise Turney, 962-0609 wezzie119@aol.com, Shana Berthelson-Mason (209)338-8635

Get To Know Our Librarians!

Dar Brown

Although we will always miss our former Librarian, Michalene Martin, we are blessed to have two dedicated ladies who worked with Michalene, Senior Library Assistant Cathy O'Connell and Assistant Librarian, Barbara Connelly.

Cathy and her husband of 47 years, Bob, moved to Pine Mountain Lake when Bob retired, which is also where Cathy's twin brother (whom she says it polar opposites in appearance!) lives. Sadly, Bob passed away suddenly just over a year ago. Originally Cathy was a relief librarian, but when the lead job became available, she jumped at the chance. Cathy and Bob have two grown children and 5 granddaughters, ranging in age from 14 – 8. Their daughter lives here and has three girls going to Tenaya. Their son lives in Salem, OR. Cathy was born and raised in Redwood City, CA where she went to both elementary and high school. High school was followed by attending Hayward State University for an undergrad degree in early childhood education, then went on to achieve a graduate degree in Human Development working with adults. She is very much committed to faith-based services and has been on the staff of many churches and has worked with women in a women's shelter. For hobbies, Cathy is an avid reader (no surprise), enjoys golf and has walked or hiked almost every trail including all of Yosemite.

Barbara and her husband Tom live in Pine Mountain Lake. Barbara has two sons – one in Lake Tahoe, where they also have a



Senior Library Assistant
Cathy O'Connell



Assistant Librarian,
Barbara Connelly

granddaughter, and the other son in Tacoma, WA. Barbara grew up in Goleta, CA and attended high school there. Tom grew up in South Carolina and has two daughters and a granddaughter. Barbara went to San Francisco City College where she got her teaching credential. She loves bird watching and often joins the group from Groveland for their monthly bird walk, and she loves cats as well. She is also a member of the Garden Club and the 18-holers golf club. Barbara is very dedicated to community service, which brought her to our Groveland Library, after 13 years of being the secretary of Greely Hill School. Some of her responsibilities include checking on the filing of books, helping visitors using the publically-available computer in the Library, and accepting/fulfilling special requests for books throughout the libraries of Tuolumne County.

Our Groveland Library provides many special programs in addition to just the lending of books and access to computers, including making tax forms available, Zip Book, Link Plus, Books at Home, which provides books for the children in families who receive a Christmas Basket, and Born to Read, which is a special program for children from age 0 – 5, wherein volunteers read to the children who attend, Fridays at 10:30. Children get a "punch card", and after 10 visits, are rewarded with a free book! If you would like to be part of the Friends of Groveland Library to advance reading and education in our community, please send your \$20 check to P O Box 43, Groveland, CA.

Kindergarten Registration at Tenaya Elementary

It's that time again, Kindergarten Registration at Tenaya Elementary School. If you have a child that will be 5 years old on or before September 1, 2020, we would love to have them start their educational journey at Tenaya. We will also be offering Transitional Kindergarten for those children that will be 5 years old between 9/2/20 and 12/2/2020.

Registration will be Friday, April 10th, 2020 starting at 8:30am. We will need copies of your child's birth certificate and immunization records. Please contact the school office to set up an appointment and pick up a registration packet. Please contact Michele Hessler or Rhonda Crow at #962-7846 to schedule your appointment today.

STUDENT OF THE MONTH

TENAYA ELEMENTARY SCHOOL
Home of the Warriors



Jesse Morrison

JESSE MORRISON – TENAYA ELEMENTARY

Mrs. Beaudreau is happy to nominate Jesse Morrison for Student of the Month. She says, "I'm excited to see his interest flourishing in subjects like literature. He has such a positive attitude and is working diligently to thrive in my classroom. It is wonderful to witness him developing as a successful and independent student." Jesse's parents are Shane Morrison & Savannah Sewald of Groveland.

Tioga ESports

Ryan Dutton – Principal, Tioga High School

Beginning in the fall of 2020 there will be an awesome new opportunity for Tioga students! We will be joining the ESports initiative with CIF (California Interscholastic Federation) by starting an EGaming squad, helping our students pursue careers and opportunities via the world of competitive video games! We will be the first high school in the county to put together an ESports team. The team will be led by Math and Robotics teacher Kevin Griffith! This will also be part of



our Career Technical Education Pathway, which finds our students on the Games & Simulation/Robotics Pathway! We will have more info soon, fall league begins in October!

✓ **CHECK OUT YOUR GROVELAND LIBRARY**

TUESDAY-THURSDAY — 1:00-6:00PM
FRIDAY-SATURDAY — 10:00AM-2:00PM



BOOKNOOK
USED BOOK SALE
EVERY SATURDAY
9:00AM – 2:00PM

HEAVENLY CLEANING SERVICE

PROFESSIONAL HOUSEKEEPING AND CARPET CLEANING*

Now cleaning up for over 25 Years!

HOME OFFICE CARPET

FULL TIME HOME OR WEEKEND GETAWAY

WE HAVE OPENINGS TO CLEAN YOUR HOME (NO LONGER ACCEPTING VACATION RENTALS)

WE ALSO OFFER DECK BLOWING & BBQ CLEANING FOR ALL YOUR CLEANING NEEDS

** Steam or dry cleaning of carpets available*

GIVE US A CALL TODAY – 209.962.6418

heavenlycleaning@mail.com • FULL LIABILITY COVERAGE




Waters Plumbing Heating & Air

FAST SAME DAY SERVICE* **All work 100% Guaranteed!**

*IN MOST CASES




Contractors License #463958
www.watersplumbing.com

"I want you to know that our technicians will give you a price before we start the job." —Wayne Waters

Groveland (209) 962-0990

Rod Diehl Pest Control

— BAT REMOVAL —

RESIDENTIAL & COMMERCIAL • HIGH QUALITY 100% SATISFACTION GUARANTEED

Locally Owned & Operated • 5th Generation Tuolumne County

PERSONAL SERVICE • FREE ESTIMATES

We will customize your service around your pets

info@RodDiehlPestControl.com

(209) 532-3260

Ask about installation of BAT HOUSES on your property



PROUDLY SERVING THE PINE MOUNTAIN LAKE / GROVELAND AREA



Mark's Groundskeeping Service

Let me help you with your seasonal chores...
Serving The Greater Groveland Area

Mark Roy
Local permitted owner / operator
Call or Text: 1 (831) 406 7715 markroy@yahoo.com

FIND WHAT YOU NEED IN THE HOME IMPROVEMENT SECTION

PML MINI STORAGE

65 Units Ranging From 5'x5' to 12'x30'

- REASONABLE RATES •
- WELL LIGHTED •

Located one-half block off Ferretti Rd. on Elderberry Way towards Airport

209/962-6220

Ken's Asphalt

Lic. 708310

Grading • Paving • Chip Seal • Road Oil

Seal & Slurry Coatings • Crafcro Hot Rubberized Crack Sealer
Driveways • Private Roads • Subdivisions

DOING BUSINESS SINCE 1985

DRAINAGE PROBLEMS?

We have the Solution!

Erosion Control • Riprap (6-12" Rock) • Asphalt Curbing • Base Rock

"Just Pave It" **Complete Concrete Services** *"Just Pave It"*

- Stamped Concrete and Colored Concrete
- Driveways
- Stained Concrete
- Walkways
- Cleaning & Sealing
- RV Pads
- Retaining Walls
- Patios

532-0800 • 962-5644 • 768-7395 Cell

LaMar EQUIPMENT & HAULING

Job Site Storage Containers

15 Ton Hydro Crane

Heavy Equipment Hauling

Irrigation & Electrical Trenching

Landscaping Materials

New Construction & Remodels & Decks

End Dump Manlifts

Rock Hauling

Lot Clearing

Demolition

Log Hauling

Septic Install

Fire Breaks

Post Hole Digging

Concrete Demolition

Towable Trailers

Retaining Walls

Earth Moving



(209) 962-0500

Mobile: 770-5667

LanceMarchetti@yahoo.com

VISA MasterCard

LOREN SNIDER'S TREE SERVICE



Serving Your Tree Needs

Removal & Pruning • Clearing & Hauling
Chipping & Stump Grinding • Mistletoe Removal

Home: **209-878-3828** • Cell: **209-402-9797**

Non licensed • 27+yrs Experience
General Liability Insurance



Sierra HEAVY DUTY
RV & TRUCK CENTER INC.

BUSINESS HOURS

Monday - Friday:
8:00am - 5:30pm

Saturday: 8:00am - 2:00pm

Sunday: CLOSED

Well Stocked Parts House:

For All of Your Heavy Duty Needs!

- Heavy Duty Brake Linings
- Baldwin & Fleetguard Filters
- Delo Oil
- LED Lights
- Air Brake Valves & Hoses
- CB Radios, Antennas & Accessories
- Logging & Dump Truck Parts
- Hydraulic Hose Shop

Full Service RV Repair Shop:

- Commercial House & Starting Batteries
- Full Service Chassis & Lube Center
- Electrical & Plumbing Repairs
- Interior & Exterior LED Lighting
- Complete Body Damage Repair Shop
- Solar Power Systems & Inverters
- Complete Detailing Services
- Warranty & Insurance Work Accepted

Mobile Service Available

18968 Waylon Way
Sonora CA 95370

Call or Email us to schedule an appointment today!
(209)-532-7994

EMERGENCY CONTACT: (209)-559-3840
Email: shop@sierraheavyduty.com
Visit Us Online: www.sierraheavyduty.com

Over 50 Years of Experience!



All Major Credit Cards Accepted.

PAINTING

Exterior/Interior Bay Cal

Deck Repairs
Wood Repairs
Remodels

LIC #923832

SEE COLOR AD PAGE 24

VISA MasterCard

209.962.4777

www.baycal.com • email: davec@baycal.com

We are known for our integrity and legendary customer service!

Produce Your Own Clean Power!

- Save \$\$\$ Every Month
- 30% Federal Tax Credit
- 5-Year Typical Payback





APS SOLAR
ALTERNATIVE POWER SOLUTIONS, INC.

Your Local Solar Electric Company

License #892261 / Since 2002
19472 Village Drive, Sonora

Call Us For A Free Estimate
209-532-5925

Follow us on Facebook at APSolarpower
Check our reviews at www.SolarReviews.com

Carpenter's Handyman Services

Need help with a small project?

We can help and will show up!

- Electrical
- Plumbing
- Drain Cleaning
- Decks
- Roof Repair
- Painting
- Tile Repair
- Debris Removal
- Chimney Sweep
- Much more...

Tim Carpenter
707-530-4154

With over 35 Years Experience

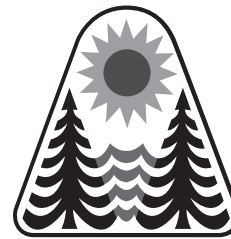
Senior Discounts available



TAGE'S PLUMBING
COMMERCIAL & RESIDENTIAL

Tage Wert
Owner

(707)615-2547 Lic. #1029595
tagesplumbing@gmail.com

Cobblestone Homes

- Custom Homes • Additions • Remodels •
- Specializing in high country design/build since 1989 •

We provide superior craftsmanship, attention to detail, follow-up, and great customer service.

Craig Lawrence-Owner
209.404.0290 Lic. 564665



COSTA'S TREE SOLUTIONS

STEVE COSTA • OWNER
FULLY INSURED/BONDED C.C.L. #1001392

MEMBER NATIONAL ARBORIST ASSOCIATION

209-962-4468
CELL 209-768-4469
CERTIFIED ARBORIST #WE7496A

Paint Discount Program

Kelly-Moore Paint Company has been serving Pine Mountain Lake for 40 years. They want to remind PML property owners of the discount program that has been established for them. This program offers a generous discount on Kelly-Moore paint and accessories such as rollers, brushes, tape, caulk, etc. Delivery is available on orders of 10 gallons or more. This special discount opportunity is available with proof of Pine Mountain Lake membership (Member ID Card) on a cash or credit/debit card basis only (no checks please).

Although this program was initiated through the Sonora store, it will be honored at any Kelly-Moore Paint Company store. If you are interested in this discount program, call your local Kelly-Moore Paint store for details.

HOMEOWNER CHECKLIST

CHECK OUT YOUR CONTRACTOR

- Did you contact the Contractors State License Board (CSLB) to check the status of the contractor's license? Connect with CSLB at 800.321.CSLB (2752), www.cslb.ca.gov or www.CheckTheLicenseFirst.com.
- Did you get at least three local references from the contractors you are considering?
- Did you call the references and personally view the contractor's completed work?
- Does the contractor carry general liability insurance?

BUILDING PERMITS

- Does your contract state whether you or your contractor will pull necessary building permits before the work starts?
- Are the permit fees included in the contract price?

www.cslb.ca.gov

DOUBLE-CHECK THE CONTRACT

- Did you read and understand your contract?
- Does the three-day right to cancel a contract apply to you?
- Does the contract identify when work will begin and end?
- Does the contract include a detailed description of the work to be done, the materials to be used, and/or equipment to be installed?
- Are you required to make a down payment? (The down payment should never be more than 10 percent of the contract price of \$1,000, whichever is less, unless there is a valid blanket performance and payment bond on file with CSLB.)
- Is there a schedule of payments? (Only pay as work is completed, not before).
- Did your contractor give you a "Notice to Owner" warning notice that describes mechanics liens and how to prevent them?
- Do you have changes or additions to your contract? (Remember that all changes must be in writing and signed by both parties to avoid disagreements.)

BEFORE YOU BEGIN CONSTRUCTION ON YOUR LOT

The Declaration of Restrictions (CC&Rs) states that no construction of any type (new construction, driveways, grading, lot development, etc.) can be performed without prior approval from the Environmental Control Committee (ECC).

Failure to obtain approval could result in the stoppage of work or even fines, and nobody wants that to happen. Inspections are made every Tuesday and reviewed by the Committee every other Thursday, so we can accommodate our members.

Please contact ECC before you begin any type of construction at 209-962-8605

R&R Mountain Enterprises, Inc.

LIC. #991183



DOWN TO EARTH

CONSTRUCTION

- Paving & Concrete work
- Excavation
- Asphalt seal coating & repairs
- Lot clearing & site work
- Complete underground work
- Septic system installations & repairs
- Retaining walls, walk-ways, etc.

NURSERY

- Perennial, annual & vegetable plants
- Shrubs & Bushes
- Garden accessories
- Wildlife & drought tolerant plants
- Shade, fruit & landscape trees
- Potting soils, compost, etc.
- Landscape supplies
- Irrigation & plumbing supplies

We Deliver Gravel & Landscape Supplies

TREE SERVICE

- Hazardous removals
- Trimming
- Shaping
- Thinning
- Brush chipping
- Fire breaks & clearance
- Mistletoe removal

FREE ESTIMATES



WE ACCEPT ALL MAJOR CREDIT CARDS
(VISA, MASTERCARD, DISCOVER & AMERICAN EXPRESS)

RAYMOND ALBANEZ

209-962-7407

13050 Boitano Road, Groveland, CA 95321 • Fax (209) 962-4987
downtoearth7407@gmail.com


LICENSED • INSURED • WORKMAN'S COMPENSATION

PARROT PLUMBING

MILT LAKE

Owner / Operator
209-852-2267

Serving Groveland, Don Pedro & Coulterville
20940 Ferretti Road Unit 'A', Groveland CA 95321
P.O. Box 127, Coulterville, CA 95311 • Email - clake@inreach.com



C-36 #791575

A AMERICAN ELECTRIC & SERVICE CO.

COMMERCIAL • INDUSTRIAL • RESIDENTIAL

209.962.7374

ELECTRICAL CONTRACTORS LIC. # 465220

Pine Mountain Lake Electric

Residential and Commercial Electrical Contracting

State Contractor's Lic. 404081



TOM KATOSIC
209/962-6949
P.O. Box 25
BIG OAK FLAT, CA 95305

HANDYMAN FOR HIRE

"The Small Job Specialist"



Doing Building and Repairs in PML Since 1976
WHERE ONE CALL CAN DO IT ALL!!!
Working by the Hour to Save you Money...

- Deck Repairs
- Painting

- Interior Repairs
- Exterior Repairs

omni1handyman@aol.com

(209) 962-5463

No License

TMC CONSTRUCTION

License # 717300
Insured
(209) 962-6938

Brushing • Log Removal Mastication Hazardous Tree Removal & Pruning Excavation

Site Prep, Engineered Septic, Culverts,
French drains, Retaining walls,
Hauling, Post hole digging,
Under ground work,
Concrete work

**We can help with your grant.
Skid Steer and Dump truck service
Reasonal Rates • Free Estimates**



Sean McCoy Painting
 License No. 822616

Home of the Cabinet Doctor

“Let’s Refinish or Paint Those Old Cabinets”

- Fine Finish • Mill Work • Cabinets
- Doors • Interiors

209.588.1741
 www.smccoypainting.com

Exterior Estimates Available




HOPE’S TREE SERVICE
 Lic# 987171

EXPERT TREE SERVICE, PRUNING, REMOVAL, CUT & STACK OR HAUL AWAY FIRE SAFETY TRIMMING • REASONABLE RATES FULLY LICENSED/INSURED

Proud member of the Yosemite Hwy 120 Chamber of Commerce

 We accept credit cards 

HOPE’S TREE SERVICE
 Fully Licensed and Insured
 PO Box 1072
 Groveland CA 95321



209.878.3096
or 209.225.3191

ADVERTISE IN THE PML NEWS – GO TO PINEMOUNTAINLAKE.COM FOR RATES AND DETAILS

Pest Control

- Ants, spiders, mice, wasps, earwigs, etc.
- Fast service, great prices
- Squirrel and bat Exclusion
- Termite Inspections
- Weed Control
- Poison Oak
- Star Thistle

962-5710
800-464-3772
 Free estimates



REIMERS CONSTRUCTION
 PROUDLY SERVING GROVELAND/PML SINCE 1987

DESIGN/BUILD • EXPERT REMODELING • SPECIALIZE IN KITCHEN AND BATH
 CEMENT SIDING • COMPOSITE & REDWOOD DECKS • WINDOW AND DOOR REPLACEMENT

(209) 962 5682

BEFORE  **AFTER**

Email: wwrpar@gmail.com
 CA.LIC. 590514

Call your local Pro!

Jack Proctor
 Heating & Air Conditioning

- Complete commercial & residential services
- Service & repair - all makes and models
- Heating & ventilation
- Heat pump specialist
- Air conditioning troubleshooting expert
- Installation and remodeling
- Upgrading & energy efficiency
- We offer the same low rates 24/7

209-678-8915
 License #313926
 Since 1975

Before replacing your unit, ask us for a 2nd opinion. Chances are, we CAN repair it!



AIRPORT MINI-STORAGE

60 Units - 6’x8’ to 10’x30’
 Open 7 a.m. to 9 p.m. Daily
 Located on Elderberry Way off Ferretti Rd. near PML Airport

209/962-5360



CLASSIFIED AD SUBMISSION DEADLINE IS THE 15TH OF THE MONTH. SUBMIT AT WWW.PINEMOUNTAINLAKE.COM
 COST IS \$0.35 PER WORD, \$10 TO ADD A PHOTO TO YOUR LISTING. ADS RUN UNTIL CANCELED BY ADVERTISER

FOR SALE

CEDAR FIREWOOD
 \$200 per cord
 209-732-5262

FIREWOOD

Premium 16" Dry, Seasoned, Wood.
 Oak 1/2 Cord - \$225 • Oak Full Cord - \$375
 Cedar 1/2 Cord - \$175 • Cedar Full Cord - \$275
 Delivered & Stacked - If Accessible!
 Deduct \$50 from above prices if we Deliver & Dump. Please Call Mark @ (209)-588-6227
 Or Steve @ (209)-732-7721

LAND FOR SALE

13516 CLEMENTS RD



Come build your dream home on this one acre parcel in the beautiful area of Pine Mountain Lake.
 209-497-7133

BEAUTIFUL DEEP WATER LAKEFRONT LOT
 121 Feet of lake frontage
 Lot 4/102 - Longridge

Beautiful deepwater lake lot on north side of Longridge approximately 1/2 acre nestled between two homes. Best deepwater lake lot on the market! \$110,000 925-818-0500

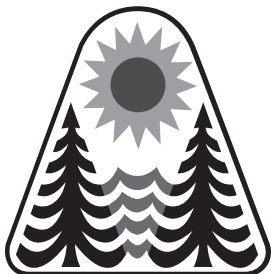
BULK LOT SALE

5 PML lots, \$10,000 or best offer. 209-768-3690

COMMERCIAL SPACE FOR LEASE

FOR LEASE

Office/Retail space now available at Mountain Leisure Center, downtown Groveland. Executive Suites from 250.00 per month, includes utilities and furnishings. Additional office/retail units 500 to 1400 sq ft. Award winning design along with the best parking in town. Call John at 209-962-6014 office, or 209-768-3690 cell.



COMMERCIAL SPACE FOR LEASE

COMMERCIAL SPACE FOR LEASE!

18717 Hwy 120, Groveland. Approximately 1600 square feet of building space, located downtown with propane heat, one ADA bathroom perfect for retail, food service, professional office, medical etc. Available 12/1/2018. Rent \$1,500.00 Deposit \$1700.00. Contact agent 650-520-1022

SERVICES

LOREN SNIDER'S TREE SERVICE

General pruning, ornamental pruning, mistletoe removal, tree removal, dump truck, chipper, stump grinder, local references, Non Licensed 27 + years experience. General liability insurance
 209-878-3828 or 209-402-9797

WEEDEATING

\$25/hr 209-878-3422 Have own equipment!
 Ask for Robert

**FURNITURE & CHAIR REPAIR/
 WOODWORKING**

Retired Cabinet-maker will repair all types / kinds of furniture, cabinets, crown moulding
 Local PML Craftsman 209-479-8098

BIG JOHN HANDYMAN SERVICES

Yard Maintenance, House Maintenance and moving households Call John 962-6163

RONNING ROOFING

Call Joe for all your Roofing and Gutter needs. Licensed, Bonded, and Insured. License #976739
 209-962-6842

HANDYMAN

For removal of unwanted items. Call Mike, very reasonable rates. Prompt Service. 209-962-0777

PROFESSIONAL PROPERTY MANAGEMENT
 RE/MAX Yosemite Gold • Patricia (Tish) Fulton
 DRE# 00760019 Property Manager Certified by California Association of Realtors 209-962-0837

ELECTRICAL
A AMERICAN ELECTRIC & SERVICE CO.
 Lic. #465220 209/962-7374

COMPUTERS

custom built, upgrades, trouble-shooting, free consultation. 209/962-7110

COSTA'S TREE SOLUTIONS
 Steve Costa, Owner
 Fully Insured/Bonded • C.C.L. #1001392
 209-962-4468 • Cell 209-768-4469
 Certified Arborist #WE7496A

SERVICES

**TV/HOME THEATER/WIFI
 INSTALLATION & SETUP**

Satellite, Blue Ray, Roku, Apple TV, Stereo equipment, Unifi, Cameras & more
 Call for a quote. 209-694-8155

LOVING PET CARE in my home or in yours - garden care also available. Call Barb 962-5653 or email at shadkitty12@gmail.com

GOT WEEDS?

Contact Jim Atkins at 209.985.4376. Lot Clearing, Hauling, Dump Runs, Weedeating. Local Guy. References available.

MASONRY

Retired Mason. Repairs, masonry powerwashing and rock sealing. Veneer rock for sale.
 John Flinchum 209-770-6084

**GET IT SOLD
 with a classified ad
 in the
 Pine Mountain Lake News**

SERVICES

CRYSTAL CLEAR HOUSE CLEANING
 Reliable with an eye for detail. New customers welcome! Call 209-770-4848

RENTALS WANTED

EXCELLENT TENANTS
 w/excellent credit and rental history looking for homes to rent. Owner approves tenant before placement. Call Yosemite Region Resorts 209-962-1111

VACATION RENTALS

PANORAMIC LAKEFRONT
 boat dock, decks, air, 3bd/2ba, Beautiful Views
 650/961-6334

The PMLA is not responsible for, nor does it endorse, any contractor, company, or individual advertising in the PML News.

Looking For A New Dentist?

We're Accepting New Patients!

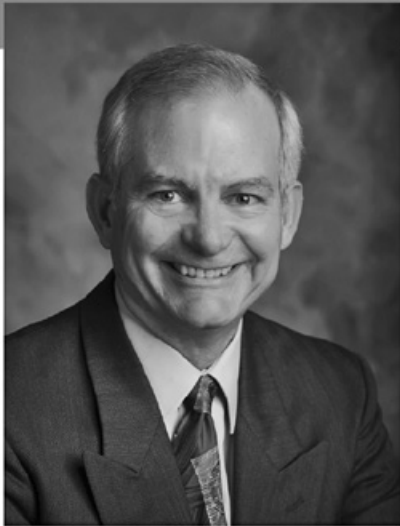
- Advanced Level Dental Expertise
- Care with a Gentle Touch
- Coffee & Tea for Your Enjoyment
- Advanced Digital Technology
- Relaxing Movies During Treatment
- Insurance Friendly
- Senior Discount



209.536.1954

Michael D Scherer, DMD, MS, APC 14570 MONO WAY, STE. I
 SONORA, CA 95370
MODERN DENTISTRY

WWW.SONORAMODERNDENTAL.COM



PAUL S. BUNT, ESQ.
ATTORNEY AT LAW

ESTATE PLANNING
PROBATE
REAL ESTATE
BANKRUPTCY
ELDER CARE
209.962.6778

Mountain Leisure Center, Groveland
appointments available in Sonora and Lake Don Pedro

NEED HOMEOWNER'S INSURANCE?



Having trouble finding insurance for your home?

We may have the solution for you even if you live in a forested area!

EASON INSURANCE AGENCY, INC.
209.383.7322

9AM - 5PM - MON - FRI ● 9AM - 1PM SAT
Email: homeins@easoninsuranceagency.com
CA Lic #0C97581

Locally Owned since 1950

YOUR ONE-STOP SHOP FOR
all your pest control services

PEST CONTROL: HOME, BUSINESS AND INDUSTRY

LAWN FERTILIZATION AND COMPREHENSIVE LAWN CARE

TERMITE INSPECTIONS, REPAIRS AND FUMIGATIONS

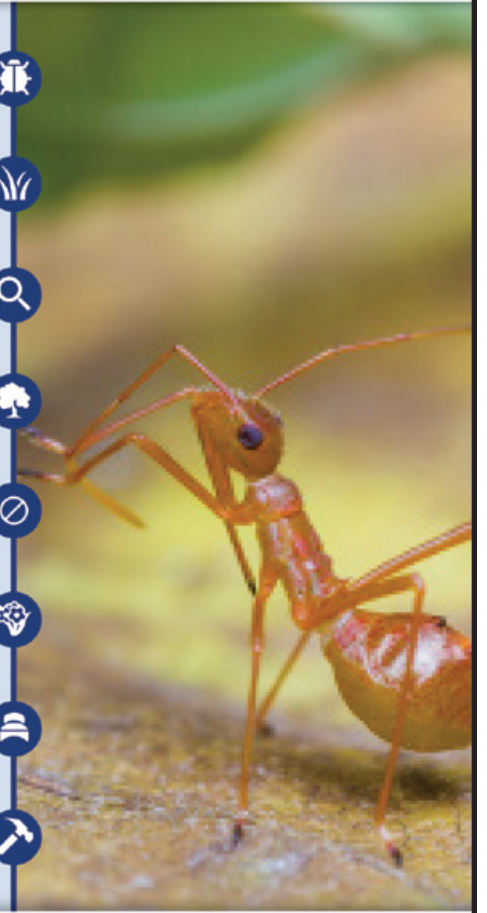
TREE AND SHRUB CARE, AND BARK BEETLE CONTROL

TERMITE TREATMENTS AND MONITORING

WEED CONTROL AND FIRE BREAKS

BED BUG TREATMENT

DECK REPAIR/REPLACEMENT (LICENSE #922758)



OUR REPUTATION IS IMPORTANT TO US AND YOUR COMMUNITY.
Call now for a free estimate!



(209) 770-7733
clarkpest.com

Happy St. Patrick's Day



Real Estate • Property Management • Vacation Rentals

209-962-1111



19120 Raboul Ct-2/328—CHARMING, SINGLE-LEVEL HOME on an all-usable, level lot, totaling .71 acre. Recently updated, with great attention to detail. 3bd, 2ba, renovated kitchen, with Cambria Quartz counters, stainless appliances, double oven, glass cooktop, convection microwave and 3-door refrigerator, plus an ultra-quiet dishwasher and large apron-front sink. New laminate flooring and fresh paint throughout. New Bryant central H/A system. Spacious, covered, back deck with hot tub. Parking space for an RV and boat. 2-car garage plus Tuff shed. \$285,000 #20200172



20285 Upper Skyridge-15/53—YOUR MOUNTAIN GETAWAY is ready to enjoy! Most furnishings are included with this 3bd, 3ba home. Open-beam cathedral ceilings, central heat/ac, double-pane windows and wood-burning stove and large bonus room. On a one-way street, near the lake and hiking trails. Just 26 miles to Yosemite's entrance. Amenities include: Airport, 18-Hole championship golf course, Country Club with indoor & outdoor dining, tennis courts, swimming pool, equestrian center and 3 sandy beaches at the lake. \$267,000 #20191664



13177 Mohrmann St-2/115—TURN-KEY READY! Well-maintained and fully-furnished. Perfect for a rental, vacation getaway or full-time living. Single level home, 3bd, 2ba, 1568sf, with a detached 2-car garage. Large, covered front porch, just right for outdoor entertaining year-round. Central heating & a/c. Situated in the beautiful, gated community of Pine Mountain Lake, about 26 miles to the north gate entrance of Yosemite Park. \$270,000 #20191663



12597 Cresthaven Dr-4/429—HERE IT IS! This 2-level cabin is just a short stroll to the lake. Open living room, with vaulted ceilings. Marble counter-tops and stainless steel appliances. Large master-suite upstairs, with a spacious closet and private deck. Come enjoy the large wrap around deck and have a BBQ! Great potential for a vacation rental or the perfect second home getaway. Most furnishings included in sale. \$249,000 #20191116



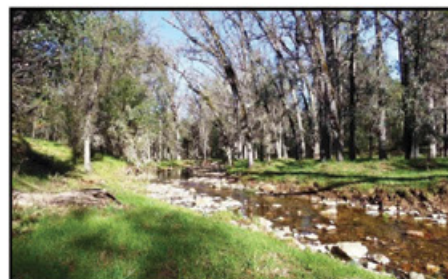
12702 Hetch-Hetchy Ct-4/520—GREAT CUL-DE-SAC LOCATION! Tri-level 2427sf home, with vaulted, pine ceiling in great room, open dining and spacious kitchen. Wood stove and separate laundry room. Generous-sized bdrms & full baths. Den and bonus room can double as sleeping areas. Recently replaced front door, new carpet and updated kitchen with freshly painted cabinets, new counter top and back splash. Samsung Black Stainless appliances, new laminate plank flooring and a dual-zone wine refrigerator. Wrap-around deck and over-sized 2-car garage, with niche for a work station, storage or hobbies. \$312,000 #20191282



A Rare Opportunity to Own Large, Ranch Properties!



Located on the eastern edge of Pine Mountain Lake's gated community are these beautiful pieces of California "gold country". These three parcels range in size from 65+ to 181+ acres. Level to gently-rolling terrain, with meadows, Oaks, Cedars, Pines and wonderful meadow and mountain views. Centrally located, near the town of Groveland and Yosemite National Park. These serene settings are one-of-a-kind and the possibilities are endless! Zoned AE-37. Pricing begins at \$500,000.



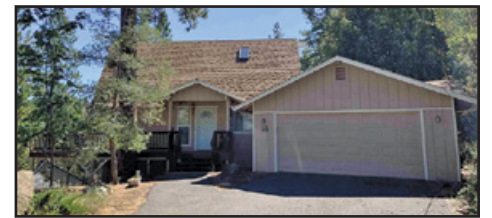
Five bare-land parcels, ranging in size from 15+ to 17+ acres. This is your rare opportunity to own a magnificent piece of property near one of the world's most loved National Parks—Yosemite. Pines, oaks, seasonal creeks and meadow views. Prices start at \$89,000. Contact Real Estate Agent for further details.

100% Local Vacation & Long-Term Rental Services Now Accepting Homes!

- ◆ Owner-Approved Rates
- ◆ Online & Telephone Reservations
- ◆ Aggressive Advertising Campaign
- ◆ AirBnB, VRBO, HomeAway, Flip-Key, Trip Advisor, Booking.com & more!
- ◆ Pre-Arrival Inspections for Guests
- ◆ Professional Departure Cleanings
- ◆ Accidental Damage Protection
- ◆ Monthly Rentals & Tenant Placement
- ◆ Tenant-Screening & Credit Reports
- ◆ Move-in / Move-out Inspections
- ◆ Scheduled Maintenance & Repairs
- ◆ 24/7 Emergency Services Available
- ◆ Monthly Statements & Owner Payments
- ◆ Local, State & Federal Tax Requirements



18687 Main Street, Suite E, Groveland, CA 95321
(209) 962-1111 • yosemiterregionresorts.com



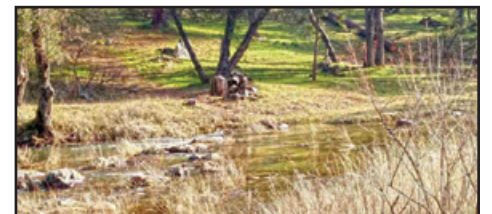
12351 Mills St-8/99—MOUNTAIN GETAWAY with stunning tree-top and mountain views. 3bd, 2ba, open floor-plan of living room, dining and kitchen. One of the bedrooms is loft-style. Knotty-Pine vaulted ceilings upstairs. Large laundry & mudroom downstairs. Three sliders go out to an expansive wrap-around deck. Most windows and sliding doors are newer. Spacious & clean, 2-car garage. Second driveway of side of house, for extra parking of RV, boat or cars. Ping Pong table and furniture included. \$249,900 #20191820



20034 Pine Mtn Dr-13/194—COMPLETELY FURNISHED down to the linens and kitchenware! This cozy cabin is located between Big Creek and the PML Marina. Well-maintained 3bd, 2ba, vaulted wood ceiling, wood-burning stove, skylight and plenty of windows for natural light. Open floor-plan and deck w/retractable awning and hot tub. Plenty of parking. Raised platform in the sub-area will store all of your seasonal goods and lake toys. Ready for you to begin enjoying it right away! \$234,500 #20191289



12375 Sunnyside Wy, 8/54—YOUR FUN AWAITS! A-frame home suited to large gatherings and vacation activities. 4bd, 3ba, 2000+sf. Many upgrades: Laminate wood flooring, granite kitchen counters, updated bathrooms and composite decking. Vinyl siding makes exterior wear-and-tear a thing of the past. This home has been a successful rental and has great potential for continued rental income. Extensive view from the deck and a short distance to the Marina beach. Yosemite Park entrance only about 25 miles away. \$289,900 #20181976



13121 Wells Fargo—PARK-LIKE SETTING with greenbelt, along the banks of Big Creek. Two merged lots. The perfect location to build your dream home! Enjoy this serene setting and the sound of Big Creek rushing by. Access to all Pine Mountain Lake amenities: Lake, fishing, golf, tennis, swimming pool and more. \$35,000 #20191861



20097 Upper Skyridge-15/19-A—'CLOUD'S PERCH' describes this beautiful setting, with a clear view of the lake and the perch of a pair of majestic Bald Eagles. Exquisite home, with timeless, natural finishes throughout. Walls of windows bring in natural light and frame the spectacular views of nature. This home has been completely and tastefully remodeled. Almost 3/4-acre, with spectacular fall colors in the Autumn. This upscale home shows pride-of-ownership and exemplary maintenance. \$399,000 #20192000



ROB STONE
OWNER/REALTOR
DRE #01025463



BJORN WAHMAN
BROKER
DRE #00706559



TARA STONE
MANAGER/FFO
DRE #01106544



LIZ MATTINGLY
BROKER ASSOC.
DRE #00709618



TED BIANCHI
REFERRAL AGENT
DRE #01318805



PAULA BIANCHI
REALTOR
DRE #01316556



RYAN NIENDS
REALTOR
DRE #01940007



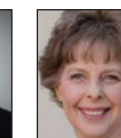
ROY NAVARRO
BROKER ASSOC.
DRE #01235457



MIRIAM MARTIN
REALTOR, RSPS, ASP
DRE #01400779



ANDREW RIETVELD
REALTOR
DRE #01994156



SHARRON WAHMAN
EXEC. ASSISTANT
RESERVATIONIST



JOSH REGALADO
EXEC. ASSISTANT
RESERVATIONIST



CAPRICE KROW
PROP. MGR/LDP
DRE #01179023



CORY STONE
PHOTOGRAPHER
VIDEOGRAPHER