

PINE MOUNTAIN LAKE ASSOCIATION



RECREATION GUIDE 2019

TABLE OF CONTENTS

Airport	7
Activities & Events	6
Campground	14
Equestrian Center	16
Golf Course	4
The Grill	8
Hiking & Walking Trail Maps	15
Independence Day	18
Information/PML Phone #s	3
Lake Lodge	7
Marina Boating/Hunting/Events	12
Marina Store/Boat Rentals	13
PML Map	10-11
Swimming Pool	7
Tennis & Pickleball	17
Windjammer Sailing	5



REAL ESTATE SALES PROPERTY MANAGEMENT VACATION RENTALS

VIEW ALL AREA PROPERTY LISTINGS ONLINE
RESERVE YOUR NEXT VACATION ONLINE ANYTIME
www.YosemiteRegionsResorts.com



LIKE US ON FACEBOOK
OVER 37,000 OTHERS HAVE

209-962-1111

Located in Mountain Leisure Center
18687 Main Street • PO Box 19
Groveland CA 95321

VACATION RENTALS • LONG TERM RENTALS • PROPERTY MANAGEMENT

PINE MOUNTAIN LAKE REALTY

An Agent Owned Company



Barry Scales
Broker/Owner
209.484.7123
DRE#00451887



Lynn Bonander, GRI
Owner/Realtor®
209.484.7156
DRE#00683485



Val Bruce, GRI
Owner/Broker Assoc.
209.768.7368
DRE#00578336



Parker 'PJ' Johnson
Owner/Realtor®
209.768.6232
DRE#01732298



Marc Fossum
Owner/Realtor®
209.770.4750
DRE#01956242



Elaine North
Realtor®
209.768.4221
DRE#01047723



Patty Beggs
Owner/Realtor®
209.840.2293
DRE#01339347



Michael Beggs
Broker Assoc./Realtor®
209.840.2294
DRE#0133568



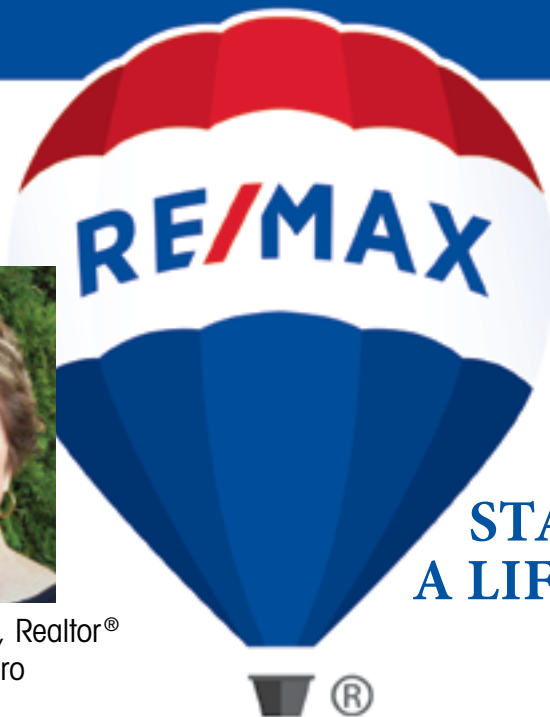
*Located in the MarVal Market
Shopping Center on the corner of
Highway 120 and Ferretti Road*

Available to serve you 7 Days a Week! Call 209-962-7156
www.pmlr.com • 18919 Ferretti Road • Ste A • Groveland CA

HELPING NEW FRIENDS
DISCOVER THE AMERICAN DREAM



Eleda Carlson, Realtor®
GRI, SRES, e-Pro
BRE#00632516



COME
FOR A
VISIT
AND
STAY FOR
A LIFETIME

RE/MAX Yosemite Gold
18688 Hwy 120, Groveland
(209) 814-4123 – Call or Text • eledac1@gmail.com

LET LEDA LEAD YOU TO
YOUR DREAM HOME IN THE FOOTHILLS

*"She gives 150% to her clients by helping out in any way possible
to make your buying & selling experience feel like family"*

"She understood my goals and really worked to achieve them"

*"Her expertise in acreage sales coupled with her negotiating
skills helped to finalize the contract for both me and
the buyer in a timely and smooth manner"*



Lauree@Lauree.com
(209) 628-4600
Broker, CRS, CRB, SRES
GRI, E-Pro, Green
Realtor since 1987
Resident of Groveland since 1977
RE/MAX Yosemite Gold



Your Mountain Guide to Groveland Real Estate

PHONE & EMAIL DIRECTORY

Pine Mountain Lake Association
19228 Pine Mountain Drive • Groveland CA 95321

So that your questions can be answered as quickly as possible please direct your inquiries to the proper extension to avoid delays in assistance.

GENERAL INFO

Tina Cutright 209.962.8600
Rental Program, Lake Lodge inquiries & reservations
admin@pinemountainlake.com

ACCOUNTING

Stacy Gray 209.962.xxxx

Michelle Cathey 209.962.8607
Receivable/Collections/Assessments
pmlar@pinemountainlake.com

Karen Peracca 209.962.8626
Accounts Payable
pmlap@pinemountainlake.com

Ken Spencer 209.962.8606
Controller Accounting Procedures
controller@pinemountainlake.com

MAIN GATE

209.962.8615

Inquiries, gate passes, tennis & campground reservations
campground@pinemountainlake.com

ADMINISTRATION

Joseph Powell, CCAM-LS, CMCA, AMS
General Manager
joepowell@pinemountainlake.com

Debra Durai 209.962.8627
Admin Asst. to G.M.
debra@pinemountainlake.com

Shannon McNair 209.962.8628
Human Resources
pmlhr@pinemountainlake.com

Terri Thomas 209.962.8605
E.C.C. Coordinator, Plan Submittal, Compliance Fees, Mergers
ecc@pinemountainlake.com

Anita Spencer 209.962.8632
Member Relations, Gate Cards, Address Changes, Webmaster, Notary Public
anita.spencer@pinemountainlake.com

Sarah Ruhl 209.962.1240
CC&R Compliance/Fire Mitigation
Community Standards Director
communitystandards@pinemountainlake.com

Suzette Laffranchi 209.962.1241
Community Standards Specialist
compliance@pinemountainlake.com

Ryan Reis 209.962.8604
Recreation & Seasonal Operations Manager
r.reis@pinemountainlake.com

DEPARTMENT OF SAFETY

Natalie Trujillo 209.962.8633
Director of Safety
n.trujillo@pinemountainlake.com

Sgt. Teri Cathrein 209.962.1244
t.cathrein@pinemountainlake.com

Sgt. Amanda Darrow 209.962.8616
a.darrow@pinemountainlake.com

MAINTENANCE DEPT

Susan Capitanich 209.962.8612
Secretary
maintenance@pinemountainlake.com

Tom Moffitt 209.962.8611
Maintenance Manager
tmoffitt@pinemountainlake.com

GOLF COURSE / PRO SHOP

Mike Cook 209.962.8620
PGA Golf Pro
golfpro@pinemountainlake.com

Rob Abbott 209.962.8610
Golf Course Superintendent
rabbott@pinemountainlake.com

Doug Schmielt 209.962.8620
Golf Pro Shop/Golf Reservations
golfshop@pinemountainlake.com

Golf Snack Shack – 209.962.5058

THE GRILL AT PINE MOUNTAIN LAKE

Jay Reis 209.962.8638
The Grill Manager
clubmgr@pinemountainlake.com

Jimmy Gutierrez 209.962.8638
Restaurant Hospitality Coordinator
cluboffice@pinemountainlake.com

19th Hole Lounge 209.962.8636

MARINA (SEASONAL)

JoAnne Bacci 209.962.8631
Marina Store Manager
marina@pinemountainlake.com

Marina Lakeside Café 209.962.8630

SWIMMING POOL (SEASONAL)

Carolyn Stuart 209.962.8634
Pool Manager
pool@pinemountainlake.com

EQUESTRIAN CENTER

Melissa Moore 209.962.8667
stables@pinemountainlake.com

PML NEWS

Editor/Design 209.962.0613
Sabre Design
PMLNews@SabreDesign.net

PML Organized Groups & Clubs

Contact the individuals below if you are interested in joining!
(All numbers are 209 area code unless noted otherwise)

Aviation Association
Bonnie Ritchey 650-996-6274

Computer Users Group
Frank Perry 962-0728

Exercise
Barbara Elliott 962-6457
Cindy Simpson 962-7018

Friends of the Lake
Mike Gustafson 962-6336

Garden Club
Linda Flores 962-0824

Guardians of PML
Frank Jablonski 962-4375

Ladies Club
Evelyn Bealby 650-743-4105

Men's Golf Club
Pat Hennigan 962-4470

Needle Crafts
Barbara Klahn 916-5420

Pickleball Club
Elisa Hoppner 962-2002

Pine Needlers Quilt Guild
Catherine Santa Maria 962-7904

PML Ladies Golf Club
Marcee Cross 962-0771

PML Niners
Stacie Brown 962-5129

PML Shooting Club
Dick Collier 770-5022

PML Waterski & Wakeboard
Dean Floyd 408-915-8848

Racquet Club
Mike Canizarro 962-6787

Residents Club
Dick Faux 962-4617

ROOFBB
Susan Dwyer 962-6265

Sierra Professional Artists
Heinie Hartwig 586-1637

Southern Valley Srs. Golf Group
Rich Robenseifner 962-0932

Sunday Couples Golf
Alma Frawley 962-5578

Wednesday Bridge Club
Joe Sousa 962-5708
Linelle Marshall 962-7931

Windjammers Sailing Club
Ken Regalia 415-819-4252

2019 ADMINISTRATION OFFICES HOLIDAY CLOSURES

Monday, May 27
Memorial Day

Thursday, July 4
Independence Day

Monday, September 2
Labor Day

Monday, November 11
Veterans Day (Observed)

Thursday, November 28
Thanksgiving

Friday, November 29
Day After Thanksgiving

Tuesday, December 25
Christmas Eve

Wednesday, December 26
Christmas Day

Tuesday, December 31
New Years Eve

Wednesday, January 1, 2020
New Years Day

2019 PMLA BOARD MEETINGS

Meetings are held at the PML Lake Lodge and start at 9 AM
(Third Saturday – Unless otherwise noted)

January 12, 2019

February 16, 2019

March 16, 2019

April 20, 2019

May 18, 2019

June 15, 2019

July 20, 2019

August 24, 2019 – Annual Member Meeting/Election

September 14, 2019 – (Second Saturday due to 49er Festival)

October 19, 2019 (Begins at 8 AM)

November – No Meeting

December 7, 2019 (First Saturday)

GOLF COURSE

12765 MUELLER DRIVE 209-962-8620 OPEN TO THE PUBLIC!

PINE MOUNTAIN LAKE GOLF
COURSE IS THE HIDDEN JEWEL OF
THE FOOTHILLS!

Our 18-hole public golf course, voted “4 ½ Stars Best Places to Play” by Golf Digest Magazine, offers beautiful views on a classic mountain style course designed by William F. Bell, and opened in 1970. Our 2800 foot elevation affords us year round play and we are “Above the Fog and Below the Snow”. The course winds through ancient oaks, towering pines and fragrant cedars, down valleys and across hills with gorgeous views of the snow-capped Sierra Nevada mountains. Each hole has its own challenges and with four sets of tees, you can change your experience just by changing which tees you play from. The greens are subtle and

staying below the hole is always a good strategy as downhillers can be tricky. No matter your skill level you’ll find your day spent on the course quite enjoyable with all of the flora and fauna that the foothills have to offer: herds of mule deer, red-tail hawks, blue jays and wildlife galore!

GOLF SHOP

It always helps to look great on the course no matter the shape of your game. The Golf Shop can help you look your best with our large variety of men’s and ladies golf wear at great prices. We carry polos, tops, shorts, windshirts & sweatshirts, hats, caps & visors, and much more from Adidas, Antigua, Bermuda Sands, Monterey Club, Jamie Sadok and others. We can also supply all of your equipment needs and wants – balls,

gloves, clubs, bags and accessories from Titleist, Cobra, TaylorMade, Bridgestone and more. If it’s not in stock we’ll get it for you.

JUNIOR GOLF

For all aspiring golfers ages 7-18 we offer Golf Clinics where you can learn most everything you need to know about playing golf - how to swing the club, rules and etiquette, and strategy on the golf course. We offer two levels on instruction: Beginning and Intermediate. Clinics are 3 days, Thursday, Friday & Saturday for 1-1/2 hours per day. Dates for this Summer are **July 5, 6, & 7, July 19, 20, 21, and August 1, 2, 3**. We will be expanding our junior program in 2019 so please contact the Golf Shop at 209-962-8620 to sign up for our events or for more information.

LESSONS

Every player needs lessons. Even the PGA Tour pros you see on TV take lessons. If you’re just starting out or looking to fine-tune your swing we can help. We provide personalized lessons for every student. Instruction can be done either individually or in groups, one lesson at a time or in series. Contact the Golf Shop at 209-962-8620 for more info and rates.

RENTALS

Didn’t bring your clubs with you? The golf shop offers rental clubs in righ-hand, left-hand and Ladies sets. When you make your tee time just let us know what you need and we’ll take care of the rest (golf swing not included.) Clubs are also available on loan for use at the Driving Range & Practice Areas.

TEE TIME RESERVATIONS

PML Property Owners may make reservations up to 14 days in advance by calling the Golf Shop at 209-962-8620. All others may call 10 days in advance. Reservations for all days of summer’s major holidays – **Memorial Day, 4th of July and Labor Day** – can be made two weeks prior to the first day of the holiday weekend. We accept reservations starting at 7am **March 11 through November 3**. “Shotgun Season” starts **November 4 through March 9, 2020** and reservations for a spot in our daily shotgun starts are accepted starting at 8am.

DRIVING RANGE & PRACTICE AREAS

Our driving Range has both grass and artificial mats for warming up before your round or fine tuning your swing. We also have a Short Game practice area with its own green and bunker for working on those scoring strokes. And don’t forget to hit the Putting Green, adjacent to the 1st tee, before teeing off. Tokens for the range ball machine can be purchased at the Golf Shop or the Snack Shack; \$3 per token (26 balls) or 4 tokens for \$10 (over 100 balls).

SNACK SHACK @ THE RANGE

Enjoy a great Hot dog or fresh handmade sandwich and take in the view of the Sierra Nevada and Yosemite at our driving range.

THE GOLF COURSE
IS FOR GOLF ONLY PLEASE!
NO GAMES, WALKING,
BIKE RIDING OR DOG WALKING
ON THE GOLF COURSE.



2019 GOLF FEES MONDAY - SUNDAY			
	Green Fees	Cart Fees	Total
PML Property Owner			
9 Holes	\$19	\$9	\$28
18 Holes	\$30	\$14	\$44
Twilight (1 pm)	\$22	\$14	\$36
Super Twilight (3 pm)	\$19	\$9	\$28
Guests & Public			
9 Holes	\$25	\$11	\$36
18 Holes	\$43	\$17	\$60
Twilight (1 pm)	\$32	\$11	\$43
Super Twilight (3 pm)	\$23	\$11	\$34
Juniors (18 & Under) 9 or 18 Holes			
PML Property Owner	\$10		
Guest or Public	\$14		
Youth on Course	\$5		

GOLF & COUNTRY CLUB DRESS CODE
Appropriate golf attire is required for all users of the golf course as follows:
Blue denim or cotton sweat pants are not permitted on the golf course.
MEN: Collared shirts are required. Mock turtleneck shirts are acceptable. No t-shirts, tank tops or muscle shirts are allowed. Shorts are allowed and must be at least mid-thigh in length. No cut-offs or swimsuits.
LADIES: Collarless tops are permitted as well as sleeveless tops with a minimum 4" shoulder strap. No tank tops or half shirts allowed. • Shorts must be at least mid-thigh in length. No cut-offs or swim suits allowed.
FOOTWEAR: Metal spiked shoes are not allowed. Approved golf shoes only, other sport shoes such as (football, soccer, track, etc.) are not allowed at any time.

WINDJAMMERS SAILING SCHEDULE OF EVENTS

WE INVITE ALL SAILORS/WOULD BE SAILORS TO PARTICIPATE IN THESE EVENTS

LAUNCH BOATS ONTO BEACH

Windjammer Club members other sailors requiring help/assistance with their boat launch

Saturday, May 4, 2019 at 10 am

MEMORIAL WEEKEND OPENING SAILING EVENT

Memorial Day is Monday 5/27 Pot Luck Club Gathering

Sunday, May 26, 2019 at 12:30 pm

SAILING FUN DAY / Fun Race "Follow the Leader" All sailboat types

Sunday, June 23, 2019 12:30 pm

MOVE BOATS OFF BEACH—MANDATORY

Fireworks at Dunn Court Beach

Saturday, July 6, 2019 at 8 am

ACTIVE CLUB MEMBERS HAVE ARRANGED ALTERNATIVE BEACH LOCATION AVAILABLE FOR ONE-DAY BOAT REMOVAL FROM DUNN COURT BEACH FIREWORK LAUNCH. ALL BOATS MUST BE REMOVED FROM DUNN COURT.

INDEPENDENCE DAY SAILING EVENT

10:30 Move boats back to beach and Beach Cleanup

Sunday, July 7, 2019 at 12:30 pm

SAILING FUN DAY / Fun Race "Simon Says" All sailboat types

Saturday, July 20, 2019 at 12:30 pm

OPEN SAIL DAY — Sunday, August 4, 2019 at 12:00 pm

LABOR DAY REGATTA

Fun Race (Don't Get Wet) (Labor Day is Monday)

Sunday, Sept 1, 2019 at 12:30 pm

FINAL SEASON SAILING EVENT

Fun Handicap Race for the Cup (Plastic Cups)

Saturday, Sept 21, 2019 at 12:30 pm

MOVE BOATS OFF BEACH / Prepare for winter storage

Saturday, Oct 26, 2019 at 9:00 am

AHOY ALL SAILING ENTHUSIASTS!

COME and participate in our WJC sailing events. You don't have to own a Hobie Cat. All sailors and sailboat types are welcome. Big or small; mono haul or nautical freaks. The winds are generally gentle /kind and the water is warm. Our Windjammer Sailing Club encourages all sailors and would-be sailors with an interest in sailing to stop by any time at Dunn Court to introduce yourself. You can generally find club members there from about 12:00 pm noon onward when the winds begin to pick up. Many club members represent a great source of information about boats, sailing techniques and stories.

If you own a sailboat, we encourage you to join our Club and get on our membership roster. The WJC's objectives are to promote sailing, improve tactics/techniques and advance safe water practices.



HOMES on the HILL

FOR ALL YOUR REAL ESTATE NEEDS:
HOMESONTHEHILL.COM

ROB STONE
PRO REALTOR
DEP 0125443

FREE LIST OF BANK OWNED AND SHORT SALE PROPERTIES
TOUR ALL OF OUR LISTINGS • VIEW ALL AREA LISTINGS (MLS SEARCH)
HIGH DEFINITION VIRTUAL TOURS • FREE HOME MARKET EVALUATION
THE BEST HOMES SELL QUICKLY, SIGN UP TO RECEIVE NEW LISTINGS BY EMAIL.

18687 MAIN STREET • PO BOX 19 • GROVELAND, CA 95321

209.962.1143

Groveland's only Multi-Line Insurance Agency

Kiefer Insurance Agency

Since 2002

Working with top rated insurers in the primary and secondary markets, we have coverage for **ALL** your insurance needs:

Homes • Autos • RVs • Boats • Trailers • Mobiles
Motorcycles • Recreational Vehicles • Business
Rental Property • Renovations

18800 Main St
Groveland, Ca 95321
Lic 0D77765

209-962-6593 P
209-962-6656 F
jkiefer@farmersagent.com

LET US HELP YOU, INSURE YOUR FUTURE

REGARDING WINDJAMMER SCHEDULE

Ken Regalia, Commodore 415-819-4252
Fred Mecum, Vice Commodore 962-7989
Kurt Petersen, Vice Commodore 962-5456

As the summer months get extremely busy with all types of watercraft sharing our lake, please be reminded that it is each and every person's responsibility while on the lake, regardless of watercraft type, to be fully aware of the PML lake rules and adherence to Coast Guard and State regulations regarding right of way and safety. Stay Alert at all times. Be on the lookout for the other guy.

Cheers to experiencing fair winds, warmer water and hotter weather in the very near future. We have had enough rain for this year.

EVENTS

Upcoming Events are listed each month in the Calendar of Events section of the PML News and at pinemountainlake.com see "upcoming events".

COUPLES TWILIGHT 9-HOLE

Enjoy a fun nine-hole round of golf, a delicious dinner and special prizes. See the PML News for upcoming dates or call the Pro Shop for details (209) 962-8620.

PML FLEA MARKETS

PML Stables on **May 11 and September 14**. Buy or sell your treasures at this very popular event. Sign up early in the PML Administration office or at the Stables the morning of the Flea Market - \$7 per space. Space set-up starts at 7 am. Spaces are "first come first serve" basis on the day of the event. Please bring your own tables, tarps, blankets, etc. 209-962-8667.

ANNUAL BBQS

Memorial Day Celebration BBQ & Dance at the PML Stables

Sunday, May 26 (sponsored by Tioga HS). Tickets available at Tioga High (209) 962-4763.

Sunday, September 1 (sponsored by STCHS). 3 - 7 pm (Dinner 3 - 7 pm and dancing) \$15 Adults \$5 Kids (12 & under) Dinner: Tri-Tip, with all the fixin's Live Music, 50/50 raffle, wagon rides and silent auction. Fun for the entire family! Bring the kids, your neighbors and Grandpa!

FRIENDS OF THE LAKE ACTIVITIES AND EVENTS

(subject to change; always check the PML News and mailbox flyers for most current information)

NOTE: FRIENDS OF THE LAKE IS A SOCIAL CLUB. OUR EVENTS ARE OPEN TO THE PUBLIC, SOMETIMES FOR A SMALL FEE. TO JOIN FRIENDS OF THE LAKE, SEND A CHECK FOR \$20 WITH YOUR NAME AND EMAIL ADDRESS TO FRIENDS OF THE LAKE, PO BOX 591, GROVELAND. WE'LL PUT YOU ON THE INVITATION LIST FOR ALL EVENTS.

Poker Run

Sunday, June 16: Friends of the Lake hosts the annual Poker Run on the lake at 5:00 pm. After a potluck dinner at the Marina, we board pontoon boats and travel around the lake picking up poker cards. Upon returning to the Marina, we play the cards. Prizes for the best and worst hands. Call 962-7904 to reserve your seat. Cost is just \$5 per person.

Independence Day Boat Parade

Saturday, July 6: Don't miss this highlight of the summer! Decorate your boat to honor Independence Day or your favorite song. Sign-up at the Marina office

and receive your entry number. The parade kicks off at 6:00 pm Saturday, prior to the fireworks display. Spectators can watch the parade from the Marina, Lake Lodge or Fisherman's Cove. Trophies are awarded for the best decorated boats. Boats of all types are welcome! Watch the PML News and mailbox flyers for more details. No fee. Call 962-6336 for additional information.

Friends of the Lake also arranges the exciting seaplane landing on the lake at 3:00 pm.

PML Lake Swim and Kayak Race

Saturday, July 13: Friends of the Lake present the annual "Lake Swim" with an open swim across the lake from Dunn Court to the Marina at 3:00 pm. You can race or just swim for fun; note proficient swimmers only. All participants must register and sign a liability waiver at Dunn Court at 2:45 pm.

At 4:00 pm, following the lake swim, one and two-person kayak races leave from the Marina to race to a point near the dam and back. Participants must register and sign a liability waiver at the Marina at 3:45 pm.

There are prizes for the fastest swimmers and kayakers. Watch the PML News and mailbox flyers for details. No fee.

Music at the Marina

Sunday, July 14: Friends of the Lake hosts "Music at the Marina" at 5:00 pm. The evening starts with a potluck dinner at the west end of the Marina beach, followed by a live band. Come sing-a-long and enjoy a warm summer evening on the Marina lawn. Free for Friends of the Lake members, \$10 for others. Bring your place setting and a potluck dish to share.

Pictionary Puzzles

Sunday, August 18: Friends of the Lake sponsors a fun evening at the lake starting at 5:00 pm. Following a potluck dinner at the Marina, we'll divide into teams on boats and look for clues to answer the quiz. It's a lovely evening at the lake with prizes for the winning boat/team. No fee.

Bingo on the Beach

Sunday, September 8: Bingo on the Beach is a great way to end the summer season. We meet at the Marina at 5:00pm for supper, and then play a rousing game of bingo until dark, with prizes for the winners. Free for members; small fee for non-members. Check the PML News and mailbox flyers for more information.

ACTIVITIES

HORSESHOE PITCHING

Meet at Pleasant View Horseshoe Pits at 1 pm every Monday and Thursday. Men and women of all skill levels are welcome! Horseshoes provided.

GROVELAND ROTARY

Meets at The Grill at Pine Mountain Lake every Tuesday at noon. For more information call Wayne Phillips.

WEDNESDAY BRIDGE

At The Grill at Pine Mountain Lake. All bridge players welcome. For more information contact Joe Sousa at (209) 962-5708.

MARATHON BRIDGE

At The Grill at Pine Mountain Lake on the first Tuesday night of the month. For info contact Joe Sousa at (209) 962-5708.



FAMILY FUN & GAMES

SAND CASTLE CONTEST

Sunday, July 7 & Sunday, Sept. 1
9:30 am to 11:30 am

FUN & GAMES

Sunday, July 7 & Sunday, Sept. 1
9:30 am to 11:30 am



FOR THE KIDS



FAMILY BINGO!

Saturday, June 29, and August 10 At the Lake Lodge from 6 pm to 9 pm. \$1 hotdogs, \$1 sodas, free popcorn and prizes.

FISHING DAYS FOR KIDS

June 9, July 7 and August 4 Using your own gear, kids ages 7-15 sign up at the Marina for a supervised fishing boat trip from 6:30 am to 9:30 am. Maximum boatload is 6 kids for this learning experience. Learn fishing tips and safety while possibly catching one of our large fish, trout/bass.

FREE FISHING DAYS FOR KIDS OF ALL AGES!

For 2019, California's free fishing days are **July 6 and August 31**. While all fishing regulations, such as bag and size limits, gear restrictions, fishing hours and stream closures remain in effect; there are two Saturdays each year where anyone can fish without purchasing a fishing license. Log on here for more information on Free Fishing Days in the San Francisco Bay area. www.dfg.ca.gov/

FISHING DERBY FOR KIDS OF ALL AGES

Be sure to sign up at the Marina store for the Fishing Derby. There is a \$5 entry fee. The fishing derby runs from **Saturday, May 25 through September 28**. Prize for the heaviest fish caught. You must sign up before catching your fish to qualify. Call Marina Store at (209) 962-8631 for details.

SWIM LESSONS AT THE POOL

962-8634

See swimming pool section for details.

JR. GOLF CLINICS

962-8620

Reservations are required so please call or sign up in the Golf Shop.

SWIM LESSON FEES

Property Owners

\$38 per person per course
\$82 per family per course
(max. of 3 students per family)

Renters/Guests

\$49 per person per course
\$93 per family per course
(max. of 3 students per family)

POOL HOURS

SUMMER

May 25 – September 2
7 Days a Week

FALL

September 7 – 29
Weekend Only 5 pm to close

- Pool is open seven days a week during the season, weather/pool temps permitting.
- Open to property owners and their escorted guests at 10 am
- Open to renters and guests 12 noon. Pool closes every night for everyone at 9 pm
- New ADA Accessible Entrance Ramp and Restroom/Shower

SWIMMING POOL

12775 MUELLER DRIVE

The Pine Mountain Lake Pool is a family recreation center with many different activities: ping pong, board games, cards, books and magazines, water toys and more are all available from the pool attendants. For your convenience, the pool also has a snack bar and store. The snack bar and store are open during all pool hours. Enjoy our quality snacks & goods at very competitive prices.

PRIVILEGES

There is no charge to use the pool. Guests must be accompanied by a property owner or have a valid guest pass. No admittance without property owner card or valid guest pass. Additional identification may be required, property owner cards are nontransferable. No person(s) is permitted in the pool area without first registering with pool attendant. A limit on the number of persons in the pool at one time is enforced.

AGE REQUIREMENT

Children under 14 must be accompanied and monitored by an adult at least eighteen (18) years of age.

INFANTS & TODDLERS

Children not potty-trained must wear plastic pants or approved swim diapers with a plastic pant over it — "double-bagged". Please bring your own or purchase them at the pool store.

Pool Capacity: 63

SPECIAL ACTIVITIES AT THE POOL

Pool Socials: Fun family entertainment, including music & BBQ one Saturday a month in **June, July and August from 6 pm to 8 pm**. Come out and meet the staff! Check with the pool staff for party information as the dates approach. See Pool Attendant on duty for ping pong balls & paddles.

WATER AEROBICS CLASSES

7 days a week: May 25 - September 2
Weekends only: September 7 - 29

Open to all property owners. No charge to participate. Enjoy aqua exercise classes (instructed by selected audio tapes) for all fitness levels. Each class consists of a series of aquatic exercises, performed in the pool using water as resistance. Simply perform exercises for a safe and effective means of achieving overall body and cardiovascular conditioning.

Class by audio instruction from various CD's, which run continuously between 8 and 10 am, Monday thru Friday, and Saturday-Sunday from 9-10 am.

By request, CD's run Tuesday and Thursday evenings 7-8 pm during open swim time.

SWIM LESSONS

All swim lessons taught by a Certified Water Safety Instructor. Check with pool attendant for registration & scheduling availability (209) 962-8634. The Pine Mountain Lake Pool is a family recreation center with many different activities: ping pong, board games, cards, books and magazines, water toys and more are all available from the pool attendants.

LAKE LODGE

**LOCATED ON
PINE MOUNTAIN DRIVE
BETWEEN
CRESTHAVEN DRIVE AND
ROCK CANYON WAY**

Beach
Suitable for family groups
Barbecue grills
Picnic tables
Large sandy beach with large swim area
Playground equipment for the kids
Restrooms
Seasonal water taxi service

NOTE: This amenity does not have sleeping accommodations.



AIRPORT OWNED & OPERATED BY TUOLUMNE COUNTY AIRPORT

209-533-5685 • PAY PHONE 209-962-8966

LOCATED IN UNIT 12 ON ELDERBERRY WAY

FACILITIES ON SITE INCLUDE:
fueling and parking.

LOCATION:

North Latitude 37, 51' 45"
West Longitude 120, 10' 40"

ELEVATION:

2,933 feet above sea level.

RUNWAY: 27/09, 3,625 feet long. Surface is asphalt. Right traffic runway 27.

LIGHTS: Runway and rotating beacon, VASI - Runway 09, PAPI - Runway 27

TAXIWAY: 3,600 feet long, paved.

TIE DOWN AREA: Paved, approximately 54 tie downs, transient tie downs available on west side of ramp south of fuel pumps. Overnight fees: \$4 single; \$8 twin.

UNICOM: 122.9

FROM VORS: MILES

FREQ.

RADIAL DME

Modesto	VOR (MOD)	114.6	052°	40
Merced area	El Nido VOR (HYP)	114.2	001°	40
Stockton area	Linden VOR (LIN)	114.8	092°	40

AIRPORT APPRECIATION DAY

Saturday, October 5, 2019 from 11:30 am - 3:30 pm

at PML Airport, Elderberry Way at Ferretti Rd.

Everyone is welcome for a **FREE**, fun day of airplanes, cars, and motorcycles on display.

Aircraft fly-bys, flying skill displays, airplane versus car races, and more.

Support our important airport services: police, fire, air ambulance, and more.
Sponsored by PML Aviation Association.

YOUNG EAGLES RALLY

Saturday, October 12, 2019 from 9 am - noon

Introduction to aviation and **FREE** airplane rides for children age 8 to 17, with parent approval. *Sponsored by EAA Local Chapter 1337.*



THE GRILL AT PINE MOUNTAIN LAKE

12765 MUELLER DRIVE • RESTAURANT 209-962-8638
19TH HOLE LOUNGE 209-962-8636

LIVE ENTERTAINMENT

Every Saturday
Night in the
19th Hole Lounge
— Music begins
at 8pm

**NO
COVER CHARGE**

The Grill at PML presents full-service family dining. We offer a Continental Cuisine dinner with something for everyone's taste including: steaks, pizza, seafood, chicken, pasta, vegetarian, and a children's menu. For current menu check it on www.pinemountainlake.com. Reservations recommended.

Lunch with all the favorites and fast friendly service with a smile. Come and dine on our terrace with unparalleled views of the Yosemite peaks and golf course. We are here to serve you!

We reserve the right to refuse service to anyone. In an effort to promote heart healthy foods we prepare our food with ZERO TRANS FAT ACID shortening. Call for reservations (209) 962-8638

RESTAURANT HOURS

Restaurant Hours of Operation.

Closed: Mondays & Tuesdays

BREAKFAST

Saturdays

8 am to 11 am

Sunday Brunch Buffet

8 am to 12:30 pm

LUNCH

Wednesday - Sunday

11 am to 3 pm

DINNER

Wednesday - Thursday & Sunday

5 pm to 9 pm

Friday - Saturday

5 pm to 9:30 pm

19TH HOLE LOUNGE — HOURS FOR THE BAR 962-8636

Monday - Friday - 11 am to close

Saturday-Sunday - 8 am to close

Saturday - Live music 8pm to midnight.

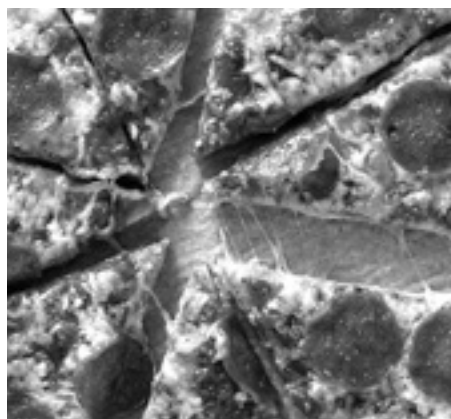
Times subject to change without notice
dependent on weather and patronage.

Monday Night Football at the 19th Hole Lounge Beginning in September

MONDAYS Sponsored by the R.O.O.F.B.B.

Enjoy a large variety of food and drink
specials during each Monday Night Football
game and the Super Bowl!

**Make ONLINE Reservations at
pinemountainlake.com/the-grill
See pinemountainlake.com for menus**



WHAT WILL YOU DO
WITH FASTER INTERNET?



*Home
Office*

*Home
Leisure*



Call
(209) 962-6373
GoSNC.com



/PINEMOUNTAINLAKECA

Your Local Solar Electric Company
19472 Village Drive, Sonora
License #892261 / Since 2002

Call Us For A Free Estimate
209-532-5925

APS SOLAR
ALTERNATIVE POWER SOLUTIONS, INC.

Produce Your Own Clean Power!

- Save \$\$\$ Every Month
- 30% Federal Tax Credit
- 5-Year Typical Payback

Follow us on Facebook at APSSolarpower and
check our reviews at www.SolarReviews.com

FUN AND FRIENDLY YOSEMITE LODGES

Evergreen Lodge & Rush Creek Lodge

Restaurants & Taverns • Saltwater Pools & Hot Tubs
Daily Activities & Guided Adventures



88 Cabins on 20 Wooded Acres
Located 1 mile from Yosemite's
Hetch Hetchy entrance
info@evergreenlodge.com
209.379.2606 | EvergreenLodge.com



143 Rooms, Suites & Villas on 20 Acres
Located less than a mile from
Yosemite's Hwy 120 West entrance
info@rushcreeklodge.com
209.379.2373 | RushCreekLodge.com

MAP LEGEND

- Pine Mountain Lake Roads
- Pine Mountain Lake Stable
- Public Access Roads
- Greenbelt
- PML Golf Course
- The Grill at PML Restaurant, 19th Hole Lounge, and Golf Shop
- PML Beaches & Activities
- Trails
- Card Entry Gates to PML
- Picnic Tables



- ADMINISTRATION OFFICE
- MAIN GATE/DEPARTMENT OF SAFETY
- PLEASANT VIEW HORSESHOE PITS
- TENNIS COURTS 1, 2, 3 & 4
- PICKLEBALL COURTS
- SWIMMING POOL
- THE GRILL AT PML, 19th HOLE LOUNGE, GOLF SHOP
- CAMPGROUNDS
- UNIT 14 & 16 HIKING TRAILS
- DUNN COURT BEACH
- MARINA
- FISHERMAN'S COVE
- LAKE LODGE
- AIRPORT
- STABLES
- ARCHERY RANGE
- SHOOTING RANGE



Pine Mountain Lake Association
19228 Pine Mountain Drive
Groveland CA 95321
209-962-8600

MARINA

12495 CASSARETTO COURT • 209-962-8631
MARINA@PINEMOUNTAINLAKE.COM

Boat registration, launching, docking, boat rentals, water-ski sign-ups, fishing licenses, Marina entrance, beach security and gas dock are all controlled from the Marina Store. NO ONE UNDER THE AGE OF 16 IS PERMITTED IN THE MARINA UNLESS ACCOMPANIED BY AN ADULT. No Lifeguard on Duty - Swim at your own risk.

MARINA HOURS

May 25 – September 2, 7 days a week.
Sept. 7 – Sept. 29, Saturday & Sunday only.

MARINA STORE HOURS

Scheduled to open **May 25** daily from 7am - 7pm

Weekends Only

September 7 - 29 7 am - 7 pm
(Friday/Saturday/Sunday; weather permitting)

LAKESIDE CAFÉ HOURS

May 25 – September 2.
Sunday-Thursday 11am to 6pm
Friday-Saturday 11am to 7pm

September 7-29.
Saturday and Sunday 11am to 6pm

GAS DOCK HOURS

7 am - 5:30 pm when store is open.
Special Lake Cruise Charter Available for \$86.50 from 6:30 pm - 7:30 pm. Call for reservation.

PARKING

Parking in the Marina Parking Lot is restricted to Property Owners ONLY on weekends and holidays. Marina parking lot hours are from 6 am to 10 pm. Cars must be removed from all beach location parking lots after hours or they will be subject to towing.

MARINA EVENTS

FISHING DERBY FOR KID'S OF ALL AGES

Derby period is from **Saturday, May 25** to **Saturday, September 28**. There is a prize for the heaviest fish. \$5 entry fee - you must sign up at the Marina store before catching your fish to qualify. Call the Marina Store at (209) 962-8631 for details.

FISHING DAYS FOR KIDS

Saturday, June 9, July 7 and August 4
Using their own gear, kids ages 7-15 sign up at the Marina store for a supervised fishing boat trip from 6:30 am to 9:30 am. Max. boat load of 6 kids for this learning experience. Learn fishing and safety tips while possibly catching one of our large fish, trout/bass.

INDEPENDENCE DAY

Saturday, July 6 SEE PAGE 19.

LABOR DAY WEEKEND

SAND CASTLE CONTEST
Sunday, July 7 and September 1
9:30 am – 11:30 am

FAMILY FUN & GAMES

Sunday, July 7 and September 1,
11 am to 1 pm, with prizes awarded.

WATER TAXI

The perfect solution to avoid the crowded parking lot at the Marina. Park your car at Fisherman's Cove, Dunn Court Beach or the Lake Lodge and ride one of our two CUSTOM BUILT, 18 PASSENGER WATER TAXIS! Dunn Court Beach will be closed **Saturday, July 6** for the fireworks set up.

Rates on **Saturday, July 6** (Independence

Day) are \$8 per adult and \$1 per child (8 yrs & under) includes wristband - if you already have a wristband you ride free. Wristbands are not day passes. Day passes not available on holidays or holiday weekends.

WATER TAXI

Park your car at Fisherman's Cove, Dunn Court or Lake Lodge and ride one of our two CUSTOM 18 PASSENGER WATER TAXIS! Water Taxi Rates: New to 2019 - The water taxi is FREE to all.

OPERATING SCHEDULE

Available seven days a week, 10 am to 6 pm, during the summer months, weather permitting. Please be at the dock prior to scheduled pick up time. (Schedule subject to change without notice.) Use the water taxi to avoid crowded Marina parking.

WATER TAXI DEPARTURES

Marina Dock.....on the hour
Lake Lodge.....on the 1/4 hour
Fisherman's Cove..on the half hour
Dunn Court.....on the 3/4 hour

PML LAKE CRUISES

Sign up for Lake Cruises at the Marina Store or call (209) 962-8631. Enjoy a relaxing lake cruise on beautiful Pine Mountain Lake. Available everyday! Charter the boat for your own group. Only \$91 for 1 hour cruise. (Maximum capacity up to 16 adults.) See the Marina Manager for details.

FIREWORKS CRUISE

Saturday, July 6: Call the Marina Store for reservations or to rent the entire boat! The Marina Store opens **May 25** (209) 962-8631.

2019 BOAT REGISTRATION FEES

Registration fees are based
on the calendar year
and are non-refundable.

POWER/ELECTRIC BOATS
\$88 per year

**PADDLE BOATS, ROWBOATS,
CANOES, KAYAKS, WINDSURFERS,
AND SAIL BOATS**
\$49 per year

FLOAT TUBES, INFLATABLE'S
\$28 per year

DAILY LUNCH PASS
\$10

**GIFT CARDS ARE AVAILABLE
AT THE
ADMINISTRATION OFFICE,
THE GRILL, AND
AT THE PRO SHOP!**



HUNTING & FISHING LICENSES

**PINE MOUNTAIN LAKE
OFFERS THE AUTOMATED
LICENSING SYSTEM SUPPLIED
BY THE DEPARTMENT OF
FISH & WILDLIFE.**

Purchase your Deer, Bear, Pig, or Waterfowl tags as well as fishing licenses and all supplemental stamps! Our system allows us to print your license and tags right on the spot. No more applications or mailings needed. If you're looking for the perfect gift you can pick up a gift voucher. It works just like a gift card. The recipient can redeem their gift at any licensing agency.

**Stop by the Main Gate or the Marina
to purchase your Hunting and Fishing
Licenses.**

*Just bring in your Drivers License
and let the automated license
system do the rest.*



**YOSEMITE
ADVENTURE
SUPPLIES**
GROVELAND CA

OUTDOOR SUPPLIES & TOURS

**Camping • Fishing • Rentals
Fly Shop • Chains • Cigars**

Book your rentals & reserve your tours at:
www.YosemiteAdventureSupplies.com

CBD Products NOW Available

Gear up here...Before going out there!

209.962.0923
18911 FERRETTI RD • GROVELAND, CA 95321





12495 CASSARETTO COURT
209-962-8630 • MARINA@PINEMOUNTAINLAKE.COM

SCHEDULED OPENING DATES

The **Marina Store** is scheduled to open **May 25**
Daily 7am - 7pm

The **Lakeside Café** is scheduled to open **May 25**
Sunday – Thursday 11am - 6pm
Friday & Saturday 11am – 7pm

For any questions please call (209) 962-8604

See pinemountainlake.com for menu

MARINA STORE

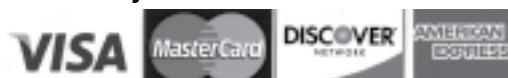
Visit our friendly full-service Marina Store
for all your Fishing,
Boating & Souvenir Needs!



- Rafts, Safety Floats & Beach Balls
- Candy
- Fishing Licenses
- Sunglasses
- Volleyball & Umbrella Rental
- Bait and Fishing Tackle
- Sun Screen
- PML Logo Hats & Shirts
- Beach Toys
- Ice, Film, Batteries & Much More!



Major credit cards welcome!



Please visit our website for any changes at PineMountainLake.com

2019 BOAT RENTALS

A \$20 deposit and I.D., a property owner's gate card, or a credit card is required on each boat rental. See the Marina Manager for weekly rates.

Must be 16 years or older with proof of a driver's license.
We are now offering advanced reservations for watercraft and equipment rentals.

Mon - Fri

Pedal Boat – Capacity 2-4

per hour	\$28
per 1/2 day (4 hours)	\$82
per day (10 hours)	\$164

Family Pedal Cruiser – Capacity 5-6

per hour	\$44
per 1/2 day (4 hours)	\$132
per day (10 hours)	\$241

Sail Boat – Capacity 2

per hour	\$28
per 1/2 day (4 hours)	\$82
per day (10 hours)	\$164

Single Kayak/Stand up Paddle Board – Capacity 1

per hour	\$22
per 1/2 day (4 hours)	\$82
per day (10 hours)	\$132

Double Kayak – Capacity 2

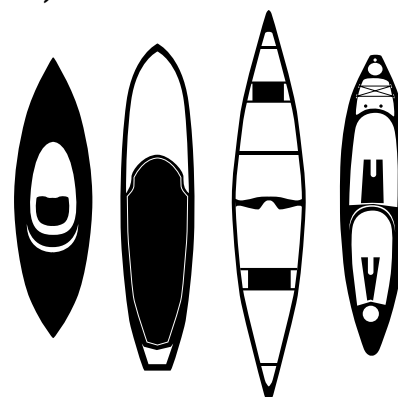
per hour	\$28
per 1/2 day (4 hours)	\$88
per day (10 hours)	\$164

Gas Fishing Boat – Capacity 4

per hour	\$33
per 1/2 day (4 hours)	\$99
per day (10 hours)	\$197

Gas Fishing Boat – Capacity 6

per hour	\$38
per 1/2 day (4 hours)	\$114
per day (10 hours)	\$208



CAMPGROUND

13500 ROCKY POINT DRIVE
DEPARTMENT OF SAFETY
209-962-8615
CAMPGROUND@
PINEMOUNTAINLAKE.COM

CAMPGROUND FEES 2019

PROPERTY OWNERS:

Tents \$16 per night
\$76 per week
\$306 per month

RVs \$23 per night
\$122 per week
\$466 per month

GUESTS AND PUBLIC:

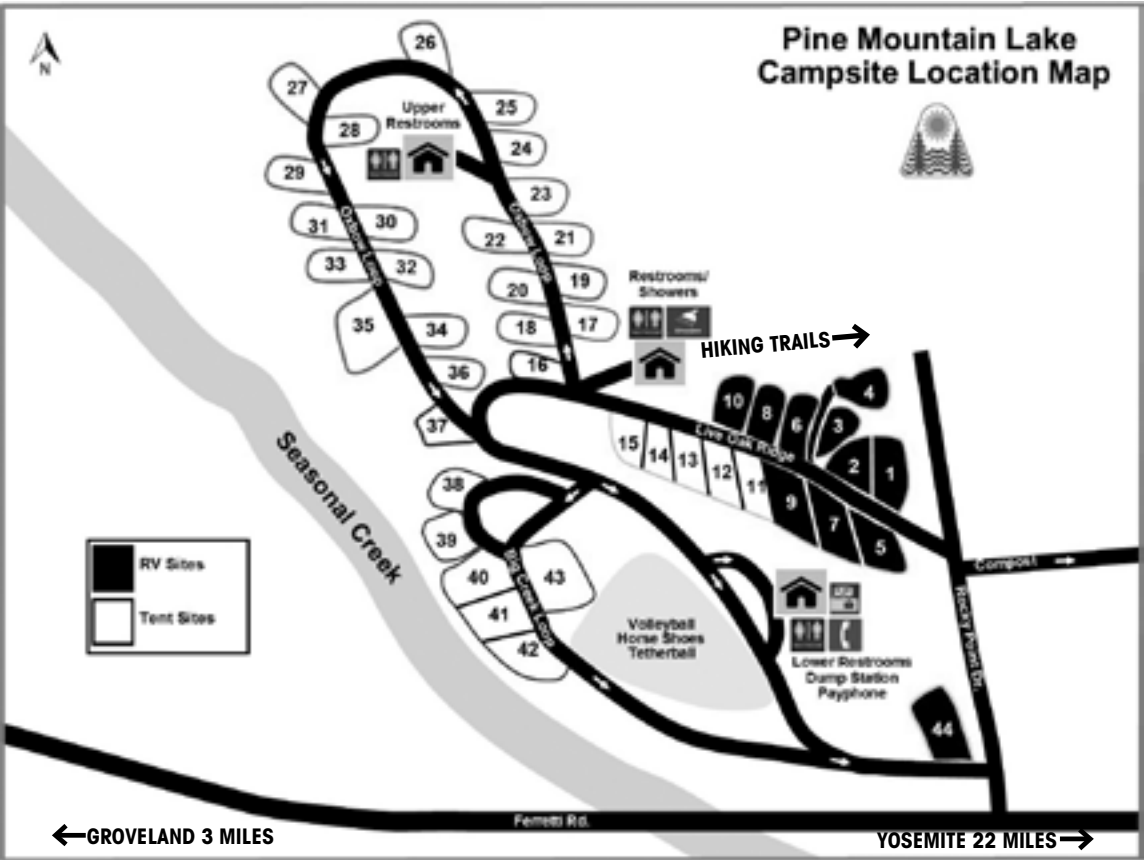
Tents \$27 per night
\$152 per week

RVs \$39 per night
\$226 per week

Additional camper charge (after 4 per site) \$4 per person per day
Non-camper dump station per use
Property Owner \$8

RULES & REGULATIONS

- Additional charge for more than four (4) persons per space.
- DOGS ARE TO BE KEPT ON LEASHES. No vicious or noisy animals will be tolerated.
- No dogs are allowed on any of the PML beaches
- Except to enter and exit only, motorcycles and all other terrain type motor vehicles are prohibited in the campgrounds and on trails.
- Check-in is 11 am; check-out is 10 am.
- Quiet time BEGINS at 10 pm.
- All generators are specifically prohibited.
- GROUND FIRES ARE PROHIBITED. Fires must be confined to designated barbecue stand. Please put out your barbecue fire before leaving.
- Electric cords and water hoses may never be connected to bathrooms.
- No washing of dishes in bathroom sinks.
- Use dumpsters for your trash and recycling.
- Please do not put your cigarette butts out on the ground.
- Fireworks are prohibited.
- Hunting is illegal in Pine Mountain Lake. Loaded firearms are prohibited.
- PLEASE KEEP CAMPSITES NEAT AND CLEAN. Check prior to vacating.
- Long term campground use for property owners building a home only. (Plans must be submitted and approved by the E.C.C.)
- PMLA is not responsible for loss or damage of camper property.
- Non-property owner boats are prohibited on Pine Mountain Lake.
- For emergencies dial 911.



SELF-SERVE RV & TENT CAMPING

Operated by Pine Mountain Lake with sites reserved for PML property owners, their guests & the public. The PML Campground is not lakeside, but is located approximately 2 miles from Pine Mountain Lake. Our facilities include 33 campsites, each with stand barbecues and a picnic table and 11 RV hook-up sites, each with power and water (dump site on location). Our guests have the use of 3 nearby restrooms, both with running water, one with hot showers. Bathrooms require codes which can be requested through the main gate. A payphone is located at the dump station. Enjoy the horseshoe pits (bring your own horseshoes), and hiking trails.

The Campground is open 7 days a week. Stays limited to 14 days within any 31 day period. Dogs must be leashed while at campground.

FACILITIES

- 33 campsites, each with stand barbecues and picnic table
- 11 RV hook-up sites, each with power and water (dump site on location, contact the Main Gate Department of Safety at (209) 962-8615 for access)
- 3 restrooms, each with running water, one with hot shower

- Horseshoe pits (Bring your own horseshoes)
- Hiking Trails

RESERVATIONS

If you wish to make a reservation, advance payment is required. Credit cards accepted. Maximum campsite stay is 14 days. Reservations should be made in advance by calling (209) 962-8615, or emailing campground@pinemountainlake.com.

CANCELLATIONS

You may be entitled to a full refund if your cancellation request is received prior to the arrival date of your reservation. Cancellations received on the date of arrival forfeits one (1) night's stay for each campsite booked, including any add-on charges. A cancellation fee of \$20 applies to cancellations received less than 7 days in advance of your arrival.

PMLA is not responsible for loss or damage of camper property.

CHECK-IN TIME is 11:00 am
CHECK-OUT TIME is 10:00 am
QUIET TIME BEGINS at 10:00 pm
Please look for the sign listing your name and dates of stay posted at the reserved site(s). If you need assistance, or the codes for the restrooms at the Campground,

dial *81 from the payphone to be connected to the Main Gate.

PUBLIC USE

- The Campground is open to the public seven days a week with first priority to property owners and guests of property owners.
- If you would like to utilize the private amenities at Pine Mountain Lake, you may do so by purchasing a \$31.00 vehicle access pass. This pass is good for 7 days and can be purchased upon arrival or by contacting the Main Gate at (209) 962-8615. No dogs allowed on beaches.
- All PMLA rules and regulations must be observed.
- Stay shall be limited to 14 days within any 31 day period.
- Loud or disruptive campers will be asked to leave.
- Campground is regularly patrolled by Department of Safety staff.

Campground pay phone number (209) 962-8931. Please dial *81 to reach the Main Gate.

PMLA SLASH & COMPOST AREA

LOCATION:

Use PML Campground turnout- Rocky Point Drive - follow the signs

ENTRANCE REQUIREMENTS:

- Verifiable PML ID
- (Vendors need Unit/Lot of job and owner name)

DAYS AND HOURS OF OPERATION:

- (weather permitting)
- April thru October 8 am to 4 pm
7 Days a Week
 - November thru March 8 am to 4 pm
Tuesday thru Saturday
Hours are subject to change without notice

Call the Main Gate 209-962-8615

LOAD SEPARATION

- Slash Pile - woody debris 6" in diameter or less
- Compost Pile - leaves and pine needles only
- Firewood Pile - branches/trees larger than 6" in diameter suitable for firewood and stripped of all smaller slash
- Horse manure pile for members and staff

LOAD SECURITY

- Loads must be tied down or covered to prevent spillage in route
- No stumps, concrete, dirt, metal, plastic, foods, trash or building materials or treated wood are allowed

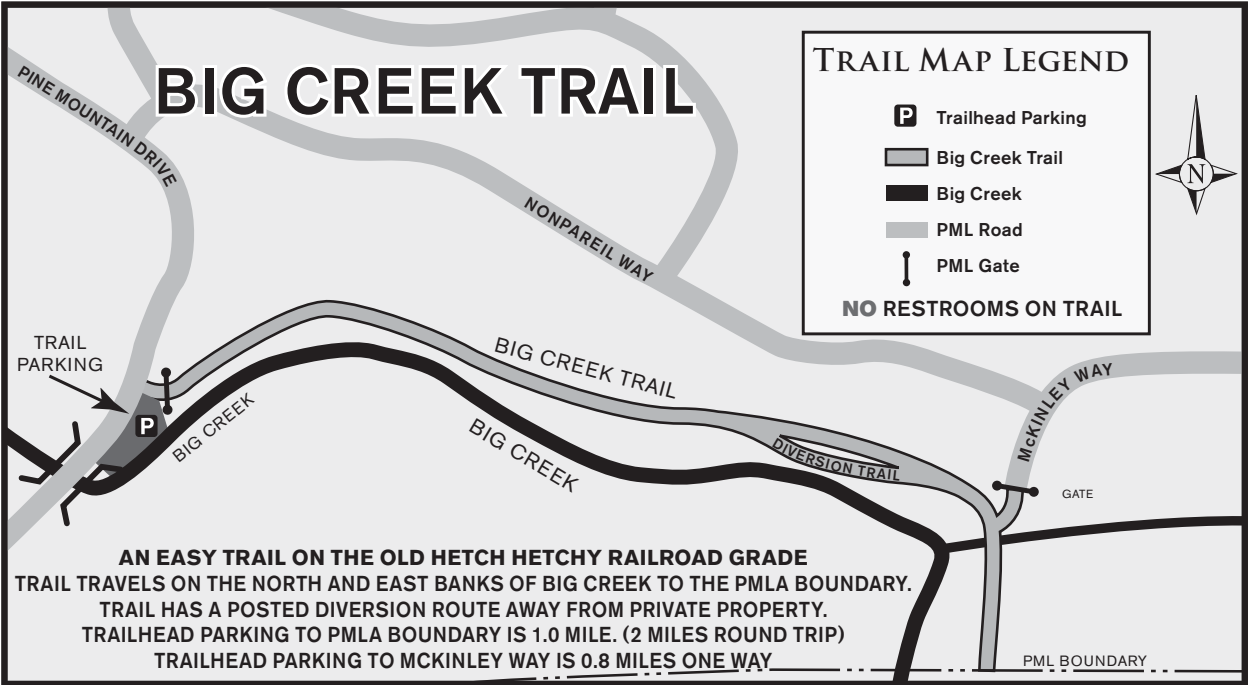
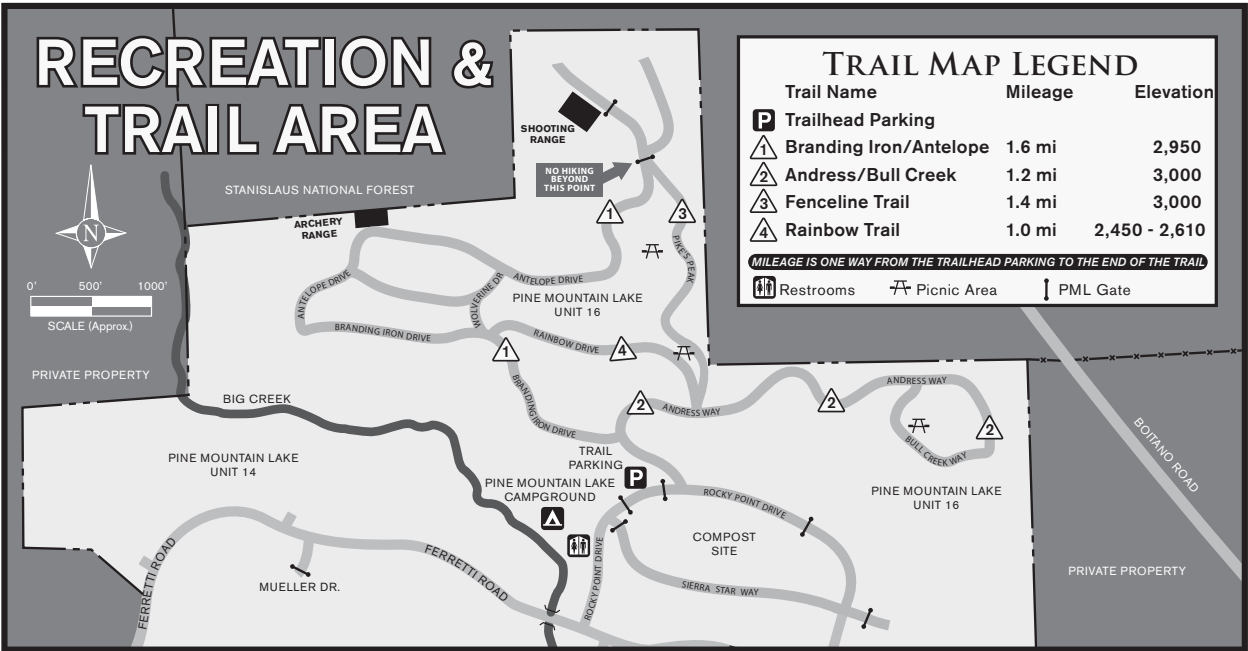
BENEFITS TO PMLA MEMBERS

- No fee charged for delivery
- No limit of trips for delivery
- Minimal fee for wood permit to cut and haul away firewood
- Organic compost available to PMLA members

Slash/yard clippings waste only — no plastic bags, household garbage, stumps or construction waste. Do not dump materials outside of the compost area.

PINE MOUNTAIN LAKE HIKING TRAILS

REPORT ANY UNSAFE CONDITIONS TO SAFETY – (209) 962-8615



PEDESTRIAN AND BICYCLE USE ONLY • DOGS MUST REMAIN ON LEASH • STAY ON TRAIL
RESPECT PRIVATE PROPERTY • CARRY DRINKING WATER
PAYPHONES LOCATED AT TENNIS CTS & CAMPGROUND – DIAL *81 TO REACH MAIN GATE
NO LITTERING • NO MOTORIZED VEHICLES • NO HUNTING • NO FIRES

EQUESTRIAN CENTER

13309 CLIFTON WAY • 209-962-8667 • STABLES@PINEMOUNTAINLAKE.COM

OPEN TO THE PUBLIC!

Open 7:00 am to 3:30 pm

Staff on hand from 7:00 a.m. to 3:30 p.m. seven days a week.

Boarding Facilities include: Stalls with paddocks, Individual Pastures and Overnight Corral Rental; a 100'x200' sand arena and a 45' round pen.

Additional amenities offered for Public Rental include: A large Lawn Picnic and Barbecue Area, stage and dance floor.

SPECIAL EVENTS AT THE EQUESTRIAN CENTER

PML FLEA MARKETS – 2019
Held at the PML Equestrian Center on **May 11 and September 14**. Buy or sell your treasures at this very popular event. Sign up early in the PML Admin. Office or at the Equestrian Center the morning of the Flea Market - \$7 per space. Space set-up starts at 7 a.m. Spaces are on a "first come first serve" basis on the day of the event. Please bring your own tables, tarps, blankets, etc.

AVIATION ASSOCIATION CONCERT
Saturday, May 18
Contact Joe Sobczak 209-962-4763.

MEMORIAL DAY BBQ

Sunday, May 26

BBQ tri tip, hay rides and a band. Contact Rebeca Dotson 209-962-4763. \$15 adults and \$8 kids 10 and younger.

A NIGHT IN THE COUNTRY

Join us **Saturday, June 15 and July 20** for a live band, food and fun!

SHRIMP FEST 2019

PRESENTED BY GROVELAND ROTARY
Meet at the PML Stables on **Saturday, August 17** for an ALL-YOU-CAN-EAT Shrimp feed. Enjoy Louisianastyle shrimp boil and/or sausage with all the trimmings, served family style. Refreshments at 5 pm, Dinner 6 pm. Tickets: \$35 adults; \$10 kids ages 6 to 12; under 6 Free. Live auction, raffle prizes and live music.

LABOR DAY COUNTRY BBQ & DANCE CELEBRATION AT THE PML EQUESTRIAN CENTER

Sunday, September 1, 3 - 7 pm

Sponsored by Southern Tuolumne County Historical Society—The fun starts at 3 pm - 7 pm. \$18 Adults / \$10 for Kids Under 12

Enjoy BBQ dinner with all the trimmings, beer/wine bar, petting zoo, kids' activities including water balloons, races and contests, historical photo displays and artifacts, silent auction & raffle, live entertainment for listening and dancing, air show and fly-over with local pilots, and world-famous bake sale items from local families.

Bring the kids, neighbors and all your friends to join in a day of FUN, FOOD and DANCING!



EQUESTRIAN CENTER BOARDING FEES 2019

STALL

Property Owner & Non-Property Owners (full care)
Pasture
Hay Surcharge
Equestrian Arena Use Boarders
General Special Event Arena Rental per day
P.A. System per day

BARN 1 BARN 2

\$295 \$348
\$257
Market Rate
N/C
\$153
\$26

PICNIC AREA

Refundable Cleaning Deposit \$120
Commercial Activity per event (Fund Raising, Etc.) \$246
Property Owners & Organized Groups per event \$89
Public Use fee \$147
Event Set-up Fee (\$35 per hour - 2 hour minimum) \$77



OTHER STABLE FEES

Overnight Fee (Paddock Only) \$15
Wrangler Camp per day per attendee
PML Members \$43
Non-Members \$48

Get "Hitched" at the Stables!

**Weddings at Pine Mountain Lake
Equestrian Center**

Fun for Everyone!
Our full service Stables
is Open to the public!



TENNIS AND PICKLEBALL

RESERVATIONS 209-962-8615

TENNIS

Welcome to PML Tennis!

The tennis courts are open to PML residents, full-time renters, and guests. Whether you are an experienced player or someone who has never played before, Racquet Club members make it easy and fun to get started playing tennis at Pine Mountain Lake. From tournament players to beginners, everyone is welcome. We may have a loaner tennis racquet for you. Get your pass at the main gate at Pine Mountain Lake and come on out to join us!

Court Locations and Times

Pine Mountain Lake Association (PMLA) has four courts located at Rock Canyon Way and Pine Mountain Drive. Courts 3 & 4 have lights until 10:00 PM, suitable for night play. The lights go out automatically at 10:00 PM and cannot be turned back on.

The tennis group has organized tennis play on Tuesday, Thursday, and Friday mornings. Weather permitting, the courts are open on Saturday for drop-in tennis starting at 8 am in the summer months and 9 am in the winter months.

Reservations

For advance reservations, call PML Department of Safety at (209)962-8615, 24 hours a day/seven days a week. Reservations may be made up to seven days in advance except day of play where you would sign up at the courts. Reservations and signups are limited to one hour for singles, two hours for doubles per day. Sign-up sheets will be posted daily at the court location showing the reserved time. Note the Racquet Club Priority Times and Tournament Dates. Reservations are forfeited if players are more than 10 minutes late. The PML Department of Safety can also provide you with a valid tennis pass.

GENERAL RULES

A valid tennis pass is required to play. Annual tennis passes are sold at the Association Office. Daily and monthly passes are sold at the Main Gate Department of Safety. Non-marking tennis shoes only. Appropriate tennis attire — no swimsuits or jeans. No food or drink other than water on the courts. No glass containers. Send an email to pmlracquetclub@gmail.com with any questions.

RACQUET CLUB RESERVED COURTS & TIMES

	WINTER	SUMMER	COURTS
TUESDAY	9:00 AM - 11:30 AM	8:00 AM - 10:30 AM	1-4
THURSDAY	9:00 AM - 11:30 AM	8:00 AM - 10:30 AM	1-4
FRIDAY	9:00 AM - 11:30 AM	8:00 AM - 10:30 AM	3-4
SATURDAY	9:00 AM - 11:30 AM	8:00 AM - 10:30 AM	1-4

PICKLEBALL

Pine Mountain Lake has a dedicated Pickleball Center with 6 courts on Mueller Drive (next to the golf course). Free lessons and equipment are available every Saturday from 10 to 11 am.

Evening Pickleball & Potluck to be scheduled starting in mid-April. Please check our

Facebook page for more details. Pickleball @ Pine Mountain Lake.

For more information about Pickleball in Pine Mountain Lake, please contact us at pmlpickleball@gmail.com or call Elisa Hoppner at 962-2002.

PICKLEBALL CLUB PRIORITY TIMES

March through September
Monday-Wednesday-Friday
Saturday & Sunday
9 am to 11 am **MEMBER PLAY**
10 am to 11 am **DROP-IN CLINIC**

October through February
Monday-Wednesday-Friday
Saturday & Sunday
10 am to 12 pm **MEMBER PLAY**
11 am to 12 pm **DROP-IN CLINIC**

RACQUET CLUB 2019 EVENTS CALENDAR

TOURNAMENT DATES

Events are subject to change due to weather or other reasons.

Cinco de Mayo May 7
Wimbledon June 18
Davis Cup September 3
Member/Guest October 8

Socials

The PML Racquet Club hosts two socials per month starting at 5 pm on the 1st and

3rd Tuesday of the month starting **June 4 through October 1**. There is a \$5.00 entry. Simply bring a side dish to share and your own drink.

Organized Tennis

Organized matches are scheduled for every Tuesday, Thursday, and Friday starting at 8 am in the summer and 9 am in the Fall/Winter months for approximately 3 hours. If you are interested in joining us, send an email to pmlracquetclub@gmail.com.

TENNIS & PICKLEBALL FEES

Players must display their valid tennis/pickleball pass while playing. You may purchase your annual tennis pass at the Association Office. Daily & monthly passes are on sale at the Main Gate Department of Safety office only. Passes are not available at the courts.

Property Owner 2019

Annual single rate\$134 per year
(Includes members' children or grandchildren through age 18)
Summer Pass\$92
(Memorial Day through Labor Day)
Off-season\$42
(Labor Day through December 31, 2019)
Monthly rate\$38 per month
Daily rate\$5 per day
Daily rate for property owners'
Minor dependents thru age 18\$1 per day

Property owners may invite guests to play at property owner rates. Property owner must make the reservation for their guests either in person or over the phone with a PMLA PIN number in order to obtain this rate for their guest.

Guest/Renter

Long-Term Annual Individual rate\$155 per year
Monthly rate\$48 per month
Daily rate\$7 per day

EQUIPMENT & CLOTHING

Paddles, balls and clothing are available
for purchase in the Golf Shop

Call 209-962-8620 for more information

PML INDEPENDENCE DAY ACTIVITIES

SATURDAY, JULY 6, 2019 beginning at dusk!

The action starts in the afternoon at the Marina with boat parade and an amphibian plane landing on the lake, and as dusk falls over the lake, a fantastic fireworks show.
Don't miss any of the events going on around Pine Mountain Lake.

AT THE MARINA

Fireworks Cruise

See the Independence Day Celebration from the water. Observe the fireworks right from the lake! \$35 per person, any age. Limited to 16 people. Light snacks and beverages provided. OR rent the entire boat for your party at \$550 per boat. These seats fill up very fast so make your reservations early!

Please be sure your current property owner parking sticker is visible or your vehicle is subject to towing. When applicable, be sure your Handicap Tags are visible in each vehicle when parked at the Marina.

19th Hole Lounge

Karaoke Friday, July 5,
8 pm to Midnight

Live Music

Sat., June 29, 8 pm to Midnight
Sat., July 6, 8 pm to Midnight

Administration Office

Closed Thursday, July 4

Office is open during this week with regular hours.

The Grill at Pine Mountain Lake

OPEN all weekend Saturday & Sunday!
Make your reservations early by calling
209-962-8638.

Saturday, July 6

Breakfast – 8 am to 11 am
Lunch – 11 am to 3 pm
Dinner – 5 pm to 9 pm

Sunday, July 7

Breakfast – 8 am to
12:30 pm
Lunch – 11 am to 3 pm
Dinner – 5 pm to 8 pm

WATER TAXI

Again this year you can relax and enjoy a water taxi ride to the Marina. Park at Fisherman's Cove or the Lake Lodge and ride one of our two CUSTOM 18 PASSENGER WATER TAXIS! (Dunn Court Beach is closed all day for the fireworks set up.)

Cost to ride water taxi is free if you already have a wristband. Otherwise, the costs below give you a wristband.

Adult \$8 pp Child \$1 pp (8 yrs & under)

Water taxis stop transport service at 7:15 pm to prepare for fireworks cruise. Taxis resume after fireworks cruise disembarks, approximately 9:45 to 10 pm.

Current property owner parking sticker must be visible or your vehicle is subject to towing. When applicable, please be sure Handicap Tags are visible in each vehicle when parked at the Marina.

FREE SHUTTLE BUS

Two shuttle buses are available for residents to take to and from the Marina. (Pick-up locations will be posted) — round trip is approximately 30 minutes. Parking is available at PML Admin Office parking lot. Shuttle buses run from 9 am to 11 pm and are available within PML Gates only.

Check www.PineMountainLake.com
and the Pine Mountain Lake News
for updates or call 209.962.8600
for more information

TIPS & INFO

- No outside Alcohol
- No Access to the Marina "by any means" until 6am

1. Observe "NO PARKING" signs. Violator's car will be towed at their expense (\$300, or more, cash or credit card only!) Any vehicles parked on Pine Mountain Drive MUST have ALL 4 WHEELS OFF the white line! No parking on any other PML streets.

2. When walking, please stay to the sides of the road – don't block traffic or emergency vehicles.

3. Please take advantage of riding the shuttle buses & water taxis. Shuttle buses run from 4pm to 11pm.

4. Cooperate with the "No Smoking" and "No Pets" resolution for the Marina.

5. NO Lifeguard on Duty at any swim area. Swim at your own risk.

6. Please be respectful of Private Property and DO NOT trespass.

7. Keep your "mountain hide-a-way" clean and beautiful ~ please don't litter. Dispose of litter in the proper receptacles provided.

8. Dunn Court Beach will be closed all day Saturday, July 6 for the fireworks display set up.

9. Dunn Court Beach - ALL boats MUST be relocated or removed from the beach the day before the fireworks display.

10. Fisherman's Cove - No swimming is allowed in this area at any time.

11. Non-property owner boats prohibited on lake.

12. Please be patient and kind to your fellow members and guests, and enjoy the fireworks!

**FIREWORKS ARE SATURDAY, JULY 6
BEGINNING AT DUSK!**



INDEPENDENCE DAY
SATURDAY JULY 6, 2019

**FIREWORKS
BEGIN AT DUSK**

WRISTBANDS

- Must be worn all day for entry to Main Marina
- Property owners get 2 wristbands per property at no charge
- Free wristbands available at the Admin office only
- Purchase add'l wristbands at the Admin Office or at the Marina
- Sold all day on Saturday, July 6 at Marina to members & guests

MARINA PARKING LOT HOURS

6 am to 10 pm

Cars must be removed from all beach location parking lots after hours or they will be subject to towing.

PINNELL'S
CARPET ONE FLOOR & HOME®



Serving the Mother Lode Community for over 40 years!

Featuring

HunterDouglas
Window Coverings



Healthier Living™
Flooring Installation System

**Carpet • Tile • LVT • Laminate
Hardwood • Vinyl**



209.532.1696
12900 Mono Way Sonora



CHARLOTTE'S Tavern

AT THE HOTEL CHARLOTTE



cali-centric comfort cuisine
featuring local farmers 📍 farm fresh ingredients
specialty cocktails 📍 local wines 📍 craft beers
OPEN NIGHTLY SUMMER 2019



THE COVER OF THE 2019 PML RECREATION GUIDE WAS HAND-DRAWN BY
LOCAL ARTIST **BETHANY WILKINSON**.

SEE MORE OF HER WORK AT [HTTPS://TINYURL.COM/VINTAGELYCAN](https://tinyurl.com/vintagelycan)



**HOTEL
CHARLOTTE**

EAT. STAY. ENJOY.

www.hotelcharlotte.com

18736 Main Street

Groveland, CA 95321

209-962-6455

reservations@hotelcharlotte.com

PINE MOUNTAIN LAKE REALTY

An Agent Owned Company



**SEE 'VAL'
FOR VALUE!**

40+ Years Experience in
Pine Mountain Lake
& Groveland



Val Bruce, GRI

Owner/Broker Assoc.

209-962-7156 / Cell 209-768-7368

val@pmlr.com

BRE# 00578336



www.pmlr.com

18919 Ferretti Rd Suite A
Groveland, CA 95321



PINE MOUNTAIN LAKE REALTY

An Agent Owned Company

Lynn Bonander, GRI

Owner / REALTOR®

**A "Top Producer"
Proudly serving the
Groveland Area
Since 1978!**



DRE# 00683485

Office: 209-962-7156 Cell: 209-484-7156

lynnb@pmlr.com • www.pmlr.com



PINE MOUNTAIN LAKE REALTY

BARRY T. SCALES
Broker/Owner
REALTOR®



Office: 209-962-7156

Cell: 209-484-7123

btscales@aol.com

barry@pmlr.com

pinemountainlakerealty.net



PO Box 738
18919 Ferretti Rd.
Suite A
Groveland, CA 95321



DRE# 00451887

Sierra Nevada
COMMUNICATIONS

Get

**High Speed Internet
in Pine Mountain Lake & Groveland**

Call (209) 962-6373



PAINTING & CONSTRUCTION

Bay Cal

LIC #795283



PAINTING – EXTERIOR/INTERIOR • DECK REPAIRS • WOOD REPAIRS • REMODELS

Bay Cal Construction
209.962.4777

www.baycal.com
email: davec@baycal.com



FREE ESTIMATES