

The Pine Mountain Lake News



TABLE OF CONTENTS

Administration	2-20
PMLA Financials	6
The Grill & Lounge	14-15
PML Clubs & Recreation	21-22, 30-33
"Homes on the Hill"	
Real Estate	23-29
Our Community	34-43
School News	44
Home Improvement	45-49
Classified Ads	50



PML COMMUNITY AIRPORT DAY
October 5 • Noon - 3pm • PML Airport



**MEET THE
 CANDIDATES
 FOR PML BOARD
 OF DIRECTORS
 SEE PAGES 11-13**

**PINE MOUNTAIN LAKE
 50TH ANNIVERSARY
 CELEBRATION**

SEE PAGE 16

**PML BOD ELECTION
 BALLOT INFORMATION &
 TIMELINE - SEE PAGE 20**

PRSR7 STD
 U.S. POSTAGE
 PAID
 ABS DIRECT
 Change Service Requested

ALL ABOARD

FIRST ANNUAL



SATURDAY, DECEMBER 14

WOULD YOU LIKE TO BE PART OF A MAGICAL EVENING AND SHARE YOUR HOLIDAY SPIRIT WITH FRIENDS AND NEIGHBORS? THE PML HOLIDAY EXPRESS WILL HELP YOU DO THAT!

Let's Light up the Links with Holiday Cheer!

On Saturday, December 14, golf carts provide tours of homes decorated on the golf course side of the property. The headlight equipped carts are set to drive by holes 1-5 and 10-18. *There is no stopping or entering of any property, just a slow drive to enjoy the holiday decorations.* The tours begin about 5:30 pm and end by 7:30 pm.

The evening will also include a buffet dinner afterward at The Grill so it will be a night of fun for everyone. **In November information will be posted for reservations.**

AND!! THERE WILL BE AN OPTIONAL HOUSE DECORATING CONTEST WITH PRIZES!

**1ST PRIZE \$80 COUNTRY CLUB GIFT CARD
2ND PRIZE \$40 COUNTRY CLUB GIFT CARD**

If you'd like to participate in the contest, drop off your name, address, unit/lot & phone No. to Mike Cook at the golf shop or email it to him at golfpro@pinemountainlake.com

Lights must be turned on by 5:00pm on December 14

Even if you prefer not to participate in the contest, please share your holiday spirit and decorate if you can

ONE-OF-A-KIND

TICKET TO RIDE

2 Great Services Under 1 Roof



Serving Tuolumne, Calaveras & Mariposa Counties

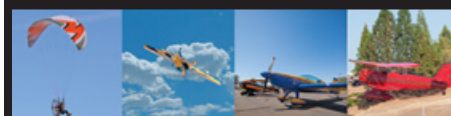
PAULA STEVENS

*Certified Residential Appraiser
and
Notary Public*

*Mobile Notary
by Appointment
Serving Tuolumne, Calaveras
& Mariposa Counties*

209.768.1479
vintagegold@SBCGlobal.net
18687 Main Street #B2 • PO Box 1050
Groveland CA 95321

On the Cover



PML COMMUNITY AIRPORT DAY
October 5 • Noon - 3pm • PML Airport



*Don't miss the annual PML
Community Airport Day on October
5 from Noon until 3pm.*

GO TO THE OFFICIAL ONLINE PRESENCE OF THE PMLA FOR LATEST NEWS & INFORMATION
PineMountainLake.com • Facebook.com/PineMountainLakeCA
Facebook.com/PMLARecreation

General Manager's Message

Joe Powell – CCAM-LS, CMCA, AMS General Manager

PML BOARD OF DIRECTORS AUTHORIZES STAFF TO POST DRAFT PML BOARD OF DIRECTORS MEETING MINUTES TO OFFICIAL PML WEBSITE

Some of our members have requested that copies of the draft board meeting minutes be posted to the Official PML Website for easy access. By law, the minutes for board of directors meetings (other than executive session minutes) must be made available to members within 30 calendar days of the date of the meeting (upon member request). There is no legal requirement that board meeting minutes approved or otherwise be posted to the Associations website. Regardless, the Association has been posting the board meeting minutes to the Official PML Website once they are approved.

The draft board meeting minutes are normally prepared within 5-10 days of the date of the board meeting depending on staff workload and operational priorities. Additionally, information regarding the actions taken at the board meetings are often posted by unofficial sources to social media and it is not always accurate.

A proposal was considered at the September 14, 2019 PML Board of Directors meeting and approved by the Board. For the purposes of transparency, and to ensure that accurate information is being conveyed to the membership, the Board authorized staff to post a copy of the draft PML board meeting minutes to the members-only section of the PML Official website when the draft minutes have been prepared.

The draft minutes will be clearly marked as such they will only be posted in the members-only section of the website.

PML 50TH ANNIVERSARY CELEBRATION EVENTS

We are celebrating our 50th year as an Association and have been planning many fun events for our members.

PML Equestrian Center

On Friday, October 25th we are planning an open house at the Equestrian Center from 3 pm to 7pm and it will include fun activities.

Grand Reopening of The Grill

Saturday October 26, 2019

Please join us for a day of fun, food and drink The Celebration Starts at 9am with a Ribbon

Cutting Ceremony

Food and Drink Specials from 11a to 3p

Door prizes

Live entertainment from 8pm till midnight

PMLA 50th Anniversary Time Capsule

As part of our 50th anniversary celebration, our staff is preparing a time capsule. All PMLA members, organized clubs and groups were encouraged to contribute to the time capsule scheduled to be opened on the 100th Anniversary of Pine Mountain Lake. The Time Capsule burial ceremony will be held at the Golf Course at 9:45 am.

50th Anniversary Golf Tournament

Our Golf Pro is holding a special 50th anniversary golf tournament on October 26th. There will be an 11 am shotgun following the time capsule ceremony and it will be a 2-player scramble and there will be tee prizes, food and other fun.

The Golf Pro Shop is selling the 50th anniversary commemorative t-shirts and they have been going fast.

ANNUAL OCTOBER BUDGET MEETING

The annual October budget preparation meeting will be held on October 19th at the Lake Lodge and is scheduled to begin at 8 am. It is an all day meeting with the Board and management team and all members are welcome to attend.

REMINDER: PML ANNUAL MEETING OF THE MEMBERS WILL BE HELD ON NOVEMBER 16TH

Due to the July Special meeting and recall election, the date of the Annual Meeting of the Members has been moved to November 16, 2019. Two director positions are up for election at that time. There are four candidates who are running in this election. All four candidates have purchased ad space in this edition of the PML News.

The Annual Meeting of the Members and Directors Election will be held at the PML Lake Lodge on November 16, 2019 and start at 9 a.m.

DAM SPILLWAY FIELD INSPECTION AND ASSESSMENT

Our engineering firm Condor Earth continues its work on the dam spillway inspection and assessment. This is a requirement of the California Division of Dam Safety. They recently completed their geological assessment and prepared a report to the DSOD. The next step is to perform the spillway boroscope inspection and other field work. Additionally, Condor is working on the disaster recovery plan for the area down below the dam and a cove and inlet sediment removal and maintenance plan. They have an on staff drone pilot and this type of technology and filming has come in handy for these multiple projects. More to follow.

NOTICE

The Pine Mountain Lake News, established July 25, 1973, is printed monthly for residents of Pine Mountain Lake and sold in the Groveland, CA 95321 area. Members can access the PML News monthly edition online at www.PineMountainLake.com. Every month the newest edition of the PML News is posted online before the first of each month. Interested parties can subscribe to the traditional "hard copy" and receive a copy by mail each month.

The PML News is mailed to approximately 3500 PML property owner households each month. Up to 500 copies are rack-sold in the local Groveland area. Our circulation reaches approximately 1200 full-time, resident, PML property owners and approximately 2300 "weekender," non-resident, property owners who maintain primary residence in Northern California, in Southern California, or in other states. For more information regarding the PML News, please call the PML Administration

Office at (209) 962-8600. We greatly appreciate your contributions but please note that the PML News fills up very quickly – often by the 7th or 8th of the month (long before the 10th deadline). To ensure that your submission is reviewed for publication please submit in full and as early as possible. Please remember that the PML News is limited in capacity and your submissions are reviewed on a first-come-first-served, space-available basis.

We publish all PMLA related submissions such as Board & Management Business, Clubs, Activities & Events. Where space remains, we publish non-PMLA related submissions in our "Community" section.

We do our best to provide timely news. If you experience delayed delivery or have misplaced a particular edition, please visit us at the PMLA website www.pinemountainlake.com for a downloadable PDF of the News posted by the 1st of the month and a downloadable PDF list of ad rates.

**Main Gate personnel
are available to issue
gate cards on
SATURDAY & SUNDAY
8:30AM–4:30PM.**

**Please call in advance
to schedule an
appointment at
209-962-8615**

Submission Guidelines

The PML News is the Official Newspaper of Pine Mountain Lake Property Owners

The PML News is dedicated to reporting PML Association business and PML Association news to Pine Mountain Lake Property Owners.

The PML News receives more than 100 Tuolumne County/Groveland community related submissions each month. All such community related articles and notices will appear in the PML News on a SPACE AVAILABLE basis and at the DISCRETION of the PML News Publishing Editor.

DEADLINES

Advertisements must be received IN FULL (text, MLS info, images, logos, etc.) by the 10th of the month for the following month's edition. Only advertisements received in full will be guaranteed to be published in that month's edition. **NO EXCEPTIONS.**

MEDIA ACCEPTED

email

SOFTWARE (Articles)

InDesign, Microsoft Word, Adobe Pages, or TXT formats only.

SOFTWARE (Advertisements)

PSD, JPG, PDF, EPS or TIFF only.

TEXT/GRAPHICS

Handwritten text is not accepted. Material composed completely of capital letters is not accepted. Please use uppercase and lowercase letters in composition. Ink jet printed images are not accepted. Images are accepted ONLY as camera ready art, original photos (to be scanned) or as JPEG, TIFF or PDF files created with above listed software. All scans and bitmap images must be in TIFF or JPG format at least 200 dpi at 100% (300 dpi preferred). Ad files are stored for 90 days from first run date. Older ads that have not been running must be resubmitted. (See Display & Insert Advertising Contract "Design and Preparation Charges.")

E-MAIL TEXT/GRAPHICS

Text/graphics may be delivered as e-mail attachments via the Internet. Send to: pmlnews@sabredesign.net.

AD DESIGN and PROOFS

Ads that are requested to be sent to other periodicals require a usage fee from the advertiser (see Display & Insert Advertising Contract "Design and Preparation Charges"). Proofs are available upon request and final proof approval for all ads is expected within 24 hours. Changes made are LIMITED to typographical or graphic placement errors. NO OTHER ADDITIONS OR CHANGES WILL BE MADE.

SUBMISSION DEADLINES

Articles – 10th each month

Ads – 10th each month

Classifieds – 15th each month

VISIT US ONLINE
www.pinemountainlake.com

PINE MOUNTAIN LAKE ASSOCIATION



209.962.8600

www.pinemountainlake.com



ADMINISTRATION OFFICE HOURS

8:00 AM TO 4:30 PM – MON THRU FRI
OPEN AT 8:45 AM SECOND TUESDAY OF EACH MONTH

2019 ADMINISTRATION OFFICES HOLIDAYS

(ADMIN OFFICE WILL BE CLOSED)

Mon. Nov 11	Veterans Day	Wed. Dec 25	Christmas Day
Thur. Nov 28	Thanksgiving Day	Tue. Dec 31	New Year's Eve
Fri. Nov 29	Day after Thanksgiving	Wed. Jan 1, 2020	New Year's Day
Tue. Dec 24	Christmas Eve		

PMLA BOARD MEETINGS SCHEDULE

Meetings are held at the PML Lake Lodge and start at 9 AM
(THIRD SATURDAY – UNLESS OTHERWISE NOTED)

OCTOBER 19, 2019

Budget Meeting (Begins at 8 AM)

November 16, 2019

Annual Member Meeting and Directors Election

December 7, 2019

(First Saturday)

PAY PHONE LOCATIONS Press *81 on any Pay Phone to contact Main Gate.

In an emergency, call 911	• Main Gate (restrooms)
• Campground (restrooms)	• Marina
• Dunn Court Beach	• Equestrian Center
• Lake Lodge	• Tennis Courts (Pine Mtn Drive)

PINE MOUNTAIN LAKE NEWS DELIVERY

Although we guarantee that the PML News is mailed from Modesto, CA on the same day (between the 26th-30th of month), most post offices (except Groveland) sort Bulk Mail after First Class mail. So, consider a First Class delivery subscription for just \$20/yr. (\$20 per year for property owners and \$30 per year for non-property owners) Interested? Call the PMLA Office at 209/962-8632 or see form above.

The Pine Mountain Lake News is also available (in PDF format) at: www.pinemountainlake.com.
New editions are posted by the 1st of the month.

PHONE & EMAIL DIRECTORY

ADMINISTRATION

General Manager – Joseph Powell
joepowell@pinemountainlake.com

Admin Asst. to G.M. – 209.962.8627
Debra Durai
debra@pinemountainlake.com

Human Resources – 209.962.8628
Shannon McNair
pmlhr@pinemountainlake.com

E.C.C. Coordinator – 209.962.8605
Plan Submittal, Compliance Fees, Mergers
Terri Thomas
ecc@pinemountainlake.com

Member Relations – 209.962.8632
Gate Cards, Address Changes, Webmaster, Notary Public
Anita Spencer
anita.spencer@pinemountainlake.com

CC&R Compliance/Fire Mitigation
Community Standards Director
209.962.1240
Sarah Ruhl
communitystandards@pinemountainlake.com

Community Standards Specialist
209.962.1241
Suzette Laffranchi
compliance@pinemountainlake.com

General Info & Lake Lodge
Scheduling 209.962.8600
Rental Coordinator – Tina Cutright
admin@pinemountainlake.com

Main Gate – 209.962.8615
General Safety Inquiries, gate passes, campground reservations, tennis reservations
campground@pinemountainlake.com

Accounting – 209.962.8607
Receivable/Collections/
Assessments
Michelle Cathey
pmlar@pinemountainlake.com

Accounts Payable – 209.962.8626
Karen Peracca
pmlap@pinemountainlake.com

Sr Accountant/Payroll
209.962.8618
Stacy Gray
stacy@pinemountainlake.com

Controller – 209.962.8606
Accounting Procedures
Ken Spencer
controller@pinemountainlake.com

Recreation and Seasonal
Operations Manager –
209.962.8604
Ryan Reis
r.reis@pinemountainlake.com

DEPARTMENT OF SAFETY
Director of Safety – 209.962.8633
Natalie Trujillo
n.trujillo@pinemountainlake.com

Sergeant – 209.962.1244
Sgt. Teri Cathrein
t.cathrein@pinemountainlake.com

Sergeant – 209.962.8616
Sgt. Amanda Darrow
a.darrow@pinemountainlake.com

MAINTENANCE DEPT
209.962.8612
Susan Capitanich
maintenance@pinemountainlake.com

Maintenance Manager
209.962.8611

GOLF COURSE
Golf Course Superintendent
209.962.8610
Rob Abbott
rabbott@pinemountainlake.com

Golf Pro Shop – 209.962.8620
Golf Pro Shop/Golf Reservations
Doug Schmielt
dschmielt@pinemountainlake.com

Golf Pro – 209.962.8622
Mike Cook
golfpro@pinemountainlake.com

THE GRILL AT PINE MOUNTAIN LAKE
The Grill Manager – 209.962.8639
Jay Reis
clubmgr@pinemountainlake.com

Restaurant – 209.962.8638
Hospitality Coordinator
Jimmy Gutierrez
cluboffice@pinemountainlake.com

OTHER PHONE NUMBERS
Equestrian Center
Equestrian Center Manager
Melissa Moore
209.962.8667
stables@pinemountainlake.com

PML NEWS – 209.962.0613
Ad/Article Submissions
Sabre Design & Publishing
PMLNews@SabreDesign.net

**PINE MOUNTAIN LAKE
ASSOCIATION**

209.962.8600

BOARD OF DIRECTORS

Mike Gustafson (President)
Steve Griefer (Vice President)
Nick Stauffacher (Treasurer)
Wayne Augsburg (Secretary)
Karen Hopkins (Director)

GENERAL MANAGER

Joseph M. Powell, CCAM-LS, CMCA, AMS

CORRESPONDENCE TO DIRECTORS

Pine Mountain Lake Association
19228 Pine Mountain Drive
Groveland, CA 95321
PMLABoard@pinemountainlake.com

ADMINISTRATION OFFICE

HOURS OF OPERATION

Monday - Friday 8:00 AM - 4:30 PM
Tel: 209/962-8600

The Pine Mountain Lake News, established July 25, 1973, is printed monthly for residents of Pine Mountain Lake and vicinity by Pine Mountain Lake Association, Groveland, California 95321.

SUBSCRIPTION RATES:

Co-owner subscription: \$6 per year
Single copies: 50 cents each
Single mailed copies: \$1.35 each
For non-members: \$10 per year

SUBMISSION DEADLINE

10th of the month by 4:30 PM
LATE SUBMISSIONS MAY NOT BE ACCEPTED

Visit www.pinemountainlake.com for ad rates and submission guidelines or email: PMLNews@SabreDesign.net.

For the mutual benefit of all property owners, the Pine Mountain Lake News reserves the right to edit all copy submitted for publication. The Pine Mountain Lake News is a private enterprise, not a public entity, and as such is entitled to reject advertisements or articles in the best judgment of its editor or publisher, despite a probable monopoly in the area of its publication. Pine Mountain Lake Association is not responsible for, nor does it guarantee the accuracy of, information contained in any ad placed in the Pine Mountain Lake News. The Pine Mountain Lake News attempts to ensure that this publication is free of legal infringements and the Pine Mountain Lake Association and its contractors are not liable for copyright/trademark infringements from external advertisements and articles.

DAVID WILKINSON - Publishing Editor
SABRE DESIGN & PUBLISHING
Design/layout

PINE MOUNTAIN LAKE NEWS

P.O. Box 605
Groveland, CA 95321
Tel: 209.962.0613
Fax: 800.680.6217

E-mail: PMLNews@SabreDesign.net

President's Corner

Mike Gustafson - PMLA Board President



Mike Gustafson
PMLA President

It is officially Fall; the sun is casting longer shadows, there is a chill in the air in the early mornings (not that I am up all that early, but this has been reported) and the acorns are bombing our deck. There is some sort of weather myth regarding the size of the acorns as related to the coming winter. If that is true then we are in for another wet Winter.

Just as sure as fall brings leaves of various colors it also brings your board into the fray called the Budget Process. Our budgeting process is long and complicated. There are several steps, starting with board members meeting with the managers of each department to understand their priorities. We have a common theme of trying to balance the desire to limit costs with the desire to provide good service to our members.

This year we face an especially daunting process trying to get a handle how to properly and efficiently hire good competent people. As I mentioned last time, your association is under pressure to keep the workers we have and to replace those that have left for higher pay elsewhere.

We do not want to have another summer season where many of our seasonal workers leave before the end of our busy season. This obviously affects the services you expect at the Marina, the Grill, Safety, etc. Various ideas have been suggested, such as end of season bonus, and paying a higher rate than the current minimum wage for many of those positions.

We also have difficulty hiring and retaining full-time employees. We

may find it necessary to hire from outside the area and provide some sort of transportation assistance. Of course this will cost more than we like, but may be necessary to continue to provide excellent member service. As you've probably noticed, our local Groveland businesses face similar challenges.

The all-day budget meeting is scheduled for October 19th starting at 8:00am at Lake Lodge. If you have a favorite amenity that you would like to support, the October budget meeting is where each department and member services will be discussed. The results of the 2019 PML Member Survey also help guide our tough budget decisions.

Part of the budget process for 2020 is rolling over any leftover funds from 2019. This money goes directly to the bottom line, helping to minimize the assessment. Unfortunately, we had to spend over \$83,000 on the Recall election and related legal fees that was completely unbudgeted. So, there will be less carry-forward money. Of course, this unanticipated cash outlay will have an unfavorable impact on next year's assessment.

On the positive side, I'm delighted to report the renovated restaurant is getting rave reviews, both for the food and the ambiance. Be sure to call 962-8638 for a reservation. The restaurant is also having a tough time hiring enough wait staff. They will open for lunch as soon as they are able to staff it properly.

As you know, we are in the middle of the election process to select two directors. Current board members

Karen Hopkins and Nick Stauffacher are running for reelection and are being challenged by Tom Moffitt and Don Bratcher. This election was delayed by the Recall so the 2019 members meeting normally held in August will be held on November 16th at 9:00am. Be sure to vote when you get your ballot in the mail in early October.

I always get a kick out whatever the latest PML rumor mill has generated. This rumor comes from the lake and it seems some members are sure that because we are a private lake, Fish and Wildlife cannot require fishing licenses. That loud sound you hear is the "Wrong Answer" gong! Private lake or not, the CDF&W requires licenses!

That's all for now; hope you enjoy the cooler weather and the fall colors.

**Subscribe to the
PML News
TODAY!**

Name _____

Unit _____ Lot _____

Mailing Address _____

NO CHARGE for Property Owners (bulk)
\$6/yr for Co-Owners (bulk);
\$10/yr for Non-Property Owners (bulk)
\$20/yr for PROPERTY OWNERS (1st class)
\$30/yr for Non-property owners (1st class)

Enclosed is my check in the amount of
\$ _____ (Payment due in full)

Send this subscription to:
Pine Mountain Lake Association
19228 Pine Mtn. Dr. Groveland, CA 95321
Attn: Anita

**COMPOST & ARCHERY RANGE
HOURS OF OPERATION**

**APRIL THRU OCTOBER - 7 DAYS A WEEK 8AM TO 4PM
WEATHER PERMITTING**

**NOVEMBER THRU MARCH - TUES. - SAT. 8AM TO 4PM
WEATHER PERMITTING**

SHOOTING RANGE - TUES, THUR, SAT 9AM TO 3PM

PLEASE NOTE Hours may vary depending on weather conditions, safety concerns, or other situations beyond control. Archery & Gun Range users must check-in with compost attendant.

HOURS SUBJECT TO CHANGE WITHOUT NOTICE

Call Main Gate at 209-962-8615

CAPITAL EXPENDITURES 8 Months Ended Aug. 25, 2019

	TOTAL RESERVE FUNDS	NEW CAPITAL ADDITIONS FUND	TOTAL CONTRIBUTION TO CAPITAL
2019 Beginning Fund Balances	3,915,186	\$ 147,288	4,062,474
Interest Income	8,185	13	8,198
Bank Fees/Discounts Taken	68		68
Assessments Earned	1,350,000 ⁽¹⁾	⁽²⁾	1,350,000
Other Income/Expense			
PURCHASES BY AMENITY			
Golf Course	(484,128)		(484,128)
Country Club	(10,815)	(3,531)	(14,346)
Bar			-
Marina	(8,653)		(8,653)
Snack Shack	(3,067)		(3,067)
Swim Center			-
Stables	(16,800)		(16,800)
Recreation	(1,045)		(1,045)
Roads & Facilities Maintenance	(1,045)		(1,045)
PROPERTY OWNER SERVICES			
Safety			-
Administration	(1,546)		(1,546)
Non-Capital Reserve Expenses	(3,882,568)		(3,882,568)
Total transfer to Operating Fund for property and equipment additions and reserve expenses	(4,409,667)	(3,531)	(4,413,198)
Adjusted Fund Balances	\$ 863,772	\$ 143,770	\$ 1,007,542

Notes to the Financial Statements

- (1) The Budgeted Reserve Fund assessment for 2019 is \$2,025,000
- (2) The Budgeted New Capital Additions Fund assessment for 2019 is \$-0-

DO YOU HAVE YOUR PIN?

Since PML is a private gated community, we want to offer our property owners a secure way to call in guests. When you become a member of PML you are assigned a Personal Identification Number (PIN) to utilize either when calling in a guest pass or using the Gate Access Internet program. This PIN identifies you to staff without you having to be present. This is a confidential number and should **not be shared**. When you call the Main Gate to authorize a guest or vendor access into PML, you will be asked for your PIN. The staff will look up the number in the computer and use it to confirm your identity before entering the guest information. You must have this number to utilize the Gate Access Internet program as well. If you do not know your PIN or have any questions, please contact the Administration Office at:



(209) 962-8600



Monday through Friday from 8 am to 4:30 pm
and we will gladly supply this information to you.

PINE MOUNTAIN LAKE ASSOCIATION
SUMMARY STATEMENT OF OPERATING FUND REVENUES AND EXPENSES
For The Eight Months Ended August 25, 2019

OPERATION OF AMENITIES	Revenues					Expenses				Budget (NET COST) INCOME	Variance Bud - Act
	Members' Assessments Net of Discount	User Fees	Sales, Net of Cost of Sales	Miscellaneous Income	Total Revenues	Total Expenses	(Cost)/Income Before Depreciation	Depreciation Expense	(NET COST) INCOME		
Golf Course	\$ -0-	\$ 513,475	\$ 20,887		\$ 534,362	\$ 922,433	\$ (388,071)		\$ (388,071)	\$ (384,873)	(3,198)
Restaurant & Bar	-0-	595	122,929		123,524	762,754	(639,230)		\$ (639,230)	(539,463)	(99,767)
Marina	-0-	350,572	135,211	(3)	485,780	557,567	(71,787)		\$ (71,787)	(74,863)	3,076
Snack Shack	-0-		32,141		32,141	38,139	(5,998)		\$ (5,998)	(25,722)	19,724
Stables	-0-	30,117		40	30,157	138,367	(108,210)		\$ (108,210)	(126,866)	18,656
Recreation	-0-	100,945	2,050	(3)	102,992	73,735	29,257		\$ 29,257	(7,208)	36,465
Roads & Facilities Maintenance	-0-	90,710		420	91,130	1,253,698	(1,162,568)		\$ (1,162,568)	(1,351,879)	189,311
PROPERTY OWNER SERVICES											
Safety	-0-	128,008		1,079	129,087	658,283	(529,196)		(529,196)	(620,642)	91,446
Administration	-0-	186,486		17,463	203,949	1,174,408	(970,459)		(970,459)	(1,001,825)	31,366
ASSESSMENTS											
Assessments	4,100,128			44,393	4,144,521	82,949	4,061,572	676,534	3,385,038	3,638,160	(253,122)
Totals	\$ 4,100,128	\$ 1,400,908	\$ 313,218	\$ 63,389	\$ 5,877,643	\$ 5,662,333	\$ 215,310	\$ 676,534	\$ (461,224)	\$ (495,181)	33,957

Notes to the Financial Statements

- 1. Total Revenues minus Total Expenses equals Net Income before depreciation. The annual budget for income before depreciation is (\$320,548).

PMLA Money Matters

Ken Spencer, CAFM – Association Controller

Long time readers of this column know what this month's column is usually about – the Budget. Since October is the month when the Association's Operating, Reserve and New Capital budget is developed, reviewed and approved it is always important to touch on this critical topic and its impact on all property owners.

The never-ending challenge we face every year in preparing this financial road map for the following 12 months is balancing the many, often conflicting, demands and expectations of all property owners. At the top of this list in at least the last 10 years has been – keep the assessment from increasing. No one wants to pay more than they did last year. On the surface a seemingly reasonable request. At least until you start to consider all of the factors (many beyond our control) that impact the cost to operate this "small city" known as PML.

I won't bore you with all of the multitude of factors that come in to play but here are a few of the significant ones. Inflation – while relatively tame over the last few years this does impact our costs anywhere from 2-2.5 percent. Minimum Wage – the minimum wage in California has increased every year for the last 4 years. Next year this rises to \$13/hour, an 8.3% increase. Union Wages – by contract the union employees of PML will see a wage increase of 3%. Union Pension Contribution – by law we are required to increase our contribution to the union pension fund by 10%. Staffing challenges – with a strong economy and low unemployment rate we have seen increasing pressure to raise wages in order to attract qualified employees, both full-time and seasonally. GCSO – sewer and water rates are projected to increase from 8-10%. These are just a few of the many pressures that are applied to our budgeting process for 2020.

Another issue is what I call the "want factor". We all want things. Some big, some small, some expensive, some not-so-expensive, some practical and some fanciful. All wants generally come at a price, either financially, emotionally, physically or some combination of all three. Throughout the year we hear from property owners who request their particular "wants" as they relate to Association operations, facilities or amenities. This is especially true as we go through the budget process because the majority of these "wants" require either additional funding or significant operational changes.

Many of these requests seem reasonable at first glance, particularly in the view of

those expressing the "want". Unfortunately often times after a more in depth evaluation and analysis the request comes with some sort of price tag. Even small costs need to be included in our budget considerations as they will, to some degree, affect the total budget and ultimately the assessment that all property owners pay. In essence this comes down to the question of - does it make sense to ask all property owners to bear at least a portion of the cost to acquire or implement any particular "want".

Some might argue that "it's only a few hundred or thousand dollars" so why is that an issue. The fact is that if we receive several of these small requests they soon add up to significant dollars and the impact on the assessment can be substantial. Remember as a general rule any increase in our annual assessment of \$41,000 equates to a \$1/month in the amount due from all property owners in the following year.

These "want" requests become even more problematic when they are made outside of the normal budgeting process when finding the funds for any such project will undoubtedly impact the financial performance of the affected department/amenity. This can be frustrating and disappointing to the requesting property owner when, in their mind, the idea makes perfect sense, meets their needs and is simple to accomplish.

The management team at PML always strives to provide the highest level of member service possible. Unfortunately this is not always achievable particularly in the eyes of a member whose great idea has not been brought to fruition. I urge all property owners to express their "wants" to the Association since this is one way that change and improvement happens. However it is important to take a step back and try and look at the big picture. How does this affect the overall cost to the Association? What is the impact on other property owners and their "wants"? Is this something that would benefit a large percentage of members or is it something that only a small group would benefit from? These are the considerations we must take in evaluating the desirability and feasibility of any "want".

Well that's it for this month. If you have any PMLA Money Matters you would like to see discussed in this column in the future please drop me a line at controller@pinemountainlake.com or give me a call at 962-8606. Thanks for reading and I hope you find this monthly discussion helpful, somewhat interesting and at least a bit informative.

PML SAFETY REPORT 2019

	1st & 2nd Qtr	AUGUST	3rd Qtr	YTD
Guest Passes Issued	7,324	2,416	5,538	12,862
Vendor Passes Issued	1,172	309	664	1,836
Temporary Resident Passes Issued	6,714	2,400	4,995	11,709
Vehicles Admitted	84,323	26,309	52,436	136,759
Vehicles Refused Entry	1,316	935	1,483	2,799
Phone Calls Received	22,621	4,847	10,136	32,757
Residential Alarm	46	7	11	57
Animal - Loose	109	32	48	157
Animal - Impounded	23	8	11	34
Animal - Dead/Injured	56	18	33	89
Animal - Disturbance	69	7	15	84
Patrol Assist	1,517	270	600	2,117
Public Assist	142	13	32	174
Welfare Check	28	2	4	32
Transport	47	7	13	60
Traffic Hazard	8	0	1	9
Traffic Control	6	1	2	8
Excessive Speed/Reckless Driving	44	0	7	51
Gate - Tamper	2	0	1	3
Gate - Follow Through	67	42	69	136
Gate - Malfunction	71	17	24	95
Gate - Struck by Vehicle	25	0	1	26
Control Burn Reported	710	0	0	710
Fire Safety - Smoke Complaint	22	2	6	28
Hazard - Tree Down	94	3	3	97
Residential Disturbance	8	3	9	17
Amenity Burglary	0	0	0	0
Residential Burglary	4	0	3	7
Grand Theft	2	0	0	2
Petty Theft	2	0	4	6
Trespassing	7	2	6	13
Vandalism	6	1	3	9
Property Damage - PML	14	1	3	17
Property Damage - Resident	11	1	1	12
PML Regs Violations Resident	18	2	8	26
PML Regs Violations Guest	9	1	4	13
Vehicle - Citation Issued	10	1	33	43
Vehicle - Accident PML	17	5	8	25
Patrolling Unit	4,604	790	1,492	6,096
Amenity Security Check	14,831	2,539	5,096	19,927
Residence Security Check	673	79	174	847
Monitoring Tennis Courts	4	5	14	18
Weapon Violation	5	0	1	6
Fixed Post	20	6	12	32
Courtesy Notice Issued	27	10	15	42
All Other Fees Collected	\$278,869	\$90,767	\$194,019	\$472,888

Make PML your
ONE-STOP-SHOP
for all your gift giving!

Pick up a gift card for:
GOLF • GOLF SHOP APPAREL & ACCESSORIES
THE GRILL • HUNTING & FISHING LICENSE VOUCHERS
Gift cards are available at the Administration Office,
The Grill, and at the Pro Shop

**GUEST & RENTERS HANDBOOK IS
AVAILABLE ONLINE!**

You can now view or print the Guest and Renters Handbook from the PML Website. Go to our website at:

www.PineMountainLake.com

and click on Resources, then scroll down to the bottom of the page and click on Guest and Renters Handbook. This handbook has valuable information for Guests and Renters in Pine Mountain Lake.

**GET IMPORTANT NEWS
RIGHT IN YOUR INBOX**

Signing up for the new eSNAP program is quick and easy and gives you the ability to sign up for the information that you want to receive. Just head over to www.PineMountainLake.com and sign up today.

eSNAP

ELECTRONIC SAFETY, NEWS & ALERT PROGRAM

marina, golf course, etc.

ABOUT EACH OF THE PROGRAMS

PML News & Alerts – Receive emails with information regarding anything affecting Pine Mountain Lake such as road closures, utility problems, fire alerts and more.

PML Amenities News – Receive emails with information about upcoming events, specials, or news regarding all PML amenities such as the lake,

The Grill at Pine Mountain Lake – Receive emails with information regarding happenings at The Grill. Get information Wine Tastings, Entertainment, Special Events and more.

This program is separate from the current email opt-in program that allows you to receive PMLA governing documents and requires your signed approval. This program can be signed up for via the online system. *Get your news and alerts via email, it's eSNAP!*

August Rainfall Totals

AUGUST 1 – 31, 2019

TOTALS ARE BASED ON A WEATHER STATION ON PML GOLF COURSE

Date	Inches	Total for Water Year*
There was no measurable rainfall in August.		
AUGUST TOTAL	0	in
Total Accumulation "18/19 Water Year"	52.37	in

**The Water Year is tracked from October 1 – November 30 and constitutes a rainfall season for rainfall tracking purposes. Unofficial rain totals collected from weather stations located in PML.*

NOTARY SERVICE

Anita Spencer, PMLA Notary Public

Prices Listed are Per Signature Rate

PML Property Owners \$10.00

Non-Property Owners \$15.00

Witness Fee \$5.00

You may call Anita @ 209-962-8632 to schedule an appointment between the hours of 8am – 4pm

PML AUTOMATIC PAYMENT PROGRAM

Taking the time to write a check for your monthly assessment payment can be time consuming and costly. You can avoid this burden and eliminate the potential for late payment charges by enrolling in PMLA's Auto Payment Program. By completing the form, which can be found at www.PineMountainLake.com under the Resources/Forms, and returning it to the Administration Office, you can have your monthly assessment automatically deducted from your checking account or charged to your credit card. This means you never have to remember to write a check and mail it each month. The peace of mind that comes with knowing your payment will always be made on time is easy to attain. We can also arrange to have any other regular payment you make to the Association (such as golf membership, horse boarding fees, etc.) paid in the same way.

For more information on this simple, effective and time saving plan please contact us at **(209) 962-8600**.

HERE IS YOUR CHANCE TO BE MORE INVOLVED IN YOUR COMMUNITY!

Pine Mountain Lake Association has openings on the Following Committees:

- Editorial Committee**
- Environmental Control Committee (ECC)**
- Fire Insurance Ad Hoc Committee**
- Safety & Security Committee**
- Waterfowl Management Committee**

If you wish to be considered for committee membership, please complete an "Application for Committee Assignment". This form is available on the website at www.pinemountainlake.com or from the Administration Office.

MAIL COMPLETED FORM TO:

Pine Mountain Lake Association, Attention: Debra Durai
19228 Pine Mountain Drive • Groveland, CA 95321

Email to Debra@pinemountainlake.com or drop it by the Administration Office

BOARD ACTION(S) VOTING RECORDS

August 24, 2019 Board Meeting – Agenda Items	Board Members*					COMMENTS	
SHOULD THE BOARD...	MG	SG	NS	WA	KH		COSTS
approve agenda?	Y	Y	Y	Y	Y	A.I.F. Motion Carried	
approve the consent agenda?	Y	Y	Y	Y	Y	A.I.F. Motion Carried	
approve ROOFBB's Golf fee Waiver and Donation request?	Y	Y	Y	Y	Y	A.I.F. Motion Carried – Fee Waiver declined/Donation Approved	\$100
approve TCSAR Donation request?	Y	Y	Y	Y	Y	A.I.F. Motion Carried – Silver Level	\$75
approve ROOFBB's Request to use Grill for Monday Night Football for 2019 season?	Y	Y	Y	Y	Y	A.I.F. Motion Carried	
approve Request from Resident's Club to hold monthly dinners at the Grill for remainder of 2019 and 2020?	Y	Y	Y	Y	Y	A.I.F. Motion Carried – 2019 Monthly dinners only	
approve rescinding Resolution #10.02-Restaurant Group Use Policy and developing a new policy?	Y	Y	Y	Y	Y	A.I.F. Motion Carried	
approve Donation and Equestrian Picnic Area Usage fees reimbursement to Groveland Rotary Club?	N	N	N	Y	N	Motion Failed	
approve Member Home Business Permit 6/138A?	Y	Y	Y	Y	Y	A.I.F. Motion Carried	
approve proposed Budget Process Revision?	Y	Y	Y	Y	Y	A.I.F. Motion Carried	
appoint member Stephen Aker to the Budget & Finance committee?	Y	Y	Y	Y	Y	A.I.F. Motion Carried	
approve formation of Fire Insurance Ad-Hoc committee?	Y	Y	Y	Y	Y	A.I.F. Motion Carried	
affirm Covenants Committee fines of 7-8-19 and 8-12-19?	Y	Y	Y	Y	Y	A.I.F. Motion Carried	
approve Director Grier's Pontoon Boat Beach Space Resolution #2 (lottery policy for Marina Beach Pontoon Boat Spaces?)	N	Y	Y	N	N	Motion Failed	
approve Director Augsburger's/Lake & Marina Committee's Pontoon boat Beach space Policy Resolution for PUBLISHING in the PML News for Member review and comment?	Y	N	N	Y	Y	Motion Carried	
APPROVE PUBLISHING OF Letters to the Editor of PML News submitted for the September 2019 edition?	Y	Y	Y	Y	Y	A.I.F. Motion Carried	
Total APPROVED Golf Donations this meeting (Retail Value)							\$240
Total APPROVED Fee Waivers (Non-Golf) this meeting (Retail Value)							\$0
Total APPROVED Other Donations this meeting (Retail Value)							\$175
Total APPROVED expenditures this meeting							\$0
/ = Absent A = Abstained A.I.F. = All In Favor o = No Vote							
* MG=Mike Gustafson SG=Steve Grier NS=Nick Stauffacher WA=Wayne Augsburger KH=Karen Hopkins							
MINORITY VOTES HIGHLIGHTED							

MONTHLY COMMITTEE MEETING SCHEDULE

COMMITTEE	DATE	TIME	LOCATION
Budget & Finance Committee	Thursday, October 17, 2019	2:00 PM	Administration Office
Covenants Committee	No meeting scheduled in October		
Editorial Committee	No meeting scheduled in October		
Environmental Control (ECC)	Thursday, October 03, 2019	9:00 AM	Administration Office
	Thursday, October 17, 2019	9:00 AM	Administration Office
	Thursday, October 31, 2019	9:00 AM	Administration Office
Equine Advisory Committee	No meeting scheduled in October		
Fire Insurance Ad-Hoc Committee	No meeting scheduled in October		
Lake & Marina Committee	Friday, October 11, 2019	2:00 PM	Administration Office
Long Range Planning Committee	No meeting scheduled in October		
Safety & Security Committee	Tuesday, October 15, 2019	11:00 AM	Administration Office

FIREWOOD CUTTING IS HERE

PML SLASH AND COMPOST SITE

OAK AND CEDAR

REQUIRES A \$20 PML WOOD CUTTING PERMIT

WOOD CUTTING PERMITS AVAILABLE AT THE MAINTENANCE FACILITY

PINE AND FIR

AVAILABLE FOR FREE CUT & HAUL

FOR MORE INFORMATION PLEASE CONTACT SUSAN AT

(209) 962-8612

BETWEEN THE HOURS OF 7 AM TO 2:30 PM, M-F.

All PMLA Homeowners Email Opt-in Program

The Association is pleased to offer a money saving program available to all PMLA property owners. This program allows you to receive many of the documents we are required to provide to you via email. This option is important because:

COST SAVINGS – The Association is spared the expense of printing and mailing many documents to those property owners who sign up.

ENVIRONMENTAL SAVINGS – Less paper means less trash and reduced damage to the environment both in the disposal and production of paper and envelopes.

REDUCED CLUTTER – By receiving documents

via email there is less paper for you to deal with. All documents can be saved on your computer and viewed at your discretion.

TIMELY RECEIPT – Documents sent electronically are received in minutes as opposed to the days it takes for regular mail to arrive.

If these sound like good reasons to you, please sign up for the Document Email Program today using the attached form. Simply return the completed form to the Administration office at your convenience.

If you have any questions on this program please feel free to give us a call (962-8600) and we will be happy to explain the details and the advantages.

Please read the Terms & Conditions for the email opt-in program on the website, www.pinemountainlake.com under the Resources/Forms > Opt-In Email Program.

Mail form below to:
Pine Mountain Lake Association

19228 Pine Mountain Drive • Groveland, CA 95321

YES, I WANT TO ENROLL IN PMLA'S EMAIL STATEMENT AND DOCUMENT SERVICE. I ACKNOWLEDGE AND AGREE TO THE TERMS AND CONDITIONS SET FORTH ABOVE AS A CONDITION FOR PARTICIPATION IN THIS SERVICE.

PMLA Account Number: _____ Unit/Lot #: _____

Name: _____ Phone #: _____

Address: _____

Email Address: _____

Signature: _____

LETTERS TO THE EDITOR

LETTERS TO THE EDITOR RECEIVED – 2 DEFERRED TO NEXT EDITION BY
DENIED BY EDITORIAL COMMITTEE – 0 EDITORIAL COMMITTEE – 0
Exceeds 250 word maximum – 0 DENIED BY BOARD OF DIRECTORS – 0
Content – 0 DEFERRED TO NEXT EDITION BY
Not a property owner – 0 BOARD OF DIRECTORS – 0
"THANK YOU" LETTERS RECEIVED* – 1 * Thank you's do not require editorial committee approval

Submit Letters to the Editor by sending to "Editor, PML News"
Mail: 19228 Pine Mountain Drive, Groveland, CA 95321
Email: PMLNews@sabredesign.net • Fax: 800-680-6217

PLEASE NOTE THAT ALL LETTERS APPEAR IN THE ORDER THEY WERE RECEIVED BY THE PML NEWS

The Pine Mountain Lake News welcomes letters and articles for publication provided they meet the criteria established in the current PMLA Editorial Policy (See excerpt below – entire policy on file at the Administration Office). Letters must be limited to 250 words, typewritten using upper and lowercase letters or neatly printed (no all-capital material) and signed with name, mailing address, PML unit/lot number, and day/evening telephone numbers by a property owner in good standing. **LETTERS MUST BE RECEIVED BY THE EDITOR BY THE 10th OF THE MONTH.** Letters deemed by the Editorial Committee to be improper will not be accepted. Readers are advised that **THE OPINIONS EXPRESSED IN THESE LETTERS ARE THOSE OF THE INDIVIDUAL AUTHORS, NOT OF THE PMLA, THE PINE MOUNTAIN LAKE NEWS, NOR THEIR EMPLOYEES.**

CANDIDATE ENDORSEMENT

Change Is Good

Don Bratcher and Tom Moffitt are two great candidates for this upcoming election who will help bring the change that nearly 700 members were interested in during the special election. Transparency, draft board minutes, committee minutes, and improved process are just a few things that members asked for – let's do it! It's time to leverage our talent pool and get to the current century. Vote for Don Bratcher and Tom Moffitt!

Thank you,
Pauline Turski
Groveland CA

CANDIDATE ENDORSEMENT

Our association needs to continue to move forward, improve our amenities, provide full transparency in all areas, improve member communication and inclusion, ensure financial stability and update our bi-laws among other things. A fresh perspective is what we believe is needed.

That is why we support Don Bratcher for PML Director. With his business background, problem solving ability, communication skills, and his deep desire and commitment to support this community he will bring a positive attitude and fresh perspective to the Board.

Bliss and Steve Sawyer
Groveland CA

THANK YOU LETTERS

Editor: We held the 24th annual Kelley Klassic golf tournament on September 7th & 8th at the Pine Mountain Lake course. All twelve participants were unanimous if their praise of the whole golf operation. The course showed at its best over the weekend with

temperatures in the 80's with a gentle breeze both days. As the organizer of this event, I can't adequately express my gratitude and thanks to the golf staff headed by Mike Cook. He took every request and any hiccups in stride to insure great rounds of golf. A special shout out to the "cart barn" personnel for their assistance in getting us on the course and finishing on time. We look forward to having the 25th Kelley Klassic next year at PML.

Regards, Don Robertson
Groveland

Jim and Jackie Sample want to thank This community for all of your help and good wishes. Jim has been unable to work since April 6 due to his fall and subsequent femur break which thankfully, he is healing from.

We love living in Groveland and plan to live here forever so many of you have helped us in our time of need and we want to tell you how grateful we are to be living in such a wonderful community it's impossible to thank everyone, although we have tried.

Jim is hoping to slowly get back to work in September we are hoping

You have not given up on him. Keep an eye out for his truck "old red" coming. We hope to literally be back on the road soon.

Jim and Jackie Sample

RESPONSE TO LETTER FROM THE BOARD OF DIRECTORS

In last month's edition of the PML News a member commented on the Due Date being reestablished for lot clearing. The Board of Directors would like to remind all property owners that it is the **Member's responsibility** to clear their property and **maintain for fire safety year-round.**

Contractors Performing Work in PML are Required to Follow PMLA Rules & Regulations

The following are some **“common violations.”** Please do your part to maintain a harmonious environment for all to enjoy. Remember: The PML Property Owner is held responsible for those they hire.

VEHICLE USE:

1. Exceeding the posted speed limit
2. Driving in a reckless manner
3. Following another through an access gate or allowing others to follow you through
4. Parking on street (road shoulders OK)

PERSONAL CONDUCT:

1. Allowing loud music
2. Uttering abusive language or conduct that would be offensive to a reasonable person
3. Using the property Owner's gate card or clicker

WORK RELATED CONDUCT

1. Starting work before 7am or continuing after 7pm
2. Allowing dogs at construction sites
3. Performing work on Sunday
4. Cutting down a tree in excess of 5” without PMLA approval
5. Trespassing on neighboring property
6. Using neighbors water or electricity without written permission
7. Leaving construction signs longer than 5 days after work has been completed
8. Nailing signs to trees
9. Storing building materials on street or easement
10. Beginning exterior construction without PMLA approval

If you have questions call
Terri Thomas, ECC Coordinator
@ (209) 962-8605 with questions.

The Hoof Print

Melissa Moore – Equestrian Center Manager

The Labor Day BBQ has come and gone and a good time was had by all. STCHS did a great job with the event and I enjoyed being a part of it very much. This month brings us lots of excitement with the first ever Ranch Horse Challenge being

held. We received the champion buckles and I'm very happy with how they turned out. Feel free to stop by my office if you'd like to see them in person.

Fall brings us cooler weather in the evenings and warmer weather in the afternoons so make sure your horses are still drinking plenty of water and watch out for tummy upsets. Soon the blankets will be coming



out to help keep our horses warm through those dropping temperatures. If you haven't thought about it already, now is a good time to wash those blankets before the cold really sets in.

Also make sure to come out to Barn 1 and check out our new

'Horsey Library'! If you would like to learn more about horses, one of our generous boarders donated a bunch of books to the barn, so we've set up a library for everyone to rent books and magazines from..

Equestrian Center

13309 Clifton Way

Office: 209-962-8667

stables@pinemountainlake.com



Vote for KAREN HOPKINS

PML Board of Directors

Experience ■ Competence ■ Integrity

Committed to advocating for the majority of PML homeowners through strong leadership, fiscal responsibility and collaborative decision making.

Proven Skills:

- Accomplished high-tech marketing and communications career
- Comprehends budgets and financial decision making
- Excellent communication skills, including listening to all views
- Strategic thinker who led PML's 2018 strategic planning process
- Data-driven decision maker - no politics, no favoritism, no hidden agenda
- Team player, collaborative style

Visit **“Karen Hopkins PML Election page”** on Facebook for the latest information.

My name is Nick Stauffacher and I want your vote for the upcoming PML election



During my term on the PML Board, I have had the honor of serving 2 of my 3 years as the Board Treasurer and have been the liaison to the Budget and Finance Committee, which I have fully enjoyed. Additionally, I have been a part of the Board to make The Grill a beautiful, safe restaurant with a fresh new look and more revenue opportunities with our new banquet facilities.

Every year in the budget there are always expenses that are a constant increase, that are out of the control of the Board. This is what is called Global Assumption. Here are a few expenditures which are going up this year that we cannot change:

- **Minimum Wage for 26 or more Employees up to \$13.00 an hour, by law**
- **Union Wage up 3 percent** • **GCS D 2020 Rates: Sewer up 15% and Water up 3%**
- **Increase cost of fuel per gallon** • **Increases in PG&E, AT&T, etc.** • **Unemployment Insurance**
- **Legal fees** (This year we will have additional costs to our legal fees; due to the Recall, additional Recall election & several lawsuits.)

With all of that in mind, this year's budget is a challenge to see where we can save in other areas without compromising the maintenance of our amenities, continuing to improve the fire break around PML along with bringing homeowners' lots into compliance with Cal Fire regulations.

My past experience of having 41 years in the electrical industry, mostly as a General Foreman, which included multiple responsibilities: controlling multimillion-dollar budgets, labor rate, job cost, and interfacing with assorted trades, has given me the necessary tools to be an effective Board member.

If re-elected I will continue working extremely hard maintaining PML amenities and to keep controlling costs where we can.

THANK YOU FOR YOUR SUPPORT AND I APPRECIATE YOUR VOTE!

VOTE FOR EXPERIENCE



What can you expect from me? I will:

- Listen to your concerns and value your ideas
- Improve communication and foster transparency
- Serve all of our property owners
- Fiscally plan for our future
- Adhere to the HOA Governing Docs
- Work with all PMLA membership, our committees, management, staff and fellow Board members in a collaborative approach to bring fresh new ideas

Summary of My Qualifications

- BA Business Administration, Cal State Fullerton
- Thirteen years as Facilities/Roads Maintenance Manager here at PMLA
- Thirty-five years of corporate, regional, and branch management experience, including:
 - o Planning & implementation of operations systems
 - o Budgets, revenues and capital outlay planning
 - o Data control, communication and information systems
 - o Written and implemented Standard Operating Procedures
 - o Generated profits and expanded new markets
 - o Managed sales, operations and marketing
 - o Facilities construction, assets and equipment acquisition
 - o Training programs and employee recruitment
 - o Grant writing with success in receiving project funds
 - o Large scale fire safety and fuel reductions projects
 - o Experienced in working with federal, state and county agencies, representatives and governments
 - o Fostered community unity and communications
 - o Synergistic approach to management and problem solving

A vote for Tom Moffitt is a win for you, the membership!

Visit me at <https://www.facebook.com/Tom-Moffitt-4-PML-Board-108963970460768/>

A FRESH PERSPECTIVE FOR PML

As the election date comes near, it's time to ask:

Am I happy with the current business model the BOD is taking us down?

- Even though PMLA is a Mutual Benefit Corporation, and our amenities are not intended to be run at a profit; does this mean we should be ok with the ever increasing subsidizes.
- The golf course, restaurant and bar, marina, snack shack and stables have already been subsidized in the first seven months of this year approximately **\$1,000,000.00**. (see Sept PML News "Summary of Statement of Operating Fund Revenues and Expense")

I have **30 successful years of experience** in business operations, sales, advertising, marketing, branding and fiscal responsibility. As a member of the BOD **I have a plan** to reduce the subsidies without reducing the quality of these amenities, as well as to further enhance them.

What's wrong with bringing technology to PML so that all members know what's going on within our governing process?

- In this day and age technology is part of our daily lives, so we should incorporate it into our communication process with our membership to include our BOD meetings and special events. As a member of the Board I will lobby for access to the BOD meetings using technology. Through effective mass communication inclusion of all our members is possible.

Visit my candidate election page at: www.facebook.com/donbratcherpml-election-page where I am happy to answer your questions.

NOW IS the TIME to Elect a candidate that will work for you - it's time for PMLA to have a Board of Director that will make inclusion of all members and fiscal responsibility a priority.



**IT'S TIME FOR A "FRESH PERSPECTIVE" SO PLEASE
CAST YOUR VOTE FOR DON BRATCHER
TO BE YOUR VOICE ON THE BOARD OF DIRECTORS.**

PML COMMUNITY AIRPORT DAY OCTOBER 5, 2019 FREE ADMISSION!

PML AIRPORT
NOON – 3:00 PM

**AIRPLANES & CARS DISPLAY
MODEL AIRPLANE DEMO • SKY DIVERS
FORMATION FLIGHTS • PLANES VS. CARS
FLYING SKILLS CONTESTS • SPECIAL AERO SURPRISES!
REFRESHMENTS AVAILABLE**

**Bring a chair and enjoy the entertainment!
At the PML Airport - Our Community Resource!**

Organized by Pine Mountain Lake Aviation Association



Follow the PML recreation Department on Facebook at: [Facebook.com/PMLARecreation](https://www.facebook.com/PMLARecreation)

The easiest way to fine out about all the Recreation & Special Events happening in Pine Mountain Lake

WELCOME TO THE
Hidden Jewel of the Foothills
**PINE MOUNTAIN LAKE
GOLF & COUNTRY CLUB**

12765 MUELLER DRIVE • GROVELAND, CA. 95321

Championship Golf Course



Beautifully Manicured Greens



Stunning Vistas & Surroundings



Mountain Golf at its Finest!



www.PineMountainLake.com

209-962-8620

The Grill Celebrates the 50th Anniversary of Pine Mountain Lake

Jay Reis – Manager

The Grill is kicking off the celebration of the 50th anniversary of Pine Mountain Lake on Saturday October 26 with a Grand Opening ribbon cutting ceremony beginning at 9am. We will have food and drink specials from 11am until 3pm. There will be live music starting at 8pm.

A special thank you to the members that have come in to enjoy the newly renovated Grill. The staff and I have enjoyed serving you. We do appreciate the support and hope you enjoy the fresh new Grill and new menu. Chef Raul Melchor and his staff have done a wonderful job creating the new menu items with a mix of the favorite dishes from before. If you haven't been in yet the Fall is one of the best times of the year at Pine Mountain Lake.

I've received many calls already for our annual Thanksgiving Buffet. Chef Raul puts out an amazing feast featuring Roast Turkey, Glazed Ham and Prime Rib. We have seating's at 11am, 1pm and 3pm. Be sure to make your reservations early. This is always a sold out event and seating is limited.

We have live entertainment on Saturday nights from 8pm until midnight. And we have Karaoke on the first Friday night of the month.

If you have any questions the best place for answers is by emailing me clubmgr@pinemountainlake.com or going to the official website www.pinemountainlake.com for the most accurate updates. Also, feel free to call me at 209-962-8638

Fire Prevention Week October 6th – 12th

Sarah Ruhl – Community Standards Director, Compliance & Fire Mitigation

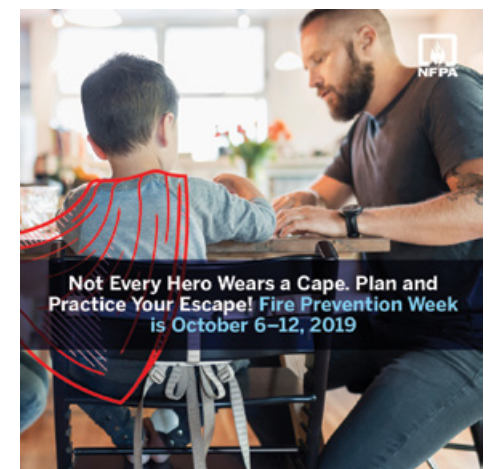
Not Every Hero Wears a Cape. Plan and Practice Your Escape!™

Pine Mountain Lake Association is teaming up with the National Fire Protection Association® (NFPA®)—the official sponsor of Fire Prevention Week for more than 90 years—to promote this year's Fire Prevention Week campaign, "Not Every Hero Wears a Cape. Plan and Practice Your Escape!" The campaign works to educate everyone about the small but important actions they can take to keep themselves and those around them safe.

NFPA statistics show that in 2017 U.S. fire departments responded to 357,000 home structure fires. "These numbers show that home fires continue to pose a significant threat to safety," said Lorraine Carli, NFPA's vice president of Outreach and Advocacy. "In a typical home fire, you may have as little as one to two minutes to escape safely from the time the smoke alarm sounds. Escape planning and practice can help you make the most of the time you have, giving everyone enough time to get out.

While NFPA and Pine Mountain Lake Association are focusing on home fires, these messages apply to virtually any location.

Situational awareness is a skill people need to use wherever they go. No matter where you



are, look for ALL available exits. If the alarm system sounds, take it seriously and exit the building immediately. This advice can also be a valuable resource in Pine Mountain Lake for Members who choose to use their home as a registered rental. Posting escape routes and evacuation information for vacationers is a simple step that can make a difference in the event of an emergency.

To find out more about Fire Prevention Week, please contact the Community Standards Department at (209) 962-1240. For more general information about Fire Prevention Week and home escape planning, visit www.fpw.org

GRAND

Re-Opening



Saturday October 26, 2019

**Please join us for a day of fun, food and drink
The Celebration Starts at 9am with a Ribbon Cutting Ceremony
Food and Drink Specials from 11am to 3pm
Door prizes**

Live entertainment from 8pm until midnight

*Celebrate
50 Great
Years*



*of our
Beautiful
Home!*

October 25 & 26, 2019

EQUESTRIAN CENTER OPEN HOUSE

Friday 25, 2019 • 3-7pm

3pm – Barn 2 open house

Hot Chocolate Bar and Smores at barn 2
Drink sales begin at the Saloon building
(beer, wine, sodas, and water)

4pm – Live Music will begin, Wagon rides,
Petting zoo, Face painting

Raffle prizes and goodie bags for all attendees.

TIME CAPSULE CELEBRATION

Saturday 26, 2019 • 9:45 am

50th Time Capsule will include invited guests for
burial along with some golden shovels.

There will be large photographs of the early days
of PMLA, a balloon arch and possibly
a guest speaker with some historical facts.

GRAND REOPENING OF THE GRILL

Saturday October 26, 2019 • 11am – 3pm

Please join us for a day of fun, food and drink

The Celebration Starts at 9am
with a Ribbon Cutting Ceremony

Food and Drink Specials from 11am to 3pm
Door Prizes

Live Entertainment from 8pm till Midnight

**50TH ANNIVERSARY GOLF
TOURNAMENT**

Saturday October 26, 2019 • 11am Shotgun Start

2 Person Scramble • 3 Flights (Ladies, Men's, Mixed)
\$50 per person • Golf Annual Holders \$25 per person

Includes Golf & Cart, 50th Anniversary Tee Prize,
Appetizers and other goodies

Open to all PML Property Owners

Additional events and competitions TBA

CELEBRATION ITINERARY FOR THE 26TH

9:00am Ribbon Cutting at The Grill
9:00am Golf Registration Begins
9:45am Time Capsule Burial
10:00am Chipping Clinic - 18th green

11:00am 50th Anniversary Golf Tournament
Appetizers, raffle and
socializing in The Grill
immediately following Tournament

WIN *for* FUN

What do you do for fun? Visit our award-winning casino!

Chukchansi's \$1 Million Wheel of Cash

FREE SWIPE
DAILY
FOR PRIZES!

EARN ENTRIES
DAILY
SEPT 3 - OCT 26

DRAWINGS EVERY
FRI & SAT
8PM & 10PM

4 CONTESTANTS
FROM EACH
DRAWING
SPIN FOR A TOTAL
OF \$10,000 TO

**WIN
\$1,000,000!**



Nifty 50's

FREE TUESDAY SLOT ⁵⁰⁺ TOURNAMENT

WIN CASH & eCASH PRIZES
11AM-2PM & 4PM-7PM

TONIGHT!

RECEIVE 2X BONUS POINTS &
DOUBLE DINING DISCOUNTS

Earn 1,000 Base Points on same day and PLAY TWICE!

Restrictions apply. Please see chukchansigold.com for details.

It's that time of the year!



CHUKCHANSI'S FOOTBALL POOL PROMOTION!

WIN A SHARE OF
\$9,350 IN eCASH!

FREE SWIPE TO SELECT
FOOTBALL TEAMS ONCE A WEEK
AUGUST 29, 2019 - JANUARY 6, 2020

If you pick the
weekly top winning teams -
YOU WIN!



CHUKCHANSI GOLD RESORT & CASINO

Hwy 41 North To Coarsegold | chukchansigold.com | 866.794.6946

Must be 21 years of age or older and a Chukchansi Rewards Club Member. All guests must have a valid government-issued photo ID acceptable to management for all Chukchansi Rewards Club transactions. Management reserves all rights to cancel or modify all offers, promotions and/or events without prior notice. Restrictions and exclusions may apply, please visit website for further details.

Revised New Resolution

PMLA Resolution Adopting A Pontoon Beach Space Policy

The following is a proposed resolution – PMLA Resolution Adopting A Pontoon Beach Space Policy. The purpose of the resolution is to establish a policy to be followed, setting standards, procedures, and guidelines with respect to the pontoon beach spaces at the Marina.

The resolution will be published for 30 days for member review and comment.



Resolution #XX.XX
Adopted: XX/XX/XX

PINE MOUNTAIN LAKE ASSOCIATION RESOLUTION ADOPTING A PONTOON BEACH SPACE POLICY

SUBJECT: Adoption of a Pontoon Beach Spaces policy

PURPOSE: To establish a policy to be followed setting standards, expectations, and guidelines with respect to the pontoon beach spaces.

AUTHORITY: The Declaration, Bylaws, and Articles of Incorporation of the Association and California Law.

EFFECTIVE DATE: _____, 2019

WHEREAS, the Board of Directors for the Association has determined the Association may benefit by adopting a pontoon beach space policy;

WHEREAS, the Board of Directors has already adopted a permanent waiting list for the Marina boat slips.

WHEREAS, the Board of Directors has determined it is in the best interests of the Association and its members to adopt a permanent waiting list for the pontoon beach spaces, in order to promote the use of this amenity in an equitable consistent manner;

NOW, THEREFORE BE IT RESOLVED, The Board of Directors adopts the following Pontoon Beach Space Policy, which provides a permanent waiting list for the pontoon beach spaces under the following conditions:

CREATION OF THE LIST

In 2020, Pine Mountain Lake Association will analyze the pontoon beach spaces for the past 4 years (2016, 2017, 2018, & 2019). For all members that have had a pontoon beach space in the past 4 years, or have had a beach space or been on the waiting list for 2 years, those members will be entered into a drawing for one of the 14 beach spaces. Drawing will take place in an open board meeting, to be determined in 2020. After all 14 spaces are decided, the remaining members will be drawn to start the waiting list for the beach spaces. Only PMLA members in good standing and current in their assessment payments may apply for a space. Only one beach space per lot may be assigned.

FUTURE MAINTENANCE OF THE PONTOON BEACH SPACES

Once the permanent spaces are finalized, any interested member who would like to be on the waiting list may complete a form online or at the Pine Mountain Lake Administration Office. Forms may be submitted in person, by mail, or by email. You may not call the Administration Office to request to be on the waiting list. The registration on the boat must match the name on the lease agreement. Boats may be parked into the leased beach space on opening day of the Marina Store and must be removed from the beach space by October 31st. Boats must be registered with Pine Mountain Lake Association before they can be launched into the lake. Subletting a beach space is not allowed.

To renew the pontoon beach space, a letter will be mailed each year and will ask the member if they wish to renew the space. If not, the space will be offered to the next member on the waiting list.

PONTOON BEACH SPACES AND PONTOON BOATS DEFINED

Pontoon Beach Spaces are located on the west end of the beach outside of the swim area.

Only Pontoon boats are allowed to be moored in this location.

Pontoon boats, also referred to as deck boats, are flattish boats that rely on pontoons as the main floatation device. A common example of a pontoon boat is the Bass Tracker Bass Buggy. For more information regarding current rules and regulations on boats, please see the other active resolutions in place.

Respectfully submitted,

Wayne Augsburger, Secretary

9/5/18 RR copy
8/15/19 DD Updated Dates

Tee to Green

Rob Abbott – Golf Course Superintendent

This time of year, is amazing. The nights get longer the days get shorter and cooler temperatures prevail. With the cooler temperatures it becomes increasingly difficult to irrigate the seventy plus acres of turf we currently maintain. Along with the shorter days comes changing sun angles casting large shade patterns throughout the course. Keeping the dry spots wet and the wet spots firm becomes quite challenging. Most of our efforts towards this balancing act have been to the greens, tees, fairways and primary rough.

With cool fall temperatures on their way, we will be doing some late season fertilizing. Greens continue a monthly program and will through the end of the month. The best results from late season fertilization will be achieved by applying fertilizer early enough in the season that the plants are still photosynthesizing and absorbing nutrients. Doing this will give the plant a boost of nutrients going into winter and give the necessary nitrogen boost to get it started in the spring.

We will be doing our course aerification throughout the month. We started this process in early September with our tees and approaches followed up on September 23 and 24 with our greens. We will continue with fairways

and roughs until completed. This particular aeration is very important due to the fact that we had to postpone most of our spring program due to rain. This activity is an invaluable tool in the quest to maintain premium playing conditions. The results of aeration are soil compaction reduction, promotes air exchange, enhances water penetration, modifies the root zone and managing thatch on turf, most notably on putting greens.

Staff has been working through the summer months to replace the sand in the bunkers throughout the course. We have nearly completed the front nine and will continue through the winter working the back nine holes. This is a very nine consuming process to do correctly. The new sand is much more playable and meets USGA specs for consistency and particle size. The sand over time becomes contaminated with fine particles causing compaction and poor playing conditions. The new sand should increase playability, and improve all your bunker shots.

I would like to take this opportunity to thank my staff for a job well done over the summer. We had many successful tournaments, a few challenging moments, but overall a quality season.

PML Member Equestrian Trail Survey

The Association is conducting a survey of members to gauge usage of the equestrian trails near the PML Equestrian Center. The trails are located on land that is leased by the Association for use by our members and guests for horseback riding.

The purpose of the survey is to determine how many members use the trails and to evaluate our recreational offerings in this area. All members are encouraged to participate in the survey which can be found online at the Official PML Website at www.pinemountainlake.com.



PML's Shooting Club

Invites you to our

Annual Meeting and Membership Drive

Open to all property owners and PMLSC Members

We offer:

100 Yard Rifle Range
Trap Range-Operational
Shooting Contest
General Target Practice

Staffed by Credentialed Range Safety Officers

October 13th; at 2:00 at the Lake Lodge
Come check us out and enjoy a hotdog lunch.



From the Fringe

Mike Cook – Head Golf Professional

The golf course made it through the summer season pretty well, thanks to Rob Abbott and his crew. As the fall season brings cooler temperatures to our area, what better reason could there be to get out and play a round of golf on our beautiful golf course. Our first tee time will be at 8:00 am in the month of October. As a property owner you can book a tee time up to 14 days in advance, call the Golf Shop at 962-8620.

UPCOMING EVENTS

Ladies 9 & 18 Hole Golf Clubs
Weekly Play Day –Thursday's

Ladies 9 Hole Golf Club
Breast Cancer Tny
October 3 – Thursday

Men's Golf Club
4 Man Scramble
October 9 – Wednesday

Ladies 18 Hole Golf Club
Pine Tree Invitational
October 17 - 19 – Thurs - Friday

PML 50th Anniversary
Golf Tournament
October 26 – Saturday

PINE MOUNTAIN LAKE 50TH ANNIVERSARY GOLF TOURNAMENT

To celebrate the 50th Anniversary of Pine Mountain Lake, we are holding a golf tournament on Saturday October 26. The

format will be a 2 Person Scramble with 3 flights; Men's, Ladies and Mixed. Entry forms are available in the Golf Shop.

11:00 SHOTGUN SEASON

Beginning November 4, we will be doing an 11 am shotgun for all play every day.

BALL MARKS ON THE PUTTING GREEN

In order to keep our greens in good shape, it is very important that all of us do our part to repair our ball marks on the greens. If a ball mark is repaired properly you will hardly be able to tell that there was a mark at all. If not repaired properly the mark can stay for days and maybe even weeks. Please make sure that you fix your ball mark on the green by following the procedure below:

How to fix ball mark on a putting green.

1. Insert the tool just outside the edge of the mark. Never push the tool into the mark itself.
2. Press the handle of the tool forward toward the center of the mark. Repeat moving around the mark as many times as necessary to repair the depression. Tamp the mark gently with the sole of your putter to reestablish a smooth surface.
3. Never lift the middle of the ball mark up but move the outside of the mark in towards the center.

Recreation Update

Ryan Reis – Recreation and Seasonal Operations Manager

We had another great summer here at Pine Mountain Lake Association in the Recreation Department. We had many people attend our events and even more enjoy our amenities. There were many challenges for our staff due to the lower than expected staffing levels. We want to thank everyone for their patience and we hope we can improve to provide a level of service that can make all of our amenities enjoyable.

As we look forward to 2020, mark your calendars for July 4. In 2020, we'll see our Fireworks Event on Saturday, July 4. This

will be both exciting and entertaining as the day of the Fireworks will actually fall on the July 4 holiday.

Also in 2019, we saw some new events: Family Bingo, Night in the Country Concerts, and Shooting Competitions. Keep an eye out for future dates in 2020.

If you haven't already like our new PML Recreation Facebook Page, make sure to do so. We'll be posting about new, current, and past events to keep everyone informed. You can find us at www.facebook.com/PMLRecreation.



**OCTOBER 12TH
FREE AIRPLANE RIDES**



Sponsored by EAA, Chapter 1337
www.eaa1337.org

EAA
"YOUNG EAGLES"
FLIGHTS

PML AIRPORT

9:00-11:30am

Ages 8-17

Parent/Guardian
Must Accompany
and Sign
Permission Form



THE ELECTION IS COMING!

BALLOTS FOR THE 2019 PMLA BOARD OF DIRECTORS ELECTION WILL BE MAILED ON OCTOBER 7, 2019

If you have moved or changed your address within the past year, please check with the PML Administration Office at (209) 962-8600 NOW, to make sure we have your correct address on file. This will ensure that you receive your ballot in a timely fashion.

VOTE VOTE VOTE VOTE VOTE

TIMELINE

FOR 2019 PMLA BOARD OF DIRECTORS ELECTION

August 16, 2019 Nominations Closed

September 27, 2019 – Record Date

OCTOBER 7, 2019 – BALLOTS MAILED

November 15, 2019 – Deadline for Return of Ballots (4:30 p.m.)

November 16, 2019 – Annual Member Meeting/Directors Election

PINE MOUNTAIN LAKE ASSOCIATION

PRESENTS

RANCH HORSE CHALLENGE

LOCATED AT THE EQUESTRIAN CENTER

OCTOBER 20, 2019

CLASSES:

Ranch Rail
Ranch Riding
Ranch Trail

See website for class descriptions.



DIVISIONS:

Open • Amateur
Novice
Walk/Jog 18 & Over
Youth 18 & Under
Walk Jog 10 & Under

Champion Buckles awarded to winner of each division, and Ribbons awarded to fifth place in each class

ENTRY FEES:

Open, Amateur, Novice, Walk/Jog 18 & over – \$45*

\$45 enters all three classes or \$20 per class

Youth, Walk/Jog 10 & under – \$35*

\$35 enters all three classes or \$15 per class

*Does not include \$10 office fee and \$5 drug fee per horse.

SPECTATORS WELCOME!!!

GO TO: WWW.PINEMOUNTAINLAKE.COM/EQUESTRIAN OR CALL MELISSA AT 209-962-8667 FOR MORE INFO

MOORE BROTHERS PREPAID BAG BIN

The bin (dumpster) at the PMLA Maintenance Yard entrance is for the dumping of prepaid, Moore Bros., trash bags ONLY. No dumping of any other trash items are allowed. Violators will face enforcement action. Please help us keep this area clear and ensure that the dumpster can remain in place for our residents use. Thank you!

THE PREPAID BAGS CAN BE PURCHASED AT THE MAIN GATE AND THE PMLA OFFICE.

PAY YOUR PML PAYMENTS ONLINE

Did you know you can make your payments online?

Online Bill Pay is available on PineMountainLake.com.

Pay via your credit card, it is quick and easy!

PML Organized Groups & Clubs

Contact the individuals below if you are interested in joining!
(All numbers are 209 area code unless noted otherwise)

Aviation Association	
Bonnie Ritchey	650-996-6274
Computer Users Group	
Frank Perry	962-0728
Exercise	
Barbara Elliott	962-6457
Cindy Simpson	962-7018
Friends of the Lake	
Mike Gustafson	962-6336
Garden Club	
Linda Flores	962-0824
Groveland Rotary Club	
Rudy Manzo	962-5219
Greg Cramblit	962-0607
Ladies Club	
Evelyn Bealby	650-743-4105
Men's Golf Club	
Pat Hennigan	962-4470 768-3720
Needle Crafts	
Barbara Klahn	209-916-5420
Pickleball Club	
Elisa Hoppner	962-2002
Pine Needlers Quilt Guild	
Catherine Santa Maria	962-7904
PML Ladies 18 Hole Golf Club	
Marcee Cress	962-0771
PML Niners	
Stacie Brown	962-5129
PML Safe Streets Campaign	
Leslie Dudley	962-4911
PML Shooting Club	
Dick Collier	962-6852
PML Waterski & Wakeboard	
Dean Floyd	408-915-8848
Racquet Club	962-6787
Mike Canizzaro	510-414-9657
Residents Club	
Dick Faux	962-4617
ROOFBB	
Susan Dwyer	962-6265
Sierra Professional Artists	
Heinie Hartwig	586-1637
Southern Valley Srs. Golf Group	
Rich Robenseifner	962-0932
Wednesday Bridge Club	
Linelle Marshall	962-7931
Windjammers Sailing Club	
Ken Regalia	415-819-4252

PML Men's Golf Club

Joe Vautier – Secretary

Hamburger Two-Man Tournament, Saturday, August 10: We had a fantastic turnout for this fun event and we had four flights. After the tournament we had a great BBQ hamburger feed with all of the trimmings. Gold Flight 1 winners were Will Hoppner and Ted Toffey at 61. Second were Paul Purifoy and John Romano, who also shot 61 but lost the card-off. Third were Steve Grant and Bryan Colteaux at 62. Fourth were Colm Conefrey and Brian Clausen at 63. Gold Flight 2 winners at 59 were Chad and Eric Meister. Second were Vince McEvoy and Steve Shih at 64. Also shooting 64 and getting third place were Doug Wall and Rudy Rich. Fourth were Cary Brown and Tom Borup at 66. Winning the Purple/Green 1 Flight were Al Craig and Wayne Handley at 63. Second were Dennis Perry and Steve Vahey at 64. Also shooting 64 and getting third place were Dick Faux and Norm Peebles. Winning the Purple/Green 2 Flight were Steve Bittick and Barry Scales with a fantastic score of 57. Second at 60 were Steve Aker and Larry Culler. Also shooting 60 and getting third place were Steve Burke and Joe Vautier.

Closest to pin winners were Will Hoppner and Jason Herd.

The only controversy came when John Graham claimed that someone took a big bite out of his hamburger when he went to get another beer. No one would confess to doing so and the competition committee had

to be convened to rule on whether John was entitled to another hamburger. Knowing the questionable character of the nearby crowd members who claimed to be completely innocent, the committee reluctantly awarded John another hamburger with the warning not to try it again next year. It was a little suspicious that when asked if he took a big bite out of John's hamburger, Rich Martinez could only shake his head side-to-side with bulging cheeks.

Summer Shamble Four Man Two Best Balls, Wednesday, August 21: We had a total of 59 players for this event. Winners of the Golf Flight were Randy Lundquist, Edvard Eshagh, Marc Allen and Tony Pavlakis with a score of 116. Second were Greg Sarratt, Larry Benson, Pat Hennigan and Brian Zenger with a score of 118. Third were Dave Bealby, Don Baker, Craig Herendeen and Steve Burke with a score of 119. Fourth were Dennis Scott, Dave Gibson, Jeff Sera and Rudy Rich with a score of 122. In the smaller Purple/Green Flight the winners were Glen Awai, John Lloyd, Joe Vautier and Bob Ells with a score of 110. Second were Doug Wall, Dan O'Conner, Dick Faux and Ed Trejo with a score of 114.

Closest to pin winners were Ed Trejo and Jay Warshauer.

Italian Open Four Man Scramble, Saturday, September 7: Results to be reported next month.

Business Meeting and 2 Man Better Ball Tournament, Saturday, September 21: Results to be reported next month.

UPCOMING MEN'S CLUB TOURNAMENTS

Four Man Scramble - Purple/Green tees, Wednesday, October 9. 9:00 am shotgun start. Deadline for sign-up is October 4.

Shootout - Two Man Alternate Shot, Saturday, October 26. 9:00 am shotgun start. Deadline for sign-up is October 21.

Turkey Shoot - Four Man Teams, Saturday, November 16. 11:00 am shotgun start. Deadline for sign-up is November 11.

The Pine Mountain Lake Men's Golf Club welcomes all property owners to join our club. The golfing events for the year are underway, but there are many more opportunities to get in on the fun. Membership is available even if you have not yet established an NCGA handicap. Membership applications are available in the pro shop, or you can contact our Membership Director, Will Hoppner.

Entry forms for all Men's Club Tournaments are available in the pro shop, or you can download the forms at <http://pmlmgc.com>. Internet tournament sign-up and payment capability is now available on the website.

Ladies Club Celebrates Fall... and Halloween

Patricia Epp

The October Ladies Club luncheon will be held October 2 at the Lake Lodge. The doors open at 12 noon and the luncheon begins at 12:30 pm.

To celebrate both Fall ... and the fun times of Halloween ... the theme is Mad Hatter ... but it's a non-traditional version ... not the 'Alice in Wonderland' version but ladies are encouraged to decorate and wear a witches hat ... and have fun with decorating it whether it's mad, crazy or unique.

The luncheon menu, provided by Lunch Lady Catering from Arnold, will include some of the best flavors of fall starting with a Pumpkin Bisque with Parmesan Crip and ending with Warm Apple Strudel

with Pumpkin Spice Whipped Cream. The main course is a choice of Apple Cider Pork Loin or Tender Chicken Breast accompanied by Penne in a creamy white wine pumpkin sauce and autumn's best veggies. It promises to be a very yummy luncheon. Cost for current members is \$15. Guests are \$18.

Dues to begin the new Ladies Club year in January, 2020 are just \$15. If you are renewing your membership ... or interested in joining ... make your check



out to the Ladies Club and mail to P. O. Box 100, Groveland, CA 95321. We love to have you be a part of the fun we share each month.

Our November luncheon is November 6. The theme is "Celebrating Those Who Serve" and it will be held at the Lake Lodge. If you'd like to be on the committee to help finalize the plans for this 'thankful' celebration please call Evelyn Bealby: 650-743-4105.

December is slated to be held at The Grill on December 4, Wednesday. Details to come ... but we know it will be wonderful as Past President Joan Stauffacher is the Chair ... so stay tuned.

Birds Eat Butterflies for Lunch

Sally Wrye



Butterflies, from left to right Elisa Hoppner, Sally Wrye, Paula Vautier, Yvonne Mattocks, Linda Johnson, Sara Hancock, Helena McMillan and Thelma Faux



Birds, left to right Anne Clark, Marilyn Scott, Jodie Awai, Linda Wall, Marcee Cress, Kathie Wood, Marlene Drew and Kitty Edgerton

The very popular two week match play tournament began on August 8th, with the Birds vs. the Butterflies. Respective teams came dressed and ready to play!! Following the first week Birds led by a healthy 3 points with a score of 7 1/2 points to 4 1/2 points, a healthy lead but not insurmountable. The first two teams split with 1 1/2 points each. But the team of Jodie Awai and Linda Wall were the lead scorers taking 2 1/2 points from opponents. Closest to the Hole for the Birds was Kitty Edgerton with 9' 6" from the hole, the Butterflies failed to make the green. Closest to the Line was Kathie Wood for the Birds and Yvonne Mattocks for the Butterflies.

Day 2, troubles continued for the Butterflies, while the Birds continued to advance increasing the lead by 5 by days end. The Butterflies who successfully secured the most points for their losing team was Paula Vautier and Thelma Faux winning a total of 4 points for both days. Jeanne Pacco replaced Jodie Awai as a butterfly and her and partner Linda Wall continue to soar, taking another 2 1/2 points. Closest to the Pin was Anne Clark for the Birds, and once again the Butterflies failed to land the green. Closest to the Line, Marcee Cress and Marjorie Rich for the Birds, Helena McMillan and Elisa Hoppner. Despite a weak showing by the Butterflies, a good time was had by all, and the Butterflies are strategizing now for their comeback in 2020! Although Birds and Butterflies stayed for lunch the Birds were pretty full by then. :)

Pine Mountain Lake Ladies Golf continued on August 22nd, with **Left/Right Partners**

1st Place – 131 Points
Thelma Faux
Marlene Drew
Patty Peebles

2nd Place – 134 Points
Sara Hancock
Linda Johnson
Yvonne Mattocks
Jeanne Pacco

Birdies:

Sara Hancock – No. 17
Paula Vautier – No. 7

August 29th the Ladies played **Gross Net Putts**, Ace of Aces was a three way tie with Kitty Edgerton, Jeanne Pacco, and Priscilla Park with a Net score of 71. Putter of the Month was Kitty Edgerton with 28 points, nice job Kit!

1st Flight (17 to 25 handicap)

1st Low Gross Kitty Edgerton 88
Low Net Priscilla Park 71

2nd Flight (29 to 34 handicap)

1st Low Gross Sara Hancock 102
Low Net Jeanne Pacco 71

October 12th PMLLG will host their 2nd Saturday playday to accommodate “off the hillers”; guests are welcome with an established index and amateur status, limited to first 16. Call the pro shop!

Tricks and Treats

Tammy Talovich



Well its October already, so get out your pickleball costumes and come on out and show everyone your fancy TRICKS or TREAT yourself to some exercise and great company. We are still at the same location, next to the clubhouse on Mueller. The days of play are Monday, Wednesday, Friday, Saturday and Sunday at 8:30am. We have been playing on Tuesday evenings at 7:00pm and it's

been working out great, playing under the lights.


It is getting cooler so play should be awesome!

If you want to learn the game, bring some water and slip into your court shoes and come on out.

Also don't forget those passes, PML Safety is still checking!

See ya on the courts!

MOORE BROS. SCAVENGER CO., INC.
P. O. Box 278 • Big Oak Flat, CA 95305 • (209) 962-7224 • FAX (209) 962-7257



VACATION RENTAL OPTIONS FOR TRASH SERVICE

In order to assist property owner/managers of short-term rentals with trash removal, Moore Bros. Scavenger Co. offers the following services.

Short-term rental customers may participate in year-round or three-month summer curbside service. To manage anticipated levels of guest trash, property owners/managers of short-term rentals should maintain the suggested service levels as determined by the *Maximum Occupancy for Rental Property* (please see the chart below). In the event that renters generate more than the expected amount of trash or the home is rented multiple times during a given week the following options are provided:

- **As Needed Extra Pickup.** Property owners/managers may request a notation on their rental service accounts to pick up extra as needed. This will ensure that all trash left alongside the cans will be picked up by Moore Bros. and a special pickup will not be required. There is an additional per-can/bag charge for each extra can/bag picked up.
- **Special Pickup.** Moore Bros. has a truck and driver available for special pickups Monday through Friday.
- Property owner/managers must place a request for service call or email to Moore Bros. before 3 pm on the business day prior to the requested pickup day. A request for a Monday pickup must be made by 3 pm on the previous Friday. **Prepaid Bags.** Prepaid Moore Bros. bags may be purchased by property owner/manager to be used by any handyman or housekeeper servicing the residence between rental customers. The prepaid bags can be disposed of at the Pine Mountain Lake Maintenance Yard on Par Court off of Mueller Rd.

Property owners/managers utilizing full summer service may go to on-call service for the off season.

- **Off Season on Call Service.** Property owner/manager may call or email an on-call request to Moore Bros. for a service pickup on the regular pickup day for the address. A request for service call or email must be received before 3 pm the business day prior to regular scheduled pickup day. Charges will be based on the standard a per-can rate for each can/bag picked up.
- **Special Pickup.** Please follow the same procedure as listed above for Special Pickup.

Maximum Occupancy for Rental Property

Maximum Occupancy	Suggested Service Level
6 - 8 people	2 can
8 - 10 people	3 can
10 - 12 people	4 can
Lake front Property 12 people	4 or more cans as typically needed

If you have questions please feel free to contact our office at (209) 962-7224 or email us at: info@moorebrosscavenger.com and Shirley@moorebrosscavenger.com (Please cc both to insure prompt replies).

A drop-off Recycling center is available for use Mon – Sat. 8 am – 5 pm @ 11300 Wards Ferry Rd. Big Oak Flat, Ca

HOMES ON THE HILL



**YOUR GUIDE TO
REAL ESTATE IN THE
GROVELAND AREA**



YOSEMITE GATEWAY PROPERTIES
GROVELAND, CALIFORNIA

CALL TODAY TO LIST YOUR HOME

SINGLE LEVEL RANCH



Single Level Ranch style house.
- 3B/2Ba, 1693 sf, Open floor
plan w/decorative ledgers, high
ceilings, light and bright. Take a
look today! 7/102 **\$299,000**

QUALITY TOP NOTCH CONDITION



DON'T LET THIS ONE GET AWAY!
Quality custom home w/park like
setting. .56 acre, 3Bd/3Ba, Bonus
Room, formal dining.
U2/L270 - 13159 Mueller Dr.
\$499,000

SINGLE LEVEL LIVING



PENDING
3b/2b ON .40 Ac. Outstanding
view from covered deck. 1,932sf
w/Living Rm & Family Rm. **U8/L82**
- 12310 Mills St,
Offered at **\$275,000**

YOUR REALTORS



GEORGE VOYVODICH
Broker/Owner
209-962-5163 Office
209-770-5163 Cell
gvoyvodich@gmail.com
BRE license 01080130



JUNE DEE
Realtor/GRI
209-962-5190 Office
209-962-7060 Home Office
209-770-5190 Cell
junedee@ymail.com
groveland-real-estate.com
BRE license 01700083

YosemiteGatewayProperties.com • (209) **962-5190**

Action 1 Properties

Residential • Ranches • Investment Sales • 1031 Exchanges

THINKING OF SELLING? When you sell your home with us it will be marketed not only locally but also in the Bay Area and Sacramento regions. This extra exposure will help your home sell faster and for top dollar. We can also represent you in buying or selling in these areas.

LET'S TALK REAL ESTATE



CUSTOM HOME ON GOLF COURSE
Situated on the 1st fairway. Charming
3B/3BA, 3000 sq.ft., 3 car garage,
terrific views. **\$570,000**
19131 Tannahill Ct. U5D/L006



ENTERTAINER'S DELIGHT NEAR LAKE
Spacious 4B/3BA, 3 fireplaces & 3
jacuzzis, Wonderful landscaping, 1/3
acre lot. New roof, heat & air **\$349,950**
20873 Big Foot Cir. U4/L66



**WONDERFUL SINGLE STORY CABIN,
FLAT 3/4 ACRE LOT - 3B/2BA**, new
roof, large 2 car garage Decks front
and back. RV parking **\$257,500**
12907 Green Valley Cir. U3/L387

LOT FOR SALE

1/2 acre buildable lot w/plans. 46' of water front,
lake access. **\$83,500 - U13/Lot 277**

COMING SOON

Large single story home on 1.5 acres, close to airport. **\$498K**
Golf Course Lot - **\$54K**



Michael O. Bowers
Broker Assoc.
Over 30 years experience
Full-time resident in PML
209.770.3683

DRE #00901538 Michael@MichaelBowers.com

Emily Hunter
Broker Assoc.

Over 16 years experience
Tech savvy with all
Real Estate platforms

925.785.3795

EmHunterRE@gmail.com DRE #01986542



PMLA OWNED LOTS FOR SALE

2/287	FERRETTI ROAD	\$2,500
2/291	FERRETTI ROAD	\$2,500
3/056	ECHO CT	\$1,000
3/057	PINE MOUNTAIN DRIVE	\$1,500
4/234	NON-PAREIL WAY	\$5,000
5/212	FERRETTI ROAD	\$1,000
6/179	COTTONWOOD STREET	\$2,000
7/049	FERRETTI ROAD	\$1,000
7/133	JACKSON MILL DRIVE	\$1,000

FOR FURTHER INFORMATION REGARDING THESE
PROPERTIES PLEASE CONTACT PMLA AT (209) 962-8600

RE/MAX
Yosemite Gold
Each Office Independently Owned and Operated

Patricia (TISH) Fulton
REALTOR® / PROPERTY MANAGER
BRE #00760019

18688 Main St. P.O. 808
Groveland, CA 95321

Phone: 209-962-0837
Office: 209-962-4080
Cell: 209-985-0216
Email: Tish.realestate@gmail.com



RE/MAX
Yosemite Gold

PineMtnLake.com
Property Sales 1 (888) 962-4080
Long Term Rentals: (209) 985-0216
CA DRE License # 00975527



Lauree Borup
(209) 628-4600
REMAXyosemite@gmail.com



Ann Powell
(209) 200-1692
AnnPowellRealtor@gmail.com



Tish Fulton
(209) 985-0216
Tish.RealEstate@gmail.com



Eleda Carlson
(209) 814-4123
EledaCl@gmail.com

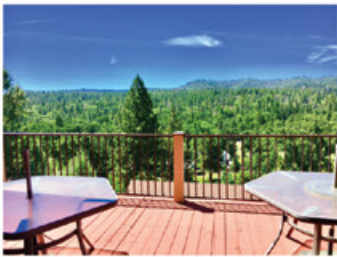
We're Showing Homes 24/7
Push Buttons on the window glass to Search Area Homes



with an Office Sign that Works Like a Giant Smart Phone or Watch a slideshow of RE/MAX local listings

MASTERFUL DESIGN with two Master Suites..

Nearly 4000 sq ft of space on two levels with additional area to expand. Situated on 3 merged lots with unobstructed golf, tree and mountain views. Great room w/ stacked stone gas fireplace, spacious kitchen with quartz countertops, hickory cabinets,



stainless appliances, main floor master suite plus huge lower level master. Wet

bar, half bath and second deck downstairs. Red oak, tile and carpeted flooring throughout. 4 bedroom, 3 1/2 baths. 2 heat/ac systems. Furnishings available.

19010 Sean Patrick Lane \$599,900

PRICE REDUCED



LINDAL CEDAR HOME 3 bedroom 2 bath all

on one level. Beautiful wood ceilings and floors, plenty of large windows throughout the house. Great kitchen for entertaining. Huge master bedroom with a large walk-in closet. Access to the deck from the master bedroom. Private room off of the



New Listing



kitchen great for a hobby room, sewing room or exercise room. Massive area under the house for storage and work shop. Serene forest views, easy care lot. 19697 Butler Way \$295,000

UPDATED CHALET with a view. Spacious

1944 with 4 bdms, 2 baths, detached double garage, on .62 acre. Most furniture included. 20614 Longview St. \$319,900

New Listing



VACATION OR FIRST HOME?

This home would be ideal for either. Situated on .54 of an acre along side a seasonal creek. 3 bdms, 1.5 baths. Newer laminate, vinyl, carpet & refrigerator. Lots of storage, nice-sized treed front yard. No HOA dues! On GCSD water 11268 Merrell Rd.



\$184,500

SERENITY STREET where you can afford



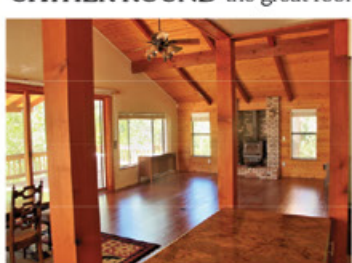
this 3 bedroom, 2 bath with all new flooring & paint inside. Propane cookstove, central heat & air, flat driveway with plenty of parking, storage shed nice enough for an office or hobby room in back. Master with walk-in closet and custom tile shower. Septic approved, pest & roof insp available. 7-223 Crocker Station, \$198,000

4 BEDROOM, 3 BATH on a truly FLAT lot



near golf, Dunn Beach and swimming pool. Long breakfast bar, vaulted pine ceilings throughout, furnished, double carport, wraparound deck. Moon landing light fixtures! Central heat and A/C plus Woodstove. 1-68 Reid Circle \$260,000

GATHER ROUND the great room. Large



glass doors open to red-wood deck. Gorgeous hickory floors. Kitchen

with new maple cabinets, granite counters, stainless appliances. Downstairs bonus room, 3rd bedroom & bath, & covered redwood deck: Many upgrades! Three-car 24' x 30' garage with 300 sf finished storage room underneath. 8-228 \$360,000

FIVE BEDROOMS -THREE ACRES



Built in 2003 with ironwood deck shaded by a pergola, detached 24' x 24' garage, 3 full baths + many quality features. Available fully furnished. Sierra views, close to town and Country Club amenities. 5B-1 Jones Hill Ct \$320,000

CHARMING COUNTRY COTTAGE on



PRICE ↓

over an acre. From the covered front porch to the open rear decking- you'll be impressed. Nearly 2500 sq ft & NO stairs! Many custom built ins, formal dining room & a breakfast area. Oversized 2 Car garage + RV Garage! 12-203 Yorkshire \$445,000 BIG REDUCTION

REACH FOR THE STARS



Celestial views from the deck; sit in the hot tub and marvel at the Milky Way. 3 bd, 2 bath on almost an acre of land, Garden and add to the abundant daffodils 7-25 \$198,000



CHRIS H. LAKE
DRE 00946632

209-768-6156

chrishlake@gmail.com



GINA GIAMPIETRO HERNANDEZ

DRE 0122655

408-506-6944

GinaGHRealEstate@gmail.com

Our FREE HOME STAGING helps you sell!! No one does what we do!

Lake Homes, Golf Course Homes, Country Homes, Cabin Homes, Newer and Fixers



**YOSEMITE AREA
REAL ESTATE**

18634 MAIN ST. STE 1 GROVELAND

View listings at www.YosemiteAreaProperties.com

PAUL S. BUNT REAL ESTATE BROKER DRE 01221266

Make
Chris & Gina
your
1st call!

DREAM HOME!



12845 CRESTHAVEN DR. U3/L442 – \$462,000
3/2 2 car 1875 sf .46ac. Absolutely STELLAR!! SO RARE to find perfect, move-in condition home!! Granite, stainless, subway tile, recessed lighting, commercial grade flooring, hot tub, 3 trek gated decks w/metal railing & solar lighting, alarm, wd burn brick hearth frstndg fp, RV parking+, lg master w/balcony, dbl sinks, guest bath w/soaker tub, upgraded plumbing & elec, whole house fan & vacuum, HVAC & Alarm, oversized garage w/wrkbench, stereo speakers, directional lighting.

BEAUTIFUL PEEKABOO LAKE VIEW



20449 ROCK CANYON WAY U3/228 – \$389,000 A block fr Fisherman's Cove, rare find, single lvl w/enormous kitch w/Corian island cooktop, cabinets throughout, breakfast nook w/patio door, gated back covered patio, sep dining rm, formal entry w/hardwood flrng, new carpet, lg lvng rm w/f.p. & bright windows, 4th bdrm or den, 1/2 ba, indoor lndry, 2 guest bdrm & Mbr w/patio access, walkin cedar lined closet. Oversize 2 car gar w/storage.

STUNNING REMODELED KITCHEN



12071 BRECKENRIDGE U13/L40 – \$499,000
4 bd/4 ba/2 car on .65ac. Fall in LOVE with this kitchen!! Move in ready private setting. Grt Rm concept eat-in kitchen + formal dining, living & family rms both w/wood fp, 3 guest bdrms, lg master w/deck access, 2 guest baths & laundry on main floor overlooking scenic wilderness. Lower level - huge bonus rm "man cave" with large wet bar, full bath, wood burn fireplace plus additional bonus storage or hobby room.

NEAR LAKE LODGE BEACH



20235 PINE MT DR. U4/L420 \$399,000
3292sf 4bd/3ba. Walking distance to beach. Great rm concept, remodeled kitch. sep. office, oversized walk-in pntry/stor. 2 mstr stes, 1 on entry level. Bonus rm w/fp & wet bar, open beams. Deck & custom lg patio. Sep. workshop. Parking & oversized 2+carport. Addtn'l exterior storage cabinets. Home warranty included.

ONE OF A KIND



9817 ERNST RD. GREELEY HILL – \$350,000
12.85ac completely fenced for horses or livestock. Has sub-division possibilities. 3bd/2ba home w/attached 2 car gar. 1800sf as stated by seller includes enclosed & developed breezeway. Vaulted ceiling, 2 wd burning stoves, lam. flooring, covered porch, rear decking & patio w/hot tub. Mature landscaping in a secluded forest setting. 2 lg detached sheds. Water well. Seasonal creek. Well maintained trees and acreage. Private setting.

LARGE FAMILY CABIN



19712 BUTLER WAY U8/L232 – \$282,000
Near Marina & Golf, this is the perfect family cabin in Pine Mountain Lake. Great room w/vaulted knotty wood/open beam ceiling & rock fireplace, open large kitchen w/breakfast bar that seats 5, plus mini bar, 2 master bedrooms on main floor, large downstairs family room w/3rd master & additional sleeping area, w/wet bar. Large outdoor deck w/tree views. Awesome for entire family! Tons of paved parking including RV parking space.

17.5 ACRES ONE OF A KIND



6395 CERRO SIERRA GREELEY HILL 17.5 acres gorgeous meadows, wooded areas and creek. Cute and clean home with 3 bedrooms and 2 baths. Two kitchens, wood burning stove. Two level configuration can be two separate apartments. Expansive views, Secluded location yet close to the local community. Detached 2 car garage. Tons of room for recreational vehicles Private well.-- Just 25 miles to Yosemite National Park.

A PIECE OF PARADISE



20141 WHITES GULCH – \$175,000 23.96 acres. Endless possibilities build your dream home, AIRBNB or bed & breakfast. Easy access to Yosemite National Park. Expansive views. Property affords several great building sites. Power at the property, septic installed in '08, district water available. Private setting yet close to town. Enjoy all the amenities of the Sierra Foothills. Above the fog line & below the snowline. Fresh air & room to roam. A friendly community which gives you a sense of belonging.

LOTS FOR SALE

Unit 2/Lot 290 – 19378 Ferretti .51 acres, access road, rolling meadow, pines and oaks, close to all amenities **\$3,000**

Unit 3/Lot 138 – Across from tennis courts. Access road, water & sewer available **\$15,000**

Unit 2/Lot 35 – Jackson Mill .25 acres, gentle to level. mature trees, corner lot, close to golf course **\$5,000**

Unit 7/Lot 152 – Jimmie Bell .25 acres, gentle to level building site, public sewer available, oaks, close to golf course **\$5,000**

SOLD



ENDLESS POSSIBILITIES



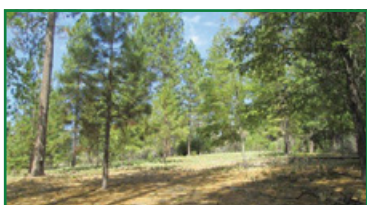
7184 RED FLAT RD – \$239,000 5 acres of useable land, suitable for horses. 3 bedroom 2 bath home, 2016 sq ft. Wrap around deck, Open kitchen, living and dining area. Under house is completely concreted could be additional living space. 4 car detached garage. Home has deferred maintance required and is subject to lender's approval for a short sale

RARE FIND HORSE PROPERTY



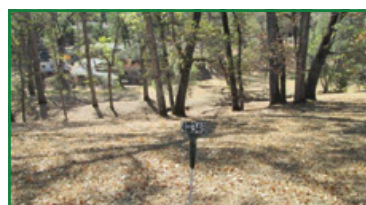
UNIT 12/LOT 183 – \$99,000 .98ac. Corner lot on cul-du-sac horse prop. fenced w/lg covered RV or Hay storage steel shelter barn. Sand on site for future round pen. Mostly level parcel. Utilities available. Walk to Fishing pond. Other amenities: HOA stables, airport, golf, lake & marina, tennis, pickleball, pool, country club dining and more. Gated community w/24 hour security.

ROOM TO ROAM



FISKE HILL RD GREELEY HILL 19.53 acres Opportunity awaits on this 19+ acre parcel. Two separate lot make up this toal acreage. Subdivision potenial .Gentle rolling and woody terrain or wide open meadow. Several choices available on this piece. Power is close by. Well and septic is required. Close to town yet secluded. Easy access has been created. A bargain at only **\$134,900**

PARK LIKE SETTING



UNIT 4/LOT 348A BIG FOOT CIRCLE – \$20,000. Almost 1/2ac. Great building sites to choose from. Gentle slope - oaks & pines. Easy access. Seasonal Creek. Quiet neighborhood. Approved for septic system for 3bdrm home. 2 blocks from beach at Lake Lodge.Gated community, private lake, golf, tennis, pool, pickle ball court, riding stables, airport and hiking trails.

DEEP WATER LAKEFRONT LOT



UNIT 4 LOT 123 LONGRIDGE CT. – \$95,000 .35 acres on cul du sac. Water access and beautiful lakeviews. Build your fabulous get away or full-time home here. Property will support a personal boat dock. Water, sewer and powerat the site. 87' of lakefrontage. Great location with east access to all the PML amenities-golf course, tennis courts, airport, stables swimming pool. Enjoy the good life. Gated community.



PINE MOUNTAIN LAKE REALTY

An Agent Owned Company

18919 Ferretti Road • PO Box 738 • Groveland CA 95321 • 209-962-7156 • www.pmlr.com



Barry Scales
Broker/Owner
209.484.7123
BRE#00451887



Lynn Bonander, GRI
Owner/Realtor®
209.484.7156
BRE#00683485



Val Bruce, GRI
Owner/Broker Assoc.
209.768.7368
BRE#00578336



Parker 'PJ' Johnson
Owner/Realtor®
209.768.6232
BRE#01732298



Marc Fossum
Owner/Realtor®
209.770.4750
BRE#01956242



Elaine North
Realtor®
209.768.4221
BRE#01047723



Patty Beggs
Owner/Realtor®
209.840.2293
BRE#01339347



Michael Beggs
Broker Assoc./Realtor®
209.840.2294
BRE#01335568



Spacious Home On Golf Course!

3Bd/2&1/2 Bth, Bonus Rm, 2 Car Garage, Approx 2800sf., Separate HVAC Unit for Upper Level, Central Vacuum, Great Rm, FP, Brfst Area & Island, 2 Warming Ovens & Indoor Grill, Wet Bar, Inside Laundry w/ Wash Tub, Guest Rms w/Private Sinks. 19950 Pleasantview 1-164
\$495,000 MLS#20190201



Have it All - Location, Views, Privacy

3 Bed/2 1/2 Bath, 2 Levels, 3 Car Finished Garage w/Utility Sink, Approx 2263sf, Approx 0.41 Acre, Backs to Greenbelt, Central Air, Large Deck, Great Rm w/ Fireplace, Hardwood Flooring, Brfst Bar, Pantry, New Countertops, Open Dining, Master w/Walk-in Closet & Deck. 12078 Hillhurst Cir., 8-152 \$439,000 MLS#20191352



Custom Lake Front Log Home!

3 Master Suites, 3 & 1/2 Baths, Bonus Rm, 2 Car Oversized Garage, 2 Levels, Approx 2609sf, Approx 1.0 Acre, Central Air, 2 Fireplaces, Security System, Wine Storage, Carved Front Doors, Large Kitchen, Antique Replica Stove, Inside Laundry, & Storage. 20156 Pine Mtn Dr 4-129
\$700,000 MLS#20190590



Spectacular Mountain Home!

3 Bd/2&1/2 Bth, Approx 3016sf, 5 Car Garage, In-law Qrts, Den, 900' Bonus Room above Garage w/Balcony & Propane BBQ, Large Gourmet Kitchen w/ Brazilian Granite, Mstr Bed/Bth, Media Rm, Hardwood Floors, 2 Sheds, Active Owner owned Solar System & MORE!
19485 Ferretti Rd 6-200
\$449,950 MLS#20191189



Great Lake View & Location

3 Bd/2 Bth, 2 Car Garage, Split Level, Deck, Living Rm w/Wood Stove, Oak Flooring, Brfst Bar, Pantry, Open Dining, Master Bed w/Walk-in Closet, Bath w/Tiled Walk-n Shower, Guest Bath w/Antique Vanity Sink, Inside Laundry, Skylights, Ceiling Fan. Close to Dunn Ct. Beach! 12810 Mt. Jefferson 1-248
\$292,000 MLS#20190673



Location-Location-Location!

3 Bd/2 Bth, 2 Car Garage, Split Level, Approx 1904sf, Central HVAC, 2 Decks, Large Great Rm, Fireplace w/Rock Surround, Master w/Walk-in, Both Baths have Double Sink Vanities, Inside Laundry. 19659 Pine Mountain Dr, 1-477 \$329,000 MLS#20191717



Golf Course Dream Home!

3 Bd/2 Bth, 2 Car Garage, Approx 1666 sf, Central Air, Propane Heat Stove, Brfst Bar, Master Bedrm w/ Walk-in Closet & Private Deck overlooking 3rd Green & 4th Tee Box, Fiber Cement Siding, Circular Driveway. Great Views!
19059 Sean Patrick 5E - 16
\$375,000 MLS#20181656



Beautiful Views!

3 Bd/2 Bth, Bonus Rm, Approx 1588sf Great Rm, Central Heat/Air, Modern Kitchen, Wine Storage, Very Large Mstr Bdrm w/Large Walk-in Closet, Storage, Inside Laundry, Covered Porch/Deck, Circular Driveway, Large Dog Run.
20048 Ridgecrest 13-299
\$305,000 MLS#20190226



Cozy Cabin!

3 Bd/2 Bth, Large Bonus Room, Approx 1360sf & 0.90 Acre, Great Rm w/ Stone FP, Brfst Bar, Skylights, Wood Framed Windows, Master Bedroom on Entry Level, Inside Laundry Washer & Dryer Included, Large Trex Deck.
19743 Butler Way 8-286
\$229,000 MLS#20190652



A Wine Maker's Dream!

3,115sf, 3 Master Suites, 3 Full & 2 Half Baths, 3 Car Garage w/Cabinets & Workbench, Great Rm, Custom FP, Family Rm, Wet Bar, Brfst Bar, 2 Pantries, Granite Countertops, Gourmet Style Range, Den, Inside Laundry, 2 HVAC Systems, Solar System, Winery & Tasting Room! 20497 Rock Canyon 3-220
\$798,000 MLS#20190316



Super Location & Views!!

2 Bd/2 Bth + Bonus Area, Attached Garage, Approx 1759sf on .54 Acres. Great Rm, FP w/Rock Surround, Central Air, Inside Laundry. 11'x11' Screened Porch w/pass thru to Kitchen. 8'x12' Shop/Storage New Trex Decks on both sides, New Septic System. Close to Many Amenities!
19600 Golden Rock 1-195
\$245,000 MLS#20190028



Spacious and Secluded!

Quiet Setting on 1.83 Acres with Mountain Views. 4 Bed/3 Bath, Floor Plan thoughtfully laid out. Hearth with Wood Burning Stove, Central Air, Skylights, Hardwood Floors. Master Bedroom on Main Floor. Attached 2 Car Carport. Upper & Lower Deck. 21024 Hillcroft Dr. 12-221
\$349,000 MLS#20181032



Super Energy Efficient!

3Bd/2 Bth, 2 Levels, Approx 1848 Great Room, Pellet FP, Brfst Bar, Pantry, Master Bd/Bth, Large Storage Rm, Ceiling Fans Thru-out, Propane Heat, Open & Shut Skylights, On-demand Hot Water Heater, Beautiful Views from Large Composite Deck.
20108 Ridgecrest 13-286
\$315,000 MLS#20191215



Spacious Mountain Home!

3 Bd/3 Bth, 2 Car Garage Plumbed, 2 Levels, Approx 2716sf, Greenbelt Lot, Central Heat/Air, Central Vacuum, Propane FP, Brfst Bar, Island, Brick Surround Stove, Garden Window, Formal Dining w/Bay Windows, Master w/Walk-in Closet, Inside Laundry, Storage, Covered Porch.
19751 Cottonwood 6-74
\$279,000 MLS#20191005



Beautiful Nature Views & Curb Appeal!

3 Bd/2 Bth, 2 Car Finished Garage with Shelves, Bonus Rm, Approx 1850sf, Approx 0.47 Acre, Central Air, RV or Boat Parking, Living Rm w/Brick Surround FP, Kitchen w/Island, Brfst Area & Bar, Open Dining w/Slider to Deck, Master Bdrm w/Walk-in Closet, Private Deck, Master Bath w/Vanity & Separate Shower, Inside Laundry, and More! Furnishings Included 20797 McKinley Way, 10-25 \$329,000
MLS#20191494



The Perfect Cabin!

4 Bd/1&1/2 Bth, Large Living Rm Everything Stays. The front Porch is under repair & Pest Report pending. Green Belt & Hiking trails go for miles located adjacent to the back of the lot. Wildlife is abundant to view. Come take a look soon before it is gone!
19720 Ferretti Rd 6-131
\$215,000 MLS#20190485



Immaculate Mountain Cabin!

4 Bd/2 Bth, 2 Car Oversized Plumbed Garage w/Workbench & Shelves, Approx 1544 sf & 0.42 Acre, Great Rm, FP, Central Air, Central Propane/ Baseboard Heat, Brfst Bar, Open Dining, Open Beam Ceiling, Ceiling Fans, Washer/Dryer Included, Deck.
20551 Nob Hill 3-117
\$295,000 MLS#20190948



Perfect Getaway Cabin!

3 Bd/1 1/2 Bth, 2 Level, Approx 1408sf, Approx 0.50 Acre. Wall A/C, Baseboard Heat, Open Beam Ceiling, Double Pane Windows, Great Rm w/ Free Standing Fireplace, Brfst Bar, Convection Oven, Refrigerator, Solid Surface Counter Tops, Laundry Rm w/Wash Tub. 12964 Jackson Mill Dr. 7-103 \$199,900
MLS#20191480

Land for Sale

\$10,000 - 3-306 Longview - Very Buildable
\$10,000 - 2-56 Tip Top Merged
\$16,000 - 4-31 Crescent - Greenbelt
\$17,000 - 3-373 Cresthaven Great Buildable Lot
\$69,000 - 5-8 Dyer Ct VIEWS!
\$75,000 - 15-324 Marina Ct - Quiet Ct Beautiful View
\$79,000 - 4-127 Lake Front, Rare Opportunity
\$97,000 - 5-28 1.29 Acre Zoned R-3



DRE# 00683485



Pine Mountain Lake Realty

An Agent Owned Company

Lynn Bonander, GRI Owner / REALTOR®

18919 Ferretti Rd., Ste. A, Groveland, CA
Office 209-962-7156 / Cell 209-484-7156
lynnb@goldrush.com www.pmlr.com



Beautiful Home!

19120 Raboul Court
2-328

\$279,000

MLS#20190472

3 Bd/2 Bth, 2 Car Oversized Garage, Approx 1,410 sqft on 0.71 Acre! Single Story. Central Air/Propane Heat, Cathedral Ceiling, Ceiling Fans, Security System, Solid Surface Countertops. Remodeled Large Kitchen w/New Appliances, Custom Kitchen Counters, Gourmet Style Range, Breakfast Area, Breakfast Bar, Pantry, New Wood Floors Thru out w/ wide Baseboards, Great Rm, Living Rm w/Fire Place. Master Bd/Bth w/Vanity & Separate Shower. Inside Laundry. Partially covered Deck with a Hot Tub, Outside Shed & plenty of Parking for RV, Boats & More! New Bryant Air Conditioner & combined Heating Unit. So Much More - Home Improvement List Available. One Look & You'll Fall in Love!



Get Away Cabin On the Lake!

20120 Lower Skyridge
15-103 & 15-102

\$525,000

MLS#20191719

Excellent Lakefront Property!! 2 Bed/2 Bath, 2 Levels, Spacious Bonus Room on Lower Level, Includes 2 Parcels equaling Approx 1319 Acre, Approx 1398sf, Covered Porch, Double Decks, Circular Driveway. Boat Dock on Parcel 103. Great Room w/Rock Surround Fireplace, Central Heat, Portable A/C Unit, Cathedral Ceilings, Ceiling Fan, Skylights, Open dining, Kitchen w/Breakfast Bar, Master Bed/Bath w/Tub/Shower, Inside Laundry, Washer Dryer Included. Beautiful Deep Water Cove. Lots are not merged, but can be done. Comes Furnished!



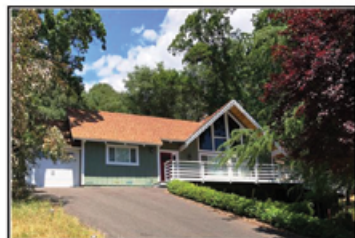
20098 Pine Mountain
Dr.,
13-279

\$575,000

MLS#20150638

~ At the Water's Edge ~

Beautiful Log Home on Big Creek, Hiking Trails Along Big Creek right across the Street. Logs imported from Canada. Outstanding in every way. Beautifully designed offering Heart-stirring warmth that will win you over. 3 Bedrooms, 3 Baths, 2440 sf, with a Downstairs Guest Quarters, 3 Levels with Bath on each level. Central Heat and Air. Tons of Amenities. All Furnishings Included. (Excludes some personal items). Great Price at \$575,000.



A Little Slice of Heaven!

12505 Pine Brook
4-460

\$353,000

MLS#20191641

4 Bed/3 Full Bath, Plus Bonus Room, used as 4th Bedroom, Approx 1872 Sq. Ft. on Approx 0.69 Acre! 1 Car Attached Garage, 2 Levels, Great Room w/Air Tight Fire Place with Rock Surround, Built in Book Case & TV Center, Cathedral Open Beam Ceiling, Gourmet Kitchen with Breakfast Bar, Granite Countertops, Open Dining Room, Ceiling Fans, Hardwood Flooring and Wall to Wall Carpet, Central Air/Propane Heat, Master Bedroom on Main Level, Master Bath with Garden Tub, Beautifully Tiled Walk-in Separate Shower and Closeted Toilet, Inside Laundry, Washer & Dryer Hookups. Approx 1100 Sq Ft of Decking. Close to Fisherman's Cove and Lake Lodge. Minutes from all other Amenities!



Ideal Location . . .

19360 Pleasantview
1-70

\$244,500

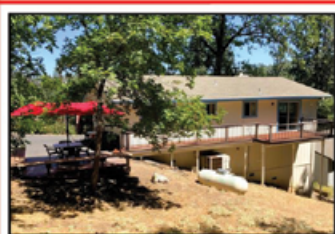
MLS#20191718

Only a stroll to the Country Club, Lake, Pickle Ball & Swimming Pool and More. Lovely Single Home in a Great Neighborhood. 3 Bedrooms, 2 Baths, 2 Car Garage, Large Living Room and a Family Room with Bay Window, both with Fire places, Make for Family Gatherings/Entertaining a Delight. Inside Laundry. New Deck, 2 Year Old Roof, New Carpet, and Freshly Painted Inside and Out. Check this out for only \$244,500.



Great Opportunity!

This rare commercial property is located in the historic town of Groveland on the Hwy 120 Corridor to Yosemite. This route is heavily traveled to the park (25 miles east) but also to this region that enjoys camping, water, summer & winter sports, fishing, hiking, & Tourism Destinations, such as "Gold Country attractions & Wine Country. The property is currently designed & used as a coin operated Car Wash. Nestled in between other thriving small businesses, ideally situated established business can be improved/enhanced to increase the level of income or adapted to other commercial uses. The zoning is Commercial General.
18762 Main St, Hwy 120 \$279,000 MLS#20191102



Lovely Single Level Home!

19283 James Cir
2-245

\$187,500

MLS# 20191638

3 Bed/2 Full Bath, Single Level, Approx 1144 Sq. Ft., on Approx 0.23 Acre, Central Propane Heat and Air Conditioning. Spacious Open Living Room with Free Standing Heat Stove, Ceiling Fan, Kitchen with Solid Surface Countertops, Breakfast Bar, Open Dining with Sliding Glass Door to Deck. Lots of Natural Lighting. Master Bedroom on Entry Level, Master Bath with Separate Shower. Lots of Room for guests. Inside Laundry with Washer & Dryer Included. A Separate Trex Deck for Barbecuing & Entertaining in back of House. Home is on Septic, no sewer payments! Large Sub Area for Storage or additional Rooms. Furniture included.



Very Cute, Very Cozy ~ Golf Course Cabin!

Located Below the #1 Green. Location and Price makes this a great Get-Away 2nd Home or Investment Property! 3 Bedrooms, 1 Bath, Approx 1152 SqFt. and Approx 0.37 Acre. Lower Level has Living Area, Kitchen, Bedroom & Bath. Upper Level has 2 Bedrooms. Deck is Approx 260 SqFt. Close to Pine Mountain Lake Golf Course and Country Club, Pool, Pickle Ball Courts and many other Amenities.
5-42 19220 Pleasantview Dr., \$199,000
MLS#20191365

LOTS FOR SALE!

- \$ 4,950 - 6-231 Upslope Lot - Nice Tree & Distant Views
- \$ 7,500 - 6-235 Gentle Uphill Slope - Take a Look!
- \$15,000 - 13-244 - Beautiful Lot with Pine Tree Setting
- \$15,000 - 5-213 Close to Country Club
- \$19,000 - 7-055 0.52 Acre near Golf & Country Club
- \$21,100 - 8-291 Beautiful/Buildable Close to Marina
- \$28,000 - 1-106 Near Most Amenities
- \$39,000 - 4-21 Beautiful Lot on 1 Acre - Reduced to Sell
- \$70,000 - 5 Beautiful Acres - Close to Yosemite National Park
- \$89,900 - 4-128 Lake Front- Gorgeous View

YOSEMITE AREA REAL ESTATE

PAUL S. BUNT REAL ESTATE – DRE #01221266



SPLASH INTO SUMMER

with this 4 bdrm, 2 bath home, over 2000 sf and only ½ mile from the Marina. Chalet style house on large lot. 19967 Pine Mountain Dr. – U13/L151
\$210,000



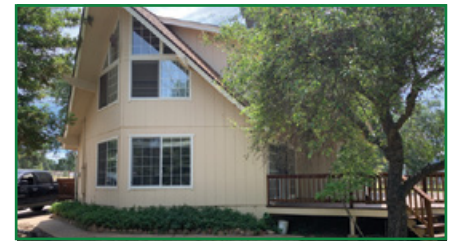
TAXIWAY LOT

.56 acre oak treed lot. Quiet loop taxiway, ideal for metal hangar & home. Must see. U12/L45
\$124,999



COMMERCIAL LOT

Only R3-MX lot for sale in PML. Contractors dream. Build multiple units or one incredible home. Large lot with perfect location, next to golf course and across from pool and Country Club. View galore! Mueller Dr. – U5/L189 **\$336,000**



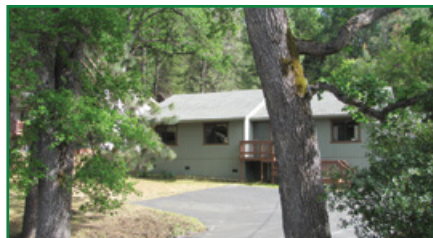
EQUESTRIAN PROPERTY

Home, Barn, Fenced Corrals
1.27 Acres 3 bdrm., 2 ba. 2128 Sq. Ft. 13319 Clements Rd., – Unit 12 Lot 125
\$399,900



RARE 4.5 AC LOT IN PML!

One of the largest lots in PML! Lot B2 also for sale, buy both! Awesome multitiered views. Very private yet located near amenities at end of cul-de-sac & borders lg ranch. 19701 Jones Hill Ct **\$125,000**



NO GATE HASSLE

Single level, 3 bdrm, 2 ba., 1368 Sq. ft., Majestic Oaks either side of entrance, rear deck for privacy. 2 car garage. 19525 Ferretti Rd. – U4/L204
\$187,000



2005 NEW HOME

Treed mountain view and location. 4 bedroom, 3 bath, 2,939sf. Warmth, charm, bright & airy With style, stamped driveway 12268 Mills St. – U8/L77
\$449,900



LUXURIOUS & PRIVATE

5 bdrm., 3.5 ba. 3511 sq. ft. 1.34 acres Two 2 car garages and work shop, hobby room 20523 Echo Ct. – Unit 3 Lot 51
\$599,900



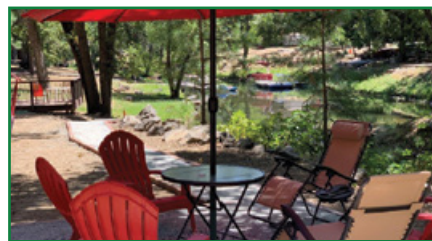
GOLF COURSE CHALET

3 bdrm., 2.5 ba., 1572 sq. ft. On 4th Fairway, scenic view 19171 Ferretti Rd. – Unit 5 Lot 243
\$344,000



1.74 BEAUTIFUL ACRES

Unit 11 Lot 56 Elderberry Ct. No gate hassle, easy build, lots of trees Walk to Airport, close to Stables
\$35,000



LAKE FRONT

Double lot. Lots of play room, dock site. 3 bedroom, + Den, 3 bath, 3,022 sf. Main lvl living and great room style. Close to main amenities & town. 19555 Pleasant View Dr – U1/L303A **\$499,900**



YOSEMITE VISTA ESTATES

Age 55 Community 2 bdrm., 2 ba., 1248 sq. ft. Two Car Garage 22490 Prospect Heights #31
\$99,900

LAND AND LOTS

7/109 **\$2,900** De Ferrari Ct. **PENDING**
4/571 **\$5,900** Rock Canyon way
6/45 **\$8,900** Cottonwood Dr.

2/485A **\$9,000** Pleasantview
3/303 **\$9,900** Longview Street **PENDING**
8/193 **\$9,900** Hillhurst Circle **PENDING**

8/278 **\$9,900** Butler Way
15/132 **\$15,000** Lower Skyridge **SOLD**
4/378 **\$38,900** Big Foot Circle



NEW CONSTRUCTION

Choose your colors, flooring and finishing touches in this 5 plus bdrm, 3 bath home with over 4400 sf and that boasts views of the golf course. 20145 Pleasant View Dr – U1/L221
\$649,900



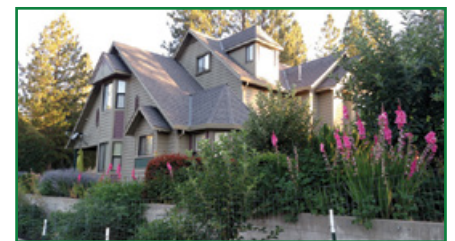
LARRY JOBE

REALTOR – TAXIWAY EXPERT
209.962.5501 • 209.768.5508 Cell
larryjobe1@gmail.com
DRE #01444727



PENNY CHRISTENSEN

BROKER ASSOCIATE – CRS
925.200.7149 Cell
penny@askpenny.com
DRE #00785760



5.39 PRIVATE ACRES

This home is truly unique & is a "one of a kind", built to last. Perfect for Airbnb or B&B 4bd/4ba/2,705sf. Antique tub. Mstr bdrm is lg w/sit-in bay window. Much, much more to see. Manicured, usable acreage. No HOA dues 20955 Whites Gulch Rd. **\$599,000**

PENNY & LARRY – Our Passion Is Here, Where's Yours?
Local Agents, Modern Technology, **Best Service**

www.YosemiteAreaRealtors.com



Emmet Brennan
Broker/Owner
DRE 00659397



Dave Lint
Realtor
209.768.5010



Linda Willhite
Broker/Assoc
209.985.2363



Ron Connick
Realtor
209.206.0007



Kathleen Love
Realtor
209.743.5432



Carmen
Office Asst.
e-Marketing

www.sugarpinerealty.com
18727 Main Street
PO Box 792
Groveland CA 95321

209.962.7765

Visualize the Nature in Bird's Eye View
\$399,900
was \$449,900
19889 Pine Mountain Drive
* 3 Bd/ 3Ba
* .75 Acre
* 2465 SqFt
* 3 Xtrodinair Fireplaces
* A Frame Cabin
* Class AA Siding
* Traventine & Granite Countertop
* 2000 SqFt Decking

MLS# 20190380
Call Linda: 209.985.2363

LOTS & LOTS of UPDATES!
\$379K
was \$389,000
12909 Mueller Drive
* 4 Bd/2 Ba
* Large Bonus Rm w / Private Entry
* Oversized Double Car Garage
* Circular Driveway for Guests
* Relaxing Patio
* Beautifully Strategized Location for Full Solar Access

MLS# 20191276
Call: Ron 209.206.0007

Secluded a Perfect for Getaway
\$339K
20185 McKinley Way
* 4Bd/4Ba
* Open Floor Plan
* Two Car Garage
* Open Great Room on Entry Level
* Cathedral Ceiling
* Breakfast Bar
* Big Storage Area
* Enjoy the Back Panoramic View of Greeneries and Natural Light from the Kitchen or the Back Deck

Call Ron Connick 209.206.0007

MAJESTIC LAKE VIEW
20301 Pine Mountain Dr
HUGE REDUCTION! Now \$429K
was \$459K
Call Ron 209.206.0007
* 3bd/2Ba
* Living & Family Rm
* Office Bonus Rm
* 2 Car Garage
* Observation Rm
* Remodelled Home
* Covered Veranda
* Short Walk to the Lake

YOUR TRANQUIL HIDEAWAY
\$279K
was \$289,000
20580 Ferretti Road
* 2 Bd/ 2 Ba
* 2 Carport
* Large Loft
* .77 Acre
* A Frame Cabin
* Central Air & Heat
* Ideal for Rental
* Well Maintained

MLS# 20190188 Call: Linda

NESTLED IN A PRIVATE CUL DE SAC
11971 Myer Court
* 2Bd/2 Ba & Loft
* Great Room
* Bonus Room
* 2088 Sq Ft
* A Frame Cabin
* Seasonal Creek
* 2 Free Standing Stoves
* Workshop Bldg
* Great Views of the Mountains

MLS# 20190126 Call: Linda

Cabin for All Seasons
20571 Rock Canyon
* 3 Bd / 1Ba
* Two Levels
* Central Heat & Air
* Upgraded Shutters & Windows
* A Frame Cabin
* Backs up to the Green Belt
* Plus Extra Sleeping on side of Spacious Knotty Pine Loft

\$179,900 was \$199K
MLS# 20190277 Call: Linda

BANK OWNED!
Conveniently Located
\$179,900
was \$214,900
20701 Nonpareil Way
* A MUST SEE!
* 4Bd/2Ba
* 2 Levels
* Well Maintained
* Deck/Balcony
* 2 Car Concrete Level Parking
* Short Walk to the Lake
* Living Rm on Entry Level

Call: Ron 209.206.0007

5.45 Private Acres
10887 Merrell Road

\$249,900
was \$299,000
Call: LINDA
* 3Bd/2Ba * Well Pump * Entry Level
* Well Pump * Covered Porch * Large Metal Carport * Garden Tub * Covered Porch with Panoramic Views.

40 ACRES for \$189K!
Long Gulch Groveland

Call: Ron 209.206.0007
Build Your Dream in this 40 Acres perfect squared land. A Development Dream Zoned AE-37 to build Two Single Family Residences.

Boo!

PML Taxiway Lot
Unit 12 Lot 79 Jimmersall

Call: Linda 209.985.2362
Last taxiway lot. Seller did not have the lot extended taxiway stops before this lot. Buyer will have to pay to have it extended.
\$75K

Land for Sale
\$5K was \$10,500
Unit 13 Lot 292 Ridgecrest Mountain Views
\$10K
Unit 10 Lot 7 McKinley Beautiful Hill-Side
\$15K
Unit 6 Lot 135 Cottonwood Level Lot Septic in
\$59,900
Unit 3 Lot 154 Boitano Mountain and Lake View
\$74,900
Unit 13 Lot 276 Pine Mountain Drive Lake Front

Bringing the American Dream Home
20209 Pine Mountain Drive

RON CONNICK Realtor
209.206.0007
EG SOLD

Bringing the American Dream Home
20660 Ferretti Road

Linda Willhite Broker/Assoc
209.985.2363
SOLD

Cozy Ranch Style
20575 Whites Gulch Rd
\$348K
* 3Bd/2Ba
* 5 Acres
* 2,100 sq ft
* Family Room
* Large Bonus Room
* Oversized 2 Car Garage
* Large Circular Driveway
* Filtration System to Well Water
Call: LINDA

The DREAM can be YOURS!
HUGE REDUCTION!
\$19,500
was \$49,000
Lot 1-61 A Tannahill
* 3/4 of an Acres
* Gentle Rolling Land
* Close to: Golf Course, Country Club, Main Marina & Dunn Court Beach
MLS# 20181940 Call:RON 209.206.0007

Groveland's only Multi-Line Insurance Agency
Kiefer Insurance Agency—Since 2002
Working with top rated insurers in the primary and secondary markets, we have coverage for ALL your insurance needs:
Homes • Autos • RVs • Boat • Trailer • Mobile Motorcycles • Business • Rental • Renovation
18800 Main St Groveland, Ca 95321 Lic 0D77765 P 209-962-6593 F 209-962-6656
LET US HELP YOU, INSURE YOUR FUTURE



Carron Tax associates
Carole Smith Enrolled Agent
20093 Ridgecrest Way Groveland, CA 95321
Tel: 209/962-6119 E-mail: carolesmith@carrontax.com
**INCOME TAX PREPARATION
AUDIT REPRESENTATION**

Friends of the Lake

Virginia Richmond

FRIENDS OF THE LAKE CELEBRATES A GREAT SUMMER!

The PML Friends of the Lake club ended our 2019 season with “Bingo on the Beach” in September. We had another great potluck and then played three rousing games of bingo for PML gift certificate prizes. Thanks to Larry and Dart Woodruff for organizing the evening and congrats to Joe Hopkins, Susie Henderson and Jim Sample for winning the games.

This was our last event for the summer, wrapping up a season of lake-oriented fun events. In May, we learned about Fish and Wildlife enforcement. June was our poker run by boat with a delicious tri-tip dinner and lots of great prizes.

July is a busy month. We organized the July 6th seaplane, the boat parade, lake swim, and kayak race, and we held a “music at the marina” evening with Rod Harris and Friends from Columbia. August was our team puzzle challenge by boat around the



lake and then Bingo in September.

Special thanks to our board members who take turns organizing all these fun events, to our 150 members who participate, and to the marina staff who are always such a great help. See you all next year!

Friends of the Lake is a social club focused on the health, safety and shared enjoyment of our lake. Membership is just \$20/family/year. To join, send your name, check and email address to Friends of the Lake, PO Box 591, Groveland.

Rotary Shrimp Fest

Rudy Manzo

The Rotary Club of Groveland would like thank all who attended this years event. It was a huge success and your support will allow enable the club to continue funding projects here in Groveland.

We were fortunate to have sprayed the area this year 5 days in advance of the event and the Meat Bees were kept away for the day.

We had one hic-up with respect to the Door Prize raffle. The Rotary Club has always taken the stand that “ you must be present to win” Unfortunately, the first ticket drawn was not present and we drew again. Bingo... person present and was paid. We later found out what the circumstances were with the first persons ticket being drawn. The club

voted pay the first tickets drawn as well. We did not want any Ill-Will in the community over this. The person was contacted, Sally Salinas, and she was thrilled and was presented her check. However, Sally donated \$250 of her winnings back to the Club. Rotary is now taking those fund and contributing the money to the Support Our Troops program to help pay for postage to ship the boxes being sent to our troops overseas. Thank you Sally Salinas for your kind gesture.

Groveland Rotary Club works hard to support our community and the Shrimp Fest for next year will have even a different twist, so stay tuned. Again, we thank the community for your support.

Garden Clippings

Sharon Hunt

What a fun wonderful summer ... warm, hot days ... fawns staying close to their mothers ... grandkids building sandcastles at the Lake and just being lazy.

So now Fall has arrived and the landscape is beginning to turn orange, yellow and red.

The next two Garden Club meetings are not to be missed! Both meetings are on the second Monday of the month at 1:00pm.

October Meeting: Monday, October 14, 2019 at Marilyn Bodle’s home. Their home and landscaping are a work of art. The address is on Down to Earth Drive ... behind the Lutheran Church on the hill. Look for the white bears.

November Meeting: Monday, November 11, 2019

Martha Cover will be at our meeting with her heathy ... fabulous ... beautiful houseplants. Bring your checkbook. We will be at the Lake Lodge.

An update and huge thank you to all the members of the Garden Club, vendors, each person who showed their garden and businesses that donated to our June Garden Tour and Luncheon. Again, this event is a highlight of Pine Mountain Lake events. The garden Jail will continue to be a happy, relaxing place of beauty on the Groveland landscape. Your support always makes a difference.

HAPPY HALLOWEEN!

HOURS
MON-TUE: 11AM - 10PM
WED 11AM - 9PM
THU-SUN: 11:00 - 10PM

“WE TAKE LOCAL
COMPETITOR’S COUPONS!”



PIZZA PIES



**FREE
Wi-Fi**

**TRY OUR ALL-YOU-CAN-EAT LUNCH SPECIAL
OR OUR OVEN BAKED SUBS**

Call ahead: 962-4897 (962-GUYS)
18955 Ferretti Road. Left turn off of Main St (Hwy 120) 1/2 Block

\$1.00

**Off Any Size Two Guys
Pizza or Calzone**

One coupon per order, per visit. May not be combined
with any other offer and/or coupon. Not valid on delivery.


PML1019 Expires 11/15/19

\$2.00

**Off Any Large or Extra
Large Two Guys Pizza**


One coupon per order, per visit. May not be combined
with any other offer and/or coupon. Not valid on delivery.

PML1019 Expires 11/15/19



**CHECK OUT YOUR
GROVELAND LIBRARY**

TUESDAY-THURSDAY — 1:00-6:00PM
FRIDAY-SATURDAY — 10:00AM-2:00PM



**BOOKNOOK
USED BOOK SALE
EVERY SATURDAY
9:00AM - 2:00PM**

Football Season is Officially HERE!!

Dar Brown

Monday Night Football, hosted by the ROOFBB's, is in full swing and as always is well-attended. This year the Grill is providing the meals but the servers and bakers are all volunteers from the ROOFBB's. There is no more fun way to watch and enjoy Monday Night Football than with friends from Groveland while chowing down on delicious dinners and wonderful desserts.

I hope many of you came to our OPERATION GROVELAND CARE Packages for the Troops event. Everyone on the committee was thrilled with the response and the generosity of our incredible community. Without the sponsorship of the ROOFBB organization, the event would not have happened, so thank you on behalf of all our troops who

will receive our care packages. Packing Day is Oct. 14 at the Community Hall and we expect it to be quite the show! If you were unable to come to the event but would still like to participate, Mal and I pack and ship all year – as soon as a box is full and we have postage money, off it goes, so it isn't too late. Please email me (dar_brown99@hotmail.com) or call (5930) for more information or questions.

On a final note, you may not all be aware that the ROOFBB's are a philanthropic organization that responds to crisis situations in our community. Besides being a truly wonderful group of caring women, we exist to do good for others. If you would like to join, mail your dues of \$40 to P O Box 1163 and we will welcome you with open arms.



PML Water Ski Day 2019

Bruce M. Thompson



The PML Water Ski Club held the first annual PML Water Ski Day event on July 5 and 8. The purpose was to introduce youth up to 17 years of age to the sport of water skiing. The event had the support of the Board of Directors as well as the Lake and Marina Committee and was open to youth of property owner families. Youth received instruction on water skiing from a ski boat owner/driver as well as the boat flagger. The trainers used several different types of water skis, i.e., doubles connected with a bar, doubles not connected, and a ski training board during the 9 A.M.-Noon instructional period.

We had an amazing level of participation. 49 kids participated, with 86 % of those "getting up out of the water." That is, 86 %

skied standing up, or sitting on top of their skis on top of the water. Several made one or more complete trips around the entire lake. Amazing!

The kids as well as parents were enthusiastic!

Those contributing their time and/or boats to the event included: Ian Morcott, Trudy Reid, Luke Lagrassa, Pam Rodgers, Tina Burke, Holly Lory, Don Felts, Christian Felts, Dean Floyd, Melody Floyd, Brent Murphy, Cameron Thompson, Sheryl Sage, Patrick Fitch. The event organizers were Bruce Thompson and Karen Seals.

We hope to hold Water Ski Day 2020 next summer, but likely at least a week away from the July 4 date. Thank you to the Board of Directors for supporting this event.

PML Lady Niners

Tammy Talovich

COOLER WEATHER SHOULD BE HEADING OUR WAY!

August 1st: 27 players for One Best Net Ball/ One Best Putt

1st place team – Marilyn Alexander, Susan Dwyer, Syd Robensiefer, Nancy Whitefield with a score of 39
2nd place team– Linda Craig, Sharon Kenyan, Judy Michaelis, Trudy Alt with a score of 44

3rd place team – Kay Bettencourt, Deanie Martini, Jane Reynolds, Sarah Zimmerman and Kay Branon, Sandy DeRodeff, Anne Toner, Linda Vahey tied with a score of 45
Pars: Trudy Alt #11 and Flo Jansen #14

Birdies: Nancy Brewster #17 (first one ever!! Way to go)

Chip-in: Nancy Whitefield #10 and #17 (WOW, this girl was on fire, nice job)

Low net: Jane Reynolds with 34

Low gross: Kay Branon with 51

August 8th: 28 players for Putts Day

1st place – Jane Reynolds with 15 putts
2nd place – 2 way tie with 16 putts, Marilyn Alexander and Sarah Zimmerman

3rd place – 3 way tie with 17 putts, Linda Craig, Linelle Marshal, Anne Toner

4th place – 2 way tie with 18 putts, Marilyn Bolar, Stacie Brown



5th place – 4 way tie with 19 putts, Kay Bettencourt, Sandy DeRodeff, Patty Nelson, Pat VanGerpen

Pars: Kat Bettencourt #10, Patty Nelson #12, Sandy DeRodeff #14, Linelle Marshall, Linda Sarratt, Jane Reynolds #17

Birdies: Marilyn Bolar #17
Low net: Linelle Marshall with 30

Low gross: Linelle Marshall with 49

August 15th: 14 players for BINGO

1st place tie: All had black out cards, Linda Craig, Flo Jansen, Pat VanGerpen, Tammy Talovich

2nd place: Stacie Brown with 5 BINGOs
Pars: Kathy Mondlock #3, Deanie Martini, Pat VanGerpen #7

Chip-in: Pat VanGerpen #9

Low net: Flo Jansen with 33

Low gross: Linda Sarratt with 51

August 22nd: Ladybugs and Butterflies tournament (no regular play)

August 29th: Ladybugs and Butterflies tournament (no regular play)

Young Eagles Fly Free

Virginia Richmond



Girls can fly! Pilot Bonnie Ritchey showed Young Eagle girls the joy of flying.



Joel Avey uses a flight simulator to show how flying works.



PML pilot Mike Lella helps two Young Eagles learn about airplanes.



Pilot Gabe Coelho readies for takeoff with a Young Eagle.

FREE AIRPLANE RIDES FOR KIDS AT PML AIRPORT, OCT. 12

Give your child a thrill! On October 12th, from 9:00am-11:30am, EAA Chapter 1337 is offering free airplane rides for children ages 8-17 at Pine Mountain Lake Airport. Kids get the thrill of an airplane ride and the chance to see the world in a new and exciting way. Participating in a Young Eagles flight can show youngsters different ways to see the world and new career possibilities.

The EAA Young Eagles program began in 1992 to give young people an opportunity to

experience flying. These flights are offered free of charge and are made possible through the generosity of PML pilot volunteers. Over two million youngsters have taken their first airplane ride with Young Eagles since the program began.

To participate, just come to the PML airport (Elderberry Way entrance) at 9:00am on October 12th and sign-up. A parent or guardian should accompany their kids and parental permission is required.

For more information, contact Ed Gregory by email at edward.gregory@sbcglobal.net or by phone at 962-5061.

PML Racquet/Tennis Club

Pauline Turski

EVENTS

The PML Racquet Club held one of their last tournaments of the season. The Davis Cup was played on 9/3 and four teams competed for the title, all dressed in their representative country colors: France, Italy, Australia, and USA. There was much competitive fun and Team Viva La France took 1st place; Larry Santa Maria, Carol Nagy, Kevin Smith, and Tom Hernandez were the Davis Cup shining stars! Larry Santa Maria took the fine trophy home and it will be brought back next year for the 2020 tournament! Immediately following the morning tournament, the players, spectators, and guests had a wonderful potluck lunch with food from the competing countries.

Our last tournament of the season is the Member/Guest tournament and is scheduled for the morning of October 8. As the name implies, bring a guest to enjoy the fun. A potluck lunch will follow immediately after. Check our Facebook or Nextdoor page for details! If you'd like to join us send an email to pmlracquetclub@gmail.com.

The summer is winding down, but we hope you can join us for these year round tennis socials!

- Weekday organized tennis is on Tuesday, Thursday, and Friday.

- Drop-in tennis on Saturday's starting at 8 AM. We have loaner racquets if you need one!

Send an email to pmlracquetclub@gmail.com to express interest in our group or learn more about any of the events. Events are also updated on the Facebook PML Tennis group or the Nextdoor Tennis Interest group.

ABOUT THE PML RACQUET/ TENNIS CLUB

Tennis is one of the year round activities at PML so come on out and join us! Whether you are an experienced player or someone who has never played before, Racquet Club members will make it easy and fun to get started playing tennis at Pine Mountain Lake. From tournament players to beginners, everyone is welcome - full time, part time, guest, and renters. We have a program for you and want



to see you on the courts. We may have a loaner racquet for you if you need one!

For questions or to learn more about the PML Tennis Club send an email to pmlracquetclub@gmail.com. Join us on the Facebook page, PML Tennis, at <https://www.facebook.com/groups/276052906497996/>.

GENERAL RULES

A valid tennis pass is required to play. Annual tennis passes are sold at the Association Office. Daily and monthly passes are sold at the Main Gate Department of Safety. Non-marking tennis shoes only. Appropriate tennis attire - no swimsuits or jeans. No food or drink other than water on the courts and no glass containers. Learn more by visiting the Tennis page at PMLA website, <http://www.pinemountainlake.com/tennis-and-pickleball-courts/>



dōTERRA

Certified Pure Therapeutic
Grade Essential Oils

increase energy • assist weight loss
boost immune system • relieve pain
repel insects • relieve stress, tension & anxiety

Watch for new class
location announcement!

Gift making class
coming November 3

Claudia Day-Fossum
209-770-2881

cday77@outlook.com

www.mydoTERRA.com/ClaudiaHeals

Community Organizations

Contact the individuals/organizations below if you are interested in joining!
(All numbers are 209 area code unless noted otherwise)

Camp Tuolumne Trails – Jerry Baker – 962-7916

Friends of the Groveland Library – Virginia Richmond – 962-6336

Village on the Hill – 209.962.6906 or info@villageonthehill.org

If you would like your community organization listed please send your group's name, contact person, and phone number to debra@pinemountainlake.com

Pine Needlers Quilt Guild

Beverly Oakley

On the right is a picture of our August class using crayon on fabric with embroidery enhancement. On the far right is a picture of what we did. It is a great and easy way to get color on the fabric. You



could also use it to enhance a quilt block. The color is permanent when ironed.

On Tuesday, September 17th, Susan Flores from Quail's Nest in Sonora explained what we need to do before class and show us an example of the rug we are making. On Wednesday September 25th she taught us how to make a Jelly Roll rug.

The November's program is not yet finalized, but I'm sure it will be interesting. Michele Roberts is doing a great job coming up with new ways of doing things.

Don't forget, we meet below the Groveland

Library at 10:00 a.m. on the third Tuesday of the month. The meeting is 10:00 a.m. to 12:00. Bring a lunch if you would like to stay and sew on the project of your choosing or just stay and chat.

Guests are always welcome. Don't worry that you are a beginner. We have all been there. We have lots of people that would love to help you. If you have a quilt or the beginnings of a quilt bring it along for 'show and tell' or for help. Don't be shy, we are all friendly and love to have new people in the club.

October 5 is PML Community Airport Day!

Virginia Richmond



See a Gyrocopter



Formation flight over PML

The Pine Mountain Lake Aviation Association invites everyone to our annual Community Airport Day on October 5th from 12:00noon - 3:00pm at the Pine Mountain Lake County Airport. This is a great fun and free way to visit your airport and see interesting aircraft and fun flying exhibitions.

Special events include helicopters, a radio-controlled model airplane demonstration, cool fly-overs, flying demonstrations, and stunning formation flying. Have you ever seen a "gyrocopter" or an airplane that can take off or land in a hundred feet?

There will be tests of flying skills among PML pilots including "chicken bombing" and precision landing contests. In between special events, visitors can view current and vintage planes up close.

The inter-modal races between airplanes and cars are always audience favorites.

This is a great opportunity to check out your county airport, see current and vintage aircraft on up close and meet local pilots. Refreshments will be available for your convenience. Admission is free. Please use the Elderberry Way entrance to the airport. Bring folding chairs and sun screen, and settle in for a fun and exciting afternoon.

We're fortunate to have a local airport which provides not only a home for PML pilots, including those who commute by air to their jobs, but also provides a safe and secure location for medical evacuation services and a base for fire fighters and firefighting aircraft during emergencies.

ROOFBB's Small Town, Big Hearts

Stephanie Annatone



Operation Care- Groveland, sponsored by the ROOFBB's on September 1st, was a complete success! This event was put together to provide support for, and to honor, the brave men and women serving our country. Donations were raised at this event, held at the Groveland Community Hall, to remember these heroes, and to provide necessary supplies for those deployed overseas.

Business, locals and visitors reached into their account, wallets and purses (and their hearts) in a big way, making this the

top fundraising event for the ROOFBB organization, so far, in 2019.

The Community Hall shined with memorabilia of all kinds and those in attendance were able to hear stories from Ed Peters, a Vietnam Veteran, and Bliss Sawyer who shared information about family members who fought for our country. Children from Tenaya Elementary School wrote and contributed letters that would later be included in the boxes shipped out to the troops, lovingly prepared by Co-founders Dar and Mal Brown. The ROOFBB's provided

food for the event, with leftovers contributed to the fire station and back to the school.

Thank you to so many volunteers that gave unselfishly of their time. Thank you to Rudy Manzo, for taking photos of the festive celebration. Thank you to David Volponi who adorned his patented stilts to portray Uncle Sam. Thank you ROOFBB sisters, Lorna and Johanna for encouraging visitors in from the streets of Groveland. Special thanks to the Hilltop singers for entertaining the crowd and to Red Raine who brought everyone to tears with his heartfelt rendition of TAPS. And finally, thank you to the town and people of Groveland for your contributions to our troops. You all truly turned Groveland RED, WHITE and BLUE!

BUSINESSES THAT CONTRIBUTED:

Bella Donna Salon, Black Oak Casino, Leahy & Sons Construction, Mar-Val Market, Micrae Travel

Special Acknowledgement - Johanna Richter for starting a Go Fund Me account and presented funds collected to Committee Chair Dar Brown

A BIG Thank You to Committee Chairs Dar Brown and Mary Reynolds

Committee Members - Simone Aker, Rae Ann Bozzo, Shirley Brasesco, Mal Brown, Sylvie Engstrom, Marise Gascard, Shirley Haliwell, Bev Hall, Cathy Leetham, Terre Melinn, Pat Pesha, Sue Petersen, Anne Peterson, Johanna Richter, Bliss Sawyer, Pauline Turski, Cheryl Whitney and Dart Woodruff.

Join us for Groveland's Annual Tree Lighting Ceremony!

Southside Community Connections

Light The Season! Once again, Southside Community Connections (SCC) will light up the night sky to welcome people traveling or returning to our community. The sparkle will adorn our live tree on the corner of Hwy 120 and Merrell Road. Join us, on Sunday, December 8, at The Little House. Please arrive by 4:30pm, Tree Lighting begins promptly at 5pm, followed by singing of holiday carols and a selection of soups, breads and refreshments. This event allows you opportunity to give back to the community we love while honoring or remembering a friend or family member. Your donation of \$10 for a Remembrance/Honor tag will help

SCC continue providing services to our community in Groveland and Big Oak Flat while honoring and remembering very special people in your life. The people you choose to honor and the families of those you choose to memorialize will receive a lovely card letting them know of your donation. Remembrance/Honor Tags are \$10 each. Order forms are available at The Little House (corner of Hwy 120 and Merrell Rd) or you can visit our website at www.SouthsideCommunityConnections.org and download the form. Please mail your completed form to: SCC, P.O. Box 63, Groveland, CA 95321. We hope to see you December 8!

Kiwanis

Sandy Smith

Thursday October 3rd is Kiwanis BINGO Night. You just never know what can happen there, even surprise Birthday parties. Julie's friends did just that last month, and involved all of us too. It was great fun and yes she was surprised. A beautiful fresh strawberry cake was shared by all. The doors open at 5:30 so you can get the perfect seat. Then Early Bird Bingo starts at 6:30. Regular BINGO starts at 7:00. The color for the evening is orange, so by wearing something orange you are entitled to a special sweet treat. See you then.....



Its Fall, and that means it's time for Kiwanis annual Coat Giveaway. Saturday October 5th is the day, 9 to 3 is the time, the Community Hall is the place. If you have a need or you know someone who does come on down.

October 31st come to downtown Groveland and help us celebrate Halloween. Kiwanis will have a Candy For The Mind booth, all kinds of books for your kids.

Be involved in your community, drop in to any Kiwanis meeting on any Tuesday at 8 a.m. at the Pizza Factory and learn about things you can do!

Bartenders Competition at Charlotte's Tavern

1ST ANNUAL BOTTLE ROCKIN' BARTENDER COMPETITION

Charlotte's Tavern, inside Hotel Charlotte is bringing another first to our lovely historic gold rush town of Groveland. On **October 8th at 7pm** Charlotte's Tavern is hosting a bartender competition in which premier bartenders from near and far will display their finest skills of mixology in a unique contest of skill and libation. The competition will feature 4 rounds of head to head cocktail creation sponsored by 4 amazing brands, including Fernet, Redwood Empire, Bosscal and Santa Teresa.

The event is free for the public to attend. There will be tastings and some giveaways. Our full bar will be serving cocktails, beer and wine. We will also have a buffet available with select small bites for an additional cost.

Competitors will be competing in 4 rounds, each round will feature one of our awesome sponsors

spirits. That's 4 chances to win cash & prizes. The Tavern will provide basics, each competition bartender will bring their own creativity, for a truly extraordinary cocktail experience.

Tavern Lead Mixologist, Jason Rhodin is the principal organizer for the 1st Annual Bottle Rockin' Bartenders Competition. "We are proud to host this unique opportunity for premier bartenders to get away from the daily hustle and bustle of their local bar or big city life and bring them to the Gateway of Yosemite to share their beautifully crafted cocktail creations with our community," said Brennen Jensen, owner. "Jason's delightful vision for our special community is infectious and we can't wait to see what delectable drinks get created on bar competition floor."

Charlotte's Tavern welcomes the public to join Tuesday, October 8, 2019 @7pm.

For more information call (209) 962-6455 or email tavern@hotelcharlotte.com.

Master Gardeners Program

The UCCE Tuolumne County Master Gardeners will host a presentation by Bill the Bulb Baron (William R.P. Welch) at their Open Garden Day on Saturday, October 5th, beginning at 10:30am at the Demonstration Garden, 251 S. Barretta Street, Sonora. Bill is a leading commercial grower, hybridizer, and authority on drought-resistant, animal-proof (deer/gopher/squirrel), easy to grow bulbs, particularly warm-climate fragrant Narcissus ("tazettas") and also summer and fall blooming fragrant outdoor Amaryllis, as well as Nerines, Watsonia, Oxblood lilies, Crinums and fragrant everblooming Amarcinums (crosses he has made between Amaryllis and Crinum, ideal for warming climate conditions.) More information

about Bill's bulbs is available at <http://www.billthebulbbaron.com/>.

Bill was the featured speaker at our General Meeting this past November. The presentation was extremely well attended and he sold out of many types of bulbs, so we've invited him back for an encore performance!

The public is invited to attend the presentation with a variety of Bill's bulbs available for purchase after the presentation, cash or checks (made out to Bill Welch) preferred as payment, credit cards accepted if you wait until the end of the sale.

For additional details contact the UC Cooperative Extension office at (209) 533-5695 or visit the UC Cooperative Extension website: <http://cecentralsierra.ucanr.edu/>

Coming Soon/Save the Date

NOVEMBER

28th – Annual Community Thanksgiving Dinner at the Community Hall

29th – 30th – Groveland Christmas Craft Faire at the Community Hall

DECEMBER

13th, 14th & 15th – Pine Cone Singers Winter Concert at Groveland EV Free Church

Support Meetings in Groveland

AL-ANON

THE LITTLE HOUSE – SATURDAY 9:30-10:30 AM
MOUNTAIN LUTHERAN CHURCH – WEDNESDAY 1:00-2:00 PM

GRIEF SUPPORT

THE LITTLE HOUSE

1ST & 3RD WEDNESDAY 10:30-NOON

CALL JUDY AT 962-5157 OR BONNIE AT 962-5507 TO REGISTER FOR GRIEF SUPPORT.

Vandalism at the Jail Garden!

Sharon Hunt

Of all the places in Groveland that doesn't deserve to be vandalized is the Jail Garden. The Pine Mountain Garden Club for over 30 years has poured thousands of volunteer hours into making this historic spot a place of beauty and relaxation. The women and men who work the garden do it because they care and they get great joy from it. How sad that someone or some ones have destroyed the Garden Clubs' labor of love.

Over the weekend of September 8, 2019, plants were dug up and taken, the hose is gone, the fence was broken when they tried to remove the hose reel, part of the drip system was tampered with,

the umbrella was removed and the pan of healthy succulents on the table is missing. The hay bale was growing chili plants and they were ripped out; and to make matters even worse the bird houses are gone. It is hard to believe that someone feels it is okay to destroy a Groveland icon.

You can contact Linda and Tony Flores at 962-0824 if you know the vandals or have suggestions of what we can do to protect the Jail Garden. This is not the first time the Jail Garden has been vandalized, it is the fourth!

SAD...SAD...SAD...SAD

Dog Park Bark

Dori Jones

Dogs and their owners honored two of their own this month with a commemorative sign posted at the Dog Park. Bob Steinkamp, and his trusty border collie, Scutaro, (named for SF Giants infielder Marco Scutaro) provide a valuable service to dog-lovers here in Groveland.

With 55 dogs registered, keeping the trash receptacles emptied and the waste bags replenished is a big job. Bob has become the dog park's "Movement Manager." At least once a week, he voluntarily hoists bags carrying 30-40 pounds of our beloved pooches' poops out of the park

and over to GCSD's receptacles. "It's a crappy job, but somebody has to do it," says Bob. "If it weren't for the dogs, I'd be out of a job."

Eight-year-old Scutaro also takes his



job as a border collie seriously. Over the past couple of years, Scutaro's twice-daily patrol of the park's perimeter has created a lovely quarter-mile trail around the park that the human visitors also enjoy. That path has now been officially designed "SCUTA Road" in honor of Bob and Scutaro's dedication to their self-appointed tasks.

The Groveland Dog Park is a wonderful, large facility with separate areas for Large and Small dogs. It's easy to become a registered member. Just stop by the GCSD administration office off Ferretti Road to register. Bring current Rabies and Bordetella

vaccination certificates, pay a \$25 annual fee for up to two dogs (\$10 for each additional dog), and get the gate code. It's a great place for you and your fur babies to socialize.

"Every New Beginning"

Pastor Ron Cratty

GROVELAND EVANGELICAL FREE CHURCH

Life is full of transition. God's plan for all of our lives calls for change as almost a constant. As Semisonic's Dan Wilson wrote in the song "Closing Time", "every new beginning comes from some other beginnings end."

Look at the life of any major character in the Bible. It is probable that his or her life was characterized by what business professor and author Robert E. Quinn calls "Deep Change." A lot of movement, a lot of stress, danger and turmoil. It's often what God used to mold them into a usable condition and place them where he wanted them.

Are you experiencing transition? Are you dealing with an ending? Facing a new beginning? Does your salvation seem to be characterized by insignificance? I love how the New Living Translation renders

Zechariah 4:10. "Don't despise these small beginnings, for the Lord rejoices to see the work begin." When the Apostle Andrew asked Jesus "What are these among so many?" (John 6:8), his real question was "How can the contents of this one kid's lunch box feed these 5,000?" As you face your new beginnings, you're going to do so drawing upon His resources.

At Groveland Evangelical Free Church we are in somewhat of a new beginning. On September 1, we once again became a one worship service church. As we blend two previous services we're experiencing a somewhat new feel at church. We're being joined (or at least visited) by new people. And there's room for you. As you face the transitions of life, we invite you to join with others on a similar journey. GEFC meets every Sunday at 10:00 a.m. at 19172 Ferretti Rd. We hope to see you soon. (962-7131)

An Invitation to Mountain Lutheran Church

Paul Ingvaldsen

It is over 500 years since the reformation based upon 99 Theses nailed to a church door by Martin Luther and the subsequent founding of the Lutheran Church, the first of the Protestant Denominations.

We are fortunate here in Groveland because we have an example of a Lutheran Church and how it functions to serve God and our community of believers.

When our beloved Pastor Ginger retired, we searched for a replacement. For many weeks we offered guest Pastors a forum, but we have special requirements. Our Pastors must be ordained by the Evangelical Lutheran Church of America.

A Lutheran Pastor stands in a traditional robe and sings to us words that were once Latin and incomprehensible to the average churchgoer, but are now in English. We also sing traditional hymns, some going back hundreds of years. At each service we receive Holy Communion. We all humbly confess our sins and receive this profound blessing. "As a called and ordained Minister, I forgive you all of your sins. In the name of God the Father His Son Jesus Christ

and the Holy Spirit, Amen"

We are very happy now because we are blessed with Pastor Debbie and Pastor Ginger. Pastor Debbie is already tasked with another church service in the morning, so that is why we are having our church services at 4 pm.

Sometimes we miss a morning opportunity to go to church and still feel a need to worship the Lord and if you find yourself in that category, you might wish to step unto a welcome mat a few minutes before 4 pm and open the door to a traditional Church. Everyone is invited to Mountain Lutheran Church afternoon services with refreshments and happy talk afterwards.

Everyone is invited to Mountain Lutheran Church for the community 5th Sunday Hymn Sing. It is Sunday, September 29, 2019, at 6 pm and following the Sing we will be having hot dogs with all the trimmings, salads and drinks.

Mountain Lutheran Church

13000 Down to Earth Ct.

Next to Down to Earth Nursery.

Telephone number 209-962-4064

Deardorff Realty

WHAT A STEAL!!!



REDUCED

Unit 4/Lot 474 – 4 bedroom, 2.5 baths / 2 car garage. Large deck with fabulous view! Walk to Lake Lodge Beach. This is a must see to appreciate. Call before it is too late Don't miss this one! Priced to sell quickly @ \$279,900!

**SUCH A DEAL...IT'S A STEAL!!!!!!!
UNIT 12/LOT 120 1.1 flat acre for only – \$89,900!!**

Contact Marilyn Deardorff-Scott - BRE 00396888
209-962-0718

Hessler & Associates Real Estate
DRE#00621876
707-484-1608



20610 Nob Hill Circle | \$379,000

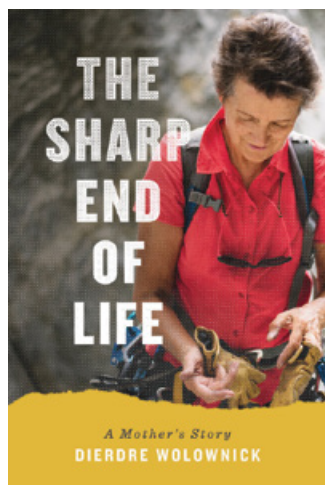
Lakeviews – Private and perfect setting for indoor and outdoor entertainment. Enjoy this lovely and charming 3 bedroom 3 bath home. Inviting and warm and waiting for that special family. Crisp new exterior paint. Wrap around deck and views create a relaxed atmosphere. Lots of natural light from an abundance of windows that capture inspiring views of Pine Mountain Lake. Easy, ample and level parking. Large sun-filled gourmet kitchen with abundant cabinets and two pantries. Large master bedroom features a large Jacuzzi tub and his/hers vanity sinks. Upstairs level has another large sitting area. Abundant storage throughout the home. Ideal home for family or a perfect vacation retreat. Call Darlene for more info and a list of the many amenities.

STCHS Speaker Series

David Roberts – STCHS Board Member

THE SHARP END OF LIFE: A MOTHER'S STORY – STCHS SPEAKER SERIES FOR OCTOBER

The Southern Tuolumne County Historical Society is pleased to welcome Dierdre Wolownick-Honnold to our speaker series on Saturday, October 19 at 7 PM, at the Groveland Community Hall. Dierdre has had many adventures in a life that has included being a writer, a language professor, and a mother. The adventures include taking up running at 54, later completing several marathons, and beginning in a climbing gym at 57, later becoming the oldest



woman to climb El Capitan. Dierdre's writing includes her autobiographical work, The Sharp End of Life: A Mother's Story, which describes her relationship with her two children, Stasia and Alex Honnold, and the impact of Alex's passion for climbing (ultimately leading to his Oscar Winning film, "Free Solo"). Deirdre will share her intimate journey, revealing how her climbing achievement reflects a broader story of courage

and persistence. We look forward to hearing from Dierdre and hope that you will be able to join us. Admission is free and contributions accepted.

MURRA'S TOTAL YARD MAINTENANCE



BRINGING VALUE FOR YOUR DOLLAR IN PML

- WEED EATING
- LOT CLEARING
- SENIOR DISCOUNTS
- LEAF REMOVAL
- PLANTING
- TREE SKIRTING
- HAULING
- AND MORE

CALL JASON MURRA
209-352-3750
LIABILITY INSURED



LOT SPECIAL ONLY \$5,000
Crocker Station 1/2 AC Usable Lot
Mueller Drive Golf Course Lot
Build Your Dream Home! Scenic views overlooking the 10th fairway & 15th green at the PML Golf Course, and the beautiful Sierra Mountains in the background.

MODERNBROKER

Weldon Killion - 209.459.0163
Janis Killion - 209.459.0098
CA DRE#00959395 / 01737445
view properties at
KillionTeam.com
Agent Opportunities
at Attractive Commission Plans



Crescent Way - 3,312 sf
2 Master Suites, 3rd Bedroom,
3.5 Baths, Shop & Grand Views



Jimmersall Lane - 4,400 sf,
Open Floor Plan, 4 Bed/3.5
Baths & Wine Cellar



Hemlock St. - 4,479 sf
4 Bedrooms, 4 Baths,
Bonus Rooms & Hangar



Crescent Way - 1520 sf
3 Bedrooms, 2.75 Baths,
Bonus Room with Wet Bar
ONLY \$179,900

1ST ANNUAL



Bottle Rockin'

BARTENDER COMPETITION

SPONSORED BY:




October 8th, 2019 @ 7pm

Hosted By Charlotte's Tavern, 18736 Main St. Croswell California

EVENT OPEN TO THE PUBLIC | FOOD & DRINK SPECIALS | GIVEAWAYS

FIND US ON  OR EMAIL TAVERN@HOTELCHARLOTTE.COM FOR MORE INFO

PAINTING & CONSTRUCTION



LIC #795283




PAINTING - EXTERIOR/INTERIOR • DECK REPAIRS • WOOD REPAIRS • REMODELS

Bay Cal Construction

209.962.4777

www.baycal.com
email: davec@baycal.com



FREE ESTIMATES

GROVELAND GAL FRIDAY

As you make out your list of fall chores, call on me to help you with:

Shopping, Rides, Pet-care, Home Checks, Senior Care, Office work, Organizing, Gardening or...

You name it!

SHARON VOLPONI
962-6848 • 770-6277

WWW.PINEMOUNTAINLAKE.COM

*Locally Owned
since 1950*

YOUR ONE-STOP SHOP FOR
all your pest control services

- PEST CONTROL: HOME, BUSINESS AND INDUSTRY 
- LAWN FERTILIZATION AND COMPREHENSIVE LAWN CARE 
- TERMITE INSPECTIONS, REPAIRS AND FUMIGATIONS 
- TREE AND SHRUB CARE, AND BARK BEETLE CONTROL 
- TERMITE TREATMENTS AND MONITORING 
- WEED CONTROL AND FIRE BREAKS 
- BED BUG TREATMENT 
- DECK REPAIR/REPLACEMENT (LICENSE #922758) 



OUR REPUTATION IS IMPORTANT
TO US AND YOUR COMMUNITY.
Call now for a free estimate!




(209) 770-7733
clarkpest.com

NEED HOMEOWNER'S INSURANCE?



Having trouble finding insurance for your home?

We may have the solution for you even if you live in a forested area!

EASON INSURANCE AGENCY, INC.
209.383.7322
9AM - 5PM - MON - FRI • 9AM - 1PM SAT
Email: homeins@easoninsuranceagency.com
CA Lic #0C97581

Call Me **BEFORE** a Burglar Calls On You!

Alarm & Fire Monitoring Systems



Jeff Weiss

LIC #ACE529159

Your Local Representative

209-606-5254

jweiss@adt.com



- Launching
- Winterizing
- House Calls
- Dock Calls
- Service
- Repairs
- Storage
- Trailer Repair

209-962-4594

The Boat Doctor

Paul Belluomini • P.O. Box 113 • Big Oak Flat, CA 95305

First Choice Mortgage

"Your Local Real Estate Financing Specialist"

**PURCHASE • REFINANCE
REVERSE MORTGAGE**

houseloan@att.net



Notary Services
30 Years Experience • Working for You *Don Teixeira*

GROVELAND CA • 209.962.2084

BRE 01130209 • NMLS 242535 • NOTARY COMM 2012748

GO TO THE OFFICIAL ONLINE PRESENCE OF THE PMLA
FOR LATEST NEWS & INFORMATION

PineMountainLake.com • Facebook.com/PineMountainLakeCA
Facebook.com/PMLARecreation

Liz Reinhard Art Exhibit

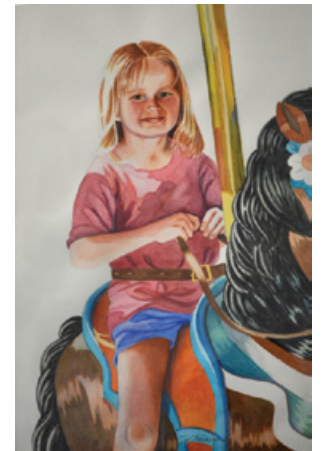
Virginia Richmond

Accomplished watercolor artist, Liz Reinhard's works will be on display downstairs at the Groveland Library from October 1 until the end of the year.

Liz is best known for her charming watercolor portraits of people and pets, and has now branched out into collages. An LA native, she was born into a family of artists and began her fine art studies at the age of eight! She enjoyed a significant career designing crafts, needlework and giftware before devoting her efforts to watercolor painting, which led to another successful career as a portrait artist of people and pets.

Liz is an active member of the Sierra Professional Artists Association. You can enjoy her lovely creations any Saturday during the Book Nook hours of 9am-2pm. A portion of the sales proceeds will be donated to the Groveland Library.

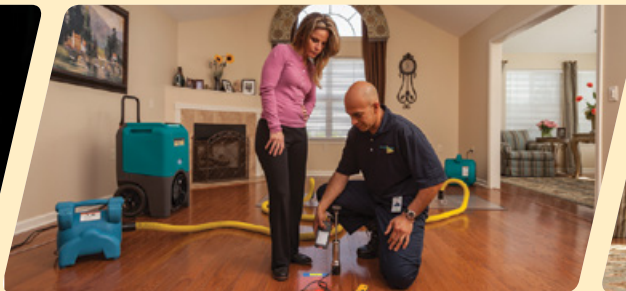
Images clockwise from top left, Artist Liz Reinhard, Girl on a Carousel, Study in Blue



**\$25
DISCOUNT**

Mention this ad for a discount on cleaning services.

Minimum charge applies.



DISASTER RESTORATION SERVICES • RESIDENTIAL AND COMMERCIAL CLEANING SERVICES

Carpet & Furniture Cleaning • Steam & Dry Cleaning • Deep Soil Extraction • Spot & Odor Removal • Oriental & Fine Rug Cleaning • Ultrasonic Blind Cleaning
24 Hour Emergency Service • Water Removal • Wet Carpet Care • Fire & Smoke Restoration • Vandalism Cleanup • Structure Drying • Sanitizing

**ServiceMASTER
Restore**

The clean you expect.

The service you deserve.



Serving Tuolumne, Calaveras & Amador Counties
ServiceMasterSierras@mlode.com • www.ServiceMasterSierras.com

209-532-1700

17330 High School Road
Jamestown CA 95327





HAMM'S Carpet Cleaning

Carpet • Tile • Upholstery
(209) 962-5852

White Bean & Turkey Chili

Recipe by Paula Martell and Tom Knoth

This is comfort food at its very best! The recipe is a derivation of Paula's Red Turkey Chili recipe which won the 49er Chili Cookoff, incorporating green enchilada sauce and white beans, and it is terrific. If you prefer your chili less spicy, you can seed and/or reduce the number of Jalapenos used.

INGREDIENTS

- 4 Jalapeno Peppers (can sub 2 Serrano Peppers)
- 1/2 Large Red Onion
- 2 cloves Garlic
- 2 lbs. Ground Turkey (we like Foster Farms)
- 1 28 oz can Green Chile Enchilada Sauce (Las Palmas brand at Marval)
- 2 15.5 oz cans White (Navy) Beans (S&W brand at Marval)
- 2 Cups Water
- 1/4 Cup Chili Powder
- 1-1/2 tsp Kosher Salt
- 1 tsp Cumin



DIRECTIONS

Coarsely chop red onion and place in food processor bowl, add jalapenos and peeled garlic cloves, then pulse until all ingredients are well chopped and incorporated together.

Add turkey to pan over high heat and

chop well with a wooden spatula. After browning turkey, add jalapeno/onion/garlic and cook until onions begin to soften. Add enchilada sauce, beans (including liquid in can), water, chili powder, salt, and cumin; stir together,

cover and reduce heat to medium. Simmer for 45 minutes.

Makes 2 Quarts (eight 1 Cup servings). Chili servings can be garnished with shredded cheese or sour cream.

**MAXIMIZE YOUR DENTAL BENEFITS FOR 2019
CALL TO SCHEDULE AN APPOINTMENT TODAY**



"A great smile is only one visit away."

SONORA
(209) 532-3171

SMILES
Dr. Dave C. Berger

Dr. Dave offers exceptional dentistry for patients of ALL ages

www.SonoraSmiles.com

\$100 OFF NEW PATIENT EXAM & X-RAYS
* For new patients only, this offer cannot be combined with any other offer. Please present this ad for discount.

BROADBAND INTERNET

Unlimited Data *Central Sierras*

LITE	BASIC	STANDARD	PLUS
3X2 MBPS	5X2 MBPS	7X2 MBPS	9X2 MBPS
\$29.95	\$49.95	\$69.95	\$89.95

GET UP TO 25 MBPS!



CONIFER
communications

866-378-8393
CONIFERCOM.NET

Enjoy free Wi-Fi at the 2019 49er Festival

**GROVELAND
SEPT. 21**

Healthy Habits

FROM PINE MOUNTAIN THERAPY

Julie Tanaka, PT

CUPPING MASSAGE AT PMT

“Cupping” is an ancient Chinese healing practice and has been around for centuries. The original practice involved putting a match or incense in a glass cup creating negative pressure so when the cup is put on the skin it draws the tissue up into the cup. In Chinese medicine this is used to draw out toxins and encourage healing. Modern equipment involved plastic cups that use a suction device to create the negative pressure and draw up the tissue into the cup. Then the cup is drawn over the skin in a massaging motion following the line of the muscle or scar tissue.

During the 2016 Olympics the signs of cupping treatment were seen world wide on Michael Phelps’s back. The circular



bruises were evidence he had undergone this treatment. But why would an Olympic level athlete during competition submit to this ancient technique? During the last decade athletic trainers, massage therapists and physical therapists have been adding this technique with a modern spin to their toolbox of healing modalities.

The physical results of cupping allow the soft tissue to be drawn up and away from the underlying muscle and fascia. This allows for mobilization of the tissue without pressing down into the area of trauma. We get the positive results of deep tissue massage without the pressure on the underlying structures. Cupping improves circulation in an area of muscles that may be over worked by repetitive use or in response to trauma. Improving circulation results in decrease in inflammation and swelling. This is really helpful in physical therapy after an injury or surgery. We also see the benefits of applying the cupping over healed scars. Again by lifting and mobilizing tissue without the trauma of pushing into the tissue, scars can heal with fewer restrictions.

Most patients relate that they feel a “lessening or lightening” of pain and restriction with cupping. Often it is a bit painful at first and then as the restrictions release becomes very pleasant. It is easy for us, and the patient, to feel the changes in the tissues as the treatment progresses.

Cupping massage is not a “cure all to end all” but it is another tool in our toolbox. The more techniques we can learn as therapists, the more we have to draw on when we get a new patient with new dysfunctions. We have introduced cupping massage into our treatments at PMT when it is indicated. Kerrie and I will be going for advanced training and certification next month. Always learning and always growing to help our community!

Electronic Devices

Etty Garber, PhD. – Licensed Marriage and Family Therapist

CHALLENGES FOR SENIORS

It has been hard for many seniors to keep up with the new technologies that have hit the modern day appliance market. Digital technology has transformed how we communicate, how we get our news, shop and even meet new people from around the world. When we were young our introduction to new inventions was television and the electric typewriter. Not too much training was needed for them.

Today seniors are faced with multiple technological advances. The training to adapt to these new electronics in the beginning was limited or unavailable. As time went on they were more available and affordable and their use became more convenient and necessary. Young people took to it easily. Seniors, not so much. They were faced with so many choices: personal computers, lap tops, tablets, e readers, smartphones, android or ipads? Other concerns may have been the fear that someone would have access to their private information and compromise their identity. The use of multiple logins and passwords and remembering them was another reason to worry.

Many seniors are not confident in their own ability to learn and properly use electronic devices. When they get a new device, they usually need someone else to set it up and show them how to use it. Some older adults may have physical challenges that may make it difficult to use or manipulate devices.

Because seniors didn’t grow up with this advanced technology, they are afraid that pressing a wrong button could “break” it. When you are

not sure what each button or link will do, it is only normal to feel afraid that you might do something wrong. When this happens you may experience frustration and a lack of self-confidence.

Despite the fears and anxiety, more and more seniors have begun to set those feelings aside, recognize the many advantages these strange devices offer: staying in touch with family and friends (facetime is a wonderful invention to communicate and watch your grandchildren grow), paying bills, keeping up with finances, up to date world news, instant responses when looking for information, to name just a few advantages in using these devices. Like all kinds of learning: the more you use it, the more familiar you become, the more comfortable and more proficient you are.

Although many seniors remain off set by the digital life, Pew Research Center shows that roughly two-thirds of the senior population go online and have smartphones. Seniors may have only used these devices in the beginning to play solitaire or other electronic games, but as they gained familiarity with use of a new device, they have moved on to using it in more diverse and useful ways. They have recognized their conveniences and are adapting and adopting their use. They also recognize that technology has had a mostly positive effect on society.

Remember to use the patience with yourself that you use with young children when you are teaching them something new. Everything is new at first, but with use and determination, success is inevitable.

PINE MOUNTAIN THERAPY

Outpatient Physical Therapy


Serving the Mountain Communities of Tuolumne and Mariposa Counties

18800 Main Street,
Groveland, CA 95321

209-962-4035

Please visit our new web site at
www.pinemountaintherapy.com

A Preferred Therapy Provider,
participating provider with
most insurance carriers
including Medicare.



Dr. Etty Garber Ph.D.
in Clinical Psychology and a licensed Marriage Family & Child Therapist, with 36 years experience in mental health, lives in Groveland and

OFFERS PRIVATE PRACTICE SERVICE

Dr. Garber can provide psychotherapy in a variety of settings to individuals, couples, families and groups.

**RELATIONSHIPS • FAMILY CONFLICT • CHEMICAL DEPENDENCY
DEPRESSION • ANXIETY • ABUSE, etc.**

Low Fees • No Insurance FOR AN APPOINTMENT CALL 209.768.5200

Camp Tuolumne Trails

Dori Jones

SAVE THE DATE!

Camp Tuolumne Trails will be hosting its Fall Volunteer Day on Wednesday, Oct 23, from 8-12:00. Although this is a weekday, we hope many community volunteers will participate and work alongside

a group from AmeriCorps to get a lot of the camp’s needed maintenance accomplished before winter weather arrives. Don’t miss the fun of another rewarding, community-minded event, including a delicious lunch following the chores.

Fall Helping Hands Happenings

Patti Beaulieu

We welcomed in the first day of Autumn a couple of weeks ago, and although we were thrilled with the number of customers we were able to serve from around the world and the business it generated for Downtown Groveland, it's refreshing to have a new season upon on. Perhaps some cooler weather, less traffic on 120 and be able to park at the Market is in our near future. This also means we are now on our WINTER HOURS of TUESDAY – SATURDAY FROM 11 – 3 AT THE STORE AND THURSDAY – SATURDAY 11 – 3 AT THE FURNITURE BARN. During the winter hours, the stores both close at 3 and the Barn is not open on Wednesdays. Donations are not accepted at either store after 2:30.

Last month, we put out the Halloween and fall items that have been donated all year. We accept all merchandise throughout the year, store it until the appropriate season, and then fully stock the Store for the the season. It's quite a bit of work, but we have Sunday workdays when our dedicated volunteers

come in and get it all done.

This month, on Sunday, October 6th we'll purge the Store of our summer inventory to make way for our FALL GIVEAWAY and start putting out our winter wear. It's the beginning of the holiday season, where we put out the fall items, then put away our fall merchandise and right on the heels of that, we bring out the Christmas.

Our FALL GIVEAWAY will be on FRIDAY and SATURDAY, OCTOBER 11 -12 from 10 – 4 at the Groveland Community Hall. This is your chance to stock up on clothing, housewares, home décor, books, linens, shoes, purses and just about anything else we have in the Store FOR FREE!! We clear out the summer clothing and other overstocked items and GIVE THEM AWAY – no charge, just take what you want.

We'll also be giving away Halloween treats in front of the Store for the Downtown Trick or Treat.

As you can see, we have a lot going on this month, but we manage to get it done with the help of our wonderful volunteers.

Share Fitness Offers Fall Prevention Class

Kathy Egan

What can cause a fall? Falls do not have to be a normal part of getting older. Despite what many people think, falls are preventable and do not just happen. Often there are causes or risk factors that you may not have thought about which are linked to falling. These causes are grouped as being either personal risk factors or environmental risk factors. Personal risk factors include loss of balance, poor leg strength, having fallen before, health conditions, taking five or more medicines, poor diet, dehydration, poor or changing eyesight, sore feet, and unsafe shoes. Environmental risk factors include poor lighting, trip and slip hazards such as objects left on the floor, loose mats, slippery floor surfaces, and uneven surfaces such as steps.

Our certified Personal Trainer, Kathy Egan, is offering a class "Preventing

Falls." Two class options will be offered: private one on one sessions (just you and the trainer) or group classes. Classes will include an assessment of your personal and environmental risk factors, ways to improve balance and increase leg strength, along with detailed discussions on the remaining risk factors. Completing a Falls Risk Checklist will help you identify if you are at risk of falling; and a Home Safety Checklist will help you determine ways to make your home safer. If you would like one of these checklists, or if you would like to sign up for this class, please call Share Fitness at 209-436-9772, and Kathy will contact you.

Find Share Fitness next to the Seventh-day Adventist church on Elder Lane. We are open weekdays 8:30 am to 3 pm, and always welcome new members. We look forward to an opportunity to assist you with your wellness journey.

Groveland Community Thanksgiving Dinner

Karen Seals

On Thanksgiving Day, November 28, 2019, come join us in Groveland Community Hall as we help host the 35th Annual Community Thanksgiving Dinner. With the help of The Tioga High School Interact Club. The Community Thanksgiving Dinner has grown more and more each year, and we want to make 2019 the biggest and best yet! Over 300 traditional Thanksgiving turkey dinners are served (or delivered) on Thanksgiving Day at The Community Hall of Groveland.

Who is invited to the Community Thanksgiving Dinner? Anyone who might find themselves eating alone or may not have the energy or funds to prepare a traditional Thanksgiving dinner is invited. In fact, everyone is invited to our Community Thanksgiving Dinner to

share a meal with our neighbors. Dinners are served from 11:30-3:30 p.m. We also arrange for meal delivery or transportation to and from the dinner.

Many thanks to all the volunteers and committee members who helped last year. This year Karen Seals, teacher at Tioga High School and the Tioga High School Interact Club will be carrying it forward.

We need many volunteers who can come to set up, wash dishes, serve, decorate, work the kitchen (carving up 18 turkeys), cutting pies, set up refreshments and clean up. If you'd like to help, please contact Kathy Follmer at 209-962-7496. This event is made possible by the generous donations of the community. If you'd like to donate, please send to P. O. Box 55, Big Oak Flat, CA. 95305.

Book Lovers Invited!

Rachel Phillips, FOGL

Please mark your calendars for the yearly FOGL Literary Event which will be held this year on October 29th 4 - 6 pm., downstairs at the library. All book clubs, all persons interested in reading, writing, and speaking are invited. There will be book reviews, discussions, presentations on all things literary. For further information please contact Nadine Pedron. (962-6953 or epedron@att.net).

Other reasons to visit our wonderful library are as follows:

- Every Friday at 10:30 preschoolers are invited to a story hour; on alternating Saturdays, which will be October 11th and 25th this month a bilingual story hour is offered.
- For all ages and all levels, a knit and crochet club called "Yarnia" is happening every Thursday from 3:00 to 5:00.
- A book club called the "Library Lot" meets at the library every second Friday, meaning the 11th this month. The book to be discussed is Remarkable Creatures by Tracy Chevalier.

Coming soon at the library:

- A teen library council will meet monthly to plan and execute events for teens.



Story hour at the library.

- A budget friendly/health conscious cooking class will be offered monthly.
- A second book club will form based on locally inspired and nature based books.
- An ACT/SAT prep course will meet once a week. A preteen book club for ages 8 to 12 will be forming to meet monthly.

For more information on these programs at the library, please call Katelyn or Barbara at 209-962-6144. Library hours are as follows: Tuesday – Thursday 1 - 6 p.m., Friday – Saturday 10 a.m. - 2 p.m. Book Nook is open 9:00 to 2:00 every Saturday.

STCHS Thanks You

Joe Hopkins

The 11th annual Labor Day Country BBQ, held Sunday on September 1 at the Pine Mountain Lake Equestrian Center, was a great success again this year. Everyone has so much fun because there is something for everyone.

The Southern Tuolumne County Historical Society would like to say a big thank you to our sponsors: Platinum-Priest Station Cafe and Rabo Bank, Gold-Helping Hands and Moore Brothers, Silver-Pine Mountain Lake Association and The Grill, Crook Logging, Yosemite Bank, Black Oak Casino, the Union Democrat and Sabre Design.

Nearly 300 braved the hot weather and

enjoyed music by Groovy Judy. Everyone enjoyed the PML Air Force flyover and we thank our generous pilots, organized by Wayne Handley. Kids participated in a watermelon eating contest and held rabbits and chickens at the Petting Zoo offered by the local 4H group. The USFS rangers had a great exhibit of pelts and skulls, and giveaways for Smokey Bear's birthday. All of our Volunteers who helped serve food, drinks, and prepare the tri-tip. The Silent Auction and Bake sale were very successful adding to the fund raising efforts to preserve and protect the history of Southern Tuolumne County.

First Wednesday Bird Walk

Jeanne Ridgley

The first Wednesday of the month Bird Walk at the Groveland Community Services property at 18966 Ferretti Road, Groveland, will be led by Jeanne Ridgley on October 2. The property encompasses an area of more than 200 acres of oak, pine and willow habitat with three water storage ponds.

On the September 4 Bird Walk, birders saw 40 species including Spotted Sandpiper, Lesser Yellowlegs, Belted Kingfisher,

Lawrence's Goldfinch and four species of Warblers: Black-throated Gray, Wilson's, Yellow and Orange-crowned.

Access for birders here is limited. Birders must be accompanied by an authorized birder.

Meet the group in the GCSO parking lot at 8:00 AM. Bring binoculars and a birding field guide if you have one. Rain will cancel the trip. The walk will last about two-three hours.

Columbia Cemetery Tours

Friends of Columbia State Park

Friends of Columbia State Historic Park is proud to host *Stories in Stone* Cemetery Tours at the historic Columbia Cemetery on Friday and Saturday evenings, September 27 & 28 and October 4 & 5. Costumed docents holding lanterns will light the way for this unique event. Guests will stop at specific gravesites

where some very convincing characters will tell the stories of citizens who lived and died in Columbia. Listen to some funny, some sad and some tragic stories about the people who lived and shaped Columbia's history.

The Columbia Docent Archives and Library Committee base the characters on extensive research. and bring these historic figures



to life. See how their lives contrast with our lives today.

This year we are offering two tours per night, at 7:00 pm and 7:30 pm. Dress comfortably and warmly for this one-and-a-half-hour walking tour. The tour route is paved, but is strenuous, and can be hilly and uneven in spots.

Reservations are required. Make yours online at www.friendsofcolumbiashp.com. Tickets are \$25/person and all proceeds benefit interpretation and educational programs in the park through the non-profit organization, Friends of Columbia.

For information about Stories in Stone or other events in Columbia, please contact the Columbia State Historic Park office at (209) 588-9128.

Groveland's 49'er Festival, Chili and Salsa Cook-Off

Tom Clawson

This year was the 30th anniversary of the 49'er Festival here in Groveland and accordingly we used the theme "30 YEARS OF FUN AND MUSIC". Attendees enjoyed fun and entertainment at this year's 49'er Festival in Mary Laveroni Park. Locals, people from the Bay Area, Central Valley and around the world enjoyed a fun filled day starting with a pancake breakfast and parade.

This year's Grand Marshall's were Paul and Kim Purifoy who are active in animal rescue and strong supporters of Tuolumne Trails. Paul, has been the go-to guy for local gun-fight reenactments and the announcer for events like the 49'er Parade and Rotary auctions.

Throughout the day attendees enjoyed music and entertainment provided by "Stomp Box", a beard contest, a chain saw carve-off, and an old-west "shoot-out" and bar room skit by Sierra Guns for Hire. They bid on fantastic items during the silent and live auctions, won great prizes during the raffle drawing and purchased unique items from over 50 vendors. Attendees also had the chance to taste and select the winners of the Chili and Salsa Cook-Off.

Breakfast in the morning was provided by Southside Community Connections. Food and refreshments were available throughout the day at the Kiwanis, Rotary and Chamber of Commerce booths.

The Board of Directors wants to thank the people and businesses that donate their services to make the festival a success: the Miller Brothers for help with traffic control and staffing the beer booth, Yosemite Bank for use of their parking to stage the parade participants, the Charlotte Hotel for the use of the balcony to announce the parade, Moore Brothers for waste bin and totes, David Danburger and Ron Hessler for chalking out the booth spaces.

Thank you to all our sponsors who have faithfully supported the festival each year. A particular thanks goes to our Platinum sponsors, Black Oak Casino, Chicken Ranch Casino, Helping Hands, Hope's Tree service, Kiefer Insurance, Sabre Design, San Francisco Power and Water, Visit Tuolumne, and Yosemite Pines RV Resort.

In addition, the Board wants to thank all the members of the Festival Committee for organizing this great event, with specific recognition for Earl Wright (Chairman), Tom Hernandez (Vendors), Cathy Leetham (Budgeting), Dawn Miller (Parade), Bob Turney (Chili & Salsa), Jeanne Wilson (Auction & Raffle), Tom Clawson (Sponsors), and Janis and Weldon Killion (Poker Run).

We hope to see you at next year's event!!

Pine Cone Singers

Bob Swan

WORKING TOWARDS WINTER CONCERT

Well, we've gotten back into the swing of rehearsal, There's still more winter in our music than in the weather outside, but we're doing our best to think of snowflakes and Santa.

The selection of music is a little more contemporary than in some past shows. Strictly speaking, we don't have a "classical" piece, although there are a few numbers written in a classical (and in one case, medieval) style. Most of the program will include both straight and jazzy arrangements of holiday favorites, plus some very recent compositions that evoke the feeling of wintertime. Of course, there will be some solos in the spirit of the season, as well as a singalong. I think you'll find this to be a very entertaining mix.

I've been remiss in not welcoming some

new members who joined us for the Spring Concert. So, a belated welcome to Yovanna Bustos, Martha Schriener, and Sarah Wells, who are also with us for this session; and welcome also to Al and Judy Costa, who are joining us for this one.

Many of you are aware that Jim Leitzel – who sang with both Pine Cone Singers and Gold Country Singers, and who was kind of a Renaissance man in this neck of the woods – passed away in the late spring. We miss him, and not just for his beautiful tenor voice.

Please save the dates – Friday, December 13 at 7PM; Saturday, December 14 at 2 PM; and Sunday, December 15 at 2 PM. All shows will take place at the Groveland Evangelical Free Church on Ferretti Road. We look forward to seeing you there.

If you'd like more information, please contact Board President Monica Herenden at 510-207-4972.

Timberwolf Howl

Ryan Dutton – Principal - Tioga High School

TIOGA HIGH PROM SUPPORT



for our kids that don't get the opportunity to have many other nights like it! Our kids are very grateful for those of you that have helped with this effort in past years, and many of our kids are already talking about this year's Prom and the excitement of creating wonderful memories! You all have no idea how far this goes in lifting up a teenager in your community!



TIOGA HIGH LANDSCAPING



The new school year is upon us, and the Landscape class at Tioga is already hard at work. We are working on painting window and door trims, adding a special twist to the main stairs coming up to campus, building some wooden adirondack chairs and kids picnic tables that will be available for purchase, and finishing a rock/log student walkway that was started in spring. Due to budget constraints, we are always in need of landscape/gardening tools and accessories, which can include woodworking tools, power equipment, and plants! Another big need is a

We recently received wonderful news that Macy's in Modesto will be hosting a trip for our gals at Tioga in the spring. Our girls will be able to attend the mall store in Modesto and pick out undergarments and makeup to prepare them for Prom night. We would like to offer the chance for our local community to help as well! Our kids are in need of assistance purchasing prom dresses as well as boys outfits (shirts, ties, shoes). We have a school account that donations can be put into and used only for Prom purchases on this trip to Modesto or for staff to help kids find their attire throughout the year in local stores. You can also feel free to bring dresses, ties, dress shoes, and shirts in good condition to the school. We hold our annual Prom at Rush Creek Lodge, and it is a very special night



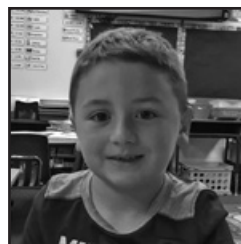
PAUL S. BUNT, ESQ.
ATTORNEY AT LAW

ESTATE PLANNING
PROBATE
REAL ESTATE
BANKRUPTCY
ELDER CARE
209.962.6778

Mountain Leisure Center, Groveland
appointments available in Sonora and Lake Don Pedro

STUDENT OF THE MONTH

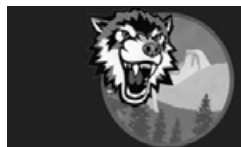
TENAYA ELEMENTARY SCHOOL
Home of the Warriors



Judah Scheu

JUDAH SCHEU – TENAYA ELEMENTARY

Tenaya Elementary has nominated Judah Scheu for our first student of the month this year! Mrs. Williamson says, "Judah has shown great responsibility since the first day of school. He is always happy, kind and willing to help. He shows great leadership skills and is a wonderful friend." Judah's parents are Michael and Kimberly Scheu of Groveland.



TIOGA HIGH SCHOOL
Home of the Timberwolves



Jaydon Spires

JAYDON SPIRES – TIOGA HIGH SCHOOL

Jaydon Spires runs to school. I pass him every morning as I drive down Ferretti Road a little after 7 am when other students may just be getting out of bed. He's an amazing runner, setting records year after year, placing first in San Joaquin sub-sections and sections in 2018, and a three time first place finisher at the Mountain Valley League championship. And the running reveals more than just his athleticism; it shows his work ethic and self-discipline, his desire to achieve excellence.

But as Ellen Jeffrey, a coach and mentor writes, "it is not his running ... that amazes me. Nor is it his determination on those gruesome intervals or the long, lonely miles he runs from a here to a there and back again, but rather the person he is - a senior possessing humor, courage and that smile which it is impossible not to return. I hope he is as proud of himself and all that he is as those who know him are."

And his Tioga family couldn't be prouder of him. Jaydon plans to attend the College of the Redwoods in Humboldt County next fall where he will run for the school and explore the many wonderful options that await him in the future.

woodworking bench that kids can measure/build/construct on. We also have a school landscape account that you can donate to! We will be looking to finish up the Ferretti

road area this year, and building a custom cedar slab sign to replace the old one at the main entrance to the school! We appreciate all of those that have donated to the program!

SAVE AS MUCH AS 30%
OVER THE CHAIN OPTICS STORES AND EVEN MORE OVER DOCTORS OFFICES

Large Selection of Unique & Traditional Designs
Can Bill Most Insurance Plans • Over 20 Years Experience
Designer Sunglasses • FREE Adjustments & Repairs



Stacy Hancock
Certified / Licensed Optician

18729 HWY 120, Unit A, Groveland • 209.962.1972

HOMEOWNER CHECKLIST

CHECK OUT YOUR CONTRACTOR

- Did you contact the Contractors State License Board (CSLB) to check the status of the contractor's license? Connect with CSLB at 800.321.CSLB (2752), www.cslb.ca.gov or www.CheckTheLicenseFirst.com.
- Did you get at least three local references from the contractors you are considering?
- Did you call the references and personally view the contractor's completed work?
- Does the contractor carry general liability insurance?

BUILDING PERMITS

- Does your contract state whether you or your contractor will pull necessary building permits before the work starts?
- Are the permit fees included in the contract price?

www.cslb.ca.gov

DOUBLE-CHECK THE CONTRACT

- Did you read and understand your contract?
- Does the three-day right to cancel a contract apply to you?
- Does the contract identify when work will begin and end?
- Does the contract include a detailed description of the work to be done, the materials to be used, and/or equipment to be installed?
- Are you required to make a down payment? (The down payment should never be more than 10 percent of the contract price of \$1,000, whichever is less, unless there is a valid blanket performance and payment bond on file with CSLB.)
- Is there a schedule of payments? (Only pay as work is completed, not before).
- Did your contractor give you a "Notice to Owner" warning notice that describes mechanics liens and how to prevent them?
- Do you have changes or additions to your contract? (Remember that all changes must be in writing and signed by both parties to avoid disagreements.)

BEFORE YOU BEGIN CONSTRUCTION ON YOUR LOT

The Declaration of Restrictions (CC&Rs) states that no construction of any type (new construction, driveways, grading, lot development, etc.) can be performed without prior approval from the Environmental Control Committee (ECC).

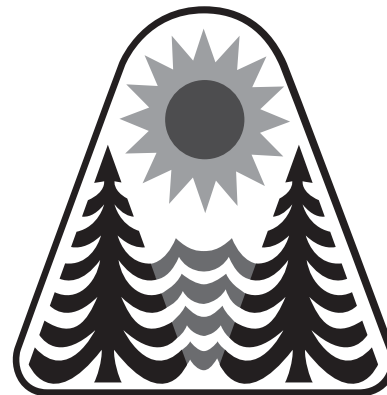
Failure to obtain approval could result in the stoppage of work or even fines, and nobody wants that to happen. Inspections are made every Tuesday and reviewed by the Committee every other Thursday, so we can accommodate our members.

Please contact ECC before you begin any type of construction at 209-962-8605

PAINT DISCOUNT PROGRAM

Kelly-Moore Paint Company has been serving Pine Mountain Lake for 40 years. They want to remind PML property owners of the discount program that has been established for them. This program offers a generous discount on Kelly-Moore paint and accessories such as rollers, brushes, tape, caulk, etc. Delivery is available on orders of 10 gallons or more. This special discount opportunity is available with proof of Pine Mountain Lake membership (Member ID Card) on a cash or credit/debit card basis only (no checks please).

Although this program was initiated through the Sonora store, it will be honored at any Kelly-Moore Paint Company store. If you are interested in this discount program, call your local Kelly-Moore Paint store for details.



Cobblestone Homes

• Custom Homes • Additions • Remodels •
• Specializing in high country design/build since 1989 •
We provide superior craftsmanship, attention to detail, follow-up, and great customer service.

Craig Lawrence-Owner
209.404.0290 Lic. 564665

PML MINI STORAGE

65 Units Ranging From 5'x5' to 12'x30'

- REASONABLE RATES •
- WELL LIGHTED •

Located one-half block off Ferretti Rd. on Elderberry Way towards Airport

209/962-6220

PROPANE DISCOUNT PROGRAM

Suburban Propane – As the preferred provider of PML we are happy to provide an exclusive members only program to all residents.

Benefits include: Propane at a discounted rate, Tank rental at a discounted rate, Free basic tank installation, Easy payment options, 24/7 Tech support, Flexible delivery options • 24/7 live phone support Contact our local staff for further details and current rates.

Suburban Propane Jamestown
California (209) 984-5283 • 1 (800) PROPANE

COSTA'S TREE SOLUTIONS

STEVE COSTA • OWNER
FULLY INSURED/BONDED C.C.L. #1001392

209-962-4468
CELL 209-768-4469
CERTIFIED ARBORIST #WE7496A

MEMBER NATIONAL ARBORIST ASSOCIATION

A AMERICAN ELECTRIC & SERVICE CO.

COMMERCIAL • INDUSTRIAL • RESIDENTIAL

209.962.7374

ELECTRICAL CONTRACTORS LIC. # 465220

Pine Mountain Lake Electric

Residential and Commercial Electrical Contracting

State Contractor's Lic. 404081



TOM KATOSIC
209/962-6949

P.O. Box 25
BIG OAK FLAT, CA 95305

TMC CONSTRUCTION

License # 717300
Insured

(209) 962-6938

Brushing • Log Removal
Mastication

Hazardous Tree Removal & Pruning
Excavation

Site Prep, Engineered Septic, Culverts,
French drains, Retaining walls,
Hauling, Post hole digging,
Under ground work,
Concrete work

We can help with your grant.
Skid Steer and Dump truck service
Reasonal Rates • Free Estimates

PARROT PLUMBING MILT LAKE

Owner / Operator

209-852-2267

Serving Groveland, Don Pedro & Coulterville

20940 Ferretti Road Unit 'A', Groveland CA 95321



C-36 #791575

P.O. Box 127, Coulterville, CA 95311 • Email - clake@inreach.com

HANDYMAN FOR HIRE

"The Small Job Specialist"



Doing Building and Repairs in PML Since 1976
WHERE ONE CALL CAN DO IT ALL!!!

Working by the Hour to Save you Money...

- Deck Repairs
- Interior Repairs
- Painting
- Exterior Repairs

omni1handyman@aol.com

No **(209) 962-5463** License

R&R Mountain Enterprises, Inc.

LIC. #991183



DOWN TO EARTH

CONSTRUCTION

- Paving & Concrete work
- Excavation
- Asphalt seal coating & repairs
- Lot clearing & site work
- Complete underground work
- Septic system installations & repairs
- Retaining walls, walk-ways, etc.

NURSERY

- Perennial, annual & vegetable plants
- Shrubs & Bushes
- Garden accessories
- Wildlife & drought tolerant plants
- Shade, fruit & landscape trees
- Potting soils, compost, etc.
- Landscape supplies
- Irrigation & plumbing supplies

**We Deliver Gravel
& Landscape Supplies**

FREE ESTIMATES



WE ACCEPT ALL MAJOR CREDIT CARDS
(VISA, MASTERCARD, DISCOVER & AMERICAN EXPRESS)

RAYMOND ALBANEZ

209-962-7407

13050 Boitano Road, Groveland, CA 95321 • Fax (209) 962-4987
downtoearth7407@gmail.com

LICENSED • INSURED • WORKMAN'S COMPENSATION

Call your local Pro!



Jack Proctor

Heating & Air Conditioning

- Complete commercial & residential services
- Service & repair - all makes and models
- Heating & ventilation
- Heat pump specialist
- Air conditioning troubleshooting expert
- Installation and remodeling
- Upgrading & energy efficiency
- We offer the same low rates 24/7

OFFICE
209-962-6471

CELL
209-678-8915
License #313926
Since 1975

Before replacing your unit, ask us for a 2nd opinion.
Chances are, we CAN repair it!

AIRPORT MINI-STORAGE



60 Units - 6'x8' to 10'x30'
Open 7 a.m. to 9 p.m. Daily
Located on Elderberry Way off Ferretti Rd. near PML Airport
209/962-5360

Sean McCoy Painting

License No. 822616

Home of the Cabinet Doctor

“Let’s Refinish or Paint Those Old Cabinets”

- Fine Finish • Mill Work • Cabinets
- Doors • Interiors



209.588.1741
www.smccoypainting.com
Exterior-Estimates Available

KEEP CALM AND REFINISH

HOPE'S TREE SERVICE

Lic# 987171

EXPERT TREE SERVICE, PRUNING, REMOVAL, CUT & STACK OR HAUL AWAY
FIRE SAFETY TRIMMING • REASONABLE RATES
FULLY LICENSED/INSURED

Proud member of the Yosemite Hwy 120 Chamber of Commerce

VISA We accept credit cards MasterCard



HOPE'S TREE SERVICE
Fully Licensed and Insured
PO Box 1072
Groveland CA 95321

209.878.3096
or 209.225.3191

Pest Control

- Ants, spiders, mice, wasps, earwigs, etc.
- Fast service, great prices
- Squirrel and bat Exclusion
- Termite Inspections
- Weed Control
- Poison Oak
- Star Thistle

962-5710
800-464-3772
Free estimates



FootHill-Sierra PEST CONTROL
Since 1977

REIMERS CONSTRUCTION

PROUDLY SERVING GROVELAND/PML SINCE 1987

DESIGN/BUILD • EXPERT REMODELING • SPECIALIZE IN KITCHEN AND BATH
CEMENT SIDING • COMPOSITE & REDWOOD DECKS • WINDOW AND DOOR REPLACEMENT

(209) 962 5682



BEFORE AFTER

This project designed and constructed by Reimers Construction

Email: wwrpar@gmail.com
CA.LIC. 590514

ARE YOU STUMPED?

COMMERCIAL STUMP GRINDING

No stump too small or too big

Contact D & L RANCH
Owner/Operator—Lester Scofield

Call for prices—**209-962-6902**





Mark's Groundskeeping Service

Let me help you with your seasonal chores...
Serving The Greater Groveland Area

Mark Roy
Local permitted owner / operator
Call or Text: 1 (831) 406 7715

markroyx@yahoo.com

**FIND WHAT YOU
NEED IN THE
HOME
IMPROVEMENT
SECTION**



Karen Faught
Owner

Sears Hometown Store #3159
14691 Mono Way, Sonoma, CA 95370
Tel 209-532-3191
Fax 209-532-8334
Service & Parts 1-800-469-4663
www.sears.com

Locally Owned & Operated



**HEAVENLY
CLEANING SERVICE**

PROFESSIONAL HOUSEKEEPING
AND CARPET CLEANING*

Now cleaning up for 25 Years!

HOME OFFICE CARPET

FULL TIME HOME OR WEEKEND GETAWAY

WE HAVE OPENINGS TO CLEAN YOUR HOME
(NO LONGER ACCEPTING VACATION RENTALS)

WE ALSO OFFER DECK BLOWING & BBQ CLEANING
FOR ALL YOUR CLEANING NEEDS

* Due to high demand carpet cleaning is by referral only

GIVE US A CALL TODAY – 209.962.6418

heavenlycleaning@mail.com • FULL LIABILITY COVERAGE



Waters Plumbing Heating & Air

**FAST
SAME DAY
SERVICE***

*IN MOST CASES

All work 100% Guaranteed!



Contractors License #463958
www.watersplumbing.com

Voted Best Plumber
in Tuolumne County
4 Years in a Row

"I want you to know that our technicians will give you
a price before we start the job." —Wayne Waters

Groveland (209) 962-0990

Rod Diehl Pest Control

"The Best Deal in Pest Control"

**RESIDENTIAL & COMMERCIAL • HIGH QUALITY
100% SATISFACTION GUARANTEED**

Locally Owned & Operated • 5th Generation Tuolumne County

PERSONAL SERVICE • FREE ESTIMATES

We will customize your service around your pets

info@RodDiehlPestControl.com

(209) 532-3260

PROUDLY SERVING THE PINE MOUNTAIN LAKE / GROVELAND AREA

PAINTING

Exterior/Interior
Deck Repairs
Wood Repairs
Remodels



Bay Cal
LIC #923832

SEE COLOR AD PAGE 37




209.962.4777

www.baycal.com • email: davec@baycal.com

We are known for our integrity and legendary customer service!

Produce Your Own Clean Power!

- Save \$\$\$ Every Month
- 30% Federal Tax Credit
- 5-Year Typical Payback



APS SOLAR
ALTERNATIVE POWER SOLUTIONS, INC.

Your Local Solar Electric Company

License #892261 / Since 2002
19472 Village Drive, Sonora

Call Us For A Free Estimate
209-532-5925



Follow us on Facebook at APSsolarpower
Check our reviews at www.SolarReviews.com

LaMar EQUIPMENT & HAULING

<p>Job Site Storage Containers 15 Ton Hydro Crane Heavy Equipment Hauling Irrigation & Electrical Trenching Landscaping Materials New Construction & Remodels & Decks</p>	<p>End Dump Manlifts Rock Hauling Lot Clearing Demolition Log Hauling Septic Install Fire Breaks</p>	<p>Post Hole Digging Concrete Demolition Towable Trailers Retaining Walls Earth Moving</p>
--	---	---



(209) 962-0500
Mobile: 770-5667 lanceMarchetti@yahoo.com

Ken's Asphalt

Lic. 708310

Grading • Paving • Chip Seal • Road Oil

Seal & Slurry Coatings • Crafcro Hot Rubberized Crack Sealer
Driveways • Private Roads • Subdivisions

DOING BUSINESS SINCE 1985

DRAINAGE PROBLEMS?

We have the Solution!

Erosion Control • Riprap (6-12" Rock) • Asphalt Curbing • Base Rock

"Just Pave It" **Complete Concrete Services** *"Just Pave It"*

- Stamped Concrete and Colored Concrete
- Driveways
- Stained Concrete
- Walkways
- Cleaning & Sealing
- RV Pads
- Retaining Walls
- Patios

532-0800 • 962-5644 • 768-7395 Cell



Sierra HEAVY DUTY
RV & TRUCK CENTER INC.

BUSINESS HOURS
Monday - Friday:
8:00am - 5:30pm
Saturday: 8:00am - 2:00pm
Sunday: CLOSED

Well Stocked Parts House:
For All of Your Heavy Duty Needs!

- Heavy Duty Brake Linings
- Baldwin & Fleetguard Filters
- Delo Oil
- LED Lights
- Air Brake Valves & Hoses
- CB Radios, Antennas & Accessories
- Logging & Dump Truck Parts
- Hydraulic Hose Shop

Full Service RV Repair Shop:

- Commercial House & Starting Batteries
- Full Service Chassis & Lube Center
- Electrical & Plumbing Repairs
- Interior & Exterior LED Lighting
- Complete Body Damage Repair Shop
- Solar Power Systems & Inverters
- Complete Detailing Services
- Warranty & Insurance Work Accepted

Mobile Service Available

18968 Waylon Way
Sonora CA 95370
Call or Email us to schedule an appointment today!
(209)-532-7994

EMERGENCY CONTACT: (209)-559-3840
Email: shop@sierraheavyduty.com
Visit Us Online: www.sierraheavyduty.com

Over 50 Years of Experience!



All Major Credit Cards Accepted.

LOREN SNIDER'S TREE SERVICE



Serving Your Tree Needs

Removal & Pruning • Clearing & Hauling
Chipping & Stump Grinding • Mistletoe Removal

Home: **209-878-3828** • Cell: **209-402-9797**

Non licensed • 27+yrs Experience
General Liability Insurance

CLASSIFIED AD SUBMISSION DEADLINE IS THE 15TH OF THE MONTH. SUBMIT AT WWW.PINEMOUNTAINLAKE.COM
COST IS \$0.35 PER WORD, \$10 FOR PHOTO. ADS RUN UNTIL CANCELED BY ADVERTISER

FOR SALE

CEDAR FIREWOOD

\$200 per cord
209-732-5262



14' ALUMINUM FISHING BOAT

New Bimini top, new battery, trolling motor, and fish finder. \$1,300 209-962-6925



2005 TRUCK CAMPER

With pop-out. For full size, shortbed truck. \$10,500
209-962-6925



2006 650 CC 5 SPEED 2900 ML

\$2,150.00 209-962-6925

TOWABLE DOLLY FOR MOTOR HOME

Motorhome towable dolly. ("Kar Kaddy 3") Disk Brakes, Auto Steer, Tilt bed. Towable weight up to 4800 lbs. For sale \$750. Call 925-699-8302

OUTBOARD ENGINE FOR SMALL BOAT

Honda Outboard Marine Gas Engine 4 stroke, 2HP*Used only once. Low emission design Model BZBF Price \$700. Call 925-699-8302

APPLIANCES

Brand new in box: Samsung stove/oven \$500, microwave w/hood vent \$250. Stainless steel double sink \$100. 831-601-5254

FIREWOOD

Premium 16" Dry, Seasoned, Wood.
Oak 1/2 Cord - \$225 • Oak Full Cord - \$375
Cedar 1/2 Cord - \$175 • Cedar Full Cord - \$275
Delivered & Stacked - If Accessible!
Deduct \$50 from above prices if we Deliver & Dump. Please Call Mark @ (209)-588-6227
Or Steve @ (209)-732-7721

HOMES FOR RENT/LEASE

MODERN, SINGLE LEVEL

3Bd, 2Ba, 1,572 sq ft, refrigerator, dishwasher, microwave, washer/dryer, attached 2 car garage, \$1,400/mo, 1 yr lease, dep \$2800, good credit, turn key, fully furnished and equipped or vacant if you wish to bring your own, address: 12631 Tannahill Drive, Groveland, CA. Contact Anna 650-400-1304

LAND FOR SALE

BEAUTIFUL DEEP WATER LAKEFRONT LOT

121 Feet of lake frontage
Lot 4/102 - Longridge

Beautiful deepwater lake lot on north side of Longridge approximately 1/2 acre nestled between two homes. Best deepwater lake lot on the market! \$110,000 925-818-0500

BULK LOT SALE

5 PML lots, \$10,000 or best offer. 209-768-3690

COMMERCIAL SPACE FOR LEASE

FOR LEASE

Office/Retail space now available at Mountain Leisure Center, downtown Groveland. Executive Suites from 250.00 per month, includes utilities and furnishings. Additional office/retail units 500 to 1400 sqft. Award winning design along with the best parking in town. Call John at 209-962-6014 office, or 209-768-3690 cell.

COMMERCIAL SPACE FOR LEASE!

18717 Hwy 120, Groveland. Approximately 1600 square feet of building space, located downtown with propane heat, one ADA bathroom perfect for retail, food service, professional office, medical etc. Available 12/1/2018. Rent \$1,750.00 Deposit \$2200.00. Contact agent 650-520-1022

RENTALS WANTED

EXCELLENT TENANTS

w/excellent credit and rental history looking for homes to rent. Owner approves tenant before placement. Call Yosemite Region Resorts 209-962-1111

FREE ITEMS

FREE POOL TABLE

Free regulation pool table
Please call 408-262-3760 if interested

SERVICES

LOREN SNIDER'S TREE SERVICE

General pruning, ornamental pruning, mistletoe removal, tree removal, dump truck, chipper, stump grinder, local references, Non Licensed 27 + years experience. General liability insurance
209-878-3828 or 209-402-9797

WEEDEATING

\$25/hr 209-878-3422 Have own equipment!
Ask for Robert

SERVICES

**FURNITURE & CHAIR REPAIR/
WOODWORKING**

Retired Cabinet-maker will repair all types / kinds of furniture, cabinets, crown moulding
Local PML Craftsman 209-479-8098

BIG JOHN HANDYMAN SERVICES

Yard Maintenance, House Maintenance and moving households Call John 962-6163

RONNING ROOFING

Call Joe for all your Roofing and Gutter needs. Licensed, Bonded, and Insured. License#976739
209-962-6842

HANDYMAN

For removal of unwanted items. Call Mike, very reasonable rates. Prompt Service. 209-962-0777

PROFESSIONAL PROPERTY MANAGEMENT

RE/MAX Yosemite Gold • Patricia (Tish) Fulton DRE# 00760019 Property Manager Certified by California Association of Realtors 209-962-0837

SATELLITE INSTALLATION & REPAIR

Call 209-694-8155 for details.

ELECTRICAL

A AMERICAN ELECTRIC & SERVICE CO.
Lic. #465220 209/962-7374

SERVICES

COSTA'S TREE SOLUTIONS

Steve Costa, Owner
Fully Insured/Bonded • C.C.L. #1001392
209-962-4468 • Cell 209-768-4469
Certified Arborist #WE7496A

GOT WEEDS?

Contact Jim Atkins at 209.985.4376. Lot Clearing, Hauling, Dump Runs, Weedeating. Local Guy. References available.

TV INSTALLATION & SETUP

Roku, Fire TV Stick, Blu-Ray, AppleTV, Stereo equipment and more. Call for a quote.
209-694-8155 • www.silvatech.net

LOVING PET CARE in my home or in yours - garden care also available. Call Barb 962-5653 or email at shadkitty12@gmail.com

COMPUTERS

custom built, upgrades, trouble-shooting, free consultation. 209/962-7110

VACATION RENTALS

PANORAMIC LAKEFRONT

boat dock, decks, air, 3bd/2ba, Beautiful Views
650/961-6334

Looking For A New Dentist?

We're Accepting New Patients!

Advanced Level Dental Expertise

Care with a Gentle Touch

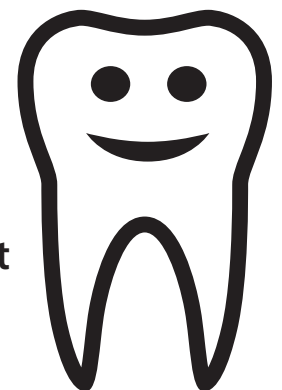
Coffee & Tea for Your Enjoyment

Advanced Digital Technology

Relaxing Movies During Treatment

Insurance Friendly

Senior Discount



209.536.1954

Michael D Scherer, DMD, MS, APC
MODERN DENTISTRY

14570 MONO WAY, STE. I
SONORA, CA 95370

WWW.SONORAMODERNDENTAL.COM



Starting At **Faster Speeds**
\$44.95 **Better Prices**
 Per mo. **Vist GoSNC.com**

(209) 962- 6373

Granite & Quartz Countertops



Located right here in Groveland!

Upgrade Your Kitchen & Bathroom Countertops
High Quality, Guaranteed Work
Affordable Prices • Stone & Tile Projects

Visit our website: www.RockSolidCreations.us

Call Brandon Hoffman: 209-962-1813

HEALTHIER. IT'S HOW WE INSTALL!



Mention this ad
to receive Free
Healthier Living
Installation
Upgrade!

Thank you for voting us Best of the Mother Lode since 2005!

PINNELL'S CARPET ONE FLOOR & HOME

209.736.8077 • 263 S Main St • Angels Camp, CA

209.532.1696 • 12900 Mono Wy • Sonora, CA



Real Estate • Property Management • Vacation Rentals

209-962-1111



20285 Upper Skyridge-15/53—YOUR MOUNTAIN GETAWAY AWAITS! Ready to enjoy, with most furnishings included. 3bd, 3ba and a large bonus room. Open-beam cathedral ceilings, central heat/ac, double-pane windows and wood-burning stove. Beautiful location, on a one-way street, near the lake and hiking trails. Just 26 miles to the north gate of Yosemite Park. Amenities include: Airport, 18-Hole championship golf course, Country Club with indoor & outdoor dining, tennis courts, swimming pool, equestrian center and 3 sandy beaches on the lake. \$267,000 #20191664



20034 Pine Mtn Dr-13/194—TURNKEY READY CABIN located between Big Creek and the main PML Marina. Well maintained 3bd, 2ba, home, completely furnished down to linens & kitchenware. Vaulted wood ceiling, wood stove, skylight and plenty of windows to bring in the natural light. Open floor plan and great outdoor deck w/retractable awning and hot tub. Plenty of parking. Raised platform in the sub-area will store all of your seasonal goods and lake toys. Everything is here for you to start enjoying, without all the fuss! \$234,500 #20191289



12702 Hetch-Hetchy Ct-4/520—GREAT EXPECTATIONS. Tri-level 2427sf home, being sold "as is". Vaulted, pine ceiling in great room, open dining and spacious kitchen. Wood stove and separate laundry room. Generous-sized bdrms & full baths. Den and bonus room can double as sleeping areas. Wrap-around deck & tree views. Recently replaced front door and new carpet. Seller is offering \$3500 for new kitchen appliances. Over-sized 2-car garage with niche that is great for a work station, storage, hobbies or wine cellar. \$319,000 #20191282



21224 Jimmersal Ln-12/103—CUSTOM HORSE PROPERTY. Beautiful, ranch-style home built for easy and efficient living. Situated on 1.22 acres, with views of Duck Wall and the Sierra. Single-level, 3bd, 2-1/4ba, 2640+sf, with hardwood, tile and vinyl flooring. Stainless appliances, laundry room & pantry. Main bath has a jetted tub, separate shower and vanity. Attic fan, over-sized garage and 1420sf of decking. Low maintenance fiber-cement siding. Property includes 1728sf barn, with tack room and 1/4 bathroom. Fenced and cross-fenced. \$475,500 #20182035



20160 Pleasant View—CHARMING GOLF COTTAGE, located at the 11th fairway. Amazing, panoramic sunrise & sunset views! Many improvements: Roof, with 40 year warranty, gutters, redwood deck, interior doors, hardwood flooring, Milgard double-pane windows, window coverings, bathroom fixtures, interior paint and lighting. Entertain your friends and family in the open living space, on the large back deck or in the gazebo, overlooking the golf course or beautiful landscaping. \$325,000 #20191033

ENJOY THE COLORS OF AUTUMN AT YOUR OWN LUXURIOUS PROPERTY!



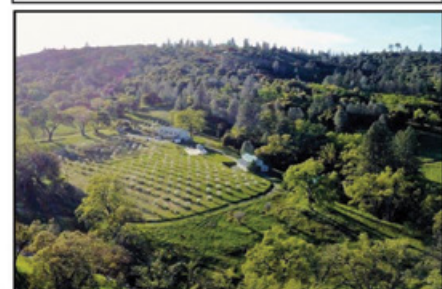
12484 Casaretto Ct ~ Unit 1 Lot 453A
Stunning lakefront, located about 50 yards from the popular Marina Beach. Three levels, 4bd, 4-1/2ba, 3674sf. Open loft, wood flooring, gourmet kitchen. Two master suites, jetted tub and custom, step-in shower. Game room, wet bar, central H/A, gas fireplace, low-maintenance composite deck, covered patio area. Garage & spacious driveway. 1,400,000. MLS #20190625



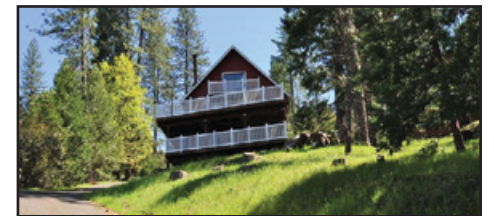
19715 Pleasant View ~ Unit 1 Lot 286
Prime lakefront location, with 96 feet of shoreline, private dock & gazebo. Lake views from almost every room! On the main level is the great room, fireplace, kitchen, hardwood flooring, master bedroom, guest bedroom, laundry room and 2-1/2 baths. The lower level has a bonus room, with fireplace, 2bd, 1ba. Two 2-car garages and a boat garage. \$987,500. MLS #20191297



12221 Deer Creek Rd, Groveland
Fabulous, fenced, 10-acre ranch property, just minutes from Groveland. Custom-built home, with 3bd, 4ba, sitting room, and large office with private entry. Elevator to 2nd floor, multiple decks & patio. Outdoor kitchen, hot tub, 50-ft pool, owned solar system, generator with auto transfer. Multiple out-buildings: Pool house w/bathroom; two-story 5-stall barn, with studio; pump house & 22x60 metal storage building. Finished & heated 4-car garage. RV hook-up & dump station. Irrigated fruit tree orchard. Water storage tanks and 3 water-pumping systems. Offered at \$1,079,000. MLS #20191720. Additional 43 acres also available for sale at \$299,000. Call for Private Showing.



20439 Pine Mtn Dr-3/319—ONE-OF-A-KIND! Single-level home, situated in a low maintenance park-like setting. 3bd, 2ba, 1628sf. Desirable floor plan, with formal dining and great room. Breakfast bar & open kitchen, where guests can visit and join in the food prep. Laundry room has great storage. Enjoy a 360-degree view of nature from the windows. Front & rear decks, mature trees, drip irrigation, nearly-level driveway and RV pad with water & electricity. Over-sized two car garage, with room for your vehicles and more! \$325,000 #20191703



12375 Sunnyside Wy, 8/54—YOUR FUN AWAITS! A-frame home suited to large gatherings and vacation activities. 4bd, 3ba, 2000+sf. Many upgrades: Laminated wood flooring, granite kitchen counters, updated bathrooms and composite decking. Vinyl siding makes exterior wear-and-tear a thing of the past. This home has been a successful rental and has great potential for continued rental income. Extensive view from the deck and a short distance to the Marina beach. Yosemite Park entrance only about 25 miles away. \$289,900 #20181976



12905 Green Valley-3/389—TUCKED AWAY behind a canopy of beautiful oaks. Two master bedrooms (the large bonus room downstairs can easily serve as a master bedroom). Many recent improvements include: New Daikin Mini Split ductless heating and AC system, extremely hi-efficiency 4-zone unit, with separately controlled unit in each room, laminate floors, large redwood deck, carpet, interior paint and 50-gallon water heater. Near Fisherman's Cove, the Lake Lodge Beach, tennis courts and Equestrian Center. Move-in ready! \$225,000 #20181729



19723 Pleasant View-1/283—WIDE-WATER VIEWS of the lake. Main floor has great room with fully-equipped kitchen, high-end appliances and upgraded features. All 4 bdrms have their own full bathroom, w/double sinks. One has a jetted tub. Deck access from 3bdrms. Downstairs has a second great room with smaller kitchenette, family room and ping pong table. Both floors have powder rooms. Laundry room on each floor. 3-car garage. Boat dock has slight sloping walkway. This has been a high-end rental with proven income. \$1,400,000. #20191057



12914 Mueller Dr-2/79—A-FRAME STYLE HOME with a budget-friendly price! 2bd, 1ba, fresh carpeting and expansive deck. Well located, near the newly-renovated Pine Mountain Lake Grill, Country Club and Golf Course. A nicely treed lot provides tranquility and a serene setting. Plenty of parking space available. Come and see this home today! \$159,900 #20191066

100% Local Vacation & Long-Term Rental Services Now Accepting Homes!

- ◆ Owner-Approved Rates
- ◆ Online & Telephone Reservations
- ◆ Aggressive Advertising Campaign
- ◆ AirBnB, VRBO, HomeAway, Flip-Key, Trip Advisor, Booking.com & more!
- ◆ Pre-Arrival Inspections for Guests
- ◆ Professional Departure Cleanings
- ◆ Accidental Damage Protection
- ◆ Monthly Rentals & Tenant Placement
- ◆ Tenant-Screening & Credit Reports
- ◆ Move-in / Move-out Inspections
- ◆ Scheduled Maintenance & Repairs
- ◆ 24/7 Emergency Services Available
- ◆ Monthly Statements & Owner Payments
- ◆ Local, State & Federal Tax Requirements

Like us on Facebook | 18687 Main Street, Suite E, Groveland, CA 95321 | (209) 962-1111 • yosemiteregionresorts.com



ROB STONE OWNER/REALTOR DRE #01025463 | BJORN WAHMAN BROKER DRE #00706559 | TARA STONE MANAGER/COFO DRE# 01106544 | LIZ MATTINGLY BROKER ASSOC. DRE #00709618 | TED BIANCHI REFERRAL AGENT DRE #01318805 | PAULA BIANCHI REALTOR DRE #01316556 | RYAN NIEDENS REALTOR DRE #01940007 | ROY NAVARRO BROKER ASSOC. DRE #01235457 | MIRIAM MARTIN REALTOR, RSPS, ASP DRE #01400779 | ANDREW RIETVELD REALTOR DRE #01994156 | SHARRON WAHMAN EXEC. ASSISTANT RESERVATIONIST | HAYDEN NANTZ EXEC. ASSISTANT RESERVATIONIST | JOSH REGALADO EXEC. ASSISTANT RESERVATIONIST | CAPRICE KROW PROP. MGR/LDOP DRE# 01179023 | CORY STONE PHOTOGRAPHER VIDEOGRAPHER