

The Pine Mountain Lake News



TABLE OF CONTENTS

Administration	3-19
PMLA Financials	6
Board Voting Record	10
The Grill & Lounge	12-13
Clubs & Recreation	20, 26-27
"Homes on the Hill"	
Real Estate	21-26
Community Calendar	28
Community	29-38
School News	39
Puzzle	40
Home Improvement	40-45
Classifieds	46



PML JOB FAIR

PML LAKE LODGE • MARCH 9 • 8AM-NOON
(WEATHER PERMITTING) • SEE PAGE 11 FOR MORE INFORMATION



FIRE SAFETY WORKSHOP MARCH 21

AT THE LAKE LODGE
SEE PAGE 14 FOR INFO

DAYLIGHT SAVING BEGINS
MARCH 10 - SET YOUR CLOCKS FORWARD ONE HOUR



PRSR STD
U.S. POSTAGE
PAID
ABS DIRECT
Change Service Requested

YOSEMITE AREA REAL ESTATE

PAUL S. BUNT REAL ESTATE – DRE #01221266



COZY CHALET

Charming 3 bdrm., 2 ba., 1769 sq. ft. Pine treed lot with deck front and rear. Soaring living room ceiling with fire place. Great for that vacation getaway
12098 Breckenridge Rd – U13/L135
\$274,900



SECLUDED MOUNTAIN VIEW

Two covered decks and view. 2 bdrm./2.5 ba. 2540 sq. ft. 3rd rm. could be used as bedrm. Some updating will make this home a jewel. Priced to sell. 12317 Mills – U8/L104
\$339,900



SINGLE LEVEL HOME

Oak trees and good location near airport, stables, Fisherman's Cove. 3bd, 2 bath, 1650 sq ft 2 car garage.
U3/L424 – 20747 Rishing Hill Circle
\$244,000



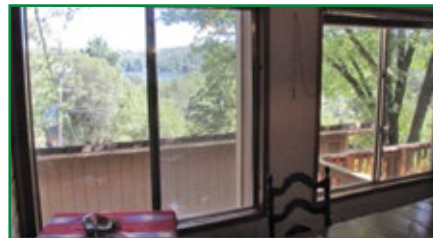
PLENTY OF ROOM

3Bd/3ba w/lwr lvl Bonus Rms, wet bars. A great Air B&B or full time residence. Wd bm clngs, beautiful rock f.p. & lg deck. 2 mstr stes on main lvl. Lg game room w wet bar & kitchenette.
U8/L232 – 19712 Butler **\$338,900**



LOCATION LOCATION LOCATION

Huge Airbnb potential
Western Themed 3bd/3ba/2426 sq ft on Fisherman's Cove
12816 Boitano Rd. – U3/L165
\$398,000



LAKE VIEW

Oak trees and lots of room
3 bdrms. 2 ba. Approx. 1700 sq. ft. Great location .1 mile to Dunn Ct. Cabin/Chalet woodsy interior
12810 Mt. Jefferson Ct – U1/L248
\$309,000



NEW LISTING

2005 NEW HOME

Treed mountain view and location.
4 bedroom, 3 bath, 2,939sf. Warmth, charm, bright & airy
With style, stamped driveway
12268 Mills St. U 8 L 77
\$449,900



SHORT SALE

EXECUTIVE HOME

5 bdrm 5 ba 4,140' of elegance on large corner lot. Very well located to CC and Golf Course. Contractors personal home. 19131 Dyer Court
\$499,000 (Requires Bank Approval)



RARE 4.5 AC LOT IN PML!

One of the largest lots in PML! Lot B2 also for sale, buy both! Awesome multi-tiered views. Very private yet located near amenities at end of cul-de-sac & borders lg ranch. 19701 Jones Hill Ct **\$125,000**



TAXIWAY LOT

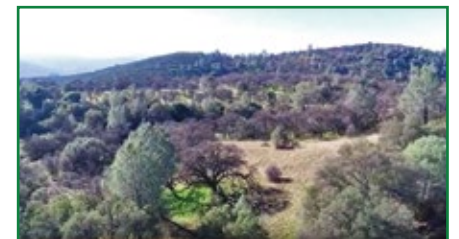
.56 acre oak treed lot. Quiet loop taxiway, ideal for metal hangar & home. Must see to appreciate. U12/L45
\$124,999



NEW LISTING

LAKE FRONT

Double lot. Lots of play room, dock site
3 bedroom, + Den, 3 bath, 3,022 sf
Main lvl living and great room style
Close to main amenities & town
19555 Pleasant View Dr U 1 L 303A
\$524,900



ROLLING HILLS

Heritage oaks, borders BLM land, gated agricultural access, abundant wildlife! Southern exposure, 37+ usable acres. Wonderful to build your dream home "off the grid." Land in Williamson Act. Seller will owner finance with 25% down **\$149,900**

LAND AND LOTS

21257 Jimmersall Ln., U12/L80, 1.5 ac, **\$34,000**
U7/L109, De Ferrari Ct., .70 ac, GOLF COURSE LOT **\$25,000**

U12/L45, Hemlock St., .56ac, TAXIWAY LOT, **\$124,999**
19071 Jones Hill Ct., U5B/L3, 4.50 ac, **\$125,000** room galore & views, near Golf Course



LARRY JOBE

REALTOR – TAXIWAY EXPERT
209.962.5501 • 209.768.5508 Cell
larryjobe1@gmail.com
BRE #01444727



KRYSTAL BIGGER

REALTOR/GRI – LAKE FRONT EXPERT
209.768.5944 Cell
kbigger81@gmail.com
BRE #01324944



5.39 PRIVATE ACRES

20955 Whites Gulch Rd. Perfect for Airbnb or B&B
4bd/4ba/2,705 sq ft Manicured, usable acreage
No HOA dues **\$599,000**

This home is truly unique and pictures don't do it justice. It is a "one of a kind" and built to last. Many built in shelf's and niches angled walls. Antique claw footed tub in one bath from 1904 with brass claw feet, original medicine cabinet with beveled mirror. Master bedroom is large with a sit in bay window. Much, much more to see. Built by premier contractor as his personal home. Usable Acreage.

www.YosemiteAreaRealtors.com • www.krystalsellspinemountainlake.com

KRYSTAL & LARRY – Our Passion Is Here, Where's Yours?
Local Agents, Modern Technology, **Best Service**

General Manager's Report

Joe Powell – CCAM-LS, CMCA, AMS General Manager

SNOWSTORMS IMPACT FEBRUARY BOARD MEETING

Due to the on and off snow storms in the middle of February, the decision was made to cancel the Board meeting for February and move all of the agenda items to the March 16th Board meeting. The Board wanted to make sure that all members have the opportunity to attend the open meeting if they want to, as there are some important agenda items under consideration.

MAINTENANCE AND DEPARTMENT OF SAFETY KUDOS

We would like to thank our Maintenance staff for the great job they did plowing the roadways and dealing with hazards during the storms. These folks worked in long shifts and made sure that our roadways were clear for travel. It was tough keeping up with the snow and clearing all 52 miles of roadways, but they did a great job.

I would also like to recognize our Department of Safety staff for their work in assisting members and guests during the storms and power outages. I have received many calls and emails from members who are appreciative of staff efforts.

PML COUNTRY CLUB BUILDING RENOVATION PROJECT

We are making progress on the Country Club Building (Grill) Renovation Project. The demolition work was completed and the subcontractors have been working on replacing the old electrical and plumbing systems. We had anticipated that given the age of the building and multiple, piece-meal renovations over the years, we would find some issues. Our contractor identified some problems with flooring and the affects of the old upgrades from years ago and is working to resolve them.

We have contracted with one of our local caterers to provide limited dinner service at the Lake Lodge to members at a reasonable price. As for food and beverage service for our golfing members and guests, this will be handled by our golf snack bar and our staff is setting up some tables, chairs and heaters in the Golf Shop paddock area.

TANNAHILL CULVERT REPLACEMENT PROJECT

The repairs to Ferretti Road have been completed and it is back open to normal traffic. Now we can start working on replacing the culvert under Tannahill Drive. Unfortunately, the

culvert replacement project was postponed due to the multiple snow and rain storms.

As of the date of writing this article, our contractor for this project plans to begin work at the end of February and finishing up in March. If everything goes as planned, we should complete this project work by the middle of March and be back to normal traffic on this roadway.

PML EQUESTRIAN CENTER LOOKING FOR MORE BOARDERS FOR OUR NEW BARN

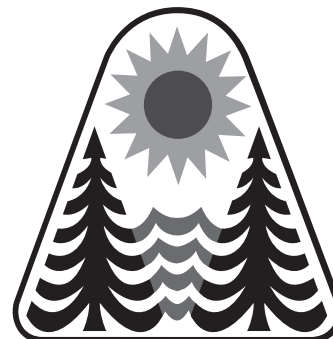
The PML Equestrian Center barn project is completed and we have our first boarder and looking for more. Anyone interested in boarding their horses in our new barn, should contact our Stables Manager, Melissa Moore at (209) 962-8667.

SIGN UP FOR THE ESNAP PROGRAM!

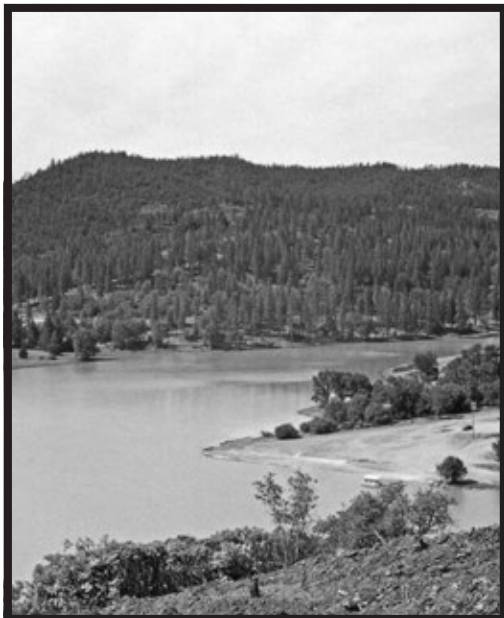
What is the eSNAP Program? eSNAP stands for Electronic Safety, News & Alert Program. The Association created a new direct email program where members can sign up and opt-in to get real-time information on everything from emergencies, safety notices, amenity events and more. Members who wish to participate and opt-in can find the link on the homepage of the Official PML Website.

Until next month, have a Happy St. Patrick's Day!

St.
Patrick's
Day



On the Cover



This month's cover features Pine Mountain Lake during its first fill. There was a lot of excitement as the center piece of our community came to life.

Photo: PML Archive

Submission Guidelines

The PML News is the Official Newspaper of Pine Mountain Lake Property Owners

The PML News is dedicated to reporting PML Association business and PML Association news to Pine Mountain Lake Property Owners.

The PML News receives more than 100 Tuolumne County/Groveland community related submissions each month. All such community related articles and notices will appear in the PML News on a SPACE AVAILABLE basis and at the DISCRETION of the PML News Publishing Editor.

DEADLINES

Advertisements must be received IN FULL (text, MLS info, images, logos, etc.) by the 10th of the month for the following month's edition. Only advertisements received in full will be guaranteed to be published in that month's edition.

NO EXCEPTIONS.

MEDIA ACCEPTED

email

SOFTWARE (Articles)

InDesign, Microsoft Word, Adobe Pages, or TXT formats only.

SOFTWARE (Advertisements)

PSD, JPG, PDF, EPS or TIFF only.

TEXT/GRAPHICS

Handwritten text is not accepted. Material composed completely of capital letters is not accepted. Please use uppercase and lowercase letters in composition. Ink jet printed images are not accepted. Images are accepted ONLY as camera ready art, original photos (to be scanned) or as JPEG, TIFF or PDF files created with above listed software. All scans and bitmap images must be in TIFF or JPG format at least 200 dpi at 100% (300 dpi preferred). Ad files are stored for 90 days from first run date. Older ads that have not been running must be resubmitted. (See Display & Insert Advertising Contract "Design and Preparation Charges.")

E-MAIL TEXT/GRAPHICS

Text/graphics may be delivered as e-mail attachments via the Internet. Send to: pmlnews@sabredesign.net.

AD DESIGN and PROOFS

Ads that are requested to be sent to other periodicals require a usage fee from the advertiser (see Display & Insert Advertising Contract "Design and Preparation Charges"). Proofs are available upon request and final proof approval for all ads is expected within 24 hours. Changes made are LIMITED to typographical or graphic placement errors. NO OTHER ADDITIONS OR CHANGES WILL BE MADE.

SUBMISSION DEADLINES

Articles — 10th each month
Ads — 10th each month
Classifieds — 15th each month

VISIT US ONLINE
www.pinemountainlake.com

**PINE MOUNTAIN LAKE
ASSOCIATION**
209.962.8600

BOARD OF DIRECTORS

Mike Gustafson (President)
Steve Griefer (Vice President)
Nick Stauffacher (Treasurer)
Wayne Augsburger (Director)

GENERAL MANAGER

Joseph M. Powell, CCAM-LS, CMCA, AMS

CORRESPONDENCE TO DIRECTORS

Pine Mountain Lake Association
19228 Pine Mountain Drive
Groveland, CA 95321
PMLABoard@pinemountainlake.com

**ADMINISTRATION OFFICE
HOURS OF OPERATION**

Monday - Friday 8:00 AM - 4:30 PM
Tel: 209/962-8600

The Pine Mountain Lake News,
established July 25, 1973,
is printed monthly for residents of
Pine Mountain Lake and vicinity by
Pine Mountain Lake Association,
Groveland, California 95321.

SUBSCRIPTION RATES:

Co-owner subscription: \$6 per year
Single copies: 50 cents each
Single mailed copies: \$1.35 each
For non-members: \$10 per year

SUBMISSION DEADLINE

10th of the month by 4:30 PM
LATE SUBMISSIONS MAY NOT BE
ACCEPTED

Visit www.pinemountainlake.com for
ad rates and submission guidelines or
email: PMLNews@SabreDesign.net.
For the mutual benefit of all property owners,
the Pine Mountain Lake News reserves the
right to edit all copy submitted for publi-
cation. The Pine Mountain Lake News is a
private enterprise, not a public entity, and as
such is entitled to reject advertisements or
articles in the best judgment of its editor or
publisher, despite a probable monopoly in
the area of its publication. Pine Mountain Lake
Association is not responsible for, nor does it
guarantee the accuracy of, information con-
tained in any ad placed in the Pine Mountain
Lake News.

DAVID WILKINSON
Publishing Editor

SABRE DESIGN & PUBLISHING
Design/layout

PINE MOUNTAIN LAKE NEWS
P.O. Box 605
Groveland, CA 95321
Tel: 209.962.0613
Fax: 800.680.6217

E-mail:
PMLNews@SabreDesign.net

President's Corner

Mike Gustafson - PMLA Board President



Mike Gustafson
PMLA President

Beware the Ides of March! Ever since a fortune teller (according to Shakespeare) warned Julius Caesar of his impending assassination, March 15 still carries a foreboding meaning. I always thought it was just my mother lamenting my birthday, guess not. March is also known for the transition from really bad weather to sorta good weather. March: in like a lion out like a lamb. Let's hope that is the case this year, we have had enough of snow and rain for now.

During the great snow storms of February, 2019 your PML Maintenance staff was out in full force, plowing the streets and clearing downed trees to make our lives safer and better. Your Safety Department was also out in the snow, making welfare checks, giving stuck drivers rides home, and doing what was needed to help. Joe Powell was in the office at 4:00am managing everything. To all of the PML staff, thank you for all you do! I am also aware of certain CHP officers who worked non-stop for 24 hours to keep us out of the snow banks and if we were already in the snow bank, getting us out of harm's way. One of our CHP officers carries a chain saw and was seen cutting away a downed tree that was blocking a road. Thank you all for your service to our homeowners.

March is very special to me because that is when the Boys of Summer start their Spring Training in Arizona and Florida. I grew up in Tucson, and the schools let

out when the Cleveland Indians came to town to practice. The team sent buckets of tickets to be given out at the high schools, and my best baseball memories are sitting on the outfield fence and talking to the center fielder.

Now to more important musings. PML will hold a Job Fair on March 9th, both for seasonal workers and for full time employees. From my point of view, the best seasonal jobs are at the Marina. What could be better than being out on the lake and being paid for it! Be sure to mark your calendar and come to the job fair if you are tired of sitting around the house or want a little extra funds.

As most of you know, your Board of Directors gave the Lake and Marina committee (L&M) the charge to come up with a better process for allocating the 14 pontoon boat Marina beach spots. The old process required interested parties to wait all night in the cold to get one of the spots. The L&M committee spent about 10 months hashing over many ideas. They contacted many boaters seeking their thoughts on this or that idea. The result of their efforts is the policy you may have read in previous PML News editions. Unfortunately, there is never going to be a process that makes everyone happy. The lake is too small and the ability to add an unlimited number of slips just does not exist. We are continuing to investigate possible ways to add at least a few more slips. Your board will be voting on the beach parking policy for 2019 at the March meeting.

I have noticed that the number of Letters to the Editor in the PML News has fallen basically to zero. I was a bit concerned at first, but then realized that in these days of Social Media, sending in a letter for

printing a month from now is no longer of great interest. Also many homeowners now send their thoughts via email to the PMLABoard@pinemountainlake.com. All board members get these emails and we read every one of them. Contrary to what you might hear, letters to the PML News are always welcome and if you want to see your name in print, please send in your thoughts. I especially enjoy the letters that thank other homeowners, vendors or staff for their positive contributions to our community.

The 2019 Homeowners Survey will be available soon. Please take a few minutes to complete the survey. It's a useful source of homeowner opinions and priorities for your PML board and management.

In closing, remembering the dreaded Ides of March, if you get invited to a Toga party, be sure to wear your flak jacket!

Mike

Subscribe to the PML News TODAY!

Name _____

Unit _____ Lot _____

Mailing Address _____

NO CHARGE for Property Owners (bulk)
\$6/yr for Co-Owners (bulk);
\$10/yr for Non-Property Owners (bulk)
\$20/yr for PROPERTY OWNERS (1st class)
\$30/yr for Non-property owners (1st class)

Enclosed is my check in the amount of
\$ _____ (Payment due in full)

Send this subscription to:
Pine Mountain Lake Association
19228 Pine Mtn. Dr. Groveland, CA 95321
Attn: Anita

**Main Gate personnel are
available to issue gate cards on
SATURDAY & SUNDAY
8:30AM-4:30PM.
Please call in advance to
schedule an appointment at
209-962-8615**

PINE MOUNTAIN LAKE ASSOCIATION



209.962.8600

www.pinemountainlake.com



ADMINISTRATION OFFICE HOURS

8:00 AM TO 4:30 PM – MON THRU FRI
OPEN AT 8:45 AM SECOND TUESDAY OF EACH MONTH

2019 ADMINISTRATION OFFICES HOLIDAYS

(ADMIN OFFICE WILL BE CLOSED)

Mon. May 27	Memorial Day	Fri. Nov 29	Day after Thanksgiving
Thurs. July 4	Independence Day	Tue. Dec 24	Christmas Eve
Mon. Sept 2	Labor Day	Wed. Dec 25	Christmas Day
Mon. Nov 11	Veterans Day	Tue. Dec 31	New Year's Eve
Thur. Nov 28	Thanksgiving Day	Wed. Jan 1, 2020	New Year's Day

PMLA BOARD MEETINGS SCHEDULE

Meetings are held at the PML Lake Lodge and start at 9 AM
 (THIRD SATURDAY – UNLESS OTHERWISE NOTED)

March 16, 2019

- April 20, 2019
- May 18, 2019
- June 15, 2019
- July 20, 2019

August 24, 2019 – *Annual Member Meeting/Election*

September 14, 2019 – *(Second Saturday due to 49er Festival)*

October 19, 2019 *(Begins at 8 AM)*

No November meeting scheduled

December 7, 2019 *(First Saturday)*

PAY PHONE LOCATIONS Press *81 on any Pay Phone to contact Main Gate.

- | | |
|---------------------------|----------------------------------|
| In an emergency, call 911 | • Main Gate (restrooms) |
| • Campground (restrooms) | • Marina |
| • Dunn Court Beach | • Equestrian Center |
| • Lake Lodge | • Tennis Courts (Pine Mtn Drive) |

PINE MOUNTAIN LAKE NEWS DELIVERY

Although we guarantee that the PML News is mailed from Modesto, CA on the same day (between the 26th-30th of month), most post offices (except Groveland) sort Bulk Mail after First Class mail. So, consider a First Class delivery subscription for just \$20/yr. (\$20 per year for property owners and \$30 per year for non-property owners) Interested? Call the PMLA Office at 209/962-8632 or see form above.

The Pine Mountain Lake News is also available (in PDF format) at: www.pinemountainlake.com.
 New editions are posted by the 1st of the month.

PHONE & EMAIL DIRECTORY

ADMINISTRATION

General Manager – Joseph Powell
joepowell@pinemountainlake.com

Admin Asst. to G.M. – 209.962.8627
Debra Durai
debra@pinemountainlake.com

Human Resources – 209.962.8628
Shannon McNair
pmlhr@pinemountainlake.com

E.C.C. Coordinator – 209.962.8605
 Plan Submittal, Compliance Fees, Mergers
Terri Thomas
ecc@pinemountainlake.com

Member Relations – 209.962.8632
 Gate Cards, Address Changes, Webmaster, Notary Public
Anita Spender
anita.spender@pinemountainlake.com

CC&R Compliance/Fire Mitigation Community Standards Director
209.962.1240
Sarah Ruhl
communitystandards@pinemountainlake.com

Community Standards Specialist
209.962.1241
Suzette Laffranchi
compliance@pinemountainlake.com

General Info & Lake Lodge Scheduling 209.962.8600
Rental Coordinator – Tina Cutright
admin@pinemountainlake.com

Main Gate – 209.962.8615
 General Safety Inquiries, gate passes, campground reservations, tennis reservations
campground@pinemountainlake.com

Accounting – 209.962.8607
 Receivable/Collections/ Assessments
Michelle Cathey
pmlar@pinemountainlake.com

Accounts Payable – 209.962.8626
Karen Peracca
pmlap@pinemountainlake.com

Sr Accountant/Payroll
209.962.8618
Stacy Gray
stacy@pinemountainlake.com

Controller – 209.962.8606
 Accounting Procedures
Ken Spencer
controller@pinemountainlake.com

Recreation and Seasonal Operations Manager –
209.962.8604

Ryan Reis
r.reis@pinemountainlake.com

DEPARTMENT OF SAFETY
Director of Safety – 209.962.8633
Natalie Trujillo
n.trujillo@pinemountainlake.com

Sergeant – 209.962.1244
Sgt. Teri Cathrein
t.cathrein@pinemountainlake.com

Sergeant – 209.962.8616
Sgt. Amanda Darrow
a.darrow@pinemountainlake.com

MAINTENANCE DEPT
209.962.8612
Susan Capitanich
maintenance@pinemountainlake.com

Maintenance Manager
209.962.8611
Tom Moffitt
tmoffitt@pinemountainlake.com

GOLF COURSE
Golf Course Superintendent
209.962.8610
Rob Abbott
rabbott@pinemountainlake.com

Golf Pro Shop – 209.962.8620
 Golf Pro Shop/Golf Reservations
Doug Schmiett
dschmiett@pinemountainlake.com

Golf Pro – 209.962.8622
Mike Cook
golfpro@pinemountainlake.com

THE GRILL AT PINE MOUNTAIN LAKE
The Grill Manager – 209.962.8639
Jay Reis
clubmgr@pinemountainlake.com

Restaurant – 209.962.8638
Hospitality Coordinator
Jimmy Gutierrez
cluboffice@pinemountainlake.com

OTHER PHONE NUMBERS
Equestrian Center
 Equestrian Center Manager
Melissa Moore
209.962.8667
stables@pinemountainlake.com

PML NEWS – 209.962.0613
 Ad/Article Submissions
 Sabre Design & Publishing
PMLNews@SabreDesign.net

PINE MOUNTAIN LAKE ASSOCIATION
SUMMARY STATEMENT OF OPERATING FUND REVENUES AND EXPENSES
 For The Twelve Months Ended December 31, 2018

OPERATION OF AMENITIES	Revenues					Expenses				Budget (NET COST) INCOME	Variance Bud - Act
	Members' Assessments Net of Discount	User Fees	Sales, Net of Cost of Sales	Miscellaneous Income	Total Revenues	Total Expenses	(Cost)/Income Before Depreciation	Depreciation Expense	(NET COST) INCOME		
Golf Course	\$ -0-	\$ 754,040	\$ 34,377		\$ 788,417	\$ 1,365,471	\$ (577,054)		\$ (577,054)	\$ (573,301)	(3,753)
Restaurant & Bar	-0-	5,600	665,312		670,912	1,261,937	(591,025)		\$ (591,025)	(524,558)	(66,467)
Marina	-0-	325,755	123,176		448,931	582,492	(133,561)		\$ (133,561)	(190,226)	56,665
Snack Shack	-0-		38,050		38,050	60,139	(22,089)		\$ (22,089)	(36,296)	14,207
Stables	-0-	35,058		944	36,002	192,658	(156,656)		\$ (156,656)	(183,346)	26,690
Recreation	-0-	102,867	2,842		105,709	117,773	(12,064)		\$ (12,064)	(23,912)	11,848
Roads & Facilities Maintenance	-0-	93,305		580	93,885	1,795,417	(1,701,532)		\$ (1,701,532)	(1,814,223)	112,691
PROPERTY OWNER SERVICES											
Safety	-0-	183,548		1,158	184,706	1,026,206	(841,500)		(841,500)	(916,530)	75,030
Administration	-0-	216,708		35,896	252,604	1,682,866	(1,430,262)		(1,430,262)	(1,490,775)	60,513
ASSESSMENTS											
Assessments	5,531,662			62,872	5,594,534	81,253	5,513,281	685,592	4,827,689	4,700,426	127,263
Totals	\$ 5,531,662	\$ 1,716,881	\$ 863,757	\$ 101,450	\$ 8,213,750	\$ 8,166,212	\$ 47,538	\$ 685,592	\$ (638,054)	\$ (1,052,741)	414,687

Notes to the Financial Statements

1. Total Revenues minus Total Expenses equals Net Income before depreciation. The annual budget for income before depreciation is (\$236,740).

	TOTAL RESERVE FUNDS	NEW CAPITAL ADDITIONS FUND	TOTAL CONTRIBUTION TO CAPITAL
2018 Beginning Fund Balances	3,606,470	\$ 117,358	3,723,828
Interest Income	9,827	23	9,850
Bank Fees/Discounts Taken	76		76
Assessments Earned	1,965,000	93,288 ⁽²⁾	2,058,288
Other Income/Expense			
PURCHASES BY AMENITY			
Golf Course	(157,639)	(2,358)	(159,997)
Country Club	(2,126)		(2,126)
Bar			-
Marina	(79,951)	(1,820)	(81,771)
Snack Shack			-
Swim Center		(12,415)	(12,415)
Stables	(102,754)		(102,754)
Recreation			-
Roads & Facilities Maintenance	(35,592)	(6,644)	(42,236)
PROPERTY OWNER SERVICES			
Safety	(28,770)	(36,419)	(65,189)
Administration	(18,072)	(3,725)	(21,797)
Non-Capital Reserve Expenses	(1,255,508)		(1,255,508)
Total transfer to Operating Fund for property and equipment additions and reserve expenses	(1,680,412)	(63,381)	(1,743,793)
Adjusted Fund Balances	\$ 3,900,961	\$ 147,288	\$ 4,048,249

Notes to the Financial Statements

(1) The Budgeted Reserve Fund assessment for 2018 is \$1,965,000
 (2) The Budgeted New Capital Additions Fund assessment for 2018 is \$93,286

	TOTAL RESERVE FUNDS	NEW CAPITAL ADDITIONS FUND	TOTAL CONTRIBUTION TO CAPITAL
2019 Beginning Fund Balances	3,915,185.69	\$ 147,288	4,062,474
Interest Income	174		174
Bank Fees/Discounts Taken	32		32
Assessments Earned	168,750 ⁽¹⁾	⁽²⁾	168,750
Other Income/Expense			
PURCHASES BY AMENITY			
Golf Course	(466,113)		(466,113)
Country Club	(1,045)		(1,045)
Bar			-
Marina	(2,090)		(2,090)
Snack Shack			-
Swim Center			-
Stables	(3,000)		(3,000)
Recreation	(1,045)		(1,045)
Roads & Facilities Maintenance	(1,045)		(1,045)
PROPERTY OWNER SERVICES			
Safety			-
Administration			-
Non-Capital Reserve Expenses	(114,385)		(114,385)
Total transfer to Operating Fund for property and equipment additions and reserve expenses	(588,723)	-	(588,723)
Adjusted Fund Balances	\$ 3,495,419	\$ 147,288	\$ 3,642,707

Notes to the Financial Statements

(1) The Budgeted Reserve Fund assessment for 2019 is \$2,025,000
 (2) The Budgeted New Capital Additions Fund assessment for 2018 is \$-0-

PMLA Money Matters

Ken Spencer, CAFM – Association Controller

As I sit here contemplating how to dig out from all the snow piling up in PML it occurs to me that we have a number of other “things” that can obscure the landscape and make life within the Association more challenging while simultaneously blurring the horizon. Excuse me if this sounds a bit too existential but I believe there is a basis here for some self-examination and introspection.

Over the past several months there have been some relatively new phrases tossed around the political and cultural arena. Such things as “fake news”, “witch hunt”, “collusion”, and “impeachment” have become commonplace phrases used to stoke fear, distrust and anger. Oftentimes these emotion laden words simply serve to distract from any real issues that deserve discussion and an honest conversation.

Similar to many small towns and communities PML represents a microcosm of this country as a whole. While I have my opinion on many of the current “discussions” taking place on social media today I will confine my impressions and comments to those that directly or indirectly impact the Association’s financial well-being (both real and perceived).

I always find it mildly amusing that a number of people express concern over the way your money (assessment) is being handled and yet they really don’t do anything to obtain accurate information, but rather rely on “fake news” to make their point. Any member of PML has the right to examine our financial records to get accurate and factual information. In addition I have repeatedly offered to meet with any property owner to discuss their concerns. Finally I conducted two financial related member workshops in 2018 which had what I would describe as extremely low participation. All of these things would provide a concerned property owner with the means to make an informed decision as to the real state of our finances instead of engaging in a “witch hunt” for signs of corruption or misuse of funds. These kinds of assertions hint at “collusion” between members of the management team and the Board of Directors to use your money in

ways that are not in the best interests of the Association.

Where do all these non-factual based claims and assertions lead us? Why of course to the ultimate recourse, the recall (impeachment) of the Board of Directors. This is the ultimate act of desperation that is taken when a governing body makes a decision that some citizens simply don’t like. Instead of gathering accurate and complete information it is easier to try and “throw the baby out with the bathwater”. Why not use the ballot box to express your dissatisfaction with the current individuals that were elected to make decisions for the Association as a whole? Each of our Board members serve three year terms. This provides more than adequate opportunity to make changes that a majority decides is necessary.

What does this all have to do with our money? Simply put it is a distraction from the focus all of us serving the membership (Board, staff and volunteers) must deal with. A distraction that costs money directly (legal fees, stalled projects, delayed decisions) and indirectly (lack of attention to other matters, gossip, depressed morale).

Ultimately as your Controller I serve at the pleasure of the General Manager and, indirectly, the Board of Directors. Having served for almost 13 years I have seen Board Members come and go and the one thing I can say for virtually all of them is that they have a desire to make our community better, stronger and more financially sound. This is a philosophy that I have and will continue to support whole heartedly.

Let’s change the tone and see what we can do to all pull in the same direction and move forward into this new year with determination, hope and dedication to making Pine Mountain Lake a more dynamic and all-inclusive place to live.

Well that’s it for this month. If you have any PMLA Money Matters you would like to see discussed in this column in the future please drop me a line at CONTROLLER@PINEMOUNTAINLAKE.COM or give me a call at 962-8606. Thanks for reading and I hope you find this monthly discussion helpful, somewhat interesting and at least a bit informative.

PML SAFETY REPORT 2019

	JANUARY	YTD
Guest Passes Issued	933	933
Vendor Passes Issued	137	137
Temporary Resident Passes Issued	456	456
Vehicles Admitted	15,090	15,090
Vehicles Refused Entry	106	106
Phone Calls Received	2,943	2,943
Residential Alarm	6	6
Animal - Loose	16	16
Animal - Impounded	4	4
Animal - Dead/Injured	16	16
Animal - Disturbance	6	6
Public Assist	24	24
Welfare Check	6	6
Transport	7	7
Traffic Hazard	1	1
Traffic Control	1	1
Excessive Speed/Reckless Driving	12	12
Gate - Tamper	0	0
Gate - Follow Through	8	8
Gate - Malfunction	7	7
Gate - Struck by Vehicle	4	4
Control Burn Reported	94	94
Fire Safety - Smoke Complaint	5	5
Residential Disturbance	2	2
Amenity Burglary	0	0
Residential Burglary	0	0
Grand Theft	0	0
Petty Theft	1	1
Trespassing	2	2
Vandalism	2	2
Property Damage - PML	1	1
Property Damage - Resident	3	3
Illegal Dumping	0	0
PML Regs Violations Resident	1	1
PML Regs Violations Guest	1	1
Vehicle - Citation Issued	0	0
Vehicle - Accident PML	2	2
Patrolling Unit	856	856
Amenity Security Check	2,580	2,580
Residence Security Check	159	159
Monitoring Tennis Courts	0	0
Weapon Violation	0	0
Fixed Post	5	5
Courtesy Notice Issued	4	4
All Other Fees Collected	\$20,746.73	\$20,746.73

PMLA OFFICIAL WEBSITE – PineMountainLake.com
OFFICIAL FACEBOOK – [Facebook.com/PineMountainLakeCA](https://www.facebook.com/PineMountainLakeCA)
 Administration Office at **209.962.8600**

COMMUNITY DOCUMENT SHREDDING DAY

Pine Mountain Lake Association has partnered with Shred-It USA to hold a community document shredding day.

SATURDAY, APRIL 13, 2019

PMLA Administration Office Parking Lot 8 am – Noon
(or when truck is full, whichever comes first)

\$8 per "Bankers Box" for PMLA Members

\$10 per "Bankers Box" for Non-Members



The event is open to all, PMLA members and non-members alike. All documents should be in "Bankers Boxes" (12" x 10" x 15"). If you do not have the correct size boxes, bring your documents in bags, bins, miscellaneous boxes etc. and they will be "measured" into a Bankers Box for pricing. Paperclips, staples, brads and thin wire spiral bindings are OK. Binders with metal rings and large binder clips cannot be accepted. You may pay with cash, check or credit card. Member charge will not be available for this event.

For more information please contact Debra at (209) 962-8627 or Debra@pinemountainlake.com

**PERSONAL IDENTITY
CONFIDENTIAL
CLASSIFIED
TOP SECRET**



COMMUNITY STANDARDS STATISTICS JANUARY 2019

Courtesy Notices.....	172
Notice of Non Compliance	88
Final Notices.....	52
Tree Removal Requests	12
Member Assistance	213
Fines.....	15

FINES LEVIED

- FIRE SAFETY**-\$1,000 plus \$500 each month or portion thereof that property is out of compliance.
- FIRE SAFETY**-\$1,000 plus \$500 each month or portion thereof that property is out of compliance.
- STORAGE**-\$250 plus \$250 each month or portion thereof that property is out of compliance.
- FIRE SAFETY**-\$1,000 in abeyance for 30 days plus \$500 each month or portion thereof that property is out of compliance.
- GARBAGE & STORAGE**-\$250 plus \$250 each month or portion thereof that property is out of compliance.
- FIRE SAFETY**-\$1,000 plus \$500 each month or portion thereof that property is out of compliance.
- FIRE SAFETY**-\$1,000 in abeyance for 30 days plus \$500 each month or portion thereof that property is out of compliance.
- FIRE SAFETY**-\$1,000 plus \$500 each month or portion thereof that property is out of compliance.
- STORAGE**-\$250 plus \$250 each month or portion thereof that property is out of compliance.
- FIRE SAFETY**-\$1,500 plus \$1,000 each month or portion thereof that property is out of compliance.
- FIRE SAFETY**-\$500 in abeyance for 30 days plus \$500 each month or portion thereof that property is out of compliance.
- FIRE SAFETY**-\$1,000 plus \$500 each month or portion thereof that property is out of compliance.
- FIRE SAFETY**-\$500 plus \$500 each month or portion thereof that property is out of compliance.
- FIRE SAFETY**-\$1,000 plus \$500 each month or portion thereof that property is out of compliance.
- FIRE SAFETY**-\$1,000 plus \$500 each month or portion thereof that property is out of compliance.

Department of Safety

Natalie Trujillo - Director of Safety

THANK YOU FOR CALLING THE PACIFIC GAS AND ELECTRIC OUTAGE LINE

As a friendly reminder, the 24-hour number for PG&E outages is 1-800-743-5002. If you are calling from a phone number associated with your address in Pine Mountain Lake you will be quickly connected to outage information in your area. The Department of Safety is not privy to specialized PG&E power restoration information, including where PG&E employees are working or their schedule of work for that day. They do not report to us and we do not have any information beyond that available to any PG&E customer affected by an outage. Again, they do not provide us with specific timeframes in which power may

be restored. Your best course of action is always to contact PG&E directly for outage information.

If you happen to discover downed power lines in the roadway or near your home, please call 911 immediately. It is important that downed power lines are addressed as quickly as possible in order to prevent death or injury from live electrical lines. You are of course encouraged to contact the Main Gate after contacting 911. Please continue to respect all hard road closures due to severe weather conditions and downed power lines.

If you would like to speak to a PG&E representative regarding an outage at your home or for a general location please call 1-800-743-5000. PG&E offers many additional resources on their website,

pge.com, including an outage map and also provides the option to sign up for outage alerts which are helpful when trying to stay up to date with estimated

restoration times.

As always, please remember to contact the Main Gate at (209) 962-8615 to report suspicious or objectionable activity!

LETTERS TO THE EDITOR

LETTERS TO THE EDITOR RECEIVED – 0
 DENIED BY EDITORIAL COMMITTEE – 0
 Exceeds 250 word maximum – 0
 Content – 0
 Not a property owner – 0
 "THANK YOU" LETTERS RECEIVED – 0

DEFERRED TO NEXT EDITION BY
 EDITORIAL COMMITTEE – 0
 DENIED BY BOARD OF DIRECTORS – 0
 DEFERRED TO NEXT EDITION BY
 BOARD OF DIRECTORS – 0
 Thank you's do not require editorial committee approval

Submit Letters to the Editor by sending to "Editor, PML News"
 Mail: 19228 Pine Mountain Drive, Groveland, CA 95321
 Email: PMLNews@sabredesign.net • Fax: 800-680-6217

PLEASE NOTE THAT ALL LETTERS APPEAR IN THE ORDER RECEIVED BY THE PML NEWS

The Pine Mountain Lake News welcomes letters and articles for publication provided they meet the criteria established in the current PMLA Editorial Policy (See excerpt below – entire policy on file at the Administration Office). Letters must be limited to 250 words, typewritten using upper and lowercase letters or neatly printed (no all-capital material) and signed with name, mailing address, PML unit/lot number, and day/evening telephone numbers by a property owner in good standing. **LETTERS MUST BE RECEIVED BY THE EDITOR BY THE 10th OF THE MONTH.** Letters deemed by the Editorial Committee to be improper will not be accepted. Readers are advised that **THE OPINIONS EXPRESSED IN THESE LETTERS ARE THOSE OF THE INDIVIDUAL AUTHORS, NOT OF THE PMLA, THE PINE MOUNTAIN LAKE NEWS, NOR THEIR EMPLOYEES.**

NOTARY SERVICE

Anita Spencer, PMLA Notary Public

Prices Listed are Per Signature Rate

PML Property Owners \$10.00
 Non-Property Owners \$15.00 • Witness Fee \$5.00
 You may call Anita @ 209-962-8632 to schedule
 an appointment between the hours of 8am – 4pm

January Rainfall Totals

JANUARY 1 – 31, 2019

Date	Inches	YTD	2018/2019 Water Year*
Jan 5	0.47	0.47	11.22
Jan 6	0.76	1.23	11.98
Jan 7	0.09	1.32	12.07
Jan 8	0.59	1.91	12.66
Jan 14	0.24	2.15	12.90
Jan 15	0.52	2.67	13.42
Jan 16	1.38	4.05	14.80
Jan 17	0.81	4.86	15.61
Jan 18	0.01	4.87	15.62
Jan 19	0.30	5.17	15.92
Jan 20	0.43	5.60	16.35
Jan 21	0.16	5.76	16.51

January Total 5.76 in

Total Accumulation Calendar Year 2019 – 5.76 in

Total Accumulation "18/19 Water Year"* – Oct 1, 18 – Sep 30, 19 16.51 in

*The Water Year is tracked from October 1 – November 30 and constitutes a rainfall season for rainfall tracking purposes.

Unofficial rain totals collected from a weather station located in PML off of Ferretti Rd.

Survey Time Be on the Lookout!

PML Long Range Planning Committee

The 2019 Member Satisfaction Survey is coming your way very soon. Yes it is true, the PML Board of Directors wants to hear from you; really! Every three years the BoD commissions the Long Range Planning Committee to create a survey that asks homeowner opinions on questions that will be used to inform the Board's budget decisions for the next three years. The 2019 survey coupled with the Strategic Plan together help the Board focus on what our members feel are important issues, such as traffic, assessment related expenses, rentals,

infrastructure upgrades, etc.

The survey will be online and will be clickable from the PML web site. For those members who would prefer a non-computer process, a hard copy version will be available at the Administration office. The LRPC will input the survey information from the hard copies.

The survey will start in April and run through the end of June. As in the past we will have three gift cards to give away as raffle prizes (\$100, \$50, and \$25) as incentives to take the survey.

MOORE BROS. SCAVENGER CO., INC.

P. O. Box 278 • Big Oak Flat, CA 95305 • (209) 962-7224 • FAX (209) 962-7257



VACATION RENTAL OPTIONS FOR TRASH SERVICE

In order to assist property owner/managers of short-term rentals with trash removal, Moore Bros. Scavenger Co. offers the following services.

Short-term rental customers may participate in year-round or three-month summer curbside service. To manage anticipated levels of guest trash, property owners/managers of short-term rentals should maintain the suggested service levels as determined by the *Maximum Occupancy for Rental Property* (please see the chart below). In the event that renters generate more than the expected amount of trash or the home is rented multiple times during a given week the following options are provided:

- **As Needed Extra Pickup.** Property owners/managers may request a notation on their rental service accounts to pick up extra as needed. This will ensure that all trash left alongside the cans will be picked up by Moore Bros. and a special pickup will not be required. There is an additional per-can/bag charge for each extra can/bag picked up.
- **Special Pickup.** Moore Bros. has a truck and driver available for special pickups Monday through Friday.
- Property owner/managers must place a request for service call or email to Moore Bros. before 3 pm on the business day prior to the requested pickup day. A request for a Monday pickup must be made by 3 pm on the previous Friday. **Prepaid Bags.** Prepaid Moore Bros. bags may be purchased by property owner/manager to be used by any handyman or housekeeper servicing the residence between rental customers. The prepaid bags can be disposed of at the Pine Mountain Lake Maintenance Yard on Par Court off of Mueller Dr.

Property owners/managers utilizing full summer service may go to on-call service for the off season.

- **Off Season on Call Service.** Property owner/manager may call or email an on-call request to Moore Bros. for a service pickup on the regular pickup day for the address. A request for service call or email must be received before 3 pm the business day prior to regular scheduled pickup day. Charges will be based on the standard a per-can rate for each can/bag picked up.
- **Special Pickup.** Please follow the same procedure as listed above for Special Pickup.

Maximum Occupancy for Rental Property

Maximum Occupancy	Suggested Service Level
6 - 8 people	2 can
8 - 10 people	3 can
10 - 12 people	4 can
Lake front Property 12 people	4 or more cans as typically needed

If you have questions please feel free to contact our office at (209) 962-7224 or email us at:

info@moorebrosscavenger.com and Shirley@moorebrosscavenger.com (Please cc both to insure prompt replies).

A drop-off Recycling center is available for use Mon – Sat. 8 am – 5 pm @ 11300 Wards Ferry Rd. Big Oak Flat, Ca

BOARD ACTION(S) VOTING RECORDS

January 12, 2019 Board Meeting – Agenda Items SHOULD THE BOARD...	Board Members*					COMMENTS	COSTS
	MG	SG	NS	PT	WA		
approve agenda?	Y	Y	Y	/	Y	A.I.F. Motion Carried	
approve the consent agenda?	Y	Y	Y	/	Y	A.I.F. Motion Carried	
approve Resolution-Small Watercraft Rack Usage Policy?	Y	Y	Y	/	Y	A.I.F. Motion Carried	
approve Resolution-Pontoon Beach Space Policy?	o	o	o	/	o	Failed for Lack of Motion	
publishing of Amended Draft Resolution-Pontoon Beach Space Policy?	Y	Y	N	/	Y	Motion Carried	
approve Member Home Business Permit 12/176?	Y	Y	Y	/	Y	A.I.F. Motion Carried	
approve Donation Request: Pine Cone Performers?	Y	Y	Y	/	Y	A.I.F. Motion Carried	\$150
affirm Covenants Committee fines from 10/30/18 hearing?	Y	Y	Y	/	Y	A.I.F. Motion Carried (8 Cases)	
appoint ECC Chairperson - Jim Phillips?	Y	Y	Y	/	Y	A.I.F. Motion Carried	
reappoint existing Committee members for 2019? (Except Editorial Com)	Y	Y	Y	/	Y	A.I.F. Motion Carried	
approve Revised Equine Committee Charter?	Y	Y	Y	/	N	A.I.F. Motion Carried	
Total APPROVED Golf Donations this meeting (Retail Value)							\$0
Total APPROVED Fee Waivers (Non-Golf) this meeting (Retail Value)							\$150
Total APPROVED Other Donations this meeting (Retail Value)							\$0
Total APPROVED expenditures this meeting							\$0
/ = Absent A = Abstained A.I.F. = All In Favor o = No Vote							
* MG=Mike Gustafson SG=Steve Grier NS=Nick Stauffacher PT=Pauline Turski WA=Wayne Augsburg							
MINORITY VOTES HIGHLIGHTED							

COMPOST & ARCHERY RANGE HOURS OF OPERATION

NOVEMBER THRU MARCH – TUES. – SAT. 8AM TO 4PM
WEATHER PERMITTING

APRIL THRU OCTOBER – 7 DAYS A WEEK 8AM TO 4PM
WEATHER PERMITTING

SHOOTING RANGE – TUES, THUR, SAT 9AM TO 3PM

PLEASE NOTE Hours may vary depending on weather conditions, safety concerns, or other situations beyond control. Archery & Gun Range users must check-in with compost attendant.

HOURS SUBJECT TO CHANGE WITHOUT NOTICE

Call Main Gate at 209-962-8615

NOTICE

The Pine Mountain Lake News, established July 25, 1973, is printed monthly for residents of Pine Mountain Lake and sold in the Groveland, CA 95321 area. Members can access the PML News monthly edition online at www.PineMountainLake.com. Every month the newest edition of the PML News is posted online before the first of each month. Interested parties can subscribe to the traditional "hard copy" and receive a copy by mail each month.

The PML News is mailed to approximately 3500 PML property owner households each month. Up to 500 copies are rack-sold in the local Groveland area. Our circulation reaches approximately 1200 full-time, resident, PML property owners and approximately 2300 "weekender," non-resident, property owners who maintain primary residence in Northern California, in Southern California, or in other states. For more information regarding the PML News, please call the PML Administration

Office at (209) 962-8600. We greatly appreciate your contributions but please note that the PML News fills up very quickly – often by the 7th or 8th of the month (long before the 10th deadline). To ensure that your submission is reviewed for publication please submit in full and as early as possible. Please remember that the PML News is limited in capacity and your submissions are reviewed on a first-come-first-served, space-available basis.

We publish all PMLA related submissions such as Board & Management Business, Clubs, Activities & Events. Where space remains, we publish non-PMLA related submissions in our "Community" section.

We do our best to provide timely news. If you experience delayed delivery or have misplaced a particular edition, please visit us at the PMLA website www.pinemountainlake.com for a downloadable PDF of the News posted by the 1st of the month and a downloadable PDF list of ad rates.

The Hoof Print

Melissa Moore – Equestrian Center Manager

In late January I had the pleasure of attending a vet seminar coordinated by Taylor Equine Hospital. Dr. Stanford gave a presentation on basic first aid, how to recognize an emergency, how to properly take vital signs, and what to do at home. While some of this was review it's always good to reiterate that knowledge and bring fresh to mind, here's my take away from the event. Dr. Stanford noted that being able to properly take vital signs is a huge help for vets when responding to calls. It helps them recognize how severe the emergency is and how much distress the horse is in.

HEART RATE: Normal resting heart rate for an adult horse is anywhere from 30-40 beats per minute, a stethoscope is recommended to properly listen and count. He recommends counting heartbeats for 15 seconds and multiplying by four. He also noted that one heart beat sounds like 'lub-dub' and to be careful not to mistake and count that as two.

RESPIRATION: Respiration rate is 8-15 breaths per minute. He expressed that once again a stethoscope helps and the trachea is the easiest place to take this vital. The lungs can also be located and used, and an inhale and exhale are counted as one.

TEMPERATURE: The average resting temperature of a horse is 99.5-101.5 anything 102 or over requires a call to the vet. He recommends taking the temperature with a digital thermometer, as they are fast to calculate, and standing parallel to the horse facing his hind end. This is helpful if the horse kicks, as if he gets you it will be in the back of the knees and your knees can bend forward.

HYDRATION: To check for hydration he recommends pinching the skin of the horse under the eye as that area maintains elasticity well. The skin should snap back into place within 2 seconds, sometimes longer for an older horse. Symptoms of dehydration can be seen when a horse is 5% dehydrated and at that point the horse is already missing 22 liters of fluid (approximately 7.5 gallons).

CAPILLARY REFILL: Capillary refill can be taken by pressing the finger to the gums and seeing how quickly the color recovers. It should take less than two

seconds, gums should be a healthy light pink and be moist. A slow capillary refill and high heart rate signify distress and poor blood circulation.

Dr. Stanford then presented six cases he worked and explained what he looked for in determining how urgent the case was. When surveying an emergency, he notes that one should determine how much distress the horse is in, is there bleeding, and where? He notes to check the entire horse so you don't miss anything and explains that surveying the surroundings can also tell a lot about the situation as well. He asked that clients take the time to just call their vet and explain symptoms. They understand that nobody looks forward to costly, unnecessary vet bills. However, responding to cases before there is an emergency can greatly impact the outcome and cost. He also recommends having numbers to your vet, the fire department, tow truck companies and someone with a backhoe always handy. Know the street address where the horse is located, and stay off the phone after calling the vet. He says it's common for him to try calling the client to determine if he needs some sort of specialized equipment, such as an x-ray machine, and he's unable to get an answer from the owner as the line is busy.

I hope this was informative for you. I know I had a great time attending and I'm looking forward to attending Pioneer Equine Hospital's seminar. Until next time!

Equestrian Center
13309 Clifton Way
Office: 209-962-8667
stables@
pinemountainlake.com

DAYLIGHT SAVINGS BEGINS MARCH 10

Don't forget to set your clocks ahead one hour
and replace the batteries in your smoke alarms/
Carbon monoxide detectors

PINE MOUNTAIN LAKE ASSOCIATION

JOB
FAIR

20 19

SATURDAY, MARCH 9
8AM – NOON

Please complete online application at
www.PineMountainLake.com

PMLA Lake Lodge
20270 Pine Mountain Drive

For questions call 209-962-8628

JOIN THE TEAM!

LAKE LODGE DINNERS

by **Duet Catering Company**

During PML Club Renovation

**DINNERS WILL BE SERVED FROM 5 - 8PM
ON TUESDAY, WEDNESDAY, FRIDAY
AND SATURDAY NIGHTS**

RESERVATIONS HIGHLY RECOMMENDED — call 962-7397

A vegetarian option is available each night • Appetizers available!

DJ "Larry" every Saturday night 7:30-11:30pm

\$15.00

PER DINNER

MARCH MENU

Fri 1 - Traditional Lasagna with Meat Sauce • **Sat 2** - Shepard's Pie

Tue 12 - Chili Verde • **Wed 6** - Appetizers, Salads, Desserts (no entrée) **5-8:30pm**

Fri 8 - Pork Tenderloin • **Sat 9** - Corned Beef & Cabbage • **Tue 12** - BBQ Pork Ribs

Wed 13 - Garlic Shrimp • **Fri 15** - Steak & Baked Potato

Sat 16 - Tequila Lime Chicken w/Southwest Caesar Salad

Tue 19 - Smoked Gouda Mac 'n Cheese with Baked Ham

Wed 20 - Pecan Crusted Salmon • **Fri 22** - BBQ Chicken

Sat 23 - California Vegetable Lasagna • **Tue 26** - Chicken Piccata

Wed 27 - All-You-Can-Eat Chicken Fajitas **3-7pm**

Fri 29 - Calypso Pork Loin • **Sat 30** - Roast Beef

Bar Open Tues, Wed – 3:00-9:00 — Drink Specials and Appetizers 3-8pm

Bar Open Fri, Sat – 3:00 until closing — Drink Specials and Appetizers 3-8pm

Menus subject to change without notice • Walk-ins welcome if not fully booked

The Grill Renovation Project Update

Jay Reis, Grill Manager

We have completed most of the demolition part of the project. The old electrical, plumbing, walls and floors have been removed down to the studs so that the General Contractor can access what the scope of his work will encompass. The design was great. The drawings were specific. But in the end there were many factors that were unforeseen in a building that was built in 1969. This includes how the many additions and expansions were added on in the last 50 years. The additions to the building were really putting a strain on the infrastructure of the building. We've had many electrical and plumbing issues in the last 11 years that I've been managing the restaurant so it was a necessity that we start from scratch. To put it into

perspective, we are starting with new electrical panels and wiring to support all the updated lighting and equipment. We are also replacing and updating the plumbing to handle the increased volume.

During our closure Duet Catering is hosting dinners at the Lake Lodge. The dinners are only \$15 and are served on Tuesday, Wednesday, Friday and Saturday nights starting at 5pm weather permitting. We also have a DJ on Saturday nights and you don't have to purchase dinner to dance the night away.

If you are planning a special occasion in 2019, you can still contact us Monday through Friday from 8am to 4:30pm at 209-962-8638. For events email Jimmy Gutierrez at cluboffice@pinemountainlake.com. To contact me email clubmgr@pinemountainlake.com.

WELCOME TO THE *Hidden Jewel of the Foothills* PINE MOUNTAIN LAKE GOLF & COUNTRY CLUB

12765 MUELLER DRIVE • GROVELAND, CA. 95321



YEAR-ROUND PLAY • OPEN TO THE PUBLIC
Driving Range, Chipping & Putting Greens



Mountain Golf

at its Finest!

Hidden Jewel Rate

\$45

Seven days a week after 11am
Includes Green & Cart Fees and Range Balls

Call **209.962.8620** for reservations
up to 10 days in advance

Valid for up to 4 Golfers • Coupon expires 12/31/2019
Not valid for tournaments • \$45 rate is per golfer

Fast INTERNET ^{-And-} VOIP

Rural Coverage In The Central Sierras

Free INSTALL
when switching from
an existing service.

Unlimited Data Get up to 25Mbps!

866-378-8393



CONIFER
communications

LOCALLY OWNED
- AND -
OPERATED
SINCE 2008

— Offer Requires 2yr. Contract. Expires January 1, 2019 —

Community Standards

Sarah Ruhl and Regal the Eagle

February in Pine Mountain Lake was an especially wintery month! The snow topped mountains and cascading creeks provided many picturesque opportunities. PML was definitely a winter wonderland. Although the winter months provide beautiful views and fun activities, they also expose our community to natural accidents. The Community Standards Division highly suggests checking your property or having a neighbor do so. Our area greatly needed the rains and high elevation snow pack, but this did unfortunately cause many trees to lose large limbs or actually uproot and fall. Pine Mountain Lake Association has contacted many property owners that were affected by falling limbs and trees to the best of our abilities, but please be sure to visit your property in case something has gone unobserved.

The Community Standards Team has a Fire Safety and CC&R Workshop planned this month at the Lake Lodge. On Thursday, March 21st beginning at 5:30pm we will discuss how to make your property fire safe for the upcoming fire season and the importance of doing so. We will also talk about the process of enforcement for fire safety and CC&R's and how to prepare for an unexpected emergency evacuation. We hope to see you there!

*Happy
St. Patrick's
Day!*

PINE MOUNTAIN LAKE FIRE SAFETY/CC&R WORKSHOP



MARCH 21, 2019 • 5:30–7:00 PM
AT THE PMLA LAKE LODGE

ALL PMLA MEMBERS ARE WELCOME & ENCOURAGED TO ATTEND

Presented by



Sarah Ruhl

PMLA Community Standards Director

Special Guest – **CAL FIRE**

MEMBER EDUCATION PRESENTATION

- What is Community Standards?
- When and why did the Fire Safety Resolution change?
- What is Defensible Space?
- What is needed for year round fire safety?
- What do I do if I receive a Courtesy Notice?
- Understanding PMLA Governing Documents & CC&R Enforcement Procedures Flow Chart
- How can I make a difference for myself and my neighbor should a wild fire threaten PML?

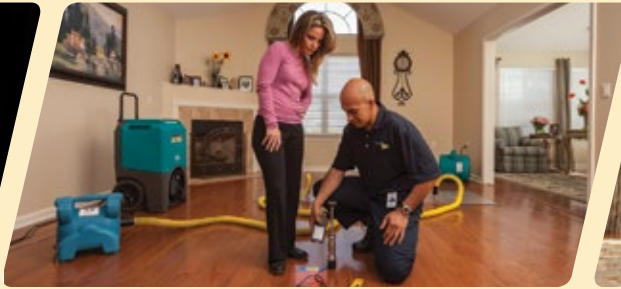


FOR MORE INFORMATION PLEASE CALL 209.962.1240

**\$25
DISCOUNT**

Mention this ad for a discount on cleaning services.

Minimum charge applies.



DISASTER RESTORATION SERVICES • RESIDENTIAL AND COMMERCIAL CLEANING SERVICES

Carpet & Furniture Cleaning • Steam & Dry Cleaning • Deep Soil Extraction • Spot & Odor Removal • Oriental & Fine Rug Cleaning • Ultrasonic Blind Cleaning
24 Hour Emergency Service • Water Removal • Wet Carpet Care • Fire & Smoke Restoration • Vandalism Cleanup • Structure Drying • Sanitizing

ServiceMASTER Restore

*The clean you expect.
The service you deserve.*



Serving Tuolumne, Calaveras & Amador Counties

ServiceMasterSierras@mlode.com • www.ServiceMasterSierras.com

209-532-1700

17330 High School Road
Jamestown CA 95327



HEALTHIER. IT'S HOW WE INSTALL!



Mention this ad to receive Free Healthier Living Installation Upgrade!

Thank you for voting us Best of the Mother Lode since 2005!

PINNELL'S CARPET ONE FLOOR & HOME

209.736.8077 • 263 S Main St • Angels Camp, CA

209.532.1696 • 12900 Mono Wy • Sonora, CA

What is the Covenant's Committee?

Patti Beaulieu – Covenants Committee Chairperson

In the **FIRST RESTATED DECLARATION OF RESTRICTIONS FOR PINE MOUNTAIN LAKE, Article XIV Section 7, states: COVENANT'S COMMITTEE** - Appointment of Committee. Acting pursuant to article X, section 1, of the Bylaws, the Board of Directors may establish a Covenants Committee to hear and decide cases involving alleged violations of the Governing Documents. If no committee is established, the Board shall perform this function.

The committee is comprised of volunteer Property Owners that do not work for Pine Mountain Lake. This is basically a peer-review committee.

The committee's task is to conduct hearings with the Property Owner when they have violated the CC&R's and have not responded to the notices sent by Administration. Those in violation are sent a Courtesy Notice describing the violation. Thirty days later they are sent a letter of Non-Compliance, and 30 days after that they are sent a Hearing Notice with the hearing date. The Hearing Notice states that the hearing will take place with or without the Property Owner in attendance. In other words, the Property Owner is given 3 months to comply or, at the very least, contact Administration and discuss the letters.

Oftentimes, the letters are ignored or refused by the addressee, which results in the necessary hearing before the Committee.

The violations can be issues involving loose dogs, garbage or unsightly items stored on the property, dead trees or uncut weeds and grasses, gate card violations, or many other issues that violate the CC&R's.

The Committee is finding many of the hearings are needed because of lack of communication with the Association. If you get a courtesy letter, or one of non-compliance, please call the office at 962-8600. Administration is there to work with

the Property Owner to become compliant. Assessing fines is the last step and neither the Association nor the Committee want to take this approach. We'd all much rather have Property Owner's become compliant with the CC&R's they agreed to when they purchased in Pine Mountain Lake.

Unfortunately, the committee is conducting at least 30 hearings each month and most of them result in fines which are levied against the Property Owner's account.

HOW CAN YOU AVOID A FINE?

There are a few things that each property owner can do to avoid letters of non-compliance, or in extreme cases, Covenant's Committee Hearings.

1. If you receive a letter from the Association, please contact them to discuss the violation and the reason for the letter. Don't ignore it. It will not go away. They are there to work with you and assist where they can.
2. If you are having work done on your property and you do not reside here, have photos taken of the work to be done, and withhold final payment until you receive photos that the work is done to your satisfaction, and the work in is compliance.
3. Attend the hearing. The committee is very willing to listen to the Property Owner and take their comments into consideration when considering the fine.
4. Appeal to the Board of Director's. The committee's decisions have to be approved by the Board and the appeal process is always an option for the Property Owner.

This is our community and we have all agreed to the governing documents upon purchase of our property. When the rules are followed, it makes for a better community for us all.

Winter Storm Duties

Tom Moffitt, Maintenance Department

After many years of California drought and mild winters, the normal winter weather patterns finally returned to the Sierra and the Foothills this 2019. Heavy rains, wind, snow and ice, along with falling trees and branches, have created a potpourri of problems throughout the area. Storm preparedness is the mainstay of the PMLA Maintenance Department and the Department of Safety. As weather conditions do change rapidly, personnel and vehicles are at a constant ready for whatever the weather brings.

In this past decade, many regular duty 2-wheel-drive vehicles have been replaced with 4-wheel-drive vehicles. Not just the three snow plow units, but all the Safety Department fleet and four additional trucks in the Maintenance Department. This allows work to be conducted in all winter driving situations. The patrol vehicles are the eyes and ears, reporting road conditions, downed trees and utilities damage, coordinated with the transportation of Maintenance Department work crews to the exact site of road problems throughout PMLA.

During extreme snow events, part of the maintenance crews are snow plowing while other crews are removing downed trees and road blockage. The primary goals being the opening of roads to allow suitably equipped vehicles to pass, especially emergency vehicles and utility repair vehicles. The heavy Sierra Sludge snow will overload the tree canopy, breaking tree branches, topple large trees, and create havoc with utility lines. Onsite evaluations of each and every damage will bring maintenance staff with heavy equipment, trucks, chainsaws and enough manpower to clear the roadway. Caution is always taken before removing trees and branches in any powerlines or overhead utilities. PG&E will

bring a tree crew to remove trees and branches which are snagged in the overhead utilities and tangled amid downed lines.

Clearing of the roadways is essential. The crews will move the down vegetation off the roads to get the road passable and usable, returning during better weather to remove all the downed timber and branches. Barricades and warning devices are placed at the sites to warn drivers of hazards and workers. In some cases a section of roadway will be closed due to powerlines or trees down on the roadway. Please obey these warnings and give the workers a safe zone to work within, be patient, and drive safely.

Snow plow operations will go 24-hours a day during snow events. Main roads are cleared first, then arterial roads, secondary arterial roads and finally courts and cul-de-sacs. Road sanding will be directed to sites where sheet ice has formed on a roadway. The areas that are sensitive to icing are mapped and sanded on a regular basis. This does not mean that all roads are passable to each and every vehicle during snow and ice events.

Know the road conditions before you drive, know your vehicles capabilities, and always adjust your driving speed to the road conditions. There is a magic speed threshold (it is a huge physic formula), where the road surface conditions, tire traction, vehicle weight, road slopes and vehicle speed reach a point of no return. Please do not exceed that threshold, the point of no return where vehicle control is lost and the dice are rolled. One clue. In bad snow and ice conditions it is somewhere between 15 mph and 21 mph on flat ground. Steep roadways and brakes will only complicate the situation. For many drivers here, just negotiating the driveway can be perilous. Be safe, be prepared.

PML AUTOMATIC PAYMENT PROGRAM

Taking the time to write a check for your monthly assessment payment can be time consuming and costly. You can avoid this burden and eliminate the potential for late payment charges by enrolling in PMLA's Auto Payment Program. By completing the form, which can be found at www.PineMountainLake.com under the Resources/Forms, and returning it to the Administration Office, you can have your monthly assessment automatically deducted from your checking account or charged to your credit card. This means you never have to remember to write a check and mail it each month. The peace of mind that comes with knowing your payment will always be made on time is easy to attain. We can also arrange to have any other regular payment you make to the Association (such as golf membership, horse boarding fees, etc.) paid in the same way.

For more information on this simple, effective and time saving plan please contact us at (209) 962-8600.

PAY YOUR PML PAYMENTS ONLINE

Did you know you can make your payments online?
Online Bill Pay is available on PineMountainLake.com.

Pay via your credit card, it is quick and easy!

HERE IS YOUR CHANCE TO BE MORE INVOLVED IN YOUR COMMUNITY!

Pine Mountain Lake Association has openings on the Following Committees:

Budget and Finance Committee

Editorial Committee

Equine Advisory Committee

Environmental Control Committee (ECC)

If you wish to be considered for committee membership, please complete an "Application for Committee Assignment". This form is available on the website at www.pinemountainlake.com or from the Administration Office.

MAIL COMPLETED FORM TO:

Pine Mountain Lake Association, Attention: Debra Durai
19228 Pine Mountain Drive • Groveland, CA 95321

Email to Debra@pinemountainlake.com
or drop it by the Administration Office

Sign Up for the eSNAP Program

Signing up for the new eSNAP program is quick and easy and gives you the ability to sign up for the information that you want to receive. Just head over to www.PineMountainLake.com and sign up today.

eSNAP
ELECTRONIC SAFETY, NEWS & ALERT PROGRAM

marina, golf course, etc.

ABOUT EACH OF THE PROGRAMS

PML News & Alerts – Receive emails with information regarding anything affecting Pine Mountain Lake such as road closures, utility problems, fire alerts and more.

PML Amenities News – Receive emails with information about upcoming events, specials, or news regarding all PML amenities such as the lake,

The Grill at Pine Mountain Lake – Receive emails with information regarding happenings at The Grill. Get information Wine Tastings, Entertainment, Special Events and more.

This program is separate from the current email opt-in program that allows you to receive PMLA governing documents and requires your signed approval. This program can be signed up for via the online system. *Get your news and alerts via email, it's eSNAP!*

GOT YOUR PIN?

Since PML is a private gated community, we want to offer our property owners a secure way to call in guests. When you become a member of PML you are assigned a Personal Identification Number (PIN) to utilize either when calling in a guest pass or using the Gate Access Internet program. This PIN identifies you to staff without you having to be present. This is a confidential number and should **not be shared**. When you call the Main Gate to authorize a guest or vendor access into PML, you will be asked for your PIN. The staff will look up the number in the computer and use it to confirm your identity before entering the guest information. You must have this number to utilize the Gate Access Internet program as well. If you do not know your PIN or have any questions, please contact the Administration Office at:



(209) 962-8600



Monday through Friday from 8 am to 4:30 pm
and we will gladly supply this information to you.

GUEST & RENTERS HANDBOOK IS AVAILABLE ONLINE!

You can now view or print the Guest and Renters Handbook from the PML Website.

Go to our website at:

www.PineMountainLake.com

and click on Resources, then scroll down to the bottom of the page and click on Guest and Renters Handbook. This handbook has valuable information for Guests and Renters in Pine Mountain Lake.

From the Fringe

Mike Cook – PGA Head Golf Professional

UPCOMING EVENTS

Ladies 9 & 18 Hole Golf Clubs

Weekly Play Day – Thursdays

Men's Golf Club

St. Patrick's Day Tournament (New Event)

Saturday March 9

Men's Golf Club

Scramble – 4 Man Event (P/G Tees)

Wednesday March 20

Men's Golf Club

Orange Ball

Wednesday April 3

Greens Aeration

Golf Course Closed

Monday & Tuesday April 8 & 9

GOLF CART USAGE

Just a reminder of how important it is to drive golf carts according to the 90 degree rule:

- 1) Keep the cart on the path as much as possible.
- 2) Drive laterally to your ball.
- 3) After hitting your shot drive back to the path or in the rough, if the ball is on the opposite side of the path.
- 4) When you reach the BLUE STAKES, drive to the path, park the cart on the path and walk to the green.

Please follow the above policy that is posted in every golf cart so we can keep our golf course in great condition.

GOLF CART BLUE FLAG POLICY

If you have a physical condition that makes walking to your ball difficult, we have a Blue flag policy that you may qualify for. Please check with the Golf Shop staff for more information. But even with a Blue Flag there are the following rules to follow:

- 1) Using the 90 degree rule is still required before you reach the Blue Stakes.
- 2) You may drive past the Blue Stakes but you must stay in the rough and drive no closer than 30 feet from the green and or bunkers.
- 3) After completion of the hole drive the

golf cart back to the Blue Stake to get back to the cart path. There are curbs bordering many of the cart paths near the greens that we do not want you to go over.

- 4) Please, never drive the golf cart around in back of any green.

PICKLE BALL PRODUCTS

The Golf Shop has expanded its stock of Pickle Ball products to include: Men's & Ladies Tee Shirts and economically priced paddles. The Golf Shop is open daily from 8:00 am to 5:00 pm during the winter months.

JUNIOR GOLF PROGRAM

We will continue to expand our Junior Golf Program in 2019. If you have a son, daughter, grandchild or know a young person that is between 8 and 17 years of age and would like to be a part of our 2019 program. Call the Golf Shop **209-962-8620** and we will add them to our mailing list. We will have more specific information, dates and times as we get closer to the spring time.

STARTING TIMES

We will be returning to starting times instead of our winter shotguns on Monday March 11. Our first tee time will be 9:00 am (depending on frost). Call the golf shop 962-8620 to reserve a starting time. Property owners can make a reservation up to 14 days in advance.

MEN'S & LADIES GOLF CLUBS

If you are interested in joining the Men's or Ladies Golf Clubs you can call the Golf Shop and we will give you the information you need. The Men's Club has a website (www.pmlmgc.com) that you can visit for an application, tournament schedule and other information concerning the Men's Club Organization.

ONLINE TEE TIME RESERVATIONS

We are in the process of establishing the ability to reserve tee times online through the PMLA website. Watch for further information as to when this will go live.

Tee to Green

Rob Abbott – Golf Course Superintendent

What a month we had, February brought us just about every type of weather we can have for this region. The two snow events we had in February brought us extremely cold freezing weather, downed trees, power outages, slippery conditions and a closed golf course for quite some time. As I write this article we have seen nearly 30 inches of rain for this season with more forecasted to come, and with our season totals typically between 32 and 36 inches, we are looking pretty good for our irrigation needs during the 2019 season.

That being said, with the 2019 growing season fast approaching I have been busy working to get our pesticide, fertilizer and season supply orders together to take advantage of some early order programs that the various companies offer.

Pesticides help limit the damage that can be caused by insects, weeds and plant diseases. Insecticides, herbicides and fungicides are used very selectively to protect the health of the turf. Fertilizers provide much-needed nutrition for the course's plant life. It is very important to note that pesticides and fertilizers are not used primarily for aesthetic reasons, they are tools that help ensure a healthy playing surface for the game. When do we apply pesticides? Pest problems on golf courses are often relatively predictable or can be diagnosed as part of an ongoing monitoring program. Once the problem

has been identified, we consider all available options. These could include cultural practices such as physically removing weeds, changing irrigation patterns or clearing underbrush around a problem area to allow more air movement or the use of chemical products. Once the problem is diagnosed and the right treatment has been selected, we treat the area in the most effective and environmentally sound manner available. Once a liquid product is applied and the turfgrass is dry or the product has been watered in, there is very little chance of exposure to golfers. This year we will be posting product information either at the golf shop or the first tee to let members know what is being applied. Members often ask why do applicators wear so much protective gear. Applicators work directly with pesticides and are exposed much more often than golfers. Pesticide label directions which carry the weight of law, require that applicators take certain precautions when mixing, loading and applying chemicals. In part because they are exposed to higher concentrations when mixing loads and when applications are being made. So the next time you see us out on the course know that a state certified professional is making applications and that we are doing everything to keep the golf course in top condition along with keeping the members protected while doing so.



CHECK OUT YOUR GROVELAND LIBRARY

TUESDAY-THURSDAY — 1:00-6:00PM
FRIDAY-SATURDAY — 10:00AM-2:00PM



BOOKNOOK
USED BOOK SALE
EVERY SATURDAY
9:00AM – 2:00PM

All PMLA Homeowners Email Opt-in Program

The Association is pleased to offer a money saving program available to all PMLA property owners. This program allows you to receive many of the documents we are required to provide to you via email. This option is important because:

Cost Savings – The Association is spared the expense of printing and mailing many documents to those property owners who sign up.

Environmental Savings – Less paper means less trash and reduced damage to the environment both in the disposal and production of paper and envelopes.

Reduced Clutter – By receiving documents via

email there is less paper for you to deal with. All documents can be saved on your computer and viewed at your discretion.

Timely Receipt – Documents sent electronically are received in minutes as opposed to the days it takes for regular mail to arrive.

If these sound like good reasons to you, please sign up for the Document Email Program today using the attached form. Simply return the completed form to the Administration office at your convenience.

If you have any questions on this program please feel free to give us a call (962-8600) and we will be happy to explain the details and the advantages.

Please read the Terms & Conditions for the email opt-in program on the website, www.pinemountainlake.com under the Resources/Forms > Opt-In Email Program.

Mail form below to:
Pine Mountain Lake Association

19228 Pine Mountain Drive • Groveland, CA 95321

YES, I WANT TO ENROLL IN PMLA'S EMAIL STATEMENT AND DOCUMENT SERVICE. I ACKNOWLEDGE AND AGREE TO THE TERMS AND CONDITIONS SET FORTH ABOVE AS A CONDITION FOR PARTICIPATION IN THIS SERVICE.

PMLA Account Number: _____ Unit/Lot #: _____

Name: _____ Phone #: _____

Address: _____

Email Address: _____

Signature: _____

FIREWOOD CUTTING IS HERE

PML SLASH AND COMPOST SITE

OAK AND CEDAR REQUIRES A \$20 PML WOOD CUTTING PERMIT

WOOD CUTTING PERMITS AVAILABLE AT THE MAINTENANCE FACILITY

PINE AND FIR AVAILABLE FOR FREE CUT & HAUL

FOR MORE INFORMATION PLEASE CONTACT SUSAN AT

(209) 962-8612

BETWEEN THE HOURS OF 7 AM TO 2:30 PM, M-F.

GO TO THE OFFICIAL ONLINE PRESENCE
OF THE PMLA FOR
LATEST NEWS & INFORMATION

PINEMOUNTAINLAKE.COM

FACEBOOK.COM/PINEMOUNTAINLAKECA

Make PML your
ONE-STOP-SHOP
for all your gift giving!

Pick up a gift card for:

GOLF • GOLF SHOP APPAREL & ACCESSORIES
THE GRILL • HUNTING & FISHING LICENSE VOUCHERS
Gift cards are available at the Administration Office,
The Grill, and at the Pro Shop

Paint Discount Program

Kelly-Moore Paint Company has been serving Pine Mountain Lake for 40 years. They want to remind PML property owners of the discount program that has been established for them. This program offers a generous discount on Kelly-Moore paint and accessories such as rollers, brushes, tape, caulk, etc. Delivery is available on orders of 10 gallons or more. This special discount opportunity

is available with proof of Pine Mountain Lake membership (Member ID Card) on a cash or credit/debit card basis only (no checks please).

Although this program was initiated through the Sonora store, it will be honored at any Kelly-Moore Paint Company store. If you are interested in this discount program, call your local Kelly-Moore Paint store for details.

Contractors Performing Work in PML are Required to Follow PMLA Rules & Regulations

The following are some "**common violations**." Please do your part to maintain a harmonious environment for all to enjoy. Remember: The PML property Owner is held responsible for those they hire.

VEHICLE USE:

1. Exceeding the posted speed limit
2. Driving in a reckless manner
3. Following another through an access gate or allowing others to follow you through
4. Parking on street (road shoulders OK)

PERSONAL CONDUCT:

1. Allowing loud music
2. Uttering abusive language or conduct that would be offensive to a reasonable person
3. Using the property Owner's gate card or clicker

WORK RELATED CONDUCT

1. Starting work before 7am or continuing after 7pm
2. Allowing dogs at construction sites
3. Performing work on Sunday
4. Cutting down a tree in excess of 5" without PMLA approval
5. Trespassing on neighboring property
6. Using neighbors water or electricity without written permission
7. Leaving construction signs longer than 5 days after work has been completed
8. Nailing signs to trees
9. Storing building materials on street or easement
10. Beginning exterior construction without PMLA approval

Call Terri Thomas, ECC Coordinator
@ (209) 962-8605 with questions.

PML Organized Groups & Clubs

Contact the individuals below if you are interested in joining!
(All numbers are 209 area code unless noted otherwise)

Aviation Association	
Bonnie Ritchey	650-996-6274
Computer Users Group	
Frank Perry	962-0728
Exercise	
Barbara Elliott	962-6457
Cindy Simpson	962-7018
Friends of the Lake	
Mike Gustafson	962-6336
Garden Club	
Linda Flores	962-0824
Ladies Club	
Evelyn Bealby	650-743-4105
Men's Golf Club	
Pat Hennigan	962-4470 768-3720
Needle Crafts	
Barbara Klahn	209-916-5420
Pickleball Club	
Elisa Hoppner	962-2002
Pine Needlers Quilt Guild	
Catherine Santa Maria	962-7904
PML Ladies 18 Hole Golf Club	
Marcee Cress	962-0771
PML Niners	
Stacie Brown	962-5129
PML Safe Streets Campaign	
Leslie Dudley	962-4911
PML Shooting Club	
Dick Collier	962-6582
PML Waterski & Wakeboard	
Dean Floyd	408-915-8848
Racquet Club	962-6787
Lisa Brown-Jimenez	510-414-9657
Residents Club	
Dick Faux	962-4617
ROOFBB	
Susan Dwyer	962-6265
Sierra Professional Artists	
Heinie Hartwig	586-1637
Southern Valley Srs. Golf Group	
Rich Robenseifner	962-0932
Sunday Couples Golf	
Alma Frawley	962-5578
Wednesday Bridge Club	
Joe Sousa	962-5708
Linelle Marshall	962-7931
Windjammers Sailing Club	
Ken Regalia	415-819-4252

Want to Join a Fun Group? PML LADY NINERS IS THE ONE FOR YOU!

Tammy Talovich

We have lots of fun things planned for this year. If you would like to learn more about the game of golf or just get back into a fun sport contact Stacie Brown. We play 9 holes on Thursday mornings, it only takes a few hours and is a great opportunity to meet some awesome ladies!

JANUARY 3RD: WE HAD 21 PLAYERS AND PLAYED PAR 4'S
1st place: Anne Clark
2nd place: Marilyn Alexander & Angie Avila
3rd place: Linelle Marshall & Jane Reynolds
4th place: Trudy Reid
Pars: Anne Clark #11
Low Net: Anne Clark w/34
Low Gross: Anne Clark w/47

JANUARY 10TH: WE HAD 10 PLAYERS AND PLAYED CHICKENS AND SNAKES (FUN GAME, MAKES YOU WORK ON YOUR SKILLS)
1st place: Angie Avila
2nd place: Judy Michaelis and Nancy Whitefield
3rd place: Pat Van Gerpen
Pars: Angie Avila #14
Chip in: Judy Michaelis #15
Low Net: Jane Reynolds and Pat Van Gerpen tied w/38
Low Gross: Jane Reynolds and Pat Van Gerpen tied w/ 57

JANUARY 17TH: WE WERE RAINED OUT

JANUARY 24TH: WE HAD OUR KICK-OFF BREAKFAST AT THE IRON DOOR SALOON,
the food was great!
We went over some of the new rules for this year but Deanie will explain them in more depth as we go along. There are going

to be some great tournaments this year both on and off the hill. We received our new handbooks with the calendar for the year. They gave us the list of the top 10 improved players for last year, we are all trying hard to move up the list or even get on the list:

1. Linda Sarratt
2. Syd Robenseifer
3. Susan Dwyer
4. Nancy Whitefield
5. Linda Vahey
6. Valerie Kelly
7. Anne Toner
8. Rosemary Wilson
9. Linelle Marshall
10. Nancy Brewster

After the kick-off several of us went out and played 9 holes, got to get the practice in so we can make the list.

JANUARY 31ST: WE HAD 22 PLAYERS AND IT WAS PUTTS DAY
1st place: Gerayln Dielman and Sarah Zimmerman
2nd place: Sandy Derodeff & Linelle Marshall
3rd place: Nancy Brewster, Susan Dwyer and Patty Nelson
4th place: Flo Jansen and Anne Toner
Pars: Angie Avila #11, Kathy Mondloch #12, Linelle Marshall, Tammy Talovich, Sarah Zimmerman #14, Tammy Talovich #17
Chip in: Sandy Derodeff #11
Low Net: Linelle Marshall and Sarah Zimmerman tied w/32
Low Gross: Linelle Marshall w/50

To finish off the month our Ace of Aces was Linelle Marshall with a net of 32, Queen of Clubs was also Linelle Marshall. Congratulations Linelle!

We are starting the year out with a bang! Getting to play 4 out of 5 weeks in January, what could be better!

PML Ladies Golf Club

Sally Wrye

Despite the wet weather in January, the PML Ladies Club managed to get in almost all of their matches in. Playing four of the five weeks. Congratulations to all of the winners! Hope to see many of you out in March as Eclectic Begins on March 7, followed by Irish Greens on March 14, 123 Putt on March 22 and 2 BB Odd 1BB Even on the 29th.

JANUARY 3, 2019 INDIVIDUAL POINT BOGEY
1st Place – Marcee Cress- 40 Points
2nd Place – Sue Perry- 38 points
3rd Place – Sara Hancock- 37 points
4th Place – Lisa Brown-Jimenez and Kit Edgerton- 35 points

Birdie – Kit Edgerton Hole #14

JANUARY 10, 2019 SOLO GOLF AND SCRAMBLE
1st – Lisa Brown-Jimenez, Kit Edgerton and Sue Perry– 150 Points

Birdie – Kit Edgerton Hole #9

JANUARY 24, 2019 SIX-SIX-SIX
1st Place – Helena McMillan, Priscilla Park and Sue Perry - 136 Points
2nd Place – Kit Edgerton, Sara Hancock and Yvonne Mattocks - 139 Points

JANUARY 31, 2019 LEFT/ RIGHT PARTNERS
1st Place – Anne Clark, Helena McMillan, Priscilla Park and Sue Perry – 131 Points

Birdies – Lisa Brown-Jimenez Hole #3
Kit Edgerton Hole #5

Pine Needlers Quilt Guild

Beverly Oakley

In January 15th, at 10:00 am, we will be tying quilts. You are welcome to come and see what we are all about. We meet below the Groveland Library. After the meeting you can bring a lunch and stay for

a class or just bring something to work on. February 19th, we will have guest speaker Nancy Mershon. She will bring quilts to show and will be giving a class after lunch.

SAVE THE DATE—The Pine Needlers

Quilt Guild Stroll will be held this year in Groveland on Saturday, May 4, 2019. If you would like to enter a quilt in the stroll, please call Catherine Santa Maria at 962-7904.

HOMES ON THE HILL

TWO PROPERTIES FOR SALE VACATION OR PERMANENT HOME AND LOT ON A CUL-DE-SAC!

13333 Mule Ct

Great vacation home/
rental/permanent
residence on 1.5 acre
lot in Pine Mountain Lake with access to Bass
Pond, close to Groveland Airport: 2 story,
2400sf w/4 bedrooms, 2 fireplaces, 2 car
garage. Seller offering rebate toward repairs
with full price offer. List price **\$270,000.**



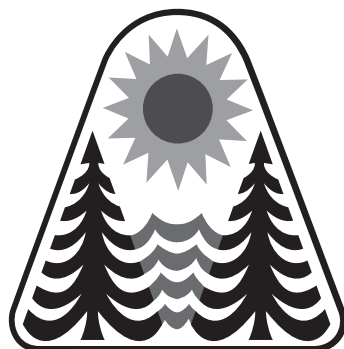
13340 Mule Ct

\$59,000 - 1 1/3 acres
bordering Bass Pond



**MIRABELLA
PROPERTIES**

Marlene Williams, Broker
CalBRE# 00882815
408-835-0061
marlene@mb-props.com



**YOUR GUIDE TO
REAL ESTATE IN THE
GROVELAND AREA**

RE/MAX
Yosemite Gold
Each Office Independently Owned and Operated

Patricia (TISH) Fulton
REALTOR® / PROPERTY MANAGER
BRE #00760019

18688 Main St. P.O. 808
Groveland, CA 95321

Phone: 209-962-0837
Office: 209-962-4080
Cell: 209-985-0216
Email: Tish.realestate@gmail.com

Deardorff Realty

BEAUTIFUL HOME W/FANTASTIC VIEWS



**3 Bdrm, 2 bath home with oversized deck! Open living with
hardwood floors, and a sun-room for a breakfast retreat!
This a your getaway for relaxation and entertaining! A must
see and yet not far from the marina beach! Unit 8 Lot 141
Priced for a quick sale at \$339,500!**

BEAUTIFUL FLAT LOT

Unit 12 Lot 120 PRICED TO SELL! Only \$105,900. Plans
available. Seller may carry some. **MAKE OFFER.**

Contact Marilyn Deardorff-Scott - BRE 00396888

209-962-0718



YOSEMITE GATEWAY PROPERTIES

18731 Main Street • PO Box 606 • Groveland CA 95321

CALL TODAY TO LIST YOUR HOME

GREAT LOCATION LOT



Gentle upslope .56 of an acre.
Overlooking greenbelt.
Unit 4 Lot 16
Only \$9,995

NEWER SINGLE LEVEL



3B/2B, 1693 sq ft ranch style
home Unit 2 Lot 102, Offered
at **\$299,900**
U must C

LOTS FOR SALE

Hondo Ct. 8/203
.56ac, Level corner lot
\$35,000

Ferretti Rd. 2/305
.31ac slight downslope
\$2,500

Ferretti Rd. 2/306
.31ac slight downslope
\$2,500

YOUR REALTORS



GEORGE VOYVODICH
Broker/Owner
209-962-4185 Office
gvoyvodich@gmail.com
BRE license 01080130



JUNE DEE
Realtor/GRI
209-962-5190 Office
209-962-7060 Home Office
209-770-5190 Cell

junedee@ymail.com
groveland-real-estate.com
BRE license 01700083

YosemiteGatewayProperties.com • (209) **962-5190**



BRE# 00683485



Pine Mountain Lake Realty

An Agent Owned Company

Lynn Bonander, GRI Owner / REALTOR®

18919 Ferretti Rd., Sthame. A, Groveland, CA

Office 209-962-7156 / Cell 209-484-7156

lynnb@goldrush.com www.pmlr.com

March



Prime Golf Course Home!

Prime Golf Course Home on the 4th Fairway with a Wall of Windows to see the Beautiful Views of the Golf Course! Located in Pine Mountain Lake and only 26 miles to Yosemite Nat'l Park. Great Room is Huge with Beautiful Hickory Hardwood Flooring. Single Level Home with 3 Bedrooms 2 Baths, Approximately 1858 sqft and Level Drive Way? The Large Deck in the back with Lots of room for entertaining overlooking a Peaceful Tree Line Setting. Great Value.

5-245 19179 Ferretti Rd **\$310,000**
MLS# 20180581



Great Get a Way!

12931 Wells Fargo
2-446

~~\$259,000~~

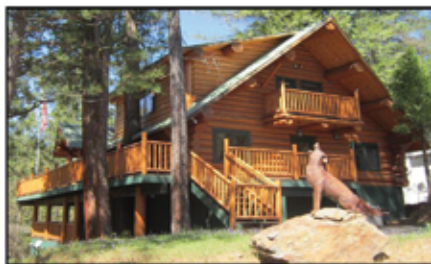
\$229,000

2 Bed/2 1/2 Baths + Bonus/Family Room on Lower Level. The 2 Car Attached Finished Garage is now being used as a Bonus/Game Rm w/Family Rm Set up with TV. Easy to revert back to full Garage Usage. Approx 1304sf on Approx 0.37 Acre Green Belt Lot, Built in 1990. Central Propane Heat/Air, Bright & Cheery Living Rm, Cathedral Ceiling, Skylights, Open Dining Area, Spacious Kitchen, Master Bedroom w/Walk-in Closet, Inside Laundry with Washtub & Cabinets, Large Storage Area. Sleeps 8 Comfortably. Excellent Vacation Rental with a good rental income. Rented on short term basis only. Furnishings Included. **Reduced 30K! Must See!** MLS#20180136



"Walk to the Beach!"

3 Bed/1 1/2 Bath, Bonus Room, 3 Levels, Approx 1500sf, Approx 0.32 Acre Green Belt Lot, Paved Road. Open Beam Ceiling, Knotty Pine Walls & Ceilings. Great Room, with Free Standing Propane Fire Place, Evaporator Cooler/Electric Wall Heaters, Double pane Windows, Breakfast Bar, Open Dining, Inside Laundry, Dryer & Washer Hookups. Deck with Ramp. Natural Landscape. 1-235 19935 Pleasant View **\$204,000** MLS#20181884



Beautiful Log Cabin in the Sierra Foothills!

Genuine Log Home, with logs imported from Canada. Outstanding in every way. Beautifully designed offering Heart-stirring warmth that will win you over. 2440 sf, 3 Bedrooms, 3 Baths plus the downstairs offers a Huge Bonus Room which can be used as Sleeping Quarters/Game Room, etc. & Complete with a Mini Bar & Full Bath. Adjacent to Big Creek w/Hiking Trails across the street. Seasonal Water Levels. Abundance of Storage Under House. Too many features to mention! Furniture is included with an acceptable offer. **\$575,000** 13-279 20098 Pine Mountain Dr. MLS#20150638



Great Mountain Cabin

12935 Wells Fargo
2-445

\$249,000

MLS#20180135

Beautiful Woodsy Setting on an Acre Lot! 2 Bd/2Bth, Sleeps 8 Comfortably, Living & Family Rm, Newly re-modeled Family/Game Rm, Laundry Rm & Lots of Storage. Approx 1570 sf, Built in 1982. Upgrades Include: 2 new mini split heat pumps on Upper & Lower levels, very energy efficient. Kitchen & Baths updated with new Tile floor. Living Rm with Propane Free Standing Fire-place. Newer Roof and New Large Trex Deck on Upper Level and nice size on Lower Level with Rod Iron Railing on both. New Gutters and Downspouts. Driveway has been resealed. Furnishings Included. Excellent Vacation Rental with good rental income. Rented on short term basis only. Don't Wait - Call today!



LOTS FOR SALE!

- \$ 3,000 - 7-239 Nice Buildable Lot on a Quite St.
- \$ 7,500 - 6-235 Gentle Uphill Slope - Take a Look!
- \$ 8,500 - 6-130 Beautiful Level Lot
- \$ 9,900 - 6-231 Upslope Lot - Nice Tree & Distant Views
- \$20,900 - 8-291 Beautiful/Buildable Close to Marina
- \$13,900 - **SOLD!** 13-183 Great Buildable Lot
- \$15,000 - **Reduced!** Ez access to most Amenities!!
- \$15,000 - 13-244 Beautiful Lot w/Pine Tree Setting
- \$19,000 - 7-55 0.52 Acre Parcel
- \$20,900 - 8-291 Beautiful/Buildable Close to Marina
- \$25,000 - 6-183 1/2 Acre + Front & Rear Access, Level Easy to Build, Septic approved for a 3 Bedroom Home
- ~~\$33,000~~ - \$28,000 **Reduced!** 1-106 Near Most Amenities
- \$59,500 - 4-21 Great Lot 1.03 Acre Across from Greenbelt. Gentle Slope
- \$89,900 - 4-128 Lake Front- Gorgeous View

MOORE BROTHERS PREPAID BAG BIN

The bin (dumpster) at the PMLA Maintenance Yard entrance is for the dumping of prepaid, Moore Bros., trash bags ONLY. No dumping of any other trash items are allowed. Violators will face enforcement action. Please help us keep this area clear and ensure that the dumpster can remain in place for our residents use. Thank you!

THE PREPAID BAGS CAN BE PURCHASED AT
THE MAIN GATE AND THE PMLA OFFICE.

PROPANE DISCOUNT PROGRAM

Suburban Propane - As the preferred provider of PML we are happy to provide an exclusive members only program to all residents.

Benefits include: Propane at a discounted rate • Tank rental at a discounted rate • Free basic tank installation • Easy payment options • 24/7 Tech support • Flexible delivery options • 24/7 live phone support

Contact our local staff for further details and current rates. Suburban Propane Jamestown California (209) 984-5283 • 1 (800) PROPANE



PINE MOUNTAIN LAKE REALTY

An Agent Owned Company

18919 Ferretti Road • PO Box 738 • Groveland CA 95321 • 209-962-7156 • www.pmlr.com



Barry Scales
Broker/Owner
209.484.7123
BRE#00451887



Lynn Bonander, GRI
Owner/Realtor®
209.484.7156
BRE#00683485



Val Bruce, GRI
Owner/Broker Assoc.
209.768.7368
BRE#00578336



Parker 'PJ' Johnson
Owner/Realtor®
209.768.6232
BRE#01732298



Marc Fossum
Owner/Realtor®
209.770.4750
BRE#01956242



Elaine North
Realtor®
209.768.4221
BRE#01047723



Patty Beggs
Owner/Realtor®
209.840.2293
BRE#01339347



Michael Beggs
Broker Assoc./Realtor®
209.840.2294
BRE#0133568



Super Location & Views!!
19600 Golden Rock Circle
1-195
\$249,000
MLS#20190028



2 Bed/2 Bath and Possible 3rd Sleeping Area. Attached Garage w/Shelves, Approx 1759sf on .54 Acres. Southern Exposure w/ Green Belt & Mountain Views. Great Rm, Living Rm, Fire Place w/Rock Surround, Central Air, Central Propane Heat. Dining L, Inside Laundry. An 11x11 Screened Porch w/pass thru to Kitchen. 8x12 Stand Alone Shop/Storage (man cave!). New Trex Decks on both sides of House. New Septic System - Completed & Approved. Close to Golf, Country Club, Pool, and Tennis/Pickle Ball Courts!



Cabin in the Woods
13026 Mocklunnes
2-203
\$310,000
MLS#20181841

3 Bd/2 Bth, Large Bonus Rm, 2 Car Garage, + Driveway Parking. Approx 1944 sf on .33 Acre, Open Floor Plan, Cathedral Ceilings, Central Propane Heat/Air, Air Tight FP, Pergo Wood Floors, New Carpet, Tile in Baths, Dining, Living Rm, Breakfast Bar, Inside Laundry Washer/Dryer Included, Large Deck. Wonderful Mountain Views.



"Contractor's Dream"
19350 Pleasant View
1-69
\$222,000
MLS#20181331



3 Bed/2 Bath, 2 Car Garage, Single Level, Approx 1884 SqFt on 0.24 Acre, Central Heat/Air, Level Driveway with RV Parking. Great Room, Roomy Kitchen w/Breakfast Bar, Master Bedroom, Bath with Jetted Tub & Separate Shower. Bay Windows, Skylights, Inside Laundry, Instant Tankless Water Heater.



Spectacular Views!!
19670 Butler Way
8-208
\$240,000



3 Bd/2 Bath, 1 Car Finished Garage w/ Shelves, Approx 1248sf, Cathedral Ceilings, Ceiling Fans, Central Electric Heat, Evaporative Cooler, Rock & Tile Fireplace, Updated Kitchen w/Granite & Appliances. Updated Bath. Washer & Dryer Hookups, Add'l Parking Under Deck, Circular Driveway. MLS#20181695



"Basket Ball Anyone"
19979 Pine Mtn Dr
13-242
\$279,999

3 Bd/2 Bth, Bonus Rm, 2 Levels, 2 Car Garage, Workbench & Cabinets, Shop, Storage, Approx 1712sf & 0.71 Acre, Central Air, 2 Fireplaces, Great Rm, Remodeled Kitchen, Breakfast Bar, Master Suite w/Fireplace, Jetted Tub & Separate Shower, Inside Laundry, Washer & Dryer Included, Trex Deck, Patio, Huge Parking Area, RV Storage. MLS#20181424



Golf Course Dream Home!
19059 Sean Patrick
5E - 16
\$375,000

3 Bd/2 Bth, 2 Car Finished Garage, Approx 1666 sf, Central Air, Central Propane Heat, Ceiling Fans, Living Rm w/ Propane Heat Stove, Breakfast Bar, Master Bedrm w/Walk-in Closet, Private Deck overlooking the 3rd Green and the 4th Tee Box, Dual Lav, Separate Shower, Closeted Toilet. Fiber Cement Siding, Blacktop, Circular Driveway. Great Views! MLS#20181656



New Listing!
Rustic Mountain Cabin!
12889 Green Valley
3393
\$249,000

3 Bd/2 Bth, 2 Car Finished Garage w/Cabinets, Approx 1416sf and located on 0.4 Acre, Central Propane Heat, Evaporative Cooler, Great Rm, Air Tight Fireplace, Cathedral Ceiling, Solid Service Countertops, Breakfast Bar & Area, Master w/Walk-in Closet and Deck Access, Lighted Ceiling Fans, Inside Laundry, Deck and Ramp. MLS#20190143



Perfect Mountain Getaway!!
12907 Green Valley
3-387
\$249,900
MLS#20190070



3 Bd/2Bath, 2 Car Finished Garage. Approx 1512sf on a Double Merged Lot 0.74 Acre! Single Level Living, Central Air, Propane Heat, Level Driveway w/Extra Parking. Great for RV/Boat/etc. Master w/Walk-in Closet & Private Deck. Central Vacuum. Very Clean & Well Maintained. Most Furnishings included w/a Strong Offer.



Charming - Close to Marina!
19900 Pine Mtn Dr
13-375
\$169,400
MLS# 20181464

Your Mountain Retreat awaits you! 2 Bedrooms and 1 Bath. Enjoy fishing, hiking, boating, horse back riding, golf, tennis, swimming and much more. Great vacation home. House has new roof, flooring, paint, lighting, forced heating & AC, all new appliances, including washer/dryer. Turn key, move-in ready. All furniture and Accessories included.



Land for Sale

\$ 6,000 - 13-84 Little Valley - Great Easy Build

\$10,000 - 8-137 Butler Way - Sense of Privacy & Peace

\$75,000 - 15-324 Maria Ct - Beautiful View on Quiet Court

Outside of Pine Mountain Lake
\$299,000 - 1 No. Boitano - 30 Acres

Unit 5 Lot 8 located on Dyer Court, this Lot overlooks the Golf Course and a Mountain Range Vista. The Property comes with Building Plans for a 1500-1600sf Home. One can walk to the Golf course, Community Pool, Pickle Ball Courts and Country Club.
\$69,000 MLS#20180646

BEFORE YOU BEGIN CONSTRUCTION ON YOUR LOT

The Declaration of Restrictions (CC&Rs) states that no construction of any type (new construction, driveways, grading, lot development, etc.) can be performed without prior approval from the Environmental Control Committee (ECC).

Failure to obtain approval could result in the stoppage of work or even fines, and nobody wants that to happen. Inspections are made every Tuesday and reviewed by the Committee every other Thursday, so we can accommodate our members.

Please contact ECC before you begin any type of construction at 209-962-8605

Carron Tax associates

Carole Smith
Enrolled Agent

20093 Ridgecrest Way
Groveland, CA 95321
Tel: 209/962-6119
E-mail: carolesmith@carrontax.com

INCOME TAX PREPARATION
AUDIT REPRESENTATION



CHRIS H. LAKE
DRE 00946632
209-768-6156

chrishlake@gmail.com



GINA GIAMPIETRO HERNANDEZ
DRE 0122655
408-506-6944

GinaGHRealEstate@gmail.com

Our FREE HOME STAGING helps you sell!! No one does what we do!
Lake Homes, Golf Course Homes, Country Homes, Cabin Homes, Newer and Fixers



**YOSEMITE AREA
REAL ESTATE**

18634 MAIN ST. STE 1 GROVELAND

View listings at www.YosemiteAreaProperties.com

PAUL S. BUNT REAL ESTATE BROKER DRE 01221266

Make
Chris & Gina
your
1st call!

CABIN GETAWAY

PENDING



19631 COTTONWOOD ST U6 L38 – \$169,000 2 bedrooms w /loft 2 baths Open beam ceilings, updates in kitchen. 2 levels Lower level has bonus area, laundry hook ups and bath. Newer dual pane windows and slider. Unique hexagon shape. Upper deck and lower covered and enclosed patio. 1/3 acre on quiet street. County records show 1395 sq ft.

BEAUTIFULLY REMODELED

NEW LISTING



19082 JIMMIE BELL ST. U7L161 – \$425,000 .40ac Beautifully remodeled nearly 3000sf cabin- style home. 4bd/2.5ba, 2 car finished garage w/RV prkg. Must see! Grt Rm Lv Rm, Kitch, Fm Rm, Din Area Combo featuring Gourmet Kitch Stnls , Monogram 6 burner gs stv&oven plus 2nd oven, instant stnls hot wtr faucet. Granite ctrs, Breakfast bars seating up to 9, walk-in pantry,vltd opn beam ceil, wd brn stv stone fp, granite&tile in all ba,fnsh gar &wrk shp/strg.

SINGLE LEVEL CHARMER



12699 CRESTHAVEN U4 L485 – \$219,000 3/2 1248sf Hard to find w/no stairs.Energy saving & efficient solar powered home. Crown molding. Wd burning stove w/slate hearth. Efficient kitch w/ elec. stove, refrig, dishwasher, disposal, microwave & pantry. Central heat/A/C. Enclosed sun porch. Wood & tile flooring. Attached 2 car gar w/washer/dryer & wash tub. Fenced area for pets. Close to Lake Lodge beach.

NEAR THE MARINA



19444 PINE MT DR U1 L409 – \$269,900 3/2 1758sf Cabin home .5 mile from Marina/Beach/Lake Main Gate, Golf Course, Swimming Pool & 35 miles from Yosemite. Tall vaulted knotty pine clngs, open living/great rm, efficient pellet heat stove fireplace, open kitchen w/great cabinet & counter space, covered deck. Main level great rm, lg master bdrm & roomy bath w/double sinks. Lower lvl - 2 lg bdrm 1 w/bunks & queen bed + lg bdrm or bonus rm + full bath.

CABIN CUTIE

SOLD



13093 MUELLER – \$242,900 Great location, Upgraded/updated!!! Move-in ready. Vltd clngs, Grt rm concept. 3bd/2ba + loft, perfect vacation retreat. Wraparound deck w/views. Updated: deck, htr, flrng, kitch, applcs, gas fp, roof & gutters, railings, electric, baths, windows, cell phone booster, cement drive. Spacious lot for expansion & privacy. Make this your home sweet cabin. Close to all PML amenities.

NO HOA DUES!!!

PENDING



13110 BOITANO – \$162,000 Manufactured home on permanent foundation 1440 sq ft 3 bedrooms/ 2 baths on 1+ acres. Newer remodeled kitchen with S/S appliances. Wood burning stove Covered porch and paved driveway. Completely fenced for horses. District water services the property. Oversized one car detached garage and separate carport. Just 25 miles to Yosemite National Park

NEAR LAKE LODGE BEACH



20235 PINE MT DR. U4/L420 \$399,000 3292sf 4bd/3ba. Walking distance to beach. Great rm concept, remodeled kitch. sep. office, oversized walk-in pntry/stor. 2 mstr stes, 1 on entry level. Bonus rm w/tp & wet bar, open beams. Deck & custom lg patio. Sep. workshop. Parking & oversized 2+carport. Addtn'l exterior storage cabinets. Home warranty included.

MOUNTAIN MAGIC



12002 HILLHURST U8/L274 – \$359,000 2576sf 3bd/2.5ba, Cozy yet spacious cabin 2 decks - trex type deck. Great Rm w/lg kitch. Oak flrng. Brkfst nook & Brkfst bar/island w/ propane cook top, tree views. Walk-in pantry. Lvg rm w/vltd wd clngs. Pellet stove & ctrl heat/air. Lg mstr w/2 walk-ins, jetted garden tub. 2 car gar & 2 car carport. Dble corner 1/2 ac lot.

MOVE IN READY

PENDING



19623 COTTONWOOD. U6 L37 – \$259,999 3 bd/2.5 ba 1680sf. Newer construction. Entry level kitchen w/corion ctrns, dishwasher, disposal, range & pantry, great rm concept/clng fan & .5ba. Upper level master ste w/private ba, 2 lg add'l bdrms & full ba. Upper level balconies, & central loft area. 2 car finished attached garage. Paved drive with plenty of parking. Central heat/A/C Concrete patio.

WATERFRONT LOT



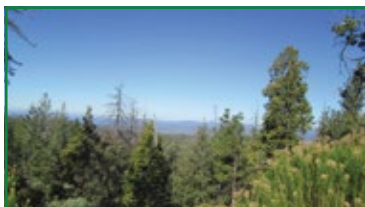
20130 PINE MOUNTAIN DR U4 L137 – \$65,000 .95acres. Most affordable waterfront lot in PML. Easy, paved entry to building area at the top of lot. Water, sewer & power available at site. Paved easement at water access. Lot cleared for fire safety & ready to build your dream home. Purchase includes professional house plans. Enjoy all the amenities. 24 hour security, gated community just 25miles from Yosemite National Park.

RARE FIND



UNIT 12/LOT 183 – \$99,000 .98ac. Corner lot on cul-du-sac horse prop. fenced w/lg covered RV or Hay storage steel shelter barn. Sand on site for future round pen. Mostly level parcel. Utilities available. Walk to Fishing pond. Other amenities: HOA stables, airport, golf, lake & marina, tennis, pickleball, pool, country club dining and more. Gated community w/24 hour security.

UNDEVELOPED POTENTIAL



PARCEL 1A VERNAL – \$62,500 Own a piece of paradise. 5.3ac a couple of miles from the quaint town of Groveland. Property boasts vista views & private setting. District water available. Power available. Engineered septic required. Make your getaway spot or build full-time dream home. Mature oaks, cedars & pines. Just 25mi from Yosemite NP. Above the fog & below the snow. No HOA dues.

PARK LIKE SETTING



UNIT 4/LOT 348A BIG FOOT CIRCLE – \$20,000. Almost 1/2ac. Great building sites to choose from. Gentle slope - oaks & pines. Easy access. Seasonal Creek. Quiet neighborhood. Approved for septic system for 3bdrm home. 2 blocks from beach at Lake Lodge.Gated community, private lake, golf, tennis, pool, pickle ball court, riding stables, airport and hiking trails.

DEEP WATER LAKEFRONT LOT



UNIT 4 LOT 123 LONGRIDGE CT. – \$95,000 .35 acres on cul du sac. Water access and beautiful lakeviews. Build your fabulous get away or full-time home here. Property will support a personal boat dock. Water, sewer and powerat the site. 87' of lakefrontage. Great location with east access to all the PML amenities-golf course, tennis courts, airport, stables swimming pool. Enjoy the good life . Gated community.

BUYER SALE/GOLF COURSE HOME

SOLD



UNIT 5 LOT 245 \$310,000 1858 sq ft. 3 bedrooms and 2 full bath. Great room concept with vaulted ceiling, hickory hardwood flooring and propane woodstove/heat stove. Open kitchen with tons of storage.Great room opens to expansive rear deck for enjoying outdoor entertaining. Premium location n the 4th fairway. Excellent golf course views as well.

PMLA OWNED LOTS FOR SALE

1/042	PINE MOUNTAIN DRIVE	\$1,000
2/287	FERRETTI ROAD	\$2,500
2/291	FERRETTI ROAD	\$2,500
3/057	PINE MOUNTAIN DRIVE	\$1,500
5/212	FERRETTI ROAD	\$1,000
6/114	FERRETTI ROAD	\$3,000
6/211	FERRETTI ROAD	\$2,000
10/007	MCKINLEY WAY	\$4,000

FOR FURTHER INFORMATION REGARDING THESE PROPERTIES PLEASE CONTACT PMLA AT (209) 962-8600

Community Organizations

Contact the individuals/organizations below if you are interested in joining!
(All numbers are 209 area code unless noted otherwise)

Camp Tuolumne Trails – Jerry Baker – 962-7916

Friends of the Groveland Library – Virginia Richmond – 962-6336

Village on the Hill – 209.962.6906 or info@villageonthehill.org

If you would like your community organization listed please send your group's name, contact person, and phone number to
debra@pinemountainlake.com

Call
Hamm's Carpet Cleaning

EMERGENCY SERVICES

WATER DAMAGE RESTORATION

STRUCTURE DRYING AND REPAIR

Locally Owned & Operated for 30 Years



209-962-5852

EMERGENCY FLOOD & RESTORATION SERVICES

Professional Truck Mounted Cleaning Equipment



Lauree Borup
Broker
(209) 628-4600
Lauree@Lauree.com



Ann Powell
(209) 200-1692
AnnPowell Realtor@gmail.com

Tish Fulton
(209) 985-0216
Tish.RealEstate@gmail.com



Eleda Carlson
(209) 814-4123
EledaC1@gmail.com

THE VIEW STARTS HERE on 6 acres, atop the Vernal Dr. ridge, only 2 miles to downtown Groveland. 3 bdrm, 2 bath, 1608 sq ft. Legal to build second house 400' away even higher on ridge. GCSD water, private septic, woodstove, ctrl heat, cute kitchen-propane cooking.

New Listing \$208,000



Spectacular Sunsets and Moon Rises



New Listing



MARCH INTO SPRING with a "New To You Home"! This charming single level home features an open design for the main living area plus 2 bedrooms and 2 full baths. Central heating and a wood stove help to keep you comfortable on cold winter nights and the central air conditioning cools things down on a hot summer day. Covered front porch for BBQ's or just relaxing. Even a seasonal creek in the front yard. 1 Year Home Warranty included. 6-148 \$179,500

There's room to roam in this 2 bedroom 2 bath home in Yosemite Vista Estates. Open living-dining-kitchen space with office/ formal dining to the side. The master suite is separated from the guest bedroom and bath for comfortable privacy. A little "TLC" may be required but there's so much to appreciate. Nice level lot with ranchland as a back yard neighbor. Garage designed for motorhome or RV plus vehicles -Lots of space!

SPACIOUS HOME + RV GARAGE



New Listing

22860 Parkwood \$139,900

New PML LOT Listings



3-412 \$12,900

down-slope with public water & sewer available. Over 1/3rd acre; just right for a home with a side drive to a garage below.

OVER ONE ACRE Merged double lot with southern exposure. Topography lends itself to a multi-level floor plan that can be accessed from the rear-no steep driveway needed! Be creative and design something special. (adjacent lot also available) 6-233 \$4,900

GOLF COURSE LOT \$15,000



Gentle slope to 6th fairway, shady oaks & pines, septic approved, on paved easement drive below Ferretti Rd, close to pool & Grill. 5-206



MODERNBROKER

KillionTeam.com

Yes NOW is a good time to Sell and spring is just around the corner.
We offer decades of experience in representing both Buyers & Sellers.
Visit our new office at 18634 Main St, Suite 3, Groveland, CA.
View all local MLS listings at KillionTeam.com, search by zip 95321

Weldon Killion 209.459.0163 Weldon@KillionTeam.com DRE#00959395
Janis Killion 209.459.0098 Janis@KillionTeam.com DRE#01737445

Ranch Revived

RUSTIC MODERN

SUPPORT SMALL BUSINESS. SHOP SMALL HERE.

- Rustic Ranch Furnishings
- Cowhides & Pillows
- Mid-century Modern Styles
- Unique Gifts
- Refurbished Antiques
- Western Wear
- Ranch & Rustic Decor
- Jewelry
- Accessories
- Lighting & Lamps
- Kitchenware
- Artwork & More!

18697 Main Street, Suite A • Groveland CA (in the Mountain Leisure Center)
209-962-0740 • Facebook.com/RanchRevivedDecor

PAINTING

Bay Cal

LIC #923832

Painting – Exterior/Interior
Deck Repairs
Wood Repairs
Remodels

VISA MasterCard

FREE ESTIMATES

209.962.4777
www.baycal.com • email: davec@baycal.com

PML Ladies Club

Patricia Epp

The first Ladies Club meeting of 2019 at Pine Mountain's Lake Lodge was an exciting success – in spite of the rain, snow, ice and bitter cold -- over 50 members enjoyed a Lunar New Year luncheon prepared by "Two Little Pigs" catering.



lover ... you won't want to miss this luncheon.

If you're new to Pine Mountain Lake, we're a social organization and enjoy our monthly opportunity to get together and share happenings, laugh, and have a great time. You can easily become involved by volunteering to be on one of the luncheon committees, or you can simply come and enjoy and get to know your neighbors. Annual membership dues are for one year starting January – ending in December – and are just \$15.

In fact, in addition to sharing our horror 'driveway' and 'no power' stories, many of us enjoyed meeting four new members: Patricia Gibson, Maureen Griefer, Nancy Ondreajka and Jeanne Wilson – Welcome! We look forward to getting to know each of you.

On March 6, the Ladies Club Luncheon theme is "Furry Friends" and we've partnered with a few Tuolumne County Animal Shelters to come and talk with us about their efforts to find both cats and dogs their forever homes. If you're a Ladies Club member ... and an animal

Don't forget, if you've not yet 'liked' our facebook page, you can 'like' us by searing for PML from your Facebook account. We'll continue to post updates, photos and information as the year progresses.

Come join us!

ROFFBB'S

Spring Luncheon
& Membership Meeting

Friday
April 5
At 11:30

Put a little **Love** in your heart
AND MAKE THE WORLD A BETTER PLACE!

ROFFBB members be sure to
Save The Date

Pot o' Gold

Tammy Talovich

Follow the rainbow to the Pickleball Courts maybe there's a pot o' gold, if not maybe just some Irish Luck to help our games get better.

The weather has been off and on for Pickleball, but will hopefully be better for March, so come on out! If you are a newbie, experienced or somewhere in between; we have courts available for all levels. Just bring your water, wear comfy clothes and court shoes we've got the equipment, if you don't.

The Pickleball Center is on Mueller (by the golf course) there is usually someone out playing every Monday, Wednesday, Friday,

Saturday & Sunday at 10:00 AM. During this time of year – it is weather permitting – if it's cold that's fine but wet courts are dangerous.

Please don't forget to purchase your Pickleball Annual Pass at the Administration Office; or you may purchase a daily pass from the Main Gate.

If you want to join a fun bunch of people, the club membership is \$15.00 per person. There will be some fun events planned for this year. You don't have to play pickleball to join us for our members-only social events!

Come on out and have some fun with us! See ya on the courts!

Jim Thomas Offers Gift to Local EAA Chapter

Ed Gregory

Jim Thomas, or "JT" as many of us know him, lived at PML for nearly 20 years. Eleven of those years, from 2003 to 2014, he was Tuolumne County Airports Manager, overseeing both PML (E45) and Columbia (O22) Airports. Moving here, after calling Alaska home for 25 years, PML was the perfect location with good flying weather, the great PML community, and closer to family. JT was active in many aspects of aviation: racing airplanes, building aircraft, crewing for air racers, and volunteering with our local EAA Chapter.

The KOLB Firestar II was JT's most recent aircraft building project. It's an open-cockpit, high wing, ultralight pusher, with conventional landing gear. Being an ultralight means it is lightweight, cruises at 80-MPH, stalls at 25-MPH, can take-off in about 200-feet, and subject to significantly less regulations.

JT was well into this estimated 300-hour construction project. He had completed much of the aluminum fuselage and wing structure, and was just beginning to work on the fabric covering. Life's priorities changed as JT met, married, and moved out of PML. He offered his Firestar project as a gift to our local EAA chapter to complete.



The local EAA Chapter 1337 was excited to accept the gift and is enthusiastic about beginning work. EAA is a national organization that promotes aviation (EAA stands for Experimental Aircraft Association). The local EAA Chapter will complete the construction. Bob Horneaur has offered to organize and lead the building project. Want to fly it? Contributors to the project can be "qualified" to fly it. Contributions can be in construction time, monetary donations, or both. The money will go toward construction supplies and a power source. An electric engine will cost about \$9,000 and a traditional gas-powered engine will cost about \$7,000; there are some trade-offs to consider in the final decision.

JT was born and raised in Orinda, CA and attended Cal Poly in San Luis Obispo. After college he worked for Boeing as a structural engineer on the 747. A kayak trip from Wrangell to Sitka, in southeast Alaska, hooked

Garden Clippings

Sharon Hunt

I can't remember when we have had sooooo much snow!!! I live at 3100' and the Snow Goddess powdered me with great amounts of sparkling white. Her down side was she outed our power, turned off our land lines and uprooted tree after tree. And yes, it WAS hard to stay warm.

Just ten days before the storm I had the opportunity to introduce a friend of mine to Yosemite. The Valley Floor was bathed clean by our first rain. So many awes!



Monday, March 11th at 1:00 p.m. the Garden Club meeting promises to be fun. We will be making grape vine wreaths with seasonal décor. You won't want to miss it.

It is never too early to start planning for our annual Garden Club Tour and Luncheon June 10th. Many

of you enjoyed the garden related vendors at the luncheon. We are looking for new vendors. You can call Linda Flores 209-962-0824 if you would like to participate.

PML Racquet/Tennis Club

Pauline Turski

ABOUT THE PML RACQUET/TENNIS CLUB

Tennis is one of the year round activities at PML so come on out and join us! Whether you are an experienced player or someone who has never played before, Racquet Club members will make it easy and fun to get started playing tennis at Pine Mountain Lake. From tournament players to beginners, everyone is welcome - full time, part time, guest, and renters. We have a program for you and want to see you on the courts.

For questions or to learn more about the PML Tennis Club send an email to pmlracquetclub@gmail.com.

TENNIS PLAY AND SOCIALS

Weather permitting, we offer drop-in tennis every Saturday starting at 10:00 a.m. during the winter months. Simply

drop in at courts 3 and 4 at Rock Canyon Way and Pine Mountain Drive to play; no advance scheduling required. This is a great way to meet members.

Join us for organized group tennis on Monday through Friday. We start at 9 AM in the cooler months and wrap up by mid-morning. If interested in joining us for weekday tennis, send an email to tomknoth@yahoo.com.

General Rules - A valid tennis pass is required to play. Annual tennis passes are sold at the Association Office. Daily and monthly passes are sold at the Main Gate Department of Safety. Non-marking tennis shoes only. Appropriate tennis attire - no swimsuits or jeans. No food or drink other than water on the courts and no glass containers. Learn more by visiting the Tennis page at PMLA website, <http://www.pinemountainlake.com/tennis-and-pickleball-courts/>

him. He spent the next 25 years living in Alaska and working on the Alyeska Pipeline. He lived in Barrow, above the Arctic Circle; JT was a field and project engineer on the Trans-Alaska Pipeline System that stretches 800 frozen miles from Prudhoe Bay to Valdez.

A big thank you to JT for his PML friendship over the years and for his generosity in donating the KOLB Firestar II project to EAA Chapter 1337. We will finish the project with pride.

Our local EAA Chapter sponsors Young Eagles Rallies at both Columbia (O22) and

PML (E45) Airports. Bring your kids age 8 to 17 to PML Airport October 12th for a free airplane ride. Chapter members also volunteer for many local aviation projects which keep PML Airport proudly supporting CalFire, Air Ambulance Service, Search & Rescue, and local aviation enthusiasts. Local members actively support area aviation activities including Father's Day Fly-In / Auto Show at Columbia Airport (June 15 & 16) and PML Airport Appreciation Day (October 5).

WED 6	THU 7	SAT 9
GCSO PARKING LOT – 18966 FERRETTI ROAD	LOWER LIBRARY MEETING ROOM	PML LAKE LODGE
<p>FIRST WEDNESDAY BIRD WALK The first Wednesday of the month Bird Walk at the Groveland Community Services property will be led by Jeanne Ridgley. The property encompasses an area of more than 200 acres of oak, pine and willow habitat with three water storage ponds. Meet the group in the GCSO parking lot at 8:00 AM. Bring binoculars and a birding field guide if you have one. Rain will cancel the trip. The walk will last about two-three hours.</p>	<p>KIWANIS BINGO NIGHT Due to the Community Hall having the floors refinished, we are not meeting there on the 7th of March. Instead we will be in the meeting room under the Library, the usual 5:30 p.m. doors open, 6:30 Early Bird, and 7 p.m. regular BINGO. We are sorry for the inconvenience, but after a year long wait it will be wonderful to meet in a nice clean building in April. If you wear something green you will receive a sweet treat. Snacks and refreshments will be available all evening.</p>	<p>PMLA JOB FAIR PMLA is holding the annual Job Fair from 8am – Noon at the PML Lake Lodge. Complete the online application at www.PineMountainLake.com and come out to the Lake Lodge to meet with the management team and apply for available seasonal jobs at PML. For questions call 962-8628.</p>
SUN 10	SAT 16	SAT 16
DAYLIGHT SAVINGS BEGINS	PML LAKE LODGE	PML LAKE LODGE
<p>Don't forget to set your clocks ahead one hour and replace the batteries in your smoke alarms/Carbon monoxide detectors</p>	<p>KIWANIS SAINT PATRICK'S DAY CORNED BEEF DINNER Normally at the community Hall, we will be at TENAYA ELEMENTARY SCHOOL CAFETERIA from 6-8pm.. The cost will be \$15 for adults, children 12 and under \$10. Dinner, Drinks, and Dessert. There will be drawings and lots of prizes. We will be selling tickets in advance. Call Earl Wright - 534-9548, Sandy Smith - 962-4950, or Tammy Kohn - 206-6759 to reserve your tickets. We will have them at the door for you.</p>	<p style="text-align: center;">PMLA BOARD OF DIRECTORS MEETING 9AM</p>
SUN 17	SAT 21	SAT 26
ST. PATRICK'S DAY	PML LAKE LODGE	TENAYA ELEMENTARY SCHOOL GYMNASIUM
	<p>FIRE SAFETY / CC&R WORKSHOP 5:30 - 7pm. All PMLA Members are welcome and encouraged to attend this workshop presented by Sarah Ruhl – PMLA Community Standards Director. The workshop will cover what Community Standards are and how they are enforced as well as Fire Safety rules, how to create a defensible space, and what you need to do for fire safety year round. For more information call 209-962-1240.</p>	<p>FAMILY WELLNESS FAIR The Groveland Rotary Club is pleased to announce our Annual Wellness Faire from 8:00 a.m. to Noon. Free screenings, such as vision, blood pressure, hearing and diabetes. Prevention is the key to wellness. Adventist Health Medical Center will offer a low cost (\$25.00) blood chemistry panel that includes a lipid panel (Cholesterol, LDL, HDL and triglycerides), kidney function thyroid and liver function. They are also offering a PSA test for \$10.</p>

Entertainment at the Lake Lodge

- Saturday March 2 – DJ
- Saturday March 9 – DJ
- Saturday March 16 – DJ
- Saturday March 23 – DJ

Support Meetings in Groveland

- AL-ANON**
- THE LITTLE HOUSE – SATURDAY 9:30-10:30 AM*
- MOUNTAIN LUTHERAN CHURCH – WEDNESDAY 1:00-2:00 PM*
- GRIEF SUPPORT**
- THE LITTLE HOUSE*
- 1ST & 3RD WEDNESDAY 10:30-NOON**
- CALL JUDY AT 962-5157 OR BONNIE AT 962-5507 TO REGISTER FOR GRIEF SUPPORT.

Helping Hands Happenings

Patti Beaulieu

The calendar says we're getting into the spring months, but at this writing (in early February) we're in the midst of a doozy of a storm lasting for 4 days. Regardless of the weather, the seasons will change. Believe it or not, this month, on March 10th, we change our clocks forward one hour. It seems as though the Daylight Savings time lasts longer and longer each year. At Helping Hands, our stores will not change to our 'summer hours' until just before Memorial Day. We'll continue with our 3 p.m. closure until then. We also have the Furniture Barn closed on Wednesdays during the winter, so it will

also be open on Wednesdays when we change our hours.

We are still putting out winter clothing inventory and continue to receive some wonderful home décor and houseware donations. Look for our VAST supply of Easter items after March 3rd. The volunteers come in on that Sunday and fill the store with bunnies, baskets, chicks and all things Easter. Shop us first for your Easter outfit or things to delight the little ones in your life.

Thanks to this wonderful community for your support, in the form of donations, purchases or just coming into the Store or the Barn to visit and say 'hi'.

Mountain Lutheran Church

Jackie Ostrom and Eva Sheldon

CUP OF COFFEE

A group of Alumni, highly established in their careers, got together to visit their old university professor. Conversation soon turned into complaints about stress in work and life. Offering his guests coffee, the professor went to the kitchen and returned with a large pot of coffee and an assortment of cups – porcelain, plastic, glass, crystal, some plain looking, some expensive, some exquisite – telling them to help themselves to the coffee. When all the students had a cup of coffee in hand, the professor said: "If you noticed, all the nice looking expensive cups have been taken up, leaving behind the plain and cheap ones. While it is normal for you to want only the best for ourselves, that is the source of your problems and stress. Be assured that the cup itself adds no quality to the coffee. In most cases even hides what we drink. What all of you really wanted was the coffee, not the cup, but you consciously went for the best cups...and then you began eyeing each other's cups." Now consider this – Life is the coffee; the jobs, money and position in society are the cups. They are just tools to hold and contain Life, and the type of cup we have does not define, nor change the quality of life we

live. Sometimes, by concentrating only on the cup, we fail to enjoy the coffee. Savor the coffee, not the cups! The happiest people don't have the best of everything. Live simply. Love generously. Care deeply. Speak kindly. Love life, and life will love you back! As we sip "Life's Coffee" from various cups, let us be mindful of Life's Seasons": On Mar 6 we celebrate Ash Wednesday, which is the beginning of Lent, a time that reminds us of Jesus' Life, Ministry and Death (and His glorious resurrection at Easter, April 21!)

"Jesus, remember me, when you come into Your Kingdom": Luke 23:42

Mountain Lutheran Church Ash Wednesday Service is Mar 6th at 7:00 pm.

Our Soup Supper & Lent Holden Evening Prayer Service is on Wednesday, April 3rd at 6:00 pm.

Our Sunday Worship Services are at 4:00 pm with ONE EXCEPTION: Easter Sunday Worship is at 10:00 am.

As always, ALL are warmly invited to all Services and Events.

See you in church!

Mountain Lutheran Church
13000 Down To Earth Court
Groveland, CA 95321
(209) 962-4064

Family Wellness Faire

Sharon Hunt

MARK YOUR CALENDAR

The Family Wellness Faire March 26, 2019 at Tenaya Elementary Gymnasium from 8:00 a.m. to 12:00 p.m..

The Groveland Rotary Club is pleased to announce our Annual Wellness Faire. The exhibitors will be bringing the most up-to-date health and safety information. You will have the opportunity to visit the wellness related exhibits located in the gymnasium. Come early so that you will have time to visit all of the booths and talk with the exhibitors. Allow yourself ample time to partake in the free screenings, such as vision, blood pressure, hearing and diabetes. Prevention is the key to wellness.

Adventist Health Medical Center will offer a low cost (\$25.00) blood chemistry panel that includes a lipid panel (Cholesterol, LDL, HDL and triglycerides), kidney function thyroid and liver function. For those of you planning on having a lipid panel, please fast, starting at midnight prior to the Faire and drink several cups of water prior to the draw. This helps the flow of blood. They are also offering a PSA test for \$10.

Knowing the importance of good health, the Rotary Club of Groveland felt that it was important to offer our annual Family Wellness Faire. With the cost of health care today the Family Wellness is practically free. Don't miss it!

First Wednesday Bird Walk

Jeanne Ridgley

The first Wednesday of the month Bird Walk at the Groveland Community Services property at 18966 Ferretti Road, Groveland, will be led by Jeanne Ridgley on March 6. The property encompasses an area of more than 200 acres of oak, pine and willow habitat with three water storage ponds.


The February 6 Bird Walk was cancelled


due to snow.

Access for birders here is limited. Birders must be accompanied by an authorized birder.

Meet the group in the GCSD parking lot at 8:00 AM. Bring binoculars and a birding field guide if you have one. Rain will cancel the trip. The walk will last about two-three hours.

HOURS
MON-TUE: 11AM - 10PM
WED 11AM - 9PM
THU-SUN: 11:00 - 10PM





"WE TAKE LOCAL COMPETITOR'S COUPONS!"

PIZZA PIES

**TRY OUR ALL-YOU-CAN-EAT LUNCH SPECIAL
OR OUR OVEN BAKED SUBS**

Call ahead: 962-4897 (962-GUYS)
18955 Ferretti Road. Left turn off of Main St (Hwy 120) 1/2 Block

\$1.00

Off Any Size Two Guys
Pizza or Calzone

One coupon per order, per visit. May not be combined
with any other offer and/or coupon. Not valid on delivery.

PML0319 Expires 04/15/19

\$2.00

Off Any Large or Extra
Large Two Guys Pizza

One coupon per order, per visit. May not be combined
with any other offer and/or coupon. Not valid on delivery.

PML0319 Expires 04/15/19

Adventist Health Welcomes Family Nurse Practitioner Melanie Patton, F.N.P.-C

Beth Martin – Temporary Communication Manager

Adventist Health proudly welcomes board-certified family nurse practitioner, Melanie Patton, F.N.P.-C, to the team at Adventist Health Sonora - Sierra Cardiology.

Specializing in comprehensive cardiology services, Patton offers care for concerns such as atrial fibrillation, hyperlipidemia, hypertension and coronary artery disease.

Patton received her Master of Science in Nursing and training as a family nurse practitioner from Georgetown University in Washington, D.C. She is board-certified by the American Academy of Nurse Practitioners.

A native of Tuolumne County, Patton enjoys caring for patients in her community.

"Helping to improve the health of my patients is the best part of what I do," she says. "I have lived in Tuolumne County most of my life and am passionate about caring for my community."



In her spare time, Patton enjoys spending time outdoors with her husband and children.

Patton is accepting new patients at Adventist Health Sonora – Sierra Cardiology, located at 900 Greenley Rd., Ste. 911, in Sonora. For appointments, please call 209-536-3240.

New Service Helps Patients Reduce Risk of Heart Attack, Stroke and Vascular Disease

Beth Martin – Temporary Communication Manager

Heart disease is the nation's number one killer, and improving your lifestyle is your best defense, according to the American Heart Association. Just in time for American Heart Month (February), Adventist Health Sonora has introduced a new service to help patients understand and reduce their risk of heart attack, stroke and peripheral vascular disease.

The Lipid Resource Center provides a lipid analysis, full cardiovascular risk assessment and extensive education and lifestyle management tools, including medication recommendations when appropriate. The center is staffed by advanced practice nurses (nurse practitioners and clinical nurse specialists with advanced education), exercise

instructors and nutritional therapists who work collaboratively with patients and their physicians.

"Our Advanced Practice Nurses spend 30-45 minutes educating each patient and creating an individualized plan to help him or her make small changes that can make a big difference in reducing the risk of cardiovascular disease," said Clinical Nurse Specialist Julie Mena, R.N., M.S.N. "We're a resource for both patients and their physicians."

Patients need a physician referral to access the Lipid Resource Center, which accepts Medicare and other insurance. The Center is located at the Adventist Health Sonora Live Well Be Well Center, 19747 Greenly Road, Sonora, and can be reached at 209-536-3720.

Nashville Hot Chicken

Recipe provided by Tom Knoth and Paula Martell

This dish was the highlight of our vacation to Nashville and it was the best fried chicken that we have ever had. We had it at "Hattie B's" and yes it was spicy. They served different spice levels of chicken with the hottest one being called "Shut the cluck up!"

We had the "Medium Hot" recipe (after lots of warnings) and despite our love for spice, the Medium delivered all of the heat that we needed. Our meal ended with a pleasant heat hanging out on our tongues and lips, but nothing intolerable. The chicken was extremely juicy with a very crunchy crust. It was incredible, and this is the recipe for it. It is a little labor intensive but so worth the effort.

If you are not a spice fan, no problem, just reduce or eliminate the cayenne pepper in the "spicy coating" below. Otherwise keep the recipe the same. The chicken is very mild flavored before the spicy coating goes on.

INGREDIENTS

For the dry brine:

1 whole chicken (3-4 pounds), washed, patted

dry and cut into quarters (we also like to substitute an equivalent weight of chicken wings)

Kosher salt and freshly ground black pepper

For the dip:

1 cup buttermilk

2 large eggs

1 tablespoon Louisiana-style hot sauce, such as Tabasco

For the dredge:

2 cups all-purpose flour (we use "OO" pizza flour, try it if you can find it)

Kosher salt

Vegetable oil, for frying

For the spicy coating:

1/2 cup hot frying oil

3 tablespoons cayenne pepper

1 tablespoon packed light brown sugar

1/2 teaspoon paprika

1/2 teaspoon chili powder

1/2 teaspoon garlic powder

Pickle slices and white bread, for serving

DIRECTIONS

Dry-brine the chicken: In a bowl, toss the chicken pieces with 1 tablespoon kosher salt and 1 1/2 teaspoons black pepper; cover and refrigerate overnight or up to 24 hours.

Make the dip and dredge: In a bowl, whisk together the buttermilk, eggs and hot sauce. In a separate bowl, whisk together the flour and 2 teaspoons Kosher salt.

Dredge the chicken in the flour mixture, then dip in the buttermilk mixture, then in the flour mixture again, shaking off the excess after each step. Rest on a wire rack.

Heat the vegetable oil in a deep-fryer to 325 degrees F. Set a wire rack on top of a rimmed baking sheet and set aside. Working in small batches, lower the chicken into the fryer and fry until crisp, 15 to 18 minutes - for breast quarters 160 F minimum internal temp and for leg quarters 170 minimum internal temp. Remove the chicken and let it drain on the rack. Allow oil to heat back up to 325 F before starting additional batches.

Make the spicy coating (I do the spice mix before cooking): Carefully ladle the frying oil into a medium heatproof bowl and whisk in with the cayenne pepper, brown sugar,



paprika, chili powder, and garlic powder. Baste the spice mixture over the hot fried chicken and serve immediately; garnish with pickles and serve with bread.

Healthy Habits

FROM PINE MOUNTAIN THERAPY

Julie Tanaka, PT

THE VALUE OF MOVEMENT

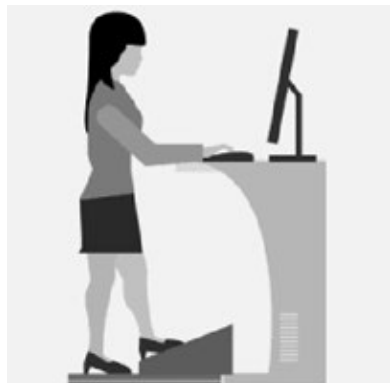
The computer era is amazing. We can shop, pay bills, and communicate with the world without getting out of our chairs. Unfortunately this is not so great for our bodies. Our bodies are made to move! Movement keeps our muscles balanced and joints lubricated.

The office set up a few decades ago had built in breaks. You had to get up to walk across the room to use the mimeograph machine, go to the post office to mail a letter, even our typewriters had built in breaks. At the end of each line you had to return the cartridge. That gave our wrist a mini break and improved circulation. Carpal tunnel syndrome (chronic wrist pain) escalated with the computer. As technology improved we are now at the point that we never have to get up or even move our hands from the keyboard. Not great for the human body, but job security for physical therapists!

In the 90's I became a specialist in workplace ergonomics. My job was to go out into the business world and set up workstations that would promote proper posture and alignment while working. We charged a lot of money and bought a lot of cool office furniture. In the end things improved, but we did not solve the problems of neck, back and wrist pain. The biggest decline in office related injury was in Japan. Japanese companies instituted a stretch break every hour for their workers and the injury rate decreased markedly. The industry of Workplace Ergonomics died out. It just wasn't that effective.

Recently adjustable desks that allow standing and/or sitting have become readily available. That is probably the best thing that came out of the "ergonomics decade". If you work from home at a computer this is a great option to help your body. Add in awareness of posture and you're ahead of the game. Now add movement and you're a winner! Set the timer on your computer for an hour. When the timer goes off take a few deep breaths while reaching your arms overhead. Walk to the kitchen and get a drink of water. You'll be able to work longer and healthier.

Stay healthy and keep moving!



PINE
MOUNTAIN
THERAPY

Outpatient Physical Therapy

*Serving the Mountain
Communities of
Tuolumne and
Mariposa
Counties*

18800 Main Street,
Groveland, CA 95321

209-962-4035

Please visit our new web site at
www.pinemountaintherapy.com

*A Preferred Therapy Provider,
participating provider with
most insurance carriers
including Medicare.*

Troops Send Thanks

Darlene Brown

The following letters were received from Troops that received the care packages sent to them from the wonderful people of Groveland!

GROVELAND COMMUNITY MEMBERS

Just a quick note to say thank you for your support of Delta Company, 299 Brigade Engineer Battalion, 1st Stryker Brigade Combat Team, 4th Infantry Division. My Soldiers and I appreciate your support and your patriotism! We are almost done with our deployment and can't wait to get home to our families and friends and get some time off to rest and recuperate. Again, thank you so much for your support of us. It means the world to us all.

Sincerely,

SFC Dennis Minor

DEAR DARLENE BROWN

Thank you very much for your generous contribution to the U.S. service members stationed at Bagram Air Force Base. It goes without measure the positive impact a kind gesture has on the emotional health and welfare of the young men and women serving here. Each and every care package and letter you send makes its way into the hands of a soldier. The knowledge that someone back home, someone they may have never met, recognizes and appreciates their sacrifice to this great nation sustains and encourages them on a daily basis. We here at the AFSBn, remain grateful for your continued support.

M Ayers

Columbia College Child Development Tea Party Fundraiser

Cari Craven

The Columbia College Child Development Department and the Child Development Future Educators Club invite you to the 3rd annual Tea Party Fundraiser. The festive family-friendly event will be held on Friday, March 15, 2019, from 3:30 – 5:30 p.m. in the Maple Building. Students, former students, staff and faculty will serve up treats and a variety of teas to support students and student teachers in the child development field. Funds go toward fingerprinting for students applying for

teaching permits, a scholarship through the Columbia College Foundation, and student activities. Please see our website <http://columbiacollegegeteaparty.weebly.com/> for more information and to purchase tickets. Tickets are \$25.00 for adults and \$10.00 for children. We hope to see you there!

For more information, contact:
Kelly Thomas, Child Care Center Manager

PH: (209) 588-5024

Email: thomask@yosemite.edu

Save the Date: May 30

WIZARD OF OZ AT THE FALLON HOUSE

Southside Community Connections

There truly is no place like home! As the greatest family musical of all time, the wonderful WIZARD OF OZ twists its way to The Fallon

House in Columbia! You'll be captivated as they travel down the Yellow Brick Road, and beyond, with Dorothy, Toto and their friends the Cowardly Lion, Tin Man and Scarecrow journey down the Yellow Brick Road to find what each of their hearts most desperately desire.

A spectacular celebration of the iconic 1939 MGM film, THE WIZARD OF OZ will blow you away from the moment the tornado touches down and transports you to a dazzling Oz, complete with munchkins

Southside
COMMUNITY CONNECTIONS

and flying monkeys. Don't miss the chance to travel Over the Rainbow and experience this national treasure, which the Library of Congress has declared "America's

greatest and best-loved homegrown fairy tale." The musical features such beloved standards as "Over the Rainbow," "Ding Dong, the Witch is Dead" and "We're Off to See the Wizard."

Tickets for this fundraiser will be available in mid-March and can be purchased at The Little House or on the SCC website www.southsidecommunityconnections.org. All proceeds benefit SCC programs, Village on the Hill, Wheels and The Little House. Contact us 209.962.7303 for more information.

Groveland Rotary Happenings

SAVE THE DATE

On Tuesday March 26th from 8 am to 12 noon Groveland Rotary will present the Annual Health Faire at the Tenaya Elementary School gymnasium. There will be approximately 35-40 vendors. Fasting blood draws \$25.00 And psa for men at \$10.00 Will be available. Every one is invited to

attend to discuss medical concerns.

ANNUAL RED, WHITE & BLUE BALL

The annual red white and blue ball was held at Tuolumne Trails great hall to a sellout group. They enjoyed dancing to "home grown" a local favorite. All proceeds will go to Wounded warrior organizations.

Adventist Health Offers Grief Support Groups

Beth Martin – Temporary Communication Manager

Grief is experienced and expressed in many ways. Healthy grief honors and cherishes the memory of a loved one while allowing you to start moving on with life. Adventist Health offers a weekly grief support group in Sonora. Volunteer grief facilitators provide a safe and supportive environment for adults who have lost a loved one, free of charge, at the following times and locations:

Monday, 6-7:30 p.m.

Community Room • Tuolumne County Library
480 Greenly Rd. Sonora

Wednesday, 10-11:30 a.m. (new time)

Community Room
Tuolumne County Library
480 Greenly Rd. Sonora

Registration is required; please call 536-5687 to register or for more information.

The Delight of Discovery at The Little House

Denise Jervis

An active mind never stops learning.

Southside Community Connections is proud to offer a wide array of stimulating lifelong

learning courses at The Little House. Lifelong learning is defined as the ongoing, voluntary and self-motivated pursuit of knowledge. Benefits of lifelong learning have been found to support well-being, provide resilience to mental health issues and enhance self-esteem. Lifelong learning enhances social inclusion, active citizenship, personal development and helps people to adapt to changes that occur to and around us.

Past sessions included Science and Space, American History, Music and Mathematics. We just completed a series on Wellness, including the use of natural and herbal remedies to help prevent and shorten the common cold. Classes are



typically scheduled on Tuesday afternoons at 1:00pm. Some courses run for six to eight weeks for approximately 90 minutes each.

Many of the course subjects are suggested by participants and community members. If you have a suggestion for a course topic or would like to coordinate and lead a session, please contact us. Join our community of lifelong learners today. We don't assign homework, nor do we give exams!!

The Little House is available for use each weekday from 6:00 a.m. until midnight. Our staff and volunteers are available Monday through Friday from 10:00 a.m. until 2:00 p.m. Find us at 11699 Merrell Road and Highway 120 in Groveland, call us at 209.962.7303, email us at tlh@southsidecommunityconnections.org or find our activity calendar and more on our website: southsidecommunityconnections.org.

The End

Pastor Ron Cratty – Groveland Evangelical Free Church

Even people who don't consider themselves particularly religious may have a fascination with the End Times. Within Christian thought the end of the world as we know it is tied in with the Second Coming of Christ. The last book of the Bible (titled "Revelation" for Protestants, "Apocalypse" for Roman Catholics) uses vivid imagery and symbolism to tell us at that time the good guys win. (Although we "good guys" disagree about timing and other details.)

In my church I'm seen as being somewhat "End Times averse." It's not that I'm a doubter, it's that I sense a more immediate issue. Eschatology is the study of final history or "the last things". It's divided into two divisions. General eschatology affects the entire universe and covers such things as Christ's Second Coming. But personal eschatology covers things that happen to individuals, such

as death. It may be that Jesus' return will happen before you read this article. (Still there?) Historically, however, it's more probably that our end of life will happen first.

Either way we each have a decision to make. In my mind the biggest choice in life is the decision to trust in Christ as Savior. Whether you are someone who nailed that one down decades ago or someone who is still definitely in search mode, we like to be a church that helps you explore and develop your relationship with God. Probably the easiest way to check us out is visiting a Sunday worship service. About once a month we all meet at 10:00 a.m. But most Sunday mornings we have a 9:30 more traditional service and an 11:00 more contemporary one. Call the church ahead of time to make sure. (962-7131) GEFC is located at 19172 Ferretti Road in Groveland.

Pine Cone Singers

Bob Swan

SPRING CONCERTS: MAY 17-19

Pine Cone Singers are hard at work learning new material for our 2019 Spring Concerts, scheduled for May 17-19. (At least, I hope we are hard at work when you read this. We did have to cancel our February 5 rehearsal because of snow).

Weather aside, Music Director Dennis Brown has put together an interesting repertoire for this concert. The unifying theme is music that was inspired by poetry. Now, making music from poetry is not at all unusual. I'd estimate that a third of the pieces we've done, during the ten years I've been in the group, owe their origin to either poems or Bible verses. In fact, four of the pieces for this concert are beautiful arrangements we've done before.

This means we do have eleven new works to learn. These range from contemplative (Robert Frost's "The Road Not Taken"),

to silly (Lewis Carroll's "Jabberwocky"), and quite a range in between. Just for fun, we'll also do an arrangement of the pop song "Africa". We think this will be a really entertaining concert, and look forward to sharing it with you in May.

In other news, our new Board for 2019 is: President Monica Herendeen, VP Frank Jablonski, Treasurer Bob Swan, Recording Secretary Barbara Klahn, Corresponding Secretary Linelle Marshall, and Production Manager Cris Todd. Congratulations, and thanks for taking on the responsibility.

Pine Cone Singers have been Groveland's community chorus for more than thirty-eight years. We are delighted to have another opportunity to serve up some entertainment, and are very grateful for the support we get from the community.

Please note the dates of the Spring Concerts, May 17-19. Hope to see you there!

Thank You from Share Fitness

Janet Gregory

What an amazing day! An awesome group of 21 volunteers turned out to move the non-profit Share Fitness gym to its new location by the 7th Day Adventist Church on Elder Lane.

Nine volunteers with trucks and trailers disassembled, moved, and re-assembled the machines, and also moved out a refrigerator and delivered it to Greeley Hill. Others packed boxes to clear out the old place and unpack at the new place (including those pesky electronics – thanks Art!). By the end of the day the gym was ready for the next day's early-morning workout.

A huge THANK YOU to Mary and Clifford Beckwith, Shirley Beebe, Robin Blameuser, Lisa Dianne, Zack Campbell, Tony Flores, Mike, and Clint, Joanne Hammond, Ellen Jeffrey, Linda Kehoe, Cyndy Krout, Bruce and Dannette Robertson (also thanks for the pizza!), Art and Janis Schreiber, Jo Thomson,

Dan Tupper, and especially our fearless and inspirational leader, Laura Lee Pier, who coordinated the effort and worked into the evening. Also thanks to the SDA church, as well as, John Stone, Erna and Tony Joncich, A.T. Rockwell, and Laura Lee for the lease arrangements just completed and just beginning.

Congratulations to our fitness community for pulling it off! Please come by to check out the beautiful new location. You will see our signs set up by the Pine Mountain Lake turn-off to Elder Lane and on the Main Street/Hwy 120 Elder Lane turn-off. We have a new mailing address: Share Fitness Box 741, Groveland, but the phone number is still 436-9772. Except for no more Saturday workouts, hours remain the same: 8:30 am to 1 pm weekdays, Monday through Thursday afternoons starting at 2:30 pm, and early bird workouts at 6:30 am.

Save the Date!

Harriet Codeglia

STCHS (Southern Tuolumne County Historical Society) will once again host its annual fundraising WINE TASTING CRUISE on Pine Mountain Lake! This year's event will be held Saturday, May 18. More details will follow.

As in previous years, water taxis will transport guests between beautiful lakefront homes where wines from local wineries will be available for sampling. Also appetizers will be furnished by leading area restaurants and caterers for your



enjoyment. Cruisers will arrive back at the Lake Lodge around 6:30 where a Coffee & Cookie Reception will be waiting.

Each year this event sells out and we're looking forward to another fabulous day on the lake.

Tickets are \$55 per person, payable in advance. Over 21 years of age only!

Please contact us at winetastingcruise@gmail.com or call Harriet Codeglia (209-962-6270).

Volunteers will be needed as always, so don't be shy!

Kiwanis Club

Sandy Smith

March Madness is upon us.....a heads up for all BINGO players. Due to the Community Hall having the floors refinished, we are not meeting there on the 7th of March. Instead we will be in the meeting room under the Library, the usual 5:30 p.m. doors open, 6:30 Early Bird, and 7 p.m. regular BINGO. We are sorry for the inconvenience, but after a year long wait it will be wonderful to meet in a nice clean building in April. If you wear something green you will receive a sweet treat. Snacks and refreshments will be available all evening.

A noteworthy surprise in March, Kiwanis will be providing a Saint Patrick's Day Corned Beef Dinner. Save the date

Saturday March 16, 6 to 8 p.m.

Normally at the community Hall, we will be at TENAYA ELEMENTARY SCHOOL CAFETERIA. The cost will be \$15 for adults, children 12 and under \$10. Dinner, Drinks, and Dessert. There will be drawings and lots of prizes. We will be selling tickets in advance. Call Earl Wright - 534-9548, Sandy Smith - 962-4950, or Tammy Kohn - 206-6759 to reserve your tickets. We will have them at the door for you.

Spring is on it's way, begin something new, join Kiwanis. Come to the Pizza Factory at 8 a.m. on Tuesdays and learn how you can help our community and its children. See you then.

DAYLIGHT SAVINGS BEGINS MARCH 10

Don't forget to set your clocks ahead one hour and replace the batteries in your smoke alarms/Carbon monoxide detectors

GCSD SPOTLIGHT
JANICE KWIATKOWSKI — Board of Directors/President

BY RONI BORREGO, Customer Relations Consultant



In December of 2016, Janice and her husband of 38 years decided to leave their life long home in the San Francisco Bay Area and enjoy their retirement together in the beauty of Groveland and specifically, Pine Mountain Lake. Having successfully raised three sons and completing a rewarding career in Pinole, Janice states it was a difficult decision to leave her kids and grandkids for life in the mountains as they “were her life.” However, she was excited to get settled in her new home and familiar with her new community. She enjoys painting, woodwork, building and cooking and spends

a great deal of time in collaborative projects with her husband, Mike.

After almost a year of getting settled into her new life, she began attending the GCSD Regular Board meetings to become more involved with the issues of the community. She found that the District was struggling. Two directors had just resigned and the General Manager was retiring at years end. There was an opportunity for Janice to jump into a position as a Director of the Board. She felt that serving the public would help her get over the feeling of missing her family. Being new to the community and retired Janice felt she had the time that was needed to be a good director.

In December of 2017 she found herself being recruited by two community members who were regular attendees of the meetings and felt that Janice would be a wonderful addition to the Board. Janice gathered more information, made the decision to serve and was appointed by County Supervisors.

At the one year mark of service on the board she was elected as the Board President in January 2019 and is enjoying her role. Janice states that being raised in a family of eleven children taught her that standing up and being heard was something she would need to do in life. Her dad was a college professor and she and

her siblings were all taught to listen and speak well. “It will serve you well in your lifetime,” he’d said, and Janice states that he was certainly correct. She is a well spoken and confident leader because she truly believes in what she, her fellow board members and management are doing.

Janice understands the importance of having the right people working at the District and trusting them to do a good job. Janice states, “Knowing that I am doing a good job is more satisfying than anything else I am doing right now. Being proud of myself and the people I work with is a great feeling. Living in this awareness helps get me past the rough edges that serving the public can sometimes present.”

After fourteen months of her community service she has learned quite a bit about the District, the hard working dedicated staff, the new General Manager, her fellow Directors and the constituent’s viewpoints that are expressed by those in attendance at the meetings. Janice is grateful to these people for helping her along the way. She is committed to positive change and has seen some very encouraging things take place.

Janice will continue to work diligently on the matters ahead for the District and would like to encourage the constituents with the following statement:

“Next time you drive past the District Office please remember that someone else is taking care of these important things you need to have to live here. I invite you to be grateful that you don’t have to worry about the issues our Community Services District provides.”

“Things are so much better than a year ago. The District has three strong, new directors, a new, very experienced General Manager and department managers that are dedicated. We are all working hard to make sure this Special District is as special as they come.” Dedication, transparency and an understanding that the services provided; Drinking Water, Waste Water, Park and Fire Department are all offered without the customers ever having to think about the safety of the water, the waste products being taken away and Mary Laveroni Park and the Fire Department being there when you want or need them.”



Take Control of Your Health

dōTERRA

FREE CLASSES at The Little House

MARCH 10 @ 4:00 – Sip wine, learn about essential oils & make a roller bottle concoction. (\$5/materials)

MARCH 18 @ 6:30pm – Natural Solutions for allergies & MORE!

RSVP to save a spot!

Learn & educate yourself on tools that can change your life.
Ask questions - absorb knowledge!

Claudia Day-Fossum
209-770-2881
cdlay77@outlook.com



GROVELAND GAL FRIDAY

SPRING IS HERE
I am ready to help you with whatever you need: Organizing, shopping, rides, pet care, senior care, office work, home checks and more.

Have a need, give me a call!

SHARON VOLPONI
962-6848 • 770-6277

LAYOUT: WWW.SABREDESIGN.COM

Free Writers Workshop in Groveland

Janet Gregory

Writers Roundtable is a free workshop for writers. It is being offered through the combined effort of Groveland Library, FOGL (Friends of the Groveland Library), and three local writers. The workshop is for adults interested in writing fiction or non-fiction.

The six-week Writers Roundtable will be hands-on and interactive, with instructional guidance. Workshop topics will help writers to start on a writing project or to advance a writing project already underway. A central theme for the workshop is engaging your readers through writing to prompts, creating exciting scenes, showing not telling, and crafting cliff hangers.

Groveland Library will host the Writers Roundtable, upstairs in the main library, on Wednesday's from 10:00am to Noon. The first meeting on Wednesday, March 13th, 2019 will focus on writing to prompts. Please pre-register with Judy or Marle Hewett at 209-480-1540. The six-week workshop will

be every Wednesday from March 13th to April 17th.

Facilitators for the workshop are three local writers: Judy Hewett, Marle Hewett, and Janet Gregory. These three writers will connect you with writing, each in their own way. Judy Hewett's focus is on non-fiction writing and will weave in literary experience from her years as a college English professor. She has published numerous poems and short stories. Marle Hewett's concentration is on writing to prompts and will open the workshop series. Marle is US Navy Retired and has his memoir in process. Janet Gregory's emphasis is on non-fiction. She is a retired high-tech business executive and has published "Built for Global" (business) and was ghostwriter for "Hanna's Story" (local autobiography) and "Eat Happily" (family recipes).

If you are an experienced or aspiring writer, please join us for the free Writers Roundtable. Remember to pre-register with Judy or Marle 480-1540, as space is limited.



Writers Roundtable

Workshop for Writers (FREE!)

- Adult writer workshop.
- For both fiction and non-fiction writers.
- Instructional, hands-on, and interactive.
- Get started or advance your existing writing project.

Topics to Engage Your Readers

- Creating Exciting Scenes
- Show, Don't Tell
- Crafting Cliff Hangers

Wednesdays 10:00am – Noon

- Six-week workshop program
- First meeting: Wednesday, March 13th, 2019
- Weekly: March 13, 20 & 27 and April 3, 10 & 17

Workshop Facilitators

Judy Hewett – Fiction emphasis
 Marle Hewett – Writing in response to prompts
 Janet Gregory – Focused on non-fiction

Workshop location
Groveland Library
 18990 Main St.
 Groveland, CA

Space is limited
Please Pre-Register
Call Judy & Marle
 480-1540

Presented by
 Friends of the Groveland Library

Friends of the Library in Action

Rachel Phillips

The winter storms and slowdowns of February have not stopped the Friends of the Groveland Library from their busy activities.



Groveland's new librarian Katelynn Gifford.

Staff Changes: As we say goodbye to our retiring librarians Maddie Sousa and Michalene Martin, we welcome the arrival of new senior library assistant, Katelynn Gifford. Originally from Fresno, She studied literature at San Diego City College. While living in Oregon, she co-wrote a children's book. She moved to Groveland a couple of years ago and has recently completed a book of short stories entitled Conifer.

Writers Workshop: Continuing the activity, FOGL is presenting a free writers' workshop for both experienced and aspiring writers. It is open to everyone, however seating is limited so enroll early. Please contact Judy or Marle Hewett at 209-480-1540. It begins March 13 and runs 6 successive Wednesday mornings (10:00am-noon) through April 17th.



FOGL donates \$2000 to Tenaya Elementary to buy new books.

FOGL Donation: Virginia Richmond, president, and Theresa Larson, treasurer made a trip to Tenaya Elementary to present a \$2,000 donation to Principal Wynette Hilton and teachers to purchase additional books for the school. Young readers may be inspired by the variety of books from which to choose. FOGL raised the funds at the popular Saturday Book Nook sales.

Free books for children birth to age 5! Registration forms are available at the library. This program is thanks to a partnership between Friends and First5Tuolumne and Dolly Parton's Imagination Library to promote early childhood literacy. Children must reside in Tuolumne County; each month they will receive a book appropriate to age. By the time they are five, they could have received 60 books. It's easy to register online. Go to first5tuolumne.org and select "For Parents," then select sign-up for the Imagination Library and follow the prompts. Or pick up a registration form at the library.

SAVE AS MUCH AS 30%
 OVER THE CHAIN OPTICS STORES AND EVEN MORE OVER DOCTORS OFFICES

Large Selection of Unique & Traditional Designs
 Can Bill Most Insurance Plans • Over 20 Years Experience
 Designer Sunglasses • FREE Adjustments & Repairs



Stacy Hancock
 Certified / Licensed Optician

18729 HWY 120, Unit A, Groveland • 209.962.1972

Snow Falls in PML



The lake is under the cloud layer in this photo by David Wilkinson.



Resident John Fijak sent in this photo of "Not your average 95321 morning."



d'Artagnan is not too sure he likes the deep snow. Photo by Chrisitna Wilkinson.

NEED HOMEOWNER'S INSURANCE?



Having trouble finding insurance for your home?

We may have the solution for you even if you live in a forested area!

EASON INSURANCE AGENCY, INC.
209.383.7322

9AM - 5PM - MON - FRI ● 9AM - 1PM SAT
Email: homeins@easoninsuranceagency.com
CA Lic #0C97581

**ADVERTISE IN THE PINE MOUNTAIN LAKE NEWS
GO TO: PINEMOUNTAINLAKE.COM FOR MORE
INFORMATION AND PRICES**

WWW.PINEMOUNTAINLAKE.COM

Locally Owned since 1950

YOUR ONE-STOP SHOP FOR all your pest control services

PEST CONTROL: HOME, BUSINESS AND INDUSTRY



LAWN FERTILIZATION AND COMPREHENSIVE LAWN CARE



TERMITE INSPECTIONS, REPAIRS AND FUMIGATIONS



TREE AND SHRUB CARE, AND BARK BEETLE CONTROL



TERMITE TREATMENTS AND MONITORING



WEED CONTROL AND FIRE BREAKS



BED BUG TREATMENT



DECK REPAIR/REPLACEMENT (LICENSE #922758)



OUR REPUTATION IS IMPORTANT TO US AND YOUR COMMUNITY. Call now for a free estimate!



(209) 770-7733 clarkpest.com

WINDOW AND DOOR REPLACEMENT BY HESSLER Construction Co. LICENSE # 991183 Serving PML for over 20 years



FEATURING HIGH QUALITY WINDOWS FROM



FULL SERVICE WINDOW REPLACEMENT REMODELS • NEW CONSTRUCTION • UPGRADES COMPETITIVE PRICING • CALL FOR QUOTES 209.768.7623 (C) • 209.962.8653 (O)

NOW OFFERING SAME DAY CROWNS CALL TO MAKE YOUR APPOINTMENT TODAY



SONORA (209) 532-3171

SMILES Dr. Dave C. Berger

"A great smile is only one visit away."

Dr. Dave offers exceptional dentistry for patients of ALL ages

www.SonoraSmiles.com

\$50 OFF NEW PATIENT EXAM AND X-RAYS

* For new patients only, this offer cannot be combined with any other offer. Please present this ad for discount.

Camp Season is Fast Approaching

Dori Jones

As we head into Spring, Camp Tuolumne Trails (CTT) is preparing for the various groups that have booked sessions this year – our eleventh season.



One of CTT's returning groups for the fifth year is San Jose-based WOLF (Web of Life Field School), which focuses on outdoor science education. In early February, 55 fifth-grade students focused their studies on snow ecology and experienced a snow storm while at camp (many students seeing snow for the first time). In addition, at the end of February, another 40 WOLF students studied science education.

Before CTT gets into the full swing of its busy season, we are seeking volunteers to commit to specific dates for helping in the kitchen, typically for the dinner shift. Duties include serving food to campers and helping with kitchen clean-up. Please call Jessica at 962-7534, if you want more information or can help out for a few hours.

Just a reminder that Saturday, April 13, will be camp's Spring Volunteer Clean-up Day. If you'd like to spend a few hours working with other community volunteers and helping with various tasks to keep camp looking spiffy and preparing for the season, join us



from 8:00 am – 12:00 noon and stay for lunch. It's a lot of fun and very rewarding.

Featured Focus: Beginning this month, each month we'll feature a short blurb on someone who makes an impact at CTT. To kick this off, we'll focus on camp's new Maintenance Manager Bryson Beck. Coming to camp in November 2018, he has quickly ramped up and is learning the ropes of managing the many facets of camp. Bryson (friends

call him Bry Bry) was born in La Vernia, Texas, and has been a Boy Scout since he was 14. He has lived in Georgia, Louisiana, Oklahoma, Indiana, Michigan and now California. Bryson spent 10 years in plant engineering/industrial maintenance/industrial automation/conveyor systems for UPS, Bimbo Bakeries and Beck's Industrial. His work experience also includes electrical, plumbing, carpentry and metal fabrication for historical restorations in Texas. Bryson's hobbies include fishing, camping, metal art, hunting, attending music festivals and people watching.

Don't forget, if you're seeking a place to hold a special event, donate time or resources, or would like a tour of camp, please contact Jessica at 962-7534.

MURRA'S TOTAL YARD MAINTENANCE




BRINGING VALUE FOR YOUR DOLLAR IN PML

- WEEDING
- LOT CLEARING
- SENIOR DISCOUNTS
- LEAF REMOVAL

- PLANTING
- TREE SKIRTING
- HAULING
- AND MORE

CALL JASON MURRA
209-352-3750

LIABILITY INSURED



PAUL S. BUNT, ESQ.
ATTORNEY AT LAW

ESTATE PLANNING
PROBATE
REAL ESTATE
BANKRUPTCY
ELDER CARE

209.962.6778

Mountain Leisure Center, Groveland
appointments available in Sonora and Lake Don Pedro

Groveland's only Multi-Line Insurance Agency

Kiefer Insurance Agency—Since 2002

Working with top rated insurers in the primary and secondary markets, we have coverage for ALL your insurance needs:

Homes • Autos • RVs • Boat • Trailer • Mobile
Motorcycles • Business • Rental • Renovation

18800 Main St
Groveland, Ca 95321
Lic 0D77765

P 209-962-6593
F 209-962-6656

LET US HELP YOU, INSURE YOUR FUTURE

First Choice Mortgage

"Your Local Real Estate Financing Specialist"

PURCHASE & REFINANCE

Fixed & Adjustable Programs • FHA & VA & USDA • Conventional
First Time Homebuyer • Down Payment Assistance Programs
100% Purchase • 203 K home Improvement
Commercial loans

www.donloans.com





Notary Services • Reverse Mortgages
28 Years Experience • Working for You *Don Teixeira*

18687 MAIN ST., C-1 • GROVELAND CA • 209.962.2084
BRE 01130209 • NMLS 242535 • NOTARY COMM 2012748

Timber Wolf Howl

Ryan Dutton – Principal - Tioga High School

KINDNESS WEEK

The Tioga High Landscape Crew culminated Kindness Week by completing a gift for their buddies across town in the kindergarten yard. They built them a picnic table that the kids can enjoy while outside on their playground. The class has been learning about woodworking projects and have been able to practice their skills on some things at school along with coming up with this project for their Kindness project. The class has been remodeling the boys student bathroom with some woodwork upgrades.



Pictured here are Noah Rehling and Jaydon Spires who were finishing the table off with sanding and stain! The table turned out great and we were happy to help give the young ones something to enjoy on their playground!



week at school, the kids hosted dress up days along with building floats following a cartoon theme. The seniors won the float competition with their SpongeBob float. It was a lot of fun and we wanted to thank all of the community members that attended, making it another awesome Homecoming at Tioga! Special thanks to Karen Seals and Rebecca Dotson for their work in helping the kids make this a successful and special night! 2018 King & Queen Josh Skelley and Aileen Martinez were in attendance to crown the winners. Josh is attending flight school in Livermore to be a commercial pilot and Aileen is studying to be a History teacher at UC Merced! Go TWolves!

CULINARY CLUB AT RUSH CREEK

The Tioga Culinary Class recently made a visit to Rush Creek to get a behind the scenes look at all of the Culinary work done at the resort. The kids will soon get a visit



from the staff to begin setting up jobs and possible career placement with Rush Creek and Columbia College. This was a great trip that sparked interest from a number of our students participating in our Culinary Vocational program. Thank you Rush Creek for your willingness to help our students pursue career goals in the hospitality industry! We look forward to partnering with you more in the future!

LANDSCAPE CLASS BATHROOM UPGRADES



The Tioga High Landscape class is currently working on a remodel of the boys student bathroom. They will move to the girls bathroom once this project is completed. Pictured here is the shiplap wall they have been working on. We have included woodworking skills in this class since we do not have a Woodshop class, and the kids have stepped up big time to show off some quality craftsmanship!!!! Great job team!

BOFG SCHOOLS ADULT EDUCATION PROGRAM

Have you been meaning to get back into the swing and finish your high school diploma?

We have an Adult Ed program that can assist you in achieving this goal! Classes meet once a week after school at Tioga to give you the resources to earn your diploma.

Call and set up an appointment today!

TIOGA'S ACADEMIC DECATHLON TEAM THANKS RUSH CREEK RESORT

Tioga's Academic Decathlon team was, once again, treated to two complimentary villas at Rush Creek Lodge in preparation for the regional competition which was held on February 2nd at Sonora High School. Academic Decathlon is an annual competition where students compete in ten subjects, math, science, social science, literature, art, music, economics, speech, essay and interview. Each year has a unique focus which drives the curriculum – this year it was the 1960s.

The nine-student team spent the day curled up in Rush Creek's lounge reviewing the seven subjects that they would be tested on the following day. Every so often, they had a chance to unwind in one of the lodge's hot tubs where they enjoyed sipping their (non-alcoholic) cocktails. One freshman, Beaumont Cook, said she learned more in those intense hours at Rush Creek than she had all year.

We are all extremely grateful to the staff at Rush Creek Lodge for providing our students with such a rich and productive opportunity. We're very fortunate to have them be partners in our students' education.

Kindergarten Registration at Tenaya Elementary

Michelle Hessler

It's that time again, Kindergarten Registration at Tenaya Elementary School. If you have a child that will be 5 years old on or before September 1, 2019, we would love to have them start their educational journey at Tenaya. We will also be offering Transitional Kindergarten for those children that will be 5 years old between 9/2/19 and

12/2/2019. Registration will be Friday, April 19th, 2019 starting at 8:30am. We will need copies of your child's birth certificate and immunization records. Please contact the school office to set up an appointment and pick up a registration packet. Please contact Michele Hessler or Rhonda Crow at #962-7846 to schedule your appointment today.

STUDENT OF THE MONTH

TENAYA ELEMENTARY SCHOOL
Home of the Warriors

JACKSON MESA – TENAYA ELEMENTARY



Jackson Mesa

Jackson Mesa has been chosen as Tenaya's Student of the Month. Mrs. Beaudreau says, "Jackson has done an excellent job maturing as a 5th grade student. He has been responsible and engaged in class. Jackson is a creative student and has an artistic ability. I appreciate his willingness to improve in all areas to become a successful student." Jackson's parents are Neva Mesa of Groveland and Edward Mesa of Atwater.

**ADVERTISE IN THE PINE MOUNTAIN LAKE NEWS
GO TO: PINEMOUNTAINLAKE.COM FOR MORE INFORMATION AND PRICES**

HOMEOWNER CHECKLIST

CHECK OUT YOUR CONTRACTOR

- Did you contact the Contractors State License Board (CSLB) to check the status of the contractor's license? Connect with CSLB at 800.321.CSLB (2752), www.cslb.ca.gov or www.CheckTheLicenseFirst.com.
- Did you get at least three local references from the contractors you are considering?
- Did you call the references and personally view the contractor's completed work?
- Does the contractor carry general liability insurance?
- Does the contract identify when work will begin and end?
- Does the contract include a detailed description of the work to be done, the materials to be used, and/or equipment to be installed?
- Are you required to make a down payment? (The down payment should never be more than 10 percent of the contract price of \$1,000, whichever is less, unless there is a valid blanket performance and payment bond on file with CSLB.)
- Is there a schedule of payments? (Only pay as work is completed, not before).
- Did your contractor give you a "Notice to Owner" warning notice that describes mechanics liens and how to prevent them?
- Do you have changes or additions to your contract? (Remember that all changes must be in writing and signed by both parties to avoid disagreements.)

DOUBLE-CHECK THE CONTRACT

- Did you read and understand your contract?
- Does the three-day right to cancel a contract apply to you?

www.cslb.ca.gov

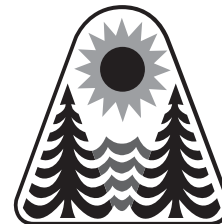


James Hendricks

We provide property maintenance & repairs
Remodels-Additions-Kitchen
Bathrooms-Roof
repairs/replacement-Termite
& water damage repairs.

209-329-3782

jimmy@jhendricksconstruction.com



**COSTA'S
TREE SOLUTIONS**



STEVE COSTA • OWNER

FULLY INSURED/BONDED C.C.L. #1001392



209-962-4468
CELL 209-768-4469

CERTIFIED ARBORIST #WE7496A

HANDYMAN FOR HIRE

"The Small Job Specialist"



Doing Building and Repairs in PML Since 1976
WHERE ONE CALL CAN DO IT ALL!!!

Working by the Hour to Save you Money...

- Deck Repairs
- Interior Repairs
- Painting
- Exterior Repairs

omni1handyman@aol.com

(209) 962-5463

No

License

LaMar EQUIPMENT & HAULING

Job Site Storage Containers

15 Ton Hydro Crane

Heavy Equipment Hauling

Irrigation & Electrical Trenching

Landscaping Materials

New Construction &

Remodels & Decks



End Dump

Manlifts

Rock Hauling

Lot Clearing

Demolition

Log Hauling

Septic Install

Fire Breaks

Post Hole Digging

Concrete Demolition

Towable Trailers

Retaining Walls

Earth Moving



(209) 962-0500

Mobile: 770-5667

LanceMarchetti@yahoo.com

VISA

MasterCard

PARROT PLUMBING MILT LAKE



Owner / Operator
209-852-2267

Serving Groveland, Don Pedro & Coulterville

20940 Ferretti Road Unit 'A', Groveland CA 95321

P.O. Box 127, Coulterville, CA 95311 • Email – clake@inreach.com

SEASPRAY AWNINGS & BOAT COVERS

533-4315 • 536-9397



Lic. #981187



TUOLUMNE COUNTY'S NUMBER ONE SOURCE FOR
Custom Retractable & Fixed Awnings
Boat Covers & Bimini Tops
Boat Upholstery & Carpet
Recovers & Repairs

www.seasprayawnings.com
www.seasprayboatcovers.com

FOR IDEAS AND ESTIMATES CALL DOUG PARRISH
14769 Mono Way, Sonora • 13893 Tuolumne Rd.

Pest Control

- Ants, spiders, mice, wasps, earwigs, etc.
- Fast service, great prices
- Squirrel and bat Exclusion
- Termite Inspections
- Weed Control
- Poison Oak
- Star Thistle



962-5710

800-464-3772

Free estimates



Ken's Asphalt

Lic. 708310

Grading • Paving • Chip Seal • Road Oil

Seal & Slurry Coatings • Crafcro Hot Rubberized Crack Sealer
Driveways • Private Roads • Subdivisions



DRAINAGE PROBLEMS?

We have the Solution!

Erosion Control • Riprap (6-12" Rock) • Asphalt Curbing • Base Rock



Complete Concrete Services



- Stamped Concrete and Colored Concrete
- Stained Concrete
- Cleaning & Sealing
- Retaining Walls
- Driveways
- Walkways
- RV Pads
- Patios

532-0800 • 962-5644 • 768-7395 Cell



Karen Faught
Owner

Sears Hometown Store #3159
14691 Mono Way, Sonora, CA 95370
Tel 209-532-3191
Fax 209-532-8334
Service & Parts 1-800-469-4663
www.sears.com

Locally Owned & Operated



ARE YOU STUMPED?

COMMERCIAL STUMP GRINDING

No stump too small or too big

Contact **D & L RANCH**
Owner/Operator—Lester Scofield

Call for prices—**209-962-6902**





TMC CONSTRUCTION
License # 717300
Insured
(209) 962-6938

**Brushing
Log Removal
Hazardous Tree
Removal & Pruning
Mastication
& Stump Grinding**



**We can help with your grant.
Skid Steer and Dump truck service
Reasonal Rates • Free Estimates**

**LOREN SNIDER'S
TREE SERVICE**



Serving Your Tree Needs

Removal & Pruning • Clearing & Hauling
Chipping & Stump Grinding • Mistletoe Removal

Home: 209-878-3828 • Cell: 209-402-9797

Non licensed • 27+yrs Experience
General Liability Insurance

**HEAVENLY
CLEANING SERVICE**



PROFESSIONAL HOUSEKEEPING
AND CARPET CLEANING*
Now cleaning up for 25 Years!

HOME OFFICE CARPET

FULL TIME HOME OR WEEKEND GETAWAY
WE HAVE OPENINGS TO CLEAN YOUR HOME
(NO LONGER ACCEPTING VACATION RENTALS)

WE ALSO OFFER DECK BLOWING & BBQ CLEANING
FOR ALL YOUR CLEANING NEEDS

** Due to high demand carpet cleaning is by referral only*

GIVE US A CALL TODAY – 209.962.6418
heavenlycleaning@mail.com • FULL LIABILITY COVERAGE

**A AMERICAN ELECTRIC
& SERVICE CO.**




COMMERCIAL • INDUSTRIAL • RESIDENTIAL

209.962.7374

ELECTRICAL CONTRACTORS LIC. # 465220

**Bert's Weedeating
and Lot Clearing**

◆◆ 962-6724 ◆◆

**Sierra
HEAVY DUTY**



RV & TRUCK CENTER INC.

BUSINESS HOURS
Monday - Friday:
8:00am - 5:30pm
Saturday: 8:00am - 2:00pm
Sunday: CLOSED

Well Stocked Parts House:
For All of Your Heavy Duty Needs!

- Heavy Duty Brake Linings
- Baldwin & Fleetguard Filters
- Delo Oil
- LED Lights
- Air Brake Valves & Hoses
- CB Radios, Antennas & Accessories
- Logging & Dump Truck Parts
- Hydraulic Hose Shop

Full Service RV Repair Shop:

- Commercial House & Starting Batteries
- Full Service Chassis & Lube Center
- Electrical & Plumbing Repairs
- Interior & Exterior LED Lighting
- Complete Body Damage Repair Shop
- Solar Power Systems & Inverters
- Complete Detailing Services
- Warranty & Insurance Work Accepted

Mobile Service Available

18968 Waylon Way
Sonora CA 95370
Call or Emial us to schedule an appointment today!
(209)-532-7994

EMERGENCY CONTACT: (209)-559-3840
Email: shop@sierraheavyduty.com
Visit Us Online: www.sierraheavyduty.com



Over 50 Years of Experience!

All Major Credit Cards Accepted.

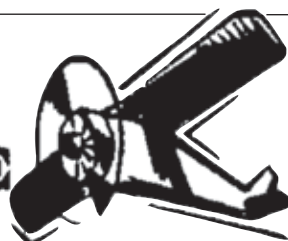
Cobblestone Homes

- Custom Homes • Additions • Remodels •
 - Specializing in high country design/build since 1989 •
- We provide superior craftsmanship, attention to detail, follow-up, and great customer service.

Craig Lawrence-Owner
209.404.0290 Lic. 564665

AIRPORT MINI-STORAGE

60 Units - 6'x8' to 10'x30'
Open 7 a.m. to 9 p.m. Daily
Located on Elderberry Way off Ferretti Rd. near PML Airport
209/962-5360



PML MINI STORAGE

65 Units Ranging From 5'x5' to 12'x30'

- REASONABLE RATES •
- WELL LIGHTED •

Located one-half block off Ferretti Rd. on Elderberry Way towards Airport

209/962-6220

Waters Plumbing Heating & Air

**FAST
SAME DAY
SERVICE***

*IN MOST CASES

All work 100% Guaranteed!



Contractors License #462958
www.watersplumbing.com

"I want you to know that our technicians will give you a price before we start the job." —Wayne Waters

Groveland (209) 962-0990

R&R Mountain Enterprises, Inc.

LIC. #991183



DOWN TO EARTH

CONSTRUCTION

- Paving & Concrete work
- Excavation
- Asphalt seal coating & repairs
- Lot clearing & site work
- Complete underground work
- Septic system installations & repairs
- Retaining walls, walk-ways, etc.

NURSERY

- Perennial, annual & vegetable plants
- Shrubs & Bushes
- Garden accessories
- Wildlife & drought tolerant plants
- Shade, fruit & landscape trees
- Potting soils, compost, etc.
- Landscape supplies
- Irrigation & plumbing supplies

TREE SERVICE

- Hazardous removals
- Trimming
- Shaping
- Thinning
- Brush chipping
- Fire breaks & clearance
- Mistletoe removal

**We Deliver Gravel
& Landscape Supplies**

FREE ESTIMATES



WE ACCEPT ALL MAJOR CREDIT CARDS
(VISA, MASTERCARD, DISCOVER & AMERICAN EXPRESS)

RAYMOND ALBANEZ

209-962-7407

13050 Boitano Road, Groveland, CA 95321 • Fax (209) 962-4987
downtoearth7407@gmail.com

LICENSED • INSURED • WORKMAN'S COMPENSATION



Call your local Pro!

Jack Proctor

Heating &
Air Conditioning

- Complete commercial & residential services
- Service & repair - all makes and models
- Heating & ventilation
- Heat pump specialist
- Air conditioning troubleshooting expert
- Installation and remodeling
- Upgrading & energy efficiency
- We offer the same low rates 24/7

OFFICE
209-962-6471
CELL
209-678-8915
License #313926
Since 1975

Before replacing your unit, ask us for a 2nd opinion.
Chances are, we CAN repair it!

We are known for our integrity and legendary customer service!

Produce Your Own Clean Power!

- Save \$\$\$ Every Month
- 30% Federal Tax Credit
- 5-Year Typical Payback



Your Local Solar Electric Company

License #892261 / Since 2002
19472 Village Drive, Sonora

Call Us For A Free Estimate
209-532-5925

Follow us on Facebook at APSSolarpower
Check our reviews at www.SolarReviews.com



Sean McCoy Painting

License No. 822616

Home of the Cabinet Doctor

**“Let’s Refinish or Paint
Those Old Cabinets”**

- Fine Finish • Mill Work • Cabinets
- Doors • Interiors



209.588.1741

www.smccoypainting.com

*Exterior-Estimates
Available*



REIMERS CONSTRUCTION

PROUDLY SERVING GROVELAND/PML SINCE 1987

DESIGN/BUILD • EXPERT REMODELING • SPECIALIZE IN KITCHEN AND BATH
CEMENT SIDING • COMPOSITE & REDWOOD DECKS • WINDOW AND DOOR REPLACEMENT

(209) 962 5682



Email: wvrpar@gmail.com
CA.LIC. 590514



Over 25 years of construction experience Highly Disciplined and Dependable

We have expertise in all phases of construction including:

- Decks and staircases
- Dock and gangway repairs and replacement
- Kitchen and bath remodels



Hilltop Homes

General Building Contractors
Lic #931547 Fully Insured

209-986-7755

Pine Mountain Lake Homeowners Steve and Cindy Watts

Rod Diehl Pest Control

“The Best Deal in Pest Control”

**RESIDENTIAL & COMMERCIAL • HIGH QUALITY
100% SATISFACTION GUARANTEED**

Locally Owned & Operated • *5th Generation Tuolumne County*

PERSONAL SERVICE • FREE ESTIMATES

We will customize your service around your pets

info@RodDiehlPestControl.com

(209) 532-3260

PROUDLY SERVING THE PINE MOUNTAIN LAKE / GROVELAND AREA

CLASSIFIED AD SUBMISSION DEADLINE IS THE 15TH OF THE MONTH. SUBMIT AT WWW.PINEMOUNTAINLAKE.COM
COST IS \$0.35 PER WORD. ADS RUN UNTIL CANCELED BY ADVERTISER

LAND FOR SALE

BEAUTIFUL DEEP WATER LAKEFRONT LOT

Over 100' of lake frontage. Approximately 1/2 acre on northside of Longridge. Great street, beautiful homes, large Oak trees. Deep water access even during drought. \$165,000 **925-818-0500**

HOMES FOR RENT OR LEASE

FOR RENT - VACATION RENTAL DAILY - WEEKLY - MONTHLY

12892 Green Valley Circle, Furnished two (2) Bedroom, Two (2) Bath, Living Room, Kitchen, Spacious Home with Dining Area, Large two (2) car garage. Telephone **408-480-7804** \$200.00 per week. Call Red Carpet Realty ask for Bruce. Unit 3 Lot 407

FOR RENT

13087 Wells Fargo Drive. 2 bedroom, 2 bath, living room, kitchen, spacious home with dining area large two garage. **408-480-7804** \$1000 per month. Red Carpet Realty ask for Bruce.

COMMERCIAL SPACE FOR LEASE

COMMERCIAL SPACE FOR LEASE!

18717 Hwy 120, Groveland. Approximately 1600 square feet of building space, located downtown with propane heat, one ADA bathroom perfect for retail, food service, professional office, medical etc. Available 12/1/2018. Rent \$1950.00 Deposit \$2200.00. Contact agent **650-520-1022**

RENTALS WANTED

EXCELLENT TENANTS

w/excellent credit and rental history looking for homes to rent. Owner approves tenant before placement. Call *Yosemite Region Resorts* **209-962-1111**

GET IT SOLD

with a classified ad
in the Pine Mountain Lake News

GET YOUR AD NOTICED



Place a photo of your item for sale for just \$10. Call 962-0613 today.

SERVICES

LOREN SNIDER'S TREE SERVICE

General pruning, ornamental pruning, mistletoe removal, tree removal, dump truck, chipper, stump grinder, local references, Non Licensed 27 + years experience. General liability insurance **209-878-3828 or 209-402-9797**

COMPUTERS custom built, upgrades, troubleshooting, free consultation. **209/962-7110**

RONNING ROOFING

Call Joe for all your Roofing and Gutter needs. Licensed, Bonded, and Insured. License #976739 Unit 3 Lot 407 **209-962-6842**

WEEDEATING

\$25/hr **209-878-3422**
Have own equipment!
Ask for Robert

HANDYMAN

For removal of unwanted items. Also tree trimming and removal. Call Mike, very reasonable rates. Prompt Service. **209-962-0777**

PROFESSIONAL PROPERTY MANAGEMENT
RE/MAX Yosemite Gold • Patricia (Tish) Fulton BRE# 00760019 Property Manager Certified by California Association of Realtors **209-962-0837**

SATELLITE INSTALLATION & REPAIR

Call **209-694-8155** for details.

TERRA'S EYE-FOR-DETAIL HOUSE CLEANING
meticulous & thorough. **209-858-8009**

TV INSTALLATION & SETUP

Roku, Fire TV Stick, Blu-Ray, AppleTV, Stereo equipment and more. Call for a quote. **209-694-8155 • www.silvatech.net**

BERT'S WEEDEATING AND LOT CLEARING
962-6724

FURNITURE & CHAIR REPAIR/ WOODWORKING

Retired Cabinet-maker will repair all types / kinds of furniture, cabinets, crown moulding **209-479-8098 Cell**

GOT WEEDS?

Contact Jim Atkins at **209.985.4376**. Lot Clearing, Hauling, Dump Runs, Weedeating. Local Guy. References available.

ELECTRICAL

A AMERICAN ELECTRIC & SERVICE CO.
Lic. #465220 **209/962-7374**

SERVICES

LOVING PET CARE in my home or in yours - garden care also available. Call Barb **962-5653** or email at shadkitty12@gmail.com

BIG JOHN HANDYMAN SERVICES

Yard Maintenance, House Maintenance and moving households Call John **962-6163**

COSTA'S TREE SOLUTIONS

Steve Costa, Owner
Fully Insured/Bonded • C.C.L. #1001392
209-962-4468 • Cell 209-768-4469
Certified Arborist #WE7496A

SERVICES

CRYSTAL CLEAR HOUSE CLEANING
Reliable with an eye for detail. New customers welcome! Call **209-770-4848**

VACATION RENTALS

PANORAMIC LAKEFRONT
boat dock, decks, air, 3bd/2ba, Beautiful Views
650/961-6334

The PMLA is not responsible for, nor does it endorse, any contractor, company, or individual advertising in the PML News.

Mark's Groundskeeping Service
Let me help you with your seasonal chores...
Serving The Greater Groveland Area

Mark Roy
Local permitted owner / operator
Call or Text: 1 (831) 406 7715 markroyx@yahoo.com

Looking For A New Dentist?

We're Accepting New Patients!

- Advanced Level Dental Expertise
- Care with a Gentle Touch
- Coffee & Tea for Your Enjoyment
- Advanced Digital Technology
- Relaxing Movies During Treatment
- Insurance Friendly
- Senior Discount



209.536.1954

Michael D Scherer, DMD, MS, APC **14570 MONO WAY, STE. I**
SONORA, CA 95370
MODERN DENTISTRY

WWW.SONORAMODERNDENTAL.COM

WHAT WILL YOU DO
WITH FASTER INTERNET?



Home
Office

Home
Leisure



Call Sierra Nevada Communications Today!

 (209) 962-6373
GoSNC.com

Granite & Quartz Countertops



Located right here in Groveland!

Upgrade Your Kitchen & Bathroom Countertops
High Quality, Guaranteed Work
Affordable Prices • Stone & Tile Projects

Visit our website: www.RockSolidCreations.us

Call Brandon Hoffman: 209-962-1813



PERFORMANCE-BASED HEATING & AIR



We Accept Credit Cards
Lic #998841

We Service All Makes and Models • Veteran Owned, Family Operated • Financing Available



CONTROL YOUR ZONE

- Room by room temperature control
- Whisper-quiet
- Odor filtration
- Improves air quality, reducing dust, mold and allergens
- Allergen filtration
- No more hot or cold rooms in your home
- Turn OFF unoccupied rooms
- Up to 40% more efficient than central air

These products have NO DUCTWORK so they are perfect for LOFTS, multi-story, additions, garages, man caves, single rooms, stick-built, modular, or in most cases the entire home. Can heat down to -15* and provide a winter wonderland on the hottest of days without costing a fortune on your energy bill.

CALL US TODAY **209-550-1444**
www.performancebasedheatingandair.com



12375 Sunnyside Wy, 8/54—YOUR FUN AWAIT! A-frame home suited to large gatherings and vacation activities. 4bd, 3ba, 2000+sf. Many upgrades: Laminate wood flooring, granite kitchen counters, updated bathrooms and composite decking. Vinyl siding makes exterior wear-and-tear a thing of the past. This home has been a successful rental and has great potential for continued rental income. Extensive view from the deck and a short distance to the Marina beach. Yosemite Park entrance only about 25 miles away. \$299,900



12905 Green Valley-3/389—TUCKED AWAY behind a canopy of beautiful oaks. Two master bedrooms (the large bonus room downstairs can easily serve as a master bedroom). Many recent improvements include: New Daikin Mini Split ductless heating and AC system, extremely hi-efficiency 4-zone unit, with separately controlled unit in each room, laminate floors, large redwood deck, carpet, interior paint and 50-gallon water heater. Near Fisherman's Cove, the Lake Lodge Beach, Tennis courts and Equestrian Center. Move-in ready! \$229,900 #20181729



20437 Pine Mtn Dr-3/318—PICTURE PERFECT home in a lovely setting, with low-maintenance landscaping. Single-level floor plan, designed to bring in the natural light. Tall ceilings, bay window alcove and propane heat stove. Spacious kitchen, solid-surface counters and a food prep area, with a pass-thru breakfast bar. Master suite has dual closets and a slider to the patio and garden. Two guest bdrms & guest bath. Instant hot water circulation. Separate laundry room doubles as a mud room from the garage. \$310,000 #20190099



19560 Grizzly Circle-1/390—QUAINT CABIN. Classic chalet-style, with modern conveniences and a beautiful creek-side location, nestled under large oaks & pines. Located about 1/2-mile to the popular Marina Beach & Lakeside Cafe and 1-1/2 miles to the Country Club & Pro-Shop. Built in 2006. Vaulted pine ceilings, 3bd, 2ba, open loft, spacious great room, central heat & A/C. Perfect for a get-away, vacation rental or full-time mountain living. \$299,000 #20190072



20611 Crescent Wy-4-39—DIAMOND IN THE ROUGH with a twist of personality. This eccentric home was built and lived in by the original family and has been passed down generation-to-generation. This quirky 4bd, 3ba, home is situated on a lovely .66-acre lot, with a seasonal creek near the back deck. Open floor plan. Near many amenities, including walking trails, tennis courts, Fisherman's Cove and the Lake Lodge beach. Bring your toolbox...this could become your polished diamond! \$199,000 #20181861



12917 Jackson Mill-7/128—TWO FOR ONE! Rare 1.11 acres features two structures, with potential for doubling the size of your living area. The original structure is a 1560sf remodeled cabin, which features a new roof and deck. The second is a 4000sf car-barn, which includes a 1600sf partially-finished loft. Design your shop, office, guest quarters or whatever you can imagine. Garden, walkways, terracing and decorative boulders. \$439,000 #20181334



21224 Jimmersal Ln-12/103—CUSTOM RANCH-STYLE HOME built for easy and efficient living. Situated on 1.22 acres, with views of Duck Wall and the Sierra. Single-level, 3bd, 2-1/4ba, 1728sf, with hardwood, tile and vinyl flooring. Stainless appliances, large laundry room and pantry. Jetted tub, separate shower and vanity in main bathroom. Attic fan, over-sized garage and 1420sf of decking. Low-maintenance fiber cement siding. Property includes 1728sf barn, with tack room and 1/4 bathroom. Fenced and cross-fenced for large animals. \$495,500 #20182035



12/227 Hillcroft Dr—PICTURESQUE 1.2 ACRE LOT. Private, wooded setting, with a gentle downhill slope. Backs to ranch-land. Located in the resort community of Pine Mountain Lake, about 25 miles to the Hwy 120 entrance of Yosemite Park. HOA fees of \$203 per month with amenities: Recreational lake with Marina and boat rentals, 3 beaches, swimming pool, Country Club, tennis courts and 18-hole championship golf course and much more to enjoy! \$38,000 #20181004



19332 Pine Mountain Dr-13-351—NEAR THE MARINA & BEACH. Spacious 2bd, 2-1/2ba home, about 1/2 mile from the main Marina, lake & beach area, boat rentals and Lakeside Café. Great room w/fireplace, central heating, bonus room. Enjoy outdoor entertaining, nestled in the trees, on your beautiful new deck. A double-merged lot provides plenty of space and privacy with over half an acre. \$200,000 #20182090



20048 Lower Skyridge-15/121—LUXURY LAKEFRONT. 5bd, 3ba, 3714sf chalet-style home. Pine ceilings, slated wall for the wood-burning stove, Hickory hardwood floors in the living room & kitchen, two central h/a units plus an 80-gal water heater. Sizable game-room, two wet bars, two spacious decks and a private boat dock. Two-car garage. About 50 feet to the water, with 85-feet of lake frontage. Situated on a wooded lot, with towering Pines & Cedars. \$775,000 #20171336



13066 Mokelumnes Cir-2/207—HILLTOP RETREAT. This is a rare gem of a home on 1.11 wooded acres. Great room floor-plan, with vaulted ceilings, open living room, dining and kitchen. 1800sf, 2bd, plus large bonus room, with half-bath & pellet stove, which can double as a sleeping area. Newly painted interior, light fixtures and recent deck work. Covered deck & private hot tub. Oversized 2-car garage with workbench, storage cabinet, inside laundry and additional storage. \$242,000 #20181276

**100% LOCAL PROPERTY MANAGEMENT SERVICES
 LONG-TERM & VACATION RENTAL PROGRAMS**

GENERATE INCOME FROM YOUR PML HOME!

VACATION RENTALS

- The Largest & Most Experienced Property Management Team in Groveland/Pine Mountain Lake With Over 30 Years Experience!
- Aggressive Advertising Campaign
- Online & Telephone Reservations
- Pre-Arrival Inspections Insure An Excellent Guest Experience
- Professional Cleaning After Every Guest
- Damage Protection Eliminates Worry About Home & Furnishings
- Owner-Approved Rates

MONTHLY RENTALS & TENANT PLACEMENT

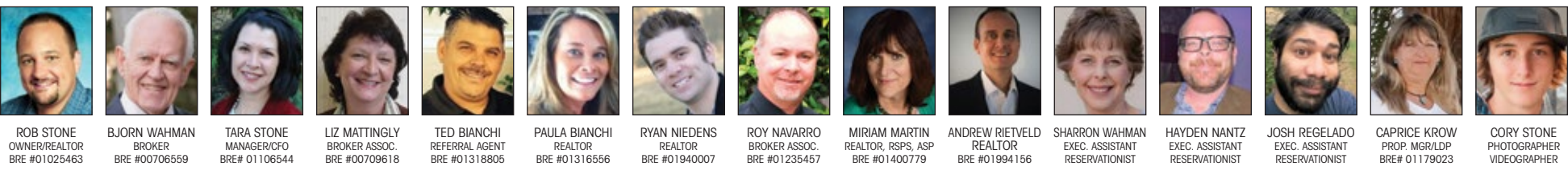
- Extensive Tenant-Screening & Credit Reports
- Move In / Move Out & Periodic Inspections
- Scheduled Maintenance & Repairs

PROPERTY MANAGEMENT

- 24/7 Emergency Services Available
- Monthly Statement & Owner Payments
- Local, State & Federal Tax Requirements


More Than 37,000 Others Have!

**18687 Main Street, Suite E
 Groveland, CA 95321
 (209) 961-1111
 yosemiteregionresorts.com**



ROB STONE OWNER/REALTOR BRE #01025463 |
 BJORN WAHMAN BROKER BRE #00706559 |
 TARA STONE MANAGER/CO BRE# 01106544 |
 LIZ MATTINGLY BROKER ASSOC. BRE #00709618 |
 TED BIANCHI REFERRAL AGENT BRE #01318805 |
 PAULA BIANCHI REALTOR BRE #01316556 |
 RYAN NIEDENS REALTOR BRE #01940007 |
 ROY NAVARRO BROKER ASSOC. BRE #01235457 |
 MIRIAM MARTIN REALTOR, RSPS, ASP BRE #01400779 |
 ANDREW RIETVELD REALTOR BRE #01994156 |
 SHARRON WAHMAN EXEC. ASSISTANT RESERVATIONIST |
 HAYDEN NANTZ EXEC. ASSISTANT RESERVATIONIST |
 JOSH REGELADO EXEC. ASSISTANT RESERVATIONIST |
 CAPRICE KROW PROP. MGR/ALDP BRE# 01179023 |
 CORY STONE PHOTOGRAPHER VIDEOGRAPHER