

PINE MOUNTAIN LAKE NEWS

MARCH
2015

FIFTY
CENTS



THE OFFICIAL NEWSPAPER OF PINE MOUNTAIN LAKE PROPERTY OWNERS

TABLE OF CONTENTS

Administration	2-11, 16-17
The Grill	14-15
PML Clubs/Activities/ Recreation	18-20
<i>Homes on the Hill</i>	
Real Estate	21-28
Events Calendar	29
Community Corner	30-35 38-41
School News	42
Home Improvement	
Directory	43-46
Classifieds	47

PRSR STD
U.S. POSTAGE
PAID
ABS DIRECT

Change Service Requested

19228 Pine Mountain Dr. Groveland, CA 95321

*Spring is
in the Air*

**PINE MOUNTAIN LAKE ASSOCIATION
ANNUAL JOB FAIR MARCH 28**

AT THE LAKE LODGE FROM 10AM UNTIL 2PM
FOR JOB LISTINGS SEE PAGE 10



The Pine Mountain Lake News, established July 25, 1973, is printed monthly for residents of Pine Mountain Lake and vicinity by Pine Mountain Lake Association, Groveland, California 95321.

SUBSCRIPTION RATES:

Co-owner subscription: \$3 per year
Single copies: 50 cents each
Single mailed copies: \$1.35 each
For non-members: \$10 per year

SUBMISSION DEADLINE 10th of the month by 4:30 PM

Late submissions not accepted

Visit www.pinemountainlake.com for ad rates and submission guidelines or e-mail: PMLNews@SabreDesign.net. For the mutual benefit of all property owners, the Pine Mountain Lake News reserves the right to edit all copy submitted for publication. The Pine Mountain Lake News is a private enterprise, not a public entity, and as such is entitled to reject advertisements or articles in the best judgment of its editor or publisher, despite a probable monopoly in the area of its publication. Pine Mountain Lake Association is not responsible for, nor does it guarantee the accuracy of, information contained in any ad placed in the Pine Mountain Lake News.

SABRE DESIGN & PUBLISHING

Design/layout

DAVID WILKINSON

Publishing Editor

PINE MOUNTAIN LAKE NEWS

P.O. Box 605
Groveland, CA 95321
Tel: 209/962-0342
Fax: 800/680-6217

E-mail:

PMLNews@SabreDesign.net

BOARD OF DIRECTORS

Jerry Dickson (President)
Mike Gustafson (Vice President)
Wayne Augsburger (Secretary)
Dana Chavarria (Treasurer)
Brian Sweeney (Director)

GENERAL MANAGER

Joseph M. Powell, CCAM, CMCA, AMS

CORRESPONDENCE TO DIRECTORS

Pine Mountain Lake Association
19228 Pine Mountain Drive
Groveland, CA 95321
PMLABoard@pinemountainlake.com

ADMINISTRATION OFFICE HOURS OF OPERATION

Monday - Friday 8:00 AM - 4:30 PM
Tel: 209/962-8600

President's Corner

BY JERRY DICKSON • PMLA BOARD PRESIDENT

This month I'd like to bring you up to date on some of the maintenance and improvement projects that have been going on in our Association during the late winter and hopefully will all be done before Memorial Day.

If you played golf in late January and into February you have seen a near rebuild of the restroom on the 13th hole. The building was about 40 years old and was in bad shape. The roof structure, the siding, and most of the studs were rotten. It was amazing to watch a new building be constructed around the old interior. The interior will be spruced up when the structure is complete. We had the same building issue with the northwest corner of the Administration building and the same reconstruction techniques were used to fix it. Apparently these buildings were built just like the old Marina Café and not meant to last forever.

The Board committed to build a sound deflection wall at the Shooting Range after we identified that there was excessive noise in the area between the campground and the high school when the big guns were being fired. A temporary sound wall was tested and showed that this technique would significantly reduce the noise in the populated areas. The Board committed funds to build a 12 foot wall about 175 feet long behind the firing positions. That project is being engineered and will go

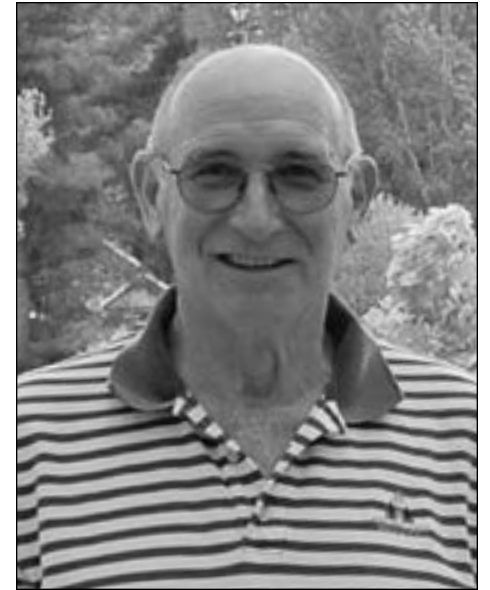
into the estimating, permitting, bidding, contacting, and construction phases later this spring. We have high hopes that this will satisfy all the affected parties.

If you didn't know we have built in the composite area a 'manure bin' to composite Stables waste in a green fashion to reduce the smell. It's up and running and doing well from what I'm told.

We have also installed a new generator for the Club House (Grill, Bar, and Pro Shop). This a 150KW machine which replaced a 35KW generator that we purchased used many years ago. The new machine has enough output to run the whole building during outages whereas the old unit could do little more than run safety lighting. So the next time the power goes out, go to the Grill and have hot meal with the lights and the heat on.

The last project is refurbishing golfer's locker rooms. The existing locker rooms go back to the beginning of time for PML and have been crying out for updating for quite some time. The schedule as I write this has the Board considering letting a contact for this project at the February Board meeting. The work should take about 8 weeks so it should be done well before Memorial Day.

You can see that the Association has been busy maintaining and updating our amenities which should improve the experience of owning property in PML.



Jerry Dickson, PMLA President

HOURS OF OPERATION

Please note the hours of operation for the following amenities:

COMPOST & ARCHERY RANGE

NOVEMBER THRU MARCH
TUESDAY THRU SATURDAY
8AM TO 4PM
WEATHER PERMITTING

SHOOTING RANGE

TUES, THURS, SAT
9AM TO 3PM

PLEASE NOTE Hours may vary depending on weather conditions, safety concerns, or other situations beyond control. Archery and Gun Range users must check-in with compost attendant.

**HOURS SUBJECT TO CHANGE
WITHOUT NOTICE.**

**Call the Main Gate
at 209-962-8615.**

On the Cover



There has been a definite feeling of Spring in the air recently. Hopefully the snow and rain are not done for the year and we can look forward to the end of the drought soon. Fingers crossed.

General Manager's Message

BY JOE POWELL, CCAM, CMCA, AMS, GENERAL MANAGER

February PML Tennis and Pickleball Meeting Canceled

Last month we scheduled an open forum meeting for our members to discuss the various issues and determine the needs of all members who enjoy racquet sports in PML. The need for the meeting was driven by member complaints and comments. In recent months, members of the Tennis Club and the Pickleball Club expressed concern over a wide variety of issues. This list included rules, scheduling priority, court usage, maintenance, upgrades and improvements, improving club membership and the overall operation of the courts.

As a management team, we felt that it would be useful to engage both tennis and pickleball groups and other interested members in an informal discussion so that we could determine the wants and needs of our membership. The plan was to discuss where we are now with tennis and pickleball and where we should go from here. After we gathered this information, we planned to help the member groups present it to the Board at the monthly meeting so that they could decide how they would like to proceed to address these issues.

Some options for Board consideration could include the formation of an ad-hoc committee made up of tennis and pickleball players, development and improvement of the rules, planning, prioritizing and funding upgrades. This process would provide a blueprint for the successful improvement of racquet sports for our membership.

We anticipate that there will be challenges with the development of any type of community activity, but were surprised when we received an email expressing concern with the meeting format. The Tennis group requested the meeting be canceled and any topic or proposal regarding tennis or pickleball be presented and discussed at the monthly Board of Directors meeting.

We felt that it was important to include both tennis and pickleball groups in the discussion. Since one of the groups expressed concern with the format, we canceled the meeting. Not one to be stymied by issues with process,

I contacted the Tennis and Pickleball groups individually and offered to meet with them. Hopefully we can come up with a format and process that will be comfortable for both groups and help get the member issues resolved for the future.

Pickleball Club Proposal Scheduled for March 21st Board Meeting

Speaking of pickleball, the Pickleball Club submitted a proposal to the Board of Directors for consideration. The proposal is to further convert Courts 5 & 6 into a total of six pickleball courts. The Pickleball Club proposal is scheduled to be heard by the Board at the March 21st monthly PML Board meeting. The monthly Board meeting is held at the Lake Lodge and is scheduled to begin at 9am. All PML members are welcome to attend.

Mountain Bike Trails Proposal Scheduled for March 21st Board Meeting

The Groveland Trail Heads is a local mountain bike organization that is made up of PML members and other members of the Groveland community. In the last couple of years, we have worked with this group to try and come up with plans for biking activities for PML members and guests. The GTH is proposing a low/no cost plan to use volunteers in their group and the community to build mountain bike trails in Unit 16 up behind the PML Campgrounds. The idea is compelling and will be presented to the PML Board of

Directors on March 21st at the Lake Lodge. We encourage all members to attend.

Impacts of the Drought

As I mentioned in last month's article, the drought in California continues to negatively impact PML. At the February Board meeting the management team and Board discussed several issues and considered options. Important topics included the negative impacts of a low lake level such as boat slip and launch unavailability, beach boat mooring, water ski and navigation safety. Water usage reductions, fire safety, reductions in revenue, and tree death were also discussed. We are committed to mitigating the situation as much as possible, but members should be aware that dramatic changes may be required if we do not receive enough rainfall in our area.

My staff and I will continue to provide useful information in the PML News and our website, but members need to take the time to personally evaluate their individual situations. Inspect your property for fire safety and tree health. Consider options for boating and access. Do your part to conserve water. Become informed and take the time to find out what you can do to battle the impacts of the drought. Weather conditions like drought are cyclical and our Association has been through this situation in the past. Hopefully the drought will break this year and we will get some rain.

Wishing everyone a Happy St. Patrick's Day!

DID YOU KNOW?

New law for 2015, AB 1965, permits restaurant patrons to bring their pooches to restaurant patios, provided the dogs are under control and the restaurant doesn't object. While canines are increasingly common sights at eating establishments, they had technically been prohibited – this law removes that ban statewide while still allowing cities or counties to nix the practice.

Dog owners should still check with the restaurant before bringing your pooch and check to see if your city or county has a prohibition on the practice.

NOTICE

The Pine Mountain Lake News, established July 25, 1973, is printed monthly for residents of Pine Mountain Lake and sold in the Groveland, CA 95321 area. Members can access the PML News monthly edition online at www.PineMountainLake.com. Every month the newest edition of the PML News is posted online before the first of each month. Interested parties can subscribe to the traditional "hard copy" and receive a copy by mail each month.

The PML News is mailed to approximately 3500 PML property owner households each month. Up to 500 copies are rack-sold in the local Groveland area. Our circulation reaches approximately

1200 full-time, resident, PML property owners and approximately 2300 "weekender," non-resident, property owners who maintain primary residence in Northern California, in Southern California, or in other states. For more information regarding the PML News, please call the PML Administration Office at (209) 962-8600. We greatly appreciate your contributions but please note that the PML News fills up very quickly – often by the 7th or 8th of the month (long before the 10th deadline). To ensure that your submission is reviewed for publication please submit in full and as early as possible. Please remember that the PML News is limited in capacity and your

submissions are reviewed on a first-come-first-served, space-available basis.

We publish all PMLA related submissions such as Board & Management Business, Clubs, Activities & Events. Where space remains, we publish non-PMLA related submissions in our "Community" section.

We do our best to provide timely news. If you experience delayed delivery or have misplaced a particular edition, please visit us at the PMLA website www.pinemountainlake.com for a downloadable PDF of the News posted by the 1st of the month and a downloadable PDF list of ad rates.

Submission Guidelines

The PML News is the Official Newspaper of Pine Mountain Lake Property Owners

The PML News is dedicated to reporting PML Association business and PML Association news to Pine Mountain Lake Property Owners.

The PML News receives more than 100 Tuolumne County/Groveland community related submissions each month. All such community related articles and notices will appear in the PML News on a SPACE AVAILABLE basis and at the DISCRETION of the PML News Publishing Editor.

DEADLINES

Advertisements must be received IN FULL (text, MLS info, images, logos, etc.) by the 10th of the month for the following month's edition. Only advertisements received in full will be guaranteed to be published in that month's edition. NO EXCEPTIONS.

MEDIA ACCEPTED

email

SOFTWARE

InDesign, Microsoft Word, Photoshop, Illustrator or PDF.

TEXT/GRAPHICS

Handwritten text is not accepted. Material composed completely of capital letters is not accepted. Please use uppercase and lowercase letters in composition. Ink jet printed images are not accepted. Images are accepted ONLY as camera ready art, original photos (to be scanned) or as JPEG, TIFF or PDF files created with above listed software. All scans and bitmap images must be in TIFF or JPG format at least 200 dpi at 100% (300 dpi preferred). Ad files are stored for 90 days from first run date. Older ads that have not been running must be resubmitted. (See Display & Insert Advertising Contract "Design and Preparation Charges.")

E-MAIL TEXT/GRAPHICS

Text/graphics may be delivered as e-mail attachments via the Internet. Send to pmlnews@sabredesign.net.

AD DESIGN and PROOFS

Ads that are requested to be sent to other periodicals require a usage fee from the advertiser (see Display & Insert Advertising Contract "Design and Preparation Charges"). Proofs are available upon request and final proof approval for all ads is expected within 24 hours. Changes made are LIMITED to typographical or graphic placement errors. NO OTHER ADDITIONS OR CHANGES WILL BE MADE.

SUBMISSION DEADLINES

Articles — 10th each month
Ads — 10th each month
Classifieds — 15th each month

VISIT US ONLINE!
www.pinemountainlake.com



PINE MOUNTAIN LAKE
209/962-8600
www.pinemountainlake.com

ADMINISTRATION OFFICE HOURS
8:00AM TO 4:30PM – MON THRU FRI
OPEN AT 8:45AM SECOND TUES OF EACH MONTH

PAY PHONE LOCATIONS

In an emergency, call 911

- Campground (restrooms)
- Dunn Court Beach
- Lake Lodge

Press *81 on any Pay Phone to contact Main Gate.

- Main Gate (restrooms)
- Marina
- Stables
- Tennis Courts (Pine Mountain Drive)

General Info 209/962-8600
 Tina Cutright *admin@pinemountainlake.com*

Main Gate 209/962-8615
 General Safety Inquiries, gate passes,
 campground reservations, tennis reservations
campground@pinemountainlake.com

Accounting 209/962-8607
 Receivable/Collections/Assessments
 Karen Peracca *pmlar@pinemountainlake.com*

Accounts Payable 209/962-8626
 Ashley Jackson *pmlap@pinemountainlake.com*

Controller 209/962-8606
 Accounting Procedures
 Ken Spencer *controller@pinemountainlake.com*

ADMINISTRATION
General Manager
 Joseph Powell *joepowell@pinemountainlake.com*

Administrative Asst. to G.M. 209/962-8627
 Debra Durai *debra@pinemountainlake.com*

Assistant to G.M. 209/962-8604
 Ivonne Deckard *ideckard@pinemountainlake.com*

Human Resources 209/962-8628
 Allie Henderson *pmlhr@pinemountainlake.com*

E.C.C. Coordinator 209/962-8605
 Plan Submittals, Compliance Fees, Mergers
 Terri Thomas *ecc@pinemountainlake.com*

Member Relations 209/962-8632
 Gate Cards, Address Changes
 Anita Spencer *pmlmr@pinemountainlake.com*

Community Standards Dir. 209/962-1240
 CC&R Compliance/Violations/Fire Mitigation
 Dennis Pival
communitystandards@pinemountainlake.com

DEPARTMENT OF SAFETY
Director of Safety 209/962-8633
 Natalie Trujillo *n.trujillo@pinemountainlake.com*

Sergeant 209/962-1244
 Sgt. Teri Cathrein *t.cathrein@pinemountainlake.com*

MAINTENANCE DEPT 209/962-8612
 Susan Capitanich *maintenance@pinemountainlake.com*

Maintenance Manager 209/962-8611
 Tom Moffitt *tmoffitt@pinemountainlake.com*

GOLF COURSE
Golf Course Superintendent 209/962-8610
 Alan MacDonald *amacdonald@pinemountainlake.com*

Golf Shop 209/962-8620
 Golf Pro Shop/Golf Reservations
 Doug Schmielt *dschmielt@pinemountainlake.com*

Golf Pro 209/962-8622
 Mike Cook *golfpro@pinemountainlake.com*

THE GRILL AT PINE MOUNTAIN LAKE
Restaurant 209/962-8638
 Bambi Johnson *cluboffice@pinemountainlake.com*

The Grill Manager 209/962-8640
 Jay Reis *clubmgr@pinemountainlake.com*

Head Chef
 Carrie Taylor *kitchen@pinemountainlake.com*

19th Hole Lounge 209/962-8636
 Jamie Wortmann
19thholelounge@pinemountainlake.com

OTHER PHONE NUMBERS
Stables Manager 209/962-8667
 Jeanna Santalucia *stables@pinemountainlake.com*

PML News 209/962-0342
 Pine Mountain Lake News
 Sabre Design & Publishing *PMLNews@SabreDesign.net*

ADMIN OFFICE HOLIDAYS 2015

(ADMIN OFFICE WILL BE CLOSED)

Mon 5/25 Memorial Day

Fri 7/3 Independence Day

Mon 9/7 Labor Day

Wed 11/11 Veterans' Day

Thurs 11/26 Thanksgiving

Fri 11/27 Day After Thanksgiving

Thurs 12/24 Christmas Eve

Fri 12/25 Christmas Day

Thurs 12/31 New Year's Eve

Fri 01/01/16 New Year's Day

UPCOMING SCHEDULE OF BOARD MEETINGS

Meetings are held at the PML Lake Lodge and start at 9 AM. (Unless otherwise noted)

MARCH 21, 2015

April 18, 2015

May 16, 2015

June 20, 2015

July 18, 2015

August 15, 2015
 ANNUAL MEETING / ELECTION

September 12, 2015
 (2ND SAT-DUE TO 49ER FESTIVAL)

October 24, 2015
 BUDGET MEETING
 (4TH SATURDAY-BEGINS AT 8 AM)

November 7, 2015
 (NEW DATE-1ST SATURDAY)

No December Meeting

Subscribe to the Pine Mountain Lake News TODAY!

Name _____

Unit _____ Lot _____

Mailing Address _____

NO CHARGE for PROPERTY OWNERS (bulk)
 \$3/year for Co-Owners (bulk);
 \$10/year for Non-Property Owners (bulk)
\$18/year for PROPERTY OWNERS (1st class)
 \$28/year for Non-property owners (1st class)

Enclosed is my check in the amount of
 \$ _____ (PAYMENT DUE IN FULL)

Send this subscription to:
 Pine Mountain Lake Association
 19228 Pine Mtn. Dr. Groveland, CA 95321
 ATTN: TINA

PINE MOUNTAIN LAKE NEWS DELIVERY

Although we guarantee that the PML News is mailed from Modesto, CA on the same day (between the 26th-30th of month), most post offices (except Groveland) sort Bulk Mail after First Class mail. So, consider a First Class delivery subscription for just \$18/yr? (\$18 per year for property owners and \$28 per year for non-property owners) Interested? Call the PMLA Office at 209/962-8632 or see form above.

NOTE: The Pine Mountain Lake News is also available (in pdf format) at:
www.pinemountainlake.com.
 New editions are posted by the 1st of the month.

RULES ENFORCEMENT ACTIONS

Violations Report – January 2015

Courtesy Notices	32
Notice of Non-Compliance	4
Fines	0
Violations Pending	81

Spring — Into The Saddle!

BY JEANNA SANTALUCIA – EQUESTRIAN CENTER MANAGER

SPRING is certainly “busting out all over”! Scents from the blossoms are wafting their way over, by the time you read this article, PML member D.J. Kraft’s horse, “Polly”, will have had her foal, and we will be in full gear ramping up our new programs to begin in June! Look for our new brochure that will be placed with real estate agents, hotels, motels and more throughout Tuolumne County.

We will now offer not only Little Wrangler Camps, to introduce children (ages 7-13) to horses and touch upon care, “cowpoke life” and their personalities, but will offer Jr. Wrangler Camps, the “next level” for ages 9 to 13, for those who have had previous outside horse experience or attended Little Wrangler Camps in the past. All camps will have a 2-child-to-1-horse ratio, to enable more “hands on” experience and riding. Camps will be limited to 6 kids per day. We are increasing camp days to: Monday, Tuesday, Thursday and Friday, 9am to 1 pm. Another

new program will be Working Students. This program is for ages 14 to 18, and will have “specialized instruction” in care, equipment, classroom lessons and riding lessons. Working Students is designed from the CHA Certified Horsemanship Association, Composite Manual, for the person who may want to eventually own a horse, work at a horse stable, or gain valuable job training. Part of the requirement is to have at least one (1) scheduled shift per week working for the Equestrian Center, learn to punch a time clock, cover missed shifts and calculate work-to-ride time. Previous students have used this program for college



and job applications, as well as following through the program, until they can apply for a CHA Certified Horsemanship Clinic, and attain their Riding Instructor Card. PMLA may also use it to evaluate future employees for our own equestrian center. Last (but

certainly not least) we will be offering Western and English riding lessons for ALL AGES. All camps, programs and lessons will be instructed

by PML Certified Riding Instructors and staff. Fees for Camps are \$40 per day for non-members, and still \$35 for PML members. Working Students and Lesson fees will vary. Quantity of Camps will be determined by demand.

Beginning in May, Trail Ride prices will be: \$40 per 1 hour trail for non-members, and \$35 for PML members; Lead Line Rides (ages 3-7) \$7.50 for non-members, \$5.00 for members. Reservations required in advance for all trail rides, camps, or programs. Early registration is recommended.

For more information on any of the rides, programs or camps, call Pine Mountain Lake Equestrian Center: 209-962-8667 or email: stables@pinemountainlake.com.

Community Standards

BY DENNIS PIPAL, COMMUNITY STANDARDS, DIRECTOR

Tenant Registration & Fee Policy

Many of our members choose to use their home in PML as a rental. Some hire a property manager to supervise this process and others choose to manage it themselves. Some have long term tenants and others have a short term. Either way, these tenants have the benefit of using our facilities and our amenities.

There are some common issues that go along with allowing non-members to live here in PML. These tenants, while enjoying the benefits of living in PML, also have the obligation to abide by the same rules the Owner agreed to comply with when they purchased their home here.

Our Board of Directors, over the years, has had to address some of the inherent problems that will occur from time to time when non-Owners fail to live by our rules and regulations. In January of 1996 the board passed Resolution #95.14, Tenant Registration and Fee Policy. This was amended in February of 1997 and again in April of 2001. This resolution sets forth the requirements for Owners who want to use their home as a rental.

This regulation requires the Owner to submit a refundable deposit. This deposit is held by the Association during the term of the tenancy as security for the return of all gate cards, PML identification cards, parking passes, and as security against the risk of damage to, or destruction of common facilities of Association property by the tenant.

The regulation also requires the tenant to register with the association and for long term tenants, a copy of the rental agreement between the Owner and tenant must be on file in the Association office.

Unfortunately, many of the complaints I investigate involve renters. When a tenant violates our rules we notify the tenant and the Owner of this violation and it is up to the Owner to make sure the violation is corrected. If the violation is not corrected the Owner may be subjected to any fines levied by the Association that result from our enforcement process.

Under the Governance tab on the PMLA website www.pinemountainlake.com we have a list of the most common violations located in the Community Standards section. This is in a printable format and I encourage those members who rent their homes to use this as a tool and include it in the rental process.

If you currently rent your home or are thinking about renting may I suggest you read Resolution #95.14 Tenant Registration and Fee Policy. You can find a copy on the PML website www.pinemountainlake.com under Governance tab/governing documents section.

The proper selection of rental tenants and the education you provide them about our rules will go a long way in making your rental income a worthwhile experience as opposed to an expensive nightmare. PML members that have questions regarding compliance issues can contact me at (209) 962-1240.

Shades of Green

BY ALAN MACDONALD, GOLF COURSE SUPERINTENDENT

The golf course remodeling project of the two restrooms is continuing. The building on #13 was found to have more dry rot and termite damage than originally thought, so it is taking more time to complete than planned. When this building is completed we will return to the restroom on #4, for additional improvements there.

Another project we are working on is a detailed plan for irrigation water consumption for normal years of rainfall, and those years that we must cut back. There are many courses and parks that are reducing the acreage of turf maintained. This is something we might want

to consider going forward.

The early February rain was a blessing. Rain totals in the yard were 5.25 inches.

Don't forget the dates that we are closed in 2015 for greens aeration; April 20, 21 & September 28, 29.

On a personal note; on January 23rd, 2015 my wife, Barbara, passed away at home. I want all of you to know how much the support that I have received from so many is assisting in the healing process. From my co-workers, from management, and all of the smiling faces that is our membership, I want to thank everyone for your kind words during this difficult time.

Contractors Performing Work in PML are Required to Follow PMLA Rules & Regulations

The following are some “*common violations.*” Please do your part to maintain a harmonious environment for all to enjoy. Remember: The PML property Owner is held responsible for those they hire.

Vehicle use:

1. Exceeding the posted speed limit
2. Driving in a reckless manner
3. Following another through an access gate or allowing others to follow you through
4. Parking on street (road shoulders OK)

Personal Conduct:

1. Allowing loud music
2. Uttering abusive language or conduct that would be offensive to a reasonable person
3. Using the property Owner's gate card or clicker

Work Related Conduct

1. Starting work before 7am or continuing after 7pm
 2. Allowing dogs at construction sites
 3. Performing work on Sunday
 4. Cutting down a tree in excess of 5” without PMLA approval
 5. Trespassing on neighboring property
 6. Using neighbors water or electricity without written permission
 7. Leaving construction signs longer than 5 days after work has been completed
 8. Nailing signs to trees
 9. Storing building materials on street or easement
 10. Beginning exterior construction without PML Association approval
- Any Questions...call Dennis Pipal, Community Standards Director @ (209) 962-1240

PINE MOUNTAIN LAKE ASSOCIATION
SUMMARY STATEMENT OF OPERATING FUND REVENUES AND EXPENSES
 For The One Month Ended February 1, 2015

OPERATION OF AMENITIES	Revenues					Expenses				Budget (NET COST) INCOME	Variance Bud - Act
	Members' Assessments Net of Discount	User Fees	Sales, Net of Cost of Sales	Miscellaneous Income	Total Revenues	Total Expenses	(Cost)/Income Before Depreciation	Depreciation Expense	(NET COST) INCOME		
Golf Course	\$ -0-	\$ 86,103	\$ 1,383		\$ 87,486	\$ 106,210	\$ (18,724)		\$ (18,724)	\$ (43,092)	24,368
Restaurant & Bar	-0-	361	58,046		58,407	108,097	(49,690)		(49,690)	(54,842)	5,152
Marina	-0-	3,438			3,438	8,837	(5,399)		(5,399)	(14,539)	9,140
Snack Shack	-0-		2,104		2,104	4,253	(2,149)		(2,149)	(2,802)	653
Stables	-0-	4,404		150	4,554	14,346	(9,792)		(9,792)	(11,203)	1,411
Recreation	-0-	7,120			7,120	3,787	3,333		3,333	(2,746)	6,079
Roads & Facilities Maintenance	-0-	305		40	345	122,296	(121,951)		(121,951)	(124,807)	2,856
PROPERTY OWNER SERVICES											
Safety	-0-	12,263		148	12,411	78,030	(65,619)		(65,619)	(75,800)	10,181
Administration	-0-	11,900		245	12,145	113,936	(101,791)		(101,791)	(115,800)	14,009
ASSESSMENTS											
Assessments	365,690			1,635	367,325	4,891	362,434	67,365	295,069	290,230	4,839
Totals	\$ 365,690	\$ 125,894	\$ 61,533	\$ 2,218	\$ 555,335	\$ 564,683	\$ (9,348)	\$ 67,365	\$ (76,713)	\$ (155,401)	78,688

Notes to the Financial Statements

1. Total Revenues minus Total Expenses equals Net Income before depreciation. The annual budget for income before depreciation is (\$130,000).
2. The Association combined the Operating Fund and the Property and Equipment Fund into one fund effective May 1, 2001.

**DID YOU KNOW...
 YOU CAN NOW
 MAKE YOUR
 P.M.L. PAYMENTS
 ONLINE?**

**Now Available
 Online bill pay at
 PineMountainLake.com**

*Pay via your credit card
 –quick & easy!*

CAPITAL EXPENDITURES 1 Month Ended Feb. 1, 2015			
	TOTAL RESERVE FUNDS	NEW CAPITAL ADDITIONS FUND	TOTAL CONTRIBUTION TO CAPITAL
2015 Beginning Fund Balances	1,846,157	\$ 119,654	1,965,811
Interest Income	233		233
Bank Fees/Discounts Taken	66		66
Assessments Earned	153,516 ⁽¹⁾	12,254 ⁽²⁾	165,770
Other Income/Expense			-
PURCHASES BY AMENITY			
Golf Course	(1,633)	(1,664)	(3,297)
Country Club	(9,883)		(9,883)
Bar			-
Marina	(3,000)		(3,000)
Snack Shack	(1,634)		(1,634)
Swim Center			-
Stables	(16,622)	(943)	(17,565)
Recreation			-
Roads & Facilities Maintenance			-
PROPERTY OWNER SERVICES			
Safety			-
Administration		(58,023)	(58,023)
Non-Capital Reserve Expenses	(62,528)		(62,528)
Total transfer to Operating Fund for property and equipment additions and reserve expenses	(95,300)	(60,630)	(155,930)
Adjusted Fund Balances	\$ 1,904,672	\$ 71,278	\$ 1,975,950

Notes to the Financial Statements

- (1) The Budgeted Reserve Fund assessment for 2015 is \$1,842,195
- (2) The Budgeted New Capital Additions Fund assessment for 2015 is \$147,050

PMLA Money Matters

BY KEN SPENCER, ASSOCIATION CONTROLLER

Every once in a while I think it is important for you to know where your assessment dollars go and what they accomplish. While a lot of this information is found in your annual budget package (which I am sure you all diligently read and absorb), sometimes it helps to present it in a different way with much of the accounting jargon and spreadsheet mentality removed.

Since the majority of property owners pay their assessment monthly it probably makes more sense to look at this from that perspective. With that in mind your \$170 monthly payment breaks down like this:

Capital and Reserves (\$48); Facilities Maintenance (\$41); Administration (\$33); Department of Safety (\$21); Golf Course (\$11); Restaurant & Bar (\$10); Stables (\$3); Recreation (\$2); Marina & Lake (\$1); Golf Snack Shack (\$1).

Knowing where the money goes is only half the story. Understanding what the money is used for is the other half. By far the largest portion of the monthly payment goes to Capital and Reserves. These funds are maintained to purchase new major items that have a long life and enhance various aspects of the Association. The Reserve portion of this amount is placed in a fund designed to pay for the major repairs and replacement of Association assets. Examples of this include our semi-annual road refurbishment program, the replacement of vehicles used by the Department of Safety and Maintenance, the recent replacement of the Marina facility and the upcoming replacement of our golf cart fleet.

Next in line is the Facilities Maintenance allocation of \$41. This may be one of the more widely visible aspects of the operation. Taking care of facilities and infrastructure that is over 40 years old can be very time and money intensive. All aspects of the Association's buildings, facilities and equipment is maintained

by this department including electrical, plumbing, paint and landscaping requirements.

The Administration department handles the management of our operations including the accounting department where we pay the bills, collect the money and handle property owner issues. In addition the general management of all other departments is coordinated at this operation.

The Department of Safety operates 24 hours a day, 7 days a week, 365 days a year and handle such tasks as staffing of the main entry gate as well as patrolling all of the Associations roads, amenities and common areas.

The Golf Course operation as well as the Restaurant & Bar are major revenue generating amenities that are open to the public and provide some of the major attraction to the area. The assessment dollars assigned to these areas is used to offset the level at which their costs exceed their revenue.

The Stables is another amenity that generates a limit amount of revenue and provides equestrian services to any

interested property owner as well as the general public. The assessment here provides for staffing of this facility as well as the supplies required to run the operation.

As the primary draw to PMLA the Marina is also a large revenue generator and produces enough income to almost completely offset the costs associated with the operation. These costs include staffing, supplies, governmental fees associated with the lake as well as the patrol and water taxi services provided during the summer season.

The Snack Shack is a small operation designed to provide limited food service to the golfing community. The revenue and expenses to staff and operate this facility are relatively minor.

Well that's it for this month. If you have any PMLA Money Matters you would like to see discussed in this column in the future please drop me a line at CONTROLLER@PINEMOUNTAINLAKE.COM or give me a call at 962-8606. Thanks for reading and I hope you find this monthly discussion helpful and at least a bit informative.

PMLA AUTOMATIC PAYMENT PROGRAM

Taking the time to write a check for your monthly assessment payment can be time consuming and costly. You can avoid his burden and eliminate the potential for late payment charges by enrolling in PMLA's Auto Payment Program. By completing the form, which can be found at www.PineMountainLake.com under the Resources/Forms, and returning it to the Administration Office, you can have your monthly assessment automatically deducted from your checking account or charged to your credit card. This means you never have to remember to write a check and mail it each month. The peace of mind that comes with knowing your payment will always be made on time is easy to attain. We can also arrange to have any other regular payment you make to the Association (such as golf membership, horse boarding fees, etc.) paid in the same way.

For more information on this simple, effective and time saving plan please contact us at (209) 962-8600.

PML Safety Report

	January	YTD
Guest Passes Issued	841	841
Vendor Passes Issued	159	159
Temporary Resident Passes Issued	92	92
Vehicles Admitted	7,874	7,874
Vehicles Refused Entry	149	149
Phone Calls Received	3,078	3,078
Residential Alarm	5	5
Animal - Loose	15	15
Animal - Impounded	3	3
Animal - Dead/Injured	36	36
Animal - Disturbance	10	10
Public Assist	12	12
Welfare Check	1	1
Transport	1	1
Traffic Hazard	2	2
Traffic Control	0	0
Gate - Tamper	1	1
Gate - Follow Through	2	2
Gate - Malfunction	13	13
Gate - Struck by Vehicle	3	3
Control Burn Reported	84	84
Smoke Complaint	4	4
Residential Disturbance	0	0
Amenity Burglary	0	0
Residential Burglary	0	0
Grand Theft	0	0
Petty Theft	0	0
Trespassing	1	1
Vandalism	0	0
Property Damage - PML	0	0
Property Damage - Resident	0	0
PML Reg Violations Resident	3	3
PML Reg Violations Guest	4	4
Vehicle - Citation Issued	2	2
Vehicle - Accident PML	2	2
Patrolling Unit	492	492
Amenity Security Check	2,522	2,522
Resident Security Check	137	137
Monitoring Tennis Courts	9	9
Weapon Violation	2	2
Fixed Post	1	1
Courtesy Notice Issued	5	5
All Fees Collected	\$6,059.95	\$6,059.95

MAKE PML YOUR ONE-STOP-SHOP FOR ALL YOUR GIFT GIVING!

Pick up a gift card for:

GOLF • GOLF SHOP APPAREL & ACCESSORIES • THE GRILL

BOAT RENTALS & GEAR AT THE MARINA

SNACK SHACK GOODIES • HUNTING & FISHING LICENSE VOUCHERS

(Gift cards are available at the Administration Office, The Grill, and at the Pro Shop)

LETTERS TO THE EDITOR

LETTERS RECEIVED – 4	DEFERRED TO NEXT EDITION BY
DENIED BY EDITORIAL COMMITTEE – 0	EDITORIAL COMMITTEE – 0
Exceeds 250 word maximum – 0	DENIED BY BOARD OF DIRECTORS – 0
Content – 0	DEFERRED TO NEXT EDITION BY
Not a property owner – 0	BOARD OF DIRECTORS – 0

Submit Letters to the Editor by sending to "Editor, PML News"
 Mail: 19228 Pine Mountain Drive, Groveland, CA 95321
 Email: PMLNews@sabredesign.net • Fax: 800-680-6217

PLEASE NOTE THAT ALL LETTERS APPEAR IN THE ORDER RECEIVED BY THE PML NEWS

The Pine Mountain Lake News welcomes letters and articles for publication provided they meet the criteria established in the current PMLA Editorial Policy (See excerpt below – entire policy on file at the Administration Office). Letters must be limited to 250 words, typewritten using upper and lowercase letters (no handwritten material, no all-capital material) and signed with name, unit and lot by a property owner in good standing. **LETTERS MUST BE RECEIVED BY THE EDITOR BY THE 10th OF THE MONTH.** Letters deemed by the Editorial Committee to be improper will not be accepted. Readers are advised that **THE OPINIONS EXPRESSED IN THESE LETTERS ARE THOSE OF THE INDIVIDUAL AUTHORS, NOT OF PMLA, THE PINE MOUNTAIN LAKE NEWS, NOR THEIR EMPLOYEES.**

Compliments for Budget Info

After reviewing the PMLA Annual Policy Statement & Summary of Pro Forma Operating Budget included in the recent assessment packet, I would like to compliment whoever (the controller?) put out the 5 pages of numerical budget information. The information was laid out clearly and in an informative and easy-to-understand manner. Seeing how much of each individual assessment was allocated to each category was useful and insightful, as well. I also appreciate the accompanying Board President's Message to also clearly and informatively spell out the budget for the upcoming year and its effect on the dues assessment. Thank you for the straight forward, understandable information. It's helpful to understand how the dues we pay are being allocated and spent for our association.

C. Phillips
2-115

was it \$20,000 – not clear.)

When asked at the meeting why it wasn't done in-house, I got the feeling that the board didn't have the confidence in the PML staff to handle this (or in the board.) I spent about an hour to come up with this the attached information:

1) A wage calculator for Tuolumne County done by M.I.T. (Living Wage Calculator, enter Tuolumne Co.) This report is a good guide for all jobs: restaurant help, office and administrative support, maintenance, etc. We need to keep in mind the rural type of area we live in.

2) A FREE homeowner's association compensation at http://www.payscale.com/research/US/Industry=Homeowner_Association/Salary.

3) A FREE wage and compensation calculator at payscale.com.

Please note these reports are objective and done by experts.

I would assume we have PML employees capable of finding out wage comparisons at no cost to members. If not, I know many members willing to take this on, and I would happily help; this information can be obtained either on-line or calling other associations. Please let our board know that this is not an acceptable expense.

Polly Wright
1/195

Re: Employee Compensation Study

The Feb., 2015 PML article stated: "The idea of conducting the study internally was first considered, but the Board wanted to ensure that the analysis was objective and conducted by experts who specialized in this type of work."

Since three of the board members were attending a Guardians' dinner, I questioned an unnecessary expense of hiring an outside firm for \$30,000 (or

A Thank You Letter from A Very Grateful Person

It has been my pleasure to have lived in Pine Mountain Lake for 17 years and I consider the residents here part of my extended family. They have continued to show me their concern and support for my health issues without hesitation. I would like to thank those who visited me in the hospital, at home, for all the phone calls, prayers and get well cards of support. You are a huge part of my well being and are what brings the sunshine into my life and for that I am eternally grateful. I thank you all very much.

Tom Carman
6/36

us as surely as folks who fire weapons make great deal of noise.

The board is an amateur body. I wager that not a single director has planned, promoted nor regulated an outdoor shooting range. But give them and the shooters credit. The idea of making an amenity for the shooters was very clever. The general membership pays for roads, designs, creation and maintenance. It is now approaching 100K. The users pay a nominal fee.

The way this amenity works is that the shooters are not directly responsible to other members. You may have noted that letters to the editors never include any responses from the shooters. They get their privileges directly from the board so needn't defend their actions or seek approval from their neighbors. The board is in a slippery place however. This amenity is their baby but they are limited by community standards. Strangely, they can decide without continuing community oversight what those standards are. More on the consequences of their decisions later.

Daniel Faben
unit 6 lot 159

Gun Range & Board Concerns

Dear Editor,

The workings of the gun range should give pause as to the nature of actions of our board of directors. They may have fine intentions in offering a place for the folks who like to gather for firing weapons. The unintended consequences are at issue and unfortunately will be with

GOT SOMETHING TO SAY?

Let your voice be heard with a letter to the editor. Submit your letter to the editor by mail to:



PML News Editor
19228 Pine Mountain Drive
Groveland CA 95321

or by email to: PMLNews@SabreDesign.net

BEFORE YOU BEGIN CONSTRUCTION ON YOUR LOT

The Declaration of Restrictions (CC&Rs) states that no construction of any type (new construction, driveways, grading, lot clearing, etc.) can be performed without prior approval from the Environmental Control Committee (ECC). Failure to obtain approval could result in the stoppage of work or even fines, and nobody wants that to happen. Inspections are made every Tuesday and reviewed by the Committee every other Thursday, so we can accommodate our members.

Please contact ECC before you begin any type of construction at

209-962-8605

NOTICE

Main Gate personnel are available to issue gate cards on Saturday & Sunday from 8:30 AM to 4:30 PM.

Please call in advance to schedule an appointment at

209-962-8615

Cell Phone Tower Petition

BY KEN SPENCER, ASSOCIATION CONTROLLER

Of all the requests and comments the Association receives regarding services here at PMLA perhaps the most frequent is the desire for expanded cell phone coverage in the community. As you may know the Association has been attempting to get a cell tower placed within PML for a few years. One of the most effective ways to get the attention of cell phone providers is through customer feedback. In an effort to bring this situation to the forefront with these providers we believe that a petition signed by a large portion of our membership is important.

With that in mind we are asking all interested members to sign the petition described below. We will then submit this to the various carriers to encourage them to support the building of the proposed tower. The petition form will be available at many of the Association's amenities including the Pro Shop, Grill, Bar and Admin office as well as on www.pinemountainlake.com.

FROM: The residents of the Pine Mountain Lake, CA

TO: Representatives of:
AT&T Mobility
Verizon Wireless
Sprint
T-Mobile

CONTACT FOR FURTHER CORRESPONDENCE:

Pine Mountain Lake Association
19228 Pine Mountain Drive
Groveland, CA 95321
Tel: (209) 962-8606

PURPOSE:

- Request for the immediate establishment of wireless voice and data services throughout the community via co-location at the multi-carrier tower site planned by the Pine Mountain Lake Association
- Indication of our interest in subscribing to such wireless voice and data services

KEY CONSIDERATIONS:

- Located near gateway to Yosemite National Park
- 3,600 acres of developed lots
- 3,519 individual properties
- 18 hole championship golf course
- Public campground and equestrian center

PROPOSED MULTI-CARRIER TOWER SITE ATTRIBUTES:

- Property owner: Pine Mountain Lake Association
- APN: 090-030-18; Tuolumne County, CA
- Lat., Long.: 37.856228, -120.21943
- 85' monopine; 3,600 s.f. equipment compound
- **Status: In development**

All About That Tech: GateAccess.net

BY NATALIE TRUJILLO, DIRECTOR

The Department of Safety offers a free guest pass service for all members through Gateaccess.net, which happens to be a part of the community management software utilized by the Main Gate. Gateaccess.net allows users to edit their guest list and view their historical guest entries via the internet. The provider of our community management software, ABDi, also offers apps that are compatible with several different devices including the iPhone, iPad, Android-enabled and even Blackberry devices. Awesome, right? The apps are all free and they make adding and removing guests an absolute cinch. I use the Gate Access app for Apple devices, which is really helpful when I lag on adding guests or when I know weeks ahead of time that I have a guest or contractor coming in and don't want to forget. You will need your PIN number, the home or main phone number listed on your account with Safety and our community code, PMLA, in order to log in. After accessing the system just select the tab you would like to review and go from there. Guests can be added with just a few clicks of your mouse, or if you're really tech savvy,

just a few taps of your fingers. It's fast, simple and straightforward. Best of all, being a Pine Mountain Lake member means you already have an account. Members can even add permanent guests to their list by leaving the start and end date blank. How fantastic is that? If you need more information regarding this program please visit the Pine Mountain Lake website, click on the Resources tab and select Department of Safety from the drop-down menu. On our page you will find a link for the whole rundown on this gate access procedure. Gateaccess.net can even notify you of entries into your property by email or text message (limit of 3 email addresses and 2 cell phone numbers). If you would like to take advantage of this particular option, please contact me by email at n.trujillo@pinemountainlake.com with the specific email(s) and/or cell phone number(s) and carrier information you would like to add. I hope that you will find this program as helpful as I have. Please feel free to contact the Main Gate at (209) 962-8615 with any questions you may have and we will be happy to assist you.

On the Lake

BY MIKE HORVATH, LIMNOLOGIST / LAKE CONSULTANT

Well, when you can't think of anything else to talk about, the drought is on everyone's mind. During our rain in early February I kept checking the flow on Big Creek hoping it would get up to 100 cubic feet per second (cfs) or more. Instead, and despite the amount of rain we got, it only went up to 4 cfs. At that rate, it would take over three months to fill the Lake. In some years, four inches of rain would have got the creek flowing pretty good and raised the Lake elevation by several feet. However, with the ground so dry, it just got soaked up and never put enough water into the creekbed to get it flowing. So, the Lake only came up about 8 inches or so and we have another four feet to go to fill it. But don't give up yet.

I just finished entering (into a database) daily lake elevations back to 1990 for a report I'm working on and there was one year the Lake was down 9 feet and it still filled and spilled. I would quiz some of you long timers on the year that happened, but shortly after entering all of those data,

my computer was attacked by some nasty ransomware that encrypted the file (along with many others). I wasn't about to pay the bitcoin ransom, so I'm still waiting to see if the files can be restored. In the meantime, think about the last time you remember the Lake being so low. And yes, I did back them up to an external drive, but it too may be infected. If worse comes to worse, I will have to reenter all of the data (hopefully on a very rainy day).

But right now, the long term forecasts don't show much other than sunny days and above average temperatures. I must say, it's hard not to enjoy the mild weather, but it sure would be nice if the boat ramp and docks were usable again. On the bright(ish) side, the Marina is ordering more paddle boards so you can still get out on the water without worrying about boat wakes knocking you over. And even if you don't get into the water, the food will still be great.

So, the take-home message this month is... remain positive. And yes, look before you leap. Splash!

Guest & Renters Handbook is Available Online!

You can now view or print the Guest and Renters Handbook from the PML Website.

Go to our website at: www.PineMountainLake.com and click on Governance then Community Standards. Then click on Guest and Renters Handbook at the bottom of the page. This handbook has valuable information for Guests and Renters in Pine Mountain Lake.



WWW.PINEMOUNTAINLAKE.COM
FACEBOOK.COM/PINEMOUNTAINLAKECA

FIREWOOD – FIREWOOD – FIREWOOD

**Firewood Cutting Is Here
PML SLASH and COMPOST SITE**

OAK and CEDAR
Requires a \$20 PML Wood Cutting Permit

Wood Cutting Permits Available
at the Maintenance Facility

PINE and FIR
Available for free CUT & HAUL

For more information please contact Susan at
(209) 962-8612 between the hours of 7 am to 2:30 pm, M-F.

**ALL PMLA HOMEOWNERS
EMAIL OPT-IN PROGRAM**

The Association is pleased to offer a money saving program available to all PMLA property owners. This program allows you to receive many of the documents we are required to provide to you via email. This option is important because:

Cost Savings – The Association is spared the expense of printing and mailing many documents to those property owners who sign up.

Environmental Savings – Less paper means less trash and reduced damage to the environment both in the disposal and production of paper and envelopes.

Reduced Clutter – By receiving documents via email there is less paper

for you to deal with. All documents can be saved on your computer and viewed at your discretion.

Timely Receipt – Documents sent electronically are received in minutes as opposed to the days it takes for regular mail to arrive.

If these sound like good reasons to you, please sign up for the Document Email Program today using the attached form. Simply return the completed form to the Administration office at your convenience.

If you have any questions on this program please feel free to give us a call (962-8600) and we will be happy to explain the details and the advantages.

Mail form below to:

Pine Mountain Lake Association • 19228 Pine Mountain Drive • Groveland, CA 95321

YES, I want to enroll in PMLA's email statement and document service. I acknowledge and agree to the terms and conditions set forth above as a condition for participation in this service.

PMLA Account Number: _____ Unit/Lot #: _____

Name: _____ Phone #: _____

Address: _____

Email Address: _____

Signature: _____

**PINE MOUNTAIN LAKE
ASSOCIATION JOB FAIR**

SATURDAY, MARCH 28, 2015

10 AM to 2 PM



PMLA Lake Lodge at
20270 Pine Mountain Drive

JOIN OUR SUMMER/SEASONAL TEAM!

THE GRILL

Servers
Line Cook
Prep Cook
Dishwasher
Bussers
Snack Shack

PRO SHOP

Outside Services

POOL

Swim Instructor
Attendants

MARINA

Store Clerk
Beach Patrol
Boat Patrol
Boat Handler
Water Taxi

LAKESIDE CAFÉ

Line Cook
Cashier

FIRE SAFETY

Coordinator

GOT YOUR PIN?

Since PML is a private gated community, we want to offer our property owners a secure way to call in guests. When you become a member of PML you are assigned a Personal Identification Number (PIN) to utilize either when calling in a guest pass or using the Gate Access Internet program. This PIN identifies you to staff without you having to be present. This is a confidential number and should **not be shared**. When you call the Main Gate to authorize a guest or vendor access into PML, you will be asked for your PIN. The staff will look up the number in the computer and use it to confirm your identity before entering the guest information. You must have this number to utilize the Gate Access Internet program as well. If you do not know your PIN or have any questions, please contact the Administration Office at:



(209) 962-8600



Monday through Friday from 8 am to 4:30 pm.
and we will gladly supply this information to you.

From the Fringe

BY MIKE COOK

Unless we get a great deal of rain, it looks like the golf season will start early again this year. The golf course is in great shape and we will be ready for another year of fun in the sun at Pine Mountain Lake. On Sunday March 8 (don't forget to set your clocks forward 1 hour before you go to bed on Saturday) we will have our last winter shotgun of the season and



don't wait until it is your turn to line up your putt.

- Do not take 2 or 3 practice swings standing over your ball before you hit, take at most 1 practice swing, and then hit. You never know, you may have wasted your best swing on the air.

- No honors, the first to the tee with club in hand hits. Just don't hit in front of an eagle.

- Putt out whenever possible if it does

not affect someone else's line.

- Most of the time, lost time is not caused by bad shots but from taking too much time between shots. Get to your ball as soon as possible and be ready to play.
- If you take multiple clubs to the green, place them in an area between the hole and your cart so you will pick them up as you walk off the green on your way to your cart.
- After completion of the hole, write the scores down at the next tee not at the green of the hole you just finished.
- If you have a hole open ahead of you but the group behind you is waiting on your group it is good etiquette and it will keep things moving to ask them to play through.
- The main thing is to be aware of your position on the course which is within 1/2 hole of the group ahead.

on Monday March 9 will be going to tee times, the first tee time will be at 9:00 am. As a Property Owner you can reserve a tee time up to 2 weeks in advance by calling the golf shop at 962-8620.

Upcoming Events

Ladies 18 Hole Club – Every Thursday is their regular play day.

Ladies 9 Hole Club – Every Thursday is their regular play day.

Men's 9 Hole Club – Every Wednesday is their regular play day.

Men's 18 Hole Club – Wednesday March 11; 4 Man Scramble

Men's 18 Hole Club – Saturday March 28; Ice Breaker – 2 Man Better Ball

Greens Aeration – Monday & Tuesday April 20 & 21. Golf Course will be closed on these days.

Call the Golf Shop 962-8520 for more information on any of our Men's & Ladies Golf Clubs.

Pace of Play

I have been here for 1 year now and I am amazed at how good the pace of play is on our course. Our average 18 round of golf takes a little over 4 hours to play. We are very blessed. For many golf courses if your average round of golf takes 4 1/2 hours you are very pleased. The average at other courses pushes the 5 hour mark. We will continue to try to do everything possible to keep the pace of play moving a nice pace.

Here are a few pace of play tips to help the pace of play keep moving:

- Play "Ready Golf" if it is clear and safe in front of you go ahead and hit, even if you are not away.
- Line up your putt while others are putting,

Rules Quiz

Rod marked the position of his ball on the putting surface with a coin and lifted the ball. He then placed his finger on the coin, while brushing aside some loose impediments so that he did not move the coin. When he lifted his finger the coin stuck to his finger and then fell to the ground and came to rest in a different position. What is the ruling? (*Hint: look at Rule 20 or if you have a decisions book, look at decision 20-1/12*)

- He incurs a 1 Stroke Penalty and must replace his ball in its original position.
- He incurs a 2 Stroke Penalty and must replace his ball in its original position.
- He incurs No Penalty and must replace his ball in its original position.

New Events at The Equestrian Center

June 6th "MOVIE, WINE AND APPETIZER NIGHT", come enjoy appetizers off the grill, a little wine the cool grass and a fun flick!

June 27th "BACK COUNTRY ADVENTURE DAYS", PML Equestrian Center together with the Back Country Horsemen, Mid Valley Unit, and various

fishing, river rafting, hiking and bicycling groups of Tuolumne County, will offer activities for young and old, including Dutch Oven cooking and lessons, Leave No Trace education, a packing demo; Y*Explores, John P. DeGrazio, discussing hiking in Yosemite, and booths featuring back country adventure business groups. Come out and find out the many ways to enjoy our parks and forests!

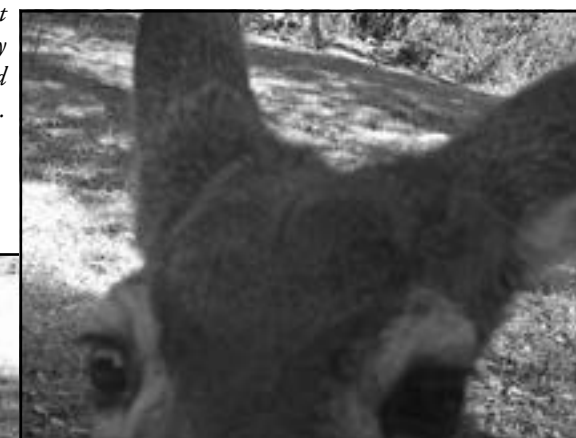
Game Cam Photos in PML

Our editor got a game cam recently and placed the camera on a tree facing a small open green space on his property. Below are some

of the images that were captured. (No food bait, no enticements to come in close, but as you can see, the animals came in anyways.)



A couple of foxes came in to see what was happening in the clearing. They returned several nights in a row and then they were gone.



No surprise to PML residents, deer were the most photographed animal over the week that the cam was up. Their big ears help them hear very well, so well that the one above heard the shutter on the camera and came in for a closer look.

\$25 DISCOUNT

Mention this ad for a discount on cleaning services.

Minimum charge applies.



DISASTER RESTORATION SERVICES • RESIDENTIAL AND COMMERCIAL CLEANING SERVICES

Carpet & Furniture Cleaning • Steam & Dry Cleaning • Deep Soil Extraction • Spot & Odor Removal • Oriental & Fine Rug Cleaning • Ultrasonic Blind Cleaning
24 Hour Emergency Service • Water Removal • Wet Carpet Care • Fire & Smoke Restoration • Vandalism Cleanup • Structure Drying • Sanitizing

ServiceMASTER Restore

*The clean you expect.
The service you deserve.®*



Serving Tuolumne, Calaveras & Amador Counties
ServiceMasterSierras@mlode.com • www.ServiceMasterSierras.com

209-532-1700

17330 High School Road
Jamestown CA 95327



RAY'S Roofing

Fully Insured - Liability & Workers' Comp



Complete Roofing Service

- Gutters
- Repairs
- Skylights
- Dry Rot



(209) 962-0368
Lic. #610291

Ray Lemasters

Sierra Nevada COMMUNICATIONS



Get the

Highest-Speed Internet in Pine Mountain Lake & Groveland

Call **(209) 962-6373**



Casa Viejos
Assisted Living

\$500 OFF

1st Month's Rent
Expires May 15, 2015

209-984-5124

- 24-hour Awake Staff
- Special Diets Available
- Scenic Gated Community
- Emergency Call System
- Staff Supervised Medications
- Memory Care & Special Needs
- Planned Activities
- 90 Private & Semi-private Rooms

18760 Charbrouillon Lane
Jamestown CA 95327
(Located off Hwy 108;
Next to Country Inn)
State Lic# 557003146

Yosemite Bank

A DIVISION OF PREMIER VALLEY BANK

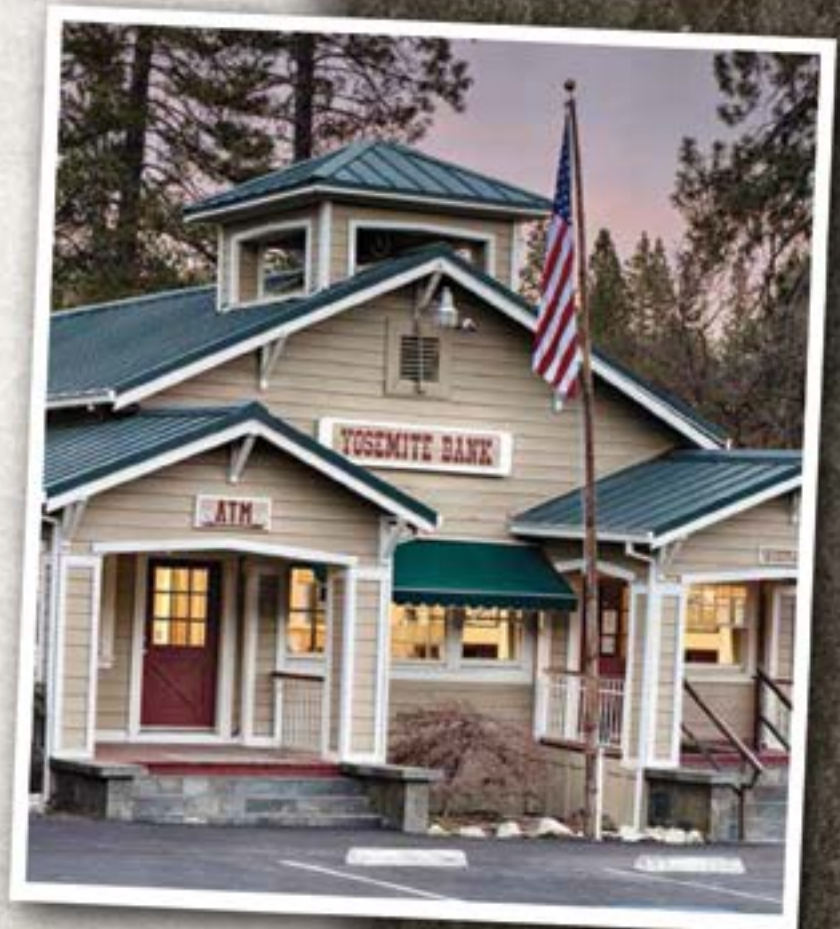
THE BANK FOR OUR COMMUNITY

Yosemite Bank offers unique benefits that larger banks simply cannot – like local loan approvals that don't have to come from an out-of-town office, as well as business bankers who know your name and your business. Whether you're in Groveland, Mariposa, Oakhurst, or any of the outlying areas, Yosemite Bank's local knowledge and commitment to the community can only help your business grow and prosper.

The Community Bank Serving the Sierra

10500 Main Street, Groveland, CA 95321 • (209) 962-7853
5171 Hwy. 49 North, Mariposa, CA 95338 • (209) 966-5444
40061 Hwy. 49, Oakhurst, CA 93644 • (559) 683-6442

yosemitebank.com



**AFFORDABLE ADVERTISING
PML NEWS — 209-962-0342**

Peter Fischer Construction

peterfischerconstruction@gmail.com



12969 Clements Rd
Groveland, Ca. 95321
Phone/fax 209-962-6199
License# 658830

peterfischerconstruction.com



Services - No job is too big or too small

- | | |
|----------------------------|-------------------------------|
| Custom Homes | Hardwood floor installation |
| Remodels | Masonry |
| Green Building | Painting EPA CERTIFIED |
| Porch or sunroom additions | Fireplaces / new or remodeled |
| New Roof | Solar panels |
| Carpentry | Deck replacement or repair |
| Concrete | Elasto-Decking |
| | Window/Door replacement |

For our customers convenience we accept credit cards

PAINTING

Bay Cal

LIC #795283

Painting – Exterior/Interior

Deck Repairs

Wood Repairs

Remodels



209.962.4777

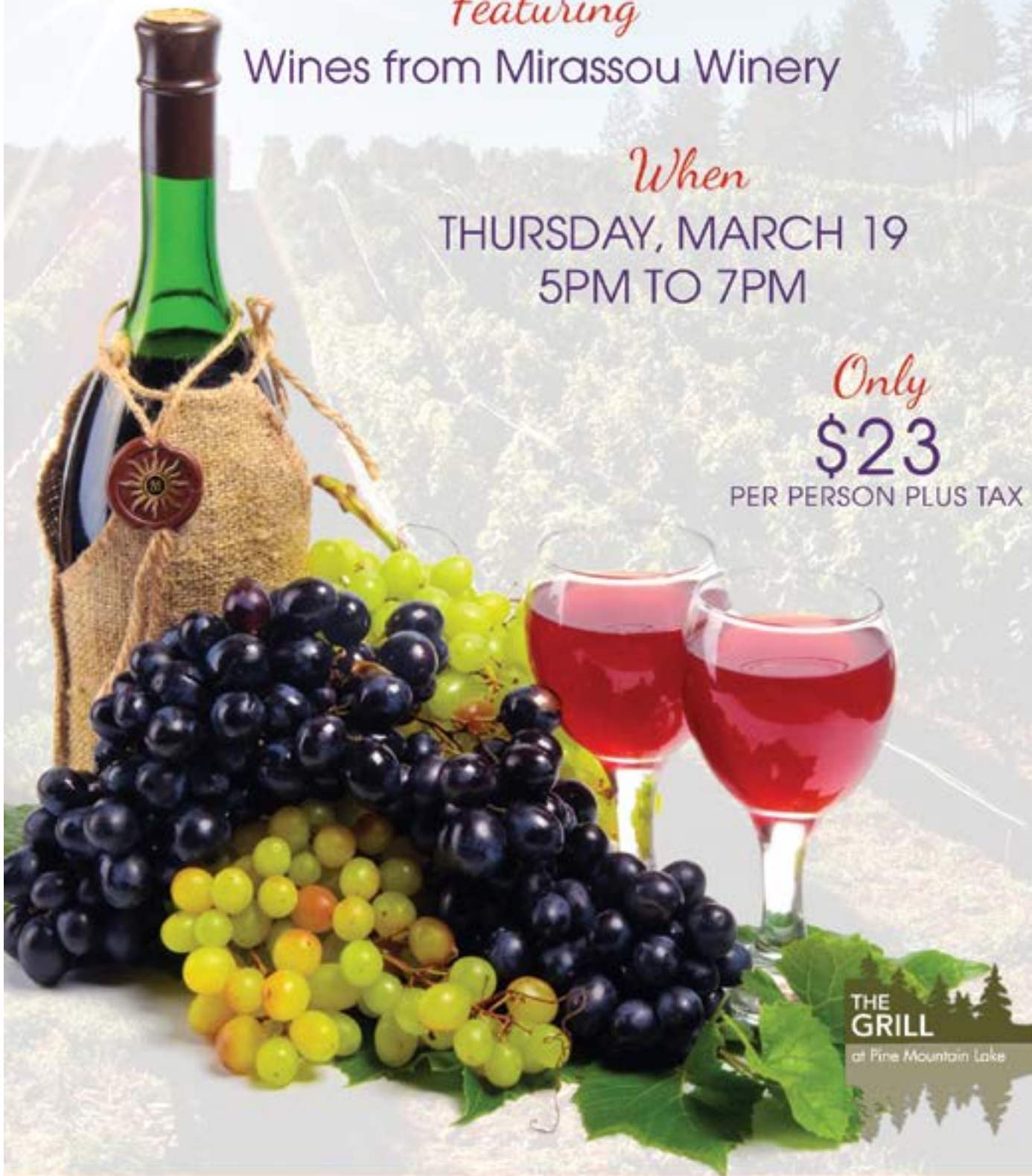
www.baycal.com • email: davec@baycal.com

You're Invited
WINE TASTING
& DINNER BUFFET

Featuring
Wines from Mirassou Winery

When
THURSDAY, MARCH 19
5PM TO 7PM

Only
\$23
PER PERSON PLUS TAX



THE GRILL
at Pine Mountain Lake



WINE TASTING & DINNER BUFFET

FEATURING WINES FROM J. WOODS BEVERAGE GROUP

THURSDAY APRIL 16

SEATING'S START AT 5PM

\$25
PER PERSON PLUS TAX

RESERVATIONS REQUIRED

(209) 962-8638



RESERVATIONS REQUIRED (209) 962-8638

March at The Grill

BY JAY REIS, THE GRILL MANAGER



The Easter Bunny visits us this year on April 5 so be sure to make reservations early. We only have Sunday Brunch on Easter and Mother's Day and they both sell out quickly.

Our March wine tasting brings a blast from the past for me. Born and raised in Sunnyvale, I remember Mirassou Winery like it was yesterday. Orchards and vineyards have been replaced by Silicon Valley tech companies. In 2003, under the pressure of development, the family decided to sell the brand name "Mirassou" to E & J Gallo and now the wine is made in the Modesto area. David Mirassou is employed by Gallo and markets the wine as a Mirassou family product. The Mirassou winery in San Jose was not part of the purchase and most of the vineyards have been converted into housing developments. Our March wine tasting dinner will be on Thursday March 19 and will feature wines from Mirassou family wines.

Marketing the Grill – This is a question that I am asked a lot. How do you market a restaurant that is considered by most a Country Club that is not on a major intersection or highway that is isolated from tourist traffic

and is located in a very small town in the Sierra foothills? Newspaper and radio have been tried and ineffective. So, I thought I'd try some free advertising. I have a request from all property owners of Pine Mountain Lake. I have added a new widget on our website on the restaurant tab. It's Trip Advisor. Just click on and post a photo of our food and add your positive review. With your help and great reviews we can market the Grill to a few travelers as they go to and from Yosemite.

The 19th Hole Lounge

We have scheduled a few new bands as requested by some of our members. We still have live music every Saturday night from 8pm until midnight. The lounge is open 7 days a week from 10 am.

Friday March 6 – Karaoke

Saturday March 7 – Blue Band

Saturday March 14 – Rockslide

Saturday March 21 – Uplands Drive

Saturday March 28- Kool Shifters

Your questions and suggestions are always welcome, contact me at clubmgr@pinemountainlake.com.

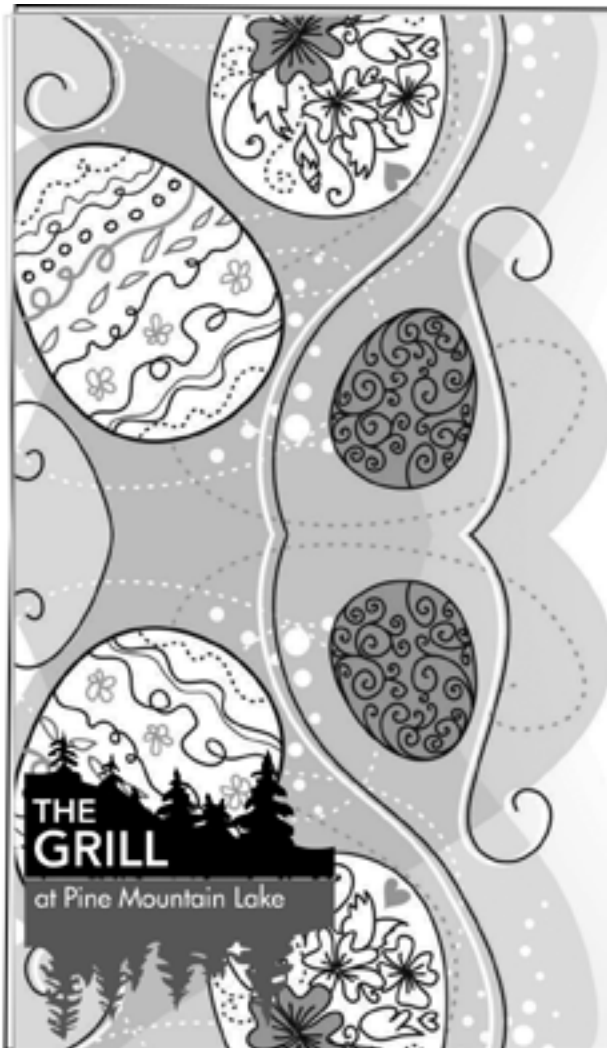


A Very Happy St. Patrick's Day To Everyone

JOIN US AT THE 19TH HOLE LOUNGE FOR SOME LUCK OF THE IRISH!
(EVERYONE IS IRISH TONIGHT!!!)

GOT RESERVATIONS?

Call The Grill, 209-962-8638 to make reservations.



Easter Sunday Brunch

SUNDAY APRIL 5

Seating Times: 9am, 11am, 1pm

Menu

Carving station with all your Holiday favorite entrees, salads and desserts

\$35

Adults

\$29

65 & Better

\$15

Kids 6-12

FREE

Kids 5 & Under

Call today for your reservations 962-8638

Amended Resolution 04.03 Editorial Committee and Policy

In accordance with Pine Mountain Lake Associations' CC&R's, Article III, Section 7 (c), Adoption and Amendment of Rules, the Board of Directors has approved this final amendment to Resolution #04.03, PMLA Editorial Committee and PML News Editorial Policy.

The purpose of the amendment is to update the PML News Editorial Policy as to the submittal of 'Letters to the Editor' for the PML News. The effect of this amendment impacts the submittal of 'Letters to the Editor'. The main effect and change is to detail the "editorial" and "physical" limitations and requirements for letter submittal.

This proposed amendment was published in the February 2015 Edition of the PML News for member review and comment. This amendment was approved and adopted by the Board of Directors at a duly noticed meeting on February 21, 2015, at the PML Lake Lodge.



Resolution 04.03
Adopted: 02/21/2004
Amended: 02/21/2015

PMLA EDITORIAL COMMITTEE AND PML NEWS EDITORIAL POLICY

This policy describes rules and regulations governing the format, content, and mechanism for publishing of submitted "Letters to the Editor" and material as well as the staffing and operation of the "Editorial Committee".

A. EDITORIAL COMMITTEE CHARTER

Editorial Committee members will review all "Letters to the Editor" prior to publication to assure compliance with the Editorial Policy. Committee members will not become involved in the daily operation of the PML News.

B. COMMITTEE MEMBERSHIP QUALIFICATIONS

Prospective members must be in good standing and should possess skills in writing and editing, and an ability to make unprejudiced and dispassionate decisions regarding the community and material submitted for review.

C. COMMITTEE MEMBERSHIP APPOINTMENTS AND OBLIGATIONS

The committee shall be composed of five members who are appointed by the PMLA Board of Directors to serve for a one-year term. Re-appointments for continued service on the committee will be considered in January of each year in accordance with the Advisory Committee Guidelines Policy.

A Chairperson will be selected by the committee and the recommendation will be given to the Board of Directors for approval at the next open Board Meeting. Election will be by a majority vote of the quorum. Any three of the five members constitutes a quorum and a quorum must be present to conduct any business. The function of the Chairperson is to arrange and chair meetings, assure proper documentation of meetings (minutes). The Administrative Assistant to the General Manager shall act as liaison between the committee and the PMLA Board, and PML News Editor. The Committee may invite prospective applicants to meet prior to providing a recommendation to the Board of Directors.

PML NEWS EDITORIAL POLICY

The PML News is the official publication of Pine Mountain Lake Association for notifying members of actions and proposed actions of the Board of Directors; legal notices; financial notices including the annual report with disclosures; for informing members of changes to Association policies, procedures, rules and regulations; and for notifying members about upcoming events and reporting on past events.

The editorial staff shall consist of the PML News Editor, and the Administrative Assistant to the General Manager, as liaison to the Editorial Committee. Letters to be considered for publication must be addressed to the PML News Editor, at 19228 Pine Mountain Drive, Groveland, CA 95321 and clearly labeled 'Letters to the Editor'. Copies of letters written to the Board, the Board President, the General Manager or other organizations or individuals to offer comment, seek information, require or suggest specific action, etc., will not be considered for publication but will be forwarded to the appropriate party. Letters may be submitted via email to the Editor at their current email address following the same criteria as stated above.

Letters will be duplicated for review and copies will be given to the Editorial Committee for approval or rejection. In order to maintain confidentiality, all PML employees are denied access to 'Letters to the Editor', with the exception of the editorial staff listed above. All letters duplicated will have the author's name, address and other information blocked out so that the author remains anonymous.

The intent of 'Letters to the Editor' is to communicate property owners' views on any subject of interest to PMLA property owners.

Letters for publication must meet the following editorial limitations:

Letters submitted for publication must be received no later than the 10th of the month for the following months' publication. (Must be received by June 10 for publishing in July edition, etc.) When the 10th of the month falls on a holiday, Saturday or Sunday, the deadline will be extended to the following workday. Letters/Emails received after the 10th of the month will be considered for publication in the next edition of the PML News, on a "space available" basis.

- Subject must be of timely interest to PMLA property owners.
- Content must not be libelous to individuals or the Association, or deal with matters of litigation. No personal attacks will be considered for print.
- Letters may not contain profanity.

- No photos will be accepted for a Letter to the Editor.
- Letters may not be of a religious or political nature. The only exception to the above will be for candidates running for election to the PMLA Board of Directors.
- No more than one letter per household may be submitted per edition of the PML News.
- Letters from active Directors will not be considered for publication. In addition, their participation in any way in the preparation of letters by others is considered inappropriate. Committee members may submit letters following the same criteria as others, however, the member submitting the letter will abstain from voting on their submissions.

Letters for publication must meet the following physical limitations:

- All letters must be from Pine Mountain Lake property owners in good standing and signed by the author. Letters authored by more than one property owner will not be accepted. Petitions should be directed to the Board of Directors.
- Letter must not exceed 250 words (body)
- Letters must be typed or neatly printed/handwritten.
- Due to space constraints, only the number of letters that will fit in the space allotted will be printed each month. Letters will be considered in the order they are received. Redundancy will be a factor to be considered. Letters from authors not recently published (say, in the past six months) will be given priority. Letters not considered because of space limitations will be considered for the following months' edition of the PML News on a "space available" basis.
- Letters must contain the sender's name, mailing address, PML Unit/Lot number, and day/evening telephone numbers. Letters not containing the above information will not be considered for publication. Only the name and city of residence will be printed if the letter is selected for publication.

The PML News will not be used as a forum for property owners to air grievances against each other. The Letters to the Editor feature is not a battleground for repeated arguing between opposing parties. Rebuttals are welcome; successive volleys are not.

The PML News shall not discriminate based on the views expressed in letters.

In the event the Editorial Committee has questions as to the accuracy of the facts and/or figures, they will make an effort to contact the property owner to verify information and to allow the property owner to make revisions. In the event that the writer cannot be contacted, the letter may be printed with a brief comment by the Board of Directors or the Editor at the bottom of the letter. The Editorial Committee and the Board shall refrain from any other comments other than to make a notation of what they feel may be incorrect facts and/or figures. Noted corrections by the Board must site a verifiable written source.

Arbitration of Rejections

Authors of rejected materials will be notified by the Editor of the PML News outlining the reasons for the rejection and the appeal process.

When a submitted letter has been rejected by the Editorial Committee, the author may appeal the matter directly to the PMLA Board of Directors for final resolution. If an article/letter is rejected by the PMLA Board of Directors, the Decision is final and may not be appealed.

Conclusion

The PMLA Board of Directors' will receive copies of all committee-approved letters to the editor.

As the responsible representatives of the Pine Mountain Lake Association, the PMLA Board of Directors retains final authority on any material published in the PML News.

All 'Letters to the Editor' printed in the PML News, unless otherwise noted, reflect the opinions of the writers and do not necessarily reflect those of the Pine Mountain Lake Association, its Board of Directors, employees, PML News or property owners. The PML News is a private enterprise, not a public entity, and as such is entitled to reject advertisements or articles in the best judgment of its editor or publisher. Pine Mountain Lake Association is not responsible for, nor do we guarantee, the accuracy of information contained in any advertisement/letter/article placed in the PML News.

Articles or columns submitted for publication by organized groups of PML will be subjected to the same time constraints and requirements as noted above.

Respectfully submitted,

Wayne Augsburger, Secretary

PML Organized Groups & Clubs

Contact the individuals below if you are interested in joining!
(All numbers are 209 area code unless noted otherwise)

Aviation Association	
Lynne Orloff	962-4631
Computer Users Group	
Frank Perry	962-0728
Exercise	
Barbara Elliott	962-6457
Friends of the Lake	
Mike Gustafson	962-6336
Garden Club	
Lonnie Roman	962-6001
Guardians of PML	
Gus Allegri	962-6915
Ladies Club	
Maddie Sousa	962-5708
Ladies Golf Club	
Yvonne Mattocks	962-4165
Men's Golf Club	
Dick Faux	962-4617
Men's 9-Hole Golf Club	
Bob Oakley	962-4799
Monday Bridge Club	
Bill Parker	962-5957
Needle Crafts	
Lee Isbell	962-5727
Pickleball	
Karen Seals	962-6657
Pine Needlers Quilt Guild	
Wina Helm	962-6534
PMLakers RV Club	
Miles (Ned) Nuddleman	925-371-2287
PML Niners	
Stacie Brown	962-5129
PML Shooting Club	
Dick Collier	770-5022
PML Waterski & Wakeboard	
Dean Floyd	(408) 378-7725
Racquet Club	
Joe Sousa	962-5708
Tom Hernandez	962-4704
Residents Club	
Dick Faux	962-4617
ROOFBB	
Ivonne Deckard	962-1904
Sierra Professional Artists	
Heinie Hartwig	(209) 586-1637
Southern Valley Srs. Golf Group	
Jim Sample	962-4747
Sunday Couples Golf	
Alma Frawley	962-5578
Windjammers Sailing Club	
Bob Haliwell	962-4137

PML Lady Niners

BY SHARON KENYON

January yielded numerous excellent play days with many winners. Marsha Martinez started her year with a hole-in-one on #17. **CONGRATUALTIONS!** Impressive way to begin 2015. Wanda Patterson hosted our Kick-Off breakfast meeting on January 3. Thank-you.

JANUARY 8

"Putts Day" with 13 players

1st Place: Karen Dickson 14 Putts

2nd Place: Dotty Davis 16 Putts

3rd Place Tie: Geralyn Dielman & Mary Hauser 18 Putts each

4th Place Tie: Kathy Egan & Pat VanGerpen 19 Putts each

Pars: #5 Karen Dickson

Chip-In: #8 Marilyn Alexander

Low Net Tie: Kathy Egan, Karen Dickson & Geralyn Dielman = 37

JANUARY 15

We played "Par Fours" with 19 golfers.

1st Place Tie: Marsha Martinez & Pat V.G.

Net 21.5 each

2nd Place: Marilyn Alexander Net 22.5

3rd Place: Bev Oakley Net 23

4th Place Tie: Stacie Brown & Trudy Reid Net 23.5 each

5th Place: Wanda Patterson Net 24.5

6th Place: June Moore Net 25

Pars: #10 Geralyn D.; #14 Stacie B., Kathy E. & Judy M.; #14 & #17 Dotty D.; #17 Carrie C., Kathy E., June M. Nice work everyone.

Birdie: #17 Bev Oakley. Congratulations Bev!

Low Net: Faye Buckley = 34

JANUARY 22

Game was "Cry Baby" with 18 players
6 best holes minus 1/2 HC.

1st Place: Carrie Carter Net 22

2nd Place: Linda Craig Net 22.5

3rd Place Tie: Kathy Egan & Flo Jansen Net 23.5 each

4th Place Tie: Stacie B. & Patty Nelson Net 24 each

5th Place: Dotty Davis Net 24.5

6th Place: Pat VanGerpen Net 25

7th Place: Jane Reynolds Net 25.5

Pars: #1 & #6 Kathy Egan; #1 Jane Reynolds; #2 Carrie Carter; #3 Stacie Brown & Bev Oakley; #7 Flo Jansen

Low Net: Kathy Egan = 36

JANUARY 29

We played no-post "Baseball" – 15 players competed for Low Net Win.

1st Place Tie: Marilyn Alexander, Dotty Davis, Wanda Patterson = 28

2nd Place Tie: Faye Buckley & Nancy Whitefield = 30

3rd Place: Mary Hauser = 32

4th Place: Flo Jansen = 33

Birdies: #14 Stacie B. & Nancy W.; #17 Dotty D. & Anne Toner. Well done ladies!

Pars: #10 Stacie B. & Nancy W.; #14 June M., Marsha M., Faye B., Wanda P.; #14, #15 & #16 Dotty Davis. Way to clean up Dotty! #17 Marilyn Hathaway, Flo Jansen, & Marilyn Alexander

PML Men's Golf Club

BY WAYNE DOTY

As we have all experienced, this has been a great winter for golf here at PML. I think, however, all of us to the man would gladly trade a few weeks without golf for buckets of rain and lots of snow in the high mountains while we remained inside reading a good book. Having said that I must admit it's nice to be playing.

The remodeling project of our clubhouse is moving forward although somewhat slower than originally planned. The bidding process is complete and if all goes well, demolition should be underway by the time this article is published. Let's keep our fingers crossed that the project stays on track from here on out. Our first tournament of the year has been played. Thanks to all who competed and we offer our congratulations to the winners. Here are the results.

Gold

1 Edvard Eshagh 70 \$80

2 W. Augsburger 72 \$70

T3 Jerry Dickson 74 \$50

Chris Ligonis 74 \$50

T5 Ralph Jimenez 76 \$31

Sylvan Braa 76 \$31

Rick Liszewski 76 \$31

T8 Frank Jablonski 77

Charlie Stoll 77

T10 Spiro Pettas 78

Pat Hennigan 78

Dan Shuey 78

T13 Wayne Handley 79

Dennis Perry Sr 79

15 Tom Knoth 83

16 Vince McNamara 85

17 Allen Craig N/C

Purple/Green

1 Derrol Beaulieu 68 \$75

T2 John Graham 69 \$52.50

Jay Warshauer 69 \$52.50

4 Milt Foster 70 \$35

T5 Michael Guess 71 \$20

Dave Penning 71 \$20

7 Barry Scales 72

8 John Case 73

9 Dan O'Connor 75

10 Eddie Wright 76

11 Bob Ells 78

12 Bill Johnson 84

Golf Quote of the Month:

Golf is like fishing and hunting. What counts is the companionship and fellowship of friends, not what you catch or shoot.

– George Archer

How Sweet it Was

BY DAR BROWN, PUBLICITY CO-CHAIR



Flo Jansen, Dart Woodruff and Jane Reynolds enjoying the wine tasting.

Charles Schulz said "All you need is love. But a little chocolate now and then doesn't hurt" and thus the Pine Mountain Lake Ladies Club celebrated the coming of Valentine's Day in the best way possible - a wine and chocolate tasting at the Grill. Southern Wine and Spirits provided 6 different varietals for tasting along with two champagnes and each lady received a bag containing 6 different delectable Lindt truffles to accompany the wines. Calories were carefully removed of course by the committee of Judy Basey, Sylvia Engstrom, Barbara Lacy, Wanda Patterson, Sue Petersen, Pat Pasha, Louise Turney and Dart Woodruff. Thanks to Carrie and the staff of the Grill who prepared and served a delicious Chicken Caprese lunch.

Please join us on Wednesday, March 4 for the wearin' of the green for our Ladies Club celebration of St. Paddy's Day themed "A Little Bit Irish".

If you would like to join the fun by becoming a member of Ladies Club, simply mail your check for \$15 for annual dues to Post Office Box 100, Groveland, CA 95321.

Hope to see you there!

WWW.PINEMOUNTAINLAKE.COM

PML Men's 9 Hole Golf Club

BY STEVE ENGSTROM

As I write this on Saturday morning, we have had 1.64 inches of rain overnight (according to our rain gauge) and it's still coming down, albeit not as hard as during the night. This bodes well for the golf course as most of the greens were starting to remind me of pool tables, where, if one were to strike a ball, even very gently, and the table was tipped, the ball would never stop! More rain is forecast for tomorrow so it may be touch and go for golf on Monday. A note to all members, our President Bob Oakley has finished the latest edition of your 9 Hole pamphlet which as the year's calendar, rules, by-laws, membership list and definitions for each of our games. These are available at the front desk in the Pro Shop.

The answer to last month's teaser which was "In his long career, Lee Trevino won three out of the four majors. Which one didn't he win?" The answer is that Trevino never won the Masters. This month's teaser is "Only two golfers have won tournaments on the PGA Tour in four different decades. Name Them". Our winners for January were:

1/7 3 Blind Mice

First: Jeff Mondloch, Second: John Olsen, Tie Third Steve Vahey, Dick Dentino, Jack Leatham, Roger Peterson and Steve Engstrom

1/14 4 Man Two Best Ball

First: Jim Van Gerpen, Roger Peterson, Jack Leatham and Steve Engstrom

1/21 Low Net

Tie First: Bob Oakley and Steve Vahey, Tie Third: Jeff Mondloch, Steve Ojeda 1/ and Walt Bales

1/28 Even Holes

First: Steve Vahey, Second: Jim Van Gerpen, Tie Third: John Klink Steve Aker, Roger Peterson and Steve Engstrom

PML Men's Nine Hole Golf Club Schedule for 2015

MARCH

- 4 Red, White, Blue
- 11 Three blind mice
- 18 Beat the Pro
- 25 Four man one best ball
- 29 Four man one best ball

APRIL

- 1 One two three
- 8 Low net plus putts
- 15 Two man best ball
- 22 Four club

MAY

- 6 Low Net
- 13 Red, White, Blue
- 20 Two man scramble

27 Four man two best ball

JUNE

- 3 Tee to green
- 10 Four man two best ball
- 17 Three blind mice
- 24 Four man one best ball

JULY

- 1 Red, White, Blue
- 8 Two Man Scramble
- 15 Four man two best ball
- 22 Four club
- 29 Low Net

AUGUST

- 5 Four man two best ball
- 12 Low putts
- 19 One two three
- 26 Low net plus putts

SEPTEMBER

- 2 One two three
- 9 FALL TOURNEY FRONT NINE
- **11 FALL TOURNEY BACK NINE
- 16 Two man best ball
- 23 Odd Holes
- 30 Beat the Pro

OCTOBER

- 7 Two man scramble
- 14 Four man two best ball
- 21 Red, white, blue
- 28 Four man scramble

NOVEMBER

- 4 Low net plus putts
- 11 Even Holes
- 18 M9H Annual Meeting
- 25 Four man one best ball

DECEMBER

- 2 Three blind mice
- 9 Four man two best ball
- 16 One two three
- Followed by 4 man 2 Best Ball
- 23 Two man scramble
- *29 Low Net

- * Tuesday
- ** Friday

If you are new or returning to golf and don't want to play 18 holes, you are invited to join the Men's Nine Hole Golf Club.

- Play every Wednesday.
- A variety of games & formats.
- We will maintain your nine-hole handicap.
- Walk or ride, it is still "a walk in the park."
- Annual Championship Tournament

Membership is \$25 per year and applications are available at <http://pmlm9h.webs.com>

Pickleball Rocks

BY KAREN SEALS

What Motivates People to Play Pickleball?

The USAPA (USA Pickleball Association) surveyed over 2000 pickleball players these are the results:

To help understand pickleballers' motives,

participants were asked to provide the three to five most important reasons they play pickleball. More than 2,000 motivation factors were given. Below is a ranking of the most important reason for playing for both males and females based on the frequency with which the reasons were expressed:

- 1st:** Health-related: exercise, fit, active, health, physical, workout, shape, body, cardio
- 2nd:** Fun-related: fun, enjoy, doing something I'm good at, travel
- 3rd:** Competition-related: competition/ compete/competitive, challenge, win
- 4th:** Social-related: social, friend[ship], people, meet, spouse, partner, family, team, camaraderie, fellowship
- 5th:** Development-related: learn, improve, achieve, mental, mind, brain, alertness

Males and females expressed very similar reasons, though there were some slight differences. For example, "fun-related" factors were mentioned more frequently by females and "competition-related" factors were mentioned more frequently by males. While the order in which respondents ranked the motivation factors is important, it should in no way undermine the importance of the lower-ranked reasons. For example, most respondents identified "personal development" as a very important motivator, which includes working



on skills and techniques, learning from others, and setting and reaching performance goals. Competition is also a key motivator – nearly all respondents claimed that they are "determined competitors,"

"enjoy trying to beat someone/a team they've never beaten before" and "try their hardest to win." In addition, over two-thirds of all respondents stated that "winning is important. Does that sound like fun to you???" Come on out and join the fun.

We have open play on for Pickleball members Monday, Wednesdays and Fridays 9-12. On Saturdays from 10-12 we are open for new players to come on out and check us out. We do ask that you stop by the main PML gate and pick up a pickleball guest pass for court 6 then come on out and Check us out! It's **easy** to join and Play!

Pickleball has become so popular at PML that on Saturdays and Sundays we could have 20 people waiting to play!! So, on March 21st the PML Pickleball Club will be making a presentation to the PML board to expand the existing 2 Pickleball courts to 6 courts so we would be able to accommodate 24 Pickleball players at once! Please come on out to the PML board meeting and show your support for the Pickleball club on the hill!!

Go to Meet up at: <http://www.meetup.com/Pine-Mountain-Lake-PickleBall-Meetup/>

Facebook page: **Pickleball @ Pine Mountain Lake**, Email us at: PMLPickleball@gmail.com or call **Karen Seals at 962-6657**

Come on out and Join the Fun, meet new friends, and get moving!!

Winter Hours:
Sun-Thurs:
 11:00AM - 8:00PM
Fri-Sat:
 11:00AM - 9:00PM

"WE TAKE LOCAL COMPETITOR'S COUPONS!"

PIZZA PIES

NOW SERVING PASTA DINNERS
TRY OUR ALL YOU CAN EAT LUNCH SPECIAL OR OVEN BAKED SUBS

Call ahead: 962-4897 (962-GUYS)
18955 Ferretti Road. Left turn off of Main St (Hwy 120) 1/2 Block

\$1.00
Off Any Size Two Guys Pizza or Calzone

One coupon per order, per visit. May not be combined with any other offer and/or coupon. Not valid on delivery.

PML0315 Expires 04/15/15

\$2.00
Off Any Large or Extra Large Two Guys Pizza

One coupon per order, per visit. May not be combined with any other offer and/or coupon. Not valid on delivery.

PML0315 Expires 04/15/15

PML Ladies Golf Club

BY SARA HANCOCK

What a great start for the year. With all our warm weather, the course is playing like summer. We were able to get in all four of our play days.

January 8 Red, White and Blue

1st Place...128...Barbara Connelly, Sandy DeRodeff, Lynne Dust, Clarice Ligonis; **2nd Place...**134...Jodie Awai, Kitty Edgerton, Marjorie Rich and Paula Vautier; **3rd Place...**135...Kay Bettencourt, Marcee Cress, Alice Stoll, Mona Tompkins. **Birdies:** Kitty Edgerton #15, Eleanor Ellis-Murphy #14.

January 15 Two Best Balls

1st Place...125...Jodie Awai, Sandy DeRodeff, Sara Hancock, Yvonne Mattocks; **2nd Place...**127...Kay Bettencourt, Lisa Brown-Jimenez, Eleanor Ellis-Murphy, Mona Tompkins; **3rd Place...**131...Marcee Cress, Thelma Faux, Patty Peebles, Kathy Shehorn. **Birdies:** Kitty Edgerton #3 and #8.

January 22, 2015 Two on Odd and One on Even

1st Place...87...Jodie Awai, Susan Dwyer, Marilyn Scott and Blind Draw; **2nd Place...**91...Kay Bettencourt, Sara Hancock, Yvonne Mattocks and Judi Maguire; **3rd Place...**92...Lisa Brown-Jimenez, Lynne Dust, Alma Frawley and Clarice Ligonis. **Birdies:** Lisa Brown-Jimenez #9.

January 29 Team Point Bogey

1st Place...134...Kitty Edgerton, Helena McMillan, Priscilla Park and Marjorie Rich; **2nd Place...**125...Kay Bettencourt, Sara Hancock, Yvonne Mattocks and Mona Tompkins; **3rd Place...**124...Lynne Dust, Kathy Shehorn, Alice Stoll and Blind Draw. **Birdies:** Sara Hancock #17.

Please note that our next General Meeting has been changed to March 3rd at 9:30 in The Grill. We have lots of fun golf coming up, especially if we can get our putters to behave.

Garden Club Clippings

BY JOYCE SMITH

How about this spring weather? It's wonderful, but we would trade it in a minute for a good rain. However, we do have a forecast for rain to come in on late Thursday (Feb. 6th). Hopefully it will happen. In the meantime we will continue to be careful with our water use. Remember if we do get a good rain, we can't go crazy, we have a long, long way to go before we are 'near normal'. One glimpse of Don Pedro Lake and we know how far we have to go.

We had a speaker from the Audubon Society for the March meeting. He spoke on the Birds and plants of our area and this topic goes well with Garden Club interests. I am writing this prior to the meeting so I will have our speaker's name and a little more information next month.

We are looking forward to a work day at the Jail in March. Yes, we love working at the Jail and we have a lot to do before our Garden is ready for our June visitors

(Garden Tour stop). The Tour will be on June 8th. This year's theme is "Frogs and Ferns", doesn't that sound interesting? Our table setters will have fun with that. However, table setters can do their table as they choose without a frog in sight. Price will be the same as last year and we will have a limited number of seats. Barbara Coldren will be taking reservations. I know this is early, but save the date. We want you to join us on our tour. It's our only fund raiser for plants and upkeep of the Jail Garden. You would be surprised by the comments we receive from tourists stopping by on their way to Yosemite. People love our Jail and Garden.

Members check your emails. That is our primary means of communicating. Have you paid your dues? Do you want to join Garden Club? Come to a meeting and see what we do? We love to have visitors.

See you at Lake Lodge!

PRECISION OPTICS

Stacy Hancock, Certified & Licensed Optician

Prescription & Non-prescription Eyewear

FREE Adjustments & Repairs

Pricing 40% - 60% less than your Doctor's Office

Insurance Welcome

(209) 962-1972

18729 HWY 120, UNIT A, GROVELAND, CA 95321

Sunglass Sale

Over 100 pairs of Designer Sunglasses
30% - 80% OFF

"Like" Precision Optics on Facebook & receive \$10 OFF any Sunglass purchase



PAUL S. BUNT, ESQ.
ATTORNEY AT LAW

ESTATE PLANNING
PROBATE
REAL ESTATE
BANKRUPTCY
ELDER CARE
209.962.6778

Mountain Library Center, Groveland
appointments available in Sonoma and Lake Don Pedro



ROOFBB CASINO NIGHT



MARCH 14, 2015 Doors Open 6:00 pm

Gambling 6:30 pm to 9:30 pm

Dancing to Midnight

A Fun Filled Evening of Casino Games, Heavy Hors d'oeuvres, Socializing, Dancing, Cocktails (No Host Bar - Drink Tickets will be Sold) & Top Winner Prizes !!

Blackjack, Roulette, Craps, Texas Holdem, Let-it-Ride

Where: The Lake Lodge

20270 Pine Mountain Lake, Groveland



Time: 6:00 pm - Midnight

Price: \$35.00 per person

(Includes Starting "Fun Money")

RSVP: Kathie Wood 209-962-7566 or
Ivonne Deckard 209-962-1904

Payment Due by March 1st

ROOFBB PO Box 1136, Groveland, CA 95321



HOMES ON THE HILL

**Your Guide to
Real Estate in the
Groveland Area**



RE/MAX
Yosemite Gold
Each Office Independently Owned and Operated

Patricia (TISH) Fulton
REALTOR® / PROPERTY MANAGER
BRE #0076019

18688 Main St. P.O. 808
Groveland, CA 95321

Phone: 209-962-0837
Office: 209-962-4080
Cell: 209-985-0216
Email: Tish.realestate@gmail.com

Deardorff Realty

19425 CHAFFEE CIRCLE \$234,500



2bd/2ba, 1 owner. Plans called for 3rd bdrm. Closet installed but left out a wall, could be easily installed to create 3rd bdrm. Mstr has walkin closet and Mstr Ba has jetted tub and separate shower. Location is prime! Close to the front gate, Marina & Dunn Ct. Beach. Oversize garage & workshop - w/extra high garage door to accommodate RV. Lg decks.

Contact Marilyn Deardorff-Scott - BRE 00396888

209-962-0718

YOSEMITE GATEWAY PROPERTIES

18731 Main Street • PO Box 606 • Groveland CA 95321
YosemiteGatewayProperties.com • (209) **962-5190**

GEORGE VOYVODICH
Broker/Owner
209-962-4185 Office
gvoyvodich@gmail.com
BRE license 01080130

REBECA MARTINEZ
Realtor
209-639-9467
rebeca95321@gmail.com
BRE license 01961957

JUNE DEE
Realtor/GRI
209-962-5190 Office
209-962-7060 Home Office
209-770-5190 Cell
junedee@ymail.com
groveland-real-estate.com
BRE license 01700083

LOTS & LAND FOR SALE

7/30 Ferretti Rd. Golf Course Lot, Grt Price \$24,500
6/135 Septic in. Ready to build \$6,500* - **SOLD**
6/114 19805 Ferretti Rd \$12K
13/117 Breckenridge \$3,500 - **SOLD**
Unit 7 Lot 149 \$3,500
** Owner Financing Available*

A GREAT VACATION HOME



19047 Crocker Station, 7/215
Newer appliances, furnace, roof, deck, doors, fans, lights & much more. A great vacation home. \$140,000

QUALITY CONSTRUCTION



For details go to:
www.groveland-real-estate.com
20488 Ferretti Rd, 3/32
2,464sf + 600 sf Bonus Room. Custom home with too many upgrades to mention in this ad. Please come by & take a look! \$429,000

*"Call me for your
real estate needs"*



Liz Mattingly • Broker Associate
BRE#00709618

209-962-1129 • 209-840-8020 Cell
18687 Main St., Suite E
Groveland, CA 95321
lizmatre@gmail.com



96%

Consumer Satisfaction Rating
www.sugarpinerealty.com



Listing Brochure

18727 Main St. #B • PO Box 792 • Groveland CA 95321
 209.962.7765 • fax: 209.962.5924



LARGE HOME, SMALL PRICE.... Designed for 2 families/friends desiring seclusion. 4 bdms, 3 baths, 2,506 sf. Open floor plan + family rm. Lrg guest qtrs on 1 side of home, w/separate air/heating/water heater. Must see to appreciate all amenities. Call Dave or Ron, 13/123 S259,900 MLS 20141981.



BEAUTIFUL COURT YARD... with koi pond and patio. Open & sunny floor plan. Large cozy fireplace in living room. Nice kitchen & dining area. 3bd/2b, 2 car oversized stick built garage w/workshop. Call Linda, S154,950 7/60 MLS#20142125



GREAT HIGHWAY 120 FRONTAGE.... A one of a kind Historical barn over 100 years old and a cistern west of the barn that is visible from hwy. 14 acres, some of which borders BML property. Call Zane McDow 209-768-8889 S260,000 Hwy 120 Groveland MLS#20121958



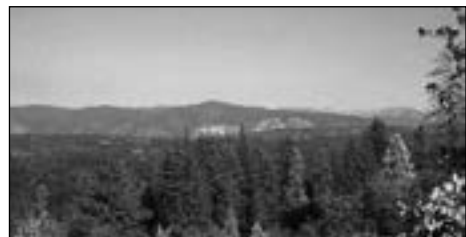
OWN A PIECE OF A HISTORICAL QUARTZ MINE.... 12.73 acres with easy access and buildable sites. Call Dave Lint or Ron Connick, S150,000 Wards Ferry Rd Robinson Mine Property. MLS#20142048



BEAUTIFUL 1.7 ACRE LOT.... enjoy the views from this ez access, mild sloping down premium lot. Very private location in desirable Unit 11. Call Michael or Patty, S159,000 11/56 MLS20121723



CHARMING CORNER LOT... Chalet with 3B/2B and plenty of space for RV & parking. Light, bright & cheery, vaulted ceiling and new paint. Large inviting deck off living room. Most furniture available. Storage under the house. Call Patty or Michael, S232,000 8/194 MLS#20141816



THIS PROPERTY HAS HISTORIC mining ruins of the Mt. Jefferson Quartz Gold Mine. Zoned R-2. Call Michael or Patty, S99,900. L10 BLK 6 Deer Flat Rd. MLS#20142021



IMMACULATE CUSTOM BUILT HOME.... Plenty of Room in this 3bdr, 3brh, 3,064 sq. ft. Home. Open Floor Plan with Deck Access w/Views from five locations. New Carpet, Central Propane and Evaporative cooling on both levels to save on those PGE Bills. Call Dave or Ron, 8/111 S267,900 MLS#20140817



LAST TAXI WAY LOT.... 12/79 Jimmersall. Call Linda Willhite S175,000 MLS#20130834



GREAT HIGHWAY 120 FRONTAGE property is located on both sides of Hwy 120 North side is steeper and borders USA property. Call Dave or Ron, S95,000 Lot 15 Hwy 120 MLS#20105035



A CABIN FOR ALL SEASONS.... High ceilings are a focal point for this 2 bd with a loft A Frame Chalet. Great views of the Mountains can be seen from its front deck, perfect for a weekend getaway. Call Linda S159,900 3/250 Pine Mountain Dr. MLS#20131008



PARK YOURSELF UNDER THE STARS on the deck or in the Hot-Tub. This home is in Pristine Condition. Split 3 Bedroom Plan, 2 Baths, 2 Car Garage and Well Maintained Decks. Close to Main Marina and Big Creek Hiking Trail. Call Dave Lint or Ron Connick S159,500 19970 Ridgecrest Way MLS#20140068



SEVEN CEDARS.... Exactly 1/2 mile to the Marina. Fireplace/stoves in upstairs master bedroom & living room downstairs-plus central heat w/separate controls up and downstairs. 3bd/2ba + 400 SF bonus room. Call Linda, S198,500 13/143 Pine Mountain Dr. MLS#20141402



LAKE FRONT.... This lot nice size and has a great building site. Choose to build on flat or over the hill slightly to put on 2 story. Easement rd bottom of lot to access lake easier than from home above. Call Dave or Ron, S79,900 13/276 MLS#20105148



COZY & CUTE CHALET IN THE TREES.... Beautiful park like setting w/seasonal creek. Lot backs up to PML greenbelt giving you a feeling of seclusion & privacy. Main level has 2bd/1ba w/open beamed ceilings, 2nd level has 2bd/1ba. Newer roof, large deck. Call Patty or Michael, S165,000 6/121 MLS#20150167



PREMIER SETTING... This lovely 2944 sq. ft. 4bd 3ba home nestled in the trees on approx. 1 acre is the perfect place to relax & enjoy nature. Approx 1,600 sq. ft. of covered deck to entertain friends & family. Call Linda 13/216 S429,000.00 MLS# 20140939



RELAXING RETREAT FOR A LRG. FAMILY... Remodeled 5bd/2.5 ba. + a bunk room. A cozy living room w/brick fireplace, open beam ceiling & bonus room downstairs. Located on a Lrg. lot w/great setting. Call Linda, S225,000 3/331 MLS#20103754



BEAUTIFUL HILLTOP.... 20 acre parcel with views north, east and west. Several building sites with great views. Historical sites of Quartz Gold mining operations in the Groveland area. Call Michael or Patty, S130,000 L8 BLK 6 Deer Flat Rd. MLS#20142007



Emmett Brennan
Broker/Owner



Dave Lint
Realtor, Past Realtor of the Year



Linda Willhite
Broker/Assoc.



Ron Connick
Realtor



Patty Beggs
Realtor



Michael Beggs
Broker/Assoc.



Zane McDow
Realtor



Elaine Stallings
Realtor



Zana Looney
Office Assistant



YOSEMITE AREA REAL ESTATE

Paul S. Bunt Real Estate – BRE #01221266



PRIME 5 ACRES READY TO BUILD ON
Move your RV onto this ready to build 5 acres. Includes; Well w/purification System. Underground PG&E to well & building site. 2 car Metal building Gar/Stor. Lvl build area.
\$168,000 20965 Morgan Drive Lot #14



LEVEL LOT CLOSE TO GOLF COURSE
Remodeled 2 lvl w/Lg deck off kitchen. Carport, lots of parking! 2bd/2ba. main living area w/ real wd brnng f.p. Spacious kitch, wd flrs. Spiral stair to dwnstrs Bed, Bonus Rm, 1/2ba & Indry area. **Only \$179,999** 13024 Mueller Drive



LOVELY OPEN FLOOR PLAN MOUNTAIN HOME
1,408Sq.Ft. 3b/2.5ba Knotty Pine Bm Ceilings. New paint, Wash/Dry, DW & remodeled Mstr Ba. Open Grt Rm. FP & Bay window. Cvr'd decks. Septic **\$165,000** 2/362 19358 James Cir.



COUNTRY RANCHETTE ON LVL 1.49 AC
Fenced/cross fenced. 2 paved drives, 4 horse paddock w/auto water, lights, elect., hay stor. & 2 lg stor. sheds. 1,741SqFt. 4bed/2ba. 2 car attached gar. & xtra stor./pntry rm. Water well **\$319,000** 12/164 - 13334 Clements Road



GREAT 2 LEVEL CLOSE TO MARINA
Combined 2 lots for .63ac. New roof in '13. Sq footage & stor. Grt Rm w/Open Beam wd ceil, lg deck. Lg kitch. Wd flrs, wall-wall carpet. Lvng rm w/air tight w.s. Section 1 pest comp, file on MLS. **\$260,000** 12456 Mills Street

REALIZE YOUR DREAMS WITH US



CHRIS H. LAKE
BROKER ASSOCIATE
209.768.6156 Cell
chrishlake@gmail.com
BRE #00946632



JAMES (JIM) NAGLE
REALTOR
209.770.5230 Cell
jamesa.nagle@gmail.com
BRE #01251085



KRYSTAL BIGGER
REALTOR/GRI
209-768-5944 Cell
kbigger81@gmail.com
BRE #01324944



BEAUTIFUL HOME
3 bedroom, 2 bath, 1349 sq. ft. single level
\$169,000 19303 Ferretti Road



GOLDEN OPPORTUNITY COMMERCIAL PROPERTY
3+ac. w/3300sqft bldng divided 3 sep. units; Previous Pizza Parlor. Lvl lot ample prkng. Dr's office rents – \$325/m. OWF w/20% dwn. District wtr. **\$199,000** 3191 El Prado, La Grange



LARRY JOBE
REALTOR
209.962.5501
larryjobe1@gmail.com
BRE #01444727

Call us today
209.962.5900



RYAN NIEDENS
REALTOR
209.982.4224 Cell
rniedens@gmail.com
BRE #01940007



RARE FIND
2 Homes on 2.4ac w/seasonal pond Main house 3bd/3ba + office Open concept w/ vaulted clngs. Gourmet kit, jetted tub, Guest 1/2 +bonus rm 1000sq' shop/gar paved prkg 2 add cottages **\$575,000** 23633 Rock Hammer



A SLICE OF HEAVEN
Secluded yet close to town 19+ ac ready for your dream home.Paved road, power to adjacent property, Well and septic required Possibly sub-dividable. Meadows and trees. Only **\$175,000** Fiske Hill Rd, Greeley Hill



PO Box 675 • 18800 Main Street, Suite B
Groveland, CA 95321



BEAUTIFUL LINDAL CEDAR CHALET
1.08 ac. Great rm w/vaulted wd beam clngs. Lg kitch w/brkfst bar, pantry, closet, 2 sinks & lots of cupboards. Nice rock'd wall with air tight wood stove. Lots of storage, lg loft, mstr bdrm w/walk in closet. **\$215,000** 20279 Little Valley Rd



NEARLY 24 VIEW ACRES
City water, power to top of lot, septic in for 3 bdrm's. Driveway graveled half way up lot Gated, close to Groveland
\$200,000



PML LOT CLOSE TO COUNTRY CLUB
Septic in for 3 bdrm's
Owner can build.
Great location **\$39,900**



BUILDABLE LOT IN PML
Southern exposure, paved road, power to property. District water and septic required. Great building site with expansive mountain views. A steal at **\$10,000** Unit 6 Lot 43



MOUNTAIN CHALET
Enjoy winter or summer 4 bed 2 bath with off street parking. Large deck for outdoor living. Close to main Marina. Seasonal creek
\$195,000 19548 Grizzly

209.962.5900 • www.YosemiteAreaRealtors.com

JUNE DEE
BRE 01700083
YOSEMITE GATEWAY PROPERTIES
209.962.5190



UNIT 3, LOT 32

A QUALITY HOME FOR ALL SEASONS AND ALL REASONS AT \$429K

Every month will seem like a vacation in this 2007 custom, 2500 sf + 600 sf bonus, 3BR, 2Ba, bonus room, bamboo & travertine flooring, quartz counter tops, walk-in closets and so much more on .95 of an acre.

Don't miss out.

VIRTUAL TOUR:
WWW.GROVELAND-REAL-ESTATE.COM
Yosemite Gateway Properties

COSTA'S TREE SOLUTIONS



Steve Costa • Owner
Fully Insured/Bonded C.C.L. #818373

209-962-4468
cell **209-768-4469**
Certified Arborist #WE7496A



RE/MAX Yosemite Gold

Property Sales: (888) 962-4080 PineMtnLake.com
Rentals: (877) 962-7180 YosemiteGoldVacations.com



Lauree Borup (209) 628-4600 Lauree@GoldRush.com
Ann Powell AnnPowellRealtor@Gmail.com 200-1852
Eleda Carlson 814-4123 EledaCarlson@GoldRush.com
Tish Fulton Tish.RealEstate@Gmail.com 985-0216
Tracy Billeb RENTALS 962-7180

GAZE ON THE GREEN **New Listing**



You're on the level with 3 bedrooms, 2 & 1/2 baths + inside laundry room in 1936 sq ft. The two sets of french doors invite you outside onto the large covered porch where you will enjoy the green expanse of the 2nd fairway. Double attached garage and ample parking. Located on a peaceful cul-de-sac, within walking distance to the Grill and Pro shop. Come take a peek!
5C-310 Fountain Court \$335,000



LEAPIN' LEPRECHAUNS **New Listing**



FIND YOUR POT O GOLD
A seasonal creek runs through the back yard of this 3 bedroom, 2 1/2 bath home.

Located near Dunn Court Beach and Golf Course, it is the ideal spot to relax. Nice tiled entry foyer, formal living room, tall windows and an impressive fireplace plus a den with wood stove. Entertain outdoors on warm summer days on the large main deck. Huge master bedroom has walk in closet and a small deck.
2136 sqft. 1-322 Pleasant View Dr \$259,900



KELLY GREEN GOLF COURSE VIEWS

Enjoy views year round from this spacious multi-level townhome overlooking the 1st fairway. Generous room sizes with 3 bedrooms and 4 full baths provide space and privacy for owners and guests, alike:
over 2100 Sq Ft. Maintenance has been a priority here.



The roof was replaced in 2008 and extensive deck work was completed in 2014. Most furnishings available with sale. Country Club Village
CCV #26 Junipero Serra \$169,500

CLOSE TO GOLF, POOL, TENNIS, bar and restaurant. Be near the things you love to do in this fine Country Club Village Townhome. Many great spaces to entertain inside.



Multiple decks on each level to enjoy the outdoors. Tall windows in the living room bring in great natural light. A bonus room on the lower level serves as the 3rd bedroom and there's an extra storage room on the upper level. Perfect for vacations, full time living or as an investment opportunity. Lake, golf, tennis, dining and swim center next door! 1889 sq ft
CCV #11 Junipero Serra \$157,500

SIERRA LUXURY, RECREATION & RANCHING 3400 sq ft architect-designed energy efficient home on one level with porte cochere & attached garage. Panoramic mountain views; exquisite quality construction. With the 125 gallon per minute well you have enough water to grow grapes, orchards, garden, or expand the tree farm. Separate guest house, shop, RV garage & equipment building. Trap shooting range, rifle and pistol ranges, shuffleboard court, horseshoe pits, pond. Hunt the abundant game. 24 acres fenced for livestock- in Ag Preserve contract for lower taxes. 8 miles to Groveland, 20 miles to Yosemite. 14025 Clements Rd at the Graham **Now priced at \$805,500**
More Info at PineMtnLake.com/Lauree





Save the Date!
May 30, 2015

2015 ROOFBB Annual Golf Tournament
11:00 a.m. Registration
1:00 p.m. Shot Gun



Door Prizes – Raffles – Auction
Tournament Chairs – Lisa Brown-Jimenez 962-0894
Janey Marshall 527-7806
Kathy Mondloch 962-0221

REALIZE YOUR DREAMS WITH US



**YOSEMITE AREA
REAL ESTATE**

PAUL S. BUNT REAL ESTATE

**James (Jim) Nagle
REALTOR®**

BRE 01251085

Because You Deserve the Best

18800 Main Street, Ste B., Groveland, CA 95321
 Direct Line: **209/962-5900** or **209/770-5230**
 Residence: **209/962-0323** • Fax: **209/962-5904**
 E-mail (Business): jamesa.nagle@gmail.com



COUNTRY CLUB VILLA # 21

Very close to Grill, Pro Shop, Tennis and Pool. Perfect for the vacation get-a-way and Vacation rental. 1,900 sq. ft w/4 bedrooms 4 baths. Separate/Private Suite downstairs. Golf Course and Mountain views. Has Vacation Rental History. **\$157,000** CCV # 21 12735 Juniper0 Sera



PERFECT STARTER OR VAC HOME

Very nice, cute & cozy. Nice decks. Free standing wood burning fireplace & fenced area for pets. 1,404 Sq Ft of upgrades. 3bd/2ba & attached 2 car garage. **\$255,000** 3/354 12800 Cresthaven Drive



LOVELY OPEN FLOOR PLAN MOUNTAIN HOME

1,408Sq.Ft. 3b/2.5ba Knotty Pine Bm Ceilings. New paint, Wash/Dry, DW & remodeled Mstr Ba. Open Grt Rm. FP & Bay window. Cvr'd decks. Septic **\$165,000** 2/362 19358 James Cir.



SELLER READY TO SELL!

COUNTRY RANCHETTE ON LVL 1.49 AC
 Everything ready/setup for toys, RV's & Horses. Fenced/cross fenced. 2 paved drives each end of home - easy access to 4 horse paddock w/auto water system, lights, electricity, covered hay storage & 2 lg stor. sheds. Spacious 1,741SqFt. 4bed/2ba of room for family & friends. 2 car attached garage & extra storage/pantry rm add to home. Renovation throughout entire home. Kitchen renovation w/kitchen sink, granite counters, hickory cabinets, (dual fuel) gas/electric oven/range & microwave. Free standing propane f.p. Covered Patio. Water well for Irrigation Nice fenced back yard for pets. New Roof & Exterior Painting **\$319,000** 12/164 - 13334 Clements Road



CUTE/COZY MTN CHALET CABIN

Very close to PML Amenities. 1,280SqFt. Huge Loft w/Half ba. 2 bdrms & full bath on main lvl. Updated. Stainless appls, lam. flrng, tankless water htr & vinyl windows. **\$160,000** 2/2 - 20270 Pleasant View Dr.



3BD/2BA SINGLE LEVEL CUSTOM

Single-level, built in 2005, with 2-car garage, attached by breeze-way. Great room has vaulted, knotty-pine ceiling. Granite counters, laminate flooring. Jetted tub, separate shower & double vanity in main bathroom. Guest rooms access decks. **\$275,000** 7/228 - 19092 Digger Pine



MOUNTAIN CHALET

Enjoy winter or summer 4 bed 2 bath with off street parking. Large deck for outdoor living. Close to main Marina. Seasonal creek **\$195,000** 19548 Grizzly

LOTS & LAND

Large Merged Lot .87 Acres Very close to Tioga High School. Easement off Ferretti Rd for easy access **\$9,600** 7-281 Ferretti Rd.

Easy Build G.C. Lot 13th fairway. Close to Dunn Ct. Beach. Seller financing available. **\$99K** 5/100A 12716 Mt Jefferson St. - **REDUCED**

Prime Gentle Slope Lot Touching the 6th fairway. Easy Access outside the gates. **\$24,000.** 5/201 Mueller Drive. - **SOLD**

.7035 Acre Gentle Down slope Parcel Very Close to the PML Lake Lodge/Beach. W/Stately Oaks & on Quiet Street. **\$49,000** - Parcel 378 Big Foot Circle

Parcel .526Ac. Ready for Builder. Great Location. Outside gates and close to High School. Engineered Septic Solution done in 2005. **\$38,000** Parcel 290 19378 Ferretti Road. - **NEW LISTING**

HIGH SPEED INTERNET 866-378-8393

\$49.95/mo.

VISIT OUR WEBSITE FOR MORE INFO.

www.Conifer.com.Net



CONIFER COMMUNICATIONS

JOANNE BERNASCONI-SCOTT
Independent Beauty Consultant

13166 Wells Fargo Drive
 P.O. Box 1257 Groveland, CA 95321
 HOME: 209-962-6394
 CELL: 209-573-1415
 Bernijo3@aol.com
 www.marykay.com/jbernasconi
 Enriching Women's Lives™



WWW.PINEMOUNTAINLAKE.COM
FACEBOOK.COM/PINEMOUNTAINLAKECA



Gina Giampietro Hernandez
OWNER/REALTOR®
BRE 01226555
NOTARY PUBLIC
408.506.6944 MOBILE
209.962.7156 OFFICE
GinaPMLRealty@gmail.com

I'm Moving Properties... Let Me Move Yours



View listings & property search online at www.PMLRealty.net

PRIVATE DECKS WITH LAKE AND MAJESTIC MOUNTAIN VIEWS \$445,000



20596 QUAIL RIDGE LN. Unit 3 Lot 148 3586 sf Beautiful/Spacious stone ext. w/5Bd (4+ add'l sleeping area) 3.5Ba, 2 car (fits 21' boat), 4 Lg decks & lake views - July 4th fireworks front row seating. No side neighbors, .27ac, private setting—perfect getaway. Open Lv Rm w/wd burn f.p. & blt-in entertain. ctr, Lg MBdr on sep. lvl w/lg deck & views, jetted tub, sep shower, dbl sinks, lg walk-in closet, cathedral clngs, hard wood cabinet, lg kitch w/brkfst bar, gas stove, garden window, walk-in pantry, sep dining area w/views, dual zone HVAC systems, 2 h.o heaters, lg downstairs fam/game rm w/wet bar & huge deck. Lg under house space can be workshop or add'l storage. A perfect family home for full-time or vacation in PML near Yosemite. <http://www.tourfactory.com/1270271>

BEACH~LAKE~FIREWORKS~FABULOUS !!! REDUCED!!!! REDUCED TO \$475,000



19881 DUNN CT. UNIT 1 LOT 269 .52ac. 60 seconds from front yard to Dunn Ct beach. Cul-de-sac w/ lake views from kitch, LvRm & Yr round covered front deck. Beautiful single lvl home, tall open bm wood clngs, 3 Mstr Bds (1 remodeled Ba) 2 garages, open kitch/great rm, stainless applcs, (cook, dine & entertain w/lake view) walk-in pantry, 2 merged lots, no side neighbors, + special front row seats to July 4th fireworks! Central H/AC, stone gas fireplace & custom wood mantel, brkfst bar, wet bar. Beautiful high windows view lg atrium Oak, newer roof, new decking off main Mstr Bdrm, new LvRm carpet, 6 sliding doors, beveled glass entry door, beautiful wood style lam. flooring in hallway & Mbrdr 1. RV +pkg. By lake and g.c. in PML near Yosemite. <http://www.tourfactory.com/1154708>

SUPERBLY MAINTAINED HOME W/PRIVACY & 6 SLEEPING ROOMS! \$449,000



20063 Pine Mountain Dr. U13 L263 .86 acres, 3036sf Room for 2 families w/main floor single story lvl living + upper & lower lvls for add'l guests w/6 private sleeping rms in all! Mstr Bdrm on main lvl, 2 bdrms on upper, 1 bd + 2 rms (w/o closets) on lwr lvl making 6 potential bdrms. 3½ ba, Lvrm w/flr to ceiling brick wood burning f.p., open to kitchen, dining area & 2 sliders to deck w/ privacy & tall trees! Formal entry & guest Ba on main lvl, upper lvl open loft w/wet bar & tall windows. Family/game rm w/wood burn stove & deck on lower lvl., 2 car over sized tall garage w/work bench, cabinets & sink. All weather cement driveway. Dual HVAC, whole house vac system, storage. All furnishings avail/negotiable — MOVE RIGHT IN AND ENJOY! <http://www.tourfactory.com/1281210>

VIEWS • 4BD (2 STES) • 3207 SF LIVING AREA + 1372 SF BONUS AREAS \$598,000



11950 MOUNTAIN SPRINGS CT. Unit 13 Lot 226 .80 ac on quiet Cul-de-sac. 4bd 4Ba. Mtn & tree views. Lg open lvng rm w/tile & wd flr beaut. inlaid, stone hearth f.p. w/cstm wd mnt, frml entry w/elev. to 3 flrs. Lg kitch w/SS applcs — Jenn Air 6 burner gas stove-top + wrmr, dbl ovens, granite cntrs, lg pntry, stnd glass light, grdn wndw. Sep exer. rm, indoor pool rm w/heated "Endless Pool", lawn & flwr grdn bkyrd & wd playhouse. 4 car gar w/dbl depth to fit 4 cars or RV on upper prkg. 1 lg & small car or trailer pkg in lwr gar + extra prkg. Timbertech® deck. 690 sf wrkshp. Mbr w/flr to clg stone gas fp, priv. deck & hot tub, dbl shwrs, skylight, tile flr, dbl closets. Wd flrs, high clngs, stnd glass light. Views from 3rd level "cupola" with elev. access. <http://www.tourfactory.com/1218839>

BEAUTIFUL HOME WITH LARGE GREAT ROOM \$259,000



19601 Cottonwood St, U6 L31 2168 sf 3bd/2ba 2 car Do you want single level living w/ a huge great room w/hard wood flooring and open beam ceilings, gas fireplace, in absolutely beautiful condition? This lovely ready to move in home is just right for the full-time, part-time or vacation rental owner. The master bedroom and bath is extremely roomy, gas fireplace, bamboo style flooring, 2 closets, dual sinks, sep garden tub and shower, picturesque views. 2 guest bedrooms, formal dining room or bonus room with tile flooring, wine cellar or hobby room on ground level. Backyard private patio, Central Heat/AC, finished garage w/built in cabinets & 10x8 Tuff Shed included. New water heater and dishwasher, on septic. <http://www.tourfactory.com/1062451>

MOVE IN READY - OUTSIDE OF PML \$162,500



18548 NORTH DOME CT. GROVELAND 1147sf 3Bd/2Ba, 1 car .42ac, septic. New paint inside/out, kitch new w/granite cntrs, maple color cabnts, new sink, faucet & disp, new elec stove, new recsd light, new flng, new LvRm dng fan. New lighting & doors, carpet, roof, deck rail front at front cement patio, ctrl heat, sinks, shower/tub, wtr htr. Lg deck off kitch. Cement drive to 1 car garage. Natural landscape, just a minute drive from downtown. Ready to move right in! <http://www.tourfactory.com/1248346>

LOTS FOR SALE

20520 FERRETTI RD. U3 L29 2 lots merged into 1. .474ac buildable lot off main rd on easement. H2O & elec. avail. Septic subject to GCSD verification. Asking \$20,000

FERRETTI RD. U6 L235 .49ac, nice open up-slope lot near Cottonwood St. Undeveloped w/water & elect. available, septic sewer to be verified by GCSD. \$30,000

Chaffee Cir U1 L99 .25 acre BEAUTIFUL BUILDABLE LOT YOU MUST SEE!! Close to golf course, Dunn Ct. Beach, pickle ball court, Main Marina. Asking \$20,000 for the lot.

BEAUTIFUL HOME IN GREAT LOCATION! \$234,000



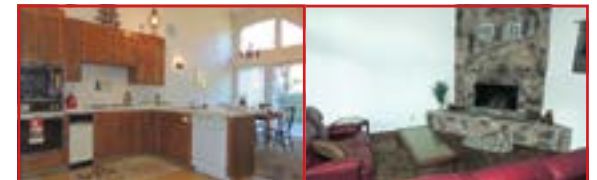
19452 PLEASANT VIEW DR. U1 L115 2062sf 3Bd/2ba 1 car, septic, deep circular paved driveway w/private garden & beautiful private landscaped yard close to golf & Dunn Ct Beach. LvRm, Fam Rm, Sun Rm, granite kitch cntrs, tile flrs & carpet. Wood burning f.p. stone hearth, vaulted dng, indoor laundry, central Heat/AC. Remodeled MBath, Lg shop/storage area off garage. Lg front terrace deck/patio. 5yr old 30/yr roof, cell phone svc & Hspeed internet Avail. <http://www.tourfactory.com/1248342>

BEAUTIFUL VIEW AND LARGE LOT \$192,000



19781 COTTONWOOD ST. U6 L81 1838 sf 3Bd/2½ ba, 2 car on septic w/LvRm & Fam Rm, beautiful natural landscape lot backs up to trees & creek in PML. Long flat driveway away from street, serene surroundings. Main Lvl living, grt rm w/open kitch, brkfst bar & garden window. Wood burning free standing f.p. Tile entry, sep laundry rm w/lg pantry stor. Lrg Mbrdr walk-in closet and French door to back deck. <http://www.tourfactory.com/1248347>

NEXT TO GOLF COURSE \$125,000



12699 JUNIPERO SERRA #3 Approx 1516 sf w/2 Mstr Bdr + additional Full Bath. Spacious Townhome w/Golf and Tennis, Swimming pool and Country Club steps away from your front door in beautiful PML, near Yosemite. Enjoy the lake & PML amenities full-time, part-time or have as investment rental just a short drive from busy Bay Area. Lg open kitch/sep dining, lg living rm w/stove wood burn f.p., 2 MBdr + full guest bath, 3 decks, Central H/AC, Tri Level. <http://www.tourfactory.com/1248349>

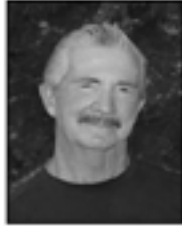
18919 FERRETTI RD., SUITE A. • IN THE MARVAL MARKET PARKING LOT

Pine Mountain Lake Realty *An Agent Owned Company*

3/15



Bruce 'Red' Rossio
Broker/Owner
BRE#01425140



Barry Scales
Owner/Broker Assoc.
BRE#00451887



Lynn Bonander, GRI
Owner/REALTOR®
BRE#00683-85



Val Bruce
Owner/Broker Assoc.
BRE#00578336



Parker 'PJ' Johnson
Owner/REALTOR®
BRE#01732298



Gina Hernandez
Owner/REALTOR®
BRE#01226555



Marc Fossum
Owner/REALTOR®
BRE#01956242



**Location ~ Location
Near Main Marina!**

**19762 Butler Way
8-218
\$189,000
MLS# 20142038**

3Bd/3Bth, Approx 1,600 SqFt. includes Approx 500 Sf Bonus Rm. Inside Laundry, 600 SqFt Deck, Paved Circular Driveway, Lots of Parking, Cabin Look on Main Level and 2 Yr old Modern Addition Down Stairs. Exquisitely Maintained Inside & Out. Most Furniture Included.



**Gorgeous
Country Estate**

**13245 Clements Rd 12-128
\$550,000
MLS#30260229**

4 Bd, 2&1/2 Bth, 2 Car Oversized Garage, Approx 2,581 sf, Approx. 1.30 Acres. Built in 2005, Great Rm, Dream Kitchen, Pantry, Bonus Rm, Hardwood Floors, Master Suite, Walk-in Closet, Spa like Bathrm, Large Laundry Rm, Trex porch, Concrete Level Stamped Driveway, RV Parking, Shed - Tons of Curb Appeal. All Furniture included. *First Class Home!* A Must See!



Good Buildable Taxway Lot !!

Build your Dream House and Fly Home!
Enjoy all the Amenities of Pine Mountain Lake, 0.56 AC 12-45 \$275,000
MLS#20141840



**12725
Cresthaven
4-510
\$229,000**

3 Bd/3 Bths, 0.60 Merged Lot. Open beamed ceilings, split level, Shop & lots of extra storage area for boat or other toys. Heat pump for heating & Cooling.
MLS# 20121545



**Spacious Ranch
Style Home**

**21179 Hemlock
12-124
\$395,000
MLS# 20130073**

4 Bd/3Bth/2 Car Attached Garage, 2760 Sq Ft, Single Level, Flat 1.60 acres, Great Rm, Cathedral Open Beam Ceiling, Large Kitchen, Breakfast Area, Sun Rm, Guest Suite, AC, Central Vacuum, Zoned for Horses .



**Beautiful Home
w/Acreage
12-104
21214 Jimmersal Ln
\$375,000
MLS#20150031**

4 Bd/2 & 1/2 Bth, 2 Car Garage Plus 36x36 Shop, Approx. 2198 SqFt on 1.29 Acre. Great Rm w/Heat Stove, Kitchen Island, Pantry, Gourmet Style Range, Master Walk-in Closet, Vanity, Separate Shower, Central Air, Central Propane Heat, Zoned for Horses, RV Elec & Sewage Hook-ups



**For Your Golf
Course Dream
Home!**
12630 Mt Jefferson
5-109
\$49,000
MLS#20140895

Beautiful Lot w/Views of 11, 12 & 13 Fairways. This Super Price may allow you to build a new Home to your liking, rather than buying an existing Home. Ck out cost per SqFt for nicer Golf Course Homes Sold or Listed to confirm this. We can help you do this!



**Clean & Neat
Single Level Cabin**
\$149,999
12400 Tannahill
Drive 1-52
MLS#20131661

2 Bd/2 Bth, 2 Car Garage, Approx. 1248 SF on 0.26 Acre, Built 1979, Great Rm, Central Propane Heat & Air, Inside Laundry, Septic. Near Main Gate and Easy Access to all Amenities.



**Great Little Fly-
In Home**
Near Pine Mountain
Lake Airport
20843 Ferretti Rd
3-490
\$164,000

3 Bdrms/3 Bths, Approx 1744 SF, Built in 1981, .39 Acre Lot, Built-In Breakfast Bar, Wood Burning Stone Fireplace, Open Dining Rm & Kitchen, Very Large Family/Game Rm or 3rd Bedroom Downstairs. Some Furnishings Included. Peaceful Surroundings!



**Custom
Home/
Airport -
Quiet
Back Tax-
way
\$599,000**

Lovely 3 Bed/ 3 1/2 Bath, Gourmet Kitchen, Upper level Wet Bar with Ice maker & 360° View. Three Sided Decking, 4 Car Garage. Hanger with Bed & Bath Apartment with a 42' Hanger Door. RV Parking with Hookups.

21101 Jimmersall Lane 12-51



**Office 209-962-7156
Fax 209-962-6710
18919 Ferretti Rd Ste. A
PO Box 738, Groveland, CA 95321
www.pmlr.com**



**Cozy Log
Cabin!**
\$119,000
3-353

12804 Cresthaven MLS#20131745
Adorable 2 Bd/2 Bth, Single Level, Approx 1026 SF, Approx. .40 Acre Home, Built in 1989. Great Room, Large Kitchen, Central Propane Heat, Evaporative Cooler, Inside Laundry, Covered Front Porch, Deck in back.

LOTS for SALE!!
10/76 - \$2,000 View of Greenbelt
3/489 - \$5,000 Close to Airport & Stables
5E/17 - \$49,000 Golf Course Lot
5/109 - \$49,000 Great Golf Course Lot
6/146 - \$12,500 Very Buildable
7/275 - \$29,900 3 Great Merged Lots
8/137 - \$7,999 Nice Lot & Location
12/45 - \$275,000 Buildable Taxway
13/257A- \$49,500 3 Merged Lots - Beautiful Setting & Backs Up to Greenbelt



DRE# 00683485



Pine Mountain Lake Realty

An Agent Owned Company

Lynn Bonander, GRI Owner / REALTOR®

18919 Ferretti Rd., Ste. A, Groveland, CA

Office 209-962-7156 / Cell 209-484-7156 lynnb@goldrush.com / www.pmlr.com



3/2015



Move-In Ready

Single Level Home

12899 Greenvalley
3-392
\$243,000

Picturesque setting nestled in Beautiful Oak Trees, Immaculate & Well Maintained 3 Bed/2Bth Home. Open Floor plan, Island w/Breakfast Bar. Central propane heat and Central A/C, Air tight wood stove w/brick hearth. Separate Laundry Rm w/deep utility sink. 2 year old-30 year comp Roof. New Trex Stairs/Railings. Freshly painted inside & out... Nice Large Back Deck to Enjoy the Natural Beauty & Wild Life. Most Furniture, Washer/Dryer & Refrigerator Included!

MLS# 20141050



Enjoy this Peaceful Setting!
12597 Cresthaven 4-429

Short Walk to the Beach! 3 Bed/2 Bath, Approx. 1488 SF, 0.49 Acre, Sits back from the Road, w/a lot of Parking. 2 Levels, Central Propane Heat/AC, Great Rm, Wet Bar, Fireplace, Knotty Pine Ceilings, Large Master Bdrm w/private Balcony, Walk-in Closet, Patio and Separate Entrance. Great Home & Location for a Vacation Rental.

Furniture Included. \$194,000

MLS#20131098



Unbelievably Beautiful Lake Front!

4 Bed/3 1/2 Bath, Great Rm, Family Rm, Den and a Loft, Large Kitchen w/Breakfast Bar & Pantry, Crown Molding, 2 Fire Places. Level Entrance. Extensively Remodeled 3206 sf, has 158 ft of Shoreline with a Lakeside Gazebo. Dock area is a very gentle down slope w/Electric & Water Outlets. A Wine Cellar provides appropriate Cooling Temps. So Much More! See our Web Site @ www.pmlr.com 20914 Big Foot Ct 4-77 \$1,150,000

MLS# 20141134

Co-Listed with Barry Scales



20659 Longview - 3-267

Sparkling Clean - Like New

This is a Premium 3 Bed/2 Bath Single Mfg Home. 2 Car Garage, Approx 1389 SF, Central Air, Central Propane Heat, Open Beam Ceiling, Great Room, Master Bath, Inside Laundry. Close to The Lake Lodge, Fisherman's Cove and Tennis Courts. \$179,500 MLS# 20141455

Co-Listed with Barry Scales



PRIME LAKE FRONT LOCATION!

3 Bd/2 1/2 Bath, w/Large Bonus Rm & a Cozy Reading Area Home Provides an Extraordinary Living Experience for All Seasons. Remodeling has put the Finishing Touches on this Outstanding Offer! Just installed, a new Ductless AC Unit w/individual controls for each room! **\$699,000 4-109**
20616 Longridge Ct. MLS# 20142132



19631 Cottonwood St - 6-38

GREAT VACATION HOME!

It's a Cutie! Hexagon Style, 3 Bed 2 Bath, and Den. Finished Loft Accessible by Ladder, a Great Kids Hide-a-way. New Upgrades: Windows, Evap AC & Water Heater. FS Fireplace, Cathedral Ceilings, Skylights, Ceiling Fan, Inside Laundry, Open Kitchen, Dining, and Living Room. Refrigerator Included **\$149,000-\$142,000** MLS# 20140610



Terrific Views - Wonderful Living!

12054 Alcan Ct 8-173 MLS# 20150106
3 Bd/3 Bth, 2 Car Finished Garage, Approx 2134 SF, Approx 0.44 Acre, Central Air/Heat, Great Room w/Fireplace, Breakfast Bar, Master Bd/Bth on Entry Level, Inside Laundry, Bonus Rm w/Fireplace. RV Parking. This home is very well Furnished & most is included with an acceptable offer. The sellers have owned this prop. for the last 15 years and have maintained it well. **\$295,000** Co-Listed with Barry Scales



Ranch Style Home
Room for it All!

13360 Clifton Way
12-156

\$449,000

MLS# 20141581

4 Bed/2 1/2 Bth, Approx 2000sf, Approx 1.09 Acres, 2 Car Attached Garage, Cov'd Deck. Great Rm, Kitchen Island & Breakfast Bar, Inside Laundry, Central Propane Heat, Evaporator Cooler, Walk-in Closet & Dual Lav in Master Suite. Plus a 2500sf Shop Fully Equipped for Auto Restoration w/heated Office area & 1/2 bath, Storage Barn. On premises gate allowing direct access to the horse trails. A Must See!! **Listed by Barry Scales.**



3 Bedrm/3 Bth, Approx 1872 Sf; Plus Bonus Rm on Main Level is Used as 2nd Master Bedroom. Only minutes from the Lake Lodge Beach. This 0.69+ Acre sewerred Lot is adorned w/a variety of trees creating a framework for privacy & serenity. The open floor plan boasts a high cathedral ceiling, stone fire place with a Fisher insert & Built-in Book Case. 1st Master Bedroom is a private suite upstairs with an alcove entry. Many Upgrades!!

Beautiful Inside & Out

12505 Pine Brook Way
4-460

\$315,000

Approx 1,872 sf
MLS# 20142112

LAND FOR SALE!

2.3 Acre Parcel - Reduced! \$75,000
Whites Gulch

4/128 - \$110,000 Lake Front with
Beautiful View!!

5-4 - \$ 8,000 Great Buildable Lot

5-5 - \$ 8,000 Also a Great Build

6-231 - \$12,500 Nice Distant View

6/183 - \$35,000 1/2 Acre+ Easy Build

8/71 - \$15,000 Beautiful Lot -
Good Location

8/137 - \$5,000 Butler Way

12/101 - \$125,000 1.09 Acre Beautiful
Level Lot near Air-
port & Stables

MARCH EVENTS CALENDAR



**ROFBB
Casino Night
March 14**



**Wine Tasting
& Dinner Buffet
March 19**



**PMLA
Job Fair
March 28**



**Soroptimist Family
Wellness Faire
April 1**

3-4

WEDNESDAY - GCSD PARKING LOT

FIRST WEDNESDAY BIRD WALK

Jeanne Ridgley leads this walk on the GCSD property. 139 species of birds have been seen there since Nov. 2007. 23 species were seen on the Jan 1st Wed Bird Walk. Meet at 8AM. Bring binoculars & a birding field guide if you have one. Rain will cancel the trip. The walk will last about two-three hours.

3-12

THURSDAY - COMMUNITY HALL

GROVELAND AREA PROSPERITY COUNCIL MEETING

Town Hall Meeting 5:30 to 6:15. Local leaders from community service organizations will be there, as will County Supervisor John Gray. Most importantly, we need YOU and your volunteer spirit. Come and meet other "doers" from our community. This is a real opportunity to make a difference.

3-14

SATURDAY - THE LAKE LODGE

ROOFBB CASINO NIGHT

Doors open at 6PM with gambling from 6:30 to 9PM. Dancing till midnight. A fun filled evening of Casino Games, Heavy Hors d'oeuvres, Socializing, Dancing, Cocktails (no host bar) and Top Winner Prizes. Cost is \$35 per person. RSVP to Kathie Wood at 962-7566 or Ivonne Deckard at 962-1904.

3-19

THURSDAY - THE GRILL @ PML

WINE TASTING & DINNER BUFFET

This month's event features wines from Mirassou Winery. Only \$23 per person plus tax for this fun evening of great wine, great food, and great company. Reservations are required so call 209-962-8638 to get yours today.

3-21

SATURDAY - COMMUNITY HALL

FREE GREY WATER SEMINAR

9am to Noon, available to all. Sierra Watershed Progressive will teach this GCSD sponsored course. GCSD water and/or sewer customers who attend the seminar are eligible for rebates on two common greywater systems. \$100 and \$200 rebates for Laundry to Landscape and/or Branched Drain. Hands on demo after.

3-26

THURSDAY - TUD BOARD ROOM

TUOLUMNE GROUP OF THE SIERRA CLUB PROGRAM

Katherine Joye will discuss the hikes that are included in her book, Day Hikes Along the Highway 108 Corridor at 7pm in Sonora. 76 hikes located near hwy features: waterfalls & peaks, and historical or geologic points of interest. All members of the community are welcome. Refreshments will be served.

3-28

SATURDAY - THE PML LAKE LODGE

PINE MOUNTAIN LAKE ASSOCIATION JOB FAIR

Come out to the PML Lake Lodge at 20270 Pine Mountain Drive for our annual job fair and join our summer/seasonal team. Jobs available at The Grill, The Pro Shop, Pool, Marina, Lakeside Cafe, and Fire Safety. Call 209-962-8600 for more information.

4-1

WEDNESDAY - TENAYA ELEM.

SOROPTIMIST'S FAMILY WELLNESS FAIRE

From 8am until Noon at Tenaya Elementary School. Blood Draws, PSA Testing, and informational booths with medical and wellness professionals. We look forward to both you and all the caring exhibitors joining us on April 1, 2015.

ENTERTAINMENT AT THE LOUNGE

**Friday, March 6
KARAOKE**

**Saturday, March 7
BLUE BAND**

**Saturday, March 14
ROCKSLIDE**

**Saturday, March 21
UPLANDS DRIVE**

**Saturday, March 28
KOOL SHIFTERS**

SAVE THE DATE

**Sunday, April 5
EASTER SUNDAY
BRUNCH AT THE GRILL**

Seating times are 9am, 11am, and 1pm. Carving station with all your holiday favorite entrees, salads, and desserts. \$35 for Adults, \$29 for 65 or Better, \$15 for Kids 6-12, FREE for Kids 5 & under. Call for reservations at 209-962-8638.

**Thursday, April 16
WINE TASTING &
DINNER BUFFET**

Seatings start at 5pm. Featuring wines from J. Woods Beverage Company. \$25 per person plus tax. Must be 21 to sample wines. Reservations are required so call for reservations at 209-962-8638.

FOGL News

HARRIET CODEGLIA, FOGL PRESIDENT 2014

The Friends of the Groveland Library set some lofty goals for 2014, and succeeded in meeting or exceeding most of them. Volunteers from our group donated over 1500 hours shelving books in the library and sorting and selling books in the Book Nook; we sponsored a mega book club event in October; we funded and wrapped children's books for the Christmas baskets, provided volunteers for Story Time, Summer Reading, Brainy Groveland and Bookleggers; we supported a school Poetry Anthology. We participated in World Book Night, giving out 120 free books to students at Tioga High and Don Pedro High Schools.

With the Saturday Book Nook sales, donations, our annual raffle and membership fundraising, we are able to purchase books, e books, and help to keep our library open five days per week, FOGL sent \$2,000 to the County Library for the purchase of additional e-books. We also were able to purchase a laptop computer for public use in the library.

We promote local artists with four exhibits per year in the Book Nook – currently we are exhibiting art works by several students of local art instructor Jim Leitzell. Many of the works are for sale. Upcoming exhibits will include

photography and quilts.

We are soon going to be offering one-on-one tutoring for adult literacy in the Groveland area. Adult literacy programs are supported by the county's annual Trivia Bee, which will take place this year on March 14 in Sonora.

The 2014 executive board for FOGL are continuing in their roles for 2015: Etty Garber is Vice President, Rachel Phillips is Secretary, Phyllis Gschwend is Treasurer and I am President.

We will continue to promote literacy and the love of reading in 2015 and beyond with the help of our fabulous volunteers, Book Nook shoppers and members. If you are not yet a member, won't you consider joining? Membership forms are available in the Book Nook and the Library. Help continue these positive programs and goals. Book donations for the Book Nook are accepted during the Saturday book sale (10 am to 2 pm) or in the drop box outside the Book Nook door below the library. There are many opportunities to volunteer – just let us know when you sign up for membership what you would like to do.

If you have already signed up for or renewed your membership, we thank you.

Happy Reading!

Engaging Our Community...

BY CHRISTIAN DE RYSS

After a spontaneous outpour of support for the Gears and Grooves Triathlon from meeting attendees, the PML Board unanimously voted to work with the Groveland Area Partnership to make a Triathlon possible. This effort, lead by Steve Griefer, will bring a manageable number of new visitors to the Groveland Area to fill our shops, restaurants, hotels and vacation rentals.

The event is scheduled for June 6th. It will finish with a musical performance featuring Paul Chesney brought to us by the Iron Door, another GAP partner. It will dovetail perfectly with the "Where the Hell is Groveland" car show on Sunday the 7th. What a great tourist season kick-off!

Mark your calendar to attend the next bi-monthly Town Hall Meeting scheduled for Thursday, March 12th - 5:30 to 6:15 at the Community Hall. This meeting is just a couple of weeks away. Local leaders from community service organizations will be there, as will County Supervisor John Gray. Most importantly, we need YOU and your volunteer spirit. Come and meet other "doers" from our community. Those who already volunteer know that projects to enhance our town can become real with volunteer power. This is a real opportunity to make a difference.

During our next brief meeting you will hear updates on key projects. We will also gather up names of those who want to take part in these and other projects:

- Pedestrian Access Plan - walkway and parking solution next steps
- Gears & Grooves Triathlon - outline of critical teams and leaders needed for race prep
- Marketing Communication - what is being done to get the word out about Groveland
- Groveland Trail Heads - results of the February 21st community outreach
- Community Health Center - what is needed for leadership, vision and fund raising
- Community Hall Renovation - next steps to upgrade this historic building

When our community engages in projects to make Groveland a destination great things happen. What has been talked about for years gets done. Jobs are created. And the town's appearance improves in a managed way. Become one of those taking action to make Groveland "sticky".

If you are a full time or part-time resident you can keep up with these and other exciting developments by joining our mailing list. Send your contact details to: info@visitgrovelandca.com. And, thank you to those who responded to last month's article. It is always rewarding to receive your feedback.

The Groveland Area Partnership – Engaging our Community to Make Groveland a Destination

Helping Hands Happenings

BY JOYCE SMITH

Hello all! Can you believe? We are already over a month into 2015. Time is really flying by.

We were open on Sunday, Feb. 15th for Presidents Day. Our weekenders love when we are open an extra day, gives them more shopping time.

Easter is on April 5th this year. I'm telling you this because I don't want you to miss out on all kind of things we will have in the store for Easter. You name it and we probably have it, that is everything except candy to put in Easter baskets. Right now we have a lot of "red stuff" in the store for Valentines Day, but it will be going out and St. Patrick's Day and Easter moving in. We are always moving things in as you buy and take things out.

As our volunteers come and go, some for a short while, others for longer periods, our Board is always working to keep our daily store operations going smoothly. As with any situation illnesses and retirements cause changes, but our

Board's management has kept all the slots filled and business goes on. Although we greatly miss our fellow workers when they are ill or leave us. We appreciate Lonnie Roman returning to fill in for Shirley Carman, on one of her days while Shirley & Tom are on Medical leave. We wish Ginny Lay well as she has resigned due to health reasons. We thank her for her time as a volunteer at the Barn. We are like a big family and help out when and where needed. Thanks to all of you for doing your part.

Remember: Drop offs only on days we are open no later than 2:30. Although we appreciate your drop offs, there might be a time when we simply do not have room to take your things.

A BIG THANK YOU to our Board for the Annual Volunteer Appreciation Luncheon on January 8th. Everything was great! Food, Fun, Drawings. and Service pins, you covered everything!

See you at the Store or Barn.




**HIGH QUALITY
LAPTOPS**

AND

**DESKTOP
COMPUTERS**

Adware/spyware & virus removal • computer repair • data recovery

Logo Design
Web Design
High Quality
Business Cards

sales@e-spon.com
www.e-spon.com
962-7110

Big News from The Little House



2015 is off to a healthy, busy start at The Little House, with several new offerings in our activities schedule.

We are pleased to announce a **free documentary film series** which focuses on issues of food, health, permaculture, and learning how to grow your own food. The series kicked off in February, and will continue through early May on the first, second, and third Wednesday evenings at 6pm. Please visit our website thelittlehouse.org and click on calendar at the top of the homepage for film dates and titles. You may also contact Chris at 962-5536.

The Healthy Eating Support group continues to meet on Monday mornings at 10-11. The emphasis is on caring for our physical health, making wise food choices, and managing weight. A second group, Life Changes and Challenges, aimed at providing support for women age +60 meets Wednesday 10-11. Both groups are free and ongoing.

And we're pleased to report that Chair Dancing, a popular exercise activity, is back on the Monday schedule from 11:30-12:30. This class offers aerobic fitness that will get your heart pumping, lower your blood pressure, ease tension and reduce stress. Phone Liz (962-0239) for details.

Remember that other popular classes/activities such as Yoga, GriefHealing, Balance & Core exercise, Senior Lunch on Tuesday and Thursday, MahJongg, Art, Needlecraft, Wii Bowling, and AIAnon/Alateen also continue. Again, check our calendar at thelittlehouse.org for a complete schedule.

Our heartfelt appreciation goes to the industrious ladies of our Thursday Needlecraft group who sold handknit hats, socks, and baby clothes as well as cozy fleece blankets at our Christmas Craft Fair in December. These ladies volunteered their time at a busy time of year, and pooled their proceeds to present a very generous donation check to TLH. A special thanks to Barbara Klahn and Judy Gross who provided the knowhow and holiday spirit which made this event come together.

Due to the success of the Christmas Craft Fair at The Little House which also featured jewelry, food items, and decorative

pieces for your home and garden, a Spring Craft Fair has been scheduled for Friday through Sunday April 24-26 10am-4pm. We know that the Groveland area is home to many creative folks, and we invite all interested craftpersons to contact either Barbara (962-6404) or Judy (962-4023) to reserve space (\$10 per table per day).

We'd also like to extend a big thank you to the great Tuolumne County maintenance crew for the new roof installed last fall.

We have several projects on our "to do" list here at TLH and will be hosting a Spring Cleaning Day on Saturday, April 18 from 9-2pm. Please contact us at 962-7303 to add your name to our volunteer list for this event. We welcome folks who have enthusiasm, power/lawn tools, weed eaters, pickup trucks, ladders, wheelbarrows, tree saws, and gardening skills to share for the day.

The Little House is here to serve our community by providing lifelong learning, emotional support, fun and fellowship. If you have a talent, passion or interest to share, please contact us at info@thelittlehouse.org or 962-7303 and add your name to the list of involved volunteers that make up the foundation of TLH.

First Wednesday Bird Walk

BY JEANNE RIDGLEY

The first Wednesday of the month Bird Walk at the Groveland Community Services property at 18966 Ferretti Road, Groveland is led by Jeanne Ridgley.



The property encompasses an area of more than 200 acres of oak, pine and willow habitat with three water storage ponds. On the Feb 4 Bird Walk 26 species were seen. Highlights were Bewick's Wren and Purple Finch.

Dates for upcoming trips are March 4 and April 1.

Meet the group in the GCSD parking lot at 8:00 AM. Bring binoculars and a birding field guide if you have one. Rain will cancel the trip. The walk will last about two-three hours. If you have any questions, call Jeanne at 962-7598.

GOT BARK BEETLES?



Western Pine Bark Beetle
Enlarged to show detail

Bark Beetle infestation is a **REAL DANGER** in the Sierra Nevada
STOP them from spreading and **SAVE** your trees

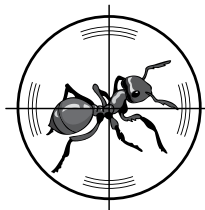
They burrow into and lay eggs inside Pine, Cedar, and Cypress trees. Once they hatch, the larvae eat the tree from the inside and burrow out to infest other nearby trees. Each adult female can lay many eggs at a time and multiple generations are possible each year. Infestation spreads quickly if untreated.

IF LEFT UNTREATED ENTIRE FORESTS ARE ENDANGERED – PREVENTION IS KEY

LET US HELP SAVE YOUR TREES!

BEETLE PREVENTION & ERADICATION

- FREE ESTIMATES
- NOW OFFERING TRUNK INJECTION
 - Lasts longer than spray-on treatments
 - No chemicals in the air or water supply
 - Treats entire tree from trunk to leaves
 - Full dose stays **IN** the tree
 - Long lasting protection and prevention
- NO HIDDEN COSTS
- CALL FOR MORE DETAILED INFORMATION



ALL-SERVICE PEST CONTROL

- RESIDENTIAL & COMMERCIAL
- OWNER OPERATED – 5TH GENERATION TUOLUMNE COUNTY
- FREE ESTIMATES
- HIGH QUALITY, PERSONALIZED SERVICE

Rod Diehl Pest Control

"The Best Deal in Pest Control"

CALL TODAY: 209.532.3260

PROUDLY SERVING PINE MOUNTAIN LAKE AND THE GROVELAND AREA

Pine Cone Singers & Players News

BY BOB SWAN

The Pine Cone Singers are well into rehearsals for our Spring Concerts, scheduled for May 14-17 at the Groveland Evangelical Free Church. This is a busy time for us, learning new arrangements and polishing up old favorites, but it's not a period of time that generates a lot of "news".

I can report that the 2015 Board of Pine Cone Performers includes Luke Sullivan (Chair), Ken Steiner (Vice Chair), Sandra Menacho (Treasurer), Cris Todd (Performers' Representative), and Bob Swan (Secretary). The Pine Cone Performers is the parent organization for both the Pine Cone Singers and the Pine Cone Players.

Pine Cone Players: We have decided NOT to put on a Spring play in 2015. We considered producing a fairly ambitious "musical-melodrama", but were unable to fully cast it. We plan to return in the fall with a more manageable production. If there is anyone reading this who is interested in writing or

adapting (and, optionally, directing) a short play or melodrama or review, please give me a call at 962-6535.

Pine Cone Singers: This will be our third concert series under the baton of Ron Randall, and will, as usual, feature a variety of musical styles. I'll have more about the musical selections in next month's article. We've got a strong turnout of singers this session, and are looking forward to a great show.

Pine Cone Singers has been Groveland's community chorus for more than thirty-five years. Although it's too late to join for this concert, we are always on the lookout for new singers. We take people of all skill and experience levels (it's a COMMUNITY chorus). If you'd like more information, please contact Luke Sullivan at 962-5952.

In any case, please note the dates of the Spring Concerts, May 14-15 at 7:30 PM, and May 16-17 at 2:00 PM. Hope to see you there!

2015 Mother Lode Invitational June 25th, 26th and 27th

BY TONY MURPHY

This is an update as to how the sign-up for the 2015 Mother Lode Invitational is proceeding. We have already received applications with deposits for half the 72 team field. This is a great start but we need to fill the tournament as soon as possible so that my committee can spend maximum time and effort on financing the event. The 2014 tournament was a good event; we hope to make the 2015 Mother Lode even better.

In 2014 we were able to make a donation of \$3000 to the Wounded Warriors Project. The Wounded Warriors Project will now be our annual Mother Lode Charity recipient. The entry fee will be \$500 which includes money that will go towards daily money for two days and all horse races. We will be paying one team Low Gross score (over the field). In 2014 we paid out \$11,400 in prizes, (2013, \$4,400 was paid out). Trophies: Did someone mention trophies? Wow!!! The 2014 trophies spoke for themselves. We will continue to honor winners with trophies representative of 1st place and representative of the club and of the event.

There will be some significant changes on how we will operate the 2015 event. First, the first day event will be an 18 hole event: 9 holes played with the scotch format (alternate shot) and the second 9 will be played with the better ball format. The second day format will remain the same as last year, both balls count. The final day dinner will be held at The Grill and not at the Lake Lodge. The committee has worked with Food and Beverage Management regarding food and drink costs so that we can have the final event at the Country Club Grill. You and your dinner guest, if you choose to bring one, will receive 3 drink tokens for the dinner and awards event. The biggest change yet is this: you, the member may bring as many guest/guest teams as you wish. If you bring a sandbagger, don't expect to be invited back next year. Also members may play with members. The Bloody Mary bars (complimentary) will remain and there will be ladies providing complimentary beverages at both horse races.

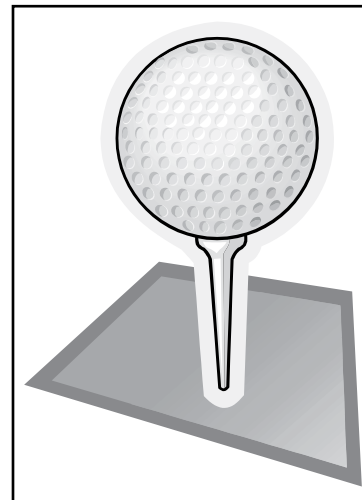
Horse Race #1 is open to ALL teams. It will be held on Thursday, the 25th at 4:00 pm. You don't have to play in the Practice Round to qualify, just show up, check-in at the registration desk (10am-4pm), register your team to play in the horse race and your team is in! You'll want to play in the horse race because the pay-out will be worthwhile and it will be a blast! The 2014 Thursday Horse Race had 100 players and this year we expect 144 players. Horse Race #2 will be held after Saturday's round for 5 teams from each flight with the HIGHEST scores participating. Same pay-out as Horse Race #1.

The food will be considerably better than before at the opening kick-off party at the Grill after Thursday's Horse Race. You will also receive complimentary drink tickets for this event. It is not a keg party as done in previous Mother Lode events. We will continue our best to provide an even playing field for this event by making necessary handicap adjustments to those who need them. We

did this in 2014 and it was well received by the participants.

I have received a couple of questions regarding the 2015 entry and I will answer them in this update. The team entry is \$500.00 and if you have paid your entry fee or entry deposit to get into the 2015 tournament and something happens where you will be unable to play, you will receive your money back. I reimbursed 3 individuals fully last year and will continue to do so in all future events. I was also asked by a number of last year's participants about "Tee Signs." We need them, as many as we can get. They are only \$50 per sign, not \$100 as in previous years. Tommy did not leave me with ANY information regarding previous donors. What I need is the information you would like on the sign and \$50 check made out to the Mother Lode Invitational and sent to P.O. Box 4, Groveland, Ca. 95321. Most of the tee sign money will go to THE WOUNDED WARRIORS PROJECT as was done last year.

As stated previously, once the tournament is filled, all future entries will be put on a waiting list in the order they are received. Please address your inquiries to Tony Murphy at 209-559-0917.



SEASPRAY
AWNINGS & BOAT COVERS
533-4315 • 536-9397

Lic. #981187



TUOLUMNE COUNTY'S NUMBER ONE SOURCE FOR

Custom Retractable & Fixed Awnings
Boat Covers & Bimini Tops
Boat Upholstery & Carpet
Recovers & Repairs

www.seasprayawnings.com
www.seasprayboatcovers.com

FOR IDEAS AND ESTIMATES CALL DOUG PARRISH
14769 Mono Way, Sonora • 13893 Tuolumne Rd.

Groveland Library Spring Basket Raffle 2015

BY ETTY GARBER

Could you be one of the winners this year? You'll have a pretty good chance with possibilities of 8 baskets: the favorite, Chocolate Decadence, 2nd favorite, Wine Indulgence, some new choices, Beer and Bites, Gardening Green-thumb, Beauty and Bath, Summer Picnic, Coffee and Tea and Children's Pleasures (ages 5-7), and the adorable Puppy Print.

All of these will be on display in the library during the week and in the Book Nook on Saturdays from March 21 where raffle tickets will be available for purchase. On Easter Sunday, April 5th and Mothers' Day Sunday May 10th, they will be at the Pine Mountain Grill for you

to see, buy raffle tickets and choose the one or ones you hope to win. We would like to thank the Pine Mountain Grill for generously allowing us to bring the baskets for your perusal.

Raffle tickets will be on sale at the library at any time. For \$5.00 you will receive 6 tickets, \$10.00 you will receive 12 tickets and for \$20.00 you will receive 25 tickets. Remember the more tickets you buy the greater the chance for you to win. Winners will be drawn on Saturday May 23rd at 1pm at the Book Nook. GOOD LUCK!

All proceeds go to the support of the library and the various programs it provides.

Columbia College Community Chorus

BY BARABARA BROAD

The Columbia College Community Chorus is now about 45 members strong, including two from Groveland. The Chorus originated from a confederation of church choirs known as the Inter-Church Choir which performed bi-annually at Christmas and Easter. With the founding of Columbia College, the chorus became a part of the school curriculum and remains so to this day. Most members of the Community Chorus have come back every semester for years, while some have joined very recently. All ages are represented, from young college students to retirees.

After 30 years as its director, John Carter, a popular instructor at Columbia College, retired last May. Dr. Daryl Hollinger who was well-known for his choral conducting and musical compositions in the Lancaster, Pennsylvania area, took over the reins in August and has one concert under his belt already. Daryl is a talented organist and composer, and the chorus is enjoying singing under his expert direction.

As a culmination of their weekly rehearsals this semester, the Community Chorus will perform two concerts at St. Matthew's Lutheran Church in Sonora April 25 and 26, with John Rutter's Requiem as the major piece. Other songs include African American spirituals, Renaissance madrigals and folk songs from around the world. Dr. Hollinger said, "I am excited about the music we are working on for our spring program. It represents some of my favorite choral pieces, in addition to some pieces that are new to me. One of my favorite sections for this concert is a group of folk songs from around the world, including two special songs that I have used in the past on my European tours: Ezulwini, an African traditional and Schpinn, Schpinn, my own arrangement of a German folk song." He added, "I love working with singers in creating a beautiful choral sound with great diction and blend. My goal is to have fun while challenging the chorus to be the best they can be."

Spring Craft Fair at the Little House

BY BARBARA KLAHN

Come see what your local crafts people have been working on this past winter. A variety of handmade goodies will be available at the Little House April 24-25-26 from 10 a.m. to 4p.m.. If you would like to be a vendor or need further information please call Barbara at 962-

6404 or Judy at 962-4023.

The pre-Christmas fair was well attended. Despite the short notice and rainy weather many brave souls ventured to the Little House to shop for last minute gift items.

So mark your calendars now and don't miss out on this fun event.

Free Healthy Living Films at The Little House

BY CHRIS EAKLE

Food, Health & Growing Your Own

Documentary Movies at The Little House - 11699 Merrell Rd., Groveland

Learn more about Healthy Eating; Planting and Growing your Own Food. Join us at The Little House for viewing these FREE documentaries.

Every 1st, 2nd & 3rd Wednesday @ 6pm.
FEB. 18TH The Future of Food - 88 mins. *7.8 An in-depth investigation into the disturbing truth behind the unlabeled, patented, genetically engineered foods that have quietly filled our grocery store shelves for the past two decades.

FEB. 25TH Food, Inc. - 94 mins. *7.9 An unflattering look inside America's corporate controlled food industry.

MAR. 4TH Processed People, The antidote to America's toxic lifestyle - 40 mins. *7.2 A wake-up call with factual, hard-hitting health commentary that is rarely heard. If you're searching for the un-processed truth about diet and Health see this doc.

MAR. 11TH Food Matters - 80 mins. *80 mins. Examination of how the food we eat can help or hurt our health. Nutritionists, naturopaths, doctors, journalists weigh in on organic food, food safety, raw food & nutritional therapy.

MAR. 18TH Fat, Sick & Nearly Dead - 97 mins. *7.7 100 lbs. overweight, loaded up on steroids & suffering from a debilitating autoimmune disease, Joe Cross was at the end of his rope. This

inspiring film chronicles his personal mission to regain his health & the health of others he meets by juicing vegetables.

APRIL 1ST Fresh, The Movie - 72 mins. *7.3 FRESH is the embodiment of the good food movement for healthier, more sustainable food. A film that's used all over the world as a platform to raise awareness and connect people to solutions in their community.

APRIL 8TH Back to Eden - 103 mins. *8.9 After years of back-breaking toil in ground ravaged by the effects of man-made growing systems, Paul Gautschi has discovered a taste of what God intended for mankind in the Garden of Eden. Sustainable organic growing methods that are capable of being implemented in diverse climates around the world with little water.

APRIL 15TH Permaculture Orchard, Beyond Organic - 115 mins. *9.1 Based on 20 years of applied theory and trial and error, biologist and educator Stefan Sobkowiak shares his experience transforming a conventional apple orchard into an abundance of biodiversity that virtually takes care of itself.

MAY 6TH Food Production Systems Part 1 & 2, For Backyard or Small Farms - Marjorie Wildcraft shows us her water systems, gardening, compost, seed saving, rabbits, poultry, aquaculture, propagating plants, recipes, permaculture design, useful plants, wild foods, solar good dehydrating & more. For more information call Chris 962-5536.

Groveland Car Show Makes Donations

BY RON SMITH

The "Where the Hell is Groveland" car club has disbursed the money received from our last car show held in June of 2014.

After careful thought we gave \$750 to the fundraiser for Alyssa Baker who is suffering from a serious disease and has many medical expenses. We also gave \$750 to the Groveland Youth Center for their use in field trips, etc.

The club also gave \$500 to the shoe program sponsored by the Rotary. This is an excellent program to ensure that all of our students have shoes on their feet. It was discovered that many of our students did not have shoes.

Tenaya School will be receiving a donation for supplies when the request comes in from the school.

All of the earnings from our car show are given back to the community. We ask that you support this yearly event by purchasing raffle tickets and/or engine tickets at the event. This year's event is Sunday, June 7 at Mary Laveroni Park. On Saturday, June 6, we will have a poker run whose destination has yet to be determined.

Should you have any questions concerning this event feel free to contact Ron Smith at 962-6119.

Hope to see you at our car show!

From Your Tuolumne County District Supervisor

JOHN GRAY, TUOLUMNE COUNTY 4TH DISTRICT SUPERVISOR

As I have said many times before, it is difficult each month to pick a subject of interest to write about. Not because there aren't enough subjects to address, but quite the opposite. What makes it especially difficult is to provide enough information on a topic and to say it all in 800 words or less.

The first subject I'd like to give you a little information about is the National Disaster Resilience Competition grant opportunity. Quite a title isn't it—but what does it mean?

This past summer, in response to State and local officials' request for help in recovery from disasters, President Obama announced the Grant Competition.

In October, the County Administrator's Office was contacted by the State Department of Housing and Community Development and asked if the County was interested in participating in the Competition. At that point staff literally had just days to contact prospective business owners and government officials to gather information on losses incurred as a result of the Rim Fire. This initial list incorporated a wide variety of projects that included everything from restoration of ranch land, to timber loss and

private business recovery.

In December, we were notified by the Governor's Office of Planning and Research, that Tuolumne County had been selected as the one candidate that the State of California was going to endorse to move on to Phase 1 of the Competition. Phase 1 applications are required to be submitted to the Department of Housing and Urban Development (HUD) by March, 2015. If selected for the Phase 2, Tuolumne County and the stakeholders would have 4 months to work on refining the projects outlined in the applications. If we make the list, we will be seeking stakeholder and public input that would be used to formulate a final project list. Providing that we are successful in this effort, many millions of dollars could be available for improvement projects in the County and many of those projects are in the Fourth District. Stay tuned for updates.

In discussions with constituents over the years, I have taken the position that jail inmate work crews are beneficial. The enactment of AB109, the early release program of prisoners from State Prison, provides additional man power and funding for the formation of a work crew.

Tuolumne County Sheriff, James Mele, came up with the idea of forming an inmate work crew in May 2014. The crew consists of six inmates, one deputy and one probation work supervisor.

To name a few of the assignments and locations, crews have worked for Columbia State Park, County facilities, Interfaith ministries, both the Columbia and Pine Mountain Lake airports, Fire Safe Councils and city and county cemeteries. Most recently, the crew has brushed the road sides between Big Oak Flat and Groveland and they have logged over 12,000 man hours without an accident.

In August a second crew was formed and funded by contracts with Rim Fire Recovery, the United States Forest Service, Cal Trans and the Department of Agriculture. This crew has logged over 7,000 man hours without an accident since August and put \$50,000 back into the program. With the addition of the second crew, Deputy Nathan Rodgers joined the team to take over the AB109 crew.

Having an inmate work crew is a "win-win" for everyone. Our community receives services for free or at a small fee which saves taxpayer money. Inmates learn specialized skills and work

ethic, plus the crew is housed in the workers unit which is a much better environment than the rest of the jail. In addition the participating inmates receive extra time off their sentence while assigned to the outside work crew. Sheriff Mele, Deputy Marcus Green, Deputy Nathan Rodgers and Probation Supervisor Daniel Green are to be commended for establishing this highly successful grant program.

It just makes sense to do more than just lock people up. Programs like this can go a long way in changing the lives of inmates. It's better for everyone to have productive individuals exist the justice system and re-enter society.

In closing, I hope that everyone likes the new street lights that grace the downtown area in Groveland. It took a little while to get it done but I think they really look great. A big thank you goes out to Duke York and to Pacific Gas & Electric (PG&E) for continuing the process and not giving up.

I will be out of the office the latter part of March. Due to this "off time" my next article will appear in May. Meanwhile, if you need to meet please call me at 533-5521 or email me at jgray@co.tuolumne.ca.us.

SOUTHERN TUOLUMNE COUNTY HISTORICAL SOCIETY

Museum Happenings

BY CARRIE CARTER

You've probably noticed the big changes taking place at the yellow Raggio House in Big Oak Flat. After a major site cleanup and restoration of windows, siding and decking, STCHS recently completed having the outside painted. That involved first submitting a plan to the County's Historic Preservation Committee to paint the exterior including the removal of the old lead based paint. STCHS is now taking bids on replacing the roof. The existing roof of corrugated metal siding was not original to the home but added much later. When the house was built during the hard rock mining boom in 1901 by Edward Cobden it had wood shingles. The new roof will be fire resistant, wood-look composite shingles to complete the historic look of this home.

Last month's archive photo was of the Hotel Charlotte, on the north side of Main Street in downtown Groveland and on the National Register of Historic Places. It was built for Charlotte De Ferrari in 1921 by Frank Ferretti during the height of the Hetch Hetchy Project. It is the only such business in Groveland to operate continuously in that role to this day. Charlotte, with her brother David ran the business until 1948. Even when the Hetch Hetchy project ended and the

workers left, the hotel and restaurant were able to remain in operation. Much of that is due to the tenacity and work ethic of Charlotte, herself.

Charlotte was born in Genoa, Italy in 1882. Her father Luigi De Ferrari had come to California during the Gold Rush, made his fortune, and then went home to Italy. After Charlotte's birth he returned to California and in 1886 was tragically killed in a mining accident near Hardin Flat. In 1900 or 1901 Charlotte, in her late teens, came to live in Groveland. In 1916 she opened her first restaurant in a small building on the east side of the Iron Door Saloon which was owned by her uncle, Giacomo De Ferrari. She closed her Hetch Hetchy Restaurant after two years and took over management of the Groveland Hotel's dining room.

Then in 1921, on the lot where the Washington Hotel, later renamed the Savory Hotel, once stood, Charlotte had her hotel built. It featured two stories with a gable roof and false front. On the old Gem Saloon lot to the west of her hotel she had a restaurant building constructed in 1927 or 1928. Charlotte sent for her niece, Mary Sbarbaro to come from Italy to help her run the new cafe. The niece, who was a fine chef, presided over the new

restaurant and later leased and operated the restaurant independently.

The concrete columns seen supporting the front balcony today were added in 1936 by Charlotte after people continually ran into the original wooden posts while parking. It seemed to work and people became much more careful while parallel parking on the north side of the street, sparing damage to their cars.

The hotel underwent a major renovation in 1975 that significantly altered the back and sides of the building, leaving the Neoclassical style of the street façade much the same as the way it looked in the 1940s.

After selling the Hotel, Charlotte purchased a home in Sonora and retired there. She died in 1970 and is interred at

Our Lady of Mount Carmel Cemetery in Big Oak Flat.

As an aside, the small wood framed building on the east side of the Hotel Charlotte in last month's photo is noteworthy as it was the home of Groveland's only newspaper before moving to Tuolumne City in 1918.

Don't forget to visit us on Facebook!

DO YOU RECOGNIZE THIS BUILDING?

If you can identify this month's historic photo from the STCHS archive you will receive 20% discount on any single item from the Groveland Yosemite Gateway Museum gift shop during the month of March (one gift per family).



The Soroptimist Scene

BY BARBARA ELLIOTT

Our mission: "Soroptimist improves the lives of women and girls through programs leading to social and economic empowerment"

You still have time to plan to attend

**SOROPTIMIST'S FAMILY
WELLNESS FAIRE April 1, 2015
LOCATION: Tenaya Elementary
School
TIME: 8AM - NOON**

Please note: PSA testing, cost \$10.00
Blood draws cost \$ 25.00, *requires 12 hours of fasting.* 30 minutes prior to arriving, drink 1 cup of water (this helps with the blood flow).
Members of Soroptimist, with lots of help from Rotary members, continue to prepare for a Wellness Faire for Groveland. We look forward to both you and all the caring exhibitors joining us on April 1, 2015.

SIG members received a note from our national organizations with a wish which we would like to pass on to you: "May your dreams grow big in the New Year"

Live your Dream has been a recent program at the national level, SIG has recently voted to make this goal a primary focus for our Groveland chapter. There will be more information in the future, letting you know how the program affects us locally.

We mentioned last month that stopping human trafficking is a cause for Soroptimists. I happened to be in Phoenix during the Superbowl. It was interesting to note that there were many PSA's about trafficking on the radio. The Police forces were paying special attention to the cause because "slave

owners" follow the money. Yes, "slave owners" who capture really young girls, follow the money and bring their "inventory" to sell to the high dollar dudes.

Congratulations to our new slate of officers for the 2015-2016 Term. They are as follows:

Co-Presidents: Sharon Volponi and Luci Tyndall

Co-Recording Secretaries: Elaine Fisher and Florence Jansen

Co-Treasurers: Linda Struhm and Debbie Shanahan

Co-Corresponding Secretaries: Lee Isbell and Liz Mattingly

These ladies will be installed June 16, 2015. More information will be provided regarding the installation next month.

You want to start getting involved in the community. You want to help the high school girls in some way. You even made a New Year's resolution to investigate the Soroptimist of Groveland. You want to get involved with the Wellness Faire and scholarship selections. You can get started helping in Groveland by attending a SIG meeting.

Change of venue for SIG meetings!!

Our evening session is held on the first Wednesday of the month at 5:00PM at the THE LITTLE HOUSE. The daytime group continues to meet on the 1st and 3rd Tuesday, at noon at THE LITTLE HOUSE. Members are invited to attend both meetings. We would invite you to call Liz Mattingly at 962-7648. We want you to become an active member of this community.



Dr. Donna Wines D.C.

Wines Chiropractic Wellness Center Wholeness is Our Goal

Specializing In Children Of ALL Ages

Non-Force Wholistic Chiropractic • Acupressure Reflexology
Nutritional Consulting • Neuro-Emotional Technique • Special Classes Avail.

Open Mon.- Thurs. • 18727 Main St., Ste. C., Groveland, CA 95321 • 209/962-4565

Happy St. Patrick's Day From Pine Mountain Lake



Take Control of Your Health
dōTERRA

Pure Essential Oils are a powerful tool:

- increase energy
- weight loss & management
- boost immune system
- first aid and pain relief
- beauty & cleaning products
- repel insects
- release stress, tension & anxiety
- reduce symptoms of numerous diseases

Learn & educate yourself on tools that can change your life.
Ask questions - absorb knowledge!
Alternative Health & Beauty Classes Offered

Claudia Day-Fossum
209-962-7196
cdlay77@outlook.com
www.mydoTERRA.com/ClaudiaFossum



GROVELAND GAL FRIDAY

PUT A "SPRING" INTO YOUR STEP BY CALLING ME TO HELP YOU WITH YOUR NEEDS

I can help you organize, file, shop, cook, elder care, rides, pet care, housesitting, home checks & many other tasks.

CALL ME FOR ANY HELP YOU NEED!

SHARON VOLPONI
962-6848 • 770-6277



Call
Bonded Insured
Hamm's Carpet Cleaning
Green Cleaning
For Health • Appearance & Longevity

Locally Owned & Operated for 24 years
209-962-5852
In Association With **green tree**

- IICRC Certified Firm # 13341
- Member of Carpet & Fabric Institute
- Certified Technician on every job
- Business Profession & Trade License # 29950

WWW.PINEMOUNTAINLAKE.COM

ASTRO

HEATING & AIR CONDITIONING, Inc.

FAMILY OWNED & OPERATED SINCE 1985

**NO
OVERTIME
FOR
WEEKEND
CALLS!**

YOUR HEATING & COOLING EXPERT

- SALES • SERVICE • INSTALLATIONS
- PINE MOUNTAIN LAKE RESIDENT

BRYANT
PREMIERE DEALER



**Heaters & Air Conditioners –
ALL Makes & Models**

**We pride ourselves on
PROMPT & RELIABLE service**

Questions about your system?

Send me an email:
brad@astroheating.com

Call Brad at
209.962.0202

www.AstroHeating.com

Licensed, Bonded & Insured
lic. #522881

bryant

Heating & Cooling Systems



HOUSE PAINTING

**FREE
Window Wash**

with every Exterior Signed Contract

VALID THRU APRIL 2015

- Full-service House Painting
- Interior/Exterior Painting & Staining
- Drywall & Drywall Repair

RESIDENTIAL • COMMERCIAL

209.962.4445

www.GreenTreePropertyServices.com

LICENSED | BONDED | INSURED | CSL960719



NATE'S



LIC. #953843

TREE SERVICE

**NO
JOB
TOO**

BIG

NO JOB TOO SMALL

For all your tree
service needs
Trimming & Removals

**CHECK
OUR PRICES!**

532-2460

Serving the Tri-Counties



LOCALLY OWNED SINCE 1950

Your one-stop shop for all your pest control services.

- Pest Control
- Termite Control
- Weed Control
- Deck Repair/Replacement {License # 922758}
- And more...

Our reputation is important to us and your community.
Call **(209) 532-3464** now for a free estimate!



To speak directly with our representative, please contact:

Seth Kuhn
skuhn@clarkpest.com
(209) 770-7733



<http://www.clarkpest.com>

NEED HOMEOWNER'S INSURANCE?



Have you been cancelled, non-renewed, or denied Homeowners Insurance based on your home being in a brush zone?

Have you been forced to accept cut-rate or sub-standard coverage due to living in a forested area?

WE MAY HAVE YOUR ANSWER!

We have a policy focused on fulfilling these needs. We are able to place moderate to high risks with an 'A' rated carrier while offering great coverage at an affordable rate.



Eason Insurance Agency, Inc.
209.383.7322

9AM – 5PM Mon – Fri • 9AM – 1PM Sat
email: homeins@easoninsuranceagency.com
CA Lic #0C97581

WWW.PINEMOUNTAINLAKE.COM



Fast Internet
from \$30 a month
MACs and PCs repaired
\$55 an hour

Since 1988
Throckmorton
enterprises

Winter Hours: Mon-Fri 8am to 4pm
Saturday 10am to 2pm

18800 Main St. (Highway 120) • Groveland CA 95321 • 209-962-7308

Throck.com

Between carwash and fire station.

Healthy Habits FROM PINE MOUNTAIN THERAPY

BY JULIE TANAKA, PT

Just Breathe

We are all born breathing from our bellies. Somewhere in our teens we start constricting our abdominal muscles and gradually restrict our breathing to our chests. Returning to belly breathing has scientifically proven benefits. Breathing comes under the category of "alternative health" as do exercise and nutrition. Which to me is absurd! These things should be number one before allopathic interventions, ie: surgery, drugs... So check out how much breathing can help you, right now!

Our natural response to stress is to restrict our abdominal muscles. Restricting the abdominals and shallow breathing stimulates the parasympathetic nervous system (fight and flight) slows down digestion, and increases the release of cortisol, the stress hormone. Read on to start your breathing program today:

Learning to belly breath again: place one hand on your chest and the other on your belly. Breath in deeply through your nose. You want to feel movement under the hand on the abdomen, and very little movement in the chest. You may have to force your stomach out at first until it becomes more natural. Exhale "audibly" make a "wooshing" noise. Your exhale should be twice as long as your inhale. Focus on this method of monitored breathing for several breaths. Practicing everyday will help you to move easily to this kind of breathing.

Great side effects of belly breathing:

FALL ASLEEP FASTER: calming the central nervous system, focusing on your breathing draws attention away from the stresses of the day.

DIGESTION: belly breathing helps to massage the large intestine improving bowel regularity and eases bloating, nausea and indigestion.

PAIN MANAGEMENT: Our automatic response to pain is to tighten and constrict. Breathing will loosen

the muscles, help release natural endorphins. The longer you exhale the more you stimulate the vagus nerve. This tells your brain you are in a safe environment.

ENERGY: improving the oxygenation of your blood helps with burning calories and providing energy to your muscles.

This is science, not voodoo, serious cool stuff!

**PINE
MOUNTAIN
THERAPY**

Outpatient Physical Therapy

*Serving the Mountain
Communities of
Tuolumne and
Mariposa
Counties*

18800 Main Street,
Groveland, CA 95321
209-962-4035

Please visit our new web site at
www.pinemountaintherapy.com

*A Preferred Therapy Provider,
participating provider with
most insurance carriers
including Medicare.*

Imagination

BY ETTY GARBER, PHD, LICENSED MARRIAGE AND FAMILY THERAPIST

Have you ever wondered if something really happened or if you just imagined it? That is not unusual because the brain often cannot distinguish between them. Whether you dreamt something or watched a tv or movie that was frightening or sensually intense, your body reacts. The sounds and images may cause exhilarated heart beat, rapid breathing or muscle tension with fear, anger or arousal. You may even experience joy or happiness in a comforting dream. All of these responses are a result of your imagination. Your body almost responds as if you were actually there.


You can direct your imagination to anything or place you choose. If you close your eyes and imagine yourself in a safe, serene place, your mind can transport your body and your senses to respond as if you are really there. This is called Guided Imagery. It is used in many ways, such as achieving deep relaxation, prepare for a competitive sport or challenge. Psychotherapists use it to help people who have experienced trauma, phobias for relieving anxiety. Sometimes it is used to recover memories of past experiences. Because you are always in control if you are having uncomfortable sensations you can redirect these unpleasant thoughts and change the images to more pleasant ones.

Visualization is another technique that is used with imagination. We use it when we

plan the activities of our day, read a book or consider possible outcomes of decisions we want or need. Visualization can also be used to deal with physical injury or pain from disease. This can be done by imagining the good cells as warrior cells who combat and wipe out the bad cells. When we use our minds we can realize its power.

Many people have used visualization to help build self confidence. "I really wanted to be able to make my presentation to my committee calmly and in control. I have always hated getting in front of others to speak. I wanted to let them know that I knew what I was doing and stood behind my work. I used the technique of visualization and concentrated on exhibiting my self esteem and it worked."

When using visualization you use all your senses: sight, smell, tastes, sounds and feel. Focus on details, where are you, is there anyone else there, describe the immediate surroundings, the weather, the temperature and how your body is feeling as well as your emotions. Think positively and assuredly when you set it up the way you want it. If something doesn't feel right or is unpleasant, change it. You have the power to image anything, anyway you want it. It may feel strange at first but if you continue to use it, you may be surprised when you make it happen. Remember, you have the power, use it, (for GOOD).



Dr. Ety Garber Ph.D.
*in Clinical Psychology and a licensed Marriage Family
& Child Therapist, with 32 years experience in mental health,
lives in Groveland and*

OFFERS PRIVATE PRACTICE SERVICE

*Dr. Garber can provide psychotherapy in a variety of settings
to individuals, couples, families and groups.*

**RELATIONSHIPS • FAMILY CONFLICT • CHEMICAL DEPENDENCY
DEPRESSION • ANXIETY • ABUSE, etc.**

Low Fees • No Insurance FOR AN APPOINTMENT CALL 209/962-5205

Support Meetings in Groveland

Al-Anon

The Little House – Saturdays 9:30-10:30 AM

Alateen

Groveland Youth Center – Tuesdays 5-6pm

Contact/Questions: GrovelandAFG@gmail.com

Sierra Grief Support

The Little House – Wed's 10:30am-Noon

Call 536-5685 to register for Grief Support.

Offered by Hospice of the Sierra.

Carron Tax

associates

Carole Smith
Enrolled Agent

20093 Ridgecrest Way
Groveland, CA 95321
Tel: 209/962-6119
E-mail: carolesmith@carrontax.com

**INCOME TAX PREPARATION
AUDIT REPRESENTATION**

Adult Literacy at Groveland Library

Can you imagine what it is like to not be able to read?

The National Assessment of Adult Literacy estimates that there are 3.4 million adults at or below the basic literacy level in California. These adults are unable to read a medicine label, an election ballot or even read bedtime stories to their children.

In an effort to help erase adult illiteracy in our community, the Tuolumne County Library's Groveland Branch is offering free one-on-one tutoring for adults needing help with reading, writing, math and pre-GED skills.

There are myriad reasons why people who have reached adulthood may not yet have learned to read. Often problems started before age 4 and might be a result of frequent moving as a child, overcrowded or underfunded classrooms, or childhood health problems that interfered with learning how to read. Adults who have difficulty

reading may be unaware of the resources available to them, and often remain hidden for fear of the consequences at work, home, or in the community if their secret were discovered. Their children suffer since they are not able to help with homework and often have not given their children the pre-reading skills necessary to be successful in school.

Adults who have not yet learned to read often suffer low self-esteem, believing they have failed and are beyond help. To help combat these anxieties, our volunteers work with students individually, adjusting teaching techniques to fit the individual. Volunteers must be 18 years old or older, possess a high school diploma and a willingness to help people.

Those interested in volunteering or need help can contact Lynn McCormick at 209-694-2727 or by emailing LMcCormick@co.tuolumne.ca.us for more information.

Chamber Chatter

BY YOSEMITE HWY 120 CHAMBER OF COMMERCE

The Yosemite Hwy 120 Chamber of Commerce presents "**The 2nd Annual Big Cash Giveaway and Summer Kick Off BBQ Dinner**" at the PML Lake Lodge on Saturday May 23, 2015. Doors open at 3:00 PM - BBQ served at 4:00 PM.

The \$100.00 ticket entitles purchaser to BBQ for TWO & Big Cash Drawings. Only 100 Tickets will be sold so buy now to get your lucky number between 1-100.

1st Drawing 4:30 PM - \$250.00

2nd Drawing 4:45 PM - \$250.00

3rd Drawing 5:00 PM - \$500.00

4th Drawing 5:15 PM - \$500.00

5th Drawing 5:30 PM - \$1000.00

6th Drawing 6:00 PM - \$2,000.00

Special 100 Square Raffle with 10 guaranteed winners

Menu:

Rib Eye Steaks and Big Brian Sweeney's Famous Chili

Cole Slaw, Rolls/Butter & Dessert

No Host Bar with:

Water & Sodas \$1.00 - Beer \$2.00 - Wine & Mixed Drinks \$3.00

Contact James 209-962-5900, Laurie 209-962-0323 or Kevin 209-962-0429 for tickets and information. Open to everyone. Must be 18 to purchase. Need not be present to win.

Greywater & Drought Landscaping Seminar

BY GROVELAND COMMUNITY SERVICES DISTRICT

From 9 AM to 12PM on Saturday, March 21, 2015, residents can attend a free, 3 hour, Do-It-Yourself Greywater Seminar at the Groveland Community Hall. Sierra Watershed Progressive will teach this GCSD sponsored course.

The seminar includes information on various greywater systems legal in California and when to use which type, as well as proper dispersal methods and applicable plants, including fruit trees and some vegetables.

You will learn proven methods to build a simple, cost-effective, and easy to maintain greywater system. GCSD will supply pertinent reference information to guide you with your project.

After the seminar, from 12:30 to 4 PM, Sierra Watershed Progressive staff will conduct an optional hands-on installation of a greywater system in Groveland. Bring your sack lunch, work clothes, gloves, and transportation to the

site. The installation will include building at least one Laundry to Landscape system, with site related topics including successful dispersal and maintenance methods.

GCSD water and/or sewer customers who attend the seminar are eligible for rebates on two common greywater systems:

1) **Laundry to Landscape** (25% of Household Water): Water from your washing machine to irrigate landscaping. No Permit is required. GCSD offers a \$100 rebate for properly completing and registering your system.

2) **Branched Drain "Simple System"** (75% of Household Water): Includes household baths, showers, laundry, and lavatory sinks, flows by gravity and branches out to your landscaping. Presently the County requires a \$181 permit, however, Environmental Health is considering a simple registration system with no fee. GCSD offers a \$200 rebate.

Groveland Kiwanis Club

BY SANDY SMITH

Groveland Kiwanis Club is very active in many things in our community, one of which is Relay for Life. Each year, funds raised at California Relay for Life events have directly supported the American Cancer Society's efforts to save lives and create more birthdays by helping people stay well, helping people get well, by finding cures, and by fighting back. A good portion of the monies raised stays within Tuolumne county. This year if you would like to help sponsor a "walker" in the relay or even participate contact Earl Wright, 534-9548 or Sandy Smith, 962-4950

for more information. The sponsor sheets need to be turned in by April 15th.

Come, join us and be a great part of our community, every Tuesday @ 4:30, Pizza Factory on Main street. Kiwanis is a global organization of volunteers dedicated to changing the world one child and one community at a time. The type of things Kiwanis members do are: feed the hungry, shelter the homeless, care for the sick, mentor the disadvantaged, and much much more. Working together Kiwanis members achieve what one person cannot accomplish alone. Come on down and see what we are about.

Strings in Spring:

VIOLINIST MARTIN CHALIFOUR AT YOSEMITE VALLEY CHAPEL

Yosemite Conservancy Outdoors Adventures moves indoors for a very special event.

Saturday April 25, 2015 Doors open at 3:30, concert at 4:00pm.

For a sensory experience unlike any other, come celebrate the acoustic delights of Yosemite in the spring with a concert by world-renowned violinist Martin Chalifour, Concertmaster of the Los Angeles Philharmonic. The beautiful harmonies will inspire you to wander out for a stroll under the shadow of Yosemite Falls and enjoy a beautiful spring day amid the park's amazing natural wonders. We welcome Mr. Chalifour for an intimate recital in Yosemite Valley Chapel on a spring Saturday afternoon.

Martin Chalifour

In the heart of Yosemite Valley, join us for a world class recital with violinist Martin Chalifour, Principal Concertmaster of the Los Angeles Philharmonic. Chalifour received a Certificate of Honor at the Tchaikovsky Competition in Moscow, and is also a laureate of the Montreal International Competition. Apart from his

LA Phil duties where we works closely with famed conductor Gustavo Dudamel, Chalifour maintains an active solo career, playing a diverse repertoire of more than 50 concertos. Chalifour has appeared as soloist with conductors Pierre Boulez, Gustavo Dudamel, Charles Dutoit, Christoph Eschenbach, Sir Neville Marriner, and Esa-Pekka Salonen. Outside the U.S., he has played solos with the Auckland Philharmonia, the Montreal Symphony, the Hong Kong Philharmonic, the National Orchestra of Taiwan, and the Malaysian Philharmonic, among others. We welcome Martin for an intimate recital in Yosemite Valley Chapel.

For more information go to <http://www.yosemiteconservancy.org/outdoor-adventures> or email adventures@yosemiteconservancy.org or call 209-379-2317 x10.

Yosemite Conservancy's Mission

Providing for Yosemite's future is our passion. We inspire people to support projects and programs that preserve and protect Yosemite National Park's resources and enrich the visitor experience.

Yosemite Foothills Fire Safe Council

To All Fire Community Friends,

Yosemite Foothills Fire Safe Council is a non-profit, non-governmental, non-regulatory community partnership of residents, property owners, businesses, and agencies working together to reduce our vulnerability to the threat of wildfire. We work closely with the US Forest Service, CAL Fire, and others by creating fuel breaks and defensible space surrounding homes and communities to improve chances of withstanding a wild land fire. Preparation must begin long before smoke appears on the horizon

Become a fire wise member of your Fire Safe Council. The Yosemite Foothills Fire Safe Council is looking for a treasurer and additional

Board members to serve in the interest of our community. These are important positions requiring dedicated people interested in the management and reduction of fuels, creation of fire breaks and establishing better fire protection. We meet once a month, the second Tuesday of each month.

If you are interested or would like more information, please contact Rick Whybra, Chairman.

209-962-7610 desk

209-768-7628 cell

Rick Whybra, Chair

Nancy Perry, Secretary

yffscouncil@gmail.net

OBITUARY

Col. James E. Snowden

SEPTEMBER 28, 1928-FEBRUARY 6, 2015

James E. Snowden, 86 years young, passed away on February 6, 2015. Born in Oakland, California, James was the son of James E. and Hilda Josephine "Babe" Snowden.

Jim received a BA in Art from the University of California at Berkeley, CA and was a member of the Phi Kappa Psi fraternity. He went on to earn his Master's degree in Fine Art from San Francisco State University. As an artist, he was proficient in watercolor, pottery, woodworking, silkscreen, oils, and serigraphy. Jim also received an Advanced Special Education degree from Stanford University. He was a licensed General Contractor and designed and built homes in the San Francisco Bay area.

In addition to his educational achievements, Jim proudly served 32 years in the U.S. Army. During his active and reserve duty, he was stationed in Germany and was deployed in the Korean Conflict. He retired as a full Colonel in 1983.

Jim's professional achievements included 32 years with the Mt. Diablo Unified School District in Northern California. Eighteen of those years were spent as the Administrator of Art and Industrial Art, which included vocational training for special education students. Jim and his art students created the iconic inlaid mosaic Ram's head at Pleasant Hill High School. He coached tennis, wrestling,

and basketball at school campuses, including Diablo Valley Jr. College. Broadcasting from the Claremont Hotel, he was a radio announcer for KRE in Berkeley, CA.

Jim was involved in various associations including the United States Professional Tennis Registry, Special Olympics, and the Park Shore Association Board of Directors in Naples, Florida. While on the Board of Directors, he championed the establishment of the "beautification award" for homes and condominiums within Park Shore.

Some of Jim's personal successes were inspired by his love of tennis, design, innovation, and creativity. He wrote a tennis book entitled "Practice for a Change" and consulted on the development and improvement of numerous tennis facilities in California and Florida. Jim never approached a problem without offering a solution. After retiring in 1988, he started playing golf and achieved a handicap of 9.

Previously married to the late Annette Marie Person, Jim remarried and is survived by his cherished wife of 32 years, Bette Smith Snowden. Jim and Bette, his "girl for all seasons", have enjoyed living in Naples, FL since 1992. His beloved family includes his daughters Karen Anne Snowden (Neil Brown), Julia Snowden Vistnes (Rick

Mountain Lutheran Church

BY PASTOR GINGER DUMARS

Lent began on Ash Wed., Feb. 18, & continues for almost the whole month of March – ending with Palm Sunday on March 29. This is the time of year when we focus on what Jesus Christ has done for us – especially with the events leading up to his death by crucifixion on a cross at Calvary. During Lent we try to simplify some of our usual activities so we can focus on the meaning of Jesus' work & relationships on Earth & then focus on his death by painful execution on a cross. Simple Soup & Bread Suppers followed by an Evening (Musical) Prayer Service help us to stay focused on the events & lessons of his life – especially the monumental events of Holy Week & Easter Morning & what they mean to us.

Our 4 Wed. Eve. Soup Suppers followed by the Holden Eve. Prayer Service will be held on Feb. 25, March 4, 11 & 18 – starting at 6 p.m. Everyone is always MOST WELCOME at Mountain Lutheran Church, 13000 Down to Earth Ct. – just off Ferretti Road. We will celebrate Palm Sunday &

honor the beginning of Holy Week on March 29 at our Sunday Morning 10:00 Worship Service. That evening at 6:00 we'll participate in our Community's 5th Sunday Gospel Sing hosted by Groveland Evangelical Free Church, 19172 Ferretti Road. Our Community's Good Friday Noon Service (April 3) will also be held at Groveland Evangelical Free Church – led by the Pastors of Foothill Ministerial Association.

Mountain Lutheran offers a Women's Old Testament (O.T.) Bible Study on the First & Third Thursdays (March 5 & 19) at 1:00. We are currently studying the books of Samuel – about several powerful & interesting leaders for God's O.T. People of Israel. You're welcome to come & learn & participate in Bible Study on the first & third Thursday afternoons. Come & Worship on Sunday Mornings at 10:00. We always have delicious refreshments & delightful fellowship time after Sunday Worship Services. You're always WELCOME at Mountain Lutheran!

Vistnes); stepchildren, Deborah Smith Stackhouse (the late Edwin Stackhouse), Brian David Smith (Heather), Randall Karl Smith (Lennie); thirteen grandchildren and four great-grandchildren.

Jim and Bette owned property in Pine Mountain Lake and spent 16 summers in the

community.

Remembrances in Jim's name may be made to Avow Hospice 1095 Whippoorwill Lane Naples, FL 34105. There are no local services planned at this time. Memorial and inurnment will be at Arlington National Cemetery in the spring.

RELIGIOUS SERVICES

Big Oak Flat Baptist Church

Wards Ferry Rd., 3 blocks from Hwy. 120,
Pastor: Jim Lowe • Sunday School 9:45 am,
Worship 11 AM & 6 pm

Buck Meadows Community Church

Old Hwy. 120 & Buck Meadows 209/962-5789
Pastor: Josephine Ellis
Sunday School & Worship 10 am
Food Pantry Open each Sun before & after service
Potluck 3rd Sunday after service

Groveland Christian Church

(Non-Denominational)
18829 Foote St., Groveland, 209/962-7654
Pastor / Elder: Jack Woodland, Dennis Smith
Sunday Worship 11:00 AM; Bible Study 9:30 AM;
AA Tuesday & Thursday 7 PM • Ladies Bible Study
Monday 4:00 PM • Wednesday Night Bible Study 7
PM Call 962-4950 for directions

Church of Jesus Christ of Latter Day Saints

19870 Hwy. 120, Groveland 209/962-5345
Branch President: Joseph Witmer, 209/768-2175
Sun. Sacrament 10 am, Sun. School 11:15 am
Sun. Prsthd Mtg. & Women's Relief Soc. Noon

Evangelical Free Church of Groveland

19172 Ferretti Rd., 209/962-7131
Senior Pastor: Ron Cratty • Services: Traditional
9:30 am, Contemporary 11 am
Mid-week Bible Studies
(please call for information)

Foothills Community Church

18717 Main St., Groveland
Sunday Worship 10:45 am; Christian Ed. Hour
(groups for all ages) 9:45 am, Child care provided
at all services. Weekly Home Bible Study,
call for times

Grace Episcopal Mission

At Mt. Carmel Catholic Church,
Hwy. 120, Big Oak Flat
Fr. Jim Stout 209/962-1899 or 209/768-0450
Services 2nd & 4th Sundays 4 pm

Groveland Seventh-Day Adventist

19585 Elder Lane, Groveland
Pastor: David Bello • Sabbath School 9:20 am;
Worship 10:50 am • Wed. Prayer Meeting 6:30 pm

Jewish Services

Call 209/962-5995 for more information
Friday 7 pm followed by Kiddush
Saturday 10 am followed by Kiddush & Kibbitz

Mountain Lutheran Church

13000 Down to Earth Court (off Ferretti)
Pastor: Ginger DuMars
209/962-4064 • Sunday Service 10:00 am,
Bible Study 1st and 3rd Thurs at 1 pm
MountainLutheranChurch.com

Northside Church of Christ

18584 Main Street, Groveland
209/878-0263
Located behind Yosemite Bank
Sunday Bible Study 10 AM
Sunday Worship 11 AM
Wednesday Bible Study 7 PM

Our Lady of Mount Carmel Catholic Church

Hwy. 120, Big Oak Flat, 209/532-7139
OLMC Parish Services - 209/962-1030
Pastor: Sam West – Parochial Administrator
Mass Saturday 4:45 pm, Sunday 9:15 am

Unitarian Universalist Fellowship

Groveland Community Hall
Contact Kathleen 209/840-4777
Service 5th Sunday, 10:30 am,
at the Groveland Library

Wheels Volunteers Drove 14,000 Miles in 2014

BY ALEX WYLIE

Last year, Wheels volunteer drivers drove 14,202 miles and spent 1,091 hours with clients taking them to 1,875 destinations!

Wheels is a senior transportation program in the Groveland area now in its third year of operation and is staffed by volunteers all of whom are seniors.

The program is an initiative of Southside Senior Services Inc., a non-profit organization whose home is The Little House in Groveland.

The service is available for residents who are unable to drive and have no family member to drive them and takes clients to medical appointments, the library, post office, banks and shopping in the Groveland area where there is no public transportation system. Wheels drivers pick up seniors from their homes and return them safely after their trips.

The service was expanded early last year and now takes its clients to medical appointments in Sonora. As a result, many seniors not previously able to travel to Sonora for medical treatment

and preventative care such as mammograms, colonoscopies and other health screenings, are now able to do so now that transportation is available.

Wheels is totally free to its users because it is staffed by volunteers who drive their own cars and pay for their own gas and they have one thing in common, they are kind and caring people who enjoy helping others in the community.

Some Wheels clients are cancer patients whose treatments have required them to visit the Cancer Centre of Sonora Regional Hospital every week day for up to seven weeks and special driver/client friendships have developed during these journeys.

If you or someone you know could benefit from the Wheels program please call 209-962-6952 and leave a message. If you'd like to volunteer as a driver or scheduler please call Alex Wylie at 209-962-4697

Best regards

“Cold Smoke” Cheese on BBQ Grill

BY TOM KNOTH AND PAULA MARTELL

If you like cold smoked cheese, you will LOVE it when you smoke it yourself. The flavor is much better than the “smoked” cheeses that you find in the market. Those are typically processed cheeses with chemical additives used for smoke flavoring.

You don't need a smoker in order to smoke cheese; there are actually numerous methods for doing it without a smoker. Here we'll describe how to do it with a Weber Kettle, and you could use this same method with a gas BBQ (without the gas) as well. You can smoke pretty much any cheese; our favorites are Cheddar, Monterey Jack, Gouda, Havarti, and Mozzarella. You can even smoke nuts or peppercorns using this method.

The objective is to get two hours of smoke on your cheese without melting it, hence the term “cold smoked”. The outside temperature must be under 50 degrees F, so cold winter days or nights are the time to do this.

You will need airflow to keep your coals lit so open the bottom vents of your BBQ and crack the lid vents half way open. I use a charcoal starter to light two charcoals, and once they are lit, I place them on a far side of the charcoal (bottom) grate. I put two unlit coals next to them, to keep the coals going longer, and then place something like a small fist sized chunk of wood on top of the coals. The wood should be aged and dry, not soaked.

What type of wood do you use? It should be a “hardwood” and locally I like to use Manzanita, Oak, or any fruit tree wood. Never use softwoods

such as Pine or Cedar, as their smoke is toxic. Your cheese should be placed on the cooking (top) grate, as far away from the coals as is possible, to keep it from melting. Larger (2 lb) blocks of cheese can be halved so that the smoke may penetrate better.

The next step is to put the lid on, and within a short time you should see smoke emanating from the lid vent. We are not looking for huge plumes of smoke; rather just a gentle flow of bluish white smoke. For the next two hours, monitor your fire every twenty minutes or so, making sure that there is enough wood to produce smoke and enough lit coal to keep it burning. If things go right, your cooking chamber temperature will remain under 85 degrees and your cheese won't melt.

After two hours, wrap your cheese in paper towels and place it on the counter to rest. It will likely “sweat” a little as it rests and you can use paper towels to dab this away. After the one hour rest, pack the cheese away in a well sealed plastic or food saver bag, and date it for two weeks later. Trust me when I tell you that you do not want to sample the cheese right after it comes off the smoker; it will taste acrid. Let it rest for two weeks before eating it, and then you will love it.

For full details and photos on cold smoking cheese, and for other recipes, you may visit our blog at: <http://homesinpinemountainlake.com/cold-smoking-cheese-weber-kettle/>

We welcome any questions or comments, and can be reached at (209) 962-5838.

Northside Pet Connection News

BY TOM GRAVE

The big news from NPC is, unfortunately, not good. Our Board of Directors made the difficult decision to cancel the yard sale, normally our biggest fundraiser. Usually held in June, last year's income from the sale was nearly \$2000! The simple fact is we don't have enough volunteers to get the job done. Someone has to be on duty every day the week before the sale to receive items from donors, then organize and price everything. There is obviously work to be done on the two days of the sale, then we have to dispose of leftover items, normally by giving them to another charity. We are certainly grateful to the many people who have given us their cast-offs to sell, and we hope you will find other ways to support NPC so we can continue

our vital work of helping northside communities control their populations of unwanted dogs and cats.

You may recall that NPC now gives out 20 vouchers each month, and the value of each voucher has been increased so that it almost covers the full cost of the spay or neuter procedure, depending on the veterinarian. To obtain a voucher call 732-6194.

Once again, we would like to encourage our members who have not yet renewed for 2015 to do so, and we would like people in our reading audience who realize the importance of our work to join NPC. For general information about NPC, call Carmel at 878-3134.

Thank you.

Village on the Hill

BY LISA VAUGHN, MEMBER AND VOLUNTEER COORDINATOR

Village on the Hill enrolls first member

Al Brizard, our community's first advocate for creating a Village-model program for seniors in Groveland, is now Village on the Hill's first member. Beginning on March 16, Village on the Hill will begin to offer services to a group of pilot members before launching our full program in May 2015. Member and volunteer applications are now available.

According to an AARP study, 90% of adults ages 65 and older would like to stay in their own homes as long as possible. Living independently, however, gradually gets more complex as we grow older and find we need assistance doing the things we once did easily by ourselves.

Village on the Hill is a nonprofit that will provide services through an extensive volunteer program. Once you join our community, you are a phone call away from receiving services, and a part of a vibrant community of local seniors. We will provide services such as a daily check-in call,

grocery shopping, changing filters, lightbulbs or smoke detector batteries, winterizing faucets, etc.

But Village on the Hill is more than its services. We are neighbors committed to helping each other, and advocates for living in the best, most vibrant way possible. We depend on the experience, expertise and care of members and individuals from the community who volunteer. Fill out an application today to help with minor home chores and maintenance, caregiver relief, grocery shopping and errands, scheduling services, writing newsletter articles and more! We will work with your schedule, skills and interests to find the best opportunities for you. Many volunteers will also be members, using our talents and skills to meet the needs of our neighbors.

Find out more information about membership and volunteering at www.villageonthehill.org or call 962-6906 or e-mail info@villageonthehill.org. Like us on Facebook at [facebook.com/vonthehill](https://www.facebook.com/vonthehill).

Tuolumne Group of the Sierra Club

PRESENTS A PROGRAM WITH KATHERINE JOYE

Katherine Joye will discuss the hikes that are included in her book, Day Hikes Along the Highway 108 Corridor. These 76 hikes are all located near highway features such as waterfalls and peaks, and historical or geologic points of interest. Her book describes difficulty levels, distance, elevations, directions, trailhead info, and other useful information for all hikers. Many members of the Tuolumne Group of the Sierra Club use her book as we explore the trails in our “backyard”.

Katherine has been an avid hiker since high school, and has hiked and backpacked in this area since 1985. She has a BS in physiology,

MS in exercise physiology, and Life Science and Physical Science teaching credentials. She has taught science courses to students from 4th grade up through college. She is also a Master Gardener and a certified California Naturalist.

We are lucky to have Katherine in our community, and to have her share her love of hiking and the natural world. Katherine will have copies of her book available for sale.

All members of the community are welcome to join us on Thursday March 26, 7 PM at the TUD Board Room, 18885 Nugget Rd., Sonora, 95370

Refreshments will be served.

Tioga Spring Sports Needs

BY RYAN DUTTON

With the end of the basketball season comes spring sports! Here at Tioga we offer track, co-ed golf, softball, and baseball. Our golf team gets to use the beautiful Pine Mountain Lake Golf Course and range here in Groveland thanks to Pro Mike Cook and his team. Please let the school know if you have golf clubs or accessories that are in good condition to donate. We thank you local golfers that have given to the program, our kids have a pretty nice setup! The track team does not have its own track, so all track meets are on the road for our team. This hasn't stopped our track team, however, from being one of the best programs in Division V in recent years! Our softball and baseball teams use Leon Rose Field courtesy of GCSO. Due to the fact our ball field is not on school grounds, we do not have equipment or a vehicle that can consistently drag and prep the ball field. The Timberwolves family is asking that if any community members

have either an ATV (3 or 4 wheeler) or golf cart that they do not need or use anymore to donate it to the high school for use on the baseball/softball field! You can always receive a tax receipt when donating items to the school. If anyone would like to help us prep the field and has their own vehicle to do so versus donating, we would greatly appreciate it as well. Currently, coaches prep the field, and both of our coaches are in the classroom teaching and don't have much time at all to do field maintenance. This would help to be able to prepare the field for use without having to use cars or trucks to do so! Any large landscape/contractor style rakes are needed for field maintenance as well! Feel free to contact Ryan Dutton at Tioga High School if you have questions or items for donation, 962-4763. Thank you GCSO for our ball field and thank you Groveland in advance for assisting our students and their school experience!

Tioga High Homecoming

BY RYAN DUTTON

Friday, February 13th, Tioga High School hosted its annual Homecoming festivities. A great night was had by all! The boys and girls basketball teams played Stockton Christian. In between games was the Homecoming Ceremony showing off our prince and princesses from each class and eventually crowning our 2015 King & Queen, seniors Scott Pomeroy and Krysti Mitchell. Following the boys game, students were able to stay for a dance in the cafeteria. Tioga also added a Middle School Showcase, giving students and parents at Tenaya a chance to see what Tioga has to offer and why the small school experience here on the hill is a great fit! Tioga teachers spoke to parents and shared student work and projects and the Culinary Class prepared homemade spaghetti and meatballs for those students and parents that made it out. We would like to thank all parents that helped



2015 King & Queen, seniors Scott Pomeroy and Krysti Mitchell.

make this happen and community members for attending our special night! Go TWolves!

Baker Family Fundraiser

The Tenaya/Tioga staff would like to thank everyone that was able to attend the Baker Family Fundraiser at Pizza Factory on February 4th. It was a wonderful success. So many people donated to our raffle. Thank you to Mrs. Hilton for donating the \$100 prize, Black Oak Casino, ARTA, Down to Earth, Bella Donna, Evergreen Lodge, Sunset Inn, Kevin & Randi's Meat Market, Miller Brothers, Pizza Factory and Tenaya Parent Club for all the raffle prizes. A big thank you to the hard workers at Pizza Factory. They

donated 25% of sales for the evening. A special thank you to the Groveland Car Show Club, and Chicken Ranch Casino for their generous donations to the family. We were able to give the family over \$3000 to help with expenses in the care of their daughter Alyssa. Alyssa has Cystic Fibrosis and spent over 175 days at Lucille Packard Children's Hospital at Stanford. If you were unable to attend the fundraiser, and would still like to donate, you can send a check to Tenaya Parent Club at 19177 Hwy 120, Groveland CA 95321.

STUDENTS OF THE MONTH

Tioga High School Student of the Month



Tarynn Warren

Tarynn Warren was busy in February. She placed second in the local Rotary Club speech contest, then turned around four days later to compete in Academic Decathlon on February 7th where she won a bronze medal in Social Sciences and walked away with high scores in the Speech, Interview and Essay categories. She also competed in both the Lions Club and AAUW speech contests. (Scores unavailable at this time, but given her history of success, she will do well in both.) Tarynn is president of Student Council and TRad (Tioga Rising Against Drugs). In case that's not enough to do, she challenges herself with AP Spanish and English. Tarynn's been accepted to

Tenaya Elementary Student of the Month



Erinn Morehouse

Tenaya's Student of the Month is Erinn Morehouse. Mrs. DeMars says that Erinn is a kind and helpful student. She always comes to class ready to work and learn. She never complains, works with anyone she needs to and has a positive attitude in class. Erinn is a hard worker and always lends a helping hand to her teachers and classmates. Her parents are Joseph and Brandice Morehouse of Groveland

Stephens College in Missouri where she intends to major in Political Science with an emphasis in International Relations. Steven Warren of Groveland is Tarynn's very proud Dad.

Tioga S Club

BY DAWNELLE DUTTON



Groveland Soroptimist sponsors our Service club. We are a big team that serves our community!

Tioga High S club visited a Soroptimist meeting to share what our S club has been doing recently. Most importantly to share that we had raised \$600.00 during our dig pink game to present to a local young lady fighting breast cancer! Our senior Krysti Mitchell chose to do this service as her Senior Service Project.

I'm so proud of this service Club I get to run! Proud of my girls who choose to serve! More importantly so excited to teach the young girls how to serve one another without



Senior Krysti Mitchell who ran the breast cancer event to raise money for Nealy Henderson (standing by her) who is fighting breast cancer

expecting anything in return. Often we get the biggest reward when we serve someone else! We hope the money we raised helps our recipient Nealy Henderson and she knows we are here to support her fight against breast cancer. Keep the good fight up, you have a lot of people rooting for ya!

Tioga Softball Home Games

Games played at Leon Rose Field on Ferretti Rd next to the Evangelical Free Church @ 4 p.m.

APRIL

3RD VS. BEN HOLT (TENTATIVE) • 5TH VS. BEN HOLT (TENTATIVE)
8TH VS. LANGSTON HUGHES • 15TH VS. MOUNTAIN OAKS
29TH VS. DELTA CHARTER

WELCOME TO THE HOME IMPROVEMENT DIRECTORY

Moore Bros.
Property Development



- New House Starts
- Brushing
- Grading for Drainage, Septic Systems, and Driveways

Lic. #910883
call Alan at:
962-5339 or 770-7169

BUSINESS CARD ADS FOR AS LOW AS \$19 PER MONTH

CALL 209.962.0342 FOR MORE INFORMATION

•slip covers•
•upholstery•
•blinds•
•shades•
•custom window treatments•

Need Help?

ANNA'S INTERIORS
962-5421



Sears

Karen Faught
Owner

Sears Hometown Store #3159
14691 Mono Way, Sonoma, CA 95370
Tel 209-532-3191
Fax 209-532-8334
Service & Parts 1-800-469-4663
www.sears.com

Locally Owned & Operated



DURLAND ROOFING

License #545005

- Re-Roofing
- Leak Repairs
- Inspections
- Gutters

Tim Durland, Owner

209 480-0097
P.O Box 1373
Groveland, CA 95321

Serving Groveland and East Bay

Costa's Tree Solutions Certified Arborist #WE7496A



Steve Costa
Owner

P.O. Box 924
Groveland, CA
(209) 962-4468
(209) 768-4469 Cell

Fully Insured/Bonded
C.C.L #818373

Bert's Weedeating and Lot Clearing

◆◆ 962-6724 ◆◆

(See Page 36 for FREE Offer)

green tree
property services

- HOUSE PAINTING
- WINDOW WASHING
- HOUSE CLEANING

209.962.4445

LICENSED | BONDED | INSURED | CSL960719



THE NEW SPARKY IN TOWN IS NOW THE OLD MOUNTAIN HAND!

THANKS FOR 5 GREAT YEARS!

MORRISON ELECTRIC, INC.
David Morrison

An Electrical Service Company

Trouble-shooting • Repair • Remodel • Additions
New Construction • Large Projects

I return phone calls, I show up on time, I don't quit until the problem is solved.

Contractor's Lic # 967749 • General Liability Insurance

962-0481 david@morrisonelectric.com

ADVERTISE IN THE PML NEWS
GO TO WWW.PINEMOUNTAINLAKE.COM
FOR RATES AND INFORMATION

Call your local Pro!

Jack Proctor

Heating & Air Conditioning

- Complete commercial & residential services
- Service & repair - all makes and models
- Heating & ventilation
- Heat pump specialist
- Air conditioning troubleshooting expert
- Installation and remodeling
- Upgrading & energy efficiency
- We offer the same low rates 24/7

OFFICE
209-962-6471
CELL
209-678-8915
License #313926
Since 1975

Before replacing your unit, ask us for a 2nd opinion. Chances are, we CAN repair it!



INSPECTION RIBBONS? FIRE SAFETY LET US HELP!



LOREN SNIDER'S TREE SERVICE Serving Your Tree Needs

Big or Small We Do Them All

Removal & Pruning • Clearing & Hauling
Chipping & Stump Grinding • Mistletoe Removal

Home: 209-878-3828 • Cell: 209-402-9797

25+ Years and Insured

JAMES PRICE CONSTRUCTION

CA. Lic. No. 591995

DECK SPECIALIST

- Professional Machine Sanding •
 - Pressure Wash and Sealing •
 - Pickets & Metal Railings Installed •
- Hardware Retrofit "For a Safer Deck"**
- Repairs and More •

Call 209-962-0486

email: designbild@earthlink.net

HEAVENLY CLEANING SERVICE

PROFESSIONAL HOUSEKEEPING
AND CARPET CLEANING

Going on our 20th Year!



HOME OFFICE CARPET WINDOWS

RENTING YOUR HOME TO VACATIONERS?

LET US HELP MAKE IT EASIER

BY DOING MORE THAN JUST CLEANING

WE OFFER TRASH REMOVAL, DECK BLOWING,
BBQ CLEANING & CHECK PROPANE, AND LAUNDRY SERVICE
WE TAKE PICTURES OF ANY DAMAGES

GIVE US A CALL TODAY - 209.962.6418

heavenlycleaning@mail.com • FULL LIABILITY COVERAGE



Voted
"Best Flooring/Carpet" and
"Best Window Coverings"
2006, 2007, 2008, 2009, 2010, 2011,
2012, 2013, 2014



- Carpet
- Laminate
- Vinyl
- Hardwood
- Ceramic Tile
- Countertops
- Window Coverings



25% off Hunter Douglas
Window Coverings
Or
Free Furniture Moving
with your flooring
purchase
*see store for complete details

263 S. Main Street, Angels Camp, CA 95222 (209) 736-8077

12900 Mono Way, Sonora, CA 95370 (209) 532-1696

www.pinnellscarpetoneangelscamp.com

www.pinnellscarpetonesonora.com



Find advertising rates, information, and
more at www.pinemountainlake.com

PML MINI STORAGE

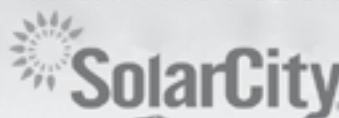
65 Units Ranging From 5'x5' to 12'x30'

- REASONABLE RATES •
- WELL LIGHTED •

Located one-half block off Ferretti Rd. on Elderberry Way towards Airport

209/962-6220

Clean, more affordable energy
Get NO COST solar today! Call John Kirby at 209.968.1588



Lock in at a low rate. Don't pay PG&E high tier rates

Pine Mountain Lake Electric

**Residential and Commercial
Electrical Contracting**

State Contractor's Lic. 404081



TOM KATOSIC
209/962-6949

P.O. Box 25
BIG OAK FLAT, CA 95305

PARROT PLUMBING

MILT LAKE

Owner / Operator
209-852-2267

Serving Groveland, Don Pedro & Coulterville
HOME PLUMBING REPAIR SEMINARS
 call (209) 962-0850 for date and time

C-36 #791575 P.O. Box 127, Coulterville, CA 95311 • Email partman@inreach.com



HANDYMAN FOR HIRE

"The Small Job Specialist"



Doing Building and Repairs in PML Since 1976
WHERE ONE CALL CAN DO IT ALL!!!
Working by the Hour to Save you Money...
 ETC = Our Cabin Care Services Available

- General Maintenance
- Deck Repairs
- Weedeating
- Property Checks, weekly or ?
- Interior Repairs
- Exterior Repairs
- Painting
- House Cleaning Available

• And more, just ask

Member of Yosemite Chamber of Commerce
 omni1handyman@aol.com

No **(209) 962-5463** License



Hours
 Mon-Fri 7 AM - 6:30 PM
 Saturday 8 AM - 2 PM
 Sunday Closed
 After Hours Emergency
 559-3840

Deliveries From The Valley Daily!!
 Pick Up and Deliveries to Your Door!!
**Next Day Special Orders
 Is Our Specialty!!**

**Full Service Heavy Duty
 Repair Shop**
 Parts & Service for All Heavy Duty
 Trucks & Tractors

Full Service RV Repair Shop
 Parts & Service for All Recreational Vehicles

On Site - Well Stocked Parts House
 Hydraulic Hose Shop:

- Cat Flange, J.I.C.
- O-Ring Face
- Metric Fittings in Stock
- #4 (1/4") thru #32 (2")
- Low, Medium and High Pressure Hose (Including 6000 PSI Drive Hoses in Stock)
- Hydraulic Cylinder Repair
- Hydraulic Pump and Motor Service
- A/C Hoses

Fleet Services on our site or yours
 with a personal call when
 service / maintenance is due!!!

Sierra Heavy Duty Parts & Service
 18968 Waylon Way
 Sonora, CA 95370

Call or email for an appointment today
 Shop: **209.532.7994**
 email: steve@sierraheavyduty.com



125 Indoor Secured Storage Spaces

REIMERS CONSTRUCTION

PROUDLY SERVING GROVELAND/PML SINCE 1987

DESIGN/BUILD • EXPERT REMODELING • SPECIALIZE IN KITCHEN AND BATH
 CEMENT SIDING • COMPOSITE & REDWOOD DECKS • WINDOW AND DOOR REPLACEMENT

(209) 962 5682



BEFORE AFTER

This project designed and constructed by Reimers Construction

Email: wwrpar@gmail.com
 CA.LIC. 590514

PAINTING

Exterior/Interior
 Deck Repairs
 Wood Repairs
 Remodels

Bay Cal
 LIC #923832

SEE COLOR AD PAGE 13

209.962.4777
www.baycal.com • email: davec@baycal.com



A AMERICAN ELECTRIC & SERVICE CO.

COMMERCIAL • INDUSTRIAL • RESIDENTIAL

209.962.7374

ELECTRICAL CONTRACTORS LIC. # 465220



Flinchum Masonry

Stone • Brick • Block Work
 (Pressure washing & sealing available)

Call **209.962.6084**
 Small Jobs Welcome

John Flinchum Lic. #609489 Insured

Construction on the PML Main Gate



LaMar EQUIPMENT & HAULING

Job Site Storage Containers 15 Ton Hydro Crane Heavy Equipment Hauling Irrigation & Electrical Trenching Landscaping Materials Water Truck Septic Install	End Dump Manlifts Rock Hauling Lot Clearing Demolition Back Hoe D6 Dozer Log Hauling	Post Hole Digging Concrete Demolition Towable Trailers
---	---	--



(209) 962-0500
Mobile: 770-5667 LanceMarchetti@yahoo.com

Over 25 years of construction experience Highly Disciplined and Dependable
We have expertise in all phases of construction including:
 Decks and staircases
 Dock and gangway repairs and replacement
 Kitchen and bath remodels



Hilltop Homes

General Building Contractors
 Lic #931547 Fully Insured

209-986-7755

Pine Mountain Lake Homeowners Steve and Cindy Watts

FREE ESTIMATES



NEWARK FENCE, INC.

FREE ESTIMATES

NEW DECK REPLACEMENT • REPAIRS
 RAILING • STAIRS
 CON-HEART REDWOOD • COMPOSITE
 HARDWOODS

GIVE US A CALL 510-797-1299



FAST SAME DAY SERVICE* All work 100% Guaranteed!
*IN MOST CASES

Contractor License #62958
www.watersplumbing.com

"I want you to know that our technicians will give you a price before we start the job." —Wayne Waters

Groveland (209) 962-0990

HOPE'S TREE SERVICE

Lic# 987171

EXPERT TREE SERVICE, PRUNING,
 REMOVAL, CUT & STACK OR HAUL AWAY
 FULLY LICENSED/INSURED



HOPE'S TREE SERVICE
Fully Licensed and Insured

Proud member of the
 Yosemite Chamber of
 Commerce

We accept credit cards



209.878.3096

or 209.225.3191

Ken's Asphalt

Lic. 708310

Grading • Paving • Chip Seal • Road Oil
 Seal & Slurry Coatings • Crafcro Hot Rubberized Crack Sealer
 Driveways • Private Roads • Subdivisions

DOING BUSINESS SINCE 1985

DRAINAGE PROBLEMS?

We have the Solution!

Erosion Control • Riprap (6-12" Rock) • Asphalt Curbing • Base Rock

Complete Concrete Services

• Stamped Concrete and Colored Concrete	• Driveways
• Stained Concrete	• Walkways
• Cleaning & Sealing	• RV Pads
• Retaining Walls	• Patios

"Just Pave It"

532-0800 • 962-5644 • 768-7395 Cell

CLASSIFIEDS

Submission deadline is the 15th of the month. Submit at www.PineMountainLake.com
 Cost is \$0.30 per word. Ads run until canceled by advertiser.

FOR SALE

2006 CROWNLINER SKI BOAT
 19' with trailer. One owner, excellent shape, low miles, seats 8 and includes a custom cover. Asking \$19,500.00. Located in Groveland area. Call **925-216-7981**

COMMERCIAL RENTAL/LEASE

COMMERCIAL WAREHOUSE/SHOP/STORAGE
 Ferretti Rd. near Airport. Easy access, 12'x20' roll up doors, insulated, 220 and 3-phase available, vented skylights, restrooms. 2 bay, 1400 sq. 600.00 per month: 3 bay, 2100 sq. 900.00: 5 bay, 3500 sq. 1500.00. Includes water and sewer. **209-962-6014**
 ask for John, Owner/Broker

GRAZING PASTURE
 in downtown Groveland. For Rent at \$300.00 per month or \$100.00 per horse. Call Terry **650-520-1022**

LAND FOR SALE

LOT FOR SALE
 Nearly level, ready to build lot. Unit 6-146 on Cottonwood St. Motivated to sell. **\$12,500**. OBO **650-866-4721**

PRIME 1.74 AC LOT NEAR AIRPORT
 Gentle slope. Southern exposure with panoramic view. Very private. Sewered. U11/L56 Elderberry Ct. For more info call Cell **209-768-4406**

LARGE LEVEL, EASY BUILD, SEWERED LOT
 Unit 3/ Lot 122 - Nob Hill Circle On quiet street close to the Lake Lodge, Fisherman's Cove and Tennis Courts. **MAKE OFFER**. For information call **209-962-4617**

HOMES FOR RENT / LEASE

VERY NICE 2 BEDROOM
 1.5 Baths, Chalet Style Home, Fplc., Deck, walk to PML Beach, Country Club and Downtown Groveland. 12412 Tannahill Drive, Groveland. **\$750.00**. Call Terry **650-520-1022** or email to: hr1107@comcast.net

RENTALS WANTED

EXCELLENT TENANTS
 w/excellent credit and rental history looking for homes to rent. Owner approves tenant before placement. Call *Yosemite Region Resorts* **800/962-4765**

SERVICES

FOR YOUR REVERSE MORTGAGE, REFINANCE, NEW HOME LOAN PURCHASE NEEDS
 Call GREAT CENTRAL MORTGAGE Corporation at **209-962-6239** or Main Office **209-632-3200**. CA BRE License #01135634, CA BRE License Information # 916-227-0931. NMLS #237919

BERT'S WEEDING AND LOT CLEARING
962-6724

COMPUTERS custom built, upgrades, trouble-shooting, free consultation. **209/962-7110**

PROFESSIONAL PROPERTY MANAGEMENT
 RE/MAX Yosemite Gold Patricia (Tish) Fulton BRE# 00760019 Property Manager Certified by California Association of Realtors **209-962-0837**

LOVING PET CARE in my home or in yours - garden care also available. Call Barb **962-5653** or email at shadkitty12@gmail.com

SERVICES

HANDYMAN - For removal of unwanted items. Have 20 foot enclosed trailer, need something moved? **Also, tree trimming available**. Call Mike, very reasonable rates. **209-962-0777**

GOT WEEDS?

Contact Jim Atkins at **209.985.4376**. Lot Clearing, Hauling, Dump Runs, Weedeating. Local Guy. References available.

ELECTRICAL
A AMERICAN ELECTRIC & SERVICE CO. Lic. #465220 **209/962-7374**

LINDA'S LOVING CARE
 Local, Reliable, Caring and Responsible - Caring for a loved one - House sitting - House cleaning - Rides to Doctor's appt., etc. Call Linda **209-985-2363** cell

COSTA'S TREE SOLUTIONS
 Steve Costa, Owner Fully Insured/Bonded C.C.L. #818373 **209-962-4468**
 Cell **209-768-4469**
 Certified Arborist #WE7496A

FURNITURE & CHAIR REPAIR/ WOODWORKING
 Retired Cabinet-maker will repair all types / kinds of furniture **962-7604**

BIG JOHN HANDYMAN SERVICES
 Yard Maintenance, House Maintenance and moving households Call John **962-6163**

SERVICES

RONNING ROOFING

Call Joe for all your Roofing and Gutter needs. Licensed, Bonded, and Insured. License # 976739 **209-962-6842**

LOREN SNIDER'S TREE SERVICE

27 years expert, safe tree work. All sizes and types of trees. General pruning, ornamental pruning, weight reduction with drop crotching method, mistletoe removal, expert technical tree removal, dump truck chipper, stump grinder, liability insurance, local references, **Responsible, Reputable, Reasonable, Reliable, Rapid Service. PREFERRED PML VENDOR 209-878-3828 / cell 209-402-9797**

HOMEOWNERS INSURANCE

I moved to Pine Mountain Lake from the Bay Area with 23 years as an independent insurance broker. I write business with most standard Insurance Companies for California homeowners. Call, fax or email me for a quick quote and get that personal local service you deserve. **Commercial Business Insurance Agency, Inc. Jess Skelley**
 CA Broker Lic# 0F50039 **209-732-3514 office**
800-726-4889 fax
www.cbi-agency.com
 email jess@cbi-agency.com

VACATION RENTALS

LIFE'S A BEACH!

Vacation at our Tropical Paradise in sunny Ewa Beach, Oahu, Hawaii NaniMoanaHale.com (209) 962-4396

PANORAMIC LAKEFRONT
 boat dock, decks, air, 3bd/2ba, Beautiful Views **650/961-6334**

GET YOUR AD NOTICED



Place a photo of your item for sale (car, truck, house) with your classified ad for just \$10. Call 962-0342 today.

PMLA LOTS FOR SALE

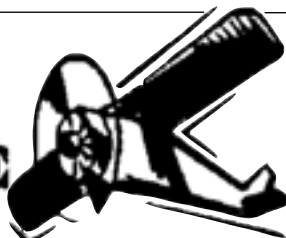
PMLA OWNED LOTS FOR SALE:
 Unit/Lot Numbers Street Asking Price

- 2/020 Mueller Drive \$1000
- 2/353 James Circle \$1000
- 4/232 Point View Drive \$1000
- 6/056 Cottonwood Street \$1000
- 6/179 Cottonwood Street \$1000
- 7/026 Ferretti Road \$1000
- 7/063 Ferretti Road \$1000
- 7/069 Ferretti Road \$1000
- 8/006 Sunnyside Way \$1000
- 8/007 Sunnyside Way \$1000
- 13/309 Ridgecrest Way \$1000

For further information regarding this property please contact PMLA at (209) 962-8600

AIRPORT MINI-STORAGE

60 Units - 6'x8' to 10'x30'
 Open 7 a.m. to 9 p.m. Daily
 Located on Elderberry Way off Ferretti Rd. near PML Airport
209/962-5360



Cobblestone Homes

• Custom Homes • Additions • Remodels •
 • Specializing in high country design/build since 1989 •
 We provide superior craftsmanship, attention to detail, follow-up, and great customer service.

Craig Lawrence-Owner
 209.404.0290 Lic. 564665



Real Estate • Property Management • Vacation Rentals

209-962-1111



12600 Cresthaven-4/45 A PERFECT LOCATION. Near the Lake Lodge beach and tennis courts. Two-level home, with open kitchen & dining area. 3bd, 3ba, 2100sf. Central h/a, woodstove, jetted tub. Additional space downstairs can be used as bonus or 4th bdrm. Large covered deck and garage to accommodate an RV or boat! Established vacation rental. Most furniture incl. \$275,000 #20140445



12346 Mills-8/90 LAKE VIEW POSSIBLE by thinning some trees. Seller says the lake view is what sold them on this home years ago, but trees have grown and blocked the view. Three-levels, double-pane windows, granite kitchen counters, bonus room, wood fireplace, 3bd, 2ba, walk-in master closet & garden tub. Lg deck, paved driveway & 1-car garage. \$199,900 #20140951



19162 Dyer Ct-5/271 A RARE OPPORTUNITY to own at Oak Tree Condominiums! Turnkey, upstairs unit includes all furniture. Vaulted ceilings, light & airy. Great getaway, with vacation rental potential or a nice full-time residence. View the golf course from a large back deck. Near Country Club, Pro-Shop, Pool & Tennis. Minutes from town. This is a real gem! \$125,000 #20150015



12891 Boitano Rd SUBSTANTIAL LAKE VIEW from the top of this lot. Access via Quail Ridge Easement, off Nob Hill Circle. Sewered 1/4 acre. Owner financing available. Call for details. \$62,000 #20121394



19555 Chaffee Cir-1/101 CUSTOM HOME near Dunn Court beach. 3bd, 2-1/2 bath, 2064sf. Free-standing fireplace in living room. Formal dining, downstairs family room & private deck off master bedroom. Double-pane windows, A/C & forced-air heating, dual sinks, vanity & jetted tub. Finished, oversized garage, with cabinets, shelves and workbench. \$285,000 #20141424



20019 Blue Bell Ct-13/56 SIMPLY ADORABLE CABIN. Two-story, 3bd, 2ba. Get a cozy, country feeling, with a wood-burning stove and loft master bedroom. Lovely woodsy setting, quiet cul-de-sac location and minutes from the main Marina, lake & beach. Wonderful for vacationing, full-time living or investment. Established vacation rental with repeat guests. Short Sale-Subject to lender approval. \$150,000 #20141997



19808 Cottonwood-6/136 SCENIC VIEWS. Gently-sloping 1/3 acre lot for an easy build & septic system installed. Backs to seasonal creek. Near Yosemite Park and historic Gold Rush towns. Amenities include: Championship golf course, County Club, pool, tennis courts, equestrian center & shooting/archery ranges. Build your dream home today! Only \$9,900 #20150126

NOW ACCEPTING HOMES
FOR OUR
LONG-TERM & VACATION RENTAL PROGRAMS

Have You Joined Us on Facebook?
Over 30,000 Others Have!

18687 Main Street, Suite E, Groveland, CA 95321
209-962-1111
yosemiteregionresorts.com



19753 Butler Wy-8/290 IT'S A BREEZE-WAY to the front entrance of this cozy home, with Stone fireplace/pellet stove insert. French doors in living room, quartz kitchen counters & tile flooring. Newer fixtures, ceiling fans and 2 remodeled bathrooms. Plenty of storage downstairs & underneath the house. Powder-coated metal deck railings. \$254,000 #20141837



20808 Crest Pine-3/481 LOOKS LIKE NEW! Spacious, single-level home, with granite counters, pellet stove, central H/A, jetted tub in master bath. Covered patio, surrounded by lovely oak trees. Near Fisherman's Cove, tennis, Lake Lodge, beach and Equestrian Center. \$268,999 #20130184



20273 Upper Skyridge-15/Par.D MERGED LOTS with a filtered lake view. Backs to greenbelt. Plenty of room off a quiet one-way road, near the Pine Mtn Lake Marina. This is a fantastic piece of land! All utilities are available for your dream home on this .88 acre parcel. \$69,000 #20131903

NOW LEASING EXECUTIVE OFFICE SUITES • FROM \$250 PER MONTH • ASK FOR JOHN • 962-6014



Private & Semi-Private Suites with Shared Entry & Lobby, Conference Room, Kitchen, Restrooms, DSL & Wifi, Utilities, Janitorial Service & Security Alarm

- | | | | | | | | | | |
|---|---|--|---|---|---|--|---|--|--|
| | | | | | | | | | |
| ROB STONE
OWNER/REALTOR
BRE #01025463 | BJORN WAHMAN
BROKER
BRE #00706559 | TARA STONE
MANAGER/CFO
BRE #01106544 | LIZ MATTINGLY
BROKER ASSOC.
BRE #00709618 | TED BIANCHI
REALTOR
BRE #01318805 | PAULA BIANCHI
REALTOR
BRE #01316556 | SHIRLEY ECKHART
PROPERTY MANAGER
BRE #01506396 | SHARRON WAHMAN
EXEC. ASSISTANT
RESERVATIONIST | CAPRICE KROW
PROP. MGR/LDP
BRE# 01179023 | CORY STONE
PHOTOGRAPHER
VIDEOGRAPHER |