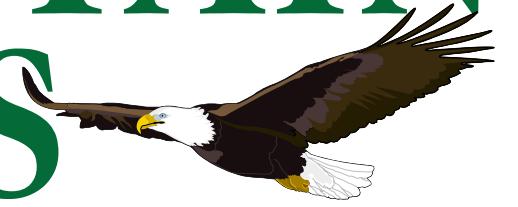




# PINE MOUNTAIN LAKE NEWS



THE OFFICIAL NEWSPAPER OF PINE MOUNTAIN LAKE PROPERTY OWNERS

**JANUARY 2016**

**TABLE OF CONTENTS**

Administration	2-9, 14-15
The Grill	10-11
PML Clubs/Activities/ Recreation	16-18
"Homes on the Hill" Real Estate	19-25
Events Calendar	26
Community	27-31, 35-38
School News	38
Home Improvement Directory	39-42
Classifieds	43

# HAPPY NEW YEAR 2016

FROM THE  
PINE MOUNTAIN  
LAKE ASSOCIATION



PRSR STD  
U.S. POSTAGE  
PAID  
ABS DIRECT  
Change Service Requested

19228 Pine Mountain Dr. Groveland, CA 95321

**UPCOMING EVENTS  
AT THE GRILL  
SEE PAGE 10-11**

**2016 ASSESSMENT/  
BUDGET PACKETS WERE  
MAILED DECEMBER 1  
SEE PAGE 3**

## President's Corner

Dana Chavarria • PMLA Board President

Happy New Year! I hope that everyone had a nice holiday. My time in PML during December was spent attending many meetings, going to a few parties, checking the progress on some of our recent amenity improvements, and curling up next to the fire watching the first snowfall of the season. We live in a beautiful setting! The comments that I heard as I attended events were primarily about what a wonderful place this is to retire or escape to while we are still working. Your Board has been busy during December talking to the members about how we can continue to maintain and improve our community.

We didn't have a regular Board of Director's meeting in December, as usual, but we did have a Meet & Greet Town Hall meeting where we focused on Crime and Safety questions from the Members. We had a great turnout for this event. Almost 60 members braved the cold weather and took the time to ask questions about these important topics. The PML Board and PML Management answered 20 detailed questions with assistance from members of the Sheriff's Department and the Community Services Unit. Topics ranged from how we enforce CC&R violations to questions about how we can best protect ourselves and our homes from criminals. Please see the website or stop by the Association office to access the packet of information that we provided to attendees. Mike McEvoy, a PML member, gave an update on crime in our community. The numbers are down for criminal activity from a couple of months ago, thanks in large part to how involved our members have been in working with the Sheriff's Department and with the PML Safety Department.

In early December all GCSD ratepayers received a mailing regarding a large water rate increase. Many of our members have expressed concern regarding these increases and are

seeking an explanation and justification from GCSD. All of us will see an increase personally, and as members of PML, this could affect the amount that we pay for our annual assessment. A GCSD Board Member met with me and a couple of other concerned ratepayers for several hours to listen to our concerns, questions and suggestions regarding the proposed increases. He encourages all affected rate payers to contact the GCSD Board members by e-mail so that they can be prepared to answer your questions at the upcoming informational meeting. Please try to attend at 6 pm on 1/13 at the Groveland Community Hall. If you would like to do some additional research, the GCSD website is full of information on this topic. To protest the increase, you must send a letter by 1/13 or drop it off at the meeting.

An issue that has come up as PML works to enforce our CC&R's, is whether the rental of single rooms or guest houses should be allowed in our community. A dispute arose with a couple of members when the Association initiated CC&R enforcement for this type of rental activity. The members questioned the Association's interpretation of the CC&R's and the Board of Directors submitted the matter to Association Counsel for review and a recommendation. Association Counsel concurred with how PML is interpreting and applying these sections of the CC&R's. Nevertheless, the Board is currently reviewing the response and recommendation from our attorney, and researching the pros and cons regarding this type of rental activity in PML. We know that members have a wide variety of opinions on the rental home or room issue. We will have this topic on an upcoming Board Meeting agenda and we plan to get feedback from our members regarding their opinion on this activity either as a part of the Long Range Planning Committee survey or as a separate



Dana Chavarria, PMLA President

member survey. Any change to the CC&R's requires a member vote.

*(Next Board of Director's Meeting: January 16, 2016)*

Hope to see you there,  
Dana

## HOURS OF OPERATION

Please note the hours of operation for the following amenities:

**COMPOST & ARCHERY RANGE**  
NOVEMBER THRU MARCH  
TUESDAY THRU SATURDAY  
8AM TO 4PM  
WEATHER PERMITTING

**SHOOTING RANGE**  
TUES, THURS, SAT  
9AM TO 3PM

**PLEASE NOTE** Hours may vary depending on weather conditions, safety concerns, or other situations beyond control. Archery and Gun Range users must check-in with compost attendant.

**HOURS SUBJECT TO CHANGE WITHOUT NOTICE.**

**Call the Main Gate at 209-962-8615.**



The Pine Mountain Lake News, established July 25, 1973, is printed monthly for residents of Pine Mountain Lake and vicinity by Pine Mountain Lake Association, Groveland, California 95321.

### SUBSCRIPTION RATES:

Co-owner subscription: \$3 per year  
Single copies: 50 cents each  
Single mailed copies: \$1.35 each  
For non-members: \$10 per year

### SUBMISSION DEADLINE

10th of the month by 4:30 PM

LATE SUBMISSIONS MAY NOT BE ACCEPTED

Visit [www.pinemountainlake.com](http://www.pinemountainlake.com) for ad rates and submission guidelines or e-mail:

[PMLNews@SabreDesign.net](mailto:PMLNews@SabreDesign.net).

For the mutual benefit of all property owners, the Pine Mountain Lake News reserves the right to edit all copy submitted for publication. The Pine Mountain Lake News is a private enterprise, not a public entity, and as such is entitled to reject advertisements or articles in the best judgment of its editor or publisher, despite a probable monopoly in the area of its publication. Pine Mountain Lake Association is not responsible for, nor does it guarantee the accuracy of, information contained in any ad placed in the Pine Mountain Lake News.

**DAVID WILKINSON**  
Publishing Editor

**SABRE DESIGN & PUBLISHING**  
Design/layout

**PINE MOUNTAIN LAKE NEWS**  
P.O. Box 605  
Groveland, CA 95321  
Tel: 209/962-0342  
Fax: 800/680-6217

**E-mail:**  
[PMLNews@SabreDesign.net](mailto:PMLNews@SabreDesign.net)

**BOARD OF DIRECTORS**  
Dana Chavarria (President)  
Wayne Augsburger (Vice President)  
Mike Gustafson (Secretary)  
Brian Sweeney (Treasurer)  
Steve Grier (Director-at-Large)

**GENERAL MANAGER**  
Joseph M. Powell, CCAM, CMCA, AMS

**CORRESPONDENCE TO DIRECTORS**  
Pine Mountain Lake Association  
19228 Pine Mountain Drive  
Groveland, CA 95321  
[PMLBoard@pinemountainlake.com](mailto:PMLBoard@pinemountainlake.com)

**ADMINISTRATION OFFICE HOURS OF OPERATION**  
Monday - Friday 8:00 AM - 4:30 PM  
Tel: 209/962-8600

## On the Cover



Wishing you all a Happy & Healthy New Year from the Pine Mountain Lake News and the Pine Mountain Lake Association.

# General Manager's Message

Joe Powell, CCAM, CMCA, AMS, General Manager

## DID YOU ATTEND THE DECEMBER PML TOWN HALL MEETING?

PML held a town hall/meet and greet meeting in December in response to member concerns regarding burglaries and the increase in crime in PML. The meeting was well attended and a lot of useful information was distributed. Resource information can be found on the PML Website at [www.pinemountainlake.com](http://www.pinemountainlake.com) under the Department of Safety page.

We plan to hold an informational meeting in the near future in coordination with the Tuolumne County Sheriff's Department and Community Services Unit. The topics will be how to set up a neighborhood watch program and protecting your property. We encourage all interested members to attend.

For those members who attended the meeting, the Board of Directors would like to know:

- Did you find the meeting useful?
- Would you like to see more meetings like this to discuss the hot topics in our community?

Please respond by sending an email to the Board of Directors email address at: [PMLABoard@pinemountainlake.com](mailto:PMLABoard@pinemountainlake.com)

## SHOOTING RANGE SOUND MITIGATION WALL INSTALLED

The PML Maintenance Department has completed installation of the Shooting Range sound mitigation wall. The Association took action to work to mitigate the level of sound emanating from the Shooting Range in response to complaints filed by some of our members. Now that the Shooting Range sound mitigation wall is in place, we anticipate that this will have a significant impact.

In accordance with the decision of the Board of Directors at their September 20, 2014 meeting, now that the sound wall is in place, Resolution #11.01 is now in effect. Specifically; authorized weapons: "Any gun that is legal in the State of California may be used at the shooting range". The restriction limiting larger calibers to Thursday and Saturday afternoon is lifted as well. The text of Resolution #11.01 will be followed.

## PML PARTNERS WITH THE GROVELAND TRAIL HEADS MOUNTAIN BIKING CLUB

PML has partnered with members of the Groveland Trail Heads biking group to bring a hike/bike trail system to PML. They are about to break ground on this

project in Unit 16 and we look forward to working with them to accomplish this great project. We would like to thank these volunteer members for their efforts and service to our community.

The ground breaking starts on Saturday, January 9, 2016. For more information, feel free to email Ariel Galos at [info@grovelandtrailheads.org](mailto:info@grovelandtrailheads.org). In addition, project information and sign-ups are available online at [www.grovelandtrailheads.org](http://www.grovelandtrailheads.org). The January edition of the Groveland Trail Heads News can also be found online at the PML Website. Check it out. It should be fun!

## NEW YEAR'S RESOLUTION - BE NEIGHBORLY

From time to time PML receives complaints regarding alleged CC&R violations. It is usually a member who is unhappy with their neighbor and wants to resolve the situation quickly. The

expectation is that PML should handle the issue. Unfortunately, many members do not talk to their neighbors prior to contacting the Association and filing a complaint. This causes an immediate conflict between the two members that could have been easily resolved with simple communication. Many times, it is an issue that PML has no authority or ability to solve.

We encourage all members to get to know their neighbors and try to develop good relationships. A small effort to communicate and being neighborly can go a long way. Think about it...would it be more comfortable to live next to someone for 10-20 years who is friendly or unfriendly? If you haven't taken the time to get to know your neighbors, please do. You might be missing out on something great.

## Wishing Everyone a Safe and Happy New Year!

# FIREWOOD AVAILABLE

FIREWOOD CUTTING IS HERE  
PML SLASH AND COMPOST SITE

OAK AND CEDAR REQUIRES A \$20 PML WOOD CUTTING PERMIT  
WOOD CUTTING PERMITS AVAILABLE AT THE MAINTENANCE FACILITY

PINE AND FIR AVAILABLE FOR FREE CUT & HAUL

FOR MORE INFORMATION PLEASE CONTACT SUSAN AT  
(209) 962-8612 BETWEEN THE HOURS OF 7 AM TO 2:30 PM, M-F.

# NOTICE

The Pine Mountain Lake News, established July 25, 1973, is printed monthly for residents of Pine Mountain Lake and sold in the Groveland, CA 95321 area. Members can access the PML News monthly edition online at [www.PineMountainLake.com](http://www.PineMountainLake.com). Every month the newest edition of the PML News is posted online before the first of each month. Interested parties can subscribe to the traditional "hard copy" and receive a copy by mail each month.

The PML News is mailed to approximately 3500 PML property owner households each month. Up to 500 copies are rack-sold in the local Groveland area. Our circulation reaches approximately 1200 full-time, resident, PML property owners and approximately 2300 "weekender," non-resident, property owners who maintain primary residence in Northern California, in Southern California, or in other states. For more information regarding the PML News, please call the PML Administration Office

at (209) 962-8600. We greatly appreciate your contributions but please note that the PML News fills up very quickly – often by the 7th or 8th of the month (long before the 10th deadline). To ensure that your submission is reviewed for publication please submit in full and as early as possible. Please remember that the PML News is limited in capacity and your submissions are reviewed on a first-come-first-served, space-available basis.

We publish all PMLA related submissions such as Board & Management Business, Clubs, Activities & Events. Where space remains, we publish non-PMLA related submissions in our "Community" section.

We do our best to provide timely news. If you experience delayed delivery or have misplaced a particular edition, please visit us at the PMLA website [www.pinemountainlake.com](http://www.pinemountainlake.com) for a downloadable PDF of the News posted by the 1st of the month and a downloadable PDF list of ad rates.

# Submission Guidelines

## The PML News is the Official Newspaper of Pine Mountain Lake Property Owners

The PML News is dedicated to reporting PML Association business and PML Association news to Pine Mountain Lake Property Owners.

The PML News receives more than 100 Tuolumne County/Groveland community related submissions each month. All such community related articles and notices will appear in the PML News on a SPACE AVAILABLE basis and at the DISCRETION of the PML News Publishing Editor.

### DEADLINES

Advertisements must be received IN FULL (text, MLS info, images, logos, etc.) by the 10th of the month for the following month's edition. Only advertisements received in full will be guaranteed to be published in that month's edition. NO EXCEPTIONS.

### MEDIA ACCEPTED

email

### SOFTWARE

InDesign, Microsoft Word, Photoshop, Illustrator or PDF.

### TEXT/GRAPHICS

Handwritten text is not accepted. Material composed completely of capital letters is not accepted. Please use uppercase and lowercase letters in composition. Inkjet printed images are not accepted. Images are accepted ONLY as camera ready art, original photos (to be scanned) or as JPEG, TIFF or PDF files created with above listed software. All scans and bitmap images must be in TIFF or JPG format at least 200 dpi at 100% (300 dpi preferred). Ad files are stored for 90 days from first run date. Older ads that have not been running must be resubmitted. (See Display & Insert Advertising Contract "Design and Preparation Charges.")

### E-MAIL TEXT/GRAPHICS

Text/graphics may be delivered as e-mail attachments via the Internet. Send to [pmlnews@sabredesign.net](mailto:pmlnews@sabredesign.net).

### AD DESIGN and PROOFS

Ads that are requested to be sent to other periodicals require a usage fee from the advertiser (see Display & Insert Advertising Contract "Design and Preparation Charges"). Proofs are available upon request and final proof approval for all ads is expected within 24 hours. Changes made are LIMITED to typographical or graphic placement errors. NO OTHER ADDITIONS OR CHANGES WILL BE MADE.

### SUBMISSION DEADLINES

- Articles — 10th each month
- Ads — 10th each month
- Classifieds — 15th each month

**VISIT US ONLINE!**  
[www.pinemountainlake.com](http://www.pinemountainlake.com)





**PINE MOUNTAIN LAKE**  
**209/962-8600**

www.pinemountainlake.com

### ADMINISTRATION OFFICE HOURS

**8:00 AM TO 4:30 PM – MON THRU FRI**  
**OPEN AT 8:45 AM SECOND TUES OF EACH MONTH**

#### PAY PHONE LOCATIONS

In an emergency, call 911

- Campground (restrooms)
- Dunn Court Beach
- Lake Lodge

Press \*81 on any Pay Phone to contact Main Gate.

- Main Gate (restrooms)
- Marina
- Equestrian Center
- Tennis Courts (Pine Mountain Drive)

#### General Info 209/962-8600

Tina Cutright admin@pinemountainlake.com

#### Main Gate 209/962-8615

General Safety Inquiries, gate passes,  
campground reservations, tennis reservations  
campground@pinemountainlake.com

#### Accounting 209/962-8607

Receivable/Collections/Assessments  
Karen Peracca pmlar@pinemountainlake.com

#### Accounts Payable 209/962-8626

Ashley Jackson pmlap@pinemountainlake.com

#### Controller 209/962-8606

Accounting Procedures  
Ken Spencer controller@pinemountainlake.com

#### ADMINISTRATION

##### General Manager

Joseph Powell joepowell@pinemountainlake.com

##### Administrative Asst. to G.M.

209/962-8627

Debra Durai debra@pinemountainlake.com

##### Assistant to G.M. 209/962-8604

Ivonne Deckardideckard@pinemountainlake.com

##### Human Resources 209/962-8628

Allie Henderson pmlhr@pinemountainlake.com

##### E.C.C. Coordinator 209/962-8605

Plan Submittals, Compliance Fees, Mergers  
Terri Thomas ecc@pinemountainlake.com

##### Member Relations 209/962-8632

Gate Cards, Address Changes, Webmaster  
Anita Spencer pmlmr@pinemountainlake.com

##### Community Standards Dir. 209/962-1240

CC&R Compliance/Violations/Fire Mitigation  
Dennis Pipal  
communitystandards@pinemountainlake.com

#### DEPARTMENT OF SAFETY

##### Director of Safety 209/962-8633

Natalie Trujillo n.trujillo@pinemountainlake.com

##### Sergeant 209/962-1244

Sgt. Teri Cathrein t.cathrein@pinemountainlake.com

#### MAINTENANCE DEPT 209/962-8612

Susan Capitanich maintenance@pinemountainlake.com

##### Maintenance Manager 209/962-8611

Tom Moffitt tmoffitt@pinemountainlake.com

#### GOLF COURSE

##### Golf Course Superintendent

209/962-8610

Alan MacDonald amacdonald@pinemountainlake.com

##### Golf Shop 209/962-8620

Golf Pro Shop/Golf Reservations  
Doug Schmielt dschmielt@pinemountainlake.com

##### Golf Pro 209/962-8622

Mike Cook golfpro@pinemountainlake.com

#### THE GRILL AT PINE MOUNTAIN LAKE

##### The Grill Manager 209/962-8639

Jay Reis clubmgr@pinemountainlake.com

##### Restaurant 209/962-8638

Bambi Johnson cluboffice@pinemountainlake.com

##### 19th Hole Lounge 209/962-8636

Jamie Wortmann  
19thholelounge@pinemountainlake.com

#### OTHER PHONE NUMBERS

##### Equestrian Center Manager 209/962-8667

Jeanna Santalucia stables@pinemountainlake.com

##### PML News 209/962-0342

Pine Mountain Lake News  
Sabre Design & Publishing  
PMLNews@SabreDesign.net

## ADMIN OFFICE HOLIDAYS 2016

(ADMIN OFFICE WILL BE CLOSED)

FRI 01/01/16 NEW YEAR'S DAY

Mon 2/15/16 Presidents Day

Mon 5/30/16 Memorial Day

Mon 7/4/16 Independence Day

Mon 9/5/16 Labor Day

Fri 11/11/16 Veterans Day  
(National Observance)

Thur 11/24/16 Thanksgiving

Fri 11/25/16 Day After Thanksgiving

Fri 12/23/16 Christmas Eve

Mon 12/26/16 Christmas Day

Fri 12/30/16 New Years Eve

Fri 1/2/17 New Years Day

## UPCOMING SCHEDULE OF PMLA BOARD MEETINGS

Meetings are held at the PML  
Lake Lodge and start at 9 AM.  
(Unless otherwise noted)

### JANUARY 16, 2016

FEBRUARY 20, 2016

MARCH 19, 2016

APRIL 16, 2016

MAY 21, 2016

JUNE 18, 2016

JULY 16, 2016

### AUGUST 20, 2016 ANNUAL MEETING / ELECTION

SEPTEMBER 10, 2016  
2ND SATURDAY

OCTOBER 22, 2016  
BUDGET MEETING 4TH SAT. 8AM

NOVEMBER 5, 2016  
1ST SATURDAY

NO DECEMBER MEETING

## Subscribe to the PML News TODAY!

Name \_\_\_\_\_

Unit \_\_\_\_\_ Lot \_\_\_\_\_

Mailing Address \_\_\_\_\_

**NO CHARGE for PROPERTY OWNERS** (bulk)  
**\$3/year for Co-Owners** (bulk);  
**\$10/year for Non-Property Owners** (bulk)  
**\$18/year for PROPERTY OWNERS** (1st class)  
**\$28/year for Non-property owners** (1st class)

Enclosed is my check in the amount of

\$ \_\_\_\_\_ (PAYMENT DUE IN FULL)

**Send this subscription to:**  
**Pine Mountain Lake Association**  
**19228 Pine Mtn. Dr. Groveland, CA 95321**  
**ATTN: TINA**

## PINE MOUNTAIN LAKE NEWS DELIVERY

Although we guarantee that the PML News is mailed from Modesto, CA on the same day (between the 26th-30th of month), most post offices (except Groveland) sort Bulk Mail after First Class mail. So, consider a First Class delivery subscription for just \$18/yr? (\$18 per year for property owners and \$28 per year for non-property owners) Interested? Call the PMLA Office at 209/962-8632 or see form above.

NOTE: The Pine Mountain Lake News is also available (in pdf format) at:  
[www.pinemountainlake.com](http://www.pinemountainlake.com).  
New editions are posted by the 1st of the month.

## RULES ENFORCEMENT ACTIONS

### Violations Report – November 2015

Courtesy Notices	63
Notice of Non-Compliance	8
Fines	0
Violations Pending	153



# BOARD ACTION(S) VOTING RECORDS

**REVISED RECORD FOR OCTOBER BOARD MEETING** – Corrects minority voting record and changes last item from Failed to Carried.

October 24, 2015 Board Budget Meeting – Agenda Items	Board Members*					COMMENTS	
SHOULD THE BOARD...	DC	WA	MG	BS	SG		COSTS
approve the agenda?	Y	Y	Y	Y	Y	AIF – Motion Carried	
approve the consent agenda?	Y	Y	Y	Y	Y	AIF – Motion Carried	
postpone consideration of Shooting RAnge Sound Wall Alternative Design?	Y	N	Y	N	Y	Tabled until November 7, 2015 meeting	
have managers review revenue projections for proposed 2016 Budget?	N	Y	N	Y	N	Motion Failed	
approve the purchase of a Hot Dog Cart for the Marina? (New Cap)	Y	Y	Y	Y	Y	AIF – Motion Carried	\$8,500
approve \$5k request from Waterfowl Management Committee	o	o	o	o	o	Failed for lack of Motion	
approve \$183k reserve expenditure for existing parking lot refurbishment (Reserves)	Y	Y	Y	Y	Y	AIF – Motion Carried	\$183,000
approve \$10k to design improved entrance to The Grill? (Operations)	N	Y	Y	Y	N	Motion Carried	\$10,000
approve the creation of a staging/event area on the first tee?	Y	Y	Y	Y	Y	AIF – Motion Carried	
Total APPROVED Golf Donations this meeting (Retail Value)							\$0
Total APPROVED Other Donations this meeting (Retail Value)							\$0
Total APPROVED expenditures this meeting							\$201,500
/ = Absent   A = Abstained   AIF = All In Favor   o = No Vote							
* DC=Dana Chavarria   WA=Wayne Augsburger   MG=Mike Gustafson   BS=Brian Sweeney   SG=Steve Grierfer							
<b>MINORITY VOTES HIGHLIGHTED</b>							

November 7, 2015 Board Meeting – Agenda Items	Board Members*					COMMENTS	
SHOULD THE BOARD...	DC	WA	MG	BS	SG		COSTS
approve the agenda?	Y	Y	Y	Y	Y	AIF – Motion Carried	
approve the consent agenda?	Y	Y	Y	Y	Y	AIF – Motion Carried	
approve Alternative Sound Wall Design at the Shooting Range?	Y	Y	Y	Y	Y	AIF – Motion Carried	
approve Naming the Shooting Range after Dr. Carol Simpson?	Y	Y	Y	Y	Y	AIF – Motion Carried	
approve a Board Parliamintarian?	Y	Y	Y	Y	A	Motion Carried – Director Grierfer is Parliamentarian	
approve new bank account for payroll?	Y	Y	Y	N	Y	4 Yes votes – Motion Carried	
approve proposed changes to the Reserve Spending process?	Y	Y	Y	Y	Y	AIF – Motion Carried	
appoint member to Employee Compensation Study Ad-Hoc Committee?	Y	Y	Y	Y	Y	AIF – Motion Carried – Pauline Turski appointed	
accept Lake & Marina Committee’s recommendation NOT to allow year-round skiing on Pine Mountain Lake?	Y	Y	Y	Y	Y	AIF – Motion Carried	
approve annual Gears & Grooves Triathlon event June 11, 2016?	Y	Y	Y	Y	A	4 Yes votes – Motion Carried	
approve 2016 Budget?	Y	Y	Y	N	N	3 Yes votes – Motion Carried	
approve Resolution 15.02 Levying 2016 General Assessment?	Y	Y	Y	N	Y	4 Yes votes – Motion Carried	
approve PML Member Home Business Permits - Applicant #1?	Y	Y	Y	Y	Y	AIF – Motion Carried	
NOT approve PML Member Home Business Permits - Applicant #2?	Y	Y	Y	Y	Y	AIF – Motion Carried – Need more Information	
approve Donation to Groveland Chamber of Commerce?	Y	Y	Y	Y	Y	AIF – Motion Carried	\$100
set Election Procedural and Board Meeting Dates for 2016?	Y	Y	Y	Y	Y	AIF – Motion Carried	
Total APPROVED Golf Donations this meeting (Retail Value)							\$0
Total APPROVED Other Donations this meeting (Retail Value)							\$100
Total APPROVED expenditures this meeting							\$100
/ = Absent   A = Abstained   AIF = All In Favor   o = No Vote							
* DC=Dana Chavarria   WA=Wayne Augsburger   MG=Mike Gustafson   BS=Brian Sweeney   SG=Steve Grierfer							
<b>MINORITY VOTES HIGHLIGHTED</b>							

**PINE MOUNTAIN LAKE ASSOCIATION**  
**SUMMARY STATEMENT OF OPERATING FUND REVENUES AND EXPENSES**  
For The Eleven Months Ended November 29, 2015

OPERATION OF AMENITIES	Revenues					Expenses				Budget (NET COST) INCOME	Variance Bud - Act
	Members' Assessments Net of Discount	User Fees	Sales, Net of Cost of Sales	Miscellaneous Income	Total Revenues	Total Expenses	(Cost)/Income Before Depreciation	Depreciation Expense	(NET COST) INCOME		
Golf Course	\$ -0-	\$ 827,483	\$ 34,587	\$ 28	\$ 862,098	\$ 1,222,771	\$ (360,673)		\$ (360,673)	\$ (385,057)	24,384
Restaurant & Bar	-0-	6,958	766,414		773,372	1,110,187	(336,815)		\$ (336,815)	(346,809)	9,994
Marina	-0-	266,597	133,304		399,901	478,376	(78,475)		\$ (78,475)	(50,468)	(28,007)
Snack Shack	-0-		37,946		37,946	55,978	(18,032)		\$ (18,032)	(32,116)	14,084
Stables	-0-	67,873		1,296	69,169	197,624	(128,455)		\$ (128,455)	(114,865)	(13,590)
Recreation	-0-	48,377	5,254		53,631	99,219	(45,588)		\$ (45,588)	(85,743)	40,155
Roads & Facilities Maintenance	-0-	34,520		260	34,780	1,474,537	(1,439,757)		\$ (1,439,757)	(1,565,184)	125,427
<b>PROPERTY OWNER SERVICES</b>											
Safety	-0-	97,393		1,581	98,974	809,207	(710,233)		(710,233)	(803,056)	92,823
Administration	-0-	162,402		5,510	167,912	1,192,459	(1,024,547)		(1,024,547)	(1,173,910)	149,363
<b>ASSESSMENTS</b>											
Assessments	4,570,715			55,415	4,626,130	83,292	4,542,838	746,303	3,796,535	3,792,530	4,005
<b>Totals</b>	<b>\$ 4,570,715</b>	<b>\$ 1,511,603</b>	<b>\$ 977,505</b>	<b>\$ 64,090</b>	<b>\$ 7,123,913</b>	<b>\$ 6,723,650</b>	<b>\$ 400,263</b>	<b>\$ 746,303</b>	<b>\$ (346,040)</b>	<b>\$ (764,678)</b>	<b>418,638</b>

**Notes to the Financial Statements**

- Total Revenues minus Total Expenses equals Net Income before depreciation. The annual budget for income before depreciation is (\$130,000).
- The Association combined the Operating Fund and the Property and Equipment Fund into one fund effective May 1, 2001.

**CAPITAL EXPENDITURES 11 Months Ended Nov. 30, 2015**

	TOTAL RESERVE FUNDS	NEW CAPITAL ADDITIONS FUND	TOTAL CONTRIBUTION TO CAPITAL
<b>2015 Beginning Fund Balances</b>	1,846,157	\$ 119,654	1,965,811
Interest Income	2,836	(306)	2,530
Bank Fees/Discounts Taken	373		373
Assessments Earned	1,688,676 <sup>(1)</sup>	134,794 <sup>(2)</sup>	1,823,470
Other Income/Expense			-
<b>PURCHASES BY AMENITY</b>			
Golf Course	(324,976)	(1,664)	(326,640)
Country Club	(34,308)	(13,487)	(47,795)
Bar	(8,466)		(8,466)
Marina	(117,818)	(17,714)	(135,532)
Snack Shack	(1,634)		(1,634)
Swim Center	(14,732)		(14,732)
Stables	(16,621)	(13,715)	(30,336)
Recreation		(5,508)	(5,508)
Roads & Facilities Maintenance	(177,388)		(177,388)
<b>PROPERTY OWNER SERVICES</b>			
Safety	(28,088)		(28,088)
Administration	(3,138)	(165,366)	(168,504)
Non-Capital Reserve Expenses	(731,904)		(731,904)
<b>Total transfer to Operating Fund for property and equipment additions and reserve expenses</b>	<b>(1,459,073)</b>	<b>(217,454)</b>	<b>(1,676,527)</b>
<b>Adjusted Fund Balances</b>	<b>\$ 2,078,969</b>	<b>\$ 36,688</b>	<b>\$ 2,115,657</b>

**Notes to the Financial Statements**

- The Budgeted Reserve Fund assessment for 2015 is \$1,842,195
- The Budgeted New Capital Additions Fund assessment for 2015 is \$147,050

**DID YOU KNOW... YOU CAN NOW MAKE YOUR PML PAYMENTS ONLINE?**

Now Available  
Online bill pay at  
**PineMountainLake.com**

*Pay via your credit card  
—quick & easy!*

**PML AUTOMATIC PAYMENT PROGRAM**

TAKING THE TIME TO WRITE A CHECK FOR YOUR MONTHLY ASSESSMENT PAYMENT CAN BE TIME CONSUMING AND COSTLY. YOU CAN AVOID HIS BURDEN AND ELIMINATE THE POTENTIAL FOR LATE PAYMENT CHARGES BY ENROLLING IN PMLA'S AUTO PAYMENT PROGRAM. BY COMPLETING THE FORM, WHICH CAN BE FOUND AT [WWW.PINEMOUNTAINLAKE.COM](http://WWW.PINEMOUNTAINLAKE.COM) UNDER THE RESOURCES/FORMS, AND RETURNING IT TO THE ADMINISTRATION OFFICE, YOU CAN HAVE YOUR MONTHLY ASSESSMENT AUTOMATICALLY DEDUCTED FROM YOUR CHECKING ACCOUNT OR CHARGED TO YOUR CREDIT CARD. THIS MEANS YOU NEVER HAVE TO REMEMBER TO WRITE A CHECK AND MAIL IT EACH MONTH. THE PEACE OF MIND THAT COMES WITH KNOWING YOUR PAYMENT WILL ALWAYS BE MADE ON TIME IS EASY TO ATTAIN. WE CAN ALSO ARRANGE TO HAVE ANY OTHER REGULAR PAYMENT YOU MAKE TO THE ASSOCIATION (SUCH AS GOLF MEMBERSHIP, HORSE BOARDING FEES, ETC.) PAID IN THE SAME WAY.

FOR MORE INFORMATION ON THIS SIMPLE, EFFECTIVE AND TIME SAVING PLAN PLEASE CONTACT US AT (209) 962-8600.

# PMLA Money Matters

Ken Spencer – Association Controller

It seems as if the older I get the faster the years go by. It feels like just a few days ago we were welcoming in 2015. Now it's time to say goodbye to 2015 and hello to 2016. Before we leave the old year behind I thought it important to review where we ended 2015 from an Association financial performance perspective.

While the final numbers are still being compiled it is safe to say that 2015 produced some very positive financial results for PMLA when compared to our budget. I anticipate that when all is said and done the final results will show that we were around \$300K better than budget for the year.

This is a pretty large number and is not a normal actual to budget variation. There were a number of factors that contributed to this result. Many of them were due to our efforts to control and reduce costs. Some of them were one-time exceptions to the norm. Still others were the result of factors beyond our immediate control and had a negative affect on our operational capabilities.

Sales volume was 2% higher than anticipated. This was coupled with a Cost of Sales figure that was 1 percentage point lower than forecast. These factors combined to produce a Gross Margin figure well above our budgeted level.

The improving economy helped us achieve higher than planned revenue figures in areas such as Transfer Fees (as a

result of more property sales), Inspection/Plan Check Fees (caused by an increase in building and remodeling activity) and Vehicle Access Fees (due to a large increase in the number of property rentals). These are areas that are very volatile and subject to fluctuations in the overall economy.

Personnel costs also came in significantly below budget. Two major factors influencing this positive result were reduce labor cost and lower medical insurance expense. Labor costs (wages) were primarily impacted by several staffing shortfalls caused by our inability to attract qualified individuals for some of our open positions. While this served to save money it also negatively impacted our service levels at several departments including Safety, Maintenance and the Marina. Similarly savings in health insurance costs were affected by these staffing issues. In addition, our base costs did not increase as much as anticipated.

Oftentimes the timing of expenses has an additional impact on our results. This was the case with some of our contracted services during the year. Some of these costs will be pushed forward and will impact us in 2016.

Concerted efforts to reduce our fuel costs were successful on two fronts. First the cost of gas did not increase as much as we projected. More importantly changes were made to some of our operational

procedures that resulted in less usage of fuel during the year. These efforts will continue going forward. Secondly we placed a major focus on controlling and reducing our cost of utilities (electricity, propane, water and telephone). These efforts produced positive financial results during the year.

Finally it is important to answer the question, where does this "extra" money go? All positive variances are used to offset future budget projections (for example the 2016 budget contains a provision to "roll over" \$256K to reduce the need for an assessment increase. Additional excess results from 2015 will be used to offset potential increases in future year's assessments. Simply stated these positive results are returned to property owners by way of future assessment savings.

These are just a few of the areas that helped produce these healthy financial results in 2015. I urge all of you to take a look at our financial statements (posted monthly on our website) and the Annual Report which is mailed to all property owners in April.

Well that's it for this month. If you have any PMLA Money Matters you would like to see discussed in this column in the future please drop me a line at [controller@pinemountainlake.com](mailto:controller@pinemountainlake.com) or give me a call at 962-8606. Thanks for reading and I hope you find this monthly discussion interesting and at least a bit informative.

# PML Safety Report

	November	YTD
Guest Passes Issued	1,354	16,730
Vendor Passes Issued	184	1,450
Temp. Resident Passes Issued	206	5,459
Vehicles Admitted	14,077	148,149
Vehicles Refused Entry	174	2,881
Phone Calls Received	5,432	60,640
Residential Alarm	15	97
Animal - Loose	21	278
Animal - Impounded	8	59
Animal - Dead/Injured	19	203
Animal - Disturbance	18	149
Public Assist	25	350
Welfare Check	7	31
Transport	0	16
Traffic Hazard	0	9
Traffic Control	0	10
Excessive Speed/Reckless Driving	6	32
Gate - Tamper	3	14
Gate - Follow Through	4	74
Gate - Malfunction	13	142
Gate - Struck by Vehicle	6	34
Control Burn Reported	60	476
Smoke Complaint	3	29
Residential Disturbance	2	49
Amenity Burglary	0	1
Residential Burglary	1	12
Grand Theft	0	2
Petty Theft	0	15
Trespassing	0	12
Vandalism	1	13
Property Damage - PML	2	17
Property Damage - Resident	0	6
PML Reg Violations Resident	3	43
PML Reg Violations Guest	0	39
Vehicle - Citation Issued	0	32
Vehicle - Accident PML	2	14
Patrolling Unit	659	4,347
Amenity Security Check	2,367	26,692
Resident Security Check	612	4,476
Monitoring Tennis Courts	1	108
Weapon Violation	0	10
Fixed Post	0	14
Courtesy Notice Issued	15	86
All Fees Collected	\$7,993.71	\$147,308.80

## GOT YOUR PIN?

Since PML is a private gated community, we want to offer our property owners a secure way to call in guests. When you become a member of PML you are assigned a Personal Identification Number (PIN) to utilize either when calling in a guest pass or using the Gate Access Internet program. This PIN identifies you to staff without you having to be present. This is a confidential number and should **not be shared**. When you call the Main Gate to authorize a guest or vendor access into PML, you will be asked for your PIN. The staff will look up the number in the computer and use it to confirm your identity before entering the guest information. You must have this number to utilize the Gate Access Internet program as well. If you do not know your PIN or have any questions, please contact the Administration Office at:



**(209) 962-8600**



Monday through Friday from 8 am to 4:30 pm.  
and we will gladly supply this information to you.

## MAKE PML YOUR ONE-STOP-SHOP FOR ALL YOUR GIFT GIVING!

**Pick up a gift card for:**

**GOLF**

**GOLF SHOP APPAREL & ACCESSORIES**

**THE GRILL**

**BOAT RENTALS & GEAR AT THE MARINA**

**MARINA LAKESIDE CAFÉ**

**SNACK SHACK GOODIES**

**HUNTING & FISHING LICENSE VOUCHERS**

**(Gift cards are available at the Administration Office, The Grill, and at the Pro Shop)**

**WWW.PINEMOUNTAINLAKE.COM**  
**FACEBOOK.COM/**  
**PINEMOUNTAINLAKECA**



## Community Standards

Dennis Pipal – Community Standards, Director

Winter weather can bring about some troubling occurrences. Every year we can get a windstorm and the damage it does to our trees is a good example of what weather can do. And an especially heavy snow fall stresses out our trees and creates a mess of downed limbs, entire trees fall, and can even cause damage to our structures.

One of the most head scratching occurrences is when your neighbor's tree/limb falls on to your Lot. Who cleans this up? Who is responsible for the damage it may have caused?

First of all, this is a civil matter between you and your neighbor. We, as an Association, can and will provide contact information so you can contact them to start the conversation about who is going to do what.

Second, we recommend you work something out between yourselves. If you are the type who likes to use your computer to gather information, Google this scenario, TREE FALLS ACROSS PROPERTY LINES. The miracle of the internet will give you a feel for the rights and responsibilities of the parties involved and it may surprise you!! However, this education is no replacement for the counsel of your licensed attorney.

Another interesting topic is tree removal and tree limbing. When do you need approval and when don't you?

PMLA rules require you to ask for approval on any tree or limb 5" in diameter or larger. It's as simple as that. The US Forestry Service has rules also. If you intend to sell, barter or trade any of the wood from your tree removal then you need to apply for a permit. If you intend to use the wood for personal use such as, firewood for your own use, taking to the compost dump or donating the wood, then no permit is required.

We are here to help you in this process

whether you want to eliminate trees for fire abatement purposes such as dead trees or the thinning of live trees, or because they are diseased or damaging your property, we can help you through the process of getting the right approvals. Our beautiful trees are an important natural resource and these rules are in place to make sure we don't artificially alter the beauty of our landscape. The Tree Removal Request form is located on our website under the Resources/Fire Safety tab. [www.pinemountainlake.com](http://www.pinemountainlake.com).

PGE has been very active in our area taking down dead trees which could be a hazard to their power lines. They fall these dead trees at no cost to the member, however, the member is responsible for the clean-up of the slash and the remaining log. They usually make two trips through PMLA each year. First, their arborist crew comes through and marks the hazardous trees, then a different crew follows a few months later and removes the tree. If you have a dead tree on your Lot which you feel is a hazard to the power lines, call PGE at (209) 743-5002 and they will send an inspector and mark the tree if they concur that the tree needs to be removed. This will happen at their next regular trip to remove trees.

PMLA burn permits are still required and they are good for 5 years. Those of you who received your permit 5 years ago will receive an automatic renewal in the mail. See the PMLA website for all the details about burning in PML.

And last, for those of you who are using these winter months for continued Lot cleaning, Good For You! I think you figured it out that it's easier to do this work in the winter months. We encourage your efforts and remember, KEEP IT SIMPLE....Get rid of the dead stuff, thin out the live stuff, and limb up those trees.

Best Wishes to you and yours for a Happy New Year!!

## PML Lost & Found Items

The following items have been turned in to the Department of Safety. If you are missing any of these items, please come to the PML Main Gate to claim it.

- Nokia Smart Phone–Blk/Whit
- Giraffe Hat
- Brown With Black Spotted Reading Glasses
- Key Ring With Four Keys–1 Chrysler Key
- Empty Red Fire Extinguisher
- Two Orange Dog Vests
- Sunglasses
- Prescription Glasses
- Gold Key
- Metal Clipboard Case Rim Fire Recovery Papers
- Possible Boat Key With Blackout Window Tinting Key Chain
- Set Of Keys–Mailbox Key, Ford Key, Etc
- Blue Iphone5c
- Red Dog Collar
- Black Wallet, Ca DL, Wells Fargo Bank Card, Chase Credit Card, SS Card
- Red Gas Can
- Tent, Portable Scanner, Air-horn, USB Cord And iHome Speaker,
- Key Chain With 1 Kwikset Key, Dog And W Emblems–4/L BBQ
- Reading Glasses With Black And Gray Case
- Small Razor Scooter
- Property Owner Card
- Green Make Up Bag W/Lexus Car Key
- Bicycle Found At 1/M
- Wedding Ring
- Check Written To Lura Richa Of The Amount Of \$50
- Go Pro Her04
- Black Leather Wallet Jose Rodriguez
- Black Yunteng Selfie Stick
- 2015 Annual Tennis Pass
- Amazon Package W/ "Palladio" Book
- Pink And White Satin Tote
- 1 Nike Shoe And A Black Galaxy Note 4 Cell Phone
- Carbon Fiber Motorcycle Helmet Slightly Damaged
- Prescription Glasses
- License Plate #3G0j398
- Plastic Saw Horse
- Tenant Gate Card Sheila Hasting
- Miscellaneous Items (Junk Draw Items)
- 2015 Annual Tennis Pass
- Red Wagon
- Blur Bone Dog Tag "Bronco"
- Silver/Black Pocket Knife
- Mail Box Key #2237
- Wheelchair Information And Seat Belt
- Silver Framed Prescription Glasses W/Black Cord

### PROPANE DISCOUNT PROGRAM

**SUBURBAN PROPANE** – As the preferred provider of Pine Mountain Lake we are happy to provide an exclusive members only program to all residents.

**BENEFITS INCLUDE:** Propane at a discounted rate • Tank rental at a discounted rate • Free basic tank installation • Easy payment options • 24/7 Tech support • Flexible delivery options • 24/7 live phone support

Contact our local staff for further details and current rates. Suburban Propane  
Jamestown California (209) 984-5283 • 1(800)PROPANE

### 2016 ASSESSMENT/BUDGET PACKETS

THE 2016 ASSESSMENT/BUDGET PACKETS WERE MAILED TO MEMBERS ON DECEMBER 1, 2015.

IF YOU HAVE NOT RECEIVED YOUR 2016 PACKET, PLEASE, CONTACT THE PML ADMINISTRATION OFFICE AT  
**(209) 962-8600**

### GUEST & RENTERS HANDBOOK IS AVAILABLE ONLINE!

You can now view or print the Guest and Renters Handbook from the PML Website. Go to our website at: [www.PineMountainLake.com](http://www.PineMountainLake.com) and click on Governance then Community Standards. Then click on Guest and Renters Handbook at the bottom of the page. This handbook has valuable information for Guests and Renters in Pine Mountain Lake.

### STRANGER DANGER

With children back in school, it is an important time to talk with them about how to protect themselves in the event of a dangerous situation. Please follow the link for helpful information to share with your children.

<http://www.mychildsafety.net/stranger-danger.html>

## LETTERS TO THE EDITOR

LETTERS RECEIVED – 2

DENIED BY EDITORIAL COMMITTEE – 0

Exceeds 250 word maximum – 0

Content – 0

Not a property owner – 0

DEFERRED TO NEXT EDITION BY

EDITORIAL COMMITTEE – 0

DENIED BY BOARD OF DIRECTORS – 0

DEFERRED TO NEXT EDITION BY

BOARD OF DIRECTORS – 0

Submit Letters to the Editor by sending to “Editor, PML News”

Mail: 19228 Pine Mountain Drive, Groveland, CA 95321

Email: PMLNews@sabredesign.net • Fax: 800-680-6217

**PLEASE NOTE THAT ALL LETTERS APPEAR IN THE ORDER RECEIVED BY THE PML NEWS**

The Pine Mountain Lake News welcomes letters and articles for publication provided they meet the criteria established in the current PMLA Editorial Policy (See excerpt below – entire policy on file at the Administration Office). Letters must be limited to 250 words, typewritten using upper and lowercase letters or neatly printed (no all-capital material) and signed with name, mailing address, PML unit/lot number, and day/evening telephone numbers by a property owner in good standing. **LETTERS MUST BE RECEIVED BY THE EDITOR BY THE 10th OF THE MONTH.** Letters deemed by the Editorial Committee to be improper will not be accepted. Readers are advised that **THE OPINIONS EXPRESSED IN THESE LETTERS ARE THOSE OF THE INDIVIDUAL AUTHORS, NOT OF PMLA, THE PINE MOUNTAIN LAKE NEWS, NOR THEIR EMPLOYEES.**

### SLALOM SKIING START TIMES

Say no to Slalom Skiing starting at 7:00 am!

If you enjoy the serenity of Pine Mountain lake in the early morning hours, that tranquility may soon be replaced by the sound of ski boats on the slalom course starting up at 7:00 am seven days a week based on a recent request to the PML Board by a small group of slalom skiers.

When the current boating rules were established several years ago, the board conducted an extensive study and determined a fair and equitable division of hours between ski boats and slow boats. (including pontoons, fishing boats, kayaks and canoes paddle boards and sail boats.)

Pine Mountain is a small lake and it is important to preserve an appropriate balance of activities and access. Ski boats are loud and create significant wakes directly impacting paddle boarders, kayakers, swimmers and fishermen effectively denying them access during these early morning hours.

In 2015, There were over 1000 watercraft registered on PML of these only 34 were waterskiers (Less than 3% of total registration) with less than 10 boats utilize the slalom course. The slalom skiers are currently using only about a third of their available 9:00 am slots.

Clearly this request benefits only the small minority of slalom enthusiasts while adversely affecting the majority.

I encourage you to contact the PML board directly to express your disagreement with this

request.....or next year you may waken to the sounds of high speed boating at 7:00am.

Phil Duncan  
Pleasanton, CA

### LOT MERGERS

The combining of lots continues to reduce income for the Pine Mountain Association.

After 17 years, we have reluctantly decided to combine our lots. The cost per lot has driven this decision.

In 2000, we wrote a letter to the Pine Mountain Association Board of Directors with a recommendation on the lot merger policy. The courtesy of a response was never received. In addition, over the years we have mentioned to previous members of the Board that consideration be given to having lots assessed at a different fee and that the policy of merging and de-merging be considered with appropriate fees.

We were always told that this was not possible.

With the continue rising cost at Pine Mountain, it is our hope that a new innovative financial approach will be found regarding lots merging and de-merging that will benefit both the Pine Mountain Association and the home owner. It is time to rethink the status quo..

John & Marjorie Kraskouskas  
Groveland, CA

## The PMLA Shooting Range

Tom Moffitt – Maintenance Department

The Shooting Range has origins in the early PMLA charter, with grass-root establishment of the Pine Mountain Lake Shooting Club. The range is staffed and operated by PMLA Shooting Club members who are trained and certified as Range Safety Officers (RSO)'s. The Shooting Range site is positioned on natural terrain, facing a northern direction, on the northern most section of PMLA Unit 16. There are two shooting stations for the 100-yard rifle, six stations for the pistol and 50-yard rifle range, and a four target 25-yard pistol range.

Concrete block sound walls have been constructed behind the shooting pavilions to refract the sounds. A separated 25-yard range for pistol firing is being improved, along with concrete block walls placed for sound and safety.

As for PMLA recreational amenities, the shooting range has been easily constructed and maintained, and has not required PMLA employees to staff and operate. Using natural terrain and existing roads, the construction was simple, the maintenance is simple, and the site improvements have been simple. The range has a single port-a potty restroom, a storage hut, a bear resistant trash container, an elevated 300-gallon water tank tower, eight covered



shooting stations, a two-way radio station, and a reclaimed antennae tower. Two discarded 1,000-gallon water tanks were placed above the range for fire suppression; water lines ran down the hill to gravity feed water flow to spigots and hoses. In total, the range is a consistently simple, low cost recreational amenity to construct and maintain.

PMLA has a bona fide Shooting Range, a bona fide Shooting Club, and an active PMLA recreational amenity that is controlled, monitored, and away from the homes. For additional information, you can review the shooting range by accessing the website at: <http://www.pmlsc.com/pmlsc/Index.asp>

## On the Lake: Lake Resolutions 2016

Mike Horvath – Limnologist/Lake Manager

As I write this, we are one day away from an expected storm that might, just might get the creeks flowing and start to refill the Lake. Alternatively, if each homeowner could bring 150,000 gallons of water to the Lake, we could also fill it that way. So that's resolution number one... fill the Lake.

Number two; don't "P" in the Lake. And hopefully you'll remember that means don't put nutrients (or fertilizer) into the Lake. For that matter, don't put anything into the Lake except your boat, your body, or your fishing line.

Number three is sort of an addendum to #2. Don't let run-off from your property pollute the Lake. I still see the occasional burn pile right next to the shoreline. And during our last rain, I was walking on Pleasant View and was pleasantly watching the gutter run with fairly clear looking

water. However, that clear water turned to muddy run-off as I passed a lot that had absolutely no ground-cover or vegetation. Remember, quite a few lots drain directly into the Lake.

Number four is another addendum. If you do put boat, body or bait into the water, make sure it doesn't bring aliens (invasive species) into the water. The current slogan from the resource agencies is to "Clean, Drain and Dry" between water bodies. That includes kayaks, canoes, life jackets, shoes, clothing, or anything else that has been in another lake, river, pond or stream.

And if I had to think of another resolution, it would have to be a positive one. Just love your Lake and get out and enjoy it. Whether you motor, paddle, or stroke on the water... or just sit at a beach and watch an osprey or eagle soar over the Lake, get out and Enjoy Your Lake. SPLASH!!!

## Know Who you Hire!

PMLA continues to receive reports from members who use unlicensed contractors and run into major problems. It could be home improvement work, asphalt, concrete, electrical, plumbing jobs or even tree removal and/or pruning. Check them out first and don't get burned!

The California Contractor State License Board has a lot of great information for consumers. We recommend visiting their

website and make sure that you double-check anyone you are thinking of hiring. Do they have a license, experience and insurance?

### GENERAL ADVICE

- Only hire state-licensed contractors.
- Any contractor performing \$500 worth

of work or more (including materials and labor) must be licensed by CSLB to work in California.

- Don't rush into repairs, no matter how badly they may be needed.
- Don't hire the first contractor who comes along or be caught up in high-pressure sales tactics.

- Ask to see the contractor's "pocket license" or their representative's "Home Improvement Salesperson" registration. All contractors are issued pocket licenses that show the type of trade for which they are licensed, and the expiration date of the license. Ask to see a photo identification to confirm their identity.

<http://www.cslb.ca.gov/Consumers/Consumers.aspx>



# *Wine Tasting* & DINNER BUFFET

*Thursday*  
*January 21<sup>st</sup> 2016*

*Seating's start at 5pm*

*\$25*  
*per person plus tax*

*Menu: Herb Roasted Chicken*

*All wines featured will be offered  
at discounted prices for this night only*

*Reservations required*  
*(209) 962-8638*





YOU ARE INVITED TO JOIN US AT 

# WINE TASTING & DINNER BUFFET

BROUGHT TO YOU BY YOUNG'S MARKET

## CLASSIC POT ROAST DINNER

### THURSDAY FEBRUARY 18TH

SEATING'S START AT 5PM

# \$25

PER PERSON PLUS TAX

ALL WINES FEATURED WILL BE OFFERED AT DISCOUNTED PRICES FOR THIS NIGHT ONLY

RESERVATIONS REQUIRED (209) 962-8638



## Happy New Year from The Grill

Jay Reis - Grill Manager



We are preparing for another busy year at The Grill. We are currently scheduling and planning our monthly wine dinners for 2016, and planning menus for some of the annual golf tournaments. Easter and Mother's Day Brunches are very popular so make your reservations early.

As we start the New Year off, I'd like to thank all of you for supporting The Grill this past year. We have been staying pretty busy on Friday and Saturday nights in the winter. The Grill staff and I look forward to serving you again in the upcoming year.

In January, the Grill is a great place to escape from cabin fever with some

of the best views of the snow capped mountains. We have great food in a warm and comfortable atmosphere, but many of our guests just like to come in and play cards or use the WiFi, or come in and watch your favorite sports team in HD, or on Saturday night come dance the night away to the live bands. The most popular night is still Karaoke the 1st Friday of each month.

A special thank you to the ladies of the ROOFBB's that volunteered their time to help decorate the Grill for the holidays. They did a wonderful job at making the Grill look so festive for the holidays. I hope the past year has been good for all of you and here is to this year being even better. Your comments and suggestions are always welcome please feel free to contact me at [clubmgr@pinemountainlake.com](mailto:clubmgr@pinemountainlake.com).

### The Grill Winter Hours

Dinner Hours (breakfast & lunch hours remain the same)

<b>Monday — Closed</b>	<b>Friday and Saturday</b>
<b>Tuesday thru Thursday</b>	<b>5pm to 9pm</b>
<b>5pm to 8pm</b>	<b>Sunday — 5pm to 8pm</b>

# St. Valentine's Day Weekend

AT THE GRILL AT PINE MOUNTAIN LAKE

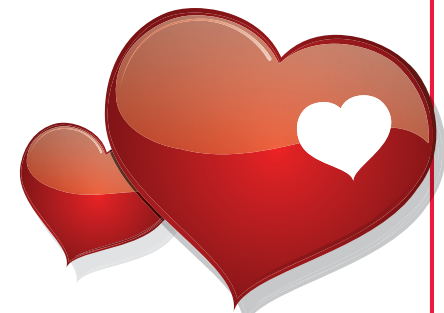
*Treat your Sweetheart to a romantic dinner & dancing*

FRIDAY, SATURDAY & SUNDAY FEBRUARY 12TH, 13TH AND 14TH

REGULAR DINNER MENU AND VALENTINE'S DAY WEEKEND SPECIALS  
ACCEPTING RESERVATIONS FROM 5PM TO 9PM

LIVE MUSIC  
SATURDAY & SUNDAY NIGHT

*Make your reservations today 209 962-8638*



**BINGO!**



For every mortgage generated from this ad, I will donate a minimum of \$500 to the Butte Fire victim of your choice.

The **Loan** that **PAYS YOU!**



*Your local*  
**Reverse Mortgage Specialist**

*For Homeowners 62 years and up*

DENNIS SILVA  
TUOLUMNE COUNTY

**IRON FINANCIAL, INC.**  
TOLL FREE 855-680-2120

26 years experience • Previously licensed Tax Practitioner  
• Member and Supporter of numerous charities

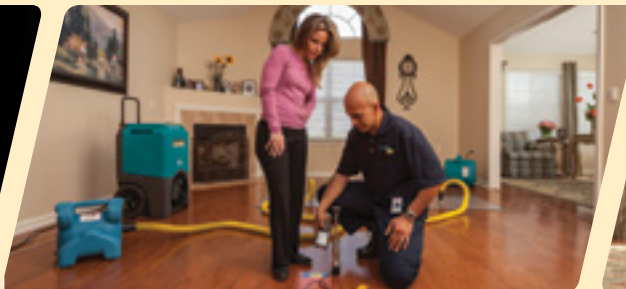
BRE #01084656  
NMLS #335858

*“Your Best Interest...Is Our Only Interest”*

**\$25 DISCOUNT**

Mention this ad for a discount on cleaning services.

Minimum charge applies.



**DISASTER RESTORATION SERVICES • RESIDENTIAL AND COMMERCIAL CLEANING SERVICES**

Carpet & Furniture Cleaning • Steam & Dry Cleaning • Deep Soil Extraction • Spot & Odor Removal • Oriental & Fine Rug Cleaning • Ultrasonic Blind Cleaning  
24 Hour Emergency Service • Water Removal • Wet Carpet Care • Fire & Smoke Restoration • Vandalism Cleanup • Structure Drying • Sanitizing

**ServiceMASTER Restore**

*The clean you expect.*

*The service you deserve.®*



Serving Tuolumne, Calaveras & Amador Counties  
ServiceMasterSierras@mlode.com • www.ServiceMasterSierras.com

**209-532-1700**

17330 High School Road  
Jamestown CA 95327





**GROVELAND GAL FRIDAY**

**LET ME HELP YOU WITH YOUR NEW YEAR'S RESOLUTIONS!**

I can help you organize, file, undecorate, shop, cook, elder care, rides, pet care, housesitting, home checks, and many other tasks.

**CALL ME FOR ANY HELP YOU NEED!**

**SHARON VOLPONI**  
962-6848 • 770-6277

**BEFORE YOU BEGIN CONSTRUCTION ON YOUR LOT**

The Declaration of Restrictions (CC&Rs) states that no construction of any type (new construction, driveways, grading, lot clearing, etc.) can be performed without prior approval from the Environmental Control Committee (ECC).

Failure to obtain approval could result in the stoppage of work or even fines, and nobody wants that to happen. Inspections are made every Tuesday and reviewed by the Committee every other Thursday, so we can accommodate our members.

Please contact ECC before you begin any type of construction at **209-962-8605**

*Peter Fischer Construction*  
peterfischerconstruction@gmail.com



12969 Clements Rd  
Groveland, Ca. 95321  
Phone/fax 209-962-6199  
License# 658830

[peterfischerconstruction.com](http://peterfischerconstruction.com)

**Services - No job is too big or too small**

Custom Homes	Hardwood floor installation
Remodels	Masonry
Green Building	Painting EPA CERTIFIED
Porch or sunroom additions	Fireplaces / new or remodeled
New Roof	Solar panels
Carpentry	Deck replacement or repair
Concrete	Elasto-Decking
	Window/Door replacement

For our customers convenience we accept credit cards

**NOTICE**

Main Gate personnel are available to issue gate cards on Saturday & Sunday from 8:30 AM to 4:30 PM. Please call in advance to schedule an appointment at 209-962-8615

**BARK BEETLES ARE KILLING YOUR TREES BUT IT MAY NOT BE TOO LATE**



Actual Bark Beetle damage to Pine trees  
Bark Beetle shown enlarged for detail

Bark Beetle infestation is a **REAL DANGER** in our area **STOP** them from spreading and **SAVE** your trees

They burrow into and lay eggs inside Pine, Cedar, and Cypress trees. Once they hatch, the larvae eat the tree from the inside and burrow out to infest other nearby trees. Infestation spreads quickly if untreated.

**IF LEFT UNTREATED ENTIRE FORESTS ARE ENDANGERED**

**PREVENTION IS KEY**

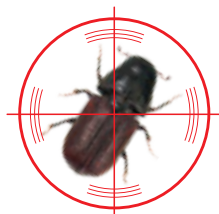
**LET US HELP YOU!**

**BEETLE PREVENTION & ERADICATION**

FREE ESTIMATES • NO HIDDEN COSTS • CALL FOR MORE DETAILED INFORMATION

**NOW OFFERING TRUNK INJECTION**

- Lasts longer than spray-on treatments
- No chemicals in the air or water supply
- Treats entire tree from trunk to leaves
- Full dose stays **IN** the tree
- Long lasting protection and prevention



**Rod Diehl Pest Control**

*"The Best Deal in Pest Control"*

**CALL TODAY: 209.532.3260**

PROUDLY SERVING PINE MOUNTAIN LAKE AND THE GROVELAND AREA



# Contractors Performing Work in PML are Required to Follow PMLA Rules & Regulations

The following are some "common violations." Please do your part to maintain a harmonious environment for all to enjoy. Remember: The PML property Owner is held responsible for those they hire.

### VEHICLE USE:

- 1. Exceeding the posted speed limit
- 2. Driving in a reckless manner
- 3. Following another through an access gate or allowing others to follow you through
- 4. Parking on street (road shoulders OK)

### PERSONAL CONDUCT:

- 1. Allowing loud music
- 2. Uttering abusive language or conduct that would be offensive to a reasonable person
- 3. Using the property Owner's gate card or clicker

### WORK RELATED CONDUCT

- 1. Starting work before 7am or continuing after 7pm
  - 2. Allowing dogs at construction sites
  - 3. Performing work on Sunday
  - 4. Cutting down a tree in excess of 5" without PMLA approval
  - 5. Trespassing on neighboring property
  - 6. Using neighbors water or electricity without written permission
  - 7. Leaving construction signs longer than 5 days after work has been completed
  - 8. Nailing signs to trees
  - 9. Storing building materials on street or easement
  - 10. Beginning exterior construction without PML Association approval
- Any Questions...call Dennis Pipal, Community Standards Director @ (209) 962-1240

# ALL PMLA HOMEOWNERS EMAIL OPT-IN PROGRAM

The Association is pleased to offer a money saving program available to all PMLA property owners. This program allows you to receive many of the documents we are required to provide to you via email. This option is important because:

**Cost Savings** – The Association is spared the expense of printing and mailing many documents to those property owners who sign up.

**Environmental Savings** – Less paper means less trash and reduced damage to the environment both in the disposal and production of paper and envelopes.

**Reduced Clutter** – By receiving documents via email there is less paper for you to deal with. All

documents can be saved on your computer and viewed at your discretion.

**Timely Receipt** – Documents sent electronically are received in minutes as opposed to the days it takes for regular mail to arrive.

If these sound like good reasons to you, please sign up for the Document Email Program today using the attached form. Simply return the completed form to the Administration office at your convenience.

If you have any questions on this program please feel free to give us a call (962-8600) and we will be happy to explain the details and the advantages.

Please read the Terms & Conditions for the email opt-in program on the website, [www.pinemountainlake.com](http://www.pinemountainlake.com) under the Resources/Forms > Opt-In Email Program.

### Mail form below to:

Pine Mountain Lake Association • 19228 Pine Mountain Drive • Groveland, CA 95321

YES, I WANT TO ENROLL IN PMLA'S EMAIL STATEMENT AND DOCUMENT SERVICE. I ACKNOWLEDGE AND AGREE TO THE TERMS AND CONDITIONS SET FORTH ABOVE AS A CONDITION FOR PARTICIPATION IN THIS SERVICE.

PMLA Account Number: \_\_\_\_\_ Unit/Lot #: \_\_\_\_\_

Name: \_\_\_\_\_ Phone #: \_\_\_\_\_

Address: \_\_\_\_\_

Email Address: \_\_\_\_\_

Signature: \_\_\_\_\_

# Special Residence Watch

Natalie Trujillo – Director of Safety

One facet of the Department of Safety's role here at Pine Mountain Lake is to provide house minding services, which are also known as Special Residence Watches or house checks. This service is intended for residents that will be gone for three days or more with a maximum of three consecutive months. Safety Officers perform a house check by periodically inspecting the perimeter of your home for the duration of your absence. As the officer walks around the exterior of your house he or she will note the condition of all windows and doors, essentially examining your home for signs of an intrusion. The Safety Officer will make an attempt to conceal door tags, packages, etc. in order to preserve the appearance that the house is still occupied. If a Safety Officer discovers anything on your property that may need your direct attention, we will make every effort to contact you or your emergency contact person by telephone so that it can be rectified.

There are a limited number of available openings on our special residence watch service, which operates in tandem with the number of Safety Officers on staff. The three month limit allows the special residence watch program to benefit as many homes as possible in any given year. Safety is unfortunately not staffed to provide each of the 2,818 homes in Pine Mountain Lake with individualized attention, which is why we employ a 24 hour roving patrol instead. On average,

we are able to conduct about 407 residence checks per month. Although we strive to offer residence watches to as many property owners as possible, I would like to encourage all permanent Pine Mountain Lake residents to take advantage of this service while they are away. If you are planning to be absent from your home for periods of time longer than three months, you may want to consider installing a more single-minded security measure, such as an alarm system or video surveillance system. In light of recent events, investing in a security system would only add to your peace of mind during the months that you are away.

If you wish to place your house on a special residence watch you can either stop by the Main Gate to pick up a form or go online to [www.pinemountainlake.com](http://www.pinemountainlake.com) to submit your request electronically. Please make sure that you fill out the form in its entirety. This enhances the effectiveness of our special residence watches while also limiting the number of times we may have to disturb you during your absence. If you expect to return home earlier than you had originally intended please inform the Main Gate as soon as it is convenient so that we may remove you from our records. We would not want to unintentionally disturb you when you return home.

As always, please remember to contact the Main Gate at (209) 962-8615 to report any suspicious or objectionable activity. Thank you!

# Building Our Community

Terri Thomas – ECC Coordinator

Happy New Year! A full, new year ahead of us filled with hopes and dreams.

Perhaps some of you are dreaming of improvements to your beautiful home or lot in Pine Mountain Lake this year. If so, the Environmental Control Committee is looking forward to working with you to make your dreams become reality.

The Governing Documents of Pine Mountain Lake Association require that "Before commencing construction or installation of any Improvement on any Lot within the Properties, the Owner planning

such Improvement must submit to the Association's Environmental Control Committee (the Committee) a written request for approval." PMLA CC&R Article V, Section 1, (c)

So when it comes time to start making your dreams become reality we're here to help you. If you have any question as to whether your

improvement needs review by the ECC, please do not hesitate to contact us. The Coordinator is in the office Monday through Friday, 8:00 – 4:30. The phone number is 209-962-8605 and email address is [ecc@pinemountainlake.com](mailto:ecc@pinemountainlake.com).



# Hooves & Happenings

Jeanna Santalucia - Equestrian Center Manager



Winter is here and the temperatures have been down to 22 degrees when we begin our work in the mornings! The water troughs freeze so we have to break it for the horses to be able to drink; we have a few "special diet" horses that need their hay soaked to reduce sugars, so it is a challenge to keep them from re-freezing while the hay drains, and the manure is already freezing to the ground out in the paddocks. There is a lot to do here at the stables, cleaning stalls and making sure all horses and their owners' needs are met. I would like to thank our stable hands for all their hard work and keeping our stables so clean and the horses healthy. Besides the icy water troughs, we have to watch for signs of hoof rot, which can make horses lame; and though most horses do better in the cold than the heat, we must watch for shivers and chills. Older horses do not have the ability to regulate their heat as younger ones, so we also blanket (varying thicknesses of blankets for temperature) and monitor water intake. If horses do not drink enough, they can "colic" from stomach blockages, and / or dehydrate. Either of these symptoms can cause a horse to literally die in a matter of hours. So we are always on our toes!!

Our previous Trail Ride Contractor, Fraser Saddle Horses, has returned and are available for rides up to 5 people, Saturdays and Sundays. Also available are lessons, and lead line rides. Reservations for Trail Rides and Lead line rides are recommended. Sometimes we have to cancel if we feel the trails are too slick to ride or we feel it is just not safe. During the week, you can also e-mail the stables to reserve your rides at: [stables@pinemountainlake.com](mailto:stables@pinemountainlake.com).

## UPCOMING EVENTS FOR 2016 AT THE EQUESTRIAN CENTER

**May 14, 2016** - Flea Market

**May 29, 2016** - Memorial Day BBQ

**June 18, 2016** -  
Back Country Adventure Day



*Back Country Adventure Day 2015*

**July 1, 2016** - 3rd Annual 5K Trail Run

**July 1, 2016** - Fourth of July BBQ

**August 2016** -  
Movie, Wine & Appetizer Night

**August 2016** -  
Groveland Rotary Sausage & Shrimp Fest

**September 4, 2016** - Labor Day BBQ

**September 10, 2016** - Flea Market

Please visit our website for any updates and reservations:

[www.pinemountainlake.com](http://www.pinemountainlake.com)  
13309 Clifton Way  
Groveland, Ca. 95321  
209-962-8667

# Happy New Year From the Fringe

Mike Cook - Head Golf Professional

We are looking forward to another great year at Pine Mountain Lake Golf & CC. Hopefully with the rains we have been experiencing our water situation will be improving in 2016. We will continue to do everything we can to offer a great golfing experience for everyone. The condition of the golf course continues to improve due to the hard work on our maintenance crew headed up by Alan Macdonald and Rob Abbott. The Ladies and Men's, 9 hole & 18 hole clubs have a busy schedule planned with a wide variety of events throughout the year. If you are not a member of our golf clubs and would like more information, please call the Golf Shop 962-8620. In addition, the Golf Shop is planning to add a few golf events for your enjoyment in 2016, such as "PML Putting Championship", "Couples Twilights" and "Match Play Championship". Be watching for information on these and other events. As always we are planning our big events, The Ladies Pine Tree Invitational (June 16 - 18) and The Men's Mother Lode Invitational (June 23 - 25).

We hope that you will take advantage of the great golf course we are blessed with and "PLA MOR GOLF" in 2016.

## 2016 RULES OF GOLF CHANGE

There are a number of rules changes that will go in effect on January 1. The biggest rule change in some years will be, Rule 14-1b. Anchoring the Club. The new rule reads:

### b. Anchoring the Club.

In making a stroke, the player must not anchor the club, either "directly" or by use of an "anchor point".

**Note 1:** The club is anchored "directly" when the player intentionally holds the club or a gripping hand in contact with any part of his body, except that the player may hold the club or a gripping hand against a hand or forearm.

**Note 2:** An "anchor point" exists when the player intentionally holds a forearm in contact with any part of his body to establish a gripping hand as a stable point around which the other hand may swing the club.

Basically this is talking about the putter even though it does not specifically say the putter. You will still be able to use a long putter but you will no longer be able to anchor the club or your hand against your body. If you have a question on this or any other rule please do not hesitate to call the Golf Shop.

## Shades of Green

Alan Macdonald - Golf Course Superintendent

Happy New Year! Have a Great 2016. Play a lot of golf, take a lesson if needed to lower that handicap [are you reading this, Uncle Milt]. Be good to the course, repair your ball mark, and the one that your playing partner forgot to do. Drive your tee shot down the middle, not the golf cart. Four years of drought have been tough on the course. Fewer carts in the fairways reduces soil compaction, allowing better rooting to improve playing conditions next summer, by having a healthier plant!

Even though the cold of winter has arrived, we will continue to be busy on the course. Along with a final cleanup from fall, we are tackling our tree care and maintenance, by reducing some hazardous and weak trees. This fall we had the trees behind the 10th green thinned to allow more morning sun to the green. Putting greens and bent grass really enjoy the morning sunlight. Don't we all? We also completed some much needed grinding of old tree stumps.

The drought has taken its toll even on some trees on the course. Where some trees have died and have been removed, we will be doing some replacement planting. In

some instances they will not be replaced due to their location, and the impact they have on the turf below.

Other winter projects that are on tap will be to complete the enlarging of the 6th & 11th forward tees. If all goes well we will also make the forward tee on #2 a little bigger this winter.

How well did we or didn't we do in our efforts to conserve lake water during 2015?

For the entire year the course consumed roughly 32 million gallons of lake water. This relates to approximately 6 inches of surface water and a 60% reduction of water used from non-drought years. We could not have realized these savings without the efforts of GCSD to supply us with as much effluent as they could provide. Late in the irrigation season there would be days that no effluent was available, but as soon as they could, they would send it over.

Thanks to them for the water they made available, and with the water from the lake, the course has survived the drought reasonable well.

Happy golfing.

See you in 2016!



## PML Organized Groups & Clubs

Contact the individuals below if you are interested in joining!  
(All numbers are 209 area code unless noted otherwise)

<b>Aviation Association</b> Catherine Santa Maria	962-7904
<b>Computer Users Group</b> Frank Perry	962-0728
<b>Exercise</b> Barbara Elliott	962-6457
<b>Friends of the Lake</b> Mike Gustafson	962-6336
<b>Garden Club</b> Lonnie Roman	962-6001
<b>Guardians of PML</b> Gus Allegri	962-6915
<b>Ladies Club</b> Maddie Sousa	962-5708
<b>Ladies Golf Club</b> Iris Moffit	962-5050
<b>Men's Golf Club</b> Dick Faux	962-4617
<b>Men's 9-Hole Golf Club</b> Malcolm Brown	962-5930
<b>Monday Bridge Club</b> Bill Parker	962-5957
<b>Needle Crafts</b> Lee Isbell	962-5727
<b>Pickleball</b> Karen Seals	962-6657
<b>Pine Needlers Quilt Guild</b> Beverly Oakley	962-6799
<b>PMLakers RV Club</b> Miles (Ned) Nuddleman	925-371-2287
<b>PML Niners</b> Stacie Brown	962-5129
<b>PML Shooting Club</b> Mike McEvoy	408-690-2270 / 962-6445
<b>PML Waterski &amp; Wakeboard</b> Dean Floyd	(408) 378-7725
<b>Racquet Club</b> Joe Sousa Tom Hernandez	962-5708 962-4704
<b>Residents Club</b> Dick Faux	962-4617
<b>ROOFBB</b> Ivonne Deckard	962-1904
<b>Sierra Professional Artists</b> Heinie Hartwig	(209) 586-1637
<b>Southern Valley Srs. Golf Group</b> Jim Sample	962-4747
<b>Sunday Couples Golf</b> Alma Frawley	962-5578
<b>Windjammers Sailing Club</b> Bob Haliwell	962-4137

Your new Men's Club officers are hard at work developing a 2016 tournament schedule that will be both enjoyable and challenging for all levels of PML golfers – stay tuned for more information about the new schedule! Over the past month, two men's club tournaments were held: the Italian Open (4-man scramble) with 68 players, and the Par 3 sweeps (2-man scramble) with 32 players in the field. Many thanks to the wonderful cooking crew for the Italian Open: Dick and Thelma Faux, Gus Allegri, Norm Peebles, Larry Hunt, and Don Lacy.

Here are the results of the October tournaments:

### ITALIAN OPEN

#### Gold Flight

- 1 Steve Kain, Chuck Obeso-Bradley, Joe Hudson, Frank Jablonski **57**
- 2 Gary Funston, Jeff Funston, Richard Crampton, Blake Funston **59**
- 3 John Wilkins, Ron Saisi, Shane Dake, Tony Martin **61**
- 4 Al Saisi, Dave Nilan, Jeff Sera, Chris Ligonis **61**
- 5 Tony Murphy, Dave Egan, Gary Deckard, Rod Raine **62**

#### Purple/Green Flight

- 1 Allen Craig, Dick Faux, Norm Peebles, Bob Ells **58**
- 2 Don Lacy, Larry Hunt, Neil Brown, Frank Brisben **59**
- 3 Dan O'Connor, Gus Allegri, John Graham, John Lloyd **60**

And there were four closest to the hole prizes: Casey Conley (#3), Rich Crampton (#7), Steve Kain (#14), Norm Peebles (#17).

### PAR 3 SWEEPS

#### Flight 1

- T1 Chuck Obeso-Bradley / Michael Hankin **47**
- T1 Ralph Jimenez / Dan Shuey **47**
- 3 Pat Hennigan Jr / Jay Warshauer **49**

#### Flight 2

- 1 Rick Higgs / Dave Penning
- T2 Vince McNamara / Wayne Augsburger
- T2 Tom Connelly / Bruce Rossio

#### Golf Quote of the Month:

*"Give me golf clubs, fresh air and a beautiful partner, and you can keep the clubs and the fresh air."* – Jack Benny

### BRRRR, WELCOME TO WINTER!

Even though it is harder to find a good golf swing during these cold days, I think that we are all happy with the regular

## PML Men's Golf Club

Chuck Obeso-Bradley

amounts of rain (and even a dusting of snow!) that we have been getting lately...

The last two Men's Club tournaments of 2015 were The Hamburger Tourney with 52 entries, and The Turkey Shoot with a whopping 72 players. The Hamburger was played as a 2-man Best Ball for the front 9, and then as a 2-man Scramble for the last nine holes. Many thanks to Frank Jablonski, Tom Connelly, Larry Hunt, and Don Lacy for help with the setup and the cooking!

### THE HAMBURGER RESULTS

#### Gold #1

- 1 Brian Sweeney / Wayne Augsburger **63**
- 2 Jeff Sera / Doug Wall **64**
- 3 Jay Warshauer / Charlie Shehorn **66**
- 4 Edvard Eshagh / Rick Liszewski **66**

#### Gold #2

- 1 Tom Borup / Alan MacDonald **65**
- 2 Jim Wilbanks / Vince McNamara **65**
- 3 Bruce Carter / Pat Hennigan **65**
- 4 Dick Mattocks / Jerry Dickson **65**

#### Purple/Green

- 1 Richard Martinez / Eddie Wright **61**
- 2 Bob Ells / John Thomas **61**
- 3 Don Lacy / Larry Hunt **65**
- 4 Joe Vautier / Glen Awai **65**

#### Hamburger Closest to the Hole

- #3 Gene McDowell **12'3"**
- #7 Steve Grant **6'10"**
- #14 Jerry Dickson **6'11"**
- #17 Rick Liszewski **4'9"**

The Turkey Shoot turned out to be one of

the most popular Men's Club Tournaments of 2015, with the 72 participants all receiving a coveted 25\$ Gift Certificate from Kevin and Randi's Old Fashioned Meat Market. Even the last place team (that of yours truly...) felt like it won something great with that gift certificate!

### THE TURKEY SHOOT RESULTS Gold

- 1 Charles Shehorn, John Shehorn, Jay Warshauer, Dennis Perry Sr **119**
- 2 Doug Wall, Vince McNamara, Rich Graham, Pat Hennigan **121**
- 3 Bill Wrighton, Tom Borup, Jim Reynosa, Dana Solomon **122**

#### Purple/Green

- 1 John Baker, Bob Ells, John Thomas, Bruce Rossio **118**
- 2 Joe Vautier, Dan O'Connor, Derrol Beaulieu, Ron Dodson **119**
- 3 Bruce Carter, Mort Moore, Phil Mathes, Bruce Lay **122**

#### Turkey Shoot Closest to the Hole

- #3 Steve Burke **10'6"**
- #7 Mike Butera **15'5"**
- #14 Dan O'Connor **7'3"**
- #17 John Baker **9'3"**

#### Golf Quote of the Month:

*"If you think it's hard to meet new people, try picking up the wrong golf ball."* – Jack Lemmon

Stay warm this Winter, and we'll see you in 2016 at the first Men's Club Tournament!

## Garden Club Clippings

Joyce Smith

Another New Year and away we go!

We had a great time at our Installation Dinner at the Grill on Sunday, December the 6th. A good turnout and a lovely and tasteful dinner. Our thanks to the Chef and the Grill Staff, for a job well done. Thanks to Ronnie Roman for the lovely table decorations. We work hard but truly enjoy our social times together.

We will not be meeting in January. Our new officers will be getting our activities for the year organized. Our new officers installed on the 6th for 2016 are: Sharon Hunt, President; Marlene Johanson, Vice President; Linda Glenn, Recording Secretary; Carol Willmon, Corresponding Secretary; Barbara Coldren, Treasurer; and Louise Turney, Parliamentarian. We are looking forward to another great year

of interesting programs and tending our Jail Garden.

Our workday at the Jail on November 23rd was cancelled due to an appointment mix up regarding our Jail Chairperson, Linda Flores. However, all was not lost. Tony Flores stepped in and planted the bulbs. Thanks Tony, we will all be thanking you in the spring when the daffodils are blooming. You and Linda do so much for the Jail.

Remember no meeting in January. Members watch for your informative Newsletter for information about upcoming meetings.

Do you want to know more about Garden Club? Come and visit, we meet the second Monday of the month at the Lake Lodge. Happy New Year!

See you at Lake Lodge in February.



## PML Lady Niners

Sharon Kenyon

ACE OF ACES FOR 2015 was Geryl Dielman with net 39.

10 players competed on the front nine, with a tie broken by the lowest scores on hole #4.

Congratulations Geryl!

**NOVEMBER 5 "ODD HOLES"** (minus 1/2 HC) with 18 players, and Ace of Aces Play-Off.

**1st Place:** Geryl Dielman – 26 – Net 17

**2nd Place:** Shirley Haliwell – 27 – Net 18

**3rd Place:** June Moore – 29 – Net 18.5

**4th Place:** Linelle Marshall – 28 – Net 19

**5th Place:** Carrie Carter – 27 – Net 20.5

**6th Place Tie:** Nancy Brewster – 34 – Net 21.5  
Flo Jansen – 35 – Net 21.5

**Chip-In:** #7 Nancy Whitefield – Very nice play!

**NOVEMBER 12 "3 BEST BALLS"** with 17 players.

**1st Place Team:** Linda Craig, Flo Jansen, Jane Reynolds (+blind draw) – Net 62

**2nd Place Team:** Marilyn Alexander, Carrie Carter, Pat Price, Anne Toner – Net 70

**Pars:** #11 Linda Craig

#14 Carrie Carter

#17 Carrie Carter & Jane Reynolds

**Low Net:** Flo Jansen – Net 36

**NOVEMBER 19 "TEE TO GREEN"** (minus HC) with 18 players.

**1st Place:** Stacie Brown – Net 24.5

**2nd Place Tie:** Marilyn Bolar & Carrie Carter – Net 28

**3rd Place Tie:** Linda Craig & Nancy Whitefield – Net 29

**4th Place:** Geryl Dielman – Net 30

**Pars:** #3 Stacie Brown

#7 Marsha Martinez

#9 Dottie Davis – For a Par 4...

Congratulations!

Awards will be presented at our Christmas luncheon on December 17.

## PML Ladies Golf Club

Sara Hancock

It is hard to believe that the year has gone and we are looking at 2016. It is time to give a big "Thank You" to those who stepped up to keep our club running this year. Also, "Thank You" to those who are willing to keep us going in 2016.

We did enjoy some nice weather on our play days.

**NOVEMBER 5TH THREE-LEGGED TURKEY SHOOT** – Individual Point Bogey

Each player chose 3 clubs plus their putter and had to let the balance of their clubs rest for the day. Many were amazed by what they could do with so few clubs. Each player who participated received a gift certificate for Mar-Val.

**1st Flight Handicaps 10-19**

**1st Place...**32 Points...Priscilla Park

**2nd Place...**29 Points...Kitty Edgerton

**2nd Flight Handicaps 20-25**

**1st Place...**32 Points...Paula Vautier

**2nd Place...**32 Points\*...Sara Hancock

**3rd Place...**28 Points...Helena McMillan

**3rd Flight Handicaps 26-30**

**1st Place...**41 Points...Susan Dwyer

**2nd Place...**34 Points...Jodie Awai

**3rd Place...**33 Points...Mona Tompkins

**4th Flight Handicaps 31-36**

**1st Place...**36 Points...Ann Hankin

**2nd Place...**33 Points...Kay Bettencourt

**3rd Place...**31 Points...Alma Frawley

\*Tie broken on the Back Nine.

**Birdies:** Susan Dwyer #3 and #7, Kathie Wood #10 and #14.

**NOVEMBER 12TH GROSS, NET, PUTTS**

**Ace of Aces:** Patty Peebles...Net 72

**1st Flight Handicaps 10-19**

**Low Gross...**Kitty Edgerton 89

**Low Net...**Patty Peebles 72

**2nd Flight Handicaps 20-25**

**Low Gross...**Paula Vautier 98

**Low Net...**Sara Hancock 76

**3rd Flight Handicaps 26-30**

**Low Gross...**Jodie Awai 103

**Low Net...**Mona Tompkins 76

**4th Flight Handicaps 31-37**

**Low Gross...**Kay Bettencourt 114

**Low Net...**Ann Hankin and Sandy DeRodeff 84

**Putter of the Month:** Jodie Awai and Barbara Connelly – 31 Putts

**Birdies:** Kitty Edgerton #12, Patty Peebles #5

**NOVEMBER 19TH U'PICK'EM**

**1st Place...**64 Points...Kitty Edgerton, Helena McMillan, Priscilla Park and Sally Wrye

**2nd Place...**66 Points...Kay Bettencourt, Lisa Brown-Jimenez, Ann Hankin and Mona Tompkins

**3rd Place...**68 Points...Lynne Dust, Clarice Ligonis, Yvonne Mattocks and Linda Wall

Get those New Year's Resolutions lined up and I hope you included playing lots of golf!

## PML Men's 9 Hole Golf Club

Steve Engstrom

It looks like a good early winter is upon us with more than 2 inches of rain recorded at multiple sites all across the PML and Groveland area on November 1st, 2nd and 3rd. While this caused "cart path only" golf and some dashes for the club house, it should really help the course. On November 18th, starting at 8:45 A.M., we will have had our Annual Breakfast Business Meeting followed by a 4 Man 2 Best Ball event. Since this is being written before this meeting, we do not yet know whom our new officers will be (albeit we have an idea). If you haven't paid your club dues by the end of the meeting, please get a membership form from Bob Oakley or Malcolm Brown and mail your check for \$25.00 to Jack Leetham.

The answer to last month's teaser, which was "Name the only major won by Tom Weiskopf in his PGA career?" is that Weiskopf won the British Open in 1973. This month's teaser is "The National Invitational Tournament" is the original name of what golf major?" Our winners for October were:

**10/7 2 MAN SCRAMBLE**

**First:** Fred Mecum and Larry Patrick

**Second:** Jim Van Gerpen and Steve Aker

**10/14 4 MAN 2 BEST BALL**

**First:** Jim Van Gerpen, Malcolm Brown, Jack Leetham and Steve Ojeda



**10/21 RED, WHITE, BLUE**

**First:** Steve Ojeda, Steve Aker, Bob Oakley and Dick Dentino

**10/28 LOW NET**

**First:** Jack Leetham • **Second:** Fred Mecum  
**Tie Third:** Walt Bales, Steve Ojeda and Jim Van Gerpen

If you are new or returning to golf and don't want to play 18 holes, you are invited to join the Men's Nine Hole Golf Club.

- Play every Wednesday.
- A variety of games & formats.
- We will maintain your nine-hole handicap.
- Walk or ride, it is still "a walk in the park."
- Annual Championship Tournament

Membership is \$25 per year and applications are available at <http://pmlm9h.webs.com>

## PML Ladies Club

Dar Brown – Publicity Chair

**"Maybe Christmas, he thought, doesn't come from a store"**

The PML Ladies Club proved that Christmas doesn't come from a store but is comes straight from the heart. Almost 70 ladies gathered at the Grill on December 2 for our annual Christmas Coffee, this year very capably chaired by Chris Franz and Dian Watson, with a theme of "Welcome to Whoville". The decorations were absolutely darling with village scenes and giant flowers, all right out of the Dr. Seuss' Whoville. Chris' beautiful painting of the Grinch stealing Christmas decorations was adored and admired by all. A brunch of quiche, fruit and a scone was served by Bambi and the staff of the Grill and Bartender Jamie reported that champagne was popular to kick off the Christmas season. The number of wonderful toys that were donated for the Christmas Basket Program was amazing and it was fun for Basket Chairs Dar and Patti to see donations that were a perfect



match for the children's Wish Lists. You may be a mean one, Mr. Grinch, but the ladies of the Ladies Club have hearts that are more than two sizes too large!!

## Quilters Corner

Sandy Smith

Wow! 2016, where has the time gone, and how did I get this old? A very happy, and healthy new year is wished to each and everyone. Have you made your new years "wish"? Mine is to finish 6 projects this year. ...well maybe 4.

Pine Needlers Quilt Guild meets on the 3rd Tuesday of each month except for the months of December and January. We will resume our regular meetings in February on the 16th, under the library at 6 p.m.

It is January...time to find time for yourself. Relax and enjoy the woman you are. One of

my favorite ways is to really browse thru an older quilt book, after all I bought it, then didn't have time to spend in it.. I have Quilts for Chocolate Lovers by Jane Worley, all ready to spend an afternoon. There are always tidbits and inspiration to delight the soul.

If you have always wanted to learn to quilt, why not come to the meeting and enjoy the process of learning and sharing. We have lots to share and great programs to learn by. Consider this a personal invitation. See you there, on the 16th of February!

## PML Pickleball

Shelby McNamara

It may be cold and gray, but Pickleball continues 5 days a week in Pine Mountain Lake! We have play for all skill levels.

Pickleball is played on a badminton sized court with special paddles and a ball similar to a wiffle ball. The game is a doubles format with 4 people of the court. The game is played to 11 points.

Why play Pickleball? Here are a few quotes from our members.

*"I was new to Pickleball last year: big time golfer, former tennis player and sports enthusiast. After trying Pickleball once, I was hooked. The learning curve is quick, the exercise on the court has made me stronger, improved my golf game, and I couldn't get enough of it. The PML Pickleball community is so much fun and the friendships are special! Come on out and give it a try. You will not regret it!"* –



Kitty Edgerton

*"I love Pickleball because I get to be outside having fun, meeting new people, and exercising at the same time."* – Karen Seals

*"I'm a new full-timer and really wanted a way to get to know people while getting some exercise. Pickleball has been a life saver for me. I'm made some great friends, gotten in better shape and most of all, I've never laughed so much while playing a sport."* – Shelby McNamara

If you would like to know more about the game, come out and play a game or two with us. We are on the court Monday, Wednesday, Friday, Saturday and Sunday at 10:00 am (winter hours).

## From Your Tuolumne County District Supervisor

John Gray – Tuolumne County 4th District Supervisor

A long sigh and quick breath after the busy holiday season.. Ahhh!. Hope yours was pleasant and eventful and that you are looking forward to the New Year.

Just for kicks I took a quick look at my January 2015 article just to make sure that I didn't address too many of the same issues this month as I had last year. But, quite frankly, some topics are as relevant today as they were a year ago.

Last year I explained the general plan process. Now, the draft Environmental Impact Report (EIR) has been completed. In January community meetings will be scheduled in Groveland and Sonora so that you can give input and have your questions answered. The draft EIR can be found on the County website in the Community Resources section.

Tuolumne County has continued to declare a State of Emergency due to the drought. Last year I explained the program that was being developed to help those that experienced dry wells. To date, the County has assisted over 300 families in providing emergency water.

I also made a positive comment about the early storm that we had experienced and how promising it looked on the wet weather front. The spring and summer proved disappointing in that regard and we are now all waiting for "El Nino" or his little brother to pay us a visit and improve our conditions.

At the most recent town hall meeting, Sheriff Jim Mele highlighted some of the reasons that he thought the crime rate in the County has shown an increase. He mentioned the voter approved Proposition 47 as one possible contributing factor. Town hall meetings are great and depending upon the topic some are better attended than others. I like to have them held in our community but unfortunately, the information that comes to and from these meetings does not always reach as broad an audience as in newspapers, radio or the web.

I would like to give a brief review of what the Sheriff mentioned and a little more information about Proposition 47.

On November 4, 2014, California voters approved Proposition 47, which reduced specific felonies to misdemeanors, including simple possession of most drugs for personal use and stealing/ theft of items worth less than \$950. The State savings from reducing incarceration rates was supposed to be used to support truancy

prevention, mental health and substance abuse treatment and victim services. The position provided that 65 percent of those savings will go to the Board of State and Community Corrections (BSCC) which will then allocate the funds as grants for rehabilitation programs, mental health and substance abuse treatment for offenders. All really good ideas but none of the funds have come our way.

There is still "a promise" but in reality what has happened is that as of July 1, 2015, trial courts had received over 160,000 petitions/applications for either resentencing or reclassification. As of November 4, 2015, approximately 4,500 inmates have been released from State prisons under Proposition 47; and 3,100 have been released from State parole supervision.

As the Sheriff said, "not good news for the County that already has a full jail". As I am not an expert in the field of law interpretation you are invited to investigate this topic further on the State of California governmental website... and google Proposition 47. The file is Safe Neighborhoods and Schools Act. A well-meaning title but so far the results have not held up. The BSCC would like your opinion on how to manage Proposition 47; you can contact them at <http://www.bscc.ca.gov>

On the positive side, at the December 17th BOS meeting, the Board agreed to continue with the planned basic design of our new jail. The design incorporates the efficiencies that will allow the sheriff and his staff to have a facility that will meet our needs now and many years into the future. Although the construction estimates have increased by approximately \$3M dollars, implementing alternative designs now- to save money in construction- would only increase the overall operation costs in the long run. I do want everyone to know that what is being designed is a facility that is not only cost effective but functional.

Also, at this same meeting, the BOS approved a strategy to develop a plan help with the tree mortality problem. This plan should be completed in late January or early February.

Please continue to follow what is happening in our county government by looking at Tuolumne County's web page. It is there that you will be able to find the most up-to-date information on many subjects. There is a lot of positive work being done by your county government.

As always I welcome your calls, emails and letters. If you need assistance please remember that office hours in Groveland are presently held at the Groveland Youth Center from 9 am to 11 am on the 2nd Monday of the month until we have moved into our new location in the Mountain Leisure Center across from the post office. Lake Don Pedro is "by appointment". If you need to meet with me in person, please do not hesitate to contact me by calling 533-5521 or by email me at: [jjgray@co.tuolumne.ca.us](mailto:jjgray@co.tuolumne.ca.us)

## PML Ladies Club

Dar Brown – Publicity Chair

### THE MYSTERY IS SOLVED!!

On December 16, over 60 super-sleuths gathered at the Grill to solve the mystery of "who killed Santa". Santa was accused of making "poor choices" and un-Santa-like behavior bordering on naughty. A local North Pole, frustrated by his nonsense and deciding enough was enough, murdered Santa, but who was it??

Sleuths had an opportunity to hear from and even question seven potential murderers!

### SUSPECT (ACTOR)

Abominable Snowman – *Maddie Sousa*  
Basil – Elf/Insurance Agent – *Bob Swan*  
Frosty – Snowman/Scientist – *Fred Faiella*  
Mrs. Santa – *Dawn Silva*  
Yule Tide – Elf/Reindeer Trainer – *Louise Turney*  
Holly Jolly – Director of Caroling



*The guilty party, Frosty, AKA Fred Faiella.*

– *Shirley Brasesco*

Mother Nature – *Joanne Scott*  
And the Victim Himself –  
Santa – *Al Silva*

Each of the suspects, clad in wonderful costumes appropriate for the (lack of) seriousness of the event, had their own reason to want to kill Santa: the possibility of reindeer abuse, political aspirations, job fears, global warming and even – gasp – the suspicion of Santa having an affair with Mother Nature.

Each team, a table of eight, was asked to solve the mystery and identify the killer. When the teams reached their verdicts, not a single team was right! Frosty, with his nose that grew from a baby carrot to a large proboscis from all his lying, was found to be guilty. Mrs. Claus was awarded the "Ham-let Award" for in recognition of her undying dramatic portrayal

of her character. It was a very fun evening enjoyed by the cast and sleuths alike.

If you would like to join the fun in 2016, mail your check for \$15 payable to PML Ladies Club and mail it to P O Box 100, Groveland, CA. Mona Tompkins and her Board are planning another great year.



# HOMES ON THE HILL

Your Guide to  
Real Estate in the  
Groveland Area



## YOSEMITE GATEWAY PROPERTIES

18731 Main Street • PO Box 606 • Groveland CA 95321

YosemiteGatewayProperties.com • (209) **962-5190**

SUCCESSFUL VACATION RENTAL!



For details go to:  
[www.groveland-real-estate.com](http://www.groveland-real-estate.com)

**13209 Wells Fargo, 2/376**

The right size cabin for the right price. Immaculate 2B/2B with 2 Car Garage, Flat lot, Lots of parking for cars, boat and/or RV. Don't miss out on this gem!

**\$149,999**

WOODSY CLASSIC CHALET



For details go to:  
[www.groveland-real-estate.com](http://www.groveland-real-estate.com)

**19670 Butler Way, 8/208**

Incredible view. Recently updated, 3B/2B with Garage. Granite counter top kitchen, double pane windows, new carpet & much more. Level lot, paved driveway. **\$189,000**

WOW, STOP THE CAR! THIS IS IT!



For details go to:  
[www.groveland-real-estate.com](http://www.groveland-real-estate.com)

**19298 James Circle, 2/356**

Spacious 2262sf, 3B/2B, Office, Den, Living Room. INDOOR SPA! All inspections completed & certified, Ready to move in. **\$237,500**

## YOUR REALTORS



**JUNE DEE**  
Realtor/GRI  
**209-962-5190 Office**  
**209-962-7060 Home Office**  
**209-770-5190 Cell**  
[junedee@ymail.com](mailto:junedee@ymail.com)  
[groveland-real-estate.com](http://groveland-real-estate.com)  
BRE license 01700083



**GEORGE VOYVODICH**  
Broker/Owner  
**209-962-4185 Office**  
[gvoyvodich@gmail.com](mailto:gvoyvodich@gmail.com)  
BRE license 01080130



**REBECA MARTINEZ**  
Realtor  
**209-639-9467**  
[rebeca95321@gmail.com](mailto:rebeca95321@gmail.com)  
BRE license 01961957

"Call me for your  
real estate needs"



**Liz Mattingly • Broker Associate**

BRE#00709618

**209-962-1129 • 209-840-8020 Cell**

18687 Main St., Suite E  
Groveland, CA 95321

[lizmatre@gmail.com](mailto:lizmatre@gmail.com)

## Deardorff Realty



**COMPLETELY REMODELED! NEW! NEW!!**  
3 bedroom, 3 bath, Gas fireplaces, large deck and patio for entertaining! Wet bar! All on 2/3 acre. Priced for quick sale @ only **\$369,000!** U13/L77.



**BEAUTIFUL EXECUTIVE HOME**  
At end of cul-de-sac! 4bd/4ba, gas fireplaces. Deck & patio plumbed for fire pit & bbq. Lg family rm w/wet bar! Separate in-law or guest quarters! All for only **\$585,000!**

**GOLF COURSE LOT**

Zoned for 3 units overlooking the 5th green only **\$59,000!** U5/L274

Contact Marilyn Deardorff-Scott - BRE 00396888

**209-962-0718**

**RE/MAX Yosemite Gold**  
Each Office Independently Owned and Operated  
**Patricia (TISH) Fulton**  
REALTOR® / PROPERTY MANAGER  
BRE #00760019  
18688 Main St. P.O. 808  
Groveland, CA 95321  
Phone: 209-962-0837  
Office: 209-962-4080  
Cell: 209-985-0216  
Email: [Tish.realestate@gmail.com](mailto:Tish.realestate@gmail.com)



# YOSEMITE AREA REAL ESTATE

Paul S. Bunt Real Estate – BRE #01221266



### MOVE IN READY AT THE COURSE

INCOME PRODUCING TOWNHOUSE  
3 bed/4 bath 1889 sq ft. Next to golf course, Country Club, swimming pool, tennis. Multi-level decks. Move in ready.

**\$159,900** CCV #7 12707 Junipero Serra



### SEASONAL CREEKSIDE CHALET

4 bedrooms/3 full baths. Vaulted ceiling, wood burning stove. efficient kitchen, expansive deck, 1900 sq ft. Close to Marina. Level parking. **\$209,900**  
1/389 19554 Grizzly



### TRANQUIL AND SERENE

1 level w/2 car gar. Grt rm concept w/f.p. Skylights enhance light & airy home. Tile counter in kit. Lg pntry. 3rd bdrm converted to music room. Lg deck at rear of house. Well maintained. 1536 sq ft. **\$229,000** 13069 Mueller



### PARK-LIKE SETTING

3 bed/ 2 bath split level home. Efficient kitchen Grt rm w/woodburning stove. Central heat/air. 2 car garage and tons of room for RVs 1404 sq ft. **\$249,000**  
12800 Cresthaven



### ONE LEVEL LIVING!

Tiled entry, open lvg rm w/vaulted clng. Gas fp w/stone surround. Big kitc., grnt cntrtops, ample cabnits & stainless applcs. Lg mstr bdrm lg walk-in closet. 2 add'l bdrms w/private views **\$255,000** 6/188 – 19600 Cottonwood Street



### COMMERCIAL PROPERTY

.715 acre's corner of Ferretti and Elderberry way. Sewered, fire hydrant at lot, gentle slope, trees. **\$89,900** 11/24



### SINGLE LEVEL RANCH STYLE

3 bedroom, 2 bath, 1436 sq. ft. with porch and rear deck, attached 2 car garage, on sewer. **\$219,900** 23/422 – 0757 Rising Hill Circle



### NEAT AND TIDY

Enjoy the views from upper & lower decks to Greenbelt & Big Creek. 3bd/3ba 1676sqft Open bm clng in grt rm. Lwr lvl mstr ste or bonus. .5ac lot, 2 car detached garage. + tons of parking **\$225,000** 20789 NonPareil



### LOCATION, LOCATION

New Roof, New flooring, fresh int. paint. New water heater. Best location for vacation rental with ample parking for guests, just a block from the Lake Lodge Beach! Partial Lake view from the deck. **\$254,000** 20879 Big Foot Ct



**CHRIS H. LAKE**  
BROKER ASSOCIATE  
209.768.6156 Cell  
chrishlake@gmail.com  
BRE #00946632



**KRYSTAL BIGGER**  
REALTOR/GRI  
209-768-5944 CELL  
kbigger81@gmail.com  
BRE #01324944



**LARRY JOBE**  
REALTOR  
209.962.5501  
larryjobe1@gmail.com  
BRE #01444727



**LIZ LILLEY**  
REALTOR  
209.962.5900  
lilleypad12414@sbcglobal.net  
BRE #01723800



**SHIRLEY ECKHART**  
LICENSED REAL ESTATE  
REFERRAL AGENT  
209.962.5900



### MOVE-IN CONDITION 1 LEVEL HOME

High quality construction, 1 lvl w/lg covered deck, full length of home. Grt rm w/propane stove, lg kitch w/Brkfst bar, cabinets. French doors. Neighbor has merged lot for more elbow room! **\$239,900** 2/115 – 13177 Mohrmann



### SINGLE LEVEL TAXIWAY HOME

Large Hangar/ 5 car garage parking Quiet Loop Taxiway **\$499,000** 12/116 – 21117 Hemlock St



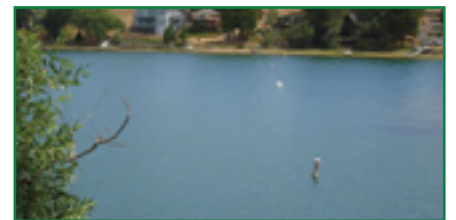
### CHARMING CHALET!

Almost 2/3 acre, enough room for a garage. Open Great Room w/vaulted open bm clngs. Bamboo flrng, air tight wd stove & cntrl propane heating & air conditioning. Large sleeping loft area. **\$159,900** 2/351 – 19264 James Circle



### .25 ACRE ON QUIET CUL-DE-SAC

Ideal for contractor or owner-builder to save thousands on fees & const. costs. Green belt at end of road, improved lot unique in PML. Minutes from Marina, very little day traffic. All utilities!! **\$58,000** 13/223 – 11956 Mountain Springs Ct



### DEEP WATER LAKE LOT

Over 71' of Lake Frontage. Don't let the steepness of this lot scare you away, not many deep water lots available! Build your dream home close to the bottom for easy access to the dock already there! **\$170,000** 15/93 – 20160 Lower Skyridge Drive





Property Sales: (888) 962-4080 [PineMtnLake.com](http://PineMtnLake.com)  
 Rentals: (877) 962-7180 [YosemiteGoldVacations.com](http://YosemiteGoldVacations.com)



Lauree Borup (209) 628-4600   Ann Powell 200-1692   Eleda Carlson 814-4123  
 Miriam Martin 962-4080 X 15   Tish Fulton 985-0216   Tracy Billeb RENTALS 962-7180

**SERENE FOREST LOOKOUT**



**NEW LISTING**

near main Marina beach. Living room and master bedroom with vaulted ceilings added on back of gambrel cabin. Bamboo & laminate floors. Kitchen with hickory cabinets, granite counters. Dual pane windows, central heat & air + woodstove. Cute, comfy 1600 sq ft cabin. Get it now and be ready for summer fun on shady North deck. 8-57 Sunnyside \$165,000

**SPACIOUS GREAT ROOM**



with vaulted beamed ceilings, woodstove on commanding rock hearth, wet bar, & slider to the deck. 1578 sq ft cabin can sleep a crowd with a master suite, guest bedroom & guest bath on the main level and big bonus room and half bath downstairs. 2-78 Mueller \$159,000



**WALKING DISTANCE TO LODGE BEACH**



Swim & picnic in the day time, play pool in the evening, then retire to the hot tub overlooking the greenbelt views. Classic cabin interior has vaulted knotty pine ceiling-wood on the walls. Great room opens out to the deck with a roofed area. Downstairs has a big bonus room with a large bedroom and a super sized bathroom. 3 bdrms, 2 baths, 1758 sq ft, double garage and big flat driveway. 4-43 Cresthaven \$225,000

**1.3 ACRE ON QUIET COURT**



Mountain views from 3 bedroom, 3 bath with den facing South for light and winter sun. Huge great room with pine ceilings, big bar to kitchen. Jetted tub & walk-in closet in main level master suite. Extensive built-in furniture in 2650 sq ft. with excellent floor plan. All new light wood laminate floors, freshly painted, new upper deck + separate lower deck off guest suite. Large tiled entry with skylight is enclosed for bonus room. 3-52 Echo Ct. \$329,000

**NEW LISTING**



**EXQUISITE PRIVACY**



**NEW PRICE**

on a quiet court, forest view, & room for an orchard on 1.33 acres. Kitchen remodeled with granite counter tops, glass tile back splash, cherry finished cabinets. NEW appliances: Bosch dishwasher, Samsung stove, microwave + NEW heating & air system. A workshop or art studio off the garage. Sweet & cozy chalet. 4-519 Hetch Hetchy \$159,000



**YOUR BEST YEAR YET! CELEBRATE**

**PRICE REDUCED \$114,900**



in this compact 2 bedroom cabin situated on a corner lot just minutes from PML amenities. Tall wood and beam ceiling, a separate dining room and a galley-style kitchen with a pass-through bar. Accessible space below the home to use as a workshop or for extra storage. This home provides an opportunity for Home Ownership at a Pint Sized price. 2-101 Gamble St \$114,900



**BERKSHIRE HATHAWAY**  
HomeServices

**California Realty**  
LAND LISTINGS:



**J.W. SMITH**  
BROKER ASSOCIATE  
209-620-0757  
Fax 209-962-1125  
[jwsmith@bhhsr.com](mailto:jwsmith@bhhsr.com)



MLS#20141291  
\$74,000 10.32 acres  
Vernal Dr., Groveland

MLS#20151892  
\$25,000 .25 acre  
Butler Way  
Pine Mountain Lake



MLS#20151275  
\$45,000  
1.5 acres  
Pine Mountain Lake



**Trust—Integrity—Knowledge**

©2015 BHH Affiliates, LLC. An independently owned and operated franchisee of BHH Affiliates, LLC. Berkshire Hathaway HomeServices and the Berkshire Hathaway HomeServices symbol are registered service marks of HomeServices of America, Inc.® Equal Housing Opportunity. CalBRE #001916850



**HOUSE PAINTING**

**FREE**  
**Window Wash**

with every Exterior Signed Contract

VALID THRU FEBRUARY 2016

Full-service House Painting  
Interior/Exterior Painting & Staining  
Drywall & Drywall Repair

**RESIDENTIAL • COMMERCIAL**

**209.962.4445**

[www.GreenTreePropertyServices.com](http://www.GreenTreePropertyServices.com)

LICENSED | BONDED | INSURED | CSL440341







**Pine Mountain Lake Realty** *An Agent Owned Company*

Office 209-962-7156 1-16

18919 Ferretti Road  
PO Box 738  
Groveland, CA 9532  
209-962-7156



**Barry Scales**  
Broker/Owner  
BRE#00451887



**Lynn Bonander, GRI**  
Owner/REALTOR®  
BRE#00683485



**Val Bruce**  
Owner/Broker Assoc.  
BRE#00578336



**Parker 'PJ' Johnson**  
Owner/REALTOR®  
BRE#01732298



**Gina Hernandez**  
Owner/REALTOR®  
BRE#01226555



**Marc Fossum**  
Owner/REALTOR®  
BRE#01956242



**Location - Location!!**  
13129 Clements Rd  
12-99  
**\$299,000**  
MLS# 20151990



**Beautiful "Farm House" Style!**  
13380 Clements  
12-166  
**\$539,000**



**Primo Lake Front!**  
**\$650,000**  
MLS# 20150937

3 Bd/3 Bth, 2 Levels, Approx 1920 sf, Approx 0.76 Acre, Bonus Room, Breakfast Bar, Solid Surface Counter Tops, Brfst Area, Master Suite with Fire Place, Walk-in Closet, Private Deck, Jetted Tub, Walk-in Shower, Closeted Toilet, Vanity, Inside Laundry, Deck, RV Parking, and Dog Run. Walking distance to PML Equestrian Center & Airport!

4 Bed, 2 1/2 Bath, 2 Car Oversized Finished Garage w/Shop, Approx 2525sf on 1.11 Acre, Built 2003, Great Room, Formal Dining, Master Suite, Walk-in Closet, Inside Laundry, 676sf Bonus Rm which brings sf up to 2811 sf, Storage Rm, Covered Porch, 2 Stall Barn, Excellent Well, RV Parking and So Much More! MLS# 20151293

Expansive view of Pine Mountain Lake. 0.63 Acre Lot. Very slight downslope to house and dock. 4 Bed/ 2 Bath Home needs some updating. Ample Room for Expansion. Great Potential! 19795 Pleasant View 1-273



**Peaceful Cabin Living**  
13000 Tip Top Cl.  
**185,000**



**Park Like Setting!**  
**\$164,500**



**Great Downtown Location!!**  
**\$229,900**



**Living at it's Best!!**  
13-211  
20290 Little Valley Rd  
**\$229,000**  
MLS#20151858

4 Bed/2 Baths, Approx 1500 sf, Approx 1.10 Acres, Circular Driveway, RV Parking, Breakfast Bar, Solid Surface Countertops, Cathedral Ceilings, Inside Laundry, Window Coverings, Central Baseboard Heat, Heat Pump, Approx 600 sf of Decking. New Deck, Roof, Exterior & Interior Paint, New Toilets, Septic Overhaul all within the past 3 years. 2/57,56,55 MLS #20151984

3 Bed/2 Bath, 2 Car Oversized Finished Garage w/Shop, Cabinets & Shelves, Measures 20'x30' ft. Great Rm W/Fire Place, Breakfast Bar, Island, All Appliances, Cathedral Ceiling, Inside Laundry, Central Propane Heat, Septic, Room for a large RV or Boat Parking. Vacant lots on both sides. 12-60 19307 Ferretti Rd MLS# 2015177

Located near the Post Office, Medical Center, Restaurants, Shopping, Park & Library. Spacious Master Bedrm on Main Level. 2 Bedrms, Bath & Family/Game Rm or Guest Suite, Wet-bar and lots of storage on lower level. Great Rm, Open Beam Ceiling, Fireplace, Large Covered Deck. 2 Car Garage w/small bonus Rm for a hobby/storage room, plus 2 Car Carport. Total Remodeled & Updated. 18835 Powderhouse MLS# 20151177

2 Bd/2 Bth, Enclosed Carport w/Garage Door-2 Car Tandem Style, Single Level Home, Great Rm, Dining Rm, Quartz Kitchen Counter Tops, Central Air, Central Propane Heat, Crown Molding, Window Coverings, Propane Fireplace, 12x14 Fully Finished Rm can be used as a Studio or Shop, RV Parking w/30 AMP Service. Newer 50 Year Roof, Whole House Fan, Whole House Water Filter & Recirculating Hot Water System. Co-Listed with Lynn Bonander



**Ranch Style Home**  
12-124  
21179 Hemlock  
**\$395,000**



**Modern Home with a Country Feel!**  
**\$275,000**



**Mountain Cabin Views - Location**  
19259 Ferretti  
7-38  
**\$169,000**  
MLS# 20151241

Spacious 4 Bd/3 Bth, 2 Car Attached Garage, 2760 SqFt, Single Level, 1.60 Flat Acres, Built 1988, Great Rm, Cathedral Open Beam Ceiling, Large Kitchen, Breakfast Area, Sun/Craft Rm. Guest Suite w/2 Rms + Bath, w/ access from inside & from outside, Central Air/Central Propane Heat, Zoned for Horses. Excessive room for parking & storage area. MLS# 20130073

3 Bed, 2 Bath, 2 Car Attached Finished Oversized Garage, Built 2005, Approx 1837sf, Single Level, Central Air, Central Propane Heat, Great Rm, Kitchen Island, Master Bedroom, Walk-in Closet, Inside Laundry, Deck Access from Bedrms, Knotty Pine Ceilings. 7-228 19092 Digger Pine MLS#20151397

2 Bed/2 Bath, Garage, Large Game Rm with add'l rooms for more sleeping quarters. Upgraded Kitchen, Breakfast Bar, Great Room, Air tight Free Standing Fire Place, Inside Laundry, Cathedral Ceiling, Skylights. Security System. Privacy, Comfort, Mountain Views, and only minutes from the Golf Course and Country Club

**LOTS for SALE!!**  
13/26 - \$3,500 Great Location  
2/355 - \$10,000 Very Buildable  
5E/17 - \$49,900 Golf Course Lot  
5B-2 - \$100,000 Best Views  
11-13 - \$225,000 Lot w/Hanger  
9-3 - \$250,000 3+Acres Lake Front  
\$80,000 Deer Flat Acreage  
\$49,900 Lytle **Sold!** Acreage

*Happy New Year from Pine Mountain Lake!*





BRE# 00683485



# Pine Mountain Lake Realty

An Agent Owned Company

Lynn Bonander, GRI Owner / REALTOR®

18919 Ferretti Rd., Ste. A, Groveland, CA

Office 209-962-7156 / Cell 209-484-7156 [lynnb@goldrush.com](mailto:lynnb@goldrush.com) /[www.pmlr.com](http://www.pmlr.com)



01/2016



**Gorgeous Log Cabin!**

**\$649,000**

Genuine Log Home, logs imported from Canada, Outstanding in every way. Beautifully designed offering heart-stirring warmth that will win you over. A true Mountain Cabin, 2440 sf, w/3Bedrms, 3/Bths + downstairs offers a Huge Bonus Rm/Sleeping Qtrs/Game Room, etc. & Complete with a Mini Bar & full Bath. Located at the end of Big Creek Cove w/Hiking Trails across the street. Abundance of Storage Under House. Too many features to mention! Furniture included w/an acceptable offer on Separate Bill of Sale. 20098 Pine Mountain Dr. 13-279 MLS#20150638



### Luxurious Airport Home with Stunning Views! (E45)

From the Moment You Open the Front Door You will be in Awe! Built in 2005, 4 Bd/4 Bth, 3 Car Garage, 4479sf, 0.9 Acre, Central Air/Central Propane Heat, Gas FP, Gourmet Kitchen, Island, Brfst Bar, Brfst Nook, Formal Dining, Den, Family Rm, Living Rm, Coffered Ceiling, Crown Molding, Sky Lights, Window Coverings, Master Suite-Walk-in Closet, Jetted Tub, Relaxing Sitting Area. Lower Level Media Rm, Wired for Surround Sound, w/Theater Seats, Game Rm w/pool table, Guest Bdrm-Murphy Bed. Inside Laundry, Central Vacuum, Storage. 44'x36' Hanger with Electric Bi-Fold Door and plumbed for Bathroom. Lighted 3,600 Ft County Maintained Runway w/GPS Approaches. Located in Pine Mountain Lake Gated Community. 20985 Hemlock St. 12-37 \$995,000 MLS#20151904



**Beautiful Home**

12642 Cresthaven 4-555

**\$374,000**  
**\$364,000**

Ideal Location! Only 0.3 mile to Lake & Beach area. Custom Built with Great Curb Appeal, Approx 2584 SqFt. 3 Bed/2 Bath, Spacious Dining Rm, Inside Laundry Rm. Lower Level offers a large Bonus Rm for extra sleeping area or Game Rm. Large Kitchen w/Granite Counter Tops & lots of Cabinets. Propane Fireplace. Upper & Lower Decking for outside enjoyment, plenty of parking. MLS#20150505



### Lake Front - 3 Merged Lots!!

Incredible Setting on almost 2 Acres! 5 Bed/3 1/2 Bath, 2,200sf, 2 Levels. Remodeled Kitchen, Breakfast Bar & all new Stainless Steel Appliances. 4 new Patio Windows. Illuminated Carport provides boat parking. 10'x6' Lighted shed w/ power outlets, workbench. Private Dock & possible to navigate a boat to within 35' of House. Ext. painted 2012. Lots of Parking. Unit 4/58,59,60 20238 Pine Mountain Dr. \$619,000 MLS#20151410



### Private & Secluded-Beautiful Setting!

2 Merged Lots, 0.54 Acre, surrounded by larger parcels that add to the sense of seclusion. Great Rm w/9' Ceilings, Beautifully Designed Kitchen, Master Bdrm, Lg Walk-in Closet, Dual Sinks, Step in Shower + soaking Tub. 3 Bed/2 Bath, 2 Car Attached Finished/Insulated Garage, Great Rm, Central Air/Central Propane Heat, Propane Fireplace, Covered Porch & Deck. Refrig. Washer/Dryer, Patio Furniture, 13' Umbrella, and BBQ Included! Owner Financing w/20% Down 20660 Ferretti 3-15 \$235,000 MLS#20151547



### Spectacular Sierra & Lake Views!

3 Bed/3 Bath, 2 Car Garage w/11/2' x10' Storage Rm, Approx 3051 sf, 0.57 Acre. Living Rm w/2 Bay Windows, 2 Family Rms Upper & Lower Level, Bonus Rm, Custom Sewing/Hobby Rm with Custom Cabinets, Work Counters & Pull Out Drawers, Lots of New Millard Windows thru out, Kitchen, Breakfast Area, Huge Master Suite, Inside Laundry, 4 Fireplaces, Central Air, Wrap around Trek Decking, Concrete Patio, Custom Curtains & Drapes, Custom Corner Bookshelves, Shelving for CDs, Books or Nic Nacs. Special Features You will Enjoy. Vacant Lots on both sides are Available by this Seller. It's a MUST SEE!!

12088 Hillhurst 8-148 \$439,000 MLS# 20151847



### Looking for Privacy?

Check out this Delightful 3 Bd/2 Bath Split Level Home. Approx 1500sf, Large Master Bdrm w/ Walk-in Closet. Nestled amongst Beautiful Trimmed Oak Trees. Lots of Rm on this 0.648 Acre Parcel. Most Furniture & Appliances included in Sale. Plenty of parking Nice Neighborhood and Quiet Street. 20590 Nob Hill Cir 3-90 \$250,000 MLS# 20151873



### Comfortable Living

3 Bed/2 Bath, 2 Levels, Approx 1800 sf, on Approx 0.40 acre. Central Air/Heat, Heat Pump, Free Standing Air Tight Fire Place, Great Room, Brfst Bar, Island, Pantry, Solid Surface Countertops, Double Pane Windows & Coverings, 600 sf Family Room on Lower Level. Nice Seasonal Creek. 12947 Jackson Mill 7-137 \$495,000 \$185,000 MLS#20151709



### Great Taxiway Lot

Includes a Large Pad for Hanger. Unfinished Shell for a 2 Level Home with Oversized Garage underneath. Approx. 0.69 Acre. County shows the Upper Level as 2 Bedrm & Bath, Main Level Living Rm, Kitchen, Dining & Bath. Bedrms not defined as this home was never finished. Fire Retardant Roof was installed in 1996 w/permit. You can Make it Your Own Design! \$184,900 12-26 20954 Woodside Way MLS#20151473



### GREAT VACATION HOME!

It's a Cutie! Hexagon Style, 3 Bed 2 Bath, and Den. Finished Loft Accessible by Ladder, a Great Kids Hide-a-way. Upgrades: Windows, Evap AC & Water Heater. FS Fireplace, Cathedral Ceilings, Skylights, Ceiling Fan, Inside Laundry, Open Kitchen, Dining, and Living Room. Refrigerator Included

19631 Cottonwood St - 6-38 \$129,000 MLS# 20140610

### LAND FOR SALE!

2.3 Acre \$59,900 Whites Gulch

- 1-1 - \$22,900 Double Lot Build
- 1-106 \$39,000 Wonderful Level Lot
- 4-128 - \$110,000 Lake Front-Beautiful
- 4-154 - \$24,900 Seasonal Creek
- 4-343B - \$10,000 Seasonal Creek,
- 5-4 - \$ 7,000 Great Buildable Lot
- 5-5 - \$ 7,000 Also a Great Build
- 5-161 \$45,000 Beautiful Corner IOT
- 5-213 \$19,000 Great Location
- 5D-7 - \$89,900 Golf Course Lot
- 6-231 - \$12,500 Nice Distant View
- 6/183 - \$29,000 1/2 Acre+ Easy Build
- 8/71 - \$15,000 Beautiful Lot
- 8/147 - \$39,900 Green Belt lot w/Lake View
- 12/87 - \$125,000 Level Lot Cul-de-Sac 1.47 Acre



RealLiving®

Sugar Pine Realty

96% Consumer Satisfaction Rating

www.sugarpinerealty.com

18727 Main St. #B • PO Box 792 • Groveland CA 95321  
209.962.7765 • fax: 209.962.5924 • BRE: 00659397



Emmett Brennan  
Broker/Owner



Dave Lint  
Realtor  
209-768-5010



Linda Willhite  
Broker/Assoc.  
209-985-2363



Ron Connick  
Realtor  
209-962-4848



Patty Beggs  
Realtor  
209-962-6268



Michael Beggs  
Broker/Assoc  
209-962-6268



Zane McDow  
Realtor  
209-768-8889



Elaine Stallings  
Realtor  
209-878-0499



SEVEN CEDARS

19935 Pine Mountain Dr.

\$198,500

Call Linda

- 3 beds / 2 baths
- Open floor plan
- 400 sf bonus room
- Approx. .50 ac lot 1/2 mi to Marina
- Private setting



PREMIER SETTING

12015 Hillhurst Circle

\$239,000

Call Ron or Dave

- Mountain views
- 3 bd/2 ba/2-car
- Furniture included
- Covered deck
- Lots of parking



RELAXING RETREAT

20712 Rising Hill Circle

\$225,000

Call Linda

- 5bd/2.5 ba
- Open floor plan
- Bonus room
- Large lot
- Great setting
- Adjacent lot available



COMFORTABLE AND PRIVATE

19997 Ridgecrest Way

\$235,000

Call Linda

- 3Bd 2Ba
- Turn Key Condition
- Private Setting
- Large Master Suite
- 2 Car Tandem Gar.
- Open Floor Plan

**"SOLD"**  
Your Home  
Could Be Here!



**LOTS AVAILABLE**  
To Build Your  
Dream Home!



CHARMING CORNER LOT

19707 Butler

\$220,000

Call Patty or Michael

- 3b/2ba
- Oversized 2 car gar
- Light Bright Cheery
- Vaulted Ceilings
- Large decks
- Furniture included



COZY & CUTE CHALET

19810 Ferretti Road

\$159,900

Call Mike or Patty

- 4 bed / 2 baths
- Beautiful park-like settings
- Knotty pine ceilings
- New roof
- Backs up to green belt
- Large decks



ABSOLUTELY GORGEOUS HOME!

19287 Ferretti Road

\$235,000

Call Elaine

- 3 Bd/2Ba
- Cathedral ceilings
- Open room concept
- Step-down lvg rm
- Bright & functional kitchen
- Courtyard patio
- Covered deck



CHARMING HOME

12286 Sunnyside Way

\$259,000

Call Elaine

- Tri level 2bd/2ba
- Bonus Room
- Family Room w/wet bar
- Open beam ceiling
- Wall of windows in Living Room
- Solid surface decking
- 2 car gar. w/loft



IMMACULATE FAMILY HOME

12054 Alcan Court

\$259,000

Call Zane

- Large Lot
- Over 2,000 sq. ft.
- 2 car garage
- Deck Surrounds Home
- Sunset Views



PREMIER SETTING

20240 Little Valley Road

\$399,900

Call Linda

- 4 bd/3 ba/2-car
- Open floor plan 2944 sq. ft.
- Bonus room
- Approx. 1 acre
- Approx. 1600 sf of covered deck
- Perfect place to relax

**GO PAPERLESS**

Now you have Access to all your Documents with Signatures from any Place and Anytime you have Internet Access. These Documents Include all your Contracts, Disclosures, Inspection Reports, Escrow and Lender Information.

You will also receive a Personalized CD with your Records at Closing.



**Looking to Build your Dream Home?**

Call us for a complete list of lots in PML



CUSTOM BUILT GOLF COURSE HOME

19227 Ferretti Rd

\$429,000

Call Ron or Dave

- 3 bd / 3ba 2,209 sf
- Separate Office
- 2 Car + 4 Car gar
- Composite Decking
- Entry Level Living
- Merged Lots
- Golf Course Views
- RV Parking



LARGE HOME, SMALL PRICE

12066 Breckenridge

\$259,900

Call Ron or Dave

- Designed for 2 families
- 4 bd/3 ba/2-car
- Open floor plan
- Separate central heat & air
- Fireplace & wood stove





Gina Giampietro Hernandez  
OWNER/REALTOR®/NOTARY PUBLIC  
BRE 01226555  
408.506.6944 MOBILE  
209.962.7156 OFFICE  
GinaPMLRealty@gmail.com

**BEAUTIFUL  
HOMES FOR  
SALE!**

*I'm Moving Properties...  
Let Me Move Yours*

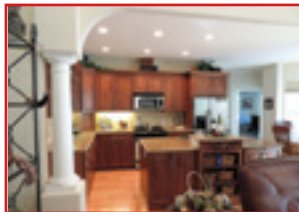


View listings & property search online at [www.PMLRealty.net](http://www.PMLRealty.net)

**HORSE PROPERTIES/AIRPORT AREA**

**FANTASTIC VIEWS OF LAKE, YOSEMITE MOUNTAINS & GOLF  
ALL IN ONE LOCATION! \$652,000**

**STUNNING LIKE NEW MODEL RANCH ESTATE \$539,000**



13245 CLEMENTS RD. U12/L128 4 BDR 2 1/2 BA 2 CAR 1.3 ACRES 2581 Sq ft Absolutely impeccable home! Must see this stellar 2005 jewel with classy / elegant modern features. Enjoy single level living at it's finest with one upper level bonus room and oversized 2 car garage on 1.3 Acres of spacious land that can accommodate horses or simply board your horse across the street at Pine Mountain Lake stables, also within 1/2 mile of PML airport. Notable high ceilings, w/ accent windows, crown molding, greatroom, granite and stainless in kitchen, gorgeous hardwood floors, front covered porch and large back trex deck, lrg master suite with patio door, jetted tub, beautiful tile, a modern new home style at a great price! [www.tourfactory.com/1448907](http://www.tourfactory.com/1448907)

**NRLY 2 AC \$0 ELECTRIC BILL! COMPLETE SOLAR, WELL WATER \$470,000**



**13340 CLIFTON WAY U12/L158**

Beautiful single lvl home w/ lg patio yard 3Bd 3bd/2ba/2car 1658sf Solar pwrdr home on Dist & well. beaut. entry & Grt Rm w/wd burn stove & stone fp. Open lg kitch. slate stone flmg, brkfst bar, Italian grmt slab cntrs, SS appls: wine frig, dbl oven, Bosch DW, Wolf gas stove & Zephyr Hurricane hd. Tankless WtrHtr, 100 yr roof, fenced garden area & backyard. Lg deck, hot tub. 12x28 Tuff Shed, beautiful trees, too many features to list [www.tourfactory.com/1401854](http://www.tourfactory.com/1401854)



12811 MOONLIGHT CT. U1A/L4A 4/5 BDR 4BA 2 CAR .82 ACR Wow! Like new app. 3000 sf, built in 2004 extraordinary home in Pine Mountain Lake w/lake views, fabulous 4th of July fireworks balcony view, Yosemite mtn views & green golf course views, all-in-one on a private lot on court near amenities including lake, golf, pool, restaurant, pickleball courts & more! Gorgeous 3 level w/vaulted ceilings & lake views from living area, Mstr & Guest stes ea w/private covered patios, spacious baths, formal slate entry & fpic, upper level 2nd Guest Ste, Enormous open kitchen & DineArea w/ lake views, dwnstr Lrg 5th bdrm/office/game rm w/balcony/deck. Storage galor! Want it all? Here it is! [www.tourfactory.com/1448902](http://www.tourfactory.com/1448902)

**PRIVACY!! TREE HOUSE CABIN \$399,000**

20063 PINE MTN DR. U13/L263 Family cabin! 4-5 bd/2.5 ba, 3 sep sleeping levels, 2 bonus rms, pool table, wet bar loft area, ex lrg gar, central HVAC, 2 fpic, must see! [www.tourfactory.com/1281210](http://www.tourfactory.com/1281210)



**BEAUTIFUL CABIN HOME W/ VIEW! \$370,000**

20064 RIDGECREST WAY U13/L294 Every rm is spacious! 3bd/3ba 2car 3320 sf. Huge kit/pntry, 3 deck areas, 2 bonus rms, pool tbl, wet bar, trees, central HVAC, 2 fp, great value - must see! [www.Tourfactory.Com/1354050](http://www.Tourfactory.Com/1354050)



**GOLF COURSE TOWNHOME \$119,000**

12699 JUNIPERO SERRA #3 at PML Golf Course 2 spacious bd/3 full ba/ tall ceilings, 3 deck areas, golf course views & at golf course entrance in beautiful Pine Mountain Lake. [www.tourfactory.com/1248349](http://www.tourfactory.com/1248349)



**SOLD!!! \$220,000**

20704 POINTVIEW DR. U4/L260 3bd/2ba/2 car/bonus rm loft



**LOTS FOR SALE**

170 BOITANO RD U3 L170 .22 ac beautiful corner lot \$68,000  
20520 FERRETTI RD. U3 L29 2 merged lots. 474ac \$20,000  
FERRETTI RD. U6 L235 .49ac, \$20,000  
CHAFFEE CIR U1 L99 .25 acre Beautiful & flat 1/2 blk from GC \$15,000



**Yosemite Gateway**

**ANTIQUES  
&  
APPAREL**

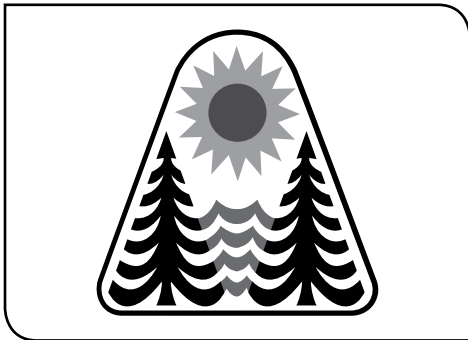
**Clothing Outfitters  
& Unique Boutique**

**Collectibles  
& Consignment**

**Apparel  
Sale**

**NEW STORE LOOK & INVENTORY • WE HAVE ADDED CLOTHING  
Unique Clothing Items • New and Vintage Selections**

**OPEN WED-SUN 10am - 6pm • Located in the MarVal Market Shopping Center Main St.  
VISIT OUR ONLINE STORE AT [www.YosemiteGatewayAntiques.com](http://www.YosemiteGatewayAntiques.com) • 209.962.6184**



**PMLA Board of Directors  
Monthly Meeting  
January 16**



**Health After 50 Class  
at The Little House  
January 19**



**Wine Tasting  
and Dinner Buffet  
January 21**



**Rotary Red, White  
and Blue Ball  
January 30**

<b>SAT 16</b>	<b>SAT 16</b>	<b>TUE 19</b>	<b>THU 21</b>
<b>PML LAKE LODGE</b>	<b>WASTE MANAGEMENT RECYCLING</b>	<b>THE LITTLE HOUSE</b>	<b>THE GRILL AT PINE MOUNTAIN LAKE</b>
<p><b>PMLA BOARD MEETING</b> Monthly meeting of the Pine Mountain Lake Association Board of Directors. Begins at 9am.</p>	<p><b>POLYSTYRENE COLLECTION</b> Tuolumne County Master Gardeners will be collecting Number 6 Polystyrene on January 16th and January 23rd from 9 A.M. to 4 P.M. at Waste Management Recycling Center on Camage Ave. off Tuolumne Road in Sonora. There will be signs to direct you. If you have any questions, please call Peggy Andrews, 962-7264 or email pja20998@gmail.com</p>	<p><b>HEALTH AFTER 50</b> <b>Tipping the Odds in Your Favor</b> Free monthly class beginning Jan. 19 (third Tuesdays from 1-3pm). Taught by a retired registered nurse, the course will feature the latest health research from leading universities around the world, and will focus on ways to use nutrition and exercise to prevent and control disease.</p>	<p><b>WINE TASTING &amp; BUFFET</b> Come out and join your friends and neighbors with a wonderful evening of wine tasting and a dinner buffet. Menu: Herb Roasted Chicken. All wines featured will be offered at discounted prices for this night only. \$25 per person plus tax. Reservations are required. Call The Grill at 209-962-8638 for reservations or more information.</p>
<b>SUN 24</b>	<b>TUE 26</b>	<b>THU 28</b>	<b>SAT 30</b>
<b>SONORA HIGH AUDITORIUM</b>	<b>PIZZA FACTORY</b>	<b>GROVELAND COMMUNITY CENTER</b>	<b>THE GRILL AT PINE MOUNTAIN LAKE</b>
<p><b>MARTIN LUTHER KING EVENT</b> Music &amp; mind tickling commentary will be featured at this years' annual Motherlode Martin Luther King Jr. event at 2:30pm. The free event will host National radio commentator, news writer, public speaker, and author Jim Hightower, and musical guests. Reception following the program. For more info contact Pat Cervelli at patcervelli@frontiernet.net, or call 928-3494.</p>	<p><b>YOSEMITE TOASTMASTERS</b> Yosemite Toastmasters Open House. Come see how Toastmasters can help you. 5:30pm to get to know each other. Meeting starts at 6pm Theme for this meeting will honor Restaurant Month. See &amp; hear prepared speeches. Speakers will receive positive valuable feedback including ways that they can improve their speaking skills in the future.</p>	<p><b>CHAMBER MIXER</b> The January 28th mixer will be held at the Community Center from 5:30 to 6:30. Our guest speaker for the evening is Lisa Mayo, Executive Director for the Tuolumne County Visitors Bureau. Lisa will present the Bureaus highlights for 2015 and speak about plans for 2016.</p>	<p><b>ROTARY RED WHITE &amp; BLUE BALL</b> Put on your dancing shoes &amp; enjoy a delicious dinner of filet or salmon at the 15th annual Red White Blue Ball. Cocktails begin at 6pm, dinner at 7pm. Home Grown will play your favorite tunes. Tickets-\$50 per person. Contact any Rotarian or call Paul Burkett 962-6542 for tickets. This popular event is not to be missed.</p>

**19TH HOLE LOUNGE ENTERTAINMENT**

<b>Friday, January 4</b> <b>KARAOKE</b>	<b>Saturday, January 19</b> <b>2 STEPS DOWN</b>
<b>Saturday, January 5</b> <b>KICKSTART</b>	<b>Saturday, January 26</b> <b>ELECTRIC BOB &amp; SHORT CIRCUIT</b>
<b>Saturday, January 12</b> <b>KOOL SHIFTERS</b>	<b>Thursday, January 31</b> <b>WESTBOUND 50</b>

**SUPPORT MEETINGS IN GROVELAND**

**AL-ANON**  
**THE LITTLE HOUSE - SATURDAYS 9:30-10:30 AM**

**ALATEEN**  
**GROVELAND YOUTH CENTER - TUESDAYS 5-6PM**  
CONTACT/QUESTIONS: GROVELANDAFG@GMAIL.COM

**SIERRA GRIEF SUPPORT**  
**THE LITTLE HOUSE - WED'S 10:30AM-NOON**  
CALL 536-5685 TO REGISTER FOR GRIEF SUPPORT.  
OFFERED BY HOSPICE OF THE SIERRA.



SOUTHERN TUOLUMNE COUNTY HISTORICAL SOCIETY

## Museum Happenings

Carrie Carter

Sitting about one hundred feet southwest of the Black Road and Highway 120 intersection in Big Oak Flat was the impressive stone structure of Mecartea's Blacksmith Shop with its two key-stoned arched openings covered by iron doors. A large locust tree at the corner provided abundant shade for customers and their horses as they awaited their turn for new shoes.

The Big Oak Flat family's story began in the summer of 1849 as sixteen year old Elvira Smith and her parents left Missouri to head west by wagon train. They crossed the Yuba River by fall and camped in Marysville and waited for Elvira to recover and regain strength from smallpox which she had contracted coming overland.

In the early 1850s, the Smith family settled in Chinese Camp where there was plenty of work for Elvira's father Samuel. But it wasn't long before Elvira's father got sick and died. About the same time that the Smith's arrived, a 23 year old miner named James Mecartea from Ohio also settled there.

In such a small town it was inevitable that the two young people would meet and by June 24, 1852 James and Elvira were married and made a home which was soon filled with the pitter patter of little feet. Their first child, Jim, had the distinction of being the first white child born in Chinese Camp. James and Elvira lived there for twenty years and had a total of eleven children.

Of all the eleven Mecartea children, only one was a girl, Alice, "blond and notably pretty". Even with the hired local Miwok women to help, one can only imagine the huge volume of cooking, cleaning, baking, and sewing that Alice and her mother, Elvira faced daily for the family of thirteen. James was able to feed all those mouths initially by working in Egling's blacksmith shop in Chinese Camp before buying a shop of his own south of where the State Historic Marker sits today.

In 1872 James Mecartea, wife Elvira and



their eleven children moved from Chinese Camp to Big Oak Flat. They purchased an existing wood framed house and a stone building which would become the family's smithy from a merchant named Michael Noziglia. Noziglia & Co. operated a store in the center suite of the Gamble building before leaving Big Oak Flat in 1875 to run his business in Raboul's Store (now Helping Hands Thrift Shop in Groveland).

To make the Big Oak Flat stone building fireproof and workable as a blacksmith shop, Mecartea added a layer of dirt on the roof. Business was good with the Big Oak Flat Road running right in front of the smithy; there was a constant stream of haulers, miners, ranchers, and cattlemen all needing work to be done on their wagons or their animals. Picks and horses shoes were popular items made by James with payment usually in gold dust or produce and with eleven children to feed, bounty from one's garden or field was probably very welcome. It wasn't long before the family increased by two more boys in their Big Oak Flat home.

In April of 1890 daughter Alice married Charles P. Hall, manager of Big Oak Flat's Tip Top Mine and over the years had two sons, James and Charles.

Then in 1899, family patriarch James Mecartea developed pneumonia and died at the age of 75. Austin, third youngest child, who

never married took over the blacksmith shop with his brother George until the advent of the automobile put them out of business and closed the big iron doors forever. Over the years, one or more of the Mecartea brothers could always be counted on to make 'house calls' up in the mountains, to shoe horses or repair wagons.

In 1916 Mecartea son Chester was shot in the chest and killed after drinking and quarreling with Dan Sullivan at the Sullivan Ranch in Groveland. The deadly Spanish influenza epidemic claimed three more siblings, James, Joseph, and Charles in 1918. In 1945 Austin was killed instantly when trapped under an overturned truck in which he was riding on Priest Grade. Eugene was almost totally blind and lived alone in a house across the road from the family home until his death in 1950 and is interred with many of his family members in the Divide (Oak Grove) Cemetery.

In the fall of 1943 the roof of the old smithy burned igniting everything inside and in the 1980s what remained of the shop was torn down. Wild berry bushes cover the large depression where once sat the well-kept orchard, garden, blacksmith shop and the grape arbor passageway that led to the long gone family home. But the Mecartea name lives on in numerous descendants and their Big Oak Flat legacy is one of pioneer resilience and a strong work ethic.

You can leave a lasting legacy, too, by making a New Year's resolution to join STCHS and help in the preservation and promotion of our area's rich history. If you've never visited the Museum, make a resolution to some see what you're missing. If you have a few hours each month to spare, make a resolution to train as a docent and welcome Museum visitors from around the world. The New Year is a time of new beginnings and there's no time like the present to help us conserve the past.

## Funding Shortfall at GCSD's Dog Park

GCSD Board of Directors

GCSD's Dog Park is located behind the EV Church on Ferretti Road, adjacent to Leon Rose baseball field. About 4 years ago the Board of Directors authorized the use of this spacious, previously unused site. The Friends of the Groveland Dog Park (FOGDP) collected funds to buy the materials for the Park and with some assistance from GCSD staff, and many volunteers, the park was built. As for ongoing maintenance of the Dog Park, the Board chose to utilize GCSD staff funded by property tax revenue rather than making maintenance the responsibility of the FOGDP. Ongoing maintenance by GCSD staff was based on the premise that the Dog Park's annual membership fee of \$25 paid by at least 100 participants would reimburse taxpayers.

Paying membership in the first couple of years did number about 100 bringing in around \$2500/yr. However, current paying membership is only about 35. With less than \$900 in annual revenue, and with maintenance estimated at about \$5000 per year, the park is facing scrutiny by the GCSD Board of Directors. The Board heard suggestions that some people using the park are likely not paying the fee. At the Dec. 7, 2015 meeting, the Board instructed staff to install a gate lock with a code available only to participants who pay for their annual pass. With this step, the Board is hoping to increase revenue.

At current estimated costs, the Dog Park needs about 200 paying members, double the highest achieved in the best year. The GCSD Board of Directors is seeking ideas and comments on how to make the Dog Park a self-funding amenity. The easiest way to make comments is to email [info@gcsd.org](mailto:info@gcsd.org) and put "Dog Park" in the title heading. You can also write to Groveland CSD, P.O. Box 350, Groveland, CA 95321, or call 209 962 7161.

## Thank you for a Successful Christmas Craft Faire

Sandy Smith

A big thank you to each and everyone who came to the Christmas Craft Faire, thanksgiving week-end. Santa was so happy to have his picture taken with all the kids. It was a happy, fun, and successful two days. Our community has done it again, we are awesome!! Many will benefit from your

time spent at the community hall. Thanks again to everyone.

Also thank you to our fire department for all their help, Earl Wright for being a fabulous Santa, the Elves (who were darling), and Groveland Kiwanis for sponsoring this event.

## Master Gardeners Polystyrene Collection

Peggy Andrews

Tuolumne County Master Gardeners will be collecting Number 6 Polystyrene on January 16th and January 23rd from 9 A.M. to 4 P.M. at Waste Management Recycling Center on Camage Ave. off Tuolumne Road in Sonora. There will be signs to direct you.

Please bring clean, tape and labels removed, Number 6 Polystyrene (Styrofoam is a trade name), in clear or black plaster

bags. If possible, separate food and take-out packaging in clear plastic bags and the big pieces used for shipping in black or clear.

No peanuts please, they can be recycled at Pak and Copy in the Junction Shopping Center or the UPS Store next to Safeway,

If you have any questions, please call Peggy Andrews, 962-7264 or email [pja20998@gmail.com](mailto:pja20998@gmail.com)

## Yosemite Toastmasters Open House

TUESDAY, JAN 26TH, 2016

Joe De Nunzio – VP of Public Relations

Would you like to feel more confident speaking in public or talking to customers, tourists, or other people in your life? Are you stepping up as a leader and want to learn how to motivate people, build teams, and achieve your dreams? Could you use some techniques to improve your communication, increase membership in your service club, or boost your sales?



**WHERE LEADERS  
ARE MADE**

Yosemite Toastmasters invites you to our Open House at the Pizza Factory in Groveland, CA on Tuesday evening January 26th. Come see how Toastmasters can help you.

We will gather at 5:30 pm to get to know each other. Our meeting will start at 6:00 pm and our theme for this meeting will honor Restaurant Month; our theme will be "Restaurants".

What can you expect? You will see and hear prepared speeches. The speakers will receive positive valuable feedback including ways that they can improve their speaking skills in the future. We will also have fun and spontaneous Table Topics and you may join in if you would like. We may be talking about the best (or worst!) restaurant food, your favorite restaurant,

a memorable dining experience, or who knows... you will have to come and find out!

Yosemite Toastmasters meets the 2nd & 4th Tuesdays of each month from 6:00 pm to 7:30 at the Pizza Factory in Groveland, CA. Guests are always welcome. Pizza will be provided at the Open House. For more information go to [www.YosemiteToastmasters.com](http://www.YosemiteToastmasters.com) or call us at (209) 962-0314.

## CASA Takes Students to S.F.

Barbara Broad

On Saturday, December 10, seventeen students from Tioga High School and the Groveland Youth Center went on an all-day outing to San Francisco, sponsored by the Groveland Coalition Against Substance Abuse (CASA), a project of GAINs. They can be seen here by the tree at Pier 39.



Gate Bridge, Chinatown, and Pier 39. This trip kept me entertained the whole time and kept my thoughts off Groveland until I realized we were back here.

And a thank you from Curtis Zwinge: Thank you for funding the San Francisco trip, it was a wonderful experience that I normally would

not have had. The trip all throughout the city was awesome, especially seeing the various buildings and types of architecture. The trip to Pier 39 was also wonderful, and all the sights and sounds really broadened my horizons. It was an incredibly worthwhile trip, proving to be one of my highlights of the school year. Thank you for funding this wonderful trip and providing for the experiences I had there.

CASA is funding recreational outings for the students with a grant from Sonora Area Foundation to establish a program of monthly outings in the future. For example, students have gone hiking in Yosemite, visited Great America, played miniature golf, and attended a movie. For more information on this program. Contact Miriam Martin at 962-4080 or Barbara Broad at 962-7730.

Leading the group were Karen Seals from Tioga High School, Jacque Pullen from the Groveland Youth Center, and Nick de Porcel. Nick reports that the feedback he got in his van on the ride home was positive. Everyone had a good time, the weather was perfect, they all tried new foods, and the open bus was awesome.

Here's a thank you to CASA from Jack Pomeroy: I had a great time in San Francisco. From the excitement of waking up to getting off the van, the whole experience was great for me. I haven't been on a long trip like that with my friends in a long time, and I thought it was great to get out of the confined town of Groveland. San Francisco I thought was a great choice of a recreational event for teens because it's a huge landmark in California with lots of well-known attractions like Alcatraz, the Golden




**HIGH QUALITY  
LAPTOPS  
AND  
DESKTOP  
COMPUTERS**

Adware/spyware & virus removal • computer repair • data recovery

Logo Design  
Web Design  
High Quality  
Business Cards

**sales@e-spon.com**  
**www.e-spon.com**  
**962-7110**




**Winter Hours:**  
Sun-Thurs: 11:00AM - 8:00PM  
Fri-Sat: 11:00AM - 9:00PM

**"WE TAKE LOCAL COMPETITOR'S COUPONS!"**

**PIZZA PIES**

**NOW SERVING PASTA DINNERS  
TRY OUR ALL YOU CAN EAT LUNCH SPECIAL OR OVEN BAKED SUBS**

Call ahead: 962-4897 (962-GUYS)  
18955 Ferretti Road. Left turn off of Main St (Hwy 120) 1/2 Block

**\$1.00**  
Off Any Size Two Guys  
Pizza or Calzone

One coupon per order, per visit. May not be combined with any other offer and/or coupon. Not valid on delivery.

PML116 Expires 02/15/16

**\$2.00**  
Off Any Large or Extra  
Large Two Guys Pizza

One coupon per order, per visit. May not be combined with any other offer and/or coupon. Not valid on delivery.

PML116 Expires 02/15/16



## Chamber Happenings

Tom Clawson

November was a busy month for the Chamber of Commerce with the relocation of our office to the Mountain Leisure Center, the change to Constant Contact for our emails and the Grand Opening celebration for Yosemite Adventure Supplies.

Our office is now located at 18687 Main Street, Suite C-2 in Groveland and our mailing address is PO Box 1263, Groveland, CA 95321.

With this move we kept only the local phone number (209) 962-0429. There are no immediate plans to staff the office so please leave a message or send an email to [info@groveland.org](mailto:info@groveland.org) and someone will respond.

Earlier this year our contact list for email was corrupted and we lost a great number of email addresses. The loss of the addresses combined with limited features of the old system we made the decision to switch to Constant Contact and rebuild our contact list starting with our existing members. If you know of anyone that is not getting emails from the Chamber and would like to do so, please have them send a message to [info@groveland.org](mailto:info@groveland.org) so we can add them to our list.

On Saturday, November 28th the Yosemite Highway 120 Chamber of Commerce held a Grand Opening



*Cutting the ribbon for the Grand Opening Celebration at Yosemite Adventure Supplies.*

Celebration for Yosemite Adventure Supplies located at 18911 Ferretti Road in Building A, Groveland CA, next to Mar-Val's Main Street Market. There was a strong turnout for the event. Chamber President Tom Clawson congratulated Bob on acquiring the store and wished him well with his expansion and diversification of offerings. Joann Lopez was the lucky winner of the drawing for \$25 in store gift certificate sponsored by the Chamber of Commerce on the day of the Opening.

We held our annual Holiday Party on December 17th at the Groveland Hotel.

The January 28th mixer will be held at the Community Center from 5:30 to 6:30. Our guest speaker for the evening is Lisa Mayo, Executive Director for the Tuolumne County Visitors Bureau. Lisa will present the Bureaus highlights for 2015 and speak about plans for 2016.

## Genealogy Workshop

Karen Davis

If you have decided that 2016 is when you're going to get your knowledge of the family's ancestors and history written down and in some kind of order these URLs might prove helpful in getting you started:

[https://familysearch.org/learn/wiki/en/Family\\_History\\_for\\_Beginners](https://familysearch.org/learn/wiki/en/Family_History_for_Beginners)

<http://www.kerchner.com/gentips.htm>

<http://rwguide.rootsweb.ancestry.com/>

<http://www.familytreemagazine.com/article/25-best-genealogy-websites-for-beginners>

<http://www.olivetreegenealogy.com/beginner/>

<http://www.trailofourancestors.com/gen4bgin.htm>

Once you've exhausted yourself going through all those old boxes, drawers, scrapbooks and photographs you have hidden away in closets, basements and storage units and have filled out your "family tree" you're probably ready for a nap and some help.

Volunteers in the History Resource Center are eager to help you further your research. Please come to the Genealogy Workshops held on the 4th Friday of each month from 1:00 – 3:00. We meet in the History Resource Center (HRC) housed above the Groveland Yosemite Gateway Museum. Other arrangements can be made if climbing stairs is an issue. Please contact either Karen Davis at [kidkaren@att.net](mailto:kidkaren@att.net) or Peggy Andrews at [pja20998@gmail.com](mailto:pja20998@gmail.com) so we can be better prepared for your visit.

## New Classes at The Little House

Ann Daws

Are you looking for ways to stay healthy, happy and in charge of your well-being in the New Year and for all the years ahead? That's exactly what you'll find as a participant in our newest offerings at The Little House.

### HEALTH AFTER 50: TIPPING THE ODDS IN YOUR FAVOR

Please join us for this free monthly class beginning on January 19 (third Tuesdays from 1-3pm). Taught by a retired registered nurse, the course will feature the latest health research from leading universities around the world, and will focus on ways to use nutrition and exercise to prevent and control disease. Among the health challenges which the class will address are heart and lung disorders, dementia, cancer, vision problems, atrial fibrillation, diabetes, urinary tract infections/disorders, colon and digestive problems, hearing loss, and anxiety and depression.

Class members will be provided links to articles about each month's topic in advance of the meeting time. You may access these by going to our website: [thelittlehouse.org](http://thelittlehouse.org) and going to our homepage or calendar.

### LAUGHTER YOGA

Everyone who has experienced this new weekly class knows that laughter really is the best medicine. Life can become too serious at times, and this group comes with a free license to unleash your inner clown. This is not your regular yoga class. The only thing you'll need to bend and stretch is your funny bone.

Come discover all the health benefits of letting those belly laughs chase away the blues. Laughter Yoga has been proven to enhance the immune system, relieve stress, reduce blood pressure and pain, increase lung capacity, and stimulate the release of endorphins. **The class meets weekly on Friday from 2-3pm.**

If you've experienced the loss of a spouse, dear friend or a beloved pet, you know that grief can make it difficult to approach life with enthusiasm or joy. Our weekly **Grief Support Group** is a place to find trained and caring people who provide a safe place for all the feelings you may be having as a result of your loss. Please feel free to drop in for our **Wednesday 10:30-12 noon** group.

The Little House provides ways to socialize, exercise, and learn new skills. Please check out our website and calendar listings at: [thelittlehouse.org](http://thelittlehouse.org), or leave a message at **962-7303**. **The Little House is a program of Southside Senior Services.**

### GROVELAND COMMUNITY PERSONAL CARE

Jan Holt L.V.N.  
Private Duty Nursing

209-962-0632 Home • 209-770-5451 Cell  
[janholt30@gmail.com](mailto:janholt30@gmail.com)



**PAUL S. BUNT, ESQ.**  
ATTORNEY AT LAW

ESTATE PLANNING  
PROBATE  
REAL ESTATE  
BANKRUPTCY  
ELDER CARE  
**209.962.6778**

Mountain Leisure Center, Groveland  
appointments available in Searos and Lake Don Pedro

## Healthy Habits

### FROM PINE MOUNTAIN THERAPY

Julie Tanaka, PT

#### ANTERIOR SHOULDER PAIN

We see a lot of shoulder pain at the clinic. The trick is differentiating between the different possible injuries and treating accordingly. There are very subtle differences the conditions that will cause pain in the front of the shoulder. They have to do with where the structures are located and the action that resulted in the pain. Some has to do with aging, some with wear and tear and others with a very specific incident.

#### The Suitcase Injury

This is a strain or tear of a small, but very important muscle and tendon on the top of the shoulder joint, the supraspinatus. The injury may happen when the shoulder is in the position that you typically assume when carrying a suitcase and trying not to let it hit your leg. This can be a sudden incident or something you do on a regular basis in this position, such as, carrying out the garbage, carrying a briefcase, lifting a vacuum cleaner up the stairs. You can feel this structure by putting your hand behind your back and then rubbing the front/medial part of the shoulder. If this is very tender you've found the spot.

#### Biceps Tendinitis

The Biceps, or the Popeye muscle, is on the front of the arm. It has two heads and two tendons. The longer tendon goes all the way up the front of the shoulder. This tendon gets irritated by overhead activities. Such as, throwing, working overhead, and excessive pushing and pulling motion of the arm as in using a computer mouse. To find the tendon rub your thumb back and forth across the front of your upper arm. You will feel a cable like structure roll back and forth under your thumb. Tenderness of this structure indicates that problem is in the biceps tendon.

Now what? With both injuries rest, ice and anti inflammatory medications are the first stage of treatment. After that stretches are helpful. For both injuries stand in front of a door and hold onto the door knob, step forward allowing your arm to stretch back, hold this position for 30 seconds and do a few times, twice a day. Avoid activities that aggravate the pain. Pay attention to how you are using your arms. Divide work into smaller units. Such as, taking breaks, taking multiple trips to carry in groceries, get a case with wheels so you don't have to lift it...

If the pain persists than it's time to talk to your doctor. When you are referred for




therapy we will start you on an exercise program specific to your injury and progress your gradually respecting your pain level. The human body is really amazing at healing itself. Often it just needs a little guidance.

**PINE  
MOUNTAIN  
THERAPY**

*Outpatient Physical Therapy*

*Serving the Mountain  
Communities of  
Tuolumne and  
Mariposa  
Counties*



18800 Main Street,  
Groveland, CA 95321  
**209-962-4035**

Please visit our new web site at  
[www.pinemountaintherapy.com](http://www.pinemountaintherapy.com)

*A Preferred Therapy Provider,  
participating provider with  
most insurance carriers  
including Medicare.*

## A New Year 2016

Etty Garber, PhD

The year 2015 has ended with all the good, bad and the ugly. It is time to take a good look at what has transpired and classify everything into one of those three categories. As you do that, pull out the bad and the ugly and see if you can figure out why they turned out the way they did. Ask yourself what could you have done differently that could have changed the outcome, if you were in a position to do so. What were the decisions you made, how did you arrive at those choices and who was involved or affected by these decisions?

Joan said, "When I decided to get a divorce and move across the country I didn't think about the major changes my young children would have to make. They missed their dad, their grandparents, their friends and all that was familiar. I didn't realize that I was being selfish and did not consider their feelings."

Joan's decision was made in haste and she later learned that she was just running away rather than trying to find a more reasonable course of action. "I was protecting my feelings with no consideration for anyone else," she added. Sometimes hindsight can be helpful where foresight can be blinding.

When our emotions are so stimulated it is sometimes hard to think clearly. The Fight or Flight takes over and usually ends badly. So, what can a person do when they are faced with the bad or ugly results ?

Now take a look at the other category, the GOOD. Ask yourself the same questions: how did that happen? What did I do that created positive results? Who benefitted? And how do I feel about it?

There are many Self-Help strategies that you need to take a look at.

- 1. Think things through** – when you are faced with a situation that requires a decision, explore alternatives, choose the best one, make a plan , then take action.
- 2. Acknowledge your feelings** – and those for whom you are responsible.
- 3. Talk to someone you trust about your decision and ask for their feedback** – leave yourself open to suggestions.
- 4. Speak up for yourself** – take a positive approach in expressing your feelings and decisions, avoid the Blame Game.
- 5. Don't be afraid to ask for help.** We all need it sometimes.

Plan now to make the new year 2016 a year of GOOD filled with positive results for you and your family.

I wish you all a fun filled holiday and memories that you will all share for a lifetime. May the New Year bring you and your family good health, happiness and love.



**Dr. Etty Garber Ph.D.**

*in Clinical Psychology and a licensed Marriage Family  
& Child Therapist, with 32 years experience in mental health,  
lives in Groveland and*

**OFFERS PRIVATE PRACTICE SERVICE**

*Dr. Garber can provide psychotherapy in a variety of settings  
to individuals, couples, families and groups.*

**RELATIONSHIPS • FAMILY CONFLICT • CHEMICAL DEPENDENCY  
DEPRESSION • ANXIETY • ABUSE, etc.**

**Low Fees • No Insurance FOR AN APPOINTMENT CALL 209/962-5205**

## PAINT DISCOUNT PROGRAM

Kelly-Moore Paint Company has been serving Pine Mountain Lake for 40 years. They want to remind PML property owners of the discount program that has been established for them. This program offers a generous discount on Kelly-Moore paint and accessories such as rollers, brushes, tape, caulk, etc. Delivery is available on orders of 10 gallons or more. This special discount opportunity is available with proof of Pine Mountain Lake membership (Member ID Card) on a cash or credit/debit card basis only (no checks please).

Although this program was initiated through the Sonora store, it will be honored at any Kelly-Moore Paint Company store.

If you are interested in this discount program, call your local Kelly-Moore Paint store for details.



# John R. Ziomek, DPM

*Podiatry practice in Groveland*



Practice limited to diseases of the foot and ankle.  
Diabetics welcome.  
Most private insurances accepted.  
**Medicare assignment accepted.**

Located at 20767 Ferretti Road  
Groveland, CA 95321  
**209.962.6000**

*By Appointment Only*

# SEASPRAY

## AWNINGS & BOAT COVERS

**533-4315 • 536-9397**



Lic. #981187



### TUOLUMNE COUNTY'S NUMBER ONE SOURCE FOR

Custom Retractable & Fixed Awnings  
Boat Covers & Bimini Tops  
Boat Upholstery & Carpet  
Recovers & Repairs

[www.seasprayawnings.com](http://www.seasprayawnings.com)  
[www.seasprayboatcovers.com](http://www.seasprayboatcovers.com)

**FOR IDEAS AND ESTIMATES CALL DOUG PARRISH**  
14769 Mono Way, Sonora • 13893 Tuolumne Rd.

## Rotary Rap

Rudy Manzo and Sharon Hunt

### RED WHITE & BLUE BALL

Put on your dancing shoes and enjoy a delicious dinner of filet or salmon at the 15th annual Red White Blue Ball on Saturday, January 30th at the PML Grill. Cocktails begin at 6:00 pm and dinner is served at 7:00 pm. By popular demand Home Grown will play your favorite tune. Tickets are \$50 per person. Dig out that beautiful dress or Black Tie (optional) for a fun evening that will benefit our community. You can contact any Rotarian or call Paul Burkett 962-6542 for tickets. This popular event is not to be missed.

This is Rotary's major fundraiser with proceeds going toward community projects ... scholarships for Tioga seniors, shoes for Tenaya, firewood for those in need, dictionaries for 3rd graders, and cameras for kids. We thank you for your support!

Goodrich, John Gray, Cory Swank and Barrett Giorgis' granddaughter.



### NATIONAL POLIO DAY

Did you see the Iron Lung in front of Marvel Market? Rotary has been committed to eradicating polio throughout world. Every child has received those lifesaving drops since 1985. Today there are only 51 cases of polio in the countries of Afghanistan and Pakistan. For every dollar we collected it was matched by three. Your \$600 became \$1800. Thank You!!!



### SIX GROVELAND ROTARIANS RECEIVE THE PAUL HARRIS AWARD

Paul Harris the founder of Rotary established this recognition to acknowledge individuals who contribute to the Paul Harris Foundation. This year's recipients' are Nadele Manzo, Sharon Hunt, Jim



## Groveland Kiwanis Club

### A VERY HAPPY HEALTHY 2016 IS WISHED FROM GROVELAND KIWANIS TO EACH OF YOU.

A new year, new beginnings, new friends, and new adventures, are waiting for

you. Join us at 4:30, each Tuesday, at the Pizza Factory and see how you can help the kids of your community. Our agenda for this year is full of fun "stuff" and surprises, come and see.

# Carron Tax

**Carole Smith**  
Enrolled Agent

associates

20093 Ridgecrest Way  
Groveland, CA 95321  
Tel: 209/962-6119  
E-mail: [carolesmith@carrontax.com](mailto:carolesmith@carrontax.com)

**INCOME TAX PREPARATION**  
**AUDIT REPRESENTATION**



# MURRA'S TOTAL YARD MAINTENANCE



**BRINGING VALUE FOR YOUR DOLLAR IN PML**

- WEED EATING
- PLANTING
- LOT CLEARING
- TREE SKIRTING
- SENIOR DISCOUNTS
- HAULING
- LEAF REMOVAL
- AND MORE

**CALL JASON MURRA  
209-352-3750**

LIABILITY INSURED



**MY CAR GUY**  
Automotive Consulting Services

**Dave Sutch**  
Auto Broker/Dealer/Consignor

20950 Ferretti Road  
Mail: PO Box 22  
Groveland, CA 95321

209-962-1144 or 415-467-2077

dave@mycarguy-sf.com  
www.mycarguy-sf.com

*...dream cars at  
dream prices  
with no hassle*



**BROKER / DEALER / CONSIGNOR**  
Cars, Trucks, SUVs, RVs,  
Motorcycles

## High Speed Internet Unlimited Data

Plans from \$**29**<sup>95</sup>/<sub>MO</sub>

866-378-8393 / Conifercom.Net



# P A I N T I N G

## Bay Cal

LIC #795283

**Painting – Exterior/Interior**

**Deck Repairs**

**Wood Repairs**

**Remodels**



VISA    MasterCard

**FREE ESTIMATES**

# 209.962.4777

www.baycal.com • email: davec@baycal.com

Find advertising rates, information, and more  
at [www.pinemountainlake.com](http://www.pinemountainlake.com)

Ad rates start as low as \$19 per month with  
sizes available from business card all the way  
to full page color advertising

Call 209-962-0342 to ask about  
advertising in the PML News

**JOANNE BERNASCONI-SCOTT**  
Independent Beauty Consultant

13166 Wells Fargo Drive  
P.O. Box 1257 Groveland, CA 95321  
HOME: 209-962-6394  
CELL: 209-573-1415  
Bernijo3@aol.com  
[www.marykay.com/jbernasconi](http://www.marykay.com/jbernasconi)

Enriching Women's Lives™



MARY KAY



**PINEMOUNTAINLAKE.COM**

**FACEBOOK.COM/  
PINEMOUNTAINLAKECA**

*Happy New Year!!!*



Dr. Donna Wines D.C.

**Wines Chiropractic  
Wellness Center**  
*Wholeness is Our Goal*

Specializing In Children Of ALL Ages

Non-Force Wholistic Chiropractic • Acupressure Reflexology  
Nutritional Consulting • Neuro-Emotional Technique • Special Classes Avail.

Open Mon.- Thurs. • 18727 Main St., Ste. C., Groveland, CA 95321 • 209/962-4565

**PRECISION OPTICS**

*Stacy Hancock, Certified & Licensed Optician*

Prescription & Non-prescription Eyewear

FREE Adjustments & Repairs

Pricing 40% – 60% less than your  
Doctor's Office

Insurance Welcome

(209) 962-1972

18729 HWY 120, UNIT A, GROVELAND, CA 95321

**Sunglass Sale**

Over 100 pairs  
of Designer  
Sunglasses  
30% – 80% OFF

"Like" Precision Optics  
on Facebook  
&  
receive \$10 OFF any  
Sunglass purchase

*Cozy Cottage Dinner*  *at Dori's Tea Cottage*

Join us on  
Thursday, Jan. 14

Two Seatings:  
5:30 p.m. or 6:00 p.m.

*Our first Cozy Cottage Dinner*

❖ *Gourmet Chicken Pot Pie* ❖ *Salad* ❖ *Rolls* ❖ *Dessert* ❖

*Wine & beer available for purchase* ❖ *Complimentary coffee & tea*

*Limited seating* ❖ *Reservations required* ❖ *\$25 per person*

**962-5300**

**AMERICAN AVIATORS  
VIP Tour of China**

FOR PILOTS AND NON-PILOTS ALIKE

**17 DAYS • MARCH 16 – APRIL 1, 2016**

**SPECIAL VIP Delegation Price**

**\$3199\***

\* per person, Dbl Occupancy  
plus airline taxes & fees, China visa & insurance



- Beijing, Wuhan, Yichang, Chongqing, Chengdu, Guilin, Xi'an, Suzhou & Shanghai
- **ALL 5-Star** hotels and **5-star** cruise ship (all cabins with private balcony).
- Great Wall, Forbidden City, Tiananmen Square, & Summer Palace
- 4-night Yangtze River Cruise through Three Gorges and 5 locks of world's largest dam with 3 included shore excursions
- Baby Pandas at Chengdu's Breeding Center
- 8000 Clay Soldiers, ancient city wall, famous Tang Dynasty show
- Exotic Guilin with Li River mini-cruise plus tea plantation & Reed Flute Caves
- VIP Tour of **NEW WW II Flying Tigers Museum** plus VIP Banquet
- Cruise Grand Canal of Suzhou, World's Silk Capital & the "Venice" of China
- Tour the old and the new modern Shanghai
- And SO MUCH MORE ...

• **Shorter 13-Day Tour Option \$2,799 - call for details!**

12th Annual **VIP Delegation** led again by local retired UAL Capt. Larry Jobe & his wife "China Nina"

**209.962.5588** or toll free **866.669.2288**

**www.TravelAireTours.com**

**for full details**



*Sierra Nevada*  
**COMMUNICATIONS**

**Get the  
Highest-Speed Internet  
in Pine Mountain Lake & Groveland**

**Call (209) 962-6373**



Fully Insured - Liability & Workers' Comp

**RAY'S Roofing**

Complete Roofing Service

- Gutters
- Repairs
- Skylights
- Dry Rot

Ray Lemasters

(209) 962-0368  
Lic. #610291

FREE ESTIMATES

REFERENCES AVAILABLE

IN PML SINCE 1990



*Locally Owned*  
since **1950**

YOUR ONE-STOP SHOP FOR  
*all your pest control services*

PEST CONTROL: HOME,  
BUSINESS AND INDUSTRY



LAWN FERTILIZATION AND  
COMPREHENSIVE LAWN CARE



TERMITE INSPECTIONS,  
REPAIRS AND FUMIGATIONS



TREE AND SHRUB CARE,  
AND BARK BEETLE CONTROL



TERMITE TREATMENTS  
AND MONITORING



WEED CONTROL  
AND FIRE BREAKS



BED BUG  
TREATMENT



DECK REPAIR/REPLACEMENT  
(LICENSE #922758)



OUR REPUTATION IS IMPORTANT  
TO US AND YOUR COMMUNITY.  
*Call now for a free estimate!*



Seth Kun  
skuhn@clarkpest.com



(209) 770-7733  
clarkpest.com

# PROTECT YOUR HOME WITH US!

## HAVING TROUBLE FINDING INSURANCE FOR YOUR HOME?

Has your Homeowners  
Insurance been cancelled  
or non-renewed due to  
your location?



## WE MAY HAVE THE ANSWER FOR YOU

Even if you live in a  
forested area! Don't  
settle for cut-rate  
insurance



## HAVE PEACE OF MIND!

Knowing that your home  
is protected by an  
"A+" rated insurer  
**Call for a Free Quote!**



**Eason Insurance Agency, Inc.**

**209.383.7322**

9AM – 5PM Mon – Fri • 9AM – 1PM Sat

email: [homeins@easoninsuranceagency.com](mailto:homeins@easoninsuranceagency.com)

CA Lic #0C97581

[WWW.PINEMOUNTAINLAKE.COM](http://WWW.PINEMOUNTAINLAKE.COM)



**Fast Internet**  
from \$30 a month  
MACs and PCs repaired  
**\$55 an hour**

Since 1988  
**Throckmorton**  
enterprises

Monday–Friday 9am to 4pm

18800 Main St. (Highway 120) • Groveland CA 95321 • 209-962-7308

[Throck.com](http://Throck.com)

Between carwash and fire station.



**ELVIS BIRTHDAY BASH**  
 featuring **Rob Ely**  
**January 16, 2015**  
 Dinner and Show - Only \$45\*  
\*Tax and Gratuity Additional  
**Reserve Today!**  
 The Cellar Door Restaurant at The Groveland Hotel  
 209-962-4000 ★ Groveland.com

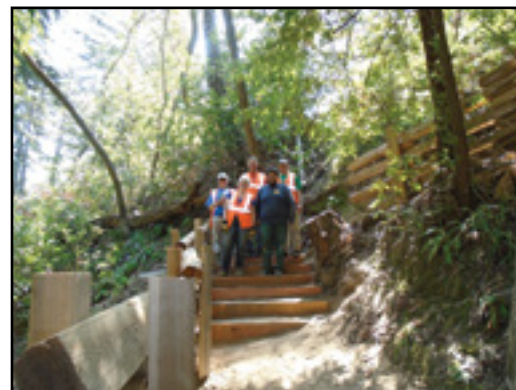
# At Your Service — Volunteering Throughout The West

PRESENTER — ELAINE GORMAN

**THURSDAY  
 JANUARY 28,  
 7:00 PM**

T U D  
 Boardroom,  
 18885 Nugget  
 Blvd., Sonora

Have you ever flipped through the outings at the back of Sierra magazine (or looked online) and wondered why anyone would pay to do work on their vacation? Over the past several years Elaine has discovered that eradicating invasive plants, removing illegal campsites, and maintaining trails is extremely rewarding. Besides having an opportunity to visit and learn about beautiful and wild places, the work of volunteers is vital for the conservation and maintenance of our public lands. Elaine



will share photos of these week-long adventures with Wilderness Volunteers and National Sierra Club from many places throughout the West, including Anza Borrego State Park, Pyramid Lake, Desolation Wilderness, Pinnacles National Monument, Big Sur, and Yosemite.

Go to [www.wildernessvolunteers.org](http://www.wildernessvolunteers.org) and <http://content.sierraclub.org/outings/> to learn more about service trips in 2016.

Refreshments will be served. All community members welcome.

## Yosemite Foothills Fire Safe Council

Nancy Perry, YFFSC Secretary

To All Fire Community Friends, Yosemite Foothills Fire Safe Council is a non-profit, non-governmental, non-regulatory community partnership of residents, property owners, businesses, and agencies working together to reduce our vulnerability to the threat of wildfire. We work closely with the US Forest Service, CAL Fire, and others by creating fuel breaks and defensible space surrounding homes and communities to improve chances of withstanding a wild land fire. Preparation must begin long before smoke appears on the horizon.

Become a fire wise member of your Fire Safe Council. The Yosemite Foothills Fire Safe Council is looking for additional Board members and liaisons to serve in the interest of our community. These are important positions requiring dedicated people interested in the management and reduction of fuels, creation of fire breaks and establishing better fire protection. We meet once a month, the second Tuesday of each month.

If you are interested or would like more information, please contact:  
 Rick Whybra, Chairman.  
 209-962-7610 desk  
 209-768-7628 cell  
 October 1, 2015

**Call**  
 Bonded Insured  
**Hamm's Carpet Cleaning**  
 Green Cleaning  
 For Health • Appearance & Longevity

Locally Owned & Operated for 24 years  
**209-962-5852**  
 In Association With **green tree**

- IICRC Certified Firm # 13341
- Member of Carpet & Fabric Institute
- Certified Technician on every job
- Business Profession & Trade License # 29950

**COSTA'S TREE SOLUTIONS**

**STEVE COSTA • OWNER**  
 FULLY INSURED/BONDED C.C.I. #1001392

**209-962-4468**  
**CELL 209-768-4469**  
 CERTIFIED ARBORIST #WE7496A



## Northside Pet Connection News

Tom Grave, Vice President

We recently learned through an article in the San Jose Mercury News that beginning in 2016 the FBI will track animal cruelty cases nationally, in order to determine frequency of animal abuse, geographical distribution across the country, and whether abuse is increasing. Why is this important? It has long been known that there is a strong link between violence toward animals and violence directed toward children, as well as adults. Young people who abuse dogs, cats, and other animals tend to repeat this pattern when they are adults, directing their violence toward children and others. Of course, animal abuse is a crime, and we are interested in seeing perpetrators caught and facing the legal consequences. In our rural area, where law enforcement

is usually in the hands of the sheriff, we were pleased to see that the FBI tracking system of animal abuse was a move that was pushed by the National Sheriffs' Association, as well as by other groups.

Turning to our local scene, we are happy to report that 37 vouchers for spay/neuter services were given out during the month of November. We recall that not too long ago, we had money to support 8 per month. We are making progress! Thanks to all of you who support our efforts. And be sure to take note of our spay/neuter telephone line: 732-6194.

All of NPC's meetings are open to the public. We meet at 5:00 pm in Coulterville Community Hall on the first Monday of each month. However, our meeting of January 4, 2016 has been cancelled.

## Mountain Lutheran Church

Pastor Ginger DuMars

**During these darkest months of the year we celebrate God's Light in our lives and in the world!** We believe that *Jesus is the Light of the World, "the Light shines in the darkness, and the darkness can not overcome it."* The Gospel according to John, chapter 1 (vs.4-5) also tells us that Jesus brings us Life and is the Light for all people. With fears of terrorism and evil swirling around us, we need God's Light to shine in our lives – knowing that these dark parts of life cannot overpower God's Light!

In these darker days & weeks of the year we continue to celebrate God's Light in our lives and in the world – especially with the Seasons of Advent, Christmas and Epiphany! Christmas lights, candles, inspiring music, glowing fires in our fireplaces, the warmth of family & friends gathering together, worshipping together, praying & celebrating together all bring Light into our lives.

**The Season of Epiphany begins on Jan. 6**, which is often celebrated as the Arrival of the Wise Men coming from the East to honor Baby Jesus and to bring him gifts of gold, frankincense, myrrh. It was a long, dangerous journey for the Wise Men, but they followed

that star – one of the signs of God's Light leading them & encouraging them. What signs of God's Light do you see around you – even in these darker months of the year?

**We'll continue to celebrate Epiphany, this Season of Light, until Ash Wednesday on Feb. 10**, which signals the beginning of Lent. We'll welcome Pastor John Van Dyck back for preaching and leading worship on Sundays, Jan. 17 & 24. He always inspires and enlightens us with his knowledge and experiences in Family Counseling, working for Calaveras County's Mental Health Department – mostly in their Jr. & Sr. High Schools. Pr. John's experience & direction in spiritual meditation always encourages us and also gives us practical application and advice for daily living in God's Light. Pr. John is an Ordained Lutheran Pastor also.

**Come & See & Experience God's Love & Light for YOU** as you worship at Mountain Lutheran Church on Sunday mornings at 10:00. We warmly welcome you to worship with us and invite you to stay for delicious snacks & refreshments after the worship service – every Sunday. We're located at 13000 Down to Earth Ct., just off Ferretti Road in Groveland.

R&R Mountain Enterprises, Inc.

LIC. #991183



# DOWN TO EARTH

### CONSTRUCTION

- Paving & Concrete work
- Excavation
- Asphalt seal coating & repairs
- Lot clearing & site work
- Complete underground work
- Septic system installations & repairs
- Retaining walls, walk-ways, etc.

### NURSERY

- Perennial, annual & vegetable plants
- Shrubs & Bushes
- Garden accessories
- Wildlife & drought tolerant plants
- Shade, fruit & landscape trees
- Potting soils, compost, etc.
- Landscape supplies
- Irrigation & plumbing supplies

**We Deliver Gravel & Landscape Supplies**

### FREE ESTIMATES



WE ACCEPT ALL MAJOR CREDIT CARDS  
(VISA, MASTERCARD, DISCOVER & AMERICAN EXPRESS)

**RAY ALBANEZ    RON HESSLER**

# 209-962-7407

13050 Boitano Road, Groveland, CA 95321 • Fax (209) 962-4987  
downtoearth7407@gmail.com

LICENSED • INSURED • WORKMAN'S COMPENSATION

## OBITUARY

### Smith, Carol ("Kay")

July 27, 1928 – November 19, 2015

Carol "Kay" Smith was born in Salt Lake City, Utah on July 27, 1928. She lived her entire life after birth in California and mostly recently spent 33 years in Groveland. Kay succumbed to brain cancer on November 19, 2015 under hospice care in Redwood City, CA.

Kay Went to high school in Walnut Creek and graduated from nursing school at Samuel Merritt College in 1949. She worked as a registered nurse off and on for about 50 years. Kay was married to the late Hugh Smith her husband of 54 years. Kay was a devoted wife, mother, grandmother, great-grandmother and friend. She was active in Eastern Star, volunteered at Sonora Regional Hospital, was on the board of SFRC, served as an officer several times of the Pine Mountain Lake Aviation Association, served on the church council at Mountain Lutheran Church and worked part-time for Mother Lode Aviation



until her Glioblastoma diagnosis in June 2015. Until the death of her husband, she kept her pilots license current. Kay was an independent woman known for her desire to help others. She was courageous and brave and loved by many. Kay will be missed terribly by all who knew her.

Kay is survived by 3 of her 4 children – Margie (Rick), Tim (Ginger), Michael (Linda) and preceded in death of her oldest daughter Holly. She leaves grandchildren Tyler (Ara), Spencer, Claire, Katie (Jason), Kyle and Mark (Jessie) and great-grandchildren Carter, Braelyn and Zegyn.

A memorial service and celebration of life was held at Mountain Lutheran Church on December 12, 2015 at 11:00 am. In lieu of flowers, please consider a contribution to the American Brain Tumor Association, Special Olympics, or Mountain Lutheran Church.



## Southside Senior Services Completes Ambitious 2015

Ron Harms

Southside Senior Services (sponsor of The Little House, WHEELS, and Village on the Hill) ended 2015 with a huge community turn-out for its 4th annual “Light the Season” event on December 6th. More than 100 people attended the candle and tree lighting ceremony that was made possible through the generosity and support of individuals and organizations across the community. We extend special thanks to the US Forest Service, Hope’s Tree Service, Down to Earth Nursery and David “Stilts” Volponi for their assistance in securing and decorating the remembrance tree. The Pine Cone Singers once again led those assembled in a round of holiday carols, and many others contributed food, drinks and general assistance to make the event possible. Finally, we thank the Light the Season planning committee (Linda Craig, Judy Gravino, Cheryl Harms, Luci Tyndall and Isobel Wylie) for their excellent work in organizing, promoting and bringing to life this year’s Light the Season event.

As we end 2015, the Board of Southside Senior Services would like to thank the community for the continuing support of its mission to enrich the community through signature programs in the areas of health, recreation, social interaction and lifelong learning. The Little House serves as a gathering place for the community with over 6,000 visits from those who participate in one or more of the 25 different programs offered in 2015. WHEELS provides essential transportation services to over 50 clients through its cadre of 40 volunteer drivers, 8 schedulers and 4 client advisors. WHEELS volunteers logged

over 2000 individual trips and 16,000 miles of donated transportation services in 2015. And our newest program, Village on the Hill, which launched its services in May 2015, concluded its year with 40 individual members who benefit from our commitment to “Neighbors-helping-Neighbors”. Village on the Hill offers an array of supportive services that enable people to remain in their homes with safety, dignity and respect. These services are delivered through a slate of 50 trained and vetted volunteers. None of the above would be possible without the commitment of the community to supporting our fundraising efforts (Broadway to Bluegrass, Light the Season) and through the many donations received from individuals and organizations throughout the year.

In looking to 2016, we plan to add several new programs at The Little House (Health After 50: Tipping the Odds in Your Favor; Laughter Yoga; Grief Support Group). You are encouraged to go to [thelittlehouse.org](http://thelittlehouse.org) for additional information and schedules for those programs. Efforts will also continue to increase the overall membership in Village on the Hill and to encourage use of a broader range of services by Village members. Finally, a new initiative being considered in 2016 is referred to as “Groveland U”. Groveland U is envisioned as an educational resource for the community that will be aimed at fulfilling the organization’s commitment to offering programs that promote “lifelong learning”. If you are interested in working on this exciting new initiative please contact Ron Harms at The Little House (209-962-7303) or contact him via email ([harms52@yahoo.com](mailto:harms52@yahoo.com)).

## Sonora Regional Medical Center Receives Several Awards

Sonora Regional Medical Center is celebrating several awards from The Joint Commission and the Collaborative Alliance for Nursing Outcomes (CALNOC) which have recognized the Medical Center’s achievements for providing safe, top-quality patient care.

“These awards reinforce the fact that our entire staff is dedicated to providing the safest, most effective health care for our community,” says Andrew Jahn, President and CEO of Sonora Regional Medical Center. “I am honored and privileged to be a part of this incredible team which has worked diligently to earn the trust of our patients and accolades from these respected organizations.”

The Medical Center was recognized as a Top Performer for the following measure sets: Heart Attack, Heart Failure,

Pneumonia, Surgical Care, and Stroke.

For more information about the Top Performer program, including eligibility criteria, visit [http://www.jointcommission.org/accreditation/top\\_performers.aspx](http://www.jointcommission.org/accreditation/top_performers.aspx)

In addition to this prestigious designation from The Joint Commission, the Medical Center has also earned the 2014 CALNOC Performance Excellence Award for preventing the following hospital acquired conditions:

- Methicillin-Resistant Staphylococcus Aureus (MRSA) – Total Facility
- Central-Line Associated Bloodstream Infection (CLABSI) – Total Facility
- Pressure Ulcers Stage II or greater
- Central-Line Associated Bloodstream Infection (CLABSI) – Critical Care

## Pine Cone Singers Bring “Beautiful December Dreams” to Groveland

Bob Swan

The Pine Cone Singers performed their Winter Holiday Concerts, with the theme “Beautiful December Dreams”, at the Groveland Evangelical Free Church on December 10 through 13. We want to thank everyone who braved the weather to listen to our mix of traditional and jazzed-up holiday music, and who joined us in the carol sing-a-long.

We also thank those who supported these concerts: Pastor Ron Cratty, and the congregation of the EV Free Church, for allowing us to perform in their beautiful sanctuary; our concert accompanist Jason Jeffrey; pianist Fred Faiella for music before the concerts and at intermission; sound technician Rich McKey; videographer Bruce Carter; Miguel Maldonado, for photography & CD/DVD editing; Wayne Phillips, slide show coordinator; and all the spouses and friends who helped with set-up and managing the shows. Many thanks also to our generous annual sponsors, and to our partners at the Groveland Area Involved Neighbors (GAINs).

We want to extend special thanks

to Choral Director Ron Randall for once again leading us to a successful performance (and for his arrangement of “Masters In This Hall”). This was Ron’s last session with us, and we deeply appreciate the musical knowledge, patience, good humor, and professionalism that he has shared with us during the past two years. Thank you, Ron.

In other news, we elected our new Board for 2016. We look forward to the leadership of President Sally Salinas, Vice-President Cris Field Todd, Secretary Luke Sullivan, Treasurer Sandra Menacho, and Performers’ Representative Susan Fisher.

The group will be re-forming on Tuesday, January 26, at 3PM in the Groveland Community Hall, to begin preparation for our Spring Concerts. Any musically inclined folks are invited to join us. The only requirement is the ability to attend a two-and-a-half hour rehearsal once a week, Tuesdays at 3:00. If you’re interested, come try us out.

Thanks again to everyone who came to the shows.

## Antipasto Bites

Recipe provided by Tom Knoth and Paula Martell

These easy to make appetizers combine all of the delicious flavors of an antipasto plate in one convenient bite. Salami cups are filled with other traditional antipasto ingredients of your choice to make a very nicely presented finger food. Always a big hit at parties!

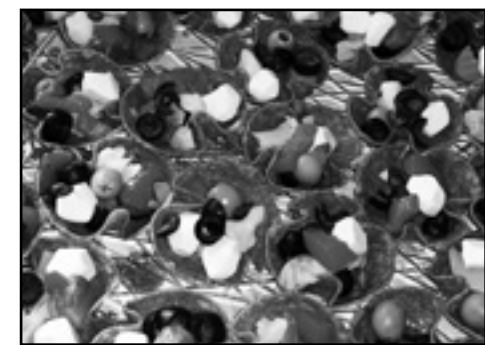
### INGREDIENTS:

12 slices Genoa Salami, 4” diameter (available at Marval Market)

Antipasto choices to fill your cups with; some suggestions: olives (black, green olives, Kalamata), pepperoncini, sweet peppers, banana peppers, giardiniera, mozzarella perline (small balls), cheese cubes (jack, cheddar, havarti, provolone, whatever), feta or gorgonzola cheese crumbles, meat cubes (turkey, ham, pepperoni, prosciutto, whatever), marinated vegetables (roasted red peppers, mushrooms, artichoke hearts, or asparagus), sundried tomato slivers, cherry tomatoes.

### DIRECTIONS

Preheat to 400 degrees and position a rack in the middle of the oven. Using a standard muffin pan, place one salami slice in each muffin cup. Press the salami



*A yummy antipasto variation perfect for parties or get-togethers.*

slices in to form cups. This usually works better if you leave the salami out of the refrigerator beforehand.

Bake for about 7-10 minutes, until the salami just begins to crisp and is holding its cup shape. Remove from the oven and let cool. Sponge extra grease off salami cups with paper towels and store in Tupperware in refrigerator until ready to use.

Shortly before service; plate the salami cups and fill with your desired antipasto ingredients. Garnish with julienned basil, if desired. Serve and enjoy.

More recipes available on Tom’s blog at [homesinpinemountainlake.com](http://homesinpinemountainlake.com)

## AREA RELIGIOUS SERVICES

### Big Oak Flat Baptist Church

Wards Ferry Rd., 3 blocks from Hwy. 120,  
Pastor: Jim Lowe • Sunday School 9:45 am,  
Worship 11 AM & 6 pm

### Buck Meadows Community Church

Old Hwy. 120 & Buck Meadows  
209/962-5789 / Pastor: Josephine Ellis  
Sunday School & Worship 10 am  
Food Pantry Open each Sun before & after  
service • Potluck 3rd Sunday after service

### Church of Jesus Christ of Latter Day Saints

19870 Hwy. 120, Groveland 209/962-5345  
Branch President: Joseph Witmer, 209/768-2175  
Sun. Sacrament 10 am, Sun. School 11:15 am  
Sun. Prsth Mtg. & Women's Relief Soc. Noon

### Evangelical Free Church of Groveland

19172 Ferretti Rd., 209/962-7131  
Senior Pastor: Ron Cratty • Services: Traditional  
9:30 am, Contemporary 11 am  
Mid-week Bible Studies (please call for info)

### Foothills Community Church

18717 Main St., Groveland  
Sunday Worship 10:45 am; Christian Ed. Hour  
(groups for all ages) 9:45 am, Child care  
provided at all services. Weekly Home Bible  
Study, call for times

### Grace Episcopal Mission

At Mt. Carmel Catholic Church,  
Hwy. 120, Big Oak Flat  
Fr. Jim Stout 209/962-1899 or 209/768-0450  
Services 2nd & 4th Sundays 4 pm

### Groveland Christian Church

(Non-Denominational)  
18829 Foote St., Groveland, 209/962-7654  
Pastor / Elder: Jack Woodland, Dennis Smith  
Sunday Worship 11:00 AM; Bible Study 9:30 AM;  
AA Tuesday & Thursday 7 PM • Ladies Bible  
Study Monday 4:00 PM • Wednesday Night  
Bible Study 7 PM Call 962-4950 for directions

### Groveland Seventh-Day Adventist

19585 Elder Lane, Groveland  
Pastor: David Bello • Sabbath School 9:20 am;  
Worship 10:50 am • Wed. Prayer Meeting 6:30 pm

### Mountain Lutheran Church

13000 Down to Earth Court (off Ferretti)  
Pastor: Ginger DuMars • 209/962-4064 •  
Sunday Service 10:00 am, Bible Study 1st and  
3rd Thurs at 1 pm MountainLutheranChurch.com

### Northside Church of Christ

18584 Main Street, Groveland / 209/878-0263  
Located behind Yosemite Bank  
Sunday Bible Study 10 AM / Sunday Worship 11 AM  
Wednesday Bible Study 7 PM

### Our Lady of Mount Carmel Catholic Church

Hwy. 120, Big Oak Flat, 209/532-7139  
OLMC Parish Services - 209/532-1739 x111  
Pastor: Sam West – Parochial Administrator  
Mass Saturday 5:00 pm, Sunday 9:00 am

### Unitarian Universalist Fellowship

Groveland Community Hall / Contact Kathleen  
209/840-4777  
Service 5th Sunday, 10:30 am  
at the Groveland Library

## Tenaya Elementary Honor Roll

### 4<sup>TH</sup> GRADE HONOR ROLL

#### 4.0 GPA or Above

Taylor Moreno  
Bryce Nicolson

#### 3.5-3.99 GPA

Natalie Harris  
Jenna Abbott  
Dylan Kappl  
Jaxon Ludwig  
Isabelle Cook  
Corra Sorsdahl  
Kyleigh Hoffman

#### 3.35-3.49 GPA

Dana Brandau  
Anatoli O'Neill

### 5<sup>TH</sup> GRADE HONOR ROLL

#### 4.0 GPA or Above

#### 3.5-3.99 GPA

Aubrey Harris  
Otto Ennis  
Harley Lennen  
Cheyenne DeCarli  
Sareen O'Neal  
Anaya Ramirez

#### 3.35-3.49 GPA

Shayla Bertram  
Madison Darrow  
Ryan Ohrt  
Eric Petro

### 6<sup>TH</sup> GRADE HONOR ROLL

#### 4.0 GPA or Above

Amelia Hendersen  
Aidan Ohrt

#### 3.5-3.99 GPA

Madilynn Ludwig  
Clay Wooldridge  
Beaumont Cook  
Ember Harris  
Ethan Avery

#### 3.35-3.49 GPA

Trey Deutsch

### 7<sup>TH</sup> GRADE HONOR ROLL

#### 4.0 GPA or Above

Sydney Simmons  
Lucy Hessler

#### 3.5-3.99 GPA

Maisy Pearlman  
Richard Park  
Alexis Richter  
Daniel Timmins  
Yashua Timmins  
Lily Lloyd  
Allison Sands  
Imani Loh  
Ira Klein  
Mitchell Lennen  
Connor Park

#### 3.35-3.49 GPA

Erinn Morehouse  
Brenda Pike

### 8<sup>TH</sup> GRADE HONOR ROLL

#### 4.0 GPA or Above

#### 3.5-3.99 GPA

Riley Hessler  
Jaydon Spires  
Sierra Kersey  
Monika Medina  
Anna Wilson  
Josh Kappl  
Raeanna Bertram  
Kira Radanovich

#### 3.35-3.49 GPA

Keri Miller  
Melanie Radanovich  
Jillian Radanovich

Congratulations to all the students for  
making the honor roll.

## STUDENTS OF THE MONTH

### Tioga High School Student of the Month



Syvanna Lopez

Tioga High's  
Student of the  
Month is Syvanna  
Lopez. According  
to teacher Lynda  
Martinez, "I am  
happy to recommend  
Syvanna as student  
of the month.  
Syvanna is a very  
serious student. This  
is the first year that

I have had her in one of my classes, and I have  
really enjoyed getting to know her. She has  
overcome several obstacles in her life which have  
served to make her the determined learner that  
she is. She always tries her best and is a pleasure  
to have in class. She is quiet, but has no problem  
asking questions when something isn't clear. She  
completes all of her work and turns it in on time.

### Tenaya Elementary Student of the Month



Samantha Hersom

S a m a n t h a  
Hersom is Tenaya's  
Student of the  
Month. Mrs. Smith  
says Samantha is  
a good friend to  
all students. She  
is always willing  
to help wherever  
needed. Our  
classroom is a better  
place due to her

smile and friendly personality. Samantha's  
Grandparents are Spencer & Maureen Edwards  
of Groveland.

I can always count on her no matter how tough  
the assignment might be. I know that Syvanna  
will be successful in whatever she sets her mind  
to do after graduation."

## Tioga Landscaping Needs Equipment

JW Dauth - Tioga Journalism

Tioga's landscaping class has done a great  
job turning our campus into a great looking  
campus. With the new pond in front of the  
gym and the new bark that was put down  
across the campus, Tioga looks better and  
better everyday. With all this hard work our

equipment has taken a beating. The class is  
looking for some donations that will help  
keep up Tioga's new look. The class needs  
big planter pots, a wheelbarrow, blower, and  
newer sturdier tarps. Any donations will  
really help out the class and it's a tax write off!

## Christmas Lights

Dawnelle Dutton

While packing away your Christmas  
lights Tioga would like to remind you  
that we are in need of light donations for  
our Christmas decorations next year. Wed

really love to show the Christmas spirit on  
our campus but cannot afford lights. We  
would love any working light donations  
you might have. Thank you.



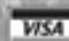
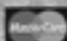
# WELCOME TO THE HOME IMPROVEMENT DIRECTORY

## HOPE'S TREE SERVICE

Lic# 987171

EXPERT TREE SERVICE, PRUNING,  
REMOVAL, CUT & STACK OR HAUL AWAY  
CERTIFIED ARBORIST

Proud member of the Yosemite Hwy 120 Chamber of Commerce

 We accept credit cards 

  
**HOPE'S  
TREE SERVICE**  
Fully Licensed and Insured  
PO Box 1072  
Groveland CA 95321



**209.878.3096**  
**or 209.225.3191**

## HANDYMAN FOR HIRE

"The Small Job Specialist"



Doing Building and Repairs in PML Since 1976  
WHERE ONE CALL CAN DO IT ALL!!!

Working by the Hour to Save you Money...

- Deck Repairs
- Painting
- Interior Repairs
- Exterior Repairs

omni1handyman@aol.com

No **(209) 962-5463** License

Visit [www.pinemountainlake.com](http://www.pinemountainlake.com)

## ABNEY CARPET

All Your Flooring Needs

Bob Abney  
(209)765-3313

17867 Highway 120  
Big Oak Flat, CA



Call For Appointment

## DURLAND ROOFING

License  
#545005

- Re-Roofing
- Leak Repairs
- Inspections
- Gutters

Tim Durland, Owner

209 480-0097

P.O. Box 1373

Groveland, CA 95321

Serving Groveland and East Bay

**HAPPY NEW YEAR!**

**LET US HELP YOU ADVERTISE  
YOUR BUSINESS IN 2016**

**GO TO PINEMOUNTAINLAKE.COM  
FOR MORE INFORMATION**

## Sears

Karen Faught  
Owner

Sears Hometown Store #3159

14691 Mono Way, Sonoma, CA 95370

Tel 209-532-3191

Fax 209-532-8334

Service & Parts 1-800-469-4663

[www.sears.com](http://www.sears.com)

Locally Owned & Operated



## Costa's Tree Solutions

Certified Arborist  
#WET486A



P.O. Box 924  
Groveland, CA  
(209) 962-4468  
(209) 768-4469 Cell

Steve Costa  
Owner  
Fully Insured/Bonded  
C.C.L #1001392

## SQUEEGEE SERVICES

WINDOW CLEANING

SCREEN REPAIR  
RESIDENTIAL & COMMERCIAL

JOHN WILSON  
Owner/Operator  
Licensed & Insured

Cell (707) 363-3947  
PML Home (209) 962-4822

Moore Bros.  
Property Development



- New House Starts
- Brushing
- Grading for Drainage,  
Septic Systems,  
and Driveways

Lic. #910885

call Alan at:

**962-5339 or 770-7169**

**PLACE YOUR AD IN THE PML NEWS TODAY**

**BUSINESS CARD ADS  
FOR AS LOW AS \$19/MONTH**

**5" X 2" BW ADS  
FOR AS LOW AS \$29/MONTH**

**CALL 209.962.0342**





**Waters Plumbing Heating & Air**

**FAST SAME DAY SERVICE\***  
\*IN MOST CASES

**All work 100% Guaranteed!**

Contractor License #462952  
www.watersplumbing.com

"I want you to know that our technicians will give you a price before we start the job." —Wayne Waters

**Groveland (209) 962-0990**

Over 25 years of construction experience Highly Disciplined and Dependable  
**We have expertise in all phases of construction including:**  
 Decks and staircases  
 Dock and gangway repairs and replacement  
 Kitchen and bath remodels



# Hilltop Homes

General Building Contractors  
 Lic #931547 Fully Insured

**209-986-7755**

Pine Mountain Lake Homeowners Steve and Cindy Watts



Call your local Pro!

# Jack Proctor

Heating & Air Conditioning

- Complete commercial & residential services
- Service & repair - all makes and models
- Heating & ventilation
- Heat pump specialist
- Air conditioning troubleshooting expert
- Installation and remodeling
- Upgrading & energy efficiency
- We offer the same low rates 24/7

OFFICE  
**209-962-6471**  
 CELL  
**209-678-8915**  
 License #313926  
 Since 1975

Before replacing your unit, ask us for a 2nd opinion.  
 Chances are, we CAN repair it!

# HEAVENLY CLEANING SERVICE



PROFESSIONAL HOUSEKEEPING AND CARPET CLEANING  
*Going on our 20th Year!*

**HOME OFFICE CARPET WINDOWS**

**RENTING YOUR HOME TO VACATIONERS?**  
 LET US HELP MAKE IT EASIER  
 BY DOING MORE THAN JUST CLEANING

WE OFFER TRASH REMOVAL, DECK BLOWING, BBQ CLEANING & CHECK PROPANE, AND LAUNDRY SERVICE  
 WE TAKE PICTURES OF ANY DAMAGES

**GIVE US A CALL TODAY - 209.962.6418**  
 heavenlycleaning@mail.com • FULL LIABILITY COVERAGE

THE NEW SPARKY IN TOWN IS NOW THE OLD MOUNTAIN HAND!  
**THANKS FOR 5 GREAT YEARS!**

## MORRISON ELECTRIC, INC.

**David Morrison**

An Electrical Service Company  
 Trouble-shooting • Repair • Remodel • Additions  
 New Construction • Large Projects

*I return phone calls, I show up on time,  
 I don't quit until the problem is solved.*

Contractor's Lic # 967749 • General Liability Insurance

**962-0481 david@morrisonelectric.com**

## PINNELL'S CARPET ONE FLOOR & HOME\*

*Proudly Serving the Mother Lode Community with Quality Flooring, Window Coverings and Tile for Over 40 Years!*



Voted Best in The Mother Lode Since 2006!

209.736.8077  
 263 S Main St  
 Angels Camp

209.532.1696  
 12900 Mono  
 Sonora



yelp houzz



**JAMES PRICE CONSTRUCTION**  
 CA. Lic. No. 591995

**DECK SPECIALIST**

- Professional Machine Sanding •
- Pressure Wash and Sealing •
- Pickets & Metal Railings Installed •

**Hardware Retrofit "For a Safer Deck"**

- Repairs and More •

Call 209-962-0486  
 email: designbild@earthlink.net

**Weed Control**

Now is the time to spray weeds

- Firebreaks and bare ground
- Driveways and roadsides
- In and around ornamental plantings
- Any place you do not want weeds
- Save yourself time and money.

Free estimates, great prices, fast service. We are the leader in weed control!



Also: Star thistle  
 Poison oak  
 Blackberries

962-5710  
 800-464-3772

**PARROT PLUMBING**  
 MILT LAKE



Owner / Operator  
 209-768-6155

Serving Groveland, Don Pedro & Coulterville  
 HOME PLUMBING REPAIR SEMINARS  
 call (209) 962-0850 for date and time

C-36 #791575 P.O. Box 127, Coulterville, CA 95311 • Email partman@inreach.com

**Sierra HEAVY DUTY**  
 RV & TRUCK CENTER



**BUSINESS HOURS**  
 Monday - Friday: 7:00am - 5:30pm  
 Saturday: 8:00am - 2:00pm  
 Sunday: CLOSED

**Well Stocked Parts House:**

*For All of Your Heavy Duty Needs!*

- Heavy Duty Brake Linings
- Baldwin & Fleetguard Filters
- Delo Oil
- LED Lights
- Air Brake Valves & Hoses
- CB Radios, Antennas & Accessories
- Logging & Dump Truck Parts
- Hydraulic Hose Shop

**Full Service RV Repair Shop:**

- Commercial House & Starting Batteries
- Full Service Chassis & Lube Center
- Electrical & Plumbing Repairs
- Interior & Exterior LED Lighting
- Complete Body Damage Repair Shop
- Solar Power Systems & Inverters
- Complete Detailing Services
- Warranty & Insurance Work Accepted

**Mobile Roadside Services Available**

18968 Waylon Way  
 Sonora CA 95370  
 Call or Email us to schedule an appointment today!  
 (209)-532-7994

EMERGENCY CONTACT: (209)-559-3840  
 Email: shop@sierraheavyduty.com  
 Visit Us Online: www.sierraheavyduty.com



Over 50 Years of Experience!  
 All Major Credit Cards Accepted.

**Bert's Weedeating and Lot Clearing**

◆◆ 962-6724 ◆◆

(See Page 20 for FREE Offer)

**green tree**  
 property services



- HOUSE PAINTING
- WINDOW WASHING
- HOUSE CLEANING

**209.962.4445**  
 LICENSED | BONDED | INSURED | CSL440341

**AIRPORT MINI-STORAGE**



60 Units - 6'x8' to 10'x30'  
 Open 7 a.m. to 9 p.m. Daily  
 Located on Elderberry Way off Ferretti Rd. near PML Airport

**209/962-5360**

**LOREN SNIDER'S TREE SERVICE**



**Serving Your Tree Needs**

Removal & Pruning • Clearing & Hauling  
 Chipping & Stump Grinding • Mistletoe Removal

Home: 209-878-3828 • Cell: 209-402-9797

Non licensed • 27+yrs Experience  
 General Liability Insurance



# REIMERS CONSTRUCTION

PROUDLY SERVING GROVELAND/PML SINCE 1987

DESIGN/BUILD • EXPERT REMODELING • SPECIALIZE IN KITCHEN AND BATH  
CEMENT SIDING • COMPOSITE & REDWOOD DECKS • WINDOW AND DOOR REPLACEMENT

(209) 962 5682



Email: wwrpar@gmail.com  
CA.LIC. 590514



# Cobblestone Homes

• Custom Homes • Additions • Remodels •  
• Specializing in high country design/build since 1989 •  
We provide superior craftsmanship, attention to detail, follow-up, and great customer service.

Craig Lawrence-Owner  
209.404.0290 Lic. 564665

# A AMERICAN ELECTRIC & SERVICE CO.

COMMERCIAL • INDUSTRIAL • RESIDENTIAL

209.962.7374

ELECTRICAL CONTRACTORS LIC. # 465220

# PML MINI STORAGE

65 Units Ranging From 5'x5' to 12'x30'

- REASONABLE RATES •
- WELL LIGHTED •

Located one-half block off Ferretti Rd. on Elderberry Way towards Airport

209/962-6220

# Ken's Asphalt

Lic. 708310

Grading • Paving • Chip Seal • Road Oil

Seal & Slurry Coatings • Crafcro Hot Rubberized Crack Sealer  
Driveways • Private Roads • Subdivisions



## DRAINAGE PROBLEMS?

We have the Solution!

Erosion Control • Riprap (6-12" Rock) • Asphalt Curbing • Base Rock

## Complete Concrete Services

- Stamped Concrete and Colored Concrete
- Stained Concrete
- Cleaning & Sealing
- Retaining Walls
- Driveways
- Walkways
- RV Pads
- Patios

532-0800 • 962-5644 • 768-7395 Cell

# PAINTING

Exterior/Interior

Deck Repairs

Wood Repairs

Remodels



SEE COLOR AD PAGE 32

209.962.4777

www.baycal.com • email: davec@baycal.com

# LaMar EQUIPMENT & HAULING

Job Site Storage Containers

15 Ton Hydro Crane

Heavy Equipment Hauling

Irrigation & Electrical Trenching

Landscaping Materials

New Construction &

Remodels

End Dump

Manlifts

Rock Hauling

Lot Clearing

Demolition

Log Hauling

Water Truck

Septic Install

Post Hole Digging

Concrete Demolition

Towable Trailers

Retaining Walls

Earth Moving



(209) 962-0500

Mobile: 770-5667

LanceMarchetti@yahoo.com

# Pine Mountain Lake Electric

Residential and Commercial  
Electrical Contracting

State Contractor's Lic. 404081



TOM KATOSIC  
209/962-6949

P.O. Box 25  
BIG OAK FLAT, CA 95305



# PML BUY & SELL

**SUBMISSION DEADLINE IS THE 15TH OF THE MONTH. SUBMIT AT WWW.PINEMOUNTAINLAKE.COM  
COST IS \$0.30 PER WORD. ADS RUN UNTIL CANCELED BY ADVERTISER.**

**COMMERCIAL RENTAL/LEASE**

**COMMERCIAL WAREHOUSE/  
SHOP/STORAGE**

Ferretti Rd. near Airport. Easy access, 12'x20' roll up doors, insulated, 220 and 3-phase available, vented skylights, restrooms. 2 bay, 1400 sq. 600.00 per month: 3 bay, 2100 sq. 900.00: 5 bay, 3500 sq. 1500.00. Includes water and sewer.  
**209-962-6014**  
ask for John, Owner/Broker

**18569 HWY 120, GROVELAND**



4000 sq. ft. with great highway exposure, new parking lot to be constructed adjacent to the property for the benefit of future tenants. Call agent for details. **650-520-1022**

**GRAZING PASTURE**

in downtown Groveland. For Rent at \$300.00 per month or \$100.00 per horse. Call Terry **650-520-1022**

**LAND FOR SALE**

**PRIME 1.74 AC LOT NEAR AIRPORT**

Gentle slope. Southern exposure with panoramic view. Very private. Sewered. U11/L56 Elderberry Ct. For more info call Cell **209-768-4406**

**TWO LOTS FOR THE LOW PRICE  
OF \$12,000 - ACREAGE OF  
APPROXIMATELY 0.5 ACRES**

Enjoy tennis, boating, golf, horseback and you can fly to Pine Mountain Lake enjoy dining at the club and drive to Sonora and Historical Columbia. Seller will consider all offers. Call: **510-301-4355**

**GOLF COURSE LOT**  
Unit 7-29, 6th Fairway,  
View, Buildable,  
**PRICE REDUCED \$17,000**  
**MUST SELL • 415-897-2791**

**FOR SALE**

**MISC HOUSEHOLD GOODS**

Small Freezer, Gently Used CA King Size Box Springs & Mattress, Oak TV Stand, Oak Entertainment center.  
**408-564-0959**

*Wishing you all  
a very Happy,  
Healthy, and  
Successful  
New Year!*

**SERVICES**

**FLINCHUM MASONRY**

Small jobs and repairs  
**209-962-6084**

**RONNING ROOFING**

Call Joe for all your Roofing and Gutter needs. Licensed, Bonded, and Insured. License # 976739  
**209-962-6842**

**ELECTRICAL  
A AMERICAN ELECTRIC &  
SERVICE CO. Lic. #465220  
209/962-7374**

**BERT'S WEEDEATING  
AND LOT CLEARING  
962-6724**

**GOLD COUNTRY PEST CONTROL**  
Nobody beats our prices. No weeds too tall. No pests too small. Local family owned and operated.  
**209-928-1905, 209-352-6067,  
209-770-5531**  
Licensed Bonded Insured

**HANDYMAN** - For removal of unwanted items. **Also power washing and tree trimming available.** Call Mike, very reasonable rates. Prompt Service.  
**209-962-0777**

**SERVICES**

**FOR YOUR REVERSE  
MORTGAGE, REFINANCE, NEW  
HOME LOAN PURCHASE NEEDS**

Call Edvard Eshagh or Edward Pinon at GREAT CENTRAL MORTGAGE Corporation at **209-962-6239** or Main Office **209-632-3200**.  
CA BRE License #01135634,  
CA BRE License Information # 916-227-0931. NMLS #237919

**PROFESSIONAL PROPERTY  
MANAGEMENT**

RE/MAX Yosemite Gold  
Patricia (Tish) Fulton BRE# 00760019 Property Manager  
Certified by California Association of Realtors **209-962-0837**

**LOVING PET CARE** in my home or in yours - garden care also available. Call Barb **962-5653** or email at **shadkitty12@gmail.com**

**COSTA'S TREE SOLUTIONS**

Steve Costa, Owner  
Fully Insured/Bonded  
C.C.L. #818373  
**209-962-4468**  
Cell **209-768-4469**  
Certified Arborist #WE7496A

**FURNITURE & CHAIR REPAIR/  
WOODWORKING**

Retired Cabinet-maker will repair all types / kinds of furniture  
**962-7604**

**GOT WEEDS?**

Contact Jim Atkins at **209.985.4376**. Lot Clearing, Hauling, Dump Runs, Weedeating. Local Guy. References available.

**COMPUTERS** custom built, upgrades, trouble-shooting, free consultation. **209/962-7110**

**BIG JOHN HANDYMAN SERVICES**  
Yard Maintenance, House Maintenance and moving households Call John **962-6163**

**SERVICES**

**LOREN SNIDER'S TREE SERVICE**

General pruning, ornamental pruning, mistletoe removal, tree removal, dump truck, chipper, stump grinder, local references, Non Licensed 27 + years experience  
General liability insurance  
**PREFERRED PML VENDOR**  
**209-878-3828 or 209-402-9797**

**HOMEOWNERS INSURANCE**

I moved to Pine Mountain Lake from the Bay Area with 23 years as an independent insurance broker. I write business with most standard Insurance Companies for California homeowners. Call, fax or email me for a quick quote and get that personal local service you deserve.  
**Commercial Business Insurance Agency, Inc. Jess Skelley**  
CA Broker Lic# 0F50039  
**209-732-3514 office**  
**800-726-4889 fax**  
www.cbi-agency.com  
email jess@cbi-agency.com

**GET YOUR AD NOTICED**



Place a photo of your item for sale (car, truck, house) with your classified ad for just \$10. Call 962-0342 today.

**GET IT SOLD OR LET  
PEOPLE KNOW WITH  
A CLASSIFIED AD IN  
THE PML NEWS**

\$0.30 per word, a photograph for only \$10 additional. Submit your classified online at [www.pinemountainlake.com](http://www.pinemountainlake.com)

**VACATION RENTALS**

**LIFE'S A BEACH!**

Vacation at our Tropical Paradise in sunny Ewa Beach, Oahu, Hawaii  
[NaniMoanaHale.com](http://NaniMoanaHale.com) **(209) 962-4396**

**PANORAMIC LAKEFRONT**  
boat dock, decks, air, 3bd/2ba, Beautiful Views **650/961-6334**

**RENTALS WANTED**

**EXCELLENT TENANTS**

w/excellent credit and rental history looking for homes to rent. Owner approves tenant before placement. Call *Yosemite Region Resorts.*  
**800/962-4765**

**PMLA LOTS  
FOR SALE**

PMLA OWNED LOTS FOR SALE:

- 2/333 MUELLER DRIVE \$500
- 4/232 POINT VIEW DR \$500
- 4/454 PINE BROOK WAY \$500
- 6/056 COTTONWOOD ST \$500
- 7/062 FERRETTI ROAD \$500
- 7/063 FERRETTI ROAD \$500
- 7/069 FERRETTI ROAD \$500
- 10/007 MCKINLEY WAY \$500

FOR FURTHER INFORMATION REGARDING THIS PROPERTY PLEASE CONTACT PMLA AT  
**(209) 962-8600**

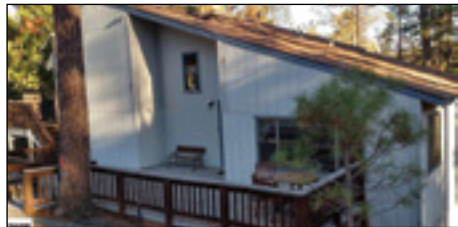




**Wishing Everyone a Happy New Year!**



**20918 Big Foot Ct-4/76 "MILLION DOLLAR" LAKE VIEW** with 245-ft lake frontage. PML Developers chose this lot for their sales office. Renovated in 2010 and handicap accessible to lower apartment. Top-quality materials. Seller is CA licensed contractor. OWF. \$1,100,000. #20152099



**11995 Valenta Wy-8/255 SPLIT-LEVEL HOME** on large lot w/ horse-shoe court. Spacious floor plan. 4bd, 2-1/2ba. Close proximity to Yosemite and numerous historic Gold Rush Towns. Enjoy all Pine Mountain Lake amenities. \$169,900 #20151986



**19949 Pleasant View-1/234 AWESOME LOCATION!** Cute cottage near Dunn Ct beach and most amenities. 3bd, 2ba, 2-car garage. Spacious, open floor-plan, knotty pine ceilings, granite counters, stainless appliances and laminate flooring. Large loft. Property backs to greenbelt, with a seasonal creek. \$323,500 #20151220



**17813 Shooting Star Ln, Sonoma FOREVER VIEWS** of mountains & valleys from this 2bd/2ba home on more than 2 acres. Beautiful courtyard separates home and garage/studio apt. Private master bedroom deck with stunning views. Level driveway, parking & front yard. Great location in the country, yet near town. \$299,000 #20151056



**12762 Mt Jefferson-1/154 NEAR THE LAKE** and Dunn Ct beach. Beautiful 4bd, 3ba, 2914sf home features a rock fireplace in the living room, renovated kitchen with Corian counters & maple cabinets. Large office and bonus room. 2-car garage with workshop and 1/4 bathroom. Great location for vacationing or full-time living. \$334,900 #20141276



**19162 Dyer Ct-5/271 A RARE OPPORTUNITY** to own at Oak Tree Condominiums! Upstairs unit includes all furniture. Vaulted ceilings, light & airy. Great getaway, with vacation rental potential or a nice full-time residence. View the golf course from a large back deck. Near Country Club, Pro-Shop, Pool & Tennis. Minutes from town. This is a real gem! \$112,500 #20150015



**19335 Pleasant View-1/235 RUSTIC MOUNTAIN CABIN** tucked away in the trees, yet near the lake & beach at Dunn Ct. Just minutes from the Country Club, tennis courts, golf course and pool. knotty-pine walls & ceilings. 3bd, 1-1/2ba, 1500sf, with bonus room, gas log fireplace, plus wall-mount heater and "swamp" cooler. Deck has ramp. \$220,000 #20150327



**19490 Ferretti Rd-6/241 CLEAN & COMFORTABLE.** Open living room, dining & kitchen. 3bd, 2ba, 1400sf, single-level home built in 1990. Central H/A plus wood-burning stove. 2-car garage. Screened porch, back deck great for entertaining. Only about 5 minutes to most Pine Mountain Lake amenities. Enjoy being part of this lovely, gated community. \$179,000 #20151780



**HOME SELLER'S WORKSHOP!**

LEARN ABOUT...

- How to prepare your home for sale.
- Pricing your home competitively.
- Staging your home to make it stand out & attract more buyers.
- Services we include with your listing.

**- VENDORS WILL BE IN ATTENDANCE TO ANSWER QUESTIONS ABOUT -**  
Wireless Internet & TV Services • Exterior Clean-up • Painting

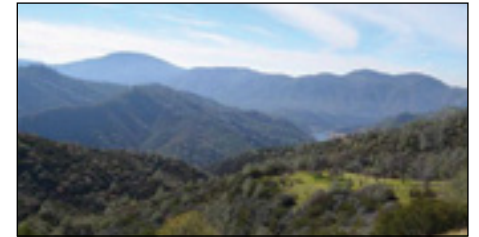
*We don't want to help you list your home... We want to help you **SELL** your home!*



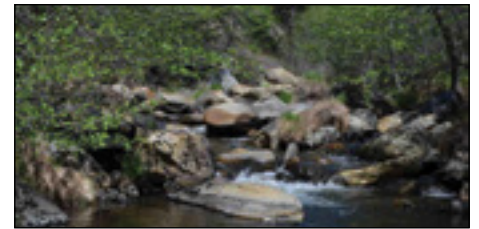
Please R.S.V.P. to Reserve Your Spot by E-mailing or Calling the Contact Information Below

Like us on Facebook  
More Than 34,000 Others Have!

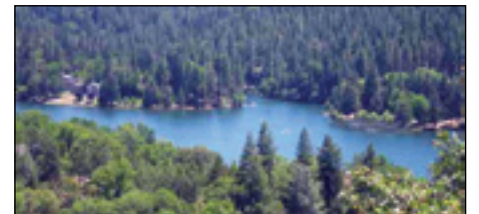
18687 Main Street, Suite E, Groveland, CA 95321  
**209-962-1111**  
realfun@yosemiteregionresorts.com



**Corcoran-Gray Rd, Big Oak Flat SPECTACULAR SETTING** with over 3/4 mile Lake Frontage, multiple hill-top sites with views of the lake. Graded roadway access, 4x4 recommended. Artesian water. Boat access via Moccasin Creek Marina. Just a short distance to Yosemite Park and multiple recreational opportunities in the Mother Lode. Fantastic opportunity to own a part of the gold county! \$325,900 #20150221



**Tuolumne Mines Property 60+ ACRES** with 4 patented Gold Rush Claims. Abt 1/3 mile of frontage on the North Fork Tuolumne River. Duckwall Creek intersects this property. Several old miner's trails from one claim to the other. No trespassing! Agent must be present. \$140,000 #20150634



**12891 Boitano Rd SUBSTANTIAL LAKE VIEW** from the top of this lot. Access via Quail Ridge Easement, off Nob Hill Circle. Sewered 1/4 acre. Owner financing available. Call for details. \$62,000 #20121394



**12905 Green Valley-3/389 MOVE IN READY!** 3bd, 3ba home with new carpeting, fresh interior paint, new 50 gallon water heater and newer deck. 2 master bedrooms (the bonus room downstairs can easily serve as a master bdrm) new 50 gallon water heater. Near Fisherman's Cove, Lake Lodge, tennis and equestrian center. \$169,900 #20151345

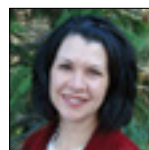
**NOW ACCEPTING Homes for Vacation & Long-term Rentals**



ROB STONE  
OWNER/REALTOR  
BRE #01025463



BJORN WAHMAN  
BROKER  
BRE #00706559



TARA STONE  
MANAGER/CFO  
BRE# 01106544



LIZ MATTINGLY  
BROKER ASSOC.  
BRE #00709618



TED BIANCHI  
REALTOR  
BRE #01318805



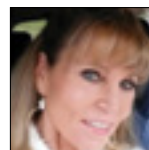
PAULA BIANCHI  
REALTOR  
BRE #01316556



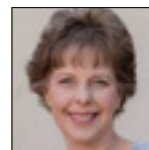
RYAN NIEDENS  
REALTOR  
BRE #01940007



ROY NAVARRO  
BROKER ASSOC.  
BRE #01235457



ELAINE NORTH  
REALTOR  
BRE #01047723



SHARRON WAHMAN  
EXEC. ASSISTANT  
RESERVATIONIST



CAPRICE KROW  
PROP. MGR/LDP  
BRE# 01179023



CORY STONE  
PHOTOGRAPHER  
VIDEOGRAPHER