

PINE MOUNTAIN LAKE NEWS

DECEMBER
2015



FIFTY
CENTS

THE OFFICIAL NEWSPAPER OF PINE MOUNTAIN LAKE PROPERTY OWNERS

TABLE OF CONTENTS

Administration	3-8, 14-15
The Grill	10-11
PML Clubs/Activities/ Recreation	16-17
Events Calendar	18
<i>Homes on the Hill</i> Real Estate	19-24
Community	26-32, 34-36
School News	36-37
Home Improvement Directory	38-41
Classifieds	42

PRSR STD
U.S. POSTAGE
PAID
ABS DIRECT

Change Service Requested

19228 Pine Mountain Dr. Groveland, CA 95321



MEET & GREET - TOWN HALL MEETING
AT THE LAKE LODGE DECEMBER 12 SEE PAGE 7
2016 ASSESSMENTS/BUDGET PACKETS
WILL BE MAILED DECEMBER 1, 2015



Real Estate • Property Management • Vacation Rentals

209-962-1111



12905 Green Valley-3/389 MOVE IN READY! 3bd, 3ba home with new carpeting, fresh interior paint, new 50 gallon water heater and newer deck. 2 master bedrooms (the bonus room downstairs can easily serve as a master bdrm) new 50 gallon water heater. Near Fisherman's Cove, Lake Lodge, tennis and equestrian center. \$169,900 #20151345



19162 Dyer Ct-5/271 A RARE OPPORTUNITY to own at Oak Tree Condominiums! Upstairs unit includes all furniture. Vaulted ceilings, light & airy. Great getaway, with vacation rental potential or a nice full-time residence. View the golf course from a large back deck. Near Country Club, Pro-Shop, Pool & Tennis. Minutes from town. This is a real gem! \$119,000 #20150015



3090 Los Prados St, San Mateo SINGLE-LEVEL CONDO. Centrally located in San Mateo near Foster City and Belmont. Easy access to freeways & public transportation. Freshly painted, 1bd, 1ba. 1-car garage. Great picnic & pool area. Perfect "starter" home to set roots in the Bay Area. Open House-Oct. 18th, from 1pm to 4pm. \$425,000 #20151821



19490 Ferretti Rd-6/241 CLEAN & COMFORTABLE. Open living room, dining & kitchen. 3bd, 2ba, 1400sf, single-level home built in 1990. Central H/A plus wood-burning stove. 2-car garage. Screened porch, back deck great for entertaining. Only about 5 minutes to most Pine Mountain Lake amenities. Enjoy being part of this lovely, gated community. \$179,000 #20151780



12762 Mt Jefferson-1/154 NEAR THE LAKE and Dunn Ct beach. Beautiful 4bd, 3ba, 2914sf home features a rock fireplace in the living room, renovated kitchen with Corian counters & maple cabinets. Large office and bonus room. 2-car garage with workshop and 1/4 bathroom. Great location for vacationing or full-time living. \$342,900 #20141276



HOME SELLER'S WORKSHOP!

LEARN ABOUT...

- How to prepare your home for sale.
- Pricing your home competitively.
- Staging your home to make it stand out & attract more buyers.
- Services we include with your listing.

- VENDORS WILL BE IN ATTENDANCE TO ANSWER QUESTIONS ABOUT -
Wireless Internet & TV Services • Exterior Clean-up • Painting

*We don't want to help you list your home... We want to help you **SELL** your home!*



Please R.S.V.P. to Reserve Your Spot by E-mailing or Calling the Contact Information Below



More Than 34,000 Others Have!

18687 Main Street, Suite E, Groveland, CA 95321

209-962-1111

realfun@yosemiteregionresorts.com



19949 Pleasant View-1/234 AWESOME LOCATION! Cute cottage near Dunn Ct beach and most amenities. 3bd, 2ba, 2-car garage. Spacious, open floor-plan, knotty pine ceilings, granite counters, stainless appliances and laminate flooring. Large loft. Property backs to greenbelt, with a seasonal creek. \$323,500 #20151220



17813 Shooting Star Ln, Sonora FOREVER VIEWS of mountains and valleys from this 2bd, 2ba, home on more than 2 acres. Beautiful courtyard separates the home and garage/studio apt. Private master bedroom deck with stunning views. Level driveway, parking & front yard. Great location in the country, yet near town. \$299,000 #20151056



Corcoran-Gray Rd, Big Oak Flat SPECTACULAR SETTING with over 3/4 mile Lake Frontage, multiple hill-top sites with views of the lake. Graded roadway access, 4x4 recommended. Artesian water, Boat access via Moccasin Creek Marina. Just a short distance to Yosemite Park and multiple recreational opportunities in the Mother Lode. Fantastic opportunity to own a part of the gold county! \$325,900 #20150221



19808 Cottonwood-6/136 GENTLY-SLOPING 1/3 acre lot provides for an easy-build. Backs up to seasonal creek with scenic views. Close proximity to Yosemite Park and historic Gold-Rush towns. Enjoy all the amenities of Pine Mountain Lake. Come build your Sierra dream home today! \$7,500 #20150126



20273 Upper Skyridge-Parcel D THREE MERGED LOTS back to greenbelt. Plenty of room to choose your building site and take advantage of a filtered lake view. Off a quiet, one-way road, not far from the Pine Mountain Lake Marina. Great piece of property with all utilities available for your dream home. \$69,000 #20131903



12891 Boitano Rd SUBSTANTIAL LAKE VIEW from the top of this lot. Access via Quail Ridge Easement, off Nob Hill Circle. Sewered 1/4 acre. Owner financing available. Call for details. \$62,000 #20121394



Tuolumne Mines Property 60+ ACRES with 4 patented Gold Rush Claims. Abt 1/3 mile of frontage on the North Fork Tuolumne River. Duckwall Creek intersects this property. Several old miner's trails from one claim to the other. No trespassing! Agent must be present. \$140,000 #20150634



11995 Valenta Wy-8/255 SPLIT-LEVEL HOME on large lot w/horse-shoe court. Expansive deck and spacious floor plan. 4bd, 2-1/2ba. Close proximity to Yosemite and numerous historic Gold Rush Towns. Enjoy all Pine Mountain Lake amenities. \$169,900 #20151986



12925 Wells Fargo-2/448 HARD TO FIND gently-sloping property with mature trees. Backs to greenbelt. Already passed for standard septic (2004). Power & water available. Nice location, near the Pine Mountain Lake Golf Course. \$11,000 #20151743



ROB STONE
OWNER/REALTOR
BRE #01025463



BJORN WAHMAN
BROKER
BRE #00706559



TARA STONE
MANAGER/CFD
BRE# 01106544



LIZ MATTINGLY
BROKER ASSOC
BRE #00709618



TED BIANCHI
REALTOR
BRE #01318805



PAULA BIANCHI
REALTOR
BRE #01316556



RYAN NIEDENS
REALTOR
BRE #01940007



ROY NAVARRO
BROKER ASSOC
BRE #01235457



ELAINE NORTH
REALTOR
BRE #01047723



SHARRON WAHMAN
EXEC ASSISTANT
RESERVATIONIST



CAPRICE KROW
PROP. MGR/LDP
BRE# 01179023



CORY STONE
PHOTOGRAPHER
VIDEOGRAPHER

President's Corner

DANA CHAVARRIA • PMLA BOARD PRESIDENT

By the time you receive this edition of the PML News, Groveland will be decorated by many volunteers, the Pine Cone Singers will be practicing for their Holiday Concert, The Grill at Pine Mountain Lake will be preparing for the New Year's Eve Celebration, and there will be private parties being held throughout our community.

I hope that everyone has a safe and joyous Holiday season!

At the November Board of Directors meeting, the Board voted to approve the 2016 Budget after much discussion and review. There will be no increase in the annual dues amount from 2015 to 2016. The 2016 Annual Assessment required total is slightly less than 2015, however, due to lot mergers reducing the number of assessable lots, the assessment per lot remains the same as in 2015.

On the agenda for November was a recommendation from the Shooting Club to name the PMLA Shooting Range in honor of Dr. Carol Simpson who recently passed away. Dr. Simpson assisted the Board and the staff during the last few years in re-opening the shooting range, helping to establish the rules, performing sound testing and preparing reports for us whenever requested, and doing all of this in the most professional and courteous manner. We will miss Dr. Simpson's contribution to our community and her friendship. The Shooting Club has generously offered to have a sign created that will honor and recognize Dr. Simpson. The Board also approved the most recent design for a sound wall to mitigate the noise from the range. The wall will be built during the next couple of months.

We received a report from the Ad-hoc Employee Compensation Committee and the Board heard a recommendation from the Lake & Marina Committee, in response to a proposal

from the PML Water-Ski Club, regarding year-round skiing on the Lake. The Board voted to accept the recommendation from the Committee to not allow year round skiing due to safety and other concerns. These Committees are continuing to work on the assignments that they were given by the Board, and will have further recommendations in the coming months.

Many of our members attended a Town Hall meeting on November 6th at the Groveland Community Center regarding criminal activity within PML and in Groveland. We learned much about crime throughout the County from the Sheriff and other law enforcement representatives. Although we heard that this is a safe place to live and the increase is primarily in property crime committed by non-violent offenders, our members are extremely concerned about the recent increase in criminal activity. The Association will hold a community forum on December 12th with a question and answer format. We anticipate many questions on this topic.

One suggestion that was made to address crime within the Groveland area was to rebuild the CSU (Community Services Unit). This organization's mission is to work with the Sheriff's Office to help make Tuolumne County a safer and more enjoyable place to live, work and visit. According to the handout that we received at the meeting, a partial answer to the problem of underfunding of the Sheriff's office is the utilization of the volunteer pool of talent and experience in the community. A member of the local CSU group told me that they received quite a few applications at the meeting from community members who are interested in volunteering. I encourage everyone to think about becoming involved in the endeavor to rebuild the CSU in our area. Please plan to attend the December 12th PML



Dana Chavarria, PMLA President

Board and Administration Meet & Greet at the PML Lake Lodge.

(Next Board of Director's Meeting: January 16, 2016)

Happy New Year!
Dana

HOURS OF OPERATION

Please note the hours of operation for the following amenities:

COMPOST & ARCHERY RANGE
NOVEMBER THRU MARCH
TUESDAY THRU SATURDAY

8AM TO 4PM
WEATHER PERMITTING

SHOOTING RANGE
TUES, THURS, SAT
9AM TO 3PM

PLEASE NOTE Hours may vary depending on weather conditions, safety concerns, or other situations beyond control. Archery and Gun Range users must check-in with compost attendant.

HOURS SUBJECT TO CHANGE
WITHOUT NOTICE.

Call the Main Gate
at 209-962-8615.



The Pine Mountain Lake News, established July 25, 1973, is printed monthly for residents of Pine Mountain Lake and vicinity by Pine Mountain Lake Association, Groveland, California 95321.

SUBSCRIPTION RATES:

Co-owner subscription: \$3 per year
Single copies: 50 cents each
Single mailed copies: \$1.35 each
For non-members: \$10 per year

SUBMISSION DEADLINE

10th of the month by 4:30 PM

Late submissions not accepted

Visit www.pinemountainlake.com for ad rates and submission guidelines or e-mail: PMLNews@SabreDesign.net. For the mutual benefit of all property owners, the Pine Mountain Lake News reserves the right to edit all copy submitted for publication. The Pine Mountain Lake News is a private enterprise, not a public entity, and as such is entitled to reject advertisements or articles in the best judgment of its editor or publisher, despite a probable monopoly in the area of its publication. Pine Mountain Lake Association is not responsible for, nor does it guarantee the accuracy of, information contained in any ad placed in the Pine Mountain Lake News.

SABRE DESIGN & PUBLISHING

Design/layout

DAVID WILKINSON
Publishing Editor

PINE MOUNTAIN LAKE NEWS
P.O. Box 605
Groveland, CA 95321
Tel: 209/962-0342
Fax: 800/680-6217

E-mail:
PMLNews@SabreDesign.net

BOARD OF DIRECTORS
Dana Chavarria (President)
Wayne Augsburger (Vice President)
Mike Gustafson (Secretary)
Brian Sweeney (Treasurer)
Steve Griefer (Director-at-Large)

GENERAL MANAGER
Joseph M. Powell, CCAM, CMCA, AMS

CORRESPONDENCE TO DIRECTORS
Pine Mountain Lake Association
19228 Pine Mountain Drive
Groveland, CA 95321
PMLABoard@pinemountainlake.com

ADMINISTRATION OFFICE
HOURS OF OPERATION
Monday - Friday 8:00 AM - 4:30 PM
Tel: 209/962-8600

On the Cover



The Pine Mountain Lake News and the PMLA would like to wish everyone a very Happy Holidays!

General Manager's Message

JOE POWELL, CCAM, CMCA, AMS, GENERAL MANAGER

PML Cell Tower Project

The PML Cell Tower project is finally starting to make progress. This project began almost two years ago and we are finally starting to see some action. The contractor completed an agreement with a major cell phone carrier, and hopes to sign on others.

The permit application has been submitted to the County by the contracting company and we just received notice that it is under review. A project notice and survey was distributed by the Tuolumne County Planning Department to all property owners within a 1,000 feet of the project. We also sent out a copy to members who were interested in weighing in during the application process. If the County approves the permit for the project, our contractor plans to begin construction of the cell tower within the first quarter of 2016.

Lake Lodge ADA Ramp Project

For many years, members have used the stairs and steep loading ramp to access the Lake Lodge. Those who are physically challenged, struggled to get down into the building. Some were unable to attend various community and private events and this was an unacceptable situation. With Board approval, we started gathering funds for this project over the past few years, and I am happy to report that the Lake Lodge ADA Ramp project is now complete. The project was completed ahead of schedule and within budget. The building is now accessible by wheelchair and will be a big improvement for our community.

Surveillance System Project

The surveillance system project is progressing with many of the core infrastructure components and access gate cameras being installed. The Main Gate Department of Safety has monitoring capabilities and many of the camera poles have been installed at the individual access gates.

We are finalizing Phase II of the four phase project and have already used the system to capture footage of individuals who vandalized the gates. We have also been able to provide digital footage to law enforcement to assist with their criminal investigations.

El Nino?

There have been a lot of news reports by scientists and meteorologists warning of the potential impact of the El Nino effect. Some predict an intense winter and spring with a lot of rainstorms, flooding and snow. While we are happy to see more water and an end to the California drought, we should all prepare for a potential deluge. We recommend that all members prepare and take a look at drainage, how water flows onto and off of their property, roof, gutter and tree maintenance. This winter could be severe and it is better to be safe than sorry.

LRPC Association

Marketing Video Project

The Long Range Planning Committee marketing video project is complete. We now have 15 videos loaded onto the PML Website that feature each amenity and one video that encompasses all of the videos in one.

As part of the plan to get local realtor buy-in to the project, we are sending out a letter to each one inviting them to be part of our realtor page, for a reasonable fee of course.

I would like to thank Director Gustafson and the committee and our webmasters Anita Spencer and Terri Thomas for their work on this project. We should begin to immediately see the benefits of this type of targeting marketing approach for our community.

2016 Annual Budget and Assessment Package

After a final review and discussion, the Board of Directors approved the 2015 Annual Budget and Assessment at the November Board meeting. The 2015 Annual Budget and Assessment Package was mailed to the membership at the end of November in accordance with our governing documents and applicable law.

From time to time we will get a call from a member who changed their mailing address, but neglected to notify the Association. Members who do not receive their budget and assessment package by December 15th should give us a call here at Administration (209) 962-8600 and our staff will be happy to assist you.

On behalf of the PML Management Team and Staff, I would like to wish everyone a Merry Christmas and Happy New Year!

FIREWOOD – FIREWOOD – FIREWOOD

Firewood Cutting Is Here
PML SLASH and COMPOST SITE
OAK and CEDAR Requires a \$20 PML Wood Cutting Permit
Wood Cutting Permits Available at the Maintenance Facility
PINE and FIR Available for free CUT & HAUL
For more information please contact Susan at
(209) 962-8612 between the hours of 7 am to 2:30 pm, M-F.

NOTICE

The Pine Mountain Lake News, established July 25, 1973, is printed monthly for residents of Pine Mountain Lake and sold in the Groveland, CA 95321 area. Members can access the PML News monthly edition online at www.PineMountainLake.com. Every month the newest edition of the PML News is posted online before the first of each month. Interested parties can subscribe to the traditional "hard copy" and receive a copy by mail each month.

The PML News is mailed to approximately 3500 PML property owner households each month. Up to 500 copies are rack-sold in the local Groveland area. Our circulation reaches approximately 1200 full-time, resident, PML property owners and approximately 2300 "weekender," non-resident, property owners who maintain primary residence in Northern California, in Southern California, or in other states. For more information regarding the PML News, please call the PML Administration Office

at (209) 962-8600. We greatly appreciate your contributions but please note that the PML News fills up very quickly – often by the 7th or 8th of the month (long before the 10th deadline). To ensure that your submission is reviewed for publication please submit in full and as early as possible. Please remember that the PML News is limited in capacity and your submissions are reviewed on a first-come-first-served, space-available basis.

We publish all PMLA related submissions such as Board & Management Business, Clubs, Activities & Events. Where space remains, we publish non-PMLA related submissions in our "Community" section.

We do our best to provide timely news. If you experience delayed delivery or have misplaced a particular edition, please visit us at the PMLA website www.pinemountainlake.com for a downloadable PDF of the News posted by the 1st of the month and a downloadable PDF list of ad rates.

2016 Assessment/Budget Packet

The 2016 Assessment/Budget Packets will be mailed to members on December 1, 2015.

IF YOU HAVE NOT RECEIVED YOUR 2016 PACKET BY DECEMBER 15, 2015 Please contact the PML Administration Office at (209)962-8600

Submission Guidelines

The PML News is the Official Newspaper of Pine Mountain Lake Property Owners

The PML News is dedicated to reporting PML Association business and PML Association news to Pine Mountain Lake Property Owners.

The PML News receives more than 100 Tuolumne County/Groveland community related submissions each month. All such community related articles and notices will appear in the PML News on a SPACE AVAILABLE basis and at the DISCRETION of the PML News Publishing Editor.

DEADLINES

Advertisements must be received IN FULL (text, MLS info, images, logos, etc.) by the 10th of the month for the following month's edition. Only advertisements received in full will be guaranteed to be published in that month's edition. NO EXCEPTIONS.

MEDIA ACCEPTED

email

SOFTWARE

InDesign, Microsoft Word, Photoshop, Illustrator or PDF.

TEXT/GRAPHICS

Handwritten text is not accepted. Material composed completely of capital letters is not accepted. Please use uppercase and lowercase letters in composition. Inkjet printed images are not accepted. Images are accepted ONLY as camera ready art, original photos (to be scanned) or as JPEG, TIFF or PDF files created with above listed software. All scans and bitmap images must be in TIFF or JPG format at least 200 dpi at 100% (300 dpi preferred). Ad files are stored for 90 days from first run date. Older ads that have not been running must be resubmitted. (See Display & Insert Advertising Contract "Design and Preparation Charges.")

E-MAIL TEXT/GRAPHICS

Text/graphics may be delivered as e-mail attachments via the Internet. Send to pmlnews@sabredesign.net.

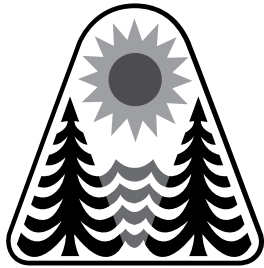
AD DESIGN and PROOFS

Ads that are requested to be sent to other periodicals require a usage fee from the advertiser (see Display & Insert Advertising Contract "Design and Preparation Charges"). Proofs are available upon request and final proof approval for all ads is expected within 24 hours. Changes made are LIMITED to typographical or graphic placement errors. NO OTHER ADDITIONS OR CHANGES WILL BE MADE.

SUBMISSION DEADLINES

Articles — 10th each month
 Ads — 10th each month
 Classifieds — 15th each month

VISIT US ONLINE!
www.pinemountainlake.com



PINE MOUNTAIN LAKE
209/962-8600
www.pinemountainlake.com

ADMINISTRATION OFFICE HOURS
8:00 AM TO 4:30 PM – MON THRU FRI
OPEN AT 8:45 AM SECOND TUES OF EACH MONTH

PAY PHONE LOCATIONS

In an emergency, call 911

- Campground (restrooms)
- Dunn Court Beach
- Lake Lodge

Press *81 on any Pay Phone to contact Main Gate.

- Main Gate (restrooms)
- Marina
- Equestrian Center
- Tennis Courts (Pine Mountain Drive)

General Info 209/962-8600
 Tina Cutright *admin@pinemountainlake.com*

Main Gate 209/962-8615
 General Safety Inquiries, gate passes,
 campground reservations, tennis reservations
campground@pinemountainlake.com

Accounting 209/962-8607
 Receivable/Collections/Assessments
 Karen Peracca *pmlar@pinemountainlake.com*

Accounts Payable 209/962-8626
 Ashley Jackson *pmlap@pinemountainlake.com*

Controller 209/962-8606
 Accounting Procedures
 Ken Spencer *controller@pinemountainlake.com*

ADMINISTRATION
General Manager
 Joseph Powell *joepowell@pinemountainlake.com*

Administrative Asst. to G.M. 209/962-8627
 Debra Durai *debra@pinemountainlake.com*

Assistant to G.M. 209/962-8604
 Ivonne Deckard *ideckard@pinemountainlake.com*

Human Resources 209/962-8628
 Allie Henderson *pmlhr@pinemountainlake.com*

E.C.C. Coordinator 209/962-8605
 Plan Submittals, Compliance Fees, Mergers
 Terri Thomas *ecc@pinemountainlake.com*

Member Relations 209/962-8632
 Gate Cards, Address Changes, Webmaster
 Anita Spencer *pmlmr@pinemountainlake.com*

Community Standards Dir. 209/962-1240
 CC&R Compliance/Violations/Fire Mitigation
 Dennis Pival
communitystandards@pinemountainlake.com

DEPARTMENT OF SAFETY
Director of Safety 209/962-8633
 Natalie Trujillo *n.trujillo@pinemountainlake.com*

Sergeant 209/962-1244
 Sgt. Teri Cathrein *t.cathrein@pinemountainlake.com*

MAINTENANCE DEPT 209/962-8612
 Susan Capitanich *maintenance@pinemountainlake.com*

Maintenance Manager 209/962-8611
 Tom Moffitt *tmoffitt@pinemountainlake.com*

GOLF COURSE
Golf Course Superintendent 209/962-8610
 Alan MacDonald *amacdonald@pinemountainlake.com*

Golf Shop 209/962-8620
 Golf Pro Shop/Golf Reservations
 Doug Schmielt *dschmielt@pinemountainlake.com*

Golf Pro 209/962-8622
 Mike Cook *golfpro@pinemountainlake.com*

THE GRILL AT PINE MOUNTAIN LAKE
Restaurant 209/962-8638
 Bambi Johnson *cluboffice@pinemountainlake.com*

The Grill Manager 209/962-8639
 Jay Reis *clubmgr@pinemountainlake.com*

19th Hole Lounge 209/962-8636
 Jamie Wortmann
19thholelounge@pinemountainlake.com

OTHER PHONE NUMBERS
Equestrian Center Manager 209/962-8667
 Jeanna Santalucia *stables@pinemountainlake.com*

PML News 209/962-0342
 Pine Mountain Lake News
 Sabre Design & Publishing *PMLNews@SabreDesign.net*

ADMIN OFFICE HOLIDAYS 2015

(ADMIN OFFICE WILL BE CLOSED)

- Thurs 12/24** Christmas Eve
- Fri 12/25** Christmas Day
- Thurs 12/31** New Year's Eve
- Fri 01/01/16** New Year's Day

UPCOMING SCHEDULE OF PMLA BOARD MEETINGS

Meetings are held at the PML Lake Lodge and start at 9 AM. (Unless otherwise noted)

NO DECEMBER MEETING

JANUARY 16, 2016

FEBRUARY 20, 2016

MARCH 19, 2016

APRIL 16, 2016

MAY 21, 2016

JUNE 18, 2016

JULY 16, 2016

AUGUST 20, 2016

ANNUAL MEETING ELECTION

SEPTEMBER 10, 2016

2ND SATURDAY

OCTOBER 22, 2016

BUDGET MEETING 4TH SAT. 8AM

NOVEMBER 5, 2016

1ST SATURDAY

NO DECEMBER MEETING

MAKE PML YOUR ONE-STOP-SHOP FOR ALL YOUR GIFT GIVING!

- Pick up a gift card for:*
- GOLF GOLF SHOP APPAREL & ACCESSORIES
 - THE GRILL BOAT RENTALS & GEAR AT THE MARINA
 - MARINA LAKESIDE CAFÉ
 - SNACK SHACK GOODIES
 - HUNTING & FISHING
 - LICENSE VOUCHERS

(Gift cards are available at the Administration Office, The Grill, and at the Pro Shop)

Subscribe to the Pine Mountain Lake News TODAY!

Name _____

Unit _____ Lot _____

Mailing Address _____

NO CHARGE for PROPERTY OWNERS (bulk)
 \$3/year for Co-Owners (bulk);
 \$10/year for Non-Property Owners (bulk)
\$18/year for PROPERTY OWNERS (1st class)
 \$28/year for Non-property owners (1st class)

Enclosed is my check in the amount of \$ _____ (PAYMENT DUE IN FULL)

Send this subscription to:
 Pine Mountain Lake Association
 19228 Pine Mtn. Dr. Groveland, CA 95321
 ATTN: TINA

PINE MOUNTAIN LAKE NEWS DELIVERY

Although we guarantee that the PML News is mailed from Modesto, CA on the same day (between the 26th-30th of month), most post offices (except Groveland) sort Bulk Mail after First Class mail. So, consider a First Class delivery subscription for just \$18/yr? (\$18 per year for property owners and \$28 per year for non-property owners) Interested? Call the PMLA Office at 209/962-8632 or see form above.

NOTE: The Pine Mountain Lake News is also available (in pdf format) at: www.pinemountainlake.com. New editions are posted by the 1st of the month.

RULES ENFORCEMENT ACTIONS

Violations Report – October 2015

Courtesy Notices	74
Notice of Non-Compliance	3
Fines	0
Violations Pending	120

PINE MOUNTAIN LAKE ASSOCIATION
SUMMARY STATEMENT OF OPERATING FUND REVENUES AND EXPENSES
 For The Ten Months Ended November 1, 2015

OPERATION OF AMENITIES	Revenues					Expenses				Budget (NET COST) INCOME	Variance Bud - Act
	Members' Assessments Net of Discount	User Fees	Sales, Net of Cost of Sales	Miscellaneous Income	Total Revenues	Total Expenses	(Cost)/Income Before Depreciation	Depreciation Expense	(NET COST) INCOME		
Golf Course	\$ -0-	\$ 779,334	\$ 32,076	\$ 28	\$ 811,438	\$ 1,127,731	\$ (316,293)	\$ (316,293)	\$ (337,009)	20,716	
Restaurant & Bar	-0-	6,525	708,923		715,448	1,013,606	(298,158)	\$ (298,158)	(317,903)	19,745	
Marina	-0-	265,234	133,275		398,509	454,258	(55,749)	\$ (55,749)	(43,042)	(12,707)	
Snack Shack	-0-		36,331		36,331	52,558	(16,227)	\$ (16,227)	(30,296)	14,069	
Stables	-0-	61,603		1,296	62,899	182,308	(119,409)	\$ (119,409)	(106,318)	(13,091)	
Recreation	-0-	47,212	5,123		52,335	96,281	(43,946)	\$ (43,946)	(79,769)	35,823	
Roads & Facilities Maintenance	-0-	33,605		240	33,845	1,359,644	(1,325,799)	\$ (1,325,799)	(1,432,215)	106,416	
PROPERTY OWNER SERVICES											
Safety	-0-	92,762		1,382	94,144	734,931	(640,787)	(640,787)	(721,683)	80,896	
Administration	-0-	152,295		5,448	157,743	1,068,210	(910,467)	(910,467)	(1,065,265)	154,798	
ASSESSMENTS											
Assessments	4,149,900			50,829	4,200,729	77,252	4,123,477	662,420	3,461,057	3,442,300	18,757
Totals	\$ 4,149,900	\$ 1,438,570	\$ 915,728	\$ 59,223	\$ 6,563,421	\$ 6,166,779	\$ 396,642	\$ 662,420	\$ (265,778)	\$ (691,200)	425,422

Notes to the Financial Statements

1. Total Revenues minus Total Expenses equals Net Income before depreciation. The annual budget for income before depreciation is (\$130,000).
2. The Association combined the Operating Fund and the Property and Equipment Fund into one fund effective May 1, 2001.

DID YOU KNOW... YOU CAN NOW MAKE YOUR PML PAYMENTS ONLINE?

Now Available Online bill pay at PineMountainLake.com

Pay via your credit card - quick & easy!

PMLA AUTOMATIC PAYMENT PROGRAM

Taking the time to write a check for your monthly assessment payment can be time consuming and costly. You can avoid this burden and eliminate the potential for late payment charges by enrolling in PMLA's Auto Payment Program. By completing the form, which can be found at www.PineMountainLake.com under the Resources/Forms, and returning it to the Administration Office, you can have your monthly assessment automatically deducted from your checking account or charged to your credit card. This means you never have to remember to write a check and mail it each month. The peace of mind that comes with knowing your payment will always be made on time is easy to attain. We can also arrange to have any other regular payment you make to the Association (such as golf membership, horse boarding fees, etc.) paid in the same way. For more information on this simple, effective and time saving plan please contact us at (209) 962-8600.

CAPITAL EXPENDITURES 10 Months Ended Nov. 1, 2015			
	TOTAL RESERVE FUNDS	NEW CAPITAL ADDITIONS FUND	TOTAL CONTRIBUTION TO CAPITAL
2015 Beginning Fund Balances	1,846,157	\$ 119,654	1,965,811
Interest Income	2,836	(306)	2,530
Bank Fees/Discounts Taken	371		371
Assessments Earned	1,535,160 ⁽¹⁾	122,540 ⁽²⁾	1,657,700
Other Income/Expense			-
PURCHASES BY AMENITY			
Golf Course	(324,976)	(1,664)	(326,640)
Country Club	(34,308)	(13,487)	(47,795)
Bar	(8,466)		(8,466)
Marina	(117,818)	(17,714)	(135,532)
Snack Shack	(1,634)		(1,634)
Swim Center	(14,732)		(14,732)
Stables	(16,621)	(13,715)	(30,336)
Recreation		(5,508)	(5,508)
Roads & Facilities Maintenance	(177,388)		(177,388)
PROPERTY OWNER SERVICES			
Safety	(28,088)		(28,088)
Administration	(3,138)	(164,509)	(167,647)
Non-Capital Reserve Expenses	(616,256)		(616,256)
Total transfer to Operating Fund for property and equipment additions and reserve expenses	(1,343,425)	(216,597)	(1,560,022)
Adjusted Fund Balances	\$ 2,041,099	\$ 25,291	\$ 2,066,390

Notes to the Financial Statements

- (1) The Budgeted Reserve Fund assessment for 2015 is \$1,842,195
- (2) The Budgeted New Capital Additions Fund assessment for 2015 is \$147,050

PMLA Money Matters

KEN SPENCER, ASSOCIATION CONTROLLER

The holidays are right around the corner! Cold nights, lots of rain/snow and plenty of opportunities to celebrate with friends and family. These are all familiar happenings this time of year. Gift giving is also part of the fun during this holiday season. In the true spirit of giving I am pleased to offer you the following insightful, thought provoking, and not always serious end-of-year gifts:

- A one way ticket to Canada for all of the so called migratory Canada Geese that seem to have taken up permanent residence in Pine Mountain Lake. Why do they spend so much time in Groveland? After all Canada is not that far away. Perhaps they enjoy the weather. Maybe the grass truly is greener on the other side (of the border). Maybe we can get President Trump to build another wall to the North to keep these unwanted "illegals" out. How high would that wall have to be I wonder?

- An Association budget (and resulting assessment) that makes everyone happy! Oh sure, while I'm at it why not solve world hunger and bring universal peace to the entire planet. Achieving this wonderful gift would take a real life Santa Claus. In the meantime I think everyone should thank me for single-handedly creating a budget that resulted in no increase in assessment. A simple bow in my presence will suffice.
- A qualified Presidential candidate not named Bush or Clinton. What the hell, if I'm going to take care of the little things like hunger and world peace why not tackle the truly impossible. Is it just a coincidence or is there something to the fact that all of the truly intelligent, competent people don't want anything to do with that job? I'm just saying.
- Two more swans for the lake. I mean after all look at what a great job the two we already have are doing at scaring the Geese away!

- A full winter with plenty of rain and snow to finally put a good dent in this drought! And you thought I couldn't come up with anything serious.
- A greater appreciation from all of us for living in a fantastic place like PML. For all of our issues this is still an incredible place to live and work. Sometimes it's nice to take a minute and smell the roses, or the pines or the oaks (do oaks have a scent?) and realize there are a whole lot of places that are much less desirable than here.

Well enough about you, how about some gifts for ME! I can't think of anyone more deserving so here is my wish list:

- More people willing to be part of the solution as opposed to only mentioning the problem.
- A trusting assumption that the Board and Management team really are working in the best interests of the entire Association.
- The password to my secret Cayman Islands account. I just had it last week and now I can't seem to find it anywhere.
- A salary comparable with my intelligence, skill, competence and overall fantastic personality (unless of course this means a cut in pay).
- A significant improvement in my golf game. Yeah, yeah I know this ranks right up there with world peace and ending hunger in the not-gonna-happen category.
- An intelligent, thoughtful, caring, competent and rational Board of Directors (just kidding Dana, Wayne, Mike, Brian, Steve).
- An intelligent, thoughtful, caring, competent and rational General Manager (just kidding whatever your name is).
- Another 25 years spent with the love of my life.
- At least another couple of years working at PML doing the job I love.

Thank you all so much for continuing to read this column every month. I promise to go back to real financial matters next month. I just felt it was time to lighten up a bit and have a little bit of fun. Hope you all have a wonderful, safe and enjoyable holiday season.

Well that's it for this month. If you have any PMLA Money Matters you would like to see discussed in this column in the future please drop me a line at controller@pinemountainlake.com or give me a call at 962-8606. Thanks for reading and I hope you find this monthly discussion interesting and at least a bit informative.

PML Safety Report

	October	YTD
Guest Passes Issued	1254	15376
Vendor Passes Issued	163	1266
Temporary Resident Passes Issued	284	5253
Vehicles Admitted	15658	134072
Vehicles Refused Entry	276	2707
Phone Calls Received	6186	55208
Residential Alarm	10	82
Animal - Loose	48	257
Animal - Impounded	10	51
Animal - Dead/Injured	17	184
Animal - Disturbance	18	131
Public Assist	51	325
Welfare Check	2	24
Transport	2	16
Traffic Hazard	0	9
Traffic Control	7	10
Excessive Speed/Reckless Driving	10	26
Gate - Tamper	0	11
Gate - Follow Through	22	70
Gate - Malfunction	10	129
Gate - Struck by Vehicle	0	28
Control Burn Reported	0	416
Smoke Complaint	2	26
Residential Disturbance	7	47
Amenity Burglary	0	1
Residential Burglary	3	11
Grand Theft	1	2
Petty Theft	2	15
Trespassing	0	12
Vandalism	3	12
Property Damage - PML	0	15
Property Damage - Resident	0	6
PML Reg Violations Resident	4	40
PML Reg Violations Guest	4	39
Vehicle - Citation Issued	0	32
Vehicle - Accident PML	1	12
Patrolling Unit	441	3688
Amenity Security Check	2557	24325
Resident Security Check	590	3864
Monitoring Tennis Courts	8	107
Weapon Violation	0	10
Fixed Post	4	14
Courtesy Notice Issued	13	71
All Fees Collected	\$8,676.36	\$139,315.09

PINE MOUNTAIN LAKE BOARD AND ADMINISTRATION

Meet & Greet Town Hall Meeting

© The PML Lake Lodge on Pine Mountain Drive

Topic: Crime & Safety Question & Answer Forum

Saturday December 12, 2015 9 - 11am

The format will be a moderated question and answer period, at the start of the meeting, where members submit written questions, suggestions, and ideas. Questions are then posed to the Board, GM, and Controller by the moderator. After the question and answer period, members will have time to mingle with the Board and get to know them face to face. We anticipate a positive response and encourage all interested members to attend.

FOR MORE INFORMATION CALL (209) 962-8600

LETTERS TO THE EDITOR

LETTERS RECEIVED – 1

DENIED BY EDITORIAL COMMITTEE – 0

Exceeds 250 word maximum – 0

Content – 0

Not a property owner – 0

DEFERRED TO NEXT EDITION BY

EDITORIAL COMMITTEE – 0

DENIED BY BOARD OF DIRECTORS – 0

DEFERRED TO NEXT EDITION BY

BOARD OF DIRECTORS – 0

Submit Letters to the Editor by sending to "Editor, PML News"

Mail: 19228 Pine Mountain Drive, Groveland, CA 95321

Email: PMLNews@sabredesign.net • Fax: 800-680-6217

PLEASE NOTE THAT ALL LETTERS APPEAR IN THE ORDER RECEIVED BY THE PML NEWS

The Pine Mountain Lake News welcomes letters and articles for publication provided they meet the criteria established in the current PMLA Editorial Policy (See excerpt below – entire policy on file at the Administration Office). Letters must be limited to 250 words, typewritten using upper and lowercase letters or neatly printed (no all-capital material) and signed with name, mailing address, PML unit/lot number, and day/evening telephone numbers by a property owner in good standing. **LETTERS MUST BE RECEIVED BY THE EDITOR BY THE 10th OF THE MONTH.** Letters deemed by the Editorial Committee to be improper will not be accepted. Readers are advised that **THE OPINIONS EXPRESSED IN THESE LETTERS ARE THOSE OF THE INDIVIDUAL AUTHORS, NOT OF PMLA, THE PINE MOUNTAIN LAKE NEWS, NOR THEIR EMPLOYEES.**

Thank You

The Carman Family would like to thank everyone for all the cards you sent in memory of Tom. Tom would have been blown away to see so many people at his Celebration of Life on November 7. We always hear the bad news in the papers and on TV, but there are so many people who

are angels in life, especially when help is needed. The help came from friends and it is amazing when help is needed people just appear across a parking lot to help. Thanks again for your kindness.

Shirley Carman
Groveland, CA

A Season of Fire and Ice

TOM MOFFITT, MAINTENANCE DEPARTMENT

These are not the fall seasonal colors we were looking for this year? The orange, rusty red silhouettes of our dead pine trees against the forest greens of the enduring pines and cedars.

To wit, after the leaf drop of the fall ornamentals, yellows, reds and oranges, we see the full attack of the deadly Bark Beetles and drought have inflicted on our stands of pines. This season has brought us face to face with the damage our forest's pine trees are enduring. The years of continued drought, the loss of



While it is hard to see in black and white, the trees in the distance are all brown, dead trees

sustainable ground water, hardships that have left the trees internal systemic defense vulnerable to the pine bark beetle infestation. The attacks have led to tree mortality, and finally, the dead trees removals.

The dead pine trees are mapped and marked for removal, and the work is assigned to qualified crews. The trees on private and common areas are being removed by contractors, utility companies, private individuals, government agencies, and the PML Maintenance Department.

The late fall, the winter months, the early

spring, the cold months, this will be the season to battle the voracious pine bark beetle, during the insect's dormant life cycle. The two greatest natural controls to the pine bark beetles

adults and larvae are fire and ice; for the pupae feeding on the inner bark of the trees, the extreme temperatures of heat and an extended freeze can halt an infestation. While they are dormant in the host pines, this will be the time to cut infested pines, drop the trees, burn the slash, stack and

solarize the timber decks by encapsulating the timber in 10 mil plastic sheeting, raise the temperatures enough to kill these pests, de-bark the timbers, simply exposing the pests to the sun or by freezing the larvae, eggs and incubating pests in the exposed timber. Direct spraying of approved insecticides must be applied directly to the bare wood to exterminate the bugs.

With the arrival of seasonal rain and snows, the hopes of ending the drought is a guarded reality – HOPE FOR THE BEST - PLAN FOR THE WORST, has always been my standard motto. The relief of the drought, and

Community Standards

DENNIS PIPAL, COMMUNITY STANDARDS, DIRECTOR

Gate Card/Clicker Control

There has been a recent uptick in gate card/clicker use by people other than the person to which the card/clicker was issued. This is a violation of Resolution #04.04 – Gate Card/Clicker Policies & Procedures and our safety personnel may confiscate the card/clicker if it is being used in violation of this rule.

Resolution #04.04 originally issued September 18, 2004 and amended September 14, 2013 is a 4 page document which goes into great detail explaining our policies and procedures surrounding the issuance and use of our gate cards and clickers.

The condensed version goes something like this: valid issuance of a gate card or clicker is for the exclusive use of the person to which it is issued.

This means I cannot allow any members of my family, who come to visit me, the use of any cards or clickers that were issued to me. It also means I cannot allow my plumber, who needs to fix a leak while I am at work, the use of my gate card/clicker. I need to make sure I have called in a pass for their access through the Main Gate.

Many who violate this rule do so in the name of convenience. Their argument is... it is such a bother to have to call the Main Gate for a guest pass or the person doing work on my house has to drive twice as far by going through the Main gate with a guest pass.

The Resolution is very clear....All members and residents who qualify for a gate Card/clicker will be issued a gate card/clicker according to association policy. All other access and use of PML amenities and facilities by member's guests shall be by passes issued in the name of the member through the PMLA Department of Safety.

Now you ask....why be so restrictive about a silly gate card? The answer is simple. For the

safety of all members and residents, we must know who and why any non-member or non-resident is entering PMLA.

To piggyback on this topic, we are also noticing some members are clicking through guests at various gates instead of registering a guest by calling in a pass to the Main gate and having the guest enter PML by checking in at the Main gate. All guests are required to enter PMLA through the guest lane at the Main Gate. In addition, once your guest has checked in through the Main Gate, anytime they leave PML they must return through the Main Gate. Again, for the safety of all members and residents, we must know who and why any non-member or non-resident is entering PMLA.

There are several ways to make it easier for your guests to have access to PML. Are you taking advantage of these programs?

SPECIAL USER CARDS: Two special user cards may be purchased by the property owner. These gate cards can be issued to property owner's relatives, one generation up and one down without approval of the General Manager. All others must apply in writing and receive approval from the General Manager.

PERMANENT GUEST LIST: members and residents can place people on this list so no prior call to the Main Gate is required. Keep in mind, people on your permanent guest list have access to PMLA any time 24/7 but they must use the Main gate.

Our safety gates are a topic of much conversation as well as the general safety of everyone in the community. When you loan your gate card to another, or you are clicking through your guest, or someone you may not even know, you are bypassing one of the chief safety purposes of this rule, that our safety personnel know who and why people are accessing our community. In my view, I'd rather be more restrictive than less.

the hardships it has inflicted on our forests, will take us years to turnaround. To alleviate the hardships on our forest and trees, we will be following these simple guidelines and remedies in our forest maintenance work.

- Keep the healthy trees vigorous - by thinning out the thicker forests stands of weak trees, cultivate the new growth trees, and diversify the natural foliage.
- Remove severely infested trees and dead trees, using proper disposal of slash and timber
- Solarize timber and wood piles by covering in 10 mil plastic sheeting, seal the edges, and expose to direct sunlight.
- Drop, limb, pile and burn trees and slash to reduce the infestation. Chipped wood has to be spread and exposed to direct sunlight to kill larvae.
- Protect healthy trees from bark beetle infestation, using natural and chemical aids

- Enhance the soils natural water percolation and moisture retention.
- Avoid work which will create bared top soils, and reduce the compacting of soils.
- Inspections of trees for bark beetle infestation, and take appropriate actions
- Timber and slash from bark beetle infested trees are not to be transported off site.

There are several fire abatement projects being performed within the greater Groveland area in these months. These are SRA grant, contracted and government agencies reducing the woody fuels in our forests, thereby reducing the fire dangers that threaten all of us. On specific days there will be debris burning and smoke, equipment making noise, trucks rolling on our roads, and work being accomplished. These are the necessary functions of the prescribed work, and we are all diligent to the tasks before us. Peace be with you, and with us all.

Spend the Rest of the Year with Us!

**Let us
do the
cooking
for You!**



New Year's Eve
Five Course Dinner
*Priced from \$50 - \$65
Served from 5:30-10:00

Thanksgiving
Four Course Dinner
*Priced from \$32 - \$38
Served from 2:00 to 10:00

Roasted Spiced Butternut Squash Soup
Citrus Spinach Salad

Green Bean Casserole
Brandy Candied Yams
Rosemary & Garlic Mashed Potatoes
Traditional Turkey Gravy
Chunky Citrus Cranberry Sauce
Biscuits with Creamed Honey Butter
Pecan, Mushroom & Sausage Stuffing

Herb Roasted Turkey
Peach & Champagne Glazed Smoked Ham
Hickory Smoked Prime Rib

Traditional Pumpkin Pie
Chocolate Mousse

Christmas Eve & Christmas
Four Course Dinner
*Priced from \$35 - \$45
Served from 5:30 to 9:00

Roasted Chestnut & Parsnip Soup
Spinach & Berry Salad

Filet Mignon
Rack of Lamb
Sword Fish
Half Chicken

Peppermint Chocolate Mousse
New York Style Cheesecake

Crab Cakes
Oyster Rockefeller
Marinated Portabella Mushroom

Clam Chowder
French Onion Soup
Wedge Salad
Citrus Spinach Salad

Filet Mignon
Pork Tenderloin
Sword Fish
Burgundy Chicken
Lobster Tail

Decadent Molten Lava Cake
New York Style Cheesecake
Raspberry Crème Brulee




The Cellar Door Restaurant . 209-962-4000 . Groveland.com

**BEFORE YOU BEGIN
CONSTRUCTION ON YOUR LOT**

The Declaration of Restrictions (CC&Rs) states that no construction of any type (new construction, driveways, grading, lot clearing, etc.) can be performed without prior approval from the Environmental Control Committee (ECC).

Failure to obtain approval could result in the stoppage of work or even fines, and nobody wants that to happen. Inspections are made every Tuesday and reviewed by the Committee every other Thursday, so we can accommodate our members.

Please contact ECC before you begin any type of construction at **209-962-8605**

GROVELAND
GAL FRIDAY

MERRY
CHRISTMAS!

Call me for help with any of your holiday needs. I can do shopping, wrapping, decorating, baking, pet care, senior care, rides, home checks, housesitting, or any other need

I LOOK FORWARD TO YOUR CALL!

SHARON VOLPONI
962-6848 • 770-6277

MURRA'S
TOTAL YARD MAINTENANCE



BRINGING VALUE FOR YOUR DOLLAR IN PML

- WEEDING
- LOT CLEARING
- SENIOR DISCOUNTS
- LEAF REMOVAL

- PLANTING
- TREE SKIRTING
- HAULING
- AND MORE

CALL JASON MURRA
209-352-3750

LIABILITY INSURED

NOTICE

Main Gate personnel are available to issue gate cards on Saturday & Sunday from 8:30 AM to 4:30 PM. Please call in advance to schedule an appointment at 209-962-8615

WWW.PINEMOUNTAINLAKE.COM

YOU ARE INVITED TO JOIN US AT

THE GRILL
at Pine Mountain Lake

Celebrate New Year's Eve

THURSDAY, DECEMBER 31, 2015

COCKTAILS 7pm

DINNER 7:30pm

Enjoy a three course dinner
and party for only

\$75 PER PERSON

Featuring Manhattan Cut
New York Steak and Scallops

Dance to the music of
WEST BOUND 50

Call for reservations
209 962-8638



Merry Christmas & Happy New Year!

Season's Greetings

JAY REIS, THE GRILL MANAGER



The holiday season is approaching fast. Time seems to go by faster and faster each year. If you're looking for that last minute gift, we do have gift cards available. Our gift cards can be

redeemed at the Pro shop and Marina and at the Grill. And for your convenience we can mail them to you or for you.

OUR WINTER HOURS ARE:

Breakfast – Saturday 8am to 11am. Sunday 8am to 12:30pm

Lunch – Tuesday through Sunday 11am to 3pm

Dinner – Tuesday through Sunday 5pm to 8pm Friday and Saturday we serve to 9pm

HOLIDAY HOURS

In December we have quite a few holiday parties so make sure that you call us for

reservations. We will be open for lunch on Thursday December 24 from 11am until 2pm. We will be closed for dinner on Thursday December 24. We will be closed all day on Friday December 25 so that our employees may spend Christmas with their families. This year's New Year's Eve party is on a Thursday so we will not be serving our full dinner menu that evening but you can order from the Bar menu in the bar that evening from 5pm to 8pm. We will be open on Friday January 1, 2016 at 11am.

So from all us at the Grill, Season's Greetings. We hope that you all have a safe and fun holiday.

ENTERTAINMENT SCHEDULE

- Friday 4th** – Karaoke
- Saturday 5th** – Kickstart
- Saturday 12th** – Kool Shifters
- Saturday 19th** – 2 Steps Down
- Saturday 26th** – Electric Bob & Short Circuit
- New Year's Eve** – Westbound 50

Shades of Green

ALAN MACDONALD, GOLF COURSE SUPERINTENDENT

I wanted to share some of the recommendations that were suggested by the USGA agronomist, Brian Whitlark, during his late September visit this year. Brian visits 160 or more courses in the western U.S. each year.

I know it seems like we are always up to something on the days that you might be playing that could have an impact as you are playing. The fact that the course is open seven days a week requires us to make course improvements and perform general maintenance when the course has players on it.

Summary of Brian's Recommendations:

FREQUENT cultivation of fairways with a solid or hollow tine or some form of slicing activity is critical due to the inconsistent soils of the course. Research has revealed that the benefits from fairway aeration will last about three to six weeks. Therefore, it is important to conduct such practices on a continuous four to six week interval through the middle of fall, or as weather conditions will allow.

In some fairways there is bedrock and shale immediately below the surface. Improving these hardpan areas requires building these locations up with 40 to 80 tons of sand per acre. This procedure is expensive [24 yards is \$1000] and requires a commitment of five years or more.

It is extremely important to continue to do light applications of top-dressing to the greens in order to avoid the need to rebuild the greens. Light, frequent sand applications assist in putting green smoothness, along with thatch and organic matter control. One application per week is the recommendation, at least twice per month if not.

In order to firm up the collars and approaches, additional aerations and top-dressings are required.

Given the reduction in water use the fairways were in good condition the third week of September. With the ongoing drought, and the need to reduce water consumption, the conditions of the fairways are considerably better than most courses enduring the drought.

A tee leveling project is overdue at PML golf course. Ideally, such a project would be completed through the services of an outside contractor skilled in golf course construction. Another option would be to have in house staff remove the sod from the tees on six holes per year, level and resod with a blend of blue and rye grass. This method would take 3 years and be less expensive completed in house.

Over the years we have had very little interest from membership in the USGA visits. I strongly recommend you come out next year when Brian returns to meet him and ask questions. You would enjoy his visit, he is a great guy!

As you can see there is much to do going forward. With the daily set-up, mowing and general maintenance of the course that requires the majority of our time, finding time to perform additional cultural events is at times difficult.

You can be assured that we will do our best to provide you with fun and enjoyable playing conditions, while trying to make these needed improvements.

In the spirit of giving, Mr. Tony Murphy has made a donation for trees for the course. Thank you, Tony.

Have a great holiday season! Be safe!

The Grill Winter Hours

Dinner Hours (breakfast & lunch hours remain the same)

Monday — Closed	Friday and Saturday
Tuesday thru Thursday	5pm to 9pm
5pm to 8pm	Sunday — 5pm to 8pm

Wine Tasting

& DINNER BUFFET

\$25

per person plus tax

Thursday January 21st 2016 Seating's start at 5pm

Menu: Herb Roasted Chicken

All wines featured will be offered at discounted prices for this night only

Reservations required (209) 962-8638

**\$25
DISCOUNT**

Mention this ad for a discount on cleaning services.

Minimum charge applies.



DISASTER RESTORATION SERVICES • RESIDENTIAL AND COMMERCIAL CLEANING SERVICES

Carpet & Furniture Cleaning • Steam & Dry Cleaning • Deep Soil Extraction • Spot & Odor Removal • Oriental & Fine Rug Cleaning • Ultrasonic Blind Cleaning
24 Hour Emergency Service • Water Removal • Wet Carpet Care • Fire & Smoke Restoration • Vandalism Cleanup • Structure Drying • Sanitizing

ServiceMASTER Restore

The clean you expect.

The service you deserve.®



Serving Tuolumne, Calaveras & Amador Counties

ServiceMasterSierras@mlode.com • www.ServiceMasterSierras.com

209-532-1700

17330 High School Road
Jamestown CA 95327



BINGO!



For every mortgage generated from this ad, I will donate a minimum of \$500 to the Butte Fire victim of your choice.

The Loan that **PAYS YOU!**

IRON FINANCIAL

Your local Reverse Mortgage Specialist

For Homeowners 62 years and up

DENNIS SILVA
TUOLUMNE COUNTY

IRON FINANCIAL, INC.
TOLL FREE 855-680-2120

26 years experience • Previously licensed Tax Practitioner
• Member and Supporter of numerous charities

BRE #01084656
NMLS #335858

"Your Best Interest...Is Our Only Interest"



Can't wait for Christmas?

DOWN TO EARTH HAS WHAT YOU NEED

- ❄ Fresh cut Christmas Trees
- ❄ Large variety of Poinsettias
- ❄ Christmas Gifts and Décor



DOWN TO EARTH

CONSTRUCTION AND NURSERY

(209) 962-7407
 13050 Boitano Road
 Groveland, CA 95321
LIC. #991183
downtoearth7407@gmail.com

Peter Fischer Construction

peterfischerconstruction@gmail.com



12969 Clements Rd
 Groveland, Ca. 95321
 Phone/fax 209-962-6199
 License# 658830

peterfischerconstruction.com 

Services - No job is too big or too small

<ul style="list-style-type: none"> Custom Homes Remodels Green Building Porch or sunroom additions New Roof Carpentry Concrete 	<ul style="list-style-type: none"> Hardwood floor installation Masonry Painting EPA CERTIFIED Fireplaces / new or remodeled Solar panels Deck replacement or repair Elasto-Decking Window/Door replacement
---	--

For our customers convenience we accept credit cards



NATE'S
LIC. #953843
TREE SERVICE

NO JOB TOO BIG

NO JOB TOO SMALL

For all your tree service needs
 Trimming & Removals

CHECK OUR PRICES!

532-2460

Serving the Tri-Counties

Building Our Community

TERRI THOMAS, ECC COORDINATOR

At long last it looks like the rain is returning to California! While it may not be enough to pull us out of the continuing drought, we are grateful for what we have gotten so far and hope it continues.

With the rain comes the possibility of drainage problems that arise when we get too much at one time or when property owners have made improvements that affect the natural flow of water.

It is highly recommended that, if at all possible, property owners check the drainage from their property during an active rain event. Checking your downspouts and drainage courses on your

property while it is raining will allow you to see if the water from your lot is draining properly. You will also be able to determine if erosion is taking place. If so, you will want to take action to handle run-off in a manner that eliminates erosion.

Property Owners are encouraged to work with their neighbors to ensure proper flow of water into streets and natural drainage channels, and not cause erosion problems.

So, let's all do our part to make sure the drainage on our lot is working properly. And then we can sit back and enjoy the beautiful sound of rain on the roof and the hope of a full lake, come spring.

ALL PMLA HOMEOWNERS EMAIL OPT-IN PROGRAM

The Association is pleased to offer a money saving program available to all PMLA property owners. This program allows you to receive many of the documents we are required to provide to you via email. This option is important because:

Cost Savings – The Association is spared the expense of printing and mailing many documents to those property owners who sign up.

Environmental Savings – Less paper means less trash and reduced damage to the environment both in the disposal and production of paper and envelopes.

Reduced Clutter – By receiving documents via email there is less paper for you to deal with. All

documents can be saved on your computer and viewed at your discretion.

Timely Receipt – Documents sent electronically are received in minutes as opposed to the days it takes for regular mail to arrive.

If these sound like good reasons to you, please sign up for the Document Email Program today using the attached form. Simply return the completed form to the Administration office at your convenience.

If you have any questions on this program please feel free to give us a call (962-8600) and we will be happy to explain the details and the advantages.

Please read the Terms & Conditions for the email opt-in program on the website, www.pinemountainlake.com under the Resources/Forms > **Opt-In Email Program**.

Mail form below to:

Pine Mountain Lake Association • 19228 Pine Mountain Drive • Groveland, CA 95321

YES, I want to enroll in PMLA's email statement and document service. I acknowledge and agree to the terms and conditions set forth above as a condition for participation in this service.

PMLA Account Number: _____ Unit/Lot #: _____

Name: _____ Phone #: _____

Address: _____

Email Address: _____

Signature: _____

Ad Rate Increase

DAVID WILKINSON, EDITOR

We have worked very hard to keep our advertising costs from increasing in recent years but, due to rising costs of production, we will be increasing ad rates beginning with the January issue. We will still be keeping the rates within industry standards and will still offer advertisers some of the best rates around. And, as always, we will still offer our 10% discount for advertisers who wish to go on 6 month contracts.

Our new rates will be based on "per column inch" pricing. This is the fairest and easiest pricing structure available. The increases in ad rates will not be large increases, and in a few cases the cost of the ads will actually decrease. The new rates are shown in the table on the right and are also available online at www.pinemountainlake.com.

As always, we can work to accommodate custom sizes, just email PMLNews@SabreDesign.com or call 209-962-

Ad Size Width x Height	1 Mo.	6 Mo.*	1 Mo.	6 Mo.*
	Black & White		Full Color	
Business Card ¹	25	22	N/A	N/A
2.25" x 4"	34	30	54	48
2.25" x 6"	51	45	71	63
2.25 x 8"	68	61	88	79
5.0417" x 2"	34	30	69	62
5.0417" x 3"	51	45	91	81
5.0417" x 4"	68	61	113	101
5.0417" x 5"	85	76	135	121
5.0417" x 6"	102	91	157	141
5.0417" x 7"	119	107	179	161
5.0417" x 8"	136	122	201	180
5.0417" x 9"	153	137	223	200
5.0417" x 10"	170	153	245	220
5.0417" x 11.75"	200	180	275	247
10.25" x 2"	68	61	113	101
10.25" x 3"	102	91	152	136
10.25" x 4"	136	122	191	171
10.25" x 5"	170	153	230	207
Half Page 10.25" x 5.8125"	198	178	263	237
10.25" x 7"	238	214	308	277
10.25" x 8"	272	244	347	312
10.25" x 9"	306	275	386	347
10.25" x 10"	340	306	425	382
Full Page 10.25" x 11.75"	400	360	495	445
Full Page Inside Front/Back	495	445	590	531
Full Page Back Cover	N/A	N/A	685	616

0342 for more details on how we can assist you with your advertising.

Hooves and Happenings

JEANNA SANTALUCIA, EQUESTRIAN CENTER MANAGER

HAPPY HOLIDAYS!!

This month I would like to feature our newest Lessor of 124.70 acres in the Long Gulch area. They are the Mother Lode Land Trust.

The Mother Lode Land Trust has been preserving privately owned lands in Amador and Calaveras counties since 1991. More recently, MLLT has expanded to preserve properties in Alpine, El Dorado and Tuolumne Counties, allowing for greater protection of our regions special features. The Mother Lode region is known for its diverse landscape of working ranches, rolling hills, oak woodlands, rivers, lakes, high Sierra peaks, and wide open spaces. They work with landowners to protect these lands and ensure the continuation of our rural quality of life.

We met Ellie Routt, Executive Director, last month when we drove her around the properties.

Ellie is an Amador County native. She attended Santa Rosa Junior College and Humboldt State University where she specialized in several natural resources options. Ellie's favorite courses were in Sustainable Agriculture, Botany and Soil Science and she eventually received a degree in Rangeland Resource Science. Ellie has volunteered with various federal, state and local agencies working on projects ranging from exotic

plant eradication, to rotational grazing studies, to native landscaping design.

MLLT purchased the property with funds originally from the state of California, to keep our parcel protected from development for Great Gray Owl habitat, and recreational use. They are happy to have a working relationship with PMLA that we may assist to safeguard the property from misuse, and continue our trail rides for our members and the public; and they didn't even raise our existing rate!

Another recreational venue in Tuolumne County under contract with MLLT is Kennedy Meadows. Their goal is to preserve the history of the pack station and meadows for future generations.

It's wonderful to know that with MLLT, their organization reflects our values of preservation of the open space, the wildlife that inhabits it, and availability for our continued use.

We invite you to meet Ellie Routt at our next Back Country Adventure Day, the third Saturday of June, and hear about the work they do, and ride the trails. Trail rides continue: Saturday, Sunday and Holidays; 9 am, 10:30 am, 12:30 pm, and 2:00 pm. Reservations recommended. 209-962-8667.

Guest & Renters Handbook is Available Online!

You can now view or print the Guest and Renters Handbook from the PML Website. Go to our website at: www.PineMountainLake.com and click on Governance then Community Standards. Then click on Guest and Renters Handbook at the bottom of the page. This handbook has valuable information for Guests and Renters in Pine Mountain Lake.

BOARD ACTION(S) VOTING RECORD

October 24, 2015 Board Budget Meeting – Agenda Items SHOULD THE BOARD...	Board Members*					COMMENTS	COSTS
	DC	WA	MG	BS	SG		
approve the agenda?	Y	Y	Y	Y	Y	AIF	
approve the consent agenda?	Y	Y	Y	Y	Y	AIF	
postpone consideration of Shooting Range Sound Wall Alternative Design?	Y	N	Y	N	Y	Tabled until November 7, 2015 meeting	
have managers review revenue projections for proposed 2016 Budget?	N	Y	N	Y	N	Motion Failed	
approve the purchase of a Hot Dog Cart for the Marina? (New Cap)	Y	Y	Y	Y	Y	AIF Motion Carried	\$8,500
approve \$5k request from Waterfowl Management Committee	o	o	o	o	o	Failed for lack of Motion	
approve \$183k reserve expenditure for existing parking lot refurbishment (Reserves)	Y	Y	Y	Y	Y	AIF Motion Carried	\$183,000
approve \$10k to design improved entrance to The Grill? (Operations)	N	Y	Y	Y	N	Motion Motion Carried	\$10,000
approve the creation of a staging/event area on the first tee?	Y	Y	Y	Y	Y	AIF Motion Failed	
Total APPROVED Golf Donations this meeting (Retail Value)							\$0
Total APPROVED Other Donations this meeting (Retail Value)							\$0
Total APPROVED expenditures this meeting							\$201,500
/=Absent A = Abstained AIF = All In Favor o = No Vote							
* DC=Dana Chavarria WA=Wayne Augsburger MG=Mike Gustafson BS=Brian Sweeney SG=Steve Griefer							
MINORITY VOTES HIGHLIGHTED							

From the Fringe

MIKE COOK, HEAD GOLF PRO

ANNUAL VETERAN'S DAY GOLF EVENT

The 9th Annual Veteran's Day Golf Event was held at Pine Mountain Lake Golf & CC on Wednesday November 11 and was a huge success. There were 104 players in this year's event, 30 more than last year. We were blessed with good weather and everyone was in a giving spirit. Before I get into the details of this year's event, I would like to go into how this event came to be.

History of the Event

The Veteran's Day inaugural event was in 2007. Doug Wall was instrumental in establishing a golf event with its main focus on honoring local veterans and financially supporting a worthy cause that assists veterans and their families in their time of need. About the same time Army Sargent Matthew Tallman, son of Virginia Tallman, was tragically killed in action in Iraq. An Army Officer who escorted Sargent Tallman back to the States suggested that we should consider an organization called The Fisher House as the beneficiary of our event. The Fisher House is non-profit organization that houses the families of veterans who are inpatients at VA hospitals. The Fisher House in Palo Alto, CA is the location that receives the support of our event. After the inception of this event the late Tom Bickmore became very involved in organizing the event until his passing in 2014. For the past 2 years Paul Purifoy has taken the ball and run with it and continued with the commitment of his predecessors to make this the successful and quality event that it has become.

2015 Veterans Day Golf Event

Prior to the start of the golf tournament there were a number of events in keeping with the spirit of honoring veterans and other service

organizations. The schedule of events were as follows:

10:20 am – Introduction of Events: Paul Purifoy, in his original full dress uniform (except for his non-issue golf shoes) took to the microphone to announce the day's events.

10:30 am – Missing Man Formation: Four of our own pilots, Wayne Handley, Michael Thoben, Alan Craig and Norm Peebles took to the air and flew an inspiring missing man formation high above the first tee. It was a site to see, especially when Mr. Handley pulled out of the formation representing the missing man, I am sure that it brought goose bumps and a few tears to many in the on-looking assembly.

10:40 am – Parade of Support Services: To the applause of the assembly a parade honoring our local support services (Highway Patrol, Sheriff Department, Cal Fire, PMLA Safety Department, Tuolumne County Ambulance Services), passed by lead by our local Groveland motorcycle group.

10:45 am – Grand Salute to Military Services: A salute to each of the branches of military service was given by David Valponi who was in his customary patriotic attire and on stilts that towered him more than 12 feet in height.

10:50 am – National Anthem: The National Anthem was beautifully performed by Linelle Marshall in acapella.

11:00 am – Taps: Rod Raine blew taps on his trumpet at the traditional time, another teary moment.

11:30 am – Trumpet the Charge: Rod Raine returned with his trumpet to officially start the golf tournament by sounding "Trumpet the Charge".

5:30 pm – Awards Dinner: The awards dinner was more than just a dinner as we were treated to a number of guests that reinforced the meaning of why we gathered for this event:

Betsy Streibel – Manager of The Fisher House, Palo Alto, Ca: Betsy gave us a first-hand account of the extraordinary work that The Fisher House does to help the families of injured and ill veterans through their tough times as their loved one recovers from their physical challenges. The families are not charged for the accommodations. Our support is going to the right place.

Seaman Richard Chilingarian: "Chili" as he is known is a resident of PMLA and he was in attendance at the dinner but his failing health did not allow him to speak so Wayne Handley recounted highlights of his duty as a signalman on the U.S.S. San Diego during World War II. The U.S.S. San Diego was involved in 21 major battles during the war and "Chili" was on duty for 14 of those battles. The U.S.S. San Diego was a very important part of an historic mission that many of us are not aware of. Preceding the official surrender of the Japanese on September 2, 1945, the U.S.S. San Diego was the first vessel to dock in Tokyo Bay prior to the arrival of the U.S.S. Missouri. Their responsibility was to establish our presence until the U.S.S. Missouri arrived and as you can imagine there was a great deal of uncertainty by many aboard ship, about how they would be received as they entered the harbor.

Fisher House Donation

As a result of this year's event a donation of approximately \$8,700.00 will be sent to The Fisher House, Palo Alto, CA. From what I am told this is by far the largest donation our event has ever raised. Thank you to everyone who donated to this event, you can rest assured that your donations are going to the right organization. If you would like to be a part of next year's event, please contact the Golf Shop at 962-8620.



Conclusion

This event was established for the purpose of honoring the veterans who sacrificed their time and for many their very lives in service of our country. There were many, many volunteers and sponsors who without their help, this event would not be possible. I would like to name every person individually who was a part of this event but I would be afraid of leaving someone out and I would never want to do that so THANKYOU to all the volunteers and sponsors who were a part of this event, you know who you are and I hope that you realize that you were a part of something that was more than just another golf tournament. Yes, there were winners in the golf competitions for the day and I am confident that they would say that the real winners of this event are the families of veterans that we have given hope and support during their time of need.

PML Organized Groups & Clubs

Contact the individuals below if you are interested in joining!
(All numbers are 209 area code unless noted otherwise)

Aviation Association	
Catherine Santa Maria	962-7904
Computer Users Group	
Frank Perry	962-0728
Exercise	
Barbara Elliott	962-6457
Friends of the Lake	
Mike Gustafson	962-6336
Garden Club	
Lonnie Roman	962-6001
Guardians of PML	
Gus Allegri	962-6915
Ladies Club	
Maddie Sousa	962-5708
Ladies Golf Club	
Iris Moffit	962-5050
Men's Golf Club	
Dick Faux	962-4617
Men's 9-Hole Golf Club	
Bob Oakley	962-4799
Monday Bridge Club	
Bill Parker	962-5957
Needle Crafts	
Lee Isbell	962-5727
Pickleball	
Karen Seals	962-6657
Pine Needlers Quilt Guild	
Beverly Oakley	962-6799
PMLakers RV Club	
Miles (Ned) Nuddleman	925-371-2287
PML Niners	
Stacie Brown	962-5129
PML Shooting Club	
Dick Collier	770-5022
PML Waterski & Wakeboard	
Dean Floyd	(408) 378-7725
Racquet Club	
Joe Sousa	962-5708
Tom Hernandez	962-4704
Residents Club	
Dick Faux	962-4617
ROOFBB	
Ivonne Deckard	962-1904
Sierra Professional Artists	
Heinie Hartwig	(209) 586-1637
Southern Valley Srs. Golf Group	
Jim Sample	962-4747
Sunday Couples Golf	
Alma Frawley	962-5578
Windjammers Sailing Club	
Bob Haliwell	962-4137

PML Ladies Golf Club

SARA HANCOCK

We missed only one play day this month. October 1st started with a little rain. The rest of the month was beautiful and we enjoyed four play days.

October 8th U' Pick 'Em

1st Place—66 points—Lisa Brown-Jimenez, Sara Hancock, Clarice Ligonis and Yvonne Mattocks

October 15th Home and Home - Point Bogey

Invitations were sent to a number of our neighboring clubs. We had players from Phoenix Lake, Elkhorn, Twain Harte and Mountain Springs. Lunch and awards followed play. Corky Graham did a great job of chairing this event.

1st Place—92 points—Thelma Faux, Ann Hankin, Val Anderson and Blind Draw; **2nd Place**—90 points—Sue Perry, Mona Tompkins, Jonney Jones and Kathy Chaty; **3rd Place**—88 points—Linda Wall, Heidi Russell, Anne Peterson and Kay Bettencourt; **4th Place**—86 points—Yvonne Mattocks, Lynne Dust, Nadine Neufield and Blind Draw. **Closest to the pin** on #14 - Member: Kay Bettencourt 4'6", Yvonne Mattocks 28'1". Guest: Denise Dobler 45'10", Diana Atanzio 56'3". **Birdies:** Mona Tompkins #17, Ann Hankin #17.

October 22nd Gross, Net, Putts

Ace of Aces: Sandy DeRodeff—Net 68
1st Flight Handicaps 10-20—Low Gross—Marj Rich 88; Low Net—Priscilla Park 77; **2nd Flight Handicaps** 20-25—Low Gross—Helena McMillan 97; Low Net—Sara Hancock 74; **3rd Flight Handicaps** 26-30—Low Gross—Kathy Shehorn 98; Low Net—Susan Dwyer 74; **4th Flight Handicaps** 30-37—Low Gross—Sandy DeRodeff 101; Low Net—Ann Hankin 70. **Putter of the Month:** Joyce Smith 32 putts. **Birdies:** Helena McMillan #11, Barbara Connelly #14, Joyce Smith #14.

October 29th Halloween Party - Two Best Balls

The Niners joined us in a fun tournament of all 18 holes played as Par 3's. Thelma Faux, Eleanor Ellis-Murphy along with Tony Murphy did a great job of making this a fun and interesting event. Eleanor and Tony spent a great deal of time making sure we did not forget it was Halloween. The flagsticks were decorated and certain obstacles were arranged on the greens to test your putting skills. Thank you so much for your time and effort.

1st Place—72—Helena McMillan, Jane Reynolds, Marlene Drew and Joyce Smith.; **2nd Place**—73—Sara Hancock, Susan Dwyer, Anne Peterson and Marilyn Hathaway; **3rd Place**—78—Marcee Cress, Ann Hankin, Kay Bettencourt and Marilyn Scott; **4th Place**—79—Kathy Shehorn, Lisa Brown-Jimenez, Marsha

Martinez and Sarah Zimmerman.

Closest to the Hole on #4 for the Niners – Jane Reynolds 5'9"; for the 18 Holers – Sara Hancock and Eleanor Ellis-Murphy 21'9".

Closest to the Hole on #14 for the Niners – Sarah Zimmerman 18'1"; for the 18 Holers – Joyce Smith 8'6".

Birdies: Joyce Smith #10, Kay Bettencourt #11, Marcee Cress #12 and Eleanor Ellis #16.

General Meeting - October 30th

Captain Lynne Dust called the meeting to order. Corky Graham gave the Treasurer's

Report. Awards Chair Alma Frawley presented Kathy Shehorn with a medal for breaking 90. The Slate of Officers for 2016 was presented: Iris Moffit – Captain, Marjorie Rich – Co-Captain, Corky Graham – Treasurer and Sue Perry – Secretary. It was moved and seconded to accept the slate of officers.

Coming up in December is our Christmas Luncheon and General Meeting on the 9th. Don't forget to bring some toys for our sweet children of Groveland. Fun is had by all at this luncheon and lots of information for the coming year.

Quilters Corner

SANDY SMITH

Merry Christmas and Happy Chanukkah to all. This is my favorite time of year, how about you?

The Pine Needlers Quilt Guild will not be meeting in the month of December. Everyone is so busy making holiday memories that the decision was made to take the month off. However remember that we do meet the 3rd Tuesday of each month, under the library at 6 p.m. Meet you there!

Quilters are a generous lot, giving, caring and sharing. A great example of this is IMVO (Its My Very Own), also known as "Bags Of Love". Several Guild members meet each month to put together small quilts with matching bags, to be filled with age appropriate toiletries, a plush toy, books, and

other goodies. These bags are given to kids when they are removed from their home by the sheriff/CPS. Our thanks to Sue Hallsted, Donna Wolf, Susan Fisher, Carol Willmon, Judy McKinnon, Irene Rhyne, and Lynn Sigafose. If I have forgotten anyone please let me know. The latest group of bags went to the victims of a home fire here in Groveland.

When you store a smaller quilt, roll it around a noodle. (you know, the grandkids swimming kind) A great tool to use for storing. This is shared from Alex Anderson's new book, All Things Quilting.

One more thought, I cannot count my day complete til needle, thread and fabric meet.

Enjoy your holiday time with family and friends. . . See you in 2016.

PML Lady Niners

SHARON KENYON

ACE OF ACES FOR OCTOBER Carrie Carter with low net 35.

play, congratulations!

Carrie Carter had an outstanding game with gross score 48.

October 8 "Baseball—Low Gross"

with 11 players.

1st Place: Stacie Brown Low gross 50

2nd Place Tie: Low gross 51 – Shirley Haliwell, Patty Nelson, Sarah Zimmerman

3rd Place Tie: Low gross 54 – Dotty Davis and Nancy Whitefield

Chip-In: #12 Patty Nelson for Par. Nice shot!

October 14 "Cry Baby" (discard 2 holes) with 13 players.

1st Place: Nancy Brewster Low net 27

2nd Place Tie: Carrie Carter, Low net 29 Flo Jansen

3rd Place Tie: Wanda Patterson, Low net 32 Jane Reynolds

Pars: #10 Linda Craig; #14 Carrie Carter; #17 Nancy Brewster

Low Net: Nancy Brewster with 32. Excellent

October 22 "Blind Partners--Low Putts"

with 18 players.

1st Place: Karen Dickson=Net 38; Wanda Patterson=Net 39

2nd Place: Linda Craig=Net 41; Jane Reynolds=Net 38

3rd Place: Marsha Martinez=Net 40; Nancy Whitefield=Net 44

4th Place: Marilyn Alexander=Net 36; Carrie Carter=Net 49

Low Putts winner: Marsha Martinez with 17 Putts.

Pars: #10 Patty Nelson; #14 Linda Craig & Trudy Reid; #15 Jane Reynolds; #17 Marilyn Alexander

Low Net: Marilyn Alexander with 36.

October 29 "Halloween Golf" with the 18 Holers.

PML Men's 9 Hole Golf Club

STEVE ENGSTROM

It looks like a good early winter is upon us with more than 2 inches of rain recorded at multiple sites all across the PML and Groveland area on November 1st, 2nd and 3rd. While this caused "cart path only" golf and some dashes for the club house, it should really help the course. On November 18th, starting at 8:45 A.M., we will have had our Annual Breakfast Business Meeting followed by a 4 Man 2 Best Ball event. Since this is being written before this meeting, we do not yet know whom our new officers will be (albeit we have an idea). If you haven't paid your club dues by the end of the meeting, please get a membership form from Bob Oakley or Malcolm Brown and mail your check for \$25.00 to Jack Leetham.

The answer to last month's teaser, which was "Name the only major won by Tom Weiskopf in his PGA career?" is that Weiskopf won the British Open in 1973. This month's teaser is "The National Invitational Tournament" is the original name of what golf major?" Our winners for October were:

10/7 2 Man Scramble

First: Fred Mecum and Larry Patrick

Second: Jim Van Gerpen and Steve Aker

10/14 4 Man 2 Best Ball

First: Jim Van Gerpen, Malcolm Brown, Jack Leetham and Steve Ojeda

10/21 Red, White, Blue

First: Steve Ojeda, Steve Aker, Bob Oakley and Dick Dentino

10/28 Low Net

First: Jack Leetham, **Second:** Fred Mecum, **Tie Third:** Walt Bales, Steve Ojeda and Jim Van Gerpen

If you are new or returning to golf and don't want to play 18 holes, you are invited to join the Men's Nine Hole Golf Club.

- Play every Wednesday.
- A variety of games & formats.
- We will maintain your nine-hole handicap.
- Walk or ride, it is still "a walk in the park."
- Annual Championship Tournament

Membership is \$25 per year and applications are available at <http://pmlm9h.webs.com>

Garden Club Clippings

JOYCE SMITH

The trip to Tuolumne Trails in late October to plant daffodil bulbs was a nice outing for those able to attend. Garden Club members were assisted by some 4-H Club members eager to help in the task. Daffodils were planted in the Memorial Garden, pond and garden areas. The plantings were in part a thank you to Jerry Baker for being a speaker at a prior Garden Club meeting. Plus, this is what Garden Club is about. The report back from this event was they had an enjoyable time, completed their task and great lunch.

Halloween at the Jail is always a good time for all of us. Garden Club Members supply the treats and hand out candy during this annual event. I don't know who has the most fun, the kids or GC Members. Thanks to our members for supplying the candy.

Thanks to Paula Baker for the craft

project at our November meeting. She said it would be easy and it was. I could even do it.

We will have our Christmas Dinner/Installation of officers at the Grill on December 6th. A nice ending to a good year and a nice evening with our friends.

Have you turned in your money for Christmas Baskets macaroni & cheese? Paid dues for 2016?

We will be having our Board meetings at Linda Flores home beginning in January.

Today is November 2nd. Our rain gauge is registering 2.5 inches. Isn't that wonderful? We are so thankful!

Watch for our wonderful Newsletter, always full of information and what you need to know about all our events.

We wish you all a Merry Christmas and a Happy New Year!

See you at Lake Lodge for our meetings.

PML Pickleball News

SHELBY MCNAMARA

A Very "Grateful" Ladies Club Luncheon

DAR BROWN, PUBLICITY CHAIR

On November 4, members of the PML Ladies Club gathered to enjoy each other's company over a delicious lunch provided by the staff at the Grill. Everyone gave thanks for our wonderful community of wonderful friends, our families and the lives and loves we have been blessed with. Dar Brown shared three thank you letters received from our troops deployed overseas who were the recipients of care packages that came from

the Ladies Club "Patriot's Day", another symbol of the generosity of our community. To help those less fortunate as we head into the holiday season, attendees were asked to bring toiletries or cleaning products for the Food Closet and the donation table was absolutely covered with donated items with many others overflowing onto the floor. What an amazing community we are lucky to live in!



1st Tournament Results

The first annual Pickleball Tournament was held on Saturday, October 24th and was a HUGE success! The winners of the tournament were:

Women's

- 1st Place** - Patty Nelson and Shelley Sordo
- 2nd Place** - Izumi Cerruto and Kitty Edgerton
- 3rd Place** - Chris Balek and Shelby McNamara

Men's

- 1st Place** - Brian Sordo and Don Bogart
- 2nd Place** - Rich Cerruto and Rick Martinez
- 3rd Place** - Jay Warshauer and Brad Nelson

Mixed Doubles

- 1st Place** - Pam and Don Bogart

2nd Place - Izumi and Rich Cerruto

3rd Place - Shelley and Brian Sordo

A great turnout and a fun barbecue! Thank you all for pitching in and making it a great day. Check out the great pictures on our Facebook page - Pickleball @ Pine Mountain Lake

Come out and PLAY!

The PML Pickleball group plays Monday, Wednesday, Friday, Saturday and Sunday from 9:00 am - 11:00 am on the courts on Mueller Drive. Come join us and learn this great sport. Club members have extra paddles and balls. We are all committed to taking the time and helping you learn the sport.

Pickleball is fun and it's easy to learn. Our group ranges in age from 35 to 81 years old!

PRECISION OPTICS

Stacy Hancock, Certified & Licensed Optician

Prescription & Non-prescription Eyewear

FREE Adjustments & Repairs

Pricing 40% - 60% less than your Doctor's Office

Insurance Welcome

(209) 962-1972

18729 HWY 120, UNIT A, GROVELAND, CA 95321

Sunglass Sale

Over 100 pairs of Designer Sunglasses 30% - 80% OFF

"Like" Precision Optics on Facebook & receive \$10 OFF any Sunglass purchase

DECEMBER EVENTS CALENDAR



**Light the Season
at The Little House
December 6**



**Meet & Greet Town Hall
Meeting
December 12**



**Las Posadas Nativity
Procession in Columbia
December 13**



**Celebrate New Year's Eve
at The Grill
December 31**

12-6

SUNDAY - THE LITTLE HOUSE

LIGHT THE SEASON

Celebrate the start of the holiday season by attending the annual Light the Season festivities at 5:00 P.M. at The Little House, located on the corner of Merrell Road and Highway 120. This event is sponsored by Southside Senior Services and its signature programs: The Little House, WHEELS and Village on the Hill.

12-10 THRU 13

TH - SUN - GROVELAND EV FREE

PINE CONE SINGERS HOLIDAY CONCERTS

Celebrate the holidays with a festive concert. Thur. & Fri. at 7:30pm, Sat & Sun at 2pm. Advance tickets available at Yosemite Bank, Hotel Charlotte, Dori's Tea Cottage, Marijka's. Advance donation \$10, at the door \$12, children 12 & under are invited to attend for free. For more info, please call 962-6535.

12-12

SATURDAY - PML LAKE LODGE

MEET & GREET TOWN HALL MEETING

Crime & Safety Q&A forum. A moderated forum and a chance to mingle with the Board of Directors and get to know them face to face. Meeting begins at 9am and ends at 11am. Call the Admin. Office for more information at 209.962.8600.

12-13

SUN. - COLUMBIA STATE HIST. PARK

LAS POSADAS NATIVITY PROCESSION

Las Posadas is a Spanish tradition that re-enacts the story of Mary & Joseph's search for shelter in Bethlehem at 5:30pm. For more information about this free event for the whole family, call the Columbia Chamber of Commerce at 209-536-1672 or go to www.visitcolumbiacalifornia.com.

12-18

FRIDAY - GROVELAND EV FREE

HILL TOP MUSICAL KIDS

The fun and funny "Arrest these Merry Gentlemen" will be performed at the Groveland Evancelical Free Church by the Hill Top Musical Kids at 7 pm. There is no admission charge, come and support our local kids and let them know we applaud their talent. For more information contact Louise Turney 962-0609.

12-19

SATURDAY - GROVELAND EV FREE

HILL TOP MUSICAL KIDS

The fun and funny "Arrest these Merry Gentlemen" will be performed at the Groveland Evancelical Free Church by the Hill Top Musical Kids at 2 pm. There is no admission charge, come and support our local kids and let them know we applaud their talent. For more information contact Louise Turney 962-0609.

12-24

THURS - MTN LUTHERAN CHURCH

CHRISTMAS EVE SERVICE

Celebrate the Gift of Jesus and His Birth with a Special 7:30 pm Christmas Eve Service of Carols and Lessons, Christmas Message and Prayers. The Service concludes in candlelight. Everyone is always MOST WELCOME at Mountain Lutheran Church, 13000 Down to Earth Court, just off Ferretti Road.

12-31

THURSDAY - THE GRILL @ PML

CELEBRATE NEW YEAR'S EVE AT THE GRILL

Spend New Year's Eve at The Grill. Cocktails at 7pm, Dinner at 7:30. A three course dinner features Manhattan Cut New York Steak and Scallops. Dance to the music of West Bound 50 and ring in the New Year. \$75 per person. Call The Grill for reservations. 209-962-8638

19TH HOLE LOUNGE ENTERTAINMENT

**Friday, December 4
KARAOKE**

**Saturday, December 5
KICKSTART**

**Saturday, December 12
KOOL SHIFTERS**

**Saturday, December 19
2 STEPS DOWN**

**Saturday, December 26
ELECTRIC BOB
& SHORT CIRCUIT**

**Thursday, December 31
WESTBOUND 50**

SUPPORT MEETINGS IN GROVELAND

Al-Anon

The Little House - Saturdays 9:30-10:30 AM

Alateen

*Groveland Youth Center - Tuesdays 5-6pm
Contact/Questions: GrovelandAFG@gmail.com*

Sierra Grief Support

*The Little House - Wed's 10:30am-Noon
Call 536-5685 to register for Grief Support.
Offered by Hospice of the Sierra.*



HOMES ON THE HILL

Your Guide to Real Estate in the Groveland Area

RE/MAX Yosemite Gold
 Each Office Independently Owned and Operated
Patricia (TISH) Fulton
 REALTOR® / PROPERTY MANAGER
 BRE #00760019
 18688 Main St. P.O. 808
 Groveland, CA 95321
 Phone: 209-962-0837
 Office: 209-962-4080
 Cell: 209-985-0216
 Email: Tish.realestate@gmail.com

Deardorff Realty

COMPLETELY REMODELED! NEW! NEW!!
 3 bedroom, 3 bath, Gas fireplaces, large deck and patio for entertaining! Wet bar! All on 2/3 acre. Priced for quick sale @ only **\$369,000!** U13/L77.

BEAUTIFUL EXECUTIVE HOME
 At end of cul-de-sac! 4bd/4ba, gas fireplaces. Deck & patio plumbed for fire pit & bbq. Lg family rm w/wet bar! Separate in-law or guest quarters! All for only **\$585,000!**

GOLF COURSE LOT
 Zoned for 3 units overlooking the 5th green only **\$59,000!** U5/L274

Contact Marilyn Deardorff-Scott - BRE 00396888
209-962-0718

YOSEMITE GATEWAY PROPERTIES

18731 Main Street • PO Box 606 • Groveland CA 95321
 YosemiteGatewayProperties.com • (209) **962-5190**

SUCCESSFUL VACATION RENTAL!

PENDING

For details go to:
www.groveland-real-estate.com

13209 Wells Fargo, 2/376
 The right size cabin for the right price. Immaculate 2B/2B with 2 Car Garage, Flat lot, Lots of parking for cars, boat and/or RV. Don't miss out on this gem!
\$149,999

WOODSY CLASSIC CHALET

PENDING

For details go to:
www.groveland-real-estate.com

19670 Butler Way, 8/208
 Incredible view. Recently updated, 3B/2B with Garage. Granite counter top kitchen, double pane windows, new carpet & much more. Level lot, paved driveway. **\$189,000**

WOW, STOP THE CAR! THIS IS IT!

"Call me for your real estate needs"

Liz Mattingly • Broker Associate
 BRE#00709618

209-962-1129 • 209-840-8020 Cell
 18687 Main St., Suite E
 Groveland, CA 95321
lizmatre@gmail.com

YOUR REALTORS

JUNE DEE
 Realtor/GRI
209-962-5190 Office
209-962-7060 Home Office
209-770-5190 Cell
junedee@gmail.com
groveland-real-estate.com
 BRE license 01700083

For details go to:
www.groveland-real-estate.com

19298 James Circle, 2/356
 Spacious 2262sf, 3B/2B, Office, Den, Living Room. INDOOR SPA! All inspections completed & certified, Ready to move in. **\$237,500**

GEORGE VOYVODICH
 Broker/Owner
209-962-4185 Office
gvoyvodich@gmail.com
 BRE license 01080130

REBECA MARTINEZ
 Realtor
209-639-9467
rebeca95321@gmail.com
 BRE license 01961957



RE/MAX
Yosemite Gold



Property Sales: (888) 962-4080 PineMtnLake.com
Rentals: (877) 962-7180 YosemiteGoldVacations.com



Lauree Borup (209) 628-4600 Ann Powell 200-1692 Eleda Carlson 814-4123 Miriam Martin 962-4080 X 15 Tish Fulton 985-0216 Tracy Billeb RENTALS 962-7180

CONVENIENT LOCATION ON 2 ACRES



NO HOA DUES!
Immaculate 3 bedroom, 2 bath built in 2004 between Groveland & PML. Real oak floors, 1728 sq ft with absolutely NO STAIRS! Large breakfast bar seats up to 6. Gas woodstove + central heat & air. Deck with access from 3 sliding doors is over 800 sq ft. Attached, finished garage is 26 foot deep. Circular driveway, plenty of parking for RVs, boats+ at least 10 cars when you have your house-warming party. Tucked privately away in the forest. Clear pest & septic provided! 19234 Pine Mtn Dr. **\$269,000**

FAIRWAYS AS GREEN AS A CHRISTMAS TREE

Enjoy the golf course frontage and views or walk 5 minutes to the beach from this woodsy cabin near the 12th green. 3 bedrooms, 3 bathrooms on one level, attached 24 x 24 ft garage with pool & air hockey tables. Big covered deck with access from dining and living rooms. Real fireplace plus woodstove on brick hearth, and central heating & A/C. Lots of level parking in front, and level yard in back. This is a fun property for entertaining and taking it easy. Oct 2015 pest clearance!
1-161 Pleasant View \$270,000



A HOME FOR THE HOLIDAYS and all year long. This fine lake side home is the perfect spot for entertaining. Over 2700 sq ft of living area inside and a huge



covered deck outside for warmer summer days. With 4 bedrooms and 3 full baths inside and the 3/4 acre lot outside, there's plenty of room to roam. Granite, skylights, wood flooring, tile, modern kitchen, breakfast area + dining room and game room. Close to Lodge Beach. Well maintained and tasteful décor. This home has it all!
4-56 Pine Mtn Drive \$749,000



CELEBRATE THE SEASON with family and friends in this roomy town-home with 3 bedrooms and 4 baths located just around the corner from the PML Country Club and Grill. Open kitchen, dining and living room with fireplace and wet bar. Lower level bonus room is "self contained" and serves as the 3rd bedroom suite. Decks on every level. Just under 1900 sq ft + extra up-stairs space.



CCV#11 \$157,500



*** VIEW-TIFUL 4 BEDROOM ON FAIRWAY 4**

Level concrete driveway, attached double garage. Entry level has all vaulted ceilings, slate rock fireplace, master suite + den. Downstairs are 3 bedrooms plus bonus room with bar sink, refrig & microwave. Slate rock columns mimic the Awahnee Hotel and frame the roofed double redwood decks perched high above the golf course. 10-minute walk to Country Club, pool, golf pro shop, & tennis. Built in 1999 to "host a crowd", the 2335 sq. ft has 3 full bathrooms plus a half bath and vanity sink in one of the bedrooms (7 bath sinks total!) Real hickory and oak floors almost everywhere. Kitchen has quartz counters, hickory cabinets, breakfast bar. On quiet one-way street -Sean Patrick Lane.



5E-13 \$360,000

Need to Mooove?
Call Roy

REACH NEW HEIGHTS IN REAL ESTATE

ROY NAVARRO
BROKER ASSOCIATE

209-962-1107

Yosemite Region Resorts
REAL ESTATE DEPARTMENT

BRE#01235457

BERKSHIRE HATHAWAY
HomeServices
California Realty
LAND LISTINGS:

J.W. SMITH
BROKER ASSOCIATE
209-620-0757
Fax 209-962-1125
jwsmith@bhhsca.com
CalBRE#01314152

MLS#20141291
\$74,000 10.32 acres
Vernal Dr., Groveland

MLS#20151126
\$47,000 .26 acre
Pine Mountain Lake

MLS#20151127
\$45,000 .52 acre
Pine Mountain Lake

MLS#20151275
\$45,000 1.5 acres
Pine Mountain Lake

\$25,000 .25 acre
Butler Way, PML

Trust—Integrity—Knowledge

©2015 BHH Affiliates, LLC. An independently owned and operated franchisee of BHH Affiliates, LLC. Berkshire Hathaway HomeServices and the Berkshire Hathaway HomeServices symbol are registered service marks of HomeServices of America, Inc.® Equal Housing Opportunity. CalBRE #001916850

PINEMOUNTAINLAKE.COM
FACEBOOK.COM/PINEMOUNTAINLAKECA

RealLiving®**Sugar Pine Realty****96%****Consumer Satisfaction Rating****www.sugarpinerealty.com**18727 Main St. #B • PO Box 792 • Groveland CA 95321
209.962.7765 • fax: 209.962.5924 • BRE: 00659397**Emmett Brennan**
Broker/Owner**Dave Urt**
Realtor
209-768-5010**Linda Willhite**
Broker/Assoc.
209-985-2363**Ron Connick**
Realtor
209-962-4848**Patty Beggs**
Realtor
209-962-6268**Michael Beggs**
Broker/Assoc
209-962-6268**Zane McDow**
Realtor
209-768-8889**Elaine Stollings**
Realtor
209-878-0499**SEVEN CEDARS**

19935 Pine Mountain Dr.

\$198,500 Call Linda

- 3 beds / 2 baths
- Open floor plan
- 400 sf bonus room
- Approx. .50 ac lot 1/2 mi to Marina
- Private setting

**PREMIER SETTING**

12015 Hillhurst Circle

\$239,000 Call Ron or Dave

- Mountain views
- 3 bd/2 ba/2-car
- Furniture included
- Covered deck
- Lots of parking

**CHARMING CORNER LOT**

19707 Butler

\$220,000 Call Patty or Michael

- 3b/2ba
- Oversized 2 car gar
- Light Bright Cheery
- Vaulted Ceilings
- Large decks
- Furniture included

**IMMACULATE FAMILY HOME**

12054 Alcen Court

\$259,000 Call Zane

- Large Lot
- Over 2,000 sq. ft.
- 2 car garage
- Deck Surrounds Home
- Sunset Views

**PREMIER SETTING**

20240 Little Valley Road

\$399,900 Call Linda

- 4 bd/3 ba/2-car
- Open floor plan 2944 sq. ft.
- Bonus room
- Approx. 1 acre
- Approx. 1600 sf of covered deck
- Perfect place to relax

**BEAUTIFUL SETTING**

20575 Whites Gulch Rd.

\$365,000 Call Linda

- 5+ acres
- 3 bd / 2 ba
- Ranch style
- Approx 2,100 sf
- Oversized 2 car garage
- Well pump house
- Back up generator for home & garage

**COZY & CUTE CHALET**

19810 Ferretti Road

\$159,900 Call Mike or Patty

- 4 bed / 2 baths
- Beautiful park-like settings
- Knotty pine ceilings
- New roof
- Backs up to green belt
- Large decks

**CUTE CABIN**

20767 Ferretti Road

\$149,000 Call Zane

- Detached garage
- Presently approved For Doctors office
- Buyer would need To get approval For commercial use

**RELAXING RETREAT**

20712 Rising Hill Circle

\$225,000 Call Linda

- 5bd/2.5 ba
- Open floor plan
- Bonus room
- Large lot
- Great setting
- Adjacent lot available

**ABSOLUTELY GORGEOUS HOME!**

12927 Ferretti Road

\$235,000 Call Elaine

- 3 Bd/2Ba
- Cathedral ceilings
- Open room concept
- Step-down lvg rm
- Bright & functional kitchen
- Courtyard patio
- Covered deck

**PANORAMIC VIEWS**

12779 Cresthaven Dr.

\$199,000 Call Linda

- 4 bd/3 ba/2-car
- Large bonus room
- 1/2 acre on merged lots
- Backs up to greenbelt
- Adjacent lot available

**COMFORTABLE AND PRIVATE**

19997 Ridgecrest Way

\$235,000 Call Linda

- 3Bd 2Ba
- Turn Key Condition
- Private Setting
- Large Master Suite
- 2 Car Tandem Gar.
- Open Floor Plan

**LARGE HOME, SMALL PRICE**

12066 Beckenridge

\$259,900 Call Ron or Dave

- Designed for 2 families
- 4 bd/3 ba/2-car
- Open floor plan
- Separate central heat & air
- Fireplace & wood stove

**CHARMING HOME**

12286 Sunnyside Way

\$259,000 Call Elaine

- Tri level 2bd/2ba
- Bonus Room
- Family Room w/well bar
- Open beam ceiling
- Wall of windows in Living Room
- Solid surface decking
- 2 car gar. w/loft

**CUSTOM BUILT GOLF COURSE HOME**

19227 Ferretti Rd

\$429,000 Call Ron or Dave

- 3 bd / 3ba 2,209 sf
- Separate Office
- 2 Car + 4 Car gar
- Composite Decking
- Entry Level Living
- Merged Lots
- Golf Course Views
- RV Parking

**EASY WALK TO THE MARINA**

19484 Pine Mountain Dr.

\$329,000 Call Ron or Dave

- 3bd / 3ba / 2 Car Garage
- Approx. 2,418 sf
- Hardwood Floors
- Composite Floors
- (in Bonus Room)
- Open Floor Plan
- Lg Formal Dining
- Freshly Painted
- Much More

GO PAPERLESS

Now you have Access to all your Documents with Signatures from any Place and Anytime you have Internet Access. These Documents Include all your Contracts, Disclosures, Inspection Reports, Escrow and Lender Information.

You will also receive a Personalized CD with your Records at Closing.

**Looking to Build your Dream Home?****Call us for a complete list of lots in PML**



Pine Mountain Lake Realty *An Agent Owned Company*

Office 209-962-7156 12-15

18919 Ferretti Road
PO Box 738
Groveland, CA 9532
209-962-7156



Barry Scales
Broker/Owner
BRE#00451887



Lynn Bonander, GRI
Owner/REALTOR®
BRE#00683483



Val Bruce
Owner/Broker Assoc.
BRE#00578336



Parker 'PJ' Johnson
Owner/REALTOR®
BRE#01732298



Gina Hernandez
Owner/REALTOR®
BRE#01226555



Marc Fossum
Owner/REALTOR®
BRE#01950242



Location - Location!!
13129 Clements Rd
12-99
\$299,000
MLS# 20151990

3 Bd/3 Bth, 2 Levels, Approx 1920 sf, Approx 0.76 Acre, Bonus Room, Breakfast Bar, Solid Surface Counter Tops, Brfst Area, Master Suite with Fire Place, Walk-in Closet, Private Deck, Jetted Tub, Walk-in Shower, Closeted Toilet, Vanity, Inside Laundry, Deck, RV Parking, and Dog Run. Walking distance to PML Equestrian Center & Airport!



Beautiful "Farm House" Style!
13380 Clements
12-166
\$539,000

4 Bed, 2 1/2 Bath, 2 Car Oversized Finished Garage w/Shop, Approx 2525sf on 1.11 Acre, Built 2003, Great Room, Formal Dining, Master Suite, Walk-in Closet, Inside Laundry, 676sf Bonus Rm which brings sf up to 2811 sf, Storage Rm, Covered Porch, 2 Stall Barn, Excellent Well, RV Parking and So Much More! MLS# 20151293



Primo Lake Front!
\$650,000
MLS# 20150937

Expansive view of Pine Mountain Lake. 0.63 Acre Lot. Very slight downslope to house and dock. 4 Bed/ 2 Bath Home needs some updating. Ample Room for Expansion. Great Potential!
19795 Pleasant View 1-273



Peaceful Cabin Living
13000 Tip Top Ct.,
2/57,56,55
\$185,000
MLS #20151984

4 Bed/2 Baths, Approx 1500 sf, Approx 1.10 Acres, Circular Driveway, RV Parking, Breakfast Bar, Solid Surface Countertops, Cathedral Ceilings, Inside Laundry, Window Coverings, Central Baseboard Heat, Heat Pump, Approx 600 sf of Decking. New Deck, Roof, Exterior & Interior Paint, New Toilets, Septic Overhaul, all within the past 3 years.



Park Like Setting!
2-60
19307 Ferretti Rd
\$164,500

3 Bed/2 Bath, 2 Car Oversized Finished Garage w/Shop, Cabinets & Shelves, Measures 20'x30' ft. Great Rm W/Fire Place, Breakfast Bar, Island, All Appliances, Cathedral Ceiling, Inside Laundry, Central Propane Heat, Septic, Room for a large RV or Boat Parking. Vacant lots on both sides. MLS# 20151771



Beautiful Views! Walk to the Lake!
3-230
20439 Rock Canyon
\$229,000

3 Bed/2 Bath, 1 Car Oversized Garage, Single Level, Great Rm, Breakfast Bar, Island, Pantry, Master Bed/ Bath, Air-Tight Fireplace, Inside Laundry, Spacious Deck, Shed. New Carpet, Freshly Painted, Well Maintained, & New Roof 2010. Across from Fisherman's Cove & Playground. MLS# 20151479



Cabin Living with Lots of Privacy
4-307
20787 Buttercup
\$175,000

3 Bedrooms/2 Baths, Approx 1272 sf, 0.50 Acre, 2 Levels, Built 1976, Cathedral Ceiling, Solid Surface Countertops, Window Covering, Brick Woodburn Fireplace, Inside Laundry, all appliances. Expansive Deck, backs up to Ranch Land. MLS# 20151851



Modern Home with a Country Feel!
\$275,000
7-228
19092 Digger Pine

3 Bed, 2 Bath, 2 Car Attached Finished Oversized Garage, Built 2005, Approx 1837sf, Single Level, Central Air, Central Propane Heat, Great Rm, Kitchen Island, Master Bedroom, Walk-in Closet, Inside Laundry, Deck Access from Bedrms, Knotty Pine Ceilings. MLS#20151397



Mountain Cabin Views - Location
19259 Ferretti
7-38
\$169,000
MLS #20151241

2 Bed/2 Bath, Garage, Large Game Rm with add'l rooms for more sleeping quarters. Upgraded Kitchen, Breakfast Bar, Great Room, Air tight Free Standing Fire Place, Inside Laundry, Cathedral Ceiling, Skylights. Security System. Privacy, Comfort, Mountain Views, and only minutes from the Golf Course and Country Club



Ranch Style Home
12-124
21179 Hemlock St.
\$395,000
MLS# 20130073

Spacious 4 Bd/3 Bth, 2 Car Attached Garage, 2760 SqFt, Single Level, 1.60 Flat Acres, Built 1988, Great Room, Cathedral Open Beam Ceiling, Large Kitchen, Breakfast Area, Sun/Craft Rm. Guest Suite with 2 Rooms + Bath, with access from inside and from outside, Central Air/ Central Propane Heat, Zoned for Horses. Excessive room for parking and storage area.



Living at it's Best!
13-211
20290 Little Valley Rd
\$229,000
MLS#20151858

2 Bed, 2 Bath, Enclosed Carport w/Garage Door-2 Car Tandem Style, Single Level Home, Great Room, Dining Room, Quartz Kitchen Counter Tops, Central Air, Central Propane Heat, Crown Molding, Window Coverings, Propane Fireplace, 12x14 Fully Finished Rm can used as a Studio or Shop, RV Parking w/30 AMP Service. Newer 50 Year Roof, Whole House Fan, Whole House Water Filter & Recirculating Hot Water System. *Co-Listed with Lynn Bonander*



LOTS for SALE!!

- 13/26 - \$3,500 Great Location
- 2/355 - \$10,000 Very Buildable
- 12-148- \$26,500 Beautiful Views - Just Reduced!
- 5E/17 - \$49,000 Golf Course Lot
- 5B-2 - \$100,000 Best Views
- 12/45 - \$220,000 Buildable Taxiway
- 11-13 - \$225,000 Lot w/Hanger
- 9-3 - \$250,000 3+Acres Lake Front
- \$80,000 Deer Flat Acreage
- \$49,900 Lytle Loomis Acreage



Pine Mountain Lake Realty

An Agent Owned Company

Lynn Bonander, GRI Owner / REALTOR®

18919 Ferretti Rd., Ste. A, Groveland, CA

Office 209-962-7156 / Cell 209-484-7156 lynnb@goldrush.com / www.pmlr.com

Merry Christmas



12/2015



Gorgeous Log Cabin!

\$649,000

Custom Designed & Quality Built 3 Bed/3 Bath + Large Bonus Rm w/full Bath & Mini Kitchen. Approx 2440 SqFt, on 0.30 Acre Located at Big Creek & adjacent Hiking Trails. Gourmet Kitchen, Breakfast Bar, Pantry, Wine Refrigerator, Great Rm, Laundry Rm, High Ceilings, Central Air, Central Propane Heat, Master Bedroom w/walk-in closet, Combo Shower/Steam Rm. Upper & Lower Decks. MLS#20150638

20098 Pine Mountain Dr. 13-279



Luxurious Airport Home with Stunning Views! (E45)

From the Moment You Open the Front Door You will be in Awe! Built in 2005, 4 Bd/4 Bth, 3 Car Garage, 4479sf, 0.9 Acre, Central Air/Central Propane Heat, Gas FP, Gourmet Kitchen, Island, Brfst Bar, Brfst Nook, Formal Dining, Den, Family Rm, Living Rm, Coffered Ceiling, Crown Molding, Sky Lights, Window Coverings, Master Suite-Walk-in Closet, Jetted Tub, Relaxing Sitting Area. Lower Level Media Rm w/Theater Seats, Game Rm w/pool table, Guest Bdrm-Murphy Bed. Inside Laundry, Central Vacuum, Storage. 44'x36' Hanger with Electric Bi-Fold Door and plumbed for Bath (not hooked up).

20985 Hemlock St. 12-37 \$995,000 MLS#20151904



Beautiful Home

12642 Cresthaven 4-555

\$374,000

Ideal Location! Only 0.3 mile to Lake & Beach area. Custom Built with Great Curb Appeal, Approx 2584 SqFt. 3 Bed/2 Bath, Spacious Dining Rm, Inside Laundry Rm. Lower Level offers a large Bonus Rm for extra sleeping area or Game Rm. Large Kitchen w/Granite Counter Tops & lots of Cabinets. Propane Fireplace. Upper & Lower Decking for outside enjoyment, plenty of parking. MLS#20150505



Lake Front - 3 Merged Lots!!

Incredible Setting on almost 2 Acres! 5 Bed/3 1/2 Bath, 2,200sf, 2 Levels. Remodeled Kitchen, Breakfast Bar & all new Stainless Steel Appliances. 4 new Patio Windows. Illuminated Carport provides boat parking. 10'x6' Lighted shed w/ power outlets, workbench. Private Dock & possible to navigate a boat to within 35' of House. Ext. painted 2012. Lots of Parking. Unit 4/58,59,60 20238 Pine Mountain Dr.

\$619,000 MLS#20151410



Private & Secluded-Beautiful Setting!

2 Merged Lots, 0.54 Acre, surrounded by larger parcels that add to the sense of seclusion. Great Rm w/9' Ceilings, Beautifully Designed Kitchen, Master Bdrm, Lg Walk-in Closet, Dual Sinks, Step in Shower + soaking Tub. 3 Bed/2 Bath, 2 Car Attached Finished/Insulated Garage, Great Rm, Central Air/Central Propane Heat, Propane Fireplace, Covered Porch & Deck. Refrig. Washer/Dryer, Patio Furniture, 13' Umbrella, and BBQ Included! Owner Financing w/20% Down 20660 Ferretti 3-15

\$235,000 MLS#20151547



Spectacular Sierra & Lake Views!

3 Bed/3 Bath, 2 Car Garage w/11 1/2' x 10' Storage Rm, Approx 3051 sf, 0.57 Acre. Living Rm w/2 Bay Windows, 2 Family Rms Upper & Lower Level, Bonus Rm, Custom Sewing/Hobby Rm with Custom Cabinets, Work Counters & Pull Out Drawers, Lots of New Millard Windows thru out, Kitchen, Breakfast Area, Huge Master Suite, Inside Laundry, 4 Fireplaces, Central Air, Wrap around Trek Docking, Concrete Patio, Custom Curtains & Drapes, Custom Corner Bookshelves, Shelving for CDs, Books or Nic Nacs. Special Features You will Enjoy. Vacant Lots on both sides are Available by this Seller.

It's a MUST SEE!!

12088 Hillhurst 8-148 \$439,000 MLS# 20151847



Looking for Privacy?

Check out this Delightful 3 Bd/2 Bath Split Level Home. Approx 1500sf, Large Master Bdrm w/Walk-in Closet. Nestled amongst Beautiful Trimmed Oak Trees. Lots of Rm on this 0.648 Acre Parcel. Most Furniture & Appliances included in Sale. Plenty of parking Nice Neighborhood and Quiet Street. 20590 Nob Hill Cir 3-90 \$250,000 MLS# 20151873



Comfortable Living

3 Bed/2 Bath, 2 Levels, Approx 1800 sf, on Approx 0.40 acre. Central Air/Heat, Heat Pump, Free Standing Air Tight Fire Place, Great Room, Brfst Bar, Island, Pantry, Solid Surface Countertops, Double Pane Windows & Coverings, 600 sf Family Room on Lower Level, Deck, Seasonal Creek.

12947 Jackson Mill 7-137 \$195,000 MLS#20151709



Great Taxiway Lot

Includes a Large Pad for Hanger. Unfinished Shell for a 2 Level Home with Oversized Garage underneath. Approx. 0.69 Acre. County shows the Upper Level as 2 Bdrm & Bath, Main Level Living Rm, Kitchen, Dining & Bath. Bdrms not defined as this home was never finished. Fire Retardant Roof was installed in 1996 w/permit. You can Make it Your Own Design! \$184,900

12-26 20954 Woodside Way MLS#20151473



GREAT VACATION HOME!

It's a Cutie! Hexagon Style, 3 Bed 2 Bath, and Den. Finished Loft Accessible by Ladder, a Great Kids Hide-a-way. Upgrades: Windows, Evap AC & Water Heater. FS Fireplace, Cathedral Ceilings, Skylights, Ceiling Fan, Inside Laundry, Open Kitchen, Dining, and Living Room. Refrigerator Included

19631 Cottonwood St - 6-38 \$129,000 MLS# 20140610

LAND FOR SALE!

2.3 Acre \$59,900 Whites Gulch

- 1-1 - \$22,900 Double Lot Build
- 1-106 - \$39,000 wonderful Level Lot
- 4-128 - \$110,000 Lake Front-Beautiful
- 4-154 - \$24,900 Seasonal Creek
- 4-343B - \$10,000 Seasonal Creek,
- 5-4 - \$ 7,000 Great Buildable Lot
- 5-5 - \$ 7,000 Also a Great Build
- 5-161 - \$45,000 Beautiful Corner 10T
- 5-213 - \$19,000 Great Location
- 5D-7 - \$89,900 Golf Course Lot
- 6-231 - \$12,500 Nice Distant View
- 6/183 - \$29,000 1/2 Acre+ Easy Build
- 8/71 - \$15,000 Beautiful Lot
- 8/147 - \$39,900 Green Belt lot w/Lake View
- 12/87 - \$125,000 Level Lot Cul-de-Sac 1.47 Acre

YOSEMITE AREA REAL ESTATE

Paul S. Bunt Real Estate – BRE #01221266



MOVE IN READY AT THE COURSE

INCOME PRODUCING TOWNHOUSE
3 bed/4 bath 1889 sq ft. Next to golf course, Country Club, swimming pool, tennis. Multi-level decks. Move in ready.

\$159,900 CCV #7 12707 Junipero Serra



SEASONAL CREEKSIDE CHALET

4 bedrooms/3 full baths. Vaulted ceiling, wood burning stove. efficient kitchen, expansive deck, 1900 sq ft. Close to Marina. Level parking. **\$209,900**
1/389 19554 Grizzly



TRANQUIL AND SERENE

1 level w/2 car gar. Grt rm concept w/f.p. Skylights enhance light & airy home. Tile counter in kit. Lg pntry. 3rd bdrm converted to music room. Lg deck at rear of house. Well maintained. 1536 sq ft. **\$229,000** 13069 Mueller



PARK-LIKE SETTING

3 bed/ 2 bath split level home. Efficient kitchen Grt rm w/woodburning stove. Central heat/air. 2 car garage and tons of room for RVs 1404 sq ft. **\$249,000**
12800 Cresthaven



ONE LEVEL LIVING!

Tiled entry, open lvg rm w/vaulted clng. Gas fp w/stone surround. Big kitc., grnt cntrtops, ample cabnits & stainless applcs. Lg mstr bdrm lg walk-in closet. 2 add'l bdrms w/private views **\$265,000** 6/188 – 19600 Cottonwood Street



COMMERCIAL PROPERTY

.715 acre's corner of Ferretti and Elderberry way. Sewered, fire hydrant at lot, gentle slope, trees. **\$89,900** 11/24



SINGLE LEVEL RANCH STYLE

3 bedroom, 2 bath, 1436 sq. ft. with porch and rear deck, attached 2 car garage, on sewer. **\$219,900** 23/422 – 0757 Rising Hill Circle



NEAT AND TIDY

Enjoy the views from upper & lower decks to Greenbelt & Big Creek. 3bd/3ba 1676sqft Open bm clng in grt rm. Lwr lvl mstr ste or bonus. .5ac lot, 2 car detached garage. + tons of parking **\$225,000** 20789 NonPareil



LOCATION, LOCATION

New Roof, New flooring, fresh int. paint. New water heater. Best location for vacation rental with ample parking for guests, just a block from the Lake Lodge Beach! Partial Lake view from the deck. **\$259,000** 20879 Big Foot Ct



CHRIS H. LAKE
BROKER ASSOCIATE
209.768.6156 Cell
chrishlake@gmail.com
BRE #00946632



KRYSTAL BIGGER
REALTOR/GRI
209-768-5944 CELL
kbigger81@gmail.com
BRE #01324944



LARRY JOBE
REALTOR
209.962.5501
larryjobe1@gmail.com
BRE #01444727



LIZ LILLEY
REALTOR
209.962.5900
lilleypad12414@sbcglobal.net
BRE #01723800



SHIRLEY ECKHART
LICENSED REAL ESTATE
REFERRAL AGENT
209.962.5900



MOVE-IN CONDITION 1 LEVEL HOME

High quality construction, 1 lvl w/lg covered deck, full length of home. Grt rm w/propane stove, lg kitch w/Brkfst bar, cabinets. French doors. Neighbor has merged lot for more elbow room! **\$239,900** 2/115 – 13177 Mohrmann



LARGE SPOTLESS HOME

Great location, family sized home. 3 bedroom, 3 bath, 2652 sq. ft. new \$18,000 deck, kitchen appliances. On septic. **\$279,900** 19638 Butler Way



WONDERFUL CHALET DOLL HOUSE!

Merged lot–total .73ac! Quiet, serene, spacious lot. Beautiful trees, room for a garage, lots of parking. Private upstairs loft w/full ba, bdrm & xtra bonus rm. Windows & doors onto spacious deck. **\$180,000** 20734 Rising Hill Circle



.25 ACRE ON QUIET CUL-DE-SAC

Ideal for contractor or owner-builder to save thousands on fees & const. costs. Green belt at end of road, improved lot unique in PML. Minutes from Marina, very little traffic during day. All utilities!! **\$58,000** 11956 Mountain Springs Ct



DEEP WATER LAKE LOT

Over 71' of Lake Frontage. Don't let the steepness of this lot scare you away, not many deep water lots available! Build your dream home close to the bottom for easy access to the dock already there! **\$170,000** 20160 Lower Skyridge Drive

209.962.5900 • www.YosemiteAreaRealEstate.com

Happy Holidays from Pine Mountain Lake!

P A I N T I N G

Bay Cal

LIC #795283

Painting – Exterior/Interior
Deck Repairs
Wood Repairs
Remodels



VISA MasterCard

FREE ESTIMATES

209.962.4777

www.baycal.com • email: davec@baycal.com

High Speed Internet
Unlimited Data

Plans from \$**29**⁹⁵/_{MO}

866-378-8393 / Conifercom.Net



CONIFER
communications

**BARK BEETLES ARE KILLING YOUR TREES
BUT IT MAY NOT BE TOO LATE**



Actual Bark Beetle damage to Pine trees
Bark Beetle shown enlarged for detail

Bark Beetle infestation is a **REAL DANGER** in our area
STOP them from spreading and **SAVE** your trees

They burrow into and lay eggs inside Pine, Cedar, and Cypress trees. Once they hatch, the larvae eat the tree from the inside and burrow out to infest other nearby trees. Infestation spreads quickly if untreated.

IF LEFT UNTREATED ENTIRE FORESTS ARE ENDANGERED

PREVENTION IS KEY

LET US HELP YOU!

BEEBLE PREVENTION & ERADICATION

FREE ESTIMATES • NO HIDDEN COSTS • CALL FOR MORE DETAILED INFORMATION

Now OFFERING TRUNK INJECTION

- Lasts longer than spray-on treatments
- No chemicals in the air or water supply
- Treats entire tree from trunk to leaves
- Full dose stays **IN** the tree
- Long lasting protection and prevention



Rod Diehl Pest Control
"The Best Deal in Pest Control"
CALL TODAY: 209.532.3260

PROUDLY SERVING PINE MOUNTAIN LAKE AND THE GROVELAND AREA

SOUTHERN TUOLUMNE COUNTY HISTORICAL SOCIETY

Museum Happenings

CARRIE CARTER

You may have wondered about the abandoned Groveland Gas Station on the southwest corner of Main Street and Powder House Street, actually one of my favorite places to park when the other twelve spots downtown are taken. The station closed its doors in the early 2000s but its interesting history began a century earlier in the 1870s when John W. Hammond had a blacksmith shop there. Blacksmiths were a crucial part of early commercial life since they could make and repair almost any metal object such as tools, gates, utensils, and wagons. In addition, blacksmiths were often the town farrier.

A. J. Blackwell owned the shop from 1897 to 1906 and Lee Edgar acquired it in 1907. At that time there was a house on the back half of the lot. With the introduction of the automobile, the blacksmith shop became a repair shop and ushered in the first generation of auto mechanics.

In 1909 Louis N. Ferretti, son of Giuseppe (Happy Joe) and Maria Ferretti, early settlers of Moccasin Creek, bought the property and added a small garage to the east of the original building.

Then about 1921, he built a new single-story concrete block building known as the Yosemite Garage on the site. The impressive new structure covered the entire corner with second-story living quarters added over the west half of the building.

Groveland experienced a disastrous fire in June 1933 when a burning vehicle hit a glass tower gas pump just outside the garage structure, breaking the glass top and spilling gasoline. The block of downtown buildings to the east, including Laveroni's Ice Cream Parlor and five homes on Back Street were totally destroyed in the resulting explosion and fire.

From the remains of Ferretti's garage building, Louis' son Orrin erected the two buildings on the corner today where he repaired and sold automobiles. The south and west walls of the office building were part of the older 1921 building. The abandoned gas pump service island sits in what was part of the interior of the original Yosemite Garage building.

James and Leila Crawford owned and operated the service station and garage from

1946 to 1979. Dave Gookin reminisced "gasoline sold for a quarter a gallon and Crawford's daughters often worked as station attendants." James Crawford also served as our south county constable for 27 years.

Title went to Ken Burke of Ken's Market from 1980 to 1987 and then Vern Lunetta bought and operated it from 1987 to 2002 as Vern's Groveland Gas. From the years of 1921 to 2002 the Standard Oil Company logo and products were proudly displayed and sold there.

While we can no longer buy gas in Groveland and have to travel all the way to Big Oak Flat, shopping locally this holiday season is one way everyone can boost our local economy. When you shop at the Museum gift shop your money stays close to home, supports projects that make this community a great place to live, and you save gas and contribute less to pollution. As a non-profit organization, the Museum can offer lower prices on unique gift items that reflect Groveland's distinctive character like our 2nd Edition Pewter ornament featuring Half Dome and the legend



of Tis-sa-ack. I encourage you to come in and enjoy the Museum this month and check out the one-of-a-kind items we offer in our gift shop.

Becoming a member of STCHS (Southern Tuolumne Historical Society) is another way to share in efforts to protect and preserve our area's rich heritage. Consider giving a friend the gift of a STCHS membership.

A perfectly painless way to donate is to obtain and show an eScrip Community Card every time you shop at Mar-Val. Pick up a form at the Museum or at Mar-Val and STCHS can earn up to 5% of your monthly purchases. You can do the same thing with a S.H.A.R.E.S. card if you shop at Save Mart, Food Maxx, or Lucky stores.

Helping Hands

Helping Hands Happenings

JOYCE SMITH

We have removed the orange and black 'stuff' from the store. Halloween is over! Such a fun time for the kids.

We hope you had a Happy Thanksgiving! We are now in the mode for Christmas and all the preparations that go with this Merry Holiday time. The Store and Barn are so festive, lots of red showing. We have just about any holiday decoration need you might have. You would be wise to check us out before leaving the hill. And don't forget our local Clubs' Craft Fairs and all our Merchants.

The nominating committee presented the names of needed officers and the Budget Committee presented the 2016 Budget at our November 12th General Meeting. The Budget is posted at the Store for members review, prior to voting for approval at our meeting on December 9th. The Store and Barn will be closed on that day for Meeting and Volunteers Christmas Party.

Mark your calendar, we will be closed on December 9th, 24th, 25th, 31st and January 1st. We will also be closed on January 14th for our Volunteer Appreciation Luncheon.

Our hearts are saddened by recent passing of volunteers Gloria Burkley and Tom Carman, and volunteer Laurie Nagle's husband Jim. Each one so special to us because they were such special people, they will be greatly missed. Our sympathy to their families..

Thanks to all of you who volunteered to bring refreshments to our General Meetings this year. Good Job!

Merry Christmas to all and Best Wishes for a

WET New Year!

See you at Store, Barn or Holiday Functions.

Christmas Basket Project

PATTI BEAULIEU

We're rolling right along with this lengthy project and coming into the home stretch. The Christmas Basket applications have been taken, the lists have been given to Santa, plans are being finalized, volunteers have been recruited, schedules are double checked and several of the countless lists and details are being made. Later this month, however, is when all the magic happens. Food will be sorted and boxed and gifts will be assigned and wrapped at the Community Hall for about 100 local families that need our assistance this year. We've made sure Santa and Mrs. Claus are available for pick up day on Saturday, December 19th. This is the way we show what our wonderful, giving community is all about.

We've met with our elves (shoppers) and they are currently busy with their assigned lists. They're so dedicated that they travel far and wide to get just exactly what the kids on their list ask for. Our list of shopping elves and everyone involved in the project will be thanked in next month's article.

Any new gifts that you or your organization would like to donate can be dropped off at the Groveland Community Hall on Thursday, December 10th after 10 a.m. If you can't make it on that day, we can make arrangements to pick them up or suggest a different delivery date. We'll have a team of wrappers on that day so if you LOVE to wrap presents, please come join us. We

supply the paper, tags, tape and all we need is your wrapping skills. There'll be plenty to do. We may have to extend our wrapping to Friday, depending on the progress that's made on Thursday.

Most local businesses, churches, organizations and clubs have stepped up again this year and are donating their assigned food, gifts or making a monetary contribution. Our local MarVal Market is selling the donated food at their cost to the purchasers, which is also very generous. Diestel Turkey Farms has, once again, donated turkeys for each of the families. This is a huge contribution and so much appreciated.

We have the food donation barrel at MarVal Market again this year so please pick up some extra cans or boxes of non-perishables when you're shopping and drop it in the barrel. The contents will be picked up throughout the month and brought to the Community Hall on December 14th.

If you'd like to come and help wrap presents, distribute food, or any of the other numerous tasks needed to pull this event together, please stop by the Community Hall from December 15-18. We'll be wrapping gifts throughout the week so feel free to call either Dar or Patti for days and times. We should be there from about 9:00 a.m. each day. There will surely be something you can do to help and your participation will be appreciated.

On behalf of the many volunteers who work on this project, we wish you all the merriest of holidays and thank you for helping your neighbors enjoy their holiday also.

If you'd like to make a monetary donation, your tax deductible check can be written to Christmas Basket Project, P.O. Box 99, Groveland, CA 95321.

If you have any questions, feel free to call Patti Beaulieu at 962-7402 or Dar Brown at 962-5930.

ITSA Film Festival Winners

CHRISTINA WILKINSON

The sixth annual ITSA Film Festival, founded by PML residents David & Christina Wilkinson, was held in November at the Sonora Opera Hall. 106 short films were shown during the three-day event. The festival is designed to showcase films, but also bring filmmakers to the Mother Lode to see what the region has to offer. See www.ITSAFilmFestival.com for more info.

Award winning films are listed below:

Outstanding Student Film – *Kurayami no Wa* directed by Morgana McKenzie of Canada (15 years old)

Outstanding Animation – *Damn Those Crows* directed by Rotem Hermoni of Israel

Outstanding Music Video (Tie) – *Unwanted* directed by Erin Brown of USA (WORLD PREMIER) and *Stay* directed by Dillon Nowak of USA

Outstanding Documentary – *A Walk through the Tenderloin* directed by Josh Hayes and Rainer Cvillink of USA

Outstanding Comedic Film – *Fanette* directed by Sebastien Chamailard of France (USA PREMIER)

Outstanding Dramatic Film – *Frontman* directed by Matthew Gentile of USA

REEL Scary Outstanding Horror Film – *Lapsus* directed by Karim Ouaret of France

Best of the Fest – *Frontman* directed by Matthew Gentile of USA

Founders Award – *Molly* directed by Becca Gleason of USA

From Your Tuolumne County District Supervisor

JOHN GRAY, TUOLUMNE COUNTY 4TH DISTRICT SUPERVISOR

First, I would like to thank everyone that attended the Town hall Meeting on November 6th at the Groveland Community Hall. For the most part, there was good and respectful dialogue. It would be fair to note that the attendance fully outweighed the seating capacity at the Community Hall. Our last Town Hall meeting less than 6 weeks ago-also well publicized- consisted of several speakers and only a half dozen members of the community. It would appear that recent activity has spurred a renewed interest in community involvement.

Many good questions and comments were brought forward. Understandably, the most important topic on the minds of those in attendance was to gain knowledge into how Law Enforcement issues have been and continue to be addressed in the South County and how residents can contribute to the betterment of our rural community. I believe that the Sheriff did an excellent job of explaining the reason his job has become more difficult and what we can do to help.

By the time you read this, I will have already met with some community members and County Staff to discuss many of the suggestions provided by residents and other professionals. We will try to determine how we can apply those suggestions to improve our community and the county as a whole. A relevant point echoed by many is that there is not "one solution" to the increased crime issue. Law Enforcement is stretched to cover this broad county. Our success will be reflected through the combined efforts of residents, law enforcement, county government and community volunteers.

Community Service Patrol units, PML Safety Patrol, Neighborhood Watch programs and neighbor to neighbor communications are all important factors in discouraging crime when coupled with Sheriff's Services and Highway Patrol coverage. We know that we have to do better and this meeting was a solemn reminder of the importance of continued co-operation and the need to be vigilant in looking out for one another.

The County Board of Supervisors (BOS) will approve the grant application for the National Disaster Resiliency Competition at the December 1st meeting. We should know by late January if our bid has made it into the final review round for these Grant funds.

Should we be successful, the South County will be a major beneficiary. This grant application provides a request for \$37M to construct a Community Resiliency Center (CRC) in Groveland. The center will be designed and built with best practices both in regard to the design and in the operation of the facility. The goal is to create a facility in the community that builds social cohesion and spurs economic stability.

The CRCs would consist of 3 structures. The 1st would be a large multi-purpose type building. This building will include the following: large multi-purpose room with several break-out rooms, restrooms and showers, commercial kitchen and

laundry facilities. The 2nd building would be a shelter and pens for animals. This building would have the following; kennels for both dogs and cats; dog runs, bathing areas, refrigerator, counters and plenty of storage; and pens for barn type animals. The 3rd structure will be a covered patio. The covered patio would contain lights for night time operations, electrical outlets and water taps.

On a day to day basis, these centers will provide a variety of services to all resident in the County. The County will partner with a number of State and local agencies, non-profit organizations and community groups to provide services and programs at these facilities. Programs and services that could be provided but are not limited to the following: job training, college courses, senior meal programs; homeless prevention and housing stabilization outreach; Head Start programs; immunization clinics and health presentations; recreational programs; Sheriff's sub-station and Community Service Unit support; business incubator programs, and rabies clinics for animals.

In an emergency situation, the CRC would be a central point for evacuations for both people and animals. The CRC's design will incorporate the need to accommodate large influx of people at a time. These facilities will also contain Wi-Fi capabilities and back-up generators. The Groveland CRC will not only serve the Groveland/ Big Oak Flat communities but would also accommodate Mariposa County residents.

At the Groveland CRC, the County will be partnering with the California Conservation Corps (CCC) to construct a crew training facility. CCC employs low-income individuals and at-risk youth to undertake conservation work including ecosystem restoration. The CCC will utilize the Groveland CRC as a staging area for forest and watershed health work proposed in the NDRC application. The facility will contain 16 dorm rooms with 4 beds to a room. This facility will house 40 CCC service members and up to 5 CCC staff and would operate 8 months out of the year.

The County agrees to implement the following:
Assuming commencement of the project as soon as funds awarded.

- Community Engagement and Confirmation of Facility Design Jan. - March 2016
- Hire Architect and Finalize Plans and Specifications Jan. - August 2016
- Environmental Review Process Aug. - Dec. 2016
- Plan Review, Permits Obtained, and Bid Project Dec. - March 2017
- Construction of Facilities March - October 2017
- Purchase and Install Equipment Oct. - November 2017
- Open for Operation December 2017

It is estimated that these projects will take a total of 24 months to complete.

(Note that the original proposed budget may be adjusted should HUD award less than the amount requested in the application.)

In previous articles I have mentioned the

Innovation Lab (ILab) that is housed at the Old Tuolumne General Hospital in Sonora sponsored by the Tuolumne County Economic Development Authority. One program under the TCEDA sponsorship at this time is "Health Lit Now". This program is a benefit to our youth and is the brainchild of our TCEDA board member/director, Barry Hillman, Ph.D. and former County Health Director, Dr. Todd Stolp.

The following has been provided by Dr. Hillman as an introduction to the program.

"Health Lit Now-Exploratorium of Healthcare Career Workshops for Tuolumne County Students Grades 7-9. Healthcare offers the fastest growing career opportunities in Tuolumne County and the surrounding region. When most kids think of healthcare careers they think of doctors and nurses yet only about 250 of the nearly 1400 people employed at Sonora Regional Medical Center, our largest single private employer, are doctors and nurses. The Healthcare Career Workshops developed by HealthLitNow (HLN) with support from The Office of Statewide Health Planning and Development (OSHPD), Tuolumne County Behavioral Health (TCBH), the Sonora Area Foundation (SAF), the Tuolumne County Economic Development Authority (TCEDA) and the Tuolumne County Innovation Lab (ILAB) are designed to provide Tuolumne County students an opportunity to learn more about the vast array of healthcare employment opportunities available and the training necessary to qualify for a healthcare career of interest.

The workshops are composed of eight engaging, non-didactic, NGSS focused stations that address multiple healthcare career opportunities. The stations include: Neuroscience, Heart and Circulatory System, Pulmonary System, Diet, Sensory, and Robotics. The workshop stations will be presented by former and exiting healthcare professionals as well as retired Tuolumne County teachers. Students will leave with a basic understanding of the vast array of healthcare careers available and a better understanding of the academic course work necessary to pursue different careers. These workshops are designed to help teachers meet an additional element of NGSS orientation, with specific science standards identified for each station. Each workshop can be adjusted to the time and physical constraints of each participating school such that a close partnership with each school is a welcome component of the project.

To date, more than 400 kids have participated in the workshops. It is estimated that approximately 1100 Tuolumne County students will have experienced the workshops by the end of March 2016.

This is the result of community volunteer presenters consisting of healthcare and education professionals both retired as well as those currently practicing throughout our community.

HLN is also offering a full day Health Career Workshop on April 23, 2016 at the ILAB for those students who wish to learn more about specific healthcare career opportunities. This workshop will be led by healthcare professionals and offer students an in-depth look at various careers as well as the opportunity to arrange a job shadow. In addition, we anticipate offering scholarship funding opportunities for those students who may wish to pursue a career in healthcare and meet certain minimum academic criteria."

Please feel welcome to inquire further regarding this excellent program by contacting Barry A. Hillman Ph.D., President HealthLitNow (209) 601-9888 or barry@healthlitnow.org.

Our next article, in January 2016, will reflect on some of the County and South County goals attained and some that are still in the works from the 2015 "to do" list.

In closing, I would like to take this opportunity to wish each and every one of you a memorable holiday season and to thank you for your continued support in seeking to maintain and improve the quality lifestyle that we, in the small rural communities and counties, enjoy.

As always I welcome your calls, emails and letters. If you need assistance please remember that office hours in Groveland are presently held at the Groveland Youth Center from 9 am to 11 am on the 2nd Monday of the month. I am hopeful that by December we will have the new office open in the Mountain Leisure Center across from the post office. Lake Don Pedro is "by appointment". If you need to meet with me in person, please do not hesitate to contact me. Phone me by calling 533-5521 or email me at: jgray@co.tuolumne.ca.us

THE EXPLORATORIUM OF HEALTHCARE CAREERS

The fastest growing career opportunities across the United States are in healthcare. Come to our workshop and participate in hands-on experiences that demonstrate future vision, auditory, humanoid robot robotics. And learn careers at all level



jobs in neuroscience, cardiology, nutrition, pulmonary and more. Meet NAO, our and learn about careers in healthcare about the many other choices for healthcare of education. Most importantly have FUN!



Experiment how we function as an electrical system and that this system can be used to control another persons' arm motion!

Learn how our lungs function and why asthma is often misunderstood.

Design a balanced diet and sample unique foods from around the world...have you ever eaten a cookie made from crickets? Do you have a "blind spot"?



The Exploratorium of Healthcare Careers will enable you to participate in hands on experimentation while also learning about the many, many career opportunities in healthcare and what you will need to do in school to pursue a profession that interest you.

You will also have an opportunity to sign up for our Healthcare Career Faire to be held on April 26, 2016 at the Innovation Lab where you will meet many different healthcare career professionals and learn more about the work they do!

Introduction to Aviation

JANET GREGORY

Ever look up at a bird and wonder what it's like to fly? Ever wonder what the world looks like from up in the air? In October twenty-eight children from the local area got to explore the answers to those questions.



Bonnie Ritchey, Young Eagles Pilot

Local EAA Chapter 1337 and Pine Mountain

Lake flew twenty-eight Young Eagles the morning of October 10th. Nine pilots volunteered their time and airplanes to share their excitement about aviation. Not sure who had more fun ... the kids or the pilots: Diane Cole, Allen Craig, Jeff Kerns, Robert Pearson, Bonnie Ritchey, Larry Roessler, Red Rossio, Erik Segerstrom and Greg Triplett. Jim "JT" Thomas had pilots well prepared with a routing and safety briefing early in the morning before the Young Eagles arrived.

There were lots of aviation activities on the ground as well. Dale Mueller walked around an airplane with kids and parents showing them how airplanes fly. There were two simulators where young aviators got to try out their piloting skills with the help of Steve deRodeff, Tim Wennberg, and Joel Avey who loaned his simulator. The movie "Planes" ran all morning in the theater delighting the kids.

The adventure of flight began with a warm greeting from Diane Harrison and Sandy deRodeff. After completing paperwork Rob Compton and Janet Gregory assigned each child to a pilot

and aircraft. Pilots walked the kids to their airplane. Guiding aircraft safely on the ground were Mike Gustafson, George Harrison, Ed Gregory and Leon Leibster who also doubled as our photographer. Check out all the photos from

the day at www.eaa1337.org.

After the flight there were big smiles and lots of excitement as the Young Eagles picked up a log book and flight certificate from Dennis Smith, Ed and Diana Sunday. Lots of other volunteers pitched in for set up, ground support and clean up, Linda Craig, Karen Handley, Lynn Orloff and Michael Thoben. The great morning ended with a volunteer lunch hosted by Ed & Janet Gregory.

Young Eagles is a national program supported by EAA, the Experimental Aircraft Association. Since the program began more than 1.9 million Young Eagles have taken to the skies. This is an opportunity to introduce the next generation to aviation and the many exciting career opportunities in their future, such as air crew, flight operations, air traffic services, aircraft maintenance and ground support services.

Thank you to the many Pine Mountain Lake volunteers who shared their time and love for aviation with the children and families that joined us for our Young Eagles Rally.

Northside Pet Connection News

TOM GRAVE, VICE PRESIDENT

We are pleased to inform our readership that all 30 of the vouchers available each month are now being requested by individuals who wish to have a cat spayed or a dog neutered. To clarify the procedure: you call the voucher phone number (732-6194) to make your request and leave your contact information. You will receive a return call from Kathleen, our voucher coordinator, usually within a day or so. Occasionally Kathleen will be out of town for as much as a week, but rest assured that she will get back to you. The voucher that you receive can be redeemed at the veterinarian of your choice. It will cover nearly the whole cost of the procedure, depending on which veterinarian you choose. Please let others know about the phone number and the process.

We still have a vacancy in the position of secretary, and we would like to fill it with someone who lives in the area we serve: Coulterville, Greeley Hill, Big Oak Flat, Groveland, and Lake Don Pedro. You will recall that NPC is a non-profit organization. Our by-laws require that we

have five directors on our Board, one of which is secretary. As it is, our president and vice-president both live in Merced, 50 miles from Coulterville! Certainly there is someone from our local community who would be interested in being secretary. The position requires two hours a month, one hour at our meeting and perhaps as much as an hour preparing the minutes for the meeting. You would be serving your community in performing a very important task. Please think about it, and call Carmel at 878-3134.

Thanks to the generosity of those of you who have chosen to support NPC, we now have sufficient funds to increase the voucher program beyond 30 per month. We have also received a suggestion that we expand the program to include other communities. Come to our next meeting and let us know your thoughts! We'll be at Coulterville Community Hall at 5:00 pm on December 7, and we'll end the meeting at 6:00 or earlier. You will also learn first-hand what the secretary job is like. See you then!

Winter Hours:
Sun-Thurs:
11:00AM - 8:00PM
Fri-Sat:
11:00AM - 9:00PM
"WE TAKE LOCAL
COMPETITOR'S COUPONS!"



PIZZA PIES



**FREE
Wi-Fi**

**NOW SERVING PASTA DINNERS
TRY OUR ALL YOU CAN EAT LUNCH SPECIAL OR OVEN BAKED SUBS**

Call ahead: 962-4897 (962-GUYS)
18955 Ferretti Road. Left turn off of Main St (Hwy 120) 1/2 Block

\$1.00
Off Any Size Two Guys
Pizza or Calzone

One coupon per order, per visit. May not be combined with any other offer and/or coupon. Not valid on delivery.

PML1215 Expires 01/15/16

\$2.00
Off Any Large or Extra
Large Two Guys Pizza

One coupon per order, per visit. May not be combined with any other offer and/or coupon. Not valid on delivery.

PML1215 Expires 01/15/16





**HIGH QUALITY
LAPTOPS
AND
DESKTOP
COMPUTERS**

Adware/spyware & virus removal • computer repair • data recovery

Logo Design
Web Design
High Quality
Business Cards

sales@e-spon.com
www.e-spon.com
962-7110

Water Saving Tips FOR LAUNDRY & CLEANING

JANET GREGORY

We are thankful for the rain and snow, but the reservoirs are far from full. Continue your water saving efforts at home, work and play. Here are a few tips for water savings when cleaning or doing laundry.

WASHING MACHINE. Washers purchased before 1992 will use significantly more water than newer models. Top loading machines are the least water efficient with older models using 50-60 gallons per load, and newer models do better at 30-40 gallons per load. Front loading washers have the best water efficiency at 15-20 gallons per load for new models. Obviously the size of the washer also affects the amount of water, compact washers use less and larger capacity machines use more. Consider purchasing a new high-efficiency front loading washer if your machine was purchased before 1990. Shop around, there are lots of great choices under \$800 at Lowes, Sears and other retailers.

LAUNDRY. Always wash full loads, no matter what type of washing machine you use. Reduce the number of wash loads each week by wearing a shirt or pants a second time. Small loads of different colors can be combined into a full load, adding "Color Catcher" keeps colors bright.

HAND WASH. Use biodegradable soap for hand washing delicate or special items. The wash water and rinse water can be used to water plants or flush a toilet.

CLEANING COUNTERTOPS. Disinfectant wipes are great for cleaning countertops in the kitchen or bath. You don't need to use any water and they also disinfect the surface at the same time. Check out the Dollar Store for good deals on disinfectant wipes, unfortunately they don't carry biodegradable soaps.

CLEANING FLOORS. Use plain water or a biodegradable soap in the bucket when washing floors. The water can then be used on plants. For spot clean up on the floor, use disinfectant wipes. When using non-biodegradable products only fill the bucket half full and use it to flush the toilet. Consider buying "Steam Shark" which uses very little water to clean and sanitize floors.

HOLDING BUCKET. If it is relatively clean water pour it into a holding bucket in the kitchen. The holding bucket can be used to water plants or to run the disposal. Unused drinking water, ice, rinse water, dish pan water and vegetable steaming water can all go into the holding bucket.

Friends of the Groveland Library

NADINE PEDRON

BOOK TALK IN THE ROUND

Book lovers from the Groveland area met together in October at the library to do what they most enjoy – talk about books! Five Book clubs (of the seven in our community) gathered around to present and discuss one of their favorite books and to invite questions and comments from the attendees. The "Library Lot" book club presented Sundays Silence; "Bert's Bookies" shared passages from Twelve Patients: Life and Death at Bellevue Hospital; All the Light We Cannot See was discussed by the "Cubbies"; the "As the Page Turns" club contributed their views of the book The Kitchen House and a group describing themselves as enjoying "all things literary" explained their "In the Moment"

meetings. Refreshments and continued book chat were enjoyed and a "Book Swap" rounded out the enjoyable afternoon. Each club also contributed a list of their recommended books from the past year to share with the participants. There are copies of this book list available at the library for anyone interested.

This event is in its fourth year and is organized and presented by the Friends of the Library and co-sponsored by GAINs. Anyone may attend, so watch for the date next October!

FOGL meets every 4th Tuesday from 2:00 – 3:00 downstairs at the library. Visitors are more than welcome! For further information about our group please contact President Harriet Codeglia (962-6270) or email: hcodeglia@gmail.com.

GROVELAND COMMUNITY PERSONAL CARE

Jan Holt L.V.N.
Private Duty Nursing

209-962-0632 Home • 209-770-5451 Cell
janholt30@gmail.com

Record Breaker and Racers

JANET GREGORY

Air racing is the world's fastest motor sport. Accelerating to speeds of 200, 300, 400 miles per hour and more. Staying tightly on course with six other airplanes, jockeying for position in three dimensions. It's electrifying!

Every year air racers from Pine Mountain Lake, the U.S. and around the world meet in Reno, Nevada for the National Championship Air Races. There are six classes of racing, based on type and speed: Formula One, Biplane, Sport, AT-6, Jet and Unlimited.

Vicky Benzing set a record at Reno this year! The prior record was held by Mary Dilda, racing at 434 mph. In Jet Class qualifying, Vicky hit a blistering 469.8 mph! By race day the weather had warmed up, slowing the speed to 446.9 mph, still breaking the record. PML is now home to THE FASTEST WOMAN IN RENO AIR RACING. Congratulations Vicky!

There were four PML air racers on the course this year: Vicky Benzing, Colleen Keller, Shane Margraves, and John Parker. In Sport Class, for fit built airplanes, Vicky flew her Lanceair Legacy "Lucky



Vicky Benzing

Girl", Colleen Keller flew Jim Thomas' Lanceair Legacy "Poncho" and Shane Margraves flew his RV-6 "Rocket-Six". The big news was John Parker taking first place gold in his Thunder Mustang "Blue Thunder". Vicky Benzing, the fastest woman in Reno Air Racing, also raced "Darkstar" an L-139 in Jet Class races.

Hill Top Musical Kids Present Arrest These Merry Gentlemen

LOUISE TURNEY

"HERE YE, HERE YE!" Can you imagine shepherds who see angels and hear them singing and Magi following a star? Well it's happening right here in Groveland on Friday, December 18th at 7:PM and Saturday, December 19th at 2:PM. Where? Groveland Evangelical Church on Ferretti Rd. Our

very own "Hill Top Musical Kids" will be presenting "Arrest These Merry Gentlemen" a musical presentation of the Christmas Story. There is no admission charge, come and support our local kids and let them know we applaud their talent. For more information contact Louise Turney 962-0609.



PAUL S. BUNT, ESQ.
ATTORNEY AT LAW

ESTATE PLANNING
PROBATE
REAL ESTATE
BANKRUPTCY
ELDER CARE
209.962.6778

Mountain Leisure Center, Groveland
appointments available in Sevens and Lake Don Pedro

Seasonal Affective Disorder (SAD)

ETTY GARBER PHD

As the days get shorter and darkness comes earlier we have a tendency to feel listless, gloomy and irritable. Fall and winter are the SAD seasons, which is referred to as SEASONAL AFFECTIVE DISORDER. During these months of the year depressing thoughts can overwhelm us due to shortened daylight and the lack of sunshine to brighten our days. We feel SAD as if an emotional cloud is hovering over our heads. We experience depression and anxiety as we do our best to get through each dreary day. It is especially difficult when we are expected to be enthused as we anticipate and participate in the most joyous holidays of the year. As Mary expressed it, "I'd rather crawl under a blanket, stick my nose into a good book or veg out on the couch and watch an old movie and then take a nap."

Day after day of light deprivation can be harmful; it can make a person cranky, lethargic and despondent. Which, of course we know, is not good for relationships. It can also affect increased appetite causing weight gain, sleeping too much or too little, feelings of worthlessness or even thoughts of death or suicide. There may even be an increase in physical ailments such as: joint pain, stomach problems, or lowered resistance to infection. This is typically the flu season so we could be more susceptible to that nasty flu bug.

SAD does not affect everyone in the same way or to the degree. According to studies women are three times more likely than men to suffer from this disorder.

People who live in colder climates have a higher incidence of SAD than do those who live in warm, sunny locations. It affects approximately 10 million people in the United States.

If you experience symptoms of Seasonal Affective Disorder, there are a number of ways to cope with it. If you have mild symptoms get more exposure during the day time, do some form of exercise daily and don't forget your sunscreen. Eat a low fat diet, eliminate refined sugars and flours, limit caffeine and alcohol and practice stress management.

For more severe symptoms, especially depression, consult your doctor for treatment advice. Light therapy and medications are possible options.

If there is a definite shortage of natural sunlight you may want to check on light therapy which is often effective. A light box is a specially made box built to increase exposure to light that is 10 to 20 times brighter than normal indoor electrical lights and may reduce symptoms and depression. You would use it at home whenever you experience the symptoms. In a study the results revealed that participants who were exposed to the morning bright light treatments experienced relief from their depression. Some patients benefit from prescribed drugs for depression in combination with light therapy. Researchers also found that psychological counseling may also be beneficial to those suffering from Seasonal Affective Disorder. You don't have to be SAD, find the SUN and have a Happy Holiday.

Healthy Habits

FROM PINE MOUNTAIN THERAPY

JULIE TANAKA, PT

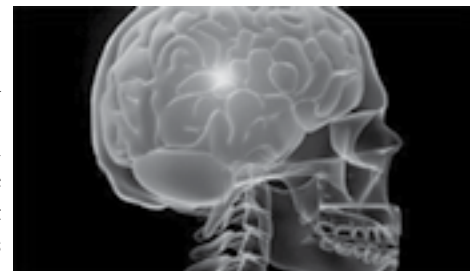
The Power of Positive Thinking

This is not just a new wave, fluffy idea. It's real and it lives in our brains. With the advent of imagery that shows how our brains light up in response to different activities and thoughts we are learning the real effect of positive thought.

Research by Barbara Fredrickson shows that when we have negative thoughts our brains are trained to shut down and focus just on this thought. This is a survival mode built into our grey matter. The example she uses is seeing a tiger in the forest. Our brain registers this as a negative thought and shuts out everything else so we can get away from the tiger. The parts of our brain that has options of picking up a twig, or looking at flower are ignored so we can focus on getting away from the tiger. We don't run into many tigers in Groveland but negative thoughts do the same thing. Once we say "I can't do this", it shuts down the part of our brain that gives us options.

Another cool thing about our brains was presented at a conference I went to last week on chronic pain and movement. Athletes brains were monitored while they performed their activity of running, rowing etc. Then, while monitored they were asked to close their eyes and visualize doing the same activity. The brain function was the same! Crazy. Without moving, the brain perceived that the muscles and joints are moving. Movement creates positive brain patterns, and release of chemicals in the brain that evoke joy and contentment. This pattern of movement also enables the athlete to perform the skill with greater ease when put back into real physical movement.

You can make this work for you. It's not magic. But it is good to know how powerful our brain is. We all have challenges in our lives. That is part of the package. But knowing that there is a physiological change in our brain when we think positive and perform



a difficult task in our mind is pretty cool. It is like having a personal coach ready to help you out. On the other hand repeatedly saying you can't do something will really limit your coach's tools to help you out.

Think positive.

Visualize the action you are trying to perform. Change your brain.

Happy Holidays!

PINE MOUNTAIN THERAPY

Outpatient Physical Therapy

Serving the Mountain Communities of Tuolumne and Mariposa Counties

18800 Main Street,
Groveland, CA 95321

209-962-4035

Please visit our new web site at
www.pinemountaintherapy.com

*A Preferred Therapy Provider,
participating provider with
most insurance carriers
including Medicare.*

Dr. ETTY Garber Ph.D.
in Clinical Psychology and a licensed Marriage Family & Child Therapist, with 32 years experience in mental health, lives in Groveland and

OFFERS PRIVATE PRACTICE SERVICE

Dr. Garber can provide psychotherapy in a variety of settings to individuals, couples, families and groups.

**RELATIONSHIPS • FAMILY CONFLICT • CHEMICAL DEPENDENCY
DEPRESSION • ANXIETY • ABUSE, etc.**

PHOTO BY BECKY SHIFFEN

Low Fees • No Insurance FOR AN APPOINTMENT CALL 209/962-5205

Carron Tax

Carole Smith
Enrolled Agent

associates

20093 Ridgecrest Way
Groveland, CA 95321
Tel: 209/962-6119
E-mail: carolesmith@carrontax.com

**INCOME TAX PREPARATION
AUDIT REPRESENTATION**

Sierra Grief
Hospice of the Sierra

Sierra Grief offers **FREE** grief support groups in Murphys, Groveland & Sonora.

*Sonora Regional Medical Center
Hospice of the Sierra
—Adventist Health*

For more information call: 209-536-5685.

SEASPRAY
AWNINGS & BOAT COVERS
533-4315 • 536-9397

Lic. #981187





TUOLUMNE COUNTY'S NUMBER ONE SOURCE FOR
 Custom Retractable & Fixed Awnings
 Boat Covers & Bimini Tops
 Boat Upholstery & Carpet
 Recovers & Repairs

www.seasprayawnings.com
www.seasprayboatcovers.com

FOR IDEAS AND ESTIMATES CALL DOUG PARRISH
 14769 Mono Way, Sonoma • 13893 Tuolumne Rd.

First Wednesday Bird Walk

JEANNE RIDGLEY

The first Wednesday of the month Bird Walk at the Groveland Community Services property at 18966 Ferretti Road, Groveland will be led by Jeanne Ridgley on Dec 2 and Jan 6. The property encompasses an area of more than 200 acres of oak, pine and willow habitat with three water storage ponds.

Winter ducks should be on the large pond and wintering sparrows should be seen.

Meet the group in the GCSD parking lot at 8:00 AM. Bring binoculars and a birding field guide if you have one. Rain will cancel the trip. The walk will last about two-three hours. If you have any questions, call Jeanne at 962-7598.

Pine Cone Singers Holiday Concerts

BOB SWAN

Thanksgiving has come and gone, and that means the Pine Cone Singers' Holiday Concerts are right around the corner. Specifically, at the Groveland Evangelical Free Church, 19172 Ferretti Road, on Thursday (12/10) at 7:30 PM; Friday (12/11) at 7:30 PM; Saturday (12/12) at 2:00 PM; and Sunday (12/13) at 2:00 PM.

Musical Director Ron Randall has selected a program that has a lot of variety, but that still captures the spirit of the season. We've got a couple of vocal adaptations of themes from The Nutcracker; two pieces from John Rutter – one of the most prominent choral composers of the 20th Century; and a nineteenth century French carol arranged by our very own Director Ron. There are also several familiar Christmas carols done in slightly unfamiliar arrangements,


and some songs that beautifully celebrate winter and renewal.

In addition to the choral numbers, Shirley Brasesco will sing "The Man With The Bag", Luke Sullivan will offer "Warm Winter's Eve", and Frank Jablonski will perform "Do You Hear What I Hear?". We'll also expect audience participation in some caroling.

We're looking forward to sharing our Beautiful December Dreams with you, December 10-13. Advance tickets are available at Yosemite Bank, Hotel Charlotte, Dori's Tea Cottage, Marijka's, or from any Pine Cone Singer. Advance donation is \$10, at the door \$12, and children 12 and under are invited to attend for free. For more information, please call 962-6535.

Hope to see you there!

John R. Ziomek, DPM
Podiatry practice in Groveland



Practice limited to diseases of the foot and ankle.
 Diabetics welcome.
 Most private insurances accepted.
Medicare assignment accepted.

Located at 20767 Ferretti Road
 Groveland, CA 95321
209.962.6000
By Appointment Only

Yosemite Foothills Fire Safe Council

NANCY PERRY, YFFSC SECRETARY

To All Fire Community Friends,
 Yosemite Foothills Fire Safe Council is a non-profit, non-governmental, non-regulatory community partnership of residents, property owners, businesses, and agencies working together to reduce our vulnerability to the threat of wildfire. We work closely with the US Forest Service, CAL Fire, and others by creating fuel breaks and defensible space surrounding homes and communities to improve chances of withstanding a wild land fire. Preparation must begin long before smoke appears on the horizon.

Become a fire wise member of your Fire Safe Council. The Yosemite Foothills

Fire Safe Council is looking for additional Board members and liaisons to serve in the interest of our community. These are important positions requiring dedicated people interested in the management and reduction of fuels, creation of fire breaks and establishing better fire protection. We meet once a month, the second Tuesday of each month.

If you are interested or would like more information, please contact:

Rick Whybra, Chairman.
 209-962-7610 desk
 209-768-7628 cell
 October 1, 2015

Tenaya Elementary Photo Contest

BONNIE BELISLE

Visit the Museum & Cast Your Votes

You can all help support our young photographers by dropping in the Museum to cast your ballot for the Top 3 photographs on display!

Each year, the Groveland Rotary Club, STCHS (Southern Tuolumne County Historical Society) and Tenaya Elementary School work together to host a student photography contest. A special thanks to the Rotary Club for their continued support.

In mid-October student participants (5th – 8th graders) were loaned (or used their own) digital cameras. A big thank you to our community and friends who donated to STCHS the digital cameras. Bonnie Belisle, STCHS Representative and Warren Belisle, Photography Advisor, conducted a meeting with the 16 students who participated in this year's contest. Our first meeting was to give photo tips and inspiration to capture scenes through the eye of the camera. Cameras were distributed and operational instructions given.

At the second meeting, held two weeks later, students chose their entry for the contest. Each student wrote a couple of sentences with thoughts about their photo in addition to coming up with a title. Thank you to Judi Maguire for assisting with this part of the program and GAINs (Groveland Area Involved Neighbors) for loaning us the laptop computers for the students to review their photos.



Nadine Pedron worked in the Science Room. Photos by Virginia Gustafson.

This contest is "judged" by Museum visitors. So please be sure to give our up and coming photographers your SUPPORT by VOTING.

The Photography Display is usually ready by Thanksgiving -- ballots and a controlled voting sign-in sheet are available from the Docent on duty at the Museum. Voting will continue through the end January. A big thanks to Bruce Carter for mounting the 8x10 photos and creating the photography display at the Museum.

Our Awards Ceremony will be scheduled sometime in February, with the exact date and time yet to be determined. Stay tuned! First, second and third place winners will be determined by the votes cast at the Museum and awarded cash prizes. All photographers will receive a Certificate of Participation and photo key rings which will include a copy of their photo.

Rate Change for Moore Bros. Scavenger and Groveland Transfer Station Customers

Moore Bros. Scavenger customers will see an increase in the solid waste collection rates beginning January 1, 2016. As a franchise hauler for Collection Area 4, Moore Bros. is entitled to a yearly increase based on the Consumer Price Index (CPI), if certain conditions exist. The CPI increase to be applied in January is 2.29%. This type of increase helps our business to keep up with the ever rising costs of fuel, maintenance, insurance, etc.

Moore Bros. Scavenger reviewed its residential rates and submitted a request to the County to adjust certain rates for yard service; multiple can service and extra pick up on the same day service. A request to establish late fees and return check fees was also requested. The increase was approved. The adjustments to the rates will bring some rates in line with other franchise areas and will help Moore Bros with today's ever rising costs.

There will be adjustments to the rates at Groveland Transfer Station (GTS). The rate for appliances with refrigerant has been adjusted from \$10.00 per item to \$20.00 per item. This is to accommodate the cost to remove the hazardous materials from the appliance prior to recycling it.

The gate fee will increase to \$4.00 on January 1, 2016 for all self-haul customers. Certain items are exempt from the gate fee. Items that had an advanced disposal or recycling fee paid at the time of purchase such as paint, TVs, laptop computers and computer monitors are exempt from the gate fee upon disposal when brought with no other waste.

Always keep recyclable household hazardous waste such as batteries, paint, oil, oil filters, antifreeze, fluorescent lamps and electronic devices separate from the rest of the trash. Please let the gate attendant know that you have brought these items. It is illegal to put them in the landfill.

We also want to take this opportunity to remind you that the GTS will be accepting Christmas trees for recycling at no charge during the month of January during regular business hours of 8:00 am to 3:45 pm. Wednesdays and Saturdays only. The minimum load charge of \$14.70 and the \$4.00 gate fee will be waived for real trees that are free of tinsel, decorations and nails. Flocked trees cannot be recycled and will be charged at the regular disposal rate.

If you cannot self haul your real tree to the GTS please call our office at 962-7224 to make

Great Volunteer Day at Camp

VIRGINIA GUSTAFSON



Volunteers Kay Meermans, Bill Bent and Dwight Follien cleared a trail.



Kitchen volunteers Barbara Klahn, Karen Hopkins and Sally Salinas prepared a delicious lunch.

Thank you so much to our great volunteers who turned out last month to help with projects around camp. We even had our local 4-H kids join in.

Karen Hopkins, Barbara Klahn and Sally Salinas are our kitchen goddesses who created a wonderful hearty lunch for the workers.

Nadine Pedron joined camp employee Gene von Montague in sorting, cleaning and organizing our science room which is used by so many school groups.

Stalwarts Dar and Mal Brown and new volunteers Janet Heuer and Mark Wellman wielded brushes and rollers to apply stain to the Great Hall deck railings, the campfire stage wings and the new observation point railings and benches. They look so much better now and are protected from the winter elements.

Kay (have weedwhacker, will travel) Meermans, Bill Bent (if it's Saturday, he's working at camp) and Dwight (Mr. Bike Trails) Follien did a great job clearing a trail, pulling old wire, and clearing around our new aspens.

Leon Liebster and new volunteer Bob LaPlaca did a masterful job applying foam insulation and caulking the west end of the

Great Hall. A lot of woodpeckers will be surprised and frustrated now!

A strong-backed crew of Mike Ireland, Tony Flores, Joe Hopkins, Brian Willmon and camp general manager John Infelise detached the entire playing field as well as the pool lawn. It looks great!

Austin Parlette, Skip Nall, and camp maintenance guru Doug Wilson dug and poured a total of nine cement piers for new facilities.

We also had great teamwork with a group of young 4-H Club members led by Carol Willmon working together with Garden Club members Linda Flores, Terre Passeur, Sue Dwyer and Donna Wolf to plant 150 daffodil bulbs around our garden. Can't wait to see them next spring.

We thank these wonderful volunteers for their gifts of time and talent that help keep Camp Tuolumne Trails a great place for our special needs campers.

To remember the camp in your year-end contributions, just send your donation to: Camp Tuolumne Trails, 22988 Ferretti Road, Groveland, 95321. We'll send you a tax receipt and the gratitude of our special campers.

Kitten Adoption Faire

KATHLEEN MORSE

Christmas Kittens at the Groveland Community Hall on Dec. 12

Come celebrate Christmas with the kittens Dec. 12 at the Groveland Community Hall from noon to 4pm. We will have free baked goodies, music, free cat toy giveaways, and wonderful kittens of all colors and sizes available for adoption.

All kittens have been rescued in the Yosemite area and have been raised in local foster homes by volunteers. They are up to date on their vaccinations and tested. Complete

health record is included with adoption. They have been spayed or neutered. In addition, they have been socialized with kids and dogs.

Our lovely kitties that are waiting to meet you at the Groveland Community Hall – Dec. 12.



an appointment to have your tree picked up at no charge. Trees must be non-flocked, cut into 5 ft. lengths and bundled. Please remove all tinsel, decorations and nails.

If you have any questions, please don't

hesitate to call our business office at 962-7224 Mon-Fri 9:00 am to 5:00 pm.

Steve Moore
President
Moore Bros. Scavenger Co., Inc.



Sierra Nevada COMMUNICATIONS

Get the **Highest-Speed Internet** in Pine Mountain Lake & Groveland
Call (209) 962-6373

JOANNE BERNASCONI-SCOTT
 Independent Beauty Consultant

13166 Wells Fargo Drive
 P.O. Box 1257 Groveland, CA 95321
 HOME: 209-962-6394
 CELL: 209-573-1415
 Bernijo3@aol.com
 www.marykay.com/jbernasconi

Enriching Women's Lives™



MARY KAY

AMERICAN AVIATORS
VIP Tour of China

FOR PILOTS AND NON-PILOTS ALIKE
17 DAYS • MARCH 16 - APRIL 1, 2016
 New Reduced cost
\$3199*




* per person. Dbl Occupancy plus airline taxes & fees. China visa & insur. - Price good through Dec. 1, 2016

- Beijing, Wuhan, Yichang, Chongqing, Chengdu, Guilin, Xi'an, Suzhou & Shanghai
- ALL 5-Star hotels and 5-star cruise ship (all cabins with private balcony).
- Great Wall, Forbidden City, Tiananmen Square, & Summer Palace
- 4-night Yangtze River Cruise through Three Gorges and 5 locks of world's largest dam with 3 included shore excursions
- Baby Pandas at Chengdu's Breeding Center
- 8000 Clay Soldiers, ancient city wall, famous Tang Dynasty show
- Exotic Guilin with Li River mini-cruise plus tea plantation & Reed Flute Caves
- VIP Tour of **NEW WW II Flying Tigers Museum** plus VIP Banquet
- Cruise Grand Canal of Suzhou, World's Silk Capital & the "Venice" of China
- Tour the old and the new modern Shanghai
- And SO MUCH MORE ...

12th Annual **VIP Delegation** led again by local retired UAL Capt. Larry Jobe & his wife "China Nina"

209.962.5588 or toll free **866.669.2288**
www.TravelAireTours.com
 for full details



green tree
 property services

HOUSE PAINTING

FREE Window Wash
 with every Exterior Signed Contract
 VALID THRU JANUARY 2015

Full-service House Painting
 Interior/Exterior Painting & Staining
 Drywall & Drywall Repair

RESIDENTIAL • COMMERCIAL

209.962.4445
www.GreenTreePropertyServices.com
 LICENSED | BONDED | INSURED | CSL440341



RAY'S Roofing Fully Insured - Liability & Workers' Comp

Complete Roofing Service

- Gutters
- Repairs
- Skylights
- Dry Rot

FREE ESTIMATES
 REFERENCES AVAILABLE

IN PML SINCE 1990


Ray Lemasters (209) 962-0368 Lic. #610291

Wines Chiropractic Wellness Center
 Wholeness is Our Goal

Specializing In Children Of ALL Ages
 Non-Force Wholistic Chiropractic • Acupressure Reflexology
 Nutritional Consulting • Neuro-Emotional Technique • Special Classes Avail.

Dr. Donna Wines D.C.

Open Mon.- Thurs. • 18727 Main St., Ste. C., Groveland, CA 95321 • 209/962-4565



Chamber of Commerce Happenings

TOM CLAWSON – CHAMBER PRESIDENT

The Yosemite Highway 120 Chamber of Commerce held their annual meeting on Thursday, November 29th at The Grill in Pine Mountain Lake. The new slate of officers installed was President, Tom Clawson, Don Pedro Dry Storage; Peggy Mosley, Groveland Hotel, Vice President; Terri Wemmer, Miner's Mart, Secretary, and Carole Smith, Carron Tax, Treasurer. These officers will serve for fiscal 2016.



The new Yosemite Hwy 120 Chamber of Commerce Board of Directors. From Left: Tom Clawson - President, Peggy Mosley - Vice President, Carole Smith - Treasurer, Terri Wemmer - Secretary, with outgoing Treasurer Cathy Leatham and outgoing Vice President Earl Wright.

Outgoing President, Tom Hernandez, Soul Be Good Residential Services, recognized:

- Dar Brown for her service as a volunteer Administrator for the Chamber
- Tony Flores for his tireless efforts in running the monthly Flea-Market
- Jerry DeVore and Cory Swank for their support of the Big-Bucks BBQ Fundraiser
- Leonard Cassaretto for his generous contribution of rent for the past several months
- Stacey Hancock and Terri Wemmer for their efforts to raise donations for the Butte Fire victims. Together they raised more than \$5,000 in cash
- Terri also collected several thousand pounds of clothing and other necessities.

President Clawson has conducted an extensive review of the Chamber's operating documents. Proposed changes to the Bylaws, Directors Roles and Responsibilities and the proposed implementation of a Directors Code of Ethics and A Finance Handbook are intended to improve separation of duties and increase control of the corporation financial resources. These proposed changes will be voted on by the full board. After acceptance by the full board, the proposed By-Law changes will be submitted to the full Chamber membership for approval and acceptance.

Dwight Folien from Groveland Trail Heads organization, provided an update on the progress on developing mountain bike trails in the Stanislaus Forest and covered the potential economic benefit it will have on Groveland and the surrounding businesses. This can be a major economic

opportunity for our community.

John Gray, District 4, Tuolumne County Supervisor, spoke about road improvements in town to increase safety for tourists and guests – namely, the restriping of the downtown section of Highway 120 to provide safe walkways all the way through town, the National Disaster Resilience Competition (NDRC) for several millions of dollars in 'resiliency' money and expected improvements in cell phone coverage for the area, with the addition of new cell towers in the immediate Groveland area.

Outgoing Vice-President Earl Wright, Pizza Factory, announced a new Chamber Logo; FREE WIFI service in town being provided by Conifer Communication, implementation of a new member communication system, using Constant Contact and the move of the Chamber Office to the Mountain Leisure Center, as part of the inter-Agency offices. This group of offices will include the Tuolumne County Sheriff, Tuolumne County Economic Development, Mother Lode Job Training and the Tuolumne County Visitor's Bureau.

The Board of Directors meets the second Thursday of the month at 11:30 AM. Members are welcome to attend and speak on any item not on the agenda. Mixers are held the third Thursday of the month at 5:30 PM. Locations vary by sponsoring member. The location is announced on the Chamber website one week prior to the event. All members on good standing are welcome to attend either or both meetings.

Your 'new' Chamber of Commerce is here to support our member businesses with information education, representation and as a business resource. Please contact us by phone at 1(800) 449-9120 or by email at info@groveland.org.

Halloween in Groveland

TOM CLAWSON



The Yosemite Highway 120 Chamber of Commerce wants to thank Terri Wemmer, Natasha Hansen, Luis Melchor, Pauline Turski, Nellie Moore and Coleen Castro for organizing the Halloween Festivities held throughout the town of Groveland and the lower section on Mary Laveroni Park.

This was the first year for "trunk or treat" where residents and local businesses who do not have a "store front" in town had the opportunity to decorate their vehicles and handout candy. The participation of residents and business and the turnout of ghouls and goblins was fantastic. Numerous parents, and visitors from out of town, commented that it was a great idea and provided

improved safety for the children.

Danny and Denise Wallace won a \$50 gift certificate to Mar Val Market for the best trunk decorations!!

Terri commented "We could not have been happier with the turnout. We have had so much positive feedback. So many people with some new ideas to add next year. They are even talking about what they are going to do to make their trunk decorations even better next time".

The Chamber also wants to thank the Groveland Garrote Lions Club for serving free hotdogs, nachos, and hot chocolate, cider and coffee at the Community Center. Thanks also go to the Fire Fall Roasting Company for donating the coffee.



Dave Sutch
Auto Broker/Dealer/Consignor

20950 Ferretti Road
Mail: PO Box 22
Groveland, CA 95321

209-962-1145 or 415-467-2077

dave@mycarguy-sf.com
www.mycarguy-sf.com

**Dream cars at
dream prices
with no hassle**



BROKER / DEALER / CONSIGNOR

Cars, Trucks, SUVs

Motorcycles

Tot-Chos

RECIPE PROVIDED BY TOM KNOTH AND PAULA MARTELL

Like Nachos?? Well, you will love “Tot-Chos”! These are basically nachos with potato tots substituted for tortilla chips, and this is a dish that allows for lots of personalization. Any toppings that you might



Garlic, Cilantro, Red Onions, Green Onions, Chives, Green Olives, Guacamole, Tomatoes, cooked Chorizo, cooked Sausage, cooked Chicken, cooked Beef, Pulled Pork, Fried or Hardboiled Egg, Cheese Sauce, Taco Sauce,

consider for traditional nachos or for a baked potato are fair game. And beyond that, you can get creative. Here is a recipe that we put together: *For each ingredient, use quantity of your preference*

Sriracha Sauce, Ranch Dressing, Broccoli, Black Beans, Mushrooms

Directions:

Cook your desired amount of tater tots per directions on the bag. You can deep fry them, but considering the calories already in this dish, I opted to oven bake them in a sheet pan, and I also added a few minutes under the broiler to make sure they were extra crispy, considering all of the wet ingredients that were going on top.

Turn oven to broil and transfer your tater tots to an ovenproof dish. Top with your desired toppings and place dish under broiler until cheese is melted and bubbly.

Top with sour cream and chives, serve.

For more detailed instructions on this recipe (and lots of photos), visit <http://homesinpinemountainlake.com/tot-chos/>

- Ore Ida Extra Crispy Tater Tots
- Bacon, strips sliced 1/2 in thick and sautéed until cooked, the drained
- Jalapeno Peppers, pickled or fresh, sliced or diced
- Black Olives, sliced
- Mozzarella Cheese, grated
- Sharp Cheddar Cheese, grated
- Sour Cream

Some other topping ideas: Pico De Gallo, Salsa,

Usher in the Holidays with “Light the Season”

RON HARMS

Celebrate the start of the holiday season by attending the annual Light the Season festivities on Sunday, December 6th at 5:00 P.M. at The Little House, located on the corner of Merrell Road and Highway 120. This event is sponsored by Southside Senior Services and its signature programs: The Little House, WHEELS and Village on the Hill.



festivities, holiday treats and beverages will be served for everyone’s enjoyment.

Your \$10 per light donation, for each person you wish to honor or remember, will add another

glowing light to our tree that welcomes residents and visitors to our community during the holiday season. Tax deductible donation forms are available at The Little House and through its website (www.thelittlehouse.org), at Dori’s Tea Cottage and Café, and through any Southside Senior Services Board member.

Join us as we usher in the holidays with the illumination of the remembrance tree, a candle lighting ceremony, and caroling around the tree with members of the Pine Cone Singers. This year’s remembrance tree has been generously donated by the US Forest Service. Following the tree lighting

We hope you will join us again this year as we gather to Light the Season. Please call 209-962-7303 for more information.

COSTA'S TREE SOLUTIONS

Steve Costa • Owner
Fully Insured/Bonded C.C.L. #1001392

209-962-4468
cell 209-768-4469
Certified Arborist #WE7496A

Call
Bonded Insured
Hamm's Carpet Cleaning
Green Cleaning
For Health • Appearance & Longevity

Locally Owned & Operated for 24 years
209-962-5852
In Association With **green tree**

- IICRC Certified Firm # 13341
- Member of Carpet & Fabric Institute
- Certified Technician on every job
- Business Profession & Trade License # 29950

2 Great Services Under 1 Roof

Serving Tuolumne, Calaveras & Mariposa Counties

PAULA STEVENS
Certified Residential Appraiser
and
Notary Public / Certified Signing Agent

Mobile Notary
by Appointment
Serving Tuolumne, Calaveras & Mariposa Counties

209.962.4600 voicemail • 209.768.1479 cell
vintagegold@SBCGlobal.net
18687 Main Street #B2 • PO Box 1050
Groveland CA 95321

Mountain Lutheran Church

PASTOR GINGER DUMARS AND PAUL INGVALDSEN

We are entering the festive season of Advent and Christmas with the First Sunday of Advent on November 29th. This time of year brings special celebrations and gatherings, beautiful music and divine meaning into our lives and families, especially at church. We'll be singing songs of praise and preparation, anticipation and celebration during these seasons. During Advent we reflect on the ways Jesus has come to us in the past, is here in the present and will come to us in the future.

We are excited to begin Advent on November 29th by being invited to the community's 5th Sunday Gospel Sing at 6 pm at Groveland's Seventh Day Advent Church, 19585 Elder Lane. Fellowship and refreshments are offered after the singing. Everyone is invited! Bring your friends.

On Wednesday, December 9th at 6 pm, Mountain Lutheran offers an Advent Soup Supper and Evening (musical) Prayer

Service, providing another opportunity for our community to prepare our hearts for the gift of Jesus, born as a human baby, yet fully divine. We call His Birth, the Gift of God incarnate in Jesus: CHRISTMAS!

We celebrate this Gift of Jesus and His Birth with a Special 7:30 pm Christmas Eve Service of Carols and Lessons, Christmas Message and Prayers. The Service concludes in candlelight. Then we continue celebrating the Christmas season for 12 days, through January 5th, with Christmas themes in worship and music on Sundays, December 27th and January 3rd at our regular Sunday Worship time of 10 am. Everyone is always MOST WELCOME at Mountain Lutheran Church, 13000 Down to Earth Court, just off Ferretti Road.

Come and celebrate with us! God bless you and your families, especially during these Holy Days (Holidays)!

Tioga High School Basketball 2015-2016 SCHEDULE

DATE	OPPONENT	PLACE	MEN	WOMEN
11/30	Don Pedro	Tioga HS	8:00	6:00
12/2	Stoneridge	Tioga HS	7:30	6:00
12/3-5	T.C. Tournament	Calvary Baptist	N/A	TBA
12/11-12	Sonora JV Tour.	Sonora HS	TBA	N/A
12/18-19	Tournament	Don Pedro	TBA	TBA
1/4	ABLE	Tioga HS	6:30	5:00
1/8	Hughes Academy	Tioga HS	6:30	5:00
1/11	Summerville (Fr.)	Summerville	N/A	4:30
1/13	Don Pedro	Don Pedro	6:30	5:00
1/15	Holt Academy	Holt	6:30	5:00
1/18	Summerville (Fr.)	Tioga HS	N/A	4:30
1/20	Lodi Academy	Tioga HS	6:30	5:00
1/22	Stockton Chr.	Tioga HS	6:30	5:00
1/25	Delta Charter	Delta	6:30	5:00
1/27	Able Charter	Able	6:30	5:00
2/1	Langston Hughes	Langston Hughes	6:30	5:00
2/5	Don Pedro	Tioga HS	6:30	5:00
2/8	Holt Academy	Tioga HS	6:30	5:00
2/10	Lodi Academy	Lodi	6:30	5:00
2/12	Stockton Chr.	Stockton	6:30	5:00
2/16	Delta Charter	Tioga HS	6:30	5:00

Tioga High Fitness Center

To Whom It May Concern:

Tioga High School has changed due to one class that has inspired and motivated students to be the best they can be. Weight training was introduced to Tioga five years ago and it has made a big impact on the lives of students. This class has helped students to push themselves to the limits in the gym and in the classroom. Unfortunately, with the weight training class growing there is a lack of equipment. With only having one classroom for this class, space is limited. If we had some more space the school could get new, updated equipment for the students. With that said, the school is looking for some donations to invest into a prefabricated warehouse to put on campus. With this new warehouse we can expand the class in size and in equipment. The new warehouse would not only benefit the students but the community members that currently attend classes and hopefully in the future could

host more community opportunities! We also have added an Aerobics class this year that uses the fitness facility, and hope to get the PE classes participating as well!

We are writing this in hopes that a local club or individual would look at what a great thing this is for our students and want to donate money towards it. We have estimated the cost between \$7,500-\$10,000. If you were, as an individual, to donate towards this building it would be a tax write off and a donator name plaque would go outside the building. We are turning to our community for help with this. Please let us know if you can or know anyone who could help. We are so excited at the thought of this happening here at our little school!

Regards,

Ryan Dutton
Principal, Tioga High School

Tioga Landscaping Class Needs Plants

DAWNELLE DUTTON

Tioga has been planting a lot of new plants around their campus in landscaping class. We are in need of big planting pots. Maybe you have some around your house that you no longer use? If you would like to drop them off

at Tioga we can give you a tax receipt. Or if they are big enough that you can't move them we can try bringing our kids out to get them. Please call the school at 962-4763 and we will arrange it. Thank you in advance!

R&R Mountain Enterprises, Inc.

LIC. #991183



CONSTRUCTION

- Paving & Concrete work
- Excavation
- Asphalt seal coating & repairs
- Lot clearing & site work
- Complete underground work
- Septic system installations & repairs
- Retaining walls, walk-ways, etc.

TREE SERVICE

- Hazardous removals
- Trimming
- Shaping
- Thinning
- Brush chipping
- Fire breaks & clearance
- Mistletoe removal

NURSERY

- Perennial, annual & vegetable plants
- Shrubs & Bushes
- Garden accessories
- Wildlife & drought tolerant plants
- Shade, fruit & landscape trees
- Potting soils, compost, etc.
- Landscape supplies
- Irrigation & plumbing supplies

**We Deliver Gravel
& Landscape Supplies**

FREE ESTIMATES



WE ACCEPT ALL MAJOR CREDIT CARDS
(VISA, MASTERCARD, DISCOVER & AMERICAN EXPRESS)

RAY ALBANEZ RON HESSLER

209-962-7407

13050 Boitano Road, Groveland, CA 95321 • Fax (209) 962-4987
downtoearth7407@gmail.com

LICENSED • INSURED • WORKMAN'S COMPENSATION

Tioga High Basketball

TIOGA HIGH JOURNALISM CLASS

The T-Wolves have a busy basketball schedule this December. Starting off the season with the girl's having their first tournament 12/3-5 in Turlock and the boy's tournament at Sonora High 12/11-12. Tioga's first home game is December 19vs.

Waterford. The girls play at 6pm and the boys play at 7:30. The Wolves next home game won't be until the end of Christmas break on 1-4 vs. Able charter. Both teams are hoping to have a winning season and to be the team to beat this year.

Tioga High S.E.E.K. Program

TIOGA HIGH JOURNALISM CLASS

The S.E.E.K program is an organization that was established to provide help to change the life styles of at risk youths. S.E.E.K stands for Seeking to Educate Endangered Kids. The program is designed

to have 3 meeting a year with 3 groups of kids at least 1 every 90 days. The goal of S.E.E.K is to help transform and give hope to the heart and mind of juveniles so they can be a positive contribution to society.

2015 Volleyball Season Ends

KATHY FOLLMER



As our volleyball season comes to an end, I look back and reflect on all of our accomplishments.

This season there was not one but two tournaments we competed in. The Mammoth Lakes Tournament was a wonderful experience and taught us so much about our game and ways we can improve. The Pacheco Tournament is my favorite and definitely plan on competing there again. We participated in the 49'ers parade,

had a bake sale fundraiser for Mountain Oaks and, most importantly, we raised over \$600 for Lindsay Seals at our Dig Pink game. We played 22 matches this season and with every game we got better! So, I want to congratulate all the girls on the team for a season well played; Jenn Harvey, Emily Kennedy, Jess Davis, Ashley Harrison, Kailey McCoy, Halei Belvail, Summer Avery, Ada Pollock and Audrey Simmons.

Tioga Landscaping

TIOGA HIGH JOURNALISM CLASS

Tioga High's campus is looking so much better thanks to the landscaping classes. Landscaping has made some campus changes. They have laid down gorilla hair and wood chips all around campus. The class is in process of making a pond in front of the gym. The

class is always looking for more equipment and tools to keep this campus looking its best. They are also in need of some river rocks or whatever rocks you don't want. Any donations will be highly appreciated by the hard working Landscaping class.

STUDENTS OF THE MONTH

Tioga High School Student of the Month



William Cook

Tioga's Student of the Month is William Cook. Will is a senior here at Tioga High School that has already started taking the necessary steps to join the United States Army after graduation in 2016. Will came to us at Tioga a few years

back from the valley and has really come into his own in terms of maturity and motivation after finding his career calling. He is our "Mr. Fix It" here at Tioga, and is currently placed in an Automotive Internship at The Tire Shop in Big Oak Flat, for which he receives high school credits for doing so. He has been a member of the Tioga soccer and track programs since becoming a Timberwolf, and has spent many hours helping serve members of his local community He currently works on the weekends at Evergreen Lodge as a member of the maintenance crew. He is well liked, respects his classmates and teachers at school, and comes to school with a smile and

Tenaya Elementary Student of the Month



Jenna Abbott

Tenaya's Student of the Month is Jenna Abbott. Mr. Egger says, "Jenna is an excellent student who always works hard, keeps a positive attitude, and is willing to help others." Jenna's parents are: Rob & Shelley Abbott of Groveland.

willingness to help others. Will should make an incredible addition to our military, bringing his work ethic and toughness to the table each and every day. We are very proud of Will and where he has come in the past few school years. He has made the effort to make his grades a priority and fully understands what it takes to make his dreams a reality. Every teacher asked this month mentioned it couldn't happen to a more deserving student. Thank you William for being such a proud member of the Timberwolf family! William Cook was nominated this month by his Principal at Tioga High School, Ryan Dutton.

Tioga High School 2nd Annual New Year 5k Run/Walk



Wear your Favorite Holiday Socks,

Wrap-up & Bring the Children, Harness your dog,

Run/Walk with your Family, Neighbors and Friends

\$30 entry fee

Support Tioga High School Basketball & Track Teams

Run Date: Saturday Jan. 2, 2016 Run Start Time: 9am

Run Start & Finish Line will be @ Tioga High School.

19304 Ferretti Rd., Groveland, CA 95321

To Register: Mail Registration Form & Check to:

Tioga High School 19282 Ferretti Rd., Groveland, CA 95321

Runners Name: _____ Age: _____

Address _____

City: _____ Zip: _____ Phone # _____

Shirt Size: Mens Shirts XS S M L XL XXL

Runners Liability Release forms will be signed day of race.

Registration is available day of race. However, shirts will only be guaranteed for preregistered runners. Pre-Registration Cutoff Date: Dec. 20, 2015

To be a sponsor at this run contact Tioga High School 925-719-5687 cost \$75

Vendor Table for after run sales also available \$10

WELCOME TO THE HOME IMPROVEMENT DIRECTORY

SQUEEGEE SERVICES

WINDOW CLEANING
SCREEN REPAIR
RESIDENTIAL & COMMERCIAL

JOHN WILSON
Owner/Operator
Licensed & Insured

Cell (707) 363-3947
PML Home (209) 962-4822

Moore Bros.
Property Development



- New House Starts
- Brushing
- Grading for Drainage, Septic Systems, and Driveways

Lic. #910885
call Alan at:
962-5339 or 770-7169

Sears

Karen Faught
Owner

Sears Hometown Store #3159
14691 Mono Way, Sonoma, CA 95370
Tel 209-532-3191
Fax 209-532-8334
Service & Parts 1-800-469-4663
www.sears.com

Locally Owned & Operated



License #545005

DURLAND ROOFING

- Re-Roofing
- Leak Repairs
- Inspections
- Gutters

Tim Durland, Owner

209 480-0097
P.O Box 1373
Groveland, CA 95321

Serving Groveland and East Bay

PLACE YOUR AD IN THE PML NEWS TODAY

**BUSINESS CARD ADS
FOR AS LOW AS \$19/MONTH**

**5" X 2" BW ADS
FOR AS LOW AS \$29/MONTH**

CALL 209.962.0342

Costa's Tree Solutions Certified Arborist #WE7496A



Steve Costa
Owner
Fully Insured/Bonded
C.C.L #1001392

P.O. Box 924
Groveland, CA
(209) 962-4468
(209) 768-4469 Cell

• slip covers •
• upholstery •
• blinds •
• shades •
• custom window treatments •

Need Help?

ANNA'S INTERIORS
962-5421



ABNEY CARPET
All Your Flooring Needs

Bob Abney
(209)765-3313

17867 Highway 120
Big Oak Flat, CA

Call For Appointment



HANDYMAN FOR HIRE
"The Small Job Specialist"



Doing Building and Repairs in PML Since 1976
WHERE ONE CALL CAN DO IT ALL!!!
Working by the Hour to Save you Money...

ETC = Our Cabin Care Services Available

- General Maintenance
- Deck Repairs
- Property Checks, weekly or ?
- Interior Repairs
- Exterior Repairs
- Painting
- And more, just ask

Member of Yosemite Chamber of Commerce
omni1handyman@aol.com

No **(209) 962-5463** License

HOPE'S TREE SERVICE Lic# 987171

EXPERT TREE SERVICE, PRUNING,
REMOVAL, CUT & STACK OR HAUL AWAY
CERTIFIED ARBORIST

Proud member of the Yosemite Hwy 120 Chamber of Commerce

Visa We accept credit cards



HOPE'S TREE SERVICE
Fully Licensed and Insured
PO Box 1072
Groveland CA 95321

**209.878.3096
or 209.225.3191**

LOREN SNIDER'S TREE SERVICE



Serving Your Tree Needs

Removal & Pruning • Clearing & Hauling
Chipping & Stump Grinding • Mistletoe Removal

Home: 209-878-3828 • Cell: 209-402-9797

Non licensed • 27+yrs Experience
General Liability Insurance

Weed Control

Now is the time to spray weeds

Free estimates, great prices, fast service. We are the leader in weed control!

- Firebreaks and bare ground
- Driveways and roadsides
- In and around ornamental plantings
- Any place you do not want weeds
- Save yourself time and money.



Also:

Star thistle
Poison oak
Blackberries

962-5710
800-464-3772

AIRPORT MINI-STORAGE



60 Units - 6'x8' to 10'x30'
Open 7 a.m. to 9 p.m. Daily

Located on Elderberry Way off Ferretti Rd. near PML Airport

209/962-5360

JAMES PRICE CONSTRUCTION

CA. Lic. No. 591995

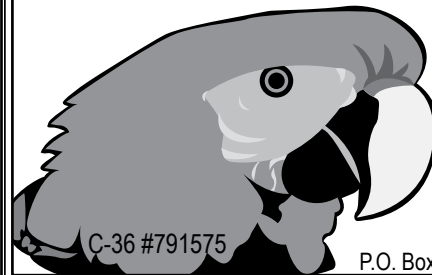
DECK SPECIALIST

- Professional Machine Sanding •
- Pressure Wash and Sealing •
- Pickets & Metal Railings Installed •
- Hardware Retrofit "For a Safer Deck"
- Repairs and More •

Call 209-962-0486

email: designbild@earthlink.net

PARROT PLUMBING MILT LAKE



Owner / Operator

209-852-2267

Serving Groveland, Don Pedro & Coulterville

HOME PLUMBING REPAIR SEMINARS

call (209) 962-0850 for date and time

P.O. Box 127, Coulterville, CA 95311 • Email partman@inreach.com

Bert's Weedeating and Lot Clearing

◆◆ 962-6724 ◆◆



BUSINESS HOURS

Monday - Friday:
7:00am - 5:30pm
Saturday: 8:00am - 2:00pm
Sunday: CLOSED

Well Stocked Parts House:

For All of Your Heavy Duty Needs!

- Heavy Duty Brake Linings
- Baldwin & Fleetguard Filters
- Delo Oil
- LED Lights
- Air Brake Valves & Hoses
- CB Radios, Antennas & Accessories
- Logging & Dump Truck Parts
- Hydraulic Hose Shop

Full Service RV Repair Shop:

- Commercial House & Starting Batteries
- Full Service Chassis & Lube Center
- Electrical & Plumbing Repairs
- Interior & Exterior LED Lighting
- Complete Body Damage Repair Shop
- Solar Power Systems & Inverters
- Complete Detailing Services
- Warranty & Insurance Work Accepted

Mobile Roadside Services Available

18968 Waylon Way
Sonora CA 95370

Call or Email us to schedule an appointment today!

(209)-532-7994

EMERGENCY CONTACT: (209)-559-3840

Email: shop@sierraheavyduty.com

Visit Us Online: www.sierraheavyduty.com

Over 50 Years of Experience!



All Major Credit Cards Accepted.

(See Page 39 for FREE Offer)

green tree
property services



- HOUSE PAINTING
- WINDOW WASHING
- HOUSE CLEANING

209.962.4445

LICENSED | BONDED | INSURED | CSL440341

LaMar EQUIPMENT & HAULING

Job Site Storage Containers 15 Ton Hydro Crane Heavy Equipment Hauling Irrigation & Electrical Trenching Landscaping Materials Water Truck Septic Install	End Dump Manlifts Rock Hauling Lot Clearing Demolition Back Hoe DG Dozer Log Hauling	Post Hole Digging Concrete Demolition Towable Trailers
---	---	--



(209) 962-0500

Mobile: 770-5667

LanceMarchetti@yahoo.com

Cobblestone Homes

- Custom Homes • Additions • Remodels •
- Specializing in high country design/build since 1989 •

We provide superior craftsmanship, attention to detail, follow-up, and great customer service.

Craig Lawrence- Owner
209.404.0290 Lic. 564665

A AMERICAN ELECTRIC & SERVICE CO.

COMMERCIAL • INDUSTRIAL • RESIDENTIAL

209.962.7374

ELECTRICAL CONTRACTORS LIC. # 465220

PAINTING

Bay Cal

LIC. 923832

Exterior/Interior
Deck Repairs
Wood Repairs
Remodels

SEE COLOR AD PAGE 40

209.962.4777

www.baycal.com • email: davec@baycal.com

Pine Mountain Lake Electric

Residential and Commercial Electrical Contracting

State Contractor's Lic. 404081



TOM KATOSIC
209/962-6949

P.O. Box 25
BIG OAK FLAT, CA 95305

REIMERS CONSTRUCTION

PROUDLY SERVING GROVELAND/PML SINCE 1987

DESIGN/BUILD • EXPERT REMODELING • SPECIALIZE IN KITCHEN AND BATH
CEMENT SIDING • COMPOSITE & REDWOOD DECKS • WINDOW AND DOOR REPLACEMENT

(209) 962 5682



BEFORE



AFTER



This project designed and constructed by Reimers Construction

Email: wwrpar@gmail.com
CA.LIC. 590514

PML MINI STORAGE

65 Units Ranging From 5'x5' to 12'x30'

- REASONABLE RATES •
- WELL LIGHTED •

Located one-half block off Ferretti Rd. on Elderberry Way towards Airport

209/962-6220

Ken's Asphalt

Lic. 708310

Grading • Paving • Chip Seal • Road Oil

Seal & Slurry Coatings • Crafcro Hot Rubberized Crack Sealer
Driveways • Private Roads • Subdivisions

DOING
BUSINESS
SINCE
1985

DRAINAGE PROBLEMS?

We have the Solution!

Erosion Control • Riprap (6-12" Rock) • Asphalt Curbing • Base Rock

Complete Concrete Services

- Stamped Concrete and Colored Concrete
- Stained Concrete
- Cleaning & Sealing
- Retaining Walls

- Driveways
- Walkways
- RV Pads
- Patios

532-0800 • 962-5644 • 768-7395 Cell



Voted
 "Best Flooring/Carpet" and
 "Best Window Coverings"
 2006, 2007, 2008, 2009, 2010, 2011,
 2012, 2013, 2014



- Carpet
- Laminate
- Vinyl
- Hardwood
- Ceramic Tile
- Countertops
- Window Coverings



- 25% off Hunter Douglas
Window Coverings
Or
Free Furniture Moving
with your flooring
purchase
*see store for complete details

263 S. Main Street, Angels Camp, CA 95222 (209) 736-8077
 12900 Mono Way, Sonora, CA 95370 (209) 532-1696
www.pinnellscarpetoneangelscamp.com
www.pinnellscarpetonesonora.com

THE NEW SPARKY IN TOWN IS NOW
 THE OLD MOUNTAIN HAND!
 THANKS FOR 5 GREAT YEARS!

MORRISON ELECTRIC, INC.
David Morrison

An Electrical Service Company
 Trouble-shooting • Repair • Remodel • Additions
 New Construction • Large Projects

I return phone calls, I show up on time,
 I don't quit until the problem is solved.

Contractor's Lic # 967749 • General Liability Insurance
962-0481 david@morrisonelectric.com

Over 25 years of construction experience Highly Disciplined and Dependable

We have expertise in all phases of construction including:

- Decks and staircases
- Dock and gangway repairs and replacement
- Kitchen and bath remodels



Hilltop Homes

General Building Contractors
 Lic #931547 Fully Insured

209-986-7755

Pine Mountain Lake Homeowners Steve and Cindy Watts



Waters Plumbing Heating & Air

FAST All work 100% Guaranteed!
SAME DAY SERVICE*

*IN MOST CASES




Contractors License #447108
www.watersplumbing.com

"I want you to know that our technicians will give you a price before we start the job." —Wayne Waters

Groveland (209) 962-0990

HEAVENLY CLEANING SERVICE

PROFESSIONAL HOUSEKEEPING
AND CARPET CLEANING



Going on our 20th Year!

HOME OFFICE CARPET WINDOWS

RENTING YOUR HOME TO VACATIONERS?
 LET US HELP MAKE IT EASIER
 BY DOING MORE THAN JUST CLEANING

WE OFFER TRASH REMOVAL, DECK BLOWING,
 BBQ CLEANING & CHECK PROPANE, AND LAUNDRY SERVICE
 WE TAKE PICTURES OF ANY DAMAGES

GIVE US A CALL TODAY – 209.962.6418

heavenlycleaning@mail.com • FULL LIABILITY COVERAGE



Call your local Pro!

Jack Proctor

Heating &
Air Conditioning

- Complete commercial & residential services
- Service & repair - all makes and models
- Heating & ventilation
- Heat pump specialist
- Air conditioning troubleshooting expert
- Installation and remodeling
- Upgrading & energy efficiency
- We offer the same low rates 24/7

OFFICE
209-962-6471

CELL
209-678-8915

License #313926
Since 1975

Before replacing your unit, ask us for a 2nd opinion.
 Chances are, we CAN repair it!

CLASSIFIEDS

Submission deadline is the 15th of the month. Submit at www.PineMountainLake.com
Cost is \$0.30 per word. Ads run until canceled by advertiser.

COMMERCIAL RENTAL/LEASE

COMMERCIAL WAREHOUSE/ SHOP/STORAGE

Ferretti Rd. near Airport. Easy access, 12'x20' roll up doors, insulated, 220 and 3-phase available, vented skylights, restrooms. 2 bay, 1400 sq. 600.00 per month: 3 bay, 2100 sq. 900.00: 5 bay, 3500 sq. 1500.00. Includes water and sewer.
209-962-6014
ask for John, Owner/Broker

18569 HWY 120, GROVELAND



4000 sq. ft. with great highway exposure, new parking lot to be constructed adjacent to the property for the benefit of future tenants. Call agent for details. **650-520-1022**

GRAZING PASTURE

in downtown Groveland. For Rent at \$300.00 per month or \$100.00 per horse. Call Terry **650-520-1022**

LAND FOR SALE

PRIME 1.74 AC LOT NEAR AIRPORT

Gentle slope. Southern exposure with panoramic view. Very private. Sewered. U11/L56 Elderberry Ct. For more info call Cell **209-768-4406**

TWO LOTS FOR THE LOW PRICE OF \$12,000 - ACREAGE OF APPROXIMATELY 0.5 ACRES

Enjoy tennis, boating, golf, horseback and you can fly to Pine Mountain Lake enjoy dining at the club and drive to Sonora and Historical Columbia. Seller will consider all offers. Call: **510-301-4355**

GOLF COURSE LOT
Unit 7-29, 6th Fairway,
View, Buildable,
PRICE REDUCED \$17,000
MUST SELL • 415-897-2791

FOR SALE

ANTIQUE ROLL TOP DESK
and Swivel Chair (cane seat)
\$500 ...call **209 962 0502**

**1989 ALFA ROMEO SPIDER
VELOCHE** Red Black Top
Convertible - good condition. 89,000 original miles, second owner, asking \$10,000
or BO. **209-768-5922**

POOL TABLE WITH PING PONG TOP
addition. Oak dinner table with two leaves. Refrigerator - white with top freezer. Dishes, silverware, etc.
209-768-5922

SERVICES

FLINCHUM MASONRY
Small jobs and repairs
209-962-6084

RONNING ROOFING
Call Joe for all your Roofing and Gutter needs. Licensed, Bonded, and Insured. License # 976739
209-962-6842

**ELECTRICAL
A AMERICAN ELECTRIC &
SERVICE CO.** Lic. #465220
209/962-7374

**BERT'S WEEDEATING
AND LOT CLEARING**
962-6724

GOLD COUNTRY PEST CONTROL
Nobody beats our prices. No weeds too tall. No pests too small. Local family owned and operated.
**209-928-1905, 209-352-6067,
209-770-5531**
Licensed Bonded Insured

HANDYMAN - For removal of unwanted items. **Also power washing and tree trimming available.** Call Mike, very reasonable rates. Prompt Service.
209-962-0777

SERVICES

**FOR YOUR REVERSE
MORTGAGE, REFINANCE, NEW
HOME LOAN PURCHASE NEEDS**
Call GREAT CENTRAL MORTGAGE Corporation at **209-962-6239** or Main Office **209-632-3200**.
CA BRE License #01135634,
CA BRE License Information # 916-227-0931. NMLS #237919

**PROFESSIONAL PROPERTY
MANAGEMENT**
RE/MAX Yosemite Gold
Patricia (Tish) Fulton BRE# 00760019 Property Manager
Certified by California Association of Realtors **209-962-0837**

LOVING PET CARE in my home or in yours - garden care also available. Call Barb **962-5653** or email at shadkitty12@gmail.com

COSTA'S TREE SOLUTIONS
Steve Costa, Owner
Fully Insured/Bonded
C.C.L. #818373
209-962-4468
Cell **209-768-4469**
Certified Arborist #WE7496A

LINDA'S LOVING CARE
Local, Reliable, Caring and Responsible - Caring for a loved one - House sitting - House cleaning - Rides to Doctor's appt., etc. Call Linda **209-985-2363** cell

**FURNITURE & CHAIR REPAIR/
WOODWORKING**
Retired Cabinet-maker will repair all types / kinds of furniture
962-7604

GOT WEEDS?
Contact Jim Atkins at **209.985.4376**. Lot Clearing, Hauling, Dump Runs, Weedeating. Local Guy. References available.

COMPUTERS custom built, upgrades, trouble-shooting, free consultation. **209/962-7110**

SERVICES

LOREN SNIDER'S TREE SERVICE
General pruning, ornamental pruning, mistletoe removal, tree removal, dump truck, chipper, stump grinder, local references, Non Licensed 27 + years experience
General liability insurance
PREFERRED PML VENDOR
209-878-3828 or 209-402-9797

BIG JOHN HANDYMAN SERVICES
Yard Maintenance, House Maintenance and moving households Call John **962-6163**

HOMEOWNERS INSURANCE
I moved to Pine Mountain Lake from the Bay Area with 23 years as an independent insurance broker. I write business with most standard Insurance Companies for California homeowners. Call, fax or email me for a quick quote and get that personal local service you deserve.
Commercial Business Insurance Agency, Inc. Jess Skelley
CA Broker Lic# 0F50039
209-732-3514 office
800-726-4889 fax
www.cbi-agency.com
email jess@cbi-agency.com

GET YOUR AD NOTICED



Place a photo of your item for sale (car, truck, house) with your classified ad for just \$10. Call 962-0342 today.

*Happy Holidays
from our Family
to Yours*

VACATION RENTALS

LIFE'S A BEACH!
Vacation at our Tropical Paradise in sunny Ewa Beach, Oahu, Hawaii
NaniMoanaHale.com **(209) 962-4396**

PANORAMIC LAKEFRONT
boat dock, decks, air, 3bd/2ba, Beautiful Views **650/961-6334**

RENTALS WANTED

EXCELLENT TENANTS
w/excellent credit and rental history looking for homes to rent. Owner approves tenant before placement.
Call *Yosemite Region Resorts.*
800/962-4765

GET IT SOLD OR LET PEOPLE KNOW WITH A CLASSIFIED AD IN THE PML NEWS

\$0.30 per word, a photograph for only \$10 additional.
Submit your classified online at www.pinemountainlake.com

PMLA LOTS FOR SALE

PMLA OWNED LOTS FOR SALE:

2/020	Mueller Drive	\$500*
2/333	Mueller Drive	\$500
4/232	Point View Dr	\$500
6/056	Cottonwood St	\$500
7/062	Ferretti Road	\$500
7/063	Ferretti Road	\$500
7/069	Ferretti Road	\$500
8/006	Sunnyside Way	\$500*
10/007	McKinley Way	\$500

* Sale Pending

For further information regarding this property please contact PMLA at **(209) 962-8600**



Fast Internet
 from \$30 a month
 MACs and PCs repaired
 \$55 an hour

Since 1988
Throckmorton
 enterprises
 Monday-Friday 9am to 4pm

18800 Main St. (Highway 120) • Groveland CA 95321 • 209-962-7308

Throck.com

Between carwash and fire station.

WWW.PINEMOUNTAINLAKE.COM

PROTECT YOUR HOME WITH US!

HAVING TROUBLE FINDING INSURANCE FOR YOUR HOME?

Has your Homeowners Insurance been cancelled or non-renewed due to your location?



WE MAY HAVE THE ANSWER FOR YOU

Even if you live in a forested area! Don't settle for cut-rate insurance

HAVE PEACE OF MIND!

Knowing that your home is protected by an "A+" rated insurer
Call for a Free Quote!



Eason Insurance Agency, Inc.

209.383.7322

9AM – 5PM Mon – Fri • 9AM – 1PM Sat

email: homeins@easoninsuranceagency.com

CA Lic #0C97581

Locally Owned since 1950

YOUR ONE-STOP SHOP FOR
all your pest control services

PEST CONTROL: HOME, BUSINESS AND INDUSTRY



LAWN FERTILIZATION AND COMPREHENSIVE LAWN CARE



TERMITE INSPECTIONS, REPAIRS AND FUMIGATIONS



TREE AND SHRUB CARE, AND BARK BEETLE CONTROL



TERMITE TREATMENTS AND MONITORING



WEED CONTROL AND FIRE BREAKS



BED BUG TREATMENT



DECK REPAIR/REPLACEMENT (LICENSE #922758)



OUR REPUTATION IS IMPORTANT TO US AND YOUR COMMUNITY.
Call now for a free estimate!



Seth Kun
skuhn@clarkpest.com



(209) 770-7733
clarkpest.com

Yosemite Gateway ANTIQUES & APPAREL

Clothing Outfitters & Unique Boutique



Collectibles & Consignment

**NEW STORE LOOK & INVENTORY • WE HAVE ADDED CLOTHING
COME SEE US FOR YOUR CHRISTMAS & HOLIDAY GIFT SHOPPING**



OPEN WED-SUN 10am – 6pm • Located in the MarVal Market Shopping Center Main St.
VISIT OUR ONLINE STORE AT www.YosemiteGatewayAntiques.com • 209.962.6184



Gina Giampietro Hernandez
OWNER/REALTOR®/NOTARY PUBLIC
BRE 01226555
408.506.6944 MOBILE
209.962.7156 OFFICE
GinaPMLRealty@gmail.com

**BEAUTIFUL
HOMES FOR
SALE!**

*I'm Moving Properties...
Let Me Move Yours*



View listings & property search online at www.PMLRealty.net

HORSE PROPERTIES/AIRPORT AREA

STUNNING LIKE NEW MODEL RANCH ESTATE \$539,000



13245 CLEMENTS RD. U12/L128 4 BDR 2 1/2 BA 2 CAR 1.3 ACRES 2581 Sq ft Absolutely impeccable home! Must see this stellar 2005 jewel with classy / elegant modern features. Enjoy single level living at it's finest with one upper level bonus room and oversized 2 car garage on 1.3 Acres of spacious land that can accommodate horses or simply board your horse across the street at Pine Mountain Lake stables, also within 1/2 mile of PML airport. Notable high ceilings, w/ accent windows, crown molding, greatroom, granite and stainless in kitchen, gorgeous hardwood floors, front covered porch and large back trex deck, lrg master suite with patio door, jetted tub, beautiful tile, a modern new home style at a great price! www.tourfactory.com/1448907

BEAUTIFUL SINGLE LVL HOME NEARLY 2 AC \$470,000



13340 CLIFTON WAY U12/L158

3bd/2ba/2car 1658sf Solar pwr'd home on Dist & well. beaut. entry & Grt Rm w/wd burn stove & stone fp. Open lg kitch. slate stone flrng, brkfst bar, Italian grnt slab cntrs, SS appls: wine frig, dbl oven, Bosch DW, Wolf gas stove & Zephyr Hurricane hd. Tankless WtrHtr, 100 yr roof, fenced garden area & entire backyard. Lg deck, hot tub. 12x28 Tuff Shed, beautiful trees, too many features to list www.tourfactory.com/1401854

FANTASTIC VIEWS OF LAKE, YOSEMITE MOUNTAINS & GOLF ALL IN ONE LOCATION! \$652,000



12811 MOONLIGHT CT. U1A/L4A 4/5 BDR 4BA 2 CAR .82 ACR Wow! Like new app. 3000 sf, built in 2004 extraordinary home in Pine Mountain Lake w/lake views, fabulous 4th of July fireworks balcony view, Yosemite mtn views & green golf course views, all-in-one on a private lot on court near amenities including lake, golf, pool, restaurant, pickleball courts & more! Gorgeous 3 level w/vaulted ceilings & lake views from living area, Mstr & Guest stes ea w/private covered patios, spacious baths, formal slate entry & fp/c, upper level 2nd Guest Ste, Enormous open kitchen & DineArea w/ lake views, dwnstr Lrg 5th bdrm/office/game rm w/balcony/deck. Storage galor! Want it all? Here it is! www.tourfactory.com/1448902

PRIVACY!! TREE HOUSE CABIN \$399,000

20063 PINE MTN DR. U13/L263 Family cabin! 4-5 bd/2.5 ba, 3 sep sleeping levels, 2 bonus rms, pool table, wet bar loft area, ex lrg gar, central HVAC, 2 frplc, must see!

www.tourfactory.com/1281210



BEAUTIFUL CABIN HOME W/ VIEW! \$370,000

20064 RIDGECREST WAY U13/L294 Every rm is spacious! 3bd/3ba 2car 3320 sf. Huge kit/pntry, 3 deck areas, 2 bonus rms, pool tbl, wet bar, trees, central HVAC, 2 fp, great value - must see!

www.Tourfactory.Com/1354050



GOLF COURSE TOWNHOME \$119,000

12699 JUNIPERO SERRA #3 at PML Golf Course 2 spacious bd/3 full ba/ tall ceilings, 3 deck areas, golf course views & at golf course entrance in beautiful Pine Mountain Lake.

www.tourfactory.com/1248349



SOLD!!! \$220,000

20704 POINTVIEW DR. U4/L260 3bd/2ba/2 car/bonus rm loft



LOTS FOR SALE

170 BOITANO RD U3 L170 .22 ac beautiful corner lot \$68,000
20520 FERRETTI RD. U3 L29 2 merged lots. 474ac \$20,000
FERRETTI RD. U6 L235 .49ac, \$20,000
CHAFFEE CIR U1 L99 .25 acre Beautiful & flat 1/2 blk from GC \$15,000