

PINE MOUNTAIN LAKE NEWS

NOVEMBER
2014



FIFTY
CENTS

THE OFFICIAL NEWSPAPER OF PINE MOUNTAIN LAKE PROPERTY OWNERS

TABLE OF CONTENTS

Administration	2-10
The Grill	14-15
PML Clubs/Activities/ Recreation	13, 16-17
Community Calendar	18
Homes on the Hill	
Real Estate	19-26
Community Corner	27-31
	34-37
School News	37
Home Improvement	
Directory	38-42
Classifieds	43

PRSR STD
U.S. POSTAGE
PAID
Permit 451
STOCKTON, CA

Change Service Requested



Holidays
at

THE
GRILL

at Pine Mountain Lake

**WINTER
COMPOST
HOURS**
SEE PAGE 2

**THE GRILL
WINTER
HOURS**
SEE PAGE 15

**THANKSGIVING CELEBRATION
& UPCOMING EVENTS AT THE GRILL**
SEE PAGES 14-15





The Pine Mountain Lake News, established July 25, 1973, is printed monthly for residents of Pine Mountain Lake and vicinity by Pine Mountain Lake Association, Groveland, California 95321.

SUBSCRIPTION RATES:

Co-owner subscription: \$3 per year
Single copies: 50 cents each
Single mailed copies: \$1.35 each
For non-members: \$10 per year

SUBMISSION DEADLINE 10th of the month by 4:30 PM

Late submissions not accepted

Visit www.pinemountainlake.com for ad rates and submission guidelines or e-mail: PMLNews@SabreDesign.net. For the mutual benefit of all property owners, the Pine Mountain Lake News reserves the right to edit all copy submitted for publication. The Pine Mountain Lake News is a private enterprise, not a public entity, and as such is entitled to reject advertisements or articles in the best judgment of its editor or publisher, despite a probable monopoly in the area of its publication. Pine Mountain Lake Association is not responsible for, nor does it guarantee the accuracy of, information contained in any ad placed in the Pine Mountain Lake News.

SABRE DESIGN & PUBLISHING

Design/layout

DAVID WILKINSON
Publishing Editor

CHRISTINA WILKINSON
Associate Editor

BETHANY WILKINSON • JUDI WILKINSON
Production

PINE MOUNTAIN LAKE NEWS

P.O. Box 605
Groveland, CA 95321
Tel: 209/962-0342
Fax: 800/680-6217

E-mail:
PMLNews@SabreDesign.net

BOARD OF DIRECTORS

Jerry Dickson (President)
Mike Gustafson (Vice President)
Wayne Augsburger (Secretary)
Dana Chavarria (Treasurer)
Brian Sweeney (Director)

GENERAL MANAGER

Joseph M. Powell, CCAM, CMCA, AMS

CORRESPONDENCE TO DIRECTORS

Pine Mountain Lake Association
19228 Pine Mountain Drive
Groveland, CA 95321
PMLABoard@pinemountainlake.com

ADMINISTRATION OFFICE HOURS OF OPERATION

Monday - Friday 8:00 AM - 4:30 PM
Tel: 209/962-8600

President's Corner

BY JERRY DICKSON • PMLA BOARD PRESIDENT

This month I'd like to take this space and talk about all the people that make PMLA a well-functioning community and common interest development. First, we have about 140 employees including all the seasonal employees that make the Lake, Marina, Pool, and Stables operate during the summer months. The primary job requirement of all our people is to make your experience with them pleasant, even when they are collecting money from you. They work hard to make PMLA a well maintained place with excellent service. Please take the time to show your appreciation of their efforts. Thank them for their service when they have treated you well and with respect, which we hope is all of the time.

Not all of our employees interact with the public. Our Maintenance and accounting staff don't have much of that opportunity but they are very important to us and would also appreciate a thank you when you get the chance.

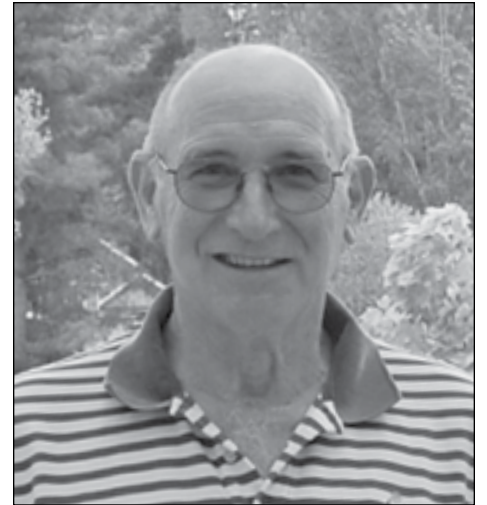
The next group that makes us work is our volunteer committees. We have Budget and Finance, Covenants, Editorial, Environmental Control, Long Range Planning, and Water Fowl Management. They provide invaluable advice and service to the Board of Directors which we could not afford to have paid staff do. This community has a wealth of wisdom and experience among our members and it is wonderful that they would put in the effort be of service to all of us. These

people deserve a giant thank you from all of us members.

The last group of that I would like to recognize is all of the leadership that is volunteered to the 25 clubs recognized by PMLA and the Groveland wide organizations including the Historical Society, Library and Museum, Helping Hands, readers at Tenaya, Pine Cone Singers and Players, and many more. All of these require chair-persons and in most cases treasurers. The benefit and joy that these clubs and groups bring to all the participants and beneficiaries is beyond measure and improves the quality of life to those that live or visit this community.

Don't take all of these volunteer groups for granted. Do all you can to join, participate and do the work that will make your selected group or groups successful. This community is a more vibrant place from all of this volunteerism. There also is the sense of accomplishment and personal satisfaction that comes from giving of yourself for the benefit of community. It makes you feel good and the science says that will make you live longer and more happily.

Last month I encouraged all of us to get out and take advantage of our amenities. This month I would like to encourage members to get out and volunteer their labor, brains, leadership, and enthusiasm to the community that you have chosen to join by buying property in PML.



Jerry Dickson, PMLA President

HOURS OF OPERATION

Please note the hours of operation for the following amenities:

COMPOST & ARCHERY RANGE

NOVEMBER THRU MARCH
TUESDAY THRU SATURDAY
8AM TO 4PM
WEATHER PERMITTING

SHOOTING RANGE

TUES, THURS, SAT
9AM TO 3PM

PLEASE NOTE Hours may vary depending on weather conditions, safety concerns, or other situations beyond control. Archery and Gun Range users must check-in with compost attendant.

**HOURS SUBJECT TO CHANGE
WITHOUT NOTICE.**

**Call the Main Gate
at 209-962-8615.**

On the Cover



This month's cover features The Holidays at The Grill at Pine Mountain Lake.

Celebrate Thanksgiving or Christmas at The Grill this year.

See pages 14-15
For more details

General Manager’s Message

BY JOE POWELL, CCAM, CMCA, AMS, GENERAL MANAGER

2015 Budget and Assessment!

Well another annual October budget meeting has come and gone, and your Board of Directors and management team diligently reviewed every line item in preparation of the final budget draft for the coming year.

The Board and management worked hard to prepare a budget that allows for the proper maintenance of the facilities and common areas, operation of the Association and provides the excellent level of service our members have come to expect. In recent years, we have been able to reduce costs through reductions in headcount, safety programs, and thoughtful use of our funds. Nevertheless, other factors contribute to overall increases, such as lot mergers, refurbishment and repair of common areas, and the rising cost of materials and supplies. We will continue to find savings where we can and implement new methods of efficiency so that we can provide the same level of service to our members going forward.

I would like to thank our Budget and Finance Committee for their diligent review and assistance during this process. I know that the Board took their recommendations seriously as did I. Having multiple reviews of the proposed budget, only serves to improve it with each iteration.

The final draft of the 2015 Budget is scheduled for approval at the November monthly Board meeting. The assessment and budget package will be finalized and mailed out to the membership at the end of this month.

Impacts of the Increase in PML Wildlife

The topic is PML Wildlife and I do not mean the fun we all have at the 19th Hole Lounge on Saturday nights. In the September issue of the PML News, we focused on the local wildlife. The impact of the drought and the Rim Fire has increased the number of critters who have set up residence in our community. PML is located in the backyard of these animals and from time to time, they will come in contact with members and guests. The goal is to work to reduce the amount of close contact we have with wildlife and any negative impacts caused by those animals who are out foraging or causing damage to property.

Unfortunately, many members, renters and guests think of the wild animals as exhibits in a large petting zoo and some are getting way too close to them. The other issue is that members do not think about the wildlife when they leave their garbage cans and pet food outside. Bears and raccoons love to forage through garbage cans. They make a mess, stir up the local dogs and damage property. We have had a few close calls, where members found themselves nose to nose with a large bear. Good ol Yogi is one of our big black bear who loves to roam around scrounging through garbage cans. Our Main Gate Department of Safety gets a frantic call from a member or renter about a bear in the front yard, in the garbage and the caller is demanding that our staff do something. Last month, we had an adult brown bear up in a tree on the #14 hole at the Golf Course. Our staff quickly put up a barricade, or “bear-a-cade” as they coined the term.

Unfortunately, there is not much we can do other than recommend that you keep your garbage cans indoors along with pet food or anything else that may attract them. We call the local game warden to notify them of bear and mountain lion sightings if they are close to homes. The game warden and Fish and Wildlife Department will not take action unless a bear or lion attacks or is in a garage or home and causing damage. The best we can do is to reduce the attraction and store food and garbage properly.

Feeding wild animals is even more hazardous. Artificial feeding is hazardous because it concentrates wildlife into very small areas increasing the risk of infectious parasitic, and nutritional diseases, predation, and conflict with humans. These conditions can act alone or in combination to the detriment of local wildlife populations.

- Animals that spend all day eating snack food get a one-sided diet, and may get sick, die or become malnourished.
- Animals that have learned to take human handouts may hang out near the road - where they are more likely to be killed by cars.
- Feeding animals can be dangerous for people. Animals can turn into beggars and sometimes bite, swipe or gore the person feeding them.
- Wild animals carry fleas and ticks that may transmit diseases like tick fever and bubonic plague to humans.
- Feeding animals such as deer may also attract their predators, such as mountain lions, putting people and their pets at risk.
- Feeding wildlife may cause some species to abandon their normal instinctive or migratory behaviors.
- It is illegal in California to feed big game animals (deer/bear), or to disrupt the normal feeding patterns of any wildlife. **IT IS AGAINST THE LAW AND PUNISHABLE BY UP TO SIX MONTHS IN JAIL, \$1,000 FINE OR BOTH.**

Authority: California Code of Regulations, Title 14, Sections 251.1 and 251.3.

So please keep the wildlife in PML wild! It benefits us and them.
Wishing everyone a Happy Thanksgiving!

Submission Guidelines

The PML News is the Official Newspaper of Pine Mountain Lake Property Owners

The PML News is dedicated to reporting PML Association business and PML Association news to Pine Mountain Lake Property Owners.

The PML News receives more than 100 Tuolumne County/Groveland community related submissions each month. All such community related articles and notices will appear in the PML News on a SPACE AVAILABLE basis and at the DISCRETION of the PML News Publishing Editor.

DEADLINES

Advertisements must be received IN FULL (text, MLS info, images, logos, etc.) by the 10th of the month for the following month's edition. Only advertisements received in full will be guaranteed to be published in that month's edition. NO EXCEPTIONS.

MEDIA ACCEPTED

email

SOFTWARE

InDesign, Microsoft Word, Photoshop, Illustrator or PDF.

TEXT/GRAPHICS

Handwritten text is not accepted. Material composed completely of capital letters is not accepted. Please use uppercase and lowercase letters in composition. Ink jet printed images are not accepted. Images are accepted ONLY as camera ready art, original photos (to be scanned) or as JPEG, TIFF or PDF files created with above listed software. All scans and bitmap images must be in TIFF or JPG format at least 200 dpi at 100% (300 dpi preferred). Ad files are stored for 90 days from first run date. Older ads that have not been running must be resubmitted. (See Display & Insert Advertising Contract “Design and Preparation Charges.”)

E-MAIL TEXT/GRAPHICS

Text/graphics may be delivered as e-mail attachments via the Internet. Send to pmlnews@sabredesign.net.

AD DESIGN and PROOFS

Ads that are requested to be sent to other periodicals require a usage fee from the advertiser (see Display & Insert Advertising Contract “Design and Preparation Charges”). Proofs are available upon request and final proof approval for all ads is expected within 24 hours. Changes made are LIMITED to typographical or graphic placement errors. NO OTHER ADDITIONS OR CHANGES WILL BE MADE.

SUBMISSION DEADLINES

Articles — 10th each month
Ads — 10th each month
Classifieds — 15th each month

NOTICE

The Pine Mountain Lake News, established July 25, 1973, is printed monthly for residents of Pine Mountain Lake and sold in the Groveland, CA 95321 area. Members can access the PML News monthly edition online at www.PineMountainLake.com. Every month the newest edition of the PML News is posted online before the first of each month. Interested parties can subscribe to the traditional “hard copy” and receive a copy by mail each month.

The PML News is mailed to approximately 3500 PML property owner households each month. Up to 500 copies are rack-sold in the local Groveland area. Our circulation reaches approximately 1200 full-time, resident, PML property owners and approximately 2300 “weekender,” non-resident, property owners who maintain primary residence in Northern California, in Southern California, or in other states. For more information regarding the PML News, please call the PML Administration

Office at (209) 962-8600. We greatly appreciate your contributions but please note that the PML News fills up very quickly – often by the 7th or 8th of the month (long before the 10th deadline). To ensure that your submission is reviewed for publication please submit in full and as early as possible. Please remember that the PML News is limited in capacity and your submissions are reviewed on a first-come-first-served, space-available basis.

We publish all PMLA related submissions such as Board & Management Business, Clubs, Activities & Events. Where space remains, we publish non-PMLA related submissions in our “Community” section.

We do our best to provide timely news. If you experience delayed delivery or have misplaced a particular edition, please visit us at the PMLA website www.pinemountainlake.com for a downloadable PDF of the News posted by the 1st of the month and a downloadable PDF list of ad rates.

VISIT US ONLINE!
www.pinemountainlake.com



PINE MOUNTAIN LAKE
209/962-8600
www.pinemountainlake.com

ADMINISTRATION OFFICE HOURS
8:00AM TO 4:30PM – MON THRU FRI
OPEN AT 8:45AM SECOND TUES OF EACH MONTH

PAY PHONE LOCATIONS

In an emergency, call 911

- Campground (restrooms)
- Dunn Court Beach
- Lake Lodge

Press *81 on any Pay Phone to contact Main Gate.

- Main Gate (restrooms)
- Marina
- Stables
- Tennis Courts (Pine Mountain Drive)

General Info **209/962-8600**
 Renee Strmiska *admin@pinemountainlake.com*

Main Gate **209/962-8615**
 General Safety Inquiries, gate passes,
 campground reservations, tennis reservations
campground@pinemountainlake.com

Accounting **209/962-8607**
 Receivable/Collections/Assessments
 Karen Peracca *pmlar@pinemountainlake.com*

Accounts Payable **209/962-8626**
 Ashley Jackson *pmlap@pinemountainlake.com*

Controller **209/962-8606**
 Accounting Procedures
 Ken Spencer *controller@pinemountainlake.com*

ADMINISTRATION
General Manager
 Joseph Powell *joepowell@pinemountainlake.com*

Administrative Asst. to G.M. **209/962-8627**
 Debra Durai *debra@pinemountainlake.com*

Assistant to G.M. **209/962-8604**
 Ivonne Deckard *ideckard@pinemountainlake.com*

Human Resources **209/962-8628**
 Allie Henderson *pmlhr@pinemountainlake.com*

E.C.C. Coordinator **209/962-8605**
 Plan Submittals, Compliance Fees, Mergers
ecc@pinemountainlake.com

Member Relations **209/962-8632**
 Gate Cards, Address Changes
 Terri Thomas *pmlmr@pinemountainlake.com*

Community Standards Dir. **209/962-1240**
 CC&R Compliance/Violations/Fire Mitigation
 Dennis Pipal
communitystandards@pinemountainlake.com

DEPARTMENT OF SAFETY
Director of Safety **209/962-8633**
 Natalie Trujillo *n.trujillo@pinemountainlake.com*

Sergeant **209/962-1244**
 Sgt. Teri Cathrein *t.cathrein@pinemountainlake.com*

MAINTENANCE DEPT **209/962-8612**
 Susan Capitanich *maintenance@pinemountainlake.com*

Maintenance Manager **209/962-8611**
 Tom Moffitt *tmoffitt@pinemountainlake.com*

GOLF COURSE
Golf Course Superintendent **209/962-8610**
 Alan MacDonald *amacdonald@pinemountainlake.com*

Golf Shop **209/962-8620**
 Golf Pro Shop/Golf Reservations
 Doug Schmielt *dschmielt@pinemountainlake.com*

Golf Pro **209/962-8622**
 Mike Cook *golfpro@pinemountainlake.com*

THE GRILL AT PINE MOUNTAIN LAKE
Restaurant **209/962-8638**
 Bambi Johnson *cluboffice@pinemountainlake.com*

The Grill Manager **209/962-8640**
 Jay Reis *clubmgr@pinemountainlake.com*

Head Chef
 Carrie Taylor *kitchen@pinemountainlake.com*

19th Hole Lounge **209/962-8636**
 Jamie Wortmann
19thholelounge@pinemountainlake.com

OTHER PHONE NUMBERS
Stables **209/962-8667**
stables@pinemountainlake.com

PML News **209/962-0342**
 Pine Mountain Lake News
 Sabre Design & Publishing *PMLNews@SabreDesign.net*

ADMIN OFFICE HOLIDAYS 2014

(ADMIN OFFICE WILL BE CLOSED)

TUES. 11/11 VETERAN'S DAY

THUR. 11/27 THANKSGIVING

FRI. 11/28 THANKSGIVING HOLIDAY

THUR. 12/25 Christmas Day

FRI. 12/26 Christmas Holiday

THUR. 1/1/2015 New Year's Day

FRI. 1/2/2015 New Year's Holiday

(Admin. office will be **OPEN**
 Christmas Eve and New Year's Eve)

UPCOMING SCHEDULE OF BOARD MEETINGS

Meetings are held at the
 PML Lake Lodge and start at 9 AM.
 (Unless otherwise noted)

NOVEMBER 8
 2nd Saturday

NO DECEMBER MEETING



RULES ENFORCEMENT ACTIONS

Violations Report – September 2014

Courtesy Notices	5
Notice of Non-Compliance	0
Fines	0
Violations Pending	28

Subscribe to the Pine Mountain Lake News TODAY!

Name _____

Unit _____ Lot _____

Mailing Address _____

NO CHARGE for PROPERTY OWNERS (bulk)
 \$3/year for Co-Owners (bulk);
 \$10/year for Non-Property Owners (bulk)
\$18/year for PROPERTY OWNERS (1st class)
\$28/year for Non-property owners (1st class)

Enclosed is my check in the amount of
 \$ _____ (PAYMENT DUE IN FULL)

Send this subscription to:
Pine Mountain Lake Association
19228 Pine Mtn. Dr. Groveland, CA 95321
ATTN: TERRI

PINE MOUNTAIN LAKE NEWS DELIVERY

Although we guarantee that the PML News is mailed from Modesto, CA on the same day (between the 26th-30th of month), most post offices (except Groveland) sort Bulk Mail after First Class mail. So, consider a First Class delivery subscription for just \$18/yr? (\$18 per year for property owners and \$28 per year for non-property owners) Interested? Call the PMLA Office at 209/962-8632 or see form above.

NOTE: The Pine Mountain Lake News is also available (in pdf format) at:
www.pinemountainlake.com.
 New editions are posted by the 1st of the month.

Happy Thanksgiving!

From the Pine Mountain Lake News
& the PMLA Staff

2015 ASSESSMENT/BUDGET PACKETS

The 2015 Assessment/Budget Packets will be mailed to members on December 1, 2014.

If you have moved or changed your address within the past year, please check with PML Administration to make sure we have your correct address on record.

If you are participating in the Email Opt-In Program, please verify your email address with PML Administration to make sure we have your correct email address on record.

This will assure you receive your 2015 Assessment/Budget Packet in a timely fashion and save you and your Association money.

**IF YOU HAVE NOT RECEIVED YOUR 2015 PACKET BY
DECEMBER 15, 2014, please contact the
PML Administration Office at (209) 962-8600**

BEFORE YOU BEGIN CONSTRUCTION ON YOUR LOT

The Declaration of Restrictions (CC&Rs) states that no construction of any type (new construction, driveways, grading, lot clearing, etc.) can be performed without prior approval from the Environmental Control Committee (ECC).

Failure to obtain approval could result in the stoppage of work or even fines, and nobody wants that to happen. Inspections are made every Tuesday and reviewed by the Committee every other Thursday, so we can accommodate our members.

Please contact ECC before you begin any type of construction at

209-962-8605

GOT YOUR PIN?

Since PML is a private gated community, we want to offer our property owners a secure way to call in guests. When you become a member of PML you are assigned a Personal Identification Number (PIN) to utilize either when calling in a guest pass or using the Gate Access Internet program. This PIN identifies you to staff without you having to be present. This is a confidential number and should **not be shared**. When you call the Main Gate to authorize a guest or vendor access into PML, you will be asked for your PIN. The staff will look up the number in the computer and use it to confirm your identity before entering the guest information. You must have this number to utilize the Gate Access Internet program as well. If you do not know your PIN or have any questions, please contact the Administration Office at:



(209) 962-8600



Monday through Friday, from 8 am to 4:30 pm. and we will gladly supply this information to you.

NOTICE

**Main Gate personnel are available to issue gate cards on
Saturday & Sunday from 8:30 AM to 4:30 PM.**

**Please call in advance to schedule an
appointment at 209-962-8615**

FIREWOOD – FIREWOOD – FIREWOOD

**Firewood Cutting Is Here
PML SLASH and COMPOST SITE**

**OAK and CEDAR – Requires a \$20 PML Wood
Cutting Permit**

**Wood Cutting Permits Available
at the Maintenance Facility**

PINE and FIR – Available for free CUT and HAUL

**For more information please contact Susan at (209)
962-8612 between the hours of 7 am to 2:30 pm, M-F.**

PINE MOUNTAIN LAKE ASSOCIATION
SUMMARY STATEMENT OF OPERATING FUND REVENUES AND EXPENSES
For The Nine Months Ended Sep. 28, 2014

OPERATION OF AMENITIES	Revenues					Expenses				Budget	
	Members' Assessments Net of Discount	User Fees	Sales, Net of Cost of Sales	Miscellaneous Income	Total Revenues	Total Expenses	(Cost)/Income Before Depreciation	Depreciation Expense	(NET COST) INCOME	Budget (NET COST) INCOME	Variance Bud - Act
Golf Course	\$ -0-	\$ 702,569	\$ 25,233	\$ 380	\$ 728,182	\$ 992,125	\$ (263,943)		\$ (263,943)	\$ (261,286)	(2,657)
Restaurant & Bar	-0-	11,445	605,394		616,839	886,132	(269,293)		\$ (269,293)	(271,203)	1,910
Marina	-0-	235,872	135,652		371,524	408,898	(37,374)		\$ (37,374)	(40,487)	3,113
Snack Shack	-0-		22,354		22,354	47,439	(25,085)		\$ (25,085)	(18,765)	(6,320)
Stables	-0-	59,590		2,450	62,040	170,774	(108,734)		\$ (108,734)	(99,714)	(9,020)
Recreation	-0-	37,662	4,112		41,774	86,484	(44,710)		\$ (44,710)	(61,676)	16,966
Roads & Facilities Maintenance	-0-	29,465		400	29,865	1,179,693	(1,149,828)		\$ (1,149,828)	(1,204,695)	54,867
PROPERTY OWNER SERVICES											
Safety	-0-	73,438		1,602	75,040	625,069	(550,029)		(550,029)	(600,301)	50,272
Administration	-0-	107,257		21,114	128,371	951,191	(822,820)		(822,820)	(874,311)	51,491
ASSESSMENTS											
Assessments	3,542,448			50,972	3,593,420	108,864	3,484,556	574,565	2,909,991	2,840,448	69,543
Totals	\$ 3,542,448	\$ 1,257,298	\$ 792,745	\$ 76,918	\$ 5,669,409	\$ 5,456,669	\$ 212,740	\$ 574,565	\$ (361,825)	\$ (591,990)	230,165

Notes to the Financial Statements

1. Total Revenues minus Total Expenses equals Net Income before depreciation. The annual budget for income before depreciation is \$0.
2. The Association combined the Operating Fund and the Property and Equipment Fund into one fund effective May 1, 2001.

**DID YOU KNOW...
YOU CAN NOW
MAKE YOUR
P.M.L. PAYMENTS
ONLINE?**

**Now Available
Online bill pay at
PineMountainLake.com**

*Pay via your credit card
—quick & easy!*

CAPITAL EXPENDITURES 9 Months Ended Sep. 28, 2014

	TOTAL RESERVE FUNDS	NEW CAPITAL ADDITIONS FUND	TOTAL CONTRIBUTION TO CAPITAL
2013 Beginning Fund Balances	2,243,037	\$ 19	2,243,056
Interest Income	2,096	2	2,098
Bank Fees/Discounts Taken	557		557
Assessments Earned	1,362,897 ⁽¹⁾	125,145 ⁽²⁾	1,488,042
Other Income/Expense	107		107
PURCHASES BY AMENITY			
Golf Course	(45,014)	(9,176)	(54,190)
Country Club	(3,422)	(1,283)	(4,705)
Bar	(2,284)		(2,284)
Marina	(573,436)	(10,257)	(583,693)
Snack Shack	(761)		(761)
Swim Center	(1,070)		(1,070)
Stables	(41,356)		(41,356)
Recreation			-
Roads & Facilities Maintenance	(3,975)	(5,221)	(9,196)
PROPERTY OWNER SERVICES			
Safety	(8,765)	(1,398)	(10,163)
Administration	(11,380)		(11,380)
Non-Capital Reserve Expenses	(1,335,410)		(1,335,410)
Total transfer to Operating Fund for property and equipment additions and reserve expenses	(2,026,873)	(27,335)	(2,054,208)
Adjusted Fund Balances	\$ 1,581,821	\$ 97,831	\$ 1,679,652

Notes to the Financial Statements

- (1) The Budgeted Reserve Fund assessment for 2014 is \$1,817,195
- (2) The Budgeted New Capital Additions Fund assessment for 2014 is \$166,857

PMLA Money Matters

BY KEN SPENCER, ASSOCIATION CONTROLLER

“No, you can’t always get what you want”. Mick Jagger and Keith Richards wrote those words in 1968 and recorded the song of the same name in 1969 for their “Let It Bleed” album. Forty five years later those lyrics can be interpreted in different ways and applied to many different situations.

It might be appropriate to take the liberty of applying them to life in a homeowner’s association in general and in particular to the dilemma we face fairly regularly here at Pine Mountain Lake. In life we all have things we would like to have that, by definition are in conflict with each other. For example, I want to eat all the sweets and snacks I can without gaining weight. In most cases it is not feasible to think you can eat whatever you want without the effect of potentially gaining weight, just as it is not reasonable to think you can avoid all dental care (including brushing) and not eventually get cavities.

Most times there is a direct correlation between two desires that are inherently in conflict and the results of our actions. In the case of PML the most visible example of this paradox is the desire to keep the assessment low while also demanding expanded or enhanced levels of service. Wanting to have longer

hours at the pool without increased staff and maintenance expenses. Expecting to be able to be immediately seated at the Restaurant on a busy night without reservations and not having increased staff costs. Desiring to have a greater Department of Safety presence without additional resource cost (wages, taxes, etc.).

These are some of the more obvious examples of this process, but there are others as well. Most of us agree that greater attention needs to be paid to the negative affect on the community of the increased presence of the Canada goose population. From the unsightly mess they create at the Marina and Golf Course to the damage they do to much of our landscaping. Unfortunately the request for mitigation efforts comes with the caveat that we shouldn’t spend more money (i.e. increase the assessment) in order to accomplish this worthwhile task.

Often times these expectations can be seen as another version of NIMBY (Not In My BackYard), known as MDIMBY (Most Definitely In My BackYard), whereby any additional cost of providing a service that one deems important should come at the expense of any other activity except for the increase in assessment. All of these expectations are in direct conflict with the very nature of living

in an HOA whereby the collective good is balanced against the individual needs and funded by all of the members.

What is the answer to this dilemma? How do we deal with this dichotomy? The Board of Directors and management team of PMLA all work to balance many of these seemingly impossible demands every day. It is equally important that all members of the community keep this in mind as we continue through the budget process. Obviously, in an ideal world, we would like to be all things to all people. Since we understand that this is an impossibility it is critical that we occasionally take a step back and really ask ourselves whether what we expect is really viable.

After all, as Mr. Jagger and Mr. Richards realized in their classic song, that, “you can’t always get what you want, but if you try sometime, you just might find, you get what you need”.

Well that’s it for this month. If you have any PMLA Money Matters you would like to see discussed in this column in the future please drop me a line at controller@pinemountainlake.com or give me a call at 962-8606. Thanks for reading and I hope you find this monthly discussion helpful and at least a bit informative.

PML Safety Report

	September	YTD
Guest Passes Issued	1187	14007
Vendor Passes Issued	103	1359
Temporary Resident Passes Issued	339	4601
Vehicles Admitted	10538	115849
Vehicles Refused Entry	288	2509
Phone Calls Received	4424	48588
Residential Alarm	8	89
Animal - Loose	25	176
Animal - Impounded	6	45
Animal - Dead/Injured	48	261
Animal - Disturbance	12	147
Public Assist	37	203
Welfare Check	0	23
Transport	0	38
Traffic Hazard	1	19
Traffic Control	0	1
Gate - Tamper	0	3
Gate - Follow Through	2	22
Gate - Malfunction	10	90
Gate - Struck by Vehicle	2	19
Control Burn Reported	0	358
Smoke Complaint	0	31
Residential Disturbance	4	65
Amenity Burglary	0	3
Residential Burglary	0	8
Grand Theft	1	3
Petty Theft	3	25
Trespass	5	31
Vandalism	3	12
Property Damage - PML	2	21
Property Damage - Resident	0	10
PML Reg Violations Resident	6	41
PML Reg Violations Guest	4	52
Vehicle - Citation Issued	1	46
Vehicle - Accident PML	0	12
Patrolling Unit	372	4288
Amenity Security Check	2496	21949
Resident Security Check	265	2000
Monitoring Tennis Courts	1	16
Weapon Violation	1	15
Fixed Post	0	29
Courtesy Notice Issued	6	36
All Fees Collected	\$7,215.83	\$116,191.20

PMLA AUTOMATIC PAYMENT PROGRAM

Taking the time to write a check for your monthly assessment payment can be time consuming and costly. You can avoid his burden and eliminate the potential for late payment charges by enrolling in PMLA’s Auto Payment Program. By completing the form, which can be found at www.PineMountainLake.com under the Financial Information tab, and returning it to the Administration Office, you can have your monthly assessment automatically deducted from your checking account or charged to your credit card. This means you never have to remember to write a check and mail it each month. The peace of mind that comes with knowing your payment will always be made on time is easy to attain. We can also arrange to have any other regular payment you make to the Association (such as golf membership, horse boarding fees, etc.) paid in the same way.

For more information on this simple, effective and time saving plan please contact us at (209) 962-8600.

MAKE PML YOUR ONE-STOP-SHOP FOR ALL YOUR GIFT GIVING!

Pick up a
gift card for:

GOLF • GOLF SHOP APPAREL & ACCESSORIES • THE GRILL

BOAT RENTALS & GEAR AT THE MARINA

SNACK SHACK GOODIES • HUNTING & FISHING LICENSE VOUCHERS

(Gift cards are available at the Administration Office, The Grill, and at the Pro Shop)

LETTERS TO THE EDITOR

LETTERS RECEIVED – 2

DENIED BY EDITORIAL COMMITTEE – 0

Exceeds 250 word maximum – 0

Content – 0

Not a property owner – 0

DEFERRED TO NEXT EDITION BY

EDITORIAL COMMITTEE – 0

DENIED BY BOARD OF DIRECTORS – 0

DEFERRED TO NEXT EDITION BY

BOARD OF DIRECTORS – 0

Submit Letters to the Editor by sending to "Editor, PML News"
Mail: 19228 Pine Mountain Drive, Groveland, CA 95321
Email: PMLNews@sabredesign.net • Fax: 800-680-6217

PLEASE NOTE THAT ALL LETTERS APPEAR IN THE ORDER RECEIVED BY THE PML NEWS

The Pine Mountain Lake News welcomes letters and articles for publication provided they meet the criteria established in the current PMLA Editorial Policy (See excerpt below – entire policy on file at the Administration Office). Letters must be limited to 250 words, typewritten using upper and lowercase letters (no handwritten material, no all-capital material) and signed with name, unit and lot by a property owner in good standing. **LETTERS MUST BE RECEIVED BY THE EDITOR BY 4:30 PM ON THE 10th OF THE MONTH.** Letters deemed by the Editorial Committee to be improper will not be accepted. Readers are advised that **THE OPINIONS EXPRESSED IN THESE LETTERS ARE THOSE OF THE INDIVIDUAL AUTHORS, NOT OF PMLA, THE PINE MOUNTAIN LAKE NEWS, NOR THEIR EMPLOYEES.**

BURNING QUESTIONS

Dear PMLA Board of Directors,

For the last several years the PMLA has strongly discouraged Burning in PML. The reasons for this has been problems with the Smoke and fire danger. The encouraged method of disposing of slash, leaves, needles, and other yard waste is residents to haul it to the Compost Pile. This is something that I fully agree with, i.e., No one should be burning in PML.

My question to all of you PMLA Board members is: Why is a MAJOR BURN being planned for the Rock Canyon Way/ Crescent Green Belt? There are over 110 Burn piles set up with little cardboard hats and ready to burn. Since the Green Belt (and Burn area) is in a little valley I can only imagine the days of hazardous smoke that I and other PML residents will have to endure.

Living through the Rim Fire and it's smoke makes me dread this PML Burn and it's effects on our health and safety.

Maintenance should have hauled this slash to the Compost Pile or shredded it as was done the last time the Green Belt

was cleared for fire protection.

Again I ask, Why is PMLA planning a Major Burn in this Green Belt while discouraging Burning in PML.

Please, Please do not allow this BURN to happen. Please protect our health and safety by having PML Maintenance do the right thing for all of us and haul this slash (burnable material) to the Compost Pile.

Thank you.

Paul Klahn
Unit 4 Lot 8

A BIG THANK YOU

To all my friends that sent the beautiful cards, flowers, and plants. For all your prayers, phone calls, and wonderful foods. A big thank you.

I've had my last chemo and all reports look good.

Betty Boatman
Unit 2 Lot 96

On the Lake IS "NAUGHT POINT EIGHT" REALLY A DROUGHT?

BY MIKE HORVATH, LAKE CONSULTANT/LIMNOLOGIST

Winston Churchill is sometimes credited with saying that Britain and the United States are two great countries divided by a common language. If you have never seen "naught" before (pronounced nawt), it is often used in Britain to denote zero. A few weeks ago, our boatman on Ullswater in the Lake District in England used the term to describe the elevation on the lake. In an after-sailing discussion at the pub with our boatman we had a chance to discuss lakes, drought and a number of other things. His "naught point eight" remark meant that the water level in Ullswater was down 0.4 meters from being full. That's a mere 12 or 13 inches, but to him it was pretty extreme. He also commented on the lack of rainfall in September. I guess they only had an inch or so when they usually get five inches. I guess everybody has their own definition of drought. I hope our one inch of rain at the end of September is just the start of something good and reasonable.

And speaking of drought and rainfall, be careful what you wish for in terms of relief. I just finished reading an excellent book on the history of drought and floods in the west. The book, "The West without Water" is a well documented and eye opening look at our climate for the last 20,000 years or so. It relies on a number of methods including; tree ring analysis, changes in plant communities at different elevations, carbon and oxygen isotopes, sediment cores, changes in lake elevations and even movement of ancient civilizations... some that were completely wiped out by drought. During one period of extended drought (mega-drought), Lake Tahoe dropped over 20 feet for a period long enough for trees to grow to a diameter of 3 feet and the Truckee River completely dried up.

An interesting fact about these droughts is that they are often followed by an exceptionally wet period (you guessed it, mega-flood).

The floods of 1861-1862 followed an extended drought that peaked in 1860. Those floods turned the Central Valley into an "inland sea." The U. S. Geological Society prepared an emergency response scenario for these 1000 year floods that is sobering reading. They estimated that over 1.5 million people in the Central Valley would be displaced and it could cause over \$700 billion in damage. I don't want to sound like a prophet of gloom and doom, but I think we all need to be aware that we have all lived in a very tame period of climate. All of the irrigation projects and agricultural practices developed in the last 150 years have been built on the assumption that the mildly wet climate we have experienced for the last century is the norm. It isn't. And this doesn't even take into account the effect of global warming... whether you believe in it or not.

So what does all of this have to do with our peaceful little lake? I wish I could say something pertinent on that. All I can say is that our lake has a limited lifespan. At the current rate of sedimentation, our lake will only be around for another 300 years or so. With some thoughtful management and planning we can extend that, but who thinks that far ahead? As always, all I can say is Enjoy your Lake. And maybe invest in a kayak or two. Whether you get one for flat-water or whitewater is up to you.

Drought thought... the drought will be good for this year's wine grapes. Smaller grapes mean more intense flavor, earlier harvesting and less problems with mold.

I'll drink to that!

Until next time, SPLASH!

Pine Mountain Lake Stables

BY LINDA AMOS

Hi to all you horse lovers, I am one myself, my name is Linda Amos and I have been the Interim Stables Manager since September 27th. It has been great getting to know all the horses and their names as well as their owners. As interim manager, it is my goal to maintain and improve this beautiful facility.

Pine Mountain Lake Stables has three great employees: Dave Balek, Eric King and Amy West. They do a great job of maintaining the Stables area and taking good care of your horses. I would love to see more people come out and Trail Ride with us while we continue to have such nice



weather. The Trail Rides are Saturday and Sunday at 9am, 11am, 1pm, and 3pm. Call and make a reservation 962-8667; I'm sure you will enjoy your ride! Children have to be at least 8 yrs old and 44" tall. We also

have Pony rides for smaller children, and the parents have the fun of leading them around. Dan Frasier will be your guide on the Trail Rides.

Pine Mountain Lake has a great facility open to the public. Many thanks to Lester Scofield, the retiring Stables Manager, for all his hard work over the years.

Happy Trails!

GOT SOMETHING TO SAY?

Let your voice be heard with a letter to the editor. Submit your letter to the editor by mail to:

PML News Editor
19228 Pine Mountain Drive
Groveland CA 95321

or by email to: PMLNews@SabreDesign.net



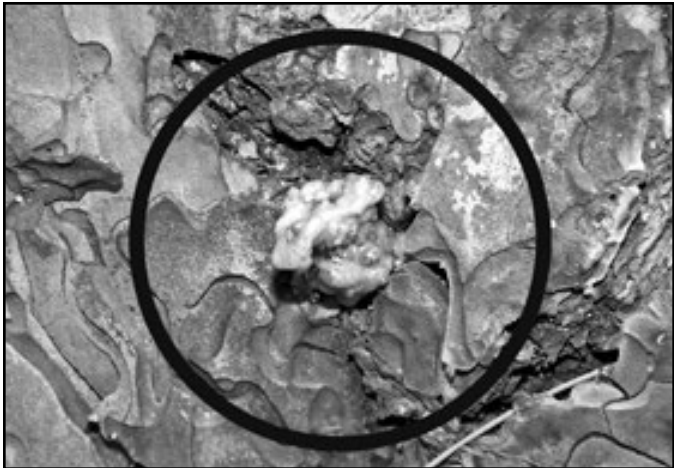
Community Standards

BY DENNIS PIPAL, COMMUNITY STANDARDS, DIRECTOR



The Bark Beetle, above, on the head of a match.

Beetles have bored into the tree. The affect is seen circled on the right.



The Drought and our Trees

Protecting our beautiful trees is a common goal we all share. Currently, many of our trees are struggling. The reasons for this are varied but the following areas are ways members can help our trees survive the current conditions.

Drought

Until we start receiving a normal rainfall there are some things members can do to protect trees:

1. The root system spread for most trees is the size of the umbrella of the tree, the area under the outermost leaves of the tree. This is called the dripline, the area where the tree derives moisture and minerals. Make sure your mature trees are not fighting with other vegetation for what little water and minerals are in the soil, especially in this dripline. This means reducing other vegetation for the benefit of the trees you want to keep healthy.
2. The best way to be proactive and conserve water is to position a soaker hose in a spiral pattern starting a few feet away from the trunk and moving out to the dripline. Monitor the hose for run-off and keep track of how long it takes for the water to penetrate 6 - 8 inches down so that you can repeat this technique when the soil becomes dry. Or you can use secondary water (ex: warm up water from your shower) to irrigate your trees.

Bark Beetles

Bark beetles are part of the forest environment but there are a few things you can do to limit the risk of attack on pine trees:

1. Bark beetles thrive on unhealthy pine trees. Weak pine trees are easier to bore into so make sure you are helping your trees be as healthy/strong as possible. (see image above)
2. High valued, un-infested trees may be protected by spraying their bark with a persistent, registered insecticide labeled as a preventative spray for bark beetles. Protective

spraying for bark beetles must be done by a licensed pesticide applicator. Spraying a persistent insecticide on valuable, un-infested trees near infested trees may be warranted to protect un-infested trees from bark beetles. However, do not substitute preventive sprays for proper cultural care. (reduced vegetation and responsible irrigation)

3. Unless trees are monitored regularly so that bark beetle attack can be detected early, any chemical spray application made once the beetles have aggregated and penetrated the bark is likely to be too late and ineffective. Treatment must target the adults by spraying the bark so that beetles are killed when they land on trees and attempt to bore into the bark to lay eggs.
4. Many of the pest control businesses in our area provide tree spraying for the bark beetle, however, we suggest members do their own research but we conducted a phone survey which indicated the following vendors spray for the bark beetle:
 - Anchor Pest Control 800.284.6968
 - Angels Pest Control 209.586.2275
 - Clark Pest Control 209.532.3464
 - Foothill Sierra Pest Control 800.464.3772
 - Safeguard Pest Control 209.586.2275
5. <http://learnmoreaboutclimate.colorado.edu/uploads/model-lessons/mountain-pine-beetles/bark-beetles-brochure.pdf> provides a thorough review of the bark beetle issue.

From the above one can see that the drought and the bark beetle are related. The drought makes trees weak and the bark beetle is attracted to weak trees. So, if the drought continues, members need to find ways to limit its affect on our beautiful trees.

If you are worried about your trees, hire a Certified Arborist who is knowledgeable about the needs of trees and educated and equipped to provide proper diagnostic and treatment services.

From The Fringe

BY MIKE COOK – HEAD GOLF PROFESSIONAL

As we transition into the winter season, we will be starting our 11:00 am Shotguns on Monday November 3. If you are not familiar with what a shotgun start is, it is where everyone starts on a different hole on the course at the same time. Property Owners can reserve a spot in the shotgun up to 14 days in advance by calling 962-8620. The Golf Shop will be open from 8:00 am until 5:00 pm, 7 days a week. The Driving Range will be open from 8:30 am until 3:30 pm, 7 days a week.

Upcoming Events

- PML Men's Club Turkey Shoot** Saturday November 15
PML Ladies Club Turkey Shoot Thursday November 20
Member Shopping Day Friday November 28

Mark Your Calendar For 2015

- Ladies 9 Hole Invitational** May 28
Ladies Club Pine Tree Invitational June 18 – 20
Men's Mother Lode Invitational June 25 - 27

Golf Tip

Putting is so very crucial to a good golf score and sadly it is the area that we practice the least. If you look at a round of golf, you use your driver about 14 times per round but you use your putter 36 (+) or (-), hopefully (-), times per round. Practice is important but practicing what is correct is more important. Try these basic putting principles during your next practice session:

- 1) Alignment/Aim** – In order to see the proper line to the target your eyes must be

directly over the ball.

2) Grip – To return the putter face back to square at impact, position your thumbs so they are pointing directly down on the top of the grip, this will give you a neutral grip.

3) Putting Stroke – The putting stroke must be performed with as little wrist action as possible. Use your arms as the main motor of the stroke, allowing your shoulders to move in concert with your arms as they swing. As you swing the putter through the ball, with your arms not your wrists, it must be smoothly accelerating through, it must never decelerate.

4) Head Position – As in all golf swings your head must stay as still as possible during the swing.

Rules Quiz

In a stroke play competition, Dave's ball was just off the putting surface and Rod's ball was on the other side of the hole about 2 feet from the hole. Dave asked that Rod not mark and lift his ball as it may "stop my ball if I hit it too hard". Dave played his shot but his ball did not hit Rod's Ball. What is the ruling?

- a** Since Dave's ball did not hit Rod's ball there is no penalty.
b Dave is penalized 2 strokes for requesting that Rod not lift his ball.
c Both Dave and Rod are penalized 2 strokes for agreeing to not lift the ball.
d Both Dave and Rod are disqualified for agreeing not to lift the ball.

This is an open book test, hint; look at Rule 22-1. Let us know how you would rule.

Contractors Performing Work in PML are Required to Follow PMLA Rules & Regulations

The following are some "**common violations.**" Please do your part to maintain a harmonious environment for all to enjoy. Remember: The PML property Owner is held responsible for those they hire.

Vehicle use:

1. Exceeding the posted speed limit
2. Driving in a reckless manner
3. Following another through an access gate or allowing others to follow you through
4. Parking on street (road shoulders OK)

Personal Conduct:

1. Allowing loud music
2. Uttering abusive language or conduct that would be offensive to a reasonable person
3. Using the property Owner's gate card or clicker

Work Related Conduct

1. Starting work before 7am or continuing after 7pm
 2. Allowing dogs at construction sites
 3. Performing work on Sunday
 4. Cutting down a tree in excess of 5" without PMLA approval
 5. Trespassing on neighboring property
 6. Using neighbors water or electricity without written permission
 7. Leaving construction signs longer than 5 days after work has been completed
 8. Nailing signs to trees
 9. Storing building materials on street or easement
 10. Beginning exterior construction without PML Association approval
- Any Questions...call Dennis Pipal, Community Standards Director @ (209) 962-1240

Shades of Green

BY ALAN MACDONALD, GOLF COURSE SUPERINTENDENT

As mentioned last month, we are widening the left side of #4 tee. We are hoping to have it ready for play in early November. This doesn't solve all of the difficulty of the tee shot, but does allow for a little better angle to the fairway.

You may have noticed that a few trees were removed from the course during greens aeration. The two pines near the driving range that were removed were hazardous or would have become a hazard. One had started to die, and the other one had quite a bit of decay in the trunk. The live oak near the 5th tee also had trunk decay. This one could have damaged the restroom or cart path had it came down on its own.

PLEASE PARTICAPTE

Thinking ahead, please communicate with your group representative that attends meetings with Mike and Alan to discuss course operations and improvements or projects. Tom Connelly is or has sent out a questionnaire to receive feedback on a variety of projects or course improvements. Our goal as a group is to have the membership be included in planning these projects, to make the course fun for all to play. Projects discussed are removing the fairway bunker on #10 and the left bunker near #18 green. Also discussed was adding a bunker to the left of #18 green, much closer to the green, along with relocating the right bunker on #18

up and to the right. Additional improvements to the location of #4 tee have been discussed. We need your wisdom and ideas to continue to make the course enjoyable for the entire membership, well into the future. All suggestions will be appreciated and respected.

I can't go a month without mentioning our irrigation water and how it is used. I believe it to be important that everyone realizes that the course is watered with lake water and supplemented with effluent water. That is the way it was designed from the beginning. GCSD has been extremely cooperative in sending us what effluent they have to send. They do not have unlimited supplies and would never have

enough effluent water to rely on for all irrigation needs. Through September the Dunn court pump has removed about 9 inches of lake water for the year. This water not only irrigates the course, but is used for the landscaping around the pool and Grill. The Dunn court lawn is also irrigated with lake water as is the marina lawn. The street department will fill their water truck with irrigation water and use it as needed for their projects.

Have a great Thanksgiving. Appreciate the rains when they arrive! Remember to become INVOLVED, assist us with your suggestions to improve your course for yourself and future PML property owners and guests.

ALL PMLA HOMEOWNERS EMAIL OPT-IN PROGRAM

The Association is pleased to offer a money saving program available to all PMLA property owners. This program allows you to receive many of the documents we are required to provide to you via email. This option is important because:

Cost Savings – The Association is spared the expense of printing and mailing many documents to those property owners who sign up.

Environmental Savings – Less paper means less trash and reduced damage to the environment both in the disposal and production of paper and envelopes.

Reduced Clutter – By receiving documents via email there is less paper

for you to deal with. All documents can be saved on your computer and viewed at your discretion.

Timely Receipt – Documents sent electronically are received in minutes as opposed to the days it takes for regular mail to arrive.

If these sound like good reasons to you, please sign up for the Document Email Program today using the attached form. Simply return the completed form to the Administration office at your convenience.

If you have any questions on this program please feel free to give us a call (962-8600) and we will be happy to explain the details and the advantages.

Please read the Terms & Conditions for the email opt-in program on the website, www.pinemountainlake.com under the Resource Center Header > Important Information & Forms > Forms > Opt-In Email Program.

Mail form below to:

Pine Mountain Lake Association • 19228 Pine Mountain Drive • Groveland, CA 95321

YES, I want to enroll in PMLA's email statement and document service. I acknowledge and agree to the terms and conditions set forth above as a condition for participation in this service.

PMLA Account Number: _____ Unit/Lot #: _____

Name: _____ Phone #: _____

Address: _____

Email Address: _____

Signature: _____

VETERANS DAY MEMORIAL
GOLF TOURNAMENT

At Pine Mountain Lake Golf & Country Club

Honoring Tuolumne County's
Military Heroes

November 11, 2014, 11:30 am Shotgun Start

Limited to 30 Teams (9:30 am Check In)

10:30 am Fly-over

Army • Navy • Air Force • Marines • Coast Guard

4 Man Scramble

Blind Bogey (No Handicap Needed)

Entry Fee \$90.00 (Includes Golf, Dinner & Donation)

\$45.00 Entry Fee for PML Property Owners

Note: PML Property Owners pay golf fees at the Pro Shop
(Extra dinners \$35.00 includes donation)

For more information contact:

Ivonne Deckard (209) 962-8604 • ideckard@pinemountainlake.com

Mike Cook (209) 962-8622 • golfpro@pinemountainlake.com

Benefiting Fisher House of Palo Alto and the Wounded Warrior Project



Guest & Renters Handbook Now Available Online!

You can now view or print the Guest and Renters Handbook from the PML Website. Go to our website at: www.PineMountainLake.com and click on the Important Information & Forms tab under the Resource Center title. Then click on Guest and Renters Handbook. This handbook has valuable information for Guests and Renters in Pine Mountain Lake.



PML Men's Golf Club

BY WAYNE DOTY

As is glaringly obvious, our long hot summer and lack of much needed rain continues. In spite of these difficult circumstances, and compared to what could be, Alan MacDonald and his crew have done a magnificent job keeping our course in great condition. Their hard work and dedication is deeply appreciated by all who enjoy what our course has to offer.

The month of September brought significant changes to our club. At the annual Business Meeting three of our officers ended their terms of service, and three new club officers were elected. Leaving us as club officers are Gus Allegri, Dan O'Connor and Wayne Augsburg. We wholeheartedly thank Gus and Dan for their years of dedicated service and congratulate Wayne as he moves on to his new position on the PML Board of Directors. Our newly elected Officers are Sylvan Braa, Derrol Beaulieu and myself, Wayne Doty. For the upcoming year Dick Faux will continue as President while Sylvan Braa assumes the role of Vice President. John Graham will still be paying the bills and tracking our finances as club Treasurer, and Frank Jablonski will continue as Handicap/Membership Chairman. Derrol Beaulieu will serve as Assistant Tournament Chairman, helping Tom Connelly as he continues to organize and manage our tournaments. Finally I will be doing my best as Secretary to document the minutes of our meetings and keep you informed of our tournament results and other golf related issues pertinent to our club.

In an effort to add another layer of competition and reward for our members, a closest to the pin element has been added to the par three holes in all future Men's Club tournaments. There will only be one winner for each par three played, regardless of teeing ground used or flight assigned. Each closest to the pin winner will receive a \$20 credit added to their account at the pro shop.

Golf Quote of the Month ... In the words of Ben Hogan, "As you walk down the fairway of life you must smell the roses, for you only get to play one round".

SEPTEMBER TOURNAMENT RESULTS

Annual Business Meeting

GOLD #1

- 1st Dave Nilan / Bill Wrighton 58
- 2nd Jeff Sera / Al Saisi 59
- 3rd Sylvan Braa / Paul Funston 61
- 4th Dave Gibson / Wayne Doty 61

GOLD #2

- 1st Larry Culler / Dennis Perry 61
- 2nd Michael Guess / Rod Raine 61
- 3rd Frank Jablonski / Dave Penning 62
- 4th Jerry Dickson / Rick Higgs 63

PURPLE/GREEN #1

- 1st Gus Allegri / Dan O'Conner 59

PML Racquet Club News

BY KEN STEINER

Another report from the courts from the Racquet Club Scribe.

It's November. Clocks have been reset, and we look forward to a winter filled with rain and snow as well as some sunny days for tennis.

Davis Cup Tournament

This year's Davis Cup Tournament took place on September 27, a perfect day. We were able to play in the morning and have our lunch celebration before getting our first real rainstorm of the year. This year, the four nations competing in the tournament were Spain, the U.K., including Scotland, the U.S. and Italy. Over 40 participants attended. A strong Spain team, hand-picked by the club President and tournament organizer Dr. Rick Gratian, featuring Dr. Rick and most of the top players at PML, led from the very beginning and looked to be a shoe-in for tournament champions. Going into the last match, Spain led its nearest competitor, Italy, by a significant margin. Unfortunately for Spain, one of the Italy teams, featuring Joe Sousa and Larry Santa Maria, won all of the games in their final match against one of the U.K. teams, forcing a tie with the team from Spain. A "trash can tie-break" rule (also devised by Dr. Rick) was invoked whereby two members from each team attempted to hit a trash can on the other side of the net with five serves while their teammates, losing team members and non-participants cheered them on. The pressure was almost unbearable, but Italy completed their



fairy tale come-back by winning the tie-break by one hit. A picture of the winning Italy teams (Joe Sousa, Larry Santa Maria, Gina Hernandez and Jerry DeHart in front of three of the flags of the four competing nations is shown nearby. After all this excitement, players and non-playing attendees enjoyed a potluck food and drink affair with food representative of the four different countries as

well as BBQ chicken and burgers. Awards were provided to the winners and to the non-playing participants who cheered for Italy.

Third Quarterly Meeting

The third quarterly meeting of the club was held at Courts 3 and 4 on September 23. The following individuals have volunteered to serve on next year's board:

- President: Tomas Hernandez and Joe Sousa - co-presidents
- Vice President: open
- Treasurer: open
- Secretary: Joanne DeHart
- Facilities: Jerry DeHart
- At Large: Larry Santa Maria
- Past President: Rick Gratian

Fourth Quarterly Meeting and Holiday Party

The fourth quarterly meeting of the club will be held in conjunction with its holiday party on Thursday, December 11, at the PML Grill. Joanne DeHart is organizing this year's event, which will feature election of new board members and thanks to outgoing board members and other volunteers.

Tuesday Tennis

Rick Gratian is organizing matches for those individuals who want to play on Tuesday mornings on Courts 1-4. If you are interested in participating, you can call Rick at 499-1001 or send him an email at Rgratian@sbcglobal.net.

Drop-in Tennis Program

Stop by any Saturday at 8:00 a.m. at the Pine Mountain Drive courts for drop-in doubles tennis. To date, drop-in tennis has been very well attended and typically fills all four courts on Pine Mountain Drive. On court 3, players rotate in and out while other players go to the upper courts to play a full set. While cheering players on and socializing, attendees enjoy fruit, "exotic juices", coffee and various breakfast delights furnished by Rick and Femmie Gratian or other Club members.

If you are interested in joining the Racquet Club, the dues are \$10 per person per year. Contact President Rick Gratian or any other officer for information. The Racquet Club website is at www.pmltennis.webs.com.

See you on the courts!

PML Organized Groups & Clubs

Contact the individuals below if you are interested in joining!
(All numbers are 209 area code unless noted otherwise)

- Aviation Association**
Lynne Orloff 962-4631
- Computer Users Group**
Frank Perry 962-0728
- Duplicate Bridge**
Bobbi Vandenberg 962-6965
Alice Stoll 962-1948
- Exercise**
Barbara Elliott 962-6457
- Friends of the Lake**
Mike Gustafson 962-6336
- Garden Club**
Lonnie Roman 962-6001
- Guardians of PML**
Gus Allegri 962-6915
- Ladies Club**
Maddie Sousa 962-5708
- Ladies Golf Club**
Yvonne Mattocks 962-4165
- Men's Golf Club**
Dick Faux 962-4617
- Men's 9-Hole Golf Club**
Bob Oakley 962-4799
- Monday Bridge Club**
Bill Parker 962-5957
- Needle Crafts**
Lee Isbell 962-5727
- Pine Needlers Quilt Guild**
Wina Helm 962-6534
- PMLakers RV Club**
Miles (Ned) Nuddleman 925-371-2287
- PML Niners**
Stacie Brown 962-5129
- PML Shooting Club**
Dick Collier 770-5022
- PML Waterski & Wakeboard**
Dean Floyd (408) 378-7725
- Racquet Club**
Rick Gratian 499-1001
- Residents Club**
Dick Faux 962-4617
- ROOFBB**
Ivonne Deckard 962-1904
- Sierra Professional Artists**
Heinie Hartwig (209) 586-1637
- Southern Valley Srs. Golf Group**
Jim Sample 962-4747
- Sunday Couples Golf**
Alma Frawley 962-5578
- Windjammers Sailing Club**
Bob Haliwell 962-4137

CALL TODAY FOR BEST DATES

LUNCH AND DINNER DATES • PRIVATE BANQUET ROOM • HOLIDAY DECORATIONS



FINE DINING • CASUAL FLAIR • EXTENSIVE WINE LIST • FRESH SEASONAL CUISINE

ENJOY YOUR CHRISTMAS & HOLIDAY CELEBRATIONS WITH US

Companies, clubs, groups, and families:
Savor a plated meal & spirits, with a menu crafted just for you.

Plan your holiday experience today!

(209) 962-4000
Groveland.com

You'll love our holiday pricing!



• FINE DINING • CASUAL FLAIR

Peter Fischer Construction

peterfischerconstruction@gmail.com



12969 Clements Rd
Groveland, Ca. 95321
Phone/fax 209-962-6199
License# 658830



peterfischerconstruction.com

Services - No job is too big or too small

- | | |
|----------------------------|-------------------------------|
| Custom Homes | Hardwood floor installation |
| Remodels | Masonry |
| Green Building | Painting EPA CERTIFIED |
| Porch or sunroom additions | Fireplaces / new or remodeled |
| New Roof | Solar panels |
| Carpentry | Deck replacement or repair |
| Concrete | Elasto-Decking |
| | Window/Door replacement |

For our customers convenience we accept credit cards

AFFORDABLE ADVERTISING

PML NEWS — 209-962-0342

GROVELAND'S CABLE TELEVISION SERVICE PROVIDER



Your Web browsing and file transfers too slow?...

Get **High-Speed Internet** added to your cable service and get **Standard* Installation \$15⁹⁵** with purchase of modem.

LIMITED TIME OFFER

CALL FOR INFO
(209) 962-6373

*NOTE: Additional cabling may incur extra charge

ASK ABOUT
OUR 10MB
SPEED!!!

The Groveland Hotel
The Groveland Hotel presents:

WINTER MAGIC

Comedy Magic Dinner Theater

November 15
Joel Ward

from Hollywood, Vegas,
Reno, and television!



\$10 Cover with Dinner Entrée
Shows Start at 7:00 with Tableside Magic
209-962-4000 ★ Groveland.com



yosemitebank.com

THE BANK FOR OUR
COMMUNITY

Yosemite Bank offers unique benefits that larger banks simply cannot – like local loan approvals that don't have to come from an out-of-town office, as well as business bankers who know your name and your business. Whether you're in Oakhurst, Groveland, Mariposa, or any of the outlying areas, Yosemite Bank's local knowledge and commitment to the community can only help your business grow and prosper.

The Community Bank Serving the Sierra
5171 Hwy. 49 North, Mariposa, CA 95338 • (209) 966-5444
18580 Main Street, Groveland, CA 95321 • (209) 962-7853
40061 Hwy. 49, Oakhurst, CA 93644 • (559) 683-6442



Matt Foraker,
VP/ Yosemite Division Manager

WWW.PINEMOUNTAINLAKE.COM

GROVELAND
GAL FRIDAY

BACK TO SCHOOL AND HOLIDAYS
FAST APPROACHING!

I can help you through this busy
season! Call me for Home Checks,
Yard Watering, Pet Care, House
Sitting, Organizing, Shopping,
Rides, Senior Care, Meals
YOU NAME IT!

SHARON VOLPONI
962-6848 • 770-6277

AFFORDABLE
ADVERTISING
PML NEWS
209-962-0342

P A I N T I N G

Bay Cal

LIC #795283

Painting – Exterior/Interior
Deck Repairs
Wood Repairs
Remodels

209.962.4777

www.baycal.com • email: davec@baycal.com



FREE ESTIMATES

LET US PREPARE YOUR *Thanksgiving Feast to Go*

Complete Dinner Feeds 4

\$80 plus tax

Roasted Turkey (approx. 6 lb.)

Rich Turkey Gravy

Herb & Sausage Stuffing

Mashed Potatoes • Cranberry Sauce

Choice of 1 Pie:

Dutch Apple or Pumpkin or Pecan Pie

Dinner Rolls

Complete Dinner Feeds 8-10

\$160 plus tax

Roasted Turkey (approx. 10-12 lb.)

Rich Turkey Gravy

Herb & Sausage Stuffing

Mashed Potatoes • Cranberry Sauce

Choice of 2 Pies:

Dutch Apple • Pumpkin • Pecan Pie

Dinner Rolls

How about a little extra somethin'...*

Candied Yams with Marshmallow Topping

Green Bean Casserole

Corn Soufflé

*Additional charges apply



All items made in-house by Chef Carrie and her staff. Convenient pick up times.
Order by Thursday 11/20 by 3pm & pick up Wed 11/26 from 3pm to 5pm

*All food served in reheatable pans with instructions.

CALL THE GRILL AT 209-962-8638



YOU'RE INVITED *Wine Tasting* & DINNER BUFFET

featuring wines from

GIANELLI VINEYARDS

**THURSDAY
NOVEMBER 6**

SEATINGS BEGIN AT 5PM

ONLY \$23
PER PERSON PLUS TAX



reservations required
(209) 962-8638

THE GRILL AT PINE MOUNTAIN LAKE

You're Invited **WINE TASTING & DINNER BUFFET**

Featuring wines from
Renner Winery



Thursday
December 4
from
5pm to 7pm

Only \$23
per person
plus tax



Reservations Required
(209) 962-8638

November at the Grill

BY JAY REIS, THE GRILL MANAGER



Our Thanksgiving Holiday Buffet is the main attraction this month. This event always sells out early so be sure to call for reservations. We will also be hosting a wine tasting dinner on Thursday the 6th featuring wines from Gianelli Vineyard. They are one of our great local wineries located in Jamestown.

The weather isn't the only thing changing in November. **Our winter hours start November 2.**

BREAKFAST

Saturday from 8am to 11am
Sunday from 8am to 12:30pm

LUNCH

Tuesday through Sunday 11am to 3pm

DINNER

Tuesday, Wednesday, Thursday and Sunday
5pm to 8pm
Friday and Saturday 5pm to 9pm

Holiday hours: The Grill will be open Wednesday December 24 from 11am to 2pm for lunch and the Grill and Bar will be CLOSED Thursday December 25.

THE 19TH HOLE LOUNGE HAS LIVE ENTERTAINMENT EVERY SATURDAY FROM 8PM TO MIDNIGHT

Saturday November 1
The Blue Band

Friday November 7
Karaoke

Saturday November 8
The 209 Allstars

Saturday November 15
ESP Band

Saturday November 22
Rockslide

Saturday November 29
TBD

Monday Night Football at The Grill Hosted by the R.O.O.F.B.B's

All money raised goes back to the Community of Groveland
"Caring Hearts Helping Others"

Monday Night Football - Dates and Menus

Monday Nights at 6:00 PM at The Grill at Pine Mountain Lake. All dinners \$12.00 unless otherwise noted. Tickets go on sale at 5:30 and dinner is at 6:00. Dine In or Take Out.

November 3rd
INDIANAPOLIS VS NY GIANTS
Guest Chef - Glen Fiance
Tri-Tip, Roasted Potatoes, Vegetable, Salad, Rolls, Dessert **\$13.00**

November 10th
CAROLINA @ PHILADELPHIA
Guest Chefs - Beau Clark and Crew
Catfish, Macaroni Salad, Baked Beans, Cornbread, Dessert

November 17th
PITTSBURGH @ TENNESSEE
Guest Chefs - Iris Moffit & Eileen Roberts
Chicken Enchiladas, Rice, Beans, Dessert

November 24th
No Meals - Thanksgiving Week!

December 1st
MIAMI @ NY JETS
Guest Chef - Brian Sweeney
Beef Stroganoff, Noodles, Vegetable, Salad, Rolls, Dessert

December 8th
ATLANTA @ GREEN BAY
Guest Chefs - Tom Knoth & Paula Martell
BBQ Pulled Pork Sandwiches, Macaroni & smoked cheese, baked beans, Dessert

December 15th
NEW ORLEANS @ CHICAGO
Guest Chefs - MNF Team
Ham, Cheesy Potatoes, Vegetable, Slaw, Rolls, Dessert

December 22nd
NO MNF - Christmas Week!

GOT RESERVATIONS?

To better accommodate you & to provide you with the best dining experience possible at The Grill, call 209-962-8638 to make reservations.

THURSDAY
NOVEMBER 27

Seatings:
11am, 1pm, 3pm

Thanksgiving

HOLIDAY

BUFFET

THE GRILL
at Pine Mountain Lake

Carving Station with Turkey and all the Trimmings,
Slow roasted Prime Rib, Holiday Sides and Salads, Desserts

\$35 Adults, \$29 65 or better, \$15 Kids (6-12)

FREE for Kids 5 & under

Call 209.962.8638 for reservations

PML Lady Niners

BY SHARON KENYON

A special THANK-YOU to Alan MacDonald for promoting Breast Cancer Awareness with bright pink flags on several of the greens. Breast cancer has affected many of us, and the flags are a touching reminder we are part of an especially supportive community.

It means a lot to know we do not stand alone in our fight against this disease.

ACE OF ACES FOR SEPTEMBER

Linelle Marshall with a 31. Congratulations!

WEEKLY PLAY RESULTS

September 4 "Putts Day"

1st Place = 14 Putts: Linelle Marshall

2nd Place tie = 16 putts: Mary Houser and Sarah Zimmerman

3rd Place tie = 17 putts: Stacie Brown, Pat VanGerpen, and Anne Toner

4th Place tie = 18 putts: Marilyn Alexander, Linda Craig, Judy Michaelis, and Pat Price

PARS: #14 Patty Nelson & Pat VanGerpen

BIRDIES: #14 Linelle Marshall

LOW NET: Linelle Marshall with a 31

September 11 "Par Fours"

(minus ½ handicap)

1st Place = 19 Trudy Reid

2nd Place = 23 Pat Price

3rd Place tie = 24.5 GERALYN Dielman and Marilyn Hathaway

4th Place tie = 25 Judy Michaelis and Mary Houser

PARS: #14 Mary Houser and Pat VanGerpen

LOW NET: Pat Price with a 35

September 18 "WINE IN THE PINES" 9-HOLE GOLF INVITATIONAL

Stacie Brown and Faye Buckley with many committee members working diligently for several months put together an outstanding golf event! Mike Cook and the golf staff were instrumental in ensuring a successful day. Thank-you all!

Guests were treated to a "Wine & Appetizer" party at the Marina the evening before.

In total we had guests from Oakdale, Twain Harte, Cameron Park, Lake of the Pines, Sequoia Woods, Merced, Lincoln Hills and San Jose. PML players filled out the foursomes for a field of 48. The Grill was theme-decorated and served wine and a sumptuous cheesy chicken luncheon. Thank-you to the staff at The Grill! Lunch was topped off with a luscious dessert by chef Carrie. Following the awards, numerous decorated baskets filled with fine wines and gifts were raffled off. Thank-you to Jay for donating a magnum of wine. On the tables for each player were take-home wine bottles filled with birdseed donated by Stacie and festive wine



Pat Price with her TOC Award.

bottle cheese/snack trays.

September 25 "Par Fours" (Front Nine)

1st Place = 22 Carrie Carter

2nd Place tie = 23 Marilyn Alexander and June Moore

3rd Place tie = 23.5 Faye Buckley, Mary Houser, and Pat VanGerpen

4th Place = 24 Marsha Martinez

PARS: #3 and #7 Pat VanGerpen; impressive performance Pat!

CHIP-IN: 32 Sarah Zimmerman; oh, happy day!

LOW NET tie: Marilyn Alexander and Pat VanGerpen

September brought us wonderful weather for a busy month of golf. Several of us went to Saddle Creek to play in their 2-day invitational. On the 26th and 27th we had some very welcome rain. To finish off the month, a number of us went to Phoenix Lake to play in their annual tournament. They always make it a really fun day.

September 4, 9 and 11 Club Championship Tournament

Congratulations to Kitty Edgerton for winning the 2014 Club Championship Tournament with a 3-day score of 264. Runner-up in the Championship Flight was Linda Johnson with a score of 271.

1ST FLIGHT

1st Place 270 Marilyn Scott

2nd Place 279 Sara Hancock

49er Golf Club

BY STEVEN C. ENGSTROM

Our club championship took place almost a month ago now and all participants had a great time. The results are below. All members: our annual breakfast and business meeting is scheduled for Wednesday, November 19th at 8:30 A.M. followed by golf at 11:00 A.M. Elections for officers will be held and any proposed rules or game changes will be voted on. In addition, one of the PML Golf staff will give us a talk on a relevant golf topic. Breakfast is free to 9 Hole members, but guests will be charged \$18. Please be prepared to pay your annual dues. In answer to last months golf teaser "What is Fuzzy Zoeller's real name", it is Frank Urban Zoeller, hence the nickname Fuzzy. This months teaser: "Who holds the record for most PGA tournaments won in a year?" On to this year's championship winners.

Individual

FIRST Steve Ojeda, **SECOND** John Cress, **THIRD** Bob Oakley, **FOURTH** Roger, Peterson, **FIFTH** Walt Bales, **SIXTH** Danny Ayala, **SEVENTH** Wally Child

Team

FIRST John Cress and Wally Child, **SECOND** Steve Ojeda and John Olsen, **THIRD** Bob Haliwell and Steve Engstrom, **FOURTH** Danny Ayala and Blind Draw Steve Engstrom, **FIFTH** Roger Peterson and Walt Bales, **SIXTH** Dennis Perry and Bob Oakley, **SEVENTH** Fred Mecum and Jim Van Gerpen



New club champion Steve Ojeda

Low Putts

FIRST Wally Child, **SECOND** John Cress, **THIRD** Jim Van Gerpen, **FOURTH** Roger Peterson, **FIFTH** Dennis Perry, **SIXTH** Jack Leetham, **SEVENTH** Bob Oakley

CLOSEST TO THE HOLE on # 14 Larry Fuller at 21' 7" and a "Special" prize of a Free Putting Lesson was awarded to Frank Biggs.

If you are new or returning to golf and don't want to play 18 holes, you are invited to join the Men's Nine Hole Golf Club.

- Play every Wednesday.
- A variety of games & formats.
- We will maintain your nine-hole handicap.
- Walk or ride, it is still "a walk in the park."
- Annual Championship Tournament

Membership is \$25 per year and applications are available at <http://pmlm9h.webs.com>

PML Ladies Golf Club

BY SARA HANCOCK

2ND FLIGHT

1st Place 298 Jeanne Pacco

2nd Place 301 (Tie) Barbara Connelly and Yvonne Mattocks,

4th Place 307 Judi Maguire

3RD FLIGHT

1st Place 315 Ann Hankin

2nd Place 317 Lynne Dust

3rd Place 318 (Tie) Clarice Ligonis, Susan Dwyer and Corky Graham.

Birdies: No Birdies on day 1 or 2. Day 3: Linda Johnson #9, Marilyn Scott #13. Thank you to Lynne Dust for doing a great job of running this tournament.

September 18 Team Point Bogey

1st Place...143...Kay Bettencourt, Lynne

Dust, Alma Frawley and Mona Tompkins

2nd Place...137 (Tie)...Marcee Cress,

Kitty Edgerton, Jodie Awai, Blind Draw Susan Dwyer, Linda Johnson, Jeanne Pacco and Marilyn Scott.

Birdies: Kitty Edgerton #6.

September 25 Partners Odd and Even

1st Place...59...Lisa Brown-Jinenez, Barbara Connelly, Marlene Drew and Kathy Shehorn

2nd Place...65...Marilyn Scott, Susan Dwyer, Kathie Wood and Alma Frawley

3rd Place...67...Marcee Cress, Clarice Ligonis, Yvonne Mattocks and Sara Hancock.

Birdies: Susan Dwyer #7.

Coming up in November is our turnover meeting on the 6th at 9:30 prior to our 11:00 shotgun. See you on the course.

Quilters' Corner

BY SANDY SMITH

Wow it is Thanksgiving time already, how time does fly. November and December are always quite busy for quilters getting ready for the holidays. So enjoy the time of being with friends and family. All of the Pine Needlers Quilt Guild wish you a wonderful Thanksgiving. Remember the Christmas Craft Faire downtown, and look for the Christmas Boutique and Bake Sale put on by the Guild Friday the 28th and Saturday the 29th. Always lots of "good stuff" to enjoy.

The 3rd Tuesday of each month Pine Needlers Guild meets under the library at 6 p.m. This month it is the 25th. Lots of good things happen there. At various times our guest speakers offer classes, and we are always willing to learn new things. Right now several of us are involved with a Round Robin. We are

at mid point right now. So within the next 2 months each group will have a finished quilt top. Everyone is enjoying the monthly show and tell from this project. Too fun, may have to do this again soon. We would love to have you come and enjoy with us.

Thursday the 27th will be the Block Party. We build little quilts for CNVC in Sonora, and are making the little dresses for the Dress A Girl project. Join us from 1 - 3 for a productive and good time. If you would be interested in tying a quilt, or making a small simple dress or two please give me a call 962-4950.

If you looking for a place to buy wide width fabrics try christianlanequilters.com. The home of the fat back they say. Was fun to browse. Also fabric.com, wow lots of stuff there. Enjoy the holiday!

PML Air Racers & Performers

BY JANET GREGORY

Each year aviation enthusiasts from around the globe gather in Reno for the National Championship Air Races. The excitement of the world's fastest motorsport is punctuated with unmatched aerobatic performers. Days, weeks and years of training and preparation are required for racers and performers.

This year's Reno Air Races were bitter sweet. Bitter was the loss of friend and air racer Lee Behel. Before the opening ceremonies, in a qualifying race it is believed that Lee's racing airplane a GP-5 experienced a structural failure which took his life. Official investigation by NTSB (National Transportation and Safety Board) will tell us what really happened but we do know that we lost a friend and father.

The Air Races continued, opening each day with a tribute to Lee. Pine Mountain Lake was well represented in the races, spectators and air show performers; all who participated in his honor.

PML Aviation Association air race pilots Vicky Benzing, Colleen Keller, Shane Margraves and John Parker raced in the Sport Class this year. Lee was one of the founders of the Sport Class Air Racing Association and its President. He was an innovator that brought modern high performance kit-built aircraft into the air race arena.

Air Racing is similar to auto racing only it's done in 3-dimensions. The race course is defined by pylons which are 50' telephone poles with specially-made drums mounted atop and painted with bright orange-red panels. Each class of air race has a specially designed oval course that vary

in circumference from 3-mile to 8.4-miles.

John Parker's "Blue Thunder" Thunder Mustang was running fast at 374 in the Sport Gold Heats but unfortunately DNS (did not start) on the final race day. Shane Margraves "Chester" Zlin Z50 ran early qualifying runs. Colleen Keller had "Poncho", Jim Thomas' Lancair slicing the air at 299 in qualifying runs. Colleen proudly brought home the 3rd place Sport Class Silver Trophy this year.

Vickie Benzing was at the top of the action this year at Reno. She flew "Lucky Girl", her Lancair Legacy to 1st place in the Sport Class Silver. Crew Chief, Jeff Benzing knew she could do it! Vickie also race in the Jet Class flying "Reality Czech", an L-39C at 418 mph to bring home the 1st place Jet Class Bronze Trophy as well as move up and make a run in the Jet Gold race. Vickie and Jeff Benzing were close friends with Lee Behel and honored their friendship with professional, winning results.

Rex and Melissa Pemberton performed their famous "Love Twist". Paint this phenomenal aerial picture in your mind. Wearing a high tech wing suit, seasoned skydiver Rex artistically flew a pattern crossing the full field from left to right high overhead before opening his parachute for a soft center field landing. While Rex is soaring in his wing suit Melissa is flying loops around him. It WOWed all of us in the crowd with heads tipped skyward, cameras clicking with excitement and wonder.

With so many great PML participants at the Reno Air Races maybe they should change the name!

Exciting Community Airport Day!

BY VIRGINIA GUSTAFSON, PMLAA



Welcome to PML Airport (photo credit Virginia Gustafson)



Mike Gustafson's hot rod racing Michael Thoben's Waco (photo credit Terri Thomas)



Skydiver lands at PML (photo credit Terri Thomas)

PML's Aviation Association welcomed hundreds of our Groveland Area friends and neighbors to Community Airport Day on October 4. This annual event showcases the resources of PML Airport for the community – the airport is used for firefighting, medical evacuations, and is home to about 100 local pilots.

Community Airport Day included skydivers, precision flying contests, races between cars and planes, demos of radio-controlled planes and copters, and wonderful formation flying exhibitions. We thank all the participants and all the volunteers.

Earlier in the day, EAA Chapter 1337 and local pilot volunteers provided free Young Eagle airplane rides to 63 area children.



The West Coast Ravens in formation over PML Airport (photo credit Virginia Gustafson)

Garden Club Clippings

BY JOYCE SMITH

Linda Flores our Jail Chairperson called a workday at the Jail on September 15th at 9:00 A.M. There were 9 of us members who came. Our purpose was to do general clean-up, raking, pruning, removing spent flower blooms, and planting a few new plants for color. Although we worked very hard, we were well compensated with Barbara Coldren's chocolate chip cookies and fudge and Linda's fruit, nutbread, juice, and water. We had a good time while accomplishing a lot. The Garden looked well cared for when we finished.

We took part in the 49ers Parade. We won two medals, one for Best Walking Entry and the other for Best Community Service for our upkeep of our Historic Jail. Did you see us? If you did you will surely remember the two bees,

Cynthia De Cant and Foxy, her chihuahua, dressed as Bees. You know every garden needs bees and these two bees were sooo cute. Congratulations to Garden Club members on your medals and colorful entry.

Anyone interested in coming to a Garden Club meeting are welcome to join us. We meet the 2nd Monday of the month at the Lake Lodge at 1:00 P.M.

If you were unable to attend the Sept. meeting, you missed a great speaker. Georgia Dempsey from the Forest Service told us about the Rim Fire Recovery and Logging Activity that are taking place now.

We were all thankful and happy to get the nice rain.

See you at the Lake Lodge meeting.

NOVEMBER EVENTS CALENDAR



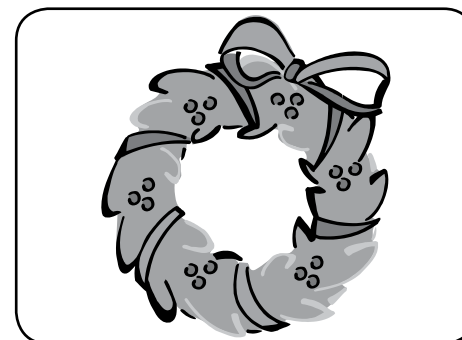
**Wine Tasting & Dinner
Buffet at The Grill
November 6**



**Divide Cemetery Veterans
Day Ceremony
November 11**



**Thanksgiving Holiday
Buffet at The Grill
November 27**



**Christmas Craft Faire
at Groveland Comm. Hall
November 28-29**

11-3

MONDAY - THE GRILL @ PML

**ROOFBBs Monday Night Football
INDIANAPOLIS VS NY GIANTS**
Guest Chef - Glen Fiance. Menu: Tri-Tip, Roasted Potatoes, Vegetable, Salad, Rolls, Dessert – \$13. All money raised goes back to the Community of Groveland. Tickets go on sale at 5:30 and dinner is at 6:00. Dine In or Take Out.

11-6

THURSDAY - THE GRILL @ PML

WINE TASTING & DINNER BUFFET
Join us for great food and wine and fun with your friends and neighbors. Featuring the wines of Gianelli Vineyards. Seatings begin at 5PM. Cost is \$23 per person plus tax. Reservations are required. Call 962-8638.

11-10

MONDAY - THE GRILL @ PML

**ROOFBBs Monday Night Football
CAROLINA @ PHILADELPHIA**
Guest Chefs - Beau Clark and Crew. Menu: Catfish, Macaroni Salad, Baked Beans, Cornbread, Dessert – \$12. All money raised goes back to the Community of Groveland. Tickets go on sale at 5:30 and dinner is at 6:00. Dine In or Take Out.

11-11

TUESDAY - DIVIDE CEMETERY

**DIVIDE CEMETERY
VETERANS DAY CEREMONY**
On November 11th, ceremony to honor veterans buried at the Divide Cemetery. The ceremony begins at 10:30 a.m. and Roland Elliott will play taps and the flag lowered to half-staff at 11 a.m. Time will also be given to those who would like to share memories.

11-17

MONDAY - THE GRILL @ PML

**ROOFBBs Monday Night Football
CAROLINA @ PHILADELPHIA
PITTSBURGH @ TENNESSEE**
Guest Chefs - Iris Moffit & Eileen Roberts. Menu: Chicken Enchiladas, Rice, Beans, Dessert – \$12. All money raised goes back to the Community of Groveland. Tickets go on sale at 5:30 and dinner is at 6:00. Dine In or Take Out.

11-27

THURSDAY - GROVELAND CC

THANKSGIVING DINNER
A traditional Thanksgiving dinner of turkey, ham, dressing, potatoes, gravy and all the trimmings served at the Groveland Community Center. The feast is sponsored by Yosemite Lodge #97 IOOF and is FREE of charge. The Thanksgiving dinner is completely funded by donations. Come out and celebrate a Community Thanksgiving.

11-27

THURSDAY - THE GRILL @ PML

THANKSGIVING HOLIDAY BUFFET
At The Grill at Pine Mountain Lake. Enjoy a traditional Thanksgiving feast: Carving station with Turkey and all the trimmings, slow roasted Prime Rib, Holiday sides and salads and Desserts. Seatings at 11am, 1pm, and 3pm. Adults \$35, 65 or Better \$29, Kids 6-12 \$15, and kids under 5 are FREE. Call 209.962.8638 for reservations.

11-28^{AND}29

FRI & SAT - GROVELAND CC

CHRISTMAS CRAFT FAIRE
9am on Friday thru Saturday. Closing time is 4pm. Do you have someone on your gift list that needs a special gift? Check out these local artisans and start your holiday shopping locally. Santa and his sleigh will be here at the firehouse on the 29th, at 9 a.m., so you can take family or individual pictures with Santa. The cost is \$5 for photos.

ENTERTAINMENT AT THE LOUNGE

**Saturday, November 1
THE BLUE BAND**

**Friday, November 7
SHOWTIME KARAOKE**

**Saturday, November 8
THE 209 ALLSTARS**

**Saturday, November 15
ESP BAND**

**Saturday, November 22
ROCKSLIDE**

**Saturday, November 29
TBD**

SAVE THE DATE

**Thursday, December 4
WINE TASTING & DINNER
BUFFET**

Join us for great food and wine and fun with your friends and neighbors. Featuring the wines of Renner Winery. Enjoy this great event from 5-7PM. Cost is \$23 per person plus tax. Reservations are required. Call 962-8638.

**Sunday, December 7
LIGHT THE SEASON AT THE
LITTLE HOUSE**

Beginning at 5:00 P.M. Help us usher in the holiday season with a tree lighting ceremony, singing of carols, and honoring or memorializing friends or family members. Holiday refreshments will be provided. Plan to join us for this magical evening!

HOMES ON THE HILL

**Your Guide to
Real Estate in the
Groveland Area**

Constance Elliott, Real Estate Broker
760-567-7654 direct

email: FourSeasonsRM@hotmail.com

*also serving you in the So. Cal. desert as
H.K. Lane Broker Affiliate:*

Christie's International Real Estate

*Palm Springs - Rancho Mirage
La Quinta - Palm Desert - Sun City*



RE/MAX
Yosemite Gold
Each Office Independently Owned and Operated

Patricia (TISH) Fulton
REALTOR® / PROPERTY MANAGER
BRE #00760019

18688 Main St. P.O. 808
Groveland, CA 95321

Phone: 209-962-0837
Office: 209-962-4080
Cell: 209-985-0216
Email: Tish.realestate@gmail.com

Deardorff Realty

ALL MY LISTINGS ARE SOLD!!!

**IF YOU WANT TO SELL
YOUR PROPERTY, CALL ME!
I'LL GET THE JOB DONE!**

Contact Marilyn Deardorff-Scott - BRE 00396888

209-962-0718



YOSEMITE GATEWAY PROPERTIES

18731 Main Street • PO Box 606 • Groveland CA 95321

YosemiteGatewayProperties.com • (209) **962-5190**



GEORGE VOYVODICH
Broker/Owner
209-962-4185 Office
gvoyvodich@gmail.com
BRE license 01080130



REBECA MARTINEZ
Realtor
209-639-9467
rebeca95321@gmail.com
BRE license 01961957



JUNE DEE
Realtor/GRI
209-962-5190 Office
209-962-7060 Home Office
209-770-5190 Cell
junedee@ymail.com
groveland-real-estate.com
BRE license 01700083

LOTS & LAND FOR SALE

13/358 .58 Ac, Seller pays closing **\$2,500 - SOLD**
7/30 Ferretti Rd. Golf Course Lot, Grt Price **\$24,500**
6/135 Septic in. Ready to build **\$6,500* - PENDING**
6/114 19805 Ferretti Rd **\$12K**
13/117 Breckenridge **\$3,500** • Unit 7 Lot 149 **\$3,500**

* Owner Financing Available

PENDING



For details go to:
www.groveland-real-estate.com

19120 Raboul Ct, 2/328
Single level Living 3B/2B, 1410 sf,
Well Maintained - **\$179,000**

PENDING



For details go to:
www.groveland-real-estate.com

20120 Ridgecrest Way 12/282
3B/1B - Charming chalet w/new comp deck and
railings. patio area & so much more! **\$149,900**

SOLD

SELLING OFF ALL THE INVENTORY,
THIS AD SPACE IS WAITING
FOR YOUR LISTING.

SOLD

SELLING OFF ALL THE INVENTORY,
THIS AD SPACE IS WAITING
FOR YOUR LISTING.

SOLD

SELLING OFF ALL THE INVENTORY,
THIS AD SPACE IS WAITING
FOR YOUR LISTING.

SOLD

SELLING OFF ALL THE INVENTORY,
THIS AD SPACE IS WAITING
FOR YOUR LISTING.



Consumer
Satisfaction Rating
www.sugarpinerealty.com



Listing Brochure

18727 Main St. #B • PO Box 792 • Groveland CA 95321
209.962.7765 • fax: 209.962.5924



LARGE "A" FRAME CABIN....3 Bdrms, 2 Baths, 1,934 sq. ft. Lrg game rm down & bonus room up can be add'l sleep area. Beautiful custom cabinets in kitchen. Level lot with plenty of room for parking. Would make a great vacation rental. Call Dave or Ron, 7/227 \$199,500 MLS#20141232



GOT IT ALL... 3 bedrooms, 3 baths rustic 2000+ sq. ft. beauty 2 wood burning stoves, panoramic views and privacy on 2 merged lots. Open floor plan for family entertaining and a huge master bedroom. Call Linda \$249,900.00. 4/168 Point View MLS#20141576



IMMACULATE CUSTOM BUILT HOME.... Plenty of Room in this 3bdr, 3bth, 3,064 sq. ft. Home. Open Floor Plan with Deck Access w/Views from five locations. New Carpet, Central Propane and Evaporative cooling on both levels to save on those PGE Bills. Call Dave or Ron, 8/111 \$279,000 MLS#20140817



PARK YOURSELF UNDER THE STARS on the deck or in the Hot-Tub. This home is in Pristine Condition. Split 3 Bedroom Plan, 2 Baths, 2 Car Garage and Well Maintained Decks. Close to Main Marina and Big Creek Hiking Trail. Call Dave Lint or Ron Connick \$159,500 19970 Ridgcrest Way MLS#20140068



PREMIER SETTING...This lovely 2944 sq. ft. 4bd 3ba home nestled in the trees on approx. 1 acre is the perfect place to relax & enjoy nature. Approx 1,600 sq. ft. of covered deck to entertain friends & family. Call Linda 13/216 \$429,000.00 MLS# 20140939



NICE HOME ON A QUIET STREET....large rear deck looking out on Cedar forest. 2bd/2b on main floor. Large bonus room downstairs w/full bath. Could be used as a bedroom or game room. Oversized detached garage w/ built in work bench. Call Michael or Patty, \$199,000 13/77 MLS#20131907



BEAUTIFUL 1.7 ACRE LOT....enjoy the views from this ez access, mild sloping down premium lot. Very private location in desirable Unit 11. Call Michael or Patty, \$159,000 11/56 MLS20121723



GREAT HOME FOR ENTERTAINING....3bd, 3bth, Large bonus room, bedroom & bath downstairs, w/Blaze King Wood Stove. Open floor plan w/propane stove in great room. Three separate driveway's with plenty of parking. Call Ron or Dave, \$174,900, 2/202 MLS#20140979



SEVEN CEDARS....Exactly 1/2 mile to the Marina. Fireplace/stoves in upstairs master bedroom & living room downstairs-plus central heat w/ separate controls up and downstairs. 3bd/2ba + 400 SF bonus room. Call Linda, \$198,500 13/143 Pine Mountain Dr. MLS#20141402



RELAXING RETREAT FOR A LRG. FAMILY... Remodeled 5bd/2.5 ba. + a bunk room. A cozy living room w/ brick fireplace, open beam ceiling & bonus room downstairs. Located on a Lrg. lot w/great setting. Call Linda, \$225,000 3/331 MLS#20103754



CHARMING SPLIT LEVEL... cozy 3 bedroom 2 bath 1700+ sq. ft. home. With a large bonus room and a 2 car garage. Nice level lot and plenty of parking for your quests or an RV. Call Linda \$190,000.00 2/345 James Cir. MLS# 20141549



CHARMING CORNER LOT...Chalet with 3B/2B and plenty of space for RV & parking. Light, bright & cheery, vaulted ceiling and new paint. Large inviting deck off living room. Most furniture available. Storage under the house. Call Patty or Michael, \$232,000 8/194 MLS#20141816



GOOD SIZE BUILDABLE LOT....at the end of a court. Plenty of flat space to build with a green belt at the rear of property. Call Dave or Ron, \$7,500 2/277 MLS#20141538 \$199,900 1/104 MLS/20132032



GORGEOUS PROPERTY ON THE BASS POND...very close to PML Airport & Stables. Horses are allowed on property. Minutes away from the lake, gold course, tennis & other amenities. Call Dave or Ron, \$89,000 12/179 MLS#20130814



ONE OF A KIND....You'll fall in love with it as you take your first look from doorway. Large living area-Marvelous kitchen-office-lounge. Loads of storage area. 4bd/3ba. Immaculate inside & out. Call Linda, \$399,900. 13/92 Breckenridge Rd. MLS#20141403



GREAT HIGHWAY 120 FRONTAGE....A one of a kind Historical barn over 100 years old and a cistern west of the barn that is visible from hwy. 14 acres, some of which borders BML property. Call Zane McDow 209-768-8889 \$260,000 Hwy 120 Groveland MLS#20121958



COZY AND COMFORTABLE....one level 3 bedroom, 2 bath home with a large 600 sq. ft. screened in porch to enjoy the summer out door living. 2 car garage and pleasant views out the back of the home. Call Linda \$250,000.00 13/124 Breckenridge MLS# 20141662



A CABIN FOR ALL SEASONS....High ceilings are a focal point for this 2 bd with a loft A Frame Chalet. Great views of the Mountains can be seen from its front deck, perfect for a weekend getaway. Call Linda \$159,900 3/250 Pine Mountain Dr. MLS#20131008



GREAT RENTAL OR VACATION HOME...Rustic cabin with central heat & air on .58 acre. Lot is open with some trees. Lots of room to expand. Outside newly painted. 3bd/2ba Call Linda Willhite, \$185,950 13/153 MLS#20140229



A MAGNIFICENT HOME....embedded and smothered in a huge pine forest. 3bd/2ba, there are 2 levels. The garage is a mans dream come true, housing 6 cars. Will go to auction 10 am, Nov. 22nd. Call Zane McDow for info, 209-765-8889. \$785,000, 22476 Confidence Rd. Twain Harte



Emmett Brennan
Broker/Owner



Dave Lint
Realtor, Past
Realtor of the Year



Linda Willhite
Broker/Assoc.



Ron Connick
Realtor



Patty Beggs
Realtor



Michael Beggs
Broker/Assoc.



Zane McDow
Realtor



Elaine Stallings
Realtor



Zana Looney
Office Assistant

YOSEMITE AREA REAL ESTATE

Paul S. Bunt Real Estate – BRE #01221266



SPECTACULAR MOUNTAIN HOME

Location, Location, Location and like NEW home. Just feet away from center of PML activities. Completely remodeled and renovated. Must See.

\$229,000 5/68 12751 Mueller Drive



OWNER FINANCING AVAILABLE

Call listing agent for details. Grt location. Walk to beach. All-vinyl ext. siding, conc. shingle. 2 lvl w/ mstr bdrm, lngv rm, full bath ea. lvl. Xtra lg pntry & storage, lg clsts & bonus rms. Lg gar. w/stor. & work spc. Pool table incl. **\$244K** 12780 Mt Jefferson Ct



PRICE
REDUCED

LOVELY OPEN FLOOR PLAN MOUNTAIN HOME

1,408Sq.Ft. 3b/2.5ba Knotty Pine Bm Ceilings. New paint, Wash/Dry, DW & remodeled Mstr Ba. Open Grt Rm. FP & Bay window. Cvr'd decks. Septic **\$195,000** 2/362 19358 James Cir.



CUTE/COZY MTN CHALET CABIN.

Very close to PML Amenities. 1,280sq.ft. Huge Loft w/half bath. 2bdms & full bath on main lvl. Updated. Stainless Steel Appls, laminate flooring, Tankless water htr & vinyl windows. **\$160,000** 2/2 - 20270 Pleasant View Drive



IT'S ALL ABOUT LOCATION!

A-frame, near 13th hole, views of course. Needs some TLC. Priv. deck off Mstr., lg deck off lngv rm. Apprv'd dog run. Open grt rm w/propane f.p., country kit. & formal dining. 2-car gar., plus wrkshp/bon. rm. **\$240K** 12600 Mt Jefferson Ct



GOLF COURSE HOME OPEN PLAN

1 lvl, 3bd/2ba. Some hardwood flooring. Great rm w/f.p. Furnishing can be included. 2 car garage. Rear deck cvrd. Hot tub views the golf course. Great vacation rental history. A steal at **\$259,000** 12728 Mt Jefferson St



CUTE AND COZY CABIN

Super clean 2 bedroom /2 bath open plan. Warm up w/airtight woodstove and cool down w/efficient, cost effective evap cooler. Move in condition Covered porch and tons of parking. Price to sell **\$129,000** 18996 Digger Pine



40.2 ACRES WITH A VIEW

2 bedroom 2 bath manufactured home. High Sierra's view. Work shop, 2 car garage, well house. You have to see the views! **\$299,900** 13980 Clements Road

REALIZE YOUR DREAMS WITH US



CHRIS H. LAKE
BROKER ASSOCIATE
209.768.6156 Cell
chrishlake@gmail.com
BRE #00946632



JAMES (JIM) NAGLE
REALTOR
209.770.5230 Cell
jamesa.nagle@gmail.com
BRE #01251085



KRYSTAL BIGGER
REALTOR/GRI
209-768-5944 Cell
kbigger81@gmail.com
BRE #01324944



LARRY JOBE
REALTOR
209.962.5501
larryjobe1@gmail.com
BRE #01444727

Call us today
209.962.5900



RYAN NIEDENS
REALTOR
209.982.4224 Cell
rniedens@gmail.com
BRE #01940007



PO Box 675 • 18800 Main Street, Suite B
Groveland, CA 95321



AIRPORT LIVING W/ HANGAR

Taxiway home. Lots of new renovations and up-grades. Live the dream with your plane. Huge hangar good for shop or car collector also.

\$449,900 12/28 20934 Woodside Way



CREEKSIDE CHALET

Newer home close to the main marina. Great location for vacation rental 4bedrooms 3full baths. Efficient kitchen. Large deck for outdoor living. Wood stove, inside laundry. Paved parking area. **\$199,000** 19554 Grizzly Circle



PRIME, DEEP-WATER, LAKE-FRONT

Over 76-feet of lake front. Close to Golf Course. Detached 2-car gar. Chalet-style, water views. Grnt cntrs, tile flr, lg pntry. Hi clng in grt rm. Alaskan cedar deck. Bns rm or xtra sleep area, w/full bath & access to deck. **\$825K** 19635 Pleasant View Dr



HANGAR WITH HOME

Taxiway home, 42X35 foot hangar could be used for car collector or as a big shop area for machinists or wood worker, etc. 3 bdrm, 2 ba, 1700 sq. Ft. home. **\$349,900** 20995 Hemlock St.



ROOM FOR EVERYONE

Over 2500sqft Lg Mstr ste w/ba, 2 sizeable guest bdms & guest bath. Gourmet kitchen, granite counters, separate dining rm, f.p. & bonus rm. Expansive decks, dog run, 2 car garage. Close to lake. **\$425,000** 12542 Cresthaven



FINEST OF THE GOLF COURSE LOTS FOR SALE

190 ft on the 4th fairway. Unbelievable views 5/284 19021 Dyer Court.

209.962.5900 • www.YosemiteAreaRealtors.com

HIGH SPEED INTERNET

866-378-8393

\$49.95/mo. VISIT OUR WEBSITE FOR MORE INFO. www.Conifer.com.Net



CONIFER

COMMUNICATIONS

WWW.PINEMOUNTAINLAKE.COM

Call
Bonded **Hamm's Carpet Cleaning** Insured
Green Cleaning
For Health • Appearance & Longevity



Locally Owned & Operated for 24 years

209-962-5852

In Association With **green tree**

- IICRC Certified Firm # 13341
- Member of Carpet & Fabric Institute
- Certified Technician on every job
- Business Profession & Trade License # 29950



Property Sales: (888) 962-4080 PineMountainLake.com
Rentals: (877) 962-7180 YosemiteGoldVacations.com



Lauree Borup
Broker, CRS, CRB,
(209) 628-4600
Realtor® since 1987
Lauree@GoldRush.com



Ann Powell
Realtor® since
1999, GRI, ABR
AnnPowell@GoldRush.com



Eleda Carlson
Realtor® since
1977, GRI, SRES,
E-Pro, ASP
EledaCarlson@GoldRush.com



Tish Fulton
Realtor, Property
Mgmt Certified-
Sales & Rentals
TishRealEstate@gmail.com



Tracy Billeb
RENTALS
962-7180
Senior Property
Manager

BREATHTAKING TUOLUMNE RIVER VIEWS



from 43 acres at the gate-secured Graham Ranch. Farmhouse style-built in 1994 & full of family fun possibilities. Fenced basketball court; pond; horse or goat corral, large patio, nicely landscaped. Wood & tile floors, gorgeous living room with slate rock hearth. 3 bedrooms + "office", 2 baths, 2665 sq ft. New roof. Separate 10 x 50 foot trailer for guests or in-laws. Good well and water system. Trail to river

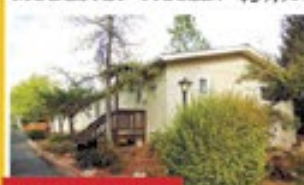
14010 Clements Rd \$525,000

TOP QUALITY LAKE HOME with lots of bells



and whistles. 3466 sq ft completely remodeled top to bottom, this home features random width oak plank flooring, granite counters, high end appliances and maple cabinetry. Soaring cathedral ceilings, & expansive windows in the great room. Entire upper level master suite with guest bedrooms on main level. Downstairs, use the exercise room or family room/ bonus area & office. On warm days enjoy landscaped grounds, deep water cove frontage and dock or the e-z care decking & retractable awnings. Detached garage w/shop. 3 bdr, 3 ba. 3-173 Rock Canyon \$999,000

MODESTLY PRICED! \$59,900



New Listing

home is surprisingly roomy inside. It features an open kitchen/ living space with a separate dining area, 2 bedrooms and a 3rd sleeping area/ den, plus 2 full baths. Newer roof, wood stove + central heat & air. Attached garage and guest parking. Located in Yosemite Vista Estates, an "Over 55" community, minutes from town with a quiet country setting.

22538 Hidden Hollow Dr.

COMFORTABLE ELEGANCE Liveability, enjoyment, pleasure and satisfaction! Have it all in this 2006 3 bdr, 3 ba.



Open floor plan with knotty pine vaulted ceiling, large windows for plenty of light. Kitchen has large breakfast bar with granite tile counters, energy efficient stainless appliances, main level master with walk-in closet attached bath. Bonus room downstairs w/wet bar a bedroom with full bath, French doors lead onto stamped concrete patio. Beautifully landscaped front and back yard, room to park an RV and a boat.

4-507 Cresthaven Dr \$399,000

CLOSE TO LAKE AND GOLF Rustic retreat offers a great location just around the corner from Dunn Court Beach and a short drive to golf. Two levels of living space with an open great room design on the main level and a large bonus room downstairs. Wood burning fireplace & central heat/ air provide year round comfort. Detached oversized garage with an extra wide door to store your "summer toys". 2 bdr/ 2 ba 1624 square feet



1-125 Pleasant View Dr \$179,000

2-STORY GREAT ROOM ON GOLF COURSE with wall of windows facing views + open loft for extra living areas. Completely remodeled with NEW roof, hickory floors, quartzite counters, cabinets, appliances, lighting, sinks, tiled showers, knotty pine doors & trim, and more. Wood-burning rock fireplace, central heat & air, 4 ceiling fans. 3 bdrms, 2 baths, 2050 sq ft. Level paved parking-garage is 11 x 24 feet deep to accommodate a boat. Close to Country Club & town.



5-244 Ferretti Rd \$278,000

REALIZE YOUR DREAMS WITH US



YOSEMITE AREA REAL ESTATE

PAUL S. BUNT REAL ESTATE

James (Jim) Nagle
REALTOR®

BRE 01251085

Because You Deserve the Best

18800 Main Street, Ste B., Groveland, CA 95321

Direct Line: **209/962-5900** or **209/770-5230**

Residence: **209/962-0323** • Fax: **209/962-5904**

E-mail (Business): jamesa.nagle@gmail.com



CUTE/COZY MTN CHALET CABIN

Very close to PML Amenities. 1,280SqFt. Huge Loft w/Half ba. 2 bdrms & full bath on main lvl. Updated. Stainless appls, lam. flrng, tankless water htr & vinyl windows.
\$160,000 2/2 - 20270 Pleasant View Dr.



BEAUTIFUL HOME & TWO LOTS

5b/3.5ba 2,144Sqft 2 lots, not merged, total 1.02 acres. Free-standing FP, trash compactor, wet bar, jetted tub, 4 new window sliders on main lvl. Lake access via the Lake Lodge inlet. Short distance to Lake Lodge & Beach.
\$595,000 4/59 & 60 - 20238 Pine Mtn Dr.



LOVELY OPEN FLOOR PLAN MOUNTAIN HOME

1,408Sq.Ft. 3b/2.5ba Knotty Pine Bm Ceilings. New paint, Wash/Dry, DW & remodeled Mstr Ba. Open Grt Rm. FP & Bay window. Cvr'd decks. Septic **\$195,000** 2/362 19358 James Cir.



COUNTRY RANCHETTE ON LVL 1.49 AC

Everything ready/setup for toys, RV's & Horses. Fenced/cross fenced. 2 paved drives each end of home - easy access to 4 horse paddock w/auto water system, lights, electricity, covered hay storage & 2 lg stor. sheds. Spacious 1,741SqFt. 4bed/2ba of room for family & friends. 2 car attached garage & extra storage/pantry rm add to home. Renovation throughout entire home. Kitchen renovation w/kitchen sink, granite counters, hickory cabinets, (dual fuel) gas/ electric oven/range & microwave. Free standing propane f.p. Covered Patio. Water well for Irrigation Nice fenced back yard for pets. New Roof & Exterior Painting
\$344,750 12/164 - 13334 Clements Road



3BD/2BA SINGLE LEVEL CUSTOM

Single-level, built in 2005, with 2-car garage, attached by breeze-way. Great room has vaulted, knotty-pine ceiling. Granite counters, laminate flooring. Jetted tub, separate shower & double vanity in main bathroom. Guest rooms access decks. **\$275,000** 7/228 - 19092 Digger Pine



PERFECT STARTER OR VAC HOME

Very nice, cute & cozy. Nice decks. Free standing wood burning fireplace & fenced area for pets. 1,404 Sq Ft of upgrades. 3bd/2ba & attached 2 car garage.
\$260,000 13/354 12800 Cresthaven Drive



COUNTRY CLUB VILLA # 21

Very close to Grill, Pro Shop, Tennis and Pool. Perfect for the vacation get-a-way and Vacation rental. 1,900 sq. ft w/4 bedrooms 4 baths. Separate/Private Suite downstairs. Golf Course and Mountain views. Has Vacation Rental History.
\$157,000 CCV # 21 12735 Junipero Sera

LOTS & LAND

Large Merged Lot .87 Acres Very close to Tioga High School. Easement off Ferretti Rd for easy access **\$9,600** 7-281 Ferretti Rd.

Easy Build G.C. Lot 13th fairway. Close to Dunn Ct. Beach. Seller financing available. **\$125K** 5/100A 12716 Mt Jefferson St.

Prime Gentle Slope Lot Touching the 6th fairway. Easy Access outside the gates. **\$24,000.** 5/201 Mueller Drive.

Finest of the Golf Course Lots For Sale 190 ft on 4th Fairway. Unbelievable Views **\$125,000** 5/284 19021 Dyer Ct. - **SOLD**

.7035 Acre Gentle Down slope Parcel Very Close to the PML Lake Lodge/Beach. W/Stately Oaks & on Quiet Street. **\$49,000** - Parcel 378 Big Foot Circle

Prime 5 ac. in Yosemite Acres w/well and storage bldg. **\$175K**

\$500 OFF
1st Month's Rent
EXPIRES December 15, 2014

Assisted Living in Jamestown

- 24-hour Awake Staff
- Special Vegetarian Diets Available
- Private & Semi-private Rooms
- FREE Cable Television
- Scenic Gated Community
- Emergency Call System
- Staff Supervised Medications
- Planned Social & Recreational Activities
- Memory Care & Special Needs

Casa Viejos
Assisted Living

18760 Charbrouillian Lane
Jamestown CA 95327
(Located off Hwy 108; Next to Country Inn)
State Lic# 557003146

209-984-5124

WWW.PINEMOUNTAINLAKE.COM
FACEBOOK.COM/PINEMOUNTAINLAKECA



PAUL S. BUNT, ESQ.
ATTORNEY AT LAW

ESTATE PLANNING
PROBATE
REAL ESTATE
BANKRUPTCY
ELDER CARE
209.962.6778

Mountain Leisure Center, Groveland
appointments available in Sonoma and Lake Don Pedro



Gina Giampietro Hernandez
OWNER/REALTOR®
BRE 01226555
NOTARY PUBLIC
408.506.6944 MOBILE
209.962.7156 OFFICE
GinaPMLRealty@gmail.com

*I'm Moving Properties...
Let Me Move Yours*

**AMAZING
HOMES FOR
SALE!**

Happy Thanksgiving



*Thank You For Your
Business !!!*

View listings & property search online at www.PMLRealty.net

BEAUTIFUL HOME 7 YEARS NEW WITH VIEW! \$479,500

12094 HILLHURST CIR., Unit 8 Lot 146
4 Bd 3 Ba 2car appr. 2700sf .60ac Quality built in '07. Granite cnts, stainless kit appl, pntry, brkfst bar, engineered wd flooring, grt rm w/ firpl, lg dstr fam/game rm, cement driveway, tall tree views, synthetic decking w/decorative mtl rail, custom interior doors, dual/sep flr HVAC units, landscaped grnds, stamped concrete, <http://www.tourfactory.com/1182734>



AWESOME HOME

GORGEOUS GREAT ROOM WITH BEAUTIFUL VIEW \$384,000

12660 EAGLE CT. Unit 4 Lot 492
App. 2400sf cul-de-sac, dbl lot w/views. RV + boat prkg. Courtyrd, 2 decks, hot tub, wd fp in Grt Rm & MBdrm. open beam tall clgs, .5ba on main lvl, 10' isld, tile & hardwood flrg, Mbdrm upstrs lg ba, sep tub/show & dbl van + Indry chute. 2nd Mbdrm dnstrs + Family Rm w/wood flrs, bonus enclosure off of garage w/bench. See virtual tour at <http://www.tourfactory.com/1167703>



MUST SEE

MOVE IN CONDITION & INCREDIBLE VIEW \$184,900

20600 QUAIL RIDGE LANE, Unit 3 Lot 146
3Bd/2Ba. Grt rm concept w/mstr bd on main lvl w/access to balc/deck. 2Bd & full ba on lwr lvl, strg in & under, grt for canoe for Fisherman's Cove nearby. Covered porch front deck. Many improvements made, home well taken care of. Has Inside Indry, free standing fplc, plus room to bld gar & plans available. See virtual tour at <http://www.tourfactory.com/1117400>



SOLD

BEAUTIFUL LAKE VIEW HOME!!! \$285,000

20287 PINE MOUNTAIN DR. Unit 3 Lot 207
Everyone Loves a Lake View! 3Bd 2 Ba 2 car, extra paved prkng/across from Lake Lodge Beach & Playground. Covered deck, tall 20ft + knotty pine ceiling grt rm w/f.p., open kitch, skylights, cntrl H/AC, lvl back entr, single flr lvng + downstairs gar. bonus rm. Lots of windows w/open & spacious flr plan. <http://www.tourfactory.com/1176623>



SOLD

VACATION GET-AWAY OR FULL-TIME HAVEN \$192,000

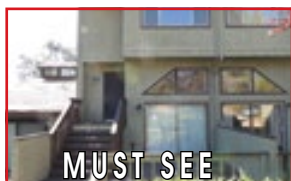
19781 Cottonwood St. U6 L81
1838 sf 3Bd/2 1/2 ba, 2 car on septic w/LvRm & Fam Rm, beautiful natural landscape lot backs up to trees & creek in PML. Long flat driveway away from street, serene surroundings. Main lvl living, grt rm w/open kitch, brkfst bar & garden window. Wood burning free standing f.p. Tile entry, sep laundry rm w/lg pantry stor. Lrg Mbdrm walk-in closet and French door to back deck. <http://www.tourfactory.com/1248347>



MUST SEE

DON'T MISS THIS GREAT OPPORTUNITY

12699 Junipero Serra #3
Approx 1516 sf w/2 Mstr Bdr + additional Full Bath Spacious Townhome w/Golf and Tennis. Swimming pool and Country Club steps away from your front door in beautiful PML, near Yosemite. Enjoy the lake & PML amenities full-time, part-time or have as investment rental just a short drive from busy Bay Area. Lg open kitch/sep dining, lg living rm w/stove wood burn f.p., 2 MBdr + full guest bath, 3 decks, Central H/AC, Tri Level. <http://www.tourfactory.com/1248349>



MUST SEE

BEAUTIFUL CUSTOM LAKE FRONT CABIN HOME - 2 LG DECKS W/BOAT DOCK, LV RM, FAM RM & 3 BONUS RMS \$899,000

12435 CASSARETTO CT. Unit 1 Lot 462
4Bd 2.5Ba, 2 car gar, ~4000sf 100 yds to Marina. 1018sf deck/3 lvls, dock, built-in BBQ, int hnd-peeled log rail & stair, 60' knotty pine clngs, rvr rck f.p., cust.kit.cab/mch aplanc, lg island butch blk, lg tile fam rm w/bar, 3 gst rms ent lvl, 3 bon. rms Lg MBed w/3X size walk-in clst + addl clst & heat stove, ctrl vac, lg Indry, patio w/clng fan & misters. <http://www.tourfactory.com/1170123>

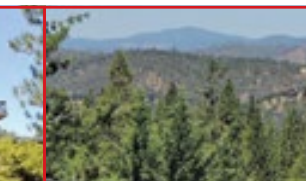


FRONT STEPS TO DUNN CT. BEACH, LAKE VIEW FROM KITCH, LIVING RM & 2 DECKS~4TH FRWKS VIEW \$549,000

19881 DUNN CT. Unit 1 Lot 269 .52 acres
Dbl mrgd lot to cnrn, 3 car gar. Towering open bm knotty pine clngs, open kitch. dining & lvng rm w/brick gas f.p. w/lake views! Huge pantry rm, 3 Mstr Bd, wd kitch. flrs, tall windows to middle atrium, cntrl H/AC, 3 car gar + paved extra prkng, circular drive, dbl mrgd lot, cvrd frnt deck patio overlooking Dunn Ct. Beach! New lvng rm carpet. <http://www.tourfactory.com/1154708>



PANORAMIC VIEWS LIKE NO-OTHER • 4BD (2 SUITES) • 3207 SF LIVING AREA + 1372 SF IN BONUS AREAS INCLUDING POOL



MUST SEE NEW LISTING

11950 MOUNTAIN SPRINGS CT. Unit 13 Lot 226 in Beautiful PML on .80 ac on quiet Cul-de-sac. 4Bdr 4Ba for vacation, full-time or vacation rental income. Spectacular mtn & tree panoramic views from 3 levels. Lg open living rm w/tile & wood flr beautifully inlaid, stone hearth fplc w/custom wd mantel, formal entry w/elevator to 3 flrs. Lg kitch w/SS appliances incl Jenn Air 6 burner gas stovetop + food warmer, dbl ovens, granite cnts, lg pantry, stained glass accent lighting, garden window. Sep exercise rm, indoor swim pool rm w/heated "Endless Pool®", lawn & flower garden bkyard & wd playhouse. 4 car gar w/dbl depth to fit 4 cars tandem or motor home on upper prkg. 1 lg & smaller car or trailer pkg in lower gar + extra prkg. TimberTech® decking. 690 sf workshop. Mbr w/flr to clg stone gas fp, private deck & 6 person hot tub, dbl shwrs, skylight, glass bowl sinks, tile flr, dbl closets. Beautiful wd flrs, high clngs, stained glass accent lighting. Scenic views from 3rd level "cupola" with elev. access. <http://www.tourfactory.com/1218839>

WELL MAINTAINED BEAUTIFUL HOME \$234,000

19452 Pleasant View Dr. U1 L115
2062sf 3Bd/2ba 1 car, septic, deep circular paved driveway w/private garden & beautiful private landscaped yard close to golf & Dunn Ct Beach. LvRm, Fam Rm, Sun Rm, granite kitch cnts, tile flrs & carpet. Wood burning f.p. stone hearth, vaulted clng, indoor laundry, central Heat/AC. Remodeled MBath, Lg shop/storage area off garage. Lg front terrace deck/patio. 5yr old 30/yr roof, cell phone svc & Hspeed internet Avail. <http://www.tourfactory.com/1248342>



MUST SEE

GREAT HOME ON CUL-DE-SAC \$162,500

18548 North Dome Ct. Groveland
1147sf 3Bd/2Ba, 1 car .42ac, septic. New paint inside/out, kitch new w/granite cnts, maple color cabnits, new sink, faucet & disp, new elec stove, new recsd light, new flrg, new LvRm clng fan. New lighting & doors, carpet, roof, deck rail front at front cement patio, ctrl heat, sinks, shower/tub, wtr htr. Lg deck off kitch. Cement drive to 1 car garage. Natural landscape, just a minute drive from downtown. Ready to move right in! <http://www.tourfactory.com/1248346>



MUST SEE

BEAUTIFUL BUILDABLE LOT IN PML \$35,000

20520 Ferretti Rd. Lot for sale. U3 L29
Two lots merged into one .474 acre very nice buildable lot with nice landscape, just near Pine Mountain Dr. up off main road on easement. Water & electricity available and can be on septic subject to verification from Groveland Community Services District. Asking \$35,000 or make offer.



LOT FOR SALE

NEED TO BUY?

NEED TO SELL?

CALL GINA!

FREE HOME STAGING ASSISTANCE

18919 FERRETTI RD., SUITE A. • IN THE MARVAL MARKET PARKING LOT

Pine Mountain Lake Realty *An Agent Owned Company*

11/14



Bruce 'Red' Rossio
Broker/Owner
BRE#01429140



Barry Scales
Owner/REALTOR®
BRE#00451887



Lynn Bonander, GRI
Owner/REALTOR®
BRE#0068385



Val Bruce
Owner/Broker Assoc.
BRE#00578336



Parker 'PJ' Johnson
Owner/REALTOR®
BRE#01732298



Gina Hernandez
Owner/REALTOR®
BRE#01226555



Marc Fossum
Owner/REALTOR®
BRE#01956242



Tranquil Setting Lake Front

20140 Pine Mountain Dr.
4-134
\$399,000

3 Bed/3 Bath, 2 Level Home, Approx. 1,700 Sf, on 1.0 Acre Lot. Private Dock on the Cove Opens Up to the Large Pine Mountain Lake. Built in 1981. Open Dining Area, Living Rm with Heat Stove, Family Room on Lower Level, Inside Laundry, Deck.
MLS#20140947



Cozy Log Cabin!

12804 Cresthaven
3/353
\$119,000
MLS#20131745

Adorable 2 Bd/2 Bth, Single Level, Approx 1026 SF, Approx. .40 Acre Home, Built in 1989. Great Room, Large Kitchen, Central Propane Heat, Evaporative Cooler, Inside Laundry, Covered Front Porch, Deck in back.



Great Little Fly- In Home

Near Pine Mountain
Lake Airport
20843 Ferretti Rd
3-490
\$164,000

3 Bdrms/3 Bths, Approx 1744 Sf, Built in 1981, .39 Acre Lot, Built-In Breakfast Bar, Wood Burning Stone Fireplace, Open Dining Rm & Kitchen, Very Large Family/Game Rm or 3rd Bedroom Downstairs. Some Furnishings Included. Peaceful Surroundings!



12725
Cresthaven
4-510
\$229,000

3 Bd/3 Bths, 0.60 Merged Lot. Open beamed ceilings, split level, Shop & lots of extra storage area for boat or other toys. Heat pump for heating & Cooling.
MLS# 20121545



Spacious Ranch
Style Home
21179 Hemlock
12-124
\$395,000
MLS# 20130073

4 Bd/3Bth/2 Car Att'd Garage, 2760 Sq Ft, Single Level, Flat 1.60 acres, Great Rm, Cathedral Open Beam Ceiling, Large Kitchen, Breakfast Area, Sun Rm, Guest Suite, AC, Central Vacuum, Zoned for Horses.



Great Summer
Home!
12272 Sunnyside
8-3
\$162,900
MLS# 20141282

3 Bed/2 Bath, Approx 1,740 sf. Cute & Cozy w/ Open Beamed Ceiling, Great Rm, Family Rm., Easy Access w/no steps to Main Level. Master Bedrm on Main Level. 2 Fireplaces. Spacious Deck with Beautiful Tree Views.. Sold "As Is".



Good Buildable Taxway Lot !!
Build your Dream House and Fly Home! Enjoy all the Amenities of Pine Mountain Lake. 0.56 AC 12-45 \$275,000
MLS#20141840



For Your Golf
Course Dream
Home!
12630 Mt Jefferson
5-109
\$49,000
MLS#20140895

Beautiful Lot w/Views of 11, 12 & 13 Fairways. This Super Price may allow you to build a new Home to your liking, rather than buying an existing Home. Ck out cost per SqFt for nicer Golf Course Homes Sold or Listed to confirm this. We can help you do this!



Clean & Neat
Single Level Cabin
\$149,999
12400 Tannahill
Drive 1-52
MLS#20131661

2 Bd/2 Bth, 2 Car Garage, Approx. 1248 SF on 0.26 Acre, Built 1979, Great Rm, Central Propane Heat & Air, Inside Laundry, Septic. Near Main Gate and Easy Access to all Amenities.



Great Location
Superbly Maintained
Home!
19141 Ferretti Rd. 5-235
\$259,500
MLS#20140760

3 Bed/3 Bath, Oversized Finished 2 Car Garage, 2 Levels, Approx 2776 sf, 0.33 Acre. Built 1990, Central Air, Central Propane Heat, 2 Free Standing Fire Places, Brfst Bar, Wet Bar, Walk-in Closet, Main Level all Bdrms & 2 Baths Lower Level Approx 600 sf Bonus/Game Rm w/Bath. Rv Parking.



Custom Home/
Airport - Quiet
Back Taxiway
\$599,000

Lovely 3 Bed/ 3 1/2 Bath, Gourmet Kitchen, Upper level Wet Bar with Ice Maker & 360° View. Three Sided Decking, 4 Car Garage. Hanger with Bed & Bath Apartment with a 42' Hanger Door. RV Parking with Hookups.

21101 Jimmerrall Lane 12-51



Happy Thanksgiving!!

Office 209-962-7156
Fax 209-962-6710
18919 Ferretti Rd Ste. A
PO Box 738, Groveland, CA 95321
www.pmlr.com

LOTS for SALE!!

3/489 - \$5,000 Close to Airport & Stables
5E/17 - \$49,000 Sale by Owner Golf Course Lot
5/109 - \$49,000 Great Golf Course Lot with Views of Three Golf Course Holes
6/146 - \$12,500 Very Buildable-Quiet Surroundings
7/108 - \$5,000 .50 Ac Near Golf Course Make Offer
7/275 - \$29,900 3 Beautiful Merged Lots, Quiet
8/136 - \$6,500 Good Buildable Lot
8/137 - \$7,999 Nice Lot in a Good Location
10/07 - \$12,000 View of Greenbelt
12-45 - \$275,000 Good Buildable Taxiway Lot
13/257A - \$149,500 3 Merged Lots - Beautiful Setting & Backs Up to Greenbelt



DRE# 00683485



Pine Mountain Lake Realty

An Agent Owned Company

Lynn Bonander, GRI Owner / REALTOR®

18919 Main St., Ste. A, Groveland, CA

Office 209-962-7156 / Cell 209-484-7156 lynnb@goldrush.com / www.pmlr.com



11/2014



Beautiful Single Level Home

12899 Greenvalley Cir
3-392

\$243,000
MLS# 20141050

Picturesque setting nestled in Beautiful Oak Trees, Immaculate 3 Bed/2Bth Home. Open Floor plan, Island w/Breakfast Bar. Central propane heat and Central A/C, Air tight wood stove w/brick hearth. Separate Laundry Rm w/deep utility sink. 2 year old -30 year comp roof. New Trex Stairs/Railings. Freshly painted inside & out... Nice Large Back Deck to Enjoy the Natural Beauty & Wild Life. Move in Ready! **Most Furniture, Washer/Dryer & Refrigerator Included!**



It's the Lake Front You've Been Waiting For!!

Beautiful Home on the Lake! This Level Entrance, Extensively Remodeled 3206 sf Beauty has 158 ft of Shoreline w/a Lakeside Gazebo. The Dock area is a very gentle down slope w/Electric & Water Outlets. The Wine Cellar provides appropriate Cooling Temperatures. 4 Bdrms/3 1/2 Bths, Den and a Loft. See our Web Site @ www.pmlr.com **Co-Listed with Barry Scales**

20914 Big Foot Court, 4-77 **\$1,150,000** MLS#20141134



Located on a Quiet Street 19631 Cottonwood St - 6-38

It's a Cutie! Hexagon Style 3 Bd 2 Bth, and Den. Finished Loft Accessible by Ladder, a Great Kids Hide-a-way. New Upgrades: Windows, Evap AC & Water Heater. FS Fireplace, Cathedral Ceilings, Skylights, Ceiling Fan, Inside Laundry, Open Kitchen, Refrigerator Included, Dining, Living Room. **\$149,000** MLS# 20140610



19650 Butler Way 8-211

Lots of charm and a Warm Feel.

This is a Great Get-A-Way Cabin. Single Owner, Near the Main Marina & Most Amenities. 4 Bedrms (2 w/o Closets) 2 Baths, 1 Car Garage, Living Room w/Pellet Fire Place, Upper Level Central Electric Air/Baseboard Heating, Master Bedroom with Walk-in Closet, Open Beam Ceiling, Inside Laundry, Special Touches, Great Views from Deck. **\$169,000** MLS#20140900



Short Walk to Lake/Beach

Enjoy this Peaceful Setting!

12597 Cresthaven 4-429

3 Bed/2 Bath, Approx. 1,488 SF, 0.49 Acre, Sits back from the Road, w/a lot of Parking. 2 Levels, Central Propane Heat/AC, Great Rm, Wet Bar, Fireplace, Knotty Pine Ceilings, Large Master Bedrm w/private Balcony, Walk-in Closet, Patio and Separate Entrance. Great Home and Location for a Vacation Rental. **Furniture Included.** Reduced! **\$214,000 - \$199,999** MLS#20131098



Delightful Ranch Style Home - Horse Zoned

13110 Clements Road 12-98 MLS#20141536

3 Bed/2 1/2 Bath, 2 Car Finished Garage, Approx. 1704sf, on Approx 0.99 Acre. An Add'l 360sf Enclosed Porch/Sunroom, completely insulated and has double pane windows. Beautiful Hardwood Floors in Living Rm, Dining & Hall. Property is clear and backs up to a 1100 Acre Ranch with miles of Equestrian Easements. Pretty Fenced Garden Area and completely fenced in back w/2 metal Gates on either side for easy access. Walls & Cabinets Decorated by a Professional Painter. Offered @ **\$275,000**



Ranch Style Home Room for it All!

13360 Clifton Way
12-156

\$475,000

MLS#20141581

4 Bed/2 1/2 Bth, Approx 2000sf, Approx 1.09 Acres, 2 Car Attached Garage, Cov'd Deck. Great Rm, Kitchen Island & Breakfast Bar, Inside Laundry, Central Propane Heat, Evaporator Cooler, Walk-in Closet & Dual Lav in Master Suite, Ceiling Fans. Plus a 2500sf Shop Fully Equipped for Auto Restoration w/heated Office area & 1/2 bath, Portion of shop is 14' High. 34 Ft of heavy duty work benches & 23 ft of floor to ceiling shelving. On premises gate allowing direct access to the horse trails. A Must See!! **Listed by Barry Scales.**



New Listing!
This Beautiful Pine & Oak Forested Property is completely fenced w/wildlife fencing. 2 Driveway Accesses. Property borders BLM land and a 15 acre parcel. Zoned RE-1 which allows for 2nd home. This 1 Bdrm/1 Bth Home was Built in 1953 & Remodeled in 1997 w/permits. 2 Sunrooms. A fixer Upper w/great Potential. AT&T internet Access in place. Oversized 2 car Detached Garage w/220 Outlet, storage shelves, work bench & heavy duty storage cabinets. Koi Pond, Chicken Coop. Sold "AS-IS" Come See!

Unique Groveland 2.55 Acre Property

19800 Elder Lane

\$125,000

MLS#20141914

LAND FOR SALE!

2.3 Acre Parcel - Reduced! **\$75,000**
Whites Gulch

4/128 - **\$110,000** Lake Front with
Beautiful View!!

6/231 - **\$15,000** Septic Lot- Nice View

6/183 - **\$35,000** 1/2 Acre + Easy Build

8/71 - **\$15,000** Beautiful Lot - Good
Location

8/226 - **\$4,800** **pending** 1/2 Acre Lot

8/137 - **\$7,999** Butler Way

12/101 - **\$125,000** 1.09 Acre Beautiful
Level Lot near Airport
& Stables

Helping Hands News

CHRISTMAS BASKET PROGRAM APPLICATION TIME CHANGE

BY PATTI BEAULIEU

If you are a Christmas Basket applicant, please note the following change in the Application time. The Tuesday time will be 10 – 1 rather than 10 – 2.

APPLICATIONS IN THE GROVELAND COMMUNITY HALL – Friday, November 7th from 5 p.m. - 7 p.m. or Tuesday, November 11th from 10 a.m. to 1 p.m. We can only accept applicants for those residing in Moccasin, Big Oak Flat, Groveland or Buck Meadows. **MARK YOUR CALENDARS!! – MAKE ARRANGEMENTS!!** You must apply in person on one of the application days and be prepared to show all sources of income and employment. If you have children residing in the home 17 or under, please bring their clothing/shoe sizes as well as their 'SPECIFIC wish lists' for Santa. If you miss the application days, you will be wait-listed so watch the local papers, businesses and bulletin boards for flyers about the application dates and times and mark them on your calendar.

Also, you will only be allowed to pick up 1 other applicants basket on pick-up day, besides your own. Please don't arrange to pick up several other applicants baskets.

If you have any questions, please call 962-6830 or 962-5930

HELPING HANDS HAPPENINGS

BY JOYCE SMITH

Happy Fall! Wasn't that rain wonderful? We had 1 1/4 inch at our house. These cooler (86 degrees daytime) (40 degrees night) temperatures are really welcome.

We are back to our earlier closing of 3:00. That means your donations should be delivered before 2:30 at both store and barn only on days they are open. Did you see we had a 1/2 sale at the Barn on 9-27-14? Yes, we do have sales there from time to time. Regarding your donations---there are some items we do not take anytime so you can save us and yourself time if you don't bring in any of the following items: BBQ's; CAR SEATS; CRIBS (mesh playpens are ok); TV's; Microwaves; Computer hard-ware; large appliances; Mattresses; exercise machines; pianos/organs; entertainment units; snow skis or boots (poles are ok used as walking sticks); plumbing

supplies (sinks or toilets); building supplies (windows, doors, cabinets, etc.) or anything in bad condition. Hopefully this will be helpful to you.

We were parade winners!!! We won medals for Best of Parade and Best of Theme. We thank you for our warm reception in the 49ers Festival Parade. We had a good time. Thanks to Susie Bales and Dawn Silva our parade chairpersons.

Welcome to new volunteer Cheryl Smith. WE look forward to working with you and having you join our worthy cause.

We had a workday on Sept. 28th to take out summer clothing and put out fall and winter. Gone are shorts, bathing suits and most of warm weather wear. Around Oct. 28th Halloween items will be gone and Christmas will be appearing. Fall and winter clothing will be put out as it comes through.

We wish you a wonderful Thanksgiving and just like the big stores, we will be open the day after Thanksgiving.

See you at the Store or Barn.

TROOP UPDATE

BY MARY BROWN

I was curious last week to know what the weather was like in Afghanistan so I looked it up, to my surprise it's about the same as here in Groveland. Speaking of looking things up....if you are interested, you can look at the same thing I do when getting info on what the soldiers are asking for. Go to anysoldier.com, click on where to send, you should get a list on the left side of your screen. You can click on any name, then to the right you will see the info on them. What branch of service, where they are stationed, how many troops are in the vicinity, male and/or female, and a personal note from them with what they are asking for at the present time. There is a question and answer section, and other info about what to send. Look around and you can learn a lot about what, when and why. If you want to shop for someone you've seen, it would be great if you click the "click Here" to get an address, print it and put with the shopping items, bring into Helping Hands together and I'll be glad to send them. Please keep in mind that we only send to units from California, in Afghanistan. If you have a question you can call me at 962-0317 I'll do my best to get you an answer. That's it for now, keep the goods coming in and I will keep sending them out.

GAINs Community Service Awards

BY BARBARA BROAD

GAINs presented its Community Service Awards for service in the year 2013 at the 49er Festival. Nominated for the adult award were Kathy Brown for her work at the Groveland Museum, nominated by Bob Oakley, and David & Christina Wilkinson for the Rim Fire t-shirt sales, nominated by Terri Thomas. There were no nominations for a youth award this year.

The award went to David & Christina Wilkinson. They heard that fire fighters like to have commemorative t-shirts, and they saw this as a way to raise money for restoration after the fire. They used their designing skills to create two t-shirts designs. Then they enlisted local merchants to sell the shirts and donate the income to their fund. With their daughter, Bethany, they filled mail orders for hundreds of shirts. The fund totaled over \$14,000. When the check was turned over to the Forest Service, they were told it had been doubled by the Tuolumne River Trust and the National Forest Foundation, totaling almost \$43,000. Funds will be used to help coordinate the repair and replacement of recreation signs, picnic tables, trail maintenance, and other services that contribute to our enjoyment of the National Park.

Kathy Brown is the Groveland Museum Operations Manager, where she directs the museum docents and schedules the helpers in the Museum. Kathy doesn't hesitate to fill in docent shifts when there is a vacancy,



*Community Service Award Winners
Christina & David Wilkinson.*

*Photo courtesy of the Yosemite Highway
Herald, Miguel Maldonado.*

and this results in numerous hours of duty every month. She is skillful at greeting visitors, particularly children, and she is very knowledgeable of our local history. Intelligent, resourceful, and articulate, she is a very special volunteer at the Groveland Museum.

Community members nominated these volunteers, and a community committee made the difficult selection. Congratulations to all!

FOGL News

FOGL = Friends of the Groveland Library

BY HARRIET CODEGLIA

FOGL volunteers continue to support our wonderful library by shelving books, sorting and selling books in the Book Nook, reading to young children at Story Time, and fund raising to keep our library open. We sponsor the Summer Reading Program and the Poetry Anthology in the local schools and assist with Brainy Groveland's math and reading programs. We fund the purchase of both ebooks and old-fashioned, no batteries required books for the County Library system. And we pay for and wrap children's books for the Christmas baskets. Stop in at the Library to pick up a membership form or email hcodeglia@gmail.com. We welcome all interested parties to our monthly meetings held on the fourth Tuesday of each month at 2 pm.

QUILTS IN THE BOOK NOOK

Each Saturday from 10 until 2, the Friends of the Groveland Library operates

the Book Nook, or sale of gently read books. Fiction and Non, children's books, and some audio books and videos are all available at very low prices. Proceeds help support the programs of FOGL. Be sure to donate your gently used books too. Please no magazines or text books.

FOGL is proud to display the artwork of local artists in the Book Nook for viewing enjoyment and sale. This quarter we are displaying locally made quilts of all sizes, plus we still have photographic greeting cards by local photographer Tracy Barbutes.

BOOK PUPPY PRINTS

Local Artist Carole Pennachi created the charming "D is for Dog" drawing and given the rights to FOGL. You can purchase this charming print by picking up an order form at the library or at the book nook, or by contacting Harriet Codeglia. hcodeglia@gmail.com or 962 6270. What a wonderful holiday gift!



Dr. Donna Wines D.C.

Wines Chiropractic Wellness Center Wholeness is Our Goal

Specializing In Children Of ALL Ages

Non-Force Wholistic Chiropractic • Acupressure Reflexology
Nutritional Consulting • Neuro-Emotional Technique • Special Classes Avail.

Open Mon.- Thurs. • 18727 Main St., Ste. C., Groveland, CA 95321 • 209/962-4565

From Your Supervisor

JOHN GRAY, 4TH DISTRICT TUOLUMNE COUNTY SUPERVISOR

First, I would like to start by dispelling a rumor that Sonora Regional Medical Center is considering closing the Groveland Clinic by asking the publishers to publish a letter I received from Andrew Jahn, President and CEO of Sonora Regional Medical Center dated September 15, 2014 which reads as follows:

Dear Mr. Gray,

Sonora Regional Medical Center is committed to ensuring that Groveland Medical Clinic is staffed with quality, full-time health care providers. We are proud to carry on the legacy and wishes of Mary Lavaroni to provide excellent health care to the Groveland community and Yosemite corridor.

While Dr. Shield will continue with his current clinic schedule of 2 days per week in Groveland, we are actively recruiting an additional full time physician to practice at the Groveland Medical Clinic.

The physician recruitment firm who is assisting us is working hard to present candidates who have a commitment to work and live in a rural area. The rural nature of Groveland makes this search particularly challenging. Hospitals around the country are fiercely competing for highly-qualified primary care physicians due to a national shortage. In addition to using the recruitment agency, our physician recruiter is sending out a mailer to primary care physicians around the country about this opportunity.

Thank you for your patience as we search for the right physician. We are committed to ensuring that the health care needs of Groveland's residents are met. If you have any questions about our recruitment efforts, don't hesitate to contact me.

Sincerely,

Andrew Jahn, President and CEO

By the time most of you have read this month's article the November election will have been completed and hopefully Proposition 1 will have passed. As I have stated it is not perfect but it could be our best chance of solving some of our lack of water issues.

A large component of the Bond includes money for additional storage. It is my opinion that this is the most important component. It is also going to be the "money most fought for" politically.

In the Bond there are five proposals that the State is considering to increase water storage:

- Site reservoir, Colusa County 1.1 million acre feet: \$3.8 million
- Temperance Flat, Fresno County 1.2 million acre feet: \$2.5 billion
- Raising San Luis Dam, 130,000 acre feet: \$360 million

- Raising Shasta Dam 3.9 million acre feet: \$1.2 billion

- Raising Los Vosqueros Dam, Contra Costa County, 225,000 acre feet: \$1 billion

If you add up the cost, you see that the total cost is far greater than the total amount of the Bond. Even though none of the proposed sites show a direct benefit to our area, common sense tells us that if more water can be stored in other areas, there is a good possibility more will be left in our reservoirs.

If you look at the list, the one that stands out most in value of cost per acre foot is the Shasta Project.

Picking the project is where the politics comes in. If you agree with me you can help promote the Shasta proposal by contacting the Governor and your State representatives to present your opinions.

Water issues have taken center stage in the news of late so it probably only fitting that I address another water issue... that of groundwater. Governor Brown has signed the California Water Action Plan-Sustainability Groundwater Management.

Tuolumne County Board of Supervisors, at their April 15, 2014 meeting, voted to send a letter to the State to address the Groundwater Plan and how it may affect our county.

Essentially, the Board of Supervisors has taken the position that due to the unique nature of groundwater in foothill and mountain counties--which are predominantly fracture and flow systems--makes us different and more complex than the typical valley areas. A "one size fits all" plan will not work.

In order to comply with Governor Brown's plan, it will be necessary for the State to fund for the studying, monitoring and enforcement of any local and State Groundwater laws if accepted. This cost should not be borne by the individual counties.

Tuolumne County has also taken the position that monitoring and management of groundwater should be done locally. Hopefully, the State will listen and help establish a local control mechanism for monitoring if one is actually needed.

Soon many of us will be celebrating traditional gatherings with friends, family and those within our communities. With the holiday season upon us, I want to wish all of you Happy Holidays.

There will not be a Supervisor article in December. But, as always your comments and suggestions are welcome. If you want to meet with me personally in Groveland or Lake Don Pedro, please call 533-5521 or email me at jgray@co.tuolumne.ca.us

Pine Cone Singers Look Forward to Winter!

BY LINELLE MARSHALL

Are you ready for Christmas? It's closer than you think, and your Pine Cone Singers are hard at rehearsal every week, getting ready to present another fabulous concert for our community! It's always great to reconnect with fellow singers, including former members who've returned (alto Regina Tilley) and new additions (Dave Montgomery increases our tenor count!), as well as a new member of the bass section, Larry Carrier.

Be sure to mark your calendars NOW for our very popular holiday concert series – December 11th & 12th at 7:30 PM, and December 13th & 14th at 2:00 PM. Our director, Ron Randall, has chosen a great selection of holiday favorites, ranging from traditional melodies to fun and silly versions of familiar songs. The choir is excited to be singing "Little Tiny Child", a lovely piece composed by our own director! Audiences will have an opportunity to join in the annual sing-along segment of the concert, and members of the choir will be featured in

solos and ensemble pieces – always a highlight.

This is also the time of year that the Pine Cone Performers ask our community to help support our artistic efforts. Our substantial operating expenses include compensation for our music director, accompanist, and musicians, as well as insurance, sheet music, publicity, printing and facility usage.

We hope we can count on your sponsorship this year. All donors giving at the Gold \$150, Silver \$100, or Bronze \$75 levels will be acknowledged in the Spring and Winter 2015 concert programs and flyers, as well as the program for the Pine Cone Performers' play. Gifts of any size are welcome and appreciated.

The Pine Cone Performers is a "not for profit" organization. Checks made out to "Pine Cone Performers" can be mailed to P.O. Box 1222, Groveland, CA 95321. Thank you for your valued support!

We look forward to seeing your cheerful faces in December!!

SEASPRAY

AWNINGS & BOAT COVERS

533-4315 • 536-9397

Lic. #981187



TUOLUMNE COUNTY'S NUMBER ONE SOURCE FOR

Custom Retractable & Fixed Awnings
Boat Covers & Bimini Tops
Boat Upholstery & Carpet
Recovers & Repairs

www.seasprayawnings.com

www.seasprayboatcovers.com

FOR IDEAS AND ESTIMATES CALL DOUG PARRISH
14769 Mono Way, Sonora • 13893 Tuolumne Rd.



BY RON HARMS

Thanks for the community's rousing support of The Little House as shown by the remarkable turnout for the Sierra Repertory Theater's production of Mark Twain's *A Murder, A Mystery & A Marriage*. Over 250 people enjoyed an evening of great tunes, goofy jokes and some hot fiddlin'. Special thanks to Pastor Ginger DuMars and the congregants of Mountain Lutheran Church for their active support and assistance on the evening of the performance.

Village on the Hill has been selected as the name for Southside Senior Service's project that is aimed at assisting people face the challenges of aging in place. The community meetings held in October provided valuable information that will be used in finalizing the services to be offered as part of this initiative. Village on the Hill expects to launch a pilot phase of the program early in 2015. If you want to know more about Village on the Hill please go to The Little House website at www.thelittlehouse.org and

click on the Village Tab at the top of the home page.

The annual Light the Season celebration is scheduled for Sunday, December 7 at The Little House beginning at 5:00 P.M. Help us usher in the holiday season with a tree lighting ceremony, singing of carols, and honoring or memorializing friends or family members. Holiday refreshments will be provided. Plan to join us for this magical evening! If you are interested in honoring a loved one as part of this occasion, please contact Ann Daws at The Little House to obtain an acknowledgement form or download the form at thelittlehouse.com.

Southside Senior Services would like to welcome two additions to its leadership team. Ann Daws will be replacing Luci Tyndall as Administrative Services Coordinator for The Little House. Luci will be moving to a new role as Program Director for Village on the Hill and will work with Lisa Vaughn who will serve as Volunteer/Member Services Coordinator for the Village. Both Ann and Lisa bring a wealth of social service and non-profit experience to the organization and we are delighted that they have chosen to work with us.

CONTACT US

Visit: 11699 Merrell Rd. & Hwy 120

Call: 209-962-7303

Email: info@thelittlehouse.comWeb: www.thelittlehouse.com

November 8th Is Volunteer Day at Camp Tuolumne Trails

BY VIRGINIA RICHMOND, TUOLUMNE TRAILS VOLUNTEER

It's that time again – each fall we invite our volunteers, neighbors and supporters to spend a morning helping to get the camp ready for winter. It's been a busy summer and the camp needs a little TLC.

Here are some of the projects we hope to tackle on Nov. 8th. If you can join us for half-a-day (and a delicious camp lunch), call 962-6336 and indicate your project preference. Call at 962-6336, if you have any questions. We'll provide the tools and equipment.

1 Kitchen crew to prepare lunch for the weary volunteers

2 Shampoo Library carpet/Organize and tidy up library

3 Organize mechanical deck and holiday storage closet

4 Clean base-boards/scuff marks on walls in Great Hall

5 Brushing crews; possibly burn, it it's a burn day.

6 Landscape work in Dedication Garden.

7 Great Hall Staining - prep work for staining, including taping and caulking.

8 Pour footings for shade structure at Archery Range.

9 Install railings at Observation Deck

10 Weed whacking and brush sawing along sidewalks and around cabins.

11 Fence removal – pull out some old metal fencing and pile it on a truck.

We will start at 8:00am and finish with a hearty camp lunch at noon.

Volunteer Days are a great help to the camp. It's fun and rewarding for the volunteers and you help keep the cost as low as possible for our special needs campers.

Please let us know if you can participate. Thanks so much for your support!

First Wednesday Birdwalk

BY JEANNE RIDGLEY

The first Wednesday of the month Bird Walk at the Groveland Community Services property at 18966 Ferretti Road, Groveland is led by Jeanne Ridgley. The property encompasses an area of more than 200 acres of oak, pine and willow habitat with three water storage ponds. 139 species of birds have been seen there since November of 2007. Migrating and winter birds returning continue. Recently Eared Grebe, Red-breasted Sapsucker, Mountain

Chickadee, Rock Wren, Lincoln's Sparrow, White-crowned Sparrow, and Golden-crowned Sparrow have been seen

Dates for upcoming trips are Nov 5 and Dec 3.

Meet the group in the GCSD parking lot at 8:00 AM. Bring binoculars and a birding field guide if you have one. Rain will cancel the trip. The walk will last about two-three hours. If you have any questions, call Jeanne at 962-7598.

Groveland Kiwanis

BY SANDY SMITH

Happy Thanksgiving from Groveland Kiwanis to each of you in our community. We all have so much to be thankful for. We live in a wonderful country, with all of its faults, and I for one am grateful for being born here.

Kiwanis has a dramatic history, check it out on Kiwanis.Org. The very 1st Kiwanis started with 35 participants in Detroit, Michigan, in 1914. Its purpose was to provide a place where businessmen could gather together and put their talents, and resources to work within their own communities. Providing services for kids and communities in need became its primary focus, as it is today. Their motto We Build - We Serve - We Grow is still practiced today, 100 years later.

Groveland Kiwanis meets each Tuesday at 4:30 p.m. for 1 hour at Pizza Factory. I have been asked why so early, the answer is because no one likes to drive in the dark any more. Also it gives you time to get home and get dinner started so that you

can be with your family in the evening. If you are interested in helping to build and serve our community come down and join us. See you there.

The month of November finds us busy serving our community. ON the 11th you will notice the American flags flying downtown, for Veterans Day. We put them up early in the morning as a tribute to our many veterans. Seeing them flying in the breeze is a goosebump moment. Check it out.

Thanksgiving week-end, November 28 & 29th Kiwanis sponsors the Christmas Craft Faire at the community hall. It is always a fun event with lots of wonderful displays of local artisans work. Also on Saturday Santa comes to visit. He brings his sleigh to the fire house so that you can come out and have your picture taken with him. The cost is \$5. Many families come each year as part of their family tradition. Santa loves to have his picture taken with the family dog too. Come on down and join in on the fun.

Christmas Craft Faire

BY SANDY SMITH

It is that time of year, Happy Holidays to one and all. Thanksgiving week-end will be here in just a few weeks. Making memories is such a great part of the holidays. The Christmas Craft Faire will be a perfect way to do this.

The Faire starts at 9 a.m. on Friday the 28th and runs thru Saturday the 29th. Closing time is 4 p.m. There are so many choices to make, and many one of a kind items that are hand made. Do you have someone on your gift list that needs a special gift? Check us out. The artisans are all local people, friends and neighbors. Come on down to the Community Center and start your holiday happenings

right here in our little community of Groveland.

Santa and his sleigh will be here at the firehouse on the 29th, at 9 a.m., so you can take family or individual pictures with Santa. The cost is \$5, and that includes the frame. Its a great way to start a new tradition. The Moore Bros. will be helping Santa in December. More information to follow next month.

Because of the Faire we are able to donate to several organizations within our own community: Cal Fire, CNVC, Community Thanksgiving Dinner, The Little House, and Kiwanis. Community helping community.

The Soroptimist Scene

BY BARBARA ELLIOTT

Our mission: "Soroptimist improves the lives of women and girls through programs leading to social and economic empowerment"

THINK PINK. Marilyn Fields and her committee, had great fun preparing our booth at the 49er Festival. Lots of friends stopped by to view the "decorations". Visitors did double takes to make sure they were viewing correctly – dozens of bras, decorated in a most creative fashion. Donna Thayer and Shirley Brascosco collaborated on the "candy kisses" fliers. While the fliers were so cute, they were complete with information regarding local services – a great hit with all the ladies. While we all had giggles, the purpose is very serious – Breast Cancer Awareness. Breast Cancer is the most common cancer among women. All of your donations (including the purchase of bras!) went to the local cancer patient support.

Hope you drank gallons of lemonade! The "S" Club had a large booth and lots of lemons. It was great to see the enthusiasm of the club members. The funds will help them with their programs.

SAVE THE DATE: November 12, 2014. Tickets have gone on sale – don't miss this popular event!!!

The first fundraiser this year is going to be a variation of the annual Winter Tea and our bi-annual Encore. We present you -- Encore & More!

This will be held at the Community Hall. There will be a lite lunch included in the \$5 ticket. This event will provide you with opportunities to purchase hostess gifts and decorations for Thanksgiving, Christmas and just because it is too wonderful to resist. You can begin your shopping for Christmas – gorgeous pieces of handmade items or splendid baskets of theme items (always a special treat!). You know that all the sales items are provided by members and sponsors of Soroptimists. All revenue goes to SIG programs.



Soroptimist members pose in front of the Breast Cancer Awareness Month banner displayed at the Groveland Fire Department during the month of October.

One of the SIG programs is B.E.S.T. Day. On October 28th we presented a program for the 7th and 8th grade girls of Teneya School. SIG provides the girls with food, crafts, music, personal hygiene guidance, thought provoking ideas and entertainment – they leave the day with smiles – we love the event!!

This program was recognized at the Soroptimist regional meeting 9-20-14. President, Liz Mattingly and Treasurer, Luci Tyndall missed all the excitement at the 49er Festival, they travelled to the conference and gave a presentation on our "formula" for B.E.S.T. Day. Way to go Liz and Luci.

Back to School Shopping was this past month. Faye Buckley prepared 40 Hygiene Packages from Soroptimist for students in the Groveland area.

Happy Birthday to US rang loud & clear at 9-16-14 meeting. We celebrated our 14th birthday with cupcakes ... yummm.

Our evening session will be held on the 1st Wednesday of the month 5:00 PM to 7:00PM. [You are welcome to bring finger food and beverage to share] Our daytime meetings will be held on the 3rd Tuesday of each month, at noon to 2:00. Both meetings will be held at the library meeting room in the lower level. Since the meeting dates are in transition we would encourage you to call Liz Mattingly at 962-7648 for current details. We want you to become an active member of this community.

Thanksgiving Dinner

BY JO ANNE BACCI

On Thanksgiving Day, Thursday, November 27 the 27th annual Thanksgiving feast will be held at the Community Hall in Groveland from 11:30 to 4 pm.

The meal will be the traditional turkey, ham, dressing, potatoes, gravy and all the trimmings. The feast is sponsored by Yosemite Lodge #97 IOOF and is free of charge.

If you would like to help serve on this great day please call JoAnn Bacci at 962-5912 after November 10.

The Thanksgiving Dinner is funded completely by donations which can be mailed to the Thanksgiving Dinner Committee at P.O. Box 55, Big Oak Flat, CA 95305 or made at the door the day of the event.

PML RISING STAR: Nolan Matter

BY JANET GREGORY

Goals, aspirations, accomplishments and growth. At 21, Nolan Matter is a young man with a full complement of each.

Nolan keeps a copy of Chernoff's "1000+ Little Things Happy Successful People Do Differently" close at hand.

Are you busy? Well, "I'm busy, too" is the common response. Everyone is busy. You. Me. Friends. Neighbors. Colleagues. We are all busy. The difference is our priorities. Focus. Purpose. To-do-list. Bucket-list. Goals. Nolan thinks that everyone can make a difference.

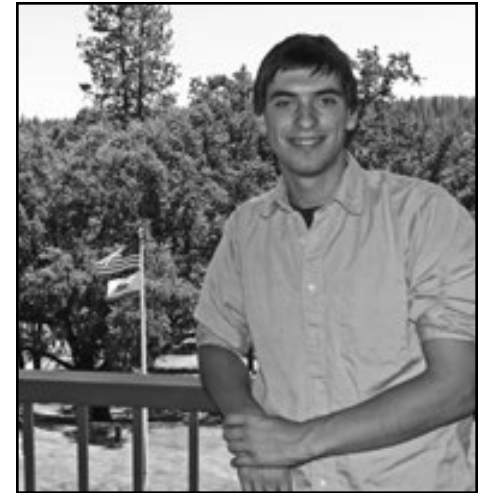
Nolan is filled with ideas and aspirations. He wants to visit the capitals of all 50 states before he's 40, write a book and influence public policy. He wonders, "Is it possible to run for Congress by age 25?" First thing is to complete his Associate's Degree at Saddleback College in Mission Viejo. No, make that two A.A. Degrees: History and Political Science. History is not a requirement but is a good teacher for the future; Political Science is an obvious path to public policy making. Then he plans to attend UC Davis or UCLA for a B.A. in Political Science.

Nolan loves interacting with people; he is smart, articulate and forward thinking. Possibilities beyond the B.A. degree are numerous: Master's Degree or teaching or Law School or politics.

In 2012, high school senior, Nolan Matter ran for Tuolumne County Board of Supervisors District 4 against John Gray. Encouraged by the Youth Leadership Program of Tuolumne County, he took the bold move to run for office. No one was running against Gray. Nolan wanted to give people a choice; it wasn't about winning, it was more about learning and the experience.

Meeting John Gray was interesting. Gray had the experience and the money to win but asked Nolan to pull out of the race. He asked "is this a joke?" No, Nolan was serious. Yes, he had to finish high school but he wasn't going to give up. Nolan attended Supervisor meetings, learned the issues, met with business people, the fire department, residents and banks. He even debated John Gray.

Nolan doesn't think of himself as political; he wants to focus on the issues, not a party line. Unfortunately people look for tags, he didn't introduce himself as a Republican but more of a conservative that looks at the issues. When fielding questions regarding his beliefs and position on issues, he credits the firm foundation of family, teachers, church and continuous learning.



Nolan Matter

With time and attention split between school and the campaign, along with a minuscule budget, Nolan built community support winning 33% of the vote. He lost the race but it was well worth the effort and Nolan would do it over again.

Family and the church are strong foundations for Nolan. He is a California native, born to Don and Karin Matter in San Lorenzo, near Hayward. He's the third of six children. "It's kind of cool being from a big family." Jordan and Drew came first, Natalie, Zach and Ellie came later. It's a close family with a strong Christian base. The family moved to Pine Mountain Lake when Nolan was 9-years old. School was a combination of public education, home schooling and Summerville High School in Tuolumne.

Nolan is proud yet humble, "it was an amazing thing to run for Supervisor at 18-years old." He liked being involved and standing up for his principles. He was President of the Associated Student Body in high school and voted Student-of-the-Year. Life isn't perfect but the imperfections enrich the picture, he wouldn't change a thing.

Keep your eye on this rising star, Nolan Matter. He's a young PML Action Hero with a future yet to be written. Go for it, Nolan!

Do you or someone you know have a story to tell? Contact me at janet.gregory@sbcglobal.net or 962-5061.



Giving Thanks for a Magical Season

BY CRAIG POLSON

These days I suppose Halloween kicks off the Fall holiday season, but November and Thanksgiving will always hold that place for me. The trees are finally all in full swing with their changing colors, which really gives a sense of the seasons winding down towards the turning of a new year. But it's not quite winter yet and we still have a harvest season to celebrate, even if perhaps most of us spend our days driving a desk instead of a tractor... or even a team of horses!

As we roll on towards the height of the season, The Groveland Hotel's "Winter Magic" entertainment series returns for a third exciting season! You'll be treated to world-class illusionists performing right at your table for a modest \$10 cover charge with your dinner entrée. Just like at the world-famous and exclusive Magic Castle dinner club in Hollywood, this year the dining selections will be offered in a tiered pre-fixe menu to better expedite table service.

Mark your calendar: our next illusionist Joel Ward will take the stage on Saturday, November 15. At the tender age of 15, he placed first in the International Brotherhood of Magicians, the largest magic fraternal organization. At 16, he was featured on television in the Lance Burton Young Magicians Showcase and called a "boy wonder" by Entertainment Weekly. Since then, Joel has been on The Tonight Show with Jay Leno, The Bonnie Hunt Show, Tosh.0, national commercials, and has too many other screen credits to list here. He has performed for Johnny Depp, Justin Timberlake, Katy Perry, Emma Stone, Jessica Biel, John Mayer, and Warren Buffett. Now, he's coming to The Groveland Hotel to perform for you personally. Do not miss this extraordinary show!

We hope you'll come in and spend your Thanksgiving holiday with us this month. Enjoy our annual Thanksgiving Feast 2 p.m. to 8 p.m. on Thanksgiving Day, featuring the sumptuous selections of our chef, Andre Muller. Dinner is a tiered menu priced according to the entrée, and includes starter, entrée, and dessert. Starter choices are spiced pumpkin and butternut squash soup, or spinach apple walnut salad with blue cheese tossed in a champagne vinaigrette. Entrée choices are slow-roasted free range turkey for \$30, honey bourbon glazed ham for \$28, or pepper-crusted prime rib for \$33. Please ask about our vegetarian options. All entrées include Cajun cornbread stuffing, butter-whipped mashed potatoes with gravy, and chefs blend of butter poached vegetables. For dessert, relax and enjoy some warm apple cobbler, or our chocolate molten lava cake.

Saturday, January 17 is the night Marshall Magoon makes his appearance as the next magician in our Winter Magic series. Ordinarily, Marshall is known for his stage acts with big set pieces as seen in Tahoe casinos, on cruise ships, at the Oakland Coliseum, and on television.


Somehow, however, he has found a way to pack that star power into the much more intimate setting of the hotel's Cellar Door restaurant. Marshall has also served as a magic consultant for TV, film, and theatrical productions, and has created illusions for the Broadway shows Spamalot, Shrek the Musical, and Spider-Man.

Finally, on Saturday, February 21, the season concludes with a return performance by the dynamic and hilarious Jimmy H., who has also performed at Disneyland, Hollywood's Magic Castle, Sea World, and The Queen Mary, and many other venues.


"Winter Magic" will feature a different magician every month (except December, which has no show), with all dinner shows beginning at a single 7:00 pm seating time. The stage show follows at 8:30 pm, at the conclusion of dinner service. The capacity of the dining room is just 46 seats, so reserve early to avoid missing out on this truly exceptional and unique family-friendly entertainment series. Call 209-962-4000 or email guestservices@groveland.com. For more information about each act, including videos, visit www.groveland.com/events.



Photo of Bald Eagle at Pine Mountain Lake courtesy of Dick & Dottie Davis. Photographed from their home.



YOSEMITE CELLARS
Wines from the Sierra foothills



12282 Punch Bowl Road
Groveland, CA

QUESTIONS?
Call or email us
for more information

Uncork Yosemite

AFTER THE TURKEY

PLEASE JOIN US AT
YOSEMITE CELLARS

FOR AN AFTERNOON
OF WINE TASTING

Friday - November 28
Saturday - November 29
12:00 - Noon - 4:00 PM

Ron & Cheryl Harms

Ron & Cheryl Harms • 209.770.3381
www.yosemitecellars.com • sales@yosemitecellars.com

**COSTA'S
TREE SOLUTIONS**



Steve Costa • Owner
Fully Insured/Bonded C.C.L. #818373

209-962-4468
cell 209-768-4469
Certified Arborist #WE7496A



MEMBER
NATIONAL ARBORIST
ASSOCIATION

NEED HOMEOWNER'S INSURANCE?



Have you been cancelled, non-renewed,
or denied Homeowners Insurance based on
your home being in a brush zone?

Have you been forced to accept cut-rate or sub-
standard coverage due to living in a forested area?

WE MAY HAVE YOUR ANSWER!

We have a policy focused on fulfilling these needs.
We are able to place moderate to high risks with
an 'A' rated carrier while offering great coverage
at an affordable rate.



Eason Insurance Agency, Inc.
209.383.7322

9AM – 5PM Mon – Fri • 9AM – 1PM Sat
email: homeins@easoninsuranceagency.com
CA Lic #0C97581

WWW.PINEMOUNTAINLAKE.COM



LOCALLY OWNED SINCE 1950

Your one-stop shop for all your pest
control services.

- Pest Control
- Termite Control
- Weed Control
- Deck Repair/Replacement {License # 922758}
- And more...

Our reputation is important to us and your community.
Call **(209) 532-3464** now for a free estimate!



To speak directly with our representative, please contact:

Seth Kuhn
skuhn@clarkpest.com
(209) 770-7733

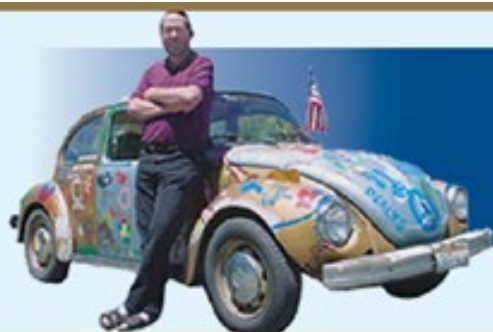
You Tube

twitter

Linked in

facebook

<http://www.clarkpest.com>



Fast Internet
from \$30 a month
MACs and PCs repaired
\$55 an hour

Throckmorton
enterprises
Monday–Friday 8am to 5pm
Saturdays 10am to 2pm

Since 1988

18800 Main St. (Highway 120) • Groveland CA 95321 • 209-962-7308

Throck.com

Between carwash and fire station.

Fully Insured - Liability & Workers' Comp

RAY'S Roofing

FREE ESTIMATES REFERENCES AVAILABLE

Complete Roofing Service

- Gutters • Repairs
- Skylights • Dry Rot

IN PML SINCE 1990

Ray Lemasters (209) 962-0368 Lic. #610291

WWW.PINEMOUNTAINLAKE.COM

green tree

property services

HOUSE PAINTING

FREE

Window Wash

with every Exterior Signed Contract

VALID THRU DECEMBER 2014



Full-service House Painting
Interior/Exterior Painting & Staining
Drywall & Drywall Repair

RESIDENTIAL • COMMERCIAL

209.962.4445

www.GreenTreePropertyServices.com

LICENSED | BONDED | INSURED | CSL960719

ASTRO

HEATING & AIR CONDITIONING, Inc.

FAMILY OWNED & OPERATED SINCE 1985



NO OVERTIME FOR WEEKEND CALLS!

YOUR HEATING & COOLING EXPERT

- SALES • SERVICE • INSTALLATIONS
- PINE MOUNTAIN LAKE RESIDENT

BRYANT
PREMIERE DEALER



Heaters & Air Conditioners – ALL Makes & Models

We pride ourselves on **PROMPT & RELIABLE** service

Questions about your system?
Send me an email:
brad@astroheating.com

Call Brad at 209.962.0202

www.AstroHeating.com

Licensed, Bonded & Insured
lic. #522881



Heating & Cooling Systems

JOANNE BERNASCONI-SCOTT
Independent Beauty Consultant

13166 Wells Fargo Drive
P.O. Box 1257 Groveland, CA 95321
HOME: 209-962-6394
CELL: 209-573-1415
Bernijo3@aol.com
www.marykay.com/jbernasconi
Enriching Women's Lives™



MARY KAY

SOUTHERN TUOLUMNE COUNTY HISTORICAL SOCIETY

Museum Happenings

BY CARRIE CARTER

Cooler fall temperatures are finally here making for comfortable hiking in the Groveland and Yosemite area. To help you choose the perfect hike for your ability, the museum store carries a variety of guidebooks. Hap Barhydt's, 'Hiking between Groveland and Yosemite' describes 43 hikes right here in our backyard. We also recommend Sharon Giacomazzi's three books that offer superb adventures for the avid hiker or casual walker. Sharon shares the lively history that surrounds the trails about which she writes and entices us all to lace up our boots and enjoy the exceptional beauty of a mountain trail. The museum store carries several other hiking guidebooks for the Yosemite area that are guaranteed to refresh your spirit and leave you with memories of breathtaking fall colors.

Last month's historic building photo was Priest's Hotel taken in 1904. Priest's Station was founded in 1855 by Alexander and Margaret Kirkwood as a stagecoach and wagon stop for travelers from all points west to Yosemite. It was located at the crossroads of Old Priest Grade, Priest-Coulterville Road, and Highway 120 in Big Oak Flat.

Before the Kirkwoods arrived from Scotland and bought the business at the top of Rattlesnake Creek Canyon, it was a small trading post run by John Wootten known as the Rattlesnake Store. Alexander and Margaret added more rooms to accommodate weary travelers looking for meals and lodging and the famous Station was founded.

In 1870 Alexander died from a fever contracted while crossing Panama years before. Margaret then married a mining engineer from Kentucky named William Priest in 1871. Other buildings added through the years included a second hotel, carriage house, livery stable, barns, sheds, some 22 in all and boasted having the first indoor plumbing south of the Tuolumne River. John Ferretti recalled, "It was a high-class establishment and well known from one end of the state to the other, the cuisine was excellent."

In 1900 William died and Margaret followed



five years later. Her niece, Jessie Carlaw Corcoran and husband Daniel continued to run the business until tragedy struck in 1926. An explosion down in the gulch below blew burning embers to the top of the hill and fire consumed all 22 buildings.

Daniel Corcoran rebuilt a small motel, store, and service station on the property and maintained the friendly service and hospitality that Priest's was noted for. Following Daniel's death in 1936, daughter Margaret and husband Joe Anker continued to operate the Station until selling it in 1969. In last month's photo, Baby Margaret can be seen in the center of the group sitting on a chair.

After the original hotel property was out of the family for 38 years, Helga and Wally Anker, the grandson of Jessie and Daniel Corcoran purchased the site and in 2009 opened Priest Station Café. With breathtaking views of the historic canyon below, the restaurant and store continue to operate under family ownership today, serving delicious meals with personal service reestablishing Priest's Station as a unique and important stop on the way to Yosemite.

Don't forget to visit us on Facebook!

DO YOU RECOGNIZE THIS BUILDING?

If you can identify this month's historic photo from the STCHS archive you will receive a colorful ceramic mug from the Groveland Yosemite Gateway Museum gift shop during the month of November (one gift per family).

Healthy Habits

FROM PINE MOUNTAIN THERAPY

BY JULIE TANAKA, PT

EVERYTHING IS CONNECTED

Patients are referred to therapy usually to address a particular complaint. We do an assessment to determine what is feeding into this pain or dysfunction. As we develop our treatment plan it will often include treating a part of the body that does not seem directly connected to the original problem. Which may lead to skepticism that we haven't read the referral correctly. But here's the deal, everything in the body is connected. It's the proverbial domino effect: your neck gets injured in a minor car accident, it gets better. Then you get some nagging shoulder pain, gradually it flows to your back and you get used to having this ache. Then you shift the way you walk a bit and your hip starts to twinge and next thing you know you are referred to PT for foot pain. The great thing is that we are living, growing entities. Cells are constantly regenerating and rebuilding. With some attention you can unwind and heal this process.

Connective tissue, very appropriately named, runs through our body in the form of fascia, tendons, ligaments, bones, muscle, blood and lymph. The fascia runs throughout the body covering and surrounding every structure. It is a strong system! Fascia is the white fibrous tissue that you remove from the back of ribs, it can also be very delicate like the tissue that surrounds chicken meat. Imagine for a moment if you could remove every part of you that is not fascia. You would have a perfect 3D model of yourself, not recognizable with features but the structure is there. Easier to visualize are the bones, attached to each other by ligaments and muscles, muscles attached by tendons, blood and lymph system running throughout the body, and don't forget every little thing wrapped in fascia.

Hopefully you're are starting to see why it's important to keep all our connective tissue balanced and in motion to support the healing of every body part. An analogy would be that a machinist would not fix the two cogs that

aren't aligned and rubbing, he'd have to look at the pulley system, the timing, etc. WAY over simplified, but gives a visual.

HELPFUL HABITS FOR MAINTAINING YOUR FASCIA

HYDRATION: Yes, it is important to drink your water. Juicy fascia is happy fascia. When fascia dries out it is more brittle and can glue layers together.

MASSAGE: Even if you drink enough water your fascia can still be dehydrated. There can be little kinks in your hoses (microvacuoles) that don't allow the hydration into the tissues. This is where seeing a body worker, massage therapist is beneficial. There are also things like foam rollers, massage balls, and "the stick" massage tools to use at home.

MOVEMENT: Soooo important. Get up and move! Change up how you move. Walk, stairs, incline, decline, walk sideways, stationary bike and vary the tempo. Mix it up. Your fascia will love you for it. One of the biggest culprits (that keeps us in business) is repetitive movement. This applies to exercise too.

PINE MOUNTAIN THERAPY

Outpatient Physical Therapy

Serving the Mountain Communities of Tuolumne and Mariposa Counties

18800 Main Street,
Groveland, CA 95321

209-962-4035

Please visit our new web site at
www.pinemountaintherapy.com

*A Preferred Therapy Provider,
participating provider with
most insurance carriers
including Medicare.*

"Times are a Changin'"

BY JOHN AND SANDY STONE, COLDWELL BANKER MOUNTAIN LEISURE PROPERTIES

First of all, we'd like to thank the community, our Agents, staff and friends for their continued love and support. Without you this journey would never have been possible. After 48 wonderful, rewarding and at times challenging years in the Real Estate business, we've decided to close our four Coldwell Banker Mountain Leisure Properties offices in the Yosemite Area as of September 30th. It has been so rewarding over these years to help hundreds of people find their special properties and vacation homes.

Our son, Rob Stone and his wife Tara, who have been in Real Estate and Property Management for the past 25 years will continue with their company, Yosemite Region Resorts, which handles both vacation and long term rentals and will now include a full service Real

Estate Division. Robert has been a top ranking Real Estate Agent in the area now for many years. Their offices will remain in Mountain Leisure Center in Groveland. Our former Coldwell Banker office, also in the Center, is being redesigned into Executive Suites, available with full services, that will provide affordable office/retail space for small businesses.

This, of course, has been a hard decision to make. After 4 agents left for "greener pastures", our main goal was to continue our business and support all our remaining loyal agents and staff. But then started thinking, maybe this could be a blessing in disguise as long as we're able to help relocate everyone so that no one would be left unemployed, especially with the current economic problems. During the past

three months, we've been able to help all of them transition to new companies. We were so very thankful for that. Life is good!

Sandy and I will be celebrating our 50th wedding anniversary this December, and have decided we really need to spend more time together while we are still able. Especially now since she's been in Seattle for most of the past 15 years caring for her elderly parents and disabled vet brother. Sadly her brother and 97 year old mother recently passed away. So now together, we plan on spending more time with our family and friends, traveling, hiking and SUPing and couldn't ask for a more perfect and beautiful base as our home in the Pine Mountain Lake airport area. Who knows, we may even decide to start flying again!

Genealogy Workshop

BY PEGGY ANDREWS

Last month I wrote about sites that can help you begin researching your family and this month I thought I would tell you about a site that gives you information on where to find just about any information you can think of or will need to get started.

Cyndi's List [<http://www.cyndislist.com>] has been a research site for more than 18 years and is meant to be used as a starting point for your research. For instance, if you go to the site and click on United States, you will find more than 331,000 links categorized and cross referenced.

I know this sounds like a broken record but it is important and will save you time in the long run if you take the time now to write down

and organize all the information you have on the relative or family you wish to search. Not just dates and places but names of brothers, sisters, cousins and good friends if you know their names. Trust me every little detail helps to make sure you are researching the correct person or family. You do not want to spend months on your research only to find that you've been working on the wrong person.

The Genealogy Workshop is dark in November and December, due to the busy holidays, however, it is a wonderful time to connect with relatives and get information. Remember family stories are as important as all the statistics and they make the person or family come alive.

ACUTE/ CHRONIC DISEASES

BY ETTY GARBER, PHD, LICENSED MARRIAGE AND FAMILY THERAPIST

Around the age of 50 we seem to notice that our bodies are not as strong or as lithe as they once were. We seem to have some aches and pains we don't remember having, at least not as often or intense. Our joints seem to show the most wear and tear in our knees, shoulders and hips. We may notice a loss of strength and endurance and frequent fatigue. This sometimes leads to frustration, anger, anxiety or other emotional distress. These are generally considered acute diseases which are usually of short duration, easily diagnosed and treated.

However, when our immune system is breaking down we may develop more serious illnesses like diabetes, heart or liver disease, emphysema, arthritis or any other chronic disease. Chronic diseases usually begin slowly and the cause isn't detected as quickly. Tests aren't always accurate which can slow down the diagnosis so treatment is delayed. These chronic illnesses are usually of a long duration, perhaps for life. They often require frequent supervision, medications, or surgery.

In order for our bodies to stay healthy we need to keep our cells alive and functioning normally. All the cells in our body need to be nourished, receive oxygen and get rid of the waste products. If anything goes wrong with any of these 3 functions, it becomes diseased. Then these cells cause organ or tissue functions to be disrupted and fail. It can become like a domino effect, one effects another, then another, etc. Thus, the feeling of discomfort and pain may lead to the

inability to live an active daily life.

Because chronic illnesses often move so slowly there can be a desire to ignore the symptoms. It is important that we learn how our bodies function so that we may recognize when it changes, even slightly. When you have been diagnosed it is vital that you maintain a positive attitude, learn as much as you can about that condition. Attitude cannot cure chronic illness but using the skills of self- management with a positive mental attitude, focusing on healthy living and being in collaboration with your medical team helps. This way you are participating in your treatment which gives you a sense of having some control. It is easy to let yourself allow the disease to become the only thought or focus of your life. You are more than the disease. Connect with others who are having the same or similar experiences, seek out moments or activities that give you pleasure. When someone has a chronic disease it may offer a time of reflection and reevaluation of one's life. Some people have taken the opportunity to learn new things or have experiences they never thought they could have previously.

Remember that life is uncertain for all of us. Uncertainty is the nature of life. We can make a goal and something can disrupt that goal in the blink of an eye. We have all experienced that during our lives. So what do we do? We create a new goal. Enjoy life.

Divide Cemetery Happenings

BY PEGGY ANDREWS

If you haven't seen it yet, the Historic Divide Cemetery now has it's own Facebook page! Please go to Historic Divide Cemetery on Facebook and "like" us and let us know what you think and if you have any questions or information.

The Divide will be observing Veterans' Day on November 11th beginning at 10:30 with a few words from Roland Elliott. Taps will be played at 11:00 a.m., the flag raised and lowered and time will be given for anyone wanting to share memories.

We are in the process of compiling a list of veterans buried at the Divide. The current list is available on the Historic Divide Cemetery facebook page. We hope to make the list as complete as possible, so please leave a comment on facebook or call 962-7264 or email pmlandrews@sonnet.com if you have any information.

Yosemite Area Real Estate Grand Opening

BY PEGGY ANDREWS

Everyone who is anyone showed up at the Grand Opening and ribbon cutting ceremony of Yosemite Area Real Estate on Saturday October 11.

Refreshments were served to attendees while they toured the new office and chatted with agents Chris Lake, James Nagle, Krystal Bigger, Larry Jobe and Ryan Niedens.

The crowd spilled outside to the front porch and enjoyed the balmy weather while witnessing the ribbon cutting ceremony sponsored by Yosemite Chamber of Commerce.

A huge Cake was cut and enjoyed by all. Tickets were drawn and Raffle prizes from wine to pearls were awarded.

Please stop by and say hello when you are in town.

PRECISION OPTICS

Stacy Hancock, Certified & Licensed Optician

Prescription & Non-prescription Eyewear

FREE Adjustments & Repairs

Pricing 40% – 60% less than your Doctor's Office

Insurance Welcome


(209) 962-1972

18729 HWY 120, UNIT A, GROVELAND, CA 95321

Sunglass Sale

Over 100 pairs of Designer Sunglasses 30% – 80% OFF

"Like" Precision Optics on Facebook & receive \$10 OFF any Sunglass purchase



Dr. Etty Garber Ph.D.
in Clinical Psychology and a licensed Marriage Family & Child Therapist, with 32 years experience in mental health, lives in Groveland and
OFFERS PRIVATE PRACTICE SERVICE

Dr. Garber can provide psychotherapy in a variety of settings to individuals, couples, families and groups.

**RELATIONSHIPS • FAMILY CONFLICT • CHEMICAL DEPENDENCY
DEPRESSION • ANXIETY • ABUSE, etc.**

Low Fees • No Insurance FOR AN APPOINTMENT CALL 209/962-5205

Winter Hours:
Sun-Thurs:
11:00AM - 8:00PM
Fri-Sat:
11:00AM - 9:00PM

"WE TAKE LOCAL COMPETITOR'S COUPONS!"



PIZZA PIES



**NOW SERVING PASTA DINNERS
TRY OUR ALL YOU CAN EAT LUNCH SPECIAL OR OVEN BAKED SUBS**

Call ahead: 962-4897 (962-GUYS)
18955 Ferretti Road. Left turn off of Main St (Hwy 120) 1/2 Block

\$1.00

Off Any Size Two Guys Pizza or Calzone

One coupon per order, per visit. May not be combined with any other offer and/or coupon. Not valid on delivery.

PML1114 Expires 12/15/14

\$2.00

Off Any Large or Extra Large Two Guys Pizza

One coupon per order, per visit. May not be combined with any other offer and/or coupon. Not valid on delivery.

PML1114 Expires 12/15/14

RELIGIOUS SERVICES

Big Oak Flat Baptist Church

Wards Ferry Rd., 3 blocks from Hwy. 120,
Pastor: Jim Lowe • Sunday School 9:45 am,
Worship 11 AM & 6 pm

**Buck Meadows
Community Church**

Old Hwy. 120 & Buck Meadows 209/962-5789
Pastor: Josephine Ellis
Sunday School & Worship 10 am
Food Pantry Open each Sun before & after service
Potluck 3rd Sunday after service

Groveland Christian Church
(Non-Denominational)

18829 Foote St., Groveland, 209/962-7654
Pastor / Elder: Jack Woodland, Dennis Smith
Sunday Worship 11:00 AM; Bible Study 9:30 AM;
AA Tuesday & Thursday 7 PM • Ladies Bible Study
Monday 4:00 PM • Wednesday Night Bible Study 7
PM Call 962-4950 for directions

**Church of Jesus Christ
of Latter Day Saints**

19870 Hwy. 120, Groveland 209/962-5345
Branch President: Vern Shumway, 209/962-6955
Sun. Sacrament 10 am, Sun. School 11:15 am
Sun. Prsthd Mtg. & Women's Relief Soc. Noon

**Evangelical Free Church
of Groveland**

19172 Ferretti Rd., 209/962-7131
Senior Pastor: Ron Cratty • Services: Traditional
9:30 am, Contemporary 11 am
Mid-week Bible Studies
(please call for information)

Foothills Community Church

18717 Main St., Groveland
Sunday Worship 10:45 am; Christian Ed. Hour
(groups for all ages) 9:45 am, Child care provided
at all services. Weekly Home Bible Study,
call for times

Grace Episcopal Mission

At Mt. Carmel Catholic Church,
Hwy. 120, Big Oak Flat
Fr. Jim Stout 209/962-1899 or 209/768-0450
Services 2nd & 4th Sundays 4 pm

Groveland Seventh-Day Adventist

19585 Elder Lane, Groveland
Pastor: David Bello • Sabbath School 9:20 am;
Worship 10:50 am • Wed. Prayer Meeting 6:30 pm

Jewish Services

Call 209/962-5995 for more information
Friday 7 pm followed by Kiddush
Saturday 10 am followed by Kiddush & Kibbitz

Mountain Lutheran Church

13000 Down to Earth Court (off Ferretti)
Pastor: Ginger DuMars
209/962-4064 • Sunday Service 10:00 am,
Bible Study 1st and 3rd Thurs at 1 pm
MountainLutheranChurch.com

Northside Church of Christ

18584 Main Street, Groveland
209/878-0263
Located behind Yosemite Bank
Sunday Bible Study 10 AM
Sunday Worship 11 AM
Wednesday Bible Study 7 PM

**Our Lady of Mount Carmel
Catholic Church**

Hwy. 120, Big Oak Flat, 209/532-7139
OLMC Parish Services - 209/962-1030
Pastor: Fr. Ray Abella
Mass Saturday 4:45 pm, Sunday 9:15 am

**Unitarian Universalist
Fellowship**

Groveland Community Hall
Contact Kathleen 209/840-4777
Service 5th Sunday, 10:30 am,
at the Groveland Library

Mountain Lutheran Church News

BY PASTOR GINGER DUMARS

November is one of my favorite months as we celebrate Thanksgiving, fall colors in our foothills, cooler weather and an abundance of blessings! The Prelude for this Season of Thanksgiving at Mountain Lutheran was an evening of Christian Music reminiscent of the 60's Gospel & Folk sounds from which many of us draw inspiration. This free concert was given by "The Living Water Band" at Mountain Lutheran, 13000 Down to Earth Ct., Groveland, on Sat. Oct. 25 at 6:00, followed by a Pre-Thanksgiving Pot Luck Supper at 7:00. We are always happy to welcome guests & visitors!

Sun. afternoon, Nov. 2, gives us another early Thanksgiving Celebration on ALL Saints Sunday as we remember & honor the Saints who have gone before us & inspired our lives. We'll meet & sing with other (Sierra San Joaquin Conference) Lutherans in Murphys for a Hymn Festival & Sunday Supper together. We'll also conduct an election for our conference's nominees for Synod Council & for our nation wide Assembly in 2016. Our members feel blessed by getting to know other Christians in a variety of settings – in the Groveland & Foothill areas & beyond.

One area of ministry & education that we support beyond the U.S.A. is a Lutheran School in Rwanda. Jean Cox recently told about

her travels & experiences visiting Rwanda & the school there. She & others saw an urgent need for a modern kitchen & cafeteria – as did the government authorities in Rwanda. With generous support from many churches & people the school now has a kitchen that can provide meals for their (approx.) 100 students & faculty, who mostly live at the school. It includes a new adjoining multi-purpose room.

Each month members of Mountain Lutheran support a specific ministry – mostly outside of our local area – as a way to share with others & to thank God for the blessings that God has given us. We call this our 2nd Mile Offerings – which we give for Disaster Relief & Malaria nets, Special Olympics, Lutheran camps & university, S.F. Night (Street) Ministry, Gideon Bibles, Rwandan School, It's My Very Own, The Little House & Local Food Banks. These offerings are above & beyond the general offerings members give for the work & operations of our Lutheran Church locally, statewide, nationwide & globally.

On Nov. 16 we'll celebrate members' financial support & pledging to Mountain Lutheran with a special offering processional giving our pledge commitments & then a Pizza Lunch after our 10:00 Worship. **Come & Celebrate with us. Sunday Morning Worship is always at 10:00.**

Carron Tax

Carole Smith
Enrolled Agent

associates

20093 Ridgecrest Way
Groveland, CA 95321
Tel: 209/962-6119
E-mail: carolesmith@carrontax.com

INCOME TAX PREPARATION
AUDIT REPRESENTATION

John R. Ziomek, DPM

Podiatry practice now open in Groveland

Practice limited to diseases
of the foot and ankle.
Diabetics welcome.
Most private insurances accepted.
Medicare assignment accepted.

Located at 20767 Ferretti Road
Groveland, CA 95321
209.962.6000

By Appointment Only

Is Your Computer Sick?
Call Mark at 209-962-5629
I Make House Calls!



- Computer Repair/Upgrades/Diagnostics
- Wireless/Internet/Network Setup
- Audio/Visual Restoration/Transfer to CD/DVD
- Don't Delay & Lose Precious Photos & Memories
- Data Recovery - If Recovery is Possible
- I Build Custom Gaming & Business Machines

Hourly Rate Applies - Call for Details

OBITUARY

JAMES W. ALLEN

MARCH 2, 1940 – AUGUST 3, 2014

James William Allen, 74, of La Verne, California passed away of cardiac arrest on August 3, 2014 at his home.

James was born on March 2, 1940 in South Gate, California to Odie Allen and Margaret (Croft) Mitchell.

During his early years he was educated in Los Angeles, California and then attended schools in Roberts, Montana from age 8, graduating from Roberts High School in 1959.

On December 19, 1970 James Allen and Jackie Hinson were married in Oakland, California. They have two children: Julene Allen and Jason Allen.

James worked as an elementary and secondary teacher and later as a school counselor in Fremont Unified School District for 33 years. He enjoyed retirement in Sacramento, California and in La Verne, California and began designing and publishing montages (a visual photo collection) on national parks, great artists, political figures, and religious figures.

He was an airman first class in the United States Air Force and worked as an electrician during the Viet Nam War in United States support services at Travis Air Force base in California.

James loved the outdoors, especially the mountains, gardening, and traveling.



James W. Allen

He enjoyed being in his cabin at Pine Mountain Lake, which he said reminded him of his early days in Montana. He traveled with family members across the United States from coast to coast twice, to the British Isles, Europe, Australia, New Zealand, and Mexico and with his wife to Spain and Portugal, Scandinavia, Russia, and Malta.

He is preceded in death by his parents.

Survivors include his wife, Jackie Allen of La Verne, CA; his daughter, Julene Allen of Fremont, CA; his son, Jason Allen of San Diego, CA; his sister Nancy Savage, of Frisco, Texas; Deborah Allen (niece) of Frisco, Texas; Bob Mitchell (half brother), of Virginia; Kathy Mitchell (half sister) of North Carolina; Judy Bridgers (half sister) of North Carolina; Jeanne Pearce (half sister) of Florida; and Adele DeVries (cousin) of Boyd, Montana.

Cremation has taken place and the family will celebrate his life at Pine Mountain Lake in November.

TODD Memorial CHAPEL in Pomona, CA has assisted with the arrangements.

Memorials may be given in Jim's name for a counseling scholarship to: the HB McDaniel Foundation: P.O. Box 546, Kingsburg, CA 93631 and to Roberts Community Foundation, Inc. Box 284, Roberts, Montana 59070.

Hill Top Musical Kids' Get Ready for Christmas

BY LOUISE TURNEY

Come join us all you kids up here "On the Hill", pre-school through 8th grades and have fun singing, dancing or performing in our 3rd Christmas Musical and our 5th musical play. We will be doing "Josie" again since a lot of people didn't get to see the first one. We will have some old performers and hopefully lots of new ones.

By the time you read this we will have

had our first sign ups but there is room for many more of you. We meet & rehearse downstairs in the Groveland Library, time 3:15PM (or right after school) to 5PM on Wednesdays & Thursdays from now until December 19th & 20th and those are performance days. There is no charge to join us. We can use more adult help too. For more information call Louise Turney 962-0609 or Jessica Whitehead 962-6189.

STUDENTS OF THE MONTH

Tioga High School Student of the Month



Rafael Garcia

Tioga's Student of the Month is senior Rafael Garcia. Rafael is being nominated by his Personal Finance teacher, Ryan Dutton. He is a student that has matured to a level of something he, his family, and the

Tioga family can all be proud of. Currently, he is a vital member of the Timberwolves soccer team, as well as serving on student council and the schools anti-drug, anti-bullying group T-RAD. He is a member of. Mr. Duttons Personal Finance class and has begun to learn important life lessons on saving and budgeting so far this year. He has shown this by getting solid grades

on all of his assignments. Rafael is also a member of the Tioga Golf team, returning this year for his third year of varsity golf! We are proud to have Rafael as part of our family and proud to nominate him for Student of the Month.

Tenaya Elementary Student of the Month



Desirae Pretzer

Tenaya's Student of the Month is Desirae Pretzer. Desirae's teacher, Mr. Coultrap says, "Desirae is a good friend to her classmates and always tries her best on her classwork. She is a

pleasure to have in class!" Desirae's parents are Jessica & Raymond Pretzer of Groveland.

Tioga ACADEC Team

BY GREGORY STIRES

On a windy Friday in the month of September, the ACADEC class went to Tuolumne Meadows in Yosemite. The main purpose of this field trip was to help the students become one with nature and gain a better appreciation for the beauty and natural resources that surround us. They went to Dog Lake and swam and finished by conquering Lambert Dome. This field trip was a calm one that showed the ACADEC class the beauty of the Yosemite whose beauty has attracted people from everywhere. This field trip also helps them because one the categories this year is



environmental issues which we have had a lot of problems with because of the drought and the rim fire last year.

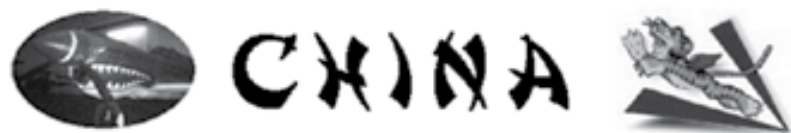
Tioga's Friday Events

BY LAYNE MCCOY

Every Friday Tioga will be having a different event to keep the students involved in activities. The first series of games was kickball, in which the Seniors took victory over the Freshmen with a final score of 7 to 1. Our newest series is volleyball. Every class must have a team of 4, 2 boys and 2 girls, to compete. We are so excited to bring these new Friday events to Tioga. It's a great way to keep things fresh and to keep the students involved.



Bryan Larea kicks the ball.



19 DAYS MAR. 18 – APR. 5, 2015 **ALL 5-STAR**

11th Annual *Escorted*

American Aviators VIP Tour to China

Possibly our LAST China tour – already filling fast!

Led once again by local retired UAL Captain

Larry Jobe & wife "China Nina"

Shanghai, Suzhou, Wuhan, Yichang, Yangtze River Cruise thru Three Gorges & the 5 locks of the World's Largest Dam, Shennong Stream, Fengdu, Chongqing, Chengdu (Baby Pandas), Guilin, Yangshuo, Xi'an, & Beijing.

Be part of a SPECIAL Delegation attending the GRAND OPENING ceremonies of the huge new **FLYING TIGERS MUSEUM** at their old airfield. *** FULL details: www.TravelAireTours.com ***

\$3448* pp (*DBL Occupancy) – Local **962-5588**

* [plus airline fees/taxes, visa, insur. & tips]

Toll-free (866) 669-2288

CST 2070111-40



HIGH QUALITY LAPTOPS

AND

DESKTOP COMPUTERS

Adware/spyware & virus removal • computer repair • data recovery

Logo Design
Web Design
High Quality
Business Cards

sales@e-spon.com
www.e-spon.com

962-7110

WELCOME TO THE PINE MOUNTAIN LAKE NEWS HOME IMPROVEMENT DIRECTORY

Moore Bros.
Property Development



- New House Starts
- Brushing
- Grading for Drainage, Septic Systems, and Driveways

Lic. #910893
call Alan at:
962-5339 or 770-7169


Costa's Tree Solutions Certified Arborist #WE7496A



Steve Costa
Owner
Fully Insured/Bonded
C.C.L. #818373

P.O. Box 924
Groveland, CA
(209) 962-4468
(209) 768-4469 Cell

DURLAND ROOFING
License #545005



Tim Durland, Owner

- Re-Roofing
- Leak Repairs
- Inspections
- Gutters

209 480-0097
P.O. Box 1373
Groveland, CA 95321
Serving Groveland and East Bay

Sears

Karen Faught
Owner

Sears Hometown Store #3159
14691 Mono Way, Sonoma, CA 95370
Tel 209-532-3191
Fax 209-532-8334
Service & Parts 1-800-469-4663
www.sears.com

Locally Owned & Operated



• slip covers •
• upholstery •
• blinds •
• shades •
• custom window treatments •

Need Help?



ANNA'S INTERIORS
962-5421

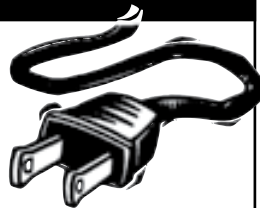
GENERAL CONTRACTOR**ALL PHASE
CONSTRUCTION****Tom Perreira**
OWNER**Have you purchased a foreclosure
or a short sale?****Does it need work? Updating?**Does it need; windows, doors, a kitchen, bathroom, storage, garage, deck, sidewalks or anything else —
give me a call and we can meet, go over ideas & I'll give you a "FREE" estimate*References available***Cell (831) 801-7727**

Full-Time Groveland resident

LIC. # 717684

**RECENTLY
COMPLETED IN
GREELEY HILL
GARAGE/SHOP
WITH FULL
LOFT STORAGE****Pine Mountain Lake Electric****Residential and Commercial
Electrical Contracting**

State Contractor's Lic. 404081

**TOM KATOSIC**
209/962-6949**P.O. Box 25**
BIG OAK FLAT, CA 95305**Waters Plumbing Heating & Air****FAST
SAME DAY
SERVICE***

*IN MOST CASES

All work 100% Guaranteed!Contractor License #460158
www.watersplumbing.com*"I want you to know that our technicians will give you
a price before we start the job." —Wayne Waters***Groveland (209) 962-0990****ADVERTISE IN THE PML NEWS
GO TO WWW.PINEMOUNTAINLAKE.COM
FOR RATES AND INFORMATION**

(See Page 33 for FREE Offer)

green tree
property services

- HOUSE PAINTING
- WINDOW WASHING
- HOUSE CLEANING

209.962.4445

LICENSED | BONDED | INSURED | CSL960719

**THE NEW SPARKY IN TOWN IS NOW
THE OLD MOUNTAIN HAND!
THANKS FOR 5 GREAT YEARS!****MORRISON ELECTRIC, INC.****David Morrison****An Electrical Service Company****Trouble-shooting • Repair • Remodel • Additions****New Construction • Large Projects***I return phone calls, I show up on time,
I don't quit until the problem is solved.*

Contractor's Lic # 967749 • General Liability Insurance

962-0481 david@morrisonelectric.com

Call your local Pro!

Jack Proctor
Heating &
Air Conditioning

- Complete commercial & residential services
- Service & repair - all makes and models
- Heating & ventilation
- Heat pump specialist
- Air conditioning troubleshooting expert
- Installation and remodeling
- Upgrading & energy efficiency
- We offer the same low rates 24/7

OFFICE
209-962-6471
CELL
209-678-8915
License #313926
Since 1975*Before replacing your unit, ask us for a 2nd opinion.
Chances are, we CAN repair it!*

HEAVENLY CLEANING SERVICE

PROFESSIONAL HOUSEKEEPING
AND CARPET CLEANING

Going on our 20th Year!

HOME OFFICE CARPET WINDOWS

RENTING YOUR HOME TO VACATIONERS?

LET US HELP MAKE IT EASIER
BY DOING MORE THAN JUST CLEANING

WE OFFER TRASH REMOVAL, DECK BLOWING,
BBQ CLEANING & CHECK PROPANE, AND LAUNDRY SERVICE
WE TAKE PICTURES OF ANY DAMAGES

GIVE US A CALL TODAY – 209.962.6418

heavenlycleaning@mail.com • FULL LIABILITY COVERAGE



Voted
"Best Flooring/Carpet" and
"Best Window Coverings"
2006, 2007, 2008, 2009, 2010, 2011,
2012, 2013, 2014



- Carpet
- Laminate
- Vinyl
- Hardwood
- Ceramic Tile
- Countertops
- Window Coverings



25% off Hunter Douglas
Window Coverings
Or
Free Furniture Moving
with your flooring
purchase
* see store for complete details

263 S. Main Street, Angels Camp, CA 95222 (209) 736-8077

12900 Mono Way, Sonora, CA 95370 (209) 532-1696

www.pinnellscarpetoneangelscamp.com

www.pinnellscarpetonesonora.com

INSPECTION RIBBONS? FIRE SAFETY LET US HELP!



LOREN SNIDER'S TREE SERVICE Serving Your Tree Needs

Big or Small We Do Them All

Removal & Pruning • Clearing & Hauling
Chipping & Stump Grinding • Mistletoe Removal

Home: 209-878-3828 • Cell: 209-402-9797

25+ Years and Insured

PML MINI STORAGE

65 Units Ranging From 5'x5' to 12'x30'

- REASONABLE RATES •
- WELL LIGHTED •

Located one-half block off Ferretti Rd. on Elderberry Way towards Airport

209/962-6220



Find advertising rates, information, and
more at www.pinemountainlake.com

JAMES PRICE CONSTRUCTION

CA. Lic. No. 591995

DECK SPECIALIST

- Professional Machine Sanding •
 - Pressure Wash and Sealing •
 - Pickets & Metal Railings Installed •
- Hardware Retrofit "For a Safer Deck"
- Repairs and More •

Call 209-962-0486

email: designbild@earthlink.net

Clean, more affordable energy
Get NO COST solar today! Call John Kirby at 209.968.1588



Lock in at a low rate. Don't pay PG&E high tier rates

**Bert's Weedeating
and Lot Clearing**
♦♦ 962-6724 ♦♦

PARROT PLUMBING MILT LAKE



Owner / Operator
209-852-2267

Serving Groveland, Don Pedro & Coulterville
HOME PLUMBING REPAIR SEMINARS
call (209) 962-0850 for date and time

P.O. Box 127, Coulterville, CA 95311 • Email partman@inreach.com

Sierra HEAVY DUTY Parts & Service

On Site - Well Stocked Parts House
Hydraulic Hose Shop:

- Cat Flange, J.I.C.
- O-Ring Face
- Metric Fittings in Stock
- #4 (1/4") thru #32 (2")
- Low, Medium and High Pressure Hose (Including 6000 PSI Drive Hoses in Stock)
- Hydraulic Cylinder Repair
- Hydraulic Pump and Motor Service
- A/C Hoses

Fleet Services on our site or yours
with a personal call when
service / maintenance is due!!!

Sierra Heavy Duty Parts & Service
18968 Waylon Way
Sonora, CA 95370

Call or email for an appointment today
Shop: **209.532.7994**
email: steve@sierraheavyduty.com

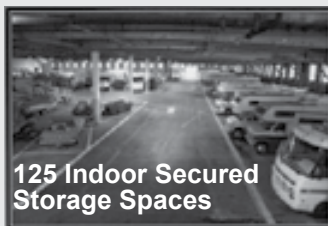


Hours
Mon-Fri 7 AM - 6:30 PM
Saturday 8 AM - 2 PM
Sunday Closed
After Hours Emergency
559-3840

Deliveries From The Valley Daily!!
Pick Up and Deliveries to Your Door!!
*Next Day Special Orders
Is Our Specialty!!*

**Full Service Heavy Duty
Repair Shop**
Parts & Service for All Heavy Duty
Trucks & Tractors

Full Service RV Repair Shop
Parts & Service for All Recreational Vehicles



125 Indoor Secured
Storage Spaces



Rod Diehl Pest Control



"The Best Deal in Pest Control"



**RESIDENTIAL & COMMERCIAL
HIGH QUALITY**

100% SATISFACTION GUARANTEED

Locally Owned & Operated
5th Generation Tuolumne County

209-962-4560

SERVING THE PINE MOUNTAIN LAKE / GROVELAND AREA

FREE
ESTIMATES



HANDYMAN FOR HIRE

"The Small Job Specialist"



Doing Building and Repairs in PML Since 1976

WHERE ONE CALL CAN DO IT ALL!!!

Working by the Hour to Save you Money...

ETC = Our Cabin Care Services Available

- General Maintenance
 - Deck Repairs
 - Weedeating
 - Property Checks, weekly or ?
 - Interior Repairs
 - Exterior Repairs
 - Painting
 - House Cleaning Available
- And more, just ask

Member of Yosemite Chamber of Commerce

omni1handyman@aol.com

No

(209) 962-5463

License

PAINTING

Exterior/Interior

Deck Repairs

Wood Repairs

Remodels



SEE COLOR AD PAGE 13

209.962.4777

www.baycal.com • email: davec@baycal.com

A AMERICAN ELECTRIC & SERVICE CO.

COMMERCIAL • INDUSTRIAL • RESIDENTIAL

209.962.7374

ELECTRICAL CONTRACTORS LIC. # 465220

REIMERS CONSTRUCTION

PROUDLY SERVING GROVELAND/PML SINCE 1987

DESIGN/BUILD • EXPERT REMODELING • SPECIALIZE IN KITCHEN AND BATH
CEMENT SIDING • COMPOSITE & REDWOOD DECKS • WINDOW AND DOOR REPLACEMENT

(209) 962 5682



BEFORE



Email: wwrpar@gmail.com
CA.LIC. 590514



AFTER

Cobblestone Homes

• Custom Homes • Additions • Remodels •
• Specializing in high country design/build since 1989 •
We provide superior craftsmanship, attention to detail,
follow-up, and great customer service.

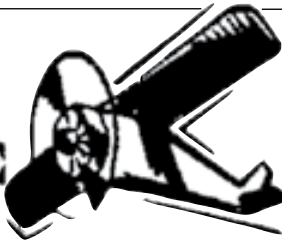
Craig Lawrence-Owner
209.404.0290 Lic. 564665

AIRPORT MINI-STORAGE

60 Units - 6'x8' to 10'x30'
Open 7 a.m. to 9 p.m. Daily

Located on Elderberry Way off Ferretti Rd. near PML Airport

209/962-5360



PAINT DISCOUNT PROGRAM

Kelly-Moore Paint Company has been serving Pine Mountain Lake for 40 years. They want to remind PML property owners of the discount program that has been established for them. This program offers a generous discount on Kelly-Moore paint and accessories such as rollers, brushes, tape, caulk, etc. Delivery is available on orders of 10 gallons or more. This special discount opportunity is available with proof of Pine Mountain Lake

membership (Member ID Card) on a cash or credit/debit card basis only (no checks please).

Although this program was initiated through the Sonora store, it will be honored at any Kelly-Moore Paint Company store.

If you are interested in this discount program, please call your local Kelly-Moore Paint store for details.

HOPE'S TREE SERVICE

Lic# 987171

EXPERT TREE SERVICE, PRUNING,
REMOVAL, CUT & STACK OR HAUL AWAY
FULLY LICENSED/INSURED



Fully Licensed and Insured

Proud member of the
Yosemite Chamber of
Commerce

We accept credit cards



209.878.3096
or 209.225.3191

Over 25 years of construction experience Highly Disciplined and Dependable

We have expertise in all phases of construction including:

Decks and staircases
Dock and gangway repairs and replacement
Kitchen and bath remodels



Hilltop Homes

General Building Contractors
Lic #931547 Fully Insured

209-986-7755

Pine Mountain Lake Homeowners Steve and Cindy Watts



Pioneer Cleaning

RCE Enterprises Incorporated

PROVIDING SERVICES SINCE 1987

when SECURITY is an issue

Custom Cleaning-Rentals-Vacation Homes

We are here when you can't be

Property Management

Patricia & Richard Clontz

22600 Sandean Ln. Groveland CA 95321

962-1934

Flinchum Masonry

Stone • Brick • Block Work
(Pressure washing & sealing available)

Call 209.962.6084

Small Jobs Welcome

John Flinchum

Lic. #609489
Insured

Construction on
the PML Main Gate

Ken's Asphalt

Lic. 708310

Grading • Paving • Chip Seal • Road Oil

Seal & Slurry Coatings • Crafco Hot Rubberized Crack Sealer

Driveways • Private Roads • Subdivisions



DRAINAGE PROBLEMS?

We have the Solution!

Erosion Control • Riprap (6-12" Rock) • Asphalt Curbing • Base Rock



Complete Concrete Services



• Stamped Concrete and Colored Concrete
• Stained Concrete
• Cleaning & Sealing
• Retaining Walls

• Driveways
• Walkways
• RV Pads
• Patios

532-0800 • 962-5644 • 768-7395 Cell

CLASSIFIEDS

**Submission deadline is the 15th of the month. Submit at www.PineMountainLake.com
Cost is \$0.30 per word. Ads run until cancelled by advertiser.**

FOR SALE

TANDEM NEXUS KAYAK FOR SALE

Great condition, only used on the lake! Paid \$750, asking \$400.
408-391-2552

2006 CROWNLINER SKI BOAT

19' with trailer. One owner, excellent shape, low miles, seats 8 and includes a custom cover. Asking \$19,500.00. Located in Groveland area. Call
925-216-7981

WHIRLPOOL WASHER/DRYER

Cabrio series. Like new. Not even 1 year old. **\$899 OBO. 962-1979**

HOMES FOR RENT / LEASE

SPECIAL DEAL

3 Bedroom 2 Bath Two Level home in the Cedars. Two Propane Furnace/Stoves & Dual Zone A/C Up & Down Stairs. 1400 Sq.Ft. Large Deck & Bar-B-Que. Very Close to all amenities. **\$675/Mo.** Also available fully furnished w/Large Bonus Room. Call for additional information.
209-962-4432

FOR RENT IN PML

2bd, 2ba, separate family room/office, lg open LR, DR, wood burning stove, new appliances, attached garage, 2 decks, near Marina, level driveway. \$945 plus deposit. **513-320-4083**

RENTALS WANTED

EXCELLENT TENANTS

w/excellent credit and rental history looking for homes to rent. Owner approves tenant before placement. Call Yosemite Region Resorts. **800/962-4765**

HELP WANTED

LIVE-IN CAREGIVER

for elderly gentleman living in PML. Must have happy & good sense of humor. MUST have vehicle for errands & Appts. Excellent pay. **530-224-9853** or dvharguth@yahoo.com

LAND FOR SALE

GOLF COURSE LOT

1/2 acre lot on quiet court for sale by owner. 7/115 Motivated seller.
209-222-0751

LOT/UNIT 5/178 FOR SALE

1/2 Block from Country Club and Swimming Pool. **\$19,950**
Contact: dkharris001@gmail.com or (831) 261-6280

LOT FOR SALE

Nearly level, ready to build lot. Unit 6-146 on Cottonwood St. Motivated to sell. **\$12,500. OBO 650-866-4721**

PRIME 1.74 AC LOT NEAR AIRPORT

Gentle slope. Southern exposure with panoramic view. Very private. Sewered. U11/L56 Elderberry Ct. For more info call Cell **209-768-4406**

LARGE LEVEL, EASY BUILD, SEWERED LOT

Unit 3/ Lot 122 - Nob Hill Circle On quiet street close to the Lake Lodge, Fisherman's Cove and Tennis Courts. **MAKE OFFER.** For information call **209-962-4617**

GOLF COURSE LOT

Unit 7-29, 6th Fairway,
View, Buildable,
\$18,500, 415-897-2791

LOT FOR SALE OR TRADE

Prime Golf Course Lot
Lot # 174 Unit #1 Pleasant View Drive. Walk to beach. Very Motivated seller. \$21,000/BO/ or Trade. Let me know what you want to trade.
email at jeepcj1986@yahoo.com or call **925-570-1176**

GET YOUR AD NOTICED



Place a photo of your item for sale (car, truck, house) with your classified ad for just \$10. Call 962-0342 today.

COMMERCIAL RENTAL/LEASE

COMMERCIAL WAREHOUSE/ SHOP/STORAGE

Ferretti Rd. near Airport. Easy access, 12'x20' roll up doors, insulated, 220 and 3-phase available, vented skylights, restrooms. 2 bay, 1400 sq. 600.00 per month: 3 bay, 2100 sq. 900.00: 5 bay, 3500 sq. 1500.00. Includes water and sewer.
209-962-6014
ask for John, Owner/Broker

GRAZING PASTURE

in downtown Groveland. For Rent at \$300.00 per month or \$100.00 per horse. Call Terry **650-520-1022**

SERVICES

FOR YOUR REVERSE MORTGAGE, REFINANCE, NEW HOME LOAN PURCHASE NEEDS

Call GREAT CENTRAL MORTGAGE Corporation at **209-962-6239** or Main Office **209-632-3200**.
CA BRE License #01135634,
CA BRE License Information #
916-227-0931. NMLS #237919

ABLE HELPERS

Experienced in small repairs, plumbing, electrical, painting. Power washing: decks, cars, etc. Detailing, organizing, windows, gutters, etc Free Estimates. Excellent references. Call Nancy and Sue. **962-5140** Reasonable, Reliable, Established, Local.

BERT'S WEEDEATING AND LOT CLEARING

962-6724

PROFESSIONAL PROPERTY MANAGEMENT

RE/MAX Yosemite Gold
Patricia (Tish) Fulton BRE#
00760019
Property Manager Certified by
California Association of Realtors
209-962-0837

HANDYMAN - For removal of unwanted items. Have 20 foot enclosed trailer, need something moved? **Also, tree trimming available.** Call Mike, very reasonable rates. **209-962-0777**

SERVICES

GOT WEEDS?

Contact Jim Atkins at
209.985.4376.
Lot Clearing, Hauling, Dump Runs,
Weedeating. Local Guy.
References available.

COMPUTERS custom built, upgrades, trouble-shooting, free consultation. **209/962-7110**

ELECTRICAL A AMERICAN ELECTRIC & SERVICE CO.

Lic. #465220 **209/962-7374**

FURNITURE REPAIR/ WOODWORKING

Retired Cabinet-maker will repair all types / kinds of furniture **962-7604**

LINDA'S LOVING CARE

Local, Reliable, Caring and Responsible - Caring for a loved one - House sitting - House cleaning - Rides to Doctor's appt., etc. Call Linda **209-985-2363** cell

COSTA'S TREE SOLUTIONS

Steve Costa, Owner
Fully Insured/Bonded
C.C.L. #818373
209-962-4468
Cell **209-768-4469**
Certified Arborist #WE7496A

SUTTON'S LANDSCAPE & MAINTENANCE

C27 #483019
Design, Installation & Maintenance
Renovation & Clean-ups
Tree, Shrub & Lawn
Planting/Replacement
Entertainment & Pool Area
Landscape.
Decks, Patios, Walkways
Seating & Retaining Walls
Stamped & Colored Concrete
Pavers, Flagstone, Brick, Arbors,
Pergolas, Gazebos, Water
Features,
Irrigation & Drainage,
Landscape Lighting,
Outdoor Kitchens
209-244-3500

BERT'S WEEDEATING AND LOT CLEARING

962-6724

BIG JOHN HANDYMAN SERVICES
Yard Maintenance, House
Maintenance and moving
households Call John **962-6163**

SERVICES

LOVING PET CARE in my home or in yours - garden care also available. Call Barb **962-5653** or email at Tedbear1@sbcglobal.net

LOREN SNIDER'S TREE SERVICE

27 years expert, safe tree work. All sizes and types of trees. General pruning, ornamental pruning, weight reduction with drop crotching method, mistletoe removal, expert technical tree removal, dump truck chipper, stump grinder, liability insurance, local references,
Responsible, Reputable, Reasonable, Reliable, Rapid Service.
PREFERRED PML VENDOR
209-878-3828 / cell 209-402-9797

HOMEOWNERS INSURANCE

I moved to Pine Mountain Lake from the Bay Area with 23 years as an independent insurance broker. I write business with most standard Insurance Companies for California homeowners. Call, fax or email me for a quick quote and get that personal local service you deserve.
Commercial Business Insurance Agency, Inc. Jess Skelley
CA Broker Lic# 0F50039
209-732-3514 office
800-726-4889 fax
www.cbi-agency.com
email jess@cbi-agency.com

RONNING ROOFING

Call Joe for all your Roofing and Gutter needs. Licensed, Bonded, and Insured. License # 976739
209-962-6842

VACATION RENTALS

LIFE'S A BEACH!

Vacation at our Tropical Paradise in sunny Ewa Beach, Oahu, Hawaii
NaniMoanaHale.com (209) **962-4396**

PANORAMIC LAKEFRONT

boat dock, decks, air, 3bd/2ba, Beautiful Views **650/961-6334**

PMLA LOT FOR SALE AT REDUCED COST

PMLA OWNED LOTS FOR SALE:

Unit/Lot Numbers	Street	Asking Price
2/020	Mueller Drive	\$1000

For further information regarding this property please contact PMLA at (209) 962-8600



Real Estate • Property Management • Vacation Rentals

209-962-1111



19753 Butler Wy-8/290 IT'S A BREEZE-WAY to the front entrance of this cozy home, with Stone fireplace/pellet stove insert. French doors in living room, quartz kitchen counters & tile flooring. Newer fixtures, ceiling fans and 2 remodeled bathrooms. Plenty of storage downstairs & underneath the house. Powder-coated metal deck railings. Horse-shoe pit. \$254,000 #20141837



12346 Mills-8/90 POSSIBLE LAKE VIEW by thinning some trees. The seller says that the lake view is what sold them on this home years ago, but the trees have grown and blocked the view. Three-levels, double-pane windows, granite kitchen counters, bonus room, wood fireplace, 3bd, 2ba, walk-in master closet and garden tub. Paved driveway and newer, large deck. 1-car garage. \$199,900 #20140951



12600 Cresthaven-4/45 A PERFECT LOCATION. Near the Lake Lodge beach and tennis courts. Two-level home, with open kitchen & dining area. 3bd, 3ba, 2100sf. Central h/a, woodstove, jetted tub. Additional space downstairs can be used as bonus or 4th bdrm. Large covered deck and garage to accommodate an RV or boat! Established vacation rental. Most furniture incl. \$275,000 #20140445



12891 Boitano Rd-3/154 SUBSTANTIAL LAKE VIEW from the top of this vacant lot in Pine Mountain Lake. Build your dream home to take advantage of the view. Sewered property. Owner financing available. Access via Quail Ridge Easement. \$62,000 #20121394



19555 Chaffee Cir-1/101 CUSTOM HOME near Dunn Court beach. 3bd, 2-1/2 bath, 2064sf. Free-standing fireplace in living room. Formal dining, downstairs family room & private deck off master bedroom. Double-pane windows, A/C & forced-air heating, dual sinks, vanity & jetted tub. Finished, oversized garage, with cabinets, shelves and workbench. \$285,000 #20141424



19823 Cottonwood-6/106 THE "LIBERTY" HOUSE. Cute cabin with 3bd, 1ba on the corner of Cottonwood & Ferretti Rd. Knotty-pine walls and retro-style interior. Enjoy all the amenities of Pine Mountain Lake, yet have easy access w/o going through the gate. Potential for a cozy get-away. Needs some tender loving care. \$68,000 #20140909



20808 Crest Pine-3/481 LOOKS LIKE NEW! Spacious, single-level home, with granite counters, pellet stove, central H/A, jetted tub in master bath. Covered patio, surrounded by lovely oak trees. Near Fisherman's Cove, tennis, Lake Lodge, beach and Equestrian Center. \$268,999 #20130184

NOW ACCEPTING HOMES for our LONG-TERM & VACATION RENTAL PROGRAMS

GENERATE INCOME FROM YOUR PML HOME!

VACATION RENTALS

- Aggressive Advertising Campaign
- Online and Telephone Reservations
- Pre-Arrival Inspections Insure an Excellent Guest Experience
- Professional Cleaning After Every Guest
- Damage Protection Eliminates Worries About Your Home and Furnishings



Like us on Facebook
More than 28,000 others have!

MONTHLY RENTALS & TENANT PLACEMENT

- Extensive tenant screening and credit reports
- Move in, move out and periodic inspections
- Scheduled maintenance and repairs

PROPERTY MANAGEMENT

- 24/7 Emergency services available
- Monthly statements and owner payments
- Local, state and federal tax requirements



20590 Morgan Dr BEAUTIFUL MOUNTAIN HOME on five acres, with fish pond, year-round stream, manicured grounds and views of Duckwall Mountain. Granite counters, new roof and windows. Room on lower level for hobbies or "man cave". Decks on two levels. Garage, carport and 22x30 shop. Sprinkler system, fruit trees and partially-fenced lawn. Great potential for a horse property! \$279,500 #20140822



12762 Mt Jefferson-1/154 NEAR THE LAKE and Dunn Ct beach. Beautiful 4bd, 3ba, 2914sf home features a rock fireplace in the living room, renovated kitchen with Corian counters & maple cabinets. Large office and bonus room. 2-car garage with workshop and 1/4 bathroom. Great location for vacationing or full-time living. \$369,900 \$20141276



14610 Mono Wy DOUBLE-WIDE MOBILE HOME in Sonora Park. Great open layout with large bedrooms and large inside laundry room/pantry. Laminate flooring throughout most of the home, new roof in 2009. Covered porch, deep carport for 2 cars, storage shed. Community pool and recreation room. Excellent location, near shopping and easy access to 108 bypass. \$14,900 #20141619

18687 Main Street, Suite A, Groveland, CA

209-962-1111

www.yosemiteregionresorts.com

NOW LEASING EXECUTIVE OFFICE SUITES • FROM \$250 PER MONTH • ASK FOR JOHN • 962-6014



Private & Semi-Private Suites with Shared Entry & Lobby, Conference Room, Kitchen, Restrooms, DSL & Wifi, Utilities, Janitorial Service & Security Alarm



ROB STONE
OWNER/REALTOR
BRE #01025463



TARA STONE
MANAGER/CFO
BRE #01106544



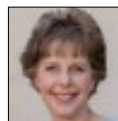
LIZ MATTINGLY
BROKER ASSOC.
BRE #00709618



TED BIANCHI
REALTOR
BRE #01318805



SHIRLEY ECKHART
PROPERTY MANAGER
BRE #01506396



SHARRON WAHMAN
EXEC. ASSISTANT
RESERVATIONIST



CAPRICE KROW
PROP. MGR./LDP
BRE #01179023



CORY STONE
PHOTOGRAPHER
VIDEOGRAPHER



BJORN WAHMAN
BROKER
BRE #00706559