

PineMountainLake.com

2013

ACTIVITY GUIDE



TABLE OF CONTENTS

Airport	18
Amenity Opening Dates	6
Activities & Events	6 & 7
Campground	14
Golf Course	4-5
The Grill	8
Hiking & Walking Trail Maps	15
Independence Day	18
Information/PML Phone #s.	3
Lake Lodge	7
Marina Boating/Hunting/Events	12
Marina Boating/Cafe/Events	13
PML Map	10-11
Real Estate	5
Stables	16
Swimming Pool	17
Tennis	17

COVER PHOTO BY LEE ISBELL

CAMP. HIKE. FISH. SWIM.

11875 PONDEROSA LANE, SUITE D., GROVELAND, CALIFORNIA 95321 • (209) 962-0923

YOSEMITE ADVENTURE SUPPLIES



VACATION RENTALS

RESERVE YOUR NEXT VACATION ONLINE ANYTIME
VIEW ALL OF OUR HOMES IN HIGH DEFINITION
FULL SCREEN VIRTUAL TOURS

www.YosemiteRegionResorts.com

800.962.4765
209.962.4396

Located in Mountain Leisure Center
18687 Main Street • PO Box 19
Groveland CA 95321

VACATION RENTALS • LONG TERM RENTALS • PROPERTY MANAGEMENT

PINE MOUNTAIN LAKE REALTY

An Agent Owned Company



Bruce 'Red' Rossio
Broker / Owner
DRE#01429140



Lynn Bonander, GRI
REALTOR® / Owner
DRE#00683485



Val Bruce
Broker Assoc. / Owner
DRE#00578336



Parker 'PJ' Johnson
REALTOR® / Owner
DRE#01732298

**WHEN EXPERIENCE
COUNTS—
COUNT ON US!**



NOTARY SERVICES AVAILABLE!



Barry T. Scales
REALTOR® / Owner
DRE#00451887

Available to serve you 7 Days a Week! Call 209-962-7156
www.pmlr.com – 18919 Main St., Ste. A, Groveland CA



YosemiteGoldVacations.com

60 Unique Homes to Choose From

View interior and exterior pictures of our rentals
and check the availability calendars live.
Enjoy the EASE of "on-line" reservation booking, or call

Toll Free 877-962-7180

18688 Highway 120, Groveland
Open 7 Days a Week For Your Convenience
E-mail: YosemiteGold@Goldrush.com



**Vacation
Rentals**

Tracy Billeb -
Our Property
Manager for
15 Years



Your Mountain Guide

to Groveland Real Estate



**Lauree
Borup**



**Pine Mountain Lake
and Beyond ...**

"Without a doubt, she has been head and shoulders above all other realtors in regard to professionalism and attention to detail"

"she made the daunting process of buying my first home a pleasure"
"we would surely hire Lauree again because we know we can wholly trust her & depend on her to come through when it is important"
"utmost intelligence, honesty & integrity" "very patient and conscientious"
"Once again you accomplished a difficult transaction and a long one and we so appreciate all you do for us" "handled it with tenacity and expertise"
"This is the second time Lauree has handled a real estate transaction for us, and we would not hesitate to have her represent us again"
"friendly, accommodating, and knowledgeable"



**To see 60+ testimonials go to
Lauree.com: "What Clients Say"**

Resident of Groveland since 1977 Realtor since 1987
Broker, CRS, CRB, SRES GRI, E-Pro, Green
Lauree@GoldRush.com (209) 628-4600

ADMINISTRATION & AMENITIES MAILING ADDRESS

Pine Mountain Lake Association • 19228 Pine Mountain Drive • Groveland CA 95321

ADMINISTRATIVE OFFICE DIRECTORY

(ALL NUMBERS ARE 209 AREA CODE UNLESS OTHERWISE NOTED)

In order to avoid delays in assistance, please direct your inquiries to the proper extension. This assists our staff in handling your questions as quickly as possible.

GENERAL INFO

Ivonne Deckard962-8600

(Rental Program, Lake Lodge Inquiries & Reservations)

admin@pinemountainlake.com

ACCOUNTING

• Accounting / Receivable/Collection/Assessments

Karen Peracca962-8607

pmlar@pinemountainlake.com

• Accounts Payable / Notary Services

-Please call for Appt

Michelle Ronning962-8626

pmlap@pinemountainlake.com

• Controllor / Accounting Procedures

Ken Spencer962-8606

controller@pinemountainlake.com

MAIN GATE

Inquiries, gate passes, tennis & camp

ground reservations962-8615

campground@pinemountainlake.com

ADMINISTRATION

• General Manager

Joe Powell, CCAM, CMAC, AMS

joepowell@pinemountainlake.com

• General Manager Assistant

Rick Whybra962-8604

rick@pinemountainlake.com

• Administrative Assistant

Debra Durai962-8627

debra@pinemountainlake.com

• Human Resources,

Allie Henderson, PHR962-8628

pmlhr@pinemountainlake.com

• ECC Coordinator, mergers, plan submittals

Sandy Golden962-8605

ecc@pinemountainlake.com

• Member Relations, Gate Cards,

Address Changes, Webmaster

Nancy Perry962-8632

nancy@pinemountainlake.com

• CC&R Compliance, Violations, Fire Mitigation

Dennis Pipal962-1240

communitystandards@pinemountainlake.com

SAFETY

• Director of Safety, Natalie Trujillo

962-8633

n.trujillo@pinemountainlake.com

• Sgt. Teri Cathrein

962-1244

t.cathrein@pinemountainlake.com

MAINTENANCE DEPT.

• Maintenance, Susan Capitanich

962-8612

maintenance@pinemountainlake.com

• Golf Course Superintendent

Alan Macdonald962-8610

amacdonald@pinemountainlake.com

• Maintenance - Streets Manager

Tom Moffitt962-8611

tmoffitt@pinemountainlake.com

OTHER PML CONTACTS

• PGA Pro, Evan Boone

962-8622

golfpro@pinemountainlake.com

• Golf Pro Shop, Golf Reservations, Tournaments

Doug Schmiett962-8620

dschmiett@pinemountainlake.com

• Golf Snack Shack

962-5058

RESTAURANT

• The Grill Restaurant Hospitality Coordinator

Bambi Johnson962-8638

cluboffice@pinemountainlake.com

• The Grill Restaurant Manager

Jay Reis962-8640

clubmgr@pinemountainlake.com

MARINA

• Marina Store (seasonal)

Jim Dahms, Manager962-8631

marina@pinemountainlake.com

• Marina Lakeside Café (seasonal)

Michelle McCoy, Supervisor962-8630

POOL (seasonal)

• Pool962-8634

pool@pinemountainlake.com

STABLES

Lester Scofield, Manager962-8667

stables@pinemountainlake.com

PML NEWS

Editor/Design, Sabre Design962-0342

pmlnews@sabredesign.net

2013

ADMINISTRATION

OFFICE HOLIDAY

CLOSURES

Monday, May 27

Memorial Day

Thursday, July 4

Independence Day

Monday, September 2

Labor Day

Monday, November 11

Veterans Day

Thursday/Friday

November 28 & 29

Thanksgiving

Tuesday/Wednesday

December 24 & 25

Christmas

Tuesday, December 31

New Years Eve

Wednesday, January 1, 2014

New Years Day

2013 PINE MOUNTAIN LAKE

ORGANIZED GROUPS, CLUBS, CLASSES

AVIATION ASSOCIATION

Eric Henderson962-0832

LADIES GOLF CLUB

Yvonne Mattocks962-4165

PML SHOOTING CLUB

Steve Chapman962-1896

COMPUTER USER GROUP

Frank Perry962-0728

MEN'S GOLF CLUB

Michael Guess962-4970

PML WATERSKI & WAKEBOARD CLUB

Dean Floyd408-378-7725

COUNTRY MOUNTAIN RIDERS

Dorothy Scofield962-6902

MEN'S 9-HOLE GOLF CLUB

Bob Oakley962-4799

RACQUET CLUB

Larry Santa Maria962-7904

DUPLICATE BRIDGE

Bobbi Vandenberg962-6965

Bill Parker962-5957

MONDAY BRIDGE CLUB

Bill Parker962-5957

RESIDENTS CLUB

Dick Faux962-4617

EXERCISE GROUP

Barbara Elliott962-6457

NEEDLE CRAFTS

Lee Isbell962-5727

ROOFBB

Corky Graham962-7816

NON-RESIDENTS GROUP

Kathy Coon510-656-0162

SIERRA PROFESSIONAL ARTISTS

Heinie Hartwig586-1637

FRIENDS OF THE LAKE

Mike Gustafson962-6336

PINE NEEDLERS QUILT GUILD

Irene Rhyne878-3569

SUNDAY COUPLES GOLF

Alma Frawley962-5578

GARDEN CLUB

Louise Turney962-0609

PMLAKERS RV CLUB

Ned Nuddleman925-371-2287

WINDJAMMER SAILING CLUB

Eric Heim962-5401

GUARDIANS OF PML

Dan O'Connor962-5770

PML NINERS (LADIES)

Stacie Brown962-5129

LADIES CLUB

Beverly Oakley962-4799

2013

BOARD MEETINGS

January 19

February 16

March 16

April 20

May 18

June 15

July 20

August 17

Annual Meeting / Election

September 14

(2nd Saturday)

October 26

Budget Meeting begins at 8 am

(4th Saturday)

November 9

(2nd Saturday)

No December Meeting

SNACK SHACK

209-962-5058

MENU

- Hot Dog — All beef 1/4 lb.
- Polish dog — spicy and just right
- Fresh sandwiches — turkey, tuna, ham, pastrami, egg salad

- Snack items — chips, candy bars, boiled eggs, energy bars, & cookies
- Drinks — bottled water, Pepsi, Diet Pepsi, Sierra Mist, diet root beer & Dr. Pepper; Gatorade, lemonade, iced tea

- Breakfast — breakfast burrito, danish, muffins, coffee, tea, hot cocoa

- Beer — Budweiser, MGD, Miller Lite, Coors, Heineken, Tecate, Michelob Ultra, O’douls, Corona, Fat Tire, Blue Moon

- Liquor — mini liquor, well drinks, bloody mary, vodka or gin & tonic, brandy & coffee, brandy & hot cocoa, schnapps & hot cocoa, Bailey’s Irish Cream

We ID.

You must be 21 years old with proof of age to purchase alcohol.

12765 MUELLER DRIVE 209-962-8620 • OPEN TO THE PUBLIC!

PML GOLF COURSE IS OPEN 7 DAYS A WEEK

- Summer Golf Course hours: 7 am to 7 pm
- Winter Golf Shop hours: 8 am to 5 pm

Pine Mountain Lake Golf Course, designed by William F. Bell, has been rated “4-1/2 stars Best Places to Play” by Golf Digest magazine and is open for play year-round. The challenging 18-hole championship course is available for tournaments and public play and is always in excellent condition. Our 18-hole, 6,382 yard, par 70 course offers everything a golfer, beginner or expert, could want from a round of golf: a classic park-like setting, a fair but challenging layout and enough trees to make you wish you had a chainsaw as your 14th club!

The first tee is at 2,840 feet, above the smog and fog. We have over 300 sunny days each year. Winter daytime temps average in the low 60’s and summer daytime temps average in the 80’s. Spring and fall temps are usually in the 70’s. Winter snows are light, allowing us to enjoy the snow’s beauty without the bother. Roads are open year round. You’ll enjoy the beautiful breathtaking views of the majestic mountain peaks of Yosemite as the course winds through picturesque oaks and pines.

Experts and novices alike appreciate our driving range in a true golf course setting. Golf lessons, clinics, locker storage, club rentals, club storage, golf carts, pull carts...We have it all!

The Golf Course is for golf only please! No games, walking, bike riding or dog walking on the golf course

Golf Pro Shop

There’s always a great selection of clubs, equipment and fine men’s and ladies’ apparel including PML logo shirts, tee’s, sweats, caps, visors and sweaters. All major credit cards are accepted and gift cards are available.

TEE TIME RESERVATIONS

We accept Golf Tee Time reservations starting at 7 am March 12 through November 4. To reserve a spot in our 11 am Shotguns (November 5th through March 11th, 2013) call 962-8620 starting at 8 am.

PROPERTY OWNERS

Can reserve tee times up to 14 days in advance. Tee time reservations on major holiday weekends (Memorial Day, Independence Day and Labor Day) are taken for all days of the weekend 14 days in advance. Reservations will be limited to one (1) tee time per day during major holiday weekends. Property owners may request one (1) additional tee time 10 days in advance.

GUESTS

In order to obtain guest rates the reservation must be made by a property owner either in person or by phone. Property owners may make tee times for their guests two (2) weeks in advance.

PUBLIC

Can make reservations 10 days in advance.

DRIVING RANGE

Tokens for the ball machine are available at the PML Golf Pro Shop or the Snack Shack. Tokens are \$3.00 each or 4 for \$10. One token = 25-30 balls. Blue Jeans and T-Shirts are allowed while using the driving range.

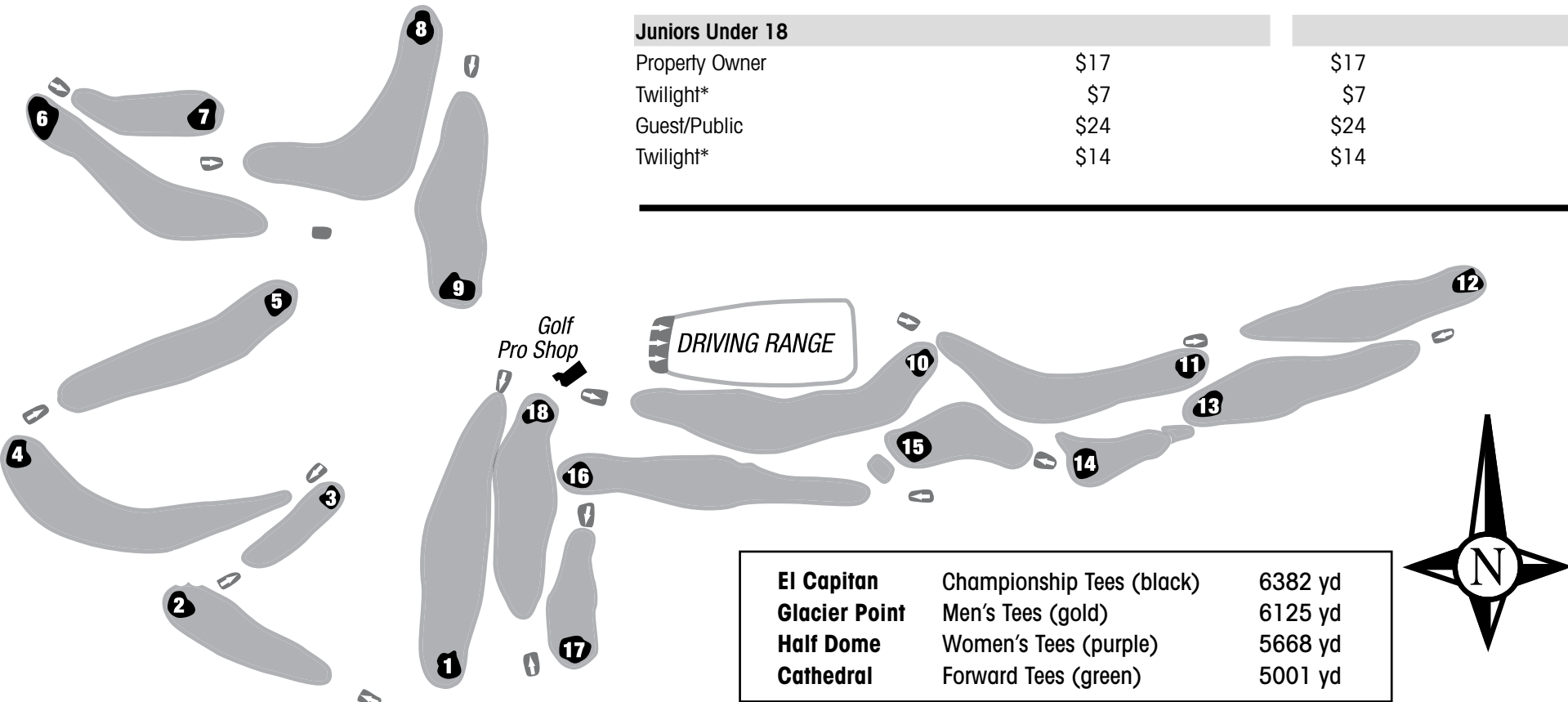
SNACK SHACK

Enjoy lunch at the PML Snack Shack at the Golf Course! We are located at the Golf Course Driving Range so come and lunch with us in the shade of the beautiful oaks and pines and watch the golfers on the golf course and driving range. (MENU ON THE LEFT)

2013 PINE MOUNTAIN LAKE GOLF FEES

Property Owner	Mon.- Fri.			Weekends & Holidays		
	Green Fees	Cart Fees	Total	Green Fees	Cart Fees	Total
9 Holes	\$17	\$8	\$25	\$17	\$8	\$25
18 Holes	\$27	\$12	\$39	\$27	\$12	\$39
Twilight*	\$20	\$12	\$32	\$20	\$12	\$32
Guest (Sponsored by Property Owner)						
9 Holes	\$32	included	\$32	\$35	included	\$35
18 Holes	\$55	included	\$55	\$58	included	\$58
Twilight*	\$33	\$15	\$48	\$33	\$15	\$48
Public						
9 Holes	\$41	included	\$41	\$44	included	\$44
18 Holes	\$65	included	\$65	\$68	included	\$68
Twilight*	\$36	\$15	\$51	\$36	\$15	\$51
Juniors Under 18						
Property Owner	\$17			\$17		
Twilight*	\$7			\$7		
Guest/Public	\$24			\$24		
Twilight*	\$14			\$14		

RESERVE TEE TIMES ONLINE AT tinyurl.com/pmlteetimes



REAL ESTATE COMPANY OFFICES IN GROVELAND

Members of the voluntary sign-free community in Pine Mountain Lake



COLDWELL BANKER MOUNTAIN LEISURE PROPERTIES

mtnleisure.com
(800) 659-5263 Toll Free
(209) 962-5252 Office



YOSEMITE REGION RESORTS - RENTALS

yosemiteregionresorts.com
(800) 962-4765 Toll Free
(209) 962-4396 Office

CONSTANCE ELLIOTT

CONSTANCE ELLIOTT, REAL ESTATE BROKER

pinemountainhomes@hotmail.com
(209) 768-3045

PAUL S. BUNT Realtors

PAUL S. BUNT REALTORS

yosemitearearealtors.com
(209) 962-5501



PINE MOUNTAIN LAKE REALTY

www.pmlr.com
sales@pmlr.com
19000 Main Street, Suite A
P.O. Box 738
Groveland, CA 95321

(209) 962-7156 Office
(209) 962-6710 Fax



RE/MAX YOSEMITE GOLD

pinemtnlake.com
(888) 962-4080 toll free
(209) 962-4080 Office

RE/MAX YOSEMITE GOLD VACATIONS

yosemitegoldvacations.com
(209) 962-7180 Rentals



ROGER POWERS REALTY

rogerpowers.com
(209) 962-4432 Office
(209) 962-7095 Fax



SUGAR PINE REALTY

- REAL LIVING
sugarpinerealty.com

18727 Main St, Ste. A, Groveland, Ca. 95321

(209) 962-7765 Office



Yosemite Gateway Properties

YOSEMITE GATEWAY PROPERTIES

yosemitgatewayproperties.com

George Voyvodich, Broker/
Owner 18731 Main Street, PO Box 606
Groveland, CA 95321

(209) 962-4185



PINE MOUNTAIN CUSTOM RENTALS

pinemountaincustomrentals.com
(209) 962-7123



ROB STONE
ePRO REALTOR
888/81025463



MOUNTAIN LEISURE
PROPERTIES

18687 MAIN STREET • PO BOX 848
GROVELAND, CA 95321

FREE LIST OF BANK OWNED AND SHORT SALE PROPERTIES
TOUR ALL OF OUR LISTINGS • VIEW ALL AREA LISTINGS (MLS SEARCH)
HIGH DEFINITION VIRTUAL TOURS • FREE HOME MARKET EVALUATION
THE BEST HOMES SELL QUICKLY, SIGN UP TO RECEIVE NEW LISTINGS BY EMAIL.

Toll Free **866.816.3997** OR **962.1143**

Annual 4th. of July BBQ



Friday July 5th.

Presented by

**Country Mountain Riders and
Pine Mountain Lake Association**

5:00-10:00 PM

PML Equestrian Center

BBQ Tri-Tip with all the fixins & hot dogs for the
little wranglers. Served 5:00-8:00 pm

Music by The Wild Rangers

Wagon Rides Available



50/50 Raffle

**Country Mountain Riders
7:00 Color Guard**



Dinner tickets: Adults \$14.00 Children (under 12) \$7

GROVELAND DOG PARK!

Groveland has a Dog Park for dogs to run and exercise in. While this is not a PML amenity, it is the place to let your dogs run and play.

Standard fee is \$25 per calendar year and is good for up to 2 dogs, additional dogs are \$10 each. You will need to provide your dogs current Rabies Vaccination and dog license.

Some Rules to Remember

- Dogs cannot be left unattended inside of the dog park.
- Dogs left unattended may be impounded. Please check local laws.

- Remember to clean up after your dog(s) so that everyone can enjoy a clean park.

- Dogs MUST be on a leash when outside the park per county ordinance.

Call GCSD at
962-7161 if
you have any
questions or
require more
information about
membership.

Attention Dog Guardians

Please pick up
after your dogs.

Attention Dogs

Grrrr, bark, woof.
Good dog.

Thank You

FOR THE KIDS

Little Wrangler Camp Stables 962-8667

Supervised by PML's Stables staff this camp is a great way to introduce your child to the world of horses and the life of a "cowpoke" all in a friendly, safe environment. Camps consist of horse and stables care, fun and game activities and lunch. Camps run every Tuesday and Thursday (ages 7 -13) 9 am to 1 pm, June, July and August. Cost is \$35 per child, per 1-day camp. Limited to 10 students per 1-day camp. Be sure to sign up early!

Fishing Days for Kids June 15, July 13 and August 10

Using your own gear, kids ages 7-15 sign up at the Marina for a supervised fishing boat trip from 6:30 am to 9:30 am. Maximum boatload is 6 kids for this learning experience. Learn fishing tips and safety while possibly catching one of our large fish, trout/bass.

Free Fishing Days for Kids of All Ages!

For 2013, California's free fishing days are July 6 and September 7. While all fishing regulations, such as bag and size limits, gear restrictions, fishing hours and stream closures remain in effect; there are two Saturdays each year where anyone can fish without purchasing a fishing license.

Log on here for more information on Free Fishing Days in the San Francisco Bay area. <http://www.dfg.ca.gov/>

Fishing Derby for Kid's of All Ages

Be sure to sign up at the Marina store for the Fishing Derby. There is a \$5 entry fee. The fishing derby runs from Saturday, May 4 through Monday, September 2. Prize for the heaviest fish caught. You must sign up before catching your fish to qualify. Call Marina Store at (209) 962-8631 for details.

FAMILY FUN & GAMES AT THE MARINA LABOR DAY WEEKEND

Sand Castle Contest - Labor Day weekend

Saturday, August 31, 9:30 am to 11:30 am.

Sunday, September 1, Fun & Games from 11 am to 1 pm.

Swim Lessons at the Pool 962-8634

See swimming pool section for details.

Jr. Golf Clinics 962-8620

Reservations are required so please call or sign up in the Golf Shop

Mondays 3 pm "Putt for Dough"

Teacher - Doug Schmielt

Putting & Chipping
\$15 per person - limited to 8 people

Minimum of 2 people required to have clinic

Wednesdays 9 am "Ladies Clinic"

Teacher - Evan Boone

Emphasizing all aspects of the game in a relaxed environment

\$15 per person - Minimum of 4 people required to have clinic

Saturdays 3 pm "Open Clinic"

Teacher - Evan Boone

Open to all players
Emphasizing all aspects of the game in a relaxed environment

\$15 per person - Minimum of 4 people required to have clinic.

Sand Castle Contest - Independence Day weekend

Sunday, July 7 from 9:30 to 11:30 am & Fun and Games from 1 to 3 pm. Prizes awarded.

EVENTS

Upcoming Events are listed each month in the Calendar of Events section of the PML News and at pinemountainlake.com

see "upcoming events"

PML Hit & Giggle Nine-Hole Golf Tournaments

Enjoy a fun nine-hole round of golf, a delicious dinner and special prizes. See the PML News for upcoming dates or call the Pro Shop for details (209) 962-8620

PML Flea Markets

PML Stables on May 11 and Sept. 7. Buy or sell your treasures at this very popular event. Sign up early in the PML Administration office or at the Stables the morning of the Flea Market - \$7 per space. Space set-up starts at 7 am. Spaces are "first come first serve" basis on the day of the event. Please bring your own tables, tarps, blankets, etc. Tioga High School "Timberwolves" fundraiser will be providing Hamburgers, Hot Dogs, donuts, coffee and juice for a fee.

MEMORIAL DAY Celebration BBQ & Dance at the PML Stables

Sunday, May 26, 5 - 10 pm (Dinner 5 - 8 pm, dancing until 10 pm)

Sponsored by Pine Mountain Lake for the benefit of Tioga High School Timberwolves

\$15 Adults \$5 Kids (12 & under)

Dinner: Tri-Tip, with all the fixin's

Live Music, 50/50 raffle, wagon rides and silent auction

Tickets available at Tioga High (209) 962-4763.

Fun for the entire family! Bring the kids, your neighbors and Grandpa!

FRIENDS OF THE LAKE EVENTS Friends of the Lake Annual Poker Run

Sunday, June 9: Friends of the Lake hosts the annual Poker Run on the lake at 5:00 pm Sunday, June 9. After a potluck dinner at the Marina, we board pontoon boats and travel around the lake picking up poker cards. Upon returning to the Marina, we play the cards. Prizes for the best and worst hands. Call 962-7904 to reserve your seat. Cost is \$5 per person.

ACTIVITIES

Annual Memorial Day BBQ

Sunday May 26, 2013

Presented By

Pine Mountain Lake

Benefit for

Tioga High School

5:00-10:00 PM

PML Equestrian Center

BBQ Tri-Tip With Fixings 5:00 to 8:00

Adults \$15.00 Kids (under 12) \$5.00

Live Music / Wagon Rides

50/50 Raffle Silent Auction

Tickets available at the door or Tioga High 962-4763

VISIT US ONLINE AT PineMountainLake.com

Independence Day "Boat Parade"

Don't miss this highlight of the summer on Saturday, July 6! Decorate your boat to honor Independence Day or a classic movie. Sign-up at the Marina office and receive your entry number. The parade kicks off at 6:00 pm Saturday prior to the fireworks display. Spectators can watch the parade from the Marina, Lake Lodge or Fisherman's Cove. Trophies are awarded for the best decorated boats. Boats of all types are welcome! Watch the PML News and mailbox flyers for more details. No fee. Call (209) 962-6336 for additional information.

PML "Lake Swim" and Kayak Races

Saturday, July 13: Friends of the Lake present the annual "Lake Swim" with an open lake swim from Dunn Court to the Marina at 3:00pm, Saturday, July 13, 2013. You can race or just swim for fun; proficient swimmers only.

One and two-person kayak races too, and prizes for top finishers. All participants must register and sign a liability waiver at Dunn Court at 2:45 pm. Watch the PML News and mailbox flyers for more details. No fee.

Music at the Marina

Sunday, July 14: Friends of the Lake hosts "Music at the Marina" at 5:00 pm on Sunday, July 14. The evening starts with a potluck dinner at the west end of the Marina beach. The Sierra Mountain Band will entertain with classic country and folk music. Come sing-a-long and enjoy a warm summer evening on the Marina lawn. No charge, open to all. Bring your place setting and a dish to share.

Scavenger Hunt

Sunday, August 11: Friends of the Lake sponsors a great evening on the lake with a Scavenger Hunt 5:00 pm, Sunday, August 11. Following a potluck dinner at the Marina, we'll divide into teams and sail around the lake looking for scavenger clues. It's a lovely evening on the lake with prizes for the winning boat/team. No fee, but please call 962-5930 to sign-up, so we have enough boats.

Bingo on the Beach

Sunday, September 8: A great way to end the summer season. We meet at the Marina at 5:00pm for our potluck supper, and then play a rousing game of bingo until dark.

ACTIVITIES

Shrimp Fest 2013

Presented by Groveland Rotary. Meet at the PML Stables on **Saturday, August 10** for an ALL-YOU-CAN-EAT Shrimp feed. Enjoy Louisiana-style shrimp boil and/or sausage with all the trimmings, served family style. Refreshments at 5 pm, Dinner 6 pm. **Tickets:** \$25 adults; \$10 kids ages 6 to 12; under 6 Free. Live auction. For more information call Jim Thayer (209)962-5007 or Larry Santa Maria (209)962-7904.

AARP Driver's Safety Course

Saturday, November 2: The American Association of Retired Persons (AARP) is offering a Driver Safety Course for motorists aged 50 and older who have years of driving experience. The course will remind you of driving skills and techniques that you once learned but perhaps fail to use regularly now, and will also provide new approaches and concepts, such as compensating for normal age-related physical changes

that may affect your driving ability. Each person who completes the session will receive a certificate that qualifies him/her for a possible discount on his/her automobile insurance. Class runs from 8:00 am to 4:30 pm. AARP MEMBERSHIP IS NOT NECESSARY TO ATTEND. Class limited to 25 people, sign up early! Sign up in the PML Administration Office (209) 962-8632

Labor Day Country BBQ Celebration

At the PML Stables sponsored by the Southern Tuolumne County Historical Society. OPEN TO THE PUBLIC!

The fun starts on **Sunday, September 1**, from 2-7 pm.

Dinner Tickets \$15 Adult, \$10 under twelve. Tickets sold at the door

Includes BBQ dinner with all the trimmings, and live music. Free Admission. Fly-over, historical displays, photos, raffles, and a world famous

bake sale! Kids' activities include Petting Zoo, games, water balloons, races, contests, and more! Bring the kids and the neighbors and join in a day of FUN, FOOD and DANCING!

For updated info check PML News each month or PML News online at www.pinemountainlake.com/pmlnews.html.

AIRPORT

PINE MOUNTAIN LAKE AVIATION ASSOCIATION (PMLAA) AND EXPERIMENTAL AIRCRAFT ASSOCIATION (EAA) CHAPTER 1337 PRESENT "Airport Day"

Saturday, October 5, 8 am to 5 pm. Join us for a day of aviation fun and flying. Young Eagle rides in the morning, flybys in the afternoon including spot landing and flour bombing contests, airplane vs. car/motorcycle races and other feats of aerial majesty. Bring a lawn chair and enjoy the day!

LAKE LODGE

The Lake Lodge is located on Pine Mountain Drive between Cresthaven Drive and Rock Canyon Way. The beach at the Lake Lodge is especially suitable for family groups with amenities such as barbecue grills, picnic tables, a large sandy beach, playground equipment for the kids, rest rooms, seasonal water taxi service and a large swim area. This amenity does not have sleeping accommodations.

LAKE LODGE RENTAL FEES

- | | |
|--|------------------------|
| • Usage fee | \$210 (non-refundable) |
| • Refundable cleaning deposit | \$210 per event |
| • Refundable Organized Group Cleaning Deposit | \$210 |
| • Special event with Outside Catering per meeting | \$210 Usage Fee |
| • Special events with | |
| "The Grill Restaurant" providing food & service | No Usage Fee |
| • Regular meeting - organized PML recognized group | No Usage Fee |

THE GRILL RESTAURANT CATERS AT THE LAKE LODGE

Save \$210 on your next special event at the Lake Lodge! Simply allow The Grill Restaurant to cater your special event. The Grill specializes in banquets and meetings. For more Lake Lodge catering information please call The Grill at (209) 962-8638.

Perfect for weddings, birthdays, family reunions, anniversaries, graduations, business meetings and more!

**SAVE \$210
ON YOUR
NEXT
SPECIAL
EVENT AT
THE LAKE
LODGE!**

ACTIVITIES

Aerobics & Sculpting Exercise by Video

Reach your fitness goals! Enjoy a full body workout for all fitness levels! Join us at 9 am on Mondays, Wednesdays & Fridays at the Lake Lodge. On Tuesday and Thursdays at 8:30 am try the Zumba dance classes. The exercise and dance classes are led by a variety of videos featuring certified fitness instructors. Bring an exercise mat and wear comfortable (loose) clothing. No charge! Call Barbara Elliott (209) 962-6457 for details.

Sierra Club Hike of the Week

Summer months beginning in May meet Thursday at 8 am. Winter months meet Thursday at 9 am. Midweek hikers in the Groveland area get to know the area better with a short informational hike on a different trail each Thursday (weather permitting). Meet at Groveland's Mary Laveroni Park for an approximate 6-mile hike. Bring a jacket, water, sunscreen and a snack in a daypack and wear hiking boots. The hike is generally followed by a no-host lunch at a local restaurant. In the summer time bring a bag lunch. Call Frank Oyung for further details (209) 962-7585.

Duplicate Bridge Tournaments

Held at the Lake Lodge. **2nd and 4th Thursdays** at 6:30 pm, contact Bobbi Vandenbergh at (209) 962-6965.

Water Aerobics Classes

All Season Long Saturday, May 11 – Sunday, Oct. 27, 2013: Open to all property owners and their escorted guests. No charge. Enjoy aqua exercise classes (instructed by audio tapes) fitness levels. Each class consists of a series of aquatic exercises performed in the pool using the water as resistance. Simply perform the exercises for a safe and effective means of achieving overall body and cardiovascular conditioning. Class by

audio instruction from various CD's that run continuously between 8-10 am Monday thru Friday, and Saturday & Sunday from 9:15 - 10 am. By request, CD's run Tuesday and Thursday evenings 7 - 8 pm during open swim time. Check with Pool Attendant for Fall aerobics hours.

Horseshoe Pitching

Meet at Pleasant View Horseshoe Pits at 1 pm every Monday and Thursday. Men and women of all skill levels are welcome! Horseshoes provided.

Lake Taxi Rides (Seasonal)

10 am to 6 pm daily **May 13 - September 2, 2013**. Contact the Marina Store at (209) 962-8631 for details.

Groveland Rotary

Meets at The Grill at Pine Mountain Lake every Tuesday at noon. For more information call Randy Burke (209) 962-4477.

Monday Bridge at The Grill at Pine Mountain Lake

All bridge player's welcome. For more information contact Bill Parker at (209) 962-5957.

Marathon Bridge

at The Grill at Pine Mountain Lake

First Tuesday night of the month. For info contact Joe Sousa at (209) 962-5708.

Computer Users Group

The C.U.G. has monthly meetings with guest speakers. Topics include hardware, software and the Internet. For information on dates and times call Frank Perry at (209) 962-0728.

Pool Socials 962-8634

Fun family entertainment! Including music & BBQ one Saturday a month in **June, July and August**, from 6 pm to 8 pm. See website for details.

2013 AMENITY OPENING DATES & HOURS OF OPERATION

Flea Markets – At the PML Stables

Saturday, May 11 & Sept 7

Fireworks Display

Saturday, July 6 at dusk

Marina Store

Opening day **Saturday, April 27**

April 27 – May 12 (limited hours)
8 am to 5 pm

May 13 – Sept 2 (regular hours)
7 am to 6 pm

Marina Lakeside Café

Opening day **Saturday, May 11, 2013**

May 11 – May 19, 11 am to 4 pm

May 20 – Sept. 2, summer hours

Sunday to Thursday, 11 am to 6 pm

Friday & Saturday, 11 am to 7 pm

Sunday (holiday weekends) 11 am to 7 pm

Sept. 3 – 15 – fall hours 11 am to 4 pm

Friday & Saturday 11 am to 6 pm

Restocking the Lake with Trout

Friday, May 3 & Friday, Sept. 20

Pool

Opening day **May 11**, closing day Oct. 27
(209) 962-8634

Saturday, May 11 – Sept. 2, (summer) 10 am to 9 pm

Sept. 3 – 15, (fall) 10 am to 7 pm – weather permitting

Sept. 16 – Oct. 27, noon to 5 pm – weather permitting

Stables – open year around 962-8667

Open 7:00 am to dusk

Staff on hand from 7:00 am to 3:30 pm



2013 EVENTS

MAY

- May 4, Saturday **TEQUILA TASTING** & Lunch Buffet
- May 10, Groveland **PROGRESSIVE DINNER**, Dessert & Dancing at The Grill
- May 12, **MOTHER'S DAY** Champagne Brunch
- May 16, **WENTE VINEYARDS WINE TASTING** & Dinner Buffet

JUNE

- June 20, **OAKRIDGE WINERY WINE TASTING** & Dinner Buffet
- June, Order Complete **BBQ DINNERS TO GO**

JULY

- July 20, **ORGANIC WINE TASTING** and Lunch Buffet

AUGUST

- August 15, **SAKE & SOJU TASTING** & Japanese Dinner Buffet

SEPTEMBER

- September 19, **FOUR WINDS CELLARS WINE TASTING** & Dinner Buffet

OCTOBER

- October 10, **OCTOBERFEST**, Widmer Brothers Brewing Company Beer tasting & dinner buffet
- October 26, **MURDER MYSTERY DINNER** and Dance

NOVEMBER

- November 7, **WINE TASTING** & Dinner Buffet
- November, Order Complete **THANKSGIVING DINNERS TO GO**
- November 28, **THANKSGIVING** Buffet

DECEMBER

- December 15, **MINGLE & JINGLE**
- December 31, **NEW YEARS EVE** Celebration

All events, dates, times, and prices subject to change without notice. Please watch for monthly updates in PML News or on the website.

THE GRILL

12765 MUELLER DRIVE • RESTAURANT 209-962-8638
19TH HOLE LOUNGE 209-962-8636

The Grill at PML presents full-service family dining. We offer a Continental Cuisine dinner with something for everyone's taste including: steaks, seafood, chicken, pasta, vegetarian, and a children's menu. For current menu check www.pinemountainlake.com. Reservations recommended.

Lunch with all the favorites and fast friendly service with a smile. Come and dine on our terrace with unparalleled views of the Yosemite peaks and golf course. We are here to serve you!

Automatic 18% gratuity for tables of 8 or more. We reserve the right to refuse service to anyone. In an effort to promote heart healthy foods we prepare our food with ZERO TRANS FAT ACID shortening. Call for reservations (209) 962-8638

RESTAURANT HOURS

Restaurant Hours of Operation.
Closed: Mondays

BREAKFAST

Saturdays \ 8 am to 11 am
Sundays \ 8 am to 12:30 pm

LUNCH

Tuesday - Sunday \ 11 am to 3 pm

DINNER

Tuesday & Wednesday \ 5 pm to 8 pm
Thursday - Sunday \ 5 pm to 9 pm

19TH HOLE LOUNGE — HOURS FOR THE BAR 962-8636

Monday - Friday 11 am to close

Saturday-Sunday - 8 am to close

Saturday - Live music every Saturday 8pm to midnight.

Times subject to change without notice dependent on weather and patronage.

INDEPENDENCE DAY Live entertainment at the 19th Hole Lounge

Friday, July 5, 2013 Karaoke 8 pm to Midnight

Live Music by Dyna Mo Saturday, July 6, 2013

Enjoy the fireworks from the terrace.

Monday Night Football at the 19th Hole Lounge Beginning in September

MONDAYS Sponsored by the R.O.O.F.B.B.

Enjoy a large variety of food and drink specials during each Monday Night Football game and the Super Bowl!

Call for prices.

THE GRILL AT PINE MOUNTAIN LAKE GOURMET PICNICS TO GO!

The Grill at Pine Mountain Lake is now complementing all that the Mother Lode has to offer by providing custom made Gourmet picnics to go. By ordering your personalized picnic 48 hours in advance, you can make any of these popular activities an unforgettable experience! No matter what the season, there is something to enjoy here in the Mother Lode. Consider any of these just to name a few; then call us to order. We'll prepare the perfect picnic to complement your activity!

- Wine tasting
- Sunning by the pool
- A day at the slopes
- Snowshoeing
- Ice Skating
- The beach
- Fishing
- Kayaking
- Many local swimming holes on the river
- Hiking (a trail for anyone)
- Mountain Biking
- Spelunking



My name is Bambi Johnson and I am the Hospitality Coordinator at The Grill. As a local resident for over 20 years, I can also provide you with information on all of these activities and more to get you on your way to outdoor fun!

Please give me a call to order your perfect picnic getaway today and I'll be happy to share all the nuggets that the Mother Lode has to offer.

ENTERTAINMENT

Memorial Day / Saturday, May 25

Independence Day / Saturday, July 6

Labor Day / Saturday, August 31

Highway 99 Band

Dyna-Mo

Highway 99 Band

INDEPENDENCE DAY

SATURDAY JULY 6, 2013

FIREWORKS BEGIN AT DUSK

Marina Parking Lot Hours
6 am to 10 pm. Cars must be removed from all beach location parking lots after hours or they will be subject to towing.

LIVE MUSIC
ROCKSLIDE plays at the Marina for your entertainment.



Call (209) 962-8600 for more information
www.PineMountainLake.com

AT PINE MOUNTAIN LAKE

WRISTBANDS

- Must be worn all day for entry to Main Marina
- Property owners get 2 wristbands per property at no charge
- Free wristbands available at the Admin office only
- Purchase add'l wristbands at the Admin Office now or at the Marina beginning May 11
- Sold all day on Saturday, July 6 at Marina & on the Water Taxis

BOAT PARADE

- Decorate your boat to honor Independence Day or any classic movie
- Sign-up at Marina office to receive entry number-No fee
- Parade starts at 6 pm on Saturday prior to fireworks display
- Watch from Marina, Lake Lodge or Fisherman's Cove
- Trophies awarded for best decorated boats
- Boats of all types are welcome!
- Call 962-6336 for additional information for the boat parade



CONIFER

HIGH SPEED INTERNET

866-378-8393

Conifercom.Net



\$49/mo.

NO DOWNLOAD OR UPLOAD LIMITS

MENTION THIS AD TO RECEIVE A 10% DISCOUNT TOWARDS YOUR INSTALLATION

⇒ WE ALSO OFFER COMPUTER / SOFTWARE REPAIR. PC, MAC ETC...

Visit us online at:
PineMountainLake.com



/PINEMOUNTAINLAKECA

STABLES FLEA MARKET

May 11, 2013
Sep. 7, 2013

at the PML Stables on
13309 Clifton Way

Space set-up at 7 am / \$7 per space.
Pay in advance at PML Admin Office



GROVELAND'S

high-speed internet
and cable
service provider

209-962-6373

PHOTO BY DAVID WILKINSON PHOTOGRAPHY



**TIOGA
HIGH SCHOOL**

**PINE MTN.
LAKE
CAMP
GROUND**

Trail
Parking

UNIT 5B

UNIT 5A

**GROVELAND
COMMUNITY
BASEBALL FIELD
"Leon Rose Field"**

**GROVELAND
COMMUNITY
SERVICE DISTRICT**

**PINE MOUNTAIN
LAKE ASSOCIATION
OFFICE 962-8600**

PINE MOUNTAIN LAKE
MAIN GATE
DEPT OF SAFETY
962-8615

MUSEUM-LIBRARY

LOCAL MARKET

TO GROVELAND

**TENAYA
ELEMENTARY SCHOOL**

HIGHWAY 120 TO YOSEMITE

Big Creek

UNIT 1A-4

PINE MOUNTAIN

MARINA &
BEACH AREA

1

LINE

137

82
81
79

MAP LE

Pine Mountain

Pine Mountain

Public Access

Greenbelt

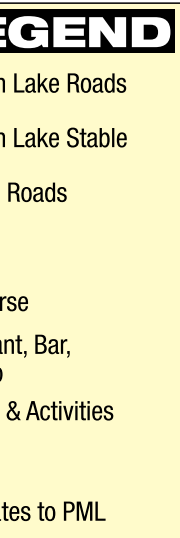
PML Golf Cou

PML Restaurants
and Golf Shop
PML Beaches

Trails

Card Entry Ga





- 1 ADMINISTRATION OFFICE**
- 2 MAIN GATE/DEPARTMENT OF SAFETY**
- 3 PLEASANT VIEW HORSESHOE PITS**
- 4 TENNIS COURTS 1, 2, 3 & 4**
- 5 TENNIS COURTS 5 & 6**
- 6 SWIMMING POOL**
- 7 PML RESTAURANT, BAR, AND GOLF SHOP**
- 8 CAMPGROUNDS**
- 9 UNIT 14 & 16 HIKING TRAILS**
- 10 DUNN COURT BEACH**
- 11 MARINA**
- 12 FISHERMAN'S COVE**
- 13 LAKE LODGE**
- 14 AIRPORT**
- 15 STABLES**

Pine Mountain Lake Association
19228 Pine Mountain Drive
Groveland CA 95321 209-962-8600

12495 CASSARETTO COURT MARINA STORE • 209-962-8631 MARINA@PINEMOUNTAINLAKE.COM

HUNTING
AND
FISHING
LICENSES

Pine Mountain Lake offers the Automated Licensing System supplied by the Department of Fish and Wildlife. This means you can now purchase your Deer, Bear, Pig, or Waterfowl tags as well as fishing licenses and all supplemental stamps! Our system allows us to print your license and tags right on the spot. No more applications or mailings needed. If you're looking for the perfect gift you can pick up a gift voucher. It works just like a gift card. The recipient can redeem their gift at any licensing agency.

Stop by the Main Gate or the Marina to purchase your Hunting and Fishing Licenses.

Just bring in your Drivers License and let the automated license system do the rest.

Boat registration, launching, docking, boat rentals, water-ski sign-ups, fishing licenses, Marina entrance, beach security and gas dock are all controlled from the Marina Store. NO ONE UNDER THE AGE OF 16 IS PERMITTED IN THE MARINA UNLESS ACCOMPANIED BY AN ADULT. No Lifeguard on Duty - Swim at your own risk.

MARINA STORE HOURS

Store is open seven days a week (209) 962-8631. Credit Cards Accepted!

April 27 to May 12
(limited hours) 8 am - 5 pm

May 13 to September 2 7 am - 6 pm

Gas Dock Hours
7 am - 5:30 pm

MARINA Lakeside Café

Avoid the wait; call your order in (209) 962-8630. Watch the website for dinner specials.

Open daily throughout the summer season.

May 11 to May 19, open 11 am to 4 pm

May 20 to September 2, regular hours below

Sunday to Thursday, 11 am to 6 pm

Friday & Saturday, 11 am to 7 pm

Sunday (holiday weekends), 11 am to 7 pm

September 3 to 15, open 11 am to 4 pm

Friday & Saturdays, open 11 am to 6 pm (limited Sunday hours)

*All hours subject to change due to weather and circumstances.

Special Lake Cruise Charter

Available for \$85 from 6:30 pm - 7:30 pm. Call for reservation.

WATER TAXI

Park your car at Fisherman's Cove, Dunn Court or Lake Lodge and ride one of our two CUSTOM 18 PASSENGER WATER TAXIS! Water Taxi Rates: \$3 per adult for an unlimited day pass, \$2 per child (8 yrs & under) for an unlimited day pass. All prices subject to change without notice!

PARKING

Parking in the Marina Parking Lot is restricted to Property Owners ONLY on weekends and holidays. Marina parking lot hours are from 6 am to 10 pm. Cars must be removed from all beach location parking lots after hours or they will be subject to towing.

MARINA EVENTS

Fishing Derby for Kid's of all ages

Derby period is from Saturday, May 4 to Monday, September 2. There is a prize for the heaviest fish. \$5 entry fee - you must sign up at the Marina store before catching your fish to qualify. Call the Marina Store at (209) 962-8631 for details.

FISHING DAYS FOR KIDS

Saturday, June 15, July 13 and August 10

Using their own gear, kids' ages 7-15 sign up at the Marina store for a supervised fishing boat trip from 6:30 am to 9:30 am. Max. boat load of 6 kids for this learning experience. Learn fishing and safety tips while possibly catching one of our large fish, trout/bass.

INDEPENDENCE DAY

Saturday, July 6 SEE PAGE 19.

LABOR DAY WEEKEND

Sand Castle Contest

Saturday, Aug. 31
9:30 am - 11:30 am

Sunday, Sept. 1, Family Fun & Games, 11 am to 1 pm, with prizes awarded.

WATER TAXI

This is the perfect solution to avoid the crowded parking lot at the Marina. Park your car at Fisherman's Cove, Dunn Court Beach or the Lake Lodge and ride one of our two CUSTOM BUILT, 18 PASSENGER WATER TAXIS! Dunn Court Beach will be closed Saturday, July 6 for the fireworks set up.

Rates

Unlimited day passes run \$3 per adult and \$2 per child (8 years & under).

Rates on Saturday, July 6 (Independence Day) are \$6 per adult and \$1 per child (8 yrs & under)

includes wristband - if you already have a wristband you ride free. Wristbands are not day passes. Day passes not available on holidays or holiday weekends.

Water Taxi Operating Schedule

Available seven days a week, 10 am to 6 pm, during the summer months, weather permitting. Please be at the dock prior to scheduled pick up time. (Schedule subject to change without notice.) Use the water taxi to avoid crowded Marina parking. Call the Marina Store at (209) 962-8631 for more information.

PML Lake Cruises

Sign up for Lake Cruises at the

BOAT REGISTRATION

To register your boat for Pine Mountain Lake; (a) you must be a property owner in PMLA and (b) the property owner must have their name on the DMV title/registration. All watercraft must be registered with Pine Mountain Lake Association before putting on Pine Mountain Lake. This includes; canoes, kayaks, paddleboats, float tubes, windsurfers, rowboats, and electric boats.

You may register your boat/watercraft at the Main Gate during the off-season September thru May or at the Marina Store May thru mid-September. All registration tags are valid from January 1 to December 31 (1 year).

To register your boat for Pine Mountain Lake; you need the following information:

1. Proof of property ownership in Pine Mountain Lake (gate card).
2. Current DMV boat registration.
3. California Vessel Registration Number (number on current DMV sticker).
4. CF numbers.

5. Copy of your current boat insurance policy.
6. Insurance Coverage minimum \$300,000.00 liability, all boats.
7. Pine Mountain Registration form.
8. Paid registration fee for Pine Mountain Lake.

To register paddleboats, sailboats, rowboats, canoes, kayaks, float tubes and windsurfers:

1. Proof of property ownership in Pine Mountain Lake Association (gate card).

2. Copy of your homeowner's insurance policy with a liability of \$300,000.00.
 3. Pine Mountain Lake registration form.
 4. Paid registration fee for Pine Mountain Lake.
- Non-Property owner boats prohibited on lake.

All items must be in hand to register your vessel. NO EXCEPTIONS.

Beach space reservations are accepted beginning February 1 of every year.



2013 BOAT
REGISTRATION
FEES

Registration fees are based on the calendar year and are non-refundable.

Power/Electric Boats

\$75 per year

Paddle Boats, Rowboats,
Canoes, Kayaks, Windsurfers,
and Sail Boats

\$40 per year

Float Tubes, Inflatable's

\$25 per year

Gift Cards are available at the Administration Office, The Grill, and at the Pro Shop!

12495 CASSARETTO COURT MARINA STORE • 209-962-8631 MARINA@PINEMOUNTAINLAKE.COM

Marina Store or call (209) 962-8631. Enjoy a relaxing lake cruise on beautiful Pine Mountain Lake. Available everyday! Charter the boat for your own group. Only \$85 for 1 hour cruise. (Maximum capacity up to 16 adults.) Includes your choice of soda or sparkling juice and a light snack. Special Cruises available from 6:30 pm to 7:30 pm - see the Marina Manager for details.

FIREWORKS CRUISE **Saturday, July 6**

Call the Marina Store for reservations or to rent the entire boat! The Marina Store opens April 27, 2012 (209) 962-8631.

FRIENDS OF THE LAKE **SPONSORED EVENTS**

2013 ACTIVITIES AND EVENTS

FRIENDS OF THE LAKE ANNUAL POKER RUN

Sunday, June 9: Friends of the Lake hosts the annual Poker Run on the lake at 5:00 pm **Sunday, June 9.** After a potluck dinner at the Marina, we board pontoon boats and travel around the lake picking up poker cards. Upon returning to the Marina, we play the cards. Prizes for the best and worst hands. Call 962-

7904 to reserve your seat. Cost is \$5 per person.

INDEPENDENCE DAY "BOAT PARADE"

Don't miss this highlight of the summer on **Saturday, July 6!** Decorate your boat to honor Independence Day or a classic movie. Sign-up at the Marina office and receive your entry number. The parade kicks off at 6:00 pm Saturday prior to the fireworks display. Spectators can watch the parade from the Marina, Lake Lodge or Fisherman's Cove. Trophies are awarded for the best decorated boats. Boats of all types are welcome! Watch the PML News and mailbox flyers for more details. No fee. Call (209) 962-6336 for additional information.

PML "LAKE SWIM" AND KAYAK RACES

Saturday, July 13: Friends of the Lake present the annual "Lake Swim" with an open lake swim from Dunn Court to the Marina at 3:00pm, **Saturday, July 13, 2013.** You can race or just swim for fun; proficient swimmers only.

One and two-person kayak races too, and prizes for top finishers. All participants must register and sign a liability waiver at Dunn Court at 2:45 pm. Watch the PML News and mailbox flyers for more details. No fee.

MUSIC AT THE MARINA **Sunday, July 14**

Friends of the Lake hosts "Music at the Marina" at 5:00 pm on **Sunday, July 14.** The evening starts with a potluck dinner at the west end of the Marina beach. The Sierra Mountain Band will entertain with classic country and folk music. Come sing-a-long and enjoy a warm summer evening on the Marina lawn. No charge, open to all. Bring your place setting and a dish to share.

SCAVENGER HUNT

Sunday, August 11: Friends of the Lake sponsors a great evening on the lake with a Scavenger Hunt 5:00 pm, **Sunday, August 11.** Following a potluck dinner at the Marina, we'll divide into teams and sail around the lake looking for scavenger clues. It's a lovely evening on the lake with prizes for the winning boat/team. No fee, but please call 962-5930 to sign-up, so we have enough boats.

BINGO ON THE BEACH

Sunday, September 8: A great way to end the summer season. We meet at the Marina at 5:00pm for our potluck supper, and then play a rousing game of bingo until dark.

Marina Lakeside Café Hours

**Avoid the wait, call in your
order! (209) 962-8630**

OPEN DAILY SUMMER SEASON

*Hours subject to change due to
weather and circumstances*

**May 11 to May 19
- open 11 am to 4 pm**

**May 20 to Sept. 2
- regular hours below**

**Sunday to Thursday –
11 am to 6 pm**

**Friday & Saturday –
11 am to 7 pm**

**Sunday (holiday weekends) –
11 am to 7pm**

**Sept. 3 to 15
- open 11 am to 4 pm**

**Friday & Saturdays –
open 11 am to 6 pm**

Limited Sunday hours

MARINA LAKESIDE CAFÉ MENU

All prices include sales tax where applicable. Menu is available at www.PineMountainLake.com and is subject to change without notice.

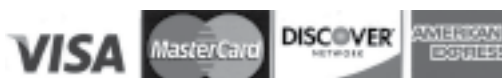
Must be at least 21 yrs to buy alcohol – we check ID's

(Prices listed at the Marina Lakeside Café)

Menu and prices subject to change without notice. Visit our friendly full-service Marina Store 209-962-8631 for all your Fishing, Boating & Souvenir Needs!

- Rafts, Safety Floats & Beach Balls
- Candy
- Fishing Licenses
- Sunglasses
- Volleyball & Umbrella Rental
- Bait and Fishing Tackle
- Sun Screen
- PML Logo Hats & Shirts
- Beach Toys
- Ice, Film, Batteries & Much More!

Major credit cards welcome!



BOAT RENTALS 2013

A \$20 deposit and I.D., a property owner's gate card, or a credit card is required on each boat rental. See the Marina Manager for weekly rates. Must be 16 years or older with proof of a driver's license.

BOATS

Mon - Fri Weekend/Holiday

Pedal Boat – Capacity 2-4

per hour	\$20	\$25
per 1/2 day (4 hours)	\$60	\$75
per day (8 hours)	\$110	\$135

Sail Boat – Capacity 2

per hour	\$20	\$25
per 1/2 day (4 hours)	\$60	\$75
per day (8 hours)	\$110	\$135

Single Kayak – Capacity 1

per hour	\$15	\$20
per 1/2 day (4 hours)	\$45	\$80
per day (8 hours)	\$90	\$120

Double Kayak – Capacity 2

per hour	\$20	\$25
per 1/2 day (4 hours)	\$50	\$85
per day (8 hours)	\$95	\$125

Gas Fishing Boat – Capacity 4

per hour	\$25	\$30
per 1/2 day (4 hours)	\$75	\$85
per day (8 hours)	\$125	\$145

Gas Fishing Boat – Capacity 6

per hour	\$30	\$35
per 1/2 day (4 hours)	\$80	\$90
per day (8 hours)	\$130	\$150

BOAT DOCKING RATES

Boat slips; beach spaces, mud flats and rack spaces are for designated property owner's use only and are assigned by the Marina Manager. Get on the waiting list early for a seasonal boat slips. Waiting list is running approximately 4 years for pontoon boats.

Seasonal Boat Slips	\$400
Pontoon Boat Slip	\$525
Beach (Marina West end)	\$175
Beach (Dunn Court)	\$145 add \$10 for sail Locker
Rack	\$120
Mud Bank (Ski & Fishing)	\$125

No trailer parking permitted except for day use only. No boats will be permitted in the dock slips from October 31 through May 1. Owners of boats left at the Marina dock or beach area after October 31 may be subject to a daily surcharge.

Boat fueling station at affordable rates!
Prices subject to change without notice.

13500 ROCKY POINT DRIVE • DEPARTMENT OF SAFETY 209-962-8615
CAMPGROUND@PINEMOUNTAINLAKE.COM

RULES & REGULATIONS

- Additional charge for more than four (4) persons per space.
 - DOGS ARE TO BE KEPT ON LEASHES. No vicious or noisy animals will be tolerated.
 - No dogs are allowed on any of the PML beaches
 - Except to enter and exit only, motorcycles and all other terrain type motor vehicles are prohibited in the campgrounds and on trails.
 - Check-in is 11 am; check-out is 10 am.
 - Quiet time BEGINS at 10 pm.
 - All generators are specifically prohibited.
 - GROUND FIRES ARE PROHIBITED. Fires must be confined to designated barbecue pits. Please put out your barbecue fire before leaving.
 - Electric cords and water hoses may never be connected to bathrooms.
- No washing of dishes in bathroom sinks.
 - Use dumpsters for your trash.
 - Please do not put your cigarette butts out on the ground.
 - Fireworks are prohibited.
 - Hunting is illegal in Pine Mountain Lake. Loaded firearms are prohibited.
 - PLEASE KEEP CAMPSITES NEAT AND CLEAN. Check prior to vacating.
 - Long term campground use for property owners building a home only. (Plans must be submitted and approved by the E.C.C.)
 - PMLA is not responsible for loss or damage of camper property.
 - Non-property owner boats are prohibited on Pine Mountain Lake.
 - For emergencies dial 911.

CAMPGROUND
SELF-SERVE
RV & TENT CAMPING

The campground facility is operated by Pine Mountain Lake with sites reserved for PML property owners, their guests & the public. The PML Campground is not lakeside. It is located approximately 2 miles from Pine Mountain Lake. Our facilities include 13 campsites, each with cooking fireplaces and a picnic bench and 10 RV hook-up sites, each with power and water (dump site on location). Our guests have the use of 2 nearby restrooms, both with running water, one with hot showers. Enjoy the horseshoe pits (bring your own horseshoes) and hiking trails, volley ball court (bring your own ball) and 2 tetherball courts (tetherballs provided). The campground is open 7 days a week. Stays limited to 14 days within any 31 day period. No dogs allowed on beaches.

FACILITIES

- 13 campsites, each with cooking fireplaces and picnic bench
- 10 RV hook-up sites, each with power and water (dump site on location, contact the Main Gate Department of Safety at (209) 962-8615 for access)
- 2 restrooms, each with running water, one with hot shower

- Horseshoe pits and hiking trails (Bring your own horseshoes)
- Volleyball Court (Bring your own volleyball)

RESERVATIONS

If you wish to make a reservation, you must pay in advance. Credit cards accepted. Maximum campsite stay is 14 days. Reservations should be made in advance by calling (209) 962-8615, or emailing campground@pinemountainlake.com or by mailing to:

PMLA Department of Safety
19228 Pine Mountain Drive
Groveland CA. 95321

Please indicate:

- (1) Name and Address
- (2) Unit and Lot number (if applicable)
- (3) Date of arrival and departure
- (4) Number of people and
- (5) Size of vehicle and/or tent

CANCELLATIONS

Cancellations received at least seven (7) calendar days prior to the date of arrival will receive a full refund.

Cancellations received six (6) calendar days or less before the date of arrival will forfeit one (1) nights stay for each campsite booked, including any add-on charges.

PMLA is not responsible for loss or damage of camper property.

Check-in time is 11:00 am

Check-out time is 10:00 am

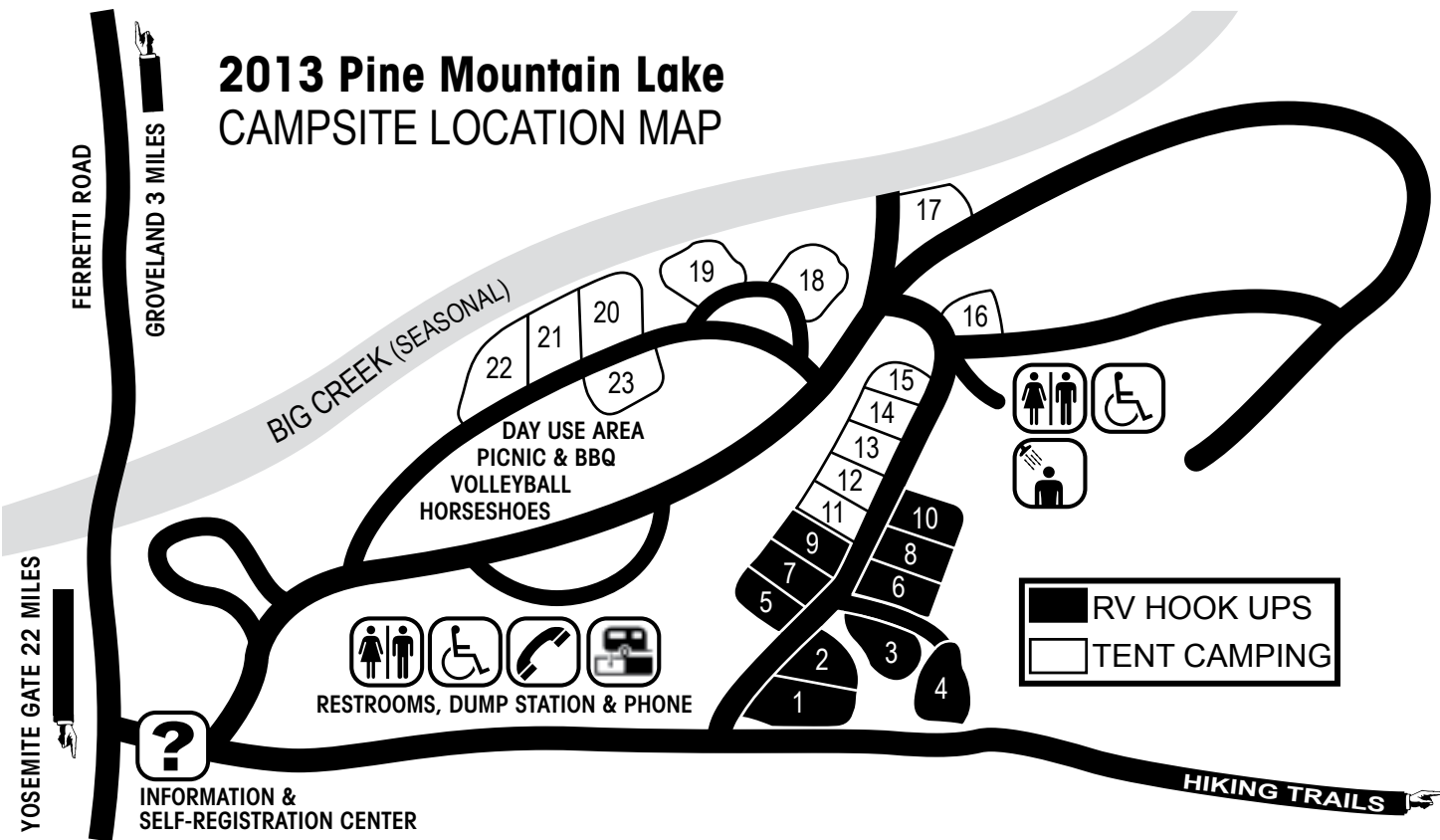
Quiet time begins at 10:00 pm

After checking in with the Main Gate, please look for the sign listing your name and dates of stay posted at the reserved site(s). If you are in need of assistance at the Campground, you can dial *81 from the payphone to be immediately connected to the Main Gate.

PUBLIC USE

- The Campground is open to the public seven days a week with first priority to property owners and guests of property owners.
 - If you would like to utilize the private amenities at Pine Mountain Lake, you may do so by purchasing a \$15.00 vehicle access pass. This pass is good for 7 days and can be purchased upon arrival or by contacting the Main Gate at (209) 962-8615. No dogs allowed on beaches.
 - All PMLA rules and regulations must be observed.
 - Stay shall be limited to 14 days within any 31 day period.
- Campground pay phone number (209) 962-8931. Please dial *81 to reach the main gate.

2013 Pine Mountain Lake
CAMPSITE LOCATION MAP



CAMPGROUND FEES
2013

Property Owners:

- Tent \$13 per night
- RV \$19 per night
- Tent \$57 per week
- RV \$100 per week
- Tent \$226 per month
- RV \$375 per month

Guests and Public:

- Tent \$17 per night
- RV \$27 per night
- Tent \$95 per week
- RV \$152 per week

Additional camper charge
(after 4 per site)
\$4 per person

Non-camper dump station use
\$12 per use

PMLA SLASH AND COMPOST AREA

LOCATION:

Use PML Campground turnout- Rocky Point Drive - follow the signs

ENTRANCE REQUIREMENTS:

- Verifiable PML ID or PML Clicker

Valid ID = gate card, day pass, preferred vendor list, PML auto sticker

(Vendors need Unit/Lot of job and owner name)

DAYS AND HOURS OF OPERATION: (weather permitting)

- April thru October 9 am to 5 pm
7 Days a Week
- November thru March 8 am to 4 pm
Tuesday thru Saturday

Hours are subject to change without notice

Call the Main Gate 209-962-8615

LOAD SEPARATION

- Slash Pile - woody debris 6" in diameter or less
- Compost Pile - leaves and pine needles only
- Firewood Pile - branches/trees larger than 6" in diameter suitable for firewood and stripped of all smaller slash
- Horse manure pile for members and staff

LOAD SECURITY

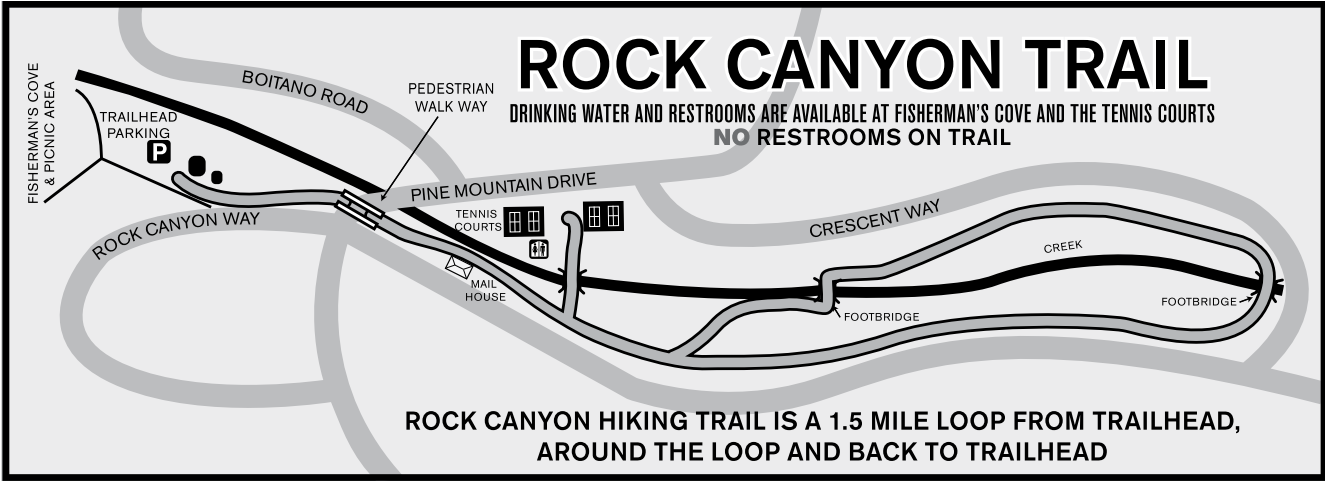
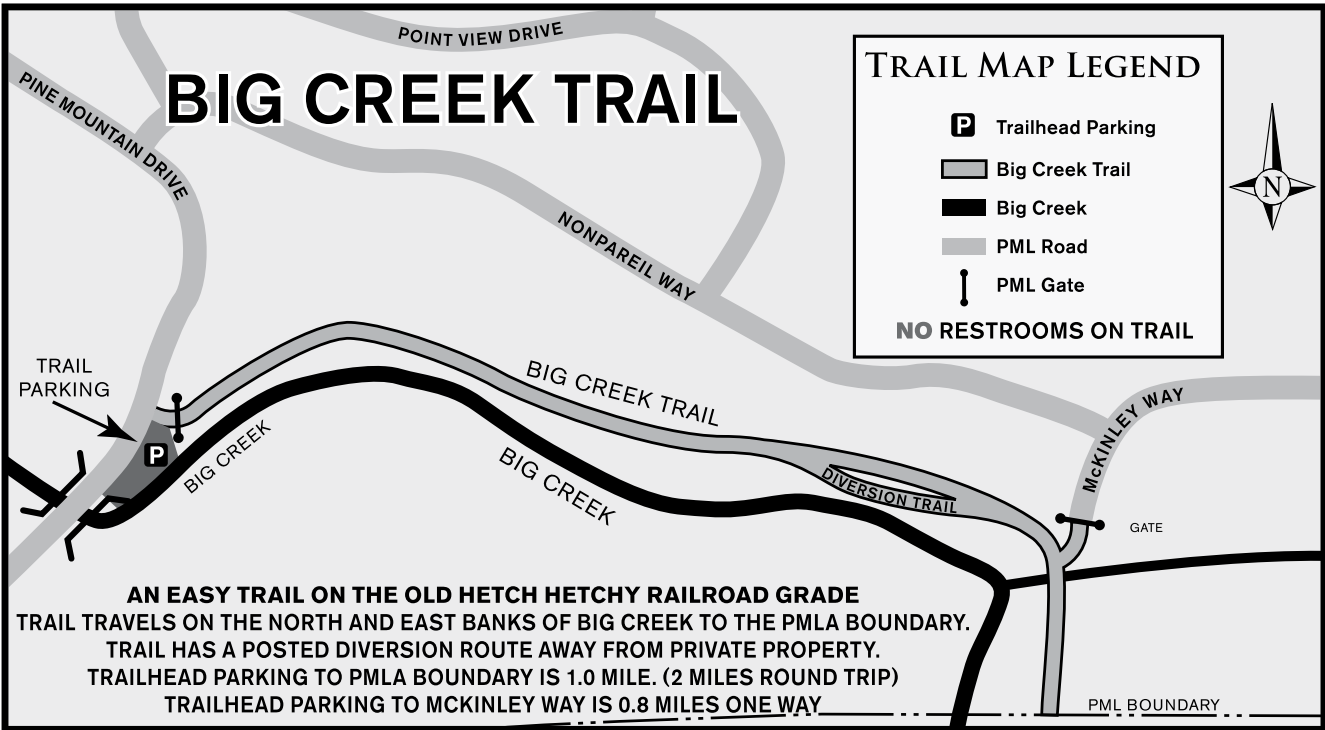
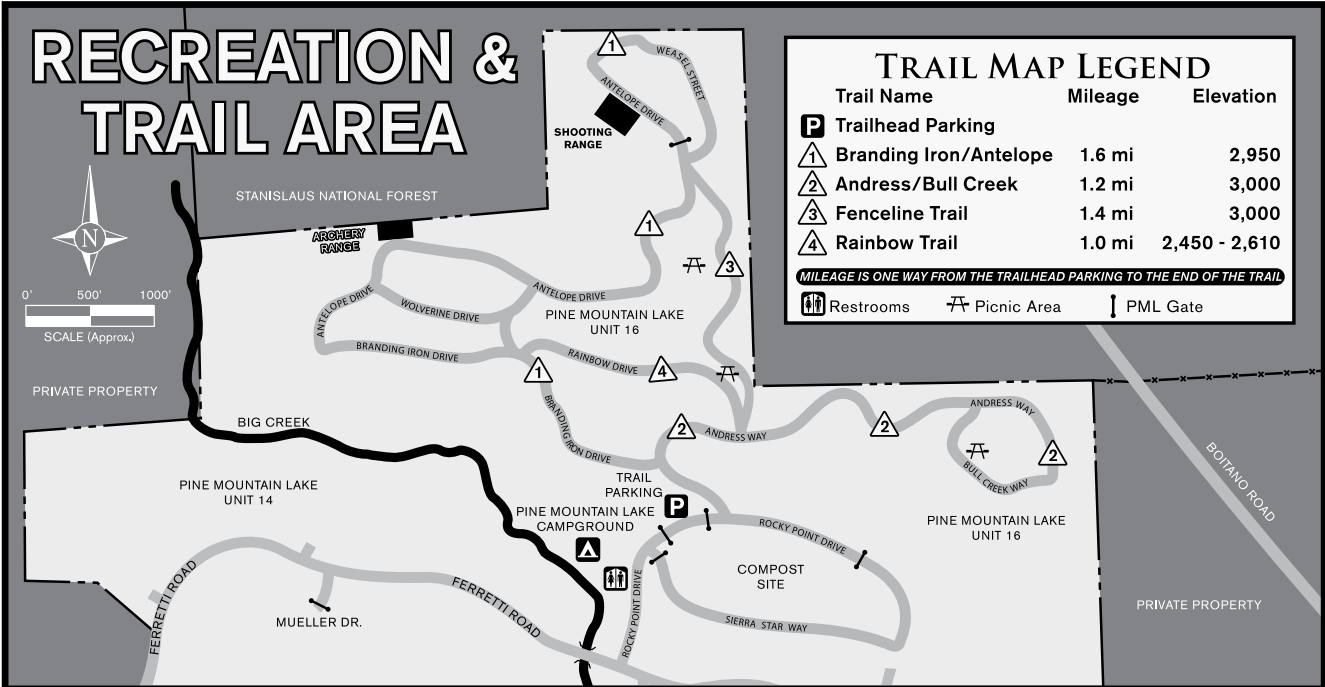
- Loads must be tied down or covered to prevent spillage in route
- No stumps, concrete, dirt, metal, plastic, foods, trash or building materials or treated wood are allowed

BENEFITS TO PMLA MEMBERS

- No fee charged for delivery
- No limit of trips for delivery
- Minimal fee for wood permit to cut and haul away firewood
- Organic compost available to PMLA members

Slash/yard clippings waste only — no plastic bags, household garbage, stumps or construction waste. Do not dump materials outside of the compost area.

PINE MOUNTAIN LAKE HIKING TRAILS
REPORT ANY UNSAFE CONDITIONS TO SAFETY – (209) 962-8615



PEDESTRIAN AND BICYCLE USE ONLY • DOGS MUST REMAIN ON LEASH • STAY ON TRAIL
RESPECT PRIVATE PROPERTY • CARRY DRINKING WATER
PAYPHONES LOCATED AT TENNIS CTS & CAMPGROUND – DIAL *81 TO REACH MAIN GATE
NO LITTERING • NO MOTORIZED VEHICLES • NO HUNTING • NO FIRES

OPEN TO THE PUBLIC! 13309 CLIFTON WAY • 209-962-8667 LESTER SCOFIELD, MANAGER
STABLES@PINEMOUNTAINLAKE.COM

Open 7:00 am to dusk

Staff on hand from
7:00 am to 3:30 pm

Our full service Stables offers trail rides 7 days a week during the summer, Wednesday through Sundays spring through fall and Friday through Sundays during the winter. *Please call in advance to book trail rides.*

Also offered are play days, horse shows, children’s horse camps, along with total care stalls, corrals and paddock rentals for your horse. A riding arena, exercise ring and a large picnic and barbecue area are also available. The stables are located in Unit 12, on the corner of Clements and Clifton Way.

Advanced reservations for trail rides are required. Safety equipment is provided. Please wear closed toe shoes.

LITTLE WRANGLER CAMP

Supervised by PML’s Stables staff, this camp is a great way to introduce your child to the world of horses and the life of a “cowpoke” all in a friendly, safe environment. Camps consist of horse and stables care, fun and game activities and lunch. Camps run every Tuesday and Thursday (ages 7-13) 9 am to 1 pm, **beginning June 11**

through August 15. Cost is \$35 per child, per 1-day camp. Limited to 10 students per 1-day camp.

SPECIAL EVENTS AT THE PML STABLES

PML Flea Markets - 2013

Held at the PML Stables on **May 11 and September 7.** Buy or sell your treasures at this very popular event. Sign up

early in the PML Administration office or at the Stables the morning of the Flea Market - \$7 per space. Space set-up starts at 7 am. Spaces are “first come first serve” basis on the day of the event. Please bring your own tables, tarps, blankets, etc.

Memorial Day Celebration BBQ & Dance at the PML Stables

Sunday, May 26 from 5- 10 pm (dinner from 5 – 8 pm, dancing until 10 pm) Sponsored by Pine Mountain Lake benefit for Tioga High School Timberwolves

\$15 Adults \$5 Kids (12 & under)

Dinner: Tri-Tip, with all the fixin’s

Live Music, 50/50 raffle, wagon rides and silent auction.

Fun for the entire family! Bring the kids, your neighbors and Grandpa!

Music Festival

Saturday, June 22: This popular event is presented by the Groveland Rotary and is held at the PML Stables from 2-7 pm. The headliner features Oakdale’s “Remedy” Band (opener for Papa Do Run Run, Montrose and Eddie Money just to mention a few) and the Columbia Jazz Band. \$25 Adults and kids \$5 (10 and under) includes music, pulled pork sandwich, chips and soda. No Host Bar offers wine and adult beverages for a fee.

Independence Day Weekend Celebration Round-up at the PML Stables- BBQ & Live

Music by “The Wild Rangers”, Presented by the Country Mountain Riders

Friday, July 5, Dinner 5 – 8 pm and music until 10 pm.

Dinner Tickets: \$14 Adults \$7 Kids (under 12), Tickets sold at the door.

BBQ Tri-Tip Dinner and hot dogs for the little wranglers.

Wagon Rides available. 50/50 raffle, 7:00 pm horse show & Color Guard

Shrimp Fest 2013 presented by Groveland Rotary

Meet at the PML Stables on **Saturday, August 10** for an ALL-YOU-CAN-EAT Shrimp feed. Enjoy Louisiana-style shrimp boil and/or sausage with all the trimmings, served family style. Refreshments at 5 pm, Dinner 6 pm. Tickets: \$25 adults; \$10 kids ages 6 to 12; under 6 Free. Live auction, raffle prizes and live music.

Labor Day Country BBQ & Dance Celebration at the PML Stables

Sponsored by the Southern Tuolumne County Historical Society

The fun starts on **Sunday, September 1,** 2 pm - 7 pm

\$15 Adults and \$10 for Kids Under 12

Enjoy BBQ dinner with all the trimmings, Beer/Wine bar, Petting Zoo, Kids activities including water balloons, races and contests, Historical Photo Displays and Artifacts, Silent Auction and Raffle, Live Entertainment for listening and dancing, Air Show and Fly-Over with local Pilots, and world famous Bake Sale items from our local families. Wagon rides.

Bring the kids, neighbors and all your friends to join in a day of FUN, FOOD and DANCING!

GUIDED TRAIL RIDES

Safety equipment provided. Must wear closed toe shoes. Ages eight (8) and up and at least 44 inches in height. Advanced reservations required. For reservations or information, call Lester Scofield, Stables Manager (209) 962-8667

WEEKDAYS, WEEKENDS & HOLIDAYS

1 hour	1-1/2 to 2 hours	Guided River Ride 4-5 hours
\$35 per person	\$65 per person	\$125 per person

Get “HITCHED” at the Stables!

Weddings at PML Stables performed by Minister Lester Scofield
Fun for Everyone!
Our full service Stables is Open to the public!

STABLES BOARDING FEES 2013

	Stall	Paddock
Property Owner & Non-Property Owners (full care)	\$235	\$215
Hay Surcharge — Market Rate		
Equestrian Arena Use Boarders	N/C	
General Special Event Rental per day	\$140	
P.A. System per day	\$22	

PICNIC AREA

Refundable Cleaning Deposit	\$110
Commercial Activity per event (Fund Raising, Etc.)	\$225
Property Owners & Organized Groups per event	\$85
Public Use fee	\$135
Event Set-up Fee (\$35 per hour - 2 hour minimum)	\$70

OTHER STABLE FEES

Overnight Fee (Paddock Only)	\$10
Little Wrangler Camp per day per attendee	\$35



The Pine Mountain Lake Pool is a family recreation center with many different activities: ping pong, board games, cards, books and magazines, water toys and more are all available from the pool attendants. For your convenience, the pool also has a snack bar and store. The snack bar and store are open during all pool hours. Enjoy our quality snacks & goods at very competitive prices.

PRIVILEGES

There is no charge to use the pool. Guests must be accompanied by a property owner or have a valid guest pass. No admittance without property owner card or valid guest pass. Additional identification may be required, property owner cards are non-transferable. No person(s) is permitted in the pool area without first registering with pool attendant. A limit on the number of persons in the pool at one time is enforced.

AGE REQUIREMENT

Children under 14 must be accompanied and monitored by an adult at least eighteen (18) years of age.

INFANTS & TODDLERS

Children not potty-trained must wear plastic pants or approved swim diapers with a plastic pant over it - "double-bagged". Please bring your own or purchase them at the pool store.

POOL SNACK BAR & STORE

Open during all pool hours. Enjoy our quality snacks & goods at very competitive prices!

SNACK BAR

- Convenience Food
- Candy Bars
- Ice Cream
- Assorted Beverages

POOL STORE

- Sun Care Products
- Pool Toys
- Swim Goggles
- "Swimmers" Diapers

SPECIAL ACTIVITIES AT THE POOL

Pool Socials: Fun family entertainment, including music & BBQ one Saturday a month in June, July and August from 6 pm to 8 pm. Come out and meet the staff! Check with the pool staff for party information as the dates approach. See Pool Attendant on duty for ping pong balls & paddles, snack bar items and pool store purchases.

WATER AEROBICS CLASSES

Open to all property owners. No charge to participate. Enjoy aqua exercise classes (instructed by selected audio tapes) for all fitness levels. Each class consists of a series of aquatic exercises, which

are performed in the pool using the water as resistance. Simply perform the exercises for a safe and effective means of achieving overall body and cardiovascular conditioning.

Water Aerobic Classes ALL SEASON LONG from May 11 - Oct. 27

Class by audio instruction from various CD's, which run continuously between 8 and 10 am, Monday thru Friday, and Saturday-Sunday from 9-10 a.m. By request, CD's will run Tuesday and Thursday evenings from 7-8 pm during open swim time.

SWIM LESSONS

All swim lessons taught by a Certified Water Safety Instructor. Check with pool attendant for registration & scheduling availability (209) 962-8634.

Pool Capacity: 63

POOL HOURS - SUMMER

May 11 - September 2 (summer)
~ 10 am to 9 pm (pool open 8 am
- 10 am for water aerobics only)

POOL HOURS - FALL

September 3 thru September 15 (fall) • 10 am to 7 pm (weather permitting)

September 16 thru October 27 • Noon to 5 pm (weather permitting)

Pool is open seven days a week during the season, weather/pool temps permitting.

Open to property owners and their escorted guests at 10 am

SWIM LESSON FEES 2013

Property Owners

\$30 per person per course
\$44 per family per course

(max. of 3 students per family)

Renters/Guests

\$42 per person per course
\$54 per family per course

(max. of 3 students per family)

Open to renters and guests 12 noon. Pool closes every night for everyone 9 pm

New ADA Accessible Entrance Ramp and Restroom/Shower



TENNIS RESERVATIONS 209-962-8615

COURT LOCATIONS

Pine Mountain Lake has six tennis courts, two by the Country Club (5 & 6) and four courts (1, 2, 3 & 4) at the Rock Canyon Way and Pine Mountain Drive Tennis Center. Courts 3, 4, 5, & 6 have lights until 10:00 pm. Night play under the lights is permitted until 10 pm. Lights go off automatically at 10 pm and cannot be turned back on.

RESERVATIONS

For advance reservations call PML Department of Safety (209) 962-8615, 24 hours a day, seven days a week. Reservations may be made up to seven days in advance but cannot be made on the day of play (you must sign up at the courts). Reservations and sign-ups are limited to one hour for singles, two hours for doubles, per day. Sign-up sheets will be posted daily at each court

location and will show reserved time. All players must be listed on the sign-up sheet before play begins. Reservations will be forfeited if players are more than ten minutes late.

GENERAL RULES

All players must have a valid tennis pass. Non-marking tennis shoes only. Appropriate tennis attire must be worn at all times. No food or drink, other than water, inside the courts. No glass containers allowed. Courts are limited to tennis play only.

PML Racquet Club Tennis Schedule of Events for 2013

For information contact the Racquet Club President, Larry Santa Maria (209) 962-7904

See website for updated Tennis Club scheduled events.

PML RACQUET CLUB PRIORITY TIMES

(except holidays)

Summer

Monday Drop-in

7 am to 11 am Courts 1

Tuesday Social

5 pm to Dark Courts 3 & 4

Thursday Men's Day

8 am to 10 am Courts 1-5

Winter

Monday Drop-in

9 am to 11 am Court 1

Thursday Men's Day

9 am to 11 am Courts 1 - 5

TENNIS FEES

All players must display their valid tennis pass while playing. You may purchase your annual tennis pass at the Association Office. Daily and monthly passes are on sale at the Main Gate Department of Safety office only. Tennis passes are not available at the tennis courts.

Property Owner 2013

Annual single rate \$112 per year

(Includes members' children or grandchildren through age 18)

Monthly rate \$34 per month

Daily rate \$5 per day

Daily rate for property owners' Minor dependents thru age 18
\$1 per day

Property owners may invite guests to play at property owner rates. Property owner must make the reservation for their guests either in person or over the phone with a PMLA PIN number in order to obtain this rate for their guest.

Guest/Renter

Long-Term Annual Individual rate
\$152 per year

Monthly rate \$46 per month

Daily rate \$10 per day

Daily rate (Under 18 years)
\$5 per day



VISIT US ONLINE AT
PINEMOUNTAINLAKE.COM

2013

INDEPENDENCE DAY FIREWORKS TIPS & INFO

- NO Household Furniture
- No outside Alcohol
- No Access to the Marina "by any means" until 6 am

1. Observe "NO PARKING" signs. Violator's car will be towed at their expense (\$300, or more, cash or credit card only!) Any vehicles parked on Pine Mountain Drive MUST have ALL 4 WHEELS OFF the white line! No parking on any other PML streets.

2. When walking, please stay to the sides of the roads so you don't block traffic or emergency vehicles.

3. Please take advantage of riding the shuttle buses and water taxi's. Shuttle buses run from 4 pm to 11 pm.

4. Cooperate with the "No Smoking" and "No Pets" resolution for the Marina.

5. NO Lifeguard on Duty at any swim area. Swim at your own risk.

6. Please be respectful of Private Property and DO NOT trespass.

7. Keep your "mountain hide-away" clean and beautiful ~ please don't litter. Dispose of litter in the proper receptacles provided.

8. Dunn Court Beach will be closed all day Saturday, July 6 for the fireworks display set up.

9. Dunn Court Beach - ALL boats MUST be relocated or removed from the beach the day before the fireworks display.

10. Fisherman's Cove - No swimming is allowed in this area at any time.

11. Non-property owner boats prohibited on lake.

12. Please be patient and kind to your fellow members and guests, and enjoy the fireworks!

This year the fireworks are shown on Saturday, July 6 beginning at dusk!

"GOINGS-ON" AROUND PINE MOUNTAIN LAKE

This year the fireworks are on **Saturday, July 6** beginning at dusk!

Don't miss the extravaganza set for Saturday, July 6. The action starts in the afternoon at the Marina with a band, boat parade and an amphibian plane landing on the lake and, as dusk falls over the lake, a fantastic fireworks show. Don't miss any of the events at the Marina.

MARINA

Saturday, July 6, 2013

MARINA PARKING LOT HOURS

Parking in lot is reserved for property owners ONLY on weekends and holidays. The Marina parking lot hours are from 6 am to 10 pm. Cars must be removed from all beach location parking lots after hours or they will be subject to towing.

WRISTBANDS

On **Saturday, July 6** wristbands must be worn all day for entry to the Main Marina. Property owners receive 2 wristbands per property at no charge. Free wristbands are available through the Administration Office only. Additional wristbands can be purchased at the Administration Office now or at the Marina beginning **May 13**. They will be sold all day on **Saturday, July 6** at the Marina and on the Water Taxis. Wristbands are \$6 per person for adults and children 8 and under \$1 each. Get your wristbands now to avoid the last-minute rush!

WATER TAXI

Here's the perfect solution to avoid the crowded parking lot at the Marina. Park your car at Fisherman's Cove or the Lake Lodge and ride one of our two CUSTOM 18 PASSENGER WATER TAXIS! (Dunn Court Beach is closed all day, July 6 for the fireworks set up.) 2013 rates on **July 6** are \$6 per adult and \$1 per child (8 yrs & under) includes wristband - if you already have a wristband you ride free.

July 6 the water taxis stop transport service at 7:15 pm to prepare for fireworks cruise. Taxis will resume after the fireworks cruise disembarks, approx. 9:45 to 10 pm.

LIVE MUSIC by **Rockslide** at the Marina for your entertainment

INDEPENDENCE DAY "BOAT PARADE"

Don't miss this highlight of the summer on Saturday, July 6! Decorate your boat to honor Independence Day or a classic movie. Sign-up at the Marina office and receive your entry number. The parade kicks off at 6:00 pm Saturday prior to the fireworks display. Spectators can watch the parade from the Marina, Lake Lodge or Fisherman's Cove. Trophies are awarded for the best decorated boats. Boats of all types are welcome! Watch the PML News and mailbox flyers for more details. No fee. Call (209) 962-6336 for additional information.

FIREWORKS CRUISE 2013

See the Independence Day Celebration from the water. Observe the fireworks right from the lake! \$35 per person, any age. Limited to 16 people. Light snacks and beverages will be provided. OR rent the entire boat for your party at \$550 per boat. These seats fill up very fast so make your reservations early!

Marina closes to vehicle traffic at 4 pm on Saturday, July 6 (the Marina parking lot usually fills up by 7 am). You are allowed to drop off people & gear until 4 pm. Please be sure your current property owner parking sticker is visible or your vehicle is subject to towing. When applicable, be sure your Handicap Tags are visible in each vehicle when parked at the Marina.

JULY 6 FIREWORKS EVENING

FREE Shuttle Bus

Get to the Marina the easy way on July 6. Two PML Shuttle Buses will depart from four convenient parking locations - round trip approx. 30 minutes. Parking will be available at the PML Administration Office parking lot, the Tennis Court parking lot (Mueller Drive only), the Evangelical Free Church, and Tioga High School (both on Ferretti Road). Shuttle buses will run from 4 pm - 11 pm.

19th Hole Lounge

Karaoke. **Friday, July 5**, 8 pm to Midnight

Live Music by Dyna-Mo, Saturday, July 6, 8 pm to Midnight

The Grill at Pine Mountain Lake

OPEN all weekend Saturday & Sunday! Make your reservations early by calling 209-962-8638.

Saturday, July 6

Breakfast - 8 am to 11 am

Champagne Brunch - 9 am to 12:30 pm

Lunch - 11 am to 3 pm

Dinner - 5 pm to 9 pm

Sunday, July 7

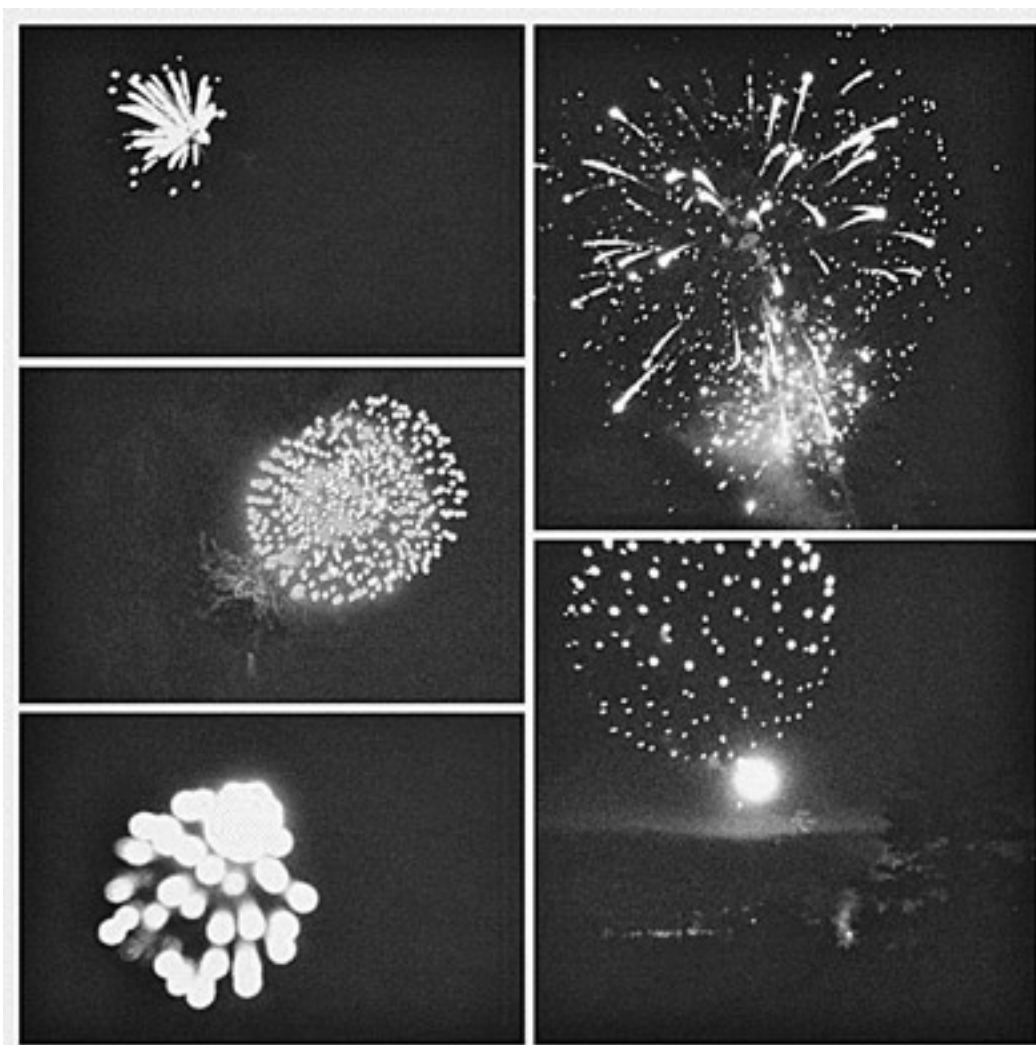
Breakfast - 8 am to 12:30 pm

Lunch - 11 am to 3 pm

Dinner - 5 pm to 8 pm

Administration office Closed Thursday, July 4

Office is open during this week with regular hours.



PHOTOS BY BETHANY WILKINSON

INDEPENDENCE DAY WEEKEND

Celebration at the Stables

Friday, July 5, Dinner 5 to 8 pm and music until 10 pm. Includes BBQ Tri-Tip dinner with all the fixings' and hot dogs for the little wranglers. Live music by "The Wild Rangers"

\$14 Adults \$7 Kids (under 12) Sponsored by Country

Mountain Riders & Pine Mountain Lake Association. Wagon rides available. 50/50 raffle, 7:00 pm color guard.

Sand castle contest

Sunday, July 7

At the Marina from 9:30 am to 11:30 am. Fun and games from 1 pm to 3 pm. Prizes awarded.

OWNED & OPERATED BY TUOLUMNE COUNTY AIRPORT • 209-533-5685 • PAY PHONE 209-962-8966

THE AIRPORT IS LOCATED IN UNIT 12 ON ELDERBERRY WAY

Facilities on site include:

fueling and parking.

LOCATION:

North Latitude 37, 51' 45"

West Longitude 120, 10' 40"

ELEVATION:

2,933 feet above sea level.

RUNWAY: 27/09, 3,625 feet long.

Surface is asphalt. Right traffic runway 27.

LIGHTS: Runway and rotating

beacon, VASI - Runway 09, PAPI

- Runway 27

TAXIWAY: 3,600 feet long, paved.

TIE DOWN AREA: Paved, approximately 54 tie downs, transient tie downs available on west side of ramp south of fuel pumps. Overnight fees: \$4 single; \$8 twin.

UNICOM: 122.9

FROM VORS: MILES

FREQ.

RADIAL

DME

Modesto VOR (MOD)

114.6

052°

40

Merced area El Nido VOR (HYP)

114.2

001°

40

Stockton area Linden VOR (LIN)

114.8

092°

40

The Pine Mountain Lake Aviation Association (PMLAA) and the Experimental Aircraft Association (EAA) Chapter 1337 present

PINE MOUNTAIN LAKE AIRPORT DAY

October 5, 2013 from 8:00 AM to 5:00 PM

Join us for a day of aviation fun and flying!

Young Eagle rides in the morning, flybys in the afternoon including spot landing and flour bombing contests, airplane vs. car/motorcycle races, and other feats of aerial majesty.

JOIN THE Pine Mountain Lake Aviation Association FOR A DAY OF AERIAL FUN on Saturday, October 5th, 2013 AT THE PINE MOUNTAIN LAKE AIRPORT IN GROVELAND



EAA Young Eagles Event – 9:00 AM to Noon
EAA/PMLAA pilots will fly youngsters ages 8-17
REGISTRATION REQUIRED. PARENT MUST ACCOMPANY FLYER.

Airport Day Open House – Noon to 5:00 PM

- Aircraft Static Displays
- Formation Fly-bys
- Skydivers
- Spot Landing / Flour Bombing Contests
- Remote Controlled Aircraft
- Airplane vs. car / airplane vs. motorcycle races
- Food and Drinks

All are welcome on the South Ramp Area. Park on Elderberry off Ferretti and enter under the banner.

Bring a chair and a hat, and join the fun.

For event information, call Lynne Orloff at 209-962-4631

For Young Eagles information, call Ed Sunday at 209-533-1405 or Michael Thoben at 209-962-0503

PAINTING & CONSTRUCTION

Bay Cal

LIC #923832



**PAINTING – EXTERIOR/INTERIOR
DECK REPAIRS • WOOD REPAIRS
REMODELS • EXCELLENT SERVICE**



FREE ESTIMATES

209.962.4777

www.baycal.com
email: davec@baycal.com

PINE MOUNTAIN LAKE REALTY
An Agent Owned Company



SEE 'VAL' FOR VALUE!

32+ Years Experience in
Pine Mountain Lake
& Groveland



Val Bruce, GRI
Owner / Broker Assoc.
209-962-7156 / Cell 768-7368
val@pmlr.com
DRE#00578336

www.pmlr.com

18919 Main St. Ste. A
Groveland, CA 95321

Vacation & full time rentals – Make your reservation today!




Mention this ad & receive 10% off!

DRE # 01080130

PineMountainCustomRentals.com Email: pmcustomrentals@aol.com

Owners: Sam & Rebeca Martinez Office: 209.962.7123 Cell: 209.639.9467

Selling & Moving Your World



James "Jim" Nagle
jamesa.nagle@gmail.com
DRE# 01251085

Let me help you find your dream home.
No obligation consultations

209.962.1122

PINE MOUNTAIN LAKE REALTY
An Agent Owned Company



33 Years Experience
Trust. Knowledge. Integrity.



Lynn Bonander, GRI
Owner / REALTOR®
Office 209-962-7156 / Cell 484-7156
lynnb@goldrush.com / www.pmlr.com
DRE#00683485

Serving the Area Since 1978!

18919 Main St., Ste. A
Groveland, CA 95321

Free Drink with Meal!
(1 coupon per meal / expires 12/31/2013)



grubs.
"Get Your Grubbin' On."

18605 Main Street, Groveland, CA.
(209) 962-0365

Smart TV begins with High Speed Internet



PROVIDING SERVICE FOR YOUR TELEVISION, TABLETS AND MORE!

962-6373

SABRE DESIGN & PUBLISHING



209.962.0342
WWW.SABREDESIGN.COM

GRAPHIC DESIGN	CUSTOM ARTWORK
WEBSITES	AD DESIGN
ILLUSTRATION	PUBLICATIONS
LOGOS	T-SHIRTS
DVDs & CDs	EVENT PROGRAMS

The Cellar Door Restaurant



CALIFORNIA FRESH CUISINE AT THE GROVELAND HOTEL

Enjoy fine casual dining in our historic 1849 dining room, or outside in our beautiful Garden Courtyard. Your local getaway for a romantic weekend, family celebration, club luncheon, or exciting entertainment. Relax on the veranda with a glass of wine from our Wine Spectator Best of Award of Excellence wine list!

This year's Yosemite Courtyard Cabaret season is dynamite! Reserve your dinner & show tickets early for best seating.

We provide the atmosphere, you create the memories.

209-962-4000 • 800-273-3314 • GROVELAND.COM

