

PINE MOUNTAIN LAKE

2008

ACTIVITIES GUIDE



FUN FOR EVERYONE AT PINE MOUNTAIN LAKE

WWW.PINEMOUNTAINLAKE.COM



VACATION RENTALS

RESERVE YOUR NEXT VACATION ONLINE ANYTIME

VIEW ALL OF OUR HOMES IN HIGH DEFINITION FULL SCREEN VIRTUAL TOURS

www.YosemiteRegionResorts.com

800.962.4765
209.962.4396

Located in Mountain Leisure Center
18687 Main Street • PO Box 19
Groveland CA 95321

VACATION RENTALS • LONG TERM RENTALS • PROPERTY MANAGEMENT



PINE MOUNTAIN LAKE REALTY

We specialize in the sales



tbruce@pmlr.com



vbruce@pmlr.com

of Homes, Lots

& Acreage

We are always here to help you!
9 am - 5 pm • 7 days a week

CALL US FOR ALL YOUR REAL ESTATE NEEDS
REALTY WORLD PINE MOUNTAIN LAKE REALTY

209/962-7156 or 800/400-7657

Website: www.pmlr.com • E-mail: vbruce@pmlr.com

The Right Agent Makes All the Difference in the World

CHECK OUR WEBSITE FOR FURTHER INFORMATION ON UPCOMING EVENTS

www.pinemountainlake.com



YosemiteGoldVacations.com

70 Vacation Rentals to Choose From

View interior and exterior pictures of our rentals and check the availability calendars. Enjoy the EASE of on-line reservation booking, or call Toll Free 877-962-7180

Open 7 Days a Week For Your Convenience

Reservation Specialists:

Tracy Billeb • Tish Fulton • Lydia Sweet

E-mail: YosemiteGold@Goldrush.com



FALL IN LOVE with PINE MOUNTAIN LAKE



COME LIVE THE EXPERIENCE!!



18583 HWY 120
GROVELAND CA

Michelle R. Perreira

Realtor/E-Pro/Notary Public

(888) 962-4080 - Office

(209) 484-8710 - Anytime

michelle@pinemtnlake.com



ONLY 25 MILES FROM YOSEMITE!

EACH OFFICE IS INDEPENDENTLY OWNED & OPERATED

2008 ACTIVITY GUIDE TABLE OF CONTENTS

- 3 Contact Numbers
- 4 Country Club
- 6 Activities
- 7 Tennis
- 8 Golf
- 10 Campground

- 12 PML Map
- 14 Around PML
- 16 Hiking & Walking Trails
- 17 Stables & Airport
- 18 Independence Day Information
- 20 Marina

- 22 Swimming Pool

* All fees, rules and hours listed in the Activities Guide are subject to change without notice.

COVER: Photo of Independence Day Fireworks 2007 by David Wilkinson.

CONTACT NUMBERS

PHONE NUMBERS & EMAIL
WWW.PINEMOUNTAINLAKE.COM

ADMINISTRATION ADDRESS

Pine Mountain Lake Association
19228 Pine Mountain Drive
Groveland, CA 95321

ADMINISTRATION OFFICE HOURS OF OPERATION

Monday - Friday 8 AM - 4:30 PM
(Open during lunch)

ADMINISTRATIVE OFFICE DIRECTORY

(ALL NUMBERS ARE 209 AREA CODE)

In order to avoid delays in assistance, please direct your inquiries to the proper extension. This will assist our staff in handling your questions as quickly as possible.

- Accounts Payable 962-8626
- Accounts Receivable 962-8607
- Advertising - Sabre Design... 962-0342
- Controller (Accounting Procedures) . 962-8606
- Country Club 962-8638
- Delinquent Assessments ... 962-8607
- E.C.C. Coordinator (Plan Submittals, Compliance Fees) 962-8605
- Fire Mitigation/Rental Program 962-8616
- Gate Cards, Address Changes, Mergers 962-8632
- General Information, Receptionist 962-8600
- General Manager, Administrative Assistant 962-8627
- General Manager Ass't 962-8604
- Golf Pro Shop 962-8620
- Golf Snack Shack 962-5058
- Lake Lodge 962-8629
- Lake Lodge Inquiries and Reservations 962-8600
- Marina Store - seasonal 962-8631
- Marina Grill - seasonal 962-8630
- Main Gate (Tennis & Campground Fees, General Security Inquiries, gate passes) 962-8615
- Maintenance/golf 962-8610
- Maintenance/streets 962-8611
- PML News - Sabre Design... 962-0342
- Pool - seasonal 962-8634
- Stables 962-8667

LOCATION OF PAY PHONES

- Campground (restrooms) 962-8931
- Dunn Court Beach 962-8929
- Lake Lodge 962-8933
- Main Gate (restrooms) 962-8938
- Marina 962-8936
- PML Airport 962-8966
- Stables 962-8957
- Tennis Courts (Pine Mtn. Dr.) 962-8928

To reach the Main Gate dial *81 from any of these pay phones.

INTERNET DIRECTORY

- Accounts Payable, Michelle Brown pmlap@pinemountainlake.com
- Accounts Receivable, Karen Peracca pmlar@pinemountainlake.com
- Administrative Assistant, Debra Durai debra@pinemountainlake.com
- Assistant Controller, Gene Zanoni accountant@pinemountainlake.com
- Campground patrol@pinemountainlake.com
- Controller, Ken Spencer controller@pinemountainlake.com
- Country Club countryclub@pinemountainlake.com
- Director of Safety, John Edner safety@pinemountainlake.com
- Patrol Dispatch Sgt, Bonnie Langfeldt dispatch@pinemountainlake.com
- Patrol Sgt, Jason Lytle patrol@pinemountainlake.com
- ECC, Sandy Golden ecc@pinemountainlake.com
- Fire Mitigation/Rental Program, Larry Woodruff larry@pinemountainlake.com
- General Manager, Joe Powell joepowell@pinemountainlake.com
- General Manager Assistant, Rick Whybra rick@pinemountainlake.com
- Golf Shop/PGA Pro, Chris Borrego cborrego@pinemountainlake.com
- Human Resources, Allie Henderson pmlhr@pinemountainlake.com
- Maintenance Department maintenance@pinemountainlake.com
- Pine Mountain Lake News,

Editor/Design, Sabre Design

..... pmlnews@sabredesign.net

- Property Owner Relations, gate cards, Mergers, Address Changes, Nancy Perry nancy@pinemountainlake.com
- Receptionist, General Info, Kathy Deniz admin@pinemountainlake.com
- Stables, Lester Scofield stables@pinemountainlake.com
- Webmaster webmaster@pinemountainlake.com

Pine Mountain Lake Website

www.pinemountainlake.com

PML News Online

The current edition is posted on or before the first of the month and offered in easy-to-download pdf format. Older editions are available. To download go to www.pinemountainlake.com/pmlnews.html. For Ad Rates & Submission Guidelines: go to www.pinemountainlake.com/pmlnews.html.

All submissions are due by the 10th of the month for the following month's edition. (Example: June 10 deadline for July edition.)

2008 PML ORGANIZED GROUPS, CLUBS, CLASSES

CALL THE INDIVIDUALS LISTED IF YOU ARE INTERESTED IN JOINING
(All area codes are 209 unless noted otherwise)

- | | |
|---|--|
| Aviation Association
Norman Peebles 962-1990 | Men's 9-Hole Golf Club
Wally Child 962-0723 |
| Computer User Group
Frank Perry 962-0728 | Monday Bridge Club
Bill Mingus (Men's) 962-4240
Norma Anderson (Women's) 962-0645 |
| Country Mountain Riders
Don Lacy 962-6046 | Non-Residents Group
Kathy Coon 510-656-0162 |
| Craft Guild
Lorraine Jordan 962-6707 | Pine Needlers Quilt Guild
Judy Basey 962-5848 |
| Dance Party
Carol Stevens 962-0406 | PMLakers RV Club
Tom Taylor 962-6596 |
| Duplicate Bridge
Linda Cordle 962-7670 | PML Niners
Jane Reynolds 962-6243 |
| Exercise Group
Marie Humphreys 962-7905 | PML Waterski & Wakeboard Club
Tom Duprey 510-796-4180 |
| Friends of the Lake
Marilyn Hathaway 962-7595 | Racquet Club
Bill Broderson 962-6524 |
| Garden Club
Lonnie Roman 962-6001 | Residents Club
Thelma Faux 962-4617 |
| Guardians of PML
John Nielsen 962-4934 | ROOFBB
Jackie Baker 962-6295 |
| Ladies Club
Dar Brown 962-5940 | Sierra Professional Artists
Heinie Hartwig 586-1637 |
| Ladies Golf Club
Sara Hancock 962-0620 | Sunday Couples Golf
Norma Baldinger 962-5332 |
| Marathon Bridge
Felix & Phyllis Gschwend .962-5034 | Windjammer Sailing Club
Jim Wilbanks 925-283-0229 |
| Men's Golf Club
Frank Jablonski 962-4375 | |

IN AN EMERGENCY DIAL 911



COUNTRY CLUB

12765 MUELLER DRIVE

RESTAURANT 209.962.8638

LOUNGE 209.962.8636

PINE MOUNTAIN LAKE COUNTRY CLUB

PMLCC presents fine dining under the management and direction of the Country Club Chef. We offer a Continental Cuisine dinner with something for everyone's taste including: steaks, seafood, chicken, pasta, vegetarian, and a children's menu. For current menu pricing check www.pinemountainlake.com.

COUNTRY CLUB RESTAURANT HOURS

BREAKFAST HOURS

Saturday 8 AM - 11 AM
Sunday 8 AM - 12:30 PM

LUNCH HOURS

Wednesday - Saturday 11 AM - 3 PM
Sunday 12:30 PM - 3 PM

DINNER HOURS

Thursday 5 PM - 8 PM
Friday & Saturday 5 PM - 9 PM
Sunday 5 PM - 8 PM

The Country Club Restaurant will be open the following 3 holiday Mondays: Memorial Day, May 26th, Independence Day, July 7th and Labor Day, Sept. 1st for Continental Breakfast 9 am to 11 am, Lunch 11 am to 3 pm - regular lunch menu offered.

Times subject to change without notice.

*For information or reservations
call 962-8638 (restaurant) • 962-8636 (lounge)*

PINE MOUNTAIN LAKE COUNTRY CLUB BREAKFAST MENU

ALL BREAKFASTS COME WITH COUNTRY POTATOES, TOAST AND FRUIT

OMELETS

DENVER OMELET

Bell Peppers, Ham And Cheddar Cheese

MOZZARELLA AND TOMATO OMELET

Shredded Mozzarella And Tomato Finished With Basil

SOUTHWEST OMELET

Salsa, Sour Cream, Guacamole, Corn, Black Beans And Cheddar Cheese

EGGS YOUR WAY

STEAK AND EGGS

6oz Grilled Steak

CHICKEN FRIED STEAK WITH COUNTRY GRAVY & EGGS

BISCUITS AND GRAVY

Comes With Eggs Your Way

2 EGGS ORDER 'EM THE WAY YOU WANT 'EM

All Eggs Come With Choice Of Bacon, Ham Or Sausage

EGGS BENEDICT

English Muffin, Tomato, Canadian Bacon And Hollandaise

BREAKFAST BURRITO

Scrambled Eggs, Ham, Cheddar Cheese, Sour Cream
And Salsa Wrapped In A Garlic Tortilla

CHILLAQUILLES

Scrambled Eggs, Cheddar Cheese, Ham And Salsa Mixed With Tortilla Chips

FRENCH TOAST

All Breakfasts Come With Fruit And Choice Of Bacon Or Sausage

TALL STACK - 4 PIECES

SHORT STACK - 2 PIECES

PANCAKES

All Breakfasts Come With Fruit And Choice Of Bacon Or Sausage

TALL STACK - 4 PIECES

SHORT STACK - 2 PIECES

ADD BLUEBERRIES

*All prices and menu items subject to change anytime.
Automatic 18% gratuity for tables of 8 or more.*

PMLCC presents lunch with all the favorites, served with a smile. Come and dine on our terrace with unparalleled views of the Yosemite peaks, our beautiful lake and golf course. *We are here to serve you!*

PINE MOUNTAIN LAKE COUNTRY CLUB LUNCH MENU

SALAD

HOUSE SALAD

Lettuce Mix With Onion, Black Olives,
Croutons And Choice Of Dressings

CAESAR SALAD

Raw Egg Traditional Caesar Dressing
W/Crouton, Cherry Tomato And Kalamata Olives

CAESAR SALAD

Raw Egg Traditional Caesar Dressing With Crouton, Cherry Tomato And Kalamata Olives

APPETIZERS

NACHOS SUPREME

Tortilla Chips With Cheese Sauce, Jalapeños,
Black Olives, Salsa, Guacamole, And Sour Cream

HOT WINGS

Served With Blue Cheese,
Celery And Carrot Sticks

MOZZARELLA STICKS

Served With Marinara

ONION RINGS

Served With Ranch

SOUP OF THE DAY

Prepared Daily By Our Chef

SANDWICHES

INCLUDES CHOICE OF FRIES OR ONION RINGS

COLD SANDWICHES

TUNA SANDWICH

Traditional Tuna Salad Served With
Lettuce, Red Onion And Tomato
(Ask To Melt, No Charge)

EGG SALAD SANDWICH

Traditional Egg Salad Served With
Lettuce, Red Onion And Tomato

B.L.T.

Bacon, Lettuce, Tomato And Mayo

WRAPS

TURKEY CLUB

A Garlic Tortilla Wrapped With Roasted Turkey
Breast With Lettuce, Red Onion, Tomato, Bacon,
Mayo And Cheddar Cheese

SOUTHWEST

A Garlic Tortilla Wrapped With Roasted
Prime Rib, Swiss Cheese, Roasted
Red Bell Pepper, Lettuce, Tomato,
Shallot Marmalade And Chipotle Mayo

HOT SANDWICHES

HOT OPEN FACED PRIME RIB SANDWICH

Prime Rib Smothered In Gravy Over Toast
Served W/Mashed Potato And Chefs Vegetables

RUEBEN

Grilled Rye Stuffed With Corned Beef,
Sauerkraut, 1000 Island And Swiss

FRENCH DIP

Thin Sliced Prime Rib, Dipped In
Au Jus Served On A Crispy French Roll
With A Side Of Au Jus

PATTY MELT

Our Beef Patty Grilled And Served
W/ Caramelized Onions, Mushrooms
And Choice Of Cheese On Rye

BUILD YOUR OWN BURGER

Served With Lettuce, Tomato, Onion And A Pickle

Extras: Bacon • Cheese • Guacamole • Blue Cheese Crumbles • Mushrooms
Chipotle Mayo • Caramelized Onions • Bbq Sauce

ENTREES

TACOS DE CARNITAS

2 soft taco flour tortilla carnitas,
rich and cabbage slaw

CHICKEN QUESADILLA

Spicy shredded chicken, cheddar, black olives,
black beans served with salsa, guacamole,
rice and sour cream

FISH N CHIPS

The standard, served with coleslaw,
tarter sauce and lemon

CHICKEN STRIPS

Three strips served with
French fries and ranch

DESSERT

CHEESECAKE with choice of sauce \$6.95

SIDES

BREAD • DIPPING SAUCES
SALSA, GUAC., SOUR CREAM
FRIES • SWEET POTATO FRIES
COLESLAW • HOUSE CAESAR

DRINKS

SODA • COFFEE / TEA • COCOA
MILK • JUICE • MINERAL WATER
BOTTLED WATER

All prices and menu items subject to change anytime.

Automatic 18% gratuity for tables of 8 or more.

We reserve the right to refuse service to anyone. Call for reservations.



PINE MOUNTAIN LAKE COUNTRY CLUB DINNER MENU

FRIDAY, SATURDAY 5-9 • PMLCC FAMILY NIGHT BUFFET • THURSDAY AND SUNDAY 4-8
EARLY BIRD BLUE PLATE SPECIAL • FRIDAY & SATURDAY NIGHTS • FROM 5 PM TO 6 PM • ALL DINNER MENU ITEMS 1/2 PORTION AT 1/2 PRICE

SALAD

Add Chicken Or Shrimp

CAESAR

Romaine Hearts Tossed In A Traditional Raw Egg Caesar Dressing With Home Made Croutons, Cherry Tomato And Kalamata Olives

BLUE CHEESE SALAD

Iceberg Wedge Drizzled With Blue Cheese Dressing Accompanied By Shaved Red Onions And Cherry Tomatoes

APPLE GOAT CHEESE SALAD

Brandy Poached Granny Smith Apples, Roasted Pine Nuts Over Spring Mix Tossed With A Goat Cheese Vinaigrette

APPETIZER

CRAB CAKE FRITTERS

Saffron Infused Dungeness Crab Fritters, Fried Golden Brown

ROASTED NEW ZEALAND RACK OF LAMB

Roasted Two Bone Rack Of Lamb Finished With Roasted Rosemary Baby Red Potatoes, Asparagus And A Blood Orange Sauce

SAUSAGE STUFFED MUSHROOM

Savory Sausage Stuffing Roasted In Button Mushrooms Finished With Risotto And Red Bell Pepper Coulis

SOUP OF THE DAY

New England Clam Chowder Every Friday
Soup Made Fresh Daily

ENTREE

All Entrees Come With Bread And Choice Of Soup Or House Salad

FISH

All Seafood Served With Chef's Vegetables And Risotto

PAN ROASTED SALMON

Finished With A Wasabi Orange Cream

PAELLA

Arborio Rice, Chicken, Andouille Sausage, Clams, Shrimp, And Vegetables Braised In A Savory Saffron Broth

SWORDFISH PUTENESCA

Swordfish Seared Then Braised In Caper, Kalamata Olive And Tomato Broth Topped With Parmesan

CHICKEN

All Chicken Served With Chef's Vegetables And Mashed Potato

MARSALA CHICKEN

Roasted Chicken Breast Smothered In A Mushroom, Marsala Cream

CACCIATORE CHICKEN

Chicken Thigh Slow Braised In A Red Wine, Tomato And Mushroom Sauce

TEQUILA CHICKEN

Lime, Tequila Marinated Chicken Breast, Grilled And Finished Chipotle Cream Sauce

PASTA

FETTUCCINI GORGONZOLA

Creamy, Garlic And Gorgonzola Cheese Sauce Tossed With Artichoke Hearts, Sun Dried Tomato And Mushrooms

LINGUINI AND CLAMS

Clams Sauteed With Herbs And A White Wine Butter Sauce Tossed In Linguini

TEQUILA CHICKEN

Lime, Tequila Marinated Chicken Breast, Grilled And Finished Chipotle Cream Sauce

MEAT

All Meat Served With Chefs Vegetables And Mashed Potato

VEAL PICCATA

Pan Seared Veal Smothered In A White Wine Caper Cream

APPLE BRAISED PORK

Slow And Savory Apple Broth Braised Pork

6 BONE NEW ZEALAND RACK OF LAMB

Finished With A Stone Ground Honey Mustard Cream

8 OZ. GRILLED HANGER STEAK

With A Gorgonzola Cream

DESSERT

CHEESECAKE

Chef's Creations, Made Fresh This Creamy, Rich, Homemade Cheesecake, Inspired By The Seasons, And Market Fresh Ingredients Will Entice You Every Time

CHOCOLATE CAKE

Personal Sized Chocolate Cake With Chocolate Fudge Finished With Raspberry, White & Dark Chocolate Sauces And A Dollop Of Whipped Cream

SCOOP OF ICE CREAM

Offered With Choice Of Sauce And Whipped Cream

SIDES

BAKED POTATO

GARLIC BREAD

SOFT POLENTA

RISOTTO

MASHED POTATO

FRIES

HOUSE SALAD

HOUSE CAESAR

BEVERAGES

SODA

COFFEE / TEA

HOT COCOA

MILK

JUICE

MINERAL WATER

BOTTLED WATER

KID'S MENU

SMALL SALAD

Choice Of Dressing

CUP OF SOUP

KIDS BURGER

Served with Fries and a Pickle

GRILLED CHEESE

Served with Fries and a Pickle

CORN DOG

Served with Fries and a Pickle

CHICKEN STRIPS

Served with Fries and a Pickle

MAC AND CHEESE

CHEESE PIZZA

PEPPERONI PIZZA

CUP OF ICE CREAM

All prices and menu items are subject to change.
Automatic 18% gratuity for tables of 8 or more.
We reserve the right to refuse service to anyone.
Call for reservations.

SPECIAL EVENTS AT THE PMLCC

Find out what is happening at the Country Club at:
www.pinemountainlake.com under "upcoming events"

LIVE ENTERTAINMENT AT THE 19TH HOLE LOUNGE

ENJOY THE BAND "REUNION," SUPERB LIVE ENTERTAINMENT
IN THE LOUNGE FRIDAY, JULY 4TH, 8 P.M. TO MIDNIGHT

Check the PML website for specific times and dates "Upcoming events."

www.pinemountainlake.com

19TH HOLE LOUNGE (BAR) HOURS

For Country Club Bar call 962-8636

MONDAY - WEDNESDAY

11 AM - 6 PM

THURSDAY

11 AM - 9 PM

FRIDAY

11 AM - 10 PM

SATURDAY

8 AM - 10 PM*

SUNDAY

8 AM - 9 PM

* Lounge open late on nights with live entertainment.
Times subject to change without notice dependent on weather and patronage.

MONDAY NIGHT FOOTBALL AT THE 19TH HOLE LOUNGE



Beginning in September

19th Hole Lounge 209-962-8636

MONDAYS Sponsored by the R.O.O.F.B.B. Enjoy a large variety of food and drink specials during each Monday Night Football game and the Super Bowl!



CLASSES AND ACTIVITIES

Exercise

Enjoy a full body workout for all fitness levels! Led by video. 9 am on most Mondays and Wednesdays at the Lake Lodge. Bring an exercise mat and wear comfortable (loose) clothing. No charge to participate! Marie Humphreys 209-962-7905

Computer Users Group

The C.U.G. has monthly meetings with guest speakers. Topics include hardware, software and the Internet. For information on dates and times call Frank Perry at 209-962-0728.

Sierra Club Hike of the Week

Thursdays, 8 am Midweek Hikers in the Groveland area get to know the area better with a short informational hike on a different trail each Thursday (weather permitting). Meet at 8 am at Groveland's Mary Laveroni Park for an approximate 6-mile hike. Bring a jacket, water, sunscreen and a snack in a daypack and wear hiking boots. The hike is generally followed by a no-host lunch at a local restaurant. Please call Frank Oyung for further details 209-962-7585.

Duplicate Bridge Tournaments

Held at the Lake Lodge. 2nd and 4th Thursdays at 6:30 pm, contact Linda Cordle at 209-962-7670.

Pool Socials - 209-962-8634

Fun family entertainment! Including music and BBQ. **Selected Saturdays from 6 pm to 8 pm.** See swimming pool section for details.

Pool Summer Hours – May 17 through September 1, 2008

Pool is open seven days a week during the summer season, weather/pool temps permitting.

Open to property owners and guests 10 am - 9 pm

Open to renters and guests 12 noon - 9 pm

Swim Hours – Fall

Sept 2nd thru Sept 14th 10:30 am to 7 pm (weather permitting)

Sept 15th thru Oct 31st Noon to 5 pm (weather permitting)

Water Aerobics Classes - Summer Hours

2 sessions available - no charge for exercising classes. Instructed by selected audiotapes. Monday – Friday at 8 am and 9 am

Water Aerobics Class Schedule – Fall Hours

1 session available ~ no charge for exercise classes. Instructed by selected audiotapes. Monday - Friday 11 am to 12 noon

Horseshoe Pitching

Meet at Pleasant View pits at 1 pm every Monday and Thursday. Men and women of all skill levels are welcome!

Lake Taxi Rides (Seasonal)

10 am to 5 pm daily May 17 - September 1, 2008. Contact the Marina Store at 209-962-8631 for details.

Monday Bridge at the Lake Lodge

All bridge player's welcome! For more information contact: call Norma Anderson at 209-962-0645 for Women; or call Bill Mingus at 209-962-4240 for Men.

Groveland Soroptimist Club

Meet at the Country Club! For more information call Linda Hunter 209-962-0291.

EVENTS

Upcoming Special Events are listed each month in the Calendar of Events section of the PML News and at www.pinemountainlake.com – see "upcoming events"

PML Hit and Giggle Nine-Hole Golf Tournaments

Enjoy a fun nine-hole round of golf, a delicious dinner and special prizes. See the PML News for upcoming dates or call the Pro Shop for details 209-962-8620

PML Flea Markets

Held at the PML Stables on May 17 and September 27, 2008. Buy or sell your treasures at this very popular event. Sign up early in the PML Administration office or at the Stables the morning of the Flea Market - \$7 per space. Space set-up starts at 7 am. Spaces are "first come first serve" basis on the day of the event. Please bring your own tables, tarps, blankets, etc

CHILDREN'S ACTIVITIES & EVENTS

Little Wrangler Camp

Stables 962-8667. Supervised by PML's Stables staff. This camp is the perfect way to introduce your child to the world of horses and the life of a "cowpoke" all in a friendly, safe environment. Camps consist of horse and stables care, fun and game activities and lunch. Camps run every Tuesday (ages 7-9) and Thursday (ages 10-13) 9 am to 1 pm, June, July and August. Cost is \$37 per child, per 1-day camp. Limited to 10 students per 1-day camp. Be sure to sign up early! See page 16 Stables for details.

EVENTS

Fishing Days for Kids

June 21, July 19 and August 16, 2008 using your own gear, kids ages 7-15 sign up at the Marina for a supervised fishing boat trip from 6:30 am to 9:30 am. Maximum boatload is 6-8 kids for this learning experience. Learn fishing tips and safety while possibly catching one of our large fish, trout/bass, by Captain Ernie.

Free Fishing Days for Kids of All Ages!

For 2008, California's free fishing days are June 7th and September 27th. While all fishing regulations, such as bag and size limits, gear restrictions, fishing hours and stream closures remain in effect; there are two Saturdays each year where anyone can fish without purchasing a fishing license. Log on here for additional information on Free Fishing Days in the San Francisco Bay area. <http://www.dfg.ca.gov/>

Fishing Derby for Kid's of All Ages

Be sure to sign up at the Marina for the Fishing Derby. There is a \$5 entry fee and it runs from June 1st through August 31, 2008. Prizes for two categories: Adults and child 12 & under. You must sign up before catching fish to qualify. Call the Marina Store at 209-962-8631 for details.

Swim Lessons at the Pool 962-8634

See swimming pool section for details.

Jr. Golf Clinics - 962-8620

See golf section for details

Holiday Activities at the Marina

Sand Castle Contest, Sunday, July 6, 9:30 am to 11:30 am. Fun and Games from 1 pm to 3 pm. Prizes awarded.

Family Fun and Games

Labor Day weekend, Sand Castle Contest, Saturday August 30th, 9 am to 11 am. Fun & Games Sunday, August 31st from 1 pm to 3 pm.

Memorial Day Celebration at the Stables

Sunday, May 25, 5 pm to 8 pm. Includes Tri Tip dinner, beans, salad & bread \$12 Adults \$8 Kids (12 & under) TO GO boxed dinners also available. Pie eating contest, Pine Cone Throwing, Petting Zoo (sponsored by 4-H), Hayrides, Shoe Kick, Egg & Spoon race, trail rides, Face Painting, 50/50 Raffle, and live music. Sponsored by the Groveland Volunteer Firefighter's Association.

Independence Day Weekend Celebration at the Stables

Friday, July 4, 5 pm to 10 pm. Includes BBQ Tri Tip dinner, trail rides, and live music. \$12 Adults \$7 Kids (under 12) Sponsored by Country Mountain Riders & Pine Mountain Lake Association. See the PML News for details.

Labor Day Celebration at the Stables

Sunday, August 31st. Includes BBQ dinner, trail rides, and live music.

Independence Day Weekend Fireworks Celebration

Don't miss the firework extravaganza set for Saturday, July 5th. The action starts in the afternoon with live music by ROCKSLIDE, boat parade and as dusk falls over the lake, a fantastic Fireworks Show! Don't miss this event at the Marina.

For updated information check the PML News each month or the PML News online at www.pinemountainlake.com/pmlnews.html.

NOTICE!! All Events, dates, times, rules and prices subject to change without notice. Watch for monthly updates in the PML News.

Get the PML News online at www.pinemountainlake.com/pmlnews.html.

COURT LOCATIONS

Pine Mountain Lake has six tennis courts, two by the Country Club (5 & 6) and four courts (1,2,3 & 4) at the Rock Canyon Way and Pine Mountain Drive Tennis Center. Courts 3, 4, 5, & 6 have lights until 10:00 pm. Night play under the lights is permitted until 10 pm. Lights go off automatically at 10 pm and cannot be turned back on.

DRESS CODE

Tennis shoes approved for tennis court use are mandatory.

MEN Collared shirts recommended but not required, no blue jeans or blue jean shorts or swim trunks.

WOMEN No blue jeans, blue jean shorts, short shorts or swim suits.

TENNIS FEES 2008

All players must display their valid tennis pass while playing. You may purchase your annual tennis pass at the Association Office. Daily and monthly passes are on sale at the Main Gate Department of Safety office only. **Tennis passes are not available at the tennis courts.**

Property owner

Annual single rate.....	\$107 per year
<i>(Includes members' children or dependents through age 18)</i>	
Monthly rate	\$32 per month
Daily rate	\$6 per day
Daily rate for property owners' relatives through age 18 (i.e. grandchildren, nephew).....	\$1 per day

Property owners may invite guests to play at property owner rates. Property owner must make the reservation for their guests either in person or over the phone with a PMLA PIN number in order to obtain this rate for their guest.

Guest/Renter

Annual single rate.....	\$145 per year
<i>(Includes members' children or dependents through age 18)</i>	
Monthly rate	\$44 per month
Daily rate	\$15 per day
Daily rate (Under 18 years).....	\$5 per day

2008 RACQUET CLUB TENNIS ACTIVITIES SCHEDULE

For info contact the Racquet Club President, *Bill Broderson* at 209/962-6524.
Racquet Club website: www.freewebs.com/pmltennis/index.htm
Tennis Center = Courts 1 – 4 located on Rock Canyon Way and Pine Mountain Dr.

Cinco De Mayo Tournament

May 5

Tennis Social at the Tennis Center - mixed doubles

Davis Cup Tournament

June 28

Tennis Social at the Tennis Center

Mixed Doubles Championships

September 6

at the Tennis Center

Doubles Championships

October 4

Tuesday BBQ Socials – June – September,
beginning June 10th from 4 to 10 pm

(Non-Racquet Club Members welcome!)

RESERVATIONS

For advance reservations call PML Department of Safety 209/962-8615, 24 hours a day, seven days a week. Reservations may be made up to seven days in advance but cannot be made on the day of play (you must sign up at the courts). Reservations and sign-ups are limited to one hour for singles, two hours for doubles, per day. Sign-up sheets will be posted daily at each court location and will show reserved time. All players must be listed on the sign-up sheet before play begins. Reservations will be forfeited if players are more than ten minutes late.

GENERAL RULES

All players must have a valid tennis pass. Non-marking tennis shoes only. Appropriate tennis attire must be worn at all times. No food or drink, other than water, inside the courts. No glass containers allowed. Courts are limited to tennis play only.

PML RACQUET CLUB PRIORITY TIMES (except holidays)

SUMMER		
Monday Drop-in	7 am to 11 am	Courts 1
Tuesday Social	5 pm to Dark	Courts 3 & 4
Wednesday Ladies Day	8 am to 10 am	Courts 1-4
Thursday Men's Day	8 am to 10 am	Courts 1-5
Friday Hit and Giggle	8 am to 10 am	Courts 5 & 6
WINTER		
Monday Drop-in	9 am to 11 am	Court 1
Wednesday Ladies Day	9 am to 11 am	Courts 1 - 4
Thursday Men's Day	9 am to 11 am	Courts 1 - 5
Friday Hit and Giggle	9 am to 11 am	Courts 5 & 6

*Special Events are even more special at
the Pine Mountain Lake Country Club*



*Wedding Receptions & Ceremonies * Bridal Showers
Rehearsal Dinners * Family Reunions * Anniversary Parties*

Our Country Club staff is ready to help you plan the event that's perfect for you. Indulge yourself. Relax, enjoy and celebrate while our staff takes care of every detail. Our two facilities can each accommodate up to 200 guests. And it's easy to take care of out-of-town family and guests with the large selection of nearby affordable lodging.

Call 209/962-8638 for details!


PINE MOUNTAIN LAKE GOLF COURSE
OPEN 7 DAYS A WEEK SUMMER HOURS 7 AM - 7 PM • WINTER HOURS 8 AM - 5 PM

Pine Mountain Lake Golf Course, a "4 1/2 Star Best Places to Play", is open for play year-round and is available for tournaments and public play. Your challenging 18-hole, 6382 yard, par 70 course offers everything a golfer, beginning or expert, could want from a round of golf: beautiful views of Yosemite National Park in a classic park-like setting, a fair but challenging layout and enough trees to make you wish you had a chainsaw in your golf bag! The course, designed by William F. Bell, opened in 1969 and is always in excellent condition.

El Capitan Tees: 6382 Yards - Glacier Point Tees: 6125 Yards - Half Dome Tees: 5733 Yards - Cathedral Tees: 5021 Yards

The Golf Course is for golf ONLY! Please no games, walking, bike riding or dog walking on the golf course.

TEE TIME RESERVATIONS
209-962-8620

PROPERTY OWNERS can reserve tee times up to 14 days in advance, beginning at 7 am, March 31st through November 3rd. Tee time reservations on major holiday weekends (Memorial Day, Independence Day and Labor Day) are taken for all days of the weekend 14 days in advance. Reservations are limited to one (1) tee time per day during the major holiday weekends. Property Owners may request one (1) additional tee time 10 days in advance.

GUESTS In order to obtain the Guest rate the reservation must be made by a Property Owner either in person or by phone. Property Owners may make tee times for their Guests two (2) weeks in advance.

PUBLIC can make reservations 10 days in advance, beginning at 7 am, March 31st through November 3rd.

DRESS CODE

MEN Collared shirts are required. No blue jeans or blue jean shorts, swim trunks or sweatpants.

WOMEN No tank tops; sleeveless blouses must have 4" straps. No blue jeans or blue jean shorts, short shorts or swim suits. T-Shirts are allowed.

DRIVING RANGE

Tokens for the driving range ball machine are available at the PML Golf Shop or the Snack Shack. Tokens are \$3 each or 4 for \$10. One token = 25-30 balls. Blue Jeans and T-Shirts are allowed while using the driving range.

2008 PINE MOUNTAIN LAKE GOLF FEES

		<u>9 HOLE</u>	<u>18 HOLE</u>	<u>TWILIGHT*</u>
PROPERTY OWNER	Monday - Sunday	\$15	\$25	\$18
	Cart	\$6	\$9	\$9
GUESTS** (CART MANDATORY BEFORE TWILIGHT)	Monday - Sunday	\$32	\$58	\$31
	Cart	Included	Included	\$12
PUBLIC (CART MANDATORY BEFORE TWILIGHT)	Monday - Friday	\$41	\$68	\$34
	Cart	Included	Included	\$14
JUNIORS (RATES BEGIN AT TWILIGHT)	Property Owner	-	-	\$7
	Guest/Public	-	-	\$13
CARTS ARE MANDATORY FOR ALL GOLFERS ON MAJOR HOLIDAY WEEKENDS UNTIL TWILIGHT				
CLUB RENTALS		\$11	\$16	\$16
PULL CART RENTALS		\$2.50	\$5	\$5

*Twilight begins at 2 PM, 3 PM or 4 PM depending on the season. Please call the PML Golf Pro Shop at 209/962-8620 for details.

** (Must be sponsored by Property Owner either in person or over the phone with a pin number)

Tournament Fees (Cart & Green Fees) \$73 per player

★★★★★ 1/2 "Best Places to Play" - *Golf Digest*

Once again the Pine Mountain Lake Golf Course received a 4.5 star rating out of 5 for the Golf Digest - Places to Play. This rating is based on reader comments to Golf Digest. This year's Best Places to Play rated more than 4000 courses in North America and the Islands. The courses were evaluated by approximately 20,000 Golf Digest readers. As always the courses were rated on the overall golf experience, value for the money, standard of service, conditioning of the course and normal pace of play for 18 holes. **Enjoy the course!**

CLINICS & LESSONS
JUNIOR GOLF CLINICS

Clinic Dates: June 25, 26, 27, July 9, 10, 11 and August 6, 7, and 8
Beginning and Intermediate clinics for kids ages 7-17
\$35 per child for each 3 day clinic
(Maximum of \$70 per family per clinic)

Beginning Clinic 9:00 - 11:00 AM each day
Intermediate Clinic 11:30 - 1:30 PM each day

Class sizes are limited. Please sign up in advance at the PML Golf Shop or call 209.962.8620 for applications.

GOLF LESSONS AND CLUB FITTING

Chris Borrego
PGA Head Golf Professional
Titleist Custom Fitting Professional

\$50 per lesson
Ask about series & group rates

Tony Murphy *The Golf Doctor*
PGA Ass't Golf Professional
Titleist Custom Fitting Professional

\$50 per lesson
Ask about series & group rates

PRIVATE & GROUP LESSONS AVAILABLE

MEMBERSHIPS AND BENEFITS

Annual Golf Memberships, Golf Club Storage and Lockers are available to Pine Mountain Lake Property Owners.

Please contact the Golf Shop at 209.962.8620 for more information.



PML GOLF COURSE SNACK SHACK



Come enjoy lunch at the PML Snack Shack at the Golf Course! We are located at the Golf Course Driving Range so come and munch in the shade of the beautiful oaks and pines and watch the golfers on the golf course and driving range. **Credit Cards Accepted.**

Snack Shack Menu Phone 962-5058
(Prices are posted at Snack Shack)

Hot Dog - Mmmm, Good Doggy

Hamburger - Singles & Doubles With Cheese

Polish Dog - Spicy And Just Right

Fresh Sandwiches - Turkey, Tuna, Ham, Egg Salad & Submarine

Box Lunch - Hot Dog, Polish Dog Or Fresh Sandwich W/ Chips, Dessert & Soft Drink – Add A Cookie, Gatorade, Beer Or Large Soda For Just A Little Bit More \$

Soup Du Jour & Chili - Mexican Tortilla, Clam Chowder & Many More

Snack Items - Chips, Candy Bars, Boiled Eggs, Energy Bars, Cookies & Fruit

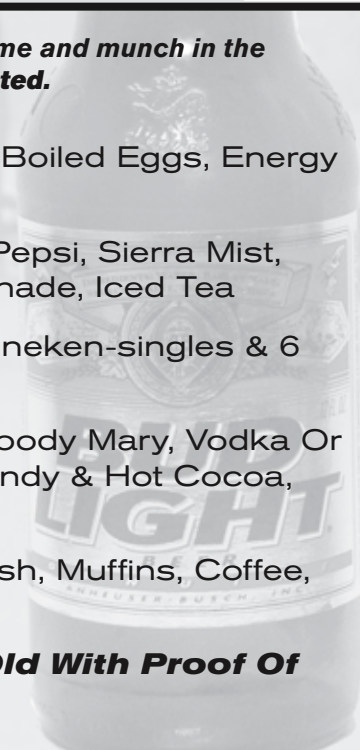
Drinks - Bottled Water, Pepsi, Diet Pepsi, Sierra Mist, Gatorade, Sobe & Snapple, Lemonade, Iced Tea

Beer - Budweiser, Miller, Coors, Heineken-singles & 6 Packs

Liquor - Mini Liquor, Well Drinks, Bloody Mary, Vodka Or Gin & Tonic, Brandy & Coffee, Brandy & Hot Cocoa, Schnaps & Hot Cocoa

Breakfast - Breakfast Burrito, Danish, Muffins, Coffee, Tea, Hot Cocoa

We Id. You Must Be 21 Years Old With Proof Of Age To Purchase Alcohol.



SUMMER HOURS
7 AM – 7 PM

THE GOLF SHOP

AT THE PINE MOUNTAIN LAKE COUNTRY CLUB

WINTER HOURS
8 AM – 5 PM

WE PROUDLY OFFER

Ahead • Fairway Golf • Kate Lord • Antigua • Titleist
Cobra • FootJoy • Nike • US Kids Golf

We carry a large selection of PML Logo items.
Swing into the Golf Shop for a full range of golf equipment and apparel!



2008 PML JUNIOR GOLF CLINICS

DUE TO THE POPULARITY OF THE JUNIOR CLINICS LAST YEAR WE'RE EXPANDING OUR SESSIONS TO 2 HOURS PER DAY

BEGINNING CLASSES
9:00 TO 11:00 AM

INTERMEDIATE CLASSES
11:30 TO 1:30 PM

COME JOIN US FOR MORE FUN AND GOLF THIS SUMMER! CLASS SIZES ARE LIMITED SO SIGN UP EARLY!

CLINIC SCHEDULE SESSION 1: June 25, June 26, June 27 • SESSION 2: July 9, July 10, July 11 • SESSION 3 August 6, August 7, August 8
Clinics are held Wednesday through Friday.

Class Schedule for Clinics

Beginning golfers: 9:00-11:00 All Beginning golfers meet at the driving range at 8:45 am for check-in. Beginning golfers are those with minimal golf experience.

Intermediate golfers: 11:30-1:30 All Intermediate golfers meet at the driving range at 11:15 am for check-in. Intermediate golfers are those who can demonstrate proper grip, stance, posture, follow through, and make consistent ball contact.

Wednesday - Full swing and short game basics. **Thursday** - Short game: Chipping & Putting clinics. **Friday** - Full swing & course etiquette, final exam.

Cost for Clinics

Each session costs \$35.00 per student with a maximum cost per family of \$70.00 per session.

Lunch Tickets (Hot Dog, Chips & Soda) are available each day for \$5.00

You can download the registration form at <http://pinemountainlake.com/uploads/docs/jrgolfclinic08.pdf> or pick one up at the Golf Shop.



CAMPGROUND SELF-SERVE RV & TENT CAMPING

DEPARTMENT OF SAFETY
209.962.8615

13500 Rocky Point Drive, Groveland, CA 95321 The campground facility is operated by Pine Mountain Lake. Sites are available for PML property owners, guests, and the public. The campground is located off of Ferretti Road, between Mueller Drive and Cottonwood Street, and is open seven days a week. Stays limited to 14 days within any 31-day period.

FACILITIES

- 23 campsites, each with cooking fireplaces and picnic bench
- 10 RV hook-up sites, each with power and water (dump site on location, contact the Main Gate Department of Safety at 209/962-8615 for access)
- 2 restrooms, each with running water, one with hot showers
- Horseshoe pits and hiking trails (*Bring your own Horseshoes*)
- Volleyball Court (*Bring your own volleyball*)

RESERVATIONS

Reservations only accepted two weeks prior to Memorial Day through Labor Day. Reservations should be made in advance by writing to PMLA Department of Safety, 19228 Pine Mountain Drive, Groveland CA. 95321. Please indicate (1) Name and Address, (2) Unit and Lot number (if applicable), (3) Date of arrival and departure, (4) Number of people and, (5) Size of vehicle and/or tent. If you wish to make a reservation, you must pay in advance. No credit cards please. Maximum campsite stay is 14 days. **Maximum campsite stay is 14 days.**

You must cancel your reservations 48 hours in advance to receive a refund.

2008 CAMPGROUND FEES

	REGULAR SPACE	RV HOOK-UP
Property Owners:	\$12 per night \$54 per week \$215 per month	\$18 per night \$95 per week \$355 per month
Guests and Public:	\$16 per night \$90 per week	\$26 per night \$145 per week
Additional camper charge (after 4 per site)		\$4 per person
Non-camper dump station use		\$11 per use

PUBLIC USE

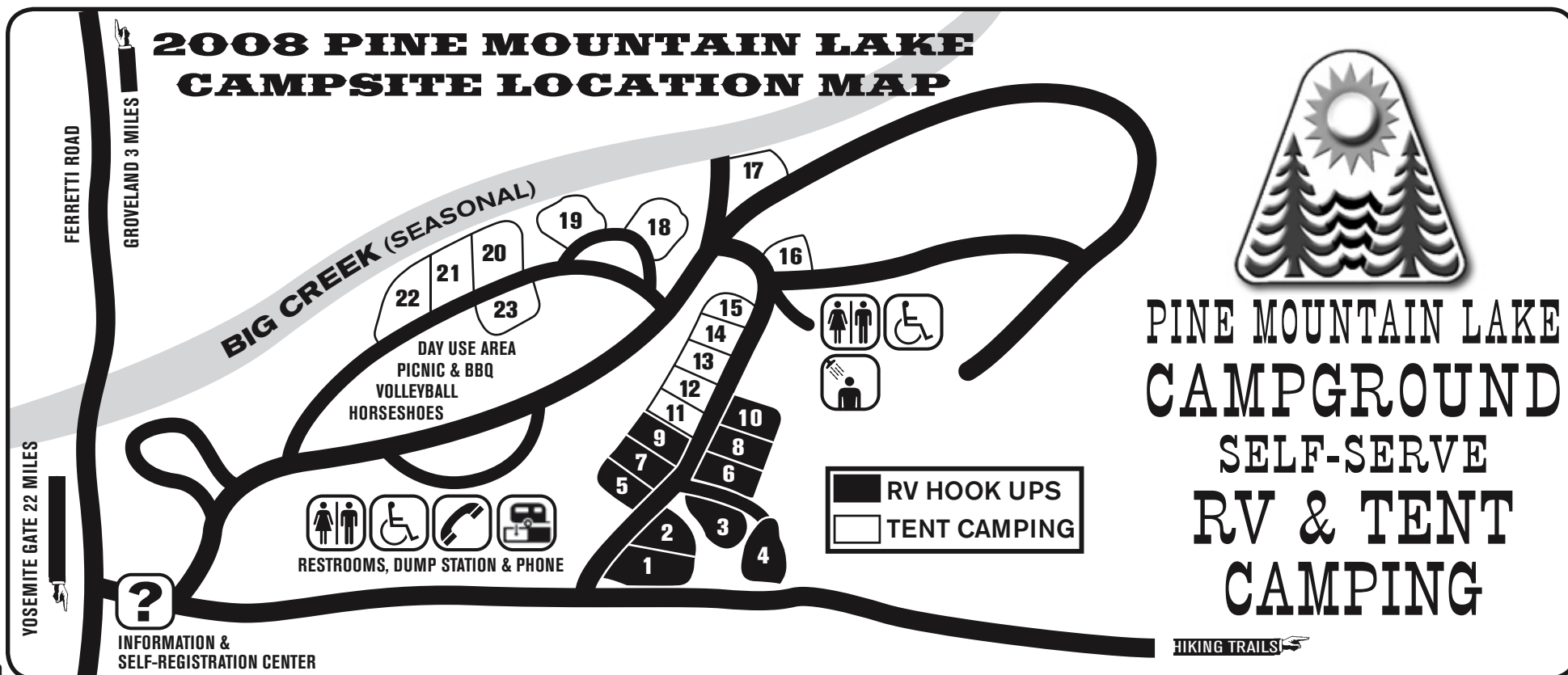
- The Campground is open to the public seven days a week with first priority to property owners and guests of property owners.
- Additional fee for use of Pine Mountain Lake amenities. See the Main Gate Department of Safety for details.
- All PMLA rules and regulations must be observed.
- Stay shall be limited to 14 days within any 31 day period.

Campground pay phone number 209-962-8931. Please dial *81 to reach the main gate.

RULES AND REGULATIONS

- Additional charge for more than four (4) persons per space.
- **DOGS ARE TO BE KEPT ON LEASHES.** No vicious or noisy animals will be tolerated.
- Except to enter and exit only, motorcycles and other all terrain type motor vehicles will be prohibited in the campgrounds and trails.
- Check-in is 8 AM, check-out is 10 AM.
QUIET TIME BEGINS AT 10 PM.
- All generators are specifically prohibited.
- **GROUND FIRES ARE PROHIBITED.** Fires must be confined to designated barbecue pits. Please put out your barbecue fire before leaving.
- Electric cords and water hoses may never be connected to bathrooms.
- No washing of dishes in bathroom sinks.
- Use dumpsters for your trash.
- Please **DO NOT** put your cigarette butts out on the ground.
- Fireworks are prohibited.
- Hunting is illegal in Pine Mountain Lake. Loaded firearms are prohibited.
- **PLEASE KEEP CAMPSITES NEAT AND CLEAN.** Check prior to vacating.
- Long term campground use for property owners building a home only. (Plans must be submitted and approved by the E.C.C.)
- PMLA is not responsible for loss or damage of camper property.
- Non-property owner boats are prohibited on Pine Mountain Lake.
- **For emergencies, please dial 911.**

2008 PINE MOUNTAIN LAKE CAMPSITE LOCATION MAP



ENJOY SAFE BOATING ON PINE MOUNTAIN LAKE

**FOR PINE MOUNTAIN LAKE
BOATING RULES
SEE MARINA STORE**



Photo by David Wilkinson

TELL A FRIEND ABOUT...



**PINE MOUNTAIN LAKE
GROVELAND, CALIFORNIA
WWW.PINEMOUNTAINLAKE.COM**



**Publishers of the PML News
& Gold Country Adventures**

Award-Winning
Custom Artwork/Logos/Advertising
Magazines/Photography/Books
Calendars/Posters/T-Shirt Designs
CD's, Press Packages & More!

**Check the PML News for our
Printing Specials Each Month**

**CALL FOR AN APPOINTMENT
209-962-0342**



MAP LEGEND

- Pine Mountain
- Pine Mountain
- Public Access
- Greenbelt
- PML Golf Course
- PML Country Club
- PML Beaches
- Trails
- Card Entry Gate

TIOGA HIGH SCHOOL

PINE MTN. LAKE CAMP GROUND

Trail Parking 9



UNIT 5B

UNIT 5A

UNIT 2

UNIT 6

UNIT 1A-4

1B-4

UNIT 5

UNIT 1

UNIT 8

GROVELAND COMMUNITY BASEBALL FIELD "Leon Rose Field"

GROVELAND COMMUNITY SERVICE DISTRICT

PINE MOUNTAIN LAKE ASSOCIATION OFFICE 962-8600

PINE MOUNTAIN LAKE MAIN GATE SECURITY 962-8615

MUSEUM-LIBRARY

MAIN STREET MARKET

TO GROVELAND

TENAYA ELEMENTARY SCHOOL

HIGHWAY 120 TO YOSEMITE

PINE MOUNTAIN LAKE

MARINE & BEACH AREA

DAM

SWIMMING AREA

DRIVING RANGE

COUNTRY CLUB

TENNIS COURTS

Water Lot

EV CHURCH





PINE MOUNTAIN LAKE MAP

LEGEND

- Lake Roads
- Lake Stable
- Roads
- se
- Club/Restaurant
- & Activities
- es to PML



- 1 ADMINISTRATION OFFICE**
- 2 MAIN GATE/DEPARTMENT OF SAFETY**
- 3 PLEASANT VIEW HORSHOE PITS**
- 4 TENNIS COURTS 1, 2, 3 & 4**
- 5 TENNIS COURTS 5 & 6**
- 6 SWIMMING POOL**
- 7 COUNTRY CLUB (DINING, BAR, GOLF SHOP)**
- 8 CAMPGROUNDS**
- 9 UNIT 14 & 16 HIKING TRAILS**
- 10 DUNN COURT BEACH**
- 11 MARINA**
- 12 FISHERMAN'S COVE**
- 13 LAKE LODGE**
- 14 AIRPORT**
- 15 STABLES**

Pine Mountain Lake Association
 19228 Pine Mountain Drive
 Groveland CA 95321 209-962-8600



AROUND PINE MOUNTAIN LAKE

MARINA EVENTS AND ACTIVITIES

INDEPENDENCE DAY WEEKEND BOAT PARADE

JULY 5 "Boat Parade" Sponsored by Friends of the Lake – Friends of the Lake sponsors the annual Independence Day weekend boat parade on Pine Mountain Lake. This is one of the highlights of the summer season. Kent Blankenburg will land his Seabee airplane on the lake to begin the parade. Decorate your boat to honor Independence Day or any American holiday. Sign-up at the Marina office and receive your entry number. There is no charge to enter the parade. Boats will convene near the dam at 5:30 pm and the parade kicks off at 6:00 pm prior to the fireworks display. Spectators can watch the parade from any lake beach except Dunn Court Beach where the fireworks display will be setting up and the beach is closed. Trophies are awarded for the best decorated boat in four categories: pontoon boats, ski or fishing boats, antiques, and non-motorized. Call 209-962-6336 for additional information.

HOLIDAY ACTIVITIES AT THE MARINA

Independence Day Weekend

Sand Castle Contest Sunday July 6, 9:30 am to 11:30 am
Fun & Games from 1 pm to 3 pm with prizes awarded.

Labor Day Weekend

Sand Castle Contest Saturday, August 30, 9 am - 11 am
Family Fun and Games Sunday, August 31, 1 pm to 3 pm.

FREE FISHING DAYS FOR KIDS – June 21, July 19 and August 16 using their own gear, kids' ages 7-15 sign up at the Marina for a supervised fishing boat trip from 6:30 am to 9:30 am Max. boat load of 6-8 kids for this learning experience. Learn fishing and safety tips while possibly catching one of our large fish, trout/bass.

2008 FISHING DERBY FOR KID'S OF ALL AGES

Derby period from June 1, 2008 to August 31, 2008. Prizes for two categories: Adults and children (12 & under). \$5 entry fee, - must sign before catching fish to qualify Call the Marina Store at 209/962-8631 for details.

MUSIC AT THE MARINA

SATURDAY JULY 5

Live music by ROCKSLIDE playing from 4:00 pm - 8:30 pm

SUNDAY JULY 13

Friends of the Lake host the third annual "Music at the Marina" at 5:00 pm on Sunday, July 13. The evening starts with a potluck dinner at the west end of the Marina beach. At 6:00 pm the music begins. Folk singers Chris and Lori will entertain from 6:00-9:00 pm. Both Chris and Lori are former New Christie Minstrels and their music is a wonderful mixture of favorite folk songs and old-time rock and roll. Come sing-a-long and enjoy a warm summer evening on the Marina lawn. No charge, open to all. Bring your place setting and a dish to share.



Pine Mountain Lake Realty
 Each office independently owned & operated

T: (209) 962-7156

F: (209) 962-6710

lynnb@goldrush.com

www.homesinpml.com

www.lynnbonander.com

Lynn Bonander, GRI - Realtor®

Win

With

Lynn

Experience

Counts!

A Consistent
 Top Producer
 Since 1987



Over 29 Years of
 Continuous Pine Mtn.
 Lake R.E. Experience

INDEPENDENCE DAY FIREWORKS CELEBRATION

Don't miss the fireworks extravaganza Saturday, July 5th!

Admission July 5th – adults \$6 children 8 & under \$1 Be sure to watch the PML News for info about the FREE Shuttle Bus to the Marina Beach departing from three different locations.

WATER TAXI

Avoid the headaches of parking at the Marina. Park your car at Fisherman's Cove, Dunn Court or Lake Lodge and ride one of our two CUSTOM BUILT, 18 PASSENGER WATER TAXIS! (Dunn Court Beach will be closed Saturday, July 5th for fireworks set up.)

2008 RATES

2008 rates on July 5th are \$6 per adult and \$1 per child (8 yrs & under) includes wristband - if you already have a wristband you ride free. Wristbands are not day passes. Day passes not available on holidays or holiday weekends. Other than holidays or holiday weekends unlimited day passes run \$3 per adult and \$2 per child (8 years & under).

OPERATING SCHEDULE

Available seven days a week, 10 am to 6 pm, during the summer months, weather permitting. **Please be at the dock prior to scheduled pick up time.** (Schedule subject to change without notice.)

Pickup Time

On the hour

15 minutes after the hour

30 minutes after the hour

45 minutes after the hour

Location

Marina

Lake Lodge

Fisherman's Cove

Dunn Court

Call the Marina Store at 209/962-8631 for more info!

PML LAKE CRUISES

Sign up for all Lake Cruises at the Marina Store or call 209-962-8631. Enjoy a relaxing lake cruise on beautiful Pine Mountain Lake! Available everyday! The length of the cruise depends on the type of cruise you take.

2008 LAKE CRUISE RATES

Charter the boat for your own group! Only \$80 per hour! (Maximum capacity is 18 adults.) Includes your choice of soda or sparkling juice and a light snack. Special Cruises available - see Ron Prieto, the Marina Manager for details.

2008 Fireworks Cruise

See the Independence Day Celebration from the water. Observe the fireworks right from the lake! \$27 per person, any age! Limit of 18 people. Light snacks and beverages will be provided. Pick up 8:30 pm at Lake Lodge dock OR rent the entire boat \$535 per boat.

**This year the fireworks will be shown
 on Saturday, July 5th, 2008!**

WATER TAXI RIDES

Water taxi rides available 10 am to 5 pm daily May 17 - September 1. Contact the Marina Store at 209-962-8631 for details.

Use the lake taxi to avoid crowded Marina parking!



AROUND PINE MOUNTAIN LAKE

LAKE LODGE | 20270 Pine Mountain Drive, Groveland, CA 95321

The Lake Lodge is located on Pine Mountain Drive between Cresthaven Drive and Rock Canyon Way. The beach at the Lake Lodge is especially suitable for family groups. Barbecue grills, picnic tables, a large sandy beach, rest rooms, seasonal water taxi service and a large swim area.

No lifeguard on duty. Swim at your own risk!

LAKE LODGE RENTAL FEES

Usage fee * \$200 (non-refundable)

* Refundable cleaning deposit \$200 per event

* Refundable Organized Group Cleaning Deposit \$100

Special event with Outside Catering per meeting \$200 usage fee

Special events with Country Club providing food and service No Charge

Regular meeting - organized PML recognized group No Charge

PINE MOUNTAIN LAKE COUNTRY CLUB CATERING AT THE LAKE LODGE

Save \$200 on your next special event at the Lake Lodge! Simply allow the Pine Mountain Lake Country Club to plan your special event. The Country Club specializes in wedding receptions, banquets and meetings. For more Lake Lodge catering information please call PML Country Club at 209/962-8638.

Perfect for weddings, birthdays, anniversaries, graduations and more!

PARKING RESTRICTIONS

A valid parking permit is required to park in any parking lot within the gated community of Pine Mountain Lake (i.e. Lake Lodge, Dunn Court, Marina, Fisherman's Cove).

PARKING PERMITS

Pine Mountain Lake parking permits are available through the Main Gate Department of Safety or the Administration Office on Pine Mountain Drive for a fee.

MARINA PARKING RULES

The use of the Marina parking lot is restricted to property owners only on weekends and holidays. Renters and guests may park at the Marina any other time with a valid parking permit.

PAY TELEPHONES

Pay phones are available at each beach location: You can dial *81 to reach the Main Gate from any of these pay phones.

Marina 209/962-8936 • Dunn Court 209/962-8929

Lake Lodge 209/962-8933

For a complete list of Pine Mountain Lake phone numbers see page 2.

FISHERMAN'S COVE

Located off Pine Mountain Drive on Boitano Road in Unit 3. A beautiful area for the entire family! Picnic tables, fishing docks, barbecue grills, basketball court, large playground facility, hiking trails, nearby tennis courts, water taxi service and restrooms.

No swimming is allowed in this area at any time.

Please respect all private property!

DUNN COURT BEACH

20022 Dunn Court – Located off Pleasant View Drive and Mount Jefferson Street. You will find everything you need for fun in this one spot including picnic tables, barbecues, rest rooms, grass area, a sandy beach, seasonal water taxi service, vending machines, a large swim area and plenty of parking.

No lifeguard on duty. Swim at your own risk!

Dunn Court Beach will be closed Saturday July 5th, for the fireworks set up and display. ALL BOATS must be relocated/removed from beach the day before the fireworks display.

**COME, PLAY,
ENJOY!**

**PINE MOUNTAIN LAKE
GOLF COURSE**

PINE MOUNTAIN LAKE'S

BLEA MARKET

AT THE PML STABLES

SATURDAY, MAY 17 & SEPTEMBER 27

8:00 A.M. TO 1:00 P.M.

- SPACES ARE FIRST COME FIRST SERVE ON THE DAY OF EVENT.
- PLEASE BRING YOUR OWN TABLES, TARPS, BLANKETS, ETC.
- SPACE SET-UP STARTS AT 7:00 A.M.
- SPACE FEE IS \$7.00 PER SPACE – PAY IN ADVANCE AT PML ADMIN OFFICE OR THE DAY OF THE EVENT AT THE STABLES

**FOR FURTHER INFORMATION CONTACT
THE ASSOCIATION OFFICE AT 962-8600**



HIKING AND WALKING TRAILS

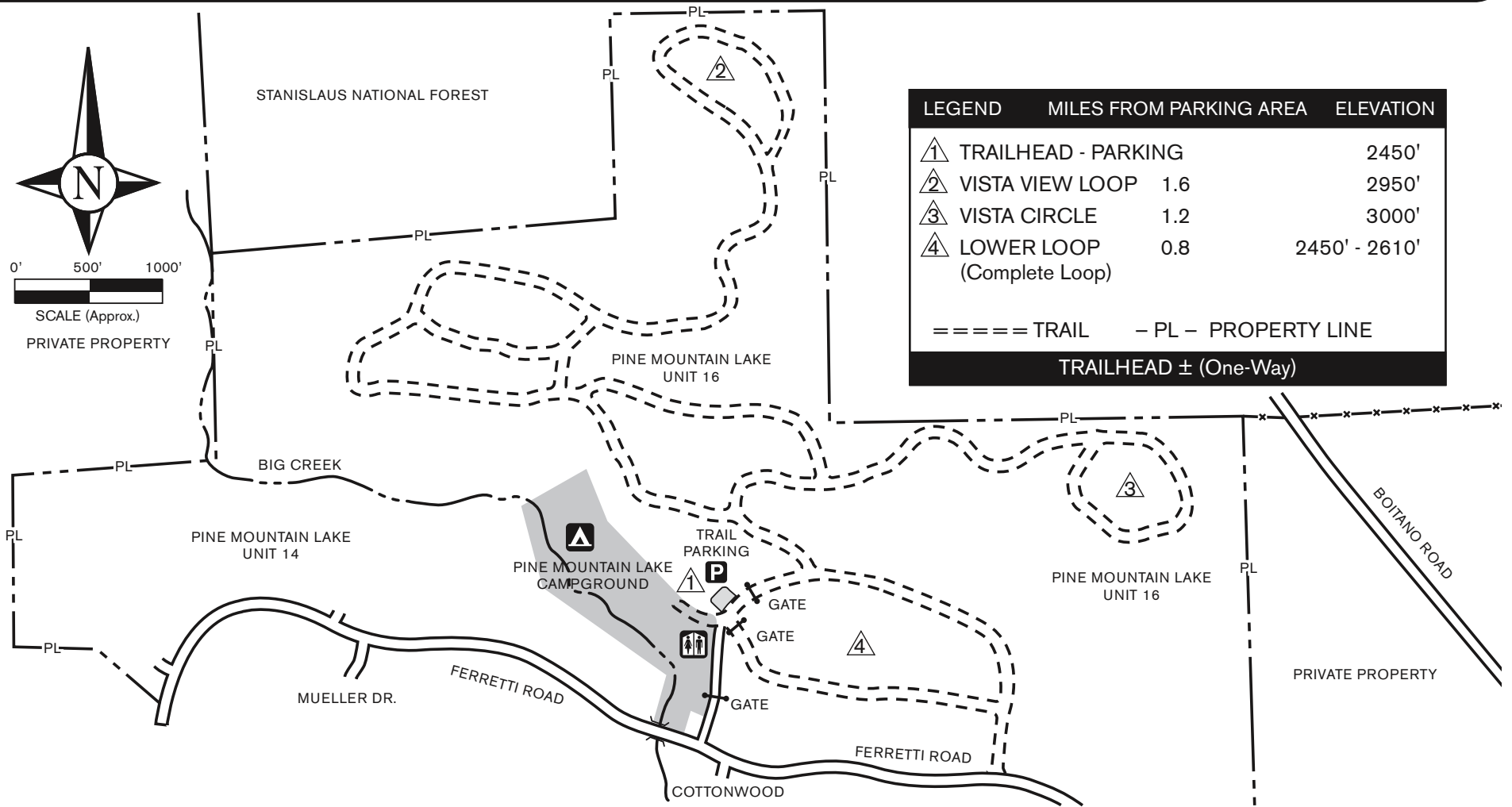
PINE MOUNTAIN LAKE RECREATION & TRAIL AREA (Units 14 & 16)

Units 14 & 16 are home to Pine Mountain Lake's Hiking Trails and are available to all property owners, renters and guests. Hours of use for trails are from 7 am to dusk. Please follow all posted rules. **NO HUNTING OF ANY ANIMAL OR FOWL ALLOWED IN PML.** Trails will be closed and entry denied if fire conditions warrant closure.

HIKING TRAIL NOTES

- | | | | | | | |
|--|-------------------|------------------|-----------------------|--|----------------|-----------------|
| 1. PEDESTRIAN & EQUESTRIAN USE ONLY
(No vehicles of any type) | 2. STAY ON TRAILS | 3. DO NOT LITTER | 4. DOGS ON LEASH ONLY | 5. RESPECT PRIVATE PROPERTY - NO TRESPASSING | 6. CARRY WATER | 7. NO CAMPFIRES |
|--|-------------------|------------------|-----------------------|--|----------------|-----------------|

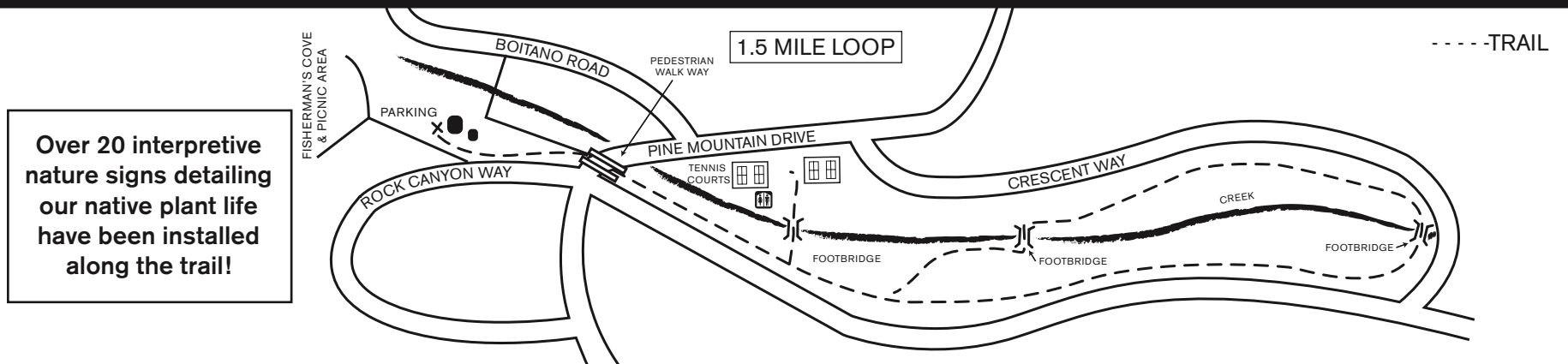
HIKING TRAILS MAP



PINE MOUNTAIN LAKE GREEN BELT HIKING TRAIL (Units 3 & 4)

Trailhead starts at Fisherman's Cove located off Pine Mountain Drive and Rock Canyon Way in Unit 3.

GREEN BELT HIKING TRAIL MAP





STABLES 13309 CLIFTON WAY

LESTER SCOFIELD, MANAGER
209.962.8667

www.pinemountainlake.com

Our full service Stables offers trail rides Wednesdays through Sundays, special excursions, play days, horse shows, children's horse camps, along with total care stalls, corrals and paddock rentals for your horse. A riding arena, exercise ring and a large picnic area and barbecue area are also available. The Stables are located in unit 12, on the corner of Clements and Clifton Way. **OPEN TO THE PUBLIC.**

2008 STABLES BOARDING FEES

	<u>Stall</u>	<u>Paddock</u>
Property Owner (full care)	\$230	\$205
Overnight fee (per day)	N/A	\$11
Hay Surcharge	Market Rate	

Equestrian Arena Use

Boarders	N/C
General Special Event Rental per day	\$135
P.A. System per day	\$21

PICNIC AREA

Refundable Cleaning Deposit	\$100
Commercial Activity per event (Fund Raising, Etc.)	\$215
Property Owners & Organized Groups per event	\$80
Public Use fee	\$125
Event Set-up Fee (per 2 hour minimum)	\$50

OTHER STABLE FEES

Overnight Fee (Paddock Only)	\$11
General Rule Violation Time (Minimum)	\$16
General Service Fee per 1/2 hour (minimum)	\$11
Little Wrangler Camp per day per attendee	\$37

GUIDED TRAIL RIDES

AVAILABLE WEDNESDAY-SUNDAY

Safety equipment provided. Must wear closed toe shoes. Ages eight (8) and up. Advanced reservations recommended. For reservations or information, call Lester Scofield, Stables Manager 209-962-8667

WEEKDAYS, WEEKENDS & HOLIDAYS

1 hour	2 hour
\$37 per person	\$70 per person

SPECIAL RIVER EXCURSIONS, FISHING TRIPS ETC.

Guided River Ride 4-5 hours \$150.00 per rider. Bring your own fishing gear and enjoy a leisurely ride to the Tuolumne River. For details and reservations contact the Stables Manager, Lester Scofield 209-962-8667.

LITTLE WRANGLER CAMP

Supervised by PML's Stables staff, this camp is the perfect way to introduce your child to the world of horses and the life of a "cowpoke" all in a friendly, safe environment. Camps consist of horse and stables care, fun and game activities and lunch. Camps run every Tuesday (ages 7-9) and Thursday (ages 10-13) 9 am to 1 pm, June 17 through August 21. Cost is \$37 per child, per 1-day camp. Limited to 10 students per 1-day camp. Little Wranglers Camp begins June 17th and ends August 21st.

SPECIAL EVENTS

Memorial Day Celebration Round-up BBQ & Dance – Sunday, May 25 - 5 pm to 8 pm Hay Rides, Pie Eating Contest, Pine Cone Throwing, Face Painting (donations accepted), Petting Zoo (sponsored by 4-H), 50/50 Raffle, Short Trail Rides and Live Music. Dinner: Tri-Tip, Beans, Salad, & Bread \$12 Adults \$8 Kids (12 & under) Fire Engine & Ambulance on display showing the specialized equipment carried. The Fire Department is selling water and soda. Pine Mountain Lake Country Club is selling beer and wine. *Sponsored by Groveland Volunteer Firefighter's Association.*

Independence Day Weekend Celebration Round-up – BBQ & Live Music Friday, July 4th, 5 pm to 10 pm. BBQ Tri-Tip with all the fixin's and Hot Dogs for the Little Wranglers Dinner Tickets: \$12 Adults \$7 Kids (under 12) 50/50 Raffle, Pony Rides and short trail rides available. 7:00 pm Horse Show & Color Guard *Presented by the Country Mountain Riders.*

Labor Day Celebration Round-up – Sunday, August 31st, Short Trail Rides, BBQ Dinner, and Live Music.



AIRPORT

OWNED & OPERATED BY TUOLUMNE COUNTY
209.533.5685 · PAY PHONE: 209.962.8966

The airport is located in Unit 12 on Elderberry Way. Facilities on site include: fueling, parking and a coffee shop/restaurant.

LOCATION: North Latitude 37, 51' 45", West Longitude 120, 10' 40"

ELEVATION: 2933 feet above sea level.

RUNWAY: 27/09, 3,625 feet long. Surface is asphalt. Right traffic runway 27.

TAXIWAY: 3,600 feet long, paved.

LIGHTS: Runway and rotating beacon, VASI - Runway 09, PAPI - Runway 27

TIE DOWN AREA: Paved, approximately 54 tie downs, transient tie downs available on west side of ramp south of fuel pumps. Overnight fees: \$4 single; \$8 twin.

UNICOM: 122.9

<u>FROM VORS:</u>	<u>FREQ.</u>	<u>RADIAL</u>	<u>DME MILES</u>
Modesto VOR (MOD)	114.6	052°	40
Merced area El Nido VOR (HYP)	114.2	001°	40
Stockton area Linden VOR (LIN)	114.8	092°	40

COMMUNITY AIRPORT DAY June 21, 2008

PML Airport - South Side Displays: 12:00 to 5:00 pm Air Show: 2:30 - 5:00 pm Sponsored by the Pine Mountain Lake Aviation Association for the enjoyment of all PML and Groveland residents. The event is free and open to the public. The busy afternoon includes airplane fly-overs, an aerobatics air show, and many interesting airplanes on display. Hot dogs and sodas will be available for purchase. Check the mailbox flyers or www.pmlaa.org for all the details.



INDEPENDENCE DAY CELEBRATIONS

INDEPENDENCE DAY "GOINGS-ON" AROUND PINE MOUNTAIN LAKE JULY 5, 2008

This year the fireworks will be shown Saturday, July 5th beginning at dusk!

Don't miss the extravaganza set for Saturday, July 5th. The action starts in the afternoon at the Marina with a band, boat parade and, as dusk falls over the lake, a fantastic Fireworks Show! Don't miss the events at the Marina.

MARINA

WRISTBANDS:

On Saturday, July 5th wristbands **MUST** be worn all day for entry to the Main Marina. Property Owners get the first 2 wristbands free - go to the Administration Building to pick up. You may purchase additional wristbands at the Main Marina Gate, on the Water Taxis, on Shuttle Buses or at the Main Administration Office. Wristbands are \$6 per person for adults and children 8 and under \$1 each. Get your wristbands now to avoid the last-minute rush! The Administration office is closed Friday, July 4th.

SATURDAY, JULY 5TH

at the Marina office and receive your entry number. There is no charge to enter the parade. Boats will convene near the dam at 5:30 pm and the parade kicks off at 6:00 pm prior to the fireworks display. Spectators can watch the parade from any lake beach except Dunn Court Beach where the fireworks display will be setting up and the beach is closed. Trophies are awarded for the best decorated boat in four categories: pontoon boats, ski or fishing boats, antiques, and non-motorized. Call 209-962-6336 for additional information.

THIS YEAR THE FIREWORKS WILL BE SHOWN ON SATURDAY, JULY 5TH BEGINNING AT DUSK!

WATER TAXI

Avoid the headaches of parking at the Marina. Park your car at Fisherman's Cove or Lake Lodge and ride one of our two CUSTOM 18 PASSENGER WATER TAXIS! (Dunn Court Beach closed all day July 5th for fireworks set up.) 2008 rates on July 5th are \$6 per adult and \$1 per child (8 yrs & under) includes wristband - if you already have a wristband you ride free. Wristbands are not day passes. Day passes not available on holidays or holiday weekends. Other than holidays or holiday weekends unlimited day passes run \$3 per adult and \$2 per child (8 yrs & under). July 5th the water taxis stop transport service at 7:15 pm to prepare for fireworks cruise. Taxis will resume after the fireworks cruise disembarks, approx. 9:45 to 10 pm.

LIVE MUSIC

ROCKSLIDE plays for your entertainment 4 pm to 8:30 pm

BOAT PARADE *Sponsored by Friends of the Lake*

Friends of the Lake sponsors the annual Independence Day weekend boat parade on Pine Mountain Lake. This is one of the highlights of the summer season. Kent Blankenburg will land his Seabee airplane on the lake to begin the parade. Decorate your boat to honor Independence Day or any American holiday. Sign-up

SEABEE PLANE

In addition, in the afternoon before the parade, there will also be an airplane fly-over. Property owner Kent Blankenburg will land his Seabee plane on the lake Saturday afternoon approx. 3:30 pm.

FIREWORKS CRUISE

See the Independence Day Celebration from the water. Observe the fireworks right from the lake! \$27 per person, any age! Limited to 18 people. Light snacks and beverages will be provided. OR rent the entire boat for your party at \$535 per boat. These seats fill up very fast so make your reservations early! Marina closes to vehicle traffic at 4 pm on July 5th. The Marina parking lot usually fills up by 7 am on July 5th. You are allowed to drop off people & gear until 4 pm. When applicable, please be sure your Handicap Tags are visible in each vehicle when parked at the Marina.

JULY 5TH FIREWORKS EVENING FREE SHUTTLE BUS

Avoid the hassle of trying to park at the Marina on July 5th. Two PML Shuttle Buses will depart from four convenient parking locations - round trip approx 30 minutes. Parking will be available at the PML Administration Office parking lot, the Tennis Court parking lot (Mueller Drive only), the Evangelical Free Church, and Tioga High School. Shuttle buses will run from 5 pm - 11 pm.

19TH HOLE LOUNGE

LIVE MUSIC WITH REUNION

Friday, July 4th 8 pm to Midnight

ADMINISTRATION OFFICE

CLOSED FRIDAY, JULY 4TH

Offices will be open regular hours Monday through Thursday 8 am to 4:30 pm.

COUNTRY CLUB

OPEN all weekend Saturday, Sunday & Monday! Make your reservations **early** by calling 209-962-8638

SATURDAY, JULY 5

Breakfast - 8 am to 11 am Lunch - 11 am to 3 pm Dinner - 5 pm to 9 pm

SUNDAY, JULY 6

Breakfast - 8 am to 11 am Lunch - 11 am to 3 pm Dinner - 5 pm to 9 pm

MONDAY, JULY 7

Continental Breakfast - 9 am to 11 am Lunch - 11 am to 3 pm

INDEPENDENCE DAY FIREWORKS - INFORMATION AND TIPS

1. Observe "NO PARKING" signs. Violator's car will be towed at their expense (Up to **\$280 CASH ONLY!**) Any vehicles parked on Pine Mountain Drive **MUST** have ALL 4 WHEELS OFF the white line! **NO PARKING ON ANY OTHER PML STREETS.**
2. When walking, please stay to the sides of the roads so you don't block traffic or emergency vehicles.
3. Please take advantage of riding the shuttle buses and water taxi's. Shuttle buses run from 5 pm to 11 pm.
4. Cooperate with the "No Smoking" and "No Pets" resolution for the Marina.
5. **NO** Lifeguard on Duty at any swim area!
6. Be respectful of Private Property and **DO NOT** trespass.
7. Keep your "mountain hide-a-way" clean and beautiful ~ please don't litter. Dispose of litter in the proper receptacles provided.
8. Dunn Court Beach will be closed all day Saturday, July 5th for the fireworks display set up.
9. Dunn Court Beach - ALL boats **MUST** be relocated/removed from the beach the day before the fireworks display.
10. Fisherman's Cove - No swimming is allowed in this area at any time.
11. Non-property owner boats prohibited on lake.
12. Please be patient and kind to your fellow members and guests, and enjoy the fireworks!



MORE INDEPENDENCE WEEKEND FUN

FISHING DERBY FOR KIDS OF ALL AGES:

Be sure to sign up at the Marina Store for the Fishing Derby. There is a \$5 entry fee and it runs from June 1 through August 31, 2008. For valid entry you must sign up prior to catching fish. Prizes for two categories: Adults and children 12 & under.

OTHER EVENTS

STABLES Friday July 4th

2008 BBQ Tri Tip & Hot Dog Dinner - Dance

Hosted by the Country Mountain Riders & Pine Mountain Lake Association. Enjoy a Tri-Tip BBQ dinner with all the fixin's and Hot Dogs for the Little Wranglers, pony rides, short trail rides, live music and MORE! Live music by Keith Keenom & Mountain Fever. Purchase your Dinner Tickets at the Stables. Adults \$12 and Children (under 12) \$7

- BBQ Tri Tip with all the fixins' • Live Music • Trail rides available •
- 50/50 Raffle • Country Mountain Riders •
- Horse Show and Color Guard 7:00 pm •

MARINA Sunday July 6th

Sand Castle Contest 9:30 am to 11:30 am

Fun & games 1 pm to 3 pm with prizes awarded.

PARKING & TOW AWAY ZONES

Unfortunately every year we are forced to tow vehicles parked in marked tow away zones and unauthorized areas. It is costly to the owner (Up to \$280 cash only!) and it is an unpleasant ending to a fabulous day at the Marina. To keep the tow zones clear we offer a FREE Marina Shuttle Bus with pick up from designated locations.

- When applicable, please be sure your Handicap Tags are visible in each vehicle when parked at the Marina.

PLEASE NOTE: PML streets are governed by the California Vehicle Code. The Vehicle Codes are enforced by our local Law Enforcement (CHP and Tuolumne County Sheriff's Department). If there is a vehicle illegally parked in the road, it will be towed. The authority code is SEC. 22651 (k) CVC. The CHP will be enforcing this as well as all Vehicle Codes.

FOR THE SAFETY OF ALL, FIREWORKS ARE PROHIBITED IN PINE MOUNTAIN LAKE. PLEASE REPORT ALL ILLEGAL FIREWORKS ACTIVITY TO THE MAIN GATE AT: 209-962-8615





Boat registration, launching, docking, boat rentals, water-ski sign-ups, fishing licenses, marina entrance, beach security and gas dock are all controlled from the Marina Store. **NO ONE UNDER THE AGE OF 16 IS PERMITTED IN THE MARINA UNLESS ACCOMPANIED BY AN ADULT.** No Lifeguard on Duty.

2008 MARINA STORE HOURS

Store is open seven days a week 209.962.8631

May 1 to May 16 (limited hours)	10 am to 2 pm
May 17 through September 1	7 am to 6 pm
Gas Dock Hours	7 am to 5:30 pm

MARINA GRILL

Avoid the wait; call your order in 209-962-8630 Watch the website for Dinner Specials. Open Daily throughout the Summer Season. May 17 - May 23, open 11 am to 4 pm May 24 - Sept. 1, Regular hours Sunday through Thursday, 11 am to 6 pm Friday, Saturday & holidays, 11 am to 7 pm

*Hours subject to change due to weather and circumstances.

BOAT REGISTRATION

To register your boat for Pine Mountain Lake; (a) you must be a property owner in PMLA and (b) the property owner must have their name on the DMV title/registration. All watercraft must be registered with Pine Mountain Lake Association before putting on Pine Mountain Lake. This includes; canoes, kayaks, paddleboats, float tubes, windsurfers, rowboats, electric boats.

You may register your boat/watercraft at the Main Gate, January thru mid May or at the Marina Store, mid May thru September. All registration tags are valid from January 1 to December 30 (1 year).

To register your boat for Pine Mountain Lake; you need the following information:

1. Proof of property ownership in Pine Mountain Lake (gate card).
2. Current DMV boat registration.
3. California Vessel Registration Number (number on current DMV sticker).
4. CF numbers.
5. Copy of current boat insurance policy.
6. Insurance Coverage minimum \$300,000.00 liability, all boats.
7. Pine Mountain Registration form.
8. Paid registration fee for Pine Mountain Lake.

To register paddleboats, sailboats, rowboats, canoes, kayaks, float tubes, and windsurfers:

1. Proof of property ownership in Pine Mountain Lake Association (gate card).
2. Copy of homeowner's insurance policy with a liability of \$300,000.00.
3. Pine Mountain Lake registration form.
4. Paid registration fee for Pine Mountain Lake.

Non-Property owner boats prohibited on lake.

All items must be in hand to register your vessel. **NO EXCEPTIONS.**

2008 BOAT REGISTRATION FEES

Registration fees are based on the calendar year and are non-refundable.

Power Boats 150 HP and above	\$86 per year
Power Boats 100-149 HP	\$80 per year
Power Boats 50-99 HP	\$75 per year
Power Boats Less than 50 HP	\$69 per year
Electric Boats	\$64 per year
Sail Boats	\$54 per year
Paddle Boats, Rowboats, Canoes, Kayaks	\$43 per year
Windsurfers	\$37 per year

BOAT RENTALS

A \$20 deposit and I.D., or a property owners gate card, is required on each boat rental. See the Marina Manager for weekly rates.

	Boat Capacity	Per Hour (1 hr min)	1/2 Day (4 hrs)	Full Day (8 hrs)
Canoe/Kayak/Rowboat	2	\$16	\$48	\$64
Large Paddle Boat/Sailboat	2-4	\$21	\$64	\$96
Fishing Boats (4HP)**	4	\$24	\$73	\$97

**Must be 16 years or older with proof of a driver's license.

Lake Cruise Boat Charter Per Hour \$80. Special Cruises Available - see Marina Manager for details.

WATER TAXI

Avoid the crowds parking at the Marina. Park your car at Fisherman's Cove, Dunn Court or Lake Lodge and ride one of our two **CUSTOM 18 PASSENGER WATER TAXIS!** 2008 Water Taxi Rates: \$3 per adult for an unlimited day pass, \$2 per child (8 yrs & under) for an unlimited day pass. (Day passes not available on holidays or holiday weekends.)

All prices subject to change without notice!

2008 BOAT DOCKING RATES

Boat slips; beach spaces, mud flats and rack spaces are for designated property owner's use only and are assigned by the Marina Manager. Get on the waiting list early for a seasonal boat slip – the waiting list is running approx. 2 years.

	DAILY	WEEKLY	SEASONAL
Boat Slips	\$16	\$80	\$375
Oversized Boat Slip	\$27	\$107	\$455
Beach	\$11	\$27	\$145 add \$10 for Locker
Rack	\$8	\$27	\$112
Mud Bank (Pontoon)			\$160
Mud Bank (Ski & Fishing)	\$11	\$54	\$118
Wind Surf Rack	\$2	\$11	\$54

No trailer parking permitted except for day use only. No boats will be permitted in the dock slips from October 31, 2008 through May 1, 2009. Boats left at the Marina dock or beach area after October 31, 2008 will be removed at owners risk and stored at \$50 a day.

"FRIENDS OF THE LAKE"

JULY 13 "MUSIC AT THE MARINA"

Friends of the Lake host the third annual "Music at the Marina" at 5:00 pm on Sunday, July 13. The evening starts with a potluck dinner at the west end of the Marina beach. At 6:00 pm the music begins. Folk singers Chris and Lori will entertain from 6:00-9:00 pm. Both Chris and Lori are former New Christie Minstrels and their music is a wonderful mixture of favorite folk songs and old-time rock and roll. Come sing-along and enjoy a warm summer evening on the Marina lawn. No charge, open to all. Bring your place setting and a dish to share.

AUGUST 10 "LAKE SWIM"

Friends of the Lake present the "Lake Swim" with a series of fun activities on our lake, including the open lake swim from Dunn Court to the Marina at 4:00 pm. Prizes awarded to the top three finishers, and refreshments for all. Following the afternoon activities, Friends of the Lake will host a potluck on the Marina beach. Watch the PML News and mailbox flyers for all the details.



**TRY OUR SOFT
SERVE ICE CREAM!**

THE MARINA GRILL

**CALL IN ORDERS
209.962.8630**

2008 MARINA GRILL MENU

All prices include sales tax where applicable

Hamburger	Chicken Tenders	Popsicle
Cheeseburger	Fish/Chips	Soft Drinks (16 oz.)
Gardenburger	Hot Dog	Soft Drinks (32 oz.)
Patty Melt	Corn Dog	Arizona Iced Tea
Philly Cheesesteak	Cheese Dog	Milk
Grilled Chicken Breast Sandwich	French Fries	Beer (domestic)
Shrimp Basket	Soft Serve Ice Cream (small)	Beer (premium)
Cold Sandwiches	Soft Serve Ice Cream (large)	Wine Coolers
Cheese Fries/Nachos	Fancy Ice Cream Bars	

All menu items and prices subject to change without notice

Marina Grill Hours
Open Daily Summer Season
May 17 – May 23 11 AM to 4 PM

May 24 – September 1
Sunday through Thursday
11 AM to 6 PM

Friday, Saturday, & Holidays
11 AM to 7 PM

- Menu and prices subject to change without notice
- Hours subject to change due to weather and circumstances

VISIT OUR FRIENDLY FULL SERVICE MARINA STORE

For all your Fishing, Boating and Souvenir Needs!

Rafts, Safety Floats & Beach Balls • Chips & Candy
Fishing Licenses • Sunglasses • Volleyball & Umbrella Rental
Bait and Fishing Tackle • Sun Screen & Tanning Lotion
Water Ski Products • PML Logo Hats
PML Logo Pens, Decals & Glassware • Children's Toys & Games
PML Logo T-Shirts • First Aid Items • Ice, Film, Batteries
& Much More!

MAJOR CREDIT CARDS WELCOME



Pine Mountain Lake Realty

**Don't Gamble with your
Real Estate needs?
Pick A Winning Team!**

Lynn & Barry have
Over 35 Years
Combined Experience
Specializing in
Pine Mountain Lake
Real Estate

Lynn Bonander, GRI
Realtor®
T: 209-962-7156
F: 209-962-6710
C: 209-484-7156
lynnb@goldrush.com
www.homesinpml.com



Barry Scales
Realtor®
T: 209-962-7156
F: 209-962-6710
C: 209-484-7123
btscales@aol.com
www.homesinpml.com



REAL ESTATE COMPANY OFFICES IN GROVELAND MEMBERS OF THE VOLUNTARY SIGN-FREE COMMUNITY IN PINE MOUNTAIN LAKE

CENTURY 21

Pleasant View Properties
www.c21pleasantview.com
(209) 962-7372 Office
(209) 962-7238 Fax

COLDWELL BANKER

Mountain Leisure Properties
www.mtnleisure.com
(800) 659-5263 Toll Free
(209) 962-5252 Office

GREAT WESTERN HOME & LAND, INC.

Groveland Office
www.BobMasonRealEstate.com
(209) 962-4220 Office
(209) 962-4230 Fax

Jamestown Office
mary@gwhomeland.com
(209) 984-0400 Office
(209) 984-0420 Fax
(866)984-0401 Toll Free

PLEASANT VIEW RENTALS

www.pleasantviewrentals.com
(888) 869-0663 Toll Free
(209) 962-7123 Office

PS&A

Peggie Sharp & Associates, Inc.
www.peggiesproperties.com
(209) 770-2328 Office

REALTHY WORLD

Pine Mountain Lake Realty
www.pmlr.com
(209) 962-7156 Office
(209) 962-7123 Rentals

RE/MAX YOSEMITE GOLD

www.pinemtnlake.com
(888) 962-4080 Toll Free
(209) 962-4080 Office

RE/MAX YOSEMITE GOLD VACATIONS

www.yosemitgoldvacations.com
(209) 962-7180 Rentals

ROGER POWERS REALTY

www.rogerpowers.com
(209) 962-4432 Office
(209) 962-7095 Fax

SIERRA HOMEFINDERS

Pine Mountain Lake Specialists
www.sierrahomefinders.com
(800) 367-0626 Office
(209) 962-7095 Fax

SUGAR PINE REALTY

www.sugarpinerealty.com
(209) 962-7765 Office

YOSEMITE REGION RESORTS - RENTALS

www.yosemiteregionresorts.com
(800) 962-4765 Toll Free
(209) 962-4396 Office



New ADA Accessible Entrance Ramp and Restroom/Shower

2008 POOL SEASON MAY 17 – OCTOBER 31 2008! **SWIM AT YOUR OWN RISK. NO LIFEGUARD ON DUTY!**

The Pine Mountain Lake Pool is a family recreation center with many different activities: ping pong, board games, cards, books and magazines, water toys, pool floats and more are all available from the pool attendants. For your convenience, the pool also has a snack bar and pool store.

Pool Capacity: 63

2008 POOL HOURS – Summer May 17 – September 1

Pool is open seven days a week during the season, **weather/pool** temps permitting.

Water Aerobic Classes / Mon - Fri (2 classes 1 hour ea) 8 - 10 AM

Open to property owners and guests 10:00 AM

Open to renters and guests 12:00 noon

Pool closes every night for everyone 9:00 PM

2008 POOL HOURS – Fall

Sept 2nd thru Sept 14th - 10:30 AM to 7 PM (weather permitting)

Sept 15th thru Oct 31st - Noon to 5 PM (weather permitting)

PRIVILEGES

There is no charge to use the pool. Guests must be accompanied by a property owner or have a valid guest pass. No admittance without property owner card or valid guest pass. Additional identification may be required, property owner cards are non-transferable. No person(s) will be permitted in the pool area without first registering with pool attendant. A limit on number of persons in the pool at one time is enforced.

SWIM AT YOUR OWN RISK. NO LIFEGUARD ON DUTY!

AGE REQUIREMENT

Children under 14 **MUST** be accompanied and monitored by an adult.

INFANTS AND TODDLERS

Children not potty-trained must wear **plastic pants** or approved swim diapers. Please bring your own or purchase at the pool store.

SPECIAL ACTIVITIES AT THE POOL

Pool Socials: Fun family entertainment, including music, BBQ!

Saturdays: Come out and meet the staff! June 21, July 26, & Aug 30

from 6 pm to 8 pm. Check www.pinemountainlake.com for party information as the dates approach. See Pool Attendant on duty for ping pong balls & paddles, snack bar items and pool store purchases.

POOL SNACK BAR & STORE

Open during all pool hours. Enjoy our quality snacks & goods at very competitive prices!

SNACK BAR

Popcorn • Candy Bars • Frozen Treats • Assorted Beverages

POOL STORE

Sun Care Products • Pool Toys • Swim Goggles

WATER AEROBICS CLASSES

Open to all property owners. No charge to participate. Enjoy aqua exercise classes (instructed by selected audio tapes) for all fitness levels. Each class consists of a series of aquathenic exercises, which are performed in the pool using the water as resistance. Simply perform the exercises for a safe and effective means of achieving overall body and cardiovascular conditioning.

WATER AEROBIC CLASSES – Summer Schedule

2 sessions available – no charge for exercise classes. Instructed by selected audiotapes. Monday through Friday 8:00 AM • Monday through Friday 9:00 AM

WATER AEROBIC CLASSES – Fall Schedule

1 session available – no charge for exercise class. Instructed by selected audiotapes. Monday – Friday 11 – 12 noon

2008 SWIM LESSONS

All swim lessons taught by a Certified Water Safety Instructor. Lesson availability based on hiring of a Certified Instructor. Check with pool attendant for registration & scheduling availability 209-962-8634.

2008 SWIM LESSON FEES

Property Owners

\$26 per person per course

\$37 per family per course (max of 3 students per family)

Renters/Guests:

\$38 per person per course

\$48 per family per course (max of 3 students per family)

Swim at your own risk. No lifeguard on duty!

FISHING, BOATING, GOLFING, RELAXING, REALLY LIVING!

PINE MOUNTAIN LAKE GROVELAND, CALIFORNIA

WWW.PINEMOUNTAINLAKE.COM

*Season's Gifts
Needles and Strings*

A sweet little Gift Shop filled to the Brim with fun unique gifts, yarns, patterns, needles & pins.



Shopkeepers
Karen Edner & Ellen Guenther

18687 Hwy 120
Groveland, CA
209-962-5099



Memorial Day BBQ

Sunday May 25th 5-8 pm
Pine Mountain Lake Stables

Sponsored by the Groveland Volunteer Firefighter's Association

Fun & Games For All

Hay Rides	Pie Eating Contest
Horse Rides	Pine Cone Throwing
Shoe Kick	Petting Zoo (sponsored by 4-H)
Spoon & Egg Race	Face painting (donations accepted)

Fire Engine & Ambulance on Display showing specialized equipment carried

Dinner: Tri-Tip Beans Salad Bread

\$12 Adults \$8 Kids (12 & under)
TO GO boxed dinners also available

The Fire Department selling water and soda
Pine Mountain Lake Country Club selling beer & wine

Live Band **50/50 Raffle**




Whitewolf
ART GALLERY EST 2006

Visit our online store at

www.cafepress.com/WhitewolfArt

Photos • Artwork • Mugs
T-Shirts • Collectibles
And More!

In Balance with Nature?



CHIROPRACTIC WELLNESS CARE
Dr. Ron Oler

GENTLE SPINAL CARE
NUTRITION
REHABILITATION EXERCISE

962-0662

18687 MAIN STREET, GROVELAND
(NEXT TO COLDWELL BANKER)

Sweet Pea Boutique

Kid's clothes with personality
boys and girls sz 0-7x
swim wear, shorts, dresses, jeans, hats, leggings, gifts, sunglasses, foot wear, hair access.

Hours: 10:30 – 5:00
Mon thru Sat

962-8999
located behind Perfectly Posh



**A PEACEFUL,
PLAYFUL,
LUXURIOUS
PLACE TO BE!**



The Groveland Hotel is an ideal romantic Yosemite lodging getaway featuring 17 uniquely decorated rooms. Savor incredible California-fresh cuisine and a Wine Spectator award-winning wine list. Enjoy delicious meals served up in our dining room by Executive Chef Greg Lutes.

The Courtyard Theatre series has an incredible array of new talent this year, starting with a **Johnny Cash** tribute on May 23rd. We've got 5 guys from Southern California doing two shows in one night, **The Beatles** and **The Monkees**. Not only are these guys great musicians, the costumes are out of this world From Rockabilly to Zydeco, Blues to Sinatra, we've covered a wide spectrum this year.

THE COURTYARD THEATRE



Johnny Cash



The Beatles



Elvis !!



Rat Pack

**ON THE WAY TO YOSEMITE • 18767 MAIN STREET • GROVELAND CA 95321
WWW.GROVELAND.COM • INFO@GROVELAND.COM • 209-962-4000**

SELLING & MOVING YOUR WORLD!

JAMES (JIM) NAGLE REALTOR®

List and Sell with the Best or deal with the rest



Coldwell Banker 2007
Overall Top Sales Producer.

"Diamond Society"
Top 4% Sales International.



Take virtual tours of homes at:

cbmlp.com

**COLDWELL
BANKER**

Expect the best.®

COLDWELL BANKER MOUNTAIN LEISURE PROPERTIES

18687 Main St., Groveland, CA 95321

209/962-5252 or 800/659-5263 • jnagle@mlode.com



Let me show you the way to find your dream home or lot.

Century 21 Pacesetter Gold Award Recipient

Century 21 Top Producer

HHAOR Board Member

GRI, Graduate, Real Estate Institute

AHS, Accredited Home Staging Specialist



June Dee

209-962-5190

209-770-5190 Cell

c21dee@yahoo.com

Visit my web site to look at all available properties for sale: www.groveland-real-estate.com



BRUCE "RED" ROSSIO THE FLYING BROKER

FOR HOMES OR LOTS CALL "RED"

BUSINESS 209-962-7156

CELL 209-768-4830

RESIDENCE 209-962-4830

FAX 209-962-6710

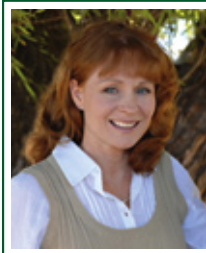
BROSSIO@WILDBLUE.NET

WWW.PMLR.COM



EACH OFFICE INDEPENDENTLY OWNED & OPERATED

Coldwell Banker Million Dollar Producers Award 2006 & 2007
Hetch Hetchy Board of Realtors Top Producer Award 2004, 2005, 2006



KRYSTAL BIGGER, GRI

(209) 962-1159 • (209) 768-5944 cell

www.krystal.cbmlp.com • krystal@mntleisure.com

Graduate Real Estate Institute

Get **BIGGER** service
for all your Real Estate Needs!



MOUNTAIN LEISURE
PROPERTIES

P.O. Box 848

18687 Main St.
Groveland, CA 95321

BUYING OR SELLING?

TOGETHER WE CAN MAKE IT HAPPEN!

Pine Mountain Custom Rentals • Pleasant View Rentals • Pine Mountain Home Loans

Vacation
Homes

Fulltime
Homes

Home
Loans

Reverse
Mortgage

Book online at www.PineMountainCustomRentals.com & www.PleasantViewRentals.com

George & Carol Voyvodich • Property Managers/Owners

Toll-free 888-869-0663

Main 209-962-7123

18731 Main Street • PO Box 606 • Groveland CA 95321

209-962-4185 George • 209-962-4186 Carol

Homes@GeorgeandCarol.com



WWW.PINEMOUNTAINLAKE.COM