

The Pine Mountain Lake News



TABLE OF CONTENTS

Administration	3-22
PMLA Financials	6
The Grill & Lounge	14-15
"Homes on the Hill"	
Real Estate	23-29
Clubs & Recreation	30-33
Events Calendar	34
Community	35-42
Puzzle	43
School News	44
Home Improvement	45-49
Classifieds	50



**HAPPY
FATHER'S
DAY!**

**NEW FIRE SAFETY
GUIDELINES
SEE PAGE 17**

**INDEPENDENCE DAY
CELEBRATION
JULY 7, 2017
WRISTBANDS
NOW AVAILABLE
SEE PAGE 7**

PRSR7 STD
U.S. POSTAGE
PAID
ABS DIRECT
Change Service Requested



Real Estate • Property Management • Vacation Rentals

209-962-1111



19435 Pleasant View-1/322—CREEK-SIDE SETTING. Spacious 3bd, 2-1/2ba home with formal living room. Large deck overlooking the seasonal creek plus a balcony off the master suite. Recent improvements incl: Split ductless heating & A/C, five-zone unit. High R-value ceiling insulation. Low-flow ADA-compliant toilets. Reverse osmosis kitchen water filter. Buck wood-burning stove in family room. Large ornamental fireplace in living room. Perfectly located near town and PML amenities. \$299,000 #20180597



19235-B Salvador Ct—A RARE OPPORTUNITY to own a Cedar Hills Condo! Only 5 units total. Two levels of living space, not including the garage. Two master bedrooms, 2-1/2 baths and 1380sf. Double-pane windows, central heating & a/c plus wall propane heating. Near PML Security Gate, Dunn Ct beach, golf, pool & tennis. Internet access available. \$159,000 #20170609



20602 Nob Hill-3/93—A PEEK OF THE LAKE. Enjoy this cozy cabin in a beautiful setting. Stone pathway leads to a decorative bridge overlooking a fish pond and fire pit. Wood-beam ceilings on both levels. Open living room, dining & kitchen. 3bd, 2ba, Room to add a garage at the rear of the property. See the lake at a distance from the deck of the dining room. \$225,000 #20180464



12900 Green Valley-3/410—RENOVATED CHALET. 4bd, 3ba, 2206sf. Granite counters in the new kitchen, built-in cutting board, stainless appliances and breakfast area. New bathrooms, new back deck, custom deck railings, double-pane windows, recessed lighting and crown moldings. Hardwood & tile flooring. Pantry, large closets and exterior storage shed. Bonus room with windows and laminate flooring for additional space is included in the total square footage. Room to park your RV or boat. \$239,000 #20180278



20510 Nob Hill-3/70—CLASSIC GAMBREL-STYLE cabin with great room, vaulted wood-beam ceilings, wood-burning stove and spacious loft, with distant mountain views. New flooring, dual-pane windows, wall heating & air unit, bathroom vanity and int/ext paint. 2bd, 1ba on main level plus laundry nook in loft area. \$175,000 #20180194

Now is the Time to Sell!

Prices are ↑ Inventory is ↓



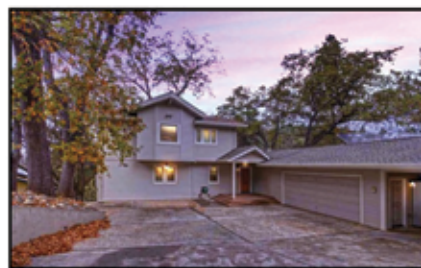
20048 Lower Skyridge—15/121
Luxury, upscale lakefront home with all the extras! 5bd, 3ba, 3714sf. Vaulted, Pine ceilings and slated wood-burning stove in grand living room. Game room, two wet bars, two spacious decks and private boat dock. Two-car garage. About 50 feet to the water's edge.
\$875,000 #20171336



20930 Hillcroft Drive—12/255
Beautiful, turn-key, custom home. Single-level, top-notch finishes throughout. Crown moldings, 9-foot ceilings, granite counters and custom light fixtures. Private gym, with wall mirror, kitchenette and full bathroom downstairs. Fiber cement siding and composite decks.
\$495,000 #20171663



12350 Mills Street—8/91
Panoramic views from the deck of this quality-built home. 4bd, plus downstairs bonus room. Vaulted wood ceiling, formal dining. Recent upgrades: laminate flooring, lighting fixtures, newer roof, heating & a/c and an extra-deep 2-car garage with storage cabinetry & work station.
\$375,000 #20171480



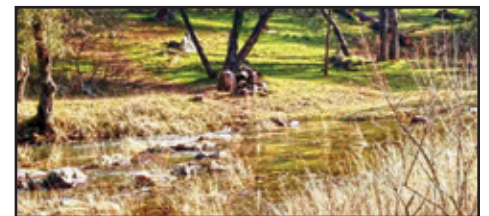
20448 Rock Canyon Wy—3/176
Updated lakefront. 3bd, 3ba, 4349sf. Formal dining, exercise room, office and rec room with pool table. Master suite has private deck with a lake view. Two climate zones, two tank-less water heaters, solar & whole-house generator. Oversized garage, carport & heated workshop.
\$899,900 #20172019



12899 Green Valley-3/392—PICTURESQUE SETTING. Well-maintained home, with great-room floor plan, vaulted ceilings, wood stove, kitchen island seating & spacious counters for food prep. 3bd, 2ba, tub/shower combo and large soaking tub in master, with glass shower surround. Separate laundry room has vanity w/ sink and washer/dryer included. Great storage throughout. Newer room and front deck. Most furniture available on separate bill of sale. \$254,000 #20180555



Crescent Way-4/13—GREAT LOCATION! Beautiful easy-build lot across the street from the greenbelt hiking trails, near the Tennis Courts, Fisherman's Cove and the Lake Lodge Beach. Property was approved in 1989 for a 3-bd septic system by Tuolumne County Environmental Health. Enjoy all the amenities in Pine Mountain Lake. \$9,000



13121 Wells Fargo—PARK-LIKE SETTING with greenbelt, along the banks of Big Creek. Two merged lots. The perfect location to build your dream home! Enjoy this serene setting and the sound of Big Creek rushing by. Access to all Pine Mountain Lake amenities: Lake, fishing, golf, tennis, swimming pool and more. \$47,900 #20160101



12846 Cresthaven-3/439—SINGLE-LEVEL HOME. Spacious 1668sf, with 3bd, 2-1/2ba 2-car garage. Large, covered front porch and level back yard with patio. Open living room with vaulted pine ceilings and wood-burning stove. Near the Lake Lodge Beach, tennis courts and Fisherman's Cove. \$225,000 #20180337



Ferretti Rd-5/215—LARGE RESIDENTIAL LOT near medical services and the Main Security Gate. Plenty of room to build your home, garage and more with this 1.44 acres. The convenience of not having to go through the Main Gate and just minutes from town, yet near most PML amenities. \$13,000 #20150427

NOW ACCEPTING HOMES

FOR LONG-TERM & VACATION RENTALS
(Accepting Vacation Rentals until April 1st only)

209-962-1111 • yosemiteregionresorts.com

18687 Main Street, Suite E, Groveland, CA



YouTube



ROB STONE
OWNER/REALTOR
BRE #01025463



BJORN WAHMAN
BROKER
BRE #00706559



TARA STONE
MANAGER/CFO
BRE# 01106544



LIZ MATTINGLY
BROKER ASSOC.
BRE #00709618



TED BIANCHI
REFERRAL AGENT
BRE #01318805



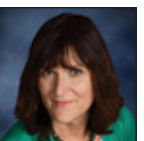
PAULA BIANCHI
REALTOR
BRE #01316556



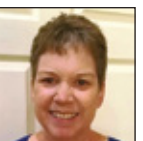
RYAN NIEDENS
REALTOR
BRE #01940007



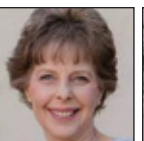
ROY NAVARRO
BROKER ASSOC.
BRE #01235457



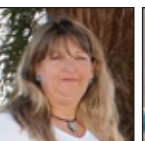
MIRIAM MARTIN
REALTOR, RSPS, ASP
BRE #01400779



SHARON VOLPONI
EXEC. ASSISTANT
RESERVATIONIST



SHARRON WAHMAN
EXEC. ASSISTANT
RESERVATIONIST



CAPRICE KROW
PROP. MGR/LDP
BRE# 01179023



CORY STONE
PHOTOGRAPHER
VIDEOGRAPHER

General Manager's Message

Joe Powell – CCAM-LS, CMCA, AMS General Manager

CANDIDATES FOR THE 2018 PML DIRECTORS ELECTION

We have four official candidates for the 2018 PML Board of Directors Election. The election is being held to fill two director positions at the Annual Meeting in August. Ms. Marcee Cress, Mr. Steve Grier, Mr. Mike Gustafson and Mr. Tomas Hernandez have thrown their hats in the ring, submitted their paperwork, and have been confirmed as official candidates. We would like to welcome all of the candidates, and look forward to their positive campaigns!

FERRETTI ROAD DETOUR UPDATE

At the May 19, 2018 PML monthly Board of Directors meeting, Tuolumne County CAO, Craig Pedro and Tuolumne County OES Coordinator, Tracie Riggs provided an update to the PML Board and members in attendance, regarding the County's efforts to get Ferretti Road repaired and back open.

The County representatives provided two handouts at the meeting and these have been posted to the Official PML Website and on social media. One document is the anticipated Ferretti Road repair and construction timeline, and the other is a list of Federal contacts. The County has worked hard to secure funding to perform the Ferretti Road repair, but stated that there is a strict process that they are required to follow. This process takes time and it looks like it may take until December to finish the repair of Ferretti Road.

Some members of the community have asked how they can help encourage Federal officials to intervene to speed up the funding approval process. The list of contacts was provided by the County for this purpose. Members of the community are encouraged to write, call and email all of the listed contacts.

A lot of other information was provided at the meeting regarding the evaluation of the use of temporary bridges, steel plates etc. as a temporary fix for Ferretti Road. Unfortunately the County engineers have determined that given the size and scope of the road damage, this is not a viable and safe temporary option, as the span would be too wide to accommodate the amount and type of traffic, so it looks like we are in this for the long haul.

After the County finished their update, the PML Board of Directors discussed, deliberated and debated the

topic at length. Some directors provided statistical data on the negative and positive impacts of the detour, and all ideas and options were considered.

The floor was opened up to member comment and members presented their ideas and comments. It was pointed out that the Board is between a rock and a hard place and they would have to make a decision that was the lesser of two bad options.

Based on all of the facts and information provided, the Board decided to keep the detour open for now, with conditions to include more work on speed enforcement, control and security. The Board also added the Ferretti Road detour as an on-going Board meeting agenda item and it will be revisited at every Board meeting until the repair is completed.

More information on the March Storm damage and repair efforts can be found on the Tuolumne County website at <https://www.tuolumnecounty.ca.gov/1104/2018-Winter-Storm-Event>.

PMLA STORM DAMAGE AND RECOVERY - UPDATE

We continue to work on recovery efforts and have prioritized repairs based on safety and need. The road work planned and scheduled for 2018 has been postponed to 2019, as we continue to work on storm damage recovery. We are still assessing the impacts and damage to our community, and cannot proceed with the

roadwork until this is completed and other repairs are made.

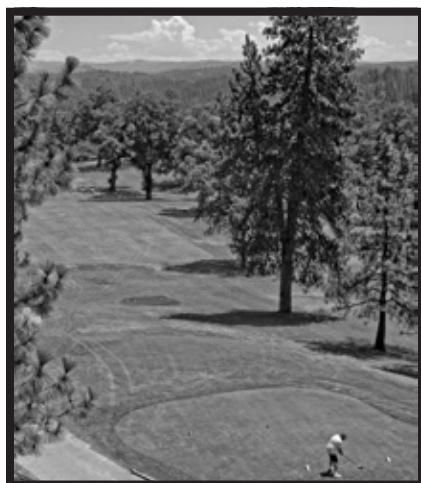
Our maintenance staff did a great job getting our seasonal amenities up and running in time for Memorial Day Weekend. Work continues on the Lake cleanup. So far Maintenance has devoted over 2,000 labor hours into cleaning out debris from the Lake and fixing and repairing the damage.

Dock "B" at the Marina remains unusable at this time. We procured a quote for the repairs and it is in excess of \$45K. Our insurance company has agreed to pay this amount and has already sent us a check, minus the deductible. We hope to get the dock back open for members to use soon.

Repairs at the Campground have been a challenge as the entire lower section of tent camping was overwhelmed and flooded and this caused significant damage. Maintenance continues to work on the roadway, and we are evaluating what is needed to replace and stabilize the shoreline of Big Creek, replacement of the recreation area and all tent campsites and equipment. It may take several years to fully recover from the March 22nd storm, but we will get there. We appreciate the continued support from our members and appreciate your patience as we work through the recovery.

WISHING A HAPPY FATHERS DAY TO ALL THE DADS!

On the Cover



HAPPY FATHER'S DAY FROM PINE MOUNTAIN LAKE!

This month's cover features our beautiful 10th hole at the Pine Mountain Lake Golf Course.

Photo by David Wilkinson

Submission Guidelines

The PML News is the Official Newspaper of Pine Mountain Lake Property Owners

The PML News is dedicated to reporting PML Association business and PML Association news to Pine Mountain Lake Property Owners.

The PML News receives more than 100 Tuolumne County/Groveland community related submissions each month. All such community related articles and notices will appear in the PML News on a SPACE AVAILABLE basis and at the DISCRETION of the PML News Publishing Editor.

DEADLINES

Advertisements must be received IN FULL (text, MLS info, images, logos, etc.) by the 10th of the month for the following month's edition. Only advertisements received in full will be guaranteed to be published in that month's edition.

NO EXCEPTIONS.

MEDIA ACCEPTED

email

SOFTWARE (Articles)

InDesign, Microsoft Word, Adobe Pages, or TXT formats only.

SOFTWARE (Advertisements)

PSD, JPG, PDF, EPS or TIFF only.

TEXT/GRAPHICS

Handwritten text is not accepted. Material composed completely of capital letters is not accepted. Please use uppercase and lowercase letters in composition. Ink jet printed images are not accepted. Images are accepted ONLY as camera ready art, original photos (to be scanned) or as JPEG, TIFF or PDF files created with above listed software. All scans and bitmap images must be in TIFF or JPG format at least 200 dpi at 100% (300 dpi preferred). Ad files are stored for 90 days from first run date. Older ads that have not been running must be resubmitted. (See Display & Insert Advertising Contract "Design and Preparation Charges.")

E-MAIL TEXT/GRAPHICS

Text/graphics may be delivered as e-mail attachments via the Internet. Send to:

pmlnews@sabredesign.net.

AD DESIGN and PROOFS

Ads that are requested to be sent to other periodicals require a usage fee from the advertiser (see Display & Insert Advertising Contract "Design and Preparation Charges"). Proofs are available upon request and final proof approval for all ads is expected within 24 hours. Changes made are LIMITED to typographical or graphic placement errors. NO OTHER ADDITIONS OR CHANGES WILL BE MADE.

SUBMISSION DEADLINES

Articles — 10th each month

Ads — 10th each month

Classifieds — 15th each month

VISIT US ONLINE
www.pinemountainlake.com

**PINE MOUNTAIN LAKE
ASSOCIATION**
209.962.8600

BOARD OF DIRECTORS

Steve Griefer (President)
Mike Gustafson (Vice President)
Wayne Augsburg (Secretary)
Nick Stauffacher (Treasurer)
Pauline Turski (Director)

GENERAL MANAGER

Joseph M. Powell, CCAM-LS, CMCA, AMS

CORRESPONDENCE TO DIRECTORS

Pine Mountain Lake Association
19228 Pine Mountain Drive
Groveland, CA 95321
PMLABoard@pinemountainlake.com

**ADMINISTRATION OFFICE
HOURS OF OPERATION**

Monday - Friday 8:00 AM - 4:30 PM
Tel: 209/962-8600

The Pine Mountain Lake News,
established July 25, 1973,
is printed monthly for residents of
Pine Mountain Lake and vicinity by
Pine Mountain Lake Association,
Groveland, California 95321.

SUBSCRIPTION RATES:

Co-owner subscription: \$6 per year
Single copies: 50 cents each
Single mailed copies: \$1.35 each
For non-members: \$10 per year

SUBMISSION DEADLINE

10th of the month by 4:30 PM
LATE SUBMISSIONS MAY NOT BE
ACCEPTED

Visit www.pinemountainlake.com for
ad rates and submission guidelines or
email: PMLNews@SabreDesign.net.
For the mutual benefit of all property owners,
the Pine Mountain Lake News reserves the
right to edit all copy submitted for publi-
cation. The Pine Mountain Lake News is a
private enterprise, not a public entity, and as
such is entitled to reject advertisements or
articles in the best judgment of its editor or
publisher, despite a probable monopoly in the
area of its publication. Pine Mountain Lake
Association is not responsible for, nor does it
guarantee the accuracy of, information con-
tained in any ad placed in the Pine Mountain
Lake News.

DAVID WILKINSON
Publishing Editor

SABRE DESIGN & PUBLISHING
Design/layout

PINE MOUNTAIN LAKE NEWS
P.O. Box 605
Groveland, CA 95321
Tel: 209.962.0613
Fax: 800.680.6217

E-mail:
PMLNews@SabreDesign.net

Director's Corner

Nick Stauffacher – Board Treasurer

**PRESIDENT'S ARTICLE DURING THE
2018 ELECTION SEASON**

We have four official candidates for the 2018 PML Board of Directors Election. Ms. Marcee Cress, Mr. Steve Griefer, Mr. Mike Gustafson and Mr. Tomas Hernandez have been confirmed as official candidates. To ensure that there is no perception of an advantage to our current directors who are running for re-election this year, President Griefer has asked me to submit an article on behalf of the Board of Directors. I am proud and happy to assist with this during the election and hope that you find my articles informative.

**COUNTY PROVIDES UPDATE ON
FERRETTI ROAD DETOUR**

To ensure that we have the latest information on the status of the Ferretti Road repair, we invited representatives from Tuolumne County to the May 19, 2018 PML monthly Board of Directors meeting. After they provided a detailed update on the work that they have been doing to secure funding for the project, our Board asked them many questions.

We have been getting input from the membership regarding the detour and projected timeframe for the repair of Ferretti Road. Obviously, we all want this road repaired as soon as possible. The County reported that the funding of the project will take time and that they had no control over this.

I and the other directors discussed our concerns and ideas, and in the end, came up with some options that we will be exploring in the next 30 days. We were very candid with the County and we got a commitment from them to reimburse PML for any of the costs incurred to mitigate the impacts

of the detour. Of course the devil is in the details and this will all have to be worked out by our lawyers and County Counsel, but we made it clear that the detour was going to be a standing item on the PML Board meeting monthly agenda until Ferretti Road is repaired and reopened.

**PML COUNTRY CLUB BUILDING
RENOVATION PROJECT UPDATE**

The Country Club Building Renovation Project is making progress. The Board has selected the General Contractor, the Robert E. Boyer Construction firm. They are a well-respected local company and have done work for PML in the past. The orders have been placed for the furniture, fixtures and equipment and there has been a lot of work going on behind the scene by our management team. They are coming up with options for limited food and beverage service for the membership during the construction this winter and the plans look promising.

To ensure that our newly renovated facility provides the menu, service and a look that our members expect, we have also hired expert consultants to assist us with marketing, training and rebranding. I can't wait to see the new menu and layout! Next year is the 50th anniversary of our Association and our plan is to have a really fun grand opening and other festivities to celebrate our community. Stay tuned.

**MEMBER SERVICE - ENGAGEMENT AND
TRANSPARENCY**

Many of the goals that the Board sets for our management team annually have to do with member service, engagement and transparency. We are working to improve the way we communicate with the

membership and looking for more efficient ways to provide information quickly and easily.

Whether it is a recording of a board meeting or a push-notification regarding boat slips, technology is the key. Unfortunately it takes time and resources to make it happen and we are all paying attention to the spending in our Association. Luckily, we have a hard-working and devoted management team and employees working hard to get the job done for us. So pick up the PML News once in a while and check out all the information on our website. Better yet...make an online reservation for dinner at the Grill! (This is one of the new services we offer).

**Wishing all of our members a great
June and hope to see you at our
amenities!**

Subscribe to the PML News TODAY!

Name _____

Unit _____ Lot _____

Mailing Address _____

NO CHARGE for Property Owners (bulk)
\$6/yr for Co-Owners (bulk);
\$10/yr for Non-Property Owners (bulk)
\$20/yr for PROPERTY OWNERS (1st class)
\$30/yr for Non-property owners (1st class)

Enclosed is my check in the amount of
\$ _____ (Payment due in full)

Send this subscription to:
Pine Mountain Lake Association
19228 Pine Mtn. Dr. Groveland, CA 95321
Attn: Anita

DO YOU HAVE QUESTIONS ABOUT PINE MOUNTAIN LAKE ASSOCIATION?

Ask questions and get answers
by going to the OFFICIAL WEBSITE at

WWW.PINEMOUNTAINLAKE.COM

or the OFFICIAL FACEBOOK page at

FACEBOOK.COM/PINEMOUNTAINLAKECA

or call the Administration Office at **209.962.8600**

PINE MOUNTAIN LAKE ASSOCIATION



209.962.8600

www.pinemountainlake.com



ADMINISTRATION OFFICE HOURS

8:00 AM TO 4:30 PM – MON THRU FRI
 OPEN AT 8:45 AM SECOND TUES OF EACH MONTH
 OPEN ONE SATURDAY PER MONTH SEE PAGE 9 FOR DATES

2018 ADMINISTRATION OFFICES HOLIDAYS

(ADMIN OFFICE WILL BE CLOSED)

Wed. 7/4–Independence Day	Mon. 12/24–Christmas Eve
Mon. 9/3–Labor Day	Tue. 12/25–Christmas Day
Mon. 11/12–Veterans Day (Observed)	Mon. 12/31–New Years Eve
Thur. 11/22–Thanksgiving	Tue. 1/1/2019–New Years Day
Fri. 11/23–Day After Thanksgiving	

PMLA BOARD MEETINGS SCHEDULE

Meetings are held at the PML Lake Lodge and start at 9 AM
 (THIRD SATURDAY – UNLESS OTHERWISE NOTED)

JUNE 16, 2018	October 27, 2018
July 28, 2018	Budget Meeting (4th Saturday-Begins at 8 am)
August 25, 2018	November 3, 2018
Annual Meeting / Election	(1st Saturday)
September 8, 2018	No December Meeting
(2nd Saturday, due to 49er Festival)	

PAY PHONE LOCATIONS Press *81 on any Pay Phone to contact Main Gate.

In an emergency, call 911	• Main Gate (restrooms)
• Campground (restrooms)	• Marina
• Dunn Court Beach	• Equestrian Center
• Lake Lodge	• Tennis Courts (Pine Mtn Drive)

PINE MOUNTAIN LAKE NEWS DELIVERY

Although we guarantee that the PML News is mailed from Modesto, CA on the same day (between the 26th-30th of month), most post offices (except Groveland) sort Bulk Mail after First Class mail. So, consider a First Class delivery subscription for just \$20/yr. (\$20 per year for property owners and \$30 per year for non-property owners) Interested? Call the PMLA Office at 209/962-8632 or see form above.

The Pine Mountain Lake News is also available
 (in PDF format) at: www.pinemountainlake.com.
 New editions are posted by the 1st of the month.

PHONE & EMAIL DIRECTORY

ADMINISTRATION

General Manager – Joseph Powell
joepowell@pinemountainlake.com

Admin Asst. to G.M. – 209.962.8627
Debra Durai
debra@pinemountainlake.com

Human Resources – 209.962.8628
Shannon McNair
pmlhr@pinemountainlake.com

E.C.C. Coordinator – 209.962.8605
 Plan Submittal, Compliance Fees,
 Mergers
Terri Thomas
ecc@pinemountainlake.com

Member Relations – 209.962.8632
 Gate Cards, Address Changes,
 Webmaster, Notary Public
Anita Spencer
pmlmr@pinemountainlake.com

**CC&R Compliance/Fire Mitigation
 Community Standards Director**
209.962.1240
Sarah Ruhl
communitystandards@pinemountainlake.com

Community Standards Specialist
209.962.1241
Suzette Laffranchi
compliance@pinemountainlake.com

**General Info & Lake Lodge
 Scheduling 209.962.8600**
Rental Coordinator – Tina Cutright
admin@pinemountainlake.com

Main Gate – 209.962.8615
 General Safety Inquiries, gate
 passes, campground reservations,
 tennis reservations
campground@pinemountainlake.com

Accounting – 209.962.8607
 Receivable/Collections/
 Assessments
Michelle Cathey
pmlar@pinemountainlake.com

Accounts Payable – 209.962.8626
Karen Peracca
pmlap@pinemountainlake.com

Sr Accountant/Payroll
209.962.8618
Stacy Gray
stacy@pinemountainlake.com

Controller – 209.962.8606
 Accounting Procedures
Ken Spencer
controller@pinemountainlake.com

**Recreation and Seasonal
 Operations Manager –**
209.962.8604
Ryan Reis
r.reis@pinemountainlake.com

DEPARTMENT OF SAFETY
Director of Safety – 209.962.8633
Natalie Trujillo
n.trujillo@pinemountainlake.com

Sergeant – 209.962.1244
Sgt. Teri Cathrein
t.cathrein@pinemountainlake.com

Sergeant – 209.962.8616
Sgt. Amanda Darrow

MAINTENANCE DEPT
209.962.8612
Susan Capitanich
maintenance@pinemountainlake.com

Maintenance Manager
209.962.8611
Tom Moffitt
tmoffitt@pinemountainlake.com

GOLF COURSE
Golf Course Superintendent
209.962.8610
Rob Abbott
rabbott@pinemountainlake.com

Golf Pro Shop – 209.962.8620
 Golf Pro Shop/Golf Reservations
Doug Schmiett
dschmiett@pinemountainlake.com

Golf Pro – 209.962.8622
Mike Cook
golfpro@pinemountainlake.com

THE GRILL AT PINE MOUNTAIN LAKE
The Grill Manager – 209.962.8639
Jay Reis
clubmgr@pinemountainlake.com

Restaurant – 209.962.8638
Hospitality Coordinator
Jimmy Gutierrez
cluboffice@pinemountainlake.com

19th Hole Lounge – 209.962.8636
Jamie Wortmann
19thholelounge@pinemountainlake.com

OTHER PHONE NUMBERS
Equestrian Center
209.962.8667
stables@pinemountainlake.com

PML NEWS – 209.962.0613
 Ad/Article Submissions
 Sabre Design & Publishing
PMLNews@SabreDesign.net

PINE MOUNTAIN LAKE ASSOCIATION
SUMMARY STATEMENT OF OPERATING FUND REVENUES AND EXPENSES
 For The Four Months Ended April 29, 2018

OPERATION OF AMENITIES	Revenues					Expenses				Budget (NET COST) INCOME	Variance Bud - Act
	Members' Assessments Net of Discount	User Fees	Sales, Net of Cost of Sales	Miscellaneous Income	Total Revenues	Total Expenses	(Cost)/Income Before Depreciation	Depreciation Expense	(NET COST) INCOME		
Golf Course	\$ -0-	\$ 186,565	\$ 7,666		\$ 194,231	\$ 437,688	\$ (243,457)		\$ (243,457)	\$ (283,808)	40,351
Restaurant & Bar	-0-	2,117	213,009		215,126	406,435	(191,309)		(191,309)	(217,656)	26,347
Marina	-0-	104,897			104,897	84,593	20,304		\$ 20,304	(10,579)	30,883
Snack Shack	-0-		6,313		6,313	14,780	(8,467)		\$ (8,467)	(11,013)	2,546
Stables	-0-	10,314		537	10,851	59,463	(48,612)		\$ (48,612)	(57,676)	9,064
Recreation	-0-	19,907			19,907	11,083	8,824		\$ 8,824	(1,033)	9,857
Roads & Facilities Maintenance	-0-	11,956		160	12,116	570,422	(558,306)		\$ (558,306)	(622,710)	64,404
PROPERTY OWNER SERVICES											
Safety	-0-	46,231		530	46,761	327,568	(280,807)		(280,807)	(316,962)	36,155
Administration	-0-	67,248		26,911	94,159	510,011	(415,852)		(415,852)	(478,661)	62,809
ASSESSMENTS											
Assessments	1,817,748			22,374	1,840,122	19,259	1,820,863	225,489	1,595,374	1,538,509	56,865
Totals	\$ 1,817,748	\$ 449,235	\$ 226,988	\$ 50,512	\$ 2,544,483	\$ 2,441,302	\$ 103,181	\$ 225,489	\$ (122,308)	\$ (461,589)	339,281

Notes to the Financial Statements

1. Total Revenues minus Total Expenses equals Net Income before depreciation. The annual budget for income before depreciation is (\$236,740).

CAPITAL EXPENDITURES 4 Months Ended April 29, 2018			
	TOTAL RESERVE FUNDS	NEW CAPITAL ADDITIONS FUND	TOTAL CONTRIBUTION TO CAPITAL
2018 Beginning Fund Balances	3,606,470	\$ 117,358	3,723,828
Interest Income	1,547	3	1,550
Bank Fees/Discounts Taken	6		6
Assessments Earned	655,000	31,096 ⁽²⁾	686,096
Other Income/Expense			
PURCHASES BY AMENITY			
Golf Course	(7,883)	(2,358)	(10,241)
Country Club			-
Bar			-
Marina	(3)		(3)
Snack Shack	(37,765)		(37,765)
Swim Center			-
Stables	(4,367)		(4,367)
Recreation			-
Roads & Facilities Maintenance	(35,591)	(6,644)	(42,235)
PROPERTY OWNER SERVICES			
Safety			-
Administration	(5,643)	(3,725)	(9,368)
Non-Capital Reserve Expenses	(314,776)		(314,776)
Total transfer to Operating Fund for property and equipment additions and reserve expenses	(406,028)	(12,727)	(418,755)
Adjusted Fund Balances	\$ 3,856,995	\$ 135,730	\$ 3,992,725

Notes to the Financial Statements

(1) The Budgeted Reserve Fund assessment for 2018 is \$1,965,000
 (2) The Budgeted New Capital Additions Fund assessment for 2018 is \$93,286

PAY YOUR PML PAYMENTS ONLINE

Did you know you can make your payments online?
 Online Bill Pay is available on *PineMountainLake.com*.

Pay via your credit card, it is quick and easy!

PML AUTOMATIC PAYMENT PROGRAM

Taking the time to write a check for your monthly assessment payment can be time consuming and costly. You can avoid this burden and eliminate the potential for late payment charges by enrolling in PMLA's Auto Payment Program. By completing the form, which can be found at www.PineMountainLake.com under the Resources/Forms, and returning it to the Administration Office, you can have your monthly assessment automatically deducted from your checking account or charged to your credit card. This means you never have to remember to write a check and mail it each month. The peace of mind that comes with knowing your payment will always be made on time is easy to attain. We can also arrange to have any other regular payment you make to the Association (such as golf membership, horse boarding fees, etc.) paid in the same way.

For more information on this simple, effective and time saving plan please contact us at **(209) 962-8600**.

PMLA Money Matters

Ken Spencer, CAFM – Association Controller

Religion and politics. Two subjects that experts advise us not to discuss with friends and family because they most often lead to disagreements, heated discussion and loud arguments. I am not always one who follows this sage advice. Accordingly I will dive in to one of these hot topics.

No, not religion. That one is way too hot for me. Instead I'd like to take some time and talk about politics. PMLA politics to be exact. In the next few months you will be asked to help choose two individuals to be members of the Association's Board of Directors. This is an enormously important decision that can affect much of what happens in PML over the next few years.

I would certainly not presume to advise anyone on how to vote in this election. I will advise everyone that they certainly should VOTE. The Board of Directors provides direction on all aspects of the Association and its operation. This includes the annual budget which impacts all property owners primarily through the assessment but also for its impacts on the various amenities and departments that make up PML. Failing to vote leaves these decisions up to others. Every member should have their voice heard and their vote counted.

So how does one decide who to vote for? Each of us has different criteria that we use to evaluate candidates for any office. Sometimes it may be personal knowledge of the individual. Other times it is input from friends or family who also are acquainted with the candidate. One source of information is the candidate's own words and stated position on various issues. These can be found in the PML news each month leading up to the election. It can be also available in many instances on the various social media sites that contain information and discussions concerning PML.

Regardless of where each of us gets our information there are some very important factors to consider when choosing who gets your support (and your vote). What makes a good Board Member? Again we all have our preferences but from a higher perspective here are a few things I would suggest that we

each consider during this important process.

First, has the candidate been involved in the Association before deciding to run for office. Have they served on any committees? Are they part of an organized group that is an active part of the community? Do they attend monthly Board meetings to see how the Board functions and operates?

Second, are they a one issue candidate? In other words are they interested in only one area of the Association and its operations or are they more broad minded and want to understand and improve all aspects of PML? Remember a Board member has a duty to make decisions that are in the best interests of the Association as a whole and not just what benefits or impacts one area, amenity, or department. This can be difficult and challenging.

Third, are they willing to learn and act as part of a team? Each Board member is one voice and has one vote on the matters being decided by the Board as a whole. Are they willing to learn the job of being a Board member? Can this candidate work with other Board members? With staff members? Other property owners? Do they have the time required to devote to being a Board member?

Lastly, and from my perspective as the Association's Controller most importantly, does this person understand the financial workings of PML? Are they solely focused on controlling the level of assessment or are they willing to take an honest look at the entire financial picture and make a sound decision that balances the needs of the Association with the necessary financial constraints?

These are just a few of the factors I would encourage all members to consider when making the all-important choice as to who will receive your vote and help lead PML for the next three years.

Well that's it for this month. If you have any PMLA Money Matters you would like to see discussed in this column in the future please drop me a line at CONTROLLER@PINEMOUNTAINLAKE.COM or give me a call at 962-8606. Thanks for reading and I hope you find this monthly discussion helpful, somewhat interesting and at least a bit informative.

Building Our Community

Terri Thomas – ECC Coordinator

DECK REPLACEMENT

I think this month would be a good time to discuss deck replacements and what is required by Tuolumne County and by Pine Mountain Lake Association.

First, let's look at whether you have to have a Tuolumne County Building Permit to replace your deck.

If your deck is:

- over 30 inches off the ground,
- requires replacing more than 200 square feet of deck board,
- attached to a building (regardless of height) or
- situated so that it services the front door

You are required to have a Tuolumne County Building permit prior to starting the job. To contact the County call 209-533-5633 to discuss whether you need a County Building Permit.

The Pine Mountain Lake ECC Guidelines say this:

DECKS/DECK COVERS

- No new decks, deck covers, or deck replacements shall be constructed without prior approval of the Environmental Control Committee.

- Request for decks/deck covers should include plot plan, easement and property lines, dimensions and material.
- Requests for deck replacement shall include construction location, materials.
- Fees will be determined by the scope of the project.
- Tuolumne County may require permits for deck work. It is the responsibility of the property owner to contact the County for any required permits prior to submittal to ECC.

Remember, this applies to any deck replacement. For example, if you are selling your home and the pest inspection reveals a problem with the deck, you are still required to submit all the required documentation and get approval from the County and Pine Mountain Lake Association prior to starting the deck replacement.

The ECC Rules, Guidelines and Construction Standards are available on the Pine Mountain Lake Website. The following link will take you directly to the document: <http://www.pinemountainlake.com/wp-content/uploads/2014/09/ECC-Guidelines-Approved-9-12-15-DD.pdf>

If you have questions, you may call our office any time, Monday through Friday, 8:00 – 4:30 at 209-962-8605 or email us at ecc@pinemountainlake.com.

PMLA WRISTBAND REQUEST

I hereby request that PMLA mail my two (2) free Independence Day wristbands per property to me. Enclosed please find a #10 self-addressed, stamped envelope with required postage affixed. I understand my free wristbands will only be mailed to the address PMLA has on record as my mailing address.



I hereby accept responsibility for delivery of the wristbands and understand that PMLA will not replace lost or missing wristbands.

Any requested change of address must be submitted in writing and signed by a current property owner.

Requests for mailing of free wristbands must be RECEIVED in the PMLA Administration office by June 15, 2018.

Property Owner Signature

Property Owner Name

Date

Unit/Lot

Mail To: PMLA Free Wristbands – Anita
19228 Pine Mountain Drive
Groveland, CA 95321

GO TO THE OFFICIAL ONLINE PRESENCE OF THE
PMLA FOR LATEST NEWS & INFORMATION

PINEMOUNTAINLAKE.COM

[FACEBOOK.COM/PINEMOUNTAINLAKECA](https://www.facebook.com/PINEMOUNTAINLAKECA)

MOORE BROS. SCAVENGER CO., INC.
P. O. Box 278 • Big Oak Flat, CA 95305 • (209) 962-7224 • FAX (209) 962-7257



VACATION RENTAL OPTIONS FOR TRASH SERVICE

In order to assist property owner/managers of short-term rentals with trash removal, Moore Bros. Scavenger Co. offers the following services.

Short-term rental customers may participate in year-round or three-month summer curbside service. To manage anticipated levels of guest trash, property owners/managers of short-term rentals should maintain the suggested service levels as determined by the *Maximum Occupancy for Rental Property* (please see the chart below). In the event that renters generate more than the expected amount of trash or the home is rented multiple times during a given week the following options are provided:

- **As Needed Extra Pickup.** Property owners/managers may request a notation on their rental service accounts to pick up extra as needed. This will ensure that all trash left alongside the cans will be picked up by Moore Bros. and a special pickup will not be required. There is an additional per-can/bag charge for each extra can/bag picked up.
- **Special Pickup.** Moore Bros. has a truck and driver available for special pickups Monday through Friday.
- Property owner/managers must place a request for service call or email to Moore Bros. before 3 pm on the business day prior to the requested pickup day. A request for a Monday pickup must be made by 3 pm on the previous Friday. **Prepaid Bags.** Prepaid Moore Bros. bags may be purchased by property owner/manager to be used by any handyman or housekeeper servicing the residence between rental customers. The prepaid bags can be disposed of at the Pine Mountain Lake Maintenance Yard on Par Court off of Mueller Dr.

Property owners/managers utilizing full summer service may go to on-call service for the off season.

- **Off Season on Call Service.** Property owner/manager may call or email an on-call request to Moore Bros. for a service pickup on the regular pickup day for the address. A request for service call or email must be received before 3 pm the business day prior to regular scheduled pickup day. Charges will be based on the standard a per-can rate for each can/bag picked up.
- **Special Pickup.** Please follow the same procedure as listed above for Special Pickup.

Maximum Occupancy for Rental Property

Maximum Occupancy	Suggested Service Level
6 - 8 people	2 can
8 - 10 people	3 can
10 - 12 people	4 can
Lake front Property 12 people	4 or more cans as typically needed

If you have questions please feel free to contact our office at (209) 962-7224 or email us at: info@moorebrosscavenger.com and Shirley@moorebrosscavenger.com (Please cc both to insure prompt replies).

A drop-off Recycling center is available for use Mon – Sat. 8 am – 5 pm @ 11300 Wards Ferry Rd. Big Oak Flat, Ca

GOT YOUR PIN?

Since PML is a private gated community, we want to offer our property owners a secure way to call in guests. When you become a member of PML you are assigned a Personal Identification Number (PIN) to utilize either when calling in a guest pass or using the Gate Access Internet program. This PIN identifies you to staff without you having to be present. This is a confidential number and should **not be shared**. When you call the Main Gate to authorize a guest or vendor access into PML, you will be asked for your PIN. The staff will look up the number in the computer and use it to confirm your identity before entering the guest information. You must have this number to utilize the Gate Access Internet program as well. If you do not know your PIN or have any questions, please contact the Administration Office at:

(209) 962-8600

Monday through Friday from 8 am to 4:30 pm
and we will gladly supply this information to you.



HERE IS YOUR CHANCE TO BE MORE INVOLVED IN YOUR COMMUNITY!

Pine Mountain Lake Association has openings on the Following Committees:

Editorial Committee

Covenant's Committee (2 Alternate Positions)

If you wish to be considered for committee membership, please complete an "Application for Committee Assignment". This form is available on the website at www.pinemountainlake.com or from the Administration Office.

MAIL COMPLETED FORM TO:
Pine Mountain Lake Association
Attention: Debra Durai
19228 Pine Mountain Drive • Groveland, CA 95321

Email to Debra@pinemountainlake.com
or drop it by the Administration Office

COMPOST & ARCHERY RANGE HOURS OF OPERATION

**APRIL THRU OCTOBER – 7 DAYS A WEEK 8AM TO 4PM
WEATHER PERMITTING**

**NOVEMBER THRU MARCH – TUES. – SAT. 8AM TO 4PM
WEATHER PERMITTING**

SHOOTING RANGE – TUES, THUR, SAT 9AM TO 3PM

PLEASE NOTE Hours may vary depending on weather conditions, safety concerns, or other situations beyond control. Archery & Gun Range users must check-in with compost attendant.

**HOURS SUBJECT TO CHANGE WITHOUT NOTICE
Call Main Gate at 209-962-8615**

MOORE BROTHERS PREPAID BAG BIN

The bin (dumpster) at the PMLA Maintenance Yard entrance is for the dumping of prepaid, Moore Bros., trash bags ONLY. No dumping of any other trash items are allowed. Violators will face enforcement action. Please help us keep this area clear and ensure that the dumpster can remain in place for our residents use. Thank you!

THE PREPAID BAGS CAN BE PURCHASED AT THE MAIN GATE AND THE PMLA OFFICE.

BOARD ACTION(S) VOTING RECORDS

April 21, 2018 Board Meeting - Agenda Items SHOULD THE BOARD...	Board Members*					COMMENTS	COSTS
	SG	MG	WA	NS	PT		
approve agenda?	Y	Y	Y	Y	Y	A.I.F.	
approve Consent Agenda?	Y	Y	Y	Y	Y	A.I.F.	
allow emergency detour to remain open through PML until next BOD meeting?	Y	Y	Y	Y	Y	A.I.F. - Restrict Truck traffic	
approve changing day of July 2018 Board Meeting?	Y	Y	Y	Y	N	Motion Carried - BOD Mtg. July 28, 2018	
approve sponsorship of Hill Top Musical Kids?	Y	Y	Y	Y	Y	A.I.F. - \$100 Platinum	\$100
approve amendment to Reso 95.04-Fire Safety Policy & Procedures?	Y	Y	Y	Y	Y	A.I.F.	
approve amendment to 2018 Monetary Penalty Schedule?	Y	Y	Y	Y	Y	A.I.F.	
approve new resolution 18.03-Board Meeting Code of Conduct?	Y	Y	Y	Y	Y	A.I.F.	
Total APPROVED Golf Donations this meeting (Retail Value)							\$0
Total APPROVED Fee Waivers (Non-Golf) this meeting (Retail Value)							\$0
Total APPROVED Other Donations this meeting (Retail Value)							\$100
Total APPROVED expenditures this meeting							\$100
/ = Absent A = Abstained A.I.F. = All In Favor o = No Vote							
* SG=Steve Griefer MG=Mike Gustafson WA=Wayne Augsburger NS=Nick Stauffacher PT=Pauline Turski							
MINORITY VOTES HIGHLIGHTED							

TIMELINE FOR 2018 PMLA BOARD OF DIRECTORS ELECTION
JUNE 22, 2018 RECORD DATE
 (Members in good standing as of this date are eligible to vote)
JULY 9 - BALLOTS MAILED
AUGUST 24 - DEADLINE FOR RETURN OF BALLOTS (4:30 P.M.)
AUGUST 25 - ANNUAL MEMBER MEETING/DIRECTORS ELECTION

April Rainfall Totals

APRIL 1 - 30, 2018

Date	Inches	Cummulative
Apr 6	0.61	22.29
Apr 7	1.46	23.75
Apr 11	0.26	24.01
Apr 12	0.03	24.04
Apr 15	0.13	24.17
Apr 16	0.46	24.63
Total for April		2.95
Total Accumulation Calendar Year Jan 1 - Mar 31		24.63 in

Unofficial rain totals collected from a weather station located in Groveland off of Ferretti Road.

NOTICE

The Pine Mountain Lake News, established July 25, 1973, is printed monthly for residents of Pine Mountain Lake and sold in the Groveland, CA 95321 area. Members can access the PML News monthly edition online at www.PineMountainLake.com. Every month the newest edition of the PML News is posted online before the first of each month. Interested parties can subscribe to the traditional "hard copy" and receive a copy by mail each month.

The PML News is mailed to approximately 3500 PML property owner households each month. Up to 500 copies are rack-sold in the local Groveland area. Our circulation reaches approximately 1200 full-time, resident, PML property owners and approximately 2300 "weekender," non-resident, property owners who maintain primary residence in Northern California, in Southern California, or in other states. For more information regarding the PML News, please call the PML Administration Office at (209) 962-8600. We greatly appreciate your contributions but please note that the PML News fills up very quickly - often by the 7th or 8th of the month (long before the 10th deadline). To ensure that your submission is reviewed for publication please submit in full and as early as possible. Please remember that the PML News is limited in capacity and your submissions are reviewed on a first-come-first-served, space-available basis.

We publish all PMLA related submissions such as Board & Management Business, Clubs, Activities & Events. Where space remains, we publish non-PMLA related submissions in our "Community" section.

We do our best to provide timely news. If you experience delayed delivery or have misplaced a particular edition, please visit us at the PMLA website www.pinemountainlake.com for a downloadable PDF of the News posted by the 1st of the month and a downloadable PDF list of ad rates.

PML ADMINISTRATION OFFICE SEASONAL SATURDAY SCHEDULE

Members have expressed an interest in having the Administration Office open at least one Saturday a month to conduct business. At the March 17, 2018 Board Meeting a weekend schedule was approved by the Board for the summer season. The Administration Office is scheduled to be open from **8:00 am to 4:30 pm** on these Saturdays:

SATURDAY, JUNE 16TH
 (Same day as monthly Board Meeting)

SATURDAY, JULY 7TH
 (Day of Fireworks Display)

SATURDAY, AUGUST 25TH
 (Same day as Annual Members Meeting/BOD Election)

SATURDAY, SEPTEMBER 8TH
 (Same day as monthly Board Meeting)

Letters to the Editor

LETTERS TO THE EDITOR RECEIVED – 6	DEFERRED TO NEXT EDITION BY
DENIED BY EDITORIAL COMMITTEE – 0	EDITORIAL COMMITTEE – 0
Exceeds 250 word maximum – 0	DENIED BY BOARD OF DIRECTORS – 0
Content – 0	DEFERRED TO NEXT EDITION BY
Not a property owner – 0	BOARD OF DIRECTORS – 0
"THANK YOU" LETTERS RECEIVED* – 0	* Thank you's do not require editorial committee approval

Submit Letters to the Editor by sending to "Editor, PML News"
 Mail: 19228 Pine Mountain Drive, Groveland, CA 95321
 Email: PMLNews@sabredesign.net • Fax: 800-680-6217

PLEASE NOTE THAT ALL LETTERS APPEAR IN THE ORDER RECEIVED BY THE PML NEWS

The Pine Mountain Lake News welcomes letters and articles for publication provided they meet the criteria established in the current PMLA Editorial Policy (See excerpt below – entire policy on file at the Administration Office). Letters must be limited to 250 words, typewritten using upper and lowercase letters or neatly printed (no all-capital material) and signed with name, mailing address, PML unit/lot number, and day/evening telephone numbers by a property owner in good standing. **LETTERS MUST BE RECEIVED BY THE EDITOR BY THE 10th OF THE MONTH.** Letters deemed by the Editorial Committee to be improper will not be accepted. Readers are advised that **THE OPINIONS EXPRESSED IN THESE LETTERS ARE THOSE OF THE INDIVIDUAL AUTHORS, NOT OF THE PMLA, THE PINE MOUNTAIN LAKE NEWS, NOR THEIR EMPLOYEES.**

COUNTRY CLUB REMODEL

Dear Editor,

I am writing to express my thoughts on the 2.2 million dollars being spent on the "maintenance", "remodel", "new construction" of the Pine Mountain Lake Grill and bar.

I am concerned about the cost of the project as well as the \$1,500+ daily losses that we have been experiencing for many years.

I understand that the bar and restaurant need to have repairs done but the current plans seem to be an enormous overkill. I have heard people in the PML community having discussions about this and the majority doesn't want this project to continue for a number of reasons.

- The cost
- The design
- Property owners not having a vote on the project

Of a project this large by the bylaws require a vote by the property owners as well as two open meetings on a Saturday. I haven't heard about either of this taking place nor have I received notification of such.

I would suggest that the Association puts a ballot out in the next PML newspaper for the Pine Mountain Lake property owners to vote on this project, and then using an independent contractor to tally the votes so there will be no doubt about the results.

Sincerely,
 Barbara Lenorak
 Groveland CA

BOARD RESPONSE TO MEMBER LETTER TO THE EDITOR - BARBARA LENORAK

Board response: The Country Club Building Renovation Project is projected to cost \$1.8 million dollars. PMLA received a legal opinion from Association Counsel. There is no requirement under the Bylaws to put the approval of this project to a vote of the membership. Nevertheless, the Board of Directors has held several meetings on the subject, solicited member input, and took this input into consideration resulting in changes to the final project design.

AUGUST '18, ELECTION OF DIRECTORS

I would once again strongly recommend Mike Gustafson for re-election to the PMLA Board of Directors. In the past I have had the privilege to work with Mike on the PMLA Board both as a co-director and a member of the budget and finance committee. I have found through the years that he is a complete and unbiased professional and a cost conscious individual that takes an analytical approach to the affairs and needs of the PMLA and ALL of its homeowners. His concerns remain focused not only for the present but for the future as well. He has been and continues to be an asset to the PMLA team.

Sincerely,
 Larry Santa Maria
 Groveland CA

DEAD TREE CONCERNS

Thirty years ago Memorial Day Weekend, we moved into our newly built cabin at Pine Mountain Lake. We have enjoyed it tremendously. Unfortunately, we have come to a place in our lives where we can no longer use our cabin. We put it up for sale last Memorial Day, but haven't been able to sell it because of the condition of the lots surrounding us. Negative comments from realtors and their clients are about all of the downed trees on those three lots around our property. I am appealing to the owners of the following lots to please dispose of these trees as soon as possible so our cabin will be more appealing to prospective buyers.

- Unit 4 Lot 232
- Unit 4 Lot 234
- Unit 4 Lot 235

The Association has already sent letters to all of you about this problem, with absolutely no response. Your prompt action regarding this problem would be greatly appreciated.

Phil and Lynn Grincewich
 Groveland CA

MIKE GUSTAFSON FOR BOARD OF DIRECTOR

It is again time to vote for Board of Directors. I'm supporting Mike to be re-elected because I feel that he truly has the best interest of all property owners in mind when he makes his decisions. I have worked with Mike in the past as an employee of PML as well as on the Lake and Marina Committee. Mike is always well informed on all the issues that he is being presented with.

For a well balanced Board please elect Mike Gustafson.

Larry Woodruff
 Groveland CA

STEVE GRIEFER IS MARVELOUS:

In the 26 years that we have lived at PML, we have never witnessed a finer president and board of directors member than Steve Griever! He communicates with the public, he explains the board's thinking and decisions, he is thorough in his approach to the problems of PML.

This has been a difficult year for our board with the major damage due to the flood. Steve has explained the Ferretti Road problem to the residents. He has met with the Board of Supervisors trying to resolve the repair so that we don't have to open our gates to the

entire public. He has explained the details to us all in nextdoor.com. He has kept us informed of the progress.

This is a "known entity" running for the board. We KNOW he will give the position his sincere effort. Why take a chance on others!

Our vote is DEFINITELY for Steve Griever. He has worked diligently for us and made Pine Mountain Lake even finer!

Dotty and Dick Davis
 Groveland CA

STEVE GRIEFER – PINE MOUNTAIN BOARD OF DIRECTORS

My husband and I are endorsing Steve Griever for his run for the PML Board of Directors.

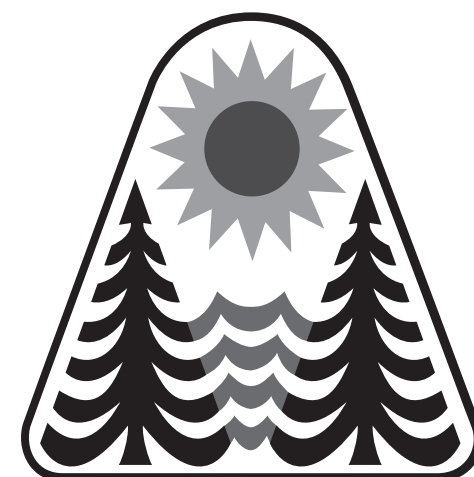
We moved to Pine Mountain Lake in September 2017. We have attended most of the Board Meetings and feel he conducts himself in an excellent manner. Steve does an outstanding job in supporting and protecting our investment in Pine Mountain Lake. He demonstrates a strong concern for the PML Association.

In addition, he has proved himself, to us, an excellent Board President. He runs the meetings in a professional manner while maintaining a friendly atmosphere for all to participate.

We urge you to vote for Steve Griever. He is tried and true. He says what he means and means what he says.

Thomas and June Fullerton
 Groveland CA

NOTE: Letters appear in the order in which they were received.



From the Fringe

Mike Cook – PGA Head Golf Professional

The golf course is finally drying out after our Miracle March and the golf course maintenance staff is working hard to get the course in tip top shape. Here are some of our ongoing activities and upcoming events. Call the Golf Shop 962-8620 to make a reservation or if you have any questions.



com) and on the PMLA website (www.pinemountainlake.com). Call the Golf Shop 962-8620 if you need more information.

2018 PML JUNIOR GOLF CLINICS

Our annual Junior Golf Clinics are scheduled on the following dates: Session 1 on July 5, 6 & 7; Session 2 on July 19, 20 & 21; Session 3 on August 2, 3 & 4. Registration forms are available in the Golf Shop and on the PMLA website (www.pinemountainlake.com) or call 962-8620 for more information.

GOLF CART USAGE RULES

The next time you are on the golf course, you will notice 2 BLUE stakes located on either side of the fairway about 50 yards short of the green on the par 4's & par 5's. These BLUE stakes indicate that at that point the golf carts must return to the cart path and remain on the path around all the greens. From the tee to the BLUE stakes use the 90 degree rule (travel laterally across the fairway). On the par 3's golf carts must remain on the path at all times.

RULES QUIZ

On hole #10, Jim's ball came to rest on the cart path. After determining his nearest point of relief, he removed a number of loose impediments from the area where he intended to drop his ball. Is this permissible?

- a) Yes.
- b) No.

Tee to Green

Rob Abbott – Golf Course Superintendent

Summer officially starts June 21st, and even though we have had a slow start to the heat it seems we are definitely feeling it now.

The hot weather brings a lot of issues for our cool season grasses. The heat brings the need to cool the grass in the afternoons with our irrigation system and hoses, this practice is called syringing turf. We are not trying to water the turf heavily, just simply cool the top of the plant to give it a break from the afternoon heat. While our nightly irrigation performs most of our watering needs this is simply applied to cool the grass during the hottest part of the day. Our daily watering will be ramping up with the heat, and my goal is to keep the course alive and playable through the summer and not have any extensive turf loss.

Originally, when the course was constructed the greens were planted with a variety of Bentgrasses. As the years go by, Poa Annuua (annual Bluegrass) has invaded the greens here as well as most courses in the region. Poa is different than bent in its fertility needs, water needs, and can be more prone to disease. As many as

30 different strains can be growing on a green. It also produces a seed head that makes the greens be a little bumpy and white in color. Poa also requires more spot watering due to being shallow rooted. This is a practice we do every morning prior to play for the entirety of the hot summer months. Another difference between Poa and Bent is the need for fertility. With our new fertilizer program and our frequent applications we should not see the extreme seeding from the Poa that we have seen in the past. Higher fertility levels have benefits that are not apparent for Bent grass. Higher levels of nitrogen are beneficial in reducing Anthracnose outbreaks. Additionally with our new fertilizer program and our frequent applications we should not see the extreme seeding from the Poa that we have seen in past years.

Enjoy your summer of golf. Play well, play often and remember to do the little things such as ball mark repair and raking a bunker following that sand shot so the players behind you can enjoy the same course you are.

UPCOMING EVENTS

Ladies 9 & 18 Hole Golf Clubs
Weekly Play Day – Thursdays

Men's 18 Hole Golf Club
Club Championship
Sat & Sun June 9 & 10

Ladies 18 Hole Golf Club
Pine Tree Invitational
Thurs/Fri/Sat June 14, 15 & 16

Mother Lode Invitational
41st Annual Invitational
Thurs/Fri/Sat June 21, 22 & 23

Men's 18 Hole Golf Club
Blind Draw (2 Man Team)
Wednesday June 27

JUNIOR GOLF PROGRAM

We are expanding our Junior Golf Program this year to include FREE clinics on Saturday afternoons at 1:00 pm. The clinic will be open to juniors of all abilities from the ages of 8 to 17. Call the Golf Shop 962-8620 for more information or to sign-up.

41ST ANNUAL MOTHER LODGE INVITATIONAL

The Mother Lode Invitational is scheduled to be held on Thursday, Friday & Saturday June 21, 22 & 23. The 2 man team event is open to all PML property owners and their guests with an established handicap. Entry forms are available in the Golf Shop, on the Men's Club website (www.pmlmgc.com).

COMMUNITY STANDARDS STATISTICS APRIL 2018

Courtesy Notices	7
Notice of Non Compliance	7
Final Notices	18
Fines	0
Tree Removal Requests	6
Personal Member Assistance	31
Pending Cases	23

PROPANE DISCOUNT PROGRAM

Suburban Propane – As the preferred provider of PML we are happy to provide an exclusive members only program to all residents. Benefits include: Propane at a discounted rate • Tank rental at a discounted rate • Free basic tank installation • Easy payment options • 24/7 Tech support • Flexible delivery options • 24/7 live phone support Contact our local staff for further details and current rates. Suburban Propane Jamestown California (209) 984-5283 • 1(800)PROPANE

NOTARY SERVICE

Anita Spencer, PMLA Notary Public

Prices Listed are Per Signature Rate – PML Property Owners \$10.00 Non-Property Owners \$15.00 • Witness Fee \$5.00 You may call Anita @ 209-962-8632 to schedule an appointment between the hours of 8am – 4pm

GUEST & RENTERS HANDBOOK IS AVAILABLE ONLINE!

You can now view or print the Guest and Renters Handbook from the PML Website. Go to our website at: www.PineMountainLake.com and click on Resources, then scroll down to the bottom of the page and click on Guest and Renters Handbook. This handbook has valuable information for Guests and Renters in Pine Mountain Lake.

PML SAFETY REPORT 2018

	1st Qtr	April	YTD
Guest Passes Issued	3,063	1,239	4,302
Vendor Passes Issued	446	187	633
Temporary Resident Passes Issued	1,001	596	1,597
Vehicles Admitted	30,525	21,579	52,104
Vehicles Refused Entry	475	314	789
Phone Calls Received	10,127	4,607	14,734
Residential Alarm	26	9	35
Animal - Loose	45	20	65
Animal - Impounded	11	5	16
Animal - Dead/Injured	39	13	52
Animal - Disturbance	10	6	16
Animal - Leash Law Violation	0	0	0
Public Assist	61	23	84
Welfare Check	18	0	18
Transport	5	5	10
Traffic Hazard	5	6	11
Traffic Control	0	2	2
Excessive Speed/Reckless Driving	18	7	25
Gate - Tamper	1	0	1
Gate - Follow Through	54	13	67
Gate - Malfunction	46	9	55
Gate - Struck by Vehicle	6	5	11
Control Burn Reported	286	142	428
Fire Safety - Smoke Complaint	12	2	14
Residential Disturbance	2	1	3
Amenity Burglary	0	0	0
Residential Burglary	4	1	5
Grand Theft	0	0	0
Petty Theft	0	2	2
Trespassing	3	2	5
Vandalism	0	1	1
Property Damage - PML	6	1	7
Property Damage - Resident	0	1	1
Illegal Dumping	0	0	0
PML Regs Violations Resident	11	6	17
PML Regs Violations Guest	5	1	6
Vehicle - Citation Issued	8	8	16
Vehicle - Accident PML	1	2	3
Patrolling Unit	2,200	725	2,925
Amenity Security Check	7,016	2,409	9,425
Residence Security Check	498	101	599
Monitoring Tennis Courts	3	5	8
Weapon Violation	0	0	0
Fixed Post	5	1	6
Courtesy Notice Issued	13	7	20
All Other Fees Collected	\$53,781.60	\$29,815.09	\$83,596.69

Main Gate personnel are available
to issue gate cards on
SATURDAY & SUNDAY FROM 8:30 AM TO 4:30 PM.
Please call in advance to schedule an appointment
at 209-962-8615

 **CHECK OUT YOUR
GROVELAND LIBRARY**

TUESDAY-THURSDAY — 1:00-6:00PM
FRIDAY-SATURDAY — 10:00AM-2:00PM



BOOKNOOK
USED BOOK SALE
EVERY SATURDAY
9:00AM – 2:00PM

VISIT THE LIBRARY FOR A GREAT
SELECTION OF BOOKS, MAGAZINES,
NEWSPAPERS, VIDEOS, CDS, DVDS.
ALSO COMPUTERS AND FREE WI-FI!

THE ELECTION IS COMING!

**BALLOTS FOR THE 2018 PMLA BOARD OF DIRECTORS
ELECTION WILL BE MAILED ON JULY 9, 2018**

If you have moved or changed your address
within the past year, please check with the PML
Administration Office at (209) 962-8600 NOW, to
make sure we have your correct address on file.
This will ensure that you receive your ballot in a
timely fashion.

VOTE VOTE VOTE VOTE VOTE

WELCOME TO THE
Hidden Jewel of the Foothills
**PINE MOUNTAIN LAKE
 GOLF & COUNTRY CLUB**

12765 MUELLER DRIVE • GROVELAND, CA. 95321



YEAR-ROUND PLAY • OPEN TO THE PUBLIC
 Driving Range, Chipping & Putting Greens

Mountain Golf  *at its Finest!*

Hidden Jewel Rate
\$45

Seven days a week after 11am
 Includes Green & Cart Fees and Range Balls

Call **209.962.8620** for reservations
 up to 10 days in advance

Valid for up to 4 Golfers • Coupon expires 12/31/2018
 Not valid for tournaments • \$45 rate is per golfer

ORGANIZED BY FRIENDS OF THE LAKE

**Pine Mountain Lake
 Boat Parade**

July 7 at 6:00pm



THEME: YOUR FAVORITE MOVIE

Boaters:
 Sign-up at the Marina; no fee • Line up at 5:30pm at the dam
 Prizes for best decorations • Any questions, call 962-6336

**Pine Mountain Lake
 2018 Election
 Candidate Forum
 and
 Weanie Roast**

**Sunday, June 10th
 at the Lake Lodge
 10:00 AM to 2:00 PM**

Sponsored by:



**Candidate Forum
 10:00 – 11:30 AM**



**Meet & Greet and
 Weanie Roast
 Starts at 11:30 AM**

For more information contact:
 Susan Dwyer – ROOFBB President
smdwyer@sbcglobal.net

**COSTA'S
 TREE SOLUTIONS**



STEVE COSTA • OWNER
 FULLY INSURED/BONDED C.C.L. #1001392



209-962-4468
 CELL 209-768-4469
 CERTIFIED ARBORIST #WE7496A

COMING SOON TO THE GRILL AT PML

Thursday, June 21, 2018 • 5pm to 7pm

Wine Tasting & Dinner Buffet

Featuring Southern Wine & Spirits

Only \$27

Per Person Plus Tax

Menu

Tri-Tip



RESERVATIONS REQUIRED (209) 962-8638

Dads and Grads

Jay Reis – Country Club Manager

The Grill is the perfect place to celebrate your new graduate or Father's Day. Be sure to call ahead for reservations. We are open for lunch Tuesday through Sunday 11 am to 3 pm. We serve breakfast on Saturday from 8 am until 11 am and Sunday's



limited menu during these large events.

The Grill Renovation is scheduled to start on October 1, 2018. We are moving along, we have hired our General Contractor and are waiting for permits from the county.

The 19th Hole Lounge –

8 am to 11:30 pm. Dinner service will be Tuesday, Wednesday, Thursday and Sunday from 5 pm to 9 pm and Friday and Saturday 5 pm to 9:30 pm. The Grill is closed on Mondays but the 19th Hole Lounge is open.

Our Wine Tasting Dinner will be held on Thursday June 21 from 5pm until 7pm. Make sure to call for reservations as this is a reservation only event.

We have our 2 largest member golf tournaments this month the Ladies Pine Tree Invitational is the weekend of the 15 and 16. And the Men's Motherlode Invitational is the following weekend on the 22 and 23. The Grill will be serving a

Here is our live music schedule for June. We have live music every Saturday night from 8pm until midnight. The lounge is open Monday through Friday from 10 am. Saturday and Sundays we open at 8am.

- **Friday June 1** – Karaoke
- **Saturday June 2** – Highway 99
- **Saturday June 9** – Kool Shifters
- **Saturday June 16** – Groovy Judy
- **Saturday June 23** – Plan B
- **Saturday June 30** – The Blue Band

Your questions and suggestions are always welcome, contact me at clubmgr@pinemountainlake.com.

Recreation Update

Ryan Reis – Recreation and Seasonal Operations Manager

THE MARINA:

As of Memorial Day Weekend, the operating hours to the Marina Store changed to 7am – 7pm; 7 days a week. The Lakeside Café hours are 11am – 6pm Sunday – Thursday and 11am – 7pm Friday and Saturday. For any questions you have, please call our Marina Store at (209) 962-8631.

As most of you have seen, we experienced a lot of damage to Dock B down at the Marina. As of May 11, we've received a ball park estimate from a contractor who specializes in dock repair. Our insurance provider has received this estimate and we plan to begin work in May. The estimated amount is over \$40,000 and there is a potential for additional work once we start repairs. We appreciate everyone's patience during this time. We'll continue to update everyone as soon as we have more information. In the meantime, if you have any questions, please feel free to call me at (209) 962 – 8604.

FIREWORKS:

The Firework Event at Pine Mountain Lake will be on July 7 this year. Per the resolutions, the Firework Event is held on the closest Saturday to the July 4 holiday.

Wristbands are \$8 for adults and \$1 for children. Property owners are entitled to 2 free wristbands. For your free wristband, please contact the Administration office at (209) 962 – 8600. Per our resolutions, to purchase a wristband, you must be a property owner or renting a home within Pine Mountain Lake Association. Property Owners can purchase wristbands for guests, but guests cannot purchase wristbands. For more information on purchasing wristbands, please see resolution 95.03 on our Pine Mountain Lake Association website or call me at (209) 962 – 8604.

CHANGES FOR 2018:

The Administration office will be open on the morning of the event to sell wristbands. For more questions, please call (209) 962 – 8600.

The shuttle will start at 9am this year.

THE LAKE LODGE:

Anybody that has been in our kitchen this year, you may have noticed that we've experienced some issues with our dish washer. I'm happy to report that the dishwasher is up and running and better than ever. Our maintenance team did a great job

Newly Improved Network!

FASTER! STRONGER!

Rebuilt To Better Serve You!

NEW PLANS UP TO 100% FASTER!	3x2 \$29.95 WAS 1.5x1	5x2 \$49.95 WAS 3x1	7x2 \$69.95 WAS 5x1	9x2 \$89.95 WAS 7x1
---	------------------------------------	----------------------------------	----------------------------------	----------------------------------

Same Price, More Speed, Unlimited Data!

BROADBAND INTERNET & VoIP

CONIFER

communications

866-378-8393

Conifercom.Net

adding in a new booster heater to replace the broken one. In addition, we've updated some of the plumbing at the dishwasher to ensure we get hot water quicker and it lasts longer.

THE SWIM CENTER:

The Swim Center has a new street address. Previously, the PMLA Swim Center shared an address with the Grill and Pro Shop building. The new address is 12755 Mueller Drive, Groveland, CA 95321.

The PMLA Swim Center opened on May 12. The hours to the pool are:

Water Aerobics (Property Owners Only):
8am – 10am

Property owners and their escorted guests: 10am – Noon

Open to guests, renters, and property owners: Noon – 9pm

Please note to enter the pool, you must show the proper identification. As a property owner,

please show your gate access card. If you do not have one, we do have a list of property owners and can check your Driver's License. For any questions on obtaining a gate access card, please call the Pine Mountain Lake Administration office at (209) 962 – 8600.

For guests, the Main Gate will give you a pass when you check in with them. This is the skinny green pass to hang from your mirror. Please show this to the pool attendant upon entry.

If you are renting for vacation or are a long term renter, please either show your gate access card or the orange pass that you receive from the Main Gate.

For any questions, please call our pool staff at (209) 962 – 8634.

We will have 3 Pool Social events this summer. We'll be serving hot dogs and playing Bingo. The first Pool Social will be on June 16 from 5pm – 8pm. Hot Dogs are \$1 each and Bingo cards are \$0.50 each. For any questions, please call (209) 962 – 8634.

ADMINISTRATION



LOCAL PARTNERS. LIMITLESS POTENTIAL.

At Yosemite Bank, our local roots allow us to understand your needs and challenges. With an array of enhanced products, such as treasury management and higher lending limits, we deliver the highest level of personalized service and solutions when you need it and where you want it.



WWW.PREMIERVALLEYBANK.COM.

THE COMMUNITY BANK SERVING THE SIERRA

40061 Hwy. 49
Oakhurst, CA 93644
559.683.6442

18580 Main Street
Groveland, CA 95321
209.962.7853

5171 Hwy. 49 North
Mariposa, CA 95338
209.966.5444



Peter Fischer Construction

peterfischerconstruction@gmail.com



12969 Clements Rd
Groveland, Ca. 95321
Phone/fax 209-962-6199
License# 658830

peterfischerconstruction.com



Services - No job is too big or too small

Custom Homes
Remodels
Green Building
Porch or sunroom
additions
New Roof
Carpentry
Concrete

Hardwood floor installation
Masonry
Painting EPA CERTIFIED
Fireplaces / new or remodeled
Solar panels
Deck replacement or repair
Elasto-Decking
Window/Door replacement

For our customers convenience we accept credit cards

**\$25
DISCOUNT**

Mention this ad for a discount on cleaning services.

Minimum charge applies.



Voted
Best
Carpet
Cleaning
Service

ServiceMASTER Restore

The clean you expect.

The service you deserve.

DISASTER RESTORATION SERVICES RESIDENTIAL & COMMERCIAL CLEANING

Carpet & Furniture Cleaning • Steam & Dry Cleaning
Deep Soil Extraction • Spot & Odor Removal
Oriental & Fine Rug Cleaning • Ultrasonic Blind Cleaning
24 Hour Emergency Service • Water Removal • Wet Carpet Care
Fire & Smoke Restoration • Vandalism Cleanup
Structure Drying • Sanitizing



209-532-1700

17330 High School Road • Jamestown CA 95327



Serving Tuolumne,
Calaveras & Amador Counties

ServiceMasterSierras@mlode.com • www.ServiceMasterSierras.com

PINE MOUNTAIN LAKE ASSOCIATION PRESENTS

Kids Fishing Days

June 9 • July 14 • August 4



Where: Pine Mountain Lake Marina
When: 6:30am – 9:30am
Phone Number: (209) 962-8631

Kids 7-15 can come to the Marina for our Kids Free Fishing Day Event. Maximum boat load is 6 children so please call in advance to reserve your child's spot.

Fire Safety

Sarah Ruhl – Community Standards Director

DEFENSIBLE SPACE INSPECTORS ARE OUT AND ABOUT TO EDUCATE & INSPECT THE DEADLINE FOR FIRE SAFE COMPLIANCE IS NO LONGER JULY 1ST PINE MOUNTAIN LAKE IS NOW A "YEAR ROUND" FIRE SAFE COMMUNITY

Fire season is here and it may be another busy year. A new federal report by the National Interagency Fire Center concludes that the potential for large wildfires in California is due to "above average" factors including:

- Weather and fuel conditions (warm and dry through August)
- smaller snowpack to melt this year
- high grasses and other vegetation
- increasing potential for thunderstorm activity

The report notes that last year the US Forest Service's wildfire suppression costs reached a historic \$2.4-billion, and 2018 is looking to be much the same.

Pine Mountain Lake is taking a proactive approach to Fire Safety. Our goal is to educate our community and provide information on being, and staying fire safe. This year we have improved our inspection process by becoming Duly Authorized Agents of CAL FIRE through the VIP (Volunteers in Prevention) program. All

inspections are made based on priority and reports from other members.

The inspection form you receive in the mail or that you are handed in the field the day of your inspection will be a CAL FIRE NOTICE OF DEFENSIBLE SPACE INSPECTION FORM. It will advise whether you are compliant or non compliant and will also show a date of re-inspection should one be needed. You will have 30 days between inspections to correct the violations noted. The first and second inspections will be performed by the VIP defensible space inspectors and should you require a third inspection, it will be performed by a CAL FIRE Prevention Officer.

Answers to many general defensible space questions can be found by visiting our website at www.pinemountainlake.com or by visiting our self help center located in the foyer of the Administration building. Defensible space is the law and we all must do our part to make our community fire safe for ourselves, our neighbors, firefighters defending our homes in the event of a wildfire, and for the wildlife.

MyMotherlode.com "Gearing Up For A Busy Fire Season" 5/19/2018 BJ Hansen, MML News Director

After the Deluge

Tom Moffitt – Maintenance Department

In the aftermath of the March 22nd storm, the heavy rains, the enormous damages, the wide-spread cleanup of debris, the sheer magnitude of repairs, comes the assessment of just who is going to fix all this mess?

The Maintenance Department has continued to work on the task of the previous disaster, the tree mortality problem. Planning for the removal of the hundreds of dead trees that are on the ground in many greenbelts has been foremost. The progress had been substantial before the heavy rains hit us. The crews were completing the timber removal cleanup and mitigation on upper Big Creek. Log decks were removed, debris piles burned, erosion controls placed, when the weather changed for the worst.

The maintenance crews adapt quickly during all storm events. We all go on storm duties: clearing of debris from drainage

inlets and roads, removing downed trees from roadways, snow plowing, restoring traction on icy roads, you see it, we do it. Even with the work underway with the clearing of the drainage inlets and the drainage ditches, the rain event was simply overwhelming.

The Maintenance Department's primary concerns are PML roads and amenities: road shoulders, road embankments, road culverts, pavement structures, drainage structures, greenbelts, common areas, recreation sites, PML buildings, the lake, dam and spillway, upper and lower Big Creek and the bridges. Everywhere there is erosion. What are the most severe areas of damage? What can we accomplish in the shortest time, with all utmost due diligence, with the greatest impact, with limited resources by assigning degrees of urgency...triage. We are in triage mode

Our crews went about the work with haste, getting loads of rock

moving, dropping boulders into eroded embankments to keep the roadway from collapsing, excavating tons of debris from culverts and clearing those major drainage collection spots, removing fallen trees and removing timbers that have blocked ditches and culverts.

Hundreds of labor hours planned for seasonal recreation preparations, site improvements and fire abatement have been allocated to the post storm clean-up tasks. Work was prioritized. By the first of May, the most popular seasonal recreation amenities were readied for use. Recreation sites such as Fisherman's Cove, the Horseshoe Pits and the lower Campground will require major reconstruction. The lower Campground? The dirt campsites are gone, it is bare rock, the horseshoe pits, volleyball court and tetherball group camping are gone. Concrete tables, steel BBQ's stands set in concrete...destroyed or gone. Piles of

rock and trees everywhere.

In the aftermath of the disaster, the damages are being tallied, sites are being inspected, mapped and prioritized. Our Pavement Management Consultants will assist us with the overall damage assessment. The consultants are pavement management specialists, with engineers who are familiar with all of the PMLA roads and roads history. They will inspect the roads, road shoulders, culverts, drainage structures and embankments, and create a repair plan and integrate the repairs with our Pavement Management Plan.

The vast amount of damage can seem over-whelming. The PML Streets Crew does not have the ability to address each and every repair, but they are working on it. We appreciate the support of the membership and positive messages. We ask that everyone be patient, eventually, we will get back to our normal maintenance duties, but it will take a while.

Marcee Cress

CANDIDATE FOR THE BOARD OF DIRECTORS

My name is Marcee Cress and I am a candidate for the PMLA Board of Directors. My family has been coming to PML for our yearly vacation for over 20 years and we loved it so much that my husband and I moved here in 2012, with my folks moving in with us in 2016. I will be a good Board member because I am passionate about the community, people, volunteer opportunities, lake, wildlife and all the other amenities and groups. I am energetic, flexible, fair, community oriented, able to listen and provide feedback, skilled at working with people and like to get things done.

AS A BOARD MEMBER I WOULD:

- Make decisions that are appropriately representative of the homeowner's desires, operate on behalf of the community and be compliant with Davis-Stirling.
- Ensure that our budget and Reserves are healthy to continue with routine

maintenance and flexible enough to solve issues caused by unforeseen emergencies without escalating costs.

- Maintain the amenities in a timely fashion to preserve the pristine condition, and provide reasonable upgrades when required
- Establish a communication vehicle to facilitate listening to the community, responding to their needs, and keeping the homeowners informed

CURRENTLY I AM INVOLVED IN

- The Lady's 18 hole golf group
 - o Co-captain 3 years
 - o Handicap chair 2 years
 - o Treasurer currently
- ROOFBB's, an organization that benefits the community
 - o Currently co-treasurer

- o Participate in fundraising (Monday Night Football, Golf Tournament, etc)

- I regularly participate in the Ladies Club and several other groups

EXPERIENCE: OVER 30 YEARS AT IBM

- Manufacturing Engineer: analysis, design and implementation of multiple high dollar projects while tracking the committed budget and return on investment (ROI)
- Systems Engineer: Technical side of a marketing team, providing in depth system and process analysis, solutions for described issues, demonstrations, and education classes
- Team Lead for an Expert System programming group: coordinated the efforts of more than 20 people worldwide, gathering information and prioritizing projects

- Product Engineering Manager: directing solutions for the business needs, working with personnel, solving issues, creating evaluation metrics, and other HR matters

- ASIC Project Manager: interface between IBM and customers to establish a skilled team to create multi-million dollar ASIC chip designs. This included managing multiple designs for several customers at a time, keeping the project on target and within budget.

EDUCATION:

- BS Industrial Technology
- Certified Project Management Professional (PMP)

Thank you

Marcee Cress

Marcee Cress

Candidate for PML Board of Directors



I am a full-time resident of PML for 5+ years and have vacationed in this community for over 20 years. With 30 years experience at IBM I have managed projects with proven return on investment (ROI) and within budget. I have held positions as a Certified Project Management Professional, team lead, technical marketing, and people management. These skills have taught me to interact well with people, be a team player, and utilize my strong communication skills. You'll find me out golfing , fundraising, and participating in PML's many active social groups.

Using my project and people management skills I will:

- Drive board decisions that represent the property owners
- Ensure budget and reserves are healthy while keeping costs from escalating
- Require timely maintenance of amenities with reasonable repair and upgrades
- Create a communication vehicle to facilitate listening to the community, responding to their needs, and keeping homeowners informed

**Giving Homeowner's a voice
Say YES to CRESS**

For more information visit with me at www.pmlrocks.com

Steve Griefer

CANDIDATE FOR THE BOARD OF DIRECTORS, PINE MOUNTAIN LAKE

Greetings friends and neighbors. My name is Steve Griefer and I'm running for the Pine Mountain Lake Board of Directors. My job as a California Highway Patrol Officer serving the Groveland, Don Pedro, Sonora and outlying areas brought me and my wife, Maureen, to Groveland from Boulder Creek, CA. We enthusiastically chose to make Pine Mountain Lake our home.

I started my community service with the Boy Scouts of America, where I earned the Rank of Eagle Scout credentials and then became a Scoutmaster. While working with the Scouts, I created, developed, and directed the Catalyst Foundation, a "not for profit" organization that raised funds to help high school students be able to afford to attend college through utilizing savings bonds.

I then achieved my goal of becoming a law enforcement officer by being selected to attend the California Highway Patrol Academy. I graduated from the rigorous 27 week training program and was appointed a CHP Officer. I've been an Officer for 15 years, and the last six years, here, serving our community.

After getting settled in Pine Mountain Lake, I became involved with our community. Working with the Groveland Area Partnership, I developed the Groveland Gears and Grooves Triathlon. My beliefs are simple. I believe in our community, and I believe in doing everything possible to our community safe, secure, and affordable.

I believe that all public organizations should be transparent.

- I believe that the PML Board of Directors works for the membership of Pine Mountain Lake.
- I believe that all budgets must be balanced.
- I believe we need to learn to do more with less.

Once re-elected, I will continue to work with my fellow directors and the PMLA to:

- Make sure the amenities are preserved, maintained, and expanded.
- Make Pine Mountain Lake a year round destination.

- Raise property values by encouraging new buyers into our real estate market.
- Improve communication with Pine Mountain Lake property owners through the use of social media.

I am experienced in working with diverse groups of people. I know how to bring people together to work toward common goals and to solve problems. I may not always have the answers, but I know where to find those who do.

I don't play favorites and when re-elected, I will work with and for ALL of the people of the great community of Pine Mountain Lake. I look forward to serving you on the Board of Directors.

Re-Elect Steve Griefer

For PML Board of Directors – A Strong Voice for the People

Safety • SERVICE • Security

- No agenda other than to **work hard** for all the members of our great community.
- Continue to **promote PML**, it's interests to our property owners, and the local community.
- Promote **transparency** between the membership, the Board and the Administration.
- Continue to work on holding management **fiscally responsible**.
- Used my background in Law Enforcement to work with the membership to create the **Safety and Security** Committee, which includes the **VIPER** program, to ensure our community is **prepared and safe**.
- **Dedicated** on moving PMLA forward into the 21st Century. Including updating our policies and procedures to reflect new technology and trends within our community and society.
- Strongly encourage, and **promote new ideas** that will benefit our association.
- Worked hard to identify issues within our association and to find **creative ways** to make **positive changes**.
- Please **re-elect me** to work for you on our **PML Board of Directors**.



Mike Gustafson

"PROTECTING THE FUTURE OF PML"

I am a candidate for the PML Board of Directors because I believe that I can make a positive contribution to our great community and ensure sound, responsible management of our resources.

You may know that I have previously served on the Board, and gained valuable experience about what works and what doesn't, the laws applicable to Homeowners' Associations, the budget process, etc.

These have been productive years for the Board. For example, during my tenure we addressed the following important issues – all designed to enhance homeowner experiences and improve property values:

- built the new marina building and café
- built a new golf cart barn, remodeled golf locker rooms and transitioned to all electric carts
- improved the tennis courts
- introduced pickleball and created their courts

- made improvements to the swimming pool
- conducted homeowner surveys and developed a strategic plan to guide future decisions
- created a safer fire policy and conducted extensive fire abatement work
- managed finances carefully, controlled costs, controlled headcount and insurance costs, and established a reserve fund to avoid the need for special assessments

PML is a beautiful place with several different constituent groups – fulltime residents, part-time vacationers, and rental property owners. It's important that the Board balance everyone's needs and interests. We must maintain and improve our aging amenities; after all, that's why we all bought here. Allowing amenities to deteriorate would reduce our home values.

I have served on the PML finance committee, and am currently board liaison to the lake and marina and

smoking committees. I also chair the long-range planning committee which focuses on our longer-term needs.

I've been a homeowner at Pine Mountain Lake since 1991, and a full-time resident since 2003. Virginia and I began as weekenders and then happily retired here. I am also a pilot and a flight instructor, and I love spending summer afternoons on the lake on our electric boat. Virginia and I also volunteer at Tenaya Elementary School, the Groveland Library, and Camp Tuolumne Trails.

My professional career was in engineering management for tech firms in Silicon Valley. As an engineer, I have a very practical and logical mind; I form opinions based on facts, not emotions or politics. I like working with people and am a good communicator. Most importantly, I have no specific agenda other than good management and maintaining a great experience for all PML homeowners.

If you believe we need an intelligent, dedicated, well-organized, and non-political director for PML's future, please vote for me. I look forward to talking with voters throughout the summer. In the meantime, you can reach me at mlgpilot@yahoo.com with any questions or comments.

Mike Gustafson

"Protecting the Future of PML"



"I will serve ALL homeowners."

Who I am:

- Retired Silicon Valley engineer and manager
- Experienced PML board member
- Advocate for ALL property owners
- Advocate for protecting our PML investments
- Non-political problem-solver

What I stand for:

- Balancing the interests of all homeowners
- Planning and budgeting for the long-term
- Maintaining and improving our amenities
- Sound financial management
- Decisions based on facts, not emotions



Vote for Mike!

Tom Hernandez, Jr.

My name is Tomas Hernandez Jr, homeowner in PML for the past 23 years and a full-time resident for the past 8. I am interested in running for and filling a vacancy on the PML Board of Directors.

I was born in 1959 and spent the first few years being raised in Campbell, California. My family moved to San Jose in 1964, where my 4 sisters and I attended elementary school, middle school and high school. I graduated from Camden High in 1978. Upon graduation I joined Intel Corporation and began my 30 year career with one of the most recognized companies in the world. I started out in Shipping and Receiving and became a supervisor at the age of 21. The management positions I held included: Warehouse Supervisor (120ksqft), Precious Metals Supervisor (\$8million), Chemical Warehouse Manager (38ksq.ft incident free), Logistics Manager (World Wide), Inventory Control Manager, Purchasing Manager, Security Manager (24x7, 2 campuses), Facilities Manager (50 Engineers/Technicians-Mechanical/Electrical/HVAC/DI Water), Mergers and Acquisitions Program Manager, where I traveled extensively to other countries to assess buildings, sites, environmental requirements and Real Estate to-due diligence.

We purchased our home in Pine Mountain Lake in 1995, and in 2010 we opted to reside in PML full time. We started a company supporting the community named SoulBeGood Residential Support Services. We joined the Chamber of Commerce, the Residence Club and the Tennis Club. We have found very warm, energetic and friendly people in PML and the surrounding Groveland areas.

I and Gina (my wife) enjoy giving back and have always given of our time to be volunteers in our community.

With my experience and track record, I am confident that I can add value and contribute to this wonderful Community we call "Living the Dream in Pine Mountain Lake". Based on observations and home owner's inputs, I have submitted suggestions on cutting cost, identifying liabilities in contracts, reviewing the PML emergency plan and submitting changes-maintenance improvements to better our community. If you as a Home Owner are truly concerned with the rising costs of assessments, operational efficiency and the Safety of this community, I would appreciate your vote.

Sincerely,

Tomas Hernandez Jr

Tomas Hernandez, Jr.

YOUR CANDIDATE FOR PML BOARD OF DIRECTORS



PML Homeowner for 23 years – Fulltime resident for 8 years

30 year career with Intel, one of the most recognized companies in the world

Management Experience – Domestic and Internationally

Local Business Owner

Community Volunteer

Involved in our Community

I want to cut costs to stem the rising assessments

Streamline Operational Efficiency and Safety

Make Pine Mountain Lake a Better and Safer Place for ALL Members

I am Tom Hernandez and I would appreciate your vote

Paint Discount Program

Kelly-Moore Paint Company has been serving Pine Mountain Lake for 40 years. They want to remind PML property owners of the discount program that has been established for them. This program offers a generous discount on Kelly-Moore paint and accessories such as rollers, brushes, tape, caulk, etc. Delivery is available on orders of 10 gallons or more. This special discount opportunity

is available with proof of Pine Mountain Lake membership (Member ID Card) on a cash or credit/debit card basis only (no checks please).

Although this program was initiated through the Sonora store, it will be honored at any Kelly-Moore Paint Company store. If you are interested in this discount program, call your local Kelly-Moore Paint store for details.

Contractors Performing Work in PML are Required to Follow PMLA Rules & Regulations

The following are some **"common violations."** Please do your part to maintain a harmonious environment for all to enjoy. Remember: The PML property Owner is held responsible for those they hire.

VEHICLE USE:

1. Exceeding the posted speed limit
2. Driving in a reckless manner
3. Following another through an access gate or allowing others to follow you through
4. Parking on street (road shoulders OK)

PERSONAL CONDUCT:

1. Allowing loud music
2. Uttering abusive language or conduct that would be offensive to a reasonable person
3. Using the property Owner's gate card or clicker

WORK RELATED CONDUCT

1. Starting work before 7am or continuing after 7pm
2. Allowing dogs at construction sites
3. Performing work on Sunday
4. Cutting down a tree in excess of 5" without PMLA approval
5. Trespassing on neighboring property
6. Using neighbors water or electricity without written permission
7. Leaving construction signs longer than 5 days after work has been completed
8. Nailing signs to trees
9. Storing building materials on street or easement
10. Beginning exterior construction without PMLA approval

Call Terri Thomas, ECC Coordinator
@ (209) 962-8605 with questions.

Make PML your
ONE-STOP-SHOP
for all your gift giving!

Pick up a gift card for:

GOLF • GOLF SHOP APPAREL & ACCESSORIES
THE GRILL • HUNTING & FISHING LICENSE VOUCHERS
Gift cards are available at the Administration Office,
The Grill, and at the Pro Shop

BEFORE YOU BEGIN CONSTRUCTION ON YOUR LOT

The Declaration of Restrictions (CC&Rs) states that no construction of any type (new construction, driveways, grading, lot development, etc.) can be performed without prior approval from the Environmental Control Committee (ECC).

Failure to obtain approval could result in the stoppage of work or even fines, and nobody wants that to happen. Inspections are made every Tuesday and reviewed by the Committee every other Thursday, so we can accommodate our members.

Please contact ECC before you begin any type of construction at 209-962-8605

FIREWOOD CUTTING IS HERE

PML SLASH AND COMPOST SITE

OAK AND CEDAR REQUIRES A \$20 PML WOOD CUTTING PERMIT

WOOD CUTTING PERMITS AVAILABLE AT THE MAINTENANCE FACILITY

PINE AND FIR AVAILABLE FOR FREE CUT & HAUL

FOR MORE INFORMATION PLEASE CONTACT SUSAN AT

(209) 962-8612

BETWEEN THE HOURS OF 7 AM TO 2:30 PM, M-F.

All PMLA Homeowners Email Opt-in Program

The Association is pleased to offer a money saving program available to all PMLA property owners. This program allows you to receive many of the documents we are required to provide to you via email. This option is important because:

Cost Savings – The Association is spared the expense of printing and mailing many documents to those property owners who sign up.

Environmental Savings – Less paper means less trash and reduced damage to the environment both in the disposal and production of paper and envelopes.

Reduced Clutter – By receiving documents via

email there is less paper for you to deal with. All documents can be saved on your computer and viewed at your discretion.

Timely Receipt – Documents sent electronically are received in minutes as opposed to the days it takes for regular mail to arrive.

If these sound like good reasons to you, please sign up for the Document Email Program today using the attached form. Simply return the completed form to the Administration office at your convenience.

If you have any questions on this program please feel free to give us a call (962-8600) and we will be happy to explain the details and the advantages.

Please read the Terms & Conditions for the email opt-in program on the website, www.pinemountainlake.com under the **Resources/Forms > Opt-In Email Program.**

Mail form below to:

Pine Mountain Lake Association

19228 Pine Mountain Drive • Groveland, CA 95321

YES, I WANT TO ENROLL IN PMLA'S EMAIL STATEMENT AND DOCUMENT SERVICE. I ACKNOWLEDGE AND AGREE TO THE TERMS AND CONDITIONS SET FORTH ABOVE AS A CONDITION FOR PARTICIPATION IN THIS SERVICE.

PMLA Account Number: _____ Unit/Lot #: _____

Name: _____ Phone #: _____

Address: _____

Email Address: _____

Signature: _____

HOMES ON THE HILL

**YOUR GUIDE TO
REAL ESTATE IN THE
GROVELAND AREA**

**TWO PROPERTIES FOR SALE
VACATION OR PERMANENT HOME
AND LOT ON A CUL-DE-SAC!**

13333 Mule Ct

\$270,000 - On private cul-de-sac & edging the Pond. 4 bedrooms, 2 baths, 2 fireplaces, 2 stories, large new deck & patio, laundry, bar. House sold as is and with furnishings.



13340 Mule Ct

\$79,000 - 1 1/3 acres bordering Bass Pond



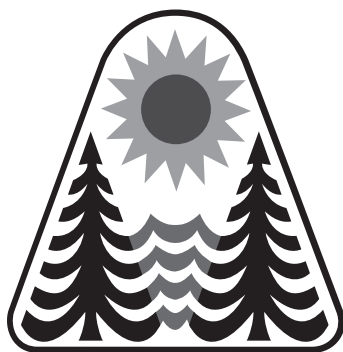
**MIRABELLA
PROPERTIES**

Marlene Williams, Broker

CalBRE# 00882815

408-835-0061

marlene@mb-props.com



YOSEMITE GATEWAY PROPERTIES

18731 Main Street • PO Box 606 • Groveland CA 95321

CALL TODAY TO LIST YOUR HOME

GREAT LOCATION LOT



Gentle upslope .56 of an acre. Overlooking greenbelt. **Unit 4 Lot 16**
Only \$9,995

LOOK NO FURTHER!!



12873 Cresthaven, 3/449
Well maintained 3/2 single level home w/garage. Level lot & parking for RV, boat or guest vehicle. **\$239,000.**
Call June for details.

LOTS FOR SALE

1 Acre Lot on Ferretti Rd, 6/233
Only \$12,500



**PEOPLE WILL SEE
YOUR HOME
IF YOU LIST IT HERE!**

YOUR REALTORS



GEORGE VOYVODICH

Broker/Owner
209-962-4185 Office
gvoyvodich@gmail.com
BRE license 01080130



JUNE DEE

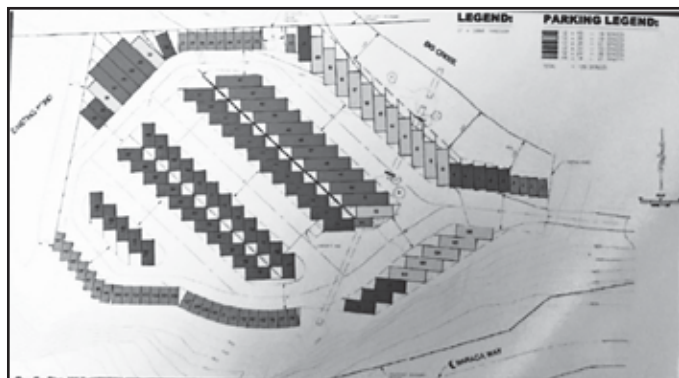
Realtor/GRI
209-962-5190 Office
209-962-7060 Home Office
209-770-5190 Cell

junedee@ymail.com
groveland-real-estate.com
BRE license 01700083

YosemiteGatewayProperties.com • (209) **962-5190**

Deardorff Realty

OPPORTUNITY OF A LIFETIME!



127 spaces for "dry storage", (boats, R.V'S, etc.) located adjacent to Pine Mt. Lake, a gated community in Groveland, CA. The demand is high for this kind of property. Permit needs to be picked up and construction started. Call agent for development information. Property consists of 27 acres adjacent to the campground at the end of Baraca Way. There is no property in Pine Mt. Lake available for storage of your boat, motor-home, camper, etc. Plans call for secured area with cameras visible from your home. Why not own it? Park your RV and collect all the rents.

Priced for a quick sale at only **\$259,000**

Contact Marilyn Deardorff-Scott - BRE 00396888

209-962-0718

*"Call me for your
real estate needs"*



Liz Mattingly • Broker Associate

BRE#00709618 • Public Notary Commission # 2137020

209-962-1129 • 209-840-8020 Cell

18687 Main St., Suite E

Groveland, CA 95321

lizmatre@gmail.com

RE/MAX
Yosemite Gold
Each Office Independently Owned and Operated

Patricia (TISH) Fulton
REALTOR® / PROPERTY MANAGER
BRE #00760019

18688 Main St. P.O. 808
Groveland, CA 95321

Phone: 209-962-0837
Office: 209-962-4080
Cell: 209-985-0216
Email: Tish.realestate@gmail.com



CHRIS H. LAKE
BRE 00946632
209-768-6156

chrishlake@gmail.com



GINA GIAMPIETRO HERNANDEZ
BRE 0122655
408-506-6944

GinaGHRealEstate@gmail.com



Work With Us – The Best in the Business!

Lake Homes, Golf Crs Homes, Country Homes, Cabin Homes, Newer and Fixers

YOSEMITE AREA REAL ESTATE

18634 MAIN ST. STE 1 GROVELAND

View listings at www.YosemiteAreaProperties.com

PAUL S. BUNT REAL ESTATE BROKER BRE 01221266



SPECTACULAR RUSTIC ESTATE



12430 MILLS ST U8/L47 – \$599,999 4bd/3.5ba, 3 car oversized gar approx. 1300sf w/wrkshp. Almost 3700sf custom living, knotty pine flrng/carpet, open bm clngs. Huge mstr ste & lg bdrms. Living rm w/vltd clng, wet bar, brick gas f.p. Mstr – gas f.p., private covered deck. Lg chef kitch w/granite ctrs, gas stove. Lots of on-site parking. Tons of storage under home.

HORSE PROPERTY



13326 MULE CT U12/L177 – \$475,000 2014sf Ranch living in PML. Great rm w/f.p., vaulted clngs. 3bd/2ba w/upper mstr ste. 2 car attached gar. Sep. lg art studio/shop w/heating. 2 car detached gar w/full ba & 3 stall barn & tack rm attached. 1.21ac fenced for horses. Almost 1ac across street also for sale w/pole barn, round open corral/completely fenced. (parcel \$99,000)

LAKEFRONT GETAWAY



19604 PINE MOUNTAIN DR U1/L428 – \$498,000 Rustic décor A-frame cabin on lake w/charm. Grt location, 3bd/2ba/2car gar + 2car carport/deck patio. Hot Tub, Sauna, dock, bocce ball ct, outdoor movie theatre, lakefront patio, fire pit, serving bar w/refrg, gated fenced yard, bonus wine cellar & exercise/hobby rm, hdwd flrng, great parking.

NEAR AIRPORT/1.3 ACRES



13245 CLEMENTS RD. U12 LOT128 Allows for livestock/horses, Ranch style/Contemporary on 1.3ac. 4bd/2.5Ba + lg finished loft. Lg mstr ste w/beautiful bath. Grt Rm w/hdwd flrs, gas f.p., gourmet kitch w/island, gas stove/oven, pantry. Formal dining, stamped cement walk/driveways. Can accommodate horses, has 16'x20' fenced garden w/drip system, 10'x12' shed

STRETCH OUT HERE



13078 FOX CT U7/L72 – \$239,999 1 lvl home 2100sf. Lg open kitch. w/island & brkfst bar. Sep dining area. Living rm w/vltd wd clng & f.p. Wd & carpet flr. Corner lot - cul du sac. Lg 2 car detached gar. w/workspace/workbench. Circular drive – add'l parking. Access to all PML amenities inc. pool, boating, fishing, golf, tennis, pickleball, stables, archery, target practice or hiking.

FRONT ROW SEATS FOR FIREWORKS



20421 ROCK CANYON U3/L233 – \$499,000 2778sf 5bds/3.5ba. Lg covered deck w/recess lighting & fan. Grt rm w/propane stove & dining area Maple cabnits w/granite ctrs in Kitch S/S applcs. Mstr ste w/dual closets & private balcony. Mstr ba Lg soaker tub, dual lvs & granite ctrs. Sep. bonus rm downstairs. Oversized double gar. Ample parking. Across from Fisherman's Cove.

PRIMO LAKEFRONT



19715 PLEASANT VIEW U1/L284 – \$999,999 Waterfront living w/lake view. Private dock & gazebo. Lg deck complete rear of house. Lwr lvl patio & boat gar. Grt Rm w/f.p., hdwd flrs, 12' clng. Pest work done. Entry lvl Mstr, guest bd, 1 full ba/1 half ba. Lndry rm w/addtl stor. & folding ctr. Lwr lvl bonus rm w/f.p. & lake access, 2bd & full ba. 2 attached 2 car gar & room for 10+ cars.

MOUNTAIN MAGIC



12002 HILLHURST U8/L274 – \$359,000 2576sf 3bd/2.5ba. Cozy yet spacious cabin 2 decks - trex type deck. Great Rm w/lg kitch. Oak flrng. Brkfst nook & Brkfst bar/island w/propane cook top, tree views. Walk-in pantry. Lvg rm w/vltd wd clngs. Pellet stove & ctrl heat/air. Lg mstr w/2 walk-ins, jetted garden tub. 2 car gar & 2 car carport. Dble corner 1/2 ac lot.

NEW CONSTRUCTION



19585 CHAFFEE CIRCLE U1/L99 – \$399,999 Golf course views. Still time to pick your colors!!! 2600sf 3bd/2ba. Across from PML Golf Course. Open plan w/vltd clngs. f.p. in living rm. kitch w/granite & SS applcs. Mstr ste w/double walk-ins & f.p. 2 car gar. .5 mile to lake, golf, pickleball, pool, + PML amenities and an amazing community!

2 ACRE RANCHETTE



10360 JALAPA LA GRANGE – \$329,000 2+ac completely fenced. Lg barn for animals or storage. 2014sf, 4bd/2ba. Walk-in pntry, formal dining rm. Mud rm. 2 car detached gar. Circular drive. Solar. Owners have not had electric bill since installation. PG&E actually owes them. Located between Lake Don Pedro & Lake McClure. Fruit trees on property.

SINGLE LEVEL CHARMER

PENDING



12022 BRECKENRIDGE U13/L103 – \$279,000 Comfortable single level home. Easy access to marina. 1460 sq ft 3 bedrooms/2 baths. Great room concept/wood stove. Pergo flooring LR, Kitchen and hall. New carpet in bedrooms. Updated baths. Expansive rear deck for relaxing or entertaining. 2 car garage. Separate lower level storage.

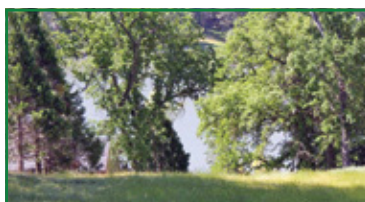
GOLFER'S DREAM

PENDING



19000 DYER CT U5/L282 – \$495,000 4bd/3.5ba 2767sf on 4th green. 3 lvls - each lvl has bdrm/full ba. Entry level mstr bd/bath ste. Living rm w/10-12' clng, gas f.p. & views of golf course. Wraparound deck. Dining area, lg kitch w/granite, brkfst bar. Powder rm. Upper level loft, 2bd/1ba. Lwr lvl bonus rm w/addtl sleeping area, sep. bdrm & 1ba. 2 car gar on .66 acres.

LAKEFRONT LOT



UNIT 3 LOT 185 .65 ACRES Best lake front lot available, Wide open lot with a majestic oak Newer homes in the area. Build your dream house here cottage or castle you decide. Lake access at your front door private dock is allowed. Enjoy the water year round. Close to Fisherman's Cove. It's a steal at \$219,000

PICTURE PERFECT ON DOUBLE LOT



20870 BIG FOOT CT. U4/L88 – \$415,000 dbl lot .77ac. on seasonal creek, walking distance to Lake Lodge. Move-in ready 3bd/3ba. F.P. in living rm, open dining area, updated kitchen w/granite ctrs. Lower lvl bonus rm/media rm w/lg screen & projector. Enclosed sun rm. Newer alum. decking & concrete tile roof. Oversized 2 car gar. Yard is all usable.

PREMIUM LAKE VIEW LOT



UNIT 3 LOT 221 Hard to find lake view lot with easy access. Almost level lot in a nice neighborhood. Will accomdate a single level home. District water and public sewer available. Power at site. No trees obstructing the view. Close to Fisherman's Cove, tennis courts and Lake Lodge beach. Very affordable at \$40,000

CUSTOM LAKEFRONT HOME

SOLD



12825 MT JEFFERSON CT U1/L252A – \$879,999 Nearly 4000sf of class & elegance at end of cul-du-sac. 5bd/3ba, gorgeous wd flrs, grmt kitch w/granite ctrs 10ft brkfst bar, island, SS appls, wine frig, gas stove w/water tap, pantry rm, step down dining & living rm w/granite gas fp, tons of windows, 11ft clng. Lakeview & frontage w/dock, upper & lwr decks of trex material.

STUNNING TRANSFORMATION

SOLD



12088 HILLHURST U8/L148 & 149 – \$449,999 Private setting (2 lots) over 3000sf, Lake View, Mtn Views, REMODELED kitch, grnt ctrs, new flr, 4 LG Living Areas ea. w/f.p., freshly paint ed ext, private mstr ste, 2 car gar w/xtra storage rm, 2 guest bds, 3 full ba, trek decking w/covered porch, cement patio BBQ area with view. No next door neighbors! Stunning must see.

MOST AFFORDABLE LAKEFRONT

PENDING



19624 PINE MT DR. U1 L430 – \$398,000 Just in time for summer fun. 1788sf 3 lg bdrms/2.5ba. Updated kitch w/granite ctrs, cabinets & SS applcs. 2 lvl cabin. Main lvl bamboo flrng in living rm. Corner stone f.p. Mstr bdrm & ba on entry lvl. Add'l .5ba & inside lndry. Upper lvl 2 lg bdrms & full ba. Deck overlooking lake. Private dock. Great for rental or private get away. Close to all PML amenities.

LEND FOR LESS HOME LOANS

I save most clients up to \$3000 on loans!



(209) 602-4900
NMLS 178729

Call for the very best rate
& expert advice for your loan.

LEND4LESS.COM



Dennis Hughes
California BRE
Broker ID #01001409

YOSEMITE AREA REAL ESTATE

PAUL S. BUNT REAL ESTATE – DRE #01221266



NEW LUXURY HOME UNDER CONSTRUCTION

3 bdrm 3 ba, 3200'
+ office – buy now and
Customize.
\$594,937



EXCELLENT MOUNTAIN VIEWS!

4Bd/2ba, 2-car gar, .72ac. Close to private taxiway. Brand new roof, lg deck, mtn views from Dining & Living rms! Nice floor plan, each rm is spacious w/lots of stor. space & much more! 12/249 – 20980 Hemlock St **\$299,950**



ELEGANT SPACIOUS HOME

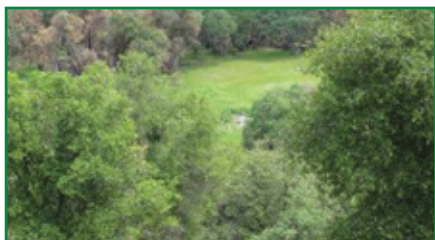
1.65 Oak treed acres w/well.
Private & serene corner lot near airport.
U11/L45 – 20795 Elderberry Way
\$586,937



SOLD OVER FULL PRICE

ACREAGE

Structure with over 79 acres.
19701 Vernal Drive



SPECTACULAR VIEWS

52 Acres – Lush Meadow
3 bdrm. 2 bath 1792 sq. ft.
2nd unfinished home 2/2 1344'
Graham Ranch
\$449,997



COMMERCIAL LOT

Ferretti and Elderberry Way. Perfect for storage business or use your imagination.
\$89,900



ALMOST 54 ACRES!

Comfortable home or unique investment, private, yet just off Yosemite hwy. 4bd/3ba. 1bd & full ba wheelchair accessible grd flr, suitable for home office. Kitch w/open plan. Cathedral clng. 11335 Wards Ferry Rd – Big Oak Flat CA
\$540,000



LARRY JOBE
REALTOR – TAXIWAY EXPERT
209.962.5501
larryjobe1@gmail.com
BRE #01444727



KRYSTAL BIGGER
REALTOR/GRI – LAKE FRONT EXPERT
209.768.5944 Cell
kbigger81@gmail.com
BRE #01324944

KRYSTAL & LARRY

Working hard as a team to meet your needs,
providing you with the **Absolute Best Service**



SPACIOUS HOME

1.34 acre lot, Open room concept with 3 bedroom / 3 bath, 2,652 Sq. Ft. of living space. Excellent full time residence, vacation or Air B&B!
20519 Echo Court
\$349,900



TAXIWAY LOT

.56 acre oak treed lot. Quiet loop taxiway, ideal for metal hangar & home. Must see to appreciate. U12/L45
\$179,900



CUTE COZY CABIN

app. 1550sf on level lot, carport, room for RV & xtra parking. 2Bd w/full bath on main lvl. Downstairs family rm possible as mstr ste. Main lvl grt rm wood stove. septic clearance & pest clearance being done. U13/L234 – 11965 Mountain Springs CT **\$209,900**



WONDERFUL CABIN HOME

Merged double lot. 2 lvl w/3bd & 2 full ba. App. 1,479sf. Nice deck for relaxing or entertaining. Clean as a whistle & ready to move in, would make a great permanent or vacation home! U2/L49 – 13035 Gamble Street **\$199,000**



GREAT LOCATION

High end Spacious home, great location, Living on one level, 3 bdrm/ 2.5 bath, 2424 Sq. Ft., great room concept, large deck.
\$449,900



PINE MOUNTAIN LAKE REALTY

An Agent Owned Company 18919 Ferretti Road • PO Box 738 • Groveland CA 95321 • 209-962-7156 • www.pmlr.com



Barry Scales
Broker/Owner
209.484.7123
BRE#00451887



Lynn Bonander, GRI
Owner/Realtor®
209.484.7156
BRE#00683485



Val Bruce, GRI
Owner/Broker Assoc.
209.768.7368
BRE#00578336



Parker 'PJ' Johnson
Owner/Realtor®
209.768.6232
BRE#01732298



Marc Fossum
Owner/Realtor®
209.770.4750
BRE#01956242



Elaine North
Realtor®
209.768.4221
BRE#01047723



Patty Beggs
Owner/Realtor®
209.840.2293
BRE#01339347



Michael Beggs
Broker Assoc./Realtor®
209.840.2294
BRE#01335568



Cozy Cabin on a Hill!
20419 Pine Mtn Drive
\$180,000

3 Bd/2Bth, 2 Level, Approx 1112 sf, Approx 0.37 Acre, Great Rm w/Propane Fireplace, Knotty Pine Ceilings & Ceiling Fans, Solid Counter Tops, Master Bdrm w/Private Deck, Laundry w/Washer & Dryer, Spacious Deck w/motorized Awnings to enjoy evening sunsets & BBQ's. MLS#20180524



New Listing!
Wow! Great Value
12675 Cresthaven 4-474
\$304,929
MLS# 20180803

4 Bd/2 1/4 Bth, 2 Car Attached Garage, Great Rm, FS Fireplace w/Stone, Open Beam Ceilings, Solid Surface Countertops, Bay Windows in Living Rm & Dining, Kitchen Pantry, Master Suite w/2 Walk-in Closet, Private Deck/Patio, Jetted Tub, Closeted Toilet, Washer/Dryer Hookups, Storage, Spacious Deck with Beautiful Views.



Classic Mountain Cabin
20837 Point View 4-233
\$209,000

3 Bd/2 Bth, Furnished, Great Rm, Fire Place, Knotty Pine Vaulted Ceilings, Kitchen Brkfst Bar, Dining, Master Bdrm, Inside Laundry Rm w/Washer & Dryer, Lower level has 600 sf unfinished area that could be a 2 Car Garage, Bonus Room or Work Shop. MLS# 20170784



Delightfully Pleasant & Well Located
19350 Pleasant View 1-69
\$228,000

3 Bed/2 Bath, 2 Car Attached Finished Garage, One Level, Approx 1884 Sq Ft, Approx 0.24 Acre, Central Air, Level Driveway w/RV Parking, Great Room, Roomy Kitchen w/Breakfast Bar, Master Bdrm, Master Bath with Jetted Tub & Separate Shower, Bay Windows, Skylights, Inside Laundry, Instant Tankless Water Heater. MLS#20171378



New Listing!
Fabulous Custom Built
21140 Jimmersall 12-111
\$629,500
MLS# 20180805

4 Bd/3 1/2 Bth, 3 Car Finished Oversized Garage w/Shelves, Work Bench & Utility Sink, Approx 4,400 sf, Approx 0.98 Acre, Custom Amenities Abound, Great Rm w/Heat Stove, Cathedral Ceiling, Brfst Bar, Island, Pantry, Brfst Area, Formal Dining, Master Suite, Walk-in Closet, Jetted Tub/ Separate Shower, Vanity, Den, Bonus Room, Storage, Climate Controlled Wine Cellar/Tasting Room, Central Vacuum, Inside Laundry Deck with Beautiful Views, Closet to PML Airport. MORE!!



Beautiful Remodels!
19926 Pine Mtn 13-353
\$475,000

Beautiful Home on 0.79 Acre. 4 Bd/3 Bath, Bonus Rm, 2 Car Garage +3 Car "Man Cave". Central Air, Propane Heat, Granite Countertops, Security System, Wet Bar, Great Rm, Propane Heat Stove, Open Dining Rm, Brfst Bar & Area, Island, Pantry, Brass Farm-Style Sink, 3 Master Walk-in Closets, Master Bath, Oversized Walk-in Shower, Vanity, Inside Laundry, New Deck & Patio. And so Much More! MLS# 20180378



Modern Mountain Cabin
19830 Pleasant View 1-152
\$365,888
MLS# 20180727

3 Bds, 2 Bth, Approx 2159 sq ft, 2 Car Garage w/Shop area. Just a few hundred ft to the Dunn Ct Beach. Kitchen Bar, Pantry, Granite Countertops, Central Air, Central Propane Heat, Fire Place, Cathedral Ceiling, Spacious Great Rm, Wet Bar. Most Furnishings & Water Craft in the Garage remain with a strong Offer. Near Dunn Court Beach



Fantastic Lake Front Home!
19729 Pleasant View 1-282
\$1,100,000

3 Bedroom Suites/3 Baths, Bonus Flex Room, Approx 2839 sf on 0.45 Acre. Includes Dock & Pontoon Boat on Your 104ft. Lake Front. All Main Rooms have a Super Lake View. Property has a Gentle Slope to the Lake. MLS# 20171432



New Listing!
Spacious and Secluded!
21024 Hillcroft 12-221
\$349,000

Quiet Setting on 1.83 Acres with Mountain Views. 4 Bd/3 Bth, Floor Plan thoughtfully laid out. Hearth with Wood Burning Stove, Central Heat & Air, Skylights, Hardwood Floors. Master Bedroom on Main Floor. Attached 2 Car Carport. Upper & Lower Deck.



Dream Ranch! 37 1/2 Acres!
9345 Priest Coulterville Road
\$595,000

Beautiful Turn-key 3 Bd/2 Bth, 2 Car Finished Garage, Master Bdrm w/Walk-in Closet, Garden Tub, Separate Shower, Approx 1889sf Single Level Living. Property Fenced, Barn, Horse Set-up, Shed, Shop, Storage, Workshop, Gazebo, Well/Pump House, Spring, Covered Porch, Patio, Fire Pit, Fenced Garden. Fully Self Sufficient. Solar System is state of the art. MLS#20180382



Immaculate Inviting Home
13130 Mohrman 2-105A
\$395,000

3 Bed/2 Bth, Approx 2108 sqft, 3 Car "Man Cave" Garage, Approx 0.88 Acre, Remodeled & Expanded, High-end features, Great Rm w/ Fireplace, Cathedral Ceilings, Skylights, Brfst Bar, Granite Countertops, Wet Bar, Master Bed/Bath w/Propane Fireplace, Walk-in Closet, Covered Porch, Deck. And So much More! MLS#20180452



Beautiful "Tree House"
19638 Golden Rock 1-198
\$349,000

3 Bd/2 1/2 Bth, 3 Car Garage, 2 Levels, Approx 2082 sf, Great Rm, Fireplace, Brfst Bar, Island, Pantry, Wine Storage, Solid Surface Countertops, Dining Area, Cathedral Ceiling, Central Air, Master Bdrm w/Walk-in Closet, Dual Lav, Laundry Rm w/Washer & Dryer. Enjoy the Greenbelt Back Yard w/a Deck perched in the midst of Towering Pines & Cedars. MLS# 20171968



Great Location!
19415 Pine Mtn Dr 1-36
\$379,950

3 Bd/2 Bth, + Bonus Rm, 2 Car Finished Attached Garage, One Level, Approx 2,346 sf, Central Air, Family Rm w/Brick Surround Fire Place, Formal Living Rm, Formal Dining, Master Bdrm w/Private Deck, Master Bath w/Tub-Shower & Vanity, Inside Laundry w/Washer & Dryer, Deck & Patio Close to Main Gate, Marina & Beach, Country Club MLS#20180527



Knotty-Pine Retreat
20571 Rock Canyon 4-42
\$199,000
MLS# 20180281

3 Bed/1 Bath, Approx 1440 SqFt, Approx 0.25 Acre, 2 Levels, Central Air/Heat, Great Room, Open Beam Ceiling, Free Standing Fireplace, Kitchen Bar, Upper Level Bdrm and Bonus Rm, Laundry, Deck, Septic. Green Belt Lot with Privacy & Beautiful Views. Close to Fisherman's Cove & Picnic Area.



Fantastic Home on the Golf Course
4 Bed/3 1/2 Bths, 3 Car Garage. 2 levels, Approx 3630 sf, Central Heat/Air, Cathedral Ceilings, 2 Fire Places, Great Rm, Brfst Bar w/Wine Rack & Wet Bar, Pantry, 2 Master Suites, Huge Loft, Office, Ceiling Fans, Deck w/Motorized Awnings, Tons of Storage. Fully Furnished. 5E-12 Sean Patrick Lane \$485,000 MLS # 20171890



Authentic Custom Built Log Cabin
20381 Greg Court
\$499,999
MLS#20180499

3 Bd/2 1/2 Bth, Large Bonus Rm, 2 Car Garage, Approx 2700 sf on 5+ Acres, Open Floor Plan Vaulted Ceilings, Skylights, Wet Bar, Wine Cellar, Large Open Kitchen, Hardwood Floors. Custom Cabinetry, Doors, Blt in Drawers, Banisters, Closets. Blt-in Vacuum System, Security Systems, Floor to Ceiling River Rock Gas Fireplace, lower level Pellet Stove. Trex Deck, Flat Stone Patio and SO MUCH MORE!



BRE# 00683485



Pine Mountain Lake Realty
An Agent Owned Company
Lynn Bonander, GRI Owner / REALTOR®
 18919 Ferretti Rd., Ste. A, Groveland, CA
 Office 209-962-7156 / Cell 209-484-7156
 lynnbonander@goldrush.com www.pmlr.com



Quality & Elegance

19720 Pleasant View
 1-141
\$425,000
 MLS #20172044

~ Distinctive Golf Course Home ~ 5D-9 Tannahill

Located just off 1st Fairway w/Beautiful Views of the lush green Golf Course, & short distance to the Country Club & Pro Shop. This luxurious 4 Bed/2 1/2 Bath home is Custom Built & Designed for Comfort, Style & Enjoyment in every room. Approx 2900 sf, High Ceilings, Great Rm w/open Kitchen, Spacious Dining area & Family Rm, Wet Bar, formal Dining w/ wrap around windows. Beautiful sweeping Entry, huge Laundry Rm, Inviting Living Rm. Guest Bedrm on main level, Upper area has a Beautiful Master Suite, Tiled Propane Fireplace, Balcony overlooking Golf Course. Awesome Master Bath w/huge walk-in Closet. Has separate shower & Soaking Tub. All this and a 2 Car Garage, Stamped Driveway & Much More. Offered at only \$449,000 Call today to See this Beautiful Home! MLS#20171128

One Block to the Lake!!

Stunning 4 Bedroom Home with 2 Master Suites, One w/Separate Entrance, and 3 Baths. Open Floor Design with Beautiful Great Room and Vaulted Ceiling. Step Down Living Room with Air Tight Wood Fireplace w/Heat circulating throughout the House. Wet Bar with Wine Rack, Central Propane Heat and Air. Wall of Windows bringing the Outdoors into perfect View & provides extra Lighting. LAKE VIEW. Hardwood Floors in Kitchen/Dining Room. Electric Range + an Island w/a Jennair Stove w/2 additional Burners/Griddle/BBQ & 2nd Sink w/extra Garbage Disposal. Pull out Drawers, Secretary Desk, Surround Sound, Intercom, Inside Laundry Room w/Cabinets. Great Full Time Living or Would make an Excellent Vacation Rental.



20098
 Pine Mtn Dr
 13-279
\$575,000

Log Cabin At Water's Edge!

Genuine Log Home, w/logs imported from Canada. Outstanding in every way. Beautifully designed offering Heart-stirring warmth that will win you over. 2440 sf, 3 Bedrooms, 3 Baths plus a Huge Bonus Rm which can be used as Sleeping Quarters/Game Room, etc. & Complete with a Mini Bar & Full Bath. Adjacent to Big Creek w/Hiking Trails across the street. Seasonal Water Levels. Abundance of Storage Under House. Too many features to mention! Furniture is included with an acceptable offer on Separate Bill of Sale. MLS#20150638



Prime Golf Course Home!

Prime Golf Course Home on the 4th Fairway with a Wall of Windows to see the Beautiful Views of the Golf Course! Located in Pine Mountain Lake and only 26 miles to Yosemite Nat'l Park. Great Room is Huge with Beautiful Hickory Hardwood Flooring. Single Level Home with 3 Bedrooms 2 Baths, Approximately 1858 sqft and Level Drive Way? The Large Deck in the back with Lots of room for entertaining overlooking a Peaceful Tree Line Setting.
 5-245 19179 Ferretti Rd \$319,000 MLS# 20180581



Attention Pilots! 1.21 Acre Lot

Taxiway Home w/Run Way Access "Almost Finished" 3 Bd/3 Bth, 1750 SqFt. w/Inside Access to the 2600 Sq Ft Hanger (50'x52'). Electric Roll-Up 40'x12' Hanger Door. 3rd Bath in Hanger w/ Stall Shower. Beautiful lot on cult-de-sac, Driveway is lined with a Split Rail Fence. On quiet Cul-De-Sac. Call for more Details.

21009 Owl Court 12-18
\$565,000 MLS#20161097



Great Mountain Cabin

12935 Wells Fargo
 2-445
\$279,000
 MLS#20180135

Beautiful Woodsy Setting on an Acre Lot! 2 Bed/2Bath, Living & Family Rm, Large Bonus/Game Rm. Laundry Rm & Lots of Storage. Approx 1570 sf. Built in 1982. Upgrades include: 2 new mini split heat pumps on Upper & Lower levels, very energy efficient. Upper Bath updated w/tile floor & new toilet, replaced wood trim, led lighting installed. Water resistant vinyl plank floor. Living Rm w/Propane free standing Fireplace. 2 yr old Roof, large Trex Deck on upper level and a nice size deck on lower level w/rod iron railings on both. Newer gutters & Down Spouts. Driveway has been resealed. *Furnishings Included.* Excellent vacation rental w/good rental income, rented on short term basis only.

Don't Wait - Call today!



Great Get a Way!

12931 Wells Fargo
 2-446
\$259,000
 MLS#20180136

2 Bed/2 1/2 Baths + Bonus/Family Room on Lower Level. The 2 Car Attached Finished Garage is being used as a Bonus/Game Rm w/Family Rm Set up with TV. (Easy to revert back to full Garage Usage) The Home is Approx 1304sf on Approx 0.37 Acre Green Belt Lot. Built in 1990. Central Propane Heat/Air, Bright & Cheery Living Rm, Cathedral Ceiling, Skylights, Open Dining Area, Spacious Kitchen, Master Bedroom w/Walk-in Closet, Inside Laundry with Washtub & Cabinets, Large Storage Area.
Furnishings Included.

LOTS FOR SALE!

- 1-106 - \$33,000 Near Most Amenities
- 3-205 - \$55,000 **~SOLD~** Great Lot w/partial Lake & Distant Views
- 4-128 - \$89,900 Lake Front-Beautiful View
- 4-416 - \$34,000 Corner Lot - Near Lake Lodge
- 4-417 - \$32,000 Adjacent Lots Sold Separately Near Lake Lodge, Fisherman's Cove, and Play Ground
- 5D-7 - \$63,000 Golf Course Lot-1st Fairway
- 5-213 - \$19,000 Close to Country Club
- 6-130 - \$8,500 Beautiful Level Lot
- 6/183 - \$29,000 1/2 Acre+ Front & Rear Access
- 6/231 - \$9,900 Upslope Lot - Nice Tree & Distant Views
- 13-66 - \$6,500 Several Buildable Sites
- 13/244 - \$15,000 Beautiful Lot, Adjacent to a Double Lot

RealLiving®

Sugar Pine Realty



96% Consumer Satisfaction Rating

www.sugarpinerealty.com

18727 Main St. #B • PO Box 792 • Groveland CA 95321
209.962.7765 • fax: 209.962.5924 • BRE: 00659397



Emmett Brennan
Broker/Owner



Dave Lint
Realtor
209-768-5010



RELAX & STAY
13023 Mokelumnes Circle
\$319,000 Call Ron or Dave
• Built in 2006 • Cathedral Ceiling
• 3Bd/ 2Ba • Skylights
• Den/Office • Breakfast Bar
• 2 Car Garage • Spacious
• RV/Boat Parking • Laundry Room



Linda Willhite
Broker/Assoc.
209-985-2363



END UNIT CONDO
19235-C Salvador Court
\$154,900 Call Ron or Dave
• End of a 3 Unit Condo • Attached 2 Car Garage
• 3 Levels • Close to Golf Course, Country Club and Pool
• 2 Bd/ 2.5 Ba
• Large Deck



Ron Connick
Realtor
209-962-4848



QUALITY HOME
12015 Breckenridge
\$459,900 Call Linda
• Discover quality • Open Beam Ceiling
• 3Bd/3Ba • Spacious Sun Rm
• Superbly Crafted • Expansive Bonus Room Downstairs
• Warm & Comfortable Great Room



Kathleen Love
Realtor
209-878-0499



BUNGALOW/COTTAGE
20570 Whites Gulch Road
\$235,000 Call Linda
• Bungalow/Cottage • Well
• 648 Sq Ft • Great for Horses
• 1Bd, 1Ba • Septic for 4 Bedrooms.
• Oversized 2 Car Garage



Carmen
Office Assistant
209-962-7765



RELAX & STAY
20774 Non Pareil Way
\$205,000 Call Linda
• 1764 Sq. Ft. • Lge 1st Floor Bd can be converted into 2 Bedrooms
• 2 Bd/2Ba Chalet • Private Deck off Master Suite
• Warm & Comfortable Great Room
• Open Beam Ceil.



THE ENTERTAINER at 20209 Pine Mountain Drive



4Bd/3Ba
2 Master Bd
2 Car Garage w/
easy level access
Game/Bonus Rm
Successful Vacation Rental Sleep up to 12

COME on DOWN!
We MAKE the Best DEAL
for our Buyers
and
We PRICE it RIGHT
for our Sellers!



Linda Willhite
Broker/Assoc
209.985.2363

Golf Course Home
Enjoy the open space of the 9th Fairway!

NEW LISTING!

3Bd/2Ba
Great Rm
Bonus Rm
Open Beam
Covered Deck
Vaulted Wood Ceilings

\$449,000



19300 Oak Grove Circle



LAKEFRONT HOME
20188 Lower Skyridge

Bright and Sunny
5Bd/3Ba
Open Floor Plan
3260 Sq. Ft.
Lg Master Bd
w/ Separate Loft
New er Dock
Large Game Room
Lots of Windows
Level Access Garage

\$749,000

PRICE REDUCED! was \$829,000

Call: Ron
Realtor
209.962.4848



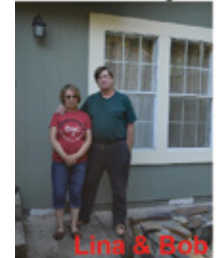
SOLD Properties

20793 Big Foot Circle
\$195,000 Realtors: Ron and Dave

20189 Upper Skyridge Dr
\$265,000 Realtors: Ron and Dave

20212 Lower Skyridge
\$725,000 Broker/Assoc: Linda

WELCOME
Our New Neighbors



Ron Connick
Realtor
209.962.4848

"BRINGING THE AMERICAN DREAM HOME"



CHARMING GARROLL COTTAGE
12021 Valenta Way
\$329,000 Call Linda
• 3 Bd/2Ba • Great Rental History
• Crown Moldings • Large Parking Area
• High Ceilings • View of Mtn. from Back Deck
• Well Maintained



CHARMING HOME
17868 State Highway 120
\$290,000 Call Linda
• 3 Bd/2Ba • 1.69 Level Acres
• Knotty Pine Ceilings/ • Wonderful Views from the Back Deck
• Concrete Tile Roof • Back Up Generator



UNIQUE HOME
12319 Mills Street
\$335,000 Call Linda
• Designed by Aaron Green • 1819 Sq. Ft. on .83 Ac with Panoramic Views
• 3 Bd/2Ba • Backs Up to Green Belt
• Lge Master Suite
• 2 Car Garage



LAKEFRONT CARMEL STYLE TRI-LEVEL HOME

Featuring 3 spacious bedrooms, 3 bathrooms, Approx. 2,166 Sq Ft of living space and is situated on a approx. 17,007 Sq Ft lot with gorgeous views of Pine Mountain Lake. Located on Longridge Drive, it is one of the few Peninsula deep water lakefront lots. Open and light floor plan with a spacious living room showcasing vaulted open beam ceilings and a separate formal dining area. The master bedroom is located upstairs with spectacular views of the lake. Each level of the home has access to it's own private patio with views of the lake, perfect for relaxing by the lake and/or entertaining. Extra parking and a single car detached garage. Pine Mountain Lake Association features amenities such as the Club House, Garden, Greenbelt, Trails, Golf Course, Sauna, Spa and Hot Tub. Airport is close by for easy fly in access.

\$1,025,000

KW BAY AREA
ESTATES
KELLERWILLIAMS

Jim Meech | Realtor | Broker Associate

408-718-3116

Jim@JimMeech.com • www.JimMeech.com • 16185 Los Gatos Blvd. #205 • Los Gatos, CA 95032

JM | JAMES MEECH

Realtor BRE#01145137
Broker BRE#01526679

ADVERTISE IN THE PINE MOUNTAIN LAKE NEWS

GO TO WWW.PINEMOUNTAINLAKE.COM

OR CALL 209-962-0613

FOR RATES AND INFORMATION

THE POWER OF 2



**MICHAEL & PATTY
BEGGS**

209-962-6268

Patty – Owner/Realtor®
pmlpatty@yahoo.com
Cell: 209-840-2293
BRE# 01339347

Michael – Associate Broker/Realtor®
beggs4homes@yahoo.com
Cell: 209-840-2294
BRE# 01333568



An Agent Owned Company

20381 Greg Ct.



NEW LISTING

FABULOUS LOG CABIN
Outside of Groveland • \$499,950

20419 Pine Mountain



NEW LISTING

CUTE AFFORDABLE CABIN
\$180,000.00

FREE:
MARKET ANALYSIS
OF YOUR HOME

FREE:
PEST INSPECTION
(with listing contract)

Phone: 209-962-6268 • GrovelandHomeSales.com

18919 Ferretti Rd. Suite A • In the MarVal Center

- Tree Removal
- Tree Pruning
- Tree Support Systems
- And Much More

Certified
Arborist

24 Hour
Emergency
Service

Saitta's
GARDENING

Your local tree care specialist
Family owned and operated since 1965

Lic #310905

Call Today For Your Free Evaluation
(209) 916-5799

Busy Summer on the Lake

Virginia Richmond

The Friends of the Lake club is planning a busy summer of lake-oriented fun events.

Friends of the Lake is a PML social club open to everyone who is committed to enjoying our beautiful lake and ensuring safe and equitable usage. In addition, we work with the PML Association to promote improvements such as lake dredging, lighted buoys, shade umbrellas, the new Marina building, and Wednesday night slow-boating.

In May, we heard an interesting presentation on tree mortality and reforestation efforts from Ranger Michael Jow of Stanislaus Forest.

June 17th will be annual poker run on boats around the lake with great prizes for the winners. The fee is just \$5; call Larry Santa Maria, 962-7904 to sign up.

July is a big month with the boat parade and seaplane landing on July 7th, the lake swim and kayak races on July 14th,



2017 Poker winners Joe Souza, John Wilson, Dart Woodruff and Bryan Willmon.

and Music at the Marina, featuring Rod Harris and Friends on July 15th. August 19 brings a scavenger hunt on the lake by boat, followed by "bingo on the beach" on September 9. Events are preceded by a potluck supper. Come join us!

Friends of the Lake organizes the annual Independence Day Boat Parade and airplane landing – the highlight of the PML summer



Seaplane comes in for a landing on Pine Mountain Lake.

season. This year's parade is on July 7th and the theme is "my favorite movie."

To join Friends of the Lake and receive information on each upcoming event, please send your contact information and a check for \$20/family to Friends of the Lake, PO Box 591, Groveland, CA 95321. Be sure to include your email address, as all club communication is by email.

PML Lady Niners

Sharon Kenyon

ACE OF ACES, QUEEN OF CLUBS and PUTTER OF THE MONTH for April was Stacie Brown with Net 30, Gross 44 & 13 Putts. What a sweep... congratulations Stacie!!

APRIL 5 "ODDS & EVENS

with 25 players

1st Place Team: Stacie Brown, Marilyn Bolar, Deanie Martini & Eunice Pennybacker with 46.

2nd Place Team: Linelle Marshall, Flo Jansen, Nancy Whitefield & (blind draw) with 48.

3rd Place Team: Sandy DeRodeff, Judy Michaelis, Alice Stoll & Syd Robenseifner with 49.

Pars: #11, #12, #14, #17 (wait for it...) Stacie Brown! How's that for consistency?! #14 Marilyn Bolar, Linelle Marshall, Judy Michaelis & Alice Stoll

Chip-In: #10 Nancy Whitefield

Low Net & Low Gross: Stacie Brown with Net 30 & Gross 44. Outstanding play Stacie!

APRIL 12 "CRY BABY" (6 BEST HOLES)

with 7 players braving a cold morning

1st Place Tie: Flo Jansen, Judy Michaelis & Jane Reynolds, all with 26.

Chip-In: #10 Judy Michaelis

Low Net: Flo Jansen with net 38.

Low Gross: Jane Reynolds with gross 50.

APRIL 19 "PUTTS DAY"

with 21 players

1st Place: Stacie Brown with 13 Putts—very impressive!

2nd Place: Alice Stoll with 17.

3rd Place: Linda Sarratt & Jane Reynolds with 18.

4th Place: Linda Craig & Pat VanGerpen with 19.

5th Place: Nancy Brewster, Syd Robenseifner, & Anne Toner with 20.

Pars: #10 Stacie Brown; #14 Shelly Hanak; and #17 Linda Craig

Low Net: Linda Sarratt with 33

Low Gross: Stacie Brown with 48

APRIL 26 "EVEN HOLES"

with 20 players

1st Place: Marilyn Alexander, Susan Dwyer, Flo Jansen, Linda Sarratt and Anne Toner, all with net 21.

2nd Place: Val Kelly, Patty Nelson and Trudy Reid with net 23.

Pars: #14 June Moore & Susan Dwyer; #17 Geralyn Dielman

Chip-Ins: #10 Marilyn Alexander; #18 Flo Jansen

Low Net: Marilyn Alexander

Low Gross: Susan Dwyer

Welcome to our newest member Julie Robinson.

PML Aero Club

Catherine Santa Maria

The PML Aero Club is proud to announce that Scott Rexwinkle a member of the Aero Club obtained his private pilot's license on April 9, 2018. We are very proud of Scott's accomplishment. Scott's flight instructor was Ken Orloff. Scott is the fifth member to do his training and obtain a private pilot's license since the Club started back in 2008.



Catherine Santa Maria, Janet Gregory, Ben Damm, and Andy Mankus are the other members of the Club who earned their private Pilot's license since the clubs inception.

We all were trained in a 1974 Cessna 172 with a 180HP engine. The club has four flight instructors: Mike Gustafson, Bob Hornauer, Larry Jobe and Ken Orloff, available to assist student pilots as well as licensed pilots.

If you are interested in becoming a Pilot then this is the Club for you! Contact our President, Dennis Smith @ 962-4950 or Jim Goodrich @ 962-4660 or visit our website at PMLaeroclub.com for more information. We meet on the first Saturday of the month at 10:30am at the Jobe hangar.

PML Organized Groups & Clubs

Contact the individuals below if you are interested in joining! (All numbers are 209 area code unless noted otherwise)

Aviation Association

Bonnie Ritchey 650-996-6274

Computer Users Group

Frank Perry 962-0728

Exercise

Barbara Elliott 962-6457

Cindy Simpson 962-7018

Friends of the Lake

Mike Gustafson 962-6336

Garden Club

Linda Flores 962-0824

Guardians of PML

Frank Jablonski 962-4375

Ladies Club

Joan Stauffacher 770-8681

Men's Golf Club

Chuck Obeso-Bradley 831-524-1331

Needle Crafts

Lee Isbell 962-5727

Pickleball Club

Elisa Hoppner 962-2002

Pine Needlers Quilt Guild

Beverly Oakley 962-6799

PML Ladies 18 Hole Golf Club

Yvonne Mattocks 962-4165

PML Niners

Stacie Brown 962-5129

PML Shooting Club

Dick Collier 770-5022

PML Waterski & Wakeboard

Dean Floyd 408-915-8848

Racquet Club

Lisa Brown-Jimenez 962-0894

Residents Club

Dick Faux 962-4617

ROOFBB

Susan Dwyer 962-6265

Sierra Professional Artists

Heinie Hartwig 586-1637

Southern Valley Srs. Golf Group

Rich Robenseifner 962-0932

Sunday Couples Golf

Alma Frawley 962-5578

Wednesday Bridge Club

Joe Sousa 962-5708

Linelle Marshall 962-7931

Windjammers Sailing Club

Ken Regalia 415-819-4252

Annual PML Boat Parade and Airplane Landing

Virginia Richmond

The Marina is open and the lake is getting cleaned up! Time to start planning your boat parade decorations. The PML Boat Parade is on July 7th at 6:00pm. All PML boat owners are invited to participate. The theme this year is "my favorite movie." You have lots of choices – choose any movie and get creative! Of course, patriotic decorations are also welcome. We're always impressed with the creativity of PML boaters!

Prizes will be awarded in four categories:

- 1.) electric boats
- 2.) gas pontoon boats
- 3.) fishing or ski boats
- 4.) non-motorized boats such as canoes, sailboats, and kayaks.

Trophies for the best decoration in each category are on display at the Grill. Sign up at the Marina store to participate in the parade. There's no fee.

Adding to the fun, be sure to watch for the airplane landing on the lake at 3:00pm on July 7th. Pilot Jim McCloud of Foothill Aviation will entertain with a great show in his seaplane.

The annual PML Boat Parade and



The Poms celebrate Labor Day in last year's boat parade.



St. Patrick's Day on the 4th of July!

airplane visit are organized by Friends of the Lake. If you have any questions, please call Virginia at 962-6336.

Garden Club Clippings

Joyce Smith

Did you have a nice Easter? I can't believe it is well into spring. The pretty lupine and California poppies blooming on the grade should be a reminder that yes, it is spring. Time for us to think about our areas where the wildflowers are in abundance. Our speaker for the May meeting was Don Kurtz from Copperopolis. Don's presentation focused on the Red Hills and Copperopolis areas. Although, our Garden Club had been to the Red Hills area several years ago, you don't tire of seeing nature's timely displays. We thank Don for his interesting presentation.

It's almost time for our June 11th Garden Club Tour and Salad Luncheon. Just about all the planning has been done and we are almost to the time of executing plans. The Groveland Flood as we all know, really hit the Jail garden hard. Much work had to be done. Hard physical work, bringing more soil and leveling out the walkways. We can't possibly thank Tony and Linda Flores, Jail Garden Chairpersons, for their work and others who helped them. Thanks to GC members for coming. Planting has been on going and will continue. It is really coming along and you will be pleasantly surprised to see what the miracle workers have done.



Garden Club work crew – Tony Flores, Larry and Donna Wolf, Terre Passeur, Bruce Robertson, Marlene Johanson, Dick Faux, and Linda Flores – working to replant and repair flood damage to the garden.

Thanks everyone! This is our only fund raiser to buy needed garden supplies. The flood wrecked havoc with our budget and we have had some unexpected expenses. The day is Monday June 11th. check in is at 9:00. We will have lovely tables to view, Raffle tickets to buy for many prizes, Gardens to visit, and Vendors showing their wares. And at 12:00 our "Always a Sellout" Salad Luncheon. You don't want to miss this event. See you there.!

PML Ladies Golf Club

Thelma Faux

We were able to play most of our Thursdays in April even though spring rains continued. We look forward to our Pine Tree Invitational in June. Teams are working on their costumes and decoration their carts.

UPCOMING EVENTS

June 14, 15, 16 - Pine Tree Invitational

July 12 - Ladies Invite the Men Tournament

August 2 - Charity Day

August 9 & 16 - Birds and Butterflies Tournament

KNOW THE RULES

Here is an interesting story about Lexi Thompson in the 2017 ANA Inspiration.

In 2016 the Rules were changed to allow penalty strokes to be added retroactively, including two extra strokes for an incorrect score card. That did not save Thompson.

Leading by two after completing the 12th hole of her final round, Thompson was informed that four strokes were being added to her third-round score because she had replaced her ball on the green in a slightly wrong spot. Thompson rallied to tie So Yeon Rye in regulation, only to lose a playoff. The incident precipitated a pair of Rules changes for 2018: no more consideration of viewer call-ins or emails (a tournament official will monitor broadcasts) and no additional two stroke penalty for an incorrect scorecard if discovered after the scorecard is signed.

APRIL 5, 2018 - GROSS-NET-PUTTS

ACE OF ACES - Paula Vautier – 68
PUTTERS OF THE MONTH (TIE)

Lisa Brown-Jimenez -33 Putts

Yvonne Mattocks - 33 Putts

1st Flight (16 to 24 handicap)

Low Gross – Kit Edgerton – 85

Low Net – Patty Peebles – 70

2nd Flight (26 to 28 handicap)

Low Gross – Paula Vautier – 94

Low Net – Lisa Brown-Jimenez – 71

3rd Flight (29 to 35 handicap)

Low Gross – Jodie Awai 104

Low Net – Clarice Ligonis 71

BIRIDES:

Priscilla Park # 10

Patty Peebles # 7

APRIL 19, 2018 - IRS BLUES

all putts on blue flags

2bb on red and white flags

1st Place – 129 Points – Thelma Faux, Helena McMillan, Sue Perry

2nd Place – 130 Points – Marlene Drew, Sara Hancock, Yvonne Mattocks

3rd Place – 132 Points – Jodie Awai, Kay Bettencourt, Paula Vautier

APRIL 26, 2018

LEFT/RIGHT PARTNERS

1st Place – 125 Points – Jodie Awai, Marlene Drew, Clarice Ligonis, Paula Vautier

2nd Place – 129 Points – Kit Edgerton, Yvonne Mattocks, Helena

McMillan, Marilyn Scott

BIRDIES – Elisa Hoppner #13

SOME GOLF HUMOR

Alex comes home after his regular Saturday golf game and his wife, Amanda asks why he doesn't include John Gumby in the games anymore. Alex asks, 'Would you want to play with a guy who regularly cheats, swears outrageously over everything, lies about his score, and has nothing good to say about anyone else on the course?'

'Of course I wouldn't,' states Amanda.

'Well,' mutters Alex, 'neither does John Gumby.'

KIEFER INSURANCE AGENCY

Groveland's Only Insurance Agency
for 16 years

John Kiefer Agent / Broker
Lic OD77765

18800 Main St, Groveland, CA 95321

Tel 209-962-6593 Fax 209-962-6656

Email jkiefer@farmersagent.com

Auto Home Life Business Recreational

PML Ladies Club

Joan Stauffacher

Wow, talk about beautifully set tables! Ladies you really out did yourselves. You all were so creative. PML Ladies Club recognized our Past Presidents with a Tea held in their honor today. Ninety-one ladies from our Club joined us to pay tribute to all our Past Presidents.

The attending Past Presidents were: Mary Ann Board, Joyce Smith, Noreen Schwab, Wanda Patterson, Linda Hunter, Rae Ann Bozzo, Judy Michaelis, Catherine Santa Maria, Sonja Palmer, Beverly Oakley, Maddie Sousa. Thank you, ladies, for all your hard work and dedication through the years.

Our luncheon was catered by "Duet Catering" and they knock our tea hats off with an outstanding menu of delicate delicious sandwiches and decadent deserts. To top it off we had our own, dressed so dashingly in a Tuxedo, Ron Selvey serving us Mimosa's and along with Maria and Johanna our lunches. Thank you all for making us feel so special.

Congratulations to Judy Sheridan on winning the June Luncheon on us, also to Marlene Drew who won the beautiful Fuchsia plant, which she gifted to Linda Hunter because Marlene stated the beautiful plant would not survive her gardening skills.

WEAR YOUR FAVORITE OR MOST OUTRAGEOUS APRON JUNE 6, 2018!

Next month please try on joining us at



The PML Lake Lodge as Suet Catering shall provide us with an elegant Brunch Buffet of Breakfast Strata (to be demonstrated after lunch), Sausage Balls, Cinnamon Roll Coffee Cake, and Fresh Fruit. Cost \$19.00 members and \$21.00 for guest. Don't forget your Apron's.

Mark your calendars for August 1, 2018 for our Black Oak Casino Trip and luncheon. For \$30.00 members and \$32.00 for guests, you will get back \$10.00 in free play with your Players Club Card. Keep watching our Facebook page for more information on this and other great events.

If you would like to join the PML Ladies Club and be a part of our fun events just send a check for \$15.00 for annual dues, made payable to the PML Ladies Club and mail it to P.O. Box 100, Groveland, CA 95321. Please be sure to include your name, address, email and phone number. Or if you would like to attend one of our events as a guest, please mail us your request for cost and sign up form.

PML Men's Golf Club

Joe Vautier - PMLMGC Secretary

PAR 3, 2-MAN SCRAMBLE, WED., MAY 2ND RESULTS

The rains stopped and we were able to complete a fun all Par 3 two-man scramble tournament. Winners of the First Flight with an outstanding score of 42 were Pat Hennigan and Dave Bealby. Second at 43 were Chuck Obeso-Bradley and Will Hoppner. Third at 44 were Ralph Jiminez and Dave Egan. In the Second Flight there was a three-way tie at 43. Winning the card-off were Glen Awai and Joe Vautier, with Dennis Perry and Steve Vahey getting second and Gus Clement and John Baker third. Fourth were Alan Craig and Fred Faiella at 44, also winning a card-off.

The winner of the Closest-to-the-Pin on #8 with a shot at 8'2" was Chuck Obeso-Bradley, and the winner on #14 with a shot at 7" was Joe Vautier.

MATCH PLAY RESULTS

The Match Play tournament started on Saturday, April 21 with 12 players in the Gold Flight and 4 players in the Purple/Green Flight. The Purple/Green Flight final match concluded on April 25 with Steve Bittick beating Joe Vautier in 19 holes.

The Gold Flight players reaching the semi-finals were Pat Hennigan, David Fernandez, Jay Warshauer and Dave Nilan. Semi-final winners were Fernandez and Nilan. They will schedule a finals match and the result will be reported next month. In the consolation bracket final Rod Raine won over Dave Bealby.

The Razzle-Dazzle is a 2-Man competition with a new format for every six holes. This is always a really fun event. Results will be reported in next month's PML News.

UPCOMING MEN'S CLUB TOURNAMENTS

*Club Championship on Saturday and Sunday, June 9 & 10

This is an individual event, so there is no need to bribe a partner to play with you! Tee times start at 9:00 am. There will be multiple flights depending on handicaps. Deadline for sign-up is Monday, June 4.

*Blind Draw 2-Man Team event on Wed., June 27

Sign-up individually and you will be randomly paired with another player for a two-man team. This is a good way to make a new friend. Shotgun start at 9:00 am. There will be an optional gross score pot. Deadline for sign-up is Friday, June 22.

OTHER EVENTS

*Motherlode Tournament on Thursday, June 21 thru Saturday, June 23.

This is a 2-man team tournament. Teams can be comprised of any mix of PML property owners and guests. There are lots of prizes and specialty competitions, concluding with a dinner on Saturday evening. Entry forms are available in the pro-shop area. If you haven't yet signed-up, check with the pro-shop for availability or last-minute opportunities for a team or even a single.

RAZZLE-DAZZLE TOURNAMENT

on Sat., May 12th (not conducted prior to press deadline)

Entry forms for all Men's Club Tournaments are available in the pro shop, or you can download the forms at <http://pmlmgc.com>

Pickleball for the Summer

Tammy Talovich

First day of summer is just around the corner, and everyone will be coming back to the mountain for some much needed vacation and fun.

Our Potluck on May 5 was a lot of fun. There were approximately 20 people on the courts! We ate, visited, played some pickleball and then ate again! We had some fellow players come out again and we had some new people!

As always there is regular play on Monday, Wednesday, Friday, Saturday and Sunday at 8:30am. So no excuses, there is a day for everyone, with play of all levels: novice, intermediate and advanced.



Make sure you stop by the Main Gate to get a pass for 1 day, 1 month or if you just love playing and want to come out anytime stop at the Administrative Office and get an annual pass.

Look forward to seeing everyone back for the summer!

HOURS
MON-TUE: 11AM - 10PM
WED 11AM - 9PM
THU-SUN: 11:00 - 10PM

"WE TAKE LOCAL COMPETITOR'S COUPONS!"



PIZZA PIES



TRY OUR ALL-YOU-CAN-EAT LUNCH SPECIAL OR OUR OVEN BAKED SUBS

Call ahead: 962-4897 (962-GUYS)

18955 Ferretti Road. Left turn off of Main St (Hwy 120) 1/2 Block

\$1.00

Off Any Size Two Guys Pizza or Calzone

One coupon per order, per visit. May not be combined with any other offer and/or coupon. Not valid on delivery.

PML0618 Expires 07/15/18

\$2.00

Off Any Large or Extra Large Two Guys Pizza

One coupon per order, per visit. May not be combined with any other offer and/or coupon. Not valid on delivery.

PML0618 Expires 07/15/18

Sierra Professional Artists

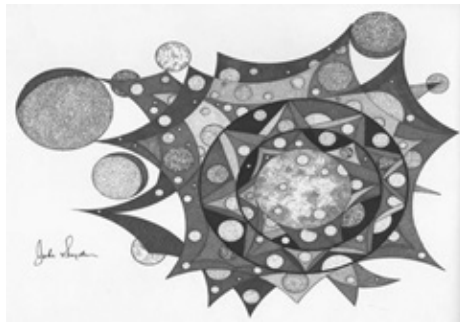
Janean Snyder

There are many accomplished and hidden artists in our community and surrounding area, we would like to meet you. We invite you to join our meetings that are held 2nd Thursday each month, 11am, Yosemite Vista Estates club room, Prospect Heights, Groveland. Bill and Jean Hammond, the membership chairs, are at 209-962-6477 for questions. Check out our website at www.sierraprofessionalartists.wordpress.com.

Meet Artist of the Month Jake Snyder: Jake had visions and dreams of his paintings that became reality. He is a painter, concrete sculptor and hardwood carver, bringing art alive from many cultures, landscapes with strikingly vibrant color and expressionistic space cosmos that feel like you are looking through a telescope.

Jake goes into a spiritual place for his abstracts and starts with 1 line from here to there or to this or that creating form for the imagination, has fun adding colors for the heart, ending with art for the soul.

Vivian Patton is showing at the Farms & Fields event, May 2 – July 29 @ Carnegie Arts Center, 250 N Broadway, Turlock. Open:



W-S 10-5pm, F 10-8pm, S 12-4pm. Reception is May 10th.

She is also showing in “The World of Frida” at the Bedford Gallery of the Leshner Center for the Arts, 1601 Civic Dr., Walnut Creek, July 8 – Sept 16. Reception is July 8, 3-5pm.

The Groveland Gallery, open Thurs – Sun, 10-5pm, features fine art, jewelry, and gifts by 30 local artists, with a wine tasting room and patio open at noon. Weekly classes upstairs include basket weaving, paint and sip classes and specialty art classes Saturdays with Heinie Hartwig. Space is available for private showings. Contact the gallery @ 209 962 0979, www.grovelandgallery.net or www.grovelandwineandart.com.

From Your District Supervisor

John Gray – Tuolumne County 4th District Supervisor

I have mentioned a number of times that I hoped we could get through 2018 without a disaster to deal with---Didn't happen!

In March we experienced a storm of monumental proportions that has impacted many lives. The rainstorm damaged many public roads in the fourth district, including the South County communities of Groveland and the Lake Don Pedro area. The price tag for repairs approaches the \$9M mark. This amount is on top of the \$8M + figure, for road damage repairs in 2017.

No small rural county has the financial resources to fund this amount of property damage without the help of the State and Federal government and the process of working to secure the assistance is complicated, to say the least.

In May of this year, we received a letter of obligation from FEMA for the repair of Marshes Flat Road. This request for assistance has been in the works since 2017. Now the funds are available and staff is prepared to expedite the construction process. With the engineering work well on its way to finalization, the construction could begin late this summer or early fall.

The County understands the importance of Marshes Flat Road and is doing whatever we can to get the road in safe navigable condition as soon as possible. A critical condition for any emergency designated project is to make sure that funding has been appropriated before work begins in order to obtain state and federal reimbursement.

With the Marshes Flat repair funds in place, the next priority project is Ferretti Road. As County Director of Emergency Services, I declared a local state of emergency on March 23, 2018. The Board of Supervisors (BOS) ratified this proclamation on March 28th and it has renewed the proclamation every 30 days.

The local proclamation requests the Governor to proclaim a State of Emergency at the highest level and to authorize

financial assistance under the California Assistance Act, or any other state funding program available, and to waive regulations that might hinder or delay response and recovery efforts. It further requests that the Governor provide assistance to expedite access to federal resources and any other federal disaster relief programs.

The Governor did proclaim a State of Emergency under California's guidelines which makes state funding available. As for the funding at the federal level, the state is still trying to determine that there was enough monetary damage to meet the approximately \$52M threshold to qualify for a Federal Proclamation.

The good news is that Ferretti Road is being funded through Federal Highway Administration and the California Offices of Emergency Services. County staff has filed an application for over \$1M for the Ferretti Road repair. This, once again, is a “process” and the county is doing everything possible to move it along more quickly. We know how important Ferretti Road is and also understands the burden it places on the Pine Mountain Lake community.

Ferretti Road is a major collector with thousands of cars traveling over it each day.

Even with all of the recent storm related problems, your county continues to work on the tree mortality issue, as well. Projects for Big Creek Shaft, Old Highway 120 and Whites Gulch are targeted areas.

I intend to continue to hold office hours in Groveland from 8:30 am to 10:30 am on the second Tuesday of the month. Please contact me with any specific questions and I will do my best to get you a prompt answer. If you wish to meet at a time other than this, please send me an email at jgray@co.tuolumne.ca.us or call me at (209) 533-5521 to schedule an appointment.

Looking forward to a Successful 2018 for our county and the many residents who call Tuolumne County “Home”.

ROOFBB's

I want to:

- Give something back to my community
- Make a difference in the lives of others
- Feel valued and part of a team
- Be part of a social group of strong minded, energetic women
- Spend quality time away from work or home

- Socialize with and get to know new friends

ROOFBB's- Since 1994 we have raised and contributed over \$276,000 to the community.

JOIN and be a part of this dynamic group of women today.

For information contact Susan Dwyer at 962-6265



PAUL S. BUNT, ESQ.
ATTORNEY AT LAW

ESTATE PLANNING
PROBATE
REAL ESTATE
BANKRUPTCY
ELDER CARE
209.962.6778

Mountain Leisure Center, Groveland
appointments available in Sonora and Lake Don Pedro

Carron Tax
associates

Carole Smith
Enrolled Agent

20093 Ridgcrest Way
Groveland, CA 95321
Tel: 209/962-6119
E-mail: carolesmith@carrontax.com

INCOME TAX PREPARATION
AUDIT REPRESENTATION

<h1>WED 6</h1>	<h1>SAT 9</h1>	<h1>SUN 10</h1>
GCSD PARKING LOT – 18966 FERRETTI ROAD	PML MARINA	PML LAKE LODGE
<p>FIRST WEDNESDAY BIRD WALK The first Wednesday of the month Bird Walk at the Groveland Community Services property will be led by Jeanne Ridgley. The property encompasses an area of more than 200 acres of oak, pine and willow habitat with three water storage ponds. Meet the group in the GCSD parking lot at 8:00 AM. Bring binoculars and a birding field guide if you have one. Rain will cancel the trip. The walk will last about two-three hours.</p>	<p>KIDS FISHING DAY From 6:30am – 9:30am kids 7-15 can come to the Marina for our Kids Free Fishing Day Event! Maximum boat load is 6 kids so please call in advance to reserve your child's spot. Call the Marina at 209-962-8631.</p>	<p>2018 ELECTION CANDIDATE FORUM AND WEENIE ROAST Come and meet the candidates at the PMLA Lake Lodge from 10:00am – 2:00pm. Candidate forum 10:00am – 11:30am with a meet & greet and weenie roast starting at 11:30am. This event is sponsored by the ROOFBBs. For more information contact Susan Dwyer, ROOFBB President at smdwyer@sbcglobal.net.</p>
<h1>SUN 10</h1>	<h1>F&S 15-16</h1>	<h1>SAT 16</h1>
MARY LAVERONI COMMUNITY PARK	GROVELAND EV FREE CHURCH	GROVELAND COMMUNITY HALL
<p>ANNUAL WHERE THE HELL IS GROVELAND CAR SHOW</p> <p>THIS EVENT HAS BEEN CANCELLED DUE TO THE FLOOD DAMAGE TO MARY LAVERONI COMMUNITY PARK. WATCH FOR DETAILS ON POSSIBLE NEW DATES!</p>	<p>RUMMAGE SALE Friday, June 15 (9:00 a.m. to 4:00 p.m.) and Saturday, June 16 (9:00 a.m. to noon). Donations are appreciated and items can be dropped off at the church on June 12, 13 and 14 (from 9:00 a.m. to 5:00 p.m.) No electronics, clothing or books, please.</p>	<p>STCHS SPEAKER: AUTHOR SHARON GIACOMAZZI Local (almost) author of Central Sierra hiking guide books and outdoor magazine articles, amateur historian and seasoned trail stomper, will regale the audience with a most unusual topic at STCHS in Groveland. Doors open at 7:00 p.m. The "Tombstone Tourist" is the topic, and you just might be one. Neither morbid nor creepy nor disrespectful, people worldwide enjoy visiting cemeteries for their beautiful setting, tranquility, history, and unusual grave stones.</p>
<h1>THU 21</h1>	<h1>21-23</h1>	<h1>SAT 30</h1>
THE GRILL AT PINE MOUNTAIN LAKE	PINE MOUNTAIN LAKE GOLF COURSE	GROVELAND COMMUNITY HALL
<p>WINE TASTING & DINNER BUFFET Enjoy this wonderful evening with wine brought to you by Southern Wine & Spirits. From 5-7pm. \$27 per person plus tax includes wine tasting and menu of Tri-Tip. Come on out and have a great evening of fine wines and great food. Reservations are required. Call The Grill for reservations at 209-962-8638.</p>	<p>41ST ANNUAL MOTHER LODGE INVITATIONAL GOLF TOURNAMENT The Mother Lode Invitational is scheduled to be held on Thursday, Friday & Saturday June 21, 22 & 23. The 2 man team event is open to all PML property owners and their guests with an established handicap. Entry forms are available in the Golf Shop, on the Men's Club website (www.pmlmgc.com) and on the PMLA website (www.pinemountainlake.com). Call the Golf Shop 962-8620 if you need more information.</p>	<p>GARROTTE LIONS CLUB CRAFT FAIR & BOUTIQUE From 9 am to 3 pm. If you're looking for handmade items made by our very talented locals, this is the place to find them. There will also be some re-gifted and gently used items, all carefully selected for sale. Vendors interested in a space, please contact Wanda Day at 209-770-6179 to reserve your space. Local crafters are needed.</p>

19th Hole Lounge Entertainment
LIVE MUSIC FROM 8PM UNTIL MIDNIGHT

Friday, June 1
KARAOKE

Saturday, June 16
GROOVY JUDY

Saturday, June 2
HIGHWAY 99

Saturday, June 23
PLAN B

Saturday, June 9
KOOL SHIFTERS

Saturday, June 30
THE BLUE BAND

Support Meetings in Groveland

AL-ANON

THE LITTLE HOUSE – SATURDAY 9:30-10:30 AM
MOUNTAIN LUTHERAN CHURCH – WEDNESDAY 1:00-2:00 PM

GRIEF SUPPORT
THE LITTLE HOUSE

1ST & 3RD WEDNESDAY 10:30-NOON
CALL JUDY AT 962-5157 OR BONNIE AT 962-5507 TO REGISTER FOR GRIEF SUPPORT.

Groveland Evangelical Free Church

Pastor Ron Cratty

As one reads the New Testament book of Acts, he/she is struck with the expanding geographic outreach of the church of Jesus Christ. Such emphasis allowed more people groups to hear the gospel message, but it was also a benefit to the churches that sent out the missionaries. I firmly believe that, even for people called to mainly focus on closer-to-home ministry, a world perspective may be very helpful for spiritual growth.

In addition to supporting a number of career missionaries, Groveland Evangelical Free Church regularly sponsors short-term mission trips for our people. In California we've sent a team to aid the disabled and their caregivers. Stateside we have sent one-week teams to aid in disaster relief in Louisiana, Kansas, Texas and New York (in addition to giving a few days more locally to assist victims of the Butte Fire). Internationally we've concentrated more on outreach and church planting in Rwanda, Peru, Romania, Germany

and, several times, China. In September we're sending a team back to Berlin to once again minister to refugees. (Last time we went in January; never say we don't learn our lessons.)

To help fund the Berlin trip we are holding a rummage sale on Friday, June 15 (9:00 a.m. to 4:00 p.m.) and Saturday, June 16 (9:00 a.m. to noon). Donations are appreciated and items can be dropped off at the church on June 12, 13 and 14 (from 9:00 a.m. to 5:00 p.m.) No electronics, clothing or books, please.

Just a reminder, our annual Vacation Bible School runs mornings, Monday to Thursday, July 9 – 12. It's free and always a great time for kids entering kindergarten through grade 5. (There are a few spots for pre-schoolers who are potty-trained and currently enrolled in a pre-school program. Pre-Registration is required and is on a first-come first served basis.) This year's theme is "Shipwrecked: Rescued by Jesus." More details next time, or call the church (962-7131).

Garrotte Lions Club Craft Fair

Cathy Leetham

Garrotte Lions Club will host a craft fair and boutique at the Groveland Community Hall on Saturday, June 30th, from 9 am to 3 pm. If you're looking for handmade items made by our very talented locals, this is the place to

find them. There will also be some re-gifted and gently used items, all carefully selected for sale. Vendors interested in a space, please contact Wanda Day at 209-770-6179 to reserve your space. Local crafters are needed.

Share Fitness in Groveland

Melinda Wright

When the Groveland Curves closed last July, people wanted to keep the "interval training with music and friends" concept available here. They formed the non-profit co-ed gym, Share Fitness. With no paid staff, volunteers keep Share Fitness open the following hours: 8:30 to 1 pm weekdays, 8:30 to 10 am Saturdays, and 4 to 6 pm weekday afternoons except Fridays. Early birds host a 6:30 am workout every weekday morning, and there is Zumba every Friday at 12:30.

To become truly sustainable, the current membership of 65 will have to more than

double in the coming year, so please come in for a free, no-obligation tour or introductory workout. Monthly memberships are \$34 (\$28 for seniors) with no enrollment fee. Punch cards are also available: \$20 for 5 workouts or \$30 for 10 workouts, and the punch cards have no expiration date. If you are looking for a pleasant, realistic way to do the "doctor-recommended 150 minutes of cardio exercise weekly", then the weight machines, music, videos, hand weights, vibration platform, helpful staff, and welcoming atmosphere of Share Fitness can make it easy for you. Located at Mountain Leisure Center, phone (209)436-9772.

Helping Hands Happenings

Joyce Smith

We changed our Store hours to closing at 4:00 p.m. starting on May 22. This is not new. It's our regular summer closing time. Drop off donations must be here by 3:30 We will hopefully be having the Barn open on Wednesdays, Thursdays, Fridays and Saturdays when it is ready to go again. The Barn underwent major repairs and the opening date is still not firmed up yet. Remember, we will be basically starting from scratch, so if you have something to donate and can keep it until we are accepting furniture again, it would be much appreciated. It is always good to call first if you have a large donation. When the Barn is ready to go, it will be on a 11:00 to 4:00 day as the Store. We are as anxious as you to get back to "business as usual". Did I tell you we had to toss out 2 dumpsters (7 tons), of ruined stuff all from the flood. Another thank you to the many people

who helped us and the downtown area.

We have moved on to summer clothes, but not to worry, if your guest, grandchildren or whomever needs a wrap or something for cool times we can usually help. Plan now in bringing your friends shopping when they come to Groveland. Everyone enjoys coming to our store. We have a new clothing rack for PML and Logo items. (A's, Giants, 49ers, Raiders, Warriors, Sharks, Harley Davidson, any clothing with Yosemite, and some high end clothing will be found on this rack. Always feel free to ask our friendly staff if you can't find what you are looking for.

We were open May 26, 27, & 28 for a 3 day weekend, for Memorial Day. We wish all you Mother's and Father's a special day. I Can't believe how fast this year is going by.

Happy Summer everyone! See You at the Store or Barn!

June is the Gateway to Summer

Jackie Ostrom with Eva Sheldon

I wonder what it would be like to live in a world where it was always June! In June, the buds in my garden are almost as enchanting as the open flowers. Flowers in bud bring recollection of the loveliest days of the year – soon to be fulfilled. And since all this loveliness can not be Heaven, I know in my heart it is June! Together we bloom and make a difference through love.

Mountain Lutheran Church is indeed blessed to have a rotation of dedicated Pastors, Musicians and Worship Assistants to lead our worship services every Sunday. We are a Lutheran congregation, part of the Sierra Pacific Synod of the Evangelical Lutheran Church of America. However, some of our members and friends have Presbyterian, Episcopal, Methodist and Catholic backgrounds. Our "Sunday Pastors" also

come from several different denominations.

This proves to be a diverse, Holy Scripture based and Holy Spirit led worship experience! If you are new to the area, or just "passing through", or have not been to church in a while, please come worship with us! You will be warmly welcomed and included in our Worship and Fellowship. Our Worship Service is at 10:00 am most Sundays, but occasionally at 4:00 pm. So please call to verify the time! Our Bible Study is at 1:00 pm on the first and third Thursday of each month.

Come Grow With Us! – Come Bloom With Us!

Mountain Lutheran Church
13000 Down To Earth Court
Groveland, CA 95321
(209) 962-4064

Mar Val Foods Main Street Market

-new store expansion
-fast work days
-invest in your future
-learn and grow
-customer service
-gain work experience

Now Hiring
ALL POSITIONS
Be apart of something
different!

-part time
-full time
-produce clerks
-cashier's
-deli clerks
-utility clerks

*****BRING YOUR RESUME IN TODAY!!!*****

Pine Cone Singers

Bob Swan

THANKS FOR COMING TO "SHOWTIME II"

The Pine Cone Singers presented their Spring Concerts at the Groveland Evangelical Free Church on May 18, 19, and 20. We want to thank everyone who came out to join us despite the slightly tricky condition of Ferretti Road.

Normally, this would be where I write about the concerts. But, since I don't have a time machine, I am actually writing this article BEFORE the concerts will take place. So I'm going to defer describing the concerts until next month. Instead, I want to devote a few words to some folks who will be leaving us permanently, due to moving out of the area. We are really going to miss Fred and Mary Ann Meese, Sandra Menacho, Ken Steiner, and Luke Sullivan.

The Meeses have been with us the last two sessions as part of their mission to the Groveland area. They will be missed by other groups as well. For us, Fred has been a strong and reliable voice in the bass section, and Mary Ann has been a

FANTASTIC rehearsal accompanist.

Sandra joined the group in 2010, and has been the leader of the alto section, as well as splitting the work of rehearsal pianist (before Mary Ann). She has regularly held sectional practice sessions at her home, and has for the last several years served as Treasurer.

Ken has also been with us since 2010, and has become a mainstay in the baritone section. He's done several solos / duets / quartets, often with a humorous slant. (He's the tall one).

Since 2006, Luke has been a solid rock in the bass section. (I will really miss cheating off his voice). In his many solo or small group performances, he frequently provided guitar accompaniment. He was also our in-house sound engineer.

We wish them all well, but we're really sorry to see them go.

REMINDER — The Sierra Sounds cabaret group – made up of current and former Pine Cone Singers – will reprise their "Cinemagic" dinner show at the PML Grill on September 12 & 13.

Love your Smile on Your Special Day

"A great smile is only one visit away."



SONORA SMILES
(209) 532-3171
Dr. Dave C. Berger

Dr. Dave offers exceptional dentistry for patients of ALL ages

www.SonoraSmiles.com

**DR. DAVE OFFERS PROFESSIONAL TEETH WHITENING AND COSMETIC DENTISTRY
CALL FOR A COMPLIMENTARY COSMETIC EVALUATION**

*Happy Father's Day
&
Congratulations Graduates!!!*

Groveland Gallery & Wine Tasting Room

**Fine Art – 30 of our local Artists
Wine, Champagne and a few beers
2000+ sq ft of Fine Art, Wine Bar & Patio**

Groveland Gallery will be hosting events such as Solo and group Art shows, Paint and Sip nights, as well as many art classes in the Artist Studio upstairs.

**Hours: Thu – Sat 11 to 7pm
Sun 11 to 5pm
Closed Monday – Wednesday**

**Wine Tasting opens at noon
11892 Ponderosa Lane
Call for info 209-962-0979**



**25 plus Wines to Choose from
A few of our wines**
Ferrari Carano • David Bynum • Wente
Murrietta's Well • Rodney Strong • Francis Coppola

MURRA'S TOTAL YARD MAINTENANCE



BRINGING VALUE FOR YOUR DOLLAR IN PML

- WEEDING
- LOT CLEARING
- SENIOR DISCOUNTS
- LEAF REMOVAL
- PLANTING
- TREE SKIRTING
- HAULING
- AND MORE

CALL JASON MURRA
209-352-3750

LIABILITY INSURED



HOUSE PAINTING

Full-Service House Painting

Interior/Exterior Painting & Staining

Drywall & Drywall Repair

Deck Staining & Restoration

RESIDENTIAL
COMMERCIAL

209.962.4445

www.GreenTreePropertyServices.com

LICENSED | BONDED | INSURED | CSL440341



Call Hamm's Carpet Cleaning

EMERGENCY SERVICES

WATER DAMAGE RESTORATION

STRUCTURE DRYING AND REPAIR

Locally Owned & Operated for 30 Years



209-962-5852

**EMERGENCY FLOOD &
RESTORATION SERVICES**

Professional Truck Mounted Cleaning Equipment

WWW.PINEMOUNTAINLAKE.COM

SAVE AS MUCH AS 30%

OVER THE CHAIN OPTICS STORES AND EVEN MORE OVER DOCTORS OFFICES

Large Selection of Unique & Traditional Designs
Can Bill Most Insurance Plans • Over 20 Years Experience
Designer Sunglasses • FREE Adjustments & Repairs



Stacy Hancock
Certified / Licensed Optician

18729 HWY 120, Unit A, Groveland • 209.962.1972

HUNGRY BARK BEETLES HAVE EMERGED CAUSING THE NEXT WAVE OF TREE MORTALITY



Untreated Bark Beetle Trees

NOW OFFERING TRUNK INJECTION

- Lasts longer than spray-on treatments
- No chemicals in the air or water supply
- Treats entire tree from trunk to leaves
- Full dose stays IN the tree
- Long lasting protection and prevention

TREE TREATMENTS & INJECTIONS

\$100 OFF any job over \$1000

\$50 OFF any job over \$500

\$25 OFF any job over \$250

1 coupon/offer per customer – Limited time offer
Coupon must be presented at time of service

Bark Beetle infestation is a **REAL DANGER** in our already devastated area. **STOP** them from spreading and **SAVE** your trees.

They burrow into and lay eggs inside Pine, Cedar, and Cypress trees. Once they hatch, the larvae eat the tree from the inside and burrow out to infest other nearby trees. Infestation spreads quickly if untreated.

Visit our website for more information – www.rodiehlpestcontrol.com

PREVENTION IS KEY

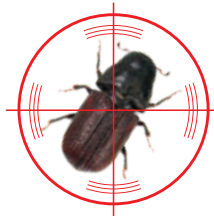
LET US HELP YOU – BEFORE IT'S TOO LATE

BEETLE PREVENTION & ERADICATION

FREE ESTIMATES • NO HIDDEN COSTS • CALL FOR MORE DETAILED INFORMATION

STUMP GRINDING SERVICE COMING SOON

FOR REMOVAL OF UNSIGHTLY STUMPS CURRENTLY RIDDLING LANDSCAPES & PROPERTY



Rod Diehl Pest Control

"The Best Deal in Pest Control"

CALL TODAY: 209.532.3260

PROUDLY SERVING PINE MOUNTAIN LAKE AND THE GROVELAND AREA

WHAT WILL YOU DO WITH FASTER INTERNET?



*Home
Office*

*Home
Leisure*



Call Sierra Nevada Communications Today!

(209) 962-6373

**Sierra Nevada
COMMUNICATIONS** GoSNC.com

Granite & Quartz Countertops



**10 YEAR
GUARANTEE**
ON ALL WORK AND
INSTALLATIONS

Located right here in Groveland!

Upgrade Your Kitchen & Bathroom Countertops

High Quality, Guaranteed Work

Affordable Prices • Stone & Tile Projects

Visit our website: www.RockSolidCreations.us

Call Brandon Hoffman: 209-962-1813

UNIQUE DECOR, GIFTS, CLOTHING & MORE

Specialty interior décor trending on rustic, ranch, and rural designs

Interior design consultations are available

Ranch Revived

18729 Main St., Groveland • 209.962.0740

Joanie Gisler
Owner/Designer

RanchRevivedDecor

P A I N T I N G

Bay Cal

LIC #923832

Painting – Exterior/Interior

Deck Repairs

Wood Repairs

Remodels

VISA MasterCard

FREE ESTIMATES

209.962.4777

www.baycal.com • email: davec@baycal.com

ADVERTISE IN THE PINE MOUNTAIN LAKE NEWS
GO TO WWW.PINEMOUNTAINLAKE.COM
OR CALL 209-962-0613
FOR RATES AND INFORMATION

WWW.PINEMOUNTAINLAKE.COM

HEALTHIER. IT'S HOW WE INSTALL!

Sierra Lodestar
2017
Best of the Mother Lode

Mention this ad to receive Free Healthier Living Installation Upgrade!

Thank you for voting us Best of the Mother Lode since 2005!
It has been our pleasure serving this community for over 40 years!

PINNELL'S CARPET ONE FLOOR & HOME

209.736.8077 • 263 S Main St • Angels Camp, CA
 209.532.1696 • 12900 Mono Wy • Sonora, CA

The Tombstone Tourist

Frank Perry

Sharon Giacomazzi, local (almost) author of Central Sierra hiking guide books and outdoor magazine articles, amateur historian and seasoned trail stomper, will regale the audience with a most unusual topic at STCHS in Groveland on June 16, 2018. Doors open at the Groveland Community Hall at 7:00 p.m.

Invariably, Sharon talks about one of her hiking adventures culled from an extensive cache of 13,000 trail miles in the Sierra. But, the audience is in for something entirely different in this presentation.

The "Tombstone Tourist" is the topic, and you just might be one. Neither morbid nor creepy nor disrespectful, people worldwide enjoy visiting cemeteries for their beautiful setting, tranquility, history and elaborate, unusual grave stones, to name a few reasons. Would it shock you to know that there are couples who choose to have their wedding ceremony in a cemetery?



They're also quiet places to study and meditate. For many, graveyards are akin to a museum.

Besides well known ones in your neck of the woods, numerous forlorn, abandoned burial grounds are not far from the Groveland environs. Come and learn where they are and why so many people for centuries love wandering among the departed.

See you there!

Groveland Kiwanis

Sandy Smith

Groveland Kiwanis meet each Monday evening at the Pizza Factory on Main Street, at 5:30. Drop in and learn about how Kiwanis helps your community.

Here it is June and we are still dealing with the March storm. At this writing we are not sure about where BINGO will be, either at the Community Hall and spaghetti dinner, or under the Library and no dinner. There will be a note on the Community Hall if we had to move to the Library.

Hopefully the hall will be finished and we can move ahead with a fun evening of BINGO. Doors open at 5:30 Early Bird Bingo at 6:30,

Regular Bingo at 7:30. Wear something Blue and you will receive a little surprise, bring a friend whose has not been before and receive a free early bird card. BINGO is fun, and door prizes too. See you there.

As we pack up winter things, remember our Coat Barrels at the Pizza Factory, and at Mar Val's. October will be here before you know it. Speaking of October if you have Childrens books and aren't using them, we can use them to share at the Halloween celebration downtown. They can be dropped off at the Pizza Factory, or call me 962-4950 and we will get them picked up.

First Wednesday Bird Walk

Jeanne Ridgley

The first Wednesday of the month Bird Walk at the Groveland Community Services property at 18966 Ferretti Road, Groveland, will be led by Jeanne Ridgley on June 6. The property encompasses an area of more than 200 acres of oak, pine and willow habitat with three water storage ponds.

On May 2 we saw 45 species. First of the season sightings here were Olive-sided Flycatcher, Western Wood-Pewee, Ash-throated Flycatcher, Western Kingbird, Violet-

green Swallow, Black-headed Grosbeak and Bullock's Oriole. A Bald Eagle was seen flying high overhead.

Access for birders here is limited. Birders must be accompanied by an authorized birder. The next scheduled Bird Walk here will be on Wed, June 6.

Meet the group in the GCSO parking lot at 8:00 AM. Bring binoculars and a birding field guide if you have one. Rain will cancel the trip. The walk will last about two-three hours.

Chamber Chatter

Carole Smith

My name is Carole Smith and I have been a permanent resident of Pine Mountain Lake for more than 10 years. I am currently Treasurer of the Yosemite Highway 120 Chamber of Commerce. Married to my husband Ron for more than 56 years; two children (boys) with six grandchildren and one great grandchild. Have been an Enrolled Agent (enables me to represent taxpayers before the Internal Revenue Service) for more than 35 years and continue to do income taxes here in Groveland along with my clients in the bay area. I know a lot of you out there and just wanted to introduce myself to those who may not be familiar with me.

Latest Chamber news as of May 4, 2018. Whether or not 49er Festival will be held this year is still on hold due to conditions at Mary Laveroni Park. Decision to be made very shortly and results will be published online.

The annual "Where The Hell is Groveland" Car Show, as of this writing, has been canceled. Stay tuned for further developments via Chamber blasts, etc.

Consider joining our Chamber where we have a good bit of fun and keep quite busy



Ribbon cutting at Breezeway Gifts. Groveland's newest retail store. A must store for all to see. Owned by Evelyn People's and her daughter, Andria Albanez.

planning new events as well as helping with other events around town. For those of you who were interested in the "Sip and Walk" event planned for May 25, this has also been canceled due to lack of interest.

If you have any suggestions as to fun events we can hold in our little town of Groveland, please feel free to contact me via email at carolesmith@carrontax.com or by phone at 962-6119. We do need some new ideas from any and all. Thanks!

All for now and hope to see you around town!

Line Dancing is Alive and Well!

Sue Salnick

We aren't gone, but due to the damage sustained at the Groveland Community Hall during the recent flooding, High Country Line Dancers will be unable to dance at the Hall until further notice. Luckily, we were able to secure one of the buildings at the Little House in Groveland where we can continue with our lessons and practice. Hopefully the Community Hall will be returned to its former glory at some point and we'll be able to move back when it's ready.

So, don't forget, we dance every Tuesday night now at the Little House (in the back room, not the main building) starting at 7:00 p.m. Beginner lessons are taught from 7 to 7:45, but everyone is welcome to stay

and learn an intermediate dance from 7:45 to 8:30. We ask for a \$2 donation per week.

In addition to line dancing, we like to celebrate birthdays and major holidays with dance parties, goodies, and pot lucks, a wonderful way to share and get to know one another a little better.

So if you've always wanted to try it, come alone or bring a friend! You don't need a partner, and you don't need to have any dance experience. No judgments here! It's a terrific social outlet, not to mention good exercise for the body and the mind. You will have a good time!

For more information, call JoAnn Prieto at 962-5876.

WWW.PINEMOUNTAINLAKE.COM

Healthy Habits FROM PINE MOUNTAIN THERAPY

Julie Tanaka, PT

RESPECT HEALING

I initially wrote this article in 2014 after my husband's second back surgery. As we navigate his third back surgery these words still hold true. Respect the healing!!! Our bodies are great at doing their job if we give them the tools to do it. The surgeon does the repair, but it is up to the patient to do the recovery. You NEVER get those first 6-8 weeks back.

All surgery requires cutting living tissue and many include cutting bone. Arthroscopic surgeries with very small port incision are deceptive. Extensive and precise repair work went on under the surface. Recent advancements in technique and pain control have also decreased the amount of post-operative pain that patient have to endure. No one wants pain, but pain is a warning to our brains that we "shouldn't do that". Take away the pain and given human beings innate need to be super stars post operative injuries occur more often than we would like.

This is what one of our patients said recently 4 weeks after back surgery, "I felt pretty good, so I helped my son chop and bring in the wood". Really? And he



thought that was a good idea and was so proud. Activities that stress the surgical site will result in damaging the surgical tissue, change the formation of scar tissue and set you up for ongoing problems that could have been avoided.

Balance rest and activity: Tiring easily after surgery is normal. Local and general anesthesia takes a toll on the body. But it is also important to get up and move around, as the doctor recommends, for circulation, lung function, digestive function etc. Getting up and walking every hour, if you can't walk at least stand and march in place, if you can't stand, move your arms and legs in bed, but do move. Then rest. You need both.

Eat well: Your tissues need nutrients to heal. Small, frequent, easy to digest meals high in protein are important. The adage that chicken soup cures all is close to the truth.

Soups made from slow cooked bone broths are full of tissue enhancing nutrients.

Bowel care: Start planning your bowel routine before surgery. Talk to your doctor about stool softeners. Have fiber rich foods available, have a water bottle ready to sip on throughout the day. Don't wait for this to be a problem, be proactive.

Wound healing: There are three phases to wound healing. The first two take about 4 weeks for the scar to be produced to pull the edges of the wound together. Ask your doctor about what medications you can take during this phase. Medications can be targeted at managing nerve pain or inflammation. We no longer just "mask the pain". Once the scar is formed, about 6 weeks, massage and touch it. Skin is a living fabric. Layers of skin will adhere together and may make the scar uncomfortable. Gently rubbing and massaging the scar helps it to remodel with more flexibility.

Healing takes time, respect the healing process. Respect the efforts of your surgeons. And above all listen to your therapist. It's the surgeon's job to repair the injury, it is our job to guide your recovery.

Doctors Online via the Telephone

Etty Garber PhD, Licensed Marriage and Family Therapist

Whatsoever house I may enter, my visit shall be for the convenience and advantage of the patient. — The Hippocratic Oath

For hundreds of years, doctors have sworn by the Hippocratic Oath, which promises to provide the best possible care to every single patient, no matter the circumstances.

As our populations grows and gets older there is a greater demand for more doctors. We are facing a shortage of more than 130,000 doctors in the next ten years. With our modern healthcare system and fast-paced lives, wait times and costs are skyrocketing. As a result, several companies have developed a way to get non emergent care by a professionally licensed doctor from your own home. It is a fast and easy way to get health information from an on online resource 24/7. You would have access to pharmacists, psychologists, dentists, dieticians, as well as fitness trainers. You can also speak to a registered nurse or a personal Health Advocate who can help you find your way through insurance and healthcare systems.

All doctors are U.S. Board Certified,

state licensed and credentialed. They have an average of 20 years of practice experience and are all residents of the United States.

These services are basically for non-emergencies. If it is an emergency the best thing to do is call 911 for immediate response.

They can recommend treatment and prescribe medication to your pharmacist for many medical issues including: cold and flu symptoms, bronchitis, allergies, poison ivy, pink eye, etc. It will depend on your accuracy in reporting symptoms and responses to the doctor's questions.

There are several companies that offer these services. Just to name a few: Doctor Care America (Teladoc), Virtual Visits (United Health Care), Telemedicine (Healthline), and Doctor On Demand (Dr. Phil McGraw). These are not insurance plans.

Each company has their own payment plan, some are for one specific call, some for extended periods of time.

However, Plushcare reports that they will work with your insurance company and will accept your copay. You can find these companies on line for more specific information including phone numbers.

The process appears easy: (you can use your phone, ipad, iphone, computer or laptop).

1. Contact the company and request a doctor consultation.
2. Talk to the doctor and tell him/her your concerns.
3. The doctor will recommend the treatment for your medical issue and if necessary will send a prescription to the pharmacy of your choice.

4. If the doctor feels that the medical issue is more involved or serious a referral will be made for a specialist.

I recommend you check on these companies to see their specific service offers, payments and comfort. I am not recommending any company. I am just informing you of the newest innovation in medical care and the insurance alternatives. Only you can make these decisions for yourself and your family.

PINE MOUNTAIN THERAPY

Outpatient Physical Therapy

Serving the Mountain Communities of Tuolumne and Mariposa Counties

18800 Main Street,
Groveland, CA 95321

209-962-4035

Please visit our new web site at
www.pinemountaintherapy.com

A Preferred Therapy Provider,
participating provider with
most insurance carriers
including Medicare.



PHOTO BY BECKY SNIFFEN

Dr. Etty Garber Ph.D.

in Clinical Psychology and a licensed Marriage Family & Child Therapist, with 32 years experience in mental health, lives in Groveland and

OFFERS PRIVATE PRACTICE SERVICE

Dr. Garber can provide psychotherapy in a variety of settings to individuals, couples, families and groups.

RELATIONSHIPS • FAMILY CONFLICT • CHEMICAL DEPENDENCY
DEPRESSION • ANXIETY • ABUSE, etc.

Low Fees • No Insurance FOR AN APPOINTMENT CALL 209/962-5205

Repairing Flood Damage at Mary Laveroni Community Park

Ron Smith

On March 22, 2018, Groveland was drenched in over 8-1/2" of rain in 15 hours, with 4" falling in just 3 hours. This storm exceeded the 150-year flood frequency. The result was Main Street flooded in 12-18 inches of water, causing millions of dollars in damage to buildings, parks, and roadways. Mary Laveroni Community Park was hard hit. This park is not only a convenient and tranquil stop available to over a million travelers a year going to and from Yosemite National Park, but is the venue for many community activities, including the "Where the Hell is Groveland Classic Car Show, Church in the Park, Summer Flea Market, the famous 49er Festival, and our Halloween Trunk or Treat celebration. These activities bring hundreds

of thousands of dollars to our local businesses and substantial income to our local service clubs, like Rotary, Kiwanis, and 4H.

Unless we repair this park quickly, these events won't happen and our community will suffer even more than it already has. We have a generous outpouring of volunteers from the community ready to begin the repair work.

But, we are lacking the \$30,000 to bring in the 900 tons of backfill material, gravel, and asphalt needed to make the repairs required to open the park for our events. This is a call out to all those who enjoy Mary's Park to contribute to the GoFundMe account managed by Groveland Rotary Club. The GoFundMe account is "gofundme.com/repair-mary039s-park" or "Repair Mary's Park."

Recipe

recipe by Tom Knoth and Paula Martell

KALE AND CHICKEN SALAD WITH PEANUT BUTTER VINAIGRETTE

Must say that I have never been a kale fan, but we recently attended a family dinner at Bandera Restaurant in Sacramento and my sister who ordered this salad had us try it. It was incredible and we immediately ordered another one for us to split. On the way home, some googling revealed several attempts of others at "copycat" recipes. We have incorporated ideas from those recipes to come up with this one which we are very pleased with.

INGREDIENTS

3 Cups Tuscan (curly) Kale, stems removed and finely shredded
1 Cup Green Cabbage, shredded
2 Scallions, thinly sliced
1/4 Cup Cilantro leaves, chopped
10 leaves Fresh Mint, chiffonade
2 Cups Cooked Chicken Breast, shredded or chopped (can use rotisserie)
1/2 Cup Roasted Salted Peanuts, chopped
1/2 Cup Parmesan Cheese, shredded
Dressing
1/3 Cup Seasoned Rice Wine Vinegar
1/4 Cup Peanut Oil (can substitute avocado, canola, or vegetable oil)



2 Tbsp Peanut Butter
1 Tbsp Sesame Oil
1 Tbsp Sugar
2 cloves Garlic
1/2 tsp Kosher Salt, or more (to taste)
1-2 pinches Red Pepper Flakes

DIRECTIONS

Pretty simple recipe; just combine all of the dressing ingredients in a food processor or blender and emulsify. This can be done day before and stored in refrigerator.

Combine and toss all of the salad greens with some of the dressing and serve on individual plates. Then evenly top each salad with chicken, then peanuts, and then parmesan cheese. Drizzle with a little more dressing and serve. The dressing is pretty rich, so don't overdo it. You can always add more.

Groveland Christian Church

Pastor Richard Cripe

What is the greatest or most important command in the Bible? This is a question that Jesus was asked just a few days before He was crucified. It was asked by a very religious man who was a lawyer, and who was very skeptical about the claims of Jesus. But in spite of his skepticism, he was very pleasantly surprised by the answer Jesus gave him. We are going to be discussing this conversation on Sunday, June 3, during our morning service which begins at 10:30 AM. Please feel free to join us if you can.

Also, each Sunday morning, there is an adult Bible study beginning at 9:30 AM, led by Don Cripe. They are presently studying in the gospel of John, and there is always an interesting discussion. There is also a

ladies Bible study that meets at the church on Monday afternoon at 4:00 PM, and a Bible study and prayer time at the Home of Dennis and Sandy Smith at 7:00 PM on Wednesday evenings.

For the past number of years, the Groveland Christian Church has held "Church in the Park", at Mary Laveroni Park on Sunday mornings from June through August. Because of flood damage this past Spring, Mary Laveroni Park will not be available for use this summer. Therefore, just a reminder, "Church in the Park" this summer will be held in the "Little Red Church" located at 18829 Foote Street, behind the Post Office. We hope you will have the opportunity to pay us a visit.

Steve Pinley Memorial

Dear residents of Pine Mountain Lake and the Greater Groveland area:

My name is Lorilei Pinley. Some of you may remember my husband and me from when Steve had an aviation maintenance and repair shop on PML Airport for over 20 years, and I owned "Lorilei's Flowers" on Main Street. Our home was near the PML stables.



will never forget.

Now, for the hard part. It is with the most profound sense of loss I tell you of Steve's 6 year battle with a difficult cancer...ultimately losing the fight on the morning of October 31, 2017 at St. Joseph's Hospital in Bellingham. The girls and I kept him company throughout his hospital stays, and a number of friends and family came from all over to

In 2007 Steve and I and our two daughters, Crystal and Cheyenna, made the life-changing decision to move to Bellingham, WA. Steve had lived on a sailboat in the San Juan Islands in the early 1970s and loved it. His dream was always to move back to the Pacific Northwest, buy a boat and share his love for the ocean and sailing with us, his family. In 2006 Steve had the opportunity to work with San Juan Sailing and Yachting as a maintenance professional. In the spirit of new beginnings, he made a career change and started Deep Blue Marine.

Our girls, now 25 and 29, finished their education in WA and have started their own lives in the Bellingham area.

On September 30th, Steve and I celebrated our 30th wedding anniversary with a few close friends and family. Everyone was aboard our 37' pleasure Trawler, the 'Charles Linn', for the re-commitment ceremony of our marriage...another special occasion I

support us during his final days. Steve was able to know of the love and caring before slipping away in a peaceful passing at the age of 69 years.

Steven Doyle Pinley was truly 'one of the good guys' always offering his giving spirit to help anyone who needed him. Steve was a hard worker and a loving husband and father. He provided us the most amazing life, full of profound love and great adventure, flying high in the sky and sailing the seas.

We are planning a celebration of life, to share our memories with all of our good friends and family at the Pine Mountain Lake Airport, Sunday June 24th at 3 PM - location to be determined and announced soon. For more information or to RSVP, please E-mail me at lorileipinley@gmail.com. We look forward to coming "Home" to our beloved Groveland and our many friends and loved ones!

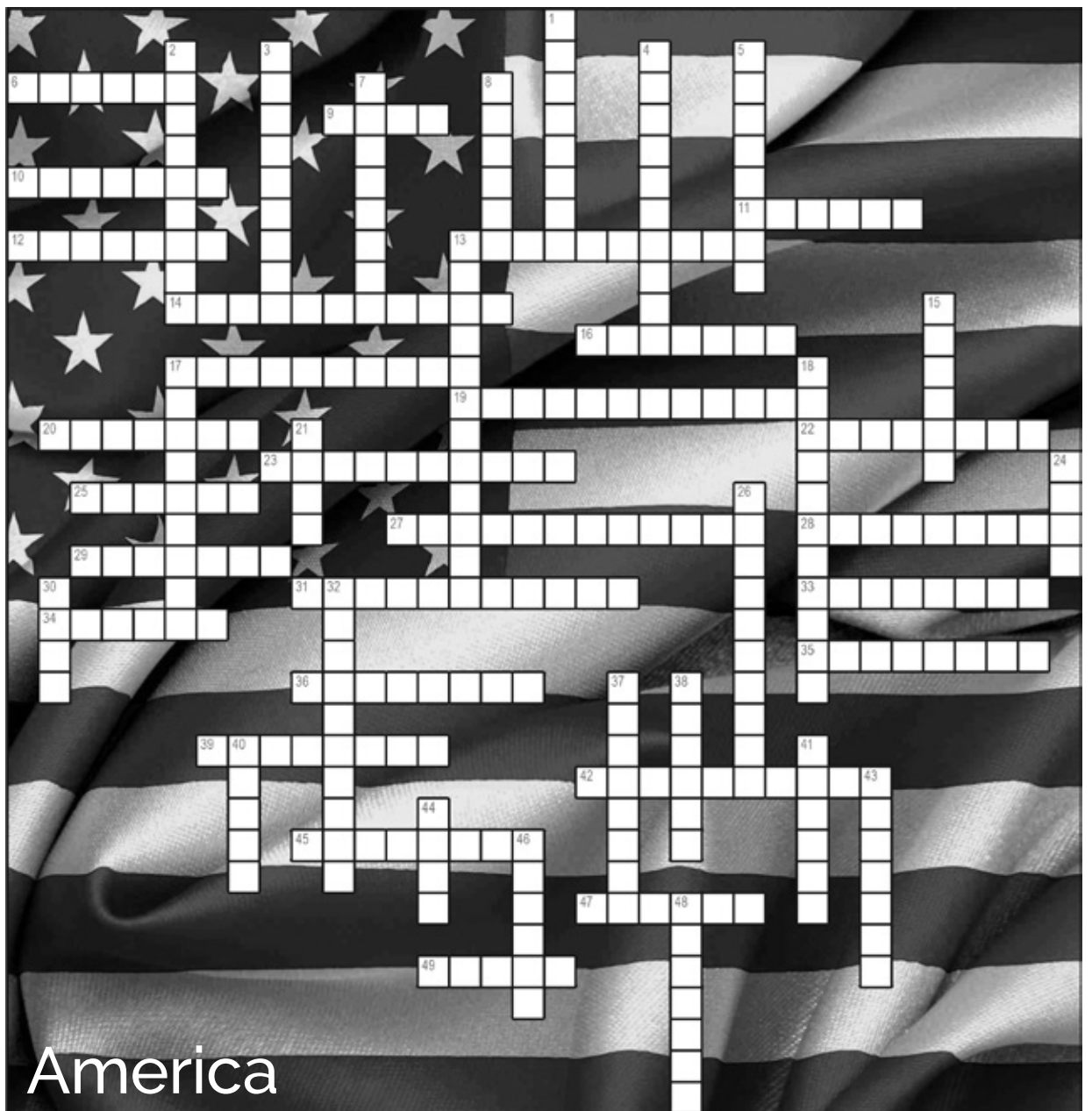
Lorilei, Crystal and Cheyenna Pinley

Across

- 6 A president, a dam, and a vacuum
- 9 Space exploration group
- 10 "_____ Enlightening the World" is this lady's full name
- 11 Brothers from Kittyhawk
- 12 Liberation, as from bondage
- 13 The most populous state in the union
- 14 Vast flat area east of the Rockies (2 words)
- 16 Emancipation Proclamation author
- 17 America is considered this type of cooking device (2 words)
- 19 What we celebrate on July 4th
- 20 A Few Good Men group
- 22 Service that controls the skies
- 23 They patrol our water borders
- 25 Tea party city
- 27 Where the continental congress made their declaration
- 28 Tinseltown
- 29 State with the smallest population
- 31 The path west over the mountains for settlers (2 words)
- 33 America is a constitutional _____
- 34 Unique vocal trait, often by region
- 35 Nickname for the stars & stripes (2 words)
- 36 Legislative body for making laws
- 39 Last name of man who gave America its name
- 42 A man, a general, a state, and a city
- 45 Frenzy that began in California in 1849 (2 words)
- 47 Highest mountain peak in America
- 49 Author Clemens' alter ego

Down

- 1 Longest river in the country
- 2 One giant leap speaker
- 3 Lewis & Clark's guide
- 4 The way groups of settlers moved west
- 5 Brother vs. Brother conflict
- 7 America's pastime
- 8 The largest state by land area
- 13 USA's governing document
- 15 Wild Bill
- 17 Colonial militia members
- 18 Site of history's day of infamy (2 words)
- 21 Inventor of the assembly line, not the auto
- 24 Dr. Jones of film is often called this
- 26 Line that defined north from south (2 words)



- 30 Carriers, destroyers, submarines and more
- 32 The war for independence
- 37 Officially the first state of the USA
- 38 The Star Spangled Banner
- 40 America's only "king"

- 41 Fifty places on the map
- 43 City where Washington took the oath of office (2 words)
- 44 Soldiers form this group
- 46 America's youngest state
- 48 First name of 39 across

ADVERTISE IN THE PINE MOUNTAIN LAKE NEWS
 GO TO WWW.PINEMOUNTAINLAKE.COM
 OR CALL 209-962-0613
 FOR RATES AND INFORMATION

Sudoku Puzzle Answers

5	1	9	3	7	4	8	2	6
6	7	4	8	1	2	5	9	3
2	3	8	6	5	9	1	7	4
1	8	6	2	3	5	9	4	7
7	4	3	1	9	6	2	8	5
9	5	2	4	8	7	3	6	1
8	6	5	7	2	3	4	1	9
4	9	1	5	6	8	7	3	2
3	2	7	9	4	1	6	5	8

8	9	3	2	4	6	7	5	1
1	5	2	7	3	9	4	8	6
6	4	7	8	1	5	2	9	3
3	6	1	9	7	8	5	2	4
4	8	5	3	2	1	9	6	7
7	2	9	5	6	4	1	3	8
2	7	4	6	9	3	8	1	5
9	3	8	1	5	7	6	4	2
5	1	6	4	8	2	3	7	9

Urquhart Bids Fairwell to Big Oak Flat/Groveland USD

Dave Urquhart

You may have heard that I have resigned my position as superintendent from the school district. I am retiring from public education on June 30 after a 41 year career as a teacher, coach, principal and superintendent. I have enjoyed every year, and all but one have been in Tuolumne County. Spending my last 6 years in this school district has been remarkable. This district has excellent employees, all who work tirelessly for the students of the district. The community is just as remarkable. The district gets thousands of dollars each year from donations from members of the community, all of which go into assisting our students and teachers. And we are careful with our funds, as we always are looking for grants to subsidize our programs. Over

the past few years, we have been able to add several programs in our schools, and I hope the district can keep the new programs running. The school board members are also very supportive of the programs and staffs of each school. They have everyone's best interest at heart and are thoughtful while making decisions that impact our students and all employees. You might know that Wynette Hilton, the very capable principal of Tenaya Elementary, will be taking over as superintendent, and she will still be in charge of Tenaya. She will have assistance from Joanne Beaudreau in the school office.

I wish everyone the best, and I am encouraged that the district will continue to work diligently for the betterment of the students of the district.

Tenaya Thanks Volunteers

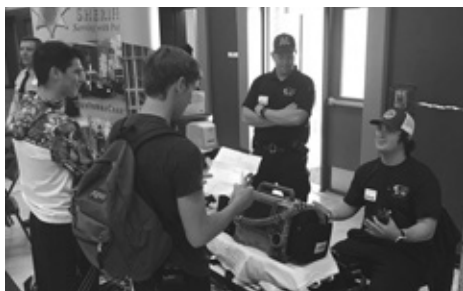
Tenaya staff and students would like to thank everyone that volunteered their time, money or both to help make our small school as wonderful as it is. We would not be able to have the successes we have without the help of our very generous community. We have many opportunities for volunteering at Tenaya. There is Brainy Groveland who work with our third and fourth graders in reading and math. We have Tail Wagging Tutors that bring their service dogs in to have children read to them. There is the Friends of the Groveland Library that have made large contributions to our classrooms and library. Groveland Rotary donates dictionaries to our third graders

every year, and raises money for our Shoes for Kids program. Helping Hands sponsors our snack program and educational fieldtrips. The Kiwanis group organizes the annual shopping spree for students to be able to start the year with new clothes and supplies. The ROOFBB organization helps in many ways including transportation for the annual shopping spree. We have many moms and dads that volunteer in the classrooms. This is invaluable to the teachers and students. We have so many other benefactors that have supported our students with school supplies, clothes, shoes, and food. This is just a small sample of all the support we have received this year. THANK YOU!

Tioga Career Day

Ryan Dutton – Principal - Tioga High School

On May 11th, Tioga High School hosted a career fair for its students as well as Don Pedro High School. Our kids were able to visit with a wide variety of professionals from many different careers, and it was a great experience for all. Thank you to the Groveland Rotary for sponsoring our BBQ lunch, the food was fantastic!



The Robotics class has been hard at work building their new VEX Robots.

We received a grant to purchase these robots and the VEX curriculum from the Sonora Area Foundation, and the kids have enjoyed building their "Clawbots" and testing them in the new competition ring! This ring is a simulation to what is to come for our Robotics program, which will be traveling to competitions to test their skills against other high school Robotics teams. The kids first use remote controllers to control their bots, and in phase two will have the chance to program their robots to do as they ask. This program is taking our technology vocational offerings to another level, at the same time making it fun and competitive for the kids in the classroom!



Thank you Mrs. Lanter for all the work you have done in bringing this great program to our school!

Tioga Track Sectional Qualifiers

Ryan Dutton – Principal - Tioga High School

Tioga High School Track has had yet another successful season, and it continues into the playoffs for a couple of athletes. Recently, the Mountain Valley League Championships were held, and three of our athletes placed well enough to move on to Sectional competition!



the Discus

All three of these athletes were named to the MVL All-League First Team!

Other team members that placed and did well at the league meet were:

Summer Avery took 2nd in the Discus and 4th in shot put

Josh Follmer took 4th in the shot put and Discus

Jaydon Spires took 1st in the 1600m and 3200m runs

Ada Pollock finished 1st in the 200m race and triple jump

Halei Belvail qualified as an alternate in

Good luck the rest of the way Tioga High Track Team!

Tioga Prom King & Queen

Ryan Dutton – Principal - Tioga High School

Congratulations to seniors Miguel Gomez and Halei Belvail on being chosen 2018 Prom King & Queen at Tioga High School! This year's Prom, held at Tuolumne Trails, was a big hit! The Culinary class setup a great menu of food items and the students enjoyed music, memories, and a photo booth to snap pics with friends! Thank you Student Council for putting together a great event!



NEED A CONTRACTOR?
NEED YOUR LOT CLEARED?
JUST NEED SOME WORK DONE?

FIND WHAT YOU NEED IN
THE HOME IMPROVEMENT
SECTION

SEASPRAY

AWNINGS & BOAT COVERS

533-4315 • 536-9397



Lic. #981187






TUOLUMNE COUNTY'S NUMBER ONE SOURCE FOR
 Custom Retractable & Fixed Awnings
 Boat Covers & Bimini Tops
 Boat Upholstery & Carpet
 Recovers & Repairs

www.seasprayawnings.com
www.seasprayboatcovers.com

FOR IDEAS AND ESTIMATES CALL DOUG PARRISH

14769 Mono Way, Sonora • 13893 Tuolumne Rd.

R&R Mountain Enterprises, Inc.

LIC. #991183



DOWN TO EARTH

CONSTRUCTION

- Paving & Concrete work
- Excavation
- Asphalt seal coating & repairs
- Lot clearing & site work
- Complete underground work
- Septic system installations & repairs
- Retaining walls, walk-ways, etc.

NURSERY

- Perennial, annual & vegetable plants
- Shrubs & Bushes
- Garden accessories
- Wildlife & drought tolerant plants
- Shade, fruit & landscape trees
- Potting soils, compost, etc.
- Landscape supplies
- Irrigation & plumbing supplies

We Deliver Gravel & Landscape Supplies

FREE ESTIMATES




WE ACCEPT ALL MAJOR CREDIT CARDS
(VISA, MASTERCARD, DISCOVER & AMERICAN EXPRESS)

RAYMOND ALBANEZ

209-962-7407

13050 Boitano Road, Groveland, CA 95321 • Fax (209) 962-4987
downtoearth7407@gmail.com

LICENSED • INSURED • WORKMAN'S COMPENSATION

Going Batty? Bats in the Belfry?

Certified by
Bat Conservation
International
"Bats in the Building"

Serving
PML &
Groveland



Tuolumne
County's
only full-time bat
exclusion company

100% safe to bats
NO
CHEMICALS
NO
PESTICIDES

APPROVED
BAT EXCLUSION
PROFESSIONAL

David Diehl & Darren Duez

Sierra Bat Exclusion

209-532-8200

www.sierrabatexclusion.com




Pest Control

- Ants, spiders, mice, wasps, earwigs, etc.
- Fast service, great prices
- Squirrel and bat Exclusion
- Termite Inspections
- Weed Control
- Poison Oak
- Star Thistle



962-5710
800-464-3772
Free estimates



**Sierra
HEAVY DUTY**
RV & TRUCK CENTER



BUSINESS HOURS
Monday - Friday:
8:00am - 5:30pm
Saturday: 8:00am - 2:00pm
Sunday: CLOSED

Well Stocked Parts House:

For All of Your Heavy Duty Needs!

- Heavy Duty Brake Linings
- Baldwin & Fleetguard Filters
- Delo Oil
- LED Lights
- Air Brake Valves & Hoses
- CB Radios, Antennas & Accessories
- Logging & Dump Truck Parts
- Hydraulic Hose Shop

Full Service RV Repair Shop:

- Commercial House & Starting Batteries
- Full Service Chassis & Lube Center
- Electrical & Plumbing Repairs
- Interior & Exterior LED Lighting
- Complete Body Damage Repair Shop
- Solar Power Systems & Inverters
- Complete Detailing Services
- Warranty & Insurance Work Accepted

Mobile Service Available

18968 Waylon Way
Sonora CA 95370
Call or Email us to schedule an appointment today!
(209)-532-7994
EMERGENCY CONTACT: (209)-559-3840
Email: shop@sierraheavyduty.com
Visit Us Online: www.sierraheavyduty.com

Over 50 Years of Experience!



All Major Credit Cards Accepted.

Ken's Asphalt

Lic. 708310

Grading • Paving • Chip Seal • Road Oil

Seal & Slurry Coatings • Crafcro Hot Rubberized Crack Sealer
Driveways • Private Roads • Subdivisions

DOING
BUSINESS
SINCE
1985

DRAINAGE PROBLEMS?

We have the Solution!

Erosion Control • Riprap (6-12" Rock) • Asphalt Curbing • Base Rock

"Just Pave It"

Complete Concrete Services

"Just Pave It"

- Stamped Concrete and Colored Concrete
- Stained Concrete
- Cleaning & Sealing
- Retaining Walls
- Driveways
- Walkways
- RV Pads
- Patios

532-0800 • 962-5644 • 768-7395 Cell

TMC CONSTRUCTION

License # 717300

Insured

(209) 962-6938

Brushing

Log Removal

Hazardous Tree
Removal & Pruning

Mastication
& Stump Grinding

We can help with your grant.
Skid Steer and Dump truck service
Reasonal Rates • Free Estimates



Call your local Pro!

Jack Proctor
Heating &
Air Conditioning



OFFICE
209-678-8915
License #313926
Since 1975

- Complete commercial & residential services
- Service & repair - all makes and models
- Heating & ventilation
- Heat pump specialist
- Air conditioning troubleshooting expert
- Installation and remodeling
- Upgrading & energy efficiency

Before replacing your unit, ask us for a 2nd opinion.
Chances are, we CAN repair it!

ADVERTISE YOUR COMPANY FOR
AS LITTLE AS \$25 PER MONTH


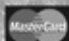
Go to www.PineMountainLake.com/pmla-newspaper/
for ad rates and information

HOPE'S TREE SERVICE

Lic# 987171

EXPERT TREE SERVICE, PRUNING,
REMOVAL, CUT & STACK OR HAUL AWAY
CERTIFIED ARBORIST

Proud member of the Yosemite Hwy 120 Chamber of Commerce

 We accept credit cards 



Fully Licensed and Insured
PO Box 1072
Groveland CA 95321



209.878.3096
or **209.225.3191**

LOREN SNIDER'S TREE SERVICE



Serving Your Tree Needs

Removal & Pruning • Clearing & Hauling
Chipping & Stump Grinding • Mistletoe Removal

Home: 209-878-3828 • Cell: 209-402-9797

Non licensed • 27+yrs Experience
General Liability Insurance

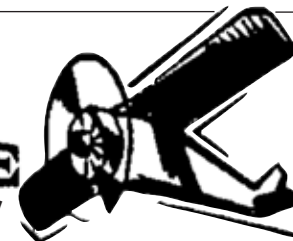
A AMERICAN ELECTRIC & SERVICE CO.

COMMERCIAL • INDUSTRIAL • RESIDENTIAL

209.962.7374

ELECTRICAL CONTRACTORS LIC. # 465220

AIRPORT MINI-STORAGE



60 Units - 6'x8' to 10'x30'

Open 7 a.m. to 9 p.m. Daily

Located on Elderberry Way off Ferretti Rd. near PML Airport

209/962-5360

PML MINI STORAGE

65 Units Ranging From 5'x5' to 12'x30'

- REASONABLE RATES •
- WELL LIGHTED •

Located one-half block off Ferretti Rd. on Elderberry Way towards Airport

209/962-6220

HANDYMAN FOR HIRE

"The Small Job Specialist"



Doing Building and Repairs in PML Since 1976

WHERE ONE CALL CAN DO IT ALL!!!

Working by the Hour to Save you Money...

- Deck Repairs
- Interior Repairs
- Painting
- Exterior Repairs

omni1handyman@aol.com

No **(209) 962-5463** License

Cobblestone Homes

• Custom Homes • Additions • Remodels •
• Specializing in high country design/build since 1989 •
We provide superior craftsmanship, attention to detail,
follow-up, and great customer service.

Craig Lawrence-Owner
209.404.0290 Lic. 564665

HEAVENLY CLEANING SERVICE

PROFESSIONAL HOUSEKEEPING
AND CARPET CLEANING

Now cleaning up for 25 Years!



HOME OFFICE CARPET

FULL TIME HOME OR WEEKEND GETAWAY

WE HAVE OPENINGS TO CLEAN YOUR HOME
(NO LONGER ACCEPTING VACATION RENTALS)

WE ALSO OFFER DECK BLOWING AND BBQ CLEANING
FOR ALL YOUR CLEANING NEEDS

GIVE US A CALL TODAY – 209.962.6418

heavenlycleaning@mail.com • FULL LIABILITY COVERAGE

Bert's Weedeating and Lot Clearing

◆◆ 962-6724 ◆◆

PARROT PLUMBING

MILT LAKE

Owner / Operator

209-852-2267

Serving Groveland, Don Pedro & Coulterville

20940 Ferretti Road Unit 'A', Groveland CA 95321



C-36 #791575

P.O. Box 127, Coulterville, CA 95311 • Email – clake@inreach.com

We are known for our integrity and legendary customer service!

Produce Your Own Clean Power!

- Save \$\$\$ Every Month
- 30% Federal Tax Credit
- 5-Year Typical Payback



Your Local Solar Electric Company

License #892261 / Since 2002
19472 Village Drive, Sonora

Call Us For A Free Estimate

209-532-5925

Follow us on Facebook at APSsolarpower
Check our reviews at www.SolarReviews.com



Sears

Karen Faught
Owner

Sears Hometown Store #3159

14691 Mono Way, Sonora, CA 95370

Tel 209-532-3191

Fax 209-532-8334

Service & Parts 1-800-469-4663

www.sears.com

Locally Owned & Operated



Waters Plumbing Heating & Air

**FAST
SAME DAY
SERVICE***

*IN MOST CASES

All work 100% Guaranteed!



Wood Best Plumber
in Tuolumne County
14 Years in a Row



Contractors License #463958
www.watersplumbing.com

"I want you to know that our technicians will give you
a price before we start the job." —Wayne Waters

Groveland (209) 962-0990

PAINTING

Exterior/Interior
Deck Repairs
Wood Repairs
Remodels

Bay Cal

LIC #923832



SEE COLOR AD PAGE 39

209.962.4777

www.baycal.com • email: davec@baycal.com

Rod Diehl Pest Control

"The Best Deal in Pest Control"

**RESIDENTIAL & COMMERCIAL • HIGH QUALITY
100% SATISFACTION GUARANTEED**

Locally Owned & Operated • 5th Generation Tuolumne County

PERSONAL SERVICE • Guaranteed Rates – No Increases! • FREE ESTIMATES

We will customize your service around your pets

www.RodDiehlPestControl.com

(209) 532-3260

PROUDLY SERVING THE PINE MOUNTAIN LAKE / GROVELAND AREA

REIMERS CONSTRUCTION

PROUDLY SERVING GROVELAND/PML SINCE 1987

DESIGN/BUILD • EXPERT REMODELING • SPECIALIZE IN KITCHEN AND BATH
CEMENT SIDING • COMPOSITE & REDWOOD DECKS • WINDOW AND DOOR REPLACEMENT

(209) 962 5682



Email: wrrpar@gmail.com
CA.LIC. 590514



JAMES PRICE CONSTRUCTION

CA. Lic. No. 591995

DECK REPAIR SPECIALIST

- Professional Machine Sanding •
- Pressure Wash and Sealing •
- Pickets Restored •

Hardware Retrofit "For a Safer Deck"

- Structural and Dry Rot Repairs •

Preferred contact via email:
designbild@earthlink.net

Call 209-962-0486

ARE YOU STUMPED?

COMMERCIAL STUMP GRINDING

No stump too small or too big

Contact D & L RANCH
Owner/Operator—Lester Scofield

Call for prices—209-962-6902



Over 25 years of construction experience Highly Disciplined and Dependable

We have expertise in all phases of construction including:

- Decks and staircases
- Dock and gangway repairs and replacement
- Kitchen and bath remodels



Hilltop Homes

General Building Contractors
Lic #931547 Fully Insured

209-986-7755

Pine Mountain Lake Homeowners Steve and Cindy Watts

CLASSIFIED AD SUBMISSION DEADLINE IS THE 15TH OF THE MONTH. SUBMIT AT WWW.PINEMOUNTAINLAKE.COM
COST IS \$0.35 PER WORD. ADS RUN UNTIL CANCELED BY ADVERTISER

HELP WANTED

LOOKING FOR HELP

with kids/house in June
We are a family with 4 kids vacationing in PML (right off the main Marina) June 4-17 looking for help with house/kids.
Please email mpbouk@yahoo.com if interested.

FOR SALE

FIREWOOD

Premium 16" Seasoned Dry
Oak - 1/2 cord \$175 • Full cord \$325
Cedar - 1/2 cord \$125 • Full cord \$225
DELIVERED & STACKED
if accessible. References
Mark **588-6227** or **732-7721**

FOR SALE NEW RV COVER

New in box Bugle RV Cover 29'-31' Class C style
209-962-1808

2003 GLASTRON GX185 BOAT

Open Bow 4.3GI Volvo Penta engine, 63 hours run time, depth finder, bimini top, serviced and detailed, excellent condition, \$14,000
Call **408-712-0137**

BOAT FOR SALE

13Ft. Aluminum boat with trailer and 6hp Johnson motor (New) \$2000 obo
408 978 2390 or **831-566-5684**

LAND FOR SALE

BEAUTIFUL DEEP WATER LAKEFRONT LOT
Over 100' of lake frontage. Approximately 1/2 acre on northside of Longridge. Great street, beautiful homes, large Oak trees. Deep water access even during drought. \$225,000 **925-818-0500**

LOT FOR SALE

Unit 6 lot 235 available for sale/Unit 6 lot 234 also available. Merger of the two lots is approx 2 acres. Ferretti Road sloped lot, neighbor to the left open to the right with beautiful views of the oaks. Property cleared and ready for building. This could be your retirement home! This lot will be offered at a discount of \$5K as owner is eager to sell. **925-354-9409**

RENTALS WANTED

EXCELLENT TENANTS

w/excellent credit and rental history looking for homes to rent. Owner approves tenant before placement. Call *Yosemite Region Resorts*
209-962-1111

SERVICES

LOREN SNIDER'S TREE SERVICE

General pruning, ornamental pruning, mistletoe removal, tree removal, dump truck, chipper, stump grinder, local references, Non Licensed 27+ years experience. General liability insurance **209-878-3828** or **209-402-9797**

COMPUTERS custom built, upgrades, trouble-shooting, free consultation. **209/962-7110**

SERVICES

RONNING ROOFING

Call Joe for all your Roofing and Gutter needs. Licensed, Bonded, and Insured. License # 976739 **209-962-6842**

GROVELAND GAL FRIDAY

Let me Spring into action and help you with pet sitting, home checks, gardening, organizing, shopping, rides and more. Sharon Volponi
209-962-6848 • 209-770-6277

HANDYMAN - For removal

of unwanted items. **Also tree trimming and removal.** Call Mike, very reasonable rates. Prompt Service. **209-962-0777**

PROFESSIONAL PROPERTY MANAGEMENT

RE/MAX Yosemite Gold • Patricia (Tish) Fulton BRE# 00760019 Property Manager Certified by California Association of Realtors **209-962-0837**

BERT'S WEEDEATING AND LOT CLEARING
962-6724

www.GrovelandPropertyManagement.com
209-404-8034

ELECTRICAL
A AMERICAN ELECTRIC & SERVICE CO.
Lic. #465220 **209/962-7374**

LOVING PET CARE in my home or in yours - garden care also available. Call Barb **962-5653** or email at shadkitty12@gmail.com

GOT WEEDS?

Contact Jim Atkins at **209.985.4376**. Lot Clearing, Hauling, Dump Runs, Weedeating. Local Guy. References available.

BIG JOHN HANDYMAN SERVICES

Yard Maintenance, House Maintenance and moving households Call John **962-6163**

FURNITURE & CHAIR REPAIR/ WOODWORKING

Retired Cabinet-maker will repair all types / kinds of furniture **962-7604**

COSTA'S TREE SOLUTIONS

Steve Costa, Owner
Fully Insured/Bonded
C.C.L. #1001392
209-962-4468 • Cell 209-768-4469
Certified Arborist #WE7496A

FLINCHUM MASONRY

Retired Mason. Repairs, masonry powerwashing and rock sealing. Veneer rock for sale. **209-770-6084**

SERVICES

TV INSTALLATION & SETUP

Satellite, Blu-Ray, Roku, AppleTV, Stereo equipment and more. Call for a quote.
209-694-8155 • www.silvatech.net

TERRA'S EYE-FOR-DETAIL HOUSE

CLEANING meticulous & thorough.
209-858-8009

VACATION RENTALS

PANORAMIC LAKEFRONT

boat dock, decks, air, 3bd/2ba, Beautiful Views
650/961-6334

The PMLA is not responsible for, nor does it endorse, any contractor, company, or individual advertising in the PML News.

PMLA OWNED LOTS FOR SALE

1/356	PINE MT DR./TANNAHILL DR.	\$500
2/291	FERRETTI ROAD	\$500
2/333	MUELLER DRIVE	PENDING \$500
3/057	PINE MOUNTAIN DRIVE	\$500
3/060	20460 PINE MOUNTAIN DRIVE	\$500
5/212	FERRETTI ROAD	\$500
6/114	FERRETTI ROAD	\$500
6/211	FERRETTI ROAD	\$500
6/240	FERRETTI ROAD	\$500
7/064	FERRETTI ROAD	\$500
10/007	MCKINLEY WAY	\$500

FOR FURTHER INFORMATION REGARDING THESE PROPERTIES PLEASE CONTACT PMLA AT
(209) 962-8600

Looking For A New Dentist?

We're Accepting New Patients!

Advanced Level Dental Expertise

Care with a Gentle Touch

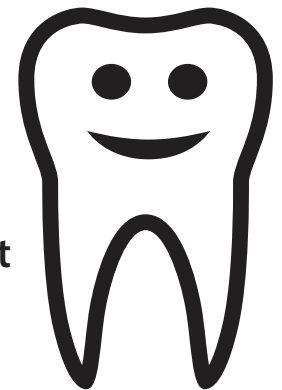
Coffee & Tea for Your Enjoyment

Advanced Digital Technology

Relaxing Movies During Treatment

Insurance Friendly

Senior Discount



209.536.1954

Michael D Scherer, DMD, MS, APC 14570 MONO WAY, STE. I
SONORA, CA 95370



WWW.SONORAMODERNDENTAL.COM

COMMUNITY ORGANIZATIONS

Contact the individuals/organizations below if you are interested in joining!
(All numbers are 209 area code unless noted otherwise)

Camp Tuolumne Trails – Jerry Baker – 962-7916

Friends of the Groveland Library – Virginia Richmond – 962-6336

Village on the Hill – 209.962.6906 or info@villageonthehill.org

If you would like your community organization listed please send your group's name, contact person, and phone number to
debra@pinemountainlake.com

Locally Owned since 1950

YOUR ONE-STOP SHOP FOR
all your pest control services

PEST CONTROL: HOME,
BUSINESS AND INDUSTRY



LAWN FERTILIZATION AND
COMPREHENSIVE LAWN CARE



TERMITE INSPECTIONS,
REPAIRS AND FUMIGATIONS



TREE AND SHRUB CARE,
AND BARK BEETLE CONTROL



TERMITE TREATMENTS
AND MONITORING



WEED CONTROL
AND FIRE BREAKS



BED BUG
TREATMENT



DECK REPAIR/REPLACEMENT
(LICENSE #922758)



OUR REPUTATION IS IMPORTANT
TO US AND YOUR COMMUNITY.
Call now for a free estimate!



(209) 770-7733
clarkpest.com

First Choice Mortgage

"Your Local Real Estate Financing Specialist"

PURCHASE & REFINANCE

Fixed & Adjustable Programs • FHA & VA & USDA • Conventional
First Time Homebuyer • Down Payment Assistance Programs
100% Purchase • 203 K home Improvement
Commercial loans

www.donloans.com



Notary Services • Reverse Mortgages
28 Years Experience • Working for You *Don Teixeira*



18687 MAIN ST., C-1 • GROVELAND CA • 209.962.2084
BRE 01130209 • NMLS 242535 • NOTARY COMM 2012748

NEED HOMEOWNER'S INSURANCE?



Having trouble finding
insurance for your home?

We may have the solution for you even
if you live in a forested area!

EASON INSURANCE AGENCY, INC.

209.383.7322

9AM - 5PM - MON - FRI • 9AM - 1PM SAT

Email: homeins@easoninsuranceagency.com

CA Lic #0C97581

Simonetta Spaccia, PhD

Clinical Psychology and Family Mediation
Practicing for twenty years

I specialize in the management of positive healthy personal relationships. If you're experiencing challenges with a loved one, family member or friend, consider getting the help you need. Taking this first step can ease anxiety and lead you on a path to clarity and peace of mind.

Located in PML. Call (408) 391-3447
or email: simonettaspaccia@gmail.com for appointment.





RE/MAX
Yosemite Gold

PineMtnLake.com
Property Sales 1 (888) 962-4080
Long Term Rentals: (209) 985-0216
CA BRE License # 00975527



Lauree Borup
(209) 628-4600
REMAXyosemite@gmail.com



Ann Powell
(209) 200-1692
AnnPowellRealtor@gmail.com



Tish Fulton
(209) 985-0216
Tish_RealEstate@gmail.com



Eleda Carlson
(209) 814-4123
EledaC1@gmail.com

New Listing



LAKE FRONT ON A QUIET COVE
Spend lazy summer days at the water's edge or relax on one of the decks and patios as you admire the terraced grounds and peaceful surroundings. Renovated inside on all three levels with high end appointments. Open great room near the entry foyer, 2 fireplaces, family room and exercise room. Detached garage with great shop space. 3 bedrooms 3 baths. Nearly 3600 sq.ft.
3-173 Rock Canyon \$1,185,000



4 BEDROOM WITH 2-CAR GARAGE



Well-built 2080 sq ft custom chalet on large level .66 acre lot with ample room for a boat and outdoor fun. Composite deck with built-in seating, woodstove on brick hearth, less than 1 mile to Marina beach. Have a retro vacation experience. Original owners! 13-151 \$295,000

GOLF, TENNIS, POOL & DINING are just around the corner. Immaculately maintained and tastefully decorated, this traditionally-styled single level home is ideally located "close to everything". Snuggle by the fireplace on cool evenings and share a pleasant meal in the modern sunlit kitchen with maple cabinets. Laminate floors in great room.



New Listing

vaulted ceilings, spacious master suite. 3 bedrooms 2 baths, 2 car attached garage and central heating and air.
5D-1 Tannahill Ct. \$327,500



SURPRISING PRIVACY



New Listing

On Ferretti Rd with merged lots all around. 3 bdrm, 2 bath on one level above oversized garage. Fresh paint, 500 sq ft rear deck, big white kitchen, plantation blinds, river rock hearth, master with walk-in closet and door to deck, on septic, .45 acre. 3-41 \$235,000

INTRIGUING LAKEFRONT HOME

Enjoy glorious sunsets from this one-of-a-kind design. Expansive windows in the great room showcase the tranquil water scene. Massive fireplaces are focal points on the main level



5600 Sq Ft

and in the lower level game room. This 5600 square foot home is well suited for large gatherings and for entertaining. Refinished hardwood floors, new carpeting and new interior paint give this home a fresh new look. Must see to appreciate! 3-192 \$1,200,000



LAKE VIEW 4 BEDROOM



New Listing

2 bath with garage & big flat parking area in back. Composite deck, laminate floors, central heat & air, woodstove on red brick hearth, fully furnished. Big great room with vaulted pine ceilings. Near Dunn Beach. Fresh exterior paint, pest clearance. 1-139 Pleasant View \$265,000



PERFECT SIZE 1871 sq. ft. 3 bdrm, 2 bath,



PRICE ↓

2-car garage. Hardwood floors in great room, corner red brick hearth with woodstove. Large master bedroom has private view balcony and "separation privacy" from the other bedrooms. Storage area under house. U shaped driveway for easy turning 7-196 Jackson Mill \$305,000

COME HOME TO QUALITY



Built in 2006

Bamboo & tile floors, fiber cement siding, Timbertech decking. Knotty alder cabinetry, wood paneled doors, gorgeous granite counters & granite fireplace, plantation blinds, 9 ft ceilings. Whirlpool tub, flat stamped concrete driveway. Much more! 3-127 Nob Hill \$435,000

EXQUISITE CUSTOM HOME



boasts of quality appointments throughout. From the sweeping staircase to the upstairs level, through the formal dining room and the chef's kitchen with adjacent breakfast area and den you will find many nice features as you tour this property. 4 bdr 4 1/2 baths-The attached three car garage is an added benefit. 13-200 \$649,000

FINE FOREST VIEWS

from both sides of single story home on half acre. 3 bdrm, 2 bath, with bonus room/shop. New roof, laminate floors throughout, large private deck in back.
13-125 Breckenridge \$265,000

New Listing- IN ESCROW

